

Strip search yields cocaine vials, police say

Tyson Davenport, 20, of Newark was charged Sunday with possession of cocaine and possession with intent to distribute after police stopped him in a car on Centennial Avenue.

Sgt. Russell Wilde pulled the car over after he observed a broken rear window, and, using the computer, determined the car had an expired registration. Sgt. Wilde observed one vial of suspected cocaine, and determined it belonged to Mr. Davenport.

At headquarters, after a strip search, police found 10 more vials of suspected cocaine in the man's rectum and under 50 grams of marijuana in his underwear. He was released on \$1,000 bail.

The driver, Jeffrey Burgess, 24, of Irvington, received a summons for driving while on the revoked list, and driving an unregistered, uninsured vehicle. The car was impounded.

Another passenger April White, 27, of Newark was charged with possession of an open alcoholic beverage in a motor vehicle.

Arrests
Dale Roberts, 46, of Centennial Avenue was charged with simple assault and harassment Thursday evening at his home after police concluded their investigation concerning a dispute between drivers on Walnut and Lincoln avenues.

According to Lt. William O'Donnell, police called to the scene found the victim, a 28-year-old Roselle woman, crying outside her car. The victim reported being hit by a man who claimed she had cut him off minutes earlier while driving on Walnut Avenue.

According to Lt. O'Donnell, the victim said she was sitting at the

Police log

traffic light at Walnut and South avenues, and a car was in the next lane. She merged ahead of the car, and stopped for a red traffic light at Lincoln Avenue where the man approached her car, Lt. O'Donnell said. She rolled down the window, and the man began to scream at her, and attack her with the palm of his hand on the left side of her face, said police.

A witness to the incident wrote down the man's license plate which police used to trace him.

It was the third incident last week involving a dispute between drivers. A Westfield man was stabbed May 15 after words were exchanged between the occupants of two vehicles engaged in a dispute after one passed the other on Raritan Road. Cranford police continue to investigate the May 14 report by a Cranford resident who claimed another person followed him for Mountainside where he had legally passed him in the car, and assaulted him when the victim stopped at a red light at Union County College. The victim told police when he got out of the car, he was attacked by both the suspect and a passenger, Lt. O'Donnell said.

• Diego F. Jaramillo, 30, of Harrison was charged with driving while intoxicated after Officer Robert Montague stopped him for trav

eling at a low rate of speed and failing to signal a lane change. • Terrence Harrison, 19, of Centennial Avenue was charged with possession of alcohol Friday after police responded to a call concerning juveniles purchasing liquor. Mr. Harrison indicated the bottle of vodka belonged to him, said Lt. O'Donnell, and that another person had made the purchase.

• Kenneth Voorhees, 23, of College Park, MD was charged with possession of under 50 grams of marijuana, speeding and driving with a suspended license after Officer Gerald Quinn stopped him for speeding 144 a.m. Thursday. Mr. Voorhees was released on \$250 bail. Two passengers were not charged.

Counterfeit bills
• Police report a \$100 counterfeit bill was used to buy merchandise at a downtown business Friday. The bank seized the bill when it was deposited into the business' account; the Secret Service will investigate.

Burglary
• A Crane Parkway resident reported the home burglarized 7 a.m.-10:10 p.m. May 16. Entry was gained by cutting a rear screen and reaching in to open the window, said Lt. O'Donnell. The residents are still determining exactly what was stolen.

Auto theft
• An Orchard Street resident reported a 1992 Jeep Cherokee stolen while parked in the driveway overnight May 14-15. It was recovered by Cranford police May 17.

Cleanup panel seeks volunteers

The Cranford Clean Communities Committee is inviting volunteers group to sign up for its fifth annual Townwide Litter Pickup Day 10 a.m.-noon Saturday, Sept. 30.

A community picnic at Orange Avenue Pool, which will include entertainment by professional magician Mr. R.E. Cycle, will follow the cleanup.

The event, funded by a Clean Communities grant from the NJ Department of Environmental Protection, is designed to encourage volunteer cleanup of public lands and to educate the public about the need to control litter.

Volunteer groups and interested families will be assigned to sites around town to collect litter and recyclables. Last year's event netted more than four tons of litter, debris and recyclables. About 300 adults

and children participated, including Scout troops, Cranford Jaycees, Cranford Rotary Club, Helen Baldwin Nursery School, Cranford River Maintenance Committee, Babysitting Coop, Grace and Peace Fellowship Church, Sunny Acres Association, Democratic Club, Junior Women's Club, College Women's Club and families.

The Clean Communities grant has supported other projects relating to litter cleanup, enforcement and education, such as the River Maintenance Committee's river cleanups, purchase of downtown litter and recycling receptacles, part-time solid waste enforcement officer, school educational programs, and cleanups using Community Service workers.

To register for the Litter Cleanup Day, call the Clean Communities Coordinator at 709-7299.

Theft
• A Lenox Avenue resident reports a decorative Easter flag stolen Saturday-Sunday.

• A Nomahegan Court resident reports two Grammy Awards stolen from his home May 16-20.

• A Brown Terrace resident reports a heavy ornate chair taken from the front porch 1:26 p.m. May 17.

Officials at Denning Construction Company of Litchfield, Ct., reported \$5,700 worth of construction materials taken from a site on North Avenue East, Cranford May 13-15.

• An employee at Krauszer's reports being victimized by shoplifters twice between May 12-15, police said. The employee reports a man would create a diversion while his partner, a female would shoplift. Fifteen bottles of aspirin were

taken the second time.

Criminal mischief
• A North Union Avenue resident reported the driver's side window on their car shattered Saturday-Sunday.

• A 19-year-old township resident reported their car's windshield wiper blades bent May 14 while they were attending a party on Denning Way.

WAREHOUSE ANNUAL MEMORIAL DAY SALE

The Guys at WAREHOUSE missed you during our move to our new location!! To welcome our existing customers back and get new customer started, bring the Coupon to the right for an additional 15% savings off our already great prices. If it's saving money on the items YOU need for everyday living, while shopping in a comfortable, friendly atmosphere it's WAREHOUSE. Outrageous selection of Outdoor Flags. NONE HIGHER than our

Blowout Price of \$13.99 Super Rubbermaid Deals

Rubbermaid 14 Gal. Storage Tote Container \$7.99 use coupon above your cost

Large Rubbermaid 1 1/2 Bushel 2 pack Laundry Baskets \$5.99 use coupon above

OUR DEALS CAN'T BE BEAT WAREHOUSE

And don't forget over 6000 different items are available at WAREHOUSE from wicker baskets to designer paper party products. Aluminum fins in over 25 different shapes & styles to make your Holiday cooking or catering chores a breeze.

AND TOO MUCH MORE TO PUT IN THIS NEW LOCATION K-MART/PATHEMARK Shopping Center Rt. 22 East • North Plainfield (At the Entrance to PatheMark) (908) 561-5454

NOT RESPONSIBLE FOR TYPOGRAPHICAL ERRORS

Police, neighbors approve action plan

(Continued from page A-1)

meeting said, "Officer Hehl is and has been assigned to that crime prevention unit and by virtue of that assignment is exposed to the problem areas as reported by local residents. Last year, the department had 1,000 arrests and Officer Hehl had 157. That's his job; that's what he is supposed to be doing."

The chief confirmed that the department is conducting an "Internal Affairs" investigation into the May 9 incident.

"Those who are bent on misbehavior or criminal conduct are not endeared to Officer Hehl," he added.

On Tuesday, in response to a Chronicle inquiry, Lt. William O'Donnell said Officer Hehl said that since the inquiry was in regards to a pending case, it would not be proper to make any comments to the press.

The Rev. Al Brown of the First Baptist Church reminded residents that Chief Wilde "initiated this meeting out of concern for the welfare of the community. I hear your frustration but you do have advocates within your community. We're (members of the ministry)

willing to be your advocate."

One audience member said she had contacted Chief Wilde and did receive prompt action on her complaint.

Police officers spoke about the tensions of the job, as well as the legal components. Chief Wilde said the escalating number of weapons arrests in the town, county, state and nation was "frightening."

"This creates tension on the blue (police) side of the fence," he said. "Do these raised tensions cause overreaction? I guess it does, but that is not an excuse."

Lt. Jerome Andrews assured the residents that their "complaints don't fall on deaf ears, even if you think so. If the administration gets enough complaints against a particular officer, they start to look into it."

In response to questions concerning police training, Chief Wilde said officers received five months of academy training, and three months of on-the-job training, but no specific sensitivity training.

The residents said the complaints did not reflect the majority of officers, just "one or two bad apples."

"We're dealing with a different generation of kids out there, and a different generation of police," said one resident. "Be aware that these things exist and don't say they don't. Officers of the law have the responsibility to protect everyone. We need to defuse this situation now, before someone gets hurt."

Police also heard complaints from parents whose children were arrested and were kept in the dark about charges and not permitted to be present during processing. Capt. James Washburne said it was the department's policy not to speak with parents until the processing procedure is complete, but Chief Wilde promised a review of this policy.

Chief Wilde said the department had "no tolerance for those that use, abuse, or sell drugs on public streets," and audience members quickly said they didn't want them to. "The mere fact that we have so many calls, show our concerns," said one resident.

Officer who shot rabid raccoon undergoing inoculation series

By JOANNE McFADDEN

THE CHRONICLE

Cranford Police officer has started the 28-day rabies vaccination series after the Health Department confirmed rabies in a raccoon shot by the officer last week.

According to Health Officer Warren Hehl, Officer John Stanier was called to a Severin Court home 5:20 p.m. May 7 concerning a strange acting aggressive raccoon.

The animal was located in the rear of a garage and the officer was forced to destroy the animal at a close range, said Mr. Hehl. He used a Canine Safety Slug to destroy the animal, but was sprayed by the animal's blood.

Officer Stanier bagged the animal and the evidence was refrigerated in police headquarters until Mr. Hehl took it May 8.

"I don't want people to panic, but they should be aware that Cranford is in an endemic area," said Mr. Hehl. "That is, rabies is not reaching epidemic proportions but it is present in the general population."

Wild animals such as raccoons, foxes, skunks and groundhogs are most likely to be infected with rabies but do not always display signs of illness, said Mr. Hehl.

Some symptoms may be a lack of coordination or staggering walk, fearlessness or tame behavior, or aggressive behavior. The appearance of a nocturnal animal during the daylight hours displaying the above symptoms should also be suspect.

If a pet has a confrontation with a potentially rabid animal, the saliva-contaminated hide of the domestic animal should not be touched for two hours. Rabies is primarily transmitted through the saliva of infected animals.

Residents bitten or scratched by an animal should try to identify the animal, monitoring from a distance without causing unnecessary risk. The wound should be washed

with soap and water and a physician or hospital emergency room should be contacted for advice.

Mr. Hehl emphasized the importance of residents being "alert, aware and informed" to avoid unnecessary exposure to a rabid animal and stressed the importance of the immunization of pets since unimmunized animals can transmit the disease to humans through a bite or scratch.

Sightings of wild or stray animals that appear disoriented or ill should be reported to the Cranford Police Department at 272-2222. Residents who have nuisance wildlife around their property should contact a pest control operator or the New Jersey Department of Fish, Game and Wildlife at 735-8793. For more information call a health department at 709-7283.

Meet Raksha Gupta, MD, from the Blue Cross Blue Shield Health Center at Cranford.

A board-certified specialist in pediatrics, Dr. Gupta holds a medical degree from the Maulana Azad Medical College, University of New Delhi in India, and completed her residency at St. Luke's/Roosevelt Hospital in New York. Dr. Gupta is just one of the quality physicians you'll find in one place together with an on-site lab, X-ray facility, and even a pharmacy, for Health Center patients. Available to everyone, even if you're not covered by Blue Cross Blue Shield. Get to know the better way to feel better. For an information packet, call us at 1-800-466-BLUE.

Blue Cross Blue Shield of New Jersey

Blue Cross Blue Shield Health Center at Cranford

Blue Cross Blue Shield of New Jersey

Blue Cross Blue Shield of New Jersey

Blue Cross Blue Shield of New Jersey

Blue Cross Blue Shield of New Jersey

Blue Cross Blue Shield of New Jersey

Blue Cross Blue Shield of New Jersey

Blue Cross Blue Shield of New Jersey

Blue Cross Blue Shield of New Jersey

Blue Cross Blue Shield of New Jersey

Blue Cross Blue Shield of New Jersey

Blue Cross Blue Shield of New Jersey

Blue Cross Blue Shield of New Jersey

Blue Cross Blue Shield of New Jersey

Blue Cross Blue Shield of New Jersey

Blue Cross Blue Shield of New Jersey

Blue Cross Blue Shield of New Jersey

Blue Cross Blue Shield of New Jersey

Fairview Cemetery

Faithfully Serving The Westfield Area Since 1868

NONPROFIT NONSECTARIAN LOT-OWNER CEMETERY

110 Picturesque Acres

1100 East Broad St. P.O. Box 850 Westfield, N.J. 07091

(908) 232-0781 (908) 233-0130

(908) 232-0781 (908) 233-0130

(908) 232-0781 (908) 233-0130

(908) 232-0781 (908) 233-0130

(908) 232-0781 (908) 233-0130

(908) 232-0781 (908) 233-0130

(908) 232-0781 (908) 233-0130

(908) 232-0781 (908) 233-0130

(908) 232-0781 (908) 233-0130

(908) 232-0781 (908) 233-0130

(908) 232-0781 (908) 233-0130

(908) 232-0781 (908) 233-0130

(908) 232-0781 (908) 233-0130

(908) 232-0781 (908) 233-0130

(908) 232-0781 (908) 233-0130

(908) 232-0781 (908) 233-0130

(908) 232-0781 (908) 233-0130

(908) 232-0781 (908) 233-0130

(908) 232-0781 (908) 233-0130

(908) 232-0781 (908) 233-0130

(908) 232-0781 (908) 233-0130

DIRTY DECK?

Get to the ROOT of mold & mildew problems.

Enjoy a clean deck

Restore Natural Wood Tones

Environmentally Safe

Cleans Roofs & Awnings

DOES YOUR HOUSE NEED

A PAINT JOB?

...or does it just need to be cleaned.

Rejuvenate painted, vinyl & aluminum siding.

BRITE SOLUTIONS INC.

908-232-4900

908-232-4900

908-232-4900

908-232-4900

908-232-4900

908-232-4900

908-232-4900

908-232-4900

908-232-4900

908-232-4900

908-232-4900

908-232-4900

908-232-4900

908-232-4900

908-232-4900

908-232-4900

908-232-4900

908-232-4900

908-232-4900

908-232-4900

908-232-4900

908-232-4900

908-232-4900

908-232-4900

908-232-4900

908-232-4900

908-232-4900

908-232-4900

908-232-4900

908-232-4900

908-232-4900

908-232-4900

908-232-4900

908-232-4900

908-232-4900

908-232-4900

908-232-4900

908-232-4900

908-232-4900

908-232-4900

908-232-4900

908-232-4900

908-232-4900

908-232-4900

908-232-4900

908-232-4900

908-232-4900

908-232-4900

908-232-4900

908-232-4900

908-232-4900

908-232-4900

908-232-4900

908-232-4900

908-232-4900

908-232-4900

908-232-4900

908-232-4900

908-232-4900

908-232-4900

908-232-4900

908-232-4900

908-232-4900

908-232-4900

908-232-4900

908-232-4900

908-232-4900

908-232-4900

908-232-4900

908-232-4900

</

Commentary

Reverence

On this Memorial Day particularly, young, old should focus on World War II loyalty, tragedy

Fifty years ago this month, the death and destruction of World War II ended in an Allied victory in Europe.

In August, the war in the Pacific ended with the hyper-escalation of violence as atomic bombs exploded over Hiroshima and Nagasaki. The Allies had won; this nation and the rest of the non-Axis countries reveled in the bitter-sweet moment.

Inside the families inside those countries, however, a more private, often tragic scenario was playing itself out. Uniformed fighting men and women — relatives — had been killed physically and otherwise. Many of those who came home were maimed physically and otherwise. Relationships built over a lifetime ended in telegrams and doorbells rung by long-faced military officers. The neighbors and the political leaders hailed the heroism of the wounded, the dead and the unscathed survivors. Their sense of duty, selflessness, courage and depth of loyalty to country led them to break off from family and friends to battle the enemy and his inhuman atrocities.

That emotional turbulence, felt in every waking hour by every American for those four long war years, must be transmitted to the

young. The gallantry, guts, pain, sacrifice, worry and the lonely-torturing deaths suffered by so many of our soldiers must be implanted in those born since the war began.

This is the near-urgency in the air on this Memorial Day half a century and two generations after the end of World War II. The message that must be delivered is the reverence the fallen soldiers deserve. Reverence for their sense of duty, their valor, their silent word from the grave: We live in a great Nation built on mutual respect among citizens, and it must be preserved at any price.

The fallen deserve the heartfelt reverence of all who have benefited from their sacrifice and faith.

There are parades Monday morning in Scotch Plains-Fanwood, Westfield and Cranford. A colorful, respectful memorial service also is scheduled in these communities in association with the parade. Cranford and Kenilworth, too, will hold memorial rites to renew community-wide respect and reverence for the family, friends and neighbors killed in battle under "O! Glory."

These colorful, often emotional events are deserving of townwide participation by citizens of all ages.



Letters to the editor

River needs regular silt dredging to avert floods

To The Chronicle:

This is with reference to the May 10 Mavis Serafin letter to the editor entitled "River cleanup project the most successful yet." It was most heartwarming to read of the continued involvement of so many political and civic minded people, including the 5-year-old child. I commend all of them and wish them success in future endeavors. I believe that the cleanup is a worthy effort and that it goes a long way toward preserving the aesthetics of the river and the adjoining park lands.

I do question, however, the slant that the publicity gives the effort, as though the "river cleanup" per se serves to maintain the hydraulic integrity of the river.

I write this missive to differentiate between aesthetics and hydraulic integrity

largely because it is apparent that Mavis is confused between the two and/or is attempting to confuse others. The appearance of large silt banks in certain critical areas of the river, particularly in the northern reaches makes it obvious that dredging has been ignored or has been inadequate.

A brief review of the recent history of the Riverway in Cranford should provide some insight to newer residents and to others who consider 20 years too long a time to remember.

Following my appointment in April 1973, with funding by the Township Committee, I embarked on a comprehensive program of river improvement designed to eliminate the disastrous flooding of the late 1960s and early 1970s. With hired

equipment and public works crews under my direct supervision, oftentimes in hip-boots, we dredged the river to uniform width and stream beds. We did this by straightening, deepening and widening the river and a half mile of the river from as narrow as 20-40 feet in the northern reaches and from 30-50 feet in the southern reaches. During this operation, we removed hundreds of thousands of cubic yards of dredge spoils and silt.

This improvement more than doubled the hydraulic capacity of the river — from the 1,750 cubic feet per second which overtopped the dikes at Kensington Avenue in 1973 to the 3,555 cubic feet per second on Dec. 15, 1975 (before the construction of the Lenape Park Detention Basin) and we still had 15 inches of "freeboard" to spare

at the same location.

Following the completion of the river improvement in 1975, I started a program of dredging the inevitable formation of silt in certain critical areas, particularly on the inside of river bends — the low velocity side of the river.

That program was continued every year to the day I left office on Dec. 31, 1983. I do not mean to embarrass anyone by this letter. I do, however, mean to stress and alert concerned residents that "river cleanup" does essentially nothing to preserve the hydraulic integrity of the river and that dredging for silt removal should be done on a yearly scheduled basis and not on a hit and miss or whim basis.

The river is too valuable an asset and an integral part of the community and it is therefore my firm conviction that it should be maintained at the hydraulic capacity level it possessed when I left office at the end of 1983. It should not be allowed to deteriorate to the clogged, flood-causing condition it was in when I inherited it in 1973.

I fear that current policy of the Township Committee does not bode well for the river.

I close this letter by summarizing my views on this issue quite succinctly: "River cleanup" without silt removal is tantamount to treating innocuous blotches on one's face while ignoring the body internal being devoured by cancer.

GREGORY A. SOROL, P.E.
Township Engineer, 1973-1983

What about noise problem?

To The Chronicle:

Thank you for giving both sides of the expanded ballfield issue at Memorial Field fair coverage. What was not mentioned was the extremely high noise level at the existing field next to the Parkway. I have attended many games at this field and the noise from the Parkway is so loud that it is difficult to have a conversation with the person next to you and impossible to hear the calls by the umpire.

I feel sorry for the residents of that area if the trees between their homes and the Parkway were ever to come down. I also don't feel that a field right next to the Parkway is the healthiest place to play ball during rush hour because of the vehicle emissions.

It is my opinion that noise barriers would need to be erected along the Parkway if this area were to be developed. Every citizen of Cranford should try to picture in their minds what the Memorial Field area would look like with a ballfield and a noise barrier and compare that with the wooded area that is there now.

Is Cranford an urban municipality or suburban? Do we develop every parcel or do we maintain a suburban ambience? These are very valid questions that seem to be common to all development proposals in Cranford.

The Cranford Baseball and Softball League does a fantastic job and is very dedicated to allowing every child in Cranford an opportunity to be on a league. Some of the ideas that we proposed regarding Sunday games or extending the season in order to accommodate the teams with the same fields or the use of county and school fields with cellular emergency phones, may make more sense if all factors are weighed.

Even if the addition of another field at this location were a last alternative to the scheduling problem, the implications to the residents of the area, and the quality of the games next to the Parkway, might make this a lose-lose situation.

I hope the League volunteers do not misinterpret this as a lack of support. If anything, I think the League should be more accommodating with creative scheduling solutions.

BARBARA J. ALTENBURG, P.E.
Cranford

Thank you for giving both sides of the expanded ballfield issue at Memorial Field fair coverage. What was not mentioned was the extremely high noise level at the existing field next to the Parkway. I have attended many games at this field and the noise from the Parkway is so loud that it is difficult to have a conversation with the person next to you and impossible to hear the calls by the umpire.

I feel sorry for the residents of that area if the trees between their homes and the Parkway were ever to come down. I also don't feel that a field right next to the Parkway is the healthiest place to play ball during rush hour because of the vehicle emissions.

It is my opinion that noise barriers would need to be erected along the Parkway if this area were to be developed. Every citizen of Cranford should try to picture in their minds what the Memorial Field area would look like with a ballfield and a noise barrier and compare that with the wooded area that is there now.

Is Cranford an urban municipality or suburban? Do we develop every parcel or do we maintain a suburban ambience? These are very valid questions that seem to be common to all development proposals in Cranford.

The Cranford Baseball and Softball League does a fantastic job and is very dedicated to allowing every child in Cranford an opportunity to be on a league. Some of the ideas that we proposed regarding Sunday games or extending the season in order to accommodate the teams with the same fields or the use of county and school fields with cellular emergency phones, may make more sense if all factors are weighed.

Even if the addition of another field at this location were a last alternative to the scheduling problem, the implications to the residents of the area, and the quality of the games next to the Parkway, might make this a lose-lose situation.

I hope the League volunteers do not misinterpret this as a lack of support. If anything, I think the League should be more accommodating with creative scheduling solutions.

BARBARA J. ALTENBURG, P.E.
Cranford

Thank you for giving both sides of the expanded ballfield issue at Memorial Field fair coverage. What was not mentioned was the extremely high noise level at the existing field next to the Parkway. I have attended many games at this field and the noise from the Parkway is so loud that it is difficult to have a conversation with the person next to you and impossible to hear the calls by the umpire.

I feel sorry for the residents of that area if the trees between their homes and the Parkway were ever to come down. I also don't feel that a field right next to the Parkway is the healthiest place to play ball during rush hour because of the vehicle emissions.

It is my opinion that noise barriers would need to be erected along the Parkway if this area were to be developed. Every citizen of Cranford should try to picture in their minds what the Memorial Field area would look like with a ballfield and a noise barrier and compare that with the wooded area that is there now.

Is Cranford an urban municipality or suburban? Do we develop every parcel or do we maintain a suburban ambience? These are very valid questions that seem to be common to all development proposals in Cranford.

The Cranford Baseball and Softball League does a fantastic job and is very dedicated to allowing every child in Cranford an opportunity to be on a league. Some of the ideas that we proposed regarding Sunday games or extending the season in order to accommodate the teams with the same fields or the use of county and school fields with cellular emergency phones, may make more sense if all factors are weighed.

Even if the addition of another field at this location were a last alternative to the scheduling problem, the implications to the residents of the area, and the quality of the games next to the Parkway, might make this a lose-lose situation.

I hope the League volunteers do not misinterpret this as a lack of support. If anything, I think the League should be more accommodating with creative scheduling solutions.

BARBARA J. ALTENBURG, P.E.
Cranford

Thank you for giving both sides of the expanded ballfield issue at Memorial Field fair coverage. What was not mentioned was the extremely high noise level at the existing field next to the Parkway. I have attended many games at this field and the noise from the Parkway is so loud that it is difficult to have a conversation with the person next to you and impossible to hear the calls by the umpire.

I feel sorry for the residents of that area if the trees between their homes and the Parkway were ever to come down. I also don't feel that a field right next to the Parkway is the healthiest place to play ball during rush hour because of the vehicle emissions.

It is my opinion that noise barriers would need to be erected along the Parkway if this area were to be developed. Every citizen of Cranford should try to picture in their minds what the Memorial Field area would look like with a ballfield and a noise barrier and compare that with the wooded area that is there now.

Is Cranford an urban municipality or suburban? Do we develop every parcel or do we maintain a suburban ambience? These are very valid questions that seem to be common to all development proposals in Cranford.

The Cranford Baseball and Softball League does a fantastic job and is very dedicated to allowing every child in Cranford an opportunity to be on a league. Some of the ideas that we proposed regarding Sunday games or extending the season in order to accommodate the teams with the same fields or the use of county and school fields with cellular emergency phones, may make more sense if all factors are weighed.

Even if the addition of another field at this location were a last alternative to the scheduling problem, the implications to the residents of the area, and the quality of the games next to the Parkway, might make this a lose-lose situation.

I hope the League volunteers do not misinterpret this as a lack of support. If anything, I think the League should be more accommodating with creative scheduling solutions.

BARBARA J. ALTENBURG, P.E.
Cranford

Thank you for giving both sides of the expanded ballfield issue at Memorial Field fair coverage. What was not mentioned was the extremely high noise level at the existing field next to the Parkway. I have attended many games at this field and the noise from the Parkway is so loud that it is difficult to have a conversation with the person next to you and impossible to hear the calls by the umpire.

I feel sorry for the residents of that area if the trees between their homes and the Parkway were ever to come down. I also don't feel that a field right next to the Parkway is the healthiest place to play ball during rush hour because of the vehicle emissions.

It is my opinion that noise barriers would need to be erected along the Parkway if this area were to be developed. Every citizen of Cranford should try to picture in their minds what the Memorial Field area would look like with a ballfield and a noise barrier and compare that with the wooded area that is there now.

Is Cranford an urban municipality or suburban? Do we develop every parcel or do we maintain a suburban ambience? These are very valid questions that seem to be common to all development proposals in Cranford.

The Cranford Baseball and Softball League does a fantastic job and is very dedicated to allowing every child in Cranford an opportunity to be on a league. Some of the ideas that we proposed regarding Sunday games or extending the season in order to accommodate the teams with the same fields or the use of county and school fields with cellular emergency phones, may make more sense if all factors are weighed.

Even if the addition of another field at this location were a last alternative to the scheduling problem, the implications to the residents of the area, and the quality of the games next to the Parkway, might make this a lose-lose situation.

I hope the League volunteers do not misinterpret this as a lack of support. If anything, I think the League should be more accommodating with creative scheduling solutions.

BARBARA J. ALTENBURG, P.E.
Cranford

Thank you for giving both sides of the expanded ballfield issue at Memorial Field fair coverage. What was not mentioned was the extremely high noise level at the existing field next to the Parkway. I have attended many games at this field and the noise from the Parkway is so loud that it is difficult to have a conversation with the person next to you and impossible to hear the calls by the umpire.

I feel sorry for the residents of that area if the trees between their homes and the Parkway were ever to come down. I also don't feel that a field right next to the Parkway is the healthiest place to play ball during rush hour because of the vehicle emissions.

It is my opinion that noise barriers would need to be erected along the Parkway if this area were to be developed. Every citizen of Cranford should try to picture in their minds what the Memorial Field area would look like with a ballfield and a noise barrier and compare that with the wooded area that is there now.

Is Cranford an urban municipality or suburban? Do we develop every parcel or do we maintain a suburban ambience? These are very valid questions that seem to be common to all development proposals in Cranford.

The Cranford Baseball and Softball League does a fantastic job and is very dedicated to allowing every child in Cranford an opportunity to be on a league. Some of the ideas that we proposed regarding Sunday games or extending the season in order to accommodate the teams with the same fields or the use of county and school fields with cellular emergency phones, may make more sense if all factors are weighed.

Even if the addition of another field at this location were a last alternative to the scheduling problem, the implications to the residents of the area, and the quality of the games next to the Parkway, might make this a lose-lose situation.

I hope the League volunteers do not misinterpret this as a lack of support. If anything, I think the League should be more accommodating with creative scheduling solutions.

BARBARA J. ALTENBURG, P.E.
Cranford

Thank you for giving both sides of the expanded ballfield issue at Memorial Field fair coverage. What was not mentioned was the extremely high noise level at the existing field next to the Parkway. I have attended many games at this field and the noise from the Parkway is so loud that it is difficult to have a conversation with the person next to you and impossible to hear the calls by the umpire.

I feel sorry for the residents of that area if the trees between their homes and the Parkway were ever to come down. I also don't feel that a field right next to the Parkway is the healthiest place to play ball during rush hour because of the vehicle emissions.

It is my opinion that noise barriers would need to be erected along the Parkway if this area were to be developed. Every citizen of Cranford should try to picture in their minds what the Memorial Field area would look like with a ballfield and a noise barrier and compare that with the wooded area that is there now.

Is Cranford an urban municipality or suburban? Do we develop every parcel or do we maintain a suburban ambience? These are very valid questions that seem to be common to all development proposals in Cranford.

The Cranford Baseball and Softball League does a fantastic job and is very dedicated to allowing every child in Cranford an opportunity to be on a league. Some of the ideas that we proposed regarding Sunday games or extending the season in order to accommodate the teams with the same fields or the use of county and school fields with cellular emergency phones, may make more sense if all factors are weighed.

Even if the addition of another field at this location were a last alternative to the scheduling problem, the implications to the residents of the area, and the quality of the games next to the Parkway, might make this a lose-lose situation.

I hope the League volunteers do not misinterpret this as a lack of support. If anything, I think the League should be more accommodating with creative scheduling solutions.

BARBARA J. ALTENBURG, P.E.
Cranford

Thank you for giving both sides of the expanded ballfield issue at Memorial Field fair coverage. What was not mentioned was the extremely high noise level at the existing field next to the Parkway. I have attended many games at this field and the noise from the Parkway is so loud that it is difficult to have a conversation with the person next to you and impossible to hear the calls by the umpire.

I feel sorry for the residents of that area if the trees between their homes and the Parkway were ever to come down. I also don't feel that a field right next to the Parkway is the healthiest place to play ball during rush hour because of the vehicle emissions.

It is my opinion that noise barriers would need to be erected along the Parkway if this area were to be developed. Every citizen of Cranford should try to picture in their minds what the Memorial Field area would look like with a ballfield and a noise barrier and compare that with the wooded area that is there now.

Is Cranford an urban municipality or suburban? Do we develop every parcel or do we maintain a suburban ambience? These are very valid questions that seem to be common to all development proposals in Cranford.

The Cranford Baseball and Softball League does a fantastic job and is very dedicated to allowing every child in Cranford an opportunity to be on a league. Some of the ideas that we proposed regarding Sunday games or extending the season in order to accommodate the teams with the same fields or the use of county and school fields with cellular emergency phones, may make more sense if all factors are weighed.

Even if the addition of another field at this location were a last alternative to the scheduling problem, the implications to the residents of the area, and the quality of the games next to the Parkway, might make this a lose-lose situation.

I hope the League volunteers do not misinterpret this as a lack of support. If anything, I think the League should be more accommodating with creative scheduling solutions.

BARBARA J. ALTENBURG, P.E.
Cranford

Thank you for giving both sides of the expanded ballfield issue at Memorial Field fair coverage. What was not mentioned was the extremely high noise level at the existing field next to the Parkway. I have attended many games at this field and the noise from the Parkway is so loud that it is difficult to have a conversation with the person next to you and impossible to hear the calls by the umpire.

I feel sorry for the residents of that area if the trees between their homes and the Parkway were ever to come down. I also don't feel that a field right next to the Parkway is the healthiest place to play ball during rush hour because of the vehicle emissions.

It is my opinion that noise barriers would need to be erected along the Parkway if this area were to be developed. Every citizen of Cranford should try to picture in their minds what the Memorial Field area would look like with a ballfield and a noise barrier and compare that with the wooded area that is there now.

Is Cranford an urban municipality or suburban? Do we develop every parcel or do we maintain a suburban ambience? These are very valid questions that seem to be common to all development proposals in Cranford.

The Cranford Baseball and Softball League does a fantastic job and is very dedicated to allowing every child in Cranford an opportunity to be on a league. Some of the ideas that we proposed regarding Sunday games or extending the season in order to accommodate the teams with the same fields or the use of county and school fields with cellular emergency phones, may make more sense if all factors are weighed.

Even if the addition of another field at this location were a last alternative to the scheduling problem, the implications to the residents of the area, and the quality of the games next to the Parkway, might make this a lose-lose situation.

I hope the League volunteers do not misinterpret this as a lack of support. If anything, I think the League should be more accommodating with creative scheduling solutions.

BARBARA J. ALTENBURG, P.E.
Cranford

Thank you for giving both sides of the expanded ballfield issue at Memorial Field fair coverage. What was not mentioned was the extremely high noise level at the existing field next to the Parkway. I have attended many games at this field and the noise from the Parkway is so loud that it is difficult to have a conversation with the person next to you and impossible to hear the calls by the umpire.

I feel sorry for the residents of that area if the trees between their homes and the Parkway were ever to come down. I also don't feel that a field right next to the Parkway is the healthiest place to play ball during rush hour because of the vehicle emissions.

It is my opinion that noise barriers would need to be erected along the Parkway if this area were to be developed. Every citizen of Cranford should try to picture in their minds what the Memorial Field area would look like with a ballfield and a noise barrier and compare that with the wooded area that is there now.

Is Cranford an urban municipality or suburban? Do we develop every parcel or do we maintain a suburban ambience? These are very valid questions that seem to be common to all development proposals in Cranford.

The Cranford Baseball and Softball League does a fantastic job and is very dedicated to allowing every child in Cranford an opportunity to be on a league. Some of the ideas that we proposed regarding Sunday games or extending the season in order to accommodate the teams with the same fields or the use of county and school fields with cellular emergency phones, may make more sense if all factors are weighed.

Even if the addition of another field at this location were a last alternative to the scheduling problem, the implications to the residents of the area, and the quality of the games next to the Parkway, might make this a lose-lose situation.

I hope the League volunteers do not misinterpret this as a lack of support. If anything, I think the League should be more accommodating with creative scheduling solutions.

BARBARA J. ALTENBURG, P.E.
Cranford

Thank you for giving both sides of the expanded ballfield issue at Memorial Field fair coverage. What was not mentioned was the extremely high noise level at the existing field next to the Parkway. I have attended many games at this field and the noise from the Parkway is so loud that it is difficult to have a conversation with the person next to you and impossible to hear the calls by the umpire.

I feel sorry for the residents of that area if the trees between their homes and the Parkway were ever to come down. I also don't feel that a field right next to the Parkway is the healthiest place to play ball during rush hour because of the vehicle emissions.

It is my opinion that noise barriers would need to be erected along the Parkway if this area were to be developed. Every citizen of Cranford should try to picture in their minds what the Memorial Field area would look like with a ballfield and a noise barrier and compare that with the wooded area that is there now.

Is Cranford an urban municipality or suburban? Do we develop every parcel or do we maintain a suburban ambience? These are very valid questions that seem to be common to all development proposals in Cranford.

The Cranford Baseball and Softball League does a fantastic job and is very dedicated to allowing every child in Cranford an opportunity to be on a league. Some of the ideas that we proposed regarding Sunday games or extending the season in order to accommodate the teams with the same fields or the use of county and school fields with cellular emergency phones, may make more sense if all factors are weighed.

Even if the addition of another field at this location were a last alternative to the scheduling problem, the implications to the residents of the area, and the quality of the games next to the Parkway, might make this a lose-lose situation.

I hope the League volunteers do not misinterpret this as a lack of support. If anything, I think the League should be more accommodating with creative scheduling solutions.

BARBARA J. ALTENBURG, P.E.
Cranford

Thank you for giving both sides of the expanded ballfield issue at Memorial Field fair coverage. What was not mentioned was the extremely high noise level at the existing field next to the Parkway. I have attended many games at this field and the noise from the Parkway is so loud that it is difficult to have a conversation with the person next to you and impossible to hear the calls by the umpire.

I feel sorry for the residents of that area if the trees between their homes and the Parkway were ever to come down. I also don't feel that a field right next to the Parkway is the healthiest place to play ball during rush hour because of the vehicle emissions.

It is my opinion that noise barriers would need to be erected along the Parkway if this area were to be developed. Every citizen of Cranford should try to picture in their minds what the Memorial Field area would look like with a ballfield and a noise barrier and compare that with the wooded area that is there now.

Is Cranford an urban municipality or suburban? Do we develop every parcel or do we maintain a suburban ambience? These are very valid questions that seem to be common to all development proposals in Cranford.

The Cranford Baseball and Softball League does a fantastic job and is very dedicated to allowing every child in Cranford an opportunity to be on a league. Some of the ideas that we proposed regarding Sunday games or extending the season in order to accommodate the teams with the same fields or the use of county and school fields with cellular emergency phones, may make more sense if all factors are weighed.

Even if the addition of another field at this location were a last alternative to the scheduling problem, the implications to the residents of the area, and the quality of the games next to the Parkway, might make this a lose-lose situation.

I hope the League volunteers do not misinterpret this as a lack of support. If anything, I think the League should be more accommodating with creative scheduling solutions.

BARBARA J. ALTENBURG, P.E.
Cranford

Thank you for giving both sides of the expanded ballfield issue at Memorial Field fair coverage. What was not mentioned was the extremely high noise level at the existing field next to the Parkway. I have attended many games at this field and the noise from the Parkway is so loud that it is difficult to have a conversation with the person next to you and impossible to hear the calls by the umpire.

I feel sorry for the residents of that area if the trees between their homes and the Parkway were ever to come down. I also don't feel that a field right next to the Parkway is the healthiest place to play ball during rush hour because of the vehicle emissions.

It is my opinion that noise barriers would need to be erected along the Parkway if this area were to be developed. Every citizen of Cranford should try to picture in their minds what the Memorial Field area would look like with a ballfield and a noise barrier and compare that with the wooded area that is there now.

Is Cranford an urban municipality or suburban? Do we develop every parcel or do we maintain a suburban ambience? These are very valid questions that seem to be common to all development proposals in Cranford.

The Cranford Baseball and Softball League does a fantastic job and is very dedicated to allowing every child in Cranford an opportunity to be on a league. Some of the ideas that we proposed regarding Sunday games or extending the season in order to accommodate the teams with the same fields or the use of county and school fields with cellular emergency phones, may make more sense if all factors are weighed.

Even if the addition of another field at this location were a last alternative to the scheduling problem, the implications to the residents of the area, and the quality of the games next to the Parkway, might make this a lose-lose situation.

I hope the League volunteers do not misinterpret this as a lack of support. If anything, I think the League should be more accommodating with creative scheduling solutions.

BARBARA J. ALTENBURG, P.E.
Cranford

Thank you for giving both sides of the expanded ballfield issue at Memorial Field fair coverage. What was not mentioned was the extremely high noise level at the existing field next to the Parkway. I have attended many games at this field and the noise from the Parkway is so loud that it is difficult to have a conversation with the person next to you and impossible to hear the calls by the umpire.

I feel sorry for the residents of that area if the trees between their homes and the Parkway were ever to come down. I also don't feel that a field right next to the Parkway is the healthiest place to play ball during rush hour because of the vehicle emissions.

It is my opinion that noise barriers would need to be erected along the Parkway if this area were to be developed. Every citizen of Cranford should try to picture in their minds what the Memorial Field area would look like with a ballfield and a noise barrier and compare that with the wooded area that is there now.

Is Cranford an urban municipality or suburban? Do we develop every parcel or do we maintain a suburban ambience? These are very valid questions that seem to be common to all development proposals in Cranford.

The Cranford Baseball and Softball League does a fantastic job and is very dedicated to allowing every child in Cranford an opportunity to be on a league. Some of the ideas that we proposed regarding Sunday games or extending the season in order to accommodate the teams with the same fields or the use of county and school fields with cellular emergency phones, may make more sense if all factors are weighed

Community Life

Cranford connections

by Diane Winans

Janet Weinstein of Manor Avenue gave a great performance last Saturday night in Westfield at Temple Emanuel-El's interactive theater experience.

Janet played the part of Nana Pinkel, the grandmother of the groom, in the production of *Marc and Marci Get Married*, which is another perspective on the Italian-style *Tony and Tina's Wedding*. Ms. Weinstein also appeared in the *Pajama Game* last season with the temple's theater group.

Janet's "real" profession is as a full-time mental health counselor. She also has a private counseling practice here in Cranford.

Another worthy organization that is important to Janet is Women Helping Women, an agency based in Metuchen, where she runs support and therapy programs. She contributes her gift for singing at fund-raisers several times a year. "The acting and singing help to keep me well balanced," she says. And I believe this is true. Daughter Bonnie of San Francisco is "home" for a visit with her mother.

Here's a little more local insight on the Community Garage Sale to benefit homeless pets which will be held Saturday at 32 West Holly. Carolyn Thomas of Locust Drive referred Elaine Wink and her children, Matthew and Megan, to Shirley "Cranford Dog Lady" Bernstein of Spruce Street as a gift for their Dad's birthday. The Wink family found their lovable Sheltie, Charlie, at the Newark Dog Pound after the animal had been abused by previous owners. With Shirley's guidance, the family successfully introduced Charlie to the Winks' first dog.

Shirley Bernstein is a true friend to all cats and dogs (and many people, too). She is very excited about this fund-raiser because expenses have always exceeded donations at New Leash on Life. A wish for success and increased prosperity.

Rochelle and Nathan Mark of Hillside Avenue were surprised recently with a splendid celebration for their 30th wedding anniversary and also Mrs. Mark's 50th birthday.

The party was held at the Masonic Lodge on Central Avenue in Westfield and was hosted by daughters Barbara Wojtowicz, Leslie Mark and Susan Mark. Guests included high school friends of the couple and visitors came from Florida and New York State.

Mrs. Mark is employed by the Cranford School district as secretary for the child study team. Nathan Mark, who was given the impression that the party was solely for his wife's birthday, is a self-employed computer programmer/analyst. A trip to Hawaii is in the future for the parents of three daughters who say, "Thank you for all the love and support."

The American Choral Directors Association competition was held recently at Jersey City State and the Cranford High School Madrigals received a first place superior rating, the highest rating of all who were judged.

The annual choir trip took place May 11-14 and the Madrigals and the Concert Choir each received a first place superior rating. High school seniors from the class of '95, Tara Eagle, Nicole Giaccone, Alana Doly and Jill Mattis roomed together for the four days of the annual choir trip and had a blast. Other activities included attending a music festival, visiting Stone Mountain and Six Flags Over Georgia.

Tara Eagle lives just around the corner from my house and sold us those terrific tangelos last winter in order to defray the cost of the trip. She will attend Union college in the fall and plans a career in nursing. Tara lives on Hamilton Avenue and has a younger sister, Katelyn, who is 6 years old and is in first grade at Orange Avenue.

Sandra La Barco celebrated an especially wonderful Mothers Day. It began with a breakfast of fruit cocktail, cheese blintzes, egg casserole with asparagus, and French toast with blueberry topping prepared and served by her children. Daughter Laura and son-in-law Stephen LaGriffa of Somerset Road have a beautiful baby girl, Emily Teresa, who was born Jan. 9.

Stephen's parents are John and Mary LoGiudice of Cranford. Laura is looking forward to studying law at Seton Hall and Stephen is employed by the United Jersey Bank.

Sandy's eldest daughter, Cheryl, a Rutgers graduate, and her husband, Greg Dohn, welcomed their new daughter Alyson Beth on April 5. The couple have another daughter, Anasara Lauren, who is 2 1/2 years old. Cheryl is employed by United Jersey Bank and Greg is the owner of Dohn's Painting.

Greg's mother, Carol Sulley, and her daughter and granddaughters accompanied Sandy or "Nanny" and family to Great Adventure and a wonderful time was had by all.

To submit a family news item to Cranford connections, contact Ms. Winans at 272-3356, or by fax at 272-0196.

Middlesex County College honors Pean and Kelsey

In her final State of the College address as president of Middlesex County College, Dr. Flora Mancuso Edwards paid tribute to 57 employees who have served Middlesex County College for 25, 20 and 10 years.

Honored for 25 years of service was Claire A. Pean, assistant professor, Dental Auxiliaries Education, of Cranford.

Honored for 10 years of service was Vicky Kelsey of Cranford, technician, Media Department.



Cranford High School teachers and NEH grant mentors, Eileen Dachnowicz and Bernard Flashberg flank students Melanie Chu, Ryan Greenwood and Michael Morley. The students were the only New Jersey applicants to receive the prestigious National Endowment for the Humanities grants.

CHS trio wins major US grant

Only NJ students to earn humanities prizes this year

By JOANNE McFADDEN
THE CHRONICLE

Only three high school students in the state were recipients of National Endowment for the Humanities Grants this year, and in a coup unprecedented for such a prestigious award, all three are from Cranford High School.

These awards, which are based purely on academic merit, are very difficult to get. Only 18 percent of all applicants receive the \$2,100 grant each year. Nationwide, there were 466 high school applicants, 17 from New Jersey, and only 68 recipients.

The recipients are sophomore Melanie Chu and juniors Ryan Greenwood and Michael Morley. Melanie will prepare a research project titled, "The Quest for Female Identity: Alienation in the Novels of Joyce Carol Oates and Toni Morrison." Michael will research "Hugo Black and Felix Frankfurter: Conflict in the First Amendment." And Ryan's project is titled, "Nick, Meet Miranda: The Male and Female Journey to Maturity in Ernest Hemingway's and Katherine Anne Porter's Short Fiction."

Melanie and Ryan are mentored by Eileen Dachnowicz, an English teacher at Cranford High School, and an NEH grant winner herself. Michael is mentored by Bernard Flashberg, a social studies teacher at the school.

Mrs. Dachnowicz has mentored four previous recipients over the last three years, including Alyssa Wright, Caroline Brady, Josephine Coakley, and William Finnegan.

The process of applying for these grants is rigorous, requiring months of preliminary research, said Michael Marcus, supervisor of English and Foreign Language departments. Each student has to submit a proposal in which there is a one-page history and definition of the project, a two-page, nine-week work plan, including primary and secondary sources to be examined and questions to be addressed, a statement of qualifications and an annotated bibliography. The mentor is required to write an evaluation of each applicant's ability, an explanation of his or her role in the project and a statement of his or her own qualifications.

"They are really doing graduate level research in high school," said Mrs. Dachnowicz.

Melanie chose her topic "out of respect for women."

"The women in these novels had to struggle to get where they are now," Melanie said. "They took responsibility for their own lives, even though it was not always easy and they fought to get what they wanted."

Michael got his idea after competing in a national debate on free speech versus national sovereignty. "The two justices (Black, Frankfurter) were the major contributors to free speech," explains Michael, "and yet their individual pasts contradict what they stood for."

Ryan was always attracted to the stoic heroes in Ernest Hemingway's stories. "They were the rough and tumble, action heroes and they were very appealing characters," he said. "Then my mentor (Mrs. Dachnowicz) suggested I do a study

with the writings of Katherine Anne Porter since, in many of their writings, the characters are semi-autobiographical."

Actually, all three grant recipients figure the hard work is done. Melanie is not worried about the writing assignment this summer; writing is something she loves to do. "But the research," she said, "that was very difficult."

"I've lost count how many days I spent in the library last summer," said Ryan. "But now that we have a basic idea of where we're going, it will be easier," added Michael.

Grant recipients work together with their mentors for nine weeks in the summer to produce a research paper which is then sent to the National Endowment for the Humanities.

"The mentor advises the student," explains Mrs. Dachnowicz, "helping initially by directing students to a subject area, reviewing the research with them, and then helping them to focus in on a specialized area. We also drive them to the library."

It is Mr. Flashberg's first time mentoring. "Working with one student was easier, but with Michael, there are so many different areas of interest that we explored before settling on one topic," said Mr. Flashberg.

The future of the grants are in jeopardy through Congressional cost-cutting, and it now looks like the program may come to an end this year. "This is our fourth successful year and it's like like it's the end, so it's only fitting that we should go out winning it all," said Mrs. Dachnowicz.

Women's American ORT opens up a thrift shop

The Sort of New Shoppe, owned and operated by the Central Jersey Region of Women's American ORT opened May 8 at 40 Alden St., Cranford.

Hours are 10 a.m.-5 p.m. Tuesday-Saturday, and 10 a.m.-8 p.m. Thursday.

Shoppers can buy a wide variety of gently used and new merchandise at low prices. Items include clothing and accessories, household products and small furniture.

Most of the merchandise is contributed by Women's American ORT members and friends.

"The opening of our new resale shop is a very special event for us," explained Sandi Omansky, ORT region president. "For the past 10 years we managed Fabu-

lous Finds in New Brunswick. We recently closed its doors.

"Our fund-raising activities raise money for the network of ORT schools across the globe and here at home. We participate in grassroots activities to improve the quality of public education in our local communities and across the country. As in the past, we will present scholarships to local graduating high school students."

Donations of merchandise are accepted during regular store hours. Merchandise must be in clean, saleable condition. Tax receipts are available. Trucking service is available for home liquidation. For more information, call 272-1128.



Suburban lightspot

Quips, quotes, puns and anecdotes from the lighter side of life in Suburban Union County. Readers are encouraged to contribute by calling 276-6000, faxing 276-6220, or writing this newspaper at P.O. Box 826, Cranford 07016. Anonymity is negotiable, but we need a signature and phone number for verification.

Wanna be in the Dead 'Possum Society?
The very first Suburban lightspot Dead 'Possum Society Award goes to a reader who raises a good question about how local government "works." Readers with similar observations are welcome to call, fax or write and tell us about the ironies they spot in local services. Here's the story of the first award winner.

A Cranford reader called the other day with a legitimate question: Why was the deceased opossum still in the street in front of his home for two full days after he called town hall? Town hall had told him to report the carcass to an animal service under contract with the township. They don't do dead 'possums.

"With all the taxes I'm paying," the caller lamented, "you'd think the township would have somebody — a cop, a fireman, a public works guy — with a shovel and a plastic bag and a minute's time to come up here and remove this dead 'possum."

"I mean the weather's getting warm, crows peck at the carcass," the caller said. "He's right. Good question. And congratulations on winning the first Dead 'Possum Society Award."

Sandi Omansky and Fran Reifeld (foreground) of ORT pose in the group's new shop. At rear, volunteer Janice Lynch shows clothing merchandise to shopper Marian Michals of Cranford.

PAMELA DOWNES and MICHAEL J. CRINCOLI

Milestones

Ms. Kowalski, Mr. Soos to wed in fall

Joan and Frank Kowalski of Edison have announced the engagement of their daughter, Sandra Marie Kowalski, to Frederick J. Soos Jr., son of Annette and Frederick Soos Sr. of Kenilworth.

The future bride graduated from Edison High School in 1982 and received her bachelor's degree in marketing in 1987 from Trenton State College. She is a telecommunication consultant for Communication Sciences Inc., Edison.

Her fiancé graduated from David Brearley High School in 1985 and received his bachelor's degree in business administration/management from Albright College in 1989. He is a police officer with Kenilworth Police Department. An October wedding is planned.



SANDRA KOWALSKI and FREDERICK SOOS JR.



KAREN and TERENCE LA DU

Karen Herbert, Terence La Du marry

Bay Head's Sacred Heart Church

Karen Joy Herbert, daughter of Mr. and Mrs. John Russell Herbert of Bay Head and Cranford, was married April 22, 1995 to Terence James La Du, son of Dorothy Marie La Du and George Lawrence La Du, both of Portland, Ore.

The Rev. Thomas Brennan performed the Roman Catholic rite at Sacred Heart Church in Bay Head. The bride is the art teacher at St. Mary's School in Ocean Township. She graduated from the University of Miami and received her master's degree in fine arts education from Kean College of New Jersey. She also gives personal art instruction.

Before teaching, Mrs. La Du was a visual merchandising manager for 14 years for various area department stores including Hahne's and Lord & Taylor.

Her parents are retired school teachers. Mr. La Du is a market and business analyst for Bellcore in Red Bank. He develops and evaluates new business communications services that can be offered on the public phone network. Prior to joining Bellcore, he was a research supervisor at Young and Rubicam in New York.

He graduated with honors from Portland (Ore.) State University, where he was a University Scholar. He received master's and doctoral degrees from New York University in industrial/organizational psychology with a minor in quantitative methods.

His father is a retired real estate broker in Portland. His mother is an office manager for Catholic Charities in Portland.

The couple live in Point Pleasant.



SHEILA ROSSI and ERIC STRASSBURGER

Krista Cicalese to marry Shawn Miller

Mr. and Mrs. Chris Cicalese of Cranford have announced the engagement of their daughter, Krista Ann Cicalese, to Shawn Thomas Miller, son of Mr. and Mrs. Dale Miller of Bethlehem, Pa.

The future bride graduated from Cranford High School in 1990 and from St. Joseph's University in Philadelphia in 1994. She is pursuing a master's degree in human resources at Rider University, Lawrenceville, and is employed by Warner Lambert Company, Morris Plains.

Her fiancé graduated in 1989 from Freedom High School in Bethlehem, Pa., and in 1994 from St. Joseph's University. He is the New Jersey sales representative for Key Food Brokerage.

The couple will be married in June 1996.

Miss Downes, Mr. Crincoli to be wed

Pamela Louise Downes, daughter of Richard and Margarita Downes of Havertown, Pa., is engaged to Michael Joseph Crincoli, son of Anthony and Joan Crincoli of Cranford.

The future bride graduated from Moore College of Art and Design in Philadelphia. She is assistant art director for Atlantic City magazine.

Her fiancé graduated from the Culinary Institute of America in Hyde Park, N.Y. He is executive chef at Papa Razzi Restaurant in Marlton.

Joan Zimmerlink is married to Frederick Perrine Jr.

Joan Kathryn Zimmerlink, the daughter of Gene and Sally Zimmerlink of Milltown, has been married to Frederick Louis Perrine Jr., the son of Fred and Noelle Perrine of South Plainfield.

A nuptial Mass was offered March 18, 1995 by the Rev. Tom Petrucci at Our Lady of Lourdes Roman Catholic Church in Milltown. A reception followed at Sir Johns in North Brunswick.

The bride carried white cascading roses. Her maid of honor, Jean Weaver of Milltown, carried a mixed bouquet of red roses.

Best man was Brett Perrine of South Plainfield, the bridegroom's brother.

Both the bride and bridegroom graduated Rutgers University. The bride works at Mortenson & Associates in Cranford and the bridegroom works at the Grand Union supermarket in North Brunswick. The couple live in Milltown.

KRISTA CICALESSE and SHAWN MILLER



KRISTEN MASSA and DAVID CRAFT

Kristen Massa, David Craft to marry

John and Frances Massa of Cranford have announced the engagement of their daughter, Kristen Anne Massa, to David Donald Craft of Bloomington, Minn., son of Nancy Hilton and Donald Craft, both living in Minnesota.

The future bride is a 1984 graduate of Cranford High School. She graduated in 1988 from Bucknell University with a bachelor's degree in education and a double major in education and psychology. She completed her master's degree in education at Seton Hall University in 1990, focusing on counseling psychology and psychological studies.

She teaches second grade classes at Cranford Adventist School. Her fiancé received his bachelor's degree in education at St. Cloud State University in Minnesota, and is currently completing his master's degree in curriculum and instruction at St. Cloud.

He teaches fifth-grade classes at Jefferson Elementary school in Minneapolis, Minn. A July wedding is planned.



SHARON SNYDER and WILLIAM WEBER

Sharon Snyder, William Weber to be wed

Mr. and Mrs. Edwin A. Snyder of Old Bridge have announced the engagement of their daughter, Sharon A. Snyder, to William E. Weber of Linden, son of Mr. and Mrs. John Weber of Cranford.

The future bride graduated from Madison High School and received her bachelor's degree from Rutgers University.

Her fiancé graduated from Cranford High School and received his bachelor's degree from The Citadel. Both are employed at United Counties Trust Company in Cranford. Mr. Weber is facilities manager and Ms. Snyder is a marketing assistant.

An August wedding is planned.



NICOLE SHAFMAN and ADAM WINTERS

Ms. Shafman, Mr. Winters to be wed

Adele and Frederic Shafman of Cranford have announced the engagement of their daughter, Nicole Elise, to Adam Dean Winters, son of Marilyn Flax of Fairlawn and Jeffrey Winters of San Jose.

A graduate of Newark Academy and Thaca College, Miss Shafman handles public relations for Barbara Kramer Enterprises, a multi-line designer clothing showroom.

Mr. Winters graduated from Fairlawn High School and Thaca College. He is the assistant vice president of Hillman Corporation, a financing and commercial finance company. A November wedding is planned.

Obituaries

Claire A. Weir, at 78

Executive secretary with Esso, Exxon

CRANFORD — Claire A. Weir, 78, died March 18, 1995 at her home in Elizabeth. She formerly was an executive secretary with the Standard Oil Co. of New Jersey and its successor, Exxon Corp. She was born in Cranford and lived in the township before moving to Elizabeth in 1954. Miss Weir joined Esso at its New York City offices in 1933; she also worked for the company in Florham Park, Elizabeth, and Linden before retiring from Exxon in 1977. She was a member of the Exxon Annuitants club.

She was a parishioner of St. Genevieve's Roman Catholic Church in Elizabeth and belonged to its Leisure Group. Surviving are a brother, Herbert J. Weir of Cranford, three nieces, two great-nieces, and three great-nephews. Services were held Saturday at the Leonard Home for Funerals, Elizabeth, followed by a funeral Mass at St. Genevieve's Church. Burial was in St. Gertrude Cemetery, Colonia. Contributions may be made to the Center for Hope Hospice, 176 Huxsa St., Linden, 07036.

Florence Wisbrock Lillie

Pianist, office manager; services today

CRANFORD — Florence Wisbrock Lillie died May 22, 1995 at JFK Medical Center in Edison. She played the piano in the Milwaukee orchestra and from 1953-58 was an office manager with the Paul Smith Co. of Union. Mrs. Lillie was born in Batavia, Ill. She lived in Hillsdale, Cranford, and South Plainfield until 1988, when she entered Villa Maria in North Plainfield.

She also was a volunteer with the Summit Chapter of the American Red Cross providing entertainment for patients at what is now the Department of Veterans Affairs Medical Center in East Orange. For more than 40 years Mrs. Lillie was a member of the 500 Club, which included her many friends in Central New Jersey. She was a charter member of the Rumson Senior Citizens Club and

a member of the Altar Society of St. Vincent de Paul Roman Catholic Church in Stirling. Mrs. Lillie was a parishioner of Sacred Heart Roman Catholic Church, in South Plainfield. Her husband, Lawrence L. Lillie, died in 1983. Surviving are two daughters, Theresa F. Schaffer of Dingmans Ferry, Pa., and Florence C. Hatten of Troy, N.Y.; a son, Lawrence L. Lillie Jr. of Flemington; 12 grandchildren and 10 great-grandchildren. Friends may call 9 a.m. today at the McCracken Home for Funerals, 2425 Plainfield Ave., South Plainfield, where services will follow 9:30 a.m. A funeral Mass will be offered 10 a.m. at Sacred Heart Church, 149 South Plainfield Ave., South Plainfield. Entombment will be in the Holy Redeemer Mausoleum, South Plainfield.

Charick Vreeland Rosencrantz

Retired from Mobil, Hahne's; was 82

CRANFORD — Charick Vreeland Rosencrantz, 82, died May 16, 1995 at his home. He was a lifelong township resident and from 1930-60 was a sales representative in New York City with what is now the Mobil Oil Corp.

Mr. Rosencrantz worked at the former Hahne & Co. department store in Westfield after leaving Mobil. He was a member of First Presbyterian Church on Springfield Avenue and also of the Cranford Historical Society.

His wife, Mary Jane Drysdale Rosencrantz, died in 1981. Surviving are a son, William D. Rosencrantz of South Bend, Ind.; three grandchildren; two great-grandchildren; a sister, Walda Rosencrantz of Sharon, Conn.; a niece, Jane Mathews, and a nephew, Jeremy Tomlinson, both of Cranford.

A memorial service will be

Martha Dee

Deremer

Insurance solicitor

for husband; at 92

Martha Dee (Coltrin) Deremer, of Garwood, died Monday, May 22, 1995 at Meridian Nursing Center, Westfield. She was 92.

Born in Alsworth, Neb., she lived in Franklin, Neb., and Kansas before moving to Garwood in 1948. Mrs. Deremer graduated in 1926 from Concordia, Kan. Business College. She was employed in various law offices and departments in Billings, Kan., Lincoln, Neb., and with the war program in N. Platte, Alliance and Hastings, Neb.

She became an insurance solicitor for her husband, the late Joseph H. Deremer, an insurance agent. When her husband died in 1962, she changed it into an agency which she later sold to George Packenham. She worked with Mr. Packenham in his Westfield office until retirement.

Mrs. Deremer was an active member of the Garwood Presbyterian Church, where she taught Sunday School for 30 years, served as deacon for 12 years, as an elder for six years. She also served as president of the Missionary Society, the Women's Association, CWV of this area and the Elizabeth Presbyterian.

She is predeceased by her husband Joseph H. Deremer (d. 1962). Surviving are seven nieces and nephews; two step-grandchildren; seven step great-grandchildren; and six step great great-grandchildren. Funeral services will be held 11 a.m. today at Garwood Presbyterian Church. Burial will be at Buttsville Cemetery, Buttsville. Contributions to Garwood Presbyterian Church Memorial Fund. Arrangements are by Gray Funeral Home, 318 E. Broad Street, Westfield.



Clergy Council aids programs

Members of the Cranford Clergy Council present a check during a recent ceremony (upper photograph) to Kathy Willis, president of the Human Relations Committee, to be used as part of the scholarship fund. The \$408.85 check represents the offering from the Clergy Council's first Holocaust Memorial Service held at Temple Beth El May 4.

Pictured left to right are Rabbi Ronald Holtberg, co-chairman, Mrs. Willis, Father Gerry Sogliuzzo, treasurer, the Rev. Milton Mason, president, and the Rev. Barrie Smith, vice president and co-chairman.

In lower photograph, Father Gerry Sogliuzzo, treasurer of the Cranford Clergy Council hands a check to Sylvia Sidoti, public assistance director while the Rev. Milton Mason, left, and the Rev. Barrie Smith, far right, watch.

Local women honored by commission

The Union County Commission on the Status of Women held their third annual dinner honoring women of achievement recently at the Westwood in Garwood, announced Freeholder Linda Lee Kelly, liaison to the commission. "The 12 outstanding women we are honoring today work in fields ranging from government to medicine, and this year we are also celebrating the 75th anniversary of women gaining the right to vote," said Kelly.

Over 400 people attended the event, which also included an exhibit featuring notable women of Union County.

Among the 12 women honored were Maria Sartor of Scotch Plains, founder and owner of Macrisart Media; Margaret Coloney of Kenilworth, Center of Hope Hospice founder; and Susan Hausstein of Cranford, Washington Rock Girl Scout Council.

Union County Places of Worship

ST. BERNARD'S CATHOLIC CHURCH 368 Sumner Ave. Plainfield 756-3393 Mass Schedule Saturday: 5:30pm Sunday: 8:00, 9:30, 11:30am Rev. Joseph F. Barbone, Pastor	CRANFORD ALLIANCE CHURCH 7 CHERRY STREET Phone: 276-1617 Sunday School 9:00 am Sunday Worship 10:30 am Sunday Evenings 6:30 pm Wed. Youth Programs 7:00 pm *An ecumenical all-faith service brought from the Bible	KENILWORTH GOSPEL CHAPEL Newark Ave. & 2nd St., Kenilworth 908-272-6131 Sunday Services 11:30am - Family Bible Hour and 6:00pm - Evening Services Monday, 7:00pm - Boys Brigade Wednesday, 7:00pm - Prayer and Bible Study Friday Night Children's Club 7:45pm (Kiss School Age) Call For More Information
St. Theresa's Church 541 Washington Ave., Kenilworth 908-272-4444 Pastor: Rev. Joseph S. Ungrowski Sunday Masses: Sat. 5:30pm Sun. 7:30-9:00 10:30-12 Noon Weekday Masses: 7am Miraculous Medal Novena Following 7:30 pm mass St. Jude's Perpetual Novena Wednesdays at 12 noon & 7:30pm Novena Holy Hour	TERRILL ROAD BAPTIST CHURCH 1300 Terrill Rd., Scotch Plains 922-7151 Rev. Michael Seaman, Pastor Sunday: 9:45am - Sunday School 11:00am - Morning Worship 6:15pm - Church Training 7:15pm - Evening Worship Wednesday: 7:00pm - Prayer Meeting Nursery Care Provided	To Advertise Call Donna at 908-722-3000 ext. 6255



Breens marks its first anniversary

If you haven't been to Breens Liquor Store in Cranford in a while, you're in for a pleasant surprise. Under the management of partners Armin Kanyalagala and Karon Kumar, Breens has become one of the best-stocked liquor stores in the area. Breens offers its customers not only the finest spirits from around the world, but also a friendly smile as well. Mr. Kumar prides himself on carrying a selection of the finest wines in his store. Wines from France, Italy, Germany, Portugal and Chile as well as a domestic California and New York varieties are available at prices to fit your budget.

Center offers diverse selection

Heritage Antiques Center, on Park Avenue, Scotch Plains (in the large red barn), was converted into an Antiques Center five years ago. The barn was originally built in 1790 and has strong historical significance in the community. The Center is made up of 18 different individual shops offering a diverse selection of value-priced antiques. The Center concept is unique, as it gives flexibility to each shop owner by allowing them the time to seek out estate treasures for antique lovers to purchase while the Center is professionally managed. Customers looking for something specific and unable to find it can bring the information, i.e. photograph, magazine clip or a sketch of the item, to the Center. With so many dealers in the Center, more times than not, the wanted items are found for yet another happy customer. Decorators and dealers are also always welcome at the Center and may contact Anita Sauls, director of Heritage Antiques Center. The Center also purchases outright or accepts on consignment antiques from one item to entire estate contents. Free appraisals are available on Saturdays. For more information, call 322-2311.

BREEN'S LIQUORS
 21 N-UNION AVE. • CRANFORD
 (908) 276-0150
 Store Hours: Mon-Wed 9:30am-9:00pm; Thurs-Sat 9:30am-10:00pm; Sunday 1:00-6:00

LIQUOR • WINE • BEER • CHAMPAGNE Johnnie Walker Red Label \$27.99 1.75L Carlo Rossi \$6.99 4 LI Beck's \$17.99 12 oz. 24 pk. 12 pk. 12 pk.	Chivas Regal \$41.99 1.75L Sutter Home Chardonnay or Cabernet \$4.99 750 ml Asti Cinzano \$8.99 750 ml Heineken Reg \$1.99 12 oz. 24 pk. 12 pk. 12 pk.	Leeds Vodka \$9.99 1.75L Berlinger White Zinfandel \$4.99 750 ml Cordon Negro Brut \$6.99 750 ml Rolling Rock \$7.99 24 pk. 12 pk. 12 pk.	Beefeater Dry Gin \$19.99 1 LI Citra Red or White \$5.99 1.5 LI Coors Extra Gold \$9.99 24 pk. 12 pk. 12 pk.
--	---	--	--

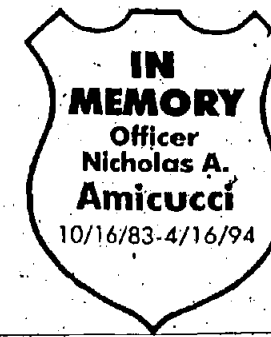
Coors Party Balls & 1/4 BBLs (Keg)
 \$19.99
WE CARRY A WIDE VARIETY OF MICRO BREW

Heritage Antiques Center
 364 Park Avenue • Scotch Plains
 908-322-2311
ANTIQUES WANTED
 Free appraisals on Saturday
 Quality dealers wanted in a profitable, friendly atmosphere with reasonable rental rates
 3 Floors of Fine Antiques, Furniture, Jewelry & Early Decorative Arts
 HOURS: Tues. to Sat. 10-5 • Sun. 12 to 5

A SALUTE TO THE CRANFORD POLICE DEPARTMENT



Chief Harry Wilde



PROTECT & SERVE

Meet Cranford's finest...dedicated to public safety, protection of property & the general well-being of all.



Capt. James E. Washbourne

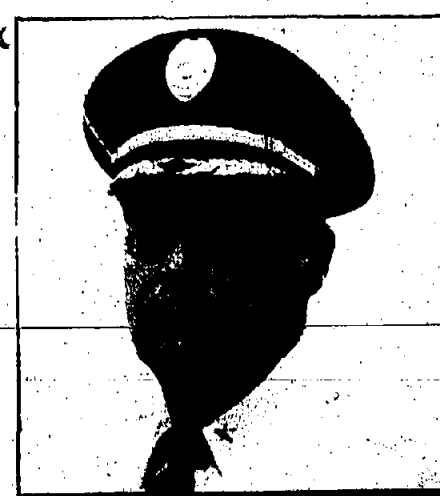


Capt. John M. Hicks

This page is sponsored by these community minded businesses.

VICTORIA FLORIST Cranford's Original \$15 a dozen ROSES 709-1440 All Occasion Flowers Open 7 Days a Week Flowers by Wire Worldwide 24 Hour Service Free Delivery All Major Credit Cards 302 Centennial Avenue Cranford	For The Finest Sloppy Joes! Mr. J's of Cranford CATERING FOR ALL OCCASIONS Sloppy Joe Platters • Hot and Cold Buffets 3 and 6 Foot Subs Sandwiches and Subs Home made Salads • Cold Cuts 272-0370 • 15 Walnut Avenue Cranford, NJ 07016	CRANFORD POOL & FITNESS CENTER Join Us... For the Health Of It! Where Summer Fun Begins! 201 Centennial Ave., Cranford, N.J. You're not just a customer... You're one of our VIPs! Call 302-728-1000 FOR INFORMATION	Dooley Funeral Service, Inc. Caring & Courteous Service to the Cranford/Westfield Area Since 1913 Cranford: 218 North Avenue, 276-0255, Francis J. Dooley Jr. Manager Westfield: 256 Westfield Avenue, 233-0255, Joseph F. Dooley Manager Charles V. Dooley, John L. Dooley, Matthew R. Dooley
--	---	---	---

Garwood Takes Pride In Its Finest



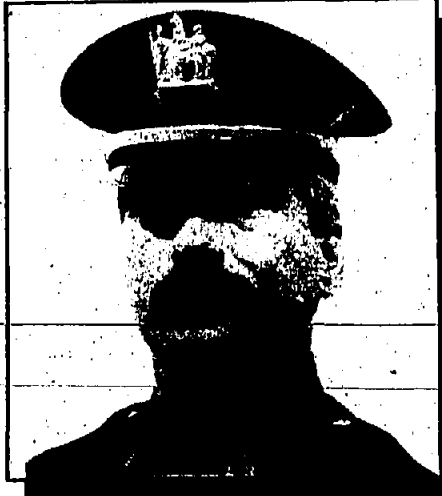
Chief Robert J. Ryan



Capt. Joseph J. Alexis



Lieut. Stanley B. Cembrola



Sgt. Dennis K. Lesak



Sgt. Robert L. McCarrick



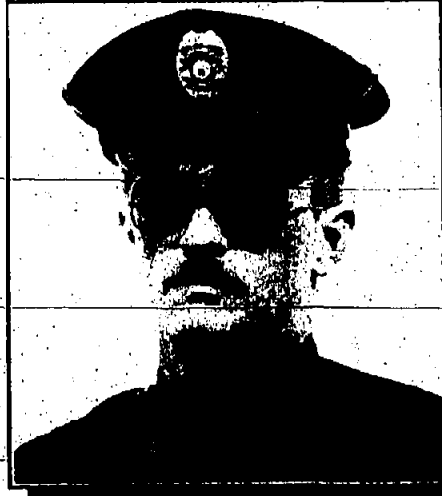
Det. Leonard J. DiStefano



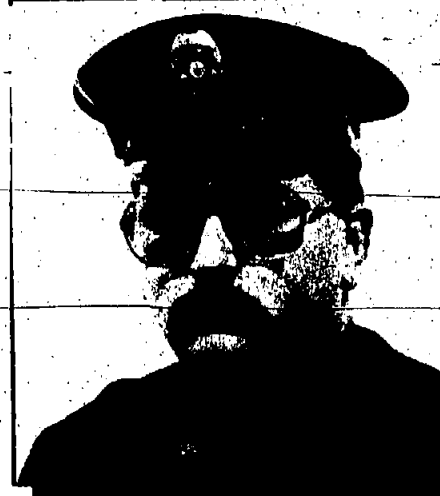
Ptl. Ronald A. Givens



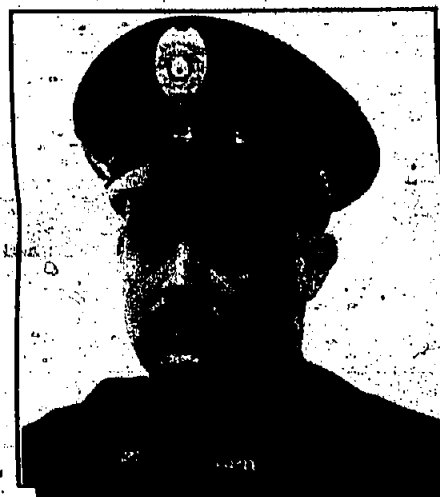
Ptl. William D. Legg



Ptl. Michael D. Lueddeke



Ptl. Joseph P. Wilds



Ptl. Bruce D. Underhill



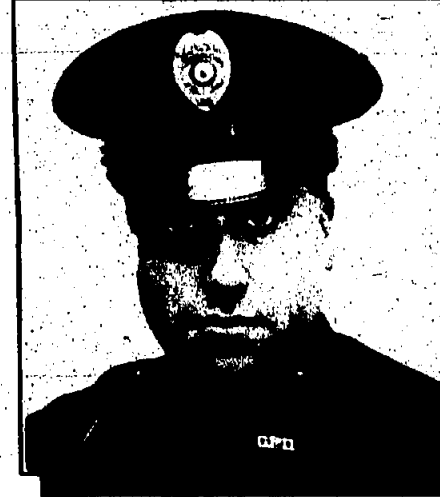
Ptl. Michael B. Wilson



Sgt. Thomas W. Mericle



Ptl. James Pipala



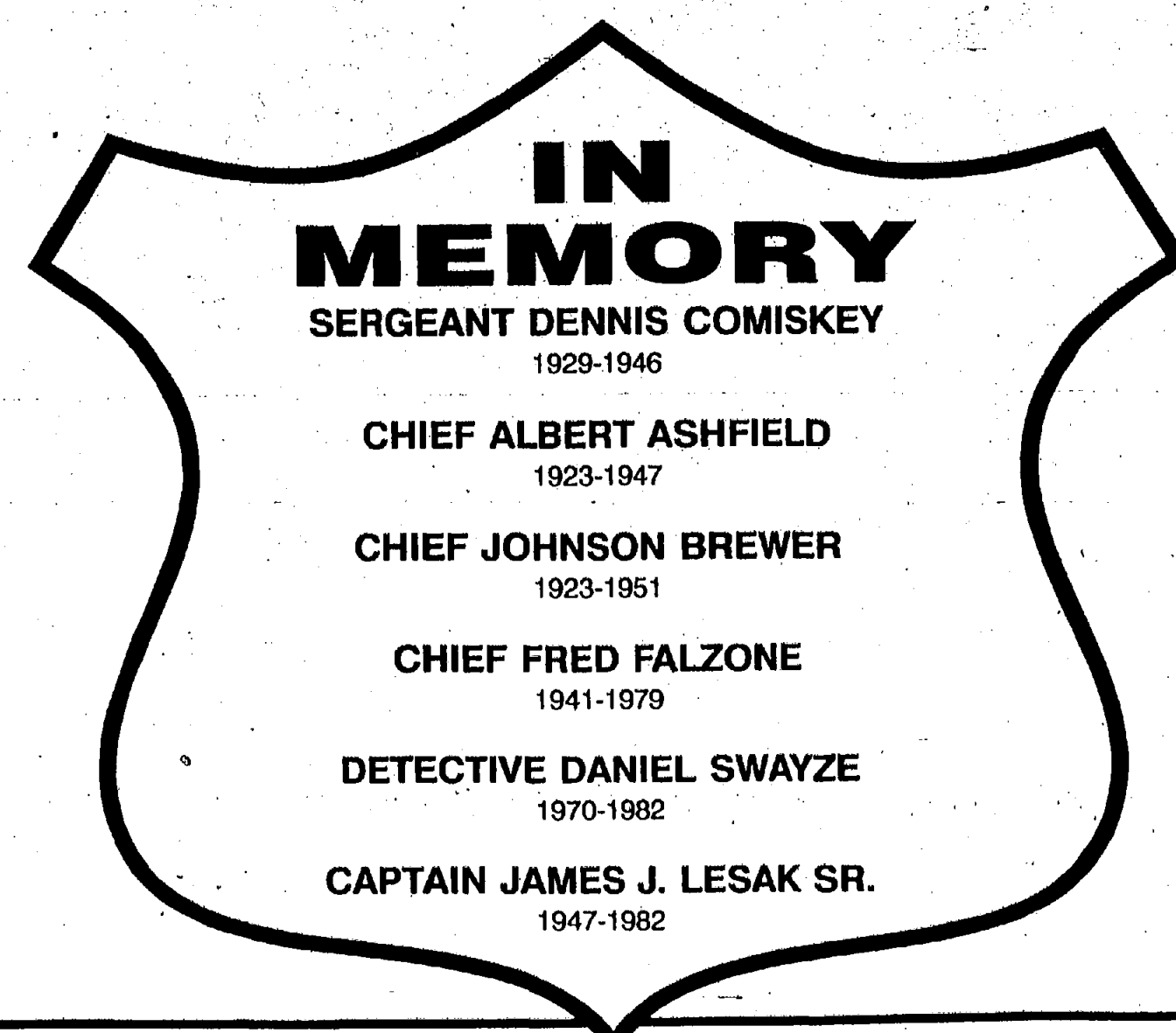
Ptl. Mario Morelli



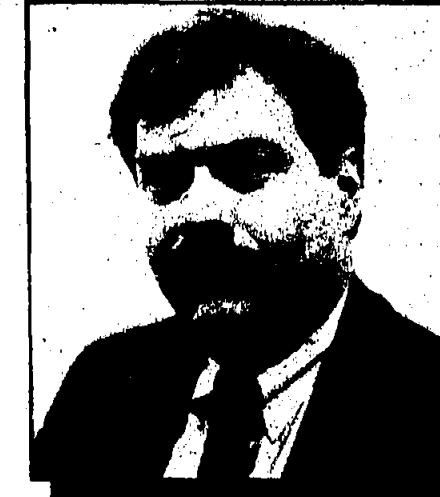
Dispatcher Laura A. Chapman



Dispatcher John Drone



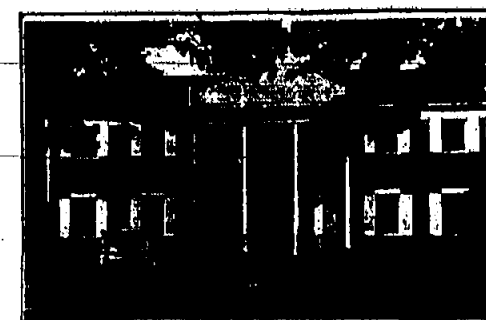
Ptl. Thomas P. Haughton

Commissioner
Paul DeVenuto

Sponsored by:

DOOLEY FUNERAL SERVICE, INC.

DOOLEY FUNERAL HOME
218 W. North Ave.
Cranford
276-0255
Francis J. Dooley Jr., Manager

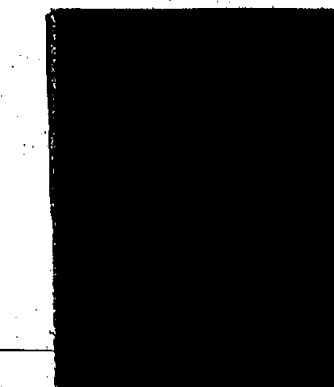


DOOLEY COLONIAL HOME
556 Westfield Ave.
Westfield
233-0255
Joseph F. Dooley, Manager

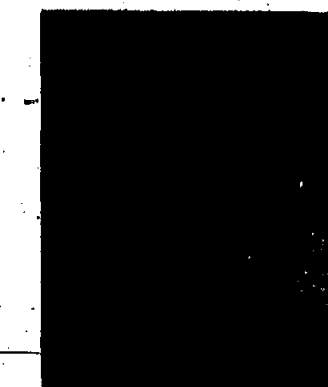
A SALUTE TO KENILWORTH'S FINEST



Chief Donald Tisch



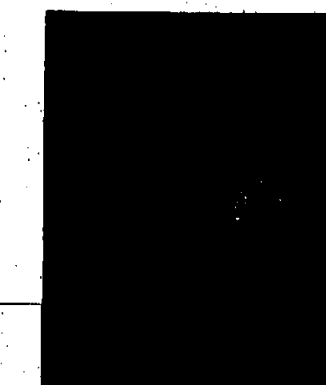
Capt. William Dowd



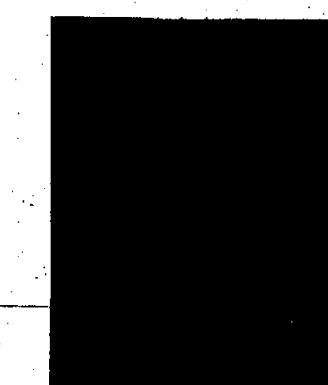
Sgt. Lawrence Stickle



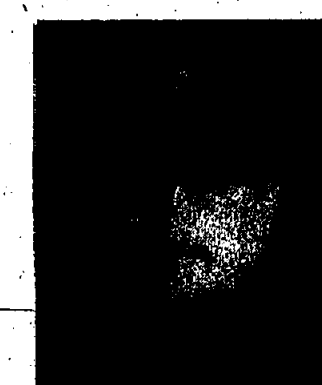
Lt. Harold Scheldegger



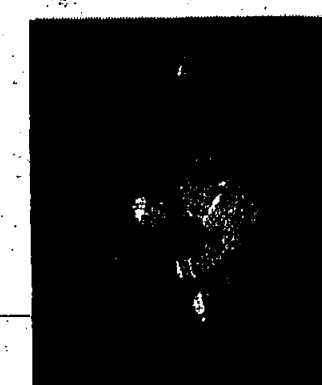
Sgt. Robert Jeans



Sgt. Michael Ciravolo



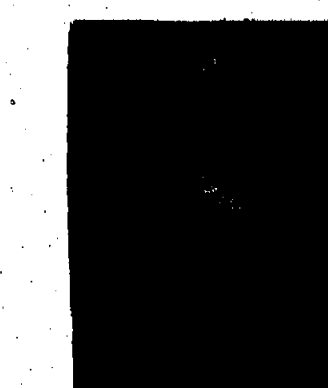
Ptl. Jeffrey Ferguson



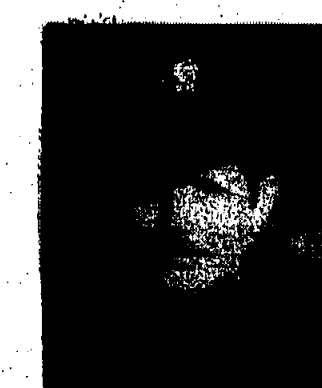
Det. Ptl. Scott Phillips



Det. Ptl. Richard Dopf



Ptl. William O'Malley



Ptl. Henry J. Moil



Ptl. Douglas Lamont



Ptl. Daniel Rica



Ptl. Kenneth Grady



Ptl. Richard Wood



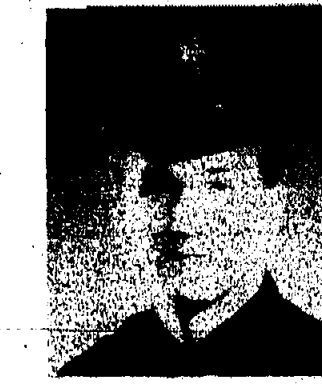
Ptl. William Harmon



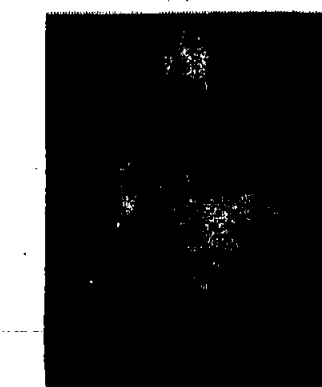
Ptl. Mark David



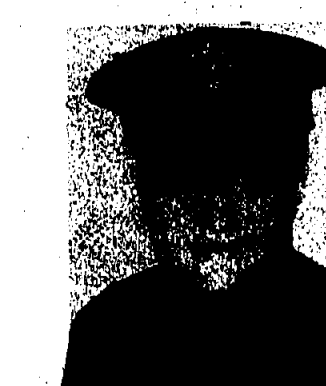
Ptl. Matthew Devlin



Ptl. Timothy Dowd



Ptl. John Zimmerman



Ptl. F. Richard Vitale



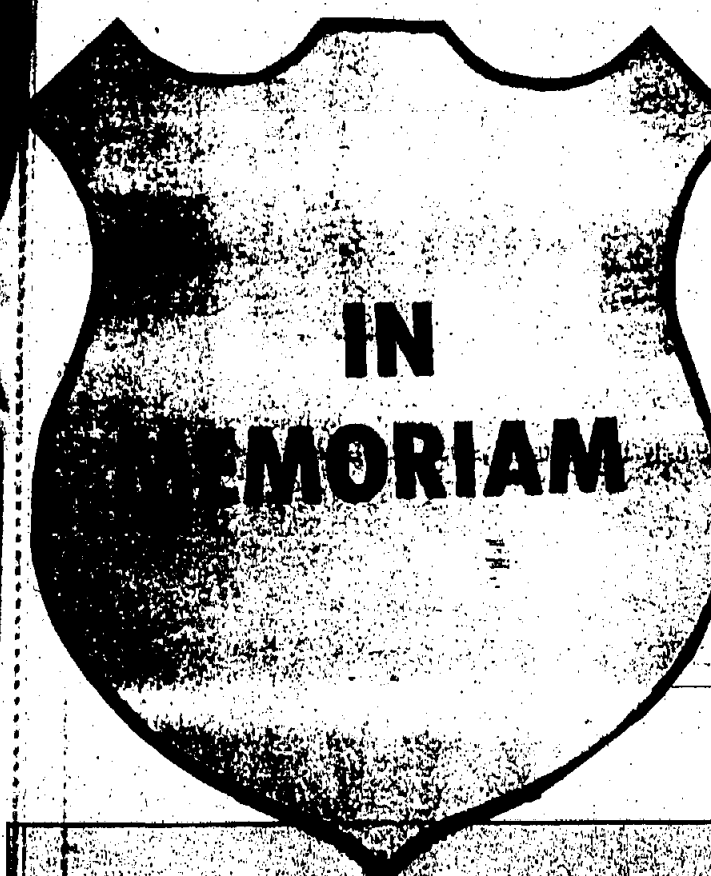
Ptl. Wayne Fannes



Ptl. Henry Obiedlinski



Ptl. Frederick Soos



Alfred Vardalis
served 1/1/26-9/16/31
Andrew Rusconsky
served 7/18/27-11/4/34
George Conklin
served 7/5/25-9/23/34
Frank Mulford
served 1/1/31-1/31/66
Edward Shupak
served 10/13/31-8/1/72
Alfred Brokaw
served 11/1/36-5/5/76
Joseph DiMario
served 1/1/53-3/9/75
George Kernan, Jr.
served 7/1/68-4/1/78
Warren Joeckel
served 11/1/76-8/26/80
Joseph Ventre
served 1953-1982

The Kenilworth Police Department wishes to acknowledge
George Elkas, President of Flexi-Van Leasing Inc., for his most generous
support of the Department over the past several years.

Police Page Sponsored By:

FLEXI- VAN LEASING

**Good Neighbor
and Friend**
George M. Elkas
President

251 Monroe Avenue
Kenilworth, NJ 07033-1106
(908) 276-8000
FAX: (908) 276-7666

chance to win first chance." The race was run seriously for all four and first overall went to the late Tom Krujts.

John Cahill, also members of the Park Avenue Cyclists, placed eighth and ninth, respectively, in the Senior 3 Race in Scotch Plains.

FREDDIE SPENCER MEMORIAL WEEKEND
(Citizen-Senior 5 Races)

1. *Joe Vinagra (Park Avenue Cyclists); 2. Jeremy Friedman (S.S. Park Riders)*

Senior 4 Races

1. *Jorge Salado (Granford Race Team); 2. Stephan Distad (Flying Tigers); 3. Michael Ripley (Quaker City Wheelers)*

Master 35-39

1. *James Joseph (North Jersey B.C.); 2. Paul Pearson (Mt. State Velo); 3. Rich Ross (MAMBO Kings)*

Senior 40-44

1. *Nelson U. (North Jersey B.C.); 2. Patrick Gelineau (Somerset Wheelmen); 3. Dave Grant (Brendenbury B.C.)*

Senior 45-49

1. *Christian Young (Newburgh); 2. Jan Prip (Briels); 3. Rafe Uzekowski (Northwestern Steamrollers)*

The Watchung Conference is divided into two divisions: the Amateur Division with Union, East Beth, Westfield, Linden, Irvington, Plainfield and East Side; and the National Division with Shalako, Scotch Plains, Summit, Rahway, Cranford and Kearny. Union County is also in the National Division, but does not have a football season.

The agreement only pertains to football, and is not indicative of this team to include cross-country with other sports.

The Watchung Conference football schedule is set up with each team playing all the other teams six divisions, which accounts for the games. The other three games on the nine-game schedule are made up by playing teams from other division, and now with the Please turn to page A-16.

Cranford Chronicle

Wednesday, May 31, 1995

CRANFORD • GARWOOD • KENILWORTH

A Forbes Newspaper 50 cents

Briefs

Election workers

There are still a few Democratic openings for Election Board Workers at the primary election Tuesday. Registered voters only may apply. Workers receive \$75. For information, call 276-3465.

Auction, auction

The Wednesday Senior Club of Cranford will host a Chinese Auction noon today at the community center. There will be a variety of new and used items. The auction is open to the public. For information, call 272-3382.

Single parents meet

The Single Parent Network meets 7:30 p.m. today at Calvary Lutheran Church, Eastman Street. The topic is "What You Can Do to Improve Your Health." Divorced, widowed and never-married mothers and fathers are welcome. For information, call 709-0495.

Support group

CO-OP Caregivers of Older People will meet 7 p.m. today in the Cranford library. Guest speaker is Gary Dushkin, a clinical psychologist and marital and family counselor, who will discuss the caregiving experience. Call 272-6731 or 245-2298 for information.

GOP party

The Cranford Republican Municipal Committee will host "They Way We Were, Returning to the Republican Majority," Friday at the Cranford VFW, South and Centennial avenues. Cocktails will be served 7 p.m.; dinner is 8 p.m. Congressman Bob Franks will speak. Tickets, at \$45, are available from Barbara Bilger at 272-8425 or Marge Shackell at 272-7543.

Lunch on the lawn

Bell Atlantic will host the 24th annual Lunch on the Lawn Thursday, June 29 at the Orange Avenue facility. The theme is the Fabulous '50s. Proceeds will benefit St. Joseph's School for the Blind, AIDS Resource Foundation for Children, Make-A-Wish Foundation and the Center for Hospice. Adult tickets are \$4.50 in advance and \$5 at the door; tickets for children 6 and younger are \$3.50 in advance and \$4 at the door. The menu includes a choice of hamburger, cheeseburger, sausage and peppers or hot dog. Raffles, games, vendors, auction. Bring a chair or blanket.

Circus time

Tickets are available for the Chamber of Commerce presentation of Vello's Old Tyme Circus June 29 at Hillside Avenue School. Performances are scheduled for 4, 6:15, and 8:30 p.m. Scheduled are performances by jugglers, comedy dogs, liberty ponies, elephants, and lots of horses. Advanced tickets are \$6. For ticket locations, call 272-8114.

Pancake breakfast

The Kenilworth Volunteer Fire Department and Rescue Squad will host their third annual pancake breakfast 7 a.m.-noon Sunday.

This year, a donation will be made through radio station FM 103.5 to St. Jude's Children's Hospital for Cancer Research.

Tickets for the all-you-can-eat breakfast are \$5; children younger than 12 eat for free. For tickets, call 276-3791 or 276-3465.

Happy 125th year party coming

By JOANNE McFADDEN

THE CHRONICLE

The Cranford 125th Anniversary Committee is planning a fun-filled calendar of 1996 events to celebrate the township's founding in 1871.

The celebration will actually begin this fall with the announcement of a beard and mustache contest, and a townwide quilting project.

The Cranford Historical Society will also plan the Fall 1995 dedication of a monument to mark the grave site of Josiah Bryant, the town's first African-American constable.

The Downtown Management Corporation (DMC) will plan an Old Fashioned Christmas this year.

The highlight of the 1996 celebration will be a three-day festival to begin June 7 with an evening concert at Eastman Plaza sponsored by the Downtown Management Corporation.

A parade will begin the festivities Saturday, June 8, featuring historical characters, floats, school bands and decorated bicycles.

The parade will be followed by a Downtown Festival coordinated by the DMC and the Chamber. It will resemble the recently held Spring Festival. The Downtown Festival concludes with lighted canoes on the Rahway River.

The anniversary committee plans to hold a Cranford River Carnival, complete with floats, Sunday, June 9. The celebration will end with a concert and fireworks display at Nomahegan Park.

The anniversary committee plans to kick-off the yearlong celebration with an Ecumenical Service in January. A special event will also be planned for April 14, the township's actual incorporation day. Other programs leading up to the three-day celebration include:

- A soap box derby.
- A poster contest sponsored by the Historical Society.
- A gala ball sponsored by the Historical Society.
- A merchandising campaign including sales of glass mugs, posters, hats, T-shirts, and license plate holders.

Volunteers are needed. Anyone who is interested should call 276-0092.

- Historical videos by TV 35.
- Weekly history column in *The Chronicle*.
- A mural painting under the railroad trestle sponsored by DMC.
- The dedication of Sperry Park, and possibly an anniversary garden at Hanson Park.

- A soap box derby.
- A poster contest sponsored by the Historical Society.
- A gala ball sponsored by the Historical Society.
- A merchandising campaign including sales of glass mugs, posters, hats, T-shirts, and license plate holders.

Volunteers are needed. Anyone who is interested should call 276-0092.

• An historical photo album.



Primed for the prom
Cranford High School's prom night Thursday found twins Cindy and Mandy Ross flanking their mother, Elaine, as Mary Conforti, left foreground, snaps their photo and Jeff Osnato coaches. See story on Page A-5.

Lackluster primary Tuesday

By JOANNE McFADDEN

THE CHRONICLE

By everyone's estimation, Tuesday's primary should be uneventful in Cranford, although at stake in November's election is party domination of the five-member committee, now at 3:2 Democratic.

Democrats will be asked to approve incumbents Mayor Norman Albert and Deputy Mayor Daniel Aschenbach, who will seek a second and fourth term, respectively.

Township Republicans will be asked to endorse the GOP candidates for the Township Committee, Michael Harrington and Thomas Shaw. Both are making their first bids for elected positions.

On the county level, there are three open seats on the Freeholder Board. Cranford resident Nicholas Guadita will run unopposed with GOP running mates Joseph F. Safaryn of Roselle and James J. Fulcomer of Rahway for November's ballot slots.

County Democrats will have to pick three from a five-candidate field that includes Daniel Sullivan of Elizabeth, Walter McNeil, Jr., of Plainfield and Carol Cohen of Westfield, running on the official regular Democrat party line; and Joseph Cayan and Joseph DeDeo of Union, who are running under the Democratic Party of Union County line.

On the state level, Scotch Plains resident Geri Samuel and Westfield resident John A. Salerno will wage a write-in candidacy in the

primary election against what they call "an extremist candidate" running of the Democratic nomination for the New Jersey Assembly. Ms. Samuel and Mr. Salerno will challenge John Kueck of North Plainfield.

Polls will be open 8 a.m. to 5 p.m. District 1 will vote at the public library; Districts 2, 10, 25 and 29, at Walnut Avenue School; Districts 3, 7, and 26 at the Cranford Municipal Building; Districts 4, 6, 14, and 15, at Livingston Avenue School; Districts 5, 13, and 21, at Lincoln Avenue School; Districts 8, 12, and 30, at the Community Center; Districts 9, 18, 20 and 28, at Orange Avenue School; Districts 11 and 27, at Hillside Avenue School; District 16 and 23, at Cranford High School; and District 17, 19, 22, and 24, at Brookside Place School.

PBA says apologize, Murphy

Officers of the Policemen's Benevolent Association Local in Cranford are demanding a public apology from former Township Administrator Ed Murphy, who recently was quoted by two Clifton police administrators saying Cranford police officers "extorted" employment opportunities from business owners and utility companies.

According to published reports, Clifton Police Capt. Robert Kelly and Capt. Martin Warner met with Mr. Murphy last week concerning the use of city police cars during outside employment. During that meeting, Mr. Murphy allegedly said Cranford officers would pressure local business owners and utility companies into hiring them.

Mr. Murphy has since called the allegations "total fabrication."

Cranford PBA President James Switek has called Mr. Murphy's alleged remarks "slandorous."

Bob Peters, PBA vice president, said Cranford officers "at least deserve a public apology from Murphy."

Mr. Murphy was pressured into resigning from his Clifton post effective July 31 after being accused of breaking state pension regulations. While earning \$81,000 a year as Clifton's city manager, Mr. Murphy also collected an annual pension of \$38,000 from Cranford for his 15 years as township administrator there.

Under state law, full-time government employees are limited to earning \$1,500 a year while collecting a pension. The pension board has ordered Mr. Murphy to refund all pension money he received while working for Clifton, and Cranford officials are looking to recoup their contribution as well.

Mr. Murphy is appealing the decision.

— Joanne McFadden

Ceremony, memories of Monday

Members of the Cranford VFW pose with their Color Guard (left photo) in front of the memorial plaques at Memorial Park Monday immediately after the laying of wreaths. They are, from left, Vince Sawowski, Elroy Darden, Robert Greco, Mark Tetraoria, Thomas Korner, Vincent Brinkerhoff, Grand Marshall Ken Curtis, Robert Foley, David Thompson, Bruce Sokol and Thomas Leahy.

In the photo at right, John and Lynn MacWirtler of Cranford display a Cleveland newspaper from VE day; he was stationed there in the Navy.



Aim for \$1 million

Hole-in-one shootout aids Children's Miracle Network
Special section inside

Soccer Magic

Murray girls selected to state Olympic squad
See Sports, page A-11

Suburban oases

Strip malls don't have to be bland
See Weekend Plus