

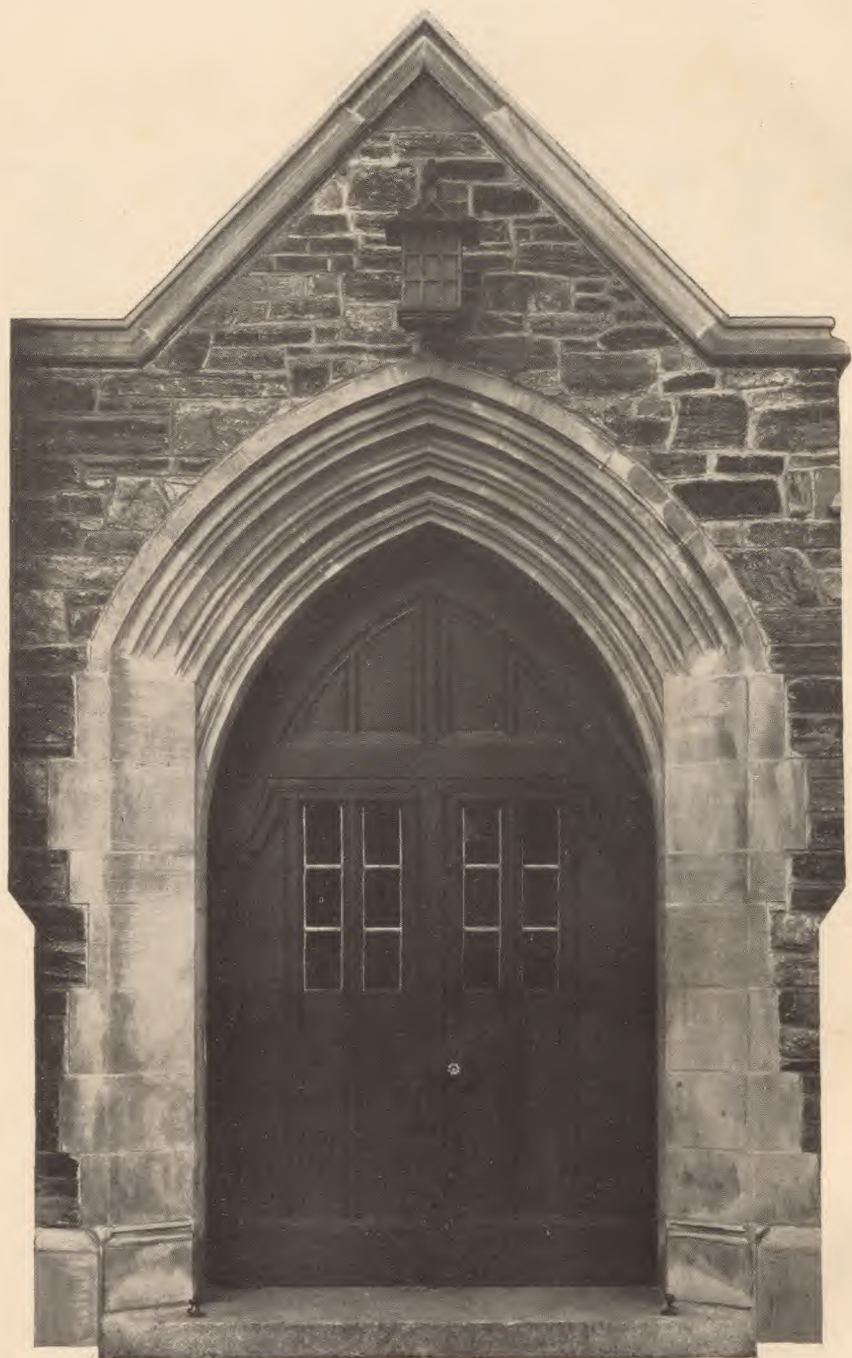
MIRROR



1930

THE
MIRROR
1930

COLUMBIA HIGH SCHOOL
SOUTH ORANGE AND MAPLEWOOD, N.J.



Foreword



It has been the sincere endeavor
of the Senior Class to reflect
in this Mirror a true
picture of Columbia
High School
in 1929-
1930





TO OUR ALMA MATER

*Towards the clouds her tower reaches,
Lifting high her walls of might,
Pillar to our aims she rises,
Symbol of the "Truth" and "Right."*

*Thus our Alma Mater strengthens
Those ambitious to succeed;
Gives each one her watchful guidance,
Stressing "Thought before the Deed."*

*As we enter life's great highway,
Happy memories fill the heart;
Bonds of loyal friendships hold us
That we may not drift apart.*

*Out beyond the dim horizon
Lies the goal for which we strive;
Heart and soul are bent upon it,
Keeping our ideals alive.*

*Spacious walls which long have taught us
Love of beauty that God made;
Send us forth, now, with your blessing,
Faithful to foundations laid.*

BETTY H. BROWN

Dedication

To

Camilla M. Low,

In appreciation of her wise guidance and sincere interest, the
class of 1930 dedicates
this volume







MATHEMATICS



PHYSICAL EDUCATION



ENGLISH



MODERN LANGUAGE



COMMERCIAL



SCIENCE



HISTORY



LATIN



ADMINISTRATION



MANUAL ARTS



HOUSEHOLD ARTS



OFFICE STAFF



MUSIC



FINE ARTS

CONTENTS

BOOK ONE THE SENIORS

BOOK TWO THE UNDERCLASSES

BOOK THREE ORGANIZATIONS

BOOK FOUR ATHLETICS

BOOK FIVE FEATURES

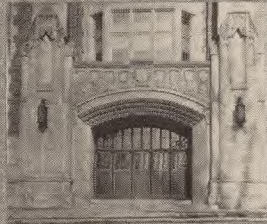
BOOK SIX ADVERTISEMENTS



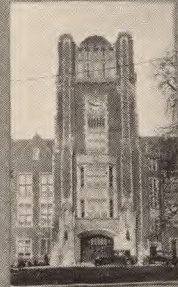
FROM PARKER AVENUE



A SIDE ENTRANCE



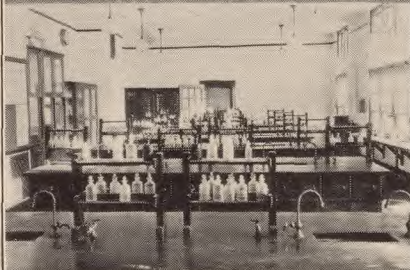
MAIN ENTRANCE



THE TOWER



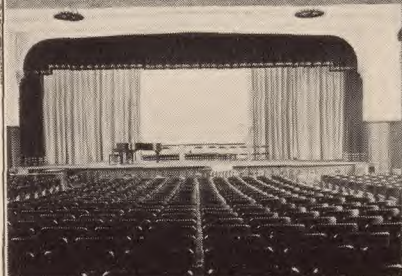
THE FIELD HOUSE



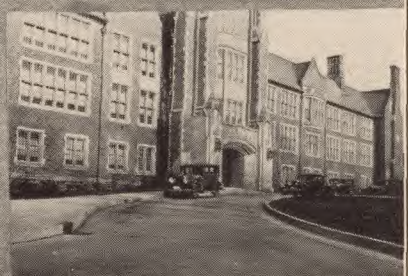
CHEMISTRY LABORATORY



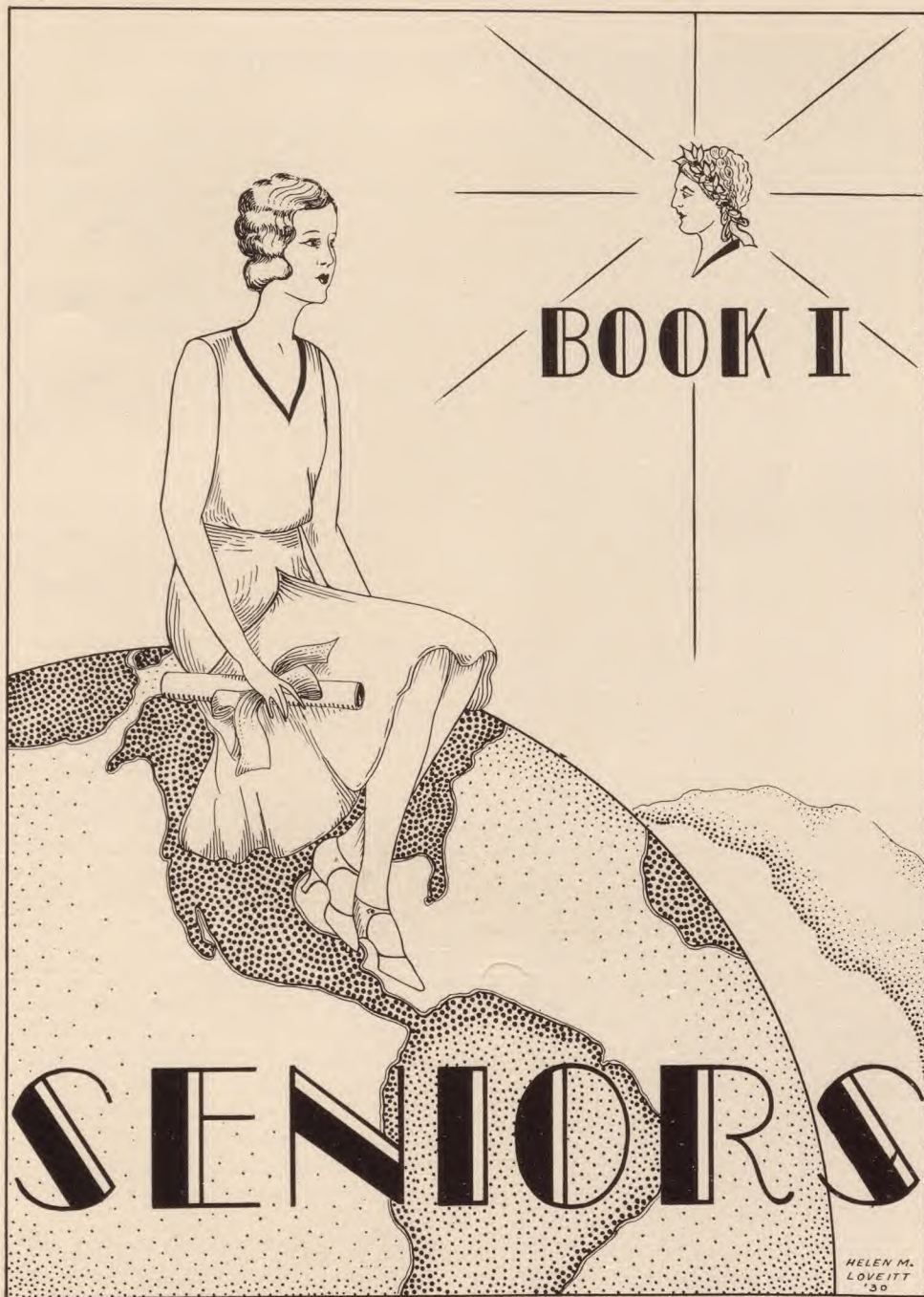
FROM ACADEMY STREET



THE AUDITORIUM



MAIN APPROACH



SENIOR CLASS HISTORY

THE class of nineteen hundred and thirty has been one of the most active and most progressive senior classes within recent years. Though respectful of tradition, the class has introduced a number of innovations. Every project undertaken has been executed with good will and sincere effort. Throughout the four years play has gone hand in hand with work, and the result has been a happy blending of strenuous effort and good times.

In the freshman year only a small number of the present class had yet entered the school, but in this group were many who were destined to be leaders in future school years.

Most of us commenced our high school career as sophomores. This was a period of acclimation, but also one of very marked activity. Many of our boys were on the varsity teams, and one of our sturdy athletes was elected to captain next year's football team. In the interclass debate, our team came out victorious in the finals, scoring a defeat over the seniors of that year. We presented a play before the school, entitled "Thank You, Doctor", which was enthusiastically received. A class party was held, a forerunner of the elaborate affairs to follow in the last two years. Generous contributions from the treasury were made to the Vermont flood sufferers, and to the school scholarship fund.

Installed as Juniors, and fully aware of our responsibilities, we set about making a good year. We had gained a reputation by the spirit and activity of our sophomore year, a reputation which we were intent upon maintaining. Again our boys and girls made envious records in athletics. In our Junior Prom, a gay night of music and laughter, given in honor of the Alumni, we established a new bond of friendship with the seniors by inviting them to attend. This act of generosity has now been firmly enrooted in school tradition. An unusually clever and entertaining assembly program was presented before the school. It consisted of a picked chorus of boys who sang well-known college songs, representing a Columbia reunion, while at the same time vivid tableaux illustrating the songs were enacted by other class members. In preceding years the junior class had given annually a public show called the Junior Vaudeville. When our turn came to present the accustomed entertainment, we took it upon ourselves to alter another school tradition and thus called our show "Junior Night", an appellation which has continued to be used.

And now our Senior year! Our play, given at Thanksgiving time, entitled "Merton of the Movies", was a creditable success. The Senior Banquet, held in March, was the occasion of good fellowship and merriment, where class talent was much in evidence, and class spirit soared high. Then through the spring months, with members on the teams, we have sped rapidly to the close of our high school career, on to our goal, Class Night and Commencement!

As we pause upon the threshold of our Alma Mater, we cast back a last, long, lingering glance. We have had a happy time, and as we say good-bye we pledge ourselves to be ever worthy of the ideals Columbia has instilled in us.

ADELINE ADAMS

*If you cannot talk, you're sure to pine,
But you're a great, great girl, Sweet Adeline!*

French Club 4; Parnassian 4; Art Club 4;
G. A. A. 2, 3, 4.

MURIEL ADDIS

*The business-like chairman of 144,
Go and ask Arthur, if you would know more.*

Jr. Basketball Mgr. 3; Jr. Night; Student Council 3; G. A. A. Council 3; Home Room Chairman 4.

ANNA ANDREWS

*She has a voice that's soprano and sweet;
If you've not heard it, you've sure missed a treat.*

Parnassian 3, 4; Jr. Night; Commencement Usher 3; Glee Club 2, 4; Chorus 3.

HENRY ALLEN

*In "Henny" an excellent fire-chief is found,
And for prowess in football he's widely renowned.*

Football 2, 3, 4; Captain 3; Baseball 2, 3, 4; Basketball 2, 3, 4; Fire Chief 4; Junior Assembly Chairman.

ROBERT AMBERG

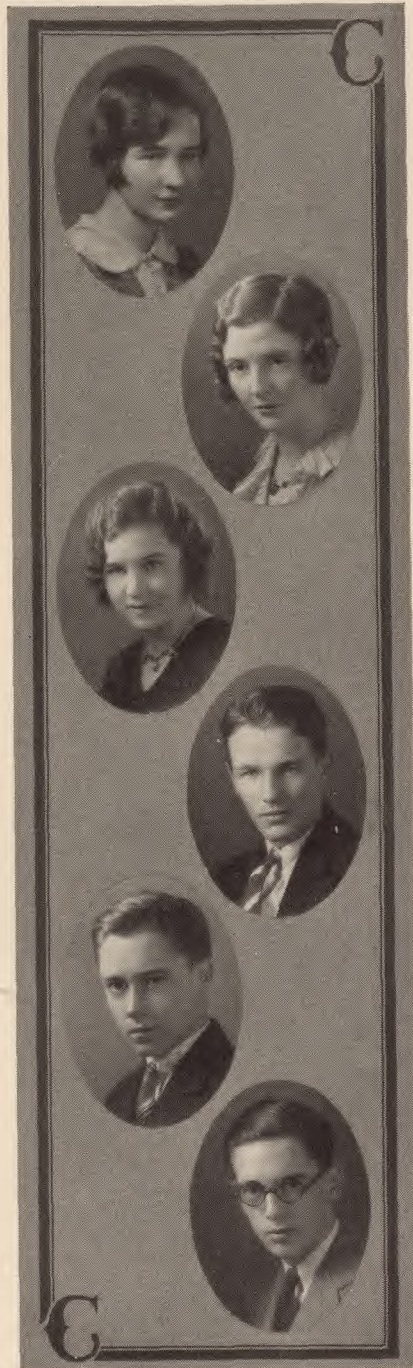
*With marks in the nineties is Editor "Bob,"
Reliable, quiet, and right on the job.*

German Club 2, 3, 4; President 4; B. A. A. Treasurer 4; MIRROR Editor; Business Mgr. Columbia High Lights 4; Columbian 3, 4.

ARNOLD AMBOS

*We understand Arnie and German
Get on together like Georgia and Sherman.*

Football 3, 4; Baseball 2, 3, 4; Stage Committee Junior Night 3; Stage Committee Senior Play 4; Fire Committee 4.



**WILLIAM ANDERSON**

*Whoever to any assembly comes
Will find Bill there with the orchestra's drums.*

Tennis 3, 4; Band 3, 4; Orchestra 3, 4.

DOROTHY ANSPACH

*One of Dorothy's strong points is math;
She'll tell you the charms that geometry hath.*

G. A. A. 2, 3; German Club 2, 3, 4; Chairman
Decoration Committee Senior Banquet.

GERTRUDE BALCH

*Whenever she's late to the day's first class,
She bashfully says, "Oh, we ran out of gas!"*

Assembly Committee 2; Jr. Prom Com.; Tradition
Com. 2; Civics Com. 2; Leaders' Club 2, 3, 4.

NORMAN BALL

*Norman likes singing and German and Dot,
And you'll find that he's gay much more often
than not.*

German Club 3, 4; Junior Night; Glee Club
4; House and Grounds Committee 4; Stage Com-
mittee 4.

JEROME BAMBERGER

*What is that auto so lustrously lacquered?
Oh, that is nothing but Bamberger's Packard.*

DUNCAN BARTON

*He likes to have his little jest,
With love of humor he is blest.*

Football 3; Basketball 1, 2; Tennis 1, 2, 3;
Civics Com. 2, 3; Traffic Com. 3.

REGINA BATAILLE

*This is the girl of the queenly name,
Whose good disposition is always the same.*

Aviation Club 3, 4; Usher at Senior Play 4.

ROBERT BATES

*Bob is one of those cheerful boys,
Whose tongue and pen add to life's joys.*

Creative Writing Club 3, 4; Jr. Night; Editor of Hand Book 4; Senior Play; Columbian 4.

CAROLYN BAUM

*Modest and quiet is Carolyn Baum;
She plays the piano with talent and calm.*

French Club 3, 4; Glee Club 3, 4; Orchestra 4; G. A. A. 2, 3; Jr. Night 3.

HELENA BEATRICE

*Wherever she is, she has always a smile;
In cheerful good spirits she sets us the style.*

French Club 2; G. A. A. 2, 3, 4; Class Basketball 3.

MARY LEE BEATTIE

*Mary Lee is a wiz in the gym;
She plays basketball with vigor and vim.*

French Club 3, 4; Basketball 2, 3, 4; Columbian 1, 2; Chorus 3; G. A. A. sec'y. 3; treas. 4.

ROY BEH

*In football and hockey our Roy is well known,
And also in talking he sure holds his own.*

Football 3, 4; Baseball 2, 3, 4; Chairman of House and Grounds Committee 4; Ring and Pin Committee 4; Assistant Fire Chief 4.



**BARBARA BELCHER**

*She has plenty of things to keep her from harm:
A keen sense of humor, quietness, charm.*

Columbia 3; French Club 3, 4; Glee Club 3, 4;
Junior Night 3; MIRROR Staff 4.

JOANNA BELL

*Joanna operates a Ford;
Perhaps that's why she's never bored.*

Science Club 3, 4; Aviation Club 3, 4; G. A. A.
3; Biology Assistant 3, 4; Decoration Com. Senior
Banquet.

GERTRUDE BENDERSKY

*She writes for our paper with wisdom and care;
She'll likely end up in an editor's chair.*

French Club 3, 4; Orchestra 4; Columbian 4;
Creative Writing Club 4; Class Basketball 3.

SHELDON BENNETT

*This thought-bomb has pierced his armor
To be a scientific farmer.*

Band 2, 3, 4; Orchestra 3, 4; Jr. Night; French
Club 4.

THOMPSON BILLINGTON

*Happy-go-lucky and genial is he,
His red hair combines with a spirit carefree.*

Track 3, 4; Football 2, 3, 4; Traffic Committee
4; Fire Committee 4.

ARTHUR BIRD

*When the orchestra's playing, who has not heard
The toot of the horn that is blown by Art Bird?*

Track 3, 4; Band 3, 4; Orchestra 3, 4.

ADELE BIRKENMEIER

*For getting to school, a new scheme she's tried;
She flutters a bill and asks for a ride.*

Junior Prom Committee 3; Civics Committee 2; G. A. A. 1, 2, 3, 4.

RAYMOND BISCHOFF

*Ray's at home with ball and bat,
And always ready for a chat.*

Baseball 2, 3; Band 2; MIRROR Staff 4; Fire Committee 4.

ROSETTA BOCCHICCHIO

*She has beauty and voice for the screen or the stage;
You're sure to enjoy them, whatever your age.*

Parnassian Club 2; Chorus 2; Junior Night 3; Home Room Program Committee 3.

EDWIN BOND

*Ed Bond gloomy? That's absurd!
As his name implies, he's good as his word.*

MARGARET BORDEN

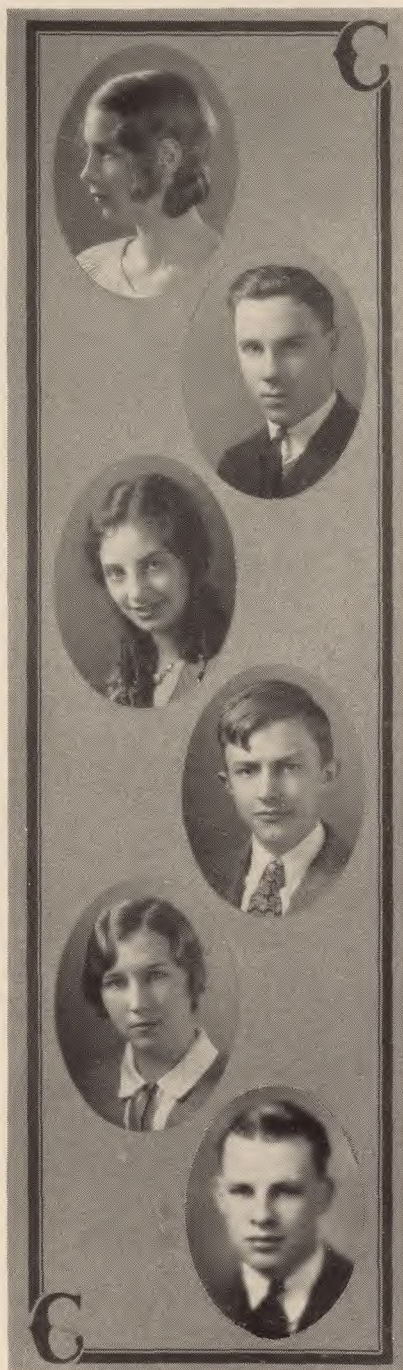
*A dependable, jolly, good fellow is "Peg";
She's always pursuing her studies with Gregg.*

Jr. Swimming Mgr. 3; Junior Night 3; G. A. A. Council 3, 4; Leaders' Club 3, 4; Girls' Civic Committee 3.

RICHARD A. BORTON

*Dick shines in football, baseball, and such.
But Parties? Horrors! that's asking too much!*

Football 2, 3, 4; Basketball 2, 3, 4; Baseball 2, 3, 4; President of Sophomore Class; Fire Committee 3, 4.





FLORENCE BOSSERT

*Dark brown eyes and frequent smile
Make one know "Flo" is worth while.*

Sec. Aviation Club 2; Leaders' Club 2, 3, 4;
G. A. A. Council 3, 4; Jr. Night Com.; Basket-
ball 4.

LIN BRIDGEMAN

*Lin's a student of renown,
Whose French is quite the best in town.*

Columbian 2, 3, 4; Parnassian 3, 4; Cercle
Francais 3, 4; Creative Writing Club 3, 4; MIRROR
Staff.

HELEN BRIGGS

*Golden brown hair, and brown eyes too,
She's been from Florida to Kalamazoo.*

Leaders' Club 4; French Club 4; G. A. A.
2, 3, 4.

BETTY B. BROWN

*Bonny and Scotch is "Betty B.";
Of horsemanship, a devotee.*

Creative Writing Club, Pres. 4; Parnassian
3, 4; MIRROR 4; Leaders' Club 2, 3, 4; Jr. Night
Usher.

BETTY H. BROWN

*She's just as jolly as can be;
Someday her news-sheet we will see.*

Columbian 3, Editor in Chief 4; French play 3;
Parnassian 4; Creative Writing Club 3, 4; MIRROR
Staff 4.

KENNETH BROWN

*Ken writes things for our newspaper,
And on the side cuts many a caper.*

Lunch Room Com. 2; Fire Com. 2, 3; Service
Orchestra 4; Columbian 4; Assistant Editor
MIRROR 4.

PRESTON BROWN

*Geometry to him is sport,
But U. S. History is his forte.*

Traffic Committee 4; German Club 3; French Club 3; Science Club 3.

EDNA BRUCKER

*Technique, line, and color too!
In art, she knows just what to do.*

Scenery, Painting, Poster, Cost, Com. Jr. Night; Chairman Scenery Painting Com. Senior Play.

CLARE BUEHLER

*If Clare keeps on her vivacious way,
She'll surely end on old Broadway.*

Parnassian 2, 3, 4; Chorus 4; Junior Night; Senior Play; G. A. A. Council.

GORDON BURNS

*Gordon "burns" with a living flame,
Pursuing Edison's road to fame.*

News Editor of the Columbian 3, 4; Science Club 2, Vice-Pres. 3, Treasurer 4; Creative Writing Club 3; Jr. Night Electrician; Senior Play Electrician.

JOHN BURROWES

*His Orchestra, made up of Columbia boys,
Helps satisfy "Ben's" craving for noise.*

Band 2, 3, 4; Orchestra 2, 3, 4; Service Orchestra 2, 3, 4; Junior Night; Organization Editor of MIRROR 4.

ROBERT CARR

*In argument "Bob" knows no par,
And in Science he'll no doubt star.*

Columbian Staff 2; Literary Editor of Columbian 3; Sophomore Play; Science Club 4; MIRROR Staff.





CHARLES CLANCY

*His wise-cracks are of exclusive make,
But it's his Trombone takes the cake.*

Columbian Staff 4; Parnassian 3, 4; Orchestra 3, 4; Service Orchestra 3, 4; Band, 2, 3, 4.

DOROTHY CLARK

*For a car like Dot's we heave a sigh,
And she has a weakness for West Orange High.*

G. A. A. 1, 2, 3, 4; Girls' Glee Club 4.

ELIZABETH A. CLARK

*"Liz" will listen to anyone's trouble;
May all her happiness be double.*

G. A. A. 2, 3, 4; Decoration Com. Senior Banquet.

ELIZABETH K. CLARK

*Beautiful, but not dumb is she,
Whose nose tilts skyward so mischievously.*

Jr. Night 3; Senior Play 4; Parnassian 4; French Club 4; Lunchroom Com. 2, 3.

CATHERINE CLYNES

*She's tried them all, "Greta" and "not";
Just now she's partial to the "bob".*

Jr. Night; Senior Play; Volley Ball 2; G. A. A. 2, 3, 4; Glee Club 4.

DOROTHY COLEMAN

*"Dot," who has grace and sleek brown hair,
When dancing, seems to tread on air.*

Vice-President Junior Class, Secretary 2 and Senior Class; Prop. Chairman, Junior Night; Parnassian 3, 4; Home Room Chairman 1, 2, 3.

JOHN CONDIT

*Perhaps driving a roadster that few have passed,
Gave "Flash" those legs that hurdle so fast.*

Football 2, 3, 4; Track 2, 3, 4; Basketball 2, 3;
Hockey 4; Fire Committee 3, 4.

RICHARD CONRADI

*His hearty laughter fills the town
And for home-runs he has renown.*

Football 3, 4; Baseball 2, 3, 4; Hockey 4; Nomi-
nating Com. 4; Fire Committee 4.

JEANETTE CONROY

*Bewitching and coy in Parnassian Plays,
Her performance calls forth the audience's praise.*

President of Glee Club 4; Parnassian Plays
3, 4; Senior Play 4; G. A. A. 3, 4; Leaders'
Club 4.

EDWIN CORSON

*A friendly smile and laughing eye,
A clever boy—but rather shy.*

Class Nominating Com. 3; Senior Play Com.
4; Civics Com. 4; Traffic Com. 4; Tennis 4.

MURIEL COVERT

*Her horsemanship could scarce be more,
And she's right at home on a smooth dance floor*

Columbian 3, 4; Lunchroom Com. 4; Jr. Night;
Chorus 4; Senior Play Usher.

RODNEY CROWLEY

*"Handsome" we voted Rod,
Who holds down the class treasurer's job.*

Treasurer Senior Class 4; Circulation Mgr.
Columbian 4; Student Council 3; Parnassian
Treasurer 4; Tennis Team 3, 4.





JAMES CURLEY

*There's one thing that makes Jim insane:
To say anything 'gainst an aeroplane.*

Junior Night 3; Aviation Club 3, 4; Track Squad 3; Monitor 3; Decoration Com. Senior Banquet.

ALBERT DAVIDS

*Our Al and Jolson—that makes two
The waiting world shall listen to.*

Traffic Committee 4, Orchestra 2; Chorus 2, 3; Glee Club 4; Publicity Mgr. Boys' Glee Club 4.

PENNINGTON DAY

*Who's that sent the ball straight down the line?
That's Pen, our little "giant," whose punting's
so fine.*

Baseball 2, 3, 4; Basketball 2, 3; Football 2, 3, 4; Hockey 4; Fire Committee 3, 4.

FORTUNE DE CICCO

*Fortuna has two flashing eyes,
And one year took the Underhill prize.*

G. A. A. 4.

SIDNEY DE RONER

*Sid sternly makes the team toe in,
While behind the glove he hides a grin.*

Baseball 3, 4.

THERESA DEVEREAUX

*In the Senior Play she did her share,
For Theresa claimed the prompter's chair.*

G. A. A. 2, 3, 4; Graduating exercises 3; Senior Play.

CHARLOTTE DIETRICH

*For her unruffled calm, her friendly smiles,
"Camels" are out—but we'd all walk miles.*

G. A. A. 1, 2, 3; German Club 4; Senior Play Usher 4.

DOROTHY DUNN

*Of all the girls that we can boast,
Dot Dunn's pug nose turns up the most.*

Parnassian 3, 4; Lunch Room Com. 3, 4; Junior Night Cast 3; Soccer Team 1, 3, 4; G. A. A. 4.

MARJORIE EARL

*Here's a twin of pleasant mein,
To derby hats her fancies lean.*

Glee Club 2, 4; G. A. A. 2, 3, 4; Poster Com., Senior Play 4; Volley Ball 2.

ERNEST EASTON

*Here's the fun-poking Parnassian President;
For just such an office, our Ernie was meant.*

Track 3, 4; Parnassian 3, Pres. 4; Flag Bearer 3, 4; Senior Play 4; Junior Night 3.

DOROTHY EDSALL

*Her qualities to friendship lend,
In Dot is found a faithful friend.*

Aviation Club 1, 2; G. A. A. 1, 2, 3.

RUTH EICHHORN

*The curls and tardiness are sent
With that artistic temperament.*

Parnassian 3, 4; Art Club President 4; Creative Writing Club 3, 4; Columbian 3; Junior Night Com. 3; Senior Play Com. 3, 4.





STANLEY ELLISON

*His abilities and grin were often sought,
And he might have been called "30's Happy
Thought"!*

Student Council 4; Chairman, Senior Nominating Committee; Senior Play; Junior Night; Traffic Committee 3, 4.

ARTHUR EVANS

*Oh, very fond of blondes is he,
But Muriel is his specialty.*

Parnassian 3, 4; Fire Com. 4; Junior Night Cast 3; Civics Com. 4; Football 4.

ROBERT EVERETT

*Beneath his outer serenity
There lies a lot of deviltry.*

Nominating Com. 4; Advertising Com. MIRROR; Traffic and Fire Com. 4; Hockey Team 4; Aviation Club 3, 4.

FLORENCE EWALD

*Our "Flo's" science is superb,
She knows her fish as well as "Herb."*

Sec'y. German Club 4; Entertainment Com., Sr. Banquet.

ELEANOR FAITOUTE

*Last year, much to her surprise,
She took the Flower-Poster prize.*

Homeroom Chairman; Homeroom Com.; Jr. Night Com.; Art Club; Senior Play Com.

LUTHER FALCONER

*Did Sea Scouts find on dark, blue seas,
Some maids to flirt, some maids to tease?*

Jr. Night Stage Com; Football 4; Track 3, 4; Traffic Com. 4; Sr. Play Stage Com.

ELIZABETH FARRELL

*She's "10 point Liz" of basketball,
And ever there at duty's call.*

Soccer 2, 3, 4; Basketball 4; G. A. A. 2, 3, 4; G.
A. A. Council 3, 4; Leaders' Club 4.

MARJORIE FELDERMAN

*In Senior Play and Junior Night,
Marjie's talent is far from slight.*

Junior Night 3; Senior Play 4; Glee Club 3, 4;
Chorus 3, 4.

GLENN FIELDING

*Glenn's a good scout, tall and thin—
We're hardly even with his chin.*

Squad Football 4; Traffic Com. 3.

DAVID FINLAY

*Finlay loves to lift a puck;
We know with Dave its ever luck!*

Football 2, 3, 4; Track 2, 3, 4; Hockey 2, 3, 4;
Traffic Committee 4; Fire Committee 4.

JANE FISHER

*A happy, bright, young girl is she,
And never an old maid will she be.*

Junior Night; G. A. A. 2, 3, 4; Glee Club 4;
Soccer Team 3; Class Basketball 2.

RUTH FOLEY

*Although she's quiet all the day,
A modern girl in every way.*

G. A. A. 1, 2, 3, 4; Assembly Com. 1; Class
Basketball 1, 2; Sophomore Dance Com. 2;
Scenery Com., Junior Night 3.





ESTHER FOOTE

*Into words we cannot put
Our friendliness for Esther Foote.*

G. A. A. 2, 3, 4.

MARY LOUISE FOSS

*She hails from "Philly," the home of the Quaker,
And already the boy-friends are out to make
her.*

DORIS FRAENTZEL

*Doris's liking for Esther is hearty
Together they go to many a party.*

G. A. A. 2, 3, 4; Glee Club 2, 3.

FLEMING FRASER

*"Nookie" is a handsome boy,
Whose presence brings the girls much joy.*

Football 2, 3, 4; Baseball 3, 4; Hockey 4; Jr.
Prom. Com.; Chairman of Traffic Com. 4.

BETTY FULLER

*From the smallest Freshman to the biggest P. G.,
When a giggle is heard, all look for Betty.*

Creative Writing Club 4; Jr. Night; German
Club 4.

MARGARET FULLER

*Peg's hair is dark and sleek and long;
In English class she's seldom wrong.*

Creative Writing Club 4.

HERBERT GAFFREY

*Herb leads the "hoarsemen"—how he can yell!
He's one of our fastest track men as well.*

Track 2, 3, 4; Stage Com. of Senior Play;
Cheer Leader 3, 4; Junior Prom. Com.

MILDRED GALOWITZ

*Throughout the school she is renowned
For skirts which almost touch the ground.*

Glee Club 3; Chorus 1; G. A. A. 2; Decorating
Com., Senior Banquet.

DOROTHY GEGENHEIMER

*When Dorothy seeks to play,
She heads down dear old Princeton way.*

Aviation Club 3, 4; Glee Club 4; Jr. Night Com.
3; Sr. Play Usher 4; Civics Com. 3, 4.

DOROTHY GEIGER

*A clever girl whose talents rare
Can make a dress or mend a tear.*

Glee Club 3, 4; Chorus 4; Jr. Night Com 3;
Sr. Play Usher 4; G. A. A. 2, 3, 4.

NOREEN GILMAN

*Our fair Noreen would be a nurse,
And all the nasty germs disperse.*

Jr. Night Usher 3; G. A. A. 2, 3, 4; Reception
Com., Sr. Banquet.

HARRY GILMORE

*"Duckie" is a comic actor,
In our plays a needed factor.*

Parnassian 2, 4; Hockey, 4; Sr. Play; Assem-
bly Com. 3, 4; Advertising Com., Sr. Play.



**MARGARET GRAF**

*One hardly knows that she's in class,
Yet she does more by far than pass.*

Orchestra 1; Junior Prom. Committee 3; G. A. A. 2; Chorus 1; Reception Committee, Senior Banquet.

JOHN GRAHAM

*Johnny is a mighty man—
He does eight push-ups with one hand!*

Football 4; Hockey 4; Fire Committee 4; Jr. Night Committee; Track 4.

STANLEY GRIESE

*Stan is one of our leading lights,
In work as well as home-room fights.*

Home Room Chairman 4; Ring and Pin Committee 3, 4; Secretary B. A. A. 4; Junior Prom. Committee 3; Traffic Committee 3, 4.

ROSEMARY GROEL

*Here is a studious little soul,
Well beloved, on the whole.*

Columbia 4; German Club 3; Junior Prom. Committee 3; Girls' A. A. 2, 3; Graduation Committee 3.

KATHRYN GROWNEY

*Most popular! Sure, we all know Kay,
Who so stylishly commutes in her Hup each day.*

Art Committee for Junior Night; Art Club 3, 4; Junior Social Committee; Soccer 4.

ISABELLE GULICK

*If e'er there's aught you wish to know,
Isabelle does with wisdom glow.*

Parnassian 2, 3, 4; Secretary Parnassian 4; Junior Night Cast 3; French Club 3, 4; G. A. A. 1, 2, 3, 4.

JANICE HAHN

*Janice knows most things quite well,
But she's that modest, it's hard to tell.*

G. A. A. 2, 3, 4; French Club 3, 4; Junior Night;
Civics Committee 4; Junior Prom. Committee 3.

FREDERICK HAMMER

*We never hear much noise from Fred,
Tho' we're sure by work he'll get ahead.*

Track 3, 4; Football 4.

CYRUS B. HAWKINS

*A heartful of girls, a headful of jokes,
But ask him a favor, and you need not coax.*

Head Cheer Leader 3; Junior Prom. Chairman
3; Eligibility Com. 3; Track 3, 4; Fire Committee.

FRANK HARTZ

*Twin Frank is smaller of the twain;
In pictures lies in part his fame.*

Treasurer Student Council 4; Chairman Elec-
tion Com. 3; School Lighting Com. 2, 3, 4; Par-
nassian 2; Columbian Photographer 3, 4.

WILLIAM HARTZ

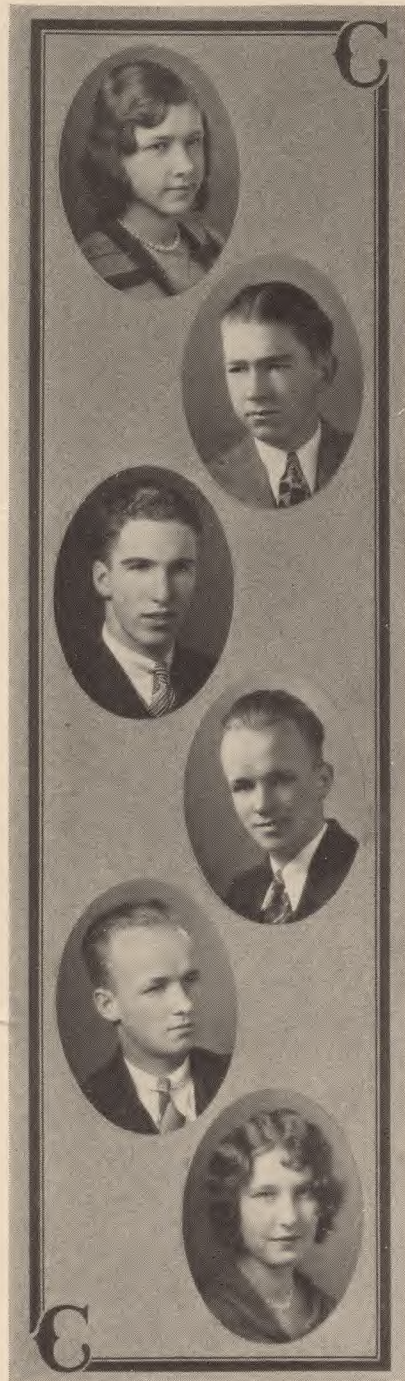
*"Bill," the partner to the last,
Is Mr. President of our class.*

President Senior Class; School Lighting Com-
mittee 2, 3, 4; Columbian 3, 4; Parnassian 2;
Chairman Eligibility Committee 3.

EVELYN HEIMALL

*Our regard for her will never wane,
For beneath her curls she hides a brain.*

Aviation Club 3, 4; Junior Night, 3; G. A. A.
1, 2, 3, 4; Glee Club, 4; Chorus, 4.





EDWARD HELLER

*Heller? We all know Ed;
One good fellow—need more be said?*

Aviation Club 3, 4; Stage Committee 4; Physics Assistant 4; Science Club 4; Ticket and Advertising Com., Senior Banquet.

VICTORIA HESS

*We don't know much about Miss Hess,
But from what we've seen, she'll stand the stress.*

Chairman Program Committee, Eng III 2; German Club 4; G. A. A. 4; MIRROR Staff.

RUTH HEYDENRICH

*Ruth tries so hard to be a shrew—
Yet, 'spite her tongue, she's seldom blue.*

Aviation Club 3, 4; Secretary Aviation Club 4; Science Club 2; French Club 2; G. A. A. 2, 3, 4.

JEAN HIBBARD

*For a comeback that's clever, you've not far to
look;
Jean ought to publish hers in a book.*

Tennis 2, 3; Civics Committee 2, 3; Class Social Chairman 2; Class Teams 2; G. A. A. Council 4.

EMILY HILL

*Emily may be crowned with red,
But she's all there from foot to head.*

G. A. A. 2, 3, 4; Junior Night Cast 3; Senior Play Committee 4; Commencement Usher 3; Leaders' Club 4.

JOHN HIRSCHBERGER

*Johnny is known for noise and pep,
And in the pool he surely can step!*

Athletic Editor MIRROR; Senior Play; Junior Night; Parnassian 3, 4; Columbian 4.

WALTER HODAPP

*Now—is it vocation—or is it fate,
That sets him collecting receipts at the gate?*

Football Manager 3, 4; Fire Committee 4;
Traffic Committee 4; Parnassian 4; Senior Play
Com. 4.

HARRY HOF

*A motorcycle has this boy;
It never fails to bring him joy.*

RALPH HOFFMAN

*Please pardon this, an awful pun—
But—have you heard “Tales” of our “Hoffman”?*

Election Committee 4; Senior Play Committee;
Dinner Committee, Senior Banquet.

EYLEEN HOPKINS

*She likes sad movies, but otherwise
Eyleen's a big cut-up for her size.*

Class Teams 2, 3, 4; Civic Committee 2, 3, 4;
Junior Night Usher; Leaders' Club 2, 3, 4; G. A.
A. Council 4.

PORTER HORNE

*Music hath charms, does Porter know?
Just look at the way his raving locks grow.*

ALFRED HOUGHTON

*He's 202's leader, called “Brad” for short,
And one of the stars on our basketball court.*

Home Room Chairman 4; Basketball 3, 4;
Senior Play; Student Council 4; Science Club 3.





JOSEPHINE HUTCHINSON

*Though Josephine is always quiet,
There's nothing so hard that she won't try it.*

Columbian 3, 4; Creative Writing Club 3, 4;
German Club 2, 3, 4; MIRROR Staff 4; Junior
Prom. Committee 3.

WARD JACKSON

*Ward is a wow at beating a drum—
And how he can make 202 hum!*

Band 4; Junior Night; Science Club 2, 4; Deco-
ration Committee, Senior Banquet.

DOROTHY JENKINS

*Dorothy's chuckles are quite well-known;
In fact, one never hears her moan.*

Secretary, French Club 3; Class Soccer 2, 3, 4;
Class Track 2, 3, 4; Junior Night Cast 3; Junior
Prom. Committee 3.

ARNOLD JENSEN

*Arnie's our slick-haired Romeo,
Whose classy clothes fairly glow.*

JAMES KANE

*If you see grease on Jimmy's ears,
He's just been fooling with the gears.*

Football 2; Basketball 2, 3; Baseball 2, 3;
Aviation Club 3.

DOROTHY KELLER

*Dot is quiet and demure,
And just as nice as she is pure.*

Glee Club 3, 4; Art Club 4; G. A. A. 4; Civics
Committee 3, 4.

MARY KERNAN

*"Kernan's" quite a famous name—
Mary upholds it just the same.*

French Club 3, 4; Leaders' Club 4; Nominating Committee 4; Art Club 4; Junior Night Cast 3.

HOWARD KILPATRICK

*And still the wonder grew
That one small head could carry all he knew.*

Science Club 4.

DOROTHY KINDT

*Kaffee Kuchen, Himmel, modernistic art—
Does she like the German, or do colors hold
her heart?*

German Club 3, 4; G. A. 2, 3.

CLARA KITCHELL

*She's crazy 'bout sports, magenta, and fun;
Offices? Yes, she's held more than one!*

Secretary of Student Council 4; Secretary of Junior Class; Varsity Basketball 3; Personal Editor of MIRROR 4; Advertising Manager of Junior Prom.

ANNA KLINE

*Our little "Ann" is often late,
Rushing in after half-past eight.*

Cercle Francais 3, 4; President Book Club 4.

HERBERT KREY

*This little boy is Herbert Krey,
And can he play a banjo? Say!*

Baseball 2; Junior Night; Service Orchestra 4.





RUTH KRUMHOLZ

*If we all had nice hair like that,
We're sure we'd never wear a hat.*

Chairman English Class Program Committee 2;
Basketball.

ANNA KYLE

*She has two smiling Irish eyes,
And a light in them that never dies.*

VILLA LAIRD

*'Prop' committees take up most of her time;
So to bury her charm is a heinous crime.*

Secretary and Vice-President, Science Club
3, 4; Parnassian 1, 2, 3, 4; Junior Night 3; Inter-
class Debates 2; Senior Play, Property Commit-
tee 4.

FRED LAMBERT

*Sometimes Fred works diligently,
Yet—many a jolly bluff throws he.*

Junior Assembly Chairman; Baseball Manager
3, 4; Chairman Assembly Committee 4; Student
Council 3, 4; Football 3, 4.

GEORGIANNA LAMSON

*There's always one fault to contrast the per-
fection:
In "Georgie," it seems, that she ne'er knows
her Latin.*

Glee Club 4; Parnassian 4; Leaders' Club 4;
Art Club 4; Cercle Francais 2, 3, 4.

MILDRED LAWRENCE

*A seamstress of excellence is our "Millie";
She sews fine seams and makes things frilly.*

Leaders' Club 3, 4; Art Club 4; Junior Prom
Art Committee 3; Senior Play, Art Committee 4;
Class Volley Ball Captain 2.

WILLIAM LAWRENCE

*Here's Billy, with the nice red hair—
The answer to one maiden's prayer.
Football.*

GERTRUDE LEE

*Some people long to attain a V. C.;
A stenographer's medals contents Gertie Lee.
Commencement usher 3; G. A. A. 2.*

ROBERT LEE

*Tho' pleased with a rattle and tickled with a
straw,
Many a friend does his good-nature draw.
Entertainment Committee, Senior Banquet.*

JANE LELAND

*"Jane" is seen daily up in the lab,
'Tis hoped the best grades she'll always nab.*

RUTH LEONARD

*With marks Ruth always heads the list,
Her drawings and paintings should not be
missed.*

Art Editor of MIRROR 4; Parnassian Secretary
3; Columbian Staff 4; Science Club, Secretary-
Treasurer 2, 3; Creative Writing Club 3, 4.

RUTH LEVINGER

*Ruth L. is always on the go,
She talks, debates, and loves a show.*

News Editor, Columbian 4; Senior Play; Parnassian 3, 4; Creative Writing Club 3, 4; Parnassian Plays 3.





CECIL LICHTMAN

*His announcements always achieve their aims;
Cecil talks, sings, and wins tennis games.*

Tennis Manager 4; Senior Play 4; B. A. A. Council 4; Junior Night 3; Chorus 3, 4.

LOUISE LICKS

*Louise has won herself a name
In swimming and diving, fancy or plain.*

German Club 2; Volley Ball 2, 3, 4; G. A. A. 2, 3, 4; Soccer 4; Swimming 3.

MARION LILLYBRIDGE

*A student with a mouse-like air,
But when Art Club meets, she's always there.*

Art Club 4; Volley Ball 2, 3, 4; French Club 2, 3; Scenery and Usher Committees, Junior Night; Scenery and Usher Committees, Senior Play.

ALEXANDER LIST

*He plays a sax with pep and vim,
Where you see "Dorrie", you'll see him.*

MIRROR Staff 4; Senior Play Properties Chairman 4; Junior Night 3; Band 2, 4; Service Orchestra 2, 4.

IRENE LITTLEDALE

*Our Brownie's striking and petite,
Her writing skill cannot be beat.*

Senior Play Committee; Junior Night Assembly Committee; MIRROR Staff; Columbian 3, 4.

JASPER LOMBARDY

*"Lombardy" seems a sporting name,
For 'Jas' has brought it lots of fame.*

German Club 1, 2; Basketball 1, 2, 3, 4; Nominating Committee 3; Junior Night Committee; Home Room Chairman 4.

NICHOLAS LOMBARDY

*When he shoots for a basket, points are chalked;
When he hurls a baseball, no one is walked.*

Baseball 1, 2, 3, 4; Basketball 1, 2, 3, 4; Football 1, 2; President of Architecture Club 4; Fire Committee 4.

HELEN LOUBET

*At basketball, this Helen starred—
Believe us folks, she's one good guard!*

Varsity basketball 3, 4; Inter-class basketball 2, 3, 4; Inter-class Soccer 3, 4; Inter-class Volley Ball 3, 4; French Play 3.

HELEN LOVEITT

*Dignified, comely, nice, and neat;
Her works of art cannot be beat.*

Parnassian 3, 4; Creative Writing Club 4; Chairman Scenery Committee, Junior Night 3; Art Club 4; MIRROR Staff 4.

RUTH LOWES

*"Ruth's" great to look at, better to know;
At basketball she's far from slow.*

Basketball 3, 4; Art Club 2; Soccer 3, 4; G. A. A.

DONALD LUDOVICI

*Though comical and ambitious, Ludovici
Somehow never does his history.*

Inter-class Basketball.

THOR LUNDGREN

*He wears a medal on his chest,
For in a sprint Thor's at his best.*

Track 2, 3, 4; German Club 4; Senior Committee.





DOLORES LYMAN

*"Dolores", here, to tell the truth,
Ain't doin' nothin' 'cept lookin' for Ruth.*

Glee Club 2, 3; Lunch Room 3; G. A. A. 2, 3, 4; Soccer 3; Civic Committee 3, 4.

KIRK LYIONS

*Now what a fix Kirk would be in
Should he date up the wrong twin!*

Track 2; Football 3; Fire Committee 4; Inter-class Basketball 2, 3, 4; Baseball 4.

GENE MACWILLIAMS

*Yep, what the boys prefer is "Gene",
She's one of the best blondes we have seen.*

Glee Club 3, 4; G. A. A. 2, 3, 4; Junior Night 3; French Club 3, 4; Art Club 4.

DORIS MAGOWAN

*Dory always knows just what to wear—
Long dresses, short dresses, or dresses that flare.*

Leaders' Club 2, 3, 4; Senior Play Com.; Junior Prom. Com.; Junior Night Committee; Home Room Chairman 2.

EMMA MALLON

*A face that is sweet, a mind that is clever;
Her report-card shows earnest endeavor.*

Cercle Francais 4; Creative Writing Club 4; Junior Night; Chorus 3; Girls' Glee Club 2, 3, 4.

ALFRED MANN

*Al is happiest when clearing a bar
And few can broad-jump half so far.*

Track; German Club; Inter-Class Basketball; Home Room Chairman.

ANN MARCHANT

*So many nice things 'bout Ann might be said,
That we'll let you discover them for yourselves,
instead.*

Glee Club 3, 4; G. A. A. 1, 2, 3, 4.

HAROLD MARSH

*He never says much 'bout himself—but then
He's probably one of those strong, silent men.*

Decoration Committee Senior Banquet.

MARION MAUCHER

*Although Marion is a friend to all,
She evidently likes them tall!*

Basketball 2, 3; Soccer 2; Leaders' Club 2, 3, 4;
G. A. A. Council 4; Chorus 2.

RUTH C. MAYES

*Her smile may well rival the sun;
"Ruth is a peach," says everyone.*

Civics Committee 2; Chorus 2, 3, 4; Cercle
Francais 3, 4; Junior Night; G. A. A. 1, 2, 3, 4.

CATHERINE McCABE

*At sprint, soccer, or basketball,
Kay captained one, but stone in all.*

Basketball 2, 3, 4, Captain 4; Soccer 2, 3, 4;
Tennis 2, 3, 4; G. A. A. Council 3, 4; Eligibility
Committee 4.

FRANK McCANN

*Frank must have swallowed the dictionary
whole,*

For he knows all the words from pole to pole.

Columbian Staff 4; MIRROR Staff 4.





VERA Mc CLINTIC

*Vera's always on her toes
When it comes to having shows.*

Parnassian 3, 4; Cercle Francaise 3, 4; Creative Writing Club 3, 4; Junior Night; G. A. A. 3, 4.

JEAN MC DOUALL

*Light-footed dancer, winsome "Colleen,"
For nice clothes and nature, please see Jean.*

Junior Night; Chorus 3, 4; Glee Club 4; Volley Ball 3; G. A. A. 3, 4.

WOODWARD McDOWELL

*Clear out to the street you could hear him
announce,
"We play Whoosis tonight, and we want a full
house!"*

Manager Basketball 4; Senior Play; B. A. A. Council 4; Chairman Eligibility Committee 4; Junior Night.

MARGUERITE McELHERN

*Though her studies get their due,
Marguerite likes a party too.*

Soccer 4; G. A. A. 3, 4; Civics Committee 4.

MICHAEL McNULTY

*Ah! 'Tis McNulty—French they say;
But a verra good mon for all o' aye.*

Treasurer of Aviation Club 3; Traffic Committee 4; Track 3, 4; Senior Play Scenery Committee.

LOIS MEEK

*No, Lois is not like her name,
Her wit and gaiety are her fame.*

Parnassian 4; Junior Night; Art Club 4; Orchestra 3; Glee Club 3.

BETSY RAY MILES

*She's cool and poised, is Betsy Miles;
So, boys, beware her winning smiles.*

French Club 3, 4; Junior Night; Art Club 4;
G. A. A. 3, 4; Columbian Staff 4.

DOROTHY MILLS

*Studies to Dot are just a bore,
For her mind is filled with thoughts of the
shore.*

Glee Club 4; Chorus 3, 4; Junior Night; Soc-
cer 2; G. A. A. 2, 3, 4.

EDWARD MONKS

*In inter-class basketball his score
Ranks among the best on the floor.*

Vice-President Architecture Club 4.

ALBERT MOOSBRUGGER

*"Al" tutors two tooters to toot
And is a chemistry whiz to boot.*

Senior Play Prop. Committee 4; Junior Night
3; Treasurer German Club 2, 3; Science Club
1; Orchestra 1, 2, 3, 4.

PERRY MORGAN

*From out the Packard peek his curls,
Methinks he rather likes the girls.*

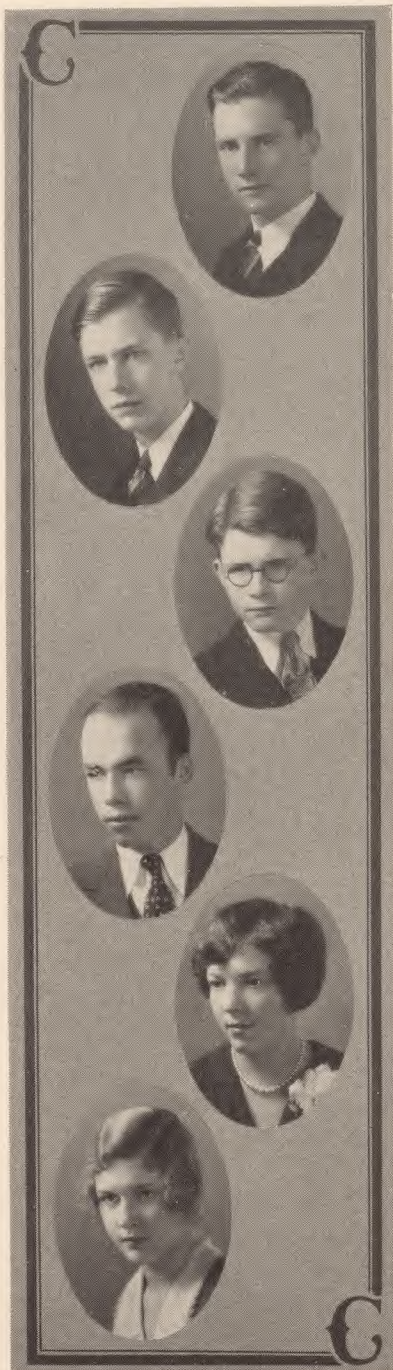
French Club 3, 4; Senior Play; Junior Night;
Orchestra 2; Band 2.

BEATRICE MULLER

*A blush nowadays is very rare;
We hope yours will always be there.*

G. A. A. 2, 3, 4; Art Club 4; German Club 4.





DONALD MURRAY

*A speedy man on the track is "Dink";
A lot of him the girls all think.*

President Junior Class; Track 2, 3, 4; Junior Assembly Chairman 3; Boys' Civics Committee 4; Student Council 3, 4.

HAROLD NOLING

*He rushed about from morn till night,
That MIRROR Statistics might be right.*

Science Club 4; Senior Play Ticket Committee; MIRROR Staff; Traffic Committee 4; Tennis 4.

LUDWIG OBERNDORF

*That he's red-haired and German no one will
dispute;
He portrayed a toothache in that tongue "sehr
gut."*

German Club 4; MIRROR, Ass't Org. Ed. 4; Civics Committee 4.

JAMES O'DONNELL

*Track ability helped this lad
To run down many a MIRROR Ad.*

Football 3, 4; Track 2, 3, 4; Junior Night Mgr.; Year Book Sales Manager; Leaders' Club 4.

LILLIAN OHAUS

*Lillian is pretty and quite petite,
A very pleasing girl to meet.*

Secretary of Class 2; Volley Ball 2; Baseball 2; G. A. 1, 2, 4; Leaders' Club 4; MIRROR Staff.

MARION OSBORN

*Marion has a charming grace,
A pleasing air, a lovely face.*

Staff of "Hamburg Sandwich" 2, 4; Athletic Association 4; Student Council 3, Year Book Staff 4; Nat. Quill and Scroll Society 3 (all in Hamburg High School).

ELSIE OTTMULLER

*Elsie is a fine athlete,
Whose guarding caused many a rival's defeat.*

G. A. A. 1, 2, 4; Leaders' Club 2, 4; Basketball 1, 2, 4; Volley Ball 1, 2; Baseball 2.

ROBERT E. PACKER

*Bob's a good fellow with nice rosy cheeks,
The secret of which every girl seeks.*

Track 3, 4; Science Club 3, 4; Eligibility Committee 4; German Club 4.

MARGARET PALMER

*As flirt, wit, pal, Peg can't be beat,
But—can she get to Chestnut Street?*

Adv. Mgr. Sr. Play; Columbian 4; MIRROR; Mgr. Girls' Varsity Basketball 4.

MAXINE PASCAL

*An artist whose beauty and charm
Cause her boy-friends much alarm.*

Vice-Pres. Student Council 3; Sec'y. Sophomore Class 2; Civics Com. 2.

HELEN PECK

*An active brain, a heart that's kind,
A friend like Helen is hard to find.*

Debating Team 2; Columbian Staff 3, 4; MIRROR Staff; Parnassian 3, 4; Creative Writing Club 4.

RICHARD PEPPARD

*It's only annoying, and not a disgrace,
To be small and have a freckled face.*

Junior Night Skit; Senior Play Skit; Hockey; Decorating Com., Senior Banquet.



**MELVIN PEPPARD**

*About Mel, one of the things we note
Is his ability to get Miss Paine's goat.*

Basketball, Asst. Manager 2; MIRROR Staff.

ETHEL PERKINS

*Her sense of fun and witty remarks
Do not prevent her from getting fine marks.*

G. A. A. 2, 3, 4; Jr. Night Ticket Com.; Sr. Play Usher.

HARRY PETTER

*What's in that polo-coat and derby?
Why! Bless our souls! It's our Harry!*

Traffic Com. 3; Attend. Com. 3.

FLORENCE PIERSON

*Florence has a brilliant smile,
The "gift of gab", and lots of style.*

Glee Club 2; Basketball 2; French Club 2;
E. O. H. S.; Jr. Night; Jr. Prom. Com.

JANET POST

*A sweet brunette is this one;
Whatever is asked her, will be done.*

Columbian Staff 3, 4; Jr. Night; Creative Writing Club 4; Soccer 4; Parnassian 3, 4.

HORACE POTTER

*With questions he drives Miss Memory wild,
"Horace" loves his Ford just like a child.*

Science Club 2; MIRROR Staff 4; Decoration Comm., Sr. Banquet.

HARRY RANKIN

*Harry is our well-dressed shiek,
Who's always ready his mind to speak.*

Civics Com. 1; Senior Play Cast 4; Senior Play Com. 4; Junior Night Cast 3; Track 1, 3.

ANN RAUSE

*Her scope of experiences is wide:
There are few things Anne has not tried.*

Leaders' Club 2, 3; Class Teams 2, 3; Nominating Com. 3; Jr. Night; Swimming Team 2, 3.

PENELOPE RENTON

*"Penel" is pretty, rather fair—
Her languid drawl's known everywhere.*

Chorus 1, 4; Junior Night Cast 3; Senior Play Cast 4; Jr. Prom. Com. 3; Usher, Sr. Banquet 2.

MARY REYNOLDS

*A kick out of life she seems to get
What—is that she, chuckling yet?*

G. A. A. 1, 2, 3; Jr. Night Com.; Sr. Play Usher; Volley Ball 2, 3; Baseball 3.

CHARLOTTE RICHARDS

*At Math our "Char." is just a shark,
And always pulls the highest mark.*

Creative Writing Club 4; MIRROR Staff; French Play 3; Jr. Night; Commencement Usher 3.

ELIZABETH RIMELSPACHER

*Though her name is hard to pronounce,
Her appeal is not diminished an ounce.*

Glee Club 3, 4; German Club 2, 3, 4; G. A. A. 2, 3, 4; Jr. Night Com.





ISAAC RODMAN

*Tho' "Junior" is not really shy,
His bashful Merton will never die.*

Ninth Grade Play 1; Ass't. Mgr. Football 2;
Jr. Night 3; Senior Play 4; Entertainment Com.,
Sr. Banquet.

DOROTHEA RUGGLES

*As a good friend Dot will rate,
But wherever she goes, she's always late.*

G. A. A. 2, 3, 4; Civics Committee 3, 4; Lunch
Room 2; Jr. Night Com.

ROBERT RUMMEL

*Of music and his ease he's fond,
This slowly-moving, genial blond.*

Melody Boys 3, 4; Class Basketball 4; Track
3, 4; Jr. Night; Boys' Glee Club.

MARIAN SALISBURY

*Marian is skillful in sewing and art,
Glad is her smile and warm is her heart.*

G. A. A. 2, 3; Volley Ball 2; Parnassian 3, 4;
Jr. Night; Decoration Com., Sr. Banquet.

DOROTHY SAUER

*If work's to be done, Dot's surely there;
At ivory tickling there are none can compare.*

Adv. Mgr., Columbian 4; Pres. G. A. A. 4;
Sr. Play 4; Basketball Squad 3; Pres. Girls' Glee
Club 2, 3.

ROBERT SAVILLE

*Well-liked, handsome, towering above all:
Bob's our "Jumper" in Basketball.*

Baseball 2, 3, 4; Basketball 2, 3, 4; Stage Com-
mittee 2, 3, 4; Chairman Election Com. 4; Ass't.
Publicity Mgr., MIRROR 4.

RALPH SAYRE

*This tall young lad with voice so clear
Helped entertain us through the year.*

Business Mgr. Columbian 4; Leader, Boys' Glee Club 4; Parnassian 4; Science Club 4; MIRROR Staff 4.

CLIFFORD SCHENCK

*Cliff plays and sings with equal ease;
And he's the one Sid loves to tease.*

Senior Melody Boys; Home Room Social Com. 4.

HARVEY SCHENCK

*Harvey's a good-natured kid,
Although he never wears a lid.*

BETTY SCHOONOVER

*By being happy all the while,
Betty shows us how to smile.*

G. A. A. 2, 3, 4; Basketball 2; Volley Ball 3.

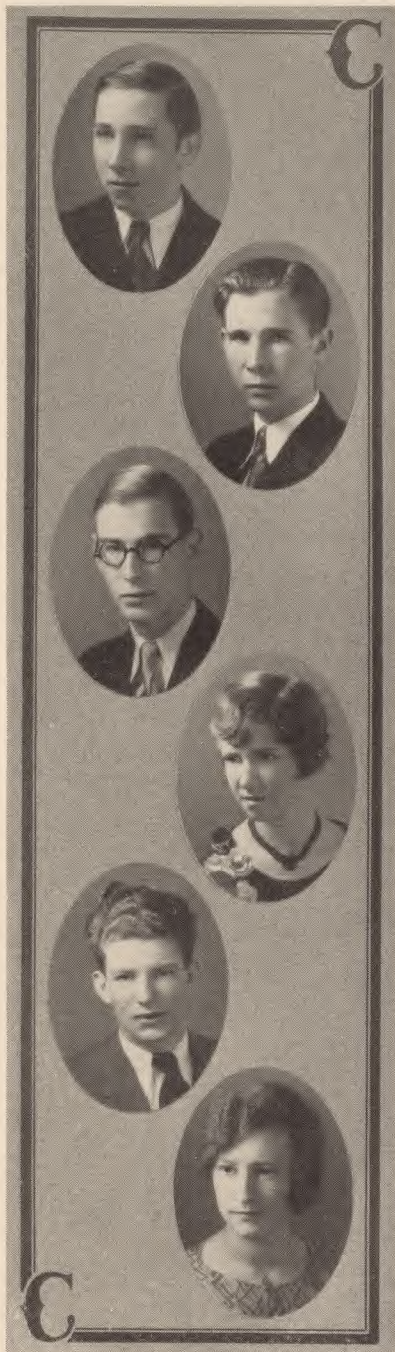
ALBERT SCHUSTER

*On the ice-pond, Al's a first-rater—
A good skate and a marvelous skater.*

DORIS SCHWARTZ

*Strictly business-like is she,
And an artist of ability.*

Jr. Night Painting Com.; Sr. Play Scenery Com.; Glee Club 1, 4; Chorus 3, 4; Art Club 4.





DOROTHY SCHWARTZ

*Now we come to one more blonde,
Of whom we all are very fond.*

Civics Committee 3; Chorus 3, 4; Nominating Committee Senior Class 4; German Club 4; Aviation Club 4.

DORIS SCOTT

*"Doris" is kind to one and all,
No matter whether big or small,*

Junior Night Usher 3; Baseball 2; Basketball 3; Science Club 2, 3, 4; French Club 3, 4.

WILLIAM SHULL

*Bill Shull never has the blues
When on his way to Syracuse!*

Baseball 2, 3, 4; Basketball 2, 3, 4; Football 2, 3; President of B. A. A. 4.

ROBERT SICKLEY

*"Bob" is at his best when Gertie waves,
And many a football game he saves.*

Football 2, 3, 4; Track 3; Fire Dep't. 2, 3, 4; House and Grounds Committee 2, 3; Hockey 4.

MARION SIEDER

*Her favorite has a roadster blue—
Good luck Marion, we know he's true!*

Civics Committee 3; Junior Night Cast 3.

EDWARD SKOKNA

*"Eddie" is smart and quick on his feet,
In football and basketball he can't be beat.*

Basketball 2, 3, 4; Football 3, 4; Track 2, 3; Stage Committee Junior Night; Fire Committee 4.

LEONARD SLUTZ

*This actor is Slutz who likes to make noise,
He can make as much as forty-nine boys.*

Senior Play; Christmas Play; Tennis Team 3;
Parnassian 3, 4; Baseball 2.

STUART SMART

*Smart and handsome, liked by all,
Our wise-cracking manager of football.*

Football Mgr. 4; Business Mgr. MIRROR 4;
Home Room Chairman 3, 4; Student Council
3, 4; B. A. A. 4.

CHARLES SMITH

*Every morning we welcome his grin;
And we must admit he can play the violin.*

German Club 2; Junior Night; Orchestra 2,
3, 4; Reception Committee Senior Banquet.

DONALD SMITH

*He'll make you prove whatever you say,
As he comes in late, day after day.*

Columbian 4.

ELSIE SMITH

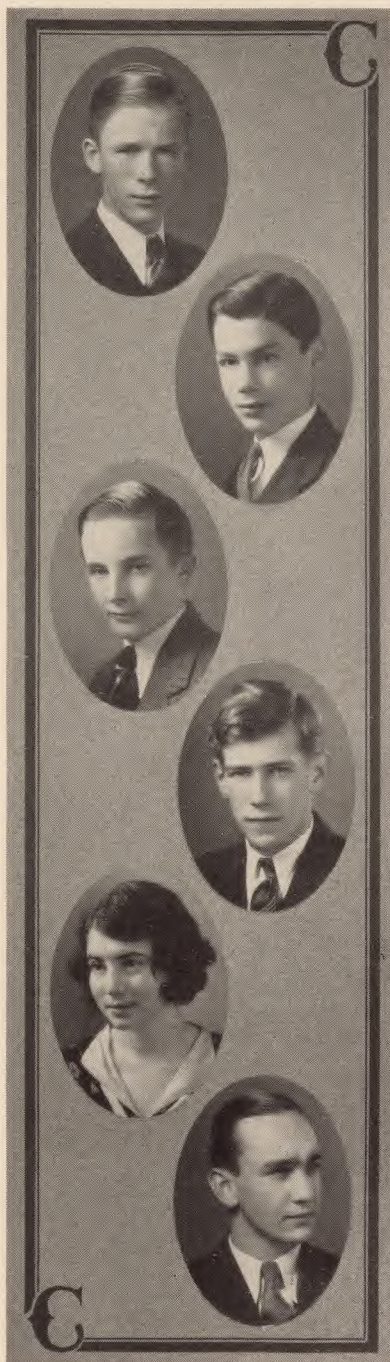
*"Elsie" is no kin of Janet's
But they're as close as two old planets.*

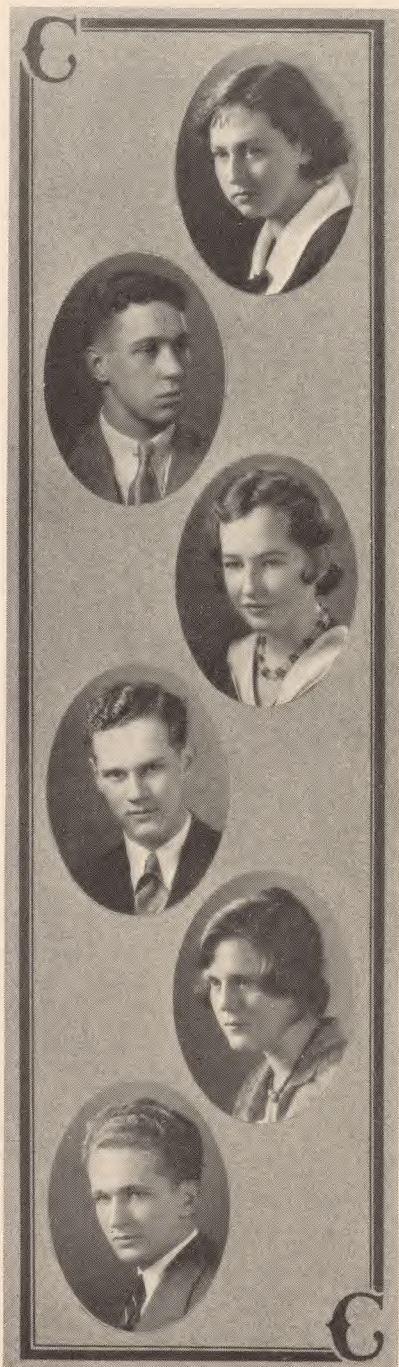
Chorus 2, 3; Glee Club 2; Leaders' Club 3, 4;
Lunch Room Committee 3, 4; G. A. A. 2, 3, 4.

FRANK SMITH

*He has a very illustrious name,
And will get a front seat in the Hall of Fame.*

Eligibility Committee 4; Track 4; Soccer 4;
Aviation Club 4.





JANET SMITH

*"Janet" may be slow when she sews,
But she's very good-natured as everyone knows.*

Lunch Room Committee 3; G. A. A. 2, 3, 4;
Dinner Committee Senior Banquet.

NORMAN SMITH

*This boy, "Duke" is a comical chap,
Who always appears to be taking a nap.*

Stage Committee 4; Bulletin Board Committee 4; Ass't. Business Mgr. Mirror 4; Color Guard 3; Civics Committee 2.

RUTH SMITH

*Ruth makes us happy with her smile,
A charming lass, devoid of guile.*

Art Club 4; Junior Night; MIRROR Staff; G. A. A. 3, 4; Reception Committee Senior Banquet.

SANFORD SMITH

*With curls on end, he pilots his flivver,
What playful wind hath blown him hither?*

Junior Night Committee; Corridor Committee.

FLORENCE SPITZMILLER

*Her manner is always so sunny and bright,
"Flo's" the kind of a girl we all like.*

G. A. A. 4; Orchestra 2, 3. (E. O. H. S.)

In Memoriam

BENJAMIN STAUFENBERGER

MARIE STEWART

*She uses her head as well as her feet
In soccer, this jolly athlete.*

Soccer 4; G. A. A. 4.

JOHN STIMSON

*One hundred on a test he got,
Just how he did it, we forgot.*

Tennis 3, 4; Bulletin Board Committee 4.

MARIANNE STOLL

*Though Marianne seems so dignified,
Her friends know there's another side.*

G. A. A. 2, 3, 4; Senior Play Committee 4.

JOHN STOBÆUS

*He seemed a cherub who had lost his way,
But his posters were always put on display.*

Treasurer of German Club 2, 3, 4; Junior Night Stage Committee; Senior Play.

JEAN STONE

*A merry heart, and kindly too,
A loyal friend through and through.*

Columbian Staff 3, 4; Junior Night Usher; French Club 3, 4, Vice-President 4; Art Club 4.

ERNEST STRUBBE

*Ernie's modest, has no airs,
Always minds his own affairs.*

German Club 3, 4.





RHODA SWAIN

*Princeton fellows know her well,
For down there she's quite a belle.*

Leaders' Club 4; Junior Night Committee;
Manager Soph. Basketball; G. A. A. 2, 3, 4; Glee
Club 2.

PHOEBE TAYLOR

*Rebellious ringlets 'neath a chic hat—
Chairman of this—head of that.*

Columbian 3, 4; President Leaders' Club 4;
Student Council; Social Committee 3, Chair-
man 4; Social Editor MIRROR.

ANTHONY TENORE

*He's small, is Anthony Tenore,
But when he speaks, demands the floor,*

Stage Committee 1; Home Room Basketball
3; Home Room Football 1.

EUNICE THATCHER

*We notice her charms in every way,
And like her better day by day.*

Junior Prom. Committee; Junior Night Usher;
G. A. A. 1, 2, 3, 4; Civics Committee 3; Class
Basketball Manager.

DORIS THOMSON

*"Doris" may worry, but she's full of fun,
She's teased and liked by everyone.*

Lunchroom Committee 3; Refreshment Com-
mittee Junior Prom.; Glee Club 3, 4; Student
Council 3; Vice-President Senior Class.

CLARK TOWER

*Though a gentleman is Clark,
We know that he prefers them dark.*

Science Club 2, Senior Play Committee 4;
Junior Night Cast 3.

HARRY TOWER

*Our reputations he lampoons,
When he portrays us in cartoons.*

Treasurer Sophomore Class 2; Chairman Senior Art Committee 4; MIRROR Staff 4; Fire Committee 4; Senior Play Committee 4.

RICHARD TOWER

*Though quiet in his way is Dick,
He's a wiz with the hockey stick.*

Baseball 1, 2, 4; Hockey 4; Orchestra 1, 2; Traffic Com. 2, 4; Fire Committee, 2, 4.

HAINES TROTH

*Tho' at school he goes a contented way,
He's most happy at the De Molay.*

Science Club 2, 3.

RALPH TULY

*Ralph is as quiet as you'll find,
But German and Science betray a good mind.*

German Club 3, 4; Science Club 2.

ELEANOR TURNER

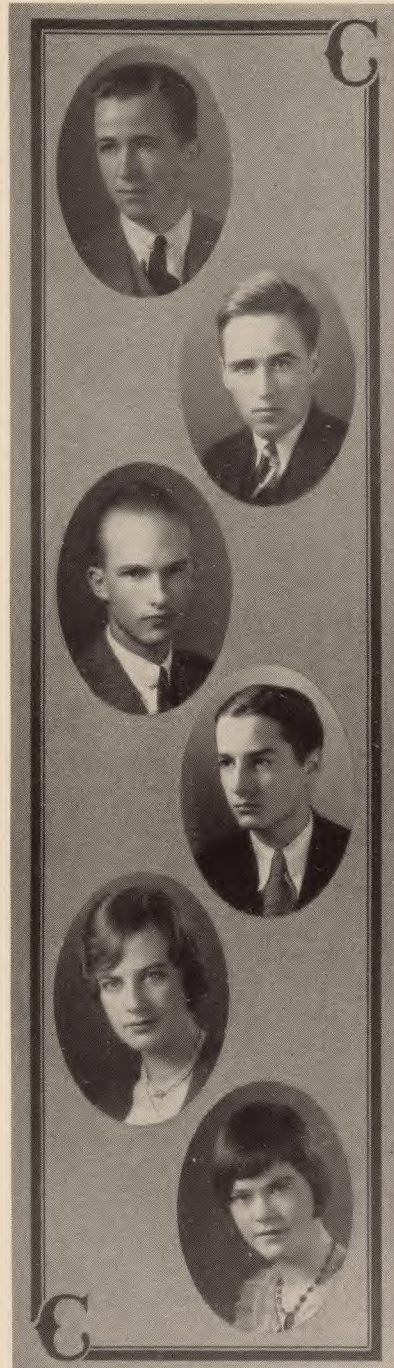
*She worships the drama, as everyone knows;
Eleanor helped enlivened many of our shows.*

Parnassian 2, 3, 4; Lunch Room Committee 3, 4; Sophomore Play 2; Parnassian Plays 2; Senior Play Usher 4.

LEONA TURNER

*Twinkling eyes and twingling toes,
Admired by all wherever she goes.*

Junior Night (Coach); G. A. A. 2, 3, 4.





ELINOR TWIDDY

*To many a show in the Great Big City
Goes a little girl caled Twiddy.*

French Club 4; G. A. A. 2, 3, 4; Soccer 2.

HARRIETTE TYSON

*Our Harriette is a 'Talkie' star,
And Hollywood is not so far.*

Orchestra 2; Senior Play; MIRROR Staff; Commencement Usher 3; Junior Night Committee.

MARGARET URBAN

*A pleasant girl is Margaret,
And what she wants sets out to get.*

German Club 4; MIRROR Staff 4.

BETTY VAN CLEAF

*Yes, Wheaton will be her next aim—
May she easily make the same.*

Volley Ball 2; Glee Club 2; Basketball 3; Art Club 4; Junior Night Usher 3.

MARY LOU VAN HOUTEN

*A line of chatter, a sly little wink;
After work, of dances does she think.*

Chairman Tradition Committee 4; Chairman Costumes, Junior Night 3; Student Council 4; Manager Soccer 4; MIRROR Staff 4.

ALEX VERADY

*Although he spends much time in the shop
His preference for music is at the top.*

Orchestra 2, 3; Glee Club 3, 4.

JACK VARLEY

*We deem this an important fact;
All his friends speak well of Jack.*

Soccer 4; Basketball 4; Aviation Club 4; Glee Club 4; Track 4.

FRED VERINDER

*Quite a kiddier is this Fred
Who of homework has a dread.*

Boys' Glee Club 4; Baseball 3, 4; Class Basketball 1, 2, 3, 4; Senior Play Committee 4.

HARRY WADSWORTH

*"Handsome Harry's" just a name;
'Twas in baseball he won fame.*

Baseball 3, 4; Senior Play Committee 4; Junior Night Com. 3; Student Council 4; Class Basketball 2, 3, 4.

KATHERINE WALKER

*With those laughing, twinkling eyes,
Kay's a devil in disguise.*

G. A. A. 2, 3, 4; French Club 3, 4; Commencement Usher 3; Junior Night Cast 3; Junior Night Committee 3.

THELMA WALKER

*Impersonations? Thelma is clever—
We could listen to her talk forever.*

Mus. Bulletin Board 4.

RUTH WALSH

*Ruth Walsh is small, with golden hair.
She and Dot J. make one good pair!*

Art Club 4; G. A. A. 2, 3; Junior Night Usher; Senior Usher 3.





RUTH WARD

*Studious and bright is she,
Taking life so seriously!*

French Club 4.

JULIA WATERFIELD

*A peppy song, and time to fool—
Or help a friend in need—that's "Jule".*

G. A. A. 4; Class Basketball 4; Chorus 4.

CLAIRE WEISS

*To Claire we'll tell our latest joke,
To see the dimples it'll evoke.*

G. A. A. 2, 4; Vice-Chairman Home Room 3;
Property Committee Junior Night; Glee Club 4.

FRANK W. WELLS

*His quiet, unassuming trend
Is bound to bring him many a friend.*

Track 3; Orchestra 3.

HARRIETTE WELTON

*In her manner always prudent,
Harriette's an A-1 student.*

Senior Play Committee 4; Entertainment Committee, Senior Banquet.

HELEN WESTER

*Golden locks and pink complexion,
"Toady" has them to perfection.*

Junior Night Cast 3; Senior Play Cast 4; Vice-President German Club 4; Leaders' Club 4; Nominating Committee 3.

RUTH WEY

*Ruth Wey is usually rather quiet—
Don't count on her to stage a riot.*

Junior Night Cast 3; Aviation Club 4; G. A. A. 3, 4; Glee Club 4; Home and School Ass'n Banquet 2.

MATILDA WHARTON

*Friendly, pretty, and gay is "Til" —
No doubt that's why she's liked by Bill.*

Ring and Pin Committee 4; Junior Night 3; Commencement Usher 3; G. A. A. 2, 3, 4; Hall Monitor 3.

JAMES WILEY

*Football and hockey were his speed,
In council, too, he held the lead.*

President Class 1; Treas. Class 3; President Student Council 4; Football 3, 4; Junior Assembly Chairman.

MABEL WILSON

*Although she looks just like a saint,
You'd be surprised to find she ain't.*

G. A. A. 2, 3; Secretary Staff Senior Play.

RAYMOND WINANS

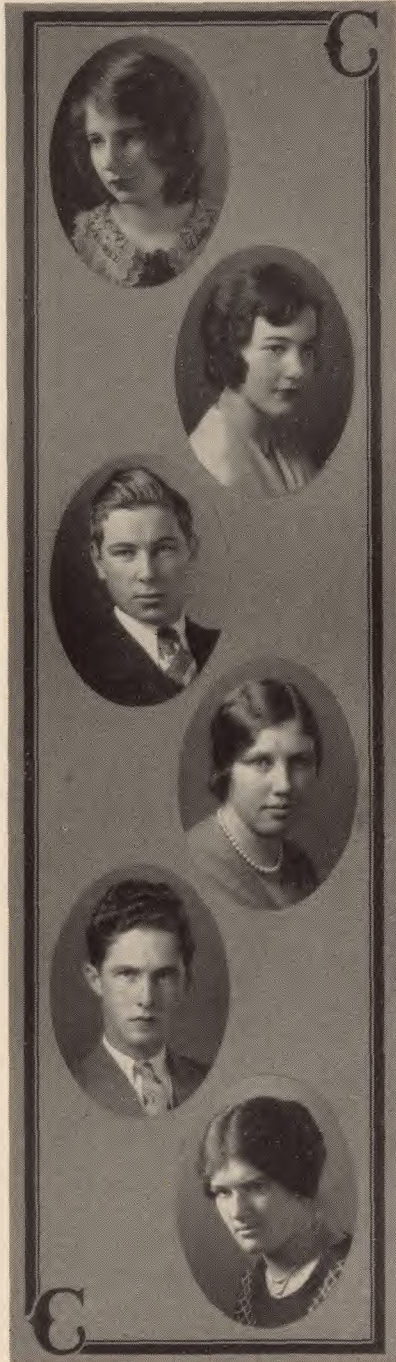
*His head is crowned by wavy locks,
And we adore his noisy socks.*

Senior Play 4; Glee Club 4; Band 2.

MARY GARETTA WINDAS

*If we had all of Mary's hair
To comb before school, we'd ne'er get there!*

Glee Club 4; G. A. A. 2.



**MURIEL WINDSOR**

*For study she never had a rep,
But she is a sport with skill and pep.*

Varsity basketball 3, 4; Baseball 2, 3; Home Room Chairman 3.

DORIS WOLBER

*In her yellow car she rolls along
With many friends and a snappy song.*

Glee Club 3, 4; G. A. A. 2, 3, 4; Orchestra 2; Girls' Civics Committee 2.

JAMES WRIGGINS

*Jimmy is a funny lad,
Always joking, never sad.*

Junior Night Committee 3; Senior Play Committee 4; Science Club 4; MIRROR Staff 4; Baseball 3.

STANLEY WRIGHT

*Stan, pursuer of the arts,
Likes to draw, and break girls' hearts.*

Track 1, 2, 3, 4; Junior Night Cast 3; Senior Play Cast 4; MIRROR Staff 4; Columbian Staff 4.

EDITH ZIMMERMAN

*Tho' in public speaking she trains her voice,
Vocally she'll never make much noise.*

Property Committee, Junior Night 3; G. A. A. 2, 3, 4; Commencement Usher 3; Flower Committee 3; Home & School Ass'n Banquet 2.

NORMA ZUSI

*Norma has an artistic line,
Her work on this MIRROR was more than fine.*

Junior Night Committee; Senior Play Committee; Commencement Usher 3; MIRROR Staff; Art Club 4.



SENIOR CLASS PROPHECY

COLUMBIA
HIGH SCHOOL

HIGHWAY
OF
LIFE

SENIOR STARTS ON
THE HIGHWAY OF LIFE

WORLD OF HARD KNOCKS
GETS THE BETTER OF HIM

DISAPPOINTMENT
IN
LOVE

TEMPTATION

LOST JOB

LIFE IS A ROUGH
ROAD TO TRAVEL

HE NARROWLY
ESCAPES DEATH

THIS WAY TO
SUCCESS

THIS WAY TO
SUCCESS

WHICH IS THE RIGHT ROAD?

SUCCESS

GOOD FORTUNE
LEADS HIM TO SUCCESS

DRAWN BY EDNA BRUCKER.



THE SIMSBURY STORE



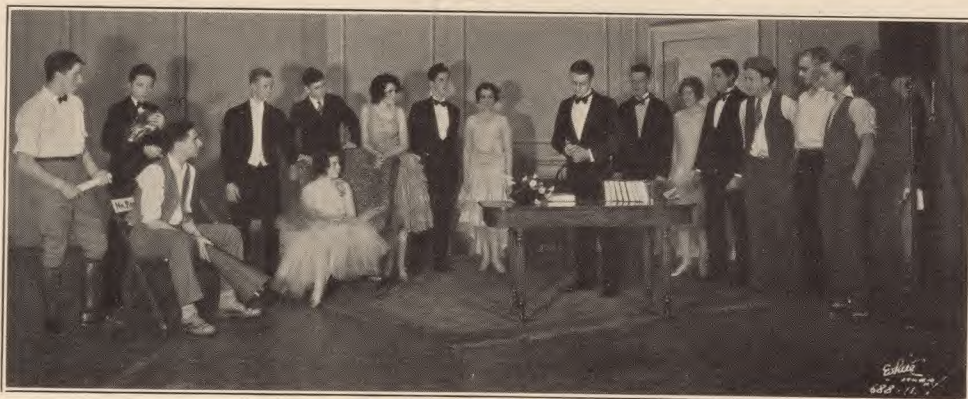
IN HOLLYWOOD

SENIOR CLASS PLAY

ON NOVEMBER 23, 1929, the school and surrounding communities were again delighted by the dramatic talent of the Senior Class, when they presented for the annual senior play "Merton of the Movies", a delightful comedy-satire by Kaufman and Connelly. The untiring efforts of our dramatic coach, Miss Helen Duff, gave charm and polish to the production.

Playing a very important lead in the comedy, Clare Buehler as the slightly hard, slightly cynical, but entirely witty Miss Montague, made a lasting impression on her audience. She knows all the heart-breaks of the trade, a little of the joy of success, and all the tricks in the very tricky game of love. As a direct foil for this young lady's modern quick-wittedness is Merton, portrayed by Isaac Rodman, Jr., who presented an understanding interpretation of a difficult role.

From the home town which Merton has cast aside for the glamour of the movie world, comes Mr. Gashwiler, friend and ally of Merton, ably portrayed by Robert Bates. Among Merton's other home-town friends are Tessie Kearns, an aspiring sweetheart and rather pathetic figure, played by Ruth Levinger, and Elmer Huff, Merton's one-time country store adviser and friend, portrayed with beautiful scorn by Harry Gilmore. In the Hollywood studio we find the casting-director, the first of the young actor's new friends, Dorothy Sauer; the breezy, violent, and wholly inconsistent director, Sigmund Rosenblatt, Cecil Lichtman; and John Hirschberger, the vigorous "yes-man" to Mr. Rosenblatt. To add a touch of forgivable conceit and subtle humor there was Leonard Slutz as the "illustrious" actor, and father of Miss Montague. There was the inevitable land-lady made sympathetic by Marjorie Felderman and Mr. Walberg, the smooth and solicitous production manager, played by Woodward McDowell. Then there were less showy but equally important parts by Ernest Easton as Jeff Baird, the "Comedy King;" Penelope Renton as an extra girl; Porter Horn as producer of emotion-raising music; Stanley Ellison as cameraman; Harry Rankin as star of Jeff Baird Comedies; Elizabeth K. Clark, the director's wife, and actress; and Jeanette Conroy as her maid.



SENIOR CLASS WILL

WE, THE CLASS OF 1930, being of sound and disposing mind, memory, understanding, and mindful of our coming graduation, hereby publish and declare this our last will and testament.

We direct that all just debts shall be paid as soon as possible, and the remaining part of our estate be divided as follows:

To Miss Low—Our boundless gratitude for her untiring efforts in our behalf during our stay at Columbia; to Mr. Threlkeld—Our undying thanks and appreciation for all he has done for us; to the three Floradora Girls (Misses Murphy, Memory, and Ackerman)—Another triumvirate, like Messrs. Clancy, Slutz and Stymus, to assist with Parnassian; to Mr. Gray—A real honest-to-goodness fountain pen that usually works; to Mr. Gnagey—A year book staff which will have its assignments in on time; to Mr. Woodman—A few of our illustrious seniors to take care of next year, for his "P. G." class; to Miss Helen Carrigan—A box of punctuation marks for her Virgil books; to Miss Freeman—A first period class which convenes in 404 and not on the floor below; to Messrs. O. C. Parsons and C. N. Doolittle—A young and innocent class which doesn't know all their jokes.

Individually we bequeath, as follows: I, Leonard Slutz, bequeath my muzzle to Florence Heffner; I, Dick Conradi, bequeath my horse-laugh to Charles H. Stymus; I, Sanford Smith, bequeath my tubercular puddle-jumper to Paul Rause; I, John Hirschberger, mindful of my extraordinary attraction to the girls, bequeath said attraction to Don Kepler; I, Betsy Ray Miles, bequeath all I know about walking to Polly Samuels and Ruth Lockridge; We, John Condit and Thor Lundgren, bequeath our abilities to make track records to some of Mr. Mahnken's prodigies; I, Albert Moosbrugger, bequeath my position in the chemistry department to Frank Hoagland; I, Don Smith, bequeath my ambition (?) to Christopher Saville; I, Ruth Heydenrich, bequeath my flirtatious abilities to Louise Archer; I, Woodward McDowell, bequeath my bigger and better basketball announcements to next year's basketball manager; we, A. K. Evans and M. Addis, bequeath our mob spirit to Stewart Ross and Hope Thedford; I, Robert Bates, bequeath my thoughts to Raymond Wolber (it would be a shame for him to be going around without any); I, Doris Magowan, bequeath my faith in Divine guidance to anyone who lets Mary Lou Van Houten drive his car.

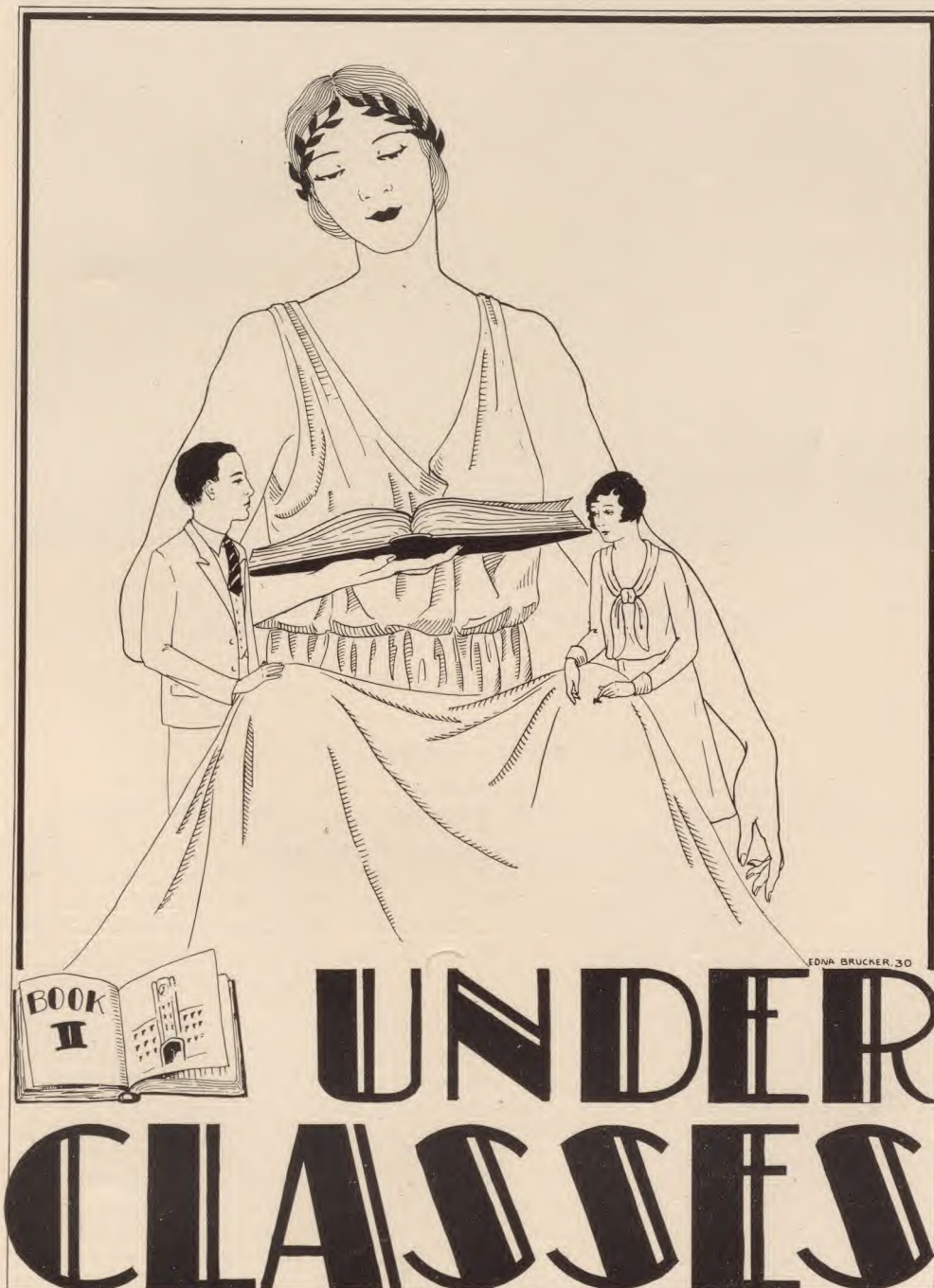
In witness whereof we have herewith set our hand and seal, this 21st day of June, nineteen hundred and thirty.

CLASS OF 1930.

Signed, sealed, published and declared by the said class of 1930 as and for its last will and testament in our presence, who in its presence, at its request and in the presence of each other signed same as subscribing witnesses.

ALEXANDER LIST, JR.

CHARLES B. CLANCY, JR.



EDNA BRUCKER, 30



JUNIOR CLASS COUNCIL

OFFICERS OF CLASS

President

DONALD KEPLER

Vice-President

JANET BREWSTER

Secretary

ELSE ASHWELL

Treasurer

WILLIAM BAMERT

HOME ROOM REPRESENTATIVES

Norman Beers
Lewellyn Collings
William Dennis
William Hooke
Virginia King

Drew Middleton
John Morrison
Bertram Tower
William Smoot
Roger Windsor

THIS YEAR the Junior Class has followed the trend toward the new and the efficient by founding the Junior Council. This plan enables the class to manage business more efficiently. It not only facilitates government but is more democratic. Always before a class meeting is held, the Junior Council meets to discuss the plans for the meeting and important problems that must be worked out. Not only this, but the Council also works as a nominating committee, thereby reducing waste of time and indecision in class meetings. Another point that has made this system important to the Junior Class is that when plans of any sort had to be necessarily rushed, the Council, with the advice of the sponsor, Miss Carley, went ahead and did it, making it unnecessary to wait for a class meeting. A representative from each Junior home room is made a member of the Council, thereby insuring thorough representation.

THE JUNIOR PROM

GAYLY FESTOONED and beribboned, the gym took on the appearance of a Spanish patio for the annual Junior Prom, held on the fourteenth of December. With the school colors, red and black, predominating, the gym presented an attractive spectacle for the grand march, and shortly



after, the many dancers started whirling about the floor to the lilting music of Howard Irving and his Rythm Kings. Under the watchful eyes of Miss Carley, Junior Class Guide, joy reigned unconfined until midnight.

During the course of the evening, charming Rosetta Bocchicchio sang "La Palona" in its native tongue, thereby fascinating her listeners. Later the floor was turned over to Nina Bocchicchio and Max De Guevera, who, with grace rarely seen off Broadway, presented an uncommonly fine exhibition of the tango. Arrayed in native costumes, Nina and Max carried us in fancy back to the home of this graceful dance.

A "sport" and "lucky" number dance served to add greatly to the enjoyment of an evening already remarked by all as having been one of the most pleasant ever witnessed at Columbia.

JUNIOR NIGHT

A BRILLIANT PERFORMANCE, suggesting the professional in its finesse, celebrated the annual showing of Junior Night. The opening scene was really inspiring in its pep and polish and we were moved by it to think of a Broadway musical comedy. It appeared under the appropriate name of "Columbia Capers" and was exactly what that name suggests.

Following this, there was a lovely naive Chinese playlet, the "Romance of the Willow Pattern." It was an amusing little thing depicting the lives of the people from the well-known Chinaware, "The Willow Pattern." The staging was beautifully done, the background being almost an exact replica of the pattern from which it was copied.

The next offering deserves very special credit. It was a fine and successful effort on the part of the coach, Miss Helen Duff, and the cast, to portray in an intelligent way nine scenes from Romeo and Juliet.

The scenery deserves a word all to itself; it was the beautiful result of many hard hours of labor and it cast the pleasing illusion over the audience that they were being entertained on Broadway.

The last event was a humorous one-act play entitled "The Flattering Word." It was an amusing farce depicting the difficulties of a struggling young actor under unusual circumstances in a pious household, trying to win them over to his way of thinking.



SOPHOMORE CLASS

CLASS OFFICERS

President

JAY RODGERS

Vice-President

JACK CROWLEY

Secretary

LA VERNE CLANCY

Treasurer

JACK RUMBLE

NOMINATING COMMITTEE

Chester Brown
Margaret Manley
Edgar Neville
Stuart Burt
John Price
Polly Samuels
Robert Wagner

Creede Wilson
Ralph Earl
Robert Green
David Hoppock
Robert Kyle
Jane Austen
Marco Soto

SOPHOMORES

AN ENTIRELY new form of government, not only new to the Sophomores, but new to the school, has been put on trial by the Sophomore class this year. On the whole it has been found very successful, due partly to the whole-hearted support it received. The plan is this—that the class shall be governed by the officers with the aid of a nominating committee and class meetings. The duties of the nominating committee are to appoint all members of standing committees and to nominate officers and chairmen and submit these nominations to the class. Added nominations for officers and chairmen can be made by “any Sophomore who appears before the nominating committee in person to present the nominees’ credentials together with a petition signed by ten per cent. of the class.” As a result of this plan a great deal of inefficiency experienced in meetings of large classes is avoided. This class has hopes of carrying out this plan next year and managing so that the Junior Council of the Junior Class and the nominating committee will be one body. If this plan is as successful as all past ventures of the Sophomores there will be very little in it with which fault can be found.

With the advent of spring, the Sophomores once more surprised us with a decided departure from an old Columbia tradition. It is not in a destructive but constructive way in which they have gone about it. Fearless and confident, showing true pioneer spirit, the Sophomores have originated a new form of entertainment, what might be termed Sophomore Day. This show, if following classes will use it as a precedent, is charmingly comprised of a one-act play, singing and dancing novelties, and guess what? an orchestra all their own. This, instead of being presented publicly, is given as an assembly program. The Bible is read by a Sophomore, the color guard and bearer are Sophomores, and it is altogether a novel and intriguing idea.

This new but enthusiastic class has shown, not only remarkable originality, but also wonderful co-operative ability and desire to join in school activities. Some figures drawn up with the aid of the class sponsor show some quite remarkable facts. In the following statistics will be clearly seen the whole-hearted enthusiasm which the Sophomores have shown.

Approximately 86 per cent. of the class participated in one or more school activity (excluding Sophomore Day).

In music organizations: Band 5; Orchestra 25; Glee Club 34; Chorus 13.

Home Room Participation (exclusive of athletics), either as members of committees, officers, or participators in programs—130.

Club memberships: Architecture, 4; Art, 15; Aviation, 11; Parnassian, 15; Creative Writing Club, 7; French Club, 16; German Club, 13; Science Club, 5.

Monitor Duty, 35; Ancient History Play, in cast, 27, on committees, 16; Regular Lighting Crew, 2; School Council Committee, 10; Cheer Leaders, 5.

Sophomore class officers: Chairman or members of committees, 32, (exclusive of Sophomore Day).

Athletics—169; (home room, varsity, class-boys and girls.)

Lunch Room—2.



POST GRADUATES

President

GEORGE BADENOCH

Secretary

MARGARET NICHOLS

Representative on Assembly Committee

JOHN BOSSHART

MEMBERS

William Grant
Edward Earl
Bernice Patrick

Harold Beattie
Austin McMan
Paul Grierson

Albert George
John Hicks
Katherine Stanley

Joseph Holsinger
Alfred Mutchler
Jack Kaufman
Doris Rolfe

THE P. G.'s presentation at the annual Thanksgiving Assembly was a hilarious riot—a burlesque on a funeral—not generally a pleasant subject, but what they did to it! A coffin was somberly carried down the aisle by grotesque pall-bearers clad in white flannels, black shirts, and red suspenders. The girls of the class were tragic indeed. Weeping and wailing, they were perfect mourners (we suspected, however, surreptitious giggles behind those veils). The crowning moment in mirth and suspense was when the coffin was pried open, and lo! a corpse designed in groceries!

Just before Christmas this same class joyfully gathered together about one hundred members from the classes of '28 and '29 and had a gay reunion. Music, speeches, holiday festivity, and best of all, the meeting of old friends, helped make a success of the happy party.

In April a play done in the best P. G. style was presented in assembly to the delight of the entire audience. The heroine was gracefully played by Bernice Patrick and the hero nobly done by Paul Grierson.





THE STUDENT COUNCIL

PLEDGE: I, a member of the Student Council of Columbia High School, do pledge myself to support the rules and regulations of this school, to further the spirit of Columbia, and to help all the members of the school to become sturdy, righteous citizens inspired by the ideal of unselfish service.

James Wiley, *President*; Betty Williams, *Vice-President*; Clara Kitchell, *Secretary*; Frank Hartz, *Treasurer*.

ASSEMBLY COMMITTEE: Fred Lambert, *Chairman*; Harry Gilmore, Irene Littledale, Naomi Cartwright, Robert Bates, William Longley, Franklin Baker, Dorothy Holslag, John Lockwood, Carolyn Keyes.

BOYS' CIVICS COMMITTEE: Donald Murray, *Chairman*; Irving Blackwell, Raymond Winans, Carl Kreifler, Arthur Evans, Ernest Easton, Robert Rummel, Harry Petter.

GIRLS' CIVICS COMMITTEE: Katherine Kreidler, *Chairman*; Kathryn Ruth, Florence Heffner, Dorothy Holslag, Mary Alice Pierson, Marjory Harden, Harriet Lammey.

ELECTION COMMITTEE: Robert Saville, *Chairman*; Ralph Hoffman, Norman Ball, William Rothen, William Bamert, William Newberger.

ELIGIBILITY COMMITTEE: Woodward McDowell, *Chairman*; Robert Packer, Catherine McCabe, Frank Smith, Jack Creelman, David Hoppock, Edward Vogeler.

FINANCE COMMITTEE: Frank Hartz, *Chairman*; Gordon Burns, Robert Amberg, John Burrowes, Ralph Hohmann, John Graham.

FIRE COMMITTEE: Henry Allen, *Chairman*; Roy Beh, Fleming Fraser, James Wiley, Fred Lambert.

HOUSE AND GROUNDS COMMITTEE: Roy Beh, *Chairman*; Irving Blackwell, Harry Lang, Norman Ball, Henry Allen, Homer Page.

SOCIAL COMMITTEE: Phoebe Taylor, *Chairman*; Nancy Cox, Marjorie Oswald, Eleanor Corry, Paul Dickson, Arthur Robins.

TRADITIONS COMMITTEE: Mary Lou Van Houten, *Chairman*; Georgianna Lamson, Carl Kreidler, Ann Bates, William Austin.

TRAFFIC COMMITTEE: Fleming Fraser, *Chairman*; Woodward McDowell, Thomson Billington, Walter Hodapp, David Finlay, John Condit, Edwin Corson, Albert Davids, Stanley Griesse, Carl Kreidler, Patrick Stark, William Hooke, Donald Kepler, Robert Taylor, Jack Rumble, George Badenock, John Bosshart, Edward Earl, William Grant, Paul Grierson, Harold Beattie, John Hicks, Austin McMahon, Alfred George.

MEMBERS: Jean Adams, Muriel Addis, William Austin, George Badenock, Norma Brewster, Robert Button, John Burrowes, Fred Clark, Jack Creelman, Paul Dickson, Stanley Ellison, Jack Evans, Harry Faulkner, Thomas Gays, Stanley Griesse, Carl Hagerstrom, Alfred Houghton, Carl Hirschberger, George Kernan, Carl Kreidler, Jasper Lombardy, Elizabeth Magovern, George McCarthy, John O'Connor, Mary O'Neil, Homer Page, Clinton Phelps, Jay Rodgers, Jack Rumble, Kenneth Sandback, Stuart Smart, Kendall Stearns, Sanford Stein, Charles Stymus, Robert Taylor, Harry Wadsworth, Gilbert Wakefield, Robert Whelan.



THE COLUMBIAN

VOL. I

COLUMBIA HIGH SCHOOL

NO. 1

Staff Sees Daily Edited In Visit To N. Y. Times

On December 6, some 24 members of the Columbian Staff journeyed by bus and ankle express to the Times Building in New York to see how a big newspaper is managed from the time the reporter starts to find the news until the newsboys begin selling it in a huge 32-page newspaper.

High spots of the tour were the top floor, the high speed elevators, the uncanny purple lights in the composing room, and the famous chair in which all celebrities, including Lindy and the Prince of Wales, have sat.

After the inspection of the building, the party trooped to a near-by Childs and appeased the enormous appetites gained by the two-mile tour. Then, after viewing the movies at the Paramount, the weary young journalists returned home and plunged into bed, dreaming that it was raining linotype machines and snowing proof sheets.

Columbian Entertains Northern N. J. Press Association

For the first time in its history the Columbian was host this year at the fall convention of the Northern New Jersey Scholastic Press Association, an association composed of the representatives from 38 high schools.

Features of the convention were addresses by Mr. Royal Davis, editorial writer of the New York Evening Post, our Eugene Farrell, advertising manager of the Newark News, and Mr. Howard Freeman, sports cartoonist of the Newark News. The guests were further entertained by a short play, "The Ghost of Jerry Bundler", presented by the Parnassian, by an exhibit of school publications in the boys' gym, and by a banquet and dance in the evening. About 250 delegates attended.

Columbian Wins Honors In National Contest

The Columbian was one of several school papers carrying off place honors this year at the national contest, sponsored by the Columbia Scholastic Press Association at Columbia University. The names of the prize-winning newspapers were announced at the annual convention held by the Association in New York last March. About 700 publications were entered in the contest, which rated the periodicals in classes according to the size of the student body in the various schools. The Columbian was rated among Class B schools, since it represents a student body numbering less than 1500.

Delegates from the Columbian were present at the Convention, which was attended by 1400 delegates from all over the country. They brought back many valuable suggestions for the improvement of the Columbian another year.

Special Issues Are Tabloid Scandal Sheet And Football Number

Eight pages of real live football news liberally bedecked with cartoons and pictures formed that sensational offering of the Columbian this year, appropriately dubbed "The Football Issue." In true Sunday supplement style on the first and last pages were depicted in rotogravure the pictures of the team and its satellites; the band, the coaches, and even the field house. The news itself consisted of an extensive review of the season's activities, amusing interviews, and sanguine prognostications on the outcome of the Thanksgiving Day game.

And the way the dirt was dished out in the Tabloid Issue, published April 1, was enough to satisfy any sewing circle advocate.



THE MIRROR STAFF

Editor-in-chief, Robert Amberg; *Assistant Editor-in-chief*, Kenneth Brown; *Social Editor*, Phoebe Taylor; *Athletics Editor*, John Hirshberger; *Assistant*, Mary Lee Beattie; *Organizations Editor*, John Burrowes; *Assistant*, Ludwig Oberndorf; *Personals Editors*, Clara Kitchell; Peg Palmer, Harry Gilmore, Irene Littledale, Betty H. Brown, Josephine Hutchinson, Betty B. Brown, Bob Bates, Harriet Tyson, Barbara Belcher, Charlotte Richards, Ruth Smith, Helen Peck, Harold Noling, Emily Hill, Mary Lou Van Houten; *Class Will*, Charles Clancy, Alexander List; *History*, Lin Bridgeman; *Prophecy*, Melvin Peppar, Frank McKann; *Business Manager*, Stuart Smart; *Publicity*, Sidney DeRoner and Robert Saville; *Advertising*, Jim Wiley, Cicil Lichtman, Roy Beh, Ray Bischoff, Bob Everett, Horace Potter; *Sales*, James O'Donnell, Ralph Sayre, Jim Wriggens, Woody McDowell; *Photography*, Frank Hartz, Bill Hartz, Bob Carr; *Art*, Ruth Leonard Baker, Edna Brubaker, Helen Loveitt, Norma Zusi, Stanley Wright, Harry Tower, Ruth Eichhorn; *Typists*, Lillian Ohaus, Muriel Covert, Margaret Graf, Victoria Hess, Margaret Urban.



PARNASSIAN SOCIETY

THE PARNASSIAN SOCIETY began another of its active and successful seasons with the annual Hallowe'en dance. The school dance band made its bow to the dancing public at this affair and contributed to the general liveliness of the party.

Shortly after the dance, the school thrilled to the acting of the "Ghost of Jerry Bundler," prepared under Miss Memory's able direction. This play was enjoyed also by the delegates to the Press Conference at Columbia.

At Christmas time, "The Loveliest Thing," by Pertwee, was rehearsed under the direction of Miss Murphy and given in assembly. It presented, in a new way, just what a little real Christmas spirit can do.

The most important presentation of the Parnassian, the group of one-act plays offered as public entertainment, took place in February. Of the four plays, two were coached by students and two by faculty coaches. Clare Buehler and Bob Bates coached "Grand Cham's Diamond" and "Outclassed," while Miss Memory and Miss Murphy coached "Wurzel Flummery" and "Jazz and Minuet" respectively.

The aim of the Parnassian Society is to encourage and sponsor dramatic, oratorical, and musical endeavor. Applicants for admission must try out in one of these fields. The club is entertained at its meetings by musical programs, debates, and short plays given by its own talent.



CREATIVE WRITING CLUB

ABOUT A YEAR AGO, in response to student request, the Creative Writing Club was formed with the purpose of giving to interested and qualified students an opportunity to gain greater inspiration and skill in creative writing. The club offers not only opportunity to talented members, but also encouragement to those less confident. Everyone is asked to contribute to the programs presented in the monthly meetings. Students are encouraged to read their own work, and to dramatize with the help of other members their original plays.

Although all of the contributions submitted each month cannot be read, the program committee endeavors to choose work of varying quality so that the constructive criticisms made may be as helpful as possible.

At special meetings the technique of various types of writing is studied. Occasionally, people who do professional writing are invited to present to the club what they have found to be the most helpful principles in literary craftsmanship, and also to give the members the benefit of professional criticism. Although the members write primarily for the pleasure of self-expression, it is the ultimate aim of the club to publish an anthology containing work of outstanding merit.



LE CERCLE FRANCAIS

THE FRENCH CLUB, organized with the idea of giving students of French a chance to put their knowledge to practical use, has gradually enlarged its activities to include additional features.

On a late Autumn afternoon, an enjoyable French picnic was held at Cherry Lane. The annual dance brought Columbia's numerous dancers to the gym, where the school dance orchestra dispensed theme songs in the modern style. Later in the year, the school was given an opportunity to attend a typical French fair. Here customers received refreshments, served in the cafe style, in return for French currency. This fair is an annual presentation of the club. Special features, musical and dramatic, mark the meetings of the group.

The club has always been instrumental in bringing two most interesting assembly programs to Columbia. Early in the year, Professor Morize of Harvard spoke to us on the differences between French and American psychology. His enjoyable talk was interspersed with campus anecdotes and humorous incidents. In January, the student body was entertained with the comedy "La Faim Est Un Grand Inventeur" in which two American soldiers have a difficult time obtaining something to eat.

The year was a success in every line of endeavor.



DER DEUTSCHE VEREIN

THE INTERESTING and varied programs given by its members have made the third year of the German Club the most successful year in its history.

The year was successfully opened with a "Kaffee Klatsch." New acquaintances were made, and delicious German coffee cakes were served.

At one meeting the club had the good fortune of being addressed by Dr. Ludwig Oberndorf, a graduate of the University of Heidelberg. Dr. Oberndorf's topic was "German Patriots in America." At other meetings talks were given by the members, German games were played, and German songs were sung.

The most ambitious program of the year, however, was the one presented in the assembly. A play, "Karl hat Zahnschmerzen," was given, and a group of boys, the "Wandervogel," charmed the audience with German folk songs. This was the first time in the history of Columbia High School that a German play was enacted before the school.

The members of the Verein feel that they have been fully repaid for anything which the club may have asked of them. Not only have they obtained a closer view of German customs and ideas, but they have also added a link to the ever-growing chain of international good-will.



THE SCIENCE CLUB

THE SCIENCE CLUB deals with most of the branches of science. Its purpose is to further interest among the pupils in some branch of this fascinating subject.

Each year the club endeavors to present two programs in the assembly. This year the first program presented Mr. William Nattis of the Edison Lighting Institute. Mr. Nattis spoke on "The Incandescent Lamp," and illustrated his talk with several slides. At a later date, Mr. Louis Williams astonished the assembly with demonstrations of the potentialities of electricity and magnetism. Both programs were immensely enjoyed by the students of Columbia.

The club meetings also produced many varied and unusual experiments. Demonstrations were given on the production of rayon, on a steam engine which had run twelve hours without stopping, and on high voltage electricity. At one meeting experiments with a photo-voltaic cell, an instrument which is very sensitive to light, were performed. The X-ray and motion pictures were other topics of discussion and experimentation; also an explanation was given of the electrification plans of the Lackawanna Railroad.

The members of the Science Club have learned many interesting and instructive facts from these meetings. It is the sincere wish of the organization to further a real interest in the alluring field of science.



THE ART CLUB

THE PURPOSE of the Art Club is to develop an interest in art, and to present an opportunity for pupils taking art to extend their talent along new and practical lines, as well as to develop creative ability.

The Art Club was created to satisfy the demand of many students who wished to gather at weekly meetings and discuss and attempt things of an artistic nature. In this the club has been most successful, and, at the end of its first year, it stands as one of the leading clubs in the school.

At each meeting a different type of art has been discussed and attempted. At one of these a costume party was given. The members attempted cartoons, caricatures, and silhouettes. Masks were studied and made. Soap carving was done. Color schemes for tables and artistic arrangement of flowers were studied and illustrated. Puppets were also made. One of the most interesting gatherings of the year was a sketching trip, followed by a picnic supper. As may be seen, the club dipped deeply into practical as well as ornamental art. Its members received a wealth of information in both fields, and also exercised their creative ability by reproducing many things.

The Art Club is to be congratulated on its fine showing. All signs indicate a prosperous future and a successful achievement of its aims.



THE AVIATION CLUB

THE AVIATION CLUB is one of the more recently organized clubs in Columbia High School. It was established because with the tremendous growth of aviation in the last few years many students are turning to aviation for a bright and prosperous future.

The club functions with the purpose of turning out our aeronautically inclined graduates with a general knowledge of the fundamental principles of flight. The club is divided into three sections, each section taking charge of a meeting and specializing in its particular subject. The sections are as follows: the Motor Section, the Model Section, and the Theory of Flight Section.

Under the auspices of the Aviation Club a class is held once a week in navigation. This class, under the instruction of Mr. Powell, has made very favorable progress. The club has also sponsored several trips to flying fields, aircraft factories, and aviation shows. It plans to do more in this line of activity in the future. The initial membership has been increased more than five times and will continue to grow as long as there are flying enthusiasts in the school.

The officers of the club are as follows: *President*, James Curley; *Vice-President*, William Longley; *Secretary*, Ruth Heydenrich; *treasurer*, Edward Heller.



THE ARCHITECTURE CLUB

THE ARCHITECTURE CLUB is one of the new organizations, and in this, its first year of existence, it has won a commendable place for itself in Columbia High School.

The club was established to foster the interests of students inclined toward architecture, as well as to study home-planning and landscaping.

Meetings were held twice a month. One of these bi-monthly meetings was held in the school, where talks were given, and various subjects discussed. At the other meeting, the club visited some buildings under construction for the purpose of gaining a practical view of applied architecture.

The social activities of the club consisted of a get-together meeting, an outing, and a picnic.

As architecture plays such a large part in our civilization, and is ever changing to meet the needs of American life, it seems evident that the Architecture Club should flourish and prosper in Columbia High School.

The officers for this year are as follows: Nick Lombardy, *President*; Edward Monk, *Vice-President*; George Burr, *Secretary*; William Bailey, *Treasurer*.



THE ORCHESTRA



THE BAND



GIRLS' GLEE CLUB



BOYS' GLEE CLUB



SERVICE ORCHESTRA



THE CHORUS



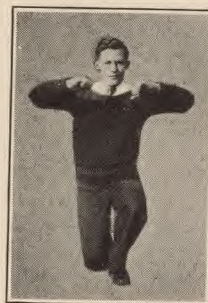
| | |
|-------------------|-------------------|
| Henry Allen | Harry Long |
| Marble Baker | Nicholas Lombardy |
| WILBUR BATT | Jasper Lombardy |
| Roy Beh. | Thor Lundgren |
| Ray Biehoff | Woodward McDowell |
| Iring Blackwell | JAMES O'DONNELL |
| Richard BORTON | Jay Rogers |
| John L. Condit | Kenneth Sandback |
| Dick Conradi | Chris Saville |
| Bill Dennis | Robert Saville |
| Pennington M. Day | DON MURRAY |
| Ed DeRoue | Bob Sickley |
| Don Fraser | Ed Skokna |
| David P. Givley | Stuart Smart |
| John R. Gishman | Harry Stark |
| Walter Hodapp | Richard Starnburg |
| Brad Houghton | Richard Tower |
| George Kernan | Harry Wadsworth |
| Carl Kieffer | Jim Wiley |
| Fred Lambert | |





VARSITY FOOTBALL

ENJOYING its most successful season since the completion of the new building, Columbia's football team came through with six victories out of eight games. The season was marked by a continued rise in power, and climaxed by the defeat of West Orange to the tune of 33-0.



Coaches Marvel and Mahnken started the season with nine letter men and a large number of Jayvees from the '28 squad. At the end of the season they had polished off four men who were nominated as All-State candidates. Pat Stark made the official first team, and Bob Sickley, Henry Allen, and Ken Sandback were given honorable mention. Almost every member of the team was mentioned on one selection or another.

The first game of the season was lost to Red Bank, 7-6, because of an offside penalty on the play for the point after the touchdown. Captain Sickley was on the bench with a bad knee, and the line inside the ends was inexperienced. The following week the team traveled to Nutley and lost a hard-fought game, 25-6. Incidentally, Nutley finished in a tie for the State Championship, and Columbia was the only school to score against her. Not discouraged by this defeat, the Columbia team developed itself into the powerful machine which smeared East Orange the next week by a 6-0 score; and it was a bigger victory than the tally indicates, for the opponents were completely bewildered during three quarters of the game. By this time the team had really found its stride. Morristown was next upset 12-6, and then Orange 19-6. When New Brunswick's team landed on Underhill Field, they found no haven of rest. Bob Sickley's work was instrumental in handing them a harsh 27-6 beating which neither they nor we shall forget (but for different reasons!).

Plainfield won't try any more practical jokes now that we put her out of the state title. After taking Columbia on "to lighten her schedule," Plainfield lost what might have been a 6-6 tie when Henny Allen saved the most hard-fought and exciting game by kicking Columbia to a 7-6 victory.

Finally, Columbia's ancient rivals loomed on the scene for the season's last game. It was a grand finish with Columbia on the long end of a 33-0 score.

With four letter men returning, and with that Jayvee team, which should have the mythical Second Team Championship, to pick from, Columbia should be able next fall to continue the stellar performance of the past season.



THE JUNIOR VARSITY

THE COLUMBIA JAYVEE TEAM surpassed the wonderful achievement of the regulars and remained not only undefeated but unscored on. The Steamroller's performance was made possible by the tireless efforts of Coach Mahnken, and the hard, persistent work of the boys in trying to come up to his expectations. Mr. Mahnken's enthusiasm was injected into those Steamrollers until they had rolled out all opponents flat.

Orange was first to feel the impact of the attack 19-0. Summit, who the year before had beaten us 6-0, was next trampled on 13-0. Then, in quick succession our rivals, West Orange and East Orange, tasted defeat 14-0 and 18-0 respectively. In the next game the Steamrollers, rolling up thirteen points in the first half and six more in the second, trimmed West Side. "On to Central!" was the cry; and Central too went the way of the defeated, 13-0. Finally, Montclair, putting up a very stubborn battle, was turned back 13-0.

The boys on this team deserve high commendation. The backs—Ambos, Moore, Sargent, Secor, Wilson, and Zeigler—rolled up 109 points. The linemen—Baker, Beers, Cunningham, Evans, Irish, Lambert, Lange, Lyons, O'Donnell, and La Vecchia—repulsed every attack of their opponents.

All but three of these fellows will be back to help that first team next year. We count on them to carry our varsity through the next season with flying colors.



HOCKEY

THE INAUGURATION of hockey into the calendar of Columbia's 1930 winter sports proved a great success. Previous to this year Columbia was unofficially represented; this year the sport was officially recognized.

Long before signs of ice appeared, the team, coached by Mr. Sterling, formerly of Dartmouth, began to practice on the school parking space. This early practice was continued with much enthusiasm till available ice was found in Summit. With constant practice and a few practice games the team steadily improved.

Finally the weather permitted, and we played and defeated Montclair, 5-0. In a return match with this team we played a standstill, 0-0. Summit was then defeated twice, 5-3, and 3-1. The defeat of Plainfield, 2-1, made it four straight victories and one tie. In our last game before the State Tournament, Morristown was turned back, 3-1.

Our first opponent in the State Title Match was Morristown. The game was very close, and neither team scored till the third period. We slipped one in first, and then with less than ten seconds of play left Morristown scored. In the second overtime period we finally proved ourselves superior. Dover was defeated in the second round, 4-1. In the semi-finals Montclair was forced to forfeit because of a school ruling. In a very poor game we lost to New Brunswick for the State Championship. Neither team was up to par, and our lone score came only in the last minute of play.





VARSIITY BASKETBALL

COLUMBIA's 1929-1930 basketball team had a very poor and discouraging season. The season was poor because the team won only three out of sixteen games; and it was discouraging because five games were lost by only one or two points, and two games by only four points. Because of the inability of the team to come through, it was deemed advisable that we stay out of the State Tournament.

For the first few games of the season Coach Mahnken used two full teams. He soon saw that this system would not function properly; consequently, before long only one team was in full swing. Several men who had played on one of the first teams were dropped to the second and helped the Jayvees through a successful season.

Although our season as a whole was very unsuccessful, there was some comfort in the fact that East Orange was defeated twice and West Orange once. Furthermore, the student body supported the team whole-heartedly through victory or defeat.

Nick Lombardy, Blackwell and Skokna were the leading scorers.

The following men from this year's squad will be back next year, the others being lost by graduation: Blackwell, Kernan, Sandback and Sargent.

THE SEASON'S SCHEDULE

| | |
|------------------|----------------|
| Columbia 26..... | Faculty 30 |
| Columbia 27..... | Alumni 29 |
| Columbia 33..... | Montclair 35 |
| Columbia 15..... | Nutley 28 |
| Columbia 27..... | East Orange 9 |
| Columbia 16..... | Orange 18 |
| Columbia 20..... | Plainfield 21 |
| Columbia 21..... | West Orange 18 |
| Columbia 28..... | Glen Ridge 35 |
| Columbia 13..... | Nutley 17 |
| Columbia 33..... | Central 39 |
| Columbia 12..... | Orange 21 |
| Columbia 24..... | Montclair 39 |
| Columbia 9..... | West Orange 23 |
| Columbia 35..... | East Orange 21 |
| Columbia 17..... | Red Bank 19 |





VARSITY BASEBALL

WITH TEN VETERANS heading the list of baseball enthusiasts, Mr. Marvel has high hope of producing another team that will rank high in the Inter-Scholastic ratings. In '27 the team kept a clean slate through a ten-game schedule; in '28 one game of the eleven played was lost; and last year Mr. Marvel experimented with a new combination and pulled the team through ten games out of the seventeen played. A wonderful record: thirty-six games won out of forty-four.

This year, with only one letter man left, the material is stronger than it has been for the last two years. The pitching staff, headed by Nick Lombardy and Roy Beh, should be strengthened by the acquisition of Lefty Joachim of last year's successful Jayvee team. In the catching department Dick Tower of the '28 team will undoubtedly assist Sid De Roner in stopping the offerings of our twirlers. Ray Bischoff will be moved from the outfield in an attempt to strengthen the initial bag, and Chuck Weis will also be endeavoring to get that position. Either Sandbeck or Moore will draw the assignment at second. Kernan and Allen will battle at shortstop, and Rodgers and Volksmuth will fight it out to guard the hot corner. In the outfield Mr. Marvel has Borton, Conradi, and Wadsworth of last year's nine and possible contenders in Lyons and Ambos.

Enthusiasm in baseball has picked up considerably in the last few years, and this year we expect the school spirit to go over the top. This year, because of the enthusiastic following of previous years, thirty-six men will be carried on the squad. The second team's schedule will include twelve games with the usual competition from the Oranges and from the second squads of the best teams in the State.

The Alumni open the season at Underhill Field, April 12. Then come two more home games with Summit, April 15, and Westfield, April 17. Bellville's game is at Bellville, April 22, and we meet Rutherford at Rutherford the following day. Barringer and Orange next come to Underhill Field, April 26 and April 29 respectively. Plainfield opens our May schedule at Plainfield on the second, then we enter the second inter-Orange contest, playing East Orange at home, May 6. The next Barringer game is away on the eighth of May. Two home games follow with Madison and Nutley furnishing the opposition, May 13 and May 17 respectively. Orange is played at Orange on the twentieth, and then we are hosts to New Brunswick on the twenty-fourth. On the twenty-seventh we engage Morristown on their field. Finally, two big games—The Memorial Day game at Bloomfield, and East Orange away on June 2.





VARSIITY TRACK

WITHOUT WAITING to pick his material from the results of the school indoor track meet, Mr. Mahnken entered last year's veterans in many of the important scholastic meets. Our boys defeated the outstanding stars of New Jersey and the Eastern United States; the team rated higher in the scoring column than it has ever before.

John Condit proved to be the outstanding sensation of the winter season. At the Newark Athletic Club Meet he won the distinction of being the National Interscholastic Champion in the seventy-yard high hurdles. He also contributed to the success of the team at the Sunday Call Meet when he and "Swede" Lundgren placed first in the seventy-yard high hurdles and the half-mile respectively. Next on the winter program was the Dickinson Meet. In this the seventy-yard dash and half-mile were won by Don Murray and Wilbur Batt respectively. Murray again placed in the State Meet, taking third in the seventy-yard dash. Many other Columbia boys participated and turned in good performances.

The fellows next turned their attention to the school indoor meet. The Seniors galloped away with first place, and were trailed by the Juniors, Sophs, and Frosh. In a close finish Wright broke the tape before Gaffrey in the seventy-yard dash; Bob Rummel, a member of last year's squad, led the field in the quarter-mile; Ray Bischoff slipped away from the pack in the mile; and John Hunter proved the big sensation by being the only underclassman to win a first, his victory being in the half-mile. The field events also were won by Seniors. Skokna and Easton were the leaders. Finally, the graduation class romped away from the others in the relay.

Following is the schedule of meets:

- April 9—Outdoor Interclass Meet—Home.
- April 11.—Red and Black Meet—Home.
- April 17—Glen Ridge—Home.
- April 19—Columbia Inter-scholastic Meet—New York City
- April 26—Penn. Relays—Philadelphia.
- April 29—Bloomfield and Plainfield—Home.
- May 6—Westfield—Home.
- May 10—South Side Invitation—Newark.
- May 13—West Side—Home.
- May 17—East Orange—Home.
- May 22—Rutherford—Home.
- May 24—Montclair Big Five Meet—Montclair.
- May 31—State Meet—Newark.



VAR SITY TENNIS

IF A COACH is available, tennis will this year be officially recognized by the Boys' Athletic Association Council as a letter sport. The fellows have expectations of attaining the heights gained by the first-year hockey team.

Jim Wiley and Johnnie Stimson, who both played singles last year, are available this year, and they are expected to be the mainstays of the team. Two members of last year's double teams, Slutz and Anderson, will be trying for positions on the 1930 team. Rod Crowley, Don Fraser, Ducky Gilmore, Harry Lange, and Ray Winan, also intend to try for the team.

Manager Cecil Lichtman has arranged this schedule. The season opens with three home games: Thomas Jefferson, April 30; Plainfield, May 5; West Side, May 7. The team then will take the longest trip a Columbia team has ever attempted to play Atlantic City May 10. The crack East Orange team will be met at home on May 12, and at East Orange May 21. The Westfield match will be played at home on May 16. Next we will play a team which is fast becoming a regular on our schedules, Plainfield. They will be opposed on their own courts May 23. Barringer and Summit come here on the twenty-sixth and twenty-eighth respectively. Finally, we wind up the season with three games on our opponents' courts—West Side, Barringer and Westfield on the second, fourth and sixth of June respectively.



BOYS' ATHLETIC ASSOCIATION COUNCIL

THE BOYS' ATHLETIC ASSOCIATION COUNCIL, continuing its achievements of previous years, can well consider this year a success. Its main work was sponsoring intra-mural sports, but it has also sponsored other athletic events.

This year tournaments were held not only between classes, but also between home-rooms and gym sections. In the fall, inter-home room touch football games were played, and at the same time a soccer tournament was in progress among the gym classes. During the winter months an inter-class swimming meet and an inter-class basketball league was sponsored. This spring another effort was made to organize class baseball, and tennis tournaments were conducted in both the fall and the spring. Indoor and outdoor track meets were also run off with their usual success. Squad teams, composed of fellows unable to make the varsity, were inaugurated during football and baseball season.

Another achievement of the year was the granting of official recognition to hockey and tennis as letter sports. In previous years both these sports saw action against other schools, but neither had a coach. This year the students showed such enthusiasm for these events that they were given a trial. The results were so successful that two more sports were thus added to Columbia's athletic calendar.

Of no less importance than these objective projects was the B. A. A. Council's valuable influence towards fostering true "Columbia spirit."



GIRLS' BASKETBALL

THE GIRLS certainly earned their Basketball letters this year. Captained by Catherine McCabe and coached by Miss Fisher and Miss Southard, the team came through with a good record. The defeats that the girls met fired them with more spirit and enthusiasm to win the next time.

Captain McCabe is well known for her spectacular shooting. No matter where she shoots from the ball just naturally drops into the basket. This year we had a girl on the team who had never tried out for Varsity Basketball before—Elsie Ottmueller, and she was a lucky find. By practicing hard she has become a first-rate guard. She was greatly helped by her other guard, Helen Loubet, a member of last year's team. The speediest girl on the team is our forward, Janet Brewster. She seems to fly at the ball and if she were breathing her last she could still hang on. The centers, Kitty Krietler and Mary Lee Beattie, also deserve applause. Kitty is Janet's close second for speed. But no team can survive without substitutes, and we owe much of our success to Betty Farrell, Ruth Lowes, and Virginia King. The able management of the team and the loyal support from the students were produced by the hard work of Peg Palmer, and much credit is due her for her helpful endeavors.

The most satisfying game was the return game with Roselle Park. We opened the season by a defeat at their hands in their gym, but we closed the season by defeating them on our court. The largest crowd of the season assembled at this game and watched the girls play as they had never played before. With the exception of one substitution, the first team played right through and won by a 22-18 score. During the game the score was very close, making the contest more exciting and harder to win. This was the first year that we had played Roselle Park but will probably not be the last.

| | Columbia | Opponents |
|--------------------|----------|-----------|
| Roselle Park | 26 | 36 |
| Orange | 27 | 6 |
| Millburn | 12 | 12 |
| Millburn | 10 | 12 |
| Roselle Park | 22 | 18 |
| Orange | 43 | 6 |





GIRLS' ATHLETIC ASSOCIATION

ANOTHER GOOD YEAR is to be credited to the Girls' Athletic Association, the organization which managed all business pertaining to the girls' athletics. Because the girls responded with such fine spirit to the G. A. A. drive in the fall, the council managed extremely well with the finances.

All the inter-class games were sponsored by the council. In the fall the sophomores were rewarded numerals for winning the inter-class soccer games. The seniors took their revenge during the basketball season by running up extremely high scores. In the spring the council sponsored track, baseball, swimming, and tennis. In tennis the winner received a cup and her opponent a Columbia "C".

This year the council started a new method of awarding the Columbia "C", giving more girls a chance to win it. The girls who have five sets of numerals now, are also awarded their letters. Numerals are given to members of the winning teams of inter-class sports, semi-finals in tennis, and to participants of the Girls' Leaders Club.

In the spring the council gave a party to the members of the G. A. A. Everyone had a good time and nearly every member attended.

The guiding hand for the council is Miss Fischer, and the members wish to thank her for her help.

The officers for the 1930 Council were: *President*, Dorothy Sauer; *Vice-President*, Miss Henderson; *Secretary*, Margaret Borden; *Treasurer*, Mary Lee Beattie.





JUST IMAGINE :

by H. TOWER

WEARING A PAIR OF TRUNKS.



SHOOTING BASKETS.



CHOKING YOUR BASEBALL BAT.



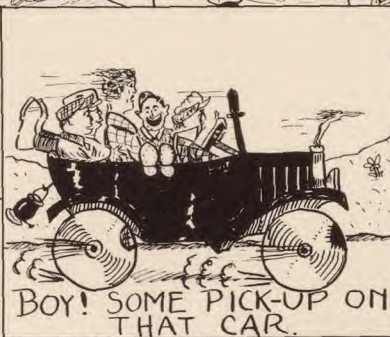
HAVING YOUR EYES GLUED TO THE PAGE.



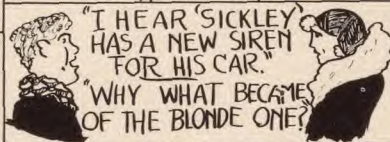
HAVING A THINKING CAP.



SCHOOL



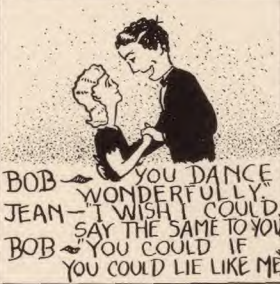
BOY! SOME PICK-UP ON THAT CAR.



"I HEAR 'SICKLEY' HAS A NEW SIREN FOR HIS CAR."
"WHY WHAT BECAME OF THE BLONDE ONE?"



"DENNY CLANCEY THE ORIGINAL BOOP-OOP-A-DOOP MAN"



BOB - YOU DANCE WONDERFULLY.
JEAN - I WISH I COULD SAY THE SAME TO YOU.
BOB - YOU COULD IF YOU COULD LIE LIKE ME.



KEN - "WHATS THE MATTER RUTH? YOU LOOK DISGUSTED."
RUTH - "AW, MY AEROPLANE WON'T FLY AND I MADE IT OUT OF FLY-PAPER, TOO"



BURNING THE MIDNIGHT OIL



RAY - "WHAT MAKES YOU THINK YOU'RE SO GOOD?"
STAN - "I CAN RUN A MILE AND ONLY MOVE TWO FEET."



"SOME OF YOUR WASH WAS JUMPING AROUND ON THE LINE LAST NITE"
"THAT WAS PROBABLY MY ATHLETIC UNDERWEAR"



"KEN BROWN HANDLES A MEAN DRUM"



• Best Dressed •

The Senior



The



Best Looking



• Most Athletic •



• Done Most •
for
School



• Biggest Flirts •



• Most Boisterous •

of



• Most Popular •

Popularity Twins



Statistics



~ Most Studious ~



~ Biggest Pull ~



~ Best Natured ~



~ Most Likely ~
to
~ Succeed ~

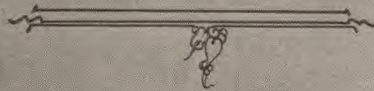


~ Wittiest ~



~ Most Popular ~

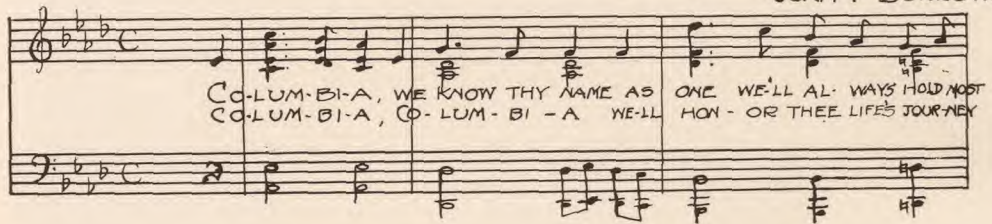
1930



~ Best Actors ~

CLASS SONG 1930

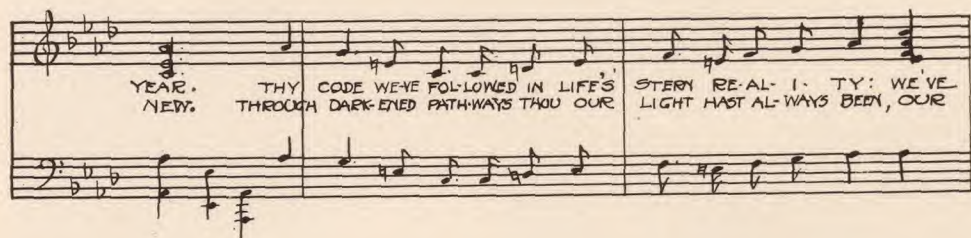
WORDS AND MUSIC
BY
JOHN F. BURROWES



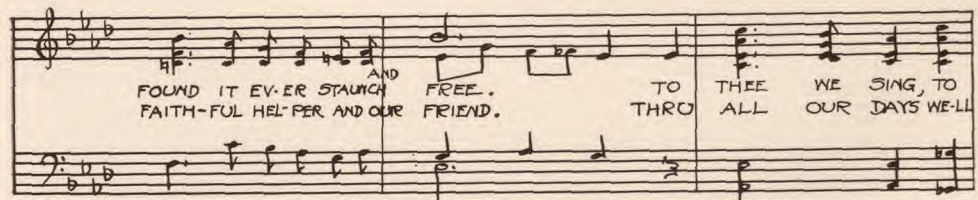
CO-LUM-BI-A, WE KNOW THY NAME AS ONE WE'LL AL-WAYS HOLD MOST
CO-LUM-BI-A, CO-LUM-BI-A WE'LL HON-OR THEE LIFE'S JOURNEY



DEAR, WITH HEART AND MIND TOWARD THEE IN-CLINED THRU EACH ON COM-ING
THROUGH, WE'LL EV-ER MORE BE TRUE TO THEE; WE NOW OUR PLEDGE RE-



YEAR. THY CODE WE'VE FOLLOWED IN LIFE'S STERN RE-AL-I-TY: WE'VE
NEW. THROUGH DARK-ENED PATHWAYS THOU OUR LIGHT HAD AL-WAYS BEEN, OUR



FOUND IT EV-ER STAUNCH AND FREE. TO THEE WE SING, TO
FAITH-FUL HEL-PER AND OUR FRIEND. THRO ALL OUR DAYS WE'LL



THEE WE BRING OUR PLEDGE OF FAITH AND LOY-AL-TY
SING THY PRAISE OUR AL-MA MA-TER TO THE
END.

ADVERTISEMENTS

BOOK VI



Castles Ice Cream

True Fruits and Flavors

Take Advantage of Our Educational Promotion Service

When planning the program for your next meeting let us help you. Mrs. Carolyn V. Wright, our Dietitian, will speak to you on the history, manufacture and value of Ice Cream; and you may have a fascinating "Movie" too. Write to us about this service.

Castles Ice Cream Co.

19 LORETTA AVENUE

IRVINGTON, N. J.

*We congratulate the Boys and Girls of
the Graduating Class of 1930 and wish them
Great Success in their new fields of endeavor.*

SOUTH ORANGE RECORD
and
MAPLEWOOD RECORD

Compliments of
CLIFF'S

SO. ORANGE, N. J.

Telephone: South Orange 3378
JERRY THE TAILOR

JERRY MUTASCIO, *Prop.*

Ladies' and Gents' Tailoring

Cleaning, Dyeing, Pressing and Repairing. Suits made to Order.

109 VALLEY STREET, SOUTH ORANGE, N. J.

Telephone
South Orange 3037

J. Jerry Turner
South Orange 98-W

SHIPMAN & TURNER

Plumbing and Heating · · · Sheet Metal Work

12 SLOAN STREET

SOUTH ORANGE, N. J.

JOHN H. REDFERN

Successor to

IRA T. REDFERN & BRO.

MUNICIPAL ENGINEERING AND SURVEYING

4 SLOAN STREET, SOUTH ORANGE, N. J.

Telephone: 4252 South Orange



*Home-Made Ice Cream
Candies*

*SODA
of Wonderful Quality*

That's Why They All Go to

GRUNING'S

59 SOUTH ORANGE AVENUE

SOUTH ORANGE, N. J.

469 ORANGE STREET

NEWARK, N. J.

WE DELIVER

*Five Great New York Stores
and Chain Systems*

Have Asked Rider to Recommend Business Administration Graduates For Their Training Squads

Leading to Executive Merchandising Positions. One Chain Store System Guarantees Rider Graduates \$3000 per year in 3 years' time.

*Accountancy, Secretarial, Com'cl Teacher
Training*

RIDER COLLEGE

65th Year
Trenton, N. J.

F. MAIER & SONS

COAL

Wood and Grain

1 W. SOUTH ORANGE AVE.

SOUTH ORANGE, N. J.

*Insurance on Anything---Anywhere
World-Wide*

Consult a Specialist

ALFRED A. EARL
Insurance Broker

56 Beaver Street, New York

Whitehall 4600

33 Oakview Avenue, Maplewood
South Orange 500

Maplewood
Bank & Trust Co.

Maplewood, N. J.

IN SCHOOL WE'VE LEARNT A
 THING OR TWO
 IN HOME ROOM FOUND OUT ONE
 THING MORE
 IF MULTIPLY YOU AIM TO DO -
 12 X 12 - 144

GERT
 LENA
 BERK
 ARMY
 GOAT

BEN
 BOB
 REE
 BAM
 BALLIE
 BOB
 PEG
 BOK
 BLA
 HEN

MEW
 NAN
 ART
 DOT
 LEE
 SHRIMP
 JOE
 LYN
 BOB
 BEN
 R.C.P.

H. B. HALSEY

South Orange
 New Jersey



A FRIEND



Phone: South Orange 1900

GEORGE G. SALMON CO.

*Dustless Coal, Fuel Oil, Lumber
Mason's Supplies, Cement Blocks*



417 VALLEY STREET

SOUTH ORANGE, N. J.

*The Best Only
in
Drugs*



TAFT'S
PHARMACY

South Orange

"We Fit You from Top to Toe"

THE MEN'S SHOP

Hatter Haberdasher Shoes
Custom Tailoring



10 W. SOUTH ORANGE AVE.
SOUTH ORANGE, N. J.

Telephone: South Orange 5197

OPEN EVENINGS

The management of your financial matters is an important part of your education. Come in and talk it over with us.

SOUTH ORANGE TRUST CO.

"The Community Bank"



53 SOUTH ORANGE AVE.
SOUTH ORANGE, N. J.

*A room that is willing and ready to go,
About 232 there is nothing slow.*

"Jay"
"Mo"
"Ike"
"Shrimp"
"Dink"
"Sammy"
"Mickey"
"Wa"
"El"
"Betty"
"Sally"
"Jack"
"Peg"
"Handsome"
"Doc"
"Dick"

"Al"
"Bob"
"H. R. P."
"Pete"
"Penel"
"Ann"
"Lil"
"Pep"
"Jim"
"Harry"
"M. R."
"Bob"
"H. R."
"H. N."
"Jackie"

MONTICELLO PHARMACY

Leo M. Higgins

1149 SO. ORANGE AVENUE
at
CITY LINE



Essex 0241-0315
NEWARK, N. J.

CADILLAC LASALLE

Wells Cadillac
Corporation

25 VOSE AVE.
SOUTH ORANGE, N. J.
SOUTH ORANGE 7070

Phone: South Orange 776

GEFKEN

Flowers
For All Occasions



Greenhouses and Office:
432 Ridgewood Road
MAPLEWOOD, N. J.

ROOM 305

| | |
|------------------|-------------|
| "Stu" | "Bill" |
| "San" | "N. Smith" |
| "D. Melvin" | "Anonymous" |
| "Teddy" | "Ben" |
| "Cholly" | "Shorty" |
| "Flo" | "Re" |
| "Leona D. M. A." | "El" |
| "Jan" | "Marianne" |
| "Elsie" | "Rhoda" |
| "Dorie" | "Eunice" |
| "Twiddy" | "Cliff" |
| "Phoeb" | "Pickles" |
| "Smitty" | "Dot" |
| "Battling Ed" | "Len" |
| "Harvey" | "Jean" |

COLUMBIA
LUNCHEONETTE
and
SODA SHOPPE

R. E. ALTIERI, Prop.

Confectionery, Cigars, and Cigarettes

Phone Orders Promptly Delivered

491 VALLEY STREET
Near Parker Ave.
MAPLEWOOD, N. J.

STUDEBAKER
Sales and Service



421-423 VALLEY STREET
SOUTH ORANGE, N. J.
W. J. McCoy, Proprietor
Phone: South Orange 3700

COMPLIMENTS
OF
314

SPECIALISTS IN
BUSINESS TRAINING
AND PLACEMENT

Send for Booklet

COLEMAN
Business College

Academy and Halsey Streets
Newark, New Jersey

Telephone: Market 2-7908

COAL :: FUEL OIL
Lumber :: Masons' Materials

SICKLEY BROS.
SO. ORANGE, N. J.

Buy the New Voice of the Skies

THE EDISON RADIO
at
Morrison-Turbett, Inc.
15 SOUTH ORANGE AVE.
SOUTH ORANGE, N. J.

Compliments
of
NELSON GARAGE, Inc.
MAPLEWOOD, N. J.

The BARBER SHOPPE
P. Fiorentino, Prop.

Three Barbers in Attendance

Facial and Scalp Treatments. Hair Bobbing
4 Highland Place Maplewood, N. J.
Near Maplewood Ave.

SOUTH ORANGE STORAGE
CO., INC.

RIMBACK'S EXPRESS

Moving

Storing

Rug Cleaning

Trucking

So. Orange 4000

Milburn 366

ALEX BEATRICE

5 West South Orange Avenue

Expert Haircutting and Shaving

Ladies' Haircutting a Specialty
Children Also

COMPLIMENTS
OF

HOME ROOM
153

MAPLEWOOD



· OAKES · BROKERAGE · CO. ·

· · · REALTORS · · ·

· EST. 1905 ·

· G. M. DUNN ·

· AT R.R. STATION · SO ORANGE 2080 ·

Oakes Brokerage Co.

REALTORS

Established 1905

G. M. DUNN

At R. R. Station.

So. Orange 2080

Personal Attention Flower Phone S. O. 1676

DARE'S
FLOWER SHOP

Flowers for all occasions

Serving you for 9 years



89 Baker St.

Maplewood, N. J.

Opposite Post Office Building

Member of Florists' Telegraph Delivery
Association

Telephone: South Orange 1597

FIERY'S ELECTRIC SHOP

Electrical Power Radios

RADIO :: APPLIANCES :: REPAIRING
Mazda Lamps

175 MAPLEWOOD AVENUE

MAPLEWOOD, N. J.

Phone: South Orange 1300-1301

R. WILLIAMS

Groceries, Fruits, Vegetables

163 MAPLEWOOD AVE.

MAPLEWOOD, N. J.

ABBOTT HOGAN, Inc.

Cleaners and Dyers

575 Scotland Road (at Tremont) Orange, N. J.

Telephone: South Orange 5130

PARKER SHOP

GIFTS

INTERIOR DECORATORS

17 SOUTH ORANGE AVENUE

SOUTH ORANGE, N. J.

UNION LAUNDRY COMPANY

Established 1880

Humboldt 1800

Orange 350

122-148 South 15th Street

Newark, N. J.

COMPLIMENTS
OF
CARCHMAN BROTHERS

Delicatessen
1113 SO. ORANGE AVE.
NEWARK, N. J.
Telephone: Essex 4928

Dependable Merchandise
Courteous Service

BELLIN'S DEPT. STORE

61 SOUTH ORANGE AVE.
SOUTH ORANGE, N. J.
Telephone: 3354 South Orange

STUDENTS ADMITTED
OCTOBER and FEBRUARY

Seth Boyden School of Business

A collegiate school of business for men and women, offering a four-year Bachelor of Science degree program and two-year Secretarial Science course.

Pre-Legal School (College Department)

Offers two years of college training to men and women interested in a liberal arts course. Satisfies the requirements for admission to Law School.

DAY AND EVENING DIVISIONS

Students admitted to sessions beginning in February may attain sophomore standing by September.

New Jersey Law School and Affiliated
Schools

40 Rector Street Newark, N. J.
Mitchell 8410



COMPLIMENTS
OF

149



EBEL'S
Yum Yum

Baking As A Fine Art
Ask Our Patrons
They Know



513 VALLEY STREET
MAPLEWOOD, N. J.

Compliments of
SAMUEL SCHECKNER

South Orange 722

YE VILLAGE GIFT SHOPPE

L. B. Thompson, Prop.

Developing and Printing

Circulating Library

69 SOUTH ORANGE AVE.

SOUTH ORANGE, N. J.

LEONA TURNER SCHOOL OF DANCING

Ruskin Building—Rooms 201-202

SCOTLAND ROAD at SOUTH ORANGE AVE.

Telephone: South Orange 83

South Orange, N. J.

MAPLEWOOD AUTO & MACHINE CO.

B. J. Lebret, President

OAKLAND ROAD AND DUNNELL ROAD

Next to Fire Headquarters

MAPLEWOOD, N. J.

Telephone: South Orange 602

GUS F. BISCHOFF

Choice Meats

VALLEY STREET CORNER JEFFERSON AVENUE

Phone: South Orange 2687

Compliments
of
H. W. HUFF

SAMUEL H. ROSS, Inc.
Good Marketing
Quality Meats & Groceries

177 MAPLEWOOD AVE.
MAPLEWOOD, N. J.

COMPLIMENTS
of

229

DIEGES & CLUST

15 JOHN ST.

NEW YORK



SPECIALTY GOLD AND SILVERSMITHS



MANUFACTURERS
of the
STANDARD RING
of
COLUMBIA HIGH SCHOOL



Medals :: Trophies :: Cups
for every branch of sport

DIAMONDS WATCHES JEWELRY SILVERWARE CLOCKS BRONZES

Compliments of

E. F. DEANE---KIDDIE SHOP

19 SCOTLAND ROAD

SOUTH ORANGE, N. J.

SOUTH ORANGE 1557

Phones 520-521 South Orange

KASSINGER & CO.

Prime Meats, Vegetables,
Poultry, and Fish

"A Business Built Upon Quality and Honest Service"

J. J. Newman, Pres.

165 MAPLEWOOD AVENUE

MAPLEWOOD, N. J.

FRAENTZEL

Hardware

MANSFIELD & SWEET

INCORPORATED

Real Estate Brokerage

MAPLEWOOD, N. J.

COMMUNITY MOTOR COMPANY

27 VALLEY ST., SOUTH ORANGE, N. J.

HUDSON and ESSEX

SALES and SERVICE

Telephones: South Orange 5001-5002

Phone: Waverly 2750

EMIL A. BERTL

Teacher

Piano, Organ, and Theory of Music

Studio: 271 MEEKER AVE.

NEWARK, N. J.

Phone: 1313 South Orange

The New York Tailoring Co.

J. TEDLOW, Prop.

Cleaning :: Dyeing :: Pressing

Altering, and Remodeling

175 MAPLEWOOD AVENUE

MAPLEWOOD, N. J.

Telephone: South Orange 5077

H. KLEEST

Manufacturer of Fine Confectionery and Ice Cream

Churches, Lodges, Weddings and Parties Supplied at Short Notice

1844 SPRINGFIELD AVENUE

MAPLEWOOD, N. J.

Shop and Residence: Telephone, 611

ARCHIBALD SHIELS

Carpenter and Builder

347 VALLEY STREET

SOUTH ORANGE, N. J.

COLUMBIA BOY TO COLUMBIA GIRL

(at close of English class)

*"The sunbeams kiss the mountains,
The moonbeams kiss the sea;
What does all this kissing mean,
If I should not kiss thee?"*

*Compliments
of*

P. A. S.

FROST MOTOR
CAR CO.

579 SCOTLAND ROAD ORANGE, N. J.

OAKLAND & PONTIAC CARS

First Class Service for All Cars
10,000 Feet Storage Facilities

Phone: Orange 10170

VACATION JOBS

Columbia boys wanted to "rush" summer debutantes. All expenses paid. Apply to Mr. Crehan.

Phone: So. Orange 188

A. RAPAPORT

Interior Decorating

53 So. Orange Ave.

So. Orange, N. J.

"read-taylor" . . . "read-taylor" . . . "read-taylor" . . . "read-taylor" . . . "read-taylor" . . . "read-taylor" . . . "read-taylor"

ENGRAVING

DES
Printing
aving

ENGRAVING

DESIGNING

UNDIVIDED RESPONSIBILITY
Designing

Printing
FINE
Designing

PRINTING

THE
 READ-
 TAYLOR
 & CO.
 Designing
 Engraving
 Printing
 & BALTIMORE

PRINTING

PRINTING

Printing

Quintana Roo

Designing



"read-taylor" . . . "read-taylor" . . . "read-taylor" . . . "read-taylor" . . . "read-taylor" . . . "read-taylor" . . . "read-taylor"

The
CHERRY TREE

Hillaballoo

THE
UNIVERSITY
OF
MICHIGAN

The 1929
EPITOME

The
Macon
1927

THE ALBUM

THE
GOLDEN
1920

THE
VOLUME

THE 1922
SCAFFET
LETTER

THE
CABLE
1920

THE
DOCK
1925

1929

MCKAYKAY

THE
HORACE
MANNIKIN
1928

THE
LOYOLA
1929

• We assume
UNDIVIDED RESPONSIBILITY

and it costs
you no more

THE WAY by which to insure absolute uniformity in your Year Book is to have the designing, engraving, printing and binding supervised under one roof.

• • •

WE ARE THE LARGEST PRODUCERS OF ANNUALS ON

COMPLETE
CONTRACT

BASIS ON THE ENTIRE ATLANTIC COAST

• • •

ILLUSTRATIONS shown hereon are a few of the outstanding annuals on which we assumed "Undivided RESPONSIBILITY"

Our proposal and 164 page book "Engraving Suggestions" will be sent you upon receipt of specifications

Columbia, N. Y. U., Georgetown, Rutgers, Hopkins, Lehigh, Fordham, Barnard, Cooper Union, Goucher, Lawrenceville, U. of Maryland, W. Va. State Normal, George Washington, Horace Mann, Tome, National Law, Handley, Maryland State Normal, Loyola, Notre Dame and City College

• READ -
TAYLOR • - Baltimore

SCHMIDT'S

Social & Commercial Stationery

21 SO. ORANGE AVE.

SO. ORANGE, N. J.

Telephone: South Orange 1656

COMPLIMENTS

OF

202

THE MIRROR OF 1930

*Wishes to thank the
students of Columbia for
their hearty support.*

Telephone: South Orange 6563

Repairing Done While U Wait

S. CORTESE

Now Located At
181 MAPLEWOOD AVENUE

Louis Cracco's Old Stand

Only Shoemaker in town using

F. L. Waterproof Leather

*LOST—My girl. Last seen wandering
with another fellow. Finder please re-
turn her to (I'm too bashful to give my
name, but you all know me from my love-
sick expression).*

P A C K A R D

Ask the Man Who Owns One

YOUR TRANSPORTATION WILL BE
MORE REASONABLE IF IT'S A

P A C K A R D

If not a new one, a good used Packard is better than a
cheaper new car.

PACKARD SOUTH ORANGE CO.

469 VALLEY ST.

Telephone: 2980 S. O. So. Orange, N. J.

