

The Link



June, 1933



THE LINK



To Miss Fine
in loving appreciation
and admiration

T H E L I N K
MISS FINE'S SCHOOL

Vol. XIII	June, 1933	No. 3
-----------	------------	-------

Board of Editors

Senior	Peggy Kerney (Chief Literary Editor) Barbara Manning (Business and Advertising Manager)	
- - - - -		
Intermediate I	Peggy Purves	
Intermediate II	Mary Fisher	
Intermediate III	Lily Buchanan	
Intermediate IV	Anna Eisenhart	
	Josephine Herring (Art Editor)	
Freshman	Alison Stuart	
Sophomore	Julia Constable	
Junior	Isabel Lawton Lorna Stuart	

TABLE OF CONTENTS

	Page
Inner Cover Page	Betty Menzies 1
Dedication	2
Class of 1933	4
Senior Farewell	Peggy Kerney 17
Class Chart	20
Class Prophecy	Betty Menzies 21
"We Are Dainty Little Fairies"	26
<u>Pomander Walk</u>	27
Student Council; <u>Link</u> Board	30
Championship Basketball; Varsity Hockey	31
Last Year's Girls	32

The Link wishes to make special acknowledgment to the following girls:

To Betty Menzies, '33, for her photographic work, her drawings and her rhymes in this number, and for the frontispiece used in all three issues.

To Ingrid Shellabarger, '34, for poetry and prose which have merited first place in the contest for points for the year.



PEGGY AMFY

Every vacation Peggy goes off to New Hampshire, to return with a queer combination accent -- British, New Hampshire, and good old Jersey. We can speak, though, of several other achievements. For years now she has wrung second-hand book-store money from our famished pocket-books. She has proved an able Senior president, and it has been a long time since she has failed to make a high honor group. "Pooch" can't seem to decide on a definite plan for the future. Her poems and themes are 'SMiller's pride and joy, but she may teach mathematics, she may be a nurse on horseback in the Kentucky mountains, or possibly she may go in the Grenfell mission in Labrador. We wonder, after her performances of "Beth" and "Marjolaine" why she has not thought of the stage. However, Smith is to be her resting-place for the next few years, and so -- adios! and may you capture all their honors and degrees!





DARICE ELMER

Darice entered school last fall with a bang. New girls are expected to mope around for a month or so, blush when spoken to, and on the whole act like cowering coyotes. But not so Cluck -- in a short time she knew everyone and everyone knew her. And not only did she know the girls, but, what is more to her credit, she knew the faculty. She knew which ones she could bluff (and did) and which she really had to work for (and did). She was on the varsity hockey squad, and was captain of the Senior Plus basketball team, and she is an enthusiastic tennis player. In contrast to this, she intimates from time to time that she has a not-too-faint fondness for New York, dancing, Guy Lombardo, Greenwich, and a list of equally bourgeois so-forths.





MOLLIE ENGLISH

Mollie is usually very quiet, but when she has an inspiration she does not hesitate to come out with it. Her mind is broad and extremely logical. She takes an absorbed interest in the things about her. One calls to mind the microscope in physiology class, and how Mollie, after we had peered through it stupidly, remarked in a professorial manner, as she inspected the drop of blood, "Yes, these is prob'ly some lymph there too." Then she added in a hushed voice, "I can't figure out which are the red corpuscles!"

Mollie doesn't join in our famous athletic endeavors but spends her time (to advantage we're told) in smearing canvases with irregular blotches of paint. Judging by all her intensive and exclusive dreaming, she should perhaps better learn the domestic arts.





MARY EMMA HOWELL

"Oh, you know, I'm so scared. I'll never pass it, never. I'll probably get the worst mark in the class." Thus bemoaning her fate, Emma emerges from the last test. Then we who got grey hairs worrying with her watch her walk off with one of the highest marks. If it's not marks she's worrying about, it's stray dogs or pathetic-looking horses. She has even drawn a diagram of her Home for the Not-Wantededs, with a special corner set aside for pigs. But Emma has even loftier ideals than this. She plans to wade bravely through calculus at Smith and later impart her mathematical knowledge to little know-nothings. If conscientiousness is any asset, we know she'll be an overwhelming success - and woe be to the little pupils who won't walk a mile to tell her they have taken a minute overtime on their tests.





PEGGY KERNEY

A Lengthy "Moo-oo" from her long-suffering omnibus, and in flies Peg - at one minute to ten. A rush up the stairs to 'SMiller for a conference. A rush down - accompanied by many queer noises, with an "I resent that" thrown in at intervals. Another "Moo-oo", and she's off to lunch, to appear later to rehearse as "Sir Peter". Our Editor-in-Chief seems always to be in some sort of hurry, yet she still manages to collect a few more friends on the way. Her sense of humor and her wit carry on the tradition of her Irish ancestors, but her red (?) hair creates a false impression. For her temper just won't flare in the traditional manner. We've tried to suggest why Peg was chosen ringmaster for our May Day circus, and why we voted her incomparable.





ELISE LUDEKE

"Uh-huh! There ya go again, George!" No, it's not Gracie Allen, though the voice is just as high and silly and would fool George Burns himself, it belongs to Lisie, the great voice changer -- sometimes uncharitably called Webbie, because of certain odd manipulations of her pedal extremities. We do not think Webbie has ever been seen running, yet she has an amazing amount of enthusiasm, mental if not physical, and she possesses one of the most generous and conscientious souls in the class. Like us all, Elise loves to pass a bit of gossip to a ready listener. There are moments when she stops talking and everyone immediately presumes she's in a fog. But no -- she's busy dreaming, sometimes about sailing and sometimes about -- well, other things.





BARBARA MANNING

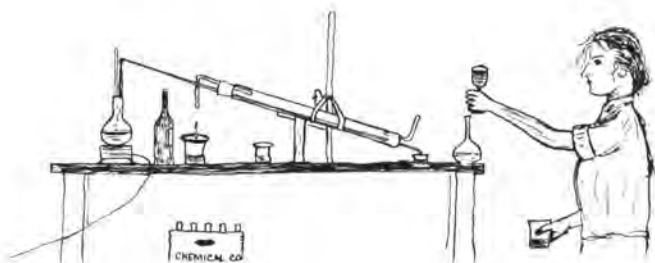
At seven minutes to nine Robert bursts into Study Hall, dropping books here and there, smiling from ear to ear, and rattling off one of Ed Wynne's jokes, sometimes funny and sometimes not so funny. We all listen patiently, for we know that she'll forget it soon. On the hockey or basketball field she is still smiling, and easily recognized by her unique monkey trot -- usually to the wrong goal. But the Student Council has held its meetings this year under Bobby's leadership, which goes to prove that there's something behind that famous grin. For the last three years she has been active on the Link board; this year she has been Advertising and Business Manager. She doesn't know what she will do next year, but we're willing to place a bet that she'll sometimes automatically come to Miss Fine's, for she's been coming here for eleven years.





BETTY MENZIES

Meet the wrestling champ! Just look at those biceps! It's much better to look at her muscles than to be their victim. This champ, however, has much greater abilities. "Pete", hopefully hugging her camera, may be seen on any sunny day, trailing the teachers, and begging them to "look at the birdie". She develops the results herself, and even makes us look at them. Her drawings and poetry adorn about one-half of the Link; and in Physics she excels. Betty's the one who rigged up our distillation plant, and this Scotch person was the one who caught the liquid as it leaked out. Her queer sense of humor and her amazing remarks have gotten her out of more than one tight spot -- and sometimes into! Her agility, in athletics also, is indispensable to the Varsity teams. Mo shoraidh slàn leat's gach àit' an teid thu, Ealasaid.

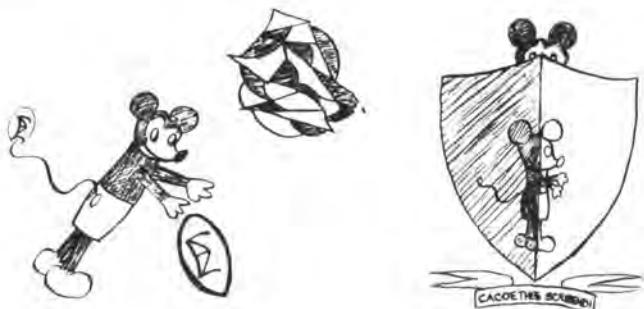




EDYTHE MIERS

We always know her (ex pede Ediam*) by her shoes -- or do we mean the remains of her shoes? Without doubt the reason for their condition is their owner's enthusiasm for athletics. She is on the first team of each seasonal sport and captain of our varsity hockey team. Not only that: she is president of the Athletic Association, baby of her class, class secretary, and heaps of other things. However, do not for a moment imagine that Edythe (she spells it like that) neglects her studies, for she does work enough to make an occasional honor group. *cf. ex pede Herculem.

During her recitations Edie assists her explanations with helpful pencil drawings in the air. She can draw on paper, too! She performs for Miss Stratton, but far more interesting are the decorations on her writing pad -- artistic designs mixed in with Micky Mice, like this:





ELEANOR MOODY

Many's the hot spring day that Eleanor has come popping through the door, completely buried in that great coonskin of hers. Remember the day last winter when it war ten above zero and "Spook" came to school in her little spring coat, staunchly declaring that she was warm as toast? However, Eleanor is by no means as stupid as this would make her seem. She has been preparing for Vassar, which, may we say, is no easy job; and on the side she has done exceptionally well with art, singing and dramatics.

Who could forget the crash behind the scenes in Little Women? "Spook" was the crash, and a little later she was the sweet warble of a robin. In Pomander Walk she was not only heard but very definitely seen. When she brandished her parasol at the "intoxicated person", it looked as though the part had been written for her.

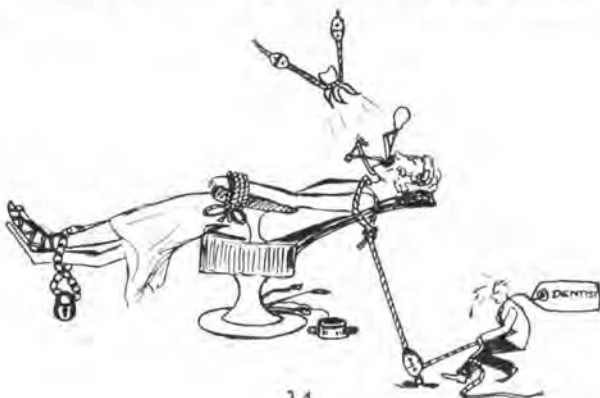




CONSTANCE RIGHTER

Many of us don't know Connie, and we're missing something, for she's a real friend to those she likes. As for those she doesn't,-- they'd be much happier if they kept their distances -- and so would Connie. But Bowler has shown a marked decrease in her moments of wrath since the dentist rudely tore her from her wisdom teeth -- though she insists upon attributing this to self-control, which she has been practicing lately to (as she would say) an "amazing" extent.

Seldom early, seldom late, Connie trudges into Study Hall just at the opportune moment. Under that Saks permanent she has a fairly lively brain, in addition to her talent for the piano, though she has a complex, and doesn't think so. She has been president of the Dramatic Association this year, and it is the opinion of experts that her "Madame" in Pomander Walk was characterized by an exceptional "float" across the stage.





MARY LOUISE SCAMMELL

Tap! tap! the sound of wood against wood echoes throughout Study Hall. "Dude" clumps across the room, disturbing the studious students, and amusing the frivolous. And all to sharpen a pencil! What does she care for mere mortals? In the future she'll tread meekly through hospital corridors, with all consideration for her sleeping patients, but why preserve the peace of Study Hall now? Her pencil needs sharpening, and it's nobody's business but her own (as she'll tell you). "Dude" has an unequalled genius for tardiness. Almost any morning between the hours of nine and nine-thirty, one can see her, wrapped in six or seven coats and hugging the radiator, explaining to Miss Fine.

And, last but not least, who has not heard that voluminous bellow down the hall? Most likely she's only laughing at herself, but the laugh is just as hearty.





JANICE WILSON

Janice is one of the New Brunswick people who have to rise each morning on the dot of seven to catch the train for Princeton. We feel that anyone who commutes day after day is deserving of special rewards. Well, she has a pleasant ride and a healthful uphill walk to school.

Janice is planning a college career, her choice being Wellesley, where along with her academic work she plans to do something with art and dramatics. Perhaps she may combine the two and paint stage scenery. She has had experience in this line as stage manager of Pomander Walk, and we must not forget that she painted some of the best-looking bricks on the five little houses. Those in art class know of her successes there and aver that she produces magnificent sail-boats and department stores.



SENIOR FAREWELL

As it gradually dawns on us that at last a-hunting we must go, some find ourselves shy for the first time. Now we can sympathize with the new-born colt that first tries to stand up; for it is the same sort of trepidation that sends the quivers through us as we face the world. The five most diligent members of the class are headed for college, so they need not worry for another few years. What of the other eight who are about to ride the waves of fortune? There are so many out there ahead of us that big things should not be expected in a hurry.

Whatever the fates have in store, the spirit that the faculty have so patiently instilled will help us wage a good fight and enjoy it as we pass along. The opportunity to receive the best of educations has been ours; how well we have availed ourselves of that opportunity is more or less a secret. We leave with a deep realization that, because of Miss Fine's generous personal interest in each of us, we have a better idea of right living. We earnestly hope that, in the time to come, she will have just cause to feel that her efforts have not been altogether in vain.





CHARACTER CHART (since 1922)

	Name	Nick-name	Suitable Song	Favorite saying	Typical garb	Saving grace	Hobby
1928	Amey	Pooh	I'm Young and Healthy	Let's have a test.	Riding boots	Figure	Gnawing pencils
1932	Elmer	Cluck	On the Sidewalks of New York	What the coo!	Suede jacket	Experience	Bluffing
1931	English	Mollie	Ah Sweet Mystery of Life	How do you spell it?	Feathered hat	Savoir faire	Dreaming
1928	Howell	Emma	What Would You Do?	What a howl!	Berët	Poise	Raising pigs
1932 (March)	Kerney	Topper	Crazy People	O you Ghoul!	Polo coat	Limousine	Punning
1930	Ludeke	Webbie	I Should Have Known Better	Hey, well listen-	Safety pin	Coffee cake	Gracie Allenizing
1922	Manning	Robert	Three on a Match	I'm insulted!	Bandana	Tennis court	Grimacing
1922	Menzies	Pete	I'll Get By	Ja wohl!	Shirt (perhaps tie)	Driving ability	Teasing
1930	Miers	Edie	All American Girl	Lookee-	Gray and black shoes	Coiffure	Chattering (idle)
1930	Moody	Spook	Tip-Toe thru the Tulips	What savages!	Coonskin	Walk	Squealing (voice)
1921 (off and on)	Righter	Bowler	You're Blasé	Don't be ridiculous	Wright uniform	Family residence	Dieting
1929	Scammell	Dude	Turn on the Heat	That galls me.	Silk dress, heavy coat	Punctuality	Clumping
1929	Wilson	Janice	I've Been Working on the Railroad	How coy!	Blue sandals	Soothing voice	Setting her hair

CLASS PROPHECY 1933



MISS AMEY OFF TO
WE PROPHECY BECAUSE
FOR QUIZZES AND
WON'T THE OTHER

SMITH WILL GO
WE KNOW!
FOR TESTS SHE'LL CLAMOUR
STUDENTS DAMOUR!



AWAY FAR DOWN IN NEW YORK'S LOWEST SLUMS
ELISE WILL GIVE COFFEE TO UNEMPLOYED BUMS
SHE'LL TEACH THEM TO LIVE AS ALL GENTLEMEN SHOULD
AND, THOUGH BUMS WILL BE BUMS, WE HOPE SHE'LL MAKE GOOD.



WHEN DONE WITH MATH WE'LL SEE SHE GETS
HER HOME FOR DOGS AND OTHER PETS;
THOUGH BONZO BITES HER WITH A GROWL
NEVER WILL MARY EMMA HOWELL!

BARGAIN! YOUR APPENDIX OUT
WITH THINNING TREATMENT FOR THE STOUT.

ALL THIS FOR BUT NOMINAL FEE

By DR. SCAMMELL (CHEERS) M.D.



MOLLIE, WE FEEL, IS EXACTLY CUT OUT
FOR A CHARTERED ACCOUNTANT, OF THAT THERE'S NO DOUBT.
PICTURE HER ADDING THE FIRM'S LITTLE SUMS
WITH OCCASIONAL "AHS" AND PERPETUAL "UMS".

'STAND ASIDE
AND SEE
DIDST OVERHEAR
YOUR GRANDE



INTOXICATED PERSIN !
POMANDER WALK REHERSIN'
HER MANAGER TELLIN' 'ER,
MANIÈRE IS JUST RIGHT, ELEANOR!



BOBBY WOULD MAKE A PERFECTLY SWELL
HOSTESS IN SOME ÉLITE HOTEL.

WITH AN EYE ON THE CASH AND AN EYE ON THE GUEST
WE'LL LEAVE IT TO YOU TO IMAGINE THE REST !



WITH WINGS TO REST UPON THE AIR
(NOT THE KIND THAT ANGELS WEAR)
DARICE WILL GLIDE BY DAY THEN, LATER,
OUTDANCE THE GIRLS (THERE'RE NONE) THAT HATE HER.



IN THE CIRCUS OUR EDE'LD BE PAID FOR HER CHATTER ;
 IF THE MONKEYS WERE SICK IT WOULDN'T MUCH MATTER :
 GREAT CROWDS WOULD SOON FLOCK TO THE NEWEST MONKEE,
 AND EXCLAIM, AS THEY STARED, "O G C E D !"



CONDUCTOR ON NEW BRUNSWICK'S TRAINS,
 JANICE WILL RISE UNTIL SHE GAINS
 CONTROL OF PENNSY'S FAMED R.R.
 WHICH NEVIN'S BUS OUTPACES FAR .



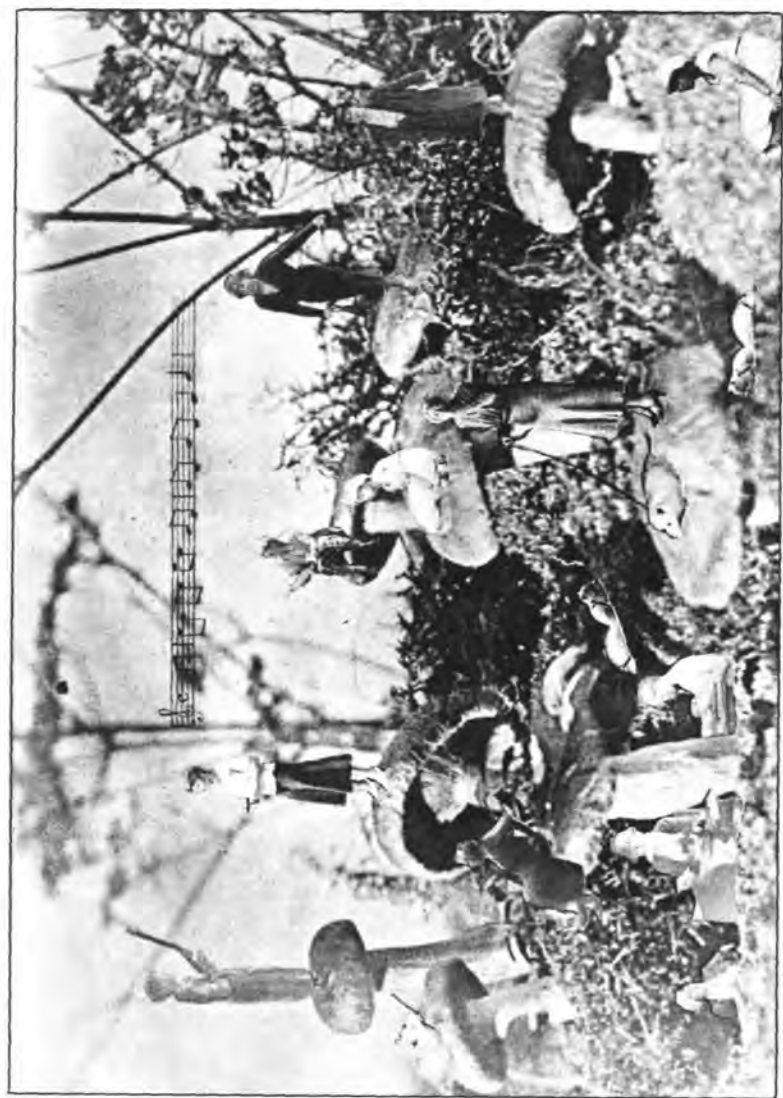
CONNIE WILL LIVE TO AT LEAST NINETY-FOUR
 HAVING HAD EVERY AILMENT THAT'S DOWN IN THE BOOKS
 BUT WHEN SHE IS GONE WON'T THE DOCTORS BE SORE
 AND THINK THE BROTH RUINED BY TOO MANY COOKS .

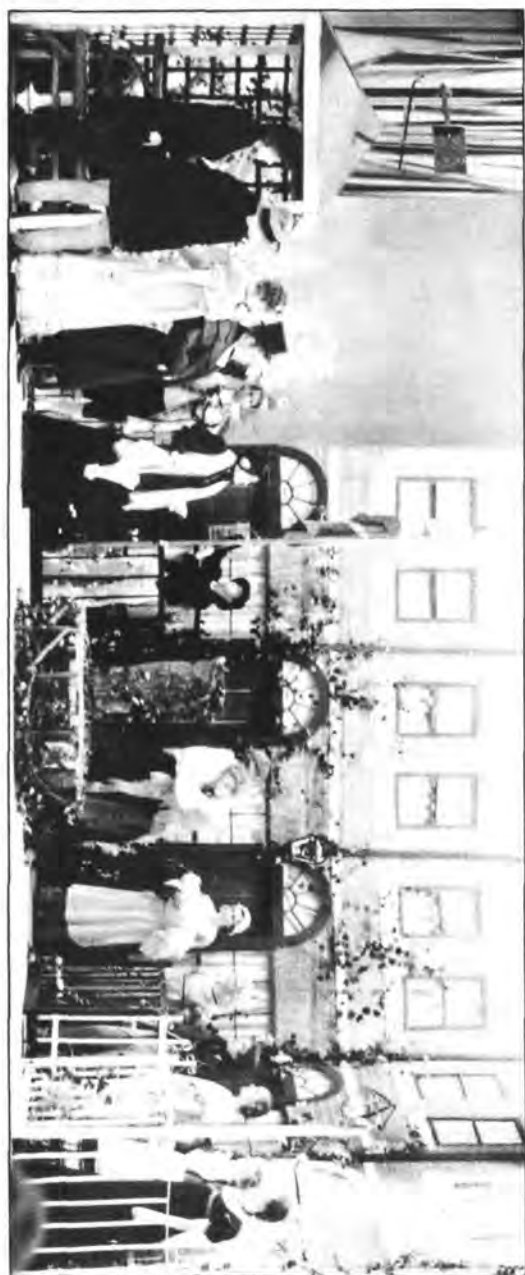


REPORTER SHE WILL LIKELY BE
TO COVER HIGH SOCIETY
AND PEG WILL MAKE HER MILLIONS YET
UPON SOME IRISH SWEEP-STAKE BET !



BETTY IS THE ANGEL CHILD
THE TEACHERS PRIDE, SMALL, CLINGING, MILD (?)
THROUGH LIFE SHE'LL PARROT AND CONFORM (?)
ROSE, PEARL ? NO, THISTLE, CAIRNGORM !!











STUDENT COUNCIL



BOARD OF EDITORS



CHAMPIONSHIP BASKETBALL TEAM — JUNIOR



Varsity HOCKEY TEAM

WHAT WE KNOW ABOUT LAST YEAR'S GIRLS

Carolyn Morse went to Smith.

Cissy Cowenhoven is at Bryn Mawr.

Anne Holt entered Sarah Lawrence.

Frannie Pardoe went to Wilson College.

Gertrude Allen went to Bradford Junior College.

Jane Wolff is studying at New College, Columbia.

Frances Clark favored Converse College, in South Carolina.

Jane Smith is on the Bishop's College, Quebec, magazine board.

Mary Davis has been on the Freshman debating team at Vassar. (Wouldn't you expect Gracie to debate?)

Margaret Russell's was the second highest average in the midyear examinations of the Freshman class at Smith.

Fourmaster, by Mary Constable, ex-'32, was broadcasted in a program of Radcliffe undergraduate poetry over WOR on May 11.

Jane Mitchell, class of '31 and back last year as assistant to Miss Fine, has been elected president of next year's Student Council at Sarah Lawrence.

Pat Herring has at last been able to give as much time as she wanted to horses. She gave long hours to help us, too, painting much-admired scenery for Pomander Walk.

Helen Watkin's designs were chosen for the stage sets of the play of the year, R. U. R., at Bennington. This meant that she also had charge of carrying them out and erecting them.

Janet Wicks, '31, P.G. '32, came to school at Easter time and gave us an enthusiastic talk about her experiences at Mount Holyoke. Both Janet Wicks and Edith Reed have sketches in the April Lion, the Mount Holyoke Freshman magazine, and Edith (class of '31 but in her first year at college) is one of its board of editors.

All this makes a rather stupendous record to be lived up to!

WITH COMPLIMENTS

of

The First National Bank

PRINCETON

NEW JERSEY



THE PRINCETON INN

PRINCETON, N. J.

*Solicits the Patronage of the Parents
and Friends of the Students
of Miss Fine's School*

{ The Inn is delightfully situated facing the
Graduate College and overlooking the
Springdale Golf Course. Golf privileges
are extended to guests of the Inn. }

J. HOWARD SLOCUM, *Manager*

WALKER-GORDON MILK

Is used by those who appreciate

a Clean and Safe Milk

SAFEGUARDED BY SCIENTIFIC METHODS
OF PRODUCTION AND HANDLING

DELIVERIES MADE DAILY IN PRINCETON

You are invited to visit the producing plant at
Plainsboro, two and one-half miles from Princeton



WALKER-GORDON LABORATORY CO.

TELEPHONE, PLAINSBORO 532

PLAINSBORO, N. J.

H. M. HINKSON

74 NASSAU STREET

School Supplies



Fountain Pens

Gold and Silver Pencils



Start the New Year Right

With a Savings Account

PRINCETON BANK & TRUST COMPANY

Chartered 1834

The
Garden Theatre

SHOWING THE LATEST TALKING
AND SOUND PICTURES
OF MERIT



"EVERYBODY'S GOING TO THE GARDEN"

*Gifts and Many Things
You Cannot Buy Elsewhere*

We are proud to say that there are many things—things typical of Princeton — etchings, books, jewelry, stationery, music—which you cannot buy anywhere except at one of our two establishments. A book of Princeton etchings, or one of the delightful histories of the College, or a tiepin with the Princeton seal cleverly mounted on it—any of these will make unusual and inexpensive gifts.



The Princeton University Store

AND

The Music Shop

PRINCETON, N. J.

Jack Rose Shoppe

HATS OF ORIGINALITY AND DISTINCTION

Designed and Copied to Suit the
Individual Taste

For All Occasions

Smartly Different . . . Conservatively Priced



52 WEST STATE STREET

TRENTON, N. J.

"EVERYONE HAS USE FOR MUSIC"

Come to

The Music Shop

for Your

Musical Needs

**Victor Records—R C A Victor
Radio and Automatic Radio Phonograph Combinations,
Equipped with the NEW LONG PLAYING
Device for the NEW VICTOR RECORDS.**



THE MUSIC SHOP

68 NASSAU STREET

Phone 80

PRINCETON, N. J.

ARCADE THEATRE

LYONS-McMULLEN CO.

Chevrolet Sales and Service

TELEPHONE 430

100 NASSAU STREET

Compliments of

MARTHA'S KITCHEN

4 MERCER STREET

PRINCETON, NEW JERSEY

Walter B. Howe, Inc.

REAL ESTATE AND INSURANCE



6 NASSAU STREET

TELEPHONE 95

PRINCETON, N. J

JOHN P. WILCOX

Pharmacist

20 Nassau Street

PRESCRIPTION SPECIALIST

University Laundry Company

Our Telephone Number

79

28-30 MOORE STREET

PRINCETON

Insure in a Home Company

**The
Standard Fire Insurance Company
of New Jersey**

TRENTON

VIEDT'S CHOCOLATE SHOPPE

110 NASSAU STREET

has created a standard of excellence that challenges every comparison through its policy of serving only the finest, maintaining the simple axiom of superior quality at its immaculate shoppe at prices that are fair, just, and reasonable.

It excels in

LUNCHEON

SODA

CONFECTIONS

MORRIS MAPLE

*Artist Supplies
Paints, Stains, Enamels
Wallpapers---Draperies*

FINISHED OR UNFINISHED
FURNITURE

200 NASSAU STREET



154 NASSAU STREET

Tel. 1643

FLOWERS

That Satisfy

Use Our Telegraph Service

Phone
378

All Work by
appointment

Christine's

We Specialize in the new
Scientific Doctrovac Facial
System and Nestle's Circu-
line Permanent Waving

MARCEL WAVING
SHAMPOO FINGER WAVING
SCALP TREATMENTS
MANICURING, ETC.

G. R. MURRAY, INC.

Real Estate
and
Insurance



60 NASSAU STREET
PRINCETON, N. J.

Telephone 15 and 1737

PHONE: 79

VOGEL BROS.

MEAT
and
PROVISIONS



104 NASSAU STREET

HULIT & HARRIS

Shoes and Hosiery

SHOE DYEING



134 NASSAU STREET
PRINCETON, N. J.

Phone 1753-W

Quality and Service

Heereman's

The Princeton Flower
Shop

144 NASSAU STREET

Anything in Flowers

Member Florists' Telegraph
Delivery Association

THE DRESS SHOP

48 NASSAU STREET

*Evening Gowns
Sports Wear
Imported Lingerie*

MRS. GEORGE MURRAY

Elsie Gallavan's

For

Gowns of Individuality



113 WEST STATE STREET
TRENTON, NEW JERSEY

The Pastry Basket

130 NASSAU STREET

*"Dainty Foods for All
Occasions"*

FARR HARDWARE

Princeton, N. J.



MARGARET McNALLY

Harper Method Scalp
Treatment

MARCELLING MANICURING
FACIAL MASSAGE



First National Bank Building
Entrance Witherspoon St.

Phones: Office 431 Res. 547

RENWICK'S



HOME MADE ICE CREAM
EXCELLENT FOOD



*Exclusive Agency for
Louis Sherry Chocolates*

F. A. BAMMAN, Inc.

Wholesale and Retail Grocers

DISTRIBUTORS OF CANADA DRY, WHITE ROCK, C & C AND
CLIQUE CLUB GINGER ALES AND MINERAL WATERS

*Anything and everything that constitutes an
up-to-date grocery*

PHONE EXCHANGE, 1282

Phone: 149

SOUTH'S GARAGE Cadillac—LaSalle

Sales and Service

Garage Machine Shop
Auto Supplies



2-4 NASSAU STREET

