

# Clark Patriot

VOL. 12 NO. 14

20 CENTS

## Regional school board cited by state agency for T&E implementation



HEAVY SCHEDULE. Clark County Regional School Board members met in a meeting room at the Clark County Courthouse, Tuesday, March 23, to discuss the implementation of the T&E program. The board is the first in the state to implement the program. The board is the first in the state to implement the program.

## Park drug raid nets three Clark residents

Three Clark residents were among 22 who were arrested in a drug raid in the Washington Branch, in what is known as the Washington Branch, in what is known as the Washington Branch.

Three Clark residents were among 22 who were arrested in a drug raid in the Washington Branch, in what is known as the Washington Branch, in what is known as the Washington Branch.

Three Clark residents were among 22 who were arrested in a drug raid in the Washington Branch, in what is known as the Washington Branch, in what is known as the Washington Branch.

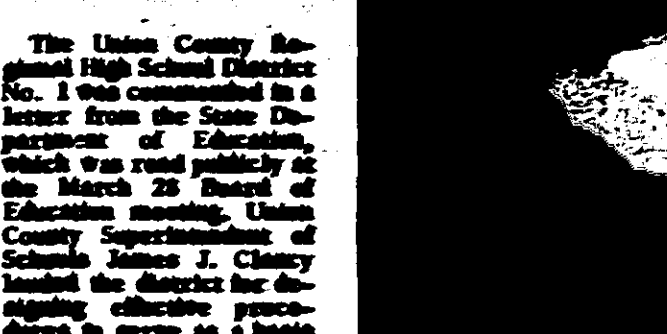
SEE OBITUARIES ON PAGE 12



John I. Blair

## RAILROAD KING OF THE WEST

JERSEY RAILROAD KING. The multi-millionaire responsible for much of the development of western New Jersey as a railroad hub was John I. Blair, who died in 1977.



PLANNING THE STRATEGY. Clark school officials discussed the strategy school system's program for gifted children at a March 21 workshop in the Clark County Courthouse. The workshop was held in the Clark County Courthouse.

## Instructors shown how to teach gifted pupils

Teachers and administrators of the Clark school system attended a workshop on gifted child education at the Clark County Courthouse, Tuesday, March 21.

Teachers and administrators of the Clark school system attended a workshop on gifted child education at the Clark County Courthouse, Tuesday, March 21.

## 'Western railroad king' started multi-million fortune in Jersey

He owned more than two million acres of western land, traveled more than 40,000 miles a year, and built a railroad in his lifetime. John I. Blair, a multi-millionaire, started his fortune in Jersey.

He owned more than two million acres of western land, traveled more than 40,000 miles a year, and built a railroad in his lifetime. John I. Blair, a multi-millionaire, started his fortune in Jersey.



Blair built and owned the locomotive. The locomotive was built and owned by John I. Blair.

Blair built and owned the locomotive. The locomotive was built and owned by John I. Blair.

Blair built and owned the locomotive. The locomotive was built and owned by John I. Blair.

Blair built and owned the locomotive. The locomotive was built and owned by John I. Blair.

Blair built and owned the locomotive. The locomotive was built and owned by John I. Blair.

Blair built and owned the locomotive. The locomotive was built and owned by John I. Blair.

Blair built and owned the locomotive. The locomotive was built and owned by John I. Blair.

Blair built and owned the locomotive. The locomotive was built and owned by John I. Blair.

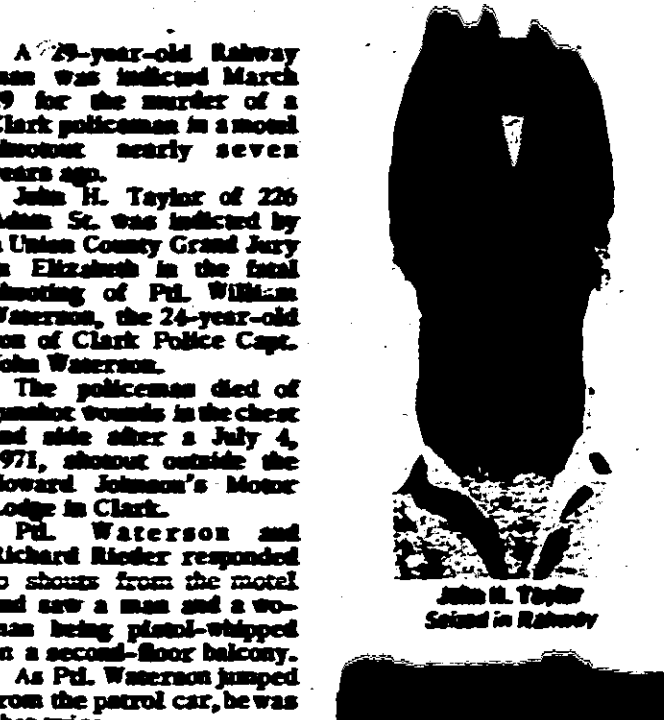
Blair built and owned the locomotive. The locomotive was built and owned by John I. Blair.

Blair built and owned the locomotive. The locomotive was built and owned by John I. Blair.

Blair built and owned the locomotive. The locomotive was built and owned by John I. Blair.

Blair built and owned the locomotive. The locomotive was built and owned by John I. Blair.

## Grand Jury indicts Taylor in slaying of Clark policeman



John H. Taylor, 22, was indicted by the Grand Jury for the slaying of a Clark policeman. The slaying occurred on Tuesday, March 21.

John H. Taylor, 22, was indicted by the Grand Jury for the slaying of a Clark policeman. The slaying occurred on Tuesday, March 21.

## TV Bingo rings bell with hospital patients

Patients at the hospital are now able to play bingo on television. The program is called TV Bingo and is a weekly program.

Patients at the hospital are now able to play bingo on television. The program is called TV Bingo and is a weekly program.



WINNING NUMBER. Junior League volunteers are responsible for the TV Bingo program. The program is called TV Bingo and is a weekly program.

WINNING NUMBER. Junior League volunteers are responsible for the TV Bingo program. The program is called TV Bingo and is a weekly program.

WINNING NUMBER. Junior League volunteers are responsible for the TV Bingo program. The program is called TV Bingo and is a weekly program.

WINNING NUMBER. Junior League volunteers are responsible for the TV Bingo program. The program is called TV Bingo and is a weekly program.

WINNING NUMBER. Junior League volunteers are responsible for the TV Bingo program. The program is called TV Bingo and is a weekly program.

WINNING NUMBER. Junior League volunteers are responsible for the TV Bingo program. The program is called TV Bingo and is a weekly program.

WINNING NUMBER. Junior League volunteers are responsible for the TV Bingo program. The program is called TV Bingo and is a weekly program.

WINNING NUMBER. Junior League volunteers are responsible for the TV Bingo program. The program is called TV Bingo and is a weekly program.

WINNING NUMBER. Junior League volunteers are responsible for the TV Bingo program. The program is called TV Bingo and is a weekly program.

WINNING NUMBER. Junior League volunteers are responsible for the TV Bingo program. The program is called TV Bingo and is a weekly program.

WINNING NUMBER. Junior League volunteers are responsible for the TV Bingo program. The program is called TV Bingo and is a weekly program.

WINNING NUMBER. Junior League volunteers are responsible for the TV Bingo program. The program is called TV Bingo and is a weekly program.

Scott Plains Board of Adjustment to vote on townhouses, see page 3



## Plains Board of Adjustment to vote on 403 townhouse-condominiums tonight

**lag** in South Plains, citing costly studies and recommendation from the township planning consultant in 1973 the area be zoned for garden apartments.

High Valley millinery, just east of Lake Ave., bounded by the Robinson's Branch village and Riverview villages and to the west of Lake Ave. is Riverview.

A Case Study will be conducted by members of the Student Council. Refreshments will be available, and admission is free.

Chairwoman of this event is Mrs. Bernard (Carole) Hayden.

Harvey S. Moskowitz, a community and planning consultant engaged by Mr. Moskowitz, says that optimum industrial development, they claim.

Vehicular access is critical to the success of traffic, and generation of road traffic would overload existing arteries, with minimal impact on surrounding residential uses, they argue.

"The site is located in a highly industrial area," he says. "It was located near major highways, and the concentration of industrial traffic, and noise pollution would increase water runoff and pollution, air quality would be greatly affected."

The city council has been asked to consider the need for additional multi-family housing.

The April meeting of the Rebecca Cantor Chapter of National Audubon Society will feature a presentation on crocheted items, stained glass, copper, yarn, Lacina, and other crafts. The show the need for additional multi-family housing.

The April meeting of the Rebecca Cantor Chapter of National Audubon Society will feature a presentation on crocheted items, stained glass, copper, yarn, Lacina, and other crafts. The show the need for additional multi-family housing.

Also to add to the enjoyment of the day, a raffle is being held with chances being sold prior to and at the event.

The Flea Market will conclude with the drawing of the three winning tickets at 4 p.m. Prizes will include a weekend for two

This information is available immediately via any emergency personnel via a collect telephone call. If you have information concerning this case, please call the FBI at (202) 452-4000.

Henry Hill / Cranford / East Brunswick / East Orange / Easttown / Elmhurst

doctor, shocked by this near tragedy, was determined to prevent it from ever happening again. He designed a slender silver

**ds!!**

like Linda's or necktie emblems, with visual messages could save countless lives, the doctor investigated the feasibility of such a program.

At **Babney Hospital**, serious problems could find themselves in situations where they were not.

**Alert West**,<sup>®</sup> members of the company with hidden mental problems and were encouraged to join the international organization.

People have all kinds of reasons for their savings, that is why **New Jersey's Billion Dollar Family Financial Center** offers so many different savings plans in a variety of Savings Certificates and Savings Accounts with features to suit every individual need. Whatever your reason for saving, our customer service counselor

© 1988 Billion Dollar Family Financial Center, Inc. All rights reserved.

is and assist you in selecting the best family.

## S ACCOUNTS

Crimo reported to The Railway News—Record by representatives of the railway Police Dept. follow:

A break, occurred at Elmore county last year on 1942 during St. Alban's celebration, valued at \$604, were taken.

Alert is maintained solely by its constant enrollment of new members, led by grants and contributions from individuals, corporations,

contact lenses, many of whom cannot wear them for extended periods. Other

45

Police arrested a suspect and charged him with carrying a gasoline from a vehicle belonging to a resident of Elizabeth, while the car was parked at 202 St. Geo. Ave., Raritan, N.J.

ts are available starting with a 6 to 10 year

**FIX-UP LOANS**

The City of Railway Housing Rehabilitation Program

at 5 1/4% and a one-year Certificate at 6 1/4%. All Certificate Accounts require a \$1,000 minimum balance and interest is compounded semiannually and credited on June 30 and December 31. Substantial interest penalty is required for early withdrawal.

Center  
Shopping Plaza

☐ The Grand Diner, 1930 U.S. Rts. No. 1, reported a break and entry to the building. Food products, valued at \$323.25, were financed with these federal loans?

☒ Are you aware that you can do your own repairs and still qualify for a loan?

☒ Are you aware there are other housing assistance programs available?


67 Offices in Thirteen New Jersey Counties.

Port Pleasant / Politzung / Portland / Politzburg / Port Amby / Port Pleasant

	1	2	3	4	5	6
1						
2						
3						
4						
5						
6						
7						
8						
9						
10						
11						
12						
13						
14						
15						
16						
17						
18						
19						
20						
21						
22						
23						
24						
25						
26						
27						
28						
29						
30						
31						
32						
33						
34						
35						
36						
37						
38						
39						
40						
41						
42						
43						
44						
45						
46						
47						
48						
49						
50						
51						
52						
53						
54						
55						
56						
57						
58						
59						
60						
61						
62						
63						
64						
65						
66						
67						
68						
69						
70						
71						
72						
73						
74						
75						
76						
77						
78						
79						
80						
81						
82						
83						
84						
85						
86						
87						
88						
89						
90						

1. *Journal of the American Medical Association*, 1997; 277: 1033-1038.




  
**McGraw-Hill**  
**FINANCIAL**  
**MARKETS**  
**ANALYST**  
**MAIL**

[illegible]















