

The National Democrat

Devoted to Local and General News, Policies, Literature, Humor &c.

DATE	PRICE	SALES	REVENUE	EXPENSES	PROFIT
1914	100	1000	10000	5000	5000
1915	120	1200	12000	6000	6000
1916	150	1500	15000	7500	7500
1917	180	1800	18000	9000	9000
1918	200	2000	20000	10000	10000
1919	250	2500	25000	12500	12500
1920	300	3000	30000	15000	15000
1921	350	3500	35000	17500	17500
1922	400	4000	40000	20000	20000
1923	450	4500	45000	22500	22500
1924	500	5000	50000	25000	25000
1925	550	5500	55000	27500	27500
1926	600	6000	60000	30000	30000
1927	650	6500	65000	32500	32500
1928	700	7000	70000	35000	35000
1929	750	7500	75000	37500	37500
1930	800	8000	80000	40000	40000
1931	850	8500	85000	42500	42500
1932	900	9000	90000	45000	45000
1933	950	9500	95000	47500	47500
1934	1000	10000	100000	50000	50000
1935	1050	10500	105000	52500	52500
1936	1100	11000	110000	55000	55000
1937	1150	11500	115000	57500	57500
1938	1200	12000	120000	60000	60000
1939	1250	12500	125000	62500	62500
1940	1300	13000	130000	65000	65000
1941	1350	13500	135000	67500	67500
1942	1400	14000	140000	70000	70000
1943	1450	14500	145000	72500	72500
1944	1500	15000	150000	75000	75000
1945	1550	15500	155000	77500	77500
1946	1600	16000	160000	80000	80000
1947	1650	16500	165000	82500	82500
1948	1700	17000	170000	85000	85000
1949	1750	17500	175000	87500	87500
1950	1800	18000	180000	90000	90000
1951	1850	18500	185000	92500	92500
1952	1900	19000	190000	95000	95000
1953	1950	19500	195000	97500	97500
1954	2000	20000	200000	100000	100000
1955	2050	20500	205000	102500	102500
1956	2100	21000	210000	105000	105000
1957	2150	21500	215000	107500	107500
1958	2200	22000	220000	110000	110000
1959	2250	22500	225000	112500	112500
1960	2300	23000	230000	115000	115000
1961	2350	23500	235000	117500	117500
1962	2400	24000	240000	120000	120000
1963	2450	24500	245000	122500	122500
1964	2500	25000	250000	125000	125000
1965	2550	25500	255000	127500	127500
1966	2600	26000	260000	130000	130000
1967	2650	26500	265000	132500	132500
1968	2700	27000	270000	135000	135000
1969	2750	27500	275000	137500	137500
1970	2800	28000	280000	140000	140000
1971	2850	28500	285000	142500	142500
1972	2900	29000	290000	145000	145000
1973	2950	29500	295000	147500	147500
1974	3000	30000	300000	150000	150000
1975	3050	30500	305000	152500	152500
1976	3100	31000	310000	155000	155000
1977	3150	31500	315000	157500	157500
1978	3200	32000	320000	160000	160000
1979	3250	32500	325000	162500	162500
1980	3300	33000	330000	165000	165000
1981	3350	33500	335000	167500	167500
1982	3400	34000	340000	170000	170000
1983	3450	34500	345000	172500	172500
1984	3500	35000	350000	175000	175000
1985	3550	35500	355000	177500	177500
1986	3600	36000	360000	180000	180000
1987	3650	36500	365000	182500	182500
1988	3700	37000	370000	185000	185000
1989	3750	37500	375000	187500	187500
1990	3800	38000	380000	190000	190000
1991	3850	38500	385000	192500	192500
1992	3900	39000	390000	195000	195000
1993	3950	39500	395000	197500	197500
1994	4000	40000	400000	200000	200000
1995	4050	40500	405000	202500	202500
1996	4100	41000	410000	205000	205000
1997	4150	41500	415000	207500	207500
1998	4200	42000	420000	210000	210000
1999	4250	42500	425000	212500	212500
2000	4300	43000	430000	215000	215000
2001	4350	43500	435000	217500	217500
2002	4400	44000	440000	220000	220000
2003	4450	44500	445000	222500	222500
2004	4500	45000	450000	225000	225000
2005	4550	45500	455000	227500	227500
2006	4600	46000	460000	230000	230000
2007	4650	46500	465000	232500	232500
2008	4700	47000	470000	235000	235000
2009	4750	47500	475000	237500	237500
2010	4800	48000	480000	240000	240000
2011	4850	48500	485000	242500	242500
2012	4900	49000	490000	245000	245000
2013	4950	49500	495000	247500	247500
2014	5000	50000	500000	250000	250000
2015	5050	50500	505000	252500	252500
2016	5100	51000	510000	255000	255000
2017	5150	51500	515000	257500	257500
2018	5200	52000	520000	260000	260000
2019	5250	52500	525000	262500	262500
2020	5300	53000	530000	265000	265000
2021	5350	53500	535000	267500	267500
2022	5400	54000	540000	270000	270000
2023	5450	54500	545000	272500	272500
2024	5500	55000	550000	275000	275000
2025	5550	55500	555000	277500	277500
2026	5600	56000	560000	280000	280000
2027	5650	56500	565000	282500	282500
2028	5700	57000	570000	285000	285000
2029	5750	57500	575000	287500	287500
2030	5800	58000	580000	290000	290000
2031	5850	58500	585000	292500	292500
2032	5900	59000	590000	295000	295000
2033	5950	59500	595000	297500	297500
2034	6000	60000	600000	300000	300000
2035	6050	60500	605000	302500	302500
2036	6100	61000	610000	305000	305000
2037	6150	61500	615000	307500	307500
2038	6200	62000	620000	310000	310000
2039	6250	62500	625000	312500	312500
2040	6300	63000	630000	315000	315000
2041	6350	63500	635000	317500	317500
2042	6400	64000	640000	320000	320000
2043	6450	64500	645000	322500	322500
2044	6500	65000	650000	325000	325000
2045	6550	65500	655000	327500	327500
2046	6600	66000	660000	330000	330000
2047	6650	66500	665000	332500	332500
2048	6700	67000	670000	335000	335000
2049	6750	67500	675000	337500	337500
2050	6800	68000	680000	340000	340000

COVER
ESTOPE
PRESSING
inc. 3
NE Dollar

FOUNTAIN PENS
Fountain Pens

OIL CLOTHS
Oil Cloths

SERIALS
Serials

HOUSEHOLD
Household

TOILET
Toilet

TRAVEL
Travel

WALKING
Walking

WALKING
Walking

WALKING
Walking

The National Democrat. A Splendid Investment. We Are Counting.
 HARWAY N. J. MARSH...

G. J. FOUR

CENTRAL...

LUMBER! LUMBER!

LUMBER!



ENDOWMENT POLICY

MUTUAL

LIFE

INSURANCE COMPANY

OF NEW JERSEY

U. S. WINSTON, President

... 300,000,000.00 ...

... 1668. The Result

EDGAR & CLARK

WATERS

EMPLOYMENT

HOUSEHOLD

HEAD BRADY

COGNAC

Huckhorn Salve

COGNAC

BEAUTIFUL

BUCKHORN SALVE

AZUPERO

FOR THE LAUNDRY

DURABLE BUILDING

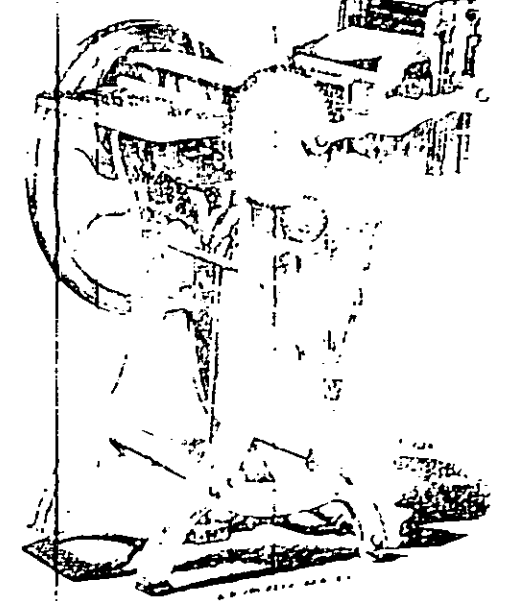
HOUSE & ...

JOB PRINTING

NATIONAL DEMOCRAT

CHEAP

Printing Establishment



ALL KINDS OF PRINTING

Handsome Styles

BEST

Power Presses

PRINTING SPEED

REOPENING

MAINTENANCE

NEW STOCK

CHILD DRESSING

Fancy Colored Work

The National Democrat Office,

RAHWAY, N. J.

LUWIS, HYER

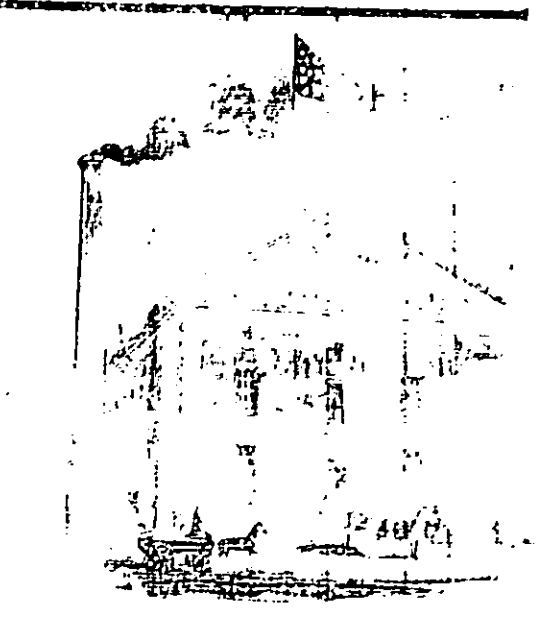
New Jersey makes

SEWING MACHINE

Street

BOOTS & SHOES

Pondrette



The ...
 W. ...
 IMPROVED
 HAIR RESTORER
 HAIR DRESSING
 New York at One Bottle

OLD WHITE
 PRICE ONE DOLLAR

FURNISHING GOODS

FOR SALE OR EXCHANGE