

Awaits GOP Nod Assembly Candidate Ponders Switch

political picture took on a different color the announcement by Councilman-at-large Loman that he was available as a candidate for nomination for Assembly in the April election.

City Clerk Loman for the last time appeared before the policy committee this morning for the decision of the committee that future political

ally reported on the screening committee favorably in Gilson when he was asked Saturday afternoon by the committee, Gilson not seek re-election for a 2-year term as a Freeholder. If rejected by the policy-making committee, Loman would seek a fifth term on Council.

development in the action of the committee, and that a range of plans by Loman, a candidate primary for the seat now held by Loman. The Assembly will seek the County seat instead of

until March 9, filing to make a decision. Loman's attorney with Kentz, Kentz & Red before the screening committee. Summit supporters received a unanimous endorsement from the Committee and he has the support of his colleagues as prominent in the Summit

Backing Committee also meeting attended its endorsement of T. Loman of who is a candidate. The committee is to interview candidates to run with Loman. Nelson also for three

resigned as City Clerk for Council. Loman encountered stiff opposition in both successful de A. Burgher and Bert Dunmore in close elections in the majority of the on Page 15)

to 1,000 young people have attended each. Frank Gifford, versatile half-back of the New York Giants, will head the caravan of sports stars to be brought to New Providence by the Jaycees. Gifford, despite injuries received this past season, has been one of the NFL's outstanding players during the last several years. After a tremendous career at Southern California, he was the number 1 draft choice of the Giant. Since coming to the New York team, he has been named to the Pro Bowl all-star team for six years and was voted the most valuable player in the league in 1956.



Freeholder Race Eyed By Badgley

Former Mayor Robert Badgley of New Providence is considering placing his name before the county Republican screening committee as a candidate for a Freeholder berth, it was learned this week.

Although Badgley has not yet made any formal announcement of his candidacy, he did admit that he is "seriously considering" the move because of the urging of friends. He has not yet asked for a definite appointment with the screening committee.

Summit Republican leaders expressed concern over Badgley's contemplated move because already in the Freeholder race is the hat of Mayor George T. Loman of Berkeley Heights, who let it be known several weeks ago that he is available as a Freeholder candidate. Loman has already appeared before the screening committee and so far that group has permitted his hat to remain. Local party leaders feel that if Loman's Summit Area hat comes off the ring that it may nullify any chance of obtaining Area representation on the Freeholder ticket.

Last week Loman was given unofficial endorsement of the Summit Republican City Committee as a Summit Area candidate. He also is reported to have other strong backing in Summit, and even New Providence, in addition to the support of his hometown GOP organization.

Summit Republicans are fearful that if Badgley is a serious contender the embarrassment of candidates from this Area will leave the screening committee no alternative but to repeat its action of last spring when both former Mayor Samuel E. Jones of New Providence and Edward A. Pizzi of this city vied for a screening committee endorsement for Freeholder. At that time the committee, rather than face a decision between the two candidates, simply by-passed the Area in making up the county Freeholder ticket.

The screening committee is also being asked to give favor. (Continued on Page 15)

YMCA Names Ridgewood Man Youth Director

Howard E. Merrick, Ridgewood, N. J., has been named as the new youth director of the Y.M.C.A. of Summit, N. J.

Merrick is a graduate of the University of Vermont, a former varsity basketball player and has directed youth activities at the Ridgewood Y.M.C.A. during the last six years. He is a veteran of the Korean War and a member of the Methodist Church.

Mr. Merrick will reside here at 4 Webster avenue. Married, Mr. and Mrs. Merrick have three children. Mr. Merrick has been a member of the local Y.M.C.A. staff since September, 1953 and under his direction the youth club activities have multiplied to the extent of 15 Hi-Y and Tri-Hi-Y clubs and eleven Indian Guide groups.

The special directory is being issued in connection with the new all-number calling plan that is being introduced in this area on Sunday, February 19. At that time, these customers will be served from New Jersey Bell's new dial central office on Mountain avenue in New Providence.

The company plans to distribute the directory in Millburn and Summit as well as Berkeley Heights and New Providence. George M. Delaney, manager for New Jersey Bell, said the special directory will contain about 2,500 alphabetical listings of new 464 telephone numbers. He said the regular Suburban Essex directory should be consulted for all other numbers.

FOR AREA DEVELOPMENT—Hubbard A. Knox, Jr., Summit Area Development fund drive chairman, is shown as he accepts from Ralph H. Sayre, Jr., CIBA executive, a check for \$2,000 donated by CIBA during a fund-raising luncheon held Tuesday at the Hotel Suburban. Looking on are Philip N. Trawbridge, Planning Board chairman, and Leo A. O'Grady, general chairman of the Area Development Committee. (Rowe Photo)

Development Fund Gets Early Gifts of \$4,400

Advance contributions to the Summit Area Development Fund totaled \$4,400 as of noon Tuesday when the area-wide drive to raise \$25,000 was officially launched by 30 campaign workers who attended a "kick-off" luncheon at the Hotel Suburban.

The advance checks ranged all the way from \$100 from a small business man to the check for \$2,000 presented to the committee at the luncheon by CIBA. The first contribution from a service club or other civic organization was a check for \$500 from the Rotary Club. W. Rae Crane, treasurer of the Summit Area Development Committee and executive secretary of the Summit Area Chamber of Commerce, said the advance contributions represent 17.6 per cent of the goal.

Enthusiastic statements endorsing the objectives and plans of the Area Development Program came from a number of organizations and community leaders in the last week. Backed by League Leo A. O'Grady, general chairman of the Development Com-

mittee, announced he had received a formal endorsement from the League of Women Voters, one of the community's leading civic action groups. It was in a letter signed by Mrs. Henry C. Dearborn, League president, which said: "The board of directors of the League of Women Voters has voted to endorse the purpose and programs of the Summit Area Development Committee. The purpose to beautify the Summit Area and to develop its facilities—cultural, business and (Continued on Page 15)

Driver Denies Guilt for Local Auto Death
Robert Apgar, 28, of Irvington, entered a plea of innocent before Union County Judge Milton A. Feller last week, on a charge of causing the death of a 13-year local boy on New Year's Eve, 1959, when both were involved in an auto accident here.

United Campaign Names Dr. Barr Drive Chairman

Dr. Frank T. Barr of 70 Oak Ridge avenue, senior engineering associate of Esso Research and Engineering Co. at Linden, has been appointed the 1961-62 United Campaign chairman. It was announced this week by Henry G. Gott, chairman of the Campaign's central committee.

He succeeds Stephen W. Ransome. Dr. Barr was graduated in 1934 from the University of Illinois with a doctorate in chemical engineering. He joined Esso Laboratories of Esso Standard Oil, Baton Rouge in 1935 and shortly afterward transferred to the petroleum development division of Esso Research and Engineering Co. at Linden, where he now holds the post of senior engineering associate.

During World War 2, he did (Continued on Page 7)

Heights Youth Dated Up for Eight Weeks
A Berkeley Heights youth was dated up for the next eight Monday nights by Springfield authorities when he was ordered on Monday of this week to report to the court each Monday for the next two months.

The youth, Warren Mischler, 20, of 74 Pine Grove road, Berkeley Heights was charged with creating a disturbance at a Springfield restaurant on January 22. He was fined \$35 and given the court visit order in addition in hopes that a view of justice in action may change his attitude, the magistrate said.

Mischler and David Norman, 18, of 84 Ashwood avenue, Summit, were convicted of refusing to obey a special officer when he told them to leave the restaurant because they were using bad language. The Summit youth was fined \$30.

School Budget of \$2,451,638 Ups Costs \$237,250

A record high school budget of \$2,451,638 for the 1961-62 year was passed by the Board of Education last night, following presentation to representatives of PTA and civic groups Monday at Wilson school. The proposed expenditure represents a \$237,250 jump over last year's budget of \$2,214,388. Cost per pupil is estimated at \$450.

Public hearing on the budget by the Board of School Estimate will be held Thursday, February 9 at 8 p.m. in City Hall.

The proposed budget calls for \$2,203,387 to be raised by local taxes as compared to \$1,996,888 while \$223,251 would be obtained from state aid, an increase of \$10,149 over the \$213,102 last year.

Of the total amount, \$1,507,300 is earmarked for teachers' salaries as well as for librarians, guidance and psychological services, beside teachers, kindergarten and classroom helpers and substitute teachers. The expenditure represents an increase of \$56,420 over last year, with the largest portion going to teacher salaries, \$38,300.

(Detailed Budget on Page 8) In addition, the budget calls for \$112,675 for salary increases for teachers, principals and supervisors and clerks in school offices. The budget also calls for a \$300 cross-the-board increase for all teachers bringing the minimum to \$4,700.

Increases in teaching costs also include the addition of 4½ new teachers at the elementary level, two for the junior-senior high, and the addition of a full-time speech counselor for the elementary schools, who now operates half-time.

On the elementary level, the Board indicated Monday night two new teachers will be needed for the new fifth grades at Wilson school, one to meet growth at Roosevelt schools in the second grade, one to meet expansion of Jefferson school in the first grade, and one-half to meet growth in the Jefferson kindergarten. Additional teachers, one each, will also be required at Brayton and Washington, but it is expected that the two positions will be offset by staff reductions at Franklin and Lincoln schools.

The Board added that after providing the new staff, class enrollments will increase to bring sizes above the "desired ratio," but that these situations may be alleviated by employing teacher-helpers when and if needed. The Board also commented that employment of helpers would be necessitated primarily because there are no free classrooms to do otherwise.

School Group Sifts Topics For New Study

Study topics and objectives for the next project to be undertaken by the Lay Committee on Education are now being studied in subcommittee, according to initial reports made to Horace F. Kennedy, chairman, and the general membership made during the January meeting.

Working under a June deadline requested by the Board of Education, the group studying staff salaries is checking local school salaries against those of neighboring towns and other similar communities. The report will also deal with the merit system and the percentages of total budgets which towns and cities spend for education.

Initial work by the foreign language subcommittee concerns the collection and analysis of previous reports by Summit teachers and by state and county groups. Objects are to find out what is being done in the elementary schools, and the feasibility of adding language study to the curriculum.

Educational television is being explored by another subcommittee. A survey of material now being shown in Summit classrooms will be incorporated into a study of what is currently available in the area and what future developments are expected.

History Study Underway
The American history subcommittee is evaluating the effectiveness of the state law which requires two years of American history for public school students. The report, or on, will be based on the assumption that if it were possible to compress the two year course into one year, the second would be free for teaching world-history or other subjects.

New methods in mathematics are being explored by another group, which started by meeting with Summit math teachers to learn what is now being (Continued on Page 15)

Summit High G.O. Ready for Call Me Madam
The Summit High's G.O. show, "Call Me Madam" which will be presented on Friday and Saturday, February 17 and 18, is now in its third week of rehearsals.

Two different choruses, one for the scenes in Washington, D. C., and another for the mythical kingdom of Lichtenburg, are among the features of this year's annual production. Tryouts for members were directed by Daniel Kautzman.

School Group Sifts Topics For New Study

Study topics and objectives for the next project to be undertaken by the Lay Committee on Education are now being studied in subcommittee, according to initial reports made to Horace F. Kennedy, chairman, and the general membership made during the January meeting.

Working under a June deadline requested by the Board of Education, the group studying staff salaries is checking local school salaries against those of neighboring towns and other similar communities. The report will also deal with the merit system and the percentages of total budgets which towns and cities spend for education.

Initial work by the foreign language subcommittee concerns the collection and analysis of previous reports by Summit teachers and by state and county groups. Objects are to find out what is being done in the elementary schools, and the feasibility of adding language study to the curriculum.

Educational television is being explored by another subcommittee. A survey of material now being shown in Summit classrooms will be incorporated into a study of what is currently available in the area and what future developments are expected.

History Study Underway
The American history subcommittee is evaluating the effectiveness of the state law which requires two years of American history for public school students. The report, or on, will be based on the assumption that if it were possible to compress the two year course into one year, the second would be free for teaching world-history or other subjects.

New methods in mathematics are being explored by another group, which started by meeting with Summit math teachers to learn what is now being (Continued on Page 15)

Summit High G.O. Ready for Call Me Madam
The Summit High's G.O. show, "Call Me Madam" which will be presented on Friday and Saturday, February 17 and 18, is now in its third week of rehearsals.

4-Point Tax Hike Seen in County Budget

An estimated 4-point county tax increase is predicted by the \$13,913,220 budget for 1961 introduced last week by the Board of Freeholders. A public hearing on the budget is set for 11 a.m. on February 16.

Of the total budget, \$11,799,387 will be raised by taxation, a \$1,895,323 increase over last year.

Republican Freeholder Harry V. Osborne, chairman of the finance department, said that salary increases for county employees and the cost of increases for operation of the county jail, the John E. Rummels Hospital for Chest Diseases, and county welfare institutions were the main causes for the budget jump.

Osborne added, however, that certain fiscal policies of the Democratic-controlled board last year had placed a slight burden on this year's Republican budget makers.

He said the Democrats had dipped into the county surplus to meet certain expenses, and had also used \$355,000 from the motor vehicle fines fund in 1960. Osborne said the Republicans (Continued on Page 15)

Urges Public Support For Development Plan
Owners of private homes, business property owners, and other persons not contacted in the current Area Development Program (fund-raising campaign) were urged this week to mail their contributions to "Summit Area Development," 57 Union Place, Summit. Hubbard A. Knox, Jr., chairman of the area community investment committee, in urging this action, pointed out everyone in the area has a vital stake in this community mobilization program.

James Hermann, treasurer of the Committee For A New Summit Library, will discuss the recently announced schematic plans for a new library and will explain the "Feasibility Report" submitted to the Library board of trustees, the Council and the Mayor by James E. Bryan, library consultant of Newark. Mr. Hermann was a member of the 1957-58 Mayor's Committee which studied Summit's library facilities and at that time he made a special study of library buildings.

Hobby Show to Feature Bell Lab Solar Battery

A solar battery and voice mirror will be exhibited by the Bell Telephone Laboratories at the Boy Scout Hobby show at Central Presbyterian Church on February 11. Accompanying the display will be explanatory literature and charts.

The Edison National Monument of West Orange will offer a collection of mementoes from Thomas Edison's life.

Judges for the show have been announced, and include the following: Arthur S. De Brito, art teacher, Summit High School; David E. McNeely, a native of Bloomfield, who has taught in the city's schools for 25 years; and James B. Wieve



William M. Baker

Summit Trust Names Baker Vice President

Harold T. Graves, Jr., president of the Summit Trust Co., has announced the promotion of William M. Baker of 20 Tall Oaks drive from senior trust officer to vice president and trust officer.

Mr. Baker is a graduate of the American Institute of Banking and the Graduate School of Banking. He is past president of the Elizabeth chapter of the American Institute of Banking and of the Middlesex-Somerset-Union County Bankers Association.

He has served as assistant to faculty of Graduate School of Bank; as a member of the committee on fiduciary accounting for trust division of American Bankers Association; and as secretary to the trust committee of the New Jersey Bankers Association.

He is a member of the Rotary Club and past chairman of the board of trustees of Christ Church.

Rumson Rabbi To Speak at Jewish Center

Rabbi Gilbert S. Rosenthal, of Congregation B'nai Israel, Rumson, will deliver the third lecture of this season's series on "Judaism—Philosophy and Practice," at the Jewish Community Center on Tuesday at 8:30 p.m. His topic will be: "The Bible and the Rabbinic."

A graduate of Columbia University, Dr. Rosenthal was ordained as rabbi by the Jewish Theological Seminary of America, which also conferred upon him the degree of Doctor of Hebrew Literature. He has occupied the pulpit of Congregation B'nai Israel of Rumson since 1957. He is a lecturer in Bible at the Women's Institute of the Jewish Theological Seminary of America.

Dr. Rosenthal has contributed articles and reviews to various journals of Jewish learning and philosophy, and is the author of the book, "The Eternal Life," to be soon published.

The lecture, which is open to the public, will be followed by a question and answer period and by a social hour.

City to Observe Day of Prayer On February 17

The 75th anniversary of the annual World Day of Prayer will be observed here on Friday, February 17 at Calvary Episcopal Church from 10 a.m. to 11 a.m.

This year's theme is "Forward Through the Ages."

Local chairman for the day is Mrs. H. W. Evans of Calvary. The program will follow the service as prepared by Miss Sue Weddell, a former secretary of the National Council of Churches.

The first World Day of Prayer was held in 1887 and has now grown into a huge interdenominational prayer circle in 145 countries. The day's offering helps provide schools, colleges, day care centers, mobile clinics, scholarships hospitals, doctors, nurses, teachers, vacation church schools and spiritual leadership both in this country and abroad. This year Alaska and Africa have been added to the number of areas participating in the program.

Child care will be provided during the service at Calvary.

Art Center Classes at All-Time High

Summit Art Center class registrations are at a new all-time high, with over 180 students participating in a diverse program of 15 classes, it was announced this week.

The Art Center, at 497 Springfield avenue, schedules morning, afternoon and evening classes throughout the week with some classes held at a private studio due to space requirements. The Art Center draws students from a wide area, and a good range of classes is available, with some few spaces still open. Mrs. James Moss of Summit is classes chairman.

The Center is currently showing works of members at Fairleigh-Dickinson University, in the Students' Lounge of the Mansion. The exhibit will continue through February.

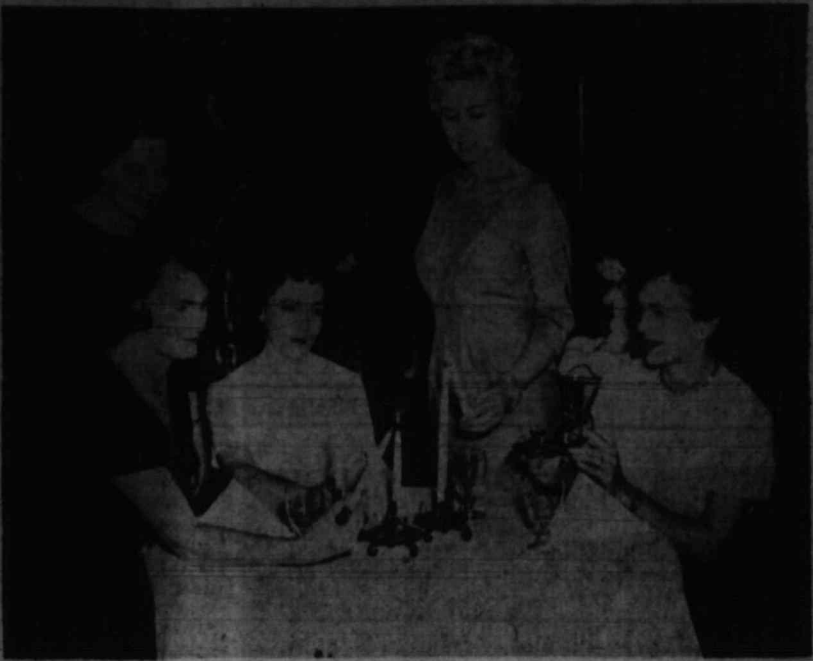
The annual loan exhibit at the Summit Art Center's studio, 497 Springfield Avenue, will be open Saturday and Sunday afternoons, February 5 through February 19. The Center invites Summit Area residents to see this show of paintings and prints by well-known contemporary artists, loaned by private collectors and New York City galleries.

Franklin PTA to Hear State Education Aide

Miss Anne Hoppock will be the guest speaker at the Monday meeting of the Franklin School P.T.A. She will speak on the subject "The Well Balanced Elementary School Program," with an emphasis on the current trends in education.

Miss Hoppock is co-ordinator of elementary schools for the State Department of Education.

Prior to the meeting there will be open house in the classrooms at 7:30. The business meeting will begin in the gymnasium at 8:15, to be followed by the speaker. Refreshments will then be served in the cafeteria.



ROMANTIC SETTING—Five members of the Newcomers' Club evening group are shown as they set the mood for "Candlelight Cocktails," the annual party given by the Newcomers' Club, of Summit; Mrs. Stan Granberry of Berkeley Heights and Mrs. Leon Melas of New Providence.

Church Family Night Has Pot Luck Supper

Central Presbyterian Church family night, sponsored by the mission committee of the Session will be held on Sunday beginning with a pot luck supper at 5:30 p.m. in the Parish House.

The program will be on "Heritage and Horizons in National Missions", and will be completed by 7:45 p.m.

There will be separate programs for adult and senior high, junior high, junior and primary. It is asked that a

salad, casserole or dessert and information call Mrs. Alma M. Silverware and dishes are hawk at CR 7-1723 or Mr. Wilbrought along. For further information call Mrs. William Gerham at CR 7-2832.

Why Be Satisfied With Less Than The Best
Charter Your Next Modern, 1960 Model Motor Coach FROM
William Braunwarth, Jr.
"Personalized" Charter Bus Service
Guided Tours Arranged
CR 3-7292
Member—Summit Area Chamber of Commerce
Somerset Buses used Exclusively

SAGE Sets New Date For Annual Meeting
The SAGE annual meeting, postponed by the storm last week, will be held instead on Thursday, February 23 at 8 p.m. at the Red Cross chapter house, 605 Springfield avenue. It was announced by Mrs. Arthur D. Schwarz, president. Highlight of the meeting will be the report by Mrs. Schwarz on the White House on Aging which in January, awarded to homesteaders.

License Is Issued
Christopher White, 2101 Nut avenue, was denied his driver's license two months last year by the Superior Court on charges of driving while intoxicated.

THE **BEST BOURBON** MAN CAN MAKE OR **MONEY CAN BUY!**

Don't Pay More... You Can't Buy Better!

KENTUCKY STRAIGHT BOURBON WHISKEY

84 PROOF

Also available as Old Heaven Hill BOTTLED IN BOND

HEAVEN HILL DISTILLERIES

The **SUMMIT EXPRESS COMPANY**, agent for **Allied Van Lines, Inc.**

STORAGE MOVING SHIPPING PACKING

No.1 specialist in local moving

CRestview 7-0315

66-76 RAILROAD AVE. SUMMIT, N. J.



Why settle for the inconvenience of an awkward "lift-up" gate?

Before you put hard-earned cash on the line for any compact wagon, just try this: open the tailgate. If it swings up, as shown at left, you could be in for some lumps and bumps on the head as your cargo rolls out. But Falcon's tailgate, with the built-in, roll-down window, swings down. That means easier loading—and 26.1 inches more cargo deck (with tailgate down) for carrying those long loads—up to 31% more cargo area with tailgate up. No doubt about it. Falcon hauls more—and that's what you buy a compact wagon for.

Pay up to \$508 more? What for? Only Falcon offers the just-right compact wagon



proper planning

CAN SAVE YOU MONEY

The right kind of estate planning can help conserve your estate so that you will get more benefits out of it . . . and more will be available for the future security of your family.

Visit The Summit Trust Company's Trust Department for complete information about our Trust Service. No obligation.

The **SUMMIT TRUST COMPANY**
Established 1891

MAIN OFFICE: Springfield Ave. and Beechwood Rd., Summit
PASSAIC VALLEY OFFICE: South St. near Springfield Ave., New Providence

Member Federal Reserve System • Member Federal Deposit Insurance Corporation

speaking of **SALADS** THEY'RE THE TOPS AT THE **Newarker** NEWARK AIRPORT Newark 6-1666

Just Right in Convenience! Check the current crop of compact wagons. You'll find they all fall short of Falcon's convenience. For instance, seven out of eleven don't give you a handy, swing-down tailgate with roll-down rear window on all models. There's attention paid even to the "little" conveniences, such as two arm rests, two sun visors, two coat hooks, all standard at no extra cost! And of course, you can have your choice of Tudor or Fordor Falcon Wagons, too.

Just Right in Price! Cast an eye on that low price sticker and you realize what a sensational value the Falcon wagon really is! Imagine . . . up to \$508 less* than some compact wagons, not stripped but equipped the way most people want their wagon . . . including radio, heater, automatic transmission and deluxe trim. With all this that you save on Falcon's low price, you're still driving a dazzling new beauty, handsomer than ever inside and out.

Just Right in Economy! Of all compact wagons, Falcon's the economy champ! America's sweetest, savingest 6-cylinder engine takes you up to 30 miles per gallon on regular gasoline—4,000 miles between oil changes. And Falcon's sensible engineering makes for rock-bottom repair costs and lower maintenance, too. You save on tires, mufflers, every driving cost in the book. P.S. For an extra measure of performance, try Falcon's brisk, new 170 Special engine option.

ALLEN-TOBIN MOTORS, Inc.
SUMMIT, NEW JERSEY

FORD Falcon

BE FALCON—HAPPY YOUR FORD DEALER

*Based on comparison of manufacturer's retail list prices for 4-door deluxe compact wagon equipped with radio, heater and automatic transmission.

Psychiatric... approval by the... on Accredited... Inspection and... approval was... general inspec... the American... located at 19... is completing... operation in... currently under... of Oscar Ros... director, and... Jr., adminis...

the Joint Com... mitation is to... lity of care ren... in all hospitals... n establishes... ards and then... to meet or sur... ards. on is made up... t organizations... ollege of Physi... College of Sur... Hospital Asser... American Medical... order to become... editation a hos... 25 beds or more... by the American... tion. Standards... n are based on... time and exve... of to be the... of good care of... ent. icalises in inten... of acute psych... The 35-bed hos... a staff of six... total persenn... ety. During 196... ts were referred... ysicians in the... ra. Licensed by... of Institutions... State of New... ka is a member... a Psychiatric... sion Association... iatric Hospi-t... and New Jersey... tions and is a... pital with the... ee Plan of New... ss).

Parade

with the Naval... in the inaugu... ridient John F... on M. Barr. son... Frank T. Barr... ge avenue, and... mus, son of Mr... r N. Polhemus of... d.

Summer Rentals

at or near... THAM, CAPE COD... summer rental cottages now being re... month or season occupancy. Make selech... choice is good.

T BAY area, East Harwich:... will modern 4BR & 2 Baths on beach at... Bay; quiet, safe, magnificent view. Full... 2,500.

modern ranch 4 BR & 2 Baths next to... ch. Available to July 31st only \$1,250.
Fascinating 4 BR & 3 Baths on Round... Pleasant Bay. Perfect anchorage and... ll Season \$2,000.

T BAY, Chatham area:
2 Baths plus Maids accommodations at... onal location with sand beach and full... view. Walk to Town. Full season \$3,500.

RIVER area:
truly magnificent 4 BR & 3 Baths; All... rished. Nice Beach & anchorage w.a.c... Nantuxet Sound. Huge sun porch & sun... ily only \$1,500.

desirable 3 or 4 BR cottages near choice... \$750 to \$1,000 for July, or \$1500 to... r full season.

EXCLUSIVE WITH
D. Ross Ragan, Inc.
Hudson Eldridge, Mgr. & Realtor
640 Main St., Chatham, Mass.
Chatham 446 or 1170; Eves: 1472-R

Not a Few Left!

walking distance of schools and... to houses of worship, shopping... courses, a community swim club... (ating in winter), express highways... and trains.

Mail from... 21,990... al Financing... "THE... PERSON" Level Model

MODEL HOME... EN DAILY & SUNDAYS... Tel: Millington 7-2700... Interior Decorations by... WALTERS DESIGNS... City and Union, N. J.
IONS: Rt. 22 west to Watchung... ara right on Watchung Ave. straight... to Watchung Circle; around circle... on right on Stirling Rd. to Spring... (Valley Rd.), turning left... miles to Greenwood Dr., Milling... nt on Greenwood Dr. then left... Hill Rd. to Model Home.
SUMMIT, Ont. Springfield Ave... n Valley Rd.) to Greenwood Dr... nd, right on Greenwood Dr. then... Clover Hill Rd. to Model Home.

IMMEDIATE OCCUPANCY!

FLINTLOCK
of
MILLINGTON
Adjoining Berkeley Heights

COLONIAL SPLIT LEVEL HOMES
ON WOODED 1/4-ACRE PLOTS
8 Large Rooms... 2 1/2 Baths... 3 and... 4 Bedrooms... Ground Level Entrance... Foyer and Finished Recreation Room... with sliding patio door... Full Basem... Gas-Fired Forced Air Heating... Built-in Garage... City Sewer &... ALL UTILITIES IN & PAID FOR.

Sales Agents: THE BOYLE CO., Elizabeth 3-4200
MODEL HOUSE
Millington 7-2700

Leonard Rouppe Of High School Faculty Dies

Leonard M. Rouppe of 33 Locust Drive, assistant principal at Summit High School, died last Friday of a heart attack at his home. He was 50.

Mr. Rouppe came here 15 years ago as a physics teacher and head of the science department at the high school. He was appointed assistant principal in September 1956.

Previously he taught in the Roselle school system for 15 years, and before that he was vice principal of the Dimock, Pa., Consolidated High School.

He received his bachelor's degree from Bucknell University in 1930 and his master's from Bucknell in 1934. He also did graduate work at Cornell and Rutgers universities.

From 1936 to 1948 he was in charge of the physics laboratory at Union Junior College.

Mr. Rouppe was born in Liberty, Pa., and lived in Roselle for 15 years before coming here. He was a member of the Summit Association of Scientists and manager of the Lake Wallkill Club, Sussex.

In 1955, he was the recipient of a fellowship from the Ford Foundation for the advancement of education and traveled around the country conducting a survey on what high schools could do to meet college requirements for science courses.

While at Roselle High School, he established the first course in driver education in New Jersey. He was physics examiner on the College Entrance Exam Board, Princeton, for three years.

While associated with Union Junior College, Mr. Rouppe established the first accelerated night high school and was its principal for three years. During this time more than 600 veterans received training in secondary school subjects to qualify for college entrance.

At Bucknell he received recognition for his research work in X-rays. Mr. Rouppe was a member of the National Science Teachers Association and served on several of its research committees. He also was active in the Summit Teachers Association and was a member of the N. J. Department Heads Association, N. J. Educational Association and National Association of Physics Teachers.

He leaves his wife, Mrs. Helen Moser Rouppe; a daughter, Miss Barbara Ann Rouppe, at home, and two brothers, Walter and Albert of Liberty Pa. Services were held Tuesday afternoon at Central Presbyter-



Leonard M. Rouppe

ian Church conducted by Rev. Samuel Buffat, assistant minister of the church.

National YM Unit Elects 6 Local Residents

Six local residents have been named to office in the Frost Valley Association of the Central Atlantic Area Council of YMCAs during the annual meeting of the board of directors held recently at the Newark YMCA.

Those named included Woodruff J. English of 25 Blackburn road, a member of the Newark law firm of McCarter and English; W. Richmond Tracey of 186 Oak Ridge avenue, former engineer and secretary of the Union County Park Commission; James A. Betts, Jr., of 56 Parkview terrace, director of development, Overlook Hospital; Rome A. Betts of 10 Euclid avenue, executive secretary of the American Heart Association; Edmund R. Tomb, of 132 Tulip street, executive secretary, Central Atlantic Area Council of YMCAs, and William R. Vanderbilt of 65 Oak Ridge avenue, an attorney and former Union County assemblyman.

The local YMCA is a corporate member of the Frost Valley Association and maintains a large enrollment at Camp Wawayanda. The site offers camping facilities and conference centers for family groups and organizations.

Resident Gets ROTC Commission of Ohio

Peter Gannon, son of Mr. and Mrs. John F. Gannon of 54 Kent Place boulevard was commissioned a 2nd lieutenant in the United States Air Force Reserve at graduation exercises at Ohio University on Saturday.

Mr. Gannon, a mechanical engineering major, will be assigned with the Air Force within the next few weeks.

Hi-Y Clubs to Have Spaghetti Dinner

Members of the Continentals and Sobros Hi-Y Clubs will have a benefit spaghetti dinner at the high school cafeteria on Thursday, February 9, with servings at 5:15, 6:15 and 7:15 p.m. The menu will include fruit jules, chips, Italian spaghetti and meat balls, garlic bread, tossed salad and beverages and apple pie a la mode. Proceeds are for YMCA world service and the Foster Parent Plan.

Persons planning to attend are asked to send name and address and time of serving to Lawton C. Johnson, 5 Oakland Place. Information as to price may be obtained by calling CR 3-1192.

Chamber Promises Little Talk, Much Fun at Dinner

Special entertainment will feature the 22nd annual dinner of the Summit Area Chamber of Commerce to be held at the Hotel Suburban at 6:30 p.m., Wednesday, February 8, W. Rae Crane, executive secretary of the Chamber, announced this week.

Crane said the speaking program will be held at a minimum in keeping with the tradition of making the annual dinner an entertaining event for the members from Summit, New Providence and Berkeley Heights. The mayors and other officials of the three communities have been invited to attend. One ceremony will include the

turning over of the president's gavel to George M. Delaney, New Jersey Bell Telephone Company executive who will head the Chamber for 1967. Another traditional event will be the introduction of the 22 members of the board of directors. Leo A. O'Grady, retiring president of the Chamber who is serving this year as general chairman of the Summit Area Development Program, also will make brief remarks. Crane urged all members who have neglected to make their reservations to call the Chamber office (CRestview 7-4155) immediately.

B Altman & Co advertisement featuring a woman in a dress and text: pack a bag and go! Make it a southern sojourn in Herbert Levy's "redingote". Navy wool coat shelters a blue print silk surah dress. A marvelous way to look! 14% to 26% and 38 to 44, 125.00 ALTMAN WOMEN'S DRESSES LOWER LEVEL MORRIS TURNPIKE AT RIVER ROAD... DRexel 9-3000

ROOT'S OF SUMMIT advertisement: CONTINUING CLOTHIERS TO GENTLEMEN...AND THEIR SONS Inventory Reduction Sale! General drastic reduction on large quantities of MEN'S, BOYS' Clothing and Furnishings. (as well as WOMEN'S sportswear). List of items and prices: OUTERWEAR, HUGE ASSORTMENT—all sizes. 1/3 - 1/2 Off; FINAL CLEARANCE MEN'S SUITS, COATS, SPORTCOATS, SLACKS 20%, 33 1/3% and many at 1/2 Off; VIYELLA SPORTSHIRTS by Hathaway, Orig. 15.95 NOW 11.95; HATHAWAY and GANT DRESS SHIRTS Stripes & Solid colors, Tabs, Button Down, Pin Tab, and Regular Collars. Orig. 6.50 - 7.95 NOW 4.80; MEN'S WHITE SHIRTS Reg. & round collars — Hathaway—Reg. 6.50 NOW 5.20; DACRON & COTTON and all Dacron Wash 'n Wear Shirts by Manhattan. Broken Sizes. Orig. 6.95 & 8.95. NOW 3.99; IMPORTED ENGLISH SWEATERS, Shawl Collar, Pull Over, All sizes and many colors. Orig. 15.95 NOW 6.99; BETTER SWEATERS Imported from Scandinavia, Italy and Austria. Orig. 19.95 - 45. 1/3 - 1/2 Off; FINAL CLEARANCE STORM KING COATS by Zero King. Dacron & Cotton Shells, zip-lined & colored in alpsca. Orig. 65.00 NOW 52.00

Andover Drive Head Reports Goal Topped

A more than successful completion of a fund drive for Phillips Academy at Andover, Mass., was reported this week by Donald H. McLean, Jr., of 160 Oak Ridge avenue, campaign chairman. Mr. McLean is a member of the Class of 1928. The drive for \$6,000,000 went over its goal by nearly \$200,000, for gifts and pledges totaling \$6,235,000, Mr. McLean said. He described the sum as "an extraordinary amount to be raised by a secondary school."

Postal Credit Union Pays First Dividend

The Summit Post Office Federal Credit Union at a recent annual meeting declared its first dividend since it became a chartered organization. Members also reelected the following officer: John Yannunzio, president; Charles Pizutti, vice president; Frank Pecca, treasurer; G. L. Faltoute, secretary; and Richard Carney, director.

In Inaugural Parade

Daniel K. Hennessy, son of Mr. and Mrs. R. E. Hennessy of 4 Manor road, was a member of the 3,800-man brigade of midshipmen which marched in the inaugural parade for President John F. Kennedy. Hennessy is in his second year at the Naval Academy, Annapolis, Md.

Overlook Director at Chicago Conference

Robert E. Heinlein, of 49 Upper Overlook road, director of Overlook Hospital, will participate in a three-day management meeting of the American College of Hospital Administrators at Chicago, today through Saturday. An affiliate of the College, Mr. Heinlein will serve as a panel member at a management seminar, one of many administrative sessions of the Congress that will be attended by more than 1,000 hospital administrators from all over the country.

Beau Says: Do you want your languages to double — It's absolutely no trouble. THE SCHOOL OF LANGUAGES Eight Teachers Available Daytime & Evening Classes PRIVATE OR CLASS INSTRUCTION CR 7-2255 P. O. Box 242 Summit, N. J.

CHURCH DIRECTORY

Christian Science Church

292 Springfield Ave. Summit

Why spiritualization of thought is necessary to individual growth and happiness will be brought out at Christian Science church services Sunday.

Introducing the Lesson-Sermon entitled "Spirit" is the Golden Text from John (4:24): "God is a Spirit: and they that worship him must worship him in spirit and in truth."

Selections to be read from "Science and Health with Key to the Scriptures" by Mary Baker Eddy include (48:14-17): Emerge gently from matter into Spirit. Think not to thwart the spiritual ultimate of all things, but come naturally into Spirit through better health and morals and as the result of spiritual growth.

Community Christian Church

(Disciples of Christ) Charles E. Wilson, Jr. Minister

Sermon Title: "This One Thing I Do"

New Providence High School 10:45 A.M.

Friends

Sunday - 11 a.m., The Religious Society of Friends (Quakers) holds its meeting for worship at the YWCA, Sunday school for children is at the same time; Visitors are welcome.

St. Luke's Reformed Episcopal

Rev. Hans E. Josephs South Street, Murray Hill

Today - 8 p.m., Prayer and Bible study with a lecture on "Tribulation" as contained in the Book of Revelation. Sunday - 9:45 a.m. Sunday School, Rev. and Mrs. Wilson, missionaries to Morocco, will speak, 11 a.m., Holy Communion Service with Rev. and Mrs. Wilson speaking; 7:30 p.m., Evening service and slides of the work in North Africa. The public is invited.

Calvary Episcopal Church

DeForest and Woodland Aves. Rev. Elmer F. Francis, Rector

Today - Purification of St. Mary the Virgin; 9:30 a.m., Holy Communion; 4 p.m., Boys choir.

Friday - 12:30 p.m., Calvary service chapter. Saturday - 9:00 a.m., Young

people's confirmation class.

Sunday - Scarsesina; 8 a.m., Holy Communion; 9:15 a.m., Family service; Church school; 9:30 a.m., Choir school; 10 a.m., Choir rehearsal; 11 a.m., Holy Communion and sermon; Church school; 4 p.m., Adult confirmation class; 4:30 p.m., Evening prayer; 7 p.m., Senior Y.P.F.

Monday - 7 p.m., Parish dinner and meeting. Tuesday - 9:30 a.m., Guild of the Intercession; 10 a.m., St. Anne's chapter.

Wednesday - 10 a.m., Church World service chapter; 4 p.m., St. Cecilia choir; 7:30 p.m., Senior choir.

Community Christian Church (Disciples of Christ) M.E. 5-8614

Sunday - 10:45 a.m., Service and sermon, "This One Thing I Do" - New Providence High School.

Jewish Community Center

67 Kent Place Blvd. Rabbi Samuel Epstein Cantor Donald Weisman

Friday - 8 p.m., Sabbath Eve service and sermon, "Was Lincoln Religious?"

Saturday - 9 a.m., Sabbath service. Sunday - 9:30 a.m. and 11 a.m., Religious school.

Christ Church, Summit

(Baptist and congregational) New England at Springfield Ave. Ministers

David K. Barnwell Richard L. Brubaker

Sunday - 9:30 a.m. and 11 a.m., Morning worship and sermon, Communion meditation; Church school classes.

Wednesday - 6:45 p.m., Annual dinner and meeting.

Unitarian Church

Springfield and Waldron Aves. Summit Rev. Jacob Trapp

Today - 8 p.m., Dr. Trapp lectures on "Great Religions of the World," followed by open discussion in the Unitarian House.

Sunday - 9:20 a.m. and 10:50 a.m., Church school; 9:30 a.m. and 11 a.m., Morning services and sermon, "What It Means to be a Unitarian;" Social half hour between services sponsored by Berkeley Heights members and friends with chairman, Mrs. Ernest Musslewhite; 12 p.m., Junior Liberal Religious Youth, short planning meeting, bring box lunch; 7:30 p.m., Senior Liberal Religious Youth meeting with brief report on "Existentialism" by Mary Mayshark followed by discussion.

Wednesday - 6:30 p.m., Congregational reception and dinner; 8 p.m., Dedication of new

building and annual business meeting.

St. John's Lutheran Church

12 DeForest Avenue Rev. W. S. Homan P.D.

Today - 4 p.m. and 7 p.m., Junior choir rehearsal; 8 p.m., Senior choir rehearsal.

Saturday - 9 a.m. and 10 a.m., Senior catechetical class; 11 a.m., Junior catechetical class.

Sunday - 9:30 a.m., and 10:45 a.m., Services and sermon, "The Christian Power of Perspective."

Monday - 9:30 a.m., Executive committee meeting of United Lutheran Church Women at the home of Mrs. Robert Bell.

Tuesday - 7:30 p.m., Council meeting. Wednesday - 8 p.m., Leadership training class.

The Methodist Church

Kent Place Boulevard and DeForest Avenue Rev. James M. Boyd, Minister Rev. D. D. Ostroth, Associate Minister

Today - 7:15 a.m. and 9:30 a.m., Devotions; 9:45 a.m., Bible class and discussion; 4:15 p.m., Junior choir rehearsal; 7:30 p.m., Boy Scout Troop 66; 8 p.m., Chancel choir rehearsal.

Friday - 7 p.m., Couples' Club. Sunday - 9:30 a.m., Worship service, Church school, Adult Bible class; 10:30 a.m., Chancel choir rehearsal; 11 a.m., Worship service; 3 p.m., Tea for the Gamblers; 4:30 p.m., 8th and 9th grade fellowship; 7:30 p.m., Senior fellowship; Wesleyan Club.

Monday - 3:15 p.m., Brownies. Tuesday - 9:30 a.m., 1:15 p.m. and 8:15 p.m., W.S.C.S. Circle meetings; 7:30 p.m., Girl Scouts.

Wednesday - 8 p.m., Girl Scout neighborhood meeting.

Central Presbyterian Church

Maple St. & Morris Ave. Rev. Robert H. Stephens D.D. Rev. Clarence E. Davison D.D. Rev. R. Samuel Buffat, Jr.

Today - 3:15 p.m., Boy choir rehearsal; 7:30 p.m., Boy Scout Troop 162; 8 p.m., Motet choir rehearsal.

Friday - 12:15 p.m., Prayer service; 12:30 p.m., Church staff luncheon and meeting; 9 p.m., Couples Club dance.

Saturday - 9:30 a.m., Confirmation class. Sunday - 9:30 a.m. and 11 a.m., Mr. Buffat will preach both services on "The Family;" Baptism of children at both services; 4:30 p.m., 7th and 8th grade fellowship; 5:30 p.m., Covered dish supper and hymn sing; 8:45 p.m., 9th grade fellowship; Sr. Hi Fellowship; 7:45 p.m., Central Club meeting.

Monday - 10 a.m., Monday morning sewing group; 7:30 p.m., Chapel choir; Boy Scout Troop 62.

Tuesday - 11 a.m., Women's Association luncheon meeting; 2:45 p.m., Cherub choir; 3:30

p.m., Junior choir; 4 p.m., Westminster girl choir.

Wednesday - 7 a.m.; Dawn Patrol.

Wallace Chapel

A. M. E. Zion Church 149 Broad Street Summit Rev. L. L. Turner

Today - 8 p.m., Meeting of all of the church. Friday - 8 p.m., Senior choir rehearsal.

Sunday - 9:30 a.m., Church school; Bible class; 11 a.m., Morning worship, Holy Communion.

Monday - 8:30 p.m., Trustee meeting. Tuesday - 7:30 p.m., Young peoples' choir rehearsal.

Wednesday - 8 p.m., Gospel chorus rehearsal; Prayer meeting.

Furniture Finishing Offered to Residents

The home economics extension service of Rutgers University, announced that registration for a furniture refinishing class is now open.

The class will be Tuesdays, February 7, 14, 21, 28, and March 7, at the Elizabeth YWCA, East Jersey Street, from 9:30 a.m. to 11:45 a.m.

During the class each member will refinish a piece of their own furniture in a natural finish. Both men and women may register for the class without charge or fee.

Interested adults should call the home economics office at EL 3-5000 before February 3, to register and get the list of supplies needed for the first session on February 7.

Area Electronics Firm to Expand

Multi-Amp Electronic Corporation of Union, will construct a modern plant and administrative office building on a two-acre site in the new industrial development located in Cranford.

Both land and building will be owned by the company. Multi-Amp manufactures high-current, low-voltage electrical test instruments for public utilities, major industrial firms, municipalities government agencies both foreign and domestic.

The new plant will have a production capacity eight times the present facility and is expected to be ready for occupancy by mid-spring.

J. M. Gross of Sheffield road is president of Multi-Amp. Mrs. Daisy Gross is secretary.

When washing windows, a little vinegar added to the water will give them a brilliant polish.



QUALIFIED - PROMPT COURTEOUS

Television Service

Quality Is Our Motto Radios & Record Players Repaired

SUMMIT TELEVISION SERVICE CENTER

86 Franklin Pl. Summit CR. 3-6991 Jim Gerard Tony Callari

Gifts & Greetings for You - through WELCOME WAGON

from Your Friendly Business Neighbors and Civic and Social Welfare Leaders

CR 3-3590

First Church of Christ, Scientist

292 Springfield Avenue Summit, New Jersey

A Branch of The Mother Church, The First Church of Christ, Scientist, in Boston, Massachusetts

Sunday Services 10:45 A.M. Sunday School 11 A.M. Wednesday Testimony Meeting at 8:15 P.M.

Christian Science Reading Room

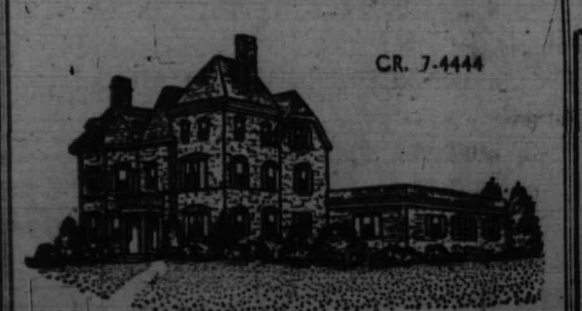
OPEN TO THE PUBLIC 340 SPRINGFIELD AVENUE

Open daily 10:00 to 4:30 except Sundays and holidays, also Friday evenings 7:30 to 9:30 (except July and August) and after the Wednesday meeting. Literature on Christian Science may be read, borrowed or purchased.

THE purpose of our funeral home is to better serve the public by placing at their disposal the homelike facilities and modern equipment so necessary to the present day funeral service. In addition to these we offer the convenience of our spacious parking area.

BROUGH FUNERAL HOME

535 Springfield Corner Morris Ave. CR. 7-4444



Local Man Cited for Life Insurance Sales

For the second consecutive year, J. Robert Dean of 7 Harvey drive has been named premium leader of the Edward B. Ames Agency of Phoenix Mutual Life Insurance Co., East Orange.

Mr. Dean also qualified to attend a business conference at White Sulphur Spring, West Va., by ranking 19th in the nation for his sales. He has been with the agency for 19 years and is a member of Phoenix national executive field staff.

Fire Department Not Endorsing Local Sale

Fire Chief Charles A. Eakley this week advised residents that

door-to-door salesmen currently selling home fire detection devices are doing so without any authorization or endorsement of the Fire Department.

Chief Eakley said it has been brought to his attention that in some instances the salesmen misrepresented their products as having approval of the local Fire Department.

PRINTING

From Business Cards to Catalogs THE ITEM PRESS 20 Main St., Millburn Phone DRexel 6-4600

Auto Boot Camp

Robert J. Taylor, son of Mr. and Mrs. Woodbury C. Taylor, of 70 Park avenue, graduated from recruit training at the Naval Training Center, Great Lakes, Ill.

THE PINGRY SCHOOL

215 North Avenue, Hillside, N.J. announces that

ENTRANCE EXAMINATION for the fall of 1961 for admission to Grades 3 through 11 will be given on

SATURDAY, MARCH 11, 1961 For further information, write or call the school EL 5-6990

AUTO REPAIR

LEN'S MOTOR Sales & Service Auto Repairs and Parts Used Cars 84 Summit Ave.

For Automatic Electric APPLIANCES

EASTERN SALES CO.

Appliance Division of Eastern Fuel Company

233 BROAD ST., SUMMIT CR. 3-0004 FREE PAID

Open Thursday and Friday Evenings 7:30 P.M.

For the HOTTEST APPLIANCE BUYS AROUND - see your



JCP&L-NJP&L

REDDY KILOWATT DEALER

From frypans to king-size ranges, your Reddy Kilowatt Dealer has the best of everything in new electric appliances. And at mighty attractive prices. But there's more than just price to a really hot appliance bargain. A good buy includes quality merchandise, a good price, and top service. A dealer must follow through with top service after he makes a sale if he's to earn his Reddy Kilowatt Dealer Seal. That's why New Jersey appliance dealers prize that Seal so highly. They know their customers recognize it as the sign of the hottest appliance buys around.

JCP&L
Jersey Central Power & Light


Established 1820

WELL trained, experienced staff members of our organization are on call twenty-four hours every day; assurance of a prompt response to every call.

BURROUGHS & KOHR

General Directors
BURROUGHS & KOHR, INC. 209 SPRINGFIELD AVE. CR 3-2323 SUMMIT, N. J.

AT YOUR FINGERTIPS



No matter what your desires - new car, house, college education - these things will be at your fingertips... within reach... when you save regularly at Union County Trust Company.

We pay 3% interest per year, compounded and payable 4 times a year.

Open your account today.

BERKELEY HEIGHTS DRIVE-IN HOURS

Monday thru Thursday	8:00 A.M. to 2:00 P.M. 3:30 P.M. to 5:30 P.M.	Friday	8:00 A.M. to 2:00 P.M. 3:30 P.M. to 5:00 P.M.
----------------------	--	--------	--

WALK UP TELLER
Monday thru Friday 2:00 P.M. to 3:30 P.M.

Better living begins at your full-service bank

Union County Trust Company

SERVING YOU IN

Summit 30 Maple Street
Berkeley Heights 350 Springfield Avenue

Five Other Convenient Offices in Elizabeth - Cranford

Member Federal Deposit Insurance Corporation

For Automatic Electric APPLIANCES

EASTERN SALES CO.

Appliance Division of Eastern Fuel Company

233 BROAD ST., SUMMIT CR. 3-0004 FREE PAID

Open Thursday and Friday Evenings 7:30 P.M.

Gaps in Americana

In order to achieve literary success nowadays, it appears that all authors have to do is to reappraise the Civil War, Lincoln and the recent decades.

With the Civil War Centennial now in effect, readers may expect a new avalanche of subject matter regarding both the war and Mr. Lincoln.

This is all good. Time gives additional historical perception and enables those of the present to better understand the past.

However, several figures of note in our historical past have been sorely neglected. Who has thoroughly explored the life of Patrick Henry beyond "Give me liberty or give me death?"

Who has ever heard of Jedediah Smith? Few, yet it was he who opened the trails to California and Oregon years before the great push west.

greatest feats in history. But his life and trip are chronicled in two obscure works.

Many of the present techniques of movie-making are attributed to the genius of D. W. A. Griffith, a pioneer movie-maker who died last year, and who actually set the groundwork for the fabulous industry it is today.

Insofar as historical eras are concerned, how much do we actually know about pre-Revolutionary America? Little has been written about the birth and growth of the eastern commercial cities such as Boston, New York and Philadelphia.

We feel there are many parts of Americana yet to be fully explored, that would be interesting reading and a welcome literary addition to the chronicle of our young past.

Let's acknowledge that the 20s, 30s, 40s, Mr. Lincoln and the Civil War were not the only contributing factors to the amazing growth of a sprawling wilderness to a world power within 180 years.

Let's Separate the Pros from the Amateurs

With the cost of education continually spiraling upward, it comes as no surprise that this year's school budget again stands at a record high.

In examining the budget, it is noted that proposed salary increases for teachers stand at \$100,000, with the minimum pay for new teachers boosted from the current \$4,400 to \$4,700.

Summit has always prided itself on paying its teachers a fair wage. This has been demonstrated by the fact that in the last five years, the minimum wage has been increased almost \$1,000 to the present \$4,400.

However, the real beneficiary of the increase in minimum pay has been the beginning teacher, whose starting salary now is almost 25 per cent higher than five years ago.

Until recently the teachers themselves, through their local organization, have pressed for higher minimums on the premise that if those starting out get higher wages, then those with many years of service will also benefit if the maximum is also boosted.

The Board of Education and the city have apparently agreed that higher minimums were necessary in order to attract superior teachers to the community.

This reasoning somehow falls short of the desired results to obtain and keep superior teachers. Why should the benefits of increased salaries always be reaped by the inexperienced teacher? And

when does the teacher with more than three years of experience and with as much as 35 years of service here start enjoying the benefits of higher pay?

While Summit does have a merit salary system and a master career teacher evaluation setup which is the envy of many school boards across the nation, a superior teacher here who has passed the maximum salary step, can only get a raise every five years, and that amounting to \$500.

But at the same time, a teacher who is still getting annual raises on the salary pattern, who has ten years of service, when a \$200 across the board raise is awarded, is only getting a fraction of the increase awarded the beginning teacher.

While it is certainly appreciated that the Board of Education and the city are interested in attracting better teachers, there is nothing that states categorically that the teacher attracted must be new to education and inexperienced. Perhaps it is about time that higher monetary rewards for the experienced teacher, who has already shown his value, be seriously considered before raising the minimums of the brand-new inexperienced teacher.

The starting salary for teachers in Summit today is \$4,400, a handsome wage for a 22-year-old fresh out of college. We urge that it be left that way and when there is going to be a raise for teachers, that it be directed at those who have been with the school system for a minimum of three years, and who have shown a decided interest to remain and teach in Summit.

Perhaps this might be reversing a national trend toward higher minimum salaries for new teachers, but it stands to reason that better education can only be achieved through attracting more experienced teachers to our midst. This can only be achieved by separating the pros from the amateurs.

Program, and a Group Who Had Not." Good Gussets. We're afraid to ask what the differences are:

Burr Under The Saddle (Boston Globe)

David Suskind is a desirable burr under the saddle of TV Westerns and a useful mote under the lid of the private eye. He is the most stinging of the critics of the uninspired, tawdry and repetitious fare served up nightly on the little box in the living room.

His constant, merciless lashing at the inane, the sordid, and the trivial may have a salutary effect on one of the country's most powerful mass media. He may just goad lethargic viewers into demanding something slightly better, programs of a little more substance and thought.

DEATHS

George Holden of 73 Kent Place boulevard, engineer and inventor, died last Thursday in a Florham Park nursing home after a short illness.

Born in England, Mr. Holden came to this country as a child and had lived here since 1919. He studied engineering in Temple University, Philadelphia, and later worked in the metal tubing and furniture field, serving as general manager of several plants in the Newark area.

In the 1920s, he operated his own firm in Newark. Mr. Holden also held a number of patents for inventions on equipment used in the work. He retired 15 years ago.

He was a member of the Old Guard. He leaves his wife, Mrs. Mary Jackson Holden; a son, Kenneth J. of this city; two daughters, Mrs. John Penek of Martinsville and Mrs. Ralph Perry of New Hartford, N. Y., seven grandchildren and four great-grandchildren.

The service was held Monday at the Brough Funeral Home, 535 Springfield avenue, conducted by Rev. Elmer F. Francis rector of Calvary Episcopal Church. Burial was in St. Bernard's Cemetery, Bernardsville.

Karl W. Waterson

Karl W. Waterson, a former Summit resident, died at Chelsea, Vt., on January 24 after a long illness. He was 85.

A retired vice-president of the American Telephone and Telegraph Co., Mr. Waterson lived at 35 Ox Bow lane before he moved to Chelsea, his birthplace, in 1956. Mr. Waterson was a graduate in 1896 of MIT and shortly thereafter joined AT&T. He was first assigned to the company's engineering department. He also held numerous positions in the engineering and traffic departments prior to 1927 when he was appointed assistant vice-president in charge of plan operation, traffic and general operating results in the engineering department.

In 1937 he was made vice-president in charge of personnel relations, a post he held at the time of his retirement. He was also a director of Bell Labs.

While living here, Mr. Waterson belonged to the University and Technology clubs of New York, and also the Essex County Country Club and the Short Hills Club. He was also a former trustee of the Short Hills Country Day School and a Fellow of the American Institute of Electrical Engineers.

Mr. Waterson's wife died several years ago. He is survived by a son, Karl W., Jr., of Maryland, a Columbia University medical student, and daughter, Mrs. Donald Gordon of Carlisle, Pa.

Mrs. Joseph Fitzgerald

Mrs. Winifred P. Fitzgerald of 25 Oak Ridge avenue died on January 24 after a long illness. She was 70.

The widow of Joseph Fitzgerald, she was born at Valley Fall, N. Y., and lived at Troy, N. Y. before coming here 13 years ago.

Mrs. Fitzgerald is survived by two daughters, Mrs. Winifred Tickner and Mrs. Geraldine Eisele, both of this city and eight grandchildren.

The funeral was held last Thursday from the Paul Ippolito Summit Memorial, 7 Summit avenue, followed by a mass in St. Teresa's Church.

George H. Pearson

George H. Pearson of 56 Franklin place died January 26 at Overlook Hospital after a long illness.

Mr. Pearson was born in England and came to this country and to Summit in 1912. He had worked 17 years for the Commonwealth Water Co. as a stationery engineer. He was a member of Euclid Lodge 136, F&AM, of Hoboken.

He leaves his wife, Mrs. Florence Reeves Pearson; two brothers, Harry and Nutley and James of Montclair, and three sisters, the Misses Liza and Betty Pearson of Nutley and Mrs. Anna Kane of Long Branch.

The funeral service was held last Saturday at 2 p.m. in the Brough Funeral Home, 535 Springfield avenue, conducted by Rev. Richard A. Bryan of the New Providence Presbyterian Church. Interment was at Fairmount Cemetery, Chatham.

Vito Amiano

Vito Amiano of 258 Washington street, Berkeley Heights, died January 23 at his home of a long illness. He was 90. Mr. Amiano was born in Italy (Continued on page 7)

LITTERS

Question: 'Traditional' Library

Editor, Summit Herald: As a former trustee of the Public Library, I was greatly pleased to read in the Summit Herald the announcement that Summit is to have a new library building. It is urgently needed and long overdue.

In a subsequent issue of the Herald, on January 26, your excellent editorial expressed what we all feel with one important exception. I do not agree with your suggestion "that those who are to be in charge of design favor the traditional rather than the modern."

In the first place I doubt that any architect would willingly recommend a "traditional" building. The Carnegie-type of library building with its high entrance steps and lofty central dome has outlived its usefulness. About the only purpose this design served was to place culture on a pedestal. It is difficult of access; expensive to heat and maintain. Older people, who may hesitate to scale the heights, should be encouraged to use the library rather than the reverse.

An article in the real estate

VALUES

... vary in life insurance. Actually, it costs nothing extra to get a good return on your investment. Let me tell you about Northwestern Mutual.

ERNEST S. HICKOK, CLU LIFE INSURANCE 382 Springfield Avenue CR 7-1427

INVESTMENT SECURITIES MUTUAL FUNDS

W. L. Canady & Co., Inc. 441 Springfield Ave. CR 3-6666

"I really saved steps when I was downtown today ... parked the car on the municipal lot and used Summit Federal's rear entrance - just a hop, skip and a jump and there I was on Springfield Avenue!"



"Say, that was easy on the arches! Hope you paused long enough to have a few more of their Free Money Orders issued, so we can take care of this month's bills!"



Of course you don't have to be a saver here to make use of our short cut to Springfield Avenue - everyone's welcome. But it makes sense to do your saving at Summit Federal.

Dividends start every month here, and savings received by the 10th of any month earn from the 1st. Your account insured to \$10,000 by United States Government instrumentality.

COMPOUNDED QUARTERLY

3 1/2% PER YEAR



Since 1891

SUMMIT FEDERAL SAVINGS

AND LOAN ASSOCIATION

SUMMIT: 393 Springfield Avenue • CRestview 3-8150 BERKELEY HEIGHTS: 441 Springfield Avenue • CRestview 3-0860

Both offices open daily, 9 a.m. to 3 p.m.; Also FRI. EVES. 6 to 8

Insured Savings Accounts • FREE Money Orders • Traveler's Checks • Christmas Club • Mortgage Loans • Refinancing Mortgage Loans

Current Comment

The Composite Image (Cleveland Plain Dealer) We are indebted to recent Bulletins of the Council for Basic Education for this intelligence, which may explain why teachers aren't always as well grounded in fundamentals as their pupils might wish.

Candidates for doctorates at Teachers College, Columbia University, are preparing dissertations on the subjects of "A Suggested Methodology to Formulate a Composite Ideal Image of the Professional Nurse" and "Field Hockey in American Education."

And Michigan State University reports a thesis on "A Study of the Personality Differences Between a Group of Women Who Had Participated in Sewing Classes in an Adult Education

TERS
 from page 3)
 old and natural
 many of them do,
 by their indivi-
 duality, but by
 they have never
 to learn. And how
 when they live in
 ment houses suc-
 more apartment
 cess, shopping cen-
 dential areas of
 house in a strip

Grand Union WINES & LIQUORS

SCOTCH
 Selected in Scotland
79
 FULL QUART

BLEND
 40% - 86 Proof
 Years Old
29
 FULL QUART

GIN
 Proof
05
 FULL QUART

BOURBON
 40% - 86 Proof
75
 FULL QUART

RUM
 West Indies
19
 A FIFTH

VODKA
 100 PROOF
369
 A FIFTH

NEW
 *ROSS'S 8 YRS. OLD
 ANCIENT & HONORABLE
 Extra Light Blended
 SCOTCH WHISKY
 Blended and Bottled in Scotland
 40% Proof
\$5.69
 A FIFTH

NEW
 *GRAND ESTATE
 N.Y. STATE WINES
 Port - Sherry - Muscatel - White
 Port - Tawny Port - Cocksall
 Sherry (Fino Dry) - Sauterne -
 Burgundy - Rhine
\$1.19
 A FIFTH

NEW
 *GRAND ESTATE
 Triple Cream Port
 Triple Cream Sherry
\$1.39
 A FIFTH

NEW
 *SANTA MARTA
 Sweet and Dry Vermouth
99¢
 FULL QUART

GRAND UNION LIQUOR STORE LOCATED AT
 FOREST AVENUE, SUMMIT, NEW JERSEY

DEATHS
 (Continued from page 6)
 and came to this country and
 Berkeley Heights 70 years ago.
 He retired 30 years ago from
 his own scrap business.
 He leaves his wife, Mrs. Rose
 Bagniola Amlano; three sons,
 Michael of Stirling, Joseph of
 Newark and Jerry of Plainfield;
 two daughters, Mrs. Mamie
 Gambino of Plainfield and Mrs.
 Antoinette Columbus, with whom
 he lived; a brother, Frank of
 Newark, and six grandchildren
 and four great-grandchildren.
 The funeral was last Thursday
 from the Paul Ippolito Berkeley
 Memorial, 646 Springfield
 avenue, with a mass at 9:30 a.m.
 in the Church of the Little
 Flower.

Mrs. Walter L. Cropley
 Word has been received of the
 death on January 23 of Mrs.
 Emma H. Cropley of 36 New
 England avenue at Daytona
 Beach, Fla. She was the wife of
 Walter L. Cropley.
 In addition to her husband,
 she is survived by two sons, Sid-
 ney B., of Buffalo, N. Y., and
 Malcolm L., of Seattle, Wash.,
 and a daughter, Mrs. John R.
 Van Duyn of Bedford, N. H.

Mrs. Douglas E. Pickens
 Mrs. Rhoda Corwin Pickens,
 a former resident of Summit
 died suddenly on Tuesday, Jan-
 uary 24, at San Francisco.
 Mrs. Pickens was born at
 Wilmington, Ohio, and lived here
 at 20 Prospect Hill avenue for
 about 10 years. She moved to
 California in 1942.
 She is survived by her hus-
 band, Douglas E. Pickens; two
 daughters, Mrs. Virginia Corwin
 Garverick of 135 Woodland ave-

DEATH NOTICE
 SOHRAMM, on January 29 Hettie
 M., widow of Fred W., formerly of
 Summit, New Jersey, service and
 interment, Wednesday, Dentally
 Funeral Home, St. Louis, Mo.

COINS
 BOUGHT & SOLD
 Complete Line of
 Coin Supplies
WHITMAN COIN
BOOKS 35¢ each,
Three for \$1.00
 Commencing February 4th,
 A Coin Dealer Will Be
 Available Every Saturday
 from 10 a.m. to 3 p.m. at

VARIETY
RECORD SHOP
 307 Millburn Ave., Millburn
 Opposite Millburn Post Office

and Mrs. Constance Mercer
 Bainbridge of Bermuda; 5
 grandchildren, 3 great-grandchil-
 dren and one great-great-grand-
 child.
 Burial services were held at
 Wilmington, Ohio.

Walter E. Gotham
 Walter E. Gotham of 17 Black-
 burn road, former vice president
 of the Nuodex Products Co., died
 Saturday in Overlook Hospital
 of a brief illness. He was 56.
 Mr. Gotham was born in
 Cologne, Germany, and was
 brought to this country as a boy.
 He lived in Union for 21 years
 before moving to Summit in
 1947.
 He joined Nuodex in 1940 and
 was with the firm when it be-
 came a division of the Heyden-
 Newport Chemical Corp. He re-
 tired six years ago as vice-
 president in charge of the manu-
 facturing division in Elizabeth.
 He was a member of the Eliza-
 beth Rotary Club and of Canoe
 Brook Country Club.
 He leaves his wife, Mrs. Helen
 Cumming Gotham; a son Robert
 W. of Plainfield; a daughter,
 Mrs. Margaret Becker of Berke-
 ley Heights, and two grand-
 children.

Domenick Masi
 Domenick Masi of 20 Kent
 Place boulevard, died Sunday
 at Overlook Hospital following
 a short illness. He was 81.
 Born in Italy, he came to
 this country 55 years ago and
 to Summit in 1908. He operated
 his own confectionary store at
 437 Springfield avenue for 45
 years before he retired 12 years
 ago. For the next 10 years he
 was employed at Katz Station-
 ery Store at Beechwood road
 and Union place. Mr. Masi was
 a member of St. Teresa's Holy
 Name Society.

George A. Landry
 George A. Landry of 61 Black-
 burn Road, a former assistant
 director of the Office of De-
 fense Mobilization, and a for-
 mer mayor of LaGrange Park,
 Ill., died Monday night of a
 heart attack in Overlook Hos-
 pital. He was 71.
 Mr. Landry rose from a \$10-
 a-week job with the Western
 Electric Co. to a vice presi-
 dent's post before he retired in
 1954 to enter government ser-
 vice for four years.
 He was born in Rouses Point,
 N.Y., and was graduated from
 Plattsburg, N.Y., High School
 and from the University of Ver-
 mont with a bachelor's degree
 in electrical engineering.
 He joined Western Electric in
 Chicago in 1911. He subsequent-
 ly became division manager of
 specialty products shops in
 Kearny, installation operations
 manager in the New York of-
 fice, and in 1949 was named
 president of the Sandia Corp. of
 Albuquerque, a Western Elec-
 tric subsidiary engaged in the
 development and production of
 atomic weapons. Three years
 later he was recalled to the New
 York office to assume the office
 of vice president.
 From 1932 to 1936, Mr. Landry

Mrs. John Correll
 Mrs. Lydia D. Correll of 23
 LaScola Place, Berkeley
 Heights, died Tuesday morning
 at her home. She was 86.
 A native of Brooklyn, Mrs.
 Correll had resided at Berkeley
 Heights for the last 28 years.
 She was the widow of John
 Correll.
 She is survived by four daugh-
 ters, Mrs. Elsie Veronski of the
 home address, Mrs. Ottilie W.
 Hayden, also of Berkeley
 Heights, Mrs. Lydia Palzer of
 Richmond Hills, L. I., and Mrs.
 Dorothy Singhofen of Marlboro;
 a son, Fred E. Walters of Los
 Angeles, and three grandchil-
 dren.
 Funeral services will be held
 tomorrow at 11 a.m. at the
 Brough Funeral Home, 535
 Springfield avenue, conducted
 by Rev. Elmer F. Francis,
 rector of Calvary Episcopal
 Church.

United Campaign
 (Continued from Page 1)
 research on heavy water at
 Trail, British Columbia, used in
 the development of the atom
 bomb. Dr. Barr has continued
 to work with the Atomic Energy
 Commission. He holds several
 dozen patents and was the first
 president of the Summit As-
 sociation of Scientists.
 Dr. Barr has been active in
 the Boy Scouts and the Summit
 Boosters and was president of
 the Summit Council of Churches
 in 1952-53. He has been a mem-
 ber of the YMCA board of
 directors and of Christ Church.
 In taking the reins from last
 year's chairman, Stephen W.
 Ransom, Dr. Barr issued this
 statement:
 "A campaign turns on the
 volunteer efforts of many and
 the individual contributions of
 every local resident. The de-
 gree of support often measures
 the character and the citizen-
 ship of a community. The way
 neighbors work together for and
 contribute toward a United
 Campaign goal indicates the
 depth of their belief in the value
 of the voluntary way in meeting
 responsibilities and in serving
 the community's human needs.
 Cites Local Services
 "Some of the vital facts about
 Summit's United Campaign
 are:
 1. That the nine agencies
 receiving funds raised through
 the United Campaign offer com-
 munity services in which every
 family in the community can
 participate or use in some way.
 2. The 25-year-old annual
 campaign itself historically has
 offered an over-all opportunity
 to avoid the duplications and
 annoyances inherent in num-
 erous door-to-door solicitations.
 The fact that other communi-
 ties, wide, door-to-door campaigns do
 take place in Summit is not the
 United Campaign's fault or
 responsibility. The chance to
 join the United Campaign has
 always been and always will
 be open to other appropriate
 drives.
 3. That it is up to the citizens
 of the community to decide
 whether they want a single
 solicitation each year or not,
 and, if so, to make sure that
 their single contribution is
 greater than the amount that
 might be raised through multi-
 ple drives by the nine agencies
 covered under the United Cam-
 paign.
 4. That in our communi-
 ty, as elsewhere throughout our

THE SUMMIT HERALD, Thursday, Feb. 2, 1951

country—a local, voluntary-sup-
 ported United Campaign is an
 opportunity to serve or con-
 tribute as a good citizen to a
 good cause and to demonstrate
 that local people can effectively
 handle their local responsibilities."

Top Stars
 (Continued from Page 1)
 named to six Pro Bowl squads.
 Representing the world cham-
 pion Philadelphia Eagles will be
 Bobby Walston, famed target
 for Norm Van Brocklin's pass-
 es, in his first year as a pro.
 Walston was named "Rookie of
 the Year." Since 1951, his name
 has been repeatedly entered in
 the record books. In 1954 he led
 the league with 114 points
 scored for one season. Besides
 being an outstanding offensive
 end for the Eagles during their
 drive to the championship in
 1960, he also contributed to their
 success with his field goals. He
 holds the club record for field
 goals in one season (11) and in
 one game (4). Top team scoring
 6 to 60, are urged to attend.

Driver Denies
 (Continued from Page 1)
 were going to a New Year's
 Eve party at the time of the
 mishap.
 The driver was taken to Over-
 look Hospital where he re-
 mained for several weeks for
 treatment of a fractured hip.

severe face lacerations and
 multiple bruises.
 Following the accident, it
 took police 20 minutes to re-
 move the victims who had been
 pinned to the seats. Ganger was
 pronounced dead at the scene.
 The accident occurred approxi-
 mately one hour and a half be-
 fore the New Year. It was the
 only auto fatality of the year
 here.

B Altman & Co
 Come to the
CHARLESTON FESTIVAL
 February 6 to 18
 in Altman's
CHARLESTON
GARDEN!
 enjoy the traditional cooking of
 southern plantations in dishes
 flown direct from Charleston,
 South Carolina, by National Air-
 lines. Taste delicacies such as
 she-crab soup, shrimp creole, black
 walnut torte and others.
 Complete luncheon 2.25.
 PENTHOUSE
 MORRIS TURNPIKE AT RIVER ROAD... DRessel 9-1000

**EARLY OR LATE
 YOU CAN ...**

"Make a date with National State"

AT OUR SUMMIT OFFICE

You'll find a wide selection
 of helpful banking services available
 at your nearby office of National State.
 You can also enjoy the convenience
 of extra banking hours as listed below.

REGULAR HOURS: 7:50 a.m. to 2:00 p.m.
EXTRA HOURS: 6:00 p.m. to 8:00 p.m. Friday

Our Summit Office features
 drive-in windows, free customer parking
 and Trust Department Headquarters.

THE NATIONAL STATE BANK
 "Union County's Leading Bank"
 • ELIZABETH • SPRINGFIELD • ROSELLE PARK
 • SUMMIT • KENILWORTH • WESTFIELD
 MEMBER FEDERAL DEPOSIT INSURANCE CORPORATION

PRINT NOV 1948

INTERVIEW
 FROM NEW JERSEY BELL
 THE HOME INTERPHONE

Now—with the new Interphone, your home
 phone service becomes a complete modern inter-
 communications system.

CHECK THE BABY
 With an extension near baby's crib, you can
 baby-sit from any part of the house.

TALK FROM ONE ROOM TO ANOTHER
 You can, from any phone in the house, talk to
 any other room that has an extension—even
 "broadcast" a message to the entire family.

YOU FEEL SO SECURE
 With Home Interphone you enjoy a great sense
 of security—especially at night. In an emergency,
 the whole family can be alerted in seconds.

YOU CAN ANSWER THE DOOR
 Through a special speaker-microphone at the
 door, you can talk with, decide if you want to see,
 callers—from any phone in your home.

IDEAL FOR SMALL BUSINESSES, TOO
 You can save time, steps and cost with an Inter-
 phone system in beauty shops, doctors' offices—
 small businesses of all types.

The Home Interphone is guaranteed trouble-
 free—or prompt repairs will be made without
 charge. For more facts, call your Telephone
 Business Office or ask your telephone serviceman.

HOLD AND TRANSFER CALLS
 You can switch outside calls for other people to
 any phone in the house—or hold a call while you
 use Interphone to answer the door.

NEW JERSEY BELL

LOW FOOD PRICES
Today! Tomorrow! Everyday!

AT SUMMIT SHOP-RITE ONLY!

GENUINE SPRING
LAMB SALE!

Pink meat LEGS of
SPRING LAMB 45¢ lb

Oven-ready legs of Pink meat lamb 53¢ lb.

Pink Meat LOIN	Pink Meat Shoulder	Pink Meat Baby Rib	Ready to Cook LAMB
Lamb Chops 79¢ lb	Lamb Chops 45¢ lb	Lamb Chops 59¢ lb	PATTIES 29¢ lb

RIB ROAST 59¢ lb
G.Q.M. U.S. Government Grade A U.S. Choice Beef

U. S. Government Graded Snow White Turkeys 39¢ lb
10-12 lbs.

Freshly Cut to Order Spiced Ham 45¢ lb
Your Choice MACARONI SALAD POTATO SALAD COLE SLAW 19¢ lb

Taylor Midgets 99¢ 1 1/2 lb. pkg.
PORK ROLL 3 #2 1/2 cans 89¢

Shop-Rite **CHEESE LOAF** 2 lb. box 79¢
DINNERS 39¢ pkg.
Chicken, Turkey, Beef, Ham, Meat Loaf, Salisbury Steak, Ham, Macaroni & Cheese, Your Choice

ORANGE JUICE 59¢ 5 8 oz. cans
SHOP-RITE or LIBBY

Golden Ripe BANANAS 10¢ lb
STRAWBERRIES 59¢ 10 oz. boxes
SHOP-RITE FROZEN SLICED

Shop-Rite **CAR MIXES** 39¢ 18 oz. jar
MAYONNAISE 39¢ jar

Shop-Rite **PEANUT BUTTER** 18 oz. jar 43¢
2 lb. jar 69¢
3 lb. jar 99¢
5 lb. pull 1.69

FROZEN WAFFLES 10 boxes 99¢
SHOP-RITE 10 boxes 99¢

NEW! Increased Parking Facilities
Summit Shop-Rite

40 PARK AVE.
SUMMIT
Open: Mon. thru Thurs 'til 9 —
Fridays 'til 10 —
Sundays 'til 5
AMPLE FREE PARKING

PRICES EFFECTIVE THRU SATURDAY, FEBRUARY 4

Resident ENDS 44 Years With Western Electric

An engineering career spanning 44 years ended Tuesday when Harold V. Schmidt of 73 New England Avenue retired from his post as vice president of the Western Electric Company's plant design and construction division.
Mr. Schmidt was responsible for the company's plant design and construction program for the past nine years. During that time, the company undertook the largest building program in its history with outlays amounting to \$370,000,000.
Among the major projects Mr. Schmidt directed were the new Western Electric building at 222 Broadway, New York City, the company's engineering research center at Princeton and the Holmdel Laboratory presently under construction in Holmdel. He was also responsible for the newly constructed manufacturing locations at Columbus, Ohio; Omaha, Nebraska; Oklahoma City, Okla.; and North Andover, Mass. More than a dozen other major facilities at locations ranging from Long Island to Los Angeles.
A native of Muscatine, Iowa, Mr. Schmidt earned his degree in electrical engineering at Iowa State College. After graduation, he joined Western Electric as a student engineer at the Hawthorne Works in Chicago. After several promotions at that location, he continued his engineering career at Western Electric's Baltimore and Tonawanda, N. Y., manufacturing centers. In 1949 he moved to the company's headquarters in New York as assistant engineer of manufacture and later was named engineer of manufacture. He was elected a vice president in 1956.
Mr. Schmidt served as a Second Lieutenant in the Air Corps from 1918 to 1919.
He and his wife, Lillian, plan a trip to Florida in the next few months.

No-New-Tax
Voys Hit by School Groups
A Governor and Legislature free to face New Jersey tax needs was the goal urged on Union County citizens at a meeting at Newark State College last night. Leonard E. Best of 237 Oak Ridge Avenue, state chairman of the PTA's school boards, municipal officials and Leagues of Women Voters.
Higher local taxes are inevitable unless the state government can provide a great deal more state school aid within the next few years, Mr. Best told the meeting. He urged that present state school aid be just about doubled. State school aid on the scale depends on changes in the state tax system, he said, and these have been blocked in recent years by "no-new-tax" pledges by state officials and in party platforms.
"Such commitments have forced local taxes to carry inevitable increases in school costs," Mr. Best insisted, "and have made New Jersey one of the nation's worst examples of a high property tax state." Local school taxes are going up at the rate of more than \$40,000,000 a year, while state school aid goes up less than \$5,000,000 a year, he stated.
"Local property taxes are grossly unfair to many citizens when they have to carry the big bulk of school costs, as they do now in New Jersey," Mr. Best told the meeting. "The Governor and Legislature we will elect this year should be free to examine this situation and help. The alternatives are still higher local taxes in some communities and poorer schools in others."
Lewis R. Applegate of Trenton, secretary of the School Support Committee, outlined a program of keeping tax commitments out of the political platforms on which candidates will run during the 1961 primary and general elections.

Four Area Residents Granted Citizenship
Four Summit Area residents were among a group of 125 from the county who were admitted to citizenship on Monday at naturalization court.
They were Endel Ebrok of 80 Ashwood Avenue, Summit; Dorothy Gifford of 47 Edgewood Avenue, New Providence; and Friedolf M. Smits of 15 Orion Road and Isabella C. Stevens of 274 Mountain Avenue, both of Berkeley Heights.

Enjoy...
CAREFREE WINTER DRIVING!

Get The Tops In Car-Care
Our highly-skilled service men are your car's best friends. With their long experience they can spot signs of trouble before it starts. Prompt attention, always.

U-HAUL RENTALS
CR. 3-1199

Harry's Esso Servicenter, Inc.
Springfield and Union Aves., New Providence

CAR GUICK
CRANE & BULLDOZER SERVICE
Trucks for Hire
Jefferson 8-2082
Berkeleyville 8-2082

REMODEL YOUR HOME

Finest Selection of PANELING
Give yourself a new...
(You deserve it!)

Make room for happier living in a new Fashionwood Kitchen. These beautiful new kitchens, designed to save space—and save your money—give you more elbow room for working and relaxing. No other kitchens offer cabinet and drawer interiors with rounded corners—so easy to clean. Come see the kitchen you deserve... today!

Still Time To Winter-Protect Your Home!

Aluminum - Combination STORM DOORS & WINDOWS

Aluminum & Wood

- TOP QUALITY
- LOW PRICE
- FREE ESTIMATES
- ADDS BEAUTY TO YOUR HOME

Cut down on drafty corners and save money on fuel with properly installed Storm Windows and Doors, made of beautiful, long lasting aluminum.

Aluminum Combination WINDOWS \$16.95 ea. installed —up to 4
\$15.95 ea. installed —5 or more

Aluminum Combination DOORS \$52.50 installed

Your Home Improvement Headquarters
STEPHENS-MILLER Co.
38 RUSSELL PLACE
PHONE: Chestview 7-0030

NOTICE OF SETTLEMENT
NOTICE IS HEREBY GIVEN THAT the first intermediate account of the subscriber, UNION COUNTY TRUST COMPANY, Trustee, under the Will of Olive C. Day, deceased, Trustee of the Trust created by Paragraph 23A(1) of the Will of CAROLYN DAY, deceased, will be audited and stated by the Surrogate, and reported for settlement to the Union County Court—Probate Division, on Friday, February 17th next at 10 A.M. E.S.T. Dated January 5, 1961.
Gertrude D. Day, Executor under the Will of Olive C. Day, deceased.
Lemuel Eldredge, Jr., Attorney.
8 Parmlay Place, Summit, N. J.
Jan. 12, 19, 26; Feb. 2 4 1 88.75

NOTICE TO CREDITORS
ESTATE OF JAMES L. HAMAR, JR., Deceased.
Pursuant to the order of EUGENE J. KIRK, Surrogate of the County of Union, made on the thirteenth day of January, 1961, upon the application of the undersigned, as Executor of the estate of said deceased, notice is hereby given to the creditors of said deceased within six months from the date of said order, or they will be forever barred from prosecuting or recovering the same against the subscribers.
Mildred S. Hamar and The Summit Trust Company, Summit, N. J., Executors.
Bourne, Schmid, Burke & Noll, Attorneys.
383 Springfield Avenue, Summit, N. J.
Jan. 12, 19, 26; Feb. 2 4w — \$14.00

NOTICE TO CREDITORS
ESTATE OF MARGARET R. KROWLES, also known as MARGARET SHELTON KROWLES, Deceased.
Pursuant to the order of EUGENE J. KIRK, Surrogate of the County of Union, made on the sixth day of January, A.D. 1961 upon the application of the undersigned, as Executor of the estate of said deceased, notice is hereby given to the creditors of said deceased to exhibit to the subscribers under oath or affirmation their claims and demands against the estate of said deceased within six months from the date of said order, or they will be forever barred from prosecuting or recovering the same against the subscribers.
Mildred S. Hamar and The Summit Trust Company, Summit, N. J., Executors.
Bourne, Schmid, Burke & Noll, Attorneys.
383 Springfield Avenue, Summit, N. J.
Jan. 12, 19, 26; Feb. 2 4w — \$14.00

NOTICE OF BUDGET HEARING
In accordance with State School Laws, the Board of Education is required to publish the proposed budget for the subsequent year on a form prescribed by the Commissioner of Education. The same shall be published in the newspaper of general circulation in the County of Union, on or before the first day of February, 1961.
Notice is hereby given that the Board of School Education of Summit will conduct a public hearing on the proposed budget for 1961-62 on Thursday, February 2, 1961, 8:00 p.m. at the Council Chamber, City Hall, 512 Springfield Avenue, New Jersey.
The detailed school budget will be on file and open for examination of the public at the office of the Board of Education, 120 Elm Street, between the hours of 8:30 a.m. and 4:30 p.m. on any day from the date of this notice until the date of the public hearing.
BY THE ORDER OF THE BOARD OF EDUCATION
W. S. EDOT, Secretary

SCHOOL DISTRICT BUDGET STATEMENT FOR SCHOOL YEAR 1961-62

Board of Education of Summit, N. J., County of Union	1959-60	1960-61	1961-62
ENROLLMENTS		(Actual)	(Estimated)
Resident Av. Daily Enroll.	4,087.4	4,184	4,184
ADD: ADE-Tuition Pupils Rec'd	4	—	—
Total Average Daily Enroll	4,071.8	4,184	4,184
SOURCES OF REVENUE			
CURRENT EXPENSE	(Actual)	(Anticipated)	(Anticipated)
Appropriation Balance	\$ 1,534.85	\$ 4,438.00	\$ 4,438.00
Balance Appropriated	—	1,534.85	1,534.85
Local Tax Levy	1,808,900.00	1,808,900.00	1,808,900.00
State Aid	202,215.00	213,102.00	213,102.00
Federal Aid	17,882.24	—	—
Miscellaneous Revenue	1,500.00	—	—
	101.00	—	—
(A) TOTAL CURRENT EXPENSE	\$2,044,727.05	\$2,117,200.00	\$2,117,200.00
CAPITAL OUTLAY			
Appropriation Balance	\$ 35,207.04	—	—
Local Tax Levy	42,000.00	36,753.03	36,753.03
Federal Aid	10,343.45	—	—
(B) TOTAL CAPITAL OUTLAY	\$ 87,550.49	\$ 36,753.03	\$ 36,753.03
TOTAL REVENUE—ALL ACCOUNTS	\$2,132,277.54	\$2,153,953.03	\$2,153,953.03

Kiwanis Hears Talk On New Rescue Squad
Ralph Pocaro, a local attorney and member of the Board of Recreation Commissioners addressed the Kiwanis Club on Tuesday on the feasibility of forming a local rescue squad.
The study has been undertaken by the Summit Area Junior Chamber of Commerce of which Mr. Pocaro is committee chairman.

Cited for Car Sales
Winton S. Fletcher, sales manager of Fletcher Lincoln-Mercury Motors Inc., 80 Franklin place, has earned a sales management award from the Lincoln-Mercury Sales Council. The certificate is awarded for proficiency in organizing and directing a top-level sales force.

Annual Dinner
The annual church membership meeting will be held today at Fountain Baptist Church. Dinner will be served at 7:30 p.m.

NOTICE TO CREDITORS
ESTATE OF ORACE D. STREIBIG, Deceased.
Pursuant to the order of EUGENE J. KIRK, Surrogate of the County of Union, made on the sixth day of January, A.D. 1961 upon the application of the undersigned, as Executor of the estate of said deceased, notice is hereby given to the creditors of said deceased to exhibit to the subscribers under oath or affirmation their claims and demands against the estate of said deceased within six months from the date of said order, or they will be forever barred from prosecuting or recovering the same against the subscriber.
CHARLES F. STREIBIG, Executor.
Bourne, Schmid, Burke & Noll, Attorneys.
383 Springfield Avenue, Summit, N. J.
Jan. 12, 19, 26; Feb. 2 4w — \$14.00

APPROPRIATIONS

CURRENT EXPENSE	1960-60	1960-61	1961-62
ADMINISTRATION	\$ 55,139.88	\$ 57,100.00	\$ 57,100.00
Salaries	1,389.90	2,203.00	2,203.00
Contracted Services	7,013.96	7,180.00	7,180.00
WETUADUCTION	—	—	—
Salaries	1,530,701.35	1,645,000.00	1,645,000.00
Textbooks	23,134.86	23,800.00	23,800.00
Libraries & Audio Visual Mat.	24,751.22	10,000.00	10,000.00
Teaching Supplies	28,579.25	29,150.00	29,150.00
All Other Expenses	8,949.37	8,275.00	8,275.00
ATTENDANCE AND HEALTH SERVICES	—	—	—
Salaries—Attendance	2,000.00	2,000.00	2,000.00
Salaries—Health	20,785.00	21,020.00	21,020.00
All Other Expenses—Health	2,529.35	3,000.00	3,000.00
TRANSPORTATION	2,340.00	2,500.00	2,500.00
Contracted Services and Public Carriers	5,017.75	5,000.00	5,000.00
All Other Expenses	628.92	800.00	800.00
OPERATION	—	—	—
Salaries	105,329.46	109,950.00	109,950.00
Heat	27,300.00	21,000.00	21,000.00
Supplies	25,579.25	29,150.00	29,150.00
All Other Expenses	6,201.15	7,200.00	7,200.00
MAINTENANCE	2,968.83	5,850.00	5,850.00
Contracted Services	3,880.25	8,000.00	8,000.00
Replacement (Purchase of Equipment)	17,882.08	20,000.00	20,000.00
All Other Expenses	22,925.04	13,075.00	13,075.00
FIXED CHARGES	15,043.58	18,450.00	18,450.00
Employee Retirement Contrib.	29,053.85	30,384.00	30,384.00
Insurance & Judgments	19,838.53	17,350.00	17,350.00
Repairs of Land & Buildings	5,500.00	4,000.00	4,000.00
EXPENDITURES TO OTHER DISTRICTS	—	—	—
Tuition	3,345.00	3,650.00	3,650.00
STUDENT BODY ACTIVITIES	—	—	—
Salaries	6,300.00	7,475.00	7,475.00
Other Expense	10,049.18	10,100.00	10,100.00
(A) TOTAL CURRENT EXPENSES	\$2,222,614.87	\$2,177,200.00	\$2,177,200.00
CAPITAL OUTLAY			
Sites	1,727.57	2,500.00	2,500.00
Buildings	10,930.00	13,000.00	13,000.00
Equipment	48,702.87	32,353.03	32,353.03
(B) TOTAL CAPITAL OUTLAY	\$ 61,360.44	\$ 47,853.03	\$ 47,853.03
TOTALS (Sum of A to B Inc.)	\$2,283,975.31	\$2,225,053.03	\$2,225,053.03
CURRENT OPERATING APPROPRIATION BALANCE			
REVENUES	JUNE 30, 1960	JUNE 30, 1960	JUNE 30, 1960
A CURRENT EXPENSES	\$ 2,112.18	\$ 2,112.18	\$ 2,112.18
B CAPITAL OUTLAY	16,000.85	—	—
TOTAL BALANCE	JUNE 30, 1960	\$ 30,093.03	\$ 30,093.03
TOTAL EXPENDITURES AND BALANCES	JUNE 30, 1960	\$2,132,086.44	\$2,132,086.44
IMPROVEMENT AUTHORIZATIONS			
UNEXPENDED IMPROVEMENT AUTHORIZATIONS	July 1, 1959 to June 30, 1960	—	—
REVENUES	July 1, 1959 to June 30, 1960	—	—
BONDS OR NOTES AUTHORIZED	—	—	—
TOTAL REVENUES	—	—	—
TOTAL REVENUES AND BEGINNING BALANCE	—	—	—
IMPROVEMENT AUTHORIZATION EXPENDITURES			
SITES	—	—	—
BUILDINGS	—	—	—
EQUIPMENT	—	—	—
TOTAL IMPROVEMENT AUTHORIZATION EXPENDITURES	—	—	—
UNEXPENDED IMPROVEMENT AUTHORIZATIONS	JUNE 30, 1960	—	—
TOTAL EXPENDITURES AND ENDING BALANCE	—	—	—

Churches
ve for
Sects

A discussion by members on the church unity feature of the Summit churches of Christ at Central Church. The speaker, G. Paul executive director of evangelism of the Council of Churches, was unable to be present because of the snow.

Members who participated in the discussion were: Stephens, Central Church, Rev. Boyd, Methodist Rev. Elmer F. vany, Episcopal.

A session centered around the proposal made in

Does
our auto
insurance
expire in
February
March?

Your Allstate agent right now!

Allstate Insurance Co.
 Mountain Avenue
 Murray Hill, N. J.

You're in good hands with
ALLSTATE
 INSURANCE COMPANIES
 PROPERTY - ACCIDENT AND SICKNESS - LIFE!

IF
 YOUR HOUSE
 LOOKS LIKE
 THIS



AND
 YOU'D LIKE
 IT TO LOOK
 LIKE THIS

HOUSE DOCTORS
 INC.
 for all repairs • alterations
 additions • and improvements

Bank Street
 Summit
CR. 7-6644



NEW PLAYHOUSE ADDITION—Shown above is the new Marjorie Jefferson auditorium of the Playhouse, dedicated with appropriate ceremonies last Sunday afternoon. The addition to the 42-year-old Playhouse, once the home of the Public Library, is the first major improvement since 1937. The wing is named in honor of Mrs. Floyd Jefferson, a charter member and long-time director. (Frantzen photo)

Playhouse Dedicates New Marjorie Jefferson Wing

The 42-year-old Summit Playhouse entered a new phase of its development last Sunday when more than 200 members and friends attended the dedication ceremonies for the new Marjorie Jefferson auditorium, named in honor of Mrs. Floyd Jefferson, a charter member and director for many years.

The auditorium, decorated in white and gold with accents of turquoise, faces a stage which was once the complete Playhouse plant and is the first radical change made to the theater since 1937 when certain remodeling, renovation and modernizing was done.

Guests of honor at the dedication included the Playhouse Board, members of the expansion fund, charter members and Mr. and Mrs. Jefferson. All were seated on the stage.

Campbell Howard, chairman of the expansion fund which raised the money for the new addition, opened the ceremonies and presented Frank Daniels, Playhouse president, with a gold key to the new auditorium. Daniels then turned the key over to Mrs. Jefferson to remain in her possession.

Various speakers recalled the history and highlights of the Playhouse.

The Playhouse was founded in 1918 as a means to raise funds for war relief and other charity. The building was leased from the Library Association. The organization had 23 charter members, eight of whom still reside here and remain members. Charter members who attended the dedication, in addition to Mrs. Jefferson, were Mr. and Mrs. Jack Manley Rose, Mrs. Susan Driver, Mrs. Norman L. Swartout, Miss Hilda Osborn and Mrs. Alice Osborn Henry.

The Association has played a major role in community affairs, particularly in giving benefit performances for other organizations and civic projects. It has given benefits for the Fighting Friends of Finland, entertainment of troops stationed at Fort Dix, local Red Cross and the College Club. It also in 1923 participated in the dedication of the High School by presenting "Billeted."

The Playhouse originally started to offer five performances a year but this later was changed to production of three 3-act plays a year. The first American production of A. A. Milne's "The Romantic Age" was at the Playhouse and its star, Beatrice Miles, stepped from amateur to professional status on the strength of her local performance.

In 1926 the Playhouse participated in the week-long Belasco Little Theater Tournament at New York City and received special acclaim for its performance.

Since its founding the theater group has given 140 plays. It has an active membership of 100, fifty inactive and more than 250 associate members.

Roger K. Brown
 is a good man
 to know

He can probably save you quite a bit of money. As an Allstate Agent, he's a specialist at taking the red tape and high cost out of insurance.

Why don't you call him?
 72 Spenser Dr., Short Hills
 DR. 9-5277

You're in good hands with
ALLSTATE
 Insurance Companies
 HOME OFFICE: MILWAUKEE, WI.

Naval Reserve Unit
Hears Talk on Cold War

At a recent drill of Naval Reserve Electronics Division 3-3 of Summit, Commander Carl A. Felt, Jr., of Chatham, addressed the personnel on "Cold War Procedures". Commander Felt attended the Defensive Strategy Seminar in Washington, D. C., last summer and participated in the Third Naval District Commandant's Sea Power Project.

ACCOUNTS INSURED
 to \$10,000 by an
 agency of the
 UNITED STATES
 GOVERNMENT

3 3/4% Per Annum
 PAID QUARTERLY

SAVE BY MAIL...
 POSTAGE PAID BOTH WAYS

HAYES
 SAVINGS and LOAN
 ASSOCIATION
 885 Broad St. Newark 2, N. J.

High School
Menus for
Coming Week

Following are Junior and Senior High School menus compiled by Margaret Schumacher, school lunch manager, for the week commencing February 6.

Hot or cold plate lunch with bread and butter and one-half pint of milk—costs 30 cents.

Monday, Feb. 6
 Tomato juice, chicken noodle soup; Hot Plate: Grilled Taylors ham on bun, pickle chips, macaroni with tomato, cabbage and relish; Cold Plate: Kiefer pear, date and cream cheese, cold cuts, chips; Tuna fish salad sandwich; Desserts: Raisin cake, coffee buns, butterscotch pudding, sliced peaches.

Tuesday, Feb. 7
 Orange juice, split pea with crostons soup; Hot Plate: Spanish rice with beef, Mexican corn, salad of fruit; Cold Plate: Fresh fruit salad, finger sandwiches; Liverwurst sandwiches; Desserts: Devil's food cake, marble pudding, jello, apple sauce.

Wednesday, Feb. 8
 Blended juice, cream of mushroom soup; Hot Plate: Hamburger and roll, sliced cheese, hashed brown potatoes, carrot rings; Cold Plate: Vegetable aspic, tuna salad, pickle chips; Peanut butter sandwich; Desserts: Cherry cottage pudding, baked custard, jello, fruit cocktail.

Thursday, Feb. 9
 Grapefruit juice, beef barley soup; Hot Plate: Broiled chicken, cranberry sauce, buttered rice, peas; Cold Plate: Ham and macaroni salad, pickled beets, stuffed celery; Bologna sandwich; Desserts: Chocolate cake, rice pudding, jello, apricots.

Friday, Feb. 10
 Pineapple juice, tomato rice soup; Hot Plate: Fillet of had-

Third Graders Are in the Dough

In a correlated study of sources of food in the community and arithmetic, Mrs. Lillian Guenther's third grade class at Wilson School last week made and baked bread.

Using a time-proven recipe, the children measured and added all their own ingredients, under the direction of the teacher, and even took on the monumental job of stirring the batter, which became extremely thick as additional flour was added. Even the musculer of the class found it difficult to stir as they went along.

One of the fascinating aspects for the children was observation of the dough rising to double its original size. After the necessary rising the dough was divided into two parts. One half was made into an old-fashioned twist loaf, while the remainder was made into a circle coffee cake and decorated with powdered sugar and a nut topping.

The preparation of the bread was part of a class study of sources of food in the community as well as a study of fractional parts.

Nearly 400 varieties of plant life have been found on New Jersey's State-owned Wharton Tract.

Now Is The Time To Trade
Your Old Lawn Mower
On a NEW 1961
ECLIPSE or JACOBSEN
POWER MOWER

"the world's finest mowers"
 Call today for sharpening and service special!

LARRY'S CYCLE & SPORT SHOP
 35 Years Of Lawn Mower Experience
 397 Broad St. CR 3-5055 Summit

MILLBURN
 COAL & OIL CO.
FUEL OIL
 JEDDO COAL KOPPERS COKE
 BUDGET PLAN
 OIL BURNER SERVICING
 "CONTINUOUS FUEL SERVICE SINCE 1911"

24 HOUR SERVICE
 9 MAIN MILLBURN
DRexel 6-0008
 METERED DELIVERIES

DESK SPACE
 Center of Town
COMPLETE OFFICE SERVICES
AVAILABLE

- mimeographing
- photo copy
- legal & statistical typing
- mailing
- billing
- notary public
- wake up calls
- vacation coverage

MOORE'S ANSWERING SERVICE
 447 Springfield Ave.
 Summit
 24 Hour Telephone Coverage

HERE'S MORE PROOF... YOU SAVE CASH and TRIPLE-S BLUE STAMPS AT GRAND UNION!

Grand Union Meats are Backed-By-Bond—our pledge to you that you will be completely satisfied or your money refunded... YOU ARE THE WINNER!

READY TO EAT
Smoked HAMS

43¢ lb. **53¢** lb.
 FULL CUT SHANK HALF **35¢** BUTT PORTION **45¢**

LONG ISLAND—Ready-to-Cook—
DUCKLINGS lb. **39¢**

ALL MEAT FRANKS 1 lb. **49¢**
HAM SLICES READY TO EAT **99¢**

FREE 40 EXTRA STAMPS
 with purchase of 1 lb. of
Ferris Sliced Bacon
 20 EXTRA STAMPS
 with purchase of 1/2 lb. pkg.

Italian Food Festival
PROGRESSO TOMATOES 3 1/2 qt. **\$1.00**
CHEF BOY-AR-DEE SPAGHETTI 2 1/2 lb. **49¢**
PROGRESSO OLIVE OIL 1 qt. **89¢** 1/2 qt. **53¢**
CHEF BOY-AR-DEE RAVIOLI 2 1/2 lb. **49¢** MEAT OR CHEESE
FRESHPAK SPAGHETTI 2 1/2 lb. **39¢** ALL VARIETIES

Del Monte
WEEK
 Values throughout the store!

SWEET EARLY GARDEN PEAS 17-oz. cans **2 37¢**
PINEAPPLE-GRAPEFRUIT DRINK 46-oz. cans **2 49¢**

FRUIT COCKTAIL 14-oz. cans **35¢**
TOMATO CATSUP 14-oz. cans **19¢**
PEACHES SWEET OR SAVORY 2 1/2-oz. cans **39¢**
TOMATO SAUCE 8-oz. cans **69¢**
CORN 2 1/2-oz. cans **35¢**
PEAR HALVES 2 1/2-oz. cans **49¢**
LARGE PRUNES 16-oz. pgs. **37¢**
SEEDLESS RAISINS 2 1/2-oz. pgs. **45¢**

Brighten your table with
Gaiety Melmac
DINNERWARE

4 piece STARTER SET
 10" DINNER PLATE
 COFFEE CUP
 SAUCER
 6" PIE PLATE

Guaranteed for one full year! Completely safe from daily bumps, boiling water, machine washings. Get the complete service. Companion pieces also available—see store displays.

1.69

plus **50 EXTRA Triple-S Blue Stamps**
 WITH EVERY PURCHASE OF A 4-PIECE PLACE SETTING (Starter Set)

ALPO DOG FOOD 2 1/2-oz. **55¢** 2 1/2-oz. **63¢**

COLGATE'S ECONOMY PACK SOAP 6 bar pack **29¢**

Temple
ORANGES **10 49¢**

ANJOU PEARS 2 1/2-oz. **29¢**
FRESH SPINACH 10-oz. **25¢**
RHUBARB 10-oz. **29¢**

Easy to Prepare Frozen Foods!
GRAPE JUICE 2 1/2-oz. **29¢**
GREEN PEAS 2 1/2-oz. **35¢**
BRUSSEL SPROUTS 2 1/2-oz. **45¢**
MORTON'S BISCUITS 12-oz. **25¢**

Provovone Slices 4-oz. **33¢**
Imported Romano 4-oz. **60¢**
Caraway or Tilsiter 4-oz. **43¢**
Honey Butter 4-oz. **35¢**

ROYAL PUDDINGS 4 1/2-oz. **37¢**

MAXWELL HOUSE COFFEE 1-oz. **69¢** GOOD TO THE LAST DROP

LIPTON SOUP MIXES
CHICKEN 1-oz. **41¢** **TOMATO VEGETABLE** 2-oz. **27¢**

FREE 30 EXTRA TRIPLE-S STAMPS
 WITH THIS COUPON AND PURCHASE OF QUART DEAL BOTTLE
Ragu Spaghetti Sauce
 1/2 qt. and 1/4 qt. sizes. SEE STORE FOR DETAILS.

Prices effective in New Jersey, Rockland and Orange County stores thru Sat. Feb. 6th. We reserve the right to limit quantities.
 Triple S Redemption Center, 269 Morris Ave., Springfield

Hymn-Sing Is Highlight At Couples Club Dinner
An old-fashioned hymn-sing will be the highlight of the Methodist Church Couples Club meeting to be held tomorrow at 7 p.m. in the church.

Miss Spalding Tells of Truth To Amherst Man
Mr. and Mrs. Roger Montgomery Spalding of 32 Druid Hill road have announced the engagement of their daughter, Caroline Helen, to John Zane Bulkeley, son of Mr. and Mrs. Milton Bulkeley of Woodside, California. A late summer wedding is planned.



Miss Caroline Spalding (V. Merrill)

New York Deb Reveals Truth To W. F. Close
Mr. and Mrs. Reginald Allen of New York City have announced the engagement of their niece, Miss Anne Purves to William Forrest Close, son of Mrs. Donald W. B. Holmes of 81 Blackburn road and Sachem's Head, Conn., and Captain Forrest Close USN, Ret., of Madrid, Spain.



Miss Anne Purves (V. Merrill)

Miss Horowitz Reveals Truth To Physician
Mr. and Mrs. Harry Horowitz of 138 Hillcrest avenue have announced the engagement of their daughter, Elizabeth, to Dr. Raphael Hertz Levey, son of Dr. and Mrs. Irving Levey of Princeton.



Miss Elizabeth Horowitz (Rowe Studio)

Fortnightly to Hear Address by Noted Writer
At the Fortnightly Club general meeting to be held at Lincoln School at 2:30 p.m. on February 8, Miss Ardis Whitman, one of America's most prolific magazine writers, will present a platform discussion on "The Intelligent Woman and her Problems."



Give THE "BEST" VALENTINE
The most thoughtful and most personal Valentine is your portrait, of course. Black drapes provided for glamorous charm studies if you wish. In color or black and white.
Call for appointment: CR. 3-0087
STUDIO OF: Jules A. Wolin
For Quality & Service Strand Theatre Bldg. Summit

St. Teresa's Members Model Spring Fashions
Eight members of St. Teresa's Parish will model fashions from Patricia Cartee, Inc. and Nobby Millinery at the style show being held in conjunction with the Parents' Guild dinner-bridge. The party will be held on Tuesday at 12:30 p.m. at the Chatham Fish and Game Club.

At Alumnae Parley
Mrs. Prieth F. Benedict of 14 Fernwood road has joined with nearly 100 other alumnae officials in the Bradford Junior College campus today and tomorrow for the college's 10th annual Alumnae Council Conference.

Modern Art Topic for Kaffeeklatsch
At the next YWCA Kaffeeklatsch on Wednesday morning, February 8, Katherine Grove Sailer will give an illustrated talk on "How to Look at Modern Art" Persons who are puzzled by modern art will learn how to better understand it and learn how to really enjoy it.

Plans Set for Lincoln PTA Fashion Show
Fairy tale fashions will be the theme of Lincoln School PTA's annual benefit dessert and fashion show to be held in the school auditorium on February 14 at 12:45 p.m. Mrs. Elmer J. Bennett, chairman, has announced that this year proceeds from the event will be used to buy additional orchestra instruments for use by the school children, as well as to support other PTA projects.

Saxton Ashley Seward Marries New York Girl
Announcement has been made of the marriage of Miss Susan Jo O'Connor, daughter of Mr. and Mrs. Dan Williams O'Connor of Rockville Centre, New York to Saxton Ashley Seward, son of Mr. and Mrs. W. Saxton Seward of New Vernon, formerly of Summit.

Children's Workshop
Art Instruction Ages 5 to 12
Classes Saturdays 10:00 A.M. to 12:00 P.M. 1:00 P.M. to 3:00 P.M.
STARTING Saturday, February 4 Continuing to March 4 \$10.00 per student
Call CRestview 3-0533

Overlook Twigs Plan Winter Carnival Dance
A winter carnival dance for the benefit of Overlook Hospital and sponsored by the Berkeley Heights Twigs, will be held Saturday at Wally's Tavern on the Hill in Watchung. Buddy Dee and his orchestra will provide the music.

TO BE WED...
David Morris...
Union avenue, New...

Pat Liveright Short Hills, N.J.
HAVE YOU INTENDED TO HAVE THE NEW BABY PHOTOGRAPHED? VALENTINE'S DAY IS GOOD REASON FOR GETTING IT DONE.
PHONE FOR DETAILS & APPOINTMENT. DRexel 9-2666

REPAIR SERVICE
Watch Repairs
Pearls Restringing
Engraving
Plating
Crystals Fitted Immediately
CARLANS
Your Community Jeweler
Open Fri. Even. 'til 9 P.M.
440 Springfield Ave. CR 7-1640

Society Holds Luncheon
Mrs. Richard L. Corby of 1 Euclid avenue entertained the Sunshine Society at a dessert meeting January 24. Progress reports were heard and it was learned that 24 members present served community welfare.

"Candlelight Cocktails" Theme For Newcomers
Mrs. James Russell, hostess chairman, has announced that "Candlelight Cocktails" is the theme for the annual Newcomers Club cocktail party for all area newcomers to be held on February 11 from 4 to 7 p.m. at the Chatham Inn.

Three YWCA Classes Still Have Vacancies
Registrations are still available in three new YWCA classes which have opening sessions next week.

Fortnightly Art Unit Plans Fashion Show
The art department of the Fortnightly Club will see a fashion show on Monday at 11 a.m. at the clubhouse. Gay Nelson and her associates; Leo Russell, art designer; Dorothy Benvenuto, hats; and Winifred Heidt, jewelry will present the show.

15th ANNUAL HOBBY SHOW
Sat., Feb. 11 11:00 A.M. to 5:00 P.M.
Central Fresh Pond
PARISH HOUSE
Boy Scout Troop 62, 142, & Park St.

Brides-to-be
Brand new wedding...
SOLD FOR \$100
Latest styles as shown in magazines and best of Perfect Dresses.
MARGE McGRATH
KENILWORTH
BRIDGE 4-6700
ALSO OPEN EVENING

ST. BERNARD'S SCHOOL
Gladstone, New Jersey
Founded in 1900
A College Preparatory School for Boys
Announces ENTRANCE EXAMINATIONS
For admission in September, 1961 to be given at the School on Saturday, February 25, 1961, at 9:00 A.M.
To register for these examinations or for further information, write the School or telephone PEapack 8-0588

The Lamp Shop
Lamp Repairs Mountings
Conversions Shades
Brass Plating and Lacquering
Brass and Silver Replating and Polishing
17 UNION PLACE, SUMMIT CRestview 3-2795

KING GEORGE INN
Recommended by Duncan Hines
12-2, Closed Mon. Air Cond. Banquet Facilities. Mt. Bethel, P.H.S., R. 1, Millington 7-6418

BUFFET SUPPER MENU
HAM CRESCENT
POTATO SALAD
FRESH COCONUT CAKE
\$1 PER PERSON
Call MELLIE WEISS
CATERER
DRexel 6-0228
24 Taylor St., Millburn
Opposite Washington School

"MAY WE BE OF SERVICE"
Shopping Service 'hat is. Call CRestview-7-4500 tell us what your food requirements are and we will expertly choose, for you, the quality of brands your taste has always maintained. There is no charge for this service delivered to your kitchen if your purchases are over ten dollars. There is a small fee of 35c for purchases under \$10.00. At THE SUMMIT FOOD MARKET, "Pleasing You Pleases Us."
CR 3-4852

ITALY
only \$170
Largest ship in regular service to the Bahamas
To and from this tropical paradise you'll be pampered with cruise delights in the luxury liner tradition. Nassau, you'll have time to shop, sightsee, and all the pleasures of the popular of cruise ports.
2 DAYS IN NASSAU
Ship your luggage through us. We can be arranged.
SEE YOUR TRAVEL AGENT
HOME LINES
42 Broadway New York 4, N.Y. Digby 4-6300
Offices in principal cities
Make Your Reservation PAULSEN TRAVEL BUREAU CR 3-1313 7 Beekwood Rd.

Ice Skating School
CLASSES FOR...
9 A.M. to 3 P.M.
3 P.M. to 8 P.M.
8 P.M. to 9 P.M.
TINY TOTS
SCHOOL AGERS
ADULTS
SPECIAL LADIES DAYTIME CLASSES
It's Never Too Late To Learn To Skate
Ralph Evans ICE SKATING SCHOOL
DREXEL 9-5933 435 ESSEX ST., MILLBURN FREE PARKING

SUMMIT ANIMAL WELFARE LEAGUE Inc.
PET OWNERS PLEASE OBEY THE LAW
Have your dog licensed - this is protection for both the dog and yourself.
A HELPFUL HINT!
A collar on your cat with owner's phone number on it often leads to fast recovery of the lost pet.
CR 3-4852

The Student Organization of NEWARK STATE COLLEGE, UNION
Announces Third Annual M. Ernest Townsend Memorial Lecture Series
Thurs., Feb. 9-Martin Luther King
Thurs., March 2-Max Lerner
Mon., April 24-Margaret Webster
Wed., May 10-William O. Douglas
All Lectures 8 P.M. - D'Angola Gymnasium
Series Subscription: \$5.00
Make out check or money order to: Student Organization, Newark State College, Union, New Jersey
Send with stamped self-addressed envelope to: Anthony R. Conte Jr., c/o Student Organization, Newark State College, Union, New Jersey

Corner
 Officer
 Bert Schmidt of 115
 has been elected
 of Beta Theta Pi
 Rutgers Univer-
 sity.
 Major in physical
 education is the son
 of Mrs. Walter H.
 Schmidt. He was recent-
 ly a graduate of Sum-
 mit. He was recent-
 ly the All-American
 and to the 1960-61
 Among Students at
 Universities and Col-
 lege also a chapel us-
 er, and a member of
 squad.
 Conference
 of 64 Black-
 and Douglas Leavens
 and road, are mem-
 bers of student group
 School which will
 annual Buck Hill
 conference to
 January 10-12 at The
 Hill Falls, Pa.

graduate school of the Univer-
 sity of California, Los Angeles.
 Ramon J. Cabrera Jr., son
 of Mr. and Mrs. Ramon J.
 Cabrera, of 82 Prospect Hill
 avenue, a freshman at Lycoming
 College, Williamsport, Pa.,
 is a member of the school's
 choir now touring western
 Pennsylvania and Ohio.

Personals
 Robert Bernhard of 103 Beech
 wood road, Peter Douglas of 130
 Mountain avenue and Richard
 Krusen of 60 Whittridge road
 are among 52 students of the
 Far Brook School, Short Hills
 who are spending three weeks
 in New Hampshire on a ski-and-
 study trip.
 Mrs. Howard Friedman of 20
 Constantine place, and her son
 and daughter, recently returned
 from an extended stay in Coral
 Gables, Florida, where they
 were guests of family members.

BIRTHS
 To Mr. and Mrs. Ralph Casio
 of 103 Orchard street, a
 daughter, born January 18.
 To Mr. and Mrs. Stanley
 Zszenchik of 84 Gales Drive,
 New Providence, a daughter,
 born January 17.
 To Mr. and Mrs. Audrey
 Walker of 118 Woodbine Circle,
 New Providence, a daughter,
 born January 17.
 To Mr. and Mrs. Joe Sanders
 of 11 Gales Drive, New
 Providence, a daughter, born
 January 17.
 To Mr. and Mrs. David Fa-
 bery of 96 Ridgeway avenue,
 New Providence, a daughter,
 born January 17.
 To Mr. and Mrs. Charles
 Hamilton of 30 Fairmount road,
 New Providence, a son, born
 January 16.
 To Mr. and Mrs. Bernard
 Needell of 20 Birch Place, New
 Providence, a son, born Janu-
 ary 15.
 To Mr. and Mrs. Walter Fader
 of 17 Clark street, a son, born
 January 15.
 To Mr. and Mrs. Herbert Let-
 terman of 24 Gales Drive, New
 Providence, a son, born Janu-
 ary 14.
 To Mr. and Mrs. Martin Con-

League Members To Note Thrift Shop Week
 Plans for the seventh annual
 "Thrift Shop Week", which will
 take place March 6 to 10, were
 announced by Mrs. William H.
 LeVan, chairman of the event.
 The Thrift Shop, located at 37
 De Forest Avenue, is operated
 by members of the Summit
 unit of the Junior League of
 Morristown. A special effort is
 made at this time to acquaint
 the community with the Thrift
 Shop and the two-fold purpose
 it serves to the city. Low-cost
 merchandise, including cloth-
 ing, bric-a-brac and household
 articles is offered to shoppers at
 bargain prices and the profits
 from sales are returned to the
 community.
 A series of coffees are being
 given by league members.
 Those attending are being asked
 to bring articles which will be
 used to stock the shop for the
 sale.
 Hostesses for the coffees will
 be Mrs. Frederick T. Lawrence,
 3rd, Mrs. Robert H. King, Mrs.
 John K. Bangs, Mrs. Gordon
 Rossiter, Mrs. Bruce M. Wimer,
 Mrs. Sumner W. White, 3rd,
 Mrs. Frederick K. Thornberg,
 Mrs. Charles Schweg, Mrs. Robert
 N. Post, Mrs. Leon G. Arpin,
 Jr. and Mrs. John W. Woods.
 On Tuesday the Summit unit
 will meet at 9:30 a.m. at the
 YWCA. The program will in-
 clude a talk on health careers
 at Overlook given by Mrs.
 Stanley Lewis, chairman of
 health careers, and also a panel
 discussion of the Combined
 Spring Health Drive, which
 starts March 1.
 Panel members will be Dr.
 Leonard A. Scheele, Russell T.
 Kerby, Jr., Miss Adele M.
 Lynch and Mrs. Arthur Ackerman.
 To Mr. and Mrs. Daniel Laker
 of 851 Springfield avenue,
 a daughter, born January 13.
 To Mr. and Mrs. Donald
 Baeder of 57 Timber Drive,
 Berkeley Heights, a son, born
 January 13.
 To Mr. and Mrs. Edward
 Moldman of 885 Central avenue,
 New Providence, a son, born
 January 25.
 To Mr. and Mrs. Albert
 Reider of 5 Harrison drive,
 Berkeley Heights, a daughter,
 born January 25.
 To Mr. and Mrs. Daniel Laker
 of 78 Elkwood drive, New Pro-
 vidence, a son, born January 25.
 To Mr. and Mrs. Joseph Del-
 Ducea of 90 Station street, Berke-
 ley Heights, a daughter, born
 January 25.
 To Mr. and Mrs. Neil Van
 Vliet of 176 Runnymede Park-
 way, New Providence, a son,
 born January 24.
 To Mr. and Mrs. Vincent Gi-
 soldi of 10 Greenfield avenue,
 a daughter, born January 22.
 To Mr. and Mrs. David Hogan
 of 60 Orion road, Berkeley
 Heights, a son, born January 21.
 To Mr. and Mrs. Frank Della
 of 254 Washington street, Berke-
 ley Heights, a son, born Janu-
 ary 21.
 To Mr. and Mrs. Harry
 Schneider of 248 Holly Glen
 Lane, Berkeley Heights, a son,
 born January 20.
 To Mr. and Mrs. Delos Pen-
 well of 25 Stanley road, New
 Providence, a son, born Janu-
 ary 20.
 To Mr. and Mrs. Nicholas
 Marinelli of 256 Woodbine Cir-
 cle, New Providence, a daugh-
 ter, born January 20.
 To Mr. and Mrs. Theodore
 Browne of 51 Gales Drive, New
 Providence, a daughter, born
 January 20.
 To Mr. and Mrs. William Lutz
 of 996 Mountain avenue, Berke-
 ley Heights, a son, born Janu-
 ary 19.



Mrs. S. A. Brallove

Jewish Aneal Leader Will Speak Here

Mrs. S. Alexander Brallove,
 honorary vice-chairman of the
 national women's division of
 United Jewish Appeal, will be
 guest speaker at a luncheon
 meeting of the Summit Area
 women's division of U.J.A., at
 the home of Mrs. M. Gordon,
 10 Rowan road, on Wednesday,
 February 15, at 11:15 a.m.
 Mrs. Brallove, chairman of
 the national women's division
 from 1948 to 1952, is on the
 board of directors of the Amer-
 ican Friends of Hebrew Uni-
 versity and the board of direc-
 tors of State of Israel bonds.
 She also served on the national
 committee of the development
 fund of the Albert Einstein Col-
 lege of Medicine and has been
 on a number of survey missions
 to Israel and other countries
 for the United Jewish Appeal.
 Mrs. Richard Jaffer, chair-
 man of the Summit Area wom-
 en's division, announced that
 the luncheon meeting is
 planned to acquaint the com-
 munity with the program of the
 United Jewish Appeal, both
 abroad and in the United States.
 Mrs. Brallove's talk will be
 followed by a buffet lunch and
 a question and answer period.

Literature Unit Plans Meetings For "Reviewing" Gardens Abroad

The literature department of
 the Fortnightly Club will hold
 its third meeting of the season
 at the clubhouse on February 9
 at 2 p.m. The meeting will be
 a guest day for the department
 and will feature a round-table
 discussion of current books.
 Mrs. George E. Moore will be
 moderator of the panel which
 has arranged a program of re-
 views of wide and varied in-
 terest. "The Good Years" will
 be reviewed by Mrs. Paul Mallon.
 "The Light in the Piazza" by
 Elizabeth Spencer has been
 selected by Mrs. George F. H. Nelson,
 while Mrs. Charles E. DeLong will
 discuss "Peaceable Lane" by
 Keith Wheeler.

Tea will be served following
 the program. Mrs. L. Deane
 Hall, hospitality chairman, will
 be assisted by Mrs. Edward
 Cann, Mrs. James C. Cum-
 ming, Ms. Howard Hebble, Mrs.
 Harold Lester, Mrs. Walter C.
 Pitman, Jr. and Mrs. J. Law-
 rence Robinson.
 The Great Books discussion
 group will meet at 9:30 a.m. on
 February 9 at the clubhouse,
 and selections from "Institutes"
 by John Calvin will be dis-
 cussed. The next meeting will
 be February 23 when "King
 Lear" by William Shakespeare
 will be the subject for study.
 The reading group will hold
 its meeting February 16 at the
 home of Mrs. Allison Hearn, 25
 Tulip street. Mrs. John Leigh-
 ton will review "The Nightin-
 gale" by Agnes Sligh Turnbull.
 Dessert will be served pre-
 ceding the program at 1 p.m.

Garden Unit to Hear Lecture on Gardens Abroad

"Home Garden Ideas from
 Abroad," by Miss Alice Dustan,
 will be the illustrated lecture
 for the Fortnightly Club's gar-
 den department meeting on
 February 17 to be held at 2 p.m.
 in the clubhouse. Home gar-
 dens in France, Switzerland
 and Holland will be featured.
 Miss Dustan, formerly assist-
 ant editor of the New York
 Times garden page, and garden
 editor of both "Home and Gar-
 den" and "House Beautiful," is
 presently a free-lance writer,
 lecturer and teacher.
 Tea will be served following
 the meeting by the hospitality
 chairman, Miss Katherine Ben-
 nett assisted by Miss Marjorie
 Beck, Mrs. Irving Angell, Mrs.
 Franklin Hunt, Mrs. William
 Hildeburn, Mrs. Arnold Linton,
 Mrs. Sherrerd Dupue, Mrs. Robert
 Parsons and Mrs. Wallace
 Winslow.

Susan Halligan Is Wed in Chatham Ceremony

Mr. and Mrs. James H. Win-
 ter of Chatham have announced
 the marriage of their daughter,
 Susan Clair Halligan, to John
 Joseph McCauley, son of Mr.
 and Mrs. L. F. McCauley of
 Champaign, Ill. Mrs. Winter is
 a former resident of Summit.
 The ceremony was officiated
 by Rev. John R. Wilcox on
 January 25 at 2:30 p.m., with a
 reception following at the bride's
 home.
 Miss Patricia V. Halligan was
 maid of honor for her sister,
 Frank Bowen of Urbane, Ill.
 The couple will reside at Ur-
 bane, Ill.

Evening Bridge Unit Plans February Meeting

The Ladies Evening Bridge
 of the Summit area Newcomers'
 Club will hold its February
 meeting on February 9 at the
 YWCA at 8 p.m.
 Dessert will be served, with
 Mrs. P. F. McBain as hostess
 chairman. All new resident are
 invited to attend. Reservations
 may be made by calling CR 7-
 6395.

Fortnightly Unit to Study Latin America

The International Relations
 department of the Fortnightly
 Club has planned for two study
 groups on Latin America under
 the chairmanship of Mrs.
 Roland P. Beattie. The meetings
 will be held on February 10 and
 24 at 10 a.m. in the clubhouse.
 Among those who are to speak
 on various aspects of the coun-
 tries are Mrs. R. P. Beattie,
 Mrs. Lester A. Crone, Miss
 Grace Freeland, Mrs. Paul
 Hanna, Mrs. Ruth Hernsey,
 Mrs. Gerald O'Connor and Mrs.
 Ronald C. Anderson, depart-
 ment chairman.

Named Dinner Aides

Mrs. Josephine Sloniewski of
 Midland terrace has been
 named co-chairman of the host-
 ess committee for the annual
 Union County GOP Lincoln Day
 dinner to be held February 13
 at Wally's, Watchung. Luther
 Smythe of Berkeley Heights is
 publicity chairman for the af-
 fair.

Interior Design

Carefully planned to suit individual
 tastes and modes of living.
ISABEL PALMER • INTERIORS
 (formerly with Telfer Studios)
 521 Millburn Avenue Short Hills, N. J.
 DRexel 9-2318

BUSCH & SONS

offers the world's
 first guarantee of accuracy.

THE FABULOUS NEW ACCUTRON by BULOVA

"WILL NOT GAIN OR LOSE MORE THAN ONE MINUTE A MONTH IN NORMAL DAILY USE."
 ACCUTRON is so different... so new... so advanced, accuracy can now for the first time be GUARANTEED!
 Because of ACCUTRON this is the first Christmas it can truly be said—There is no man who has everything.
 SEE and HEAR the first instrument of the space age you can wear and use.
 ACCUTRON Microsonic Timepiece WEEKLY PAYMENTS ARRANGED.



BUSCH & SONS
 ESTABLISHED 1880
 PARKING IN REAR OF STORE
 419 SPRINGFIELD AVE. SUMMIT
 CR 7-2125 Open Friday Nights 'Til 9

YW Drop-in Group To Discuss Marriage

The next Sunday afternoon
 Drop-in, open to all single
 young adults from 18 to 40, is to
 be held at the YWCA on Febru-
 ary 5 from 4 until 7 p.m. These
 informal occasions provide op-
 portunities for meeting old or
 new friends in the relaxing and
 homelike atmosphere of the
 YWCA. Games, TV, records and
 refreshments are available.
 The program will feature Rev.
 R. Samuel Buffat, Jr., minister
 at Central Presbyterian Church,
 who will talk on "Marriage and
 Sex," followed by discussion.
 Also an advisor to the Central
 Club, Mr. Buffat has recently
 helped to set up a course on
 the same topic, to begin Febru-
 ary 7.
 No prior reservations are re-
 quired for attendance at these
 gatherings. Further information
 may be obtained by calling Mrs.
 William Boney at the YWCA,
 CR 3-4242.

Delta Gamma Alumnae Hold Luncheon Meeting

The Summit-Westfield alumnae
 chapter of Delta Gamma

will hold a luncheon today at the
 home of Mrs. C. F. Campbell of
 104 Portland road. Mrs. Frank
 LeBar and Mrs. James B.
 Hayes will be co-hostesses. Mrs.
 Elliot Haller, chapter president,
 will preside, at a business meet-
 ing following the luncheon.
 Any Delta Gammans who are
 newcomers to Summit are cordi-
 ally invited to the monthly
 meetings and may contact Mrs.
 W. J. Ricker, 478 LaGrande
 avenue, Fanwood.

Evening Group Plans Cosmetic Discussion
 The Summit Area Newcomers'
 evening group will meet on
 Tuesday at Christ Church at
 8:15 p.m. The program will be
 given by Mrs. Walter Hamph-
 reys and Mrs. Donald O'Fee,
 who will present a cosmetic
 demonstration and discussion.
 Mrs. Tom Strayer is hostess
 chairman. All newcomers are
 invited and are asked to call
 CR 7-6335 for reservations.

THOMPSON'S Jewelry and Gifts
 Arthur Pelosi, Proprietor, Jeweler, and Designer
BRIDAL REGISTRY SERVICE
 • STERLING... Towle, Gorham, Kirk
 • CHINA... Wedgwood, Spode, Royal Doulton
 Belleek
 • CRYSTAL... Tiffin, Fostoria, Stuart, Skruf of
 Sweden
 Plus most other popular brands
 We Specialize in Jewelry Design and Repair
 Work Done on Premises
51 UNION PLACE, SUMMIT CR 3-3305
 Opp. Railroad Station

Visit Breck's Gift Department
 New and unusual items that have just arrived in our gift de-
 partment. We always carry a wide range of unusual gifts and
 as soon as our buyer locates new and different items you will
 find them at Breck's.
THESE ARE AMONG THE NEWEST
CANDY GARDENS
 A Perfect Valentine Gift
 Useful plastic flowerpot cover
 holding 1 1/2 ozs. Pascall Im-
 ported English Fruit Filled
 Sweets. Decorated with wash-
 able, life-like plastic flowers—
 Lilies of the Valley - Daffodils -
 Lilies - Mountain Roses - Azal-
 eas and others.
2.00 Each

HIBACHI GRILLS
 Three sizes available for in-
 door cooking. Have a winter
 cookout in your fireplace or
 at your table side. Prepare
 delicious hors d'oeuvres and
 snacks on these attractive
 personal cookers.
 Available in Three Sizes
1' - 13'

SMOKELESS
ADJUSTABLE COOKING GRID
INNER ASH SIFTING GRATES
EASY DRAFT ADJUSTMENT

ARTIFICIAL FLOWER AND FOLIAGE SPRAY
 This newest of Aerosol
 Sprays keeps your artificial
 flowers clean and fresh look-
 ing. Repels airborne dust and
 gives a natural sheen to your
 artificial arrangements.
5 oz. 89¢
15 oz. 1.98

IN OUR HOUSE PLANT DEPARTMENT
TWENTY VARIETIES OF FOLIAGE PLANTS BEING OFFERED AT 3 FOR 1.00 This Week Only
BRECK'S HOME AND GARDEN CENTER
MORRIS TURNPIKE, MILLBURN DR 6-1900
 OPEN SEVEN DAYS A WEEK 9 A.M. - 6 P.M.

AL Clearances SHOES
REMEMENDOUS SAVINGS
NER GROUP 19.99
 Levine, Julianelli, Erica,
 NONE HIGHER Reg. to \$50.00
LITE GROUP 14.99
 NONE HIGHER Reg. to \$25.00
FLATS and LITTLE HEELS
 Amalfi, Jeanna Filles
6.99 and 10.99

FOOTNOTES by HAUSMAN
 EAST ORANGE 587 Central Ave.
TH SHOPS OPEN THURS. TILL 9 P.M.

Valentine GREETINGS
 For young and old
 We have all kinds,
 cute, clever, or
 sentimental.
SIEGEL'S STATIONERY SHOP
 379 Springfield Ave. CR 3-2340
 Parking in Rear

NOW LEASING FOR MARCH OCCUPANCY
Executive Apartments at ELIZABETH
 421 Irving Avenue (At Price 2.) Elizabeth, N. J.
 Completely Air-Conditioned 2 1/2 Room Efficiency
 Apts. in New Colonial Brick Building
 Ideal for...
 Executives...
 Bachelorettes...
 Retired and
 Business Couples
 Newly Weds
 From
\$113 Mo.
 FREE HEAT
 GAS & PARKING
 INCLUDED IN REN.
 100% On-Site Parking
 Typical Floor Plan
 Centrally Located Close To Everything
 Walking distance (only 2 blocks) to So. Broad St.,
 Newark and N. Y. buses... 4 blocks from Elizabeth's
 business center and the Pennsylvania and Jersey Cen-
 tral R.R. stations... and a few minutes drive from
 Newark Airport, N. J. Turnpike, Garden State Parkway,
 Routes 1 and 22.
 Furnished Model Apart-
 ment Open for Inspection
 Daily (including Saturday
 & Sunday) from 11 A.M.
 to 7 P.M. Rental Manager
 on Premises.
 Tel. EL 5-1962
 Owner - Builder: ADMA
 CORP., 1441 Morris Ave.
 Union, N. J. - MU 5-5259.
 Interiors by: John Wal-
 dren of Waldron Design,
 New York City & Union,
 N. J.

SPORTS

Summit Topples Verona In Afternoon Tilt, 58-41

Summit outplayed Verona before a large Tuesday afternoon crowd to win 58-41.

Summit jumped out to a 6-0 lead with Don Overbeck's two baskets and Sol Steplight's basket. After a basket by Verona's Cerecife, Leech made a foul shot and Steplight poured in 3 points to build up a 10-2 lead. Verona could only manage one more point before the quarter ended 10-3 in favor of Summit.

In the second quarter Summit built up a 12 point lead at 19-7, and finally ended the half ahead by 12 points, 30-18. In this quarter Summit was assisted by the 7 points of Peter Molnar, the 4 points of Lee Smith, and the 3 points of Jerry Thomas.

Starting the third quarter, Peter Leech threw in two straight baskets to make the score 34-18. Midway through the period, with Steplight's 6 point major factor, Summit pulled out ahead 43-25. The third quarter ended with Summit on top 50-29.

In the last quarter Summit substituted frequently and went on to a very easy 58-41 victory. Our team only managed 8 points, but the defense held the opposition to only 13 points, far short of victory.

Summit's leading scorer was Sol Steplight who put in 15 points. Sol played only three quarters of the game but was also the top rebounder. Sol made over 50% of his shots from the floor. Peter Molnar made 10 points and played well on defense. Peter Leech put in 8 points, most of these in the third quarter when Summit completely broke the game wide open.

Player	FG	FT	F	Pts
SUMMIT	23	12	14	58
VERONA	17	7	15	41

Dogwood Lane Surprises Serritella

First place Serritella News lost three straight to sixth place Dogwood Lane in the Berkeley Heights Township Women's bowling league. It could easily afford the luxury as its margin dwindled to a mere seven games.

Della's Liquors beat Mandato Trucking, Della Builders took Kresge Summit, David's Electric defeated Richland Co., and Berkeley Pharmacy rolled past Berkeley Bakery, all by two to one counts.

Muriel DeSalvo rolled 484 to lead the way. She was followed by Ida Serritella with 471, Tad Phillips with 458, Scotty Doty 432, Shirley Caporaso 448, and Dolores Amillo 447.

Esso Sweeps Three Games From Nigro

Berkeley Esso swept three games from Nigro Construction in the New Providence Boro and Township bowling league.

P and M Oil Burners swept three from Berkeley Esso, Delias Liquor took two from Police Department, Wayne's beat Nigro, Mea Florist tied Linda's and N. P. Fire Dept. beat Berkeley Meat Market, two to one.

Crestview Clips Modern Two Times

Crestview Insurance defeated Modern Polishing and Plate two to one in the Berkeley Heights Business Men's bowling league.

Hot and Son took two of three from front running Heights Barbers, Mar Jul defeated Kellers, Delias rolled past Mountain Cleaners, and Berkeley Barbers outscored Rural TV, all by two to one margins.

Esso Beats H Labs Twice In Rec Loop

Harry's Esso toppled H Labs three times in the Berkeley Recreation Men's Handicap bowling league to break the deadlock for first place between the two clubs.

Harrison Labs defeated Kellers, three to nothing, Pat's and Jim's dropped Stratton two to one, Sperco took H. G. Edwards three to nothing, and Jaeger outscored Summit Area Jaycees, three to nothing.

Archgate Homes Leads Roller Loop

Archgate Homes New Providence, took the lead in the Rocky Rollers League, Cory 5 & 10 and Kirschner Steel second place.

Edith Tetzlaff of Archgate Homes scored high game of 175 and high series of 414. Archgate Homes New Providence scored high team game of 618. High team series went to Park Beverage for 1724.

Berkeley Five Ey Upset Over High Flying Summit

Berkeley Heights — Their bid for an upset victory over undefeated New Providence High thwarted by the Pioneers strong finish, the cagers of Governor Livingston Regional High School have set their sights on two objectives as they head into the final one-third of the season.

Don Wodock's battling Highlanders are shooting for a winning season and an upset victory over Summit High's championship-bound quintet. Summit is making a shambles of the Suburban Conference race.

The Hilltoppers defeated the Highlanders in the opening game of the season for Governor Livingston and Wodock's cagers are thirsting for revenge.

Although the 96-52 loss to New Providence dropped the Highlanders' record to 5-6 for the season, a winning record is not out of the question by any means. With six games remaining (including last Tuesday's contest in West Orange against Mountain High), the Highlanders need four triumphs to finish with a winning mark.

Since the Highlanders will rate as definite underdogs only against Summit and Hillside High, the No. 3 team in Union County and led by Frank Cherski one of the State's most highly regarded players, Wodock's boys have a chance of posting the necessary four wins.

The remaining schedule will work in the Highlanders' favor, with four of the last five games scheduled at their Berkeley Heights gymnasium. The only away game will be with Middlesex High, a team that Governor Livingston already has beaten decisively. The Highlanders play host to a strong Essex Catholic High five from Newark at 7 p.m. tomorrow. After that they will be idle until Feb. 10 when they meet Hillside at Berkeley Heights.

Governor Livingston gave New Providence a stern battle for more than three periods, but once again the Pioneers ability to hold Lynn Nesbitt in check made the difference.

Leapin' Lynn, a standout in Highlander victories over Watchung Hills and Bridgewater-Raritan, was limited to eight points by New Providence.

Fine defensive work on Nesbitt and a 29-point performance by Howie Stephens spoiled the Highlanders' bid for an upset. Governor Livingston was in contention until the final minutes, however, trailing only 53-48 until the Pioneers exploded for 13 quick points around a basket by Howie Rudominer, who paced the Highlanders with 18 points.

The loss snapped a two-game winning streak of Governor Livingston. Wodock's cagers had whipped Bridgewater-Raritan High, 64-46, on Jan. 24 at Berkeley Heights. The Highlanders outscored the Somerset County quintet in every period.

As usual, the Highlander scoring twins showed the way to victory. Nesbitt tossed in 21 points and Rudominer added 17. Richie Klein helped out with 10 points, while Weiss added eight. DiPasquale, Kertesz, Bill Sawyer and Doty each tallied two points.

With a burst of field goals against Watchung Hills and

Mitchell Scores 20 In JV Win

The Summit JV, with Mitchell's 20 points, defeated Verona 59-48 last Tuesday.

Summit started out ahead 3-0 with 2 points by Meinert and a foul shot by McCue. With Mitchell's 6 points the team enjoyed a 15-9 lead after the first quarter. In the second quarter, Verona made the first 3 points, but Summit followed with 5 consecutive points, including a beautiful layup by Tucker McCue. After Verona came to life, Summit ended the first half with 4 straight points to lead 26-17.

In the last quarter Verona's Demasi made a layup to start things off, but Summit, with Mitchell's 4 points and Bayne's 2 points, pulled ahead 41-28.

When victory seemed almost out of the question, Verona made 10 consecutive points to draw close at 53-47. However, Summit ended the last two minutes of the game with 8 points to a single marker for Verona, to win, 59-48.

The leading scorer for Summit was Rodney Mitchell with 20 points. The next highest scorers were Ritchie with 12 points and Robinson with 8 points.

Player	FG	FT	F	Pts
SUMMIT	18	12	16	48
VERONA	21	17	38	59

Pontiac Loses Two Games To Wayne's

Colonial Pontiac lost two games to Wayne's Bakery in the New Providence Women's bowling league to keep their lead at three games. L. Behrens scored 479 to lead the winners.

Nigro's won one of three from Center Stationers behind the 444 bowling of Camille Fricke. Williams Market also took two of three from Family Shoppe behind the 423 score of Lois Callahan.

Joseph F. Church took two from Country Cobbler and A and E Television took the measure of Plaza Lanes by the same score.

Matmen Post Second Win Against Jefferson Club

Berkeley Heights — With his three top-notch performers flashing championship form, Coach Ray Higgins has hopes his Governor Livingston Regional High School wrestlers will make their first season, a winning one.

The Highlanders posted their second victory in five meets last Friday in Elizabeth when they rallied to rout winless Thomas Jefferson, 36-14. Governor Livingston lost three of the first four matches to trail 9-5 before coming through with a burst of pin victories.

Leading the way for Higgins' matmen as they have all season were John Wadas, Terry Rice and "Chuck" Whitford. Wadas, a 114 pounder, and Rice, a heavyweight, both pinned their opponents in slightly more than one minute. It was the fifth straight win for Rice, four of them by pins.

Wadas turned in his third consecutive pin victory after battling to a draw in his opening match. Whitford won his fourth match, edging Jefferson's Jeff Grote, 2-1, in the closest bout of the day. Whitford's only loss this season occurred in a match in which he was injured.

Sharing the spotlight in the Jefferson match was 128 pound Greg Telek who set a school record and probably a county

Nuggets Strengthen Hold on First Place

The Nuggets strengthened their hold on first place and the Guns moved into a third place tie by virtue of their victories in last week's Board of Recreation Intermediate Basketball League.

Summit JV's Boost Season Mark to 9-3

The Summit JV's record is now 9-3 as the result of a 45-13 victory over Madison last Friday. The JV was again led by the scoring of Rodney Mitchell and rebounding of Jim Robinson.

The play in the first quarter was very slow, with Madison holding a slight 5-7 lead. Starting off the second period, Summit made 6 consecutive points before Way of Madison made a jump shot. Then Summit ended the half with 14 consecutive points in a fine display of fast breaking. The 27-10 half-time lead was aided greatly by Jim Robinson's 10 points and Rodney Mitchell's 8 points.

In the third quarter, with 4 points each from Robinson and Mitchell, the JV increased its lead to 37-14. In the last quarter Summit started off with 6 consecutive points and went on to a very easy victory of 45-13.

Summit was led by the scoring of fleet-footed Rodney Mitchell. Rodney threw in 13 points, most of them on beautiful layups. Jim Robinson was the next highest scorer with 14 points. Jim also did a very fine job of rebounding.

Madison's high scorer was Way with 5 points. Talmadge and Neibling each had 4 points. As a team Madison was only able to make 5 baskets and 2 free throws while Summit threw in 20 from the floor and 5 from the charity line.

Madison started out ahead with great spirit, but it was not able to compete with Summit's fast breaking, fine defense, and rebounding.

Pioneers Stretch Streak To 12 Against Berkeley

Thanks to the brilliant outside shooting of Howie Stephens and a strong zone defense of the Pioneers which harassed the Highlanders into poor shots and sloppy passes, New Providence remained among the state's unbeaten elite by dropping Berkeley Heights Friday, 66-52.

The Highlanders managed to stay within three points at the half, but the boro cagers, a strong second half ball club, pulled away from their neighboring rivals with a stirring fourth quarter performance.

In the opening period, it became evident the Highlanders had spent the last two weeks concentrating on the wrong man in the Pioneer offense. While they put two and sometimes three men on Dick Kesler, Howie Stephens rolled in a total of 29 points.

Berkeley held a 15-13 lead at the quarter on the strength of shooting by Rudominer, Klein, and Weiss. In the second period, the Pioneers took charge as Stephens rolled in 10 tallies. He held 18 of the 27 Pioneer points at halftime. The boro defense began to tell as the Highlanders were limited to three goals in the second period. Berkeley led behind for good when Stephens hit a jump shot from the side with four minutes remaining in the half.

In the third period, the Pioneers, playing control ball, began to pick holes in the Highlander defense and added another 18 points. The New Providence Club cut loose in the final quarter with 21 points as Kesler, bottled up most of the night, scored eight in the period to lead his club to its 12th straight win of the season.

The Pioneers' defense and shooting proved too much for Springfield on Tuesday of last week as the boro cagers repeated their earlier win of the season by scoring a 54-48 triumph.

The Pioneers started strong and rolled up 16 points to Springfield's seven. Every member of the starting five, broke into the scoring column for the Pioneers.

Springfield held its own in the second period with the help of rugged rebounding by its tall front line. Scoring all of the

Faith Falters But Retains League Lead

Faith Lutheran led in the Summit bowling league as it scored four points from several Methodists. Faith placed by the barest margin, following bump night, each club was matched its nearest rival in the standings.

Combined Churches three points from Lutheran A team, Memorial won four from Community Center, into eighth place, then into eighth place, four from Temple Presbyterians won a Christ Church.

Bill Herrell rolled Leonard 216, Herman 211, Franklin Nelson, Mackain 191, Ed McBen Lassier and Ben 185, and Len Hulin in the

Amiano Leads Two Games To Elks Club

First place Amiano games to the Elks Club in the Berkeley Men's bowling league. The 247 single and Bob Rogers, Kurt and a 372 for the Elks. Truesdell led Berkeley Recreation Nigro leading the 569, K and K two from Harquail Carl Garner led 539.

Berkeley Meat its series with Nijon Office Services from Wi-r-et. high single of 556 arios of 252.

Rockets Lose Upset Series To The Docs

The Rockets dropped games to the Docs Teresa Holy Niam league as they posted lead in divide to the Second place Fakers out of four from the N. C. swept its series over Shamrocks, then Sal Liberator rolled high honors. Joe 551, D. Russo 537, R. 536, Felix Mast 534, 519 and Mark Stank Wiatroski 484, each.

Summit Area's Leading Source For: Alum. Comb. Windows Alum. Comb. Doors Alum. Screens Aluminum Storm SASH

REPAIRS
H. G. Edwards & Co.
24 Franklin Pl., Summit
CR 3-3224
Even. CR 2-3815
Member Summit Area Chamber of Commerce:

AUTO RENTAL-LEASING

Anything on Wheels DAY-WEEK-MONTH LOW YEARLY RATE
WERNER-SUMMIT
CR 3-4343
Plymouth-Volant Imperial-Chrysler

outraged?

Want lower cost heating for your home? Switch to Eastern Watchdog Heating. It's the most satisfying heating you can have — and also the most economical! Try it and see for yourself.

Call without obligation

WILLIAM JAY CLARK
CR 3-0066

VOLVO is the sports car, family style

Volvo proves that the true economy car can still have the essential sports car qualities of power, maneuverability and quick response.

With its superlative 85 h.p. engine, Volvo performs with a get-up-and-go that other cars with more cylinders find difficult to match. That's why Volvo has won such wide respect in major automotive competitions throughout the world.

When you buy Volvo, you buy a complete family sports car—in quality, performance, equipment, and economy. These are the qualities that make Volvo the sports car, family style. Get a first hand demonstration.

Serviced wherever you go—over 330 dealers coast-to-coast • Ask about our European Delivery Plan.

Symbol of superb Swedish engineering and craftsmanship.

WILLIAM JAY CLARK
Authorized SAAB & VOLVO Dealer
501 Somerset St., N. Plainfield, N. J. PL 6-2239

HOW Water Works

Do You Know? WATER IS INDESTRUCTIBLE—WILL NOT WEAR OUT! WATER IS AS PERMANENT AS AIR and SUNLIGHT!

IF FOR ANY REASON YOU ARE EVER IN DOUBT AS TO THE PURITY OF YOUR WATER SUPPLY—
FIRST—BOIL ALL WATER USED AT LEAST 20 MINUTES.
SECOND—AS SOON AS POSSIBLE NOTIFY YOUR WATER UTILITY.

COMMONWEALTH WATER CO.

LET'S GO BOWLING

FROM 10 A.M. EVERY DAY

Air Conditioned

BERKELEY RECREATION
CR. 7-2727

284 Springfield
Berkeley Heights

Offers Summer Program
 Pleasure in enlarged camp for Summit girls for the 1961

GRAND (BOYS)
 on its new site of Claryville, mountains. Here fields, mountains and top of the Cat-

RS (GIRLS) is Pocono mountains, Pa., and 60 acres of wood-spring fed lakes center much of viles. include cabin units, kitchen and dining and athletic of all types inery, handicrafts, fishing, overnight and horseback part of the program on four July 2 to 15 for girls ages

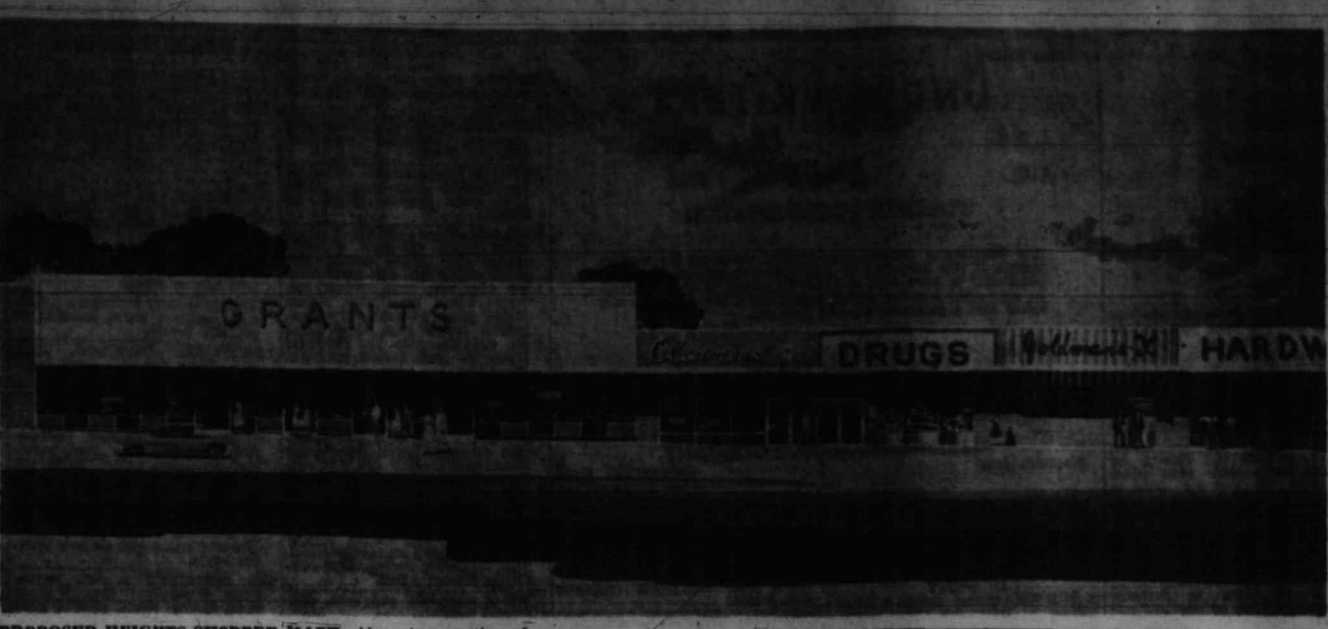
Cubs Cited at Washington Pack Meeting
 Seven awards marking advancement featured the monthly meeting of Washington School's Cub Pack 66, last Friday evening in the school gymnasium. The meeting, postponed a week because of the snow, attracted a large group of Cub Scouts and their families who also saw skits presented by two of the dens. Gene Gilligan of 55 Madison avenue, and Arthur Ericson, 49 Canoe Brook parkway, received their Lion badges, highest Cub Scout award. Wayne Christmann, 10 Iris road; Anthony Dagradi, 39 Aubrey street; Ross Nelson, 19 Fay place; George Van Arsdale, 11 Lafayette avenue, and Tommy Wason, 14 Brainerd road, received Wolf badges. Robert Runyon, 7 Mount Vernon avenue, was inducted into the Pack as a Bobcat. Den 2 presented a skit with a western story as its theme and Den 3 offered a dramatization in which each member of the den, dressed in the costume of a Latin American country, told about the nation he represented.

will be held at ICA as follows: Grand, February 10; Awards, February 24. begin at 8 p.m. information together and applications secured by calling at the "Y", CR

County showed an population of 64,760 in 1960 census. rest population in county in the

Oil Co.
 Main Avenue
 NGFIELD
 OIL COKE
 Deliveries
 get Plans
 of Springfield
 of Commerce

ZMAN
 ARMY & NAVY
 MENT STORE
 St., Orange
 3-7444
 Green Stamps
 tra., Fri. 9 to 9
 Wed. 9 to 6
 Sat. 9 to 1



PROPOSED HEIGHTS SHOPPER MART—Above is a portion of a proposed new shopping center planned for the corner of Springfield and Snyder avenues in Berkeley Heights, provided a zoning variance is granted. Principal lessees in the \$500,000 project would be W. T. Grant & Co. and Food Fair supermarket.

New \$500,000 Shopping Mart Planned at Heights

The Berkeley Heights Zoning Board has under consideration a request for a zone variance to permit construction of a new \$500,000 shopping center at Springfield and Snyder avenues. The center, to be built by the Highland Co. of Newark, would be located on 6 1/2 acres of as-

and plans call for the removal of existing residential structures on the property.

The principal tenants for the proposed center are Food Fair markets and W. T. Grant Co., who will occupy more than 40,000 square feet of building area with the remainder to be offered for retail and professional use. The estimated cost of the building will be more than \$500,000 and personal property to be

located in the stores will be valued at approximately another \$300,000 thus making a total of \$1 million.

The front portion of the property is located in a business zone and the rear portion in a residential zone. A variance is asked to permit construction of the store structure on the rear portion now zoned for residential use with the front portion to be used for off-street parking for approximately 300 cars. Most of the citizens in the immediate area of the proposed

center have signed a petition in favor of the project. However serious objection has been made by Coney Mea, an officer of Berkeley Development Co., owner of an existing shopping center located across the street from the proposed new one.

The proposed new center will require a favorable recommendation from the Board of Adjustment and concurrence by the Township Committee before a building permit can be issued. John A. Lombardi, a former Township committeeman, is representing the applicant.

Cubs Cited at Washington Pack Meeting

Seven awards marking advancement featured the monthly meeting of Washington School's Cub Pack 66, last Friday evening in the school gymnasium. The meeting, postponed a week because of the snow, attracted a large group of Cub Scouts and their families who also saw skits presented by two of the dens. Gene Gilligan of 55 Madison avenue, and Arthur Ericson, 49 Canoe Brook parkway, received their Lion badges, highest Cub Scout award. Wayne Christmann, 10 Iris road; Anthony Dagradi, 39 Aubrey street; Ross Nelson, 19 Fay place; George Van Arsdale, 11 Lafayette avenue, and Tommy Wason, 14 Brainerd road, received Wolf badges. Robert Runyon, 7 Mount Vernon avenue, was inducted into the Pack as a Bobcat. Den 2 presented a skit with a western story as its theme and Den 3 offered a dramatization in which each member of the den, dressed in the costume of a Latin American country, told about the nation he represented.

The OLD MILL INN
 is now open every night till midnight, for those who wish to drop in for a late snack.
 On Route 202
 Bernardsville, N. J.
 Raymond J. Cantwell, Innkeeper

RUG CLEANING
 in our own plant
Wall-to-Wall — in your home
 Phones: DRexel 9-2000, SOuth Orange 2-3444
 • Expert Repairing
 • Domestic
 • Orientals
 • Professional Installation
RIMBACK
 MOVING—STORAGE—PACKING—SHIPPING
 Across the Nation • Around the World

a GOLD STAR AWARD gas range
 brings you a new world of cooking pleasure

The Gold Star you see on select gas ranges is not a brand name. It is your guarantee that you are buying a gas range that has passed the most demanding test of 33 individual standards for cooking convenience ever devised. No matter what brand you choose, look for the Gold Star award, the highest standard of cooking excellence.

YOUR DEALER WILL EXPLAIN ALL THE WONDERFUL FEATURES OF A GOLD STAR GAS RANGE. SEE HIM SOON!

PUBLIC SERVICE

FREE! 50 ACME GREEN STAMPS

In addition to your regular stamps with purchase of meat totaling \$3.00 or more and this coupon.

Free 50 ACME GREEN STAMPS
 In addition to regular stamps with meat purchase totaling \$3.00 or more and this coupon.

NAME _____
 STREET _____
 CITY _____
 This coupon expires February 11th, 1961

FAMOUS TOP QUALITY LANCASTER BRAND
STEAK
 SIRLOIN lb. **79c**
 PORTERHOUSE lb. **89c**

LANCASTER BRAND—TENDER, JUICY
LEGS O' LAMB
 Regular Style lb. **59c** Oven-Ready lb. 65c

Lancaster Brand
 Lamb Chops Shoulder lb. 69c Rib lb. 79c Leg 1.09
 Combination—Roast, Chops, Stew
 Chucks Lamb lb. 33c Breast Lamb lb. 19c
 Lancaster Brand
 Lamb Liver lb. 49c Picnics 5-lb. can 3.29

The New Golden Book
PICTURE ATLAS
 6 MAGNIFICENT BOOKS OF THE WORLD
 • North America
 • South America
 • Europe and the USSR
 • Asia
 • Africa
 • Australia, Oceania and the Polar Lands
 EACH BOOK ONLY **99c**
 Buy a book-a-week

Acme Fruits and Vegetables
 Grapefruit Indian River bag 39c
 Broccoli Andy Boy bunch 29c
 Tomatoes Firm—Ripe carton 19c
 Carrots Tender Western 2 cello 19c
 Cauliflower Snow White large head 29c
Frozen Foods
 Seabrook Peas 4 10-oz. pkgs. 65c
 Chopped or Leaf
 Ideal Spinach 2 10 oz. pkgs. 25c
 All advertised prices effective thru Saturday, February 4th

Pancake Mix 2-lb. pkg. **33c**
 Maxwell House
Coffee All Grinds 1-lb. can **69c**
 Sanelec
Instant Milk 10-quart size **79c**
 Progresso Red—10: Coupon offer in newspapers
Kidney Beans 2 20-oz. cans **27c**
 Fleko
Pie Crust Mix 2 10-oz. pkgs. **33c**
 Mazola
Margarine 2 1-lb. pkgs. **69c**
 Pard—2c off label
Dog Food 3 16-oz. cans **43c**

College Club Scholarships Available Now
 College Club president, Mrs. Welland Gay, has announced that scholarship applications will be available during February in the Summit Preparatory School offices for qualified senior girls. Applications must be completed and returned to the school principal's office by March 1. To be considered eligible girls must be residents of Summit, New Providence or Short Hills and attend Summit High School, Oak-Knot or Kent Place School. All daughters of club members may apply for scholarships also, regardless of the preparatory school they attend. Scholarships are awarded on the basis of need, scholarship and citizenship. To be considered, students must rank in the top part of their class. The awards are made possible through the proceeds from the College Club book sale held each year in the fall. Since 1922, over \$60,000 has been awarded by the Summit branch of AAUW to deserving local girls. At present nine area girls are receiving aid. The colleges they attend are Radcliffe, Ohio University, Bucknell University, Mt. Holyoke, Juniata, MacMurray College, Fairleigh Dickinson University, Wilson and William and Mary.

NEW LOW PRICES ON 1961
 FULL DELIVERED PRICE
Valiant Plymouth
\$1785 \$1925
 NO MONEY DOWN—LOW BANK RATE—3 YEARS TO PAY
Main Auto Sales, Inc.
 Authorized Plymouth-Valiant Dealer
 135 MAIN ST. MADISON FR 7-0240
 OPEN 'TIL 9 P.M. EXCEPT WED. & SAT.

for \$200 less than the current year, to bring total operating cost increase to \$4,350.

Maintenance Costs Up - Also proposed in the budget as a special maintenance item is the replacement of wood sash in classroom windows of the old portion of Washington school, which were installed in 1911, at an estimated cost of \$12,500.

In the capital areas, the budgeted total of \$30,420 for all schools, which would include audio-visual equipment, establishment of six additional elementary classrooms, and a \$2,000 item for teaching machines.

Also included is \$5,000 estimated as needed to convert four areas to classroom use. The areas are now libraries or basement rooms and will be utilized to provide additional classrooms at Brayton, Jefferson, Roosevelt and Washington schools.

Total capital needed would be \$40,420 or \$3,355 more than budgeted this year. Textbook and educational supplies are expected to cost an additional \$33,935 next year, bringing the total to \$120,405.

Additional \$220, or \$740, while those with more than the 14 years might receive an \$550 increase if declared a master career teacher.

Total costs of teacher increases in the proposed budget are \$100,000, of which \$52,000 is slated for raising the basic scale, \$30,800 for progression below the maximum, \$4,200 for merit increases to those newly eligible, and \$2,000 for merit increases in exceptional cases.

The proposed minimum of \$4,700 places Summit on a par with proposals at Millburn, Westfield, and South Orange-Maplewood at the bachelor's degree level. Pay proposals at Chatham call for \$4,500, while at Ridgewood and Montclair they are \$4,800, or \$100 more.

All six other communities also provide for salary differentials for master's degrees, ranging from \$200 to \$600 depending on the community. The largest differential is given by Montclair, which begins master degree teachers at \$5,300. Summit provides no salary differentials for master's degrees.

Five of the six comparable communities provide for maximum salaries on scales which are above Summit's. With the exception of Chatham, where the maximum is \$7,600, lower than Summit's maximums are placed from \$7,800 at Millburn to \$8,400 at Ridgewood.

4-Point Tax (Continued from Page 1) now plan to use only \$200,000 from the fund. "We don't want to leave the cupboard too bare," he said.

A spokesman for the county tax board said the tax rate would have gone up as much as eight points if there had not been a sizeable increase, amounting to \$37 million, in the county's ratables this year.

Osborne said the largest increases in the budget were for the following departments: John E. Rannels: Up \$382,000 to a total budget of about \$2 million.

Park commission: Up \$75,085 to \$1,041,000. The increase includes \$10,000 for a survey of the Upper Elizabeth River as a step towards a countywide flood control program.

Welfare board: Up \$238,000 to \$1,895,223. Sheriff's office: Up \$147,000 to \$681,000.

Other increases were: Prosecutor's office: \$39,000, board of elections, \$37,000 new equipment, \$22,000 and the probation department, \$61,000.

Osborne said two of the three presentation Monday board indicated that of the high school library is estimated that 3,000 new books to be purchased, cost "in the neighborhood of \$40,000."

Board said it proposed half of bringing the latter half of school year, so be processed and student use in the fall. Additional appropriate library needs reduced in the 1962.

ed budget includes additional sum for of a new super-able \$1,009 has been search as expenses ministrator.

YMCA Names

(Continued from Page 1)

tribes. Before coming to Summit, Mr. Hydorn was executive secretary for the Somerset Valley YMCA. He resides at 105 New England avenue.

Mr. Hydorn's new duties will in effect assist Mr. Devenney in general YMCA services such as dormitory and auxiliary activities. All physical education programs will continue under the direction of Louis T. Choquette, Jr., the YMCA physical director and his staff of part-time instructors and supervisors.

The addition of Mr. Merrick to the staff will again bring the YMCA executive group to former strength. The staff had been cut to three when Lawrence C. Burr, adult program secretary resigned in May, 1959 to become head of a New York community center.

School Groups

(Continued from Page 1)

taught locally. Some of the problems encountered are several experimental programs now being tested by other school systems, new published material, and acceleration versus enrichment. The effects of grouping children according to abilities—at an early age, and the problems which junior and senior high school acceleration programs impose upon elementary schools will also be studied.

At the conclusion of the studies by the subcommittees, the formal report made by the Lay Committee will be addressed to the Board of Education and to the public through the sponsoring PTA's and civic organizations.

Freeholder

(Continued from Page 1)

able consideration to another local resident, Mrs. Josephine Slonczewski of Midland terrace, for the State GOP Committee-woman post being vacated by the retirement of Mrs. Helen Glaeser of Plainfield. Also being mentioned for the vacancy is Mrs. Robert Scott of Elizabeth.

Charles P. Bailey, county Republican chairman, said the GOP policy committee would complete the screening of possible freeholder and assembly candidates Saturday and make known its final selection within two weeks.

Gilson Awaits

(Continued from Page 1)

local Republican organization, Father on Council. He is the son of the late Councilman Herbert G. Gilson, a former president of the Union County Bar Association, and the late Mrs. Elinor Gilson Martin, the third woman in New Jersey to be admitted to the Bar. He

Minimum

(Continued from Page 1)

Additional \$220, or \$740, while those with more than the 14 years might receive an \$550 increase if declared a master career teacher.

Total costs of teacher increases in the proposed budget are \$100,000, of which \$52,000 is slated for raising the basic scale, \$30,800 for progression below the maximum, \$4,200 for merit increases to those newly eligible, and \$2,000 for merit increases in exceptional cases.

The proposed minimum of \$4,700 places Summit on a par with proposals at Millburn, Westfield, and South Orange-Maplewood at the bachelor's degree level. Pay proposals at Chatham call for \$4,500, while at Ridgewood and Montclair they are \$4,800, or \$100 more.

All six other communities also provide for salary differentials for master's degrees, ranging from \$200 to \$600 depending on the community. The largest differential is given by Montclair, which begins master degree teachers at \$5,300. Summit provides no salary differentials for master's degrees.

Five of the six comparable communities provide for maximum salaries on scales which are above Summit's. With the exception of Chatham, where the maximum is \$7,600, lower than Summit's maximums are placed from \$7,800 at Millburn to \$8,400 at Ridgewood.

4-Point Tax (Continued from Page 1) now plan to use only \$200,000 from the fund. "We don't want to leave the cupboard too bare," he said.

A spokesman for the county tax board said the tax rate would have gone up as much as eight points if there had not been a sizeable increase, amounting to \$37 million, in the county's ratables this year.

Osborne said the largest increases in the budget were for the following departments: John E. Rannels: Up \$382,000 to a total budget of about \$2 million.

is a graduate of Sumner school, Princeton University and Yale Law School and is a 34-year veteran of the Navy serving on sub chasers in the Central Pacific, and was discharged as a lieutenant. He has taught jurisprudence and local government at Princeton.

Loosly Gilson is prominent in civic affairs. He is a member and former director of the Rotary Club, former director of the YMCA, a member of the Summit Tennis Club and Downtown Association and has held major jobs in various charitable fund appeals. He also has been a secretary of the Planning Board and for many years was a member of the Municipal Youth Guidance Council. He is a member and a former deacon of Central Presbyterian Church and resides at 24 Drum Hill drive.

Holmes, in commenting on his possible switch to the Councilman-at-large office, said he felt that because of his lifetime knowledge of the city and his familiarity with all neighborhoods, that he could best serve property owners as representative of the entire city, rather than a section of it. He stressed, however, that if Gilson does not vacate the Councilman-at-large seat that he will remain a Council candidate from Ward 1 opposing Sailer, who was appointed to Council only several weeks ago by the Council.

"We can not however prevent their development on the borough."

Development

(Continued from Page 1)

property—is one that all residents should support and further. We are pleased, too, that this undertaking has been conceived and carried out by private citizens in cooperation with their government, and that they have tried to draw in as widespread representation of interested groups as possible.

At Tuesday's luncheon, Philip Cary Grant and Deborah Kerr were the main attractions.

Special treat for the children Sat. February 4th, 2 shows 1:30 and 3:00 P.M. on the Community stage.

ZIPPY the World's greatest chimp, as seen on the nation's top TV shows, will join on the screen Saturday, Feb. 4, at 1:30 and 3:00 P.M. on the Community stage.

Special treat for the children Sat. February 4th, 2 shows 1:30 and 3:00 P.M. on the Community stage.

ZIPPY the World's greatest chimp, as seen on the nation's top TV shows, will join on the screen Saturday, Feb. 4, at 1:30 and 3:00 P.M. on the Community stage.

Special treat for the children Sat. February 4th, 2 shows 1:30 and 3:00 P.M. on the Community stage.

ZIPPY the World's greatest chimp, as seen on the nation's top TV shows, will join on the screen Saturday, Feb. 4, at 1:30 and 3:00 P.M. on the Community stage.

Special treat for the children Sat. February 4th, 2 shows 1:30 and 3:00 P.M. on the Community stage.

ZIPPY the World's greatest chimp, as seen on the nation's top TV shows, will join on the screen Saturday, Feb. 4, at 1:30 and 3:00 P.M. on the Community stage.

Special treat for the children Sat. February 4th, 2 shows 1:30 and 3:00 P.M. on the Community stage.

ZIPPY the World's greatest chimp, as seen on the nation's top TV shows, will join on the screen Saturday, Feb. 4, at 1:30 and 3:00 P.M. on the Community stage.

Special treat for the children Sat. February 4th, 2 shows 1:30 and 3:00 P.M. on the Community stage.

ZIPPY the World's greatest chimp, as seen on the nation's top TV shows, will join on the screen Saturday, Feb. 4, at 1:30 and 3:00 P.M. on the Community stage.

of our city, in neighboring communities, such as Millburn, Springfield, or Scotch Plains. Our action must therefore be one of so stimulating ourselves, so improving our facilities, our service, our merchandise, that our citizens and those of the surrounding communities will prefer to do their business here in Summit.

Ralph H. Sayre, Jr., CIBA executive who heads the industrial division of the drive, and O'Grady were the other speakers. Residential values require attractive business and industrial areas and top civic and cultural services. A high level of civic and cultural service needs competent community leadership. Each interest depends on, and serves, the other. All interests must act together!

Your program as indicated by your leadership and your presence here today is indicative of a determination to "get the job done" and is very encouraging, not only to the governing body of the city, but I believe to the community as a whole. You are indeed to be congratulated.

I think it is well known that the Common Council and the Planning Board have followed a policy of not favoring the growth and development of shopping centers in our city. Time and again plans for such developments have been rejected.

"We can not however prevent their development on the borough."

Special treat for the children Sat. February 4th, 2 shows 1:30 and 3:00 P.M. on the Community stage.

ZIPPY the World's greatest chimp, as seen on the nation's top TV shows, will join on the screen Saturday, Feb. 4, at 1:30 and 3:00 P.M. on the Community stage.

Special treat for the children Sat. February 4th, 2 shows 1:30 and 3:00 P.M. on the Community stage.

ZIPPY the World's greatest chimp, as seen on the nation's top TV shows, will join on the screen Saturday, Feb. 4, at 1:30 and 3:00 P.M. on the Community stage.

Special treat for the children Sat. February 4th, 2 shows 1:30 and 3:00 P.M. on the Community stage.

ZIPPY the World's greatest chimp, as seen on the nation's top TV shows, will join on the screen Saturday, Feb. 4, at 1:30 and 3:00 P.M. on the Community stage.

Special treat for the children Sat. February 4th, 2 shows 1:30 and 3:00 P.M. on the Community stage.

ZIPPY the World's greatest chimp, as seen on the nation's top TV shows, will join on the screen Saturday, Feb. 4, at 1:30 and 3:00 P.M. on the Community stage.

Special treat for the children Sat. February 4th, 2 shows 1:30 and 3:00 P.M. on the Community stage.

ZIPPY the World's greatest chimp, as seen on the nation's top TV shows, will join on the screen Saturday, Feb. 4, at 1:30 and 3:00 P.M. on the Community stage.

Special treat for the children Sat. February 4th, 2 shows 1:30 and 3:00 P.M. on the Community stage.

ZIPPY the World's greatest chimp, as seen on the nation's top TV shows, will join on the screen Saturday, Feb. 4, at 1:30 and 3:00 P.M. on the Community stage.

Special treat for the children Sat. February 4th, 2 shows 1:30 and 3:00 P.M. on the Community stage.

ZIPPY the World's greatest chimp, as seen on the nation's top TV shows, will join on the screen Saturday, Feb. 4, at 1:30 and 3:00 P.M. on the Community stage.

of our city, in neighboring communities, such as Millburn, Springfield, or Scotch Plains. Our action must therefore be one of so stimulating ourselves, so improving our facilities, our service, our merchandise, that our citizens and those of the surrounding communities will prefer to do their business here in Summit.

Ralph H. Sayre, Jr., CIBA executive who heads the industrial division of the drive, and O'Grady were the other speakers. Residential values require attractive business and industrial areas and top civic and cultural services. A high level of civic and cultural service needs competent community leadership. Each interest depends on, and serves, the other. All interests must act together!

Your program as indicated by your leadership and your presence here today is indicative of a determination to "get the job done" and is very encouraging, not only to the governing body of the city, but I believe to the community as a whole. You are indeed to be congratulated.

I think it is well known that the Common Council and the Planning Board have followed a policy of not favoring the growth and development of shopping centers in our city. Time and again plans for such developments have been rejected.

"We can not however prevent their development on the borough."

Special treat for the children Sat. February 4th, 2 shows 1:30 and 3:00 P.M. on the Community stage.

ZIPPY the World's greatest chimp, as seen on the nation's top TV shows, will join on the screen Saturday, Feb. 4, at 1:30 and 3:00 P.M. on the Community stage.

Special treat for the children Sat. February 4th, 2 shows 1:30 and 3:00 P.M. on the Community stage.

ZIPPY the World's greatest chimp, as seen on the nation's top TV shows, will join on the screen Saturday, Feb. 4, at 1:30 and 3:00 P.M. on the Community stage.

Special treat for the children Sat. February 4th, 2 shows 1:30 and 3:00 P.M. on the Community stage.

ZIPPY the World's greatest chimp, as seen on the nation's top TV shows, will join on the screen Saturday, Feb. 4, at 1:30 and 3:00 P.M. on the Community stage.

Special treat for the children Sat. February 4th, 2 shows 1:30 and 3:00 P.M. on the Community stage.

ZIPPY the World's greatest chimp, as seen on the nation's top TV shows, will join on the screen Saturday, Feb. 4, at 1:30 and 3:00 P.M. on the Community stage.

Special treat for the children Sat. February 4th, 2 shows 1:30 and 3:00 P.M. on the Community stage.

ZIPPY the World's greatest chimp, as seen on the nation's top TV shows, will join on the screen Saturday, Feb. 4, at 1:30 and 3:00 P.M. on the Community stage.

Special treat for the children Sat. February 4th, 2 shows 1:30 and 3:00 P.M. on the Community stage.

ZIPPY the World's greatest chimp, as seen on the nation's top TV shows, will join on the screen Saturday, Feb. 4, at 1:30 and 3:00 P.M. on the Community stage.

Special treat for the children Sat. February 4th, 2 shows 1:30 and 3:00 P.M. on the Community stage.

ZIPPY the World's greatest chimp, as seen on the nation's top TV shows, will join on the screen Saturday, Feb. 4, at 1:30 and 3:00 P.M. on the Community stage.

of our city, in neighboring communities, such as Millburn, Springfield, or Scotch Plains. Our action must therefore be one of so stimulating ourselves, so improving our facilities, our service, our merchandise, that our citizens and those of the surrounding communities will prefer to do their business here in Summit.

Ralph H. Sayre, Jr., CIBA executive who heads the industrial division of the drive, and O'Grady were the other speakers. Residential values require attractive business and industrial areas and top civic and cultural services. A high level of civic and cultural service needs competent community leadership. Each interest depends on, and serves, the other. All interests must act together!

Your program as indicated by your leadership and your presence here today is indicative of a determination to "get the job done" and is very encouraging, not only to the governing body of the city, but I believe to the community as a whole. You are indeed to be congratulated.

I think it is well known that the Common Council and the Planning Board have followed a policy of not favoring the growth and development of shopping centers in our city. Time and again plans for such developments have been rejected.

"We can not however prevent their development on the borough."

Special treat for the children Sat. February 4th, 2 shows 1:30 and 3:00 P.M. on the Community stage.

ZIPPY the World's greatest chimp, as seen on the nation's top TV shows, will join on the screen Saturday, Feb. 4, at 1:30 and 3:00 P.M. on the Community stage.

Special treat for the children Sat. February 4th, 2 shows 1:30 and 3:00 P.M. on the Community stage.

ZIPPY the World's greatest chimp, as seen on the nation's top TV shows, will join on the screen Saturday, Feb. 4, at 1:30 and 3:00 P.M. on the Community stage.

Special treat for the children Sat. February 4th, 2 shows 1:30 and 3:00 P.M. on the Community stage.

ZIPPY the World's greatest chimp, as seen on the nation's top TV shows, will join on the screen Saturday, Feb. 4, at 1:30 and 3:00 P.M. on the Community stage.

Special treat for the children Sat. February 4th, 2 shows 1:30 and 3:00 P.M. on the Community stage.

ZIPPY the World's greatest chimp, as seen on the nation's top TV shows, will join on the screen Saturday, Feb. 4, at 1:30 and 3:00 P.M. on the Community stage.

Special treat for the children Sat. February 4th, 2 shows 1:30 and 3:00 P.M. on the Community stage.

ZIPPY the World's greatest chimp, as seen on the nation's top TV shows, will join on the screen Saturday, Feb. 4, at 1:30 and 3:00 P.M. on the Community stage.

Special treat for the children Sat. February 4th, 2 shows 1:30 and 3:00 P.M. on the Community stage.

ZIPPY the World's greatest chimp, as seen on the nation's top TV shows, will join on the screen Saturday, Feb. 4, at 1:30 and 3:00 P.M. on the Community stage.

Special treat for the children Sat. February 4th, 2 shows 1:30 and 3:00 P.M. on the Community stage.

ZIPPY the World's greatest chimp, as seen on the nation's top TV shows, will join on the screen Saturday, Feb. 4, at 1:30 and 3:00 P.M. on the Community stage.

of our city, in neighboring communities, such as Millburn, Springfield, or Scotch Plains. Our action must therefore be one of so stimulating ourselves, so improving our facilities, our service, our merchandise, that our citizens and those of the surrounding communities will prefer to do their business here in Summit.

Ralph H. Sayre, Jr., CIBA executive who heads the industrial division of the drive, and O'Grady were the other speakers. Residential values require attractive business and industrial areas and top civic and cultural services. A high level of civic and cultural service needs competent community leadership. Each interest depends on, and serves, the other. All interests must act together!

Your program as indicated by your leadership and your presence here today is indicative of a determination to "get the job done" and is very encouraging, not only to the governing body of the city, but I believe to the community as a whole. You are indeed to be congratulated.

I think it is well known that the Common Council and the Planning Board have followed a policy of not favoring the growth and development of shopping centers in our city. Time and again plans for such developments have been rejected.

"We can not however prevent their development on the borough."

Special treat for the children Sat. February 4th, 2 shows 1:30 and 3:00 P.M. on the Community stage.

ZIPPY the World's greatest chimp, as seen on the nation's top TV shows, will join on the screen Saturday, Feb. 4, at 1:30 and 3:00 P.M. on the Community stage.

Special treat for the children Sat. February 4th, 2 shows 1:30 and 3:00 P.M. on the Community stage.

ZIPPY the World's greatest chimp, as seen on the nation's top TV shows, will join on the screen Saturday, Feb. 4, at 1:30 and 3:00 P.M. on the Community stage.

Special treat for the children Sat. February 4th, 2 shows 1:30 and 3:00 P.M. on the Community stage.

ZIPPY the World's greatest chimp, as seen on the nation's top TV shows, will join on the screen Saturday, Feb. 4, at 1:30 and 3:00 P.M. on the Community stage.

Special treat for the children Sat. February 4th, 2 shows 1:30 and 3:00 P.M. on the Community stage.

ZIPPY the World's greatest chimp, as seen on the nation's top TV shows, will join on the screen Saturday, Feb. 4, at 1:30 and 3:00 P.M. on the Community stage.

Special treat for the children Sat. February 4th, 2 shows 1:30 and 3:00 P.M. on the Community stage.

ZIPPY the World's greatest chimp, as seen on the nation's top TV shows, will join on the screen Saturday, Feb. 4, at 1:30 and 3:00 P.M. on the Community stage.

Special treat for the children Sat. February 4th, 2 shows 1:30 and 3:00 P.M. on the Community stage.

ZIPPY the World's greatest chimp, as seen on the nation's top TV shows, will join on the screen Saturday, Feb. 4, at 1:30 and 3:00 P.M. on the Community stage.

Special treat for the children Sat. February 4th, 2 shows 1:30 and 3:00 P.M. on the Community stage.

ZIPPY the World's greatest chimp, as seen on the nation's top TV shows, will join on the screen Saturday, Feb. 4, at 1:30 and 3:00 P.M. on the Community stage.

of our city, in neighboring communities, such as Millburn, Springfield, or Scotch Plains. Our action must therefore be one of so stimulating ourselves, so improving our facilities, our service, our merchandise, that our citizens and those of the surrounding communities will prefer to do their business here in Summit.

Ralph H. Sayre, Jr., CIBA executive who heads the industrial division of the drive, and O'Grady were the other speakers. Residential values require attractive business and industrial areas and top civic and cultural services. A high level of civic and cultural service needs competent community leadership. Each interest depends on, and serves, the other. All interests must act together!

Your program as indicated by your leadership and your presence here today is indicative of a determination to "get the job done" and is very encouraging, not only to the governing body of the city, but I believe to the community as a whole. You are indeed to be congratulated.

I think it is well known that the Common Council and the Planning Board have followed a policy of not favoring the growth and development of shopping centers in our city. Time and again plans for such developments have been rejected.

"We can not however prevent their development on the borough."

Special treat for the children Sat. February 4th, 2 shows 1:30 and 3:00 P.M. on the Community stage.

ZIPPY the World's greatest chimp, as seen on the nation's top TV shows, will join on the screen Saturday, Feb. 4, at 1:30 and 3:00 P.M. on the Community stage.

Special treat for the children Sat. February 4th, 2 shows 1:30 and 3:00 P.M. on the Community stage.

ZIPPY the World's greatest chimp, as seen on the nation's top TV shows, will join on the screen Saturday, Feb. 4, at 1:30 and 3:00 P.M. on the Community stage.

Special treat for the children Sat. February 4th, 2 shows 1:30 and 3:00 P.M. on the Community stage.

ZIPPY the World's greatest chimp, as seen on the nation's top TV shows, will join on the screen Saturday, Feb. 4, at 1:30 and 3:00 P.M. on the Community stage.

Special treat for the children Sat. February 4th, 2 shows 1:30 and 3:00 P.M. on the Community stage.

ZIPPY the World's greatest chimp, as seen on the nation's top TV shows, will join on the screen Saturday, Feb. 4, at 1:30 and 3:00 P.M. on the Community stage.

Special treat for the children Sat. February 4th, 2 shows 1:30 and 3:00 P.M. on the Community stage.

ZIPPY the World's greatest chimp, as seen on the nation's top TV shows, will join on the screen Saturday, Feb. 4, at 1:30 and 3:00 P.M. on the Community stage.

Special treat for the children Sat. February 4th, 2 shows 1:30 and 3:00 P.M. on the Community stage.

ZIPPY the World's greatest chimp, as seen on the nation's top TV shows, will join on the screen Saturday, Feb. 4, at 1:30 and 3:00 P.M. on the Community stage.

Special treat for the children Sat. February 4th, 2 shows 1:30 and 3:00 P.M. on the Community stage.

ZIPPY the World's greatest chimp, as seen on the nation's top TV shows, will join on the screen Saturday, Feb. 4, at 1:30 and 3:00 P.M. on the Community stage.

AGENCY - Living... 3-5458

OR RENT - 7 rooms, 4... 3-5458

ATSON, INC. - Short Hills... 3-5458

To Vote New School In Spring

Berkeley Heights—Voters will be offered a fourth elementary school early this spring. It was announced at the Board of Education meeting Thursday night. The school, if approved, will be located 200 feet off Mountain Ave. between Plainfield and Snyder on a 15 acre tract.

School Architects Scrimenti, Swackamer and Perantoni, said the earliest date for launching construction would be September, 1961.

It will take approximately one year to complete the building. Before construction can begin, 4 to 6 weeks are necessary to prepare preliminary drawings and get initial approval from the State Department of Education and the Board of Local Government, six weeks for a public referendum, and 20 weeks to prepare complete drawings and specifications, gain final State approval and receive contractors' bids.

The preliminary plans will be for a 2 kindergarten 18 classroom school, with alternate plans for a smaller building.

Other action taken by the Board at the adjourned meeting was to award Mrs. Erna Niedermayer, Assistant Board Secretary, \$300 as compensation for extra duties and responsibilities for the 1960-61 school year. Since the Board anticipates the employment of a full-time Board Secretary next year, this money is not considered as an increase in yearly salary.

Board member Robert Lynch was appointed publicity chairman for the Board.

In subsequent articles the Board will explain the need for a new elementary school and periodically will inform the public as to its planning and progress.

Who Is Who?

Berkeley Heights—Residents will no longer be in the dark at Township Committee meetings when Committeemen utter words of wisdom, or otherwise. Small paper placards placed in front of each Committee member announce their names.

Candidates' Night Date Set

Berkeley Heights—All Republican candidates ranging from Governor to Township Committeeman will be invited to speak at the Berkeley School auditorium on Tuesday, March 14, at a Candidates' Night.

Candidates' Night Committee will include Leo Glaser, chairman; Frank Guida, Bob Marzucco and George Strumpf.

Residents were asked to save the date, March 14.

Trim Up for Your Swim Suit

New Providence—The starting date of the new series of Danish Gymnastics offered by the Recreation Commission, at a nominal fee to participants, has been changed from Thursday, February 2nd to Thursday, February 9th, 8 p.m. at the high school gymnasium due to inclement weather cancelling the last lesson in the present series and causing the last lesson to be given on February 2nd.

Women interested in joining the new class have until Monday February 6th to register at the Recreation Center. Doctor's approval to participate must be presented at time of registration.

Ice-fishing For Juniors

New Providence—An ice fishing tip-up making contest will be conducted at the Febru-

Holy Name To Present Football Film

New Providence—The Holy Name Society of Our Lady of Peace Parish will show the same film which recently was exceedingly well received in a television showing on the "Twentieth Century" series sponsored by the Prudential Insurance Company, according to Program Chairman John Smith.

Mr. Smith invites all men of the Parish to see the film, regardless of whether or not they are Holy Name Society members. The film shows what goes on in the football huddles during the professional games, including everything said by the players as they plan each succeeding series of plays. Sam Huff, the star tackle of the New York Giants football team is the central character. The film depicts the physical contact which is, of course, a real part of the

Adult Dancing Instructions

New Providence—Tonight is the last opportunity to take advantage of the Dancing Instructions provided by the New Providence Recreation Commission at a nominal fee to couples interested.

A ten week series of instructions will start at the Lincoln School Auditorium at 8 p.m.

Winter Rules For Motorists

Motorists are urged to keep streets open during what may prove to be a heavy snow storm. Traffic movement would be eased if motorists would:

- Make sure the gas tank is full, put on snow tires or chains and carry a shovel and bag of sand.
- Stay in the proper lane, do not cut across center islands, or up one way streets and ramps.
- Give snow plows the right of way.
- Avoid parking on main highways and thoroughfares. Sanding equipment and snow plows cannot clear the roads if they are jammed with stalled or parked cars.
- If a car must be abandoned, pull it off the road first.

Lincoln Day Dinner Told

Berkeley Heights—Union County Republicans are holding their Annual Lincoln Day Dinner, Monday, February 13th at 7:30 p.m. at Wally's, Watchung. Tickets are available from Municipal Chairman Luther Smythe.

Congresswoman Florence Dwyer and Senator Clifford Case will be present as well as county office aspirants, state and county candidates.

Change Date

Berkeley Heights—Effective February, 1961, the regular monthly meeting of the Recreation Commission will be held on the fourth Tuesday of each month. The public is invited to attend all Recreation Commission meetings.

Berber's Baby Food

Strained Chopped
9 jars 95¢ 6 jars 95¢

Beech-Nut Baby Food

Strained Chopped
9 jars 95¢ 6 jars 95¢

Diet Delight Gling Peaches

Sliced 2 1/2 oz. cans 35¢

Heinz Sweet Gherkins

7 1/2 oz. jar 31¢

La Choy Chinese Dinner

Meatless 1 1/2 oz. pkg. 53¢

Scotkins

Family size paper napkins
2 pkg. 33¢

Argo Gloss Starch

16 oz. pkg. 16¢

Sweetheart Soap

Buy 3 at regular price...
Get 1 for 1¢
4 reg. 32¢ 4 both 45¢

Ivory Soap

Personal size
4 cakes 25¢

Ivory Soap

For toilet and bath
3 medium 29¢

Ivory Soap

For dishes, laundry or bath
2 large 31¢

Lint Laundry Starch

12 oz. pkg. 15¢

Duz Soap Powder

large 33¢ giant 79¢

Lolli-Pops Dog Candy

2 7 oz. pkg. 29¢

dexo

Wonderful new recipes on the label! All-Purpose dexo is ideal for cakes, pies, perfect fries.

dexo 3 lb. 73¢

Equal to the best yet made you buy

Honor Student

Berkeley Heights—Kathy MacFadyen, daughter of Mr. and Mrs. James MacFadyen of 86 Delmore Ave., was named to the honor roll for Governor Livingston High School the last marking period. Kathy is a junior. The Guidance Office said its omission from the original honor roll was an error that occurred during the transcribing of grades.

Holy Name To Present Football Film

New Providence—The Holy Name Society of Our Lady of Peace Parish will show the same film which recently was exceedingly well received in a television showing on the "Twentieth Century" series sponsored by the Prudential Insurance Company, according to Program Chairman John Smith.

Mr. Smith invites all men of the Parish to see the film, regardless of whether or not they are Holy Name Society members. The film shows what goes on in the football huddles during the professional games, including everything said by the players as they plan each succeeding series of plays. Sam Huff, the star tackle of the New York Giants football team is the central character. The film depicts the physical contact which is, of course, a real part of the

Honor Student

Berkeley Heights—Kathy MacFadyen, daughter of Mr. and Mrs. James MacFadyen of 86 Delmore Ave., was named to the honor roll for Governor Livingston High School the last marking period. Kathy is a junior. The Guidance Office said its omission from the original honor roll was an error that occurred during the transcribing of grades.

Robert A. ...

Plumbing
Gas Connections
Furnaces
CR 440

GO TO "THE STORE" WITH MORE!

- Berber's Baby Food
- Beech-Nut Baby Food
- Diet Delight Gling Peaches
- Heinz Sweet Gherkins
- La Choy Chinese Dinner
- Scotkins
- Argo Gloss Starch
- Sweetheart Soap
- Ivory Soap
- Ivory Soap
- Ivory Soap
- Lint Laundry Starch
- Duz Soap Powder
- Lolli-Pops Dog Candy
- dexo

"Super-Right" Naturally Aged Beef!

RIBS OF BEEF

REGULAR STYLE 59¢ lb. OVEN-READY 69¢ lb.

(FIRST CUTS PRICED HIGHER)

BONELESS CHUCK POT ROAST

No Fat Added 65¢ lb.

LARGE ROASTING CHICKENS

READY-TO-COOK 4 to 5 1/2 lbs. 45¢ lb.

Beef Chuck—Bone in	California Roast 53¢	Boneless	Cross Rib Roast 89¢
Chuck Steaks Full Cut Full Value 53¢	Rib Steaks 75¢	Stewing Veal Boneless 69¢	Smoked Butts PORK Boneless 79¢
Stewing Beef Boneless 65¢	Ground Chuck BEEF 65¢	Ham Slices SMOKED Center Cuts 99¢	Bologna or LIVERWURST By the Piece 49¢
Ground Beef Freshly Ground 49¢	SWIFT'S SAUSAGE MEAT brookfield 1 lb. 45¢	Fresh Spare Ribs 59¢	LAMB SHOULDERS Combination Chops and Stewing Lamb lb. 39¢

GRAPEFRUIT

Florida Seedless 5 lb. bag White or Pink

Young, Tender

- Fresh Broccoli
- Temple Oranges 10
- Iceberg Lettuce
- Fresh Tomatoes
- Pascal Celery
- Yellow Turnips

PIE PRIZE FOR THE VALUE-WISE!

Jane Parker

PEACH PIE

More Jane Parker Value

This Week Save 10¢

- PINEAPPLE PIE
- Donuts
- Gold Square Cake
- Buttermilk Bread

AGP's Brewed up good buy

"TAKE TEA AND SEE"

- Our Own Tea Bags
- Our Own Tea
- Nectar Tea Bags
- Nectar Tea

It's Hot Chocolate Time

Chocolate Drink

A & P Brand Instant Mix 13 1/2 oz. pkg. 29¢

With 5¢ Off Label

Dairy Favorites!

With 5¢ off Label

- Cream Cheese
- American Slices
- Swiss Slices
- Italian Romano
- Muenster Cheese
- Cottage Cheese

Frozen Food Values!

- Dole's Pineapple Juice
- Birds Eye Meat Pies
- Stuffed Peppers
- Scallop Dinner
- Perch Fillet
- Dressed Smelts

FREE... 2 Special PALMOLIVE SOAPS When you buy COLGATE DENTAL

For Dishes and Fine Fabrics Trend 2

NOW! ASTOUNDING

BLAUPUNKT

SYMBOL OF QUALITY

FM/AM TRANSISTORIZED CAR RADIO

FOR TRUE HI-FI IN MOTION!

- Rich, resonant high fidelity tone!
- World-famous precision engineering
- Transistorized for increased output and reduced battery drain!
- No feedback... no underpass blackout with FM!
- Backed by written warranty!
- Easy installed in American or imported cars!
- Also available in AM model!
- Generous trade-in on your old car radio! Easy credit terms!

Summit Television Service Center
66 Franklin Pl., Summit
CR 3-6991

WESTFIELD CITY-WIDE SALE

Thursday Feb. 2 Friday Feb. 3 Saturday Feb. 4

THE SALE DAY BARGAINS WILL BE FOUND IN THE STORES DISPLAYING THE RED AND BLACK SALE BANNERS.

STORES OPEN LATE THURSDAY AND FRIDAY NIGHT

PARKING FACILITIES FOR OVER 4,000 CARS

Sale sponsored by the Retail Trades Division, Westfield Area Chamber of Commerce

Parking is never a problem in Westfield. Six off-the-street parking areas and numerous on-the-street spaces are available to you. Parking facilities for over 4,000 cars a day!

dexo

3 lb. 73¢

Equal to the best yet made you buy

29¢ SALE!

Worthmore Brand Candy

- Chocolate Peanuts 7 1/2 oz. 29¢
- Peanut Clusters Covered 8 oz. 29¢
- Bridge Mix Chocolate Covered Assortment 8 oz. 29¢
- Orange Jellies RASPBERRY Flavor 9 oz. 29¢

19¢ SALE!

A & P Brand—Frozen Foods

- Lima Beans Baby or Fordhook 10 oz. 19¢
- Green Beans Cut or French Style 9 oz. 19¢
- Cauliflower Tender 10 oz. 19¢
- Mixed Vegetables Snow White Delicious Combination 10 oz. 19¢

THE GREAT ATLANTIC & PACIFIC TEA COMPANY, INC.

AP Super Markets

AMERICA'S DEPENDABLE FOOD MERCHANT SINCE 1839

Prices effective thru Sat., Feb. 4 in Super Markets and Self-Service stores only.