

# Board of Ed seeks to protect confidentiality of student records

## Summit Herald

Summit's only real newspaper

VOLUME 96 NO. 27

February 11, 1984

Price: 25¢

### Zoning board decides burned building is unique case, grants variance on parking

By PEG THURLER

SUMMIT — The 75-year-old Colonial Hall which once housed the city hall will now undergo a long-awaited restoration and enhancement. The owner of Colonial Hall presented a convincing case to the Zoning Board last Monday evening, receiving for his efforts approval to renovate and expand the gross floor space of the burned-out building without providing off site parking for its tenants.

Perry Root, president of Root Estates, Inc., explained that the brick, historical building at 350 Springfield Ave. represents a unique case, and should not have to comply with the recently passed interim parking ordinance. He and his sister have owned the building since 1967, had leased it out for 99 years, and only this past year re-gained control of it following the disastrous fire in August, 1982.

"The renovations we plan are first rate," Root told the Board. "In order to be economic, we have to make it three stories." This will involve adding 2,000 square feet to the third floor area, and 700 square feet of new construction creating a second and third floor above the Aldo Tailor shop at 352 Springfield Ave.

However, Root's attorney Edward Kenyon pointed out that the new addition to the west of the present structure will be for an elevator and lobby, not for any additional office space. The 2,700 square feet added to the original dimensions of the building would require 14 parking spaces under the new interim ordinance.

Root testified he had been unsuccessful in trying to find parking spaces that

would comply with the ordinance. The code states that a property owner in the Central Business District who adds to the gross square footage of his building must provide parking spaces that are within 1500 feet of any point on the perimeter of the CBD. Also the owner must make a commitment of not less than 25 years to continue supplying the spaces.

"I could not find any such spaces that would comply," Root told the Board. "I struck a dead end on the Broad Street lot idea when we met with the City. An ordinance would be required to show that the lot along Broad Street was not needed for public use, and then anyone could bid on the spaces.

He acknowledged that Summit has a parking problem, but affirmed his belief in Summit's "enterprising" business district that has survived every kind of competition, such as the Short Hills Mall and Route 22."

Root suggested that multi-level garages be built over the present parking lots between DeForest Avenue and Springfield Ave. The sloping land would lend itself to the idea, he noted.

Board member Richard Callaghan, who is also chairman of the Planning Board, invited Root to come before the Planners and present his ideas during their current revision of the Master Plan.

Architect Richard Paroli, of Port Washington, N.Y., explained the drawings of the project for Colonial Hall, noting that the addition will blend in with the original structure through use of some of the original bricks and repeating the design of the cornices and parapets.

The first floor proposal shows retail space and a lobby for the elevator area. "We may have only one tenant on the main floor," Root told the board. "One tenant is interested in it." The upper floors will be renovated for office space, 3,800 square feet on the second floor, and 1,800 plus the new 2,000 square feet on the third floor for a 7,600 square foot total office space.

The modern maintenance codes would have made it impossible to restore the building to its original layout. Paroli listed additions such as fire exits, toilet facilities, means of egress.

He explained why the renovation plans had not moved faster after Root Estates, Inc. had gained control of the building. Debris from the fire had to be removed by hand trucks to a dumpster on the street. The foundation had to be analyzed by LeSanti, licensed N.J. engineer. The walls were analyzed for re-inforcing plans, which include bracing them. A sprinkler system is planned also.

Real Estate appraiser Robert Heffernan testified for Root that the new Colonial Hall will have a positive effect on property values, especially on the surrounding neighborhood.

The board questioned him specifically on his stand that "there are places in the area for long term parking."

"There are no places within 1,500 feet of the CBD for long term parking," said Heffernan, "but there are a substantial number of spaces at the far end of the Broad Street lot available that are for metered parking." He cited this area as available within walking distance.

Board attorney Arthur Condon challenged Heffernan's remarks on intensity of use in the building before the fire, saying that he was "projecting without personal knowledge."

Kenyon summarizes

plea for variance

Root is trying to bring back the historical significance of the building for Summit, explained attorney Kenyon. "We don't know exactly how many people will use the building," said Kenyon, "but the retail space will decrease and the office space will increase. Parking is the only real issue. We are not building up a fire trap. We are building a modern fireproof building that will enhance the area."

The ordinance, he pointed out, passed in September, 1983, was intended to create a moratorium on building until the revised Master Plan is adopted — but this hulk of a building needs attention now. Before the ordinance was passed, Root had already spent a quarter of a million dollars on acquisition and planning.

Board meets for discussion

and vote at end of evening

The Zoning Board discussed the variance application for a major subdivision and relief from the parking restrictions. The preliminary vote was unanimous to grant Root's request, and the final vote came two nights later on Feb. 8.

"Its value to the community is very strong," noted board member John Costanzo.

"The hardship is the timing of the ordinance," said Callaghan. "It is a unique case. I am concerned over precedent, but that is not a reason for refusal," he continued. He asked Condon, in drawing up the final resolution for passage, to stress the uniqueness of the situation.

Callaghan noted that the survey conducted by Construction Official Ed Pilot when the Planning Board was considering the interim parking ordinance did not consider Colonial Hall in listing the number of buildings of various sizes in the CBD.

Intensity of use is of prime concern, he said. Restaurants are most apt to bring in more cars, he commented. Plans for a new restaurant on Maple Street were recently given a big boost when Common Council voted with very little discussion to permit transfer of a liquor license to the location formerly Roy's Toy and Hobby Shop.

Callaghan had told the board that city planner Jay Lynch had said that a moratorium on building is illegal. Therefore the interim ordinance was adopted, but with the stipulation that it could be extended from one year to two years.

"In effect we do have a moratorium, though," noted board chairman Michael Heaney. He said also that the City could condemn the building, that the variance was not the only alternative.

But the 75 year old building, which once housed Summit's city hall, will now undergo a long awaited restoration and enhancement.



ARCHITECT'S RENDERING of plans by Root Estates, Inc. to renovate, restore, and expand Colonial Hall, 350 Springfield Ave., show one floor of retail space and two floors of office space. The burned out shell of a brick building has been standing idle since a disastrous fire in August, 1982.

### Converting large homes into two units is one alternative to flag lots

By PEG THURLER

SUMMIT — City Planner John J. Lynch told the Planning Board last Wednesday evening that home owners desiring economic gain from a large lot could be encouraged to convert their home to two units, rather than build a second house at the rear of the property on a "flag lot."

He showed the planners and the audience a map of Summit that indicated the oversized and undersized lots in Summit. The ones with a large land area not considered as wide frontage are the lots that may be subject to a request for a flag lot, noted Lynch, those that are unusually deep.

Planning Board chairman Richard Callaghan said that the placement of the house on the lot also may limit the number suitable for sub-dividing. Lynch pointed to the area north of the railroad tracks in the northeast part of Summit as having a particularly high concentration of over-sized lots.

"Looking at the pattern," said Lynch, "there are not a whole lot of areas where flag lots are a significant consideration."

"There are other ways of dealing with a desire for economic gain," he told the Board. One option is to create another dwelling unit within the existing house.

"Most towns have rejected such a plan," he warned, "because the next step could be a rooming house." The second unit should be smaller than the other one, he said, and the building should not appear to be two family from the outside.

When the gross floor area of a home is 5,000 square ft., the second unit would be 700 square ft. It could be a solution for a homeowner with an "empty nest," or for an older person who might rent the second unit to a young couple who could help with the maintenance of the property.

"Closet" conversion

cannot be tracked

The biggest underground movement is "closet" conversion, noted Lynch, where the changes in a home are not reported or approved. He maintained that the impact of two family homes is no greater than when teenagers lived at a home, filling the driveway with cars. One concept is that one tenant should be over 62, but board member Ann Reeves stressed the importance of keeping a balance of age groups in Summit. Providing housing for young people as well as for the elderly entails providing housing they can afford.

One way to prevent the creation of flag lots is to insist that the Zoning Board adhere to the zone plan of the town. Callaghan suggested that Lynch draw up a policy on flag lots to be included in the revised version of the Master Plan.

Single family homes most

significant land use change

Summit continues to have as its dominant land use single family residences, according to a land use map presented at the meeting by Lynch. '83 new single family homes have been built during the period from June, 1977 till January of this year. There were 7 two family dwellings added, and multiple family units have been built along New England Ave. and in the public housing area.

There was an official loss of 4 single family dwellings, such as in the Community Development area. But Lynch pointed out that those lost by conversion are not easily tracked. There was a net gain of 3 commercial establishments, and a significant amount of industrial additions, such as at Ciba-Geigy.

"There is an increasing market for smaller units," Lynch told the Board. "Summit already has multi-family stock. It is in good shape. It provides space for a full range of age groups. The location of multi-family housing is where it should be. Summit is unique in that it is a well balanced community."

Commercial uses on

Springfield Avenue's western strip?

Board member James Little asked Lynch about the future of the western stretch of Springfield Ave. in the light of recent citizen requests for a change in zoning.

A heavily traveled avenue like Springfield is not attractive for residential use; said Lynch. But allowing the area to turn commercial would result in it becoming even more heavily traveled, and would complicate the situation.

"Look at what has happened along Morris Ave.," he said, "a string of commercial uses out from the center of town. The board must consider if there are any public benefits from having a variety of commercial uses along Springfield Ave."

"Summit should not think of retail patterns along that road," he said, "but there may be the option of professional office use, or more home occupations. "Home occupations were marked on a map he showed, with three noted on the south side of Springfield Ave. and one on the north side, as of 1977. They include doctor's offices on property where the doctor also resides in the home.

One retail business was noted, the garden center on the north side of Springfield Ave., but it had been established before zoning laws restricted land use in that area.

Next meeting to

discuss traffic

The next special Planning Board meeting to discuss traffic in the Master Plan update will be Mar. 7 at 8 p.m. Board member and Common Councilman Thomas Kent asked the board to address the subject of one way conversion for Morris Ave. and Broad St. He said that new members of the Council need to be informed of the situation.

The public will be given a chance to express its opinions and ideas on traffic in Summit.

### Supper to benefit YMCA van

The Summit Area YMCA is sponsoring a spaghetti supper on Fri., Mar. 2, from 6 to 8 p.m. at the Summit Area YMCA, 67 Maple St., Summit.

The purpose of the dinner is to defray the cost of the new 15-passenger van that was recently purchased for use in the expanded Y on Wheels program. This after school transportation service is now available to children attending grade school in Summit, New Providence, and Berkeley Heights, and provides safe,

supervised activities at the YMCA for over 100 children. Members of the YMCA Board of Directors and friends of the Y have contributed generously; however, there is still an unpaid balance.

Why not join us for an evening of good food and fun and support a worthwhile cause?

Spaghetti, salad, fresh bread, and dessert in bountiful portions will be served. Tickets are \$5 for adults and \$3 for children under 12 and are available at the YMCA or by calling 273-3330.

### Warren Vache plays Art Center

By PAIGE BROOKE TUNSTALL

SUMMIT — Spontaneity. Elegance tempered with a sometimes brash, sometimes delicate irony. If these are the essential elements of jazz, then the performance by the Warren Vache Trio last Sunday was the quintessence of that musical genre.

Spontaneity was certainly provided by Jane Jarvis, who jumped into the breach when the Trio's pianist John Bunch could not make it. Jarvis, who has been dubbed by Lionel Hampton "One of the finest pianists of our time," fit into the Trio like a charm.

It was, in fact, something of a miracle in itself that Summit's John Carman was able to persuade the performers to play for us at all. Warren Vache had to find his way back to the Rainbow Room in New York the minute the concert ended, with bassist Phil Flannagan close by his side. The Trio is accustomed to an altogether different sort of atmosphere — the rather more glittery, perhaps more sophisticated world of gigging.

Vache, Flannagan, and Jarvis complemented each other in the manner of true professionals; never shy during their own feature, each played with the perfect mixture of enthusiasm and restraint when it was another's turn. Jazz may be a modern medium, but listening to them weave together was like listening to a kind of long forgotten courtesy.

Some of the tunes, such as "You'd Be So Nice to Come Home To," and "These

Familiar Places," were recognized by the audience, some were not. But the entire afternoon rang true with the genuine happiness of the Trio, once they got going, you got the feeling you couldn't have stopped them for anything in the world.



Warren Vache

### Summit Community Concerts fade into echoes

By PAIGE BROOKE TUNSTALL

SUMMIT — A grand old tradition of 33 years seems to have come to an end. Last Saturday evening, Peter Rabuzzi introduced the New York Solisti program for Summit Community Concerts — and simultaneously bid farewell to the Community Concerts per se.

"Regretfully, the trustees of Summit Community Concerts have concluded that there is insufficient interest in our concert series to warrant its continuance," Rabuzzi stated.

The audience received this news with a mixture of sadness and surprise. But to Rabuzzi, President of the Community Concerts, it was the predictable finale to a syndrome he has experienced for a matter of years.

"These problems have been building up for a long time," he said. "It's not as if something suddenly struck us like a bolt from the blue."

According to Rabuzzi, there were a "whole variety of reasons, some with more weight than others." In the past seven years, the series' membership has dwindled from 1150 to 500. Even with marathon efforts to fundraise, said Rabuzzi, "Corporate and individual contributions have failed to suffice for the last three years."

"When we began to encounter serious financial problems, we went out and got tax-exempt status," he continues. "Corporations were in many cases very generous to us, both in terms of cash donations and in terms of offering their time or business facilities. We had help from organizations including Ciba-Geigy, American Telephone and Telegraph, the

Summit Junior League, Public Service, Electric and Gas, Chase Manhattan, Suburban Cablevision, Truesdale, Exxon, Martindale-Hubbell, Magen, MPD, and others. The Holmes Agency let us use their phones. Siegel's let us use their premises, and Pfaltz and Waller helped us with other arrangements. But it just wasn't enough."

In addition to lean membership and funding, Rabuzzi names another important factor in the trustees' recommendation to dissolve the series (the trustees can recommend dissolution, but 2/3 of the board must vote to end the series before it becomes official). "Our problem was a function of the overall decline in volunteerism across America. It's getting harder and harder to find people. We've had a core of volunteers here who had to do everything to keep the ball rolling."

Competing cultural sources also have played a part in the gradual attrition of the Community Concerts. "Local associations such as the Chatham Musical Series and the rejuvenated Friday Evening Club are great attractions in themselves. Add the accessibility of New York's cultural opportunities and there's bound to be a scattering of resources and loyalties."

Does he think there's any chance of the Board voting to keep the series going? "Even if they did," he points out, "no money is left for operations."

Maybe the organization which brought Summit such outstanding performers as the Canadian Brass, American Ragtime, the Zagreb Ballet, the New York Vocal Ensemble, and most recently, Solisti, will reform someday.

But in light of the Herculean efforts of Rabuzzi and his colleagues, it is clear that dredging up funds and volunteers is no easy task. Whoever next tackles this challenge will need Summit's wholehearted support.

### Board to seek court order to protect student records

SUMMIT — The Board of Education will apply for a court order to protect the confidentiality of documents and records of students involved in crimes related to drug abuse seized by the Police Department Thursday from the office of the junior high school principal.

The Police Department, after presenting search warrants, seized all records of crimes committed in the junior high school by students, records of disciplinary action taken against these students and any evidence of these crimes.

The Board's statement said, "The police now have in their possession, after having gone through numerous files of varied nature, the disciplinary records of

students going back several years. The Herald could not ascertain whether the records were limited to simple drug abuse problems or covered a wide scope of misbehavior and its correction.

The complete statement issued by the Board of Education Friday morning:

On Thurs., Feb. 9, officers of the Summit Police Department appeared at the offices of the Superintendent of Schools, Business Administrator and the office of the Principal of the Junior High School with search warrants "seeking all records pertaining to any crimes committed in the Summit Junior High School, by students, and any records of disciplinary action taken against these students. Also any

evidence as a result of these crimes such as narcotics and alcoholic beverages."

The police seized certain records from the offices of the Superintendent and Junior High Principals. The police provided a receipt for the documents taken. The police now have in their possession, after having gone through numerous files of varied nature, the disciplinary records of students going back several years.

The Superintendent of Schools, the Business Administrator and the Junior High School Principals complied with the demand of the Police Department. Student disciplinary procedures in Summit public schools are carried out pursuant to policies adopted by the Board of Educa-

tion. The Board of Education is committed to preventing narcotic and alcohol use among its students and, to this end, has a strong policy to enforce this.

The Board of Education has sought but has been given no information that warrants the sudden action taken by the local authorities. The Board of Education believes that the indiscriminate search and seizure of student records compromises the confidentiality rights of the students of Summit and is inappropriate.

In order to safeguard the civil rights of students, the Board of Education will apply for a Court Order to protect the documents and records.

Subscriptions  
\$10 per year  
Call 464-1025

SUMMIT PUBLIC LIBRARY  
75 MAPLE ST.

CR 07107

SUMMIT N.J.

07901

Car fires and faulty alarms plague fire department

SUMMIT — Fire damaged the engine compartment of a car owned by Joseph Steiner of Millburn. The fire was already out when firemen arrived at 12:16 on Feb. 5 in front of 387 Springfield Ave., but the car had to be towed away after firemen disconnected the battery. Police reported an overheated car on Route 24 west near Broad Street on Feb. 1. However, upon arrival at 6:22 p.m. firemen could not find any evidence of a fire. Harry Spaven, Chatham, reported a fire under the hood of his car on Jan. 28 at 5:21 p.m. Gasoline and insulation had ignited, and firemen reported slight smoke and fire damage. Point of origin was the carburetor. A Buick Skylark, 1982 model, caught fire at the corner of Springfield Avenue and Essex Road on Jan. 27. The vehicle was totally destroyed from the engine on back, according to the fire report. Ignited were cloth, wires, plastic, and paint. A 1964 Ford caught fire on Jan. 25 at the corner of Baltusrol Road and Hughes Place. Damage was to the engine area and firemen disconnected the battery. Woodstove found burning in commercial zone. Firemen answered a complaint regarding open flames at the Honda store at 312

Broad St. on Jan. 19. The owner was asked to remove all kerosene heaters, or turn them off. Also he was informed that the woodstove in his garage is illegal, and must be removed. A smoldering fire in a bathroom closet brought firemen and equipment to a home on Glendale Road on Jan. 17. The fire on the second floor damaged the contents of the closet, walls and ceiling. An overheated boiler brought firemen to a home on Llewellyn Road on Jan. 22. The low water cut-off on the steam boiler had malfunctioned. It had apparently failed when the boiler had run low on water. A faulty smoke detector brought fire equipment to Overlook Hospital twice within two hours on Jan. 26. Active alarms sounded in the waiting room of the Community Health Building on the 4th floor. The detector had been activated by cigarette smoke, apparently, said the fire report. Fire at the Junior High being investigated. Toxic fumes from a burning toilet seat filled a first floor lavatory and the area above it on Jan. 27. Firemen were forced to use masks to enter the area and extinguish the blaze involving the plastic seat and paper. A smoke ejector was used to ventilate the area. Source of ignition was a match, and police are investigating. A chimney fire occurred at a home on Ashland Road on Jan. 28. Firemen upon arrival at the scene found smoke seeping out of cracks at the top of the chimney. The chimney cover was red hot. Men used a dry chemical extinguisher, and used chains to remove burning soot from the chimney wall. They advised the owner to have his wood burning stove checked and the chimney repaired. Squirrel activates alarm. Firemen answering an alarm at Club Drive found that a squirrel had chewed through the alarm wire. The incident occurred on Feb. 1. Fate of the squirrel was not reported. A report of smoke in the area of Upper Overlook Road was reported at 3 a.m. on Jan. 21. The person who

phoned in gave the name of a property owner in the area without that person's permission. The Fire Department reported that a tape recording is made of all messages phoned in to its emergency call board, and that it is against the law to give a name other than your own when making the call.

Asian to bring a message of the meaning of Christianity



Kosuke Koyama, one of the leading theologians of Asia, will preach at Central Presbyterian Church, 70 Maple St., Summit on Feb. 19 at the regular 10 a.m. worship service. Dr. Koyama has written

five books, one of these, Waterbuffalo Theology, is a successful attempt to bring the deepest theological concepts down to the level of a simple rice farmer. It is this gift, the presentation of difficult concepts into everyday symbols and conversation, that has made him so widely sought as a lecturer and teacher in Asia, Europe and America. Dr. Koyama has had a rich and varied background, having served as Professor of Theology in Thailand Theological Seminary in Chiangmai, Thailand. From there he moved to the Directorship of the Association of Theological Schools in South East Asia, followed by a stint as Dean of the Faculty in the seminary in Singapore. Following this he served as editor of the South East Asia Journal of Theology, published in Singapore. He lectured at the University of Otago, Dunedin, New Zealand for five years until he was called to the John D. Rockefeller, Jr. lectureship at Union Theological Seminary, New York City. From his long-time service in five different countries, he brings a startlingly clear message as to the meaning of Christianity in a troubled world. In addition to preaching at the 10 a.m. service on Sun., Feb. 19th, he will be present at the Coffee Hour and the 11:00 Adult Enrichment hour for a question and answer period. He will return again the following week, Feb. 26, at 11 a.m. to pursue his topic during the Adult Enrichment hour. All are welcome to attend the worship service or the discussion hours at 11 a.m. Dr. Koyama was educated in Tokyo, Drew University, Princeton Theological Seminary, and in Switzerland at the Bossey Graduate School of Theology.



OVERLOOK RECEIVES NEW COMPUTER from Chubb and Sons insurance specialists. Dr. Donald Wernsing, Director of the Family Practice Residency Program at Overlook, and Dr. Donald Kent, Associate Director, look on as Chubb and Sons' Senior Vice President Jesse Benton demonstrates the computer's versatility.

New computer gives Overlook's programs a shot in the arm

SUMMIT — Overlook Hospital's Family Practice residents are now reaping the benefits of a new computer donated by Chubb and Sons insurance specialists. Explained Donald Wernsing, M.D., Director of the Overlook Family Practice Residency Program: "By using this computer system, we will be able to ensure that the physicians taking their residency training in Family Practice at Overlook will have the most comprehensive training possible." "If one of our residents has not been personally involved with a particular problem, the computer will indicate this fact. We will then attempt to have that resident become involved in caring for patients who had that problem." The computer will also assure Overlook's strict compliance with the American Board of Family Practice's list of mandatory experiences that must be completed before a physician can become certified as a Family Practitioner. Donald Kent, M.D., Associate Director of the Residency Program at Overlook, adds that "It's important that the residents be exposed to a multitude of different medical problems in order to provide their future patients with the best possible care." In addition to the computer's obvious role in the education process, it will be used to improve patient management in the Overlook and Chatham Family Practice offices. One application is the establishment of patient profiles. These will include a list of medical problems, medications and drug allergies for each patient which will promote better management of each patient's health care. The computer will eventually have a drug interaction package that will automatically tell the physician if there is a potential adverse interaction between two or more drugs the patient is taking. Overlook Hospital is already on this type of computerized program hospitalwide. Until now, however, this capability has been reserved for only the hospitals and pharmacies. The computer will also be used for certain epidemiological studies and analyses. "This will help us to understand the prevalence of a particular disease in a given geographic area and will also help us to provide better patient care," says Dr. Wernsing. "This generous contribution from Chubb & Son, Inc., will enable us to provide our Family Practice residents with a better educational experience and our Family Practice patients with important refinements in diagnosis and care," notes Dr. Kent.

Program will channel high school women into science and technology in N.J.

AREA — About 500 female high school students will gather at the N.J. Institute of Technology Mar. 20 for a one-day conference exploring careers in science and mathematics. Called "Futures Unlimited," the program is designed to encourage young women to consider technological careers at an early age. Through workshops, hands-on math

and science experiments, and direct involvement with computers and special laboratory apparatus, the day will emphasize the importance of math and science courses. Adult women involved in the skilled trades, various technologies, the sciences and business will lead small discussion groups to share their experiences. Special educator, workshops will be held for high school counselors and teachers attending the program. The "Futures Unlimited" conference will make use of facilities and faculty at NJIT and at Rutgers/Newark, program co-hosts. Advance registration for the program is required and a

Peg goes Public

next low pressure system rolls out of the midwest. Hearts and flowers are waiting in the warmth of Summit's downtown stores. Just pull on the boots and come on down. Lorenson's Jewelers, 446 Springfield Ave., has a puffed heart with a diamond in the center for \$90. It hangs on a gold chain, just one of many kinds of pendants for chains. A heart-shaped gold-filled locket is \$52. Most popular of the gold hearts is a graceful openwork outline of a heart with a single diamond. It comes in three sizes, according to Richard Sorenson who showed it to the Herald one day this week. A sapphire and dia-

mond heart pendant is \$350. It can be made up in any birthstone but the sapphire is the most popular. A blue stone heart made of sodalite might be the gift for someone with a "heart of stone." There are also heart-shaped gold earrings that match some of the pendants. Once you get inside the store, don't miss the display of clocks. Lorenson's stocks windup clocks from the New England Clock Co. in Connecticut. The handsome all cherry case of a large shelf clock houses two chimers, the Westminster and the Whittington. It is a windup style priced at \$370. If you want a battery to do the work of winding for you, look at the mantel clock by Seico, all wood case and with the same two chimers as the

New England wind-up. It is \$275. Lou Castellano, owner of Summit Hills Florist, at 376 Springfield Ave., has an unusual gold chain with a heart pattern, 14 karat gold priced at \$175. For a very, very special gift on Valentine's Day, there is a heart shaped pendant with one full carat of diamonds set on a lacy gold frame. Or try on a heart ring with a pave of diamonds. Tiny diamonds are croppped together on this dinner ring in the shape of a heart. The Elsa Peretti pendant is the outline of a heart hanging at an angle from a gold chain, and there are heart shaped earrings of different sizes in 14 karat gold. Roses are red, violets are blue... Jim Piana, owner of Summit Hills Florist, 11 Beechwood Rd., has stocked a good supply of red roses and blue African violets, part of a store full of plants and cut flowers. The size of the head and the length of the stem determines the prices of the roses. By the dozen, prices run from \$30 up to \$50. A single rose starts at \$2.50, goes up to \$5, depending on the type of packaging and boxing you want. African violets come in not only deep blue, but pink, white, and various shadings, priced at \$5 a pot, and all in full bloom. Piana showed the Herald a special spring bouquet of fresh flowers, pre-packed and ready for giving. For \$5 there are sprigs of freesia, statice, plus long stemmed tulips and daffodils. Florists Transworld Delivery (FTD) has designed two new arrangements for sending flowers long distance. Pink carnations with white daisies are cut flowers in a Romanian glass vase, or a similar arrangement in a white paisley print container. A giant oversized heart balloon is tethered in the florist's window. It is at least 3 feet wide, solid red, and for \$15 can be delivered to your valentine. DeDuca Florist at 434 Springfield Ave. has sweetheart roses for \$24 a dozen. They have a smaller bud than the larger long stemmed variety which range in price from \$36 up to \$42 a dozen. In the gift department there is a medium tall, fluted glass vase, heart shaped, just continued on p. 14

Happy Valentine's Day from Raffaele's Specializing in Frostings & Copperizing - Tinting Styling and Permanent Waves Raffaele's 273-1467 3 Woodland Ave., Summit

Happy Valentines Day! Costume deliveries for Valentines Day! Send your love with balloons and kisses anywhere in the country! Balloon Bouquets with personalized messages delivered by cupid! Visit or call for the best in flowers and balloons for Valentines Day!

PARTY LINE 484 Springfield Ave., Summit • 273-8236 Open Sunday

Give our best to your love. BASKIN-ROBBINS ICE CREAM STORE 14 Beechwood Road Summit, New Jersey • 522-9731 Store hours: Sun. to Thurs.: 11 a.m. to 10 p.m. Fri. to Sat.: 11 a.m. to 11 p.m. ©1978 BASKIN-ROBBINS ICE CREAM COMPANY.

Pediatric Dentistry Practice Limited to Children and Adolescents Stephen Kerson D.D.S. 783 Springfield Ave. Summit, N.J. Saturday hrs. too 522-0640

insurance corner by Ralph Lee The Maben Agency PROFESSIONAL LIABILITY If you're a professional, whether in the practice of medicine, law, or as an officer or director of a business firm or association, you're expected to perform within the high standards of your profession. If your performance is challenged, for any reason, you may be subjected to a law suit with dire financial consequences. That's why you need professional liability insurance. This information has been brought to you as a public service by SPENCER M. MABEN, INC., 490 Morris Avenue, Summit, N.J. 273-1900 Your one-stop answer to complete insurance protection.

S.A.T. We help improve scores with our comprehensive 24-hr. course. We build skills needed to do well, and we help reduce test anxiety. We offer: Individualized help from expert teachers practice and review of prior SATs UNLIMITED EXTRA HELP at NO EXTRA CHARGE Courses offered in LIVINGSTON and MORRISTOWN Course begins Feb. 26 for APRIL SAT and Mar. 18 for MAY SAT. Call us today to determine how we can help your son or daughter. 994-2900 THE LEARNING CENTER 25 W. Northfield Rd. • LIVINGSTON

HEART SHAPED EVERYTHING'S COMING UP HEART SHAPED COOKIES CAKES PETIT FOURS DECORATED CUPCAKES TROST BAKE SHOP 277-6052 • 277-0014 427 Springfield Ave. Summit

DAVIES & COX 7A Beechwood Rd. Summit 273-4274 WATCH & CLOCK REPAIRS Done on premises 20% OFF ALL NEW WATCHES FOR SALE Large selection of vintage pocket & wristwatches fully reconditioned & guaranteed. WE SELL, REPAIR & APPRAISE Estate Jewelry WE BUY & SELL Gold, Silver, Antiques HOURS Mon. - Sat. 9:30-5:30

The Unitarian Church in Summit Waldron & Springfield Aves. Sunday Services 10 a.m. Service Theme: "A Ritual for Change and Growth" Ours is a liberal faith based on reason and love. All are welcome. Call 273-3245

NEW BOOK JUST RELEASED THE GENERAL PUBLIC'S GUIDE TO NEW JERSEY WILLS, ESTATES, TAXES AND PLANNING. By ROBERT G. SALIBA, Attorney at Law 16 Washington Street, Morristown, New Jersey, 07960 I. Dying Without A Will II. Dying With A Will III. Administering The Estate IV. Estate Planning 105 Pages. Available in bookstores at \$4.95 plus tax or by mail for \$6.25 (includes tax and handling). Check or money order to: RGS PRESS, P.O. Box 285, Morristown, New Jersey, 07960

American Heart Association First Annual Benefit ANTIQUE SHOW & SALE Saturday, Feb. 18, 1984 10 am - 8 pm Sunday, Feb. 19, 1984 10 am - 6 pm at the Old Mill Inn Hotel "Harvest Room" Route 202, Bernardsville, NJ (off exit 26, Rt. 287) Midway between Rt. 50 and Somerset, NJ off Interstate 287 Admission \$3.50 w/card \$3.00 Senior Citizens 50% Discount Children Under 12 Free This Card Admin. 2 At The Reduced Price Sponsored by & for the benefit of The Unitarian-Somerset AHA Chapter, Inc. Promotions by B. Trumble & J. Oltz 201-812-7295 or 618-2610

SUMMIT HEALTH FOODS 277-2050 • 277-2688 ALL DIET FOODS Herbs - Juices - Nuts NATURAL VITAMINS SUN DRIED FRUITS (CLOSED WEDNESDAYS) 484 Springfield Avenue Summit

The Junior League of Summit, Inc. Thrift & Consignment Shop 37 DeForest Avenue Summit, NJ 273-7343 1/2 PRICE SALE Consignment Shop Only Thurs., Feb. 16 Friday, Feb. 17 Closed Week Of Feb. 20th Daily Hours 9:30-3:30 Closed Wednesday Thursday evenings 6:30-8:30 p.m. Saturdays 9:30-12:30

## Martha Mason is engaged

Mr. and Mrs. John Mason 3rd of Spring Lake Heights, formerly of Summit, are pleased to announce the engagement of their daughter, Martha Willets Mason, to David Porter Frummond, son of Mr. and Mrs. Robert C. Drummond of New Canaan, Ct.

Miss Mason is a graduate of Summit High School and the University of Vermont. Currently, she is employed as a women's health counselor and is attending San Diego State University, pursuing a masters degree in social work.

Mr. Drummond is also a graduate of the University of Vermont. He is presently the district manager in San Diego for Grolier Interstate, Inc.



Martha Mason

A wedding is planned in the spring of next year.

## Alice Cable Montgomery

Mr. and Mrs. Philips Montgomery Jr. of Berlin, N.Y., and Truro, Mass., announce the engagement of their daughter, Alice Cable, to William Thayer Bradford, son of Mr. and Mrs. Edward Standish Bradford, Jr. of Baltimore, Maryland. The Bradfords formerly lived in Summit while Mr. Bradford was Headmaster of Newark Academy.



Alice Cable Montgomery

Miss Montgomery and Mr. Bradford are 1981 graduates of Bates College.

Mr. Bradford graduated from Newark Academy in 1977. She teaches at the Landon School in Bethesda, Maryland and he at the Wilmington Friends School in Wilmington, Delaware. A June wedding is planned in Truro.

## Events of interest in Summit schools

Feb. 14 - High School Varsity-JV Boys Basketball game at home vs. Caldwell, 4 p.m.

Feb. 15 - High School Varsity Boys Swimming vs. Irvington, YWCA, 3:30 p.m. High School Varsity-JV wrestling vs. Livingston, at

home, 4 p.m. Education Forum, "A Look At All-Day Kindergarten," Lincoln School Library, 8 p.m.

Feb. 17 - High School Varsity-JV Girls Basketball Game at home vs. West Milford, 6 p.m.



## Rudy named to Swarthmore committee

BERKELEY HEIGHTS—Alan Rudy, son of Donald and Sylvia Rudy of Berkeley Heights, has been appointed to the Student Housing Committee at Swarthmore College. Alan is currently a senior at the College.

## Anne Morris honored

SUMMIT — Anne K. Morris, daughter of Mr. and Mrs. James K. Morris of 281 Summit Avenue, has been awarded a junior varsity let-

ter in field hockey at Trinity College.

Morris, a sophomore at Trinity, majoring in Spanish, was a member of the field hockey team in her freshman year and was a tutor at the McDonough Elementary School in Hartford. She is a 1982 graduate of Newark Academy.

## Robert Chapman honored at RPI

SUMMIT — The Rensselaer Polytechnic Institute (RPI) has announced that Robert Chapman, III of 136 Pine Grove Ave., Summit, a junior majoring in computer and systems engineering, has been named to the Dean's List.

To qualify for the Dean's List, candidates must be full-time students, earn at least a 3.0 quality point average out of a possible 4.0 and have no grade below "C."

## obituaries

### Daniel Maloney

Daniel J. Maloney, 96, of Summit died in the Veteran's Administration Hospital, Lyons.

A Mass was offered at 9:30 a.m. Tuesday in St. Teresa's Church following the funeral from the Brough Funeral Home, 535 Springfield Ave. Mr. Maloney was a machinist with the Phelps Dodge Corp., Elizabeth, for 15 years before retiring in 1949. He served in the Army during World War I. Born in Bayonne, he lived

in Elizabeth before moving to Summit 11 years ago.

Surviving are a daughter, Mrs. Mary L. Oberst; a son, Daniel J., Jr.; a sister, Mrs. Susan Eilbacher; two grandchildren and three great-grandchildren.

### George J. Storch

Mr. George J. Storch, age 81, died Feb. 2 at Ashbrook Nursing Home in Scotch Plains. He was born in Newark, lived in Irvington and Springfield, and in Summit for 9 years.



Robin Peckham and Andrew Nestler

## Robin Peckham, Andrew Nestler have tied the knot

SUMMIT — St. Catherine's Church in Laguna Beach, California was the setting for the marriage of Robin L. Peckham and Andrew G. Nestler on Oct. 15, 1983.

The bride is the daughter of Mr. and Mrs. Robert Peckham of Laguna Beach, formerly of Summit. Dr. and Mrs. Warren B. Nestler of Summit are the parents of the groom.

The bride was attended by Debbie Paul of San Diego, Ca., as the maid of honor. The bridesmaids were Amy

Nestler of Boston, sister of the groom, and Polly, Tory and Jonny Peckham, all of Laguna Beach, sisters of the bride.

Steven Nestler of Chatham served as best man for his brother. Ushers were J. Peter Nestler of Washington, Ct., Alan Wessel of Denver, Col., Frank Woodbury of New York City, and Spencer Woodbury of Chatham.

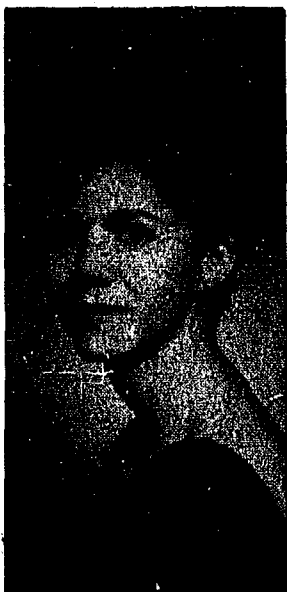
Following an outdoor reception at Emerald Bay Park and a trip to St. Croix, the couple is residing in Irvine, Ca.

## Kathleen Gilroy betrothed

Mr. and Mrs. Robert James Gilroy of Summit announce the engagement of their daughter, Kathleen, to William Anthony Christine, III, son of Mr. and Mrs. William Anthony Christine, Jr. of Plymouth Meeting, Pa.

Miss Gilroy attended the School of Visual Arts, New York City and Holy Cross

College, Worcester, Massachusetts. Mr. Christine is a graduate of Saint Joseph's University, Philadelphia, Pennsylvania. He is employed by Evans-Pitcairn Incorporated, Jenkintown, Pennsylvania and is project manager of Crossroads Business Center, Burlington Township, N.J. An October wedding is planned.



Kathleen Gilroy (Photo by Bachrach)

## Fun at South Street

"An unforgettable and enjoyable trip to the fabulous Frick Museum and to Chinatown" in New York City is scheduled by Sigmond C. Taft on Tues., Mar. 6 leaving at 8:30, returning at 4 p.m.

A lecture and tour at the elegant Frick Museum will feature the marvelous paintings of such old masters as Renoir, Vermeer, Titian, Bellini, El Greco, Goya, Degas, Van Dyck, Hogarth and many others.

Departing from the museum, it will be Chinatown, where one may choose from a variety of restaurants. Scheduling will provide time for a stroll around Chinatown. The trip

will be by a comfortable bus from Millburn, and the fee of \$15.50 includes all travel, admissions and parking in Millburn. "The fee does not include lunch, which can be as inexpensive as you like," explained Mr. Taft.

Two one day trips are now available to the new South Street Seaport on April 10th and May 9th. Fee will be only \$14 for each trip.

Checks with address and phone number on the back for either or all of the trips may be made out and mailed to Mr. Taft, 46 Undercliff Rd., Millburn, NJ 07041. For more information and reservations, call Mr. Taft at 379-2570.

## William Mauze finishes Marine recruit training

SUMMIT — Marine Pvt. William H. Mauze, son of George and Ann Mauze of 7 Blackburn Place, Summit, has completed recruit training at the Marine Corps Recruit Depot, Parris Island, S.C.

During the 11-week training cycle, he learned the basics of battlefield survival. He was introduced to the typical daily routine that he will experience during his

enlistment and studied the personal and professional standards traditionally upheld by Marines.

He participated in an active physical conditioning program and gained proficiency in a variety of military skills, including first aid, rifle marksmanship and close order drill. Teamwork and self-discipline were emphasized throughout the training cycle.

## Stanton wins silver wings

Air Force National Guard 2nd Lt. Thomas M. Stanton, son of William M. Stanton of 153 Center Ave., Chatham, has been awarded silver wings following graduation from U.S. Air Force navigator training at Mather Air Force Base, Calif.

Stanton will now serve at Holloman Air Force Base, N.M., with the 452nd Flight Training Squadron.

He is a 1981 graduate of Hawthorne College, Antrim, N.H.

He functions in the areas of education, community services and social action.

## Art of batik to be explained

SUMMIT — The National Council of Jewish Women of Summit is having its regular meeting at Temple Sinai in Summit on Feb. 14 at 11:30 a.m. All are invited.

Mrs. Jennifer McLeod, a well known crafter, will speak on the medium of Indonesian batik. A native of Quebec, she now makes New York City her headquarters.

The National Council of Jewish Women is a national voluntary organization devoted to improving the quality of life for all people.

## Davis Artz wins distinction

SUMMIT — Andrew Davis Artz of Summit has been named to the Chancellor's List at the University of North Carolina in Charlotte.

In order to be honored by the Chancellor's List at UNC-Charlotte, the student must complete 12 semester hours with grades of A, B, or C and earn a grade point average of 3.6 or better.

## Shoemaker achieves distinction

SUMMIT — David W. Shoemaker, son of Mr. and Mrs. Mel Shoemaker of 57 Mountain Ave., has been named to the first semester's

Dean's List at Houghton College, N.Y.

All of the 185 students on the Dean's List carried the required course load of 12 to 18 credit hours.

## Janet Abazia honored at USC

Janet L. Abazia of Summit has been named to the Dean's List at the University of South Carolina in Columbia.

The University of South Carolina reserves its Dean's List for those freshmen with a grade point average of 3.25 or better, and those upperclassmen with an average of 3.5 or better.

"IN REAL LIFE, I assure you, there is no such thing as algebra." Fran Lebowitz.

**ELEGANT WEDDING PHOTOGRAPHY**  
award winning photographers  
-FREE BLACK & WHITE ENGAGEMENT PHOTO WITH THIS AD  
the Image Maker  
Summit photography  
540 Springfield Ave., Berkeley Heights, N.J.  
665-2089  
OPEN MONDAY THRU SATURDAY

AUTHORIZED digital DEALER  
**Rainbow**  
100  
ALSO THE 100 +  
WORD PROCESSING MULTIPLAN LOTUS 1-2-3 + dBASE II  
**DECmate II**  
SYMBOLIC SYSTEMS INC. 201-277-6150  
15 YEARS SALES & SERVICE  
IMMEDIATE DELIVERY CALL FOR DISCOUNT PRICES & REFERRALS

## Mrs. Vavrek to head Kent Place anniversary celebration

SUMMIT — Headmaster Archibald R. Montgomery, III, and Alumnae Association President Mrs. John B. Crosby, Jr. have announced the appointment of Mrs. Thomas W. Vavrek as General Chairman of Kent Place School's Ninetieth Anniversary Celebration Committee.

The committee of students, faculty, parents and alumnae was formed recently to plan observances of the School's ninetieth anniversary in 1984-85.

Highlights of the celebration year will include dedication of the School's new auditorium and an all-purpose/athletic facility presently under construction

and a Family Day for students, parents and alumnae.

Kent Place School was founded in 1894. In its 90 years, 3,000 young women have attended Kent Place which is today the largest non-sectarian day school for girls in New Jersey. In 1982 Kent Place led the state with the number of National Merit Finalists in its senior class.

Mrs. Vavrek, nee Florence Lambeth, is a graduate of Kent Place and Hollins College. She is a former President of the Kent Place Alumnae Association and is a member of the board of the Chestire Home in Florham Park.

## Monsignor Bogdziewicz named chairman

SUMMIT — Monsignor Anthony F. Bogdziewicz, co-pastor of St. Teresa of Avila parish, Summit, has been named county chairman for the 1984 Archbishop's Annual Appeal (AAA).

"One Faith, One Family, One Very Good Reason to Share," is the theme of the fundraising drive which sup-

ports charitable, educational and spiritual programs in all communities of the Archdiocese of Newark.

The Church is called upon to do many things: to reach out to others in justice and charity, to worship and pray, to provide strong leadership, to share values and vision in

education and to foster a faith community.

Ordained in 1949, Monsignor Bogdziewicz is a graduate of Seton Hall University, South Orange, and the Immaculate Conception Seminary, Mahwah. He has been co-pastor of St. Teresa of Avila parish since 1977.

**FOR THE ONE YOU LOVE...**

A diamond ring from Venice Jewelry sums up all your feelings. It says "I love you."

**Venice Jewelry**  
464-6519  
370 Springfield Ave. Berkeley Heights  
Hours: 9-6 Mon.-Fri., Thurs. - 9-8:30, Sat. - 9-5

**Art for the Heart...**

found at  
**d. christian james gallery**  
522-1969  
357 Springfield Ave., Summit

**YOUR SWEETHEART STORE**

CANDY ♥ CARDS

BALLOONS PLUSH

and other great gifts!

**THE APOTHECARY CARDS & GIFTS**  
(At Hendricksen's)  
415 Springfield Ave., Berkeley Heights

35% off Ski Jackets	Ski Package	Reg Sale
25% off Stretch Ski Pants	Spalding Mistral Skis, Tyrolia 170 w/brakes	235 119
<b>SKI BOOTS</b>		
Reg Sale	Ski Package	Reg Sale
Cober Sierra 97 59	Atomic Mid Ski, Tyrolia 170 w/brakes	235 129
Cober Squadra Sport 180 109		
Dachstein Bora 95 55		

**Colorado Ski Shop**  
297 Springfield Ave. Berkeley Heights 464-9361

## Letter Perfect Valentine.

Give your sweetheart the new Letter Holder Bouquet. Fresh flowers delivered in a solid, polished brass letter holder. It's a gift your Valentine will love now, and use forever. And one quick call to our shop sends it anywhere in the country. It's letter perfect.



Send the Letter Holder Bouquet. Valentine's Day, Tuesday, Feb. 14.

**New Providence Florist**  
Teleflora

**TREAT Your Sweetheart To The Ultimate Beauty Experience For VALENTINE'S DAY.**

we offer HER a Total Facial Makeover Complete Hairstyling and Therapeutic Manicure

**Valentine Special**  
A FREE GIFT will be given with each facial makeover from our selection of exclusive Cleonice beauty products

Hurry In & Purchase a Valentine Gift Certificate!  
(Good through February '84)

**Rob Trugman's Reincarnation**  
48 Maple Street • Summit • 273-4500



Nicole Williams, daughter of Watchung manager, Hilton Williams, changing leads with Seag.



Cindy Osewski mounted on Dark Star.



Arienne Dekkenzo exercising Pumpkin.



Chickie Frisch putting Jim through his paces.



Katie Heyman spending an afternoon with her favorite mount, Whiskey Man.



Cheryl Domenico and Katie Heyman at ease.

# EYE ON SUMMIT

Perhaps the best way to brave the bitter winter is simply to ignore it. These denizens of Watchung Stable hardly seem to notice the cold - they're too busy enjoying their rides.



Kim Herslo on Jazz.



Nicole Williams.



Jessica Burger with Concho.



Nadine Severini riding Jabberwocky.



Fred Lazzara enjoying the view from Coney Island.



Cheryl Domenico, Watchung instructor, riding Emily.

Poverty: it eludes perfect definition, but brings brutally definite realities

BY PAIGE BROOKE TUNSTALL
SUMMIT — By global standard, Summit rank high on the scale of affluence. Our frame of reference in defining poverty and wealth might well seem skewed to most of the world's people. But does that absolve us from our social obligations on a local level? And to what extent does that absolve us from our social obligations on a local level? And to what extent does that absolve us from our social obligations on a local level?

Where did my money go?
Last year, Nightingale received a call from a confused donor who had contributed to the Family Services' annual Christmas drive. "He said he'd heard that there were no poor in this area," she explained, "and quite reasonably wanted to know where his money had gone." In fact, says Nightingale, "We have 1,146 people listed below the poverty level, that is, who make less than \$4,800 per annum."

The Puritan ethic: how much do we really want to help?
We give lip-service to the Protestant ethic, but we have conflicting ideologies. We say we want to help. But we also believe that people must earn their keep. We have to face the reality at hand here—some of the individuals we reach can be helped to their feet, to self-sufficiency, but some will never be able to make it on their own," she contended. Here Nightingale has pinpointed a fundamental contradiction underlying a broad range of American values: what if the huddled masses yearning to be free can't pull themselves up by their own bootstraps? Or can't stay "up"?

The Steppenwolf: detached and lonely
Many of those who will never be self-sufficient have insatiable cases of wanderlust. They are the ones emotionally or mentally disturbed in ways resistant to the kinds of therapy we have to offer. They may roam at the beck and call of insatiable impulses," says Nightingale of the latter category.
The issues at stake here cannot be oversimplified," she counseled the audience. "But if we are to forget these people on the fringe, we have to realize that that's what we're doing and live with the consequences."
Nightingale also mentioned that poverty tends to be cyclical, and that frequently

children who grow up on welfare will receive welfare for their own families.
There are several psychological trends at play in the passing of poverty from one generation to the next, according to Nightingale. For example, she commented, "The teenage girl who has grown up with a sense of emptiness or neglect may perceive pregnancy as a filling up, a sense of nurture and purpose. But after the baby is born, and eventually, begins to establish a separate personality, the sense of aloneness may return more painfully than ever."
It is a myth that these girls become pregnant in order to go on welfare," adds Nightingale.
If you're a service for the poor, are you a poor service?
Family Services deal with the entire financial spectrum, from those who can afford the top fee to those who can't afford to pay at all," muses Nightingale. "But we find ourselves confronted with the idea that if we serve the poor, we must be a poor service. And this image arises from all too many examples of that logic."
It took six years for us to get rental assistance in Summit, and it seemed like most of that time was spent pushing papers. Unfortunately, those in the

business of designing plans to help the poor have scant sense of what will work with people," Nightingale said with evidence of frustration.
Taxpayers may or may not wish to contribute to welfare, but it is the rare taxpayer who is willing to pour his money into mismanaged or ineffectual programs, it appears.
At times," she concluded, "we have to be in the business of helping almost surreptitiously since the system often penalizes the poor for any extra income, earned or received from an agency. We had one woman with six children getting \$560 a month in welfare; her rent was \$550 a month, and there was no way she could afford to leave her children. The welfare simply isn't enough in a case like that."
Alicia Domizi, also of Family Services, concluded the presentation with an example of an emergency situation in which the Association had to mobilize all its resources to keep a roof over one woman's head. From Domizi's description of the situation and the network of people required to fill the breach, the audience got a taste of the kind of poverty which does exist in Summit.
St. John's service will continue next week with a global perspective on the balance of wealth.

Letters

Who will pay for Reagan's policies?

To the editor:
I am one American who is getting pretty tired of Ronald Reagan's "Do as I say, not as I do" politics. The President has asked everyone else to tighten their belts and help restore the economy. But when it comes to his pet cause, Militarism, he shows absolutely no self control. The sky's the limit as far as his military spending is concerned.
And as if that isn't enough, he is running up unprecedented deficits which can only be relieved by exorbitantly high taxes. Of course, he will not raise the taxes now because it is an election year, but what will happen after election? Perhaps not until after Ronald Reagan is finished, but eventually someone is going to have to pay for those bomber airplanes.

Most of us don't tolerate that kind of behavior from anyone else in our lives. Why, then, do we accept it from our President? I submit it is because we like to think of our country and our President as above the rest, an example to the world, our beautiful America. We do not want to see reality.
Unfortunately, this kind of thinking blinds us, does not allow us to see our faults and to change them. If we want our America to become a peace loving nation again, interested in the welfare of its citizens, and a beacon to the world of what humanity can achieve, we must not allow our President to make us into a military machine.
A concerned Summit citizen

Blast the blight decision!

To the editor:
I read the Summit City Council's decision to declare the city blight within Morris Ave., Broad St., and Chestnut Ave. a "blighted" area both in form and in spirit.
All Summit residents I have talked with share my feelings of anger and disbelief concerning the possibility of such kind of blight. Summit is one of the finest, cleanest, and healthiest communities in the State.
James B. Clark III
Summit

The City Council's decision to overturn the Planning Board in declaring a "blight" here seems inexplicable, while the result of forcing two honest and productive Summit shops out of business seems truly unconscionable. I can only wish the storeowners mentioned herein the best of luck in their suit against the City to have the City Council's unsound decision overturned.
James B. Clark III
Summit

Library aid increase favored by Franks

To the editor:
I am particularly pleased and gratified that Governor Tom Kean has recommended an increase of \$2.5 million in the appropriation for the state's libraries in his proposed fiscal 1985 budget.
The amount of the increase is almost identical to the increased library aid that resulted last year from legislation I sponsored to use, on a one-time basis, money from dormant in unimpaired accounts. The Governor's new budget proposal reflects his commitment to maintain that higher level of state aid. I urged him to do when he signed my bill last year.

I am gratified that last year's increase in library aid was not simply a "one-time shot in the arm." Instead, if the Joint Appropriations Committee approves the governor's recommendations, increased aid to our public libraries will be ongoing.
Our public libraries are a crucial resource for every New Jersey citizen. Too often, library aid is cut when we face a budget crunch and this increased appropriation reverses that trend.
Bob Franks
Assemblyman, District 22
Editor's note: Assemblyman Franks is a member of the legislature's Joint Appropriations Committee.

Superintendent urges teachers to join union

To the editor:
The Summit Teachers' Association requests publication of the following communication and STAs' comments on the same.
TO: Teaching Staff
FROM: Richard F. Lander, Superintendent of Schools
Richard Thomasey, President, Summit Education Association
DATE: January 18, 1984
SUBJECT: Professional Membership
The need to stay abreast of the continuing developments, innovations, and challenges of our profession in our chosen profession has never been more apparent than it is today. While opportunities we find ourselves in a defensive posture, there is much to celebrate, publicize and discuss.
The most reliable index for articulation and definition of best practice and professional growth in our education can be found in our public libraries. It is one of the essential tools of our profession. We must actively support the library, its resources, its services, its programs, and the organization that supports it.
I am pleased to announce that the Summit Education Association has accepted the offer of a membership position to be actively and fully involved in the profession. I am pleased to announce that the Summit Education Association has accepted the offer of a membership position to be actively and fully involved in the profession. I am pleased to announce that the Summit Education Association has accepted the offer of a membership position to be actively and fully involved in the profession.

participate in appropriate professional organizations. The primary responsibility of a teacher has to be generating and transmitting knowledge; it can be said, we think, that the next responsibility in importance is improving the practice of the profession.
With this as a guiding tenet, the Superintendent and the Summit Education Association agree that teachers, in order to meet their obligations to their profession and themselves, should hold active membership in professional groups and organizations. Such membership are, therefore, strongly encouraged, including and especially important, membership in the Summit Education Association.
The Summit Teachers' Association applauds the Superintendent of Schools' earnest request to the teaching staff to stay abreast of continuing developments in their profession by attending to their professional development through active membership in professional groups and organizations.
We do, however, deplore the use of the above communication as a Professional Membership to advance the cause of the Summit Education Association, the bargaining agent for the teachers, within a bargaining unit.

The Summit Herald
I am pleased to announce that the Summit Education Association has accepted the offer of a membership position to be actively and fully involved in the profession. I am pleased to announce that the Summit Education Association has accepted the offer of a membership position to be actively and fully involved in the profession. I am pleased to announce that the Summit Education Association has accepted the offer of a membership position to be actively and fully involved in the profession.



Susquehanna Choir to regale St. Teresa's

"Exuberant! Vibrant! Joyful, and an aural delight!" are the words used to describe the Susquehanna University Concert Choir which will join in concert with the choir of St. Teresa's Church in Summit on Mar. 1 at 8 p.m. This concert, second of a series sponsored by St. Teresa's, will be the highlight of the music season. The Susquehanna University Concert Choir, comprising 70 highly select choral musicians under the leadership of Cyril M. Strelansky, performs the great religious and secular choral literature of the past five centuries in its concert season each year. It performs not only on various campuses and sites in the U.S., but also abroad in such places as the Salzburg Cathedral, Austria; Coventry Cathedral and Trafalgar Square in

England; Notre Dame de Paris and Chartres Cathedral in France; Palazzo del Congressi in Florence, St. Mark's Cathedral in Venice; and the Cathedral of Guarasaca in Mexico. In addition the Choir has recorded a total of five volumes, made television appearances and has been featured on nearly 500 radio stations.
The Music Steering Committee of St. Teresa's with help from St. John's Lutheran Church, Summit will provide housing and hospitality for the Choir. A reception at St. Teresa's upon the arrival of the chorale and one following the concert will be held in Memorial Hall, Morris Avenue.
Tickets (\$4 each) may be purchased at St. Teresa's rectory or at the door.

On the aisle with Simon Saltzman Liza and Chita can not save "The Rink"

NEW YORK — "The Rink" is definitely the best musical of the month. That distinction carries with it the disheartening news that no other show (play or musical) is scheduled to open on Broadway until after March 1.
This sad state of affairs also forces me into an unwitting recognition that it is as much this theaterlover's gratefulness for dramatic triumphs, as it is for the occasional flashes of excitement that spark the new Kander and Ebb musical at the Martin Beck Theatre starring Chita Rivera and Liza Minnelli.
Reunited for the first time since their five week stint together 9 years ago in another Kander-Ebb musical, "Chicago," when Minnelli replaced an ailing Gwen Verdon, this dynamic duo have exchanged the jazz milieu of a Romy and Myrtle house of detention for the more contemporary, breeze of a fun town and soon to be demolished boardwalk roller rink.
Playwright Terrence McNally, best known for his ballad opera "The Rink," has written a script, that with a narrative of complexity and a minimum of ornamental affectations, illuminates the relationship between two women, ex-lovers, mother and her, all too humanly damaged. No one would expect a musical book to contain either the kind of satirical exposition, or a non-communicative dialogue that we get in "The Rink." But McNally's script makes it so. It is a rare gem that comes from the pen of a playwright who has spent his life in the show and cabaret world, and who has lived and worked in the heart of the city since 1945.
What McNally's book has decided to do is to take the story of a woman who has lived in the heart of the city since 1945 and to tell it in a way that is both entertaining and enlightening. It is a rare gem that comes from the pen of a playwright who has spent his life in the show and cabaret world, and who has lived and worked in the heart of the city since 1945.

returns home unexpectedly after her most recent seven year recess. Stunned to find her mother casually dumping the past, for a new life, a new man and two weeks in Rome, Annie tries to reattach broken ties with her mother and a life she had always recalled with bitterness and resentment.
A flashback technique is used to isolate fragments from the past, trace both Angel's childhood recollections of her emotionally immature father, a prettier-than-she-was mother, and a wallflowered adolescence, and Anna's own frustrations with a doomed marriage, and her "Chief Cook and Bottle Washer" existence. The flashbacks become tiresome in spite of the inclusion of some peppy dances.
The most disappointing aspect of this show is that the element of surprise is noticeably missing. All of the songs — their melodic insistence noted — are calculated show-stoppers — manipulated to a fault, and uninterestingly computerized to relate characters to an audience rather than to each other. While Rivera's more flashy role gives her the preponderance of laughs, dance numbers, and even a more clearly defined character, Minnelli's expertly restrained dynamics still emerge to keep an even, if not as shapely a footing, with her co-star. Actually Stopping the show once or two on roller skates for a complex and very funny roller skating folies number. Ingeniously playing key roles — including some "pen travesty," during the flashbacks, the syncopated six manage to skate off with the highest marks.
A.E. Antoon's direction seems to be as ambiguous as McNally's book in deciding whether to take the situation seriously. Ditto for Giacela Dancie's not O.K. choreography. Peter Larkin's benevolent and setting was impressive.
It was fabulous ladies and six wretches in a shade of de-roller rink is enough to be a winner. "The Rink" delivers the good.

Multifaceted musician strikes new chords at U. M.

SUMMIT — The First United Methodist Church started the new year with the addition to its staff of Dr. James Culver, organist/music director. Dr. Culver holds Master's and Doctor's degrees in organ performance and pedagogy from The University of Iowa. He teaches music theory, composition, and general music skills at the Kent Place School. Through Kent Place School he also gives private instruction in organ and piano, while conducting a handbell ensemble, a chamber orchestra, and choral groups.
As choral and instrumental conductor of Silver Burdett Publishing Company, New York, New York, he has conducted 300 educational recordings which have sold 5 million copies each in the U.S., England, Australia, and New Zealand. These recordings were made at the CBS Studios, New York City.
He has 101 compositions to his credit, featuring organ works, choral anthems, chamber music and piano works, choral cantatas, handbell works, and strong quartets. He has held organist positions in New Jersey, Iowa, and Illinois and has given recitals in Europe and various places in the U.S. His wife, Megan, a native of Short Hills, is organist at the Rockaway First Presbyterian Church.



Dr. James Culver

An afternoon of Chamber music

A delightful afternoon of chamber music will be presented on Sun., Feb. 12 at 4 p.m. by the Stretto Chamber Players at the Unitarian Church in Summit. This is the third and final concert of the "Afternoon Music" series, now in its second year. The Stretto Chamber Players, professional string instrumental musicians, was organized in 1974 and has been hailed for the high calibre of its performances throughout north central New Jersey.
The program will offer music from three eras: Vivaldi's Sinfonia "Al Santo Sepolcro" and the Bach Brandenburg Concerto No. 5 from the Baroque Era, the Classic Era represented by Mozart's Divertimento in B-Flat, K. 137, and Paul Hindemith's Five Pieces for Strings, Op. 44 written in 1927.
The three soloists for the Brandenburg Concerto will be Katherine Clark, violinist, Katherine Price, flutist, and Kenneth Hooper, harpsichordist.
Ms. Clark is a graduate of the University

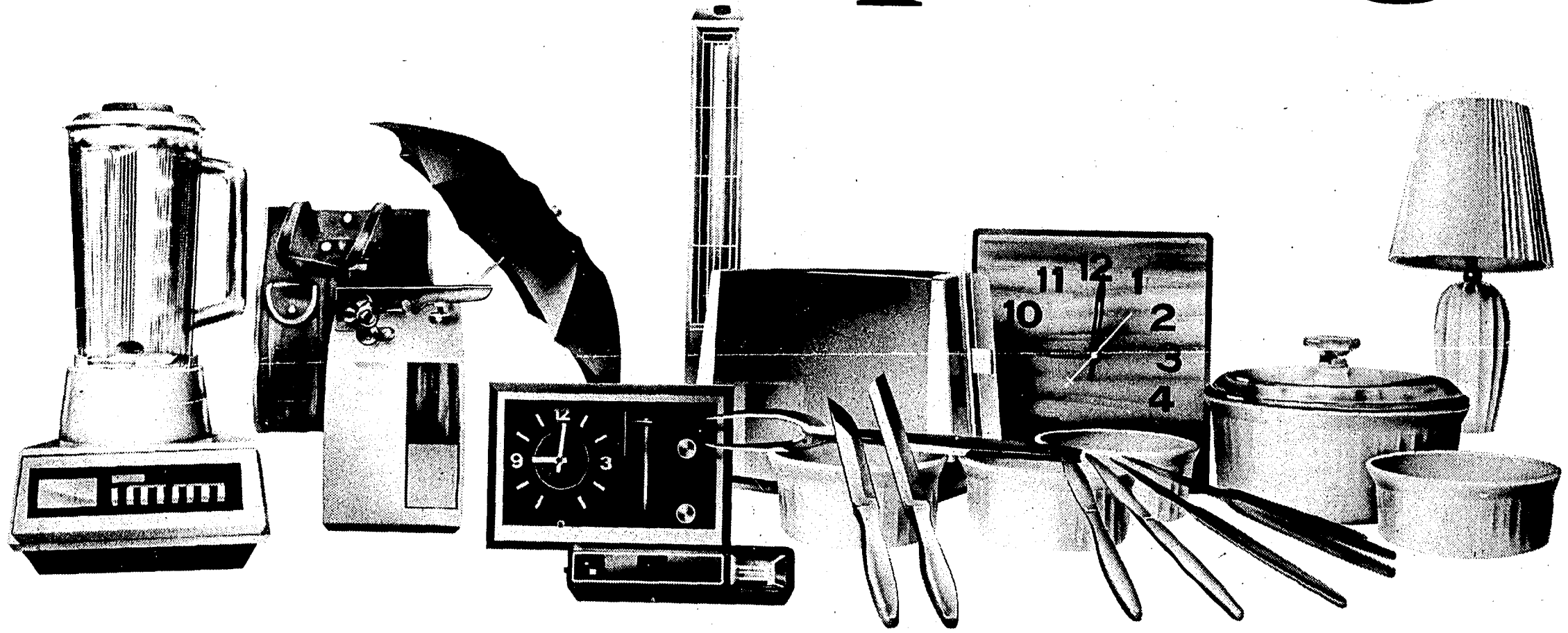
of Pennsylvania and studied with Emanuel Zeitlin and Sally Thomas. She is a frequent performer in this area and is a member of Colonial Symphony. She resides in Summit where she maintains a large class of violin and viola students.
Ms. Price holds degrees from Stetson University and the Juillard School and has studied with Julius Baker, Charles DeLaney, and Arthur Lora. She has performed throughout the New York metropolitan area and in the Southeastern states. She is a resident of South Orange, teaches privately, and is on the faculty of the Kent Place School in Summit.
Hooper is the organist at the Unitarian Church in Summit. He has degrees from Oklahoma City University and Northwestern University, from which he holds the Doctor of Music. As both soloist and collaborative pianist he has performed throughout the United States, and appears frequently in the New York metropolitan area. He is a resident of Summit where he maintains a teaching studio.

"Langston" views Harlem of the twenties

The Crossroads Theatre Company, a troupe of black professionals, will restage their critically acclaimed production of "Langston" at Kean College of New Jersey before taking the show on the road.
A performance of the musical dramatization is set for 8:15 p.m. Feb. 15 in the Wilkins Theatre, as part of the college's celebration of Black History Month. Admission is free, but tickets from the box office, 527-2337, are required.
The play is an adaptation of the work of Langston Hughes' (1902-1967) poetry and music. With little change in cast and scenery the actors travel from Harlem in the 1920s and 1930s to today. Hughes, who began writing in the 1920s, concentrated on the "little people." He was a poet, playwright, novelist, short story writer, song lyricist, journalist and editor.
He was born in Joplin, Mo., and grew up in Ohio and Mexico. He served as a seaman and sailed to Asia and Europe, lived in France and Italy and travelled in Spain, Africa, and Russia. Even so, he identified with the Harlem community and drew most of his characters from 125th Street between Amsterdam and Lexington Avenue.
The Crossroads production incorporates the dance, song, and humorous spirit of Harlem during the 1920s. It is directed by Rick Khan, and features five Crossroads veterans. "Langston" was adapted by Khan who read Langston's biography, autobiography and other works.
The play is a collaboration with Langston Hughes and the Crossroads Theatre Company. It is a production of the Crossroads Theatre Company. It is a production of the Crossroads Theatre Company.

Smith, who plays Langston's father; Candy Mayfield as Raean, Rom Talton on the corner, and Brenda Thomas, play the various characters in Langston's life.
Kean College staff and students working on the adaptation of "Langston" include: David Porter, Livingston; James Collier, Summit; Alan Schaefer, Colonia; Colleen Murray, Phantaway; David Jackson, Newark; Seth Newfield, Maplewood and Warren Cross, John Carmo, Jane Carpenter, Robin Hertzfeld, Peepen Sheen and Fran Sukovich, all of Elizabeth. Kean College's Wilkins Theatre frequently provides production assistance to non profit community performing groups.
Vivaldi "Gloria" at Calvary
The Calvary Chorale will present the Vivaldi "Gloria" for choral and organ, under the direction of Howard Vogel, on Sun., Feb. 12th, at 11 a.m., at Calvary Episcopal Church, Woodlawn and De Forest Ave., Summit.
Soloists will be Sally Beal with soprano, Deborah Emmell, soprano, E. De Hart, soprano, and Michael Bull, alto.
The choir is composed of 100 members. For more information, call 527-2337.

# You deserve a very Grand Opening.



**And the Howard is bringing you one in Summit—complete with great prizes, free gifts and everything you need in a bank.**

## The Howard has arrived.

The Howard Savings Bank has opened a new office at 789 Springfield Avenue, Summit, New Jersey. While we're new to Summit, we've been an old friend to New Jersey families since 1857.

So when you bank with the Howard, you're banking on 127 years of experience. Plus the security of being backed by our \$3.4 billion in assets.

## For your convenience—longer, full-service banking hours.

At the Howard, we're making our hours fit your hours.  
**Full Service:**  
 9 am - 6 pm Monday, Tuesday, Wednesday and Friday  
 9 am - 7 pm Thursday  
 9 am - 12 noon Saturday  
 (9 am - 3 pm Saturdays between February 4 and March 3)

## High yield savings plans include flexible time accounts.

The Howard offers you a variety of savings plans at competitive rates. With our flexible time accounts of 32 days or more, you can deposit any amount over \$500 and select your own maturity date. And with many of our time accounts — you decide when to take your interest... monthly or at maturity.

## High interest IRAs.

Earn a high rate and shelter up to \$2,000 from your federal income taxes. At the same time, you'll be saving for your retirement.

## Choose one of these with a new or add-on savings deposit of \$5,000 or more:

- Shetland 1,500 Watt Quartz Heater
- Twin/Full Bed Comforter
- Corning 6-Piece French White Set
- Keystone Camera Kit
- Aluminum Folding Table
- GE AM Clock Radio
- Decorative Table Lamp
- Washington Forge Cutlery Set
- Waring 7-Speed Blender
- \$20 Cash

## Choose one of these with a new or add-on savings deposit \$500 to \$4,999:

- Cross Chrome Pen
- Butcher Block Clock
- Tote with Umbrella
- Afghan Kit
- Fieldcrest St. Mary's Blanket
- 2 Slice Toaster
- Can Opener

This offer applies to the Summit office only. One gift per account. All gifts must be picked up. Gifts available while supplies last. The Howard reserves the right to make substitutions. Retirement Accounts not eligible for gifts. No transfers from other Howard accounts. The Howard shall have no liability for damages, direct or indirect, resulting from any defect in merchandise offered. Any applicable warranties are sole responsibility of the products' manufacturers. This offer may be withdrawn without notice.

## Win sweepstakes prizes.

- 1st Drawing**  
 Prize: Saturday, February 11, 3 pm  
 GE AM/FM Digital Clock Radio with Telephone
- 2nd Drawing**  
 Prize: Saturday, February 18, 3 pm  
 GE Microwave Oven  
 - Large 1.4 Cubic Foot Oven Capacity  
 - Electronic Digital Readout
- 3rd Drawing**  
 Prize: Saturday, February 25, 3 pm  
 Commodore 64 Home Computer with Color Monitor
- Grand Prize Drawing**  
 Prize: Saturday, March 3, 3 pm  
 Sony 21" Trinitron Color TV  
 - Remote Control  
 - Cable Ready

## The Howard meets all your banking needs.

We're proud to be a part of your community, and we look forward to providing everything you need in a bank. For starters, there's savings and checking and loans.

And a whole lot more, including retirement plans, trust services to help with your estate and financial planning, and a Discount Brokerage Service that can save you up to 70% on full-service brokerage fees. For all the details, ask your Howard banker when you stop by.

### Grand Opening Sweepstakes Drawing

Please enter my name in your Grand Opening Sweepstakes.

Name \_\_\_\_\_

Address \_\_\_\_\_

Phone # \_\_\_\_\_

Deadline for Sweepstakes entries is 2:45 P.M. March 3, 1984

**the Howard SAVINGS BANK**

Member FDIC

**THE NEW  
PRESTIGE DINER  
BREAKFAST SPECIALS**

Mon.-Sat. 6 a.m.-11 a.m.

- 1. 2 Eggs (any style) Potatoes, Toast, Jelly ..... \$1.19
- 2. 2 Pancakes Butter & Syrup ..... \$1.19
- 3. 2 Slices French Toast, Butter & Syrup ..... \$1.19
- 4. American Cheese Omelette, Potatoes, Toast, Jelly ..... \$2.19
- 5. Above orders with Bacon, Sausage or Taylor Ham ..... \$2.19

**Breakfast • Lunch • Dinner**

Sun., Mon., Tues., 6 a.m.-1 a.m.  
Thurs., 6 a.m.-3 a.m. • Fri. & Sat 6 a.m.-4 a.m.

1318 Springfield Ave., New Providence • 665-0211

**LINCOLN SALE**

**20% TO 50% TO 70% SAVINGS**

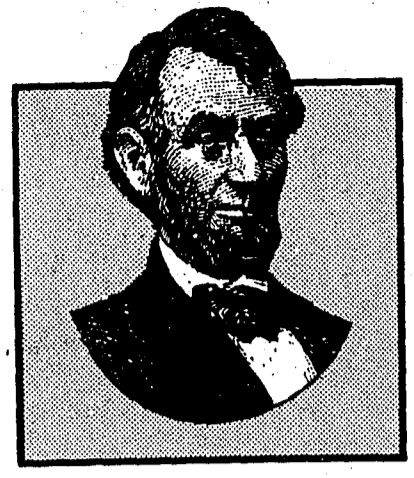
**ALL WINTER MERCHANDISE 1/2 PRICE\***  
*Super Special Rack up to 70% Off\**

**FINAL WINTER CLEARANCE**  
Fill out Lucky Lincoln Coupon to win Free Gift Certificate

**Kids Country**

\*Note: 50-70% SALE ITEMS ONLY  
• Final Sale  
• No Return  
• No Exchanges  
• No Charges  
• No Exceptions

1283 Springfield Ave., New Providence • 464-4455 • Mon. thru Sat. 9:30-5:30 p.m., Thurs. til 9 p.m. • Free Parking In Rear



**DAYS**

**CONTINUE  
THRU MONDAY**

• AKUTAGAWA • ANTON BERG • BANNER • BARTONS • BENSONS  
• BIERMANN • BLACK FOREST • BLUM'S • BROWN & HALEY  
• CADBURY'S • CARD & BOWSER • CANNON • CANTON & HARVEY  
• CHOCOM • CLOTT • CLOTT • CLOTT • CLOTT • CLOTT  
• SHAW • SHAW • SHAW • SHAW • SHAW • SHAW  
• GUIDI • GUIDI • GUIDI • GUIDI • GUIDI • GUIDI  
• K... • K... • K... • K... • K... • K...  
• M... • M... • M... • M... • M... • M...  
• O... • O... • O... • O... • O... • O...  
• KE... • KE... • KE... • KE... • KE... • KE...  
• W... • W... • W... • W... • W... • W...  
• BAN... • BAN... • BAN... • BAN... • BAN... • BAN...  
• BLUM'S • BLUM'S • BLUM'S • BLUM'S • BLUM'S • BLUM'S  
• CAVEND... • CAVEND... • CAVEND... • CAVEND... • CAVEND... • CAVEND...  
• DROSTE • DROSTE • DROSTE • DROSTE • DROSTE • DROSTE  
• GHIRARDELLI • GHIRARDELLI • GHIRARDELLI • GHIRARDELLI • GHIRARDELLI • GHIRARDELLI  
• LONDON'S • KATHERINE • HARRY • HARRY • HARRY • HARRY  
• VOSGIENNE • LINDT • M... • M... • M... • M...  
• MERIJAL • NAPOLEON • ODENSE • OVALTINE • PANDA • PANDA  
• TELL • TOBLER • TREBOR • WILBUR • WILKINSON'S • WUNDERLE

**IMPORTED AND DOMESTIC  
CHOCOLATES AND CANDIES**

*For the Valentine  
in your life*

**CHOCIES**

Village Shopping Center  
New Providence  
464-8218

**ALL VALENTINE  
CARDS  
AND  
WRAPPING PAPER**

**20% OFF**

**FREE BIC PEN**  
with the purchase of 3 Valentine Cards

**FREE PAPERMATE PEN**  
with any Valentine Candy purchase over \$10.00

**LARGE SELECTION OF  
WHITMAN'S VALENTINE CANDY**

**20% OFF**

**ZIGGY VALENTINES**

**20% OFF**

**STRAWBERRY SHORTCAKE VALENTINES**

**20% OFF**

**CENTER STATIONERS**

1261 Springfield Avenue  
New Providence • 665-1545

**VIDEO MADNESS**

**\$1.00 RENTAL**  
With coupon-Mon. thru Thurs. only  
Not valid with any other coupon

**T.D.K. • T 120 • Super Avilyn**  
**\$7.99** **SAVE \$2.44**  
Regular \$10.45

**LAST 4 DAYS!!!**

**VIDEO CLUB SPECIAL**  
Join now and receive

- 6 Free Rentals Value \$24.00
- 1/2 off Video Head Cleaning & Maintenance \$24.95
- 10% Discount on any Video purchase
- \*2<sup>nd</sup> Rental Fee

\*All for a low maintenance fee of \$50.00  
We will honor any membership card \*\*\* Stop in for details!

**Over 700 Titles Available**

 **GE. 4002**  
**8-Hour Video Cassette Recorder**  
**\$439** Reg. \$550.

**FREE Movie Club Membership With Video Recorder Purchase (\*\$100<sup>00</sup> value)**

**An "Honest Abe" Sale at Bell Drugs**

**10% OFF**

OUR ALREADY LOW PRICE ON

**RECORDS & TAPES**

COUPON

**15% OFF**

ALL PERSONAL APPLIANCES

HAIR DRYERS • CURLING IRONS  
TOOTHBRUSHES, ETC.

COUPON

Valid thru Feb. 14, 1984. Not valid with any other promotion.

**YOUR VALENTINE HEADQUARTERS FOR**  
RUSSELL STOVER CANDY  
HALLMARK CARDS  
FINE FRAGRANCES

**THE NEW Bell Drugs**

18 South Street, New Providence 464-8484

**Lincoln Sales Days**

**20%-50%**

On a large selection of 14K gold, sterling silver, & American Indian jewelry.

**WAY OF THE ARROW**

72 South St., New Providence • 464-2270  
Monday-Saturday 10-6, Thursday 'til 8:00

**Colonial**


**665-1212**  
Mon.-Fri. 10:00-9:00  
Sat. 10:00-7:00  
Open Sunday 10:00-5:00

TV • VIDEO • AUDIO  
HOME ENTERTAINMENT CENTER  
We Service What We Sell

Village Shopping Center • 260 Springfield Ave. • New Providence

**FOR EVERY \$39<sup>00</sup>  
YOU SPEND AT THE  
DRESS STOP THIS  
WEEK YOU WILL  
GET \$100 (OR MORE)  
WORTH OF QUALITY  
WINTER APPAREL!**

**THAT'S A FACT!**



**Charge It!**





1300 Springfield Ave., New Providence

Daily to 5:30 • No Evenings til Merch  
Plenty of off street parking

**SALE**

**50% OFF**

Colored Bead and  
Freshwater Pearl Strands

Longines Watches

Colibri Lighters

Assorted Brass Giftware



**Braunschweiger**

FIFTH GENERATION JEWELERS  
MORRISTOWN: 33 SOUTH STREET □ 538-2189  
NEW PROVIDENCE: VILLAGE SHOPPING CENTER □ 665-1487  
WARREN: PLEASANT RUN PLAZA □ 356-1300  
MEMBER AMERICAN GEM SOCIETY

**LAST TWO DAYS**

SATURDAY AND MONDAY  
FEBRUARY 11th AND 13th

**ADAMS' & MADAM'S  
LINCOLN SALE DAYS**

OUR ENTIRE  
FALL-WINTER STOCK  
REDUCED

**20%  
TO  
75%**

**SUPER BARGAINS  
ON FIRST QUALITY  
NAME BRAND MERCHANDISE**

NO "SECONDS" NO "SPECIAL PURCHASES"

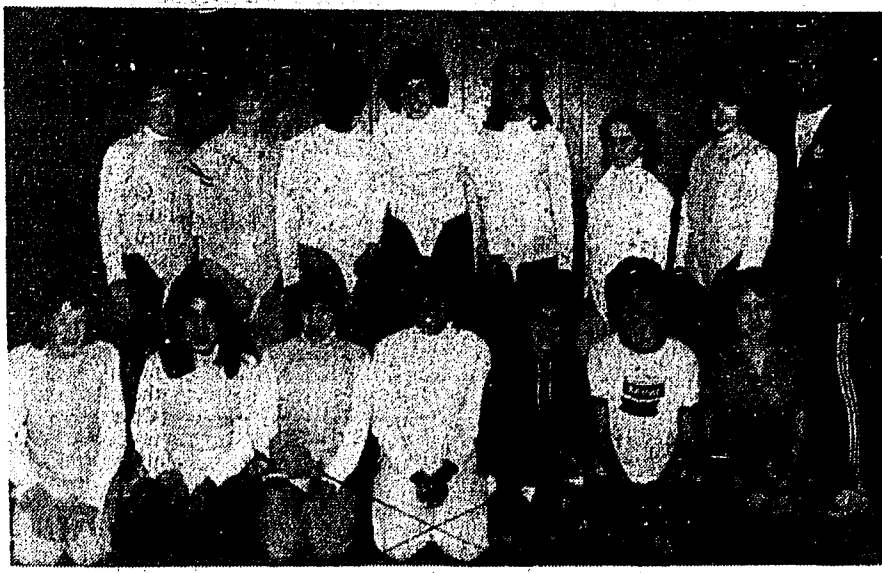
THE RESPONSE TO THIS SALE  
HAS BEEN TREMENDOUS.  
BUT THERE ARE STILL MANY SUPER BARGAINS  
WAITING FOR YOU. SO HURRY IN!

STORE HOURS DURING SALE:  
Sat. 9:30-6:00 Mon. 9:30-9



The finest attire for men, women and boys

1271-1275 Springfield Avenue • New Providence • 665-0800



OAK KNOLL SCHOOL'S 1983-84 fencing team, sporting a 5-2 record to date, placed fourth out of 15 schools participating in the Santelli Tournament for New Jersey girls' fencing teams held recently at Voorhees High School. Team members are, top, from left, captain Aileen O'Driscoll, Muffy Turney, Lamonah Richardson, Jenny Walsh, Anna Legeza, Mary Beth Iorizzo, Christine Doyle and coach Gregory Boutsikaris. Bottom row, from left, are Tori Walsh, Lisa Aloimo, Christina Butler, Lynn Kadri, Suzanne Civile, JoAnn Pachana and Wendy Pflaum.

## Rec events planned for the handicapped

AREA — A variety of recreational activities are scheduled for February and March by the Association for Advancement of the Mentally Handicapped (AAMH) for mentally handicapped adults.

The AAMH is an independent, non-profit social service agency helping mentally handicapped adults become productive members of the community through a variety of services.

Events planned for February include a trip to the

American Craft Museum in New York City, a trip to a Wheelchair Basketball Game, a dinner out at Big Stash's in Linden, and a dance at the Five Points YMCA in Union.

Scheduled in March are trips to a museum, a New Jersey Nets game, a New Jersey Devils hockey game, and a local restaurant.

Judy Knecht, director of recreation, said one aspect of the support given to the handicapped is to encourage them to participate in agency

sponsored or community-based social and recreational activities.

"These activities are open to all mentally handicapped adults," Knecht said. "We encourage new people to join our activities, because we feel they are excellent learning experiences - the chance to explore the community, meet new people, and have great times."

Anyone wishing more information on these events can call Knecht at 354-3040.

## Body Magic begins Feb. 28 at Edison Center

AREA — The Summit Recreation will offer a unique fitness program called Body Magic beginning Tues., Feb. 28 at the Edison Recreation Center. It is a fitness program that effectively exercises the whole body, toning muscles, firming flab and improving cardiovascular function.

Body Magic is a program

put together by Carol Eisenbud and Susan Skeer of Berkeley Heights. It moves beyond aerobics giving the person a productive workout. The program has become very successful necessitating the use of other instructors that undergo an intensive training program, including consultations with a physiologist, nutritionist and certification in CPR.

Body Magic courses are also offered in Union, Essex, Somerset Counties and Manhattan. It is a program for people wanting to get in shape. Participants begin at their own level and work up to more demanding exercises, but not straining beyond natural limits.

The program will run for six weeks every Tuesday

beginning Feb. 28 and ending April 3 at the Recreation Center, 100 Morris Ave., Summit. The hour will begin at 7:30 p.m. and the cost is \$12.

A preliminary sign-up is necessary at the center during the hours of 8:30 a.m. to 2 p.m.

For more information, call 277-4119.

## Recreation team pins Linden to 72-33 loss

SUMMIT — Summit Recreation's Union County team recorded its third league victory in a row in a wrestling match versus Linden 72-33. It was also the third week in a row that they were on the road.

Craig Brodman pinned his Linden foe for his third league victory and third league pin. Keith Simms, Rick Proctor, Gary McElroy, Cary Logue and Jason Evers also registered six team points with falls

over their Linden opponents. Lee Pietrantonio, Pat Natale and Paul Fleming also posted six for Summit with forfeit victories.

Greg Shanahan who just signed up this week and only had two practices under his belt, wrestled two exhibition matches against boys with three and four years experience and was so impressive that the coaches were smiling, all the way home.

If there are any young

boys in grades K through eight who would still like to sign-up and give wrestling a try, and maybe put a smile on a coach's face, come on out.

Grades K through fourth

wrestle on Mon. and Wed. in the high school wrestling room from 6:30 to 8 p.m. and fifth to eighth grade Tues. and Thurs. from 7 to 9 p.m. at the Jr. High Girls' Gym wrestling room.

## Cladis takes aim

Association.

Combining hard work and hours of practice, Cladis advanced his rifle shooting through three levels to achieve this impressive award.

The NRA's Qualification Program enables individual shooters to measure marksmanship proficiency through competition against oneself. Four ratings are available and each rating has a set of marksmanship requirements which must be completed by an individual and submitted to the NRA for approval. The Distinguished Expert Rating requires supervision by an instructor or club leader.

## Redson paces Penn swimming

SUMMIT — If there is any one reason why the University of Pennsylvania women's swim team is successful that reason would have to be Cathy Redson.

Take a recent 92-48 thrashing of rival Dart-

mouth, for example.

Redson, a senior, captured firsts in three events. She won the 200-yard breaststroke (2:30.5), the 200-yard individual medley (2:12.2), and the 200-yard butterfly (2:08.2), plus swam on the school record-setting

200-yard medley (1:53.5) team.

Redson, from Summit, now holds seven individual school marks and is a part of two relay teams that have made the record books.

The Pennsylvania squad currently sports a 4-2 record.



LINDA ROMAN, a Nautilus trainer at the Summit Area YMCA demonstrates the equipment at the Health and Fitness Center.

## Toning up at the YMCA

AREA — When Summit resident Linda Roman decided to try the new Nautilus equipment in the Summit Area YMCA's recently established Health and Fitness Center (HFC) she didn't know that it would lead to a new part-time career as a Nautilus trainer.

Roman, in fact, was already employed at the YMCA as an aerobic dance instructor.

However, she quickly became a regular and enthusiastic visitor to the Health and Fitness Center and decided to apply for a position in what used to be an all-male bastion not too long ago.

Roman, who has been employed as an instructor for the past five months, says she is pleased that she hasn't encountered much resistance from the membership in the HFC.

"Most men are very receptive to the advice I offer them about the use of the machines or their technique," she said. "Everyone comes to Nautilus with their own personal fitness goal, and as long as I can help them achieve it, that's all that is important to most people, men or women."

Women, in fact, comprise about one-third of the total membership of the Health and Fitness Center. Nautilus is a good fitness system for both men and women because it can be easily adapted to an individual's needs. It is an excellent body toning program, but the machines can also be used to build muscle bulk by simply increasing the amount of resistance used.

"We have many couples who enjoy working out together here at the Nautilus," she said. "It's one of the few fitness activities that two people can do together, but at their own separate levels."

The HFC is located on the second floor of the Summit YMCA, 67 Maple St., and operates from 7 a.m. to 9 p.m., Monday through Friday and until 6 p.m. on weekends. YMCA membership is not required to join. Available are one-year and three-month memberships. For a brochure or more information, call 273-3330.

## Girls' league begins play

SUMMIT — In the first basketball game of the Summit Recreation Girls' Minor League, the Space Invaders shot the Space Raiders down 32-8.

The Invaders passing and rebounding skills contributed to their win. For the Invaders, Monica Anzaldi and Josie Simpson were high scorers with 16 points apiece. Kim Cardone added six points and Courtney Hill two.

The top scorer for the Raiders was Jill Martin with four points while Ginger Cohen and Kathleen Mullery both contributed two.

The Centipedes walked over the Ms. PacMans 23-6 in the second game. Wendy Furrer of the Centipedes could not be stopped, sinking 15 points. Also for the winning team, Amanda Winn had four points, Courtney Cooper two, and Gillian Harmon two.

The Ms. PacMans put up a hard fight but they lacked control of the boards. High scorer for the team was Brynna Cho with six.

In a close battle, the Defenders were edged by the Asteroids 19-14, as both teams played a fine game. For the winning team Kelly Formichella racked up 15 points and Randy Mendelson added four.

For the Asteroids, Andrea Rolfe had a high of six, Kim Pierson had four, and both Carol Fisher and Ann Schley had two.

**Insured Money Market Deposit Account**

**8.76%**  
annual yield on

**8.40%**  
per year  
(current rate)

- Minimum deposit: \$2,500.
- Earn Money Market rates with your deposit of \$2,500 or more.
- Write three personal checks per month.
- Make up to three pre-authorized or automatic transfers per month.
- Make withdrawals any time without penalty.
- Make deposits in any amount at any time.

**1-Year Savings Certificate**

**10.45%**  
annual yield on

**9.80%**  
per year  
(current rate)

- \$500 minimum deposit.
- Rate is guaranteed for the entire term you choose.
- Interest compounded continuously and credited monthly.

**Save with the rates you want... from the people you know at Montclair!**

Look at Montclair Savings' Money Market Deposit Account and the other high-yielding certificates with new flexible terms! Why invest in money market funds when you can get competitive rates in FDIC-insured accounts and have your funds invested right where you live? Ask one of our customer representatives for more details on our flexible maturities.

**MONTCLAIR SAVINGS BANK**  
AROUND THE CLOCK BANKING

Get acquainted with Montclair's "Around the Clock Banking" automatic teller machine! Now you can have a banker that keeps your hours... whatever your hours! "Around the Clock Banking" available at our Montclair, Upper Montclair, Cedar Grove, Midland Drive-In, and Boonton/Mtn. Lakes offices.

**Six-Month Savings Certificate**

**9.76%**  
annual yield on

**9.40%**  
per year  
(current rate)

- \$500 minimum deposit.
- Rate is guaranteed for the entire term you choose.
- Simple interest, credited monthly.

**2-Year Savings Certificate**

**11.01%**  
annual yield on

**10.30%**  
per year  
(current rate)

- \$500 minimum deposit.
- Rate is guaranteed for the entire term you choose.
- Interest compounded continuously and credited monthly.

**MRS. FATIMA 574-8649**  
**CLAIRVOYANT • ESP PSYCHE**

Advice on love, marriage, business, horoscope and palm reading  
**\$5.00 off with ad**  
17 Brant Ave., Clark

**PAULA'S SOCIETY OF SINGLES**  
- Presents -  
**2 FABULOUS WEEKENDS AWAY -**

Feb. 17-20 Washington Birthday Holiday - Stevensville Country Club, Swan Lake, N.J.  
\$140-4216 p/p plus tax & grat.  
Featuring Jack Carter

March 16-18 A Touch of Class, Fallview Hotel, Ellenville, N.Y., Entire Hotel for Singles Only.  
\$116-4150 p/p plus tax & grat.  
\$25 Dep. Required to Paula D'Angelo  
RR 4, Lakewood Dr., Kotonak, N.Y. 10536  
914-232-4291 for Info. & Brochure

**POEMS by JACKIE**

Are really the rage  
For any occasion  
Regardless of age.

If there's a person you truly adore  
Let Jackie help you.  
You're certain to score!

If Hallmark has failed you  
Just give me a call  
Humorous or romantic  
Personalized poems say it all!

**464-1712**

**HELP YOUR CHILD DO BETTER IN SCHOOL**

Your son or daughter is not working to potential for many reasons. These include weak study habits, or poor reading or math skills. Your child may try hard, but still get poor grades or warning notices.

**FREE INITIAL CONSULTATION**  
Students from first grade to high school need help from time to time. Often they are very bright.

We help by first testing to detect the cause of the problem. Then we build the skills needed to succeed in school. Of course, we meet often to review the progress being made.

**THE LEARNING CENTER**  
25 W. Northfield Road  
LIVINGSTON 994-2900

**SAVE**

**DISCOUNT COUPON USERS! DON'T THROW MONEY AWAY!**

SAVE hundreds of dollars a year on your food and household budget! Receive the wanted discount coupons of your choice. Hurry! You must enclose a stamped, self-addressed envelope for easy details on how to save money at your local store.

SEND TO: UNITED COUPON CLUB, INC. "FREE" INFO  
6427 West Capitol Drive  
Milwaukee, Wisconsin 53216

\*Enclosed is stamped, self-addressed envelope. Please send facts on joining the Club.

**DISCOUNT COUPON USERS! DON'T THROW MONEY AWAY!**

**SAVE**

**Montclair Savings Bank**

NEW PROVIDENCE: Village Shopping Center • Phone: 464-5788  
Other Offices: Montclair, Upper Montclair, Cedar Grove, Midland Drive-In, Rockaway, Boonton/Mountain Lakes

Inquire about our other high-yielding deposit accounts! Each of these accounts insured to \$100,000 by the FDIC!



JOE GALLO

## The friendliest rivalry in town

They call it the friendliest rivalry in town. There's no stealing of mascots or painting of academic buildings when these two get together. It's strictly for fun. Pure and simple. Almost like inviting your neighbor over for afternoon tea.

Oak Knoll versus Kent Place. Kent Place versus Oak Knoll. Two private, all-girl schools on opposite sides of Springfield Avenue. Crosstown rivals? Bite your tongue. Competitive? Well, yes. But you certainly won't hear anyone in the stands screaming out for blood. Sure they play all-out — from the opening tap right down to the final buzzer — but after the last second has ticked off the game clock, all is forgotten and forgiven.

"We have an unspoken rivalry," said Jerry Butler, head coach at Oak Knoll. "There's a certain camaraderie between us that you won't find in other schools. Of course, we don't want to lose to them, either."

"Once when Oak Knoll qualified for the states we went over to their gym and practiced with them so they could get better prepared," related Barbara Ruziska, head coach at Kent Place. "That's just the kind of relationship we have with them."

On Monday the two schools got together to play that All-American game called basketball. No engraved invitations were not sent out. It was more like an open-house party. Come as you are. BYOB (bring your own basketball). Casual. Informal. Just a clean, wholesome full-court five-on-five. Loser's out.

But even the best of relationships have their problems. In their first meeting of the season Oak Knoll blasted Kent Place and hosted them 55-29. Normally a 26-point thrashing would be grounds for a divorce, but remember, this is Kent Place versus Oak Knoll. Nothing that a healthy rematch couldn't resolve. But before I get to the game, first a word on the Kent Place gym, the site of their latest confrontation.

On the school's campus work is currently underway on a multi-million dollar gymnasium that, when done, will be a superior athletic facility in every way to the present shoebox that passes off as their home court. Still, for all those bucks and all that work, the new building will be lacking one thing. And unfortunately, it's something that money can't buy, and that's character.

First off, the court is so small ("How small is it?") that the out of bounds line is the building's interior wall. Second, it is one of the few places left in the state that still uses wooden backboards. Third, there are no bleachers. Fourth, there are no locker rooms. Shall I continue?

Upstairs there is something they pass off as a balcony where spectators can lean over the edge or glare between safety rails at the action. The building's total capacity is approximately 100, saying, of course, that everyone stands sideways and sucks their stomachs in. But please don't get me wrong. I like the Kent Place gym. It's the kind of place you curse now, but fondly reminisce about later. Stories about games in the "old gym" will start the second it closes its doors and live on forever.

"Kent Place has the type of gym that anything can happen in," Butler said. "They could turn things completely around on us there."

Now to the matter of a little roundball contest. The faculties at both schools can down-play this rivalry business as much as they like, but to the fans and parents in attendance, right on down to the players on the court, this was a big game that both sides wanted to win.



JOANN ROCHE of Berkeley Heights applies tough defense to Kent Place's Anne Bentley. Kent Place topped Oak Knoll 44-37. (Photo by Ann Stern)

Seconds after the opening tip-off Kent Place center Wynne Jackson swatted a shot by Oak Knoll's ace Alison Morena and the battle was on. Exactly 1:20 later Kent Place guard Ray-Cheryl Furman (12 points) hit the first bucket of the game and the gym erupted.

Furman added four more points during the quarter as guard Cathy Eld (seven

points) directed the Kent Place offense to an early lead. Oak Knoll's sharpshooting Kim Genkinger paced her squad with six markers, all on long-range jumpers, but it wasn't enough. After one, Oak Knoll led 12-7.

In the second period Jackson took over, scoring five Oak Knoll points during

an 8-2 bulge that opened up a 20-9 advantage. Jackson, who stood a head taller than anyone else on the court, also began to dominate play under the boards (11 points and 18 rebounds).

Genkinger hit four more of her game-high 18 points, but at the intermission, Kent Place trailed 24-15.

Using a four-guard offense to throw the taller Kent Place club off balance, Butler's squad opened the third period with a 10-2 streak. Berkeley Heights' JoAnn Roche (eight points), Mimi Wry, Genkinger and point guard Regina Maguire brought Oak Knoll to within one, 26-25. But Kent Place held off the rally, and at the end of three they still led 33-29.

During the crucial opening minutes of the fourth quarter Kent Place (10-3) put the game away. Chris Alfieri the squad's all-purpose forward hit four points during an 8-2 binge and Oak Knoll (13-4) could never recover, falling 44-37.

Afterward there were no tears or sad faces. Just a bunch of exhausted players. The friendliest rivals in town were living up to their image. Still, you couldn't help but see a trace of disappointment in Butler's face as he stared up at the scoreboard. "Well," he said, "it doesn't surprise me."

## Highlander swimmers overpower Pioneers 47-29

By PEG THURLER  
SUMMIT — The Berkeley Heights girls' swim team swept eight out of 10 events on Feb. 2 when they met the New Providence Pioneer girls at the YMCA pool, home pool for both teams. The final score was 47-29, as Highlanders Debbie Shugard and Laura Marturana won three events each.

Yvonne Verhagen, Chris Fosko and Kelly Whitney. Marturana took an early lead and never gave it up in the 200 IM. Teammate Jill Hofmann was second, Pioneer Fosko third and Karen Ledebuhr third. Shugard won the 50 freestyle, ahead of Pioneer Whitney, Ammerlaan, and Pioneer Chris Thomson.

Gretchen Ernest and Fosko and never gave it up. Shugard was first in the 100 freestyle. Teammate Claudia Ciferno third, behind Pioneer Christy McKee. Marturana moved the score up to 36-23 with her win in the 100 backstroke, out in front with an early lead ahead of second place Julie Fisher, and third place McKee. McLellan took the 100 breaststroke. Teammate Kathy McCauley was third, Yvonne Verhagen and Linda

## Softball umpires clinic slated

AREA — Two clinics for area softball umpires have been scheduled this month by the Union County Department of Parks and Recreation in cooperation with the Amateur Softball Association of New Jersey. Men and women interested in becoming a registered A.S.A. umpire, or those already qualified as umpires, but interested in a refresher course are eligible to attend.

Freeholder Meeting Room of the Union County Administration Building, Elizabeth. The Union County Annual Softball Clinic, for those seeking to become an umpire, will take place on four consecutive Mondays starting March 5 at 7 p.m. Softball rules for slow and fast pitch will be discussed in preparation for the official A.S.A. exam on Mon., April 2. A fee of \$35 is payable after the second session and if the candidate passes the exam, \$15 of the fee will be used to pay the 1984 A.S.A. dues.

The Refresher Clinic for Union County Softball Umpires is one night only, Tues., March 13 at 7 p.m. and all present softball umpires in the greater Union County area are eligible. Umpires will prepare for the 1984 season by reviewing fast and slow pitch rules. There is no charge for this program. To register or find out more, call Leo Spirito at 527-4931.

## ATTENTION: PARENTS OF CABBAGE PATCH KIDS

The New Jersey laws of Wills and Probate and the Federal Tax laws have been changed significantly over the past three years. Insure that your loved one(s) are properly provided for in the event something happens to you. Have a Will prepared or your old Will updated. Be certain who will be caring for your kid.

Law Offices  
MARTIN L. BEARG, P.A.  
41 River Road  
Summit, NJ  
273-8503

Open evenings and Saturdays by appointment

**This Week In Summit**  
The Bi-Weekly News Show

**Learn About Students Entering College**

This Live, call-in program will be aired at a special time:  
8:00 p.m. to 9:00 p.m. Monday, Feb. 13

Join Moderator Kathy Clingan as she discusses the decisions facing college bound students and the role of the High School advisor with the Director of Guidance for Summit High School, Dr. Jakubik.

**CALL IN • 277-6310 •**

## Foul shooting contest

SUMMIT — Tryouts have been underway in the elementary schools for the upcoming foul shooting contest, scheduled for Feb. 14 from 3 to 4 p.m. at three elementary schools for grades four to six.

The gym teachers at each school have been conducting the tryouts, selecting the top three boys and girls to compete in the finals.

Fourth grades will be at Brynton led by gym teachers Nataliy Howad and Bob Greenwald. Fifth grades will

go to Franklin School, with Ken Kuebler in charge, and sixth grades will be at Washington with Wayne Butrick instructing.

There will be trophies for first place winners and medals for placements from second to fifth. The event is sponsored by the Physical Education Department. Howard Anderson is the Director.

Each child will take 20 shots. The top five will go to the finals and shoot 10 more times.

## Knicks at 4-0 in Major League

SUMMIT — The Knicks continue to win in the Summit Recreation Major League as they ran over the Nets 36-26 to bring their record to 4-0.

Mike Feoli tossed in a game high 24 points with Dave McCann and Jim Lovocare adding 11 and 10 points, respectively. Charlie Cernoshia had 10 points for the Nets.

The 76'ers came to life downing the Cavaliers by a 45-28 score as Chris Spinner

and Pat Wroblewski scored 15 and 14 points. Tim Duetsch added eight. Jay Williams scored 10 points for the Cavaliers and Chris Panhans chipped in with seven.

The Lakers took a 20-point win over the Celtics as they won 40-20. Chris Cherry and Rod Blackley hit the cords for 16 and 14 points. The best the Celtics could offer was 11 points from Jim Witzell. The next leading scorer was Tyrone Holmes

**DO YOU OPERATE A UNIQUE BOUTIQUE?**

We are developing an elegant enclosed mall for 25 upscale Boutique Shoppes, anchored by two theme restaurants.

Strategically located on a main thoroughfare in affluent suburban west Essex County (Caldwell-Essex Fells area), the site affords excellent parking and will serve heavily populated area with executive clientele (Demographic Survey Available).

Opening is projected for Christmas '84 business (shell is erected), so don't pass up an opportunity to be considered for this unusual center offered at an equitable, non-participating rental rate.

CONTACT:  
MARTIN C. MAYER  
THE MAYER COMPANIES  
(OWNER-BUILDERS)  
101 Eisenhower Parkway, Roseland, N.J. 07068  
(201) 228-9618

**SPRING 1984 GOVERNOR LIVINGSTON ADULT SCHOOL**

*Classes Include:*

- Basic Word Processing
- Computer Programming
- Microcomputers for home and business
- Condos & Townhouses
- Darkroom Photography
- Psychic Energy
- Introduction to Sailing
- Tai Chi Chuan

In Person Registration Feb. 14, 6 p.m.-9 p.m.  
At Governor Livingston Regional High School  
Berkeley Heights

For more information, call 376-6300 Ext. 99, Harry Linkin

## Summit girls take third in Union County swim meet

By PEG THURLER

AREA — Summit's Allison Winter swam to a first place in the 50-yard freestyle, helping her team place third in the Union County Swim meet held last Saturday at the Dunn Sport Center pool in Elizabeth.

Summit racked up placement points in nine separate events to earn valuable points for the 190 score. Union Catholic was first for the third straight year with 293 points, Westfield second with 287.

Winter's gold medal came on a time of 26.29, as she outraced UC and Westfield in the event. Tracey Chisholm also gave the spectators a thrill when she took the lead in the 100 breaststroke after three laps, but wound up in third place after she "couldn't quite hold on," according to her coach, Bob Greenwald.

Kristin Fellows made a strong showing, second in the 200 freestyle in 2:06.36, fifth in the 50 freestyle, and third in the 400 relay along with Winter, Karen Cornell and Chisholm.

Kristy Wesson took a fourth in the 200 medley

relay with Chisholm, Cornell and Nina Zazzara, then placed fourth in the 200 IM, and seventh in the 100 backstroke.

Cornell was fourth in the 100 butterfly in addition to her placements in the two relays. Winter was third in the 400 relay. She swam a personal best in her leg of the relay, clocked at 56.4. Total relay time was 4:01.58.

Summit diver Julie Phillips placed fourth with 140.2 points. Her best dives, according to her coach, were the Inward Dive and the Inward Somersault.

Westfield won a milestone

It finally happened, after 13 years of competition the Summit girls splashed to a victory over powerful Westfield, 47-29 on Feb. 1. This puts the Summit girls at 10-0, a record they hope to stretch on and on, and against Westfield, there were eight first places to celebrate.

Fellows clocked a 5:37, her best by five seconds, in the 500 freestyle. That was better than the winning swim at the county meet, won by Joann Buccelato of Union Catholic

in 5:40.93. Wesson teamed with Chisholm, Cornell and Zazzara to take the 200 MR, then finished second in the 200 IM, as well as in the 100 backstroke.

Wesson teamed with Chisholm, Cornell and Zazzara to take the 200 MR, then finished second in the 200 IM, as well as in the 100 backstroke. Wesson teamed with Chisholm, Cornell and Zazzara to take the 200 MR, then finished second in the 200 IM, as well as in the 100 backstroke.

## Turner takes lead in mens' league

SUMMIT — Turner took the "A" Division basketball lead with a 90-75 win over Setco giving Turner an 8-1 record and Setco a 7-2 total.

Turner used nine players and wore-down the Setco team who had but six. Turner pressured the game from the opening tap and opened up a first half margin of 20 points as they took a 49-29 lead.

to be the deciding factor as Sunoco took a 32-16 bulge.

Airco's Mike Porter battled valiantly with a 30-point game followed by Al Kadolka with 18, but the scoring of Jim Suurballe's 27 points and Damon Gilyard and Paterson Reese with 14 apiece and Carlton Crowley's 10 proved to be too much scoring power for Airco.

Dave Shehadi took scoring honors with 21 points for Turner, getting help from Kevin Doy and Bill George with 14 apiece, and Ted Johnson and Steve O'Brien had 12 and 10, respectively. Rick Kentz scored 20 points for Setco and Steve Nitti had 19, Kendall Phells 14, and Tim Lambour 12.

Bell Labs downed Celanese 79-67 as Cole spearheaded the team with 25 points. The Labmen took a 26-8 first-quarter lead that Celanese was never able to overcome. The scoring was reversed though in the second quarter as Celanese out-scored the Labs 30-13.

Ski program continues season

Roosevelt Darby added 15 to Cole's 25. Zeek Sheppard battled with 22 points for Celanese followed by Webb with 11 and Lisk with 10. Schlott Realtors moved to

the top of Division "B" with a 63-51 victory over Chubb and Son. Big Rich Boyds height, and scoring (17 points), was too much for Chubb. Kevin Bartz tossed in 10 points for Schlott as John Stites, Dave Sotilli and Shawn Kelly had 14, 11 and 10, in that order, for Chubb.

AREA — Skiers have been enjoying an exceptional season with all the snow we've had and the 1984 Cross Country Ski Program sponsored by the Union County Department of Parks and Recreation has been especially successful and informative.

There's still a month of sessions left in February, and some openings remain for those who sign up now. Classes originate at the Trailside Nature & Science Center, Coles Avenue and New Providence Road, Mountainside. Snow or no, classes are scheduled on Feb. 4, 11, 18 and 25. The fee is \$5 per

lesson or \$3 for a no snow program. Beginners meet from 9:30 to 10:30 a.m. to learn the basics of gliding, stopping and turning outdoors. Intermediate instruction will take place from 11 a.m. to noon and covers downhill negotiating, double poling and telemark turns. The instructor is Pete Streeter of Hills and Trails Ski Shop, Clark. Students may bring their own equipment or rent it from Hills and Trails.

The four no snow programs are "How to dress," "Equipment," "Waxing," and "Technique." To register or find out more, call Trailside at 232-5930.

**PRESIDENT DAYS SALE**  
ALL WINTER CLEARANCE MUST GO NOW  
THRU FEB. 20th

An Additional

**50% OFF**

Our Low Original Discount Price ON ALL WINTER CLEARANCE

PLUS An Additional **20% OFF**  
Our Already Low Low Prices ON ALL SPRING & SUMMER FASHIONS NOW IN STOCK

PLUS An Additional **20% OFF**  
Our Already Low Low Prices ON ALL PANTYHOSE, LINGERIE ACCESSORIES & JEWELRY

**UPTOWN FASHION**  
420 Springfield Ave., Berkeley Heights  
464-8383

Open Mon.-Sat. 10 a.m.-6 p.m., Thurs. till 9 p.m.

## Clifford Scott rally clips Summit hoopsters 41-37

By JOE GALLO  
SUMMIT—There was a time during last Tuesday's 41-37 loss to Clifford Scott when everyone in the Summit High School gymnasium thought the Hilltoppers had a chance to win.

In fact, with the scored tied 32-32 with under five minutes to play in the contest, it was even more than just a thought, it was a distinct possibility.

Unfortunately, dreams die fast. Scott's opposing frontline duo of Terrell Johnson (game-high 18 points) and Robert Oden (12 points) hit for eight of their team's next nine points as the Summit offense faltered against their taller Essex County opponents.

The game started off well for Summit whose patient offense was forced to go up against Scott's swarming full-court trap press. Brian Kasbar (17 points) got the game's first points on a layup at the 6:40 mark, then scored again a minute later on a nice pass inside from Keith Jordan to tie it at 4-4.

A John Bartz (11 points) bucket was then sandwiched around six more Scott points before the Hilltoppers bounced back with five unanswered points of their own. Kasbar nailed a power layup and Chris Miles turned a three-point play to put Summit in front 11-10.

After Johnson counted his eighth point of the quarter and Bruce McCloud popped a 20-footer, Bartz swished

one from 15. The first quarter ended with Scott, the Star-Ledger's number three ranked team, leading by a mere 14-13.

In the second quarter Scott managed to get their running game temporarily in gear as they outscored the Hilltoppers 14-10. Oden had six points in the spurt while Summit's Darryl Hudgins came off the pine to hit two quick buckets to keep the Hilltoppers in the thick of things.

Summit then narrowed the gap and pulled to within one. Bartz grabbed the rebound off a Scott miss and threw a full-court pass to the breaking Kasbar who thundered home a two-handed jam. Moments later Bartz counted two free throws to make it a 28-27 ball game.

Scott's 5-7 guard Andre Robinson hit a 20-foot jump shot with :03 showing on the clock and the first half ended with Summit trailing 30-27.

Kasbar won the tap to start the third quarter and Scott immediately fell back into a 2-1-2 zone. But Summit elected not to attack, passing the ball around the perimeter instead while waiting for the Scotties to come out and play. They never did.

Almost the entire third period went by without a shot as Scott coach Greg Tynes stuck to his game plan. With :02 remaining in the quarter Bartz fired up a 20-footer that missed and the score remained 30-27.

In the third quarter Scott came out in a man-to-man defense and Kasbar responded

by muscling his way to a three-point play with 6:32 to go in the contest. Johnson then hit a layup but Bartz countered with a Hilltopper basket to put things at 32-32.

Johnson, Scott's 6-5 high-scoring forward, then went on to hit four of his team's next six points as Summit could only manage one free throw by Bartz.

But Summit still had an outside shot as Bartz counted two more free throws to narrow it to 38-35. Then on the defensive end Kasbar tied-up the ball, forcing a jump with McCloud. Scott, though, controlled the tap and Summit's hope for an upset ended.

**OVERTIME**  
The game was marred by a shouting incident between Tynes and a Summit fan during the second half.

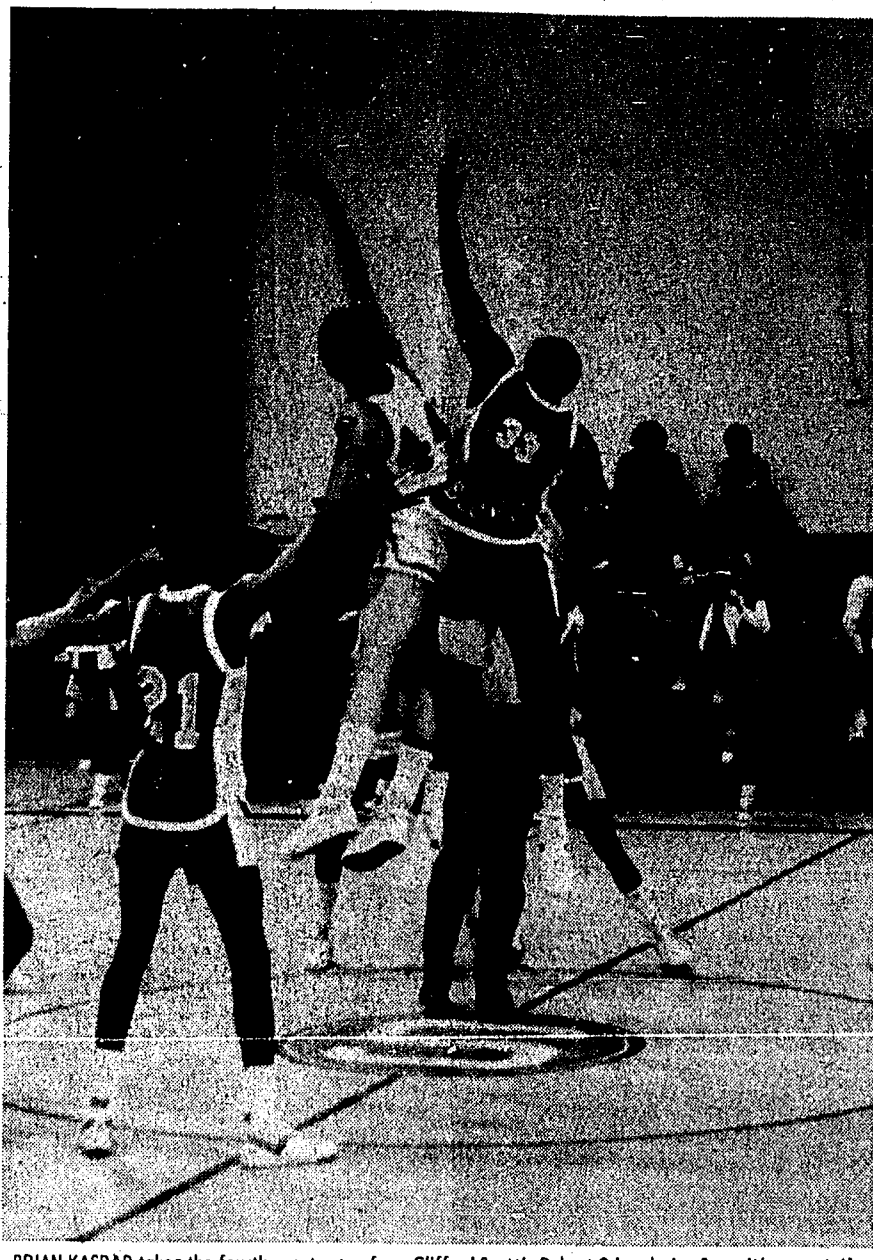
One has to wonder why Tynes would leave one of the state's top-ranked teams in a zone throughout the third period rather than come out and play man-to-man. None of his players were in foul trouble.

The contest ended with an incredible, flying one-handed dunk by Oden, in traffic, off a fast break.

Summit hit 7-for-9 from the free throw line. Scott hit only 5-for-12.

The win upped Clifford Scott's record to 16-1 (their only loss was to Camden) while Summit fell to 12-6.

The Hilltoppers were scheduled to visit Montville yesterday. Next week they will compete in the Union County Tournament.



BRIAN KASBAR takes the fourth quarter tap from Clifford Scott's Robert Oden during Summit's recent 41-37 loss. Kasbar scored 17 points and John Bartz added 11 but it was not enough to top the powerful Scotties. (Photo by Eric English)

## Summit girls 'injured' by Millburn 55-45

By PEG THURLER  
SUMMIT — Injuries continue to plague the girls' basketball team, but coach Lisa Schmidt is managing to keep her squad strong with help from her bench.

Tracey Burke was back in action last Friday evening when the team journeyed to Millburn for a return game, but Lisa Heft appears to be out for the season with a broken bone in her left hand.

Yet the five who played, without any subbing, put on a third quarter rally that was inspiring if not entirely successful. The score gap narrowed from 12 points down to five during that period. It was Millers on top, 43-39, at the start of the final quarter, but Burke had led an 11-point rally that kept Summit in the ball game.

Final score was 55-45 for Millburn, but with a mere :37 seconds remaining in the game, at 51-45, a Miller timeout gave the Hilltoppers one last chance to plan a miracle.

But Summit fouls gave Miller shooting ace Jackie Holle four chances to score at the line, and she didn't waste one of them. The score moved up to 55 and the game ended there. A miss by Holle is a rarity.

The Millers had a height

advantage and controlled the territory under the hoops. But Summit's Lori Patrick moved in for her share of the rebounds in the final minutes, and her best play was a great interception of a pass intended for the waiting hands of Holle.

Carolyn Sabol got off a beauty of a shot in the excitement of the third period. As the Miller coaches were shouting directions and code numbers at their players, Sabol got possession of the ball, turned and shot a basket amid the commotion.

Burke was high scorer for Summit with 21 points. She and Cathy Staunton never gave up, but their chances for teamwork were limited by a tenacious Miller defense that kept changing from zone to man-to-man, effectively breaking up the best-laid plans of players and coach.

Brenda Kasbar had 14 points, six in that significant third period. She took nice passes from Staunton and was up for rebounds of her team's shots.

Holle was high scorer for Millburn with 18. Jen Ackerman had 17, one basket came on a pass from Peddy Ghaidich, and she blocked a key Summit shot with :48 seconds left in the final period.

Summit JV lost to Millburn 57-11. Summit needs a lot of practice in order to develop the plays it needs to get on the scoreboard, or maybe it was the Miller man-to-man defense that shut down Summit's scoring.

Kristen Shields had the heartbreaking shot of the game, when the ball went round and round the rim, but on the last turn, flipped out instead of in, and the struggle went on. Center Sonja James went up for rebounds. Dawn Bennett hustled and hung on for the jump ball. Dawn Mander and Kelly Ryan tried hard to cope with the tight Miller defense, trying to move down court.

Michelle Haldenwang made a nice outside shot and showed speed. Maureen Lynch and Margaret Meola played in the second quarter, trying for the scores that were almost as scarce as hens' teeth. Haldenwang was top scorer with eight of the 11 points scored.

For Millburn Ricky Riekers and Dawn Graziano each had 10 points. The Miller coach was able to field almost three completely new lineups during the game in a show of strength.

## Aquatic Club captures spirit award

AREA — Promising swimmers from throughout the east recently competed in the McDonald's Mid-Atlantic 21st Annual Age Group Swim Meet in Philadelphia. Local Berkeley Aquatic Club swimmers combined superb swimming and sportsmanship to emerge with an impressive array of awards and New Jersey state records including the

Jersey 200-free relay record for their 15-18 age category with a time of 1:41.84.

Similarly, 15 to 18-year-olds JoAnne Montague, Duncan, McDonald's Team Spirit Award, a large banner presented to the team whose members displayed the best sportsmanship and team spirit throughout the three-day meet. Berkeley swimmers cheered each other on enthusiastically right through the final event.

For sheer speed, however, Berkeley swimmers were also hard to beat. Three relay teams set new New Jersey state records. The 13 and 14-year old girls' relay team of Lisa Besson, Mia Schneider, Deirdre Ryan and Jenny Moyer swam the 200-yard freestyle relay in a record-breaking 1:43.17. Anne Wilkins, Erin Dittmar, Susie Duncan and Meyer also captured first and set a New

Other Summit and Berkeley Heights swimmers bringing home honors were: 13 and 14-year-old girls, fourth in 200-yard medley relay (2:00.17); Ryan, Besson, Moyer, Schneider, Schneider; 11th in 100 free (56.43); 12th in 50 free (26.41); Kenzie Young; 11th in boys, 13 and 14-year-old 100 fly (1:01.16), seventh in 200 fly (2:12.86); Sumner Anderson; 11th in boys 13 and 14-year-old 200 breast (2:36.05); John Miller; ninth in the mens' 15 to 18-year-old 100 back (58.22).

## Walk for March of Dimes

AREA — In what has been called the largest walking event in history, people all across the country will take part in the March of Dimes' WalkAmerica.

In North Jersey, the annual 30-kilometer Walk against birth defects will take place on Sun., April 29.

Last year, 1.5 million walkers in 1,100 communities raised \$22 million to fight birth defects, this coun-

try's number one child health problem. The North Jersey Chapter of the March of Dimes alone raised \$894,108.50 in the 1983 WalkAmerica.

Money collected from pledges helps support programs in birth defects research, medical service and education.

Anyone interested in participating or volunteering call 882-0700.

UNIQUE DINING IN A CASUAL ATMOSPHERE

**JASON'S SUTTON PLACE**  
RESTAURANT & COCKTAIL LOUNGE  
COME SEE WHAT EVERYONE IS TALKING ABOUT  
"Absolutely Delicious" Daily Journal, December 2, 1983  
TREAT YOUR SWEETHEART TO DINNER AT SUTTON PLACE ON VALENTINE'S DAY  
Complimentary Champagne! Flowers For All The Ladies!  
• for the lighter appetite — available anytime: famous Broadway burgers, sumptuous salads, authentic New York deli style sandwiches, and an assortment of appetizers you can't resist.  
• for the more discriminating diner — a full range of your favorite entrees including fresh seafood, steaks, chicken, pasta, plus outstanding daily specials.  
• full service "Skyline Bar" open until 2:00 a.m.  
• Happy Hour 4:00 to 7:00 Mon. thru Fri. • Saturday — Bloody Marys \$1.00 — 1:00 p.m. to 4:00 p.m.  
Come see our view of New York and try our 5th Ave. Fizz!  
Serving Continuously Tues. - Sat. 11:30 a.m. — Midnight; Sun. 4:00-10:00. Casual attire. Your Host — Jason Babat formerly of The Office in Summit  
at the Five Points • Union. 657-0707

**DINING OUT**

**Four Seas**  
Cuisines of China

**Special Valentine's Day Dinner**

Reserve Now For Feb. 14th

1-7 Central Ave. Madison, N.J. 07940  
(201) 822-2899

"NOTHING ruins a class reunion like a fellow who has managed to stay young-looking and get rich at the same time." — Indianapolis Star.

**DINING OUT**

**BLUE DOLPHIN SEAFOOD RESTAURANT**  
"THE ULTIMATE IN SEAFOOD DINING"  
62 W. Mt. Pleasant Ave., Livingston 992-1185  
LUNCHEON • DINNER • COCKTAILS DAILY

**BUSINESSMEN'S LUNCHEON SPECIALS AVAILABLE DAILY**

Sun.-Thurs. 11 A.M.-11 P.M., Fri. & Sat. 11 A.M.-Midnight  
Happy Hours 3 P.M.-5 P.M. Ample Free Parking

An elegant gift for your daughter.

**The Governor Morris Inn**

A wedding at a very elegant hotel.

Wedding reception at The Governor Morris Inn, decidedly a grand affair. From the moment your guests arrive, they are treated to an ambience of elegance and warmth.

Needless to say, your gift of town guests will love the luxury of dining here. The Governor Morris Inn takes special pride in offering an exceptional wedding reception. Let our superb and beautiful reception facilities and service make your wedding day a truly memorable one.

**The Governor Morris Inn**  
2 Whippany Rd. Morristown, N.J. 07958  
Call Me: (609) 839-3300

**Mandarin Chinese Restaurant**  
The finest authentic Chinese cuisine: Peking, Hanan and Szechuan  
Cooking with Natural Flavor: NO MSG ADDED  
Recommended by NEW YORK TIMES • THE RESTAURANT REVIEW CLUB • N.Y. WNCN's Stendahl Food & Wine Review and the INDEPENDENT PRESS 饭店

CHINESE COOKING DEMONSTRATION At Mandarin II: 7:30 p.m. Tuesdays  
CHINESE DIM SUM (Refreshments) at Mandarin II: 12 to 3 Every Day

Low Calorie Dishes Available Upon Request

**MANDARIN I**  
330 Springfield Ave., Summit, N.J. (Near corner of Summit Ave.)  
273-0483  
American Express Accepted  
Open Tues. thru Sun. til 10 p.m.  
Fri. and Sat. til 11 p.m.  
Closed Monday

**MANDARIN II**  
Madison Plaza Shopping Center • (BESIDE CHANNEL)  
Main Street, (Rt. 24), Madison, N.J.  
377-6661 • 822-9857  
Major credit cards accepted • Parties and Banquets Welcome  
Open every day til 10 p.m. • Fri. and Sat. til 11 p.m.

**Local merchant supplies hockey all-star awards**

The Bradshaw Company of Summit was recently awarded a contract to provide each of the National Hockey League Allstars with a moment of the Allstar Game at the Byrne Arena, in the Meadowlands.

The selection of a telephone, clock-radio, suitably inscribed for the occasion, was decided upon after thought and research.

Each of the players will have this item in his home as a constant reminder of the very high honor he has won.

John Bradshaw, General Manager of Premiums and Incentives for Bradshaw's, says his firm specializes in finding and supplying unique promotional items, and business gifts to corporation, clubs and organizations.

Bring that Special Someone to Dinner

**Valentine's Day, Tues., Feb. 14th**

**The William Pitt Colonial Inn**  
94 Main St. Chatham • 635-2323

**SINCLAIRE'S**  
Seafood Restaurant  
Authentic New England Seafood  
Oyster Bar • Fine Wines & Champagne  
(by the glass)

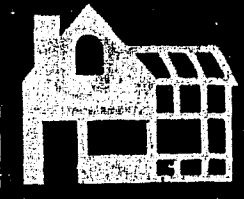
Luncheon Daily Specials  
Dinner • Valet Parking

**BANQUET FACILITIES AVAILABLE**

Make Your Valentine's Day Reservations Early  
240 North Ave., W., Westfield  
(across from the train station)  
789-0344 for reservations



# BOARD OF REALTORS



**Lois Schneider Realtor**



**STATELY CLASSIC**

This grand old 5 Brm, 3 full bath stucco Colonial on one of Summit's oldest streets complete with original gas lamps features large, gracious rooms, magnificent huge private backyard and all the charm and workmanship of a bygone era.

**Kathy Tennent**  
277-0482

\$259,000

411 SPRINGFIELD AVENUE - 277 1398

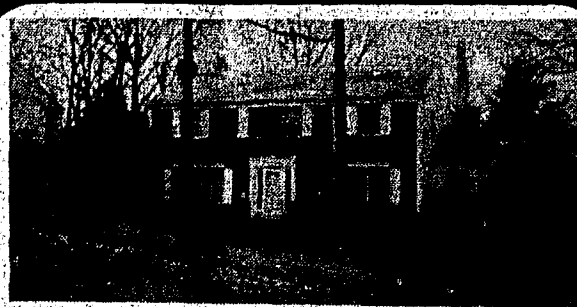
**Schlott**  
REALTORS

**WE'VE GOT IT!**

10 1/2% A.R.M. available to qualified purchasers, 25 year term. Call your nearest Schlott Realtors Office for further details!

**WE ARE CREATIVE AT VSF**

VSF means Very Special Financing. As a customer of SCHLOTT REALTORS, you can be assured of receiving the financing you need when you need it. As one of the top Real Estate firms in New Jersey, we place 10's of millions of dollars of mortgages each year, and to insure that you get the most attractive rate possible, our firm is on a computerized system that gives immediate information on all current mortgage rates in the area. We offer professional, flexible financial plans to fit most budgets.



**WOODLAND PARK** - In a most exclusive area of SUMMIT is this custom built home featuring large picture window and top quality construction. A spectacular view is offered by the fireplace living room, formal dining room and master bedroom suite. Large kitchen, family room with built in bookcases, 4 bedrooms, central air and so much more... at \$347,500. Treat yourself!! 277-1770 (SUM320)

CHATHAM  
132 Main St.  
635-9600

SUMMIT  
361 Springfield Ave.  
277-1770

OVER 40 OFFICES  
IN NEW JERSEY

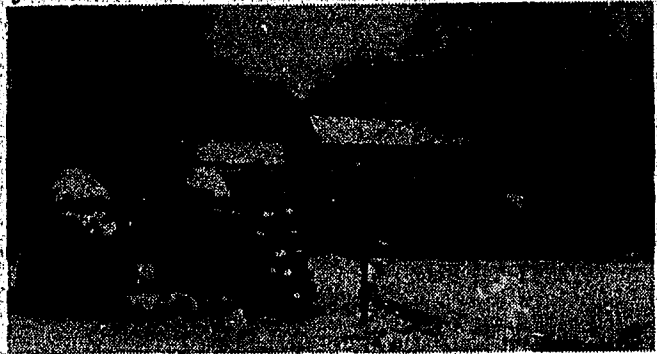
**SCHLOTT**

**HOLMES** Agency

Since 1896... A Tradition Of Excellence

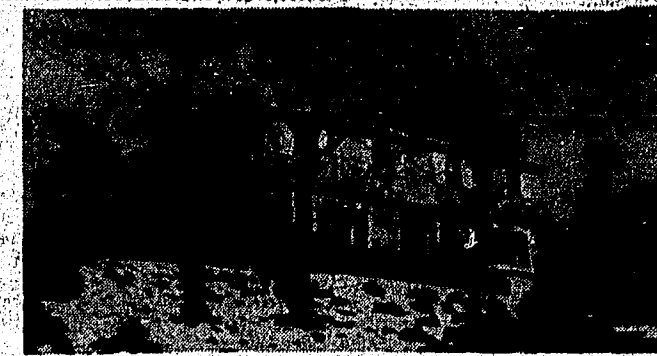
**6 UNITS.... Over \$1,000,000**

During the past few days our office has compiled an impressive sales profile. Call us on these listings before it's too late.



**BERKELEY HEIGHTS  
BLUE MOUNTAIN FARMS**

Enjoy the privacy, the view, the paneled family room of this 5 bedroom center hall Colonial home. Financing is offered - why wait for your new home when the home on Diamond Hill is available now. \$210,000.



**COLT ROAD, SUMMIT**

Just one block to Franklin School from this custom built 4 Bedroom Colonial with plenty of room for the growing family. It boasts a beautiful pine paneled recreation room, a basement recreation room, screened porch, large family room, kitchen, first floor laundry room, etc. etc. Don't miss the opportunity to own this superb home. \$319,000.

291 MORRIS AVE • SUMMIT • 273-2400

Winner of the 1983 AWARD OF EXCELLENCE from the Builders Association of Morris and Somerset.

## The Limited Edition Townhomes

No other community will entice so many but accommodate so few.



Limited to only 150 exclusive townhomes at Basking Ridge.

Treat yourself to truly gracious living at our very private Countryside Manor, where quality and charm combine for an added dimension in townhome life.

This exclusive enclave of uniquely designed one and two bedroom townhomes and suites offers the quaint charm of a New England village in a secluded setting a quarter-of-a-mile back along its own winding drive.

Yet you are situated in beautiful Basking Ridge in an area unsurpassed for fine schools, shopping, corporate facilities and ease of commuting.

Stop by and visit us today. Let our Countryside Manor be your Countryside Manor.

Model Hours: 10 to 5 daily

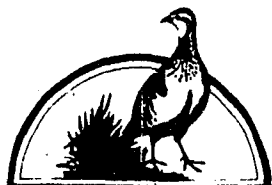
Directions: From the Morristown area: South on Route 287 to Mt. Airy Road (Bernardsville) Exit. Bear right off exit ramp, bear right at light. Proceed 1/2 mile to entrance on left.

From the Somerville area: North on Route 287 to 2nd Mt. Airy Rd. Exit (Bernardsville), go under overpass, bear right at light, proceed 1/2 mile to entrance on left.

**One-Bedroom Condominiums from \$99,500**  
**Two-Bedroom Townhomes from \$145,950**

Below market financing to qualified buyers.

A Joint Venture of Country Place Associates, a Landex Company, and Queen City Service Corporation.



**COUNTRYSIDE MANOR**

8 Countryside Drive  
Basking Ridge, NJ 07920  
(201) 766-7646

Country Place Associates, 1984

**DEGNAN BOYLE**  
REALTORS

**IMMACULATE RANCH**

With wonderful first floor FAMILY ROOM, perfect for toddlers, adjoining deck for pleasant summer outdoor living, 3 year old kitchen, 2 fireplaces. Located in a fine family area...lots of trees and grass. Asking \$182,500. In New Providence. Evenings call Diana Burke 464-5729.

**DEGNAN BOYLE, Realtors**

SUMMIT OFFICE:  
779 Springfield Ave.  
CALL 273-4111

THE SIGN OF EXPERIENCE

**ONE OF A KIND**

Sparkling 7 room Ranch. Large foyer, living room, dining room with bow window, modern eat in kitchen, huge paneled family room, fireplace and cathedral ceiling. 3 large bedrooms, 2 1/2 baths. 1 landscaped acre with patio. Convenient location. Mendham Boro. Asking \$198,000.

**Betty M. Bennett**

201-543-7146

LIST WITH US LOCALLY - SELL THROUGH US NATIONALLY

6 HILLTOP ROAD  
MENDHAM, N.J.  
07945

REALTOR

"Better See Bennett"

"Open Every Day"

**REAL ESTATE FOR SALE**

HILTON HEAD ISLAND South Carolina. Oceanfront. 1 br condo unit, fully furnished plus 2 bunk and sofa sleeper. Choice location with pool and activities nearby. Owner 201-647-0087, agent 1-800-845-7017 ext 338.

RESIDENTIAL BUILDING LOT in New Providence. Approx 100x225. \$65,900. Call 464-1946.

**SUMMIT**

**FOR SALE BY OWNER**

Charming 3 bedroom colonial, modern eat-in-kitchen, large yard, 2 porches. Asking \$122,500.  
273-2215

**REAL ESTATE FOR SALE**

STIRLING modern 1 bedroom apt, convenient location, lease, security, and references required. No pets, after 7pm 766-0334.

**ARTIE'S ADS**  
SUMMIT-DRUM HILL AREA  
Excellent value in this unique 3 BR Ranch with 2 full baths. Lg. Rec Rm., gas heat, 2 car garage. A real buy at \$179,500. Vacant.

Recently someone asked me for 1 good reason why they should LIST their home with WEICHERT REALTORS CO. I responded to give him 18 EXCELLENT REASONS. Would you like to know?  
ASK FOR ARTIE BENZ WEICHERT CO. REALTORS  
277-1200

**LOTS FOR SALE**

NO MONEY DOWN. Take over payments. Bank repossession lot. Wooded lake community. Pocomo Mts. in Pa. Many extras. Call Mr. Rue evs. 1-800-233-8160.

**RENTAL**

2 br, 1 bath apt. w/screen porch. First floor of 2 family house in lovely residential neighborhood. Close to downtown Summit and train station, \$750/mo. Available 3/1. 277-6121 after 7pm and weekends.

BERKELEY HEIGHTS - 1-2 bedroom apartment, adults, no pets, \$490. plus utilities, available. 322-6607.

FURNISHED ROOM FOR RENT near transportation, near shopping area. \$300. a month including utilities. 464-2581, 464-3326.

CHATHAM - Comfortable room for business gentlemen only. Full kitchen facilities, separate entrance, parking, convenient location. References. \$55 per week plus security. 273-4828.

CHATHAM COLONIAL. 1R/1 1/2. DR. KITCHEN/DW & Refrigerator. 3 BRs, enclosed porch. Basement with washer/dryer. Central A/C, fully carpeted. No groups, no pets. Available 3/1/84. Call 464-6732.

CHATHAM TOWNSHIP room w/kitchen privileges; non-smoker, professional person preferred. 377-8917 evenings and weekends. 589-7500 days. L. Morgan.

FURNISHED ROOM for rent. 49 Park Ave., Summit. \$45 a week.

LANDLORDS - No Fee - No obligation. No expenses, screened and qualified tenants only. CENTURY REALTORS. 379-6903.

LARGE FURNISHED ROOM 1 block from center of town, limited kitchen, TV with cable available extra. 273-9457.

MILLBURN - 3 rooms, ideal for single professional, near transportation and shopping, no pets, available March 10, \$435 mo plus utilities. 273-6154.

NEW PROVIDENCE 3 room apartment, walk to trains and shopping, \$595 all utilities included. Parking for 1 car only. Available March 1. 464-4022.

NEW PROVIDENCE - immaculate executive rental. Unfurnished. 3 br, 2 1/2 baths, family room w/fireplace, dining room, eat-in-kitchen, enclosed porch, central air. Quiet neighborhood. 1 block to school. \$1200/mo. Call 272-6619 evs.

RENTALS AVAILABLE, starting from \$900 and up. Additional information call DEGNAN-BOYLE REALTORS, 779 Springfield Ave., Summit. 273-4111.

RENTALS - We have a few - maybe one for you - starting at \$700.

**FAITOUTE AGENCY**

484-1700 273-5522

SCOTCH PLAINS - 3 room and bath. Finest residential area. Call 754-8439.

SHORT HILLS - Furnished room, \$75/week, private home, utilities and parking, available 2/11. MATURE BUSINESSMAN ONLY. 467-5094 AFTER 5PM.

SMALL SHOP OR garage in business zone of Summit. To be used as busy machine shop. 10x10 backroom or workshop ideal. 755-4747.

**SUMMIT**

2 apts in 2 family house. Good location. \$650 per mo. Call 850-0870.  
**MOUNTAIN AGENCY**  
88 Summit Ave.  
Summit 273-2212

# CLASSIFIED

## RENTAL

SUMMIT - 1 br apartment, ideal for 1 person or couple, non-smokers only, \$550 includes all utilities except elec. 277-0092.

SUMMIT - 1 br apartment, newly decorated, large kitchen, both, heat and hot water supplied, security and references required, daily 9-4pm 635-5665.

SUMMIT - First floor apartment, \$650 per month, available March 15, 1 possible 2 bedrooms.

3 br apartment available April 15, second and third floor of 2 family house, \$800 per mo.

Mountain Agency, Realtors  
273-2212.

SUMMIT - THREE BEDROOM, 2 bath luxury apartment with attached garage and maid's suit. New GE kitchen, laundry room, loads of storage space. Heat and air conditioning included. \$1395 per month. 273-5600.

SUMMIT - attractive room in pleasant home, share kitchen and bath, non-smoking professional 277-1167.

SUMMIT - prime location, new 2 and 3 br unfurnished apartments in renovated Victorian, central air, carpeted, washer/dryer, parking. \$875 - \$1250. 277-4371.

WE HAVE FURNISHED AND UNFURNISHED RENTALS. Call us. Helen P. Fisher Realtor. 24 Beechwood Rd, Summit, 273-7200.

## REAL ESTATE WANTED

WANT TO BUY  
Local family (qualified buyer) wishes to purchase home. Countryside, Stone Ridge Park, Hansell Road, or Colchester area. Particulars to:  
Box 481  
New Providence Post Office  
PRINCIPALS ONLY

## VACATION RENTAL

SOUTH SEAS PLANTATION RESORT, Captiva Island Florida, 2 BR, 2 bath, luxury villa directly on Gulf. Tennis, pool, golf, shelling, water sports, 1 or 2 week rental thru April 30, sleeps 6, reasonable. Call 263-1748.

CAPE COD MASS. Beachhouse in wildlife sanctuary, June thru October. \$150-\$325 weekly, families, 647-0625 evs.

FORT MYERS, new 2 bedroom, 2 bath condo fully furnished sleeps 6. Tennis, heated pool near beaches. \$400. per week. 464-5405.

HILTON HEAD ISLAND - Sea Pines. Wake up to the great blue heron, osprey, kingfisher, alligator, forest preserve, golf, tennis, crab, horse, bike, sun, beach, pool. Rent our villa. It's fantastic. 2 br, 2 bath, \$460 per week. \$350 after Sept. 1. 464-0309.

LONG BEACH ISLAND. 2 bedrooms from beach, sleeps 6, gas grill, deck, outside shower, \$600/week. 2 week minimum. Available June, July, August, September. 522-0003 evs, 233-7500 days.

MARCO ISLAND - 2 BR, 2 BATH LUXURY CONDO on the beach. High floor wrap around balcony with panoramic view of Gulf of Mexico and Island. Fully furnished with tv and phone. Pool, tennis, boat dock and golf. Available weekly-monthly. Dec thru April 84. Reserve early 201-464-5956 or 201-459-3004.

MARCO ISLAND. Two bedroom, 2 bath condominium on Gulf of Mexico. \$600 a week. Call 277-1398.

POCONO LAKE FRONT year round home, ski Tanglewood or Cross Country on our golf course, 3 BR, 3 baths, living and rec. rooms, 2 stone fireplaces, 464-1211.

SNOW, SNOW, SNOW! Superbuck has this year. Our new luxury 4 bedroom, 2 bath condo in The Village, walking distance to slopes (or use free bus if you wish) is available most of December through March. For available dates and rental terms call: business hours 277-6416, after 647-6412.

TWO LUXURIOUS APARTMENTS: fully furnished one and three bedroom apartments on ocean front with a breathtaking view. Indoor and outdoor swimming pools and tennis courts. Many restaurants nearby and good shopping facilities. Kiddie Comp. Community activities, movies, etc. Lots of fun things to do. Private half mile long private beach. Call day time 201-831-3933, evenings and weekends, 201-839-4332. Apartments are located between Rehoboth Beach, Del., and Ocean City, Maryland.

SKI CHALET  
10 Minutes from WHITEFACE MOUNTAIN near Lake Placid. Sleeps six, 1 1/2 baths, fireplace, central heat, completely furnished with all conveniences. Call evenings, 747-5872.

## RENTAL WANTED

APT WITHIN EASY ACCESS TO RT 78, for responsible, quiet married couple with no children, pets, non-smoking, both work in executive capacities for local corporations. 276-5538 evs.

PROFESSIONAL WOMAN wants house to rent with option to buy within 5 mile radius of Woburn area. Planning spring/summer move. Must have 3 BR. Call 753-6635 after 6pm.

ROOMS, APARTMENTS, HOUSES for Transferring Corporate Executives. Confidential. No Fee. Metropolitan Relocation Consultants, Inc. 722-8550.

TWO CAREER women who do not smoke, have no pets, no children, quiet, neat, desire apartment of a moderate rent. Call 273-1913.

CORPORATE transferees need your furnished and unfurnished rental apartments and homes, all sizes, all price ranges. Free service to landlords. Call Karm Baril at Burgdorf Realtors, 201-273-8000.

## RENTAL TO SHARE

2 YOUNG PROFESSIONAL MEN seek third to share house in Millburn. \$195 per month and utilities. Deposit required. 379-5596 after 7PM.

CAR DEAD STORAGE. Need economical dry storage. Summit area for small foreign car. 277-1958 after 6pm.

HOUSE TO SHARE IN SUMMIT - \$285 plus utilities, near train, call 273-0043 after 7pm.

SEEKING NON-SMOKING FEMALE PROFESSIONAL to share farmhouse in Berkeley Heights. \$375 per mo. rent, plus utilities, days 285-7437 evs 665-1476.

## SPACE FOR RENT

BERKELEY HEIGHTS, New 7 store shopping center. Post Office main tenant. 1 very ideal for confectionery, bakery, nail salon, hardware, dental office, etc. 2 miles west of Berkeley Heights. Call 464-1570.

## RENTAL

WARREN - efficiency apartment for 1 or 2 persons, kitchen with refrigerator, unfurnished, \$400, furnished \$475 plus utilities. Short or long term, call 753-9622.

## OFFICE SPACE

BERKELEY HEIGHTS AREA. New office space. 6 suites, 900 square feet each. Available \$550 per suite.

ERA KARLTON, Realty  
464-1570

EXECUTIVE OFFICE SPACE for rent. Excellent location; center of town, near train, post office, parking. Call Mr. Walters 277-2112.

OFFICE SPACE TO SHARE - Approx. 200 sq. ft. rear entrance on South St., only \$135/mo. Call 464-8088, evs. 647-5171.

## INSTANT OFFICE

Furnished private office including receptionist, telephone answering service and conference room, typing and copying available also, in prestige building, from \$375 per mo. 273 5600.

AVAILABLE 4/1, 1000 square feet of ground floor office space at 524 Morris Ave., Summit, Call 273-0487.

## REAL ESTATE WANTED

WANT TO BUY  
Local family (qualified buyer) wishes to purchase home. Countryside, Stone Ridge Park, Hansell Road, or Colchester area. Particulars to:  
Box 481  
New Providence Post Office  
PRINCIPALS ONLY

## COMMERCIAL BUSINESS

NOTICE TO PROSPECTIVE RENTERS. Any rents advertised herein for qualified renter property may be subject to any rebate or credit required by State Law (N.J.S. 5:4-4.6-3 et seq.)

## BUSINESS OPPORTUNITIES

Own your own Jean-Sportswear, Ladies Apparel, Combination, Accessories, Large Size stores. National brands: Jordache, Chic, Lee, Levi, Vanderbilt, Izod, Gunne Sax, Espirito, Britania, Calvin Klein, Sergio Valente, Evan Picone, Chiatrone, Members Only, Bill Blass, Organically Grown, Healthtex, 300 others. \$7,800 to \$24,900, inventory, airfare, training, fixtures, grand opening, etc. Mr. Keenan (612) 888-8555

2 POSITIONS OPEN. HOSTESS AND FOOD PREP/UTILITY person. Will train, must be dependable. Room for growth. Call after 2pm, Blondies Restaurant, 273-2331.

\$5,000. PART TIME SOUND GOOD? non-Thurs off weekends. Housekeeping own transportation. Millburn area. 564-8198. evs.

\$50.00 PER HUNDRED PAID for processing mail at home! Information, send self-addressed, stamped envelope. Associates, Box 95, Roselle, NJ 07068.

ALOE PLUS COSMETICS sell natural skin care products. Free kit, flexible hours, good income. 743-4682.

ART/DECORATOR/SALES. I am a successful woman with my own art and design business. If interested in some call 359-1511 from 9-5.

ATTRACTIVE \$95 per week opportunity for housewives and mothers. Two evenings per week. Free wardrobe. Call 757-3477. 10am to 1pm.

BAKERY SALES, full time. Dependable, will train. Call Berkeley Bakery, 464-0080.

CAREER OPPORTUNITY - full time permanent position available for person to be trained as chairside dental assistant for New Providence private general dental practice. Call evening 7:30 to 10PM, 377-7653.

CARPENTER WANTED Experienced only. Call 665-1270 after 6pm.

CASHIER - part time afternoons and odd day Sat (9-6). Walters Clothing, Summit. Ask for Mr. Walters. 277-2112.

CLERICAL ADMINISTRATIVE ASSISTANT needed to work in sales and production dept. Training welcome. Call Ann for interview. 277-0400.

CLERK/TYPIST. Part time exciting position in music and entertainment field. Light typing, clerical and bookkeeping, must have pleasant telephone voice. Perfect for mature individual returning to work force. Will train energetic self-starter. Call for interview. 325-1940.

CONSCIENTIOUS HARD WORKING PERSON to deliver furniture and work in warehouse for fine quality furniture store. Contact Valley Furniture Shop at 756-7623.

DELIVERY HELP for Saturdays only, \$5 per hour, apply in person Furniture For Today, 2550 Rt. 22, Union, NJ, between 5-6pm weekdays.

DRIVER NEEDED for local deliveries, store details and handwork. Call for interview 464-8955.

DRIVER/PACKER. 40 hr week, overtime available, suburban Wholesale Florist, call for appointment 273-0600.

ELEGANT GIFT STORE Summit requires part time gift, mature person preferred, pleasant personality. Experience not required, but must be willing worker. Call for interview 273-0600.

EXPERIENCED MEDICAL ASSISTANT  
Wanted for full time position in doctors office. Call 377-9500 after 1 p.m.

EXPERIENCED MEDICAL ASSISTANT  
Wanted for part time work in doctors office. Call 377-9500 after 1 p.m.

FULL TIME BOOKKEEPER, general ledger, payroll, subsidiary ledgers, computer knowledge. Full benefits, good working conditions. Salary open. Summit area. Interview by appointment, call 325-0686.

FULLTIME/PARTTIME person needed for busy chiropractic office in Summit. Receptionist, typing, insurance experience preferred. Hourly wage plus bonuses. Call for appointment 273-2225.

FULL TIME part time help wanted for greenhouse work immediate opening. Apply in person. Mea Greenhouses, 17-31 High St., New Providence, N.J. or call 464-7821.

GAS ATTENDANT for gas station in Berkeley Heights, full time, 7:30-4pm, clean and reliable, call for appointment 273-1903 ask for Jim

## HELP WANTED

GREENHOUSE HELP NEEDED full time, start immediately. 464-5355, 43 Division Ave, Summit.

INJECTION MOLDING machine operator, full time, small manufacturer in Springfield, benefits. Call 686-4192.

INTERIOR ACCESSORY DECORATOR, part time. Need creative, energetic person. Enjoy people, will train. 668-0838.

LIFE GUARD needed, certified reliable. Weekday mornings 7-11AM. Call Mary Ann Artuso, Summit YMCA, 273-3330.

LIVE IN POSITION New Providence area, child care - housekeeper, mature responsible applicants only. No Nanny's Unlimited, 943-5706 or 914-963-5854.

MECHANICS HELPER, knowledge of small engines, truck maintenance and minor electrical repairs helpful. Apply Taylor Rental, 284 Springfield Ave., Berkeley Heights.

MOTOR ROUTES - part time, early morning established newspaper routes are available to reliable people with cars in Spfd, Summit, Mountaineer, Berkeley Heights, and New Providence. Excellent earnings that will help supplement your present income. Call 800-242-0850 toll free.

McDonald's Part Time Full Time Flexible hours, apply in person 1771 Springfield Ave. New Providence.

NEEDED MATURE WOMEN to model in own home for responsible, polite, discretion guarantee. Call 277-3451 ask for John.

NUMBER ONE EXERCISE program looking for part time instructors, intensive training program, \$8 per working hour plus bonuses. Write to PO Box 25, Berkeley Hts. 07022.

PAINTERS WANTED experience necessary. 464-8436.

PART TIME DRIVER with car for Sunday morning newspaper home delivery route in Summit. Sunday 6-9 AM. Compact routes, delivery only, no collections. 277-0155.

PART TIME district managers are needed in the early morning hours to supervise of small group of newspaper carriers in Berkeley Heights, New Providence, Passaic township, Summit or Springfield. Permanent positions are available. You must have a good car. Call 800-242-0850 toll free.

PART TIME - office help in a one person office, hours 8:00AM to 12:00AM Monday thru Friday general office duties with good handwriting and pleasant telephone personality. Phone between hours of 8 to 12AM 277-0155.

PART TIME afternoon secretary for Berkeley Heights YMCA. 464-8373.

PART TIME INSIDE PHONE SALES for a growing company in music and entertainment field, knowledge of music not essential, flexible schedule, salary open. 325-1940.

PART TIME BABYSITTER needed immediately, my home, own transportation. Call 273-2799.

PART TIME injection RN. For more information call 277-3838.

PART TIME 15-18 hours per week. Chatham fabric store. 635-1850.

PART TIME downtown Summit 2-3 days per week, answer telephone and take messages, very light office work, write PO box 867 Summit, NJ 07901.

PART TIME MESSENGER needed 5 afternoons a week, M-F, use own car, please call 273-5680.

PART TIME office worker, must be experienced, typing, bookkeeping, etc. Call 376-6800 or 830-4309, M-F.

PART TIME employment in small office for self-starter, light typing, diversified duties, salary open. Call 464-8710.

PLAYGROUND/CAFETERIA AIDE immediate opening, 2 hours per day, both on Township Elementary School at Lafayette, call 635-7243 or 635-5450.

PJT Tues: Mon. 3/hrs. \$5/hr. Info Retrieval Service. 201-836-0939.

RESPONSIBLE FULL TIME person to work in dry cleaning establishment. Paid holidays and vacation. Apply 29 Chestnut Ave., Summit.

RESPONSIBLE PERSON to take care of my pets in your home. Please call 464-1484.

ROOFER/ROOFER'S HELPER. Some experience, 7:30-12:00 call evenings.

SALES HELP-PART TIME. CARD & GIFT DEPTS: 12 to 5:30 pm, Mon thru Thurs. Permanent.

CARDS GALORE, SUMMIT, NJ. Call Mr. Dale 487-3989 noon to 5pm.

SALES PERSON F/T, individual with sales experience in retail store necessary. Apply in person Taylor Rental Center, 284 Springfield Ave., Berkeley Heights.

SALES PERSON part time 10 to 3, knowledge of sewing helpful. Furrer's Sewing Center, Summit, 273-0210.

SALES. Shoe sales person experienced. Ladies high fashion shoes, full or part time. Call Moll at Short Hills, R. Wallman 467-8444.

SCHOOL PLAYGROUND AIDE - immediate vacancy, contact the office of the Superintendent of Schools, 304 Central Ave., New Providence, NJ, 07974, 464-9050. We are an Equal Opportunity/Affirmative Action Employer.

SEAMSTRESS - experienced only, full or part time. New Providence, call between 8-6pm, 464-5784.

SECRETARY full time for suburban low firm, steno necessary, full benefits, Springfield/Summit area 467-8855.

SECRETARY - RECEPTIONIST for Summit law firm. Part time, 1-5 perched, but also 9-11 am. Present typing ability preferred. Parking on premises. 277-3131.

SECRETARY - opening for secretary in modern office building, must have excellent typing skills, full medical package, free lunch, salary commensurate with exp. Call 762-0008.

SECRETARIAL POSITION, prefer experience or training in general office duties. Skills desirable: bookkeeping, typing, filing. Please send resume to Harding Stove Co. 161 Division Ave., Summit, 464-8955.

SERVERS PART TIME AND FULL TIME weekdays and nights, hours day and night shifts. Apply between 2-5, Mon-Thur. The Office Restaurant, Summit.

SEVERAL POSITIONS STILL OPEN for those who enjoy driving, meeting people and being able to set own hours. 10 year excellent driving record a must. Individuals having days and/or weekend hours available will be given immediate attention. Call 992-9762.

STENOGRAPHER - City of Summit City Clerk's Office. Salary: \$7,533/year, with yearly step increases. Job entails dictation, both stenographic and dictaphone, and general clerical work. Part-time. Major Medical, Blue Cross and Blue Shield with Rider J, pension and sick leave provided. Send resume to City Clerk's Office, 512 Springfield Ave., Summit, NJ. Application deadline February 29, 1984. Equal Opportunity Employer.

STOCK PERSON for heavy warehouse type work. Please call for appointment. Mirror Pharmacy - 665-0001.

STUDENT FOR AFTER SCHOOL WORK for clean up work. 273-3140. Creative Wallcoverings and Interiors, 455 Springfield Ave., Summit.

SUBSTITUTES NEEDED for assistant and teacher positions at preschool. Part and full day available. Call Mon-Thurs. 10-3PM. 742-3265.

SUMMIT 7-11 Store, mature responsible individual needed for full or part time work all shifts. Apply with in 317 Morris Ave. Summit.

## HELP WANTED

MARKETING  
CUSTOMER SERVICE  
Contact-growth with \$\$\$, excellent training for hard working aggressive individual w/good phone skills and sales ability. Willing to work for future.

## GEROTOGA

A-1 in Personnel  
219 Park Avenue  
Scotch Plains  
322-8300

## NEEDED IMMEDIATELY

Secretaries (with steno)  
Typist  
(Florham Pk Whippany areas)

IBM Display Writers  
Word Processors  
ALL SKILLS NEEDED  
(Minimum 6 Mos Experience)  
Vacation pay/ferrol bonus

If you are interested in a temporary position please come in and register with us. You can work a day, a week, a month or longer.

635-2804  
1 Main St., Chatham  
Kelley Services

## ROOTS

## RETAIL CAREER OPPORTUNITIES

In view of our continual growth and success we are seeking several full time sales associates for the furnishings dept. of our Summit store. Please call us at 201-865-2040 to set up a convenient appointment to discuss career opportunities or send your resume to ROOTS, INC., 582 Central Ave., Murray Hill, NJ 07974. ATT: Personnel. We will offer a competitive salary and an excellent benefits package to candidates who will grow and prosper with us.

## B.E.A.

THE EMPLOYMENT AGENCY  
TEMPORARIES LOVE  
And no wonder! We offer the friendliest atmosphere...help with brushing up on skills...high pay...assignments at big corporations, or at the small office around the corner.  
REGISTER ONCE. NO FEE  
WE'LL STEAL YOUR HEART AWAY

330 South Street  
Morristown  
638-0200  
200 South St.  
Epk 31, Rt. 297  
308 Springfield Ave.  
Berkeley Heights  
464-4000

## SECRETARIES OFFICE WORKERS TYPISTS

## ! WORK LOCAL !

Berkeley Heights, New Providence, Summit, Murray Hill, Watchung.

The best of companies in your local area call us. Work days, weeks, or longer. Earn extra \$\$\$ and keep up your skills. You need only visit our office one time and be on call for the best of local temporary positions.

## APOXI FORCE A-1

Temporaries

219 Park Ave.  
Scotch Plains, NJ  
322-8302

## TEMPORARIES WE NEED YOU NOW!!

Secretaries, stenos, excellent typists, clericals, Syntex, Olivetti & Memory typists needed NOW. Register once no fees.

Berkeley Employment Agency  
Berkeley Temp Help Service

308 Springfield Ave.  
Berkeley Heights  
464-4000

330 South St.  
Morristown  
538-0300  
Exit 31 off Rt. 287

## RN's and LPN's 3-11 and 11-7 Shifts

JOHN E. RUNNELLS HOSPITAL OF UNION COUNTY  
BERKELEY HEIGHTS, N.J. 07022

343 Bed JCAH Accredited Hospital located in beautiful suburban setting where a caring staff works within a therapeutic community in a team approach for quality nursing...

## NEW PAY SCALE

RN's with license - \$18,000, per annum - Additional salary based on Education and Experience - Full Time and Part Time openings...

LPN's - Full Time Openings...

## EXCELLENT BENEFITS

Paid Orientation  
Overtime Pay  
Annual Medical Exam  
State Pension  
Tax Sheltered Annuity  
Free Parking  
Shift Differentials

Prescription Plan  
Medical Insurance  
Tuition Reimbursement  
14 Paid Holidays  
Sick Leave Pay  
Paid Vacation  
3 Personal Business Days  
Dental Plan

Contact the Personnel Department 322-7240 Ext. 355 for applications and appointments for interviews.

An equal opportunity employer

## HELP WANTED

CLERK TYPIST Permanent, full time, diversified position, excellent opportunity, must be good typist, full benefits, 35 hours, salary commensurate with experience and ability. ENGINEERED SALES COMPANY, 273-6755.

CLERK TYPIST Permanent, full time, diversified position, excellent opportunity, must be good typist, full benefits, 35 hours, salary commensurate with experience and ability. ENGINEERED SALES COMPANY, 273-6755.

CLERK/SECRETARY  
Summit Real Estate Office. Diversified activity. Good telephone skills. Typing for sales associates, maintaining multiple listings books. Light bookkeeping. A very interesting position. 40 hour week. Attractive salary. Phone for an appointment 273-2212.

## GENERAL OFFICE MANAGER

Progressive Real Estate office seeks a detail-oriented individual with excellent organizational skills and leadership qualities. Job responsibilities will include statistics, financial and cost management. Contact Wayne Fowler at 273-0400 for interview.

## BROWN-FOWLER REALTORS

## RECEPTIONISTS CLERK TYPISTS

We seek receptionists and clerk typists with 1-15 years work or business school experience. \$13-18K. Please call or send resume to:

MR. DAN CAUDLE  
ALLIED FORCES  
Maldons Ave.  
Madison NJ  
377-3170

## NURSE

Explore the nursing opportunities at our modern, progressive 68 bed alcohol treatment facility. Experience in alcoholism treatment preferred. We offer a competitive salary and benefits package. Interested candidates please contact:

JOAN FADDEN  
for immediate consideration  
(201) 285-4716

CENTER FOR ADDICTIVE ILLNESSES  
95 Mt Kemble Ave.  
Morristown, NJ 07960  
E.O.E. M/F

## ACCOUNTING AUDITORS ACCOUNTANTS

We seek accountants and auditors with 2 plus years experience. Corporate or large volume firm experience preferred. \$22-38K. Please call or send resume to:

MR. DAN CAUDLE  
ALLIED FORCES  
Maldons Ave.  
Madison NJ  
377-3170

## SECRETARIAL

Secretary  
High steno, work for V.P. of sales, marketing & advertising. Handle confidential matters, travel arrangements. Excellent work will be rewarded. Excellent benefits package.

To \$300/Wk  
Working for president in team environment. Good typing and steno skills. Nice benefits package.

Typist  
Busy environment in friendly office. Telex, relief switchboard. Train on word processor.

# SERVICES OFFERED

### ANTIQUES

**NANCY HERMANE ANTIQUE BUYING SERVICE FOR OVER 25 YRS.**  
Higher Prices - Immediate cash for: Jewelry, Furniture, Silver, China, Glass, Dolls, Oriental rugs, Paintings, etc.  
377-2138, 635-2733 or 377-2054

### CHILD CARE

**CHILD CARE** - excellent care in my home or yours, references, 273-4143.  
**CHILD CARE/HOUSEKEEPER** - professional couple in Chatham seeks loving responsible child care for new born son. Light housekeeping, 5 day week. Live in or out, non-smoker only, references required. Call 201-635-2708.  
**CHILD DEVELOPMENT PROGRAM** FOR ages 2-6 Full day. Emphasis on classical education. Music, dancing, swimming, Home environment. Professional staff. State certified. Joe School, 307 Maple St. Murray Hill. Phone 464-3311.  
**FULL TIME BABYSITTER** wanted in your home for 9 mo. old infant, beginning March. Call 376-2945.  
**MATURE, LOVING** responsible sitter with extensive infant care experience in my Berkeley Heights residence. Mon-Fri, 8-5:30pm. References required. 464-6571 7-8pm.

### LOOKING FOR A SPECIAL PERSON

to care for adorable toddler in our home. Must drive own car, speak English and have previous experience with children. References a MUST. Call: 564-8616

### WANTED - SUMMIT

Responsible individual to take care of four-year old child 5 days per week. Must have your own car. References essential. Excellent salary & benefits. 522-9052 after 6 p.m. or weekends.

### FOR SALE

BLANK VCR TAPES - T-120 or L-750, high grade quality. \$7.75. Days 665-0976, eves 277-5743, ask for Tom.  
OPT ROTARY III - word processing systems (2), \$3000. Purchased singly \$2000 each. Service agreement available. 277-2200.  
FAMOUS FRENCH NON-STICK COOKWARE, wholesale prices, limited quantity. 273-5431.  
FANTASTIC CHEESECAKE and other mouth watering confections home baked and delivered fresh to your door. Chris' Pastry Cart, 464-1949. Mornings (except Mon and Fri) on all day Sunday.

### FIREPLACE WOOD

Guaranteed seasoned hardwood delivered and stacked. Our 27 year Charlie Vincent Landscaping 647-2326.  
FRIGIDAIRE REFRIGERATOR \$60, good running condition. 273-6657.  
GAS DRYER, \$50. Call 763-4642.  
HAWAIIAN LIMOGES SERVICE, 11-5 pc. settings, with extra also 12 serving pc., 20 pc. crystal glassware, \$675. Call 322-6213.  
KENMORE WASHER/DRYER, \$40 each. Call 273-2564.  
KNABE console piano, excellent condition, cherry wood w/brass trim. \$1595. 376-8526.  
LADIES NAME BRAND SPORTSWEAR - Save up to 60%. All first quality merchandise.

### THE FACTORY OUTLET

629 SPRINGFIELD AVE  
BERKELEY HEIGHTS  
665-0458

LENOX AND SILVER assorted pieces. Bedroom dresser and mirror, walnut modern, \$65. Twin mattress/box spring, \$35. Humidifier, \$30. Volar, 77 Parsons table, 40x60, woodgrain laminate, \$85. File cabinet, \$13. Snow blower, \$75. Chandelier, crystal, \$75. 464-7317.  
PIANO, upright. Needs tuning and replacement of some ivories. Can be converted to player piano. Price is right, call 464-1118 after 7pm week nights.  
PICTURE WINDOW with double-hung side windows 122"x54". Twin double-hung window 76"x54". Used, good condition. Phone 635-5663.  
RANCH HANK, full length, size 10. \$1150. firm. 464-7317.  
ROUND TABLE, hardwood top, cast iron center post and platform. beautiful, decorative and functional. Call 464-1118 after 7pm week nights.  
SEARS DRYER heavy duty, electric, best offer. 464-8328.  
SUNBEAM ELECTRIC snow thrower, 18 in. Deluxe model, \$50. Call 665-0169.

### AUTO-SUNROOFS

For cars, pickups, vans, pickup truck bed liners, sliding rear windows, van conversions. Top quality, low prices. Rainbow Sunroofs 464-4141

### BRIDAL GOWNS

FORMALS, bridesmaids, mothers, accessories. Reasonably priced. Large selection. Pamela's Bridal House. 464-7317

### WORLD BOOKS ENCYCLOPEDIA

Special limited SALE on brand new 1983 Edition - regular price \$549. Act now and save \$125. Call Mrs. Niedermeyer, District Manager. 464-9512

Drapes, beige, open-weaves, 85" long, 40" wide, five pairs: \$50. (Good condition). Call 273-8825 after 6:30.  
**FURNITURE FOR SALE**  
2 HANDSOME CREDENZAS, high back executive swivel chair plus 2 matching side chairs, youth desk and matching hutch (bookcase). Excellent condition. Call 277-3119 7:30-9:30pm only.  
8 ft. TOMLINSON sofa, metal hanging kitchen cabinets, humidifier, 21x36x12 metal chest drawers, metal ottomans. Call Herb 763-4200 or 457-1033.

### FURNITURE FOR SALE

DINING ROOM TABLE (38" round), 2 leaves (20" each), pads, chairs (2 ornate chairs upholstered seat, cone back, 4 side chairs upholstered seat and back), breakfast (60x16x33) 3 doors, shelves, mirrored back, also chair with ottoman. 522-1344.  
GOLD LAWSON sofa - 3 cushion, 96" very good condition. \$150. 522-9116 offer 5.  
LE CORBUSIER black leather chaise longue by Cassio, Brand new, unused. Will sell to best offer over \$1000. 379-2625.  
MEDITERRANEAN BEDROOM ormar, triple dresser w/mirrors, 2 night tables, queen headboard, excellent condition, reasonable. 635-9422.  
MUST SELL Yellow 6 drawer dresser w-matching hutch, great for girls room, w-kitchen front (60x16x33) 3 doors, shelves, mirrored back, also chair with ottoman. 522-1344.  
OFFICE FURNITURE - modern light brown secretarial desk with typewriter return, 2 secretarial chairs, 1 metal storage case, 6'x3" Days 273-6620, eves 766-0000.  
RECLINER ROCKER slim, black, like new, \$100, eves 273-1595.

### SAVINGS UP TO 50%

Catalogues available to look through in your home. Over 350 top manufacturers. Call Dione Illick. 647-4553.

### GARAGE SALE

292 TIMBER DR., One day only Sat, Feb. 11, 10 o'clock to 2PM. Wrought iron porch, fur, boys captain's bed, air conditioner, porta cooler, cart, toys, children's clothes, furniture and lots more.  
FOR SALE Moving - inside wrought iron furniture for solution, enclosed porch, end and kitchen, brass fire screen, sofa love seat, sectional divans, end table, maple cricket chair, vinyl chair, stereo and speaker in cabinet, leather chair with ottoman, humidifier, large solid oak office desk, aluminum extension ladders, antique wash stand, 9x12 Indian oriental rug. Shown by appointment only. Call 273-4782.  
MOVING MUST SELL. 14.7 cu. ft. GE no-frost Refrigerator, good condition, 4 drawer victorian bureau, fancy wicker veneer, family piece, 20" window fan, 273-0748.  
MOVING - Child's bed and frame, metal wardrobe, steel office desk, child bookcase, air conditioner, dishwasher, bikes, steel chrome chairs, odds and ends. 273-5826.

### LOOKING FOR...

Household goods, rugs, pictures, mirrors, china, jewelry, toys, clothing.  
Call MARLY 467-5412

### SAGE RESALE SHOPPE

50 DeForest Ave., Summit, N.J.  
If having a house sale is not "your thing" but you have saleable furniture, china, bric-a-brac, you no longer need, we will be happy to issue a TAX CREDIT. Proceeds will be used for community service. Please call MRS. SPERCO, 273-5564, 273-2465

### LOST AND FOUND

LOST CAT: \$300 reward for return. Large long haired beige male, Maine Coon, missing since 1/25 from house above park on River Rd Chatham. Answers to Nobby. Much loved, much missed. If have any information please call 635-7312, evenings or weekends. 953-3707 weekdays.  
LOST DOG grey curly hair female, w/ beard, no tail, white chest/paws, medium size, reward. 889-6988 or 754-1320.  
LOST - Necklace (coin) downtown Summit. 464-7470.

### PERSONAL

A NOVENA TO ST. JUDE - Oh holy St. Jude Apostle and Martyr, Great in virtue and rich in miracles, near kingdom of Jesus Christ, Faithful intercessor of all who invoke your special recourse in time of need. To you I have returned from the depth of my heart and humbly beg to whom God has given such great power to come to my assistance. Help me in my present and urgent petition. In return I promise to make your name known and cause you to be invoked. Say Three Our Fathers, Three Hail Marys and Glories. Publication must be promised. St. Jude pray for us and all who invoke your aid. Amen. This novena has never been known to fail. I have had my request granted. Publication promised. G.A.P.

### PETS

AQUARIUMS used 10, 15, 20H, 20L, 29, 55 and 75 gallon tanks, some with filters. Call 273-0152.  
AFFECTIONATE CAT approx. 9 mos. old needs loving RESPONSIBLE home. Exquisite black coat w/white markings on face. Spayed, shots. Call before 5pm 474-7848, after 5pm 549-4708.  
AKITA PUPPIES. The in dog of 1984. Welshed 11/26/83, exceptional litter, private breeder, champion line, excellent guard dog and good with children. Parents on premises. Price \$400-\$600. Call 233-3497.  
BEAUTIFUL BLACK CAT wants loving home. FREE! Call before 6pm 273-1880.  
FOODIE, black, 7 mos., trained, has shots, \$200, to loving home. Call 277-1051.  
JUST FOR YOU  
Fill that void in your life by looking at our family of adoptable cats and dogs.  
DOGS  
Stemmy-ton young sheltie mix.  
Hubb - brown colored Husky Samoyed.  
Emile - shepherd doberman mix, black and tan.  
Louie Small fuzzy black brown eyes.  
Sandy - blonde sheltie mix, lost one eye, real cutie.  
Fala - male black lab.  
Smart and gentle Sheltie mix puppies 2 mos., shepherd lab mix 2 mos.  
CATS  
Rusky young long haired male.  
Christopher-tiger and white neutered male.  
Tigger - female 2 mos brown tiger.  
Marcie - female white and tiger.  
Mitzi - long haired tiger declawed.  
Bridgit - grey white.  
Patsy - male tiger, flat ears, all have shots.  
Margie - white kitten 4 mos, yellow eyes.  
Call 273-2663 9-5 weekdays, spaying in formation 376-1439 9-5 daily and weekends.  
SUMMIT ANIMAL LEAGUE

### WANTED TO BUY

CUT GLASS - fine china, old lace, old boxes, etc. 464-5814.  
LIONEL, IVES, AMERICAN FLYER AND other toy trains. Immediate cash. Top prices paid. 635-2058 or 334-8709.

### OLD BANJOS WANTED

to restore and play.  
Private buyer Call 522-1013 offer 5.  
OLD BOOKS AND STAMPS  
ORIENTAL RUGS  
ANTIQUES  
Private Buyer Call 224-6205  
PAY CASH for used Oriental rugs and tapestries. 837-0080.  
WANTED - World War 1, World War 2, War Souvenirs, American, Nazi, Japanese helmets, daggers, medals, uniforms, etc. After 6pm. 665-1087.

### GOOD BOOKS BOUGHT & SOLD

High prices paid. Prompt removal. Brokers welcome. Free parking. The Chatham Bookseller 8 Green Village Rd., Madison 822-1361

### LOVE LINES

ALBERT and MICHAEL HAPPY VALENTINES Day for two special guys we love you lots. Love Mom and Daisy Kisses.  
B: I love being part of your life. Happy Valentine's Day. I love you, J.  
CAL: You're not rich, you're not a hunk but baby how I love you're junk. Love Tools.  
CTM: Happy Valentine's Day. Love ACC.  
DEAR SNOWMAN, just wanted you to know I'm thinking of you. I love you! Happy Valentine's Day. Love your Little Autocar.  
DOOPER: I'll always love you because you're my dutch oven Love Sister.  
LILLIAN, Happy Valentine's Day. (Mommy Dear!)  
OOH that sandwich! Watch out for broken wine bottles, Me.

### SERVICE OFFERED

FRONTIER ELECTRIC COMPANY, 1 Clark St., Summit. Prompt service. No job too small. 277-3071. If no answer, 757-15402.

### GARAGE SALE

50 DeForest Ave., Summit, N.J.

### PERSONAL

A NOVENA TO ST. JUDE - Oh holy St. Jude Apostle and Martyr, Great in virtue and rich in miracles, near kingdom of Jesus Christ, Faithful intercessor of all who invoke your special recourse in time of need. To you I have returned from the depth of my heart and humbly beg to whom God has given such great power to come to my assistance. Help me in my present and urgent petition. In return I promise to make your name known and cause you to be invoked. Say Three Our Fathers, Three Hail Marys and Glories. Publication must be promised. St. Jude pray for us and all who invoke your aid. Amen. This novena has never been known to fail. I have had my request granted. Publication promised. G.A.P.

### PETS

AQUARIUMS used 10, 15, 20H, 20L, 29, 55 and 75 gallon tanks, some with filters. Call 273-0152.  
AFFECTIONATE CAT approx. 9 mos. old needs loving RESPONSIBLE home. Exquisite black coat w/white markings on face. Spayed, shots. Call before 5pm 474-7848, after 5pm 549-4708.  
AKITA PUPPIES. The in dog of 1984. Welshed 11/26/83, exceptional litter, private breeder, champion line, excellent guard dog and good with children. Parents on premises. Price \$400-\$600. Call 233-3497.  
BEAUTIFUL BLACK CAT wants loving home. FREE! Call before 6pm 273-1880.  
FOODIE, black, 7 mos., trained, has shots, \$200, to loving home. Call 277-1051.  
JUST FOR YOU  
Fill that void in your life by looking at our family of adoptable cats and dogs.  
DOGS  
Stemmy-ton young sheltie mix.  
Hubb - brown colored Husky Samoyed.  
Emile - shepherd doberman mix, black and tan.  
Louie Small fuzzy black brown eyes.  
Sandy - blonde sheltie mix, lost one eye, real cutie.  
Fala - male black lab.  
Smart and gentle Sheltie mix puppies 2 mos., shepherd lab mix 2 mos.  
CATS  
Rusky young long haired male.  
Christopher-tiger and white neutered male.  
Tigger - female 2 mos brown tiger.  
Marcie - female white and tiger.  
Mitzi - long haired tiger declawed.  
Bridgit - grey white.  
Patsy - male tiger, flat ears, all have shots.  
Margie - white kitten 4 mos, yellow eyes.  
Call 273-2663 9-5 weekdays, spaying in formation 376-1439 9-5 daily and weekends.  
SUMMIT ANIMAL LEAGUE

### CLEAN UP

CLEAN UP - yards, garages, etc. Rubbish removal. Light hauling. Short Hills, New Providence, Passaic Township area. Call Greg 647-4297.  
CLEAN UP - any appliances, household, yard, etc., debris. Charlie Vincent. 647-2236.

### RICK'S CLEAN-UP SERVICE

I'll haul anything and everything!  
\$3300 per truckload (Household items, etc.)  
\$3700 per truckload (Brush)  
• Lawn mower repair • Garages & attics  
• Expert landscaping • Rubbish & brush hauled  
• Local moving • Fence repairs  
Free estimates • Lowest rates  
Call 273-7083 anytime!

### HOME IMPROVEMENT

BATHROOM TILE REPAIRS. Tiles regouted and cleaned. Tubs refinished. Call Rich, days 381-3716, eves 862-3521.  
FENCE INSTALLATION AND REPAIR  
Stockade, chain link, and custom. Free estimates. Call 464-3163 after 10am.  
ORMSBY SIDING  
Vinyl and aluminum siding, seamless gutters, storm windows - roofing. All work guaranteed.  
CALL 464-3303 ANYTIME  
INCOME TAX  
PERSONAL-SMALL BUSINESS Income tax, payroll-accounting. Local accountant 21 years experience. Member-N.J. Assoc. Public Accountants-National Assoc. Public Accountants. Satisfaction guaranteed. 277-2964.  
BUSINESS & PERSONAL TAX returns prepared by professional with over 20 yrs. experience. 273-5159.  
TAKE ADVANTAGE OF THE NEW TAX LAWS. Have your income tax prepared by a tax specialist and put more \$\$\$ in your pocket. Personal or business. Ivan Goldstein and Co. 761-1100.  
ATTENTION! NEW CLASSIFIED DEADLINES FOR THE INDEPENDENT PRESS FRIDAY 5PM HERALD PUBLICATIONS THURSDAY 3PM  
BARBARA OBERLE TUTORING SERVICE Middle school, high school, adult. SAT preparation. Resume writing 635-5890.  
Private Guitar Lessons - In your home - pop/rock/folk/Impov, Theory, Reading \$12/HR. Doug, 232-8950/232-4745

### CLEAN UP

Have Truck Will Travel  
Clean ups and light hauling. We supply labor, truck time and gas. You supply rubbish to be thrown out or items to be moved.  
Reasonable Rates Quality Service  
Please call M. Frederick at 665-1493 or 753-1014.

### ENTERTAINMENT

ONE MAN BAND, John Gee (Accordionist/Organist/Vocalist w/ automatic drums). Parties, catered affairs, etc. 759-8324.

### FENCING

FENCE INSTALLATION AND REPAIR  
Stockade, chain link, and custom. Free estimates. Call 464-3163 after 10am.  
STOCKADE/SPLIT RAIL NEW OR REPAIR MELE BROS. 484-9482

### FIREWOOD

SEASONED FIREWOOD - oak, \$125 per cord delivered. Call Maple Nursery 635-5501.

### HAULING DELIVERY

LIGHT HAULING AND CLEAN UP  
Reasonable rates. Appliance removal our specialty. 277-4013.  
CLEAN UP - yards, garages, etc. Rubbish removal. Light hauling. Short Hills, New Providence, Passaic Township area. Call Greg 647-4297.

### PETER J. FARLEY LIGHT HAULING

Local and long distance 277-8481

### HAVE TRUCK WILL TRAVEL

Clean ups and light hauling. We supply labor, truck time and gas. You supply rubbish to be thrown out or items to be moved.  
Reasonable Rates Quality Service  
Please call M. Frederick at 665-1493 or 753-1014

### HOME CLEANING

C & C CLEANING SERVICE specializing in general house cleaning. Includes carpets, ovens, windows, walls, clothes, and office floor waxing. 753-5946.  
GENERAL HOUSE CLEANING  
Reliable Person to Give Your Home The Clean It Deserves.  
F. Miles 561-4812 recording 757-3755 after 4pm.  
GIVE A SPECIAL AND UNIQUE GIFT to yourself or someone you love... We'll clean your house once, weekly, bi-weekly, or monthly. Through Dependable. References. Call Betsy 647-1870 or Dathryn 277-2499.

### CLOCK REPAIR

DAVIES & COX  
Expert watch & clock repairs done on premises. Antique & modern timepieces. 7A Beechwood Rd., Summit. 273-4274.

### ELECTROLYSIS

CYNTHIA HUNTINGTON, RN  
Royal College of Nursing  
CERTIFIED ELECTROLOGIST  
22 Bank St., Summit  
Open Sunday  
For appointment or complimentary consultation 522-0180

### HOME IMPROVEMENT

ALTERATIONS, REPAIR, REMODELING  
Quality work at excellent rates  
CREATIVE RECONSTRUCTION, INC.  
Michael Fromme 647-6380  
Chris Byrnes 665-1829

### MUSICAL INSTRUCTION

VOCAL INSTRUCTION. CALL HESTER YOUNG 464-0590.  
VOICE & PIANO LESSONS by experienced teacher, reasonable rates call Inge at 665-9199.  
PIANO LESSONS  
All ages (adults, children) and all levels (beginning to most advanced). Understanding of and appreciation for the classics emphasized. Lessons given in your own home or in Chatham Borough studio.  
James Vaughan, 635-1287

### 4-Track Recording Demo Tapes Coming soon

Musical Equipment  
UP TO 55% OFF  
Professional Private Instruction  
Guitar, Banjo, Bass, Mandolin, Violin, Drums, Flute and Piano  
All Styles for all Ages  
Band Rehearsal Space Available - supervised  
Sales of Instruments, Accessories, Sheet Music & Records  
Rentals also Available  
464-2610

### PAINTING

ABSOLUTE SATISFACTION 10 years experience, local references, interiors/exteriors, paperhanging, minor repair work. Kevin or Joe - 522-1769.  
ACE INTERIOR/EXTERIOR PAINTING. Wall papering, carpentry, 25 years experience. Free estimates. Insured. Quality work. 748-7174.  
EUROPEAN DECORATORS - Compulsive perfectionists - will point your home or apartment flawlessly. Expert wall-covering. Excellent references. Reasonable rates. We aim to please. Call after 7pm 672-7654.  
PAINTER. Interior-exterior. Paperhanging - Excellent work, reasonable rates, free estimates. Insured. Call after 5:30pm 464-5539.  
SHEEN-TOP PAINTING, residential specialty, painting and paperhanging, local - references available. Free estimates. Call 736-9436.  
CHANDLER PAINTING  
Top notch interior and exterior work at sensible prices. Fully insured and free estimates. Call 464-1579 or 647-6271.

### PAINTING

ABSOLUTE SATISFACTION 10 years experience, local references, interiors/exteriors, paperhanging, minor repair work. Kevin or Joe - 522-1769.  
ACE INTERIOR/EXTERIOR PAINTING. Wall papering, carpentry, 25 years experience. Free estimates. Insured. Quality work. 748-7174.  
EUROPEAN DECORATORS - Compulsive perfectionists - will point your home or apartment flawlessly. Expert wall-covering. Excellent references. Reasonable rates. We aim to please. Call after 7pm 672-7654.  
PAINTER. Interior-exterior. Paperhanging - Excellent work, reasonable rates, free estimates. Insured. Call after 5:30pm 464-5539.  
SHEEN-TOP PAINTING, residential specialty, painting and paperhanging, local - references available. Free estimates. Call 736-9436.  
CHANDLER PAINTING  
Top notch interior and exterior work at sensible prices. Fully insured and free estimates. Call 464-1579 or 647-6271.

### PAINTING

ABSOLUTE SATISFACTION 10 years experience, local references, interiors/exteriors, paperhanging, minor repair work. Kevin or Joe - 522-1769.  
ACE INTERIOR/EXTERIOR PAINTING. Wall papering, carpentry, 25 years experience. Free estimates. Insured. Quality work. 748-7174.  
EUROPEAN DECORATORS - Compulsive perfectionists - will point your home or apartment flawlessly. Expert wall-covering. Excellent references. Reasonable rates. We aim to please. Call after 7pm 672-7654.  
PAINTER. Interior-exterior. Paperhanging - Excellent work, reasonable rates, free estimates. Insured. Call after 5:30pm 464-5539.  
SHEEN-TOP PAINTING, residential specialty, painting and paperhanging, local - references available. Free estimates. Call 736-9436.  
CHANDLER PAINTING  
Top notch interior and exterior work at sensible prices. Fully insured and free estimates. Call 464-1579 or 647-6271.

### PAINTING

ABSOLUTE SATISFACTION 10 years experience, local references, interiors/exteriors, paperhanging, minor repair work. Kevin or Joe - 522-1769.  
ACE INTERIOR/EXTERIOR PAINTING. Wall papering, carpentry, 25 years experience. Free estimates. Insured. Quality work. 748-7174.  
EUROPEAN DECORATORS - Compulsive perfectionists - will point your home or apartment flawlessly. Expert wall-covering. Excellent references. Reasonable rates. We aim to please. Call after 7pm 672-7654.  
PAINTER. Interior-exterior. Paperhanging - Excellent work, reasonable rates, free estimates. Insured. Call after 5:30pm 464-5539.  
SHEEN-TOP PAINTING, residential specialty, painting and paperhanging, local - references available. Free estimates. Call 736-9436.  
CHANDLER PAINTING  
Top notch interior and exterior work at sensible prices. Fully insured and free estimates. Call 464-1579 or 647-6271.

### PAINTING

ABSOLUTE SATISFACTION 10 years experience, local references, interiors/exteriors, paperhanging, minor repair work. Kevin or Joe - 522-1769.  
ACE INTERIOR/EXTERIOR PAINTING. Wall papering, carpentry, 25 years experience. Free estimates. Insured. Quality work. 748-7174.  
EUROPEAN DECORATORS - Compulsive perfectionists - will point your home or apartment flawlessly. Expert wall-covering. Excellent references. Reasonable rates. We aim to please. Call after 7pm 672-7654.  
PAINTER. Interior-exterior. Paperhanging - Excellent work, reasonable rates, free estimates. Insured. Call after 5:30pm 464-5539.  
SHEEN-TOP PAINTING, residential specialty, painting and paperhanging, local - references available. Free estimates. Call 736-9436.  
CHANDLER PAINTING  
Top notch interior and exterior work at sensible prices. Fully insured and free estimates. Call 464-1579 or 647-6271.

### PAINTING

ABSOLUTE SATISFACTION 10 years experience, local references, interiors/exteriors, paperhanging, minor repair work. Kevin or Joe - 522-1769.  
ACE INTERIOR/EXTERIOR PAINTING. Wall papering, carpentry, 25 years experience. Free estimates. Insured. Quality work. 748-7174.  
EUROPEAN DECORATORS - Compulsive perfectionists - will point your home or apartment flawlessly. Expert wall-covering. Excellent references. Reasonable rates. We aim to please. Call after 7pm 672-7654.  
PAINTER. Interior-exterior. Paperhanging - Excellent work, reasonable rates, free estimates. Insured. Call after 5:30pm 464-5539.  
SHEEN-TOP PAINTING, residential specialty, painting and paperhanging, local - references available. Free estimates. Call 736-9436.  
CHANDLER PAINTING  
Top notch interior and exterior work at sensible prices. Fully insured and free estimates. Call 464-1579 or 647-6271.

### PAINTING

ABSOLUTE SATISFACTION 10 years experience, local references, interiors/exteriors, paperhanging, minor repair work. Kevin or Joe - 522-1769.  
ACE INTERIOR/EXTERIOR PAINTING. Wall papering, carpentry, 25 years experience. Free estimates. Insured. Quality work. 748-7174.  
EUROPEAN DECORATORS - Compulsive perfectionists - will point your home or apartment flawlessly. Expert wall-covering. Excellent references. Reasonable rates. We aim to please. Call after 7pm 672-7654.  
PAINTER. Interior-exterior. Paperhanging - Excellent work, reasonable rates, free estimates. Insured. Call after 5:30pm 464-5539.  
SHEEN-TOP PAINTING, residential specialty, painting and paperhanging, local - references available. Free estimates. Call 736-9436.  
CHANDLER PAINTING  
Top notch interior and exterior work at sensible prices. Fully insured and free estimates. Call 464-1579 or 647-6271.

### PAINTING

ABSOLUTE SATISFACTION 10 years experience, local references, interiors/exteriors, paperhanging, minor repair work. Kevin or Joe - 522-1769.  
ACE INTERIOR/EXTERIOR PAINTING. Wall papering, carpentry, 25 years experience. Free estimates. Insured. Quality work. 748-7174.  
EUROPEAN DECORATORS - Compulsive perfectionists - will point your home or apartment flawlessly. Expert wall-covering. Excellent references. Reasonable rates. We aim to please. Call after 7pm 672-7654.  
PAINTER. Interior-exterior. Paperhanging - Excellent work, reasonable rates, free estimates. Insured. Call after 5:30pm 464-5539.  
SHEEN-TOP PAINTING, residential specialty, painting and paperhanging, local - references available. Free estimates. Call 736-9436.  
CHANDLER PAINTING  
Top notch interior and exterior work at sensible prices. Fully insured and free estimates. Call 464-1579 or 647-6271.

### PAINTING

ABSOLUTE SATISFACTION 10 years experience, local references, interiors/exteriors, paperhanging, minor repair work. Kevin or Joe - 522-1769.  
ACE INTERIOR/EXTERIOR PAINTING. Wall papering, carpentry, 25 years experience. Free estimates. Insured. Quality work. 748-7174.  
EUROPEAN DECORATORS - Compulsive perfectionists - will point your home or apartment flawlessly. Expert wall-covering. Excellent references. Reasonable rates. We aim to please. Call after 7pm 672-7654.  
PAINTER. Interior-exterior. Paperhanging - Excellent work, reasonable rates, free estimates. Insured. Call after 5:30pm 464-5539.  
SHEEN-TOP PAINTING, residential specialty, painting and paperhanging, local - references available. Free estimates. Call 736-9436.  
CHANDLER PAINTING  
Top notch interior and exterior work at sensible prices. Fully insured and free estimates. Call 464-1579 or 647-6271.

### PAINTING

ABSOLUTE SATISFACTION 10 years experience, local references, interiors/exteriors, paperhanging, minor repair work. Kevin or Joe - 522-1769.  
ACE INTERIOR/EXTERIOR PAINTING. Wall papering, carpentry, 25 years experience. Free estimates. Insured. Quality work. 748-7174.  
EUROPEAN DECORATORS - Compulsive perfectionists - will point your home or apartment flawlessly. Expert wall-covering. Excellent references. Reasonable rates. We aim to please. Call after 7pm 672-7654.  
PAINTER. Interior-exterior. Paperhanging - Excellent work, reasonable rates, free estimates. Insured. Call after 5:30pm 464-5539.  
SHEEN-TOP PAINTING, residential specialty, painting and paperhanging, local - references available. Free estimates. Call 736-9436.  
CHANDLER PAINTING  
Top notch interior and exterior work at sensible prices. Fully insured and free estimates. Call 464-1579 or 647-6271.

### PAINTING

ABSOLUTE SATISFACTION 10 years experience, local references, interiors/exteriors, paperhanging, minor repair work. Kevin or Joe - 522-1769.  
ACE INTERIOR/EXTERIOR PAINTING. Wall papering, carpentry, 25 years experience. Free estimates. Insured. Quality work. 748-7174.  
EUROPEAN DECORATORS - Compulsive perfectionists - will point your home or apartment flawlessly. Expert wall-covering. Excellent references. Reasonable rates. We aim to please. Call after 7pm 672-7654.  
PAINTER. Interior-exterior. Paperhanging - Excellent work, reasonable rates, free estimates. Insured. Call after 5:30pm 464-5539.  
SHEEN-TOP PAINTING, residential specialty, painting and paperhanging, local - references available. Free estimates. Call 736-9436.  
CHANDLER PAINTING  
Top notch interior and exterior work at sensible prices. Fully insured and free estimates. Call 464-1579 or 647-6271.

### PAINTING

ABSOLUTE SATISFACTION 10 years experience, local references, interiors/exteriors, paperhanging, minor repair work. Kevin or Joe - 522-1769.  
ACE INTERIOR/EXTERIOR PAINTING. Wall papering, carpentry, 25 years experience. Free estimates. Insured. Quality work. 748-7174.  
EUROPEAN DECORATORS - Compulsive perfectionists - will point your home or apartment flawlessly. Expert wall-covering. Excellent references. Reasonable rates. We aim to please. Call after 7pm 672-7654.  
PAINTER. Interior-exterior. Paperhanging - Excellent work, reasonable rates, free estimates. Insured. Call after 5:30pm 464-5539.  
SHEEN-TOP PAINTING, residential specialty, painting and paperhanging, local - references available. Free estimates. Call 736-9436.  
CHANDLER PAINTING  
Top notch interior and exterior work at sensible prices. Fully insured and free estimates. Call 464-1579 or 647-6271.

### PAINTING

ABSOLUTE SATISFACTION 10 years experience, local references, interiors/exteriors, paperhanging, minor repair work. Kevin or Joe - 522-1769.  
ACE INTERIOR/EXTERIOR PAINTING. Wall papering, carpentry, 25 years experience. Free estimates. Insured. Quality work. 748-7174.  
EUROPEAN DECORATORS - Compulsive perfectionists - will point your home or apartment flawlessly. Expert wall-covering. Excellent references. Reasonable rates. We aim to please. Call after 7pm 672-7654.  
PAINTER. Interior-exterior. Paperhanging - Excellent work, reasonable rates, free estimates. Insured. Call after 5:30pm 464-5539.  
SHEEN-TOP PAINTING, residential specialty, painting and paperhanging, local - references available. Free estimates. Call 736-9436.  
CHANDLER PAINTING  
Top notch interior and exterior work at sensible prices. Fully insured and free estimates. Call 464-1579 or 647-6271.

### PAINTING

ABSOLUTE SATISFACTION 10 years experience, local references, interiors/exteriors, paperhanging, minor repair work. Kevin or Joe - 522-1769.  
ACE INTERIOR/EXTERIOR PAINTING. Wall papering, carpentry, 25 years experience. Free estimates. Insured. Quality work. 748-7174.  
EUROPEAN DECORATORS - Compulsive perfectionists - will point your home or apartment flawlessly. Expert wall-covering. Excellent references. Reasonable rates. We aim to please. Call after 7pm 672-7654.  
PAINTER. Interior-exterior. Paperhanging - Excellent work, reasonable rates, free estimates. Insured. Call after 5:30pm 464-5539.  
SHEEN-TOP PAINTING, residential specialty, painting and paperhanging, local - references available. Free estimates. Call 736-9436.  
CHANDLER PAINTING  
Top notch interior and exterior work at sensible prices. Fully insured and free estimates. Call 464-1579 or 647-6271.

### PAINTING

ABSOLUTE SATISFACTION 10 years experience, local references, interiors/exteriors, paperhanging, minor repair work. Kevin or Joe - 522-1769.  
ACE INTERIOR/EXTERIOR PAINTING. Wall papering, carpentry, 25 years experience. Free estimates. Insured. Quality work. 748-7174.  
EUROPEAN DECORATORS - Compulsive perfectionists - will point your home or apartment flawlessly. Expert wall-covering. Excellent references. Reasonable rates. We aim to please. Call after 7pm 672-7654.  
PAINTER. Interior-exterior. Paperhanging - Excellent work, reasonable rates, free estimates. Insured. Call after 5:30pm 464-5539.  
SHEEN-TOP PAINTING, residential specialty, painting and paperhanging, local - references available. Free estimates. Call 736-9436.  
CHANDLER PAINTING  
Top notch interior and exterior work at sensible prices. Fully insured and free estimates. Call 464-1579 or 647-6271.

# AUTO MART

## AUTO MART

1978 200Z Black, 5 speed, 6 cyl., fuel injection, a/c, am/fm stereo and cassette player, 45,000 miles, \$7000 firm. Call 635-1919 days, 635-6351 even.

1978 CHEV CAPRICE CLASSIC 4 door, a/c, p.s., p/b auto trans, cruise control, stereo, excellent condition, 92,000 miles, \$2500 or best offer. 464-8794

1979 MAZDA RX7 2 tone, small v 8, good gas, full power, 2nd owner, sunroof, best offer. Days 277-0206, even 522-1608.

1978 HONDA ACCORD LX - 76,000 miles, p.s., am/fm stereo cassette, a/c, MUST SELL, MOVING. 665-9014 after 7:30pm.

1979 MAZDA RX7 GS. Silver with wine interior, a/c, am/fm, alloy wheels, 5 speed manual trans, \$4995 or best offer. 376-0833.

1980 MONZA PIONEER am/fm radio, cassette player, new tires, 4 speed, excellent condition. \$2950. Call 781-3218 or 464-5857 after 5pm.

1981 DODGE ST. REGIS (police vehicle) 102,700 miles, 4 door, call 464-2700 between 9-4pm.

1981 HONDA PRELUDE red. Automatic transmission, A/C, Kenwood AM/FM cassette, Jensen 7 band equalizer, 4 Sony speakers, electronic antenna, Firestone all weather radials. Mint condition. 540-1878, John.

1982 MAZDA RX7 - 5 speed, excellent condition, black, fully loaded, 277-3200 after 4pm.

79 AUDI - 2 door, stick, sun roof, excellent condition. 50,000 miles, \$4500 neg. 467-0803.

BENCH SEATS FOR FORD, CHEVY or Dodge vans, 1 4-seater and 2 3-seaters, excellent condition. Call 464-0475, 356-1492.

CHEVROLET 1972 Nova - \$1,000 or swap for pick-up or equal value. 755-4247.

## AUTO MART

### CAMPER TRAILER FOR SALE

ALJOA TRAVEL TRAILER - Sleeps 5, large 4 burner stove, ice box, sink, gas and electric lights, water and elec. hook-up, table, lots of storage, owning, new tires, fine condition. \$1900. Call 665-0125.

### MOPED

MOPED PALACE N.J.'s OLDEST MOPED DEALER FANTASTIC \$55 DISCOUNTS Peugeot Motocycle/Gorelli 1,000's of Parts & Accessories Fast, Top Quality Service 15 Industrial Place Summit, N.J. 277-0005

The Summit Herald has been designated by Summit's Board of Health as the official news medium through which it will keep the public posted on its affairs.

This designation fulfills the requirements of the Open Public Meetings Act, Chapter 231, P.L.

Named as second and third official newspapers for the Board of Health were The Summit Independent and The Summit Observer.

The next Board of Health conference is scheduled for Feb. 13, 7 p.m. in City Hall.

# Peg goes Public

continued from p. 2 waiting to be filled with a fresh flower bouquet.

Or on the lighter side, there is a white piggy bank with red hearts for ears, and the motto is, "I'm saving it all for you." Cost is \$5. There is a red ceramic vase or candleholder in the shape of a number 1 for \$4, to hold that single red rose gift.

Teddy bear lovers would like the ceramic heart shaped boxes with two teddies on the cover. Inside it reads "hugs and kisses," priced at \$3.50. Or you can buy a whole box of small red hearts with strings for hanging as decorations or attaching to gifts, at \$2.50 a dozen.

Valentine sentiments appear on white mugs at \$4 each. "When I think about you," - then it's time to buy a valentine for your favorite person.

## Veterans' Memorial Committee

The first phase of the Veterans' Memorial Committee's plans has been completed. The list of veterans killed in action during World War I, the Korean Conflict, and the Vietnam Conflict, has been checked and corrected.

Committee chairwoman Mary Hagen reports that the next step will be to launch a campaign to raise funds for the installation of a granite memorial on the World War I memorial on the Village Green.

A bronze plaque will contain the complete list of names of those who gave their lives in the three wars since World War I.

Initial interest has resulted in the City Clerk already receiving contributions, but the official start of the campaign is expected to begin within the next several weeks.

The Committee met with an architect this past week at the site of the memorial to finalize the plans and determine an estimate of the cost.

EARLY ALERT - The Planning Board will be listening to the public on the subject of one way conversion for Morris Ave. and Broad St. at its next special Master Plan meeting, March 7 at 8 p.m. at City Hall first floor.

These are county roads and county engineer Walter Gardner is continuing to press the city to make the conversion. Does Summit want this? Speak out on March 7.



FAR BROOK KINDERGARTENERS gather around their creation -- "Ted, the Kindergarten Snowman" -- with their Kindergarten teacher Donna DeLorenzo. The children made "Ted," whom the children claim is 6 years old, with the remains of last week's snow during their outdoor play time. Standing proudly with their friend are Matthew Bronson, of Millburn, Charlotte Newhouse, of Summit, Amy Martino, of Morris Plains, Wendy Tepperman, of Short Hills, and Anne Delaney, of Summit.

# Three students struck by car

SUMMIT - Three children on their way to school were struck by a car at the corner of Morris Avenue and Maple Street on Jan. 30. The children, Stacy Moran, 31 Shadyside Ave., Kathy Castles, 5 Larch Pl., and LiAnn Brewster, 14 Shadyside Ave., were crossing Morris Avenue on the green light. When they reached the center line, the light turned yellow.

July Smith, 49 Blackburn Pl., told police she was driving east on Morris. She said she stopped at a red light at Maple, then proceeded through the intersection when it turned green. She felt something brush against her car, and pulled over. She said she asked the three children if they were okay. Believing that they were, she continued on.

Smith did not report the accident until notified to do so by Sergeant Michael Yannotta. The children said the car entered the intersection, and struck all three. The driver slowed down, looked back at the children, then left the area. The children gave a description of the driver to police. Upon arrival at school they were treated by the school nurse.

Smith received two summonses, for leaving the scene of an accident where an injury was involved, and failing to yield the right of way to a pedestrian. Alice Woodbury, 30 Hawthorne Pl. was taken to the hospital following an accident on the stretch of Summit Avenue between Ridge

and Badeau. Woodbury said she was driving North on Summit Avenue. She tried to change the station on her car radio. When she looked up, she saw a truck in front of her. She said she tried to brake, but her car hit the truck.

The truck, owned by the City of Summit, was parked at the curb with its flashers on while its driver was doing some roadwork. Driver of the truck was Robert Fisher of Edison.

A collision involving a snowplow occurred on Jan. 30 at the corner of Broad St. and Chestnut Ave. Patricia Sacco of New Providence, said she was driving west on Broad St. She saw Waferd Crowson, 108 Morris Ave., going south driving a vehicle with snowplow attached. She proceeded through the intersection after she thought the Crowson vehicle had stopped.

Pedestrian struck while crossing Maple St. Janet Gale, 105 New England Ave. received a summons on Feb. 3 for failing to stop before turning right on red. As she turned right off DeForest Ave. on to

Maple St., her car struck Joanna Mitt, Mountaineer, as Mitt attempted to cross Maple on the crosswalk. She refused medical assistance at the scene. Carol Henwood, 25 Greenbriar Dr., was backing out of a driveway at 20 Glen Oaks on Feb. 3. Her vehicle struck a parked postal truck in front of 19 Colony Drive. Driver of the truck was Gary

Caill, Maplewood. Icy conditions on the road on Feb. 5 caused a one car accident on Passaic Ave. near Kent Place Blvd. John Blasi of 735 Springfield Ave. was driving north on Passaic when he lost control of his vehicle. It struck a fence and a tree. A passenger, Mary Blasi, was taken to the hospital.

Robin Geist, Millburn, received a summons on Feb. 5 for driving with no license in possession following an accident on Springfield Avenue. Geist's car slid into a vehicle stuck in the snow, then pushed it into a tree on property at 166 Springfield Ave.

Slippery road conditions contributed to an accident at Overlook Hospital on Feb. 5. Barbara Pawlek, 851 Springfield Ave., was attempting to exit the Lot F Priority driveway of the hospital. As she approached the intersection of Sylvan Rd. and the driveway, she could not stop her car and it slid into the road and struck a car driven by William Smith of Chatham. The Smith car was moving downhill on Sylvan and could not stop before it slid into the side of the Pawlek car. Police reported: no sign of salt or sand or other activity to clear the roadway.

A second sliding car accident occurred the same day, in the same area. Loretta Hall, Hartley Rd., was driving north on Beauvoir Ave. Suddenly ahead of her she saw a vehicle sliding down the hill toward her. It was driven by Charlotte Daly of Hillside. The Daly vehicle was going south on Beauvoir and slid into the Hall car.

# Pingry musical groups make the big time on Wall Street

AREA - The Balladeers (selected women's group of singers), Buttendowns (selected men's group of singers), Brass Choir and Chamber Orchestra of the Pingry School (Bernards Township Campus) are performing a concert at Trinity Church, Wall Street, New York, at 1 p.m. Wed., Feb. 15. Part of the "Brown Bag" series, the concert is open to the public and well-attended by the Wall Street community.

# "Great Jewish Personalities" is S.J.S. spring course

SUMMIT - "Great Jewish Personalities and Their Times" is the topic for the eight-session Spring adult course of the Suburban Jewish School. The classes, led by Salo Enis of Springfield, will be held at 8 p.m., in the offices of Zisman, Traurig and Elblonk, CPAs, 80 Morris Ave., Springfield. The class dates are scheduled for Tuesdays - Feb. 14, 28; Mar. 13, 27; Apr. 10, 24; May 8, 22. The cost, not including possible

# Public to discuss all-day kindergarten

A public discussion to explore the idea of all-day kindergarten will be held on Wed., Feb. 15 at 8 p.m. in the Lincoln School Library in Summit. This discussion is the third in a series of educational forums presented by the Summit Board of Education.

A brief presentation will be made by the resource people: Stuart Salkin, is principal of Washington School and chairman of the Summit public schools' Kindergarten Committee; Watching school system learning consultant Carol King and reading specialist Pearl Lazar (the Watching district has an all-day kindergarten program); Kathy Newman,

social worker for the Summit Child Care Center and Claire Pisapia of the Summit Lay Committee on Education. The Lay Committee recently completed a study of all-day kindergarten. An open discussion of various types of extended day programs will follow the presentations. Community members are urged to attend and share their ideas and concerns. As background material for the discussion, copies of the kindergarten study done by the Lay Committee on Education are available to be read at the public library, Board of Education offices, 14 Beekman Place, and at each elementary school.

# Route 22 to undergo repairs

AREA - The Department of Transportation will begin work on or about Feb. 15 towards rehabilitation of the westbound Rt. 22 viaduct, Newark, Essex County. The project includes new deck, beams, parapet and sidewalk and repair of abutments, piers and caps. The westbound viaduct will be closed to traffic until the

# LEGAL

## CONSOLIDATED REPORT OF CONDITION (Including Domestic Subsidiaries)

Summit and Elizabeth Trust Company		COUNTY	STATE	ZIP CODE	STATE BANK NO. 0784
Summit		Union	New Jersey	07901	FEDERAL RESERVE DISTRICT NO. Two
ASSETS					CLOSE OF BUSINESS DATE
					December 31, 1983
Cash and due from depository institutions	\$62,994				Mill. Thou.
U.S. Treasury securities	55,682				
Obligations of other U.S. Government agencies and corporations	10,258				
Obligations of States and political subdivisions in the United States	50,327				
Other bonds, notes, and debentures	8,500				
Federal funds sold and securities purchased under agreements to resell	30,000				
Bank premises, furniture and fixtures, and other assets representing bank premises	5,533				
Real estate owned other than bank premises	5,481				
Other assets	10,055				
<b>TOTAL ASSETS</b>	<b>\$675,164</b>				
LIABILITIES					
Demand deposits of individuals, partnerships, and corporations	\$143,823				
Time and savings deposits of individuals, partnerships, and corporations	426,584				
Deposits of United States Government	980				
Deposits of States and political subdivisions in the United States	14,346				
Deposits of commercial banks	792				
Certified and officers' checks	50				
<b>Total Deposits</b>	<b>592,006</b>				
Total demand deposits	\$157,944				
Total time and savings deposits	434,062				
Federal funds purchased and securities sold under agreements to repurchase	29,699				
Interest-bearing demand notes (note balances) issued with report date	6,766				
Other liabilities for borrowed money	46				
Mortgage indebtedness and liability for capitalized leases	538				
Other liabilities	4,696				
<b>TOTAL LIABILITIES</b>	<b>633,951</b>				
EQUITY CAPITAL					
Common stock a. No. shares authorized 621,044 b. No. shares outstanding 611,264 (par value)	4,890				
Surplus	3,264				
Undivided profits	33,009				
Reserve for contingencies and other capital reserves	14,000				
<b>TOTAL EQUITY CAPITAL</b>	<b>41,163</b>				
<b>TOTAL LIABILITIES AND EQUITY CAPITAL</b>	<b>\$675,164</b>				
MEMORANDA					
1. Amounts outstanding as of report date: Standby letters of credit, total	\$4,133				
Time certificates of deposit in denominations of \$100,000 or more	46,830				
Other time deposits in amounts of \$100,000 or more	600				
2. Average for 30 calendar days (or calendar month) ending with report date:					
Cash and due from depository institutions	\$4,311				
Federal funds sold and securities purchased under agreements to resell	43,342				
Total loans	432,347				
Time certificates of deposit in denominations of \$100,000 or more	579,852				
Total deposits	29,699				
Federal funds purchased and securities sold under agreements to repurchase	48				
Other liabilities for borrowed money	662,691				
Total assets					

We, the undersigned officers, do hereby declare that this Report of Condition (including the supporting schedules) has been prepared in conformance with the instructions issued by the Federal Deposit Insurance Corporation and is true to the best of our knowledge and belief.

SIGNATURE OF OFFICERS AUTHORIZED TO SIGN REPORT  
John R. Feeney, Sr. Vice Pres. & Chief Fin. Off.  
Francis R. Polyn, Ass't. Vice Pres.

We, the undersigned directors, attest the correctness of this Report of Condition (including the supporting schedules) and declared that it has been examined by us and to the best of our knowledge and belief has been prepared in conformance with the instruction issued by the FDIC and is true and correct.

SIGNATURES OF DIRECTORS  
Paul Hardin, Donald P. Moriarty, Robert W. Parsons  
State of New Jersey, County of Union, ss:  
Eugene J. Schofer, Treasurer of Summit Home for Children, CHESEBROUGH FOUNDATION

TO WHOM IT MAY CONCERN:  
Take notice that the annual report of the Summit Home for Children, CHESEBROUGH FOUNDATION for the year ending December 31, 1983 required by Section 6056 of the Internal Revenue Code is available for inspection by any citizen who requests it within 180 days after the publication of this notice. Requests to inspect the said annual report should be made to the undersigned.

Eugene J. Schofer, Treasurer of Summit Home for Children, CHESEBROUGH FOUNDATION  
155 Woodbine Circle  
New Providence, N.J. 07974  
S.H.: Feb. 11, 1984 \$7.70

# Fahnestock & Co.

(Established 1881)  
MEMBERS NEW YORK STOCK EXCHANGE INC. AND OTHER LEADING EXCHANGES.  
Stocks, Bonds, Commodities, Investments And Advisory Service  
Suite 500, 382 Springfield Avenue  
Summit, New Jersey 07901  
201-273-2100 Thomas S. Paluck (Mgr.)

# PREPARE FOR SPRING '84 S.A.T. and ACHIEVEMENT TESTS

CLASSES FOR MAY 1984 SAT BEGIN FEBRUARY 29 & MARCH 1.  
Stanley H. Kaplan Educational Center  
TEST PREPARATION SPECIALISTS SINCE 1938  
147 Columbia Tpk., Florham Park  
822-0229

• Personal Centers open days, evenings and weekends  
• Low hourly cost  
• Complete TEST-M-TAPE facilities for review of class lessons and supplementary materials  
• Classes taught by skilled instructors  
• Opportunity to make up missed lessons  
• Voluminous home-study materials constantly updated by researchers expert in their fields

NOTICE  
TAKE NOTICE that on 5th day of March, 1984, at 8:00 P.M. in the City Hall, a hearing will be held before the Zoning Board of Adjustment of the City of Summit on the appeal or application of the undersigned for a variance or other relief to permit conversion of the 9.5 x 15 foot screened porch to a 12 x 15 foot room. This will require extending the foundation 2.5 feet toward Pine Ridge Rd. leaving a setback of 27.14 instead of the required 30 feet, on premises located at 100 Pine Grove Ave. and designated as Block 95-J Lot 1-D on the Tax Map of the City of Summit, located in the R-10 Zone.

The application and supporting documents are on file in the Office of the Construction Department and are available for inspection.  
Any interested party may appear at said hearing and participate therein in accordance with the rules of the Zoning Board of Adjustment.  
Sumner B. Sweetser Applicant  
S.H.: Feb. 11, 1984 \$10.01

If someone in your family has a drinking problem, you can see what it's doing to them. But can you see what it's doing to you? For information and help contact:  
**AL-A-NON**  
Write P.O. Box 487  
Or Call 672-7231

# The Business Directory Of Services

<b>Additions • Alterations</b> SERVING THE AREA SINCE 1955 <b>ADDITIONS • ALTERATIONS</b> Planning & Designing Kitchen & Bathroom Remodeling • Custom Wood Working • Traditional Front Door Fronts • Shetrock, Taping & Finishing Residential • Commercial • Industrial Outlets & leaders • Roofing • Siding • Masonry & Brick Walkways Storm Doors & Windows • Sky Lights • Sun Decks & Florida Rooms • FREE ESTIMATES • FULLY INSURED • REFERENCES <b>Horio Contractors 522-0467</b>	<b>Furniture Stripping</b> Carriage House <b>Bix Service</b> Serving Summit Area 10 Years • Furniture Stripping, Refinishing, caning, reupholstering, etc. Metal polishing and plating 24 Franklin Pl., Summit • 277-3815	<b>Plumbing &amp; Heating</b> 40 Years Experience <b>Victor Guidetti</b> Licensed • Insured • Experienced Bathroom, Kitchen, Rec. Room, Alterations, Hot Water Heating Specialists in Steam and Hot Water Heating Commercial and Industrial Work Sewer Connections <b>Call 464-1810</b>
<b>Additions</b> <b>TK MARTIN CONSTRUCTION</b> Residential - Industrial Renovations & Additions <b>No Jobs Too Small 635-1315</b>	<b>Limousine Service</b> <b>BUSINESS OR LEISURE</b> With Us Your Trip Is A Pleasure <b>CC LIMOUSINE</b> A Distinguished Service For All Occasions At Reasonable Rates FOR RESERVATIONS OR ESTIMATES CALL <b>(201) 624-5200</b>	<b>PAUL SCAPPETTO</b> <b>Plumbing &amp; Heating</b> Lic. no. 6653 <b>522-9456</b> <b>Roofing</b> <b>Nelson's Roofing Co.</b> Experts in shingle roofing, roof sealing and wood shake treatments. Fully insured. Reasonable rates. <b>CALL 665-1499</b> for free estimate
<b>Custom Drapery</b> <b>Custom-Designed DRAPERIES</b> of elegant distinction to satisfy the most discriminating homeowner, from the studios of <b>DORIS DORIN</b> We will be pleased to receive your inquiries. Please call for a Free Consultation. <b>561-9181</b> <b>381-5985</b>	<b>Rentals</b> <b>PIONEER RENTALS, INC.</b> We fill propane tanks Party Needs • Lawn Mowers • Lawn Equipment • Automotive Tools • Contractors Equipment <b>635-7870</b> N. Passaic Ave., Chatham	<b>Sewing Machine Repairs</b> <b>SINGER</b> EXPERT REPAIRS ON ALL MAKES <b>SEWING MACHINES</b> • Vacuum Cleaners • Factory Trained Mechanics Free Estimates • We Guarantee Prompt Service Liv'n Mall • Lower Level Near Ham's <b>994-2515</b>
<b>Chimneys Cleaned</b> <b>Chatham Chimney Sweeps</b> "Help prevent chimney fires" Fully insured - Caps Installed <b>FREE INSPECTION 635-6326</b>	<b>Painting</b> <b>KEN MELIA'S</b> OVER 15 YRS. • EXTERIOR & INTERIOR • WALLPAPER • GUTTERS & LEADERS • BRUSH AIRLESS SPRAY 387 ELM STREET • STIRLING <b>647-0540</b>	<b>TV's Wanted</b> <b>TVSETS WANTED</b> Working or Not Portable Only <b>CASH PAID</b> Days Even. <b>753-7333 464-7496</b>
<b>Chimney Sweeps</b> <b>Chatham Chimney Sweeps</b> "Help prevent chimney fires" Fully insured - Caps Installed <b>FREE INSPECTION 635-6326</b>	<b>Furniture Refinishing Stripping</b> <b>THE CHAIR-MAN</b> Furniture Refinishing Repair - Antiques Restored CANE - RUSH - SPLINT SEATS Maria Urbanski, Myerville OPEN 7 DAYS, 10-5 <b>647-1959</b>	<b>Boost Your Business!</b> <b>ADVERTISE, ADVERTISE, ADVERTISE.</b> <b>CALL 464-1025</b>



# COME JOIN US FOR SUNDAY BRUNCH

Featuring a sumptuous buffet and such delicacies as eggs benedict and cheese blintzes squeezed orange juice and assorted pastries. We invite you to bring your own wine or champagne to further enhance your dining enjoyment.

luncheon Tues-Sat 11:30am-2:30pm  
dinner Tues-Sat 5pm-10pm  
high tea Tues-Sat 2:30pm-4:30pm  
Sunday brunch 11:30am-2:30pm  
Supper 3pm-8pm  
**THE FOX & FAWN**  
82 Yosa Ave.  
South Orange  
761-0080