

uniteen

46

THE Weather Vane

KEN ALBRIDGE • German Club (2, 3, Vice-Pres. and Treas. 4); Latin Club (2); Literary Club (4); Football (2, 3); Intramural Basketball (2, 3, 4); B.A.C. (2).

ANN ALLEN • G.A.C. (4); Cheerleader (2, 3); French Club (2); Literary Club (3, 4); Senior Play Comm. (4); Outing Club (3).

EDWARD ALLEN • Catalyst Club (3, Sec. 4); Slide Rule Club (3, 4); German Club (3, 4); Guidance Council (2, 4); Track (2, 3, 4); Literary Club (4); B.A.C. (4); Cross-Country Track (W4).

ERNEST ANDERSON • Spanish Club (2, 3, Treas. 4); Catalyst Club (4); Victory Corps (3); Cross-Country Track (W4); Track (3, 4); Senior Play Cast; Academic Comm. (3).

NORMAN ANDREASSEN • Track (2, 3, 4); Red Cross Council (2).

LOUISE ARMSTRONG • All-State Chorus (3, 4).

RUTH BACON • French Club (3); Service Club (3).

WILLIAM BACON • Victory Corps (2, 3); Catalyst Club (3); Collectors' Club (3, 4); Chess Club (4); Senior Play Cast.

EVELYN BAKER • Mask and Mime (2, 3, 4); Senior Play Comm. (3); Girl Reserves (2); Red Cross Council (2, 3); Fall Play Comm. (3, 4); Triple Trio (4).

ESTHER BARRANCO • Service Club (2, 4); French Club (2, 3); Spanish Club (3, 4); Red Cross Council (2); Student Council (4); "Hi's-Eye" (4); Annual.

ROSINA BAVOS • Art Club (3, 4).

DOROTHY BECK • Spanish Club (2, 3, 4); Literary Club (3, 4); Writers' Club (4); "Weather Vane" (4); Guidance Council (3).

HARRIET BECKER • Service Club (4).

JACK BEIERLE • Forum (3, Treas. 4); Catalyst Club (4); Collectors' Club (3); Spanish Club (4).

EDWARD BELCHER • Victory Corps (2); Track (3); Junior Prom Comm. (3); Catalyst Club (3, Sec. 4); Hi-Y (3, 4); Slide Rule Club (4); Fall Play (4); Senior Play Comm. (4); Academic Comm. (Chairman 4); Annual.

MILDRED BIDDULPH • Collectors' Club (2, 3, Sec. 4); Art Club (4); Senior Play Comm. (4); Service Club (4); Mask and Mime (2).

GRACE BIRNIE • Art Club (2, 3); "Weather Vane" (3); Spanish Club (4); Mask and Mime (3); Outing Club (3); Literary Club (3, 4); Annual.

MICHAEL BIVONA • "Hi's-Eye" (2, 3, 4); Red Cross Council (3); Guidance Council (2); Service Club (3).

KATHLEEN BOXILL • Red Cross Council (2); Collectors' Club (4); Art Club (4).

ANN BRAHAM • French Club (2, 3); Literary Club (3, 4); Writers' Club (4); "Hi's-Eye" (2, 3, Editor-in-Chief 4).

BEVERLY BRANDT • Latin Club (2, 3); Spanish Club (3, 4); Mask and Mime (2, 3, 4); Writers' Club (3, 4); Literary Club (3, 4); All-State Chorus (3, 4); Triple Trio (4).

BETTY BROBACK • Latin Club (Treas. 2, 3); Spanish Club (2, 3); Girls' Sports (2, 3, 4); G.A.C. (2, Sec. 3, Pres. 4); Honor Society (3, 4); Slide Rule Club (4); Annual.

JACK BROOK • Track (2, 3, 4); French Club (2); Hi-Y (3, 4); Literary Club (4); Motto Comm. (4).

MARILYN BULL • French Club (2, 3); Spanish Club (3); Forum (2, 3); Outing Club (3); Service Club (3, 4).

ROZELMA BULLOCK • Fall Play Cast (3); Senior Play Comm. (4).

RICHARD CADMUS • Track (2, 4); Swimming (W3); Red Cross Council (Vice-Pres. 3, 4); Mask and Mime (3, 4); German Club (2, 3, 4); Service Club (3, 4); Hi-Y (3, 4).

JAMES CHAMBERS • Baseball (W2, 3, 4); Football (W3, W4); Senior Play Cast; Art Club (4); Senior Play Comm.

EDWARD CHEASLEY • Track (2, 3, 4); Hi-Y (3, 4); Intramural Basketball (3, 4); Guidance Council (4); Victory Corps (2, 3).

JOHN CHIRONNA • Football (W2, W3, W4); Basketball (W4); Senior Play Cast.

EDWARD CHRISTIAN • Aeronautics Club (2); Collectors' Club (2, Vice-Pres. 3); Victory Corps (2, 3); Hi-Y (3, 4).

BRENT CLARK • Hi-Y (3, Pres. 4); Swimming (W2, W3, W4); Football (2, 3, W4).

JAMES CLARK • Outing Club (3, Pres. 4); Fall Play Cast (4); Mask and Mime (3, 4); Senior Play Cast.

GEORGE COALE • Swimming (3, W4); Football (3, 4); Hi-Y (3, Vice-Pres. 4); Senior Play Comm.; National Honor Society (4).

LOIS COHEN • Mask and Mime (2, 3, 4); "Hi's-Eye" (2, 3, Feature Editor 4); Service Club (3).

MARILYN COLBY • Cheerleader (3, 4); Christmas Tableaux (2, 3, 4); Mask and Mime (3, 4); Library Council (4); Service Club (3, 4); Girls' Sports (2, 3, 4); Annual.

WILLIAM COMRIE • Baseball (W2, W3, W4); Basketball (2, W3, W4); Football (2, 3); Hi-Y (3, 4); Victory Corps (2); Senior Play Cast.

ROBERT COOLEDGE • Hi-Y (3, 4); Football (2, 3, 4); Swimming (W3, W4); Track (2, 3); Catalyst Club (4); Nominating Comm. (3); Senior Play Comm.

YVONNE COOLEY • All-State Chorus (4).

MILDRED COLLINS • Art Club (4); Service Club (4); "Hi's-Eye" (4); Senior Play Comm.

SUZANNE CORRELL • Victory Corps (4); Mask and Mime (4); Service Club (2).

JUNE CREHORE • Girls' Sports (2, 3, 4); G.A.C. (3); Mask and Mime (2, 3); French Club (2, Vice-Pres. 3); Latin Club (2, 3); Girl Reserves (2, 3, Pres. 4); National Honor Society (3); Annual.

ALFRED DEMPSEY • French Club (2, 4); Latin Club (3, 4); Chess Club (4); Literary Club (4); Motto Comm. (4); Guidance Council (3).

GEORGE DENNY • Swimming (Mgr. 2, 3, W4); Latin Club (2); German Club (2, 3); Catalyst Club (3); Technicians' Club (3, 4); Literary Club (4); Mask and Mime (4).

PHYLLIS DODGE • Latin Club (3); French Club (3, Sec. 4); Slide Rule Club (Sec. 4); Literary Club (4); Girl Reserves (4); Academic Comm. (4); Mask and Mime (4).

MARILYN DOWNS • "Weather Vane" (3, 4); Spanish Club (4); Latin Club (2); Literary Club (3, 4); Library Council (3, 4); Mask and Mime (2, 3, 4); Catalyst Club (3, 4); Guidance Council (3); Annual.

BORGHILD DUEFIELD • French Club (3, 4); Art Club (2, 3); Victory Corps (2, 3).

NANCY EBERSOLE • Art Club (4); Mask and Mime (4); French Club (4).

KATHERINE EHRNHOLM • Mask and Mime (2, 3, 4); Service Club (4); Outing Club (4).

WINNIE EMERY • Girls' Sports (4); Art Club (4); Mask and Mime (4); Literary Club (4); Girl Reserves (4); Senior Play Comm. (4); Annual.

CHARLOTTE ENGLE • Victory Corps (2, 3); Red Cross Council (2, 3, 4); Mask and Mime (3, 4); Cheer Squad (Captain 4); Motto Comm. (4); Hockey (2, 3); Senior Play Cast.

WILLIAM EWING • Guidance Council (2, 3); Track (3, 4).

ROBERT FISHER • Swimming (3); Catalyst Club (4).

MARGERY FLEISHMAN • Girls' Sports (2, 3, 4); French Club (2, 3, 4); Spanish Club (2, 3); Mask and Mime (4); Literary Club (4); Girl Reserves (2, 3); "Weather Vane" (4); Senior Play Comm. (4); Annual.

THEODORE FOSTER • Catalyst Club (3, Pres. 4); Hi-Y (4); Victory Corps (2, 3); Slide Rule Club (4); Student Council (4); Academic Comm. (4); German Club (4).

ELIZABETH ANN FROLICH • Secretary (2); Girl Reserves (2, Vice-Pres. 3); Student Council (Sec. 4); G.A.C. (3, Vice-Pres. 4); Girls' Sports (2, 3, 4); Honor Society (3, 4); Senior Play Cast.

LETTY GLIMM • "Hi's-Eye" (Editor 3, 4); Writers' Club (2, 3, 4); Literary Club (3, 4); Mask and Mime (2, 3, 4); Spanish Club (2, 3, 4); Christmas Tableaux (2, 3, 4); Annual.

DAVID GREEN • Cheerleader (2, 3, W4); Christmas Tableaux (3, 4); Hi-Y (3, 4); Library Council (2); Swimming (2, 4); Mask and Mime (2, 3, Council 4); Fall Play (3, 4).

PEGGY GRIGGS • Spanish Club (3); Mask and Mime (3, 4); Victory Corps (3); Service Club (3, 4).

NANCY GUTHRIE • Spanish Club (2, 3, 4); Literary Club (4); Guidance Council (4); Girl Reserves (2, 3); Mask and Mime (4); Art Club (3, 4).

DOREEN HALLOCK • Girl Reserves (2, 3, 4); French Club (2, 3, 4); Latin Club (2, 3); Service Club (3, 4); Mask and Mime (3, 4).

CLAIRE HAMILTON • Secretary (3); French Club (2, Sec. 3); Latin Club (2, 3); G.A.C. (2); Senior Play Comm.

THOMAS HARMS • Jr. Prom Comm. (3); Christmas Tableaux (3, 4); Hi-Y (3, Pres. 4); Track (2, 3); Baseball (4); Football (2, W3, W4); Senior Play Cast.

ROBERT HART • French Club (2, 3, 4).

JAMES HEBDEN • President (2); Football (2, W3, W4); Basketball (3, 4); Track (2, 3); Hi-Y (3, Pres. 4); B.A.C. (2, Treas. 3); National Honor Society (3, 4); Student Council (Pres. 4); N.A.S. Society (3, 4).

SHIRLEY HEITKAMP • Secretary (4); Writers' Club (Sec. 4); Senior Play Cast (4); Christmas Tableaux (4); Hockey Team (4); National Honor Society (4).

EDWARD HERUSKA • Basketball (3, 4); Baseball (4); Hi-Y (4); Victory Corps (2, 3, 4).

BARBARA HILL • "Weather Vane" (2, 3, 4); Girls' Sports (2, 3, 4); G.A.C. (3, 4); Writers' Club (3, 4); Literary Club (3, 4); Outing Club (3, 4); Spanish Club (3, 4).

MARJORIE HOHENSTEIN • Cheerleader (3, 4); Girls' Sports (2, 3, 4); Senior Play Comm.; Girl Reserves (2, 3, Treas. 4); Mask and Mime (2, 3, 4); Fall Play Cast (4); Service Club (2, 3, 4).

BILL HOLADAY • Latin Club (Pres. 3); Slide Rule Club (3, 4); Council of Presidents (3); Annual.

WALDRON HOLCK • Football (3); Basketball (3); Baseball (3, 4); Mask and Mime (4); Red Cross Council (3); German Club (2, 3, 4); Outing Club (3); Intramural Basketball (2, 4); Art Club (4).

EDWARD HOLDEN • Catalyst Club (2, 3); Latin Club (2, 3); Track (2, 4).

ROBERT HOLLOWAY • Track (2, 3); Baseball (4); Basketball (3); Senior Play Cast; Christmas Tableaux (4); Hi-Y (3, 4); German Club (2, 3); Student Council (4); B.A.C. (3); Jr. Prom Comm.

ROGER HORNER • Basketball (2) Victory Corps (3); Swimming Team (W3); Hi-Y (3, Treas. 4); Slide Rule Club (4).

JUDITH HUNTER • Mask and Mime (2, 3, 4); Senior Play Comm.; Spanish Club (2); Service Club (2, 3, 4); Girls' Sports (2, 3); Fall Play (3, 4); Girl Reserves (2).

MILDRED HYDE • Art Club (2, 3, 4); Guidance Council (4); Outing Club (2, 3); Mask and Mime (3, 4); Nominating Comm. (3); Senior Play Comm. (4); Red Cross Council (2, 3).

MARILYN ILGER • Red Cross Council (2, 3); Service Club (2); Mask and Mime (3, 4); Literary Club (4); French Club (2, 3); Girls' Sports (3, 4); "Hi's-Eye" (3) German Club (4); Outing Club (3).

JUNE JAFFEE • Treasurer (2, 4); Girls' Sports (2, 3, 4); Senior Play Comm.; Guidance Council (3); G.A.C. (4); Service Club (4); Outing Club (4); "Hi's-Eye" (4); National Honor Society (3).

JULIA JARVIS • Girl Reserves (2, 3, 4); Victory Corps (3).

JOHN JESKE • Football (2, 3, 4); Hi-Y (3, 4); Senior Play Cast; Christmas Tableaux (3); Latin Club (2); Slide Rule Club (4); Red Cross Council (4); Annual.

JOYCE JOHNSON • Triple Trio (4); "Hi's-Eye" (4); Fall Play (4); Senior Play Comm. (4).

KATHERINE ANN JOHNSON • Mask and Mime (2, 3, Council 4); Literary Club (3, 4); Writers' Club (2, 3); Outing Club (3, Sec.-Treas. 4); Red Cross Council (3, 4); Girls' Sports (3).

LESLIE JOHNSON • Track Team (2, 3, 4); Cross-Country Track (W4); Swimming (4); "Weather Vane" (2, 3, 4); Art Club (Sec. 2, Pres. 3, 4).

MARY KINDREGAN • Service Club (2, 3, 4); Mask and Mime (2, 3, 4); Hockey (2); Red Cross Council (2, 3); Jr. Prom Comm.; Senior Play Comm.; Nominating Comm. (2, 3).

ELIZABETH KININGHAM • Mask and Mime (2, 3, 4); Senior Play Comm.; Journalism Club (2, 3, 4); Fall Play Comm. (3, 4); Triple Trio (4); All-State Chorus (4).

ALBERT KLINGELHOFER • German Club (2, 3, Pres. 4); Chess Club (Pres. 4); Outing Club (3).

ANNA LOU KRAMER • Mask and Mime (2); Literary Club (3, 4); Latin Club (2); Senior Play Comm. (4).

CHARLENE LAMBE • Mask and Mime (4); Spanish Club (3); Victory Corps (4); Service Club (3); Outing Club (2); Girl Reserves (3); Hockey (2).

ROBERT LAMBERT • Football (2); Track (2); Catalyst Club (3, 4); Slide Rule Club (3, 4); German Club (4).

EVE LAPEYROUSE • Writers' Club (2, 3, 4); French Club (2, 3, 4); Literary Club (3); "Weather Vane" (3, Editor-in-Chief 4); Catalyst Club (3); Annual.

JOHN LEEMING • Writers' Club (2, Treas. 3, Pres. 4); Forum Club (2, Vice-Pres. 3, Pres. 4); Honor Society (3, 4); Literary Club (4); Golf (3, 4); Student Council (4); Annual (Editor-in-Chief 4).



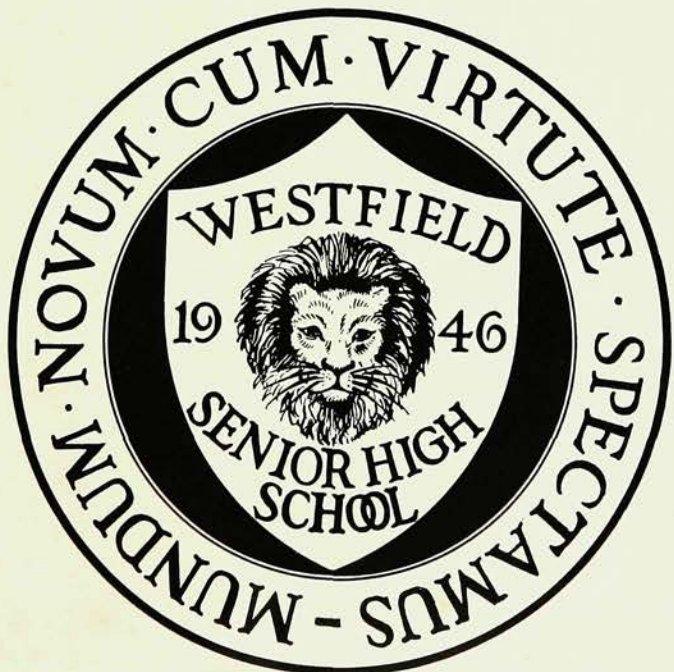
FOREWORD

We have had our work, we have had our play, we have had our laughs together. Here is a short reminder of each to take along with us. In the years to come as we find places in the world, may it give us pleasure to look back through these pages. Here's health and happiness to us all from us all!

JOHN LEEMING, Editor-in-Chief.

TABLE OF CONTENTS

DEDICATION	4
ADMINISTRATION AND FACULTY	6
SENIORS	8
JUNIORS	44
SOPHOMORES	47
ACTIVITIES	51
ATHLETICS	75
FEATURES	85





THE

-Betty Hanshew-



WEATHER VANE

1946

*Local
History
974.939
Wes
1946*

Westfield High School

WESTFIELD, NEW JERSEY

Dedication



As an expression of our gratitude for her genuine understanding and her sincere interest in the welfare of the school and the students, we, the members of the Class of 1946, dedicate this twenty-fifth issue of the **Weather Vane Annual** to Miss Mildred G. Fox.

With her understanding, her winning personality, and her ready smile Miss Mildred C. Fox, a member of the Westfield High School faculty for the past four years, has won the friendship of all. Her close relationship with the students and their problems has been instrumental in making her recent appointment as Guidance Counselor a source of satisfaction to everyone who knows her.

Born in Pennsylvania, Miss Fox attended Ursinus College at Collegeville, Pennsylvania, from which she received the degree of Bachelor of Arts. The Master's degree was conferred upon her by New York University where she is now taking a course in guidance.

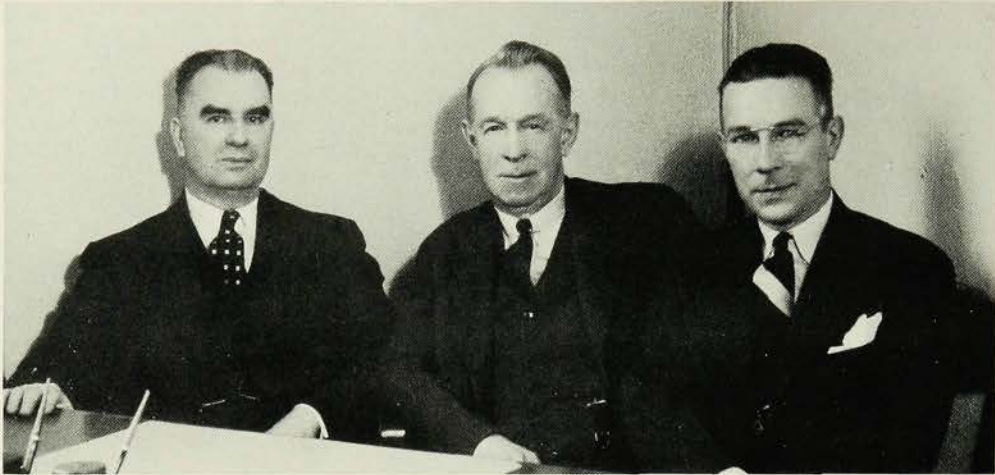
After graduation from college Miss Fox accepted a teaching position in the Mahanoy Township High School, where she was head of the Social Studies Department. From there she came to Westfield. Here she has taught P.A.D., English, history, and geography and in the extra-curricular field has served as a faculty adviser to the Guidance Council and the Forum. In both of these student organizations she transmits her zeal for the development of discussions of current problems to the members.

A versatile person, indeed, Miss Fox finds time aside from her work for reading biographies and books on international affairs, for music, drama, dancing, and sports. During the summer one may find her traveling, for she enjoys the glories of the country, or vacationing with her family and little niece and nephews in the mountains of Pennsylvania.

Although the Class of 1946 is leaving the halls of Westfield High School, the guiding influence of Miss Fox will carry many of its members successfully into the future.



ADMINISTRATION



PRINCIPAL — DR. FRANK NEUBAUER
SUPERVISING PRINCIPAL — CHARLES A. PHILHOWER
ASSISTANT TO THE PRINCIPAL — HAROLD THOMPSON

GUIDANCE DEPARTMENT

MISS J. ISABELLA DODDS
MISS MILDRED G. FOX



OFFICE ASSISTANTS

MISS DERBY
MISS VITAGLIANO
MISS MORTON
MRS. RIKER



AND FACULTY



Front row: Wanda Darling, B.A., M.A.; Margaret Dietrich, B.A., M.A.; Gertrude Swift, B.S., M.A.; Frank N. Neubauer, B.A., M.A., D.Sc.; Harold Thompson; Mary Colley, B.A.; J. Isabella Dodds, B.A., M.A.; Muriel Engelke, B.S. Second row: Noel Taylor, B.S., M.Ed.; Napoleon Jean Papale, B.A.; Gertrude E. Foutz, B.A., M.A.; Louise Theurer, B.A., M.A.; Janet M. Grimler, B.A., M.A.; Dolores W. Bordner, B.A., M.A.; Harriet S. Howard; Charles Young, B.A.; Milton Luxembourg, B.S.; Walter E. Johnson, Jr., B.S., M.A. Third row: Fritz Heim, B.S., M.A.; Ruth Cameron, B.A., M.A.; Eileen M. Price, B.A.; Marion Scott; Mildred G. Fox, B.A., M.A.; Mary B. Sitler, B.A., M.A.; Stella Hemphill, B.A.; Olive Hammell, B.S.; Annie P. Hewitt, B.S., M.A.; Robert L. Duncan, B.S. Fourth row: Weyman O. Steengrafe, B.S., M.Ed.; Gomer Lewis, B.S., M.Ed.; Chester Olinger, B.S., M.A.; James C. Montgomery, B.S., M.A.; Samuel Bunting, B.A.; Bart Ellis, B.A., M.Ed.; Gaston B. Gesner, B.S., B.A.; Joseph Freeman, B.S.; Le Roy Bloomingdale, B.A.; Edmund Allen, B.A., M.S. Absent: Dama Hill, B.S., M.A.; Alice F. Pelton.



THE SENIORS

1. The "7"
2. Jim
3. Betty Ann
4. John
5. Self Support
6. Locomotive
7. Ann

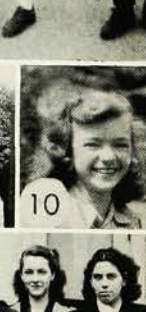


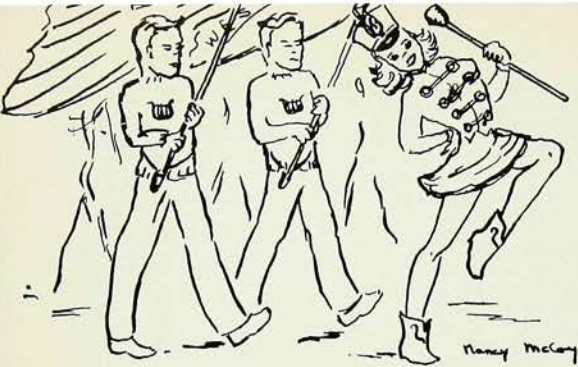
8. Thelma
9. Margie
10. Mary
11. June
12. Pardon me
13. Sittin' Pretty
14. Posing

President Loren Rodewig
 Vice-President John Zeiller
 Secretary Shirley Heitkamp
 Treasurer June Jaffee
 Adviser Mr. Steengrafe



CLASS OF 1946





ERNEST ANDERSON

Ernie spends a lot of his time keeping Western Union going, but he finds time to go out for the mile in track and cross-country. As a railroad enthusiast, a nature lover, and a creator of painful puns Ernie scintillates.



KENNETH ALBRIDGE

You are likely to see Ken down at the "Y" after school, either bowling or playing a mean game of basketball. He is the possessor of a different kind of humor, and is a true friend to all who know him.

NORMAN ANDREASSEN

This tall fellow is very fond of skating, fishing, and hunting. Norm, who was greatly needed on the track team, did all that was expected of him, and that's a lot. Although he is quiet, he is lots of fun.

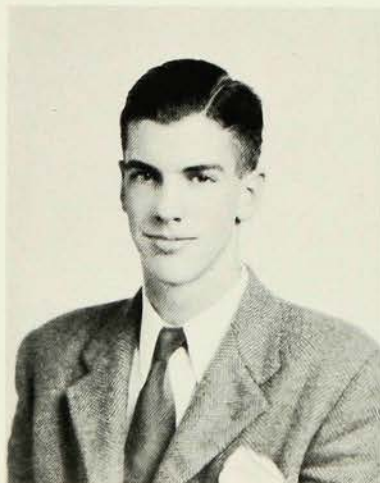


ANN ALLEN

Gay, vivacious Ann can often be found at hen parties where her gay spirit brightens the evening. Lovely hair and chic clothes make Ann one of the most attractive members of our class. She's loads of fun to have around.

LOUISE ARMSTRONG

This All-State Chorus star takes her musical career seriously—and with good reason. Louise's beautiful contralto voice has often thrilled audiences, and she has a fine stage presence. Stamps, antiques, and even beauty culture are among her interests.



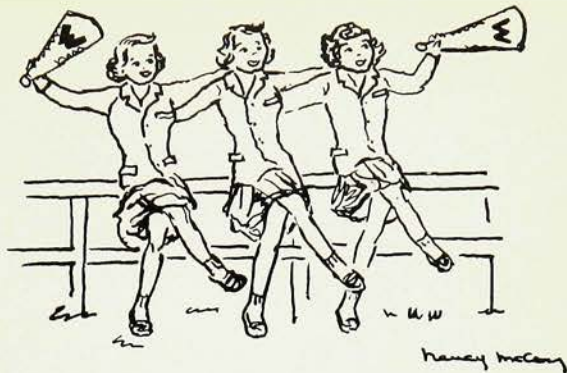
EDWARD ALLEN

Here is a star half-miler who likes hunting and going to Union. In school he prepares himself for a future in the medical profession. As a seafaring life has a certain fascination for Ed, he prefers vacations on the sea.



RUTH BACON

We believe that Ruth prefers the social atmosphere of high school to the educational program. At any rate she shows a predilection for football players and Milk Bar activities. This attractive little girl is also fond of argument in the classroom.



WILLIAM BACON

If you notice a tall, serious boy around school, that's probably Bill. His willingness to try and determination to do will be factors in future success. A deep booming voice and a dry type of humor characterize this swell fellow.



EVELYN BAKER

"Ebb" is a petite girl with a mischievous glint in her eyes. Her bubbling personality, sense of humor, and constant flow of small talk make every party complete. Socially minded "Ebb" is a member of the Junior Auxiliary and also sings in the chorus.



ESTHER BARRANCO

Blessed with an adorable smile and shining dark locks is this smartly dressed and perfectly groomed senior. Because she is sweet and friendly too, we know Es is bound to go places. What a kindergarten teacher she will make!



ROBERT BAILEY

Bob moved away three years ago and came back to be with us this year, until the service claims him. Quiet and friendly, this enthusiastic Junior Essex trooper likes horseback riding and shooting, and finds trig the bane of his existence.



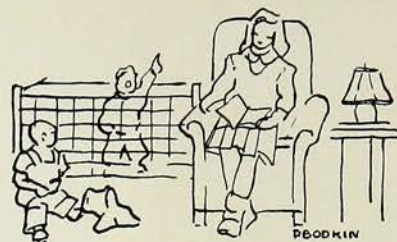
ROSINA BAVOS

Rosie, well known for her friendly greetings and her jokes, makes up for her diminutive stature by her delightful personality. At present one of Rosie's hobbies is collecting poems; another is dressmaking. She expects to make the latter her vocation.



RENA BAVOSA

This sturdy, indomitable girl is a pleasant and attractive classmate who aspires to be a pianiste. Though quiet she is full of fun and is devoted to her athletic brothers. That Rena takes four hours of sewing suggests refreshing practicality.



DOROTHY BECK

Reserved and dreamy, Dottie loves the finer things of life. Nevertheless she is a lot of fun. Everyone is a victim of her hobbies, psychology and palmistry. At present her ambition is to teach, but perhaps she'll change her mind.



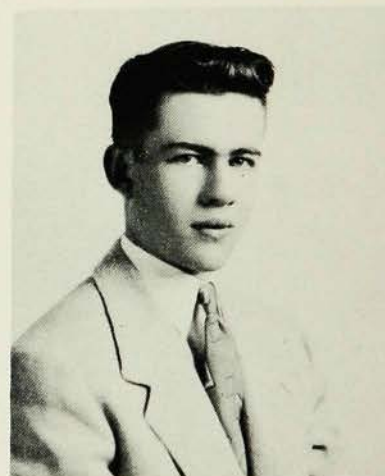
JACK BEIERLE

Have your pockets felt light lately? Joe the magician is rather deft in the fine art of picking pockets, with which he has amused countless audiences. Besides being quick of hand, Jack argues convincingly in Forum and plays the trombone.



HARRIET BECKER

Harriet, known to all for her smiling, cheerful disposition, enjoys laughing and conversing when she is not reading. A winning way with children makes her popular with parents as well as with her high-school friends. General office work is her goal.



EDWARD BELCHER

Ned, romantic tenor and amateur actor, was our speed demon, but has been retired until October, 1946. Mathematical genius and scientific ability will certainly help in his chosen field, electrical engineering. His friendly smile and cheerful philosophy win many friends.

MILDRED BIDDULPH

A whiz on roller skates, "Mickey" can be seen every Wednesday (and any other day she can get her skates on) at the Plainfield Roller Rink. A natural at art, Mickey has turned from dreams of a secretarial career to commercial art.





ANN BRAHAM

Under Ann's serenity there are many hidden capabilities. Great depths of thought and feeling give her a wide understanding of people and life. An avid reader, she likes the fantastic and is very imaginative. Great potentialities augur future success.



GRACE BIRNIE

Brown eyes — the biggest in W.H.S. — sparkle enthusiastically at everything and everyone. They belong to Grace, the tall, slender complement to such qualities as graciousness, friendliness, sincerity, artistry, serenity, and cheerfulness that endear her to many.



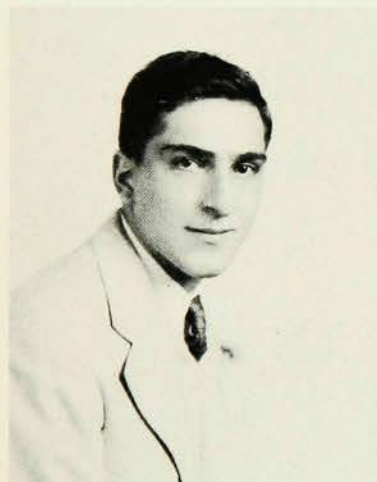
BEVERLY BRANDT

Vivacity, a neat sense of humor, and loads of musical talent—that's Bev. She has long been known for her beautiful voice and the traditional Brandt eyes. How about that "frat" pin you're sporting? Too bad Lafayette isn't co-ed!



MICHAEL BIVONA

Mike is a real worker. This is evidenced by his Herculean task in the stand at Recreation Field. Every afternoon he can be found driving a mail truck or carrying a mailbag. Working on his model railroads occupies spare time.



BETTY BROBACK

Betty's beautiful blonde hair and "sharp" clothes make a striking picture. This "brain" of the senior class excels in sports as well as numerous other activities. Her charming personality, together with originality and dependability, makes Betty an ever-welcome friend.



KATHLEEN BOXHILL

"Taffy," as she is known to her friends, thrives on algebra, movies, and the newest records. Frequently you can find her laden with books. Her sweet personality and snappy smile will continue to win Kathleen many faithful friends.



JOHN BUSHBY

"Bush," who served as an engineer and nose gunner on one of the Army Air Corps' B-24s, returned to finish school after an exciting career with Eighth Air Force over Germany and France. He plans a career in aviation.



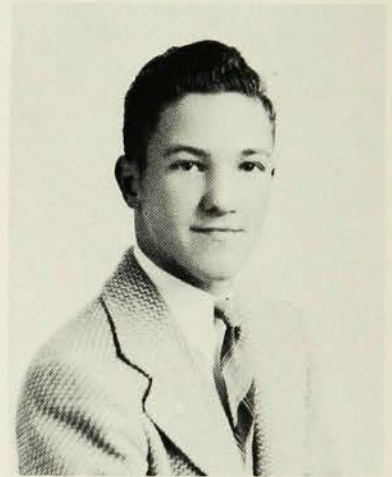
JACK BROOK

This connoisseur of modern American jazz can tell you anything you want to know about recordings. He is also interested in sports and is an outstanding quarter miler. As an ardent Dodger fan, Jack probably tops them all.



RICHARD CADMUS

Two years ago Roselle lost a swell boy by the name of Dick, and since then he has become well known around these parts. This president of the Red Cross excels in swimming the back stroke and in emitting subtle humor.



MARILYN BULL

Bull, well known for her droll humor, is everyone's friend. Her "driving" and nonchalance have made her famous with teachers and students alike. You can usually see her tramping up to Spanish II five minutes after the late bell each day.



JAMES CHAMBERS

Nothing ever fazes easy going "Champ" except a female passer-by. Excelling in football, basketball and baseball, he also draws and can make all kinds of music sound forth from a willing piano. He's a "lovable" boy, isn't he, Coach Freeman?



ROZELMA BULLOCK

Rozelma is known to all not only for her ability to make people laugh but for her contributions in acting in the Mask and Mime Club and the dramatics class. What's more this gal has plenty of that old Westfield spirit.





EDWARD CHEASELEY

The main worry of "Cheese" is trying to start his so-called coupe each morning. Ed, an ardent follower of the Cincinnati Reds every summer and of Army football every fall, has among his other loves Artie Shaw and track.



BRENT CLARK

Brent is one of the men you can't hold down; in football he was always in there fighting his hardest. But he possesses brain as well as brawn. This good listener often catches us off guard with a side-splitting joke.



JOHN CHIRONNA

Mr. Ellis will certainly have a hard job next year trying to fill out jersey #30 because this year it had in it one of the best linemen in the state. This well-liked football mainstay is destined for success.



JAMES CLARK

The grumpy Mr. Little of "The Fighting Littles," in reality a good-natured farmer to be, has had much practical experience on Mr. Buriss's farm every summer. His gun, Phyl; tractor, Alice; and bass violin, Betsy, are foremost in Jim's affections.



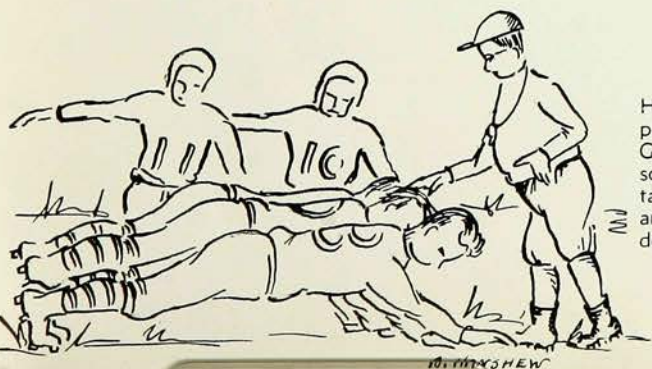
EDWARD CHRISTIAN

Ed, known to his friends as "Toad" or "Enrico," is the mechanic and driver of the class. Always doing something and being a wonderful friend, this star tuba player is bound to succeed as an aeronautical or auto mechanic.



GEORGE COALE

Have you a question about chemistry, physics, or trig? Well, just see George. Besides achievements in the scholastic field he performs in the tank and on the gridiron. This longest and lankiest of seniors is a swell and dependable fellow.





LOIS COHEN

This cute, freckled band librarian has a finger in many pies. Although often seen flying around as feature editor of the Hi's-Eye, Lois would like to enter the radio announcing and dramatic field via Emerson College in Boston.



WILLIAM COMRIE

Bill shines in sports, for he is just as efficient on the basketball court as on the baseball diamond. Indeed, he is a letterman in both these sports. Taking to the stage this year, he delighted us as Haskell Cummings.



MARILYN COLBY

One of the peppiest cheerleaders we've ever had in W.H.S., "Colby" is always flashing that sparkling smile around school. Often seen speeding along in that '37 Chevy, she's a terror on the road. We hope she really enjoys teaching kindergarten.



ROBERT COOLEGE

Bob is noted for his famous tackle in the Summit game, and also as an outstanding member of the swimming team. His easy laughter is often heard and is one of the many things which make him genuinely liked by everyone.

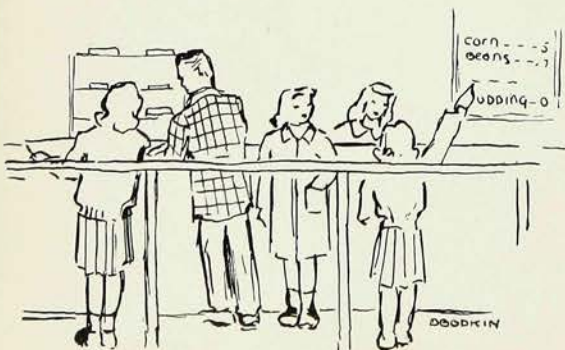


MILDRED COLLINS

Though new to Westfield, Millie showed poise that enabled her to fit into our "family circle." Among her hobbies are roller skating, ice skating, movies, and jitterbugging. Nevertheless, she finds time to render "service with a smile" to all.

YVONNE COOLEY

Everyone's friend and a very nice girl to have around—that's Yvonne. Possessor of an exceptionally fine alto voice, she graces our music department and is also an able student. Here's wishing the best to a girl who deserves it!



VIRGINIA DANNEHOWER

Another of the famed Dannehower clan, Ginny has added to the reputation of the tribe. Writer and actress, our petite "Gin" has friends sprayed from here to Pennsylvania and back, all coming to her for advice, zany chatter and laughs.



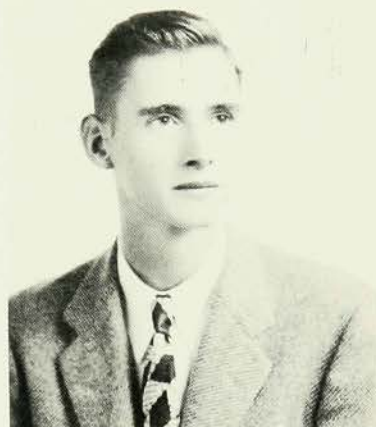
SUZANNE CORRELL

"If you knew Suzie like I know Suzie —oh, what a gal!" Sue is quite a gal. A tall blonde with a contagious giggle, wonderful personality and sense of humor, she is always surrounded by groups of friends, male and female.



JAMES DAVIDSON

"Skinny's" that long, lean, and lanky man whose sense of humor makes him welcome everywhere. Jimmie knows all there is to know about jazz; he's a star on the diamond and basketball court; and he has a host of warm friends.



JUNE CREHORE

A member of the famous fourth period physics class, June possesses brains as well as pulchritude, personality, and pep. When you hear a gifted gabber, you'll soon come upon this spirited blonde dazzler. Dame Fortune will smile wherever June goes.



BETTY ANN DAVIES

"Bet" is that cute blonde with the cheerful hello and a smile that wins every Tom, Dick, and Jack. She can be found any afternoon "tooting" down Euclid. Betty Ann will be well remembered for activity in sports and her numerous original expressions.



JACK DAGASTARO

That slim, shy fellow with black wavy hair is Jack. He may seem shy, but wait until you know him. Though his main interest is here in school, he is interested in naval aviation and likes to swim and fish.





PHYLLIS DODGE

This little, little girl with the short, curly red hair and an infectious giggle answers to the name Phyl. Wellesley's loss was Westfield's gain when this package of efficiency, competence, scholastic and musical ability, and really riotous wit blew into town.



ROSE DE CELLIS

Here is a slim, shy, quiet, dark-haired senior who always attends to her own affairs. Her occasional smile lights up her whole countenance. A good student and mathematician, Rose really knows the answers when something has to be added.



MARILYN DOWNS

Her shiny, well-styled page boy locks, sparkling, innocent blue eyes, and generous winsome smile will help to win Marilyn success in her nursing career. "Miss Innocence" is always ready to lend a helping hand to her many friends.



ALFRED DEMPSEY

Al's that tall, good looking guy with the wavy hair who can usually be seen dashing off to another club meeting. This future lawyer divides his leisure time between golf and chess. That's a good-lookin' corduroy jacket, Al!



BORGHILD DUEFIELD

"Smooth" is the word for "Betty." A pretty blonde with a bright smile and nice clothes, she has a sense of humor, a love of fun, and makes a loyal friend. She is an ardent roller skater and movie goer.



GEORGE DENNY

At heart hunter, camper, and farmer, George is an ace at gun collecting and sharp shooting. A bit quiet around school, where he manages the swimming team, he is transformed when he heads his father's Mercury towards "field and stream."





NANCY EBERSOLE

Nancy, who formerly attended school in Elmora and Akron, entered W.H.S. last fall. This competent student is noteworthy for quiet charm and a co-operative spirit. She is interested in art, dramatics, and music, and performs on the recorder, an Elizabethan flute.



CHARLOTTE ENGLE

She's small and chic, has a personality that's tops, and warbles like a bird. Her peppy cheerleading has taken us through the year in the best of spirits. We couldn't have done without her. Congratulations on the beautiful ring, Charlotte.



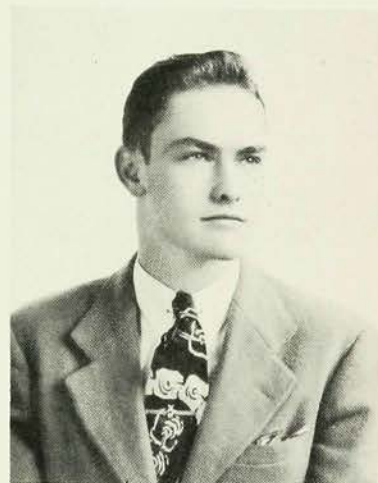
KATHERINE EHRNHOLM

Kathy, that slim miss who eats her fill, is the "life of any party" because of her dynamic personality and that laugh of hers. Most of us know Katherine with a twirling baton in her hand, and her strut is tops.



WILLIAM EWING

Bill, a quiet guy around Westfield High, loves to travel. He has journeyed many times to Canada and Chicago. His major hobby is chicken raising. Though he works in a bank, he always finds time to make something for his chickens.



WINNIE EMERY

Vivacious, facetious, and always into things—that's Winnie. Although she is occasionally a thorn in a teacher's flesh because of continual chatter, she's loads of fun. If there's ever a record you can't find, Winnie's the girl to turn to.



JOSEPH FEDORKA

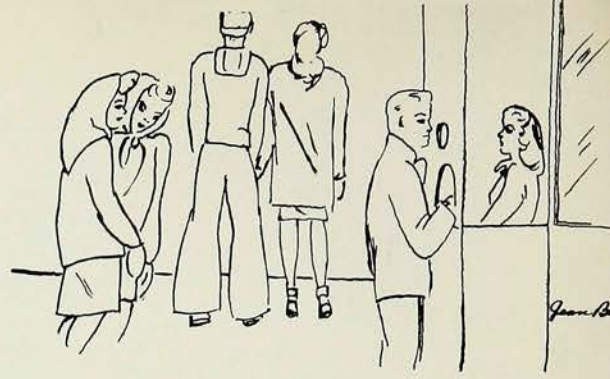
Joe, a Navy dischargee, is the outdoor man of our class with fishing and hunting rating high. Friendly, well informed, and fond of debating, Joe likes "wine, women, and song." How about a hunting story, Joe? Shot any "dear" lately?





ROBERT FISCHER

This chap is a natural for a second-hand car dealer. Our quiet woodworker and auto mechanic is on his third car, a doorless four-door '31 Chevy sedan. Tall, brown-eyed Bob maintains a steady average in his studies and prefers math.



MARGERY FLEISHMAN

Margie, tall, sophisticated, and dark haired, has that rare talent for wearing clothes well. Pretty blue eyes that sparkle like the devil when she smiles, which is often, are her most outstanding assets. The most sincere friend you'll find is Margie.

THEODORE FOSTER

Ted, the mathematical genius whose theories on the jet propulsion astound even the omniscient Mr. J., will undoubtedly make the first trip to the moon. This member of the brain trust makes good marks and hopes to attend the University of Michigan.



LIBBY FROLICH

Libby is that vivacious brunette with an uncontrollable and contagious giggle. Liked by all, Lib has an effervescent personality and is overflowing with originality. A competent lass in the classroom and on the athletic field, Libby is an outstanding classmate.



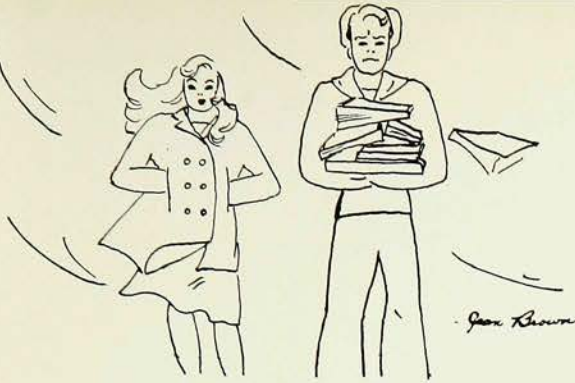
ROBERT FLUCKIGER

"Fluck" has returned from the battlefields of Europe to complete his interrupted senior year and add his name to the academic honor roll. He is also applying himself to the study of art, for he expects to specialize in interior decorating.

LETTY GLIMM

Letty is that vivacious blonde with the infectious giggle. This "angel" is in many activities around school, her specialties being the Christmas Tableaux and the HI'S-EYE. Her charm and good looks assure her fun and success wherever she goes.





DOREEN HALLOCK

Although her charm and her lovely smile are now gracing the halls of Dedham High, the Class of '46 will always remember "Dorie." Possessed with a talent for making friends wherever she goes, Doreen will go far in the world.



DAVID GREEN

David, formerly a masculine counterpart of the Junior Miss, has really grown up. He has had an active high school career, cheerleading, diving, swimming, writing, and acting. His last stage performance was as "Dickie," but his best act is as David.



CLAIRE HAMILTON

Claire, one of our sweetest senior girls, is known for her really solid piano playing, her record collection, and her skillful hockey game. Popular with everyone, Claire's lots of fun, and her winning smile makes her a grand girl to have around.



PEGGY GRIGGS

Possessing an ever-ready smile, Peggy can always get you out of the dumps. She is the mainstay of the flute section of the band and her brown eyes are constantly seeking new interests. With her pleasing manner, we know she'll succeed.



THOMAS HARMS

With a finger and sometimes a foot in every social pie, Tom was a stalwart football and track man, a Hi-Y president, and a wicked driver of car and motorcycle. Witty quips and comebacks make him a popular senior.



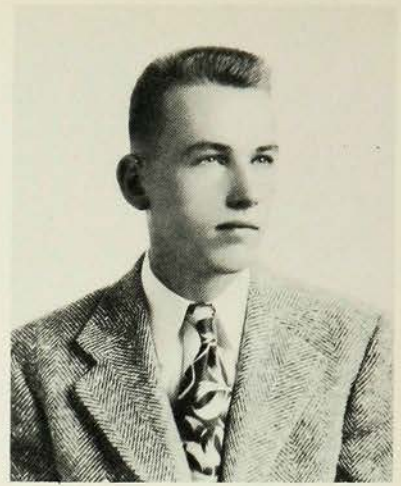
NANCY GUTHRIE

Although she appears quiet, Nancy's witty remarks and infectious giggling keep any group in constant laughter. The talent and perseverance of this friendly lass with beautiful brown hair will surely make her successful as a dress designer in the future.



EDWARD HERUSKA

If you want to see Ed just go to the "Y" where he can be found playing ping-pong, basketball or numerous other games. Although he's quiet in school, Ed usually is one of the first to crash the hen parties.



ROBERT HART

This friendly, pleasant fellow really can speak French fluently and has even taken the lead in French plays. As a collector Robert prefers comic strips. When illness made it necessary for Bob to be tutored privately, we certainly missed him.



BARBARA HILL

Barbara is a mixture of sincerity, sympathy, helpfulness, and sportsmanship. Besides all this she has literary talent. Have you ever read her poems, book reviews, or sport articles? All your many friends, Bobby, know you will be happy and successful.



JAMES HEBDEN

Jim has been a star back on the Varsity for two years and excels in basketball, track, and baseball. He is an A student and president of the Student Council. His humor and his smile make him popular everywhere.



MARJORIE HOHENSTEIN

Marge has the good qualities of dependability and leadership, but she combines these with an indescribable zest for living. Well known for her great cheerleading and her superb hockey style, Marge can be expected to distinguish herself.



SHIRLEY HEITKAMP

Heit has won a place in our hearts, for her sparkling personality and winning friendliness can't be beat. In band, class office, and tableaux she excelled. Living "up the mountain" does not faze her, for she's now a "Drivin' Woman."



L. Weaver



WILLIAM HOLADAY

Willie, president of the band this year, is one of the real spark plugs of our class. His wit and musical ability are known throughout the school, but the one thing he will always be remembered for is that famous Model T.



ROBERT HOLLOWAY

Hear something rattling down the road? It's probably Bob in his "Model A." Go! "Hol" has that dry "Indiana" humor which shows up at the queerest times. This happy-go-lucky boy is well liked by both gals and guys.



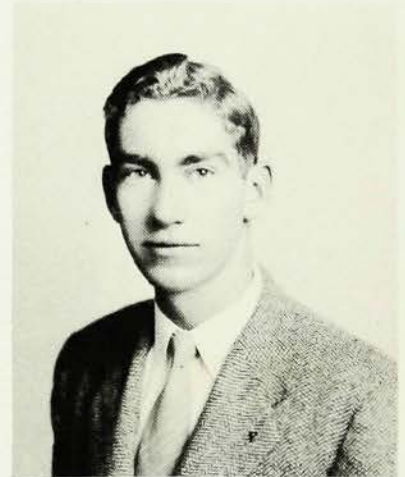
WALDRON HOLCK

Whitey, as he is known to friends, will long be remembered for his performance in "The Fighting Littles." Making All-State Chorus was one of his achievements in the Music Department. A junior class member takes up most of his spare time.



ROGER HORNER

Roger is an active member of the Hi-Y where he serves as treasurer. He is also a fine swimmer and life-saver as his classes in swimming will attest. Roger's wit and dynamic personality make him a welcome member in any gathering.



EDWARD HOLDEN

This three-year ace drummer of the marching band tackles everything he does with unusual enthusiasm. Ted spends a great deal of time at home working with chemistry and radio, but driving that abused station wagon is his favorite pastime.



L. Weaver

JUDITH HUNTER

Tall, blonde, and beautiful, and generally described as a "bear," is our girl Judy. A personality that is a combination of friendliness and sympathetic understanding makes her popular. "Hunt" will be remembered for her ability to "polish the apple."





MILDRED HYDE

Artistic Milly is the gay, blue-eyed blonde, always found driving her beloved "Zephy" around town packed full of friends. This cheerful, optimistic girl plans to adorn a white cap in the nursing profession after she leaves the halls of W.H.S.



JUNE JAFFEE

Whether running an S.A.T. drive, collecting dues, managing basketball, or running down the hockey field, June is the efficient gal on whom one can rely. With her winning smile and friendly personality she is bound to succeed in all undertakings.



THOMAS HYSLIP

Tommy, commonly known as "Chester," is a boy who finds excitement in driving and riding around in cars. In his garage work he enjoys repairing and delivering them. An attractive personality makes "Chester" a popular lad in any crowd.



JULIA JARVIS

Julia, known as "Stuff" to her friends, is a glamorously attractive number and has a superb sense of humor. She is a fast typist as well as writer and has kept many of the service men happy. J.J. is Jolly Julia.



MARILYN ILGER

Quiet and interested in everything, Marilyn, the Mrs. Anthony of our class, will lend a sympathetic ear to the outpourings of anyone's heart. An agile hockey halfback and an excellent basketball player, she has the push to get ahead.



JACK JESKE

A favorite around school with both boys and girls, "Mouse" is known for his wonderfully corny humor, insatiable appetite, skilled horsemanship, and inconceivably bad eyesight. He really works hard in school and has played football for three years.



MARY KINDREGAN

Mary, noted especially for her good looking wardrobe, unfailing neatness, and integrity, has a swell personality. She's always busy with one activity or another, and willing to give her best to W.H.S. Mary is popular with both sexes and dances superbly.



JOYCE JOHNSON

New to W.H.S. this year, Joyce lost no time in acquiring friends of both sexes. Her accent, straight from the South, has become "Westfieldized" under the influence of hen parties and dances. Her genuine ability will win her great success.



ELIZABETH KININGHAM

Here is one vivacious brunette with big brown eyes, a cute turned-up nose, and quite a personality. As a singer, Libby's tops, and we bet her talent will really take her places. There's never a dull moment with Lib.



KATHERINE ANN JOHNSON

Kitty is the darling little gal with big brown eyes she uses to advantage. Knitting, and singing in the girls' chorus and the choir are her favorite pastimes. Always willing to help others, Kitty deserves good fortune in the future.



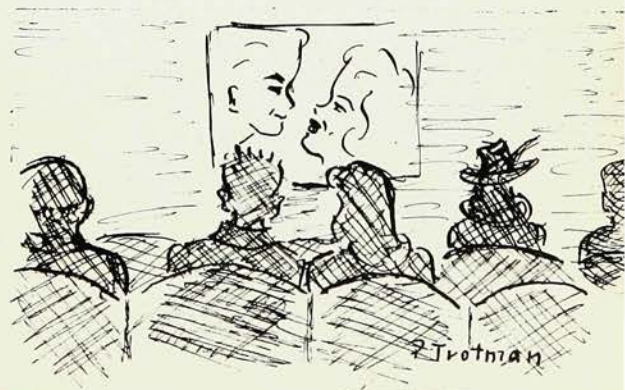
ALBERT KLINGELHOFER

One of the quieter but smarter members of our class, Al has made his mark as the alert manager of the Chess Club and a practically indispensable president of the German Club. Athletic propensities reveal themselves in outside activities.



LESLIE JOHNSON

As a Boy Scout he is certainly tops, and he could enjoy a chat with Mr. Philhower on Indian lore. Now that we have seen our class seal, we also realize that Les is an original artist who should go far.





DOROTHY LANTZ

Though Dot is a lively girl who loves roller skating and other amusements, she is most remarkable for her pride in her family. She can boast of three brothers, a sister, and a dog in the service of our country.



ANNA LOU KRAMER

This "southern gal" with the quiet and sincere nature is always dependable and can often be found rehearsing the bells in the band room. Anna Lou is a good student and will surely succeed in her ambition to become an architect.



EVE LAPEYROUSE

Just go to A-108 to see where the brains of the French class are! But then, you'll see lots more than that in Eve who exhibits great journalistic and artistic talent. Eve's wry and subtle humor sets us howling.



CHARLENE LAMBE

"Lambie" is that little gal with the sparkling giggle and laughing brown eyes. She is well known within these portals for the super "figger" and her "mean" warbling. All this plus a really wonderful personality makes our "Lambie" tops with all.

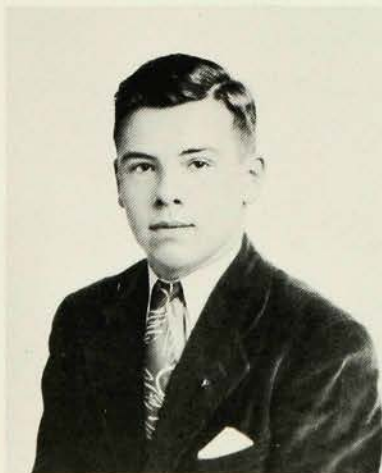
JOHN LEEMING

Presenting unusual initiative in his school work, John has been blessed with the job of creating our yearbook. This three year bass drum "maestro" and active member of many organizations possesses a subtle humor that makes him welcome in any crowd.



ROBERT LAMBERT

"Hoss" is the partner in crime of the famous Model T. As Pfc. Lambert he is a member of the State Guard; as Lt. Lambert he is in the Junior Essex Troop. No ladies' man, Bob is nevertheless a swell fellow.





JEAN LEVY

Who's that cute little green-eyed gal with the really keen sense of humor? Jean Levy, of course! Her "mean" bridge and driving tactics are enough to send anyone under the nearest table! All ribbing aside, Jean's wonderful personality endears her to all.



JEANNE LUFT

Who's that effervescent blonde gal? Why, it's "Lufty" of course. Constantly flitting from place to place, Jeanne's hard for even longer legged people to keep up with. Her efficient manner and pleasant personality will help fulfill those secretarial aspirations.



JEAN LEWIS

Jean is the quiet, unassuming, little brunette with the soft dark eyes, who always has a winsome smile and a cheery greeting for her friends. This rather reticent little person is fond of lakeside and seashore vacations and loves sewing.



MARJORIE MACKAY

Marge, one of the quieter members of the class of '46, spends some of her spare time writing to English and French correspondents. This girl's quiet, unassuming manner has won her many friends in her two years in Westfield High School.



ANN LUCCHESI

Brunette Ann is frequently seen racing up and down the hockey field or basketball court; yet she still has time to be tops in her studies. Our intellectual "Babe" will be remembered for her witty contributions to fourth period English.



WARNER MACKAY

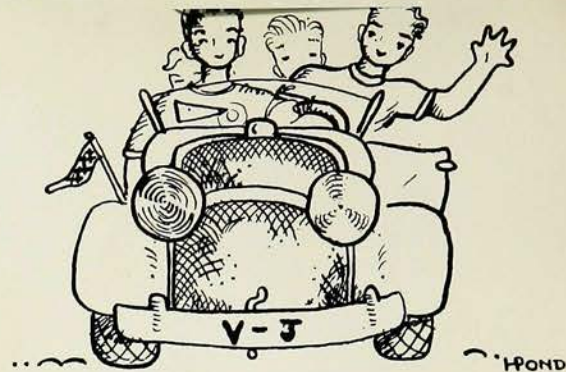
This famous "22" is known to all who follow football. "Snookie" is a brain, but he also does equally well in other things besides his studies. Where did you get that build? From Tarzan? Here's to your success as an engineer.





BARBARA MacMILLAN

If it's an answer you're looking for, Mac is the person for you. She knows them all. One of the few in our class who have acting ability, Mac likes and can really "do right by" character parts such as "Hilda."



JANE ELLEN MATHES

Her friends call her "Janey," but to acquaintances she is Jane Ellen. Her big blue eyes are always twinkling; and if she has ever been serious, we have never known it. At present she is studying to be a fashion designer.



ROSALIE MAROTTA

The short girl with gleaming eyes and a winning smile—that's our Ro. This jitterbug is also a bowler and skater. Parties don't begin until Ro comes rushing through the door. Liked by all, this little package is bound for success.



MARJORIE MATHIS

One of the girls in the Mathis harem, Marge isn't heard from around school much except for a few buzzes now and then in class. A pleasant smile and manner and an enigmatic look characterize this well-liked, happy-go-lucky girl.



DAPHNE MASON

This tall, carefree senior is gifted with a ready wit, which adds to any conversation. She is always dressed up to, or ahead of, the latest style. "Daffy," an ardent lover of jazz, can be "sent" any time by "The Hawk."



SHIRLEY McCARTHY

Who is always ready to lend her friends money, to go a-hostelling with Miss Theurer, and to swing through the figures of a square dance? Shirley, of course. Sparkle, verve, and a cheerful spirit make this senior truly popular.



PETER MEYER

Pete and the "gray ghost" are omnipresent entities around town. Even though he says it's a wreck, he makes that car sit up and beg for mercy. With his inventive genius he'll surely make an excellent mechanical engineer.



ELIZABETH MEIER

Quiet and scholarly Betty always has a cheery greeting for all. Her pleasant manner and friendliness are well liked by both classmates and teachers. Her high grades will enable her to go far in the field of teaching.



ADELE MITCHELL

Always willing to help, "Mitch" pitches in without a word and comes through with a job well done. To her friends she is a grand all-around gal who will pull them out of the dumps with her encouraging words.



MILLICENT MERKER

Millicent is that lively blonde with those bright blue eyes. Mike's dreamy expression might fool you, for she is really a whiz in action on the hockey field. Quiet poise and a keen sense of humor have won her many friends.



VINCENT MONE

A pleasant and helpful nature has made Jim popular with both students and teachers. This shy fellow's many friends regretted that his rising career on the gridiron was ruined by an accident in the opening game. Good luck to you, Jim!



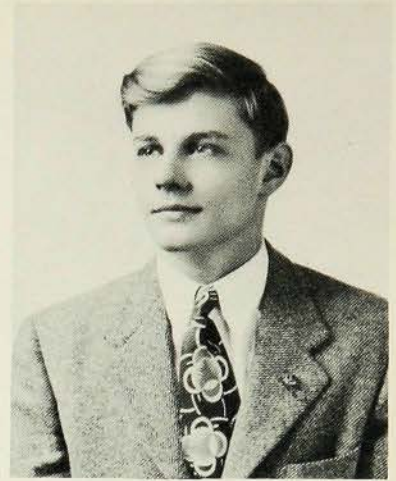
VIRGINIA METZLER

Behind busy knitting needles Ginny can be found turning out more and more socks. She's so ambitious that she even knits socks for her friends. Always ready to type for publications and cooperate in all good works, she will certainly succeed.



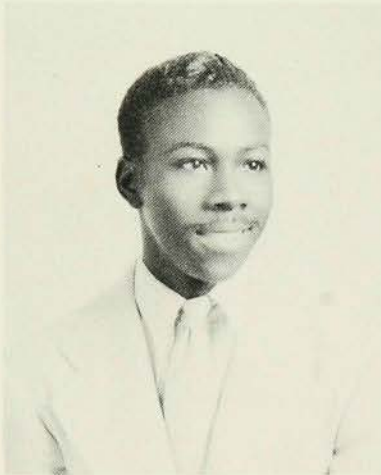
GORDON NELSON

Here's a fellow with a lot on the ball! Gordon's time is spent in building radios (they work too), sailing, and collecting trophies. In addition to all this he is a mainstay of the swimming team and a regular fellow.



PERCY MONROE

One of Nat (King) Cole's most ardent fans, Percy is almost a walking encyclopedia on that fascinating subject and his songs. This tall fellow with a Clark Gable smile somehow has managed to keep his ambitions and hobbies to himself.



KAY NITCHIE

Kay, with a cheery smile for all, is efficient and neat, and her many friends will testify to her thoughtfulness. Kay's ambition is to be a draftsman, but she also collects things, likes to bicycle, and is an eager equestrienne.



MILDRED MORITZ

Although she's quiet in manner, we know she's ready and willing to lend a helping hand. Milly's personality makes her everybody's pal! Ice skating, sleigh riding, and swimming are her favorite sports. Look out! She's a menace on roller skates.



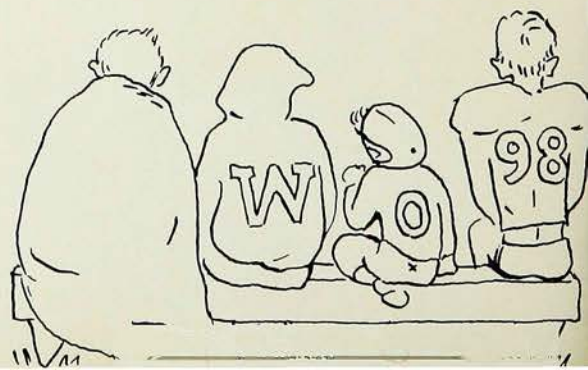
PATRICIA NOLAN

Under her siren lashes and curly brown hair Patsy has a really sweet nature. In addition her slightly exaggerated sense of humor and sharp blue buggy both point to "Nol's" being the sensation of the season at Pt. Pleasant in June.



EVELYN NEAD

"Marines," that is the first, last, and only thought that comes to Eve, a sweet girl who likes everyone and always has a big smile for anyone that passes. Her pleasant personality and friendly manner will carry Evelyn to the very top.





GABRIELLE NOSWORTHY

Gaby is the gal with the glamour. She may be a little on the screwy side, but she's such fun we forgive her! Although new when a sophomore, she has become one of our best-known, best-liked seniors.



DONNA PAYTON

An exuberant personality and a wonderful cheerleader, that's Donna. Coming to us in her junior year from Regional, she really brightened up our darkest halls with her gay laughter and wit. Although living in Cranford, she wouldn't desert us in W. H. S.



DORIS ONEAL

This curly-headed Navy fan might appear quiet to those who don't know her. Don't be fooled! She's really a bundle of personality and dependability. Her skill on the hockey field is hard to match. Also no one could have a truer friend than Dorie.



JAMES PEERY

A well-known character in these halls, smiling, blue-eyed Jim usually has a song on his lips and a girl beside him. Besides participating in all the choral activities, this handsome letterman played tackle on the championship football team.



PATRICIA PATTERSON

Pat, one of the most animated members of her class, has never been seen without a big smile for everyone she meets. In school Pat is active in her gym class; outside she enjoys her job at the Telephone Company.



LILLIAN PETERSEN

Sincere and conscientious, Lill has large and assorted collections of everything. But by far the largest and most varied is her collection of friends who have been attracted by her cheerful friendliness and willing helpfulness. She also knits and sews beautifully.





ALISTELLE PETITT

Spinner of feature stories and hilarious jokes, Alistelle looks on life as a merry-go-round. Her omnipresent humor will always make her the life of the party. That there is an underlying seriousness in "Al" is proved by her dependability.



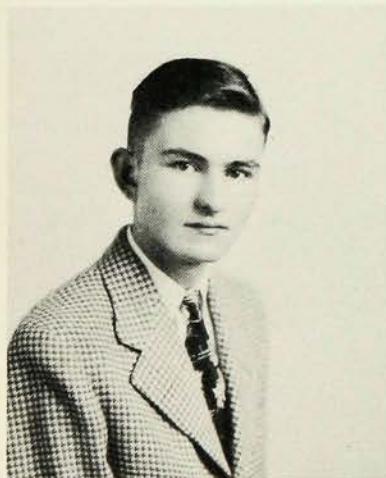
LORRAINE PFEIFFER

"Rainie," that petite blonde faithful to the Navy, can often be seen smiling triumphantly when the mailman rolls around. A member of the Senior Class Hockey Team and an active participant in other sports, "Rainie" is a super hostess, too.



JOHN PFAFF

Wherever there is a party, you will find popular Johnny. Chief among his many talents is playing the piano, and his renditions of both classical works and jazz delight us. John is sure to be a success in the future.



CAROL RASMUSSEN

Carol is the all-round senior who is always nice to everyone. One of the élite of the Honor Society, she has also proved to be one of the G.A.C.'s most capable treasurers. Carol's many interests make her the swell person she is.



ROBERT PFAUF

Bob, as nice as he is quiet, is the boy who, when he sets out to, really gets things done. He plays the baritone in the band, likes to read good books, and enjoys railroading as his spare time hobby.



N. Ebersole

JANET REEH

Who possesses some of the "snappiest" clothes in our class and personality plus besides? Why, Jan, of course. Always laughing at something—herself or the latest joke—this sincere, sympathetic, and clever girl is a grand person to know.



EVELYN ROHRABAUGH

All know "Evie" by her ever-ready smile, a valuable asset that wins her many friends. A joy to be near, she's ready for a laugh or for a serious "confab". Superb piano playing consumes a good deal of her time.



JACK REYDEL

One of the most outstanding athletes in the school, Jack has received his letter in football, basketball, and baseball. His ready sense of humor and good natured personality make him a well-known figure in these dilapidated halls. We'll never forget number 26.



MARJORIE ROST

Wavy blonde hair, happy hazel eyes graced with artistically shaped glasses, and beautiful clothes all combine to make "Marj" a most desirable friend. She works enthusiastically in school and is well known for her activities in hockey and other sports.



LOREN RODEWIG

Brains, athletic ability, and popularity make "Rod" one of the outstanding members of our class. As president of the Senior Class and captain of the championship football team of 1945, "Rod" has surely made a success of his high-school years.



RONALD ROTH

Ronnie is the tenor who made All State Chorus twice, and choir and boys' glee club thrice. This cheerful lad has a smile for literally everyone. A zealous stamp collector and keen sports fan, he himself pitches a mean ball on the diamond.



JANE ROGERS

You think she's quiet? Don't be fooled by that demure "classroom" expression. Pretty, nicely dressed, and full of fun, she is as cute as they come. In addition to numerous club and athletic activities, Jane recently joined the Hi-Y.





JOHN SALOMONE

John enjoys everything he attempts. He plays the clarinet in the band and is well known to the fourth period speech class to which he always adds a touch of humor. That tan convertible tells us that he is near.



MURIEL ROY

Here is a petite, piquant little lass who longs for New York and looks well in snowsuits. Dependable and helpful, Muriel belongs to the Service Club. Her hobbies are crocheting and embroidering. Instead of "sitting" in gym she flits.



JACK SALVATO

One of the few three-letter men in W.H.S., sports, Jack is the strong, silent man with the eye-catching physique that has made him a starting athlete. Although silence prevails with strangers, Big Jack has many a friend throughout the school.



JACK RUH

Jack is one of our returned veterans, back this fall from a year in the Coast Guard where he saw service in the South. For years one of the mainsprings of the swimming team, Jack was gladly welcomed back to W. H. S.



RUTH SAMPSON

A devotee of gum chewing, Ruthie is that cute little brunette with the sparkling brown eyes who always has another trick up her sleeve. She is continually bubbling over with fun and excitement, possibly due to that topaz ring.



CALPURNIO SALOMONE

Cal, his clarinet, and his brother's convertible Ford are prominent objects about W.H.S. Our choir would be at a loss without his robust bass voice, and our band would be unable to perform unless he and his ready clarinet were there.





WALTER SAVOYE

This quiet, unassuming fellow is one of the more studious members of the Senior Class. Besides being top man in the Chess Club, he is active in scouting. His sincerity, dependability, and friendliness have won him many good friends.



MARY ANN SCHODER

This unusual girl has effectively combined school work, extracurricular activities, and social life. She is active in choir and library work. Her ability to leave you at the climax of a story will guarantee success in radio serial writing.



PAUL SCHARWENKA

Swimming, weight lifting, singing, and science are a few of Paul's accomplishments. He can be heard exercising his bass voice every morning before school. Paul's scholastic achievements and friendly manner make his success a sure thing.



BETTY ANN SCHOTT

Early hours have no terrors for Betty, for she has been in the choir and the girls' chorus. She is one of those deceptive souls, appearing very quiet in the school room and being full of fun and giggles outside.



KARNEY SCIOSCIA

"Shush", that powerful fullback of Freeman Inc., is recognized by his laugh and a gentle (?) slap on the back. Known to his friends for his humor and those seven-sandwich lunches, "Doc" is a swell guy and will be remembered by all.

DORIS SEISS

Doris is known throughout the halls of W.H.S. for her smile and cheery "Hello". That she is an all-round gal is shown by her counsellor and Girl Scout positions. Friendliness and sincerity insure her success in her future life.





MARION SKELLY

Marion's most outstanding characteristic is her gorgeous head of wavy strawberry blonde hair. Athletic, scholastic, and musical ability, combined with a neat personality and a ready laugh, has won her many friends and insures an interesting and profitable future.



RUTH SMITH

This petite lass is an ardent patron of the roller rink where one frequently finds her. She helped out on the home front at Schaefer's and also did her share in building the Navy's morale. Why so retiring in school, "Kit"?

DONALD SMITH

Commonly known to his friends as "Snuffy," this boy and his ready smile are sure to go far in this world. Our varsity basketball manager, Don also swings a mean tennis racquet and has a very definite interest in the opposite sex.



WILLIAM SMYTH

Strictly a ladies' man, Bill is usually to be found at a hen party surrounded by the women. An active member of many rare "dqin's," he still manages to get by in his schoolwork. This guy will be hard to forget.



NANCY SMITH

Smitty, who walks in the rain to curl her hair, has been a mainstay of all school groups. Nancy of the brilliant smile and lilting laughter that have helped to brighten our years in W.H.S. is fond of all music.



ROBERT SOMMER

Reddish hair, mild manners, and athletic and scholastic ability characterize "Som." For two years he played varsity baseball, and he was a regular end of the '45 eleven until injuries benched him. In off hours he is a mailman **par excellence**.





DOROTHY STEPHENSON

When you hear a unique, ascending giggle, you know Dotty is near. In more serious moments this petite blonde, who makes up in pep for what she lacks in size, is often heard warbling a high note for the "Dutchess."



THELMA SOWELL

"Nice things come in little packages"—true in this case. This charge of dynamite overflowing with energy is a good friend and companion. Her familiar sneeze will add unsurpassable bursts of explosive humor to our awesome Atomic Age.



SHIRLEY STILES

"Shirl", a tall red-head, can usually be found either twirling with the band, writing letters, or dashing to parties. Always ready to laugh with you or sympathize with you, she is a perfect friend and has a fun-loving personality.



CATHERINE SPERRY

Here's our idea of personality plus and the epitome of frankness. Katie is the cutie who manages her men with an iron hand; ask any one of them! She always has an "interesting" time because she's such fun herself.



MARY STILLWELL

Mary, the girl with the adorable blue eyes and the soft voice, is to be seen either flying with C. A. P. or driving a cream colored Ford. She is well known for her scholastic record and the many things she makes by hand.



JAMES STAVROS

Jim, alias "the Greek", is a lover of fine things, including music and pretty girls. One of the younger members of the class, Jim is a good student, an enthusiastic Hi-Y officer, and one of the better "Duncan Ball" players.

EDWARD THIELING

The Navy is "Son's" favorite branch of the armed forces; and dairying is his preference for a life work. Because once Ed starts a job he always finishes it, we expect him to have a farm of his own some day.



JAMES STOCKSLAGER

Always ready to hold up the end on Joe's team and recognized as a star swimmer, "Stocks" is also equipped with a subtle humor and armed with a barbed wit. In college he's sure to be a Phi Beta Kappa.



JEAN THOMSON

This likeable Scottish lassie has big brown eyes and soft brown hair. Her friends know and like her for her grand sense of humor. Jean, who is a movie fan and never misses a good picture, plans a beautician's career.



BEVERLY STRUBLE

Beverly is that happy, vivacious blonde, full of fun and always ready for a good time. Although she has her serious moments, Bev isn't quiet long. You see, she believes in going places and doing things!



ROBERT TILLOTSON

"Tillie", formerly from Roselle, joined the class last year. This year illness has dogged his steps, but "Tillie" has arrived at school from time to time in his beloved chariot with his favorite passenger—five minutes after the bell has rung.



GLENN TAYLOR

This good looking boy is known for his friendly smile. He spends most of his time swimming, driving his car, and calling up women. It is Glenn's ambition to become a doctor, and judging from his marks, he can't fail.





LLOYD TOWNLEY

A mean sax, an elderly Ford, and cute Betty suggest this ex-band member. Tall, dark, and handsome Lloyd has been seen in all corners of W.H.S. and the Milk Bar. By the way, that yellow sweater is really something, isn't it, Miss Fox?



BETSY ULRICH

This petite, curly-haired brunette has a smiling "Hello" for literally everyone. Not content with just being a social butterfly, she delights her classmates with zany stories, first class poetry, and entertaining acting. With her talent, she's sure to succeed.



NANCY TUCKER

"Nan" is one of those few blessed with both naturally curly hair and a radiant smile. Popular with everyone, she excels in sports and music. This versatile senior is also the proud possessor of "all A's" on her report card.



DOROTHY VAN DEVENTER

A gal who rises to the top in everything she does, Dot is best known around school for her sense of humor and her friendliness. Having an A-plus personality as well as brains, assures Dot loads of success in the future.



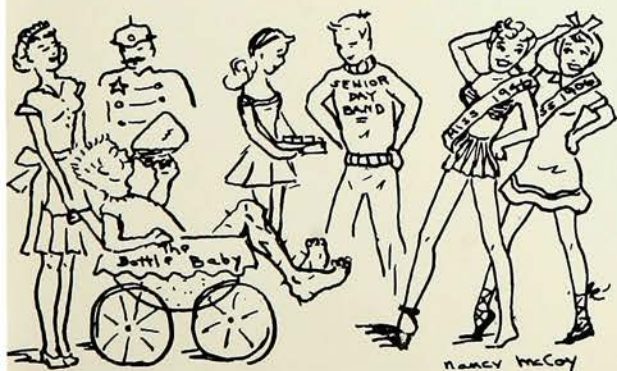
ANNETTE TURNER

"Waddy" to many of us and "Mrs. Little" to all of us, she is the most versatile member of the band's percussion section. In spite of all this her real interest is art. "Waddy" hopes to specialize in commercial art.



BESSIE VAUGHAN

Sweet, unsophisticated, cool, and serene—that's Bessie. One of the smartest dressers in our class, Bessie arrived in Westfield from Virginia in her sophomore year. This great basketball fan is quiet as a mouse, but even a mouse has ideas.





PIERRE VIGLIANTI

This likeable fellow is very popular with his teachers and even with the girls he loves to tease. Next to drawing, his chief interests seem to be architecture and a notebook filled with Petty and Varga girls.



ANN VREELAND

The Clare Booth Luce of our class is a cute blonde whose scholastic and Red Cross achievements are well known to all. This gal's marvelous personality makes up for her tiny size. Good luck in your UNO Secretariat aspirations, Ann!



BONNIE LOU VOGT

This tall brunette with sparkling brown eyes, has a perpetually cheery "Hi there," for everyone. She is the sincerest and most valuable of friends. Bonnie's well worth knowing, and we are glad she decided to come back to us this year.



MARION WALSH

Cold weather doesn't stop Marion from getting out on the field, vivacious, agile, and competent as a twirler. She enjoys dancing, bowling, and letter writing. Her honesty, sincerity and friendliness win her many friends and admirers.



ERIC VON MEHREN

Before we start, let it be known that this tall, Nordic-looking boy is well taken care of on the home front. Although new to us this year from the Navy, Eric has already distinguished himself by his friendliness and charm.



REED WARBURTON

This ambitious boy, who hopes to become a lawyer, is one of the more accomplished members of our class. He holds numerous offices, has the rank of Eagle Scout, and is our baseball manager. Reed is an ardent supporter of Pepsodent toothpaste.



BETTY JANE WICHERN

Noted for that light brown hair, BJ is also a Lake George fan. "The look" may often be seen whizzing around in that cream Chrysler or swinging a badminton racket. With her outstanding scholastic record BJ is bound to go places.



ROSEMARIE WARD

The office force does not find many such willing helpers as Rosemarie. Her fastidious nature and her genuine skill as a seamstress are shown in her chic costumes. It's said that Long Branch possesses special charm for her.



ELEANOR WIDTH

Elly is frequently seen brightening up the front hall with her golden locks. Enormous blue eyes and a distinctive style of dress enhance her charm. This friendly, sincere, and honest girl keeps a diary. We wonder what is in it.



MIMI WATERMAN

Lively, lovely, talkative Mimi is welcome at any party because of her blithe spirit and those innocent remarks at unexpected moments. This "member" of the Honor Society is a good student and an important member of both choir and chorus.



JOAN WILLIAMS

This Library Council member loves reading and also favors dancing. Although a modest and quiet student, Joan possesses genuine ability, and no one knows to what her interest in psychology will lead. Perhaps she will psycho-analyze us in the future.



RICHARD WATROUS

Smooth, with dark, penetrating eyes, "Blackie" is the sheik of our class. A veteran of the Merchant Marine, he has returned to us from his world-wide travel to become one of the most memorable of the class of '46"





NANCY YODER

"To the hills," Yoder's at the wheel again. Well-known for those gorgeous auburn tresses and her flow of conversation, Nancy also likes to "tickle the ivories." Possessing a grand personality plus a good sense of humor, Nancy's bound to go far.



ROBERT WILLIAMS

With a happy look on his face, "Boskie" wanders blissfully around the school and the "Y." This clarinet tooter has sung in the choir for three years and in All-State Chorus for two. "Boskie's" a really good guy.



ARLENE YOUNGHANS

Although she came to W.H.S. from Union this year, Arlene has already made many close friends. Her sparkling eyes are an addition to any group and certainly brighten up the orchestra when she is there as a sawyer of viola strings.



RICHARD WILSON

Who's that with the blond hair blowing in the breeze? Dick, a proud owner of a model "A" (not blowout proof!). He is found at any W.H.S. sports event; and in baseball, his greatest love—in sports anyway—Dick is always giving his best.

JOHN ZEILLER

One of our most popular seniors is "Honest John" of the wavy hair (?) fame. An ardent sports fan, John is an enthusiastic member of the basketball and tennis teams. His pleasing and amicable personality will surely gain him success.



CHARLES WOODBURY

The hard-working manager of the championship '45 football team, Charlie is also president of our Slide Rule Club and has obtained the rank of Eagle Scout—a great accomplishment. Charlie is very much interested in the domain, called Texas.







THE JUNIORS

F. Intelisano, B. Riley, R. Tryon, D. Burslem, G. Greer, H. Kaufman, S. Ayres, L. McCormick, D. Deer, J. Tittle, B. Walker, C. Caldwell, J. Lancaster, P. Clark, E. Marcantonio, R. Mueller.

A. Edge, B. Dougherty, B. Watson, H. Mekeel, R. Smith, B. Kinneman, P. Hayden, P. Bivona, E. Villa, R. Dagastero, T. Octaviano.

M. Imrie, B. Addiss, J. Randolph, B. Doerrer, B. Singerle, C. Conley, W. Baughman, A. Coding, G. Crain, D. Coykendall, S. Parry, D. Clark.

M. Torgensen, R. Crosley, R. Schuemacher, R. Spindler, G. Bovino, B. Craig, S. Newman, P. Mathes, E. Swart, R. Betz, D. Kersting, G. Servanti.

J. Shotwell, B. Haessig, S. Parrett, L. Lee, M. Morton, A. Andrews, J. Stirrup, L. Clark, C. Andreson, D. Murphy, P. Earhart, G. Johnson, S. Bryant, P. Rapp, P. Pollard.

E. Moss, M. Rehm, I. Walker, F. Kelly, G. Nelson, P. Braham, D. Quimby, J. Bubb, B. Cameron, H. Dens, B. Jewell, P. Burritt, T. Framnes, A. Thomas, G. Braun.

L. Gardner, J. Hall, L. Menle, M. Albee, S. Baldwin, B. Hanshew, J. Montgomery, N. Jenkins, S. Montgomery, C. Sanford, L. Russell, J. Creedon, H. Jones, P. Colyer.

J. Dannehower, L. Welch, P. Salvati, M. Salm, C. Akers, J. Heatly, L. Young, C. Willis, J. Ely, F. Jessee, P. Watts, G. Tomlins, N. Loveland, H. Lewis, R. Gaido.



CLASS OF 1947

H. Moore, R. Carey, D. Miller, E. Hoos, J. Kruse, D. Ellis, F. Savoye, E. Rochat, D. Brooks, J. Mazza.

L. Hilgesen, J. Moore, A. Bingham, P. Littmann, J. Ainsley, L. Budell, E. Richards, B. Schoder, B. Maidment, B. Garrison, B. Anspach.

A. Lowe, B. Martin, B. Leitz, B. Anderson, D. Gaskill, R. Yockum, A. Schott, A. Hood, E. Mackie, P. Widin, R. Robinson, E. Crane.

D. Brown, B. Long, J. Scudder, B. Turnbaugh, A. Bracher, D. Downs, G. Wolfenden, D. Dickenson, P. Magnier, J. Kingston, J. Wright, M. Couch, B. Salt.

J. Neeb, H. Pond, J. Nein, L. Mulinas, R. Patch, L. Donaldson, C. Brower, J. Burbank, B. Arndt, B. Davies, M. Burr, P. Allen, J. Brown.

J. Cutler, J. Mueller, A. Ross, B. Whaley, R. Harris, G. Dustin, E. Oppenheimer, B. Clyne, S. Burger, R. Batten, B. Stiles, C. Sorge, R. M. DeBella, E. Villani, M. Bavosa.

P. DeBarger, S. Thomason, H. Hinterleitner, D. Bodkin, J. Sollenberger, J. Monroe, H. Moore, M. Mathews, R. Thomas, M. Wright, F. Williams, J. Grasso, L. Brunetta, L. Negri, C. Merrill.

P. Scull, S. Anderson, J. Verburg, M. Pfaff, S. Stewart, M. Crowell, P. Trotman, M. Feil, P. Antle, D. Keller, S. Vaughan, E. Woodruff, P. Williams, S. Woodruff, B. Mueller.

P. Hughes, M. Campbell, A. Greany, J. Borgeson, A. Hart, M. Gibbs, M. Chandler, J. McCoy, N. Vogeler, P. Wallace, A. Wolfred, A. Collins, P. Gerds, J. Reynolds, B. Meixner.

1. Dizzy (half) dozen
2. Taking it easy
3. Polar Bears
4. Phyllis and Ann
5. Dorie



6. Georgie boy
7. Jane
8. Florence
9. Jane Montgomery
10. Hand on head

President Arch Bracher
 Vice-President Robert Anderson
 Secretary Marilyn Chandler
 Treasurer Phyllis Antle
 Adviser Mr. Allen

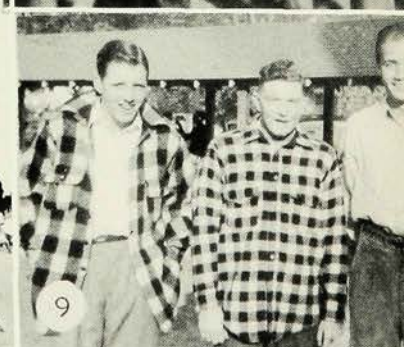


1. Charlie's harem
2. Ginny
3. Arkansas Wilson
4. Frank
5. Happy foursome
6. Chewing the rag
7. Batter up



8. Joyce
9. Checked and de-checked
10. Catching flies
11. Gang's all here
12. Heads win
13. Geoff and Terry

President Peter Bickett
 Vice-President Richard Kramer
 Secretary Mary Lee Mitchell
 Treasurer Robert Hefferman
 Adviser Miss Foutz





THE SOPHOMORES

T. Hooper, L. Currier, R. Kelly, W. Ortlepp, R. Shiley, E. Leonard, T. Brady, D. Brooks, G. Wally, D. Sensbach, R. Mulford, R. Salt, C. Moore, W. Wilson, B. Willis, J. Collins, B. Cloughly, R. Schmitz, P. Magnier, R. Smith, J. Ainsley, P. Rochat, C. Conley, F. Coumbe, G. Romeo, H. Tuorto, J. Stornelli.

W. Bass, D. Mackay, C. Bell, R. Batt, L. Reed, W. Coumbe, D. Fischer, J. Sands, J. Wood, W. Kite, R. Huddleston, B. Rhaesa, A. Bonnetti.

W. Miller, R. Ellis, W. Smith, J. Hubbard, D. McFarlan, C. Boleter, W. Scharman, R. Grant, D. Reed, R. Hefferman, B. Fox, D. Beck, J. Del Nero.

D. Potts, W. Schneider, R. Cunningham, J. Thomson, W. Weim, R. Herr, D. Hansen, G. McGinley, A. Eichorn, H. Mekeel, J. Marvosa.

C. Robinson, M. Webb, B. Lynch, C. Brandt, C. Smith, L. Weaver, M. Bloomsburg.

P. Hudson, M. Teslof, J. Saal, V. Williams, A. Achard, C. Carnevale, B. Clark, P. Conlin, P. Stebbins, J. Driver, A. Nettleship, J. Wiant.

R. Lunger, A. Ritterbush, P. Ennis, P. Klein, R. Hun, M. Clements, J. Millar, M. Smith, J. Richardson, E. Child, M. Steiner, C. Hanson, B. Fish, M. Stanford.

P. Holburg, M. Graver, D. Tiedeman, R. Worth, F. Lushear, M. Goodlaw, M. Bracuto, J. Pidato, B. Ringen, C. Watson, J. Berry, B. Young.

J. Hall, A. White, B. Lachenauer, J. Healy, M. O'Neil, D. Jones, S. Monaco, H. Force, J. Dis, M. Kryioglou, M. Mitchell, P. Crawford, N. Harkrader.



CLASS OF 1948

E. Eggleston, W. Hopkins, R. Montroy, T. Brown, B. Love, G. Buchan, W. Holaday, R. Gustafson, E. MacMillan, H. Potts, P. Bavos, D. Butler, W. Valaine.

C. Parret, R. Willig, K. Corduan, R. Burton, S. Tingle, I. Greifer, D. Mikeska, R. Podboy, W. Klezar, J. Payne, M. Fogle, H. Heitman, C. Hemmenger.

H. Hollingsworth, W. Paton, F. Coale, W. Kuhlke, D. Bazeley, G. Wilcox, W. Victor, F. Salvato, J. Wilson, H. Paddock, D. Matthewson, T. Frankenbach, W. Glimm.

J. Podby, J. Caramagno, E. Wise, P. Piret, D. Brower, R. Grimes, R. Mulcahy, F. Barranco, C. Waterman, J. Riley, D. Dushanick, R. Wimmer, A. Hruda, C. Coqueron.

S. Tate, M. Cooper, D. Wright, P. Coumbe, N. Pettit, P. Kinkead, M. Reeh, N. Goodwin, A. Stuhler, D. Kessler, J. Frickman, C. Kenny, B. Frickman.

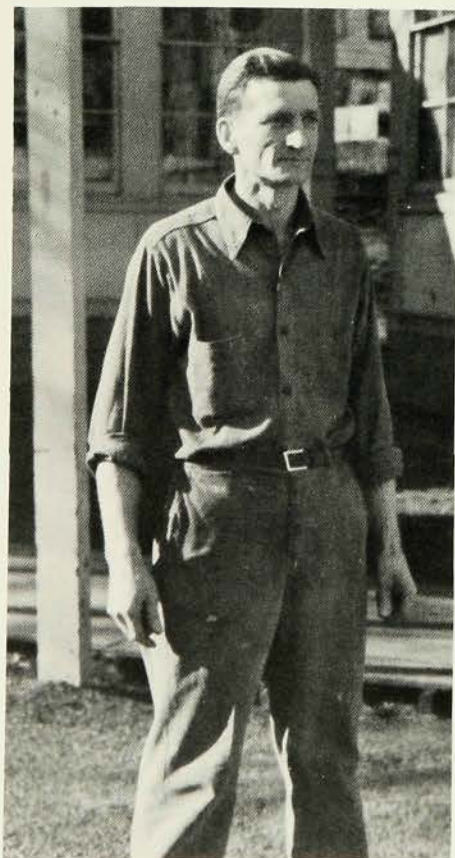
T. Larson, F. Herrick, B. Taylor, J. Ibberson, G. Dysart, J. Martin, F. Bockius, C. Olsen, N. Hardie, L. Sinclair, S. Evans, J. Pratt, G. DeConcho, L. Baker, G. Meade, J. Robinson.

R. Doerrer, C. Appezzato, S. Lantz, S. Smith, M. Sommer, P. Geokemeyer, L. Pierce, J. Powell, B. Williams, D. White, B. Merrill, J. Turnbaugh, A. Tucker, E. Kern, J. Haslem, P. Wahlgren.

H. Brager, N. Greifer, T. Malloy, N. Scheurman, L. Thomas, R. Stoddard, J. McDougal, J. Bidstrup, J. Williamson, L. Stuart, J. Alexander, J. Craig, J. Moran, M. Grim, E. Williams, M. Eams, N. Young.

J. Horstman, J. Walker, J. Garretson, J. Christian, S. Haynes, J. Boyer, V. Coale, M. Muller, B. Bryant, D. Dabney, M. Muse, P. Doty, V. Oliverie, J. Spino.

R. Brown, J. Saxe, D. Chambers, P. Bickett, R. Kramer, D. Andrews, B. Crutenden, M. Kostkos, R. Losee, M. Alton, V. Leskes, M. Meisel, B. Silberman, P. Fisher, B. Sellino, A. Linden, E. Worth.



Activities



Betty Hanshaw



WEATHER VANE ANNUAL

Thirty-eight students answered the call for volunteers for the staff of the "Weather Vane Annual." These were headed by John Leeming, editor-in-chief, and June Jaffee, business manager. Advisers to the group included Miss Dolores Bordner, sponsor; Miss Harriet Howard, art adviser; and Mr. Gomer Lewis, financial adviser.

The padded cover featuring a photograph of the school was retained, but certain changes were possible within the book on account of a reduction in the number of organizations. Picture content was greatly increased.

The book was compiled with the aid of Letty Glimm and Nancy Smith, write-ups; Marilyn Downs and Marjorie Mathis, activities; Eve Lapeyrouse, features; Betty Broback, Marilyn Colby, and Esther Barranco, pictures; Mary Ann Schoder, faculty; Jane Rogers and Don Smith, athletics; Daphne Mason, superlatives; and Virginia Metzler and Lorraine Pfeiffer, typists. These were assisted by the students in the picture above and by Miss Hammell's eighth period typing group. Charles Woodbury and Ned Belcher gave special assistance.

The layout for the senior pages was devised by a committee of art students, and sketches were provided by the following students: Doris Keller, Gordon Crain, Jane Reynolds, Dolores Bodkin, Nancy Ebersole, Pat Trotman, Nancy McCoy, Laura Weaver, Betty Hanshew, Helen Pond, Winnie Emery, and Jean Brown.



DOLORES BODKIN



WEATHER VANE MAGAZINE

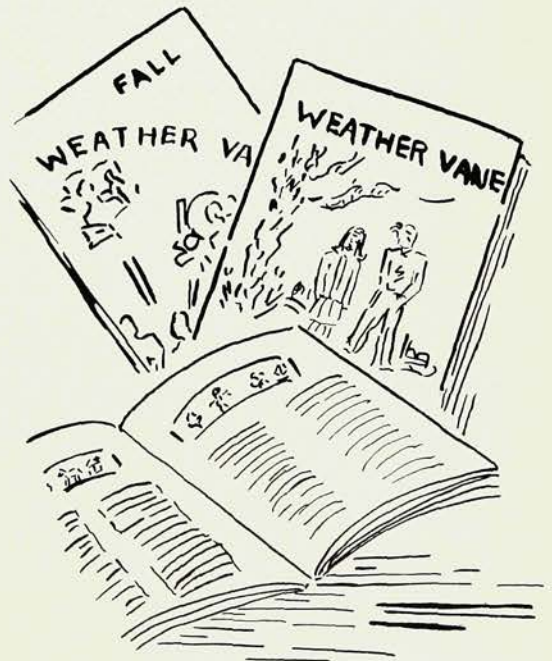
The magazine staff, under the sponsorship of Miss Dolores Bordner and Miss Harriet Howard, meets every Thursday during the third period. Composed of members of all classes, the staff works hard to accomplish its many duties, among which are selecting themes, seeing that suitable stories and art are provided, selecting, voting, and commenting upon received material, deciding upon illustrations, making up the dummy, reading proof, and engaging in countless other activities necessary to produce a prize-winning magazine.

The **Weather Vane's** many departments are designed to interest the entire student body; they include literature, art, aviation, alumni, school news, sports, and humor.

For twenty-three years the **Weather Vane** has flourished in Westfield, because the students enjoy their own magazine and support it loyally. The staff is justifiably proud of its magazine, for it has won first place many times in the annual contest sponsored by the Columbia Scholastic Press Association.

The chief event of the year was the trip to the Columbia Scholastic Press Convention, held on March 21, 22, and 23. The staff was represented on the program by Miss Bordner and Carol Brower.

Officers for the year were Editor-in-Chief, Eve Lapeyrouse; Secretary, Lorraine Pfeiffer; and Treasurer, Letty Russell.





Westfield Hi's-Eye

Published by the Students of
WESTFIELD SENIOR HIGH SCHOOL
Westfield, New Jersey

November 29, 1945

Volume XII, No. 4

EDITOR-IN-CHIEF
ASSOCIATE EDITOR

Ann Braham
Letty Glimm



EDITORIAL STAFF: Art, Joseph Moore; Copy, Barbara Jewell; Clubs, Patricia Gerdtz; Exchange, Eleanor Width; Features, Lois Cohen, Alistelle Pettitt; News, Gaby Nosworthy, Sally Montgomery; Photography, Stephen Ayres, Elenie Melanos; Sports, James Chambers, June Jaffee.

BUSINESS MANAGERS: Barbara Meixner, Michael Bivona, Shirley Heitkamp, Joyce Johnson, Libby Kinningham, Jane Rogers.

REPORTERS: Bruce Angell, Evelyn Baker, Esther Barranco, Grace Birnie, Patricia Braham, Betty Cameron, Marilyn Clements, Virginia Cole, Mildred Collins, Barbara Coombe, Suzanne Correll, Richard Fischer, Marguerite Goodloe, Julia Jarvis, Jeanette Johnson, Rosalie Marotta.

TYPISTS: Nancy Hardie, Dilys Jones, Ann Lucchesi, Lorraine Pfeiffer, Marjorie Reeh, Noreen Sceurman, Napoleon Jean Papale.

HI'S-EYE

Technically an editor edits, but at WHS he must be a versatile genius with talents ranging from the selling of candy at football games, promoting community fairs, and sponsoring movie benefits to hatching plots for succulent front page stories. With Ann and Letty as their guiding lights, this year's staff has met and conquered the myriad problems of publication: assignment sheets, news-gathering, feature writing, planning innovations, sketching layouts, headline writing, copy editing, dummy make-up and circulation.

Many significant strides were taken in the direction of enlarging and improving the **Hi's-Eye**. Money earned by the staff in diverse benefits to supplement the budget helped transform the paper from five to six columns, for a 68 per cent increase in newsprint, as well as pay for the pictures so much in demand by the student body.

In addition, new columns and features appeared with each successive issue in response to popular demand.

Adviser to the **Hi's-Eye** is Mr. Papale, always ready to counsel the staff.





ART CLUB

This year proved to be a very eventful year for the Art Club. In the fall the Club aided the annual United War Campaign by decorating a store window. At Christmas time menu covers were designed for the Navy, and during the Easter season, cards were made for the hospitalized veterans' use. In addition to these things, posters for many school and town events were made by the members.

At the first meeting of the Club in October, Mr. Duncan, the boys' athletic adviser, consented to be the guest and to pose for his portrait. After this, refreshments were served in the cafeteria.

Following the Christmas vacation several water colors were submitted to the Annual High School Art exhibition in Bamberger's, sponsored by the **Scholastic Magazine**.

As the purpose of the Art Club is to further the knowledge and appreciation of art by learning from outside sources different types and views of art, Westfield artists were invited to be the Club's guests.

In the spring an exhibition was held showing the year's work of the members.

The officers for this year were President, Betty Hanshaw; Vice-President, Doris Keller; Secretary, Dolores Bodkin; and Treasurer, Donald Beck. The club adviser is Miss Howard.



Laura Weaver



WRITERS' CLUB

The purpose of the Writers' Club is to contribute articles and stories to the **Weather Vane**. Through discussion of the various types and styles of writing, the members attempt to improve their own techniques, and each member is required to make four contributions annually.

The contributions are read at monthly meetings held in the homes of members. A special occasion is the trip taken to see one of the better plays. **Deep Are the Roots** was this year's choice.

The sponsor, Miss Margaret Dietrich, was aided by the following officers: President, John Leeming; Vice-President, Sally Montgomery; Secretary, Shirley Heitkamp; and Treasurer, John Kruse.

LIBRARY COUNCIL

The Library Council is a growing organization which serves our school. The amount of work accomplished is amazing. Our adviser, Miss Scott, teaches us to take care of the mail, and slip, stamp, paste, and shelve the numerous books in the library. Other duties include signing slips, straightening magazines, charging and collating books, and mounting pictures and book jackets.

Social activities, too, are on the upswing. We gave a tea in celebration of Washington's Birthday for the council from Somerville and Springfield. Our guests were entertained with a quiz, a speaker, and refreshments.

This year's officers were Mary Ann Schoder, president; Helen Pond, vice-president; and Lois Donaldson, secretary and treasurer.





LITERARY CLUB

The Literary Club has in a pleasant social manner provided an enriched background of good literature through a study of famous authors and best works.

The program for 1945-46 has included the works of American and foreign authors. Among these have been Arnold Bennett, John Galsworthy, Leo Tolstoi, Sigrid Undset, Thomas Mann, Sinclair Lewis, Thomas Wolfe, Eugene O'Neill, and Maxwell Anderson. Programs with guest speakers were presented at holiday seasons. In April the club attended "I Remember Mama."

The officers were President, Reed Warburton; Vice-President, Charles Woodbury; Secretary, Sally Montgomery; and Treasurer, Nancy Tucker. Miss Margaret Dietrich proved a helpful sponsor.

THE COLLECTORS' CLUB

Under the direction of Miss Olive Hammell, an ardent collector who specializes in bells, cameos, stamps, and coins, the Collectors' Club has met faithfully on the second Tuesday of each month. Members display their collections and extend help to one another in improving collections of stamps, glasses, coins, airplane pictures, old books, et cetera.

Perhaps refreshments were an added attraction at the meetings although the members do not admit this. They say that the collector's bug has really bitten these club members.

The officers were Walter Bass, president; Bill Kuhlke, vice-president; Mildred Bidulph, secretary; and Mildred Mortiz, treasurer.





GERMAN CLUB

The purpose of the German Club is to increase the knowledge of German art, customs, and culture among the members.

Club activities included a trip to the New York Museum of Art where we saw examples of German minor arts, including book binding, wood-carving, and gold decorative work, as well as painting by the great artists. The afternoon was spent at a German movie, after which we enjoyed a dinner at a German restaurant, which provided additional atmosphere.

The monthly meetings, under the leadership of Albert Klingelhofer, Ken Albridge, Shirley Burgher, and Miss Theurer, include programs of motion pictures, songs, and games.

LATIN CLUB

Under the able leadership of Miss Gertrude Foutz and Mr. Edmund Allen the Latin Club had an eventful year offering its members a chance to use the language for pleasure and to become acquainted with Roman life and customs.

Some of the more interesting meetings were devoted to singing, playing bingo and vocabulary games, and giving original plays. The most popular meeting was the one at which the students of Latin 1 presented an original comedy.

The officers, bearing the titles of Roman officials, were Consul, Janet Reeh; Vice-Consul, Bruce Cloughly; Scriptor, Betty Taylor; Quaestor, Marjorie Reeh; and Vice-Quaester, Carol Sanford.





LE QUARTIER LATIN

Under the supervision of Mr. Gesner and Miss Foutz the French Club, proud of being one of the oldest and largest clubs of Westfield High School, again succeeded in presenting at its monthly meetings programs which were of great interest to all. The piece de resistance, however, proved to be a French luncheon and a French movie in New York.

The most notable accomplishment was the successful sponsoring of a movie benefit from which all proceeds went to French war orphans.

The officers were President, Patricia Wallace; First Vice - President, Adele Greany; Second Vice-President, Donna Payton; Secretary, Phyllis Dodge; and Treasurer, Diantha White.

SPANISH CLUB

The Spanish Club programs were planned to help members develop understanding of everyday Spanish and to foster friendlier relations with Spanish speaking neighbors. During the year members presented short plays, nursery tales, movies, games, and songs. The Christmas meeting featured accounts of Spanish traditions and the bursting of a colorful pinata.

After the initiation of first year students after mid-year examinations, the Club took its annual excursion to the Hispanic Museum and other points of interest in New York.

The officers were President, Edith Oppenheimer; Vice-President, Arthur Bingham; Treasurer, Ernest Anderson; and Secretary, John Kruse. Miss Stella Hemphill and Mr. Samuel Bunting were the Club's able sponsors.





STUDENT COUNCIL

Last spring by a vote of pupils and teachers it was decided that the governing student body should be a student council rather than a council of presidents, a system which had been in use the year before. The Student Council recently organized consists of one representative from each sophomore and junior homeroom and two representatives from each senior homeroom in addition to the president of each class.

This body concerned itself with problems about the school. Various subjects discussed and checked to a certain extent were tardiness to class, congestion in the hallways, unsuitable dress at evening affairs such as the senior play, and lack of courtesy. There has also been correspondence with other schools in order to secure advice on certain problems.

On November 16 the officers and sponsors attended the annual meeting of the New Jersey Association of High School Councils at New Jersey College for Women in New Brunswick. After an assembly there were panel discussions of vital problems concerning the school and its governing body.

At the elections last spring Jim Hebden was elected president; John Kruse, vice-president; Libby Frolich, secretary; and John Zeiller, treasurer. Advisers were Mr. Napoleon Papale and Mr. Harold S. Thompson.



NATIONAL HONOR SOCIETY

To create enthusiasm for scholarship, to stimulate a desire to render service, to promote worthy leadership, and to encourage development of character in the pupils of the Westfield High School are the worthy aims of the Westfield Chapter of the National Honor Society, whose sponsor is Mr. Weyman O. Steengrafe.

At the beginning of the school year the following seniors were members: Elizabeth Broback, John Leeming, Jr., Carol Rasmussen, Elizabeth Ann Frolich, Nancy Tucker, Lorraine Pfeiffer, James Hebden, June Jaffee, Warner Mackay, Dorothy Van Deventer, Shirley Heitkamp, and Marion Skelly. Following the election of new members on March 6, the group was augmented by twenty-five seniors and juniors to bring it to its full strength, comprising the top tenth of the two classes. Seniors elected were Phyllis Dodge, Anna Lucchesi, Annette Turner, Eve Lepayrouse, Mary Elizabeth Waterman, Claire Hamilton, Edward Belcher, George Coale, Elizabeth Meier; juniors were Carol Sanford, Joseph Parry, Adele Greany, David Downs, Edith Oppenheimer, Sarah Montgomery, Betty Hanchew, Herbert Entwistle, Letty Russell, Lee McCormick, Mary Campbell, John Kruse, Joan Mueller, Sylvia Stewart, Donald Deer, and Richard Coykendall.

The officers of the Honor Society for 1946 were President, James Hebden; Vice-President, Elizabeth Ann Frolich; Secretary, Shirley Heitkamp; and Treasurer, Dorothy Van Deventer.





CHESS CLUB

The Chess Club, under the supervision of Mr. Gaston Gesner, meets every Wednesday evening at Lincoln School. Members work out chess problems and carry on a keen intra-club competition to determine the strength of players.

Invitations were sent to about fifteen schools, but only a few accepted the challenge. The first match was on February 25 against Millburn which the Westfield Club took easily, $4\frac{1}{2}-\frac{1}{2}$. In six years, the Club has won twenty-eight games, lost none, and tied one. With this excellent record to encourage them, they look forward to a successful season.

The officers this year were Albert Klingelhofer, president, and William Bacon, secretary.

FORUM

The Forum, under the guidance of Miss Mildred Fox, has completed another year of interesting, constructive club work. The purpose of this club is to develop the public speaking of its members and to help them form intelligent opinions by enlightening discussions on the outstanding perplexing problems of the day.

The year's activities included an assembly forum with speakers from outside schools, a trip to the "Town Meeting of the Air," a talk by the former sponsor, Mr. Steengrafe, and the debates at the regular supper meetings.

The officers were President, John Leeming; Vice-President, Letty Russell; Secretary, Carol Sanford; and Treasurer, Jack Beierle.





GUIDANCE COUNCIL

Each homeroom is kept in touch with the Guidance Office through a representative who weekly reports the activities of the Council to his classmates.

With the help of Miss Dodds and Miss Fox the Council assisted in preparations for College Night and also discussed scholarships, requirements for admission to college, and college analyses. The members also kept up to date on new materials received in the Guidance Office and made use of guidance tools such as kits, notebooks, and catalogs.

Because the majority of institutions of higher learning are overcrowded, special emphasis has been placed upon early application to college.

OUTING CLUB

The Outing Club, which has been sponsored by Miss Theurer since its founding two years ago, now numbers fifty. Its purpose is to promote interest in outdoor activities such as hiking, cycling, skating, and skiing.

During the past year one of the outstanding accomplishments of the Club was a three day cycling trip through historic Pennsylvania. Other shorter outings were taken from time to time. A hostel trip has been planned for the spring.

The membership consisted of sophomores, juniors, and seniors. Officers for the year were Thelma Sowell and James Clark, co-chairmen, and Katherine Ann Johnson, secretary-treasurer.





CATALYST CLUB

Under the leadership of Mr. James C. Montgomery, the adviser, the Catalyst Club endeavors to further interest in chemistry in as many students as possible.

Meeting monthly, the Club presented varied programs including movies on chemistry, a lecture on the uses and the make up of the spectograph, and a discussion of atomic energy and the atomic bomb. The group also plans science shows that are of interest to all the students in the high school.

Mr. Montgomery was assisted by the following officers: President, Ted Foster; Vice-President and Treasurer, Gordon Nelson, and Secretaries, Ned Belcher and Edward Allen.

THE SLIDE RULE CLUB

This year the Slide Rule Club has been made up entirely of seniors. Its purpose is to teach the use of the slide rule so that mathematical processes can more easily be done. At the first few meetings the members were taught the fundamental uses of a slide rule. From then on harder and harder problems were tackled until at the end of the year the most difficult physics problems were being worked with surprising ease.

The officers of the club this year were Charles Woodbury, president, and Phylis Dodge, secretary and treasurer. The adviser of the club is Mr. Walter E. Johnson.





GIRL RESERVES

The combined clubs of the Girl Reserves, under the capable leadership of Miss Louise Theurer and Mrs. Ruth Cameron, had a successful year. Besides the regular activities, there was a waffle supper, a talk by the Rev. Mr. Petty, a Sport Hop, a combined spaghetti dinner and swim, a constructive lecture on make-up, and the annual Lenten Breakfast.

The procedure of having the meetings every other Tuesday afternoon at the Y.M.-C.A. was varied by the Junior-Senior group which held its meetings at the High School and at the homes of members.

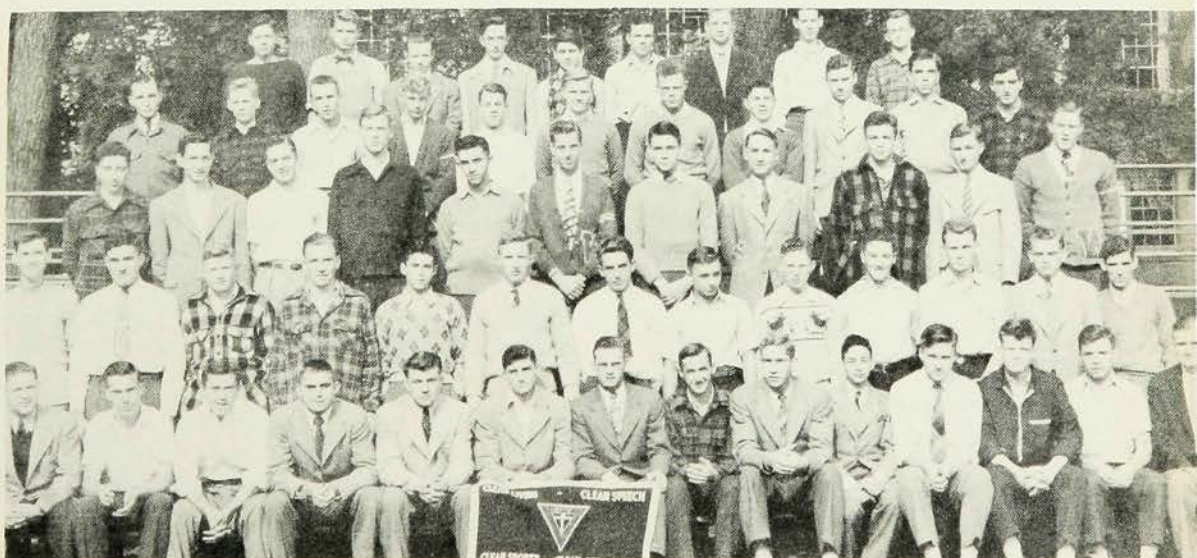
The senior officers were President, June Crehore; Secretary, Ann Allen; and Treasurer, Marjorie Hohenstein.

HI-Y

Through participation in community projects and in educational programs the Hi-Y continued to create, maintain, and extend high standards of Christian character under the direction of Mr. Walter E. Johnson, Jr., and Mr. Donald Babcock.

The Senior Hi-Y and the Junior Hi-Y, the latter admitting sophomores, had a successful year. Dances were sponsored, including the New Year's Eve dance, and delegations were sent to the Older Boys' Conference and to the New Jersey Model Legislature.

The officers of the White Chapter were Jim Hebden, president; Loren Rodewig, vice-president; John Zeiller, secretary; and Jack Reydel, treasurer. Those of the Blue Chapter were Brent Clark, president; Jim Perry, vice-president; and Roger Horner, treasurer.





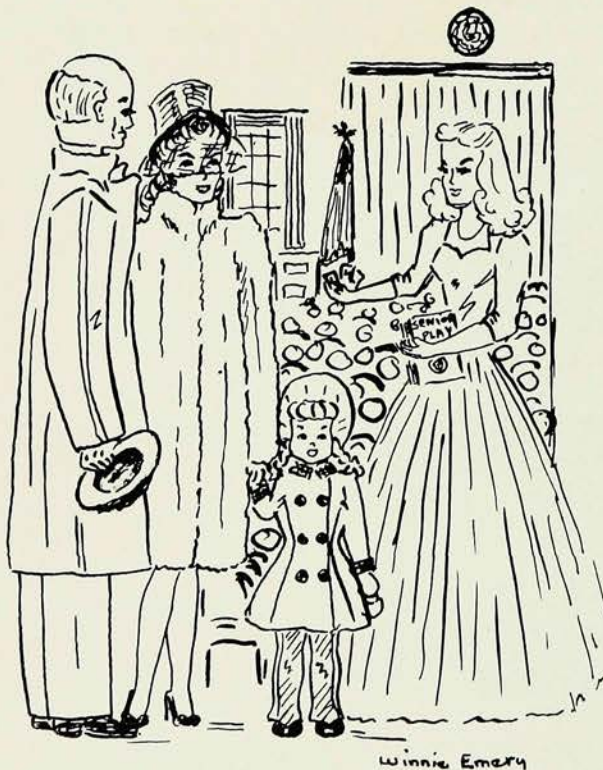
SERVICE CLUB

Service Club members work in the office, delivering notices and filing; they usher at plays and other school functions, and perform many other duties. This year they have helped Bill White sell greeting cards and magazine subscriptions, as well as sending him relief help to his stand in the afternoon.

The various committees of art, publicity, program, office help, and ushering all help them to accomplish their numerous jobs efficiently. They have found Miss Pelton, their adviser, a valuable asset to the organization, for she has contributed many useful and suggestive ideas.

Although the Service Club is only five years old, it is one of the largest and most active groups in school. Each member contributes two study periods a week to serve others.

This year's officers were Mary Ann Schoder, president; Joan Moran, vice-president; Mary Pfaff, secretary; and Shirley McCarthy, treasurer.



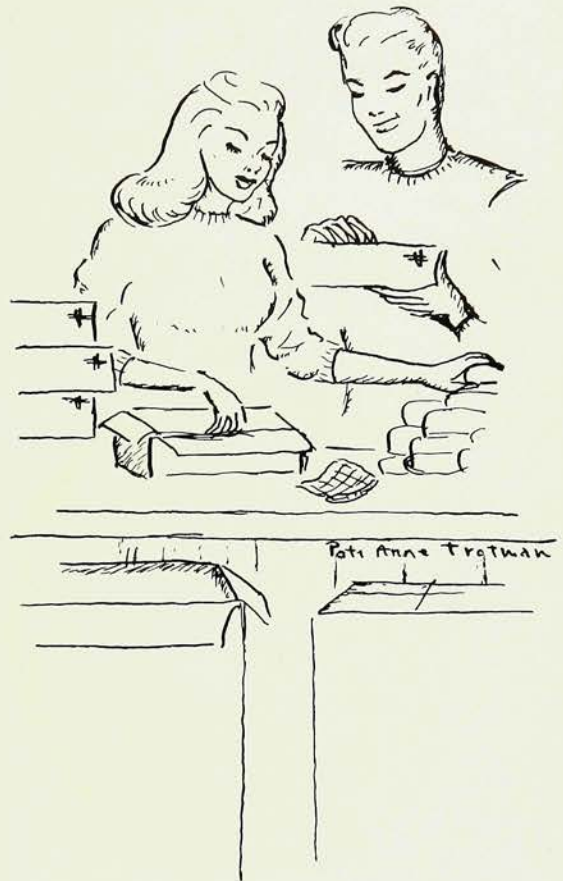
RED CROSS COUNCIL

The members of the Red Cross Council are volunteers who represent every homeroom in the school. Meetings are held the last Thursday of each month to discuss plans for future projects.

This year the Council handled the annual Junior Red Cross membership drive, packed boxes to be sent to the children of Europe for use in their schools and hospitals, collected clothing to be sent to a school in Kentucky which the children could not attend for lack of clothing, sent boxes of soap, paper, pencils, crayons, games, and candy to Wallasey, England and boxes of food and small gifts to a family in Holland, made scrapbooks for the Army and Navy hospitals, and knitted an afghan which was sent to a veterans' hospital. Fifty-four games and more than three hundred lap boards were contributed to headquarters in New York through the Manual Training Department.

The Council received many interesting letters from England, Holland, and Belgium thanking them for the boxes they had sent. These letters were posted on the main bulletin board so that everyone in the school might read them.

Miss Hewitt and Miss Sitler are the sponsors of the Junior Red Cross Council. The officers are Ann Vreeland and Dick Cadmus, co-chairmen; Julie Bubb, secretary; and Ted Frankenbach, treasurer.





MASK AND MIME

One of the largest and most active clubs, the Mask and Mime, is open to all sincerely interested in any phase of dramatics.

"The Fighting Littles," a comedy based upon family life, with particular emphasis placed upon the adolescents, was presented as the traditional fall play.

Next, members worked on the staging, lighting, and makeup for the Christmas Program. The backstage crews assisted throughout the year in assemblies, programs, club programs, the music festival, and other stage affairs.

In the spring the club went to see a play in New York. This annual visit to see a Broadway production is a tradition and always a gala time.

This large club with its more than one hundred members maintains its efficiency through its excellent council and its fine committees. The Mask and Mime Council, the governing body of the club, determines the policies and activities of the organization at meetings held at intervals throughout the year. This council consists of thirteen members and is headed by the club president.

Miss Wanda Darling was the director of the club, while the officers for the year were Virginia Dannehower, president; Donna Payton, vice-president; Janet Reeh, secretary; and Betsy Ulrich, treasurer.



N. Ebersole

The Mask and Mime Club
1945-1946
Westfield Senior High School
PRESENTS
The Fighting Littles

By CAROLINE FRANCKE
Adapted from the Novel of the Same Title
By BOOTH TARKINGTON

THE CAST
(In Order of Appearance)

ALMATINA
OLITA

FILMER

HAM ELLERS

MR. LITTLE

GOODY

MRS. LITTLE

ANTOINETTE

CUCKOO

SCREWBALL

HENRIETTE

NORMAN PEEL

DICKEY HARPEDDLE

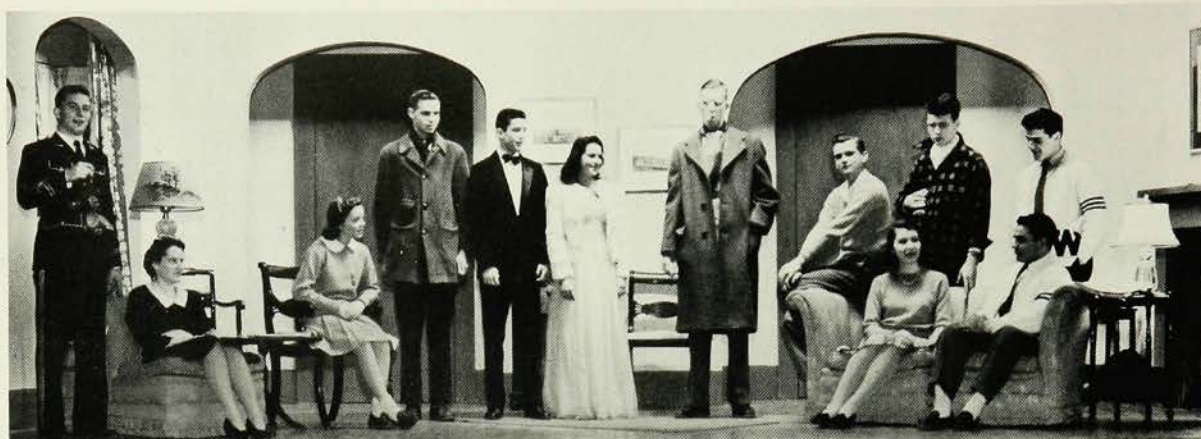
MRS. HARPEDDLE

MISS POLOGA

Sally Montgomery
Marjorie Hohenstein
Paul Piret
Waldron Holok
James Clark
Betsy Ulrich
Annette Turner
Diane Kessler
Jean Barnett
Nancy Harkrader
Joyce Johnson
Ned Belcher
David Green
Judy Hunter
Elizabeth Young

SCENE: The Littles' Living Room.
TIME: ACT I—Scene I A July Morning.
ACT II—The next afternoon, same day.
ACT III—5:00 P. M. The next day.





Junior Miss

By JEROME CHODOROV and JOSEPH FIELDS

Play is produced by special arrangements with the Dramatists' Play Service of New York.

CAST

(In order of appearance)

HARRY GRAVES	Jim Clark
JOE	Jack Jeske
GRACE GRAVES	Nancy Tucker
HILDA	Barbara MacMillan
LOIS GRAVES	Libby Frolich
JUDY GRAVES	Charlotte Engle
FUFFY ADAMS	Virginia Dannehower
J. B. CURTIS	James Perry
ELLEN CURTIS	Shirley Heitkamp
WILLIS REYNOLDS	Jim Chambers
BARLOW ADAMS	Dick Wilson
WESTERN UNION BOY	Ernest Anderson
MERRILL FEUERBACH	Lloyd Townley
STERLING BROWN	Robert Holloway
ALBERT KUNODY	William Bacon
TOMMY ARBUCKLE	Tom Harms
CHARLES	John Chironna
HENRY	Karney Scioscia
HASKELL CUMMINGS (The Man in Judy's Life)	Bill Comrie



Men in
Lois'
Life

SCENE

The Graves' apartment

ACT I

SCENE 1. An evening late in December.

SCENE 2. Three hours later.

ACT II

SCENE 1. Christmas morning.

SCENE 2. New Years' Day.

ACT III

The following evening

Production directed by Wanda Darling.

"Echoes from Broadway"

Music by High School Orchestra. Direction Fritz Heim.

Senior Members of the Orchestra

Walter Savoye

Jim Clark

Peggy Griggs

Jack Beierle

John Leeming

Phyllis Dodge

Calpurnio Salomone

Junior Miss first appeared as short stories in the *New Yorker Magazine*. Chodorov and Fields dramatized Sally Benson's stories after they had been published in volume form. The comedy opened in 1942 as a Broadway hit and later toured the United States. Then it was made into the current moving picture starring Peggy Ann Garner.

Art

TICKET RESERVATION COMMITTEE
John Zeiller } Co-Chairmen
James Hebden }
June Jaffee }

Harriet S. Howard, *Supervisor*
Class Seal designed by Leslie Johnson
Stage Design by Jim Chambers

Posters

Mickey Biddulph
Jean Thomson
Gloria Taylor
Nancy Yoder
Bob Fluckiger
Winifred Emery
Mildred Hyde

Mildred Collins
Jane Mathes
Leslie Johnson
Nancy Guthrie
Donna Payton
Nancy Ebersole
Rosina Bavos

SALES ORGANIZATION
Marjorie Hohenstein, *Chairman*
Betty Broback
Jim Davidson
Claire Hamilton
June Jaffee
Virginia Metzler
Adele Mitchell
Lorraine Pfeiffer
Muriel Roy
Shirley Stiles
Betty Jane Wichern

Production

PROMPTERS

Margery Fleishman
Donna Payton
Marion Skelly
Betsy Ulrich

LIGHTS

Reed Warburton, *Chairman*
Ned Belcher
Dick Cadmus
David Green
Charlie Woodbury

STAGE CREW

Jim Chambers, *Chairman*
George Coale
Bob Cooledge
George Denny
Bill Holaday
Bob Lambert
Warner Mackay
Pete Meyer
Reed Warburton

PROPERTIES

Marge Rost, *Chairman*
Marilyn Kathryn Downs
Anna Lou Kramer
Doris O'Neal
Alistelle Pettitt
Carol Rasmussen
Dot Van Deventer

MAKE-UP

Gaby Nosworthy, *Chairman*
Judy Hunter
Joyce Johnson
Mary Kindregan
Libby Kiningham
Shirley McCarthy
Millicent Merker
Pat Nolan
Thelma Sowell
Betty Ann Davies

PUBLICITY

Ann Vreeland, *Chairman*
Gaby Nosworthy
John Pfaff
Joan Williams
Rosalie Marotta
Ann Lucchesi

PROGRAM

Mary Ann Schoder





CHRISTMAS PROGRAM

The combined efforts of the music, art, and dramatics departments produced once more a beautiful, reverent, and inspiring Christmas service on Thursday and Friday, December 20 and 21.

Seven exquisite tableaux, resembling the paintings of the Old Masters, revealed the story of the Nativity. Those taking part were Shirley Heitkamp, **Mary**; Thomas Harms, **Joseph**; Letty Glimm, Nancy Yoder, Shirley Baldwin, Marjorie Morton, and Millicent Merker, **Angels**; Jim Chambers, Richard Watrous, and Warner Mackay, **The Three Kings**; Joy Borgeson and Marilyn Colby, **Children**; and Pat Bavos, Glen Taylor, John Salomone, Bob Holloway, and Paul Piret, **Shepherds**. John Leeming read an arrangement of the Christmas story from the Gospels at intervals during the tableaux. This part of the program was directed by Miss Harriet Howard and Miss Wanda Darling.

In conjunction with the tableaux and the reading, a fine carol service was presented by the full choir under Miss Janet Grimler's direction. The processional was "O Come Emmanuel;" the recessional, "Dona Nobis Pacem;" and the benediction, "Peace I Leave with You." Among the carols, representative of many countries, were "As It Fell upon a Night," "What Can This Mean?" "The Three Kings," "Lullaby, Jesus Dear," "Long Years Ago in Bethlehem," "Lullaby on Christmas Eve," and "A Song of Peace." These were preceded by the singing of "And the Glory of the Lord" from Handel's **Messiah** and followed by the "Hallelujah Chorus" from the same oratorio. Incidental solos were sung by Dorothy Stephenson, Lee McCormick, Libby Kinningham, Walter Baughman, Beverly Brandt, Louise Armstrong, Paul Scharwenka, James Peery, and Charlene Lamb. At the conclusion of the program the benediction was sung by Charlotte Engle.

VOCAL MUSIC

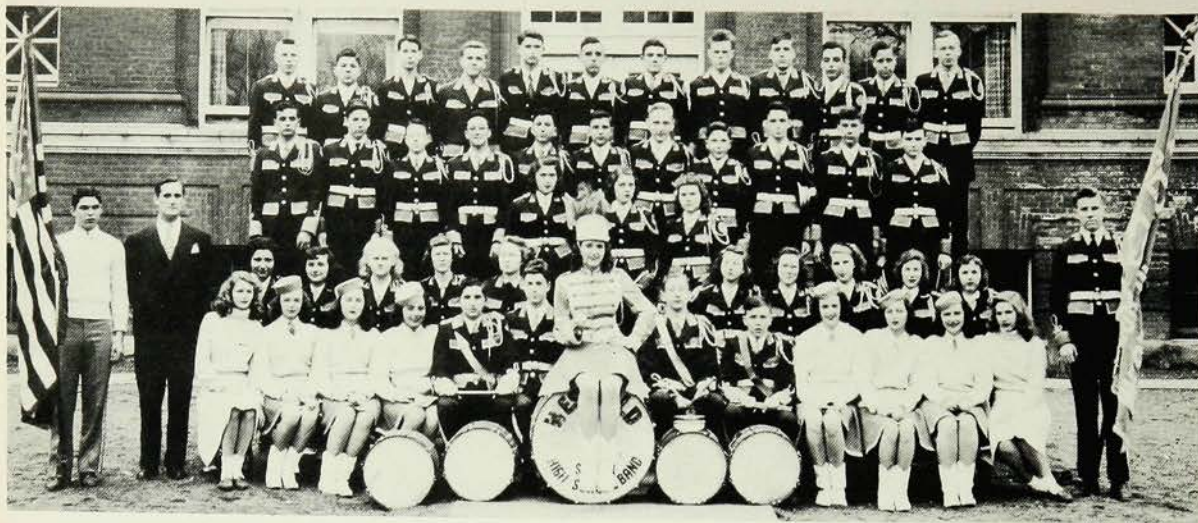
Once again throughout the school year the various organizations in the music department, under the leadership of Miss Janet M. Grimler, have brought enjoyment to our school, parents, and friends.

The first public performance of the choir was the inspiring Christmas program. Then in the spring came the Annual Music Festival which was built around Tom Scott's **America, I Hear You Singing**. Especially notable were the songs of praise, **Alleluia** by Randall Thompson and **Psalm CL** by Cesar Franck. The latter was sung accompanied by Gordon Crain and Claire Hamilton on two pianos. In the same group of selections Charlotte Engle had a solo part in Samuel Richards Gaines' **Yonder! Yonder!** Later in the spring the choir gave performances at the various grade schools.

Besides the choir there are two other large groups, the Boys' Glee Club, accompanied by Gordon Crain, and the Girls' Chorus, accompanied by Claire Hamilton.

Two smaller musical organizations are the Boys' Double Quartet and the Girls' Triple Trio. In the former the following boys performed for many outside organizations during the year: James Peery, Waldron Holck, Lee McCormick, Walter Baughman, Donald Deer, George Greer, Ned Belcher, Harold Montroy, James Stavros, and Sandy Parry. The Triple Trio, which has already made a place for itself, contains the following members: Dorothy Stephenson, Libby Kiningham, Charlotte Engle, Beverly Brandt, Bonnie Lou Vogt, Joyce Johnson, Nancy Tucker, Dorothy Van Deventer, Mimi Waterman, and Evelyn Baker.





INSTRUMENTAL MUSIC

Under the excellent leadership of Mr. Fritz Heim, the Westfield High School band and orchestra made great strides. Between them these organizations furnished appropriate music at football games and rallies, the fall play, the senior play, the spring festival, and the band concert. School spirit and town interest were aroused by having the band march to many home football games.

In an effort to improve both organizations Mr. Heim inaugurated a system of group instruction which proved very successful.

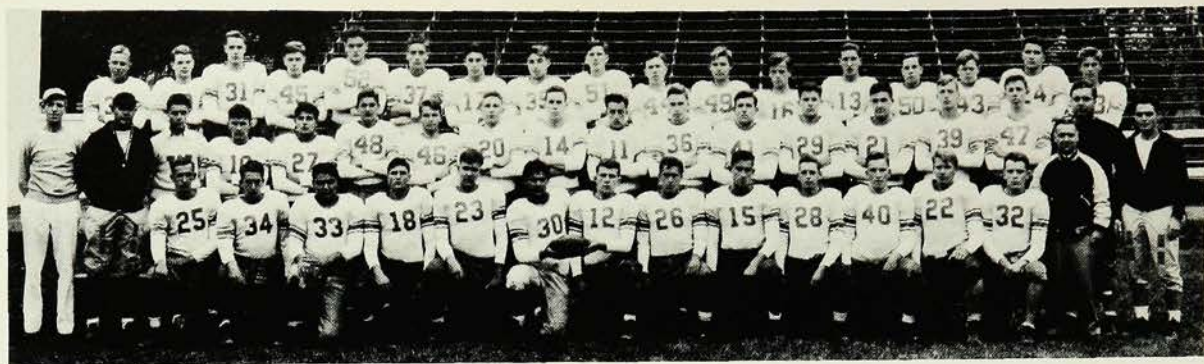
The officers of the band were President, Bill Holaday; Vice-President, John Lancaster; Secretary, Phil Clark; Treasurer, Shirley Heitkamp; and Property Managers, Hubert Entwistle and John Leeming.



Athletics



Laura Weaver



FOOTBALL

This year, as last, coaches Freeman, Ellis, and Rowan turned out another great team. Nine victories and one defeat is the record which the 1945 team leaves behind it. At the close of the season the Blue Devils were awarded the sole possession of the trophy emblematic of the Group III Section II State Championship.

Among the victims of the Freemanites were Ridgewood 27-7, Somerville 34-0, Millburn 31-0, Roselle 12-6, Columbia 26-6, Bound Brook 25-7, Summit 34-7, West Orange 14-0, and finally the "atomic" Plainfield club which was defeated 12-6. The lone defeat came at the hands of a good Roselle Park Club. The score was 27-0.

At the end of the season letters were awarded to the following boys: Co-captains Loren Rodewig and John Chironna, Tom Harms, Karney Scioscia, and Captain-elect Bob Dougherty, all of whom were All State selections, and also to Brent Clark, Jim Chambers, Al Eichorn, Jim Hebden, Warner Mackay, Jerry McGinley, Jim Peery, Jack Reydel, Jack Salvato, Frank Savoye, and the manager, Charles Woodbury.





Chick



Rod



Bob



Champ



Jack



Shush



Ike



Tommy



Red



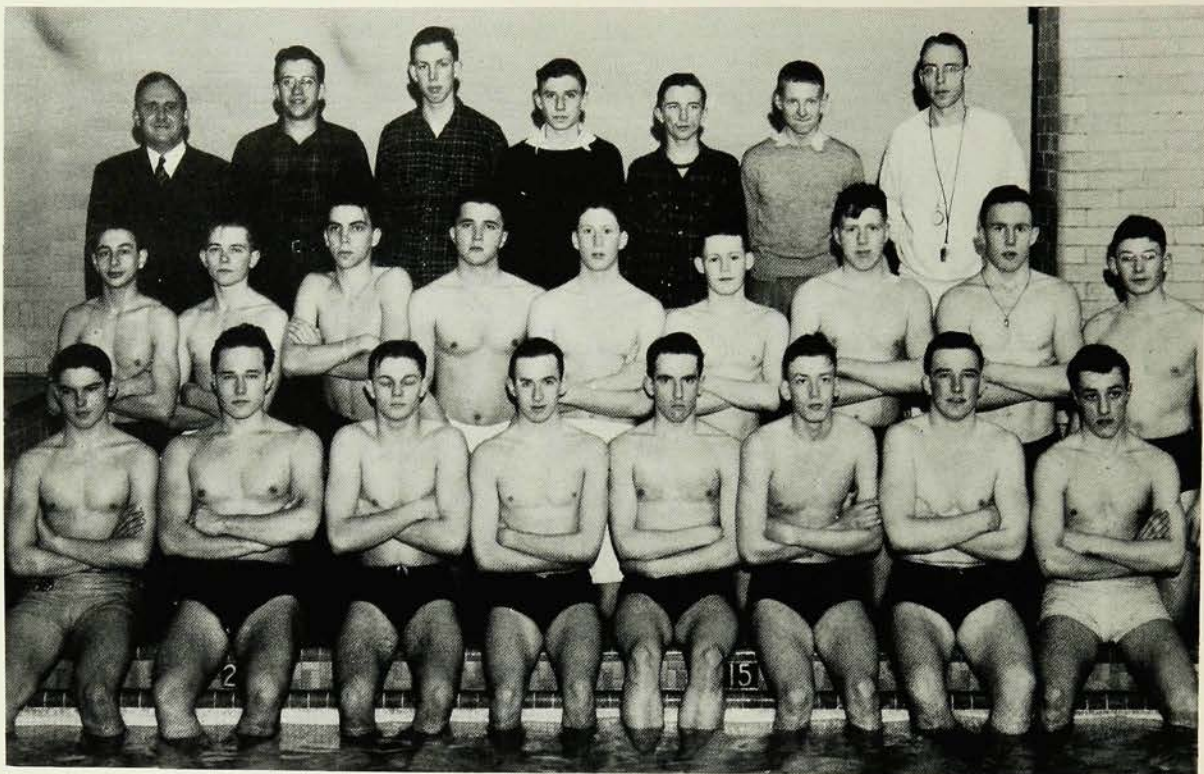
Mac



Jack



Heb



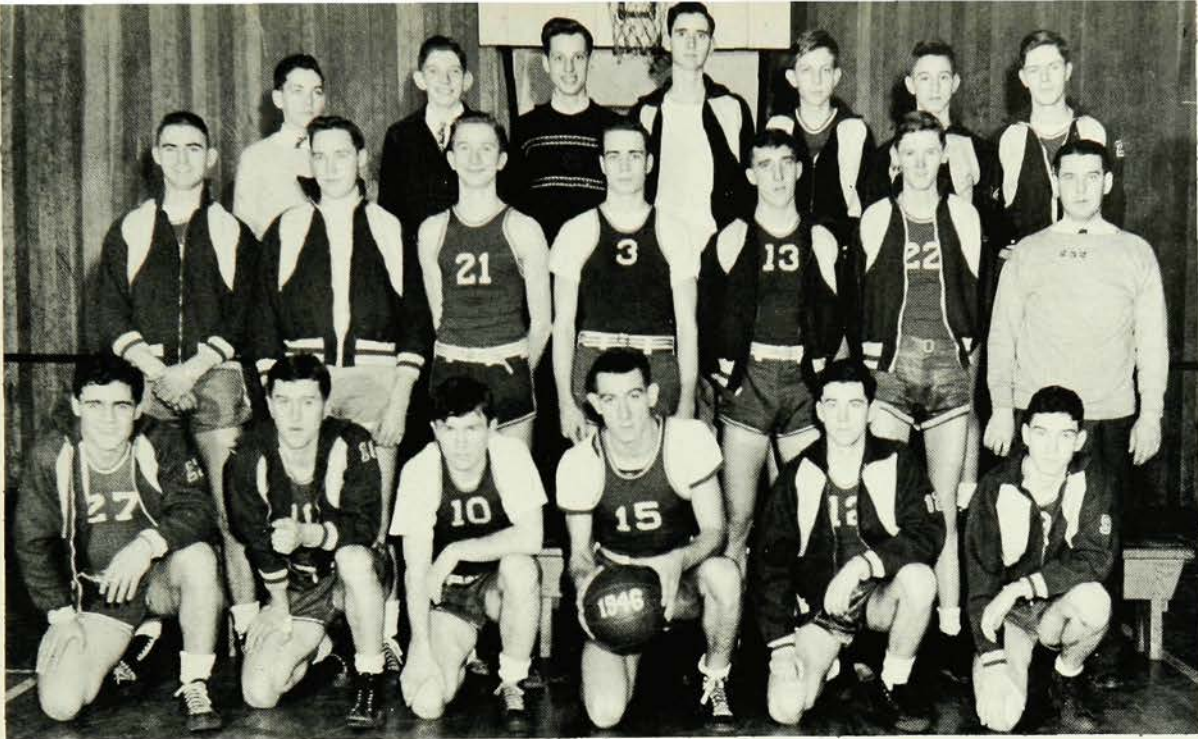
SWIMMING

With four lettermen around whom to build the team, the swimmers had an excellent year. These men were Jim Stockslager, George Coale, Brent Clark, and Gordon Nelson.

The first meet, on January 14, ended with Westfield victorious over Bloomfield by a score of 43-23. Then, for the first time in years, Westfield emerged ahead of Plainfield by a score of 34-32. The relay team won the meet by finishing a few inches ahead of the Plainfield team. Next Fairlawn was beaten by a score of 37-29, and Pingry by a score of 44-13. Again Westfield swam against Plainfield, only to lose the meet 19-47; but in the next week, returning to winning form, the home team defeated Lincoln 39-18. Following this, Columbia overpowered Westfield by a score of 41-25. In rapid succession Westfield then beat Bloomfield and Fair Lawn by the scores 41-25 and 42-24. Columbia, definitely superior, then administered another defeat, 48-18.

At the time of going to press there were dual meets with Pingry and Trenton and the State Meet to enter.

The senior manager of the team was George Denny, while Mr. Edmund Allen and Mr. James Montgomery coached.



BASKETBALL

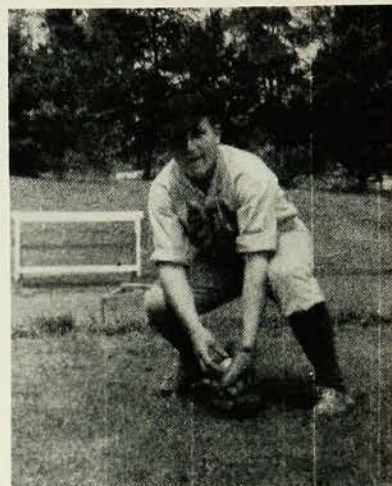
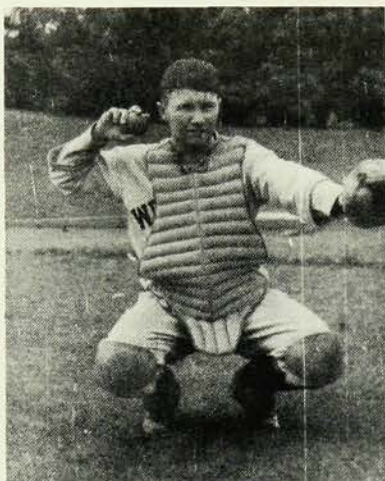
The basketball season with its two victories and fourteen defeats was naturally a disappointment to all concerned, players, coach, and fans. The only victories were those over Millburn and Bound Brook. In the County Tournament Westfield bowed to Union, 35-33, in a close played thriller, although the home boys had a five point lead in the final quarter.

Three players, Salvato, Dougherty, and Reydel were the principal point gatherers, having 142, 115, and 81 points respectively. Late in the season they were joined by Mateer and Chironna who did excellent work at guard and cut down the margin of defeat by their close play in the final games.

This year's lettermen were Captain Jack Salvato, Bob Dougherty, Jim Davidson, Jim Thomson, Francis Salvato, Jack Reydel, John Chironna, Bill Mateer, Bill Comrie, and Manager Don Smith. Mr. Gomer Lewis was the coach.



Basketball		
Dec. 7	Plainfield	Away
Dec. 11	Edison	Home
Dec. 14	Millburn	Away
Dec. 18	Columbia	Away
Jan. 2	Union	Away
Jan. 4	Roselle Park	Away
Jan. 8	Bound Brook	Away
Jan. 11	Regional	Home
Jan. 14	Roselle Park	Away
Jan. 18	Summit	Home
Jan. 30	Columbia	Home
Feb. 1	Bound Brook	Home
Feb. 5	Union	Away
Feb. 13	Plainfield	Home
Feb. 19	Millburn	Home



BASEBALL

With a fifteen-game schedule facing them, Westfield's varsity nine go into the season with excellent prospects. Seven lettermen—Jim Chambers, ace hurler; his battery mate, Bob Dougherty; infielders, Dick Wilson, Bill Comrie, and Loren Rodewig; and outfielders, Bob Sommer and Jack Reydel—return this year, and they together with several newcomers will form the squad. Much of the season's success hinges on

Chambers' right arm, for he is the only hurler who has seen much action. Jim Davidson and Frank Savoye are other moundsmen who have shown promise. It is not improbable that Jack Reydel, whose batting average last year was .409, will figure prominently in this year's success.

Reed Warburton is the very capable manager. Mr. Noel Taylor, new to Westfield, will coach the team.





TRACK

Ed Hoos, Steve Ayres, Ernie Anderson, and Les Johnson made a promising beginning as a cross country squad in October, and in the nine opportunities presented by the spring schedule the team is hoping to come out on the credit side of the ledger.

Some of the hopes for the season are Ed Hoos, miler; Steve Ayres in the quarter mile; Hav Mekeel in the hundred yard dash; "Butch" Mackay in the weights; and a promising group of sophomores spread thinly through all events.

The squad is looking to Mr. Bloomington, their third coach in three years, for able and timely direction.

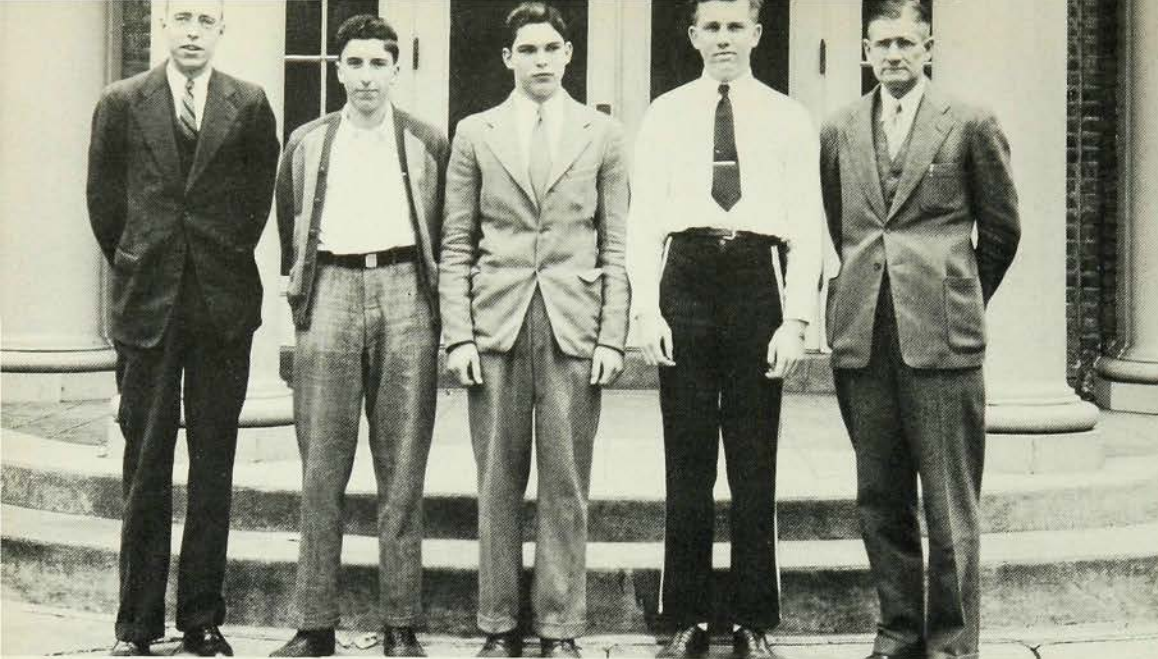
BOYS' ATHLETIC COMMITTEE

The Boys' Athletic Committee is composed of the elected representatives from each homeroom. This group, under the supervision of Mr. Robert Duncan, conducts the athletic activities for the boys of the school.

This organization puts teams into competition in all major sports and also makes all awards. In addition to this, the members take care of the equipping, financing, and scheduling of outside competition.

The officers for the year have been Loren Rodewig, president; Frank Savoye, vice-president; Jack Reydel, secretary; and John Zeiller, treasurer.





GOLF

With only one letterman, Roger Spindler, back from last year's team, the Westfield High School golfers face an uncertain future. However, an unusually large number of golfers turned out for the first meeting of the team.

Mr. Duncan, the Director of Athletics, has arranged a schedule of ten games for the team.

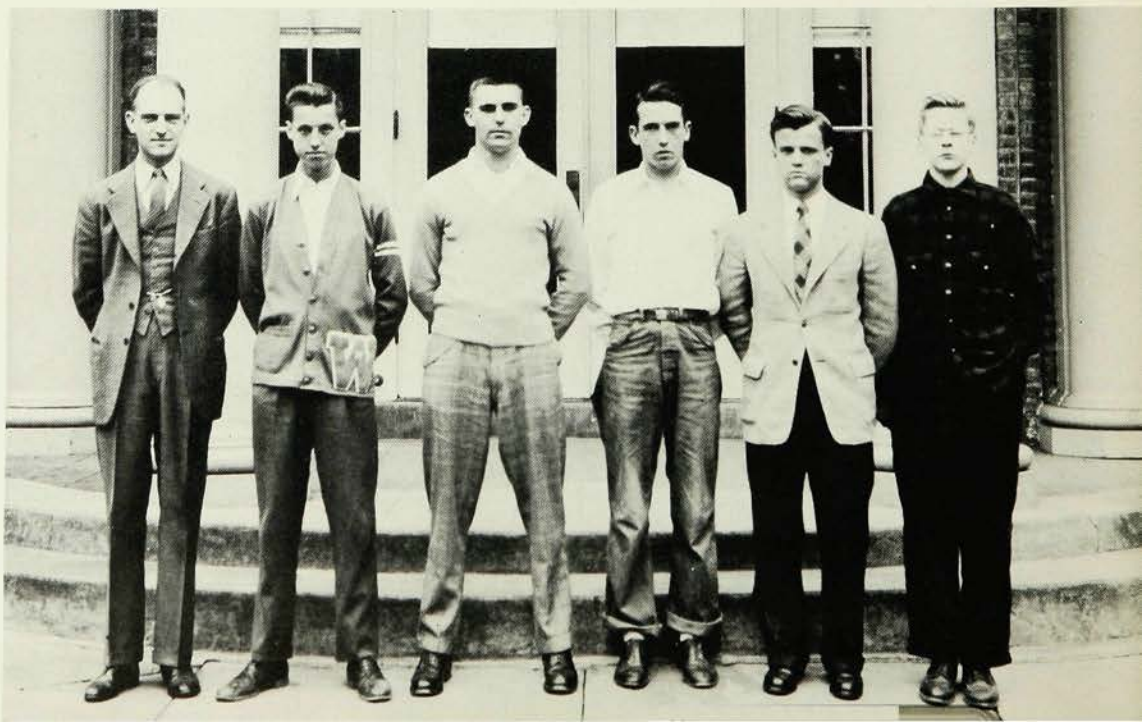
The head coach is Mr. Walter E. Johnson, Jr., who is ably assisted by Mr. Edmund Allen. The senior manager of the team is Glenn Taylor.

TENNIS

Jim Stockslager and John Zeiller are lettermen available for this year's tennis team. The places of Paul Smith and Mickey McManigal must be filled by two new boys. Bill Combe, a sophomore, is a bright prospect for one of these places.

Games have been scheduled with Millburn, Perth Amboy, Pingry, Plainfield, Highland Park and Morristown. Return matches will be played with all of these.

Mr. Samuel Bunting is the team's very able coach.





The Girls' Athletic committee, which is composed of one representative from each homeroom, meets weekly to plan the after-school activities for girls. With the assistance of Miss Gertrude M. Swift, director of physical education for girls, and Miss Muriel Engelke, the girls also undertake projects to improve the health and safety conditions in the school. Selling booster badges and kerchiefs to raise money were among the new projects.

This year the G.A.C., headed by Betty Broback, chairman; Lib Frolich, vice-chairman; Nancy Jenkins, secretary; and Carol Rasmussen, treasurer, planned a varied sports program. Among the most popular of these sports was the competition among the classes in hockey. Six outstanding girls

represented W.H.S. at the North Jersey Field Hockey Tournament on November third. Of these girls, Millicent Merker and Thelma Sowell placed on the first team and Marj Rost on the second. The season was concluded by the annual WAC-WAVE contest, this year the WACS coming out on top.

Basketball followed hockey, and under the management of June Jaffee the class teams competed with Clifford Scott, Rahway, and Chatham High Schools. Winter revealed over 40 badminton enthusiasts, managed by Jane Rogers. Table tennis, headed by Marion Skelly, softball, and modern dancing completed the program.

The regular spring physical education program was not held this year, on account of the prolonged illness of Miss Gertrude M. Swift



CHEER SQUAD

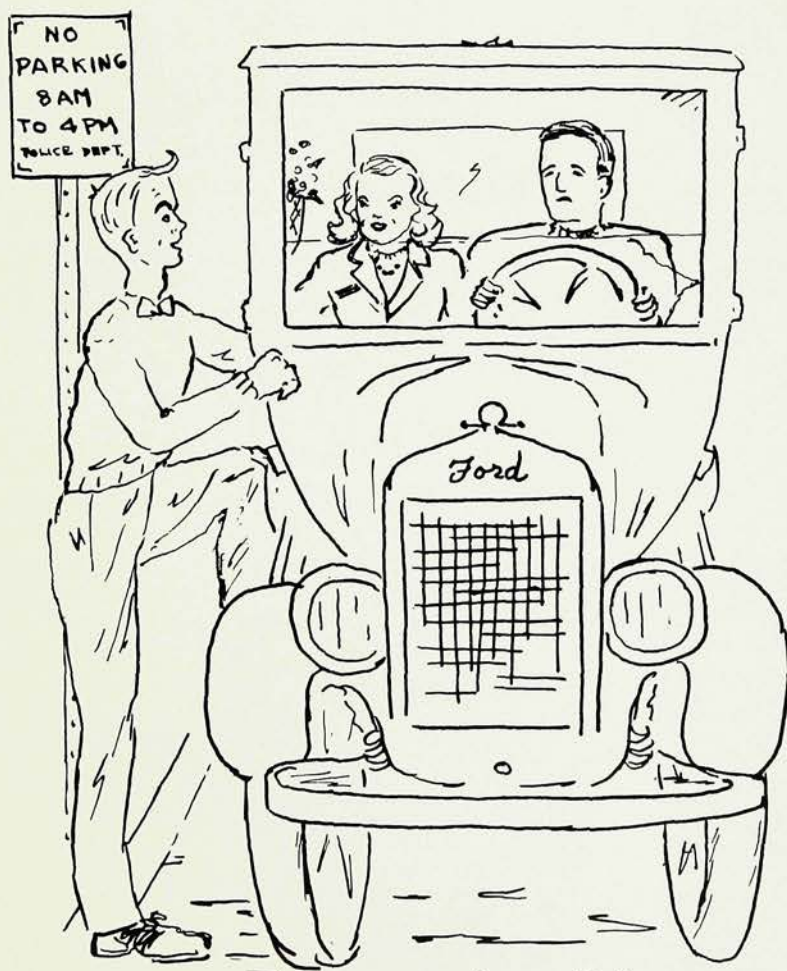
As in previous years, the enthusiasm and undying spirit of Westfield High School aroused by the cheerleaders, who braved all kinds of weather to spur the team on towards success, led the 1945-46 football team through a victorious season.

From the usual large bevy of candidates, a squad of fourteen was finally selected. Under the capable direction of Miss Gertrude M. Swift, director of physical education for girls, the squad attained perfection and efficiency, and has been recognized as leading one of the best spirited schools in the state.

The squad cheered not only at the football games but also at numerous cheer assemblies and at the final Football Rally at the Rialto Theater.

David Green, a senior, received his varsity letter early in the year for three years of service. Other members on the squad were Marilyn Colby, Charlotte Engle, Marjorie Hohenstein, Donna Payton, Mary Ann Crowell, Jane Reynolds, Walter Baughman, Arthur Bingham, William Smyers, Barbara Fish, Marianne Stanford, Frank Barranco, and William Coumbe.

Features

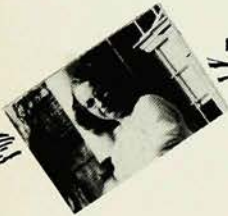


Nancy McCoy

A BOUQUET to



Betty Hanshaw



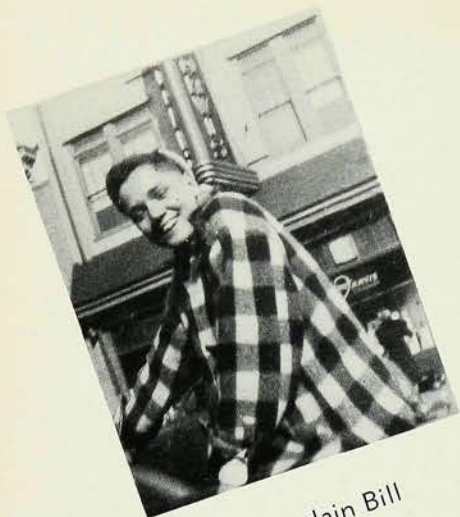
Mimi Waterman
Doris Oneal
Betty Ann Davies
Peggy Griggs
Doris Seiss
Lib Kiningham
Pat Nolan
Mary Kindregan
Anna Lou Kramer
June Jaffee
Betty Broback
Shirley Heitkamp
Evelyn Baker
Marilyn Bull
Betsy Ulrich
Lib Kiningham
Joyce Johnson
Pat Nolan
Marilyn Bull
Charlene Lamb

Romeo and Juliet
Most Polite
Friendliest
Happiest
Sweetest
Heartbreaker
Most Sophisticated
Most Suave
Quietest
Most Dependable
Most Brilliant
Most Likely to Succeed
Class Optimist
Class Pessimist
Most Naive
Best Line
Prettiest Smile
Prettiest Eyes
Laziest
Cutest

John Leeming
Dick Wilson
Jim Peery
Bob Cooledge
Dick Wilson
Bill Comrie
Bob Fluckiger
Blackie Watrous
Jack Salvato
John Leeming
John Leeming
Jim Hebden
Jack Jeske
Jim Stockslager
Bob Holloway
Jim Chambers
Karney Scioscia
Bill Comrie
Bill Smyth
Bill Comrie



- | | | |
|---------------------|--------------------------------|-----------------|
| Ginny Dannehower | Class Actress and Actor | James Clark |
| Annette Turner | Class Artist | Leslie Johnson |
| Claire Hamilton | Class Musician | Bill Holaday |
| Marjorie Hohenstein | Class Athlete | Jack Reydel |
| Charlotte Engle | Class Singer | Jim Peery |
| Phyllis Dodge | Class Scientist | Ted Foster |
| Milly Hyde | Class Driver | Blackie Watrous |
| Eve Lapeyrouse | Class Angel | Bob Pfau |
| Rozelma Bullock | Class Sunshine | Jack Jeske |
| Alistelle Pettitt | Class Wit | Tom Harms |
| Dot Stephenson | Class Giggler | Jack Reydel |
| Charlotte Engle | Best Looking | Blackie Watrous |
| Betty Broback | Best Dressed | Bob Fluckiger |
| Donna Payton | Best Figure or Physique | John Chironna |
| Ginny Dannehower | Best Personality | Tom Harms |
| Claire Hamilton | Most Dignied | Ned Belcher |
| Betsy Ulrich | Most Inquisitive | Jim Stockslager |
| Pat Nolan | Most Attractive | John Zeiller |
| Shirley Heitkamp | Most Popular | Loren Rodewig |
| June Jaffee | Most Sincere | Loren Rodewig |



Just plain Bill



G-r-r-r!



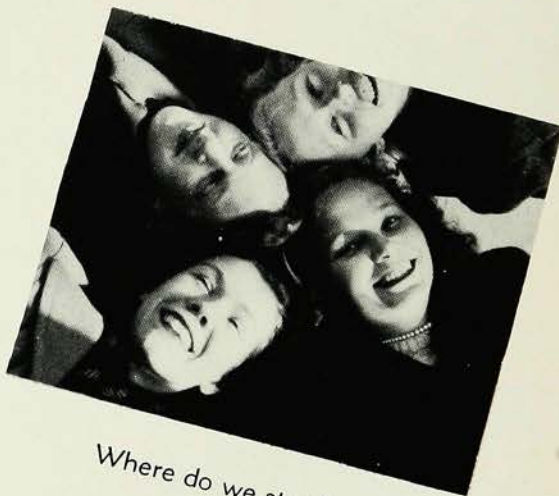
Bobby Sox



Smile!



Ladies' Day



Where do we start?



Boy Scouts



**BY
THE
SEA**



WHICH IS WHICH?





1. T. Harms
2. N. Yoder
3. E. Lapeyrouse
4. C. Engle
5. D. Stephenson
6. J. Mathes
7. J. Rogers
8. D. Mason
9. E. Barranco
10. W. Mackay
11. J. Luft
12. B. J. Wichern

13. M. Colby
14. M. Ilger
15. L. Kinningham
16. B. Meier
17. B. Vogt
18. W. Emery

19. N. Smith
20. M. Merker
21. M. Mathis
22. M. Downs

23. K. Johnson
24. A. L. Kramer
25. B. Comrie
26. P. Griggs

CLASS WILL

We, the Senior Class of 1946, being in a slightly confused state of mind, hereby bequeath all our earthly possessions (also the unearthly ones) to the deserving few:

1. To Dr. Neubauer we leave the never ending quest for a new school.
2. To users of the library we leave an encyclopaedia of excuses for gaining admittance to Miss Scott's inner sanctum.
3. To Miss Bordner we leave a license to serve candy and ice cream to her fifth period English class.
4. To "Boss" Thompson we leave a tabulated index to the worst auto accidents in the United States.
5. To the sophomore girls we leave several slightly used football pins to keep them company for the next few years.
6. To Mrs. Cameron we leave the two sides to every story.
7. To the up and coming male student body we leave Holloway's famous course entitled "How to Be Naive."
8. To "Spitting Joe's" squad of next year we leave a demand for the complete annihilation of Roselle Park.
9. To "Swiftie" we leave ten cases of Kellogg's Pep in the hope that she will feed it to the cheer squad.
10. To Mr. Lewis we leave a basketball player who can make 99 out of 100 "peepers."
11. To the junior boys we leave bigger and better collar bones so that they may withstand "Strangler" Duncan's wrestling matches.
12. To patrons of the junk yards we leave "Harm's Heap."
13. To the future wits of the school we leave Mackay's joke books which he forgot to read.
14. We, the Class of 1946 leave—most of us, that is.

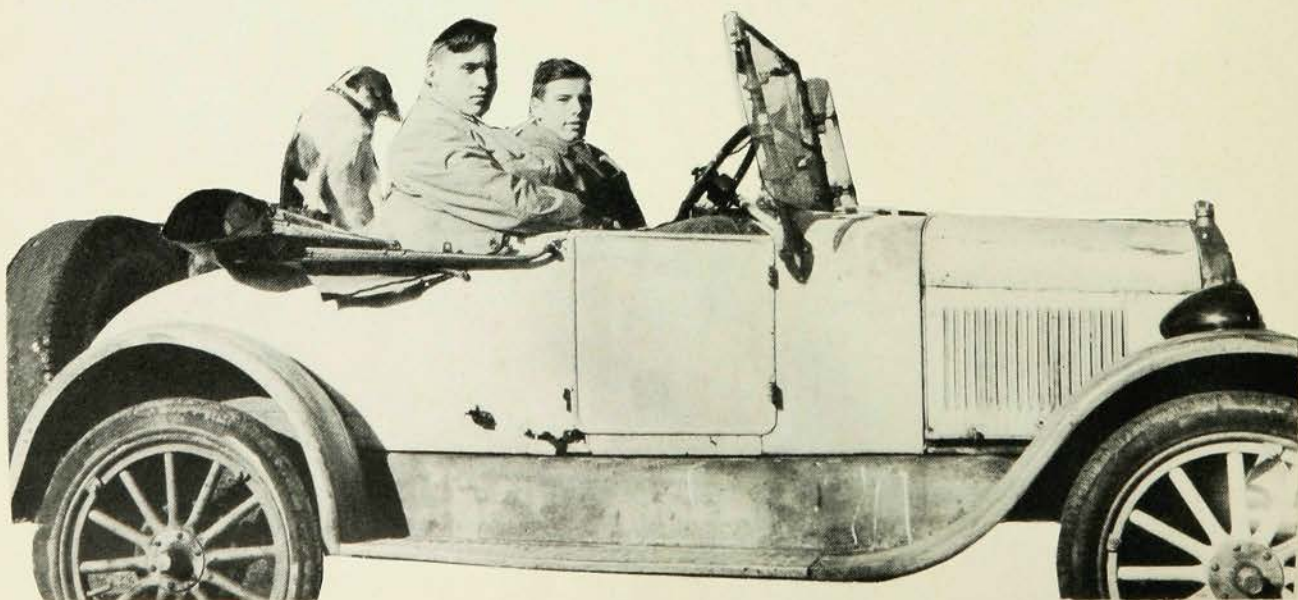
Witnessed on a balmy Sunday morning after one of those Hi-Y dances.

Witnesses

Senator Claghorn
B. O. Plenty
The Toads

Executors

Members of the New Year's Eve Band
C. H. L. and S. Wrecking Crew





3 9550 00188 1274

JEAN LEVY • French Club (2, 3, 4); Spanish Club (2, 3, 4); Mask and Mime (3, 4); Service Club (2); Victory Corps (3); Girl Reserves (2).

JEAN LEWIS • Girl Reserves (2, 3); Service Club (2, 3).

ANN LUCCHESI • Girls' Sports (2, 3, 4); Senior Play Comm. (4); Guidance Council (4); Service Club (3, 4); Collectors' Club (4); Outing Club (4); "Hi's-Eye" (4); Academic Comm. (2); Annual.

JEANNE LUFT • French Club (2, 3, 4); Spanish Club (3); Mask and Mime (3, 4); "Weather Vane" (4); Service Club (3, 4); Girl Reserves (3, 4); Annual.

MARJORIE MACKAY • Collectors' Club (3, 4); Spanish Club (4).

WARNER MACKAY • German Club (2, 3); Slide Rule Club (3, 4); N.A.S. Society (3, 4); National Honor Society (3, 4); Basketball (3); Track (2, W3, W4); Football (3, W4); Senior Play.

BARBARA MACMILLAN • Mask and Mime (3, 4); Literary Club (4); Outing Club (4); Red Cross Council (4); Senior Play Cast (4).

ROSALIE MAROTTA • Girls' Sports (2, 3, 4); G.A.C. (3); Service Club (4); Hi's-Eye (3, 4); Senior Play Comm.

DAPHNE MASON • Mask and Mime (3, 4); Spanish Club (4); Girl Reserves (3, 4); Hockey (4); Annual (4); Literary Club (3, 4).

JANE MATHES • Art Club (4); Mask and Mime (4).

MARJORIE MATHIS • Spanish Club (3, 4); Outing Club (3); Mask and Mime (3, 4); "Weather Vane" (3); Girl Reserves (2); Girls' Sports (3, 4); Annual.

SHIRLEY McCARTHY • Service Club (2, 3, Treas. 4); Mask and Mime (2, 3, 4); Outing Club (3, 4); Chess Club (3); Hockey (3, 4); Student Council (4); Guidance Council (3).

ELIZABETH MEIER • Service Club (2); Spanish Club (3, 4); French Club (2, 3, 4); Guidance Council (4); National Honor Society (4).

MILLICENT MERKER • Spanish Club (2, 3, 4); French Club (2); Girl Reserves (3, Sec. 4); Victory Corps (4); Mask and Mime (3, 4); Literary Club (4).

VIRGINIA METZLER • Girl Reserves (2, 3, 4); "Weather Vane" (3, 4); Guidance Council (4); Annual; Senior Play Comm.; Red Cross Council (4); Service Club (3).

PETER MEYER • Hi-Y (3, 4); Catalyst Club (3, 4); Spanish Club (3).

ADELE MITCHELL • Service Club (4); Art Club (2, Sec. 3); Girls' Sports (2, 4); Mask and Mime (4); Guidance Council (3).

VINCENT MONE • Football (3, 4).

MILDRED MORITZ • Collectors' Club (3, Treas. 4).

EVELYN NEAD • Service Club (3, 4); Collectors' Club (2, 3, 4).

GORDON NELSON • Swimming Team (W3, W4); French Club (3); Catalyst Club (3, Vice-Pres. and Treas. 4).

KAY NITCHIE • Collectors' Club (2, 3); Guidance Council (2).

PAT NOLAN • Mask and Mime (2, 3, 4); Senior Play Comm.; Victory Corps (2, 3).

GABRIELLE NOSWORTHY • Mask and Mime (2, 3, 4); Service Club (2); Red Cross Council (3, 4); Spanish Club (4); "Weather Vane" (4); "Hi's-Eye" (4); Senior Play Comm.

DORIS ONEAL • French Club (2, 3, 4); Spanish Club (3, 4); Mask and Mime (3, Vice-Pres. 4); Cheer Squad (4); Girls' Sports (3, 4); Jr. Prom Comm. (3); Senior Play Comm.; Outing Club (3); Annual.

PATRICIA PATTERSON • Service Club (4); Officers' Training (4); Guidance Council (3); Mask and Mime (4); Annual.

DONNA PAYTON • French Club (3, 2nd Vice-Pres. 4); Mask and Mime (3, Vice-Pres. 4); Cheer Squad (4); Girls' Sports (3, 4); Jr. Prom Comm. (3); Senior Play Comm.; Outing Club (3); Annual.

JAMES PERRY • Football (2, 3, W4); Track (2); Basketball (3); Baseball (4); Hi-Y (3, Sec. 4); Senior Play Cast.

LILLIAN PETERSEN • Victory Corps (2, 3); Outing Club (3); Forum (3).

ALISTELLE PETITT • Mask and Mime (2, 3, 4); Girls' Sports (2); Service Club (3); Red Cross Council (4); Jr. Prom Comm. (3); Senior Play Comm. (4); Victory Corps (2, Sec. 3).

JOHN PFAFF • Art Club (2, 3); Hi-Y (3, 4); Latin Club (3); Victory Corps (4).

ROBERT PFAU • Catalyst Club (4).

LORRAINE PFEIFFER • Mask and Mime (2, 3, 4); Spanish Club (2, 3); Senior Play Comm.; "Weather Vane" (3, Sec. 4); "Hi's-Eye" (4); Girls' Sports (2, 3, 4); National Honor Society (3, 4); Annual.

CAROL RASMUSSEN • G.A.C. (Treas. 4); Girl Reserves (2, 3); Senior Play Comm.; French Club (2, 3, Pres. 4); Girls' Sports (2, 3, 4); National Honor Society (3, 4); Council of Presidents (3).

JANET REEH • Latin Club (2, 3, Pres. 4); Guidance Council (3, 4); Spanish Club (3, 4); Girls' Sports (2, 3, 4); Mask and Mime (3, Sec. 4); G.A.C. (2).

JACK REYDEL • Football (2, W3, W4); Basketball (2, W3, W4); Baseball (W2, W3, W4); B.A.C. (3, Sec. 4); Slide Rule Club (4); Jr. Prom Comm. (3); Hi-Y (3, Treas. 4); N.A.S. Society (3, 4).

LOREN RODEWIG • President (4); Vice-President (3); Football (2, W3, Co-Capt. W4); Baseball (W2, W3, W4); Basketball (3); B.A.C. (Pres. 4); Hi-Y (3, Vice-Pres. 4); "Hi's-Eye" (2, 3).

JANE ROGERS • Spanish Club (2, 3); Mask and Mime (3, 4); "Hi's-Eye" (2, 3, Editor 4); Girls' Sports (2, 3, 4); Literary Club (4); Writers' Club (4); G.A.C. (3); Annual.

EVELYN ROHRBAUGH • Victory Corps (2, 3); Outing Club (3).

MARJORIE ROST • Girl Reserves (Treas. 2); Latin Club (Sec. 2, Treas. 3); Spanish Club (2, 3); Mask and Mime (3, 4); Senior Play Comm.; Girls' Sports (2, 3, 4); G.A.C. (4).

RONALD ROTH • Chess Club (2, 3, 4); Baseball (3, 4).

MURIEL ROY • Service Club (3, 4); Guidance Council (3); Outing Club (4); Senior Play Comm.; Girl Reserves (3).

JOHN RUH • Swimming Team (W2).

CALPURNIO SALOMONE • Spanish Club (2); All-State Band (4).

JOHN SALOMONE • Spanish Club (2); Christmas Pageant (4).

JACK SALVATO • Football (2, W3, W4); Basketball (2, W3, W4); Hi-Y (3, 4).

RUTH SAMPSON • Victory Corps (3); Service Club (2, 4); Red Cross Council (2); Mask and Mime (2).

WALTER SAVOYE • Spanish Club (3); Victory Corps (2, 3); Chess Club (4); Catalyst Club (3, 4); Indoor Track (4).

PAUL SCHARWENKA • Swimming Team (2, 3, W4); Hi-Y (4); Spanish Club (2, 3, 4).

MARY ANN SCHODER • Writers' Club (2, 3, 4); "Weather Vane" (2, 3, 4); Literary Club (3, 4); Library Council (2, 3, Pres. 4); Service Club (Pres. 4); Annual; Mask and Mime (2, 3, 4).

BETTY ANN SCHOTT • Service Club (2); Outing Club (3).

KARNEY SCIOSCIA • Football (2, W3, W4); Track (2, W3, W4); Senior Play Cast; N.A.S. Society (3).

DORIS SIESS • Red Cross Council (4); Service Club (4).

MARION SKELLY • Treasurer (3); Senior Play Comm.; Girls' Sports (2, 3, 4); Girl Reserves (2, 3); G.A.C. (2, 3); Latin Club (2, 3); Jr. Prom Comm. (3); Mask and Mime (2); Honor Society (3, 4); Annual.

DONALD SMITH • Tennis (2, 3, W4); Basketball Mgr. (2, 3, W4); Football (3); Hi-Y (3, 4); B.A.C. (2, 3, 4); Spanish Club (2, 3); Latin Club (4); Red Cross Council (Treas. 2); Annual.

NANCY SMITH • French Club (2, 3, 4); Spanish Club (3); Literary Club (3, 4); Mask and Mime (4).

WILLIAM SMYTH • Hi-Y (3, 4); Track (2, 3); Slide Rule Club (4); Outing Club (3, 4); Victory Corps (2, 3, 4); Latin Club (2).

ROBERT SOMMER • Slide Rule Club (4); Basketball (3); N.A.S. Society (3, 4); Jr. Prom Comm. (3); Baseball (2, W3, W4); Football (3, 4); Hi-Y (3, 4).

THELMA SOWELL • Mask and Mime (2, 3, 4); Outing Club (3, Pres. 4); Latin Club (2, 3, 4); Chess Club (3); Service Club (3); Hockey (2, 3, 4); Fall Play Comm. (2, 3); Senior Play Comm.

CATHERINE SPERRY • Girls' Sports (2, 3, 4); Girl Reserves (2); Latin Club (2); Spanish Club (2, 3); Victory Corps (2, 3); Mask and Mime (4); Outing Club (3).

JAMES STAVROS • Slide Rule Club (4); Baseball (3, 4); Victory Corps (3); Double Quartet (4).

DOROTHY STEPHENSON • French Club (2, 3); Latin Club (3, 4); Service Club (2, 3, 4); Triple Trio (4); All-State Chorus (3, 4); Mask and Mime (3, 4).

SHIRLEY STILES • Service Club (2, 3, 4); Mask and Mime (4); Girls' Sports (4); Senior Play Comm. (4); Victory Corps (2, 3).

MARY STILLWELL • Aeronautics Club (2); Spanish Club (2, 3); Latin Club (2); Mask and Mime (3, 4); Victory Corps (2, 3); Service Club (3).

JAMES STOCKSLAGER • N.A.S. Society (3, 4); Hi-Y (3, 4); Slide Rule Club (4); Swimming Team (W2, W3, Co-Capt. W4); Tennis Team (W2, W3, W4); Literary Club (4); Football (3, 4).

BEVERLY STRUBLE • Service Club (3); Red Cross Council (2); Mask and Mime (2); Girl Reserves (2).

GLENN TAYLOR • Literary Club (3, 4); Catalyst Club (4); French Club (2, Treas. 3); Latin Club (4); Swimming Team (3, W4); Golf Mgr. (3, W4); Jr. Prom Comm.

JEAN THOMPSON • Service Club (3, 4); Collectors' Club (Treas. 3); Mask and Mime (3).

LLOYD TOWNLEY • Golf (2, 3); Slide Rule Club (4); Victory Corps (2, 3); Hi-Y (3, 4); Senior Play Cast; Annual.

NANCY TUCKER • French Club (2, 3); Literary Club (3, Treas. 4); Writers' Club (4); Latin Club (2, 3); Slide Rule Club (4); Senior Play Cast; Honor Society (3, 4); Girls' Sports (2, 3, 4); Annual.

ANNETTE TURNER • Latin Club (2); Spanish Club (2, 3); Mask and Mime (2, 3, 4); Fall Play Cast (4).

BETSY ULRICH • Writers' Club (2, 3, 4); Literary Club (3, 4); Mask and Mime (2, 3, Treas. 4); Fall Play Cast (3, 4); "Weather Vane" (2, Sec. 3, 4); Annual.

DOROTHY VAN DEVENTER • Latin Club (2, 3); G.A.C. (4); Mask and Mime (3, 4); Senior Play Comm.; Slide Rule Club (4); Honor Society (3, 4); Girls' Sports (2, 3); Triple Trio (4); All-State Chorus (4).

BESSIE VAUGHAN • Girl Reserves (2, Vice-Pres. 3 and 4); Guidance Council (4).

PIERRE VIGLIANTI • Baseball (2); Victory Corps (2).

BONNIE LOU VOGT • French Club (2); Spanish Club (2, 4); Triple Trio (4); Hockey (2, 4); Girl Reserves (2); Annual.

ANN VREELAND • Red Cross Council (2, Sec. 3, 4); Literary Club (3, 4); Victory Corps (2, 3); Forum (2, 3, 4); Service Club (4); Senior Play Comm.; Mask and Mime (4); Annual.

MARION WALSH • Mask and Mime (2, 3, 4); Service Club (3, 4); Outing Club (4); Cafeteria Comm. (3); Fall Play Comm. (2).

REED WARBURTON • Literary Club (3, Pres. 4); Spanish Club (2, Pres. 3); Baseball Mgr. (2, 3, W4); Senior Play Comm.; Hi-Y (3, 4); Council of Presidents (3).

ROSEMARIE WARD • Red Cross Council (2); Service Club (3, 4).

MIMI WATERMAN • Literary Club (3, 4); Writers' Club (2, 3, 4); Latin Club (2); Outing Club (3); "Hi's-Eye" (2); Triple Trio (4); Girls' Sports (2, 4).

RICHARD WATROUS • Football (W2).

BETTY JANE WICHERN • French Club (2, Vice-Pres. 3); Spanish Club (2, 3, 4); Service Club (2, Vice-Pres. 3); Mask and Mime (4); Senior Play Comm.; Girls' Sports (2, 3, 4).

ELEANOR WIDTH • Girl Reserves (2); "Hi's-Eye" (2, 3, Editor 4); Service Club (2); S.A.T. Drive (2); Red Cross Council (2); Guidance Council (2).

JOAN WILLIAMS • Girls' Sports (3, 4); Mask and Mime (2, 4); Spanish Club (2, 3); Latin Club (2, 3); Library Council (4); Senior Play Comm.

RICHARD WILSON • B.A.C. (4); Baseball (2, W3, W4); Senior Play Cast; Hi-Y (4); Victory Corps (3).

CHARLES WOODBURY • Football Mgr. (2, 3, W4); Hi-Y (3, 4); Spanish Club (2, 3); Literary Club (Vice-Pres. 4); Student Council (4); Slide Rule Club (Pres. 4).

NANCY YODER • Mask and Mime (2, 3, 4); French Club (3, 4); Service Club (3); Christmas Pageant (4); Hockey (3); Literary Club (4); Victory Corps (2, 3); Annual.

ARLENE YOUNGHANS • Girls' Sports (2, 3).

JOHN ZEILLER • Vice-President (2, 4); Basketball (4); Tennis (W2, W3, W4); Hi-Y (3, Sec. 4); Jr. Prom Comm. (3); B.A.C. (2, Treas. 4); Senior Play Comm.; Student Council (Treas. 4); Ring Comm. (2, 3, 4).

