

The background of the cover is a light-colored wood grain. A solid dark blue vertical line runs down the left side of the page, starting from the top and extending past the bottom of the text.

# *Weather Vane*

## *1950*



**THOMAS ALBEE.** National Honor Society (3, Pres. 4); Senior Play (4); Forum Club (Treas. 4); Hi-Y (2, 3, 4).

**CHARLOTTE ANDERSON.** All-State Chorus (3, 4); Triple Trio (4); Library Council (3, 4); Mask and Mime (2, 3, 4); Spanish Club (3, 4); Y-Teen (3).

**ROBERT ARMANTROUT.** Chess Club (2); Collectors' Club (2, Pres. 4); Hi-Y (2, 3, 4).

**PETER ATKINSON.** Catalyst Club (3).

**RUSSELL BAKER.** Football (W3, W4); Basketball (3, W4).

**ROBERT BEHRENS.** All State Chorus (4); Thirteen (4); Literary Club (4); Mask and Mime (4); Writers' Club (4).

**MARTIN BENDER.** Senior Play (4); Mask and Mime (4); Technicians' Club (2, Sec. 4).

**CHARLES BENNINGER.** Track (W4); B. A. C. (2); Forum Club (4).

**JOYCE BERNARD.** Senior Play (4); Library Council (2, 3, 4); Mask and Mime (2, 3); Y-Teen (2, 3, 4).

**RICHARD BOHANNON.** National Honor Society (3, Vice-Pres. 4).

**BARBARA BOOTH.** Girls Sports (1); Twirling (3, 4); Senior Play (4); Art Club (3, 4); Latin Club (2); Mask and Mime (2, 3, 4); Spanish Club (3, 4); Y-Teen (2, 3).

**BARBARA BOURNS.** National Honor Society (3, Sec. 4); Class Vice-Pres. (3); Girls Sports (1, 2); All-State Chorus (3, 4); Triple Trio (4); Senior Play (4); Mask and Mime (2, 3, 4); Spanish Club (3); Y-Teen (2, Pres. 3, Pres. 4).

**HADLEY BRIGGS.** Library Council (2, 3); Literary Club (3, 4).

**ELIZABETH BROPHY.** National Honor Society (3, Treas. 4); Student Council (2, 3); Weather Vane Magazine (3); Girls Sports (1); All-State Chorus (4); Senior Play (4); Y-Teen (2).

**BARBARA BROWN.** G. A. C. (3); Triple Trio (4); Senior Play (4); Latin Club (2); Literary Club (4); Mask and Mime (2, 3, 4); Spanish Club (3).

**PHILIP BROWN.** Student Council (2); All-State Chorus (3, 4); Thirteen (3, 4); Senior Play (4); Forum Club (Treas. 3, Vice-Pres. 4); Spanish Club (Vice-Pres. 2).

**MARJORIE BUDELL.** Weather Vane Magazine (3, 4); Annual (4); Senior Play (4); Art Club (2, 3, 4); Mask and Mime (2, 3, 4); Service Club (3, 4); Y-Teen (2, 3).

**CAROL BUNCE.** All-State Chorus (3, 4); Senior Play (4); Junior Red Cross Council (3, 4); Latin Club (3, 4); Annual (4); Literary Club (4); Mask and Mime (2, 3, 4); Spanish Club (2); Service Club (2); Y-Teen (2, 3, 4).

**CLEMENTINE BURNS.** Annual (4); Girls Sports (1); Forum Club (4); Library Council (4); Literary Club (4); Mask and Mime (2, 3); Service Club (2, 3); Spanish Club (4); Writers' Club (Sec. 4); Y-Teen (2).

**PATRICIA BURR.** Senior Play (4); Mask and Mime (2); Spanish Club (4); Y-Teen (2, 3).

**MARTHA CAMBRIA.** Mask and Mime (4); Service Club (2, 3, 4); Y-Teen (2, 3, 4).

**JOEL CARLSON.** Latin Club (4); Literary Club (4); Mask and Mime (4).

**FRED CATLIN.** Senior Play (4); Mask and Mime (4); Technicians Club (2, 3, Vice-Pres. 4).

**SUE CHADWICK.** Library Council (4); Literary Club (4); Mask and Mime (4).

**THOMAS CHASE.** Senior Play (4); Hi-Y (2, 3, 4).

**NANCY CHERRY.** Senior Play (4); Literary Club (4); Mask and Mime (2, 3, 4); Service Club (2); Spanish Club (4); Writers' Club (4); Y-Teen (2, 3).

**CHERYL CLARK.** Student Council (3, 4); Annual (4); Girls Sports (1); G. A. C. (3, 4); Senior Play (4); Junior Prom (3); French Club (2, 3); Mask and Mime (2, 3, 4); Literary Club (4); Spanish Club (3, 4); Y-Teen (2, 3).

**WALTER CLARKSON.** Student Council (3, 4); Hi's-Eye (2, 3, Co-Ed. 4); Track (W3, Captain W4); Indoor Track (W3, Captain W4); Cross Country (W3, Captain W4); Westfield Athletic Council (4); Senior Play (4); Forum Club (3, Pres. 4); Latin Club (3).

**KATHLEEN CLEMENTS.** Annual (4); Senior Play (4); Junior Red Cross Council (2, 3, 4); Mask and Mime (2, 3, 4); Service Club (2); Spanish Club (3, 4); Y-Teen (Treas. 4).

**SALLY CLINE.** Annual (4); Junior Prom (3); Literary Club (4); Mask and Mime (2, 3, 4); Service Club (2); Spanish Club (3); Y-Teen (2).

**SUE COLE.** Annual (4); G. A. C. (2); French Club (3); Junior Red Cross Council (2, 3); Literary Club (4); Mask and Mime (2, 3, 4); Service Club (4); Mask and Mime (2).

**ALAN COLYER.** Hi-Y (2, 3, Pres. 4); Latin Club (2); Literary Club (4); Mask and Mime (2).

**JOAN COOLEY.** Student Council (Vice-Pres. 3); Class Secretary (4); Annual (Ed.-in-Chief 4); Girls Sports (1); Cheerleading (2); All-State Chorus (4); Triple Trio (4); Junior Prom (3); Forum Club (Sec. 3, Sec. 4); Junior Red Cross Council (Sec. 2); Latin Club (2, 3); Mask and Mime (2, 3, 4); Service Club (2); Spanish Club (3).

**JACK CORBETT.** Class President (4); Football (W4); Basketball (2, W3, W4); Baseball (W2, W3, Captain W4); B. A. C. (2).

**JANICE CROW.** Girls Sports (1); G. A. C. (2, 4); Cheerleading (3, 4); Senior Play (4); Forum Club (4); French Club (3); Mask and Mime (2, 3, 4); Spanish Club (Treas. 2, 3); Y-Teen (2, 3).

**GLORIA DABNEY.** Forum Club (3, 4); Latin Club (2); Library Council (3, 4); Y-Teen (2, 3, 4).

**JACK DAVIS.** Forum Club (4); Hi-Y (2, 3, 4).

**RACHEL DAWSON.** Service Club (3, 4).

**PATRICIA DEGNEN.** Senior Play (4); Junior Red Cross Council (4); Mask and Mime (3, 4); Spanish Club (3).

**MURIEL DEMAREST.** All-State Chorus (3, 4); Forum Club (3); French Club (Treas. 4); Latin Club (2); Literary Club (3, 4); Mask and Mime (2, 3, 4); Service Club (3); Writers' Club (2).

**DANIEL DENNY.** Chess Club (3); Forum Club (3); Latin Club (2, 3, 4).

**ANNE DEVINE.** Senior Play (4); Latin Club (4).

**ANGELINA DI FONZO.** Service Club (2, 3, 4).

**BARBARA DOANE.** Girls Sports (1); Senior Play (4); Forum Club (4); French Club (3); Mask and Mime (2, 3, 4); Service Club (3).

**STANLEY DOPIERALA.** Senior Play (4); German Club (2); Latin Club (4); Literary Club (3, Treas. 4).

**DONALD DOTY.** Student Council (2); Hi-Y (2, 3, 4).

**WILLIAM DRAKE.** Student Council (4); Class Vice-Pres. (4); Annual (4); Senior Play (4); Writers' Club (3, 4).

**MARIO ECKER.** Technicians' Club (2).

**HARRY ENGEN.** Track (W3, W4); Indoor Track (W3, W4); B. A. C. (3).

**JOHN ERICSSON.** Senior Play (4); Forum Club (4); Hi-Y (2, Vice-Pres. 3, Treas. 4).

**JEAN ESSIG.** Art Club (2); Mask and Mime (4); Service Club (3, 4).

**DOROTHY FANTONE.** Mask and Mime (3, 4); Service Club (2, 3, 4); Y-Teen (2, 3).

**RALPH FISHER.** B. A. C. (2); Forum Club (3, 4); Hi-Y (3, 4); Spanish Club (2, 3, Pres. 4); Writers' Club (4).



**BETSY FLINT.** National Honor Society (3, 4); G. A. C. (2); Senior Play (4); Forum Club (4); Latin Club (2, 3, 4); Literary Club (4); Mask and Mime (4); Y-Teen (2, Sec. 3).

**STEPHEN FOGG.** Student Council (2); Library Council (2, 3, 4); Literary Club (3); Spanish Club (4).

**PRISCILLA FREEMAN.** Mask and Mime (4); Writers' Club (3, 4).

**FRED FREY.** Football (W4); B. A. C. (2, 3).

**MARYBELLE FROST.** Mask and Mime (2, 3, 4); Spanish Club (2, 3, 4); Y-Teen (2, 3, 4).

**ESTHER GARDELL.** Junior Red Cross Council (3, 4); Spanish Club (2, 3, 4); Y-Teen (2, 3).

**GILBERT GLEASON.** Chess Club (2, 3); French Club (2, 3); Latin Club (3, 4).

**ARTHUR GOLDSBY.** Senior Play (4); Forum Club (3, 4); Hi-Y (2, Sec. 3, 4); Junior Red Cross Council (2, 3); Mask and Mime (2, 3); Writers' Club (4).

**JANE GOULD.** Student Council (4); Senior Play (4); Literary Club (4); Mask and Mime (3, 4).

**DAVID GRACEY.** Senior Play (4).

**HARRY GRANDER.** Football (2, W3, W4); B. A. C. (2); Senior Play (4); Junior Prom (3).

**JOAN GRAY.** Weather Vane Magazine (3, 4); Annual (4); Girls Sports (1, 2); G. A. C. (4); Cheerleading (3, Co-Captain 4); Junior Prom (Chairman 3); Latin Club (2); Mask and Mime (2, 3, Pres. 4); Service Club (2); Spanish Club (3); Y-Teen (2, 3).

**GAIL GREEN.** Weather Vane Magazine (3, 4); Girls Sports (1); G. A. C. (3); Cheerleading (3, Co-Captain 4); Senior Play (4); Art Club (2, 3, 4); Mask and Mime (2, 4); Spanish Club (2); Y-Teen (2); Annual (4); Junior Prom (3).

**DORIS GREER.** Senior Play (4); Junior Red Cross Council (2); Latin Club (2, 3); Literary Club (4); Mask and Mime (2, 3, 4); Service Club (2); Spanish Club (3, 4); Y-Teen (2, 3, 4).

**JUDY GRISWOLD.** Senior Play (4); French Club (2, 3, Vice-Pres. 4); Literary (4); Spanish (2, 3).

**CAROL GROSVENOR.** Junior Red Cross Council (4); Latin Club (2); Mask and Mime (2, 3, 4); Y-Teen (2).

**JANET GUMBERT.** Girls Sports (1); Library Council (4); Mask and Mime (2); Spanish Club (4); Y-Teen (2).

**SALLY GUTHRIE.** National Honor Society (3, 4); Annual (4); Girls Sports (1); Twirling Majorette (4); Senior Play (4); Junior Prom (3); Junior Red Cross Council (3, 4); Latin Club (2); Literary Club (4); Mask and Mime (2, 3, 4); Spanish Club (3, 4); Y-Teen (2, 3).

**ROBERT HAASE, Jr.** Student Council (3); Senior Play (4); Hi-Y (2, 3, 4).

**JOAN HACKNEY.** Hi's Eye (3, 4); French Club (2, 3, 4).

**BARBARA HALLAM.** National Honor Society (3, 4); Girls Sports (1, 2, 3); G. A. C. (2, 3, 4); Senior Play (4); Junior Prom (3); French Club (2, 3); Latin Club (2, 3); Literary Club (3); Mask and Mime (2, 3, 4); Y-Teen (Treas. 3).

**JOHN HANN.** Junior Red Cross Council (2, 3, 4).

**RICHARD HARDIN.** Annual (4).

**ROBERT HARRIS.** Annual (4); Hi-Y (2, 3, 4); Football (2, 3, Manager W4); Photography Club (2).

**RICHARD HARRISON.** Tennis (W3); Junior Red Cross Council (2, 3, 4); Mask and Mime (2, 3, Treas. 4).

**FRANCES HARVEY.** National Honor Society (3, 4); Weather Vane Magazine (3, 4); Girls Sports (1, 2, 3); All-State Chorus (3); Triple Trio (4); Senior Play (4); Junior Prom (3); Forum Club (4); Latin Club (2, 3); Literary Club (3, 4); Mask and Mime (3, 4); Y-Teen (2).

**GORDON HARVEY.** Mask and Mime (3, 4); Technicians' Club (3); Photography Club (2).

**ELEANOR HATHAWAY.** Student Council (2, 4); Hi's Eye (2, 3); Latin Club (2); Literary Club (2); Mask and Mime (2, 3); Service Club (2); Writers' Club (3, 4); Y-Teen (2, 3, 4).

**IAN HEATLEY.** Student Council (3); Weather Vane Magazine (3, 4); Swimming (2, W3); All-State Chorus (3, 4); Junior Red Cross Council (2, 3); Literary Club (Vice-Pres 4); Mask and Mime (4); Writers' Club (4).

**ANNE HENDRICKS.** Library Council (4); Mask and Mime (2, 3, 4); Service Club (4); Y-Teen (2).

**EUGENE HERMANN, Jr.** Student Council (2); Golf (2, W3, W4); Senior Play (4); German Club (3, 4); Hi-Y (2, 3, 4); Literary Club (4); Mask and Mime (2, 4).

**SAM HICKS.** Football (2, 3, W4); Track (W4).

**MILTON HOLDEN.** Technicians' Club (4).

**ROBERT HOLMES.** Senior Play (4); Hi-Y (Pres. 2, 4).

**WILLIAM HOOPER.** Track (2, W3, W4); Writers' Club (4).

**FRANCIS HORSTMAN.** Girls Sports (1); Senior Play (4); Junior Prom (3); Literary Club (3); Mask and Mime (3, 4); Spanish Club (3); Y-Teen (2, 3).

**RICHARD HRUDA.** Golf (W2, W3); Forum Club (4).

**BETSY HUSK.** Junior Prom (3); Latin Club (2, 3); Mask and Mime (2, 3, 4); Y-Teen (2, 3, 4).

**DOUGLAS HUTTON.** Junior Red Cross Council (2); Mask and Mime (3).

**LAVINIA JEWELL.** Annual (4); Weather Vane Magazine (4); All-State Chorus (3, 4); Senior Play (4); Art Club (Vice-Pres. 3, Pres. 4); Literary Club (4); Latin Club (2); Mask and Mime (2, 3, 4); Writers' Club (2, 3); Y-Teen (2, 3, 4).

**RICHARD JOHNSTON.** Student Council (2); Football (2, 3, W4); Baseball (2, W3, W4); Library Council (2, 3, 4); Literary Club (4).

**BARBARA JONES.** Annual (4); Hi's Eye (3); Weather Vane Magazine (4); Senior Play (4); Junior Prom (3); Art Club (2, 3, 4); Forum Club (4); Library Council (Sec.-Treas. 4); Service Club (2, 3, 4); Y-Teen (2, 4).

**RALPH JONES.** Student Council (4); Class Treas. (2, 3); Hi's Eye (3, Co-Ed. 4); Track (W4); B. A. C. (Treas. 3); Senior Play (4); Junior Prom (3).

**MARYANN KEAL.** G. A. C. (2); French Club (2); Library Council (4); Service Club (2).

**ROBERT KING.** Senior Play (4).

**GEORGE KIRN.** Basketball (2, 3, W4); B. A. C. (2); Spanish Club (3).

**FRANK KLION.** Student Council (3); Chess Club (2); French Club (2); Junior Red Cross Council (2); Latin Club (2, 3); Literary Club (4).

**DORIS KRAUSER.** Annual (4); Senior Play (4); Junior Prom (3); Art Club (2, 4); Junior Red Cross Council (4); Latin Club (2, 3); Literary Club (4); Mask and Mime (2, 3, 4).

**JEANNE LAFONTAINE.** Twirling (3, 4); All-State Chorus (3); Annual (4); Junior Prom (3); French Club (2); Mask and Mime (2, 3, 4); Y-Teen (2).

**NANCY LAING.** Mask and Mime (3).

**CHARLES LEHMAN.** Class Treasurer (4); Swimming (W3, W4); Senior Play (4); Latin Club (4); Literary Club (4).

**EDMUND LEWIS.** Class President (3); Football (2, W3, W4); Baseball (W2, W3, W4); Westfield Athletic Council (4); B. A. C. (Vice-Pres. 3).







## TABLE OF CONTENTS

DEDICATION .....	4
FACULTY AND ADMINISTRATION ....	6
SENIORS .....	10
JUNIORS .....	51
SOPHOMORES .....	54
ACTIVITIES .....	59
SPORTS .....	83
FEATURES .....	95

## FOREWORD

The Past, Present, and Future govern the strength of our lives—is it not true? We cast our thoughts upon the Past for inspiration, we live in the Present for experience, and we look to the Future for promises and hopes to be fulfilled. This book of some one hundred pages holds a revitalization, in a sense. When striving for the Future, I hope you will open this book and look back upon these happy moments we have spent together and in turn, be so inspired as to reach for those stars toward which you are straining.

JOAN COOLEY  
Editor-in-Chief



# DEDICATION



We, the members of the Class of 1950, dedicate this twenty-ninth issue of the **Weather Vane Annual** to Mr. Harvey F. Gerber whose friendliness and impartiality in the classroom and on the football field have won our deepest regard.





### HARVEY F. GERBER, B.S.

One of the greatest privileges open to Westfield students is knowing Mr. Gerber, either in algebra class or on the football field. All who have had this privilege know his friendliness and his warm but impartial interest in all.

Mr. Gerber's first year at Westfield High School was 1946-47. He had served in the Navy from 1943 until 1946 as an athletic specialist. He instructed in the Navy V12 program at Colgate. Previously he had been for several years a teacher at the Haddonfield High School and before that at the Atlantic Highlands High School.

Mr. Gerber attended Muhlenberg College and has done graduate work at Rutgers and Temple Universities. His home was in Summit Hill, Pennsylvania, until, as he puts it, "I set up a little establishment of my own." Mr. Gerber is married, and there is a Harvey, junior.

At Muhlenberg, Mr. Gerber, playing in the

backfield on the football team, was a three year letterman. As our "B" Squad coach, he has shown that those years were not wasted by producing four highly successful "B" Squad teams, two of which went undefeated. Any boy who went out for football will also testify that Mr. Gerber is one of the foremost administrators of Calisthenics in the business.

In school, Mr. Gerber makes an effort to give his classes a little something extra, to keep them from becoming stereotyped or routine. He has a multiplicity of clever sayings and devices to make "math" easy and enjoyable, ranging from "My dear Aunt Sally"—multiply, divide, add, then subtract—to the definition of zero, "A foot in a stocking without a leg." "Yes," says Mr. Gerber, "it's corn, but it helps you remember."

It will be a long time before we forget Mr. Gerber. Knowing him has been an enriching experience; it should happen to everybody.





1900



1910



19

# THE WEAT

WESTFIELD SENIOR HIGH SCHOOL





1956



19(?)



50

# HER VANE

WESTFIELD, NEW JERSEY



# FACULTY



**Edmund Allen**  
B.A., M.S.  
Latin



**Marguerite Batten**  
R.N.  
Home Nursing



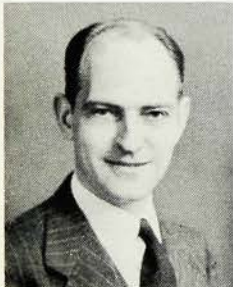
**Graham Beckel**  
B.A., M.A.  
History



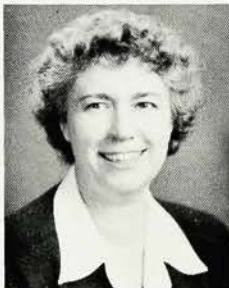
**Dolores Bordner**  
B.A., M.A.  
English



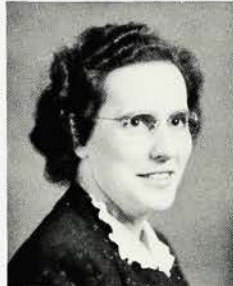
**Carol Brinser**  
B.A., M.A.  
Speech



**Samuel Bunting**  
B.A.  
Spanish



**Ruth Cameron**  
B.A., M.A.  
History



**Margaret Dietrich**  
B.S., M.A.  
English



**Emerald Dillen**  
B.S., M.Ed.  
Commercial Subjects



**Robert Duncan**  
B.S.  
Physical Education



**Bart Ellis**  
B.A., M.Ed.  
Mathematics



**Catherine Flannelly**  
B.S.  
Physical Education



**Gertrude Foutz**  
B.A., M.A.  
English, Latin



**Joseph Freeman**  
B.S.  
English, Safe Driving



**Harvey Gerber**  
B.S.  
Mathematics



**Gaston Gesner**  
B.S., B.A.  
French



**Janet Grimler**  
B.A., M.A.  
Vocal Music



**Alice Hall**  
Assistant Librarian



**Stella Hemphill**  
B.A.  
Spanish



**Annie Hewitt**  
B.S. M.A.





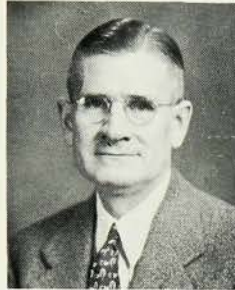
**Dama Hill**  
B.S., M.A.  
Mathematics



**Harriet Howard**  
Art



**Anthony Ingram**  
B.Sc.  
Instrumental Music



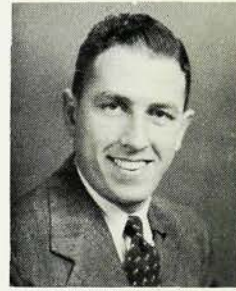
**Eugene Johnson**  
B.S., M.A.  
Physics, Chemistry



**Clarence Jones**  
B.S.  
Biology, Physiography



**Gomer Lewis**  
B.S., M.Ed.  
History



**Milton Luxemburg**  
B.S., M.A.  
English



**Melvin Michaels**  
B.A., M.A.  
English, History



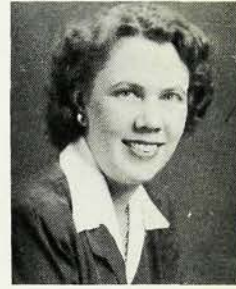
**Alice Pelton**  
Commercial Subjects



**C. Blair Rogers**  
Ph.B., M.A.  
Chemistry, Biology



**Gertrude Rogers**  
B.S., M.A.  
Physical Education



**Marian Scott**  
B.S.  
Librarian



**W. O. Steengrafe**  
B.S., M.Ed.  
History



**Noel Taylor**  
B.S., M.Ed.  
Biology



**Louise Theurer**  
B.S., M.A.  
English, German



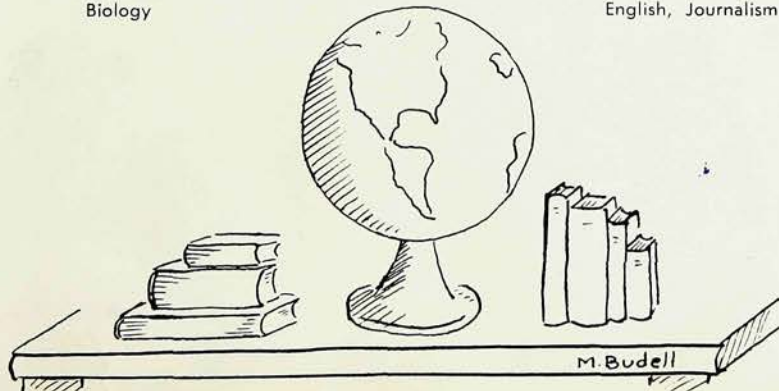
**Bernard Thomas**  
Ph.B., M.S.  
English, Journalism



**John Thompson**  
B.S.  
Industrial Arts



**Ruth Tombacher**



**Howard Tomlinson**  
B.S., M.S.  
Commercial Subjects



# ADMINISTRATION



**Stacey Ewan, Jr.**  
B.S., M.A., Ph.D.  
Supervising Principal



**Harold Thompson**  
B.S.  
Assistant to the Principal



**Robert Foose**  
B.A., M.A.  
Principal



**Eleanor Derby**  
Secretary



**Mildred Fox**  
B.A., M.A.  
Guidance



**Isabella Dodds**  
B.A., M.A.  
Guidance Director



**Ann Abernethy**  
Clerk



**Grace Bingham**  
Clerk



**Mary Lou Jones**  
Register Clerk



**Alice Riker**  
Clerk

# MY BUDDIES



G.G.  
©.S.



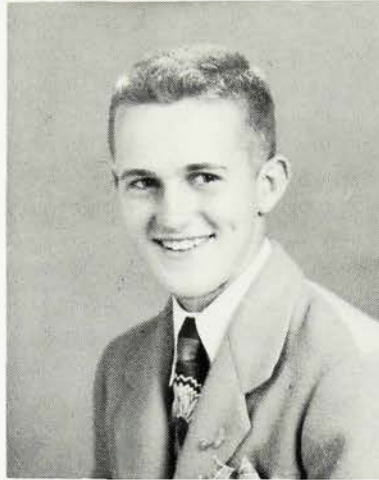


**ROBERT ADDISS** ♦ soothing, mellow, deep baritone voice . . . choir . . . Boys' Glee Club . . . quiet . . . but effectual . . . cheerful . . . reserved in manner . . . after three years in Coast Guard . . . maintains W.H.S. will never change . . . "Hi" . . . Bob.



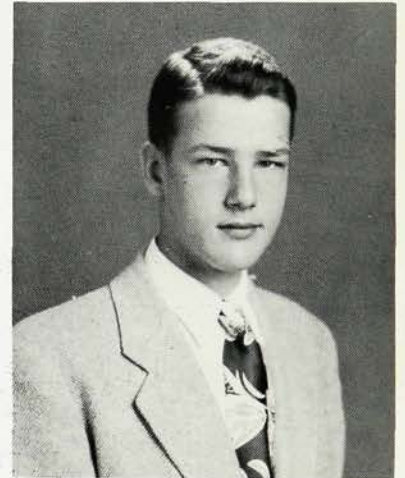
**CHARLOTTE ANDERSON** ♦ our Swedish nightingale . . . with a full voice . . . flirtatious eyes . . . laughter that rings . . . an air of sophistication . . . runs for exercise . . . pulse-taker . . . greatest ambition to be a nurse . . . earnest when talking . . . enjoys living . . . "Ding it!" . . . Char.

**PETER ATKINSON** ♦ happy-go-lucky . . . bashful red head . . . sparkling personality . . . owner of three cars . . . tops on the tennis court . . . loves basketball . . . good sport . . . likes to kid people . . . hails from Illinois . . . puns for everyone . . . classy array of sweaters . . . Pete.



**THOMAS ALBEE** ♦ very scholastically minded . . . has an astounding sense of humor . . . intensified by a deep and continuous chuckle . . . big red Packard . . . financier of the Forum Club . . . Hi-Y member . . . President of National Honor Society . . . future aspiration—Annapolis . . . Tom.

**ROBERT ARMANTROUT** ♦ long, tall guy . . . proudly displayed W.H.S.'s colors at football games . . . physics genius . . . lanky walk . . . trackman . . . a lady's man . . . eye torturing shirts and sweaters . . . regular bridge player . . . a scout trek to New Mexico . . . laughing politeness . . . Bob.



**RUSSELL BAKER** ♦ An Ipana grin that spreads from ear to ear . . . a smashing defensive end . . . continual kidder . . . more continual laughter . . . a great salesman of shares . . . friendliness personified . . . life is one big smile . . . sometimes "Booker" more often Russ.





**ROBERT BEHRENS** ♦ casual nonchalance . . . demon driver . . . delights in argument . . . Southern gentleman with sideburns . . . dares to do what others don't . . . exceptional baritone . . . "Thirteen" . . . ambling gait . . . dark, solemn good-looks . . . always a clever quip . . . charming, impetuous nature . . . Bob.



**CHARLES BENNINGER** ♦ excels in sports . . . plays in the "Y" softball and basketball league . . . a member of the "Sunday afternoon football association" . . . possessor of a '38 Plymouth . . . which he claims "could get \$500 easy" . . . ardent Yankee fan . . . Chuck.

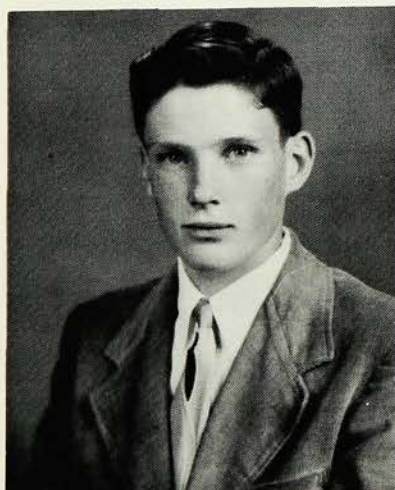


**MARTIN BENDER** ♦ Nobel's mischievous protege . . . mechanically minded . . . haunts the shop . . . and works back stage . . . operates visual education gadgets . . . flies model airplanes behind the armory . . . a forgetful mind that loses everything . . . ingratiates himself in 101 . . . Martin.

**DAVID BLACKWOOD** ♦ known for his interests and acknowledgments . . . to the sophomores . . . blue model "A" Ford . . . hunter of various things . . . winning smile . . . reddish tint to his hair . . . dapper sweaters . . . joker . . . gobs of freckles . . . curly hair . . . Dave.



**JOYCE BERNARD** ♦ infectious giggle . . . incessant talker . . . talented equestrienne . . . knits unusual socks . . . leaves her knitting in assembly . . . big hearted . . . drives a lush cream convertible . . . reliable and conscientious . . . between class conversations with . . . music "sweet and solid" . . . Joyce.



**RICHARD BOHANNON** ♦ Mr. Ingram's pride and joy . . . of the trumpet section . . . vice president of the Honor Society . . . lots of savoir-faire . . . leader of a terrific band . . . has an indomitable will to overcome difficulties . . . plans to pursue medical profession . . . Dick.



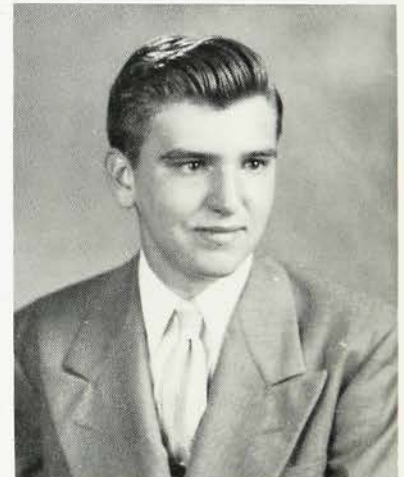
**ROBERT BONSALE** ♦ ambitious . . . plans to study business administration . . . happy-go-lucky . . . one of the few better students . . . propped against the wall he talks with a contented senior . . . has a new car but is saving it . . . Bob.



**BARBARA BOURNS** ♦ undisturbed serenity . . . unexcelled mathematician . . . abhors herbs . . . jovial smile to go with a spontaneous giggle . . . wispy hair-do . . . hockey enthusiast . . . and modern dance . . . well groomed height . . . conscientious . . . sonorous alto . . . Barbie.



**BARBARA BOOTH** ♦ gentle eyes . . . and a soft amiable smile . . . curly hair that frames a mild face . . . with a laugh that comes without effort . . . sane driver . . . a shining boat . . . constant in character . . . quiet, moderate but firm independence . . . Boothie.



**ELIZABETH BROPHY** ♦ our one and only oboeist . . . distinguished treasurer of National Honor Society . . . bubbling with pep . . . cheery giggle . . . powerful alto voice that sang her into choir . . . State Chorus . . . extremely loquacious . . . adorable clothes . . . lovely figure . . . lbby.



**HADLEY BRIGGS** ♦ member of the choir and glee club . . . teaser . . . master councilor of De Molay . . . enjoys golf . . . worrier . . . interested in photography and engineering . . . possesses a likeable personality . . . sincere . . . draws caricatures . . . nice dresser . . . polite . . . appreciative . . . Bud.



**BARBARA BROWN** ♦ big brown eyes . . . long beautiful hair . . . winsome personality . . . always cheerful . . . lovely second soprano voice . . . Triple Trio . . . quiet friendliness . . . yet sparkling . . . when laughing . . . sweet face . . . budding pianist . . . creamy complexion . . . pensive . . . at times . . . Barb.





**PHILIP BROWN** ♦ extremely musical . . . All State Chorus, choir, "Thirteen" . . . talented pianist . . . vice president of the Forum Club . . . loves a spirited debate . . . has a winning smile that brightens the dark corners . . . conscientious in all his endeavors . . . Phil.



**MARJORIE BUDELL** ♦ an ace horsewoman . . . who collects ribbons as a hobby . . . an artist of exceptional note . . . one of those people who has seen the glorious West . . . "the Green Hornet" . . . sweet . . . apple cheeks . . . Margie.



**CAROL BUNCE** ♦ throaty laugh at anything . . . hair that gets straight from setting . . . and curly from fooling with it . . . piquant . . . member of the Bumper's Association . . . always late for history . . . adores Reed's mints . . . semi-somnolent member of the Latin Club . . . enthusiastic All-State chorister . . . ostentatious sneeze . . . Bunny.



BZ



**PATRICIA BURR** ♦ seen dashing around in a '49 green Plymouth . . . special sense of humor . . . active member of Spanish Club . . . green eyes . . . friendly . . . excellent scholastic record . . . greatest ambition is to be a teacher . . . Tricia.



**MARTHA CAMBRIA** ♦ possesses deep serenity . . . but rushes to choir and chorus . . . motion pictures . . . theatre . . . opera . . . and ballet . . . kindness beams from her face . . . peppy "Hi, you's" fall to most the universe . . . a friend in need . . . Martha.



**CLEMMIE BURNS** ♦ petite . . . occupied after school . . . with band practice . . . peppy . . . kindergarten teacher to be . . . giver of successful parties . . . pert and well-groomed . . . cute smile . . . "Oh yeah?" . . . greeting wink . . . Clemmie.



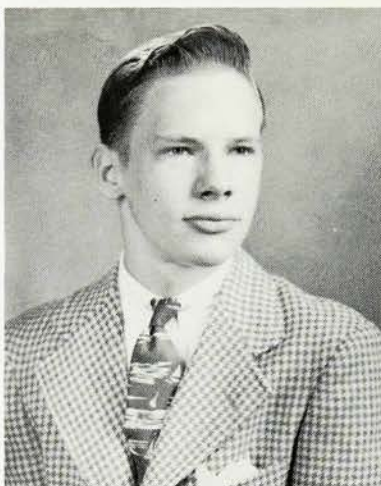


**JOEL CARLBON** ♦ entertaining . . . won lots of friends . . . by laughing at their jokes . . . Stewart's . . . droll wit . . . DeMolay member . . . is making up for lost time . . . a sly smile . . . novelty tunes . . . has an ailing, stay-at-home Ford . . . Jay.



**SUE CHADWICK** ♦ vivacious . . . when you get to know her . . . plans to be a social worker—overseas . . . impulsive gestures . . . prefers a dark-haired, dark-eyed boy . . . continually wearing a smile . . . "to the victor" . . . Susie Q.

**NANCY CHERRY** ♦ tolerates school in general . . . and abhors Pepsi . . . intelligent Cardinal rooter . . . who's equivalent to a baseball almanac . . . an author exceptional . . . Writer's Club . . . sarcastic . . . a modest pianist who reads notes like Horowitz himself . . . Nancy.



**FRED CATLIN** ♦ up and coming electrician . . . interested in railroads . . . "sine qua non" of all our stage productions . . . co-operative . . . quiet . . . until you become acquainted . . . enthusiastic member of the Technicians' Club . . . pleasant . . . Fred.

**THOMAS CHASE** ♦ "commuter" from Bryn Mawr, Penn. . . special interest in everything . . . tall and lanky . . . gangling walk . . . track team . . . placid expression . . . which matches his disposition . . . canal boat feet . . . Hi-Y . . . thundering Westfield High rooter . . . Tom.



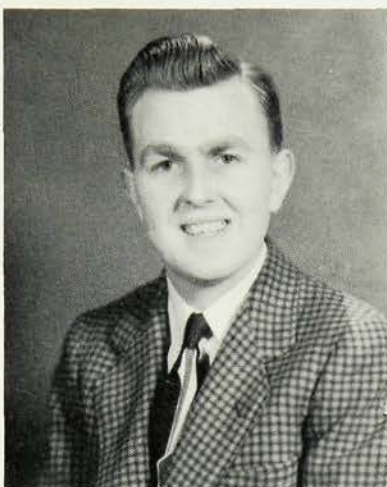
**CHERYL CLARK** ♦ evidence of a Midwest drawl . . . versatile sports woman . . . noted for "toot" of the Buick . . . full of pranks and mischief . . . after the game parties . . . Luckies . . . likes gadgets . . . occasionally thoughtful . . . more often with the kids . . . laughing . . . Cheryl.



E. FIELD



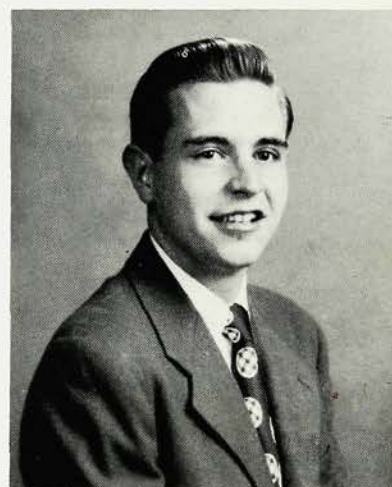




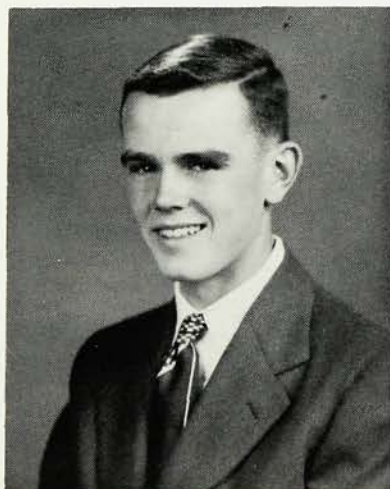
**SUE COLE** ♦ beautiful wardrobe of chic outfits . . . dimples that enhance a quick smile . . . and a hearty laugh . . . firm concepts of right and wrong . . . at times mischievous . . . often serious . . . easy to talk to . . . immaculate in work and dress . . . Sue.



**KAY CLEMENTS** ♦ full of fun . . . and fancy free . . . a "must" at slumber parties . . . mania for music . . . respects quiet people . . . but can't bear them . . . personality plus . . . with friends to prove it . . . lover of the better things . . . "Beanhead" . . . Kay.



**JOHN CLISSOLD** ♦ always the gentleman . . . quick grin . . . good date . . . loyal and sincere . . . sometimes serious . . . loves New York and the shore . . . amiable temperament . . . an up and coming man of the world . . . friendly . . . first-rate husband material . . . Johnny.



**ALAN COLYER** ♦ laughs constantly . . . chief hobby . . . working on car . . . Why go to Olympic Park when you can drive with Al? . . . well known for his sudden trips to the shore . . . mathematical genius . . . friendly . . . Chirt.



**RAYMOND CONSTANTINE** ♦ known for his blue Buick . . . reserved . . . a stinging wit . . . once he gets started . . . can be found in the manual training shop . . . possesses an amazing knowledge of guns and cars . . . construction worker . . . Ray.



**FRED CATLIN** ♦ up and coming electrician . . . interested in railroads . . . "sine qua non" of all our stage productions . . . co-operative . . . quiet . . . until you become acquainted . . . enthusiastic member of the Technicians' Club . . . pleasant . . . Fred.

**JOHN CORBETT** ♦ chosen as class president . . . three letter man . . . popular for leadership and dependability . . . not the flashy athlete . . . but always there when needed . . . model of school spirit . . . Jack.

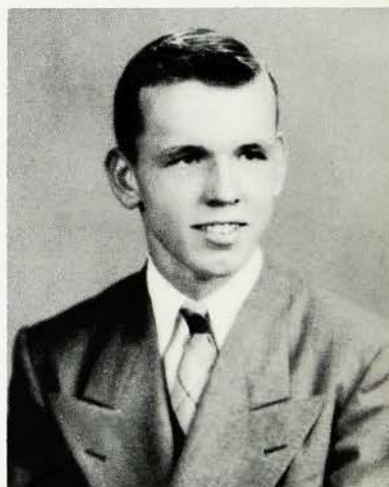


**THOMAS CHASE** ♦ "commuter" from Bryn Mawr, Penn. . . special interest in everything . . . tall and lanky . . . gangling walk . . . track team . . . placid expression . . . which matches his disposition . . . canal boat feet . . . Hi-Y . . . thundering Westfield High rooter . . . Tom.



**JOAN COOLEY** ♦ admiration for the genuine . . . bridge game 'til the wee hours . . . born leader . . . of infinite jokes . . . dead aim for basket and hockey cage . . . debater . . . user of elongated words . . . outspoken alto . . . perfect teeth . . . natural psychologist . . . reader . . . Cooley.

**WILLIAM CROCCO** ♦ an itinerant to Arizona and California . . . via truck . . . a natty dresser . . . a smile that bursts with radiant friendliness . . . one of the great team of '50 . . . his interest for the future . . . accountancy . . . Bill.



**ARTHUR COX** ♦ craves cold weather . . . so there'll be ice hockey . . . but puts up with basketball and football and track . . . "ticklish" . . . a knowing laugh . . . untimely snoozes in the movies . . . chief desire—a car . . . Bud.

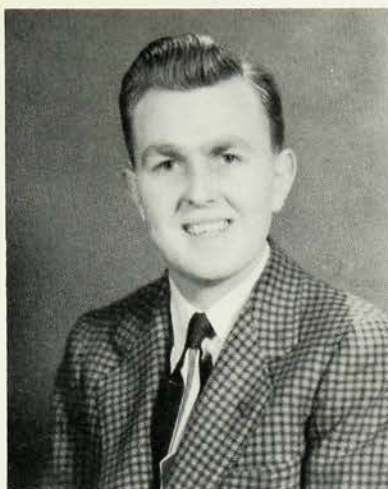


**JANICE CROW** ♦ one of our happiest . . . cheerleader . . . hardworking choir member . . . a warm debater . . . usually for the negative . . . clothes for every occasion . . . eager smile that tugs at the corners of her mouth . . . is learning the art of thinking . . . Jan.





**GLORIA DABNEY** ♦ diligent worker . . . both in and out of school . . . acquiescent . . . shy smile that is endearing . . . modest . . . talkative once she gets started . . . favorite pastime—roller skating . . . future ambition—history teacher? . . . Gloria.



**JOHN DARLAK** ♦ a good mind . . . provides conversation . . . on a multitude of subjects . . . for Mr. White . . . with whom he is seen constantly . . . generosity and eagerness to be of service . . . a proficient writer . . . and more proficient baseball score board . . . John.

**RACHEL DAWSON** ♦ a Virginia gal . . . with a contagious drawl to match . . . manners to perfection . . . would like to pass the time . . . by listening to the radio . . . a welcome spark to any fire . . . a future beautician . . . Rachel.



**JOHN DAVIS** ♦ friendly . . . fun-loving . . . active in Y league sports . . . party lover . . . liked by girls and boys alike . . . member of Hi-Y . . . horses around . . . a stack of good jokes . . . called Jack.



**HARRY ENGEN** ♦ outstanding in track and football . . . class leader . . . when it comes to telling jokes . . . amusing combination of savoir-faire and naturalness around girls . . . typical Westfield heart breaker . . . wavy hair . . . scintillating smile . . . adds zest to gatherings . . . Skip.

**PATRICIA DEGNEN** ♦ whipped - cream complexion . . . topped with a bright cherry . . . easy going . . . Dodger fan . . . proud bearer of a Sears-Roebuck driver's license . . . twirling chorus canary . . . effervescent spirit . . . sparkling vocabulary . . . burns to a crisp . . . during the summer . . . Pat.



vacuous blonde . . . with  
knits loud socks . . .  
into trouble . . .  
another Dodger  
combinations  
and jit-

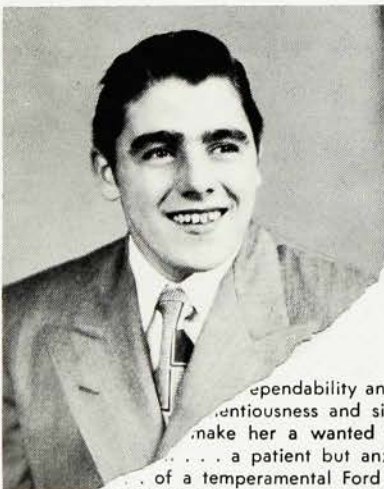




**DANIEL DENNY** ♦ one of those people who can understand chess . . . much conscientiousness, too . . . he is a workin' man in town . . . a good math student . . . his ambition points to professional work . . . Dan.



**WILLIAM CROCCO** ♦ an itinerant to Arizona and California . . . via truck . . . a natty dresser . . . a smile that bursts with radiant friendliness . . . one of the great team of '50 . . . his interest for the future . . . accountancy . . . Bill.



dependability and efficientness and sincerity make her a wanted commodity . . . a patient but anxious . . . of a temperamental Ford . . . natural at badminton . . . whose form is nigh perfect . . . Barbara.



**ANNE DEVINE** ♦ maybe small . . . but a pint of seltzer water pep . . . talkative . . . giggle that attracts attention . . . has a friendly "Hello" for everyone . . . a delicate air . . . a face that is suggestive of Irish colleens . . . Anne.



**ALEXANDER DI IORIO** ♦ serious . . . always seems to be contemplating . . . when smiling . . . he lights up the whole room . . . works . . . with his father . . . in a contracting business . . . drives a gray '37 Chevy . . . stocky . . . pleasant to everyone . . . Alex.

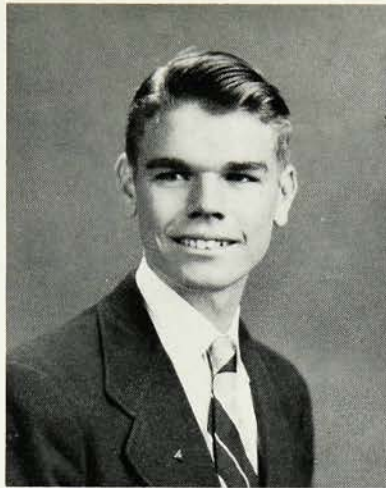


**STANLEY DOPIERALA** ♦ tolerant . . . reserved in manner . . . speaks only when spoken to but then has something to say . . . Polish background . . . listens with admiration to opera and the classics . . . intellectual bent . . . is supplemented by personal experience . . . Stanley.

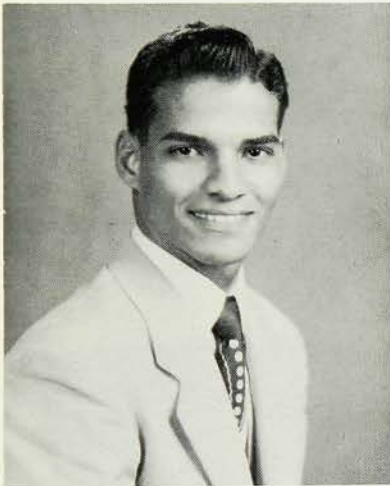




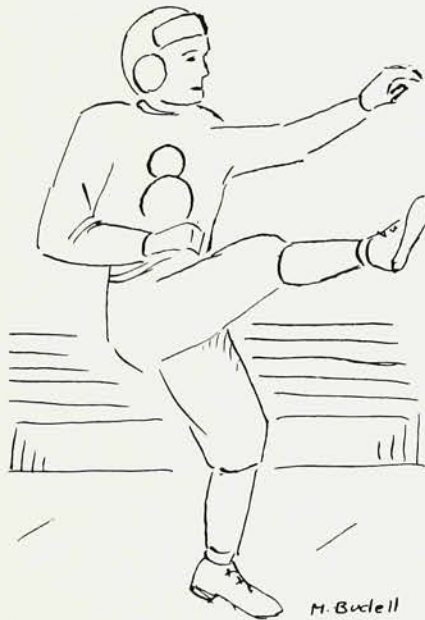
**DONALD DOTY** ♦ a master at mechanical drawing . . . among other things . . . one of Miss Grimler's faithful basses . . . politeness and patience . . . that give him distinction . . . flashing smile . . . a mood that puts others into hysteria . . . generous . . . Don.



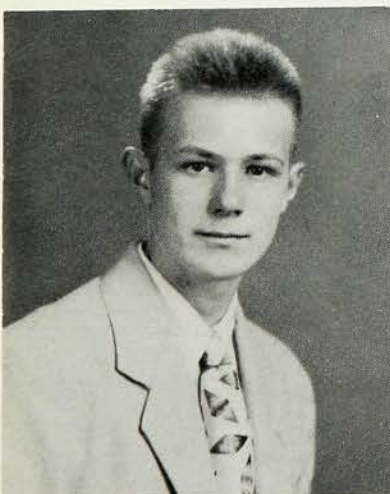
**MARIO ECKER** ♦ handsome lad from Panama . . . of varied interests—stamp collecting and model building . . . hard persistent worker . . . Mason's helper . . . press operator . . . enthusiastic Sea Scout . . . cooperative . . . well mannered . . . mature . . . student . . . Mario.



**WILLIAM DRAKE** ♦ new last year . . . made friends fast . . . easy-going . . . Missouri drawl . . . stellar actor . . . Veep of class . . . brilliant student . . . Spanish enthusiast . . . on track squad . . . drives white sedan . . . Bill.



**JOHN ERICSSON** ♦ sports galore—football, basketball, track . . . serves as Hi-Y Chapter treasurer . . . Forum Club . . . reserved in manner . . . but surprises everyone with retorts . . . intense thinker . . . enjoys everyone else's jokes . . . proficient in many activities . . . John.



**HARRY ENGEN** ♦ outstanding in track and football . . . class leader . . . when it comes to telling jokes . . . amusing combination of savoir-faire and naturalness around girls . . . typical Westfield heart breaker . . . wavy hair . . . scintillating smile . . . adds zest to gatherings . . . Skip.



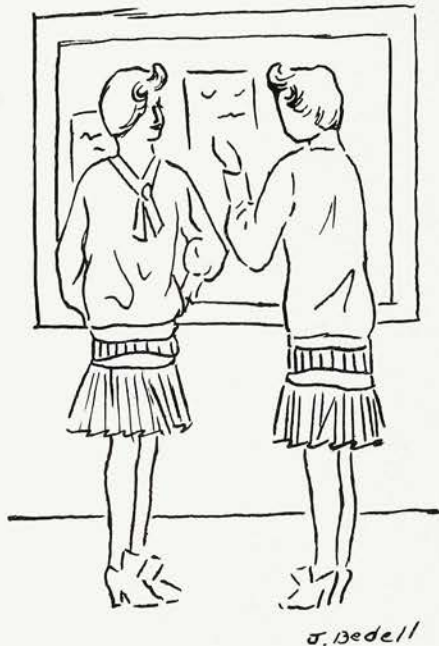
**JEAN ESSIG** ♦ vivacious blonde . . . with infectious giggle . . . knits loud socks . . . has the habit of getting into trouble . . . eager to do things . . . another Dodger die-hard . . . fabulous color combinations . . . crazy 'bout square dancing and jitterbugging . . . "How about that?" . . . Jean.



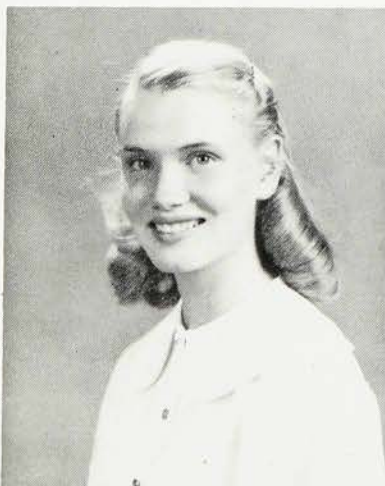
**DOROTHY FANTONE** ♦ dashing, devastating and debonair . . . looks crisp and clean . . . persevering young lady . . . dimples . . . Service Club . . . new shades of nail polish . . . full of "zip-boom-bala!" . . . party-giver . . . favorite pastime—dancing . . . goes places . . . in a grey De Soto . . . Dottie.



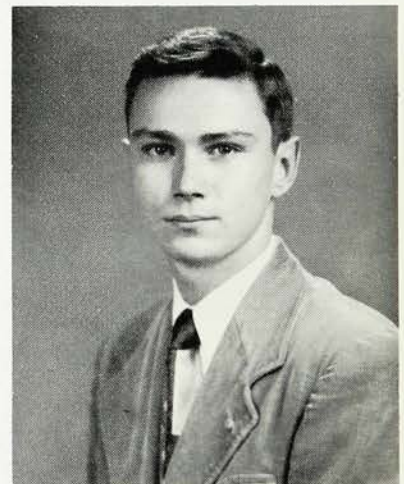
**ELIZABETH FLINT** ♦ a lover of good music . . . outstanding member of the Honor Society . . . the soul of diplomacy . . . subtle sense of humor . . . knitter of good looking argyles . . . angelic smile that shows off her cute dimples . . . completely dependable . . . Betsey.



**PRISCILLA FREEMAN** ♦ socially minded . . . sees nature through rose colored glasses . . . not afraid to express ingenious ideas . . . gullible . . . rhythmic poetry . . . life sketches . . . conscientious actress of *Pride and Prejudice* . . . reads to excess . . . distinct individual . . . Priscilla.



**RALPH FISHER** ♦ succeeds in everything . . . he attempts . . . sound common sense . . . Hi-Y . . . Forum Club debater . . . Spanish Club . . . "Y" basketball league . . . ingenious wit . . . unruffled personality . . . neat dresser . . . with catchy sweater combinations . . . smooth conversationalist . . . once he gets started . . . Ralph.



**STEPHEN FOGG** ♦ a one in a hundred dancer . . . who knows every step . . . the very essence of gentlemanliness . . . a bursting laugh . . . that makes him red in the face . . . clothes to be envious of . . . considerate . . . Steve.

**FRED FREY** ♦ appreciates the lighter side of things . . . a Ford with a driver who can't tell east from west . . . determination . . . a modest bass . . . lots of ideas about nothing in particular . . . staunch hockey player . . . and football letterman . . . Fred.





**MARYBELLE FROST** ♦ the silliest thing on two feet when tired or sick . . . holder of an I. D. bracelet that's much too big . . . liberal ideas . . . rarely worries . . . but a pessimist . . . weird sounds when she gets muddled . . . broad sense of humor . . . Frostie.



**GILBERT GLEASON** ♦ violin virtuoso . . . All State Orchestra two consecutive years . . . choir and glee club . . . our most talented musician . . . undiscovered tennis star . . . ping-pong enthusiast . . . hobby is chemistry . . . a whiz at bridge . . . his favorite game . . . boisterous ties . . . Gil.

**JANE GOULD** ♦ transfer from Chevy Chase . . . menagerie of stuffed animals . . . acrobatics like a pretzel . . . lover of life . . . ready to defend what she believes . . . bouncing hair . . . blessed with luck . . . bubbling party goer . . . frets about the family convertible . . . authority on little things . . . from the Ideal . . . Jane.

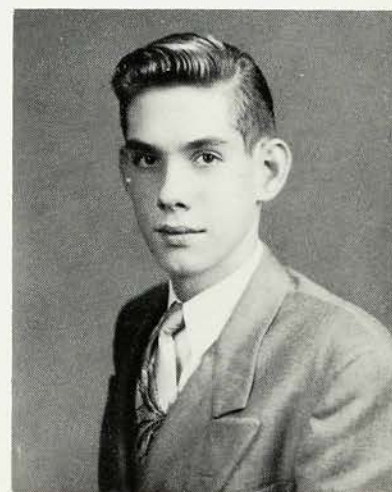
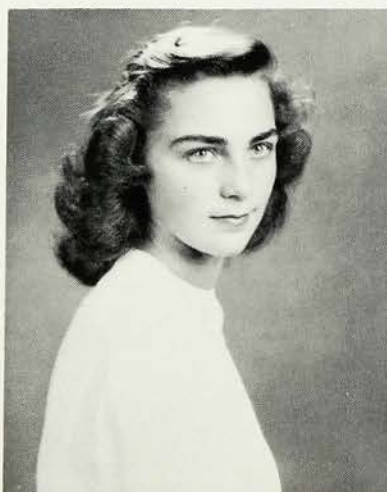


**ESTHER GARDELL** ♦ high voice . . . and suddenly a higher laugh . . . a way of saying things that drip with humor . . . smattering of photography . . . fervent admirer of Maine . . . constant energy . . . successful hostess . . . big teaser but so very likeable . . . Esther.

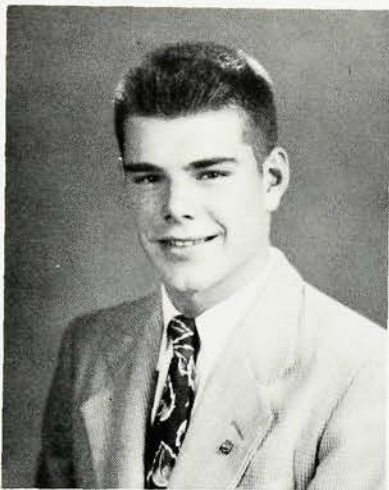
**ARTHUR GOLDSBY** ♦ star clarinetist of Mr. Ingram's brood . . . flashy '49 Ford . . . which he use alternately . . . with his motor scooter . . . member of Hi-Y . . . president of Pilgrim Fellowship . . . "Specs" . . . long legs . . . attractive smile . . . Art.



**DAVID GRACEY** ♦ absorbed in wood-working and photography . . . courteous . . . ambitious . . . to do architectural drawing . . . and attend Pratt Institute . . . solemn . . . companion to books . . . cooperative . . . itinerant of the United States and Canada . . . reticent friendliness . . . Dave.







**HARRY GRANDER** ♦ no. 23 on gridiron . . . All-State guard . . . likes all sports . . . and girls . . . flash in chemistry . . . second year . . . former junk dealer . . . crewman's haircut . . . avid Slippery Rock Teachers' fan . . . liked by all . . . Harry, Har, or "H".



**GAIL GREEN** ♦ a warming smile . . . innocent expression of a mischief planner . . . soft, smooth voice . . . cheerleader . . . perfectly groomed in sport clothes . . . unruffled hair and disposition . . . pulchritude that catches the eye . . . lover of horses . . . among other things . . . Gail.

**JUDY GRISWOLD** ♦ a witticism always on the tip of her tongue . . . our most accomplished equestrienne . . . proved by her many ribbons . . . short, pert, peppy . . . "that's the way to go, coach" . . . Veep of French Club . . . it would disintegrate without her . . . Judy.



**JOAN GRAY** ♦ considerate and charming with an air of perfect poise . . . executive of the Cheer Squad and Mask and Mime . . . unselfish . . . sleek fitting clothes . . . slits for eyes when laughing . . . believer in people . . . accomplished basketballer . . . owner of a pretty face . . . Joan.

**DORIS GREER** ♦ deeply dimpled . . . appreciates good humor with torrents of giggles . . . thrives on trouble . . . dry humor that draws laughter . . . actually sleeps at slumber parties . . . sweet and lovable . . . but says what she thinks . . . wild about music . . . and a first alto . . . Doris.

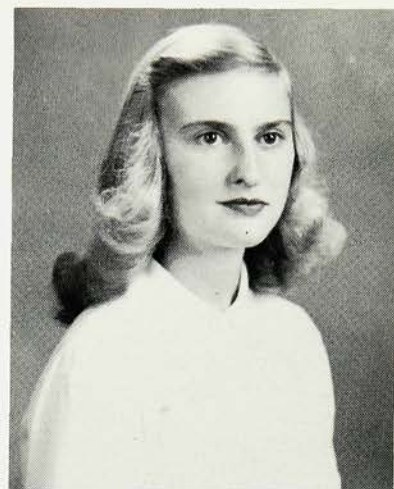


**CAROL GROSVENOR** ♦ petite and blonde . . . every boy's dream . . . usually late to history class . . . an expert knitter and seamstress . . . calm . . . tries to do her shorthand five minutes before class . . . always in a cheerful mood . . . Carol.

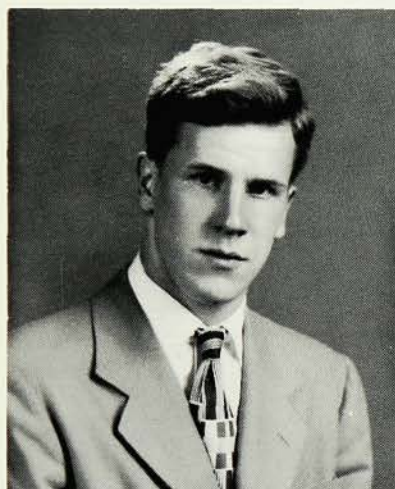




**JANET GUMBERT** ♦ a lightning left wing . . . who made All-State and All-West-field hockey teams . . . rubber in her shoes—she bounces . . . another "Wait-'til-next-year" Dodger fan . . . frantic driver . . . of a blue Dodge . . . continual laughter . . . Janet.

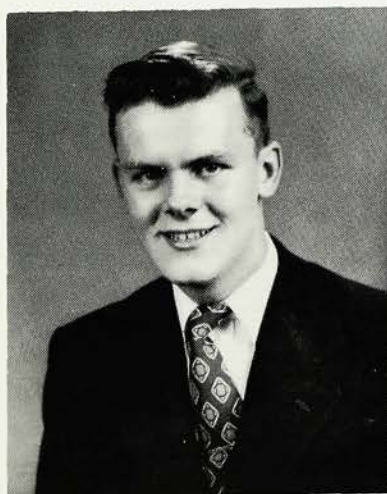


**BOB HAASE** ♦ a subordinate to no one . . . who can argue on almost anything . . . and win . . . weaving driver . . . expert on Canasta . . . amazing vocabulary . . . spends summers at the Tennis Club . . . sitting . . . inert . . . startling comebacks . . . Titian tint . . . Red.



**SALLY GUTHRIE** ♦ lover of life . . . and witty quips . . . drum majorette . . . murder in modern dance . . . hockey and basketball . . . a catty egotist in *Seventeenth Summer* . . . a laugh that rocks . . . long blond hair that shines like the golden fleece . . . Sally.

**BARBARA HALLAM** ♦ an outstanding member of G.A.C. . . . one of our best hockey officials . . . hockey manager . . . fencing . . . active in all sports . . . an honor student . . . from start to finish . . . always lending a helping hand . . . sweet sincerity . . . Bobby.

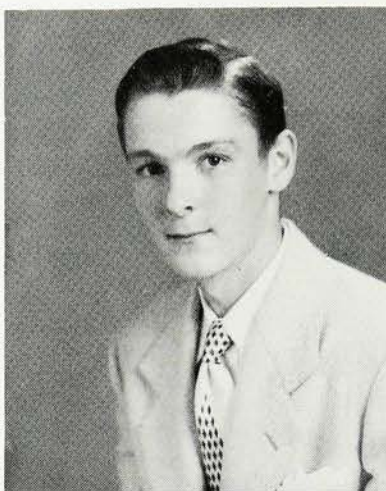


**JOAN HACKNEY** ♦ philosophic thinking . . . unusual ideas that occasionally surprise the *Hi's Eye* . . . writes with profundity . . . lives within her thoughts that seem to stem from reading . . . it's true that still water runs deep . . . Joan.

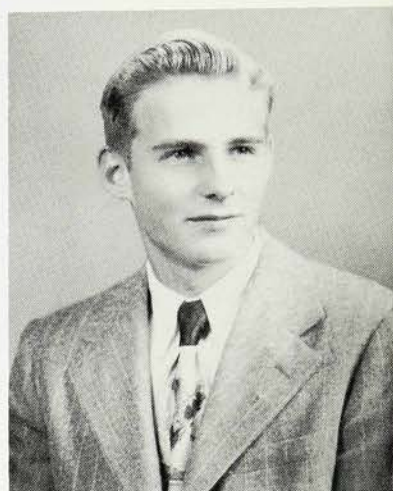
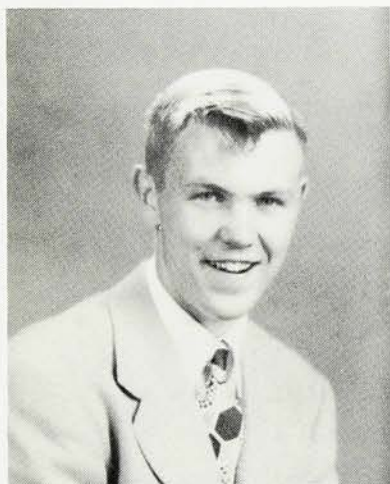
**JOHN HANN** ♦ hunting enthusiast . . . tall and lean . . . tool and die maker . . . wide smile . . . hobby is radio . . . quiet in school . . . gray Ford . . . with open top . . . enjoys fishing . . . pleasing personality . . . likes people . . . John.



**RICHARD HARDIN** ♦ a set of model trains . . . favorite pastime—reading . . . summer visitor to Canada . . . on the decorating committee . . . for the Junior Prom . . . rifle marksman . . . red sweaters . . . hidden humor . . . future ambitions include . . . engineering . . . Dick.



**DICK HARRISON** ♦ firm appreciator of Maine . . . a comet on skates who drives a flying puck . . . lethargic Latin student . . . never takes life too hard . . . never worries . . . and often abuses homework . . . ardent fisherman but won't eat the fish . . . Dick.



**ROBERT HARRIS** ♦ manages the football team . . . camera fiend who's good at trick photography . . . always has a smile . . . for the girls . . . Scotch burr is killing . . . jokes are well flavored with maize . . . mischievous glint . . . to his eyes . . . Bob.



**GORDON HARVEY** ♦ unusual personality . . . accompanied with a rare sense of humor . . . a band of his own . . . garish plaid shirts . . . beats the road to the stock car races . . . in which he should be a driver . . . Glen.



**FRANCES HARVEY** ♦ good things come in little packages . . . a shorty . . . delectable personality . . . infectious sense of humor . . . immaculate grooming . . . Triple Trio . . . choir . . . chorus . . . athletic . . . a finger in every pie . . . loves to argue . . . National Honor Society . . . "Everything's moldy" . . . Fran.



**ELEANOR HATHAWAY** ♦ fervent lover of Cape Cod . . . an experienced saleswoman . . . inclination towards dramatics . . . gay receiver of parking tickets . . . witty, easy-going with a zest for life . . . rare knack of putting even strangers completely at ease . . . Ellie.





**IAN HEATLY** ♦ poker face . . . sardonic humor . . . literary creator of English "high life" . . . lover of any argument . . . excels in sprints—in the water . . . acts even the cad with aplomb . . . worries about oil for his car . . . understands women . . . Ian.

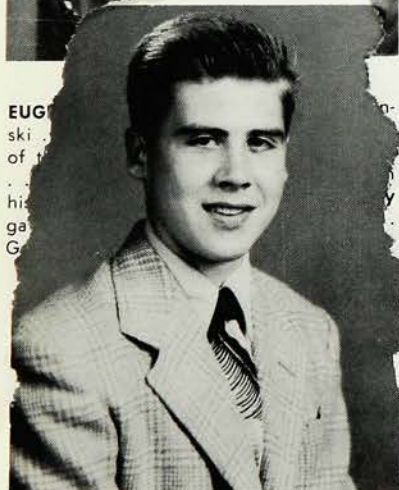
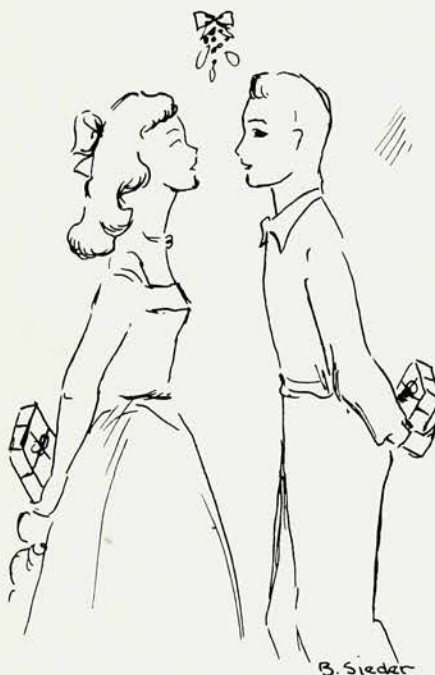


**ANNE HENDRICKS** ♦ sweet and unassuming . . . slow to anger . . . generous to Westfield High with her time and service . . . through the Library Council and the Service Club . . . another Mask and Mimer . . . a help to anyone . . . Anne.

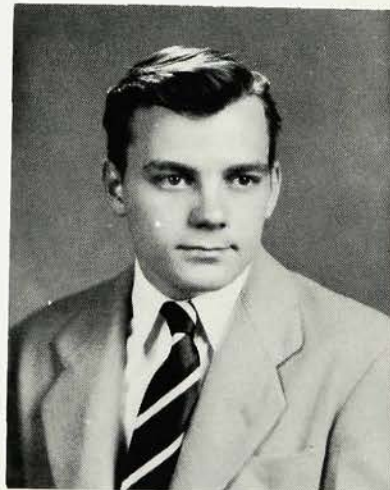
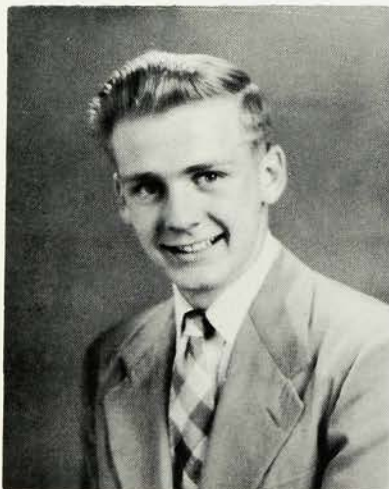
**SAM HICKS** ♦ sincere friend . . . shy smile . . . contagious laugh . . . Sidney Bouche and Duke Ellington fan . . . fighting football guard . . . "on the wagon" . . . subtle humor . . . followed by bright ideas . . . watch out Cincinnati U.I . . . Sam.



**ROBERT HOLMES** ♦ participates in the "Y" league in both basketball and softball . . . always willing to lend a hand where needed . . . "Bughead" . . . another loyal Dodger fan . . . sports enthusiast . . . Hi-Y member . . . Bob.



**EUGENE** ♦ ski . . . of the . . . his . . . ga . . . G



nds  
m-  
on  
ne  
nat  
ice





**MALCOLM HOOD** ♦ big, quiet guy . . . pleasant . . . cooperation exemplified . . . snappy wit . . . that would cheer up anyone . . . one of the few conscientious students . . . excels in history . . . top musician . . . highlight of the band and orchestra . . . along with his trumpet . . . Hoody.



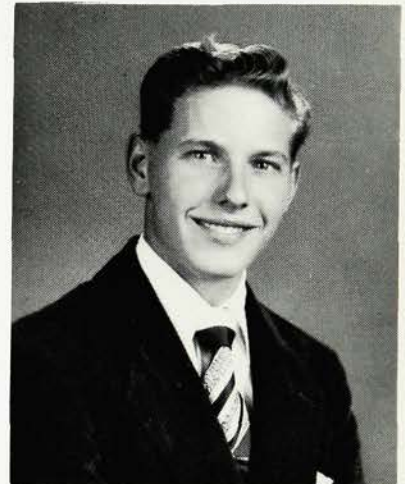
**FRANCES HORSTMAN** ♦ prize trombonist in band and orchestra . . . pretty . . . modest and industrious . . . loves to travel . . . expert swimmer and diver . . . and tennis player . . . gives snap to any situation . . . blushes easily . . . enjoys life . . . abundant supply of corny jokes . . . Fran.

**BETSY HUSK** ♦ bobbing red locks . . . just laughs and laughs . . . and talks and talks . . . understanding and sympathetic friend . . . modest, enthusiastic interest . . . mild temperament . . . alive at any hour . . . loyal . . . keeps things to herself . . . "You think she doesn't?" . . . Bets.



**WILLIAM HOOPER** ♦ radio ham . . . guitar strummin' a specialty . . . also a harmonica playing hillbilly musician . . . a grey Chevy that carries him to New York on week-ends . . . jokes galore . . . trackman extraordinary . . . versatile and indispensable member of the Writer's Club . . . Bill.

**RICHARD HRUDA** ♦ tall . . . tan . . . and terrific . . . good looks plus . . . three year star of golf team . . . noted for his jeans . . . and plaid shirts . . . friendly smile . . . sincere . . . ignores female admirers . . . "one love has he" . . . Dick.



**DOUGLAS HUTTON** ♦ of English parentage . . . brusque . . . off-hand manner . . . plaid shirts . . . startling eyes . . . cheerful . . . interested in the University of Maine . . . or the Air Corps . . . keen . . . asks leading questions . . . becomes absorbed in his work . . . Doug.

**FRANCES HARVEY** ♦ good things come in little packages . . . a shorty . . . delectable personality . . . infectious sense of humor . . . immaculate grocer . . . Triple Trio . . . choir . . . chorus . . . athletic . . . a finger in every pie . . . loves to argue . . . National Honor Society . . . "Everything's moldy" . . . Fran.



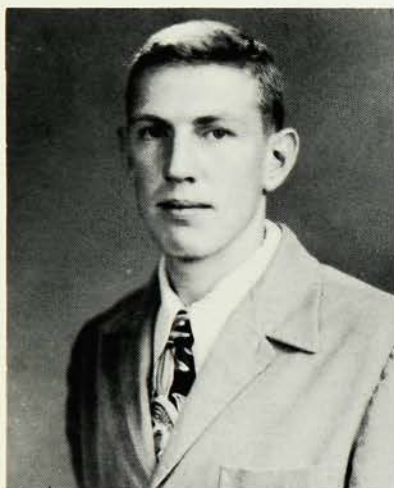
**ANOR HATHAWAY** ♦ fervent lover of the Lord . . . an experienced salesman . . . inclination towards dramatics . . . gay receiver of parking tickets . . . witty, easy-going with a zest for life . . . rare knack of putting even anger completely at ease . . . Ellie.



**LAVINIA JEWELL** ♦ the latest coiffure . . . habit of attracting men . . . flair for character acting . . . intelligence with common sense . . . much enthusiasm over people . . . "Ricky ticky" . . . affectionate nature . . . tall and slim . . . with a husky second soprano voice . . . Vinnie.



**RICHARD JOHNSTON** ♦ sometimes kidded for it . . . but always gave very best for school . . . spirit sticks out all over him . . . flashy drummer . . . always ready to give out with life story in class . . . irrepressible personality . . . "Ace" or Johnny.



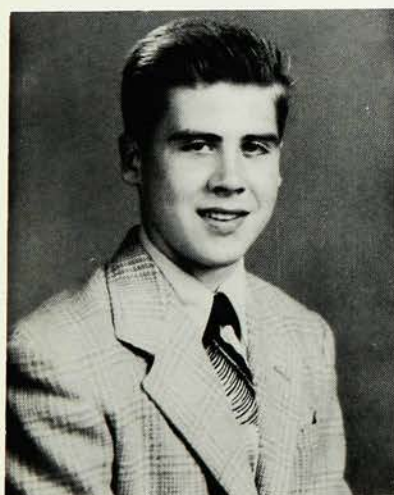
**IVAR JOHANSON** ♦ clings to W. H. S. . . . but spends much time at the shore . . . blond curly-top . . . honest as they come . . . reserved . . . trackman . . . enjoys radio and stamp collecting . . . shy . . . but friendly . . . Ivar.



**RALPH JONES** ♦ co-editor of Hi's-Eye . . . edits columns in other newspapers . . . brilliant mind . . . when he talks . . . avid sports fan and participant . . . track . . . baseball . . . Yankees . . . efficient . . . yet full of enjoyable quips . . . future—journalism . . . Ralph.



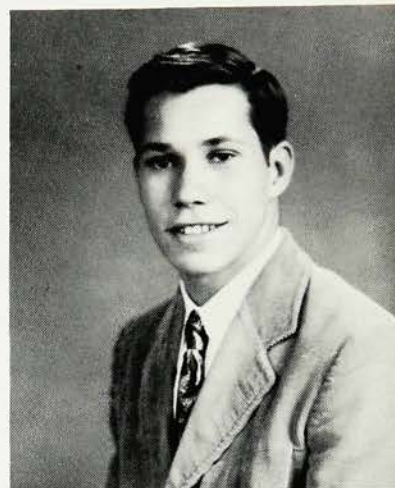
**BARBARA JONES** ♦ terrific sense of humor . . . friendly . . . loaded with artistic ability . . . secretary of the Library Council . . . enthusiastic joker . . . famous for her coat of assorted names . . . aspires to be . . . aviatrix . . . "get it now" . . . crazy about anything yellow . . . Jonesie.



**MARYANNE KEAL** ♦ winsome smile . . . willowy brunette . . . sweet, willing manner . . . quiet, unassuming . . . smart dresser . . . heads south during her vacation . . . outside amusements . . . fascinating talker . . . Maryanne.



**ROBERT KING** ♦ immigrant from Long Island . . . the last piece of the '50's class puzzle . . . self-confidence . . . student director . . . of the Senior Play . . . takes yearly bird census . . . a "woman-killer" . . . attractive cosmopolite . . . always rushing . . . but going —Qui sait? . . . Bob.



**GEORGE KIRN** ♦ varsity basketball man . . . likes any sport . . . frequent visitor to South Orange . . . popular music lover . . . and singer . . . Yankee rooter . . . owns deluxe one-door sedan . . . migrates to shore for summer . . . George.

**FRANKLIN KLION** ♦ large brain capacity . . . one of the few people still rootin' for the Pirates . . . proud owner of a Pierce . . . bound for Cornell . . . and medical school . . . south paw . . . intellectual parties . . . good conversationalist . . . smooth dresser . . . Beanie.



J. GARRETTSON

**JEANNE LA FONTAINE** ♦ enviable independence . . . lives by the day . . . a believer in "Eat, drink, and be merry" . . . calm observer of life . . . common sense and logic that floors opponents . . . stands by convictions and friends . . . a deep alto who doesn't blend . . . but enjoys herself . . . Jeanne.

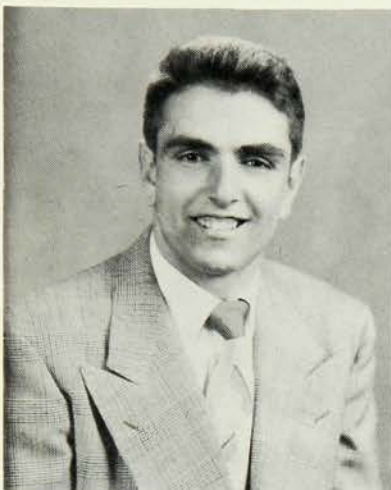


**DORIS KRAUSER** ♦ gal of many talents . . . won state and national dressmaking contests . . . chairman of Costume Committee of Mask and Mime . . . blessed with natural curly hair . . . tall and slender . . . clothes she makes herself . . . loves Milton Berle . . . Doris.



**NANCY LAING** ♦ sophisticated . . . with beautiful wavy blonde hair . . . Trinity's loss and our gain . . . enjoys the company of artists . . . second soprano in choir . . . deep blue eyes . . . that have that "come hither" look . . . sincere friend . . . Nancy.



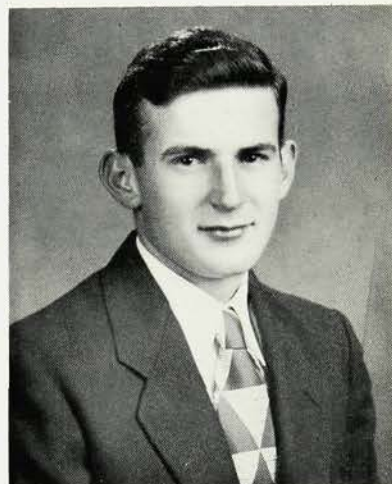


**JOHN LATERRA** ♦ a game and fishing follower . . . who is informed on the latest sports news . . . November 10th is his day . . . tall, dark participant in the Choir and Boys Glee Club . . . a handy man with the shop tools . . . John.



**CHARLES LEHMAN** ♦ proficient treasurer . . . member of swimming team . . . table tennis at the Y . . . subjugated by the Dodger "team" . . . undisturbed thinker . . . Steel-Craft Cruiser - joint ownership with Pop . . . rare wit . . . on occasions . . . presumptuous . . . procrastination personified . . . Charlie.

**RONALD LEY** ♦ full of fun . . . and heck . . . friendly smile . . . capable on hardwoods . . . hates the Cardinals . . . likes Romeo hates Juliet . . . gangling stride . . . angel in study periods . . . likes to rough-neck with "Boog" . . . Ron or "Rat".

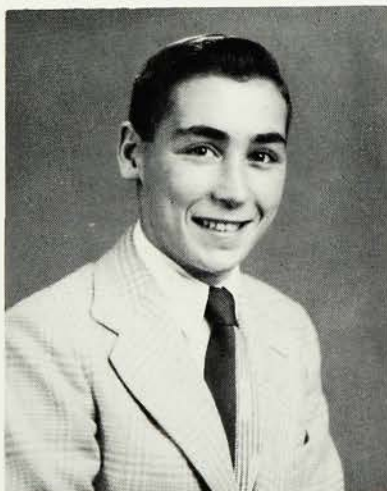


**EDMUND LEWIS** ♦ connoisseur of sports and exquisite feminine pulchritude . . . amicable and complaisant . . . usually found at all main events . . . around town . . . graces "The Point" at summertime . . . "Scraper" . . . original sweaters . . . hearty laughter . . . Dr. Lewis? . . . Eddie.



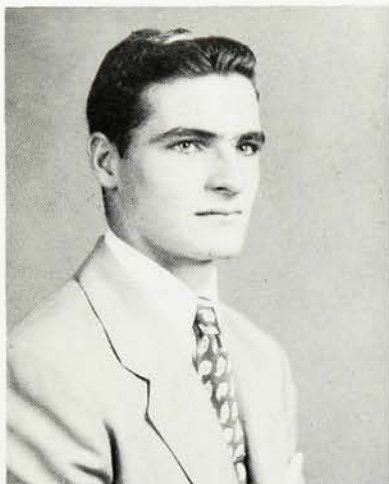
J. GARRETSON

**FRANK LOCKFELD** ♦ intricate sense of humor . . . instigates laughter . . . frequent visits to Maine . . . fishing . . . Mask and Mime . . . dark hair and mischievous brown eyes . . . a whiz at trig . . . a swimmer and boxer . . . for the future - architecture . . . Frank.

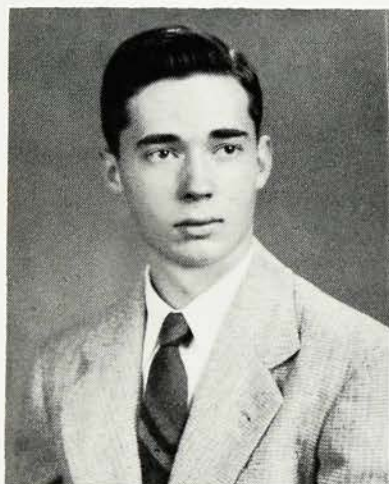


**GERTRUDE LOESCH** ♦ Mask and Mime costume committeewoman . . . a writer whose results are always good . . . enjoys biology . . . plans to be a kindergarten teacher . . . where there's a will there's a way . . . when it comes to permits . . . Trudy.





**FREDERICK MABBATT** ♦ our most mature senior . . . reticent . . . philosophical . . . deep-set eyes with curly lashes . . . interests are many . . . from farming in the Catskills . . . to Community Players . . . is heading for the University of Alaska . . . Tony.



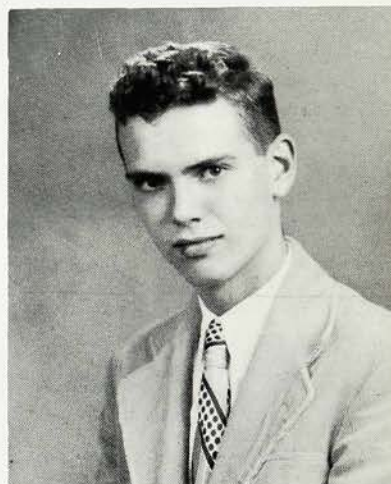
**CHARLES MARTIN** ♦ often seen huddled . . . by the line taking pictures . . . modest photographer for Westfield Leader . . . **Hi's-Eye** . . . likeable guy . . . photographed Townsend fire . . . member of Civil Air Patrol for two years . . . physics fiend . . . jaunty walk . . . Charlie.

**ANNE McCORMACK** ♦ wealth of dry wit and good humor . . . quiet and unassuming manner . . . calm . . . views life without concern . . . enjoys it . . . always dependable . . . fun to be with . . . fine appearance . . . good natured . . . good cook . . . speaks German fluently . . . Anne.



**JOYCE MACKIE** ♦ sentimental, silly, serious . . . leaping from one mood to another . . . understanding and sympathetic friend . . . obsession for cutting hair . . . maker of hilarious faces . . . worried outlook on life . . . nimble wit and conversation . . . energy of a bouncing ball . . . Mac.

**CHARLES MAYES** ♦ tanned, serious face . . . lighted with a brilliant smile . . . has two cars that both work . . . usually filled with girls . . . generous . . . patient . . . and genial . . . patron of "Underwood Hotel" . . . and ardent admirer of the seaside sun . . . Charlie.

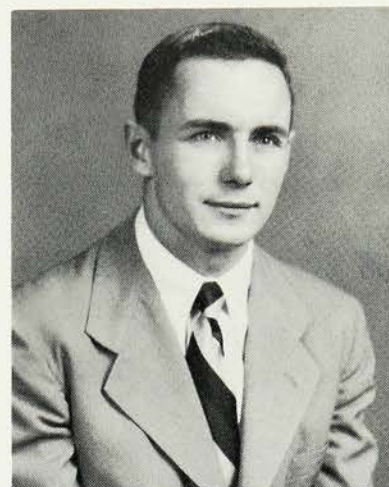
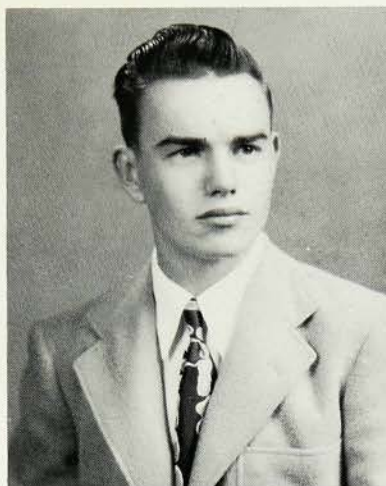


**SALLY McCOY** ♦ freckles and auburn hair . . . a famous giggle . . . well chosen clothes . . . frisky right wing . . . sympathetic and understanding listener . . . predictable but occasionally astonishes her many companions . . . genuine sincerity . . . water baby . . . worries over chemistry . . . Sally.

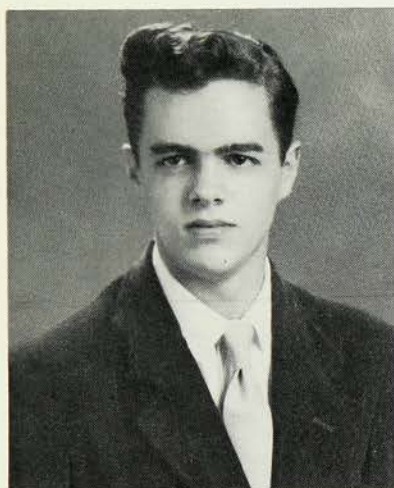




**EUGENE McDERMOTT** ♦ one of Mr. Michaels' trackmen . . . who has a natural aptitudes as a hurdler and relay man . . . brown eyes that sparkle when amused . . . an attitude of unconcern . . . yet serious . . . aptness in the tank . . . Gene.



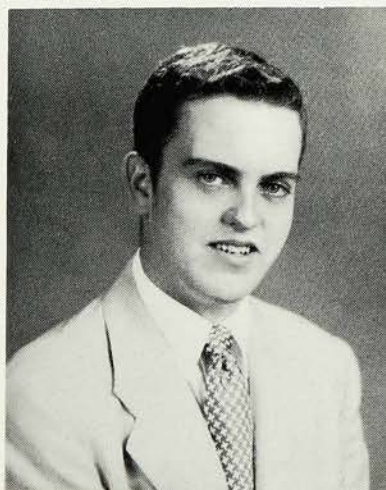
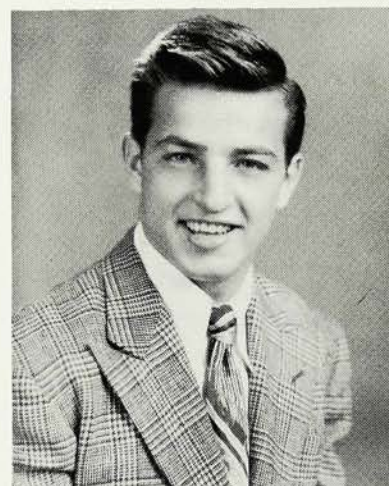
**ELDON MERENESS** ♦ excellent stage designer who has done all our sets . . . music maker with a mellow bass voice . . . in choir and glee club . . . canasta fan . . . hit-you-in-the-face-ties and argyles . . . "You know" . . . Eldon.



M. Bodell

**MORTIMER MILLS** ♦ constantly working on his physics . . . or fixing his black Ford . . . arrived three years ago . . . from Newark . . . controls one of Westfield's drug stores . . . with a dust cloth . . . hidden jocularity . . . that bubbles forth . . . Mort.

**RICHARD MCGINLEY** ♦ Mr. Football to WHS for three years . . . sheer magic of coordination and speed . . . 46 TD's in career . . . record breaking sprinter . . . one of the school's most popular . . . No. 40 will live in Westfield hearts forever . . . Rick.

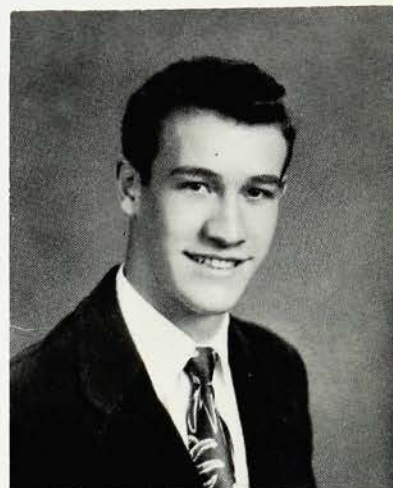


**ANDREW MIGLIOZZI** ♦ short . . . stocky . . . a reliable wingback . . . supporter of Yankees . . . and Joe DiMaggio . . . good-natured . . . a fine sport . . . connoisseur of orthodontic mal-occlusion . . . and ravioli . . . a plain good guy . . . Andy or Weasel.

**HARRY MONTGOMERY** ♦ dry wit . . . president complex . . . walking dictionary . . . on every imaginary subject . . . with something to say on everything . . . National Honor Society . . . quiet sarcasm . . . favorite pastime—taking the negative side in arguments . . . comical part of stuffy minister . . . Harry.



**JUNE MONTGOMERY** ♦ striking blonde  
 . . . essence of loyalty . . . warm sincerity  
 . . . a dash of impulsiveness . . . blushing  
 giggle . . . thoughtful friend . . . sunny  
 disposition . . . proficient knitter . . .  
 talented artist and piano player . . . ever  
 cheerful smile . . . figure . . . WHOW!  
 . . . June.



**LILA MUDGE** ♦ clown of the aquacade  
 . . . radiant smile . . . lambent eyes . . .  
 topped with shining black hair . . . at  
 home in the water . . . and on ice . . .  
 cautious driver . . . appreciator of good  
 humor . . . boys . . . and movies . . .  
 compassionate . . . Lila.

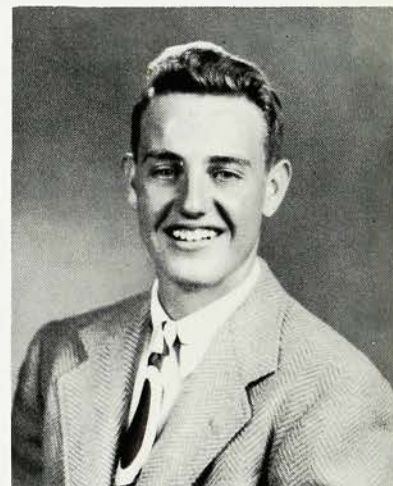


B. STEWART

**WILLIAM MUELLER** ♦ express-train full-  
 back . . . speedy dash man . . . looks  
 lazy, but gets things done . . . ever  
 present grin . . . never known to let you  
 down . . . football greatest love . . . to  
 mates, Mull or Moose.



**GEORGE MORTON** ♦ personality plus . . .  
 sense of humor . . . rare sincerity . . .  
 generous to a fault . . . neat and well  
 groomed . . . towering . . . good looks  
 . . . nice manners . . . loves music . . .  
 booming bass . . . speaking of singing  
 . . . full of mischief . . . love that twinkle  
 . . . George.



**HENRY MUELLER** ♦ shrewd businessman  
 . . . innocent expression . . . ruddy com-  
 plexion . . . usually seen driving his grey  
 convertible . . . hopes to follow in his  
 father's footsteps . . . as a farmer . . .  
 natural charm and amiable manner . . .  
 Hank.

**ROBERT MUMM** ♦ ex-Lindenite . . . helper  
 of others . . . scarcely loquacious but  
 friendly . . . a perfectionist who does  
 all things well . . . skyscraper form . . .  
 yet shrinks from observation . . . earns  
 our good wishes . . . and gains our re-  
 spect . . . Bob.



**HOWARD PERKINS** ♦ "Funster" . . . active . . . in many sports, especially basketball and baseball . . . member of the "Thirteen" . . . impetuous . . . with . . . way with girls . . . goes to temperamental extremes . . . good looking . . . full of pep and energy . . . "you know it!" . . . Perk.



**ROBERT NEILSON** ♦ handsome boy . . . sauntering walk . . . hands jammed into his pockets . . . subtle humor . . . slow appealing smile . . . that devastates the weaker sex . . . the catch that set up another touchdown . . . a mind that changes . . . more than meets the eye . . . Herbie.

**ALFRED PIESCO** ♦ member of '49 eleven . . . fighter in uniform, but off the field always a gentleman . . . truly modest . . . happiest when not studying . . . rugged fellow . . . smooth dresser . . . beaming smile . . . that brightens our gloomy halls . . . Al.



**ESTELLE NEUER** ♦ slick silhouette . . . enjoys dancing, eating, and roller skating . . . participates in outdoor sports . . . array of boy friends . . . dances . . . at Fort Monmouth . . . a friendly and flirtatious smile . . . a hearty laugh . . . jokes . . . that are actually funny . . . Estelle.



**JOAN NEWETT** ♦ fabulous strawberry blonde whose hair shines like polished copper . . . finds pleasure in roller skating . . . square dancing . . . generous with her service . . . in the Service Club . . . supplied with an over-abundance of joyful energy . . . Joan.

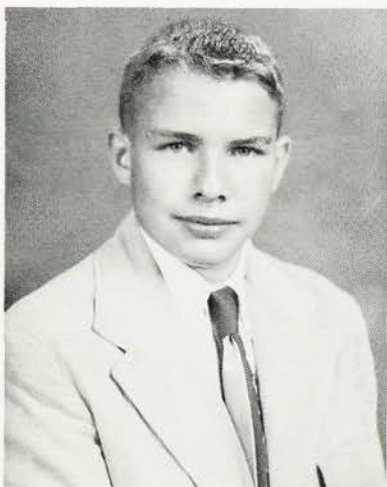
**INGE NEUBERGER** ♦ known for her irrepressible giggle . . . merry blue eyes . . . superb figure . . . gay and unruffled . . . never a dull moment in her geometry class . . . friendly manners . . . never has to worry when it rains . . . her hair is naturally wavy . . . Ingie.



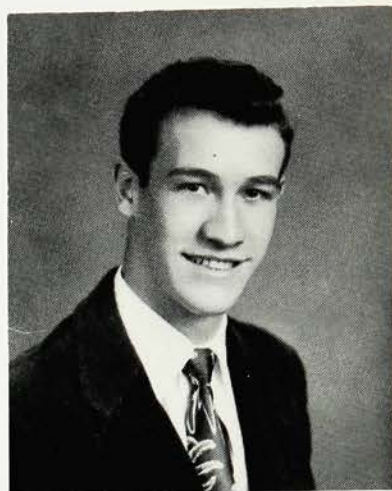
**PAULA NEWALL** ♦ black, wavy hair . . . with fine haircuts, her specialty . . . sneaks into class when late . . . outstanding pianist . . . a friendly nod and a wink for the world . . . earnest . . . high ranker among the best dressed in W.H.S. . . . Paula.



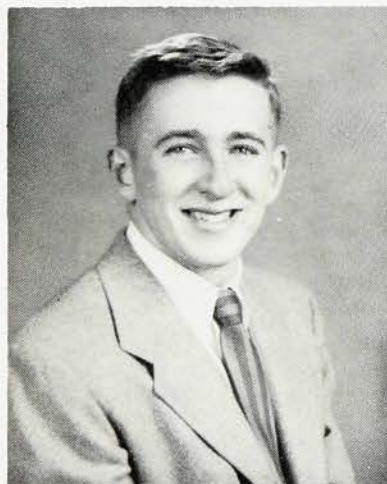




**JAMES O'DONNELL** ♦ baseball authority . . . who argues whole-heartedly for the Giants . . . happy-go-lucky . . . active in sports . . . proud owner . . . of the only square dog in captivity . . . school newspaper boy . . . nice-looking . . . good sense of humor . . . inquisitive . . . Jim.



**GEORGE MORTON** ♦ personality plus . . . sense of humor . . . rare sincerity . . . generous to a fault . . . neat and well groomed . . . towering . . . good looks . . . nice manners . . . loves music . . . booming bass . . . speaking of singing . . . full of mischief . . . love that twinkle . . . George.



**PAUL PARIZEAU** ♦ practical joker . . . cartoonist . . . frequent trips to the Island . . . demolishes the family car . . . unforgettable summer experiences . . . fastidious dresser . . . gum chewer to the nth degree . . . smart . . . when in the mood . . . Paul.



A. SPINDLER



**WALTER PASKO** ♦ nary a care in the world . . . speeds around . . . in a Lincoln . . . eagerly defends "dem Bums" . . . came to us in his junior year . . . from Elizabeth . . . gratifying . . . tranquil . . . ingratiating smile . . . Walt.

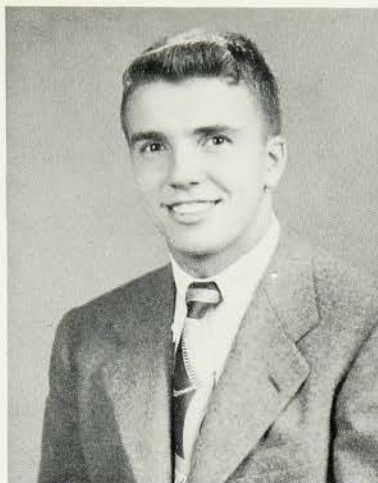


**BARBARA PARTINGTON** ♦ president of the French Club . . . driver of a huge black Lincoln she wishes were her own . . . tallest soprano in Triple Trio . . . possessor of a lovely face . . . and charming smile . . . Barb.





**HOWARD PERKINS** ♦ "Funster" . . . active . . . in many sports, especially basketball and baseball . . . member of the "Thirteen" . . . impetuous . . . witty . . . way with girls . . . goes to temperamental extremes . . . good looking . . . full of pep and energy . . . "you know it!" . . . Perk.



**ALFRED PIESCO** ♦ member of '49 eleven . . . fighter in uniform, but off the field always a gentleman . . . truly modest . . . happiest when not studying . . . rugged fellow . . . smooth dresser . . . beaming smile . . . that brightens our gloomy halls . . . Al.

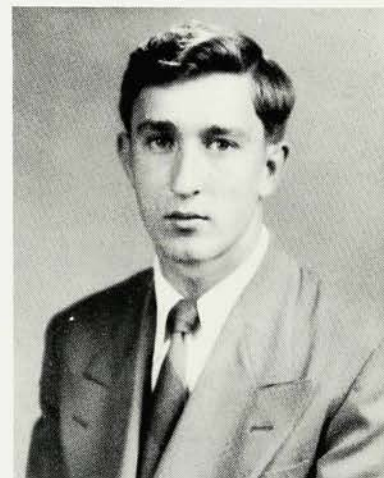
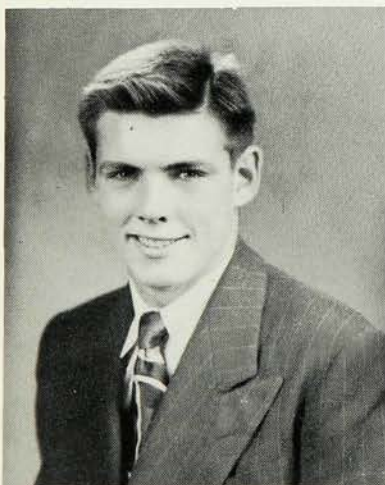


**GEORGE PETITT** ♦ one of the mainstays of Mr. Michaels and Co. . . . the "Virginia Creeper" . . . frequently seen . . . cruising around in his gray bus . . . Hi-Y . . . Glee Club . . . and "X" basketball league keep him busy . . . never too busy . . . to extol the virtues of Virginia . . . Ned.



A. SPINDLER

**BARRY PRUSS** ♦ bruiser of a guard . . . whose bark is worse than his bite—sometimes . . . tinkers with his Ford . . . a serious side . . . but adept at mischievous pranks . . . enjoys life . . . ear splitting laugh . . . the life of most parties . . . Moppy.



**FRANK PISCOPO** ♦ bashful . . . fleet-footed third baseman and future pro . . . who is a rooter for the New York Yankees . . . sharp clothes . . . drives a mean golf ball . . . placid personality . . . a whiz in history . . . sincere smile . . . Frank.

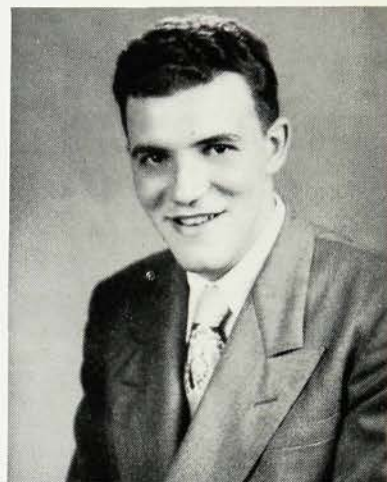
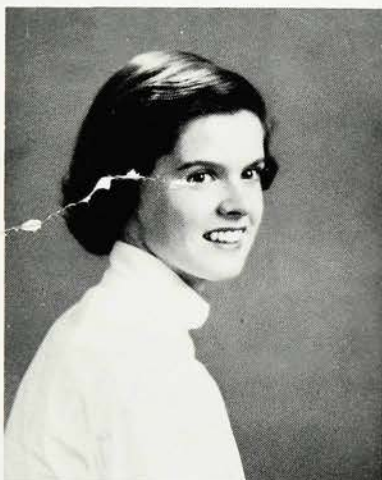
**DOLORES RAKOWSKI** ♦ curly top . . . numerous nicknames . . . enjoys a joke . . . "Doesn't he remind you of somebody?" . . . constant hunger . . . appeased by tunafish sandwiches . . . spontaneous remarks at odd times . . . always rushing some place . . . Dolores.



**BETTY RANDOLPH** ♦ immaculate in dress . . . endless hours for preening . . . better late than never . . . fish face . . . changeable . . . our pretty cheerleader . . . and second alto . . . a look-twice silhouette . . . tumbling words . . . uncomplaining resignation to constant kidding . . . Betty.



**NANCY READ** ♦ dry wit and humor . . . sincere . . . with a big heart . . . honest with herself and others . . . the latest in clothes . . . known for her cross country excursions . . . especially to Mexico . . . uncomplaining and reserved . . . Nancy.



**ANTHONY RASERA** ♦ the A and P's hardest worker . . . spare time spent bowling . . . Giant zealot . . . or is it the Dodgers? . . . not hard to get along with . . . favorite pastime teasing and kidding the girls . . . wears his favorite overcoat in spring, fall, or winter . . . Tony.



**JOHN RILEY** ♦ small in stature . . . but superabundant in ability . . . and energy . . . good athlete . . . careful driver . . . when roadster's in garage . . . many friends . . . especially female . . . they think he's "cute" . . . Jack or "Rile".



**SHIRLEY REYNOLDS** ♦ capacity for keeping an audience hysterical . . . famous for her comebacks and quick wit . . . bubbling with spirit . . . always friendly and cheerful . . . peppy . . . a terrific flare for writing . . . winning friends . . . and zany ideas . . . "I didn't do it" . . . Shirl.

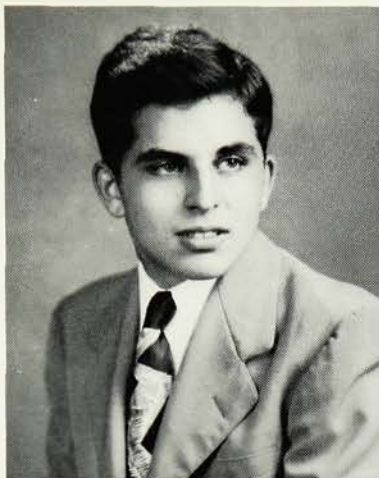


**ALICE RINEHART** ♦ spontaneous giggle . . . worrier . . . conscientious . . . dependable . . . Honor Society . . . pert . . . always late and rushing . . . dreamer . . . amiable . . . will go into nurses' training . . . thoughtful friend . . . ambitious . . . captain of the hockey team that beat Chatham . . . Al.





**JAMES ROBINSON** ♦ quick wit . . . would like usually to be seen in a blue Buick . . . active on the cinder track . . . famous for his campaign speeches and jaw-hanging comebacks . . . bold frankness . . . adept contributor to publication humor sections . . . Jim.



**THOMAS ROMAGNOLI** ♦ staid and earnest in convictions . . . quiet . . . rabid baseball fan . . . information bureau on every sport . . . penetrating glance . . . constrained and unobtrusive . . . dark hair and eyes . . . Glee Club . . . enjoys walking . . . cooperative with everyone . . . captivating smile . . . Tom.



**NED ROSECRANS** ♦ lethargic . . . therefore loves to fish . . . basketball supporter . . . persistent party goer . . . even temper . . . most of the time . . . hoards of feminine admirers . . . annoys people and vice-versa . . . Ned.



**DOROTHY ROSS** ♦ inquisitive . . . frank about everything . . . slow talker . . . composed . . . hidden wit that seeps through a good-natured laugh . . . knits weird socks . . . ever fizzing in the physics lab . . . and solid g . . . the part of a wise mother in the senior play . . . Dot.

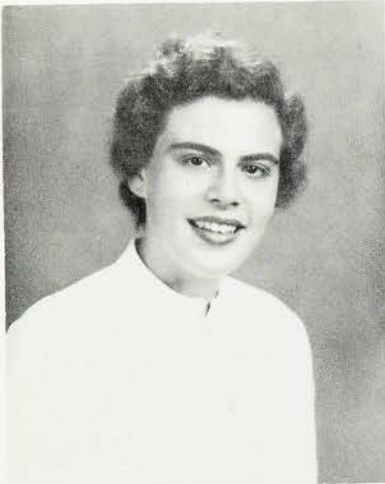


**MARGARET SAVOYE** ♦ pert and peppy . . . athletic ability . . . brains . . . quick wit . . . knack of having fun . . . subservient to Sir Oogle Boogle . . . sincere determination . . . enthusiasm . . . aspires to be a physical education teacher . . . G.A.C. officer . . . student council . . . lusty singer off key . . . Peggy.



**ROBERT SAVOYE** ♦ terrific cartoonist . . . track high jump and hurdle man . . . a remarkable memory for ludicrous jokes . . . amateur astronomist . . . Gilbert & Sullivan critic . . . knows a bit about everything . . . shortest part in the Senior Play . . . Bob.





**ANN SCALZADONA** ♦ an incessant laugh . . . scurrying second alto . . . brick-wall-of-a halfback . . . practical outlook on life . . . stubborn . . . thrives on responsibility . . . a zealous committee-woman . . . one big kiddie . . . forever in a hurry . . . curly brown crown . . . Scalz.



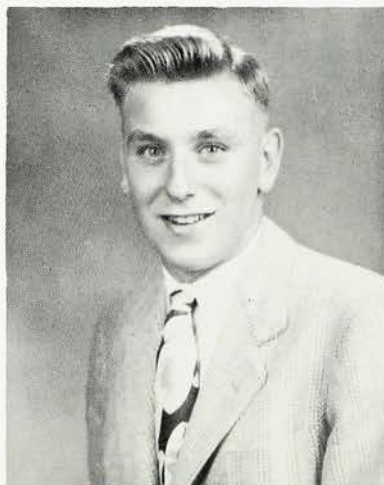
**JEANNE SCHAEFER** ♦ friendly . . . sincere . . . sparkling brown eyes . . . life of any party . . . persistent letter writer . . . artist . . . loves all sports—made the goal that made history—and eating . . . attempts dieting every week . . . happy-go-lucky . . . Jeanne.

**PEGGY SELTZER** ♦ thrives on night life . . . fiery independence . . . firm dislike of mayonnaise . . . drives an oblique green Mercury faster than sound . . . "I'm ruined" . . . collects clothes . . . wizard in solid g . . . unpunctual . . . nonchalant absentmindedness . . . Peg.



**GLORIA SCHAIBLE** ♦ born philosopher . . . sincerity and friendliness come to life . . . whirlwind driver . . . frantic at her own forgetfulness . . . natural actress . . . sits on the edge of her seat . . . practical . . . except when in a ridiculous mood . . . likes fine music . . . Gloria.

**PAUL SENSBACH** ♦ considerate . . . southpaw . . . huge smile for everyone . . . hunting and fishing during spare moments . . . '36 Plymouth . . . with a built-in oil burner . . . pretty reindeer sweaters . . . intense gazer . . . comes in the large size . . . future carpenter . . . Paul.



**ALTON SHERRICK** ♦ swimming captain . . . one of our most popular . . . good in any sport . . . modest . . . super Christmas card salesman . . . loves school . . . inhabits seashore in warm weather . . . a flash on the links . . . Bussie.





**ROGER SIDENER** ♦ tall and straight . . . window gazer in English . . . chess devotee . . . choir . . . All-State Chorus . . . flourishing bass . . . yellow sweaters . . . believes in locked car doors . . . smooth on the dance floor . . . considerate of others . . . Dr. Sidener . . . Roger.



**ROBERT SIESS** ♦ usher at football games . . . touch football enthusiast . . . Hi-Y . . . dabbles with charcoal sketches . . . and paintings . . . funny chuckle . . . enjoys life . . . "live and let live" . . . clement . . . numerous outside interests . . . companionable . . . laughs out-right . . . at times . . . Bob.



**BARBARA SEIDER** ♦ unaffected and ingenuous artist . . . angular and lean . . . practically lives on sailboats . . . in the summer . . . startling distraction . . . clownish basketball official . . . hockey forward . . . lethargic eyes . . . enjoys all sports . . . never serious . . . Barb.

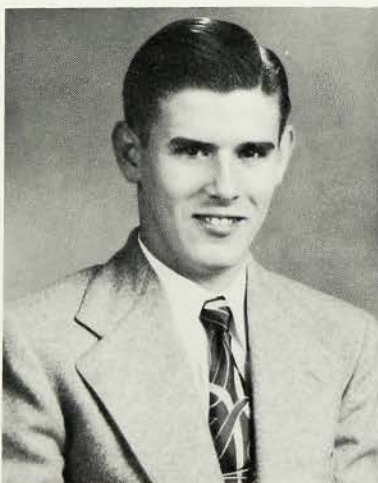


J. GARRETSO

**JOAN SMITH** ♦ twinkling Spanish senorita . . . from Venezuela . . . fascination personified . . . slight . . . mellifluous Spanish . . . unpremeditated giggle . . . which sends everyone into gales of laughter . . . persistent teasing smile . . . another pedestrian hater . . . now that she's behind the wheel . . . Joanie.



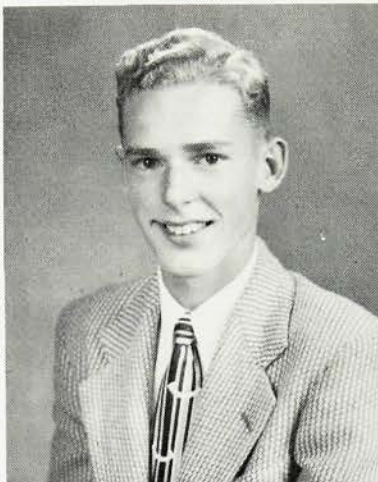
**JOAN SLATER** ♦ sweet . . . sincere . . . and sometimes silly . . . airplanes are her life . . . and is a member of the Civil Air Patrol . . . infectious giggle . . . smiling eyes . . . her artistic talent displayed in ceramics . . . fun-loving . . . Joan.



**KENNETH SMITH** ♦ star soccer player of the All South American Team . . . from Venezuela . . . his first words in English "Okay" and "you kid" . . . likes Westfield . . . but has a preference for Florida . . . television fan of "Kid Gavilan" . . . Ken.



**ROGER SMITH** ♦ a member of a dance band . . . plays the sax . . . member of the DeMolay . . . enjoys golf . . . sings in the Glee Club and choir . . . falls for some one periodically . . . then recovers just as periodically . . . terrific grin . . . Rog.



**RICHARD SOMMER** ♦ baseball fiend . . . Giants . . . mathematical wizard . . . on the quiet side . . . but always has a witty reply to any question . . . a score of friends . . . winning smile . . . never seen without blue baseball cap . . . Dick.



**LOIS SOLLENBERGER** ♦ attractive squealer . . . gifted pianist . . . will continue with music . . . lively . . . tactful . . . full of fun . . . active in sports . . . and clubs . . . capricious . . . good natured . . . cheerful . . . good student . . . winning smile . . . poised . . . genuine sincerity . . . loves life . . . and people . . . always happy . . . Lo.

**LYDIA SPADARO** ♦ a pennyworth of fun . . . neat appearance . . . good listener . . . possesses a charming personality . . . appreciative . . . shy . . . willing to please . . . secretarial ambitions . . . fervent talker about her niece and nephew . . . '41 Plymouth . . . Lee.



**THELMA SOUDER** ♦ multitudes of friends to whose parties and weddings she pleasantly trips . . . heights appall her . . . hilarious character part in *Pride and Prejudice* . . . proficient and eager conversationalist . . . Mask and Mime council . . . slow speech, almost a drawl . . . Thelma.

**YOLA SPADARO** ♦ gift for gab . . . laughable "Yogi" . . . rushes to the Economy at 2:30 . . . surprises everyone . . . with an occasional tap dance . . . extra time spent . . . writing letters . . . punster . . . her shyness deceives us . . . actually very gleeful . . . Yola.





**ARLENE SPINDLER** ♦ extensive and gorgeous wardrobe . . . much made by her own hands . . . originality and imagination that truly aids her artistic ability . . . a friendly and good-natured manner . . . a tall blonde in an angel's costume . . . Arlene.



**DOTTY STAUB** ♦ loyal friend . . . exercises everywhere . . . slow, breathy "Hello" on the 'phone . . . dimples . . . happy confusion . . . always ready . . . to lend a hand . . . sincere . . . swinging walk . . . gleeful driver . . . holds high standards and keeps them . . . Mask and Mime play . . . exuberant talker . . . Dotty.

**BETTY SUE STEWART** ♦ bubble of vitality . . . petite and pert . . . top art student . . . designs and sketches . . . full of mirth . . . always at a meeting . . . dexterous fencer . . . tried her hand at modeling . . . and the Mask and Mime play . . . Betty Sue.



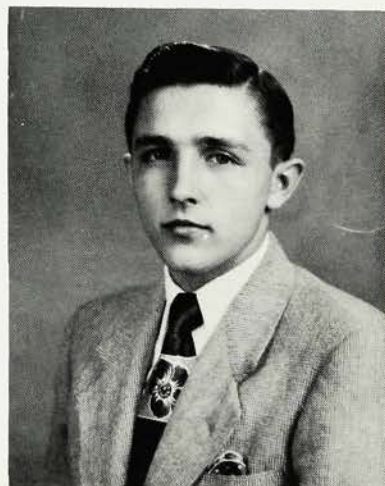
**ROBERT STRUBLE** ♦ major interests—fishing, hunting, women . . . facetious character . . . possesses a long reference list . . . in his black book . . . repertoire of hilarious puns . . . ruddy and black-haired . . . enjoys candy . . . but is partial to Clark Bars . . . sports devotee . . . Bob.



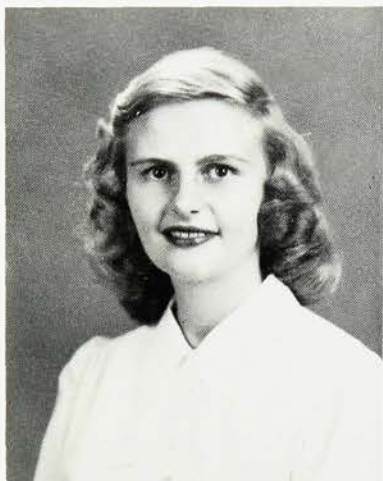
**MARGARET STEINER** ♦ spicy anecdotes for despairing moments . . . happy-go-lucky . . . an appreciation for the ridiculous . . . perpetual chatterbox . . . engaging smile . . . witty artist who draws at her convenience . . . despises boring moments . . . can be serious . . . if she settles down enough . . . Peg.



**JAMES STUART** ♦ able and ambitious . . . sensible and systematic . . . swimming manager par-excellence . . . laughs long, loud, and easily . . . keen intellect . . . loyal and reliable friend . . . avid Gilbert and Sullivan fan . . . competent choir secretary . . . indispensable veteran of "Thirteen" . . . driving determination . . . Jim.







**MARILYN STURGES** ♦ accomplished diplomat . . . patient recipient of jesting comments about her feet . . . able executive of the G.A.C. . . . cheery greetings for a multitude of friends . . . even tempered . . . champion sportswoman . . . especially tennis . . . considerate and kind . . . faithful in friendship . . . Marilyn.



**ROBERT TORBORG** ♦ comes from a Westfield High School family . . . tall . . . lanky . . . blond . . . chairman of Lighting Committee for Junior Prom . . . loves to work with his hands . . . future farming, he hopes . . . Bob.

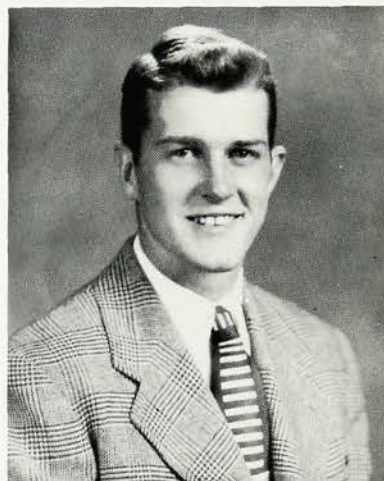
**ARLENE TRIPP** ♦ easy conversationalist . . . with good ideas . . . frankness . . . and constant questions . . . sweet . . . bird-like singer . . . bubbling energy . . . like a jack-in-the-box . . . serious, but often subject to giddiness . . . quoter of literature . . . Ardie.



**NANCY TOBEY** ♦ a collection of multi-colored sweaters . . . too numerous to count . . . and envied by all . . . an elfish little smile . . . little sister trouble . . . meticulous driver . . . dress making is her avocation . . . hopes to major in home economics . . . Nanc.



**DAVE TOWNLEY** ♦ serious . . . a smile and greetings for everyone . . . even when occupied . . . nine letter man . . . in football . . . basketball . . . and baseball . . . easy going . . . without conceit . . . mild disposition . . . except at times . . . meticulous dresser . . . with hosts of friends . . . Dave.



**RUTH TROEBER** ♦ Able twirler . . . always time for a friendly word for everyone . . . quick smile . . . choir member . . . sincere . . . enthusiastic Endicott hopeful . . . (conscientious letter writer to Purdue) . . . domestic . . . baker of good brownies . . . Ruth.





**NANCY TROTMAN** ♦ agile hockeyist . . . lover of people . . . and life . . . possessor of a fine head of naturally curly hair . . . unselfish generosity . . . and friendship . . . sincere . . . never walks . . . "Wanta hear a cute joke?" . . . vicacious socialite . . . and talker . . . Nance.



**VALERIE VANDERWERKER** ♦ five feet of trim, compact figure . . . proud owner of a Sigma Chi sweat shirt . . . experienced and constant knitter . . . of coveted sweaters . . . perky laugh . . . beautiful complexion . . . appalling marks . . . faithful to the end . . . baker of luscious cakes . . . Val.



**ROSEMARIE TRUONO** ♦ center of attraction when it comes to dancing . . . works in library . . . writes letters in spare time . . . energetic gal . . . short . . . but makes up for size . . . hard worker . . . full of vim and vigor . . . flirtatious personality . . . Row.

**FLORA VAN HECKE** ♦ cheerful, amiable manner . . . sweet, sincere smile . . . able club president . . . Service Club . . . Red Cross Council . . . vivacious and jolly . . . lends helping hand to many . . . incessant talker . . . "If I only had a car of my own." . . . Flo.

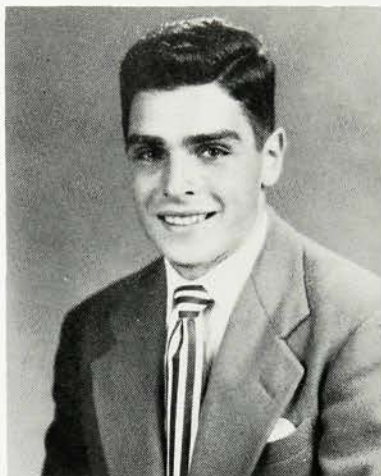


**JACK VAN HART** ♦ intense liking . . . for sports . . . avid ice hockey enthusiast . . . enjoys jocularity at all times . . . green Ford . . . always filled . . . with friends . . . trim dresser . . . changeable disposition . . . likes arguments and debates . . . enjoys classifying all girls . . . an individualist . . . "Easy!" . . . Jack.

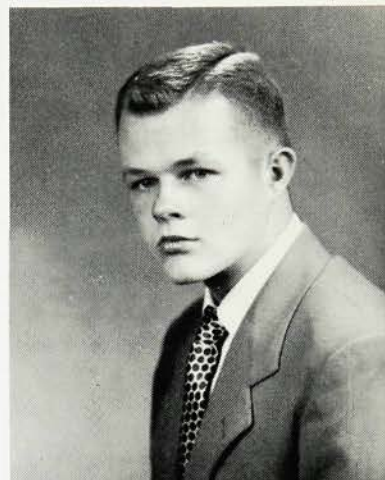
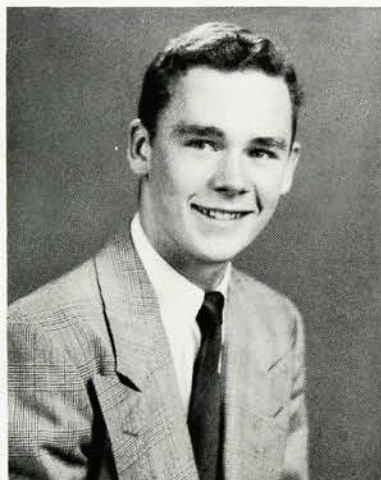
**JOAN VAN TASSEL** ♦ angelic expression . . . the delightful habit of saying the wrong thing at the right time . . . loyal friend who'd do anything for anyone . . . sweet . . . repugnance to sea food . . . mistress of the almost forgotten art of blushing . . . Joannie.



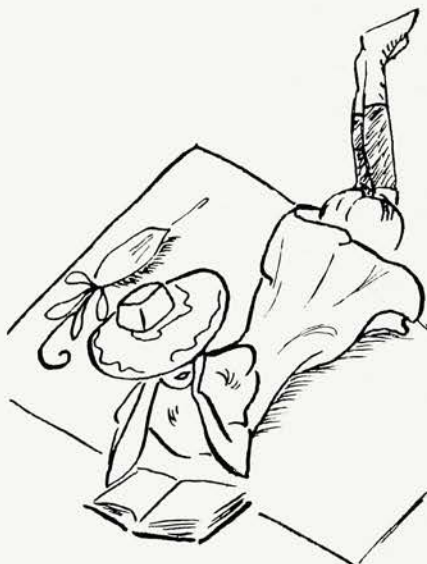
**MORTON VICTOR** ♦ our punter on the grid . . . tosses things for the track squad . . . classy blue Olds . . . snappy dresser . . . ladies' man . . . full of witty remarks . . . dark and handsome . . . Mort or Vic.



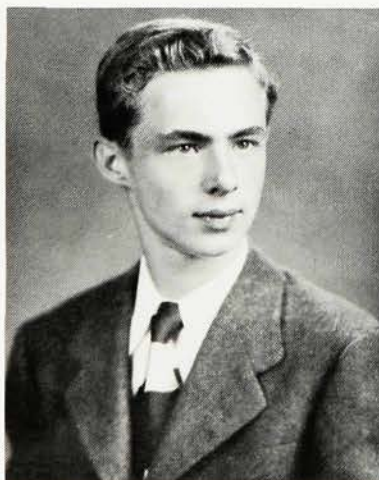
**PETER WALDROP** ♦ has a collection of road maps . . . good looking . . . with auburn hair . . . and a neat smile . . . keeps one foot in Tennessee . . . future plans include being a surgeon . . . reluctant editorial writer . . . extremely friendly . . . Pete.



**ROBERT VLIET** ♦ sharp dresser . . . on football squad for three years . . . careful driver . . . famous for his New Year's Eve party . . . also famous for his narrow escape from decapitation at the hands of a discus . . . called by friends . . . "Tex".



**FREDERIC WALKER** ♦ expert in the railroad field . . . a second Lucius Beebe . . . ruddy cheeks . . . sporting owner . . . of a tilted pinball machine . . . easy to get along with . . . often seen . . . delivering packages for Whelan's . . . quiet manner . . . Rocky.



**EDWARD WALKER** ♦ honest ambition . . . friendly . . . polite . . . hard worker . . . member of Literary Club . . . possessor of neat clothes . . . and quiet smile . . . active in Glee Club . . . goes out of his way . . . to help others . . . and support Senior Class . . . Ned.



**JANICE WALKER** ♦ diminutive brunette . . . lively temperament . . . band baritone . . . tailored clothes . . . "Aunt Jan" . . . jester . . . with laughing eyes . . . fervent knitter . . . occasionally found thinking . . . about the male species . . . glittering hair . . . and smile . . . Jan.





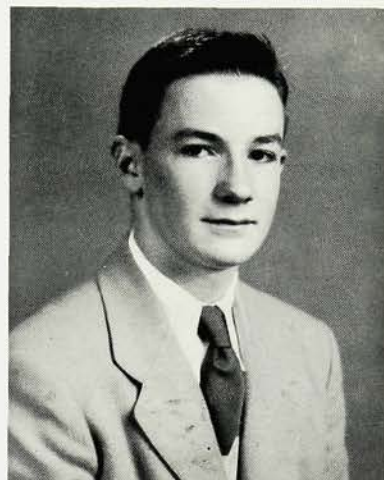
**NORMAN WEBB** ♦ Vice-president of the Hi-Y this year . . . another Euclid . . . the upper crust in marks . . . dependable . . . and co-operative . . . a musician of the choir and orchestra . . . basketball "Y" leaguer . . . Norman.



**DEE WEISBECKER** ♦ dizzy red-head . . . usually seen scurrying around . . . with a lot of nothing to do . . . possessor of a cheerful "Hi" . . . and an Ipana smile . . . plans to go into politics . . . likes the guitar . . . Dee.



**BARBARA WEISLEDER** ♦ easy laughter . . . often in hysterics over nothing . . . authority on Tweed-O-Roys . . . Camels . . . jokes in Spanish . . . grotesque sense of humor . . . diligent gum chewer . . . ambling walk . . . evening swims in the ocean with a large audience . . . future ambition—? . . . Weis.



**KENNETH WELCH** ♦ a big splash . . . off a diving board or socially . . . cracker-jack diver . . . and swim captain . . . or pole vaulter . . . conscientiousness . . . that gets scholastic honors . . . brand new 1929 four-door sedan . . . dazzling smile . . . that is always ready . . . Ken.



**CAROLYN WELLMAN** ♦ profuse talker . . . with the spirit of a bouncing cork . . . intelligent reasoning . . . collector of blue slips . . . for a multitude of activities . . . in a distressed tone "I've got to be at four places right now . . . enthusiastic sportster . . . Lynn.



**NANCY WERBER** ♦ cute blonde . . . wants her own car keys . . . known for her gorgeous hand-knit sweaters . . . great worrier . . . artistically inclined . . . incessant talker . . . friendly to everybody . . . active in sports . . . has many interests . . . Nancy.





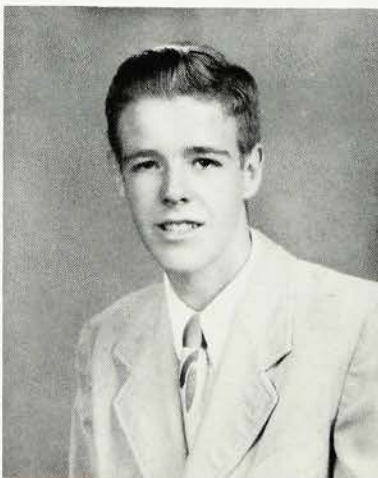
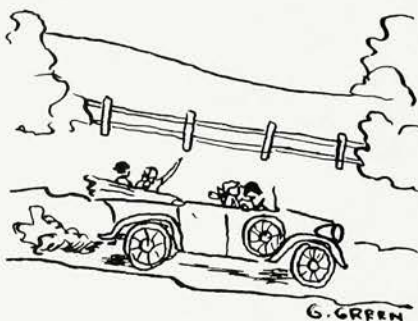
**DONALD WEST** ♦ breeder and racer of homing pigeons . . . genuinely amiable . . . devoted to sports, especially football and baseball . . . Hi-Y enthusiast . . . definitely not a ladies' man . . . bent toward business administration . . . Don.



**ELIZABETH WHEELER** ♦ passion for arguments, sarcasm, and bridge . . . freckled strawberry blonde . . . deep-voiced chorister . . . avid hockey star . . . laughing eyes . . . lover of jeans . . . practical organizer . . . strong aversion to hats . . . artist . . . droll humorist . . . with a mind of her own . . . "Obviously" . . . Liz.



**DORIS WHITE** ♦ hair of gold . . . eyes of blue . . . realistic view of life . . . intent . . . on nothing in particular . . . but everything in general . . . abhors latecomers . . . fanatical sports fan . . . epitome of gaiety . . . she's lookin' for her future . . . Dobby.



**JACK WILLIAMS** ♦ exaggerated height . . . that could be used . . . by any basketball team . . . keeps the "Y" in business . . . humorous agitator . . . sharp wit . . . courteous to everyone . . . lady's man . . . travels north . . . to some forgotten island . . . idle gait . . . Jack.



**ANDREW WILLIAMS** ♦ "Hoosier" boy . . . possesses a "souped-up" Plymouth convertible . . . enjoys working on his car . . . and at the Shell gas station . . . secretive smile . . . another hot-rod . . . unusual fellow . . . everyone's colleague . . . "blue ribbon" . . . Andy.

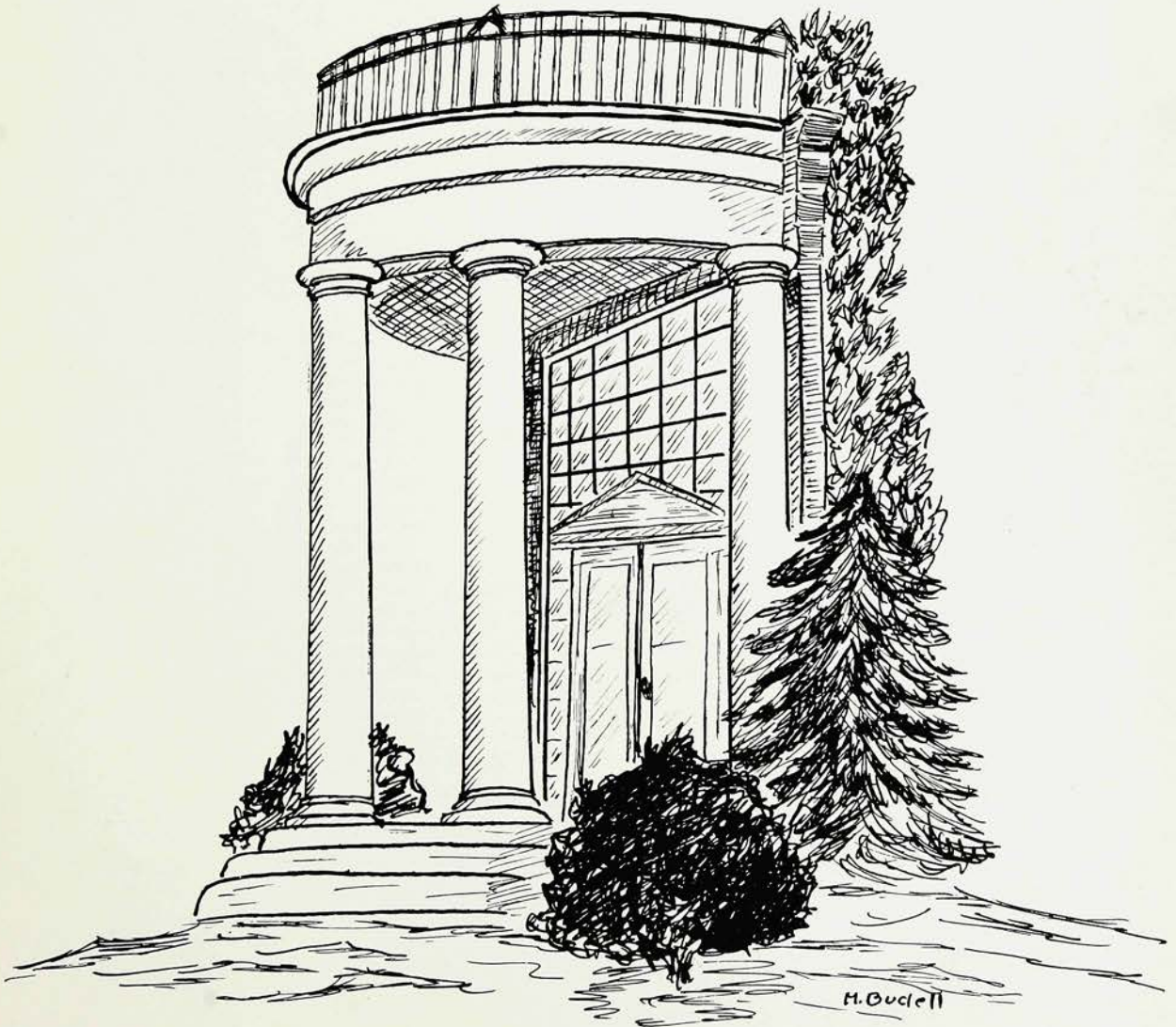


**PEGGY WILLIAMS** ♦ flashing smile . . . southern belle . . . big-hearted . . . drummer girl for the band . . . whiz at stenography . . . Hi's-Eye standby . . . dark haired . . . favorite pastime writing letters . . . to a certain marine . . . rainbow sweaters . . . continuous giggle . . . Peggy.





**MARY WRAGG** ♦ figure supreme . . .  
 spontaneous laughter . . . serious talker  
 . . . perennial spring fever . . . a smile  
 for the world . . . invulnerable hockey  
 fullback . . . patient . . . lead of the senior  
 play . . . immeasurable energy . . .  
 "such stuff as dreams are made of" . . .  
 Mary.





# SUPER

Bill Drake .....	Class Actor .....	Gloria Schaible
Dave Townley .....	Class Athlete .....	Joan Cooley
Bob Savoye .....	Class Artist .....	Barbara Jones
Tom Albee .....	Most Ambitious .....	Alice Rinehart
Morton Victor .....	Most Attractive .....	Joan Gray
Tom Albee .....	Most Brilliant .....	Elizabeth Brophy
Ralph Jones .....	Most Businesslike .....	Lynn Wellman
Howard Perkins .....	Biggest Bluffer .....	Janice Crow
Ed Lewis .....	Most Charming .....	Joan Gray
Ronald Ley .....	Most Carefree .....	Betsy Husk
Skippy Engen .....	Cutest .....	Sally McCoy
Dick Johnston .....	Class Clown .....	Jane Gould
George Morton .....	Class Couple .....	Ardie Tripp
Mike Parry .....	Most Discreet .....	Barbara Booth
Roger Sidenor .....	Most Dignified .....	Barbara Bourns

Walt Carlson .....	Most Dependable .....	Marilyn Sturges
Bussie Sherrick .....	Most Determined .....	Doris White
Stephen Fogg .....	Class Dancer .....	Rosemarie Truono
Morton Victor .....		
Ed Lewis .....	Best Dressed .....	Joan Gray
Jack Van Hart .....	Most Daring .....	Jeanne La Fontaine
Bob Savoye .....	Most Ingenious .....	Barbie Bourns
Bill Drake .....	Most Interesting .....	Gloria Schaible
Skippy Engen .....	Best Line .....	Vinnie Jewell
Dick Hruda .....	Best Looking .....	Gail Green
Ed Lewis .....	Best Leader .....	Marilyn Sturges
Ed Lewis .....	Luckiest .....	Jane Gould
Dick Hruda .....	Laziest .....	Barbara Weisleder
Gilbert Gleason .....	Class Musician .....	Lois Sollenberger
Walter Clarkson .....	Class Journalist .....	Sally Cline
Rus Baker .....	Nicest Smile .....	Joan Gray
George Morton .....	Best Natured .....	Dotty Staub
Bill Drake .....	Most Likely to Succeed .....	Marilyn Sturges
Jim O'Donnell .....	Most Optimistic .....	Sally Cline
Harry Montgomery .....	Class Orator .....	Lynn Wellman
John Clissold .....	Most Polite .....	Anne McCormack
Sam Hicks .....	Most Pessimistic .....	Doris White
Dave Townley .....	Most Popular .....	Joan Gray
Dave Townley .....	Best Personality .....	Lila Mudge
Dave Townley .....	Best All-round Person .....	Marilyn Sturges
Tony Mabbott .....	Prettiest Eyes .....	Kay Clements



# LATIVES

Howard Perkins .....	Peppiest .....	Nancy Trotman
Bob Nielson .....	Class Mystery .....	Joan Hackney
Moppy Pruss .....	Class Ring Leader .....	Barbara Weisleder
Bob Behrens .....	Class Singer .....	Charlotte Anderson
Bob Vliet .....	Class Sunshine .....	Dotty Staub
Phil Brown .....	Sweetest .....	Sally McCoy
Sam Hicks .....	Most Sincere .....	Barbara Booth
Ian Heatly .....	Most Sarcastic .....	Liz Wheeler
Charlie Mays .....	Most Sentimental .....	Joyce Mackie
Ralph Jones .....	Most Systematic .....	Carol Bunce
Morton Victor .....	Most Suave .....	Liz Wheeler
Roger Sidenor .....	Most Sophisticated .....	Maryanne Keal
Ian Heatly .....	Most Talkative .....	Dolores Rakowski
Dick Bohannon .....	Most Talented .....	Doris Krauser
Jim Robinson .....	Wittiest .....	Sally Guthrie
Walter Clarkson .....	Most Versatile .....	Joan Cooley
Jim Robinson .....	Class Writer .....	Joan Hackney
Tom Albee .....	Teachers' Blessing .....	Elizabeth Brophy
Dick Johnston .....	Teachers' Trial .....	Jane Gould
Jack Riley .....	Class Driver .....	Jane Gould
Harry Montgomery .....	Done Most for WHS .....	Marilyn Sturges
Dick Johnston .....	Most Enthusiastic .....	Dotty Staub
Charlie Mays .....	Class Flirt .....	Vinnie Jewell
Bob Struble .....	Funniest .....	Shirley Reynolds
Andy Migliozi .....	Best Physique	
	Figure .....	Betty Randolph
Dave Townley .....	Friendliest .....	Dotty Staub
Rick McGinley .....	Class Heartbreaker .....	Vinnie Jewell
Jim Robinson .....	Class Humorist .....	Shirley Reynolds
Bill Mueller .....	Woman Hater	
	Man Hater .....	Judy Lott
Hank Mueller .....	Happiest .....	Dotty Staub
Harry Montgomery .....	Best Ideas .....	Shirley Reynolds
Moppy Pruss .....	Most Inquisitive .....	Joan Van Tassel





## SENIORS

President .....John Corbett  
 Vice-President .....William Drake  
 Secretary .....Joan Cooley  
 Treasurer .....Charles Lehman



Beanheads



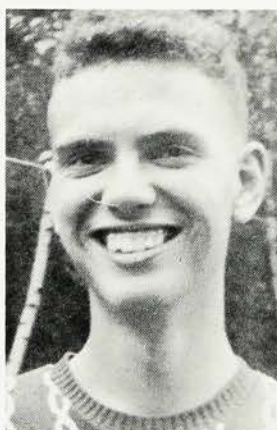
Boneheads



What a Racket!



Liz



"Charley My Boy"



Clemmie



"She Wore a Yellow Ribbon"



Betty



Charlotte



"Have I Told You Lately ..."



"That Old Gang of Mine"



Alice and Peg





# JUNIORS

President ..... Charles Brandt  
 Vice-President ..... Dave Dinwoodie  
 Secretary ..... Patricia Petitt  
 Treasurer ..... Tom Martz



Leaning Tower of Pisa



EE Gad!



"It Isn't Fair"



Ann



Pyramid



Caroline



Preacher's Blessing



Newark?



"Happy Talk"



Why-Teens?





## CLASS

First row: P. Greer, M. Eckhart, C. Foote, H. Huntley, M. Malcolm, L. Ringen, L. Parks, B. Bowles, A. Schasny, S. Williams, C. Brandt, T. Martz. Second row: V. Clark, S. Clune, C. Grander, J. Clark, M. Zastrow, B. Peterson, T. O'Rorke, D. Johnson, G. Harbt, R. Johnson, D. Storr, T. Brown. Third row: O. Morch, S. Mulinos, S. Gracey, L. Stiles, E. Davitt, B. Mehle, B. Garrett, H. Ellerman, S. Bedell, M. Naething, V. Fox, R. Bauer, R. Ferreby, J. Culver, D. Robinson. Fourth row: R. Kelly, R. Ventimiglia, E. Neuer, R. Moran, M. Sank, F. Weiss, L. Campbell, D. Degen, G. Wolf, A. Osterman, G. Pinto, G. Cutler. Fifth row: R. Jenkins, J. Brady, L. Horner, R. Cole, D. DuBois, W. Martin, P. Kraft, J. Rapp, B. Heerich, S. Sanford, C. Anderson, D. Benninger, B. Pfeiffer, R. Fortiner. Sixth row: F. Vecchio, A. Walti, C. Williams, M. Howard, R. Hall, R. Rietz, M. Scarkus, R. Prentiss, W. Halsey, C. Patton, K. Gibbs, J. Anderson, M. Tucker, E. Howard. Seventh row: D. Dilley, G. Dietrich, R. Coolidge, H. Bowser, R. Sprague, A. Linden, W. Mastrian, R. LaRoza, B. Herr, F. Smyers, T. Dilley, D. Hunter, R. Grant. Eighth row: D. Anderson, R. Smith, R. Ford, A. Foster, R. Mateer, H. Villa, D. Singer, W. Gebler, H. Pensa, E. Bodkin, C. Bavosa, E. Field, C. McKeel, R. Joline.





## OF 1951

First row: D. Dinwoodie, P. Petitt, S. Giumarra, R. Selino, L. Braxton, S. Gillis, K. Sharman, M. Seemon, D. Sigmond, R. Walker, R. Cooley, J. Flint, J. Clark, C. Faulkner. Second row: D. Petosky, L. Bivona, A. Ruggeri, E. Pontura, T. Pidota, T. Appezzato, P. Stevens, R. Wood, L. Harris, W. Kyrioglou, F. Vitale, I. Spina, D. Bazley, E. Clark, P. Young. Third row: V. Rugh, D. Nein, B. Dixon, P. Drake, N. Gartland, P. Wallace, C. Scaff, J. Bedell, B. Zeitlehack, J. Bedell, J. Brophy, T. Adkins, R. Allen, R. Yenser, F. Betz. Fourth row: L. Becker, J. Smith, C. Bianco, J. Kuebler, J. DePauw, J. Cardillo, M. Diaz, N. Voorhees, B. Anderson. Fifth row: P. Herrington, A. Stacey, L. Johnson, D. Colin, E. Diefenbach, J. Campbell, B. Boor, P. Melhose, H. Bartlett, S. Jacobus, B. Day, L. Miller. Sixth row: M. Kruse, P. Komich, B. Martyn, A. McMillan, J. Garretson, J. Haynes, F. Freeman, D. Marquardt, J. Wiant, W. Haines, R. Hewson, R. Harcourt, D. Murphy. Seventh row: B. McClure, J. Pentz, H. Goekemeyer, A. Grissinger, D. Ewart, N. Mathis, P. Dolan, J. Lowell, C. Nolan, F. Colyer, C. Nolan, D. Woolfenden, J. Cassidy, H. Blodgett, D. Smith, C. Tatro. Eighth row: A. Harris, D. Dabney, R. Bullock, H. Wyatt, L. Redd, W. Bennett, H. Tomfohrde, T. Mason, C. Patterson, J. Callahan, J. Rodewig.





## CLASS

First row: F. DeWysocki, R. Weijlard, F. Stein, J. Stein, J. Barraia, E. Schroder, C. Allen, J. Bierfreund, G. Gustafson, J. Berke, D. Newhall, B. Schweitzer, E. Frickman, J. Zink. Second row: H. Buccino, E. Holmgren, P. Jackson, J. Coughlan, A. Parizeau, N. Lowell, M. Gentles, M. Lancaster, J. Crichton, C. Davison, B. DeBarger, A. Frolich, E. Worobey, J. Neilson. Third row: R. Fedorka, G. VanHart, K. Alsop, P. Brown, R. Day, R. Read, A. Pirette, P. Fischer, B. McKim, A. Williams, S. Gerhart, J. Grimes, A. Canfield, M. Merrill, J. Papandrea, J. Merrill. Fourth row: D. Crane, C. Smith, R. Callaway, D. Crane, J. Crichton, P. Robinson, R. Haferbier, W. Bowles, G. Davis, J. Bonnett, R. Hewitt, K. Kingsley, E. Johansen, V. Minnicks. Fifth row: E. Yarussi, D. Wilcox, J. Pelton, R. Akers, K. Pelton, J. Wright, L. Fisher, P. Giordano, J. Brunetta, G. Quaglietta, S. Horn, W. Jebens, K. Smith, H. Thorpe. Seventh row: L. Betts, E. Coffey, G. Hovendon, R. Cogswell, E. Hall, R. Thompson, W. Brown, B. Thomas, W. Stuart, B. Meyer, G. Turk, B. Washburn. Eighth row: A. Holzworth, A. Pfirrmann, G. Bode, J. Glimm, H. Raichle, D. Lermond, W. Howard, R. Schmal, A. Bavosa, W. Neuer, J. Morette, R. Logie, G. Bourns. Ninth row: W. Johnson, D. Williams, M. Hulse, C. Hartman, V. Le Grande, R. Bean, R. Ryan, D. Remine, D. Kansky, D. Atkinson, J. Cambria.





## OF 1952

First row: J. Duncan, D. List, C. Marsh, J. Menger, J. Self, J. Crichenberger, B. Burritt, L. Mulit, M. Jones, B. Conlin, L. McIntyre, F. Romeo, A. Spino, T. Bohrer, R. Vuillemont. Second row: B. Kuebler, M. Bullock, J. Morris, G. Campbell, M. Jones, C. Hackett, E. Hall, E. Muse, E. Klezer, P. Herrington, M. Grosvenor, M. Colapietro, C. Stallone, G. Stone. Third row: B. Boyle, J. Baldwin, P. Collins, B. Coqueron, K. Wade, N. Lowe, P. Luttringhaus, G. Lambert, D. Dann, E. Ley, C. Walker, J. Conover, B. Gingrich, M. Thompson, D. Bannard, R. Moons, D. Ayers. Fourth row: M. Jennings, J. Turner, M. Nichols, A. Tedesco, L. Williamson, E. Catlin, S. Pestoff, E. Rittenhouse, M. Booth, H. Conley, L. Klingelhofer, C. Weisleder, G. Deets, F. Dilorio, N. Burr. Fifth row: J. Lindsey, E. Rogers, C. Reid, B. Burbank, J. Boyle, A. Rumple, E. Harkrader, S. Bode, C. Schroder, A. Brady, P. Bauer, J. Noll, E. Tracey, J. Schneider, P. Welch, R. Roth. Sixth row: M. Mumford, B. Royce, J. Cross, J. Kipp, E. Smith, B. Habley, B. Roh, J. Hoff, J. Fletemeyer, R. Fugmann, R. Casey, R. App, R. Kling, D. Holck. Seventh row: Y. Nelson, N. Sommer, C. Thomas, A. Poole, K. Thomas, R. Campbell, H. Tenny, D. Greifer, H. Foreman, R. Smith, I. Clark, P. Cuarino, C. Cogswell, B. Anderson, A. Hartwig. Eighth row: S. Whaley, D. Harasty, D. Sidenor, J. Clark, J. Curlett, J. Williams, E. Russell, C. Drummett, C. Reid, S. Nelson, A. Mazza, D. Large, L. Mullen.





## SOPHOMORES

President ..... John Zink  
 Vice-President ..... Dawson List  
 Secretary ..... John Carter  
 Treasurer ..... Judy Duncan



Margaret



"Money Ain't Everything"



Babe in the Woods



Party Gals



Outdoor Gal



Van



Richard



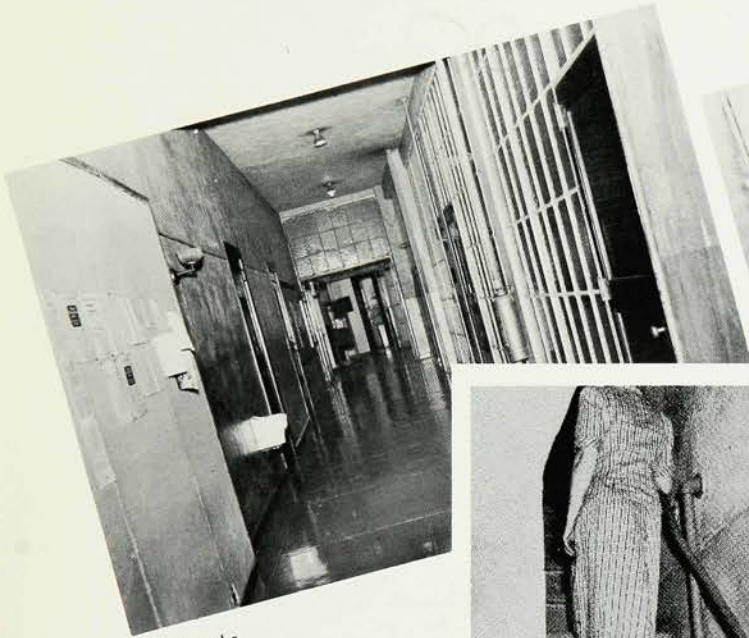
"Ain't She Sweet"



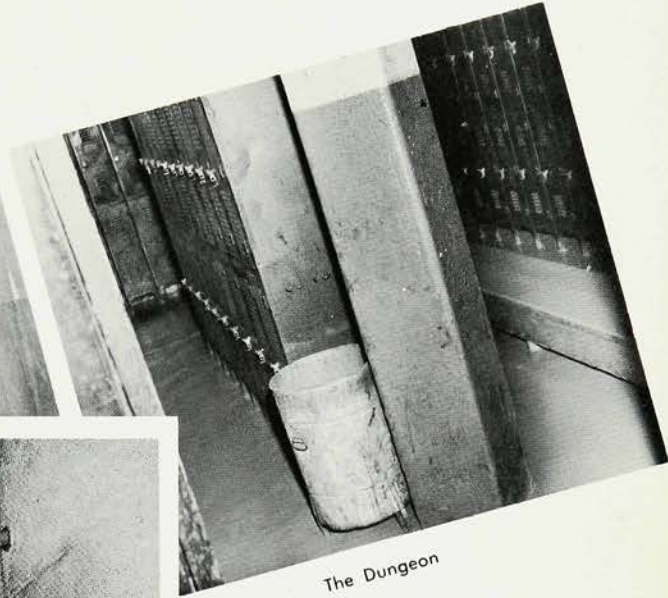
Moppy's Special



# "From Grief To Glory"



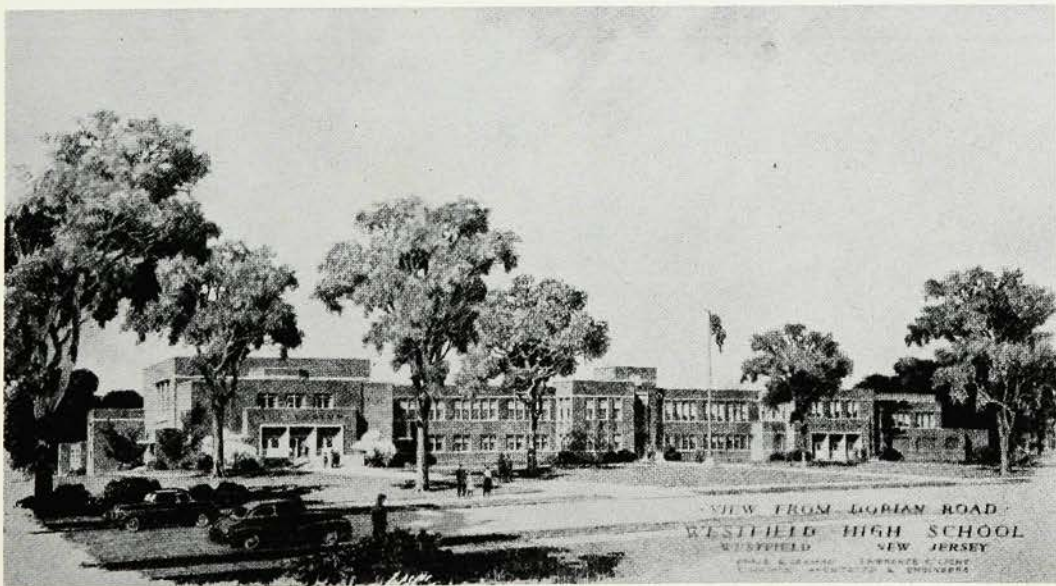
Cell-blocks



The Dungeon



Up From Hades

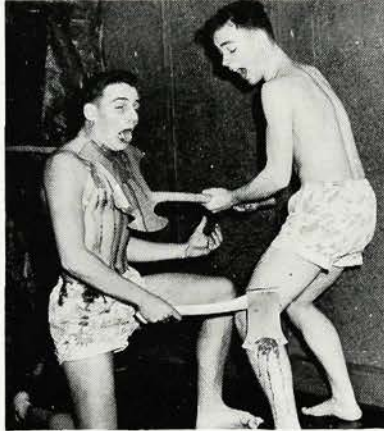


VIEW FROM LOGAN ROAD  
WESTFIELD HIGH SCHOOL  
WESTFIELD NEW JERSEY  
FRANK S. WILSON ARCHITECTS & ENGINEERS

"The Glory and the Dream"



# Thru The Windows



Cutting Up in the Halls



Cafeteria Capers



Substitute Teacher



Calm before the Storm



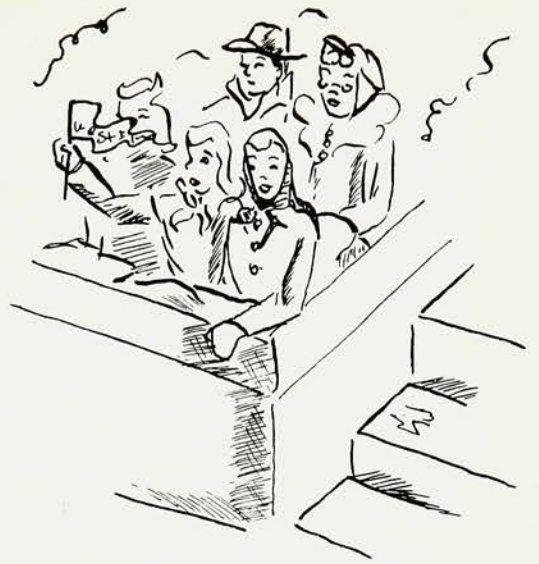
Faculty Meeting



Gym Squad







# ACTIVITIES







## WEATHER VANE ANNUAL

Each year the **Weather Vane Annual** Staff is comprised voluntarily of members of the senior class and several of the underclassmen. But this compilation of work could not have been possible minus the apt guidance of our apt adviser, Miss Dolores W. Bordner.

Several changes have been incorporated to produce a more interesting and original yearbook, the most predominant of these being a noticeable change in the style of the write-ups, the allotment of more space to the Music Department, and the use of two different designs for the padded cover.

Editor-in-Chief Joan Cooley was assisted in her work by many committees, headed by the following people: Peggy Steiner and Liz Wheeler, Write-ups; Joyce Mackie and Joan Gray, Pictures; Dolores Rakowski, Activities; Carolyn Wellman, Clubs; Barry Pruss, Boys' Sports; Doris White, Girls' Sports; Shirley Reynolds and Vinnie Jewell, Features; Bob Harris, Charles Martin, and Ned Walker, Photography; Bill Drake, Dedication; Connie Bianco and Jeanne Smith, Typing.

The Class of '50 extends its gratitude to Miss Harriet S. Howard and her art classes for the remarkable sketches which appear throughout the book and to Mr. Dillen for cooperation in supplying typists.







## WEATHER VANE MAGAZINE

This year marks the twenty-eight anniversary of the school magazine, **The Weather Vane**. Through this publication the student body has had an excellent opportunity to exhibit its literary talents. Ordinarily several issues are published annually. However, due to a complete renovation of the magazine, designed to suit students exclusively, and a lack of finances, only one issue could be printed.

Pete Waldrop headed the well-organized staff. Literary editors included Lynn Wellman, Vinnie Jewell, Frances Harvey, Joan Gray, Muriel Demarest, Gail Green, Barbara Garrett, Jane Thompson, and Marilyn Mumford. Peggy Savoye was in charge of girls' sports; humor and poetry departments were handled by Jim Robinson and Shirley Reynolds, respectively. Ian Heatley was business manager.

The art staff, composed of Barbara Jones, Marjorie Budell, Eldon Mereness, Betty Sue Stewart, Bob Savoye, and Betty Zeitelhack, under the direction of Miss Howard, did an excellent job.

Although hampered by reduced funds, the staff was overwhelmed with superior writing. It is hoped that next year's staff, under the leadership of Miss Dolores Bordner, will be blessed with an equal show of talent, as well as a subsidy from the Board of Education. This would allow the magazine to return to its customary publishing schedule and permit its further recognition as a first class publication which took All-Columbian Honors for short stories and essays in 1949.

## WEATHER VANE FALL-1949



WESTFIELD  
SENIOR HIGH SCHOOL





## THE HI'S EYE

Combining quality with quantity, this year's **Hi's Eye** appeared to arrive once more at the high rating it held before the war. Operating under its third adviser in three years, the newspaper, despite several physical defects, was a great improvement over the publication of two years ago, when only five well-planned issues were put out, and that of last year, when thirteen issues were presented.

For the Christmas issue the staff put out the first six-page issue in the history of the **Hi's Eye**

and repeated with a similar number of pages in the fifteen-year anniversary issue in February.

Bernard O. Thomas came here from Woodbury to do a remarkable job in his first year as **Hi's Eye** adviser. Co-editors Walt Clarkson and Ralph Jones, Associate-editor Allison Stacy, Feature Editor Jim Robinson, Advertising Managers Patty Dolan and Sally Cline, reporters Tom Martz, Jim O'Donnell and Joan Hackney, and the rest of the journalism classes all combined in producing one of the finest **Hi's Eyes**.

---

---

### WESTFIELD HI'S-EYE

WESTFIELD SENIOR HIGH SCHOOL, WESTFIELD, NEW JERSEY

JANUARY 20, 1950

#### EDITORIAL STAFF

Co-Editors ..... Walt Clarkson, Ralph Jones  
 Associate Editor ..... Allison Stacey  
 Feature Editor ..... Jim Robinson  
 Reporters: Joan Hackney, Tom Martz, Jim O'Donnell.  
 Cub Reporters: Jack Carter, Johnny Callahan, Bob Harcourt, Dave Dinwoodie, Harry Grander, Barbara Habley, Gordon Harvey, Burr Meyer, Dolores Marquardt, Marilyn Mumford, Shirley Reynold, Elizabeth Rittenhouse, Lee Smith, Margo Zastrow.  
 Photographers ..... Bob Harris, Charles Martin  
 Adviser ..... Bernard O. Thomas

#### BUSINESS STAFF

Business Editors ..... Sally Cline, Pat Dolan  
 Business Staff ..... Betty Stewart, Peggy Williams, Ruth Garabrant  
 Advertising Editor ..... Clemmie Burns  
 Advertising Staff: Edward Hall, Jayne Haynes, Dean Johnson, Sandra Pestoff, Donald Singer  
 Adviser ..... Howard Tomlinson

Published twelve times through the school year by the journalism students of  
 Westfield Senior High School, Westfield, New Jersey

Purchase of a Student Activity Ticket entitles Westfield students to a copy of each issue of **Westfield Hi's Eye** during the school year. Subscription for one year, by mail, \$1.00. Single copy, any quantity, ten cents.

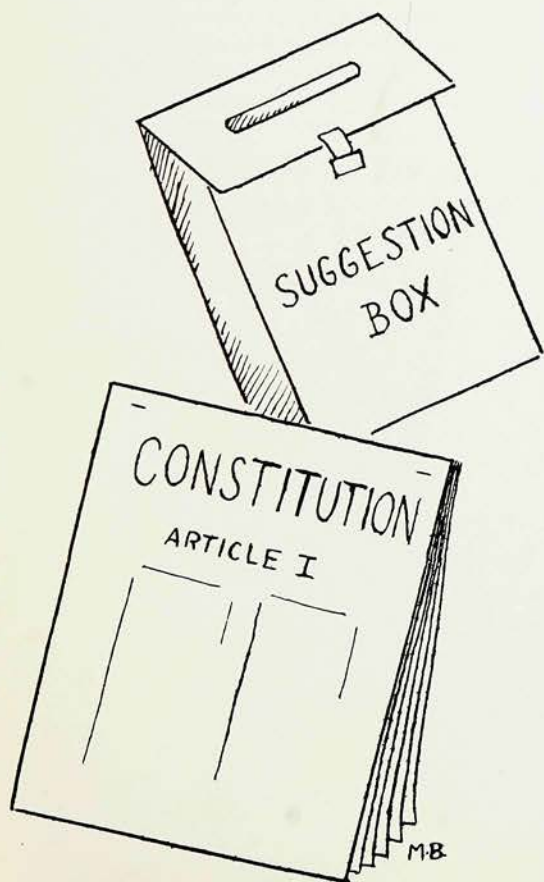
---

---





## STUDENT COUNCIL



This year the Student Council experienced a period of considerable rehabilitation. With Graham Beckel joining Harold Thompson and the new officers: Harry Montgomery, president; Dave Dinwoodie, vice-president; Dotty Staub, treasurer; and Betty Sue Stewart, secretary; another constitution was created by the council. Through the cooperation of the faculty, the council was able to establish a staggered system or released periods. Setting up committees to carry on much of the work, the council chalked up accomplishments in improving assembly programs, installing a public address system at basketball games, aiding in Career Day, improving their own finances through the sale of book covers, and generally receiving student opinions and crystallizing suggestions into action.

Taking an active part in the county and state student government organizations, the council had delegates at numerous conferences and its candidate, Dave Dinwoodie, elected vice-president of the Union County Student Council.

It was the hope of the council that their organization would play a more important, useful role in school affairs in the future and that their broadened base of representation, together with steps toward greater responsiveness to student opinion, would make this an active, dynamic body in the service of the students and the school.





## NATIONAL HONOR SOCIETY

Membership in the National Honor Society is extended to those juniors and seniors who rank scholastically high in their respective classes and whose courage, service, and leadership have helped to maintain the high standards of the school and to stimulate other students to improve their ratings. The induction takes place during an impressive ceremony in the spring.

Mr. Weyman O. Steengrafe is the sponsor of the Honor Society. The officers for this year were President, Tom Albee; Vice-President, Dick Bohannon; Secretary, Barbara Bourns; Treasurer, Elizabeth Brophy.

As stated in the National Honor Society Constitution, the purposes of the organization are "To create enthusiasm for scholarship, to stimulate a desire to render service, to promote worthy leadership, and to encourage development of character."

Besides participation in the nomination and election of candidates to the American Hall of Fame, this group has raised money for a first and second prize to be awarded to the seniors who have advanced the most in their class standing.







## Literary Club

The Literary Club has endeavored this year to give students a fuller appreciation and understanding of the literary works of today.

Various phases of the field of literature were discussed at the monthly meetings. Miss Theurer spoke early in the year on the subject of German literature. Mrs. Florence Freeman showed a number of slides taken on a recent trip to Europe. Early in the spring the representative of a publishing company spoke to the club. The play which was chosen for the annual trip to New York was **Lost in the Stars**.

This year's officers were President, Dorothy Ross; Vice-President, Ian Heatley; Secretary, Florabelle Smyers; Treasurer, Stanley Dopierala.

Changing its policy so that it met twice a month instead of once, the Writers' Club, under the guidance of Miss Margaret Dietrich, had an extremely productive season. In addition to attending a Broadway play, the members chose, from their works, material to be contributed to the Newark News writing contest, an annual competition which brings together the talent of New Jersey. Meetings were held in the homes of the members. Each writer would read his original composition, and constructive criticism would be rendered by the other members.

The officers elected at the first meeting were President, Jim Robinson; Vice-President, Ruth Arlene Wood; Secretary, Clemmie Burns; Treasurer, Inge Neuberger.

## Writers' Club







## Latin Club

One of the largest and most popular clubs in W.H.S. is the Latin Club which is under the supervision of Miss Foutz and Mr. Allen. The Club draws its members from a cross section of the school, and any student taking Latin or who has taken Latin is eligible to join.

The fundamental purpose of the club is to stimulate interest in ancient Rome and its customs. The meetings are quite diversified and deal with many interesting Latin subjects. At one or more meetings during the year refreshments are served.

The officers for this year were President, Gil Dietrich; Vice-President, Ruth Arlene Wood; Secretary, Mary Lancaster; and Treasurer, Lydie Diehl.

The French Club, called Le Quartier Latin, gives French students a chance to speak the French that they are learning.

Under the invaluable guidance of Mr. Gesner and Miss Foutz, the club has diversified activities. Early in December a trip was made to the United Nations to hear French as it is used today. Other activities included French plays and amusing French songs and games.

The officers for this year were President, Barbara Partington; Vice-Presidents, Judy Griswold and Marcus Scarkos; Secretary, Allison Stacey; and Treasurer, Muriel Demarest. Committee Chairmen were Barbara Boyle, Diane Colin and Kathryn Nolan.

## French Club







## Spanish Club

The purpose of EL Ateneo is to give Spanish students an opportunity to practice the Spanish they have learned in the classroom.

At its meetings, the club sang songs in Spanish, presented a play in Spanish, and played games in Spanish, including the traditional breaking of the pinata at the Christmas meeting. In February new members were initiated, and a month later the club took its annual trip to New York.

Under the direction of Miss Stella Hemphill and Mr. Samuel Bunting, the officers chosen for this year were President, Ralph Fischer; Vice-President, Doug Robinson; Secretary, Joan Smith; and Treasurer, Lois Sollenberger.

Because of the increased use of visual education, the Technicians' Club was organized a few years ago. The club members show films during their class or study periods. About one hundred and fifty films were shown this year under the expert guidance of Mr. John Thompson.

Although the club has not been used to capacity, it has been kept moderately busy showing various types of films to all the classes. The Technicians' Club is composed of students who will voluntarily give up their time, when requested, to show these films.

The officers for this year were President, Lyles Ringen; Vice-President, Fred Catlin; Secretary, Martin Bender; Treasurer, Donald Kansky

## Technicians' Club







## Library Council

The Library Council, numbering forty-six, had the largest membership in its history and accomplished much this year. The members had such duties as taking care of library permits, preparing new books for the shelves, and putting books away. The monthly meetings were devoted to discussion of duties and plans for meetings.

But all was not work. The council entertained library committees from other schools, and it visited Princeton and Cranford. In December, several members attended the state meeting of the New Jersey Library Council Association.

The officers were President, Rosemarie Truono; Vice-President, Ruth Arlene Wood; and Secretary-Treasurer, Barbara Jones. The advisers were Miss Scott and Mrs. Hall.

The Service Club was organized to do the necessary little things around school. Each member gives up one study period a week and acts as receptionist in the main hall. Members usher at Mask and Mime plays, band concerts, and other school affairs. The members also deliver notices and work in the main and annex offices. A rather new project of the club is that of selling Christmas cards and wrappings for Mr. White, blind resident of Westfield.

The projects of the club are under the capable guidance of Miss Alice Pelton. This year's officers were President, Flora Van Hecke; Vice-President, Barbara Herr; Secretary, Bernice Pfeiffer; and Treasurer, Grace Frickman.

## Service Club







## Forum Club

The monthly meetings, held at the homes of the various members, featured forum discussions on current topics, with four members speaking each time.

The club participated in many outside activities, including trips to the **Herald Tribune**, Columbia University, and Union County Forums, where several of our members were entered in the discussions. The club also claimed the Union County Forum's president, Harry Montgomery. Lynn Wellman represented the Forum Club on the Junior Town Meeting over WAAT.

This year's club officers included President, Walt Clarkson; Vice-President, Phil Brown; Secretary, Joan Cooley; and Treasurer, Tom Albee. Miss Mildred Fox again was the club's efficient adviser

Under the direction of Miss Hewitt, the Junior Red Cross accomplished many feats this year. A campaign for funds was conducted in which more than one hundred dollars was collected. Members of the wood-working classes made wooden ash trays which were sent to neighboring army camps. Used clothing was collected and sent to a needy family in Kentucky. A wounded veteran was selected, and on his birthday he received a surprise birthday box containing many useful articles. In addition to the above, numerous other projects were completed by this group.

This year's officers were President, Flora Van Hecke; Vice-President, Barbara Herr; Secretary, Ellen Diefenbach; and Treasurer, Ruth Arlene Wood.

## Red Cross Council







## Hi-Y

Hi-Y's aims can best be stated by its motto—"clean speech, clean sports, clean scholarship, clean living".

This year Hi-Y again continued its service to the school and community. Hi-Y boys ushered at football games, helped in the annual Hallowe'en Parade, sold Christmas tree tickets in co-operation with the "Y" Men's Club, and helped in the United Campaign Drive. Other activities included the New Year's Eve and other dances, an area Hi-Y conference at Dover, and a joint panel discussion with the Y-Teens on Boy-Girl Relationships.

The advisers are Mr. Beckel of the "Hi" and Mr. Babcock, Boys Work Secretary of the "Y".

The Y-Teen clubs have had an interesting and unusual year. The activities of the various clubs have included the sponsoring of several dances, panel discussions with the Hi-Y on mutual problems, vocational speakers, a fashion show, and conference planning. Meetings were held every other week, either at the "Y" or at members' homes.

The combination of the senior and junior clubs was found to be successful. Presidents of the three clubs were Senior Club, Lois Sollenberger; True Blue Club, Gloria Dabney; and Sophomore Club, JoAnn Menger. Mrs. Dorothy Rankin was the adult adviser.

## Y-Teens







## ART CLUB



The Art Club, consisting almost entirely of Miss Howard's art classes, was engaged in many activities this year. The members' ability and willingness aided in all the projects that were undertaken.

The two largest projects this year were the yearbook—with accurate results on the layouts and the sketches—and the class seal—designed, cut, and painted by Jeanne Schaefer and Cheryl Clark.

Other contributions were the design for the Christmas Tableaux program, various posters for different performances, and, of course, the painting of Doerrer's windows with shmoos, ghosts, and witches. The best efforts on these windows were rewarded with prizes.

The success of the Art Club was due to the excellent guidance of Miss Harriet Howard. The officers of the club for this year were President, Lavinia Jewell; Vice-President, Betty Zeitlehack; Secretary, Barbara Sieder; Treasurers, Jeanne Schaefer and Joy Hoff; and Program Chairmen, Majorie Budell and Joyce Garretson.





## MASK AND MIME

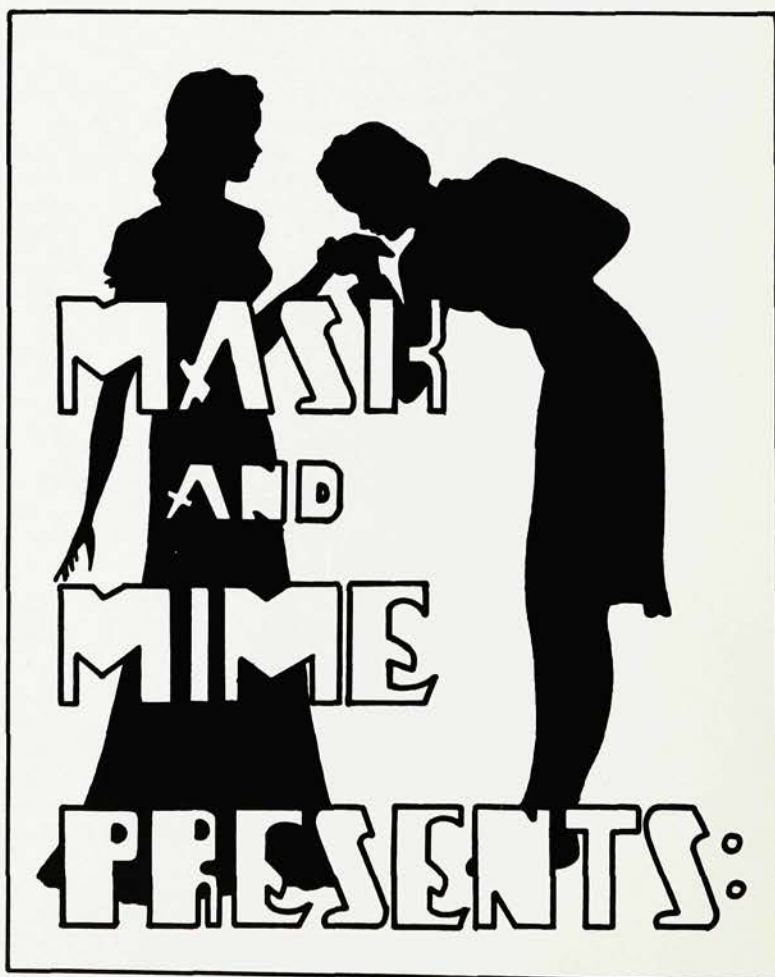
Mask and Mime, the high school dramatic club, with three hundred members, had an outstanding year, due in great part to the excellent and experienced counsel of the club's adviser, Miss Carol Brinser.

Jane Austen's **Pride and Prejudice**, as dramatized by Jane Kendall, was the club's fall presentation and was well received by the audience.

To increase interest in the speech activities of the club, membership was renewed in the New Jersey Forensic League. Continuing a project adopted by the Mask and Mime in previous years, the group sent "CARE" packages to Europe.

Among the highlights of the club's activities were the attendance of some two hundred members at **Kiss Me Kate**, a sparkling musical comedy based on **The Taming of the Shrew**; participation in the One Act Play Festival at Kearney New Jersey; and the Christmas Tableaux—the traditional program presented in collaboration with the Music and Art Departments.

The officers for the year were President, Joan Gray; Vice-President, Bob Grant; Secretary, Pat Herrington; Treasurer, Dick Harrison.





# The Mask and Mime Club

1949—1950

## Westfield Senior High School

PRESENTS

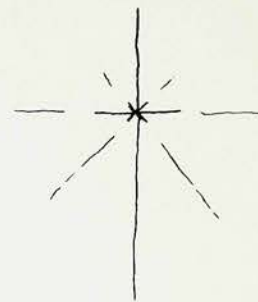
## Pride and Prejudice

THE CAST  
(in order of appearance)

LYDIA .....	Margaret Malcolm
JANE .....	Priscilla Freeman
CATHERINE .....	Betty Sue Stewart
MARY .....	Vinnie Jewell
MRS. BENNETT .....	Flossie Smyers
MR. BENNETT .....	Phil Kraft
ELIZABETH .....	Gloria Shaible
HILL .....	Charlotte Patton
LADY LUCAS .....	Thelma Souder
CHARLOTTE .....	Dotty Straub
MISS BINGLEY .....	Kitsie Gibbs
MR. BINGLEY .....	Bob Behrens
MR. DARCY .....	Bill Martin
MR. WICKHAM .....	Ian Heatly
MR. COLLINS .....	Harry Montgomery
LADY CATHERINE DE BOURGH .....	Joyce Garretson







# Westfield Senior High School Christmas Program

1949

O COME EMMANUEL

CAROL SERVICE  
PROCESSIONAL

Gregorian Melody—8th Century  
Handel

FROM THE "MESSIAH"—For Unto Us A Child Is Born  
THE PROPHECY  
THE NATIVITY OF THE MANGER

WHILE ALL THINGS WERE IN QUIET SILENCE  
AVE MARIS STELLA  
WHILE I DID WATCH MY SHEEP AT NIGHT  
WHAT CAN THIS MEAN?  
THE THREE KINGS  
LONG YEARS AGO IN BETHLEHEM  
A CRADLE HYMN  
OF THE FATHER'S LOVE BEGOTTEN  
YE WATCHERS AND YE HOLY ONES  
FROM THE "MESSIAH"—The Hallelujah Chorus

Traditionally the audience arises for the Hallelujah Chorus.  
the Chorus the audience is requested to remain seated until the P

NOBIS PACEM

RECESSIONAL

WITH YOU  
THE BENEDICTION









# Seventeenth Summer

from the book by

MAUREEN DALY

Play is produced through special arrangements with the  
Dramatists Play Service, Inc.

## CAST

In the Order of Appearance

KITTY, the little sister .....	<i>Sally McCoy</i>
ANGIE, the girl .....	<i>Mary Wragg</i>
MRS. MORROW, the mother .....	<i>Dorothy Ross</i>
MR. MORROW, the father .....	<i>Harry Montgomery</i>
MARGARET, the engaged sister .....	<i>Gloria Schaible</i>
LORRAINE, the hopeful sister .....	<i>Peggy Savoye</i>
MARGIE, a girl friend .....	<i>Shirley Reynolds</i>
JANE, a menace .....	<i>Sally Guthrie</i>
JACK, the boy .....	<i>William Drake</i>
MARTIN, Lorraine's hope .....	<i>Roger Sidener</i>
ART, Margaret's fiancé .....	<i>Robert Vliet</i>
FITZ, Margie's "steady" .....	<i>Robert Savoye</i>
TONY, a boy friend .....	<i>Eugene Hermann</i>

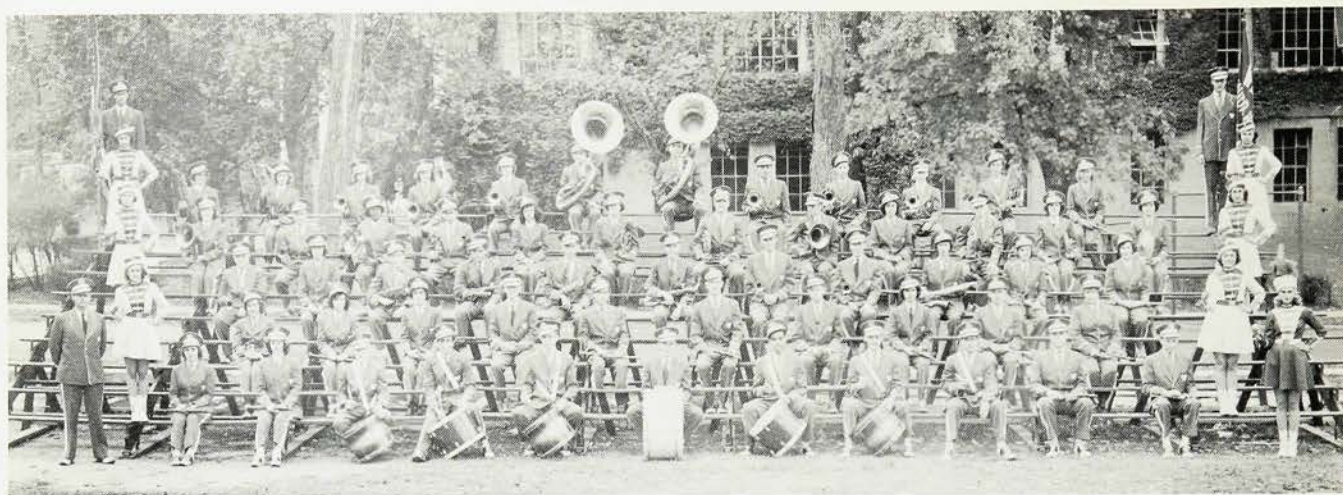
Production under the direction of CAROL BRINSER











## BAND



Director .....Anthony Ingram

Chairman .....Linda Johnson







## ORCHESTRA

Director ..... Anthony Ingram

Chairman ..... Gilbert Gleason

## CHOIR

Under the direction of Miss Janet Grimler, the Choir gives two main performances each year—one at Christmas, when the Choir provides the musical stories for the Tableaux and the other at the Spring Music Festival. Other choral groups performing in the Festival are the Boys' Glee Club, Girls' Chorus, "The Thirteen," and the "Triple Trio". This year the choir presented, in addition to selections from **South Pacific**, those songs which have been most enthusiastically received by the audiences over the past ten years.

The officers for this year were President, Michael Parry; Vice-President, Phil Brown; Girls' Secretary, Charlotte Anderson; Boys' Secretary, Jim Stuart; and Treasurer, Frank Vitale.





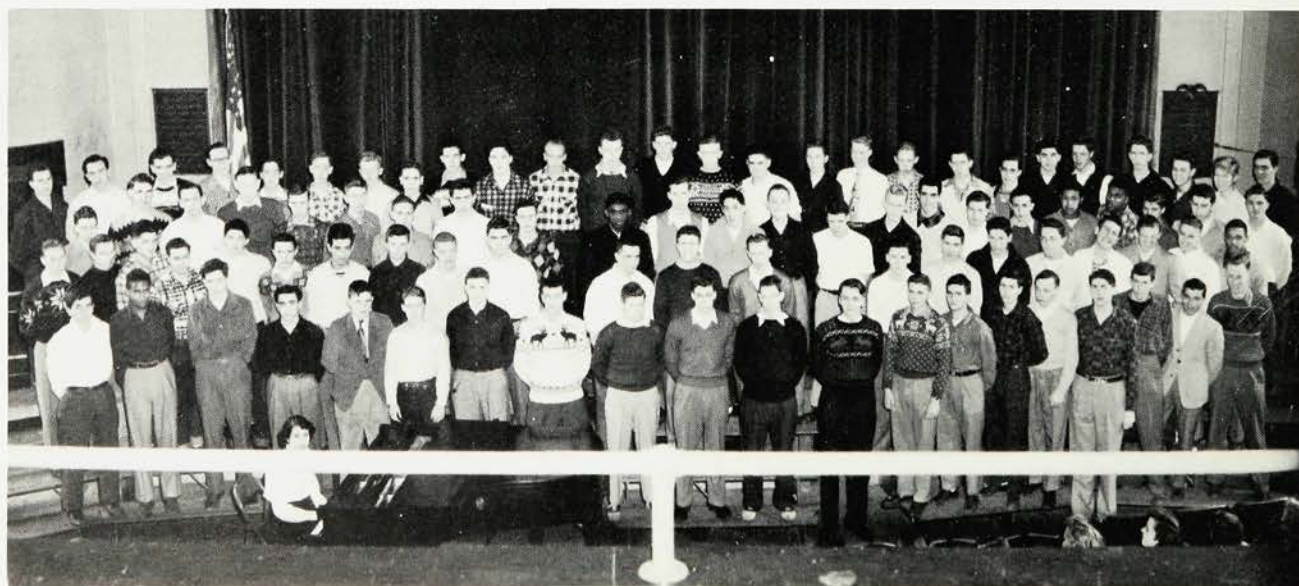


## BOYS' GLEE CLUB

Director ..... Janet Grimler  
 Chairman ..... Richard McGinley  
 Accompanist ..... Katherine Gibbs

## GIRLS' CHORUS

Director ..... Janet Grimler  
 Chairman ..... Barbara Bourns  
 Accompanist ..... Julie Anne Bonnett







## TRIPLE TRIO

Left to right: Marilyn Sturges, Barbara Brown, Charlotte Anderson, Arlene Tripp, Barbara Partington, Frances Harvey, Joan Cooley, Barbara Bourns, Elizabeth Wheeler.

## THE THIRTEEN

Left to right: Robert Behrens, David Dinwoodie, Michael Parry, Howard Perkins, Richard McGinley, James Stuart, George Morton, Donald Dilly, Robert Fortiner, Edgar Howard, Frank Vitale, Philip Brown, Robert Roth.





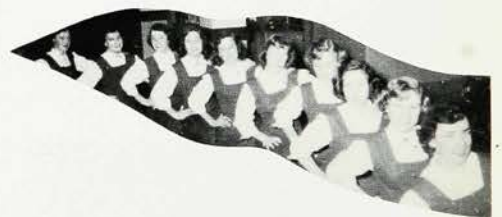
Gilbert Dietrich  
Milton Luxenburg Advisor  
Caryl Marsh  
Kay Kingsley  
Jerry Cutler  
Richard LaRosa  
Clair Nolan



Barbara Heerich  
Kathryn Nolan  
Arlene Tripp  
Gail Green Co-Capt.  
Joan Gray Co-Capt.  
Janice Crow  
Betty Randolph

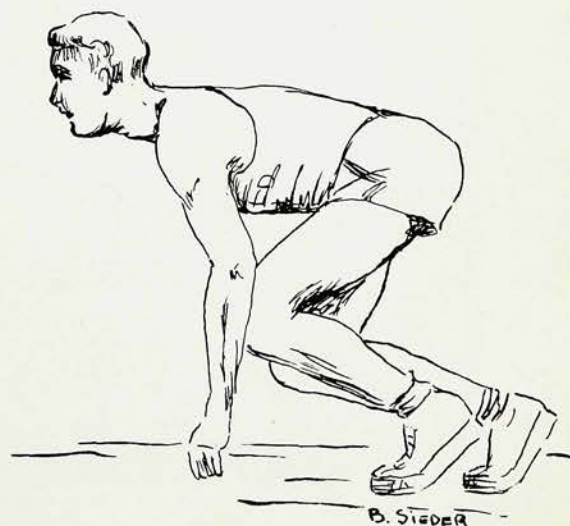


## CHEER SQUAD





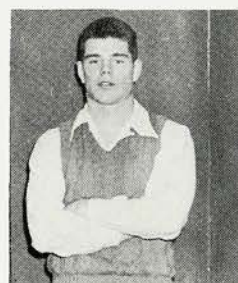
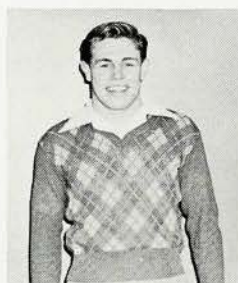
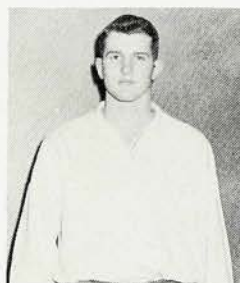
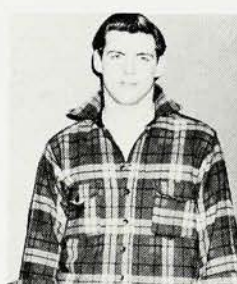
# S P O R T S



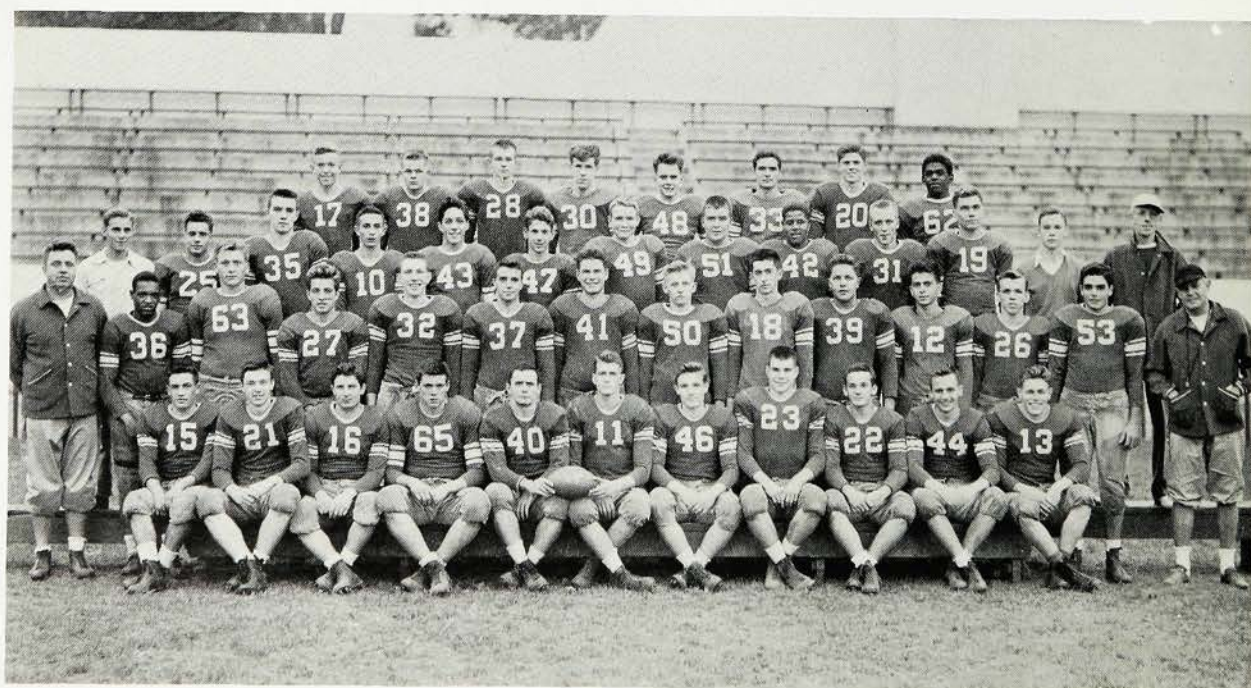
B. STEDER



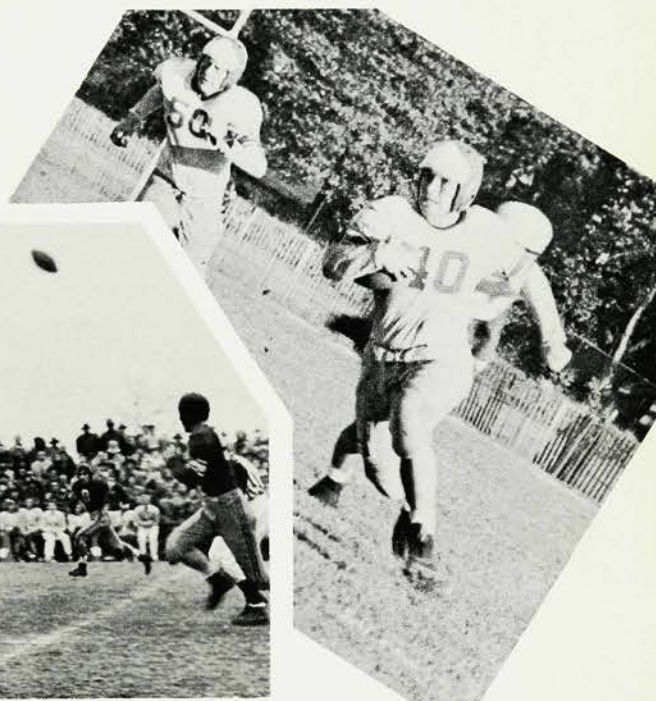
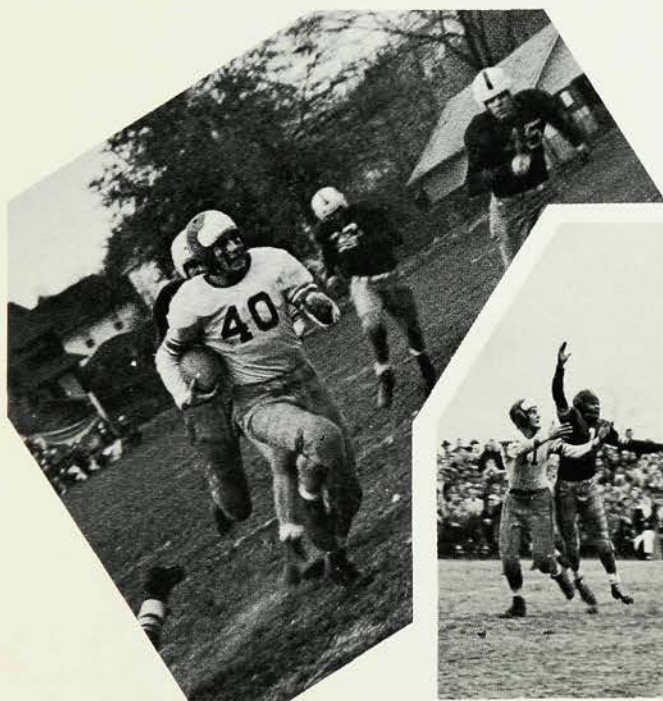
# FOOTBALL



ALL COUNTY AND ALL STATE WINNERS







The 1949 football team was typically Westfield, with that penchant for winning ball games. Coach Freeman's boys won eight out of ten games and had their season "gold-plated" when they were awarded a tie with Regional for the Group III, Section 2 championship.

The Blue Devils gained victories in their first seven starts of the year, bowling over Somerville, Millburn, Roselle, Roselle Park, Columbia, Bound Brook, and Union, but finally met defeat when they traveled to West Orange on November 12 and lost to the Cowboys, 25-12. The next week they drubbed Ferris, 27-6, but on Thanksgiving Day their rivals from Plainfield downed them.

The gridders were led by Co-Captains Rick McGinley and Dave Townley, who both had great

seasons. McGinley scored over 100 points for the second time in three years and ran his touchdown total to 146. Townley was spectacular at his end post, nabbing 24 passes for the year and playing a solid defensive game as well.

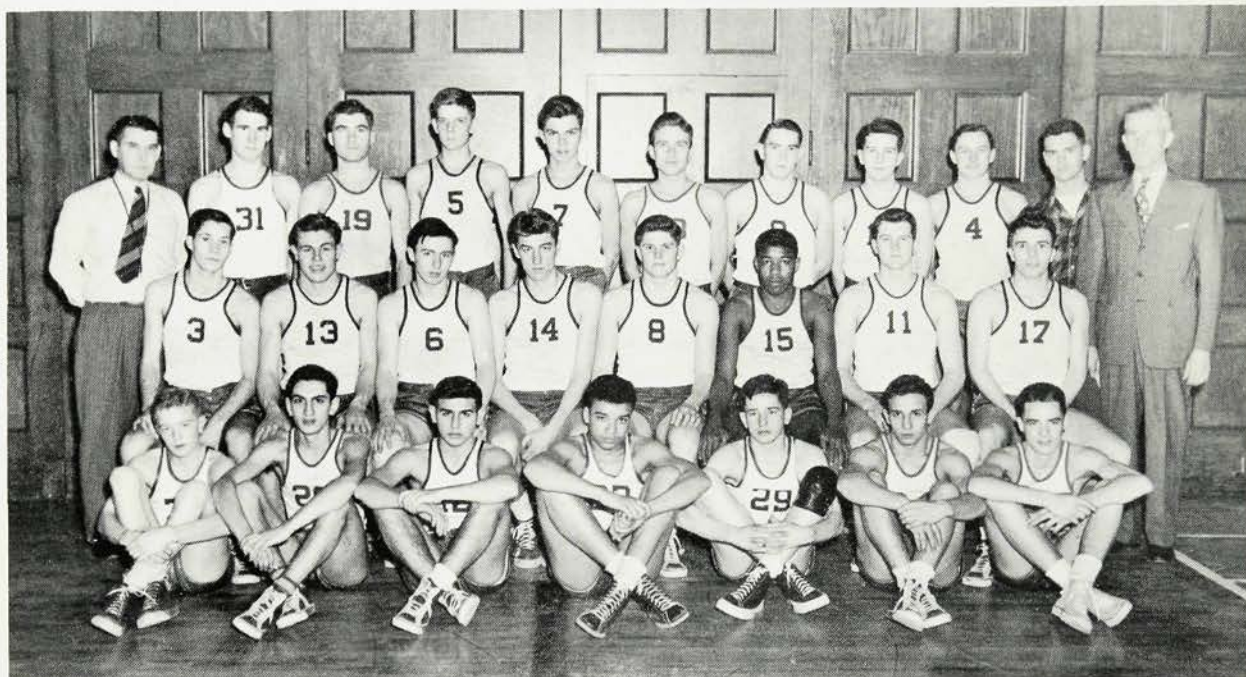
Bill Mueller did a bang-up job at fullback, while Dave Anderson, a junior, was the club's No. 1 passer. Wally Brown and Buddy Redd were two valuable backfield men. In the line, where games are really won, Moppy Pruss, Harry Grander, Charlie Brandt, and Al Piesco did excellent work, while Russ Baker teamed with Townley at end to form the best wing combination in the district. The center duties were divided by Fred Frey and Dave Dinwoodie.

Bart Ellis, line mentor, and Harvey Gerber, assistant coach, again teamed with Coach Freeman to form the best coaching staff in the state.





# BASKETBALL



The Westfield High basketball team this year was like a rubber ball — it bounced up and down. Its play during the season ranged from miserable to spectacular; it was more unpredictable than the Brooklyn Dodgers.

The team reached its zenith in the Union County Conference Basketball Tournament when it defeated Regional in the consolation round to take third place in the tourney. It had been bounced out in the semi-finals by Hillside after triumphing over Cranford and Edison in the earlier rounds.

The team had a 12-11 record for the entire season, including the tournaments, and for the regular season had an even-up mark of nine wins and nine losses.

Starting off the season with four straight wins, the Blue Devils then proceeded to bow to their opponents in six of the next seven encounters. They lost three out of four more before they started clicking again to take six of their last eight contests. Union beat them in the state tourney.

Dave Townley, team captain, had a fine season, tallying 267 points for an average of over 14 points a game. Townley's 199 for the regular season was closely trailed by the 196 total of Jack Corbett, who was a handy man for Coach Lewis all season long. The towering junior, Dick Jenkins, was another valuable hand, coming into his own in the tournaments. Russ Baker, Dave Dinwoodie, George Kirn, Howard Wyatt, and Howard Perkins were all regulars on Lewis's off-shifted varsity.

Head Coach Gomer Lewis was assisted by Junior varsity mentor, Howard Tomlinson.

## Basketball Schedule

1949-50

Dec. 7	Somerville	Away 3.30
Dec. 13	Columbia	Home 3.30
Dec. 17	Plainfield	Home 7.30
Dec. 20	Union	Away 3.30
Dec. 23	Summit	Away 7.30
Dec. 30	Regional	Home 7.30
Jan. 3	Bound Brook	Away 3.30
Jan. 6	Regional	Away 7.30
Jan. 10	Roselle Park	Away 3.30
Jan. 14	Summit	Home 7.30
Jan. 17	Columbia	Away 3.30
Jan. 20	Roselle	Home 7.30
Jan. 31	Union	Home 3.30
Feb. 3	Roselle	Away 7.30
Feb. 7	Bound Brook	Home 3.30
Feb. 10	Scotch Plains	Home 7.30
Feb. 15	Somerville	Home 3.30
Feb. 21	Plainfield	Away 7.30

Coach, Gomer J. Lewis

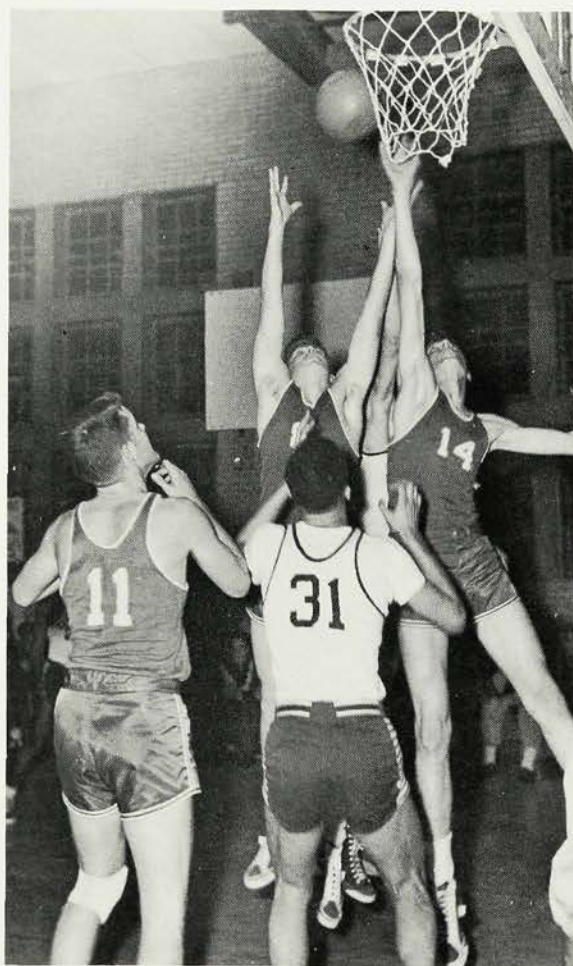
Ass't Coach, Howard Tomlinson

Captain, David Townley

Manager, Charles Mays

WESTFIELD HIGH SCHOOL







# CROSS-COUNTRY



Although the Westfield High Cross-Country team was able to win only two of its six dual meets, it rose to capture third place in the Union County Championship run and fourth in the State Meet. In the latter the team competed against all Group 1, 2, and 3 schools.

The first loss was a heart-breaker to Metuchen, 27-28. Running on the tough Metuchen home course for the first time, the Blue Devil harriers were just nosed out. Plainfield also set the team back 22-23 in the second meet of the season. The harriers' luck turned and they swamped the Rahway squad, 15-40. Westfield runners swept to the first ten places.

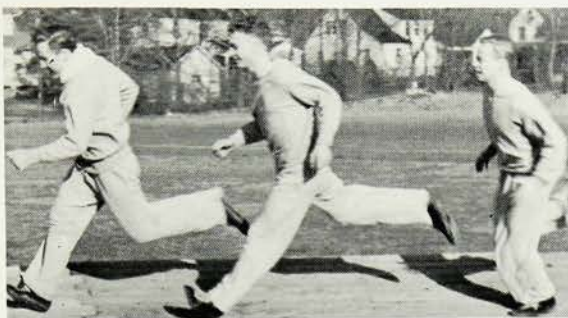
In the county meet Westfield men placed fourth, seventh, and eighth, but lack of depth cost them the title. Next came the second victory as the team toppled Edison, 20-35. The last two dual meets went to the opponents by the same score, 25-30, as Union and Jefferson took Westfield's measure. In the State meet, run over the two and one-half mile course in Warinanco Park, Westfielders took eighth, tenth, twenty-first, thirtieth, and thirty-first spots to nab fourth place. The team headed all other Group III squads in standing.

Captain Walt Clarkson was Westfield's first





# TRACK



man in all the meets, and he won the last four dual meets. Carl Tatro was chosen next year's captain as second man in most meets. Other lettermen were Ned Petitt, John Flint, Lou Joline, and Phil Young. Perry Welch was chosen as outstanding sophomore harrier.

The team participated in four indoor meets during the season. In the Essex County CYO meet Captain Clarkson took third in the mile, while in the State Indoor Championships Clarkson again took third and Bob Savoye matched him in the 60-yard high hurdles. Other meets included the Nationals in Madison Square Garden and the Union County Indoor Relays.

## SPRING TRACK

As May 1 approaches, Westfield's Blue Devils look forward to a highly successful season. Coach Michaels' team will have to work to better last year's dual meet record and bring home the gold. All thirteen events in the dual meets are open, especially the field events. Moppy Pruss is the only returning letterman in the weights. Clarkson and Savoye are expected to lead the mile and high hurdles, while Muller and Redd capture the sprints and low hurdles. The team shows promise individually, but it lacks depth in several events.





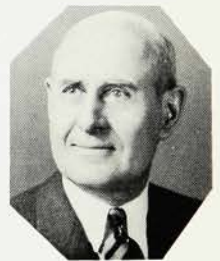
# BASEBALL



Coach Noel Taylor will begin his fifth season as head coach with prospects for a successful campaign.

Although Captain Rudy Stanzel, Sam Mitchell, Jim Scott, and Jack Van Hart will be missing from last year's Group Three Championship team, Coach Taylor will have eight returning lettermen to fill the gaps. The senior lettermen are Captain Jack Corbett, who served as both pitcher and second baseman on last year's team; Dave Townley, rated by many as the best catcher in the county; Frank Piscopo, who hit over 300 while playing third base; Howard Perkins, who played both at first and in the outfield; Ed Lewis, the utility infielder who played both at first and at third; and "Ace" Johnson, who played regularly in the outfield. The two juniors who are returning are Dave Anderson and Dick Smith. The former played both in the outfield and at second, while the latter was a leading pitcher.

Every returnee was good enough to play varsity baseball as a sophomore, and with the help of a few newcomers from last year's good junior high school team, they should give a good account of themselves. Westfield's hopes for another successful season—possibly a championship season are high.





# GOLF



With two lettermen returning from last year's Union County Championship aggregation, Coach Walter E. Johnson expressed high hopes for his golf team's success in the 1950 season. Gene Hermann and Gil Dietrich are expected to

sparkplug the outfit with Walt Bennett and Hugh Blodgett returning from last year's team. Teams played this year will be Union, Jefferson, Metuchen, West Orange, and North Plainfield, and the team will also play in the Union County tournament at Galloping Hill.

# TENNIS



With a team bolstered by the presence of six returning lettermen from the 1949 Group III State Championship, Coach Sam Bunting will strive to equal the 10 won, 1 lost record that last year's team compiled. The lettermen on the squad are Dick Harrison, Pat Patterson,

Jim Cassidy, Dick La Roza, Bob Yenzer, and Peter Atkinson. The team will play a tough schedule, with all opponents but Morristown coming from Group IV schools. Teams played will be Jefferson, East Orange, Pingry, Plainfield, West Orange, Dunellen, and Morristown.



# SWIMMING



Even though hampered in almost every meet by the absence of some main point-winner, Coach Allen's mermen came through the season with a five and four record, leaving another meet still to be swum. However, the four defeats were at the hands of the perennially powerful Plainfield and Columbia natators.

These setbacks were partly mitigated by the excellent showing Westfield made in the Eastern Interscholastics, held in the Princeton University Pool on February 25. Here Ken Welch upset highly favored Marty Devlin in the diving event to keep the diving crown Westfield has held for three years, and the Medley Relay team of Dick Cooledge, Don Large, and Bussie Sherrick broke a school record to become the first Blue Devils, other than divers, to place in this meet.

While the Devils were strong in the specialty events, Backstroker Dick Cooledge, Breaststrokers Don Large and Larry Mullen, and Individual Medleyman Rich LaRosa being outstanding in dual competition—they were weak in freestylers, the two bright spots being Ken Welch in the 40-yard freestyle and Bussie Sherrick in the 200-yard freestyle. Sherrick combined with Cooledge and Large too for the best Medley Relay team Westfield has ever seen.

The Allenmen are now pointing for the State Meet, trying to better their 18-point, third place showing of last year. Sure point-getters in this important meet seem to be Diver Ken Welch; Freestyler Sherrick; Backstroker Cooledge; Breaststroker Large; the Medley Relay team of Cooledge, Large, and Sherrick; and perhaps the Freestyle Relay team of Lehman, Schmal, Brandt, and Welch.

## Swimming Schedule 1950

Jan. 9	Morristown	Home 3.30
Jan. 13	Plainfield	Away 3.30
Jan. 18	Pingry	Home 3.30
Jan. 20	Columbia	Away 3.30
Jan. 27	Lincoln (J.C.)	Away 4.00
Jan. 30	Columbia	Home 3.30
Feb. 3	Plainfield	Home 3.30
Feb. 6	Irvington	Home 3.30
Feb. 10	Morristown	Away 3.30
Feb. 13	Pending	
Feb. 17	Pingry	Away 3.30
Feb. 28	Irvington	Away 2.30
Mar. 4	State Championship	

Princeton University

Coach, Edmund C. Allen

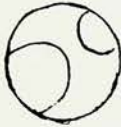
Co-Captains

Bussie Sherrick Ken Welch

Manager, Jim Stuart



# G.A.C.



The Girls' Athletic Committee, under the direction of Mrs. C. Blair Rogers and Miss Catherine Flannelly, is composed of six elected representatives from each grade who organize the girls' athletic program. Led this year by President Marilyn Sturges, Vice-President Peggy Savoye, Secretary Kitsy Gibbs, and Treasurer June Montgomery, the committee has sponsored dances, sold drinks, and planned inter-scholastic hockey and basketball games with near-by schools. The council also plans the annual Mother-Daughter Tea and the Award Assemblies.

At the North Jersey Field Hockey Tournament in Glenrock, New Jersey, Anne Williams, Marcia Sank, Joan Cooley, Janet Gumbert, and Liz Wheeler were sent to represent Westfield. Out of a field of two hundred competitors, Joan Cooley and Liz Wheeler were selected for the Honorary Team, while Janet Gumbert was chosen for the Reserve Team.



# GIRLS' SPORTS



THREE LETTER GIRLS

BADMINTON GIRLS







# Features





# Wacks and Waves



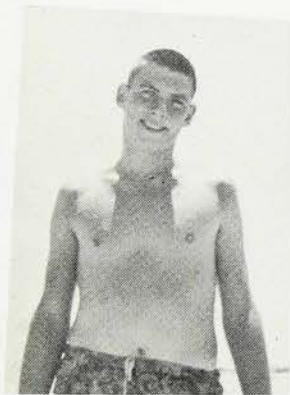
Hen



Beginners' Luck



Party



Moppy



Quintet



Cheryl



"Honeybun"



Dobby



Front Porch Foolery



Johnny



"So This Is Love"



"It's All Over Now"



Early To Rise



Russ





Enjoy Yourself—It's Later  
Than You Think



"Rain or Shine"



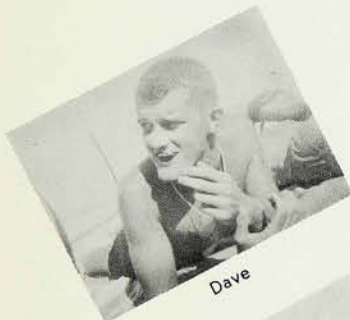
Sophomore Strategy



Incognito



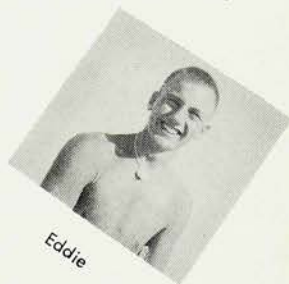
"Bye Bye Baby"



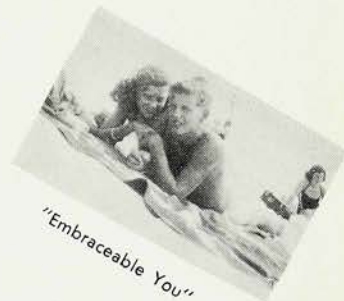
Dave



Sign Language



Eddie



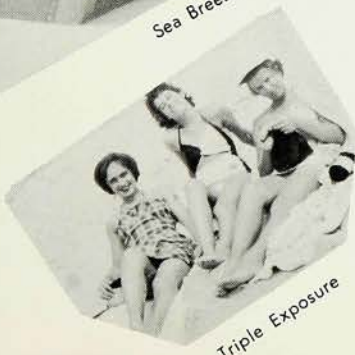
"Embraceable You"



Lolling



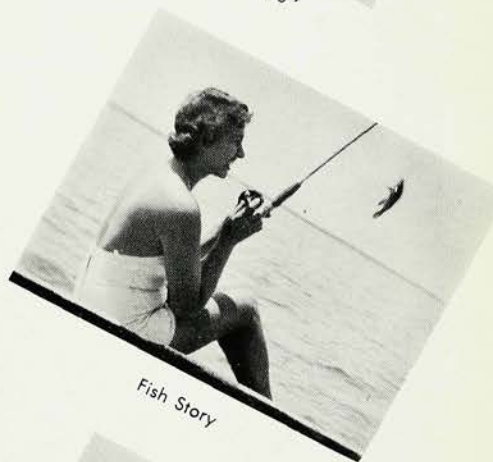
Sea Breeze



Triple Exposure



"Crazy He Calls Me"



Fish Story



Boothy





"Garbage Can Blues"



"Thru a Long and Sleepless Night"



"Happy Times"



"Three O'clock in the Morning"



"Johnson Rag"



"Gonna Wash That Man Right Out of My Hair"



Horsin' Around



Sometimes I'm Blue"



"Sometimes I'm Happy,



S. P. C. A. Inc.



"Ragg Mopp"



Dawson



Crane Swain



Sally



Tom



Joyce



Ryan



Shirley



Nance



"Peg O' My Heart"





"Midnight Masquerade"



43210762



"Sam, You Made The Head Too Big"



Bobby



"Homework"



Audrey



Beachcombers



Date Bait



Yipes!



Cheesecake



"She Played Her Ukulele as the Ship Went Down"



Pat



Threesome



Cheers and Jeers



"Candy and Cake"



## Class Will

We the Class of 1950, eagerly seeking our goals in life, hereby inscribing our last will and testament, pass through the walls of W.H.S. and on to higher learning, I mean learning!

*First,* We leave parking meters in the halls for all steady couples.

*Second,* We leave Miss Howard an express elevator to the art room.

*Third,* To Mr. Beckel we leave the Charleston.

*Fourth,* To Miss Abernathy we leave a bulldozer to clear out the main hall after eighth period.

*Fifth,* We leave Miss Bordner's English classes—Gene Hermann's exclusive system.

*Sixth,* To the sophomores and juniors we leave the Sands of the Seaside.

*Seventh,* We leave the newly established custom of going-steady after the first date.

*Eighth,* To Mr. Steengrafe we leave a gold-plated bobbypin.

*Ninth,* We leave flash-bulb cameras to all those girls foolish enough to give slumber parties.

*Tenth,* To all those who eat in the cafeteria we leave the annex rest room.

*Signed,*  
*The Class of 1950*

*Witnessed by,*  
*"My Buddy" and John Dewey*









**FRANKLIN LOCKFELD.** Latin Club (4); Mask and Mime (3, 4).

**GERTRUDE LOESCH.** Hi's-Eye (2, 3); Annual (4); Quill and Scroll (3, 4); Senior Play (4); German Club (2, 3); Junior Red Cross Council (4); Literary Club (3, 4); Mask and Mime (2, 3, 4); Writers' Club (2, 3, 4); Y-Teens (2, 3).

**FRED MABBATT.** Mask and Mime (2, 3, 4).

**JOYCE MACKIE.** Student Council (3); Senior Play (4); Mask and Mime (2, 3, 4); Spanish Club (3, 4); Annual (4).

**CHARLES MARTIN.** Annual (4); Hi's-Eye (4); Senior Play (4); Photography Club (2).

**CHARLES MAYS.** Basketball (Mgr. 2, Mgr. 3, Mgr. W4).

**ANNE MC CORMACK.** Senior Play (4); German Club (2, 3); Latin Club (2, 3); Library Council (4); Literary Club (3, 4); Mask and Mime (2, 3, 4); Y-Teens (2).

**SALLY MC COY.** Girls Sports (1); G. A. C. (4); Senior Play (4); Latin Club (Treas. 2); Literary Club (4); Mask and Mime (2, 3); Spanish Club (3, 4).

**EUGENE MC DERMOTT.** Student Council (2).

**RICHARD MC GINLEY.** Student Council (3); Football (W2, W3, Co-Captain W4); Track (W2, W3); B. A. C. (2); Thirteen (4); Senior Play (4); Library Council (3).

**ELDON MERENESS.** Senior Play (4); Art Club (2, 3, 4); Literary Club (4); Mask and Mime (3, 4); Annual (4).

**ANDREW MIGLIOZZI.** Football (2, 3, W4); Senior Play (4).

**MORTIMER MILLS.** Senior Play (4); Latin Club (3).

**HARRY MONTGOMERY.** National Honor Society (3, 4); Student Council (3, Pres. 4); Hi's-Eye (4); Senior Play (4); Forum Club (3, 4); Hi-Y (Sec. 2, 3, Treas. 4); Mask and Mime (3, 4); Latin Club (Treas. 2); Literary Club (2).

**JUNE MONTGOMERY.** Student Council (3, 4); Girls Sports (1, 2); G. A. C. (3, Treas. 4); Senior Play (4); Junior Prom (3); Junior Red Cross Council (2); Literary Club (3, 4); Mask and Mime (2, 3, 4); Spanish Club (3, 4); Writers' Club (2); Y-Teen (Sec. 2, 3); Annual (4).

**GEORGE MORTON.** Thirteen (4); Forum Club (4).

**LILA MUDGE.** Girls Sports (1); G. A. C. (2); Twirling (3, 4); Senior Play (4); Latin Club (Sec. 2); Literary Club (4); Mask and Mime (3, 4); Spanish Club (3, 4).

**HENRY MUELLER.** Junior Red Cross Council (3).

**WILLIAM MUELLER.** Football (2, 3, W4); Indoor Track (W3, W4); Track (W3, W4).

**GEORGE MURPHY.** Literary Club (4); Mask and Mime (4).

**ROBERT NEILSON.** Football (2, 3, W4); B. A. C. (2, 3); Senior Play (4); Literary Club (4).

**INGE NEUBERGER.** Senior Play (4); Junior Red Cross Council (2, 3); Mask and Mime (3); Service Club (2, 3); Writers' Club (4); Y-Teen (2).

**ESTELLE NEUER.** Library Council (4); Mask and Mime (2, 3, 4); Service Club (2, 3, 4); Y-Teen (2, 3).

**PAULA NEWALL.** Senior Play (4); Forum Club (3); German Club (2); Junior Red Cross Council (3, 4); Latin Club (2); Library Council (3); Mask and Mime (3).

**JOAN NEWETT.** Girls Sports (1); Senior Play (4); Art Club (4); Library Council (4); Mask and Mime (2, 3, 4); Service Club (2, 3, 4).

**JAMES O'DONNELL.** B. A. C. (3); Hi-Y (2, Pres. 3, 4).

**JOHN O'DONNELL.** Mask and Mime (3).

**PAUL PARIZEAU.** Hi-Y (2, 3, Vice-Pres. 4); Literary Club (4); Mask and Mime (2, 4); Spanish Club (4).

**MICHAEL PARRY.** Class President (2); Annual (4); Thirteen (3, 4); All-State Chorus (3, 4); Hi-Y (2, 3, 4).

**BARBARA PARTINGTON.** Weather Vane Magazine (3); All-State Chorus (4); Triple Trio (4); Senior Play (4); Art Club (2, 3); French Club (2, 3, Pres. 4); Literary Club (4); Mask and Mime (3, 4).

**STEWART PAYNTER.** German Club (2).

**HOWARD PERKINS.** Student Council (4); Football (W4); Basketball (2, W3, W4); Baseball (W2, W3, W4); Thirteen (3, 4); Senior Play (4); Forum Club (4); Latin Club (3, 4); B. A. C. (3).

**NED PETITT.** Track (W4); Cross Country (2, 3, W4); Indoor Track (2, W3, W4); Senior Play (4); Forum Club (3, 4); Hi-Y (3, 4); Latin Club (2).

**ALFRED PIESCO.** Football (2, 3, W4).

**FRANK PISCOPO.** Baseball (2, W3, W4); B. A. C. (3).

**BARRY PRUSS.** Annual (4); Football (2, W3, W4); Track (W3, W4); B. A. C. (2, 3).

**DOLORES RAKOWSKI.** Student Council (2, 4); Annual (4); Girls Sports (1); Senior Play (4); Forum Club (4); Literary Club (3, 4); Service Club (2, 3, 4); Spanish Club (Sec. 2, Treas. 3, 4); Y-Teen (2, 3, 4).

**BETTY JOAN RANDOLPH.** Cheerleading (4); All-State Chorus (3); Latin Club (2); Literary Club (4); Mask and Mime (2, 3, 4); Spanish Club (4).

**NANCY READ.** Girls Sports (1); Senior Play (4); French Club (2, Treas. 3); Literary Club (4); Mask and Mime (2, 3, 4); Spanish Club (3, 4); Writers' Club (2); Y-Teen (2, 3).

**SHIRLEY REYNOLDS.** Annual (4); Weather Vane Magazine (3, 4); Senior Play (4); Literary Club (4); Mask and Mime (2, 3, 4); Writers' Club (2, 3, 4); Y-Teen (2, 3); Junior Prom (3); Hi's-Eye (4).

**JACK RILEY.** Senior Play (4); Literary Club (4); Mask and Mime (4); Spanish Club (4).

**ALICE RINEHART.** National Honor Society (3, 4); Girls Sports (1, 2); Senior Play (4); Latin Club (2, 3); Literary Club (4); Mask and Mime (2, 3, 4); Spanish Club (3, 4); Y-Teen (2); Annual (4).

**JAMES ROBINSON.** Student Council (3); Hi's-Eye (2, 3, 4); Cross Country (2, W3); Indoor Track (2, W3, W4); Senior Play (4); Spanish Club (3, 4); Writers' Club (3, 4).

**THOMAS ROMAGNOLI.** Chess Club (2); Spanish Club (2).

**DOROTHY ROSS.** Twirling (3, 4); Senior Play (4); Latin Club (2, 3); Literary Club (3, Pres. 4); Mask and Mime (2, 3, 4); Service Club (2); Spanish Club (3, 4); Y-Teen (2, 3, 4).

**PEGGY SAVOYE.** Girls Sports (1, 2, 3); Westfield Athletic Council (4); G. A. C. (2, 3, Vice-Pres. 4); Senior Play (4); Junior Prom (3); Latin Club (3, 4); Literary Club (4); Mask and Mime (2, 3, 4); Spanish Club (2); Y-Teen (Pres. 2, 3, 4).

**ROBERT SAVOYE.** Track (2, W3, W4); Senior Play (4); Junior Prom (3); Art Club (2, 3, 4); Hi-Y (2, 3, Sec. 4); Mask and Mime (2, 4); Writers' Club (4); Annual (4).

**ANN SCALZADONA.** Annual (4); Girls Sports (1, 2, 3); Latin Club (2, 3); Mask and Mime (2, 3, 4); Y-Teen (2, 3, 4).

**JEANNE SCHAEFER.** Girls Sports (1); Senior Play (4); Art Club (Treas. 2, Treas. 3, 4); Junior Red Cross Council (2, 3); Latin Club (2); Mask and Mime (2, 3, 4); Spanish Club (3, 4); Y-Teen (2, Vice-Pres. 3, 4); Annual (4).

**GLORIA SCHAIBLE.** Weather Vane Magazine (4); Senior Play (4); Literary Club (4); Mask and Mime (4); Spanish Club (3); Y-Teen (4).



**PEGGY SELTZER.** Annual (4); Mask and Mime (2, 3); Y-Teen (2).

**ALTON SHERRICK.** Swimming (W3, Co-Captain W4); B. A. C. (2); Senior Play (4).

**ROGER SIDENOR.** All-State Chorus (3, 4); Senior Play (4); Chess Club (2, Pres. 3); French Club (2, 3); Literary Club (4).

**BARBARA SIEDER.** Annual (4); Girls Sports (1); Senior Play (4); Art Club (2, 3, Sec. 4); French Club (2, 3, 4); Y-Teen (2).

**ROBERT SIESS.** German Club (2, 3); Hi-Y (2, 3, 4).

**JOAN SLATER.** Junior Red Cross Council (4); Library Council (3, 4); Mask and Mime (2, 3, 4); Service Club (2, 3, 4).

**JOAN SMITH.** Senior Play (4); Latin Club (4); Mask and Mime (2, 3, 4); Spanish Club (2, 3, Sec. 4); Y-Teen (2, 3, 4).

**KENNETH SMITH.** Senior Play (4).

**ROGER SMITH.** All-State Chorus (3, 4); Senior Play (4); Literary Club (3, 4).

**LOIS SOLLENBERGER.** Student Council (2); Girls Sports (1, 2); G. A. C. (4); Senior Play (4); Latin Club (2, 3); Literary Club (4); Mask and Mime (2, 3, 4); Service Club (Sec. 2); Spanish Club (3, Treas. 4); Y-Teen (Treas. 2, 3, Pres. 4); Annual (4).

**RICHARD SOMMER.** German Club (2).

**THELMA SOUDER.** Girls Sports (1, 2); Senior Play (4); French Club (3, 4); Latin Club (2, 3); Literary Club (3, 4); Mask and Mime (2, 3, 4); Service Club (2).

**LYDIA SPADARO.** Library Council (4); Service Club (2, 3, 4).

**YOLA SPADARO.** Library Council (4); Service Club (2, 3, 4).

**ARLENE SPINDLER.** Weather Vane Magazine (4); Annual (4); Senior Play (4); Art Club (2, 3, 4); Junior Red Cross Council (2, 3, 4); Latin Club (2, 3, 4); Library Council (4); Mask and Mime (2, 4); Service Club (2, 3, 4).

**DOROTHY STAUB.** Student Council (Treas. 4); Class Secretary (3); Girls Sports (1); Senior Play (4); Junior Prom (3); Forum Club (4); Literary Club (4); Mask and Mime (2, 3, 4); Service Club (2); Spanish Club (2, 3).

**PEGGY STEINER.** Annual (4); Senior Play (4); Junior Prom (3); French Club (2); Literary Club (4); Mask and Mime (2, 3, 4); Service Club (2); Spanish Club (3, 4); Y-Teen (2).

**BETTY STEWART.** Student Council Sec. (4); Girls Sports (1, 2); Senior Play (4); Junior Red Cross Council (2, 4); Library Council (4); Mask and Mime (2, 4); Service Club (2, Vice-Pres. 3, 4).

**ROBERT STRUBLE.** Student Council (4).

**JAMES STUART.** National Honor Society (3, 4); Student Council (3, 4); Thirteen (3, 4); Hi-Y (2, Vice-Pres. 3, 4).

**MARILYN STURGES.** National Honor Society (3, 4); Student Council (3); Class Officer (Sec. 2); Girls Sports (1, 2); Westfield Athletic Council (4); G. A. C. (Sec. 3, Pres. 4); Triple Trio (4); Senior Play (4); Forum Club (4); Latin Club (2, 3); Literary Club (3, 4); Mask and Mime (2, Vice-Pres. 3, 4); Spanish Club (3, 4); Y-Teen (2, 3, 4).

**NANCY TOBEY.** Girls Sports (1); Forum Club (4); Library Council (4); Literary Club (4); Mask and Mime (2, 3, 4); Spanish Club (3); Y-Teen (2, 3).

**ROBERT TORBORG.** Jr. Prom (3); Mask and Mime (3, 4); Technicians' Club (3).

**DAVID TOWNLEY.** Football (W2, W3, Co-Captain W4); Basketball (W2, W3, Captain W4); Baseball (W2, W3, W4).

**ARLENE TRIPP.** Girls Sports (1, 2); Cheerleading (4); All-State Chorus (3, 4); Triple Trio (4); Forum Club (4); Junior Red Cross Council (4); Mask and Mime (2, 3, 4); Spanish Club (2, 3); Y-Teen (2, 3, 4).

**RUTH TROEBER.** Student Council (3); Twirling (3, 4); Senior Play (4); Library Council (3, 4); Mask and Mime (2, 3, 4); Y-Teen (2).

**NANCY TROTMAN.** Girls Sports (1, 2); Senior Play (4); Art Club (2); Junior Red Cross Council (3, 4); Mask and Mime (2, 3, 4); Spanish Club (3); Y-Teen (2, 3, 4).

**ROSEMARIE TRUONO.** G. A. C. (2); Senior Play (4); Junior Red Cross Council (4); Library Council (2, 3, Pres. 4); Service Club (2, 3, 4).

**VALERIE VANDERWERKER.** National Honor Society (3, 4); Latin Club (2); Mask and Mime (2, 3, 4); Spanish Club (3, 4).

**JACK VAN HART.** Baseball (W3); Literary Club (4).

**FLORA VAN HECKE.** Junior Red Cross Council (3, Pres. 4); Latin Club (2); Library Council (2, Sec. 3, 4); Mask and Mime (2, 3, 4); Service Club (3, Pres. 4).

**JOAN VAN TASSEL.** Student Council (2); Annual (4); Girls Sports (1, 2); Senior Play (4); Forum Club (2, 3); French Club (2, 3); Mask and Mime (2, 3, 4); Spanish Club (3, 4).

**MORTON VICTOR.** Football (2, 3, W4); B. A. C. (3, 4); Latin Club (2).

**BOB VLIET.** Senior Play (4); Literary Club (4); Spanish Club (4).

**PETER WALDROP.** Weather Vane Magazine (3, Editor 4); Football (2, 3, Mgr. W4); Senior Play (4); Hi-Y (Sec. 2, 3, 4).

**EDWARD WALKER.** Annual (4); Collectors' Club (Vice-Pres. 3); French Club (3, 4).

**FREDERIC WALKER.** French Club (3); Latin Club (3).

**JANICE WALKER.** Senior Play (4); Mask and Mime (2, 4); Y-Teen (2, 3).

**NORMAN WEBB.** All-State Chorus (2); Junior Prom (3); Hi-Y (Treas. 2, 3, Vice-Pres. 4).

**DEE WEISBECKER.** Forum Club (4); Literary Club (3, 4); Mask and Mime (3, 4); Service Club (2, 3); Writers' Club (2, 3, 4).

**BARBARA WEISLEDER.** Junior Prom (3); Mask and Mime Club (2, 3, 4); Spanish Club (Vice-Pres. 3, 4).

**KENNETH WELCH.** National Honor Society (3, 4); Swimming (W2, W3, Co-Captain W4); Track (W2, W4); Hi-Y (Pres. 2, Treas. 3).

**CAROLYN WELLMAN.** Student Council (4); Annual (4); Weather Vane Magazine (4); Girls Sports (1, 2, 3); Senior Play (4); Forum Club (3, 4); German Club (2, Treas. 3); Literary Club (3, 4); Mask and Mime (2, 3, 4).

**NANCY WERBER.** Girls Sports (1, 2); Senior Play (4); Literary Club (4); Mask and Mime (2, 3, 4); Spanish Club (4); Y-Teen (1, 2, 3).

**DONALD WEST.** Hi-Y (2, 3, 4); Technicians' Club (4).

**ELIZABETH WHEELER.** Annual (4); Girls Sports (1); Junior Prom (3); All-State Chorus (3, 4); Triple Trio (4); French Club (2).

**DORIS WHITE.** Girls Sports (1, 2, 3); G. A. C. (4); Annual (4); Senior Play (4); Latin Club (2, 3); Literary Club (3, 4); Mask and Mime (2, 3, 4); Spanish Club (3, 4); Service Club (2); Y-Teen (2, 4).

**ANDREW WILLIAMS.** Senior Play (4); Spanish Club (4).

**PEGGY WILLIAMS.** Service Club (4).

**MARY WRAGG.** Girls Sports (1); Senior Play (4); Latin Club (2); Mask and Mime (2, 3, 4); Spanish Club (4).

*Damage noted Oct 20/81*



