

## LIONS CLUB HERE WAS VISITED BY HEAD OF DISTRICT

Conferred With Local Units On Matters Concerning The Aims of Organization

The Lions Club of Belleville welcomed Ray Geyer, Governor, 16E, Lions International, which includes 61 clubs in this section of the state, at its meeting Thursday, Oct. 3.

Lion Geyer is past president of the Oranges Lions Club, has served as Zone Chairman and Deputy Governor, holds a Key membership and has been awarded the Extension Award by Lions International. He is active in civic affairs, is a past president of the Chamber of Commerce and has served two years as chairman of the Industrial Commission of the City of Orange.



RAY GEYER

Governor Geyer attended the local club's meeting to confer with Club President William A. Frey, Secretary H. Douglas Merrill Jr., and other officers, directors and members of the club on matters pertaining to administration and the Lions' great program of humanitarian service, particularly to the blind.

(Continued On Page Two)

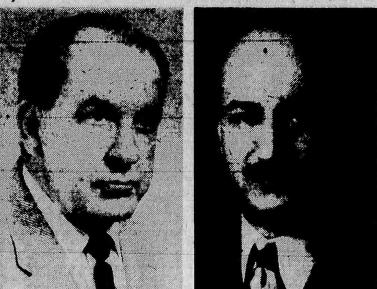
## More Chairmen Named For Community Chest Fund Drive Now Under Way



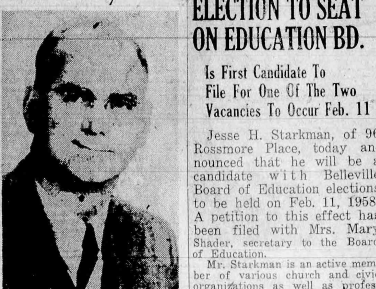
HAROLD DUFFORD,  
Chairman School Maintenance



T. J. McLAUGHLIN  
Chairman of Government



J. SILVERMAN  
Advance Gifts Chairman



THOMAS E. McMAHON  
Fraternal, Civic Groups

DR. WILLIAM H. FOST  
Chairman Professional Group

EVAN H. THOMAS  
Chairman of Schools

## Six More Named As Chest Drive Leaders

Heads Of Several Divisions Appointed By General Chairman Lewis In Current Campaign To Raise Funds For Seven Groups

Henry Lewis, general chairman of the Community Chest fund campaign which began in Belleville this week, has announced the appointment of the six additional group chairmen pictured above.

The naming of Mrs. Charles E. Ashe as Residential Chairman was reported in the Times-News last week, together with the appointment of Mr. Lewis. The general chairman said today that two final committee-head appointments would be announced next week.

(Continued On Page Two)

### Invitation To A Tea

Belleville Community Chest's board of trustees this week issued an invitation to the people of town to attend a tea Wednesday, Oct. 9, at 1:30 P.M. The affair will be held at For-Hills Restaurant, 888 Mt. Prospect Avenue, Newark, and an interesting program is promised.

The tea will afford the people of town to meet representatives of the agencies who are participating in the 1957 Community Chest campaign for funds which got under way this week.

Those planning to attend the tea are asked to notify one of the following: Mrs. C. Ashe, Plymouth 9-9167; Mrs. E. Rochau, Plymouth 9-1379; Mrs. J. Keller, Plymouth 9-4730.

### Inspections To Mark Fire Prevention Week

Sunday, Oct. 6, will mark the beginning of Fire Prevention Week.

As is customary in Belleville, this period will be observed here by a fire department inspection of all factories, schools, stores, churches, multiple-home dwelling structures and all other places where people congregate in large numbers.

While such inspections are a semi-annual project in Belleville, the inspection made during Fire Prevention Week is more thorough than the one conducted in May. All firemen participate in the program.

The fire department has available a number of films and speakers on the subject of fire prevention. Any organization interested in showing a fire prevention movie or having a speaker appear at one of its meetings need only call fire department headquarters and the department's co-operation will be extended.

### COMMANDER OF BATTERY AT AA CAMP PROMOTED

A. J. Biviano Now Captain; Major N. S. Garigiano To Attend N. G. Conference



MAJOR GARIGIANO GIVES NEW BARS TO CAPT. BIVIANO

First Lieutenant Angelo J. Biviano, of 51 Dwight Street, Jersey City, commanding officer of Battery B, 108th Antiaircraft Battalion, New Jersey National Guard, located in Branch Brook Park on Belleville Avenue, Belleville, has been promoted to captain on receipt of orders from the National Guard.

(Continued On Page Two)

### ROUTE 21 MILE HERE TO NUTLEY, TO BE CONSTRUCTED

\$3,500,000 For Section Is Included In Program Announced By Meyer

Included in the \$74,221,049 highway construction program for every section of New Jersey announced by Gov. Robert B. Meyner Thursday, was an item of \$3,500,000 for the construction of a section, one mile long, of Route 21 as a six-lane expressway from Roosevelt Avenue, Belleville, north to Highland Lane, Nutley. Federal funds will pay 90% of the cost of the job.

One section of the Newark-to-Paterson expressway in Belleville is under construction. This portion extends north to Roosevelt Avenue and includes a viaduct at the turnpike bridge. The Passaic River's bed is to be shifted eastward to allow the filling in of a strip along Main Street. This will permit the widening of the land available for the road.

Present plans call for the expressway to stop at Route 46, pending negotiations with Passaic County officials for its continuation through Clifton and Passaic.

### To Have Dance Oct. 12

Saturday evening, Oct. 12, the Sisterhood of Congregation Ahavath Achim will sponsor a Seder dance at the synagogue on Academy St. Music will be furnished by Lew Strassman's orchestra. Tickets may be obtained from committee members.

## P.T.A. Representatives To Have County Meeting

Essex Gathering To Hear Many Prominent Speakers At Morning And Evening Sessions; Theme: "P.T.A. Families In A Changing World"

"P.T.A. Families in a Changing World" will be the theme of Essex County Council of Parent-Teachers Associations at its meeting Monday, Oct. 7, at the Summer Avenue School, Newark. Two sessions will take place, at 9:30 A.M. and 2:30 P.M.

Mrs. Spencer Pirner, health and physical education teacher in Caldwell and North Caldwell schools, will deliver the feature address at the morning session. A symposium of speakers will be guests at the afternoon session.

Included will be Dr. Paul Shelly, principal of the Stockton School, East Orange; Dr. Mary Lois James, marriage counselor and former member of Essex County Council; Lester Goldman, county health chairman; Mrs. A.

B. Lewis, county character and spiritual education chairman.

The afternoon session will include the presentation of a skit on "How Not To Do It Yourself," with the cast being made up of members of the Summer Avenue School P.T.A. Mrs. A. C. Demerest, reading and library chairman of the New Jersey Congress of Parents and Teachers will be the narrator. She is also the author of the skit.

Arthur Davis, county president, will preside at both sessions, with Fred Treadwell, county vice-president, assisting at the morning conference.

John Platt, county and state music chairman and supervisor of music at Newark State Teachers College, will provide musical entertainment.

(Continued On Page Two)

## STARKMAN TO SEEK ELECTION TO SEAT ON EDUCATION BD.

Is First Candidate To File For One Of The Two Vacancies To Occur Feb. 11

Jesse H. Starkman, of 96 Rossmore Place, today announced that he will be a candidate with Belleville Board of Education elections to be held on Feb. 11, 1958. A petition to this effect has been filed with Mrs. Mary Shuler, secretary to the Board of Education.

Mr. Starkman is an active member of various church and civic organizations as well as professional societies. He is vice-president of the board of directors of Belleville Adult School and chairman of its curriculum committee, a member of the board of directors of Belleville-Nutley Tabernacles Association, zone chairman for Belleville Chapter of the American Red Cross 1947 drive, vice-chairman of the Lay Advisory Committee appointed by the Board of Education in 1956 and financial secretary of Belleville Council, No. 835, Knights of Columbus.



JESSE H. STARKMAN

(Continued On Page Two)

## Commissioner Sullivan Urges People To Safeguard Homes

Public Safety Director Asks For Co-Operation During "Fire Prevention Week"; Lists Some Of The Danger Spots; Points To Good Record Here

President Eisenhower has proclaimed the period from Oct. 6 to Oct. 12 as Fire Prevention Week. In joining the rest of the nation in devoting the week to bringing home to all citizens the lessons of fire prevention.

Public Safety Director Harry Sullivan has instructed the fire department to join this country-wide effort. Commissioner Sullivan told The Times-News this week that every day across our country there are 150 store fires, 110 barn fires, 100 factory fires, 120 school fires, nine church fires and four hospital fires. Above all, there are 1300 home fires daily, and 31 deaths.

This year Fire Prevention Week has issued this important request to parents: "Never leave your children alone and unprotected, not even for a short period, for it is in these short periods that the most trouble occurs. If you are going out for any length of time,

always arrange to have someone in attendance at home.

It is always wise to instruct a baby sitter of the location of your children's rooms and of alternate escape routes from your home. Tell the sitter how to call the local fire department and how to reach you. Above all, instruct the baby sitter that immediately on smelling smoke or suspecting a fire, to take the children out.

(Continued On Page Two)

### Elected Vice-President

Fredrick W. Zifp Jr. has been elected vice-president in charge of manufacturing and engineering of American Dyewood Co. and its wholly-owned subsidiary, New York Chemical Co. He is making his office in the Belleville plant of the company.

### To Collect Paper

Belleville Post, No. 105, The American Legion, will conduct a salvage paper drive Sunday, Oct. 6. Trucks will leave Legion Home at 9 A.M.

Residents are asked to have their paper, properly banded, on the curb before that hour.

## Sea Scout Ship 303 Is Commissioned



IOR 2361

Captain Walter Wunderlich of Sea Scout Ship 303, Belleville, affixes the Kiddie pennant to the bow of the S.S.S. Walter Kiddie at commissioning ceremonies held Wednesday, Sept. 25, marking the official acceptance by the group of the 36-foot ex-Navy air-sea reserve boat. Looking on are President John E. Kiddie (holding ensign), E. R. Randall, G. C. Hiss and John Franco, all of Walter Kiddie & Co., Inc., Belleville, sponsor of Ship 303. Belleville Sea Scouts in the group are Lee Davis and Dave De Fabio.

### Hospital Body Adds Member

The board of trustees of Clara Maass Memorial Hospital, Belleville, has elected to membership Karl Haber, of 185 Edison Avenue, Newark. He is married and has two sons.

Mr. Haber is an executive with Baker Company, Newark. A graduate of the University of Chicago, with a Doctor of Philosophy degree, he is general counsel for a group of companies known as Engelhard Industries.

## PADULA SUPPORTS THIRD RIVER PARK DESPITE HYDE ACT

Four Of Five Belleville Commissioners Continue To Ask Two-Town Park From County

Mayor Isadore J. Padula, of Belleville, informed The Times-News last night that he and three other members of the Belleville Town Commission will continue to support the Nutley-Belleville proposal for a 43-acre park, to cost \$675,000, along the Third River from Harrison Street to Joramelon Street.

Overwhelming Support In pledging continued support of the two-town park, now before the Essex County Park Commission, the Belleville Mayor and three Commissioners refuse their support to a rival project of a 10-acre playground entirely within Belleville, which Belleville Commissioners have supported.

(Continued On Page Two)

### Belleville Woman Aiding With Luncheon Tickets

Mrs. Ruth Fredericks of Belleville is a member of the committee in charge of tickets for the campaign luncheon to be held by Essex County Women's Republican Club at Hotel Suburban, East Orange, Wednesday, Oct. 9, at 12:30 P.M.

Speaker will be Mrs. Danne Leeds, Assistant Commissioner of Patents, first woman to hold that position in the more than 150-year history of the Patent Office. Senator Malcolm Forbes, candidate for Governor, will be guest of honor. Other guests will include men and women high in the ranks of the Republican Party in New Jersey including candidates on the state and county levels.

## Belleville Gridders Open Season At Stadium Saturday

First Home Game Also Is Initial Contest For This Year; Bloomfield Is Conceded Slight Edge Over Blue And Gold; Pinadella Is Question

By Dave Thaler

Given a week's grace in which to heal its injured, Belleville's football squad will be at near-full strength when the Bengals of Bloomfield invade Municipal Stadium tomorrow, Saturday, for Belleville's first home game of the season. As it turns out, it also is the first game of the season for the Bellaville.

The lone question mark in the Blue and Gold lineup is Gene Pinadella, Belleville fullback.

Hampered by a bad knee, Pinadella definitely was to have been out of a week's grace with East Orange. But the flu epidemic affected East Orange last week, leaving 20 members of its Panther squad at a loss for a postponement. The game is tentatively rescheduled for Nov. 23. This was a break for Belleville in that Pinadella will be available for the postponed game.

The amount of action that the big fullback will see tomorrow, though, will be limited. The knee still lingers in him, and the game brace devised by Herman "Jitz" Wische has yet to be tested in

competition. The brace has allowed Pinadella to work out, however.

Will Pinadella on the sidelines, Coach Ed Bednarski probably will juggle his lineup during the game. He will start off with Gene Bara at fullback, John F. Kelly at right halfback, Frank P. Angelo at left halfback and Mike Mavono calling the signals.

As Bara's best position is halfback, the Blue and Gold mentor will give Dave Bartel, a Sophomore, a chance to fill Pinadella's shoes. When Bartel is in, (Continued On Page Two)

## Child Guidance Clinic To Be Launched Here Oct. 8

Junior Woman's Club Here Sponsoring Project For Four-Town Area; Many Leaders Are Invited To Take Part In Initial Discussion On Subject Tuesday

The establishment of a Child Guidance Clinic for the residents of Belleville, Nutley, Bloomfield and Glen Ridge has been proposed by the Junior Woman's Club of Belleville in association with the Mental Health Association of Essex County.

Leading citizens and fraternal organizations of these communities have been contacted to attend a meeting Tuesday, Oct. 8, at 8:45 P.M., at the Belleville-Woman's Club, 31 Rossmore Pl., in an effort to establish a committee to work toward the establishment of the clinic.

(Continued On Page Two)



## CHIEF.

## CHIEF

(Continued On Page Two)

basically the situation is o  
parents can cope with more c  
fectively than can the police

"The legislature has not given us, as requested by our association of police chiefs, the power we need to enforce proper use of bicycles, such as we have with motor vehicles. Parents, however, the chief went on, "can do a vast amount of good by repeatedly warning their youngsters to be careful on the streets where

Turning from bicycles to automobiles, Chief Spatz told the reporter that there has been a noticeable increase in the number of stolen cars in Belleville and vicinity in recent weeks. In most cases, the chief said, the cars taken are older models — dating back to 1950 and before. The chief said the police officers and officials to the assumption that older cars were being stolen and turned over to junk dealers for a small profit.

"Buying a car without seeing the title is illegal," Chief Spatz stated, "but I suppose some people will take chances just to make a few fast bucks."

Conceding his remarks, the chief said that if people who have garages, or at least driveways, would use them instead of leaving their cars on the street, the number of cars stolen would be reduced materially. "And," he said in a parting shot, "if people would learn NOT to leave keys in their cars when unoccupied, it would help a lot."

  
The Best Way  
**De Camp**  
**BUSES**  
Frequent, convenient service

Pleasant, relaxed riding, in fast, giant Buses DIRECT to the heart of New York City. Ride in comfort going to New York. No nuisance of driving, no parking problem, no changing to ferry or tubes. Save time and money.

Timetable Information  
GRegory 1-2360 Clifton, N. J.  
**De CAMP BUS LINES**  
NEW JERSEY'S FINEST

**Hardware**  
DeMOTT  
S • HARDWARE • TOYS  
2-4987 Nutley, N. J.

headquarters

**Scout Equipment**  
**EPT. STORE**

operation Overseas"

recently from the man to whom  
businessman, his wife, and their

but they all demonstrate the

value in day-by-day living as well as in times of emergency, of doing your banking at a bank which provides *all* banking services under one roof —

Business Loans, Trust Department, Securities Department, Personal and Auto Loans, Regular and Special Checking Accounts, and many others.

And the moral we'd like to draw here applies to your Savings Accounts. To be sure, there are a dozen or so institutions in Essex County where

you can save—if that's *all* you want. But just ask yourself: Where can I begin to match the many advantages and conveniences of saving where you get

We are sure you will find that to ask the question is to answer it. Open your Savings Account — and add to it regularly.

**FIDELITY UNION  
TRUST COMPANY**

**The Bank in New Jersey**  
Member Federal Deposit Insurance Corp.

\*To maintain privacy, we have used a fictitious name for an actual incident.











# THE BELLEVILLE TIMES-NEWS

ADVERTISING, NEWS AND BUSINESS OFFICE  
328 WASHINGTON AVENUE  
RALPH E. HEINZEN, EDITOR AND PUBLISHER

## Give To All — At One Time

Under the aegis of the Community Chest, the annual drive for funds for a group of organizations which do a tremendous amount of good work in Belleville got started this week.

The organizations are the Boy Scouts, Girl Scouts, Visiting Nurse Association, Sister Elizabeth Kenny Fund, Essex County Service for the Chronically Ill, United Service Organization Fund, Family Service and Child Welfare of Belleville.

With Henry Lewis as general chairman, Mrs. Charles E. Ashe as residential chairman and other well-known local folks as heads of other divisions, the campaign has for its aim the raising of \$36,000 by the end of the month.

When the volunteer workers — and more of them can be used in the effort — call at your homes or places of business, we urge you to give as liberally as you can.

In reaching a decision on how much to contribute, this should be kept in mind: seven fund drives are being telescoped into one by the Community Chest; if there were no Community Chest to gather these groups into one effort for all, you would be approached seven times for contributions. You should give to the Community Chest volunteer what you would have given had you been approached individually by each of the seven organizations affiliated with the Chest.

All of these units will make excellent use of every cent collected. Not one of them receives as much as it can use to good advantage. In at least one instance — Family Service and Welfare of Belleville — the need has reached the point of being critical.

In a letter to The Times-News last week, Dr. James E. D. Gardam, president of Family Service and Child Welfare of Belleville, said: "Because of our limited income in the past two years due to the poor response to the Community Chest campaigns, we have been forced to use our reserve funds for current expenses. As a result, we find that Family Service and Welfare will be forced to go out of existence in about 18 months."

This should NOT be allowed to happen. A few weeks ago this paper printed an article relating the scope and activities of the Service. All who read that report

and all others familiar with the work of the organization — must know that the Service should be enabled to go on for many years to come.

When the end of October arrives, we hope to see broad smiles on the faces of the Community Chest workers and the officers of the several organizations associated with the Chest — smiles brought forth by the magnificent support of the campaign for funds by the people of Belleville.

## An Interesting Point

Eugene Kelly raised a highly interesting point at the Belleville Board of Education meeting last week when he supported the proposition that after-hours instruction in music should not be charged for but should be made part of the regular curriculum.

The school board member was referring to the practice — followed throughout the country — of charging fees for special instruction on musical instruments outside of school hours. The schools in Belleville, elsewhere, provide space free for such instruction, but the teachers are allowed to collect payment for the time they devote to the extra-curricular activity.

Mr. Kelly, presumably, would have the teachers' fees paid from school board funds and the program of teaching made part of the school schedule.

Board President William A. Boyd differs. He does not think it would be proper for the taxpayers as a whole to pay for the additional musical instruction sought by some students. Supt. of Schools Evan Thoms has pointed out that the regular school curriculum does include music instruction, and that the classes referred to in the discussion were beyond this basic program and of interest only to those who wanted to make a specialty of playing one or more instruments.

While we laud Mr. Kelly's devotion to the principle of free public education and his alertness in watching for any infringement on this idea, we feel that Mr. Boyd is right in arguing that the extra classes should not be a financial responsibility of the town's taxpayers.

Our view is based on the belief that the school discharges its duty to provide free education by having regular courses in music. If a student desires to go beyond that which is offered in the curriculum, he should be prepared to and expected to pay for that additional instruction.

## Thomas Zemek Named Youth Director At Fawcith

Thomas Zemek has been appointed youth director at Fawcith Memorial Presbyterian Church. He is a first-year student for the Christian ministry at Union Theological Seminary, New York. He is a graduate of Knox College, Chicago, and a commissioned officer in the U. S. Army in Germany.

He will teach a Ninth Grade Church School class, assist in the morning worship and direct and supervise the Junior and Senior Westminster Fellowship group Sunday evenings.

The following Senior High officers were installed at a candlelight ceremony last Sunday evening: Karen Pennypacker, Joyce Baldwin, Carol Bais, Harry Windfield. Other committee chairman are Diane Owens and Beverly Mc Walters.

## Church Officers, Leaders To Attend Retreat Tonight

The officers and leaders of Fawcith Memorial Presbyterian Church will attend a retreat tonight and tomorrow (Friday, Oct. 4, and Saturday, Oct. 5) at the Paterson Y.M.C.A. Camp at Stockton, N. J. Retreat leader is the Rev. Theodore Rath, executive director of the N. J. Presbyterian Conference.

Detailed plans and program will be discussed by the delegates and brought to the congregation and to the various church organizations. Major areas are under consideration — evangelism and the new Christian education addition. Elders in charge of the retreat are Harold Ross, Warner Field, Mrs. James Dunn, E. K. Abresht. Mr. Harold Snook is in charge of reservations. Dr. James K. Morse, pastor, is general chairman.

## Yom Kippur, Other Services At Temple Are Announced

The holiday schedule at Temple Ahavath Achim, Yom Kippur, Succoth and Simchat Torah has been announced as follows:

Friday, Oct. 4, 6:45 P.M. — Kol Nidre.

Succoth, "Value of Values," by Rabbi Victor Cohen will follow.

Saturday, Oct. 5, 8:30 A.M., with Yizkor at 11:30.

Succoth, "Value of Values," by Rabbi Victor Cohen will follow.

Sunday, Oct. 6, 8:30 A.M. and 6:30 P.M.

Friday, Oct. 11 — 9 A.M. and 8:30 P.M.

SHMIN ATZERATH

Wednesday, Oct. 17 — 9 A.M., 11 A.M. (Yizkor), 6:30 P.M.

Simchat Torah

Friday, Oct. 18 — 9 A.M. and 8:30 P.M.

Church of the Holy Spirit

At the initial meeting of the Colored Women's Welfare Council of Belleville for the new season, Mrs. Eliza B. Goldston, president, presided at the National Baptist Convention which she attended at Louisville, Ky., in July.

In addition to Mrs. Goldston's report, Mrs. Myrtle Dickinson, delegate to the New Jersey State Colored Women's Club Convention at Jersey City, gave a report on her representation at the convocation.

The meeting, which was held at the home of Mrs. Georgia Peterson, 29 High St., a charter member, was climaxed by the presentation of a corsage to Mrs. Marie Mathews, secretary of the council, for her outstanding work and achievements for the local group during the past year.

To Dedicate Hall Sunday

At Bethany Lutheran Church, World Wide Communion Sunday will be observed Oct. 6.

Following the 11 o'clock service, the congregation will proceed to the parish house, where Al Helm Hall will be dedicated. The hall is being dedicated to the memory of a former Church Council member.

At the home of Mrs. Eliza B. Goldston, president, the congregation will proceed to the parish house, where Al Helm Hall will be dedicated. The hall is being dedicated to the memory of a former Church Council member.

At the home of Mrs. Eliza B. Goldston, president, the congregation will proceed to the parish house, where Al Helm Hall will be dedicated. The hall is being dedicated to the memory of a former Church Council member.

At the home of Mrs. Eliza B. Goldston, president, the congregation will proceed to the parish house, where Al Helm Hall will be dedicated. The hall is being dedicated to the memory of a former Church Council member.

At the home of Mrs. Eliza B. Goldston, president, the congregation will proceed to the parish house, where Al Helm Hall will be dedicated. The hall is being dedicated to the memory of a former Church Council member.

At the home of Mrs. Eliza B. Goldston, president, the congregation will proceed to the parish house, where Al Helm Hall will be dedicated. The hall is being dedicated to the memory of a former Church Council member.

At the home of Mrs. Eliza B. Goldston, president, the congregation will proceed to the parish house, where Al Helm Hall will be dedicated. The hall is being dedicated to the memory of a former Church Council member.

At the home of Mrs. Eliza B. Goldston, president, the congregation will proceed to the parish house, where Al Helm Hall will be dedicated. The hall is being dedicated to the memory of a former Church Council member.

At the home of Mrs. Eliza B. Goldston, president, the congregation will proceed to the parish house, where Al Helm Hall will be dedicated. The hall is being dedicated to the memory of a former Church Council member.

At the home of Mrs. Eliza B. Goldston, president, the congregation will proceed to the parish house, where Al Helm Hall will be dedicated. The hall is being dedicated to the memory of a former Church Council member.

At the home of Mrs. Eliza B. Goldston, president, the congregation will proceed to the parish house, where Al Helm Hall will be dedicated. The hall is being dedicated to the memory of a former Church Council member.

At the home of Mrs. Eliza B. Goldston, president, the congregation will proceed to the parish house, where Al Helm Hall will be dedicated. The hall is being dedicated to the memory of a former Church Council member.

At the home of Mrs. Eliza B. Goldston, president, the congregation will proceed to the parish house, where Al Helm Hall will be dedicated. The hall is being dedicated to the memory of a former Church Council member.

At the home of Mrs. Eliza B. Goldston, president, the congregation will proceed to the parish house, where Al Helm Hall will be dedicated. The hall is being dedicated to the memory of a former Church Council member.

At the home of Mrs. Eliza B. Goldston, president, the congregation will proceed to the parish house, where Al Helm Hall will be dedicated. The hall is being dedicated to the memory of a former Church Council member.

At the home of Mrs. Eliza B. Goldston, president, the congregation will proceed to the parish house, where Al Helm Hall will be dedicated. The hall is being dedicated to the memory of a former Church Council member.

At the home of Mrs. Eliza B. Goldston, president, the congregation will proceed to the parish house, where Al Helm Hall will be dedicated. The hall is being dedicated to the memory of a former Church Council member.

At the home of Mrs. Eliza B. Goldston, president, the congregation will proceed to the parish house, where Al Helm Hall will be dedicated. The hall is being dedicated to the memory of a former Church Council member.

At the home of Mrs. Eliza B. Goldston, president, the congregation will proceed to the parish house, where Al Helm Hall will be dedicated. The hall is being dedicated to the memory of a former Church Council member.

At the home of Mrs. Eliza B. Goldston, president, the congregation will proceed to the parish house, where Al Helm Hall will be dedicated. The hall is being dedicated to the memory of a former Church Council member.

At the home of Mrs. Eliza B. Goldston, president, the congregation will proceed to the parish house, where Al Helm Hall will be dedicated. The hall is being dedicated to the memory of a former Church Council member.

At the home of Mrs. Eliza B. Goldston, president, the congregation will proceed to the parish house, where Al Helm Hall will be dedicated. The hall is being dedicated to the memory of a former Church Council member.

At the home of Mrs. Eliza B. Goldston, president, the congregation will proceed to the parish house, where Al Helm Hall will be dedicated. The hall is being dedicated to the memory of a former Church Council member.

At the home of Mrs. Eliza B. Goldston, president, the congregation will proceed to the parish house, where Al Helm Hall will be dedicated. The hall is being dedicated to the memory of a former Church Council member.

At the home of Mrs. Eliza B. Goldston, president, the congregation will proceed to the parish house, where Al Helm Hall will be dedicated. The hall is being dedicated to the memory of a former Church Council member.

At the home of Mrs. Eliza B. Goldston, president, the congregation will proceed to the parish house, where Al Helm Hall will be dedicated. The hall is being dedicated to the memory of a former Church Council member.

At the home of Mrs. Eliza B. Goldston, president, the congregation will proceed to the parish house, where Al Helm Hall will be dedicated. The hall is being dedicated to the memory of a former Church Council member.

At the home of Mrs. Eliza B. Goldston, president, the congregation will proceed to the parish house, where Al Helm Hall will be dedicated. The hall is being dedicated to the memory of a former Church Council member.

At the home of Mrs. Eliza B. Goldston, president, the congregation will proceed to the parish house, where Al Helm Hall will be dedicated. The hall is being dedicated to the memory of a former Church Council member.

At the home of Mrs. Eliza B. Goldston, president, the congregation will proceed to the parish house, where Al Helm Hall will be dedicated. The hall is being dedicated to the memory of a former Church Council member.

At the home of Mrs. Eliza B. Goldston, president, the congregation will proceed to the parish house, where Al Helm Hall will be dedicated. The hall is being dedicated to the memory of a former Church Council member.

At the home of Mrs. Eliza B. Goldston, president, the congregation will proceed to the parish house, where Al Helm Hall will be dedicated. The hall is being dedicated to the memory of a former Church Council member.

At the home of Mrs. Eliza B. Goldston, president, the congregation will proceed to the parish house, where Al Helm Hall will be dedicated. The hall is being dedicated to the memory of a former Church Council member.

At the home of Mrs. Eliza B. Goldston, president, the congregation will proceed to the parish house, where Al Helm Hall will be dedicated. The hall is being dedicated to the memory of a former Church Council member.

At the home of Mrs. Eliza B. Goldston, president, the congregation will proceed to the parish house, where Al Helm Hall will be dedicated. The hall is being dedicated to the memory of a former Church Council member.

At the home of Mrs. Eliza B. Goldston, president, the congregation will proceed to the parish house, where Al Helm Hall will be dedicated. The hall is being dedicated to the memory of a former Church Council member.

At the home of Mrs. Eliza B. Goldston, president, the congregation will proceed to the parish house, where Al Helm Hall will be dedicated. The hall is being dedicated to the memory of a former Church Council member.

## Talk Of The Town . . .

The Fourth Grade at School Nine has been studying furnaces for the past several weeks. As a climax to their studies, Mrs. Violet M. Herson, teacher, with the cooperation and guidance of William R. Martin, custodian, took the youngsters to the furnace room of the school, where they were told how the building was heated.

They learned about the operations of the stoker, valves and protective asbestos.

Mr. Martin also showed them how ashes were raised from the grate, through the window and to the sidewalk.

Peter Uberschär was elected president of the Student Council of School Nine at a recent meeting.

President who helped build it. Pastor Painter Herson hopes that all members of the church will be present for the ceremony.

Friday, Oct. 4, at 8 P.M., the Brotherhood will meet to see the film "This is New Jersey." All members are urged to attend.

## World Wide Communion To Be Observed At Fawcith Church

World Wide Communion will be observed Sunday, Oct. 6, at Fawcith Memorial Presbyterian Church. The 11 o'clock worship service, Dr. James K. Morse, pastor, will give a Communion Meditation. The Board of Elders will serve the Sacrament of the Lord's Supper.

Mrs. James Dunn, Dr. James K. Morse, pastor, will give a Communion Meditation. The Board of Elders will serve the Sacrament of the Lord's Supper.

Mrs. James Dunn, Dr. James K. Morse, pastor, will give a Communion Meditation. The Board of Elders will serve the Sacrament of the Lord's Supper.

Mrs. James Dunn, Dr. James K. Morse, pastor, will give a Communion Meditation. The Board of Elders will serve the Sacrament of the Lord's Supper.

Mrs. James Dunn, Dr. James K. Morse, pastor, will give a Communion Meditation. The Board of Elders will serve the Sacrament of the Lord's Supper.

Mrs. James Dunn, Dr. James K. Morse, pastor, will give a Communion Meditation. The Board of Elders will serve the Sacrament of the Lord's Supper.

Mrs. James Dunn, Dr. James K. Morse, pastor, will give a Communion Meditation. The Board of Elders will serve the Sacrament of the Lord's Supper.

Mrs. James Dunn, Dr. James K. Morse, pastor, will give a Communion Meditation. The Board of Elders will serve the Sacrament of the Lord's Supper.

Mrs. James Dunn, Dr. James K. Morse, pastor, will give a Communion Meditation. The Board of Elders will serve the Sacrament of the Lord's Supper.

Mrs. James Dunn, Dr. James K. Morse, pastor, will give a Communion Meditation. The Board of Elders will serve the Sacrament of the Lord's Supper.

Mrs. James Dunn, Dr. James K. Morse, pastor, will give a Communion Meditation. The Board of Elders will serve the Sacrament of the Lord's Supper.

Mrs. James Dunn, Dr. James K. Morse, pastor, will give a Communion Meditation. The Board of Elders will serve the Sacrament of the Lord's Supper.

Mrs. James Dunn, Dr. James K. Morse, pastor, will give a Communion Meditation. The Board of Elders will serve the Sacrament of the Lord's Supper.

Mrs. James Dunn, Dr. James K. Morse, pastor, will give a Communion Meditation. The Board of Elders will serve the Sacrament of the Lord's Supper.

Mrs. James Dunn, Dr. James K. Morse, pastor, will give a Communion Meditation. The Board of Elders will serve the Sacrament of the Lord's Supper.

Mrs. James Dunn, Dr. James K. Morse, pastor, will give a Communion Meditation. The Board of Elders will serve the Sacrament of the Lord's Supper.

Mrs. James Dunn, Dr. James K. Morse, pastor, will give a Communion Meditation. The Board of Elders will serve the Sacrament of the Lord's Supper.

Mrs. James Dunn, Dr. James K. Morse, pastor, will give a Communion Meditation. The Board of Elders will serve the Sacrament of the Lord's Supper.

Mrs. James Dunn, Dr. James K. Morse, pastor, will give a Communion Meditation. The Board of Elders will serve the Sacrament of the Lord's Supper.

Mrs. James Dunn, Dr. James K. Morse, pastor, will give a Communion Meditation. The Board of Elders will serve the Sacrament of the Lord's Supper.

Mrs. James Dunn, Dr. James K. Morse, pastor, will give a Communion Meditation. The Board of Elders will serve the Sacrament of the Lord's Supper.

Mrs. James Dunn, Dr. James K. Morse, pastor, will give a Communion Meditation. The Board of Elders will serve the Sacrament of the Lord's Supper.

Mrs. James Dunn, Dr. James K. Morse, pastor, will give a Communion Meditation. The Board of Elders will serve the Sacrament of the Lord's Supper.

Mrs. James Dunn, Dr. James K. Morse, pastor, will give a Communion Meditation. The Board of Elders will serve the Sacrament of the Lord's Supper.

## Town Hall Jottings

Town Clerk Florence R. Morey and her husband, George, accompanied by their son, John L., and his family, of Bloomfield, spent the past week-end at their farm, "Heaven Hill," at Stornville, N. Y.

Miss Louise Franklin is again serving as advisor to the group.

A luncheon-bridge will take place at the Woman's Club, 51 Rosemont Pl., Monday, Oct. 7, at 1 o'clock.

Mr. Martin also showed them how ashes were raised from the grate, through the window and to the sidewalk.

Mr. Martin also showed them how ashes were raised from the grate, through the window and to the sidewalk.

Mr. Martin also showed them how ashes were raised from the grate, through the window and to the sidewalk.

Mr. Martin also showed them how ashes were raised from the grate, through the window and to the sidewalk.

Mr. Martin also showed them how ashes were raised from the grate, through the window and to the sidewalk.

Mr. Martin also showed them how ashes were raised from the grate, through the window and to the sidewalk.

Mr. Martin also showed them how ashes were raised from the grate, through the window and to the sidewalk.

Mr. Martin also showed them how ashes were raised from the grate, through the window and to the sidewalk.

Mr. Martin also showed them how ashes were raised from the grate, through the window and to the sidewalk.

Mr. Martin also showed them how ashes were raised from the grate, through the window and to the sidewalk.

Mr. Martin also showed them how ashes were raised from the grate, through the window and to the sidewalk.

Mr. Martin also showed them how ashes were raised from the grate, through the window and to the sidewalk.

Mr. Martin also showed them how ashes were raised from the grate, through the window and to the sidewalk.

Mr. Martin also showed them how ashes were raised from the grate, through the window and to the sidewalk.

Mr. Martin also showed them how ashes were raised from the grate, through the window and to the sidewalk.

Mr. Martin also showed them how ashes were raised from the grate, through the window and to the sidewalk.

Mr. Martin also showed them how ashes were raised from the grate, through the window and to the sidewalk.

Mr. Martin also showed them how ashes were raised from the grate, through the window and to the sidewalk.

Mr. Martin also showed them how ashes were raised from the grate, through the window and to the sidewalk.

Mr. Martin also showed them how ashes were raised from the grate, through the window and to the sidewalk.

Mr. Martin also showed them how ashes were raised from the grate, through the window and to the sidewalk.

Mr. Martin also showed them how ashes were raised from the grate, through the window and to the sidewalk.

Mr. Martin also showed them how ashes were raised from the grate, through the window and to the sidewalk.

Mr. Martin also showed them how ashes were raised from the grate, through the window and to the sidewalk.

Mr. Martin also showed them how ashes were raised from the grate, through the window and to the sidewalk.

Mr. Martin also showed them how ashes were raised from the grate, through the window and to the sidewalk.

Mr. Martin also showed them how ashes were raised from the grate, through the window and to the sidewalk.

Mr. Martin also showed them how ashes were raised from the grate, through the window and to the sidewalk.

## New Gym Program To Start For Girls Here

The Recreation Dept. will offer a special all-round gym program for girls of Seventh and Eighth Grade ages starting Oct. 17, at Belleville High School. The program, which will be directed by Barbara Newshwander, will include such diversified activities as elementary tumbling, basketball, clinic games, dancing and others.

It is recommended that the girls wear shorts and gym shoes.

Activities will get under way at 7 P.M. Thursday, Oct. 17, and each Thursday thereafter, and will end at 8:30. The Recreation Dept. recommends that parents call for their youngsters at 8:30.

It is recommended that the girls wear shorts and gym shoes.

Activities will get under way at 7 P.M. Thursday, Oct. 17, and each Thursday thereafter, and will end at 8:30. The Recreation Dept. recommends that parents call for their youngsters at 8:30.

It is recommended that the girls wear shorts and gym shoes.

Activities will get under way at 7 P.M. Thursday, Oct. 17, and each Thursday thereafter, and will end at 8:30. The Recreation Dept. recommends that parents call for their youngsters at 8:30.

It is recommended that the girls wear shorts and gym shoes.

Activities will get under way at 7 P.M. Thursday, Oct. 17, and each Thursday thereafter, and will end at 8:30. The Recreation Dept. recommends that parents call for their youngsters at 8:30.

It is recommended that the girls wear shorts and gym shoes.

Activities will get under way at 7 P.M. Thursday, Oct. 17, and each Thursday thereafter, and will end at 8:30. The Recreation Dept. recommends that parents call for their youngsters at 8:30.

It is recommended that the girls wear shorts and gym shoes.

Activities will get under way at 7 P.M. Thursday, Oct. 17, and each Thursday thereafter, and will end at 8:30. The Recreation Dept. recommends that parents call for their youngsters at 8:30.

It is recommended that the girls wear shorts and gym shoes.

Activities will get under way at 7 P.M. Thursday, Oct. 17, and each Thursday thereafter, and will end at 8:30. The Recreation Dept. recommends that parents call for their youngsters at 8:30.

It is recommended that the girls wear shorts and gym shoes.

Activities will get under way at 7 P.M. Thursday, Oct. 17, and each Thursday thereafter, and will end at 8:30. The Recreation Dept. recommends that parents call for their youngsters at 8:30.

It is recommended that the girls wear shorts and gym shoes.

Activities will get under way at 7 P.M. Thursday, Oct. 17, and each Thursday thereafter, and will end at 8:30. The Recreation Dept. recommends that parents call for their youngsters at 8:30.

It is recommended that the girls wear shorts and gym shoes.

Activities will get under way at 7 P.M. Thursday, Oct. 17, and each Thursday thereafter, and will end at 8:30. The Recreation Dept. recommends that parents call for their youngsters at 8:30.

It is recommended that the girls wear shorts and gym shoes.

Activities will get under way at 7 P.M. Thursday, Oct. 17, and each Thursday thereafter, and will end at 8:30. The Recreation Dept. recommends that parents call for their youngsters at 8:30.

It is recommended that the girls wear shorts and gym shoes.

Activities will get under way at 7 P.M. Thursday, Oct. 17, and each Thursday thereafter, and will end at 8:30. The Recreation Dept. recommends that parents call for their youngsters at 8:30.

It is recommended that the



**Times Classified Advertisements**  
To Sell, Buy or Trade Telephone PLymouth 9-3200  
Ads May Be Inserted At The Belleville Times News Office  
328 Washington Avenue, Or Call  
PL 9-3200 Up to 5 P.M. on Wednesday  
\$1.25 for One Week; \$2.50 for Three Weeks;  
For Twenty-five Words or Less

**Cabinet Makers**  
CABINET MAKING. Residential work. Kitchen cabinets, furniture, repairing and refinishing. Hammel & Sons Woodworking Co., 12-16 Barton Place, Belleville, Telephone PLymouth 9-2638.

**Carpenters & Builders**  
ALTERATION, HOME REMODELING. Will repair and modernize your home from basement to attic. Financing arranged. Call PL 9-2515 day or night; free estimates. Frank Sandico, 12-16 Barton Place, Belleville, Telephone PLymouth 9-2638.

**Complete Line of Mason**  
Work, specializing in garages, sidewalks, brick stoops, patios, stone blocks, etc. All work guaranteed. Frank D'Arcy, 17 Fairway Ave., PL 9-8774 or Klam 2-1515.

**Plastering & Patching**  
Cement work. No job too big or too small. Call day or night. N. Anderson. Telephone PLymouth 9-0474.

**Alterations - Men and Women**  
TIONS. Kitchen, collar and suit remodeling. Fur coats and suits. The work and garment. No job too big or too small. Call day or night. N. Anderson. Telephone PLymouth 9-0474.

**Ralph Martino**  
General Contractor  
Residential, Commercial  
Light Industrial Repairs  
Remodeling Additions  
874 Clifton Ave. Newark  
Humboldt 2-6299

**Child Care**  
LE BRETON NURSERY SCHOOL. Planned programs under trained supervision to develop in children confidence and self-reliance. 2-6 yrs. Transportation service. Belleville, Nutley & Newark. Nutley 2-0685.

**Class Reunion**  
ANYONE INTERESTED in a 20 yr. Reunion of the Class of 1938, Belleville High School, please telephone NUTLEY 2-0685. Reunion banquet to be held at Plymouth 9-2277.

**Decorators & Painters**  
EWALD TORNEPORT, INC. PAINTING & DECORATING of the better grade. We have quality workmen. 10 Jerome Ave. Belleville, N.J. Plymouth 9-3295.

**Electricians**  
ELECTRICAL SERVICE. Prompt and reasonable. Outlets, lights, switches installed. Wiring and conditioning. Call COLE, Plymouth 9-7391 or Plymouth 9-3380.

**For Rent**  
STORE - Washington Avenue opposite Acme Market and High School. Excellent for stationery and school supplies. children's wear, office, etc. Telephone PL 9-1558.

**For Sale**  
AFRICAN VIOLETS, blooming, 50 cents to \$1.50. Davis' Franklin Street, Bloomfield, N.J. Telephone 9-8285. Open Sunday to 5 P.M. PL 9-3577.

**For Sale**  
GOING SOUTH - Three rooms of practically new furniture. Bedroom suite; refrigerator; automatic washing machine; living room set. Call at 197 William Street. 10-14

**For Sale**  
BED ROOM SET, Frigidaire, writing desk, radio, two piece living room set, two door linen closet, one bed and Singer sewing machine. Address 55 Center Street. 10-15

**For Sale**  
AFRICAN VIOLETS, blooming, 50 cents to \$1.50. Davis' Franklin Street, Bloomfield, N.J. Telephone 9-8285. Open Sunday to 5 P.M. PL 9-3577.

**For Sale**  
AFRICAN VIOLETS, blooming, 50 cents to \$1.50. Davis' Franklin Street, Bloomfield, N.J. Telephone 9-8285. Open Sunday to 5 P.M. PL 9-3577.

**Mattresses**  
CUSTOM MATTRESS MAKERS. complete line of bedding, feather, "Shifman" (Sleeper) and "Barton" (Knee) mattresses. Box springs made to order. Renovating same day service. Full line of maple furniture. 87 Franklin Ave. Nutley 6764. Free estimates until 5 Saturday 4 P.M.

**Oil Burners**  
WELT FUEL OIL, 221 Prospect Ave. No. Arlington, N. J. Oil Burners, fuel oil. Complete automatic oil heating installations. Oil burner efficiency, oil specialty. Kruyer 9-277.

**Koofers**  
ROOMING CONTRACTOR. All work done by owner. New work and all types of repairs. Shingle roofs, hot tar, and chimneys. Skylights, leader and gutters. Estimates free. George Francorino, Plymouth 9-1873.

**Furnished Rooms**  
NICKLY FURNISHED ROOM. Next to bath. Convenient to bus. Telephone Plymouth 9-1593.

**Nice Comfortable Room**  
Large closet. Residential. School teacher or business woman. Breakfast optional. One block from 219 bus. Parking space. Telephone Plymouth 9-0103.

**Large Front Room**  
with three windows. Suitable for business, family or residential use. Four doors from Jerusalem Street. Telephone Plymouth 9-2860.

**Large Front Room**  
with two windows. View of R.I. School. Gentleman. Telephone Plymouth 9-6143.

**Single Room**  
Clean and comfortable. Near transportation. Reasonable. Telephone Plymouth 9-7413.

**Help Wanted Female**  
EXPERIENCED OPERATOR on ladies dresses. Union shop. excellent wages. Vacation with pay. Pleasant working conditions. Telephone Nutley 2-7605.

**Woman to Do general housework**  
several days a week. Telephone Plymouth 9-4657.

**Clerical**  
Girl adept at figures and typing. Job includes some typing. Reasonable. Telephone Nutley 2-4321.

**The Great A & P Tea Co.**  
265 Cortlandt Street  
PART TIME SECRETARY - days. Hours arranged. Interviews Tuesday, October 8th. 5 P.M. Scientific Wood Cabinet Co., 80 Holmes Street.

**Secretary - Girl Friday**  
General office work. Monitor switchboard. dictating. Telephone Plymouth 9-4300.

**Instruction**  
Piano - INSTRUCTION. For pleasure or profit. Learn quickly and thoroughly. Beginners and advanced. Ralph A. Franco, 36 Linden Place, Nutley, Telephone Nutley 2-4321.

**Junk Dealers**  
ALWAYS TAYING TOP DOLL. Buy your rags, metal, brass, copper, metals, Singer sewing machines, furnaces, papers, 35c per 100 lbs. Immediate pick up. Easy Scrap Metal, 47 Dover Avenue, Kearny; Kearny 2-0432.

**Attorney - Call Your Local Man**  
For top prices: paper and magazines. Scrap iron and metal, rags, mattresses, sinks, tubs and bathtubs. Call J. L. By and Co., Nutley 2-8768.

**Lawn Mowers**  
HAND AND POWER MOWERS cleaned, sharpened, repaired, adjusted, or guaranteed. Pickup and delivery. Grass shears, hedge clippers sharpened. Nutley Key Shop, 165 Franklin Avenue. Telephone Nutley 2-6406.

**Sheriff's Sale**  
SUPERIOR COURT OF NEW JERSEY. CHANCERY DIVISION. ESSEX COUNTY. Docket No. 154-5456. Between James and New Rivers, Defendants, and William Rivers, Plaintiff. EXECUTION on the writ of HABEAS CORPUS. The above named James and New Rivers, Defendants, are directed to appear at the COURT HOUSE in Newark on Tuesday, the 11th day of October, at 1:30 p.m. (Greenwich Time), to answer to the writ of HABEAS CORPUS, and to show cause why they should not be committed to the custody of the Sheriff of Essex County, New Jersey.

**Beginning at a point in the water**  
side of the Atlantic Ocean, distant 100 feet from the shore, the line of the boundary line of the Town of Belvidere, Essex County, New Jersey, shall be the line of the boundary line of the Town of Belvidere, Essex County, New Jersey, as shown on the map of the Town of Belvidere, Essex County, New Jersey, filed in the office of the Clerk of the Superior Court of New Jersey, Chancery Division, Essex County, on the 11th day of October, 1957.

**Legal Notice**  
SEALING OF PROBATE RECORDS. The Board of Education of the Town of Belvidere, Essex County, New Jersey, is hereby notified that the records of the Board of Education of the Town of Belvidere, Essex County, New Jersey, for the year 1956, are now open for public inspection at the Board of Education, 100 North Street, Belvidere, New Jersey, from 9:00 a.m. to 5:00 p.m. on all days except Sundays and holidays.

**Legal Notice**  
The Board of Education of the Town of Belvidere, Essex County, New Jersey, is hereby notified that the records of the Board of Education of the Town of Belvidere, Essex County, New Jersey, for the year 1956, are now open for public inspection at the Board of Education, 100 North Street, Belvidere, New Jersey, from 9:00 a.m. to 5:00 p.m. on all days except Sundays and holidays.

**Legal Notice**  
The Board of Education of the Town of Belvidere, Essex County, New Jersey, is hereby notified that the records of the Board of Education of the Town of Belvidere, Essex County, New Jersey, for the year 1956, are now open for public inspection at the Board of Education, 100 North Street, Belvidere, New Jersey, from 9:00 a.m. to 5:00 p.m. on all days except Sundays and holidays.

**Legal Notice**  
The Board of Education of the Town of Belvidere, Essex County, New Jersey, is hereby notified that the records of the Board of Education of the Town of Belvidere, Essex County, New Jersey, for the year 1956, are now open for public inspection at the Board of Education, 100 North Street, Belvidere, New Jersey, from 9:00 a.m. to 5:00 p.m. on all days except Sundays and holidays.

**Legal Notice**  
The Board of Education of the Town of Belvidere, Essex County, New Jersey, is hereby notified that the records of the Board of Education of the Town of Belvidere, Essex County, New Jersey, for the year 1956, are now open for public inspection at the Board of Education, 100 North Street, Belvidere, New Jersey, from 9:00 a.m. to 5:00 p.m. on all days except Sundays and holidays.

**Legal Notice**  
The Board of Education of the Town of Belvidere, Essex County, New Jersey, is hereby notified that the records of the Board of Education of the Town of Belvidere, Essex County, New Jersey, for the year 1956, are now open for public inspection at the Board of Education, 100 North Street, Belvidere, New Jersey, from 9:00 a.m. to 5:00 p.m. on all days except Sundays and holidays.

**Legal Notice**  
The Board of Education of the Town of Belvidere, Essex County, New Jersey, is hereby notified that the records of the Board of Education of the Town of Belvidere, Essex County, New Jersey, for the year 1956, are now open for public inspection at the Board of Education, 100 North Street, Belvidere, New Jersey, from 9:00 a.m. to 5:00 p.m. on all days except Sundays and holidays.

**Legal Notice**  
The Board of Education of the Town of Belvidere, Essex County, New Jersey, is hereby notified that the records of the Board of Education of the Town of Belvidere, Essex County, New Jersey, for the year 1956, are now open for public inspection at the Board of Education, 100 North Street, Belvidere, New Jersey, from 9:00 a.m. to 5:00 p.m. on all days except Sundays and holidays.

**Legal Notice**  
The Board of Education of the Town of Belvidere, Essex County, New Jersey, is hereby notified that the records of the Board of Education of the Town of Belvidere, Essex County, New Jersey, for the year 1956, are now open for public inspection at the Board of Education, 100 North Street, Belvidere, New Jersey, from 9:00 a.m. to 5:00 p.m. on all days except Sundays and holidays.

**Legal Notice**  
The Board of Education of the Town of Belvidere, Essex County, New Jersey, is hereby notified that the records of the Board of Education of the Town of Belvidere, Essex County, New Jersey, for the year 1956, are now open for public inspection at the Board of Education, 100 North Street, Belvidere, New Jersey, from 9:00 a.m. to 5:00 p.m. on all days except Sundays and holidays.

**Legal Notice**  
The Board of Education of the Town of Belvidere, Essex County, New Jersey, is hereby notified that the records of the Board of Education of the Town of Belvidere, Essex County, New Jersey, for the year 1956, are now open for public inspection at the Board of Education, 100 North Street, Belvidere, New Jersey, from 9:00 a.m. to 5:00 p.m. on all days except Sundays and holidays.

**Legal Notice**  
The Board of Education of the Town of Belvidere, Essex County, New Jersey, is hereby notified that the records of the Board of Education of the Town of Belvidere, Essex County, New Jersey, for the year 1956, are now open for public inspection at the Board of Education, 100 North Street, Belvidere, New Jersey, from 9:00 a.m. to 5:00 p.m. on all days except Sundays and holidays.

**Legal Notice**  
The Board of Education of the Town of Belvidere, Essex County, New Jersey, is hereby notified that the records of the Board of Education of the Town of Belvidere, Essex County, New Jersey, for the year 1956, are now open for public inspection at the Board of Education, 100 North Street, Belvidere, New Jersey, from 9:00 a.m. to 5:00 p.m. on all days except Sundays and holidays.

**Legal Notice**  
The Board of Education of the Town of Belvidere, Essex County, New Jersey, is hereby notified that the records of the Board of Education of the Town of Belvidere, Essex County, New Jersey, for the year 1956, are now open for public inspection at the Board of Education, 100 North Street, Belvidere, New Jersey, from 9:00 a.m. to 5:00 p.m. on all days except Sundays and holidays.

**Legal Notice**  
The Board of Education of the Town of Belvidere, Essex County, New Jersey, is hereby notified that the records of the Board of Education of the Town of Belvidere, Essex County, New Jersey, for the year 1956, are now open for public inspection at the Board of Education, 100 North Street, Belvidere, New Jersey, from 9:00 a.m. to 5:00 p.m. on all days except Sundays and holidays.

**VITA M. DUVA**  
Mrs. Vita Maria (Pennebaker) Duvay, of 76 Harrison St., died at Clara Mass Hospital Tuesday, Oct. 1. She was born in Italy. She is survived by her husband, John, and seven children: James, of Cedar Grove, Joseph, of Newark; Mrs. Bertha Zucca, of Newark; Mrs. Josephine Duvay, of Newark; Mrs. Josephine Duvay, of Newark; Mrs. Josephine Duvay, of Newark; Mrs. Josephine Duvay, of Newark; Mrs. Josephine Duvay, of Newark.

**BERTHA COVE**  
Mrs. Bertha Cove, of 35 Oak St., widow of the late John Cove, died at her home Tuesday, Oct. 1. Born in Newark, Mrs. Cove had been a Belleville resident for 16 years.

**JOSEPH W. HASTER**  
Funeral services for Joseph W. Haster, of 90 Melrose St., will be held Saturday, Oct. 5, at 10 A.M. from the Cole Funeral Home, 145 Roselle Ave., Newark. A Solemn High Mass of Requiem will be offered at 8 A.M. at St. Mary's R. C. Church, Nutley.

**JAMES A. HITCHER**  
Funeral services for James A. Hitcher, of 4 Elmwood Ave., will be held Saturday, Oct. 5, at 10 A.M. from the Cole Funeral Home, 145 Roselle Ave., Newark.

**Mary Raccanelli**, and a brother, Louis Pennabere of Belleville. Services will be held Saturday, Oct. 5, from the Zorro Funeral Home, 145 Harrison St., Newark. A Solemn High Mass of Requiem will be offered for the repose of her soul at St. Anthony's R. C. Church at 9:30. The Rev. T. Manegassi will officiate and burial will be made in Holy Sepulcher Cemetery.

**BERTHA COVE**  
Mrs. Bertha Cove, of 35 Oak St., widow of the late John Cove, died at her home Tuesday, Oct. 1. Born in Newark, Mrs. Cove had been a Belleville resident for 16 years.

**JOSEPH W. HASTER**  
Funeral services for Joseph W. Haster, of 90 Melrose St., will be held Saturday, Oct. 5, at 10 A.M. from the Cole Funeral Home, 145 Roselle Ave., Newark. A Solemn High Mass of Requiem will be offered at 8 A.M. at St. Mary's R. C. Church, Nutley.

**JAMES A. HITCHER**  
Funeral services for James A. Hitcher, of 4 Elmwood Ave., will be held Saturday, Oct. 5, at 10 A.M. from the Cole Funeral Home, 145 Roselle Ave., Newark.

**Loses Wallet With \$400**  
The loss of a wallet containing \$400 and important papers was reported to the police Tuesday by Mrs. Margaret Bergmann of 80 Columbus Ave. Mrs. Bergmann explained that she had withdrawn the money from the bank Monday, planning to pay bills and taxes Tuesday. While enroute to her destination Tuesday, she stopped at a service station, then drove off. Several minutes later, she discovered her loss and returned to the station, where an attendant informed her that he had received a passerby pick up something from the ground and walk away.

**To Exhibit Paintings**  
The fourth annual exhibition of paintings by students of Nancy Crisp will be held at Wesley Methodist Church, Washington Avenue and Academy Street, Belleville, Saturday afternoon, Oct. 5, from 2 to 6.

**To Exhibit Paintings**  
The fourth annual exhibition of paintings by students of Nancy Crisp will be held at Wesley Methodist Church, Washington Avenue and Academy Street, Belleville, Saturday afternoon, Oct. 5, from 2 to 6.

**To Exhibit Paintings**  
The fourth annual exhibition of paintings by students of Nancy Crisp will be held at Wesley Methodist Church, Washington Avenue and Academy Street, Belleville, Saturday afternoon, Oct. 5, from 2 to 6.

**To Exhibit Paintings**  
The fourth annual exhibition of paintings by students of Nancy Crisp will be held at Wesley Methodist Church, Washington Avenue and Academy Street, Belleville, Saturday afternoon, Oct. 5, from 2 to 6.

**To Exhibit Paintings**  
The fourth annual exhibition of paintings by students of Nancy Crisp will be held at Wesley Methodist Church, Washington Avenue and Academy Street, Belleville, Saturday afternoon, Oct. 5, from 2 to 6.

**To Exhibit Paintings**  
The fourth annual exhibition of paintings by students of Nancy Crisp will be held at Wesley Methodist Church, Washington Avenue and Academy Street, Belleville, Saturday afternoon, Oct. 5, from 2 to 6.

**To Exhibit Paintings**  
The fourth annual exhibition of paintings by students of Nancy Crisp will be held at Wesley Methodist Church, Washington Avenue and Academy Street, Belleville, Saturday afternoon, Oct. 5, from 2 to 6.

**To Exhibit Paintings**  
The fourth annual exhibition of paintings by students of Nancy Crisp will be held at Wesley Methodist Church, Washington Avenue and Academy Street, Belleville, Saturday afternoon, Oct. 5, from 2 to 6.

**To Exhibit Paintings**  
The fourth annual exhibition of paintings by students of Nancy Crisp will be held at Wesley Methodist Church, Washington Avenue and Academy Street, Belleville, Saturday afternoon, Oct. 5, from 2 to 6.

**To Exhibit Paintings**  
The fourth annual exhibition of paintings by students of Nancy Crisp will be held at Wesley Methodist Church, Washington Avenue and Academy Street, Belleville, Saturday afternoon, Oct. 5, from 2 to 6.

**To Exhibit Paintings**  
The fourth annual exhibition of paintings by students of Nancy Crisp will be held at Wesley Methodist Church, Washington Avenue and Academy Street, Belleville, Saturday afternoon, Oct. 5, from 2 to 6.

**To Exhibit Paintings**  
The fourth annual exhibition of paintings by students of Nancy Crisp will be held at Wesley Methodist Church, Washington Avenue and Academy Street, Belleville, Saturday afternoon, Oct. 5, from 2 to 6.

**To Exhibit Paintings**  
The fourth annual exhibition of paintings by students of Nancy Crisp will be held at Wesley Methodist Church, Washington Avenue and Academy Street, Belleville, Saturday afternoon, Oct. 5, from 2 to 6.

**To Exhibit Paintings**  
The fourth annual exhibition of paintings by students of Nancy Crisp will be held at Wesley Methodist Church, Washington Avenue and Academy Street, Belleville, Saturday afternoon, Oct. 5, from 2 to 6.

**To Exhibit Paintings**  
The fourth annual exhibition of paintings by students of Nancy Crisp will be held at Wesley Methodist Church, Washington Avenue and Academy Street, Belleville, Saturday afternoon, Oct. 5, from 2 to 6.

**To Exhibit Paintings**  
The fourth annual exhibition of paintings by students of Nancy Crisp will be held at Wesley Methodist Church, Washington Avenue and Academy Street, Belleville, Saturday afternoon, Oct. 5, from 2 to 6.

**FREE GLASSWARE With Every \$7.50 Purchase**

**Bull's Eye Boys**

**PLUS 50% GREEN STAMPS!**

**FRESH - LEAN**

**Pork Loin**

**RIB PORTION LOIN PORTION RIB HALF**

**lb. 33c lb. 43c lb. 49c**

**LOIN HALF 59c**

**CENTER CUT CHOPS AND ROAST 79c**

Lean, fresh pork is easy to digest, rich in vitamin B. Tasty, tender pork with sauerkraut and apple sauce makes a delicious, economical meal. Serve a pork loin this week-end at these special low prices.

**ROUND ROAST OF BEEF**

**OR ROUND STEAK LANCASTER BRAND "U.S. CHOICE" lb. 89c**

Solid Meat! Boneless! You'll agree here's the finest beef money can buy! Got't guarantee "U.S. Choice" so tender & juicy!

**SHRIMP**

**FANCY lb. 69c 5 lb. box \$3.39**

NONE SOLD TO DEALERS. WE RESERVE THE RIGHT TO LIMIT QUANTITIES.

**Compare These Acme Prices On Top-Quality Groceries!**

**Niblets Corn** FRESH CORN 12 oz. 29c  
OFF THE COB 2 cans

**Sugar Crisp** POST'S CEREAL 9 oz. 45c  
2 pkgs.

**Pineapple Juice** DOLE 46 oz. 49c  
2 cans

**Savarin Coffee** 16 oz. can 91c

**Apple Sauce** IDEAL BRAND 4 16 oz. 49c  
cans

You save up to 17c on 4 cans over most other brands.

**Instant Dry Milk** FARMDALE 3 lb. can 79c

Each can makes 15 quarts! You save up to 25c over most other brands.

**Acme FARM FRESH PRODUCE**

**FANCY - RED**

**APPLES** 4 lb. bag 25c

Excellent for eating and cooking. Firm, juicy, fine flavor.

**Celery** FANCY CALIFORNIA 2 extra large stalks 29c

Tender, crunchy, extra large stalks

**Lettuce** ICEBERG CALIFORNIA large head 19c

**FROZEN FOOD SPECIAL!**

**BEEF STEAK** LANCASTER Brand 3 8 oz. 1.00  
BUTTERED 2 pkgs.

**BROCCOLI** BIRDS EYE 2 10 oz. 39c  
SPEARS 2 pkgs.

**ACME BAKERY SPECIALS!**

**French Apple Pie** VIRGINIA LEE large size 49c

Serve apple pie with Ideal Ice Cream!

**Choc. Chiffon Cake** SPECIAL! VIRGINIA LEE each 49c

**ACME DAIRY FAVORITES**

**Swiss Cheese** Domestic - Sliced Grade A - Rindless lb. 49c

All advertised prices effective through Saturday, October 5th.



# GUARD AGAINST FIRE

*National Fire Prevention Week*

October 6 Through October 12

*Kiss 'em goodbye, Mom...*



*...you may never see them again!*

**Unattended children** the youngest ones especially, would be helpless if fire should strike while you're away!

Whether left alone for many hours or for only a few minutes, children can start a fire in so many innocent ways.

Make sure your children are never left unattended. Equally important, teach them to be conscious of the hazards of fire.

Fire danger is something your whole family should recognize and work as a team to prevent.

Some important rules are: Don't smoke in bed—Keep matches away from young children—Don't overload your wiring system—Check electric cords for fraying—Clean out junk from your attic and basement—Be careful with lighted cigarettes—Learn to use your oil stove correctly—Don't use flammable cleaning fluids—Don't use ordinary extension cords on heaters or irons! Most of all, don't forget what Sparky, the fire-dog says:



**"DONT GIVE FIRE A PLACE TO START!"**

**THE LIFE YOU SAVE MAY BE YOURS**

**Help Us To Make This A Fire Safe Year**

HARRY T. WHITE  
FIRE CHIEF

HARRY J. SULLIVAN  
Director of Public Safety

**IN CASE OF FIRE  
CALL PL. 9-1500**

We beg your cooperation in observing  
**FIRE PREVENTION WEEK 52 WEEKS** in  
the year. We will help you in inspecting  
your home for fire and other hazards.  
Call PL 9-1500 and a competent,  
trained fireman will be at your service.





TO THANK YOU FOR YOUR PATRONAGE, WE ANNOUNCE A GIGANTIC MONTH-LONG EVENT!

# A&P's 98th Anniversary Sale

"SUPER-RIGHT" QUALITY

## RIBS of BEEF

REGULAR STYLE		OVEN-READY	
10 INCH CUT	7 INCH CUT	10 INCH CUT	7 INCH CUT
51 <sup>c</sup> lb.	57 <sup>c</sup> lb.	61 <sup>c</sup> lb.	67 <sup>c</sup> lb.



Come See . . . You'll Save at A&P!

"SUPER-RIGHT" QUALITY

## SMOKED HAM

Shank Portion	Butt Portion	Whole or Either Half - Full Cut
29 <sup>c</sup> lb.	39 <sup>c</sup> lb.	49 <sup>c</sup> lb.

"Super-Right" Quality Ready-to-Eat Hams

Shank Portion 33<sup>c</sup> lb. Butt Portion 43<sup>c</sup> lb. Whole or Either Half - Full Cut 51<sup>c</sup> lb.

## SLICED BACON LINK SAUSAGE

Super-Right Brand

1 lb. pkg. 65<sup>c</sup>

## HAM SLICES

SMOKED

"Super-Right" Quality - Center Cuts

1 lb. 89<sup>c</sup>

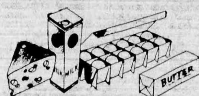
Swift's Brookfield

1 lb. pkg. 79<sup>c</sup>

## FLOUNDER FILLET

FRESH 1 lb. 65<sup>c</sup>

### DAIRY VALUES!



Fancy Domestic - Sliced or Piece  
**MUENSTER CHEESE** 1 lb. 45<sup>c</sup>

Fancy Domestic  
**ROMANO CHEESE** 1 lb. 89<sup>c</sup>

American, Swiss, Pimento - Process Cheese  
**MEL-O-BIT SLICES** 6 oz. pkg. 23<sup>c</sup>

Fancy Domestic - Wisconsin  
**SLICED SWISS CHEESE** 1 lb. 55<sup>c</sup>

Borden's  
**LIEDERKRANZ CHEESE** 4 oz. pkg. 39<sup>c</sup>

Breakstone - All Varieties  
**COTTAGE CHEESE** 2 8 oz. cups 37<sup>c</sup>

### Frozen Food Values!

Birds Eye Strawberries Sliced 2 10 oz. pgs. 43<sup>c</sup>

Birds Eye Mixed Vegetables 2 10 oz. pgs. 39<sup>c</sup>

Birds Eye Spinach Chopped or Leaf 2 10 oz. pgs. 35<sup>c</sup>

Swanson's Chicken Breasts 1 lb. 87<sup>c</sup>

Ocean Perch or Cod Fillet Cep'n John's 15 oz. pkg. 33<sup>c</sup>

Red L Fried Scallops 7 oz. pkg. 47<sup>c</sup>

### More Grocery Values!

Lanolized  
**VANITY FAIR** Facial Tissues 2 pkgs. of 400 45<sup>c</sup>

Hawaiian Punch Pure fruit flavors 46 oz. can 35<sup>c</sup>

Greenwoods Red Cabbage 2 16 oz. cns. 35<sup>c</sup>

Star-Kist Tuna Fish Chunk style 4 1/2 oz. cans 31<sup>c</sup>

River Brand White Rice 12 oz. pkg. 12<sup>c</sup>

Kitchen Charm Waxed Paper 100 ft. roll 19<sup>c</sup>

20 Mule Team Borax 16 oz. pkg. 20<sup>c</sup>

Borax Powdered hand soap 8 oz. can 19<sup>c</sup>

C-N Disinfectant 4 oz. bottle 23<sup>c</sup>

### 89c SALE! Mix'em . . . Match'em! YOUR CHOICE

Mix 'em . . . match 'em - within each group. Lesser quantities sold at our low regular prices. Stock your pantry now!

#### BROADCAST HASH

SAVE 16<sup>c</sup>

#### MANHATTAN

DILL PICKLES

SAVE 10<sup>c</sup>

#### TIDE DETERGENT

SAVE 7<sup>c</sup>

#### WHITE MEAT TUNA

A&P BRAND Solid Pack

SAVE 4<sup>c</sup>

#### HERSHEY'S SYRUP

SAVE 16<sup>c</sup>

#### DEL MONTE

STEWED TOMATOES

SAVE 14<sup>c</sup>

#### RONZONI

SPAGHETTI or SPAGHETTINI

SAVE 14<sup>c</sup>

#### LIBBY'S SWEET PEAS

SAVE 9<sup>c</sup>

#### BIRDS EYE

CUT CORN FROZEN

SAVE 16<sup>c</sup>

#### GREEN BEANS

FROZEN

SAVE 16<sup>c</sup>

#### DOLE'S

PINEAPPLE-GRAPEFRUIT JUICE FROZEN

SAVE 10<sup>c</sup>

#### MINUTE MAID

GRAPEFRUIT JUICE FROZEN

SAVE 4<sup>c</sup>

#### SPAGHETTI

FRANCO-AMERICAN PREPARED

SAVE 16<sup>c</sup>

#### BIRDS EYE

WHIPPED POTATOES FROZEN

SAVE 13<sup>c</sup>

#### CAMPBELL'S

PORK and BEANS

SAVE 6<sup>c</sup>

#### HUDSON NAPKINS

SAVE 6<sup>c</sup>

#### Your Choice

3 FOR 89<sup>c</sup>

89<sup>c</sup>

89<sup>c</sup>

89<sup>c</sup>

89<sup>c</sup>

89<sup>c</sup>

89<sup>c</sup>

89<sup>c</sup>

89<sup>c</sup>

89<sup>c</sup>

89<sup>c</sup>

89<sup>c</sup>

89<sup>c</sup>

89<sup>c</sup>

89<sup>c</sup>

89<sup>c</sup>

89<sup>c</sup>

89<sup>c</sup>

89<sup>c</sup>

89<sup>c</sup>

89<sup>c</sup>

89<sup>c</sup>

89<sup>c</sup>

89<sup>c</sup>

89<sup>c</sup>

89<sup>c</sup>

89<sup>c</sup>

89<sup>c</sup>

89<sup>c</sup>

89<sup>c</sup>

89<sup>c</sup>

89<sup>c</sup>

89<sup>c</sup>

89<sup>c</sup>

89<sup>c</sup>



All Purpose - McIntosh

**APPLES** ONE PRICE ONLY! 3 lb. 23<sup>c</sup>

Regala Brand - Washed

**SPINACH** 10 oz. 19<sup>c</sup> 20 oz. 33<sup>c</sup>

Large Size - Western

**CANTALOUPE** ONE PRICE ONLY! each 23<sup>c</sup>

Golden Ring

**BANANAS** ONE PRICE ONLY! 2 lb. 29<sup>c</sup>

Fresh - Fine for Slicing

**TOMATOES** ONE PRICE ONLY! carton 19<sup>c</sup>

From Western Farms - Iceberg

**LETTUCE** ONE PRICE ONLY! large head 17<sup>c</sup>

Fresh - From Western Farms

**CARROTS** ONE PRICE ONLY! 1 lb. 15<sup>c</sup>

From Nearby Farms - Green

**NEW CABBAGE** ONE PRICE ONLY! 1 lb. 4<sup>c</sup>

Jane Parker

**CHERRY**

**PIE** 45<sup>c</sup>

Jane Parker - Cinnamon

Breakfast Rolls 1 pkg. of 9 for 33<sup>c</sup>

Jane Parker

Cheese Cake Creamy smoother each 45<sup>c</sup>



Gerber's Baby Food

Strained Chopped

10 jars 99<sup>c</sup> 6 jars 89<sup>c</sup>

Swift's Meats

for Babies

2 jars 45<sup>c</sup>

#### Crisco

Pure vegetable shortening

1 lb. 35<sup>c</sup> 3 lb. 95<sup>c</sup>

#### Bosco

Milk amplifier

12 oz. 35<sup>c</sup> 24 oz. 59<sup>c</sup>

#### Sweet Gherkins

Haine brand

7 1/2 oz. 31<sup>c</sup>

#### Boned Chicken

Richardson & Robbins

6 oz. 60<sup>c</sup>

#### Orange Marmalade

Cross & Blackwell

16 oz. 29<sup>c</sup>

#### Karo Syrup

Blue Label

24 oz. 25<sup>c</sup>

#### Kretschmer

Wheat Germ

12 oz. 31<sup>c</sup>

#### China Beauty

Chow Mein Dinner

Chicken Triple pack 59<sup>c</sup>

#### Statler

Paper Towels

300 sheet size 35<sup>c</sup>

#### Rinsol Blue

For the family wash and dishes

large 32<sup>c</sup> giant 77<sup>c</sup>

#### Dash Detergent

For automatic washers

large 39<sup>c</sup>



THE GREAT ATLANTIC & PACIFIC TEA COMPANY

Prices effective thru Saturday, October 5th in Super Markets and Self-Service stores only.

#### Oakite

For cleaning woodwork, walls and tile

2 10 oz. 35<sup>c</sup> 24 oz. 47<sup>c</sup>

#### Comet Cleanser

For all cleaning uses

2 14 oz. 29<sup>c</sup>

#### Swift's

Pard Dog Food

16 oz. cans 46<sup>c</sup>

Air Conditioned - Shop Comfortably At Your A & P Super Market

Store Hours: Open Tuesday - Thursday 'till 9 p.m. Fridays 'till 10 p.m. Large, Free, Parking Area

333 Franklin Avenue, Belleville, N. J.