

MONARD  
1937







R  
N.Y.  
371.8  
Belleville



For Reference

Not to be taken

from this library

BELLEVILLE PUBLIC LIBRARY





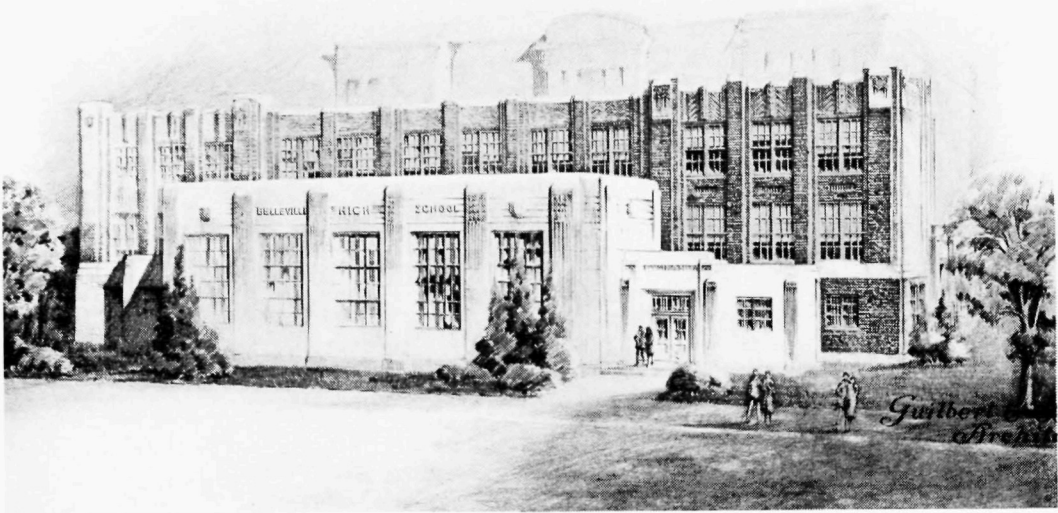












THE 1937 MONAD

# THE MONAD FOR NINETEEN






SOPHIE MADLER  
Editor-in-Chief

SHIRLEY SCHELLIN  
Business Manager

# HUNDRED AND THIRTY-SEVEN



---

PUBLISHED BY

THE SENIOR CLASS

---

BELLEVILLE HIGH SCHOOL

BELLEVILLE, NEW JERSEY

## FOREWORD

Our stay here is drawing to its close. This past school year has been a happy and interesting one. We have continued the old traditions in scholarship and play; we have added a beautiful building to our school; we have seen a further expansion in extra-curricular groups. Through the years, school has become more and more important to us, and this last year has been the most enjoyable of all because of the friendships we have made and the consideration and loyalty of our teachers. We offer this, our MONAD, hoping it will help recapture a little of the spirit that has pervaded all we have done.



HUGH D. KITTLE

#### DEDICATION

To Mr. Kittle, who through his diligence and constant devotion to his work has taught and inspired us during this year, we gratefully dedicate this book.





## BOARD OF EDUCATION

JOHN P. DAILEY, *President*

CHARLES GEBHARDT

HERBERT SCHMUTZ

WALTER GILBY

MRS. PORTER SHELDON

WAYNE R. PARMER

*Supervising Principal*

RUEL E. DANIELS

*District Clerk and Business Manager*

MONAD

1  
9  
3  
7



ADMINISTRATION



### ADMINISTRATION

HUGH D. KITTLE, B.S. of M.E., Bucknell University  
 MINNIE KAYHART, Trenton State Teachers College  
 MARJORIE HASLAM, Montclair State Teachers College  
 FLORA LONGCORE, Belleville High School

*Principal*  
*Vice-Principal*  
*Secretary to the Principal*  
*Clerk*

### FACULTY

MYRLE ALLEN, Ph.B., University of Wisconsin  
 LINNEA ANDREE, A.B., Wilson College  
 PAUL BRENNAN, B.C.S., Rider College  
 REGINA BRENNAN, A.B., College of St. Elizabeth  
 HELEN CARLS, A.B., Syracuse University  
 WILLIAM CHAPMAN, Ph.B., Muhlenberg College  
 NORMAN COTTER, M.A., Columbia University  
 KENNETH COULTER, M.A., Columbia University  
 ALVIN DAVIS, B.P.E., Panzer College  
 P. WEBSTER DIEHL, M.Ed., Pennsylvania State College  
 HARRIET DOUGLAS, Homeopathic Hospital  
 MARY DYE, M.A., Columbia University  
 ROBERT FAGAN, M.A., St. Lawrence University  
 DAVID FULCOMER, M.A., New York University  
 EDWARD GLASPEY, M.A., Tufts College  
 ALMA GRAY, Plattsburg State Normal School  
 WALTER HACK, M.A., State University of Iowa  
 JOHN HEFFERMAN, M.A., University of Pittsburgh  
 SHELDON HENRY, Mechanics Institute  
 HELEN HOLLBERG, Litt.B., New Jersey College for Women  
 ESTHER JENNINGS, M.A., Columbia University  
 BREWSTER JONES, M.A., Wesleyan University

*English*  
*Commercial*  
*Commercial*  
*English*  
*English*  
*Business Practice, Science*  
*Science*  
*American History*  
*Physical Education*  
*Art*  
*Nurse*  
*French*  
*Chemistry*  
*Commercial*  
*Head of English Department*  
*Stenography*  
*General Science*  
*Mathematics*  
*Industrial Arts*  
*German*  
*Mathematics*  
*English*





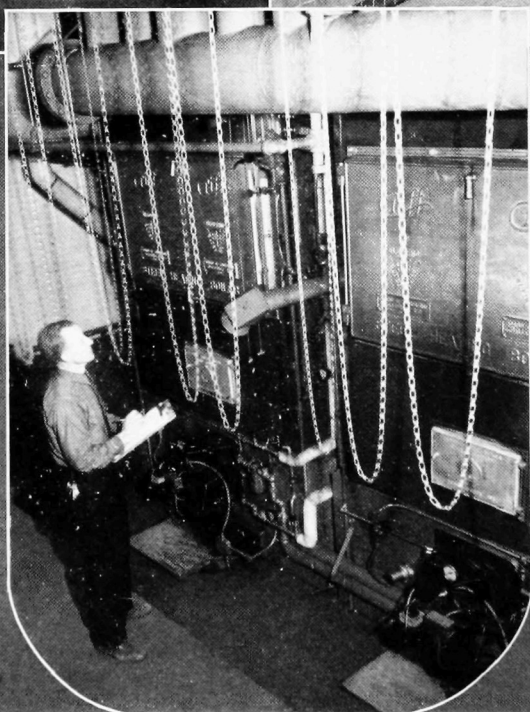
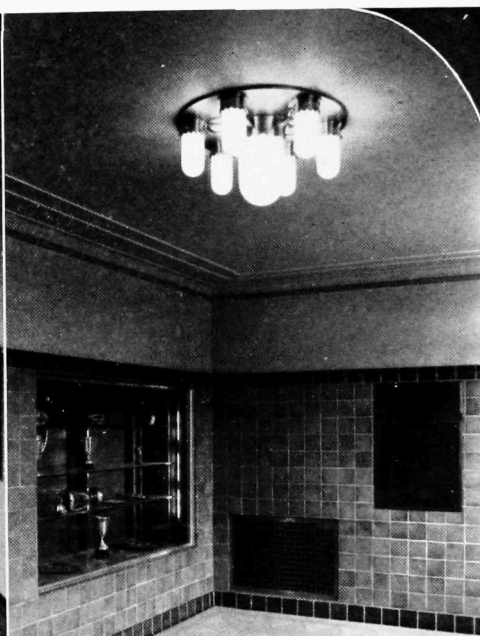
PAUL JONES, B.S. of Ed., Juniata College  
 WILLIAM JUNDA, B.C.S., Rider College  
 ELIZABETH KELLEHER, M.A., Columbia University  
 ESTHER KIETZMAN, A.B., Kansas University  
 ETHEL KNOX, Geneseo Normal School  
 MARGARET LEAHY, Sargent School  
 ALBERT K. MCBRIDE, E.S., Mount Union College

*Head of Physical Education Department*

BLANCHE McDONALD, M.A., Columbia University  
 OLGA NELSON, B.S., Columbia University  
 PENELOPE PATTISON, B.A., Rollins College  
 FRIEDA REED, A.B., Moravian College for Women  
 GEORGE REINKE, M.A., University of Pennsylvania  
 ELSIE SANDFORD, B.A., Syracuse University  
 HERSCHEL SAUNDERS, B.S., University of Michigan  
 DOROTHY SHANER, B.S., Pennsylvania State College  
 HORACE SHEPPARD, A.B., Bucknell University  
 FRANK SMITH, B.S., Dartmouth College  
 ANNE SNEDEKER, M.A., New York University  
 FRANK SPOTTS, Ph.B., Muhlenberg College  
 GRACE STRICKLAND, B.S. in L.S., Drexel Library School  
 ALBERT TARRANT, B.A., Hope College  
 OLEITA THORNE, B.S., Elmira College  
 ANNA UNDERWOOD, B.A., Barnard College  
 ALICE WALTERS, Eastman School of Music  
 THELMA WEIDMAN, M.A., New York University  
 MURRAY WILCOX, M.A., Cornell University  
 WILHO WINIKA, B.S. in Ed., Rutgers University  
 LYDIA WRIGHT, Sargent School

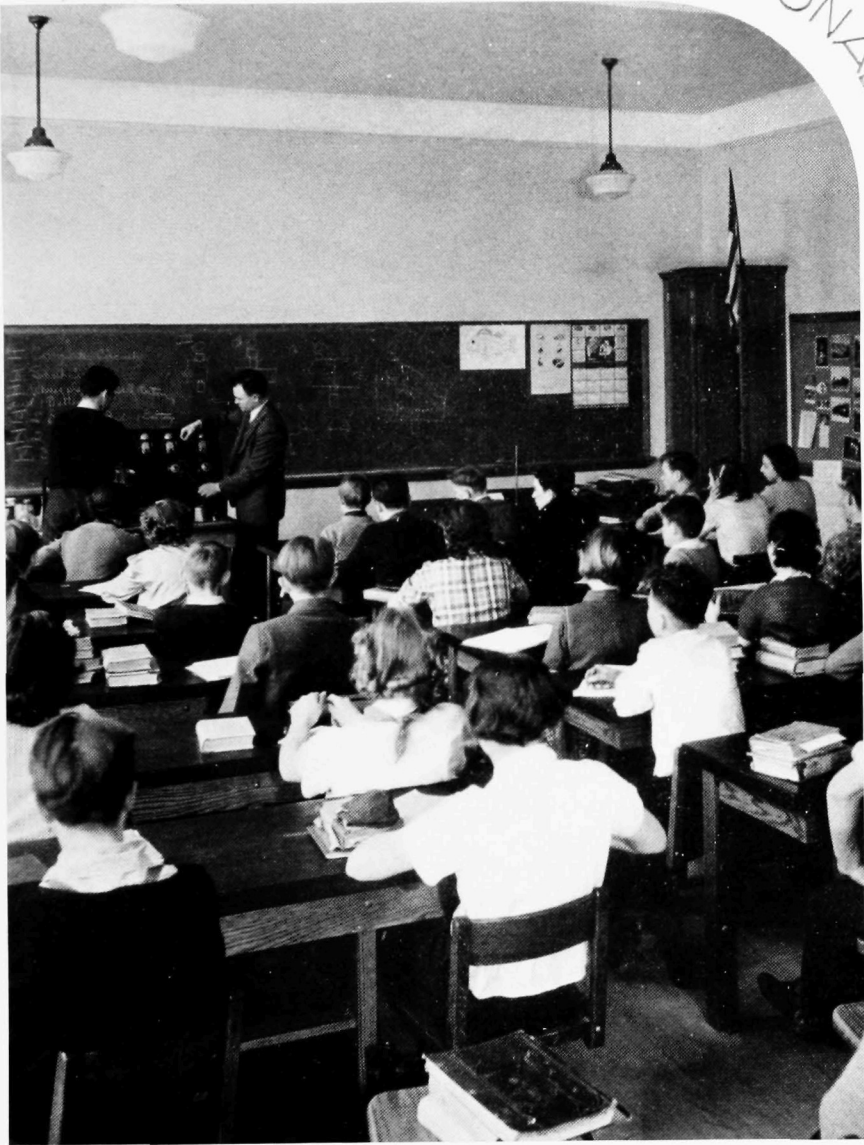
*History*  
*Commercial*  
*English*  
*Mathematics*  
*Latin, German*  
*Physical Education*

*English, History*  
*History*  
*French*  
*Dramatics, English*  
*Latin*  
*History*  
*Mechanical Drawing*  
*Cafeteria*  
*Commercial*  
*History, General Science*  
*Stenography, Typewriting*  
*Biology, Physics*  
*Library*  
*English, French*  
*Biology, General Science*  
*English*  
*Music*  
*English, History*  
*Physics*  
*Physical Education*  
*Physical Education*



B  
H  
S

I  
9  
3  
7



MONAD

1  
9  
3  
7

CLASSES





## SENIOR CLASS ADVISORY COUNCIL

KENNETH C. COULTER, *General Chairman*

ROBERT C. FAGAN  
ALMA GRAY  
PAUL JONES

WILLIAM JUNDA  
ELSIE SANDFORD  
FRANK SPOTTS



## SENIOR SENATE

### Officers

FRANK CARRAGHER  
HARVEY NIELSEN  
BETTY GIBSON  
FRANK BROWN

*President*  
*Vice-President*  
*Secretary*  
*Treasurer*

### Representatives

302  
Phyllis Ames  
Leonard Aiello  
  
303  
Winifred Fitzsimmons  
Marion Flanagan

304  
Betty Freitag  
Nettie Haber

307  
Sophie Madler  
Alice Neville

308  
Audrey Ural  
Harry White

309  
Dorothy Codner  
Elmer Gibbs

310  
Joan Rummel  
Charles Robinson

ANNA ADAMWICZ

*distracting — dimpled  
— demonstrative*

Sophomore Hop 2; Class Committees 2, 3, 4; Press Club 2; Dramatic Club 1; German Club 2; Art Club 1, 3, 4.

JEANNETTE M. ALFKE

*heartly — honest  
— humorous*

Junior Prom 3; Sophomore Hop 2; Class Committees 1, 2, 3, 4; German Club 2; Art Club 1, 2, 3; Glee Club 1; Poster Contest Winner 2, 3; Secretarial Club 4.



HELENE AINSWORTH

*neat — nice — nonchalant*

Debate Club 1, 2; Latin Club 1, 2; Glee Club 1.

PHYLLIS AMES

*sprightly — smooth  
— spontaneous*

Class Executive Committee 3, 4; Junior Prom 3; Sophomore Hop 2; Class Committees 1, 2, 3, 4; Dramatic Club 2; Latin Club 1; French Club 2, 3; Press Club 2.



MONAD

---

LEONARD AIELLO

*outspoken — obliging  
— original*

Class Treasurer 3; Class Executive Committee 3, 4; Junior Prom 3; Sophomore Hop 2; Class Committees 3, 4; Student Council 1; Football 4; Basketball 4; Baseball 3; Secretarial Club 4; French Club 2, 3; Glee Club 1.



JOHN ANDREWS

*wholesome — warm  
— winning*

Class Executive Committee 3; Basketball 3; Baseball 3; Art Club 1; German Club 3.

ANTHONY AMATO

*polite — proficient  
— patient*

Baseball 3, 4; Latin Club 1; Orchestra 1.



NICK FRED ALTIERI

*willing — wise — wary*

Football 3, 4; Basketball 3; Baseball 4; Track 3, 4.

ELINOR E. ARMOUR

*girlish — guileless  
— gigglish*

Secretarial Club 4; Or-  
chestra 2; Band 1, 2.



LENA AROMANDO

*careful — cheery  
— calm*



EVELYN ARMSTRONG

*red-headed — real  
— refreshing*

Dramatic Club 1; Latin  
Club 1, 2, 3; German Club  
2, 3; Piano Club 1.

DOROTHY BELANSKE

*easy — engaging — elusive*

Sophomore Hop 2; Class  
Committees 4; Cheerleader  
3, 4; Dramatic Club 1; Latin  
Club 1; German Club 2.

---

---

1937

FRANK ANDROSIGLIO

*musical — modest  
— meritorious*

Orchestra 1, 2, 3, 4.



EDWARD BECK

*studious — serious — steady*  
Orchestra 1.

BENNY BOCCHINO

*unselfish — unusual  
— unconcerned*



NICHOLAS BISSELL

*resolute — rare — reserved*  
French Club 2, 3.



DOROTHY ENID BENN

*regal — remote — radiant*

Junior Prom 3; Sophomore Hop 2; Class Committees 2, 3, 4; Student Banker 3; Basketball 4; Tennis; Fret Club 1; Dramatic Club 2; Secretarial Club 4; French Club 3.

MILDRED  
BIEBELBERG

*bright — brisk — busy*

Senior Monad; Junior Prom 3; Class Committees 4; Student Banker 1, 2; Debate Club 1, 2, 3, 4; Secretarial Club 4; French Club 3.



FRANCES BERKOWITZ

*stately — smooth  
— stimulating*

Senior Monad 4; Junior Prom 3; Class Committees 3, 4; Student Council 2; Student Banker 1, 2, 3, 4; Piano Club 1; Debate Club 1, 2, 3, Secretary 4; Secretarial Club 4; French Club 2.

RITA BITZ

*sunny — scintillating — sure*

Junior Prom 3; Class Committees 3, 4; Basketball 4; Secretarial Club 4.

MONAD

---

ALBERT BONIFACE

*assertive — agreeable  
— athletic*

Football 3, 4; Baseball 3, 4.

VICTOR R.  
BRUEGMAN

*naïve — nimble — nice*  
Basketball 3, 4; Track 3, 4; Band 1.



FRANK EDWARD  
BROWN

*sophisticated — suave  
— sharp*

Class Treasurer 4; Class Executive Committee 4; "Tweedles"; Junior Prom 3; Class Committees 3, 4; Student Patrol 1; Basketball 3, 4; Track 3, 4; Secretarial Club 4; German Club 2.

ANTHONY BURDE

*unspoiled — unassuming  
— unconcerned*

Latin Club 1, 2; French Club 2, 3; Band 1, 2, 3.

PATRICIA JEAN BOYD

*piquant — pert — pleasing*

Junior Prom 3; Secretarial Club 4; German Club 2; Glee Club 2.



ROSE BRINDISI

*undaunted — unhesitating  
— unconcerned*



RUTH BRIGHT

*obliging — observant  
— orderly*

Senior Monad; Junior Prom 3; Class Committees 4; Student Banker 1, 3, 4; Debate Club 1; German Club 2.

THERESA BROLO

*graceful — girlish  
— guileless*

---

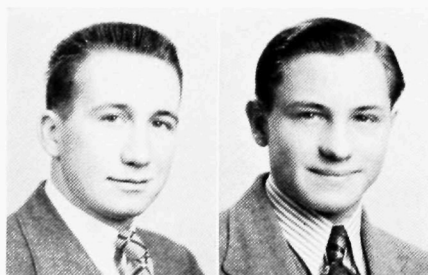
---

1937

FRANK CARRAGHER

*paradoxical — popular  
— proficient*

Class President 3, 4; Junior Prom 3; Class Committees 2, 3, 4; Student Council 1; Football Manager 2, 3; Basketball 1, 2, Captain 3; Baseball 1; Varsity Club 1.



ANTHONY CASALE

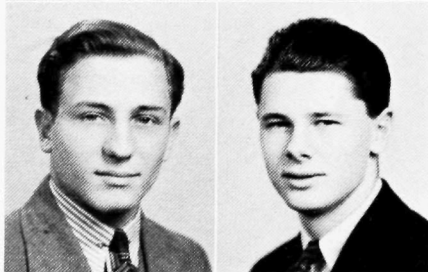
*ingenuous — impish  
— invaluable*

Sophomore Hop 2; Student Patrol 1; Basketball 4; Baseball 4; Gym Club 2.

FRANK CHAMBERS

*exasperating — entertaining  
— eager*

Swimming 2; Band 1, 2, 3; Orchestra 1, 2.



CAESAR CASALE

*debonair — different  
— demonstrative*

Class Executive Committee 3; Junior Prom 3; Football 4; Baseball 3, 4.

### MARIE BUTLER

*gentle — girlish — genuine*  
 Sophomore Hop 2; Class  
 Committees 3; Student  
 Banker 4.



### DOROTHY CODNER

*shy — sweet — sunny*  
 Class Executive Commit-  
 tees 3, 4; Junior Prom 3;  
 Sophomore Hop 2; Class  
 Committees 4; Student  
 Banker 2, 3; Secretarial  
 Club 4.



### LORRAINE CARPENTER

*nimble — noisy — natural*  
 Class Executive Commit-  
 tee 3; Class Committee 4;  
 Student Council 1, 2; Stu-  
 dent Banker 1, 2, 3, 4; Band  
 2, 3; Orchestra 2, 3.



### EVELYN CONKLIN

*timid — tacit — tenacious*  
 Class Committees 4.



## MONAD

### R. H. COLE, JR.

*contemplative — composed*  
*— creditable*

Student Banker 1; Base-  
 ball 3, 4; Latin Club 1, 2;  
 French Club 2; Bronze-  
 men's Club 1, 2.

### ROBERT COPELAND

*hearty — happy — hardy*  
 Junior Prom 3; Sopho-  
 more Hop 2; Student Bank-  
 er 2; Band 1, 2, 3, 4; Essex  
 County Band 3; All-State  
 Band 2; Orchestra 1, 2, 3, 4;  
 French Club 3; Rifle Club  
 4; International High  
 School Artists' Society 3, 4.



### JAMES CONNELL

*profound — practical*  
*— plastic*  
 French Club 2.

### JOSEPH COSTANTINO

*punctual — pensive*  
*— pleasant*  
 French Club 2.

PATRICIA CECELIA  
CONNOLLY

*pert — peppy — playful*  
Secretarial Club 4; French  
Club 2.



LILLIAN L. COOK  
*serene — shy — silent*  
Secretarial Club 4.

AGNES COPPOLA  
*patient — pleasing — petite*  
Student Council 2; Stu-  
dent Banker 2; Secretarial  
Club 4.



JOSEPHINE CORDI  
*shy — sensitive — seemly*

---

---

1937

JOSEPH MARTIN  
COYNE

*peppy — perplexing*  
*— playful*  
Sophomore Hop 2; Class  
Committees 4.



JOHN C. CRANE  
*witty — wily — waggish*  
Sophomore Hop 2; Stu-  
dent Banker 3; Basketball 4.

PHILIP D'ANGELO

*pleasant — prudent*  
*— pacific*  
Student Banker 1; Or-  
chestra 1.



CHESTER DAVIS  
*gentlemanly — good-*  
*natured — genuine*  
Class Committees 4; Ger-  
man Club 2, 3.

IRENE COULTHER  
*serious — studious — stable*  
 French Club 2.



M. ELIZABETH  
 CRONSHEY  
*impetuous — interesting*  
*— incomparable*  
 Debate Club 4.

MARGARET  
 DE BARTOLA  
*elusive — elastic — easy*



NORMA FAY  
 DE CAPUA  
*business-like — bland*  
*— brief*

## MONAD

---

JOHN J. DECK, JR.  
*sincere — smiling — steady*  
 Class Committees 3; Student Banker 2; Secretarial Club; Treasurer 4; German Club 2.



VALENTINE DE LUCA  
*chubby — comical*  
*— compact*

EDWARD DOYLE  
*undisturbed — unassuming*  
*— unhurried*

Junior Prom 3; Football 2, 3, 4; Basketball 2; Baseball 4; Swimming 1; Band 1; Orchestra 1.



HARRY DRAKE  
*suave — sleek — smart*  
 Junior Prom 3; Sophomore Hop; Football 3; Swimming 2; Track 4; Tennis 1; Rifle Club 4; Gym Club 4; Orchestra 2.



LUCY DEL GROSSO

*tranquil — tacit — timid*



ROSE MARIE  
DEL TUFO

*assiduous — active  
— assertive*

Senior Monad 4; Junior Prom 3; Sophomore Hop 2; Class Committees 2, 3, 4; Student Banker 4; Debate Club 1, 2, 3, Treasurer 4; Secretarial Club 4; Winner, Oration Contest 4.

GERALDINE LOUISE  
DE MEO

*sweet — staunch — seemly*



ANGELINA DE NOIA

*sure — systematic — small*

Sophomore Hop 2; Class Committees 2; Student Council 1; Student Banker 2, 4; French Club 3; Art Club 1; Piano Club 1.

---

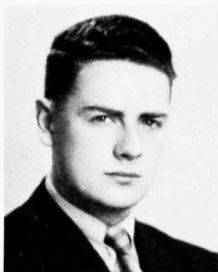
---

1937

EDWARD M. DUNHAM

*sedate — staunch  
— straight*

Football 3; German Club 2; Drum and Bugle Corps 2, 3.



DOUGLAS DYER

*unselfish — undaunted  
— undisturbed*

HAROLD  
FAIRWEATHER

*thoughtful — thorough  
— tolerant*

"Tweedles"; Junior Prom 3; Track 3; German Club 2; Press Club 3; Drum and Bugle Corps 1.



RICHARD  
ELLSWORTH

*fair — friendly — forbearing*

GERALDINE  
DI VINCENZO

*good-natured — gay  
— garrulous*



IRMA MARY  
DONNELLY

*buoyant — buxom — blithe*

DOROTHY DUFFY

*tranquil — tasteful — true*

Class Committees 4; Student Council 1; Tennis 1; Secretarial Club 4.



DOROTHY ELLIS

*talkative — tenacious  
— truthful*

## MONAD

CARLO FERRAIOLI

*diligent — discreet  
— dignified*

Latin Club 1, 2; German Club 2.



CLARENCE FISCHER

*gentlemanly — good-natured — genial*

ASCENZIO FRANCO

*earnest — excitable  
— elastic*

French Club 2; Band 1, 2, 3, 4; Orchestra 1, 2, 3, 4.



CLIFFORD  
FREDERICKS

*optimistic — obliging  
— observant*  
German Club 2.

VIRGINIA B.  
ENTREKIN

*chary — certain  
— conservative*

Class Executive Committees 2, 3; Senior Monad; Junior Prom 3; Sophomore Hop 2; Class Committees 1, 2, 3, 4; Latin Club 1; French Club 3; Band 2.



FLORA EVANGELISTA

*enthusiastic — exhilarant  
— effective*

Class Executive Committee 3; Junior Prom 3; Sophomore Hop 2; Basketball 1; French Club 3; Art Club 1, 2.



MARGARET FAAS

*trim — tasteful — trusty*  
Secretarial Club 4; German Club 4.

MARY ETHEL FENNO

*perplexing — persistent  
— piquant*  
Piano Club 2.

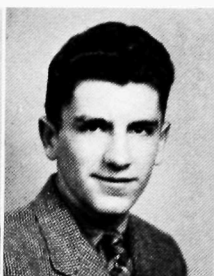
---

---

1937

JOSEPH W. GANNON

*dynamic — debonair  
— demonstrative*  
“Tweedles”; Student Patrol 1; Golf 4.



ELMER GORDON  
GIBBS

*complaisant — curt  
— circumspect*

Class Executive Committee 3, 4; Junior Prom 3; Sophomore Hop 2; Class Committees 2, 3, 4; Track 3, 4; Drum and Bugle Corps 1, 2.



JAMES GILROY

*droll — debonair — defiant*  
Track 4; Latin Club 1, 2; French Club 2.

HARRY GIMBEL, JR.

*true — tactful — tacit*  
German Club 2; Band 1, 3; Orchestra 1.

MARCELLA ANN  
FERGUSON

*enthusiastic — energetic  
— explosive*

"Tweedles," Student  
Coach 4; Student Banker 3;  
Cheerleader 3, 4; Rifle Club  
4; Secretary and Treasurer  
4; Dramatic Club 1, 3, 4;  
Latin Club 1; French Club  
3; Art Club 3.

MARGARET  
FLANAGAN

*decorous — direct  
— determined*

Secretarial Club 4; French  
Club 2; Art Club 2, 3.



WINIFRED M.  
FITZSIMMONS

*clever — competent  
— captivating*

Class Committees 2, 3, 4;  
Class Executive Committee  
4; Senior Monad; Junior  
Prom 3; Sophomore Hop 2;  
Student Banker 1; Basket-  
ball 4; Latin Club 1; Press  
Club 2; Glee Club 1; Dra-  
matics 1.

MARION FLANAGAN

*sprightly — systematic  
— sage*

Class Committees 2, 3, 4;  
Class Executive Committee  
4; Senior Monad; Junior  
Prom 3; Sophomore Hop 2;  
Student Banker 4; Basket-  
ball 4; French Club 2, 3.

MONAD

---

BERNARD J. GOODALE

*decorous — definite  
— different*

Track 3, 4.



LAWRENCE  
GREENBERG

*capricious — chummy  
— confident*

Latin Club 1, 2.

ANGELO GUARINO

*adagio — assuring  
— amusing*

Football 3, 4.



SHERMAN HAGGERTY

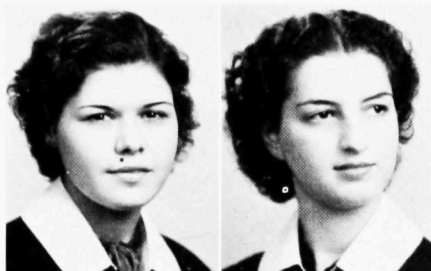
*consistent — conservative  
— cool*

German Club 2.

JEANNE FRAPPIER

*diminutive — docile  
— dainty*

Secretarial Club 4; Glee  
Club 1.



ANIBELLE TAYLORE  
FREELAND

*impulsive — ingenious  
inexhaustible*

Glee Club 1; A Cappella  
Choir 1.



FLORENCE BARBARA  
FREEDMAN

*dignified — discreet  
— diplomatic*

Senior Monad; Junior  
Prom 3; Sophomore Hop 2;  
Class Committees 2, 3, 4;  
Student Council 1; Student  
Banker 1, 2, 3; Debate Club  
1, Vice-President 4; Drama-  
tic Club 1, 2; French Club  
2; Art Club 1, 2, 3; Band 1.

BETTY ANN FREITAG

*efficient — elusive  
— easy*

Class Executive Commit-  
tees 3, 4; Senior Monad;  
Junior Prom 3; Sophomore  
Hop 2; Class Committees  
2, 3, 4; Student Council 1;  
Basketball 1; Secretarial  
Club 4; German Club 2;  
Art Club 1.

---

---

1937

EINO HANTALA

*spartan — spirited  
— straight*

Football 3, 4; Baseball 3.



CHARLES HARRIS

*co-operative — courteous  
— candid*

Sophomore Hop 2; Latin  
Club 1; French Club 2;  
Stamp Club 1.



JAMES HARDAWAY

*silent — smiling  
— self-sufficient*

Football 2, 4; Track 3, 4;  
Stamp Club 1; Bronzemen's  
Club 1.

ROBERT HARRIS

*proficient — promising  
— prudent*

Junior Prom 3; Class  
Committees 3; Band 1, 2,  
3, 4; Latin Club 1.



GERALDINE A. FRETZ  
*loyal — laudable — logical*



LORRAINE HELEN  
 FRETZ  
*pretty — plucky — pensive*

HELEN JEANNE FRIED  
*refreshing — restless — real*  
 Senior Monad 4; Junior  
 Prom 3; Debate Club, Sec-  
 retary-Treasurer 3; Drama-  
 tic Club 3.



MARTHA MARIE  
 GEORGIANNA  
*willing — worthy — wary*

## MONAD

---

GEORGE HEARLE  
*philosophical — pleasant  
 — polite*  
 Glee Club 4; Essex  
 County Chorus 4.



CORMACK HEARN  
*co-operative — considerate  
 — composed*  
 Student Patrol 1; Secre-  
 tarial Club 4; French Club  
 3; Nature Study Club 2.

WILLIAM RANK  
 HEILMAN  
*pungent — proud — prompt*  
 Junior Prom 3; Sopho-  
 more Hop 2; Class Com-  
 mittees 3, 4; Football 3;  
 Swimming 1, 2; Track 4.



CHARLES HENRIS  
*dependable — distinctive  
 — discriminating*  
 Student Banker 3; Latin  
 Club 1; Stamp Club 1, 2;

ELIZABETH GRACE  
GIBSON

*sparkling — sweet — sage*

Class Secretary 4; Class  
Executive Committee 3, 4;  
Junior Prom 3; Sophomore  
Hop 2; Class Committees  
2, 3, 4; Student Council 2;  
Latin Club 1; Piano Club  
1; Glee Club 1, 2, 4; Essex  
County Chorus 4; Music  
Council 4.

MARGARET M.  
GOODRICH

*happy — hardy — humane*

Senior Monad; Class  
Committees 4; Secretarial  
Club 4.



RITA VERONICA  
GLENNON

*unpretentious — undemon-  
strative — undisturbed*

ANTOINETTE J.  
GUARINO

*generous — gentle — genial*  
Student Banker 1.

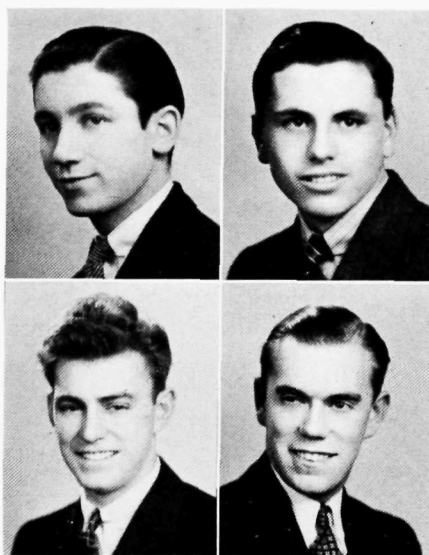
---

1937

ROBERT HOGAN

*generous — gentlemanly  
— gallant*

Latin Club 1; French  
Club 3.



WILLIAM HOOPER

*mannerly — manly  
— matchless*

Art Club 3; Engineering  
Club 3.

HERBERT INGS

*happy — honest — helpful*

Student Banker 1; Stu-  
dent Patrol 1, 2; Secretarial  
Club 4; Orchestra 1.

BERNARD A. INGS

*original — optimistic  
— outspoken*

VIOLA MARIE GWARA

*frank — fearless — flexible*  
Basketball 4.

ELLEN MAY HAYES

*intelligent — independent*  
*— interesting*

Class Executive Committee 3; Senior Monad 4; Junior Prom 3; Sophomore Hop 2; Class Committees 2, 3, 4; Student Council 1, 2; Latin Club 1; French Club 2; Library Assistant 3, 4.



NETTIE HABER

*responsive — ready*  
*— reputable*

Class Executive Committee 3, 4; Senior Monad; Junior Prom 3; Sophomore Hop 2; Class Committees 2, 3, 4; Student Council 2; Student Banker 2, 3, 4; Secretarial Club 4; French Club 3; Art Club 2.

GLADYS M. HEIMRICH

*congenial — constant*  
*— complaisant*

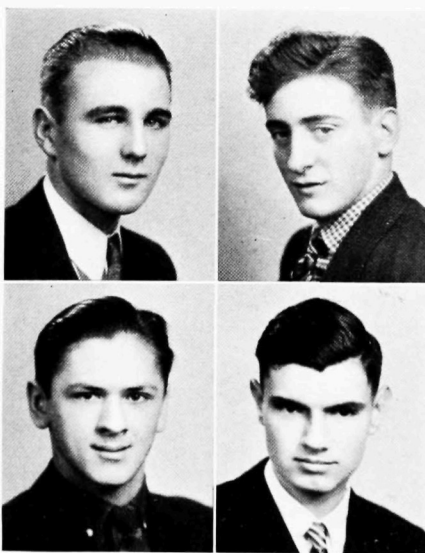
Kearny High School 1, 2, 3; Class Committees 4.

MONAD

---

ROBERT JENSEN

*nonchalant — neat*  
*— natural*  
Band 1, 2, 3.



HERBERT KOELSCH

*discriminating — deliberate*  
*— direct*

Football 1, 2, 3; Swimming 1, 2; German Club 1, 2.

LEOPOLD J.  
KONDRATOWICZ

*gallant — gladsome*  
*— gracious*

ARTHUR LACKNER

*careful — curt*  
*— changeable*

Senior Monad; Latin Club 1; Band 1, 2.

# HELEN HETT

*steady — self-sufficient  
— solicitous*

Student Banker 1, 2.



# THERESA ILARIA

*pleasant — pacific — polite*

Class Committees 4; Debate Club 4; French Club 3; Glee Club 3.



# KATHRYN HOBSON

*stimulating — solicitous  
— straightforward*

Junior Prom 3; Class Committees 4; Debate Club 4; French Club 2; Art Club 2.

# PAULA JENNINGS

*spontaneous — sensitive  
— shrewd*

Junior Prom 3; Class Committees 4; Student Banker 2, 4; Debate Club 1, 2, 3, 4; Secretarial Club 4; French Club 2; Glee Club 4.

---

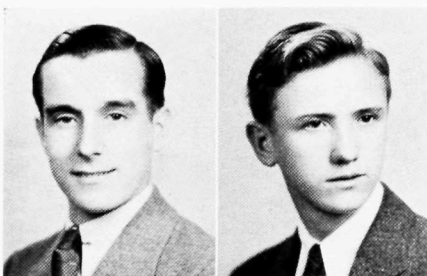
---

1937

# JOHN JAMES LOEBELL

*artistic — alert  
— assiduous*

Art Club 2, 3; Contest Winner 3.



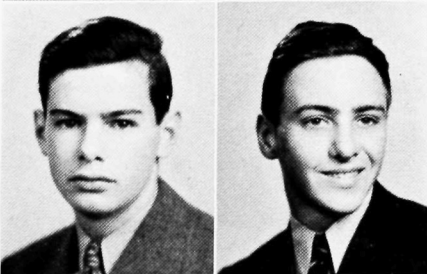
# FRANK LUKOWIAK

*content — curt — concise*

Student Patrol 1; Nature Study Club 1.

# LOUIS MAZZA

*subtle — sage — singular*  
Latin Club 1.



# JACK McCANN

*cheerful — courteous  
— calm*

Student Council 3.

ELEANOR JENSEN  
*capable — chic — cool*



JUNE JOHNSON  
*intelligent — inventive  
— industrious*  
Secretarial Club 4; French  
Club 3.



ALICE P. JOCKER  
*athletic — adaptable — able*  
Class Committees 4.



MARY LOUISE  
JORDAN  
*pretty — placid — patient*  
French Club 2.



## MONAD

FRANK E. McCOURT  
*whimsical — warm  
— winning*

Junior Prom 3; Student  
Banker 1; Student Patrol 1;  
Nature Study Club 1; Band  
1, 2, 3, 4; Orchestra 1, 2, 3,  
4; Drum and Bugle Corps 3.



ANDREW McFADZEAN  
*terse — tolerant — true*  
Class Committees 4; Stu-  
dent Banker 1; Student Pa-  
trol 1; Nature Study Club 2;  
Stamp Club 1.



JOHN McDERMOTT  
*forceful — fearless — facile*  
Junior Prom 3.



EUGENE McTIERNAN  
*modest — merry  
— mischievous*  
Dramatic Club 1, 2; Latin  
Club 1, 2, 3; German Club  
2, 3.





HELEN F. KALUZER

*riotous — real — ready*

Student Banker 1, 2; Basketball 1, 2; German Club 1, 2; Art Club 1, 2, 3.



EDITH KISTNER

*fluent — fair — friendly*

Band 1, 2, 3, 4; Glee Club 4; Orchestra 4.



C. JANET KENWELL

*lively — likeable — lenient*

ISABEL M. KOHLHEIM

*individual — impartial  
— inflexible*

Student Banker 1, 2, 3.

---

---

1937

FRANCIS  
MISERENDINO

*optimistic — observant  
— obliging*



GEORGE NEWMAN

*sophisticated — sober  
— staid*

Stamp Club 1.



JOSEPH MORANO

*companionable — congenial  
— collected*

Golf 3.

HARVEY CLAYTON  
NIELSEN

*jaunty — just — jolly*

Class Vice-President 4;  
Class Executive Committee 3, 4; "Tweedles"; Junior Prom 3; Sophomore Hop 2; Class Committees 2, 3, 4; Swimming 1, 2; Track 3, 4.

ANNA  
KONDRATOWICZ  
*generous — gay — gigglish*  
Senior Monad.

MAY H. LOEBELL  
*meritorious — mannerly*  
*— modest*  
Class Executive Committee 3; Junior Prom 3; Class Committees 3; Student Council 1; Dramatic Club 1; French Club 3.



ADELE KRISTENSEN  
*witty — wise — winsome*  
Class Executive Committee 3; Senior Monad; Junior Prom 3; Sophomore Hop 2; Class Committees 2, 3, 4; Student Banker 2, 3, 4; Dramatic Club 2; Secretarial Club 4; German Club 2.

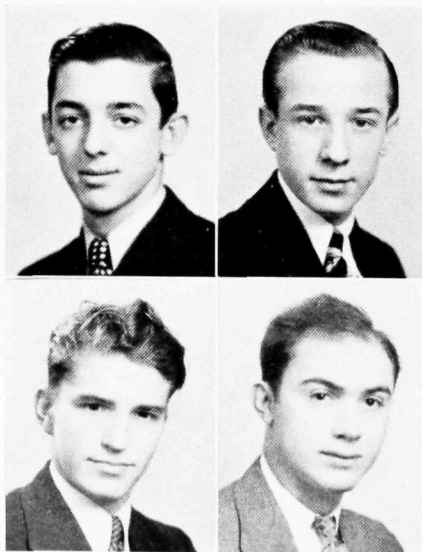
CLARA JOAN  
LUKOWIAK  
*genuine — gracious*  
*— gentle*  
Senior Monad, Advertising Manager.

## MONAD

---

HENRY PASSAFARO  
*taciturn — tenacious*  
*— thoughtful*  
Student Patrol 1; Football 3; Golf 2; Latin Club 1, 2; French Club 2.

STANLEY REYNOLDS  
*talented — tranquil — terse*  
Dramatics 2, 3.



WALTER PODOLSKI  
*co-operative — candid*  
*— competent*

ARMAND RICHIA  
*reserved — respected*  
*— reflective*

JEAN ROSE LUNETTA

*refined — resolute  
— recommendable*

Student Banker 1, 4; Li-  
brary Assistant 3, 4.



ANGELINA  
MACALUSO

*pleasing — placid — plucky*



JOSEPHINE LUZZO

*constant — considerate  
— cordial*

RUTH MACAULAY

*resourceful — refreshing  
— restless*

Junior Prom 3; Sopho-  
more Hop 2; Class Com-  
mittees 2, 3; Latin Club 1,  
2; German Club 2, 3; Art  
Club 1, 3; Glee Club 2.

1937

HAROLD HOBART  
ROACH

*cheerful — carefree  
— cordial*

ARTHUR RONCO

*interested — imaginative  
— impartial*

Student Council 1; Stu-  
dent Banker 1, 2; Football  
4; Latin Club 1; French  
Club 1; Music Council 2, 3;  
Orchestra 2, 3; Band 2, 3.



CHARLES LESTER  
ROBINSON, JR.

*enigmatic — effervescent  
— exasperating*

Class Executive Commit-  
tee 4; Basketball Manager  
3, 4; Track 4; Stamp Club 1;  
Latin Club 1; French Club  
2.

AUGUST RUSS

*meritorious — manly  
— meditative*

BLOSSOM  
MAC LAUGHLIN

*carefree — capricious  
— chummy*

Senior Monad; Secretarial  
Club 4.

MARY SYLVIA MASI

*wistful — wise — worthy*  
Latin Club 1; Band 3;  
Orchestra 4.



SOPHIE MADLER

*inspiring — idealistic  
— industrious*

Class Executive Commit-  
tee 4; Senior Monad, Edi-  
tor-in-Chief; Sophomore  
Hop 2; Class Committees 2,  
4; Student Council 1, 2; Stu-  
dent Banker 1, 2, 3; Latin  
Club 1; Piano Club 1; Glee  
Club 1, 2.

LOIS KATHRYN MAYS

*animated — affable — artful*

Class Secretary 3; Class  
Executive Committee 3;  
Junior Prom 3; Sophomore  
Hop 2; Class Committees  
1, 2, 3, 4; Dramatic Club 3.

EMMET JAMES RYDER

*democratic — delightful  
— droll*

Class Vice-President 3;  
Class Executive Committee  
3; "Tweedles"; Junior Prom  
3; Sophomore Hop 2; Class  
Committees 2, 3; Student  
Council 1; Student Banker  
4; Student Patrol 1; Nature  
Study Club 1; Varsity Club  
2; Football 1, 2, 3, 4; Bas-  
ketball 1; Baseball 1, 3, 4;  
Glee Club 1.

GEORGE F. SAMMIS

*staid — solemn — skeptical*  
Student Banker 1; French  
Club 2; Stamp Club 1;  
Football 3, 4.



MONAD

MILO SHERMAN  
SALTERS

*commendable — cautious  
— civil*

Junior Prom 3; Sopho-  
more Hop 2; Student Patrol  
1, 2; Football 1, 2, 3; French  
Club 2, 3; Engineering  
Club 3; Nature Study Club  
2; Bronzemen's Club 1, 2;  
Orchestra 1, 2, 3, 4; Glee  
Club 1, 2, 3; A Cappella  
Choir 1, 2; Colored Choir 1.

JOSEPH SCARPELLI

*thoughtful — tactful  
— talkative*

Student Banker 1; Foot-  
ball 1.

ELIZABETH MAZUJAN

*generous — garrulous  
— gladsome*

Dramatic Club 1; French  
Club 3; Glee Club 3, 4.

BETTE McMANUS

*ultramodern — unusual  
— unruffled*

Sophomore Hop 2; Class  
Committee 4; Student  
Banker 1; French Club 2, 3;  
Glee Club 4.



HELEN McCANN

*sweet — serene — sprightly*

Junior Prom 3; Sopho-  
more Hop 2; Class Commit-  
tees 4; Student Banker 4;  
Secretarial Club 4.

VIOLA MEGARO

*eager — estimable  
— emphatic*

Glee Club 1; Secretarial  
Club 4; French Club 2.

---

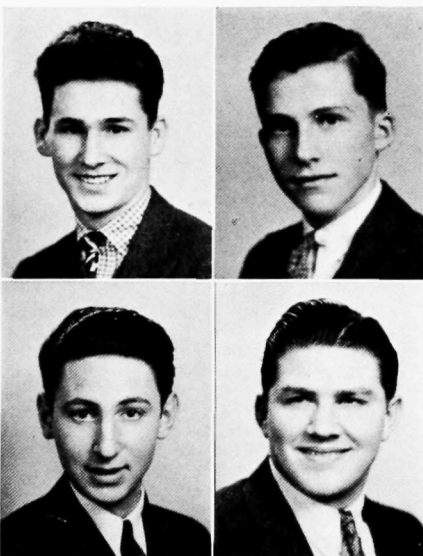
---

1937

JACK SCHMUTZ

*skeptical — sensible  
— spirited*

Swimming 1, 2; Track 3,  
4; Tennis 1; Band 2, 3; Es-  
sex County Band 3; Orches-  
tra 3; Latin Club 1; Inter-  
national High School Art-  
ists' Society 3.



WILLIAM SCHOFIELD

*garrulous — generous  
— gentlemanly*

Stamp Club 1; Nature  
Study Club 1.

HARRY SCHWARTZ

*analytical — agreeable  
— ambitious*

Student Banker 1; Latin  
Club 1; French Club 2;  
Nature Study Club 2.

ROBERT  
SHAUGHNESSY

*baffling — beaming  
— bluffing*

Junior Prom 3; Student  
Council 1; Football 2, 3, 4;  
Baseball 4.



GERTRUDE METZ

*truthful — tom-boyish  
— trustworthy*

ALICE MOROZ

*altruistic — accomplished  
— admirable*

Senior Monad; Basketball  
4; Latin Club 1; German  
Club 2; Glee Club 1, 2.



LOIS ELIZABETH  
MILLEN

*esthetic — enthusiastic  
— expressive*

Senior Monad; "Tweedles"; Junior Prom 3; Class  
Committees 2, 3; Sophomore  
Hop 2; Press Club 2; Stamp  
Club 1; Band 1; Debate Club  
1, 2; Dramatic Club 1; Latin  
Club 1; French Club 2.

CHRISTINE NARDI

*buxom — brisk — busy*  
Student Banker 1, 2; Sec-  
retarial Club 4.

MONAD=====

JAMES SHEA

*entertaining — encouraging  
— estimable*

Track 3; Secretarial Club  
3, 4; Engineering Club 3.



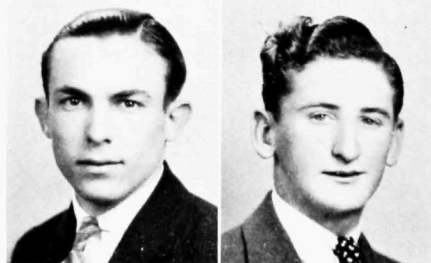
FREDERICK  
SPENCELEY, II

*capable — composed — civil*

Junior Prom 3; Student  
Banker 2; Track 4; Tennis  
1, 4; Latin Club 1; German  
Club 2, 3; Nature Study  
Club 2; Orchestra 1.

DOMINICK SPINELLO

*studious — sedate  
— scrupulous*  
French Club 2.



DEWEY RAYMOND  
TATZ, JR.

*adept — attentive  
— amusing*

Orchestra 1, 2; Golf 1, 2,  
3, 4.

# ALICE NEVILLE

*systematic — specific*  
*— self-sufficient*

Class Executive Committee 3, 4; Student Council 1, 2; Student Banker 1, 2; Press Club 2; Debate Club 1; Latin Club 1; Glee Club 1, 2, 3, 4; International High School Artists' Society 4.

# JAYNE O'CONNOR

*fragile — feminine*  
*— fashionable*

Latin Club 1; French Club 3; Glee Club 4.



# ELIZABETH NOWAKOWSKI

*petite — persevering*  
*— plastic*

# EDNA PERKOWSKI

*athletic — able — active*

Student Council 2; Student Banker 1, 2; Secretarial Club 4; Glee Club 1.

---

---

1937

# JOE THALHEIMER

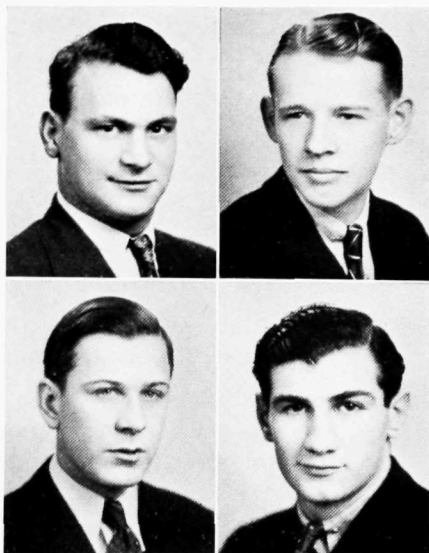
*facetious — fluent*  
*— fearless*

Student Patrol 1; Football 2, 3.

# NORMAN HARVEY THOMPSON

*competent — co-operative*  
*— confident*

Nature Study Club 2, 3; President 4; Stamp Club 1; Band 2, 3, 4; Drum and Bugle Corps 1.



# ROLF THETING

*distant — durable*  
*— dispassionate*

# LOUIS C. TOTARO

*dapper — dauntless — deft*  
Dramatic Club 2, 3; Gym Club 3, 4.

TERESA PESACRETA

*reasonable — resolute  
— rigorous*

MARY PISAPIA

*merry — moderate  
— mobile*

Student Banker 1; Secretarial Club 4; French Club 3.



CAROLYN PHILLIPS

*scintillating — sociable  
— smooth*

French Club 3.

RUTH CAROLYN  
RADER

*dignified — discreet  
— determined*

"Tweedles"; Sophomore Hop 2; Class Committees 2, 4; Dramatic Club 1, 3, 4; German Club 2, 3, 4; International High School Artists' Society 4.



MONAD

---

ALFRED J. WALKER

*discreet — dependable  
— deserving*

HARRY WHITE, JR.

*dapper — daring  
— distracting*

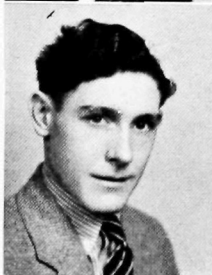
Class Executive Committees 3, 4; Junior Prom 3; Sophomore Hop 2; Class Committees 2, 3, 4; Student Banker 3; Football 3, 4; Basketball 2, 3, 4; Swimming 2; Track 3, 4.



ROBERT M. WERTZ

*passionless — polite  
— poised*

Class Executive Committee 3; Senior Monad; Junior Prom 3; Sophomore Hop 2; Class Committees 2, 3, 4; Football 2, 3, 4; Track 3, 4; Glee Club 1.



JOHN LAFAYETTE  
WOOD

*courteous — composed  
— capable*

Latin Club 1, 2.

HELEN REMEIKA

*dramatic — diverting  
— different*

"Tweedles"; Junior Prom  
3; Class Committees 3, 4;  
Student Banker 1; Debate  
Club 3, 4; Latin Club 1; Art  
Club 1, 2, 3; International  
High School Artists' Soci-  
ety.

MARGARET ROBERTS

*emphatic — elastic  
— earnest*



ELAINE ELIZABETH  
RHODES

*adaptable — agile  
— accommodating*

Junior Prom 3; Class  
Committees 3; Student  
Council 1; Cheerleader 4;  
Debate Club 3; Secretarial  
Club 4; French Club 3; Art  
Club 2, 3.

RUTH JANYCE ROEGE

*lilliputian — loquacious  
— lively*

Senior Monad; Junior  
Prom 3; Sophomore Hop 2;  
Class Committees 2, 3, 4;  
Debate Club 3, 4; Latin  
Club 1; French Club 3;  
Band 1.

---

1937

ARTHUR ZARRILLO

*silent — studious  
— sociable*



GEORGE S. ZOPPA

*retiring — reputable  
— reliable*

Student Banker 1, 2;  
Football 2, 3, 4; Baseball 2,  
3; Varsity Club 3, 4.

DORIS G. ROSENBLUM

*diligent — discerning  
— durable*

Senior Monad, Associate Editor; Sophomore Hop 2; Student Council 1; Debate Club 3, 4.

MILDRED M.  
ROVIELLO

*keen — kind — knowing*

Senior Monad; Junior Prom 3; Sophomore Hop 2; Class Committees 3, 4; Debate Club 1; French Club 2, 3.

ROSE SALZANO

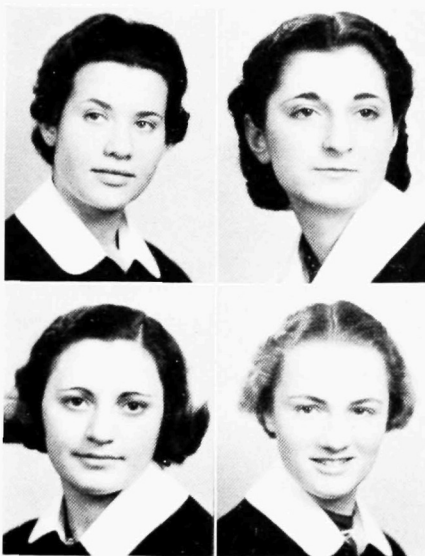
*valuable — vigorous  
— venturesome*

Secretarial Club 4; French Club 3.

SHIRLEY SCHELLIN

*frisky — fluent — fair*

Senior Monad, Business Manager; Junior Prom 3; Sophomore Hop 2; Class Committees 2, 3, 4; Secretarial Club 4; Art Club 2, 3; Contest Winner 2, 3.



JOSEPHINE ROSSI  
*talented — tolerant  
— twinkling*

Class Committees 4; Piano Club 1, 3, 4; International High School Artists' Society 3, 4; Glee Club 1, 2, 3, 4; Essex County Chorus 3, 4; A Cappella Choir 1; Latin Club 1; French Club 2, 3, 4.

JOAN ADELE RUMMEL  
*chaotic — colorful — caustic*

Class Executive Committee 3, 4; Junior Prom 3; Sophomore Hop 2; Class Committees 1, 2, 3, 4; Student Council 1; Student Banker 1, 2, 3, 4; Basketball 1; Latin Club 1, 2; French Club 3; Press Club 2; Band 3; Glee Club 1, 2, 3.

## MONAD

G. JEAN SCAPEROTTA  
*inexhaustible — intense  
— inquisitive*

Class Executive Committee 3; Senior Monad, Circulation Manager; Junior Prom 3; Sophomore Hop 2; Class Committees 2, 3, 4; Student Council 2; Student Banker 2, 4; Press Club 2; Secretarial Club 4; French Club 3.

IRENE SCHOLTZ  
*exquisite — expressive  
— exceptional*

"Tweddles"; Junior Prom 3; Sophomore Hop 2; Class Committees 2, 3; Basketball 4; Stamp Club 1; Dramatic Club 1; Latin Club 1, 2; French Club 3.



ELSA SCHREYER

*casual — convincing  
— compatible*

Secretarial Club 4; German Club 2.



ALICE SHANAHAN

*companionable — constructive — co-operative*

Secretarial Club 4.



DORIS SEELY

*attractive — amiable  
— amused*

Sophomore Hop 2; Class Committees 2; Basketball 4; Secretarial Club 4; Band 1, 2; Orchestra 2.

KATHERINE  
ELIZABETH SIMPSON

*recommendable — resolute  
— reticent*

French Club 2.

1937

DOROTHY ALICE  
STEFANELLI

*lovable — lady-like  
— liberal*

Secretarial Club 4; French Club 2, 3; Glee Club 2, 3, 4; Essex County Chorus 4.



GERTRUDE M.  
STOOTMAN

*impish — impulsive  
— inquisitive*

Senior Monad; Sophomore Hop 2; Class Committees 2, 4; German Club 2, 3.



GRACE ELIZABETH  
STEWART

*blithe — benignant  
— buoyant*

Debate Club 3, 4; Secretarial Club 4; Art Club 2.

ALMA SWENSON

*sympathetic — straight-  
forward — sincere*

Junior Prom 3; Class Committees 4; Student Banker 2; Band 2; Orchestra 2; Dramatic Club 3; Latin Club 1.



ELLA THETING  
reserved — reliable — rare



EVELYN JULIA  
TRUITT  
frank — facile — fluent  
Junior Prom 3; Secretarial  
Club 4; French Club 2.

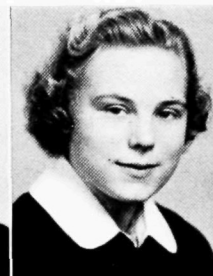
AUDREY URAL  
affable — adept — artful  
Class Executive Commit-  
tee 4; Junior Prom 3; Class  
Committees 3, 4; Student  
Council 3; Secretarial Club  
4.



ANNA UTTER  
loquacious — laughing  
— lovable

## MONAD

ELAINE VAN RIPER  
unpretentious — unruffled  
— unsophisticated  
Art Club 2.



ELLA VON ENDE  
feminine — flexible  
— friendly  
Class Executive Commit-  
tee 3; Senior Monad; Junior  
Prom 3; Sophomore Hop 2;  
Class Committees 2, 3, 4;  
Art Contest Winner 1, 2, 3;  
Art Club 2, 3; International  
High School Artists' Society  
3, 4.

IRENE FRANCES  
WALDIE  
unsophisticated — unselfish  
— undemonstrative  
Sophomore Hop 2; Na-  
ture Study Club 3; Latin  
Club 1, 2.



MARY JANE  
WALKER  
mischievous — magnetic  
— mirthful  
Sophomore Hop 2; Class  
Committees 2; Student  
Council 2; Student Banker  
1, 3; Basketball 4; Dramatic  
Club 1; Secretarial Club,  
President, 4.

CLARA W.  
ZEOROWSKI

*talkative — thorough*  
*— taking*  
Secretarial Club 4.



ELYSABETH ANNE  
ZUCCARELLI

*dogmatic — dexterous*  
*— daring*  
Good Counsel High  
School 1, 2, 3.

---

---

1937

SAM AROMANDO

*lackadaisical — liberal*  
*— likeable*  
Football 2, 3, 4; Varsity  
Club 3, 4; French Club 2, 3;  
Orchestra 1, 2.

CHARLES MARRA

*amiable — assuring*  
*— accommodating*  
Latin Club 1.

JOSEPH RIZZO

*courteous — co-operative*  
*— commendable*  
French Club 2.

LOUIS EVANGELISTA

*industrious — impetuous*  
*— intense*

VINCENT NUCCI

*mischievous — modest*  
*— merry*  
Football 3; Track 4; Latin  
Club 1, 2.

PHILIP D. WARD

*blonde — buoyant — benign*  
Student Council 1; Stu-  
dent Banker 2, 3; Student  
Patrol 1; Football 2; Tennis  
2; Stamp Club 1.



### UNDERCLASS ADVISORY COUNCILS

#### Junior Class

Anne A. Snedeker, *Chairman*

Brewster H. Jones

William Junda

Oleita Thorne

#### Sophomore Class

Regina Brennan, *Chairman*

Blanche McDonald

George Reinke

#### Freshman Class

Norman Cotter

Rose Friedman

Thelma Weidman

## HISTORY OF THE SENIOR CLASS

Four years ago, to Belleville High School came a group of girls and boys who were ready, willing, and able to carry on the prospective duties of each class.

During the first year they sponsored no affairs and elected no officers. The commercial students were separated from the rest of the Freshman Class and went to Number Eight School.

In their Sophomore year the commercial students joined the rest of the class at the High School, making the class more unified. Their first social venture, of which happy memories still linger, was the Sophomore Hop. This affair was made a great success under the capable leadership of Miss Regina Brennan and a crew of active workers.

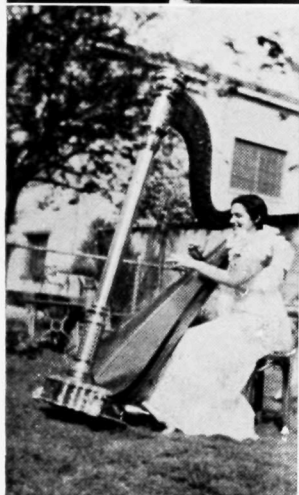
As grown-up and dignified Juniors they organized their class. They selected Frank Carragher as president, Emmet Ryder as vice-president, Lois Mays as secretary, and Leonard Aiello as treasurer. Miss Linnea Andree and Mr. Charles W. Lewis were the class advisers. The junior year was one filled with many activities. They sold feather novelties and hot dogs at football games. They held a movie benefit at the Capitol Theatre. They participated successfully in the sale of magazine subscriptions for the purchase of a school motion-picture machine. The Junior Prom, the most important affair of the year, was held on May 22. From the old gym with brown walls, they made a modernistic ballroom, all decorated in black and silver. Through the marvelous co-operation of the entire class this affair was an outstanding success. The Junior Prom was an event which will long be remembered by those who attended.

Then came the time for every good Junior to reach the stature of a Senior. Early in their Senior year they held elections and elected Frank Carragher for president, Harvey Nielsen for vice-president, Betty Gibson for secretary, and Frank Brown for treasurer. These officers, the class advisers, and the Senate representatives, worked hand in hand to hold many successful novelty dances during the school year. Their first social event was the Hallowe'en Dance. At the football games they sold candy and football programs. At Christmas time they used high pressure salesmanship to urge the sale of Christmas cards.

The month of February found them working all day—for the new full session had started. Even the Seniors found themselves lost in the new building, although Mr. Kittle had held a special assembly of instruction with plans and diagrams.

This was our class. These were our activities. We shall not forget them for long years to come.







## HISTORY OF THE JUNIOR CLASS

Of course, the class of 1938 has always been fortunate in having the (marvelous) personnel of the class of 1937 set up before it as an example. When its numbers entered this great institution of learning, theirs would have been indeed a sorry lot had it not been for the ever-thoughtful, helpful criticism of their elders, the Sophomores then, the Seniors now.

In spite of the civilizing influence offered by the upper classes, it was thought best by the authorities to segregate the Freshmen. They were placed under mental quarantine and not permitted to associate with the ladies and gentlemen of the upper classes, until such time as they should come to understand that they were Freshmen in High School and not Seniors in grammar school.

A year of this, and then they began to develop. By studiously applying themselves they finally managed to organize. For their first group of officers they elected:

|                    |                       |
|--------------------|-----------------------|
| William Engelman   | <i>President</i>      |
| Adele Conroy       | <i>Vice-President</i> |
| Leo Culkin         | <i>Treasurer</i>      |
| Katherine McDonald | <i>Secretary</i>      |

In spite of the good raw material at hand, the class advisers, Miss Regina Brennan and Mr. Paul Brennan, performed a Herculean task. With their aid, the Sophomores held a very entertaining Leap Year Dance. During the floods of 1935, this class contributed the money set aside for decorations for the Sophomore Hop to the Red Cross.

From this period, as they became slowly conscious of the dignity befitting Juniors, their progress was very, very good. As Juniors they have been ambitious, resourceful, and energetic. Entering wholly into the spirit of high school life, they have done much to make school more interesting. They have sold candy and pennants. The Junior Prom in Valencia promised much in entertainment and fulfilled every expectation.

This year the class has been under the able guidance of a faculty committee consisting of Mrs. Anne Snedeker, chairman, Miss Oleita Thorne, Mr. Brewster Jones, and Mr. William Junda, with the class officers as follows:

|                  |                       |
|------------------|-----------------------|
| Robert Cook      | <i>President</i>      |
| William Engelman | <i>Vice-President</i> |
| David Martin     | <i>Secretary</i>      |
| Daniel Wascoe    | <i>Treasurer</i>      |

And now the time draws near when they will take our place, and we know of no other class to whom we might more confidently entrust the leadership of Belleville High School. To you, Seniors of 1938, we say that we are happy to have known you, and, with a touch of regret—"so long!"



## HISTORY OF THE SOPHOMORE CLASS

While yet Freshmen, the class went their way quietly, as all good Freshmen should, and were careful not to interfere with the activities of the upper-classmen. Because they attended school in the afternoons rather than in the mornings, they accomplished little. Their major affair was the annual Christmas Dance.

But when they developed into Sophomores they exemplified their graduation by electing as their class officers:

|                 |                       |
|-----------------|-----------------------|
| Nicholas Zuzzio | <i>President</i>      |
| Charles Feeney  | <i>Vice-President</i> |
| Shirley Bitz    | <i>Secretary</i>      |
| Jerry Ferrara   | <i>Treasurer</i>      |

Later, with the aid of their able advisers, Miss Regina Brennan, Miss Blanche MacDonald, and Mr. George Reinke, they launched their annual Sophomore Hop, on April 23. The undertaking afforded real enjoyment and entertainment.

Continue the good work, Sophomores, and when you finally become Seniors you will have something to show for your four years at Belleville High School.

## HISTORY OF THE FRESHMAN CLASS

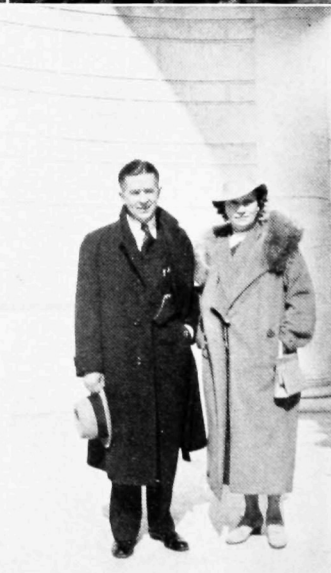
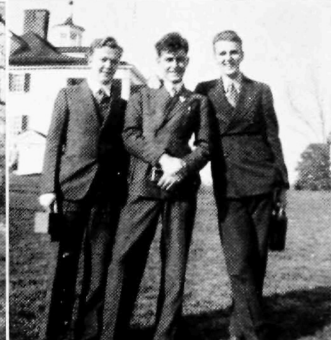
When our new building was completed and the Freshmen started attending school during the same hours as the upper-classmen, they began to get "in our hair" and "under our feet."

To start the ball rolling they, of all people, were given almost complete domination of the new school. This was rubbing salt on a raw wound, for naturally we Seniors felt that since we were leaving school this year we were entitled to the best. We soon overlooked that, however, since it was no fault of theirs, and decided to treat them kindly.

Finally, they got down to business and gave a Christmas dance on December 18. All who attended had an enjoyable evening and the affair was highly successful.

Another of their accomplishments to which their guides, Miss Rose Friedman, Miss Thelma Weidman, and Mr. Norman Cotter, may point with pride was the election of these class officers:

|                |                       |
|----------------|-----------------------|
| Herbert Tolton | <i>President</i>      |
| Edith Frey     | <i>Vice-President</i> |
| Frances Hoover | <i>Secretary</i>      |
| Jean Payne     | <i>Treasurer</i>      |



## WASHINGTON TRIP (AS REPORTED BY AN EYE-WITNESS)

April 1st, 1937! That long-awaited day when sixty of us left for Washington, D. C., had arrived. When the train pulled into the Union Station, we tumbled out and ran into the building, and right on out to the sightseeing buses.

Appropriately, the first place we visited was the Capitol. Here we were introduced to the stairs that are distributed so freely throughout the city. The Senate and House of Representatives were interesting, but the Whispering Room caused more comment. Next, the quiet serenity of the Lincoln Memorial and then an impromptu track meet along the reflector pool. After a general tour of the city, we arrived at the Cairo Hotel for dinner.

After dinner, we were taken to the Congressional Library, where we saw an awe-inspiring number of books and a tempting array of banisters. From our return to midnight was free time.

We asked the desk to wake us at seven, but that was an unnecessary request for the steam woke us at five. After breakfast, we left to see various buildings. First, the Pan-American building where we saw bananas and chandeliers. Next, the Bureau of Printing and Engraving where we were allowed to look at piles and piles of money. At the Washington Monument, the guide advised us not to climb



but the more ambitious ones did. Then to the Smithsonian Institute where we looked around for twenty minutes.

At the conclusion of lunch at the Cairo, we went on to Arlington, with a stop at the Zoological Garden. At the Cemetery we were impressed with the simplicity of the Unknown Soldier's Grave. We visited Mount Vernon next and the picture that is displayed below was taken. The return journey was broken by a visit to the Masonic Temple in Alexandria where we saw a rather unusual picture of the Father of Our Country.

In the evening, although for weeks everyone had been vowing that he would not attend a moving picture show on his free night, everyone did.

It was nice seeing Annapolis next morning—especially nice to be in front of Dahlgren Hall when dismissal for mess was called, eh, girls? Then all too soon it was time to leave Washington. The trip home was enlivened by an excess of bazookas and community singing, not to mention the chicken dinner. After the engineer missed the Elizabeth Station by about a mile (he hadn't been with us, either) we were packed into buses and taken back to the school, tired, but very happy.



### SENIOR ROLL OF HONOR

In the activities of the Senior Class this year there has appeared a group of faithful Seniors who have carried the burden of class work willingly and effectively. Feeling that more honor is due to these students than is usually accorded, the members of the faculty in charge of Senior activities have nominated sixty-two members of the class, not otherwise honored as an organized group, for special recognition. The *Monad* is proud to establish for them the *Senior Roll of Honor*.

Leonard Aiello

Jeannette Alfke

Phyllis Ames

Enid Benn

Frances Berkowitz

Mildred Biebelberg

Rita Bitz

Ruth Bright

Frank Brown

Marie Butler

Kathryn Hobson

Theresa Ilaria

Bernard Ings

Paula Jennings

Herbert Koelsch

Adele Kristensen

Clara Lukowiak

Jean Lunetta

Sophie Madler

Lois Mays

Lorraine Carpenter

Frank Carragher

Dorothy Codner

Evelyn Conklin

Joseph Coyne

Philip D'Angelo

Angelina De Noia

Harry Drake

Edward Dunham

Virginia Entrekin

Flora Evangelista

Winifred Fitzsimmons

Marion Flanagan

Florence Freedman

Betty Freitag

Elmer Gibbs

Betty Gibson

Margaret Goodrich

Nettie Haber

George Hearle

William Heilman

Helen McCann

Andrew McFadzean

Bette McManus

Alice Neville

Harvey Nielsen

Jayne O'Connor

Carolyn Phillips

Helen Remeika

Armand Richia

Ruth Roege

Josephine Rossi

Mildred Roviello

Joan Rummel

Shirley Schellin

Gertrude Stootman

Alma Swenson

Norman Thompson

Audrey Ural

Ella Von Ende

Irene Waldie

Robert Wertz



### MONAD BOARD

SOPHIE MADLER  
 ELLEN HAYES  
 DORIS ROSENBLUM  
 SHIRLEY SCHELLIN  
 CLARA LUKOWIAK  
 JEAN SCAPEROTTA  
 RUTH BRIGHT  
 ELLA VON ENDE  
 WINIFRED FITZSIMMONS

*Editor-in-Chief*

*Associate Editors*

*Business Manager*

*Advertising Manager*

*Circulation Manager*

*Assistant Circulation Manager*

*Photography Editor*

*Chief of Typing Squad*

### Faculty Committee

Edward Glaspey, *General Chairman*  
 David Fulcomer

Brewster Jones

Penelope Pattison

### Staff

Frances Berkowitz  
 Mildred Biebelberg  
 Rose Del Tufo  
 Virginia Entrekin  
 Marion Flanagan  
 Florence Freedman  
 Betty Freitag  
 Helen Fried  
 Margaret Goodrich  
 Nettie Haber

Anna Kondratowicz  
 Adele Kristensen  
 Arthur Lackner  
 Blossom MacLaughlin  
 Lois Millen  
 Alice Moroz  
 Ruth Roege  
 Mildred Roviello  
 Gertrude Stootman  
 Robert Wertz



### "TWEEDLES"

Lights! Curtain! and a sudden hush prevails as the curtain slowly rises on Mrs. Albergone's Antiquity Shop in our presentation of Booth Tarkington's delightful comedy, "Tweedles."

For weeks we have worked to perfect our parts, and enjoyed especially the rehearsals during which a favored few practised eating cherry pie or any available cookies. But suddenly Fate frowns upon us, and following her partner's example, Lady Luck departs when just before the play opens we receive the tragic news that Martha Roddenbery, our hero's cultured mother, is too ill to appear. Consequently we are greatly indebted to Ruth Rader who substituted for Martha and gave a splendid performance.

But to return to our hilarious rehearsals. Who will ever forget "Lover Joe's" crooning, Emmet's remarkable French, Helen as a New England widow, Miss Reed's marvelous patience, that touching line, "there comes a time in every young man's life," and the Cast's theme song, "Does Your Heart Beat for Me?" with special harmony arrangements by Harvey, Joe, and Emmet?

All too soon our rehearsals are ended and first night has arrived, accompanied by torrents of rain, a packed house, trembling knees, and clearing of throats. Suddenly Irene, as our very beautiful widow, bravely rings the bell and the play has begun!

Now that the curtain is at last down and the play is all over, we find ourselves reminiscing. We wonder what we should have ever done without Miss Reed's skillful direction, Mr. Jones's wonderful advertising, and Miss Kelleher's lovely antiques. One and all we offer our humble thanks, our gratitude, and our fervent hope that you have at last found the answer to that persistent question, "Are you a Tweedle?"





## "TWEEDLES"

by

Booth Tarkington

Frieda E. Reed, Director

### Cast

|                         |                    |
|-------------------------|--------------------|
| <i>Mrs. Ricketts</i>    | Irene Scholtz      |
| <i>Mrs. Albergone</i>   | Helen Remeika      |
| <i>Winsora</i>          | Lois Millen        |
| <i>Julian</i>           | Joe Gannon         |
| <i>Adam Tweedles</i>    | Emmet Ryder        |
| <i>Ambrose</i>          | Harold Fairweather |
| <i>Mrs. Castleberry</i> | Ruth Rader         |
| <i>Mr. Castleberry</i>  | Frank Brown        |
| <i>Philemon</i>         | Harvey Nielsen     |

# The Chronicle

GRADUATION EDITION

Vol. I, No. 1

Belleville High School

Complimentary Copy

## FOUR SENIORS TAKE HONORS IN ELECTIONS

**Madler, Rhodes, Nielsen, and  
Carragher Lead**

### BIG VOTE POLLED

Apr. 6. The final returns of class elections give huge votes to Elaine Rhodes, Sophie Madler, Frank Carragher, and Harvey Nielsen. Elaine Rhodes was elected most original, peppiest, class clown, noisiest, biggest talker, most entertaining, and wittiest. The vote adjudged Sophie Madler most likely to succeed, one who has done most for the class, most respected, most scholarly, most efficient, most serious, most ambitious, most diplomatic (which she shared with Mildred Biebelberg), and busiest. Frank Carragher received the honors of most popular, most respected, one who has done most for the class, most diplomatic, best politician, and busiest. Harvey Nielsen was elected best conversationalist, one possessing the best personality, most interesting, most friendly, peppiest, best sport by a tie with Chester Davis, best natured, noisiest, and most entertaining.

Great interest was shown in the elections. Students carefully debated candidates for various honors during any available time, disproving the theory that the public is not interested in elections.

From the whole group, only one clique was noticed—the "Gas House Gang," whom we suspect as being cohorts of Mr. Brennan.

There was only one outsider who gave any serious competition—Lil' Abner. Ma Yokum received a few votes and Daisy Mae, one, but this did not cause appreciable consternation.

## "TWEEDLES" GOES ON DESPITE ABDICATION

**Student Night Is Huge Success;  
All Seats Taken**

### RADER PINCH-HITS

Dec. 10. Although the Fates contrived to cause a disturbance that made history, and the Spirits of the Rain did their utmost to create vast new oceans, the senior play went on as scheduled.

Every seat was filled with students from various schools and a few adults. "Student Night," which received its introduction this year, proved to be very successful. Tickets for the performance were half-price and the promise of dancing afterward helped to draw a number which greatly exceeded the wildest prophecy.

The performance is considered by many critics as one of the best in the history of Belleville High School senior plays.

The play "Tweedles" was written by Booth Tarkington and revolves around Winsora, a waitress in her aunt's antique shop in New England, and Julian, a summer vacationist who mistakes his love for Winsora for his love for rare glassware and is finally brought to his right senses by his disgusted father. Winsora was portrayed by Lois Millen and Julian by Joe Gannon. The supporting cast was of unusual excellence.

A thrilling touch was added when Martha Rodenberry, who was to portray the hero's mother, became suddenly ill and was absolutely unable to take her place in the performance. Ruth Rader, who understudied the part, substituted immediately and played so well that we in the audience did not even suspect that anything had gone wrong.

## School Opens With Two-Session Day

### 1525 REGISTERED

Sept. 9. The student body of Belleville High School returned to school today to begin the year 1936-1937 in two-session days.

Again the halls were crowded with people trying to find home rooms. Old teachers were greeted affectionately and new ones were duly met, investigated, and approved of. The student body, comprising 1525, is the largest ever attending B. H. S.

In accordance with tradition, the Seniors were dispersed over the top floor, the Juniors on the second, and the Sophomores on the first. The Freshmen and part of the Sophomore Class attend school in the afternoon, due to lack of facilities, and they are scattered throughout the school.

Short classes were held and the teachers showed that they did not lose their grip during the summer by distributing home work immediately. Of course, students were indignant at this overdoing the thing but their objections were met with the usual cool stare or laugh. However, after the first shock of realizing that work was beginning in earnest passed, students admitted that it was pleasant to be back again and really doing something after a summer of loafing.

## STUDENTS OBJECT TO REPORT CARDS

Apr. 27. A recent study of sentiments regarding the report cards which are presented to the pupil every six weeks shows that these appurtenances could be dispensed with without causing any regret.

The general objection to them seems to be the fact that they decrease in complimentary value as the term advances. During the first marking of these fatal pieces of paper, the teachers condescendingly remarked that they were giving us marks twice as high as we deserved from pure generosity. That was the day when we were all in the "CCC", if you understand us correctly. From then on, our cards have grown more colorful with each application of ink.

At the present time, there is some hope felt among students who have evolved the theory that it is impossible to receive lower marks, thus causing a possible increase. The surprising part of it is that despite these black days once every marking period, most of us manage to graduate.

## Traffic Problem Throughout School

### CHAOS ON STAIRS

Feb. 10. Growing animosity to up and down stairways has been noted among students. It seems bad enough to have to rush from 307 to 5 without having to blindly push through the milling crowd, desperately seeking a down stairway and escape from the tumult.

It is inevitable that the elusive stairway is always on the other side of the school, grinning in malicious self-satisfaction at the chaos it causes in the mind of the struggling student. It has been suggested that each student carry with him a map to aid him in extricating himself from the terrifying maze, but this idea was not carried out because the necessity of deciphering such an intricate pathway on the map would probably make blithering idiots of us all.

The teachers show a heartless cruelty and unconcern for our tribulations. Never for a moment do they waver in their determination to turn back everyone who uses the wrong stairway. And then when the student is late to class and in utter despair mutters something about wrong stairways, these same teachers smile cynically and request the student's company after school.

The Seniors have the worst fate. We were put on the top floor, which means we have to trudge the weary journey up in the early hours of the morning and then all the way down after a hard day's work. More and more we become convinced that Daedalus was a sissy!

## SENIOR WILL DRAWN

June 16. As the news spread around that the class of 1937 was dying a large crowd gathered. As in its short life there had been no time to stop at a lawyer's and have a last will and testament drawn up, there was a lawyer at the death-bed to take down the faint and diminishing words of this noted personage.

There was much interest shown as the crowd strained to hear the whispering. The lawyer, realizing this, repeated the message to the assembled group. As is always the case, many were disappointed while many were greatly overjoyed at their good fortune in having some of the belongings of so well-loved a relation.

As the reading went on the crowd grew more tense and the failing voice more faint until at last the voice faltered and stopped—the will of the Class of 1937 was made.

BELEVILLE PUBLIC LIBRARY

## COLLEGE GLEE-ERS THRILL STUDENTS

Mar. 5. "There—there—and there!"

And the pretty little rabbit skipped happily and blushing along!

This, dear readers, comes as the climax in the program that the Glee Club and Band of Moravian College presented to us in our assembly today.

There was an interlude of quartet singing between the music of the Glee Club and that of the Band. In the Glee Club's repertoire the piece that was received with most favor was "The Musketeers." The Band, not to be outdone, featured trombones—featured them in such a way as to make you want more, and more, and more!

This crowd also sang for their dinner. For proof of this you can ask any of the bold, bad girls who mobbed them on their day down to the cafeteria to ask them to correspond with them.

The only aftermath of this gala occasion was the tendency of a few high school students to be pretty little rabbits for several days thereafter.

## Underclass Events

Apr. 9. It isn't the first time we have walked into our gymnasium—nor will it be the last—only to find a yacht, barnyard, garden, or exclusive night club scene. Everything always looks different when Sophomore Hop or Junior Prom time comes around. The committee members are seen busily working on the plans for a successful event.

We approached many persons in an effort to gain some information concerning this year's gymnasium transformations but were silenced by the firm words, "Sorry, I'm busy now—some other time."

But even though we reporters have not been able to secure advance details on these gala events, we predict, with assurance, that two underclass dances will take place in a gay atmosphere of "different" decorations which will make them pronounced successes.

## Senior Class Elections

Sept. 22. The Senior Class of 1937 of Belleville High School has seen fit to elect officers for the term of their seniority, these said officers to form the executive head of the class governing body. They will fulfill such duties as fall unto them in a manner both grave and dignified and it is the duty of every senior to accord his officers due respect and obedience. The worthies elected were Frank Carragher, President; Harvey Nielsen, Vice-President; Betty Gibson, Secretary; and Frank Brown, Treasurer.

## LANDON BUTTONS DEPART EN MASSE

Nov. 4. The Landon buttons which have been seen in such profusion during the past few weeks made a mysterious mass departure this morning. The faces found behind them which usually wore such confident and condescending expressions were surprisingly sheepish and turned all shades of red on the slightest provocation.

Several students have offered the overwhelming re-election of President Franklin D. Roosevelt as the solution to this pressing mystery. This explanation has been accepted in most circles.

Other interesting results of yesterday's excitement have been noted. Students and teachers were extraordinarily sleepy today after sitting up half the night with the radio. Strange counting and exchanges of various sums of money or other spoils has been going on. Mr. Coulter wore a new suit and we wonder.

There is a general feeling of relief now that the fatal day has gone and classes will be the same again and old friends will resume their pleasant relationships where they were left off at any time during the vigorous campaign of the past few months.

## Fire Gongs Go Mad

Nov. 20. The usual buzz of second period classes was rudely interrupted by the fire drill gong. Out filed the classes—glad to lose a few minutes of class. Back they came, laggingly. No sooner were they seated than the gong rings again. Wonderingly the school goes out in the cold again. Back in and seated—the gong rings again—out—in—out—in—until they were dizzy and having a grand time. It was finally learned that someone had forgotten to turn the fire gong off.

## Impromptu Cheerleading

Nov. 25. "Would the gentlemen in the back of the room who are making so much noise like to get up here and lead the cheering? Yes, you, Gabrielson and Feltey!" Much to the surprise of Mr. Kittle and the students—they would.

Up they came. After a few false attempts and blushes they started—independently, however. After a few more tries a weak cheer followed—weak because most of the audience was convulsed with laughter. Finally, together, they led a cheer that nearly brought the balcony down.

## TEACHER RESTORES SANTA CLAUS FAITH

Dec. 23. There is a Santa Claus! We know because we saw him. Mr. Santa Claus honored the students of Belleville High School by making a very unexpected appearance at morning assembly today. Everyone was sitting quietly awaiting a usual program when Santa "popped" in.

Santa seemed to be in as good health as ever. His corpulent figure still looked like a moving mass of pillows—which it was. Mr. S. Claus made an appropriate speech pertaining to the proper duties of his high office and then set about distributing the many presents, real ones, too, which filled his bag so full. Did you see those presents? If you didn't you missed a novel time. And the colors of the recipients' faces—they ranged from dusky pink to vivid red.

Only the most dire calamity happened to cut Santa's visit short. One of the bands that supported his traditional suit broke and caused him to leave the platform hurriedly with only a trail of pillows behind as evidence that Santa came.

Oh! Mr. Reinke, will you ever live it down?

## NEW SCHOOL OPENS

Feb. 8. After receiving conflicting rumors for several weeks, students have finally moved into the new section of the school. Directions were given in assembly with the aid of diagrams and with a parting word of advice we were sent forth to brave the new danger by Mr. Kittle.

The weary students hunting for rooms gave evidence that halls supposedly leading to classes often led into unsuspected nooks. However, the missing rooms were soon found and OH! the expressions of joy! The students were delighted with the new art and science rooms, with the biology laboratory and the beautiful new gymnasium.

The return to the one-session schedule has given opportunity for a more developed social life in school and general approval of the new system has been noted.

## B. H. S. Science Discovery

Nov. 16. In the science laboratory of the High School a new and effective cure has been found for that chronic disease, "outofthewindow—hangitis." Mr. Fagan, with his usual ability to cope with any situation which presents itself, has devised a novel method of bringing the head and shoulders back to the same atmosphere with the rest of the torso. A simple way—you merely apply a yardstick to the most available portion of the anatomy.

## Classified Advertising

### Lost and Found

LOST—Large section of ceiling. Finder please return to R. C. Fagan. No reward.

LOST—Hours and hours of sleep. Finder please notify Washington Trip D. G.'s and R. C.'s how to regain.

FOUND—Several nice bus drivers on Washington Trip. Anyone interested please inquire trippers.

LOST—Center stairway to first floor. Finder may keep; it's too late to do anything about it.

LOST—Faith in women. Finder kindly notify Charles Robinson.

### Wanted

JOBS—First-class references can be supplied. Write Seniors, c/o Belleville High School Employment Service.

METHOD to escape from Sophomore and Freshman flappers. Highest prices paid for first-class ideas. Beau Gannon.

ANOTHER group of five Latin IV students. Write Mrs. Knox.

LONG vacation with pay. Write, phone, or call B. H. S. Faculty.

### Personal Notices

EMIL—Return at once. All is forgiven. K. C. C.

MY best girl having returned my gold football and all my pictures, I shall no longer be responsible for any bills except those contracted by myself. Heartbroken Football Player.

MORAVIAN College Glee Club—Please write. We have been waiting patiently. B. H. S. Girls.

### For Sale or Rent

FOR RENT—Top floor space in Belleville High School. To be vacated by present occupants on June 25. Write H. D. Kittle.

FOR SALE—Posters suitable for any occasion. Recordings of latest numbers by best-known orchestras. Senior Executive Committee.

BOOK Belleville's best girls' trio for your next political campaign. Write Emmet Ryder, agent.

### Public Notices

TAKE notice that since this is a Senior yearbook, no space will be given on these pages to the Junior Class Youth Week elections. Signed, Defeated Seniors.

## CLASS ELECTIONS

| BOYS               |  | GIRLS             |
|--------------------|--|-------------------|
| Frank Carragher    | <i>Most popular</i>                            | Audrey Ural       |
| Jack Schmutz       | <i>Most likely to succeed</i>                  | Lois Mays         |
| Frank Carragher    | <i>Most respected</i>                          | Sophie Madler     |
| Frank Carragher    | <i>One who has done most<br/>for the class</i> | Sophie Madler     |
| Robert Jensen      | <i>Most scholarly</i>                          | Sophie Madler     |
| Leonard Aiello     | <i>Most athletic</i>                           | Alice Moroz       |
| Cormack Hearn      | <i>Most efficient</i>                          | Sophie Madler     |
| Harry White        | <i>Most talented</i>                           | Josephine Rossi   |
| Harvey Nielsen     | <i>Best conversationalist</i>                  | Marcella Ferguson |
| Harvey Nielsen     | <i>Best personality</i>                        | Lois Mays         |
| Harry White        | <i>Most original</i>                           | Elaine Rhodes     |
| Harry White        | <i>Most versatile</i>                          | Irene Scholtz     |
| Harvey Nielsen     | <i>Most interesting</i>                        | Marcella Ferguson |
| Harold Fairweather | <i>Best mannered</i>                           | Adele Kristensen  |
| Bill Heilman       | <i>Most sincere</i>                            | Irene Scholtz     |
| Harvey Nielsen     | <i>Most friendly</i>                           | Lois Mays         |
| Harvey Nielsen     | <i>Peppiest</i>                                | Elaine Rhodes     |
| James Hardaway     | <i>Laziest</i>                                 | Dorothy Belanske  |
| Cormack Hearn      | <i>Most serious</i>                            | Sophie Madler     |
| Armand Richia      |  |                   |
| Jack Schmutz       | <i>Most ambitious</i>                          | Sophie Madler     |
| Chester Davis      | <i>Best sport</i>                              | Lois Mays         |
| Harvey Nielsen     |  |                   |
| Harvey Nielsen     | <i>Best natured</i>                            | Alice Moroz       |



|                  |                           |                    |
|------------------|---------------------------|--------------------|
| Frank Carragher  | <i>Most diplomatic</i>    | Mildred Biebelberg |
|                  |                           | Sophie Madler      |
| Bernard Ings     | <i>Most generous</i>      | Mary Jane Walker   |
|                  |                           | Joan Rummel        |
| Frank Carragher  | <i>Best politician</i>    | Rose Del Tufo      |
| Elmer Gibbs      | <i>Best looking</i>       | Jayne O'Connor     |
| Elmer Gibbs      | <i>Best dressed</i>       | Phyllis Ames       |
| Frank McCourt    | <i>Best dancer</i>        | Rita Bitz          |
| Emmet Ryder      | <i>Class bluff</i>        | Ruth Macaulay      |
| Arthur Ronco     | <i>Class clown</i>        | Elaine Rhodes      |
| John Deck        | <i>Most bashful</i>       | Evelyn Conklin     |
|                  |                           | Jeanne Frappier    |
| Anthony Paul     | <i>Quietest</i>           | Ella Theting       |
| Harvey Nielsen   | <i>Noisiest</i>           | Elaine Rhodes      |
| Joe Gannon       | <i>Biggest talker</i>     | Elaine Rhodes      |
| Frank Brown      | <i>Most sophisticated</i> | Bette McManus      |
| Joe Gannon       | <i>Class flirt</i>        | Joan Rummel        |
| Charles Robinson | <i>Class baby</i>         | Jayne O'Connor     |
| Robert Jensen    | <i>Teachers' pet</i>      | Audrey Ural        |
| Harvey Nielsen   | <i>Most entertaining</i>  | Elaine Rhodes      |
| Emmet Ryder      | <i>Most optimistic</i>    | Marcella Ferguson  |
| Harry Drake      | <i>Most pessimistic</i>   | Margaret Faas      |
| John Deck        | <i>Blushingest</i>        | Lois Millen        |
| Ascenzio Franco  | <i>Scrappiest</i>         | Margaret Faas      |
| Edward Doyle     | <i>Biggest giggler</i>    | Anna Adamwicz      |
| Joe Gannon       | <i>Wittiest</i>           | Elaine Rhodes      |
| Charles Harris   | <i>Most naive</i>         | Dorothy Duffy      |
| Armand Richia    | <i>Best salesman</i>      | Marion Flanagan    |
| Joe Gannon       | <i>Best line</i>          | Ruth Macaulay      |
| Frank Carragher  | <i>Busiest</i>            | Sophie Madler      |

## MEMENTOES

Br-r-r-ing! Br-r-r-ing! (The shrill jangle of a telephone disturbs the serenity of a peaceful hospital. A nurse in white answers.)

Sunshady Sanatorium. No, madam, our visiting hours are from two to three every Tuesday, Friday, and Sunday afternoon. I'm very sorry, madam, but the rules are—Who? Elaine Rhodes? Oh, I see. Her scrapbook of Nelson Eddy! By all means! Leave it at the desk and Miss Perkins will bring it right up. Oh, you're very welcome. Good-bye. (Turning to a companion nurse) Miss Clarkson, that's what Elaine has been begging for these past three days.

Well, it's a relief to know at last what she wanted. Her laryngitis is so bad she can't say a word.

Yes, a very serious case. Oh dear, why don't those supplies come? We're in desperate need of them. Do you know that Marcella Ferguson is upsetting all the other patients in room 217 with her oversupply of energy? Only a dose of Amberscilllicodososis will quiet her down. (Miss Perkins appears and hands two packages to Miss Clarkson who joyfully carries them to the desk.)

Here is that precious scrapbook—and, at last, the supplies!

Oh fine! Will you help me to check and distribute them, please?

Certainly. Here is the pep-diminisher, Miss Rogers.

Rush that to room 217 for Marcella.

One feather pillow for Joe Thalheimer. Is he the boy who is suffering from insomnia?

Yes, poor fellow. It seems he slept so much in school that now he is unable to sleep at all. This danger sign, Miss Clarkson—place this on the door of room 212. We must warn our young nurses to beware of Junie Carragher's fascinating line and fetching smile.

These combs go to Miss Bette McManus. She's feeling much better this morning, you know. I imagine she just overtaxed her brain trying to create fashionable outfits to accentuate that sophisticated coiffure of hers. One game of monopoly for Harvey Nielsen.

Maybe after he's played this game he'll be able to obtain a monopoly on that charming girl friend of his, Audrey Ural. Are these pictures for Joe Gannon?

Yes, we simply couldn't allow all those young ladies to call on him every day, so they've sent their pictures instead.

Look, on this one it says, "There comes a time in every young man's life." What do you suppose that means?

Oh, that's the line Joe made famous in the Senior Class Play last winter.

An actor? Well, can you imagine! Elank music sheets for Harry White. As his fever rises he composes more and more amorous love lyrics. That love bug is a dangerous insect but decidedly inspirational, don't you think so, Miss Rogers?

Indeed I do. This Moravian college pennant is for Shirley Schellin—in memory of a certain conquest, no doubt, if you can believe what the other patients say.

She'll have to show it to her friend Ella Von Ende who, it seems, shared the fun. A miniature Bible for Emmet Ryder. I wonder if he could want this to remind him of the huge family Bible with which he so piously governed the lives of the highly respectable Tweedle family.

Are all these pencils for Eddie Doyle? That must be some book he's writing, "How to Become a Good Influence." I believe he's anxious to get it written so his friend Bob Shaughnessy can read it.

Do you see these 1937 dog licenses? Well, Mary Jane Walker ordered them to distribute among the other members of the "Oh-So-Peachy-Woof-Woof-Club." I heard they puzzled the entire student body and faculty at Belleville High by wearing dog licenses to class. However, they went too far and tried to live on puppy biscuits and that's why they are all here now.

I wonder what Peggy Goodrich intends to do with this green ribbon?

Perhaps she intends to keep it until Christmas to wear "with" her hair. It would certainly be in keeping with the color scheme of the season, Miss Rogers.

Yes indeed. Is this the medal Marion Flanagan has been waiting for?

Yes, obtained by hook or crook, I understand, for selling Monads. Here is a file.

Oh yes, Miss Clarkson. The doctors insist on removing that romantic chain bracelet which Bill Heilman has worn on his wrist for such a long time. They won't accept his excuse that he hasn't the key to unlock it.

Harold Fairweather will be able to use these passes for the bicycle races soon. He's leaving next week. We'll all miss his friendliness, won't we?

We certainly will. But listen to this, Miss Clarkson—I heard that John Barrymore is coming here tomorrow for a rest cure. See, here's his photograph.

The picture is of John Barrymore, but it's for Frank Brown, to inspire an imitation of that great lover's subtle technique. I don't believe Frank is coming for a rest cure, however, as I happen to know there's a certain young lady here in whom he's very much interested. The rest cure is merely an excuse. But, of course, you can never be positive—

What beautiful dance bids! Rita Bitz and Winnie Fitzsimmons must be anxious to get out of this sanatorium so they can attend these affairs. If they don't leave soon we'll have a dancing school here, because all the convalescents seem to be begging for lessons.

Philip Ward ordered this pinochle deck. He certainly must be a clever player—at least whenever I go in his room I find him telling the others what cards they should have played and when they should have played them.

Typewriter ribbon for Kathryn Hobson. She's well enough to sit up and type now. What is she working on?

A book called "How to Develop Your Personality." I imagine it will be very successful judging from Kay's own charming personality.

A community song book for Bernard Ings. Without a song and Bernie—. The train ride home from Washington would never have been so much fun, so they say. Now let's see what's next on the list?

One Hollywood pattern for Jayne O'Connor. You know she's been quite anxious to make a new addition to her lovely wardrobe.

M-m-mm, doesn't this candy heart look delicious? I'd love to sample it but we'd better rush it right up to room 204 to replace the one Betty Gibson lost to a certain alumnus.

Well, what's this official looking envelope? Look! one ticket to Washington for Harry Drake, and an engraved invitation.

Oh, he's been waiting for that for weeks. It's an invitation from President Roosevelt to come down and advise him on the Supreme Court question. Aha, one of our patients is thrifty—behold the bank!

Yes, for Jean Scaperotta—and this time it's for her own savings instead of the money which she so efficiently collected for the MONAD. It worried her so much that she had horrible nightmares of orange slips and quarters.

One bow tie for that handsome fellow in room 207—Elmer Gibbs. I've heard the other patients comment on how well he dresses.

Be sure to check this one, please—one "Dissertation on the Benefits to be Derived from a Long Rest" for Sophie Madler. Dr. Glaspey recommends that she read it thoroughly because she is so exhausted from her brilliant work in editing the Senior MONAD.

At last it has come!

What? What has come?

Why the engagement ring that Bob Wertz has been eagerly awaiting. Perhaps tonight with this under his pillow he will dream of Dotty Codner and orange blossoms.

Here's a complete make-up kit for Ruth Macaulay, manufactured especially by the R. C. Fagan Co.

A pair of shoes for Junie McCourt. He wears them out so quickly doing those fast dance numbers.

Well, what in the world is this—Orange ribbons and green nail polish?

For Ellen Hayes, so she will be prepared for next St. Patrick's Day. Speaking of nail polish, here's the weekly supply of black for Carolyn Phillips.

Ahoy there! a tiny boat. Check this off for Jack Schmutz. From what I've heard he hopes to command a larger one some day.

Check and double check this one for those two patients, Dot Belanske and Helen Fried. They are suffering from acute indigestion caused by eating their lunch too fast at noontime. Here's an alarm clock for them. I wonder if it will teach them the value of time?

This football banner will surely remind Sam Aromando of the days when he fought so desperately for dear old B. H. S.

This piece of music is for Doris Seely. Look—it's that old favorite, "I Found a Million Dollar Baby in the Five and Ten Cent Store."

Yes, I understand Herby Koelsch ordered it sent to her from him.

Behold, wisdom enters our gates in the form of the three little monkeys. These are for Joan Rummel.

Next, a lengthy volume on the "Art of Argumentation" by Kenneth Coulter for those two splendid debaters, Rose Del Tufo and Florence Freedman.

In my opinion, Miss Rogers, there should really be something here for each of our patients. They are all deserving of some memento, with which to remember their stay at our beautiful sanatorium, but it seems that time will not permit us to mention every one.

Goodness, that's true, Miss Clarkson. Look at the clock! We'll have to hurry or we'll be late.

## ADVICE TO THE JUNIORS

There comes a time in every young Junior's life when he must take his place as a Senior, and so we feel that a little advice from those who have made the trip will do no harm and will prove a safeguard as they enter the last mile on the highway of schooldom.

### TO THE CLASS IN GENERAL

1. The best advice we can give is for everyone to graduate in June, 1938.
  2. Always have a new supply of records on hand for the radio.
  3. After our Senate meeting the other day we suggest that you go to Mr. Kittle when you are in need of novel ideas.
- To the Juniors Who Intend to Go to Washington: You had better give Mr. Kittle a medical bag to make it more convenient to attend the ailing Seniors.
- To Robert Cook: Remember, Bob, you don't have to have a Carragher haircut to be class president.
- To Bill Engelmann: How about a few more members in that orchestra? Maybe that would improve it some.
- To Dave Martin: You'd better keep that racing bike in good condition so you can get to Jean's house in nothing flat.
- To Dan Wascoe: Don't you think it's about time you awoke from your coma of shyness?
- To Adele Conroy: We suggest that you take a few lessons in bookkeeping from Joe Caskey in order to liquidate your liabilities.
- To Helen Sanok: Stick to your basketball, Helen: maybe Miss Wright will consent to a Girls' Basketball Team that will play more than one game next year.
- To Lois Fatzinger: Don't run into any doors when you're a Senior, Lois. That line won't work then.
- To Peggy Luby: You'd better get a clock that won't lose time; one of these days Danny won't wait for you.
- To Bill Parmer: Don't be like the rest of the athletes, Bill; hold on to that gold basketball.
- To Leo Culkin: You can't afford a long vacation next year, appendix or no appendix!
- To Marirose Hanlon: Why be so self-conscious about your glasses, Toots; you know you can't tell a book by its cover!
- To Dottie Dunleavy: Dottie, you'd better ask Good Counsel's John Julius for another picture because you'll wear that one out.
- To Jimmy Craven: You'd better start looking now for a girl who admires your smile as Lois did.
- To Joe Distasio: Keep up the good work, Joe; one of these days you'll be a great orator.
- To Cecile Campbell: You'd better put your culottes in moth balls if you expect to use them for cheerleading next year.
- To Wanda Rogers: If you really like Bus, in all fairness you should admit it, so the rest of us will know where we stand.

## CLASS PROPHECY

Scene: Hut in the woods. Gypsy girl sits alone at table, turning over the leaves of a book, and croons in weird monotone:

Double, double, toil and trouble;  
Life is but an empty bubble.  
From the past . . .

(Class President knocks.)

Enter, I pray, whoe'er thou art.

(Class President enters.)

What seekest thou, youth? Thy need impart!

(Class President speaks.) Wise prophetess, guardian of the unseen things to be, the class of 1937 of Belleville High School is about to pass forever out of school life into life's school. They tell me that by mere contact with the personal belongings of the individuals you are able to read their future. With this in mind I have brought you these handkerchiefs, fragrant with the personalities of these graduates.

(Phophetess speaks.) Have thou a seat. Thou art indeed brave to dare look down the vista of things to be. Knowest thou not that a glance into the future is never a pleasure unmingled with pain? But as thou hast spoken—as thou hast dared to tempt the gods by thus challenging their revelations of thyself and thy classmates—listen, and it shall be prophesied unto thee.

(Takes first handkerchief.) Ah! I see a rich man, a banker—riding in his aeroplane, counting out his money—wearing his diamonds. His name? Harry White.

(Takes second handkerchief.) Under the supervision of Helen McCann and Lois Mays, Paula Jennings will soon receive her degree as dancing instructor.

(Takes third handkerchief.) A woman of strong mind, strong will, and stronger temper! Rita Eitz, author of the first book entitled "AC's Gone."

(Fourth handkerchief.) A strong breeze and a whiff of far, far prairies, a girl of the plains—riding bareback over the broad spaces, Elaine Rhodes.

(Fifth handkerchief.) A school of learning and a noble professor before his class. They look at him, in reverence of the vast learning he acquired at B. H. S. Why, what is that they call him as they bow in homage before him? Professor Joe Scarpelli.

(Sixth handkerchief.) I see a bride weeping the loss of her pet poodle. Who is the bride? Her name once was Irene Coulther.

(Seventh handkerchief.) Hear the newsboy running down the street! What does he say? Listen, I catch it now—"Extra! Extra! All about the big battle! American forces led to victory by the gallant soldiers, heroes of the hour—The Great Caesar and Anthony Casale."

(Eighth handkerchief.) Ah, an immense billboard, and what does it say? A second Melba—greatest opera singer of the day! Josephine Rossi.

(Ninth handkerchief.) A young lady, disappointed in some love affair, has become a nun and devotes her life to others, Theresa Ilaria.

(Tenth handkerchief.) Let's drink a toast to our doctor, Sam Aromando. May he never become friendly with the undertaker, "Pretty Boy" George Hearle.

(Eleventh handkerchief.) Shades of a train announcer at the Essex Street station of the Erie, Harvey Nielsen!

(Twelfth handkerchief.) At the young age of thirty I see the filibustering senator from Belleville, Emmet Ryder.

(Thirteenth handkerchief.) This belongs to our weather reporter, Harold Fairweather. He tries very hard to live up to his name.

(Fourteenth handkerchief.) Who's that trucking king? Yea, man, it's James Hardaway.

(Fifteenth handkerchief.) I believe this next little lady deserves a cheer. She is none other than Marcella Ferguson, wife of a Cornell professor.

(Sixteenth and seventeenth handkerchiefs.) They seem to cling together. Why! Evelyn Truitt and Betty Zuccarelli have become partners in a beauty parlor on Fifth Avenue.

(Eighteenth handkerchief.) Well, well, if it isn't Leonard Aiello! He is now the producer of a great Broadway Show, starring Winnie Fitzsimmons and Jean Frappier.

(Nineteenth handkerchief.) I see a line-up before the Capitol Theater. I wonder what the attraction is. The billboard states that "A Lady's Man" is playing, starring Nick Bissell, our second Robert Taylor, with none other than that fair young lady, Agnes Coppola.

(Twentieth handkerchief.) Ah! but don't let the sound fool you. It is Helen Kaluzer who is doubling for Martha Raye, in a screen picture called "I Didn't Enjoy It"!

(Twenty-first handkerchief.) Lois Millen is now the proprietor of a tea shop. Joe Cannon has become one of her regular patrons.

(Twenty-second handkerchief.) One glance at this handkerchief and you can guess to whom it belongs. Who? Why, to Valentine De Luca, the most famous comedian on Broadway.

(Twenty-third handkerchief.) I'm sure this belongs to Mary Heimrich, the world's best court stenographer.

(Twenty-fourth handkerchief.) Dainty, lively, and light is that famous Broadway dancer, Betty Cronshey.

(Twenty-fifth handkerchief.) I see a fair young nurse, her name is—why yes—Grayce Stewart.

(Twenty-sixth handkerchief.) I believe this is your handkerchief, dear President. You shall not be a success as Lochinvar. Your success lies in your ability to design the latest hair fashions for men.

Mr. President, brave official of the Class of 1937, my duty is at an end, and the future is hereafter to thee and thy classmates an open book. May each of you follow faithfully the paths I have marked out for your footsteps.

*Prophetess of Class of 1937*

ROSE DEL TUFO



## CLASS WILL

We, the unconquerable, irrepressible, and prospective graduates of the Class of 1937, from that illustrious hall of learning, famed both far and wide, namely Belleville High School, situated in the town of Belleville, county of Essex, state of New Jersey, in that prosperous country known as the United States, on the continent of North America, in the Western Hemisphere, X marking the spot at precisely  $74^{\circ} 15'$  longitude,  $41^{\circ} 18'$  latitude on this terrestrial sphere, being of a mind intact and efficient, and about to glide out on the stream of unconsciousness between the portals of this noble edifice, do hereby present to the anxiously waiting world our last will and testament.

Item I. To Mr. Kittle, our principal, we give and bequeath the power to forgive and forget and remember that Seniors will be Seniors.

Item II. To that long-suffering aggregation of pedagogues, affectionately known as "THE FACULTY," with all the strength we can gather together as we strive to ward off the oncoming darkness, we extend our most heartfelt gratitude, and sigh as we ponder on all they have endured to attempt to instill in us a few grains of learning and make us aware of our approaching duties as shining examples of American citizenship.

## SPECIFIC TO THE FACULTY

1. To Miss Underwood—a handy oak gavel for the single, express, and obvious purpose of striking the surface of her desk a sturdy blow to arouse dormant students, stimulate interest, create silence out of noise, frighten the timid and tame the belligerent.

2. To Miss Brennan—chewing gum! (!!)

3. To Mr. Reinke—some ruffled curtains to put the finishing touches on his domestic habitat.

4. To Miss Walters—an automatic filing system to take care of those sheets of music which the Glee Club simply refuses to put away after class.

5. To Miss Gray—a stop watch.

6. To Mr. Coulter—one nice long, dreamy recording of "Blue Hawaii" for "that" mood.

7. To Mr. Smith—a bunch of hard doughnuts to take the place of his football "cream-puffs."

8. To Miss Hollberg—an extensive and all-embracing course in the art of sketching to help her bring her German students out of the fog.

9. To Mr. Junda—one spare fountain pen for those moments when Mr. Brennan has forgotten to return his other one.

10. To Miss Leahy and Miss Wright—one script with cues underlined in red ink to keep them from interrupting each other in the process of reproaching the (so we thought) irreproachable.

11. To Mr. Paul Jones—larger pockets in which to carry his hands.

12. To Mr. Fagan—just one class, small, if need be, but intellectual so that he can give the kind of Chemistry course he'd like to.

13. To Mr. Hefferman—a little more courage so he could give that hidden canary of his a chance; it brightens the whole day to hear a teacher singing.

14. To Mr. Winika—that long-awaited streak of lightning for his track team.

15. To Mr. Davis—some overstuffed chairs for the new office.

Item III. To our diminutive successors we strongly recommend Alice in Wonderland's effective prescription for attaining a more impressive height.

Item IV. To the Freshmen—the hope that the school will last long enough for them to make the grade.

Item V. To the Sophomores—just half the knowledge when they're Juniors that they thought they had when they were Sophomores.

Item VI. To the Juniors—a restful summer vacation to build them up to resist the wear and tear of the Senior year.

Item VII. Now, out of the goodness of our heart, we leave these significant tokens to members of the under-classes:

1. To Edward Banta—a date book to record the dates he *didn't* keep.

2. To Muriel Sommers—a dictaphone record of her chatterings to keep herself company when no one else will listen.

3. To Vincent Sorrentino—an awful lot of hope tied with pink ribbons that he will gain a permanent place at first base.

4. To Virginia Breunich—you do try so hard, so we will leave you some of Bette McManus' flair for sophistication.

5. To Bill Engelmann—a whole class of new Freshman girls upon whom to expend your charming personality.

6. To Lois Fatzinger—visions of sugar-plums—or is it Billy Heilman?

7. To Betty Schwab—a horde of good-looking young men to add to your retinue of loyal followers.

8. To Robert Howard—the hope that the truant officer will become your dearest friend. You know, just in case.

9. To Shirley Bitz—her sister's dancing footsteps in follow in.

10. To Anne Roviello—A lost-and-found ad for her other dimple.

11. To Robert Cook—Junie Carragher's oratorical ability minus the stage-roaming tendency.

12. To all those who come to school late—a volume of quick-witted answers to questions from our stern inquisitors, the office force; also, our utter tranquillity when entering a class ten minutes tardy during the progress of a momentous test upon the Reality of Abstract.

As we find ourselves fast receding from the realm of Secondary Education we fasten our feverish eyes on the shining goal ahead and hereby and herewith appoint and forcefully name as executors and trustees of our last will and testament the hopeful Freshmen, the studious Sophomores, the aspiring Juniors, Mr. Kittle, and the class advisers on this, the 16th day of June in the year of 1937.

Witnesses: Yvonne, Cecille, Annette, Emilie, and Marie Dionne.

## THE STUDENT'S CREED

I believe in honest work, in generous comradeship, in the courage of high convictions.

I believe in the inspiration of all that is truest and best: in books, in people, and in life.

I believe in loyalty to our high school, the fostering mother of these ideals, and I pledge her my allegiance in all her undertakings, in all that will make her a stronger and nobler school.

MONAD

1  
9  
3  
7



ACTIVITIES



### DEBATE CLUB

This year has been, for the Debate Club, a year of achievement. The club increased its membership greatly and the team has been quite successful, having been awarded three decisions out of a possible five.

The scheduled meetings were held each second Wednesday throughout the school year. The meetings were devoted to discussions of the principles and practices of debating and the questions to be debated, as well as to the hearing and judging of try-out speakers.

In addition to the regular activities of the Club, individual members have taken part in many interesting scholastic contests. In this school's New Jersey Forensic League Oratorical Contest, Rose Del Tufo was adjudged the winner; in Belleville's John Marshall College of Law Oratorical Contest, Joseph Distasio was proclaimed best speaker.

For the first time in the history of Belleville High School, letters have been awarded for debating. The award was based on two years of participation in varsity debates. Those who received their letters were Frances Berkowitz, Mildred Biebelberg, Joseph Distasio, Janet Waldie, and Grayce Stewart. In addition to this, Beatrice Berkowitz and Lorraine Houseman were voted best debaters.

The Belleville High School Debate Club, which holds membership in the New Jersey Forensic League and the Northern New Jersey Debating League, owes much of its success to its faculty adviser, Mr. Kenneth C. Coulter.



## BANKERS

Every Tuesday morning we are greeted with the suggestive sign, "Bank Day Today." Then, very virtuously we dig into our pockets and bring forth the shining coins. Away they all go to the bankers—Lincoln, the buffalo and the Indian, the eagle and the draped figure, and the pretty lady. Of course, they're not really lost to us, for they're all accounted for in our bank books.

The bankers send a record of our deposits and the money to Mr. Fulcomer, and he sends the deposits from the entire school to the First National Bank of Belleville.

Banners are presented to home rooms which achieve one hundred per cent, and Miss Kelleher and Mr. Brennan usually carry on a banking war with these banners as spoils.

Banking encourages thrift and sensible spending, thereby creating a sense of responsibility in students. It also helps to pull us out of some tight places, because high school students always run short of money!



### CHEER LEADERS

"Don't be frightened, Grandma, they won't hurt you. Jumping around? The heat? Oh no, dear, they're just trying to help win the game. By keeping up the morale of the players, of course. That roaring noise? It's all right, darling. That's a new cheer 'The Swing Locomotive.' Why, dearest, how could you think a thing like that? They're not fanatics, they're just the cheerleaders.

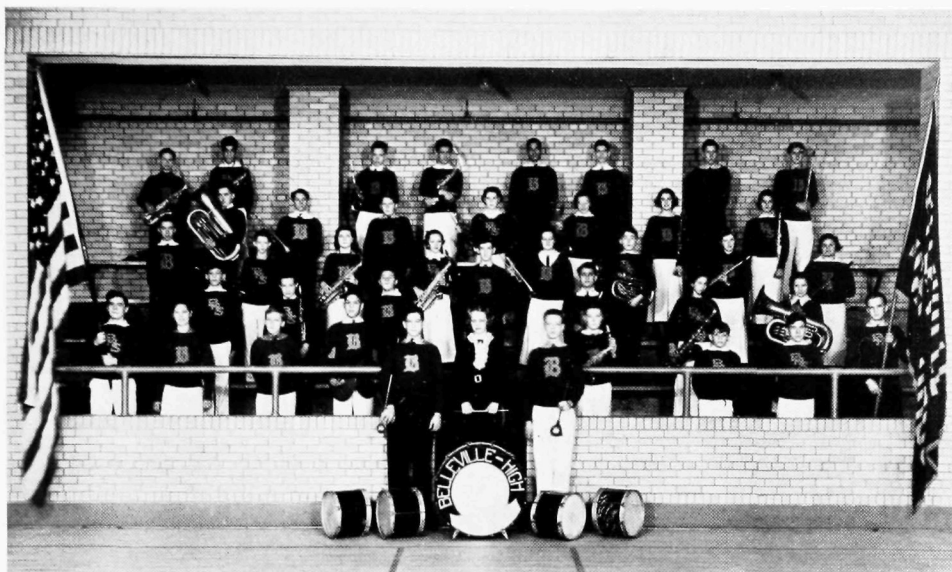
"Why look, there's Marcella Ferguson, and Dorothy Belanske! What a relief it is to see at least two familiar faces! Dearest, look over there. Do you see that girl jumping all over the place? She looks familiar. Why it's—no, it can't be—but it is! It's that Elaine Rhodes! How many is that now? Three? No, dear, I don't see any boys at all. Isn't that little girl Isabel Smith? That dark-haired one is Bernice Becker, I think. Yes, dear, there must be a boy around somewhere but I don't see him. Janet Moffett? Yes, that's she. The girl with her must be Cecile Campbell. That makes seven, doesn't it? Must be another one. Grandma! A vision, a dream, a boy! Who can this chivalrous hero be, who rushes in where other men fear to tread? Why, it's that nice McCoy boy—Larry McCoy.

"Yes, dear, they always wear those yellow cheerleading sweaters. It's sort of a sign of the profession, if you understand what I mean.

"Looks after them? Oh yes, that is a job. Mr. Glaspey is responsible for them as much as anyone could be. Yes, it probably is very nerve-racking. No, he doesn't show any signs of premature greyness.

"Do sit still, Grandma, and stop cheering. Everyone is looking at us!"





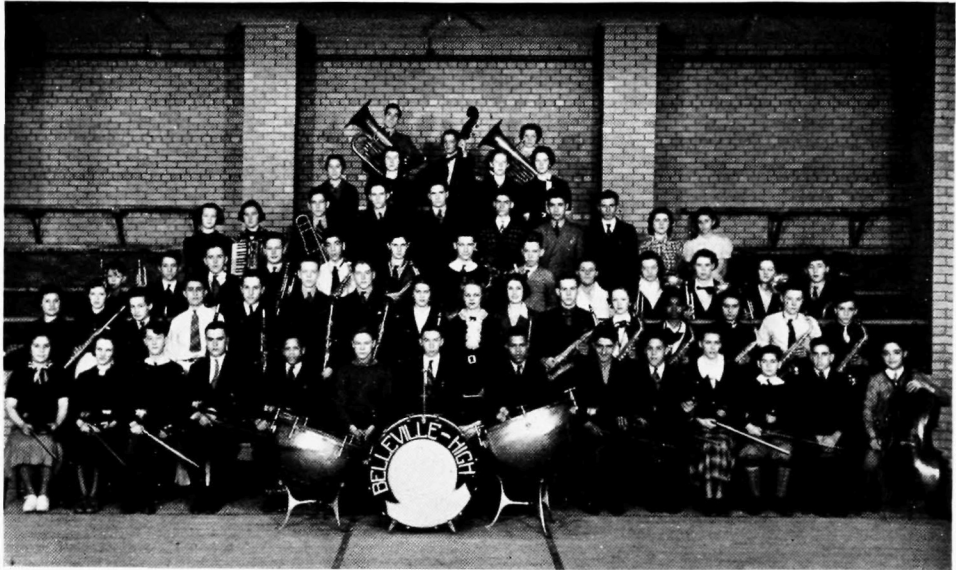
## BAND

The Belleville High School Band, under the leadership of Miss Walters, has been able to carry out the fine work and traditions of every high school band.

During the football season every pupil of Belleville High felt that thrill and joy of school spirit when the 58 band members, decked in lively colors of gold, blue, and white, marched down the field with their shining instruments playing favorite songs appropriate for the season. The drum major walked very proudly, leading the band around the field, with Pat Tortorelli doing his twirling stunts in a breathtaking fashion that made the crowds roar. They played their way to the Belleville grandstand and then to the visitors', and with a turn, they all came back to take their places in the Band section of the Belleville grandstand. Whether we won or lost, the band was always there to encourage the cheerleaders and players with its music, especially our famous *Alma Mater*, between halves.

The Band stands out not only during football games, but also in other activities, as school assemblies and parades. One Freshman girl, Carol Carswell, a clarinetist, tried out for the New Jersey All State Band and took second place—fine work! We have many such people in this great band of ours that we don't hear so much about, but who do big things in a big way.

Miss Walters has started a Beginners' Band this year in which 25 students will participate and co-operate in preparation for next year's games.



## ORCHESTRA

An organization both educational and entertaining is the Belleville High School orchestra. It is composed of seventy members and is conducted by Miss Walters. These seventy members play a great and interesting variety of instruments.

All the faithful congregate in the music room once a week to devote a period to Pan. In this manner they prepare for the programs on which they appear. They played at assemblies, they helped along with the ceremonies at the dedication of the new school, and furnished the overture and intermission music at the performance of "Tweedles." At the Spring Concert they furnished the classical music of the program.

Their repertoire is extensive and impressive. This year it included such beautiful but difficult selections as excerpts from Tschaikowsky's "Pathetique Symphony," "The March of the Peers" from Gilbert and Sullivan, and the Andante Movement from Haydn's "Surprise Symphony."



## GLEE CLUB

We're certainly proud of our Glee Club! And here are just a few of the reasons:

Their first accomplishment was a Thanksgiving Day Program, for the assembly, in which they sang the famous poem, "Hiawatha." Later came the dedication ceremonies of the new addition to our school and they entertained our parents and friends with a number of selections. To further their achievements they sang the "Halleluiah Chorus" from *The Messiah*, at our own Christmas program. But these earlier presentations were given just in preparation for their main event—The Spring Concert—which was held in May and which proved definitely their abilities. It was their eighth annual Spring Concert, and consisted of both classical and popular divisions. The Symphonic Orchestra furnished the accompaniment in the classics, and our own jazz orchestra rendered the popular selections. Included were numerous original scenes, among them a Dude Ranch Scene and a Fashion Show. Flimsy, pastel gowns worn by the girls completed the appealing effect produced by their singing.

To our honorary list we added twenty-four songsters who represented Belleville High School in the annual Essex County Chorus. And in addition, we boast five members of the International High School Artists' Society.

Now do you believe us when we say we're proud of our Glee Club?



### SECRETARIAL CLUB

MARY JANE WALKER  
DOROTHY CODNER  
AUDREY URAL  
MRS. ANNE SNEDEKER

*President*  
*Vice-President*  
*Secretary*  
*Faculty Adviser*

Scene—Typewriting Class; Two Juniors are seated before typewriters.

.....Gee, do you suppose we'll ever be able to type like that?

.....Oh, I hope so, but you know those girls belong to the Secretarial Club, and you must have a B average to be eligible for membership.

.....Secretarial Club? What's that?

.....Well, the Secretarial Club is a business organization that meets on the first Thursday of every month and is composed of certain commercial students who wish to gain experience in the business world. They gain this experience by acting as secretaries for the teachers and the office clerks.

.....You know, I bet they have a lot of fun at meetings, especially under the administration of "The Three Musketeers," Walker, Codner and Ural.

.....Yes, they certainly do. They have splendid programs after each meeting, such as debates, plays and discussions, all of which pertain to the business world, of course.

.....I wonder what they'll do next—

.....Well, at present I hear that they are planning to go to New York to tour the Stock Market and some of the large industrial concerns. Confidentially speaking, I've heard rumors that they are going to give a play in assembly.

.....It seems to be both educational and entertaining—I hope we can join next year.

.....Yes, I hope so, too, but we'll never be eligible if we don't finish this typing. Gosh, it's 4:30! Let's begin!



## INTERNATIONAL HIGH SCHOOL ARTISTS' SOCIETY

It is a mark of distinction to be elected to this society which honors those people who work diligently and skillfully in their several fields. To be a candidate one must fulfill the following requirements:

First: Achieve junior standing.

Second: Earn a general scholastic rating, at the time of election, in the upper third of the class.

Third: Attain outstanding achievement or recognition in one of the fine arts: music, dramatics, or art.

This society was sponsored and founded by many outstanding artists, among them, Mme. Schumann-Heink and Amelita Galli-Curci. These people have attained outstanding achievements in their respective fields and we proudly present our members and hope that they will meet with such success as this.

The present membership includes Josephine Rossi, '37, music; Alice Neville, '37, music; Betty Gibson, '37, music; Ella Von Ende, '37, art; Florence Freedman, '37, art; John Loebell, '37, art; Ruth Rader, '37, dramatics; Angelina De Noia, '37, music; Marcella Ferguson, '37, dramatics; Edith Atkinson, '38, music; Elizabeth Sharp, '38, music; Michael D'Ambola, '38, music; Milton Swenson, '38, music; Ruth Compton, '38, music; Helena Zarra, '38, music; Genevieve Holland, '38, art; Frances Butler, '38, art; Virginia Bruenich, '38, art.



## RIFLE CLUB

HOWARD GARLAND  
 RICHARD SCHLICHTING  
 BLOSSOM HUIZER  
 MARCELLA FERGUSON  
 MR. SAUNDERS



*President*  
*Vice-President*  
*Secretary-Treasurer*  
*Faculty Adviser*

This year the Rifle Club was re-organized by a group of enthusiastic riflemen. Although handicapped by the lack of a range in Belleville, the club continued to grow throughout the year and established itself as a vigorous organization, using the range of the Maplewood Rifle Club for the meetings.

Only one match was scheduled, that with Hillside High School, the latter winning by a close score.

With one year of experience, the Rifle Club expects next season, which will be a busy one, to continue the activities of this year.

The members include Howard Garland, Harry Drake, Blossom Huizer, John Idenden, Robert Allaire, William Fehon, Fred Johnston, Richard Schlichting, Jack Robinson, Ernest Alden, Louis Rau, Robert Jenkins, Hugo Di Giovanni, Paul Thompson, Clifford Smith, Fred Wohlfert, Samuel Cocks, Edward Volpe, James Pitrelli, Marcella Ferguson, Jean Robinson, Frances Sheldon, Jane Horgan, Margaret MacLaughlin, Betty Schwab, and Margaret Papartis.



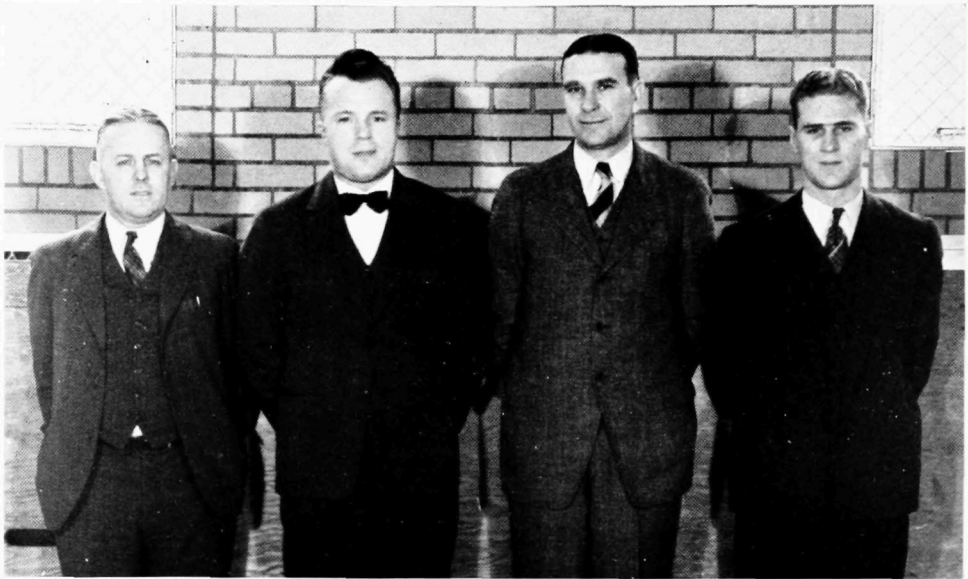
MONAD

1  
9  
3  
7



ATHLETICS





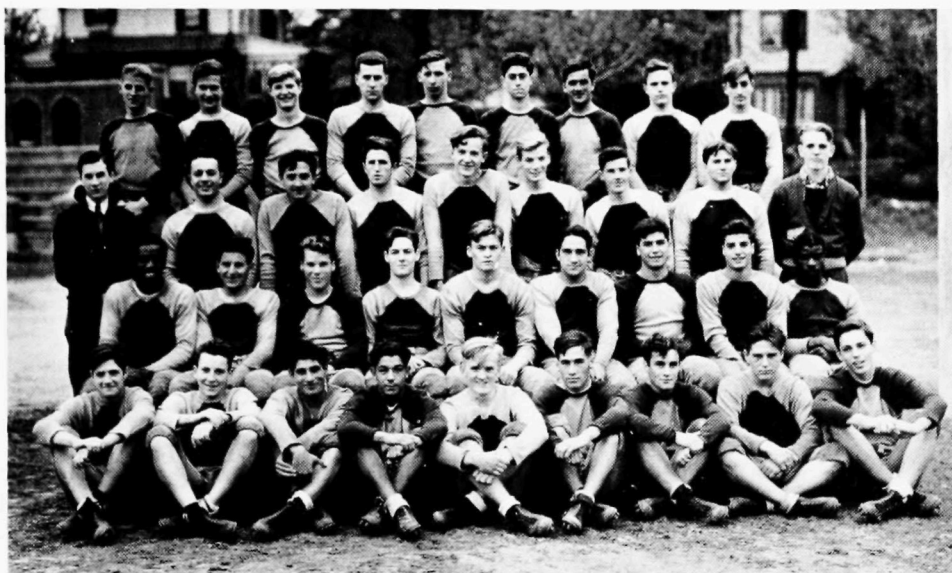
### COACHES

The burden of responsibility for the training and direction of athletic teams rests upon the shoulders of four members of the faculty. As coaches of the various sports, they give generously of their time and effort. It is the Monad's pleasure to acknowledge on behalf of the student body the value of their services to us.

In general charge of the athletic activities of the Belleville schools is A. K. McBride, Athletic Director. Mr. McBride serves also as coach of the basketball team. He is assisted by Alvin B. Davis.

The coach of football and baseball is Frank B. Smith, who is assisted in football by Mr. Davis and Wilho Winika, and in baseball by Mr. Davis.

Mr. Winika is coach of the track team, assisted by Henry Watters, a citizen of Belleville and an alumnus of the High School.



## FOOTBALL

Six or seven footballs flying through the cold, stinging air—a band gayly attired standing at attention, proudly serenading the group running, kicking, and warming up on the white striped field—crowds cheering their favorites—flashes of color in the scene which tells us that King Football is with us once again and the first game is about to start.

Students and townspeople alike showed they were completely backing the team and coach by turning out en masse for the opening game at Clearman Field. The boys knew that this year they had a difficult task because last year's squad was broken up by the loss of regulars. But they met the enemy and conquered. The team played through a vigorous schedule of nine games and encountered the top-notch teams of Essex County and vicinity.

Now let us review the highlights of the important games. The Bell-boys opened their campaign with Ramsey and won handily. Next came our athletic arch-enemy and traditional rival, Bloomfield; Coach Smith had his boys pointing for this game and the boys fought to the point of exhaustion but it just wasn't our year.

However, victory was again ours on the following Saturday against Lyndhurst. A few weeks later saw one of the best games played on Clearman Field, our opponent being Central High. It was nip and tuck throughout with Belleville finally losing out, but gloriously. Our last game, on Thanksgiving Day, was greeted with talk of turkey and snow.

The team was coached by Frank Smith along with the able assistance of Wilho Winika, a newcomer from Rutgers, and Alvin Davis.

Big Bus Gausepohl captained the team and Leo Culkin was appointed Student Manager.

At the All Sports Banquet sweaters and footballs were presented to Hollweg, Shaughnessy, Boniface, Zoppa, Hardaway, Wertz, A. Zuzzio, N. Zuzzio, Hantala, and Tesone. Doyle, Vuono, Aromando, Ryder, Gausepohl, and Slade received letters.

#### SCHEDULE

|          |                     | Belleville | Opponents |
|----------|---------------------|------------|-----------|
| Sept. 26 | Ramsey              | 24         | 0         |
| Oct. 3   | Bloomfield          | 0          | 36        |
| Oct. 10  | Lyndhurst           | 32         | 0         |
| Oct. 19  | Good Counsel        | 26         | 0         |
| Oct. 24  | Irvington           | 0          | 6         |
| Oct. 31  | Central (Newark)    | 14         | 26        |
| Nov. 7   | Kearny              | 0          | 13        |
| Nov. 14  | West Orange         | 6          | 27        |
| Nov. 26  | South Side (Newark) | 7          | 19        |



## BASKETBALL 1937

ALBERT K. McBRIDE  
ALVIN B. DAVIS  
CHARLES ROBINSON

*Coach*  
*Assistant Coach*  
*Student Manager*

Glancing over the schedule we find that Kenneth Coulter, Belleville High School's Faculty Manager, had booked for the basketball team sixteen hard games, eight of which were to be played on our home court.

To increase the attendance, student tickets were made available by the Athletic Council. Thus, for one dollar, a student was permitted to see seven home games. The enthusiastic support of both students and adults was capably handled by our frisky cheerleaders. When the new gymnasium was opened the basketball team did their bit in the dedication by playing West Orange on the court.

Now, let's turn to the high-lights of the season. The Kearny game was a forty minute period packed full of thrills. Either a tied score or a one point difference prevailed throughout the game. With less than a half minute to play Bill Parmer received a free throw. While Parmer shot and missed, Captain "Bus" Gausepohl had called time out. Thus Bill was entitled to another chance at the toss, which was destined to win for Belleville.

At West Orange, our high school squad not only "gained revenge" with the

homesters for spoiling our inauguration ceremonies, but broke a record by beating the West Orange Cowboys 30-24. You see, previous to this Belleville had never defeated West Orange on the latter's court.

For the third consecutive year we were invited to enter the New Jersey State Basketball Tournament. Call it bad luck, if you wish, but Belleville was chosen to play Weequahic at the Orange Armory. As the schedule shows, Weequahic won 39-21.

Just a minute! The season is never completed until we consider the awards. A change was made in the presentation of the gold basketball. Formerly the player receiving the highest percentage of foul shots acquired the honor. This year Bill Parmer received it for the greatest improvement over the previous season. Together with the basketball, the following awards were presented at the All-Sports Banquet: Sweaters to Harry White, Leonard Aiello, Frank Brown, Victor Brugeman and Charles Robinson; letters to Horace Gausepohl, Leo Culkin and William Parmer.

Thus ended another successful season of this popular sport.

#### BASKETBALL SCHEDULE 1937

|          |    |                  | Belleville | Opponents |
|----------|----|------------------|------------|-----------|
| January  | 5  | Alumni           | 34         | 21        |
|          | 8  | Dickinson        | 19         | 24        |
|          | 12 | Lyndhurst        | 42         | 24        |
|          | 15 | Kearny           | 24         | 23        |
|          | 19 | West Orange      | 22         | 28        |
|          | 22 | Irvington        | 30         | 21        |
|          | 27 | Bloomfield       | 30         | 33        |
|          | 29 | Weequahic        | 24         | 45        |
| February | 2  | Good Counsel     | 33         | 21        |
|          | 5  | Thomas Jefferson | 23         | 38        |
|          | 9  | West Orange      | 30         | 24        |
|          | 12 | Weequahic        | 19         | 25        |
|          | 16 | Irvington        | 26         | 6         |
|          | 19 | Kearny           | 27         | 21        |
|          | 23 | Dickinson        | 22         | 36        |
|          | 26 | Lyndhurst        | 42         | 28        |

#### TOURNAMENT

|       |   |           |    |    |
|-------|---|-----------|----|----|
| March | 5 | Weequahic | 21 | 39 |
|-------|---|-----------|----|----|



## BASEBALL

In the spring the air becomes full of flying robins, insects, and baseballs. Any nice afternoon, one can see the team practising at School Seven Field under the ever-watchful eyes of Mr. Smith and Mr. Davis.

Our old stand-bys are to be seen—the pitchers, Gausepohl, Parmer, and Anthony Paul; catchers, Zoppa and Lepre; the infielders, Riccio and Sorrentino; and Ryder and Adolph Paul, outfielders. The annual group of fresh recruits includes Amato and McCann as pitchers; Von Nostrand and Peace, catchers; Banta, Cole, Byles, Mosior and Lupo, infielders; and Slavin, Zuzzio, Scarpelli, Craven, and Jackson as outfielders. Bus Gausepohl is the acting captain.

The schedule for this year is:

|          |                   |
|----------|-------------------|
| April 13 | Orange            |
| April 27 | Kearny            |
| April 30 | Clifton           |
| May 1    | Dickinson         |
| May 4    | Garfield          |
| May 7    | Good Counsel      |
| May 11   | Hillside          |
| May 15   | Lincoln           |
| May 18   | West Side, Newark |
| May 21   | Bloomfield        |
| May 25   | Good Counsel      |
| May 28   | South Side        |
| June 3   | Irvington         |
| June 8   | Clifton           |



## TRACK

One outdoor game in Belleville High School which deserves special recognition is track—not because of its great popularity, but because it has already proved its possibilities beyond doubt although it was not introduced until last year.

This year, the coming of spring heralded the renewal of this sport. Eighty boys, eagerly anticipating the opening of the season, answered the call for candidates. From this group, a team of more than twenty boys was selected.

Through this season, under the guidance of Mr. Winika and Mr. Waters, the schedule was:

April 22  
 April 27  
 May 11  
 May 14  
 May 20  
 May 25  
 June 1  
 June 9

South Side  
 St. Mary's  
 Clifton  
 East Orange  
 Lyndhurst  
 Kearny  
 West Side  
 Hillside





### GYM TEAM

The only non-competitive team in the school is the Gym Team. It was formed last January and is developing rapidly under the direction of Coach Alvin Davis. There are, at the present time, twelve active members. Many more boys wish to join but as yet Coach Davis has not been able to find the time to work with them.

The boys have shown the results of their training and practice at various basketball games. Their most important appearance of the year was at the Gym Exhibition on March 18.

Up to the present time the Gym Team has performed only at high school affairs. The aim of the team, however, is to develop into a squad strong enough to compete with gym teams in other high schools.

The team consists of L. Tortaro, W. Botto, G. Meder, R. Ziess, L. Stefanelli, P. Bohrer, E. Sciaraffa, H. Drake, R. Martin, and L. Willette.

## APPRECIATION

The editors, managers, and staff of the MONAD have been glad to contribute their time and effort to the production of this year's book. However, they feel themselves deeply obligated to others who, by reason of experience and position, have offered valuable technical and artistic direction to the work. In particular they wish to acknowledge the services of the Faculty Committee, comprising Mr. Glaspey, Miss Pattison, Mr. Fulcomer, and Mr. Brewster Jones; Mr. Saunders, for lettering and design; Mr. William B. Hawkins, of the Abbey Printing Company; Mr. Peter S. Gurwit, of the Jahn and Ollier Engraving Company; and Mr. James Ryan, of the Nucamera Studio of Kresge Department Store.

We wish also to express appreciation to our advertisers, whose continued support of our school activities merits your good will and patronage.

---

**NATIONAL GRAIN YEAST CORPORATION**

FRANK J. HALE,

*President*

.....

OUR CONGRATULATIONS

AND

BEST WISHES

TO

THE GRADUATING CLASS OF 1937



**THOMSON MACHINE COMPANY**

BELLEVILLE

NEW JERSEY

.....

---

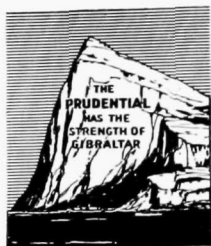
## BE HARD TO SATISFY

Worth-while careers are builded by men who are not content to rest on their present knowledge and skill.

They try to learn new things daily and the more they learn the more they wish to know.

The well equipped go the farthest.

Enlist in this select group now!



### The Prudential Insurance Company of America

EDWARD D. DUFFIELD, *President*

HOME OFFICE: NEWARK, NEW JERSEY

---

## FEDERAL LEATHER COMPANY

ONE OF BELLEVILLE'S LARGEST MANUFACTURERS



*Makers of Artificial Leathers and  
Rubber Coated Fabrics*



Some of the items in which these Materials are  
processed by buyers of "Federaleather" products:

|                        |                  |                      |
|------------------------|------------------|----------------------|
| Ladies' Pocketbooks    | Auto Topping     | Upholstery—Furniture |
| House Slippers         | Auto Upholstery  | Raincoats            |
| Belts—Rubber and Dress | Auto Accessories | Leatherette Coats    |
| Binders—Loose Leaf     | Auto Novelties   | Suede Jackets        |

---

ALL  
PHOTOGRAPHIC  
WORK  
in this YEARBOOK

MADE BY  
NUCAMERA STUDIO

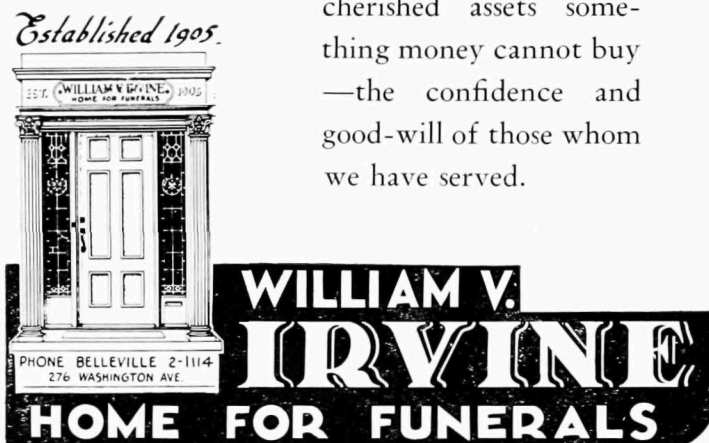
KRESGE DEPARTMENT STORE  
NEWARK, NEW JERSEY



---

## WE COUNT

Among our most  
cherished assets some-  
thing money cannot buy  
—the confidence and  
good-will of those whom  
we have served.



---

### ZUCCARELLI'S PHARMACY

240 BELLEVILLE AVENUE  
BELLEVILLE, N. J.

*Prescriptions Carefully Compounded*

Telephone BE 2-2057

---

Phones Belleville 2-1081, 2-2994

### BELLEVILLE PHARMACY

*Dependable Drug Store Service*

W. E. Rivola, Ph.G., Prop.

Corner UNION AVE. and JORALEMON ST.  
BELLEVILLE, N. J.

---

### BELLWOOD MARKET

PRIME MEATS, VEGETABLES, FISH

Phone BE 2-2061

575 BELLEVILLE AVENUE  
BELLEVILLE, N. J.

---

### HARRISON - MILLER MOTORS

PLYMOUTH - DE SOTO DEALER

BELLEVILLE  
NEW JERSEY

---

**LOREN MURCHISON & CO., INC.**

40 CLINTON STREET      NEWARK, N. J.

*Official Jewelers*

Class, Fraternity, Club, and Society Pins

Rings and Keys, Medals

Prize and Loving Cups, Plaques and Trophies, Etc.

*Original Designs Prepared*

---

**OVERMAN**

© "The World's Best Tire"

SOLIDS  
CUSHIONS  
PNEUMATICS

151-171 CORTLANDT STREET  
BELLEVILLE, N. J.

---

*Compliments of*

THE BOSTON STORE

BE 2-3224

Repairing

*If it is a BICYCLE you want,  
see Kopsky*

**KOPSKY'S, INC.**

306 WASHINGTON AVENUE  
BELLEVILLE, N. J.

---

Telephone BELleville 2-1359

*Established 1918*

**WILLIAM V. EUFEMIA**

CLOTHES MADE TO YOUR MEASURE

Ladies' and Gents' Dyeing, Cleaning  
and Remodeling

322 WASHINGTON AVENUE  
BELLEVILLE, N. J.

---

---

## ERNIE'S DAIRY

328 STEPHENS STREET

BELLEVILLE, N. J.

B. R. WALDRON & SONS' DAIRY PRODUCTS

---

*Compliments of*

ITALIAN QUALITY BAKERY,  
INC.

224½ PARKER STREET  
NEWARK, N. J.

HU 2-1348

**WILLIAM MAASZ**  
DELICATESSEN

327 UNION AVENUE  
BELLEVILLE

Phone  
BE 2-3509

---

FRUIT PRODUCTS  
CORPORATION

BELLEVILLE, N. J.  
CHICAGO, ILL.

MARASCHINO STYLE CHERRIES  
COCKTAIL CHERRIES  
GLACE CHERRIES AND PINEAPPLE

*Compliments of*

THEODORE SANDFORD

.....  
BELLEVILLE 2-1883—1884

**SMITH BROTHERS  
OLD COMPANY'S LEHIGH COAL**

KOPPERS SEABOARD COKE, FUEL OIL

74 ACADEMY STREET

BELLEVILLE, N. J.

*Not connected with any other concern with similar name*

---

*Do you wish to teach*

**HEALTH & PHYSICAL EDUCATION?**

THE SAVAGE SCHOOL conducts an accredited course in the theory and practice of health and physical education, prepares men and women High School graduates to fill positions as supervisors, directors, teachers, and leaders in colleges, schools, playgrounds, recreation and community centers, camps, clubs, and industrial organizations.

*Catalog Upon Request—Employment Bureau for Graduates*

*Register now for class entering on September 17, 1937*

Graduates of this three-year course may complete the Bachelor of Science Degree requirements in one additional year at certain recognized colleges.

**SAVAGE SCHOOL**

308 WEST FIFTY-NINTH STREET, NEW YORK, N. Y.

---

**BELLEVILLE LAUNDRY CO.**

137-141 RALPH STREET

BELLEVILLE, N. J.

TELEPHONE BELLEVILLE 2-1576

*Established 1922*

---

**HARTER FLORIST**

368 WASHINGTON AVENUE

BELLEVILLE, NEW JERSEY

Telephones: BE 2-1686, 2-1730

ARTISTIC FLORAL ARRANGEMENTS

.....

## BERKELEY SCHOOL

### FOR YOUNG WOMEN

Affiliate: Berkeley-Llewellyn School, Graybar Bldg., 420 Lexington Ave., New York.

One-year intensive secretarial course preparing high-school graduates and college women exclusively for business.

Individualized instruction under distinguished university faculty. Charming-ly appointed roof-garden studios. Restricted enrollment. Placement service.

For bulletin, address the Director, 22 PROSPECT ST., EAST ORANGE, N. J.  
ORange 3-1246

### EDGAR T. BRITTAIN

ESSO DEALER

WASHINGTON AND GREYLOCK AVENUES  
BELLEVILLE, N. J.  
BELleville 2-1241

*The station where service is a fact—not merely a slogan.*

*Compliments of*

BELLEVILLE FRUIT EXCHANGE

82 WASHINGTON AVENUE  
BELLEVILLE, N. J.

### LLOYD ENGINEERING COMPANY

BELLEVILLE, N. J.

Telephone BELleville 2-1900

|                 |             |
|-----------------|-------------|
| Drying          | Fans        |
| Heating         | Blowers     |
| Ventilating     | Conveying   |
| Dust Collectors | Sheet Metal |



COMMERCIAL PHOTOGRAPHY

1587 BROADWAY NEW YORK CITY

### WILLIAM WATTERS GRADE A MILK AND CREAM

202 UNION AVENUE  
BELLEVILLE, NEW JERSEY

*Compliments*

*of*

**THE SENIOR MONAD  
BOARD**

---

Phone BE 2-4474

C. A. STICKNEY  
PETROLEUM PRODUCTS

21 JEFFERSON STREET  
BELLEVILLE, N. J.

---

I LIKE  
MIDDLETOWN  
CREMI RICH  
MILK  
THE BEST

*Distributed by*  
**FREIDRICH'S DAIRY, INC.**  
273 PARK AVENUE    LYNDHURST, N. J.

*Compliments of*

RARE METAL  
PRODUCTS CO.

---

*Compliments of*

**JULIAN KONDRATOWICZ**

512 WASHINGTON AVENUE  
BELLEVILLE, N. J.

---

Phone BE 2-1611

**THE UNION AVE. MEAT  
MARKET**

FRESH MEATS, POULTRY,  
VEGETABLES AND FISH

325 UNION AVENUE  
BELLEVILLE, N. J.

LEO DUMBROFF, *Prop.*

---

## CLUB EVERGREEN

*Presents Nightly*

BOB CULLAN'S ORCHESTRA

SPECIAL ENTERTAINMENT SATURDAYS

DINNERS FROM \$1.00

*No Cover Charge at Any Time*

7 BELLEVILLE AVE., BLOOMFIELD  
NEW JERSEY

---

*Compliments of*

THE BLUE RIBBON DINER CO.  
INC.

Edw. G. Smith, Prop.

855 MT. PROSPECT AVE., NEWARK, N. J.

HOME-COOKED MEALS AND  
SANDWICHES

*Open Day and Night*

---

*Compliments of*

MINGLE'S DAIRY

48 ROSSMORE PLACE

BELLEVILLE, N. J.

---

**C. I.**

TAILORING AND CLEANING  
SHOP

Chas. Iskendarian, Prop.

CUSTOM - MADE CLOTHES

126 WASHINGTON AVENUE

BELLEVILLE, N. J.

Tel. Belleville 2-3710

---

AMY G. STRATTON

TEACHER OF PIANO AND THEORY  
MODERN METHOD

*Individual or Class Instruction  
Adult Beginners as Well as Children*

325 UNION AVENUE

Tel. BE 2-4492-J

---

FRANK VUONO & SONS

MEAT MARKET AND GROCER

Belleville 2-1189

192 PASSAIC AVENUE

BELLEVILLE, N. J.

*Free Delivery*

---

*Always at Your Service*

BELLWOOD DELICATESSEN

*Quality First and Always*

Delivery Service

577 BELLEVILLE AVENUE

Tel. Belleville 2-1446

---



---

*Compliments of*  
**BELLEVILLE FOOD MARKET**

524 WASHINGTON AVENUE  
BELLEVILLE, N. J.

---

**RUSSELL'S MARKET**  
R. Sandford  
**PRIME MEATS—POULTRY**

84 WASHINGTON AVENUE  
BELLEVILLE, N. J.  
Phone BE 2-2485

---

Tel. Montclair 2-6937, 2-1070

**HOUSE OF LUCKY WEDDING  
RINGS**

MICHAEL CORBO  
*Dealer in*  
WATCHES, DIAMONDS AND JEWELRY  
292 FOREST AVE. GLEN RIDGE, N. J.

---

**VALLEY COAL CO.**

433 CORTLANDT STREET  
Belleville 2-3100

*Anthracite Coal*  
*Koppers Coke*  
*Cannel Coal*  
*Fuel Oil*

---

*Compliments of*  
**MALCOLM KONNER**  
**PLYMOUTH - DE SOTO AGENCY**

433 BLOOMFIELD AVENUE  
CALDWELL, N. J.  
Phone Caldwell 6-1013

---

**ROAD TO SUCCESS**

Finish high school first—then specialize. Rider College offers this advice to young men and women who aim to enter the business world. It is based on 71 years of experience in training business executives. It will pay you to follow it.

*Literature on Request*  
**RIDER COLLEGE**  
OF BUSINESS ADMINISTRATION  
Founded 1865 TRENTON, N. J.

---

**BREMOND HAIR STUDIO**

*Permanent Waving*  
*All Branches of Beauty Culture*

54 BREMOND STREET  
BELLEVILLE

Miss E. Lovett, Prop.  
BE 2-2753

---

**OTTO GRONER**

*Prime Meats and Poultry*  
*Fancy and Staple Groceries*

135 WASHINGTON AVENUE  
*Established 1900*  
Belleville 2-1907

---

## *The Crescent Press*

HENRY CHARRIER

PRINTERS - STATIONERS - ENGRAVERS

131-133 WASHINGTON AVENUE

BELLEVILLE, N. J.

Telephone BELleville 2-1872

*"Everything for the Office and  
Shipping Room"*

---

INSURE WITH

HARVEY B. THOMPSON

280 WASHINGTON AVENUE

*"and be relieved of every Insurance worry."*

Telephone BE 2-2712

Insurance

Real Estate

---

Phone BELleville 2-2941

YUDIN'S

PAINT STORE

*Paints - Wall Paper - Window Glass*

*Ladders - Hardware and Tools*

114 WASHINGTON AVENUE

---

Pvt. GEORGE A. YOUNGINGER

POST NO. 275

VETERANS OF FOREIGN WARS

HAFFNER'S

HOME-MADE CANDY AND ICE CREAM

448 WASHINGTON AVENUE

BELLEVILLE, N. J.

Telephone BELleville 2-2389

---

LESLIE A. DEL TUFO

PLUMBING AND HEATING

14 CLEVELAND STREET

BELLEVILLE, N. J.

Telephone BELleville 2-3533

---

Phone BELleville 2-2186

**VICTOR HART**

*Belleville's Reliable Jeweler*

Diamonds, Watches, Jewelry  
Expert Watch and Jewelry Repairing  
Class Rings and Pins

457 WASHINGTON AVENUE

BELLEVILLE, N. J.

---

High-Grade Chocolates and Bon Bons  
Home-Made Ice Cream

KRISTENSEN'S

FINE CONFECTIONERY

*Delicious Home-Made Candies  
Our Specialty*

306 WASHINGTON AVENUE BELLEVILLE  
BELleville 2-2315

---

TIRE TRADING CO.

237-239-241 HALSEY STREET

NEWARK, N. J.

IGNITION AND CARBURETOR  
EXPERTS

*Established 1910*

BELLEVILLE COAL CO.

MILL AND CORTLANDT STREETS

BELLEVILLE, NEW JERSEY

Telephone BE 2-1422

*D. SLAFF, Proprietor*

GREYLOCK PHARMACY

JOS. G. LATERZA, *Ph.G.*

528 UNION AVENUE

BELLEVILLE, N. J.

*Compliments of*

BELLEVILLE AVENUE

PRODUCE MARKET

*Compliments of*

ARMSTRONG'S

UNION AVE. AND JORALEMON ST.

*Greeting Cards, Stationery, Toys,  
Lunchroom*

*Compliments of*

NAPIER HAT MFG. COMPANY

URBAN'S MARKET  
DELICATESSEN

215 BELLEVILLE AVENUE

BELLEVILLE, N. J.

Phone BE 2-3185

*Open Sundays and Evenings*

MENZEL - FORD

High Grade

MILLWORK AND CABINET WORK

SASH—DOORS—FRAMES, ETC.

85 ACADEMY STREET

BELLEVILLE, N. J.

Telephone BE 2-3020

# "Jahn & Ollier Again"

• Artists and  
Makers of Fine  
Printing Plates for  
Black or Color

The Largest  
College Annual  
Designers and  
Engravers in  
America . . .

**Jahn & Ollier Engraving Co.**

*817 W. Washington Blvd.  
Chicago, Illinois*

*There is no substitute for quality*

---

*R<sub>4</sub>* for a

## *Satisfactory Annual*

ABBNEY PRINTING COMPANY prescribes painstaking workmanship, intelligent supervision and an understanding of the problems facing the Annual Editor.

These ingredients have gone into the making of more than four hundred Year Books for over twenty-five years.



**ABBNEY PRINTING COMPANY**

INCORPORATED

**439 MAIN STREET**

**EAST ORANGE, NEW JERSEY**

---



FINIS







BELLEVILLE PUBLIC LIBRARY



