

EDISON, THOMAS A.
1979

"ASK AT DESK"

REFERENCE

100 YEARS

EDISON TWP. FREE PUBLIC LIBRARY

NOT TO BE TAKEN
FROM LIBRARY

OF

LIGHT

FOLLOWING ITEMS ARE ENCLOSED:

1. Edison: Persistent Genius
2. Film Reviews
3. Brief Bio. of Th. A. Edison
4. Edison (green pamphlet)
5. Here's an Idea!
6. Beehives of Invention
7. 1879-1979 Bicentennial of Light

NATIONAL PARK SERVICE

NEW JERSEY HISTORICAL COMMISSION

NEW JERSEY HISTORICAL SOCIETY



EDISON, T. A. 1979

Edison

NATIONAL HISTORIC SITE • NEW JERSEY

NOT TO BE TAKEN
FROM LIBRARY

GPO: 1977 - 240-967-42 - Reprint 1977

ABOUT YOUR VISIT

Site headquarters, on Main Street at Lakeside Avenue in West Orange, is 2 miles west of Garden State Parkway and half a mile north of Interstate 280. Guided tours (1-1/2 hours) of the laboratory are conducted daily, beginning at 9:00 a.m., with the last tour starting at 3:30 p.m. Groups of 10 or more must make advance reservations by mail or telephone (201-736-5050). Tours of Glenmont begin on the hour, 10 a.m. to 4 p.m., Monday through Saturday except holidays by arrangement at headquarters. The laboratory is closed on Thanksgiving, December 25, and January 1.

ADMINISTRATION

Edison National Historic Site is administered by the National Park Service, U.S. Department of the Interior. A park manager, whose address is Main Street at Lakeside Avenue, West Orange, NJ 07052, is in charge.

As the Nation's principal conservation agency, the Department of the Interior has basic responsibilities for water, fish, wildlife, mineral, land, park, and recreational resources. Indian and Territorial affairs are other major concerns of America's "Department of Natural Resources." The Department works to assure the wisest choice in managing all our resources so each will make its full contribution to a better United States—now and in the future.

National Park Service

U.S. DEPARTMENT OF THE INTERIOR

THE WEST ORANGE LABORATORY

At the West Orange Laboratory, into which he moved on Thanksgiving Day, 1887, Edison could "build anything from a lady's watch to a Locomotive." There, for the next 44 years, he and his carefully chosen associates pursued their goal of inventing and developing things that "every man, woman, and child in the world wanted," and would buy at prices they could afford.

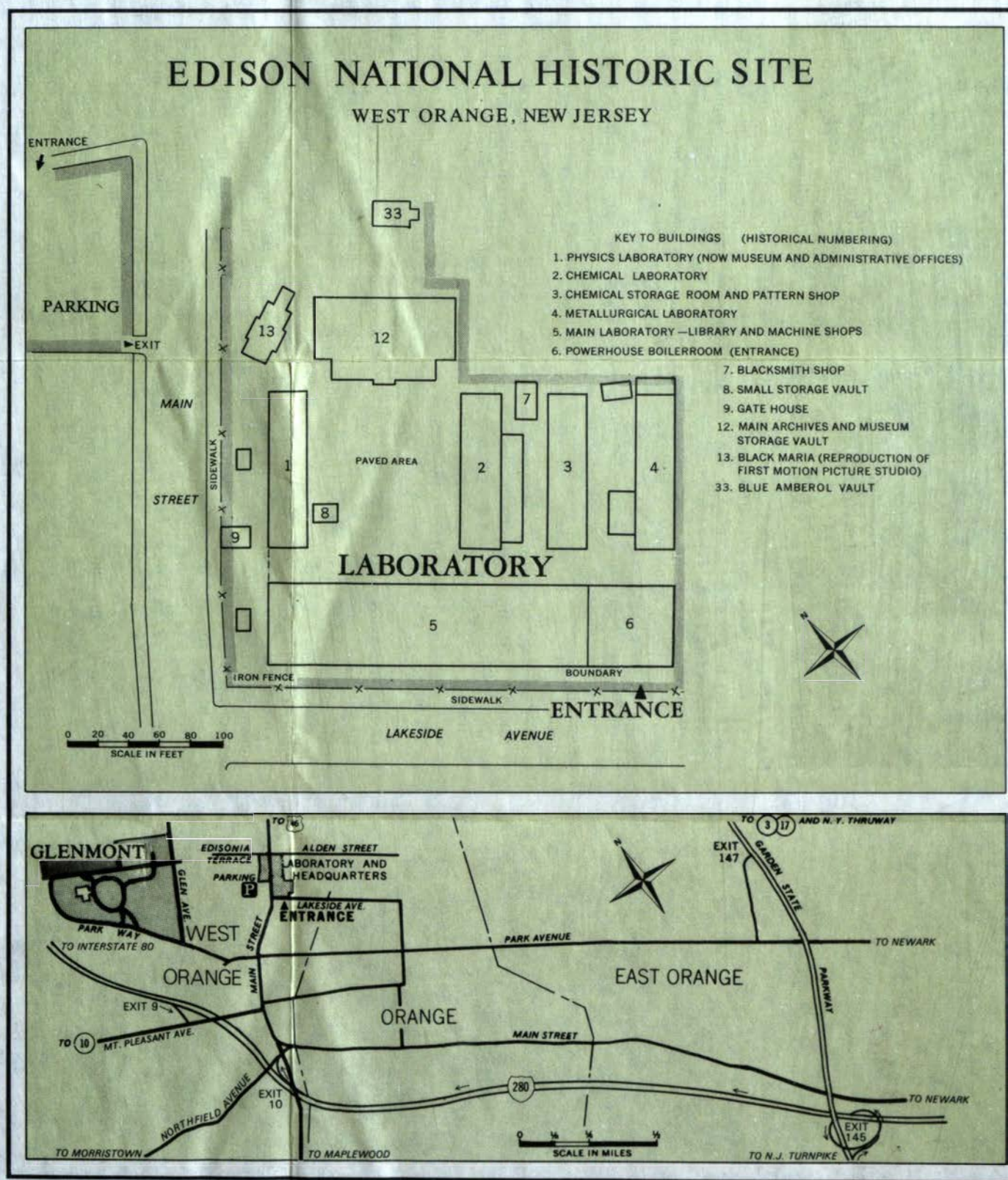
Still preserved at West Orange are the main laboratory building and five smaller red-brick structures that comprised the physics laboratory, chemical laboratory, chemical storage room and pattern shop, metallurgical laboratory, and powerhouse boilerroom. Other buildings, some of which still survive, were added later. The main archives building and museum storage vault were erected after Edison's death, as was the full-sized replica of his original tar-papered "Black Maria," the first motion picture studio.

The interiors of many of these structures are little changed from their appearance in the inventor's own time. Some contain exhibits like his original tinfoil phonograph of 1877, his 1889 "Strip Kinetograph" and other motion picture apparatus, and early electric light and power equipment. Edison's machine shops and stockroom are still here, as well as the double-tiered library containing his own desk and the cot on which he used to take catnaps when working round the clock. The chemical laboratory is little changed from its appearance in 1927-31, when Edison was conducting his rubber experiments.

GLENMONT

Glenmont, the 23-room Edison home, reveals the domestic side of the inventor's life. Here he found relaxation and time to generate new ideas for testing at the laboratory. The house, built for a New York executive in 1880 and predominantly Victorian in architectural style, today looks much the same as when the Edisons occupied it. Almost all the original furnishings remain in place, and include family portraits and other fine paintings and prints; books by the hundreds; heirlooms and period pieces; gifts from the great and near-great of many lands; and all the little accessories of living that make a house a home.

The beautifully landscaped 13½-acre estate also contains a barn, garage, greenhouse, gardener's cottage, potting shed, and other outbuildings. On the grounds, in a quiet, green bower, are the graves of Thomas and Mina Edison.





Here, where Thomas Alva Edison lived and worked for 44 years, are preserved the original laboratory buildings he erected in 1887 for organized research and development. Out of this cradle of wonders came hundreds of inventions and improvements which have made life easier and better for people everywhere. Edison's establishment at West Orange also set the pattern for great industrial research organizations which today serve the world.

Not far from the laboratory buildings, and part of the site, is Glenmont, the handsome country estate Edison purchased in 1886. This was his "thought bench," the starting point for many ideas which later took form at his laboratory "work bench" in the valley below.

EDISON: THE MAN AND HIS WORK

Born at Milan, Ohio, on February 11, 1847, Edison had only about 3 months' formal schooling. From an early age, however, he was a remarkably inquisitive boy, and, stimulated by his mother Nancy (a teacher before her marriage to Samuel Edison, Jr.), he learned rapidly on his own. When he was 10 years old, he had a small working laboratory in the basement of his home; when he was 12, he had another in a baggage car on the Grand Trunk Railway, where he worked as a newsboy and a "candy butcher." Earnings in this first job provided money for books to further his ruling passion for study and experiment.

Edison learned telegraphy in 1862, and developed his first patented invention, an electrical vote recorder, in 1868. The next year he produced an improved stock ticker which he sold for \$40,000. In 1876, after a period in which he manufactured many improved telegraph instruments of his own design, he moved to Menlo Park, N.J. There he built his first large laboratory, gathered round him a group of capable



assistants, and went into the "inventing business" on a more extensive scale, creating his fabulous phonograph as well as practical electric lighting and power systems. By the time Edison was 30 years old, he was already called "the Wizard of Menlo Park."

Mary Stilwell, the inventor's first wife, died in 1884. Two years later, Edison married Mina Miller, and the family took up residence at Glenmont, in the Llewellyn Park section of West Orange. Nearby he built a laboratory ten times larger and better equipped and staffed than the one at Menlo Park.

Out of West Orange came the motion picture camera, vastly improved phonographs, and both silent and sound movies. Other Edison patents covered electric motors and generators, incandescent and fluorescent lamps, continuous nickel and copper plating, a method of depositing metals in a vacuum, magnetic separation and briquetting of iron ore, processes for making carbolic acid from coal tar, and a nickel-iron alkaline electric storage battery which alone required 50,000 experiments.

In addition to his inventions and his work in industrial development, Edison made two significant discoveries in pure science. One was "etheric force," the electromagnetic waves later used in radio transmission; the other, a fundamental phenomenon of electronics which has since become known as the "Edison Effect" and which led to a world-wide advance in communications and space technology.

To the end of his days Edison retained an insatiable zest to discover and invent new things, resulting in 1,093 U.S. patents. He also had many foreign patents to his credit. His last ambitious undertaking, to find a practical domestic source of natural rubber, was almost complete when he died at Glenmont on October 18, 1931.



EDISON, T.A.
1979

FILM REVIEW
EDISON NATIONAL HISTORIC SITE

NOT TO BE TAKEN
FROM LIBRARY

EDISON TWP. FREE PUBLIC LIBRARY

THE WIZARD WHO SPAT ON THE FLOOR

Presented by The British Broadcasting Co.

Produced by Time-Life Films and the B.B.C.

Available from: Time-Life Multimedia Co.
Time-Life Building
New York, NY 10020

1970s

One hour (2 reels)

Color

For adults

Edison through interviews with his daughter, Madeline Sloane, and his staff: John Coakley, Ed Daly, Paul Kasakove, and Norman Speiden. The film reviews Edison's life, successes and failures, and portrays him as an individual who chewed tobacco, spat on the floor and made use of the knowledge of others to make his inventions practical. It ends showing Edison, the botanist, and his contributions to mankind.

Interesting and valuable for its presentation of Edison as a human being.

THE BOYHOOD OF THOMAS ALVA EDISON

Produced by Coronet Films

Available from: Coronet Films
Coronet Building
Chicago, IL 60601

1964

14 minutes

Color

For elementary schools

Photographed in Greenfield Village, Michigan, and Milan, Ohio, the film dramatizes Edison's boyhood, his early experiments, and his newspaper publishing venture. Besides emphasizing Edison's ingenuity and persistence, it reflects on the changes he made in the world.

Well organized and entertaining.

GREAT TRAIN ROBBERY

Produced by Thomas A. Edison, Inc.

Available from: Film Classic Exchange
1914 South Vermont Avenue
Los Angeles, CA 90007

1903

11 minutes

Black and white

For all ages

This classic is the first long-play motion picture with a plot to be filmed. The fast-moving, rough-action film in which Edison used his machinists and factory workers as actors introduces Max "Bronco Billy" Anderson, who soon became the first "western" star.

An excellent film of historical value.

THOMAS ALVA EDISON'S "GLENMONT"

Presented by The United States Fidelity & Guarantee Co.

Produced by Comco Productions, Inc.

Available from: Comco Productions (Ann Shanks)
201B East 82nd Street
New York, NY 10028

1974

25 minutes

Color

For ages 10 and up
(For administrative use only)

After E. G. Marshall's brief introduction to the life of Edison, the film covers his boyhood, the Menlo Park area, and West Orange, and focuses on his home. It ends at Edison's grave, where Marshall comments on Edison's contribution to mankind.

Inspiring, well done and entertaining.

A LAMP IS LIGHTED

Presented by A Detroit Edison Film

Produced by Video Films

Available from: Video Films, Inc.
2211 East Jefferson Avenue
Detroit, MI 48207

1950

18 minutes

Black and white sound

For ages 12 and up

This film is initially slow moving as Francis Jehl, one of Edison's coworkers, explains the development of the incandescent lamp. After he discusses how Edison reached the point of using a high-resistance carbon filament in a vacuum, the film becomes informative and presents a first-hand account of the events leading to the trial of the first lamp.

An outdated though excellent account of the development of the incandescent lamp.

THE STORY OF THOMAS A. EDISON

Presented by Levey & Cooper

Produced by Robert Snyder

Available from: Em-Gee Film Library
49-31 Gloria Avenue
Encino, CA 91316

1960s

30 minutes

Color

For all ages

This excellent film presents the entire life of Thomas A. Edison, beginning with his birthplace in Milan, Ohio, following him to Port Huron, Michigan, and tracing him eastward to Menlo Park, New Jersey. It introduces the inventions Edison worked on in Menlo Park, the incandescent lamp and the phonograph, and moves to the West Orange laboratory and his accomplishments there. It closes in his Fort Myers, Florida, home and mentions Edison's contributions to mankind.

Factual, interesting and entertaining.

IMPACT OF THOMAS A. EDISON

(Charles Blair's "Better World Series")

Presented by Pictura Films

Produced by Off Network Productions, Inc.

Available from: Off Network Productions, Inc.
515 Madison Avenue
New York, NY 10022

1974

24 minutes

Color

For ages 10 and up

Based on an interview with Paul Kasakove, an assistant to Edison, about Edison and his inventions, the film contains scenes that include Edison in his lab with his friends, Harvey Firestone and John Burroughs, as well as several brief Kinetoscope movies of the first filmed boxing match, belly dancer and contortionist. A brief look at Glenmont in the interview of Thelda Coakley contains scenes of the 1929 radio broadcast heard around the world. The movie reflects on Edison's theology and depicts his contributions to mankind.

Interesting and factual.

THE OLD MAN

Produced by New Jersey Educational Television

Available from: New Jersey Public Television
1573 Parkside Ave.
Trenton, NJ 08638

1972

25 minutes

Color

For all ages

This film uses Edison's shots of old news photographs and motion pictures to explore the genius of the man who brought more than one thousand inventions to the world. It shows Edison with President Herbert Hoover, Harvey Firestone, Ty Cobb, Connie Mack, and a young Franklin D. Roosevelt. It also shows him experimenting on a process to develop synthetic rubber from the common goldenrod.

Interesting and informative.

FILM ORDERING INFORMATION

Teachers and organizations wishing loan service for A Lamp is Lighted or The Boyhood of Thomas Alva Edison may contact the Film Loan Service at the New Jersey State Museum, 205 West State Street, P. O. Box 1868, Trenton, New Jersey 08625. (609) 292-6313

Film loan service may also be available through the Regional Film Centers throughout the State.

Purchase/rental information on Edison films reviewed in this leaflet is updated below. Shipping costs are not included.

Title	Ordering Address	Order Phone	16mm Purchase Price	Rental Price
<u>The Wizard Who Spat on the Floor</u>	Time-Life Multimedia Distribution Center 100 Eisenhower Dr. P. O. Box 644 Paramus, N. J. 07652	(201) 843-4545	\$500.*	\$50/3 days
<u>The Boyhood of Thomas Alva Edison</u>	Coronet Instruc. Media 65 E. So. Water St. Chicago, Ill. 60601	(Toll free) (800) 621-2131	\$243.**	not available
<u>Great Train Robbery</u>	Film Classic Exch. 1914 S. Vermont Ave. Los Angeles, Ca. 90007	(213) 731-3854	\$55.	\$15/day
<u>Thomas Alva Edison's "Glenmont"</u>	Paramount Commun. P. O. Box 38817 Hollywood, Ca. 90038	(213) 463-0100	\$355.	\$40/showing
<u>A Lamp is Lighted</u>	Video Films, Inc. 2211 E. Jefferson Ave. Detroit, Mich. 48207 Attn: Mr. Cliff Hanna	(313) 393-0800	\$75.	not available
<u>The Story of Thomas A. Edison</u>	Em-Gee Film Library 16024 Ventura Blvd. Suite 211 Encino, Ca. 91436	(213) 981-5506	not available	\$8.50/ showing
<u>Impact of Thomas A. Edison</u>	Pictura Films 111 8th Ave. New York, N. Y. 10011	(212) 691-1730	\$350.	\$35/showing
<u>The Old Man</u>	N. J. Public T.V. 1573 Parkside Ave. Trenton, N. J. 08638 Attn: Susan Miller	(609) 882-5252	\$200.	\$30/day

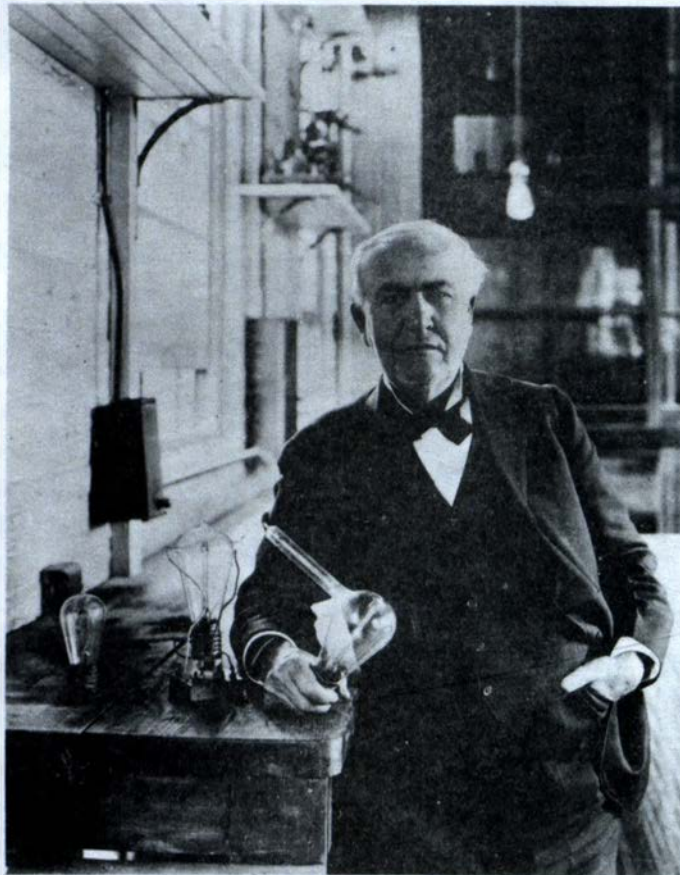
* Available in video-cassette: purchase - \$250, rental - \$50/3 days

** Discount available with used film exchange

EDISON, T. A.
1979

NOT TO BE TAKEN
FROM LIBRARY

Thomas A. Edison: Persistent Genius



EDISON TWP. FREE PUBLIC LIBRARY

Unit Plan For Teachers

Prepared By
Edison National Historical Site



UNIT PLAN: Edison, Persistent Genius

Educational Objectives:

1. Students will gain exposure to all aspects of Thomas A. Edison's life.
2. Students will be able to project an understanding of the impact of Edison's inventions.
3. Students will be able to project an understanding of the value of hard work in achieving success.

Day 1. Activity time: $\frac{1}{2}$ hour

A. Discussion - The Laboratory

1. Identify:
The Laboratory
Edison National Historic Site
U.S. Department of the Interior
Edison is one of more than 300 areas in the National Park System.
2. Identify location in New Jersey
Using a state map identify the distance you must travel from your school to the Laboratory, and the distance from major cities - Newark, New York, etc.
3. Discuss the dates that Edison worked here
Chronological dates: 1887 to 1931
What was going on in history? World War I; Scientific Revolution, etc.
What was going on in technology? Electricity; Automobile; Industrial Research; Mass Production, etc.
4. Briefly identify what the student will see at the laboratory. Refer to the section, "At the Laboratory."

B. Poster - Activity time: $\frac{1}{2}$ hour

1. Prominently display poster. (You might hang it on the bulletin board for the duration of the unit.)

2. Discuss quotation on the poster.
3. Discuss the physical environment in the poster. Emphasize things associated with work, i.e., workbench, shelves, tools, light bulbs, etc.
4. Discuss Edison's physical characteristics.

C. Homework Activity

1. Have the student make a list of how many light bulbs he has in his home, or how many times he uses lights, or the phonograph, radio, TV, or any other appliance that requires electricity. Or you may have him list the number of household objects that Edison had a hand in inventing.

Day 2. Inventions - Activity time: 1 hour

A. "The Father of Electronics" - Activity time: $\frac{1}{2}$ hour

1. Ask the students how many patents was Edison granted? (He had 1093 patents registered to his name in his 84 year life.)
2. Discuss some of his major inventions.
 1. Light Bulb or Electric Light
 2. Phonograph or Speaking Machine
 3. Motion Picture Camera or Movie Camera
 4. Nickel, Iron, Alkaline, Storage Battery
 5. Electric Cars (used to test his batteries)
 6. Microphone and Carbon Transmitter (part of the telephone)
 7. Improved Stock Ticker (used to keep tabs on the Stock Market)
 8. Electric Pen or Mimeograph
 9. Multiplex Telegraph (modernized the primitive telegraph system)
 10. Wax Paper
 11. Concrete Houses
 12. Fluoroscope - the basis of the X-Ray
 13. Edison Effect - the beginning of the Radio Tube, and Electronics
 14. Vote Register or Vote Counter (his first invention)

B. Contributions - Activity time: $\frac{1}{2}$ hour

1. Have the student write a brief statement on "What Life Would Be Like Without Edison's Inventions."

Day 3. Activity time: 1 hour

Edison's Inventive Style

1. Accompany the students to the library to research Edison's inventive style. Students should return with a few basic concepts along the following lines:

The Self-Made Man: Edison learned from reading and experimenting. Self-educated, he was dismissed from school after only a three-month attendance. His mother, a part-time teacher, taught him to read.

Many Long Hours of Hard Work: Edison used to work on the average 15 to 16 hours a day, 7 days a week, sometimes even 24 hours a day.

The Empirical Method of Experimentation: The trial-and-error method allowed him to build his knowledge on his success and failures. Edison believed if you have an idea, try it. The attempt will lead to new knowledge.

Extensive Documentation: During his lifetime, Edison filled over 1400 notebooks. In fully utilizing paper, he wrote on both sides and erased (instead of crossing out) his mistakes.

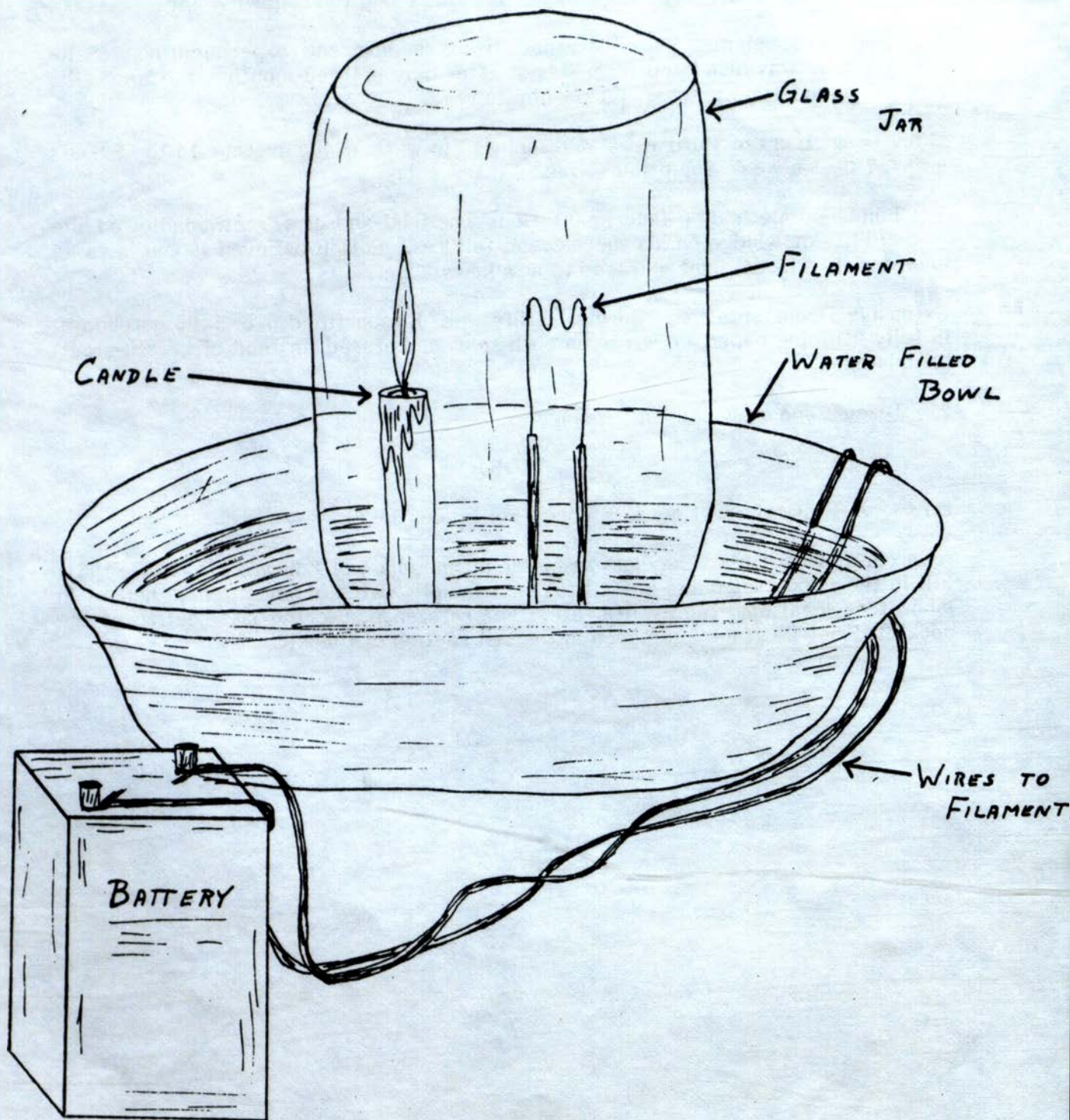
2. Discuss and share student findings.

(OR)

Day 3. Activity time: 1 hour or more (For grades 3 - 6)

As a class project have the class assemble a time chart of Edison's life, 1847 -1931. Fill in the important dates in his life, for example, dates of inventions, changes in laboratory locations, family life, etc. For reference, use the last section of the booklet, Brief Biography, included in the last section of this kit.

EDISON'S LIGHT BULB EXPERIMENT



Day 4. Activity time: 1 hour

A. Build a Working Light Bulb

Using Edison's research technique, make a light bulb as described below. Note that the light bulb was invented in 1879; and 1979 marks its 100th anniversary.

Materials Needed:

- Glass Jar - Quart size, instant coffee or mayonnaise jar.
- Bowl - Large enough to hold glass jar upright, and about 2 inches deep.
- Batteries - 2 or 3 6-volt-dry-cell batteries (common lantern batteries).
- Wire - Two sections of thin plastic coated wire about 2 feet long.
- Filament - Very thin wire, i.e., 1 strand of picture frame wire, or piano wire.
- Candle - A 3 inch candle, or 2 birthday candles.
- Water - Enough water to fill the bowl to a depth of 1 inch.

Directions:

1. Fill the bowl with 1 inch of water.
 2. Make the filament; twist filament wire around a pencil, about 4 loops.
 3. Strip both ends of the coated wire, about 1 inch from the end.
 4. Connect the filament to one end of both of the coated wires.
 5. Bend the coated wire so that the filament stands straight up in the bowl, and the other ends of the coated wire are outside of the bowl. Tape can be used to hold the wires in this fashion.
 6. Place the candle in the bowl, about 1 inch from the filament.
 7. Light the candle.
 8. Place the jar over the filament and the burning candle without putting the candle out.
 9. When the candle burns out (due to the lack of oxygen), note that the water will rise in the jar. This is because a vacuum has been created in the jar when the candle burns off all of the oxygen.
 10. Connect one battery at a time to the stripped ends of the coated wire, which is outside of the bowl. (see diagram on page 2)
- B. Discussion on the Light Bulb Experiment - Activity time: 5 minutes

Discuss the results:

1. Was the bulb very bright?

2. Why a vacuum? (Without a vacuum the filament in a regular bulb will burn up.)
3. Why a clear glass bulb? (This is for the maximum light output. Sometimes a frosted bulb is used to avoid glare.)
4. Compare your experimental parts necessary for the lighting industry to work, i.e., generators, switches, fuses, sockets, meters, etc.
5. Discuss any other questions the students may have.

Day 5. Activity time: 1 hour

A. Culmination of pre-visit preparation

1. Using the knowledge and experience gained from the last 4 days of class, have the student express his understanding of Edison and his inventive style. This can be accomplished in various ways, i.e., an essay using the poster (with its quote as a theme); or building an invention, painting, drawing, etc. This project can serve as an evaluation of the effectiveness of the unit. The activity can also be used after your field trip to help reinforce the unit and the subject matter.

2. The following is a list of topics which students can research and share while studying Edison.

Biography of Edison
 Edison's Family Life
 Edison's Boyhood
 Edison's Contribution to the Telephone
 Tin-Foil Phonograph
 Motion Picture Camera
 Movie, "The Great Train Robbery"
 Black Maria, Motion Picture Studio
 Storage Battery
 Electric Light
 Fluoroscope, A Type of X-Ray
 Electric Pen, Mimeograph
 Edison Effect, Forerunner of the Radio Tube
 Rubber From the Goldenrod Plant
 History of Electric Power
 History of the Phonograph
 History of the Motion Picture Industry
 Edison's Cement Works
 Edison's Contribution to Electric Vehicles, Cars and Trains
 Biography of W.K.L. Dickson
 Biography of Francis Jehl
 Biography of Charles P. Steinmetz
 Biography of Francis Upton
 Biography of John Ott

Biography of John Kruesi
Biography of Charles Batchelor
Glenmont, Edison's West Orange Home
Edison's West Orange Laboratory
Fort Myers, Edison's Florida Home
Edison's Birthplace, Milan, Ohio
Edison's Menlo Park Laboratory

3. A fun project is to assemble a large collage using pictures from newspapers, magazines, etc., of devices that Edison invented and improved, i.e., lights, phonographs, telephones, radios, electric cars and trains, concrete houses, etc.

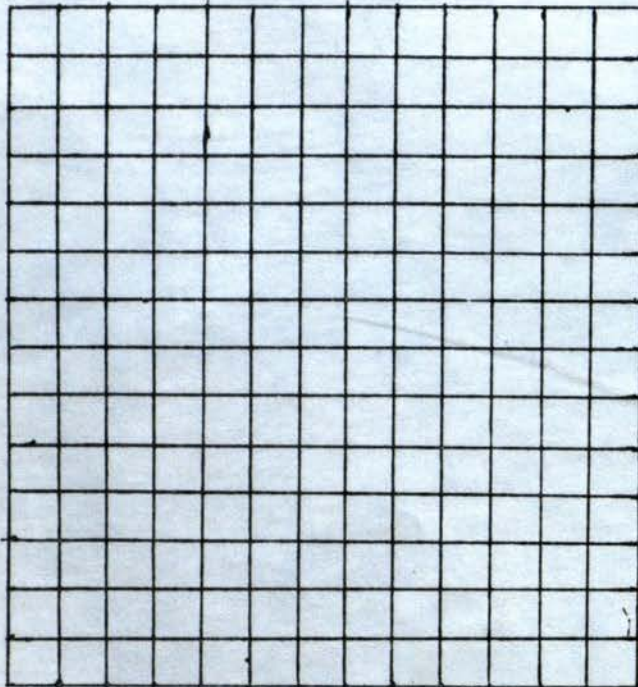
PROJECTS TO DO: Word Games

1. Find the 10 words related to the electric light bulb. Words may run up and down, across, or diagonally.

R	A	I	G	E	C	R	H	W	O	U
E	L	E	C	T	R	I	C	I	T	Y
M	E	B	E	F	E	C	T	R	H	G
Z	G	Y	R	B	O	A	I	E	G	C
G	H	U	C	T	S	M	W	S	I	U
M	T	N	U	O	R	E	S	B	L	M
F	B	S	I	L	U	N	Z	G	B	F
R	U	B	T	B	I	T	T	S	Q	U
I	L	S	R	R	E	P	L	U	G	S
L	B	P	E	H	E	S	E	E	N	T
H	S	I	P	S	A	L	L	U	T	G

2. Cross Word Puzzle of Thomas Edison's Inventions

CLUES



Across

1. Used as sandwich wrap
2. Incandescent lamp
3. A _____ (Electric Pen)

Down

4. Used to make motion pictures
5. Nickel, Iron, Alkaline, storage _____
6. Speaking Machine
7. His first invention
8. Used to test his battery
9. Used in the stock market, the patent sold for \$40,000.00.

GLOSSARY

Using a dictionary, have students find the definitions of the following words which relate to Thomas A. Edison's work.

acoustic _____

bamboo _____

bakelite _____

battery _____

electronic _____

filament _____

generator _____

laboratory _____

mimeograph _____

patent _____

persistence _____

phonograph _____

projector _____

research _____

sound _____

vacuum _____

BIBLIOGRAPHY

A. Books in Print on Edison for Student Use

B. Ed. Cousins, Margaret. Thomas Alva Edison, 1965. Random House.

gam. file *Davidson, George. Beehives of Invention, 1973. U.S. Government Printing Office, National Park Service.

B. Ed. Garbedian, H. Gordon. Thomas Alva Edison, Builder of Civilization, 1947.

JB Ed. Guthridge, Sue. Thomas Edison, Boy Inventor, 1947. Bobbs Publishing.

621.309H *Hutchings, David. Edison At Work, 1969. Hasting House.

Kaufman, Marvyn D. Thomas Alva Edison, 1968. Dell.

JB Ed. Thomas Alva Edison Miracle Worker, 1962. Garrard.

B. Ed. Kurland, Gerald. Thomas Edison, Father of Electricity, 1972. Storyhouse.

JB Ed. Martin, Patric M. Thomas Alva Edison, 1968. Dell.

X *Palmer, Arthur. Edison, Inspiration to Youth, 1954. Edison Birthplace Assoc.

X *Schultz, Robert F. Edison Experiment Series, 6 Booklets, 1967-1973. Thomas Alva Edison Foundation.

B. Books in Print on Edison for Teacher Reference

B. Ed. Clark, Ronald W. Edison, The Man Who Made the Future, 1977. Putman Press.

925C Crowther, James G. Famous American Men of Science, 1937. Arno. Press.

B. Ed. Ellis, Keith. Thomas Edison, Genius of Electricity, 1976. Crane Russak Co.

X Frost, Lawrence A. Thomas Alva Edison, Album, 1969. Superior Publishing.

X Hendricks, Gordon. Origins of the American Film, 1972. Arno. Press.

B. Ed. *Josephson, Matthew. Edison, 1963. McGraw Hill.

X *Lewis, Floyd A. The Incandescent Light, 1959. Shorewood Publishing.

*Read, Oliver and Walter Welch. From Tin Foil To Stereo, 1976. Howard Sams Co.

609 Van. *Vanderbilt, Byron M. Inventing, How the Masters Did It, 1974. Moore Publishing.

B.Edi *Vanderbilt, Byron M. Thomas Edison, Chemist, 1971. American Chemical Society.

*On Sale at the Museum.

C. Books Not In Print; Excellent Reference; For Student Use

J507.2Vn Thomas Alva Edison Foundation. Edison Experiments You Can Do, 1960.

JB Ed North, Sterling. Young Thomas Edison, 1958. Houghton Mifflin Co.

D. Books Not In Print; Excellent Reference; For Teacher Use

Edison, Thomas Alva. Diary of Thomas A. Edison, 1885. Chatham Press Inc., 1970.

Sarnoff, P. et al. The Indispensable Man, 1962. Thomas Alva Edison Foundation.

This is a partial bibliography. Many other interesting books are available.

Additional information and many related experiments can be obtained from science books.

E. Films for Class Use

The Boyhood of Thomas Alva Edison, 1964. Produced by Coronet Institute Films; 15 Minute Color Film for grades 3 through 7.

Edison, Persistent Genius, 1965. Produced by David Estes Productions; 15 Minutes Color Film for grades 3 through 7.

The Story of Thomas A. Edison, 1965. Produced by Levey and Cooper Inc.; 30 Minute Color Film for all grade levels.

Thomas A Edison, The Old Man, 1972. Produced by New Jersey Public T.V.; 25 Minute Color Film for all grade levels.



New Jersey Historical Commission

113 West State Street • Trenton, New Jersey 08625 • (609) 292-6062

A THOMAS EDISON CENTENNIAL PACKET

This packet of materials provides basic information about the career and inventions of Thomas Alva Edison. It has been prepared by the National Park Service at Edison National Historic Site, West Orange; the New Jersey Historical Society, in Newark; and the New Jersey Historical Commission, in Trenton. The project has had the generous financial support of the Charles Edison Fund of East Orange, and the Eastern National Park and Monument Association.

The packet's production is one of a number of activities organized in New Jersey to commemorate the centennial year of Edison's development of the first practical incandescent light at Menlo Park, New Jersey, in 1879.

The packet has been designed primarily for teachers; the materials in it selected to stimulate the inclusion of units on Edison and the development of modern science and technology at all instructional levels. To this end, the sponsors have included the Historical Society's Instructional Bulletin, several classroom activities developed by the National Park Service, and reproductions of photographs suitable for instructional use depicting Edison's career and inventions.

Librarians and media specialists will also find the packet useful as other items provide basic reading about Edison and his career, a guide to some films by and about Edison, and a bibliography in the Instructional Bulletin for those interested in further pursuit of the subject.

The sponsors hope you will find the packet useful and that, through it, you might help in promoting a greater appreciation of Thomas Edison's many contributions to our modern society.

The New Jersey Historical Commission is in the Division of the State Library, Archives and History, Department of Education.
Brendan Byrne, Governor • Fred G. Burke, Commissioner of Education.
Henry N. Drewry, Chairman • Donald A. Sinclair, Vice Chairman • John T. Cunningham • Assemblyman James R. Hurley • Kenneth Q. Jennings • Richard P. McCormick • Sister Margherita Marchione • Assemblyman Harold Martin • Senator James P. Vreeland, Jr. • Senator Laurence S. Weiss.
Ex Officio: Judith W. Blood, Acting Chief, State Office of Historic Preservation • Barbara F. Weaver, State Librarian.
Staff: Bernard Bush, Executive Director • Richard Waldron, Associate Director • Peggy Lewis, Editor • Paul A. Stellhorn, Research Director • Lee R. Parks, Associate Editor • Ronald J. Grele, Director, Oral History Program • Mary Alice Quigley, Public Programs Coordinator.

2 Pages

Thomas Alva Edison



1847-1931

SCIENCE AND INVENTIONS



Edison: Thomas Alva Edison

Thomas Alva Edison

1847-1931

The Wizard of Menlo Park

Thomas Edison, one of America's greatest inventors, was born on Feb. 11, 1847, in Milan, Ohio. When he first attended school in Port Huron, Michigan, his teachers complained that he was "too slow" and hard to handle. As a result, Edison's mother decided to take her son out of school and teach him at home. Although young Edison disliked arithmetic intensely, he was fascinated by science and at 10 had already set up his first chemistry laboratory.

Young Edison's early career took a strange twist when, at the age of 15, he saved a stationmaster's child from being crushed by a runaway freight car and was rewarded for his courage with an apprenticeship as a telegraph operator. Soon he was spending all his spare time inventing telegraphic devices. His first commercially successful invention was an improved stock market ticker to report market prices. Using the money he received for this venture, Edison opened his own shop in Newark, New Jersey, in 1870, where he made stock tickers and turned out several inventions, including paraffin paper, the electric pen, which became the mimeograph machine, and a carbon transmitter that improved on Alexander Graham Bell's original telephone.

In 1876, Edison started what he called his "invention factory" in Menlo

Park, N.J. Soon a flood of inventions and improvements began flowing out of Edison's laboratory, and he became known as the "Wizard of Menlo Park." There he made some of his greatest inventions, the phonograph, and improvements upon the incandescent lamp so that it could be produced in large quantities at low cost.

Edison's next masterstroke was to build the first central electric power station in the world, located on Pearl Street in lower Manhattan, New York City. His men spent two years (1880-1882) digging trenches and installing 14 miles of underground cable required to power the 400 lamps belonging to his first 85 customers.

His only basic discovery in the world of pure science, the "Edison effect", in 1883 was to become the basis for the vacuum tube, which proved so essential to modern radio technology. In later years, Edison contributed greatly to standardizing and improving motion picture technology.

Edison's inexhaustible energy and genius (which he allegedly defined as "one percent inspiration and ninety-nine percent perspiration") produced in his lifetime more than 1,300 inventions. He died, at 84, on Oct. 18, 1931, in West Orange, N.J.

Illustration: *Edison holding incandescent lamp he invented*

Edison Twp. Pub. Lib.
340 Plainfield Ave.
Edison, N. J. 08817

HERE'S AN IDEA!

NOT TO BE TAKEN
FROM LIBRARY



Did you know that you can spend a fascinating, but inexpensive day at the West Orange, New Jersey laboratory and home of the world's most famous inventor, **THOMAS ALVA EDISON** without using an automobile?



What you will see

The West Orange Laboratory of Thomas Alva Edison - the largest laboratory of its kind devoted to the "business of inventing." Birthplace of the motion picture camera, silent and sound movies, nickel-iron alkaline battery, and improved phonographs.

Shown by continuous guided tours 9:00 A.M. to 3:30 P.M. daily, except Thanksgiving, December 25th and January 1st.*

Address:

**EDISON NATIONAL
HISTORIC SITE**

Main St. & Lakeside Ave., West Orange, N.J. 07052

201 / 736-5050

**Last complete tour*

Glenmont, the home of Edison for the last 45 years of his life. A 23 room Victorian mansion complete with original furnishings from the Edison years. The "thought bench" from which came innumerable ideas for his "work bench" at the laboratory.

Home shown by 40 minute guided tour hourly, 10:00 A.M. to 4:00 P.M. - Monday to Saturday except holidays.

Reservations made at laboratory.

COMBINATION ADMISSION FEE:

50¢

UNDER 16 AND OVER 62, FREE



HOW TO GET THERE

LEGEND

• BUS STOP

DeCAMP BUS #66
FROM NEW YORK

TNJ BUSES #21 & 24
FROM NEWARK AND
ELIZABETH

(E&L) CONRAIL FROM
HOBOKEN (PATH)

DeCAMP BUS #77
FROM NEW YORK

ORANGE TO NEWARK

ORANGE STATION (CONRAIL E&L)

TNJ SCHEDULE

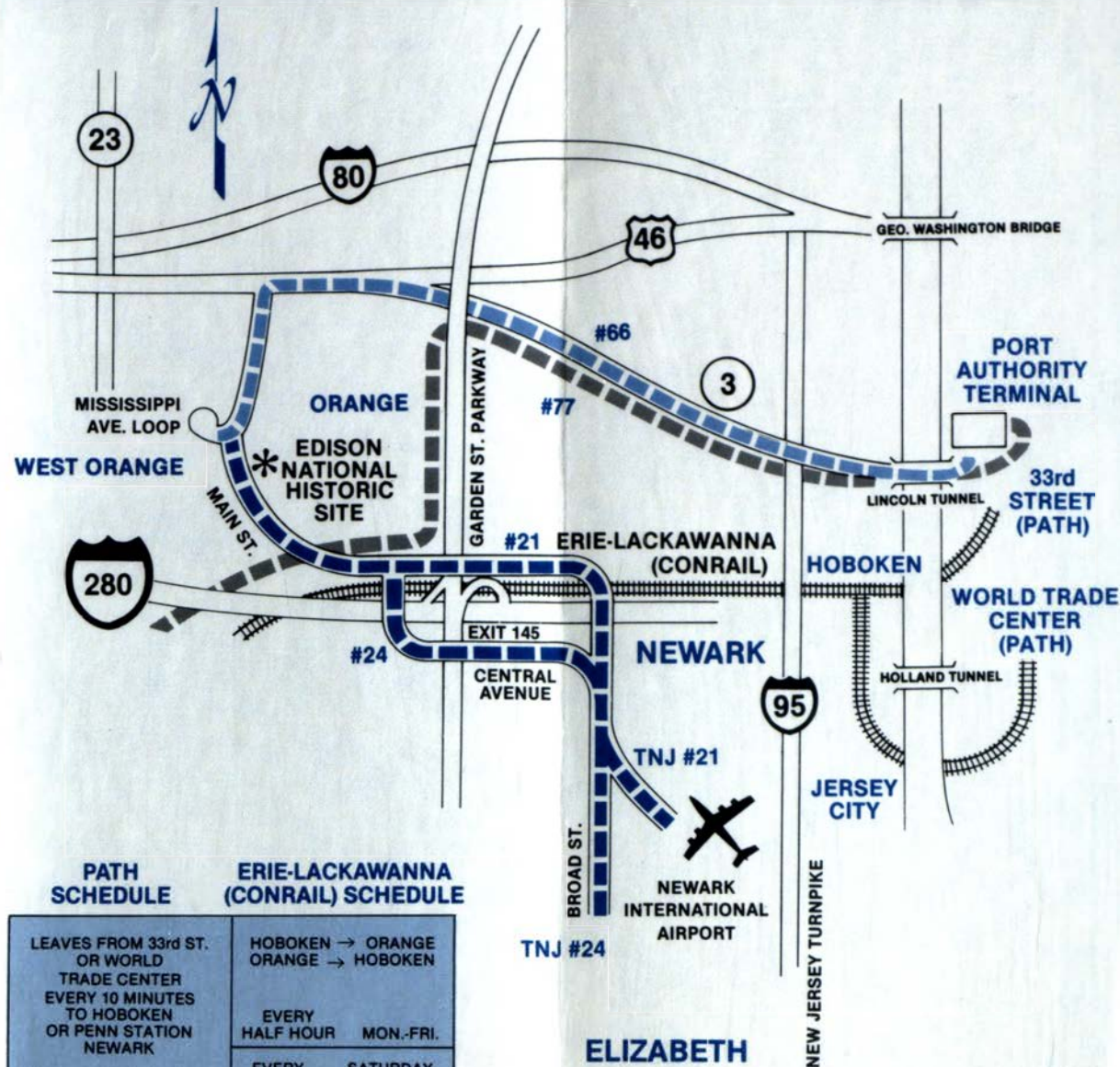
#21 #24

LEAVES	M-F	SAT. & SUN.	MON.-SAT.	SUNDAY
PENN STATION NEWARK	EVERY 10 MIN.	EVERY 15 MIN.		
ELIZABETH E. JERSEY AND FRONT STREETS			EVERY 15 MIN.	EVERY ½ HOUR ON THE QUARTER
WEST ORANGE MISSISSIPPI AVE. LOOP	EVERY 10 MIN.	EVERY 15 MIN.	EVERY 15 MIN.	EVERY ½ HOUR ON THE HALF

DeCAMP SCHEDULE

LEAVES #66 #77

PORT AUTHORITY TERMINAL 8th AVE. & 41st St. MANHATTAN	EVERY HOUR ON THE HALF HOUR	EVERY HOUR AT 15 MIN. PAST/HOUR
BEGINS 8:30 M-F	9:30 SAT. 10:30 SUN.	BEGINS 8:15 M-F 9:15 SAT./SUN.
WEST ORANGE MISSISSIPPI AVE. LOOP	EVERY HOUR AT 15 MIN. PAST/HOUR	
ORANGE MAIN ST. AND JEFFERSON		EVERY HOUR AT 20 MINUTES PAST/HOUR



PATH SCHEDULE

LEAVES FROM 33rd ST. OR WORLD TRADE CENTER EVERY 10 MINUTES TO HOBOKEN OR PENN STATION NEWARK

ERIE-LACKAWANNA (CONRAIL) SCHEDULE

HOBOKEN → ORANGE
ORANGE → HOBOKEN

EVERY 10 MINUTES
EVERY HALF HOUR MON.-FRI.
EVERY HOUR SATURDAY SUNDAY

Ask At Desk

Chronology of Events *in the* Life of

NOT TO BE TAKEN
FROM LIBRARY

Edison,
Thomas A.

THOMAS
ALVA
EDISON

EDISON TWP. FREE PUBLIC LIBRARY

- 1847 February 11—born at Milan, Ohio, son of Samuel and Nancy Elliott Edison.
- 1854 Edison family moved to Port Huron, Michigan.
- 1857 Earliest record of interest in chemistry—young Tom Edison had a laboratory in the cellar of Port Huron home.
- 1859 A newsboy and “candy butcher” on the train of the Grand Trunk Railway, running between Port Huron and Detroit.
- 1862 Printed and published a newspaper, “The Weekly Herald,” on the train—the first newspaper ever printed on a moving train.
- 1862 August—saved from death the young son of J. U. MacKenzie, Station Agent at Mt. Clemens, Michigan. In gratitude, the father taught Edison telegraphy.
- 1863 Used a locomotive whistle to telegraph across the river between Sarnia, Ontario, and Port Huron, when a telegraph cable broke.
- 1863 Put up a telegraph line from Port Huron railway station to the village and worked in the local office.

- 1879 Invented the first practical incandescent electric lamp. The invention was perfected October 21, 1879 when the first lamp, containing a filament of carbonized sewing thread and embodying the principles of the modern incandescent lamp, had maintained its incandescence for more than forty hours.
- 1879 Invented radical improvements in construction of dynamos, making them suitable for generators for his system of distribution of current for light, heat and power. Invented systems of distribution, regulation and measurement of electric current, including sockets, switches, fuses, etc.
- ✓ 1879 December 31—gave a public demonstration of his electric lighting system in streets and buildings at Menlo Park, New Jersey.
- 1880 April 3—invented the magnetic ore separator.
- ✓ 1880 May 13—started operation of the first passenger electric railways in this country at Menlo Park, New Jersey.
- 1880 Ushered in seven strenuous years of invention and endeavor in extending and improving the electric light, heat and power systems. During these years he took out upwards of 300 patents. Of 1,097 patents issued to Thomas A. Edison, 356 deal with electric lighting and power distribution.
- ✓ 1880 October 1—first commercial manufacture of incandescent lamps began at Edison Lamp Works, Menlo Park, New Jersey.
- 1881 January 31—opened offices of the Edison Electric Light Company at 65 Fifth Avenue, New York City.
- 1881 March 2—Edison arranged to open the Edison Machine Works at 104 Goerck Street, New York City.
- 1882 January 12—opened the world's first commercial incandescent lighting and power station at Holborn Viaduct, London, England.
- 1882 May 1—moved the first commercial incandescent lamp factory from Menlo Park to Harrison, New Jersey. Organized and established shops for the manufacture of dynamos, underground conductors, sockets, switches, fixtures, meters, etc.
- 1882 September 4—commenced the operation of the first commercial central station for incandescent lighting in this country at 257 Pearl Street, New York City.

- 1883** Commenced the installation of central stations all over the United States and the world.
- 1883** July 4—first three-wire system central station for electric lighting started operation at Sunbury, Pennsylvania.
- 1883** Discovered a previously unknown phenomenon. He found that an independent wire or plate, placed between the legs of the filament of an incandescent lamp, acted as a valve to control the flow of current. This became known as the "Edison Effect." This discovery covers the fundamental principle on which rests the modern science of electronics.
- 1883** November 15—filed patent on an electrical indicator using the Edison Effect, the first application in the field of electronics.
- 1884** August 9—His wife, Mary Stilwell Edison, died at Menlo Park, New Jersey.
- 1885** March 27—patent executed on a system for communicating by means of wireless induction telegraphy between moving trains and railway stations.
- 1885** May 14—patent executed on a ship-to-shore wireless telegraphy system, by induction.
- 1886** Bought Glenmont, a residence in Llewellyn Park, West Orange, New Jersey.
- 1886** February 24 — Married Mina Miller, daughter of Lewis Miller, co-founder of Chautauqua, inventor and manufacturer of agricultural machinery, of Akron, Ohio.
- 1886** December—moved plant of Edison Machine Works from 104 Goerck Street, New York City, to Schenectady, New York.
- 1887** November 24 — moved his laboratory to West Orange where, for the first time, Mr. Edison applied his method of invention known as "Organized Research." During the first four years of his occupancy of his West Orange laboratory, he took out over eighty patents on improvements on the cylinder phonograph. He established a very extensive business in the manufacture and sale of phonographs and records, including dictating machines, shaveable records and shaving machines.
- 1887** Patented process for making plate glass.
- 1889** October 6—first projection of an experimental motion picture. This was a "talkie" shown at the West Orange laboratory; the picture was accompanied by synchronized sound from a phonograph record.

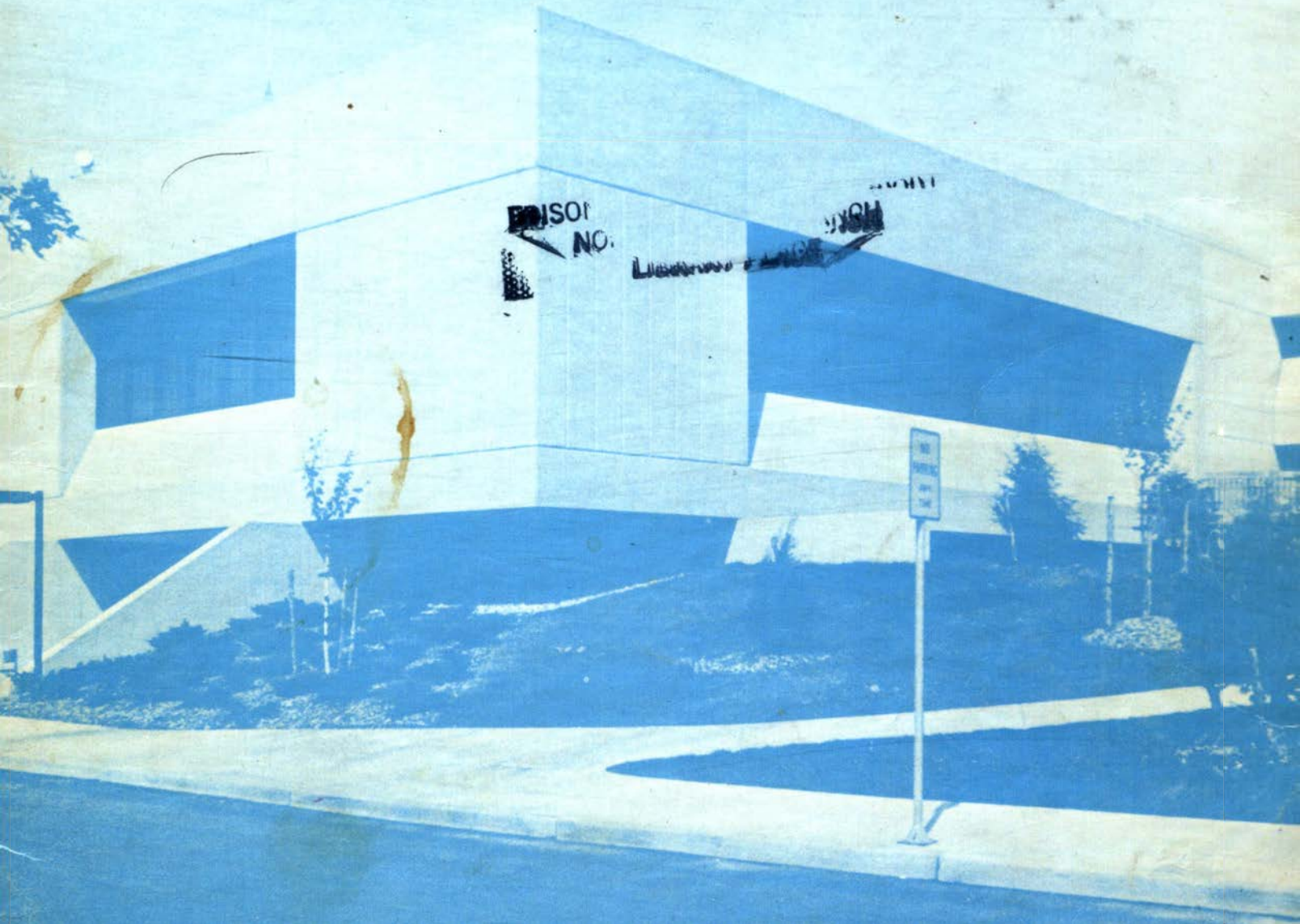
- 1889** Phonograph doll and other toys manufactured by Edison.
- 1891** July 31—applied for patent on the motion picture camera. By the invention of this mechanism, with a continuous tape-like film, originated by Eastman, it became possible to take and reproduce motion pictures as we have them today.
- 1891** This year marked the culmination of his preliminary surveys and experimental work on iron-ore concentration which he had started while in Menlo Park in 1880. Edison did some of his most brilliant engineering work in connection with this project. Actual work was commenced in his great iron-ore concentrating plant at Edison, New Jersey, during 1891 and this enterprise was continued till 1897.
- 1893** Edison-Lalande primary cells supplied power for the first electric semaphore signal installed on railroad near Phillipsburg, New Jersey.
- 1894** April 14—first commercial showing of motion pictures took place with the opening of a "peephole" Kinetoscope parlor at 1155 Broadway, New York City.
- 1896** Experimented with the X-ray discovered by Roentgen in 1895. Developed the fluoroscope which invention Mr. Edison did not patent, choosing to leave it to public domain because of its universal need in medicine and surgery.
- 1896** February 26—death of his father, Samuel Edison, in Norwalk, Ohio.
- 1896** April 23 — first commercial projection of motion pictures at Koster & Bial's Music Hall, New York City, by the Edison Vitascope.
- 1896** May 16—applied for a patent on the first fluorescent electric lamp. This invention sprang directly from his work on the fluoroscope.
- 1897** Rock crusher, drying apparatus, mixer and conveyor developed by Edison.
- 1900** This year marked the beginning of a ten-year period of work which resulted in the invention of the Edison nickel-iron-alkaline storage battery and its commercial introduction. The alkaline battery is widely employed as a power source in mine haulage, inter- and intra-plant transportation, for railway train car lighting and air conditioning, signalling services and many other industrial applications.

- 1901** Commenced construction on the Edison cement plant at New Village, New Jersey, and started quarrying operations at nearby Oxford. In his cement industry, Edison proceeded to apply the fruits of experience gained in the iron-ore concentrating venture.
- 1902** Worked on improving the Edison copper oxide primary battery.
- 1903** July 20—applied for patent on long rotary kilns for cement production.
- 1907** Process for artificially aging Portland cement developed.
- 1907** Developed the universal electric motor for operating dictating machines on either alternating or direct current.
- 1908** Prefabricated housing begins with Portland cement developed by Edison.
- 1910** This year initiated a four-year period of work on improving the disc phonograph. His work resulted in the production of an instrument and records which reproduced vocal and instrumental music with improved fidelity and sweetness.
- 1911** Perfected diamond point phonograph reproducers.
- 1913** Introduced the Kinetophone for talking motion pictures, after spending much time on its development.
- 1914** October 13—patent executed on electric safety lanterns which are used by miners for working lights. These miners' lamps have contributed in an important degree to the reduction of mine fatalities.
- 1914** Developed a process for the manufacture of synthetic carbolic acid and aniline dyes. Designed a plant, and within a month was producing a ton a day to help overcome the acute shortage due to the World War.
- 1914** December 9—Edison's great plant at West Orange, New Jersey, was destroyed by fire. Immediate plans for rebuilding were laid and new buildings began to arise almost before the ruins of the old were cold.
- 1914** Invented the Telescribe, combining the telephone and the dictating phonograph, thus permitting the recording of both sides of telephone messages.

- 1915** Established plants for the manufacture of fundamental coal-tar derivatives vital to many industries previously dependent on foreign sources. These coal-tar products were needed later for the production of wartime explosives. Mr. Edison's work in this field is recognized as having paved the way for the important development of the coal-tar chemical industry in the United States today.
- 1915** Became President of the Naval Consulting Board, at the request of Josephus Daniels, then Secretary of the Navy. During the war years, he did a large amount of work connected with national defense, particularly with reference to special experiments on over forty major war problems for the United States Government. At that time the late President, Franklin D. Roosevelt, was Assistant Secretary of the Navy.
- 1918** On leaving Naval Consulting Board, advocated permanent research board from which suggestion the present naval research facilities developed.
- 1923** Made a study of economic conditions, the result of which was published in a pamphlet in 1924, when Mr. Edison presented to the Secretary of the Treasury a proposed amendment to the Federal Reserve Banking System.
- 1926** Began experiment in producing rubber from native plants. Experimented with over 17,000 plant specimens, selecting goldenrod. Before his death he produced rubber which was vulcanized from goldenrod grown in his experimental gardens at Fort Myers, Florida.
- 1928** October 20—presented with the Congressional Medal of Honor by Andrew W. Mellon, Secretary of the Treasury. Original phonograph returned by the British government at this ceremony.
- 1929** October 21—commemorating the Fiftieth Anniversary of the incandescent lamp and in the presence of President Hoover, Henry Ford and other world leaders, Mr. Edison re-enacted the making of the first practical incandescent lamp.
- 1931** October 18—died at Llewellyn Park, West Orange, New Jersey at the age of eighty-four; survived by his wife, Mina Miller Edison; his four sons, Thomas Alva, Jr., William Leslie, Charles and Theodore, and his daughters, Marion Edison Oser and Madeleine Edison Sloane.

Edison:
History

DEDICATION of MUNICIPAL COMPLEX



Township of Edison

EDISON TWSP. FREE PUB. LIBRARY
NORTH EDISON BRANCH
LIBRARY PLACE

May 24, 1981
100 Municipal Boulevard
Edison, New Jersey 08817

MAYOR



Anthony M. Yelencsics

Councilmember



George J. Asprocolas

Councilmember



Lewis M. Bloom

Councilmember



Dorothy K. Drwal

Councilmember



Margery S. Golin

Councilmember



John J. Hogan

Councilmember



James Mack

Edison
Municipal
Government

Council President



Angelo A. Orlando Jr.

EDISON TOWNSHIP EMPLOYEES

Homer Abron, Jr.
Louis Alfieri
Matthew Alston, Jr.
Jean Ambrosio
The Honorable Paul E. Anderson
E. Annis
Jeanne Anselmo
Nora M. Anthony
Edwin Arocho
The Honorable George J. Asprocolas
Joyce J. Asprocolas
Steve Bagan
Eleanor Balasic
Mary F. Baran
Roy J. Barankovich
Gerry Barr
Sgt. Richard Barrett
Marge Barry
James Baskerville
Sgt. John Bauer
Edna T. Beers
Vince Behan
Miriam L. Bell
Peter A. Belluscio
John D. Bernai
Sgt. George H. Berrue
Kathleen F. Berrue
Mim Berry
Pat Best
Jay Biri
Marge Blasi
Josephine F. Blaszk
The Honorable Lewis M. Bloom
Sgt. Robert J. Bobik
Matthew R. Bolger
Molly Bright
Selma N. Brown
Sgt. Thomas W. Bryan
Helen L. Bryla
Dolly L. Buchok
Joseph A. Buck, Jr.
Ralph J. Bullock
Ann E. Burns
Lt. Anthony J. Calamoneri
Mary Ann Calise
Daniel E. Campbell
Tricia Campbell
Robert Campbell, Jr.
Robert Campbell, Sr.
Scilla V. Cangro
Richard L. Cannella
Dr. A. Peter Capparelli
Sue Catena
Jo Cavanaugh
Paul S. Chester
Walter P. Chmura
Carole A. Christie
Larry P. Cimmino
Dorothy M. Close
Robert Clougher
Winnie Clougher
William J. Coleman
John C. Colletto
Grace Colyer
Steven Combenakis
John J. Connolly
Sgt. George W. Cook
Edgar J. Crowder
Nancy E. Crowley
Mark J. Cudakiewicz
Marge Curran
Joan Dalton
Joseph Daly
John Damiano
Thomas DeChirico
Louis DeCovelo
Mary Ann DeFalco
Thomas J. DeMarty
Peter A. DeSarno
Steve Deak

Edward Dechert
John A. Delesandro
Julius N. Deri
Robert DiPinto
Frank DiSilvestro
Tilly Dipple
Phyllis Donaldson
Joseph J. Drew
The Honorable Dorothy Drwal
Deputy Chief Donald Dudics
Lt. George Dudics
William J. Dunham, Jr.
Beatrice P. Dyevoich
Joan L. Eisenhut
John English
Jack Enoch
Karen Enoch
Constance Erdek
Barbara K. Espenschied
Anne J. Fairbanks
Dianne Faraca
Gary M. Farinich
Arlene J. Farkas
F. & B. Squad Dispatchers
George Fendt, Jr.
Clara Festa
Bill Finley
Albert L. Fiorino
Chief William T. Fisher
John H. Fox
Norma D. Francis
Sandra Frankel
Joseph Frazee
Phyllis Fritts
Liz Galati
John J. Gardella
Martha Gartner
John Gary
Gentore
Louis N. Ghilino
Doreen Giacobbe
Ed Glidden
Ben A. Goedeski
Dianne Golden
The Honorable Margery S. Golin
Don Gorbe
Dorothy Gresh
John O. Grun
Louis Gurdon II
Michele Guyette
MaryLou Hagglund
Don R. Hansen
James Hansen
John C. Hansen
Jean Haydu
Doris Heck
Robert Heck
Joan C. Hegedus
William Heilig
Alex Herman
Lt. John Hermesen
William E. Hight
Gene Himself
The Honorable John E. Hogan
John Horvath
Marie Irving
Helen Jobbins
Tony Juarez, Jr.
Sadie Kanitra
James Kelly
Ruth Kettyle
Carol Kinsey
David Klemick
Ptl. Richard S. Kluj
Mary Krovath
Pat Kuchar
Catherine Kwiatkowski
John Labbanz
Lt. Fred Lacik
Albert Lamkie

Doris Lang
Richard A. Latham
Michael G. Leight
Peter Leonard
Andy Lipnick
Florence Logan
Steven C. Lombardi
Joseph Luniello
William M. Lund
Richard Lutzky
George A. Lux
Maureen Lyman
The Honorable James J. Mack
Bob Macko
James Madden, Sr.
James P. Madden
Joseph F. Magdon
Josephine Maibach
George Maison
Jacqueline Manganaro
Frank Mantuano
Louis Marchitto
Nick Marchitto
Sgt. Arpad G. Marics
Capt. Joseph P. Marino
Sandra Math
Harold V. McAvoy
Capt. Richard M. McGinnis
Bruce McWhorter
Del Methner
James Metz
Jim Myer
Audrey Michaels
Deputy Chief Raymond M. Milcsik
Barry Miller
Lt. Danny Miller
Norma Monaghan
John W. Mooney
Marylou Mooney
Ptl. Adolph J. Muth
Richard Myzeruski
Andy Nagy
Virginia Nault
Carol Nemeth
Det. Stephen Nemeth
Am H. Nguyen
C. Nielson
Katherine Noonan
Mary Ann O'Leary
The Honorable Angelo A. Orlando, Jr.
Ellen Oswald
Clifford Parker
Jack J. Pasterak
Terri Patterson
Geno Pelago
Stella Pensak
Al Perduk
Capt. Charles M. Peterson
George Petrunyak
Joseph A. Pinter
Roger L. Pinter
Deputy William E. Pinter
Phyllis Pizaia
Abe Plaza
Harold Prongay
Julius Przybowski
Rose Anne Quinn
Rafael Quinones
Al J. Raiford
Harriet Rashap
Pat Raymond
Bill Raymond
Joseph J. Reap
Randy Reed
Ralph M. Reed, Jr.
George J. Reister
James Renner
Stephen J. Resko
Joseph F. Rispoli
Benito Rivera, Jr.

Judi A. Rizzo
Joseph Rodziewicz
Lou Rohland
Linda Romanoff
Frank Rubright
Earl Ruppert
Anthony Ruvolo
Charles Ruvolo
Marie L. Sanders
Louis R. Sands
Lee Santangelo
Nancy Schmalder
Peter M. Schnappauf, Jr.
Donald G. Schweitzer
Adele M. Searfoss
Richard J. Seeterlin
Lt. Joseph H. Seroka
Katherine Shibley
Lt. Joseph N. Shirley
John H. Shuey
Walter J. Sosiak
Richard L. Spahn
R. Spence
John R. Spittler, Sr.
Christina Spitzmiller
Jeanne L. Stabile
Hilda Stein
Dorothy C. Stephens
Robert E. Stephens
Rosemary F. Stevenson
Eleanor G. Stokley
Freddie Stricker
Herb Struve
Roman S. Sypniewski
Sgt. Stephen Szalay
Joseph B. Szebenyi
Ruth A. Szilagyi
Eugene M. Tanganelli
Dorothy Tannura
Barry S. Thorne
Matt J. Tirpak
Migdonio Torres
Terri Truitt
Lucille E. Tucker
Arlene Turanica
Anne Twist
Mickey Uman
Diane Vajo
Lawrence R. Valentino
Fred Valeri
Lois VanDoren
Capt. James J. Vargo
Greg Velez
Chief H. Ray Vliet
Elaine E. Wade
Joanne Waldron
Michael Waldron
Denise C. Wasko
Charles E. Weingart
Ida S. Weingarten
Anthony E. Westrol
Rosalie Y. Whelan
Caryl S. Williams
John J. Williams
Lt. Richard J. Williams
John L. Woodring
Minnie Woods
Art Wuest
The Honorable Anthony M. Yelencsics
Gussie Young
J. Yuhas
Robert Zaccaro
Samuel Zaccaro
Kathryn K. Zeiler
Maryanne A. Zogg
Joyce R. Ducics
Joseph P. Marino, Jr.

PROGRAM

Master of Ceremonies	The Honorable Anthony M. Yelencsics <i>Mayor of Edison</i>
Pledge of Allegiance	The Honorable Angelo A. Orlando, Jr. <i>Edison Council President</i>
Star Spangled Banner Sung by:	The Honorable Dorothy K. Drwal <i>Edison Council Member</i>
Accompanied by:	Combined Edison and J. P. Stevens High School Bands Bernard Stark, <i>Director - Edison</i> Andrew DeNicola, <i>Director - JPS</i>
Invocation	Reverend Gerard Van Dyke <i>Pastor - Grace Reformed Church</i>
Introduction of Guests	The Honorable Anthony M. Yelencsics <i>Mayor of Edison</i>
Guest Speaker	The Honorable Robert A. Roe <i>U.S. Congressman</i>
"Sing We and Chant It" - (by Morley)	Combined A Cappella Choirs of J. P. Stevens and Edison High Schools - Under the Direction of Miss Ginny Moravek, <i>Choir Director, JPS</i>
Remarks	Mr. Charles A. Boyle <i>Superintendent of Schools</i>
Remarks	The Honorable Stephen J. Capestro <i>Director - Board of Chosen Freeholders County of Middlesex</i>
Health Trailer Dedication	Dr. A. Peter Capparelli <i>Edison Health Officer</i>
Presentation	Mrs. Marge Szebenyi, <i>President</i> Clara Barton Democratic Club Cherry Tree planting in honor of former Congressman Edward J. Patten
Presentation	Mrs. Dora Engel, <i>President</i> <i>Bonhamtown Senior Citizen Club</i>
Presentation	Mrs. Lee Santangelo <i>Municipal Vice-Chairlady of the Edison Democratic Organization</i>

"Battle Hymn of the Republic" (by Peter Wilhousky)	Combined A Cappella Choirs of Edison and J. P. Stevens High Schools Under the Direction of Mr. Winston Hughes <i>Choir Director - Edison</i>
Benediction.....	Reverend Samuel C. Carpenter <i>Pastor - Mt. Pleasant Baptist Church</i>
Ribbon Cutting	The Honorable Anthony M. Yelencsics <i>Mayor of Edison</i>

COMPLEX WINS AWARD



Robert Price, President of the New Jersey Chapter A.C.I. presents Mayor Anthony M. Yelencsics, Township of Edison, with the "Grand Award" from The New Jersey Ready-Mixed Concrete Association and The New Jersey Chapter of the American Concrete Institution, for our new Municipal Complex.

J. Di Leo Associates
INSURANCE AND REAL ESTATE



1315 STELTON ROAD, PISCATAWAY, NEW JERSEY 08854 • 201-985-1000 • 201-752-2100

*Congratulations
on the
Dedication of the
New Municipal Complex
of
Edison Township, New Jersey*

BORRELLI and ASSOCIATES
CERTIFIED PUBLIC ACCOUNTANTS

HISTORY OF EDISON

The early history of the local area is directly related to the histories of Woodbridge and Piscataway Townships from which Raritan Township was formed in 1870. Early settlers who replaced the original inhabitants—Lenni-Lenape Indians—came from New England and several European countries. Included among these were the Stelle and Bonham families after whom sections of the Township are named. Despite difficulties inherent in founding early settlements, these pioneers cleared land for farming, built St. James and Stelton Baptist Churches, established local government, constructed a meeting house in Piscatawaytown and founded a local school there and one in Oak Tree.

During the Revolutionary War local residents remained loyal to the Patriots' Cause, engaging in numerous skirmishes, especially in the Piscatawaytown-Bonhamtown area where several British regiments were stationed. Among the many who served with the American militia were Major Reuben Potter and Captain Abraham Tappan. Following the end of hostilities, residents turned their attention to improving and extending facilities and services started before the War. Funding through subscriptions and special taxes was initiated.

Of major importance during the 19th Century was the movement to form a new township from portions of Woodbridge and Piscataway Townships. Led by a group of Metuchenites, local leaders were successful when Raritan Township was incorporated, with the first election held at the Academy on April 16, 1870. Family names of the earliest settlers filled many of the civil servant lists—Tappan, Martin, Stelle, Campbell.

Internal political differences concerning representation, improvements and taxation continued after the formation of Raritan Township. Leaders in Metuchen opted successfully for the creation of a separate borough in 1900, followed by Highland Park in 1905.

During the following years, residents again renewed their efforts towards extending and refining facilities and services. A major change was made in the form of local government from Township Committee to Commission which lasted until 1958. However, throughout much of the eighty-four year period of Raritan Township, there existed a need to identify with the township and not with sections of the township—a situation which was common to other townships made up of villages in a rural setting.

The post-World War II period brought with it a rapid and massive increase in population with its corresponding demands for expansion and reorganization of all the resources of the community. The change from Raritan to Edison in 1954 honored Thomas A. Edison, who spent perhaps the most fruitful period of his life in the Menlo Park section during the latter part of the 19th Century. Numerous individuals and civic groups made concerted efforts to remove the last of the sectionalist feelings and build an identification with Edison. The result of their efforts is apparent.

Today, Edison is one of the major communities in the state of New Jersey with a comprehensive master plan to insure a well balanced municipality.

TRADE
Bi-Lateral
MARK

BI-LATERAL FIRE HOSE CO.

Fire Hose & Fire Department Supplies

9 LIVINGSTON AVE., P.O. BOX 74
KEARNY, NEW JERSEY 07032

(201) 998-8310



REALTY APPRAISAL CO.

4912 Bergenline Avenue / West New York, New Jersey 07093 / Union 7-3870

JOSEPH RUBENSTEIN (1934-1972)
ROBERT I. RUBENSTEIN, M.A.I., I.F.A.S.
STANLEY RUBENSTEIN, I.F.A.S.

**GOOD LUCK
AND BEST WISHES
IN YOUR NEW HOME**



CONGRATULATIONS AND BEST WISHES

TO
MAYOR ANTHONY M. YELENCICS,
THE MUNICIPAL COUNCIL
AND THE RESIDENTS
OF EDISON TOWNSHIP ON THIS
HISTORIC OCCASION.

*From your friends and
neighbors at*



**First
National
State®**

First National State Bank — Edison

Member First National State Bancorporation

Member FDIC

Equal Housing Lender • Equal Opportunity Lender



FRASER BROTHERS

940 Amboy Avenue
Edison, N.J.
(201) 738-7400

Insurance Since 1903



**Eckert
morton
RUSSO architects
& planners**
A professional
association

R.D. 4, BOX 447, NORTH BRUNSWICK, N.J. 08902



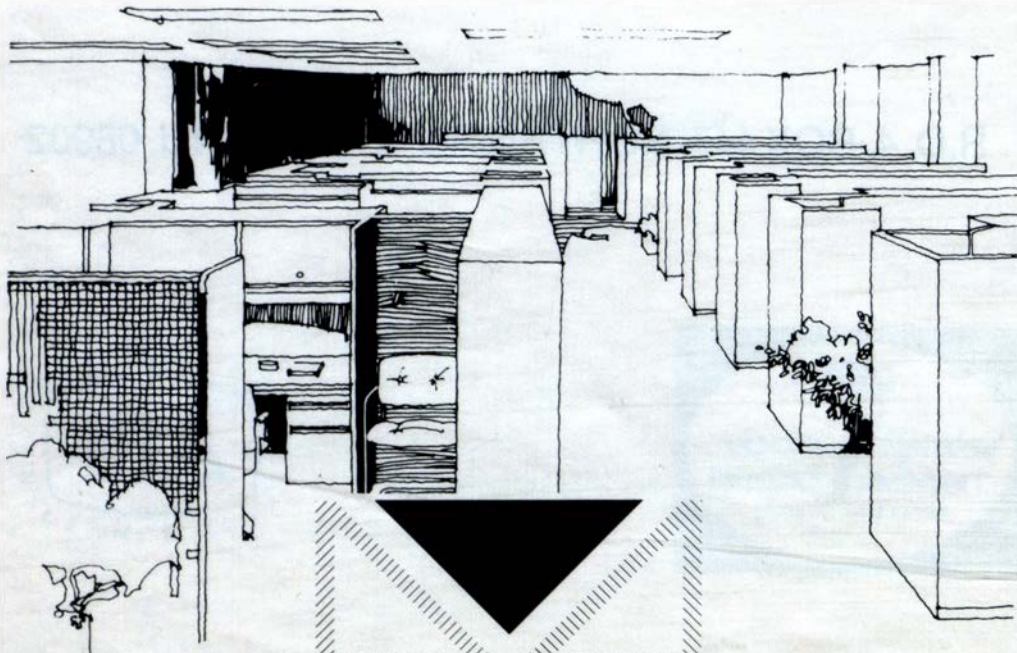
"The only sure bulwark of continuing liberty is a government strong enough to protect the interests of the people, and a people strong enough and well enough informed to maintain its sovereign control over its government."

—Franklin D. Roosevelt

THE NEWS TRIBUNE

1 Hoover Way, Woodbridge, N.J.
(201) 442-0400

Daily in Middlesex and Northern Monmouth Counties



VALENTINE'S

658 Whitehead Rd., Trenton, N.J. 08638

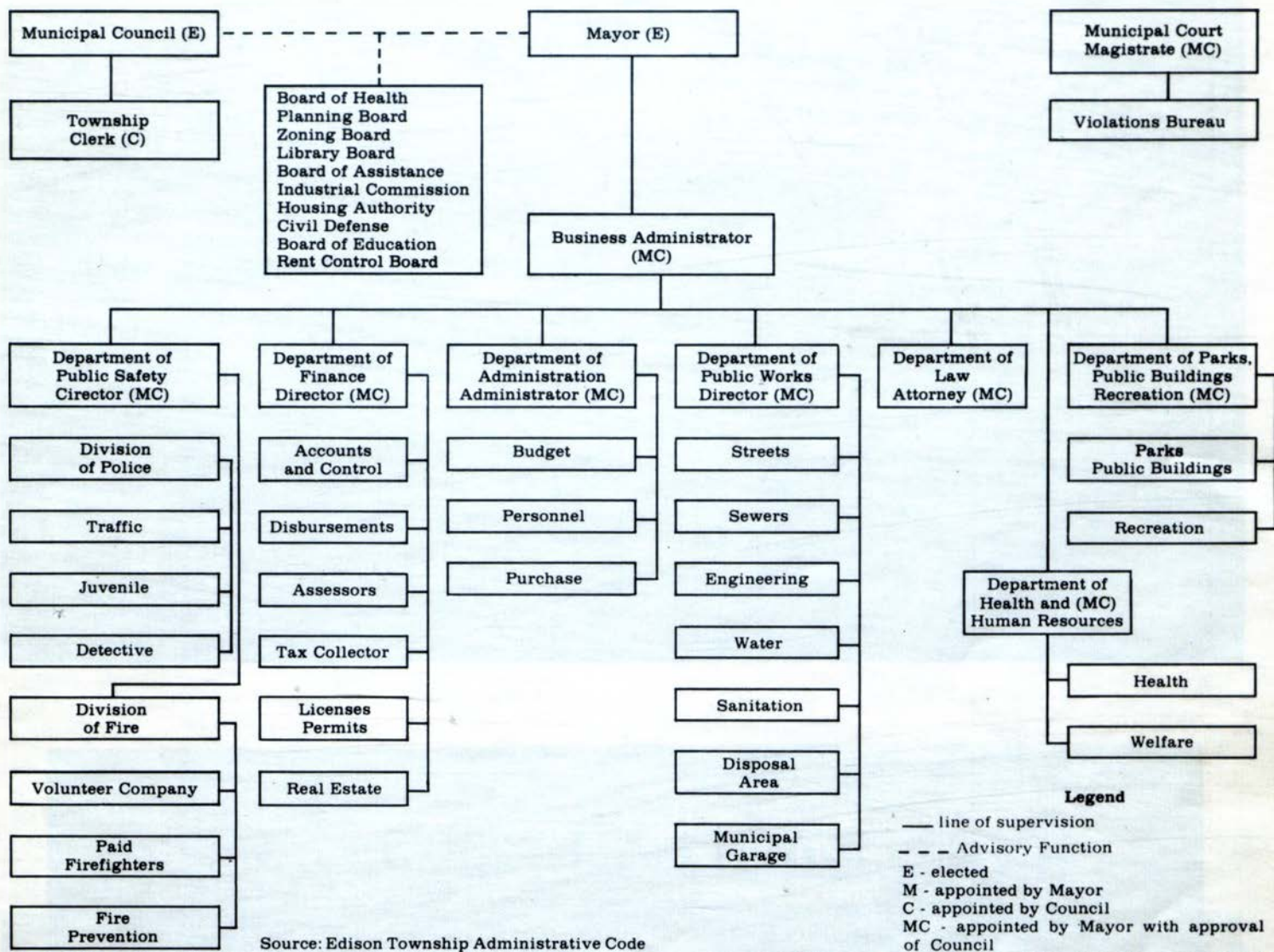
IS PROUD TO BE A PART OF YOUR FUTURE ...

MAY IT BE A BRIGHT ONE IN NEW FACILITIES.

CONGRATULATIONS!

FINE OFFICE PRODUCTS

TOWNSHIP OF EDISON ORGANIZATIONAL CHART



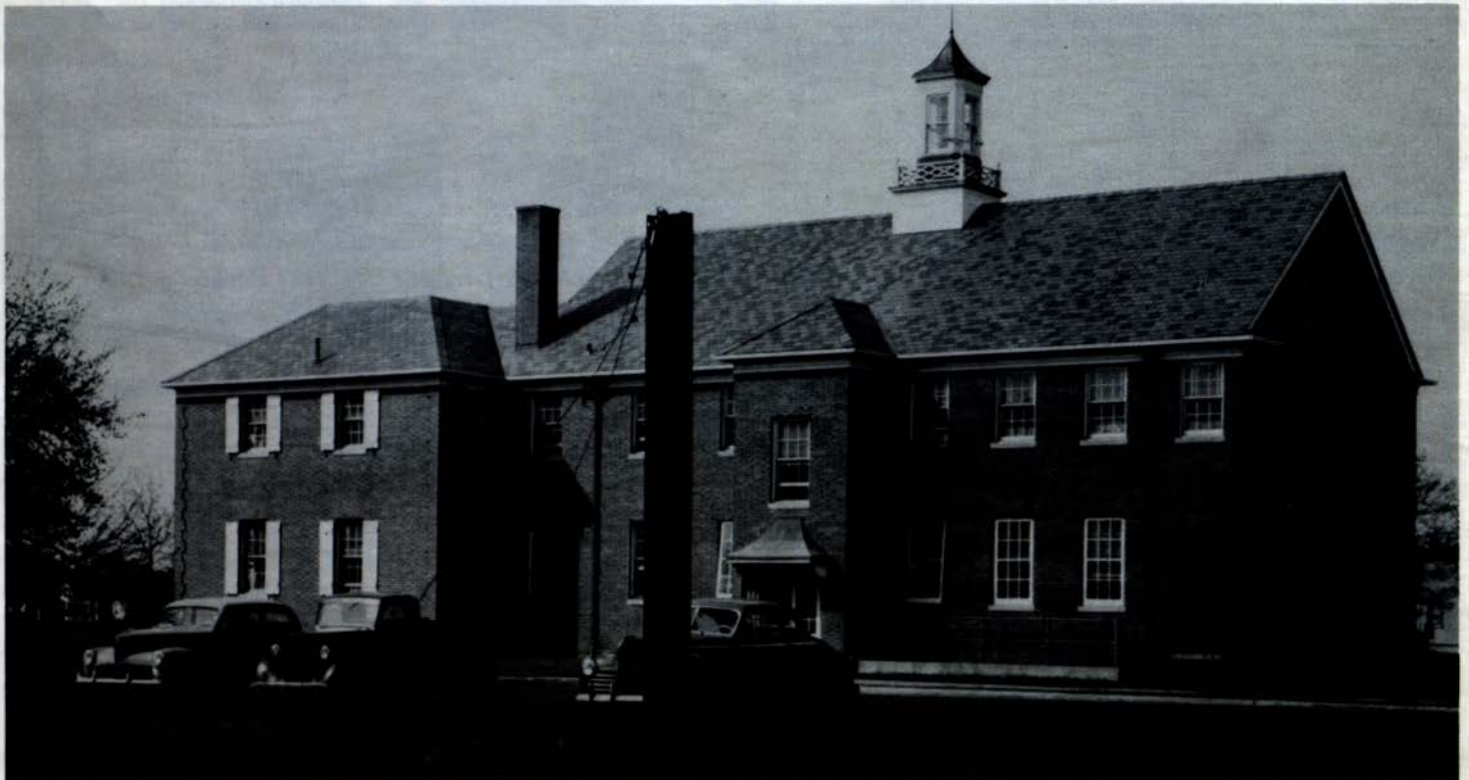
Anthony M. Yelencsics, *Mayor*
 Angelo A. Orlando, Jr., *Council President*
 George J. Asprocolas, *Councilmember*
 Lewis M. Bloom, *Councilmember*
 Mrs. Dorothy K. Drwal, *Councilmember*
 Mrs. Margery S. Golin, *Councilmember*
 John J. Hogan, *Councilmember*
 James Mack, *Councilmember*
 John A. Delesandro, *Business Administrator*
 Lucille Tucker, *Township Clerk*
 Julius Deri, *Director, Dept. of Public Works*
 William M. Lund, P.E., *Township Engineer*
 Bruce McWhorter, *Construction Official*
 Steven Lombardi, *Zoning Official*
 James A. Rossi, *Building Subcode Official*
 Louis E. Rohland, *Plumbing Subcode Official*

Peter Wasko, *Electrical Subcode Official*
 John H. Fox, Jr., *Director, Dept. of Finance*
 Harold V. McAvoy, *Director, Dept. of Parks, Public Bldgs. & Recreation*
 Dr. A. Peter Capparelli, *Director, Dept. of Health & Human Resources*
 Peter A. DeSarno, *Township Attorney*
 Paul E. Anderson, *Magistrate*
 John W. Mooney, *Assessor*
 Gary Farinich, *Collector*
 William T. Fisher, *Chief, Division of Police*
 William Pinter, *Deputy Chief, Div. of Police*
 Raymond Milczik, *Deputy Chief, Div. of Police*
 H. Ray Vliet, *Chief, Division of Fire*
 Donald Dudics, *Deputy Chief, Division of Fire*
 Joseph Szebenyi, *Fire Subcode Official*

TOWNHALL VACATED IN 1980



TOWN HALL 1930'S



ORIGINAL TOWN HALL



5 ¼% NOW Accounts
Savings Accounts
Checking Accounts
Handy Teller 24 Hour Banking
Auto Loans
Personal Loans
Safe Deposit Boxes
6-Month Money Market Certificates
30-Month Investment Certificates
High Interest Savings Certificates

Home Improvement Loans
Overdraft Protection
Business Loans
Trust Services
International Services
Travelers' Checks
Auto Leasing
Holiday Clubs
High Interest Retirement Plans
Direct Deposit of Social Security

**Judge a bank by
what it can do for you.**

MIDLANTIC
Midlantic National Bank

Member FDIC

An Equal Opportunity Lender

Best Wishes

Stavola Construction Materials, Inc.

Best Wishes

Trautwein's Inc.
Woodbridge, N.J.

METUCHEN BUILDERS SUPPLY, INC.

Lumber and Building Materials

Mason Supplies Hardware Paints

Telephone: 548-1122
548-1123

890 Middlesex Avenue
Metuchen, N.J. 08840

759-1400



Cerami Construction Company, Inc.

BUILDERS—CONTRACTORS

**15 Raymond Street
Belleville, N.J.**



FIRE APPARATUS
SALES AND SERVICE OF FIRE,
FIRST AID, POLICE
AND SAFETY EQUIPMENT

FIRE AND SAFETY SERVICES LTD.

451 Stelton Road
Piscataway, N.J. 08854

P.O. Box 100
Dunellen, N.J. 08812

AREA CODE
201-752-2400

WALTER G. RUNYON

BUSINESS FURNITURE INC.

133 Rahway Avenue

Elizabeth, N.J.

(201) 355-3400

CONTRACT DRAPERIES

•
Hospital Cubicle Curtains and Tracks
Distributor For
General Cubicle Co.
Louverdrape Vertical Blinds
Levolor Venetian Blinds & "Kirsch Electrac"

STAGE DRAPERIES AND HARDWARE

•
Custom Draperies & Hardware
Installations for Hospitals,
Nursing Homes, Schools,
Churches, Offices, Motels, Etc.

Bai Lar Interior Services, Inc.

Covering N.J., N.Y., Pa., Conn., Mass., Del. & Md.
554 New Brunswick Ave., Fords, N.J. 08863 • (201) 738-0350



**BRUCE
KIRKPATRICK
INSURANCE AGENCY, INC.**

2116 Oak Tree Road, Edison, N.J.
Telephone: 201-548-3394 / 201-548-3399

INSURANCE OF ALL FORMS

LIFE

PERSONAL

PENSIONS

PROPERTY

BUSINESS

INDUSTRIAL

LIABILITY

WORKMENS COMPENSATION

***CONGRATULATIONS & BEST WISHES
TO***

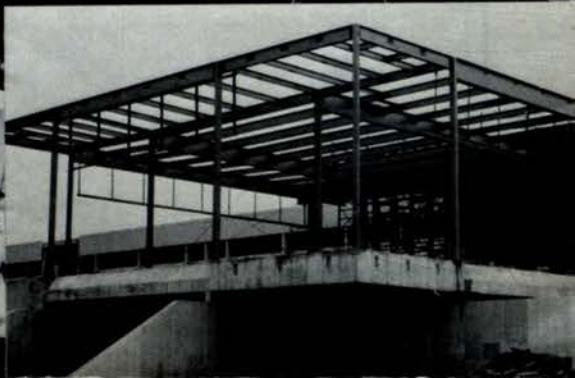
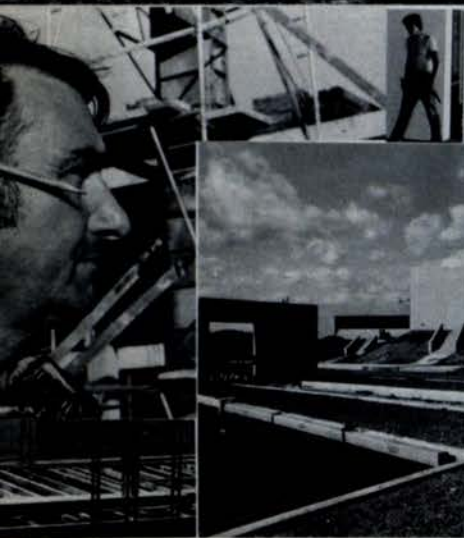
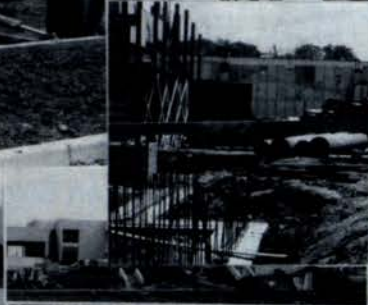
**Mayor, Anthony M. Yelencsics
Employees and Citizens of Edison**

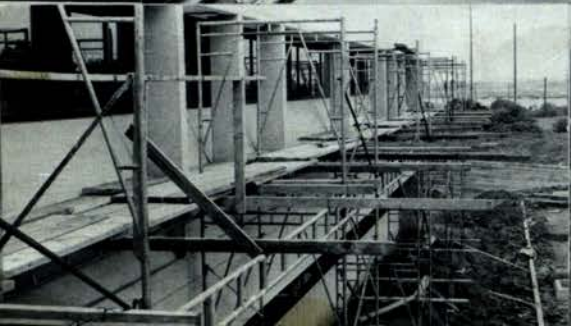
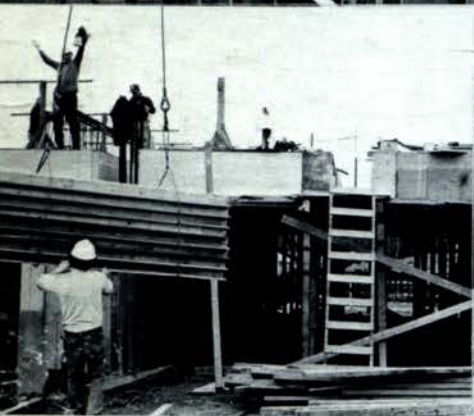
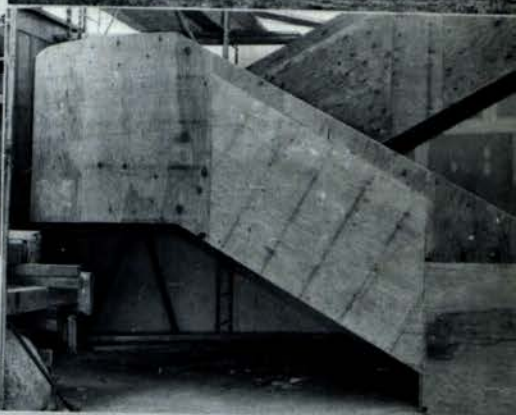
Barnickel Engineering Corporation

MECHANICAL AND
ELECTRICAL ENGINEERING

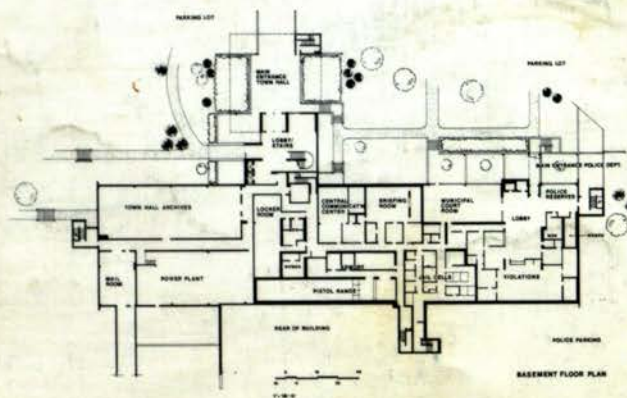
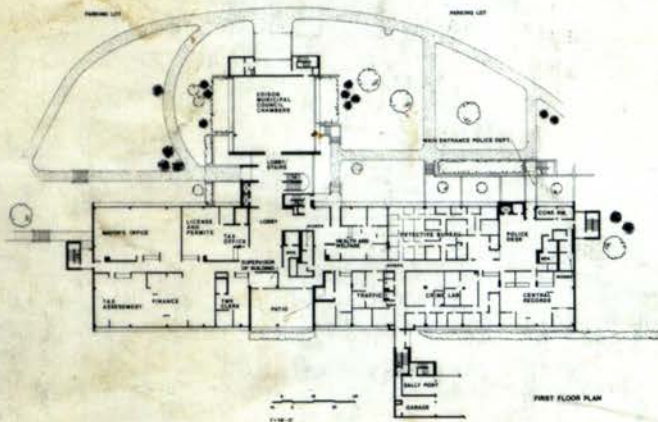
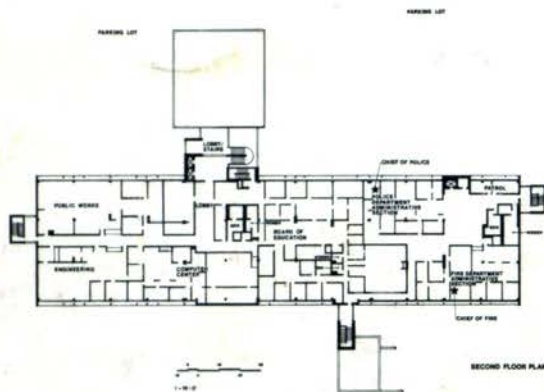
111 Earl Street
Woodbridge, N.J. 07095
201 - 636-3200

**DISTRICT 65, U.A.W. SALUTES
EDISON TOWNSHIP AS A
PROGRESSIVE, ENLIGHTENED COMMUNITY
AND LOOKS FORWARD TO A
CONTINUOUS AND HARMONIOUS
RELATIONSHIP.**





done
 4/12
 4/5
 12/15/88
 10/20/88
 2/10/88



SITES OF SPECIAL CONCERN

IN EDISON TOWNSHIP

MIDDLESEX COUNTY, NEW JERSEY

MAP USER'S GUIDE

AUGUST 1997



PREPARED BY

THE EDISON ENVIRONMENTAL COMMISSION

IN COOPERATION WITH

STATE OF NEW JERSEY

DEPARTMENT OF ENVIRONMENTAL PROTECTION

IN CONSULTATION WITH

E.S.P. ASSOCIATES, INC.

HOWELL, NEW JERSEY

SITES OF SPECIAL CONCERN

IN EDISON TOWNSHIP

MIDDLESEX COUNTY, NEW JERSEY

MAP USER'S GUIDE

AUGUST 1997



PREPARED BY

THE EDISON ENVIRONMENTAL COMMISSION

IN COOPERATION WITH

STATE OF NEW JERSEY

DEPARTMENT OF ENVIRONMENTAL PROTECTION

IN CONSULTATION WITH

E.S.P. ASSOCIATES, INC.

HOWELL, NEW JERSEY

Originally commenced in 1991, this project reflects the efforts of members of the Edison Township Environmental Commission, both past and present.

In addition, the Commission would like to acknowledge the assistance of the Edison Township Health Department, and Oross and Associates, planner to the Township when the project began.

This project was funded by a grant from the Department of Environmental Protection with matching funds provided by Edison Township.

At this time, Edison is the first municipality to complete a map of Sites of Special Concern. The Edison Township Environmental Commission urges everyone using the map and materials to call the appropriate agency contacts contained in these materials if questions about a site arise.

Edison Township Environmental Commission
Charles Kavcsak, Chair - September 1997

The latest information available at the time was used when the *Sites of Special Concern* was mapped in 1995 by our consulting engineers, ESP Associates, Inc., of Howell.

A. ABOUT THE *SITES OF SPECIAL CONCERN* MAP

The *Sites of Special Concern* map was prepared as a tool for planners, Town Officials and others seeking information about the known contaminated sites located within the borders of Edison Township, in Middlesex County.

The map shows, as closely as possible given its scale, the locations of sites where contamination of soil or ground water is confirmed and where remediation is currently underway or is pending. Due to the time it takes to complete a project of this magnitude, some clean ups may have been completed by the date of publication of this map and guide.

Current information on the status of each site is available by calling the phone numbers on the map legend which are also listed in this guide.

Work on the *Sites of Special Concern* was begun by the Edison Environmental Commission in 1991 under a Grant from the NJ Department of Environmental Protection (NJDEP).

It is the intention of the Environmental Commission to revise the *Sites of Special Concern* map from time to time as new information becomes available. The status of sites will change over time. A site may change from an active site to a pending site as new contamination is discovered. Sites now shown on the map may be removed on future maps once clean up activities have been completed and approved. New sites may be added as they are discovered and assessed.

Information on the sites listed on the *Sites of Special Concern* map was gathered from a variety of sources including the Edison Health Department, sites filed under the NJ Environmental Clean Up Responsibility Act (ECRA), known Super Fund sites, former landfills and sites included on the *Known Contaminated Sites in New Jersey*, published by the DEP in 1994 and revised in 1995.

The latest information available at the time was used when the *Sites of Special Concern* was mapped in 1995 by our consulting engineers, ESP Associates, Inc., of Howell.

The Department of Environmental Protection helped us identify and eliminate sites filed under ECRA that were not known to be contaminated and where no clean up plan was filed or was required under the Law.

Although considerable effort was made to ensure the accuracy and completeness of the ***Sites of Special Concern*** map, the Commission recognizes that some inaccuracies pertaining to the inclusion or designation of a particular site may still exist or that more complete information may be available. Therefore, the Edison Environmental Commission considers the ***Sites of Special Concern*** Map and Guide to be a dynamic document and invites the public to submit suggested corrections and any other relevant information directly to the Edison Environmental Commission or the Edison Health Department at 732-248-7200 or to the NJ DEP.

B. ABOUT THE SITES

The ***Sites of Special Concern*** in Edison includes sites under the oversight of the NJ DEP Site Remediation Program that have contamination present at levels greater than the applicable cleanup criteria for soil and/or ground water standards. Contamination is normally identified at a site through sampling of soil, surface water and/or ground water or by visual inspection (e.g., identification of floating hazardous substance product on water).

Although contamination has been identified at the sites included on this map, the nature and extent of contamination present, health risks posed, environmental damages and associated remedial priority are not reported. Rather, the details on the nature, extent and severity of the contamination at a specific site may be obtained by arranging a file review with the remediation program leads/contacts provided by the NJ DEP's Site Remediation Program on this Map and Guide.

The sites appearing on this map are classified as either *active*, when the site is assigned to a specific remedial program area, or *pending*, when the site is awaiting assignment to a specific remedial program area.

C. HOW TO USE THIS MAP

1. The latest information on the sites displayed on the *Site of Special Concern* map is available by calling the NJ DEP telephone numbers shown on the map legend on its upper left corner. The map site designations include an abbreviation for the bureau in charge of the site and a number which corresponds to the number on the site lists that begin on page 4 of this guide. When requesting information, callers will need to refer to a particular site by the name and address provided on these lists.

D. SITE LISTINGS

Two Bureau Agency names listed on the *Sites of Special Concern* map legend, **Emergency Response-Region II (BER -II)** and **County Environmental Health Act (CEHA)** are not included in this guide as there are no sites in Edison that fall under their oversight at present.

4. **BEECRA (Environmental Evaluation, Cleanup and Responsibility Assessment) 609-777-4130**
5. **BFCM (Federal Case Management) 609-633-1455**
6. **BFO-CA (Field Operations Case Assignment Section) 609-292-2943**
6. **BFO-IN (Field Operations-Initial Notice) 609-633-0708**
7. **BFO-S (Field Operations - Southern) 609-584-4150**
8. **BSCM (State Case Management) 609-633-0719**
8. **BSM (Site Management) 609-984-2990**
8. **EMSA (Environmental Measurements and Site Assessment) 609-584-4280**
8. **EPA (Environmental Protection Agency) 609-292-2943**
9. **BUST (Underground Storage Tanks) *Not shown on Map* 609-292-8761**

BUREAU OF ENVIRONMENTAL EVALUATION, CLEANUP AND RESPONSIBILITY ASSESSMENT (BEECRA)

CR

1	AMERCHOL CORPORATION	136 TALMADGE RD	NJD053099974
	STATUS: ACTIVE - 12/07/1992	LEAD/CONTACT: BEECRA - 92-12-06-0958-57	
2	AUXILEC AIR EQUIPMENT INCORPORATED	3920 PARK AVE	NJD980779847
	STATUS: ACTIVE - 06/29/1990	LEAD/CONTACT: BEECRA - E89399	
3	BAXTER HEALTHCARE CORPORATION	100 TO 120 RARITAN CTR	NJL000049940
	STATUS: ACTIVE - 03/09/1993	LEAD/CONTACT: BFO-S - 9210221405	
	STATUS: ACTIVE - 05/24/1995	LEAD/CONTACT: BEECRA - E93224	
4	BERGER INDUSTRIES INCORPORATED	EDISON INDUSTRIAL CTR & RTE 1 S	NJL500040258
	STATUS: ACTIVE - 05/27/1995	LEAD/CONTACT: BEECRA - E93498	
5	CARY CHEMICALS INCORPORATED	BLDG 443 RARITAN CTR	NJD002562247
	STATUS: ACTIVE - 02/28/1990	LEAD/CONTACT: BEECRA - E84256	
6	CONTINENTAL CAN COMPANY	24 KILMER RD	NJD047512611
	STATUS: ACTIVE - 08/28/1992	LEAD/CONTACT: BEECRA - E90462	
	STATUS: ACTIVE - 08/28/1992	LEAD/CONTACT: BEECRA - E92119	
7	E L BETH LIMITED	321 MEADOW RD	NJD980594022
	STATUS: ACTIVE - 12/29/1987	LEAD/CONTACT: BEECRA - E85539	
8	IDEAL GAS PRODUCTS INCORPORATED	977 NEW DURHAM RD	NJL500015573
	STATUS: ACTIVE - 05/29/1990	LEAD/CONTACT: BEECRA - E90133	
	STATUS: ACTIVE - 11/02/1990	LEAD/CONTACT: BEECRA - E90311	
9	INLAND CONTAINER CORPORATION	2960 WOODBRIDGE AVE	NJD981140312
	STATUS: ACTIVE - 11/29/1994	LEAD/CONTACT: BEECRA - E94081	
10	INTERLEE INCORPORATED	191 TALMADGE RD	NJD002153393
	STATUS: ACTIVE - 04/30/1991	LEAD/CONTACT: BEECRA - E85507	
11	J M HUBER CORPORATION	100 PERSHING AVE	NJD000632414
	STATUS: ACTIVE - 03/09/1995	LEAD/CONTACT: BEECRA - E94672	
12	METEX CORPORATION	206 TALMADGE RD	NJD000811026
	STATUS: ACTIVE - 11/28/1988	LEAD/CONTACT: BEECRA - E85412	
13	MULLER MACHINERY COMPANY INCORPORATED	135 WHITMAN AVE	NJD982532988
	STATUS: PENDING - 12/03/1993	LEAD/CONTACT: BEECRA - 931201	
14	NUODEX INCORPORATED NIXON FACILITY	40 NIXON LN	NJD063138531
	STATUS: ACTIVE - 04/19/1990	LEAD/CONTACT: BEECRA - E85375	
15	PRIVATE FORMULATIONS INCORPORATED	460 PLAINFIELD AVE	NJD002037307
	STATUS: ACTIVE - 09/25/1989	LEAD/CONTACT: BEECRA - E88644	
	STATUS: ACTIVE - 12/21/1992	LEAD/CONTACT: BEECRA - E92560	
	STATUS: ACTIVE - 05/28/1993	LEAD/CONTACT: BEECRA - E86587	
16	REVLON INCORPORATED	RTE 27 & TALMADGE RD	NJD002520542
	STATUS: ACTIVE - 07/11/1990	LEAD/CONTACT: BEECRA - E85804	
	STATUS: ACTIVE - 07/20/1992	LEAD/CONTACT: BEECRA - E92261	
	STATUS: ACTIVE - 03/01/1993	LEAD/CONTACT: BEECRA - E93010	
17	STAUFFER CHEMICAL CORPORATION	MEADOW RD	NJD052204633
	STATUS: ACTIVE - 03/28/1988	LEAD/CONTACT: BEECRA - E85156	
	STATUS: ACTIVE - 07/15/1992	LEAD/CONTACT: BEECRA - E87579	
	STATUS: ACTIVE - 07/15/1992	LEAD/CONTACT: BEECRA - E87815	
18	WADELL EQUIPMENT COMPANY INCORPORATED	3920 PARK AVE	NJL500034160
	STATUS: ACTIVE - 06/29/1990	LEAD/CONTACT: BEECRA - E87478	

BUREAU OF FEDERAL CASE MANAGEMENT (BFCM)

CM

1	EDISON 1ST AID SQUAD STATUS: PENDING - 11/22/1994	33 LAKEVIEW BLVD LEAD/CONTACT: BFCM	NJL000048298 - 9411130
2	EDISON MOVING & STORAGE STATUS: ACTIVE - 11/30/1994	110 RTE 1 LEAD/CONTACT: BFCM	NJL000067850 - 0032906
3	KIN BUC LANDFILL STATUS: ACTIVE - STATUS: ACTIVE - 04/01/1992	383 MEADOW RD LEAD/CONTACT: BFCM LEAD/CONTACT: EPA	NJD049860836 - NJD049860836 - M227
4	MACYS RARITAN DISTRIBUTION CENTER STATUS: PENDING - 07/27/1994	10 CLEARVIEW RD (RARITAN CENTER) LEAD/CONTACT: BFCM	NJL600202196 - 9407125
5	NJ HOME FOR DISABLED SOLDIERS STATUS: PENDING - 08/17/1994	132 EVERGREEN RD LEAD/CONTACT: BFCM	NJL600173280 - 940850
6	NJ STATE POLICE EDISON TOWNSHIP STATUS: PENDING - 07/26/1993	2667 WOODBRIDGE AVE LEAD/CONTACT: BFCM	NJD982728479 - 9307191
7	RARITAN OIL COMPANY INCORPORATED STATUS: PENDING - 11/18/1994	401 RTE 1 S LEAD/CONTACT: BFCM	NJL600206882 - 941187
8	RARITAN CENTER STATUS: ACTIVE - 04/01/1992	RARITAN CENTER PHY & WOODBRIDGE AVE LEAD/CONTACT: BFCM	NJD986571362 - NJ1680090015
9	RENORA INCORPORATED STATUS: ACTIVE -	83 MAIN ST LEAD/CONTACT: BFCM	NJD070415005 - NJD070415005
10	US POSTAL SERVICE EDISON TOWNSHIP STATUS: PENDING - 11/07/1994	21 KILMER RD LEAD/CONTACT: BFCM	NJL600074967 - 941135
11	WELLS SERVICE STATION STATUS: PENDING - 06/02/1995	1818 LINCOLN HWY LEAD/CONTACT: BFCM	NJL600045512 - 950605

CA

BFO-CA

1. ASHBROOK FARM LANDFILL
STATUS: PENDING - 06/02/1993
RAHWAY RD & INMAN AVE
LEAD/CONTACT: BFO-CA - 9304164
NJD980755334
2. EDISON TOWNSHIP MUNICIPAL LANDFILL
STATUS: PENDING - 06/02/1993
MEADOW RD
LEAD/CONTACT: BFO-CA - 9304102
NJD000571505
3. FEDERAL STORAGE WAREHOUSE LANDFILL
STATUS: PENDING - 06/02/1993
KING GEORGES POST RD
LEAD/CONTACT: BFO-CA - 9304124
NJL000064600
4. ILR SANITARY LANDFILL
STATUS: PENDING - 06/25/1993
MILL RD
LEAD/CONTACT: BFO-CA - 9303234
NJD980505275

5. BAVOSA/INTELLISANO
RAHWAY & RARITAN ROAD
BFO-CA

- Field Operations - Initial Notice BFO-IN

IN

GRAPHIC EQUIPMENT COMPANY
STATUS: ACTIVE - 06/27/1995
55 WEBSTER AVE
LEAD/CONTACT: BFO-IN - 0222239
NJD048403778

BUREAU OF FIELD OPERATIONS (BFO)

0-5

1	1 MARLIN AVENUE EAST STATUS: PENDING - 04/05/1995	1 MARLIN AVE E LEAD/CONTACT: BFO-S - 950414 NJL000052563
2	131 GROSS AVENUE STATUS: PENDING - 10/28/1993	131 GROSS AVE LEAD/CONTACT: BFO-S - 931091 NJL000067413
3	26 REED STREET STATUS: PENDING - 05/17/1993	26 REED ST LEAD/CONTACT: BFO-S - 930545 NJL000052712
4	31 EXETER AVENUE STATUS: ACTIVE - 04/10/1995	31 EXETER AVE LEAD/CONTACT: BFO-S - 950131135145 NJL800110835
5	32 SCOTT AVENUE STATUS: ACTIVE - 03/10/1995	32 SCOTT AVE LEAD/CONTACT: BFO-S - 941110103025 NJL800098642
6	35 ASHLEY ROAD STATUS: ACTIVE - 07/20/1993	35 ASHLEY RD LEAD/CONTACT: BFO-S - 930720102223 NJL800001430
7	35 MARKHAM ROAD STATUS: PENDING - 04/06/1994	35 MARKHAM RD LEAD/CONTACT: BFO-S - 9403174 NJL800012874
8	58 GARDEN TERRACE STATUS: ACTIVE - 03/21/1995	58 GARDEN TERR LEAD/CONTACT: BFO-S - 941122103451 NJL800100802
9	7 RAMSEY ROAD STATUS: ACTIVE - 11/12/1993	7 RAMSEY RD LEAD/CONTACT: BFO-S - 930811114553 NJL800002594
10	BAXTER HEALTHCARE CORPORATION STATUS: ACTIVE - 03/09/1993 STATUS: ACTIVE - 05/24/1995	100 TO 120 RARITAN CTR LEAD/CONTACT: BFO-S - 9210221405 LEAD/CONTACT: BEECRA - E93224 NJL000049940
11	BLUE SPRUCE II STATUS: PENDING - 12/21/1992	653 RARITAN CENTER PWY LEAD/CONTACT: BFO-S - 921270 NJD980769988
12	DUYK LAW OFFICE STATUS: PENDING - 05/17/1993	1636 RTE 27 LEAD/CONTACT: BFO-S - 930543 NJL880002563
13	EDISON GENERATOR EXCHANGE STATUS: PENDING - 12/16/1992	785 RTE 1 LEAD/CONTACT: BFO-S - 921223 NJL000044818
14	ENTENMANN'S BAKERY OF NEW JERSEY INC STATUS: ACTIVE - 12/09/1994	2120 RTE 27 (LINCOLN HWY) LEAD/CONTACT: BFO-S - 940914101205 NJL000051466
15	INTERNATIONAL FOODS INCORPORATED STATUS: PENDING - 03/14/1995	505 OLD POST RD LEAD/CONTACT: BFO-S - 950395 NJL000047407
16	MOBIL CHEMICAL CORPORATION RESEARCH LAB STATUS: ACTIVE - 07/22/1992 STATUS: ACTIVE - 06/11/1995	2195 RTE 27 & VINEYARD RD LEAD/CONTACT: BFO-S - 9207201614 LEAD/CONTACT: BUST - 0163514 NJD053101085
17	REGAL BELOIT CORPORATION STATUS: PENDING - 05/14/1993	55 NATIONAL RD LEAD/CONTACT: BFO-S - 930559 NJD131656019
18	US LAND RESOURCES INCORPORATED STATUS: PENDING - 12/04/1992	330 TALMADGE RD LEAD/CONTACT: BFO-S - 921228 NJD038589834

BUREAU OF SITE MANAGEMENT (BSM)

SM

CHEMICAL INSECTICIDE CORPORATION

30 WHITMAN AVE

NJD980484653

STATUS: ACTIVE - 04/01/1992

LEAD/CONTACT: BSM

- NJD980484653

BUREAU OF STATE CASE MANAGEMENT (BSCM)

SC

1

CENTER REALTY

300 RARITAN CENTER PWY

NJD020777181

STATUS: ACTIVE - 01/01/1980

LEAD/CONTACT: BSCM - NJD020777181

2

CENTRAL GAS WORKS (PSE&G)

410 SILVER LAKE AVE

NJD000574392

STATUS: PENDING - 01/15/1993

LEAD/CONTACT: BSCM - 930152

ENVIRONMENTAL MEASUREMENTS AND SITE ASSESSMENT SECTION (EMSA) Formerly called Remedial Planning and Design Element- Site Assessment Section (RPD-SA)

SA

KEMCO CORPORATION

990 INMAN AVE

NJD986609964

STATUS: PENDING - 12/23/1993

LEAD/CONTACT: EMSA - 931197

UNITED STATES ENVIRONMENTAL PROTECTION AGENCY (EPA)

EPA

1

KIN BUC LANDFILL

383 MEADOW RD

NJD049860836

STATUS: ACTIVE -

LEAD/CONTACT: BFCM - NJD049860836

STATUS: ACTIVE - 04/01/1992

LEAD/CONTACT: EPA - M227

2

PETROLEUM CHEMICAL TECHNOLOGY

455 RARITAN CENTER PWY

NJD980529606

STATUS: ACTIVE - 01/28/1993

LEAD/CONTACT: EPA - 920580

BUREAU OF UNDERGROUND STORAGE TANKS (BUST)

MOBIL SERVICE STATION STATUS: ACTIVE - 06/07/1995	2200 RTE 27 & VINEYARD RD LEAD/CONTACT: BUST - 0037947	NJD986606127
MOBIL SERVICE STATION EDISON TOWNSHIP STATUS: ACTIVE - 03/16/1989	2084 WOODBRIDGE AVE LEAD/CONTACT: BUST - 0037352	NJD986606101
MOBIL SERVICE STATION EDISON TOWNSHIP STATUS: ACTIVE - 03/18/1991	755 RTE 1 & OLD POST RD LEAD/CONTACT: BUST - 0037956	NJD986606119
NEW BRUNSWICK SAW SERVICE INCORPORATED STATUS: ACTIVE - 06/03/1992	5 GREEK LN LEAD/CONTACT: BUST - 0117074	NJL600073696
OPEN ROAD HONDA STATUS: ACTIVE - 12/06/1993	50 RTE 1 LEAD/CONTACT: BUST - 0021412	NJD986615136
RARITAN CENTER STATUS: ACTIVE - 12/30/1991	104 SUNFIELD AVE LEAD/CONTACT: BUST - 0155937	NJL600098313
ROOSEVELT HOSPITAL STATUS: ACTIVE - 10/10/1990	ROOSEVELT DR & PARSONAGE RD LEAD/CONTACT: BUST - 0127271	NJL600080485
ROOSEVELT PARK MAINTENANCE BUILDING STATUS: ACTIVE - 02/10/1993	OAKWOOD AVE LEAD/CONTACT: BUST - 0127370	NJL000039149
RARITAN PERIODICAL SALES STATUS: ACTIVE - 12/06/1993	125 CLEARVIEW AVE LEAD/CONTACT: BUST - 0031169	NJL000059758
RARITAN VALLEY BUS SERVICE STATUS: ACTIVE - 02/10/1986	115 S MAIN ST LEAD/CONTACT: BUST - 0111575	NJL600070098
SHELL SERVICE STATION EDISON TOWNSHIP STATUS: ACTIVE - 07/21/1988 STATUS: ACTIVE - 11/24/1993	890 RTE 1 S & OLD POST RD LEAD/CONTACT: BUST - 0047513 LEAD/CONTACT: BUST - 0013673	NJD000584664
SHELL SERVICE STATION EDISON TOWNSHIP STATUS: ACTIVE - 04/25/1994	33 RTE 27 LEAD/CONTACT: BUST - 0052184	NJD000701185
SHELL SERVICE STATION EDISON TOWNSHIP STATUS: ACTIVE - 08/30/1988	DURHAM AVE & NEW DURHAM RD LEAD/CONTACT: BUST - 0047874	NJD986585982
SOMFY SYSTEMS INC STATUS: ACTIVE - 10/28/1994	2 SUTTON PL LEAD/CONTACT: BUST - 0235253	NJL800109076
SUNOCO SERVICE STATION EDISON TOWNSHIP STATUS: ACTIVE - 01/24/1992	265 PLAINFIELD RD LEAD/CONTACT: BUST - 0258131	NJD000695429
SUNOCO SERVICE STATION EDISON TOWNSHIP STATUS: ACTIVE - 08/28/1989	1808 WOODBRIDGE AVE LEAD/CONTACT: BUST - 0164469	NJD000695445
TEXACO SERVICE STATION EDISON TOWNSHIP STATUS: ACTIVE - 04/18/1991	960 AMBOY AVE LEAD/CONTACT: BUST - 0004376	NJD986607455
TORSIELLO & SONS STATUS: ACTIVE - 01/27/1993	27 PROGRESS ST LEAD/CONTACT: BUST - 0244910	NJL000055814
TWIN COUNTY GROCERS INCORPORATED STATUS: ACTIVE - 06/01/1990	145 TALMADGE RD LEAD/CONTACT: BUST - 0025184	NJD0006973101
WHITE CONSOLIDATED INCORPORATED STATUS: ACTIVE - 12/07/1994	2170 RTE 27 LEAD/CONTACT: BUST - 0011459	NJL600007520

BUREAU OF UNDERGROUND STORAGE TANKS (BUST)

1171 INMAN AVENUE STATUS: ACTIVE - 07/31/1992	1171 INMAN AVE. LEAD/CONTACT: BUST - 0074036	NJL600048003
5 KELLOG COURT STATUS: ACTIVE - 01/12/1995	5 KELLOG CT LEAD/CONTACT: BUST - NJL800110033-001	NJL800110033
AMOCO SERVICE STATION EDISON TOWNSHIP STATUS: ACTIVE - 12/29/1994	RTE 27 & ROBINSON AVE LEAD/CONTACT: BUST - 0018010	NJD982720427
AMOCO SERVICE STATION EDISON TOWNSHIP STATUS: ACTIVE - 04/10/1995	421 RTE 1 S LEAD/CONTACT: BUST - 0018083	NJD986611432
AMOCO SERVICE STATION EDISON TOWNSHIP STATUS: ACTIVE - 05/14/1991	1501 RTE 1 S & PARSONAGE RD LEAD/CONTACT: BUST - 0008804	NJD986636595
AMOCO SERVICE STATION EDISON TOWNSHIP STATUS: ACTIVE - 10/08/1991	RTE 1 N & PLAINFIELD AVE LEAD/CONTACT: BUST - 0009920	NJL600006464
ATLANTIC GAS COMPANY INCORPORATED STATUS: ACTIVE - 10/02/1991	233 PLAINFIELD AVE LEAD/CONTACT: BUST - 0010964	NJL600174536
AUTOMATIC CATERING FOOD CONCEPTS STATUS: ACTIVE - 04/12/1989	58 BRUNSWICK AVE LEAD/CONTACT: BUST - 0036993	NJL600024228
CITGO SERVICE STATION EDISON TOWNSHIP STATUS: ACTIVE - 07/17/1986	STEPHENVILLE PHY LEAD/CONTACT: BUST - NJL600189864-001	NJL600189864
CON LUX COATINGS INCORPORATED STATUS: ACTIVE - 07/10/1992	226 TALMADGE RD LEAD/CONTACT: BUST - 0158547	NJD002157030
DEOLS AUTO & TRANSMISSION REPAIR STATUS: ACTIVE - 03/07/1994	209 CENTRAL AVE LEAD/CONTACT: BUST - 0240527	NJL000059055
EXXON SERVICE STATION EDISON TOWNSHIP STATUS: ACTIVE - 10/13/1987	144 RTE 1 S LEAD/CONTACT: BUST - 0079671	NJD986599546
EXXON SERVICE STATION EDISON TOWNSHIP STATUS: ACTIVE - 05/24/1988	3115 WOODBRIDGE AVE LEAD/CONTACT: BUST - 0086970	NJD986599777
EXXON SERVICE STATION EDISON TOWNSHIP STATUS: ACTIVE - 12/01/1989	240 RTE 27 & WOOD AVE LEAD/CONTACT: BUST - 0076728	NJD986604833
FEDERAL EXPRESS LDJ STATUS: ACTIVE - 08/31/1994	305 CLEARVIEW AVE LEAD/CONTACT: BUST - 0146856	NJL600244115
FORD MOTOR EDISON ASSEMBLY PLANT STATUS: ACTIVE - 06/01/1992	939 RTE 1 LEAD/CONTACT: BUST - 0024996	NJD002143782
FRANK MILLMAN DISTRIBUTORS INCORPORATED STATUS: ACTIVE - 11/13/1991	8 PROGRESS ST LEAD/CONTACT: BUST - 0064758	NJL600042105
HESS SERVICE STATION EDISON TOWNSHIP STATUS: ACTIVE - 10/28/1988	1555 RTE 27 LEAD/CONTACT: BUST - 0087898	NJC876004169
HESS SERVICE STATION EDISON TOWNSHIP STATUS: ACTIVE - 09/27/1989	789 AMBOY AVE LEAD/CONTACT: BUST - 0084125	NJD986586063
HESS SERVICE STATION EDISON TOWNSHIP STATUS: ACTIVE - 10/28/1988	RTE 27 & PARSONAGE RD LEAD/CONTACT: BUST - 0126830	NJD986597664
HEYNA MOTOR FUELS INCORPORATED STATUS: ACTIVE - 06/21/1994	279 RTE 1 & OAKLAND AVE LEAD/CONTACT: BUST - 0012421	NJL600008171
INMAN SPORTS CLUB STATUS: ACTIVE - 07/05/1990	990 INMAN AVE LEAD/CONTACT: BUST - 0195807	NJL600183636
KRAUSZERS DAIRY INCORPORATED STATUS: ACTIVE - 02/03/1995	76 NATIONAL RD LEAD/CONTACT: BUST - 0059024	NJD982794836
MIDDLESEX COUNTY MOSQUITO COMMISSION STATUS: ACTIVE - 12/14/1992	200 PARSONAGE RD LEAD/CONTACT: BUST - 0069357	NJD000776666
MOBIL CHEMICAL CORPORATION RESEARCH LAB STATUS: ACTIVE - 07/22/1992 STATUS: ACTIVE - 06/13/1995	2195 RTE 27 & VINEYARD RD LEAD/CONTACT: BFO-S - 9207201614 LEAD/CONTACT: BUST - 0163514	NJD053101085

Edison Twp. Pub. Library
340 Plainfield Ave.
Edison, NJ 08817

REFERENCE

ASK
AT
DESK

EDISON TWP. FREE PUBLIC LIBRARY



3 9360 00421327 1

Edison Township has been an independent municipality for more than 100 years.

Raritan Township was incorporated in 1870, but in 1954 residents voted to change the name of the community in honor of Thomas A. Edison, who perfected the incandescent light bulb at his Menlo Park laboratory here in 1879.

A rural community until the 1920s, Edison is now a major commercial and industrial center.

POPULATION: 73,390.

POST OFFICES

Edison — 2101 Route 27, 287-4311

Menlo Park — Route 1 and Parsonage Road, 548-4603

Nixon — 2079 Woodbridge Avenue, 985-3442.

ZIP CODES

South Edison, 08817; Clara Barton, 08837; North Edison, 08820; Edison P.O. Box No., 08818.

MUNICIPAL BUDGET: \$38,340,994.

TAX RATE

\$1.55 for school purposes.

11 cents for municipal purposes.

68 cents for county purposes.

12 cents for garbage where service is available.

Total General Tax Rate, \$2.46.

POLICE: Headquarters in the rear of the Municipal Building, 100 Municipal Blvd., off Route 27, 287-0900.

Police Chief: Richard Kermes.

Deputy Police Chief: Capt. Joseph Seroka.

To report a crime or accident: dial 287-0900. Give your name, address and telephone number to the desk officer.

Residents may also request a patrol car be sent to their home to assist in preparing accident or crime reports. Copies of police reports may be obtained at the Central Records Bureau of the department from 9 a.m. to 8 p.m., Monday through Friday. In emergencies, dial 287-0700.

MUNICIPAL COURT:

Judge: Paul E. Anderson.

Court Clerk: Margery Curran.

Sessions: 10 a.m. Monday, 7 p.m. Thursday and 7 p.m. on the first Tuesday of each month in the courtroom in the police wing of the Municipal Building. The Violations Bureau is open from 9 a.m. to 4 p.m., Monday-Friday.

GOVERNMENT

Edison operates under the Faulkner Act, with a mayor and seven council members elected at large on a partisan basis for staggered terms of four years.

Municipal Building is at 100 Municipal Blvd., off Route 27.

The Township Council holds regular meetings at 8 p.m. on the second

and fourth Wednesdays of the month in the council chambers on the second floor of the municipal building. Caucus sessions are held at 7:45 p.m. on the second and fourth Mondays of each month in the council caucus room behind the council chambers.

Special council meetings may be called by the mayor or at the request of any three council members.

TOWNSHIP COUNCIL

Mayor Anthony M. Yelencsics; Democrat, office, 287-0900, Ext. 200 — term ends Dec. 31, 1985.

Council President George Asprocolas, Democrat, 225-3873 — term ends Dec. 31, 1985.

Councilwoman Dorothy Drwal, Democrat, 985-6663 — term ends Dec. 31, 1987.

Councilman Sid Frankel, Democrat, 985-6428 — term ends Dec. 31, 1987.

Councilman Angelo Orlando Jr.; Democrat, 287-0763 — term ends Dec. 31, 1985.

Councilman John Hogan, Democrat, 985-0800, term ends Dec. 31, 1987.

Councilman Henry Cackowski, Democrat, 494-5012 — term ends Dec. 31, 1987.

Councilman George Spadaro; Democrat, 225-2549 — term ends Dec. 31, 1985.

ELECTIONS:

Voting for council is held every two years, on a staggered basis. The mayor and three councilmen are elected every four years; four councilmen are elected in alternate years.

VOTER REGISTRATION:

Registration may be made at the township clerk's office, daily from 9 a.m. to 4:30 p.m., at the municipal building, 100 Municipal Blvd.

MUNICIPAL OFFICIALS:

Business Administrator: John Delesandro, 287-0900, Ext. 200.

Clerk: Lucille Tucker, 287-0900.

Department Directors:

Finance: John H. Fox Jr.

Public Safety: Mayor Anthony M. Yelencsics, acting director.

Township Attorney: Peter A. DeSarno.

Public Works: William Lund.

Parks, Public Buildings and Recreation: Harold V. McAvoy.

Health and Human Services: Dr. A. Peter Capparelli.

MUNICIPAL BOARDS:

Planning Board, 8 p.m., third Wednesday of each month, Council Chambers, municipal building.

Zoning Board of Adjustment, 8 p.m., third Tuesday, Council chambers.

Board of Health, meets four times a year following regular Township Council meetings.

Environmental Commission —



New housing in Edison

Woodbrook Corner in Edison is among new housing developments that have sprung up in

meets six times a year at different libraries in the township.

Housing Authority — 8 p.m., second Tuesday, Community Room, Julius Engel Apartments, Willard Dunham Drive.

Rent Control Board — 7:30 p.m., first Wednesday, Council Chambers, municipal building.

RECREATION:

Edison has two county parks within its borders, more than 30 equipped and staffed neighborhood playgrounds, softball fields and several golf courses. Fourteen of the parks are on public or parochial school grounds and are in full operation for eight weeks during the summer.

Work on a new municipal pool, to be located on the Municipal Complex grounds off Route 27, is expected to begin during 1986.

Tennis Courts: Central Avenue, Oak Tree Road, Portland Street, Earl Schenk Meirs (N. 8th Avenue), Edison High School, J.P. Stevens High School.

GARBAGE COLLECTION:

Edison has public garbage collection for most private homes in 13 garbage districts. Other areas and nearly all apartment complexes are served by private collectors paid by the users. Pickups in the garbage districts are twice weekly, either on Mondays and Thursdays or Tuesdays and Fridays.

Special pickups are made on Wednesdays for oversized or special items. Arrangements may be made with the Sanitation Department, 287-0900, ext. 300.

WATER AND SEWER SERVICE



TNT photo

this community which is tucked into the northern part of Middlesex County.

Most older homes already have water meters; new home owners may call the Water Department, 287-0900, ext. 305.

Clara Barton and North End are serviced by the Middlesex Water Co., 434-1500. Other areas are served by the municipal water department.

LIBRARIES

Main Library, 340 Plainfield Ave., 287-2298.

North Edison Branch, Library Place and Grove Avenue, 548-3045.

Clara Barton Branch, Hoover and Pleasant avenues, 738-0096.

Library Board of Trustees meets at 4 p.m. on the first Tuesday of each month at the Main Library. No meeting is held in August.

FIRE DEPARTMENT:

Fire chief: Richard Latham, appointed by the mayor. Edison has both paid and volunteer firefighters. There are five fire precincts, with approximately 120 paid firemen and 250 volunteers. Members of each precinct elect their own officers.

All fires are reported to a central number, 287-0100.

Precinct 1 — Raritan Engine Co., House 1, Plainfield and Simpson avenues; House 2, Route 27 and Langstaff Avenue.

Precinct 2 — Edison Volunteer Co. 1, Route 27, park area.

Precinct 3 — Raritan Engine Co., 849 Amboy Ave.

Precinct 4 — H.K. Volunteer Co.,

840 New Dover Road.

Precinct 5 — Oak Tree Volunteer Co., 1 Beverly St.

FIRST AID SQUADS

All emergencies are reported to a central number, 287-0700.

Edison First Aid Squad No. 1, Lakeview Boulevard, off Woodbridge Avenue.

Edison First Aid Squad No. 2, Route 27.

Clara Barton First Aid Squad No. 3, 1079 Amboy Ave.

SCHOOLS

The Edison Township School District includes 13 elementary schools, four junior high schools and two high schools.

SCHOOL BUDGET: \$47,027,694
TAX: \$1.55 per \$100 of assessed valuation.

Superintendent of Schools: Charles A. Boyle. Office, 287-4400, third floor municipal building, 100 Municipal Blvd., 8:30 a.m. - 4:30 p.m.

School enrollment: 9,966

ELEMENTARY SCHOOLS

All kindergarten through sixth grade:

No. 8, Lincoln, Brookville Road, 287-2320.

No. 9, Washington, Winthrop and Cambridge Roads, 985-1102.

No. 10, James Madison, New Dover Road, 549-9440.

No. 11, Benjamin Franklin, 2485 Woodbridge Avenue, 985-7330.

No. 13, John Marshall, Cornell

Street, 985-3377.

No. 14, Menlo Park, Monroe Avenue, 548-3903.

No. 15, James Monroe, Sharp Road, 225-3170.

No. 16, Lindeneau, Blossom Street, 985-7011.

No. 17, Woodbrook, Robin Road, 548-3875.

No. 18, Martin Luther King, Tingley Lane and Inman Avenue, 754-4289.

No. 20, James Madison, New Dover Road, 549-4852.

Cerebral Palsy Center School, Roosevelt Park, 225-3060.

JUNIOR HIGH SCHOOLS

John Adams, New Dover Road, 549-9257.

Thomas Jefferson, Division Street, 985-2500.

Herbert Hoover, Jackson Avenue, 225-9390.

Woodrow Wilson, Woodrow Wilson Drive, 548-2550.

HIGH SCHOOLS

Edison High School, Boulevard of the Eagles, 985-2900.

John P. Stevens High School, Grove Avenue, 549-5543.

REGISTRATION: Go to the principal's office of the school serving your area and present the child's birth certificate, health records and school records.

PRIVATE SCHOOLS

St. Helena Roman Catholic School, (k-8), Grove Avenue, 549-6234.

St. Matthew's R.C. School, (k-8), Seymour Avenue, 985-6633.

St. Francis R.C. School, (k-8), Main Street, Metuchen, 548-3107.

Our Lady of Peace R.C. School, (k-8), New Brunswick Avenue, Fords, 738-7464.

Moriah Yeshiva Orthodox Jewish Academy, (k-8), 2 Harrison St., 572-5052.

Alpha Montessori School, (k-6), Plainfield Avenue, 985-0594.

St. Thomas Aquinas High School, (9-12), New Dover Road and Tingley Lane, 549-1108.

Wardlaw-Hartridge School, (8-12), Inman Avenue, 754-1882

BOARD OF EDUCATION

The Board of Education holds public meetings at 8 p.m. on the second Monday of each month. Caucus sessions are held at 8 p.m. on the Thursday prior to the second Monday. On even months, the board meets at Edison High School; on odd months, at John P. Stevens High School.

Members: John White, president; Ralph Bayard, Bertha Griffin, James Cassidy, Nancy Levin, Charles Andreasen, Claire Minnig.

Board members can be contacted through the Board of Education, 287-4400.

Raritan Independent

MRS. O. R. WINFIELD, Editress and Proprietor.

ENTERED AS SECOND CLASS MATTER NOVEMBER 13, 1916, AT THE POST OFFICE AT NEW BRUNSWICK, N. J., UNDER THE ACT OF MARCH 3, 1879.

VOL. 32, No. 52

PISCATAWAYTOWN, N. J., FRIDAY, JANUARY 3, 1941

FIVE CENTS

AROUND the WORLD on WASHDAY Japan



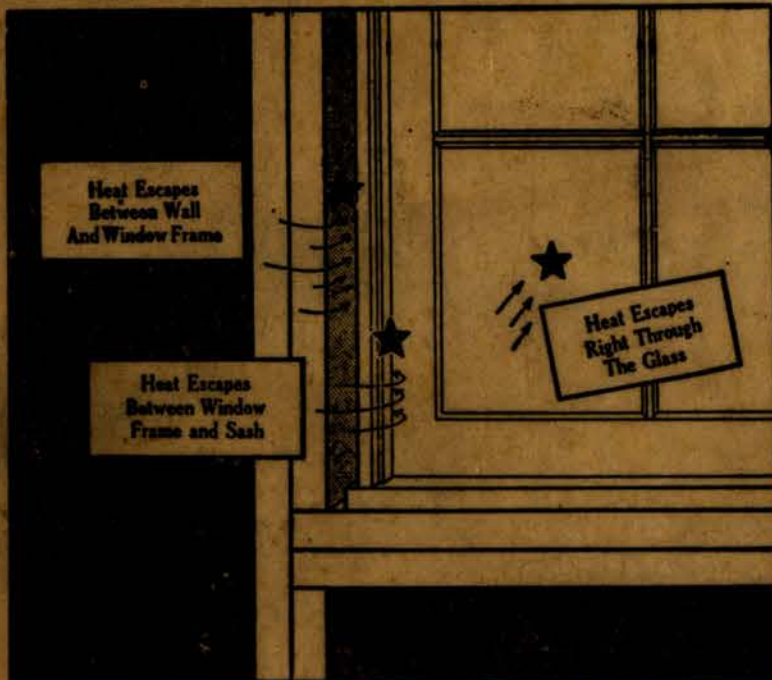
Ewing Galloway

THIS picture may not have been taken on a Monday, but these Japanese women are confronted with an age-old problem that faces women the world over—doing the week's wash.

Though such primitive laundering

may be quaint and picturesque, it would be hard to convince the American housewife that her modern method of simply soaking the dirt out of her clothes in Oxydol's thick, rich suds, can be excelled either for ease or for results.

WALLS IN HOME ONLY PART OF INSULATION PROBLEM



Many a home is being built today that is only half insulated. Yet the man who is spending his money to build the house doesn't know a thing about it. These people, when they build, won't hesitate to spend \$150 to \$200 to make their walls weather-tight. They will buy the best insulation, the best moisture barrier, and use the best construction methods, but they overlook completely the fact that the walls of their homes have from ten to thirty great big holes in them that are filled only with windows.

These holes must be filled with good windows—window more than harmonize

chitecture of the home. For a window is not only an architectural feature. It is also a mechanical feature.

Windows are just as permanent a part of the wall as insulation. Just as it is wise to spend those extra-dollars for insulation—so it is wise to spend a few extra dollars to see that a window frame makes a permanent weather-tight joint with the wall, that window sash are precision fitted to the frame, that an efficient job of weatherstripping is done, that storm sash or double glazing is provided, and that the operating equipment used will give a lifetime trouble-free operation.

Operation for Sinus Trouble May Be Futile

By DR. JAMES W. BARTON
(Released by Western Newspaper Union.)

A FEW years ago there were many operations for sinus trouble—the little hollows or caverns adjoining the nose. These sinuses are called the sounding box of the voice. Thus when a head cold is present and these little sinuses get filled with mucus, the voice sounds flat and “ing” sounds like “ick.”

When these head colds became very common and the mucus and sometimes pus was too thick to drain out, the enlarging of the opening was frequently done by nose surgeons to enable this mucus and pus to drain out. The enlarged opening also helped to “ventilate” the sinus, thus keeping its lining of mucous membrane in a more healthy condition.

Unfortunately, these openings from the sinus into the nose are not placed in the best position for drainage when we are standing or sitting, but as Dr. Louis M. Pearlman states in Hygeia, the different positions one naturally takes when lying down are favorable to the emptying of the sinuses.

When one lies on the left side, the right antrum (sinus in cheek bone) is emptied; when one lies on the right side the left antrum is emptied, and when one lies face downward the sinuses at upper and back part of the nose (level with the eyes) are emptied.

However, it has been found that in many cases operation is of no help and may leave the patient in the same condition as before operation and with some loss of smell.

Dr. Pearlman states further: “The present trend of treatment is tracing the trouble to its source and getting rid of it before the condition becomes chronic. Stress is laid on increasing the resistance of the individual and performing only slight operations to increase ventilation and drainage.”

Eating less meat and table salt and eating more fruit and vegetables seems to help a number of these chronic sinus cases.

Isolate New Horses

Horses newly purchased in preparation for spring work should be kept isolated from other horses for at least two weeks. This is particularly to guard against the danger of influenza, which may seriously impair the usefulness of all horses on the farm during the spring work season, says the Prairie Farmer. The disease is contagious, and caution should also be exercised in placing horses in strange stalls, where they may pick up infection.

Keeping Roosts Clean

Cleaning the dropping boards under the roosts daily, or twice weekly, is important in maintaining healthy and sanitary conditions in the poultry house. If it is not possible to clean the house frequently, the droppings should be permitted to fall from the roost poles to the floor, several feet beneath. The birds then will be troubled less with odors and gases from the droppings. The space under the roosts should be fenced with wire netting

DON'T NEGLECT FUNDAMENTALS IN YOUR NEW HOME



1 This is a corner of the foundation and footings. Your whole house rests upon it. It can never be replaced.



2 This is the same foundation with timber skeleton now in place. Again here is a part of your home that can never be replaced.



3 Here is a rough window opening from the inside. Notice how the framing members are doubled all around the opening. Dark shaded portions show insulation in place between the studding.

Glitter of Gadgets Often Distracts Builder From Quality Where It's Needed Most

Are you building a house for the first time? Then chances are you are in kind of a daze. There are so many things to decide, so many things to buy, so many more things you want and can't buy because there is just so much money. Now there's nothing less glamorous than the concrete footings and foundation. One doesn't show them off to one's friends, but if you skimp on either, you'll be busy for years to come trying to cover up cracked walls that all your friends will see.

Don't Skimp On Framework

Likewise the timber skeleton or frame of your house is going to be all covered up, but if you skimp on it you'll have sagging floors that squeak at every step.

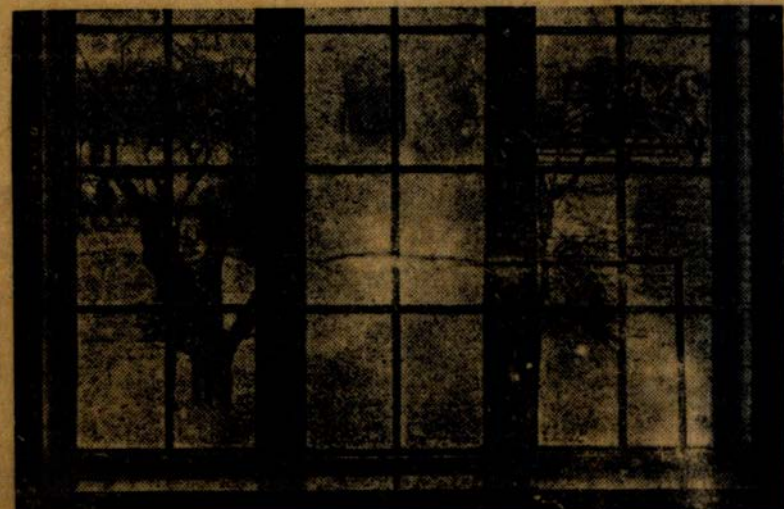
And how about those great big holes in the wall, the rough window openings. You can buy win-

dows and window frames to fill these holes pretty cheap. And you'll pay for them for years to come in heat lost, drafty floors and wet walls. Or, you can buy carefully designed, precision built and factory fitted windows and window frames complete with weatherstrip that will be a joy and a comfort every year that you live in your house. Yes, and you'll find that the extra cost was money well spent because of heat bills, repair bills and redecorating bills saved.

Can't Replace Windows

Good windows are a permanent part of your walls. They protect your investment in insulation and quality construction. Any home without weathertight windows is only one-half insulated. So when you build, get down to fundamentals. Always remember—you can add the gadgets any time, but you can't replace footings or timbers or windows. They've got to be good right from the start.

WINDOW FOGGING CONTROLLED BY DOUBLE GLASS



Here is one way to control that annoying fogging and condensation on the windows in your new home. Shown here are three casement windows. Notice that two of them are entirely clear because of inside double glazing. The other window has had the inside double glazing

removed, with the result that it is fogged up almost immediately. When this picture was taken the inside room temperature was 71 degrees, while outside the thermometer stood at 15 degrees above zero.

Patronize Home Merchant

Raritan Independent

Mrs. O. R. Winfield, Editress, Proprietor and Business Manager.



ISSUED WEEKLY

Subscription Rates:

ONE YEAR \$1.50
ONE YEAR IN ADVANCE 1.50
SINGLE COPIES 5 Cents

Publication Office: PISCATAWAYTOWN

Telephone: New Brunswick

Post Office Address, New Brunswick, N. J.

FRIDAY, JANUARY 3, 1941

THE AMERICAN CREED

I believe in the United States of America as a government of the People, and for the People, whose just powers are derived from the consent of the governed; a democracy in a republic; a sovereign NATION of many sovereign states; a perfect union, union, one and inseparable, established upon those principles of freedom, equality, justice, and humanity for which American patriots sacrificed their lives and fortunes.—I therefore believe it is my duty to my country to love it, to support its Constitution, to obey its Laws, to respect its Flag, and to defend it against all enemies.—William Tyler Page.

The Raritan Independent stands for the best interests of the Township of Raritan, for new industries, worth while people and any organization for the betterment or advancement of our Township or surrounding municipalities in Middlesex will receive the sincere cooperation of this newspaper as far as lies within the power of this publication. Clean and sane governmental policies are all that can be asked for or expected at any time with officials who consider the PEOPLES interests along lines of economy without retarding progress.

Give us good men, brave men, loyal and true!
Men who have served their country for Me and You!
Men who have stood up side by side and fought for to save their country's pride!
Men who have stood in the face of a war of hell! who have bled and died that all might be well!
Men who have never failed when duty called,
In the name of patriotism given their all!
Men who can smile in the face of defeat, when all seems just a world of deceit.
Men who when failure has seemed evident, have laughed at the word and did invent, a way out of difficulty, struggled and won and now good Readers the World Carries On!

NOTICE

TO WHOM IT MAY CONCERN

I will not be responsible for and bills or debts contracted in my name or the name of the Raritan Independent in any form whatsoever without I am present in person and my written consent is given to the same with witnesses. Also for any money or monies borrowed at any time.

Signed,

MRS. ORPHA R. WINFIELD

A Physician's Prayer

Dear Lord Thou Great Physician

I kneel before Thee, since every good and perfect gift must come from Thee,

I Pray,

Give skill to my hand, clear vision to my mind, Kindness and Sympathy to my heart.

Give me singleness of Purpose.

Strength to lift at least a part of the burden of my suffering fellowmen and a True realization of the privilege that is mine. Take from my heart all guile and

Worldliness that with the simple faith of a child I may rely on Thee. Amen.

ARE YOU A BOOSTER SEND IN YOUR NEWS ITEMS

LEGAL ADVERTISEMENT IN CHANCERY OF NEW JERSEY.

TO FREDRICK KAISER.

By virtue of an order of the Court of Chancery of New Jersey made on the 18th day of December, 1940, in a cause wherein the Township of Raritan, in the County of Middlesex, a municipal corporation of the State of New Jersey, is complainant, and Max J. Ielin, et. al's, are defendants, you are required to appear and answer the bill of said complainant on or before the 19th day of February next, or the said bill of complaint will be taken as confessed against you.

The said bill is filed to foreclose a certain certificate of sale for taxes, purchased by the Township of Raritan; Pated June 1st, 1931, made and executed by Melvin A. Campbell, Collector of Taxes of the taxing district of the township of Raritan; and you, Frederick Kaiser, are made a defendant because you are the holder of a conditional mortgage affecting the premises herein, and as such claim an interest which is a lien on the lands described in said certificate of tax sale.

Dated: December 23, 1940.

THOMAS L. HANSON,
Solicitor for and of Counsel
with Complainant,
1060 Broad Street,
Newark, New Jersey.
d. 27, j. 3-10-12, 13

LEGAL ADVERTISEMENT IN CHANCERY OF NEW JERSEY

TO LEONARD F. MANHEIM and MARGARET MULVEY REYNEAU, as trustees for Rosalie Debski and Eleanor B. Manheim.

By virtue of an order of the Court of Chancery of New Jersey, made on the 6th day of December, 1940, in a cause wherein the Township of Raritan, in the County of Middlesex, a municipal corporation of the State of New Jersey, is complainant, and Leonard F. Manheim and Margaret Mulvey Reyneau, as trustees for Rosalie Debski and Eleanor B. Manheim, are defendants, you are required to appear and answer this bill of said complaint on or before the 7th day of February next, or the said bill of complaint will be taken as confessed against you.

The said bill is filed to foreclose a certain certificate of sale for taxes, purchased by the Township of Raritan, dated September 23rd, 1935, made and executed by James Kirkpatrick, Collector of taxes of the taxing district of Raritan Township, in the County of Middlesex and State of New Jersey, and you, Leonard F. Manheim, are made a defendant because you are a trustee for Rosalie Debski and Eleanor B. Manheim, and as such claim an interest which is a lien on the lands described in said certificate of sale for taxes.

Dated: December 11, 1940.

THOMAS L. HANSON,
Solicitor for Complainant,
1060 Broad Street
Newark, N. J.
d. 12, 20, 27, 40, j. 3, 41

Weighty Air

The ancients considered air an imponderable substance, but in the past 100 years our knowledge of it has increased considerably. One authority, says London Tit-Bits Magazine, says that the air in the average room weighs about 160 pounds. A cubic foot weighs as much as a letter which can be sent through the post for 1½ pence, and in the course of a day the weight of air breathed by the average person is greater than the weight of food consumed by him. Air is composed of more than a dozen gases, which include nitrogen, oxygen, carbon dioxide, water vapor, hydrogen, helium, neon, argon, krypton, xenon, radon, and other lesser-known elements.

FARM TOPICS

TURKEY PRODUCTION IS MAJOR INDUSTRY

Fifty-six Per Cent Increase Shown in Past 10 Years.

Nearly \$70,000,000 worth of turkeys (at farm prices) were produced last year, reports the bureau of agricultural economics. This figure was somewhat less than for 1937, but was larger than in any other year in the current decade and probably the second largest in the history of the industry.

Since 1929 the production of turkeys has increased more than 56 per cent—from less than 17,000,000 birds in that year to more than 26,000,000 in 1938. Peak of production during the decade was nearly 28,000,000 turkeys in 1936. Highest prices during the 10-year period were in 1929, lowest in 1933. The 1938 average—\$2.66 per bird—was about 16 per cent lower than in 1929.

Principal turkey-producing states in 1938 were Texas (3,285,000 birds), California (2,625,000), Minnesota (2,145,000), Oklahoma (1,418,000), Iowa (1,386,000), North Dakota (1,265,000), and Oregon (1,265,000). About 40 per cent of the 1938 crop was raised in the 12 North Central states as contrasted with only 30 per cent in 1929.

Expansion of the turkey industry during the last 10 years is attributed chiefly to improvements in production and management methods which have lessened the mortality of poult and lowered production costs in competition with chickens and other meats. Production of turkeys in small farm flocks has decreased in most areas, but this has been more than offset by increased numbers of large flocks which are kept separate from other poultry and handled under improved methods of sanitation, feeding, and marketing.

Terry Pin's Tips on TAILORING

By
FREDERIC A. BIRMINGHAM



Consolidated Features, Inc.—WNU Service.

TAILORING is the most pressing problem of the day.

Tailors and cooks illustrate the brotherhood of man. The thicker the gravy, the more often suits have to be cleaned.

The vest is unfair, because it gets all the jewelry, and does only half as much work as the coat and pants.

Sending a suit to the cleaner's keeps it from wearing out, since they usually shrink it so, you only feel like wearing it on very dark nights when there is no moon.

RARITAN TOWNSHIP Church Notices

ST. JAMES P. E. CHURCH

Piscatawaytown
Rev. W. E. Phillips, Rector
7.45 a. m.—Holy Communion.
9.30 a. m.—Church School.
11.00 a. m.—Morning Prayer and sermon.

BAPTIST CHAPLE

Woodbridge Ave. and Chapel St.
Baptist Sunday School at Baptist Chapel at 9 o'clock every Sunday morning.

NEW DURHAM

Union Church
Rev. Dunham V. Reineg.
10 a. m.—Sunday School.
11 a. m.—Morning Worship.

Township Directory

Township meeting of Commissioners, meet at the Town Hall, Woodbridge and Plainfield avenues, Piscatawaytown, 2nd and 4th Tuesdays of the month at 8 P. M.

School Board meets 2nd Monday of each month at School No. 3, Piscatawaytown.

West End Republican Club meets 2nd Wednesday every month at the Troger Home, Woodbridge avenue, Piscatawaytown at 8 o'clock in the evening.

East Raritan Republican Club meets 1st Tuesday of each month.

North Raritan Republican Club meets 4th Monday of every month at Oak Tree Fire House at 8 o'clock in the evening.

The Harold L. Berrue Memorial Drum and Bugle Corp meet on Monday evenings in the Old Town Hall on the Commons at 8 o'clock.

Oak Tree Parent-Teacher Association meets the Third Tuesday of every month at the Oak Tree School.

Henry Street Democratic Club meets 1st Friday of the month in H. K. Fire House.

Freeholders meet 1st and 3rd Thursdays of every month.

Gingham Shoppe

Mrs. K. M. Hess, Prop.

NEW MARKET ROAD

New Market, N. J.

General Merchandise

Mens and Boys' Underwear

Mens Workshirts

Ladies' Silk Hosiery, Socks, Notions

Home Made Jams, Jellies, Pickles

Light Lunches served from 7 a.m. to 11 p.m.

Just across Lehigh Valley R. R. Crossing.

Ice Cream, Cakes, Pies, Bread Sandwiches, also Sandwiches to take out.

Cigarettes, Tobacco, Candles Soft Drinks.

Prices Reasonable. Patronage Welcomed. Courteous Treatment.

PHIL'S SEA FOOD MARKET

Letson Place & Super Highway

Route 25, Piscatawaytown

Oysters, Clams & Fish

at most reasonable Prices

MRS. ORPHA R. WINFIELD

Book and Job Printer

All Kinds of Printing Given Prompt Attention.

PARK PLACE

PISCATAWAYTOWN, N. J.

P. O. Box, 625, NEW BRUNSWICK, N. J.