

**CYNO
SUR
E**

1942







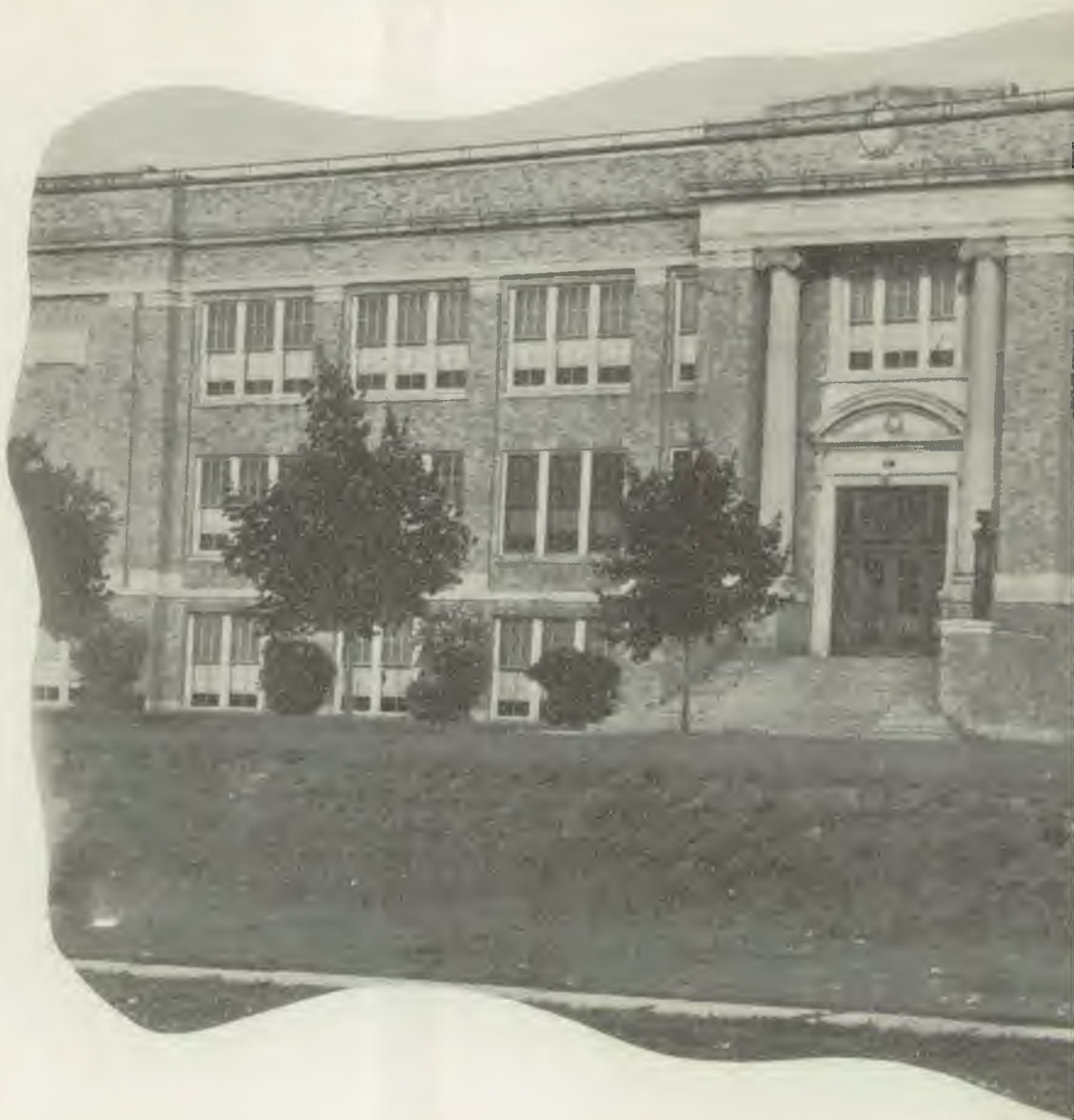
The
Senior Class
of

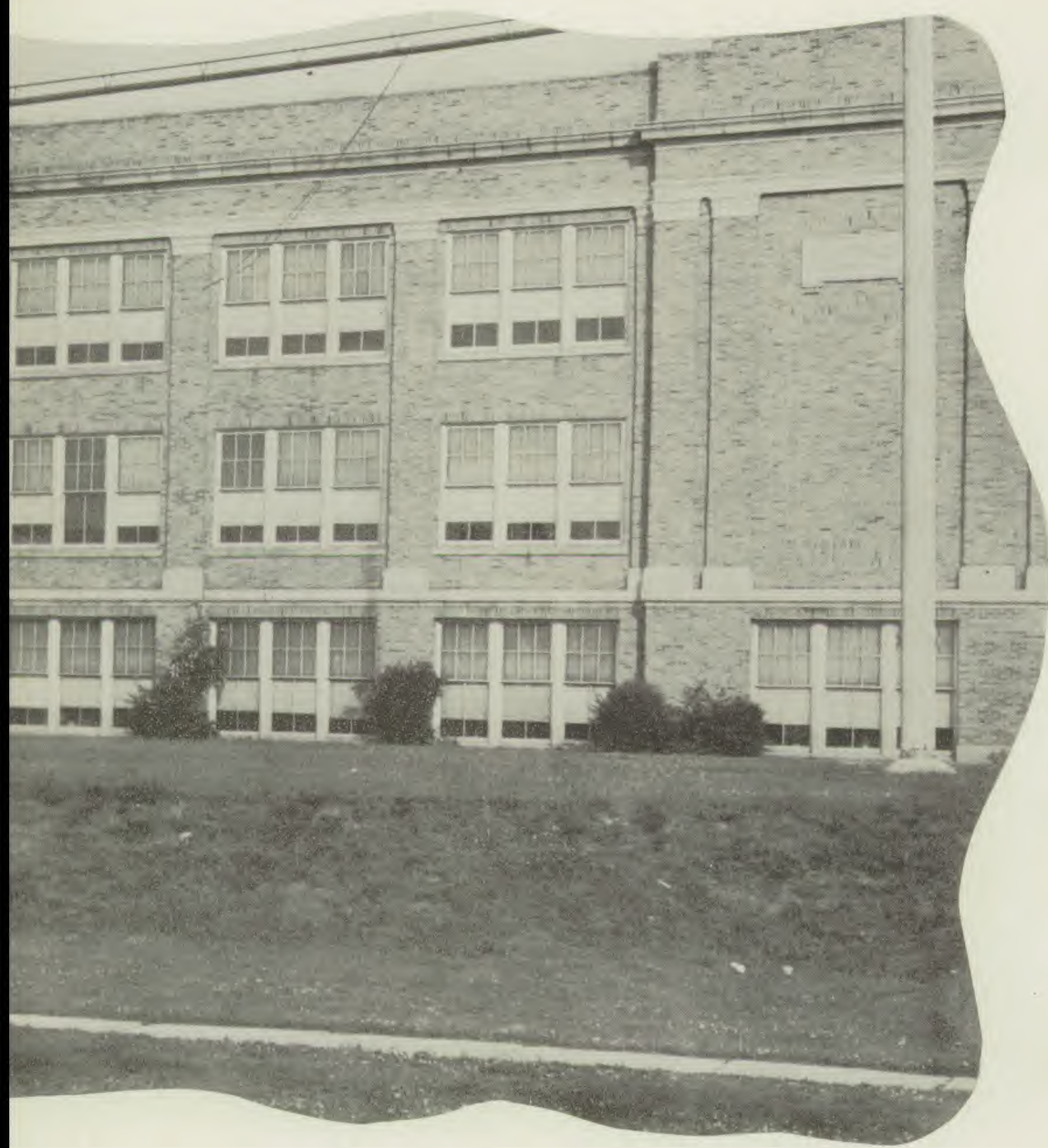
1942

Presents

The Linden High School
Cynosure

Linden High School





Linden, N. J.

Administration Board of Education

James F. Dooley.....President
George W. Bauer.....Vice-President
Betty Evans
Emanuel Margulies
George St. Andrassy



PAUL R. BROWN

A. B. Simpson College; S. T. B. Boston University; M. Ed. Rutgers University; A. M. Columbia University. Superintendent of Schools.

You young men and young women who are being graduated from high school have an especially vital part to play in a world that is striving for peace. Your education, typically American throughout your entire experience, has been based upon and made possible by the existence of a healthy, vigorous democracy. Through it you have lived democratically and you have come to appreciate the true values of the democratic way of life. You are the finest achievement of and the most essential factor in any democracy—an educated citizenry. And upon you must fall the responsibility of helping to mold a new social order. You will do it well.



LIDA M. EBBERT

Ph.B. Dickinson College; A.M. Columbia University. Principal of High School.

When you receive your diplomas in June, you will in all probability go out to face different conditions from those you had expected and planned for. You may not be able to finish college as you had hoped, or to follow the occupation of your choice. Do not be disturbed by this. Much may be learned and much achieved in any set of circumstances. These are stern times, and stern demands lie ahead for all of us. As you go into the future—men and women of tomorrow—try to do your duty from day to day as you see it, hold fast to your ideals, and live up to the best that is in you. In doing this you will be contributing your part toward the making of a better world for everyone.



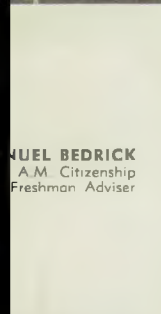
HELEN ASHWELL
A. B. English
Adviser Chronicle
Freshman Adviser



GERTRUDE ATKINS
A. B. Citizenship
English



LESTER BARR
B.A. Biology
General Science
Freshman Adviser



DANIEL BEDRICK
A.M. Citizenship
Freshman Adviser



RUTH BELL
B.C.S. Commercial Subjects
Freshman Adviser



ALBERTA BORIS
A.B. German
English
Freshman Adviser



GERALD CLARK
A.M. Commercial Subjects
Chairman Corridor Committee
Athletic Tickets
Commercial Stock Room



FRANKLIN BUCKMAN
A. M. Social Science Department
Head
Economics; Commercial Law
History; P.A.D.
Senior Adviser



DOT CASEMENT
A.M. Typing
Chronicle Secretarial Committee
Sophomore Adviser



ANN DANAHER
B.S. Office Practice
Stenography
Sophomore Adviser



MARIE DEMAREST
B.S. Health Education
Adviser Cheer Leaders
Freshman Adviser

Faculty



EDWARD COOPER
B.S. Supervisor Physical Education;
Coach of Football, Baseball



JOHN DORNE
M.Ed. Mechanical Drawing
Woodwork



LYMAN DUDLEY
B.S. Head of Manual Arts
Department;
Woodwork



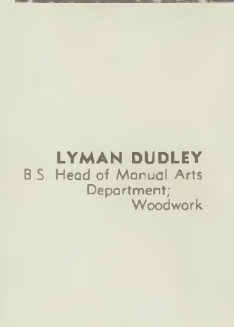
WILLIAM DIEHL
A.M. Science
Freshman Adviser
Chemistry Club



PAULINE GEIGES
A.B. English
Freshman Adviser



ABRAHAM GELFOND
B.S. Geometry
General Mathematics
Citizenship



HELENA GILKESON
A.M. English
Adviser and Coach Dramatic
Club;
Coach Senior Play



LESLIE GOODWIN

B.S. Physical and Health Education;
 Assistant Coach Football
 Coach Basketball, Track
 Dance Orchestra

**FLORENCE GRANT**

A.M. Retail Selling
 Typing
 Junior Adviser

**GRACE GRAVES**

A.M. English
 Junior Adviser

**MARGUERITE GULICK**

A.M. Cafeteria Head

**JULIA HARDIN**

B.A. English
 Adviser Cynosure
 Senior Adviser

**FRANCIS HE**

Commercial
 Adviser Comm
 Sophom

**GAYLORD JAMISON**

A.M. History; P.A.D.
 Adviser Debating Club
 Coach Debating Team
 Junior Adviser

**CLAIRE KANTNER**

B.S. Vocal Music
 Boys' and Girls' Glee Clubs
 A Capella Choir

**ALICE KENDALL**

B.S. Commercial Subjects
 Junior Adviser



Faculty

FRANCIS KENDALL

B.S. Mechanical Drawing
 Printing
 Chairman Freshman Advisers

**JOSEPHINE LANG**

A.M. History
 P.A.D.
 Adviser Civic Forum
 Senior Adviser

**ELEANOR LELAND**

B.S. Sewing
 Adviser Home Economics Club
 Freshman Adviser

**ELEANORE LEVENDUSKY**

A.M. General Mathematics
 Algebra
 Freshman Adviser

**MORRIS LEVINE**

B.A. Citizenship
 History; P.A.D.
 Tennis Coach
 Freshman Adviser

**SARA**

A.M.
 Advertising Staff
 Junior





HELEN McCORMACK
A.B. English
Circulation Staff Chronicle
Freshman Adviser



WARREN F. MALPAS
B.S. Instrumental Music
Director Orchestra, Band



HANS MOLDASCHL
Ph.D. Language Dept. Head
German
Adviser Cynosure
German Club
Senior Adviser



EFFIE NODDIN
A.M. French
Adviser French Club
Junior Adviser



ALFRED NOGI
B.S. Physical and Health Edu.
Assistant Coach Football, Basket-
ball, Baseball, Track



DOROTHY OLDACH
B.S. Art
Adviser Art Club
Puppet Club



EDWARD OSMUN
B.S. Commercial Geography
Economics
Consumer Education
Sophomore Adviser



DOROTHEA PAGE
A.B. English
Adviser Literature Club
Sophomore Adviser



WILBUR PIPE
A.M. Science Department Head
Biology
Chairman Sophomore Adviser
Adviser Golf Team

Faculty



GEORGE RAMAGE
A.M. Mathematics
Sophomore Adviser
Student Council Club Committee



BELLE RANNEY
A.M. English
Chief Adviser Cynosure
Senior Adviser



ELIZABETH REYNOLDS
B.S. Mathematics
Adviser Mathematics Club
Sophomore Adviser



MARGARET RICKERT
School Nurse



AGNES ROSE
A.M. Mathematics Dept. Head
Mathematics
Chairman Senior Advisers



LLOYD RUCH
A.M. General Chemistry
General Science
Freshman Adviser



JOHN SCHOTT
B.S. Algebra
General Mathematics
Assistant Coach Football



WILSON SCOTT
B.S. Biology
Adviser Microscope Club
Sophomore Adviser



HELEN SIEGMUND
Physical and Health Education



EVELYN SMITH
A.B. English
History
Adviser Knitting Club
Student Council Club Committee
Freshman Adviser



RAYMOND STOKES
Metalwork



VIRGINIA STRAUCH
B.S. Physical Education



AMERICO TARANTO
B.S. Consumer Education
Freshman Adviser



MABEL TUTTLE
A.M. Supervisor of English
Director Assembly Programs



PAUL WALKER
A.M. General Science
Adviser Photography Club,
Cynosure
Freshman Adviser



JEANNETTE V.
M.S.
Adviser Home Economics
Freshman Adviser



JANE WATERMAN
B.L.S. Librarian
Adviser Library Squad



EDWARD WEISS
A.M. Chemistry
Junior Adviser



LILLIAN WINET
B.Ed.C. Commercial Science
Sophomore Adviser



PAUL YEISLEY
A.M. Physics
General Science
Senior Adviser





SENIORS



JEAN ALBER

"Jean"

H.R. Sec. 2; Dram. Club 3, 4; Red Cross Knitting Club 4; Cynosure; Bsktbl. 2, 3; Volley Ball 3; Badminton 3.

ROBERT ARNOLD

"Bob"

Band 1, 2, 3, 4; Interclass Bsktbl. 1, 2, 3, 4; May Festival 1, 2, 3, 4.

ANDREW BABINEC

"Fuse"

Varsity Baseball 2, 3, 4; Interclass Bsktbl. 2, 3, 4; Jr. Prom Decorating Com.

CECILIA BABINEC

"Ceal"

H.R. Sec. 4; H.R. Chairman 4.

FLORENCE BAICOFSKY **"Florence"**

Clubs: Latin 1, 2, 3, 4; French 2, 3, 4; Civic Forum 2, 3; Red Cross Knitting 4; Home Ec. 3; Makeup Com. May Festival 3, 4; "Hey Stranger."

ELMER BALAZS

"El"

Perfect Attendance 1, 2, 3, 4.

PETER BARA

"Truck"

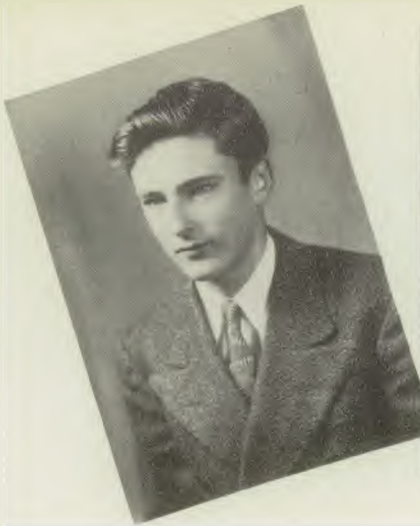
Varsity Football 3, 4; Band 1, 2.

CHARLES BARG

"Flash"

H. R. Treas. 1; Cynosure; Perfect Attendance 1, 2, 3, 4.





CHARLES BAUM

"Charlie"

His own character is the arbiter of his fortune.

HARRIET BAUM

"Har"

Silence is golden.

BERNICE BECKER

She isn't quiet,
She isn't loud;
She likes to mingle with the crowd.

JOHN BEDNAR

"Yonk"

Lively, congenial, full of fun,
There is cheer in his carefree manner.



WILLIAM BEKSI

"Willy"

J. V. Ftbl. 1, 2; H. R. Treas. 1, Pres. 4; Chron. 4; Per. Att. 1.

MARY BELAN

"Belle"

Clubs: Glee 3; Lit. 3; Dram. 3; Cynosure; Sec. Appointment.

IRWIN BELT

"Pepsi"

If congeniality is a rung in the ladder of success, Pepsi is well on his way upward.

JOSEPH BERKOWITZ

"Berk"

Band 1, 2, 3; Drum Major 4; Sec. 4; Orch. 3, 4; Clubs: Glee 3, Treas. 4; Ger. 3, 4; Dram. 2, 3, 4; Swing Band 3, 4; Chron. 2, 3; All-St. Chorus 4; Double Quartet 3; Cyno.; Mixed Chorus 3, 4.





CATHERINE BERLINSKI "Key"

Clubs: Ger. 2, 3, 4; Dram. 3, 4; Art 4; Civic Forum 1; Debate 1.

DOROTHY BERMAN "Dotty"

Clubs: Home Ec. 1, 2; Art 4; Cynosure.

WALTER BILLICK "Budge"

Assist. Adv. Mgr. Chronicle 4. A good mind possesses a kingdom.

MARGARET BILLY "Billy"

Glee Club 1; Comm. Club 4, Treas. 3; May Festival 1, 3; Sec. Appointment.

VIRGINIA BLANCHE "GINNY"

Clubs: Dram. 2, 3; Ger. 2, 3, 4; Math 2, 3, 4; Glee 3, 4; Band 2; Class Treas. 3, 4; H. R. Pres. 2, 3; Stu. Coun. 2, 3, 4; Chron. 3, 4; Cyno.; Sr. Play.

HOWARD BOLTON "Howie"

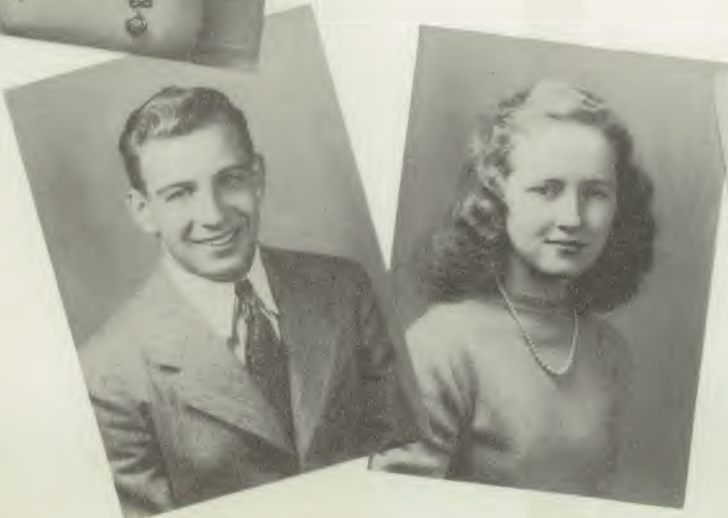
Vars. Ftbl. 2, 3, 4; Interclass Bsktbl. 2, 3, 4; Jr. Prom Com.

ALICE BRADY "Al"

Clubs: Glee 3, 4; Math 2, 3, 4; Fr. 2, 3, 4; Latin 1; Chron. 4; H. R. V. Pres. 1, 3, Treas. 2; Sr. Play Com.; Paddle Ten. 2; Cynosure.

JAMES BRANCH "Jim"

J. V. Football 2; J. V. Bsktbl 2; Baseball 2.





MURIEL BRUGGER

Quiet and reserved is she
As it becomes a girl to be.

CONSTANTINE BURAK "Chick"

Aviation Club 1
A serious worker but a light-hearted
companion.

ELIZABETH CARLEY "Betty"

Clubs: Glee 1, 2; Ger. 2, 3, 4; Civic
Forum 1; Jr. Prom. Com.; H. R.
Sec. 1.

THOMAS CARMODY "Tom"

Of every noble work the silent part
is best of all expression, that which
cannot be expressed.



KATHLEEN CAVANAUGH "Kay"

Clubs: Glee 1, 2; Dram. 2, 3, 4;
Home Ec. V. Pres. 3, Pres 4; H. R.
Treas. 3; Jr. Prom; Cyno; Mixed
Chorus 2; Chron. 2, 3, 4.

ANDREW CHENGERI "Onda"

In fishing and in hunting too,
He's a sportsman through and through

MATILDA CHERNOTSKY "Tillie"

Clubs Debating 1, 2, 3, 4; Latin
1; Glee 1; Lit. 4; Dram. 2, 3, 4;
Civ. For. 4; Fr. 4; Orch. 1, 2, 3, 4;
Cynosure; Chron. 2, 3, 4.

CHESTER CHROBAK "Chet"

Interclass Basketball 1, 2; Jr. Vars
Ftbl. 3; Vars. Bsktbl. 4.





JEAN CODDINGTON "Jeannie Gal"

Glee Club 1, 2, 3; Mixed Chorus 1, 2, 3; Chron. 3; Art Club 3, 4.

BURTON COHEN "Quinn"

Cynosure Ed; Chron. Ed. 3; St. Ex-temp. Speaking Champ. 3; Outstanding St. Debater 3; Civic Forum Pres. 4, V-Pres. 2, 3; Vars. Debating 1, 2, 3, 4; Class Debating Champ. 2; Tennis 3, 4; Math Club 2, 3, 4.

MARY COHEN "Peppy"

Glee Club 1; Baseball 3.
"In darkness, light."

SYLVIA COHEN "Syl"

Home Economics Club 1, 2; Glee Club 1.

MICHAEL CORDASCO "Mike"

Per. Attend. 3, 4; Interclass Bsktbl. 1, 2, 3, 4; Jr. Prom Dec.; Interclass Badminton 1, 2, 3, 4.

VIRGINIA COX "Ginnie"

Secretarial Appointment.
Friends I have made
Whom envy must commend.

ROBERT DACKERMANN "Dack"

Perfect Attendance 1, 2.
Give me the rough life.

AGNES DANCHISKO "Ag"

H. R. Sec. 3, Sec.-Treas. 4; Cynosure; Sec. Appoint.; Per Attend. 1; Sr. Play Com.





MARGARET DANCHISKO

H. R. Sec. 1; Foul Shooting Winner 2.

MIRIAM DARSEY

Clubs: Glee 1, 2, 3; Puppet 3; Bad-
min. 3; Mixed Chorus 3; Jr. Dec.
Com. 3; Girls' Spec. Chorus 3; Make-
up Com. 3; Chron. 3; Sr. Play Read-
ing Com.

ALBERTA DAVIS

"Bertie"

Sports 2, 3, 4; Clubs: Fr. 2, 3, Pres.
4; Math. 2, 3, 4; Lit. 3, 4; Co-
Chairman. Cynosure Reporters.

VICTOR DELDIN

"Red"

Interclass Basketball 1, 2, 3, 4;
Interclass Badminton 1, 2, 3, 4;
Assist. Mgr. Baseball 2, Mgr. 3.

JEAN DENNISTON

Chronicle 4; Glee Club 4; Home Ec.
Club 4.

ROBERT DESHEFY

"Desh"

Clubs: Glee 2, 3; Art Pres. 3, 4;
May Festival 2, 3.

JACOB DIAMOND

"Jake"

A little nonsense now and then
Is relished by the wisest men.

CATHERINE DI LEO

"Kate"

To brisk notes in cadence
beating,
Dance Catherine's feet with cares all
fleeting.



JOSEPH Di LEO

"Bing"

When hunting season has begun, he's often out with dog and gun.

ALICE DONNELLY

"Al"

Clubs: Glee 3; Lit. 3; Cynosure; Chronicle 3.

GERALD DOPKIN

"Dop"

Tennis 3, 4; Class Basketball 1, 2, 3; Class Badminton 2, 4.

CONSTANCE DUNAY

"Connie"

Secretarial Appointment.

OLGA DUROSKA

"Olg"

Clubs: Lit. 2, 3, Treas. 4; Com. 3, 4; Chrman. Cler. Staff Chron. 3; Chrman. Cler. Staff Cyno.; Sec. App.; Sr. Play Prop. Com.

SYLVIA EARLES

"Syl"

Art Club 3; Chronicle 3.

ANNE EICHHORN

"Ike"

Sports 1, 2, 3, 4; Civic Forum 1; Glee Club 1, 2, 3, 4; Orch. 1, 2, 3, Sec. 4; All St. Orch. 2, 3, 4; Mixed Chorus 1, 2, 3, 4; Cynosure.

WARREN J. ERICSSON

"Wazzy"

Ftbl. Vars. 3, 4; Track 2, 3; H. R. Pres. 1, 2, 3, 4; Clubs: Dram. 1, 2, 3, 4; Glee 1, 2, 3, 4; Stu. Cncl. 2, 3; Band 2; Mixed Ch. 1-4.





ANN FILMONCHIK

"Annie"

Perfect Attendance 2.
Cooking is an art, a noble science;
cooks are gentlewomen.

MARGARET FARRELL

"Peggy"

Sports 1, 2, 3, 4; Clubs: Ger. 2, 3, 4;
Math. 2, 3, Sec. 4; Student Council
4; Cynosure; Chronicle.

DAVID FORD

"Yehudi"

Bsktbl. 1, 2, 4; Baseball Assist. Mgr.
1, Mgr. 2; H. R. V-Pres. 1; Glee
Club 2, 4; Mixed Chorus 4; Barn
Dance 3, 4; Perf. Attend. 2.



JULIUS FAZEKAS

"Zeke"

Aviation Club 1.
Genius does what it must,
Talent does what it can.

FRANK FOTIO

"Fotio"

H. R. Treas. 2; Student Council 1;
Perfect Attendance 1.

BEATRICE FAZIO

"Bea"

Commercial Club 4; Secretarial Ap-
pointment.

TONY FOTIO

"Tony"

Baseball 3, Varsity 4.



LILLIAN FECIUCH

"Fetch"

Comm. Club 3, 4; H. R. Sec. 2;
Cynosure; Sr. Play Prop. Com.





LOUISE FRANCIS

"Lou"

Jack will pipe and Lou will dance.

THOMAS FRANK

"Frank"

Interclass Basketball 4; Interclass Badminton 3, 4; Chem. Club 1; Aviation Club 3.

JOSEPH FREEL

"Irish"

Interclass Basketball 1, 2, 3, 4.
There's always time for an occasional joke.

JOHN GAIDELIS

Stamp Club 1, 2.
His future lies in the service of the airway.

ANN GALEN

Clubs: Latin 1, 2, 3, V-Pres. 4; Gle 1, 2, 3; Art 2, 3, 4; Dram. 2, 3, 4; Treas. 4; Fr. 4; Cynosure.

DOROTHY GALL

"Dot"

Clubs: Comm. 3, 4; Aviation 4; Gle 1; Sec. Appoint.; Perfect Attendance 1, 2; Cynosure.

WALTER GALUSH

"Walt"

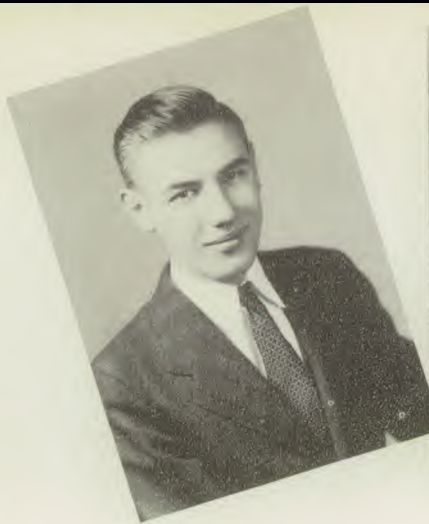
Interclass Basketball 3, 4.
He keeps the friends he makes.

ALFRED GANO

"Al"

H. R. V-Pres. 4; H. R. Treas. 2.





PHILIP GARDOS

"Phil"

H. R. Pres. 3; Band 1, 2, Assist. Mgr. 3; Golf 2, 3, 4; Swing Band 1, 2.

STEPHEN GASSLER

"Gashouse"

Fish and Game Club 1, 2; Perfect Attendance 3.

JOHN GAYDOS

"Yonk"

Vars. Ftbl. 2, 3, Capt. 4; Chem. Club 2, 3; Stu. Council 1, 3, 4; H. R. Pres. 2; Jr. and Sr. Class Pres.; Sr. Play Com.

FRANK GIEGRICH

"Patrick"

J. V. Ftbl. 2, 3; Track 3, 4; Radio Club 2, Pres. 3; Aviation Club 2; Per. Att. 2; H. R. Pres. 2.

LELA GLASSBERG

"Lee"

Clubs: Lit. 2, 3, 4; Debate 1, 2, 3, 4; Dram. 4; Civic For. 2, 3; Latin 1, 2, 3; Math 2, Treas. 3; Makeup 3, 4; Adv. Chrman Cyno.; Chron. 3, Editorial Ed. 4.

LEWIS GOETZ

"Lew"

J. V. Ftbl. 3; Vars. 4; Vars. Baseball 3, 4; H. R. Pres. 4; Sr. Play Com.; Barn Dance 4; Cynosure.

FRED GOLEME

Some think the world is made for fun and frolic.

HELEN GONCHARIK

Clubs: Lit. 2, 3, 4; Comm. 4; Sec. App.; Sr. Play Com.; Cyno.





HELENA GONDAY

"Penny"

Art Club 2, 3, 4; Chronicle Adv. Staff 3; Cynosure Adv. Staff.

JAMES GOOD

"Joe"

Decoration Committee Jr. Prom.; Cynosure.

"Haste makes waste," the prophets say; Jimmy believes it, anyway.

HELEN GUZEWICZ

Congenial to all, she laughs her way through life.

WARREN GYURK

"Sonny"

German Club 3, 4; Glee Club 4; Math. Club 3, 4; Sr. Nominating Committee 4; Chronicle 3, 4; Cynosure; Perfect Attend. 1, 2, 3.

GRACE HALLORAN

Girls' Sports 1, 2, 3; French Club 2, 3, 4; Glee Club 1, 4; May Festival 1; Perfect Attendance 1, 2, 3.

BARBARA HAMMER

"Bobbie"

Basketball 4; Com. Club 3, 4; Home Ec. Club 4; H. R. Treas. 2; Jr. Dec. Com. 3; Cynosure.

LOIS HARRELL

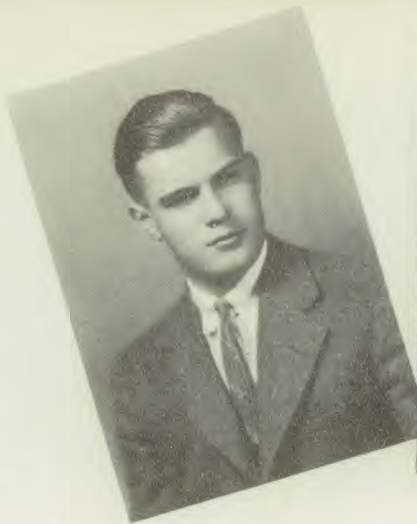
Aviation Club; Perfect Attendance 3.

RUTH HARTMAN

"Blondie"

Foul Shooting 2; Volley Ball 4; Badminton 4; Glee Club 2, May Festival 2.





HARRISON HEILMAN

Cynosure.

A bit of mischief now and then is relished by the best of men.

ANDREW HARVAN

Civic Forum 1, 2, 3, 4; Cynosure 4.

LOUIS HASBROUCK

"Lou"

Fish and Game Club 1; Perfect Attendance 1.

EDWARD HATOLSKI

"Ed"

Quietly he treads the road of life.

ANNE HAVEL

Twirler 3, 4; H. R. Sec. 3; Sec. Ap-
point.; Barn Dance Dec. Com. 4;
Cynosure; Glee Club 1, 2, 3; Mixed
Chorus 1, 2.

NICHOLAS HERCEG

Golf 3; Football, J. V. 4.

HARRY HERGENHAN

Basketball 3; Per. Attend 1.

EDWARD HERING

He has life and pep to spare.





WALTER HICINBOTHEN "Hicky"

Clubs: Fr. 1, 2, 3; Glee 4; Debate 1;
Band 1, 2, 3, 4; Orch. 1, 2, 3, 4;
H. R. Pres. 1; Cynosure.

PHYLLIS HILTS "Phyl"

Chronicle 2, 3; H. R. Sec. 3, Treas. 4;
Sec. Appointment.

FRANCIS HILYARD

Interclass Basketball 1, 2; H. R. Sec.
1, 2.

MARGARET HOERRNER "Marge"

Comm. Club 3; Library Squad 1;
Cynosure; Secretarial Appoint.

RICHARD HOFMANN "Dick"

Orch. 2; Band 1, 2; Swing Band 1, 2;
Jr. Prom Com.; Barn Dance Com. 3;
May Festival 1, 2.

CHARLES HOLLOSY "Hank"

Class Basketball 2, 3; Track 2, 3, 4;
Union County and St. 220 yd. Cham-
pion 3; Penn Relays 3; Vars. Bsktbl.
4, Math Club 3, Pres. 4; Ger. Club 3,
4; Band 1, 2, 3; Orch 3; H. R.
Pres. 3.

LORETTA HUNT

Dramatic Club 3; Glee Club 1.

THELMA HUNTER

Laughing and very gay,
Thelma goes on her way.





MARILYN JENKINS "Junky"

Clubs: Lit. 3, Sec. 4; Comm. 3, Pres. 4; H. R. Pres. 1, Sec. 3, 4; Assoc. Editor Cyno.; Sr. Play Com.; Sec. Appointment; Jr. Prom. Dec. Com.

ANNA DELL JOHNSON "Dale"

Home Economics Club 1; Perfect Attendance 1.

ANNE KAISER "Annie"

Comm. Club 4; H. R. Treas. 4; Sec. Appointment.

MARILYN KANTOR

Clubs: Lit. 4; Civic Forum 1, 2, 3, 4; Debate 2, 3, 4; Baseball 3; Badmin. 2, 3, 4; Paddle Ten. 1, 2, 3; Bsktbl. 1, 2, 3, 4; Track 1, 3, 4; Volleyball 1, 2, 3, 4.

JOSEPH IARIA "Joe"

Stamp Club 1; Woodwork Club 2.

GLORIA INTILI "Glor"

Glee Club 1; Aviation Club 4; Home Room Treasurer 3.

CHARLES JACOBSON "Jake"

Debating Club 3, 4; Civic Forum Club 4; Cynosure; Sr. Play Com.

JOHN JEFFRIES "Jeff"

A friend to all while he was with us.





ABRAHAM KAPLAN

"Raz"

French 1; Math 2, 3; Debating 4;
Swing Band 3, 4; Band 4.

JOHN KARALIS

"Jabo"

J. V. Ftbl. 2, Vars. 3, 4; J. V. Bsktbl.
2; Track 3; Clubs: German 3, 4;
Math 3; Dramatic 3, 4; Perf. Attend.
1; Senior Play.

EDMUND KARDAUSKAS

"Ed"

Junior Prom. Decorating Committee;
Cynosure.

RAYMOND KENDALL

"Ray"

Stamp Club 1; Perfect Attendance
2, 3.

JOHN KENNEDY

His spirit is quiet, but it is not meek.

RUTH KIMMELMAN

"Kim"

Clubs: Debate 1, 2, 3, 4; Civic
Forum 1, 2, 3, 4; Math 2, 3, 4;
Debate Team: Class 1, 2, 3, 4; J. V.
2, Varsity 3, 4; State Tourn. 3, 4;
Chronicle 1, 2, 3, Editor 4; Paddle
Tennis 1, 2.

ANDREW KINSELLA

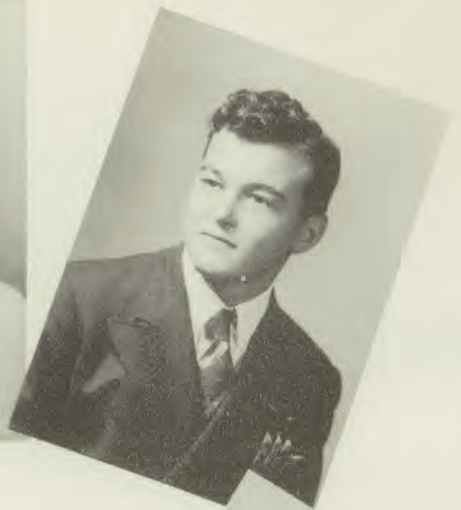
"Bumps"

Vars. Baseball 3, 4; J. V. Football 4;
Senior Play Committee.

FRANK KLAUNN

Baseball Ump. 3; Clubs: Stamp 1, 2;
Chem. 3; Library Squad 1, 2, 3; Per-
fect Attendance 1, 2.



**ROBERT KLINE****"Dink"**

Ah, happy years! Once more who would not be a boy?

LEATRICE KNOHL**"Lea"**

Clubs: Lit. 2, 3, Pres. 4; Debate 1, 2, 3, 4; Civic For. 2, 3, 4; Latin 1, 2; Math 2; Chronicle 2, 3, 4; Cynosure; Senior Play; Debate: Class 1, 2, 3, 4, J. V. 3, 4; Dram. 3, Pres. 4.

JAMES KOELLER

J. V. Football 3; Barn Dance Committee 4.

HAROLD KORNMEYER

Perfect Attendance 2.

I live not in myself, but

I become part of that around me.

FLORENCE KOSTYACK**"Flo"**

Quiet and reserved, yet well liked by all who know her.

FRANCES KRENEK**"Franny"**

Library Squad 1; Cynosure; Perfect Attendance 2.

WILLIAM KRIVIT**"Willy"**

Clubs: Debate 1, V.-Pres. 2, Pres. 3, 4; Civic For. 1, 2, 3, 4; Dram. 2, 3; Math 2, 3, 4; Jr. Nom. Com.; Barn Dance 3; Chronicle 1, 2, 3, 4; Cynosure; Debate: Interclass 1, 2, 3, 4; Varsity 3, 4.

AGATHA KRUCHAS**"Aggie"**

Volleyball 3, 4; Basketball 3, 4; Foul Shooting 3, 4; Clubs: Glee 2, 3, 4; Latin 3, 4; Home Economics 3, 4.





RUTH KUBIAK

Secretarial Appointment; Senior Play Committee.

BARBARA KUHN

Not too shy, not too bold,
She tries to do as she is told.

EVA KUHN

Perfect Attendance 3.
Beaming with good humor.

RAYMOND LADA

Aviation Club 1, V-President 2,
President 3; Perfect Attendance 1.

"Bobby"

JOHN LANG

J. V. Basketball 3; Varsity Basketball 4; Track 3, 4.

"Eve"

MICHAEL LAZO

H. R. Pres. 3, 4; Stu. Council 3;
Exec. Com. 4; Consti. Com. 3.

"Ray"

PERRY LEIB

Tennis Mgr. 3, 4; Glee Club 1, 4;
Latin Club 1, 2; Stamp Club 1; May Festival 1.

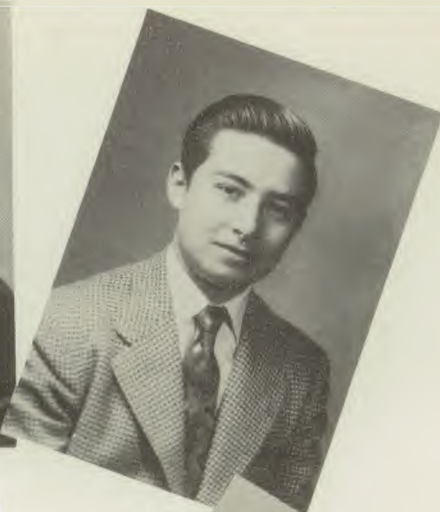
"Sleib"

MILDRED LENSER

Commercial Club 3, 4; H. R. V-Pres. 2; Chronicle 3; Cynosure; Secretarial Appointment.

"Millie"





ROBERT LUDVINAITIS "Luddy"

Football Manager 2; Aviation Club 1; Cynosure; Senior Play.

TED LUKASEWSKI "Luke"

Fish and Game Club 1; H. R. President 1; Perfect Attendance 1, 2.

HAROLD LYONS "Pete"

Varsity Football 3, 4; Track 3; Senior Play.

LE ROY LYONS "Lee"

Football Manager 2, 3, 4; Stamp Club 1; Perfect Attendance 1.

LILLIE LESKO "Little-one"

Clubs: French 2, 3, Sec. 4; Latin 1, 2; Math 2, 3, 4; Jr. Prom Committee.

EDWARD LISCAK "Ed"

Give me the wide open spaces.

SEYMOUR LITWIN

Clubs: Debate 1, 2, Treas. 3, 4; Civic Forum 1; Math 2, 3, 4; German 2, 3, 4; Chronicle 1, 2, 3, 4; Cynosure.

LE VERNE LOVELAND "Lovey"

Clubs: Dram. 4; Glee 2, 3, 4; Library Squad 3; A Capella Choir 4; Senior Play; Perfect Attendance 3.





RUTH MacINTOSH "Ruthie"

A Capella Choir 1, 2, 3, 4; All-St. Ch. 2, 3; H. R. Sec. 3, 4; Sr. Play; Glee Club 1, 2, Sec. 3, 4; Sec. Appoint.

CATHERINE MAHAR "Bubbles"

Volleyball 2, 3, 4; Foul Shoot. 2, 3, 4; Bsktbl. 2, 3, 4; Badmin. 2, 3, 4; Paddle Ten. 2, 3, 4; Bsktbl. 3, 4.

ANNABELLE MAHONEY "Freckles"

Volybl. 1, 2; Bsktbl. 1; Badmin. 1, 2; Clubs: Pup. 3; Aviation 3; Lib. 3; Barn Dance Com. 4.

ALICE MANN.

Clubs: Glee 1, 2; A Capella Ch. 1, 2; Girls' Special Ch. 3; Rifle 2; Band 3, 4; Sec. App.; Cynosure.

LILIAN MARSHALL "Chic"

Bsktbl. 3; Sports 4; Lit. Club 3, 4; Jr. Dec. Com.; Nom. Com. 4; Cynosure; Sec. Appoint.

EDMUND MATREJEK "Ed"

Clubs: Dram. 2, 3, 4; Art 2, 3; Glee 2, 3, 4; A Capella Choir 3, 4; All-St. Chorus 4.

ROBERT McARDLE "Bob"

Clubs: Rifle 1; Civ. For. 4; Puppet 3; Dram. 3; Glee 2, 3, 4; All-St. Ch. 2, 3; Cyno.; A Capella Choir 3, 4.

DOROTHY McCARTNEY "Sis"

Clubs: Comm. 4; Glee 1; Puppet 3; H. R. Pres. 1; Per. Attend. 2, 3; Sr. Play Com.; Cynosure.



**IRENE McGLONE****"Mickie"**

Commercial Club 4.

Laughing cheerfulness throws the light of day on her path of life.

ROBERT McKANE**"Bob"**

Clubs: Aviation 2, 4; Civic Forum 4; Commercial 3; Sec. Appoint.

ROBERT McMILLAN**"Mac"**

Assist. Manager Basketball I, Manager 2; J. V. Basketball 3, Varsity 4; J. V. Baseball 3; Commercial Club Pres. 3; Cynsure.

WILLIAM MELICHAR**"Pep"**

J. V. Bsktbl. 2, Vars. 3, Co-Capt. 4; Interclass Bsktbl. 1; Track 2; J. V. Baseball 3; H. R. Treas. 1, 2.

DORIS MELLOR

Clubs: Rifle 1; Comm. 3, 4; Cynsure; Chronicle 2; Volleyball 1; Foul Shooting 1, 2.

MANUEL MENDELSON**"Manny"**

H. R. Pres. 4.

He is slow on his feet, but has a snappy comeback.

CARROLL MESSINA**"Carl"**

I have a heart with room for every joy.

HELEN MILLER

Clubs: French 1, 2, 3, 4; Glee 1; Jr. Dec. Com. 3; Per. Att. 3; May Festival 1.





ELEANOR MONTESI

"Babe"

H. R. Sec. 1; Senior Play; Secretarial Appointment.

CLIFFORD MOORE

"Duke"

Football 4; Baseball 4; Track 4; Swing Band 4.

GEORGE MORITZ

"Red"

How charming is divine philosophy.

MYRTLE MORRISON

"Myrt"

Foul Shooting 1, 2; Field Day 1, 3; Comm. Club V-Pres. 4; Chronicle 3; Jr. Dec. Com.; Cynosure; Secretarial Appointment.

JOSEPH MOSCATO

"Joe"

Cynosure; Assistant Manager Baseball 1, Manager 2.

DOROTHY MRACEK

"Dot"

Clubs: Commercial 3, 4; Photography 4; Cynosure; Perfect Attendance 3; Secretarial Appointment.

MARIAN MULDOON

Glee Club 2, 3, 4; A Capella Ch. 3, 4; Girls' Special Chorus 3, 4; H. R. Treas. 4; Cynosure; Secretarial Appointment.

MARY MUMMOLO

"Lu-Lu"

Handsome is as handsome does.





ALFONSO NOVIELLO "Funzy"

Never trouble trouble, till trouble troubles you.

ROLAND NUBER "Rol"

Clubs: Dram. 2, 3, 4; Glee 1, 2, 3, 4; A Capella Choir 3, 4; May Festival 1, 2, 3, 4; Sr. Play Com.; Senior Play.

MARY O'HALLORAN "Mickey"

Cheerleader 4; H. R. Pres. 1, 4, Sec. 2; Clubs: Dram. 3, 4; Comm. 3; Glee 1, 2; Civic Forum 2; B. Dance Dec. Com.; Sec. App.

MARGARET O'NEILL "Gigi"

Volleyball 1, 4; Library Squad 1; H. R. Secretary 3, 4.

ANNA MURAWSKY "Anne"

Cynosure; Secretarial Appointment 4; Glee Club 1.

JOHN MURPHY "Murph"

Golf 3; Track 3, 4; Basketball 4; Debating Club 2; Dram. 2.

IRVING NISSMAN "Sonny"

Latin Club 1, 2, 4; Stamp Club 1.

JOSEPH NOVALANY "Novy"

Javee Football 2, Varsity 3, Co-Captain 4; Javee Baseball 2, Varsity 3, 4; Senior Class Vice President; Senior Play Com.





MARION OPUSAK

"Shorty"

Basketball 1; Track 1.

JUDITH ORGEL

"Judie"

Clubs: Civic Forum 1, 2; Debate 1, 2; Latin 1, 2; Lit. 3, 4; Dram. 2, 3, 4; Cynosure; Chronicle 2, 3.

WILLIAM G. PALERMO

"Bill"

Clubs: French 1, 2, V. Pres. 3; Dram. 3, 4; Glee 2; Tennis 2, Capt. 4; H. R. Pres. 3; Chron. 4; Band 4; Senior Play.

WALTER PARADOWSKI

"Parrot"

J. V. Football 3; Varsity 4.

HELEN PAVLACKA

"Len"

Glee Club 1, 3; May Festival 1, 3; H. R. Vice-President 1.

ALEXANDER PAWLIKOWSKI

"Xerxes"

Joking decides great things, stronger and better oft than earnest can.

EIGIL PEDERSEN

"Pete"

Art Club Vice-President 4; Cynosure; Band 1.

HELEN PEDERSON

"Pete"

Library Squad 1.
Light-hearted and fun-loving.





IRENE PERLMUTTER

"I"

Latin Club 1, 2, 3, 4; Civic Forum Club 2, 3.

ANNETTE PERZLEY

"Net"

Clubs: Debate 1, 2; Civic Forum 1, 2, 3; Dram. 2, 3, 4; Cynosure; Senior Play.

GLORIA PETERS

"Pete"

Clubs: Glee 1; Art 4; Band 2; Librarian 3, 4; Orch. 4; H. R. Sec. 2, Treas. 3; A Capella Choir 3, 4; Swing Band 2.

JOHN PETERSON

"Pete"

Photo. Club 4; Stud. Council 3, 4; Nom. Com. 3; H. R. V-Pres. 3; Cynosure.



CHRISTOPHER PHELAN "Chris"

Varsity Football 4; Basketball 1, 2, Varsity 3; Baseball Varsity 3; Senior Play.

EDWARD PHILIPS

"Eddie"

Clubs: Aviation V-Pres. 3, Pres. 4; Radio V-Pres. 2; Interclass Basketball 1, 2.

CHARLES PLUNGIS

J. V. Ftbl. 3; Bsktbl. 3, Vars. 4, In-Class 1, 2; Clubs: Debate 1, 2, 3; Dram. 1; Chron. 1, 2, 3; H. R. Pres. 1, V-Pres. 2; Exec. Com. 3.

JOHN PLUNGIS

J. V. Ftbl. 2, Vars. Ftbl. 3, 4; In-class Bsktbl. 1, 2, 3, 4; Per. Attendance 1, 2; H. R. Treas. 2.





BEVERLY PODOLLA

"Bev"

Commercial Club 3; Cynosure; Secretarial Appointment.

JANE PORTER

Glee Club 1, 2, 3, 4; A Capella Choir 2, 3, 4; Special Chorus 3, 4; Cynosure.

CONSTANCE PRATT

"Connie"

Quietness combined with a free nature.

TEDDY PYRTEK

"Ted"

Care has no part in Teddy's day. He's nonchalant, merry-hearted, and gay.

HELEN RABA

"Rab"

Volleyball 1, 2, 3, 4, Co-Capt.; 3; Basketball 1, 2, 3, 4; Foul Shooting 1, 2, 3, 4; Badminton 2, 3, 4; Paddle Ten. 1, 2, 3, 4; Clubs: Glee 1; Civic Forum 1; Cynosure.

ARLENE RATEL

"Arl"

Library Squad 1; Cynosure; H. R. Treasurer 4.

CHARLOTTE RATEL

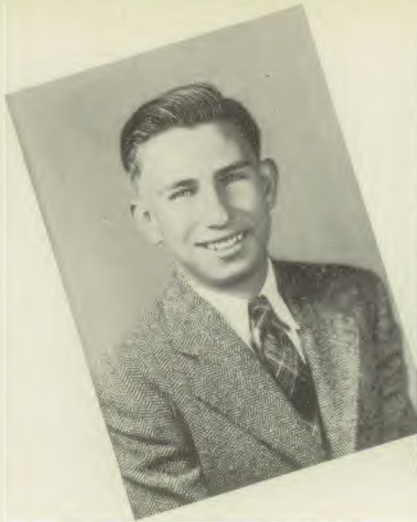
"Cocoa"

H. R. V-Pres. 3; Cynosure; Senior Play Committee.

WILBUR RAU

"Woop"

Rifle Club 1.
Why aren't they all content like me?



GEORGE REMETA

"Rem"

Interclass Basketball 3, 4; Senior Play Committee.

GEORGE ROBINSON

"Supe"

Senior Play.
A ready laugh for anyone's humor.

ASA ROBISON

"Ace"

Speech is great, silence is greater.

SELMA ROSENTHAL

"Shayne"

Cheerldr. 2, 3, 4; Clubs: Glee 1, 2, 3, 4; Dram. 3; A Capella Choir 2; H. R. Treas. 1, Sec. 2, 3; Jr. Dec. Com.; Cyno.; Lib. Squad 2.



JOSEPH ROSNOWSKY **"Meyer"**

He of few words and many thoughts is to be admired.

FRANK ROSTKOWSKI **"Rusty"**

Chem. Club 1; H. R. Pres. 1; Jr. Prom Dec. Com.; Stu. Cncl. 1.

WALTER RUNCK **"Walt"**

Clubs: Fish and Game 1; Photo. 4; Orch. 1, 2, 3, 4; H. R. Treas. 3; All-St. Orch. 4; Cynosure.

HOWARD SCALZO **"Scalywag"**

Class Bsktbl. 3, 4; Clubs: Dram. 2, 3, 4; Glee 4; H. R. Sec. 2, Pres. 3, 4; Stu. Cncl. 3; A Capella Choir 4; Per. Att. 3; Cynosure; Senior Play.



**RUTH SCHILLING****"Til"**

Cheerleader 3, 4; H. R. Sec. 4; Cynosure; Secretarial Appointment.

EDMUND SCHNEIDER**"Eddie"**

Class Bsktbl. 2, 3; Clubs: Aviation 1; Stamp 2; Junior Prom Decorating Committee; Photography 4.

INGEBORG SCHNEIDER**"Inkey"**

Clubs: Latin 1, 2; Debate 1, 2; Ger. 2, 3, 4; Comm. 4; Cynosure; Secretarial Appointment.

JOSEPH SCHNEIDER**"Schnitz"**

Clubs: Civic Forum 1, 2; Debate 1; Glee 1; Swing Band 1, 2; Sr. Play Committee.

LA VERNE SCHNELL**"Verne"**

Paddle Tennis 2; Clubs: Glee 2, 3; Comm. 3, 4; Cynosure; Senior Play Committee.

FRANKLIN SCHOENBERG**"Skip"**

Sure of his way, quick in finding it.

GEORGE SCHUBERT

No better pal; no surer friend.

SIDNEY SCHWARTZ**"Sid"**

Clubs: Chem. 1; Debate 1; Band 3; Orch. 1, 2; Librarian 3.





ELEANOR SCHWEITZER "EI"

Bsktbl. 2; Paddle Ten. 2; Badminton 2; Clubs: Lit. 3; Comm. 3; Library Squad 2; H. R. Pres. 2, V-Pres. 4.

SALVATORE SEDIA "Sammy"

Baseball 3, 4.
Calm as a summer's day;
Patient in every way.

SALLY SHANAHAN

Clubs: Glee 2, 4; Photography 2, 4;
May Festival 2, 4.

ALEX SHEPHERD "AI"

Glee Club 2, Sec. 3, Pres. 4; A
Capella Choir 3, 4; Dram. Club;
Cynosure; Perfect Attendance 1, 2, 3;
Senior Play Com.



SYLVIA SHUMSKY "Syl"

Glee Club 1, 2, 4; May Festival 1, 2, 4.

EUGENIA SHUPEK "Genie"

Clubs: Lit. 2, 3, 4; Comm. 3, 4;
H. R. Pres. 2; Chron. 3; Cyno.; Sec.
App.; Per. Att. 1, 2, 3; Senior Play
Committee.

ROMOLA SHUR "Ronny"

Girls' Sports 4.
Skill and beauty walk hand in hand.

PAULINE SILWONES "Paul"

Basketball 4; Clubs: Aviation 3;
Photography 4.





JEANETTE SMITH

"Smitty"

Clubs: Civic Forum 1; Fr. 2, 3;
Dram. 2, 3, 4; Glee 1, 2, 3, 4; Lib.
Squad 2, 3, 4; Cynosure.

SOLLY SMOLENSKY

"Smole"

Jr. Prom. Dec. Committee.

EDWARD SOBAN

"Happy"

Class Treas. 3; Per. Attend. 1.
Always laughing, always gay,
His smile will drive your cares away.

JOHN SOOS

"Zeus"

He isn't quiet, he isn't loud,
He likes to mingle with the crowd.

LEONARD SPANJERSBERG

"Lenny"

Always laughing, always a joke on
hand.

EILEEN SPRINGER

"E"

Home Ec. 2; Aviation 3; Makeup 4;
Photo. 4; Basketball 4; Perfect At-
tendance 2.

HELEN STAHR

"Honey"

Commercial Club 3; Cynosure; Secre-
tarial Appointment.

STEPHEN STAUB

"Staub"

Perfect Attendance 2.
Quite contented with the world.





EDNA STEWART

"Stew"

Glee Club 1, 2, 3, Pres. 4; Mixed Chorus 1, 2, 3, 4; All-St. Chorus 2; Swing Band; Cynosure.

MAUDE SUCHAND

French Club 1, 2, 3, 4; Per. Attendance 1, 2, 3; Cynosure; Senior Play Committee.

HELEN SUDIA

"Blondie"

Glee Club 1; Assist. Class Treas. 1; Jr. Prom. Dec. Committee.

EDWARD SULIGA

"Eddie"

"An all round friendly fellow."



HELEN SZALAY

"Slip"

When it comes to moods,
She prefers to be happy.

BLANCHE THEILER

"Midgie"

Glee Club 1; Library Squad 2.

MARGARET THOMAS

"Margie"

Clubs: Art Sec. 2, V-Pres. 3; Puppet 3; Dram. 3, 4; Photo. 4; H. R. Pres. 1, 3; Barn Dance Com. 3; Sec. Jr. and Sr. Class Sec. Student Council 3.

THELMA TOBIASSON

"Toby"

Clubs: Lit. 3, 4; Photo. 4; H. R. Sec. 1, 3, Pres. 2; Chron. 3.



**BETTY TOMLINSON****"Bet"**

Clubs: Civic Forum 1; Debate 1; Ger. 2, 3, Sec. 4, Treas 4; Math. 3, 4; Glee 2, 3; Lit. 3; Chronicle 2, 3, 4; Cynosure 4.

ALICE TONNEMAN**"Al"**

Glee Club 4; A Capella Choir 4; Secretarial Appoint.; Senior Play Committee.

DOROTHY TRUDEL**"Trudy"**

Clubs: Ger. 2, 3, 4; Glee 1, 2, 3, 4; Rifle 1; Per. Attend. 1.

OSCAR TUCKER II**"Gray"**

Clubs: Civic Forum 2; Dram. 4; Glee 3, 4; Cynosure; Jr. Prom Dec. Com.; A Capella Choir 3, 4; H. R. V-Pres. 3, Pres. 4.

DOUGLAS TURNER**"Doug"**

J. V. Ftbl. 3, Vars. 4; H. R. Pres. 3; Stu. Cncl. Pres. 4; Jr. Class V-Pres.; Stu. Coun. Consti. Com. 3; Barn Dance Com.

THOMASINA TWADDLE**"Tommy"**

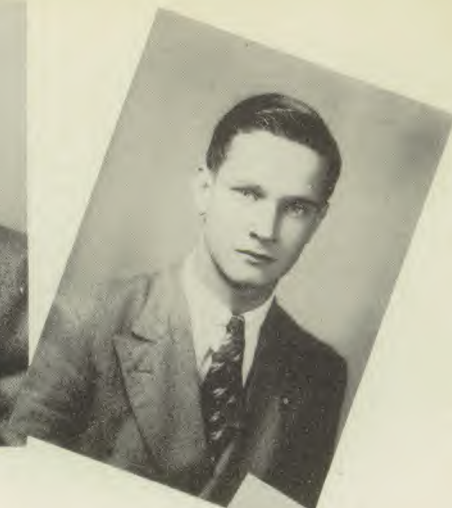
Clubs: Fr. 2, 4; Lit. 2, Sec. 3, V.Pres. 4; Glee 1, 3, 4; Girls' Special Chorus 3, 4; A Capella Ch. 3, 4; Accompanist for Boys' Glee Club 4; Sec. Staff; Co-Chairman Cynosure Reporters.

THEODORE TYBURSKI**"Ted"**

In-Class Bsktbl. 2, 3, 4; J. V. Ftbl. 2, 3, 4; Inter-Class Track 2, 3, 4; Fish and Game Club.

ANNE VALEGA**"Shrimpie"**

Comm. Club; Cyno.; Chron.; H. R. Pres. 2; Sec. Appoint.



STEVE VOLOVAR

We grant, although he has much wit, he is very shy of using it.

DOROTHY VAN SAVAGE "Dotty"

Commercial Club; Band 1; Cynosure; Secretarial Appointment.

HARRIET WALES

"Scotty"

Volleyball 3, 4; Basketball 3, 4; Foul Shooting 3, 4; Paddle Tennis 4; Badminton 4; Baseball 4; Track 3, 4.

EMIL VARGA

"Aim"

Interclass Basketball 2; Vars. Basketball 3, 4; Vars. Baseball 3, 4; Interclass Track 4.

DOROTHY WALSH

"Dot"

Secretarial Appointment. She's jolly, yes, throughout the day. We've never seen her another way.

ROBERT VEALS

"Bobby"

Chem. Club 1, 2, 3, 4; H. R. Pres. 4; Treas. 3.

MARGARET WEBER

"Webbie"

Glee Club 1, 2, 3, 4; Perfect Attendance 1, 2, 3.

MARIE VENA

"Re-re"

Clubs: Glee 1, 2, 3, 4; Stamp 1; All State Chorus 2; May Festival 1, 2, 3, 4.





JANET WEINER

"Weinie"

Clubs: Glee 1, 4; Dram. 2, 3, 4; Makeup 2, 3, Pres. 4; Civic For. 1, 2, 3, 4; Debate 1, 2, 3, 4; Lib. Squad 1; Band 1, 2, 3; Jr. Prom Com.

MARGARET WENIS

"Midge"

Comm. Club 3, 4; Cynosure; Sec. Appointment; Chronicle 3; H. R. President 2, Sec. 3.

ANDREW WHITE

"Andy"

H. R. V-Pres. 1, Treas. 2; Stud. Council 4; Jr. Prom Comm.

GEORGE WHITE

"Whitey"

J. V. Football 3; Per. Att. 2.

BETTY WIEDING

"Duchess"

Comm. Club 3, 4; Per. Attendance 1, 2, 3, 4; Chairman Sec. Staff 4; Dec. Committee Jr. Prom.

FLORENCE WIESER

"Flo"

Baseball 3, 4; Dec. Committee Barn Dance; Dec. Committee Jr. Prom.

DOROTHY WILKINSON

"Dottie"

Volleyball 2, 3, 4; Basketball 3, 4; Paddle Tennis 2, 3, 4; Baseball 3, 4; Track 3, 4; Foul Shooting 2, 3, 4; Badminton 2, 3, 4; Glee Club 2, 3, 4.

ARTHUR WILLIAMS

"It is the mind that makes the man and Arthur's vigor is in his immortal soul."





LILLIAN WOYTOWICZ "Woyt"

Sports 1, 2, 3, 4; Comm. Club 3;
H. R. Pres. 1, Treas. 2, 3, 4; Cynosure.

ARNOLD WILPON "Arnny"

Clubs: French 1, 2, 3, 4; Math 2, 3, 4; Orchestra 1, 2, 3.

RUSSELL WINANS "Russ"

Jr. Dec. Com.; Dram. Club 2, 3, 4;
Lit. Club Play; Sr. Play Committee;
Chronicle 4.

LYDIA WOLTER "Lyd"

Study is her chief delight.
Literature Club 3, 4.

ALICE WOOD "Woodsie"

Clubs: Glee 1, 3; Civic Forum 1, 4;
Jr. Prom Dec. Com.

BETTYMAE WRIGHT "Betsy"

Commercial Club 3, 4; Cynosure.

ISABELLE WYBER "Scotty"

Nothing is impossible to a willing heart.

OLGA YADLOWSKI

Volleyball 2, 4; Foul Shoot. 2, 4;
Bsktbl. 4; Paddle Ten. 2, 3, 4; Bad-
min. 2, 4; Baseball 2, 4; Library
Squad 1; Glee Club 1; Comm. Club
3; Cynosure; Senior Play Committee.





PAUL YURICK

Baseball 3, 4.
Silence is true wisdom's best reply.



JOSEPH ZEMAITIS "Zemie"

Interclass Bsktbl. 1, 2; Vars. Bsktbl. 3;
J. V. Ftbl. 3, Vars. Ftbl. 4.



LEONARD ZIRLIN

Dramatic Club 2, 3, 4; Comm. Club
3, 4; H. R. Treas. 1.

CLASS OFFICERS

Virginia Blancke.....Treasurer
John Gaydos.....President
Joseph Novalany.....Vice President
Margaret Thomas.....Secretary

**SENIOR HOME ROOM
CHAIRMEN**

William Beksi
Michael Lazo
Mary O'Halloran
Lewis Goetz
Oscar Tucker
Howard Scalzo
Warren Ericsson
Manuel Mendelson

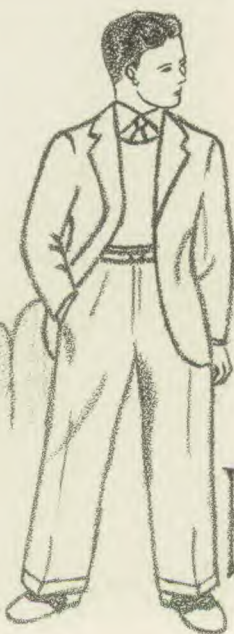




JUN IORS



Sophomores



Freshmen

marion
muldoon



ROW 1—W. Coody, H. Czuczak, L. Derrig, A. Bergenstock, S. Andrews, E. Alber, J. Belt, J. Barr, B. Dubrowski, A. Davids. ROW 2—P. Doklia, E. Fazekas, H. Andersen, A. Baszak, E. Bednar, S. Drewniak, L. Baum, L. Chernikoff, J. Colish, J. Chabak. ROW 3—V. Christel, R. Airel, H. Bauman, S. Berkowitz, A. Angelo, J. Behun, E. Dagnes, O. Aimone, B. Barat. ROW 4—E. Eska, J. Dombrowski, P. Demyanovich, W. Daniels, A. Del Col, M. Bebkowitz, C. Beksi, G. Christoff. ROW 5—S. Denniston, W. Daw, M. Derelanko, F. Dudley, R. Egles, W. Barsce, W. Deveikis.

Junior

ROW 1—M. Wagner, B. Byko, D. Weid, D. Casey, M. Thomas, J. Zanetti, C. Bazunas, R. Wigger, P. Wetzel, A. Bernard, H. Stofan. ROW 2—V. Tanzi, M. Berlinski, E. Carson, H. Wiewiorska, R. Vaughn, E. Casino, J. Trautmann, G. Tripp, F. Budsock, D. Boyle, E. Vigdor. ROW 3—W. Woytowicz, A. Angelo, W. Borkowski, S. Buchy, J. Bocson, L. Urbanowitz, A. Cadet, S. Tepperman, A. Bayda, R. Warne, T. Wilkinson. ROW 4—D. Tracy, W. Willmot, M. Veverka, J. Caruso, M. Burin, A. Wesolowski, C. Calladine, M. Tomalavage. ROW 5—E. Zander, S. Yashinowitz, H. Vasnelis, B. Sumer, G. Butchko.





ROW 1—A. Gorecki, B. Sterner, S. Spaeth, P. Stetz, M. Gaydos, M. Gantly, G. Ferriše, M. Gregory, W. Slys, I. Simpson, M. Sepela. ROW 2—A. Stevenson, B. Gonska, H. Golad, J. Simmel, E. Sep, C. Sedia, J. Stasil, E. Soos, S. Greenfield, J. Griscik. ROW 3—J. Zavoda, J. Zemba, J. Staanyk, K. Smith, M. Schubert, R. Schreck, E. Zych, A. Zavoda, E. Soboćinski, L. Hade, W. Sinclair. ROW 4—D. Starosciak, J. Filmonchik, T. Gesek, H. Sidloski, J. Flanagan, S. Graziano, R. Gallo, D. Haefner. ROW 5—H. Fishkin, E. Spildooren, J. Gadek, R. Greenfield

Groups

ROW 1—S. Pivarnik, A. Pribush, A. Samalonis, C. Roden, F. Pecesky, B. Highfield, S. Pyrtek, A. Savitsky, L. Potyk, D. Scheebel, D. Petuskey, M. Poley. ROW 2—L. La Ferrara, A. Gorecki, L. Handera, I. Sara, G. Fendler, R. Harkins, A. Rosenberg, E. Hering, D. Ristau, M. Rashkind, R. Reichardt. ROW 3—G. Sauer, L. Roels, E. Hade, R. Gellin, L. Pugash, S. Schneider, H. Harkins, J. Percival, T. Roberts. ROW 4—N. Rolband, J. Riggi, H. Rosen.





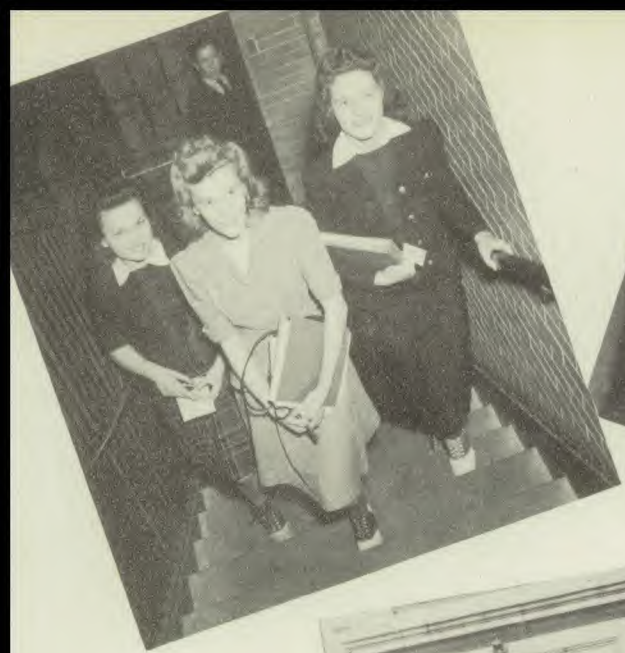
ROW 1—B. Houlroyd, D. Martone, R. Jack, F. Juliano, S. Morrison, I. Hudak, E. Hobokan, C. Moore, J. O'Halloran, H. Jurcsisin, T. Noviello. ROW 2—M. Pagacik, E. Hornbaker, C. Newmark, D. Idec, R. Gellin, C. Schreck, M. O'Krepky, R. Martin, E. Olenick, V. Nash, ROW 3—E. Miller, S. Mehrman, N. Matrunich, L. Natkiewicz, W. Schneider, J. Monek, V. Moretti, E. Markant, F. Hnat, S. Nezgodowicz. ROW 4—E. Jackson, W. Johnson, S. Karmel, F. Messina, E. Mileski, A. Markowitz, W. Mueller, F. Hoerl, M. Pasternak. ROW 5—E. Johnston, S. Orgel, S. Kaplan, S. Nelson, G. Nichols, T. Miliano.

Groups

Junior

ROW 1—V. Kelly, M. Kohl, E. Komoroski, W. Kelly, T. Lissenden, E. Loos, C. Lechner, A. Lukas, L. Koscielniak, L. Kondracki, M. Kochie. ROW 2—E. Kohlmyer, G. Kostyack, H. Lowsky, J. Levine, H. Kulfinski, E. McCluskey, H. Kozak, A. Lenser, C. McGovern, A. McCormack. ROW 3—A. Mack, B. Kreitzman, M. Kovacs, G. Lapidus, R. Kaufmann, E. Lebowitz, C. Makowski, R. Kostyack, C. Klin, W. Koester. ROW 4—W. McArdle, J. McCarthy, H. Kutzenko, E. Keller, H. Leiderman, A. Lacaskey, R. Lebel, P. McCarthy, G. Kontra.





ROW 1—J. Bajusz, M. Stellitano, M. Dilibatis, L. Sirkin, O. Matlaga, S. Holland, B. Lebowitz, S. Klotz, A. Rosoff, H. Blacklock, L. Pakulski.
 ROW 2—M. Jagodinski, J. Wagenbach, O. Dennis, M. Burns, B. Bakunas, E. Ross, I. Gers, D. Coddington, D. Batt, H. Harvan, M. Eichhorn.
 ROW 3—A. Miklosy, J. Prentice, C. Dvorin, F. Muldoon, M. Posnock, E. Kaplowitz, D. Zeitchik, M. Glasston, J. Gauer, H. Chapman.
 ROW 4—P. Schulman, W. Christoffers, G. Andersen, C. Baldwin, G. Hicinbotham, P. Fairbank, D. Blanke, R. Dalziel, P. Eisenberg, A. Dodd.
 ROW 5—N. Chaplick, V. De Marco, J. Ruppeikis, R. Gettis, P. Barr, J. Dooley, H. Fecho.
 ROW 6—J. Lockwood, E. Garbus, N. Haefner.



land 2

Sophomores

ROW 1—V. Loveland, F. Riggi, D. Borek, E. Lendack, J. Laskoski, L. Krumenaker, S. Miller, S. Mason, J. Sonderland, M. Sweet, A. Koscielniak, E. Silady.
 ROW 2—E. Marson, D. Lewis, E. Welser, C. Morrison, J. Isler, S. Isler, H. Nelson, R. Bosco, R. Moscato, G. Carpin, D. Meyers, N. Popowitz, M. Seamans.
 ROW 3—C. Regenbrecht, A. Bushinsky, R. Dvorin, H. Nikola, R. Ball, G. Kominetsky, G. Mick, S. Milochik, S. Stives, F. Mannuzza, J. Polly.
 ROW 4—A. MacMillan, E. Adler, M. Quaid, L. Hrynicky, B. Tuthill, S. Kimmelman, N. Klawunn, E. Wagner, S. Shumsky.
 ROW 5—W. Lehr, A. Rahocik, E. Moody, J. Bara, D. Pullen, J. MacGee, H. Zeitchik, W. Horoch.





ROW 1—S. Wilpon, H. Davis, M. Kube, F. Peirano, L. Bartsch, D. Schwartz, B. Meyer, M. Shupek, E. Mahoney, G. Huff, J. Stankowitz, J. Venezia, A. Palermo. ROW 2—J. Orandash, J. Kurasz, H. August, B. Quinlin, E. Balak, E. Winans, D. Seaman, C. Buckley, L. Urbanski, H. Smith, K. Turner, P. Mummolo. ROW 3—L. Nawrocki, J. Jasurek, O. Phillips, L. Swirsky, W. Davidson, E. Hodges, G. Stolar, W. Skliar, E. Rubin, R. Surgens. ROW 4—R. Wood, F. Hunter, C. Lamont, A. Wighton, H. Spader, W. Kochan, J. Hooton, P. Zapolin, G. Widom.

Sophomores

Band 4



ROW 1—B. Buchmann, A. Leiderman, D. Humcke, A. O'Keefe, J. Fersjerowski, S. Gorczyca, M. Wyber, M. Mihalko, G. Gellin, M. Weber, M. Szczepaniak, H. Kowalski, A. Beriont. ROW 2—A. Chase, B. Shoplock, G. Deveikis, L. Broesamle, M. Forberger, R. Hladinec, J. Gelis, E. Ashworth, G. Cacchione, S. Cargle, D. Murphy. ROW 3—A. Burnam, O. Holmes, J. Hunter, F. Kubalak, E. Fischer, D. Barge, M. Babinec, E. Walsh, F. Kapitan, A. Anthony, L. Evans. ROW 4—M. Goncharik, L. Parker, J. Arnold, I. Wernock, M. Prascik, L. McGann, J. Aubrey, O. Billick, G. Bernard, B. Ryan, E. Baum. ROW 5—J. Bilarczyk, S. Silwones, J. Beline, M. Guydan, J. Sahli, E. Lebinski, J. Israel, G. Kuhn, M. Piccoli.



ROW 1—I. McGrath, I. Stefanick, F. Sotnychuk, D. Solsky, D. Pemberton, C. Miller, V. Petraitis, D. Tokar, L. Sherman, L. Parfitt, H. Lewandoski. ROW 2—V. Nelson, R. Kalvin, R. Joerns, H. Micenko, M. Drake, M. Moore, L. Kluben, C. Stewart, A. Sussman, J. Mahar. ROW 3—R. Carmody, E. Nartowicz, R. Oyer, S. Margolis, T. Mannuzza, M. Mortensen, O. Gibbert, M. Janasie, C. Hamann, C. Opusak, F. Mannuzza. ROW 4—E. Galinat, H. Oehme, R. Keimig, C. Carolina, A. Stauch, R. Daniel, W. Meyers, M. Micenko, W. Blum, W. Mason, S. Radomski.



Sophomores

5 and 6



ROW 1—E. BREEN, R. Mayer, M. Gallo, A. Zavoda, R. Provenzano, M. Trocina, M. Halapi, L. Graseck, D. Kitzler, R. Rist. ROW 2—T. Skladanek, A. Basso, M. Walasek, E. Weiss, D. Zemaitis, M. Tomalavage, B. Mellor, B. Conisha, M. Contreras, C. Brugger, A. Fontana. ROW 3—C. Dixon, M. Clark, V. Gall, E. Forstenhausler, H. Carson, H. Clemenko, S. Woznak, M. Lello, M. Harrold. ROW 4—F. Twyford, A. Petralia, E. Byrne, E. Wolf, E. Reap, T. Tracy, C. Dackerman, J. Fill, J. Guzzo. ROW 5—C. Winans, R. Venezio, R. Denniston, C. Barefield, C. Bukofsy, E. Earles, P. Buchy, E. Beecher, D. Callender.





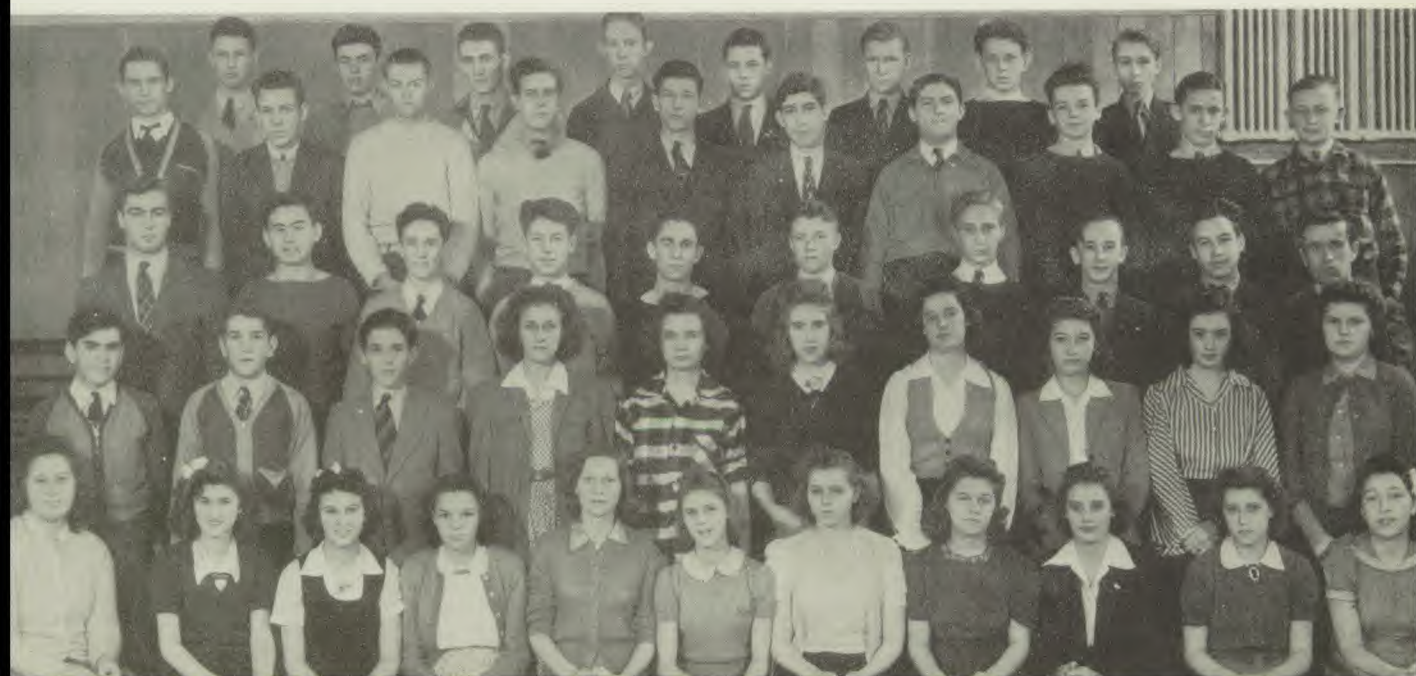
ROW 1—W. Wagner, P. Valega, J. Teffenhart, E. Kormmeyer, L. Paserba, T. Morrison, R. Bosco, L. Bianco, G. Matey. ROW 2—W. Krus, W. Mays, T. Zamorski, B. Higley, F. Mason, H. Dudash, H. Jackson, M. Risko, J. Slahetka. ROW 3—J. Messina, R. Marhan, S. Spugani, J. Lozowski, A. Cartinella, R. McCartney, G. Bruns, S. Soban. ROW 4—J. Harper, J. Kowalski, J. McDougall, E. Lukenda, C. Meszaros, H. Haligowski, E. Olbrys, J. Gesek, L. VanSomeran. ROW 5—R. Lukenda, W. Hunter, L. Andersen, C. Babulski, J. Popyk, H. Diamond, R. Cadmus, C. Tylutki.

Sophomores

7 and 8



ROW 1—E. Faget, C. Foti, S. Grimmer, C. Daniels, E. Gibbert, I. Schleck, B. Christel, S. Kawalec, A. Helman, A. Hoptay, V. Yamony. ROW 2—V. Russo, S. Berry, D. Joffe, L. Falkowski, F. Wadors, M. Manz, S. Davis, F. Yamakaitis, G. Costello, D. Farrell. ROW 3—S. Flanagan, R. Van Jaeckel, R. Christel, J. Smith, A. Wietrzykowski, F. Sweeney, A. Wersneski, A. Senise, G. Furman, T. Murphy. ROW 4—J. Martinko, W. Kanzlar, B. Strohkirsch, J. Romanosky, G. Walasek, M. Adler, M. Hatzlhofer, R. Hora, M. Chengeri, A. Klin. ROW 5—R. Brown, J. Devine, R. Stagich, R. Hoerrner, J. Halm, S. Wesolowski, G. Vansnelis, R. Dunn.





ROW 1—J. Farrell, H. Havel, P. Duffy, E. Richvalsky, D. Schioppa, L. Finkel, R. Quinn, D. Feciuch, T. Merlo, H. Lake, D. Klass, J. Truncala, E. Darsey. ROW 2—P. Theiler, P. Krotulis, J. Wojcik, E. Roseman, E. Russ, A. Orik, C. Lasek, M. Machnowski, H. Nycz, R. Kuchar. ROW 3—P. Floyd, D. Casterlin, G. Bihm, J. Francuz, H. Gresczyk, M. Gordon, E. Szuba, R. Leiser, A. Yawornisky, F. Chiamonte. ROW 4—K. Gabrick, E. Knapp, H. Febick, T. Miller, H. Sadowitz, G. Loya. ROW 5—J. Kendall, A. Kubiak, A. Krenek, A. Fenska, D. Spader, E. Hempel, G. Kisslan, W. Wendel, T. Caruso, N. Chiamonte.

Freshmen

ROW 1—P. Aubrey, K. Krochmalny, H. Christoff, M. Meccia, M. Barth, B. Kontra, M. Paglia, R. Nadel, A. Vidnanski, M. Metzger, M. Faede, E. Carhart. ROW 2—A. Wojtkowski, J. Spata, S. Sansone, P. Fedirko, M. Wierzbicki, C. Griffith, M. Getchis, A. Geles, F. Schiafone, T. Reczka, B. Marony, W. Svoboda, J. Schaefer, P. Eastman, E. Stanislawski, A. Stanke. ROW 3—D. Carson, W. Pahos, M. Haney, T. Bonner, J. Sosinski, G. Lechner. ROW 4—N. Danchisko, R. Sotnychuk, H. Dennette, H. Rozborski, T. Clements, T. Hemenway, F. Rumbauskas, P. Vena, C. Chase, A. Tempalsky. ROW 5—V. Tracy, B. Byko, K. Peterson, G. Kelley, H. Messenger.

2





ROW 1—E. Shuski, I. Mendel, S. Mudry, G. Kline, M. Vaughn, B. Manasse, F. Miller, M. Linek, A. Rosenbaum, S. Cuvala, V. Carley. ROW 2—E. Carter, G. Duffy, E. Perry, P. Ryszewska, R. Evangelista, A. Beres, Y. Fekishazi, G. Mullmann, D. Flath, A. Zander, L. Graham. ROW 3—J. Barrett, S. Cole, M. Muldoon, C. Contreras, A. Blum, K. Durdaik, F. Forte, M. Cuperwich, H. Engle. ROW 4—E. Eiva, T. McGovern, G. Handera, S. Recknagle, M. Przybylski, B. Heller, A. Elowitz, R. Garster, T. Lazo. ROW 5—E. Kohutt, G. Papsun, H. Golad, J. Orzechowski, T. Kubas, R. Brown, M. Dittemer, R. Martone, M. Muzycka.

3

Freshmen

ROW 1—M. Mazurek, C. Dooley, J. Kennedy, G. Lawson, I. Gorecki, E. Mullen, V. Brady, B. Newman, P. Eisenberg, C. Rennick, A. Christie, T. Plausek, A. Collins. ROW 2—G. Glick, F. Lesko, J. Kasko, N. Berg, J. Seiler, M. Chapman, E. Price, R. Serra, H. Perlmutter, A. Horn, R. Chase, M. Cohn. ROW 3—R. MacMillan, P. Sawyer, E. Bolan, R. Tuttle, G. Iannacone, J. Rochman, A. Potyk, G. Messer, D. Barbarich, A. Depczynski, G. Sytch. ROW 4—S. Kaplan, J. Funk, B. Fairbank, T. Coody, J. Liss, R. Branch, H. Flynn, B. Arnold, J. Jamison, J. Bloom, C. Marr, R. Payne. ROW 5—M. Adler, J. Pencak, T. Pfeuffer, R. Nelson, A. Edzek, J. Michaels.

4





5

ROW 1—L. LaTourette, D. Westermann, C. Mannuzza, A. Bilak, E. Pilot, M. Aimone, S. Suliga, P. Marshall, G. Therezo, P. Fowler, K. Harvey, E. Ekarius. ROW 2—M. Zepht, D. Kress, M. Wanca, D. Tracy, L. Komoroski, A. White, G. Houlroyd, S. Kaplan, B. Weil, D. Conk. ROW 3—J. Stalowski, C. Poleski, F. Tomlinson, J. Sorbera, R. Schaeffer, D. Caggiano, J. Reagan, J. Dooley, C. Naiman, G. Blacklock, R. Mack. ROW 4—E. Rayon, H. Warshaw, S. Aurne, E. Kiel, R. Whitley, D. Villani, G. Stadnyk, H. Wishna, W. Hrabinsky. ROW 5—H. Tomaszewski, J. Ziemian, P. Musso, J. Fialkowski, E. Zaborowski, R. Dittmer, R. Brown, E. Ericsson, A. Roehm.

Freshmen

ROW 1—M. DiLeo, A. Ondeyko, M. Sinnott, B. Arnold, N. Pawlikowski, F. Berlinski, E. Hempel, H. Wegryn, M. Natkiewicz, M. Wood, H. Rozborski, H. Barsce. ROW 2—J. Kasser, N. Kravitz, J. Pomper, O. Micenko, M. Fernau, S. Idec, J. Skubish, H. Walchek, M. Devoto, M. Pader, L. Lewandoski, R. Goldstein. ROW 3—T. Simcsak, B. Wigginton, G. Wohltman, V. Murray, V. Gurnsey, E. Gladdis, A. Paffrath, R. Pavlacka, C. Figman, S. Halas, E. Demyanovich. ROW 4—R. Hoffman, D. Barg, A. Donchue, A. Laramée, M. Ferguson, D. Freyman, J. LeVay, B. Kostrubianics, M. Goggans, M. Finn, E. Kerr. ROW 5—M. Boyle, M. Hogrise, J. Frank.





ROW 1—A. Bowman, R. Hart, C. Gregorcik, L. Stevenson, R. McCartney, M. Radomski, M. Rahoche, L. Burton, D. Burleigh, T. Ferrise, C. Colish, E. Glinka. ROW 2—E. Hackenberry, R. Francaviglia, H. Bersey, O. Zavoda, I. Wans, F. Watson, O. Stanki, V. Maruhnic, R. Geller. ROW 3—J. Mitko, H. Evans, B. Cox, H. Gallo, V. Jacob, E. Antes, C. Kadlac, P. Malinowski, S. Tylutki, B. Kopek, C. Frank. ROW 4—A. Gireb, E. Hunter, L. Dass, R. Dittrich, P. Horowitz, E. Rybinsk, G. Kovas, C. Carral, M. Raiffe. ROW 5—A. Valane, R. Carroll, I. Jacobs, W. Donnelly, S. Koskey, R. Callahan.

7

Freshmen

8 ROW 1—S. Zaborowski, M. Welser, B. Pentz, A. Zurawski, B. Pfitzenmayer, J. Wegrzynowski, M. Wallace, E. Werda, E. Pavlik, B. Lesko. ROW 2—V. Woytowicz, A. Duda, M. Gallo, R. Tornambe, D. Kaiser, L. Greene, J. Tracy, G. Thieme, B. VanSavage, A. Shiel, J. Maul. ROW 3—G. Linn, G. Orek, I. Seaman, K. O'Halloran, E. Wilsen, D. Peal, B. Thompson, G. Queen, A. Tanzi, M. Schulman. ROW 4—F. Majewski, P. Szczczyk, J. O'Reilly, C. Pirroco, L. Schellhamer, W. Kazary, W. Belt.



9

ROW 1—R. Nawrocki, H. Matuska, J. Holmes, L. Febick, M. Lunney, H. Sherry, V. Higley, E. Edwards, O. Kochie, B. Dedina, F. Jones, L. Jamison. ROW 2—W. Schnarr, J. Stahar, A. Waiton, F. Hudowicz, M. Papkow, R. Egnar, A. Wersneski, D. McLean, S. Niemczyk, W. Petrovich, A. Davids, J. Heeney. ROW 3—M. Chechko, P. Zaitz, W. Nixon, E. Komar, P. Zaitz, G. Silverblatt, A. Cuperwich, G. Milkosky, J. Swkovich, A. Lorencie. ROW 4—R. Hoffman, L. Starosciak, W. Yadlowski, R. Pileagi, W. Myers, H. McCloud, S. Solsky, P. Podeszwa, E. Flanagan, L. Dombrowski, L. Potochney.

Freshmen

ROW 1—R. Pytlowany, H. Wenek, M. Wernes, F. Szczepaniak, E. Young, D. Sahli, D. Schreck, R. Klett, E. Natkiewicz. ROW 2—J. Kobylakiewicz, E. Chornoboy, W. Kennedy, J. Cafaro, H. Lawson, J. Messer, R. Schioppa, J. Silwones, J. Eisenkerch, G. Yacik, C. Gergich. ROW 3—S. Romanowski, S. Mazza, K. Lyons, R. Goodman, J. Streno, R. Weber, A. Schmid, R. Green, A. Jozefyk. ROW 4—R. Klett, C. Kadlac, D. Kelly, A. Kashork, A. Bundonis, P. Wolar.

10





ACTIVITIES



ERIC Pedersen



Activities

"Activities"—this magic word holds the key to successful enjoyment of one's stay at the Linden High School. It is often by participation in some of the varied activities that a student finds himself, discovers some degree of the natural talents he possesses and puts them to good use. Nowhere does one have more opportunity for wholesome extra-curricular activities than in Linden High School. A balanced program of sports, dramatics, journalism, literature, and forensic work tends to create in the typical graduate a well-equipped and useful citizen, a worthwhile member of society, a credit to the community. In the field of athletics encouraging leaders and persevering students have combined time and time again to produce teams which have taken their place with the finest. No year has passed when Linden High has not accomplished some outstanding feat in the world of sports. Dramatics, home economics, literature, journalism, and forensic work all provide ample opportunity for the expression of one's fondest hopes and ambitions.



La Societe Francaise

The French Club is an honor club. In order to become a member, a French student must earn a grade of "A" or "B" in the first marking period. The minutes are written in French, and translated into English for the benefit of first year students. The French, German, and Latin Clubs combined at their Christmas meeting, where Christmas carols were sung by the three clubs and a musical program arranged by the French Club was presented. Talks on famous heroes of France such as Roland, Charlemagne, and Joan of Arc are presented at the meetings. The meetings are opened by singing the French National Anthem, "La Marseillaise." The officers are Alberta Davis, president; Hugh Harkins, vice-president; Lily Lesko, secretary; Sheldon Wilpon, treasurer, and Miss Noddin, faculty adviser.

ROW 1—E. Mahoney, P. Eisenberg, A. Christie, B. Newman, L. Lesko, S. Wilpon, Miss Noddin, A. Davis, H. Harkins, B. Lebowitz, S. Holland, H. Perlmutter, G. Halloran. ROW 2—A. Miklosy, L. Potyk, I. Perlmutter, S. Morrison, L. Glassberg, F. Baicofsky, A. Leiderman, L. Sirkin, H. Stofan, C. Roden, J. Seiler, L. Koscielniak. ROW 3—A. Mahoney, A. Galen, M. Posnock, D. Lewis, T. Twaddle, A. Rosenberg, R. Harkins, E. Kozak, A. Brady, M. Chernotsky. ROW 4—L. Hrynicky, E. Bolan, P. Leib, S. Stives, G. Stolar, F. Mannuzza, G. Carpin. ROW 5—H. Leiderman, J. MacGee, A. Wilpon, J. Bara.





ROW 1—D. Barge, R. Tuttle, H. August, H. Nikola, J. Smith, F. Lesko, D. O'Donnell, J. Stankowitz, C. Rennick, F. Berlinski, A. Christie. ROW 2—G. Cacchione, N. Pawlikowski, M. Mazurek, Miss Waterman, M. Natkiewicz, M. Horsch, A. Rosenbaum, M. Meccia, S. Cuvala, D. Conk. ROW 3—D. Kress, M. Zepht, C. Buckley, A. Collins, E. Gladdis, M. Contreras, Miss Kleiman, B. Jagodinski, G. Houlroyd, A. Hunt. ROW 4—D. Freyman, B. Pentz, E. Price, J. Simmel, R. Vaughn, M. Goggans, A. Donahue, A. Laramie.

Library Squad

The Library Squad, a group of students who work voluntarily to gain experience in library work, are assigned to certain duties, such as stamping books borrowed by students, shelving books and magazines, writing out fine slips, keeping book shelves neat and orderly. Usually it is recommended that students have good grades to do this work, as each must spend at least two study periods a week plus an afternoon after school in the library. Some members come before school to deliver books or notices to classrooms. The Club meets the first Wednesday of each month, and sometimes combines with the Literature Club. Often a person outside school is invited to talk. This year Miss Alice Bible from Westfield High School gave a very interesting talk concerning the "Surgical Unit of the Red Cross" and work being done by school children in this vicinity. In November a group of girls from the Squad visited the Teaneck Junior-Senior High School, which has two well equipped libraries. The officers of the Club are Jean Smith, president; Janet Simmel, vice-president; Helen August, secretary; Miss Waterman, adviser.

Girl Reserves

The purpose of this club is to "find and give the best." It is a branch of the Y. W. C. A., and has been associated with the school this year. The meetings are held every first and third Wednesday immediately after school. The club members have been very active this year. They helped a needy family at Christmas time. They held a swim meet at the Y. M. C. A. To become a member of this club a girl must go to high school and live up to rules of the club. This club offers a chance for girls to join together and discuss topics that interest them. It offers girls a chance to meet other Girl Reserves and compare ideas and activities. The officers are Ann Denise McCormack, president; Dorothea Casey, vice-president; Dorothy O'Donnell, secretary; Ruth Jack, treasurer; Mrs. Boudier, leader; Miss Halsey, representative from Y.W.C.A.

ROW 1—S. Greenfield, D. Weid, R. Jack, D. O'Donnell, Mrs. Boudier, A. McCormack, D. Casey, D. Martone, H. Stofan. ROW 2—D. Murphy, E. Soos, G. Huff, H. Mahar, I. Sara, L. Handera, C. McGovern, C. Roden, M. Moore. ROW 3—J. Zanetti, F. Juliano, E. Balak, D. Seaman, B. Byko, G. Ferrise, A. Zavoda.





ROW 1—S. Holland, A. Sussman, J. Smith, L. Glassberg, A. Perzley, Miss Gilkeson, L. Knohl, M. Berlinski, F. Pecesky, K. Cavanaugh, L. Sirkin, B. Lebowitz. ROW 2—M. Thomas, M. Poley, M. Chernotsky, H. Harvan, E. Soos, M. Gregory, R. Jack, H. Stofan, A. Galen, C. Berlinski, M. O'Halloran, S. Morrison. ROW 3—M. Moore, A. Miklosy, J. Zanetti, D. Weid, E. Olenick, A. McCormack, V. Blancke, M. Butler, S. Pyrtak, M. Glasston, H. Czuczak, A. Leiderman. ROW 4—W. Perzley, R. Martin, L. Pugash, M. Rashkind, M. Posnock, E. Kaplowitz, D. Zeitchik, M. Mortensen, E. Welser, G. Bernard. ROW 5—O. Tucker, J. Horner, H. Scalzo, W. Hunter, A. Shepherd, L. Loveland, R. Nuber, W. Palermo, F. Hoerl.

Dramatic Club

The Dramatic Club is one of the most interesting clubs in the entire school. It is a pleasure and also an honor to belong to it. To become a member you must be voted into the club. When you apply, there are certain requirements to observe. First you must be a freshman, and second, you should have your application in on time, towards the end of your freshman year. On this application you may state what phase of dramatics you are interested in, and how much experience you have had. You will get your invitation at the end of your freshman year and it will be both an honor and a pleasure to look forward to three full years in the Dramatic Club. Of course there are enough jobs for everybody in the club. Acting is the most important and probably the hardest, but almost all the members get a chance, at some time or other during their three years, to act on the stage with a large audience full of friends they want to please. And that is something the Dramatic Club always does. It pleases its audience. Other phases of work in the Dramatic Club are make-up, stage managing, costumes, house, directing, prompting, speech classes, scenery and many other interesting odd jobs. All these things are ably supervised by Miss Gilkeson, faculty adviser. Every year the Dramatic Club gives two performances, one in the spring and one in the fall. The latter is after school and you need a ticket to attend. This fall the club gave "Antic Spring" and "Quiet, Please." The former was a one-act comedy, outstanding for its humor. "Quiet, Please" concerned two hill-billy brothers who were always quarreling, but temporarily became friends. The stage and scenery crew had a great deal to do with the success of that play. The spring production was entitled "Black Out" and was a mystery which took place in England. It was very appropriate for these times and was very well acted.

Mathematics Club

The Mathematics Club has been of great help and interest to the students concerned with the practical application of mathematics in our scientific world of today. Each meeting consists of a short business discussion, with the remainder given over to the program committee. The programs consist mostly of mathematical quiz shows, which deal with the oddities of mathematics and histories of important men. In the spring members are given the opportunity to do extensive field work. The club has in its possession many instruments which are used in finding the heights of buildings and distances across lakes and ponds. Officers of the club are Charles Hollosy, president; Jeanette Levine, vice-president; Peggy Farrell, secretary; and Dorothea Casey, treasurer. Miss Reynolds is the faculty adviser.

ROW 1—L. Lesko, R. Kimmelman, M. Eichhorn, J. Levine, P. Farrell, C. Hollosy, Miss Reynolds, D. Casey, H. Harvan, A. Koscielniak, S. Klotz. ROW 2—A. Gushin, J. Bajusz, E. Welser, J. Zanetti, B. Tomlinson, V. Blancke, A. Brady, P. Wetzel, M. Glasston, S. Morrison, J. Barr. ROW 3—A. Kaplan, W. Krivit, B. Winans, D. Lewis, A. Davis, D. Weid, A. Miklosy, M. Kovacs, H. Nikola, A. Palermo. ROW 4—J. Dooley, C. Plungis, B. Cohen, S. Berkowitz, S. Graziano, W. Gyurk, W. Horoch, J. MacGee, D. Blancke. ROW 5—H. Harkins, A. Wilpon, S. Kaplan, S. Litwin.



Home Economics Club

The Home Economics Club met the first Wednesday of each month to further interest in fields of sewing, cooking, and homemaking. To become a member a girl must have received an A or a B in Home Economics subjects during the first marking period. One of the most interesting programs was a speech, "What We Can Do For Defense," by Miss Culick. In conjunction with this speech, posters concerning proper nutrition were made by the girls and placed in the cafeteria. An initiation party and a dance, the usual social activities, were given. The officers of the club are Kathleen Cavanaugh, president; Mary Moore, vice-president; Ruth Jack, secretary; Irene Sara, treasurer; Miss Leland and Miss Ware, faculty advisers.

ROW 1—H. Wegryn, H. Blacklock, M. Mazurek, M. Moore, K. Cavanaugh, Miss Ware, Miss Leland, R. Jack, I. Sara, R. Francavigilia, B. Becker, D. Westermann. ROW 2—J. Wagenbach, E. Mahoney, E. Demyanovich, J. Kennedy, D. Barge, H. Rozborski, R. Hoffmann, H. Christoff, I. Gorecke, M. Wood, M. Aimone, E. Pepe, C. Dooley. ROW 3—M. Pader, A. Kruchas, F. Posnock, E. Mullen, F. Schiafone, A. White, D. Kress, G. Thieme, S. Cuvala, E. Nartowicz, G. Wohltman, A. Koscielniak. ROW 4—V. Maruhnic, S. Andrews, O. Stanke, G. Denniston, D. Hammer, E. Springer, M. Danchisko, C. Babinec, L. Harrell, A. Brady, M. Devoto, O. Zavoda, H. Mahar, S. Cohen.







Senior Play

The class of '42 presented as its annual senior play a modern comedy in three acts by Florence Ryerson and Colin Clements, entitled "Ever Since Eve." It was presented at a matinee performance on February 5, and at two evening performances February 6 and 7. The play was coached by Miss Gilkeson, ably assisted by Maude Suchand, stage manager and Helen Miller, assistant stage manager. The play was a great success and was enjoyed by young and old alike. The plot centered around the office of the "P. H. S. Penguin," school paper of which Johnny Clover (Bill Palermo) was editor-in-chief, while his chum Spud Erwin (Howard Scalzo) was business manager. Mrs. Clover (Virginia Blancke) and her absent-minded husband (George Robinson) agreed to let Johnny use his old nursery for the office, as it was across the street from the school. Things began to pop, however, when Susan Blake (Ruth MacIntosh), Johnny's childhood playmate, and Betsy Erwin, Spud's sister (Annette Perzley) were appointed as assistant editors in order that the girls might be represented. Important to the plot of the play was Lucybelle Lee (Eleanor Montesi), a southern belle who had all the boys worshiping her. She visited the office of the Penguin and persuaded Johnny to print a poem that she had written, in the Christmas issue of the Penguin. When Spud and Johnny got the measles and Susan and Betsy took over the editing of the paper, things really got mixed up. The Christmas issue sold at the Christmas Dance caused a riot; it announced the marriage of Miss Willard (Leatrice Knohl), a popular teacher in the high school, to Mr. Quinn (Roland Nuber), the principal, thus giving "Old Quinsy" the incentive needed to ask her; Lucybelle's poem was found to be advertising a junk yard; she had a temper tantrum and refused to go to the dance with Johnny and Spud, both of whom had asked her to go. The play ended happily, however, when apologies were made and explanations given. The curtains closed as Johnny and a new Susan—grown-up in a new evening dress and gold slippers—went off to the dance with Spud and Lucybelle, while Mr. and Mrs. Clover looked on lovingly. Long to be remembered for their fine performances were Harold Lyons as Officer (Cappy) Simmons, who had known the "kids" all their lives; Johnny Karalis as Preston Hughes, the conceited captain of the football team who was another of Lucybelle's numerous swains; and last, but not least, those never-to-be-forgotten football players: Lew Goetz, LaVerne Loveland, Chris Phelan, Joseph Schneider, John Murphy and Robert Ludvinaitis. As always, there were more people responsible for the success of the play than those actually taking part. Various committees were responsible for everything used or worn by the actors and actresses. The property committee under the supervision of Miss Lang and Mrs. Hardin had the immense task of furnishing a boy's office-desk, telephone, couch, bookcase, and rug—besides the various "odd" objects which found themselves being used. Included among these were a clothes-wringer, wheelbarrow, baby carriage, keg of salt herring, and bird-cage. We can realize now the job they must have had; those on the committee were Alice Brady, Lillian Feciuch, Olga Duroska, Al Gano, Oscar Tucker, and Olga Yadowski. To the costume committee went the task of finding complete wardrobes for the main characters, football suits for seven football players, and a policeman's uniform for Cappy. This committee, under Miss McBride, included Marilyn Jenkins, chairman, Beatrice Fazio, LaVerne Schnell, Lillian Marshall, Margaret Wenis, Lewis Goetz, Charles Jacobson, and Joseph Schneider. The stage committee, made up of Andrew Kinsella, Joe Novalany, John Caydos, Joseph Zemaitis, and Alex Shepherd, had the job of making the scenery and the fireplace, and had charge of the lighting and sound effects. These boys worked under the direction of Mr. Yeisley. Those who made up the various players were Janet Weiner, chairman, Ann Galen, Lela Glassberg, Margaret Thomas, and Selma Rosenthal. Those responsible for the sale of tickets and the reserving of seats were Alice Tonneman, chairman, Agnes Danchisko, Phyllis Hilts, Ruth Kubiak, Dorothy McCartney, Eugenia Shupek, Matilda Chernotsky, and Charlotte Ratel, with Mr. Buckman as faculty chairman. The committee responsible for the choice of the play were Roland Nuber, chairman, Virginia Blancke, Helen Goncharik, Russell Winans, and Miriam Darsey, under the supervision of Miss Ranney. Orchids to the actors, the committees and to Miss Gilkeson for one of the finest plays ever given here in Linden High School. Last, but not least, were those girls who acted as usherettes. They worked under the supervision of Miss Rose. They were, on Friday night, Barbara Hammer, Myrtle Morrison, Harriet Wales, Mildred Lenser, Ruth Schilling, Bettymae Wright, Doris Mellor; on Saturday night, Muriel Brugger, Marion Opusak, Jeanette Smith, Jean Coddington, Peggy O'Neill, Marie Vena.



Literature Club

The members of the Literature Club are people vitally interested in poetry, good books, and creative work. This year they sponsored a poetry and essay contest, awarding a prize of \$2.50 to the person submitting the best work in each of these two classes. Every other meeting is held in conjunction with the Library Squad. In this way members of both organizations meet many interesting speakers. Miss Maihl of the Linden Public Library spoke this year to the members about new books. Everyone enjoyed and profited from her opinions. In the spring the club presented a comedy, "Bargains in Cathay," as an assembly program. This was a delightful comedy about the romance between a young man who wishes to write poetry and the young woman who works in the book department of his father's store. She encourages his writings, against the father's wishes, and many exciting complications result. The club is sponsored by Miss Page, with officers as follows: president, Leatrice Knohl; vice-president, Thomasina Twaddle; secretary, Marilyn Jenkins; treasurer, Olga Duroska.

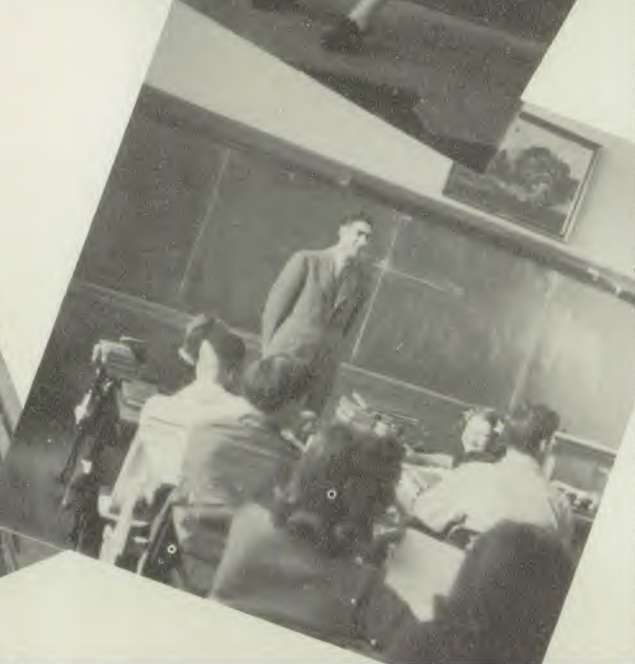
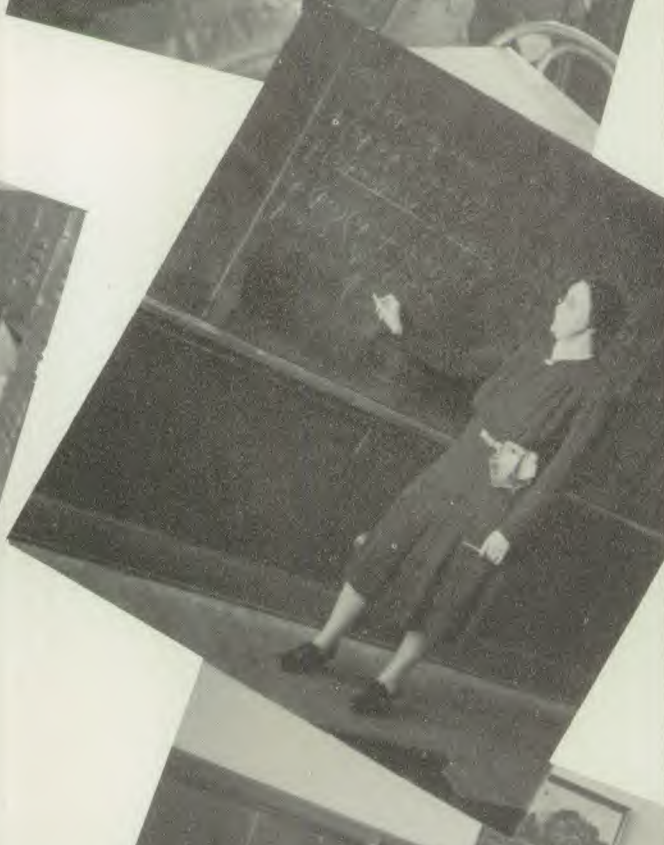
ROW 1—T. Twaddle, O. Duroska, L. Knohl, Miss Page, S. Holland, L. Sirkin, A. Gushin. ROW 2—L. Wolter, J. O'Halloran, S. Morrison, L. Glassberg, A. Leiderman, A. Anthony, J. Fersterowski, B. Lebowitz. ROW 3—M. Kantor, L. Marshall, E. Shupek, M. Chernotsky, L. Parker, T. Tobiasson, J. Orgel, J. Barr. ROW 4—H. Rosen, J. Levine, H. Goncharik, S. Orgel.

Civic Forum Club

The Civic Forum Club is one of the most active clubs in school, and it is also one of the most popular clubs with the students. The boys and girls enjoy coming to meetings because they can give their own opinions on current topics. Everyone tries to participate at each meeting. Price Control, What Industry Can Do To Aid in the Emergency, What the Individual Can Do to Aid in the Emergency and many other subjects have formed the basis of the discussions for this year. The Civic Forum Club gave a forum in assembly on the topic "What the Individual Can Do to Aid in the Emergency." Those participating in this very successful program, later repeated for a Parent-Teacher meeting, were Alice Miklosy, Stanley Berkowitz and Symona Klotz. The club also held its annual public forum. The officers are Burton Cohen, president; Judith Barr, vice-president; Anne McCormack, secretary; Louis Chernikoff, treasurer.

ROW 1—A. Sussman, R. Kimmelman, A. McCormack, B. Cohen, Miss Lang, L. Chernikoff, J. Barr, A. Perzley, S. Klotz. ROW 2—C. Jacobson, H. Sadowitz, D. O'Donnell, M. Kantor, S. Greenfield, E. Baum, L. Knohl, O. Tucker, M. Adler, A. Stevenson. ROW 3—R. Kaufmann, W. Perzley, R. Greenfield, A. Harden, H. Rosen, W. Hunter. ROW 4—S. Orgel, W. Krivit, H. Leiderman.





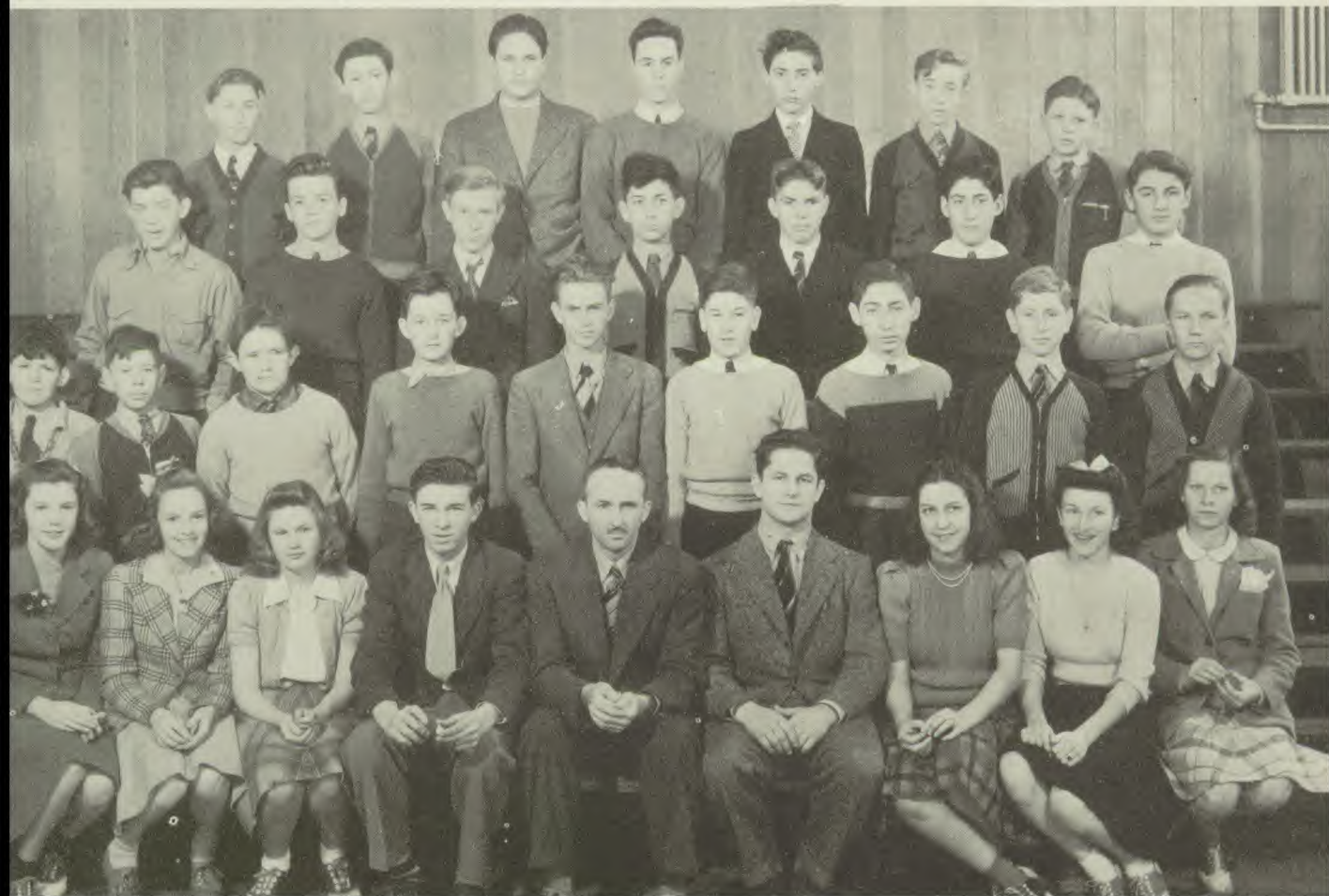
Aviation Club

Every year a large number of students apply for admission to the Aviation Club, which meets the second Wednesday of each month. This year, because of the war, students are keenly aware of aviation's great importance. The club has co-operated splendidly with Mr. Dudley in building model planes for the United States government. They are made out of gum and pine wood. It has also placed on exhibition, in the school library, a model plane as a constant reminder of the slogan:

"The more stamps you buy,
The more planes will fly."

Several of the club members conducted quiz programs and others gave illustrated talks on planes. Sometimes they discussed such topics as gliders, construction of planes, aviation as a profession, models, flying, and the like. It has been the custom of the club to take a trip in May to Newark or Westfield Airport and give many students the thrill of their first airplane ride. This year, because of the war restrictions, the freedom of the airports is very limited. Therefore the club decided not to take any of these trips but instead use the money saved in buying defense stamps. The officers are, president, Vladimir Matlaga; vice-president, Edward Philips; secretary, Eleanore Olenich; treasurer, Herbert Nikola; faculty adviser, Mr. Ruch.

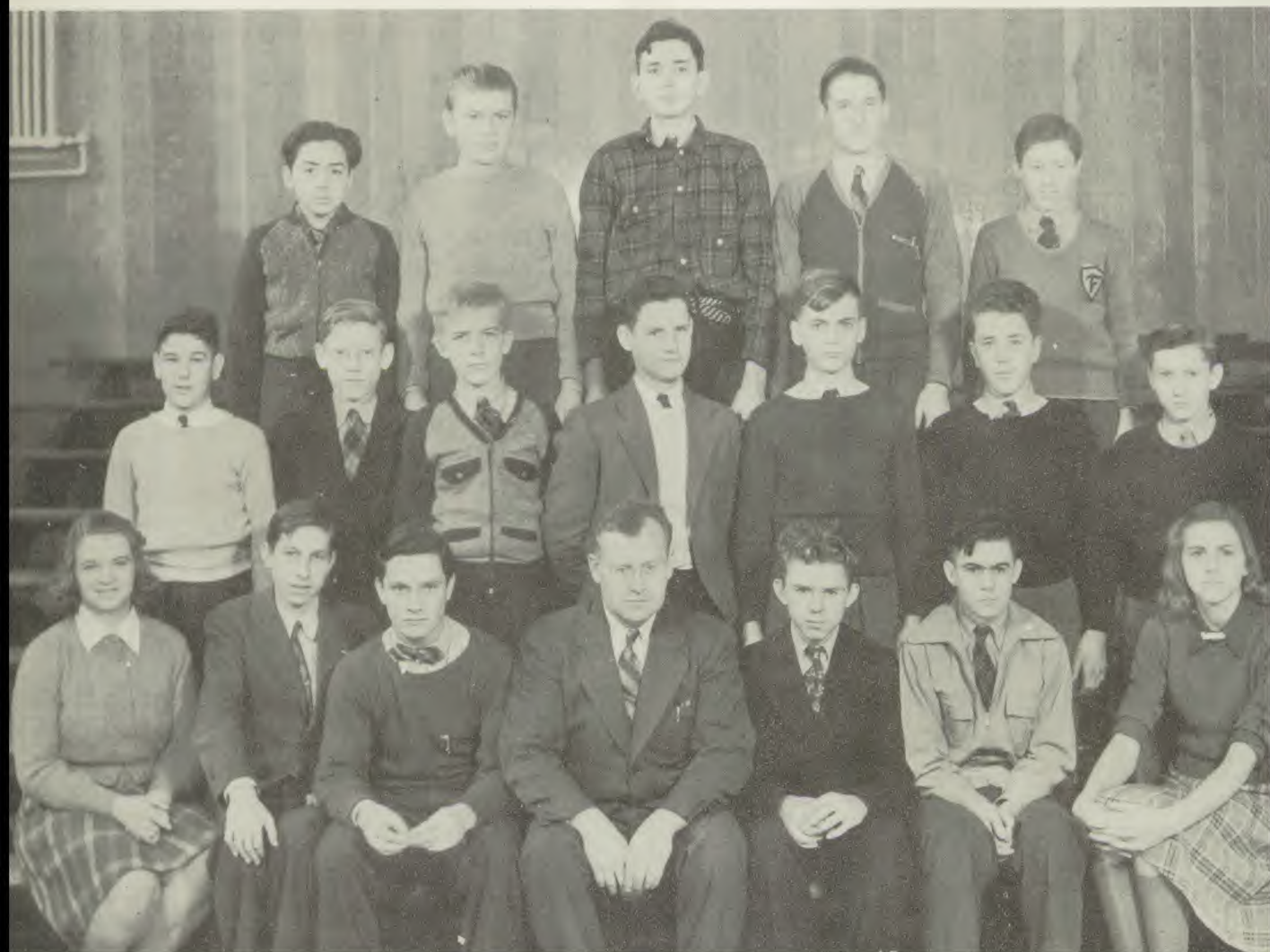
ROW 1—D. Coddington, D. Batt, M. Burns, W. Lambert, Mr. Ruch, V. Matlaga, E. Olenick, M. Walasek, E. Gibbert. ROW 2—M. Cohen, W. Schnarr, C. Naiman, B. Fairbank, R. Weber, P. Sawyer, J. Rochman, B. Heller, A. Depczynski. ROW 3—W. Davidson, R. Hora, G. Iannacone, S. Kimmelman, H. Nikola, W. Skliar, F. Mannuzza. ROW 4—E. Chornoboy, R. Dvorin, B. Tuthill, G. Weilandic, E. Rayon, R. Greene, M. Hochrum.



Chemistry Club

The Chemistry Club, which was formed to afford extra time for experiments and research work to various members of science and chemistry classes who felt they could use it, held very many interesting meetings this year. These meetings were usually in charge of various members of the club, under the supervision of Mr. Diehl, faculty adviser of the club. One meeting was devoted to reports on new developments in current science during the past year, while at another the production of electricity with a home-made apparatus was demonstrated. One very popular program was that dealing with explosives in which volcanoes and gunpowder were made. The officers of the club are Robert Veals, president; Charles Regenbrecht, vice-president; Alex MacMillan, treasurer; William Lehr, secretary; Mr. Diehl, faculty adviser.

ROW 1—P. Wetzel, W. Lehr, R. Veals, Mr. Diehl, C. Regenbrecht, A. MacMillan, I. Seaman. ROW 2—T. Sawyer, R. Tuttle, O. Phillips, E. Hodges, R. Surgens, R. Whitley, K. R. Turner. ROW 3—H. Warshaw, N. Klawunn, J. Mickales, W. Meller, F. Lesko.



The Photography Club

The Photography Club, one of Linden High's most interesting and informative clubs, holds its meetings once a month. Such subjects are discussed as cameras, lenses, lighting, and other topics pertaining to photography. Not all of the members know how to develop, print, or enlarge their own pictures. These novices are taught how to begin work. The club has a work-shop, situated between the physics and chemistry laboratories and provided with the necessary chemicals and apparatus (except cameras, which the members themselves own) from the club's dues. The room may be used by any of its members after school. The club is beneficial not only to its members but also to the rest of the school, because a few of the members help in getting some of the pictures of baseball, basketball, and football, plays, classrooms, shops, and other interesting snapshots of the school and its activities for the year-book. The membership has to be restricted because of the lack of space. The value of this club to a student even after he has left high school can be seen to be great, because it may turn out to be the beginning, not only of a life-long hobby but even of an interest in a profession which is prominent and may be even more so in the future. The officers are Barbara Byko, president; Anna Zavoda, secretary; Sally Shanahan, treasurer; Mr. Walker, adviser.

ROW 1—H. Wishna, W. Coody, B. Byko, Mr. Walker, S. Shanahan, A. Zavoda, A. Horn. ROW 2—D. Barbarich, E. Springer, T. Tobiasson, P. Silwones, M. Thomas, E. Ericsson. ROW 3—J. Peterson, R. Lebel, E. Zaborowski, J. Pencak, R. Brown, W. Runck.





ROW 1—F. Kapitan, M. Kube, D. Schwartz, A. Pribush, P. Stetz, J. O'Halloran, Mr. Moldaschl, B. Tomlinson, M. Aimone, H. Jurcsisin, A. Gushin, M. Berlinski. ROW 2—L. Broesamle, P. Farrell, I. Schneider, E. Loos, V. Nash, E. Soos, C. Berlinski, B. Houlroyd, J. Zanetti, C. Lechner, P. Wetzel, C. Dvorin. ROW 3—D. Kress, K. Harvey, D. Casey, R. Jack, D. Weid, V. Blancke, D. Seaman, D. Lewis, E. Welser, M. Glasston, F. Muldoon, H. Harvan, M. Eichhorn. ROW 4—C. Regenbrecht, W. Koester, B. Barat, F. Springer, H. Fecho, R. Airel, S. Litwin, J. Berkowitz, O. Aimone, D. Blancke, V. Tanzi. ROW 5—S. Berkowitz, W. Gyurk, P. Demyanovich, C. Hollosy, J. Karalis, D. Turner, J. Dooley.

German Club

It is impossible during the present war to study anything about Germany today. No one really knows anything that is happening. The German Club has felt, however, that by learning about Germany's former habits and ideals we shall more easily be able to understand their present conditions. By knowing the people's background there will be a better understanding at the close of this war. The club has learned much about customs and songs before the first world war. The programs were very entertaining as well as educational. The club has also carried on its regular activities with great success. The officers are Catherine Dooley, president; Betty Tomlinson, secretary-treasurer; Mr. Moldaschl, faculty adviser.



ROW 1—E. Shupek, B. Fazio, A. Havel, M. Billy, M. Morrison, A. Danchisko, Mr. Hergenhan, A. Valega, L. Feciuch, A. Tonneman, O. Duroska, A. Kaiser. ROW 2—I. Stefanick, I. Schneider, T. Lissenden, S. Pyrtek, L. Hunt, G. Intili, D. MacCartney, L. Potyk, M. Butler, F. Pecesky, D. Solsky, A. Bernard. ROW 3—A. Mann, O. Billick, B. Hammer, B. Wright, H. Kulfinski, V. Cox, D. Mracek, D. Mellor, J. Aubrey, G. Bernard, E. Baum, M. Vena. ROW 4—B. Wieding, D. Gall, A. Lenser, L. Baum, D. Ristau, S. Drewniak, L. Schnell, D. Van Savage, A. Pierce, M. Wenis. Row .5—A. Donnelly, H. Goncharik, M. Goncharik, S. Nelson, M. Lenser, C. Dunay, M. Mortensen.

Commercial Club

This year produced a great change in the Commercial Club. As many of last year's members graduated, it was necessary to build up the membership. Mr. Hergenhan, the new faculty adviser, led the discussion wherein the aims of the club were slightly changed. The old members agreed that it was not only fair to the underclassmen but wise to admit them if they had two commercial subjects. In this way these sophomores would prepare themselves to carry on the tradition of a Commercial Club when they became seniors, not to mention the increased aid they would get from such a membership. The second meeting showed the club to be quite large, and it was decided that there would not be any further additions. Elections were then held. After a discussion regarding the programs of the future meetings, the president appointed a committee to take advantage of the suggestions and prepare a program for the next meeting, which was the third Wednesday of the month. The meetings covered such topics as "How to dress for an interview for a job;" "How to prepare yourself for various clerical positions such as typists, stenographers, or filing clerks;" "How to be on the alert and not remain in a rut if you are capable of promotion." With this good start the graduating members hope that the Commercial Club will continue its good work in acquainting students with what to expect from the world and how to handle the problems of a working world. The officers of the club are Marilyn Jenkins, president; Myrtle Morrison, vice president; Agnes Danchisko, secretary; Anne Valega, treasurer; and Mr. Hergenhan, adviser.



Chronicle Staff

ROW 1—S. Klotz, A. Miklosy, M. Moore, A. McCormack, S. Orgel, L. Chernikoff, Mrs. Ashwell, R. Kimmelman, L. Glassberg, M. Glasston, I. Sara, D. Casey, J. Zanetti. ROW 2—W. Gyurk, B. Byko, J. Denniston, E. Soos, S. Pivarnik, H. Stofan, B. Houlroyd, V. Blancke, P. Farrell, B. Tomlinson, F. Baicofsky, S. Morrison. ROW 3—F. Schiafone, H. Christoff, L. Knohl, M. Chernotsky, C. Dvorin, B. Gonska, H. Mahar, G. Ferrise, F. Juliano, M. Sepela, A. Savitsky. ROW 4—R. Tuttle, E. Miller, L. Pugash, R. Schreck, A. Brady, L. Baum, D. Ristau, A. Lenser, E. Hering, S. Drewniak, B. McArdle. ROW 5—R. Keimig, W. Billick, J. McCarthy, C. Hollosy, H. Leiderman, H. Rosen, W. Krivit, S. Litwin.

EDITORIAL STAFF

Editor in Chief.....Ruth Kimmelman News Editor.....Louis Chernikoff
Editorial Editor.....Lela Glassberg Feature Editor.....Mona Glasston

REPORTERS—Virginia Blancke, Alice Miklosy, Dorothea Casey, Jean Zanetti, Ann McCormack, Vincent Tanzi, Seymour Tepperman, Mary Moore, Warren Gyurk, Al Shepherd, Russ Winans, Eugene Bolan, Florence Baicofsky, Alice Brady, Matilda Chernotsky, Charlotte Dvorin, Mary Gregory, Betty Houlroyd, Charles Hollosy, Russell Keimig, Leatrice Knohl, Symona Klotz, Dorothy Kress, William Krivit, Bette Lebowitz, Herbert Leiderman, Seymour Litwin, William McArdle, Edward Miller, Selma Morrison, Emily Soos, William Palermo, James Reagan, Harriet Stofan, Betty Tomlinson, Robert Tuttle, Edward Zaborowski, Peggy Farrell.

BUSINESS STAFF

Circulation Manager.....Irene Sara Advertising.....Dorothea Casey, Manager
Walter Billick, Assistant

TYPISTS—Grace Ferrise, Chairman; Barbara Byko, Jean Denniston, Flora Juliano, Lorraine Pugash, Margaret Sepela, Claire Schreck, Ruth Schreck.

COLLECTORS—Chief of Staff, Irene Sara, Stella Drewniak, Dorothy Ristau, Eleanor Hering, Betty Gonska, Alice Lenser, Mary Moore, Virginia Loveland, Theresa Reczka, Florence Schiafone, Louella Baum, Susan Pivarnik, Anne Savitsky, Helen Mahar, Helen Christoff.

Exchange Editor.....Sidney Orgel

FACULTY ADVISERS—Helen Bryan-Ashwell, Helen McCormack, Sara Light, Helen Bugbee, Dot Casement.





Secretarial Staff

Almost everyone has heard of the Secretarial Staff, but he really doesn't know much about it. As you read on, reasons for having such a staff will be made clear. Miss McBride chooses for every teacher who has enough work to warrant a secretary a girl who works for her teacher-employer for one-half year. During this period she does stencil work, typing, mimeographing, stenography, and many other types of work which give her invaluable secretarial experience. Each marking period the teacher for whom the young woman is working sends in a sheet grading her on her personal appearance, initiative, courtesy, self-reliance, and all other character traits which are definite "musts" in an office. The secretary sends in a sheet listing her duties and the time she spends at them. On many occasions a girl must give her study periods to complete the work given her by her teacher-employer. She must go after school regularly. At the end of a half year each girl is assigned to a new teacher. Thus she must again prove herself a competent and able secretary in new surroundings and under a new "boss." At various intervals Miss McBride has a conference with each girl, at which time she points out each one's good points and those where improvement is essential. Any work which a secretary may be too rushed to handle is put into the capable hands of someone on the Secretarial Staff, which is made up of those who are not given secretarial appointments. At the year's end every young secretary realizes that being an expert at her work requires more than knowledge learned from books.

ROW 1—D. Walsh, A. Valega, B. Fazio, A. Tonneman, M. Jenkins, Miss McBride, A. Havel, M. O'Halloran, M. Billy, R. Schilling, I. Schneider. ROW 2—H. Stahar, L. Marshall, R. MacIntosh, A. Kaiser, M. Wenis, E. Shupek, M. Morrison, M. Muldoon, A. Murawsky, B. Podolla. ROW 3—A. Mann, V. Cox, E. Montesi, D. Mracek, P. Hilts, M. Belan, A. Donnelly, D. VanSavage, B. Wieding, D. Gall. ROW 4—C. Dunay, R. Kubiak, H. Goncharik, M. Hoerner, A. Danchisko, M. Lenser, O. Duroska.





New Clubs

Because of the increasing number of interests shown by the students of Linden High four new clubs came into the already large circle of clubs. These were the Knitting Club, the Microscope Club, the Linden High School Fish and Game Club, and the Radio Club. The Knitting and the Radio Clubs have not fully organized this year and have elected no officers. The Knitting Club is working in cooperation with the Red Cross. Miss Smith is the instructing teacher. The Radio Club, under Mr. Yeisley's sponsorship, will try to teach students the rudiments of radio, both civil and military. With Mr. Scott as adviser, the Microscope Club has put in a very busy year, studying slides under the microscope and learning the parts of the microscope. Special entrance requirements make this club an honor to belong to. The officers are president, Stanley Berkowitz; treasurer, Emily Soos; secretary, Alice Lenser. The aims of the Fish and Game Club, re-organized after a lapse of several years, are to promote interest in field sports and to acquaint members with legislation concerning these sports. The club has already become a popular one. The officers of the club are president, Joe Messina; secretary, John Wagner; treasurer, James Smith; faculty adviser, Mr. Schott.





Cynosure Staff

ADVERTISING COMMITTEE

Dorothy Berman
Kathleen Cavanaugh
James Good
Helena Gonday
Harrison Heilman
Charles Jacobson
Gloria O'Connell
Annette Perzley
Selma Rosenthal
Oscar Tucker

CIRCULATION COMMITTEE

Ann Eichhorn
Lewis Goetz
Andrew Harvan
Andrew Kinsella
Walter Runck
Howard Scalzo
Jeanette Smith
Edna Stewart
Maude Suchand
Marie Vena
Lillian Woytowicz

ART COMMITTEE

Marilyn Jenkins
Chairman
Catherine Berlinski
Agnes Danchisko
Robert McArdle
Marion Muldoon
Eigil Pedersen

EDITOR
Burton Cohen
ASSOCIATE EDITOR
Marilyn Jenkins

FACULTY ADVISERS

Chief Adviser
Miss Ranney
Advertising Adviser
Miss McBride
Circulation Adviser
Mrs. Hardin

CLERICAL COMMITTEE

Olga Duroska
Chairman
Jean Alber
Alice Donnelly
Lillian Feciuch
Dorothy Gall
Helen Goncharik
Barbara Hammer
Anna Havel
Margaret Hoerrner
Frances Krenek
Mildred Lenser
Alice Mann
Lillian Marshall

ADVERTISING MANAGER
Lela Glassberg
CIRCULATION MANAGER
Margaret Farrell

Professional Photography
Adviser
Mr. Moldaschl
Amateur Photography
Adviser
Mr. Walker

Doris Mellor
Anna Murawsky
Beverly Podolla
Arlene Ratel
Charlotte Ratel
Ruth Schilling
Ingeborg Schneider
LaVerne Schnell
Eugenia Shupek
Helen Stahar
Anne Valega
Dorothy VanSavage
Margaret Wenis
Bettymae Wright

PHOTOGRAPHY COMMITTEE

Walter Billick
Robert Ludvinaitis
John Peterson
Walter Runck
Alex Shepherd

REPORTERS

Alberta Davis
Thomasina Twaddle
Co-Chairmen
Florence Baicofsky
Charles Barg
Mary Belan
Joseph Berkowitz
Virginia Blancke
Alice Brady
Matilda Chernotsky
Virginia Cox
Ann Galen
Walter Hicinbothem
Edmund Kardauska
Leatrice Knoch
William Krivit
Seymour Litwin
Dorothy McCartney
Robert McMillan
Myrtle Morrison
Dorothy Mracek
Judith Orgel
Jane Porter
Betty Tomlinson

Cynsawie



Committees



Circulation Committee

Cynsawie Photographers



Clerical Committee

Advertising Committee



Cynsawie Artists

Cynsawie Reporters





ROW 1—R. Egles, H. Leiderman, J. Berkowitz, P. Eisenberg, A. Cadet, Coach Goodwin.
 ROW 2—P. Wetzal, J. Schneider, F. Dudley, J. Russell, P. Vena, D. Joffe, J. Bajusz.
 ROW 3—E. Stewart, A. Kaplan, C. Moore, R. MacIntosh.

Dance Orchestra

Those students who attend the school dances sponsored by the various clubs always have an enjoyable time dancing to the music of the "Serenaders." Under the direction of Coach "Les" Goodwin, and accompanied by their charming vocalists, Edna Stewart, Ruth MacIntosh and Janet Bajus, our dance orchestra is a part of our school that we can rightfully be proud of. During the year the orchestra featured Joseph Schneider, who played the trumpet; Forest Dudley, the trombone; Herbert Leiderman, the saxophone; and our excellent pianist, Abe Kaplan. All were accepted as excellent soloists by those who heard their performances. Every year the students of Linden High look forward to the program given by the orchestra, and this year we listened to a bigger and better program than ever before.

Band

One of the major activities of the band this year was the concert that was played on March 27th. The band played a medley of American tunes under the direction of a guest conductor, Clarence J. Andrews, instrumental instructor at the Plainfield schools. Mr. Andrews also gave a cornet solo. The money that the band received for this concert started the fund that is required to buy new uniforms. The band expects to run a series of concerts and thus obtain enough money for a new set of uniforms. The band was prominent at all the football games, at our home field and at our adversaries'. Mr. Malpas, working with the Union Band, attempted the formation of a turkey and a pumpkin at the Thanksgiving Day game. Another item that sparked the band's appearance was the new uniforms of the majorettes, Anne Havel, Alice Mann, Winifred Kelly and Betty White. The band participated in national holiday parades in Linden on Memorial Day and Armistice Day. It played at several assemblies and P. T. A. meetings, and lent a helping hand to the rallies for the football games in the beginning of the season. The band instituted a new organization this year, the student band council. The purpose of this was to maintain discipline and organization of the band. It acquired two new french horns and a bell lyre. Instead of having individual practice with Mr. Malpas this year, a new schedule for different instrument groups was maintained, consisting of a rotating schedule of the different sections. Two members, Joe Berkowitz and Alfred Cadet, were sent to the State Band. The membership of the band has grown to 65 members.

ROW 1—J. Bloom, E. Hornbacker, A. Cadet, R. Arnold, W. Hicinbotham, A. Mann, A. White, J. Berkowitz, W. Kelly, A. Havel, S. Schneider, H. Zeitchik, D. Villani, J. Aubrey, S. Radomski. ROW 2—P. Demyanovich, H. Andersen, D. Weid, W. Mays, H. Fishkin, R. Ball, S. Klotz, R. Nuber, C. Dvorin, L. Chernikoff, J. Messer, R. Callahan, A. Roehm, D. Batt, A. Miklosy. ROW 3—E. Markant, C. Stewart, J. Sanderland, S. Mehrman, G. Mick, A. Koplowitz, I. Cody, J. Sorbera, A. Palermo, C. Regenbrecht, J. Guzzo, P. Eisenberg, H. Leiderman, A. Gushin, M. Zepht. ROW 4—P. Wetzel, F. Dudley, G. Kuhn, H. Tomaszewski, J. Russell, G. Peters, C. Marr, C. Carow, M. Sevac, A. MacMillan, R. Dittrich, B. Tuthill, R. Lebell, W. Palermo, D. Joffe.



Orchestra

What would our assembly programs be like without the musical preludes of the orchestra? Besides playing each Thursday, it has contributed its talent on several occasions. An excellent performance was given for the annual Christmas program and also between the acts of the Senior Play. This year, as in the past, representatives were sent to the All-State Orchestra in Atlantic City. Those sent from Linden were Anne Eichhorn, viola; Walter Runck, second-violin; Herbert Fishkin, second violin; and Robert Egles, string-bass. The officers are manager, Forest Dudley; assistant managers, Herbert Fishkin and Harold Mick; secretary, Anne Eichhorn; librarians, Peggy Wetzel and Dorothy Weid; faculty adviser, Mr. Malpas.

ROW 1—A. Eichhorn, M. Chernotsky, A. Leiderman, E. Welser, J. Barr, H. Chapman, C. Dvorin, J. Levine, D. Kress, Mr. Malpas. ROW 2—S. Klotz, W. Runck, G. Mick, E. Kiel, H. Fishkin, C. Makowski, J. Beruck, P. Wetzel, R. Egles, A. MacMillan, S. Silwones. ROW 3—W. Hicinbotham, A. Cadet, J. Berkowitz, M. Zepht, A. Gushin, C. Moore, M. Eichhorn, E. Wagner, A. Potyk, M. Meccia, J. Bilarczyk. ROW 4—D. Joffe, M. Sevack, B. Tuthill, E. Markant, G. Peters, R. Ball, H. Andersen, P. Demyanovich, D. Weid, H. Tomaszewski, F. Dudley.





ROW 1—G. Hicinbothem, B. Arnold, A. Pribush, G. Halloran, S. Rosenthal, L. Pugash, Miss Kantner, E. Stewart, D. Casey, H. Chapman, J. Smith, E. Demyanovich, R. Rrist. ROW 2—D. Seaman, A. O'Keefe, D. Feciuch, R. Nadel, D. Trudel, M. Weber, J. Bajusz, A. Bernard, S. Holland, A. Morgner, J. Stasil, J. Fersterowski, C. Griffith. ROW 3—D. Westermann, K. Harvey, E. Loos, D. Murphy, E. Soos, M. Shupek, E. Marson, M. Seamans, M. Eichhorn, D. Humcke, P. Aubrey, D. Conk, M. Natkiewicz, M. Linek. ROW 4—E. Baum, M. Poley, W. Kelly, F. Muldoon, E. Ashworth, V. Kelly, J. Porter, O. Zavoda, J. Gauer, F. Posnock, H. Jurcsisin, H. Walchek, B. Winans. ROW 5—M. Posnock, D. Lewis, P. Fairbank, S. Shanahan, V. Blancke, A. Brady, R. Vaughn, J. Simmel, A. White, G. Houlroyd, A. Kruchas, I. Haus.

Girls Glee Club

ROW 1—D. Zeitchik, L. Stevenson, L. Parfitt, R. Quinn, M. Wallace, S. Halas, C. Figman, P. Duffy, J. Truncale, A. Bilak, M. Metzger, H. Havel, J. Farrel, E. Kaplowitz. ROW 2—A. Tonneman, T. Merlo, C. Lasek, S. Idec, P. Marshall, J. Wojcak, M. Getchis, R. Hart, M. Finn, G. Gellin, J. Weiner, R. Gellin. ROW 3—M. Muldoon, E. Kozac, A. Rosoff, J. LaVay, M. Ferguson, B. Wigginton, A. Yawornisky, E. Szuba, M. Sinnott, G. Cacchione, H. Zatorski. ROW 4—M. Gregory, B. Quinlin, I. Armstead, A. Bowman, S. Tylutki, V. Nelson, M. Glasston, A. Eichhorn, A. Bergenstock, G. Peters, G. Huff, O. Billick. ROW 5—E. Casino, H. Kulfinski, A. Gorecki, A. McCormack, C. McGovern, D. Meyers, L. Parker, T. Twaddle, M. Vena, M. Gantly, R. MacIntosh.



Boys Glee Club



ROW 1—A. Cadet, M. Hatzlhoffer, J. Berkowitz, A. Shepherd, Miss Kantner, A. MacMillan, R. Nuber, E. Matrejek, S. Radomski, R. McMillan. ROW 2—A. Roehn, S. Berkowitz, E. Ericsson, A. Metzger, E. Kiel, S. Schneider, W. Gyurk, D. Ford, W. Schneider. ROW 3—K. Smith, G. Christoff, J. MacGee, W. Hicinbothem, R. Lebel, B. Tuthill. ROW 4—O. Tucker, H. Sadowitz, L. Loveland, H. Zeitchik, T. Murphy.

A Capella Choir

ROW 1—A. Bilak, B. Arnold, J. Fersterowski, E. Matrejek, O. Tucker, A. Roehn, Miss Kantner, R. McMillan, C. Stewart, G. Huff, A. Tonneman, M. Muldoon. ROW 2—R. Nadel, S. Holland, D. Conk, A. MacMillan, E. Ericsson, E. Zander, A. Cadet, A. Eichhorn, M. Eichhorn, R. MacIntosh, D. Casey. ROW 3—D. Humcke, E. Stewart, D. Seaman, A. McCormack, K. Smith, W. Hicinbothem, S. Schneider, E. Kaplowitz, H. Chapman, G. Peters. ROW 4—M. Poley, W. Kelly, J. Porter, A. White, H. Scalzo, D. Ford, J. Berkowitz, A. Bergenstock, D. Zeitchik, E. Winans. ROW 5—L. Parker, R. Vaughn, H. Zeitchik, A. Shepherd, L. Loveland, J. MacGee, R. Lebel, R. Nuber, E. Pugash, T. Twaddle.



Boys Glee Club

Water and air, He for the Tenor chose;
Earth made the Bass, the Treble flame arose.

—COWLEY

Every boy at some time likes to sing. Whether he is singing at work, or following a dance tune, or singing because he's happy, the urge is the same. In the Boys' Glee Club the boys have the chance to sing and at the same time learn vocal lessons. During the past year some thirty-five enjoyed a busy and profitable season. At their regular Wednesday afternoon rehearsals the boys perfected their Christmas and May Festival programs. Miss Kantner feels that this year's group has improved greatly. The officers who helped run the club were Miss Kantner, adviser; Al Shepherd, president; Joseph Berkowitz, treasurer; Roland Nuber, secretary; Alex MacMillan, librarian.

A Capella Choir

"The beauty and inspiration of music must not be restricted to a privileged few, but be made available to every man, woman, and child." This year the A Capella Choir, under the direction of Miss Claire Kantner, is trying to bring this idea to Linden High School. They are trying to show that anyone with a little knowledge and love of music can enjoy taking part in it. The students of Linden High are showing their appreciation of the Choir's work by the splendid attention they give at the various programs. "The Dizzy Baton," a musical comedy, was enjoyed by all who saw it. The fine acting and singing of Alex Shepherd, as the crazy professor, will be remembered as one of the stage highlights of the year. At the May Festival, the Christmas program, and the P. T. A. meetings the A Capella Choir was one of the outstanding numbers on the program. Several solos sung by Edna Stewart and Alex Shepherd helped to round out an entertaining program.

Regular officers of the Choir are: Ruth MacIntosh, president; David Ford, secretary; Anne Eichhorn, librarian. Three of the members of the A Capella Choir were members of the All-State Chorus, and took part in the concert at Atlantic City last November. These were Edna Stewart, first soprano; Edmund Matrejek, first bass; and Joseph Berkowitz, first tenor.

Girls Glee Club

The Girls' Glee Club is the largest musical organization in the school, consisting of over 150 girls. They meet on Tuesday afternoons eighth and ninth periods. Each year the combined glee clubs have charge of the Christmas program. The girls solemnly march down the aisles with lighted candles in an effective processional. When they are on the stage the combined glee clubs sing Christmas carols in keeping with the spirit of Christmas. The May Festival is a much-looked-forward-to event in the lives of the students. The proceeds are used to send representatives to the All-State Chorus. Those students chosen this year were Edna Stewart, Joseph Berkowitz, and Edmund Matrejek. The officers of the club are Edna Stewart, president; Ruth MacIntosh, secretary; Dorothea Casey, treasurer; Lorraine Pugash and Helen Chapman, librarians; Miss Kantner, director.

The 1942 May Festival had as its theme "Should Old Acquaintance Be Forgot," with songs from operettas by American composers, such as "The New Moon," "Porgy and Bess," "Three Musketeers," "Rose Marie" and "Katinka." The curtain opened with the girls arranged on the stage, their costumes blending with the scenery in tones of red, violet and yellow. Amelia Poley sang "One Kiss," with the girls joining on the chorus. The next scene presented Gershwin's "Porgy and Bess," with the lead taken by Edna Stewart, whose rendition of "Summertime" will long be remembered. Songs by the Boys' Glee Club were enjoyed as well and they were well rewarded for their hard work at practices during the year. Everyone for the last few years has enjoyed the songs of the A Capella Choir and their work in the May Festival came up to their high standards. The combined Glee Clubs, singing "Strike Up the Band," marched up the aisles as a grand finale for the vocal section of the May Festival.

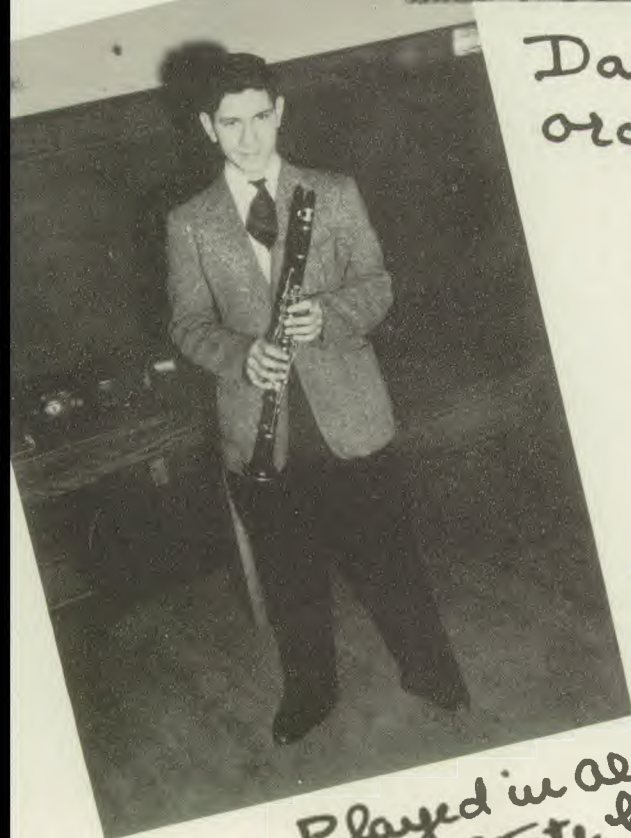
All state
orchestra
musicians



Majorettes



Dance
orchestra



The Dizzy Baton

Played in all
state bands



Debating Team

ROW 1—R. Kimmelman, L. Knohl, A. Miklosy, M. Gregory. ROW 2—Mr. Jamison, W. Krivit, B. Cohen.

The pertinent question of compulsory military training has been the topic for the varsity debating team this year. The topic, unlike most debate topics, actually concerns the debaters, because it will be these young boys and girls who will participate in a program of conscription. Accordingly they participated with more than the usual vim and vigor. The Linden High Varsity Debating Team, composed of Burton Cohen, Leatrice Knohl, Ruth Kimmelman, William Krivit, Alice Miklosy, and Mary Gregory, participated in various debate tournaments at Trenton, Newark, Woodbridge, Jamesburg, Somerville, and Plainfield. The Debating Club also sponsored many home debates with various schools. The team, weakened by the loss of a few varsity members, placed only fifth in the state debating tournament, which was held at the New Jersey State Teachers' College. The tournament was held under the supervision of Morris Schaeffer, a former Linden debating student. The debaters present on March 21 had two debates each at the tournament. The new Oregon system of cross-questioning was used for the first time in New Jersey. Leatrice Knohl and Burton Cohen both received two mentions apiece as members of the all-state debating team. Although four of the six varsity debating members will graduate this year Mr. Jamison, debate coach, is very optimistic about the coming year's debate team.

Debating Club

The Debating club assumed new importance in the role of the education of students because of the tense, perplexing foreign and national situations. The club considered items of prime importance, such as the price-control bill, the labor problem, and the probable peace. These were discussed with a realization of the closeness of the problems to the participants. Many freshmen and sophomore members joined the team this year. These underclassmen and the older members used the new Oregon system with the topic, Resolved: That the permanent policy of the United States should be to require every able-bodied male citizen to have one year of full time military training before attaining the age of twenty-one. Because of the age limit the debaters felt that this topic was of vital concern to them. They realized that it would be they who would make up the ranks of the conscripted boys and girls if the program went into effect and therefore debated even more enthusiastically than heretofore. One of the highlights of the debating was, of course, the annual student-teacher debate, the humorous debate. The topic, "The little man who wasn't there, was there," was enjoyed by all. Mr. Gelfond and Mr. Jamison were in their usual form; in fact, this year they actually received four votes from the student body. The Debating Club participated in the Dramatic Interpretation, Extemporaneous Speaking, and American Legion Contests. Mary Gregory represented Linden High School at the Dramatic Interpretation of the New Jersey Forensic League in Passaic with her declamation "The Devil and Daniel Webster." Mary Gregory also gave this selection in the assembly program; Alice Miklosy gave an interpretation of a story of Oliver Cromwell. Alice Miklosy placed first in the county contest of the Sixth Annual National American Legion Oratorical Contest.

ROW 1—S. Klotz, R. Kimmelman, A. Koscielniak, L. Chernikoff, J. Barr, Mr. Jamison, W. Krivit, S. Orgel, L. Glassberg, B. Lebowitz, A. Rosoff. ROW 2—A. Miklosy, M. Kantor, J. Levine, M. Posnock, M. Chernot-sky, A. Sussman, L. Knohl. ROW 3—S. Litwin, W. Hunter, M. Kovacs, S. Berkowitz, C. Jacobson. ROW 4—W. Perzley, E. Bolan, E. Baum, H. Chapman, M. Gregory, D. Zeitchik, E. Kaplowitz, B. Cohen, D. Casey, P. Leib.





ROW 1—L. Glassberg, F. Bajcofsky, V. Tanzi, D. Weid, A. McCormack, Miss MacConkey, C. Buckley, M. Kube, M. Walasek, H. Jurcsisin, C. Miller, S. Klotz. ROW 2—B. Houlroyd, A. Kruchas, A. Koscielniak, M. Chernotsky, A. Perzley, I. Perlmutter, E. Soos, G. Halloran, D. Schwartz, A. Galen. ROW 3—D. Seaman, H. Chapman, E. Olenick, J. Simmel, F. Muldoon, C. Dooley, A. White, E. Mullen, J. Zanetti, R. Jack. ROW 4—H. Stofan, S. Holland, A. Rosoff, M. Posnock, L. Sirkin, J. Kennedy, I. Gorecke, B. Tomlinson, J. Smith, A. Brady. ROW 5—I. Nissman, L. Evans, O. Tucker.

Latin Club

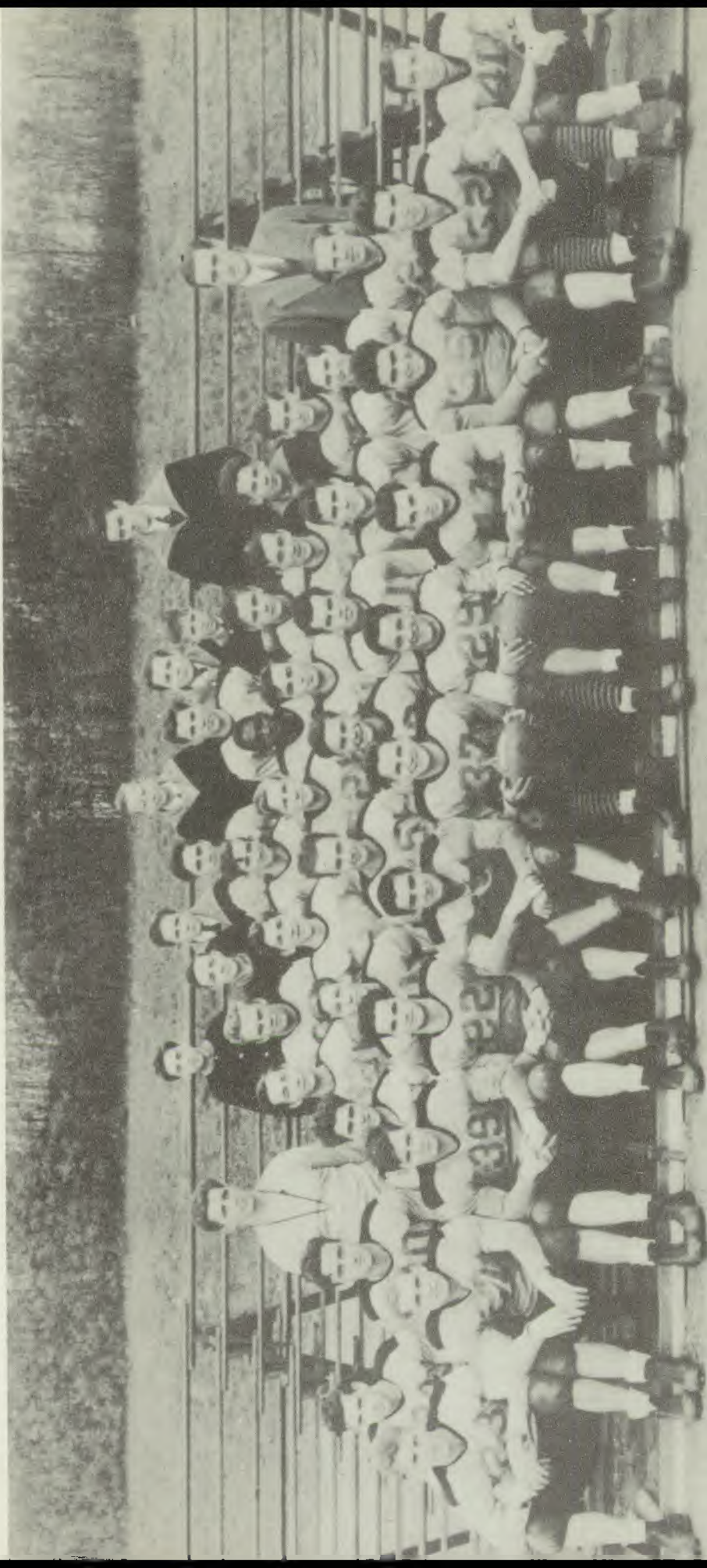
The Romans were patriotic, obedient to authority and law, had respect for the gods and religion of the state, were honorable and faithful, and had many other fine traits. The Latin Club has had meetings to show how these great people acted during times similar to our own. The members learned how many years ago the Roman people were faced with many difficult problems. Their brave actions will be an inspiration to us all. The Latin Club also gave its yearly dance with the Home Economics Club. The members succeeded in selling many tickets as, working with the German Club, they had purchased a walnut record cabinet for the use of the school. The officers of the Club are president, Ann Denise McCormack; vice president, Dorothy Wied, secretary, Claire Buckley; treasurer, Vincent Tanzi.

SPORTS



← E. PEDERSEN →

First Team



FOOTBALL FIRST TEAM

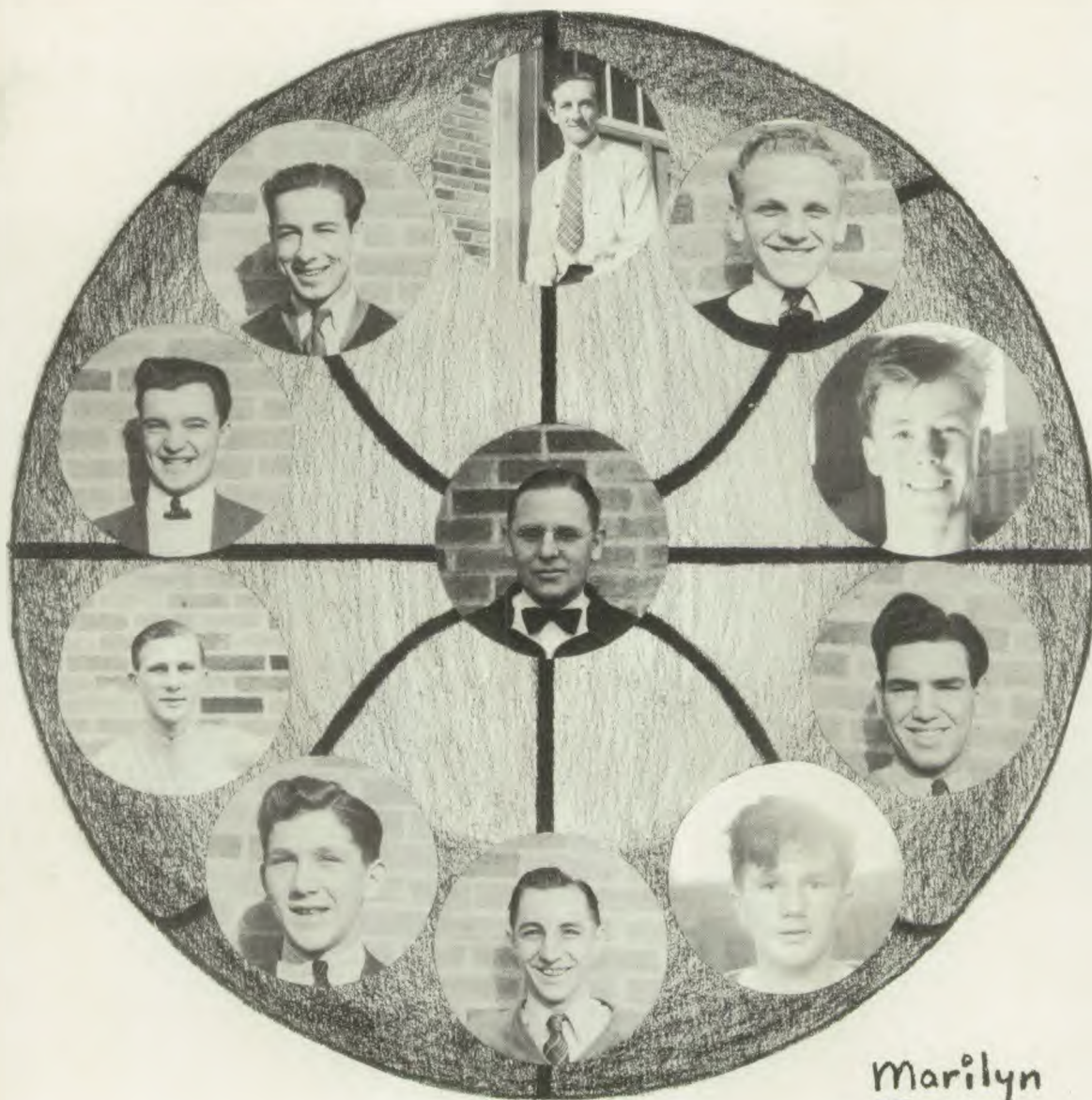
ROW 1—R. Stoglich, J. Zemaitis, H. Lyons, S. Graziano, J. Karalis, J. Novakary, J. Gaydos, R. Gallo, J. Riggi, W. Ericsson, H. Bolton. ROW 2—J. McCarthy, H. Vasnalski, R. Bosta, D. Turner, E. Castle, G. Butchko, J. Flanagan, A. DeCol, C. Phelan, E. Babulski. ROW 3—Mr. Nagi, A. Markowitz, C. Chrobak, C. Plungis, S. Flanagan, L. Goetz, P. McCarthy, Mr. Schott. ROW 4—J. Bocson, H. Spader, C. Carolina, R. Lukenda, W. Kochan. ROW 5—E. Beecher, J. Dooley, S. Yeshinowitz, E. Ekarius, E. Hade. ROW 6—D. Jaffe, C. Naiman, L. Lyons, J. Horner.



ROW 1—R. Stagich, J. Zemaitis, H. Lyons, S. Graziano, J. Karalis, J. Novalany, J. Gaydos, R. Gallo, J. Riggi, W. Erricsson, H. Bolton. ROW 2—J. McCarthy, H. Vasnelis, R. Bosco, D. Turner, E. Castle, G. Butchko, J. Flanagan, A. DelCol, C. Phelan, E. Babulski, P. McCarthy. ROW 3—J. Dooley, A. Markowitz, J. Bocson, H. Spader, C. Chrobak, C. Plungis, S. Flanagan, L. Goetz, C. Carolina, R. Lukenda, S. Yashinowitz. ROW 4—C. Moore, N. Herceg, A. Kinsella, T. Miliano, L. Loveland, J. Caruso, F. Sweeney, S. Denniston, C. Harvey, J. Percival. ROW 5—Mr. Nogi, M. Buren, W. Billick, B. McArdle, M. Pasternak, E. Stanley, E. Miller, N. Rolband, T. Wilkinson, R. Keimag, V. Matlaga, M. Guydan, Mr. Schott. ROW 6—D. Joffe, C. Naiman, E. Beecher, E. Hade, L. Lyons, W. Kochan, J. Horner, E. EKarius

Football

Hampered by loss of outstanding seniors of last year, Linden High's football team went through a tough schedule of ten games. Although their won and lost record was four won and six lost, they outscored their opponents 100 to 73. In their first game, against a very strong alumni team, they lost by the score of 14-0. "The Tigers" then traveled to Perth Amboy, where they lost to a strong Group IV club 12-0. The team then entertained Red Bank at home, winning 25-0. At Rahway the following week the two teams played a thriller to a capacity crowd. Rahway scored on a long run after a kick. Linden's Wally Daniel tied it up at seven all when he caught a pass. Rahway scored in the second half, winning 14-7. The team then went to Dover, where they at first appeared to be crushing Dover's team, scoring a safety at the outset. But Dover held and scored 6 points, winning 6-2. Meeting Roselle at home, Linden had a field day, scoring 31 points to Roselle's 7. Then next week at Cranford they rolled up 26 points to Cranford's nothing. Dooley passed to Novalany for two touchdowns, and Lukenda and Gallo intercepted and raced for touchdowns. Meeting Carteret, who had a long consecutive game streak, at home, Linden put up a strong battle for three quarters but let Carteret score two touchdowns in the fourth, losing 14-0. The "Little Tigers" stopped Hillside 9-0 in a very close ball game. Then in the annual Turkey day game with Union, Linden lost a thriller 6-0 to end the season. Considering their schedule and their tough injury jinx, the football boys, led by John Gaydos and Joe Novalany, deserve a lot of credit for their work. There'll be as fine a bunch of fellows on the field again next year to carry the Orange and Black.



Marilyn
Jenkins

Identification reads counter-clockwise.

COACH GOODWIN

Herman Spader
Edward Eska
Charles Hollosy
Charles Plungis
Chester Chrobac
Walter Starosciak
Douglas Callender
Anthony Messina
Robert McMillan
Emil Varga

First Team



Varsity Basketball

Linden's season of 41-42 ended in 8 wins and 14 losses. In the Orange and Black's opening of the season, they lost to Regional by a score of 32-20. Determined to make up for the loss of their opening game, the Linden Tigers defeated North Plainfield by 13 points. A close game with Cranford followed, in which the opposition needed an extra period to force upon the Linden five its second loss. The next game, against Rahway, wasn't very encouraging to the Orange and Black when they were beaten 44 to 21. The following game was played against a quintet which had also once been taught most of what they know by Coach Goodwin. The Alumni, led by Lolly Beriont, the previous year's outstanding athlete, wrested the game from the Tigers in an extra period, in which their leader made the winning basket. The losing streak was broken by defeating Woodbridge—46 to 17. The next two games weren't much credit to the team, as they lost to Plainfield—60 to 37 and to Rahway—60 to 12. They made an attempt to reestablish themselves by swamping the Union team by a score of 54 to 19. The Tigers weren't permitted to continue enjoying victory when they met their superiors in a strong Central High team. They played well, but were downed 44 to 37. The Orange and Black in their next game tried in vain to regain victory, being defeated by Cranford in an extra period by a score of 34-32. They were rewarded for their efforts in the next game when they handed Hillside a 42 to 37 defeat. A losing streak ensued in which Jefferson, Plainfield, Regional, and North Plainfield conquered the Tigers in that order—the Regional game being the best game of the four. The Roselle game ended the streak of bad fortune, Roselle being defeated 23 to 21. Carteret's invasion of Linden High's court prevented the Orange and Black from continuing to win. The striped cagers, however, did give Union a second defeat by a score of 36 to 16. In the opening of the County Tournament, the Linden five conquered Sacred Heart 11 to 35. The Tiger's conquered the Hillside netsters next by the tight score of 29 to 28. The Orange and Black were then eliminated from the semi-finals by Jefferson High—37 to 20. Emil Vargo, the captain, led the team's basketball season. Robert McMillan and Charles Plungis also helped in the conquests of the Orange and Black. Melichar, the co-captain, might have been one of Linden's outstanding men, had he not been excluded because of doctor's orders.



Jr. Varsity Team



Marilyn
Jenkins

ROW 1—H. Portman, J. Tobin, J. Cassino, G. Walck, L. Reagan, T. Walck, S. Olearczyk. ROW 2—J. Kinsella, J. Novalany, J. Bilanin, A. Babinec, C. Phelan, E. Varga, L. Goetz. ROW 3—Coach Cooper, S. Smolyn, A. Miliano, S. Sedia, P. Yurick, A. Fotio, A. Del Col, R. McMillan, W. Melichar. ROW 4—D. Joffe, E. Beecher, R. Haefner, G. Butchko, S. Kaplan, V. Deldin, Coach Nogi.

Baseball Squad

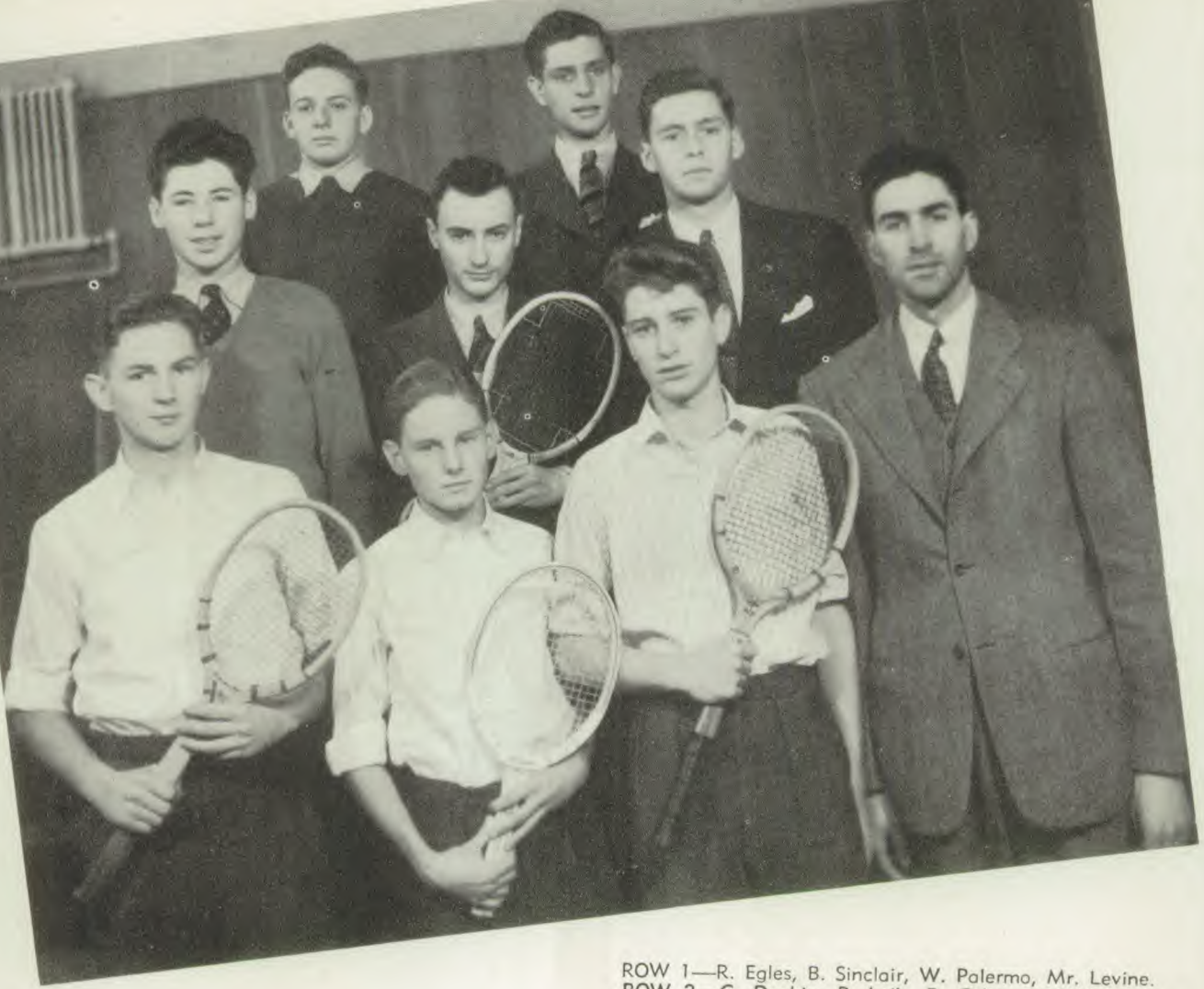
The Orange and Black closed the season of 1941 with a record of 6 wins, 7 losses, and one tie. Vanquishing a strong alumni team by a score of 9-6, the locals went on to **drop the** next contest to Newark Central. Following this, Linden deadlocked Plainfield in a 4-4 tie, a game which was highlighted by Georgie Walck's mighty home run. Entertaining Chatham at home, the Orange and Black forged ahead to victory by a score of 10-8 in a game featured by Novalany's round tripper. In the next engagement Linden was swamped under by a determined Cranford nine. Led by Cassino, George Walck, Portman, and Tobin, the Little Tigers trounced Carteret, Weequahic, and Rahway by scores of 7-6, 7-3, and 8-1 respectively. Defeated once again by Cranford's hard-hitting team, Linden, sparked by three home runs, trounced Edison by the one-sided score of 19-5. However, in the next contest Roselle managed to tally 5 times to defeat Linden 5-1. Hillside, Roselle, and Carteret tamed the Little Tigers at the closing of the season by scores of 10-7, 3-0, and 13-3 in that order. Despite the fact that Olearczyk, Cassino, Portman, and Walck ended the season with batting averages of .391, .375, .339, and .302 respectively, Linden closed the 1941 season with a fair record. The hopes for the season of 1942 have been strengthened with the return of Babinec, Goetz, Novalany, and Vargo.



ROW 1—D. Morrison, G. Zavoda, C. Hollosy, L. Chapman, E. Heller, P. Werkmeister. ROW 2—P. Wolfberg, J. Flanagan, S. Nelson, J. Lang, J. Hubeny, H. Bolton, H. Markant, T. Tyburski, S. Graziano, D. Blancke, G. Lutz, Coach Goodwin. ROW 3—J. Behun, W. Fecho, J. Karalis, H. Lyons, E. Dagnes, A. Wesolowski, J. Percival.

Track Squad

Linden officially opened the 1941 track season by winning the Penn Relays. In the Long Branch Relays Linden finished in fourth place. The interclass meet was copped by the Juniors by successive scores of 28-25 and 10-9. In a tightly fought contest the track team of the Orange and Black fell behind $2\frac{1}{2}$ points, being defeated by Newark Board of Education. Engaging Regional away, the "Little Tigers" decisively trounced their opponents 70-47. Again displaying their superior track talent, Linden went on to top honors at the Ridgewood Relay Carnival. Rahway, the bitter enemy of Linden football lovers, was overwhelmed by the score of 85-32. In a hotly fought track meet, the Lindenites managed to snatch one point more than Cranford, emerging triumphant by a 59-58 score. Despite their valiant efforts they came in second at the county meet, falling $2\frac{1}{2}$ points behind the leader. Playing at Warinanco, Linden trounced Westfield, 65-53. State honors were bestowed upon the Orange and Black after they won the state meet, 64-53. The season of 1941 was, indeed, one of the most successful seasons in the track history of the Linden High School. Headed by Leon Chapman, "Charlie" Hollosy, and "Lolly" Beriont, to mention a few, the team was rewarded with three trophies. The victory of the juniors over the Seniors in the interclass meet is a good sign for a successful 1942 season.



ROW 1—R. Egles, B. Sinclair, W. Palermo, Mr. Levine.
ROW 2—G. Dopkin, P. Leib, B. Cohen. ROW 3—S.
Karmel, W. Krivit.

Tennis Team

The Linden Courtsters of 1941 enjoyed a season reasonably successful in view of the sport's being comparatively new in Linden, winning 2 and dropping 7 contests. After losing to the Alumni, Linden engaged Westfield and bowed to their highly superior opponents, 5-0. Headed by "Bob" Egles, one of the outstanding singles players in the county, the local netmen won their first victory of the season by defeating Cranford, 3-2. The next four contests were dropped, Linden again being turned back by a highly favored Westfield team. Two victories by Gerald Dopkin and "Bob" Egles in doubles matches enabled the Lindenites to eke out a 3-2 triumph over Roselle. However, the last match of the season, played at Plainfield, was lost 5-2. Despite the fact that most of her matches were lost, "Kay" Dooley gave a good performance throughout the year, playing in four matches against boys as opponents. The hopes for a successful 1942 season were high, since the whole tennis squad returned. However, in view of the present war and the shortage of tennis balls, the tennis programs of several schools were curtailed.





Boys' Interclass Basketball

INTERCLASS BASKETBALL GROUP A

ROW 1—A. Kinsella, J. Karalis, J. Plungis, J. Zemaitis, A. Babinec, T. Tyburski.

Each class, freshman, sophomores, juniors, and seniors, choose two basketball teams from their midst. These teams are called the A and B teams. Then the boys in the A league play twelve games among themselves. The same thing happens in the B league. After twelve games the A team and B team which won the most games in each league play off for the championship.

This year the Senior A team beat the Senior B team. Up to the play-off each team had lost only one game apiece. The Senior B's led the A's in the first half but lost when the A's began swishing the basket. The score was twenty-three to eighteen.



INTERCLASS BASKETBALL GROUP B

ROW 1—H. Scalzo, G. Dopkin, R. Arnold, L. Lyons, D. Ford.



Cheerleaders

Cheering at football and basketball games, the cheerleaders stimulate the school spirit. Their energy quickly spreads to all those who watch them. Miss Demarest has given much time to the coaching of these girls, inspiring them to acquire poise, rhythm, and personality. In order to arouse the school spirit, several pep rallies were held this year. The cheerleaders worked hard, but not in vain. Students are urged to submit any cheers they think are good, and the squad considers them. If they can be put to motions, a routine is worked out. One student whose cheer was put into use was Betty Ryan. The girls are allowed one absence during the football season, and three during the basketball season. The girls' plans to get new uniforms were disrupted because of the increase in material prices. For each game a captain is elected by the girls to take the lead in cheering. At the end of the basketball season try-outs for the following year take place. This year approximately eighty girls participated. These girls were helped by the cheerleaders for four or five weeks. At the end of this time, a group of judges, consisting of several of the faculty, selected a new squad. These girls will carry on the job next year, with the inspiration of the previous cheerleaders spurring them on to do as well, if not better.



CHEERLEADERS

ROW 1—A. Davis, D. Borek, S. Ferrise, S. Rosenthal, H. Kulinski. ROW 2—F. Wadors, B. Ryan, B. Sterner, R. Schilling, M. O'Halloran. ROW 3—R. Chreck, M. Schubert.



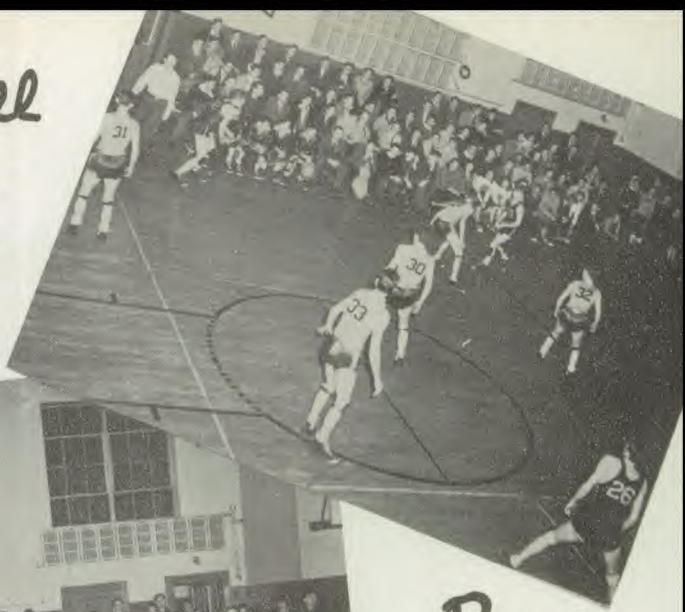
ROW 1—H. Wales, D. Wilkenson, M. Kantor, H. Raba, Miss Straughan, K. Mahar, L. Woytowicz, A. Eichhorn, P. Farrell. ROW 2—R. Shur, A. Kruchas, D. Ristau, I. Sara, B. Byko, A. Lenser, L. Marshall. ROW 3—B. Gonska, H. Mahar, R. Jack, V. Nash, S. Greenfield.

Girls, Sports

"Hip, hip, yeah! Juniors! Hip, hip, Yeah! Juniors!" murmured the Seniors through their delicate throats at the last game of the volleyball season as the Seniors congratulated the Juniors on winning the championship. But the Seniors, gracefully led by Captain "Bubbles" Mahar, came in second. "Hip, hip, yeah! Seniors! Hip, hip, yeah, Seniors!" Immediately six heads tilted upward, as the Seniors and their Captain, Helen Raba, received congratulations from all on winning the basketball tournament. Those wonderful Freshmen came in second. Next on the schedule badminton and paddle tennis met with much response from the girls. In early May comes Field Day, where all may try in relay, dash, high jumping, broad jumping, basketball and baseball throwing. Baseball is one of the most interesting sports for girls. Pleasure is added to pleasure by Coach's inviting Hillside and Union to come over and have "Play day." This year for the first time every High School was invited to come to Rahway to compete in making two perfect teams. Eight girls from each school were invited; those from Linden were Ann White, Theresa Reczka, Lillian Woytowicz, Helen Raba, Dorothy Wilkinson, Sheba Mahar and Catherine Mahar. Those chosen were Theresa Reczka for the Honorary Team and Sheba Mahar for the Reserve Team. "One, two, three—Seventy-five, Wow! At last I'm finished." Such were the expressions during the foul shooting contest as the girls took 75 shots and tried to sink 75. Helen Raba came in first, with Bobby Shreck second.



You tell
'em,
Coach



Beat
that zone



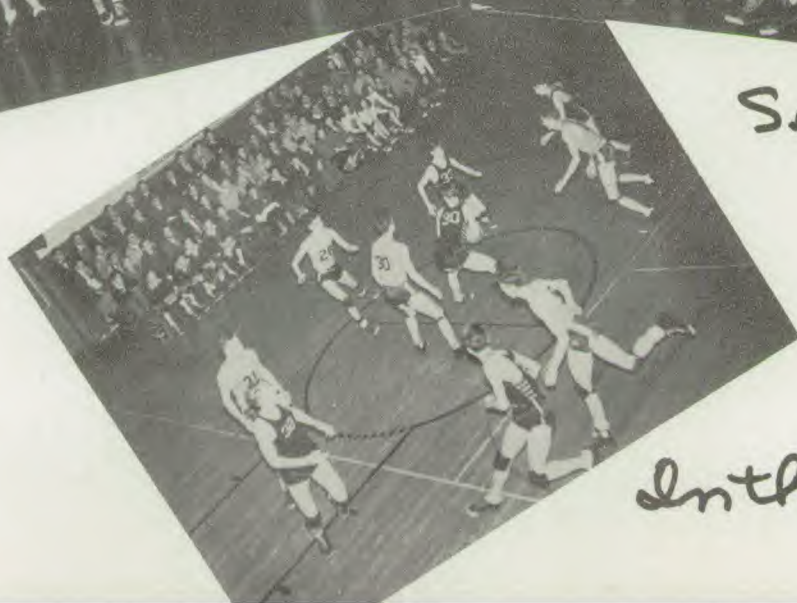
Emil leads
the way



Duce



Set it up



In the bucket

BUY



NOW!

Compliments of

MYLES J. McMANUS
Mayor

H. ROY WHEELER
Councilman-at-Large

ARTHUR CROUCHER
Councilman—1st Ward

THOMAS WIESER
City Clerk

EDWARD McGANN
Councilman—2nd Ward

JAMES J. SMITH
City Treasurer

LEON NATKIEWICZ
Councilman—4th Ward

HERBERT D. BANTA
Receiver of Taxes

JOHN F. FITZPATRICK, Jr.
Councilman—5th Ward

LEWIS WINETSKY
City Attorney

CHARLES S. VALVANO
Councilman—6th Ward

JAMES DAVIDSON
City Engineer

JULIUS KALISH
Councilman—7th Ward

LOUIS RAKIN
Police Recorder

WILLIAM J. HURST
Councilman—8th Ward

Patrons

Mr. and Mrs. Norman L. Hunter

Dr. Samuel B. Harris

Mr. and Mrs. Anthony Filangeri

Mr. and Mrs. Philip Cohen

Mr. and Mrs. C. Dudley Blancke

Mr. and Mrs. Joseph Kantor

Dr. and Mrs. H. M. Glasston

Mr. and Mrs. Wm. G. Palermo

Hebrew Provisions

Mr. Joseph Perlmutter

Mr. and Mrs. M. Cavanaugh

Miss Helena Gilkeson

Miss Virginia Straughan

Dr. and Mrs. N. Fuchs

Mr. and Mrs. A. Kimmelman

Mr. Harry Mopsick

Mr. and Mrs. W. E. Reibel

Schuler and Ortner

Mr. Herman A. Bronner

A Friend

ALUMNI

TRUMAN C. TUCKER '39

SYLVIA ENTENBERG '37

HENRY L. JACOBSON '40

PHONE LInden 2-4537

THE LINDEN JEWELERS

Linden's Leading Jewelers

Headquarters for

CLASS RINGS, KEYS AND CHARMS

TROPHIES AND LOVING CUPS

WATCHES, RINGS, JEWELRY

TYPEWRITERS, SILVERWARE

CAMERAS AND CAMERA SUPPLIES

316 N. WOOD AVE.

LINDEN, N. J.

UNION STORE — 1029 STUYVESANT AVE., UNION, N. J.

COMPLIMENTS OF

LINDCREST

1116 NORTH STILES ST.
LINDEN, NEW JERSEY

NEW JERSEY'S MOST DESIRABLE
APARTMENT HOME COMMUNITY

Compliments of

LINDEN HIGH
SCHOOL
PARENT-TEACHER
ASSOCIATION

Compliments of

A
FRIEND

Compliments of

WHELAN DRUG STORES
AGENCY

John J. Clancy, Ph. G.
100 N. WOOD AVE. LINDEN, N. J.
Phones: Linden 2-3521, 2-3533

**BERKELEY
SCHOOL**

22 Prospect St.
East Orange, N.J.
420 Lexington Ave.
New York City

Two-year comprehensive and One-year intensive secretarial courses for high-school graduates and college women exclusively. Distinguished Faculty. Individualized Instruction. Attractive roof-garden studios. Effective Placement Service.
FOR BULLETIN, ADDRESS DIRECTOR

DES ROSENSONIANS

Is Our Best Brand

LINDEN HARDWARE & PAINT CO.

Linden 2-6900-1

Compliments of

ROYAL GROCERY

521 N. WOOD AVENUE

Linden 2-275

J. Twomey, Prop.

NADEL COAL & SUPPLY CO.

NORGE and FRIGIDAIRE REFRIGERATORS
RANGES and WASHING MACHINES
DELCO OIL BURNERS

FUEL OIL - SUSQUEHANNA COAL
KOPPER'S COKE

1520-28 W. ELIZABETH AVE.
LINDEN, N. J.

Linden 3240-4080

Compliments of

F. W. WOOLWORTH CO.

LINDEN, N. J.

DEVELOPING AND PRINTING

DAILY PHOTO SERVICE CO.

MOVIE FILM LIBRARY

117 N. WOOD AVE.

Linden 2-2818

LINDEN, N. J.

213 N. WOOD AVE.

The Home of Quality Furniture

AMERICAN FURNITURE CO.

Linden 2-4021

Linden 2-2592

SALES AND SERVICE

LINDEN RADIO SERVICE

APPLIANCES

129 N. WOOD AVE.

LINDEN, N. J.

EDMAR'S INC.

DRESSES - COATS - SUITS

SPORTS WEAR

312 N. WOOD AVE.

LINDEN, N. J.

LET GAS

DO THE FOUR BIG JOBS

COOKING
REFRIGERATION
WATER HEATING
HOUSE HEATING

**ELIZABETH CONSOLIDATED
GAS COMPANY**

WALLEY and BAUMAN

(Formerly Fink's)

LINDEN'S LEADING RESTAURANT

104 N. WOOD AVE.

LINDEN, N. J.

THE STANDARD NEWS CO.

NEWSPAPERS and MAGAZINES
DELIVERED

Linden 2-4206

Linden 2-3943

Free Delivery

H. ROCHMAN

G. & G. FRUIT MARKET

WHOLESALE and RETAIL

205 N. WOOD AVE.

LINDEN, N. J.

(Next Door to Bank)

Phone Linden 2-4144

Notary Public

THE LINDEN AGENCY

INSURANCE - REAL ESTATE - BONDS

Edward J. Rapasky, Manager

6 WEST PRICE ST.

LINDEN, N. J.

LE-LA'S KNIT SHOP

8 EAST BLANCKE ST.

Hours: 9-6 Daily (Closed Thursdays)
9-9 Saturdays and Wednesdays

FREE INSTRUCTIONS

We carry Yarns, Crochet Cotton, Stamped
Goods and Buttons

Phone Linden 2-3182

PLAZA RESTAURANT

Famous for Regular Breakfasts
Luncheons and Dinners

OPEN DAY AND NIGHT

Theotanis Bros., Props.

209 N. WOOD AVE.

EVELYN'S KNITTING NOOK

Complete Stock of Yarn and Needles
Free Instructions Open Evenings

Special Attention to Beginners

421 ROSELLE ST.

LINDEN, N. J.

Compliments of

KEN'S

AMOCO SERVICE CENTER

129 ST. GEORGE AVE. WEST
LINDEN, N. J.

SUNNYSIDE MEAT MARKET

MEATS - GROCERIES - VEGETABLES

Tel. Linden 2-4472

239 ST. GEORGE AVENUE WEST

Prop. George Wolff

Free Delivery

Linden 2-3222

Compliments of

LINDEN RESTAURANT

19-23 N. WOOD AVE.
LINDEN, N. J.

Compliments of

LINDEN COAL COMPANY

COAL

FUEL OIL

DELICATESSEN - GROCERY
CONFECTIONERY

DOKTOR'S CONFECTIONERY

903 N. WOOD AVE.

ROSELLE, N. J.

ROselle 4-6240

Compliments of

THE LINDEN DAIRY

210 NORTH WOOD AVE.
Phone Linden 2-4382

NOW IS THE TIME
TO BUY
DEFENSE STAMPS & BONDS

MROZEK AUTO SALES

PONTIAC SIXES AND EIGHTS

Products of General Motors Sales and Service

415 ROSELLE ST.

LINDEN, N. J.

A. Edw. Mrozek, Prop., Phone Linden 2-2637

Compliments of

RATHJEN BROS.

1065 E. LINDEN AVE.

Linden 2-4030

WOOD COAL & FUEL CO.

11 W. ELIZABETH AVE.

Linden 2-3621

Compliments of

O'DONNELL'S SERVICE STATION

16 SO. WOOD AVE.

Linden 2-2807

WASHING - LUBRICATION
GENERAL REPAIRS

Compliments of

SUNNYFIELD GOLF CLUB

J. R. BAUMANN

Florist

UNUSUAL AND ARTISTIC
COMBINATIONS OF FLOWERS

RAHWAY, NEW JERSEY

RA 7-0711

ROLLER'S TYDOL SERVICE STATION

Tydol Gas - Lubrication - Veedol Oils
and Greases — Tire Repair

St. George and Wood Aves.

Linden, N. J.

Phone Linden 2-2645

THE CYNOSURE

Thanks all its advertisers

and

recommends them to its readers.

Compliments of

WILLIAM SCHOENBERG

WHOLESALE CANDY and TOBACCO

LINDEN, N. J.

Linden 2-2885

ELizabeth 2-0865

ALL MAKES

Sold **USED CARS** Bought

MURPHY BROS., Inc.

HY-GRADE USED CARS

711 RAHWAY AVE.

ELIZABETH, N. J.

Compliments of

BEVIANO BUS SERVICE

ELMWOOD SWEET SHOP

M. BERKOWITZ, Prop.

503 N. WOOD AVE.

LINDEN, N. J.

"WISHING YOU ALL
THE BEST OF HEALTH"

EICHNER'S BAKERY

Polkowitz and Bernstein, Props.

Compliments of the

COMMERCIAL CLUB

Compliments of the

DRAMATIC CLUB

Compliments of the

**BOYS' and GIRLS'
GLEE CLUBS**

JOE'S A. & N. SPORT SHOP

160 N. WOOD AVE.

LINDEN, N. J.

Linden 2-4024

PATRONIZE YOUR HOME TOWN

Sporting Goods

Work Clothes

Compliments of

HIRSCH'S

SHOE REBUILDERS

118 N. WOOD AVE.

LINDEN, N. J.

Compliments of the

**HOME ECONOMICS
CLUB**

Compliments of

SHOR'S CUT-RATE

HOME OF COUGH-EX

JEWELL'S BEAUTY SHOP

We Specialize In
PERMANENT WAVES

and in all branches of Beauty Culture
— Call us for an Appointment —

13 S. WOOD AVE.

Linden 2-3697

Compliments of the

GERMAN CLUB

Compliments of the

CIVIC FORUM CLUB

Compliments of

LINDEN FRUIT EXCHANGE

219 N. WOOD AVE., LINDEN N. J.

RADEMAEKERS

BOOKBINDERS & BOOKSELLERS

NEWARK, N. J.

The Choice of a Good Insurance Policy
Is of Vital Importance To You. We Sell
Dependable Insurance. Let Us Insure You
Now

N. M. PALERMO INC.

7 N. WOOD AVE.
Phone Linden 2-3573-4

SWEET SIGNS

FOR 22 YEARS

When You Think of Printing, Think of . . .

LINDEN PRINTING CO.

13 E. Elizabeth Avenue Linden, N. J.
Linden 2-4220

COMPLIMENTS OF

FARBER BROS. SUPPLY COMPANY

COMPLIMENTS OF

G. J. ALBRIGHT

JEWELER

CLASS RINGS AND PINS

715 N. WOOD AVE.

LINDEN, N. J.

Compliments of

**TOMPKINS ICE CREAM
COMPANY**

Linden 2-2630 "Happy Motoring"
BUY AT THE **ESSO** SIGN
MELLOR'S ESSO SERVICE
EST. 1929
WOOD AVE. & HENRY ST. LINDEN, N. J.
A. J. MELLOR, Prop.

Compliments of

McCARTHY'S PHARMACY

WOOD AVENUE
LINDEN, NEW JERSEY

The DRAPKIN PRINTING Co.
"PRINTERS OF DISTINCTION"

36 EAST 19th STREET
LINDEN, NEW JERSEY
Linden 2-2978

GRANGER & KLING

Gifts - Greeting Cards - Circulating Library
Costume Jewelry - Stationery
1202 N. WOOD AVE. LINDEN, N. J.

ELiz. 2-3675

ELIZABETH MUSIC SHOP

HOLTON'S INSTRUMENTS
and other fine makes
Special Prices for School Students
Instruments Repaired, Sheet Music
45 BROAD STREET ELIZABETH, N. J.

TURCHIN'S

HOUSEWARES AND GIFTS

The Most Complete Line in Linden
116 N. WOOD AVE. LINDEN, N.J.

CITY HALL PHARMACY

A. ROTHBERG -:- R. KESSLER
Reg. Pharmacists
235 NORTH WOOD AVE. LINDEN, N. J.
Telephone Linden 2-3553

Compliments of

School No. 4 P. T. A.

L. H. S. STUDENTS

Be Sure To Come To
LEVY BROTHERS
IN ELIZABETH FOR YOUR
GRADUATION CLOTHES

COOPER RADIO SERVICE

EXPERT REPAIRS ON ALL
MAKES

9 E. ELIZABETH AVE. LI-2-4585

CAREFUL CLEANING
EXPERT DYEING

Send Us Your Most Delicate Garments

C. CHAPNICK

15 E. ELIZABETH AVE. LINDEN, N. J.

Compliments of

FIDELITY BARBER SHOP

19 E. ELIZABETH AVE.
LINDEN, NEW JERSEY

TONY'S

A. CHIARAMONTE
24 Years' Experience
Ladies' and Gent's Hats Cleaned - Made Like
New — Shoe Shine Parlor
106 N. WOOD AVE. LINDEN, N. J.

RAE-LOU SHOP

SPORTSWEAR AND ACCESSORIES

233 NORTH WOOD AVE.
LINDEN, NEW JERSEY

Tel. Conn. — Linden 2-2897

JOSEPH DiLEO

BRANCH OF FULTON FISH MARKET
We Sell Anything That Swims
108 N. WOOD AVE. LINDEN, N. J.

TELL YOUR NEIGHBORS ABOUT

MIKOS DAIRY

MILK FOR ALL THE FAMILY

Telephone Linden 2-4182

Residence, Office and Milk Depot
900 ROSELLE STREET

LINDEN BOWLING ACADEMY

103 N. WOOD AVE.

LINDEN, N. J.

BOWL FOR RECREATION

Phone Linden 2-3294

Compliments of

The LINDEN CLOTHING STORE

For the Well-Dressed

MEN, YOUNG MEN and BOYS

226 N. WOOD AVE.

LINDEN, N. J.

Tel. Linden 2-4700-4701

CHARLES FOGEL

STATIONER & PRINTER

7 E. ELIZABETH AVE.

LINDEN, N. J.

**MARGARET
BEAUTE SALON**

WILL BE HAPPY TO SERVE YOU

Phone for appointment

Linden 2-2508

Compliments of

FATHER & SON BARBERS

206 N. WOOD AVE.

LINDEN, NEW JERSEY

Prop. Angelo Attanasio, Sr. and Jr.

SAM'S SHOE REPAIR SHOP

SHOE REPAIRING
SHOE SHINE
LACES AND POLISH

Prop. Salvatore Livolsi

113 N. WOOD AVE.

DORR'S GOOD FOOD STORE

FREE DELIVERY

Linden 2-4338

231 W. PRICE ST.

LINDEN, N. J.

Linden 2-4050

LOUIS LEVINE INC.

Real Estate and Insurance - Complete Insurance
Service - Renting - Management

Mortgage - Loans

COMMERCE BUILDING

223 N. WOOD AVE.

LINDEN, N. J.

QUALITY

ECONOMY

KERNER'S

YARD GOODS - CURTAINS - DRAPES
SPREADS - LINENS

308 N. WOOD AVE.

LINDEN, N. J.

"Flowers By Wire"

Linden 2-2994

ADDALIA'S FLOWER SHOP

MEMBER OF THE F. T. D. A.

Corsages a Specialty

148 E. ST. GEORGE AVE.

LINDEN, N. J.

FORD

THE UNIVERSAL CAR

LINDEN AUTO SALES, Inc.

Telephone Linden 2-3789

Represented by Geo. F. Ludeking

15-17 West Elizabeth Ave.

Linden, N. J.

**PASSAIC-BERGEN LUMBER
COMPANY, Inc.**

LUMBER - MILLWORK
BUILDING MATERIALS

Linden 2-2560

101 W. Elizabeth Ave.

Linden, N. J.

THE GOODY SHOPPE

Extends Congratulations to the
GRADUATING CLASS

N. Wood Ave. and Court St.

LINDEN, N. J.

COMPLIMENTS OF

THE PLAZA THEATER

ALWAYS A GOOD SHOW

N. WOOD AVENUE

LI 2-2980

LINDEN, NEW JERSEY

R. J. GOERKE CO.

ELIZABETH

JUNIOR MISS and BOYS'
FASHION CENTER
of
UNION COUNTY

LINDEN PORK STORE

Manufacturers of
All Kinds of Home Made Bologna
Imported Style Specialties

PRIME MEATS and POULTRY
FRESH FRUITS and VEGETABLES

123 N. WOOD AVE.
LINDEN, N. J.

Free Delivery

Linden 2-5086

LINDEN TRUST COMPANY

WOOD AVENUE AND PRICE STREET

Branch:

ST. GEORGE'S AVENUE AND CHARLES ST.

HENRY P. WETZEL

FURNISHINGS FOR
MEN and BOYS

125 N. WOOD AVE.
LINDEN, N. J.

OFFICIAL HEADQUARTERS
FOR BOY SCOUTS

Fenton
SPORTSWEAR

"FOR BETTER SPORTSWEAR"

SKIRTS - SWEATERS - BLOUSES
SUITS - SLACKS
DRESSES

1153 E. Jersey St.

Elizabeth, N. J.

ALLOY STEEL PRODUCTS COMPANY

Stainless Steel Valves and Fittings

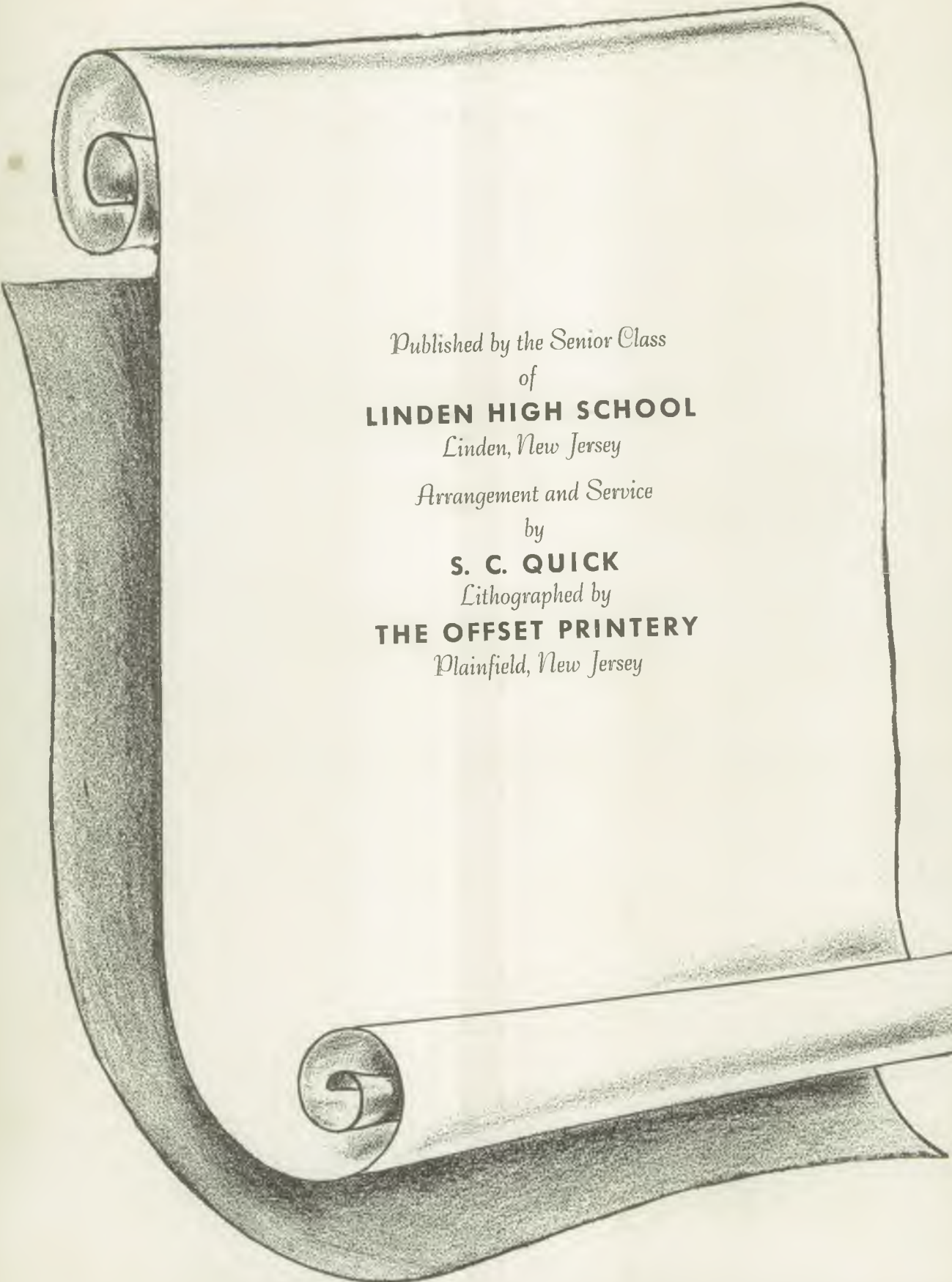
LINDEN, NEW JERSEY

COMPLIMENTS
OF

**COLLEGIATE
CAP & GOWN CO.**

366 — 5th AVE.
N. Y. C.

Autographs



Published by the Senior Class
of
LINDEN HIGH SCHOOL
Linden, New Jersey

Arrangement and Service
by
S. C. QUICK
Lithographed by
THE OFFSET PRINTERY
Plainfield, New Jersey











