

The Cynosure

The Cynosure Presented



"We will seek to make
justice, peace, and
brotherhood prevail.
We will pass on this nation
not less, but greater,
better, and more beautiful
than it came to us....."

Oath of Athenian Young Men





By The
Class
of 46

Foreword

The graduating class of 1946 proudly presents the "Cynosure". We hope that in looking through our book you will receive a permanent impression of the ideals for which we stand.

We are the first class to be graduated in peace time since 1940, and we fully realize our responsibilities. Some members of our class will go on to further their educations; some will enter the working and professional fields immediately upon graduation. Yet there is one certainty: we shall go forth into the world with unshaken confidence and a firm resolve not to be defeated or hindered by the everyday hardships of life, and with the unswerving faith that when called upon to assume leadership, we shall truthfully be able to say, "We are ready."

Contents

	Page		Page
Foreword	4	Chemistry Club	87
Contents	5	Junior Red Cross and Forensic Clubs	88
Linden High School	6, 7	Field Map and Surveying Club	89
Cynosure Staff	8, 9	French and Art Clubs	90
Student Council	10	German and Spanish Clubs	91
Chronicle	11	Latin and Commercial Clubs	92
Around the School	12, 13	Shop Foremen and Eckers Clubs	93
Senior Play	14, 15	Junior Dramatic and Make-up Clubs	94
Lab Shots	16	Senior Dramatic Club	95
Introduction to Administration	17	Microscope and Aviation Clubs	96
Board of Education, Dr. Brown, Miss Ebbert, and Mr. Meyer	18	Mathematics Club	97
Supervisors and Heads of Departments	19	Library Squad	98
English	20	Girl Reserves and Fish and Game Club	99
Arts and Librarians	21	Sports and International Relations Club ..	100
Social Science	22	Senior Girls' Social Club	101
Commercial	23	Boys' Travel and Crocheting Clubs	102
Health, Physical Education and School Nurse	24	Cafeteria Corps and Archeology Club	103
Science	25	"Pirates of Penzance"	104
Foreign Language and Mathematics	26	Introduction to Sports	105
Introduction to Seniors	27	Football	106, 107
Senior Council	28	Basketball	108
Senior Pictures	29-57	Junior Varsity Basketball	109
Snapshots	58	Baseball	110
Introduction to Underclassmen	59	Track	111
Junior, Sophomore, and Freshmen Homeroom Presidents	60	Girls' Sports	112
Junior Class Officers	61	Sports Roundup	113
Underclassmen	62-78	School Calendar, 1945-1946	114
Introduction to Activities	79	Ads and Features	115
Girls' Glee Club	80	Snapshots	116
Boys' Glee Club	81	Senior Play Pictures	117
A Cappella Choir and Orchestra	82	Things to Remember	120
Band and Girls' Choral Group	83	Snapshots	121
Cheerleaders and Twirlers	84	The Black Flamingo	124
Motion Picture Club	85	Student Council Write-up	125
Boys' and Girls' Photography Clubs	86	Can You Imagine	129
		Class Will	132



Linden High School
Linden, N. J.



Cynosure Staff

EDITORIAL

Miss Ranney, Adviser
Helen Brown,
Editor-in-Chief
Frank Bilanin, Art Editor
Jeanne Alzheimer
Carl Anthony
Gertrude Becker
Myrna Bronstein
Rose Chernikoff
Nancy Chiappetta
Jean Cordasco
Gladys Goldberger
Helen Jean Hislop
Anne Kiseli
Edward Kashork
Lorraine Lynch
Freda Markant
Joan McGann
Aspasia Piskos
Betty Reb
Dolores Yeomans

ADVERTISING

Mrs. Passani, Adviser
William Farber,
Business Manager
Dorothy Starkey, Assistant
Gloria Cordasco
Eleanor Lesko
Evelyn Lischko
Gerald Messer
Isadore Moore
Helen Okun
Arthur Sherman
Arthur Vanderwall

AMATEUR PHOTOGRAPHY

Mr. Walker, Adviser
Howard Watter
Paul Yeisley

CIRCULATION

Mr. Levine, Adviser
Violet Aaron
Cecelia Abrams
Marion Baars
Isabelle Caggiano
Dorothy Dilbatis
Genevieve Dragan
Madeline Forberger
Agnes Frank
Sebley Holick
Stephanie Idec
Ruth Jensen
Roslyn Kaplan
Phyllis Koplin
Dorothy Krahling
Helen Kundla
Ruth Miller
Lillian Minet
Mary Moore
Kathleen Muccione
Walter Pawlikowski
Joyce Pile
Marjorie Reiber
Theresa Russo
Virginia Saultz
Margaret Seamans
Eleanor Smith
Carmine Tavormina
Marie Tuthill
Charles Valvano
Marie Valvano

TYPISTS

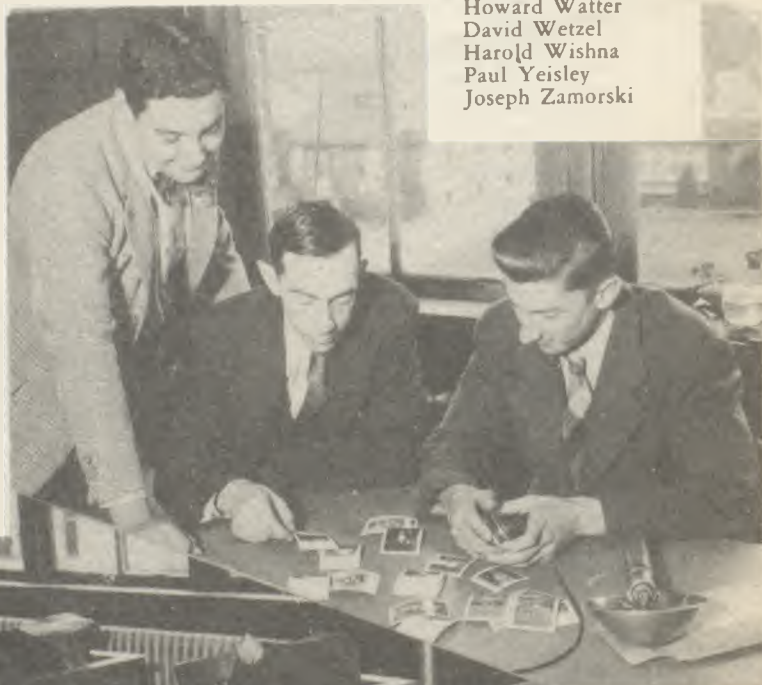
Nancy Chiappetta,
Chairman

Sebley Holick
Anne Kiseli
Phyllis Koplin
Evelyn Lischko
Aspasia Piskos
Eleanor Smith
Helen Solomin

PHOTOGRAPHER'S HELPERS

Mr. Moldaschl, Adviser
Carl Anthony
Frank Bilanin
Alfred Brokaw
John Christie
Emery Dougherty
Alfred Hoerrner
Martin Hrynck
Richard Hubeny
Charles Jeffrey
Robert Kanzler
Edward Kashork
William Liddy
Carl Majewski
Albert Pirrocco
Walter Roll
Thomas Sara
Robert Schaeffer
George Tkach
Hugh Treacy
Charles Valvano
Arthur Vanderwall
Howard Watter
David Wetzel
Harold Wishna
Paul Yeisley
Joseph Zamorski

AMATEUR PHOTOGRAPHY



TYPISTS

EDITORIAL



PHOTOGRAPHERS'

HELPERS



CIRCULATION



ADVERTISING



Student Council



Sophomores

Corrinne Vitarius, 211; Harriet Polin, 26; Dick Piper, 202A; Betty Coleman, 40; Doris Martis, 213; Frances Trinkl, 15; Ruth Bolton, 216; Harold Lamont, 212; Sylvia Rosenson, 228; Shirley Stegmeier, 226; John Kimik, 224.

Freshmen

Virginia Turano, 215; Joseph Daniels, 14; Michael Coyle, 115; Harold Fechter, 208; Frank McGovern, 108; William Sebring, 30; Barbara Reinfurt, 32; Theresa Wiedecker, 132; Ellen Kalinak, 118; Eleanor Moscato, 12; Mike Petroi, 114; Peggy Hatton, 16; Audrey Blum, 6; George De Carlo, 13; Wilbur Brazilian, 202.

President

Emery Dougherty

Vice-President and Treasurer

Bill Berry

Secretary

Jean Ostarticki

OFFICERS

STUDENT COUNCIL

REPRESENTATIVES

Seniors

Richard Beecher, 219; Marjorie Coleman, 221; Elinor Joffe, 217; Dorothy Krahling, 201; Aileen Rathjen, 38; Shirley Serra, 222; Leo Zacharczyk, 19.

Juniors

Carol Armstead, 121; Dorothy Danninger, 119; Philip Ginfrieda, 203; Phyllis Litwin, 138; David Nelson, 134; William Post, 123; Richard Sumer, 113; Betty Voynick, 210.

Chronicle



CHRONICLE STAFF

Co-Editors-in-Chief

Betty Reb
Carl Anthony

Sports Editor

Karl Asch

Editorial Editor

Frances Wexler

Faculty Adviser

Miss Light

Columnists and Reporters — Ottavio Cacchione, Jeannette Croteau, Dorothy Danninger, Larry Dougherty, Dorothy Dittrich, Benita Feldman, Grace Foss, Anna Francaviglia, Patricia Gantley, Carol Beth Glasston, Terry Goldman, Florence Handschu, Patricia Harkins, Ann Jaslowski, Ann Kurdilla, Robert Likowski, Betty Malinchak, Marian Metro, Rosalyn Miller, Dorothy Natkiewicz, Sandra Nissman, Irene Opuscak, Jean Ostarticki, Florence Pietrowski, Anita Rafelson, Elaine Sellner, Dorothy Treacy, Arlene Weitzman, Harold Wishna, Selma Zeitlin, Arlene Eidelberg, Dolores Yeomans, Joan McGann, Robert Segal, William Sebring, Joan Gardos, Martha Nadel.

Art Staff — Miss Oldach, Adviser.

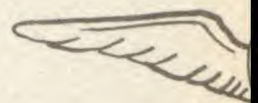
Advertising Staff — Mary Moore, Gertrude Machalett, Mr. Taranto, Faculty Adviser.

Circulation Staff — Mrs. McCormack, Faculty Adviser, Jane Farmer, Chief-of-Staff, Cecelia Abrams, Marion Baars, Mary Jane Beck, Helen Kundla, Eleanor Lesko, Joan Lund, Ann Mahar, Mary Moore, Dorothy Nicolai, Nancy Reuter, Elizabeth Rybinski, Elaine Trotter, Belle Hamilton, Anna Wolasonovich.

Typewriting Staff — Mrs. O'Brien, Faculty Adviser, Mary Schnurr, Typist and Clerk, Secretarial and Office Practice Classes.



Around-S



he - School



Senior

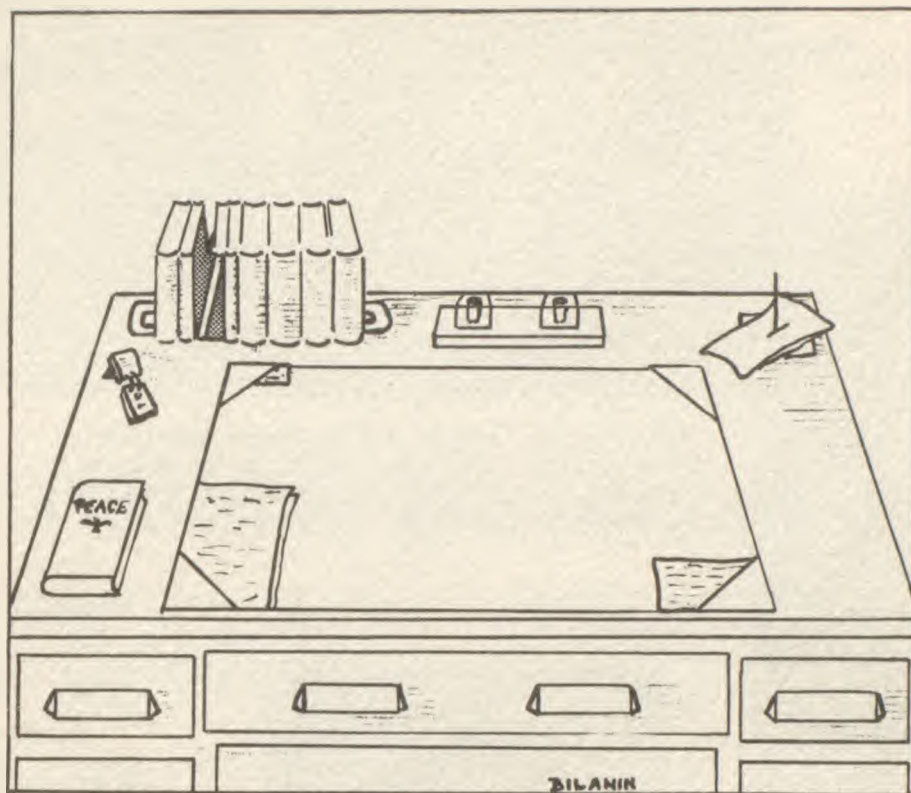


Play



Lab Shots





L. H. S.

Administration

BOARD OF EDUCATION

BETTY EVANS	President	
EMANUEL MARGULIES	Vice-President	
THOMAS ARCHIPLEY	JAMES SMITH	GEORGE ST. ANDRASSY



PAUL R. BROWN

A. B. Simpson College; S. T. B. Boston University;
A. M. Columbia University; M. Ed., D. Ed. Rutgers
University.
Superintendent of Schools.

ERNEST A. MEYER

B. S., M. A. New York University;
M. Ed. Rutgers University; LL. B.
John Marshall College.
Assistant Superintendent, working on
Industrial and Community Relations.



LIDA M. EBBERT

Ph. B. Dickinson College; A. M. Columbia University.
Principal of High School.





Row 1 M. Tuttle, F. Buckman.
Row 2 H. Moldaschl, M. Gulick,
E. Cooper.

SUPERVISORS AND DEPT. HEADS

FRANKLIN P. BUCKMAN

B. A. Swarthmore College; A. M. Columbia University.
Head of Social Science Department; United States History; Problems of American Democracy; Economics; Commercial Law; Senior Adviser.

EDWARD R. COOPER

B. S. in Ed. Rutgers University; Panzer College.
Director of Athletics and Supervisor of Physical Education; Physical Education; Coach of Football, Baseball.

LYMAN P. DUDLEY

B. S. Newark State Teachers' College.
Supervisor of Industrial Arts; Woodwork.

MARGUERITE A. GULICK

B. S. Rutgers University; A. M. Columbia University.
Supervisor of Home Economics and Cafeterias.

WARREN F. MALPAS

B. S. Juilliard School.
Supervisor of Music; Instrumental Music; Director Band, Orchestra.

HANS MOLDASCHL

Ph. D. University of Vienna, Vienna, Austria.
Head of Language Department; German; Adviser German Club, Cynosure Professional Photography; Senior Adviser

VIOLA PASSANI

B. S. University of Vermont; A. M. New York University.
Head of Commercial Department; Stenography; Secretarial Practice; Faculty Business Manager of Cynosure; Senior Adviser.

WILBUR G. PIPER

B. S. Lafayette College; A. M. Columbia University.
Supervisor of Science.

AGNES M. ROSE

A. B. Bryn Mawr College; M. A. New York University.
Head of Mathematics Department; Algebra; Solid Geometry; Plane Trigonometry; General Mathematics; Chairman of Senior Advisers.

MABEL A. TUTTLE

B. S. New York University; A. M. Columbia University.
Supervisor of English; Director of Assembly Programs.



Row 1 W. Malpas, A. Rose.
Row 2 W. Piper, V. Passani,
L. Dudley.



Row 1 B. Ranney, D. Page, H. Gilkeson. Row 2 V. Nogi, A. Vigne.

ENGLISH DEPARTMENT

HELENA GILKESON

B. S. University of Missouri; A. M. Columbia University. English; Coach of Senior Play.

GRACE GRAVES

B. S. Northwest Missouri State Teachers' College; A. M. Columbia University. English; Sophomore Book Closet; Junior Adviser.

JULIA N. HARDIN

B. A. Syracuse University; M. Ed. Rutgers University. English; Junior Book Closet; Adviser Senior Girls' Social Club; Sophomore Adviser.

SARA M. LIGHT

A. B. Lebanon Valley College; A. M. Columbia University. English; Adviser Chronicle; Junior Adviser.

EDITH MacCORMACK

A. B. Adelphi College; A. M. New York University. English; Chairman Junior Advisers.

HELEN V. McCORMACK

A. B. Bucknell University; A. M. New York University. English; Adviser Chronicle Circulation; Freshman Adviser.

DOROTHEA E. PAGE

A. B. New Jersey College for Women. English; Chairman of Sophomore Advisers.

VIDA E. NOGI

A. B. New Jersey College for Women. English; Speech; Dramatics; Adviser Junior Dramatic Club, Senior Dramatic Club, Make-up Club.

B. BELLE RANNEY

A. B. Wellesley College; A. M. Columbia University. English; Chief Adviser Cynosure; Senior Book Closet; Senior Adviser.

ADELE VIGNE

B. S. in Ed., M. Ed. Rutgers University. English; Adviser Service Committee; Freshman Book Closet; Freshman Adviser.



Row 1 S. Light, H. McCormack.
Row 2 E. MacCormack, J. Hardin,
G. Graves.

ARTS, LIBRARIANS

Row 1 M. Bennett, D. Oldach. Row 2
A. Boris, C. Kantner. Separate J.
Waterman.



MARGARET BENNETT

B. A. College of St. Elizabeth; B. L. S. Columbia University; M. A. Seton Hall College.
Assistant Librarian; Adviser Library Squad.

AGNES M. BORIS

B. S. New York University.
Accompanist; Vocal Music.

CLAIRE KANTNER

B. S. Rutgers University.
Vocal Music; Director Boys' and Girls' Glee Clubs,
A Cappella Choir; Music Appreciation.

DOROTHY M. OLDACH

B. S. in Ed. University of Pennsylvania; M. A. New York University.
Art; Adviser Art Club, Alpha Sigma Chapter National
Art Honor Society for Secondary Schools.

JANE WATERMAN

A. B. Wells College; B. L. S. Columbia University.
Librarian; Adviser Library Squad.

GEORGE B. ST. ANDRASSY

B. S. Newark State Teachers' College.
Printing; Adviser Printing Club.

MARY BOYLE

B. S. in Home Econ. Immaculata College.
Foods; Adviser Home Economics Club; Freshman Adviser.

JEAN TURTUR

B. S. Columbia University.
Clothing; Adviser Home Economics Club; Freshman
Adviser.

FRANCIS L. KENDALL

B. S. Ed. Rutgers University.
Mechanical Drawing; Chairman Freshman Advisers.

RAYMOND C. STOKES

Oswego State Teachers' College.
Metal Work; Adviser Shop Foremen's Club.

HOME ECONOMICS AND INDUSTRIAL ARTS

Row 2 F. Kendall, J. Turtur, G. St.
Andrassy. Row 1 R. Stokes, M. Boyle.



Row 1 J. Lang, J. O'Brien. Row
2 G. Atkins, M. Levine, E.
Crawford. Row 3 E. Potter,
E. Smith



SOCIAL SCIENCE

GERTRUDE ATKINS

A. B., A. M. Montclair State Teachers' College.
Citizenship; United States History; Adviser International
Relations Club; Chairman Student Council Club Com-
mittee; Freshman Adviser.

EDNA B. CRAWFORD

B. S., M. Ed. Rutgers University.
Citizenship; Adviser Crocheting Club; Freshman Adviser.

H. GAYLORD JAMISON

B. A. Dakota Wesleyan University; A. M. Columbia
University.
History; Problems of American Democracy.

JOSEPHINE M. LANG

B. S. New York University; A. M. Columbia University.
Problems of American Democracy; Guidance; Adviser
Forensic Club

MORRIS LEVINE

B. A. Dartmouth College; M. A. New York University.
United States History; Problems of American Democracy;
Adviser Cynosure Circulation; Chairman Cafeteria Squad;
Senior Adviser.

ELIZABETH POTTER

A. B. Wellesley College; A. M. Columbia University.
Early European History; Modern European History;
United States History; Adviser Archeology Club; Soph-
omore Adviser.

EVELYN W. SMITH

A. B. Elmira College; M. Ed. Rutgers University.
World History; U. S. History; Guidance; Adviser Stu-
dent Council

JOHN O'BRIEN

B. S. in Ed., M. Ed. Rutgers.
Citizenship; United States History.



COMMERCIAL DEPARTMENT

Row 1 R. Bell, A. Taranto.

Row 2 D. Casement, N. Holland.



RUTH BELL

B. S. New York University.
Junior Business Practice; Commercial Geography; Girls' Choral Group; Sophomore Adviser.

DOT CASEMENT

B. S. Southwest Missouri State Teachers' College;
A. M. New York University.
Typing; Junior Business Practice; Adviser Junior Red Cross Club; Sophomore Adviser; Adviser Typing Club.

GERALD M. CLARK

B. S. Southwest Missouri State Teachers' College;
A. M. Columbia University.
Commercial Law; Typing; Commercial Geography; Athletic Tickets; Commercial Stockroom; Adviser Boys' Photography Club; Sophomore Adviser.

NORAMAE HOLLAND

B. A. Idaho Teachers' College; A. M. Columbia University.
Stenography; Typing; Retail Selling; Sophomore Adviser.

ALICE H. KENDALL

B. S. Indiana State Teachers' College of Indiana, Pa.
Stenography; Commercial Geography; Retail Selling; Adviser Commercial Club; Junior Adviser.

ALICE O'BRIEN

B. S. in Ed. Rutgers University.
Office Practice.

AMERICO TARANTO

B. S. Lebanon Valley College.
Consumer Education; Chronicle Photography Adviser; Bus Tickets; Freshman Adviser.

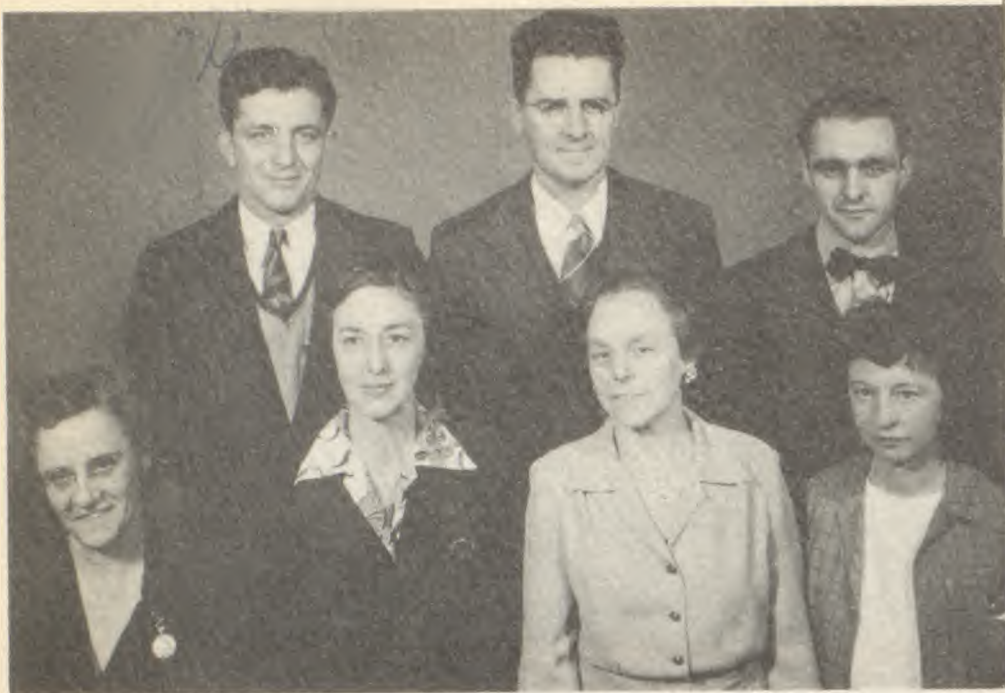
LILLIAN M. WINETSKY

B. Ed. C. Rider College.
Bookkeeping; Commercial Law; Faculty Manager of Student Accounts.



Row 1 L. Winetsky, A. Kendall.

Row 2 A. O'Brien, G. Clark.



Row 1 M. Rickert, H. Siegman,
M. Demarest, D. Mossman. Row
2 A. Nogi, J. Gaines. P. Galletta.

HEALTH AND PHYSICAL EDUCATION

MARIE F. DEMAREST

B. S. in Ed. New York University.
Health; Domestic Hygiene and Home Nursing; First
Aid; Adviser Cheerleaders; Sophomore Adviser.

JOSEPH GAINES

B. S. University of Iowa.
Physical Education.

PHILIP GALLETTA

B. S. Notre Dame University; A. M. Columbia University.
Health; Physical Education; Assistant Coach Basketball;
Assistant Coach Football.

ALFRED JAKUCS

B. S. Panzer College.
Health; Physical Education; Coach Basketball; Assistant
Coach Football, Baseball.

DREW MOSSMAN

Savage School for Physical Education.
Physical Education; Adviser Junior Red Cross Club.

ALFRED E. NOGI

B. S. in Ed. University of Alabama.
Physical Education.

MARGARET RICKERT, R.N.

Newark City Hospital.
School Nurse.

HELEN SIEGMAN

Trenton Normal School.
Health and Physical Education; Adviser Twirling Club.





Row 1 L. Ruch, L. Barr. Row 2
P. Yeisley, J. P. Walker, E.
Weiss. Row 3 J. Mele, W.
Diehl.

SCIENCE

LESTER S. BARR

B. A. Gettysburg College.
Biology; Adviser Microscope Club; Freshman Adviser.

WILLIAM S. DIEHL

B. S. Lafayette College; A. M. Rutgers University.
General Science; Adviser Girls' Science Club; Freshman
Adviser.

JOSEPH MELE

B. S., M. S. Villanova College.
Biology; Coach of Track; Adviser Swing Band; Soph-
omore Adviser.

LLOYD S. RUCH

B. S. Lafayette College; A. M. Rutgers University.
General Science; Adviser Aviation Club.

J. PAUL WALKER

B. S. Franklin and Marshall College; A. M. Columbia
University.
General Science; Adviser Girls' Photography Club, Cyno-
sure Amateur Photography; Freshman Adviser.

EDWARD A. WEISS

Ph. B. Boston College; A. M. Columbia University.
Chemistry; Adviser Chemistry Club; Junior Adviser.

PAUL A. YEISLEY

B. S. Lafayette College; A. M. Columbia University.
Physics; General Chemistry; Technical Adviser; Senior
Adviser.

A. WILSON SCOTT

B. S. Trenton State Teachers' College
Science.





LANGUAGES

Row 1 H. MacConkey, H. Ramage.
Row 2 A. Boris. Not shown E. Noddin.

ALBERTA BORIS

A. B. Montclair State Teachers' College.
German; Citizenship; English; Adviser Indoor Recreation Club; Freshman Adviser.

HELEN ADAMS MacCONKEY

A. B. Mount Holyoke College; A. M. Columbia University.
Latin; Spanish; Adviser Latin Club; Junior Adviser.

EFFIE M. NODDIN

B. A. Maine Wesleyan Women's College; B. A. University of Maine; A. M. Columbia University.
French; Spanish; Adviser La Société Française; Junior Adviser.

HELEN S. RAMAGE

B. A. Montclair State Teachers' College.
Spanish; Adviser Spanish Club; Freshman Adviser.

ANNA KUTZ

B. S. Ursinus College.
Plane Geometry; Algebra; Adviser Junior Red Cross Club; Sophomore Adviser.

BEATRICE MARGULIES

B. S. in Ed. University of Wisconsin.
General Mathematics; Algebra; Adviser Motion Picture Clubs; Freshman Adviser.

JOHN D. OKERSON

B. S. in Ed. Trenton State Teachers' College.
Algebra I; Plane Geometry; Sophomore Adviser.

GEORGE N. RAMAGE

B. S. Wesleyan University; A. M. Columbia University.
Plane Geometry; Shop Math; Algebra; Adviser Field Work in Mapping and Surveying Club; Junior Adviser.

ELIZABETH REYNOLDS

B. S. New York University; M. Ed. Rutgers University.
Plane Geometry; General Mathematics; Algebra; Adviser Math Club; Sophomore Adviser.

JOHN D. SCHOTT

B. S. Providence College.
General Mathematics; Algebra; Adviser Fish and Game Club; Assistant Football Coach; Freshman Adviser.

MATH

Row 1 A. Kutz, B. Margulies. Row 2
J. Schott, E. Reynolds, G. Ramage.
Not Shown J. Okerson.

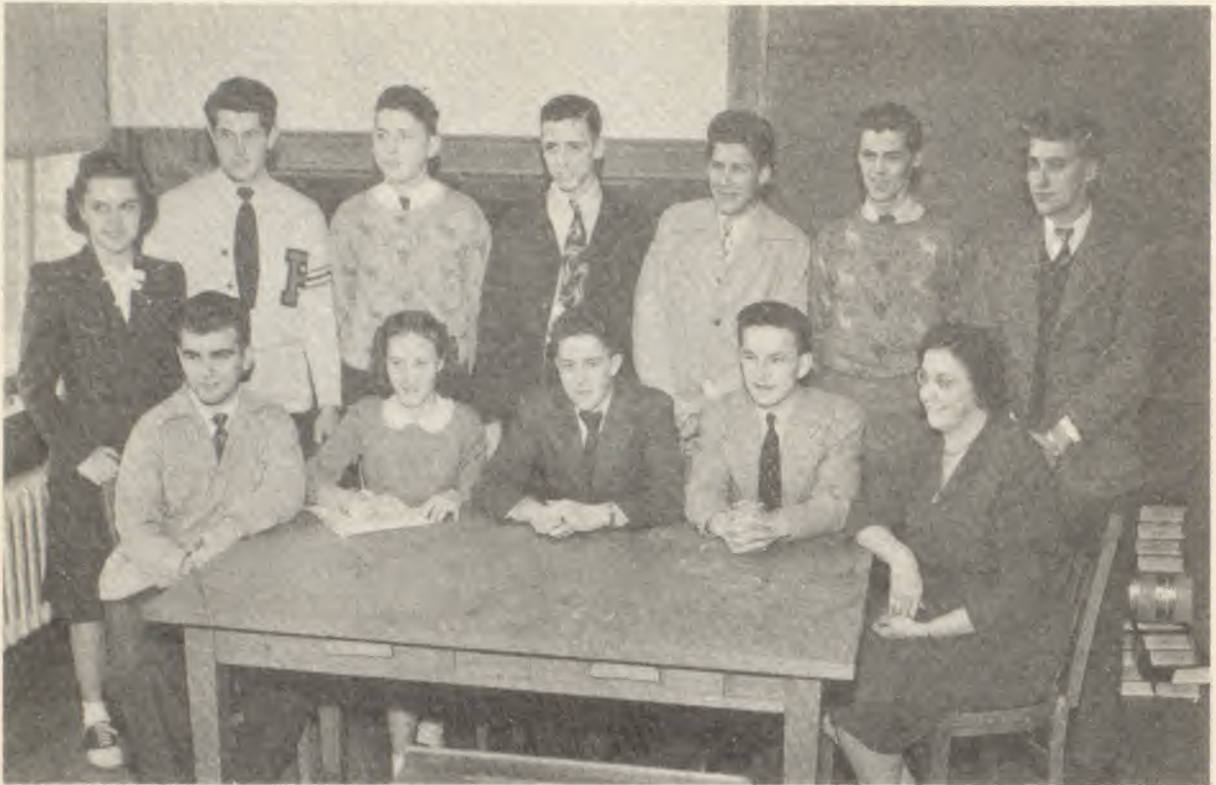


Class Of



1946

Senior Council



Row 1 Class Officers — Martin Hryn timer, Treasurer; Freda Markant, Secretary; Richard Beecher, President; Frank Bilanin, Vice-President; Miss Rose Adviser. Row 2 Homeroom Presidents — Helen Brown, Miss Rose's, 219; Isadore Moore, Mr. Moldaschl's, 38; William Liddy, Mr. Yeisley's, 201; Alfred Hoerrner, Miss Ranney's, 217; Walter Roll, Mr. Passani's, 222; John Christie, Mr. Buckman's, 221; Arthur Vanderwall, Mr. Levine's, 19.

When a problem comes up before the senior class, or when there is a date or committee to pick for some occasion, the Senior Council goes into session. They do not meet regularly but only when Richard Beecher, class president, or Miss Rose, chairman, of the senior advisers, believes a problem has come up that is worthy of their attention.

The members of this group are the class officers and the homeroom presidents. The members this year were Richard Beecher, class president, Frank Bilanin, class vice-president, Freda Markant, class secretary, Martin Hryn timer, class treasurer, and Helen Brown, Jack Christie, Alfred Hoerrner, William Liddy, Isadore Moore, Walter Roll, and Arthur Vanderwall, homeroom chairmen. Miss Rose is the faculty adviser.

After the elections of the class officers in October, the first problems that met the council were the amount of the Senior dues and the Junior-Senior Barn Dance. It was decided that the dues remain the same as in previous years and that they be used for the same purpose. At meetings of the Junior and Senior officers the orchestra, decorating, and ticket committees for the Barn Dance were chosen with members of both classes on each committee.

The Class of 1946 did an unprecedented thing when it ordered its class rings last year. This action was decided upon because there was an uncertainty of delivery had they been ordered in November. The beautiful rings arrived in January and are the pride and joy of all who own them.

One of the most pleasant jobs the council had was to pick the bid, decorating, and orchestra committees for the Senior prom. A member of each homeroom was on each committee. The council, acting as representatives of the senior class, chose the gift which the class presented to the school on Gift Day.

VIOLET AARON
"Vi"

*A sweet, attractive girl
is Vi,
Friendly, gay, but some-
times shy.*

Library Squad 1, 2; Cynosure Circulation Committee; Secretary Motion Picture Club 4; Social Club 4.



CECELIA ABRAMS
"CELE"

*A well-dressed girl is
usually an attractive one.*

Cynosure Circulation Committee; Chronicle Circulation Committee 2, 3, 4; Jr. Prom Dec. Committee 3; H. M. S. Pinafore 2; Pirates of Penzance 3; Orchestra 2, 3; Library Squad 1; Clubs: Commercial 3, 4; Make-Up 3.



FRANK ADAMS
"BUNKEY"

*Unassuming, contented,
with an ever-ready smile
to remember him by.*

H. R. Treasurer 2; Fish and Game Club 1; Interclass Basketball 2.



DOROTHY ADASZIK
"Dot"

*A charming lass—petite
and demure.*

Library Squad 2; Home Economics Club 1.



JEANNE ALZHEIMER
"GINGER"

*Ever smiling, ever gay,
A friend to all who come
her way.*

Cynosure Editorial Staff; Senior Play; Knitting Club 3; Library Squad 1; Pirates of Penzance 3; Chronicle Circulation Comm. 2, 3; Barn Dance Ticket Committee 4; Secretarial Appointment; Patience.



CARL ANTHONY

*Versatile, talented, ambi-
tious—
Journalism is his goal.*

Cynosure Editorial Staff; Chronicle 1, 2, Co-Editor-in-Chief 3, 4; Clubs: Boys' Glee 1; A Cappella Choir 1; French 1, 2; Dramatic 1, 2; Art 2, 3; Math 2, 3; Chemistry 3; Senior Play.



MARION BAARS
"MAR"

*A good friend to all,
cheerful and gay;
That is Marion all the
way.*

Chronicle 1, 3, 4; Basketball 3; Knitting Club 3; H. R. Treasurer 4; Senior Play Ticket Committee; Cynosure Circulation Committee.



FRED BABBITT

*A tall fellow with great
interests in sports and
other activities.*

Homeroom Chairman 3; Treasurer 1; Chronicle Play 4; Usher for Graduation 3; Prom Dec. Comm. 3; Talent Show Stage Comm. 3; Milk Bar Comm. 3, 4; J.V. Football 2, Varsity 3, 4; Interclass Basketball 1, 2, 3, 4; Clubs: Latin 3, Treasurer 4; Sports 3, 4.





BELLE BAKER

*Wisdom, neatness, along
with her refined manner,
make up Belle.*

Homeroom Secretary 4;
Homeroom Treasurer 3;
Chairman Senior Play Read-
ing Committee 4; Clubs:
Art 1, 4, Treasurer 2, Vice-
President 3; Math 2, 4, Sec-
retary 3.

BERNICE BARGE

Dimples are her charm.

Clubs: Glee 1, 2, 3; Steno
4; Secretary Knitting Club
3; Library Squad 1, 2, 3;
Secretary Junior Red Cross
3; A Cappella Choir 3;
Homeroom Vice-President 3;
Usherette H. M. S. Pina-
fore 2.



ROBERT BARRETT "Bob"

*Small in stature,
Big in personality.*

Homeroom Chairman 1, 2;
Homeroom Treasurer 2; Se-
nior Play; Junior Prom Dec-
oration Committee 3; Print-
ing Club 1; President Travel
Club 3.



PETE BARTUS "BARTI"

*His spirit of true sports-
manship will carry him
far in the Navy.*

Sports Club 3, 4; J. V.
Baseball 2, Varsity 3; J. V.
Basketball 3; J. V. Football
2, Varsity 3, 4; Chronicle
Play 4.

CHARLOTTE BEAM

*A beaming smile and a
friendly heart;
In sports and gymnastics
she does her part.*

Typing Club 3; Spanish
Club President 3; Girls'
Basketball 1, 2, 3; Girls'
Volleyball 2, 3, 4; Library
Squad 1; Pirates of Pen-
zance.



GERTRUDE BECKER "GERTY"

*Intelligent, efficient, but
nevertheless fun-loving.*

Cynosure Editorial Commit-
tee; Clubs: Home Economics
1; Commercial 3; Movie 3;
Senior Play Costume Com-
mittee.



RICHARD BEECHER "BEECH"

*The ability to lead and
hold true friends
is Beecher's now and for-
ever.*

Senior Class President; Jr.
Class President; Homeroom
President 1, 2; Boys' Glee
Club 1, 2; Student Council
1, 2, 3, 4; Athletic Commit-
tee 3; Decorating Committee
3; Talent Show 3; Cheer-
leading 3, 4; Usher Senior
Graduation 3; Milk Bar
Committee 3, 4; Chronicle
Play 4.

MARTHA BERNSTEIN

*A scholar, a friend,
A wonderful blend.*

Christmas Decorating Com-
mittee 3; Junior Prom Dec-
orating Committee; Clubs:
German 3, 4; Art Appre-
ciation 3; Senior Play Stage
Committee.





ALICE BERTA

"ALLE"

*A pretty person, a quiet girl,
Usually is an intelligent one.*

Clubs: Math 2, 3, Vice-President 4; Home Economics 1; Art 1, 3; Library Squad 1; Cafeteria 2; Student Council Alternate 3; Perfect Attendance 2, 3; Assistant Stage Manager Senior Play.

FRANK BILANIN

His capability, generosity, big heart, and ever-ready smile gather friends for him as he goes along.

Senior Class Vice-President; Homeroom President 2, Vice-President 4; Junior Varsity Basketball 2, 3; Varsity Basketball 4; Cynosure Editorial Committee; Senior Play Reading Committee 4.



MICHAEL BITTNER

"MIKE"

*Considerate, conservative, congenial and kind,
Pleasant in manner,
gentle in mind.*

Cafeteria Committee 3.



ALBERT BODNER

"CHOP"

*Always a smile, never a frown,
Gets him places by leaps
and bounds.*

German Club 3, 4.

ALICE BODNER

"AL"

Friendly, sweet, with a charming personality.

Perfect Attendance 3; Clubs: German 3, President 4; Dramatic 2; Senior Play.



EDWARD BODZIOCH

"Bo"

His ambitious playing on the football field will always be remembered.

Sports Club 3, 4; Football J. V. 2, Varsity 3, 4.



PAUL BONGARD

"BONNIE"

*Here's a boy who's lots of fun;
He's always gay and on the run.*

Aviation Club 1; Fish and Game Club 3; Junior Prom Decorating Committee.

VERONICA BOWBLIS

"PATRY"

*Happy-go-lucky, jolly and sweet;
Watch her with those dancing feet.*

Baton Twirling 1, 3, 4; Christmas Decorating Committee.



HELEN BRANCH

*A friend like Helen is
a true friend.*

Motion Picture Club 4.



AL BROKAW

"BROKE"

*A tall fellow,
A happy person,
A friendly guy,
A grand friend.*

Baseball 1, 2, 3, 4; Basket-
ball 2, Captain 3; Football
3; Homeroom Chairman 1;
Dramatic Club 1, 2; Cafe-
teria Corps 4.



MYRNA BRONSTEIN

"MERN"

*Fair, kind, and true, have
often lived alone;
Which three, 'till now,
never kept seat in one.*

Clubs: French 1, 2, Sec. 3,
Pres. 4; Dramatic 2, 3, Sec.
4; Home Economics 1, 2;
Make-Up 1, 2, 3, 4; Glee
Club 1, 2, 3, Attendance
Sec. 4; A Cappella Choir 3;
Cynosure Editorial Staff;
Cynosure Play; Jr. Prom
Decorating Comm.; Talent
Show 2; May Festival 1;
H. M. S. Pinafore; Pirates
of Penzance.



HELEN BROWN

Intelligent, attractive, and

*These three traits make
up a prize.*

Jr. Class Sec.; Homeroom
Pres. 2, 4, Sec. 3; Cynosure
Editor; Clubs: Home Eco-
nomics 1, 2; Commercial
Club 3; Band 1, 2, Libra-
rian 3, 4; Orchestra 1, 2, 4,
Librarian 3; All-State Chorus
4; Jr. Prom Decorating
Comm.; Sr. Prom Refresh-
ment Comm.; Junior Talent
Show; H. M. S. Pinafore;
Pirates of Penzance; Band
and Orchestra Concerts;
Patience.



RUTH BRUGGER

"RUTHIE"

*Tall, quiet, and a true
friend.*

Make-Up Club 4.



ISABELLE CAGGIANO

"Is"

*Cheerful, sunny, with a
smile,
Is this young lady all the
while.*

Movie Club 3; Commercial
Club 3; Perfect Attendance
3; Co-Chairman Cynosure
Circulation Comm.; Dra-
matic Club 4; Senior Play
Costume Comm.; Secretarial
Appointment.



JOYCE CHAPMAN

"BLONDIE"

*Mischief and laughing
eyes will always make up
Joyce.*

Home Economics Club 1;
Library Squad 1.



MARGARET CHAPMAN

*Interested in sports and
excelling in them,
Margaret quietly wends
her way through
school.*

Track 1; Basketball 1, 2, 4;
Volleyball 1, 2; Badminton
1, 2, 3, 4; Paddle Tennis 1,
2, 3, 4; Surveying Club 1.



JOHN CHECHKO
"CHECK"

*Ambitious, friendly,
and liked by all.*

Student Council Representa-
tive 1; Homeroom Vice-
Pres. 1.



ROSE CHERNIKOFF

*Ability plus sincerity
equals greatness.*

Cynosure Editorial Staff;
Clubs: Math 2; Home Eco-
nomics 2; Latin 1, 2; Ticket
Comm. Stage Door; Senior
Dramatic 2, 3, 4; Elmer 1.



CAROLINE CHIAPPETTA
"KITTY"

*Well-dressed, fun-loving,
and carefree,
A dress designer she
hopes to be.*

Ring Comm. 3; Christmas
Dec. Comm.; Jr. Prom Dec-
orating Comm.; Barn Dance
Dec. Comm. 3; Clubs: Art,
3; Knitting 3; Glee 4;
Social 4.

NANCY CHIAPPETTA
"NAN"

*Always cheerful, always
gay;
Nancy's friends like her
that way.*

Cynosure Editorial Staff,
Chairman Typing Staff;
Clubs: Commercial 3; Movie
3; Chairman Senior Play
Ticket Committee; Secre-
tarial Appointment.



*To Batt
all the luck
she would to
the name
*Looks personable, hu-
mor, a winning smile
on all American guy.
A Club 3; Sr. Ring Comm.
tee 3
life. Mary*

MORTON CHRISTENSEN
"MORT"

JOHN CHRISTIE
"JACK"

**Looks personable, hu-
mor, a winning smile
on all American guy.
A Club 3; Sr. Ring Comm.
tee 3*

*Beaming with good hu-
mor and mischief.*

H.R. Pres. 3, 4; Interclass
Basketball 1, 2, J. V. 3, Var-
ity 4; Glee Club 4; Sr.
Prom Refreshment Comm. 3;
Cynosure Comm.



MARJORIE COLEMAN
"JANE"

*Margie is sweet, kind and
gay;
She spells personality
plus in every way.*

H.R. Secretary 3, Vice-Presi-
dent 4; Social Committee 4;
Volleyball 1, 2, 3, 4; Basket-
ball 3, 4; Badminton 3, 4;
Christmas Decorating Com-
mittee; Senior Prom Refresh-
ment Committee 3; Student
Council 4; Ushereffe Pirates
of Penzance.



ANGELINA CONSTANZA
"ANGIE"

*Fun-loving but quiet,
Angie is one we all like
to be with.*

Knitting Club 3.



VELMA COOTS

"VEL"

"Vel" is one who is quiet and a nice girl to know.

Glee 1; Art 2; Latin 1, 2, 3; Typing 4.

Velma Coots

GLORIA CORDASCO

"GLOR"

Her presence always adds a spark of life.

Cheerleading 2, 3, 4; Cynosure Advertising Comm.; Student Council 4; H.R. Treas. 2, 3; H.R. Sec. 4; Library Squad 1; Christmas Dec. Comm.; Jr. Talent Show; Sr. Prom Refreshment Comm. 3; Sr. Play Property Comm.; Secretarial Appointment.



JEAN CORDASCO

"JEANIE"

Well-dressed, fun-loving, and with dancing feet. Here's a girl you'd like to meet.

Library Squad 1; Cynosure Editorial Staff; Jr. Talent Show; Usherette Pirates of Penzance; Jr. Prom Dec. Comm.; Christmas Dec. Comm.; Clubs: Art 1; Girls' Glee 2; Commercial 3.



WALTER CZYZEWSKI

"WALT"

Ambition and efficiency in Walt give evidence of a prospective accountant.

H.R. Treas. 4; Chemistry Club 4; Interclass Basketball 3, 4; Christmas Dec. Comm.; Athletic Comm. 4; Sr. Prom Refreshment Comm. 3; Sr. Play Costume Comm.

MARION DELBARRE

Her dancing has always delighted us all.

Talent Show 1, 2, 3; Usherette H. M. S. Pinafore; Make-up Comm. 3, 4.



THERESA DELLERA

"TESS"

Her eagerness to make and keep friends is one of the many reasons why Tess is well liked.

Latin Club 3, 4; Typing Club 4; Volleyball 4; Basketball 4.



RITA DE MARCO

Her sincere nature makes friends wherever she goes.

Library Squad 1, 2, 3; Art Club 2, 3, 4.

WILLIAM DEMYANOVICH

"BILL"

Though quiet he may be, he is a friend we all like having.





WANDA DEPCZYNSKI

She who lives quietly lives well.

Clubs: Art 1, 2; Chemistry 3, 4; Latin 3, 4.



DOROTHY DILBATIS

"Dot"

A neat and pleasing appearance, combined with a sweet nature, makes up Dot.

Home Economics Club 1, 2; Knitting Club 3; Barn Dance Ticket Comm. 3; Cynosure Circulation Comm.

EMERY DOUGHERTY
"Doc"

Doc sings in all of our musical programs and has one of the finest tenor voices in the school.

Student Council 1, 3, President 4; Junior Class Vice-President; Clubs: Latin 1, Treasurer 2; Boys' Glee 3, 4; A Cappella Choir 3, President 4; All-State Choir 3, 4; Mixed Quartet 3, 4; Talent Show 2, 3; May Festival 2, 3, 4; Cynosure Comm.; Sr. Prom Refreshment Comm. 3; Senior Play Costume Comm.; Patience.



LARRY DOUGHERTY
"Doc"

Of all the friends you'd like to win, Choose Doc with his magnetic grin.

Class Pres. 2; Jr. Talent Show; Cheerleading 3, 4; Chronicle Circulation Comm. 4; Chronicle and Cynosure Plays 4.

GENEVIEVE DRAGAN
"GEVIA"

A charming lass skilled in the arts of knitting, reading, and dancing.

Cynosure Circulation Comm.; Barn Dance Orchestra Comm. 3; Perfect Attendance 1, 2, 3; Clubs: Knitting 3; Home Ec. 1, 2.



HAROLD DREISSIG
"HARRY"

Not that he likes school less

But that he likes fun more.

Senior Play Property Comm.



SHIRLEY DU TOT
"DUKE"

Her voice was like the voice the stars had, when they sang together.

H.M.S. Pinafore; Pirates of Penzance; Patience; Band 1, 2, 3, 4; Orchestra 1, 2, 3; A Cappella Choir 1, 2, 3, 4; Junior Talent Show; May Festival 1; Clubs: Art 1; Math 2, 3, 4.

JOHN DWYER
"JOHNNY"

A keen sense of humor and a witty manner make Johnny an interesting person to know.

Band 1, 2, Asst. Mgr. 3, Mgr. 4; Orchestra 2, 3, 4; Mapping and Surveying Club Vice-President 3; Boys' Glee Club 4; Senior Play.



JOYCE ECKSTEIN
"JERCE"

*Ambitious and willing to
do her part,
To travel in the future is
close to her heart.*

H.R. Treasurer 1; Aviation
Club 1; Assembly Commit-
tee 3; Christmas Decorating
Committee; Jr. Prom Decor-
ating Comm.; Senior Play
Ticket Comm.



EDWARD EIVA
"PEEWEE"

*Ed leads a life very care-
free and gay,
Yet he's a swell friend in
every way.*

Football 1; Class Treasurer 3.



JOSEPH ELOWITZ
"JOE"

*A quiet mind, 'tis often
said,
Is all one needs to get
ahead.*

NANCY EVANS
"NAN"

*Nan's new here but has
already proved herself an
asset through her per-
sonality.*

Usherette Stage Door.



WILLIAM FARBER
"VEV"

*Light is the task when
Vev shares the toil.*

Business Manager Cynosure;
Clubs: French 1, 3, 4; Glee
1, 3; Math 4; Chronicle 3;
Choir 1; Jr. Prom Decorat-
ing Committee; Christmas
Decorating Committee; Sr.
Play Stage Committee.

JANE FARMER
"JANIE"

*Janie is friendly, loyal,
and a girl with a won-
derful sense of humor.*

Chronicle Circulation Staff
1, 2, 3, Chief of Staff 4;
May Festival 1; Usherette:
H.M.S. Pinafore, Pirates of
Penzance; Basketball 1, 2, 3,
4; Foul Shooting 3; Volley-
ball 1, 2, 3, 4; H.R. Vice-
Pres. 1; Clubs: Glee 1, 2, 3,
4; Girls' Photo 3; Girl Re-
serves 3, 4.



HELEN FATULA
"FOOTS"

*Fun can always be found
When our Foots is
around.*



DOROTHY FECIUCH
"DOTTIE"

*Dottie has entertained
many football audiences
with her baton twirling.*

H.R. President 1, Vice-Presi-
dent 2, Secretary 3; Major-
ette 1, 2, 3, 4; Usherette:
H. M. S. Pinafore, Stage
Door; Band Concert 1, 2, 3;
Barn Dance Dec. Comm. 3;
Jr. Prom Dec. Comm;
Clubs: Glee 1; Speech 3;
Twirling 1, 2, 3, 4.

WALTER FELTER
"STRETCH"

*Quiet and shy,
But a good-natured guy.*
Perfect Attendance 3; Glee
Club 4.



POCAHONTAS FLOYD
"POKEY"

Friendship always benefits.
Baton Twirling 3, 4; Home
Economics Club 1.



MADELINE FORBERGER
"MADDY"

*Quiet and tall,
A good friend to all.*
Perfect Attendance 1, 2;
Clubs: Movie 3; Commer-
cial 4; Library Squad 1;
Cynosure Circulation Com-
mittee.

AGNES FRANK
"AGGIE"

*Her quiet nature fools
some;
Her carefree air wins
many.*
Art Club 3; Art Honor So-
ciety 3, 4; Cheerleading 4;
H. R. Pres. 1; Talent Show
1, 2; Girl Reserves 3, Treas.
4; Perfect Attendance 1, 2;
Cynosure Circulation Com-
mittee.



HELEN FRAYKOR
"BABS"

*Although she is quiet
and small, "Babs" is a
charming lass with a will
to work.*
Library Squad 1; Secretarial
Appointment.

MARILYN FRITZE

*Jesting is frequently
an evidence of under-
standing.*
Library Squad 1; Latin Club
3, 4; Chemistry Club 4;
Usherette Pirates of Pen-
zance.



SHEILA GARFINKLE

*Her talents are shown
in many ways.*
Dramatic Club 3, 4; French
Club 3, 4; Band 3, 4; Or-
chestra 3, 4; Band Concert
3; Pirates of Penzance.



GERALD GLICK
"JERRY"

*May his happy and
carefree manner continue
in his Navy life.*
Cafeteria Corps 4; Glee
Club 4; A Cappella Choir 4.



GLADYS GOLDBERGER
"GILD"

*A cheerful life is what
the Muses love;
A soaring spirit is their
prime delight.*

Clubs: Dramatic 2, 4, Treas. 3; French 1, 2, 3, 4; Home Ec. 1, 2; Forensic 2, 3, 4; Cynosure Ed. Staff; Chronicle 1, Exchange Ed. 2; Barn Dance Dec. Comm. 3; Jr. Prom. Dec. Comm.; Property Comm. Chairman, Elmer; Ass't Director, Eternal Life; Stage Door; Cynosure Play; Talent Show 2, 3; Humorous and Dramatic Declaration Contest 2, All-State 3, 4; Senior Play Property Comm.

CLAIRE GRIFFITH
"GRIFF"

*She's lively, kind, and
she smiles for all.*

H.R. Pres. 2; Clubs: Art 1; Knitting 3; Home Ec. 3; Movie 4, Vice-Pres. 3; Glee 1; Baton Twirling 1; Usherette H.M.S. Pinafore, May Festival.



ROBERT GUSHIN
"GUSH"

*Gush loves to argue
out his point.*

J.V. Football 3; Chemistry Club 3, 4; Senior Prom Refreshment Committee 3; Senior Play Stage Committee.



WALTER GUTKOWSKI
"WALT"

*Silent caution is preferred
to loquacious folly.*

Clubs: Boys' Glee 3; Chemistry 4; Mapping and Surveying 2; Stage Crew Sophomore Talent Show; Senior Play.

JOHN GUYDAN
"CHINK"

*Chink is a lover of the
great outdoors.*



MARY HALISACK

*Swift to hear, slow to
speak, slow to wrath.*

Student Council Representative 1; War Bond Committee; Clubs: Aviation 3, Secretary 4; Mapping and Surveying President 3.



JEANNE HARDENBURG
"RED"

*Jeanne's life will always
be gay with her
happy manner.*

Homeroom Vice-President 3; Girl Reserves 3; Volleyball 2, 3, Captain 4; Basketball Captain 2, 3; Badminton 3; Band 1, 2, 3, 4; Orchestra 1, 2, 3, 4; Decorating Jr. Prom; May Festival 1; Senior Prom Refreshment Committee 3; Pirates of Penzance; H.M.S. Pinafore Orchestra; Typing Club 4.

BERNARD HARKINS

*Quiet, peaceable, and
undisturbed.*

Clubs: Cnes 1; Chemistry 4; Talent Show 2; Perfect Attendance 2.





HERMAN HAUSLEITER
"HAUS"

An athlete to be remembered.
Homeroom Treasurer 4;
Sports Club 4; Jr. Varsity
Football 2, Varsity 3, 4;
Perfect Attendance 3.

BARBARA HELLER
"BAB"

*A little mischief now and then;
Along with this she'll be your friend.*
Clubs: Movie 3, Pres. 4;
Senior Social 4; Volleyball 2.



JEAN HENDERSON
"JEANIE"

After laughter, the things she likes are sports.

Basketball 1, 2, 4; Service-
ball 1, 2, 4; Badminton 3;
Clubs: Glee 1, 4; Interna-
tional Relations Vice-Pres. 3,
Treas. 4; A Cappella Choir
1, 4; Girls' Special Chorus
1, 4; Pirates of Penzance;
Patience.



TERESA HENNESSEY

Although Teresa is a newcomer to Linden High she has proved herself ambitious and friendly.

HELEN HISLOP
"Hip"

The steps of her future are lightened by music.

Cynosure Editorial Staff;
Barn Dance Dec. Comm. 4;
Dance Band 3; Talent Show
1, 2, 3; Library Squad 1;
Clubs: International Rela-
tions 3; Girls' Glee 1, Lib.
1, Sec. 3, 4; A Cappella
Choir 1, Lib. 2, 3, 4; Girls'
Trio 1, 2, 3, 4; Girls' Spe-
cial Chorus 1, 2, 3, 4; All-
Star Chorus 2, 3, 4; May
Festival 1; H.M.S. Dinafore;
Patience; Pirates of Pen-
zance; Girls' Basketball 1,
Capt. 2, 3; Girls' Volleyball
1, 2, 4; Foul Shooting 1;
Badminton 2.



JOY HOCHHAUSER
"Hocky"

*Short 'n petite
And twice as sweet.*

H.R. Secretary 4; Clubs:
Home Economics 1, 2;
French 1, 2; Barn Dance
Decorating Comm. 3; Jr.
Prom Decorating Comm.



EDWARD HOEFTLING
"Ed"

*Ed's as quiet as they come,
But just the same, he's full of fun.*

Travel Club 3, 4; Barn
Dance Decorating Commit-
tee 3.

ALFRED HOERRNER
"Al"

Determination, high ideals, and a keen sense of humor will be the bulwark of his success.

Senior Play; H.R. Pres. 4;
H.R. Treas. 3; Clubs: Pho-
tography 2; Microscope 3;
Chemistry 3, Treasurer 4;
Senior Playreading Comm.



SEBLEY HOLICK
"SEB"

*Always happy; always
gay;
Always active the live-
long day.*

Cynosure Circulation Comm.
4; Chronicle Collector 3;
Barn Dance Ticket Comm.
3, 4; May Festival 1; Li-
brary Squad 1, 2; Clubs:
Girls' Glee 1; Art 1, 2;
Movie 3; Commercial 3, 4;
Senior Play Ticket Comm.



*Lot of luck
to a well girl.*

MARTIN HRYNICK
"MARTY"

Wit is a gift of the gods.

Senior Class Treasurer; Se-
nior Play; H.R. Treas. 1;
Talent Show 1, 2, 3; Pirates
of Penzance; Clubs: Latin 1,
Vice-Pres. 3, 4; Chemistry 3;
Chess 1.



*Lot of luck
to a well girl.*

RICHARD HUBENY
"HUB"

*Tall, dark, and handsome,
Hub's an atomic burst
in the field of sport.*

Varsity Football 2, 3; Cap-
tain 4; Varsity Basketball 2,
3, Captain 4; Sports Club
3, 4; Cynosure Comm.

STEPHANIE IDEC
"TAFFY"

*A pretty girl with danc-
ing feet;
That's our Steff, who's
kind and sweet.*

H.R. Sec. 2; Clubs: Travel
3; Girls' Glee 1; Barn
Dance Decorating Comm. 3;
Jr. Prom Decorating Comm.;
May Festival 1; Cynosure
Circulation Comm.



*Body:
Basket anything
he would ever offer
in the world.*

CHARLES JEFFREY
"JEFF"

*Jeff is tall, dark and
handsome, loves sports,
and is liked by all.*

Clubs: Mapping and Sur-
veying 3; Sports 3, 4; Bask-
etball Jr. Varsity 3, Varsity
4; Cynosure Comm.



RUTH JENSEN
"JEN"

*Ready to work, ready
to smile.*

Home Economics Club 1;
Movie Club Sec. 3; Library
Squad 1; Student Council 1;
Usherette H.M.S. Pinafore 2;
Cynosure Circulation Comm.



ELINOR JOFFE
"JIFF"

*Charming, serene, a lover
of sports,
That's Jiff with her pleas-
ant smile.*

H.R. Sec. 1, 2; Clubs: Math
2; International Relations
Sec. 3; Girl Reserves 3; Vol-
leyball 3, 4; Basketball 2, 3;
Student Council Club Com-
mittee 4; Jr. Prom. Decorat-
ing Comm.; Student Coun-
cil 4; Talent Show 2.



ADOLPH KAISER
"KAY"

*To join the Navy is
Kay's aim.*

Travel Club 3, 4; J.V. Bask-
etball 3.

ROBERT KANZLER
"Bob"

An industrious person is an intelligent person.

Homerom President 2, 3, Vice-President 1, 4; Band 1, 4, Assistant Manager 2, 3; Orchestra 1, 2, 3, Manager 4; Perfect Attendance 2, 3; Cynosure Committee; Christmas Decorating Committee; Talent Show 3; Clubs: Math 2, 3, President 4; Chemistry 3, Vice-President 4; Chess 1; Radio 1; Senior Play.



ROSLYN KAPLAN
"Roz"

If Roz could have her happy way, she'd dance all through the live-long day.

Clubs: Girls' Glee 1; Art 1, 2; Movie 3; Commercial 3, 4; May Festival 1; Library Squad 1; Cynosure Circulation Comm.



EDWARD KASHORK
"Ed"

Silently observing, quietly working, striving to gain his goal.

Cynosure Editorial Staff; Usher Graduation 3.

MILDRED KAUFFMAN
"MILLIE"

A quiet girl is usually an especially nice one.

Student Council Representative 3; Movie Club 3; Home Economics Club 2; Crocheting Club 4; Senior Prom, Refreshment Committee 3.



AGNES KAUFMANN
"AGGIE"

A lover of sports is she, especially of bowling and swimming.

Baton Twirling 1; Girl Reserves 2, 3, Vice-President 4; Knitting 3.

JOHN KAWALEC
"JOHNNY"

Fun is the keynote of his existence; mechanics, the keynote of his ambition.



BERNARD KIMMELMAN
"KIMMY"

The real character of a man is found out by his many amusements.

Chronicle 1, 2; Baseball J. V. 3, Varsity 4; Interclass Basketball 1, 2; Clubs: Sports 4; Aviation 1; Senior Play Stage Committee.



JACQUELINE KING
"JACKIE"

A quiet, intelligent, and understanding young lady, Jackie will surely attain the aim of success.

Movie Club 3.



RUTH KIRBY

*She works with a will
and does things well.*

Homeroom Sec. 1, 2; Clubs:
Art 1, 2, Sec. 3, 4; Latin 1,
Sec. 2; Home Ec. 1; Math.
3, 4; Chronicle 3.

ANNE KISELI

"ANKA"

*Short, pleasant, full of
cheer,
You'll feel her presence
when she's near.*

Cynosure Editorial and Typ-
ing Staff 4; Band 1, Libra-
rian 2, 3, Sec. 4; Concerts
1, 2, 3, 4; Junior Red Cross
Club 3; Senior Play Ticket
Comm.; Senior Play.



GRACE KLINE

"GRACIE"

*Movie-lover, roller-skating,
she finds life always full
of fun.*

Knitting Club 3; Junior Red
Cross 3; Stage Crew Pirates
of Penzance.



BERNARD KOMINETSKY

"KAYE"

*Although he's quiet, he's
always gay;
What an artist he'll make
some day.*

Clubs: Art 1, 2, 4; Boys'
Glee 3, 4; Art Honor So-
ciety 2, 3; A Cappella Choir
3; Pirates of Penzance; Se-
nior Play Costume Comm.;
Patience.

PHYLLIS KOPLIN

"PHYL"

*Small, petite and oh so
neat,
Her singing and dancing
give all a treat.*

Clubs: Girls' Glee 1; Movie
3; Commercial 3, 4; May
Festival 1; Cynosure Circu-
lation Comm.



THERESA KOWALSKI

"TERRY"

*Music to the ear is fine;
Terry likes it all the time.*

Girl Reserves 2; Movie Club
3; Girls' Glee Club 3.



DOROTHY KRAHLING

"TOOTS"

*A radiant smile, a lovely
face,
A friend that's true, what
e'er the case.*

Clubs: Home Economics
Club 1, 2, 3; Jr. Red Cross
3, 4; Girl Reserves 3, 4;
Glee Club 1; H.R. Treas-
urer 1, Sec. 3; Student Coun-
cil 4; May Festival 1; Cyno-
sure Circulation Comm.

RICHARD KROWICKI

"KROW"

*Friendly and eager to
do his best.*

Forensic Club 1; Travel
Club 3; J. V. Football 3;
Boys' Photography 3, 4;
Boys' Glee Club 4; Senior
Play; Patience.



*So Betty
You are such
a gentle girl,
but oh
how much
you have
done for
the school
and
the
community*



HELEN KUNDLA
"KUN"

*Happy-go-lucky, full of
fun,
A worry or care? No,
sir, not one!*

H. R. Treas. 4; Comm. Club
3; Chronicle 1, 2, 3, 4;
Prom Dec. Comm.; Jr.
Talent Show 3; Usherette:
Pirates of Penzance, Stage
Door; Secretarial Appoint-
ment; Senior Prom Refresh-
ment Comm. 3; Cynosure
Cir. Comm.

IRVING LAPIDUS
"Irv"

*A rare sense of humor
is his most treasured pos-
session.*

Travel Club 3.



HAROLD LAWSON

*An untiring and ex-
celling worker in the
subjects he likes: radio
and art.*

Photography Club 3.



ELEANOR LESKO
"El"

*Her smiling confidence
portrays a true compa-
nion.*

Chronicle 1, 2, 3, 4; Girl
Reserves 2, 3, 4; Student
Council Serviceman's Comm.
3; May Festival 1; Clubs:
Glee 1, 2; Commercial 3.

HOWARD LEVENBERG
"Levi"

*Music is the universal
language of mankind.*

Band 1, 2; Assistant Band
Manager 4; Dance Band 2,
4; Talent Show 1, 2; Band
Concert 1, 2, 3, 4; Ring
Committee 4; Clubs: Foren-
sic 1, 2, 3; Chess 2; Micro-
scope 3; Senior Play.



ALICE LICKNACK
"Al"

*Humor is the harmony
of the heart.*

Art Club 2, 3; Glee Club 1,
4; Library Squad 1; May
Festival 1, 4.



WILLIAM LIDDY
"Bill"

*Bill is interested in en-
gineering and probably
will build his future
around it.*

H. R. Chairman 3, 4; Per-
fect Attendance 3; Sr. Prom
Refreshment Comm. 3; Jr.
Prom Dec. Comm. 3; Clubs:
Math 2, 3, 4; Aviation 1;
Chem. Sec. 4.

EVELYN LISCHKO
"Ev"

*Personality rates high
with this girl;
Without her, sad would
be our world.*

H. R. Treas. 2; Library
Squad 1; Glee Club 2; Pi-
rates of Penzance 3; Usher-
ette H. M. S. Pinafore, Stage
Door; Girls' Service Ball 4;
Student Council Alternate 4;
Senior Play; Senior Social
Club Treasurer 4.



JAMES LOGUE
"JIM"

*Although Jim is new
around these parts,
His friends have taken
him to their hearts.*

Glee Club 4.



WILLIAM LOVELAND
"BILL"

*A sincere fellow
With an honest ambition.*

Homeroom Chairman 3;
Track 2; Boys' Glee Club
3, 4; A Cappella Choir 3;
Pirates of Penzance 3.



LORRAINE LYNCH
"MICKEY"

*For Mickey, life is full
of treasures;
Roller skating and art-
istic work, her pleas-
ures.*

Cynosure Editorial Commit-
tee; H.R. Sec. 2; Art Club
1, 2, 3, Treas. 4; Chairman
Jr. Prom Dec. Comm.; Girl
Reserves 3, 4; Senior Play
Stage Comm.

GERTRUDE LYONS
"GERT"

*A sweet, attractive girl is
Gert.
Friendly, kind, and on
the alert.*

Homeroom Secretary 2, 4;
Badminton 3; Student Coun-
cil 1, 2, 3; Usherette Pirates
of Penzance; Senior Prom
Refreshment Committee 3.



GERTRAUD MACHALETT
"TRAUDIE"

*Here's one girl you all
should meet;
She's pretty, kind, and
twice as sweet.*

Band 1, 2, Librarian 3, 4;
Orchestra 3, 4; Dance Or-
chestra 1; Drum Majorette
4; German Club 4, Sec. 1,
Vice-Pres. 2, Treas. 3; Band
Concerts 1, 2, 3, 4; Ring
Comm. 3; Senior Play.

CARL MAJEWSKI

*Tall in stature, but
every inch a perfect fel-
low.*

Chronicle 1.



CARMELA MANNUZZA
"BUB"

*She has many interests
large and small,
And friendly Bub is loved
by all.*

Clubs: Latin 1, 2, Math 3,
4; French 2, 4; Treas. 3;
Library Sec. 1; Roul
Shooting 2, 3; Service
Ball 1, 2, 3; Basketball 1, 2,
3; Badminton 3; Senior
Play.



FREDA MARKANT
"FREED"

*Rare and precious as a
jewel,
Charm and sweetness
are her tools.*

Senior Class Secretary; H.R.
Sec. 1, 2, 3, Sec.-Treas. 4;
Orchestra 1, Sec. 2, 3, 4;
Band 3, 4; Concerts 1, 2, 3,
4; Commercial Club Sec. 3;
Pirates of Penzance; H.M.S.
Pinafore; Barn Dance Orch.
Comm. 4; Talent Show 1, 3;
Perf. Att. 2; Cynosure Ed.
Staff; Chronicle 1.

JOAN McGANN
"JOANIE"

Joan is a beautiful dresser, and an attractive girl who loves sports.

Cynosure Editorial Comm.; Chronicle 2, 3, 4; Home-room Vice-Pres. 3; Badminton 2, 3; Volleyball 2; Glee Club 1; Baton Twirling 1, 2, 3, 4; Sr. Prom Refreshment Comm. 3; Usherette: Band Concert 3, Pirates of Penzance; May Festival 1; Chronicle Play 4; Girl Reserves 2, 3, 4; Senior Play.



MARGARET MCGILL
"MARGE"

A jolly and congenial companion.

Latin Club 1, 2, Assistant Treasurer 3, 4; Glee Club 2; Usherette H.M.S. Pinafore, Pirates of Penzance; Chemistry Club 3, 4; A Cappella Choir Co-Librarian 3, 4; Girls' Special Chorus 4.



CHARLES McGRATH
"SQUIRE"

Small in stature but great in personality.

GERALD MESSER
"MESS"

We'll always remember "Mess" for his sweet music and grand, care-free manner.

Band 1, 2, 4; Barn Dance Decorating Comm. 3; Dance Band 1, 2, 3, 4; Talent Show 2, 3; May Festival 1, 2; Cafeteria Corps 4; Chronicle Play 4.



MARY MICENKO
"MARY"

Mary is always a quiet, likable, friendly young lady.

Latin Club 2; Math Club 3, 4; Typing Club 3; Perfect Attendance 1.

PATRICIA MILLER
"PAT"

A happy person whose chief pastime is roller-skating.

Homeroom Secretary 1; Clubs: Art 1, Sec. 3; Math 2, 3, 4; French 3, 4; Speech 3.



RUTH ANN MILLER
"RUTH"

Quiet and studious but a friendly person.

Clubs: French 1, 2, 3; Glee Club 1; Art 1, 2; Barn Dance Ticket Comm. 3; Perfect Attendance 2; Speech Class 3; Christmas Decorating Comm.



RUTH E. MILLER
"RUTHIE"

Whenever you find humor, you'll find "Ruthie" close by its side.

Cynosure Circulation Comm. 4; Library Squad 1, 2; Clubs: Commercial 3; Jr. Red Cross 3; Christmas Decorating Comm.



LILLIAN MINET
"Lil"

*Carefree, happy, and oh,
so gay,
With her, life's fun all
the day.*

Home Economics Club 1;
Barn Dance Dec. Comm. 3;
Cynosure Circulation Comm.



GEORGE MODRAK
"Mo"

*Although quiet, "Mo"
has a sense of humor not
found in all.*

ISADORE MOORE
"Itz"

*If books were shaped like
footballs,
Itz would be in paradise.*

H.R. Pres. 4; Varsity Foot-
ball 4, J.V. 2; Interclass
Basketball 1, 2, 3; Glee
Club, 2, 4, Sec. 3; A Cap-
pella Choir 3; Chronicle 3;
Barn Dance Dec. Comm. 3;
Jr. Prom Dec. Comm. 3;
H.M.S. Pinafore; Pirates of
Penzance; Patience.



MARY MOORE

*With her lively and
fun-loving nature, she
spreads cheer as she goes
through life.*

Homeroom Treasurer 1;
Commercial Club 3, Vice-
President 4; Chronicle 3, 4;
Cynosure Circulation Com-
mittee.

KATHLEEN MUCCIONE
"Kay"

*A lively girl with laugh-
ing eyes.*

H.R. Vice-Pres. 1, 2; Clubs:
Latin 1, 2; Math 2, 3, Treas.
4; Home Economics 1; Field
Mapping and Surveying 4;
Basketball Captain 1, 3;
Volleyball 4; Perf. Attend-
ance 1; Christmas Dec.
Comm.; Student Council
Rep. 2; Senior Play Prop-
erty Comm.; Co-Chairman
Cynosure Circulation Comm.



FLORENCE NARTOWITZ
"Flo"

*"F" is for friendliness;
"L" is for loyalty;
"O" is for orderliness.
Put them all together
And you spell "Flo".*

Movie Club 3.



DOROTHY NATKIEWICZ
"Dot"

*We'll always remember
Dot for her wonderful
cheerleading.*

Cheerleading 2, 3, 4; Chron-
icle 3, 4; Chronicle Play 3,
4; Volleyball 3; Basketball
3; Badminton 3; Library
Squad 1; Glee Club 1;
Junior Prom. Decorating and
Ticket Comm. 3; Senior
Play Property Comm.

EVELYN NOMIS
"LYN"

*Evelyn is happy when
she's doing the thing she
likes—drawing.*

Clubs: Home Economics 1;
Commercial 3, 4.





ANNA NOVIELLO
"SKINNY"

Twirling is Anna's favorite pastime.

Twirling 1, 2, 3, 4; Jr. Prom Decorating Comm. 3.

SOPHIE NYCZ
"HONEY"

*Cute as they come,
And twice as much fun,
There couldn't be
One nicer than she.*

Jr. Red Cross 3, 4; Library Squad 4.



HELEN OKUN

*She makes two grins
grow where there was
only a frown before.*

Student Council Representative 3; Make-up Comm. 1, 2, 3, 4; Junior Prom Decorating Comm.; Chronicle Advertising Manager 2; Make-up Comm. Pinafore, Pirates of Penzance; Clubs: French 1; Home Economics 1, 2; Art 3, 4.



HERBERT PARFITT
"MURPHY"

*A fellow who enjoys
smiling for all.*

Christmas Decorating Comm. 3; Lawn Comm. 3.

WALTER PAWLIKOWSKI
"POM POM"

*The cafeteria will
never be the same with-
out "Pom Pom."*

Cafeteria Comm. 3, 4; Cynosure Circulation Comm.



ELLA PENDER
"KIP"

*Kip is every inch as
tall as the happiness she
spreads.*

Clubs: Glee 1; Knitting 3; May Festival 1.

JOSIE PICCOLI
"Jo"

*Her sweetness makes
being with her a pleasure.*

Glee Club 1, 2; International Relations Club 3; May Festival 1, 2.

JOYCE PILE
"Joy"

*A gay friend is a
worth-while friend.*

H. R. Treasurer 1, Secretary 2; Movie Club 3; Jr. Prom Decorating Comm.; Christmas Decorating Comm.; Cynosure Circulation Comm.



ALBERT PIRROCCO
"AL"

One of the original founders of the Cafeteria Corps, he's liked by all who know him.

Student Council 1; Cafeteria Corps 3, 4; Clubs: Aviation 1; Printing 3; Boys' Glee Club 2; Lawn Comm. 3, 4; Jr. Barn Dance Dec. Comm. 3.



ASPASIA PISKOS
"TESS"

Great talent is hers in music, personality and humor.

H.R. Treas. 3; Band 1, 2, 3, 4; Orchestra 2; Choir 1, 2, 3; All-State 4; Perfect Attendance 1, 2, 3; Student Council 3; Dance Band 3, 4; Talent Show 1, 2, 3; Cheerleading 4; Usherette Pirates of Penzance, Stage Door; Concerts 2, 3, 4; Christmas Dec. Comm. 3; Clubs: Home Economics 1; Art 2; Glee 1; H.M.S. Pinafore; Cynosure Editorial Staff.



MICHAEL POLLY
"MIKE"

Shy and quiet he seems to be, Until you know him as well as we; Then I'm sure you'll all agree A handsome, smiling boy is he.

FRANCES PRATO
"FRANNY"

Attractive, fun-loving; never a dull moment with our pal "Franny."

Perfect Attendance 2; Baton Twirling 1; Home Economics Club 1.



RITA PREBIS
"REE"

We'll never forget "Ree" and her giggles, which have made us all smile.

Perfect Attendance 1; Junior Prom Decorating Comm.; Talent Show 1; Usherette Pirates of Penzance; Clubs: Movie 3; Typing 3; Girls' Glee 2, Librarian 5.

AILEEN RATHJEN
"AI"

Laughter is high and activities fly; Attractive, sweet, that's our "Ai."

Basketball 1, 2, 4; Volleyball 1, 3, 4; Badminton 3; Chronicle 1, 2, 3; Senior Prom Refreshment Comm. 3; Jr. Prom Dec. Comm.; Student Council 4; Usherette Pirates of Penzance; Christmas Dec. Comm.; Social Committee 4.



BETTY REB
"BET"

A sparkling humor that shines like polished silver.

Chronicle 1, 2, Co-Ed. 3, 4; Student Council 2, Sec. 3; H.R. Pres. 2; Cyn. Ed. Staff; Sr. Ring Comm. 3; Sr. Prom Refreshment Comm. 3; Pirates of Penzance; Usherette: H. M. S. Pinafore, Stage Door; May Festival 1; Glee Club 1, 2; Library Squad 1; Talent Show 1, 2; Chronicle Play 3, 4; Girl Reserves 4; Senior Play Costume Comm.



JASON REED
"JAKE"

"Jake" is nice, he loves sports, and once you've met him you'll be glad you did.

Interclass Basketball 2; Fish and Game Club 3.

MARJORIE REIBER
"MARGIE"

Oh, to be efficient!

H.R. Sec 3; International Relations Club 3; Chronicle 2, 3; Girl Reserves 4; Cynosure Circulation Committee; Senior Play Ticket Comm.



JOSEPH REINSTEIN
"PUG"

Every bit of Pug reveals a nice dresser and a swell friend.



MABEL RIMLI
"SHORTY"

*So small in stature,
Yet vast in heart,
These words describe
"Shorty" only in part.*

Choir 3; Cheerleading 4; Usherette Pirates of Penzance; Clubs: Dramatic 4; Make-up 3; Glee 3; Patience.

WALTER ROLL
"WALLY"

In all his tasks sincerity is dominant.

H.R. Pres. 1, 3, 4, Vice-Pres. 2; Clubs: Math 2, 3, 4; Chem. 3, Pres. 4; Student Council Assembly Comm. 3; Track 2, 3, 4; Senior Play.



THERESA RUSSO
"TESSIE"

Quiet—but oh how mischievous.

Spanish Club 3; Library Squad 1; Cynosure Circulation Committee.

ELIZABETH RYBINSKI
"BOBBIE"

*Neat, trim, and full of fun,
She's a peppy little one.*

Homeroom Secretary 2; Girl Reserves 1, 2, 3; Knitting Club 3; Badminton 2; Library Squad 1; Senior Play Ticket Comm.



HELEN SABOL
"SHORTY"

*A polite and quiet miss,
She is liked by all who know her.*



THOMAS SARA
"TOM"

*Fun can be found
When Tommy's around.*

Clubs: German 2; Chemistry 3, 4; Sports 4; Interclass Basketball 1, 2, 3, 4; Basketball 3, 4.



ADOLPH SARRO
"RUDY"

Rudy excels himself in sports, and is one of the nicest fellows you could ever meet.

Baseball 1, 2, 3, 4; Varsity Football 3, 4; Jr. Varsity Basketball 3; Sports Club 3, 4.

VIRGINIA SAULTZ
"VIRGIE"

With her blonde hair and her great big smile, She's happy and carefree all the while.

Homeroom Treasurer 4; Commercial Club 3; Glee Club 1, 2; Library Squad 1, 3; Cynosure Circulation Committee; Christmas Decorating Comm.; Jr. Talent Show.



ROBERT SCHAEFFER
"BOB"

Bob is one who likes to fly, Handsome, quiet, twice as shy.

Baseball 3; Aviation Club 4; Barn Dance Committee 3; Cynosure Committee.



MARGARET SEAMANS
"MARGIE"

A congenial companion.

Library Squad 3; Cynosure Circulation Committee.

JULIUS SENYSHYN

Music! Music! My kingdom for music!

Band 1, 2, 3, 4; Orchestra 1, 2, 3, 4; Dance Orchestra 1, 2, 3, 4; Band-Orchestra Concert 1, 2, 3, 4; May Festival 1; Pirates of Penzance; H.M.S. Pinafore Orchestra; All-State Band 3



EDWARD SERDEN
"POLACK"

Ed likes sports; we like Ed, How could we help it with his cheerful manner!

Baseball Varsity 3, 4, J. V. 2; J. V. Basketball 2, 3; Sports Club 3.



SHIRLEY SERRA
"LEE"

Her quiet poise and manner conceal a gay and fun-loving nature.

French Club 1, 2, Pres. 3, 4; Art Club 2; Orchestra 3, 4; Christmas Decorating Committee; Student Council 4; Band-Orchestra Concert 3.

ARTHUR SHERMAN
"SHERMAN"

A merry heart and a sportive air combine with an intelligent mind.

Boys' Glee Club 3, 4; A Capella Choir 3; Chronicle 2; Library Squad 1; Baseball Manager 1; Pirates of Penzance; Sr. Prom. Refreshment Committee 3; Senior Play.





ALICE SHOPLOCK

A true friend is very rare and very precious.

Orchestra 1, 2, 3, 4; Concerts 2, 3, 4; May Festival 1; Aviation Club 3, 4.

ALBERTA SHUKIS

"SHUKY"

A pleasant smile always comes with a friendly nature.

Homeroom Pres. 1, 2, Vice Pres. 3; Milk Bar Treas. 3.



GEORGE SILVERBLATT

A keen and alert observer of sports.

Travel Club 3.



STEFFIE SKWARSKI

"HONEY"

Ability and personality add to the qualities of an excellent nurse.

Talent Show 1; Homeroom Secretary 1; Latin Club 3; Usherette H.M.S. Pinafore.

OLGA SLAVIC

"OLLIE"

Ollie's gay laughter wins her many friends.

Twirling 2, 3; Glee Club 2, 3; A Cappella Choir 3.



ELEANOR SMITH

"EL"

Sweet, sensitive and full of femininity.

Cynosure Circulation Committee; Chronicle Collector 2, 3, 4; Senior Play; Girl Reserves Sec. 4; Volleyball 1, 3; Basketball 3; Clubs: Knitting 3; Commercial Club Sec. 4; Senior Play.

RUTH SMITH

"SMITTY"

Smitty is as radiant as her glowing red hair.

Perfect Attendance 1; Orchestra 1; May Festival 1; H.M.S. Pinafore; Volleyball 2, 3, 4; Basketball 2, 3; Typing Club 3.



VICTORIA SOBAN

"VICKI"

Sweet, shy and kind, A nicer girl is hard to find.

Homeroom President 1; Girl Reserves 3; Make-Up Comm. 2; Home Economics Club 2.



HELEN SOLOMIN

"LENNY"

Intelligence is charm of the highest order.

Student Council 1, 2; Sec. Assembly Committee 4; Library Squad 1, 2, 4; Linden Eckers 1, Sec. 2, Vice-Pres. 3, Pres. 4; Red Cross Club 3, 4; Secretarial Appointment; H.R. Vice-Pres. 4; Senior Play Reading Comm.



GRACE SPACCAROTELLA

Fair of face, full of grace, A credit any place.

Movie Club 4, Pres. 3.



DAVID SPADER

"DUBBY"

A lover of sports and good times, "Dubby" is a very much liked fellow.

Varsity Football 3, 4; Varsity Basketball 3, 4; Sports Club 3, 4; Glee Club 4.

JOHN STALOWSKI

"JOHNNY"

Quiet and reserved, but a person we enjoy talking to.

Chemistry Club 4.



*Betty Jones
Lucky +
success for
future plans
Dot*



MARY STANZIOLA

"STANZE"

Attractive and sweet, A pleasure to meet.

H.R. Sec. 3, 4; Swing Band 3, 4; Movie Club 3.

DOROTHY STARKEY

"DOT"

Twinkling eyes and a catchy smile, Make up a girl we all like very much.

Assistant Business Manager Cynosure; Secretarial Appointment; Homeroom Treasurer 3; Talent Show 1; Perfect Attendance 2; Archeology Club 3.



LOVENA STEVENSON

"GINGER"

A happy heart and a cheerful countenance make "Ginger" a friend to all.

Barn Dance Ticket Comm. 3; Interclass Basketball 2; Movie Club 3.



RAYMOND STIVES

"WINDY"

A quiet boy in a nice sort of a way.

Photography Club 1, 2; Aviation Club 4; Football J. V. 1

GREGORY SYTCH

"GREG"

Tall and fun-loving and quite carefree.

Fish and Game Club 1, 2; Chem. Club 4; Jayvee Football 3; J. V. Basketball 3; Glee Club 4.



JEAN TARLA

She lights the way to happiness with her sunny smile.

Chronicle 2, 3.



CARMINE TAVORMINA

"TABS"

If smiles were riches, "Tabs" would be a millionaire.

Cynosure Circulation Committee.

FRED TOMLINSON

"HERKY"

Sports and movies he likes to see, But an engineer he hopes to be.

Clubs: Archeology 4; Travel 4; Glee 4.



GEORGE TKACH

"MUSCLES"

Although he is quiet, "Muscles" has many friends.

Track 2, 4; Cynosure Committee; Senior Play Costume Comm.

HUGH S. TRACY

When the music starts to beat, There is rhythm in his feet.

Homeroom President 2, Treasurer 4.



MARIE TUTHILL

"RE"

To continue singing is her aim; With her excellent voice we know she'll gain.

Glee Club 1, 2, 3, Treasurer 4; A Cappella Choir 3, 4; May Festival 1; H.M.S. Pin afore; Pirates of Penzance; Dance Band 2, 3, 4; Class Secretary 1; Jr. Prom Dec. Comm. 3; Cynosure Circulation Committee; Talent Show 2, 3; Girls' Special Chorus 4



BARBARA TUTTLE

"BOBBIE"

"Bobbie" is intelligent, friendly, and neat.

H.R. Pres. 1, 2; Talent Show 2; Library Squad 1; Pirates of Penzance; H.M.S. Pin afore; May Festival 1; Basketball 2; Choir 1, 2, Treas. 3, 4; Girls' Special Chorus 1, 2, 3, 4; Glee Club 1, 2, 3, Pres. 4; Clubs: Latin 1, 2; Math. 2; International Relations Pres. 3, 4; Typing 3; Senior Play Reading Comm: Senior Play: Patience.





CLAIRE URBANOWITZ

*Blonde, blue-eyed, mighty sweet,
She goes along on dancing feet.*

Cheerleading 2, 3, 4; Perfect Attendance 3; H. R. Treas. 2; Girls' Glee Club 1.

CHARLES VALVANO

"CHARLIE"

*He is true to the adage
"a rolling stone gathers no moss."*

Clubs: French 1, 2; Chemistry 3; Glee 4; Chronicle 3; Cynosure Circulation Comm.; Perfect Attendance 1, 3; Christmas Dec. Comm.; Pirates of Penzance; Track 1; Interclass Basketball 1, 2, 3, 4; Senior Play.



MARIE VALVANO

"MILLIE"

*Her timely remarks hint
at mischievousness.*

Commercial Club 3; Cynosure Circulation Committee.



ARTHUR VANDERWALL

"ARTIE"

*Meeting Art is quite a treat,
With his cheerful, friendly smile.*

H. R. Vice-Pres. 1, 2, Pres. 3, 4; Asst. Football Mgr. 1, 2; Bas. Dance Dec. Comm. 3; Jr. Prom Dec. Comm. 3; Student Council 3; Talent Show 1, 2, 3; Interclass Basketball 3, 4; Club International Relations 3, 4; German 1; Club Committee 1, 3; Senior Play

BERNARD VAN SAVAGE

"BERNIE"

*Blond hair, bright smile—
Thinks life is worthwhile.*

Alternate Student Council Rep. 2; Stage Manager Radio Equipment 1, 2, 3, 4; Elmer and the Love Bug 3; Eternal Life 2; Clubs: Photography 1, Sec. 2; Math. 3, 4.



JULIA VIDNANSKI

"JUNIE"

*Sweet and cute and oh, so fair,
She goes through life with
a happy air.*

Art Club 1; Secretarial Appointment; Senior Play Ticket Comm.

CHARLOTTE VILL

"CHY"

*Blond and quiet Chy is,
true,
But you'll never see her
blue.*

Library Squad 1, President 2, 3; H. R. Vice-Pres. 2; Jr. Prom. Dec. Comm.

ROSALIE VILLANI

"Ro"

*Full of pep, vigor and fun,
"Ro" goes merrily
along the paths of life.*

Girl Reserves 2, 3, Pres. 4; Perfect Attendance 3; Chronicle Collection Staff 4.





JOHN S. VOYNICK
"JACK"

There would be no world without music.

H. R. Vice-President 3, 4; Special Quartet 3, 4; A Capella Choir 1, 2, 3, 4; All-State Chorus 3, 4; H.M.S. Pinafore; Orch. 1, 2; Swing Band 2, 3, 4; Track 3; Interclass Basketball 3; Talent Show 1, 2, 3; Orch. Concert 1, 2; May Festival 1, 2; Fall Production Dramatic Club 3; Double Quartet 2, 3; Clubs: Boys' Glee 1, 2, Treas. 3, Pres. 4; Photography 1; Dramatic 3, 4; Art 2, Pres. 3; Sr. Play.

BETTY ELLEN WAGNER
"BABY"

*Here is Betty, care-free and gay;
Everything's fun when it comes her way.*

Clubs: Latin 1, 2; Home Ec. 1; Art 1; Inter. Relations 3; Treas. 4; Typing 3; Glee 1, 2, 3, 4; Choir 2, 3, 4; Girls Special Chorus 2, 3, 4; May Festival 1; H.M.S. Pinafore; Pirates of Penzance; Basketball 2; Stage Manager Senior Play; Patience.



GORDON WALKER
"SCOTTY"

A good laugh is sunshine.

Photography Club 1, 2; Math Club 3, 4; Chemistry 3, 4; Band 1, 2; Orchestra 2; Perfect Attendance 1; Stage Crew Radio Equipment 2, 3; Band and Orchestra Concert 1, 2.



LOUISE WARNE
"PETE"

*Full of mischief, a lot of fun,
Providing smiles for everyone.*

Cheerleader 4; Library Squad 2.

HOWARD WATTER
"HESH"

*He is a well-bred fellow,
always sociable, always manly.*

German Club 2, 3, 4; Interclass Basketball 4; Cynosure Photography Committee; Pirates of Penzance; Senior Play Stage Comm.



HELEN WEGRYN
"WIGGLES"

*Fun is the key-note of her existence,
While hair-styling is her goal.*

Home Economics 1.



WILLIAM WEISS
"BILL"

*Fun-loving, well-dressed,
with dancing feet,
Bill is a swell fellow to meet.*

Aviation Club 1; Cheerleading 3, 4; Chronicle 4; Junior Talent Show.

BERNARD WEISSMAN
"BERNIE"

Bernie's not complete without his car.

Band 1, 2; Band Concerts 1, 2; Glee Club 2, 3, 4; Choir 2, 3, 4; Barn Dance Dec. Comm. 3, 4; Jr. Prom Dec. Comm.; Pirates of Penzance; Interclass Basketball 3; Photography Club 1; Patience.



JAMES WENTZ
"JIM"

*Ability to work with the hammer
Accompanies quietness in manner.*

Art Club 1



DAVID WETZEL
"WETZ"

His happy laugh has made us smile.

H. R. Vice-Pres. 2, 3; German Club 1, 2, 3, 4; Club Committee 3; Student Council 2; Jr. Prom. Decorating Comm.; Senior Play Stage Comm. Chairman.



LOUISE WIETRY
"DIMPLES"

*If it weren't for her skating,
She'd be completely lost.*
Library Squad 4.

JEANETTE WIRTSHAFT
"JEN"

*Kind in thought, gracious in deed,
In our hearts Jen plays a lead.*

Library Squad 1; Ring Comm.



HAROLD WISHNA
"WISH"

A true friend is like a diamond, precious and rare.

Photography Club 1, 2, 3, Pres. 4; Cynosure Committee; Chronicle Photography 4; Cafeteria Corps 4; Glee Club 4.

WILLIAM WOLAR
"BILL"

His athletic abilities, cheerful smile, and easy-going manner set him on top.

Jr. Class Treasurer; Sports Club 3, 4; Warsity Football 2, 3, 4; Pirates of Penzance 3.



PAUL WEISLEY
"WEIS"

His likable manner makes him a true friend to all.

Clubs: German 1, 2, 3, 4; Math 2, 3; Chess 1; Track 2, 3, 4; Band 1, 2; Band Concert 1, 2; H. R. Treasurer 3; Chairman Cynosure Photography Staff; Perfect Attendance 2; Barn Dance Decorating Comm. 4; Senior Play Stage Comm.



DOLORES YEOMANS
"LORRY"

*Efficient is the word for you,
A pal who's always good and true.*

H. R. Sec. 3, 4; Clubs: Commercial 3; Movie 3; Chronicle Staff 2, 3, 4; Cynosure Editorial Staff; Christmas Decorating Comm.; Barn Dance Ticket Comm. 3; Jr. Prom Decorating Comm.; Chairman Senior Play Costume Comm.

LEO ZACHARCZYK
"LEE"

A quiet fellow with an everlasting tune.

Student Council Representative 4; Track 2, 3; Choir 3, 4; Pirates of Penzance 3; Clubs: Aviation 1; Boys' Glee Club 2, 3, Secretary 4; Patience.



JOSEPH ZAMORSKI
"Po"

*Happy-go-lucky as they come;
Always ready for some fun.*

Homeroom Secretary 2; Band 1, 2, 3; Orchestra 3; Perfect Attendance 2, 3; Cynosure Comm.; Assembly Committee 3; Band and Orchestra Concerts 1, 2, 3; Pirates of Penzance; Senior Play Property Comm.



EDWARD ZATORSKI
"ZKE"

Says little; thinks a lot.

Clubs: Aviation 1, 2, 3, 4; Boys' Glee 4; Homeroom Secretary 2, Vice-President 2, 4; Christmas Decorating Committee; Patience.

EDNA RUTH PRICE
"EDDIE"

A girl who always looks for fun and finds it.

Art Club 1, 2, 3; Glee Club 4; Library 1, 4.



CATHERINE KENNEDY
"Sis"

Sis has many outside activities, including rink skating and dancing.

Girls' Glee Club 4; Twirling 2.

RUTH MILLIGAN
"RUTHIE"

*Kind of quiet, full of fun,
She is liked by everyone.*

Choral Club 3; Commercial Club 3.







JUNIOR HOMEROOM PRESIDENTS

Row 1 F. Petrowski, J. Warhol, J. Ostarticki. Row 2 O. Semanchek, A. Kurdilla, M. Blythe.



SOPHOMORE HOMEROOM PRESIDENTS

Row 1 H. Zamorski, R. Bolton, D. McNair, M. Milochik. Row 2 P. Prakop, J. Kimak, J. Green, W. Berge.



FRESHMAN HOMEROOM PRESIDENTS

Row 1 V. Dering, D. McDaniels, F. Galbraith, E. Dunay. Row 2 W. Hanus, E. Hurley, R. DeCarlo. Row 3 G. Jeffries, J. Bacus, L. Dering.





THE JUNIOR CLASS

The Junior class is divided up very much like the Senior class; that is, they are divided into homerooms alphabetically and are governed by four class officers. The class officers in 1946 were William Berry, president, Stephen Guzy, vice-president, Margaret Petrowsky, secretary, and Merwin Zitomer, treasurer. The homeroom officers were Mabel Blythe, William Emrich, Stephen Guzy, Ann Kurdilla, Jean Ostarticki, Margaret Petrowsky, Virginia Symons, and John Warhol. The chairman of the homeroom advisers was Miss MacCormack.

The first activity of the Junior class is usually the Junior-Senior Barn Dance, and so it was this year. Members of the Junior class united with members of the Senior class to form the ticket, decorating, and orchestra committees. At Christmas it was the task of chosen members of this class to decorate the halls and the cafeteria; everyone enjoyed the results of their work. On one of the assembly programs the class presented its annual Talent Show. A variety of skills was exhibited and the production was enjoyed by all. The most important social event on the Junior roster was their annual prom. This gala event wound up the program until it could be resumed in their senior year.

CLASS OF



Row 1 R. MacDonald, C. Kurek, E. Kashtock, J. Kagan. Row 2 E. Leskanic, D. McMullen, R. Macknowsky, E. Lawson, J. Kauffmann, A. Laskodi, L. Manasse, J. Maas. Row 3 B. Malinchok, M. Maffia, D. Klin, N. Kilbourne, P. Litwin, G. Larson, M. Humcke, A. Kurdilla. Row 4 H. Lenkeit, E. Hrabinsky, D. Howard, J. Iaria, C. Landfish, J. Klingemaier, T. Long. Row 5 R. Likowski, B. Lamont, L. Kinsella, R. Kassel, S. Kaplowitz, S. Jackson, J. Mancino, S. Jacobson.



Row 1 J. Warhol, S. Venditto, M. Zitomer, F. Wolf, A. Tkach, J. Wagenhoffer. Row 2 M. Yawornisky, M. Wagner, J. Ziemian, M. Ziemian, M. Tracey, N. Walck, A. Willmot, B. Voynick, D. Traub, D. Wolff. Row 3 D. Wagner, N. Tobiasson, M. Zojac, M. R. Johnson, N. Trush, F. Von Buelow, R. Uhl. Row 4 F. Vitrano, H. Tborn, S. Szurley, R. Tonneman, A. Zangrando, T. Tracey, J. Verikas. Row 5 J. Wieworski, B. Wadors, F. Wexler, Mrs. Kendall, L. Wheeler, J. Zbranek, M. White.

1947



Row 1 A. Segall, R. Stankus, J. Susko, J. Silady. Row 2 J. Seidenwand, J. Sweeney, D. Stegmeier, M. L. Slack, M. Streno, V. Springer, D. Simpson, B. Slinski. Row 3 L. Symanski, C. Stanziola, E. Silverblatt, E. Straub, M. Strelzoff, O. Semancheck, J. Sep. Row 4 V. Symons, R. Sumer, M. Shur, T. Souchek, R. Smith, T. Silver, W. Smolyn. Row 5 F. Stefanick, E. Stroin, D. Sweet, D. Stalminski, Mr. Ramage, A. Stagich, E. Sukovich, H. Sharkey, H. Smith.



Row 1 F. Miller, G. Milden, E. Natkiewicz, R. Oselus. Row 2 M. Newell, S. Oetting, M. Metro, A. Novak, G. Mickelson, M. Martyn, E. Opusak, J. Martin. Row 3 M. Noviello, B. Miller, M. Orszewski, E. O'Connell, M. Metro, P. Marczak, A. Matrunich, H. Oppel. Row 4 D. Nelson, R. Newell, W. Martin, A. Martinko, D. Martinson, R. Morrison, L. Mullen, E. Orlando. Row 5 J. Ostarticki, D. Olszewski, D. Miller, Miss MacConkey, J. Miller, A. Mayer, H. Meyers.

CLASS OF



Row 1 R. Gregory, P. Ginfride, J. Hammer, J. Gombas. Row 2 J. Horsch, D. Haber, T. Heinrich, R. Greenberg, L. Garster, C. Glasston, M. Harrison, K. Griess. Row 3 M. Hodes, J. Harvanik, B. Howard, P. Harkins, F. Handschu, A. Hicinbothem. Row 4 R. Hoehn, P. Holderbaun, R. Goldberg, B. Giberson, G. Hatter, J. Greenberg. Row 5 S. Guzy, L. Gerdes, Mr. Weiss, A. Homola, J. Grabas.



Row 1 S. Posnock, C. Pilot, P. Samalonis, S. Paserba. Row 2 J. Peal, B. Pettinger, M. Pribush, Miss Light, D. Perzley, H. Pado, A. Pivarnik. Row 3 P. Roden, E. Scillath, T. Riha, D. Pawlikowski, M. Pedersen, N. Porter. Row 4 D. Reiber, S. Pakowitz, H. Schulman, J. Palestino, R. Remeta, C. Polly. Row 5 M. Petrowsky, F. Pietrowski, W. Post, A. Schulman, W. Prentice, M. Posnock, D. Potyk, M. Schnurr.



Row 1 R. Bade, R. Carson, J. Billy, E. Bednarz. Row 2 D. Carmody, P. Abrams, M. Beres, C. Armstead, Miss MacCormack, B. Baldwin, S. Barr, J. Antonowicz, J. Alzheimer. Row 3 M. Borcharding, M. Breen, A. Cassio, A. Chadwick, E. Boyarski, G. Borowski, J. Boyarski, F. Babiaz. Row 4 M. Allen, B. Arnold, M. Attanasio, A. Brandon, R. Branagan, D. Calhoun, M. Blythe, J. Baumle, L. Bona. Row 5 W. Beam, R. Bielarski, K. Asch, W. Berry, N. Bihm, R. Bellek, H. Berkowitz, F. Arndt, C. Casterlin.



Row 1 F. Gallo, W. Furman, P. Finkler, K. Chin. Row 2 N. Cirrota, J. Croteau, D. Danninger, S. Dittimer, Miss Graves, I. Fonseca, P. Fuyot, E. Elder, B. Feldman. Row 3 V. Earles, J. Derrig, G. Foss, D. Dittrich, H. Davids, C. Deldin, K. Collatos, E. Foley. Row 4 J. Dobosiewicz, J. Constantine, L. Clark, T. Eichhorn, N. Fallace, W. Emrich, R. Deraskewich, F. Conforti. Row 5 C. Does, M. Figlin, J. Cohen, P. Culos, J. Donahue, L. Diamond, M. Dunay, G. Galush, A. Forte.



Row 1 O. Gallagher, J. Bernstein, R. Milesko, S. Gelher. Row 2 W. Berlinski, E. Marhan, J. Krupinski, J. Rathjen, E. Monash, D. Hubert, E. Sefchick, M. Nadel. Row 3 C. Zimmerman, H. Gasper, J. Poleski, M. Taylor, S. Houlroyd, C. Vitarius, B. Coons, J. Lund. Row 4 M. Milochik, D. Nicolai, M. Zielenbach, N. Alber, G. Preston, A. Crist, E. Janasie, B. Ruff. Row 5 S. Cutler, V. Grimes, W. Adaszczik, Miss Page, F. Clancy, N. Boyle, H. May, R. Stalowski, R. Smith.



C L A S S O F

Row 1 E. Wojciechowski, C. Santolli, G. Kochan, A. Alzheimer, E. Naiman, B. Sanderson, R. Poleski, S. Christie. Row 2 D. Bohling, J. Gardos, N. Klett, H. Hicks, Miss Reynolds, R. Lochner, M. Palek, E. McKenzie. Row 3 W. Berge, J. Campbell, L. Krivit, G. Martis, I. Butler, R. Barg, A. Conti, J. Babbitt, H. Dodd, L. Kamienski. Row 4 H. Baker, C. Gauer, G. Romanoski, R. Richter, W. Hoffman, R. Piper, F. Weid, G. Sweet, G. Coody, A. Schmidt.



Row 1 A. Kohl, F. Fernau, J. Villani, C. Mullener, S. Laibel, L. Riggi, M. Golian, J. Data.
 Row 2 F. Zamorski, F. Trinkl, E. Rusnak, J. Quick, A. Shamus, P. Helms, D. Markan, A.
 Matseur. Row 3 J. Stanley, D. Moore, J. Wotelko, M. Borek, E. Mulasz, B. Wieser, M.
 Graziano, H. Zamorski. Row 4 A. Gabrick, M. Wenis, Mrs. Potter, B. Eikamp, J. Dobrow-
 olski.



Row 1 C. Meycr, M. Hofmann, P. Michel, M. Hora, B. Stives, M. Diehl, L. Kasner, H. Hvist.
 Row 2 L. Pivonski, A. O'Halloran, M. Borkes, L. Glinka, B. Kopec, A. Kalinak, B. Williams,
 M. Starke. Row 3 M. Mindurski, M. Horochonic, L. Williams, G. Getchis, E. Miller, D.
 Hasbrouck, H. Walters, H. Kimak. Row 4 J. Matuska, T. Stone, I. Vaniska, J. Forberger,
 Miss Casement, B. Bolton, L. Wolfberg, J. McManus, S. Macknowski.



Row 1 J. Vornbaum, J. Maloney, E. Burke, F. Makowski, W. Dombrowski, T. Frank. Row 2 M. Goodman, P. Mullen, S. Graham, S. Aaron, M. A. Stadnick, S. Rosenwald, H. Munson, C. Pratt. Row 3 C. Deveiakis, J. Lischko, L. Miller, A. DeKarski, W. Young, A. Kubalak, S. Sherman. Row 4 H. Lamont, R. Hiltz, R. Mullen, W. Gorecki, I. Perzley, W. Pfeuffer. Row 5 R. Sottos, M. Belan, Miss Kutz, H. Skwarski, E. Farrell. Not shown, Mr. Okerson.



Row 1 H. Kimmelman, G. Sakach, W. Wargacki, H. Hildabrand, H. Goodrow, J. Kawalec, R. Wagner, A. Vena. Row 2 V. Kasner, E. Cram, E. Soban, M. Rankosky, Mrs. Bell, A. McDermott, S. Paleu, A. Meland, J. Vilichka. Row 3 C. Harrold, F. Grant, J. Mahar, B. Ikenson, E. Gorringer, I. Mitko, A. Wilpon, I. Breidt. Row 4 T. Hart, N. Davidson, J. Stauch, J. Kimak, J. Lyons. Row 5 R. Daly, J. Remeta, E. Romanoski, R. Warner, S. Galayda, S. Wolf, T. Lipke.



Row 1 D. Jordan, H. Wolar, M. Anderson, J. Wieszicki, D. Dabosiewicz, S. Fingerlin. Row 2 S. Rosenson, J. Baars, M. Bukofsky, R. Lee, E. Stankowitz. Row 3 G. Hoptay, V. Guzewicz, A. Rupek:s, Miss Holland, C. Maline, A. Tola, J. Constanza.

1
9
4
8



Row 1 W. Bettiger, E. Wersneski, J. Green, J. Geles, A. Aikens, G. Nicholas. Row 2 A. Battaglia, M. Zemlan, S. Stegmeier, D. Holmes, R. Schaper, L. Hart, R. Chiaramonte, M. Cebula. Row 3 B. Joffe, L. DiLeo, F. Cornelius, M. Furman, L. Price, D. Hoehn, E. Cornelius, F. Richvalsky. Row 4 R. Johns, E. Shoplock, *Mr. Clark, F. Rauchbach, J. Konchak.



Row 1 J. Calhoun, A. Phelan, A. Isaacs, J. Busch, O. Cacchione, S. Freeman, J. Papuzynski, R. Kress. Row 2 G. Brown, H. Polin, J. Scheckner, E. Croteau, A. Galella, Miss Demarest, J. Durbin, M. Mehrman, B. Mc Clusky, S. Smythe, E. Handy. Row 3 T. Bright, E. Brudeck, F. Chapman, J. Regenthal, O. Handy, B. J. Cooper, R. Brady, R. Roll, H. Shaw, R. Nannery. Row 4 W. Dalziel, S. Slivinski, R. Wolf, R. Sytch, R. Westling, J. Romanski, J. Souza, E. Muzik, R. Miller, H. Martinson.



Row 1 A. Misley, F. Caggiano, H. Kantor, E. Lebowitz, H. Reibel, B. Zullo, J. Belan, G. Metro. Row 2 R. Lazo, P. Gechtberg, B. Coleman, R. N. Pawlus, Mr. Mele, G. Humcke, E. Kasko, J. Kilpatrick, H. Aronowitz. Row 3 M. Peck, N. Savas, E. Strazdas, W. Arjemi, I. Walker, S. Warhol, G. Wright, G. Dress, J. Duffy. Row 4 R. Phillip, M. Schultz, R. Flohs, K. Dutcher, M. Halajscik, E. Wilpon, P. Prakop, M. Hudak, J. Fendler.

CLASS OF



Row 1 I. Carson, I. Kopik, I. Sheperis, E. Steiner, S. Hirsch, J. Howard, S. Platkin, W. Wadors.
 Row 2 J. Giltner, P. Adler, R. Harkins, C. Bodnar, D. Stanton, S. Kraynik, A. Perzley, D.
 Mc Nair. Row 3 E. Sellner, M. Pinho, J. Myers, D. Jacky, J. Jackson, E. Depew, F. Givens.
 Row 4 M. Senyshyn J. Harris, Mrs. Hardin, A. Arndt, E. Griess, D. Martis.

THE SOPHOMORE CLASS ...

The Sophomore class is not divided up the same as the Junior and Senior classes. They are not put into homerooms alphabetically as are the two higher classes but are placed by sections. The class also does not elect class officers but confines itself to officers in the various homerooms. Those who held the titles of presidents this year were Mary Milochik, William Dalziel, Wayne Berge, Peter Prapkop, Doris McNair, Helen Zamorski, Ruth Bolton, Joseph Skolsky, Stephen Wolf, and Joseph Green. Miss Page was the chairman of the homeroom advisers.

The Sophomores differ from the Juniors and Seniors also in the fact that they have no definite social functions or activities that are sponsored and conducted by the entire class, except for their annual talent show. They work hard on this show, and as a result it is always a huge success when it is given before the rest of the school. This year was no exception; the show was enjoyed by everyone.

THE FRESHMAN CLASS

The Freshman class is the last to be mentioned but by no means the least. This class constitutes the largest group in the school, having twelve homerooms. The chairman of the homeroom advisers was Mr. Kendall. The class does not elect class officers, but like the Sophomores confines itself to officers in the homerooms. The homeroom presidents this year were James Gregory, Joseph Kinely, Frances Galbraith, Eleanor Dunay, Dorothy McDaniels, Ann Francaviglia, Edward Bihm, Lawrence Dering, Audrey Blum, Earl Hurley, George DeCarlo, and William Hanes. These officers preside over the meetings on Friday morning in the homerooms, where they discuss various topics concerning their future. These discussions are varied by amateur shows and programs of the kind that can be carried on within the homeroom.

Like the Sophomores, the only activity that they work on as an entire class is the Talent Show. This program, when witnessed by the rest of the school, left no doubts that the Freshman class was well equipped with skill and able to carry on.

CLASS OF



Row 1 M. Petraroi, J. Machesko, M. Modrak, R. Christel, H. Zamorski, F. Massaro, J. Humcke, E. Miller. Row 2 T. McMahon, A. Yawornisky, E. Sharkey, S. Kaplowitz, Mr. Barr, H. Dittmer, A. Lawson, B. Sisko. Row 3 H. Spader, R. Raber, G. Jeffries, J. Glancey, J. Sabik, S. Tepperman, J. Martyn, A. Palew, J. Tyburski. Row 4 R. Ostarticki, D. Traynor, W. Lipke, F. Guzzo, E. Stagich, H. Duda, A. Petty.



Row 1 R. Vilichka, J. Durbin, J. Evans, J. Lischko, F. Dann, A. Therezo, J. Penna. Row 2 D. Page, D. Young, S. Vernikoff, Mrs. Crawford, P. Hatton, W. Twaddle, J. Martin, P. Jones. Row 3 E. Harriett, N. Parsons, T. Baldwin, M. Dookin, R. Coots, K. Labow, S. James, T. Soban, W. Harris. Row 4 A. Powell, H. Rumpf, S. Kowachik, E. Prigge, J. Spadora, E. Bihm, G. Daneke.

1949



Row 1 R. Clearie, H. Zajac, E. Frysztak, J. Kontra, R. Will, R. Wagner, E. Pancurak, R. Snyder. Row 2 R. Sharo, B. Sumner, J. Gordon, O. Horsley, Mrs. Atkins, L. Parris, C. Zrebiec, M. Masarsky, M. Boltzer. Row 3 A. Greenberg, A. Taylor, G. May, P. Maline, W. Hanus, W. Barge, C. Miller, G. Souza, J. Daniels. Row 4 S. Kaplan, W. Rachwal, M. Galayda, J. Davison, W. Totera, C. Venezia, R. Cotton, J. Russo.



Row 1 G. Chaplick, R. Does, M. Chiaramonte, R. Colish, H. Horsch, R. Bodzioch, E. Kerekes. Row 2 H. Martyn, J. Traub, P. Eichhorn, A. Kalning, A. Solsky, B. Schuler, M. Loenser, J. Mihalko, M. Lehotsky. Row 3 M. Nusbaum, H. Gutowski, R. McMullen, G. Poth, A. Kessner, J. Sharo, A. Hubatka, E. La Tourette, A. Saloka. Row 4 R. Ignar, J. Olearczyk, C. Booth, J. Backes, E. Lund, Mr. Schott, F. McGovern, P. Chernabay, M. Mihlik, S. Kauska.



Row 1 L. Warshaw, O. Lehotzky, I. Coons, F. Galbraith, H. Kagan, H. Dillon. Row 2 J. Clements, T. Cafaro, R. Griffen, D. Alberta, D. Rosenson, S. Berman, R. Segal, A. Wallace. Row 3 R. Quinlin, L. Meland, S. Soldo, A. Barna, Mrs. Ramage, W. Husmann, M. Pileggi, J. Pickney, M. Jones. Row 4 L. Eimont, V. Chiaramonte, E. Burke, H. Brown, B. Di Leo, B. Lissanden, W. Sebring, G. Herdegen, R. Pawlikowski.



Row 1 R. Frank, J. Verchik, R. McKay, A. Bell, H. Fletcher, R. Bosonac, E. Kovacs. Row 2 H. Kaplan, H. Manasse, L. Hoptoy, P. Stuve, Mr. Diehl, D. Rubel, M. Kreitzman, D. Evans, J. Knieley. Row 3 W. Brightwell, R. Tomaszewski, G. Hudak, S. Krupowies, F. Sparks, G. Mountain, R. Tresche, A. Mulaz. Row 4 R. Eikamp, J. Figurelli, R. Mays, J. Bolomey, O. McKenzie, R. Putz, A. Gregory.

CLASS
OF



Row 1 M. Angelo, A. Francaviglia, Miss Margulies, I. Mihalenko, L. Chernobay. Row 2 F. Kasprak, G. Lello, M. Ondovik, I. Kurek, M. A. Weiss, A. Spaccarotella, R. Miller. Row 3 V. Ellsworth, C. Colburn, A. Kanski, S. Crossman, J. Noback, D. Olesko, D. Treacy, H. Zaitz, M. Galella. Row 4 J. Catevacci, E. Engels, A. Petyo, A. Jaslowski, D. Joergens, J. Arnold, A. Madden, M. Tice, C. Heckman.

1
9
4
9



Row 1 J. Malenea, A. Mahar, Mrs. McCormack, M. Plunkett, J. Gregory. Row 2 V. Turano, T. Attanasio, A. Christensen, E. Poper, P. Vranken, D. Sommer, T. Goldman. Row 3 J. Cooperstein, B. Heagy, N. Reuter, E. Trotter, M. Beck, M. Pluta, R. Oliver, A. Wolosonovich. Row 4 W. McDermott, B. Elowitz, J. Mayer, W. Gibson, R. Massarik, R. Hagelin, B. Warren, C. Butkus.

CLASS OF



Row 1 J. Wiewiorski, A. Herthel, L. Vena, A. Gustofson, F. Ziegler, R. Janasie. Row 2 L. Tylutki, C. Mudry, B. Pekar, G. Chiappetta, J. Johnson, A. Blum, B. Parlapiano, G. James. Row 3 C. Thieme, C. Natkiewicz, L. Eckstein, M. Taylor, R. Smith, S. Fallace, M. Mikos. Row 4 Mr. Kendall, W. Wactor, J. Kiefer, J. Franklin, R. Hering, R. Jamison, G. DeCarlo, T. Gergich, Miss Boyle.



Row 1 I. Daniel, D. Pilot, H. Porbansky, R. Hudak, J. Johnston, A. Tola, J. Leboff, M. Mannuzza. Row 2 B. Silverblatt, B. Sabodos, B. Lukenda, E. Kalinak, H. Vanco, R. Romanowski, V. Gamm, C. Aber, J. Conant, M. Daly. Row 3 J. Laskodi, M. Wojcik, M. Wactor, R. Blum, Mr. Walker, B. Almquist, D. Conrad, N. LeRoy, J. Dellera.

1
9
4
9



Row 1 R. Cohn, B. Suretsky, C. Olimpo, E. Hurley, S. Bunk. Row 2 D. Guzzo, R. Chernotsky, J. Smythe, A. Weitzman, Miss Vigne, S. Zeitlin, P. Gantley, F. Cooperstein, E. Laczynski. Row 3 A. Drewniak, S. Nissman, G. Colicelio, R. Casaletto, J. Katona, A. Eidelberg, M. Bronstein, A. Rosenson, C. Seiler. Row 4 A. Zakanych, E. Klawunn, M. Coyle, R. Bade, G. Davis, E. Kurtyka, R. Eick, E. Valentine, A. Cucos, L. Wilson.



Row 1 H. Miskanick, A. Vitrano, A. Provenzo, J. Linek, D. Shellhamer, M. Gerbery. Row 2 C. Martinko, R. Reagan, M. Bettie, D. Blanchard, K. Brindley, M. Castoral, A. Susko. Row 3 G. Harriott, V. Dering, D. Gahm, L. Brown, W. M. Harris, A. Wojciechowski, E. Moscato, M. Banovsky. Row 4 D. Yanaski, M. Miller, E. Mays, S. Wiedecker, Miss Turtur, H. Wludyka, A. Latourette, E. Maro, E. Sloboda.



1949

Row 1 J. Sosinski, E. Dunay, Miss Boris, F. La Ferrara, B. Reinfurt. Row 2 A. Kurzinski, H. Hertwig, M. Chiappetta, L. Wenis, R. Gallagher, V. Bednarz, D. Romanowska, K. Christel. Row 3 C. Mountan, H. Kenny, J. Reitzer, B. Mac Gee, D. Armstrong, M. Jenco, E. Lee B. Jensen, H. Milden, J. Semko, D. Pavlacka. Row 4 S. Lewandowski, B. Kovac, J. Woodfield, H. Masley, M. Bursel, L. Payne, L. Brown, P. Hapkins, C. Parker, J. Fuchs.



Row 1 W. Brown, P. Clemenko, R. Lawson, R. Parfitt, R. Yats. Row 2 J. Zaccaro, J. Gaykowski, H. Cornelius, R. Girsick, Mr. Taranto, D. Gotts, E. Antoniewicz, J. Lapira, M. Green. Row 3 L. Dering, A. Bowman, W. Brazilian, J. Gomulka, J. Tevnan, E. Reagan, G. Urban, P. Brummer, S. Sterenchak. Row 4 M. Lewis, R. Kerr, J. Callander, W. Witts, S. Stefanovich, J. Tracey, R. Caruso, M. Mihalko, A. Kube.





Row 1 J. Martin, H. Hertwig, S. Rosenwald, M. McGill, V. Springer. Row 2 M. Bronstein, Attendance Sec., H. Hislop, Recording Sec., B. Tuttle, Pres., Miss Kantner, Director, Miss Boris, Accompanist, M. Tuthill, Treas., C. Armstead. Row 3 J. Farmer, B. Croteau, P. Gantly, E. Harriett, M. Loenser, P. Eichhorn, D. Joergens, J. Smythe, B. McCluskey, S. Smythe, M. Mehrman. Row 4 L. Williams, S. Zeitlin, P. Jones, H. Munson, M. Breen, C. Kennedy, C. Landfish, J. Seidenwand, T. Baldwin, A. Weitzman, E. Tucker. Row 5 A. Rosenson, A. Shamus, B. Feldman, E. Elder, Manager, E. Straub, N. Porter, J. Regenthal, G. Getchis, S. Nissman, J. Gordon, H. Okun.

GIRLS' GLEE CLUB



Row 1 M. Bronstein, Attendance Sec., H. Hislop, Recording Sec., B. Tuttle, Pres., Miss Kantner, Director, Miss Boris, Accompanist, M. Tuthill, Treas., C. Armstead, Librarian. Row 2 D. Pavlacka, C. Parker, J. Cooperstein, M. Bettie, J. Leboff, A. McDermott, M. Pinho, H. Polin, J. Harris. Row 3 H. Dillon, M. Wagner, J. Henderson, D. Sweet, E. Price, A. Mayer, M. Attanasio, M. Miller, M. Wactor, E. Lee. Row 4 D. Perzley, L. Garster, T. Attanasio, M. Starke, D. Milberger, B. Baldwin, J. Johnson, F. Cooperstein, B. Kovac, D. Sommer, M. Masarsky.

BOYS' GLEE CLUB



Row 1 J. Penna, H. Zajac, B. Warren, E. Cram, B. Elowitz, R. Hagelin, J. Russo, F. Wolf. Row 2 W. Sisko, P. Prakop, Treas., L. Zacharczyk, Sec., Miss Boris, Accompanist, Miss Kantner, Director, J. Voynick, Pres., A. Sherman, Librarian, B. Weissman, Mgr., R. Cotton. Row 3 R. Krowicki, J. Christie, E. Dougherty, E. Zatorski, J. Logue, R. Massarik, J. Dwyer, F. Tomlinson, L. Clark, E. Orlando. Row 4 C. Valvano, G. Sytch, W. Prentice, B. Wadors, W. Felter, I. Moore, D. Spader, B. Kominetsky, H. Wishna. Row 5 M. Pena, R. Likowski, G. Wright, A. Wilpon, J. Papuzynski, J. Mayer, W. Loveland, P. Finkler, L. Wilson, J. Gregory.

VOCAL MUSIC

Our vocal music department is well rounded, consisting of two glee clubs, an a cappella choir, and various smaller groups. All are directed by Miss Kantner and accompanied by Miss Boris.

The Girls' Glee Club, having about 95 members, performed at the annual Christmas program, P. T. A. meetings, and in several assembly programs. Those elected to hold offices were Barbara Tuttle, Helen Hislop, Myrna Bronstein, Marie Tuthill, Carol Armstead, and Harriet Polin. Another favorite was the Boys' Glee Club, which had approximately 50 members this year. This size was larger than in other years but also may be thought of synonymously with an increase in quality. Their performance in the Christmas program and their operetta "Freshies" delighted everyone. This type of operetta with an all-male cast was something new to all. John Voynick, Peter Prakop, Leo Zacharczyk, Arthur Sherman, Edward Bodzioch, were the officers. The very popular a cappella choir is a group selected from both glee clubs. It is in this club that vocal talent is really tested, for they sing without an accompaniment. The members worked hard at their rehearsals once each week, and the results were evident.

Among the special vocal ensembles were the Girls' Trio, composed of Shirley DuTot, Helen Hislop, and Helen Brown, and the Boys' Quartet, made up of John Voynick, Emery Dougherty, Bonnie Wadors, and John Papuzynski. Every year certain members of the choir are selected to try out for the All-State chorus. The members of the chorus are chosen by means of elimination tryouts of high school students from all over the state. Representing Linden High this year were Helen Brown, Helen Hislop, Aspasia Piskos, George Wright, John Papuzynski, Alvin Wilpon, and John Voynick.

The music department presented a Gilbert and Sullivan Operetta this year, entitled "Patience". Those who held leading roles were Emery Dougherty, Bonnie Wadors, Warren Prentice, John Papuzynski, Alvin Wilpon, Shirley DuTot, Helen Hislop, Barbara Tuttle, Harriet Polin, and Jeanne Alzheimer. Miss Kantner directed the music, Miss Gilkeson and Mrs. Nogi directed the dramatics, Mr. Malpas conducted the orchestra, and Miss Boris accompanied on the piano.

ORCHESTRA

A group of outstanding musicians in our school is the orchestra. This group played at all of the dramatic productions, at assemblies, and for the operetta. They also played at the concert in March and did a grand job. The officers were Robert Kanzler, Freda Markant, George Milden, Vincent Grimes and Sophia Oetting.

In 1945 Linden High was able to add another honor to its annals, for Mr. Malpas was chosen to conduct the All-State Orchestra. Those who heard the performance of that organization in Atlantic City or Newark were very proud of him. Phyllis Litwin, Marian Mehrmann, and Albert Midgley were members of the All-State Orchestra.

A CAPELLA CHOIR



Row 1 P. Eichhorn, C. Armstead, M. Rimli, M. Starke. Row 2 Miss Kantner, Director, M. Tuthill, M. Masarsky, W. Sisko, J. Penna, F. Wolf, M. McGill, F. Cooperstein, Miss Boris, Accompanist. Row 3 A. Piskos, J. Cooperstein, E. Elder, E. Dougherty, Pres., B. Wadors, G. Wright, B. Weissman, Mgr., H. Hislop, H. Brown, A. Rosenson. Row 4 H. Polin, B. Tuttle, J. Henderson, B. Kominetsky, G. Sytch, L. Zacharczyk, J. Voynick, E. Zatorski, H. Wludyka, T. Baldwin, M. Newell. Row 5 M. Miller, E. Tucker, S. DuTot, P. Finkler, W. Loveland, J. Logue, A. Sherman, J. Russo, L. Williams, M. Wactor, N. Porter.

ORCHESTRA

Row 1 J. Kilpatrick, A. Misley, R. Quinlin, R. Segal, B. Zullo. Row 2 S. Houlroyd, H. Brown, F. Markant, D. Klin, S. Oetting, P. Litwin, M. Plunkett, J. Alzheimer, C. Aber. Row 3 L. Meland, E. Klawunn, G. Machajett, A. Hicinbothem, A. Shoplock, F. Galbraith, S. Serra, E. Oetting, R. Kanzler, G. Milden. Row 4 J. Campbell, J. Dwyer, R. Ostarticki, V. Grimes, E. Richter, J. Senyshyn, R. Tomaszewski, J. Gregory, J. Pickney, Mr. Malpas.





Row 1 H. Kagan, R. Segal, F. Wolf, W. Sisko, B. Zullo, S. Fallace, N. Chiamonte, A. Alzheimer. Row 2 H. Brown, F. Markant, S. Garfinkle, D. Blanchard, D. Klin, D. Wolff, C. Glasston, M. Metro, D. Feciuch, C. Aber, A. Kiseli. Row 3 J. Kilpatrick, A. Misley, B. Warren, R. Quin, A. Hicinbothem, G. Machalett, S. Du Tot, A. Piskos, B. Elowitz, P. Gechtberg, G. Milden. Row 4 L. Meland, J. Pickney, E. Klawunn, H. Levenberg, R. Kanzler, Mr. Malpas, J. Dwyer, H. Martinson, J. Gregory, R. Remeta, N. Fallace. Row 5 J. Campbell, I. Perzley, V. Grimes, R. Tomaszewski, J. Senyshyn, D. Piper, R. Richter, G. Sweet, A. Tola, J. Messer, R. Ostarticki.

BAND

The Linden High band opened its season this year in a burst of glory on the football gridiron. Gertrude Machalett led them down the field as Drum Majorette. The credit for this wonderful band goes to Mr. Malpas, who directed and conducted it, and to the officers. They were John Dwyer, manager; Howard Levenberg, William Zullo, and Dick Piper, assistant managers; Anne Kiseli, secretary; and Helen Brown, Gertrude Machalett, and Alice Hicinbothem, librarians. The high spot of the year for the band came at their concert in March, which was given with the Orchestra. They did a wonderful job and deserve a lot of credit.

GIRLS' CHORAL GROUP



Row 1 P. Haynesworth, Sec., L. Hart, V.-Pres., Mrs. Bell, Faculty Adviser, C. Armstead, Treas., F. Givens, Pres. Row 2 M. Starke, D. Holmes, D. M. White, W. M. Harris. Row 3 L. Brown, G. Harriott, P. Jones, M. Wactor, T. Baldwin. Row 4 E. Harriott, L. Brown, J. Johnson, G. James.

Row 1 C. Urbanowitz, D. Natkiewicz, G. Cordasco. Row 2 A. Frank, A. Piskos, L. Dougherty, R. Beecher, W. Weiss, L. Warne, M. Rimli.



CHEERLEADERS AND TWIRLERS

If you have attended any of our football or basketball games, you have seen the cheerleaders leading the Linden rooters in wild and loud cheers for the team. They go at their job with such enthusiasm and zeal that followers of the teams just can't help shouting for all they're worth.

Miss Demarest is the faculty adviser of this group, but they have no other officers, and at each game a different captain is chosen. They work hard every Tuesday and Wednesday during activity period, practicing old cheers, learning new ones, and helping new additions to the squad get the proper twists and bends at the right time.

The cheerleaders have led us grandly for a long time, and now it is time for us to give them a cheer - so: Yea Cheerleaders! Yea! Yea! Cheerleaders!

Another popular group in the school is the twirlers. They strut right behind the band at all the football games and with their orange sweaters and white skirts they make a grand sight while they perform on the gridiron. Miss Siegman has charge of the girls (there are no male members as yet) and teaches and trains them until they are ready to march with the band.



Row 1 E. Stankowitz, A. Kohl, D. McNair, A. Pivarnik. Row 2 V. Bowlblis, C. Deldin, L. Price. Row 3 A. Hudak, J. Johnstone, H. Porbansky, H. Hertwig, H. Miskanick, J. Rogers, M. Starke, H. Tucker, A. Petyo. Row 4 N. Porosky, A. Saloka, D. Conrad, E. Lee, A. Solsky, L. Eckstein, A. Blum, L. Tylutki, D. Gahm, M. Angelo. Row 5 M. Noviello, P. Gantley, A. Noviello, J. Giltner, A. Madden, T. Baldwin, P. Jones, L. Shaw, P. Floyd, E. Tucker, D. Joergens. Not shown Miss Siegman, Faculty Adviser.

Row 1 J. Pile, N. Walck, V. Aaron, Sec., A. Constanza, M. Delbarre, J. Farmer. Row 2 F. Trinkl, H. Branch, G. Spaccaratella, Treas., Miss Margulies, Faculty Adviser, L. Stevenson, F. Nartowitz. Row 3 J. Eckstein, B. Heller, Pres., C. Griffith, D. Adaszik, B. Coons, J. Lund A. Matrunich, R. Prebis.



MOTION PICTURE CLUBS

"Did you see Van Johnson's latest picture? Wasn't he adorable? I think I'll vote for him this week. A girl? Hm, I think June Allyson is so sweet."

This is the conversation many students hear on Wednesday mornings before going into Room 132, where the Motion Picture Club has its meeting. Miss Margulies is in charge. There are two groups, the Freshman and Sophomore group, and the Junior and Senior group. They have alternate meeting days and each group has its own officers.

At the meetings they talk about movie stars and the latest moving pictures. Then, by way of ballot, they vote for their favorite actress and actor. Beautifully colored portraits of the winners every week can be seen hanging up on their bulletin board. Scrapbooks have been made; and quiz programs, which prove to be quite amusing and interesting, are held frequently.

The upperclassmen have an advantage over the "poor" freshmen. Among them one is that they hope to obtain a regular movie feature and have a lot of fun running and showing it. The officers of the Freshman and Sophomore group are Margaret Galella, President, and Irene Kurek, Treasurer. In the Junior and Senior group Barbara Heller is President, Violet Aaron, Secretary, and Grace Spaccaratella, Treasurer.



Row 1 J. Leboff, G. Sello, J. Data, M. Golian, A. Francaviglia, I. Kurek, Treas. Row 2 Miss Margulies, Faculty Adviser, I. Kopik, M. Weiss, M. Chiappetta, A. Jaslowski, J. Catanacci, L. Carson, E. Engels, S. Platkin. Row 3 C. Colburn, A. Kanski, M. Borek, M. Wenis, I. Stanley, J. Novack, H. Zaitz, M. Galella, Pres., F. Kasprak, D. Treacy, D. Moore. Row 4 L. Riggi, J. Arnold, E. Marhan, I. Mihalenko, M. Tice, P. Riehl, C. Mullener, F. Zamorski, J. Villani, D. Marhan, E. Rusnak.

BOYS' PHOTOGRAPHY CLUB



The Boys' Photography Club discusses photographs and the principles of photography. They have contests in picture making, and prizes are given for the best pictures. They also have snapshot contests, in which prints are judged on composition and the quality of photography. The club is equipped with a dark room; therefore the members can practice printing, developing, and enlarging of pictures. The club is planning on having movies concerning the elements of photography. A program committee is also planning on having an outing for the club.

Row 1 H. Gutowski, Sec., R. Ostarticki, Treas., Mr. Clark, Faculty Adviser, R. Smith, Pres., P. Chernobay, V.-Pres., Row 2 F. Massaro, R. Christel, M. Modrak, G. Chaplick. Row 3 L. Meland, V. Grimes, K. Rumpf, J. Stauch, E. Klawunn. Row 4 E. Kerekes, H. Chernikoff, A. Palew, G. De Carlo. J. Maloney, Not Shown.

GIRLS' PHOTOGRAPHY CLUB



Row 1 J. Lenek, D. Milberger, M. Chiappetta, J. Leboff. Row 2 H. Hertwig, J. Catenacci, E. Moscato, L. Symanski, V.-Pres., A. Chadwick, Pres., I. Daniel, Sec., P. Gantly, L. Warshaw. Row 3 R. Pilot, D. Sommer, M. Hatton, M. Banovsky, M. Nadel, J. Arnold, M. Angelo, A. Provenzano, M. Mannuzza. Row 4 D. Joergens, O. Goydic, N. Leroy, B. Lissenden, M. Bukofsky, E. Chasey, D. Mason, N. Reuter, A. Vitrano, Mr. Walker, Faculty Adviser. Row 5 A. Blum, L. Tylustki, D. Gahm, D. Calhoun, M. Castoral, K. Brindley, D. Blanchard, H. Brown, B. DiLeo, S. Nissman, R. Miller.



Row 1 W. Liddy, Sec., R. Kanzler, V.-Pres., Mr. Weiss, Faculty Adviser, W. Roll, Pres., A. Hoerrner, Treas. Row 2 J. Busch, H. Kandrowitz, M. Martyn, M. McGill, M. Fritze, W. Depczynski, C. Does, T. Frank, M. Posnock. Row 3 L. Bona, G. Coody, T. Sara, R. Gushin, B. Harkins, R. Massarik, A. Rupeikis, R. Smith, N. Fallace. Row 4 P. Ginfrieda, M. Zitomer, S. Posnock, W. Emrich, A. De Karski, W. Gutkowski, J. Stalowski, J. Mayer.

CHEMISTRY CLUB

If on Monday mornings you find yourself looking out the window and see girls snapping pictures here and there, don't be alarmed at this incident. It's only the Girls' Photography Club. At the club meeting, after all old and new business has been attended to, Mr. Walker takes over. Using one or two girls as models, Mr. Walker shines bright lights on them at different angles. He demonstrates how defects may be hidden and the good points brought out. As he lectures on how to focus cameras and take pictures informally, the girls listen intently. They thoroughly enjoy listening to a subject which is fun as well as interesting and educational.

By the end of the year, Mr. Walker hopes that all these girls will be able to take pictures inside, outside, nighttime, daytime, and develop and enlarge them as well. When the bell rings, the girls groan. They hate to leave, but oh, well, there's always another Monday morning to look forward to.

Extra, extra, read all about it — new, unequaled hair serum has been found, and it can now save studying for one full year. As we read down the front page, we see our own Walter Roll and Robert Kanzler have discovered it. The reporter who interviewed them found out that the secret of their success was their practice in Chemistry Club in Linden High (under Mr. Weiss' supervision).

You, too, can be a chemist. You can learn about atoms, spinach or the dyes in your clothes. In case of fire you can make a fire extinguisher. The purpose of this very prominent club is to emphasize the importance of chemistry in industry, hobbies, and our world tomorrow. Interesting experiments are made by the students in order to carry out this purpose. Oh, come on; surely those smells floating from the chemistry lab don't bother you. It's only H_2O , or is it H_2S ? I'd better join the Chemistry Club and find out.

JUNIOR RED CROSS CLUB



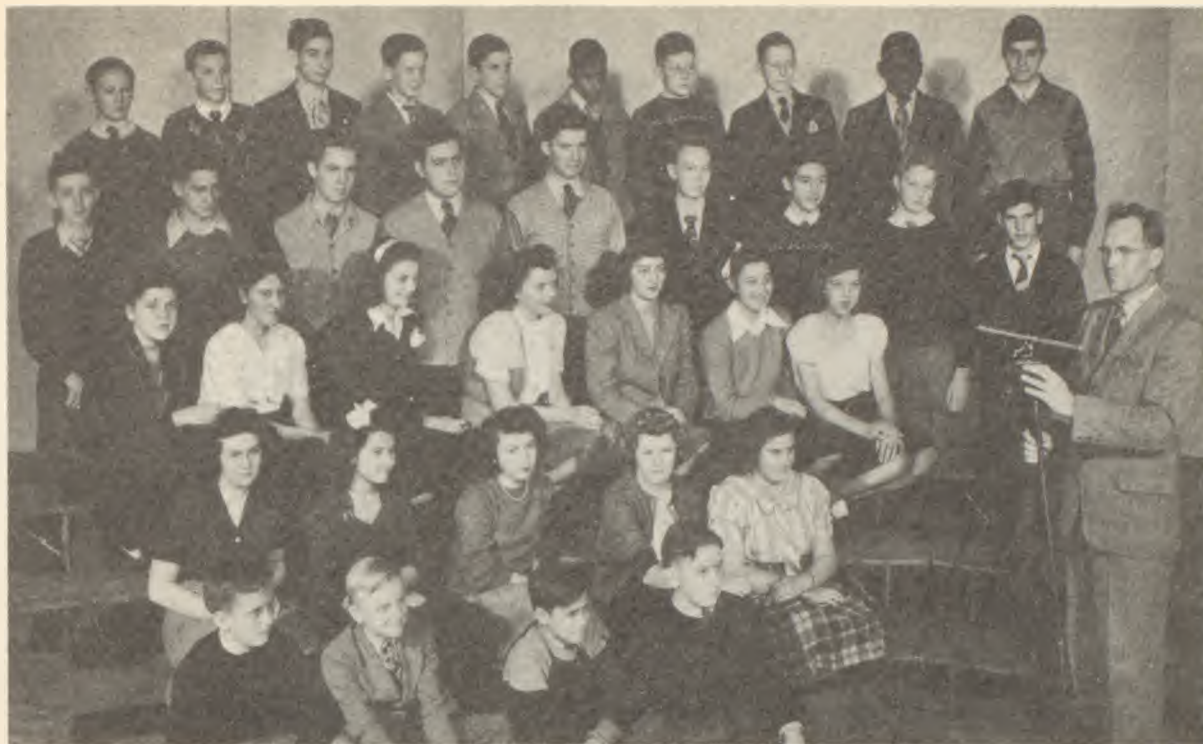
Row 1 A. Pivarnik, V.-Pres., D. Pavlacka, Treas., B. MacGee, Pres., H. Kenny, V.-Pres.
 Row 2 Miss Casement, Miss Kutz, Faculty Advisers. Row 3 E. Laczynski, J. Woodfield,
 M. Bursee, G. Lello, K. Christel, R. Gallagher, L. Wenis, M. A. Weiss. Row 4 H. Masley,
 J. Semko, D. Krahling, H. Sharkey, H. Milden, D. Gerhard, J. Reitzer, A. Drewniak, A. Will-
 mot. Row 5 A. Eidelberg, M. Bronstein, H. Solomin, S. Nycz, L. Payne, D. Guzzo, C. Seiler,
 A. Rosenon.

Row 1 J. Cohen, Pres., Miss Lang, Faculty Adviser, F. Wexler, Treas., K. Asch, V.-Pres.
 Row 2 N. Reuter, E. Elder, J. Scheckner, B. Voynick, S. Zeitlin, M. Nadel. Row 3 M. Har-
 rison, G. Dress, R. Branagan, R. Richter, S. Gelber, R. Segal, M. Orszewski.



FORENSIC CLUB

Today is Wednesday, Wednesday-Forensic Club. Is everybody happy? Well, I should say, and they do say. You see, this club is for "saying". Miss Lang's future rooters are practicing the very thing we fought for and want — freedom of speech. Now it isn't for just plain talking. If you can act, there are the Dramatic and Humorous Declamation Contests, for the former of which we were host school. Then there are some who like to read poetry, make speeches, or discuss current topics. There are the Poetry Reading and Oratorical Contests for those. Gladys Goldberger represented L. H. S. for the first two contests; Joy Hochhauser and Betty Voynick entered, respectively, for the last two. So if everybody's satisfied, I'll go to the next class.



Row 1 E. Fraysztak, J. Hondra, R. Will, R. Wagner. Row 2 K. Muccione, Sec., C. Zrelirec, A. Galella, A. Mahar, M. Boltzer. Row 3 B. Foley, Pres., L. Parris, M. Pluta, D. Haber, C. Bauman, M. Masarsky, R. Sharo. Row 4 R. Kress, E. Muzik, M. Schultz, A. Schulman, L. Diamond, J. Davidson, C. Venezia, Treas., L. Meland, G. May. Row 5 R. Snyder, R. Pawlikowski, A. Greenberg, G. Kochan, Vice-Pres., W. Hanus, W. Barge, C. Miller, A. Taylor, T. Daniels, S. Kaplan. Standing at Right Mr. Ramage, Faculty Adviser.

JUNIOR

RED CROSS

Making hospitals brighter is one of the main functions of the Junior Red Cross Club. The club's continuous work, sponsored by Miss Casement and Miss Mossman, (first half year Miss Kutz), produces many and varied projects. They supply Lyons Veteran's Hospital with ornaments and objects of cheerfulness. To enliven many less fortunate persons at Christmas tide, the girls made scrapbooks of Christmas cards, Christmas nut cups, and bright tray favors. To the stricken children at the hospitals or the unfortunate children at the orphanages, the girls sent Christmas packages consisting of hand worked soft toys in the shape of dolls and animals, made from stockings. At each of the important holidays the club sends tray favors depicting the holiday and throughout the year the girls are working on wash cloths and knitted afghans. The officers of the club are Helen Pado, President; Mary Beres, Secretary; Anna Pivarnick, Treasurer.

FIELD MAP

AND SURVEYING

"Hurry up with that transit." "Are you sure she's carrying the angle mirror?" "You take two poles and I'll take the other."

The above is a sample of a typical conversation preceding an outing by the Field Map and Surveying Club. This is one of the most practical clubs in the school. Its purpose is to develop and further the practical application of Math. The members actually go out and survey or map various objects or buildings in the near vicinity of the school building.

In preparation for this, the club gives reports and explanations of the different instruments employed. Also varied problems are worked out. A few of the more adept members make some of the instruments and then explain their use to the rest of the members. The officers of the club are Betty Foley, President; George Kochan, Vice-President; Kathleen Muccione, Secretary; and Carmen Venezia, Treasurer.



Row 1 R. A. Miller, Sec., M. Bronstein, Pres., R. Miller, Treas. Row 2 D. Milberger, M. L. Slack, B. Croteau, Miss Noddin, Faculty Adviser, R. Har-kins, R. Chernotsky, C. Seiler Row 3 D. Calhoun, D. Guzzo, J. Katona, H. May, A. Phelan, W. Farber, A. Rosenson, A. Weitzman. Row 4 M. Bronstein, A. Eidelberg, P. Miller, S. Garfinkle, R. Sylvester, G. Colicelio, S. Nissman.

FRENCH CLUB

Parlez-vous francais? No? Then I'll have to tell you in English about the French Club. The meeting, conducted in French by Myrna Bronstein, President, the members replying in English, includes Secretary Ruth Ann Miller's and Treasurer Robert Miller's reports, and the National Anthem. Vice-President Rose Mary Brady is in charge of cultural reports. This year the main project has been the adoption of a school in France to help build it up.

ART CLUB

The Art Club attempts to provide an opportunity for those interested in art to get together in a social manner. At these gatherings the members discuss various types of art. Examples are cartooning, architecture, and industrial designing. Someone is chosen to present these to the club. Usually pictures or some other sorts of illustration are used. Quizzes are also given in order to test how much each individual has remembered.



Row 1 M. Malochik, Sec., L. Lynch, Treas., Miss Oldach, Faculty Adviser, N. Tobiasson, Pres., R. Likowski, V.-Pres. Row 2 J. Humcke, L. Chernobay, J. Howard, R. Kirby, F. Cooperstein, S. Lewandowski, D. Perzley, S. Hirsch, L. Hoptay. Row 3 J. Cooperstein, S. Crossman, A. Rafelson, S. Kruprowies, R. Raber, J. Maloney, J. Myers, B. Silverblatt, H. Okun. Row 4 J. Gordon, J. Harris, G. Wright, B. Kominetsky, L. Wolfberg, B. Baker, E. Du-nay, P. Maline.

Row 1 J. Gardos, R. Lochner, M. Loenser, P. Eichhorn. Row 2 C. Vitarius, Mr. Moldaschl, Faculty Adviser, A. Bodner, Pres., G. Machalett, Sec.-Treas., A. Vanderwall, V.-Pres., H. Gasper. Row 3 A. Rathjen, M. Coleman, M. Bernstein, A. Kalning, M. Strelzoff, E. Straub, P. Roden, E. Oetting. Row 4 G. Lyons, D. Wetzol, H. Watter, A. Bodner, P. Yeisley, F. Hofmann, D. Bohling, S. Houlroyd. Row 5 B. Schuler, R. Franke, E. Kovacs, M. Kreitzman, H. Kaplan, H. Fletcher, J. Spratt.



GERMAN CLUB

"Der Deutsche Verein" meets in room 38 every Wednesday morning during activity period. With the helpful supervision of Mr. Moldaschl, the club tends to further interest in German. Providing a more intimate knowledge of the language and of the people who speak it is also one of its main purposes. The programs, varying from instructive to entertaining, aid in accomplishing these aims.

SPANISH CLUB

Every Wednesday in Room 30 one may see a revival of old Spain or pictures depicting scenes of our Spanish neighbors in South America. The members of the Spanish Club strive for fluency and a better understanding of Spanish and Spanish-speaking countries. A Spanish meal, the Pan-American Fiesta at State Teachers' College, a trip to the Hispanic Museum in New York are a few outstanding social activities.

Row 1 M. Pileggi, H. Dillon, P. Abrams, N. Cirotta, E. O'Connell, D. Rosenson. Row 2 H. Thorn, V.-Pres., M. Attanasio, A. Hicinbothem, Mrs. Ramage, Faculty Adviser, L. Rihá, D. Olszewski, Sec., M. Peck, Treas.



LATIN CLUB

Row 1 F. Babbitt, V.-President, W. Depczynski, President, A. Mahar, Sec., M. Fritze, Treasurer. Row 2 C. Butkus, B. Elowitz, Miss MacConkey, Faculty Adviser, B. Warren, H. Kantrowitz. Row 3 M. McGill, T. Deller, M. Pluta, E. Trotter. Row 4 W. Gibson, M. Plunkett, T. Attanasio, A. Christensen, T. Goldman, O. Gallagher.



Sh, a meeting is beginning. The president calls it to order; the secretary reads the minutes; the treasurer's report is given; Miss MacConkey then gives a fine cultural report on the background of Italy. The club's idea is to promote leadership and responsibility. It is trying to open the cultural world to its members. The nineteen active members meet on Tuesdays. You're right; give that young lady a ticket to Rome — it's Sodalitas Latina.

Do you know what to do if you encounter a difficult social or business situation? The members of the Commercial Club, with the help of Mrs. Kendall, may be able to help you, as these are the main topics of discussion during their meetings. Writing letters and other commercial training are also a part of the club's weekly concern. A regular feature of the club is the Mothers' Day Tea.

COMMERCIAL CLUB



Row 1 E. Silverblatt, Treas., E. Smith, Sec., M. Moore, V.-Pres., J. Ostarticki, Pres. Row 2 B. Pittinger, R. Macknowsky, M. Metro, E. Rybinski, L. Garster, S. Holick. Row 3 M. Petrowsky, M. Baars, C. Abrams, M. Reiber, R. Kaplan, A. Gabrick, H. Oppel, A. Homola. Row 4 A. Shamus, E. Lesko, C. Stanziola, C. Landfish, N. Porter, D. Potyk, V. Springer, P. Koplin. Not shown: Mrs. Kendall, Faculty Adviser.



Row 1 G. Monek, L. Mullen, E. Miller. Row 2 B. Joffe, J. Malenda, Mr. Stokes, Faculty Adviser, M. Petraroi. Row 3 M. Modrak. Row 4 S. Paserba, W. Kania, T. Stone. H. Dodd.

SHOP FOREMEN

Boys interested in advanced training in metalwork may join the Shop Foremen's Club. This meets every Wednesday in the Metalwork Shop under the watchful eye of Mr. Stokes. The officers elected each year are the Superintendent and Secretary-Treasurer. The meetings consist of regular business and discussions on obstacles encountered during the past weeks in Metalwork classes. The club aims to develop leadership abilities, self-confidence and advanced training pertaining to metalwork.

ECKERS

The members of the former Home Economics club decided, after much discussion, to revise their constitution, changing their name to the "Linden Eckers." During the school year the club advisers, Miss Boyle and Miss Turtur, supervised such programs as fashion shows depicting the proper school and date dress and also the appropriate dress for the first interview for a job.



Row 1 C. Armstead, A. Kurzinski, B. Baldwin. Row 2 H. Solomin, Pres., J. Maas, V. Pres., Miss Turtur, Faculty Adviser, J. Martin, Sec., B. Feldman, Treas. Row 3 M. Banovsky, J. Seidenwand, E. Soban, J. Croteau, H. Sharkey, M. Bettie. Not Present Miss Boyle, Faculty Adviser.



MAKE-UP

Row 1 D. Perzley, Mrs. Nogi, Faculty Adviser, M. Delbarre. Row 2 P. Alber, V. Bednarz, O. Cacchione, W. Prentice, E. Sefchick, E. Monash. Row 3 J. Seheckner, O. Handy, N. Rauter, E. Miller, R. Brugger, M. Hodes. M. Attanasio, H. Gasper, B. Feldman. Row 4 B. Croteau, E. Handy, M. Nadel, E. Maro, L. Payne, R. Harkins, M. Strelzoff, D. Danninger, M. Bronstein.

JUNIOR DRAMATIC

Row 1 O. Lehotzky, V.-Pres., J. Coons, Treas., Mrs. Nogi, Faculty Adviser, B. Sumner, Pres., P. Stuve, Sec. Row 2 V. Turano, L. Wenis, R. Miller, T. Goldman, D. Rubel, J. Martin, P. Hatton. Row 3 P. Vranken, M. Plunkett, F. Galbraith, J. Clements, D. Pavlacka, J. Semko, B. Heagy, H. Kenny. Row 4 J. Smythe, L. Payne, J. Evans, E. Klawunn, F. Dann, R. Gallagher, M. B. Bursel.



SENIOR DRAMATIC CLUB



Row 1 E. Monash, D. Perzley, M. Rimli. Row 2 D. Danninger, M. Mehrmann, M. Newell, Treas., M. Bronstein, Sec., Mrs. Nogi, Faculty Adviser, R. Chernikoff, V.-Pres., G. Goldberger, J. Sweeney. A. Brandon, Pres., Not Present. Row 3 E. Handy, R. Roll, E. O'Connell, A. Rafelson, I. Stanley, I. Caggiano, B. Foley, S. Garfinkle, M. Attanasio, P. Harkins, R. Branagan. Row 4 M. Taylor, J. Regenthal, B. McCluskey, S. Smythe, R. Morrison, H. Smith, A. Wilpon, O. Handy, J. Seheckner, J. Rathjen, N. Kilbourne. Row 5 C. Glasston, S. Oetting, A. Shames, W. Sisko, J. Billy, I. Walker, S. Gill, N. Cirrotta, H. Casper, M. Strelzoff, B. Feldman.

JUNIOR DRAMATIC

Since the Freshmen had not ever been permitted to take an active part in dramatics, a new club was formed for them last year. This club is known as the Junior Dramatic Club, and is under Mrs. Nogi's supervision, as is the Senior Dramatic Club. The activities of the two clubs are parallel. Meetings are held with the following officers presiding: Olga Lehotzky, President; Beverly Sumner, Vice-President; Patricia Strive, Secretary; Jean Coons, Treasurer. During the meetings various planned programs are given, or speech work or improvisations worked on. The club, along with the Senior Dramatic Club, is planning a trip to New York City to see a play. Now the Freshmen have an early start at displaying and bettering their talent.

SENIOR DRAMATIC

"To be, or not to be."

No, that's not exactly what you'll hear at a Senior Dramatic Club meeting. A regular meeting is conducted by Rose Chernikoff, President, since Alice Brandon, original President, has left this school, with reports from Secretary Myrna Bronstein and Treasurer Marjorie Newell.

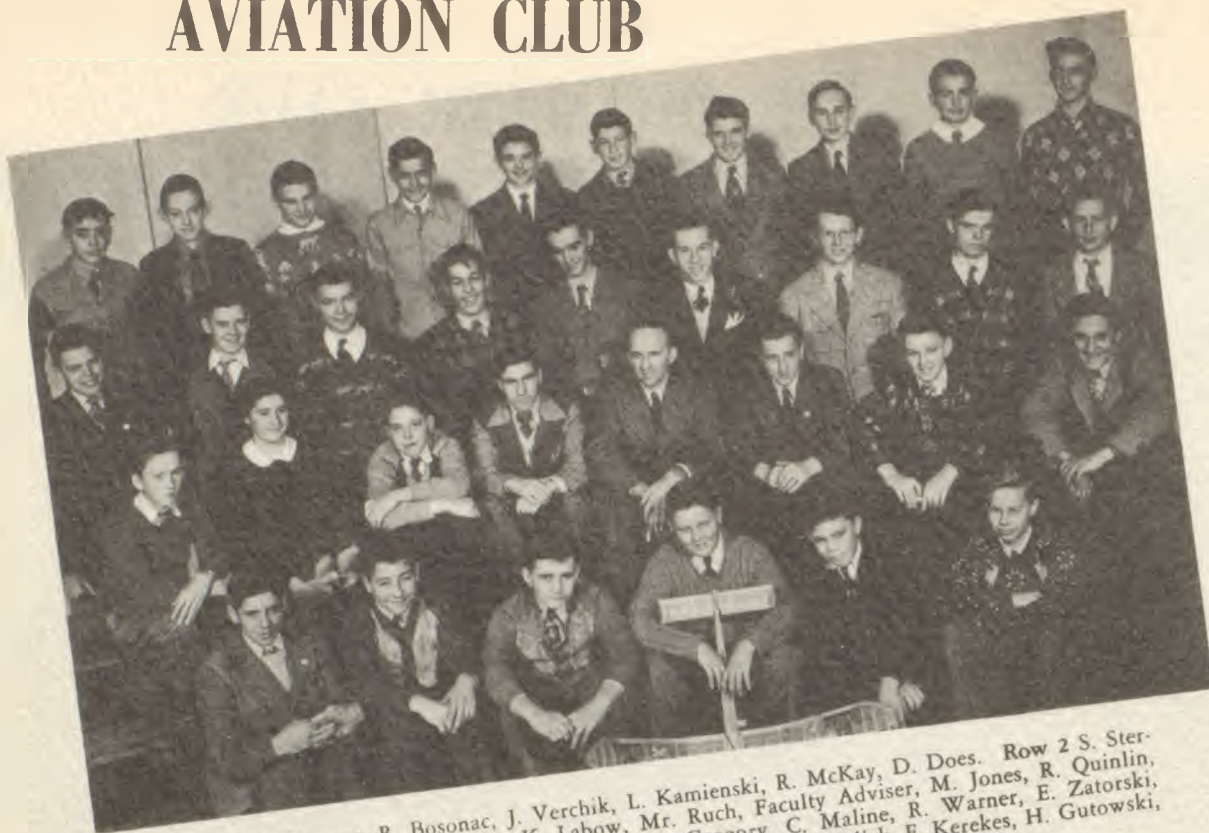
In the earlier part of the school year the most important activity of the club is the Fall production, which this year was "Stage Door", the first evening performance ever given by the club. The latter half of the year is occupied mainly by working on the Spring production, this year, "Afterwards". Aside from working on the plays there are programs planned by the members. During the Spring they are going to delve into Broadway plays, discuss, analyze, and criticize them.

MAKE-UP CLUB

If you happen to pass room 112 on a Wednesday afternoon and see a rather startling face peering at you, don't be frightened. It's only a victim of the Make-Up Club. The club is under the supervision of Mrs. Nogi. As they have no regular officers, no formal meeting is held. The members choose a partner among themselves and begin work immediately.

The beginners are taught the fundamentals, and for the first few months they apply only base. As they become more advanced they are taught the more complicated work. They are taught to make up all types of characters, giving them a certain skill and deftness. The members of the club are able to get real experience by making up the characters in school plays and operettas.

AVIATION CLUB



Row 1 L. Eimont, R. Bosonac, J. Verchik, L. Kamienski, R. McKay, D. Does. Row 2 S. Sterenchak, A. Shoplock, R. Eikam, K. Labow, Mr. Ruch, Faculty Adviser, M. Jones, R. Quinlin, A. Kubalak. Row 3 R. Stives, G. Hudak, A. Gregory, C. Maline, R. Warner, E. Zatorski, V.-Pres., G. Szurley, Pres., J. Tracy, C. Deveikis. Row 4 G. Chaplick, E. Kerekes, H. Gutowski, M. Coyle, J. Kniely, D. Evans, M. Dookia, P. Chernobay, R. Treche, R. Schaeffer.

MICROSCOPE CLUB



Row 1 A. Zangrando, M. Borcharding, Mr. Barr, Faculty Adviser, R. M. Pawlus. Row 2 A. Gustofson, T. Long, E. Bednarz, W. Toter. Row 3 S. Shumsky, S. Jackson, R. Smith, J. Warren, D. Page.

Nothing hides from the eyes of a powerful microscope when the Linden High Microscope Club presents a program. Each week they examine the mechanics of the microscope. They have found that ordinary yellow paper becomes an astonishing subject when analyzed by a microscope. This is the type of work the club does each Wednesday morning during activity period, after their regular business meeting in Room 114. The sponsor of the club's work is Mr. Barr, and the officers are Marie Borcharding, President; Rose Pawlus, Secretary; Andy Zangrando, Treasurer.



Row 1 R. Kanzler, Pres., E. Straub, Sec., Miss Reynolds, Faculty Adviser, A. Berta, V.-Pres., K. Muccione, Treas. Row 2 F. Wexler, R. Kirby, M. Micenko, C. Mannuzza, M. Strelzoff, M. Harrison, P. Miller, B. Baker, B. Foley. Row 3 W. Liddy, W. Berry, A. Schmidt, H. Baker, D. Piper, W. Hoffmann, M. Dunay, J. Cohen, K. Asch, A. Alzheimer. Row 4 W. Sanderson, M. Zitomer, S. Posnock, M. Posnock, W. Post, W. Roll, G. Szurley, R. Barg, W. Farber.

AVIATION

The Aviation Club meets during the Wednesday activity period under the supervision of Mr. Ruch. It aims to appeal to aviation-minded students really interested in this activity. During the meetings many interesting features of aviation are discussed, such as the theory of flight demonstrated with a model plane having movable controls, jet propulsion, etc. Some of the members work together at building model planes. Girls as well as boys belong to this club. The girls are very proud of a flying model which they built this year. Several boys brought in gas models to demonstrate to the club members. At the end of the year the club usually plans a trip to New York or places of interest to aviation-minded people.

MATHEMATICS

While the rest of the school busy themselves with their tasks during activity period, Tuesday, a group of thirty-three mental wizards, known as the Math Club, rack their brains in Room 202A. Under the supervision of Miss Reynolds, the club undertakes a study of math, its history, including famous mathematicians, mathematical puzzles and fallacies, slide rule, navigation, and surveying. Math plays are also a recognized activity.

An ideal collection of paraphernalia for the use of these highbrows might include hypsometer, angle-mirror, sextant, transit, and, of course, paper, pencil, and ruler. During the Noel season, the group decorates the traditional geometric Christmas tree in their meeting room. An unknowing passerby might at first be startled to see a sweet-smelling spruce hung with tetrahedrons, hexahedrons, octahedrons, dodecahedrons, and icosahedrons. After a second glance, though, he might realize that these multi-colored figures are indeed a credit to the patience of the skillful club, and truly beautify the evergreen.

The aim of the Math Club is to promote a better understanding of mathematics and to acquaint themselves with its uses in the outside world.



Row 1 C. Batkus, H. Kimmelman, R. Cohn, E. Hurley, S. Bunk, J. Dellera. Row 2 Miss Waterman, Faculty Adviser, M. Miller, I. Martinko, A. O'Halloran, Sec., G. Preston, Pres., S. Nycz, L. Wietry, Miss Bennett, Faculty Adviser. Row 3 D. Gerhard, A. Drewniak, E. Price, H. Shankey, V. Pres., M. Zielenbach, H. Mildner, E. Mulasz, B. Wieser. Row 4 S. Wiedecker, E. Trutter, M. J. Beck, J. Hammer, Co-Chairman, R. Mileski, Membership Chairman, E. Klawunn, H. Rumpf, H. Wludyka, H. Polin, L. Paris, J. Poleski. Row 5 S. Slinski, A. Crist, E. Janasie, G. Davis, E. Valentine, R. Eick, W. Tibson, J. Peal, A. Kalnink, J. Reitzer, B. MacGee.

LIBRARY SQUAD

Miss Waterman and Miss Bennett, our librarians, are assisted by a large group of boys and girls who call themselves "The Library Squad." They not only work during their club meeting but they give up their activity periods, study halls, and free time before and after school. By sacrificing their free time, the members help keep our excellent library in good condition at all times. Working toward a goal of efficiency, they record books, replace returned books on the shelves, arrange magazines, and in all make it easy for everyone to find just what he is looking for. The members of the club not only work, but also enjoy lectures by Miss Waterman on library procedure or outside speakers invited as guests of the club, who talk about a wide range of subjects other than library work.



Row 1 R. Romanoski, A. Tola, E. Laczynski, B. Stives, M. Stadnick, S. Rosenwald, H. Porbansky, J. Woodfield. Row 2 M. Diehl, L. Kasner, T. Attanasio, A. Christensen, M. Boltzer, D. Shellhamer, E. Maro, J. Conant, E. Sloboda. Row 3 Miss Waterman, Faculty Adviser, L. Glinka, F. Miller, H. Munson, R. Lee, A. Solsky, D. Yanaski, H. Masley, K. Christel, A. La Tourette, Miss Bennett, Faculty Adviser. Row 4 B. Sabados, B. Lukenda, H. Vanco, C. Aber, E. Kalinak, I. Mihalenko, M. Daly, V. Gamm, M. Masarsky, A. Wolosonovich, R. Oliver, E. Poper.

GIRL RESERVES

Row 1 J. Kauffmann, J. Iaria, H. Pado, M. Gallo. Row 2 D. Simpson, G. Dragan, E. Smith, Sec., A. Kauffmann, V.-Pres., R. Villani, Pres., A. Frank, Treas., D. Dilbatis, T. Heinrich. Row 3 A. Galella, J. Sweeney, E. Sefchick, D. Danninger, E. Rybinski, N. Alber, J. Farmer, J. Pile, P. Rohden, C. Deldin, G. Mickelson, B. Reb. Row 4 D. Sweet, M. Borcharding, M. Moore, J. McGann, F. Pietrowski, D. Orszewski, M. Reiber, R. Branagan, P. Harkins, I. Riha, I. Stanley, M. Orszewski, L. Lynch, M. Newell. Row 5 D. Krahling, M. Baars, J. Baars, D. Moore, M. Borek, M. Wenis, J. Rathjen, E. Mulasz, B. Wieser, M. Strelzoff, M. Harrison, B. Vonnick, J. Villani, C. Mullener.



FISH AND GAME

The Girl Reserves is one of the youngest clubs in High School. The membership grows larger each year, though only Sophomores, Juniors and Seniors are allowed to join.

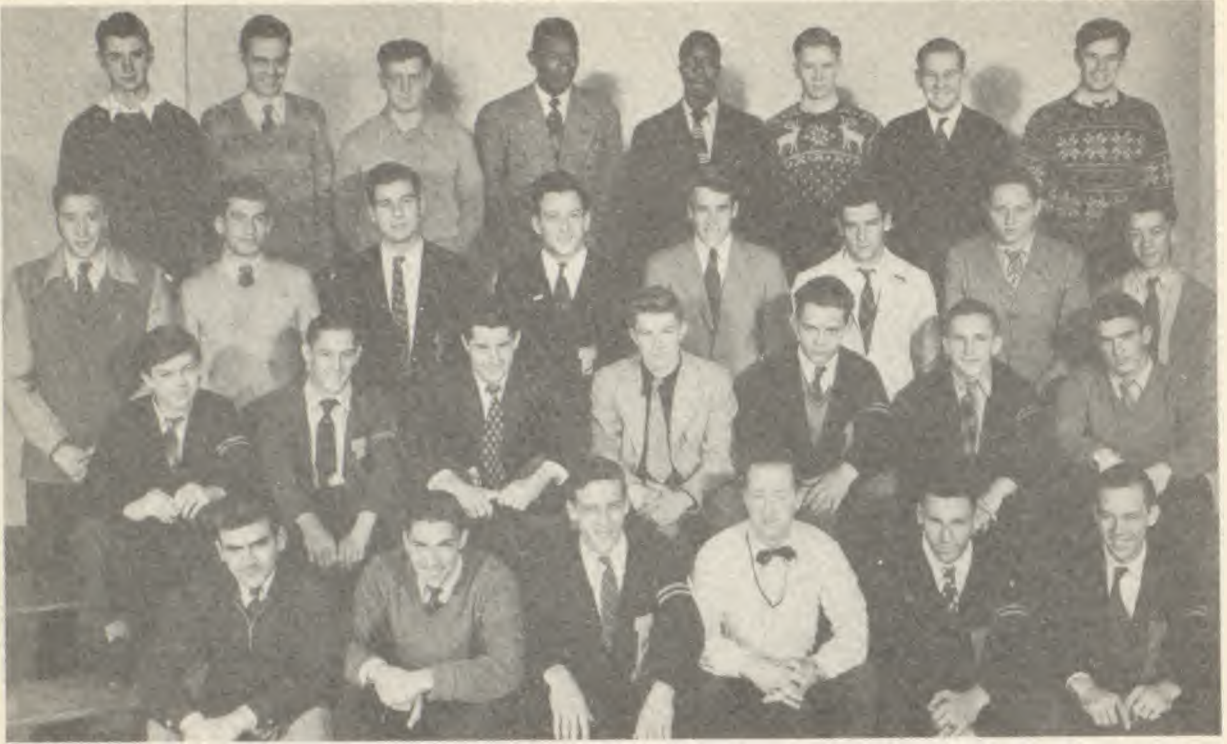
This club is connected chiefly with the Y. W. C. A. Their social affairs consist of hayrides, barn dances, swim meets, parties, formal dinner dances, and banquets. The members also make favors for orphanages and homes, and scrapbooks for servicemen and hospitals.

The Fish and Game Club meets on Wednesday in Room 108 under the supervision of Mr. Schott. The officers are John Donahue, President, Richard Mays, Vice-President, Anthony Conti, Treasurer, and Kwong Chin, Secretary. The boys learn how to apply their knowledge of hunting and fishing. In the fall the trend is toward game hunting, in the winter toward ice-fishing, and in the summer toward lake fishing. For this task they learn how to tie flies.



Row 1 P. Clemenko, A. Therezo, N. Chiaramonte, K. Chin, Mr. Schott, Faculty Adviser, A. Conti, R. Lawson, A. Bell, A. Lawson. Row 2 M. Poltz, D. Gotts, E. Antoniewicz, J. Lischko, B. Twaddle, J. Martyn, B. Spader, J. Vornbaum, J. Mihalko, A. Petty. Row 3 R. Mullen, C. Gahn, A. Tola, V. Guzewicz, J. Grabas, D. Martinson, R. Kerr, N. Davidson, A. Kube. Row 4 J. Gomulka, J. Gaykowski, P. Brummer, J. Tevman, R. Putz, S. Warhol, E. La Tourette, G. Dancke, J. Glancur, W. Brightwell.

SPORTS CLUB



Row 1 R. Sarro, Treas., R. Hubeny, V.-Pres., D. Spader, Pres., Coach Jakucs, E. Harasty, F. Babbitt, Sec., Row 2 W. Latawiec, J. Green, I. Moore, J. Konchak, E. Bodzioch, J. Dobosiewicz, W. Martin. Row 3 P. Casino, S. Kaplowitz, P. Culos, W. Wolar, L. Kinsella, J. Zbranak, J. Romanski, W. Emrich. Row 4 S. Guzy, C. Jeffrey, G. Beriont, T. Chapman, M. White, T. Sara, H. Hausleiter, K. Dutcher.

INTERNATIONAL RELATIONS



If you had been near Room 14 at any time of the year during Tuesday, activity period, you would have witnessed a flurry of excitement or heard voices raised in heated arguments. This was the meeting place of the International Relations Club. As a project this year they planned and made a scrap book of life in Linden and sent it to a school in Ecuador. The book contained snapshots of our school and students, one or two copies of "The Chronicle," and many other such items of interest. When the members were not working on the scrapbook they were engaged in discussions of inter-American affairs. The officers of the club were Barbara Tuttle, President; Robert Gushin, Vice-President; Josephine Ziemian, Secretary; Jean Henderson, Treasurer; and Mrs. Atkins, Faculty Adviser.

Row 1 J. Henderson, Treas., R. Gushin, V.-Pres., Mrs. Atkins, Faculty Adviser, B. Tuttle, Pres., J. Ziemian. Row 2 J. Cooperstein, M. Jajac, A. Homola, Sec., F. Von Buelow, M. Miller. Row 3 J. Jackson, B. Wagner, A. Vanderwall, D. Martis, E. Sellner. Row 4 J. Martin, V. Turano, H. Okun, J. Seidenwand, P. Vranken.

SPORTS CLUB

One of the newest activities in our school is the Sports Club, organized this year under the sponsorship of Coach Al Jakucs. Every boy who earns a high school letter is eligible to join. These sports-minded fellows meet the first and third Wednesdays of each month in the gym. If you walked into one of the club's meetings you would probably hear a lot of talking. But have no fear; the boys have a reason for all their chattering. They discuss football, baseball, and basketball. They try to offer suggestions for improving their teams. How to improve conditions in the school itself is also one of their topics for discussion. Their ideas for improving their sports help to win some of our games, and their ideas about improving the school also show results.

GIRLS' SOCIAL

If you walk by Mrs. Hardin's room and see a group of Senior girls involved in an interesting discussion, you can tell that the Girls' Senior Social is having their weekly meeting. The Senior Social is a brand-new club. It consists of about twenty members and is not going to increase its membership. Each girl is going to hand her membership to one of the Juniors, so next year the club's membership will be exactly the same.

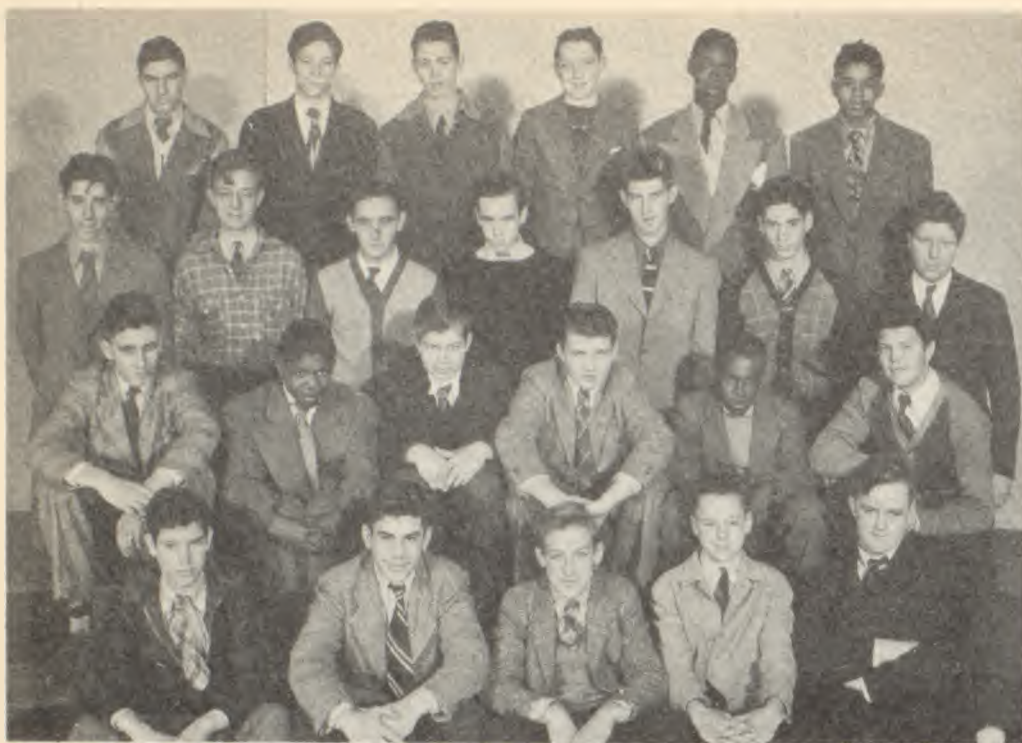
During the meetings the girls have discussions on social problems, psychology, and even Cupid. Cupid was the discussion the girls enjoyed most.

This is expected to be one of the outstanding clubs. Who will be the lucky Juniors picked to be members next year?

SENIOR GIRLS' SOCIAL CLUB



Row 1 E. Lischko, Treas., G. Spaccarotella, Sec., C. Griffith, Pres., Mrs. Hardin, Faculty Adviser. Row 2 T. Hennessey, J. Pile, J. Eckstein, R. Brugger, B. Heller, L. Stevenson. Row 3 C. Chiappetta, A. Kaufmann, V. Aaron, A. Constanza, D. Dilbatis, M. Delbarre, M. Stanzola.



Row 1 H. Cornelius, E. Reagan, Pres., R. Gersick, J. Malenda, M. Green. Row 2 H. Rumpf, W. Brown, G. Urban, M. Dookin, R. Yates, A. Kube. Row 3 E. Burke, B. Almquist, E. Hoefling, R. Blum, A. Kaiser, R. Caruso, Treas., Mr. O'Brien, Faculty Adviser. Row 4 K. Labo, J. Gomulka, M. Christensen, L. Dering, Sec., H. Bowman, E. Loney. Not shown R. Barret, V-Pres.

BOYS' TRAVEL CLUB

The members of the Boys' Travel Club, which meets every Tuesday in Room 108 under the sponsorship of Mr. O'Brien, discuss the many peregrinations they would like to undertake. They explore the frigid wastes of Alaska, the sunny clime of California, fascinating South America, the arid deserts of Arizona, and intriguing Canada, all in Room 108. Officers of the club are E. Reagan, President; R. Barrett, Vice-President; R. Caruso, Treasurer; L. Dering, Secretary.

CROCHETING CLUB

The Crocheting Club, under the supervision of Mrs. Crawford, is in its second year of activity. When at meetings, which are held in Room 16, the girls do very fine work. Its officers are Ann Arndt, President, Joanna Sosinski, Vice-President, Marilyn Miller, Secretary, and Filomena La Ferrara, Treasurer. Some things that the girls do individually are crocheting edges on handkerchiefs and bathtowels, and knitting sweaters and scarfs. Together they are making an afghan.



Row 1 M. Miller, Sec., J. Sosinski, V.-Pres., Mrs. Crawford, Faculty Adviser, A. Arndt, Pres., F. La Ferrara, Treas. Row 2 M. Gerbery, A. Wocieczowski, A. Susko, M. Kauffmann, B. Reinfurt, J. Fuchs, A. Kurzinski. Row 3 R. Ignar, C. Bodnar, M. Bettel, S. Wiedecker, S. Kowachik, E. Griess, E. Dunay, R. Harkins. Row 4 S. Lewandoski, T. Raiffe, D. Jordan, M. Anderson, J. Wiezbicki, S. Fingerlin, N. Parsons.

CAFETERIA CORPS

Hm — that music, it sounds lovely; it comes from the cafeteria. Yes, these boys under Mr. Levine's fine leadership decided eating to music is pleasant and relaxing. Besides music, they've provided us with rules to follow, in order to help them help us. These rules are to keep the cafeteria clean, keep pleasant order in lines so everyone gets to eat in time and to keep our tables and chairs in order. Reminders are spoken over the loud speaker and drawn in picture form to remind us to bring the bottles and trays back. The Art Club has set up an alumni board for pictures and articles of interest. The Service Squad is to help us, but they need our cooperation. They have given us all this in a successful effort toward happier eating.



Row 1 A. Pirrocco. Row 2 J. Messer, P. Finkler, H. Wishna, W. Furman. Row 3 A. Brokaw, R. Smith, Mr. Levine, Faculty Adviser. Row 4 M. White, H. Treacy, W. Pawlikowski, T. Chapman.

ARCHEOLOGY CLUB

A comparatively new club, started only last year, is the Archeology Club. Since Archeology, the study of ancient ruins and relics, was the purpose of the club last year, that name was chosen as its title. Having run out of information on this particular subject, the club has started anew this year with the study of Oriental countries. The original name has been retained, however. Japan was chosen as the first country to be taken up. The members discuss and compare their knowledge and findings of the customs, history, ways of thinking, and even some of the words of the Japanese people.



Row 1 J. Smythe, F. Cooperstein, E. Poper, R. Oliver. Row 2 M. Coyle, V.-Pres., B. Voynick, Pres., Mrs. Potter, Faculty Adviser, C. Vitarius, Sec., S. Houlroyd, Treas. Row 3 B. Heagy, M. J. Beck, E. Valentine, G. Davis, G. Dress, G. Colicelio, A. Wolosonovich, B. Suretsky.

PIRATES OF PENZANCE



"I thought I heard a noise!"
"Hush, hush not a word!"



"When you had left our pirate lair!"



"Oh, dry the glistening tear!"



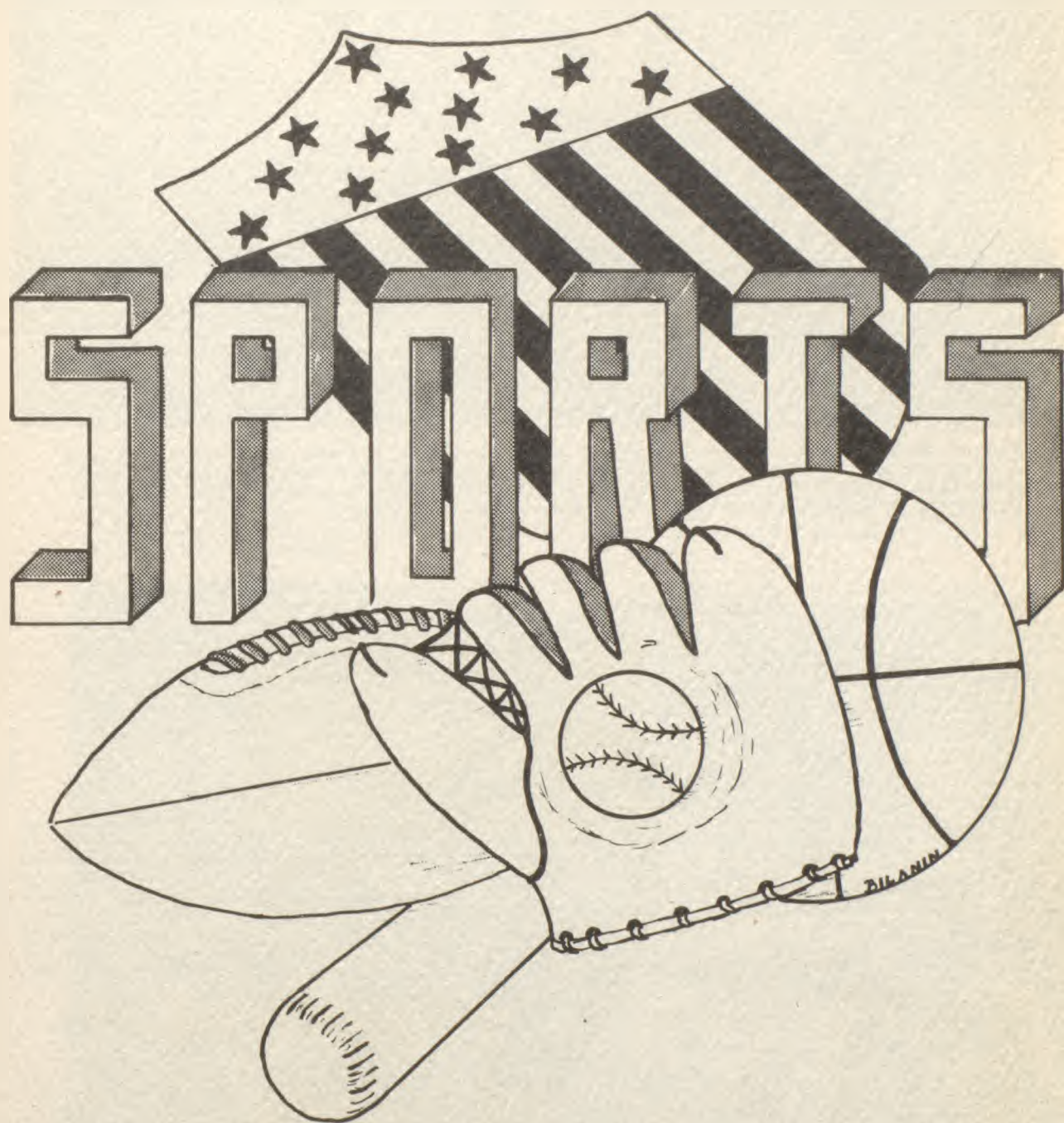
"When the foeman bares his steel!"



"Stay, Frederic, stay!"



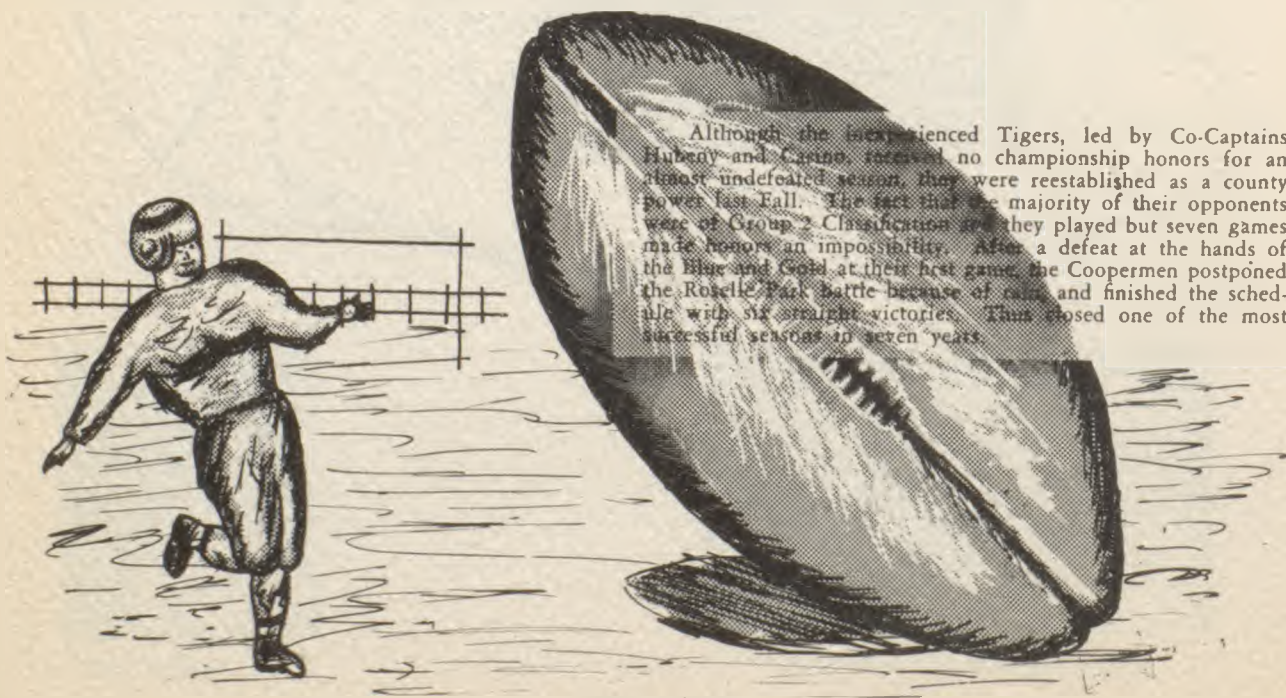
"Dear father, why leave your bed?"





Row 1 P. Bartus, D. Spader, R. Sarro, B. Beriont, R. Hubeny, Co-Captain, P. Casino, Co-Captain, W. Wolar, E. Bodzioch, E. Harasty. Row 2 B. Wadors, S. Kaplowitz, L. Kinsella, R. Newell, P. Culos, R. Morrison, I. Moore. Row 3 Coach Cooper, K. Ducher, R. Uhl, S. Guzy, R. Bielarski, E. Orlando, Coach Jakucs. Row 4 H. Hausleiter, T. Chapman, M. White, J. Green, M. Boyle, W. Svoboda, T. Lazo, Coach Schott.

Football



Although the inexperienced Tigers, led by Co-Captains Hubeny and Casino, received no championship honors for an almost undefeated season, they were reestablished as a county power last Fall. The fact that the majority of their opponents were of Group 2 Classification and they played but seven games made honors an impossibility. After a defeat at the hands of the Blue and Gold at their first game, the Coopermen postponed the Roselle Park battle because of rain and finished the schedule with six straight victories. Thus closed one of the most successful seasons in seven years.



S C O R E S

CRANFORD	9	CARTERET	0
LINDEN	6	LINDEN	14
ROSELLE PK.	3	WOODBIDGE	6
LINDEN	1	LINDEN	18
RAHWAY	0	HILLSIDE	19
LINDEN	30	LINDEN	20
DOVER	0	UNION	0
LINDEN	42	LINDEN	45

HUBENY WITH
THE BALL

SARRG ON
THE EXTRA

Row 1 J. Mahar, J. Lyons, F. Babbitt, S. Venditto, E. Budrecki, E. Naiman, F. Farro, L. Clark, C. Gahm, J. Constantine, P. Miller. Row 2 S. Galayda, F. Weid, F. Martinko, F. Stefanick, H. Smith, S. Guzy, J. McManus, C. Harrold, R. Hiltz. Row 3 W. Latawiec, W. Berge, H. Larson, G. Coody, W. Rockwald, N. Savas, O. Gallegher, E. Muzik, A. Culos. Row 4 Coach Galletta, J. Bachus, L. Krivet, A. Gustofson, A. Yawornisky, T. Krilly, J. Konchek, M. Belin, J. Vornbaum.



J.
= V.



Row 1 L. Kinsella, J. Christie, R. Hubeny, C. Jeffrey, F. Bilanin. Row 2 S. Sherman, Manager, G. Martis, J. Spader, S. Wolf, J. Konchak, J. Cohen, A. Yawarski. Not shown Coach Jakucs.

Basketball

The 1946 Linden High Quintet paced the Orange and Black through the greatest season since 1940. Again the Linden Five are champs, having won the Group III, Section 2 contest in the state. The champs defeated Regional in the elimination; Edison in the quarter-finals and were beaten by a clever, smooth-working Woodrow Wilson in the semi-finals, the highest state competition in which Linden has ever played.

After a stiff battle for the varsity posts, the first game found Christie and Bilanin at forwards, Jeffrey and Casino at guards, and Joe Spader at the center position.

Regional's 13 point victory was partially due to the illness of Captain Richie Hubeny, top notch forward, and several other players. After this first-game defeat, which is reminiscent of the football schedule, the Linden netsters tucked five straight under their belt, having outclassed the North Plainfield, Cranford, Carteret, Rahway, and Alumni teams. Plainfield, sparked by Tierney, stopped their winning streak in a 28-24 upset. Having won a victorious battle with a hard-fighting Union, the Jakucsmen then proceeded to lose by 3 points to Rahway on home grounds. Cranford, Union, and Hillside, our next opponents, were promptly turned back by the roaring Tigers. In the following game the strong Edison five, which lost by 10 points to Hillside, won by a close margin, 2 points. The Linden cagers then bowed again to smashing Plainfield, and were felled by Jefferson to the tune of 50-31. In finishing the schedule, the Orange and Black surged through the Regional and Roselle Park teams to win easily, but lost to North Plainfield by 2 points.



SCORES

REGIONAL	41		28
NO. PLAINFIELD	41		44
CRANFORD	27	L	33
CARTERET	34		41
RAHWAY	31	I	32
PLAINFIELD	28		24
UNION	32	N	49
RAHWAY	33		28
CRANFORD	33	D	42
UNION	35		39
HILLSIDE	27	E	50
EDISON	44		42
PLAINFIELD	39	N	34
JEFFERSON	50		31
REGIONAL	31		46
ROSELLE PK.	38		47
NO. PLAINFIELD	37		35
ALUMNI	18		34

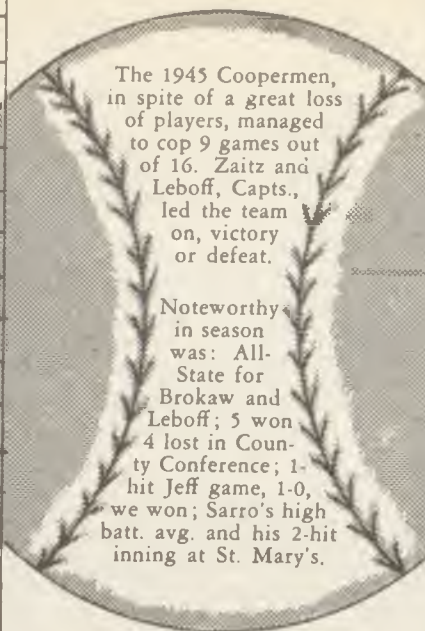
INFORMATION

SCORERS	GOAL	FOUL	TOTAL
HUBENY	81	30	192
CHRISTIE	77	25	179
CASSINO	45	69	159
BILANIN	53	24	130
JEFFREY	45	23	113
KINSELLA	14	6	34
FERTONARDO	3	2	8
SPADER	3	0	6

Row 1 R. Hoehn, J. Mahar, M. Belan, J. Callander, R. Goldberg. Row 2 S. Sherman, Manager, W. Peables, J. McManus, P. Chernobay, R. Piper, A. Phelan, A. Tola, A. Yawarski. Row 3 S. Cutler, G. Sweet, F. Rauchbach, F. Weid, J. Calhoun, Mr. Galletta.



EDISON	4
LINDEN	2
ROSELLE	2
LINDEN	1
NEW BRUNS.	4
LINDEN	1
PLAINFIELD	2
LINDEN	4
ST. PATRICKS	6
LINDEN	14
JEFFERSON	0
LINDEN	1
WESTFIELD	5
LINDEN	8
RAHWAY	6
LINDEN	1



ROSELLE PK.	2
LINDEN	1
WESTFIELD	2
LINDEN	1
ROSELLE	3
LINDEN	4
CRANFORD	1
LINDEN	6
WOODBIDGE	4
LINDEN	1
HILLSIDE	5
LINDEN	17
ST. MARYS	4
LINDEN	14
CARTERET	1
LINDEN	3

Baseball

Row 1 R. Kress, Mgr., L. Kinsella, W. Emrich, P. Zaitz, J. Leboff, J. Stahar, A. Brokaw, V. Joffe, Mgr. Row 2 Coach Cooper, C. Gahm, Mgr., J. Konchek, T. Sara, R. Sarro, E. Serden, J. Zieman, S. Christie, Mgt. Row 3 W. Latawicz, B. Kimmelman, E. Orlando, R. Bielarski, G. Hatter, H. Berkowitz, R. Goldberg, Coach Jakucs. Row 4 R. Schaefer, M. Figlin, J. Buellers, S. Wolf, R. Bellek, S. Shumsky. Not Present P. Bartus. J. Dobosiewicz.





Row 1 S. Kaplan, N. Davidson, J. Liss, J. Cafaro, T. Eichhorn, A. Rupeikus, G. Coody, W. Barge. Row 2 Coach Mele, L. Mullen, W. Roll, J. Green, A. Cafaro, W. Berge, W. Post, W. Kopec, J. Reagan, Coach Pellicone. Row 3 C. Beam, M. Peck, E. Harasty, L. Zackarczyk, S. Lebinski, J. Voynick, D. Miller, J. Romanski, D. Wagner, W. Martin. Row 4 C. Naiman, R. Richter, P. Culos, P. Casino, P. Yeisley, S. Kaplowitz, T. Chapman, M. Adler, J. Zbranek, S. Sahli.

Track

WESTFIELD	47 $\frac{3}{4}$	<p>TRACK 1945</p> <p>With only three lettermen, Harasty, Recknagel, and Liss, as the backbone of the team, the Linden High silksters defeated Westfield and Carteret in their six-meet season. Recknagel, through his performance on the high and low hurdles, and occasionally by pole vaulting, became this year's highest scorer with 43 points. Chapman, who ran the 100, 200, and 440 yard dashes, was a close second with 42 points. Harasty, a pole vaulter, who tied for third place in the County Meet, with 37 points, copped third.</p>	UNION	81
LINDEN	60 $\frac{1}{2}$		LINDEN	36
CRANFORD	78		REGIONAL	76
LINDEN	39		LINDEN	41
RAHWAY	59		CARTERET	39
LINDEN	58		LINDEN	78



The Senior girls' team won the inter-class basketball tournament; of the six games played, the winning team lost none. The Juniors were the runners up, followed by the Freshmen and the Sophomores, who tied for third place. Jeanne Hardenburg was captain of the Seniors, Phyllis Marczak and Frances Von Buelow were co-captains of the Junior team, Helen Wolar led the Sophomores, and Rosemary Komar led the Freshman team.



Girls' Sports



The annual interclass servusball tournament was won by the Senior girls. Their team won five games and lost one. The Juniors came in second, followed by the Freshmen, then the Sophomores. The games were hard fought and exciting; the Seniors had to be on their toes every minute to win. Jeanne Hardenburg was the captain of the Senior team, Phyllis Marczak was captain of the Juniors, Helen Wolar led the Sophomores, and Charlotte Mountain was the captain of the Freshman team.

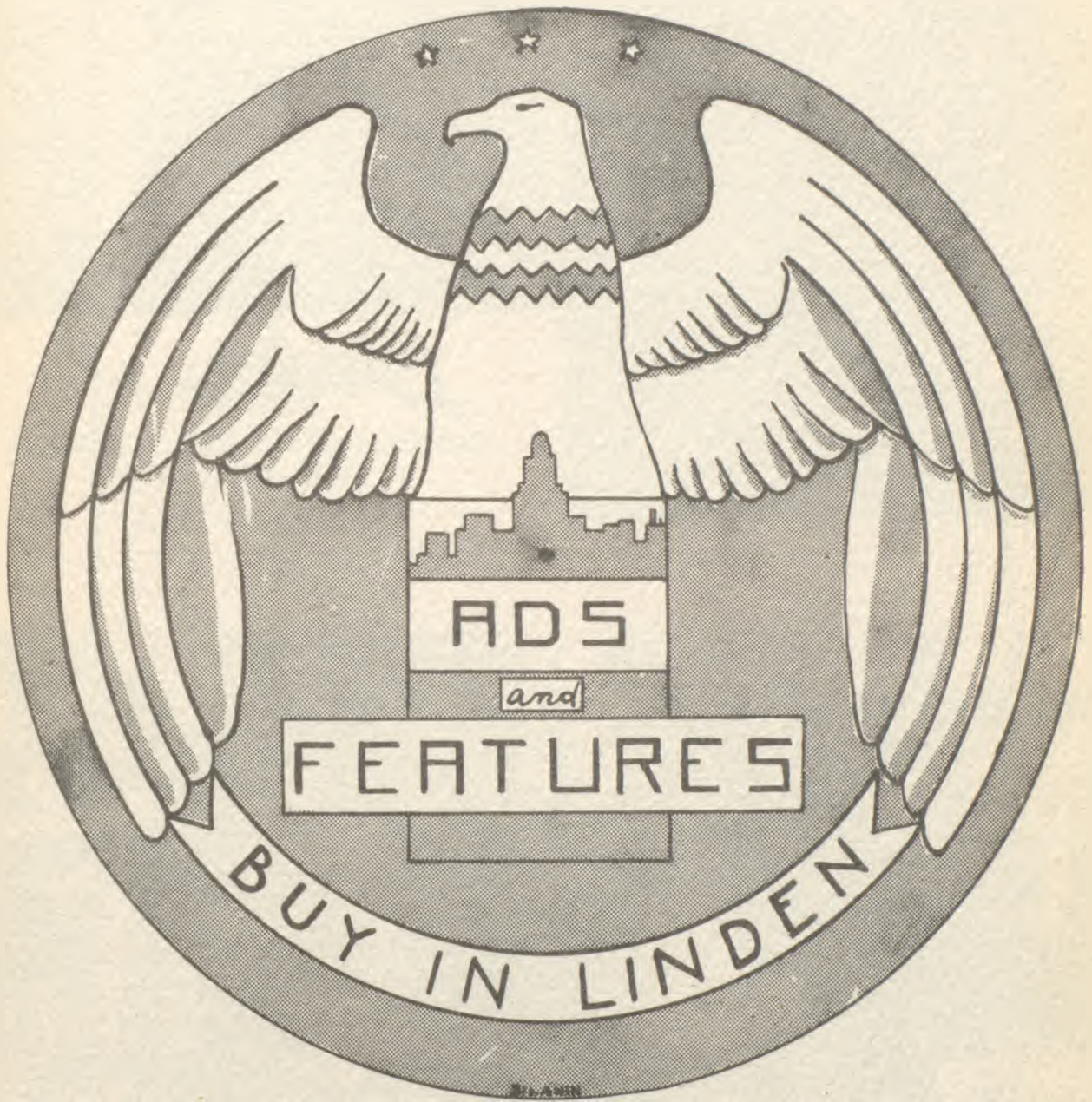
Sports Roundup



School Calendar

1945 - 1946

SEPTEMBER	OCTOBER	NOVEMBER
<p>School opens. We all have schedule trouble. Cynosure work starts. Senior class officers elected. First Student Council Meeting. Cranford 9 - Linden 6.</p>	<p>First Milk Bar Dance. Linden 30 - Rahway 0. Senior Council meets. First Pep Rally. Linden 40 - Dover 0. Senior Pictures taken. Linden 14 - Carteret 0. Bartus and Glick leave for Navy.</p>	<p>Phillip Cummings speaks. Linden 18 - Woodbridge 6. Chronicle play given. Junior-Senior Barn Dance. Linden 20 - Hillside 19. Strawbridge ballet in assembly. Linden 45 - Union 0. Thanksgiving Vacation. Cynosure play in assembly.</p>
DECEMBER	JANUARY	FEBRUARY
<p>All-State at Atlantic City. Basketball season starts. "Stage Door" presented. Juniors decorate halls. Musical Christmas program. Choir carols in halls. Senior play try-outs. C. Armstead sings in Carnegie Hall.</p>	<p>Carroll Glenn concert in assembly. Evening dance given by P. T. A. Sophomore Talent Show. Operetta cast chosen. Coach Nogi and Mr. Gaines return. Senior rings received. J. Cohen speaks on station WAAT.</p>	<p>Senior Play huge success. Mrs. Overstreet speaks to pupils. Senior poll results. Snow King and Queen crowned at dance. Mr. Scott returns. Linden cops 2nd place in County Basketball Tourney. "Freshies" given by boys. Failing seniors get letters.</p>
MARCH	APRIL	MAY
<p>Cynosure goes to press. State Basketball Tournament. Band and Orchestra concert. Track season opens. Pupils attend Metropolitan Opera performances. Seniors measured for caps and gowns.</p>	<p>Mr. Jamison returns. Senior prom enjoyed by all. Easter Vacation. Freshman Talent Show. Baseball season starts. Dramatic Club Spring Production.</p>	<p>Operetta "Patience" given by music department. Junior Prom success. Senior examinations. Cynosures received. Junior Talent Show.</p>
JUNE	SUNNY DAYS	CLOUDY DAYS
<p>Gift Day. Underclass examinations. Senior trip. Graduation of Class of '46.</p>	<p>Week-ends. Vacation Days. Senior Trip. Days with no homework.</p>	<p>Test Days. Report Card Days. Graduation. Days with no homework done.</p>



Linden 2-4070

POST BUILDERS' SUPPLY CO.

LUMBER - MASON MATERIALS

305 ELIZABETH AVENUE, WEST

LINDEN, NEW JERSEY

Compliments of
LOUIS LEVINE, Inc.
Real Estate and Insurance
Commerce Building

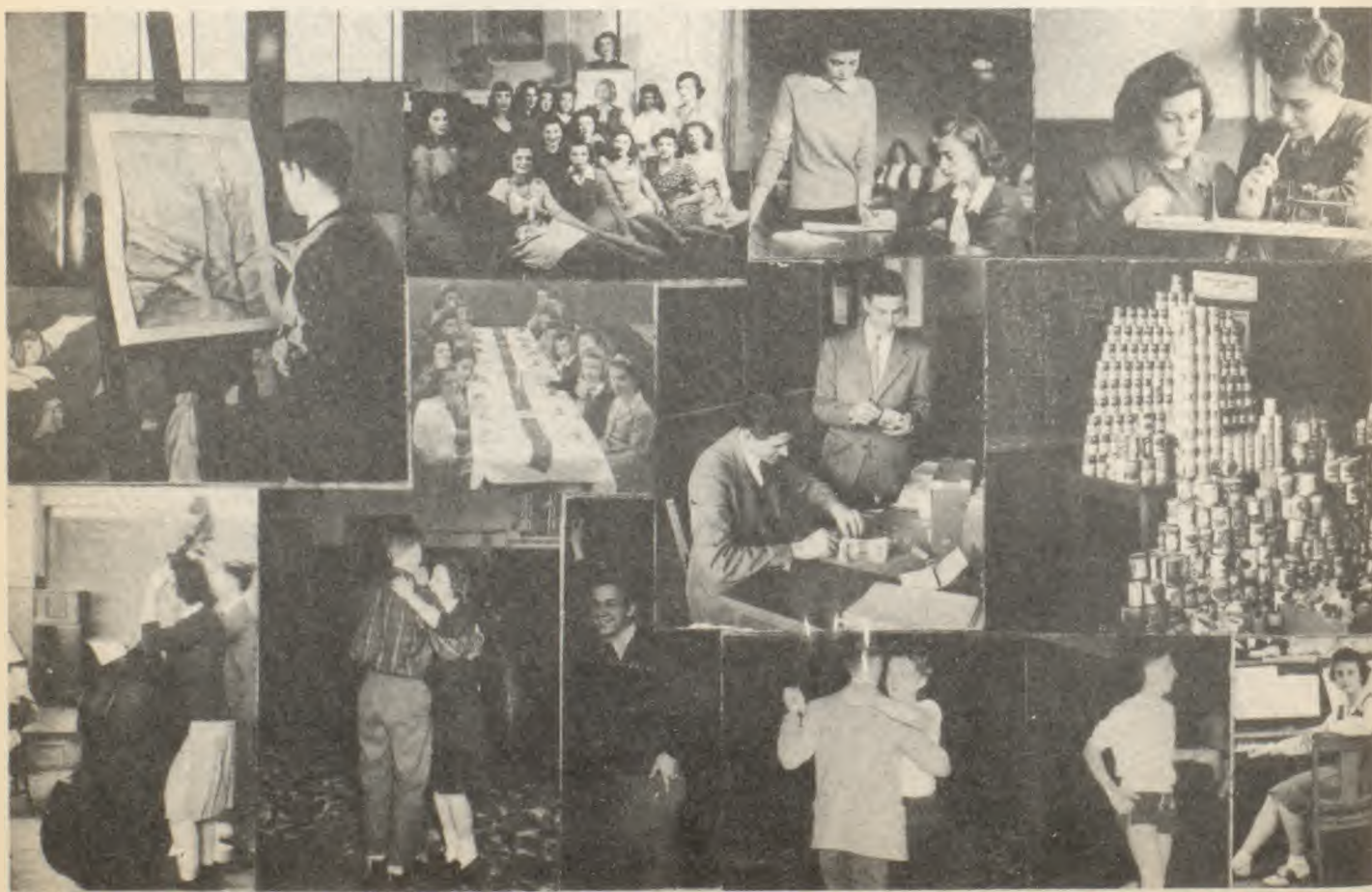
223 N. WOOD AVE. LINDEN, N. J.
Linden 2-4050

Compliments of
LOUIS OKUN

Linden 2-2994

Addalia's
FLOWER SHOP

LINDEN, NEW JERSEY





THE BLACK FLAMINGO



The Black Flamingo

**GAVROCHE, CHIEF RABBLE-ROUSER,
LEADS THE MOB.**

Compliments of

**Tompkins
Ice Cream Co., Inc.**

Compliments of

SHOR'S PHARMACY

LINDEN RADIO & APPLIANCE CO.

129 NORTH WOOD AVE.

LInden 2-2592

LINDEN, N. J.

COMPLIMENTS OF

LINDEN COAL COMPANY

COAL - KOPPERS COKE - FUEL OILS

LInden 2-3439

LINDEN TRUST COMPANY

WOOD AVENUE and PRICE STREET

— Branch —

ST. GEORGE AVENUE and CHARLES STREET

ELizabeth 2-8874

DANIEL H. McCARRON
General Builder and Contractor

550 PINE STREET ELIZABETH, N. J.

Novelties Sportswear

RITZ SPECIALTY SHOPPE
Costume Jewelry
Bags - Hosiery

222 NORTH WOOD AVENUE

Compliments of
FOGEL STATIONERY CO.

Linden 2-4700

7 E. ELIZABETH AVE. LINDEN, N. J.

Compliments of
**THE
GOODY SHOPPE**

638 N. WOOD AVENUE, Cor. of Curtis Street

Please Call for Appointment · Linden 2-2508

VOGUE BEAUTE SALON

100 N. WOOD AVE. LINDEN, N. J.
Entrance on Elizabeth Ave.

Compliments of
LINDEN DAIRY

210 NORTH WOOD AVE.
LINDEN, N. J.

Linden 2-4382

D. LEFF, Prop.

**Linden Hardware
& Paint Co.**

Linden 2-6900

GOOD LUCK TO THE
GRADUATES

Linden Junior High
Parent-Teachers'
Association

RUBEL FLORIST

102 E. EDGAR ROAD LInden 2-4109

JOE'S ARMY & NAVY STORE

Sporting Goods . . . Work Clothes
Fishing Tackle . . . Shoes, Rubbers
Camp Supplies . . . Rain Coats

106 N. WOOD AVE. LINDEN, N. J.

Compliments of
LINDEN CITY LAUNDRY

300 W. ELIZABETH AVE. LINDEN, N. J.

Compliments of
HIRSCH'S SHOE REBUILDING

118 N. WOOD AVE. LINDEN, N. J.

Complete Family and Property Insurance

SAM F. MINKOWITZ
GENERAL INSURANCE

1111 ST. GEORGE AVE. ROSELLE, N. J.

Compliments of
KORONA'S BAKERY

318 N. WOOD AVE. LINDEN, N. J.

THE LINDEN JEWELERS

"LINDEN'S LEADING JEWELERS"

316 N. WOOD AVE. LInden 2-4537 LINDEN, N. J.

Headquarters for

CLASS RINGS, KEYS and CHARMS

TROPHIES and LOVING CUPS

DIAMONDS, WATCHES, RINGS

JEWELRY, SILVERWARE

CRYSTALWARE

CAMERAS, TYPEWRITERS

CLOCKS and JEWELRY REPAIRED

THINGS TO REMEMBER

The day we entered Linden High as Freshmen.
 The 450 Thanksgiving Day football score.
 The night we received the second place cup in the County Basketball Tournament.
 The afternoon we all tried to reserve seats for the Senior Play and get our rings at the same time.
 How authentic Al Hoerrner looked as a priest in "The Black Flamingo".
 The day the Senior girls learned the words to "Indicate the Route to My Abode" in the gym locker room.
 The "Truth or Consequences" program given in assembly.
 Bob Kanzler's sharp bow ties.
 The day the "Skibos" came to school with their flashy sweaters.
 The six fuses we blew out while taking pictures for the Cynosure.
 Those noisy pep rallies we had in the auditorium.
 The wild time we had at the Junior-Senior Barn Dance.
 The night Tessy Piskos and Jack Christie were crowned Snow Queen and King.
 The fun the Advertising Staff had getting ads.
 The poor Senior girls who had to have their pictures taken on that rainy day.
 The week after eye examination when so many of us came to school sporting new eye glasses.
 The night Charlie Jeffrey made a goal in the last few seconds to give us a 28-27 win over Rahway in the Tournament.
 That good old meeting place for the boys and girls of L. H. S., the Sugar Bowl.
 The operetta, "Freshies," that the boys in the Glee Club gave in assembly.
 The grand time we all had at the long-awaited Senior Prom.
 Graduation night, when we sang the Alma Mater for the last time.

SWEET SELLS PAINT

Next to Post Office

Compliments of
McCARTHY'S PHARMACY

523 N. WOOD AVE. L.Inden 2-4664.

L.Inden 2-2467

GRANGER & KLING GIFT SHOP

Greeting Cards
Two Complete Floors of Gifts

312 N. WOOD AVE LINDEN, N. J.

L.Inden 2-3599

JOHN OLENIK

OLENIK MOTORS
SERVICE GARAGE

824 ST. GEORGE AVE. LINDEN, N. J.

Compliments of
THE
GERMAN CLUB

L.Inden 2-4144

Edward J. Rapasky

Manager

THE LINDEN AGENCY

Realtors - Insurers

9 WEST PRICE ST. LINDEN, N. J.

Linden 2-5086 LINDEN, N. J.

WOOD AVENUE LINDEN, N. J.



Compliments of

H. Roy Wheeler
MAYOR

William J. Hurst
COUNCILMAN-AT-LARGE

Arthur R. Croucher
COUNCILMAN — 1st WARD

Thomas J. Wieser
CITY CLERK

William Dalziel
COUNCILMAN — 2nd WARD

Charles S. Valvano
CITY TREASURER

Andrew Fabian
COUNCILMAN — 3rd WARD

Herbert D. Banta
RECEIVER OF TAXES

Edward Murawski
COUNCILMAN — 4th WARD

Lewis Winetsky
CITY ATTORNEY

John J. Fitzpatrick
COUNCILMAN — 5th WARD

Edward Flanagan
COUNCILMAN — 7th WARD

Joseph C. Monico
COUNCILMAN — 6th WARD

Michael Smigelsky
COUNCILMAN — 8th WARD

Compliments of
**Acme Plumbing &
Heating Company**

C. WIESSMAN, Prop.

212 HARVARD RD. LINDEN, N. J.
Linden 2-3197

Compliments of
KERNER'S
Yard Goods - Curtains - Drapes

308 N. WOOD AVE. LINDEN, N. J.

LINDCREST



SERVICE

ST. GEORGE AVE. and STILES ST.
A. R. Croucher Linden 2-4986

Compliments of
FARBER BROS. SUPPLY CO.



LINDEN, N. J.

Linden 2-2670

GOODFRIEND'S HARDWARE
"Pittsburgh Paints"

217 N. WOOD AVE. LINDEN, N. J.

Compliments of
ROYAL GROCERY

521 N. WOOD AVE.
Linden 2-2750

J. Twomey

Joseph DiLeo
BRANCH OF FULTON FISH MARKET

We Sell Anything That Swims

108 N. WOOD AVE. LINDEN, N. J.

Compliments of

**F. W.
WOOLWORTH
CO.**

LINDEN
NEW JERSEY

Day Phone
Linden 2-4146

Night Phone
Linden 2-3263

20th CENTURY BOX LUNCH
Ray Harmon

1220 ELIZABETH AVE. LINDEN, N. J.

Compliments of
MR. and MRS. ELI KATZ

We Deliver Phone Linden 2-4445

**CREST
DRUG STORE**
I. Barbarosh, Ph.G.

628 ST. GEORGE AVE., W. LINDEN, N. J.

JEWELL'S BEAUTY SHOP
We Specialize in Permanent Waves and
In All Branches of Beauty Culture
Call Us For An Appointment
13 S. WOOD AVE. Linden 2-3697

THE BLACK FLAMINGO

The play takes place in an old castle which was turned into an inn. The time is during the French Revolution. Monsieur Bodier (Arthur Sherman) and his wife (Carmella Mannuzza) run the inn, in which a haunting ghost violin is guarding the queen's necklace, a priceless treasure. The inn is not very prosperous until rebellions break out in Paris and the aristocrats flee to the country. Trigaud (Walter Roll), a vagabond violinist but really of an aristocratic family, is the first guest at the inn. Because of his violin, the innkeeper suspects him as being the banshee guard of the chimney.

Soon another guest arrives, Francois De Lussac (Robert Barrett), son of a Duke, who has a supposedly secret message from Marie Antoinette to her brother in Austria, asking for troops to crush the Paris mobs. He is shown to a room just as his father (Martin Hrynicky) enters with his two daughters (Barbara Tuttle and Jeanne Alzheimer), who are seeking Francois. A priest accompanies them. Later, at dinner, the priest is revealed as Count Cagliostro (Alfred Hoerrner), a noted magician. He learns from De Lussac that he is seeking his son, who has mysteriously disappeared from his room. The priest offers to help find the son with the aid of Diane, the Duke's youngest daughter. Count Cagliostro hypnotizes her and makes her lead him to where her brother is. She goes to the fireplace where the jewels are and Francois falls out of the chimney. He and the daughters are taken to their rooms to recover from the shock.

Meanwhile, the innkeeper and his vicious friend, Borien (Arthur Vanderwall) are contemplating the capture of these aristocrats and their jewels. They also get the help of a mob of French vagabonds under the leadership of a violent fellow named Gavroche (Howard Levenberg).

While the innkeeper is seeking the mob, Trigaud plays his violin to induce the guardian of the necklace to come forth. An old man (Walter Gutkowski) does come out of the chimney, sees Count Cagliostro, trips, and dies. On him is found the necklace. Trigaud takes it and asks permission to give it to Diane, for he loves her. The Count also wants it because it will release him from his banishment. Trigaud gives it to him when he releases Diane from her hypnotic spell.

Just then the mob rushes in, captures the aristocrats, and starts torturing the Count. The violin shrieks and scares the mob away — all except Gavroche. He has a duel with Trigaud and is killed. The Count gives the necklace to Trigaud, who, in turn, gives it to his love.

THE STUDENT COUNCIL

The Student Council, formed of students from the four classes, discuss problems which affect the school and try to solve them. It is the duty of this group to promote the general welfare of the student body. The council is organized into various committees and is presided over by Emery Dougherty, the president this year. The other officers this year are William Berry, vice-president and treasurer, and Jean Ostarticki, secretary. Miss Smith is the chief faculty adviser.

The committees which the council are divided into and their advisers and chairmen are the social committee, presided over by Marjorie Coleman, advised by Miss Smith; the club committee, under Elinor Joffe, with Mrs. Atkins in an advisory capacity; the assembly committee, headed by Phyllis Litwin with Miss Tuttle as faculty adviser; the service group, which includes the lawn committee, headed by William Sebring, and advised by Miss Vigne; the athletic committee, under Phil Ginfrieda and Mr. Buckman; and the stamp and bond group, under Harriet Polin and advised by Mr. Levine.

The social committee plans the affairs which are on the social roster; the most notable of these was the Snow Ball dance, at which the Snow King and Queen were elected. The assembly programs are planned in advance by the assembly committee; they must be as enjoyable to the student body as possible. The task of recording data and tabulating the membership of clubs goes to the club committee. The stamp and bond group executes the sale of the aforementioned in the cafeteria. The service committee is responsible for the campaigns which are held for a better-appearing school. The athletic committee encourages the sale of the A. A. tickets and conducts pep-rallies. The student council has grown in importance in that its services to the school have become innumerable. It is our hope that in future years the importance of this fine group will increase even more.

Compliments of

Quality



Service

LAMPERT DAIRY FARMS

PRODUCING PASTEURIZED AND HOMOGENIZED
VITAMIN-D MILK

Linden 2-3337

VILLANI BUS COMPANY, Inc.

115 SOUTH WOOD AVENUE

LINDEN, N. J.

Compliments of
A FRIEND

KOZAK'S DEPT. STORE
The Store of Values

1168 E. ST. GEORGE AVE. LINDEN, N. J.

Compliments of
WHELAN DRUG STORE
Agency
John S. Clancy, Ph.G.

100 N. WOOD AVE. LINDEN, N. J.
Phones Linden 2-3521 - 2-3533

Compliments of
THE
COMMERCIAL CLUB

Compliments of
GERSON'S MEAT MARKET

DIEGES & CLUST

17 JOHN ST. NEW YORK 8, N. Y.

Manufacturing Specialty
Jewelers

CLASS RINGS and PINS

Medals, Cups, Trophies
Athletic Awards

Linden 2-3976

MURRAY'S MEN'S & BOYS' SHOP
Manhattan Shirts
McGregor Sportswear

214 N. WOOD AVE. LINDEN, N. J.

Compliments of
FELDMAN'S DELICATESSEN

Compliments of
THE
STUDENT COUNCIL

RAHway 7-1414

RAHWAY
SASH, DOOR & SUPPLY CO., Inc.
Lumber, Millwork and Mason Materials

453-457 ST. GEORGE AVE. RAHWAY, N. J.

Linden 2-5005

GAY AMUSEMENT CO.
Popular and Classical Phonograph Records
Radio and Amplifier Repairs

1130 ST. GEORGE AVE. LINDEN, N. J.

Compliments of
H. FARBER LUMBER CO.
ROSELLE, NEW JERSEY

Linden 2-4837

ANTONIO'S  SERVICE

Cor. WOOD and ELIZABETH AVES.
A. J. Antonio LINDEN, N. J.

Linden 2-3444

PULASKI MOTORS
Oldsmobile Sales and Service

400 ST. GEORGE AVE. LINDEN, N. J.

Koenig Hardware Co.

Quality Products
Since 1918

126 N. WOOD AVE. LINDEN, N. J.

Linden 2-4584

Linden Town Shop

LADIES' and CHILDREN'S SPORTSWEAR

103 N. WOOD AVE. LINDEN, N. J.

Compliments of
THE
SENIOR DRAMATIC CLUB



Turchin's Dep't Store

HOUSE FURNISHING
SPECIALISTS

Pots and Pans
Chinaware - Gifts

116 N. WOOD AVE. LInden 2-3933

Edmar's, Inc.

Everything for the Smart Woman

312 NO. WOOD AVE. LINDEN, N. J.

DALZIEL HOMESTEAD MARKET

309 N. STILES ST. LINDEN, N. J.
LInden 2-2679

APEDA STUDIO

212 WEST FORTY-EIGHTH ST.
NEW YORK 19, NEW YORK
Circle 6-0790

Official Photographers
for the
1946 Cynosure

COMPLIMENTS OF

THE

LINDEN ROTARY CLUB

MEMBER OF THE INTERNATIONAL ROTARY

CAN YOU IMAGINE

Larry Dougherty without his grin?
Nancy Chiappetta not on the Super Honor Roll?
Eddie Eiva not wearing his orange sweater?
Jeanne Hardenburg on time?
Mort Christensen without his rings?
Nancy Evans not having something new to wear?
Harold Dreissig without his Dick Haymes looks?
Thomas Sara without a date?
Mabel Rimli 5 ft. 7 in. tall?
Paul Yeisley without his camera?
Jean and Gloria Cordasco taken for twins?
Wally Roll without his car?
Dot Feciuch not helping Miss Lang?
Leo Zacharczyk without his good looks?
Alberta Shukis not up to something?
Bobby Barrett without Greta?
Joyce Eckstein without her giggle?
Elinor Joffe without her dimples?
Sophie Nycz not acting as Cupid?
Barbara Heller out of trouble?
Lillian Minet without her corny jokes?
The Editorial Staff on time for their next class?
Linden High without us?

Compliments of
JOS. JAVORNICKY
Trading As
EICHNER'S BAKERY

216 N. WOOD AVE. LINDEN, N. J.

SAM'S SHOE REPAIR SHOP

Shoe Repairing - Shoe Shine
Laces and Polish

113 N. WOOD AVE. S. LIVOLSI, Prop.

Linden 2-3446

MESSINA'S FRUITS AND VEGETABLES

239 W. ST. GEORGE AVE. LINDEN, N. J.

THE CYNOSURE

THANKS ALL ITS ADVERTISERS

AND

RECOMMENDS THEM TO ITS READERS

DON'T BE A
"LATE DATE"

Keep Pace With Your Classmates
Who Are Going To College

START A SECRETARIAL CAREER

Train Quickly for a Position
With a Future

Day and Evening Classes the Year Around

Write for New Catalogue

DRAKE COLLEGE

1139 EAST JERSEY STREET
ELIZABETH, N. J.
Tel. ELizabeth 2-5509

R. J. HALL, B. C. S., Manager

Compliments of
THE FORENSIC CLUB

Linden 2-3785

BEACON
RADIO - TELEVISION - APPLIANCES
Sales - Service

101 NORTH WOOD AVENUE

Compliments of
THE LINDEN OBSERVER

ANDY'S BARBER SHOP

A Fellow From Your Own Town
The Best of Service - Sanitary Conditions

443 NORTH WOOD AVE. LINDEN, N. J.

Compliments of

**The
Lindcrest Apartments**

**Anderson Bros.
Hardware**

We Deliver

624 WEST ST. GEORGE AVENUE
LINDEN, N. J.

Near Lindcrest Apartments

Compliments of



Get Your Phonograph Records
and Albums at

**C and D Radio and
Appliance Co.**

223 N. WOOD AVE.

Linden 2-4585

LINDEN, N. J.

LE-LA'S KNIT SHOP

8 EAST BLANCKE ST.

Hours: 9:30 A. M. - 5 P. M. - Closed Thursdays

9:30 A. M. - 8:00 P. M. - Fridays, Saturdays

We Carry Yarns, Crochet Cotton,
Stamped Goods and Buttons

Compliments of

MAPPING and SURVEYING CLUB

Compliments
of
MELROSE ELECTRIC CO.

PARAMOUNT LIVE & DRESSED POULTRY CO.

Finest Dressed, Quick Frozen and
Eviscerated Poultry

PLANT - MILTON, DELAWARE

Class

Will

We, the Senior Class of nineteen-hundred forty-six, being of sound mind and body, do hereby declare this to be our last will and testament.

To the faculty of the Linden Senior High School we express fondest sentiments for their perseverance in dealing with us during the years we spent in the high school.

To the Junior Class we leave the trials, tribulations, the heartaches and the joys, and above all the honors and privileges that are accorded to a Senior Class.

Individual members of our class bequeath the succeeding titles and responsibilities:

Evelyn Lischko	her sense of humor to	Anita Rafelson
Joan McGann	her title of best dressed Senior to	Frances Wexler
Bill Weiss	his dancing feet to	Sanford Jackson
Richard Beecher	his executive ability to	Bill Berry
Marge Coleman	her personality plus to	Dot Haber
Richard Hubeny	his sports ability to	Larry Kinsella
Alice Berta	her beauty to	Marge Petrowsky
Emery Dougherty	his inspiring voice to	Bonnie Wadors
Shirley DuTot	her musical talents to	Phyllis Litwin
Frank Bilanin	his position on the Honor Roll to	Jerry Cohen
Freda Markant	her general efficiency to	Jean Ostarticki
Charlie Jeffrey	his tall, dark, and handsome look to	Pete Culos
Betty Reb	her full-time schedule to	Marge Newell
Barbara Tuttle	her dramatic talents to	Nita Kilbourne
Art Vanderwall	his optimistic air to	Bobby Morrison
Helen Brown	her general all-round ability to	Dot Dittrich
Dave Wetzel	his robust laugh to	Bob Svaboda
Aileen Rathjen	her band box appearance to	Dot Sweet
Carl Anthony	his unlimited vocabulary to	Karl Asch
Tessy Piskos	her cheery "Hello" to	Joan Sweeney

May the above bequests be carried out faithfully.

Signed, sealed, published, and declared in the month of February, in the year of our Lord, nineteen hundred and forty-six.

THE CLASS OF 1946

RICHARD BEECHER

FREDA MARKANT

Witnesses:

MARGARET C. MARTINKO

PAULINE M. STETZ

Linden 2-3943

Free Delivery

H. ROCHMAN
G and G FRUIT MARKET
Wholesale and Retail

205 N. WOOD AVE.

LINDEN, N. J.

Compliments of
ROSENTHAL'S BAKERY

115 N. WOOD AVE.

LINDEN, N. J.

Linden 2-3642

Compliments of
N. M. PALERMO, Inc.
Insurance

7 N. WOOD AVE.

LINDEN, N. J.

Compliments of
THE RAMBLERS

NATELSON BROS.
Men's and Boys' Wear

91 BROAD ST.

ELIZABETH, N. J.

UNION FOOD STORE
B. Kurek
Meats, Groceries, Fruits and Vegetables

319 ROSELLE ST.

LINDEN, N. J.

ROselle 4-6308

HEBREW KOSHER PROVISION CO.

1155 ST. GEORGE AVE.

ROSELLE, N. J.

Linden 2-4914

ST. GEORGE
PAINT & WALLPAPER SUPPLY

1136 ST. GEORGE AVE.
LINDEN, N. J.

H. Katz

Painter

AMERICAN FURNITURE CO.

"Home of Quality Furniture and a
Full Line of Juvenile Furniture"

213 and 218 NORTH WOOD AVENUE

Compliments of
THE
AVIATION CLUB

Compliments of
MICK'S DELICATESSEN

423 N. WOOD AVE.

Linden 2-2865

Linden 2-3553

CITY HALL PHARMACY

A. Rothberg - R. Kessler
Registered Pharmacists

235 N. WOOD AVE.

LINDEN, N. J.

Compliments of
LINDEN AUTO SALES

15-17 W. ELIZABETH AVE.

Linden 2-3789

LINDEN, N. J.

TONY'S
A. CHIARMONTE
27 Years' Experience
Ladies' and Gents' Hats Cleaned
Made Like New

106 N. WOOD AVE.

LINDEN, N. J.

Compliments of
ANCHOR HEATING & PLUMBING CO.

222 PRINCETON ROAD

LINDEN, N. J.

Linden 2-2593

Compliments of
THE BOYS' and GIRLS'
GLEE CLUBS

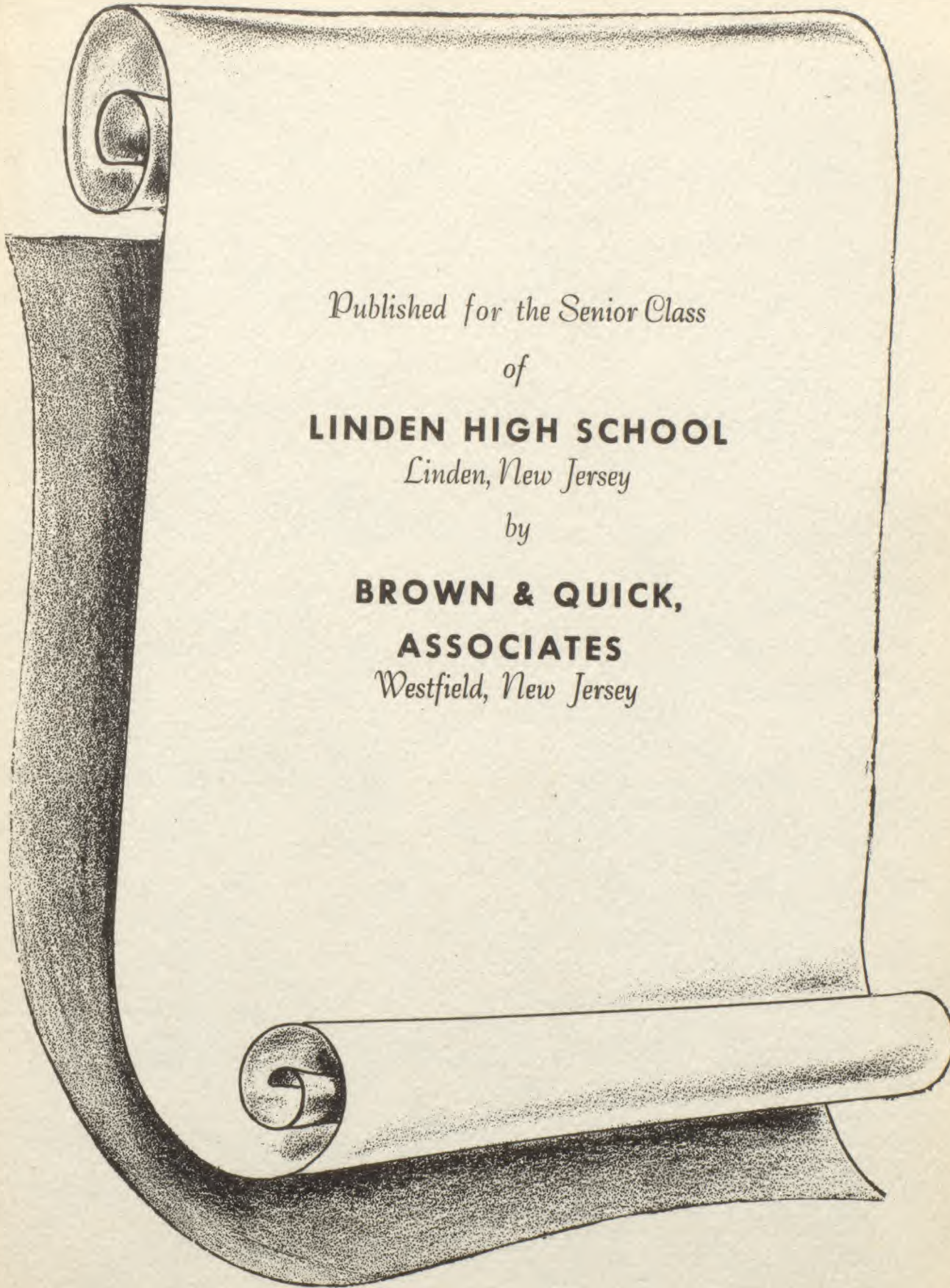
Patrons

MR. and MRS. RALPH GOLDBERGER
MR. and MRS. GEORGE BERTA
MR. and MRS. WILLIAM BROWN
MR. and MRS. THOMAS J. CIECIUC
MR. and MRS. ELOWITZ
MR. and MRS. H. B. HARDENBURG
MR. and MRS. T. HISLOP
MR. and MRS. JOHN LISHKO
MR. and MRS. VINCENT MANNUZZA
MR. and MRS. ADOLF A. MELLOR
MR. and MRS. WILLIAM NEISZ
MR. and MRS. N. STARKEY
MRS. S. LESKO
MR. THOMAS S. MANNUZZA
MR. and MRS. PAUL MARKANT
MR. and MRS. G. A. MARTINSON



Alumni

BARBARA HOFFMAN
ANNE WHITE
ALICE CHRISTIE
MARILYN AIMONE
EDITH BROWN
IRENE GORECKI
DOROTHY ANN KRESS
BETTY LESHKO
ELEANOR MULLEN
ANN VIDNANSKI



Published for the Senior Class
of
LINDEN HIGH SCHOOL
Linden, New Jersey
by

BROWN & QUICK,
ASSOCIATES
Westfield, New Jersey

[illegible]

