

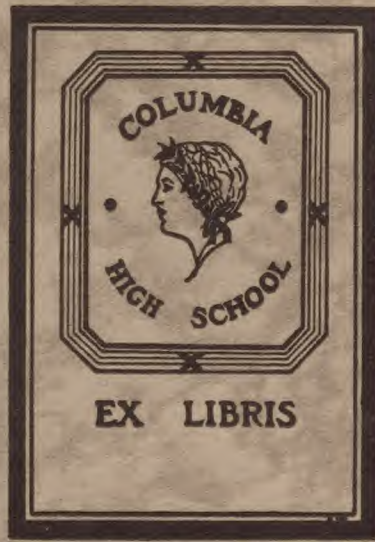


THE  
MIRROR  
1932













THE MIRROR  
CLASS  
OF  
1932

COLUMBIA  
HIGH SCHOOL

SOUTH ORANGE  
AND  
MAPLEWOOD  
NEW JERSEY

Ref.  
373.9  
C

DURAND  
ROOM





## FOREWORD

In the planning and building of a book which will carry on the precedent of merit established by former graduating classes, the class of 1932 has met, in this year, tasks of peculiar difficulty. We have been guided, however, by a single desire, which has been to reflect in this Mirror a true picture of the school life of Columbia pupils, and to leave a record that will give pleasure to many in years to come.

MARGUERITE COLIE,  
*Editor-in-Chief.*





### *DEDICATION*

The senior class of 1932 wishes to show its gratitude to its esteemed guide, Helene J. Smith, by dedicating this year book to her. May it be assured that her wholehearted interest and careful guidance will always be keenly appreciated by each member of the class.





JOHN H. BOSSHART  
*Superintendent of Schools*

## COLUMBIA FACULTY



CURTISS H. THRELKELD  
*Principal*

### ENGLISH

Maurice E. Currier, Supervisor  
Ida Grace Alexander  
L. Eunice Genthner  
Theodore P. Gnagey  
Martha M. Gray  
Gladys Hayner  
Marjorie McFarland  
Marjorie Nichols  
Ruth C. Paine  
Helene J. Smith  
Christie Tollefson  
Dorothy E. Watson  
John I. Wenker

### MODERN LANGUAGES

Margaret M. Allen, Supervisor  
Catherine M. Carrigan  
Cecilia P. Freeman  
Bertha G. Gates  
Charlotte E. Kingston  
Anita Vale  
Wilma T. Walsh  
Marion M. Wolcott

### LATIN

Helen M. Carrigan, Supervisor  
Anna B. Caswell  
Charles N. Doolittle  
James H. Havey  
Marie T. Merdinger  
Margaret A. Sanders

### SOCIAL SCIENCES

Henry C. Gray, Chairman  
Florence R. Ackerman  
Camilla M. Low  
Mildred F. Memory  
Harry B. Sheeley  
Raymond Sterling

### SCIENCE

A. J. Erickson, Chairman  
Elton F. Chase  
Allene M. Markham  
Olin D. Parsons  
O. Lloyd Reynolds





FREDERICK J. CREHAN  
*Dean of Boys and  
Vice-Principal*



MARY S. HENDERSON  
*Dean of Girls and  
Vice-Principal*

## COLUMBIA FACULTY

### MATHEMATICS

Frederick J. Crehan, Supervisor  
Frances E. Hewitt  
George F. Jackson  
Elizabeth MacBaine  
Philip H. Marvel  
Burnham L. Paige  
Frank W. Rogers  
Charlotte C. Smith  
Clinton D. Talbot  
Lee W. Woodman

### COMMERCIAL

George B. Pontz, Supervisor  
Mildred G. Bullock  
Mary A. Gaylord  
Josephine I. Hammond  
Marion C. Johnson  
(On leave of absence)  
Carl Strony  
Gertrude P. Young

### ART

Genieve Secord, Supervisor  
Violet B. Demarest  
Marion K. Wheeler

### PHYSICAL EDUCATION

Thomas W. Higbee, Supervisor  
Marian F. Allen  
William Baker  
Harry A. Mahnken  
Constance Southard

### MANUAL TRAINING

James E. Hopkins, Supervisor  
Voris A. Linker  
Leonard S. Platt  
H. Emerson Powell

### HOME ECONOMICS

Helen M. Snyder, Supervisor  
Joyce I. Dwyer

### MUSIC

F. Russell Shenton, Supervisor  
Charles E. Batchelder

### LIBRARIAN

Winifred Wilcox

### NURSE

Kathleen A. Harris



*"There simmer first unfald her robes, and there the langest tarry . . ."*

—BURNS





THE SHOP



CHEMISTRY LABORATORY



MEDICAL OFFICE



DENTAL OFFICE



OBSERVATORY



MAIN ENTRANCE



















# C O N T E N T S

SENIORS

CLASSES

ACTIVITIES

ORGANIZATION

ATHLETICS

ADVERTISEMENTS



JAMES GRAHAM WHITELOW  
*President, Board of Education*

*BOARD OF EDUCATION*

J. G. WHITELOW, *President*

HAROLD M. BEATTIE, *Vice-President*

GEORGE E. DIX  
DONALD S. STEWART  
MRS. FLORENCE L. RUMMEL  
WALTER C. BENNETT  
J. HARRISON PETTER  
JOSEPH F. MCGINITY  
ARTHUR H. PRATT









## SENIOR CLASS HISTORY

The class of 1932 initiated, by coördinating the class council and the class meeting, a form of government which is both representative and direct. The purposes of the organization are first, to attend to the details of class business; second, to save time so that major items of class business would be in shape to present at class meetings; third, to make possible a fairer distribution of extra-curricular activities. In order to facilitate appointing members of various committees, the council has issued questionnaires, yearly, on which the students could indicate their interests. To distribute activities fairly, the council weighed carefully the opportunities which each student previously had both in school and class activities. However, the class alone, aided by suggestions from the council, has held the power to elect candidates for major positions.

The assistance rendered by the council became evident, when late in its sophomore year, the class presented an "All-Sophomore" assembly. A sophomore color guard and a sophomore assembly chairman introduced the program which consisted of an interesting and suitable variety number, followed by the play, "Two Crooks and a Lady". The enthusiastic reception of this assembly showed that the class had gone a long way in making the school sophomore-conscious.

The two big events of our junior year, the Junior Prom and Junior Night, proved to be successful. Pursuing its reputation for originality, the class brought the Prom from the gym to the cafeteria where the gay dancers enjoyed themselves thoroughly. "Junior Night" consisted of three plays interspersed with several variety numbers, all of which provided much worth-while entertainment.

Seniors! In September the senior girls welcomed the new girls of the school with a party. The Senior Play, "The Copperhead", proved to be a dramatic triumph, while the Senior Banquet brought the class together in the spirit of good fellowship. Again coming to the fore, the girls entertained their mothers at breakfast. Then came Commencement, a glorious ending, and we trust, a grand beginning.

The class of '32 is proud of the fact that, through careful distribution of activities, almost every class member has at some time aided the class. For instance, three hundred and twenty-five students assisted in Junior Night, either on the stage or through the various committees. When "The Copperhead" was produced, one hundred and thirty-seven pupils worked to make it a success.

For many of us, this is the end of a school career. Approximately twenty per cent of the class will seek further training at the hands of that grand old man, Experience. The plans of these seniors vary all the way from starting at the bottom on Wall Street, to running an independent business. Nevertheless, for nearly eighty per cent of the class, school, and a good deal more of it, lies in the future. Among these seniors, plans range from taking four years of general training in bachelor of arts or bachelor of science courses, to very specialized training for definite vocations and professions. Whatever our plans may be, it is with the deepest affection and gratitude that we bid farewell to Columbia High School, whose traditions we pledge ourselves to uphold always.

# T H E M I R R O R



SENIOR CLASS COUNCIL



MISS HELENE J. SMITH  
*Senior Class Guide*



ROBERT BUTTON  
*Senior Class President*



# C L A S S O F 1 9 3 2



ROSE MARIE ADAMS

*Addie*

Junior Night; Junior Night Costume Committee; Home Room Basketball (3, 4); G. A. A. (3, 4); Glee Club (3, 4); Commercial Club (3); Senior Play Committee; Leaders' Club (4).

GEORGE ALENSON

*Chub*

Home Room Football (2, 3, 4); Home Room Basketball (2, 3, 4); Hockey (3, 4); Home Room Soccer (3); Class Basketball (3, 4); Senior Play Ticket Committee; Chair-man, Home Room (2).

EDITH ALLERTON

Lunch Room Committee (2); G. A. A. (2, 3, 4); Junior Night; Junior Night Properties Committee; Senior Play Properties Committee; French Club (4).

HAROLD D. ANDERSON, JR.

*Andy*

Junior Night Properties Committee; Senior Play Properties Committee.

NORMAN ANDERSON

*Andy*

Football (2); House and Grounds Committee (2); Traffic Committee (3); Ticket Committee, Senior Play; Civics Committee (4); Vice-Chairman, Home Room (4).

WILLIAM V. ANDRESEN

*Bill*

German Club (2, 3); Football (2); Junior Night Ticket Committee; Basketball (3); Civics Committee (4).

# T H E M I R R O R



LOUISE ARCHER

*Lou*

Civics Committee (2, 3); Art Club (2); Junior Night Scenery Painting Committee.

VIRGINIA ARKENBERG

*Ginny*

G. A. A. (2, 4); Art Club (3, 4); Junior Night Costume Committee; Glee Club (4); Senior Play Costume Committee.

JANE AUSTIN

Civics Committee (2, 3); Class Basketball (2, 3, 4); Eligibility Committee (3, 4); Junior Council; Student Council (3), Secretary (4); Junior Assembly Chairman; Leaders' Club (3, 4); Lunch Room Control Committee (4).

WILLIAM EDWARD AUSTIN

*Bill*

Senior Class Treasurer; Assistant Sports Editor of Mirror; Varsity Tennis (2, 3, 4); Basketball (3, 4); Junior Night Properties Committee Chairman; Lunch Room Control Committee (4); Traditions Committee (3); Student Council (2).

JANE AVERILL

G. A. A. (2, 3, 4); Junior Night Chorus; Glee Club; Home Room Vice-President (4); Senior Play Committee.

JOANNA BAEBI

*Jo*

G. A. A. (3); Commercial Club (3, 4); Junior Night; Leaders' Club (4).





EVELYN MAY BAHRs

*Cubby*

German Club (2); Sophomore Play; G. A. A. (3, 4); Home Room Basketball (3); Junior Night Committee; Junior Night.

WILLIAM BAILEY

*Billy*

Sophomore Play Committee; Architecture Club Treasurer (3); Senior Play Committee.

CONSTANCE BAKER

*Connie*

Civics Committee (2); Junior Night; Ring and Pin Committee (3); Home Room Basketball (3); G. A. A. (3, 4); Home Room Chairman (4); Senior Play Usher.

EDWARD BARBER

Member of Junior Council (3); Chairman, Decoration Committee for Junior Prom (3); Member of Finance Committee (3).

GLADYS MARION BARCAL

*Glad*

G. A. A. (2, 3); Soccer (2); Glee Club (3); Junior Night.

GRACE EDITH BARCAL

*Gra*

G. A. A. (2, 3, 4); Volley Ball (2); Junior Night; Home Room Basketball (3); Baseball (3); Swimming (3); Speedball (4); Soccer (4).



# T H E M I R R O R



## BINGHAM BARNES

*Bing*

Football (3); House and Grounds Committee (3); Junior Night Ticket Committee; Color Guard (3, 4); Fire Committee (4); Senior Council; Senior Play Ticket Committee; Home Room Secretary (4).

## CLARK O. BARTLETT

Traffic Committee (2, 3, 4); Lighting Committee (2, 3, 4); Vice-Chairman, Civics Committee (3); Parnassian Society (3, 4); Columbian Staff (3, 4); Chairman, Home Room (4); Lunch Room Control Committee (4); Mirror Advertising Committee (4).

## MARY BATES

Monitor (2); Creative Writing Club (2, 3, 4); French Club (3, 4); Junior Night Committee; Lunch Room Committee (3, 4).

## MILDRED BAUM

*Mil*

French Club (2, 3); Glee Club (2, 3, 4); Junior Night; Ring and Pin Committee (3); National High School Chorus (3); Aviation Club (4); Senior Play; Senior Play Usher.

## ROBERT W. BAUNACH

*Bob*

Science Club (1, 2, 3), Secretary (4); Junior Night; Junior Prom.

## SHERWOOD BEATTIE

*Sherry*

Secretary-Treasurer, Home Room (2); Leaders' Club (2, 3, 4); Sophomore Play; Orchestra (2); Soccer (2); Junior Night Properties Committee; G. A. A. (3, 4); Secretary, Home Room (4).





WILLIAM J. BECKER

*Becker*

Baseball (2, 3, 4); Finance Committee (3); Fire Committee (3, 4); Traffic Committee (3); Election Committee (4); House and Grounds Committee (4).

WILLIAM BEIDELMAN

*Tiger*

Track (2, 3, 4); Assistant Manager, Basketball (2, 3, 4); Home Room Basketball (3, 4), Champions (2); Class Basketball (2, 3, 4); Assistant Manager, Tennis (2, 3); Home Room Football (2, 3, 4); Glee Club (2, 3).

ELIZABETH BELL

*Betty*

G. A. A. (2, 4); Art Club (2, 4); Junior Night Committee; Soccer (4); Senior Play Committee.

JOSEPH A. BENDERSKY

*Jess*

Orchestra (2); Band (2, 3); Squad Football (2, 3); Track (3, 4); Home Room Basketball Champions (2); German Club (2); Senior Play Advertising Committee.

MELVIN D. BENNETT

Home Room Football (2); Home Room Soccer (3); Junior Night; Senior Play.

EDYTHE LOUISE BENTLEY

*Ed*

G. A. A. (2, 4); Junior Night; Commercial Club (3).



# T H E M I R R O R

---



## EVERITT BENSEL

Glee Club (2, 4), Treasurer (3); Home Room Basketball Champions (2); Home Room Football (2); Junior Night Stage Committee; Senior Play; German Club (4).

## ALFRED BERNAT

*Al*

Orchestra (2, 3).

## EILEEN ANN BERRY

Home Room Committee (2, 3); G. A. A. (2); Junior Night Usher; Commercial Club (3); Home Room Vice-Chairman (4); Civics Committee (4).

## RICHARD E. BISHOP, JR.

*Dick*

Home Room Basketball Champions (2); Home Room Football (2); Junior Prom Ticket Committee; French Club (4); Science Club (4); Track (4); Mirror Photographer (4).

## AUSTIN BONN

*Austy*

Home Room Football (2, 3); Home Room Basketball (3, 4); Senior Play Committee; Monitor (4); Track (4).

## SPENCER W. BORDEN

Football (2, 3, 4); Lunch Room Committee (2, 3, 4); Track (3, 4); Boys' Glee Club (4); Senior Play; Vice-Chairman, Home Room (2, 3).



# C L A S S O F 1 9 3 2



## ALMA BOTTELLI

Basketball (2); Parnassian (2, 3, 4); Soccer (2, 3, 4); G. A. A. (2, 3, 4); Junior Night; Leaders' Club (3, 4); Senior Council; Senior Play Committee.

## CLAIRE BRENNAN

*Claire*

E. O. H. S. (2, 3); G. A. A. (4); Senior Play Committee; Soccer (4).

## NORMA BREWSTER

Home Room Chairman (2, 4); Soccer (2); Assembly Committee (2); Basketball (2); Junior Night Committee; Commercial Club (3); Senior Play Committee; Typist for Mirror (4).

## EVELYN BREX

*Eve*

G. A. A. (2, 3, 4); German Club (2); Scholarship Committee (2); Sophomore Dance (2); Home Room Basketball (3); Junior Night.

## CHESTER BROWN

*Chick*

Home Room Chairman (1); Vice-Chairman, Home Room (2); Nominating Committee (2); Glee Club (1); Home Room Basketball Champions (2).

## EDWIN H. BROWN

*Eddie*

Barringer High School (2, 3); Civics Committee (4); Fire Committee (4); Home Room Chairman (4); Cheer Leader (4); Hockey (4).



# T H E M I R R O R



ERIC BRUMMER

*Bill*

Chorus (2); Basketball (2, 4); Baseball (3).

CHARLES F. BUBENHEIM, JR.

*Bubie*

German Club (2); Service Orchestra (4); Fire Committee (4); Senior Play; Glee Club (4).

PAUL BURBAGE

Football (2); Junior Night Stage Committee, Senior Play Stage Committee.

MARIE BURGER

*Billie*

G. A. A. (2, 3, 4); Home Room Committee (2); Junior Chamber of Commerce (3); Junior Night Committee; Senior Play Committee.

FRED BURROUGHS

Home Room Vice-President (2); Service Orchestra (3, 4); Parnassian Society (3, 4); Home Room Secretary (3); Track (4).

JEAN BURT

G. A. A. (2, 3, 4); Orchestra (2, 3); French Club (3, 4); Junior Prom Committee; Junior Night Committee; Home Room Secretary (3); Mirror Staff.



# C L A S S O F 1 9 3 2



## ROBERT BUTTON

*Bob*

Track (2, 3, 4); Parnassian Society (2, 3, 4); Student Council (2, 3); Junior Assembly Chairman; Traffic Committee (3); Eligibility Committee (3); Service Orchestra (4); President of Senior Class.

## JOSEPH P. CAIN

*Joe*

Interclass Basketball (2, 3, 4); Interclass Football (2, 3, 4); Traffic Committee (3, 4).

## HARMON H. CARDOZO

Parnassian (1, 2); French Club (3, 4); Ring and Pin Committee (3); Home Room Vice-Chairman (3); Home Room Treasurer (4); Ancient History Play (2); Editor-in-Chief, Ancient History Book (2).

## ROGER MERLE CARROLL

*Feller*

Home Room Football (2, 4); Ancient History Play (2); Mirror Staff; Bulletin Board (4).

## FRED CAUFIELD

*Pete*

Social Committee (2); Home Room Vice-President (2); Track (2, 4); Color Bearer (3, 4); Junior Council; Junior Prom Chairman; Senior Council; Fire Committee (4).

## ESTHER A. CERATI

*Es*

Home Room Scholarship Committee (2); G. A. A. (2, 3, 4); Junior Night Program Committee; Commercial Club (3); Home Room Committee (3).

# T H E M I R R O R



HELEN E. CHANDLER

Home Room Secretary (2, 4); Leaders' Club (3); Junior Night; Glee Club (4); Senior Play Committee.

HELEN K. CHANDLER

Soccer (2, 3, 4); Basketball (3, 4); Speedball (4); Swimming Manager (3); Commencement Usher (3); Junior Night; G. A. A. Council (3).

MILDRED E. CHANDLER

*Mil*

Civics Committee (2, 3, 4); Glee Club (2, 3, 4); Art Club (2); Leaders' Club (3, 4); Junior Night; Soccer (4).

FRED H. CHASE

Inter-Home Room Football (2, 3); Baseball (2); Home Room Treasurer (2); Aviation Club (2); Sophomore Play Stage Committee; Junior Night Stage Committee Chairman; Fire Committee (4); Ancient History Play (4).

CLINTON MONROE CHASE

Home Room Football (2, 3, 4); Home Room Basketball (2, 3); Glee Club (3, 4); Junior Night; Senior Play Ticket Committee.

MARGARET CHRISTOPH

G. A. A. (2, 4); Home Room Basketball (3, 4); Senior Play Committee.





E. LAVERNE CLANCY

*Clance*

Secretary, Sophomore Class; Orchestra (2, 3); G. A. A. (2, 3, 4); Junior Council; Junior Night Committee; Junior Night Cast; Chairman, Senior Girls' Party; Senior Play Committee.

LILLIAN S. CLARK

*Lil*

Commercial Club (3).

HAROLD GREEN CLAYTON

Class Football (2, 3); Baseball (2); Junior Night Construction Committee; Aviation Club Chairman (4); Swimming (4); Senior Play Stage Committee.

JOHN COLEMAN

Interclass Basketball (2, 3, 4); Interclass Football (2, 3, 4); Soccer (3, 4).

MARGUERITE COLIE

*Maggie*

Assembly Committee (3), Chairman (4); Editor-in-Chief, Mirror (4); French Club (3), President (4); Home Room Chairman (3); Pre-Junior Night Committee; Junior Night Cast; Girls' Basketball Manager (4); Advanced Senior Play Committee.

JAMES B. CONKLING

*Jim*

Band (2, 3, 4); Service Orchestra (3, 4); Track (3, 4); Junior Night; Parnassian (3), Treasurer (4); Senior Play; Advertising Manager, Columbian (4); Advertising Manager, Mirror (4).

# T H E M I R R O R



ADELE COX

*Dell*

Orchestra (2, 3, 4); G. A. A. (2, 3, 4); Junior Night Committee; Aviation Club (4).

HELEN CRAWFORD

Creative Writing Club (2, 3, 4); Home Room Program Committee Chairman (2); G. A. A. (2, 3, 4); Junior Night; French Club (4); Senior Play Committee.

DOROTHY CRIMMINS

*Dot*

G. A. A. (2, 3, 4); Junior Night; Swimming (3); Soccer (4); Leaders' Club (4); Baseball (4); Home Room Basketball (4).

ROBERT G. CROOT

*Bob*

Football (2, 3, 4); Hockey (3, 4); Class Basketball (2, 3); Color Guard (3, 4); Fire Committee (3, 4); Sophomore Program Committee; Home Room Vice-Chairman (2); Lunch Room Committee (4).

JACK CROWLEY

*Jack*

Student Council Treasurer (4); Columbian (3), Assistant Editor (4); Parnassian (2, 4), Vice-President (3); Parnassian Plays (2, 3, 4); Vice-President, Sophomore Class; Senior Play (4); Home Room Chairman (3); Junior Night Advertising Committee Chairman.

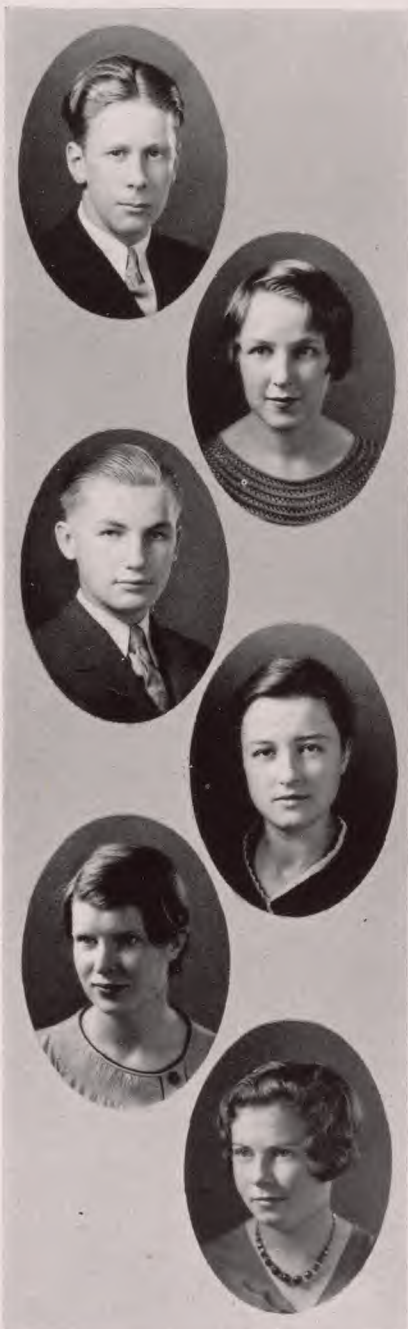
MARIAN D. CUMMINGS

*Marry*

G. A. A. (2, 3, 4); French Club (3, 4); Civics Committee (3); Junior Night; Art Club (4); Senior Play Committee.



# C L A S S O F 1 9 3 2



EDWIN G. DAVENPORT

*Davy*

Parnassian Society (2, 3, 4); Sophomore Play Committee; Junior Night; Senior Play; Glee Club (2, 3); Swimming (4); Baseball (2, 4); Junior Prom Committee.

MABEL DAVIS

Monitor (2, 3); Secretary, Home Room (3); Junior Night Committee; Senior Play Committee; Senior Play Usher; Civics Committee (4).

GERARD Q. DECKER, JR.

*Jerry*

Orchestra (2, 3, 4); Band (2, 3, 4); Creative Writing Club (2, 3); Sophomore Play Stage Committee; Pre-Junior Night Committee; Junior Night Advertising Committee.

MADELINE DELAVAL

E. O. H. S. (2, 3); News Reporter in E. O. H. S.; Senior Play Painting Committee.

ELIZABETH D. DIX

*Libba*

G. A. A. (2); Art Club (2); Sophomore Play Committee; Parnassian Society (3, 4); French Club (3, 4); Junior Night Committee; Junior Prom Committee; Senior Play.

EVELYN DOWNING

Creative Writing Club (2, 3, 4); French Club (2, 3, 4); Home Room Secretary (2); Leaders' Club (3, 4); Soccer (2, 3, 4); Life Saving Leader (2, 3); Junior Night; G. A. A. (2, 3, 4).

# T H E M I R R O R



## HARVEY DUNPHEY

Football (2); Orchestra (2, 3, 4); Track (2, 3, 4); Band (2); Service Orchestra (2); Junior Night Committee; House and Grounds Committee (3); Senior Play Committee.

## RALPH W. EARL, JR.

Orchestra (2, 3); Glee Club (2, 3, 4); Junior Council; Basketball (3); Senior Play; Eligibility Committee (4); Parnassian Society (4); Varsity Swimming (4).

## FLORENCE MARGARET EBEL

### *Flossie*

G. A. A. (2, 3, 4); Junior Night Chorus; Junior Night Committee; Senior Play Committee; Speedball (4); Home Room Basketball (4); Home Room Collector and Distributor (4).

## MARGARET EBERHARDT

### *Peggy*

Parnassian Society (2, 3, 4); Glee Club (2, 3, 4); Orchestra (2, 3); G. A. A. (2); Junior Night; Columbian Staff (4).

## GILBERT L. EHRENKRANZ

### *Senator*

Ancient History Play (1, 2); Sophomore Play (2); Assistant Hockey Manager (2), Manager (3); Parnassian Society (3, 4); Traffic Committee (3, 4); German Club (4); Senior Council; Senior Play Advertising Committee.

## RITA EICHHORN

G. A. A. (2, 3, 4); Creative Writing Club (3, 4); Junior Night Committee; Senior Play Committee.





EDITH EISNER

*Edie*

G. A. A. (2, 4), Council (3); French Club (2, 3, 4); Glee Club (2), Vice-President (3), President (4); Ancient History Play (3); Junior Night; Mirror Staff; Assembly Committee (4); Civics Committee (4).

EDWARD ELLIS

*Ted*

Lighting Committee (2, 3, 4); Science Club (2), Treasurer (3), President (4); Parnassian (3, 4); Baseball (2); Sophomore Play; Junior Night; Senior Play; Monitor (2, 4).

EDWARD ERN

*Ponty*

Boys' Glee Club (2, 3, 4); German Club (3, 4); Minstrel Show (3, 4); Junior Night Cast.

MARGARET EVERETT

*Peg*

G. A. A. (2); Civics Committee (2, 3, 4); Home Room Secretary (2); Junior Night; Senior Play Committee.

RUTH FENRICH

Sophomore Play Committee; G. A. A. (2, 3); Art Club (2); Basketball (2); Junior Night Committee.

LUCILE FERINE

*Lu*

Decoration Committee, Junior Night; G. A. A. (3, 4); Junior Night Advertising Committee; Soccer (4); Basketball (4).

# T H E M I R R O R

---



## ELEANOR FETCHO

*Fetch*

Sophomore Play (2); G. A. A. (2, 3, 4); Glee Club (2, 3, 4); Soccer (3, 4); Basketball (3); Junior Night; Baseball (3); Chorus (3).

## PAUL N. FIMBEL

German Club (2, 3); Ancient History Play (2); Track (2); Junior Night Committee; German Play (3); Fire Committee (4); Traffic Committee (4).

## ELBERTA FISHER

*Bert*

French Club (1, 2, 3); Glee Club (1, 2, 3); G. A. A. (1, 2, 3, 4); Sophomore Assembly; Junior Night.

## LOGAN FOLEY

*Fuzzy*

Football (2, 3, 4); Science Club (2); House and Grounds Committee (2); Assembly Committee (2); Civics Committee (3); Traffic Committee (3, 4); Junior Night Advertising Committee; Track (4).

## LEONA M. FOLKNER

*Lee*

Glee Club (2, 3), Vice-President (4); G. A. A. (2, 3, 4); Sophomore Play Cast; Commercial Club (3); Leaders' Club (3, 4); Junior Night Costume Committee; Civics Committee (4); Senior Play Properties Committee.

## BETTY FORSYTH

Secretary-Treasurer, Home Room (3); G. A. A. (3, 4); Junior Night Properties Committee; Home Room Basketball (3, 4); Treasurer, Home Room (4); Senior Play Committee.



# C L A S S O F 1 9 3 2



## DEAN FREIDAY

*Jim*

Science Club (2, 3); German Club (2, 3); Junior Night Ticket Committee; Washington Museum Director (4); Home Room Treasurer (4); Senior Play Properties Committee.

## DOROTHEA FREY

*Dot*

Ancient History Play Costume Committee (2); Volley Ball (2, 3); G. A. A. (2, 3, 4); Junior Night Cast; Glee Club (4).

## IRVIN FREUND

*Irv*

Class Football (2, 3, 4); Class Basketball (2, 3, 4); Junior Varsity Baseball (2), Varsity (3, 4); Senior Council; Fire Committee (4).

## ALVIN FUERTH

*Al*

Entertainment Committee Chairman (2); Class Football (2, 3, 4); Class Basketball (2, 3, 4); Science Club (3).

## MARY GALLIGAN

French Club (2, 3); G. A. A. (2, 3, 4); Basketball (2, 3, 4); Junior Night; Parnassian Society (3, 4); Vice-Chairman, Home Room (3); Senior Play Committee.

## STELLA GASKIN

German Club (2); Art Club (2); Sophomore Committee; Junior Night Committee; French Club (3); Senior Play Committee.

# T H E M I R R O R



KATHERINE GENEREUX

*Frenchie*

French Club (2, 3, 4); Parnassian (3, 4); Creative Writing Club (3, 4); Dues Committee (4); Junior Night.

ROLAND C. GEORGE

German Club (2, 3), President (4); Ancient History Play (2); German Play (2, 3); Junior Night Committee; Civics Committee (3); Traffic Committee (4).

HELEN GIERDING

Soccer (2, 3); Basketball (2, 3, 4); Cheer Leader (2, 3); G. A. A. Council (2, 3, 4); Swimming (2, 3); Leaders' Club (3, 4); Junior Night.

HAROLD P. GILPIN

*Bud*

Football (3, 4); Fire Committee (4); Track (4).

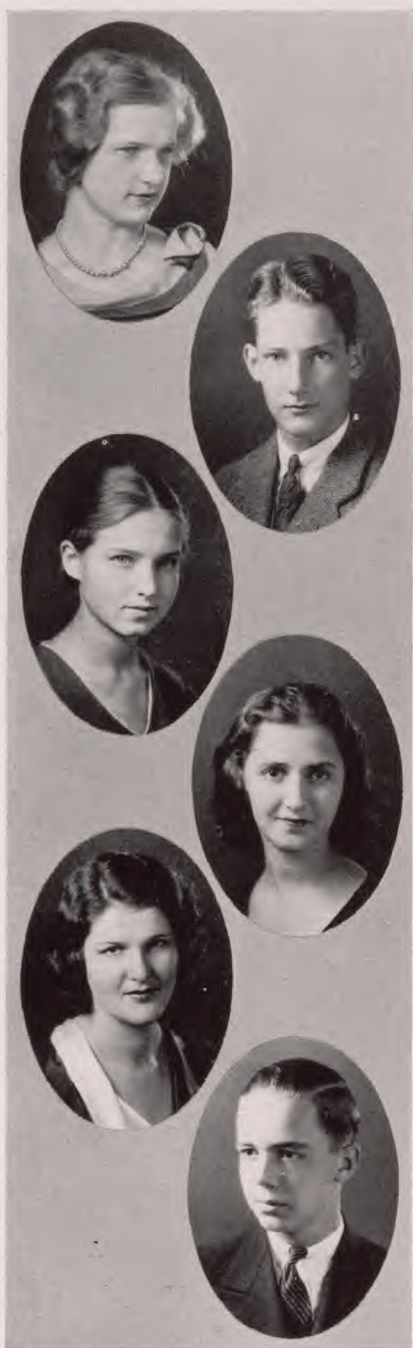
EDITH GLENDENING

French Club (2, 3, 4); Glee Club (2, 3, 4); Junior Night; Parnassian (4); Senior Play Committee; Monitor (4).

JOHN H. GOODELL

Assistant Manager, Football (2), General Manager (4); Home Room Chairman (3); Stage Manager, Parnassian (4); Business Manager, Mirror (4); Fire Chief (4).





HELEN GOULD

*Blondie*

Treasurer, Class (1); Typing Committee Chairman (4); Junior Night Program Committee; Senior Class Typist; Mirror Typist.

ROBERT GREEN

*Bob*

Football (2, 3); Swimming (4); Civics Committee (3); Fire Committee (3, 4); Advanced Junior Night Committee; Junior Council; Parnassian Plays Stage Committee (3); Assistant Hockey Manager (3).

HELEN M. GREGORY

Home Room Secretary (2); French Club (3, 4); Parnassian (3, 4); Junior Night Committee; Junior Prom Committee; Junior Council; Chairman, Senior Play Scenery Painting Committee; Civics Committee (4).

ETHEL GROPPER

*Pat*

Orchestra (2, 3, 4).

LILLIAN GRUNT

*Lilli*

Junior Night Poster Committee; G. A. A. (3, 4); Soccer (4); Museum Committee (4); Creative Writing Club (4).

MAX R. L. DeGUEVARA

*Cincinnati Max*

Lunch Room Committee (2, 3); French Club (2, 3, 4); Junior Night; Science Club (3); Fire Committee (4); House and Grounds Committee (4).

# T H E M I R R O R



## ALYS GARDINER HADLEY

*Alice*

French Club (2, 3, 4); Glee Club (3, 4); Soccer (2, 3, 4); Lunch Room Committee (2, 3, 4); Ring and Pin Committee (3); Junior Night; Leaders' Club (3, 4).

## BETTY HAFLEY

G. A. A. (2), Council (3, 4); Leaders' Club (3, 4); Civics Committee (3); Pre-Junior Night Committee; Junior Night; Social Committee (4); Chairman, Senior Play Program Committee; Mirror Staff (4).

## BILL HALL

Band (2, 3, 4); Sophomore Assembly; Orchestra (3, 4); Service Orchestra (3, 4); Junior Night; German Club Play (3); Glee Club (4); Senior Play Cast.

## H. HERRON HALM, JR.

Freshman Council; Home Room Secretary (1); Football (2, 3, 4); Fire Committee (4); Traffic Committee (4); Junior Night Committee.

## GEORGE HAMMEL

Science Club (4); Track (4).

## JOHN HANLE

*Jack*

Aviation Club (2, 3), President (4); Glee Club (2); Science Club (4); Civics Committee (4); Finance Committee (4).



# C L A S S O F 1 9 3 2



ELSIE HARMS

German Club (2, 3, 4); German Play (3); Junior Night Costume Committee; Commercial Club (3); Senior Play Costume Committee.

RUTH HARRISON

Parnassian Society (2, 3, 4); G. A. A. (2, 3); Civics Committee (2); Junior Night; Senior Play Advertising Committee.

COLIN B. HECOX

Orchestra (2, 3, 4); Interclass Football (2); Service Orchestra (3, 4); Parnassian Society (3, 4); Columbian Staff (4); Junior Night; Assembly Performances (3, 4); Track (4).

FREDERICK V. HENDERSHOT

*Fritz*

Ancient History Play (2); Football (2, 3, 4); Fire Committee (3); Track (3, 4); House and Grounds Committee (4); Traffic Committee (3, 4).

ANNA MAY HENDERSON

*Chickie*

Scenery Painting Committee, Junior Night.

JAMES B. HENDERSON

*Jimmy*

Home Room Vice-Chairman (2); Nominating Committee (2); Senior Play Ticket Committee.



NATHALIE G. HENERLAN

*Nat*

Barringer High School (2, 3); Sophomore Club; Hockey (2); Art Club (2, 4); Social Service Club (3); Social Welfare Club (3); French Club (3); G. A. A. (4).

DORIS E. HEYDORN

*Darrie*

Chorus (2); Glee Club (2); Welfare Pageant (2); Ring and Pin Committee (3); Junior Night; G. A. A. (4); Treasurer, Junior Chamber of Commerce (4); Senior Play Usher.

LINDA SUE HILDEBRAND

German Club (3, 4); G. A. A. (4).

CARL HIRSCHBERGER

*Chen*

Cheer Leader (2, 3, 4); Home Room Chairman (2, 3); Parnassian Society (2, 3, 4); Columbian Business Manager (4); Senior Council; Sales Manager of Mirror; Varsity Football Squad (4); Varsity Swimming Squad (4).

LEONARD L. HODAPP

*Len*

Orchestra (2, 3); Traffic Committee (4).

WILLIAM HOFFMANN

*Bill*

Sophomore Council; Junior Night Ticket Committee Chairman; Nominating Committee (3); Track (3, 4); Junior Council; Civics Committee (4); Home Room Chairman (4).



# C L A S S O F 1 9 3 2



OLIVER W. HOLMES

*Ollie*

Football (2); Track (2, 3).

JOHN HOPKINS

*Hop*

German Club (2); Squad Football (3); Parnassian (3); Track (4).

ADDISON WEAVER HOPPER

*Add*

Senior Play Ticket Committee; Assembly Program (4).

DAVID W. HOPPOCK

*Bill*

Eligibility Committee (2, 3), Chairman (4); Basketball (3, 4); Columbian Staff (3, 4); Organizations Editor of Mirror; Tennis (2, 3, 4); Parnassian Society (4); Senior Play; Sophomore Council.

M. VIRGINIA JACOBS

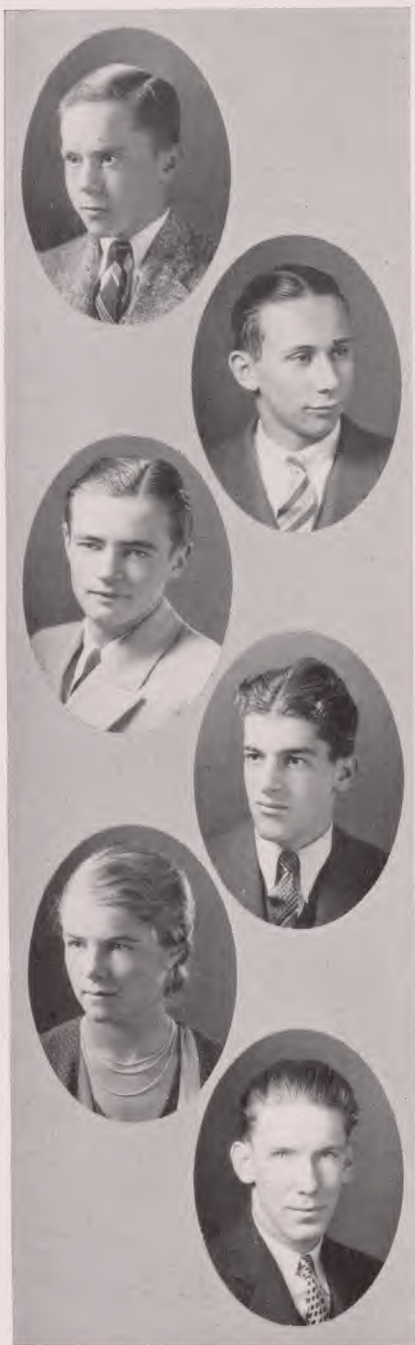
*Jiggs*

Sophomore Play; Parnassian Society (3, 4); Junior Class Vice-President; Junior Assembly Chairman; Leaders' Club (3, 4); Student Council Vice-President; Senior Play; G. A. A. Secretary (4).

ELEANOR JAEGER

G. A. A. (2, 4); Sophomore Play Properties Committee; Finance Committee (3); Senior Play Properties Committee.

# T H E M I R R O R



## WILLIAM JONES

*Bill*

Assistant Manager, Football (2, 3), Manager (4); Junior Night Advertising Committee; Traffic Committee (3); Monitor (3); Junior Class Basketball; Nominating Committee for Standing Officers (3); Lunch Room Control Committee (4).

## LEO KEAN

*Max*

Baseball (2, 4); Orchestra (2, 3); German Club (2, 3, 4); Class Football (2, 3, 4); Class Basketball (2, 3, 4); Room Committee Chairman (3).

## OWEN KEEFE

Columbian Sports Editor (2, 3, 4); Columbia Sports Editor for Newark Evening News (2, 3, 4); Assistant Manager, Baseball (2), Second Team Manager (3), Publicity Manager (4); Basketball (2, 3, 4); Home Room Football; Junior Night Publicity Committee; Junior Prom Publicity Committee; Sports Editor, Mirror (4).

## DONALD KENNY

*Don*

Glee Club (3); Junior Night; Track (4).

## CAROLYN KEYES

*Carol*

French Club (2, 3, 4); G. A. A. (3); Junior Class Secretary; Home Room Secretary (3, 4); Chairman, Traditions Committee (4); Chairman, Senior Play Costume Committee.

## KENNETH B. KNOX

*Ken*

Ancient History Play (2); Home Room Football (2, 3); Home Room Basketball (2, 3); Monitor (3); Stage, Armistice Day Program (4); Stage, Christmas Program (4).





MARIANNE KINSEY

*Kins*

G. A. A. (2, 3); Junior Night Costume Committee.

JANE KNOWLAND

G. A. A. (2); Junior Night; Senior Play Usher; Senior Play Properties Committee; Creative Writing Club (4).

RICHARD K. KEOGLER

*Rich*

Aviation Club (2), Vice-President (4); German Club Treasurer (3); Home Room Football (2, 3, 4); Junior Prom Ticket Committee; Junior Night Ticket Committee; Senior Play Scenery Construction Committee; Home Room Treasurer (4).

GEORGE KOLB, JR.

Assistant Manager, Football (2); Junior Night Stage Committee; German Club (3, 4); Senior Play Construction Committee.

CARL KOPLIN

Home Room Football (2, 3, 4); Home Room Basketball (2, 3, 4); J. V. Basketball (3).

MELBA R. KRAHENBUHL

*Mel*

Art Club (2, 3, 4); French Club (2, 3, 4); G. A. A. (2); Commercial Club (3, 4); Junior Prom Art Committee; Junior Night Art Committee; Chairman, Mirror Art Committee (4); Columbian Staff (4).

# T H E M I R R O R

---



DORIS KURTZMAN

*Dot*

Sophomore Play; G. A. A. (2, 3); Parnassian (3, 4); French Club (3, 4); Junior Night Cast; Nominating Committee for Standing Officers (3); Mirror Staff (4); Vice-Chairman Home Room (4).

ELIZABETH KYNOR

*Betty*

Orchestra (2, 3, 4); Glee Club (2, 3, 4); Home Room Program Committee (2); Chorus (2); Christmas Program (4).

FRANK H. LABIAUX

*Labby*

Track (3); Squad Football (3); Aviation Club (3); Traffic Committee (4); Senior Play Construction Committee.

T. HARRY LANG

Hockey (2, 3), Captain (4); Football (2, 3), Captain (4); Tennis (2, 3, 4); Color Guard (3, 4); Class Council (2, 3); House and Grounds Committee (2, 3); Lunch Room Control Committee (4); Fire Committee (2, 3).

WALTER A. LARBIG

*Bud*

Football (2, 3, 4); Baseball (2, 3, 4); Fire Committee (3, 4); Traffic Committee (4); Traditions Committee (4); Senior Council.

LEWIS F. LARSON

*Lew*

Football (2, 3, 4); Fire Committee (3, 4); Junior Night Stage Committee; Traffic Committee (4).



# C L A S S O F 1 9 3 2



RICHARD J. LaVECCHIA

Football (2, 3); Basketball (2, 3, 4); Track (2, 4); Fire Committee (2, 3, 4); Senior Play Ticket Committee.

THOMAS LEE

Football (2, 3, 4); Baseball (2, 3, 4); House and Grounds Committee (+); Fire Committee (+).

ALBERT LESKO

*Al*

Soccer (2, 3); Football (2, 3); Basketball (2, 3); German Club (2, 4); Ancient History Play (2); Scenery, German Plays (2, 3).

ROBERT F. LESSER

*Bob*

Class Football (2); Junior Prom Ticket Committee; Science Club (3); Class Basketball (3); Class Soccer (3); Tennis Squad (3); Traffic Committee (+); Laboratory Assistant (+).

THELMA LINKE

*Thel*

Glee Club (2); Junior Prom Decoration Committee; Junior Night Chorus; Leaders' Club (2, 3, 4); Senior Play Prompter; Baseball (3).

DOROTHEA LOVE

*Dot*

Soccer (2, 4); Home Room Social Committee (2); G. A. A. (2, 3, 4); Parnassian Society (3, 4); Leaders' Club (3, 4); Junior Night; Basketball (4); Home Room Secretary (4).

# T H E M I R R O R



ELIZABETH LOVE

*Tootsie*

Senior Play Program Committee.

BERNICE LUNDY

G. A. A. (2, 3, 4); German Club (2, 4); Creative Writing Club (4); Soccer (4); Speedball (4).

ELEANOR LUNN

*El*

G. A. A. (2); Home Room Secretary (2); German Club (3, 4); Art Club (3), President (4); Junior Night; Pre-Junior Night Committee; Mirror Staff (4).

ALEXANDER MACKENZIE

*Alex*

Sophomore Play Committee; Junior Night Committee; Junior Prom Committee; Senior Play Committee.

CHRISTIAN MAGORY

*Chris*

Football (3, 4); Baseball (3, 4); Ring and Pin Committee (3); Commercial Club Trips Committee (3); Class and Home Room Basketball (3, 4).

MILDRED ZELEVITCH

Junior Chamber of Commerce (4).



# C L A S S O F 1 9 3 2



## CHARLOTTE MALINOWSKI

Orchestra (2); G. A. A. (2); Chairman, Home Room Program Committee (2); Junior Prom Program Committee; Creative Writing Club (4); Senior Play Usher.

## HELEN MALONE

Senior Play Properties Committee.

## HERBERT MAND

German Club (2); Junior Prom Poster Committee; Track (3, 4); Senior Play Ticket Committee.

## MARGARET MANLEY

Sophomore Nominating Committee; Parnassian Society (3, 4); Junior Night; Senior Play Advertising Committee; Basketball (4); Home Room Treasurer (4).

## HELEN MARCHEL

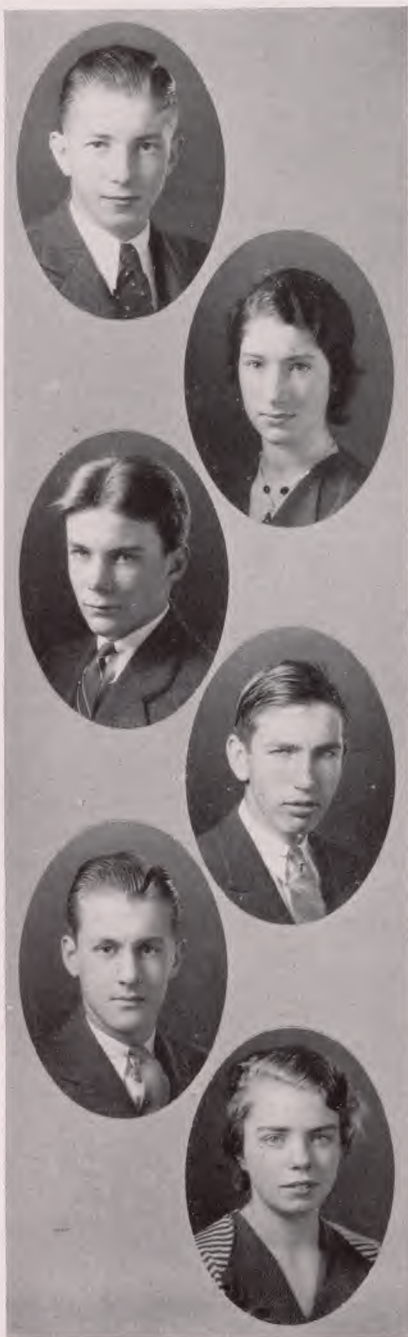
Sophomore Finance Committee; Home Room Entertainment Committee (2); Vice-Chairman, Home Room (2); Glee Club (2); Ring and Pin Committee (3); Junior Night Properties Committee; French Club (4); Home Room Basketball (4).

## STEPHEN JOHN MARTIN

*Steve*

Football (2); Class Basketball (2, 3, 4); Baseball (2, 4); Track (3).

# T H E M I R R O R



## AUSTIN MATHEY

Assistant Manager of Football (2, 3); Sophomore Play Program Committee; Financial Manager of Football (4).

## HELEN MAY

*Len*

Soccer (2); Columbian Staff (3, 4); G. A. A. (2, 3); Creative Writing Club (3), Vice-President (4); German Club (3); Junior Night; Glee Club (3, 4); French Club (4).

## G. DOANE McCARTHY, JR.

Chairman, Home Room (2), Vice-Chairman (3); Parnassian Society (2, 3, 4); Cheer Leader (2, 3), Head (4); Junior Night Advertising Committee; Swimming Team Captain (4); Chairman, Senior Play Advertising Committee; Manager, Track (4); Fire Committee (4).

## LESTER McDOWELL

*Mac*

Band (2, 3, 4); Orchestra (3); Science Club (3); Aviation Club (3); Service Orchestra (4); Traffic Committee (4); Mirror Staff.

## JOHN McGIBBENY

East Washington High School (1, 2, 3); Freshman Class President; Stage Manager (2, 3); Assistant Football Manager (3); School Paper Staff (2, 3).

## ELIZABETH McHUGH

*Betty*

South Side High School (2, 3); Joost Debating Club (2); Patrol (3); Commencement Usher (3); Glee Club (4); French Club (4); G. A. A. (4); Soccer (4); Senior Play Costume Committee.





ANN ELLIS McKAY

*Scottie*

Barringer (2, 3); French Club (4); G. A. A. (4); Glee Club (4); Senior Play Advertising Committee.

MARY McMAHON

French Club (2, 3); Basketball (2, 3, 4); Parnassian (3, 4); Junior Night Play; Parnassian Plays Properties Chairman (3); G. A. A. Council (4); Home Room Secretary (4); Girls' Track Manager (4).

RUTH McMANUS

*Rufus*

Mirror Staff; Columbian Staff (4); Junior Night Properties Committee Chairman; Basketball (2, 3, 4); Home Room Secretary (3); Home Room Vice-Chairman (4); French Club (2, 3); Sophomore Play Committee.

WHEELER MEEKER

*Meek*

Squad Baseball (2); Interclass Track (2, 3, 4); Interclass Basketball (2, 3, 4); Interclass Football (2, 3); Junior Prom Decoration Committee; Home Room Secretary-Treasurer (4).

WILLIAM E. MOIR

*Bill*

Football (3, 4); Baseball (3); Track (4); Lunch Room Committee (4).

MILDRED L. MOORE

*Mil*

G. A. A. (2, 3, 4); Senior Council; Junior Night Properties Committee; Junior Prom Decoration Committee; Senior Play Properties Committee Chairman; Leaders' Club (2, 3), President (4); Basketball (2, 3, 4), Varsity (2); Mirror Staff.

# T H E M I R R O R



CHARLES ALEXANDER MOREL

*Chuck*

Assistant Manager of Basketball (2, 3); Assistant Manager of Baseball (2); Home Room Basketball (2, 3); Junior Night Stage Committee; Home Room Football (3, 4); Senior Play Stage Committee; Manager of Swimming (4); Home Room Treasurer (4).

DOROTHY M. MORIARTY

*Dot*

G. A. A. (2, 3).

DOROTHY R. MORIARTY

*Dot*

G. A. A. (2, 3); Glee Club (2, 3); Chorus (2, 3); Aviation Club (3).

ELIZABETH MORRIS

*Betty*

Art Club (3); Program Committee (4); Junior Night Costume Committee; G. A. A. (4).

BARBARA MUELBERGER

*Bobby*

Secretary, Freshman Class; Home Room Secretary (2); G. A. A. (2, 3, 4); Chairman, Junior Night Committee; Junior Prom Committee; Tennis Manager (4); G. A. A. Council (4).

GERTRUDE MÜLLER

Art Club (2); German Club (3, 4); G. A. A. (2, 3, 4).





JOSEPH C. MURPHY

*Joe*

Track (2, 3); Junior Chamber of Commerce (3); Junior Prom Advertising Committee; Home Room Football (3); Swimming (4); Home Room Chairman (4); House and Grounds Committee (4).

WILLIAM K. MYERS

*Stretch*

Interclass Swimming; Varsity Hockey (3, 4); Varsity Track (3, 4); Assembly Committee (4); Traffic Committee (4).

EDGAR NEVILLE

*Eddie*

Track (2, 3, 4); Student Council (2); Nominating Committee (2); Junior Council.

WILLIAM H. NEWBURGER

*Bill*

Junior Council; Parnassian Society (2, 3, 4); Hockey (3, 4); Tennis Manager (4); Fire Committee (4); Traffic Committee (4); Advanced Senior Play Committee.

PHOEBE R. NORTON

*Phubs*

Glee Club (2, 3, 4); Soccer (4); Leader (4); Senior Play Scenery Painting Committee; Monitor (2); G. A. A. (4); Speedball (4); Art Club (4).

WILLIAM NORTON-TAYLOR

*Bill*

Chairman, Ancient History Stage Committee (2); Sophomore Play Stage Committee; Junior Class Finance Committee; Junior Night Stage Committee; Home Room Chairman (4); Chairman, Senior Play Stage Committee; Variety Night Stage Committee (4).

# T H E M I R R O R



TERENCE H. O'DONNELL, JR.

*Terry*

Social Committee (2); Home Room Entertainment Committee Chairman (2, 4); Glee Club (2, 3, 4); Election Committee (4).

DOROTHY OHR

*Dot*

German Club (2); G. A. A. (1, 2, 3); Sophomore Assembly; Junior Night Committee; Senior Play Committee; Mirror Committee (4).

DOROTHY OLIVER

*Dot*

Treasurer, Junior Chamber of Commerce (3), President (4); Senior Class Typing Committee; Home Room Basketball (4).

KENNETH B. OSTERMAN

*Mossy*

Sophomore Play Committee; Home Room Soccer (2, 3, 4); Junior Night Construction Committee; Touch Football (3); Home Room Basketball (3, 4); Senior Play Stage Committee; Variety Night Stage Committee (4).

DOROTHY O'TOOLE

*Dot*

Chairman, Junior Night Poster Committee; Art Club (3, 4); G. A. A. (3, 4); Basketball (3, 4); Creative Writing Club (4).

ROBERT B. PALMER

*Bob*

Ancient History Play (2); Sophomore Play Committee; Glee Club (3); Junior Night Stage Committee; Junior Night Scenery Committee; Fire Committee (4); Senior Play Stage Committee; Home Room Teams (2, 3, 4).





MURIEL PARKER

*Murie*

Parnassian (2, 3, 4); Glee Club (2, 3); Art Club (3, 4); Junior Night Cast; Senior Play Usher; Track (2); Soccer (4); Home Room Basketball (4).

IDA PARLATORE

G. A. A. (2); Sophomore Dramatic Club (2); Glee Club (4); Commencement Usher (2); Commercial Club (3, 4); Senior Play Properties Committee; Mirror Staff.

FRANCIS L. PATTON

*Pat*

Junior Night Ticket Committee; German Play Stage Committee (3); Senior Play Ticket Committee; Monitor (4).

EVELYN PAUSIN

G. A. A. (2); German Club (2); Sophomore Play Costume Committee; Class Basketball (2); Junior Night Usher; Junior Prom Invitation Committee; Home Room Basketball (3, 4).

DORIS PAYNE

*Dot*

G. A. A. (1, 2, 3, 4); Secretary, Home Room (2, 3); Art Club (2, 3); Basketball (1, 3, 4); Sophomore Play Committee; Junior Night Committee; Junior Chamber of Commerce (3); Home Room Basketball (3, 4).

LILLIAN PAYTON

Junior Night Committee; Senior Play Committee; German Club (4).

# T H E M I R R O R

---



## GILBERT PELLISSIER

*Gil*

Home Room Vice-Chairman (2); Glee Club (3); Home Room Football (2, 3, 4); Home Room Basketball (2, 3, 4); Squad Football (2).

## VINCENT PETER

*Vin*

Junior Night Committee; Senior Play Committee; Interclass Soccer (2, 3, 4); Interclass Baseball (2, 3).

## CLINTON PHELPS

Basketball (2, 3); Home Room Chairman (2); Fire Committee (3, 4); Tennis (2); Student Council (2); Junior Night Committee; House and Grounds Committee (4); Election Committee (4).

## KENNETH PHILCOX

*Ken*

Football (2); Track (2); Glee Club (3); Manager of Track (3); Home Room Chairman (3); Junior Night; Election Committee Chairman (4); Business Manager of Track (4).

## NORMAN PHILCOX

*Bud*

Glee Club (2); Sophomore Play Committee; Football (3, 4); Junior Prom Committee; Senior Play Committee.

## MARGARET PIERCE

*Peggy*

Soccer (2); G. A. A. (2), Council (4); Junior Night; Vice-Chairman, Home Room (3); Junior Prom Decoration Committee; Parnassian (3, 4); Baseball (3); Senior Play Cast.





JOSEPH PIERCE

*Joe*

Assembly Committee (2, 3); Sophomore Play Program Committee Chairman; Columbian (3, 4); Lunch Room Committee (2, 3), Cashier (4); Ancient History Play (2); Tennis (3, 4); Junior Night Scenery Construction Committee.

MARY ALICE PIERSON

*Pudge*

G. A. A. (2, 3, 4); Junior Night; Junior Prom; Home Room Basketball (3, 4); Home Room Vice-Chairman (3).

ALFRED POST

*Posty*

Orchestra (2, 3, 4); Band (3, 4); Glee Club (2, 4).

BRADLEY POTTER

Tennis Team (2, 3, 4); Junior Night; Glee Club (3, 4); Senior Play; Mirror Staff (4); Parnassian (4); Senior Council; Vice-Chairman, Home Room (4).

MILDRED PRAGER

*Millie*

Laboratory Assistant (2, 3); Junior Night; G. A. A. (4); Properties Committee, Senior Play; French Club (4); Basketball (4).

JOHN PRICE

*Tennessee*

Track (2, 3, 4), Captain (3); Fire Committee (2, 3, 4); House and Grounds Committee (3), Chairman (4); Traffic Committee (2, 3); Home Room Basketball (2, 3, 4); Home Room Football (2, 3, 4); Home Room Committees (2, 3, 4).

# T H E M I R R O R

---



HELEN JANE PRITCHARD

Junior Night; Glee Club (4).

THOMAS F. PRYOR

*Tom*

Assistant Manager, Baseball (2), Manager (3); Class Basketball (2, 3, 4); Class Football (2, 3, 4); Lunch Room Control Committee (3); Junior Night Committee; Senior Play Committee.

JACK QUINN

*W2Dew*

Science Club (2, 3), Vice-President (4).

HOWARD RADLER

*Howie*

Home Room Football (3, 4); Home Room Baseball (3, 4).

THELMA RALL

*Skeets*

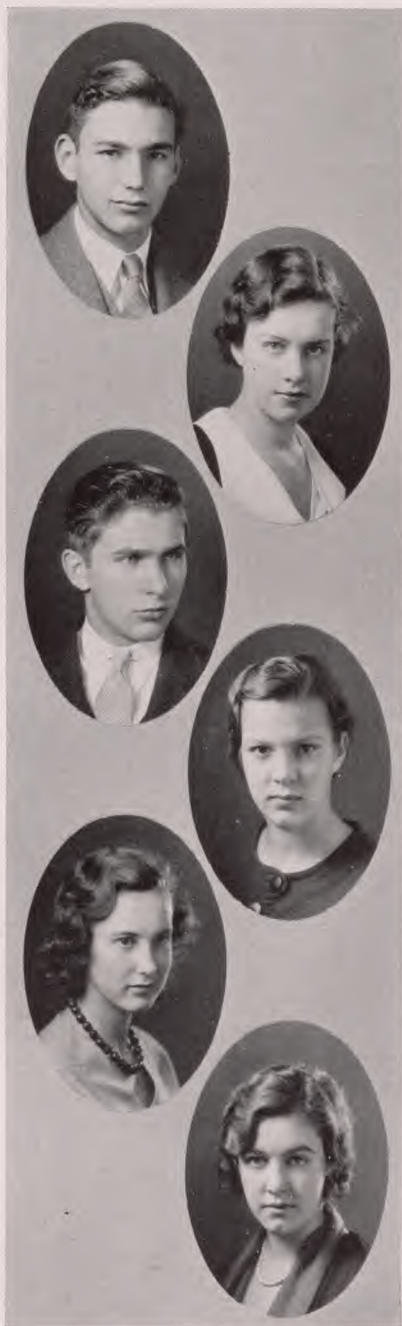
G. A. A. (2, 3, 4); Commercial Club (3).

BENJAMIN RAPAPORT

*Rappy*

Sophomore Play Scenery Committee; House and Grounds Committee (4); Swimming Team (4).





RANSOM RATHBUN

*Ranny*

Orchestra (2, 3, 4); Band (2, 3, 4); Glee Club (2, 3, 4); Junior Night Cast; Senior Play Cast; Tennis Team (3, 4); Parnassian (4); Fire Committee (4).

DOROTHY E. RAUH

*Dot*

Monitor (2); G. A. A. (3, 4); Junior Night; Junior Prom Committee; Senior Play Properties Committee; Soccer (4); Home Room Basketball (4); Art Club (2, 4).

PAUL RAUSE

Mirror Photography Staff; Football (2); Science Club (2); Monitor (2, 3); Home Room Football (2, 3, 4); Track (2).

JANE ESTHER REDFERN

*Jan*

French Club (2, 3); G. A. A. (2, 3); Junior Prom Decoration Committee; Junior Night Costume Committee; Glee Club (4); Senior Play Costume Committee.

PEGGY REOCH

*Peg*

Sophomore Play Social Committee; G. A. A. (2, 3, 4); Junior Night Costume Committee; Junior Prom Decoration Committee.

KATHARINE RICE

*Kay*

Orchestra (2, 3, 4); G. A. A. (2, 3, 4); Junior Night Usher; Junior Night Program Committee Chairman; Glee Club (4).

# T H E M I R R O R



## G. ALAN RICHARDSON

Basketball (2, 3, 4); Home Room Basketball (2, 3, 4); Football (2, 3, 4); Fire Committee (4); Senior Play Ticket Committee.

## JAY RODGERS

Baseball (1, 2, 3, 4); Student Council (1, 2); Columbian Staff (1); President, Sophomore Class; Fire Committee (2, 3, 4); Chairman, Junior Prom Program Committee; Junior Council; Chairman, Senior Play Ticket Committee.

## BURCHARD P. ROMAIN, JR.

*Burt*

Science Club (2, 3, 4); Civics Committee (2); Home Room Treasurer (2); Scenery, French Club (2).

## DOLORESE B. ROMAINE

*Frenchie*

Costume Committee, Junior Night; Junior Chamber of Commerce (3); Home Room Basketball (4); Secretary, Junior Chamber of Commerce (4).

## RENA ROMAN

Junior Night Scenery Painting Committee.

## KATHERINE ROSE

*Kay*

Monitor (2); Junior Night; Home Room Basketball (4); G. A. A. (2, 3); Junior Night Properties Committee.





JEANNE RUBRIGHT

Sophomore Play; Chairman, Home Room Entertainment (2, 3, 4); Junior Night; Parnassian (3, 4); Art Club (3, 4); Senior Play; Art Staff, Mirror (4); Bible Reading Committee (4).

JOHN RICHMOND RUMBLE

*Jack*

Home Room Chairman (1, 2, 3); Treasurer, Sophomore Class; Junior Assembly Chairman; Manager, Basketball (4); Parnassian (2, 3, 4); Junior Night; Senior Play; Chairman, Traffic Committee (4).

ADELBERT J. RUMMEL

*Dub*

Lunch Room (1, 2); Squad Football (2); Assistant Track Manager (3), Manager (4); Senior Play; Senior Play Properties Committee; Civics Committee (4).

ARALENE M. RUSSEN

*Bobbie*

Basketball (2); G. A. A. (2, 3); Volleyball (2); Commercial Club (3, 4); Junior Night Committee; Senior Play Ticket Committee.

JANE RUTLEDGE

E. O. H. S. (2); Baseball Team (3); G. A. A. (3); Junior Night Committee; Civics Committee (3); Senior Play Usher; Speedball (4); Washington Museum Committee (4).

MARSHALL Salfisberg

Junior Night Committee; Home Room Committee (4); Senior Play Committee; Mirror Staff (4).

# T H E M I R R O R



## POLLY YALE SAMUELS

Sophomore Nominating Committee; Student Council (3, 4); Parnassian (2, 3, 4); French Club (2, 3); Junior Night; Senior Play.

## JACK SANDFORD

Vice-Chairman, Home Room (2, 3); Chorus (2); Hockey (3, 4); Traffic Committee (3); Football (4); Fire Committee (4); Election Committee (4).

## CHRIS SAVILLE

Football (2, 3); Fire Committee (2, 3, 4); Mirror Staff.

## KATRINA HULST

### *Katinka*

Parnassian (2, 3, 4); Creative Writing Club (2, 3, 4); Junior Prom Committee; Junior Night Prompter; Soccer (2, 3); G. A. A. (2, 3).

## ROBERT SCHAMBACH

### *Gov'nor*

Assistant Manager, Hockey (3), Manager (4); Track (3, 4); Ring and Pin Committee (3); Junior Night Committee; Traffic Committee (4); Home Room Basketball (2, 3, 4); Home Room Football (2, 3, 4).

## PEARL R. SCHECHNER

### *Shecky*

G. A. A. (2, 4), Council (3); Secretary, Home Room (2); Basketball (2, 3, 4); Soccer (2, 3, 4); Civics Committee (3); Junior Night; Mirror Staff (4).





WILLIAM F. SCHILLING

*Sheik*

Home Room Football (2, 3, 4); Home Room Basketball (2, 3, 4); Basketball (2); Track (2).

EDWARD SCHLATTER

*Shlatts*

Track (2, 3, 4); Ancient History Play (2); Junior Night Ticket Committee; Monitor (4).

JOSEPH SCHUBERT

*Red*

Home Room Football (2, 3, 4); Home Room Basketball (2, 3, 4); Orchestra (2, 3); Glee Club (3); Baseball (3, 4).

MARY ELIZABETH SCHULTZ

*Betty*

G. A. A. (2, 3); Junior Prom Entertainment Committee; Junior Night; Home Room Basketball (3); Creative Writing Club (3, 4); Vice-Chairman, Home Room (4); Columbian Staff (4).

ADELAIDE SCHWARTZ

Commercial Club (3).

RAY SCHWEITZER

*Snooky*

Baseball (2, 3, 4); Home Room Football (2, 3); Home Room Basketball (2); Home Room Treasurer (2); Monitor (2); Sophomore Play; Junior Night Committee.

# T H E M I R R O R



## KATHERINE SEABER

*Kitten*

G. A. A. (2, 3, 4); Soccer (2, 4); Chairman of Home Room Committee (2); Aviation Club (3); Junior Night Committee; Art Club (4); Senior Play Usher; Speedball (4).

## GLENDON SEIFERT

*Newt*

Aviation Club (2); Squad Football (2); Track (3, 4); Senior Council.

## MARGARET SHERWOOD

*Peg*

Sophomore Play Committee; Creative Writing Club (2, 3, 4); Parnassian Society (3, 4); Columbian Staff (3, 4); Junior Night; Home Room Basketball (3, 4); Senior Play Costume Committee.

## CAROLYN SHOUDY

*Con*

Art Club (2); Glee Club (2, 3, 4); National High School Chorus (3).

## HARVEY SMITH

*Smitty*

Ancient History Play (2); Football (2, 3, 4); German Club (2, 3, 4); Basketball (4); Fire Committee (4); Traffic Committee (4); Senior Play Ticket Committee.

## MARIANNE SMITH

*Anne*

Glee Club (2, 3); Soccer (2, 4); Art Club (2); G. A. A. (2, 3, 4); Junior Night Committee; Senior Play Usher.





ROBERT A. SMITH

*Bob*

Architecture Club (2); Interclass Basketball (2, 3); Interclass Swimming (2); Hockey (3, 4); Junior Night Ticket Committee; Senior Play Stage Committee.

MARCO SOTO

*Marc*

Nominating Committee (2); Glee Club (3, 4); Junior Night; Senior Play; Swimming (4).

MARGUERITE SPAETH

*Peggy*

Glee Club (2, 4); Junior Night; Senior Play Committee.

HENRY STAEHLING

*Hay*

Baseball (2, 3, 4); Band (2, 3, 4); Hockey (2, 3, 4); Interclass Basketball (2, 3, 4); Interclass Football (2, 3, 4); Interclass Swimming (2); Senior Play Ticket Committee.

VIRGINIA STANLEY

*Ginney*

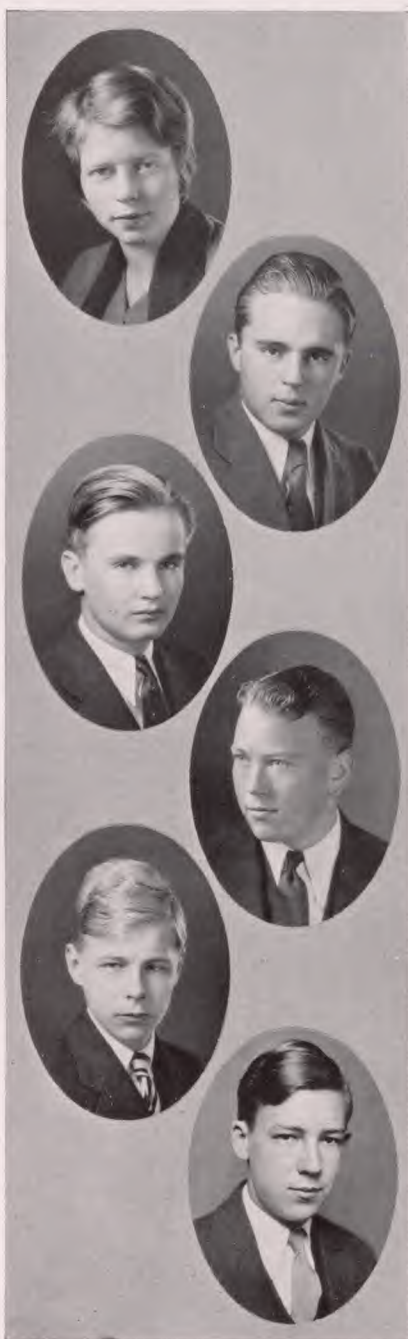
Sophomore Play Committee; Home Room Chairman (3); Ring and Pin Committee; Junior Night; Senior Class Secretary; Student Council Social Committee Chairman (4); Mirror Staff; Columbian Staff (4).

CHARLES F. STARK

*Junie*

Assistant Manager of Track (2); German Club (2, 3, 4); Monitor (2); Junior Night Ticket Committee; Senior Play Ticket Committee.

# T H E M I R R O R



BETTY M. STEINBACH

*Steiny*

G. A. A. (2, 3, 4); German Club (2), Secretary (3); Junior Night Committee; Soccer (4); Home Room Basketball (4); Speedball (4); Leaders' Club (4).

HOWARD W. STEPHENS

Hockey (2, 3, 4); Football (2, 3); Fire Committee (4); Junior Night Committee; Traffic Committee (4); Senior Council (4).

HARRY STEVENS

Home Room Vice-Chairman (2); Parnassian Society (3); Hockey (3); Assistant Manager of Football (3); Fire Committee (4); Swimming (4); Mirror Staff; Senior Play Advertising Committee.

WILLIAM STILLMAN

*Bill*

Football (2, 3, 4); Track (2, 3); Parnassian Society (3, 4); Junior Night; Fire Committee (3); House and Grounds Committee (4); Traffic Committee (4); Swimming (4).

FREDERICK C. STOBÆUS

*Stubby*

Glee Club (2, 3, 4); Sophomore Play Properties Committee; Ancient History Play (2); Junior Night; Junior Night Properties Committee; Junior Prom Committee; Senior Play.

ROBERT W. STORER

*Bob*

French Club (3, 4).





BETTY STORY

Art Club (2); G. A. A. (2, 3, 4); Manager, Basketball (2); Chairman, Junior Prom Committee; Junior Night Scenery Committee; Mirror Staff (4); Parnassian (4); Senior Play Scenery Committee.

PAUL STRUBE

Track (2, 3).

DOROTHY STUART

Soccer (2, 3, 4); Creative Writing Club (2, 3), President (4); Junior Night Cast; Sophomore Play Committee; Civics Committee (4); Senior Play Cast.

MARY ELIZABETH SUTCLIFFE

*Bib*

Junior Night Poster Committee; Senior Play Scenery Committee.

BETTY SWEET

Soccer (2, 3, 4); Chairman, Junior Night Committee; French Club (3), Treasurer (4); Art Club (2, 3), Treasurer (4); Civics Committee (2); G. A. A. (2, 3, 4); Junior Night Usher.

MARY TAUB

G. A. A. (1, 2, 3, 4); Soccer (1, 2, 4); Volleyball (1), Manager (2); Orchestra (2); Sophomore Program; Junior Night; French Club (4).

# T H E M I R R O R



## EDNA TAYLOR

Ancient History Play Properties Committee (2); Home Room Entertainment Committee (2); G. A. A. (2, 3, 4); Junior Night.

## ELIZABETH H. TAYLOR

### *Betty*

G. A. A. (2, 3), President (4); French Club (3, 4); Junior Night; Vice-President, Senior Class; Class Basketball (2, 3); Junior Council; Parnassian Society (4); Mirror Staff (4).

## ROBERT TAYLOR

### *Biscuit*

Assistant Football Manager (1, 2); Football Manager (3); Junior Class President; Home Room Chairman (1, 2, 3); President of Student Council; Varsity Football (4).

## KATHERINE NANCY TENORE

### *Kitty Nan*

Chorus (2, 3); G. A. A. (2, 3, 4); Home Room Play (2); Junior Night Poster Committee; Junior Night Cast; German Club (3); Art Club (2); Home Room Activities (4).

## HOPE THEDFORD

G. A. A. (2, 4); Civics Committee (2); Art Club (3); Junior Night Art Committee; Senior Play Art Committee.

## JANET THOMPSON

French Club (3), Secretary (4); Home Room Secretary (3); Junior Night Costume Committee; Chairman, Junior Prom Refreshment Committee; Secretary-Treasurer, Creative Writing Club (4); Home Room Secretary (4); Senior Play Usher (4).



# C L A S S O F 1 9 3 2



TOM THORPE

*Tom*

Fire Committee (3); Lunch Room Control Committee (3), Chairman (4); Football (2, 3, 4); Student Council (4); Track, Assistant Manager (1), Manager (2).

CLIFFORD JAMES TICHENOR

*Kip*

Football (2, 3, 4); Baseball (2, 3, 4); Treasurer, Junior Class; Chairman, Finance Committee (3); German Club (3); Student Council (4); Fire Committee (4); Traffic Committee (4).

WILLIAM TILLISH

*Tick*

Football (2); Basketball (2, 3); Baseball (3, 4); Junior Night; German Club (4); Senior Play Committee.

LOUISE TILLISH

*Tick*

Commercial Club (2); Civics Committee (2); German Club (4).

RUTH I. TILP

*Moccasin Feet*

G. A. A. (2, 3, 4); German Club (3, 4); Glee Club (3); Aviation Club (3); Junior Night; Basketball (3, 4); Soccer (4); Speedball (4).

ALBERT K. TOBEY

*Al*

Civics Committee (2); Ancient History Play Committee (2); Sophomore Play Committee; Class Football (2, 3, 4); Class Basketball (2, 3, 4); Junior Night Committee; Senior Play; Track (4).

# T H E M I R R O R



## IRA TUCK

French Club (1, 2, 3), Vice-President (4); German Club (1, 2); Science Club (1, 2, 3); Aviation Club (2), Secretary (3); Boys' Civics Committee (2); Physics Laboratory Assistant (4); Junior Prom Refreshment Committee; Junior Night Scenery Committee.

## MASON TURNER

Parnassian (2, 3, 4); Class Football (2, 3, 4); Class Basketball (2, 3, 4); Assistant Manager, Baseball (2); Orchestra (2); Parnassian Plays (3); Junior Night; Track (4).

## DUNCAN VANDERBILT

*Dunc*

Class Football (2); Junior Night Committee; Aviation Club (3); Senior Play Committee.

## CAROLYN VANDERBURG

*Carol*

G. A. A. (2, 3, 4); Commercial Club (3, 4).

## SHIRLEY VAN HOFF

*Sherry*

Monitor (2, 3, 4); Junior Night.

## ELNA VAN HOUTEN

Basketball (2, 3); Soccer (2, 3); Junior Prom; Junior Night; Civics Committee (3); G. A. A. (2, 3, 4); Class Treasury Committee (4).



# C L A S S O F 1 9 3 2



ELSIE E. VARADY

*Bobo*

Commercial Club (3); Monitor (4).

JESSIE A. VASSEY

*Jay*

Glee Club (2, 4); Art Club (2); Commercial Club (3, 4); Junior Night Committee; Senior Play Committee.

ALBERT VOLKMUTH

*Albie*

Baseball (2, 3, 4); German Club (3); Basketball (3); Traffic Committee (4); House and Grounds Committee (4); Senior Play Committee.

LOUISE VOORHEES

Commercial Club (2); G. A. A. (4); Glee Club (4).

ELLEN ROBERTA WAKEFIELD

*Rustie*

Chairman, Home Room Scholarship Committee (2); Costume Committee Junior Night; Junior Chamber of Commerce (3).

WILLIAM C. WALKER, JR.

*Bill*

Science Club (2, 3); Sophomore Play Committee; Class Football (2); Aviation Club (3); Junior Night Shop Committee; Ring and Pin Committee; Civics Committee (4); Class Basketball (4).



ELVA KATHRYN WALLENSTEIN

*Jimmy*

Glee Club (2, 3); Chairman Home Room Program (2); Commercial Club (4).

CHANDLER WASHER

Sophomore Play Properties Committee; Junior Night; Junior Prom Committee.

JOEL WEBER

Monitor (2); Junior Council; Senior Council; Junior Night Committee; Attendance Committee (3); Junior Prom Committee; Senior Play Committee.

DOROTHY WEFERLING

*Dot*

G. A. A. (2); Junior Prom Committee; Junior Night Committee; Junior Night Usher; Aviation Club (4); Art Club (2).

JOHN C. WELLS

Orchestra (3, 4); Band (3, 4); Junior Prom Ticket Committee; Junior Night Chorus; Science Club (4); Aviation Club (4); Senior Play Properties Committee.

EDWARD WESTER

*Ed*

Class Business Committee (2); Junior Night Business Committee; Junior Prom Business Committee; Home Room Business Committee (4).





ROBERT WESTERVELT

*Westy*

Ancient History Play (2); Home Room Chairman (3); Science Club (3); Junior Night (3); Chemistry Laboratory Assistant (4); Senior Play; Swimming Team (4); Assistant Editor, Mirror.

ROBERT WHELAN

*Tubby*

Home Room Chairman (2); Parnassian Society (2, 3), President (4); Parnassian Plays (2, 3); Fire Committee (3, 4); Junior Night Cast; Glee Club Minstrel (3, 4); Senior Play Cast; Manager of Football (4).

ROBERT WHITE

*Bob*

Squad Football (2, 3); Track (2, 3); Attendance Committee (2, 3); Basketball (3); Junior Night Stage Committee; Junior Prom Ticket Committee; Swimming (4); Senior Play Stage Committee.

EDWARD WHITNEY

*Smoke*

Orchestra (2, 3); Junior Night Scenery Committee; Junior Prom Ticket Committee; Senior Play Scenery Committee; Attendance Committee (4); History Play Committee (4); Columbian Literary (4).

HERBERT WILLIAMS

*Herb*

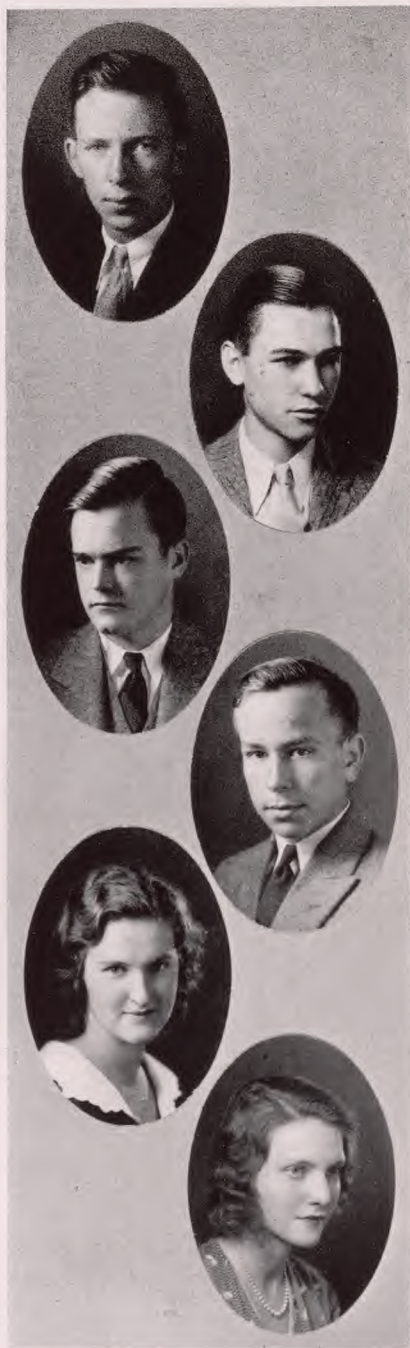
German Club (3, 4); Traffic Committee (4); House and Grounds Committee (4); Monitor (4).

CREEDE WHITE WILSON, JR.

*Whitey*

Football (2, 3, 4); Hockey (3, 4); Tennis (2, 3, 4); Traffic Committee (2); Monitor (2); Fire Committee (3, 4).

# T H E M I R R O R



## BILL WILSON

Boys' Glee Club (2, 4), Secretary (3); Track (2); Ancient History Play (2); Junior Night; Civics Committee (3, 4); Parnassian (3, 4), Basketball (3); Service Orchestra (4).

## FRED WINTER

Senior Play Shop Committee.

## JOHN A. WOODWARD

Aviation Club (2); Attendance Committee Chairman (3); Football Squad (3); Junior Night Properties Committee; Junior Prom Ticket Committee.

## WALTER W. WRIGGINS

### *Perle*

Parnassian Society (2, 3, 4); Class Play (2); Home Room Committee (3); Junior Night; Stage Manager, Senior Play.

## MARY YOUNG

G. A. A. (2, 3, 4); Glee Club (2, 3, 4); Junior Night; Chorus (4); Class Basketball (2, 3, 4); Commercial Club (3, 4); Volley Ball (2, 3).

## DOROTHY ZECHLIN

### *Dot*

G. A. A. (2, 3, 4); Junior Prom Decoration Committee; Junior Night Costume Committee; Junior Class Finance Committee; Senior Play Costume Committee.





FRANCIS ZIEGLER

*Zig*

Football (1, 2, 3, 4); Basketball (2, 3), Captain (4); Baseball (1, 3, 4); Fire Committee (2, 3, 4); Monitor (2, 3, 4); Home Room Chairman (4).

CHARLES HANSEN

Blair Academy (3, 4), entered Columbia in March; Football (3, 4); Vice-President, Chi Epsilon Chi (3, 4); Secretary, Academy Players (4).

BENSON WOODLAND

*Blake*

Blair Academy (1, 2, 3); Football Squad (2, 3, 4); Captain, Insley Basketball (3); Hockey (3); Track Squad (3); Ring Committee (3); Blair Breeze (3); Golf (3); X. E. X.



THE TAYLORS



THE AUSTINS







BIGGEST BLUFF



BEST LOOKING



MOST POPULAR



MOST ATHLETIC



BEST DRESSED



MOST LIKELY  
TO SUCCEED



DONE MOST FOR  
SCHOOL



BIGGEST PULL



WITTIEST



BEST STUDENTS



BIGGEST FLIRTS



BEST ACTORS

## SENIOR CLASS PROPHECY

With a class composed largely of celebrities it is hardly necessary to predict anything but a brilliant future. The world with open arms awaits the debut of such a group. How can the depression continue when such up and coming lads as Bob Taylor and Bob Button step forth to astonish the world? What housewife could possibly resist the force of a salesman such as Carl Hirshberger? What tired business man (he doesn't have to be very tired!) could fail to be intrigued by the superb acting of Polly Samuels, a second Ethel Barrymore.

We fear for the famous Parisienne modistes when our own Jane Austin flaunts her newest creations. We were going to repeat the old adage, "Clothes make the woman", but we aren't quite sure whether it applies in this case. But then brains are not all, especially when we have Peggy Everitt, Miss America, in our midst. Peg will probably be the object of many a young swain's devotion when she co-stars with Bob Croot, "the debutante's delight", in the latest movietone production. Mr. Croot's motto is said to be, "Quality, not quantity".

Knowing Ginny Jacobs's executive ability one can easily understand that the first woman president of the United States had most of her training running Columbia's Civics committee. A certain young gentleman who immigrated from Barringer last year is certainly slated for success, if you call it that. He knows plenty of gossip about the public, and if Winchell dies, Brown will be the first class scandal-monger of America. O Kay! Ed Brown!

It may be an erroneous statement to say that Logan Foley will be a farmer, but we don't know any position that would give him a better chance to throw the bull. We don't consider it a blotch on Logan's character, but we feel that his children will grow weary of hearing what a great guy their father was, and still is, according to Mr. Foley. Besides being noted for his Epicurean tastes concerning the preparation of fried eggs, "Biscuit" Taylor also has a sister, no less outstanding than he, who will either follow in the footsteps of Helen Wills Moody or be the joint-owner of a penthouse. She hasn't quite made up her mind!

Among the men of brawn and speed who grace the halls of Columbia, we find the makings of famous stars. Frannie Ziegler, another Carrideo, Harry Lang, a second Orsi, "Deacon" Price, a Paddock with a southern drawl, and Logan Foley, a new Londos with a voice like Russ Colombo. Dick La Vecchia, Bud Gilpin, Bill Moir, and Herron Halm will make names for themselves in football. Creede Wilson will find his niche in professional hockey, and be all tied up in the holy bonds of matrimony. What do you think, Thayne?

Laverne Clancy, noted for her "toughie" impersonations and ready wit—you may call it that with a slight stretch of the imagination—is expected to be a slight improvement on Ethel Merman. Bob Westervelt and Bob Whelan, who are well-known in Columbia for their acting, are expected to reach the heights of stardom in the future, and Jack Rumble, a local wit, seems to have a lean toward either hog-calling or radio announcing. Colin Hecox and Jim Conkling, the two human calioes, seem to have



all the requirements for a couple of swell glass-blowers. We won't limit their profession to this, but we venture to say that they'll make a success of any job where lots of air is needed, hot, compressed, or otherwise.

Who would guess the talents hidden under Betty Storey's quiet demeanor? Some day she will make a name for herself in the field of designing. Betty's boon companion, Barbara Muellbeurger, has already started on the path to be a psychologist, in which she is to gain distinction. Her friends have tried to persuade her to choose the opera for her final goal, but she still clings to her original ambition.

"Purged in the holocaust of a great love, he will wander into the sunset, a wiser man". This might be said about Bing Barnes, who, when he shakes off the anguish of youth's shattered dream, will turn into a business man of no small importance. Earl Carroll will have a successor in Clinton Phelps, who, according to rumor, has acquired some of the necessary experiences in and about Columbia.

Looking into the future with the proverbial rose-tinted glasses is somewhat precarious, but we venture to prophesy with all veracity that: (1) Miss Ackerman will reach some definite conclusion pertaining to the eighteenth amendment and will have a more perfect control of her temper due to contact with a more humble class; (2) The bushes along Parker Avenue will have an increase in density so as to offer an excellent ambush for Mr. Crehan, from which he may pounce on intrepid loafers; (3) Miss Nichols will discover what she terms—to coin a new expression—a "well-rounded sentence"; (4) Miss Vale will find a student who never disturbs her equanimity; (5) Mrs. Gray will find another to replace the inevitable Jack Rumble.

For all teachers and seniors who have not been singled out for special mention in this document, may it be said that much is expected of them. Very likely the wheel of fate will make its ironical turn for them—some who are so famous now will disappear into the limbo of oblivion, others, yet unheard of, will one day make the sun seem dull by their brilliance.

## THE WILL OF THE CLASS OF 1932

Everyone knows by this time that a state of depression descended on the world this year. We of the senior class have suffered with the rest, but we have been led, by that spirit of giving, to "carry on", and so this document marks our last will and testament. We hereby revoke all other wills and bequests that might have been made before the setting down of these momentous bequests.

As a class we bequeath:

- ITEM: To Miss Smith, gratitude we can but poorly express for her sympathetic guidance during these years.
- ITEM: To the school, space for a new senior class.
- ITEM: To Mr. Threlkeld, a lasting impression of the cream of the youth of today.
- ITEM: To Mr. Parsons, the finest of Angora cat fur to replace the mangy skin of an under-nourished alley-cat that now drapes the lab. desk of good old 314.
- ITEM: To Mr. Erickson, the fresh air of heaven—let's see what he can do to that.
- ITEM: To Mr. Jackson, a bottle of strong and effective liniment to ease the stiff neck he is going to have this summer. It seems Mr. Jackson has the habit of shaking a warning head to loquacious students.
- ITEM: To Miss Tollefson, our appreciation of her excellent coaching of the "Copperhead".
- ITEM: To Miss Paine, a senior English class endowed with originality in expression (wisecracks to you), literary appreciation, and ability to produce a finished piece of work.
- ITEM: To the fairer and weaker members of the faculty we hereby give them permission to use any of our wisecracks and "boners" (if any of the latter can be found) for publication. However, we stipulate that any monetary gain that might have been made in this end must be used to pay for the services of a faculty basketball coach. This stipulation is made in the hope that these young ladies might offer suitable opposition to next year's senior girls' basketball team.
- ITEM: To the male basketball players of our esteemed faculty we bequeath chairs, stools, or benches without seats in them, so that these court stars of yesteryear might sit comfortably next year after the Varsity-Faculty basketball game.
- ITEM: To Miss Wilcox, an enlarged library with a batch of tables big enough to provide each and every student with solitary confinement.
- ITEM: To Miss Caswell, our sincerest hopes that by her untiring and diligent labors she may succeed in graduating the class of '33.
- ITEM: To Miss Memory and Mr. Currier we bequeath our heartiest congratulations. They and only they had the intestinal fortitude to withstand the telling effects of our brilliant puns and jokes and to retaliate with (alas and alack! we must admit it!) better cracks than our very own!
- ITEM: To Mr. Marvel, a leather vest with pockets that can stand the pressure of those awesome thumbs.



# C L A S S O F 1 9 3 2

- ITEM: To Mrs. Gray, one copy of the latest edition of Fanny Farmer's cook book. To go along with this we bequeath Mr. Gray a cast-iron stomach as a defensive measure.
- ITEM: To Miss Nichols, plenty of commas, periods, question marks, apostrophes, colons, semi-colons, and exclamation points, to enable her to make more perfect sentences in her alphabet soup.
- ITEM: To Mr. Sterling, either of the following: (1) 18 pairs of DeLuxe ball "barrion" roller skates, or (2) free use of Greenland's icy mountains—(my, my, what that man could do with a mountain of ice!).
- ITEM: To Don Kepler and Jack Creelman, we bequeath some fertilizer and grass seed in case they make another attempt at raising "mushtashes".
- ITEM: To Logan Foley, we bequeath a flit gun to spray his vocal chords.
- ITEM: To Peggy Pierce, we bequeath a hairnet—a strong hairnet—a horsehair-net, to keep that hair "up". Better still some hair to put up.
- ITEM: To Bill Moir we bequeath a corset with which to pull himself together.
- ITEM: To Francis Patton we bequeath a bicycle—a tandem at that—to get himself and his O. A. O. to and from classes.
- ITEM: To each of the future Einsteins and Einsteinesses, Messrs. Pierce, Koegler, Hoppock, and Misses Sherwood and Thompson, we bequeath a nice neat shingle inscribed as follows: "Brains cleared, remodeled, and enlarged". One such shingle posted in, near, or around Columbia would bring a wealth of business to its owner.
- ITEM: To Harry Lang, we bequeath a net to go with his hook, line and sinker. Careful, girls, this new addition will make Harry the perfect little devil!

Individually we bequeath:

- ITEM: I, Bob Taylor, bequeath to any unfortunate who wishes to acquire it, my profound ability to garner real haircuts and a neat booklet entitled, "Hair Mattresses, and How to Make One Cheaply and Quickly".
- ITEM: I, Bud Larbig, bequeath my knack for bowling over the fair damsels to Bob Patton who needs it.
- ITEM: I, Betty Taylor, gum-chewer supreme, bequeath to posterity, a collection of my very best wads of gum as a distinct achievement.
- ITEM: I, William Beidelman, bequeath all my secrets to my outstanding success as an athlete ne plus ultra to Carl Klemp, whose physique needs only my finesse and grace to develop into one of the finest on record.
- ITEM: I, Polly Samuels, bequeath my position of inspiration to men to Thayle Landers.
- ITEM: I, Jack Rumble, the wit (at least I'm half right), bequeath all I know about making announcements to someone who knows nothing whatsoever about them. Perhaps he (or it could be a she) will appreciate my talent.
- ITEM: I, Connie Baker, bequeath my role of class flirt to any blushing maiden of the junior class who might feel the need of my cute little tricks.

IN WITNESS WHEREOF, we herewith subscribe our name and seal, and publish and decree this to be our last will and testament on this first day of June, in the year of our Lord, one thousand, nine hundred and thirty-two.

THE CLASS OF 1932.

Sworn and subscribed to before me this first day of June, in the year of our Lord, one thousand, nine hundred and thirty-two.

J. RICHMOND RUMBLE,  
Legal Adviser to the Class of '32.

# T H E M I R R O R



## SENIOR BALLYHOO







# CLASSES

1933 1934-







## POST GRADUATES

The post graduate group of 1931-32 has been the largest in the history of Columbia. Why, we don't know. But, at any rate, it is perfectly certain that every member of this class, with an enrollment of 38, has done his share in making the past school year so successful.

The P. G.'s of whom Charles Annette was the chairman, Donald Kepler the vice-chairman, and Carol Stone the secretary, deserve much credit for the successful Thanksgiving program they presented. True, you might say that it is traditional in Columbia for this group to take charge of arrangements for the Thanksgiving assemblies. But here's the unusual side of the question. They did it all without assistance of any kind. It is upon that fact that they are to be complimented. The program went over beautifully, and many needy people were benefited by it.

Now we must mention the banquet the P. G.'s gave in honor of their classmates of last year. That also turned out to be a huge success; and although we ourselves were not in on the fun, we can surely appreciate the pleasure and good fellowship that reigned on that eventful evening. Those of this year's seniors who are contemplating taking a post graduate course, certainly have an example worthy of following.

# T H E M I R R O R



JUNIOR CLASS COUNCIL



MISS ANNA B. CASWELL  
*Junior Class Guide*



FRED GUERIN  
*Junior Class President*



## THE JUNIOR CLASS DURING 1931-'32

Juniors occupy a rather unique position in school life at Columbia. Not only are they expected to live up to the records of their predecessors in both scholastic and extra-curricular activities, but they are also obliged to carry out two time-honored traditions, Junior Prom and Junior Night, and to try to make them even better than the performances given by preceding classes.

In trying to show what Juniors have done and accomplished in the school year of 1931-'32, let us consider first the field of athletics. With Roy Cooper, Howie Buck, and John Long, all three-sport men, most notable, the class has filled positions on every varsity team representing Columbia, while many others have gained valuable experience playing on the junior varsity and squad teams. Certainly coaches may look forward to a good year for sports when school rolls around again next September, with the many athletes from the Junior Class forming the nucleus of their teams.

Juniors may also boast of a large membership in other extra-curricular activities, such as the Parnassian, French Club, German Club, Glee Club, Art Club, and the Columbian. In dramatics Mont Pike and Edward Young may well compare with other stage luminaries of the past, while the school publication does not lack for talent with Janet German, Paul Olson, Bill Rathbun, Bob Buehler, and Mildred Ringel on its staff.

Junior Night and the Prom were the usual grand successes and lived up to their titles of being the "best ever." Both were the result of a great amount of time and labor and were exceedingly well-planned and executed entertainments. For the former, a pre-Junior Night committee was picked, headed by Homer Page, which chose the plays to be given and outlined the program of dances and other specialties. Then committees were chosen for stage work, scenery, lighting, and programs. The result was a gay and colorful evening for a very appreciative audience. The same procedure was carried out in preparing for the Prom, and to the strains of Ben Burrough's orchestra, Columbia's students enjoyed their big social event of the year.

It would be unfair to close this article without mentioning the splendid leadership exercised by the class officers and the Junior Council in discharging their duties so ably and willingly. All success which the Junior Class may have enjoyed this past year is due to them, and also to Miss Caswell, whose sagacious council has made this year a memorable one for every Junior.

RICHARD NEIBLING, '33.







CLEMENTINE  
KNOWS HER STUFF  
IS SHE COLD!  
TO HER WILL ALL  
THE BOYS SHE  
DOTH MOLD  
THERE IS NAUGHT  
YOU HAVE MISSED  
IF BY HER YOU'VE  
BEEN KISSED  
ON HER STYLE ALL  
THE LADDIES  
ARE SOLD



BILL PARASIL  
AN ARMOROUS SWAIN  
LOVES THE GIRLS -  
MANY HEARTS HE  
HAS BLAIN.  
BUT HE FOUND HE  
WAS WRONG  
WHEN HE SANG HIS  
LOVE SONG -  
TO CLEMENTINE SMITH,  
THE UNTAMED.



HERE'S A YOUNG FELLOW  
NAMED EDDIE  
WHO FOR A SWIM ALWAYS  
WAS READY  
JUST GAZE AT HIS GARB  
DONT YOU THINK ITS A DARE  
ONE GLANCE MAKES YOUR  
NERVES QUITE UNSTEADY



ALEXANDER'S  
RAG-TIME  
BAND

A  
COLUMBIA  
SUPPORTER



FOREST LELAND'S A  
TRACK MAN RENOWNED  
ON HIS MERITS WE  
LOVE TO EXPOUND  
BUT HIS HEAD'S  
BEEN AWHIRL  
BECAUSE THAT CERTAIN  
GIRL  
HAS HIM TRAILING  
ABOUT LIKE A HOUND







## THE HISTORY OF THE SOPHOMORE CLASS

Our High School is divided into three parts: one of which is called the Seniors; another the Juniors; and the third those who are called, in their own language, Paragons, in ours, Sophomores. All of these differ among themselves in customs, mannerisms, and general outlook. The Seniors are bounded on one side by the deep pitfalls of life, on the other by the Juniors; the Juniors are entirely surrounded by the Seniors and the Sophomores, while the Sophomores face towards the east.

Of these, the most intelligent and the bravest are the Sophomores. In September, 1931, this tribe made a grand invasion of High School from their own territories of South Orange and Maplewood. Undaunted at their strange conditions, the noble Sophomores scored several sweeping triumphs even as early as October. Led by the two gallant chieftains, Jack Hoppock and Beverly Smith, the Sophomores charged up and down to glory on the football field. The assault on the hockey team, with Paul Finley's brilliant individual dashes the feature, was vigorous. The women of the tribe proved themselves as brave battlers as the men with their successive victories over the Juniors and Seniors in soccer.



MISS CAMILLA LOW  
*Sophomore Class Guide*

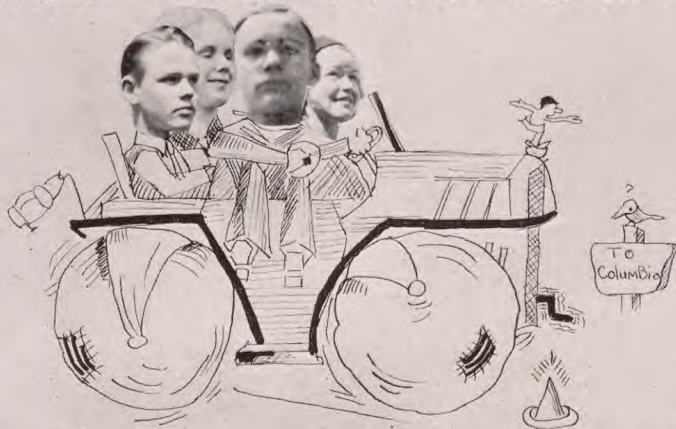
In the more intellectual pursuits, too, they demonstrated their superiority. Ten sturdy Sophomores successfully besieged the Parnassian Club. Nine of them gained admittance to the bulwarks of the Creative Writing Club, boasted well-nigh impregnable. Sixteen forced an entrance into the French Club. On the battle field of the Columbian activity, the Sophomores, led by Robert Burns, whose cartoons proved master strategems, and Harry Welker, brilliant interviewer, again emerged victorious. The crowning triumph came later in Assembly, December 4th. The attack, a play, "Rich Man, Poor Man", planned by the Sophomore Dramatic Club, under the leadership of Edward Padula, Dan Decker, and Mary Lou Dull, completely annihilated the foe.

The Sophomores have already made great advances towards their goal, supremacy over all High School. Youth is theirs, intelligence, courage, manliness. They are blessed with opportunities without end. They will go on from victory to victory until the forces of all High School are at their feet.

JULIUS CAESAR  
(Alias David Furman)

# THE NEW PUICK

AXE THE MAN WHO OWNS ONE



Mr and Mrs Jack Hoppock & Mr and Mrs RALPH Slutz

## SIMPLIFIED FREE WHEELING

Leaves Both arms Free For Other Purposes (Ask L Redpath)

## SILENT STYNKO-MESS SHIFT

Four Forward Speeds 1-1½-2 & 4 hours per mile

SIXTY HOARSEPURR AUTOMATIC CRUTCH

'THE CAR YOU HONE TO OWN'

EXHIBIT-VELT









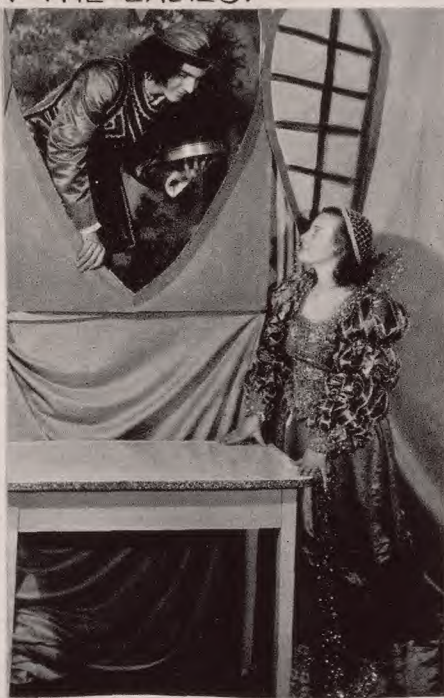
## PARNASSIAN PLAYS



"SHALL WE JOIN THE LADIES?"



"THE ARTIST"



"THE KNAVE OF HEARTS"







## THE SENIOR PLAY

The senior class of 1932 presented on the evening of November 21, "The Copperhead", by Augustus Thomas.

This play was of a serious nature, and far more difficult than those usually attempted by amateurs.

The plot, which was one of high idealism, portrayed against a Civil War background, told a stirring story.

Ralph Earl, as Milt Shanks, the misunderstood but loyal patriot, gave a splendid performance. Elizabeth Dix as Grandma Perley and Dorothy Stuart as Mrs. Shanks, enacted their roles with stellar ability. Playing other important parts were Jack Crowley and David Hoppock as Union officers, and Bob Westervelt as Joey, the heroic boy who sacrifices his life that the Union might live. Neighborly solicitude was gracefully proffered by Virginia Jacobs as Mrs. Bates, while Peggy Pierce was the excitable little girl, Sue Perley. It was in this play that Edwin Davenport earned the title, "Deacon".

Bradley Potter, Jack Sandford, Junior O'Donnel, Fred Stobaeus, Everitt Bensel, Marco Soto, Spencer Border, Charles Bubenheim, Frank Cartwright, and Bill Hall provided the martial atmosphere. The villain of the play, Lem Tallard, was most capably impersonated by Jack Rumble.

In the second epoch, about thirty years later, we find Polly Samuels as Milt Shank's granddaughter, and Bob Whelan as Philip Manning, furnishing the romance, although Jim Conkling as a rival suitor, Dr. Randall, and Jean Rubright as Philip Manning's mother, rendered effective hindrance to the path of true love.





## SOPHOMORE PLAY

One of the school's societies which has gained increasing prominence in the last few years is the Sophomore Dramatic Club, which features each year one major production. This year, in an attempt to outdo previous performances, the club presented in assembly on March 4th an operetta, "Tulip Time in Holland."

The place of this operetta, as you may have surmised from the title, was in Osen-darf, Holland, and the time was during the annual tulip celebration. A Dutch love story was the theme of the play, seconded in interest by a high-handed robbery of some tulip bulbs. The sophomores surely gave a fine portrayal of how tulip bulbs are stolen and how love is made in the dear old Netherlands. There were nice American boys, and lovely Dutch damsels in the operetta, and charming little flower girls who alone would have made the play highly interesting. Especially good were the clever dance routines, large singing choruses, and solo parts, all of which made the program a huge success.

The entire club, either by actual participation or committee work, assisted in staging this play, which was produced under the sponsorship of Miss Alexander.

Having seen such a splendid example of sophomore talent, the entire school indeed is eager for, and anticipates with much pleasure, the future programs to be presented by this organization.





## THE ELECTRICAL COMMITTEE

The Electrical Committee renders valuable service to Columbia High School. The members take charge of switchboard, slide projector, and spotlight for all regular assembly programs. When a club requires lighting effects for a program, it applies to Mr. Parsons, the sponsor of the committee, who then assigns certain members of the committee to take over the electrical work for that program.

The committee is in charge of the most modern type of remote control pre-set switchboard, which controls the distribution of over 60,000 watts. It embodies 25 relays, 81 selector switches, two pre-sets, and two sub-mains.

The committee also operates a duplex dissolving slide projector and motor-generator operated arc spot lights. This equipment is supplemented by a generous number of small spot and flood lights. A special telephone communication system aids in the coordination of lighting effects for dramatic productions.

The committee is composed of two representatives from each class so that well-experienced members are always at the head of the organization. This year's personnel includes the following: Edward Ellis and Clark O. Bartlett, seniors; Robert Wepler and Frederick Strassner, juniors; Edward Jacobson and William Silleck, sophomores. Chandler Bellows, a post graduate, is also on the committee.



## OUTSTANDING ASSEMBLIES



EDWIN MARKHAM, POET

One of the most interesting and unusual assembly programs this year occurred when we were honored by the presence of Edwin Markham, the famous American poet. After a fascinating address to the school, this venerable gentleman concluded by reading his well-known poem written in honor of Lincoln. This entertaining and beneficial opportunity was enjoyed by everyone.

"The Rat Trap Murder Mystery", by Z. Mont Pyke, was produced in the auditorium on November 13th. This play was presented by Room 311, and as a thrilling melodrama, it offered much enjoyment to the entire audience.

"Across the Breakfast Table", a modern one-act comedy, was presented in assembly, January 15th, by Room 323, a junior home room. One of its members, David Timmons, was the author of the play which amusingly portrayed the troubles and disagreements of a modern family.

The Boys' Glee Club again came through, when it presented an old-fashioned minstrel show in assembly on January 29th. The music was good, the jokes were funny, and the program was a huge success.

In commemoration of the Bi-Centennial of Washington's birth, a play was written and presented by the U. S. History students of the school. The play paid tribute to a great man and was a great success.

On April 8th, members of Miss Paine's fourth year English class presented a play, "Captain of the Gate". The plot was historical and dealt with the days of Cromwell. The program was a success and pleased everyone.

As an annual feature in the school's entertainment comes the post-graduate play presented by this class and coached by a member of the faculty. This year the event occurred in assembly on April 22nd, and without doubt easily equalled the record of excellency set for it by former post-graduate classes. The choice of play was Booth Tarkington's "The Trysting Place", which was coached by Miss Genthner and which was, of course, a presentation set forth with the usual *savoir faire* of the "P. G.'s".

Mr. Gnagey's first period junior English class presented a one-act play entitled, "Cupid's Telegrams", written by a member of the class, in assembly on June 12th. The play was a modern problem play, a comedy. Nearly every member of the class participated in some phase of its production.

On June 3rd the Assembly Committee presented a program, the purpose of which was to review all activities and entertainments in which students participated throughout the year. The presentation which was furnished with a musical accompaniment included both motion pictures and slides of sports, plays, and class activities. A motion picture reel of the charity football games featured the program.











## THE SCHOOL COUNCIL

The School Council is composed of one representative from each home room, the chairmen of the nine standing committees, the officers and representative of the faculty. Once a month is held a regular meeting at which committee reports are read, old and new business is transacted, and suggestions made to the home room chairmen in regard to the functions of the student body. Special meetings are sometimes called to consider urgent matters.

It is the duty of the home room chairman to keep the members of his home room informed of what takes place in the council meetings, and to act as their spokesman in the council for any matter which the home room as a whole may wish to be brought up.

Each year a Council Induction Ceremony is held, at which the members and officers of the council are presented to the student body. The members then make the following pledge: "I, a member of the School Council of Columbia High School, do pledge myself to support the rules and regulations of the school, to further the spirit of Columbia, and to help the members of the school to become sturdy, righteous citizens inspired by the ideal of unselfish service."

Officers: President, Robert Taylor; Vice-president, Virginia Jacobs; Secretary, Jane Austin; Treasurer, Jack Crowley.

Standing Committee Chairmen: Assembly, Marguerite Colie; Eligibility, David Hoppock; Civics, Virginia Jacobs; Traffic, John Rumble; Social, Virginia Stanley; Elections, Kenneth Philcox; Finance, Jack Crowley; Fire, John Goodell; House and Grounds, John Price; Lunch Room Control, Tom Thorpe; Traditions, Carolyn Keyes.



# T H E M I R R O R

---



## THE MIRROR

Dear Reader:

We, the Staff of the 1932 Mirror, take great pleasure in presenting to you this traditional senior class project. Although we can't take time to mention every editor of the different departments, and all the assistants of each, you all know, probably most of you by experience, that every member in every organization works, and works hard. That is sufficient.

Our aim has been to reflect, as accurately as possible, a clear picture of life in Columbia. With that end in view, we have attempted to make this book representative of every sport, club, class, and other organization in the school, and we have also portrayed the outstanding social and dramatic events, with write-ups and pictures of each.

In addition, scattered throughout these pages, you will discover the fruit of the labor of our student photographers. By their persistence you have been provided with photographs of your classmates in their most characteristic attitudes, and, when your life in Columbia has long been but a memory, by just glancing over the many snapshots of the school and your friends, you can actually be, once more, the high school student of 1931-32.

Such has been our aim, such will be your gain.

Sincerely,  
THE STAFF.





## THE COLUMBIAN

"The Columbian", news organ of Columbia High School, is completing its seventeenth year in its present form. Although established as a magazine in 1910, "The Columbian" did not become a newspaper until 1915. From that time until now, it has had a steady increase in size, circulation, and power as an organization.

Fifteen regular issues with occasional feature supplements are now printed at intervals of approximately two weeks.

"The Columbian" offers a chance to learn by experience and instruction both the literary and business ends of journalism.

The literary staff tries to cover thoroughly all the news of the school, and to bring before the student body, through the editorial page, any problem confronting the school. In the regular Monday staff meetings, the new members are segregated from the veterans of last year. While the inexperienced reporters are being taught the elements of journalistic writing, the older members under the direction of Miss Janet German, editor-in-chief, do the more advanced work of headline writing, proof reading, and make-up.

The business staff, whose duty it is to finance the paper, has made "The Columbian" a self-supporting organization. Carl Hirschberger is the business manager, and Miss Marjorie McFarland is faculty sponsor.









## THE PARNASSIAN SOCIETY

The dramatic organization of Columbia, the Parnassian Society, is engaged in a most active year. The Parnassian strives to serve the school by producing entertaining dramas, and none can say that it has not fully lived up to that purpose during the last school year.

The Parnassian also promotes the social side of life at Columbia. Interesting meetings, which include business, entertainment, and refreshments, are held every two weeks. A Hallowe'en dance was held in the fall.

Four assemblies were entertained by the Parnassian Society this year. In the autumn, "Judge Lynch", a drama of southern mountaineer life, was presented for the approval of the student body. Later on, "The Doctor of Lonesome Folk" brought the spirit of Christmas into Columbia. In January, "Green Chartreuse", a short thriller, and "The Golf Ball Cupid", a motion picture, acted and entirely filmed and produced by the society, were produced. A fourth play was given in an assembly in the spring.

The Parnassian Public Plays were, as usual, the features of the year. Four plays, "The Artist", by A. A. Milne, "The Knave of Hearts", by Louise Saunders, "The Short Cut", by Percivale Wilde, and "Shall We Join the Ladies?", by Sir James Barrie, were presented. The productions proved the worth of many actors of promise.

Much of the credit for the success of the Society is due to Miss Mildred Memory, Mrs. Martha Gray, and Mr. James Havey, the sponsors.

The officers are: President, Robert Whelan; vice-president, Homer Page; secretary, Helen Oswald; and treasurer, James Conkling.





## LE CERCLE FRANCAIS

The French Club is one of the oldest and most interesting clubs in the school. It was started 24 years ago by a petition of 30 students. Its membership is limited to one hundred students now.

At the first meeting of the French Club a French talk was given on education in France, showing in what way the French methods of instruction differ from our own. Miss Carrigan, who has just returned to Columbia after spending a year at the Sorbonne in Paris, gave the talk.

One meeting was held in the gym, where students vied with one another in competitive French games. The students also learned to play bridge in French. (We think that this has great possibilities; think of the wonderful alibis that can be based on lingual misunderstanding.)

On November 12th the annual dance was held in the cafeteria. The room was attractively decorated with evergreens and French war-posters to represent a café in France after the signing of the Armistice. Sixteen girls, dressed as Salvation Army lassies, served cider and doughnuts to an enthusiastic group of over 200. Music was furnished by the Service Orchestra.

The French Club also had the pleasure of hearing several interesting speakers. Some of the meetings were devoted to dramatics.

Alors, on peut dire que cette année était bien pleine des choses amusantes et instructives.





## DER DEUTSCH VEREIN

The German Club had a most successful year. The membership has never been larger nor has the interest ever been keener. The usual Kaffee Klatsch was held at the first meeting. This, to you, is a tea-party, where one drinks coffee and talks. At this meeting Miss Kingston, a student at the University of Hamburg, told of her experiences in Germany. One of the intellectuals among the members told the club about the part played by German youths in the struggle between the Hittlerites and the Communists.

At Christmas time a truly German party was held. The spirit was so German, in fact, that you expected the students to talk with an accent. The club sang German Christmas carols around a tree, played charades and German games, and, best of all, ate real German Christmas cakes.

On February 12th the ever-popular "Schnitzelbank" was interpreted and a one-act comedy was presented.

Later in the year, Schiller's drama, "William Tell", was studied by these German enthusiasts. Having completed its study, the club went to the Metropolitan Opera House and saw this play enacted by the famous singers. The overture, the ballets, the fine choral work, and the gorgeous scenic effects made a great impression on those attending the opera for the first time. After the opera the club took a Cook's tour through the foyers and to the boxes.

Being a student has advantages. The Little Theatre has been showing German pictures, to which the members of the club are admitted by showing student tickets. This plan has offered an excellent opportunity to hear native German spoken.





## THE SCIENCE CLUB

The Science Club continued its activities during the school year of 1931-'32 with its customary meetings and assembly programs. The club strives to foster the knowledge of science, not only among its members but also among the entire student body. To accomplish this purpose several of the meetings at which very interesting experiments were demonstrated were open to the public and two assembly programs were sponsored.

Many interesting and sometimes puzzling demonstrations of the wonders of science have been shown at the fortnightly meetings. The subjects have covered physics, chemistry, radio, and inventions. Among the devices shown and operated by the members were the recording and playing of phonograph records made by members, the demonstration and use of licensed radio transmitters, hearing without sound, and delayed speech. Motion pictures on scientific subjects were shown at several of the meetings.

In an assembly program presented in December a motion picture, "Thomas Edison, the Benefactor" was shown. After that Mr. Lester Cummins of General Electric spoke on "The Development of the Electric Light" and demonstrated several interesting devices involving lights and lighting.

Another assembly in the spring was devoted to the demonstration of some of the wonders which had been worked out during meetings.

Miss Allene Markham replaced Mr. Parsons as faculty adviser of the club this year. Ted Ellis was president, John Quinn vice-president, Robert Baunach secretary, and George Burr treasurer.





## THE ART CLUB

The purpose of the Art Club is to further an interest in art among the students, and to give them a chance to work freely in any line they desire. The only qualification for membership is an interest in art; no previous training is necessary.

The Art Club, which meets twice a month, started its work this year by life-drawing. A member of the club was asked to pose and the other members drew her according to their individual impressions. The time was limited. Afterward, the best drawing was awarded a prize. Other prizes were given to the most humorous drawing, to the most life-like, and to the one with the best color effect.

There have been general discussions of various kinds of art in industry. The topics of discussion have been furniture, clothing, jewelry, books, lighting fixtures, and other manufactured goods that require design.

In the middle of the school year the club sponsored an assembly program. Mr. Chapman, the speaker, gave an interesting demonstration of the mechanics of picture-making.

The members of the Art Club have always been ready to coöperate with other clubs and organizations in providing scenery painting and costume designing.

The officers for this year were: President, Eleanor Lunn; vice-president, Marie Poh; secretary, Martha Fraser; treasurer, Betty Sweet. A great deal of credit for the successful year should be given to the club's sponsor, Miss Wheeler.





## THE AVIATION CLUB

Was the success of Charles A. Lindbergh hastened in any way by such a thoroughly modern method of promoting interest in aeronautics as the Aviation Club of Columbia High School? No, and yet his fame is world-wide; he is one of our international heroes.

Reflect upon the above statement for a moment and you will not be long in reaching the conclusion that with the coöperation of the sponsors and officers of this club at least one or two of the young aeronautic enthusiasts of Columbia undoubtedly will attain as great if not greater fame than that of Lindbergh himself.

By the flights taken in both closed and open planes, by the benefits derived from trips to the Aviation Show in New York, and by the knowledge gained in hearing various speakers, its members greatly enriched their background in aviation.

At the meetings, which are held twice a month, much pleasure and benefit are derived not only from the addresses given by various well-known aviators and from moving pictures, but also from the members themselves, who discuss the branch of aviation in which they are particularly interested, and who at times demonstrate the models they themselves have designed and constructed.

Each spring the club sponsors an aviation meet in which the pupils from the Junior Highs are permitted to compete. Then, too, it gives an annual assembly program, this year's consisting of a moving picture on the Akron, the world's largest dirigible.

Although the Aviation Club is not among the older organizations in the school, it is rapidly growing up and taking an important place in Columbia activities.





## THE COMMERCIAL CLUB

What could be more encouraging in this time of depression than to see a group of high school students as eager to enlarge their business knowledge and experience as the members of the Commercial Club are?

Although this club has been organized only for two years, it has nevertheless already become a success and a well-known organization. Like every other extra-curricular activity, it has certain aims.

Of course the most interesting and profitable way of accomplishing these aims, which are to further a commercial interest among the members and to increase their professional knowledge, is to secure speakers experienced in affairs of the business world, who will address the club at its meetings which are held once a month. Sometimes these speakers give demonstrations on the various commercial machines, and sometimes they discuss such subjects as what employers expect of their employees. Always, however, they are well worth hearing.

In contemplating the motives underlying the origin of the club, we cannot help wondering whether by chance there was not somewhere deep within its founders a vague premonition of the depression to come, and a resulting instinct to prepare for the worst. Whether we are correct in our suppositions is unknown, but, at any rate, it is certain that with the rapid growth of the Commercial Club, its members will be better prepared to meet the situations arising in times of depression or prosperity.





## THE SOPHOMORE DRAMATIC CLUB

The Sophomore Dramatic Club is a comparatively new organization in the school. It aims to further dramatic ability in the sophomore class, to create an interest in modern drama in all its phases, and to give an opportunity to the sophomores to have a club all their own.

This year its initial presentation was a one-act farce entitled "Rich Man, Poor Man," by Bertha Burnel.

In the beginning of the second semester the club produced "Playing the Game," a play written by the president of the club, Edward Padula.

Later in the year the club presented an operetta which gave every member an opportunity to participate. A novel presentation of a two-act play was also given. The club's talent made its final showing in a one-act play late in the spring.

This club not only offers opportunities for prospective actors and actresses, but also provides opportunities for those interested in the stage techniques. Assisting the production of the club's various dramatic showings are the make-up committee, the lighting, painting, and scenery committees, the shop committee, and the costume designing committee.

The club is certainly to be congratulated for its wide range of interest and for its abundant activity throughout the year.



## THE MUSIC DEPARTMENT

The music organizations of Columbia purpose to give each student, according to his ability, the opportunity to participate in the school life through music.

The orchestra, band, glee clubs, and service orchestra, are open to all students. Certain credit is granted toward graduation in these applied music courses.

The largest opportunities for participation in the school's activities through music are in the Christmas and Armistice Day programs, a community concert each year, and the assembly programs.

The Memorial Day program, sponsored jointly by the Board of Education and the patriotic organizations of the community, affords a unique opportunity for the music and dramatic organizations to combine their best array of talent.

Students are urged to try out for membership in the music organizations not only for the benefits in skill and experience which accrue to themselves, but also for the opportunity thus offered to them to bring credit to their school.



ORCHESTRA

T H E M I R R O R

---



BOYS' GLEE CLUB



GIRLS' GLEE CLUB



C L A S S O F 1 9 3 2



BAND



SERVICE ORCHESTRA

# T H E M I R R O R



FACULTY PLAY



FACULTY SNAPS





# ATHLETICS



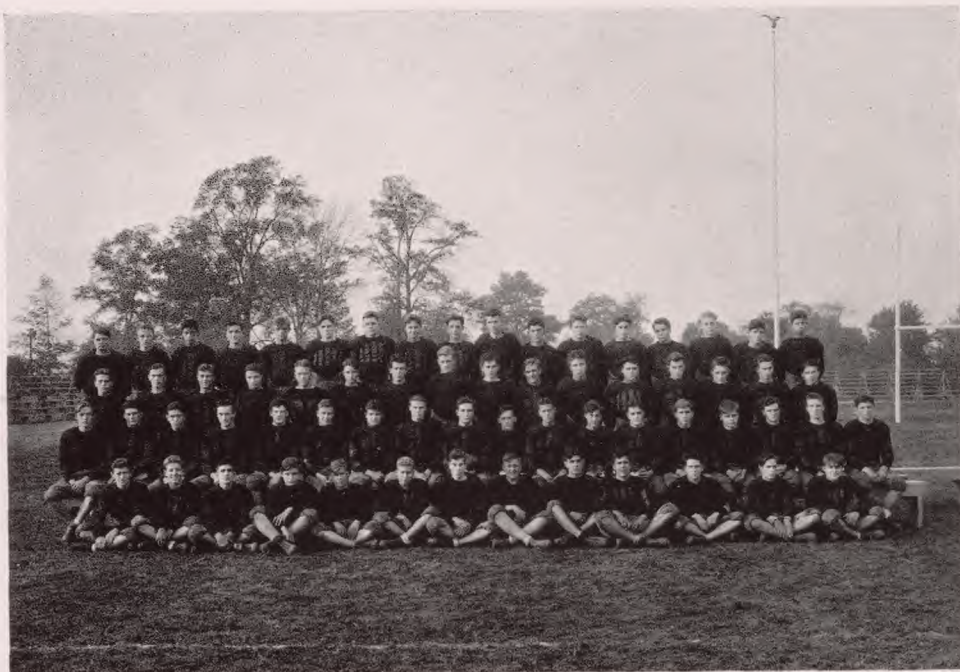




### FOOTBALL

COLUMBIA	—	12	MORRISTOWN	0
COLUMBIA	—	52	ORANGE	0
COLUMBIA	—	0	WESTFIELD	19
COLUMBIA	—	0	MONTCLAIR	0
COLUMBIA	—	20	NEW BRUNSWICK	0
COLUMBIA	—	7	EAST ORANGE	6
COLUMBIA	—	0	WEST ORANGE	18

IN THE POST SEASON CHARITY GAMES  
COLUMBIA WON FROM EAST ORANGE  
AND LOST TO WEST ORANGE



## FOOTBALL

The Columbia High football season was fairly successful. Columbia started out with a green line with the exception of Captain Harry Lang, although the backfield was a veteran one which reached its peak against Orange.

Frannie Ziegler, quarterback, was the team's star; his all-around play gained him wide recognition. Bud Larbig was a fine blocking back, Bob Croot excelled in end runs, and Roy Cooper, John Lang, and Spencer Borden performed with merit.

In the line Bax Patton, center, a newcomer from Columbus, Ohio, was outstanding. The rest of the line, composed of Herron Halm, Logan Foley, Bill Moir, Bob Taylor, guards, and Fred Hendershot, Red LaBeaume, Bud Philcox, Ed Vogeler, tackles, and Harry Lang, Howie Secor, Howie Buck, ends, and Bud Gilpin, center, was effective.

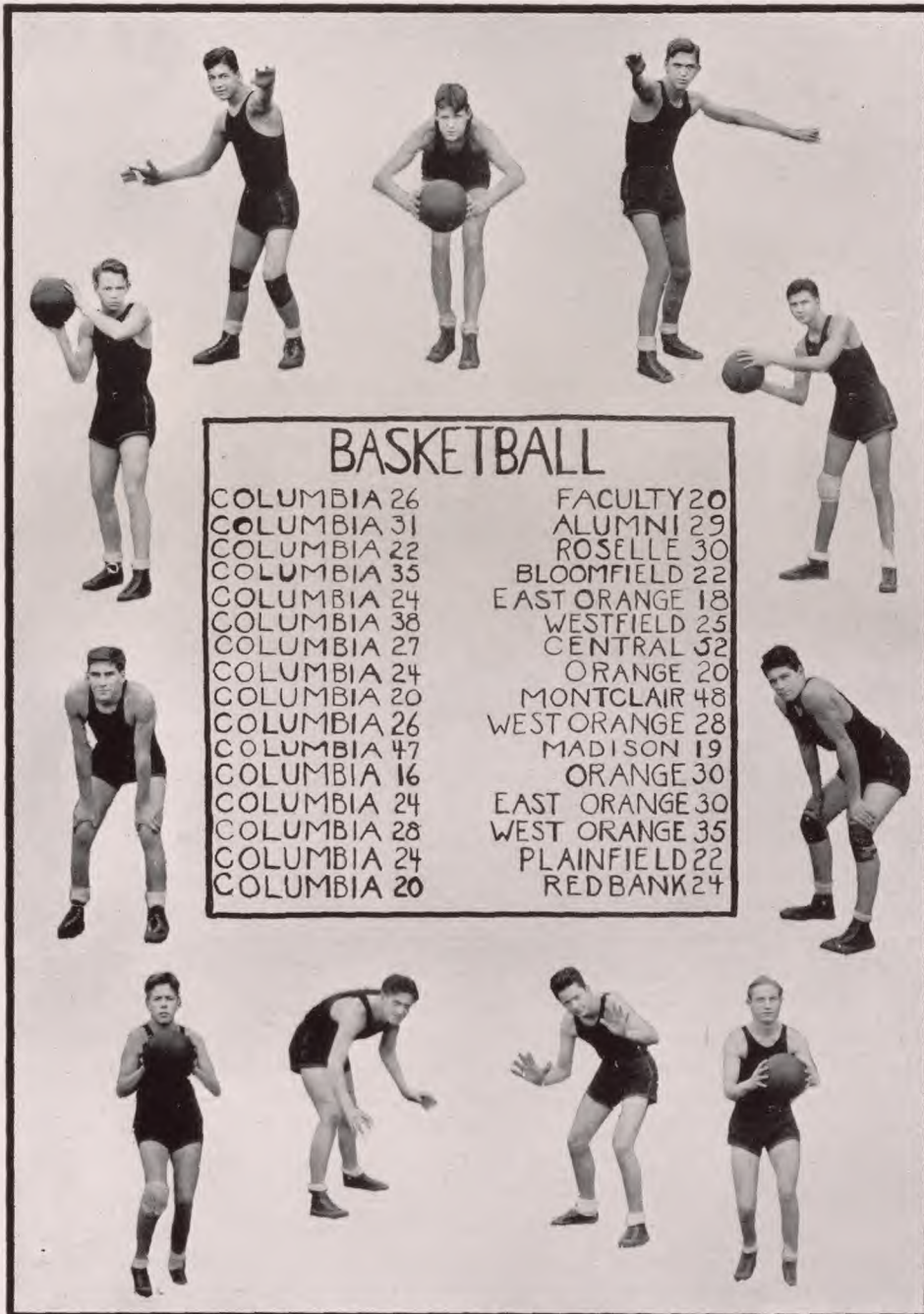
The opening game with Morristown, which Columbia won 12-0, was void of thrills. Orange, who humbled our pride last year, was crushed 52-0.

The first defeat, caused by Westfield, was unfortunate, as two intercepted passes enabled the homesters to win 19-0. Although the Red and Black outplayed Montclair in a thrilling game, the final score was tied at 0.

A 20-0 triumph over New Brunswick and a great 7-6 win from East Orange brought the team back into the limelight. However, West Orange trampled us 18-0 in the Thanksgiving fray.

In the charity games East Orange was subdued on first downs 9-3 by Columbia. We lost to West Orange 14-3, after leading until the last minute of play.





## BASKETBALL

COLUMBIA 26	FACULTY 20
COLUMBIA 31	ALUMNI 29
COLUMBIA 22	ROSELLE 30
COLUMBIA 35	BLOOMFIELD 22
COLUMBIA 24	EAST ORANGE 18
COLUMBIA 38	WESTFIELD 25
COLUMBIA 27	CENTRAL 52
COLUMBIA 24	ORANGE 20
COLUMBIA 20	MONTCLAIR 48
COLUMBIA 26	WEST ORANGE 28
COLUMBIA 47	MADISON 19
COLUMBIA 16	ORANGE 30
COLUMBIA 24	EAST ORANGE 30
COLUMBIA 28	WEST ORANGE 35
COLUMBIA 24	PLAINFIELD 22
COLUMBIA 20	REDBANK 24



## BASKETBALL

A difficult task confronted Coach Harry Mahnken, Red and Black basketball mentor, when the 1932 season rolled around. All of the lettermen of 1931 were lost by graduation, so it was necessary to choose the team from inexperienced material. The team was strengthened considerably, however, by the return of Howard Secor, who had seen varsity action in 1930.

The varsity, displaying great potential scoring power, a well coordinated attack, and a superb defense, defeated the faculty and the alumni.

The Red and Black suffered its first defeat of the season at the hands of Roselle in a slow and poorly-played game. Bloomfield, East Orange, and Westfield then fell victims to a fighting Columbia team smarting under the Roselle defeat. At this point the team showed all indications of being the best one to represent our school in many years. However, Central handed the squad its second defeat of the season in a disappointing game.

The team reached the peak of its season when it subdued the powerful Golden Tornadoes of Orange, the league champions, in a brilliant game played before a crowd of 1,500 spectators. The Red and Black completely bewildered the fighting Orange five by a perfect execution of plays and accurate shooting, while the defense consistently prevented the vaunted Orange attack from scoring.

The Columbia quintet never regained this form for the rest of the season, suffering an unaccountable let-down and falling into a disappointing slump. The remainder of the games were dropped except for the Madison and Plainfield tilts.





## HOCKEY

COLUMBIA 5  
COLUMBIA 7  
COLUMBIA 5  
COLUMBIA 7  
COLUMBIA 4  
COLUMBIA 1  
COLUMBIA 6

ALUMNIO  
SUMMIT 2  
DOVER 0  
PLAINFIELD 2  
SUMMIT 2  
BAY-SHORE 0  
CRANFORD 1



## HOCKEY

In spite of one of the warmest winters in years the Columbia hockey six completed its third undefeated season. Coach Sterling, unable to find natural ice, brought the team down to Hobey Baker Rink in Princeton and to the Brooklyn Ice Palace, seven games being played and won.

Since hockey has been instituted at Columbia, twenty-five scheduled games and three tournament tilts were played. The only defeat was in the tourney final of 1930 when New Brunswick won 2-1. In regular scheduled games Montclair has tied the Red twice.

The goal tending of Captain Harry Lang featured the season. Lang played six games, being ill in one of the Summit frays, and had but four goals scored upon him. Bob Taylor, his understudy, also turned in some fine performances.

Coach Sterling had at his command two snappy front lines, one composed of Bill Myers, Whitey Wilson, and Bob Rose, respectively, and the other of Chan Holmes, Bob Croot, and Chubby Alenson, along with Dan Roman and Joe Brown. Jack Sandford and Howie Stephens shone consistently at defense along with their subs, Paul Dickson, Harold Cross, and Bill Neuberger.

Whitey Wilson captured the season scoring honors with twelve points, while Bill Myers had eleven.

The season achievement was a 1-0 win over Bay Shore High. Bay Shore, conquerors of Jamaica, New York Public School champions, gave the Red its only fight. Holmes's goal with five minutes to play beat the Long Island champions. Other victories were Alumni, Summit (twice), Dover, Cranford, and Plainfield.





## BASEBALL

Prospects for the Columbia High nine appear bright. However, graduation of several stars along with the most difficult schedule Columbia has had, make all-state predictions impractical.

Out of the 120 candidates, the largest turnout in Columbia history, who reported to Coach Phil Marvel, seven lettermen were in the number.

The team looks strong on the whole, but about two relief pitchers, a first baseman, and some hard-hitting outfielders are needed. Several shifts may be made to strengthen those posts.

In the pitching corps, Howie Secor and Irv Freund, star twirlers and lettermen, are the mainstays, but relief is needed because of the long schedule. Jay Rodgers, three-year veteran, is being tried out in the box while Lou Smith, Whitey Hanson, Juve Webb, Les Horbelt, and Lefty Jacoby appear the best of the newcomers.

Roy Cooper, team's slugger, will again be behind the plate along with Chris Magory, Jayvee star, while Gene Becker and Fat McBride look promising.

First base is open by graduation of Kernan, and Jack Rumble and Hen Staehling, Jayvee lads, will battle it out with George Murphy, Bud Byer, and Norm Freund.

Second base will be a battle between Bud Larbig, letterman, Ray Schweitzer, veteran, Jack Kreidler, Jayvee star, while John Long at shortstop and Al Volkmuth, third baseman, appear fixtures.

Howie Fued, a great ball hawk, Fran Ziegler, letterman, and Dick Tillisch, veteran, will compose the outfield, unless a slugger is found.

Six new schools are on the schedule, namely, Dickinson, State Champs, Passaic, Kearny, Bound Brook, Ridgewood, and Roselle Park, all Class A. The other games are with Alumni, Westfield, Madison, East Orange, Summit, Morristown, Bloomfield, and New Brunswick. Including return engagements, there will be seventeen games altogether.





## TRACK

A large number of lettermen and many new stars are the elements which should make the '32 team one of the best. Among the lettermen from last year are Captain Price, Harold Burr, Bob Button, Glenn Seifert, Woodsey Leland, and Bill Myers. The newcomers who should push the veterans for their jobs are Dally Anderson, Buck, Mansfield, Schroeder, Pike, Hirshberg, and Neville.

The Columbia indoor team was represented in the Sunday Call meet, the Dickinson meet, the State meet, and the Villanova scholastics. Harold Burr, sophomore sensation of 1931, and brother of Columbia's former star miler, placed third in the mile. Leland, Button, and Price also collected points in the meets. The relay team won the medley event at the Villanova scholastics in fast time.

Coach Harry Mahnken, whose success with track teams is phenomenal, has been drilling his cohorts since December. The third floor now resounds with the thud of flying feet, but soon the tracksters will be outdoors. Mahnken has made every effort to round out a well-balanced team, a potential scorer in each event. The interclass track meet unearthed a find in the person of Harold Anderson, who is a high jumper of unusual ability, while several other runners were discovered.

Bob Button, veteran sprint man, will carry the point-getting burden in the 100-yard and 220-yard dashes, despite an illness which threatened to bring to an end his running career. Price also should do well in the quarter and 220.

The schedule follows: April 6, Interclass meet; April 8, Red and Black meet; April 13, Westfield; April 30, Penn Relays; May 3, Bloomfield; May 7, Interscholastic (Newark); May 11, West Side; May 14, Princeton Scholastics; May 16, East Orange; May 28, Montclair Invitation; and State Meet.





## TENNIS

Prospects for a successful tennis season are exceedingly bright because of the fact that all of the lettermen from the 1931 team, champions of the Oranges, are back in school. Manager Newberger has arranged a difficult schedule for the team, including matches with the co-state champions, East Orange and Westfield. The Columbians will be pressed to take the matches from the powerful Westfield aggregation. Shien of West Side, national indoor boy champ, and Gus Westerners, should furnish the Columbia team with stubborn opposition, while the champion East Orange team has lost its entire team.

The squad has been practising daily indoors under the tutelage of the local mentor, Mr. Wenker, who is pleased with the form of his veterans and the talent of several newcomers. The veterans from the past two years who will form the nucleus of this year's outfit include Bill Hoppock, Bud Austin, Whitey Wilson, and Harry Lang. Hoppock and Austin, veteran doubles combination, will be playing their third year together, while the spectacular team of Lang and Wilson, all-around athletes, should garner victories for the Red. Among the candidates for the remaining berth are Chase, Humphries, Pierce, Potter, and Rathbun.

When the first call for candidates was made, nearly 60 turned out for the preliminary training period. However, Coach Wenker was obliged to cut the squad because of the limited space. The excellent material and the return of last year's team should be instrumental in turning out the best net team in the history of Columbia High School.

The schedule includes matches with Westfield, West Side, East Orange, West Orange, Barringer, Summit, Red Bank, and Paterson Central.





## SWIMMING

1932 marks the inauguration of a new sport at Columbia High School, namely, varsity swimming. For many years there has been a great deal of interest in swimming, but a coach was not available to direct a varsity swimming squad. This year, however, Bill Baker, a former collegiate swimming luminary and a newcomer to the physical education department, consented to coach a varsity tank team. Seventy swimmers responded to Coach Baker's call for candidates, and when the first meet with Plainfield rolled around a well-balanced team was ready to make Columbia's first splash in scholastic swimming circles.

Doane McCarthy, Columbia captain, was one of the leading performers on the squad, capturing first place consistently in the 200-yard free style and 100-yard back stroke. Davenport and Murphy turned in great races in the breast stroke, while Hirshberger, Earl, Tag, Ben Rapaport, and Vogeler earned points for the Red and Black in the dashes and relays. Green, Westervelt, and Bishop represented Columbia in the dives.

The Red and Black natators garnered four victories from their ten dual meets, defeating Barringer, West Side, and South Side twice, and losing to East Orange, Plainfield, and Paterson Central. The tank team made a very impressive showing in the state meet at Trenton by rolling up 10 points to tie for fourth place. Columbia swimmers took second place in the back stroke and medley, and a fourth place in the breast stroke. The first season of swimming has met with great enthusiasm, and the team has made a very commendable showing.



C L A S S O F 1 9 3 2



GIRLS' LEADERS CLUB



GIRLS' ATHLETIC ASSOCIATION





## GIRLS' ATHLETICS

Due to a new point system inaugurated this year, there was an increased interest in girls' athletics. By this point system, it became more difficult to earn athletic awards, such as class numerals and letters, although more girls were given an opportunity to obtain insignia. Twenty-five is the maximum number of points obtainable through participation in any one sport. Those obtaining two hundred points are entitled to a "C", and one hundred points make one eligible for numerals.

The fall season was opened with an interclass soccer tournament. Many girls saw action and each game furnished a great deal of excitement. By defeating the strong junior and seniors teams, the sophomores proclaimed themselves victorious.

Immediately after the soccer season, many girls came out for speedball, a sport introduced in the school this year, combining the forward pass of football, the passing of basketball, and the footwork of soccer. Because of the weather, it was impossible to proceed with a tournament, although the girls who appeared for the practices received the points to which they were entitled.



The basketball season was opened with a bang! The women members of the faculty accepted the challenge of the senior girls, and "prepared to withstand the assault of heedless youth". The big surprise of the game was the swiftness with which the faculty set to work. In spite of the spectacular cheering of the faculty, the teachers were defeated by the score of 8-2.

Following two months of competition, the home room basketball championship was captured by the juniors of 306, who defeated the sophomores of 149 in the finals.

The interclass basketball season was heralded by an enthusiastic group of girls, volunteering from each class.

After a few weeks of intensive practice, teams were chosen to represent each class in the intramural tournament.

In the spring, the athletic association sponsored baseball, fistball, tennis, and swimming, and the activities of the association were brought to a close for the year with the annual G. A. A. dance.





## INTRAMURAL SPORTS

The program "Sports for All" is well carried out at Columbia since, besides the varsity teams, students are offered many opportunities to participate in athletics. The annual home room and class touch football and basketball games, tennis tournaments, and the squad football league, offer this opportunity. These events not only enable everyone to engage in athletics but also stimulate good relations between home rooms.

The following are the winning home room teams in the 1931-32 tournaments supervised by Mr. Higbee:

### TOUCH FOOTBALL

Sophomores (318)—Salfisberg, Schriber, Roman, Romano, Seaman, Serbe, and Shanley.

Juniors (144)—Adler, Alexander, Barclay, Arena, Baldwin, R. Anderson, Baerncoff, and Baiter.

Seniors (333)—Tillish, Shilling, Volkmuth, Shubert, Turner, Ehrenkranz, Dumphy, Tobey, and Vanderbilt.

### HOME ROOM BASKETBALL

Sophomores (339)—Freund, Wisokay, Maguire, Monahan, Brown, and Jedrzijik.

Juniors (144)—Anderson, Adler, Barclay, Arena, Baerncoff, Baldwin, and Baiter.

Seniors and Post Graduates—Beckers, Blackwell, Annett, Hultz, Irish, Bataille, and Creelman.

The following team won the squad football championship: Klein, Page, Saltsman, Jones, Drake, Tober, Nicholson, Warner, Frenchman, Hammane, Pachee, Petrozzillo, Ford, and Sayre.

The interclass basketball tournament provided great opposition. The seniors won the championship by taking the sophomores over 17-14 in a play-off game. Both teams were tied with three victories and a defeat. The seniors' big lead in the first half was the margin of victory.

The members of the teams were:

Seniors—Volkmuth, Beidelman, Andresen, Tillish, Jones, Schlatter, Lesko, and Magory.

Juniors—Baerncoff, Dolan, Adler, Watson, Fritsch, Smith, and Schweirtet.

Sophomores—Knapp, Decker, Gordon, Webb, Kirschbaum, Fabrizio, Wilder, and Wakelee.

Interclass baseball and tennis games will be staged this spring.

The indoor interclass track meet, which was held in the third floor corridor, produced many thrills. The juniors easily won, having doubled the score of the second place team, the post graduates. The seniors, with 14 points, were half a point behind the P. G.'s, while the sophomores came last. The feature of the meet was the win of Dally, junior, over Mand, senior, in the mile. The P. G.'s, with a three-man team consisting of Beckers, Blackwell, and Annett, led for awhile, but lack of reserves cost them the meet.





ADVERTISEMENTS





## INDEX OF ADVERTISERS

	Page		Page
Abbey Printing Company -----	137	Maier & Sons, F. -----	140
Abbott-Hogan, Inc. -----	142	Maplewood Gift Shop -----	142
Barkhorn Co., Wm. H. -----	132	Maplewood Theatre -----	129
Bradbury, H. A. -----	138	Men's Store of Maplewood, The ----	136
Buick -----	128	Nelson Garage, Inc. -----	137
Burrowes, Ben -----	131	Pace Institute -----	144
Castles Ice Cream -----	130	Parker Shop -----	139
Coleman College -----	135	Rapaport, A. -----	142
Deane, E. F., Kiddie Shop -----	139	Record, So. Orange & Maplewood ----	131
Drake's -----	133	Rodgers, T. F. -----	127
Ebel's Yum Yum -----	131	Ross, Inc., Samuel H. -----	131
Ervey & Co., A. V. -----	129	Salmon Co., Geo. G. -----	128
Fiery's Electric Shop -----	137	Sickley Bros. -----	140
Fraentzel -----	129	South Orange Trust Co. -----	141
Gruning's -----	138	Stevens, Harry J. -----	126
Hagny's -----	138	Taft's Pharmacy -----	140
Jack, Andrew -----	136	Town Hall Delicatessen -----	138
Jenkin's Sons, Inc., M. W. -----	129	Voss, A. -----	138
Kassinger & Co. -----	129	Wells Cadillac Corp. -----	139
Leona Turner School of Dancing ----	139	Whitman's Secretarial School, Miss --	134
Liberty Market -----	139	Williams, R. -----	137
		Wilson Music House, The -----	137

## HOME ROOMS

120 -----	141	229 -----	140
144 -----	141	231 -----	136
145 -----	143	232 -----	138
148 -----	144	233 -----	133
155 -----	144	234 -----	135
202 -----	144	312 -----	136
209 -----	132	314 -----	138
213 -----	134	320 -----	132
214 -----	131	323 -----	135
215 -----	141	333 -----	135
216 -----	143	337 -----	143
217 -----	133	404 -----	134

# HARRY J. STEVENS

*REAL ESTATE*

*INSURANCE*

478-80 Central Avenue, at West Market Street  
NEWARK, NEW JERSEY



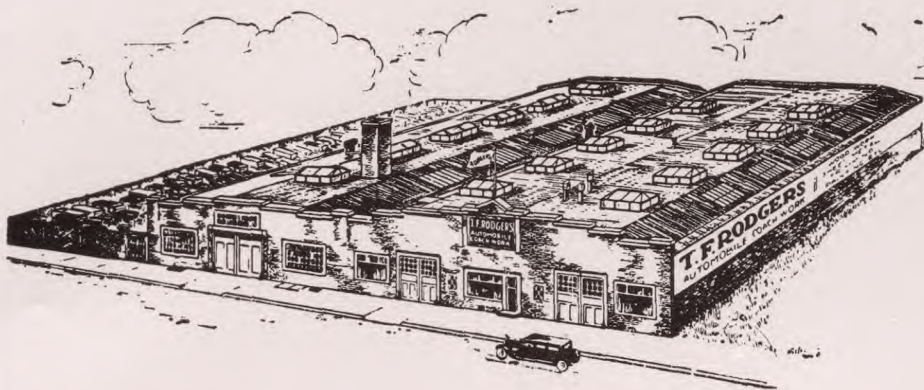
SECRETARY OF HOLLAND B. & L. ASSOCIATION  
*and*  
TRUSTWORTHY B. & L. ASSOCIATION



*Managing Agents:*

South Mountain Estates  
The Enclosures  
Larchmount Estates





Established 1885

Phones Orange 3-6420-1-2-3

## T. F. RODGERS

*Motor Coach Work*

Central Avenue and Eighteenth Street  
EAST ORANGE, NEW JERSEY

RECONSTRUCTION

METAL AND WOOD WORK

BODY AND FENDER REPAIRING

SAFETY GLASS

REFINISHING

UPHOLSTERY

SLIP COVERS

CARPETS

TOPS RECOVERED

SIMONIZING



Phone So. Orange 2-1900

## GEORGE G. SALMON COMPANY



*Dustless Coal, Fuel Oil, Lumber,  
Masons' Supplies, Cement Blocks*



417 Valley Street  
SOUTH ORANGE, N. J.

---

*"When Better Automobiles Are Built, Buick Will Build Them"*

## BUICK

SOUTH ORANGE BUICK COMPANY

Telephone South Orange 2-2700



Telephone So. Orange 2-7665

THE MAPLEWOOD THEATRE

Maplewood Avenue  
MAPLEWOOD, N. J.

*May We Entertain You?*

---

*Cleaners*

*Dyers*

A. V. ERVEY & CO.

4 Inwood Place  
MAPLEWOOD, N. J.

Telephone South Orange 2-3914

---

**FRAENTZEL**

*Timken Oil Burners*

---

Phones South Orange 2-0520—2-0521

**KASSINGER & COMPANY**

PRIME MEATS, VEGETABLES, POULTRY AND FISH  
*"A Business Built Upon Quality and Honest Service"*

J. J. NEWMAN, President

165 Maplewood Avenue  
MAPLEWOOD, N. J.

---

**M. W. JENKINS SONS, Inc.**

Established 1877

*Manufacturers of Brushes of Every Description*

444 Pompton Avenue, CEDAR GROVE  
Essex County, NEW JERSEY

Telephone Verona 8-5327



**CASTLES ICE CREAM CO.**

PERTH AMBOY, N. J.

GARFIELD, N. J.

ROSE BANK, STATEN ISLAND, N. Y.

*For That Next*

PARTY — LUNCHEON — BRIDGE

*Serve*

INDIVIDUAL FANCY FORMS

An Assortment of 12 or More Delivered to Your Door

Packed in Dry Ice

Order from Your Nearest Castles Dealer at Least

24 Hours in Advance



五

177 Maplewood Avenue  
MAPLEWOOD, N. J.

## Modern Dance Music



131

**WM. H. BARKHORN CO.**

MILLWORK

*Sash Doors—Interior Trim—Frames—Columns*

Telephones Terrace 3-6700—3-6701—3-6702

22 Sayre Street  
NEWARK, N. J.

**WM. H. BARKHORN CO.**

MILLWORK

*Sash Doors—Interior Trim—Frames—Columns*

Telephones Terrace 3-6700—3-6701—3-6702

22 Sayre Street  
NEWARK, N. J.

**WM. H. BARKHORN CO.**

MILLWORK

*Sash Doors—Interior Trim—Frames—Columns*

Telephones Terrace 3-6700—3-6701—3-6702

22 Sayre Street  
NEWARK, N. J.

**WM. H. BARKHORN CO.**

MILLWORK

*Sash Doors—Interior Trim—Frames—Columns*

Telephones Terrace 3-6700—3-6701—3-6702

22 Sayre Street  
NEWARK, N. J.

**WM. H. BARKHORN CO.**

MILLWORK

*Sash Doors—Interior Trim—Frames—Columns*

Telephones Terrace 3-6700—3-6701—3-6702

22 Sayre Street  
NEWARK, N. J.

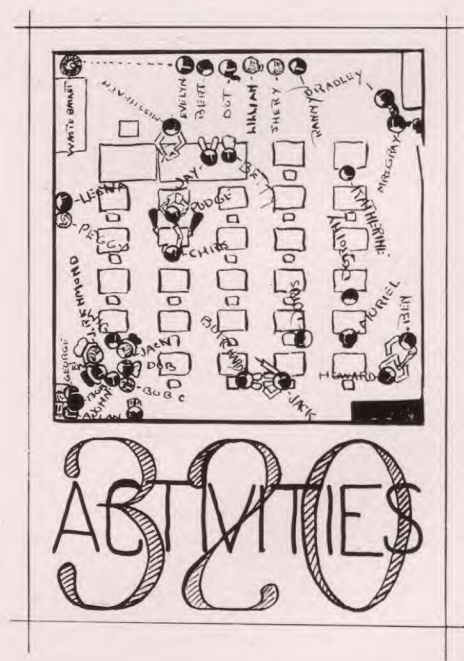
**WM. H. BARKHORN CO.**

MILLWORK

*Sash Doors—Interior Trim—Frames—Columns*

Telephones Terrace 3-6700—3-6701—3-6702

22 Sayre Street  
NEWARK, N. J.





## DRAKE'S

New Classes Will Be Formed for Incoming Students  
Day and Night

Secretary, Accounting, Commercial, Shorthand Courses

SHORTEST AND MOST INTENSIVE COURSE OBTAINABLE

Advanced Registration is Requested  
Every Graduate is Placed in a Good Position

Nearest School: METROPOLITAN BUILDING, 308 Main Street  
ORANGE

ALSO SCHOOLS AT

155 Market Street, Newark  
Hinck Building, Montclair



## MISS WHITMAN'S SECRETARIAL SCHOOL

Intensive Commercial Courses, Post Graduate Course and Secretarial  
Training for the High School, Private School and College girl.

All graduates placed in responsible positions.

DAY AND EVENING CLASSES

Cultural Environment

University Faculty

121 Clinton Avenue, Newark, N. J.

*Catalog upon request*

Telephone Market 3-6305





# COLEMAN COLLEGE

H  
O  
M  
E  
R  
O  
O  
M

2  
3  
4

Carl Kamps  
Jack Kertler  
Adelina Kumpig  
John D. Kunk  
Orville Kunk  
Edward Kunk  
Karl and Helen King  
Douglas King  
Ollie Kunk  
Lance Kunk  
Frank Kunk  
Arthur Kunk  
Virginia Kunk  
Margaret Kunk  
Annette Kunk  
Mable Kunk  
Ollie Kunk  
Maynard Kunk  
Hedra Kunk  
Haller Kunk  
Ward Kunk  
George Kunk  
Joe Kunk  
Edw. Kunk  
John Kunk  
John Kunk  
Hedra Kunk



THE MEN'S STORE OF  
MAPLEWOOD

Fine Furnishings and Hats for  
Men, Young Men, and Boys

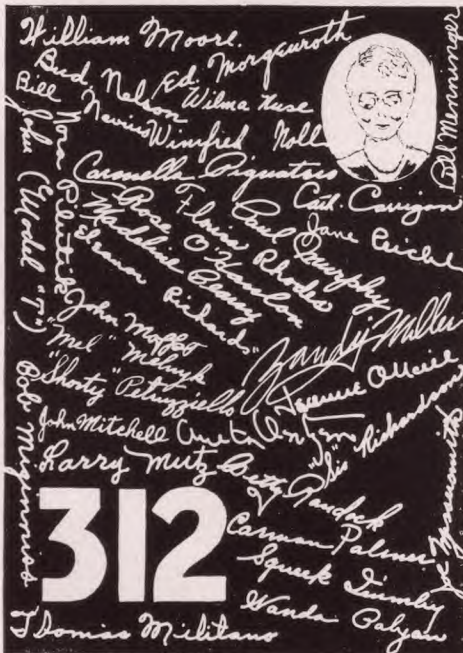


MAPLEWOOD CENTER  
Opposite the Bank

BREITBART-SIRLYN, Inc.

Phone South Orange 2-4062

*Andrew Jack*  
REALTOR





Telephone South Orange 2-1597

FIERY'S ELECTRIC SHOP

MAJESTIC ICE BOXES

*Jobbing*

*Appliances  
Mazda Lamps*

*Repairing*

175 Maplewood Avenue  
MAPLEWOOD, N. J.

*Compliments  
of*

THE  
WILSON MUSIC HOUSE  
Maplewood, N. J.

*Compliments  
of*

NELSON GARAGE, INC.  
Maplewood, N. J.

Phones South Orange 2-1300—2-1301

R. WILLIAMS  
*Groceries, Fruits, Vegetables*

163 Maplewood Avenue  
MAPLEWOOD, N. J.



A POPULAR CORNER

THE MIRROR OF 1932 was Engraved, Printed and Bound by

ABBAY PRINTING COMPANY

*Makers of Fine Annuals since 1912 at East Orange, N. J.*

A. VOSS  
Formerly  
SCHMIDT'S

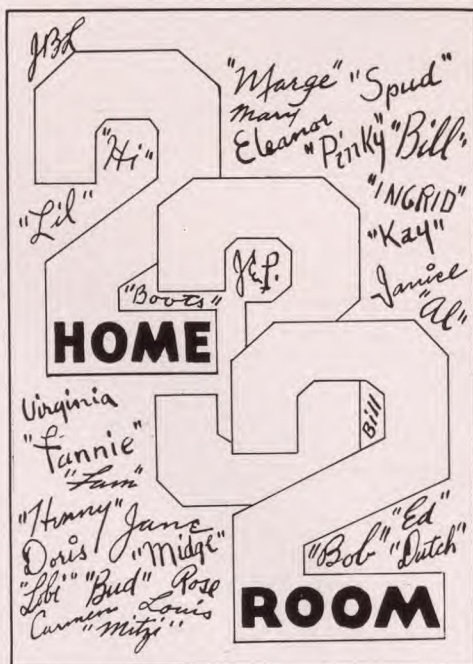
*Social and Commercial  
Stationery*

South Orange 2-5282

TOWN HALL  
DELICATESSEN

*"Where Quality Reigns and  
Service Pours"*

111 South Orange Avenue  
SOUTH ORANGE, N. J.



Telephone South Orange 2-0329

Residence Phone  
South Orange 2-4022

H. A. BRADBURY  
*Florist*

FLOWERS FOR ALL OCCASIONS

73 South Orange Avenue  
SOUTH ORANGE, N. J.

Home-Made Ice Cream—Candies  
SODA

of Wonderful Quality  
That's Why They All Go to

GRUNING'S

59 South Orange Avenue  
SOUTH ORANGE, N. J.

469 Orange Street  
NEWARK, N. J.

WE DELIVER

HAGNY'S  
Central Avenue, corner of 5th Street  
NEWARK, N. J.

Prescription Service  
and  
Sick Room Supplies

WE CALL AND DELIVER

Phones Branch Brook 3-4189—3-8776





Telephone South Orange 2-5130

PARKER SHOP  
17 South Orange Avenue  
SOUTH ORANGE, N. J.

INTERIOR DECORATIONS—GIFTS

---

CADILLAC — LA SALLE — OLDSMOBILE

WELLS CADILLAC CORPORATION

25 Vose Avenue  
SOUTH ORANGE, N. J.  
South Orange 2-7070

---

*Compliments of*

E. F. DEANE



KIDDIE SHOP

19 Scotland Road  
SOUTH ORANGE, N. J.  
South Orange 2-1557

---

LEONA TURNER SCHOOL OF DANCING

MEMBER OF

Dancing Masters of America  
New York Society of Teachers of Dancing  
Dancing Masters' Normal School  
New York Dancers' Club

RUSKIN BUILDING—ROOMS 201-202  
Scotland Road at South Orange Avenue  
SOUTH ORANGE, N. J.  
Telephone South Orange 2-0083

---

LIBERTY MARKET

FANCY FRUITS AND VEGETABLES  
CANNED GOODS

309 MAIN STREET, ORANGE  
Orange 3-5780

113 SOUTH ORANGE AVENUE  
SOUTH ORANGE  
South Orange 2-1478

183 Maplewood Avenue, Maplewood  
South Orange 2-3013

352 Millburn Avenue, Millburn  
Millburn 6-0919

F. MAIER & SONS

COAL

*Wood and Grain*

1 W. South Orange Avenue  
SOUTH ORANGE, N. J.

*Compliments*

*of*

HOME ROOM 229

Robert Hyde	Carol Jackson
Ilse Hohman	Irene Johnson
Dorothy Hopkins	Helen Joyce
Helen Horn	Merle McGibbeny
Minnie Jack	George Murphy
Hilda Jensen	Gertrude Hooke
Edward Johnston	Chandler Holmes
Alex McCarthur	Dorothy Hosford
William Morpeth	Herbert Hunkele
John Hooke	Edward Jacobson
Lillian Holle	Edna Johnston
Edna Horn	Millicent Kalisch
Ward Humphrey	Francis Morgan
Paul Redfern	

COAL — FUEL OIL

Lumber—Mason's Materials

SICKLEY BROS.

South Orange, N. J.

The Best Only

in

DRUGS



TAFT'S PHARMACY

South Orange



HAROLD D. HENDERSON  
*Assistant Secretary-Treasurer*

[illegible]

Helen Gould—"Blondie"  
Robert Green—"Newton"  
Helen Gregory  
Ethel Gropper—"Pat"  
Lillian Grunt  
Max De Guevara—"Cincinnati"  
Alys Hadley—"Tubby"  
Betty Hafley  
Bill Hall  
Herron Halm  
John Hopkins—"Hoppie"  
Bernice Lundy—"Bernie"  
Eleanor Lunn—"El"  
Doane McCarthy—"Mac"

## ABBOTT-HOGAN, INC.

*Cleaners and Dyers*

575 Scotland Road (at Tremont Avenue)  
ORANGE, N. J.

---

Phone South Orange 2-0188

A. RAPAPORT

*Interior Decorating*

53 South Orange Avenue  
SOUTH ORANGE, N. J.

---

Phone South Orange 2-9814

Open 8 A. M.—11 P. M.

MAPLEWOOD GIFT SHOP

(Formerly Sirlyn Shop)

Greetings Cards, Gifts, Toys, Games, Novelties

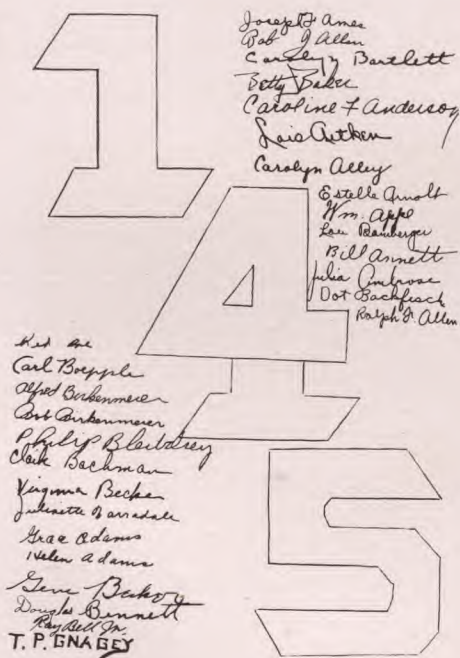
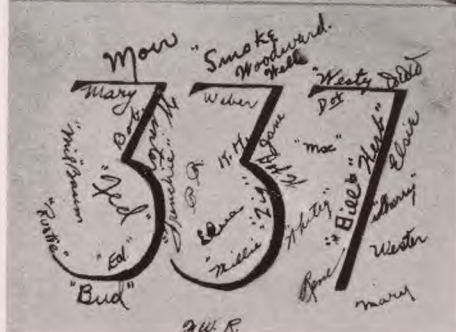
Fine Stationery

Schrafft's Selected Candies and Chocolates

165 Maplewood Avenue  
MAPLEWOOD, N. J.







## LOOKING UP IN THE WORLD

## Room 155

MISS GENTHNER

Margaret Cannon	Ed Dench
Virginia Cyphers	Dan Decker
Bea Dexter	Mary Lou Dull
Eddie Decker	Bally Dunklin
Richard Drake	Helen Dunn
Bob Eisele	Pete Enderle
Miriam Davidheiser	Isabella Deyrmanjian
Victoria Deyrmanjian	Charlotte Curdt
Florence Dodge	John De Cicco
Blanche Doolittle	Charles Decker
Agnes Dugan	Ralph De Cicco
Eugene Devereaux	John Devereaux
Le Roy Edmunds	Joe Elsmann
Edwin Decker	Mildred Freitag
David Edgell	William Cary

## All Graduates of this school are eligible for admission to Pace Institute

—a nationally known and distinctive  
professional school of technical training in

### Business Administration Accountancy Secretarial Practise

Classes for beginners at Pace Institute  
prepare high-school graduates for im-  
mediate earnings. Many Pace graduates are  
now treasurers and controllers of large  
corporations—others are in successful  
accountancy practise.

Field trips to the offices and plants of the  
largest organizations in New York City  
are conducted especially for day students  
in the Accountancy School and for day  
students in the Secretarial School.

*Students and Parents are invited  
to confer with the Registrar*

Day School — — Evening School

**Pace Institute**  
225 Broadway New York

202

MISS FLORENCE R. ACKERMAN

Roy Cooper, *Chairman*  
Margaret Bennett, *Secretary*

Alice Burt, *Vice-Chairman*  
Margaret Coyne, *Treasurer*

Alice Beebe	Ruth Byer
Adele Beidelman	Dorothy Cameron
Mildred Berry	Albert Campbell
Betty Bigalke	Bob Campbell
Marie Burt	Jane Chamberlain
"Nels" Butz	"Wis" Chubb
Marguerite Bush	

Fred Clark	Katherine Cordes
Johnnie Clark	"Hal" Cross
Doug Cochran	D. Courter Dally
Don Coeyman	Warren Davidheiser
Margery Cohen	Robert B. Davis
Nelson Condit	Walter Dealaman
	Charles Dughi

MARY CAMERON  
WARREN BOHNER  
LILLIAN BRUCE  
MARGARET BRUBAKER  
JOHN BURROUGHS  
EDWARD BURT  
KENNETH BROWN  
RUTH BRUNYATE  
LUCILLE BODEI  
ELEANOR BOWEN  
ROBERT BROWN  
BETTY BRITTEN  
HELEN BROWNLIE  
LUCIAN BURNETT  
CHARLES BRAUTIGAM

ROBERT BURNS  
WINIFRED BELL  
KATHRYN BENZA  
CORINNE BLUM  
RUTH BROWN  
DOROTHY BROWN

BEATRICE BRANDES  
ANNE BELLOTT  
WILLARD BYER  
VERLYN CORLISS  
MISS SNYDER

from  
HOME ROOM  
148



*AUTOGRAPHS*

*AUTOGRAPHS*



















