

Ref.  
373.9  
C

DURAND  
ROOM



## Foreword

*I*N THE preparation of the 1933 MIRROR, we have sought not only to make the book financially successful, but also to picture the daily life in Columbia High School.

This year, because of the lack of commercial advertising, which in the past has been a large factor in financing the book, we were forced to call for home room advertisements. For their splendid response, we wish to thank the many home rooms which helped to make our MIRROR a reality by their cooperation.

In seeking to reflect a cross section of everyday life in Columbia, we have endeavored to portray that which is best in our student life, that which is most permanent and will live longest in our memories. We have tried to picture not the grinding hours of study, but rather the happier hours of student life. The trials and tribulations of our efforts to gain a high school education will soon be forgotten, but the companionship and good times reflected through our MIRROR will live forever in our memories.

This MIRROR has several innovations. The first is the feature section, devoted to humor. Comments on students and faculty, and quirks of the pen by cartoonists may be found therein. It has been hoped that the feature section will make the book more personal. The second change from previous years was made when the art work on the MIRROR was turned over to the art department. The competition on the project was open to all classes, irrespective of grade. Those drawings which seemed best for their artistic worth, and which seemed most expressive of the idea to be conveyed, were accepted for use in the MIRROR.

The MIRROR will never be used as a text-book in any of our classes. It is collateral, pure and simple, and as such we present it for your approval.

MIRROR STAFF.





## DEDICATION

*In appreciation of counsel and guidance kindly and thoughtfully given, we, the class of 1933, dedicate this MIRROR to our esteemed guide, Miss Anna B. Caswell. "If success through life doth crown us," we will always pay tribute to her forceful and inspiring leadership.*



## THE MIRROR



**ENGLISH**—Reading left to right—Back row: Mr. Gnagey, Miss Paine, Mr. Marshall, Miss Watson, Mrs. Sterling, Miss Alexander, Miss Nichols; front row: Mr. Wenker, Miss MacFarland, Miss Genthner, Mrs. Gray, Miss Tollefson, Miss Hayner. Others, Mr. Currier, supervisor; Miss H. Smith.



**MATHEMATICS**—Reading left to right—Back row: Mr. Jackson, Mr. Marvel, Mr. Rogers, Mr. Page, Mr. Crehan, supervisor; front row: Miss Hewitt, Miss MacBaine, Miss C. Smith, Miss Sprague. Others: Mr. Talbot.



**COMMERCIAL DEPARTMENT**  
Reading left to right—Back row: Mr. Strony, Miss Gaylord, Miss Young, Mr. Pontz, supervisor; front row: Miss Hammond, Miss Johnson, Miss Bullock.



**SOCIAL SCIENCES**—Reading left to right—Back row: Mr. Brown, Mr. Gray, Mr. Sheeley, Mr. Sterling; front row: Miss Low, Miss Memory, Miss Ackerman, chairman.



**FOREIGN LANGUAGES**—Reading left to right—Back row: Miss C. Carrigan, Miss Sora, Miss Wolcott, Miss Gavin, Miss Kingston; front row: Mrs. Gates, Miss Allen, supervisor, Miss Freeman. Others: Miss Vale.



**LATIN**—Reading left to right—Back row: Miss Caswell, Mr. Doolittle, Miss Gavin; front row: Miss Sanders, Miss H. Carrigan, supervisor, Mrs. Sterling.



**SCIENCE**—Reading left to right—Mr. Erickson, chairman; Mr. King, Miss Markham, Mr. Parsons, Mr. Chase.



**INDUSTRIAL ARTS**—Reading left to right—Mr. Platt, Mr. Linker, Mr. Hopkins, supervisor; Mr. Powell.



**MUSIC**—Reading left to right—Mr. Shenton, supervisor; Mr. Batchelder.



## CLASS OF 1933



**MEDICAL**—Reading left to right—  
Miss Harris, Miss Lawder.



**PHYSICAL EDUCATION**—  
Reading left to right—Back row: Mr.  
Baker, Mr. Mahnken, Mr. Higbee,  
supervisor; front row: Miss South-  
ard, Miss Darrow, Miss Allen.



**DOMESTIC SCIENCE**—Reading  
left to right—Miss Dwyer, Miss  
Snyder, supervisor.



**J. H. BOSSHART**  
*Superintendent*



**ART**—Left: Miss Wheeler; right:  
Miss Demarest.



**C. H. THRELKELD**  
*Principal*



**F. J. CREHAN**  
*Vice-Principal*



**M. S. HENDERSON**  
*Dean of Girls*



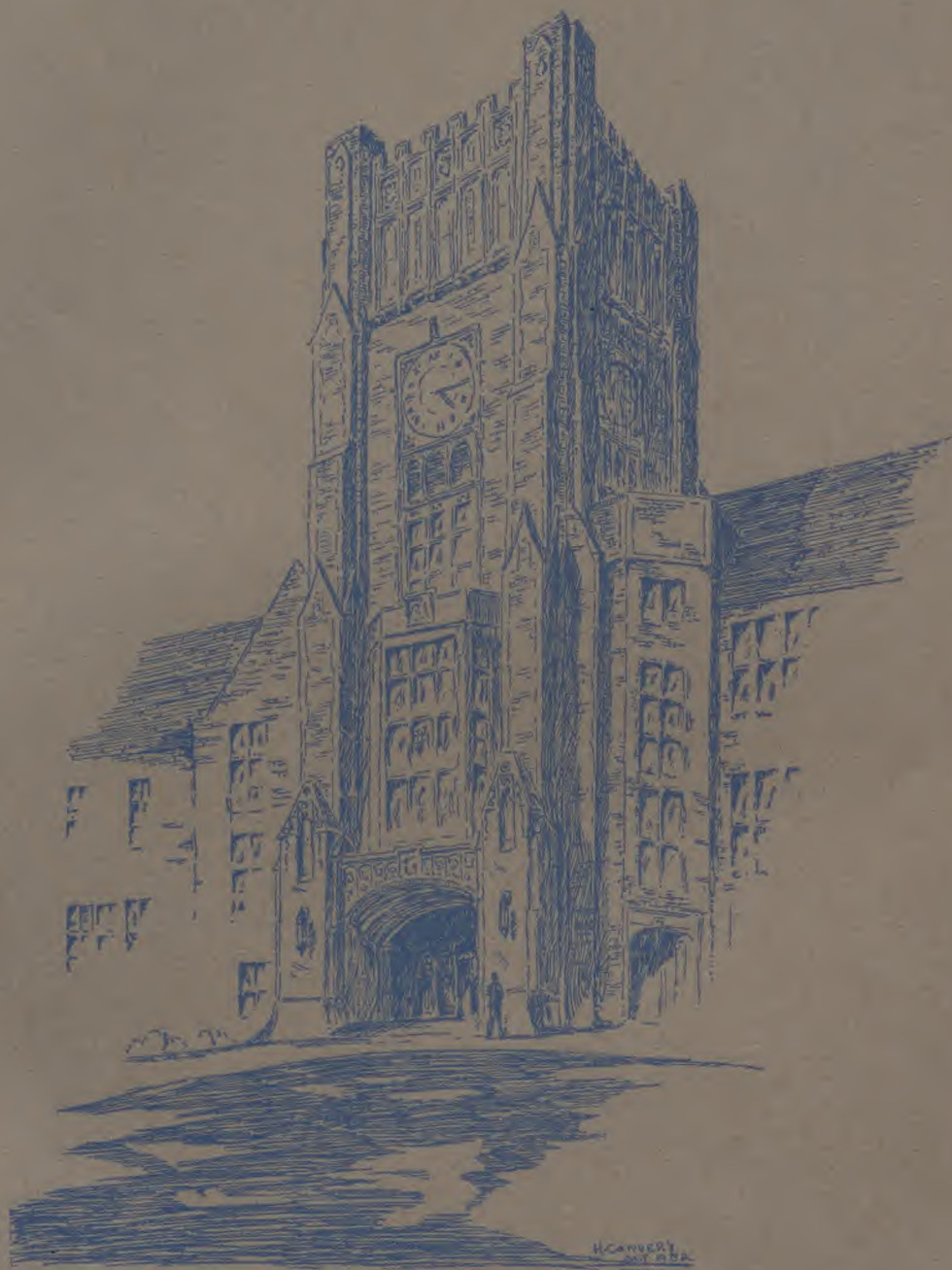
IN  
MEMORY



LEE W. WOODMAN

William Schoeder
















H. CONVEY  
Oct 1882



CONTENTS	
	SENIOR
	CLASSES
	ORGANIZATIONS
	FEATURES
	ATHLETICS
	HOMEROOM-ADVERTISEMENTS







SENIOR







## SENIOR CLASS HISTORY

IN our sophomore year, we, of the present senior class, originated the Sophomore Dramatic Club, an organization composed of sophomores only, which enabled them to use their forensic talents to the best advantage. The club assisted the glee clubs in presenting the Christmas program. In the early spring, it produced "The Waning Moon". The annual sophomore assembly was held late in the spring. The program consisted of a dance by several sophomore girls, and a play, "The Man in the Bowler Hat". Late in the same year, in accordance with the annual custom, we entertained the incoming sophomores with a musical program.

The two outstanding events of our junior year were huge successes. The Junior Prom was held in the cafeteria just before Christmas. Christmas decorations were used, and a wintry atmosphere prevailed. The 1933 version of Junior Night was called "Spontaneous Combustion". This idea was carried out in every phase of the production. The program consisted of two one-act plays, "The Romancers", and "A Game of Chess", and several specialty numbers. "Spontaneous Combustion" deserves special commendation for the original and novel way in which it was presented.

In the fall of our senior year, the senior girls entertained the new girls with a party. The Senior Play, "The Black Flamingo", which was given in November, was a great success. The weird setting of the play, combined with the dramatic talent of the actors, created an evening of enjoyment for all who witnessed the production. Late in the spring, the senior girls held the Senior Breakfast for their mothers. Then came Commencement, a wonderful ending to our high school days. Many of us will further our education by attending college, while many others will immediately enter the business world. Wherever we may go, and whatever we may do, we shall never forget the wonderful days which we spent here.

Members of the class of 1933 have participated in all phases of extra-curricular activities. We have given our share of good actors and actresses, of fine musicians, speakers, and artists, of stars in all varsity sports, and of officers and members of clubs.

For the past three years, *The Columbian* has had a member of the class of 1933 for its editor-in-chief. The only time that a sophomore had ever held this office was in our sophomore year.

Looking back over our years at Columbia High School, we find that they have been happy years—years well spent in the formation of our lives. Much of this happiness is due to the splendid efforts of Miss Caswell, our class guide. We feel that we have derived much pleasure from these years, but that in so doing we have not neglected the furthering of our knowledge.

And so we bid farewell to Columbia High School! We shall always uphold her traditions, and hold her standards high!

## THE MIRROR



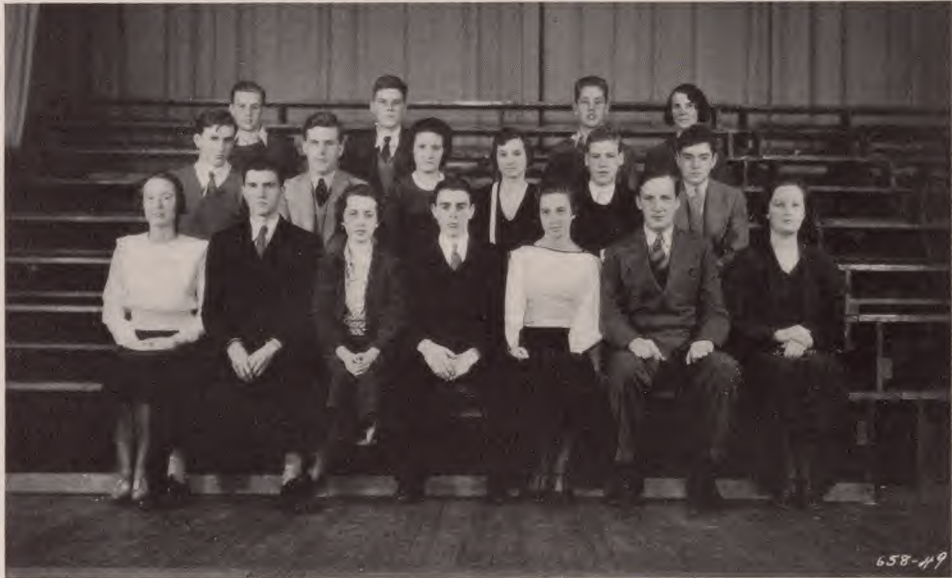
FRANK MCGINITY  
*President*

DORIS HYDENRICH  
*Vice-President*

ALICE BURT  
*Secretary*

FRANK STANLEY  
*Treasurer*

## THE SENIOR COUNCIL



BACK row: Irving Ryerson, Edwin Hobson, Forrest Leland, Miss Caswell (senior class guide). Second row: Roger Bishop, John O'Connor, Bernice Buehler, Elizabeth Akin, Robert Hahn, John Lockwood. First row: Mary Hopkinson, Frank Stanley, Alice Burt, Frank McGinity, Doris Heydenrich, Edson Outwin, Ellenor Farquhar. Not appearing in picture: Margery Cohen, Clifford Weiss, Thomas Spence.



## CLASS OF 1933



### NATA ADDIS

Home Room Secretary (2); Sophomore Dramatic Club (2); Properties Committee Junior Night (3); Junior Night Cast (3); Scenery Painting Committee Senior Play (4).

### EMIL ADLER

Baseball (2, 3, 4); Hall Monitor (4); Senior Play Committee (4); Class Football (2, 3, 4); Class Basketball (2, 3, 4); Aviation Club (1).

### GEORGE ADLER

*Wolf*

Aviation Club (2); Baseball (3, 4); Home Room Football (3, 4).

### EVELYN B. ADRIANCE

*Evy*

Orchestra (3); Glee Club Accompanist (3, 4); Junior Night (3); Pre-Junior Night Committee (3); Mirror Staff (4).

### ELIZABETH AKIN

*Titter*

Senior Play (4); G. A. A. Council (4); Senior Council (4); Parnassian (3, 4); Parnassian Play (3); Junior Night (3).

### LOUIS ALEXANDER, JR.

*Lou*

Chairman Home Room (3); French Club (2, 3, 4); Chairman Publicity Committee (3, 4); Assistant Manager Baseball (2, 3); Junior Night Advertising Committee (3).

### RALPH F. ALLEN

Glee Club (4).

### VIRGINIA ALLEN

G. A. A. (1, 3, 4); Class Basketball (3); H. R. Basketball (3); Monitor (2, 3); Senior Play Advertising Committee (4).



#### RUTH AMBERG

French Club (2, 3, 4); Vice-President French Club (4); Parnassian Society (3, 4); Senior Play (4); Leaders' Club (4); Soccer Manager (4).

#### RICHARD M. ANDRESEN

*Dick*

Class Football (2, 3, 4); Class Basketball (2, 3, 4); Junior Night Ticket Committee (3); Monitor (4); Senior Play Committee (4).

#### RUTH ANSPACH

Member of Parnassian Society (3, 4); Sophomore Dramatic Club (2); G. A. A. (2, 3, 4); Home Room Basketball (2, 3, 4); Junior Night Committee and Usher (3).

#### PEGGY ANTHONY

*Pug*

Parnassian Society (2, 3, 4); Secretary of Parnassian (4); Pre-Junior Night Committee (3); Swimming Manager (4); Senior Play (4).

#### ERNEST ARENA

Sophomore-Stage Committee (2); Aviation Club (2, 3); Home Room Basketball, Football (2, 3); Varsity Football (4); Junior Stage Committee (3).

#### MARJORIE ARKENBERG

*Marge*

Junior Night (3); Parnassian Society (3, 4); Head Monitor (4); French Club (2, 3, 4); Chairman of Refreshment Committee (4).

#### MAE ARLEDGE

Sophomore and Junior Years spent at Punahou School, Honolulu; G. A. A. (4); Soccer Team (4); Glee Club (4).

#### FREDERICK M. ARNOLT, JR.

*Fred*

Sophomore Dramatic Club (2); Varsity Football Squad (2, 3, 4); German Club (3, 4); Hockey (4); Track (4).



## CLASS OF 1933



### EDWARD ASMUTH

*Tabiti*

Freshman, Sophomore, Junior Years spent at Bordentown Military Institute; Football (2, 3, 4); Basketball (2, 3, 4); Track (2, 3, 4); Swimming (1).

### ELAINE ASTURIAN

*Layne*

Monitor (2); Glee Club (2); Commercial Club (2, 3); Junior Night (3); Senior Play Committee (4).

### JAMES W. ATZ

*Atzy*

Fire Committee (2); Football (2, 3, 4); Junior Council (3); Traffic Committee (4).

### CLARK BACHMAN

*Barney*

Home Room Basketball (2, 3, 4); Home Room Football (2, 3, 4); Ticket Committee of Senior Play (4).

### LILLIAN BAER

*Lil*

Home Room Basketball (2); Junior Night (3); Senior Play Committee (4).

### RICHARD BAERNKOPF

*Dick*

Interclass Football (2, 3, 4); Advertising Committee Junior Night; Tennis (3, 4); Traffic (4); Swimming (4).

### RICHARD J. BAITER

*Dick*

Band (2, 3, 4); Service Orchestra (3, 4); Track (3, 4); Junior Night (3); Ticket Committee of Senior Play (4).

### CHARLES H. BAKER, JR.

*Junie*

Football (2, 3, 4); Fire Committee (3, 4); Home Room Secretary (3); Junior Night Ticket Committee (3).

## THE MIRROR



### JANE BALDWIN

G. A. A. Council (2, 3); Student Council (2); Orchestra (3); Junior Night Committees (3); Senior Play (4).

### OGDEN BALDWIN

*Baldy*

Hockey (3, 4).

### WILLIAM J. BARKLEY, JR.

*Stretch*

Basketball (2, 3); Captain (4); Track (2, 3, 4); Home Room Football Champions (2, 3, 4); Vice-Chairman Home Room (2, 4).

### ROSE BASKERVILLE

*Ted*

Glee Club (2, 3); Home Room Basketball (3); Junior Night Scenery Painting (3).

### RUTH E. BEACH

Vice-Chairman Home Room (2); Home Room Basketball (2, 3, 4); Junior Night Usher (3); Senior Play Committee (4); Assistant Head Monitor (4).

### RICHARD L. BEAZLEY

*Dick*

Fire Committee (3, 4); Color Guard (3, 4); Traffic Committee (4); Ticket Committee of Senior Play (4); Hockey (4).

### HELEN M. BEATRICE

G. A. A. (2, 3, 4); Leaders' Club (3); Soccer Team (3); Basketball Team (3); Baseball Team (3).

### ALICE BEEBE

G. A. A. (2, 3, 4); Glee Club (3, 4); Junior Night (3); Junior Night Costume Committee (3); Senior Play Costume Committee (4).



## CLASS OF 1933



### ADELE BEIDELMAN

*Bug*

G. A. A. (2); French Club (2); Sophomore Dramatic Club (2); Secretary of Home Room (2).

### NORTON BELCHER

Band (1, 2, 3, 4); Orchestra (2, 3, 4); Service Orchestra (2, 3); Interclass Football Championship (3, 4); Track (2, 3, 4).

### STEPHEN P. BELCHER, JR.

*Pat*

Home Room Play Cast (3); Boys' Glee Club (3, 4); Senior Play Cast (4); Parnassian (4); Home Room President (4).



### LOIS BELLINGER

*Loe*

Costume Committee (4).



### MELVIN BENBROOK

Interclass Football (2, 3, 4); Interclass Basketball (2, 3, 4); Junior Night (3).

### MARGARET BENNETT

*Mig*

Sophomore Dramatic Club (2); Art Club (2); G. A. A. (2, 3, 4); Junior Night (3); Senior Play Usher (4).



### MILDRED BERRY

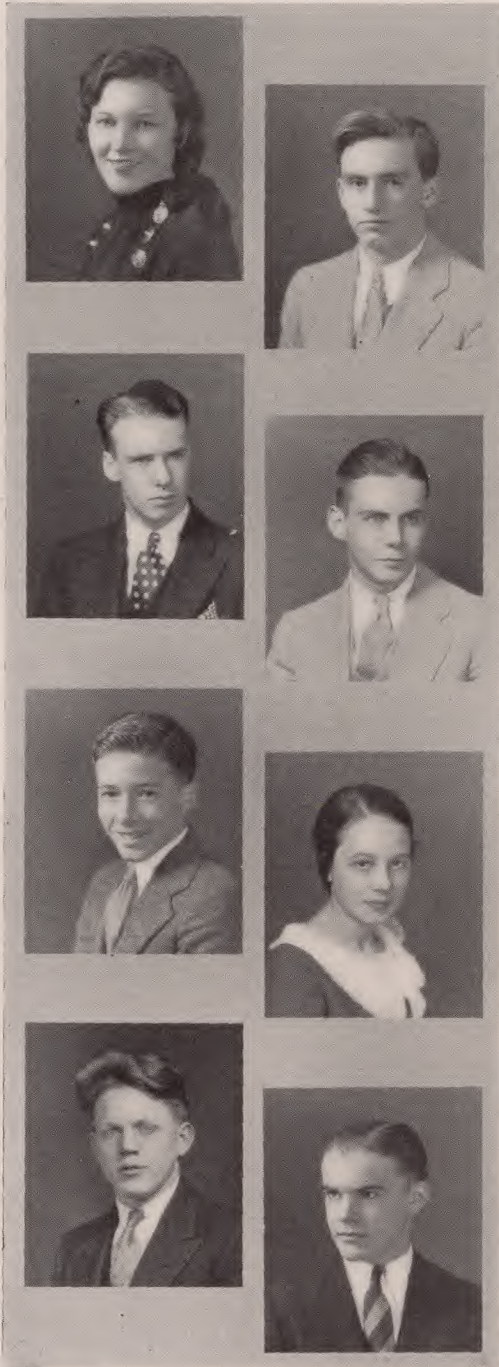
*Millie*

Glee Club (2); G. A. A. (2, 4); Commercial Club (3, 4); Costume Committee Junior Night (3); Costume Committee Senior Play (4).

### BETTY BIGALKE

Sophomore Dramatic Club (2); Art Club (2, 3, 4); G. A. A. (2, 3, 4); Home Room Committee (4); Senior Play Scenery Painting (4).





**EDYTHER E. BIRCH**

Dramatic Club (2); Junior Night (3); Class Secretary (3); Parnassian Society (4); Senior Play Usher (4).

**ROGERS BISHOP**

*Eli*

Junior Council Representative (3); Ticket Committee of Junior Night (3); Interclass Football (2); Championship (4); Interclass Basketball (2, 3, 4).

**RICHARD BLACKMAN**

*Dick*

Junior Night (3); Home Room Play Cast (3); Parnassian (3, 4); Boys' Glee Club (3, 4); Senior Play Stage Committee (4).

**WILLIAM H. BLAKE**

*Billie*

Ancient History Play (1); Junior Prom. Ticket Committee (3); Home Room Play Stage Committee (3); Parnassian Society (4); Senior Play Stage Committee (4).

**RICHARD BLOUNT**

*Dick*

Band (2, 3, 4); Orchestra (2, 3); Home Room Basketball (2, 3); Home Room Football (4); Ticket Committee Senior Play (4).

**LUCILLE BODIE**

*Lou*

G. A. A. (2); Secretary-Treasurer of Home Room (2); Leaders' Club (3); Glee Club (3); Commercial Club (4).

**NORMAN BOE**

*Red*

**GEORGE BOGART**

*Lucky*

Track (Barringer 1, 2, 3); Science Club (Barringer 1, 2, 3); French Club (Barringer 1, 2, 3); Football (Barringer 2, 3); Swimming (Barringer 3).



## CLASS OF 1933



### JANET A. BOGUE

G. A. A. (1, 2, 3); Secretary Dramatic Club (2); Chairman Program Committee Junior Night (3); Election Day Program (4); Mirror Staff (4).

### LOLITA E. BOND

G. A. A. (2); Costume Committee Junior Night (3); Costume Committee Senior Play (4).

### ROBERT BOSSHART

*Bob*

Massed Band (1, 2, 3, 4); Band (2, 3, 4); Orchestra (2, 3, 4); Traffic Committee (2, 3); Service Orchestra (2, 4).

### VIRGINIA BRADLEY

*Jinny*

Sophomore Play (2); Parnassian (2, 3, 4); Home Room Play (3); Senior Play (4); Leaders' Club (4).

### DOROTHY L. BRAUN

*Dot*

Soccer (2); G. A. A. (2, 3, 4); Art Club (3); Basketball (2, 4); Glee Club (3, 4).

### CHARLES BRAUTIGAM

*Pants*

### MARGARET BRIDGEMAN

*Marrie*

Parnassian Society (2, 3, 4); Glee Club (2, 3, 4); Secretary of Glee Club (4); Chairman Costume Committee Junior Night (3); Leaders' Club (4).

### ETHEL M. BROADWELL

G. A. A. (2); Home Room Basketball (2, 3, 4); Leaders' Club (3).



# **BETTY B. BROWN**

*Betty*

G. A. A. (2); Sophomore Dramatic Club (2); Home Room Basketball (2, 3, 4); Junior Night Committee (3); Senior Play Committee (4).

# **RUTH ANNETTE BRUBAKER**

Creative Writing Club (2, 3, 4); French Club (3); Art Club (3); Junior Night Scenery Painting (3); Senior Play Usher (4).

# **W. CHANDLER BRUNYATE**

*Slim*

Class Basketball (1, 2); Class Football (1, 2, 3, 4); Home Room Stage Committee (3); Senior Play Stage Committee (4).

# **HOWARD WILLIAM BUCK**

*Senator*

Chairman (4); Basketball (2, 3, 4); Track (2, 3, 4); Football (2, 3); Captain (4).

# **ALBERT BUCKELEW**

Science Club (2, 3, 4); Scenery Painting Junior Night (3); Scenery Construction, Senior Play (4).

# **KATHERINE BUCKLEY**

*Kay*

Sophomore Dramatic Club (2); French Club (3); Usher Junior Night (3); Basketball (3, 4); Soccer (4).

# **BERNICE A. BUEHLER**

*Bernie*

Junior Night (3); Member of Senior Council (4); Advertising Manager of Glee Club (4); Chairman of Social Committee Parnassian Society (4); Chairman of Parnassian Hallowe'en Dance (4).

# **ROBERT F. BUEHLER**

*Bob*

Columbian (2, 3, 4); Home Room Chairman (3); Secretary Junior Class (3); Parnassian (3); Stage Committee Chairman (4).



## CLASS OF 1933

---



### JEAN-ELLEN BURNS

G. A. A. (2); Sophomore Dramatic Club (2); Parnassian Society (3, 4); Parnassian Play Cast (3); Home Room Play Cast (3).

### HAROLD BURR

Science Club (2); Track (2, 3, 4); Scenery Construction Committee (4); Vice-Chairman of Home Room (4).



### ALICE BURT

Parnassian Society (2, 3, 4); Junior Night (3); Parnassian Plays (3); Secretary of Senior Class (4); Civics Committee (4).

### MARIE BURT

*Burtlett*

G. A. A. (2, 3, 4); Art Club (2, 3); Home Room Basketball (2, 3, 4); Junior Night (3); French Club (3).



### MARGUERITE BUSH

*Mig*

Sophomore Drama Club (2); Art Club (2, 3, 4); Leaders' Club (3, 4); Junior Night Usher (3); Book Club (4).

### A. NELSON BUTZ, JR.

*Nelse*

Glee Club (2, 3, 4); Science Club (2, 4); French Club (2, 3); Ring and Pin Committee (3); Chairman Ticket Committee of the Senior Play (4).



### RUTH BYER

*Byer*

Sophomore Dramatic Club (2); Junior Night Cast (3); French Club (3); G. A. A. (2, 4); Art Club (4).

### DOROTHY CAMERON

*Dot*

Chorus (2); Commercial Club (2); Costume Committee Junior Night (3); Glee Club (3, 4).



**ALBERT W. CAMPBELL**

*Al*

Track (2, 3, 4); Stage Committee of Junior Night (3).

**MARGARET A. CANNON**

*Mac*

Swimming (3, 4); Art Club (4); Basketball (4); Scenery Painting Committee for Senior Play (4).

**HARMON H. CARDOZO**

*Harm*

Parnassian (2); Vice-President of Home Room (3); Ring Committee (3); French Club (3, 4); Hockey (4).

**JANE CHAMBERLAIN**

G. A. A. (2, 3, 4); French Club (3, 4); Soccer Team (3, 4); Junior Night (3); Leaders' Club (3).

**WISTAR M. CHUBB, JR.**

*Wis*

Home Room Chairman (2); Parnassian (2, 3, 4); Junior Night (3); Pep Committee (4); Civics Committee (4).

**FREDERICK CLARK**

*Fred*

Orchestra (1, 2, 3); Chairman of Home Room (1); Parnassian (4); French Club (4).

**JOHN CLARK**

*Johnnie*

Track (1, 2, 3); House and Grounds Committee (3); Traffic Committee (3, 4); Civics Committee (4); Swimming (4).

**H. DOUGLAS COCHRAN**

*Doug*

Band (2, 3, 4); Service Orchestra (3); Traffic Committee (4); Student Council (4); Mirror Staff (4).



## CLASS OF 1933



### DONALD COEYMAN

*Don*

Science Club (2, 3, 4); President of Science Club (4); Junior Prom Decoration Committee (3); Radio Committee (4); Monitor (4).

### MARGERY COHEN

G. A. A. (2, 3, 4); Junior Council (3); Christmas Play (3); Parnassian Society (3, 4); Senior Council (4).

### WALLACE COONS

*Wally*

Tennis (2, 3, 4); Junior Varsity Basketball (2, 3); Monitor (2, 3); Home Room Chairman (4); Fire Committee (4).

### ROY COOPER

*Rocking Chair*

Football (2, 3, 4); Basketball (2, 3, 4); Baseball (2, 3, 4); Home Room Chairman (3); Chairman Lunch Room Control Committee (4).

### KATHRYN CORDES

*Rope*

G. A. A. (2, 3, 4); Commercial Club (2, 3, 4); Junior Night Usher (3).

### WINIFRED COURT

*Win*

Junior Night (3); Parnassian (4); G. A. A. (4); Advertising Committee of Senior Play (4); Glee Club (4).

### MARGARET COYNE

Home Room Basketball (2, 3); G. A. A. (2, 3); Junior Night Program Committee (3); Home Room Treasurer (3).

### BETTINA CRACCO

*Bee*

Junior Prom (3); Glee Club (4).



# **DOREEN CROMPTON**

*Dora*

Home Room Basketball (1); Sophomore Dramatic Club (1, 2); G. A. A. (1, 4); Glee Club (2); Sophomore Play Cast (2).

# **JANET CROOKS**

G. A. A. (2, 3, 4); Art Club (2, 3); Sophomore Dramatic Club (2); Junior Night Committee (3); Parnassian (4).

# **HAROLD L. CROSS, JR.**

*Hal*

Football (2, 3, 4); Hockey (2, 3, 4); Glee Club (4).

# **ELIZABETH ANNE CUMMINGS**

*Betty*

Sophomore Dramatic Club (2); Sophomore Soccer Team (2); G. A. A. (2, 3, 4); Home Room Basketball (2, 3, 4); Art Club (3).

# **DAVID COURTER DALLY**

*Corke*

Track (2, 3, 4); Junior Nominating Committee (2); Monitor (2, 3); Football (3); Assistant Chairman of House and Grounds Committee.

# **DOROTHY DALY**

*Dot*

Sophomore Dramatic Club (2); G. A. A. (2, 3, 4); Junior Night (3); Junior Night Advertising Committee (3); Senior Play Advertising Committee (4).

# **VIRGINIA DARE**

*Jinny*

Properties Committee of Junior Night (2); Glee Club (2, 3, 4); Baseball (2, 3, 4); Soccer (2, 3); Junior Night Chorus (2).

# **WARREN H. DAVIDHEISER**

Aviation Club (2, 3); Junior Night Committee (2); Track (3, 4); German Club (3, 4).



## CLASS OF 1933



### ALAINE MARGORY DAVIMOS

French Club (3, 4); Junior Night (3); Columbian Circulation (4); Parnassian (4); Advertising Committee Senior Play (4).

### ROBERT B. DAVIS

*Bob*

Sophomore Dramatic Club (2); Vice-President Sophomore Dramatic Club (2); Manager of Baseball (4).

### BETSEY CRANE DAY

G. A. A. (2, 3, 4); French Club (3, 4); Aviation Club (3); Junior Night (3); Book Club (4).

### WALTER M. DEALAMAN, JR.

*Bus*

German Club (2, 3, 4); Junior Prom Decoration Committee (3); Senior Play Ticket Committee (4).

### OLIVE DEAN

### ARTHUR W. DE GROFF

German Club (2, 3); Hockey (3, 4); Junior Night Stage Committee (3); Ticket Committee Senior Play (4); Fire Committee (4).

### ISABELLE DEMAREST

Junior Night Committee (3); G. A. A. (4); French Club (4); Book Club (4); Senior Play Committee (4).

### PAUL DICKSON

Columbian (2, 3); Junior Council (3); Hockey (3, 4); Tennis Manager (4); Student Council Treasurer (4).



**JACK DIETZE**

*Jack*

Home Room Chairman (2, 3, 4); Football (2, 3, 4); Swimming (2, 4); Traffic Committee (4); Finance Committee (4).

**RUTH ELIZABETH DIETZE**

Aviation Club (2); Junior Ring and Pin Committee (3); Junior Night Advertising Committee (3); Junior Prom Advertising Committee (3); Senior Play Costume Committee (4).

**MICHAEL DOLAN**

*Mike*

Football (2, 3, 4); Baseball (2, 3, 4); Inter-class Basketball (3, 4); Junior Night Committee (3); German Club (3).

**GEORGE T. DORSO**

*Bab*

Football (2, 4); Art Club (2, 3); Track (2, 3).

**MILDRED A. DOWE**

*Mil*

G. A. A. (2, 3, 4); German Club (3, 4); Junior Night Usher (3); Glee Club (4).

**VIRGINIA DREWRY**

*Droopy*

G. A. A. (2, 3, 4); G. A. A. Council (3); Junior Night Usher (3); Senior Play Committee (4).

**LOUIS E. DRYPOLCHER**

*Skipper*

Debating Society (2, 3); Band (2, 3, 4); Orchestra (2, 3, 4); Manager of Tennis (2, 3); Senior Prom Committee (4).

**CHARLES DUGHI**

Properties Committee Senior Play (4).



## CLASS OF 1933



### MARGARET DUNAWAY

*Marnie*

G. A. A. (2, 3, 4); Parnassian (3, 4); Mirror (4); Assembly Committee (4); Junior Night (3).

### PRISCILLA DUNN

*Pris*

Aviation Club (2); Sophomore Dramatic Club (2); G. A. A. (2, 3, 4); Soccer and Basketball Teams (2, 3, 4).

### URSULA DUNN

*Urs*

### ELIZABETH EARL

*Lib*

Sophomore Dramatic Club (2); Art Club (3); Committee for Junior Prom (3); Committee for Senior Play (4); G. A. A. (4).

### NATALIE EARL

*Nat*

Glee Club (2, 3, 4); Junior Night Chorus (3); Leaders' Club (3); Soccer (4); Senior Play Costume Committee (4).

### MARY I. EDMISON

G. A. A. (1, 3); Junior Night Costume Committee (3); Junior Ring and Pin Committee (3); Assistant Chairman Senior Play Costume Committee (4).

### ANTOINETTE M. EGGER

*Tony*

Chairman of Program Committee (2); Glee Club (2); G. A. A. (2, 4); Home Room Basketball (2, 3, 4); Junior Night (3).

### HELEN EISELE

*Chic*

Student Council (3); Secretary (4); G. A. A. Council (2, 3); President (4); Parnassian Society (2, 3).



**DOROTHY E. ELLIS**

*Dot*

G. A. A. (1, 2, 3, 4); Art Club (3, 4); Monitor (3); Junior Night Cast (3); Senior Play Usher (4).

**JOHN R. EVANS, JR.**

*Red*

Student Council (2, 4); Hockey (1, 2, 3, 4); Football (2); Finance Committee (3); Junior Night Committee (3).

**GEORGE W. EWALD**

German Club President (4); Senior Play Committee (4); Mirror Staff (4); Student Council (2); Junior Prom Committee (3).

**ALBERT C. FAATZ, JR.**

*Junie*

Football (2, 3); Track (2, 3, 4); Junior Night Cast (3); Senior Play Advertising Committee (4); German Club (4).

**MARJORIE W. FAITOUTE**

*Marge*

G. A. A. (2, 3, 4); Commercial Club (3, 4); Publicity Manager Commercial Club (4); Girls' Glee Club (4); Junior Night Cast (3).

**ANN R. FALCONER**

*Ann*

German Club (3, 4); Junior Night Committee (3); Senior Play Costume Committee (4); Home Room Secretary and Treasurer (4); G. A. A. (4).

**EUGENE FARLEY**

*Gene*

Interclass Basketball (3, 4); Science Club (4); Creative Writing Club (4); Parnassian Society (4).

**ELLENOR FARQUHAR**

Columbian Staff (3, 4); French Club (2, 3, 4); Publicity Committee French Club (3, 4); Senior Council (4); Creative Writing Club (2, 3, 4).



## CLASS OF 1933

---



### ERIC FARR

*Farr*

Band (3, 4); Swimming (3, 4); School Council (3); Stage Committee Junior Night (3); Stage Committee Senior Play (4).

### PENELOPE FERRY

*Penny*

French Club (2, 3, 4); Parnassian Society (4); Junior Night Cast (3); Senior Play Advertising Committee (4); Art Club (2, 3).

### BETTY FIACRE

*Betty*

Sophomore Dramatic Club (2); Art Club (2, 3); Junior Night Cast (3); Athletics (numerals) (3); Senior Play Advertising Committee (4).

### ALBERT FIELD

*Deacon*

Creative Writing Club (4); Sound Effects, Senior Play (4).

### HENRY R. FIELD

*Slim*

Hockey (3, 4); Junior Night Construction Committee (3); Senior Play Construction Committee (4); Tennis (4).

### LENORA M. FIELDING

*Lee*

G. A. A. (2, 3, 4); Commercial Club (2, 3, 4); Senior Play Costume Committee (4); Junior Prom Refreshment Committee (3); Home Room Basketball (2, 3, 4).

### EDNA FIERY

Sophomore Dramatic Club (2); French Club (2, 3, 4); Glee Club (2, 3); Secretary of Home Room (3); Art Club (4).

### GLENN FIERY

Glee Club (2, 4); Aviation Club (2, 3); Sophomore Dramatic Club (2); Junior Night Committee (3); Home Room Football (2, 3, 4).



**ANNE GERTRUDE FOX**

*Ann*

Sophomore Dramatic Club (2); G. A. A. (2, 3); Graduation Usher (2); Home Room Basketball (3).

**ALBERT FISCHER**

*Al*

Senior Play Committee (4).

**DORIS FISCHER**

Aviation Club (4); Leaders' Club (4); Junior Night (3); Junior Prom Committee (3); Home Room Secretary and Treasurer (2).

**STANLEY FISCHER**

*Bud*

Commercial Club (2); Sophomore Dramatic Club (2); Senior Play Committee (4).

**HELEN F. FITZGERALD**

*Fitz*

Commercial Club (2, 3, 4); G. A. A. (3, 4); Home Room Basketball (2, 3, 4); Volley Ball team (3); Soccer Team (3, 4).

**GERTRUDE FLORENCE**

*Scotty-Gigglin' Gert*

Glee Club (4); Commercial Club (2); Home Room Basketball (3).

**A. JOSEPH FRANK**

*Lefty*

Basketball (2, 3, 4); German Club (2); Basketball Assistant Manager (1); Senior Play (4); Chairman Home Room Program Committee (3).

**ELIZABETH J. FRANZ**

German Club (3, 4); Senior Play Costume Committee (4); G. A. A. (2).



## CLASS OF 1933



### JOHN E. FRANZEN

*Red*

Football (2, 3, 4); Baseball (3, 4); Business Manager Columbian (4); Business Manager Junior Night (3); Fire Committee (4).

### BURGESS FREEMAN

Aviation Club.

### MORTON J. FRENCHMAN

*Frenchy*

Home Room Chairman (2); Sophomore Basketball Team (2); Junior Night (3); Track (3); Track (4).

### ELMER A. FRITSCH

*Moose*

Senior Play (4); Football (3); Interclass Basketball (2, 3); Home Room Football (2); Home Room Basketball (2, 3).

### WILLIAM BURTON FURMAN

*Burt*

Decoration Committee Junior Prom (3); Home Room Football (2, 3); Laboratory Assistant Chemistry (4); Home Room Basketball (2, 3).

### DOROTHY L. GALER

*Dot*

Glee Club (1, 2); Basketball (1, 2, 3); Hockey (field) (2, 3).

### BARBARA GALLOWAY

Parnassian Society (3, 4); G. A. A. (2); Junior Night Scenery Committee (3); Art Club (2); Home Room Basketball (2, 3, 4).

### HOWARD F. GEORGE

*Howie*

Sophomore Play (2); Entertainment Committee (2, 3); Commercial Club (2); Senior Play (4).

## THE MIRROR



### JANET R. GERMAN

G. A. A. Council (3); Editor Columbian (3); Parnassian Society (4); President French Club (4); Mirror Staff (4).

### RODERIC GIBBINS

*Rod*

Glen Ridge High School; Basketball (2); Service Squad (2, 3); Orchestra (2, 3).

### EDWARD R. GILLIGAN

*Ed*

Football (2, 3, 4); German Club (3); Junior Night Committee (3); Interclass Football (3, 4); Interclass Basketball (3, 4).

### DOROTHY GLADSON

*Dot*

Sophomore Dramatic Club (2); G. A. A. (2, 3, 4); Home Room Basketball (2, 3, 4).

### MARY GLASSER

Orchestra (2, 3, 4); Home Room Basketball (2, 3, 4); Secretary of German Club (3).

### ALBERT GOEDDE

*Al*

Football (3); German Club (3); Junior Night Committee (3); Senior Play Committee (4); Interclass Basketball (3, 4).

### HAROLD GOERKE

*Zilch*

Basketball (3, 4); Baseball (3, 4); Junior Night Committee (3); Interclass Football (2, 3, 4); Science Club (3).

### ELIZABETH GOLDSMITH

*Betty*

Creative Writing Club (3, 4); Junior Prom Committee (3); Junior Night (3); French Club (2, 3, 4); Mirror Staff (4).



## CLASS OF 1933



**MATTHEW GOLDSTEIN**

*Speed*

Squad Football (1, 2); Aviation Club (2, 3); Home Room Basketball (1, 2, 3); Ancient History Play (1).



**FAITH GORT**

*Syd*

Sophomore Dramatic Club (2); Art Club (3); Properties Committee for Junior Night (3); Girls' Sophomore-Senior Play (4); G. A. A. (2, 3, 4).



**MARIANNE GREGORY**

G. A. A. (2, 3, 4); Creative Writing Club (3, 4); Properties Committee Junior Night (3); French Club (2, 3, 4); Advertising Committee Senior Play (4).



**ELSIE GREGOWITZ**

*El*

Glee Club (2, 3); Commercial Club (3); G. A. A. (3); Home Room Basketball.



**STEPHEN GREGOWITZ**

*Gimsha*

Accordion in Musical Program (2); Sophomore Program (2); Christmas Play (4); Junior Night (3); Home Room Program Committee (3).



**FREDERICK L. GUERIN**

*Fred*

Student Council (2, 4); Junior Class President (3); Glee Club (3, 4); Track (2, 4); Mirror Staff (4).



**WILLIAM HAAS**

*Bill*

German Club (2, 3); Home Room Football (3, 4); Home Room Basketball (3, 4); Senior Play Committee (4); Junior Night Committee (3).



**GERTRUDE HAFNER**

Commercial Club (2, 4); G. A. A. (2, 4); German Club (4).

## THE MIRROR

---



### ROBERT HAHN

*Bob*

Manager of Hockey (4); Traffic Committee (4); Finance Committee (4); Junior Council (3); Senior Council (4).

### BERT HALL

Parnassian Society (4); Vice-Chairman Home Room (4); Stage Committee of Junior Night (3); Art Club (4); Scenery Painting Senior Play (4).

### ROBERT HALSEY

*Bob*

Council Representative (2, 3); Election Committee (3); Chairman (4); Junior Night Stage Committee (3); Senior Play (4).

### CALEB DEAN HAMMOND, JR.

*Bud*

Chairman Stage Committee Senior Night (4); Stage Committee Junior Night (3); Glee Club (2); German Club (2, 3); Track (2, 3).

### M. EVELYN HANKINSON

*Lyn*

G. A. A. (2); Junior Night Committee (3); Senior Play Committee (4).

### J. G. ROBERT HANSEN

*Bob*

Football (2); Basketball (2, 3); Baseball (3, 4); Junior Construction Committee (2); Chairman of Sophomore Class (2).

### ELINOR HARDEN

*Ed*

Parnassian (3, 4); Glee Club (3, 4); Junior Night (3); Usher Senior Play (4); Parnassian Plays (3).

### JANET F. HARLEMAN

*Jan*

G. A. A. (2, 3, 4); Junior Night (3); Glee Club (2, 4); Sophomore Dramatic Club (2); Senior Play Committee (4).



## CLASS OF 1933



### C. ELLISON HARKRADER

*Elly*

Vice-President Sophomore East Orange High School (2); J. V. Football, Blair (3); Chi Epsilon Chi Society, Blair (3); Fire Committee (4).

### GORDON HARMUTH

*Gummi Gordon*

Track (2, 3, 4); Home Room Football (2, 3, 4); Fire Committee (4); Home Room Basketball (2, 3).

### IRWIN B. HARRIS

Junior Night Committee (3); Science Club (4); Home Room Committee (3, 4); Senior Play Committee (4); Home Room Football (2, 3, 4).

### ELVIRA DICKSON HARRISON

*Boodie*

Parnassian Society (3, 4); G. A. A. (2, 4); Junior Night (3); Soccer (4); Chairman of Home Room Committee (2).

### ALTHEA BELLE HAYHURST

*Al*

Parnassian (3, 4); Creative Writing Club (3, 4); Junior Night (3); Home Room Secretary (3, 4); G. A. A. (2, 4).

### MARGARET M. HEALY

*Peggy*

G. A. A. (2, 3, 4); Junior Night Properties Committee (3); Treasurer of Commercial Club (4); Chairman of Senior Play Program Committee (4); Glee Club (4).

### NAOMI RUTH HEIMALL

Commercial Club (2); Glee Club (2, 3, 4); Junior Night (chorus) (3); Senior Play Committee (4); G. A. A. (2, 3).

### ELFREDA HERKART

G. A. A. (2, 4); French Club (2, 3, 4); Sophomore Dramatic Club (2); Book Club (4); Usher Junior Night (3).



**RICHARD A. HERZBERG**

*Dick*

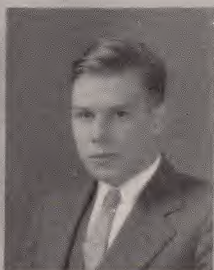
Track (2, 3, 4); German Club (3, 4); Properties Committee Senior Play (4).



**DORIS H. I. HEYDENRICH**

*Dunk*

Senior Class Vice-President (4); President Art Club (4); Columbian Staff (2, 3, 4); Senior Play (4); Parnassian Society (3, 4).



**EDWIN L. HOBSON**

*Otto*

Manager Basketball and Assistant (2, 3, 4); Football (2, 3, 4); Junior Council (4); Senior Council (4); Sophomore Election Committee (2).



**EDWIN B. HOERTZ**

*Ed*

German Club (4); Home Room Football (2, 3, 4); Home Room Basketball (2, 3, 4); Junior Night Committee (stage) (3); Fire Committee (4).



**ILSE E. HOHMANN**

German Club (2, 3, 4); Secretary of German Club (4); Soccer, Volley Ball (4, 3); Art Club (4); G. A. A. (2, 3, 4).



**LILLIAN HOLLE**

Columbian Staff (3, 4); French Club (2, 3, 4); Parnassian Society (3); Usher, Junior Night (3).



**CHANDLER HOLMES**

*Chan*

Hockey (2, 3, 4); Senior Play Committee (4); Fire Committee (2, 3, 4); Interclass Home Room Football (2, 3, 4); Home Room Basketball (3, 4).



**GERTRUDE HOOKE**

*Gertie*

Civics Committee (2); Secretary of Home Room (3); Art Club (3); Junior Night (chorus) (3); Chairman of Social Committee (4).



## CLASS OF 1933

---



### JOHN HOOKE

Swimming (3, 4); Football (2, 3); Vice-Chairman of Civics Committee (4); Chairman of Home Room (2); Fire Committee (4).



### DOROTHY HOPKINS

*Dot*

Commercial Club (2).



### MARY HOPKINSON

*Hoppie*

Assembly Committee (3, 4); Lunch Room Control Committee (3, 4); Eligibility Committee (2, 3); Class Council (3, 4); G. A. A. Council (3).



### EDNA HORN

*Ed*

G. A. A. (2, 3); German Club (2, 3); Commercial Club (3, 4); Program Committee Junior Night (3).



### HELEN V. HORN

*Hornie*

Commercial Club Corresponding Secretary (4); G. A. A. (2); Program Committee, Junior Night (3); Senior Play, Advertising Committee (3).



### NORMAN HOSFORD

Squad Football (2); Civics Committee (3); Fire Committee (3); German Club (4).



### WARD HUMPHREY

Tennis Team (3, 4); Traffic Committee (4); Junior Prom Committee (3); Senior Play Committee (4); Lunch Room (4).



### HERBERT J. HUNKELE, JR.

*Jack*

Football (2, 3, 4); Swimming (3, 4); Track (4); Traffic Committee (4); Glee Club (2, 3, 4).



**ROBERT T. HYDE**

*Red*

Football (2, 3, 4); Home Room Chairman (3, 4); German Club (3); Treasurer (4); Assistant Manager Track (3).

**MINNIE JACK**

*Jack*

Commercial Club (2, 3); Senior Play, Costume Committee (4); G. A. A. (2, 3).

**GRACE CAROL JACKSON**

Art Club (2, 4); Glee Club (4); Leaders' Club (3); Junior Night (3); Monitor (3).

**EDWARD WM. JACOBSON**

*Bud*

Sophomore Dramatic Club (2); Science Club (2); Parnassian Society (4); Columbian Staff, Business (3, 4); School Lighting Crew (3, 4).

**CARL JAMES**

*Bama*

Senior Play Advertising Committee (4); Inter-class Football (4); French Club (2); Science Club (3); Vice-President of Home Room (2).

**WILLIAM JENKINS**

*Bill*

Football Varsity (3, 4); Junior Varsity (2); Baseball Junior Varsity (2); Baseball Varsity (4); Fire Committee (4).

**HILDA E. JENSEN**

*Jenny*

Leaders' Club (2, 3); Junior Night, Advertising Committee (3); Commercial Club (2, 4); G. A. A. (2, 3, 4); Senior Play, Scenery Painting (4).

**E. IRENE JOHNSON**

*Johnny*

G. A. A. (2, 3); Art Club (2, 4); Junior Night (3); Glee Club (3, 4).



## CLASS OF 1933



**EDNA H. JOHNSTON**

*Eddie*

Creative Writing Club (3, 4); German Club (4); Junior Night (3); Science Club (2, 3, 4); G. A. A. (2, 3, 4).



**EDWARD JOHNSTON**

German Club (2, 3, 4); Refreshment Committee Junior Prom (3); Science Club (4); Properties Committee Senior Play (4).



**HELEN JOYCE**

*Jerce*

Commercial Club (2, 3, 4); Finance Committee G. A. A. Party (4).



**MILLICENT KALISCH**

G. A. A. (2, 3, 4); Junior Night Usher (3); Monitor (3, 4); German Club (4); Home room Basketball (4).



**N. WARD KAUCHER**

Home Room Football (2, 3, 4); Home Room Basketball (2, 3, 4); Swimming (4).



**GERTRUDE KELLER**

*Gert*

Glee Club (2); Commercial Club (2, 3); G. A. A. (2, 3, 4); Basketball (2, 3, 4).



**WALTER J. KELLY**

*Walt*

Home Room Football (2, 3, 4); Home Room Basketball (2, 3, 4); Fire Committee (4).



**FRANCES KERNAN**

*Jitty*

Sophomore Manager Basketball (2); G. A. A. (2, 3, 4); Junior Night (3); Leaders' Club (4); Home Room Secretary-Treasurer (4).



**MARIE J. KERNAN**

*Honey*

G. A. A. (1, 2, 3, 4); G. A. A. Council (1, 2); Junior Night (3); Leaders' Club (3); Vice-Chairman Home Room (4).

**LEONARD KEYES**

*Keyesie*

Squad Football (2); Junior Prom (3); Swimming (3, 4); Senior Play (4).

**BARBARA KINGSLEY**

*Barb*

Cartoonist on Columbian (2, 3); G. A. A. (2, 3); Art Club (2); Secretary (4); Chairman Scenery Painting Committee Senior Play (4).

**DOUGLAS B. KING**

*Doug*

Glee Club (2); Track (2, 3, 4); Junior Prom Committee (3); Senior Play Ticket Committee (4); Science Club (4).

**ANNA KIEHM**

Orchestra (1, 2, 3, 4); French Club (1, 2, 3, 4); Book Club (4); Mirror Staff (4); Costume Committee Chairman Senior Play (4).

**DONALD KINGSLEY**

*Bud*

Aviation Club (2); Cheer Leader (2, 3, 4); Interclass Football and Basketball (2, 3, 4).

**BARBARA KIRCH**

*Bobbie*

Sophomore Dramatic Club (2); Decoration Committee Junior Prom (3); French Club (3, 4); Chairman Properties Committee Senior Play (4); Home Room Chairman (4).

**EDWARD KLEBAUR**

*Ed*

Home Room Football (2, 3); Home Room Basketball (2, 3, 4); Baseball (3, 4).



## CLASS OF 1933



**E. THEODORA KLEIN**

*Teddy*

G. A. A. (2, 3, 4); Home Room Basketball (2, 3, 4); Junior Night Usher (3); Commercial Club (3); Senior Play Costume Committee (4).



**CARL KLEMP**

Home Room Chairman (3); Junior Prom Ticket Committee (4); Columbian Sports Editor (4); Manager of Basketball (4).



**OTILIE H. KORNE MANN**

*Sweetie*

G. A. A. (2); Glee Club (2); Orchestra (2, 3); Junior Night (3); Parnassian (3, 4).



**GEORGE J. KRIEGER**

*Judge*

Track (3); Advertising Committee, Senior Play (4).



**NOEL LA BEAUME**

*Red*

Football (2, 3, 4); Track (2); Hockey (2, 3).



**OLGA LA JOIE**

G. A. A. (2, 3, 4); Junior Night Cast (3); German Club (2); Sophomore Dramatic Club (2); H. R. Basketball (2, 3, 4).



**THAYLE LANDERS**

Columbian Business Staff (2, 3); Junior Night (3); Advertising Manager (Columbian) (4); Senior Play (4); Parnassian Society (3, 4).



**MARGARET LANGE**

*Muggs*

German Club (3); Glee Club (2); Junior Night (3); Commercial Club (4).



**JANE LARMOUR**

G. A. A. (2, 3, 4); Art Club (2, 3); Junior Night (3); H. R. Basketball (2, 3, 4); Senior Play Committee (4).



**JAMES DONALD MacLAURIN**

*Mac*

Junior Night (3); Football (2, 3, 4); Track (2, 3, 4); Senior Play (4); Fire Committee (4).



**RITA LEARY**

Columbian (4); Parnassian (4); Senior Play Advertising Committee (4).



**MARJORIE C. LEE**

*Margie*

Junior Night (3); Costume Committee Senior Play (4); Glee Club (4); G. A. A. (4).



**ETHEL LEIDIG**

*Ep*

G. A. A. (3); Junior Night Committee (3); Commercial Club (4); Senior Costume Committee (4).



**FORREST LELAND**

*Woodsy*

Football (2, 3, 4); Track (2, 3, 4); Home Room Chairman (3); Fire Committee (4); Senior Council Representative (4).



**ALEX P. LELONG**

*Al*

Glee Club (2, 3, 4); Home Room Chairman (2); Junior Night (3); Track (3, 4); Advertising Manager of Football (4).



**ALICE J. LENAHAN**

*Al*

Sophomore Play (2); Junior Night (3); Glee Club (2, 3); Girls' Athletic Association (2, 3, 4); Leaders' Club (3, 4).



## CLASS OF 1933



### FRANK E. LESKO

*Duke*

Sophomore Dramatic Club (2); Track (2, 3, 4); Class Football (2, 3, 4); Class Basketball (2, 3, 4); Senior Class Basketball (4).

### VIRGINIA H. LESSER

*Gin*

Sophomore Dramatic Club (2); Parnassian Society (3, 4); Glee Club (4); Leaders' Club (4).

### VIRGINIA H. LEVY

*Ginny*

Sophomore Dramatic Club (2); Junior Night Committee (3); Junior Prom Committee (3); Parnassian (3, 4); Mirror Staff (4).

### RUTH LEWIS

Glee Club (2, 3); Junior Night Committee (3); Senior Play Committee (4); Art Club (4).

### VIRGINIA LICHTLE

*Ginny*

Soccer (2, 3); Basketball (2, 3); G. A. A. (2, 3, 4); Junior Night (3).

### HELEN LEICHTMAN

Costume Committee (4).

### RUTH LIPIS

*Ruthy*

Creative Writing Club (2, 3, 4); G. A. A. (2, 3, 4); Junior Night Cast (3); Junior Prom Committee (3); French Club (3, 4).

### JOHN H. LOCKWOOD

*Johnny*

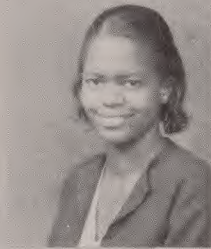
Junior Council (3); Junior Night Ticket Committee (3); Columbian Circulation Manager (3, 4); Senior Council (4); Civics Committee (4).



**JOHN A. LONG**

*Johnny*

Football (2, 3, 4); Basketball (2, 3, 4); Baseball (2, 3, 4); Fire Committee (2, 3, 4); Chief (4).



**JOSEPHINE LONG**

*Joe*

Glee Club (4); G. A. A. (3, 4); Junior Night (3); Basketball (3).



**RUTH LOSAW**

*Ruthie*

Glee Club (2); Junior Night (3); Commercial Club (2, 3, 4); G. A. A. (4); Senior Play Committee (4).



**MARGUERITE LOWREY**

*Miggie*

Junior Night Cast (3); Parnassian Club (2, 3, 4); H. R. Basketball (2, 3, 4); G. A. A. (2, 3, 4); Senior Play Usher (4).



**ARTHUR LUCAS**

*Red*

Hockey (2, 3); Chairman Advertising Committee (3); Civics Committee (2, 3, 4); Football Manager (4); Fire Committee (4).



**EDWIN LUNDY**

*Ed*

German Club (2, 3); H. R. Social Committee (2, 3); H. R. Treasurer (3); H. R. Football (2, 3, 4); Senior Play Construction Committee (4).



**LOUISE A. MAGEE**

*Lou*

G. A. A. (3); Glee Club (4).



**EUGENE A. MAGLIARO**

*Mag*

Class Football (2, 3, 4); Class Basketball (2, 3, 4); Track (3, 4).



## CLASS OF 1933



**FRANCES J. MAHONY**

*Fran*

Sophomore Dramatic Club (2); Glee Club (2); G. A. A. (2, 4); Art Club (4); Leaders' Club (4).



**LOLA JANE MALONEY**

*Lu*

Sophomore Dramatic Club (2); Junior Night (3); G. A. A. (2, 3, 4); Senior Play (4); Senior Girls' Party (4).



**HOWARD D. MARCUSSON**

*Howie*

Aviation Club (2, 3, 4); Junior Prom (3); Junior Night (3); Senior Play (4).



**JANE P. MARSH**

*Pat*

G. A. A. (2, 3, 4); Junior Night (3); Secretary-Treasurer H. R. (4); French Club (4); Senior Play Usher (4).



**PERCIE H. MARTIN**

*Perk*

Sophomore Dramatic Club (2); G. A. A. (2, 3, 4); H. R. Basketball (2, 3, 4); Junior Night (3); Leaders' Club (4).



**MARY E. MARTYN**

*Texas*

Junior Night (3); Glee Club (3); French Club (4); Creative Writing Club (4); Book Club (4).



**DOROTHEA MATHISON**

*Dot*

G. A. A. (2, 3, 4); Junior Night Costume Committee (3); French Club (3, 4); Monitor (4); H. R. Basketball (4).



**ROY MATTHEISSEN**

Sophomore Dramatic Club (2); Science Club (2, 3); Parnassian Society (4); Senior Play (4).



# **ALBERT MATZEK**

*Al*

H. R. Basketball (4); Basketball (4); Baseball (4); Senior Ticket Committee (4).

# **RAYMOND MAUDSLEY**

*Ray*

Interclass Football (2, 3); Junior Night Advertising Committee (3); Senior Play Construction Committee (4); Science Club (4).

# **ALEX McARTHUR**

*Mac*

Sophomore Dramatic Club (2); Orchestra (2, 4); H. R. Football (3, 4); H. R. Basketball (3, 4); Fire Committee (4).

# **LEONARD W. McCHESNEY**

*Mac*

Service Orchestra (1, 2, 3, 4); Band and Orchestra (1, 2, 3, 4); Parnassian (2, 3, 4); Chairman Junior Prom Committee (3); Ticket Committee Senior Play (4).

# **F. MERLE McGIBBENY**

*Mac*

Vice-President of Class (1, 2) East Washington High; J. V. Basketball (3); Chairman H. R. Entertainment Committee (3).

# **FRANK MCGINITY**

*Mac*

Track (2, 3, 4); Junior Night (3); Junior Prom Advertising Committee, Chairman (3); Class Lawyer (4); Class President (4).

# **F. DONALD McLEAN**

*Scotty*

Sophomore Dramatic Club (2); Science Club (2, 4); H. R. Basketball and Football (2, 3, 4); Parnassian Society (3, 4); Track (3, 4).

# **STANTON D. McMAHON**

Parnassian Society (2, 3, 4); Parnassian Plays (3); Ticket Committee Senior Play (4); Decoration Committee Junior Prom (3); Assistant Basketball Manager (3, 4).



## C L A S S O F 1 9 3 3



### MARGARET MEEKER

*Marge*

G. A. A. (2, 3, 4); Sophomore Dramatic Club (2); H. R. Treasurer (3); Junior Night (3); Junior Night Committee (3).

### MARION A. MELIA

*Ronny*

German Club (2, 3, 4); G. A. A. (2, 3, 4); Junior Night (3); Senior Play Usher (4).

### DIXON MELICK

Science Club (2, 3, 4); Junior Night (3); Junior Night Ticket Committee (3); Assistant Football Manager (3); Senior Play Ticket Committee (4).

### HELEN MENAGH

*Menagh*

Girls' Glee Club, Secretary (2, 3); G. A. A. (1, 2, 3); Leaders' Club (2, 3); Assembly Bible Reading (3).

### ROBERT MERRICK

*Bob*

Junior Council Member (3); H. R. Basketball (2, 3); German Club (3, 4); Senior Play (4); H. R. Chairman (4).

### HERBERT MEYERS

Orchestra (1, 2, 3); Interclass Basketball (3, 4); Interclass Football (3); Basketball (4); Football (4).

### ROBERT S. MILLER

*Bob*

Home Room Basketball (4).

### G. ELEANOR MILLIGAN

*El*

French Club (3, 4); Creative Writing Club (4); Chairman Junior Night Properties Committee (3); Senior Play Usher (4); Book Club (4).



**MARGARETHA K. MINDER**

*Peggy*

G. A. A. (2, 3); Sophomore Dramatic Club (2); Art Club (2, 4); Junior Night (3).



**FRANCES J. MONKS**

*Fran*

Treasurer H. R. (2); Sophomore Dramatic Club (2); Commercial Club (2, 4); G. A. A. (2, 3, 4).



**EUGENIA MOREL**

*Jean*

Monitor (3); Basketball (3); Junior Night Committee (3); G. A. A. (2, 3, 4); French Club (4).



**FRANCIS J. MORGAN**

*Franny*

Pre-ground school Course (2); Aviation Club (2); Interclass Games (2, 3, 4); Stage committee Junior Night (3); Monitor (4).



**ANNA MUELBERGER**

Manager G. A. A. (2, 3); Secretary G. A. A. (4); Eligibility Committee (4); Tradition Committee (4); Senior Play Committee (4).



**RITA MULROY**

*Mul*

G. A. A. (2, 3); Sophomore Dramatic Club (2); Tennis (2, 3, 4); H. R. Basketball (2, 3, 4); Junior Night (3).



**MARGARET MURPHY**

*Midge*

G. A. A. (1, 4); Sophomore Dramatic Club (1, 2); Glee Club (1, 2, 4); Sophomore Play Cast (2); Program Committee Senior Play (4).



## CLASS OF 1933



### HELEN V. NEILL

*Pete*

Eligibility Committee (3); Leaders' Club (3); Chairman Costume Committee Parnassian (4); G. A. A. Council (4); Chairman Tradition Committee (4).

### RUTH NEILSON

Tradition Committee (3); Nominating Committee Council Officers (3); Columbian Staff (3 4); Social Committee (4); Eligibility Committee (4).

### DANIEL NEISS

*Stewie*

South Side High School (1, 2); Class Football (3, 4); Class Basketball (3, 4); Commercial Club (3, 4); H. R. Chairman (3).

### RAYMOND M. NEU, JR.

*Ray*

Track (2, 3, 4); German Club (2, 3, 4); Fire Committee (3); Senior Play Ticket Committee (4); H. R. Vice-President (4).

### CHARLES R. NEUBERGER

Squad Football (2); Ring and Pin Committee (3); Junior Prom (3); Science Club (4).

### WINIFRED NEVILLE

*Winnie*

Soccer (2, 3, 4); Junior Night (3); Leaders' Club (3, 4); Basketball Manager (4); Glee Club (4).

### KATHRYN NICHOLS

Glee Club (2, 4); Junior Night (3); French Club (4); Creative Writing Club (4); Book Club (4).

### JAMES NICHOLSON

*Nick*

History Play (2); Construction Committee for Plays (2, 3); Football (3, 4); School Council (4); Fire Committee (4).

## THE MIRROR

---



### **RICHARD NORWOOD**

*Dick*

Parnassian (2, 3, 4); Hockey (2, 4); Civics Committee (3); Columbian (3, 4); Fire Committee (4).

### **HAYDEN O'CONNOR**

*Hank*

Sophomore Dramatic Club (2); Junior Prom (3); Science Club (3, 4); Biology Assistant (3, 4); Traffic Committee (4).

### **JOHN O'CONNOR**

*Johnnie*

H. R. Chairman (1, 2); Biology Assistant (3, 4); Chairman Scenery Construction Committee (3, 4); Senior Council (4).

### **BETTY O'DONNELL**

G. A. A. Manager Basketball (2); Glee Club (2, 3, 4); Junior Council (3); Senior Night Committee (4).

### **EILEEN OERTZEN**

*Eileen*

Sophomore Nominating Committee (2); Civics Committee (3); Soccer (3, 4); H. R. Basketball (3, 4); H. R. Secretary Treasurer (4).

### **ELEANOR OHLSEN**

G. A. A. (2, 3); Creative Writing Club (2, 3, 4); Junior Night (3); French Club (3, 4); Senior Play Costume Committee (4).

### **PAUL N. OLSON**

H. R. Chairman (2); Columbian News Editor (2, 3, 4); Eligibility Committee (3); Chairman Advertising Committee Senior Play (4); Varsity Swimming (3, 4).

### **NATALIE OPPENHEIM**

*Nat*

Soccer (2, 3); H. R. Plays (2, 3); G. A. A. (2, 3); Swimming (2, 3); Basketball (2, 3, 4).



## CLASS OF 1933



### KATHRYN O'REILLY

*Kay*

Home Room Committee (2); G. A. A. (2);  
Commercial Club (2); Civics Committee (3);  
Program Committees Senior Play (4).

### CAROL OSGOOD

*Carol*

Sophomore Dramatic Club (2); Parnassian  
(2, 3, 4); Junior Night (3); G. A. A. Council  
(4); Student Council (4).

### HELEN OSWALD

*Ozzie*

Junior Assembly Chairman (3); Secretary of  
Parnassian Society (3); G. A. A. Council (2, 3);  
Vice-President Council (4); Chairman of Cos-  
tume Junior Night (3).

### EDSON OUTWIN

*Ed*

Football (2); Home Room Football (2, 3, 4);  
Glee Club (3); Junior Night (3); Senior Coun-  
cil (4).

### RICHARD OUTWIN

*Dick*

German Club (2, 3, 4); Glee Club (3); Fire  
Committee (4).

### HOMER O. PAGE

Football (1, 2); Home Room Chairman (1, 2);  
Junior Council (3); Senior Play (4); Parnassian  
(2); Vice-President (3); President (4).

### WALTER PALMER

*Swede*

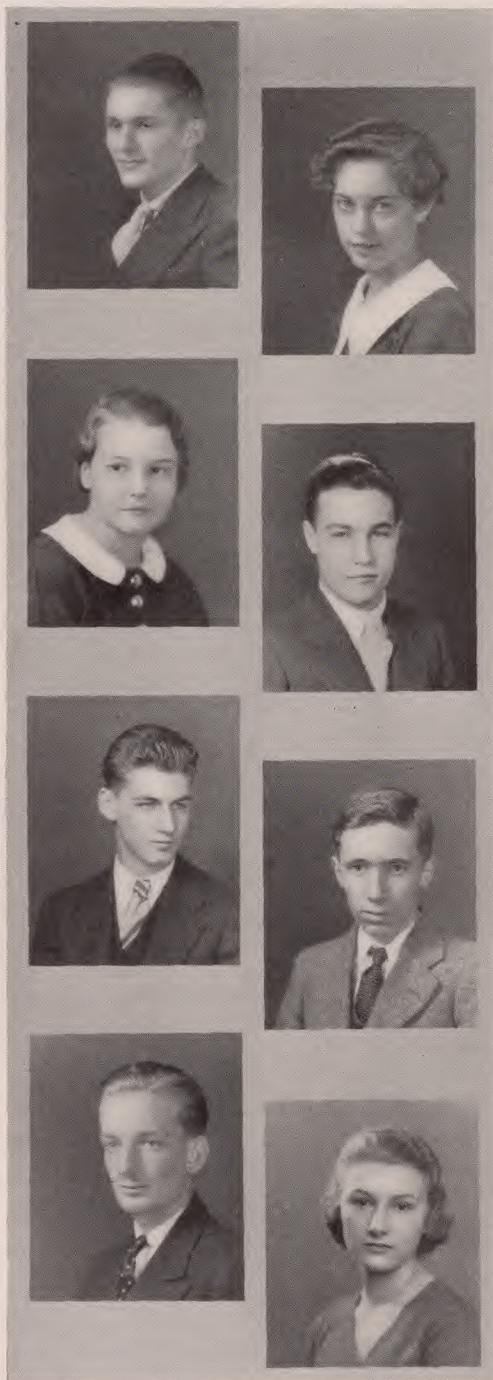
Basketball (2, 3, 4); Civics Committee (2, 3);  
Fire Committee (4); Senior Construction Com-  
mittee (4); Vice-Chairman Home Room (4).

### GLEN E. PARKER

*Limpy*

Entered from Detroit (3); Football (3, 4);  
Fire Committee (4).

## THE MIRROR



### WILLIAM R. PARSIL

*Pecus*

Football (2, 3, 4); Chairman Junior Construction (3); Home Room Chairman (4); Fire Committee (4).

### MARION PARTELOW

*Pete*

Sophomore Assembly (2); G. A. A. (2, 3); Election Committee (3); Junior Night (3); Home Room Committee Chairman (4).

### LOUISE PATTERSON

*Wez*

Glee Club (2, 3); Junior Night (3); Junior Night Properties Committee (3); French Club (4); Book Club (4).

### ROBERT M. PATTON

*Bex*

Football (2, 3, 4); Junior Assembly Chairman (3); Lunch Room Committee (3); Fire Committee (4); President Student Council (4).

### MARTIN W. PAYNE

*Butch*

Junior Night Scenery (3); Football (3); Mirror Staff (4).

### HERBERT PIERCE

*Herb*

Junior Night Scenery Committee (3); Junior Prom Committee (3); Boys' Art Club, President (3, 4); Senior Play Scenery Construction (4); French Club (4).

### MONT PIKE

*Zeb*

Track (2, 3, 4); Columbian (2, 3, 4); Junior Night (3); Parnassian (3, 4); Pep Committee (4).

### MARIE E. POH

*Marie*

Home Room Secretary (2, 3); G. A. A. (2, 3, 4); Junior Night (3); Vice-President Art Club (3); Senior Play Committee (4).



## CLASS OF 1933

---



### JOSEPH A. PORKERT

*Jap*

Home Room Basketball (2, 3); Home Room Football (2, 3); Home Room Play (3).

### HELEN M. QUINN

*Curly*

Junior Night (3); Speedball (3); G. A. A. (3, 4); Commercial Club (4); Soccer (3, 4).

### PANDIA C. RALLI

*Pan*

Assistant Football Manager (2, 3); Swimming (3, 4); Football Financial Manager (4); Civics Committee (4); Traffic Committee (4).

### WILLIAM RATHBUN

*Bill*

Parnassian (2, 3, 4); Tennis (2, 3, 4); Junior Night (3); Treasurer Junior Class (3); Editor-in-Chief Columbian (4).

### PAUL REDFERN

*Mike*

Secretary-Treasurer Home Room (4); Football (2); Fire Committee (4); Senior Construction Committee (4); Junior Prom (3).

### MIRIAM C. REED

G. A. A. (2); Junior Night Usher (3); Glee Club (4); Book Club (4).

### MARIE LOUISE RENTON

Basketball (2, 3); Junior Night (3).

### EDWARD RHATICAN

*Shifty*

Home Room Basketball Team (2); Football (2, 3, 4); Basketball (2, 3, 4); Baseball (3, 4); Fire Committee (4).



**BARBARA RICH**

*Barby*

Sophomore Dramatic Club (2); Junior Night (3); French Club (3, 4); Mirror Staff (4); President of Girls' Leader Club (4).

**JOYCE RICHARDS**

*Joy*

Secretary of Home Room (2, 4); Junior Night Committee (3); Junior Night (3); Monitor (3, 4); Parnassian (4).

**CAROL RICHARDSON**

*Sis*

Soccer (2, 4); G. A. A. (2, 4); Leaders' Club (2, 4); Commercial Club Program Committee (4); Senior Play Costume Committee (4).

**MILDRED E. RINGEL**

*Milly*

Columbian (2, 3, 4); French Club (2, 3, 4); G. A. A. (2, 3, 4); Leaders' Club (3, 4); Lunch-room Committee (3, 4).

**HAYWARD ROBERTS**

*Josie*

Glee Club (2); Orchestra (2, 4); Band (2, 3, 4).

**ARTHUR ROBINS**

*Art*

Home Room Football (1, 2, 4); Junior Night (3); Senior Play (4); Assembly Traffic Committee (4); Traffic Committee (4).

**DOROTHY A. RUESTOW**

*Dot*

G. A. A. (2, 3, 4); Sophomore Dramatic Club (2); Aviation Club (3); Junior Night Scenery Committee (3); Costume Committee Senior Play (4).

**JOHN RUSSELL**

Orchestra (2, 3); Band (2, 3, 4); Swimming (3); Stage Committee Senior Play; Track (4).



## CLASS OF 1933

---



### LELAND RUSSELL

*Lee*

Cheerleading (2); Ticket Committee, Senior Play; Home Room Chairman (4); Band (2, 3, 4); Home Room Football (2, 3, 4).

### OLGA RUTGA

*Hotcha*

Commercial Club (2, 3, 4); Monitor (2); Swimming (2); Commercial Club Play (4); G. A. A. (4).

### REBMAN RUTZ

Parnassian (4); Vice-President Science Club (4); Creative Writing Club (4); Senior Play Cast (4); Sophomore Dramatic Club.

### IRVING RYERSON

*Irv*

Football (2, 3, 4); Home Room Chairman (2, 3); Junior Night Cast! Civics Committee (3, 4); Senior Class Representative.

### HELEN E. SALISBURY

G. A. A. (2); Junior Night Advertising Committee; Art Club (3); Junior Prom Advertising Committee; Senior Play Scenery Painting Committee.

### ROBERT SALTER

*Bob*

Home Room Football (2, 3, 4); Junior Prom Committee; Junior Night Cast; Monitor (3, 4); Senior Play Construction Committee.

### RENVILLE SANDERS

*Reny*

Ticket Committee, Junior Night; Scenery Construction Committee, Senior Play.

### ROBERT SAUNDERS

*Bob*

Home Room Treasurer (2); Science Club (2); Junior Night Stage Committee; Swimming (3); Football (3, 4).



**CAROLYN E. SAYER**

G. A. A. (2, 3, 4); Junior Night; Senior Play Committee; Soccer (2, 3, 4); Leaders' Club (3, 4).

**EMILY SCHERER**

G. A. A. (2, 3, 4); German Club (3, 4); Junior Night Committee; Parnassian Society (4); French-German Club Dance Committee (4).

**ELEANOR D. SCHIELKE**

G. A. A. (3); Home Room Basketball (3, 4); Leaders' Club (4); Senior Play Costume Committee.

**RUSSELL SCHMIDT**

*Rusty*

Science Club (4); Radio Division (4); Home Room Football (4).

**BETTY K. SCHNEIDER**

*Betty*

Junior Night; Leaders' Club (3, 4); G. A. A. Council (4); Columbian Staff (4); Mirror Staff (4).

**CHARLOTTE A. SCHNIBBE**

German Club (2, 3); Commercial Club (2, 3, 4); G. A. A. (3, 4); Junior Night; Senior Play Costume Committee.

**WILLIAM SCHROEDER**

*Bill*

Hockey (2); Track (3); Advertising (Posters) (2, 3, 4); Commercial Club (3); Lunch Room Control (4).

**MARGARET H. SCHULZ**

*Marge*

G. A. A. (2, 3); Junior Night Cast (3); Art Club (3); Junior Prom, Decorating Committee; Senior Play Scenery Painting Committee.



## CLASS OF 1933



### LORETTA SCHUSTER

*Peb*

Commercial Club (2); G. A. A. (2); Vice-President Commercial Club (3, 4); Vice-Chairman Home Room (3); Program Committee, Senior Play.

### MARY MARGARET SCOTT

*Scottie*

Secretary of Glee Club (3); Parnassian Society (3, 4); Junior Night Cast; President of Glee Club (4); Bible Reading Committee (4).

### ROBERT E. SCULLY

*Bob*

Junior Night Committee; Monitor (3); Civics Committee (3); Glee Club (4); Home Room Football (3, 4).

### JEAN SCULTHORPE

*Scully*

G. A. A. (2); Home Room Basketball (2, 3).

### HOWARD SECOR

*Coach*

Football (2, 3); Basketball (2, 3); Baseball (2, 3); Lunchroom Committee (4); Traffic Committee (4).

### FRED WALTER SERBE

Class Football (3, 4); Class Basketball (3); Advertising Committee of Senior Play.

### ELISABETH SHERMAN

*Betty*

Basketball (2, 3, 4); Soccer (2, 3, 4); Swimming (2, 3, 4); Art Club (3); Junior Night.

### KATHARINE JUNE SIMONS

*June*

G. A. A. (2, 3, 4); French Club (3, 4); Junior Night (3); Art Club (3); Senior Girls Party Committee.



**KENNETH SIMPSON**

Deutsche Verein (2, 3, 4); Junior Night; Traffic Committee (4); Senior Play; Home Room Football (2, 4).

**BETTY SMART**

*Betty*

G. A. A. (2, 3); Art Club (2); Home Room Chairman (3); Advertising Committee, Junior Night; Advertising Committee, Senior Play.

**FRED F. SMITH**

*Fritz*

Home Room Football and Basketball (2); Junior Night; Swimming (3, 4); Football (3); Senior Play.

**GEORGE E. SMITH**

*Cap'n Smith*

Fire Committee (4); Home Room Football (1, 4); Civics Committee (3); Home Room Vice-Chairman (2, 3); Ancient History Play (1).

**HADDON SMITH**

*Smitty*

Cast of Junior Night; French Club (3, 4); Band and Orchestra (2, 3, 4); Ticket Committee, Senior Play; Publicity Manager of Swimming (4).

**IRA SMITH**

Parnassian (2); Junior Night Committee Chairman; Senior Play Committee; French Club (4); Boys' Art Club, President (3, 4).

**LOUIS SMITH**

*Lou*

Football (3); Baseball (3, 4); Fire Committee (4); Home Room Basketball (4); Monitor (3, 4).

**ROBERT SMITH**

*Lew*

Chairman Home Room Activities (3); Advertising Committee Senior Play.



## CLASS OF 1933



**DOROTHY E. SNABLE**

*Dotte*

From Westfield High School.



**VIRA SOMERNDIKE**

*Vi*

Sophomore Dramatic Club; Parnassian (2, 3, 4); Junior Night Cast; Senior Play Usher; G. A. A. (1, 2, 3, 4).



**MARGARET SOMMER**

Junior Council; Junior Night; Secretary-Treasurer of Creative Writing Club (3, 4); Vice-Chairman of Home Room (4); President of Book Club (4).



**THOMAS E. SPENCE**

*Tom*

Home Room Chairman (2); Basketball (2, 3, 4); Junior Night Stage Committee (3); Traffic Committee (3); Senior Council.



**FRED P. SPINDLER**

*Freddie*

Junior Night Construction Committee; German Club (4); Senior Play Construction Committee.



**FRANK N. STANLEY, JR.**

*Frankenstein*

Basketball (2, 3, 4); Tennis (3, 4); Color Guard (3, 4); Treasurer Senior Class; Senior Play Cast.



**JOHN B. STEARNS**

*Jack*

Assembly Committee (2, 4); Columbian (2, 3, 4); Tennis (2, 3, 4); Treasurer of Parnassian (4); Student Council (4).



**JOHN STEIMLE**

Class Football (2, 3, 4); Class Basketball (2, 3); Track (2); Glee Club (4).



**JACK STOCKMAN**

German Club (2, 3, 4); Swimming Team (3, 4); Junior Night; Columbian Staff (3); Traffic Committee (4).

**HAROLD S. STOETZEL**

*Hal*

Home Room Football (2); Home Room Committee Chairman (3); Senior Play Construction Committee.

**DONALD STOKES**

*Don*

Band (3, 4); Orchestra (2, 4); Track (3, 4); Junior Night Committee (3); Science Club (4).

**FRED STRASSNER**

*Fred*

French Club (1); Science Club (2); Lighting Committee (2, 3, 4); Parnassian (3, 4); Home Room Scholarship Committee (2, 3, 4).

**RACHEL STRICKLAND**

*Rae*

Dramatic Club (2); Secretary of Home Room (2); Treasurer Home Room (3); Junior Night Usher.

**MARIE STRUBBE**

Home Room Basketball (2, 3, 4); Baseball (3, 4); German Club (3); Junior Night; Chairman of Refreshment Committee of German Club (3).

**MURIEL I. STRUBEL**

Basketball (2); Home Room Basketball (2, 3, 4); Baseball (3); Commercial Club (3); Junior Night.

**HARRY D. SUTCLIFFE**

*Butch*

Home Room Football (2, 3); Squad Football (2, 3); Business Committee Junior Night; Swimming (4).



## CLASS OF 1933

---



### FRED SUTZ

Junior Night (3); Science Club (4).

### GEORGE A. SWEEZEY

*Shiek*

Union High School; Camera Club President (2, 3); Science Club (2); Traffic Squad (3); French Club (4).

### GEORGE S. TALMAGE

Manager Baseball (4); Band (2, 3, 4); Parnassian (4); Orchestra (2, 3, 4); Home Room Play (3).

### MILDRED TAYLOR

*Millie*

G. A. A. (1, 2); Parnassian (1, 2); North Eastern Club; Mask Club (Arlington Hall).

### SAMUEL TEDLOW

*Ted*

Fire Committee (2); French Club (1, 2); Orchestra (1, 2, 3, 4); Glee Club (4); Service Orchestra (4).

### MARGUERITE TELLER

*Cun*

French Club (1); G. A. A. (1, 2); Parnassian (2, 3); Chairman Properties (4); Junior Night; Civics Committee (2, 4).

### DAVID TIMMONS

*Dave*

Parnassian Society (2, 3, 4).

### EDITH H. TITSWORTH

Soccer (2, 3, 4); Home Room Basketball (2, 3, 4); Junior Night; Speedball (3); Senior Play.



**MARY PATRICIA TITSWORTH**

*Patty*

Home Room Secretary-Treasurer (3); Junior Night; Advertising Committee, Senior Play; Glee Club (4); French Club (4).

**MARIE TOBIAS**

*Toby*

Soccer (2, 3, 4); Basketball (2, 3, 4); Tennis (3); Junior Night; Commercial Club (3, 4).

**THERESA TOBIAS**

*Toby*

G. A. A. (2, 3, 4); Junior Night Program; Leaders' Club (3, 4); Soccer (2, 3, 4); Commercial Club (2, 3, 4).

**DOROTHY TORBERT**

*Dot*

Home Room Play (3); Junior Night; After-school Athletics (1, 2, 3, 4); German Club (2, 3, 4); French Club (1, 2, 3, 4).

**MYRTLE TWYFORD**

Leaders' Club (2); German Club (2); G. A. A. (2, 3); Home Room Committee (2, 3, 4); Glee Club (3, 4).

**CONSTANCE M. VAIL**

*Connie*

Home Room Committees (2, 4); G. A. A. (2, 3); Senior Girls' Party Finance Committee.

**T. WILLIAM VAIL**

*Bill*

Manager of Baseball (3); Finance Committee (2, 4); Traffic Committee (2, 4); Home Room Chairman (3, 4); Mirror Staff (4).

**HORACE B. VAN DORN**

*Van*

Orchestra (2, 3); Aviation Club (2, 3, 4); German Club (4); Senior Play, Properties Committee; Treasurer of Aviation Club (4).



## CLASS OF 1933



### TIBOR CHARLES VARGA

Commercial Club (2); Senior Play Advertising Committee.

### PEGGY ANN VETTER

*Peggy*

Junior Night Cast; Commercial Club (2, 3, 4); G. A. A. (2, 4); Commercial Club Play (4); Home Room Basketball (4).

### EDWARD VOGELER

*Ed*

Football (1, 2, 3); Track (1, 2, 3); Swimming (3); Senior Play (4); Parnassian (3, 4).

### SUSAN VOORHEES

*Sue*

Orchestra (2, 3); German Club (3, 4); Commencement Usher (3); Home Room Basketball (2, 4); Senior Play Usher.

### BYRON W. VREDENBURGH, JR.

*By*

Science Club (4); Junior Night Committee (3); Senior Play Committee (4); Biology Lab. Assistant (4); Aviation Club (2).

### AMY WAKEFIELD

Treasurer of Home Room (2).

### ANNE WALKER

Costume Committee, Senior Play.

### DONALD WALKER

Parnassian Plays (2, 3); Member Parnassian (2, 3, 4); Junior Night; Football Squad (4); Assembly (4).

## THE MIRROR



### MARGARET G. WALKER

*Peg*

Parnassian Society (2, 3, 4); Leaders' Club (3, 4); G. A. A. (2, 3, 4); Junior Night Property Committee; Senior Play Properties Committee.

### ROSEMARY WALKER

Columbian Staff (3, 4); Parnassian Society (4); French Club (4); Editor-in-Chief of Mirror (4); Pre-Junior Night Committee.

### NORMAN WARD

*Nor*

Sophomore Dramatic Club (2); Junior Night Committee (3); Home Room Basketball (3, 4); Home Room Football (3, 4).

### CLIFTON WATKINS

*Cliff*

Track (2); Junior Night Committee (3); Senior Play Committee (4).

### WILLIAM PERRY WATSON

*Bill*

Baseball (2); Football (3); Tennis (3); Ticket Committee Junior Prom (3); Chairman Ticket Committee Senior Play (4).

### CLIFFORD A. WEISS

*Kip*

Student Council (2); Junior Council (3); Junior Night Committee (3); Senior Council (4); Mirror Staff Advertising Manager (4).

### G. ROBERT WEPPLER

*Wep*

German Club (2, 3, 4); Electrical Crew (2, 3, 4); Parnassian (3, 4); Staff Photographer Mirror (4); Manager of Swimming (4).

### OLGA WERKOWITZ

*Olga*

Junior Night (3); G. A. A. (3, 4); German Club (4); Commercial Club (4).



## CLASS OF 1933



**FREDERICK WHITEHEAD**

*Fritz*

Track (2); Football (2, 3); Junior Night (3);  
Swimming (3, 4); Senior Play (4).



**ELLSWORTH WILTSHIRE**

Football (3); Junior Night (3); Pin and Ring  
Committee (3); Swimming (3, 4); Senior Play  
(4).



**LEONARD W. T. WOLCOTT**

Creative Writing Club (2, 3); President (4);  
Boys' Glee Club (2, 3, 4); Columbian Staff  
(3, 4); Senior Play (4).



**FRED WOLF**

*Bud*

Glee Club (2); Home Room Chairman (3);  
Football (3, 4).



**NAOMA WOLFF**

*Na*

Orchestra (2, 3, 4); Basketball (2, 3, 4); G.  
A. A. (2, 3, 4); Leaders' Club (4); Senior Play  
Usher (4).



**SOPHIE YESKEL**

*Sue*

Hockey (2, 3); Basketball (2, 3); Glee Club  
(2, 3); Senator (2, 3); "Sun Shines Bright" (3);  
South Side High School.



**MARION D. YOUNG**

Aviation Club (2); Home Room Secretary-  
Treasurer (2); G. A. A. (2, 3); Junior Night  
(3); Senior Play Committee (4).



**ROBERT W. ZACHARY**

*Bob*

Literary Society (2, 3); Interclass Track (2, 3);  
French Club (2, 3); West Orange H. S.



**WILLIAM F. ZIMMERMANN**

*Bill*

Aviation Club (2); Chairman Ticket Committee Junior Prom (3); Football (3); Track (3); Business Manager Mirror (4).



**FRANCES ZINN**

*Fay*

Sophomore Dramatic Club (2); Home Room Committee (2); Basketball (2); G. A. A. (2, 3); Home Room Plays (2, 3).



**MARGARET H. ZITTERMAN**

*Margy*

Home Room Committee (2); G. A. A. (2, 3); Commercial Club, Chairman Program Committee (3, 4); Glee Club (4); Costume Committee Senior Play (4).



**ALBERT J. ZUSI**

Assistant Baseball Manager (3); Aviation Club (3); Junior Night Committee (3); Band (3, 4); Mirror Staff (4).



## CLASS OF 1933

---

### CLARK BEAM

*Beans*

### EILEEN M. BLAZO

*Pee Wee*

Commercial Club (2, 3, 4); Home Room Basketball Team (2, 3).

### LINDSLEY CAULFIELD FOSTER

Civics Committee (3).

### HOWARD FUDE

*Howie*

Baseball Varsity (2, 3, 4); Home Room Basketball (3, 4); Scenery Construction Committee (4).

### CRADDOCH HOEHNE

Business Committee Junior Night (3).

### WALTER HOELZEL

Home Room Basketball (2, 3, 4); Home Room Football (2, 3, 4); Monitor (4).

### HELEN LEICHTMAN

*Honey*

Central High School (1, 2, 3); Senior Play Committee (4).

### MORIAN MAJEWSKI

*Bo*

Track, West Side H. S. (2); Vice President Athletic Association (3); President Athletic Association (4); Football (2, 3); West Side H. S.

### LESTER McDOWELL

*Mac*

Band (1, 2, 3, 4); Aviation Club (2); Science Club (3); Service Orchestra (3, 4); Mirror Staff (4).

### CHARLES M. MUELER

*Fritz*

Irvington High School (1, 2, 3).

### GEORGE MURPHY

*Murph*

Football (2, 3); Baseball (2, 3, 4); Ticket Committee Junior Prom (3); H. R. Basketball (3, 4); H. R. Touch Football (4).

### ERNEST A. PENNELL, JR.

*Ernie*

Debating Team (3, 4); Literary Club (2); Irvington High School.

### GILDA SALERNO

*Gil*

French Club (2); G. A. A. (2, 3, 4); Junior Night Committee (3); Commercial Club (2, 3); President Commercial Club (4).

### ARTHUR H. SMALL

### A. CLINTON SWIFT

*Swiftly*

Middlesex School; Football (3); Baseball (3); Stage Manager (3); Tennis Squad (3).

### DEAN SWIFT

*Dean*

Hill School, Soccer; George School, Football; Wynderoft, Football.

### CHARLES YATES

Home Room Football (2); Home Room Basketball (3); Construction Committee Senior Play (4).

# SENIOR STATISTICS



MOST POPULAR



BEST ALL AROUND



DONE MOST FOR SCHOOL



BEST LOOKING



WITTIEST



BEST ACTORS



MOST ATHLETIC



BEST WRITERS



MOST LIKELY TO  
SUCCEED



BEST DRESSED



BEST STUDENTS



MOST MUSICAL



BIGGEST FLIRTS



## SENIOR WILL

WE, the Seniors of the class of 1933, being of sound and disposing mind, memory, and understanding, do make, publish, and declare this our last will and testament, as follows:

To the faculty we leave the just pride of the artist in viewing his finished masterpiece.

To our parents, the just pride in receiving that masterpiece.

Jean-Ellen Burns, Dorothy Gladson, Doris Fischer, and Jim Nicholson willingly give their appendices to the Biology Department for further anatomical study.

To the school in general we leave plans for an elevator system with express service between the fourth floor and cafeteria.

To the sophomore boys, a wagon-load of can openers for their third floor lockers.

To the sophomore girls we give the art of being sophisticated and the sense to grow out of it.

To the French Club we give a life size portrait of Kaiser Wilhelm to arouse discussion when interest lags during its meetings.

To the Pep Committee we leave one hogshhead of crunchy breakfast food.

To the members of the Fire Committee we give red hats and sirenized scooters with which to get to their respective posts.

To the Parnassian Society we leave the boots of Thayle Landers, Mont Pike, and Homer Page to be filled by ardent aspirers.

### PERSONAL BEQUESTS:

To Mr. Threlkeld, a fond memory of effervescent students who could not refrain from hurling soggy pretzels at football games.

To Frau Gates we leave six beer mugs to be used only at German Club meetings.

To Mr. Marvel we give Jack Hoppock and Fred Reeve as a start for next season's gridiron gangsters.

To Miss Markham we bequeath the simple pleasures of trapping mice and spiders.

To Mr. Doolittle, a Virgil class that knows its relative pronouns.

Ed Vogeler gives his number twelve golf shoes to Paul Finlay. This automatically makes Paul president of the Long Shoe Club.

To Teddie Scott Janet German leaves her ability to study.

John Long, Roy Cooper, Howard Buck, and James Atz leave their robustness to the coming athletes.

Helen Oswald leaves her pleasant personality and winning smile to Janet Croot.

To Dot Evans Helen Eisele bequeaths her all-round ability.

To Bob Hook and Bev Smith Bob Buehler and Jack Dietze leave their respective drags with man's better half.

In witness whereof, we, the said Seniors of the class of '33 have hereunto set our hand and seal this 27th day of June, nineteen hundred and thirty-three.



## THE SENIOR PLAY

ON November 19, the senior class of 1933 presented "The Black Flamingo," a three-act play by Sam Janney.

The setting of the play was in an old inn situated in France. It was here that the plot, centered on the search for a lost necklace, unraveled. Mystery, superstition, and the conflict between the proletariat and the aristocrats were the prevailing elements in the story.

The cast included fine dramatic ability. Roy Matthiessen, playing the part of an innkeeper, but in reality searching for the treasure, and Thayle Landers as his wife, Nicole, were excellent, especially when their wordy battles reached a climax. Doris Heydenrich as Clotilde, a servant, and Edward Vogeler as Popo, an effeminate, vain aristocrat, won many a laugh from the audience. Elizabeth Akin and Bob Halsey furnished the necessary touch of romance in their roles of Diana and Trigaud. The priest, a man with an uncanny knowledge of people's thoughts, was enacted by Homer Page, who interpreted his part exceptionally well. Bob Merrick, Peggy Anthony, and Rebman Rutz as aristocrats, together with Frank Stanley, in league with the innkeeper, and Stephen Belcher, a crazed jeweler, were others invaluable to the success of the play, enacting their roles in an exceptionally fine manner. Jack Stearns, Frederick Whitehead, Donald McLaurin, Howard George, Forrest Leland, Wister Chubb, and Frederick Smith were the villagers, led by Leonard Wolcott, as Garoche, who captured the audience with his interpretation of the part which he played.



CLASS OF 1933



## PROPHECY

COLUMBIA HIGH SCHOOL. December 20, 1953. Grand Reunion of the Class of 1933. Great Crowd Out. Practically all the Class present, looking handsomer than ever and much more prosperous. A few faces, however, are missing, and the following are telegrams received from them:

"Am author of two of the ten worst sellers to date. Must finish third by end of month. Albert Field." I always knew Albert would become famous. Imagine two worst sellers and another on the way!

"Sorry but tonight's the premier showing of my new play, 'The Multiplication Table'. Mont Pike." Lot's of luck, old boy. I suppose it's the greatest problem play of the century.

"Am president of biggest college in country. Have to stay home and mind my children. Janet German." By the way, do you know what Janet's name looks like written out in full? Janet German, B.S., A.B., M.A., P.H.D., D.D.S., D.V.S., F.O.B., P.D.I., and S.O.S. I'll say S.O.S.!

"A new shipment of cows just in, meaning we're stuck here. Arthur Lucas, Richard Norwood, Fred Guerin." Well, our old friends, the water boys, promoted to milk men! You just can't keep good runners still.

"Opening new branch of Hoppin 'n' Gobble Restaurant at 59th Street. Can't get away. Doris Heydenrich and Company." I hear Doris specializes in baked Alceste pigs. I'll bet they're grand, eh, Popo? Oh, by the way, can anyone guess who the "and company" is? Yep, you're right; it's the old basket shooter himself, Frank Stanley.

"Am instructor in plain and fancy tennis lessons. Keep me going day and night. Virginia Drewry." I'll bet it's that fancy tennis lesson that keeps her going nights.

"Am running for fifty-ninth president of the United States. Will be elected by Democrats. Bill Zimmerman." Hey, Bill, run on some other ticket if you want this school behind you! The Socialist, for instance.

"Keep pet shop. Specialize in turtles, eels, and elephants. Expecting new shipment and must be here to greet them. David Timmons." Well, at least he's sorry he can't come.

"Make my debut tonight singing Romeo in 'Romeo and Juliet.' Wish me luck. Thayne Landers." There's a girl who can sing two entire songs without losing the tune.

"Am presiding at National Bridge Tournament where my new system is being featured. Carol Osgood." I hear it's quite an elaborate system of penalties imposed for trumping your partner's ace, forgetting what trumps are, bidding no-trump with thirteen spades, etc. I'm sure it'll be a national hit.

"Just published a book on calories. Have to stay in or I'll be mobbed. Janet Bogue." Well, I see Janet is still counting the calories, and I'll bet she's still nice and substantial but not the least bit fat.

If anyone who was not prosperous enough to be present misses his name from the chronicle of this reunion, it was probably because he sent his telegram collect and our alumni organization had not received enough Irish dividends to receive them.



# CLASSES









## POST GRADUATES



**B**ACK row, reading from left to right: Robert Palmer, Addison Hopper, Oliver Holmes, Roger Carroll, William Wilson, Robert Westervelt, Alex Mackenzie, Frank Stetson; second row: Robert Hake, Elizabeth Kynor, Helen Chandler, Doris Payne, Charlotte Malinowski, Marianne Smith, Harriet Watson, Helen Read, Lillian Payton; third row: Fred Stobeus, John Wells, Joseph Schubert, Carl Hagerstrom, Joanna Baebi, Elizabeth Love, Doris Heydorn, William Dailey; front row: Charles Bubenheim, Eric Brummer, Harvey Smith, Doane McCarthy, Norman Philcox, George Crawford, Thomas Thorpe, Robert Shambach. Members not in picture: Howard Radler, Ray Bischoff, Jack Crowley, Jessie Vasey, and Mildred Moore.

## THE MIRROR



JACK HOPPOCK  
*President*

DOROTHY EVANS  
*Vice-President*

ROBERT BURNS  
*Secretary*

MARJORIE MAIN  
*Treasurer*

## THE JUNIOR COUNCIL



BACK row: Robert McMillan, Richard Seamon, Marjorie Mehl, Joseph Maguire, William Menninger. Second row: Walter Tymeson, Hermon Grunning, Raymond Page, Richard Hubschmitt, Richard Drake. Front row: Marjorie Main, Dorothy Evans, Robert Burns, Jack Hoppock, Robert Wheaton, Robert Hooke, Grace Adams. Not appearing in picture: Robert Forrest.





## JUNIOR NIGHT

THE Junior Class presented the traditional Junior Night on April first, and in keeping with the day its performance was a musical revue in two acts, entitled "April Folly."

The production was composed of sketches written and compiled by members of the Junior Class, together with the play "Cinderella Married." In these skits were some of our favorite Mother Goose characters, such as Old King Cole, Mistress Mary Quite Contrary, the Old Woman in the Shoe, and Little Miss Muffet.

"Cinderella Married" offered the solution to a question which has for some time been very troublesome. In this interesting play we were informed that the marriage of Cinderella and Prince Charming wasn't quite as romantic and happy as we had let ourselves predict.

"April Folly" was a satire on elections of today, picturing the campaign journey of King Cole, who was a candidate for the presidency of the Mythical Kingdom. Upon visiting various people in his kingdom, Old King Cole learned very interesting and beneficial facts from Mistress Mary, the Old Woman in the Shoe, and the Little Miss Muffets, and decided to place his newly acquired knowledge at the disposal of others.

The entertainment was brought to a close with a grand finale in which all the court was assembled. Old King Cole gave his inaugural address with much clapping, and bade all to make merry. Then, symbolic of the entire performance, a group of girls constituted a jig-saw puzzle, which, when put together, spelled "April Fool."



## THE JUNIOR DRAMATIC CLUB

THE Junior Dramatic Club, organized by a group of eager and enthusiastic members of the Sophomore Dramatic Club at the end of their Sophomore year, became a full-fledged and active club in the fall of 1932 with 110 members and having as its faculty sponsor Mr. Robert K. Marshall. The Club set for itself the ideal "to further the interests in, and knowledge of dramatics; to offer an opportunity for the members of this same organization to express themselves in their respective fields of endeavor; to present productions of a worth-while nature; and, to broaden the interest of the individual member in those form of dramatics other than those in which he is already interested."

Leaving the field of material staging to other dramatic groups, the Club has devoted its attention to student directing, acting, and experimentation in suggestive lighting. The first public performance sponsored by the Club was of the satiric comedy, "The Pot-Boiler," with Dan Decker, Dorothy Kautzman, Raymond Page, Lloyd Gruman, Jack McHarg, Frederic Reeve, and Lois Aitken.

Studio productions were given of "The Brink of Silence," directed by Janice Wiley and acted by Dan Decker, Nelson Knapp, Matthew McDermit, Edward Dench; "Catesby," directed by Dorothy Yard and acted by Dorothy Evans and Robert Hooke; "The Man in the Bowler Hat," with Edward Dench, Theodora Scott, Lillian Stevens, Matthew McDermit, Lloyd Gruman, Robert Hooke, Paul Murphey, acting, and Dorothy Yard assisting in the direction; "The Valiant," with Frederic Reeve, Mary Smith, Edward Padula, William Wakely; the "Pot-Boiler," with Frank Entwistle and Ruth Greene relieving Dan Decker and Lois Aitken. The tentative schedule as posted in April included studio productions of "Black

Magic," directed by Frank Entwistle, and tentatively cast with John Glendenning, Mary Selitto, Clara Schultz, George Wilder, Frank Entwistle; "The Unseen," directed by Eleanor Ticherno and tentatively cast with Mary Cameron and Robert Loveitt.

The schedule also included production of the "Valiant" and "Aria d'Amore" before the assembled school.





CLASS OF 1933





## THE SOPHOMORE CLASS

THE king sat silently upon a gilded throne and calmly surveyed his noble realm. By his strong right hand was the prime minister; by his left sat his three most trusted and esteemed overseers. Many other high officials sat in state on the raised dais, while the vaulted room rang with the gay chatter of lesser subjects. King Threlkeld of Columbia High School was holding court, and great was the pomp and majesty thereof.

Slowly, impressively, the monarch spoke, and the vast assemblage was still. "We are gathered here this day that you may know of the exceptional achievements of a certain section of my kingdom. But my words are of little import. Let one of the Sophomores tell of their ability and talent."

The Senior knights and ladies stood haughtily aloof. The Junior squires and damsels listened with some interest, for they remembered that they had been lauded for their spirit in past years. The elderly Post-Graduates were spectators on the vantage point of superior wisdom and intellect.

"Your majesty," began the Sophomore who had stepped into the foreground, "we are proud of our school, its traditions, its teachers, its athletic teams, and above all of you, our noble king, Mr. Threlkeld. Under the guidance of Miss Hayner, one of your overseers, we have tried to uphold the standards which have been set by those before us, and I believe we have succeeded. Our dramatic club has produced some worthy efforts. Chief among these was 'Bon Voyage,' in which the dances were engineered especially well by Marguerite Hirshberger and Kathryn Hansen. We are proud of them, and also of several of our more talented actors and actresses who gained admittance to the Parnassian Society, namely John Harvey, Gale Spowers, Marshall Rothen, John Sayre, and Leonora Bajda. Our place in the government of the school was ably upheld by a staff of home room officers, and we placed reliance in them. *The Columbian* had Gordon Annin as a reporter and John Sayre and Charles Gardner on the business staff. The orchestra, the band, and the service orchestra all had their complements of Sophomores. The science club started its radio division with the help of Jack Prior, a Sophomore. The aviation club was supported by some enthusiastic Sophomores. The stamp club was suggested by Sophomores, and held its first meetings under the leadership of Jack Prior. In football Norman Freund made the varsity, and the squads and Jayvees boasted of several Sophomores who made promising material for the future. In basketball Freund again made the varsity, and Basil Tully proved his merit as a center on the Jayvee team, supported by others of his class. Edwin Nevius and Russel Adams earned many points for the swimming team as divers, and some of the squad who were Sophomores showed real aquatic ability. Hockey saw some Sophomore skaters on the ice. In track Featherstone was a good miler, Carl Wiedmann showed speed in the quarter-mile, and Tully showed his excellence in the high jump. Sophomores were eager to try out for all positions on the baseball team."

At this point the Sophomore was so carried away by his enthusiasm that the court broke down, and filed out to its summer vacation.



CLASS OF 1933



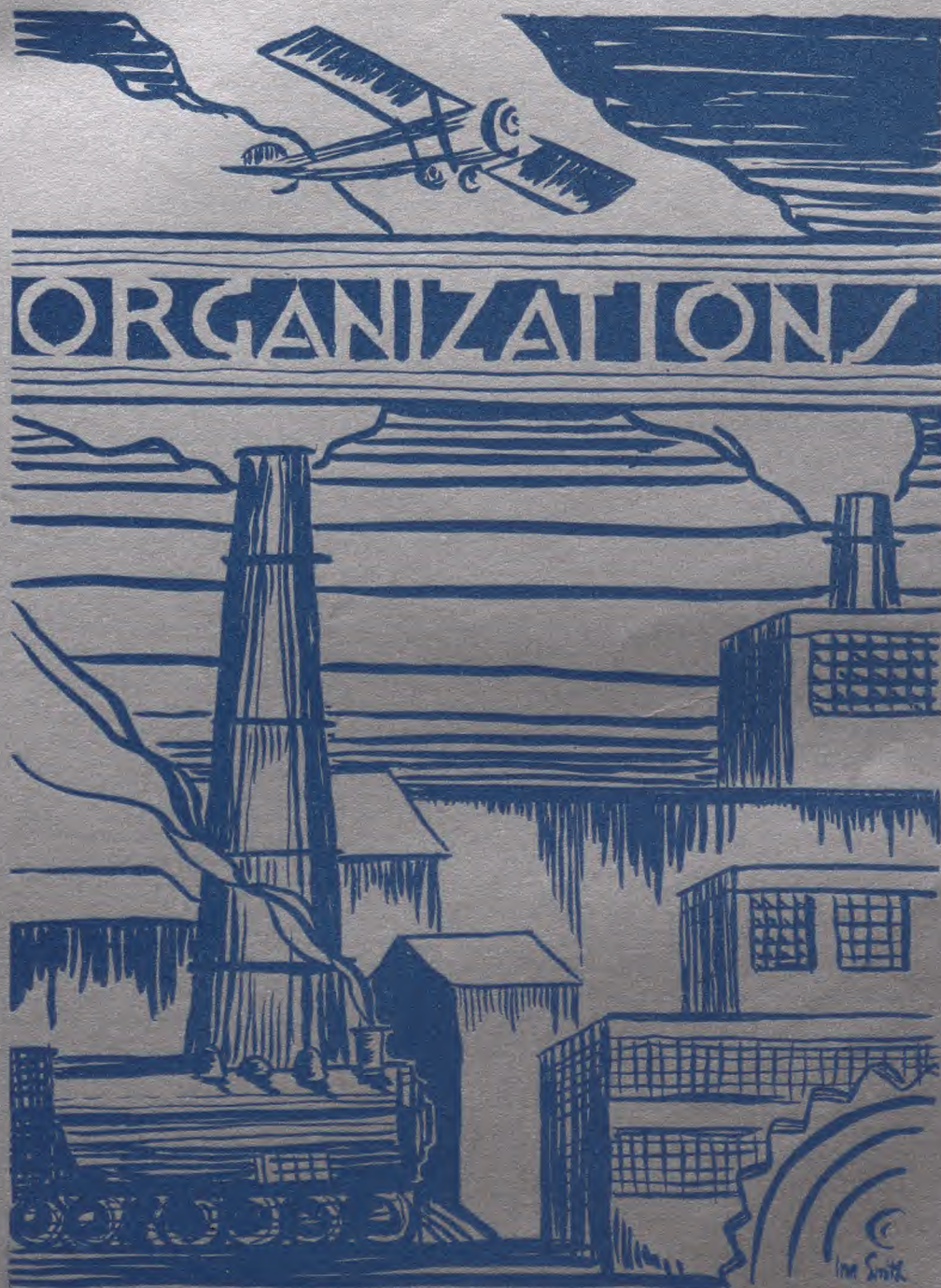
SOPHOMORE DRAMATIC  
CLUB OPERETTA  
"BON VOYAGE"



THE MIRROR













## THE SCHOOL COUNCIL



**B**ACK row: Robert Hendershot, Ralph Saltsman, Beverly Smith, Jarvis Page, Douglas Cochran, Leland Russell, Stephen Belcher, Wallace Coons, Ramon Fisch, William Eberhardt, Ralph Vogel, William Vail. Third row: John Hooke, Bob Eisele, John Glendenning, Robert Merrick, John Franzen, Jack Dietze, James Nicholson, William Parsil, Robert Hyde, Robert Laird, John Harvey, John Evans, Mr. Threlkeld, principal. Second row: Mr. Crehan, vice-principal; John Long, Robert Forrest, Robert Burns, Jack Mansell, Russell Adams, Carl Wiedman, Petie Heflin, Edith Payne, Caroline Anderson, Barbara Kirch, Janice Wiley, Peggy Anthony, Miriam Farrier, Elizabeth Ball. Front row: Doane McCarthy, Roy Cooper, Lawrence Redpath, Fred Guerin, Bob Buehler, Howard Buck, Helen Neil, Helen Oswald, Bob Patton, Helen Eisele, Paul Dickson, James Martine, Kent Cooper, Marshall Rothen, William Jennings, Henry Chapman. Not appearing in picture: Robert Wolcutt, Gale Spowers, Lois Schwarzwald, Robert Schultz, Joseph Haydu, Malcolm Haydu.

The purpose of the Council, representative of every home room group and of various committees, is to uphold Columbia High School's principle of student participation in school government. The Council, in its present form, was founded in 1928.

## THE MIRROR STAFF



**B**ACK row: Frank McGinity, Mr. Gnagey (faculty adviser), George Ewald. Third row: Albert Zusi, Janet German, William Vail, Anna Kiehm, Martin Payne. Second row: Douglas Cochran, Barbara Rich, Margaret Dunaway, Betty Schneider, Janet Bogue, Betty Goldsmith, Fred Strassner. Front row: Evelyn Adriance, William Zimmerman, Rosemary Walker. Not appearing in picture: Ira Smith, Virginia Levy, Bob Weppler, Fred Guerin, Leonard McChesney, and Clifford Weiss.

The obligation of this group, elected by the senior class, was the publication of this year book, *The Mirror* of 1933.



## THE COLUMBIAN



BACK row, reading from left to right: Barbara Dunklin, Bob Hyde, Carl Klemp, Charles Gardner, Theodora Scott, Richard Norwood, Fred Strassner. Third row: Leonard Wolcott, John Sayre, Robert Loveitt, Walter Kirkpatrick, John Lockwood, Frank Haveron, Betty Schneider, Mildred Ringle, Janet German, Ellenor Farquhar. Second row: Lawrence Redpath, Gordon Annin, David Furman, Bill Richardson, Malcolm Stearns, Thayle Landers, Doris Krahenbuhl, Alaine Davimos, Lillian Holle, Ruth Neilson, Miss McFarland (literary adviser). Front row: Edward Jacobson, Paul Olson, Bob Buehler, Bill Rathbun, John Franzen, Rita Leary, Sidney Wachtel, Louis Alexander, Doris Heydenrich. Members not appearing in picture: Jack Stearns, Rosemary Walker, Mary Martyn, Z. Mont Pike, Robert Burns, Edward Salisbury, Warren Bohner, Beverly Smith, Eleanor Tichenor, Mr. Gray (business adviser).

The purposes of the Columbian, founded in 1915, are the following: (1) To provide a medium for circulation of school news and allied community news; (2) To provide an exploratory field for those vocationally interested in journalism; (3) To acquaint the community with the affairs of the school; (4) To promote school spirit; (5) To build student opinion; (6) To encourage good scholarship.



## CREATIVE WRITING CLUB



**B**ACK row, reading from left to right: Betty Goldsmith, Marianne Gregory, Ellenor Farquhar, Agnes Dugan, Marie Isenberg, Helen Adams, Miss Nichols, sponsor; second row: Betsey Anne Hunicke, Kathryn Nichols, ( . . . ), Albert Field, Rebman Rutz, ( . . . ), Eleanor Ohlsen, Frederick Reeve; front row: Helen Page, Jean Tallman, Virginia Hochette, Barbara Dunklin, Leonard Wolcott, President; Mary Louise Dull, Margaret Sommer, Secretary-Treasurer; Ruth Lipis, ( . . . ). Members not in picture: Ruth Brubaker, Nelson Butz, Eugene Farley, Jean Kinkhead, Ruth Knothe, Mary E. Martyn, Roy Mathiessen, Eleanor Milligan, Robert Schultz, and Robert Valcutt.

The Creative Writing Club was organized in response to a student request, in February, 1921, for the purpose of giving those interested an opportunity to gain greater inspiration and skill in their writing, and to deepen their appreciation of the sheer pleasure to be derived from this form of self-expression. The frequent interchange of material at the monthly meetings, the friendly criticisms and suggestions volunteered, and the presentation of helpful principles in literary craftsmanship provide a real stimulus to students interested in writing.



## THE BOOK CLUB



BACK row, reading from left to right: Betty Goldsmith, Marianne Gregory, Ellenor Farquhar, Ruth Amberg, Virginia Bradley, Marguerite Bush, Elfredia Herkhart, Miriam Reed, Anna Kiehm, Miss Paine, sponsor. Second row: Marianne Fiens, Beverly Kurtzman, Virginia Becker, Mary Jensen, Blanche Doolittle, Catharine Kaufman, Corine Blum, Betsy Day, Charlotte Quimby, Virginia Lesser. Front row: Virginia Hochette, Helen Page, Jeanne Tallman, Louis Alexander, Elizabeth Akin, Lillian Holle, Rosalind Robb, Helen Dewar, Margaret Sommers, Katheryn Nichols. Not appearing in picture: Isabelle Demarest, Eleanor Milligan, Louise Patterson, Mary Martyn, Elizabeth Kejonor.

The purpose of the Book Club, founded in September, 1932, is to give to those with a pronounced genuine interest in reading, an opportunity to read and discuss books; and to give an opportunity to read and evaluate current authors.



## THE FRENCH CLUB



**B**ACK row, reading from left to right: R. Knowe, J. Harvey, H. Cardozo, H. Smith, H. Stine, M. Morrisson, D. Krambuhl, M. McCormick, E. Fiery, L. Annin, M. Brunjio, D. Mathieson, D. Ellison, M. Main, D. Addis. Fifth row: R. Bramley, K. Cooper, P. Titsworth, J. Marsh, J. Simmons, H. Voderberg, R. Post, H. McJames, D. Senft, E. Hefflin, E. Paine, L. Ringle, J. Smith, L. Schwartzwalder, M. Hirschberger, V. James, A. Roberts. Fourth row: D. August, D. Mathews, E. Davimos, J. German, R. Walker, B. Goldsmith, M. Gregory, E. Farquhar, E. Herkhart, B. Day, L. Holle, A. Kiehm, I. Demarest, E. March, R. Brubaker, D. Torbet, M. Ringle, Miss Carrigan, sponsor. Third row: M. McMullin, Miss Allen, sponsor; J. Hallett, E. Boyer, S. Scheitlin, B. New, R. Strickland, P. Clark, W. Richardson, J. McClennin, D. Farman, F. Clark, K. Eberhart, A. Burt, P. Ferry. Second row: B. Baker, B. Schneider, B. Rich, B. Stobaeus, B. Doolittle, M. E. Jensen, C. Kaufman, V. Hochette, C. Quimby, J. Reiche, S. Garrabrant, M. Warton, P. Thayer, C. Palmer, M. Shephard, J. Chamberlain, M. Taskowitz. Front row: Miss Wolcott, sponsor; R. Pinkerton, R. Adams, M. Cameron, E. Ohlsen, M. Arkenberg, J. Lane, L. Redpath, R. Amberg, J. Schlechter, L. Alexander, J. Taylor, B. Dunklin, M. Sommers, K. Nichols, B. Kirch, R. Lipis, B. Cromartie. Not appearing in picture: B. Brett, M. Martyn, J. Perry, H. Pierce, L. Stillman, I. Smith, A. Tuck, H. Walter, E. Kinsky, E. Milligan, and M. Moss.



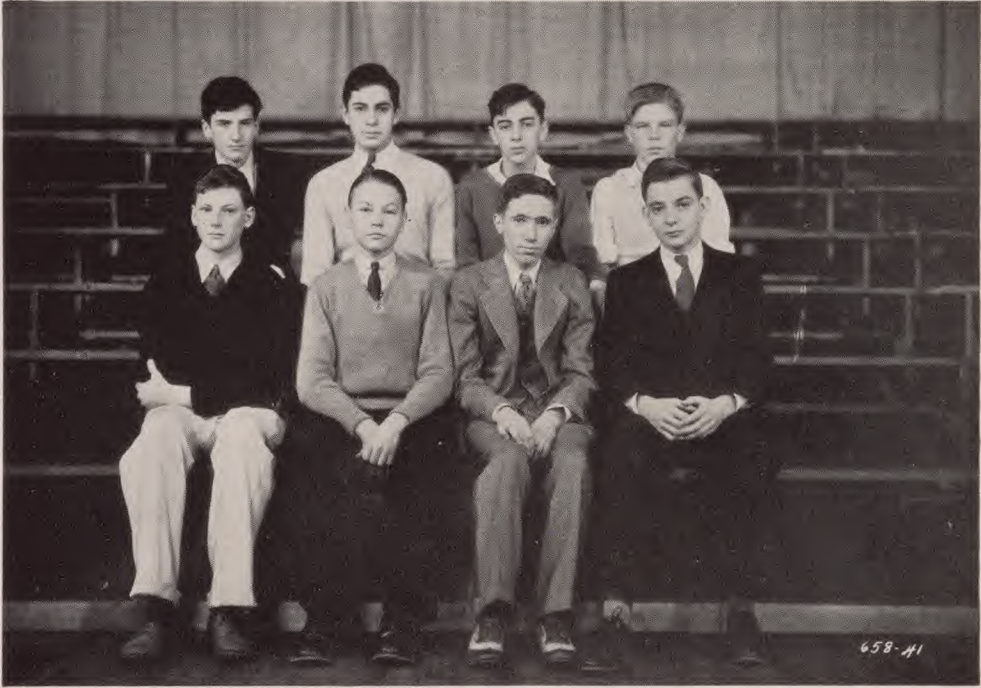
## THE GERMAN CLUB



BACK row, reading from left to right: Otto Sticht, ( . . . ), Robert Hinsdale, James Martine, Leonard Keyes, Richard Outwin, Edward Vogeler, Norman Hosford, Edwin Burt, Richard Bergner, Kenneth Simpson, ( . . . ); second row: Edward Johnston, Edwin Hoertz, Walter Schmidt, Sidney Wachtel, Alfred Birkenmeier, Mildred Dowe, Edna Johnston, Marie Strubbe, Elizabeth Franz; third row: Walter Sommer, Horace Van Dorn, ( . . . ), Robert Merrick, Albert Faatz, Edward Kremments, Peter Enderle, Raymond Neu, Jack Stockman, Millicent Kalisch, Emily Scherer, Corinne Blum, Ann Falconer; fourth row: Mrs. Gates, sponsor; Marian Melia, Winifred Noll, Walter Kirkpatrick, Fred Arnolt, Paul Smith, Harold Schmidt, Robert Wepler, Dorothy Torbert, Gertrude Krohn, Eleanor Kays, Blanche Shabaikowich, Marjorie Schultz, Ursula Andre; front row: Nadie Makov, Olga Werkowitz, Elizabeth Ender, Loris Gross, Nore Pilutik, Robert Hyde, Treasurer; George Ewald, President; Ilse Holmann, Secretary; Gladys Helden, Lou Schwartz, ( . . . ), Marjorie Taft, Frances Herman, Elenore Schmidt, Ernest Van Horn. Members not in picture: Walter Dealman, Jack Dietze, Vice-President; Everett Flemming, Gertrude Hafner, Richard Herzberg, Charlotte Beuthauser, Evelyn Mueller, Fred Spindler, Suzanne Voorhees, Walter Weinacker, and Richard Woehse.

The German Club was founded in 1926. Its purpose is to further interest in German people, customs, and language; to bring about closer contacts and understanding between the two countries; to give opportunity for hearing and conversing in the foreign language.

## BOYS' ART CLUB



**B**ACK row: Leonard Wolcott, Ira Smith, Harry Clement, Robert Bramley. First row: Fraser Stokes, Lewis Stillman, Herbert Pierce, Bert Hall. Not appearing in picture: Howard Kirk, William Guerin, Douglas Cochran.

The purposes of the Boys' Art Club, founded in 1931, are: (1) To foster an interest in art; (2) To give a greater opportunity for creative work; (3) To give students not taking art an opportunity for art work.



## THE GIRLS' ART CLUB



**B**ACK row, reading from left to right: Dorothy Pryor, ( . . . ), Margaret Cannon, ( . . . ), Janet Croot, Betty Britten, ( . . . ); second row: ( . . . ), Carol Jackson, ( . . . ), Jean O'Neill, Wilma Nuse, ( . . . ), Elizabeth Heflin, Ruth Lewis, Helen Menagh, Peggy McHugh, ( . . . ), Kathryn Dennison, ( . . . ); third row: Irene Johnson, Marguerite Bush, Ruth Seaman, Carmen Palmer, Jean Runnells, Betty Baker, Mimi Conkling, Betty Bigalke, ( . . . ), Marianne Fines, Betty Vroman, Maynarda Wolcott, Marjorie Mehl, Doris Smalley, Norma Tompkins; front row: Helen Rimelspacher, Ruth Robbins, ( . . . ), ( . . . ), ( . . . ), ( . . . ), ( . . . ), Barbara Kingsley, Secretary-Treasurer; Doris Heydenrich, President; Helen Dexter, Vice-President; Betty Ralli, Virginia Lesser, Dorothy Ellis, Edna Fiery, Lois Aitkin, ( . . . ), Eleanor Bowen. Member not in picture: Joséphine Wolf.

The Girls' Art Club was founded in 1928. Its purpose is to provide a means of expression through the various mediums of art.



## THE SCIENCE CLUB



**B**ACK row, reading from left to right: Sydney Lansing, Robert Schwartzentack, Edward Smith, William Smith, Russell Schmidt, Edward Salisbury, Raymond Mandsley, Eugene Farley, Roy Matthiessen, Joe Handley, Leslie Crocker, Erwin Stumpf, George Urban, Neil Gilman. Second row: Philip Lipis, Herbert Hall, William Parsil, Richard Blackman, Ralph Slutz, William Lyles, Robert Saber, Richer Faber, Edna Johnston, Percie Martin. Third row: Ellsworth Williams, Wilma Rogers, Prudence Thayer, Helen Dunn, Olive Hendricks, Fred Sutz, William Vail, Donald Stokes, Charles Neuberger, Sanford Stein, Diane Fow, Miss Markham, Sponsor. Fourth row: Mary Sloan, Ted Ballisted, Jack Pryor, Robert Loveitt, Richard Blount, Douglas King, Sylvia Garrabrant, Dorothy Kehoe, Richard Woebse, Webster St. John, Milton Spielman, Herbert Hart, Mr. Chase, Sponsor. Front row: Walter Sayre, Albert Buckelew, William Morpeth, Ruth Green, Secretary; Clara Sculz, Donald McLean, Donald Coeyman, President; Rebman Rutz, Vice-President; Nelson Butz, Frank Stetson, Treasurer; Addison Epp, Dixon Melick, Gordon Annin, Byron Vreedenburgh, George Scarlet.

The Science Club was founded in 1927. Its purpose is to give diversion and education in the various branches of science.



## THE AVIATION CLUB



**B**ACK row: Eugene Gwyer, Leonard Keyes, Howard Marcussen, Gordon Holbrook, David Richardson, Neal Gilman, Robert Kineke. Second row: Gilbert Wakefield, Doris Fischer, Dorothy Egger, Frances Dupont, George Tichenor, Bob Faatz. Front row: Adelaide Sloan, Elizabeth Warner, Wilma Rogers, Eugene Harrison, W. L. Walsh (faculty advisor), Horace Van Dorn, Alfred Nelson, Gordon Annin, John Keyes. Members not appearing in picture: Richard Faber, Burgess Freeman, Natalie Currier, Walter Weinacker, Bob Dietze, Edward Pilpari.

The purposes of the Aviation Club, founded in 1929, are: (1) To promote knowledge of aeronautics; (2) To study various phases of aeronautics; (3) To work for establishment of a course in aeronautics in Columbia High School.

## THE ELECTRICAL COMMITTEE



**S**TANDING: Henry Brucker, Mr. Parsons (sponsor), James Martine. Seated: William Silleck, Robert Weppler, Fred Strassner, Edward Jacobson.

The two purposes of the electrical committee, founded in 1926, are: (1) To take charge of operating all electrical appliances connected with the school auditorium, whenever student programs are presented; (2) To give experience in the operation of stage lighting and switch-board equipment.



## THE COMMERCIAL CLUB



BACK row, reading from left to right: Alice Lenahan, Marie Tobias, Thressa Tobias, Helen Joyce, Helen Horn, Recording Secretary; Margaret Vetter, Minnie Jack, Antoinette Egger, Secretary; Helen Fitzgerald, Virginia Dare; second row: ( . . . ), Lenore Fielding, Helen Quinn, Charlotte Schnibbe, Peggy Healy, Treasurer; Mildred Berry, ( . . . ), ( . . . ), ( . . . ), Pauline Zembika, Edna Sturat, Vice-President; Frances Monks; front row: Marjorie Faitoute, Margaret Zitterman, Carol Richardson, Ruth Speck, Florence Hardgrove, Mary Gross, ( . . . ), Anna Capella, Olga Werkowitz, Olga Rutga, ( . . . ), Winifred Noll. Members not in picture: Gilda Salerno, President; Dan Veiss, Gertrude Hafner, Dot Kaufman, Ethel Leidig, Anna Borton, Mary Kasalka, Rose Mercadante, Fanny Fantl, Lucille Bodei, Lester Miller, Milton Geilter, and Florence Ross.

The Commercial Club was founded in 1930. Its purpose is to promote an interest in commercial work, to further the opportunity for self-expression and leadership among the members; and to encourage social contacts among the students of the commercial department.



## THE PARNASSIAN PLAY



ON the evening of February eleventh, the Parnassian Society presented "The Swan", a romantic comedy of three acts by Ferenc Molnar.

In a modern royal palace, amid a setting of courtly gallantries and modern sophistication, the intriguing and amusing plot unfolded. Princess Beatrice, with ambition for her daughter's marriage to the Crown Prince Albert, resorted to the well-known scheme of arousing the Prince's jealousy to interest him in her daughter Alexandra. When the young tutor, Agi, whom she had chosen as a rival for the Prince, was discovered to be madly in love with Alexandra, the situation became too complicated for even the designing Beatrice. With the aid of wise Father Hyacinth and Dominica, mother of the Prince, the affair was straightened out and a marriage arranged for between Prince Albert and Alexandra. Although it was inevitable that the Princess should become a queen, it was with a feeling of regret that the audience watched the tutor, Agi, bid farewell to Alexandra, and leave the kingdom forever.

Sylvia Garrabrant, as the heroine, Princess Alexandra, the Swan; David Timmons, as Agi, the tutor; Carol Osgood, as Princess Beatrice; Mont Pike, as Father Hyacinth; Homer Page, as Prince Albert; and Lillian Holle, as Maria Dominica, all gave splendid portrayals of their respective roles. Others on the cast who helped to make the play a success were Margery Arkenberg, Carl Hagerstrom, John Harvery, Gale Spowers, Marshall Rothen, Malcolm Stearns, Joyce Richards, Marguerite Lowrey, Marilyn Shepherd, Helen Neill, Katherine Eisner, Carmen Palmer, Lawrence Redpath, Bill Guerin, Donald Walker, Richard Blackman, and Richard Koch.



## THE PARNASSIAN SOCIETY



**B**ACK row, reading from left to right: B. Wilson, D. McCarthy, W. Chubb, G. Spowers, J. Harvey, M. Rothen, E. Salisbury, R. Koch, E. Colie, F. Entwistle, S. McMahon, V. Lesser, D. Heydenrich, R. Matthiesen, E. Farley, R. Rutz; second row: F. Cartwright, E. Burt, R. Blackman, S. Belcher, V. Bradley, ( . . . ), R. Amberg, ( . . . ), D. Walker, L. McChesney, F. Clark, W. Blake, J. Richards, C. Palmer, S. Scheitlin, P. Dickson, J. Runnells, G. Talmage; third row: B. Galloway, H. Watson, W. Court, M. Arkenberg, E. Jacobson, B. Rathbun, Z. M. Pike, R. Buehler, E. Vogeler, P. Ferry, J. Crooks, B. Yarwood, M. Walker, M. Shepherd, O. Kornemann, V. Somerndike, K. Eisner; fourth row: E. Harden, M. Cohen, A. Davimos, E. Birch, R. Anspach, E. Akin, M. Stearns, R. Norwood, C. Hagerstrom, H. Hall, R. Slutz, J. German, R. Leary, M. L. Dull, B. Baker, M. Conkling, M. Main, N. Thompkins; fifth row: Mrs. Gray, sponsor; M. Dunnaway, J. Sayre, H. Neill, H. Oswald, A. Burt, M. Bridgeman, R. Loveitt, R. Wepler, F. Strassner, D. McLean, S. Garrabrant, R. Walker, L. Holle, L. Bejda, B. Love, V. Manley; front row: L. Redpath, J. Ames, O. Sticht, H. Grunning, B. Guerin, P. Murphy, B. Buehler, H. Eisele, Vice-President; P. Anthony, Secretary; T. Landers, H. Page, President; V. Levy, E. Padula, M. Scott, E. Harrison, A. Hayhurst, M. Lowry, E. Scherer. Members not in picture: J. E. Burns, J. Crowley, F. McGinity, C. Osgood, H. Read, J. Stearns, M. Teller, D. Timmons, and L. Wolcott.



## THE JUNIOR DRAMATIC CLUB



**B**ACK row, reading from left to right: T. Scott, A. Webb, D. Decker, ( . . . ), E. Colie, ( . . . ), ( . . . ), F. Entwistle, B. Silleck; second row: C. Blum, H. Adams, F. Haveron, W. Kirkpatrick, R. Turner, R. Hooke, D. Yard, R. Wheaton, D. Kautzman, D. Crane, P. Miller, R. Brown, F. Dodge; third row: M. McCormick, J. Barradale, C. Conklin, M. McDermott, L. Stevens, J. Glendenning, J. Blum, D. Evans, L. Gruman, R. Page, J. McHarg, B. Yarwood, F. Mysel, B. Brandes, M. Hanle, M. Smith, D. Gillen; fourth row: M. Main, J. Runnells, ( . . . ), J. Harris, P. Graham, V. Campbell, K. Eberhardt, C. Fisch, D. Williams, M. Mehl, V. Hochette, V. Becker, ( . . . ), D. Kehoe, J. Reichl, M. Dull, B. Newman; fifth row: S. Scheitlin, E. Manley, J. Young, G. Wilder, B. Wakely, A. McCullough, R. Snow, M. Stearns, R. Loveitt, P. Murphy, R. Macmillan, K. Eisner, B. Stobeus, J. McBride, ( . . . ), S. Geiger, V. Manley, E. Maxfield; sixth row: B. Kurtzman, C. Anderson, C. Alley, B. Dunklin, A. Conkling, B. Dexter, R. Speck, F. Hardgrove, P. Thayer, M. Davidhauser, S. Garrabrant, B. New, E. Tichenor, M. Cameron, M. Morrison, C. Kaufman, V. Higgins, E. Schachtel; front row: Mr. Marshall, sponsor; M. Chandler, M. De Groff, B. Ender, N. Pilutick, M. Selitto, R. Koch, T. Mains, Secretary; F. Reeve, Treasurer; J. Wiley, President; J. Croot, N. Tompkins, Vice-President; D. Krahenbuhl, L. Aitkin, N. Golden, B. Graham, R. Green. Members not in picture: D. Crompton, E. Dench, C. Denk, C. Hartford, C. Schulz, E. Salisbury, and F. Stokes.



## THE SOPHOMORE DRAMATIC CLUB



**B**ACK row, reading from left to right: Sommer, Sullivan, Hadley, ( . . . ), Getler, Bodkin, Gardner, Galowitz, Saber ( . . . ), ( . . . ), Norwood, Smith, Fisher; second row: La Joie, Ryerson, Klunder, Dannerman, Scott, Knight, Jung, Lipis, Spowers, Reuter, Stine, Convery, Sklarz; third row: Walter, Seidler, Matthews, Moss, Klein, Hunicke, Kinkead, Pample, Richman, Disque, Perry, Seidler, Minnerly, Klein, Dixon, Doyle, ( . . . ); fourth row: West, Oppel, Laskowitz, Smith, Bayer, Voderburg, Post, Benn, McJames, Senft, Annin, Hansen, Wosnitzer, Fantl, Gibson, Aikman, Robbins, Dickie, Berlacque; fifth row: Berlacque, Bajda, Beers, Stimpson, Brown, Spaeth, Fiacre, Braun, Pohlman, Bornheuter, Davis, Hertzschuch, Tallman, Dewar, Anderson, Tessier, Schmidt, Stockton; sixth row: Marchant, McHarg, Menninger, Clark, Wolcott, ( . . . ), Wassal, Trimble, August, Payne, James, Fisher, O'Hara, Schwartzwaelder, Allen, Makov, Ringel, ( . . . ); seventh row: Krey, Cunningham, Findlay, Robb, Gross, Farrier, ( . . . ), Hirschberger, Kohr, Knapp, McMullen, Ball, Amend, Conlan, Clark, Faatz, Brothers, Faber, Andre; front row: McHugh, Rimelspacher, ( . . . ), Hoyt, Runcie, McDonough, Taft, Knowe, Farr, Heflin, West, Secretary; Roberts, President; Addis, Hunicke, Jennings, Vice-President; Rothen, Jung, Treasurer; ( . . . ), Martine, Schultz. Members not in picture: Bachman, Bauham, Brett, Dridgeman, Campagna, Curtiss, Davis, Groner, Harth, Lauderback, Ludlow, Lyman, Perry, Schench, Smith, Tuck, and Tyroler.



*THE MIRROR*

---



ORCHESTRA



SERVICE ORCHESTRA



CLASS OF 1933



BAND



GLEE CLUBS



## ACTIVITIES PROGRAM OF COLUMBIA HIGH SCHOOL

IN a broad view of school life and work, the extra-curricular activities have just as important a part as the regular scholastic subjects. The aim of the different organizations is to provide an outlet for the varied interests of the students and to give a constructive background to the following out of these interests.

The required physical education course is the center from which radiate the interests that have stimulated the organization of our athletic groups. In the boys' activities we have football and basketball, perhaps the two best known teams, followed by others in season. Boys who are not placed on these teams still have opportunities in the home room tournaments. The girls' sports do not get as much notoriety as the boys', but continue to flourish. Interclass soccer, basketball, and baseball are the major teams.

The dramatic talent of Columbia finds its outlet in the Parnassian, Junior, and Sophomore Dramatic Associations. These organizations are very well known throughout the school by their frequent assembly productions, which constitute some of the best programs of the year. These groups not only provide opportunities for those interested in acting, but also for those who enjoy back-stage work, directing, and scenery designing.

Our four music clubs are becoming better known each year. Since the glee clubs have been incorporated into regular class time with the possibility of credit for membership, their enrollment has greatly increased, making possible the production of more difficult programs. The orchestra and band are reaching higher standards each year as a result of the increasing music training in the lower grades. And our beloved service orchestra continues to thrive and be one of the most important groups in the school, in spite of the fact that a number of prominent members were graduated last year.

Two of the most popular organizations in the school are the French and German Clubs. Students interested in these languages and the countries where they are spoken derive much satisfaction and help from membership. The opportunity to hear and participate in programs carried out entirely in a foreign language is an unusual one, but one that gives a great deal of pleasure to the participants. Along the linguistic line, the Creative Writing Club encourages creative written work of all types. Its members produce a number of unusual compositions. The Book Club, new this year, is organized solely for the reading and discussion of books.

The School Council, composed of one representative from each home room, is very effective in its management of a large number of student problems. Its members take charge of such committees as the following: assembly, traffic, social, fire, and lunch room.

Among the other organizations, our school paper, the *Columbian*, ranks high in achievement. Other groups are the Electrical Committee, most important in all assembly functions, the Science Club, Boys' and Girls' Art Clubs, Aviation Club, and Commercial Club.





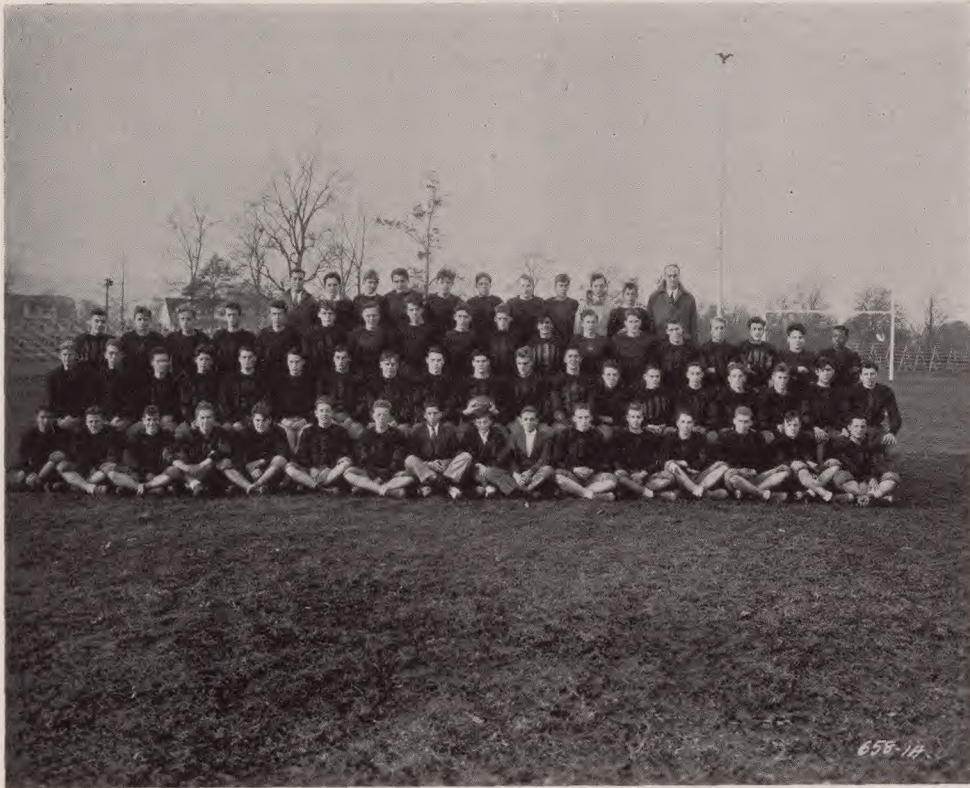
HAYDENRICH

ATHLETICS









## FOOTBALL

### THE SEASON

Date	Place	Team	Score	Team	Score
October 1	Summit	Columbia.....	0	Summit .....	6
October 8	South Orange	Columbia.....	13	Morristown .....	0
October 15	West Orange	Columbia.....	6	Orange .....	0
October 22	South Orange	Columbia.....	6	Westfield .....	27
October 29	Montclair	Columbia.....	24	Montclair .....	6
November 5	South Orange	Columbia.....	14	New Brunswick .....	25
November 12	East Orange	Columbia.....	6	East Orange .....	27
November 24	South Orange	Columbia.....	0	West Orange .....	13



**FRANZEN**  
L.H.B.



**SMITH**  
L.E.



**MARVEL,**  
*Head Coach*



**HOPPOCK**  
R.T.



**MAHNKEN,**  
*Ass't. Coach*



**HUNKELE**  
R.G.



**LONG**  
F.B.





CLASS OF 1933

COOPER  
Q.B.



PATTON  
C.



LELONG,  
*Manager*



HARRISON  
L.T.



BUCK,  
*Captain*



JENKINS  
L.G.



FREUND  
R.H.B.



## SQUAD FOOTBALL



The "Microbes," captained by Quarterback Weiderman and coached by Bill Stillman, a post-graduate, were runners-up for the championship in the second half of the season. They showed good spirit right along and had an excellent line with Packer outstanding. The football season was divided into two parts for the squads, and the best team at the end of each period was declared the champion. The famed "Wildcats" won that title both times.



The "Rams" were coached by Bud Philcox and headed by Ellis Smith. They put up a stubborn fight in every game. At the end of the season an all-squad team was chosen from the best players in the four groups. This team went up to Underhill Field and almost succeeded in overwhelming the Columbia J. V.'s, but had to be satisfied with a 6-6 tie.

Coached by a senior, Bill Watson, and captained by that star halfback, Luke Magliaro, the "Wildcats" had a perfect season, being undefeated, untied, and unscored on. Nelson, a quarterback, was an outstanding player on this team. "Hard, consistent practice plus team spirit was the reason for this excellent record," were Mr. Brown's words. This team used exactly the same plays as the others used, these being the plays of the Notre Dame system.



Captain Frank Magliaro, halfback, and Coach Tom Thorpe, a post-graduate, took the "Olympiads" successfully through the first half of the season when they were runners-up for the championship, only to be conquered by the invincible "Wildcats". All four squad teams practiced and played their games on the field back of the school. Of course their ultimate aim in High School is to play on the varsity at Underhill Field.







## BASKETBALL

### THE SEASON

Team	Score	Team	Score
Faculty .....	41	Columbia .....	40
Alumni .....	23	Columbia .....	32
Westfield .....	26	Columbia .....	36
Central .....	27	Columbia .....	22
Montclair .....	15	Columbia .....	30
Orange .....	26	Columbia .....	18
Kearny .....	38	Columbia .....	18
Bloomfield .....	35	Columbia .....	23
Montclair .....	35	Columbia .....	21
West Orange .....	14	Columbia .....	30
Westfield .....	19	Columbia .....	29
Orange .....	33	Columbia .....	26
East Orange .....	16	Columbia .....	26
West Orange .....	22	Columbia .....	24
Madison .....	14	Columbia .....	27
Red Bank .....	20	Columbia .....	30

THE MIRROR



JOHNNY LONG  
GUARD

MOE LEVY  
GUARD

EDWIN HOBSON  
MANAGER

BILL BARKLEY  
CENTER

ROY COOPER  
FORWARD

SWEDE PALMER  
FORWARD

HARRY MAHINKEN  
COACH



# CLASS OF 1933



DICK BEAZLEY  
LEFT DEFENSE

BOB ROSE  
LEFT WING

DAN ROMAN  
RIGHT WING

PAUL DICKSON  
RIGHT DEFENSE



JOHN EVANS, GOALIE

TEAM	SCORE	TEAM	SCORE
COLUMBIA	2	ALUMNI	1
COLUMBIA	8	ALUMNI	2
COLUMBIA	2	SUMMIT	2
COLUMBIA	1	HIGHLAND FALLS	1
COLUMBIA	2	TENAFLY	2
COLUMBIA	6	TENAFLY	2
COLUMBIA	6	TENAFLY	1



CHAN HOLMES, CENTER



RAY STERLING  
COACH



BOB HAHN  
MANAGER



### 1933 BASEBALL SCHEDULE

April 15	vs. Alumni
April 18	vs. Verona
April 22	vs. East Side
April 25	vs. Millburn
April 27	vs. Bound Brook
April 29	vs. New Brunswick
May 3	vs. Roselle Park
May 6	vs. Perth Amboy
May 9	vs. Summit
May 13	vs. Kearny
May 17	vs. Passaic
May 20	vs. Kearny
May 23	vs. Morristown
May 27	vs. Rutherford
May 30	vs. Bloomfield
June 3	vs. New Brunswick
June 7	vs. Ridgewood



PHIL MARVEL  
Coach



GEORGE TALMAGE  
Manager





## TRACK

### THE SEASON



HARRY MAHNKEN  
*Coach*

April 19.....	Columbia-Westfield
April 22.....	Columbia Interscholastics
April 29.....	Penn Relays
May 3.....	Columbia-Thomas Jefferson
May 6.....	Newark Interscholastics
May 9.....	Columbia-East Orange
May 13.....	Villanova Interscholastics
May 20.....	Kearny Relays
May 24.....	Columbia-Union
May 27.....	Montclair Invitation Meet
May 31.....	Columbia-Westside
June 3.....	State Meet



EDWIN HOBSON  
*Manager*





### SWIMMING SCHEDULE, 1933



BILL BAKER  
Coach

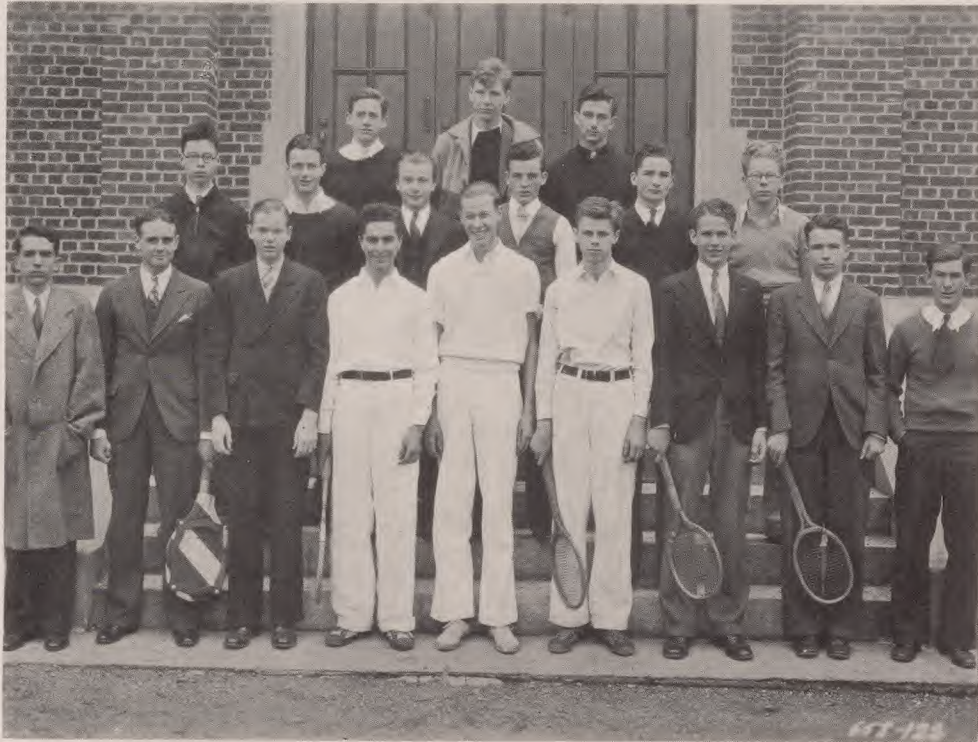
Team	Score	Team	Score
Columbia .....	39	West Side .....	36
Columbia .....	35	East Orange .....	40
Columbia .....	41	Barringer .....	34
Columbia .....	36	Plainfield .....	39
Columbia .....	29½	Paterson Central .....	45½
Columbia .....	31	Barringer .....	44
Columbia .....	27	East Orange .....	48
Columbia .....	54	South Side .....	21
Columbia .....	60	Summit .....	15
Columbia .....	31	Paterson Central .....	44
Columbia .....	37	Plainfield .....	38



ROBERT WEPPLER  
Manager



## CLASS OF 1933



### 1933 TENNIS SCHEDULE



JOHN WENKER  
*Coach*

May 5	Columbia vs. Rutherford
May 8	Columbia vs. Summit
May 10	Columbia vs. East Orange
May 11	Columbia vs. West Side
May 15	Columbia vs. Barringer
May 16	Columbia vs. Summit
May 19	Columbia vs. Paterson Central
May 22	Columbia vs. Rutherford
May 24	Columbia vs. Central
May 26	Columbia vs. Barringer
May 29	Columbia vs. East Orange
May 31	Columbia vs. Passaic



PAUL DICKSON  
*Manager*



THE MIRROR

---

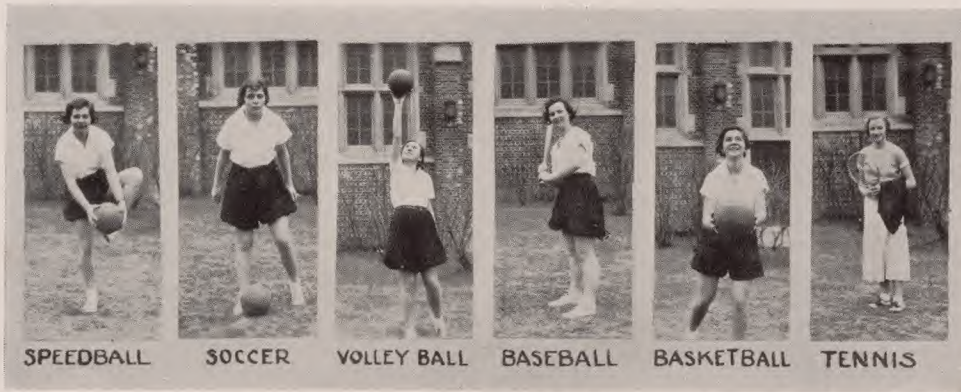


LEADERS' CLUB



G. A. A. COUNCIL





## GIRLS' ATHLETICS

TO serve as the executive body of the Girls' Athletic Association is the purpose of the Council of that organization. Composed of the officers and the managers of the various sports, it supervises the activities of the association.

This year the council maintained the point system introduced by the class of 1932, which enables a girl to win class numerals or a letter, whether or not she is on a winning team. This is a much fairer method of giving awards, since by the old plan many girls skilled in athletics failed to obtain a "C". Last year it was merely a trial arrangement, but it has now become an established precedent. The only change that has been made since last year is that of having three teams in every sport for each class, and to award to members of the third teams the number of points heretofore given to substitutes.

Soccer, probably the most popular sport, drew a large crowd of enthusiasts, and was marked by the overwhelming success of the Juniors.

Accepting the challenge offered by the faculty, the Seniors vanquished their foes in an eventful basketball game by the score of 13 to 2.

Many joined in the keen competition for positions on the class basketball teams. The play-offs were exciting contests, in which some participants were almost equally matched. The Juniors again contrived to take the lead with the Seniors coming in second.

Successful in reaching the finals of the homeroom basketball tournament were rooms 234 and 329. In a thrilling game 234, a senior room, subdued 329.

For the first time in the history of the school swimming became an organized sport for girls. A meet was arranged in which all classes participated.

Life Saving classes met both in the fall and in the spring, and several girls passed their Junior or Senior Life Saving Test.

With the addition of a ping pong tournament and speedball practice, which has been transferred from fall to spring, the customary spring sports, volleyball, baseball, and tennis, took place as usual.

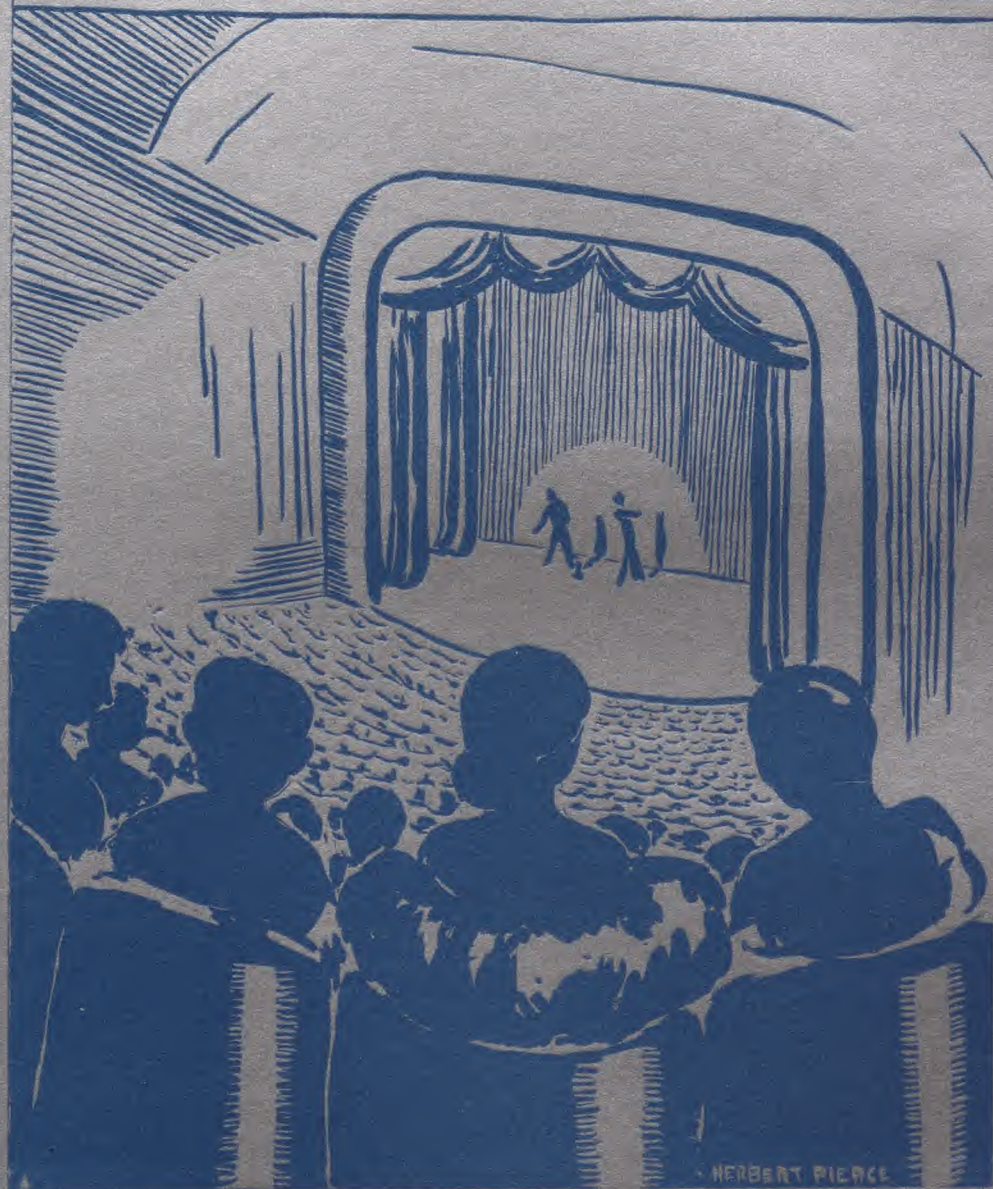
The parties promoted by the G. A. A. Council were successful social and athletic gatherings; and the large attendance at each party proved the real interest of the girls in athletics.







# FEATURE









## VARIETY NIGHT



THE FACULTY PLAY



THE PARENTS' PLAY

## COLUMBIA

**A** is for *Atz*, an amiable ape,  
Who sews up his theories with lots of red tape.

**B** is for *Buck*, with giggle so shy.  
If he ever grows up, he'll make a great guy.

**C** is for *Caswell*, a class guide of prudence,  
Who's put up for years with us pesky students.

**D** is for *Davimos*, with a cry on her lip:  
"What a rotten low mark—I know it's a gyp!"

**E** is for *Eisele*, a chicken, I'll bite,  
As an all-round sport, that girl is all right!

**F** is for *Freeman*, a high (404) teacher of French;  
But she has a tough time when the students are dense.

**G** is for *Guerin*, an amiable cuss,  
Whose glance in a female raises some fuss.

**H** is for *Hunkele*; some tackle, no doubt.  
At the end of the game his opponent is out.

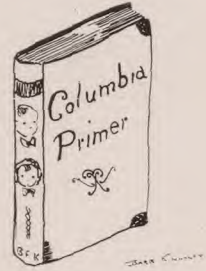
**I** is for *Ignorance*, baleful old hag  
That runs off and leaves the dunce holding the bag.

**J** is for *Jacobsen*, expert on lights.  
By pushing a button, he makes days of the nights.

**K** is for *King*, a teacher of science,  
Whose laboratory reeks with chemical defiance.

**L** is for *Levy*, a pianist of skill,  
When she plays jazz, you can't sit still.

**M** is for *Mahnken* and *Marvel*—those athletic champs  
Who make good football teams out of young scamps.





## PRIMER

N is for *Neighbors*, your friends in the class.  
They didn't get through, but they help you to pass.

O is for *Osgood*, who runs the assembly,  
And therefore spends most of her days feeling trembly.

P is for *Patton*, and *Parker*, and *Page*;  
They hold the center of field and of stage.

Q is for *Quiet*, abhorred by all students,  
But often maintained purely for prudence.

R is for *Rathbun*; as we understand it,  
He could lick all our teams just single-handed.

S is for *Sterling*; if you'll take our advice,  
You'll steer clear of him when it's too warm for ice.

T is for *Timmons*, the ladies' delight;  
He puts up his hair in curl papers at night.

U is for *Underhill Field*, where the boys  
Play down the gridiron and play up the noise.

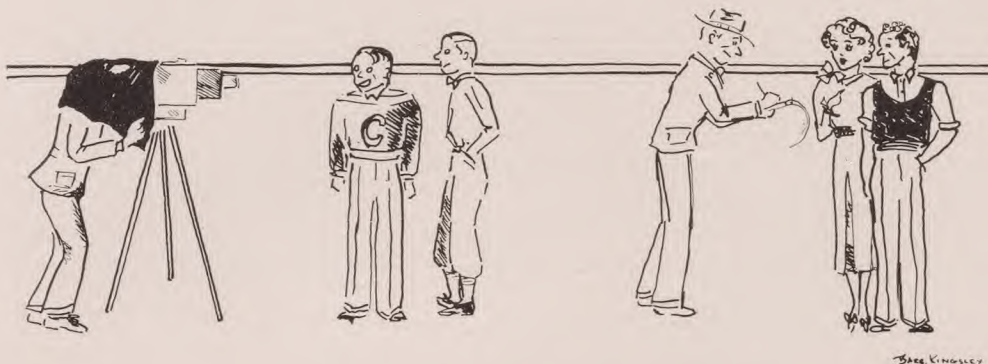
V is for *Vale*, the spitfire from Spain.  
Spain's loss, so it seems, was Columbia's gain.

W is for *Wilcox*, the Library's keeper,  
Who urges the slothful and wakes up the sleeper.

X is for *X-ams*, which the seniors don't fear;  
If they hadn't passed them, they wouldn't be here.

Y is for *youse guys*, who're reading this stuff;  
We think by this time you've had quite enough.

Z is for *Zephyr*, a flower in the West;  
Ask Rosemary Walker, for she knows it best.



## STATEMENTS TO THE PRESS

(As made by certain seniors on the eve of graduation.)

*Bob Patton:* "It has been my very great pleasure to spend two years passing through Columbia's halls. Your applause speaks for itself. I thank you."

*Helen Oswald:* "Oh, no! Don't quote me. No, no, I haven't done anything. I've barely gotten through. Please don't put anything in the paper. I hate publicity—"

*Louis Alexander:* "Glad to see you. I'll tell you a story I heard. Now, this is really funny. Gee, you'll laugh."

*Herb Hunkele:* "So I made a touchdown."

*Marie Renton:* "Oh, is *this* graduation? I'm *so* thrilled!"

*Jimmy Atz:* "If you ask my opinion on technocracy, it is my firm belief that in ten years—Oh, graduation? Yes, that's right—we're going to graduate. Well—I don't just know what to say."

*Marie Poh:* "Oh, dear, Johnny and I had another fight last night. You bet I told him—"

*Virginia Drewry:* "How-do!"

*Courter Dally:* "Have you seen my new blue sweater?"

*Mont Pike and Bill Rathbun:* "As they sang in the evening by the moonlight—"

*Myrtle Twyford:* "Well, really, now, you embarrass me."

*Thayle Landers:* "Nobody ever said I wasn't frank. I think graduation's a pain in the neck!"

*Paul Olson:* "Quite so!"





## REMEMBER THE DAYS WHEN—

The grass was green and we-uns was greener: David Timmons was the man in the Bowler Hat. . . . It surprised you that 202 had been next to 201 all this time and you didn't know it. . . . Stephen Gregowitz wore a "we want beer" tie. . . . You thought Cun Teller's name was Con. . . . Ed Hobson came to Columbia, bringing the sunny South, "yas-suh" . . . . Joyce Richards and Edna Johnston performed statuesquely for our scintillating Junior Night. . . . and the skeletons prowled. . . . and Irv Ryerson went Russian. . . . and Bob Buehler worked the wind machine with ferocity and skill in the Sophomore Dramatic Club play. . . . Haddon Smith first started to play the cymbals in the band. . . . You got a thrill at coming back in the fall and hearing Mr. Threlkeld welcome the newcomers in the approved manner, and then waiting with at least the semblance of patience while Miss Caswell read off the home room lists. . . . The swimming team of '31-'32 took a deep breath and plunged into the waters of interscholastic competition. . . . You got little black and red feathers with your season ticket. . . . Bill Barkley wore John Lockwood's hat to a swimming meet. . . . and dropped it in the liquid. . . . and Fred Whitehead played the hero or villain, depending on one's point of view, about that hat and saved it. . . . Alice Burt was the sweet young heroine who peeked over the wall. . . . Chick Eisele was lots-of-people's girl. . . . Bill Rathbun was a hair-grower salesman. . . . You gave a shy glance upward and thought, "It must be great to be a senior!"

## SUPPRESSED DESIRES OF THOSE SIMPLE SENIORS

Roy Cooper—To be on the ping-pong team.  
Bill Barkley—To change places with one L. I. A. for a day.  
Homer Page—To act raucous and uncouth.  
Natalie Oppenheim—To become a dark, dark brunette.  
Ruth Lipis—To talk *all* the time in class.  
Bob Hahn—"Hahndy's girlfriend."  
Thayle Landers—To eat perthimmonth.  
Jack Dietze—To wear a bright red sweater, bright red socks, bright red tie.  
Rosemary Walker—To be a runner (Heh! heh!)



## DESIRES REALIZED

Arthur Lucas—To chew gum.  
Bill Parsil—To chew gum and act tough.  
Bill Schroeder—To chew gum and act tough and be graduated.  
Margaret Sommer—To blush.  
Doris Heydenrich—To have Frank Stanley elected handsomest man.  
Bill Zimmerman—To see the Democrats elected.  
David Timmons—To be a minister.  
Marguerite Lowery—To get a break. (Aren't you laughing? Her toe got a break!)



## FACULTY FOIBLES

Miss Ackerman dined in the Columbia lunch room for some years before she realized that they served chocolate ice-cream.

Mr. Platt, at the time of the skit advertising "Variety Night", said he'd rather teach a year without pay than appear before that crowd of students. Take that, Columbia!

Miss Marian Allen reads herself to sleep every night.

Mr. Marshall likes everything about "Th' no'th" except its climate.

Miss Sanders balances the bounding optimism of the rest of the faculty by a constant and determined pessimism.

Mr. Gnagey's disguise in "All at Sea" was practically perfect. Only the Gnageyan poise as he bowed to the audience betrayed him.





# GUESS WHO?



Mac 33

# THE MIRROR



FRED GUERIN  
mighty lak a rose



BILL RATHBUN - he started out young



ZMONT PIKE  
Pike wasn't so peaked then



MARGUERITE E. LOWREY  
Smilin' thru



MARTIN PAYNE  
Cap'n Jinks of the Horse  
Marines

BOB HAHN  
wasn't hea Hahn-ey



Lead on M'GINITY



NAT OPPENHEIM  
all is not gold that glitters



PEGGY ANTHONY  
twinkle, twinkle little star



PAUL OLSEN  
"Skippy"



MARION MELIA  
flowers that bloom in  
the springtime  
tra-la



BOB BUEHLER - he hasnt scratched yet



CAROL OSGOOD  
when a feller needs a friend



JACK and RUTH DIETZE  
two babes in Maplewood



ELIZABETH AKIN  
"Dolly Dimples"





HOME ROOM ADVERTISEMENTS







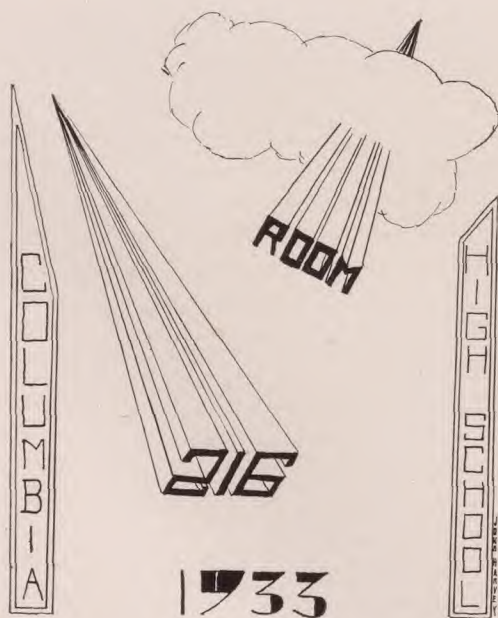
## INDEX OF ADVERTISERS

### HOME ROOMS

	Page		Page
144 .....	127	233 .....	130
145 .....	134	234 .....	127
149 .....	132	305 .....	133
153 .....	128	310 .....	131
201 .....	132	311 .....	130
202 .....	137	312 .....	127
210 .....	130	314 .....	129
211 .....	126	318 .....	132
212 .....	130	320 .....	126
213 .....	131	323 .....	129
214 .....	128	325 .....	131
215 .....	131	330 .....	127
216 .....	126	333 .....	128
222 .....	126	337 .....	128
223 .....	132	404 .....	129
229 .....	129		

### COMMERCIAL

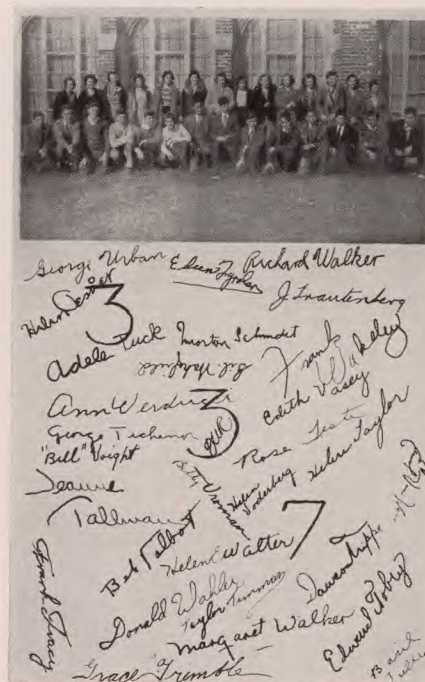
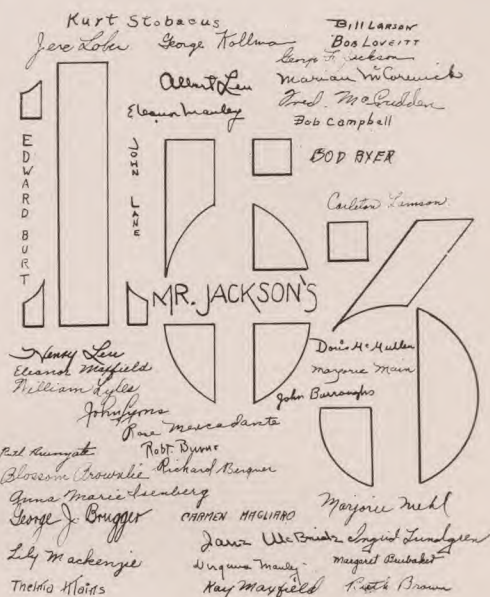
	Page		Page
Abbott-Hogan, Inc. ....	139	Leona Turner, Dancing .....	138
Acme Engraving Co. ....	141	Maplewood Bank & Trust .....	133
Becker Gift Shop, The .....	139	Maplewood Delicatessen .....	138
Bellin Dep't Store .....	139	Mayfair Gift & Sweet Shop .....	136
Berkeley School .....	140	Miss Whitmans School .....	138
Buick Co., So. Orange .....	140	Pace Institute .....	140
Breitbart-Sirlyn, Inc. ....	134	Patrick, William, Inc. ....	141
Castles Ice Cream .....	134	Rogers, T. F. ....	139
Coleman College .....	137	Ross, Samuel H., Inc. ....	136
Colyer Printing Co. ....	142	Rudd Taxi Service .....	138
Dare's Flowers .....	136	Salmon, George G. ....	137
Drake School .....	136	Sickley Bros. ....	133
Fraentzel, H. V. ....	133	Strubbe's .....	136
Gruning's .....	137	Taft's Pharmacy .....	138
Kassinger & Co. ....	133	White Studio .....	135

[illegible]





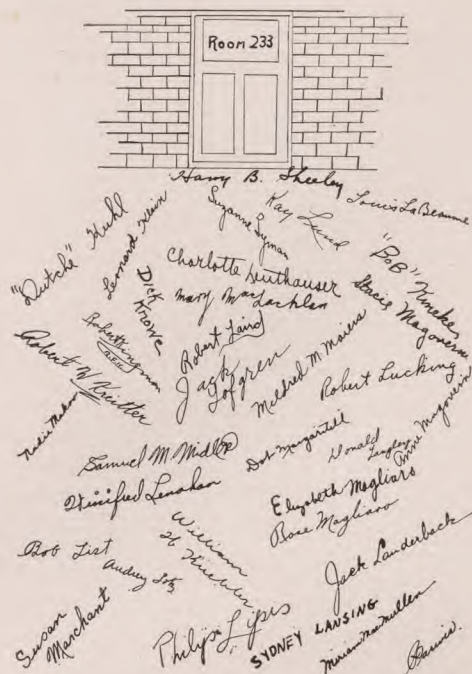
COMPLIMENTS  
of the SOPHOMORE HOMER  
333

[illegible]



CLASS OF 1933





C.H.



## THE BANK OF COLUMBIA

210

CAPITAL—Unlimited  
LIABILITIES—Non-existent

ASSETS—Universal  
INTEREST—100%

### BOARD OF DIRECTORS

Honorary Chairman .....	Miss Bullock	Secretary-Treasurer .....	Ann Falconer
Chairman .....	John Evans	Representative .....	Ellenor Farquhar
First Vice-Chairman .....	George Ewald	Janitor .....	Paul Dickson

### VICE-PRESIDENTS

Elizabeth Earl	Marjorie Faitoute	Albert Faatz
Natalie Earl	Penelope Ferry	Eugene Farley
Mary Edmison	Betty Fiacre	Albert Field
Antoinette Egger	Lenora Fielding	Henry Field
Helen Eisele	Edna Fiery	Glenn Fiery
Dorothy Ellis	Arthur De Groff	Robert Salter



## Room 213

Jean Deacon  
Edwin Decker  
Harold Decker  
Joseph G. De Ieso  
Betty Deerin  
Mary Deerin  
Irene Demarest  
Catherine Denison  
Helen Dewar

Dorothy S. Dickie  
Ellen Dickson  
Bob Dietze  
Joe C. Dietmier  
Harold Dietrichson  
Patricia Disque  
Ellenor Doyle  
Dan J. Dughi  
Jeanne Dunaway

Beverly Drane  
Mary Frances Dupont  
Bill Eberhardt  
Le Roy R. Edmunds  
Dorothy Egger  
Addison Epp  
Robert A. Faatz  
Richard D. Faber  
J. Judson Fairbanks

## Home Room 215

Barbara Elliot  
Helen Ellor  
Flora Ellwood  
Fanny Fantl  
Cora Farr  
Dorothy Farrell  
Miriam Farrier, Chairman  
Marianne Feins

Haynes Fellows  
Richard Fenner  
Edward Fetherston  
Doris Fiacre  
Harriet Tyrrell  
Walter Finch  
Catherine Findley  
Henry Fischer  
Phyllis Fisher, Vice Chairman

Thomas Flynn  
Mildred Freitag  
Harold Frenchman  
Norman Freund  
Herbert Galowitz  
Liliane Gaskin  
Charles Gardner, Secretary  
Thelma Ginsberg

## Compliments of Room 325

Robbins, Ruth  
Roberts, "Bobby"  
Runcie, "Peg"  
Ruppel, Rose  
Ryerson, "Cag"  
Schaub, Leona  
Schenck, Ruth  
Schieve, Gertrude

Schmidt, Elenore  
Schrieber, Henrietta  
Schrafft, Helen  
Sayre, John  
Sayre, "Red"  
Scarlett, George  
Schill, "Gilly"  
Schill, "Hilly"  
Schill, "Bob"

Schnauz, "Larry"  
Schrader, "Just Willy"  
Schultz, "Bob"  
Schwartz, Herbert  
Schwarzenbach, "Schwartz"  
Schwarzenbach, Fred  
Seilhamer, "Slip"  
Selitto, Joe

## Home Room 310

MR. CHASE

"Portia" Miller  
"Silver" Miller  
"Willie" Rogers  
"Eve" Mueller  
"Skippy" Nitzel  
"Kay" Denk  
"Teddy" Godshall  
"Betty" Newman  
"Bob" Allen  
"Freddie" Reeve  
"Mat" McDermitt  
"Sandy" McCullagh

"Bud" Redpath  
"Jack" Mansell  
"Bill" MacBeth  
"Helen" Mocko  
"Ken" McClave  
"Bob" McMillan  
"Junie" Marsh  
"Mac" MacBride  
"Rostie" Rose  
Mary Carolyn Morrison  
"Betty" New  
"Red" McCaskie

"Bill" Romain  
"John" Rinner  
"Les" Mason  
"Wings" Ambrose  
"Ann" Mochnal  
"Dan" Roman  
"Billie" Minnerly  
"Jack" McHarg  
"Shrimp" Maudsley  
"John" McClennan  
"Evan" Myself  
"Bill" Richardson

### Compliments of 318

Edward Margenroth	"Eddie"
Ralph Morso	"Raoul"
Cameron Moseley	"Moses"
Edith Payne	"Rusty"
Marian Moss	"Peg"
Richard Myers	"Dick"
Howard Murphy	"Murph"
Madeline Murphy	"Mickey"
Helen Nolan	"Helene"
Thesera Mulascio	"Pertassium"
Edwin Nevius	"Eddie"
Walter Niebling	"Wally"
Eleanor Noel	"Noela"
John Noll	"Noll"
Edna Pearson	"Bedelia"
Elaine O'Hara	"Bunny"
Jane Perry	"Perry Jane"
Kathryn Pohlman	"Peek"
Anita Oppel	"Nita"
Edward Padula	
Helene Page	"Helen"
William Parlatore	"Bill"
Roy Pascal	"Roy"
Joseph Passinger	"Duffer"
Joseph Musial	"Musical"
Joseph Norwood	"Nor"
Eleanor Perry	"Eleanor"
Dorothy Pampel	"Dot"

### TO THE *MEMORY*

*of*

201

### Home Room 149

Our classroom is devoted to sewing,  
That's when the classes are going.  
But, to sew, we don't need,  
So our tongues roar and speed  
Like a farm machine threshing and mowing!

### Compliments

*of*

ROOM 223



---

### Home Room 305

36 seniors, overflowing with glee,  
Made 305 THE place to be.  
A chemistry teacher with jokes when you're good,  
A red-headed devil who's misunderstood.  
Football and basketball, baseball and track,  
Of athletes fine 305 has no lack.  
Girls to be noticed, boys to be cheered,  
A teacher that's grand—all 305 reared.

---

### *How Is Your Heater?*

## TIMKEN OIL BURNERS

H. V. FRAENTZEL

MAPLEWOOD, N. J.

---

### *Congratulations*

## The Maplewood Bank & Trust Company

Maplewood, N. J.

---

Phones South Orange 2-0520—2-0521

### KASSINGER & COMPANY

PRIME MEATS, VEGETABLES, POULTRY AND FISH

*"A Business Built Upon Quality and Honest Service"*

J. J. NEWMAN, President

165 MAPLEWOOD AVENUE

MAPLEWOOD, N. J.

---

COAL — FUEL OIL

## SICKLEY BROS.

LUMBER — MASON MATERIALS

SOUTH ORANGE, N. J.

---



PERTH AMBOY, N. J.

GARFIELD, N. J.

*The Men's & Boys' Store  
of Maplewood*

We feature nationally  
recognized qualities of

**FINE FURNISHINGS**

Manhattan, Arrow, Interwoven, etc.

**STETSON HATS**

Correct Style of  
Columbia Red and Black Sweater

**Breitbart - Sirlyn, Inc.**

163 MAPLEWOOD AVENUE

S. O. 2-4062

Virginia Becker  
Lois Aiken  
Irma Balck  
Norman Boe

—  
Betty Baker  
Joseph Ames  
Winifred Bell  
Kathryn Benza  
Eugene Becker  
Betty Britten  
Julia Ambrose  
Eleanor Bowen  
Warren Bohner  
Carolyn Alley

B C  
e a  
a r  
t o  
r l  
i y  
c n  
e

Brandes Bartlett

**145**

Jack Blum  
Mr. Gnagey  
Juliaette Barradale  
Grace Adams  
Helen Adams

—  
Gladys Davis  
Carl Boepple  
William Annett  
Philip Bleibdrey  
Caroline Anderson  
Dorothy Backfisch  
Alfred Birkenmeier  
Robert Birkenmeier

C W  
o i  
r l  
i l  
n i  
n a  
e m

Blum Appe





520 FIFTH AVENUE  
NEW YORK



Completely equipped to render the highest  
quality craftsmanship and an expedited  
service on both personal portraiture and  
photography for College Annuals.



Official photographer to the  
"1933 MIRROR"

---

## Samuel H. Ross, Inc.

Established 1905

### *Good Marketing*

Quality Meats and Groceries

177 MAPLEWOOD AVENUE  
MAPLEWOOD, N. J.

---

## STRUBBE'S

*Home-Made Ice Cream and  
Candies Are the Best*

1102 CLINTON AVENUE  
Irvington Center  
Es. 2-9824

178 MAPLEWOOD AVENUE  
Maplewood Center  
S. O. 2-2465

---

## DARE'S FLOWERS

Emory H. Dare, Jr., Prop.

*Flowers for All Occasions*

Tel. S. O. 2-1676

167 MAPLEWOOD AVENUE  
MAPLEWOOD, N. J.

---

## Mayfair Gift and Sweet Shop

157 MAPLEWOOD AVENUE  
MAPLEWOOD, N. J.

Attractive Gifts, Greeting Cards  
Bridge Accessories

MAYFAIR SWEETS

*The Home-Made Candy That Is Unexcelled*  
Tel. S. O. 2-1674

---

## SECRETARIAL and ACCOUNTANCY COURSES

ENTRANCE REQUIREMENTS

High School  
or  
Preparatory School  
Graduate

## DRAKE

### SECRETARIAL SCHOOL of the ORANGES

W. C. COPE, President  
H. B. LLOYD, Manager





---

## **Miss Whitmans**

*Secretarial and Finishing*

EXECUTIVE

SECRETARIAL

ACADEMIC

For the young woman seeking a high grade commercial and cultural training. High school graduates and college women eligible only. Short term and long term secretarial courses. Select, limited enrollment.



126 CLINTON AVE., NEWARK, N. J.

Bigelow 3-0563

---

*Cars to Hire by Day or Trip*

## **RUDD TAXI SERVICE**

Seven Passenger Cars by  
Special Order

11 SECOND STREET  
SOUTH ORANGE, N. J.

Phones: South Orange 2-2654  
South Orange 2-3739

---

---

THE BEST ONLY

IN

DRUGS

## **TAFT'S PHARMACY**



SOUTH ORANGE

---

Phone So. Orange 2-9813

## **DELICATESSEN**

Ludwig Pietz, Prop.

MAPLEWOOD DELICATESSEN

*Free Delivery*

3 Highland Place      Maplewood, N. J.

---

## **LEONA TURNER School of Dancing**

CLASSES SEMI-PRIVATE  
Private by Appointment

1-11 SCOTLAND ROAD  
South Orange 2-0083

New Jersey State Supervisor of  
"Dancing Masters of America"

---



---

## BELLIN DEPARTMENT STORE

DEPENDABLE MERCHANDISE

61 South Orange Avenue

South Orange, N. J.

---



Est. 1885

### T. F. RODGERS MOTOR COACH WORK

Collision Repairs — Duco Refinishing

CENTRAL AVENUE AND 18th STREET

EAST ORANGE, N. J.

Phones Or. 3-6420-1-2

---

### *Have Your Diploma Framed at* THE BECKER GIFT SHOP

5 VOSE AVENUE

Greeting Cards :—: Bridge Prizes  
We Specialize in Artistic Picture Framing  
South Orange 2-3939

---

## ABBOTT-HOGAN, INC.

CLEANERS AND DYERS

575 Scotland Road, (at Tremont Avenue)

Orange, N. J.

---

EDITOR OF MIRROR SAYS:

**"Patronize our advertisers"**

---

## ALL GRADUATES of this School are eligible for admission to PACE INSTITUTE

... a private institution of business technology, conducting the School of Accountancy and Business Administration, the School of Secretarial Practice, and the School of Shorthand Reporting. Both daytime and evening classes are provided.

High-school graduates are prepared at Pace Institute for beginning positions in business. The basis is laid for ultimate advancement to positions of large responsibility.

Field trips to the offices and plants of the largest organizations of New York City are conducted for daytime students of the School of Accountancy and Business Administration and the School of Secretarial Practice. Students and Parents are invited to confer with the Registrar.

### PACE INSTITUTE

225 Broadway

New York, N. Y.

## BERKELEY

School of Secretarial Training

Intensive one-year course stimulating cultural and vocational achievement. Curriculum combines standard college subjects with practical secretarial studies. Distinguished faculty of university professors.

Fall enrollment now open to carefully selected group of young women. High school graduation prerequisite. For bulletin address the Director.

22  
Prospect Street



East Orange  
New Jersey

TELEPHONE ORANGE 3-1246

EDITOR OF MIRROR  
SAYS:

"Patronize  
our  
advertisers"


*"When Better Automobiles Are Built, Buick Will Build Them"*

BUICK

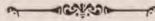
SOUTH ORANGE BUICK COMPANY

Telephone South Orange 2-2700



*Acme*  
 REPRODUCTION  
C O M P A N Y  
112 West 30th St. New York  
*Telephones Longacre 5-5381-2-3*  
SCHOOL *and* COLLEGE  
PHOTO-ENGRAVING

*Typesetters to Printers  
and Publishers*



WILLIAM PATRICK, INC.

16-22 LAWRENCE STREET, NEWARK, N. J. ~ MARKET 3-1131-2



## SCHOOL AND COLLEGE PRINTERS

### CHARACTERISTICALLY DIFFERENT!

From the earliest days when man first recorded his impressions by arduous carving in stone, the inherent faculty of true craftsmanship manifested itself. Among the relics of the early stone carvers can be found outstanding examples of characteristic difference—distinctive ability that was the forerunner for the artist and the craftsman of today. ¶ And just as primitive recordings in stone show varying degrees of superiority, so does a Colyer-produced Annual stand out distinctive of the full possibilities of the highly-developed graphic arts of today.

## COLYER PRINTING COMPANY

SUSSEX AVENUE AND DEY STREET ~ NEWARK, N. J.



## AUTOGRAPHS

## AUTOGRAPHS













