

**THE  
MIRROR**

**1 9 3 5**

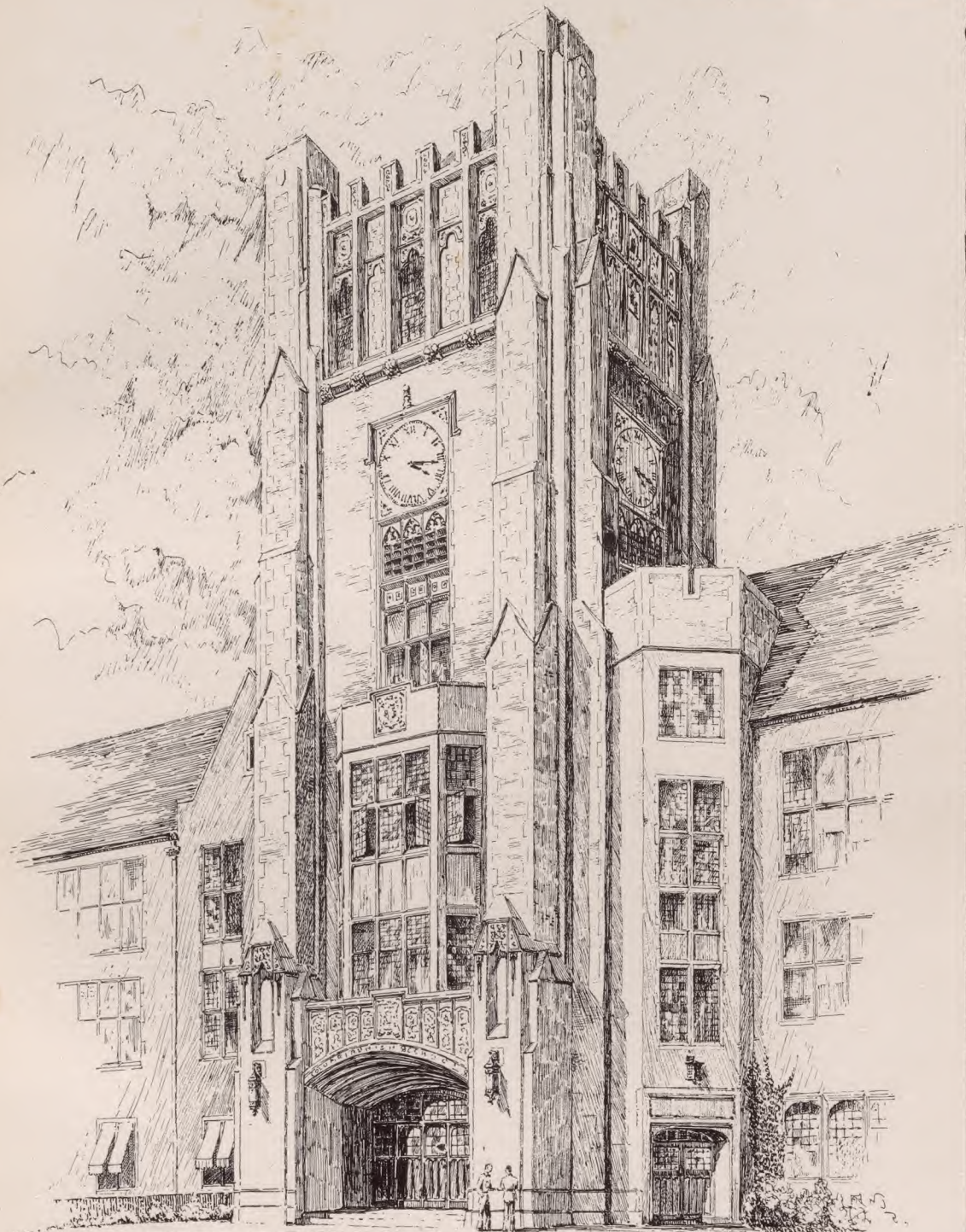








Maplewood Memorial Library  
Maplewood, New Jersey 07040



DURAND  
ROOM

**THE  
MIRROR**  
1935

Ref  
373.9  
C



"With them the seed of wisdom did I sow."

Omar Khayyam.

---

---

MIRROR 1935

---

---

---

# MIRROR 1935

---

"This castle hath a pleasant seat."

Shakespeare.





"A casement high and triple-arched there was,  
All garlanded with carven imageries."

Keats.

---

---

MIRROR 1935

---

---

---

# MIRROR 1935

---

## DEDICATION

To MISS MILDRED MEMORY, in appreciation of her many inestimable services to Columbia, we, the class of 1935, dedicate this **Mirror**. Since 1917 Miss Memory has devoted her abilities to work in this school, endearing herself to the hearts of all those who have come into contact with her, both in the class room and in extra-curricular activities.





## FACULTY

### ADMINISTRATION

John A. Bosshart, A.B.,  
**Superintendent of  
Schools**  
C. H. Threlkeld, A.M.,  
**Principal**  
Frederic Crehan, A.B.,  
**Vice-principal**  
Mary Henderson, A.M.,  
**Vice-principal**

### ENGLISH

Maurice Currier, M.Ed.,  
**Supervisor**  
I. Grace Alexander, A.M.  
John Brown, A.B.  
Eunice Genthner, A.B.  
Theodore Gnagey, A.M.  
Martha Gray, A.B.  
Gladys Hayner, A.M.  
Robert Marshall, A.M.  
Marjorie McFarland,  
A.M.  
Marjorie Nichols, A.M.  
Ruth Paine, A.M.  
Margie Pullen, B.S.  
Helene Smith, A.M.  
Irwin Thompson, A.B.  
Christie Tollefson, A.M.  
John Wenker, A.M.  
Helen Leech, Ph.D.

### MATHEMATICS

Frederic Crehan, A.B.,  
**Supervisor**  
Frances Hewitt, A.B.  
George Jackson, A.M.  
Elizabeth Macbaine, B.S.  
Philip Marvel, B.S.  
Burnham Paige, A.M.  
Frank Rogers, A.M.  
Charlotte Smith, A.M.  
Clinton Talbot, A.M.

### SOCIAL SCIENCES

Harry Sheeley, A.M.,  
**Chairman**  
Florence Ackerman, A.M.  
Henry Gray, A.M.  
Camilla Low, A.M.  
Mildred Memory, B.S.  
Raymond Sterling, A.M.  
John Brown, A.B.

### PHYSICAL SCIENCES

J. A. Erickson, A.M.,  
**Chairman**  
Norton Brown, M.S.  
Elton Chase, A.M.  
Allene Markham, A.M.  
Olin Parsons, A.M.  
Donald Summers, Ph.D.

### MODERN LANGUAGES

Margaret Allen, A.B.,  
**Supervisor**  
Alda Ahrens, A.B.  
Catherine Carrigan,  
C.E.F.  
Cecelia Freeman, M.Ed.  
Bertha Gates, A.M.  
Marie Sora, A.M.  
Anita Vale, A.B.  
Marian Wolcott, A.M.  
Lillian Dirks, A.M.

### LATIN

Helen Carrigan, A.M.,  
**Supervisor**  
Anna Caswell, A.B.  
Charles Doolittle, A.M.  
Margaret Sanders, A.M.  
Helen Leech, Ph.D.

### DIETICIAN

Adaline Wood

### LIBRARIAN

Winifred Wilcox, A.M.

### COMMERCIAL

George Pontz, M.S.,  
**Supervisor**  
Mildred Bullock  
Mary Gaylord  
Marian Johnson  
Florence Ropp, B.S.  
Carl Strony, A.M.

Kermit Williams, B.E.C.  
Gertrude Young, A.M.

### PHYSICAL EDUCATION

Thomas Higbee, A.M.,  
**Supervisor**  
Marian Allen, A.M.  
William Baker, A.M.  
Kathryn Eldon, Ph.B.  
Harry Mahnken, B.P.E.  
Constance Mueller

### FINE ARTS

Genieve Secord, B.S.,  
**Supervisor**  
Violet Demarest, B.S.  
Marian Wheeler, B.S.

### INDUSTRIAL ARTS

James Hopkins,  
**Supervisor**  
Voris Linker, A.M.  
Leonard Platt  
Emerson Powell, S.A.E.

### MUSIC

Russell Shenton, B.S.,  
**Supervisor**  
Charles Batchelder

### HOME ECONOMICS

Helen Snyder,  
**Supervisor**  
Joyce Dwyer, B.S.,  
Elizabeth Zielenbach, B.S.

---

---

# MIRROR 1935

---

---

Page Seven

---

---

## I N D E X

---

1. SENIORS
  2. JUNIORS
  3. SOPHOMORES
  4. ORGANIZATIONS
  5. FEATURES
  6. ATHLETICS
  7. ADVERTISEMENTS
- 
- 
-



### MESSAGE FROM THE PRINCIPAL

**T**O the Seniors:

I suppose most of you seniors are giving considerable thought to your plans after graduation. Most of you know what you are going to begin, but few of you know exactly what life has in store for you. If you did, much of the joy and pleasure of living would be removed, for we human beings thrive on the ambitions, anticipations, hopes, and plans which make living the glorious adventure that it is.

In your educational experience and life thus far you should have discovered yourselves to a certain extent. You should now appreciate many of your abilities and disabilities, your likes and your dislikes, your strengths and your weaknesses. You should know these better than anyone else—parent, teacher, or friend. Your task is to take stock of these personal qualities and fit yourselves into the world in such a way as to insure your own best adjustment to your fellows and the material world about you. It seems that you are going to participate in a more highly developed and sensitively adjusted cooperative society than has existed heretofore. If so, you will have a more challenging life than members of past generations have had. In the kind of cooperative society that will be tolerated in this democracy of ours the individual will be called on to adjust himself to more things and more people than has been the case heretofore. There will be greater, not less, challenge to the individual than ever before, and therefore more satisfaction.

I suspect your greatest needs in the living that stretches out ahead of you will be faith in yourselves and confidence in other people. Each of you has ability. Make the most of it. Most of the people whom you meet are all trying to do the right thing. Be friendly with them. Success and happiness do not come from the outside world, but come from within yourselves. Both will be realized in direct proportion to your ability to adjust to yourselves and to the world about you.

God speed and best wishes!

Most cordially,

C. H. THRELKELD, Principal.

---

## MIRROR 1935

---



# SENIORS



---

# MIRROR 1935

---

Page Eleven



## SENIOR CLASS OFFICERS

President .....WILLIAM BORRIE

Vice-President .....CORA FARR

Secretary .....CHARLOTTE KNAPP

Treasurer .....WILLIAM EBERHARDT

## SENIOR CLASS COUNCIL



## SENIOR CLASS HISTORY

IN June of this year our class will leave Columbia High School to seek places in the world. The time has come for our little caravan to hit the dusty trail of life. For twelve years we have been preparing to make the journey into the outside world; for twelve years we have been learning how to live, and now at last our restless group is ready to proceed into the future. Youth seeks new fields of endeavor, and onward, ever onward, we are destined to march.

Yes, for twelve years we have been preparing to go into the world, and it hardly seems possible that at last we are ready to depart. Three of the most important of these preparatory years were spent in Columbia High School, and in these years we have become proud of that school, proud of what it has taught us, proud of its traditions, its teachers, its spirit. Our sojourn in Columbia has been both enjoyable and eventful. We have participated in all phases of extra-curricular activity and have produced our share of the school's actors, speakers, musicians, journalists, athletes, office holders, and scholars.

As sophomores we continued the Sophomore Dramatic Club, organized the Stamp Club, and the radio division of the Science Club, and produced "Bon Voyage", a superb musical operetta. Several of our actors were admitted to the Parnassian Society as sophomores. Norman Freund played varsity basketball and football as a sophomore. Russell Adams and Edwin Nevius earned many points for the swimming team as divers. Gordon Annin was a Columbian reporter as a sophomore. The class of '35 was represented in all of our school's organizations.

As juniors we again took the stage with our Junior Night production, "Fair Enough." This musicale created an evening of enjoyment for all who witnessed it. During this year many members of our class became prominent in school activities. Sully's wit and Borrie's tenor voice became well-known. The dramatic ability of Bob Schultz, Marion Moss, and John Harvey advanced to popularity. Many members of our class were outstanding in athletics. We won the annual G. A. A. banner in the interclass sports competitions.

As seniors we presented as the annual senior play, "The Royal Family". Special commendation for this production went to the cast which was headed by Petie Heflin, Marian Moss, Margaret Kay, and Marshall Rothen. During our senior year Gordon Annin distinguished himself as editor-in-chief of our school paper, "The Columbian". Lucille Annin became noted for her poetry and wit; Joe Haydu for his neckties, Kirby Preston for his fighting spirit, Marguerite Hirschberger for her dancing and enthusiasm. The hockey team and swimming team, represented by seniors, had a brilliant season, the former winning the state championship. Marshall Rothen headed our student council with Ann Roberts as vice-president; Bill Borrie was our class president.

Our years in Columbia High School have been three happy years. We have enjoyed every moment of them and have derived much pleasure and profit from our varied activities. We have made many lifelong friends, and although our caravans may take us on our dusty way to the farthest corners of this globe, wherever we go, whatever we do, we shall always remember our school and endeavor to uphold its standards.

---

---

# MIRROR 1935

---

---

# MIRROR 1935

Page Thirteen

## DOROTHY E. ABBOTT

"Dot"

Home Room Basketball (2, 3, 4); G. A. A. (2, 3); Secretary Home Room (2); Glee Club (2, 3, 4); Monitor (3).

## DORIS ADAMS

"Dot"

G. A. A. (2, 3, 4); Home Room Basketball (2, 3); Latin Club (3); Leaders' Club (3); The Guild (4).

## RUSSELL V. ADAMS, Jr.

"Sonny"

Chairman, Home Room 148A (2); Junior Night; Fire Captain (4); Swimming (2, 3, 4); Track (2, 3, 4).

*KILLED FLYING WITH U.S. NAVY AIR CORPS JAN. 1942  
ON TRAINING FLIGHT AT PENSACOLA FLA.*

## DOROTHY LELAND ADDIS

"Lee"

Junior Night; Junior Dramatic Club; Eligibility Committee (2, 3), Chairman (4).

## JANET AIKMAN

"Jan"

G. A. A. (2, 3); Costume Committee, Junior Night; Home Room Basketball; Senior Life-Saving.

## STANFORD ALEXANDER

Home Room Football and Basketball (2, 3, 4).

## DOROTHEA ALLEN

"Dot"

Sophomore Dramatic Club; G. A. A. (2, 3, 4); Junior Dramatic Club; Chairman Costume Committee, Junior Night; Senior Play Committee.

## FLORENCE ALLEN

"Flo"

Leaders' Club (2, 3, 4); G. A. A. (3, 4); Junior Night; Scholarship Committee (4); Glee Club (4).

## KATHLEEN AMEND

"Bobbe"

Sophomore Dramatic Club; G. A. A. (2); Junior Night; Leaders' Club (3); Senior Soccer Team.

## LETITIA ANDERSON

"Tish"

Sophomore Dramatic Club; Junior Night; Junior Dramatic Club; Art Club (3); G. A. A. (4).





**URSULA ANDRAE**

**"Uzzy"**

G. A. A. (2, 4); Orchestra (2, 3); German Club (2, 3), President (4); Sophomore Dramatic Club; Senior Play Scenery Painting Committee.



**LUCILLE ANNIN**

**"Dede"**

G. A. A. (2); French Club (2); Parnassian (3); Junior Dramatic Club; Columbian (4).



**DOROTHY AUGUST**

Secretary Home Room 148A (2, 3); Sophomore Dramatic Club; G. A. A. (2, 3, 4); Leaders' Club (2, 3); Junior Night.



**MARY AURIEMMA**

G. A. A. (2, 3); Leaders' Club (2, 3, 4); Soccer (2); Basketball (3).



**ALFRED AVAGLIANO**

Home Room Football and Basketball, 148A.



**AUGUST BAATZ**

**"Fathoms"**

Home Room Football (2, 3); Aquarium Club (2); Aviation Club (2); Home Room Basketball (2, 3).



**VIRGINIA BACHMAN**

**"Jinnie"**

G. A. A. (2, 3, 4); Sophomore Dramatic Club; Junior Dramatic Club.



**LENORE BAJDA**

**"Nuni"**

Parnassian (2, 3, 4); Sophomore Dramatic Club; Home Room Mirror Representative (2); G. A. A. (3, 4); Junior Night.



**ELIZABETH BALL**

**"Betty"**

Chairman, Home Room 209 (2); G. A. A. (2, 3, 4); Sophomore Dramatic Club; Latin Club (3); Junior Night Costume Committee.

---

MIRROR 1935

---

---

# MIRROR 1935

---

Page Fifteen

## **WILLIAM J. BALL**

"Bill"

Glee Club (2, 3, 4); Junior Night.

## **JAMES BARNES**

"Jim"

Varsity Swimming (2, 3, 4); Track (2); Chairman, Home Room 148A (3); Fire Committee (4); Lunch-room Control (4).

## **FRANK BARRY**

Varsity Swimming (2, 3, 4); Color Guard (3); Drum-Major (4); Fire Committee (4); Senior Council.

## **MARGARET E. BAUHAN**

"Mig"

G. A. A. (2, 3, 4); Sophomore Dramatic Club; Latin Club (3); Costume Committee, Junior Night.

## **EDNA R. BAYER**

"Eddie"

Sophomore Dramatic Club; French Club (2, 3); G. A. A. (2, 3, 4); Junior Night; German Club (4).

## **EDWARD BEATTIE**

Football Squad (2), Varsity (3, 4); Latin Club (3, 4); House and Grounds Committee (3); Chairman, Home Room 233 (4); Lunchroom Control (4).

## **VIRGINIA BEERS**

"Ginny"

Sophomore Dramatic Club; G. A. A. (2, 3); Junior Dramatic Club; Election Committee (3); Junior Night.

## **LEE BEINER**

Dramatic Club, Secretary of Class, Central High School, Newark, N. J. (2); Dramatic Club, Glee Club, Irvington High School, Irvington, N. J. (2); Senior Costume Committee.

## **JEAN BENN**

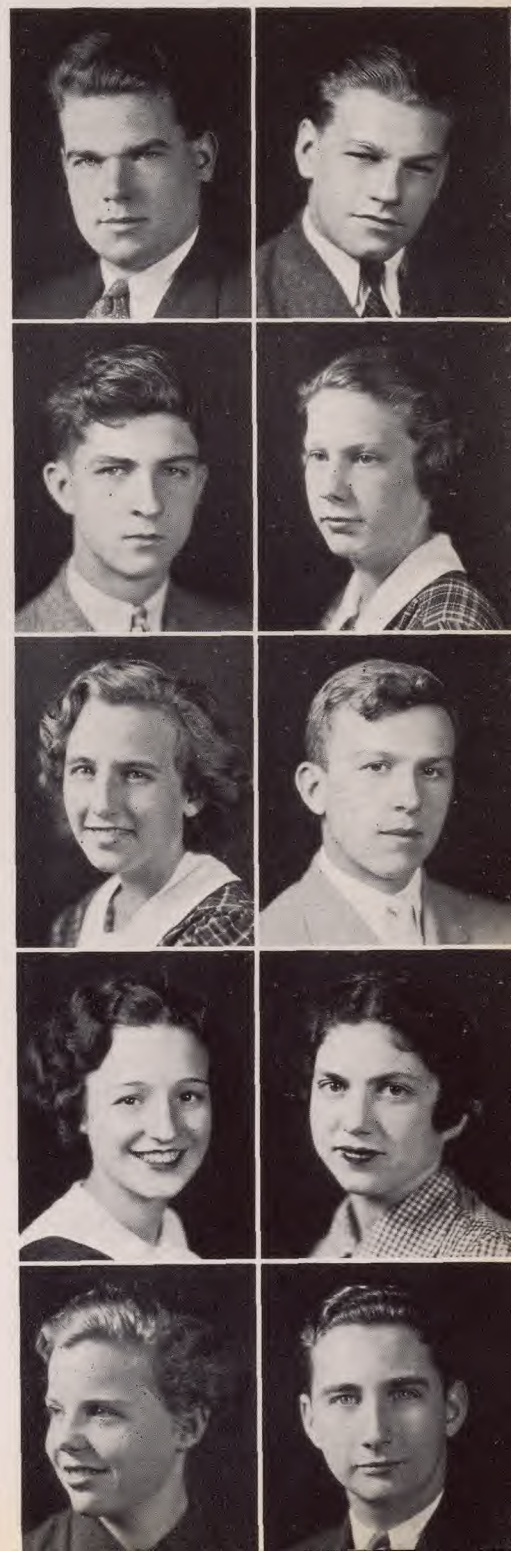
"Bendie"

G. A. A. (2, 3, 4); Sophomore Dramatic Club; Junior Dramatic Club; Junior Night; Latin Club (4).

## **DOUGLAS G. BENNETT**

"Doug"

Sophomore Dramatic Club; Traffic Committee (2); Assistant Track Manager (3); Orchestra (4); Band (4).





**AUDREY R. BERCHEY**

G. A. A. (2); Junior Dramatic Club; Book Club (3); Art Club (3).

**CONCETTA BERLACQUA**

**"Connie"**

Soccer (2, 3, 4); Basketball (2, 3, 4); Volley-Ball (2, 3, 4); Baseball (2, 3, 4); Sophomore Dramatic Club.

**JOSEPHINE V. BERLACQUA**

**"Joe"**

Soccer (2, 3, 4); Basketball (2, 3, 4); Volley-Ball (2, 3, 4); Baseball (2, 3, 4); G. A. A. (2, 3).

**WOODROW E. BOCHICCHIO**

**"Woody"**

French Club (2, 3); Latin Club (3, 4); Track (3, 4); Basketball (3).

**ALETTA BORNHEUTTER**

G. A. A. (2, 3, 4); Sophomore Dramatic Club; Junior Night; German Club (4); Senior Play Properties Committee.

**WILLIAM ALEXANDER BORRIE**

**"Bill"**

Newark Academy (2); Junior Night; Chairman, Home Room 311 (3); President, Senior Class; Football (1, 2, 3, 4).

**EDWARD BOYKIN**

**"Ed"**

Stamp Club (2, 3); Science Club (2, 3); Parnassian (3, 4).

**ARTHUR J. BRADY**

**"Irish"**

St. Benedicts (1); Baseball (1); Band (2, 3, 4); Assistant Manager Basketball (2); Service Orchestra (4).

**ROBERT BRAMLEY**

**"Bob"**

House and Grounds Committee (2, 3, 4); Junior Night; Swimming (3); Science Club, Radio Division (3, 4); Senior Play.

**ELAINE E. BRAUN**

**"Pette"**

G. A. A. (2, 3); Sophomore Dramatic Club; Junior Night; Senior Play, Properties Committee.

---

MIRROR 1935

---

---

# MIRROR 1935

---

Page Seventeen

## BETTY BRETT

"Brat"

G. A. A. (2, 3, 4); Social Committee (3); Vice-chairman, Home Room 337 (3); Junior Night; Secretary, Home Room 337 (4).

## JUNE BRIDGEMAN

Sophomore Dramatic Club; French Club (2, 3, 4); G. A. A. (2, 3, 4); Junior Night Scenery Painting Committee.

## JAMES H. BROTHERS, III

"Jim"

Sophomore Dramatic Club; Junior Night; German Club (2, 3); Science Club (4); Property Committee, Senior Play.

## EDITH CHAMPION BROWN

"Champ"

Southwest High School, Kansas City (2); Hockey Team (2); Home-Room Representative; G. A. A. (3, 4); Monitor (4).

## JANE BROWN

Sophomore Dramatic Club; Property Committee, Junior Night; Leaders' Club (3); Lunchroom Control.

## HENRY BRUCKER

"Hank"

Lighting Crew (2, 3, 4); Sophomore Dramatic Club; Junior Dramatic Club; Junior Night; Chemistry Laboratory Assistant.

## NORBERT E. BRUGGER

"Bert"

Chairman, Home Room 215 (2); Track (2, 3, 4); Football (2, 3); German Club (2); Junior Night.

## MARIE BRUNJES

"Peter"

G. A. A. (2); French Club (2); Table Tennis Club (3); Junior Dramatic Club; Parnassian (4).

## ROBERT A. BUTZ

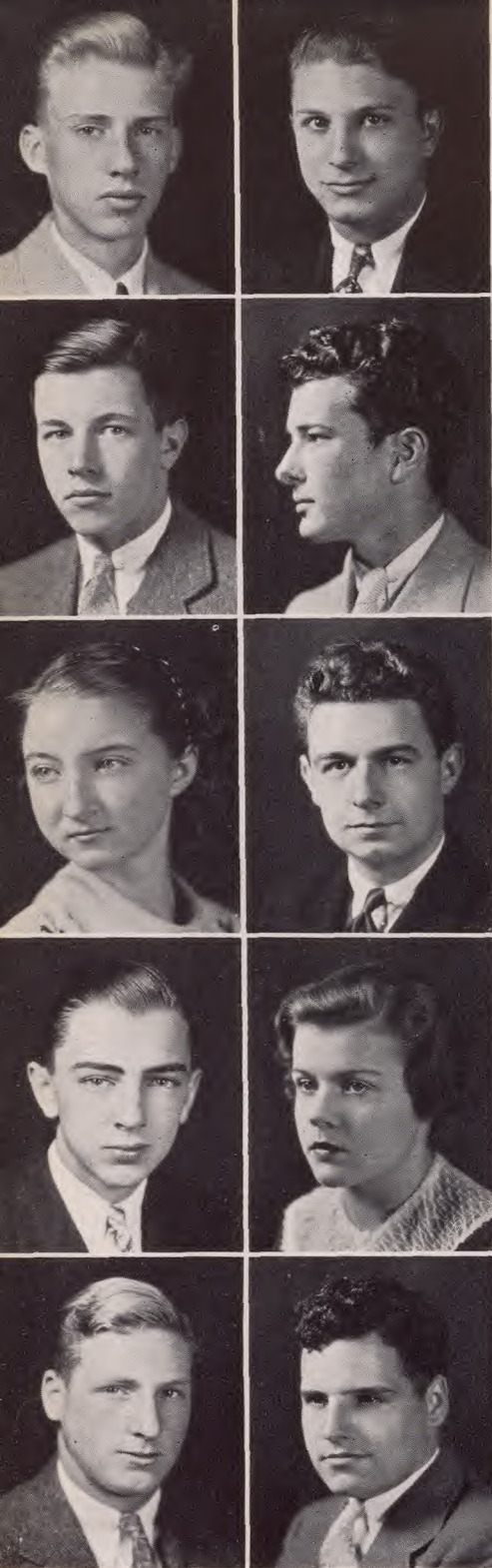
"Bob"

Football (2); Chairman, Home Room 320 (3); French Club (3); Vice-President (4); House and Grounds Committee (4); Ticket Committee, Senior Play.

## MILDRED CARR

Library, German Club, Glee Club, Swimming, Barringer High School, Newark, N. J. (2, 3); German Club (4).





### DICK J. CASPAR

Band (2, 3, 4); Program Committee, Home Room 320 (4); Construction Committee Senior Play.

### CHARLES CARMINE CATALDO

"Rubinoff"

Home Room Football (2, 3); Home Room Basketball (2, 3); Orchestra (2, 3, 4); Parnassian (3, 4).

### HENRY P. CHAPMAN, Jr.

"Bugs"

Chairman, Home Room 320 (2); Hockey (3, 4); Junior Night; Advertising Manager, Senior Play; Eligibility Committee (4).

### FRANK CHRISTIE

### EMMA CLARK

"Peanut"

Sophomore Dramatic Club; Junior Dramatic Club; Junior Night.

### PUTNAM CLARK

"Put"

Sophomore Dramatic Club; Assembly Stage Committee (2, 3, 4); Columbian (4); Football Manager (4).

### HARRY G. CLEMENT

"Hank"

Advertising Committee, Junior Night; Creative Writing Club (3); Senior Manager, Swimming; Columbian (2, 3, 4); Guild (4).

### MARGARET E. CLOOS

"Midge"

G. A. A. (2, 3); Junior Dramatic Club; Junior Night; French Club (4); Mirror Staff.

### ROBERT EDWIN COE

"Tex"

Football (2, 3, 4); Aviation Club (2, 3); Science Club (3); Track (4).

### PAUL W. McCLAMROCK COFFIN

"Indiana"

Track, Football, Home Room Chairman, Irvington High School, Irvington, N. J.; Football (4); Swimming (4).

---

# MIRROR 1935

---

---

# MIRROR 1935

---

Page Nineteen

## KENT P. COOPER

Chairman, Home Room 209 (2); Columbia Highlights Committee (2); Track (3, 4); Guild (4); Parnassian (4).

## LOUISE CONKLIN

"Conkie"

G. A. A. (2, 3); Junior Night; Monitor (3); Scenery Painting Committee, Senior Play.

## MARY CONLAN

Sophomore Dramatic Club; G. A. A. (2, 3, 4); Latin Club (3); Junior Night.

## BETH CONNOLY

Vice-chairman, Home Room 209 (3); Junior Night; Junior Dramatic Club; Student Council (4); Mirror.

## HARVEY CONVERY

Swimming (2, 3, 4); Treasurer, Junior Class; Junior Night; Traffic Committee (3, 4); Chairman, Civics Committee.

## LOUIS B. CORBETT

"Lou"

Police Patrol, Boxing, Home Room Monitor, Lunch Committee, South Side High School, Newark, N. J. (1); Squad Football (3).

## VERLYN CORLISS

"Bunny"

Glee Club (2), Soccer Team (2), East Orange High School; Junior Night; Home Room Basketball; G. A. A. (3, 4).

## RUTH COSTLEY

Sophomore Dramatic Club; G. A. A. (2, 3); Girls' Art Club (2); Junior Night Usher.

## EDMUND S. COURTER

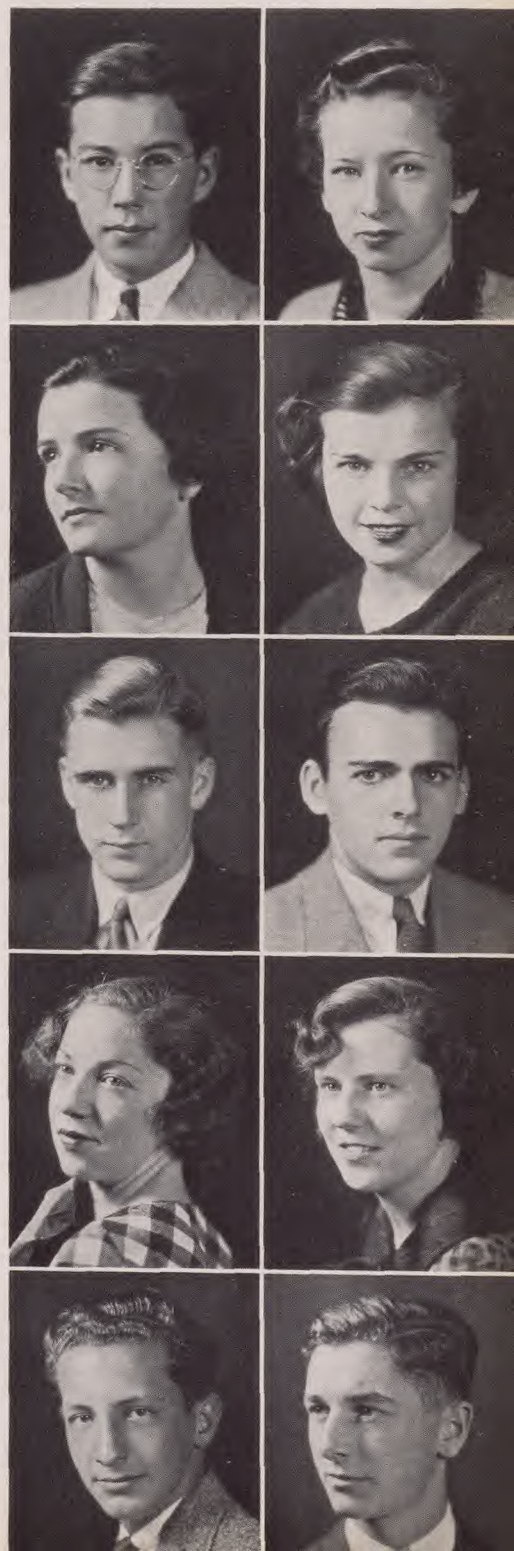
"Two Bits"

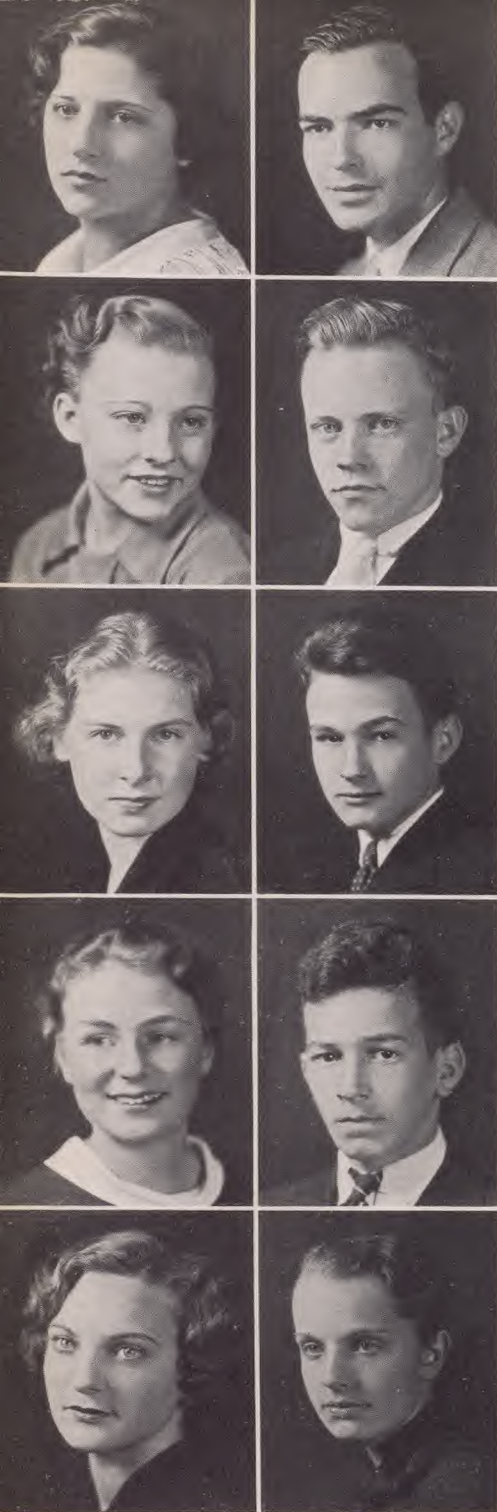
Election Committee (3); Senior Play Construction Committee; German Club (4); Ping Pong Club (4); Fire Committee (4).

## JOHN C. COX

"Jack"

Vice-Chairman, Home Room 209 (2); Traffic Committee (3); Assembly Committee (4); Construction Committee, Senior Play; Swimming (3, 4).





# **GRACE CRACCO**

**"Gracie"**

Costume Committee, Junior Night; Commercial Club (4); Costume Committee, Senior Play.

# **LESLIE CROCKER**

**"Less"**

Photographer, Sophomore Dramatic Club; Photographer, Junior Dramatic Club; Vice-President, Science Club (3); Chairman, Projection Committee (4); Chairman, Photography Group Science Club (4).

# **BETSY CROMARTIE**

**"Bubbles"**

Sophomore Dramatic Club; Soccer (2, 4); French Club (2, 3); Junior Night; Advertising Committee, Senior Play.

# **GRAHAM G. CROMARTIE**

Squad Football (2); Ticket Committee, Junior Night; Election Committee (3), Chairman (4); Attendance Committee, Home Room 209.

# **SUZANNE CUNNINGHAM**

**"Skee"**

Orchestra (2, 3, 4); Leaders' Club (2, 3); Glee Club (3); Junior Night; Property Committee, Senior Play.

# **NATHANIEL CURRIER**

**"Nat"**

Swimming (2, 3, 4); Football (2, 3); Chairman, Home Room 209 (3); Property Committee, Senior Play; Traffic Committee (4).

# **NANCY B. CURTISS**

**"Bish"**

Orchestra (2); G. A. A. (2, 3); Sophomore Dramatic Club; Advertising Committee, Senior Play; Vice-Chairman, Home Room 209 (4).

# **ANTHONY T. CUVA**

**"Tony"**

Home Room Basketball (2, 3, 4); Home Room Football (2, 4); Monitor, Home Room 155 (2); Squad Football (3); J. V. Basketball (3).

# **MARIE CZUPRYK**

**"Soupie"**

G. A. A. (2, 3, 4); Leaders' Club (2, 3); Costume Committee, Junior Night; Costume Committee, Senior Play.

# **ALMA DANNENNMANN**

G. A. A. (2, 3, 4); Sophomore Dramatic Club; Junior Dramatic Club; German Club (4); Senior Play Costume Committee.

---

---

## MIRROR 1935

---

---

---

# MIRROR 1935

---

Page Twenty-one

## CHESTER DASSING

### MARY A. DATO

"Dits"

Orange High School, Orange, N. J. (2), Secretary, Home Room (2); Costume Committee, Junior Night; Commercial Club (4); G. A. A. (4).

## GRACE DAVIS

Sophomore Dramatic Club; Parnassian Society (3, 4); Parnassian Play (3); Senior Council; Chairman, Costume Committee, Senior Play.

### HOPE ELIZABETH DAVIS

Secretary, Home Room 213 (2); Junior Council; Junior Night; Senior Council; G. A. A. (4).

### RICHARD E. DAVIS

"Richie"

Science Club (2); Assistant Equipment Manager, Baseball (3); Senior Play Construction Committee.

### RALPH DE CICCIO

"Jack"

Home Room Football (2, 3, 4); Home Room Basketball (2, 3, 4); Band (3); Service Orchestra (4).

### ELIZABETH ANN DEERIN

"Betty"

G. A. A. (2, 3, 4); Junior Dramatic Club; Latin Club (3); Junior Night Property Committee; Senior Play Program Committee.

### MARY DASHIELL DEGROFF

"Itchy"

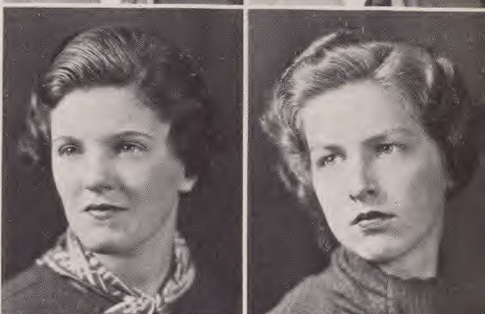
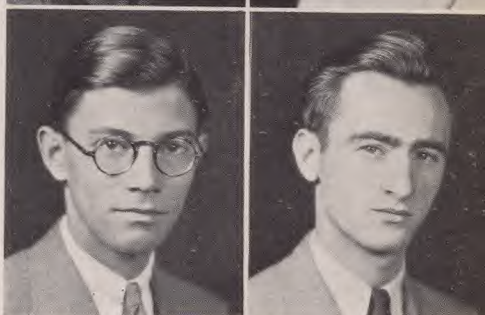
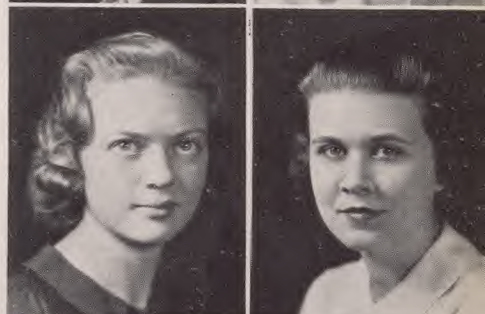
Sophomore Dramatic Club; Junior Dramatic Club; Secretary of English Class (4); G. A. A. (2, 3, 4); Chairman, Home Room Bible Reading (4).

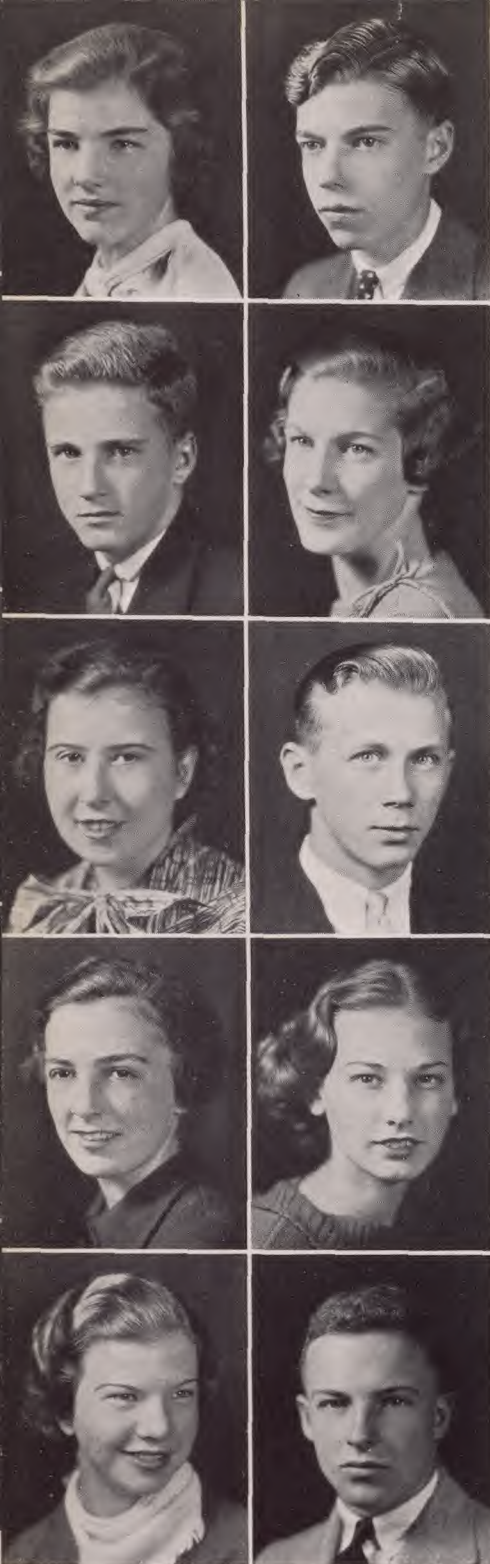
## JOE DE IESO

Home Room Basketball (2, 3, 4); Football, Squad (2); Home Room Football (2, 3, 4).

### IRENE DEMAREST

Sophomore Dramatic Club; G. A. A. (2); Home Room Basketball (2, 3); Latin Club (3); Junior Night.





### ELLEN RUTH DICKSON

Sophomore Dramatic Club; G. A. A. (2, 3, 4);  
Home Room Basketball (2, 3); Glee Club (4).

### HAROLD DIETRICKSON

Stamp Club (2, 3); Ring and Pin Committee (3);  
Junior Night; Chairman, Senior Play Stage Construction Committee.

### ROBERT DIETZE

"Bob"

Swimming (2, 3, 4); Vice-Chairman, Home Room  
213 (2, 3, 4); Cheer Leading (3, 4); Fire Committee (4).

### PATRICIA DISQUE

"Pat"

Sophomore Dramatic Club; G. A. A. (2, 3, 4);  
Junior Dramatic Club; Junior Night; Treasurer, Home  
Room 213 (4).

### ELLENOR DOYLE

"Sally"

Sophomore Dramatic Club; Glee Club (2, 3);  
Junior Night; Junior Night Committee; G. A. A. (4).

### RICHARD DRAKE

"Dick"

Junior Council; Senior Council; Fire Committee  
(4); Basketball (2, 3, 4); Track (3, 4).

### SHIRLEY DRYPOLCHER

Swimming (2); Junior Dramatic Club; Junior Night;  
Leaders' Club; Senior Play Committee.

### JEANNE DUNAWAY

G. A. A. (2, 3, 4); Sophomore Dramatic Club;  
Junior Dramatic Club; Junior Night; Science Club  
(4).

### MARY FRANCES DUPONT

"Dupie"

G. A. A. (2, 3, 4); Aviation Club (2); Table Tennis  
Club (3); Junior Night; Leaders' Club (3).

### WILLIAM C. EBERHARDT

"Ebee"

Chairman, Home Room 213 (2); House and  
Grounds Committee (2, 3), Chairman (4); Track (2,  
3, 4); Treasurer, Senior Class; Traffic Committee (4).

---

# MIRROR 1935

---

---

# MIRROR 1935

---

Page Twenty-three

## DOROTHEY EGGER

"Dorey"

G. A. A. (2, 3, 4); Aviation Club (2); Junior Night; Parnassian (4); Senior Play Cast.

## BARBARA ELLIOTT

"Bobbie"

Junior Dramatic Club; Junior Night Committee; Civics Committee (3); G. A. A. (4).

## HELEN ELLOR

"Howie"

G. A. A. (2, 3); Junior Night; Table Tennis Club (3); Monitor (4).

## ADDISON EPP

Secretary, Home Room 213 (2); Science Club (2, 3, 4); Chemistry Laboratory Assistant (3); Scenery Construction Committee (4).

## ROBERT A. FAATZ

"Bob"

Sophomore Dramatic Club; Parnassian Society (3, 4); Junior Dramatic Club; Junior Night; Treasurer, Home Room 213 (3).

## RICHARD FABER

Stamp Club, Treasurer (2); Sophomore Dramatic Club; Science Club (2, 3), Treasurer (4); German Club (3, 4); Biology Laboratory Assistant (3, 4).

## CORA FARR

G. A. A. Council (2, 3, 4); Columbian Staff (3, 4); Chairman, Home Room 215 (3); Parnassian (3, 4); Vice-President Senior Class.

## MIRIAM FARRIER

"Dolly"

Chairman, Home Room 215 (2); G. A. A. Council (4); Senior Play Committee; Senior Council; Mirror Staff (4).

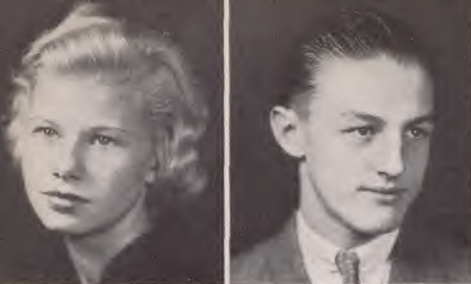
## HAYNES H. FELLOWS

Band (2, 3, 4); Lunchroom Committee (3); Squad Football (3); Junior Night, Ticket Committee; Senior Play, Ticket Committee.

## ED FETHERSTON

Football (2, 3, 4); Track (2, 3, 4); Civics Committee (4).



**DORIS FIACRE****"Dor"**

Sophomore Dramatic Club; G. A. A. (2); Leaders' Club (2); Junior Dramatic Club; Junior Council.

**PHYLLIS FISHER****"Phyl"**

G. A. A. (2, 3, 4); Secretary, Home Room 215 (2); Sophomore Dramatic Club; Vice-Chairman, Home Room 215 (3); Chairman, Home Room 215 (4).

**THOMAS J. FLYNN, Jr.**

Basketball (3); Junior Night; Science Club (4); Table Tennis Club (4); Home Room Play (4).

**HAROLD FRENCHMAN****"Frenchy"**

Class Football (2); Class Basketball (2, 3); Civics Committee (2, 3).

**CARL E. FRITSCH**

Home Room Football (3, 4); Home Room Basketball (3, 4).

**HERBERT GALOWITZ****"Pancho"**

Sophomore Dramatic Club; Junior Dramatic Club; Football, Varsity (3, 4); Junior Night; Parnassian Society (4).

---



---

# MIRROR 1935

---



---

# MIRROR 1935

Page Twenty-five

## CHARLES C. GARDNER, Jr.

"Hotcha"

Band (2, 3, 4); Columbian Staff (2); Service Orchestra (3, 4); Junior Night; Track, Manager (4).

## LILIANE E. GASKIN

G. A. A. (2); Junior Night; Science Club (3); Chairman, Entertainment Committee, Home Room 215.

## CHARLES J. GEIGER

"Squeak"

Track, Varsity (2, 3, 4); Interclass Track Meet (2, 3, 4); Home Room Football (4).

## MAY GIANCIPOLI

Leaders' Club (2).

"Maizie"

## FILOMENA GIANNASIO

"May"

Art Club (2), Orchestra (2), Dickinson High, Jersey City; G. A. A. (3); Junior Night.

## MARIE GIANNASIO

G. A. A. (2).

## PHYLLIS GIBSON

"Gibby"

Sophomore Dramatic Club; G. A. A. (2, 3); Junior Dramatic Club; Junior Night.

## MARGARET GILCHRIST

G. A. A. (3); Girls' Glee Club (3).

"Gilly"

## ETHEL GODSHALL

"Sis"

Dramatic Club (2), Gym Club (2), Irvington High, Irvington; Gym Club (3), Plainville High School, Plainville, Conn.; G. A. A. (3, 4).

## CARL GOODWIN, Jr.

Band (2, 3), Track (2, 3, 4), Football (2), Highland Park High, Dallas, Texas; Junior Night; Hockey (4).





**JAMES GRAHAM**

"Bushy"

Football (2, 3), Basketball (2, 3), Ithaca High School, Ithaca, N. Y.; Basketball (4).



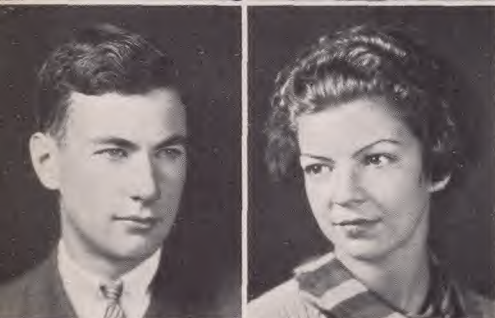
**ALFRED GREGORY**

Football (2); Track (4); Football, Home Room 216 (4).



**JANET GRONER**

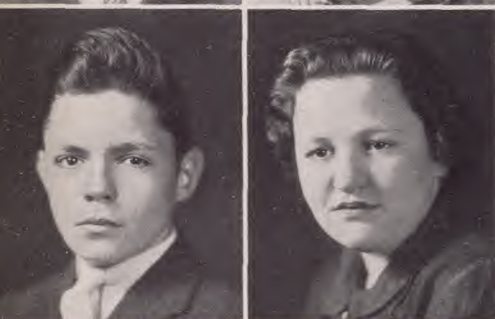
G. A. A. (2, 3, 4); Sophomore Dramatic Club; Junior Dramatic Club.



**PAUL H. GUILFOIL, Jr.**

"Feet"

Rifle Team, Science Club (2), Brooklyn Prep; Football (3); Traffic Committee (4); Lunch Room Control Committee (4); Basketball (3, 4).



**ALAN HADLEY**

"Al"

Sophomore Dramatic Club; Orchestra (2, 3); Band (4); Swimming Manager (4); Football, Home Room 216 (4).

**VIRGINIA HALL**

"Ginnie"

G. A. A. (2); Commercial Club (2); Senior Party Committee.

---

# MIRROR 1935

---

Page Twenty-seven

## JANICE HALLETT

"Jan"

Sophomore Dramatic Club; French Club (2, 3, 4);  
Glee Club (2); Junior Dramatic Club; Parnassian (4).

## MARJORIE J. HAMILTON

G. A. A. (2, 3, 4); Sophomore Dramatic Club;  
Chairman, Home Room 155 (3); Commercial Club (3).

## HOWARD E. HAMPSON, Jr.

Baseball, Squad (3, 4); Football, Basketball, Home  
Room 216 (4).

## JOE HANDLEY

Chairman, Radio Division, Science Club (2);  
Swimming (2, 3, 4); Football, J. V. (3).

## KATHRYN HANSEN

"Kitty"

Leaders' Club (2); Junior Night; Junior Council;  
Soccer Team (4); The Guild (4).

## MORTEN M. HANSEN, Jr.

Track (2, 4); Home Room, Basketball (2, 3); Foot-  
ball (2, 3, 4); Glee Club (4).

## JUNE HARTH

Sophomore Dramatic Club; G. A. A. (3, 4); Vice-  
Chairman, Home Room 216 (3); Soccer (4).

## JOHN L. HARVEY, Jr.

Highlights Staff (2); Assembly Program Committee  
(2, 3); Junior Dramatic Club, Chairman, Program  
Committee; Treasurer, School Council; President,  
Parnassian Society.

## WALTER HAUSER, Jr.

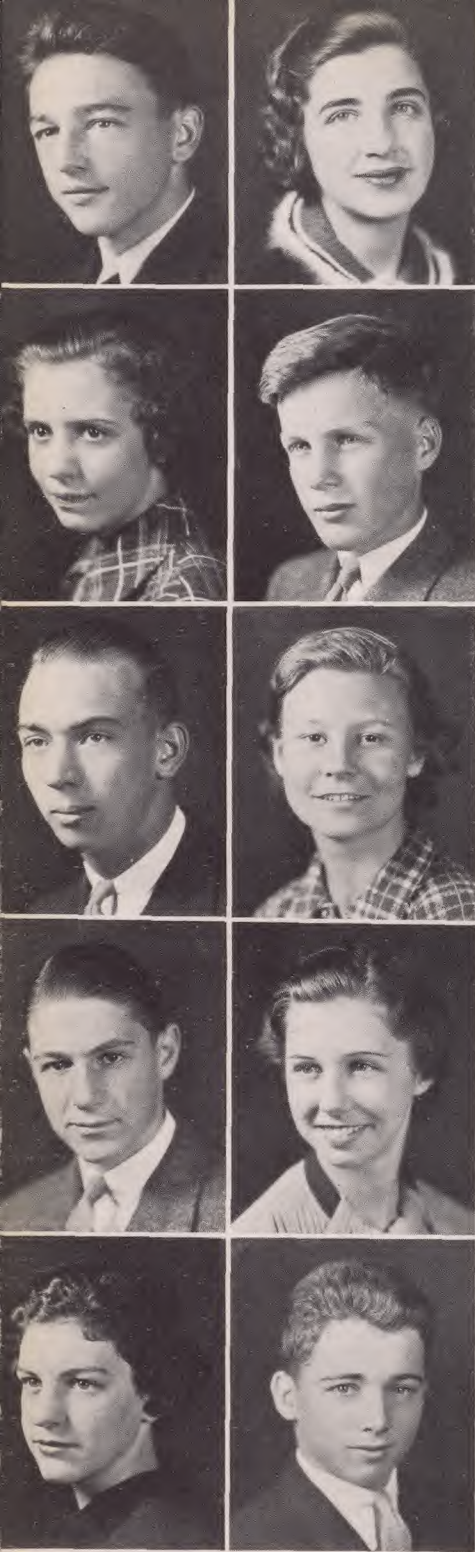
"Baron"

German Club (2, 3); Junior Night.

## GEORGE HAY

Band (2, 3, 4); Columbian Staff (3, 4); Junior Dra-  
matic Club; House and Grounds Committee (3);  
Civics Committee (3, 4).





**JOSEPH HAYDU**

"Bing"

Vice-President, Home Room (2); Baseball, Varsity (2, 3, 4); Civics Committee (3, 4); Senior Play.

**ELIZABETH HEFLIN**

"Petie"

G. A. A. (2, 3, 4); School Council (2); Parnassian Society (3, 4); Sophomore Dramatic Club; Junior Dramatic Club.

**AUDREY HEIMALL**

"Patsy"

Commercial Club (3, 4); Glee Club (4).

**GERARD HELDEN**

"Red"

Science Club (3, 4); House and Grounds Committee (3); Junior Night; Manager, Baseball (4); Senior Play, Program Committee.

**HENRY HELLREIGEL**

"Henny"

Football, Varsity (2, 3), Captain (4); Baseball, Varsity (2); House and Grounds Committee (3, 4); Fire Committee (4).

**OLIVE HENDRICKS**

"Ollie"

Science Club (2, 3, 4); Stamp Club (2, 3); Leaders' Club (3, 4); Secretary, Home Room 217, (2, 3); Chess Club (3).

**ALAN H. HERMAN**

"Philbert"

Nominating, Standing Committee (2); Junior Night; Baseball, Manager (4); Senior Play; Mirror Staff (4).

**FRANCES HERMAN**

"Fran"

G. A. A. (2, 4); German Club (2); Latin Club (1, 3).

**RUTH F. HERTZSCHUCH**

Sophomore Dramatic Club; Orchestra (2); Junior Dramatic Club; Junior Night; Parnassian Society (4).

**CHARLES HESPE**

"Moe"

Swimming (2, 3); Basketball (2); Football, Manager (4); Hockey (4).

---

MIRROR 1935

---

---

# MIRROR 1935

---

Page Twenty-nine

## GERALDINE HETZEL

"Gerrie"

Sophomore Dramatic Club; Girls' Art Club (3); Junior Dramatic Club; Book Club (3); G. A. A. (4).

## HENRY HILL

"Henny"

Basketball, Home Room (2, 3, 4); Baseball, Junior Varsity (3, 4); Chairman, Home Room (3); Thanksgiving Day Program (3); Senior Play.

## MARGUERITE HIRSCHBERGER

"Mig"

Sophomore Dramatic Club; G. A. A. (2, 3, 4); Parnassian Play (3, 4); Junior Dramatic Club; Senior Play.

## ARCHER R. HOBSON, Jr.

"Arch"

Football (2); Civics Committee (2); School Council (3); Home Room Chairman (3); Senior Play, Ticket Committee.

## GORDON HOLBROOK

Aviation Club (2, 3); Junior Night, Ticket Committee; Junior Council; Chairman, Home Room 217 (4); Senior Play, Ticket Committee.

## JOSEPH HOLSLAG

"Bud"

Latin Club (3); Swimming (3, 4).

## LES HORBELT

Football (2, 4); Baseball (2, 3, 4); Traffic Committee (4).

## CARL HOSP

Home Room Football (2); Home Room Basketball (2, 3, 4); Baseball (2).

## CHARLOTTE HOYT

"Char"

Social Committee (2); G. A. A. Council (2, 3); Sophomore Dramatic Club; Junior Night; Monitor (2, 3, 4).

## ELIZABETH ANN HUNICKE

"Betsy"

Sophomore Dramatic Club; Junior Dramatic Club; Creative Writing Club (2, 3); G. A. A. (2, 3, 4); The Guild (4); Parnassian (4).





**BYRON A. HUNICKE**

**"Piggy"**

Swimming (2, 3); Parnassian Society (3, 4); Senior Play, Stage Crew; Football, Usher (4); Fire Committee (4).

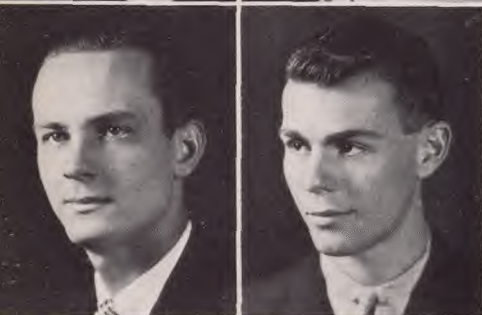


**NORMAN HUNTER**

Basketball (2, 3), Bernardsville High, Bernardsville, N. J.; Aviation Club (3); Squad Football (4).

**THELMA JACOBI**

G. A. A. (2, 3, 4); Home Room Basketball (2, 3, 4); Junior Night; Leaders' Club (3); Commercial Club (4).



**VERA JAMES**

**"Jimmy"**

G. A. A. (2, 3, 4); Sophomore Dramatic Club; Parnassian (3), Secretary (4); Columbian Staff (3, 4); Chairman Social Committee (4).



**HENRY JEDRYZEK**

**"Jedy"**

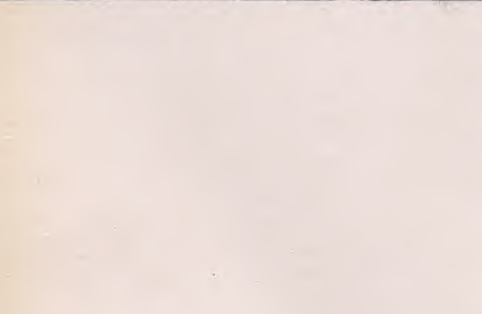
Home Room Football (2, 3, 4); Home Room Basketball (2, 3, 4); J. V. Basketball (2); Junior Play Committee; Varsity Basketball (3, 4).



**RICHARD L. JENNINGS**

**"Dick"**

Swimming Team (3, 4); Chairman, Lunch Room Control Committee (4); Football, Financial Manager (4); Senior Play Cast; Tennis Team, Manager (4).



**OWEN JOHNSON**

**"Coach"**

Home Room Football (2); Home Room Basketball (2, 3); Junior Night Committee.



**HOWARD L. JONES**

**"Hoddy"**

Orchestra (2, 3, 4); Hockey (2, 3), Co-Captain (4); Football (2, 3, 4); House and Grounds Committee (3); Traffic Committee (4).

**CHARLES H. JUNG, Jr.**

**"Charlie"**

Track (2, 3, 4); Cheer Leader (2, 3, 4); Glee Club (2, 3); Junior Night, Program Committee; Color Guard (3, 4).

**FRED W. JUNG, Jr.**

**"Fritz"**

German Club (2, 3, 4); Swimming (2, 4); Glee Club (3, 4); Table Tennis Club (3, 4); Senior Play, Ticket Committee.

---

# MIRROR 1935

---

---

# MIRROR 1935

---

Page Thirty-one

## MARTIN KALICKI

"Marty"

Art Club (4); Science Club (4).

## ARTHUR M. KALLOP

"Art"

Home Room Football (2, 3, 4); Science Club (3, 4); Vice-Chairman, Home Room (3); Senior Council.

## ANNA MARIE KASSINGER

"Ann"

G. A. A. (4).

## MARGARET BERYL KAY

"Peggy"

Round Table Club, Holyoke High School, Holyoke, Mass. (2); Parnassian Society (4); Senior Play; Secretary, Home Room 213 (4).

## WILLARD KEHOE

"Will"

Class President, Xavier High School, New York City, N. Y. (2); Track (2); Senior Council; Ticket Committee (4); Mirror (4).

## EDWIN M. KELLY

"Ed"

Table Tennis Club (3, 4); Memorial Day Committee (3); Chairman, Publicity Committee (4); Science Club (4); Varsity Basketball (4).

## JOHN KEYES

"Joke"

Treasurer, Home Room 222A (2); Orchestra (2, 3, 4); Science Club (3, 4); Track (4); Properties Committee, Senior Play.

## ROBERT KINEKE

"Hobo"

Aviation Club (2); Radio Division Science Club (3, 4); Junior Dramatic Club; Scenery Construction Committee, Senior Play.

## ROBERT F. KINGMAN

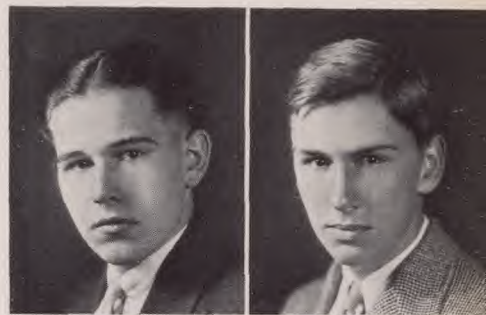
"Bob"

Track (2); Orchestra (2, 3, 4); Band (3, 4); Home Room Football (3); House and Grounds Committee (4).

## JEAN KINKEAD

"Kinky"

French Club (2, 3, 4); Sophomore Dramatic Club; Creative Writing Club (2); G. A. A. (2, 3, 4); Junior Dramatic Club.





**VINCENT KINCAID**

**"Flicker"**

Home Room Football (2, 3, 4); Home Room Basketball (2, 3, 4).



**AILEEN KLEIN**

**"Billie"**

Sophomore Dramatic Club; G. A. A. (2, 3, 4); Junior Night; Junior Dramatic Club; Chairman, Home Activities (3).



**JANICE KLEIN**

**"Jan"**

Sophomore Dramatic Club; Science Club (2); Junior Dramatic Club; German Club (3); G. A. A. (2, 3, 4).



**LEONARD KLEIN**

**"Len"**

Band (2, 3, 4); Glee Club (2); Home Room Football (2, 4); Football (3); Hockey (3, 4).



**EDNA KLEMM**

**"Ed"**

G. A. A. (2, 4); Leaders' Club (2); Home Room Basketball (3).



**PHYLLIS KLUNDER**

**"Phyl"**

Sophomore Dramatic Club; G. A. A. (3, 4).



**CHARLOTTE KNAPP**

**"Sharlie"**

Junior Dramatic Club; Junior Night; Secretary, Senior Class; Secretary, Home Room 222A (2, 3, 4); G. A. A. (2, 3, 4).



**ROBINSON G. KNIGHT**

**"Bob"**

Sophomore Dramatic Club; Junior Dramatic Club; Parnassian Society (4); Latin Club (3); French Club (3).



**RICHARD H. KNOWE**

**"Dick"**

Home Room Chairman (3); Junior Night; Basketball Manager (4); Head Cheerleader (4); Parnassian Society (4).

**DANIEL P. KNOWLAND, Jr.**

**"Dan"**

Track (2); Hockey (2); Swimming (3, 4); Junior Night.

---

# MIRROR 1935

---

Page Thirty-three

## MARJORIE ANN KOHR

"Midge"

Columbian Staff (2); Pre-Junior Night Committee (3); G. A. A. (2, 3, 4); Mirror Staff (4); Vice-Chairman, Home Room 222A (4).

## JACK KREISMER

Boys' Art Club (2), Treasurer (4); Senior Play, Scenery Painting Committee.

## ROBERT W. KREITLER

"Bob"

Home Room Football (2, 3, 4); Equipment Basketball Manager (3); Fire Committee (3, 4); Secretary-Treasurer, Home Room 233 (3); Vice-President, German Club (4).

## FLORENCE E. KREY

"Flo"

Sophomore Dramatic Club; G. A. A. (2, 3, 4); Glee Club (2, 4); Girls' Art Club (3); German Club (4).

## WILLIAM KUEBLER

"Bill"

Football, Blair Academy (1, 2); Latin Club (3); German Club (3, 4); Home Room Football (4); Home Room Basketball (4).

## MICHELE LA BEAUME

Chairman, Home Room (2, 3); Sophomore Dramatic Club; Guild (4); Commercial Club (4).

## ROBERT LAIRD

"Bob"

Chairman, Home Room 233 (2); Football (2); Track (2, 3, 4); Home Room Basketball (2, 3, 4); Civics Committee (4).

## JEANNE LA JOIE

"Lah Jwah"

Sophomore Dramatic Club; Junior Night; French Club (2, 3); G. A. A. (2, 3, 4); Senior Play Committee.

## DONALD LANGLEY

"Don"

Nominating Committee (2); Home Room Football (2, 3, 4); Scenery Construction Committee (3).

## SIDNEY M. LANSING

Science Club (2, 3); Sophomore Dramatic Club; Latin Club (3); Chairman, Biology Club (4).





**MIRIAM LASKOWITZ**

**"Mimzy"**

French Club (2, 3); Sophomore Dramatic Club;  
Junior Dramatic Club; Parnassian Society (4).



**JOHN COSBY LAUDERBACK**

**"Jack"**

Sophomore Dramatic Club; Civics Committee (3);  
House and Grounds Committee (3); Traffic Com-  
mittee (3, 4); Science Club (4).



**WINIFRED LENAHAH**

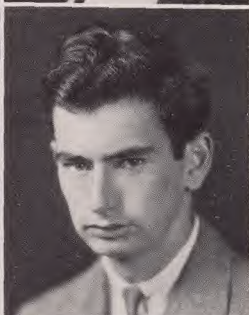
**"Wynne"**

Glee Club (2, 3, 4); Commercial Club (2); Home  
Room Basketball (2, 3, 4); Junior Dramatic Club;  
June Concert (2, 3).



**CHARLOTTE LEUTHAUSER**

German Club (2, 3, 4); Home Room Basketball (2);  
Junior Night, Scenery Committee; Senior Play, Scen-  
ery Committee.



**PHILIP H. LIPIS**

**"Phil"**

Sophomore Dramatic Club; Science Club, Radio  
Division (2, 3, 4); Junior Night; Junior Dramatic Club;  
Civics Committee (3).



**ROBERT B. LIST**

**"Bob"**

Home Room Football (2, 3).



**JACK LOFGREN**

**"Sox"**

Home Room Football (2, 3).



**ROBERT LUCKING**

**"Bob"**

Home Room Football (2, 3).



**JAMES M. LUDLOW**

**"Jimmy"**

Parnassian Society (3, 4); Mirror Staff (4); Eligi-  
bility Committee (3, 4); Junior Dramatic Club; Office  
Committee (3, 4).

**KENNETH LURICH**

**"Ken"**

Varsity Tennis (2, 3, 4); Home Room Football (2, 3,  
4); Junior Tennis Championship; Senior Tennis  
Championship; Fire Committee (4).

---

# MIRROR 1935

---

Page Thirty-five

## SUZANNE LYMAN

"Sue"

Sophomore Dramatic Club; G. A. A. (2, 3, 4); Soccer Team (2, 3); Junior Night; Secretary, Home Room 233 (4).

## ROBERT L. LYNCH

Baseball, Junior Varsity (2); Vice-Chairman, Home Room (2); Junior Night; Traffic Committee (3, 4); Fire Committee (4).

## KENNETH MACKENZIE

"Mac"

Baseball (2); Home Room Football (2, 3, 4); Home Room Basketball (2, 3, 4); Scenery Construction, Junior Night (3); Senior Council (4).

## JAMES A. MacKEITH

"Scotty"

Track Team (2, 3, 4); Home Room Committee (2); Junior Night.

## MARY MacLACKLAN

"Mac"

Home Room Basketball (2); Commercial Club (3).

## ELIZABETH MAGLIARO

Commercial Club (2, 3); Home Room Basketball (3).

## ROSE MAGLIARO

Commercial Club (3).

## FRANK MAGLIO

Football, Orange High (2); Football (2, 3, 4); Basketball (2, 3, 4).

## ANNE MAGOVERN

Home Room Basketball (2, 3, 4); Junior Dramatic Club; Latin Club (3); Art Club (3); Book Club (3).

## STACIE MAGOVERN

"Mike"

Home Room Basketball (2, 3, 4); G. A. A. (3, 4); Junior Dramatic Club; Girls' Art Club (3); Latin Club (3).





# **MILDRED MAIERS**

**"Millie"**

G. A. A. (2, 3); Home Room Basketball (3); Junior Night; Commercial Club (3); Senior Play Committee (4).

# **NADIE MAKOV**

**"Nettie"**

Sophomore Dramatic Club; German Club (2, 3, 4); G. A. A. (2, 3); Latin Club (3); Commercial Club (4).

# **GEORGE E. MANAHAN**

Swimming Team (2, 3, 4); Traffic Committee (3, 4); Columbian Staff (4); Fire Committee (4); Lunch Room Control Committee (4).

# **SUSAN MARCHANT**

**"Sue"**

G. A. A. (2); Sophomore Dramatic Club; Orchestra (3).

# **ROBERT MARSH**

**"Bob"**

Squad Football (3); Scenery Construction Committee, Senior Play; Home Room Football (4); Science Club (4).

# **LAYNG MARTINE**

**"Jimmy"**

Electrical Committee of School (2, 3, 4); Parnassian Society (3, 4); Chairman Home Room 213 (2); Columbian (3); Mirror Staff.

# **DOT B. MATHEWS**

Vice-Chairman Home Room 215 (2); Parnassian (3, 4); G. A. A. (2, 3, 4); Vice-President, Junior Dramatic Club (3); Secretary, French Club (3); Vice-President, The Guild (4).

# **JEROME McCABE**

**"Jerry"**

Squad Football (2); Varsity Football (3); Home Room Football (3, 4); Vice-Chairman Home Room (4); Aviation Club (4).

*U.S. Army Air Corps*

# **HELEN McGRATH**

G. A. A. (2, 3, 4); Leaders' Club (2, 3, 4); Home Room Program Committee (2); Sophomore Dramatic Club (2); Latin Club (3).

# **KATHARINE McGUIRE**

**"Kay"**

G. A. A. (2, 3); Commercial Club (2, 3, 4).

---

---

# MIRROR 1935

---

---

---

# MIRROR 1935

---

Page Thirty-seven

## **DOROTHEA McHARG**

**"Tibbet"**

Sophomore Dramatic Club Play (2); Chairman Scholarship Committee 318 (2); Junior Dramatic Club (3); Usher, Graduation (3); G. A. A. (4).

## **ANN MARGARET McHUGH**

**"Peggy"**

G. A. A. (2, 3, 4); Girls' Art Club (2, 3); Sophomore Dramatic Club; Chairman, Home Room 320 (4); Traditions Committee (4).

## **HELEN R. McJAMES**

**"Mackie"**

French Club (2); Sophomore Dramatic Club; Columbian (3); Junior Dramatic Club (3); Guild (4).

## **GIBSON McMILLAN**

**"Gibby"**

Junior Council (3); Chairman Stage Crew, Junior Night (3); Swimming Team (3, 4); Chairman Stage Crew, Senior Play (4).

## **CAROLYN MENNINGER**

**"Carol"**

Art Club (2); Sophomore Dramatic Club; Junior Night, Scenery Painting; Senior Play, Scenery Committee.

## **JEANNE MESKER**

Sophomore Dramatic Club; Junior Dramatic Club; Junior Night, Scenery Committee; Senior Play, Scenery Committee.

## **LESTER C. MILLER**

**"Oklahoma Charlie"**

Commercial Club (2); Aviation Club (2, 3); Chairman, Program Committee, Junior Night; Program Committee, Senior Play; Civics Committee (4).

## **MILES MILLER**

**"Spike"**

Sophomore Dramatic Club (2); Home Room Football (2); Junior Night, Scenery; Senior Play, Stage Construction; Hockey (4).

## **PHILIP MILLER**

**"Phil"**

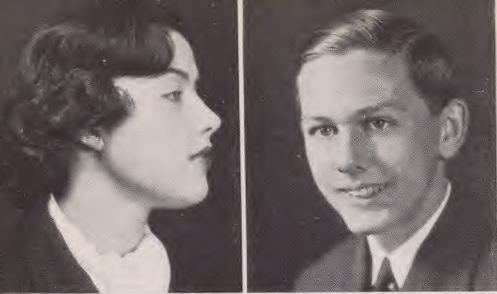
Squad Football (2, 3); Hockey Team (3, 4); Junior Night; Fire Committee (4).

## **ELIZABETH R. MINNERLY**

**"Betty"**

Glee Club (2); Sophomore Dramatic Club; Junior Night.





**PATRICIA MOORE**

**"Pat"**

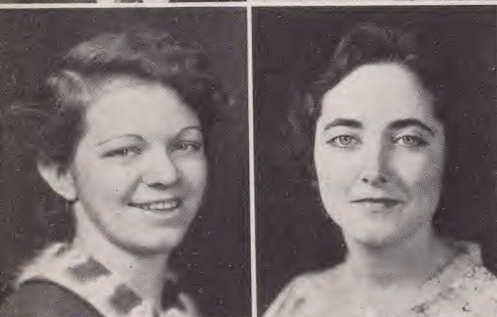
Dramatic Club (3), Varsity Tennis (3), Art Manager of "Inkspots" (3), Cherry Valley High School.



**RALPH MORSS**

**"Raoul"**

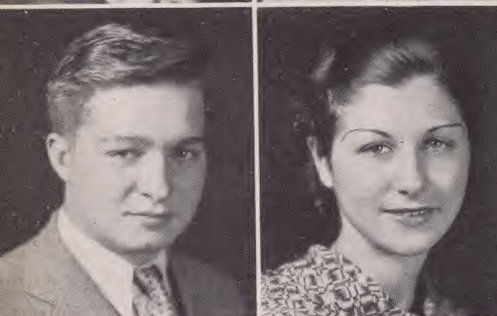
Home Room Football (2); Track (3, 4); House and Grounds Committee (3, 4); Squad Football (3, 4); Civics Committee (4).



**CAMERON MOSELEY**

**"Moses"**

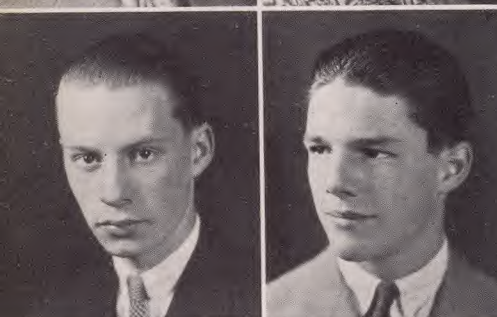
Junior Dramatic Club; Columbian (3, 4); Track (3, 4); Parnassian Society (4); Senior Play Cast (4).



**MARIAN CELESTE MOSS**

**"Mossie"**

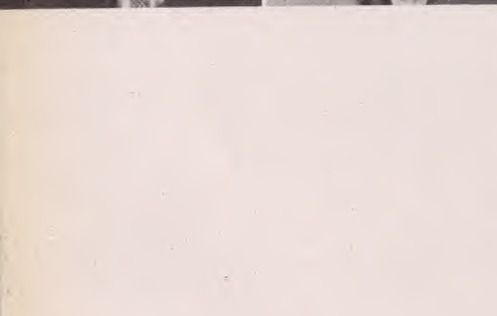
Glee Club (2, 3, 4); G. A. A. (2, 3, 4); Parnassian Society (3, 4); Senior Play; The Guild (4).



**MADELINE P. MURPHY**

**"Micky"**

Glee Club (3); Junior Night.



**MARY MURPHY**

**"May"**

G. A. A. (2, 3); Commercial Club (3, 4); Junior Night; Program Committee, Senior Play.



**JOSEPH T. MUSIAL**

**"Joe"**

Home Room Basketball (3); Stamp Club (3); Junior Night Stage Committee; Home Room Football (3, 4); Senior Play Stage Committee.

**THERESA MUTASSIO**

**"Tres"**

All Sports (2); G. A. A. (2, 3); Junior Night; Leaders' Club; Costume Committee, Senior Play.

**RICHARD W. MYERS**

**"Dick"**

House and Grounds Committee (3, 4); Traffic Committee (3, 4); Science Club (3, 4); Junior Night (3); Table Tennis Club, Vice-President (3); Properties Committee, Senior Play (4).

**EDWIN NEVIUS**

**"Ed"**

Swimming Team (2, 3, 4); Traffic Committee (3); Monitor (3); Fire Committee.

---

MIRROR 1935

---

---

# MIRROR 1935

---

Page Thirty-nine

## WALTER NIEBLING

"Wallie"

Treasurer, Junior Dramatic Club (3); Junior Council; Parnassian (4); Football (4); Chairman, Ticket Committee, Senior Play.

## HELEN NOLAN

"Sissy"

Art Committee, Senior Play (4).

## JOHN V. NOLL

"Mussels"

Home Room Football (2, 3, 4); Science Club (2); Latin Club (3); Junior Night; Boys' Art Club (4).

## JOSEPH O. NORWOOD

Home Room Chairman (3); Junior Night; Civics Committee (3); Elections Committee (4); Mirror Staff (4).

## ELAINE MORSE O'HARE

Sophomore Dramatic Club; G. A. A. (2); Secretary, Home Room (2); Latin Club (3, 4); Junior Dramatic Club (3); Junior Night.

## ANITA E. OPPEL

"Teeney"

G. A. A. (2, 3); Home Room Program Chairman (3); Junior Dramatic Club (3); Leaders' Club (3); German Club (4).

## HELENE PAGE

Book Club (2); Creative Writing Club (2); Junior Night (3); Home Room Basketball (3); Senior Play, Scenery Painting.

## WILLIAM R. PARLATORE

"Bill"

Basketball (2, 3); Home Room Teams (2, 3, 4); Home Room Chairman (4); Civics Committee (4).

## EDITH GWENDOLYN PAYNE

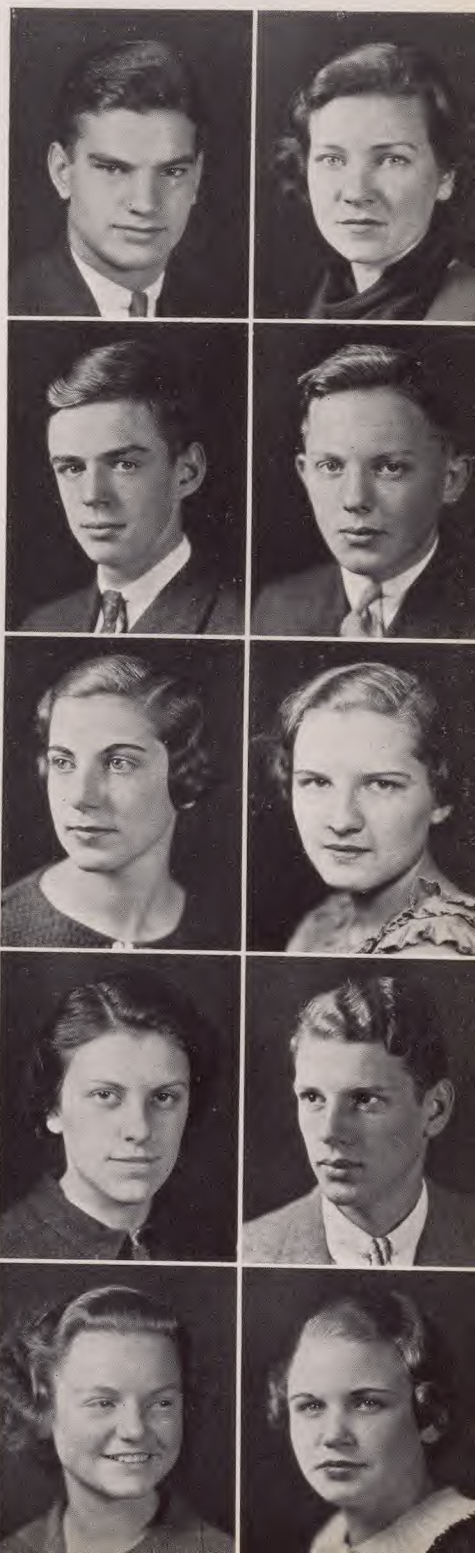
"Rusty"

G. A. A. (2); Student Council (2); G. A. A. Council (3); Secretary, Home Room; Vice-President, G. A. A. (4); President, Commercial Club (4).

## EDNA PIERSON

"Eddie"

Girls' Leaders' Club (3); Junior Night, Costume Committee; Senior Play, Costume Committee.





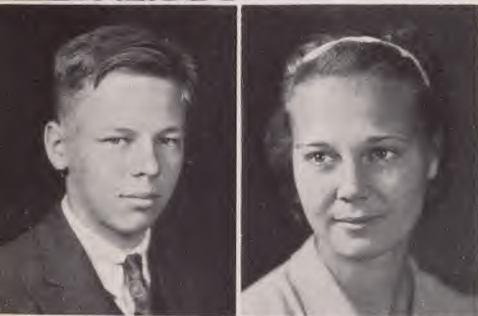
**MARGURITE PENNELL**

"Margie"

French Club (3, 4); G. A. A. (3, 4); Junior Night (3); Home Room Secretary (4); Parnassian Society (4).

**JANE E. PERRY**

G. A. A. (2, 3, 4); Secretary, Sophomore Dramatic Club (2); Secretary, Junior Class; Secretary, Junior Dramatic Club; Secretary, School Council (4).



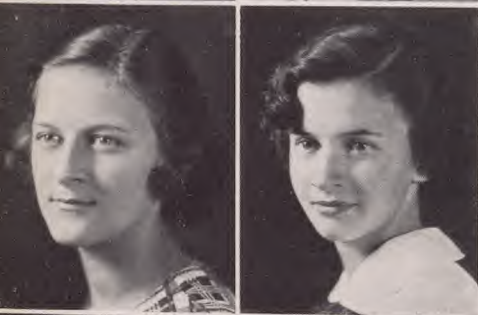
**EDWARD T. PIIPARI**

Band (2, 3, 4); Home Room Civics Committee (3); Service Orchestra (4).

**KATHRYN POHLMAN**

"Peek"

G. A. A. Council (2); Soccer (2); G. A. A. (3, 4); Junior Dramatic Club (3); Junior Night (3); Home Room Chairman (4).



**FLORENCE PORKERT**

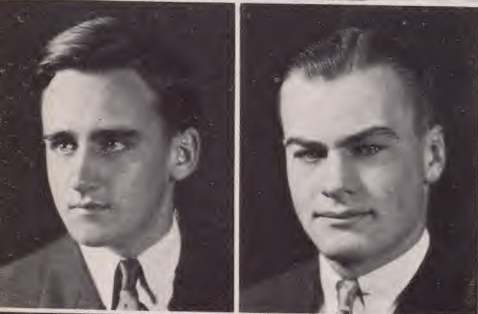
"Flor"

Pin and Ring Committee (3); Commercial Club (3); G. A. A. (3); Costume Committee, Junior Night (3); Treasurer, Commercial Club (4).

**ROBERTA W. POST**

"Bobbie"

G. A. A. (2, 3, 4); French Club (2); Parnassian (3, 4); Junior Night; French Club President (4).



**BERT L. PREMO**

Track (2), Cross Country (2), Nature Club (3), Irvington High School; Track (4); Home Room Football (4).

**E. KIRBY PRESTON**

"Eby"

Football (2), Basketball (2), Baseball (2), Mt. Vernon High School; Football (3, 4); Basketball (3, 4); Baseball (3, 4); Junior Council; School Council.



**FRANK G. PRICE**

Chairman, Boys' Athletic (3, 4); Civics Committee (3); Basketball (3, 4); House and Grounds (4).

**JACK W. PRIOR**

President, Science Club (3, 4); Band (2, 3, 4); Junior Night; Senior Play; Columbian Staff (4).

---

MIRROR 1935

---

---

# MIRROR 1935

---

Page Forty-one

## VIVIAN L. RAUSE

"Peach"

G. A. A. (2, 3, 4); Leaders' Club (2); Home Room Chairman; G. A. A. (2, 3, 4); Monitor (2); Senior Play, Scenery Committee.

## LEON RICHARD RECHNITZ

Fencing, James Madison High School (2); Junior Night; Latin Club (3); Junior Dramatic Club; Senior Play Cast.

## WILLIAM H. J. REILLY

"Wild Bill"

Home Room Treasurer (2); Track (3, 4); Home Room Vice-Chairman (4); Home Room Football (4).

## ETHEL RESSLER

"Toots"

Usher, Commencement, West Orange High School (3).

## GEORGE REUTER

"Gis"

Glee Club (2, 3, 4); Home Room Football (2, 3, 4); Sophomore Dramatic Club; Chairman, Home Room Attendance Committee (3).

## EVELYN R. RICHMAN

"Ev"

Sophomore Dramatic Club; G. A. A. (2, 3, 4); Junior Dramatic Club; Parnassian (3, 4).

## HELMUT RIEHL

Newark Academy, Art Editor of "Polymian" (2); Stevens Prep, Art Editor of "Lever" (3); German Club (4); Art Club (4).

## JACK K. RIMALOVER

Junior Night (3); Columbian Staff (3, 4); House and Grounds Committee (4); Home Room Treasurer (4); Assistant Editor-in-Chief, Mirror (4).

## HELEN D. RIMELSPACHER

"Rimmy"

G. A. A. (2, 3, 4); Sophomore Dramatic Club; Girls' Art Club (2); Junior Night, Usher; Commercial Club (4).

## LUCILLE RINGEL

"Lu"

G. A. A. (2, 3, 4); Parnassian (3, 4); Junior Night; Girls' Art Club (3); Columbian (3, 4).





**RUTH ROBBINS**

**"Robbie"**

G. A. A. (2, 3, 4); Sophomore Dramatic Club; Junior Dramatic Club; Junior Night; The Guild (4).



**ANN ROBERTS**

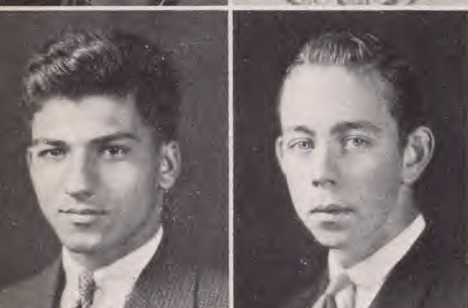
G. A. A. Council (2, 3, 4); Vice-President of Class (3); Eligibility Committee (3); Vice-President, School Council (4); Parnassian (3, 4).



**CARROLL ROCK**

**"Rocky"**

Swimming Team (2, 3, 4); Gym Exhibit (3).



**MARSHALL GRAHAM ROTHEN**

**"Tink"**

Home Room Chairman (2); Parnassian Society (2, 3, 4); President, Junior Class; Track (3, 4); President, School Council (4); Senior Play.



**MARGARET V. RUNCIE**

**"Peg"**

G. A. A. (2, 3); Home Room Basketball (2, 3, 4); Soccer Team (2); Sophomore Dramatic Club (2); Junior Night; Leaders' Club (2, 4).



**CAROL RYERSON**

Sophomore Dramatic Club (2); Soccer (2); G. A. A. (2, 3).



**ROBERT H. SABER**

**"Bob"**

Varsity Football (3, 4); Senior Council; House and Grounds (2, 3, 4); German Club (3); Traffic Committee (2, 3, 4).

**WEBSTER ST. JOHN**

**"Web"**

Science Club (2); Junior Night, Construction Committee; Home Room Entertainment Committee (3).



**DONALD L. SANDERS**

**"Don"**

Withren High School, Aim, Ohio, Camera Club (2, 3), Philatelic Society (2, 3), Hi-V Club (3); Table Tennis (4); Stamp Club (4).

**JOHN A. SAYRE**

Parnassian Society (2, 3, 4); Chairman, Stage Crew (3); Tennis (3, 4); Junior Color Bearer; Hockey (4).

---

## MIRROR 1935

---

---

# MIRROR 1935

---

Page Forty-three

## WALTER SAYRE

"Walt"

Science Club (2), Secretary (3), Vice-President (4);  
Glee Club (2, 3, 4); Junior Night.

## GEORGE P. SCARLETT

Science Club (2, 4); Table Tennis (4); Senior Play  
Construction Committee; Fire Committee (4).

## LEONA SCHAUB

G. A. A. (3); Junior Night.

## RUTH F. SCHENCK

Sophomore Dramatic Club; Leaders' Club (2, 3);  
G. A. A. (2, 3, 4); Program Committee, Commercial  
Club (4).

## GERTRUDE SCHIEVE

G. A. A. (3); Junior Night.

## GILBERT SCHILL

"Gilly"

Band (2, 3, 4); Home Room Football (2, 3, 4); Home  
Room Basketball (2, 3, 4); Swimming (2, 3, 4).

## ROBERT SCHILL

"Bob"

Band (2, 3, 4); Service Orchestra (2, 3, 4); Orches-  
tra (2, 3, 4); Junior Night; Senior Council.

## ROBERT SCHINDEL

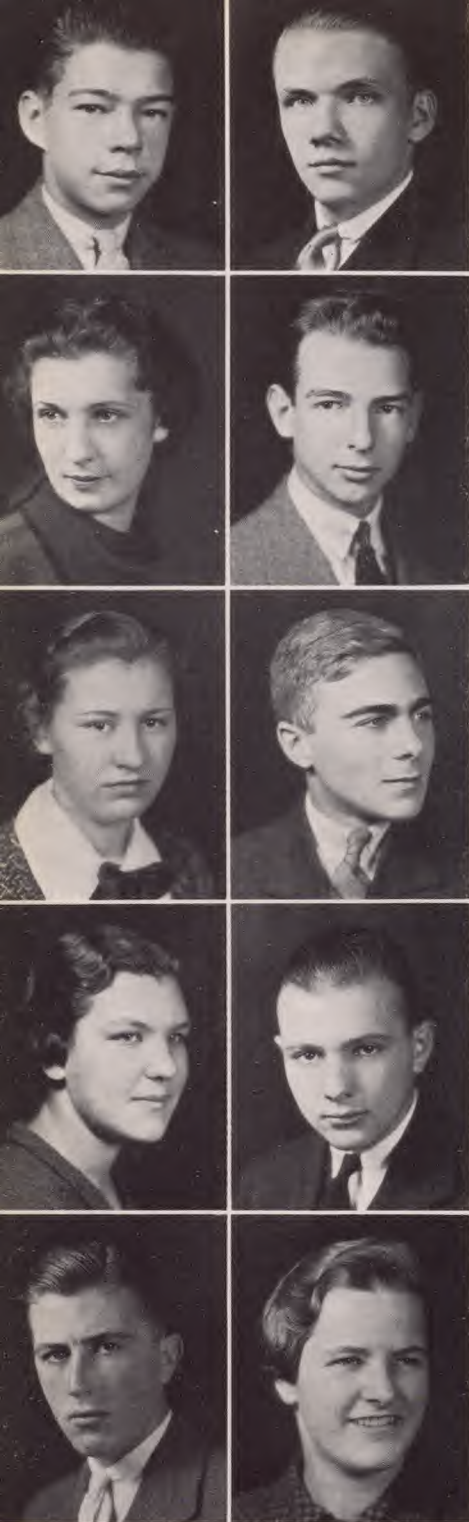
Junior Night; Home Room Basketball (3); Home  
Room Football (3); Traffic Committee (4); Senior Play  
Property Committee.

## MORTON SCHINDEL

## ELENORE SCHMIDT

Sophomore Dramatic Club; German Club (2, 3, 4);  
Secretary (3); Junior Night; Senior Play Prompter.





**LAWRENCE C. SCHNAUZ**

"Larry"

Bennet High School, Buffalo, N. Y.; Chess Club (2); Civics Committee (3).

**WILLIAM H. SCHRADER**

"Bill"

Football (2); German Club (2, 3); Band (2, 3, 4); Service Orchestra (2, 3, 4); Junior Night.

**HELEN SCHRAFFT**

Sophomore Dramatic Club; G. A. A. (2, 4); Junior Night; Basketball (3); Soccer (4).

**GEORGE L. SCHULTZ**

Newark Academy, Newark; Track (2); Hockey (2, 3, 4); Science Club (3); House and Grounds Committee (4); Tennis (4).

**MARJORIE SCHULTZ**

"Marge"

German Club (2, 3); G. A. A. (2, 3); Leaders' Club (2, 3, 4); Home Room Scholarship Committee (4).

**ROBERT S. SCHULTZ**

"Bob"

Home Room Chairman (2); President, Junior Dramatic Club; Parnassian (3, 4); Chairman, Pep Committee; Editor-in-Chief of Mirror (4).

**ROSE SCHUMAN**

West Side High School, Newark, Social Welfare Club (2), Dramatic Club (2, 3); French Club (4).

**FRED SCHWARZENBACH**

"Plumber"

Squad Football (2); Class Committee (2); Stage Construction Committee (4).

**ROBERT SCHWARZENBACH**

Squad Football (2); Science Club (2); Junior Night, Construction Committee; Class Football (3, 4).

**LOIS D. SCHWARZWAELDER**

Sophomore Dramatic Club; Student Council (2, 4); G. A. A. (2, 3, 4); Parnassian (3); Leaders' Club (3, 4).

---

MIRROR 1935

---

---

# MIRROR 1935

---

Page Forty-five

## FLORENCE ELIZABETH SCOTT

Sophomore Dramatic Club; G. A. A. (2, 3, 4); Leaders' Club (2, 3), President (4); Junior Night; Home Room Scholarship Committee (3, 4).

## ELEANOR L. SEARLES

"Les"

Sophomore Dramatic Club; Chairman, Home Room Entertainment Committee (2); Junior Dramatic Club; Commercial Club (3, 4).

## ALICE MARIE SEIDLER

"Al"

Sophomore Dramatic Club; Leaders' Club (2, 3, 4); Vice-President (3); Junior Dramatic Club; Junior Night; G. A. A. (2, 3), Secretary (4).

## RUTH HELEN SEIDLER

"Petie"

Sophomore Dramatic Club; Leaders' Club (2, 3, 4); Junior Night; French Club (3, 4); G. A. A. (2, 3), President (4).

## JOE SELITTO

"Cousin"

Home Room Football (2, 3, 4); Table Tennis Club (4).

## DOROTHY L. SENFT

"Sloop"

Sophomore Dramatic Club; French Club (2); Junior Night; Guild (4); Home Room Secretary (3, 4).

## HARRY E. SHANKLIN

"Shank"

Squad Football (2, 3); Varsity (4); Track (2, 4); Junior Night.

## RAYMOND SHEIK

"Butch"

St. Benedicts Prep, Newark, Editor of Class Paper (3), Class Basketball (3), J. V. Basketball (3), Varsity Track (3).

## ROSE FARLEY SHERIDAN

"Sherry"

G. A. A. (2, 3); Junior Night; Commercial Club (3, 4).

## WILLIAM T. SHERWOOD

"Bill"

Aviation Club (3); Science Club (3); Columbian (3, 4); Parnassian (4); Guild (4).





**H. FISCHER SILVER**

"Hank"

Football (2); Junior Dramatic Club; Junior Night; Columbian Staff (4); House and Grounds Committee (4).

**LEO SKLARZ**

"Flash"

Sophomore Dramatic Club; Junior Dramatic Club; Varsity Track (1, 2, 3), Co-Captain (4); Glee Club (3, 4); Fire Committee.



**MARY ADELAIDE SLOANE**

"Mary Ad"

G. A. A. (2, 3, 4); Junior Dramatic Club; Assistant Business Manager, Mirror (4); Columbian Staff (4); Guild (4).

**GEORGE SMALL**

Glee Club (2, 3); Ring and Pin Committee (3); Scholarship Committee (3).



**PATRICIA LEE SMALLEY**

"Pat"

G. A. A. (2); Junior Dramatic Club.

**ANNIE SMITH**

G. A. A. (2, 3, 4); Basketball (2, 3); Creative Writing Club (3); Tennis (3); Commercial Club (4).



**BILL SMITH, Jr.**

"Smyth"

Squad Football (2); Science Club (3); Home Room Basketball (3); Senior Play Committee.

**EDWARD D. SMITH**

"Two Gun"

Glee Club (2, 3, 4).



**EMMA B. SMITH**

"Be"

Commercial Club (2); Home Room Basketball (2, 3); Glee Club (3); G. A. A. (3, 4).

**JAMES SMITH**

Home Room Football (3, 4); Senior Play Scenery Construction Committee.

---

## MIRROR 1935

---

---

# MIRROR 1935

---

Page Forty-seven

## JUNE SMITH

G. A. A. (2, 3, 4); Leaders' Club (2, 3, 4); Junior Night; German Club, Committee Chairman (4).

## ROBERT SMITH

"Smitty"

J. V. Baseball (2, 3); Band (3); Traffic Committee (4); Lunch Room Committee (4).

## WALTER L. SOMMER, Jr.

"Walt"

Sophomore Dramatic Club; German Club (2, 4); Junior Night; Band (2, 3, 4).

## PAUL ADAMS SOMMERS

"Bulski"

Home Room Vice-Chairman (2); Latin Club (3); Traffic Committee (4).

## CATHERINE SPAETH

"Spaeth"

Sophomore Dramatic Club; Make-up Club (2); G. A. A. (2); Junior Dramatic Club; Junior Night.

## LOCKARD B. SPAIN

"Lockie"

Swampscott High School, Mass., Glee Club (2); Track (3, 4); Science Club (4); Stamp Club (4).

## GALE M. SPOWERS

Home Room Chairman (2, 3, 4); Track (3); Junior Dramatic Club; Vice-President of Parnassian; Guild President (4).

## THERESA STANOPOLIS

"Tess"

Book Club (3).

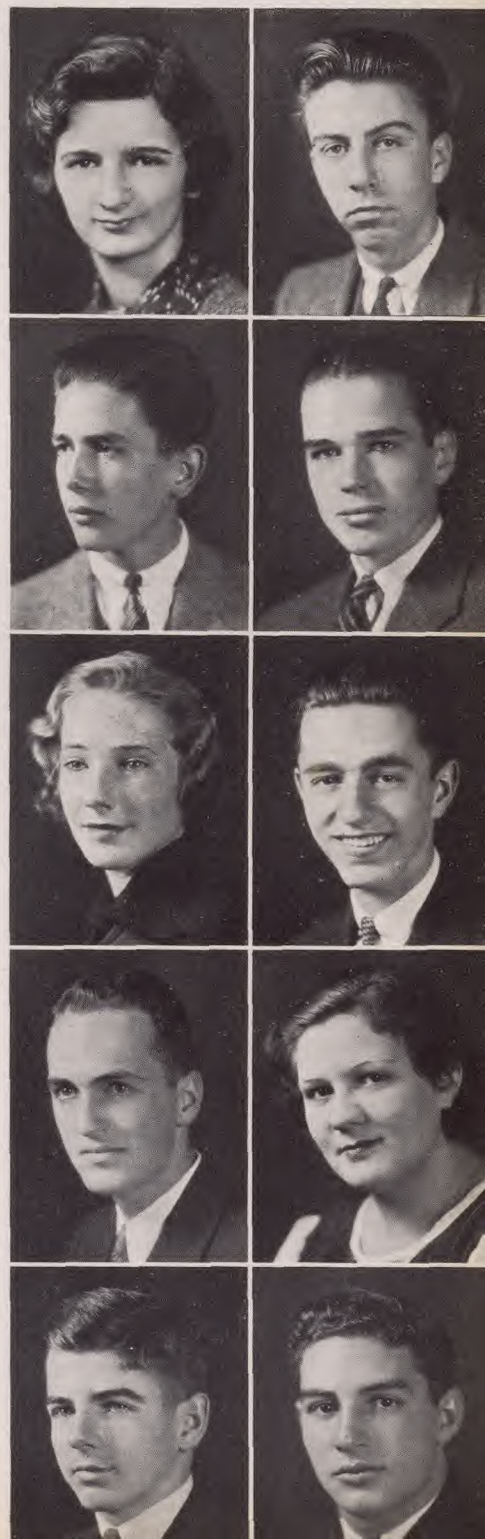
## MALCOM STEARNS, Jr.

"Sandy"

Parnassian (2, 3, 4); Class Councils (2, 3, 4); Pre-Junior Night; Eligibility (3, 4); Equipment Manager, Football (3, 4).

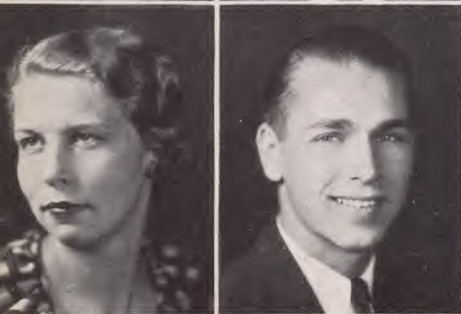
## JOSEPH STELLA

Varsity Swimming (1, 2, 3, 4); Fire Committee (2, 3, 4); Columbian (3); Business Manager Columbian, Mirror (4); Latin Club (3); Vice-President (4); Chairman Traffic Committee (4).





**NETTIE STERLING**



**CLARENCE E. STEVENS, Jr.**

**"Steve"**

Civics Committee (4); Mirror Staff (4).



**GERTRUDE STEWART**

**"Gert"**

Home Room Basketball (2, 4); G. A. A. (3, 4).



**ROGER M. STEWART**

**"Stew"**

Traffic Committee (3); Junior Night; Swimming (3, 4); Treasurer, German Club (4).



**LEWIS M. STILLMAN**

**"Lewie"**

House and Grounds Committee (2, 3, 4); Swimming Team (2, 3, 4); Junior Night; Parnassian Society (4); Treasurer, Home Room (4).



**ANNE B. STIMSON**

**"Anne"**

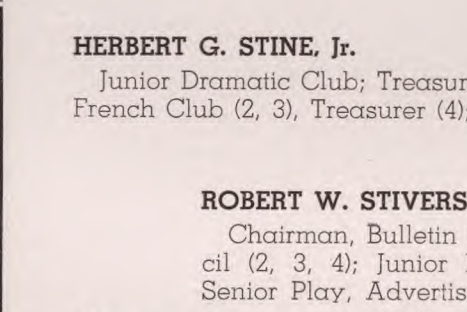
Home Room Secretary (2, 3); Ring and Pin Committee (3); G. A. A. (4); Senior Play, Property Committee.



**HERBERT G. STINE, Jr.**

**"Herb"**

Junior Dramatic Club; Treasurer, Latin Club (3, 4); French Club (2, 3), Treasurer (4); Parnassian (4).



**ROBERT W. STIVERS**

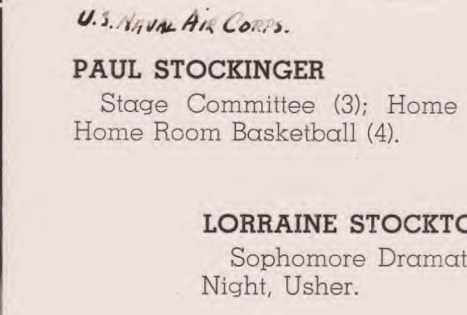
Chairman, Bulletin Board Committee (2, 3); Council (2, 3, 4); Junior Night Advertising Committee; Senior Play, Advertising Committee.

*U.S. Naval Air Corps.*

**PAUL STOCKINGER**

**"Stock"**

Stage Committee (3); Home Room Football (4); Home Room Basketball (4).



**LORRAINE STOCKTON**

**"Micky"**

Sophomore Dramatic Club; G. A. A. (2, 3); Junior Night, Usher.

---

MIRROR 1935

---

---

# MIRROR 1935

---

Page Forty-nine

## ROSCOE L. STRICKLAND, Jr.

Orchestra (2); Junior Dramatic Club; Junior Night Advertising Committee; French Club (3); Parnassian (4).

## EDYTHE STRUBBE

Creative Writing Club (3); Junior Night; Commercial Club (3, 4).

## ERWIN BERTHOLD STUMPF

"Erv"

Science Club (2, 3, 4); Glee Club (2, 3, 4); Biology Laboratory Assistant (3, 4); German Club (2, 3, 4); House and Grounds (4).

## ROBERT JOSEPH SULLIVAN

"Sully"

Parnassian (3, 4); Swimming (2, 3, 4); Junior Night; Columbian (3, 4); Feature Editor Mirror (4).

## MILDRED SWANSON

"Millie"

Home Room Basketball (2); Home Room Soccer (2); Junior Night.

## LILLIAN SYROWSKY

## ARTHUR D. SYSKA

"Art"

## MARJORIE TAFT

"Margie"

Sophomore Dramatic Club; German Club (2); G. A. A. (2, 3); Girls' Art Club (3); Scenery Painting Committee, Junior Night.

## DONALD TAG

"Tug"

Swimming Team (2), Captain (3, 4); Junior Night; Traffic Committee (3, 4); Fire Committee (3, 4); Senior Play Committee.

## ARTHUR LEE TALBOT

"Art"

Teaneck High School, Teaneck, N. J.; Parnassian (4); Chairman, Home Room Attendance Committee (4).



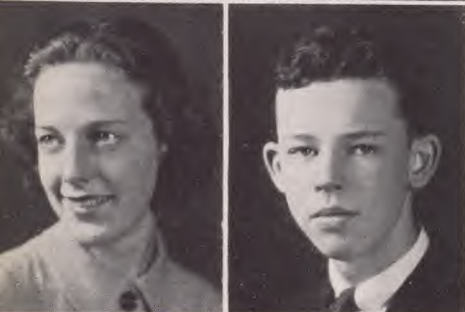


**HELEN TAYLOR**

**HELEN TESSIER**

**"Tess"**

Sophomore Dramatic Club; Junior Dramatic Club; G. A. A. (4); Secretary-Treasurer, Home Room (4).

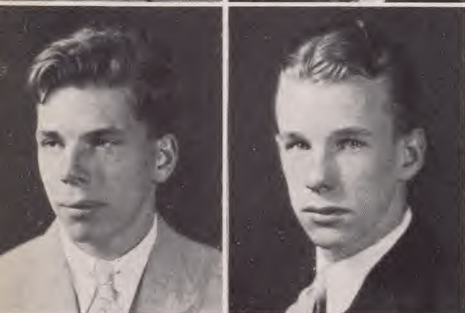


**NANCY THEDFORD**

G. A. A. (2, 3); Sophomore Dramatic Club; General Organization, East Orange High School (3); Art Club (3).

**HERRICK M. THOMAS**

Junior Dramatic Club; Science Club (3); Swimming (3); Parnassian (4).



**GEORGE TICHENOR**

**"Tich"**

Aviation Club (2); Assistant Track Manager (2); Football (2, 3); Track (3); Traffic Committee (4).

**TAYLOR F. TIMMONS**

Track (2, 3, 4); Junior Night; Traditions Committee (4).



**EDWARD H. TOBEY**

Squad Football (2); House and Grounds Committee (3); Junior Night; Senior Play Stage Construction Committee.

**FRANK TRACEY**

**"Cousin"**

Home Room Entertainment Committee (2); Home Room Football (2, 3, 4); Home Room Basketball (2, 3, 4).



**RUTH TRAUTMANN**

**"Rufus"**

Ardasley High School, Ardsley, New York; Junior Chorus (2); Honor Society (3).

**GRACE A. TRIMBLE**

Vice-Chairman Home Room (2); Sophomore Dramatic Club; Junior Dramatic Club; Senior Council; Leaders' Club (2, 3, 4).

---

# MIRROR 1935

---

Page Fifty-one

## DAWSON L. TRIPPE

Science Club (2, 3, 4); Junior Night; Guild (4); Parnassian (4); Traffic Committee (4).

*P.C.A.F.*

## ADELE JANET TUCK

"Dell"

Glee Club (2, 3, 4); French Club (2, 3), Secretary (4); Junior Dramatic Club; Parnassian (4).

## NORMA TUTTLE

"Nooty"

Plattsburg High School; Basketball (3); G. A. A. (4).

## EDITH VASEY

"E"

G. A. A. (3); Latin Club (3); Junior Night Committee (3).

## ANN VERDUCCI

G. A. A. (2, 3); Sports (2, 4); Commercial Club (2, 3); Girls' Swimming Team (3); Leaders' Club (2, 3, 4).

## HELEN VODERBERG

Leaders' Club (2, 3, 4); Parnassian (3, 4); Latin Club (3, 4), Secretary (4); Junior Night; Mirror Staff (4).

## JUNE VOGELL

G. A. A., Dearborn-Morgan School, Orange (2); Junior Night, Properties Committee; Home Room Basketball (3); G. A. A. (4).

## WILLIAM VOIGHT

"Pete"

Home Room Basketball (2); Home Room Football (2, 4); J. V. Basketball (2); Varsity Baseball (3); Home Room Entertainment Committee (3).

## BETTY VROMAN

G. A. A. (2, 4); Girls' Art Club (2, 3); Junior Night Scenery Painting; Senior Play Scenery Painting.

## DONALD G. WAHLER

"Danny"

Orchestra (2, 3, 4); German Club (2, 3, 4); House and Grounds Committee (3); Service Orchestra (4); Fire Committee (4).





**GILBERT L. WAKEFIELD**

**"Gib"**

Chairman, Home Room (2); Glee Club (2, 3); Aviation Club (2, 3); Traffic Committee (4).

**FRANK HART WAKELEY**

**"Rink"**

Track (2, 3), Captain (4); Home Room Chairman (4); Fire Committee (4); House and Grounds Committee (4); Home Room Football (4).

**BOB WALCUTT**

Home Room Chairman (2); Swimming (2, 3, 4); Junior Night; Guild (4); Varsity Football (4).

**RICHARD K. WALKER**

**"Dick"**

Aviation Club (3); Junior Council; French Club (3); Science Club, Secretary (3, 4); Parnassian (4).

**ALBERT WALSAK**

**"Al"**

Junior Night, Business Committee; Junior Prom, Ticket Committee; Home Room Football (3); Science Club (4); Senior Play, Program Committee.

**HELEN ELSIE WALTER**

Glee Club (2, 3, 4); French Club (2, 3, 4); Sophomore Dramatic Club; Junior Dramatic Club; Junior Night.

**EUNICE WASSAL**

Sophomore Dramatic Club; G. A. A. (2, 3, 4); Leaders' Club (2, 3, 4); Junior Dramatic Club; Biology Club (4).

**HERBERT WEIS**

Science Club (2, 4); Squad Football (2); Junior Night; Monitor (3); House and Grounds Committee (4).

**TED WEISSE**

Chairman, Home Room Nominating Committee (3, 4); Home Room Football (3); Chairman, Home Room Entertainment Committee (4); Civics Committee (4).

**HARRY L. WELKER**

**"Red"**

Sophomore Dramatic Club; Swimming Team (2, 3); Tennis Tournament (3); Hockey Team (4); Senior Play Committee.

---

MIRROR 1935

---

---

# MIRROR 1935

---

Page Fifty-three

## ELINOR WEST

"El"

Secretary, Home Room (2); Secretary, Sophomore Dramatic Club; G. A. A. (2, 3, 4); Junior Council; Chairman, Home Room (4).

## MARY ANNE WEST

"Westie"

Soccer (2); Sophomore Dramatic Club; G. A. A. (2, 3); Junior Night; Senior Play, Properties Committee.

## EDITH GRACE WESTER

"Chinnie"

Junior Dramatic Club; Glee Club (3); Commercial Club, Secretary (4); Secretary, Home Room (4); Civics Committee (4).

## CARL WEIDMANN

"Carl"

Home Room Chairman (2, 3); Track (2, 3, 4); Finance Committee (2); Junior Assembly Chairman; Fire Committee (3, 4), Chairman (4).

## MARGARET WILDERSPIN

G. A. A. (2); Basketball (2, 4); Junior Night; Commercial Club (3).

## NORMAN WILLIAMSON

Home Room Football (2, 3, 4); Home Room Basketball (2); Science Club (4).

## ERIC WILSON

"Bud"

Home Room Football (3); Vice-Chairman, Home Room Entertainment Committee (4).

## FREDERICK J. WILSON

Home Room Football (2, 3, 4); Home Room Basketball (2, 3, 4); Monitor (2, 3); Baseball (2, 3, 4).

## JOSEPHINE WOLF

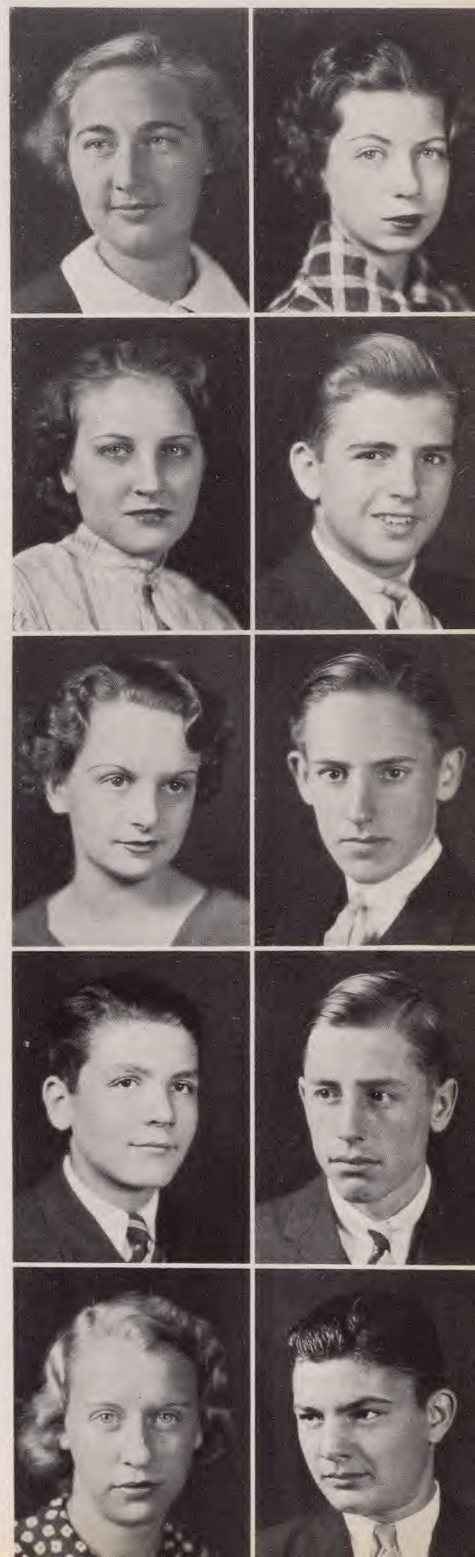
"Jo"

G. A. A. (2, 3, 4); Girls' Art Club (2, 3); Leaders' Club (2, 4); Biology Club (4); Chairman, Scenery Painting Committee (4).

## JOHN WOODARD

"Woody"

Band (2, 3, 4); Squad Football (2); Home Room Basketball (2).





**FRANK WOODENSCHKE**

**"Frankie"**

Science Club (2, 3); Home Room Football (2, 3, 4); Home Room Basketball (2, 3, 4); Monitor (3); Baseball (4).

**MILDRED WYRILL**

**"Millie"**

Home Room Committee (2).

**AUDREY ZEIGLER**

**"Aud"**

Chairman Costuming, Junior Night; German Club, Nominating and Program Committee (4); G. A. A. (4).

**HELEN ZELEVITCH**

**"Palsie"**

Basketball (2); Junior Play, Scenery Committee; Book Club (3); Senior Play, Scenery Committee.

**JANET ZIMMERMANN**

**"Zimmy"**

G. A. A. (2, 3, 4); Leaders' Club (2, 3, 4); Home Room Treasurer (2); German Club (3, 4).

---



---

MIRROR 1935

---



---

---

# MIRROR 1935

---

Page Fifty-five

## SENIOR CLASS WILL

WE, the class of '35, being of sound and disposing mind and body, do herewith decree, publish, and declare this, our last will and testament.

- Item: To the incoming seniors we leave a book entitled "The Last Days of Columbia, or How to Act like Seniors."
- Item: We also leave them our self-respect (what little of it there is left.)
- Item: To the school at large we leave Glen Gray and his Orchestra to play during all activities and lunch periods.
- Item: To the German Club we leave a bottle of beer, three pretzels, and a copy of the Stein Song.
- Item: To the Stamp Club we leave a pocket dictionary so they can all learn how to pronounce philately.
- Item: To the Guild we leave Mr. Marshall's southern accent and a copy of Gertie Stein.
- Item: To Miss Tollefson we leave our sincere thanks for guiding us through the struggles of Junior Night and the Senior Play.
- Item: To Mr. Gnagey we leave a group of students who are considerate enough to leave his honorable mustachios off of their scavenger lists.
- Item: To Mr. Baker we leave the pool as a start for next year's swimming team.
- Item: Mr. Sterling leaves to Mr. Sterling a stiff poke in the jaw for Mr. Sterling's dirty cracks about Mr. Sterling in Variety Night.
- Item: To Mr. Marvel we leave Herb Rainwater, Joe Murphy, and the rest of Murderer's Row as a start for next year's production of "Cavorting Cougars."
- Item: To Miss Hayner we leave the pleasure of never having to worry about our five weeks' marks again.
- Item: To ourselves we leave the same pleasure.
- Item: Mutt Schindel leaves his Master's Degree in the Arts of Prevaricating to Phil Pike.
- Item: Marshall Rothen leaves his all around ability to Sam Carrier.
- Item: Charles Jung leaves his good right arm to Les Bride so Les won't waver while carrying the Flag.
- Item: Ginny Beers leaves her freckles to "Butch" McGinnity, provided "Butch" can find room for them.
- Item: Will Kehoe leaves his antique "Old Nellie" to anyone who can drive it off the parking space.
- Item: Robert (South Orange Sully) Sullivan and Cora (Maplewood) Farr leave their best regards—Gr-r-r—to a certain Newark columnist.
- Item: Dick Meyers leaves his "debutante droop" to Benny Hamilton and hopes he has the good sense to grow out of it.
- Item: Cy Currier, Alan Herman, and Dick Jennings leave their life story, or "How to get out of Staying for Miss Vale."

Finally, we herewith name and appoint, as sole executor of this our last will and testament, Mr. Crehan's spats. We feel if any trouble arises they will get to the foot of the mishap.

IN WITNESS THEREOF, we, the class of 1935, the testator, have set our hand and seal on this, the twenty-first day of June, in the year of our Lord MCMXXXV.



## THE SENIOR PLAY

COLUMBIA HIGH SCHOOL Auditorium, November 24, 1934, 8:30 o'clock; a hush falls over the audience and the curtain slowly rises on the first act of "The Royal Family." A fast-moving, modern comedy, meeting with great popularity both on the Broadway stage and on the screen, this play proved a difficult but successful test of the ability and talent of the senior class. The plot concerns itself with the lives of the various members of a certain well-known stage family—the Barrymores—or as in the play, the Cavendish family. Each member of the family determines to quit the stage and live a peaceful, private life. But their attempts meet with futility, for the bond of acting is far too strong among them. The swift-moving action and clever remarks of the play kept the audience in a continual state of laughter and it was with profound regret that the assembly saw the final curtain come down with the death of Fanny Cavendish. The cast, under the direction of Miss Christie Tollefson, spent many hours of hard work on this play, and the result was a finished and finely acted production. Each member fitted his role to perfection and carried out his individual part with amazing ability. Marion Moss, as "Fanny Cavendish," a dominant old woman of seventy, and head of the Cavendish clan, is to be particularly commended for her outstanding portrayal, along with Marshall Rothen, who in playing the role of "Tony Cavendish," scapegrace of the family, held the audience in excitement and laughter throughout the play with his unusual antics and excellent acting. Other members of the supporting cast who deserve a great deal of commendation were "Petie" Heflin as "Julie Cavendish," John Harvey as "Herbert Dean," Margaret Kay as "Gwen Cavendish," Jack Prior as "Oscar Wolfe," Dick Jennings as "Perry," Cameron Moseley as "Gilbert Marshall," Dorothy Egger as "Kitty," Janice Hallett as "Della," Alan Herman as "Jo," Leon Rechmitz as "McDermott," Doris Adams as "Miss Peake," Bob Bramley as "Gunga," James Brothers as "Wo Fan," Jack Rimalover as a chauffeur, Russell Adams and Herbert Stine as hallboys.

---

# MIRROR 1935

---

# MIRROR 1935

Page Fifty-seven



MOST DRAG



DID  
MOST  
FOR  
SCHOOL



BIGGEST BLUFFS



MOST ATHLETIC



BIGGEST FLIRTS



BEST LOOKING



BEST WRITERS



MOST MUSICAL



BEST DRESSED



MOST HUMOROUS



BEST STUDENTS



BEST ACTORS

## SENIOR CLASS PROPHECY

MR. WELLS refused to lend us his Time Machine; the invention possessed a copyright and could not be trusted with strangers. In this dilemma we hastened to Scotland to consult the three witches and secure some advanced information.

The creatures were in despondent mood. Business had dropped steadily away since Macbeth's time. They had lost all their teeth and couldn't manage the poetry very well. But in order not to disappoint their young admirers they danced feebly around the fire and said:

"Bobble, bobble, limp and hobble;

Times are chang'd, and now we wobble."

Handing us a copy of a magazine, the first witch called plaintively to the others and the three of them disappeared, obviously glad that the interview was over.

The magazine is dated June 12, 1945. It might easily be an Alumni Weekly of Columbia High School. On the cover is an enormous self-portrait of Commander Harvey Convery, youthful head of a naval expedition to the South Seas. This is surprising; we had expected him to become an architect.

Upon the inner side of the cover "Barrel" Galowitz supersedes Charles Atlas as the world's strongest and most perfectly-developed man.

Among the first news items we read that Ann Roberts is replacing James Ludlow as Secretary of the Treasury. Mr. Ludlow declares: "The mutation, I feel, is in the best interests of the financial stability of the nation."

Cora Farr, fair-haired leader of the younger "Four Hundred," is preparing for a wedding. It takes two to make a wedding.

There is a conservative announcement to the effect that Lucile Annin and Gertrude Stein are appearing in lectures together. "Miss Annin, from whom we expect some great poetry, is married, but refuses to divulge the name of her husband."

John Harvey's "Macbeth" is beginning to take rank as "one of the finest interpretations of its day and age."

William Borrie, virile operatic star, announces his intention of reviving "Fair Enough." His managers, while confident of his extraordinary powers, appear dubious about the public's reception of this classic opus.

The politicians are earnestly discussing prospects of nominating Marshall Rothen for United States Senator from New York in 1948.

News from Hollywood indicates that Alan Herman and his cigar will soon direct the film version of Robert Schultz's great stage success, "An American Comedy," starring Elizabeth Heflin. Robert Sullivan, America's best-loved comedian, vehemently asserts that he will not sign a contract with any motion picture outfit unless his salary is stipulated as \$25,000 weekly. Another article states that Mayor Richard Jennings has "begun a 'clean-up' campaign in Hollywood."

Dorothy Matthews, youthful novelist, is voyaging to Bermuda. Walter Niebling, vice-president of the Erie Railroad, has suddenly felt the need of a vacation. He is on the same boat.

The sports page displays a picture of Leo Sklarz, sprinter of a few years back, who explains why he never ran the hundred in eight seconds' flat. One wonders why he never ran it in five. "Red" Richardson plans to stride across the United States in record time.

\* \* \* \* \*

Lest these prognostications throttle the ambitions of those mentioned, we left the periodical in the care of the three witches, who were so apathetic that they didn't even place a curse on us as we left.

---

# MIRROR 1935

---



GALE SPOWERS

# JUNIORS



---

# MIRROR 1935

---

Page Sixty-one



## JUNIOR CLASS OFFICERS

President .....SAM CARRIER

Vice-President .....SALLY GUERIN

Secretary .....BETTY MIERAU

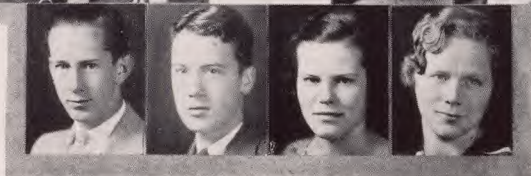
Treasurer .....JOSEPH MURPHY

## JUNIOR CLASS COUNCIL





19



36

---

# MIRROR 1935

---

---

# MIRROR 1935

---

Page Sixty-three

**Row I:** June Abrams, Barbara Adams, Richard Adams, Esther Allerton, John Annin, Mary Ash, Paul Auerbacher, Marjorie Austin, Mary Bacher.

**Row II:** Standish Bachman, Betty Backes, Bob Baer, Evelyn Bains, Audrey Baiter, Lorraine Ball, Dorothy Barton, Lillian Baskerville, Lorraine Bayer.

**Row III:** Tom Bebout, Arlene Beckett, Dorothy Beers, Marjorie Beers, Nathan Belcher, Curtis Bell, Eleanor Bellor, Olive Benn, Harvey Bennett.

**Row IV:** Isabelle Bennett, Janice Bennett, Wildin Bennett, Evelyn Bergman, Barbara Bickel, Donald Bierwert, Jane Bigelow, Kenneth Birch, Marston Bird.

**Row V:** Helen Birkenmeier, Evelyn Bodei, Dorothy Bomeisler, Lorraine Bomeisler, Lena Bosshart, John Bowen, Gordon Boyd, Norman Bradley, Catherine Brandes.

**Row VI:** William Brandes, Noel Briden, Alan Brown, Betty Brown, Willard Brown, Marion Browne, Traver Browner, Betty Burmeister, Mabel Jane Burt.

**Row VII:** Donald Button, Evelyn Campbell, Helen Campbell, Mildred Campbell, James Caniff, Joy Carman, Sam Carrier, Alice Carse, Robert Carter.

**Row VIII:** Mary Cary, Pauline Cary, Jean Casterton, Robert Casterton, Mabel Castner, Robert Celler, Clare Chamberlain, Marjorie Chandler, Lorraine Chiovarou.

**Row IX:** Alan Clark, June Clark, Barbara Clausen, William Cogan, June Cohen, Doris Colsh, Rudyard Colter, Norman Condit, Joseph Conneen.

**Row X:** Ira Conrad, Henry Cox, Joan Cramer, Ruth Crockett.



19



36

---

# MIRROR 1935

---

---

# MIRROR 1935

---

Page Sixty-five

**Row I:** Roy Cromartie, Dorothy Crompton, Malcom Cross, James Crowley, Lawrence Cucciniello, Gil Cullen, Cyrus Currier, Marian Dally, Richard Davis.

**Row II:** Harold Decker, Eleanor de Laval, Richard de Lorenzi, Ann Denton, Helen Dewar, Clinton Dodd, Annette Doyle, Nancy Drake, Richard Durang.

**Row III:** Grant Easton, Maurice Ellen, Jane Faatz, Francis Faber, Emmett Faison, Lawrence Falls, Joel Fantl, Janet Febrey, Chester Ferguson.

**Row IV:** Betty Ferry, Ruth Filler, Thomas Finn, Joseph Fiore, Leahadele Fisch, Henry Fischer, Hazel Fleischman, Elisabeth Fleming, Betty Flynn.

**Row V:** Arthur Ford, Charles Foster, Arlene Fow, Dorothy Franz, Nanetta Franz, Mary French, Polly French, Donald Fuller, Miriam Fuller.

**Row VI:** Fred Gaertner, Margaret Gamble, Jane Gedney, Helen Geiger, De Loise Geissle, Jack Geortner, Arthur Gewehr, Joseph Gibbons, Lucy Gladson.

**Row VII:** William Glaser, Le Monde Glass, Robert Glendening, Norman Glickman, Thomas Goeller, Elizabeth Goelitz, Betty Goodwin, Richard Gove, Jeanne Graham,

**Row VIII:** Gail Green, William Greene, Arthur Gregory, Thomas Grimes, Mildred Groden, Charles Grom, Sally Guerin, Philip Guilfoil, Jane Gumaer.

**Row IX:** John Gutmann, George Hahn, Grace Haire, Elise Haldeman, Bruce Hamilton, David Hamilton, Kingdon Hamilton, Margaret Hammel, Richard Hammer.

**Row X:** Thelma Hammond, Betty Harrop, Ethel Haydu, Bobbie Hayes.



19



36

---

# MIRROR 1935

---

---

# MIRROR 1935

---

Page Sixty-seven

**Row I:** Jack Hayward, Peter Hebel, Imelda Heery, William Henry, Kathryn Herdman, Wallace Herrick, Walter Hesse, Frank Hildebrand, George Hind.

**Row II:** Joe Hinlicky, Dorothy Hoelzel, Charles Hoelzer, Helen Hosford, Phil-  
etta Hotz, Bob Hoyt, Dick Hubley, Fred Jacob, Doris Johnson.

**Row III:** Lois Johnson, Mildred Johnson, Doris Jones, Marjorie Ann Jones,  
Louise Juley, Teddy Kasalka, Charles Keebler, Eleanor Keller, Aldrich  
Kendall.

**Row IV:** John Kennedy, Carolyn Kessler, Charles Kessler, Anne Kinkead,  
Doris Kirch, William Kisch, Bill Klein, Hazel Klepp, Joan Klimek.

**Row V:** Rudolph Klimkiewicz, Lorraine Klitsch, Lois Koch, Ferdinand Koehler,  
Raymond Kohaut, Robert Kollmar, Lucille Kreutler, Betty Kruse, Agnes  
Kunz.

**Row VI:** Ken La Mond, Donald Larson, Sylvia Laub, Jeanne Lawrence, Mar-  
dette Leary, Ben Leibe, Dorothy Leibe, Julius Lesko, Doris Lester.

**Row VII:** Joffre Lewis, Edna Long, Rita Long, Phyllis Lyon, Grace Lyons,  
Ralph Mabbs, Leslie MacBride, Douglas MacEvoy, Edith Magie.

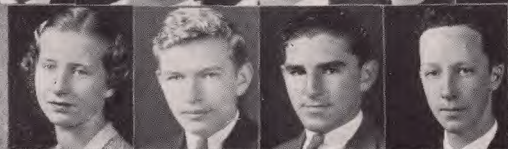
**Row VIII:** Anthony Magliaro, Helen Magliaro, Sam Magnes, Katherine Ma-  
hony, Virginia Maloney, Robert Marcussen, Betty Mason, Michael Mat-  
arazzo, Marshall Maudsley.

**Row IX:** Patricia May, Ted May, Thomas McCabe, Elaine McCormick, Betty  
McDaniels, Grace McEvoy, Doris McGinity, George McIntosh, Rodman  
McLanathan.

**Row X:** Jane McWilliams, Betty Mierau, Betty Miller, Margaret Milzer.



19



36

---

# MIRROR 1935

---

---

# MIRROR 1935

---

Page Sixty-nine

- Row I:** Margaret Mitchell, Karl Mohrbacher, John Molineaux, Dick Mouk, Paul Mueller, Dolores Murphy, Howard Murphy, Jim Murphy, Joseph Murphy.
- Row II:** Hugh Meyers, Lenora Myerson, Paul Nelson, Robert Nerburger, Doris Newman, Yuk-Sui Ng, Barbara Norris, Louise North, James Oakley.
- Row III:** Bill O'Brien, Marie Odronic, Vera O'Neill, Burton Oppenheimer, Ruth Osborne, Chauncey Page, Dorothy Pampel, Earl Parker, Raymond Pascal.
- Row IV:** Roy Pascal, Joe Passinger, John Patterson, John Payton, Madeline Percy, Joseph Pelt, Doris Petter, Harold Pfautz, Jane Phillips.
- Row V:** Philip Pike, Graham Platner, Wesley Pollit, William Poppke, Betty Porter, Albert Prochoren, Ben Prochoren, Barbara Preston, Rosalie Preston.
- Row VI:** Irene Prokul, Dot Pryor, Jack Pustilnik, Richard Raichlen, Herbert Rainwater, Connie Raywid, Alice Reichl, Betty Remlinger, Carol Renton.
- Row VII:** Tom Reynolds, Lucille Riker, Virginia Ritter, David Richardson, Francis Rock, George Rock, Constance Roe, Tilton Roe, Jeanne Rolfe.
- Row VIII:** Marie Roscher, Victor Rose, Elizabeth Rosebrook, Ruth Roithauser, Janice Ruprecht, Leonard Rydholm, Natalie Sager, Muriel Sandberg, Jean Sandford.
- Row IX:** Joe Sausville, Dorothy Scardefield, John Scattergood, Ruth Schafer, Gertrude Schanz, Betty Scheiner, Lydia Schilling, Lillian Schlintz, Adele Schmachtenberg.
- Row X:** Charlotte Schultz, Walter Schwanhausser, Herbert Schwartz, Fred Scott.



1936

---

MIRROR 1935

---

---

# MIRROR 1935

---

Page Seventy-one

- Row I:** Joseph Scott, George Seel, Joan Seidler, Carmen Selitto, Lenora Sha-baikowich, Jean Sharkey, Dorothy Short, Helen Short, Stanley Schulze.
- Row II:** Bessiel Sierp, Robert Sigman, Peggy Simpson, Anna Skiff, Elinor Smart, Kenneth Smart, Edward Smith, George Smith, Harris Smith.
- Row III:** Harry Smith, Nancy Smith, Aileen Snow, Dick Snyder, Doris Snyder, Marne Snyder, Suzanne Sommers, Henry Soto, Ruth Spaeth.
- Row IV:** Jean Speirs, Fred Spingler, Craig Spowers, Violet Stahr, Marguerite Stalder, Florence Steets, Howard Steinberg, Ralph Steinhardt, Morten Stern.
- Row V:** Virginia Stevens, Mildred Stockinger, Harriette Stokes, Florence Sullivan, Maurice Sullivan, Jane Sweeney, Ruth Syrowsky, Mary Tabor, Sally Thayer.
- Row VI:** William Thomas, Henry Thomasson, Horace Tillery, Richard Tippet, Frank Tomlinson, George Tremper, Dot Turck, Florence Uptegrove, Eddie Uslar.
- Row VII:** Craig Vail, Edward Van Dyke, Alfred Walsh, Mary Walsh, Juliet Ann Ward, Malcolm Ware, Sonia Warnetzke, George Warren, Robert Weber.
- Row VIII:** Dorothy Wells, Marjorie Wells, Gladys Wey, William Whitehead, William Whitehead, Alice Williams, Jane Williams, Shirley Williams, Anne Winter.
- Row IX:** Frances Witkowski, Geraldine Witt, Bernard Wolff, Wesley Woodman, William Woodman, Virginia Yeomans, Donald Yetter, Roy Zachary, Marie Zelinsky, Joe Zellers.



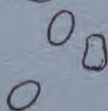
## JUNIOR NIGHT

WITH the crack of his whip, and at the blare of the band, Joe Gibbons as Ringmaster led an eager audience over the top to the famed circus of the Class of '36. The performance was marked by its snappy tempo. From the opening circus parade, starting at the back of the auditorium, and creating a decided stir, the audience responded enthusiastically to the frolics of the performers. "You're the Top", an original parody, sung by Sally Guerin and Doris McGinity, introduced the first act of the circus. The Pony Ballet, with its whip cracking drivers and prancing steeds, danced their way to fame and succeeded in gaining an encore. The "Man on the Flying Trapeze" number was particularly appealing because of the well-known song and the humorous pantomime. Master Frederic Crehan, as the besatined jockey with his old gray mare, caused many feminine hearts to flutter. A note of seriousness entered the program with the presentation of "A Night in an Inn." The entire performance was marked by an intensity of suspense. Bruce Stauderman's ability as an emotional actor was proved by his remarkable rendition of "Snigger". The cowboy and gypsy numbers, as well as the side-show features, won the favor of the audience.

---

# MIRROR 1935

---



GALE SPONER

# SOPHOMORES



---

# MIRROR 1935

---

Page Seventy-five

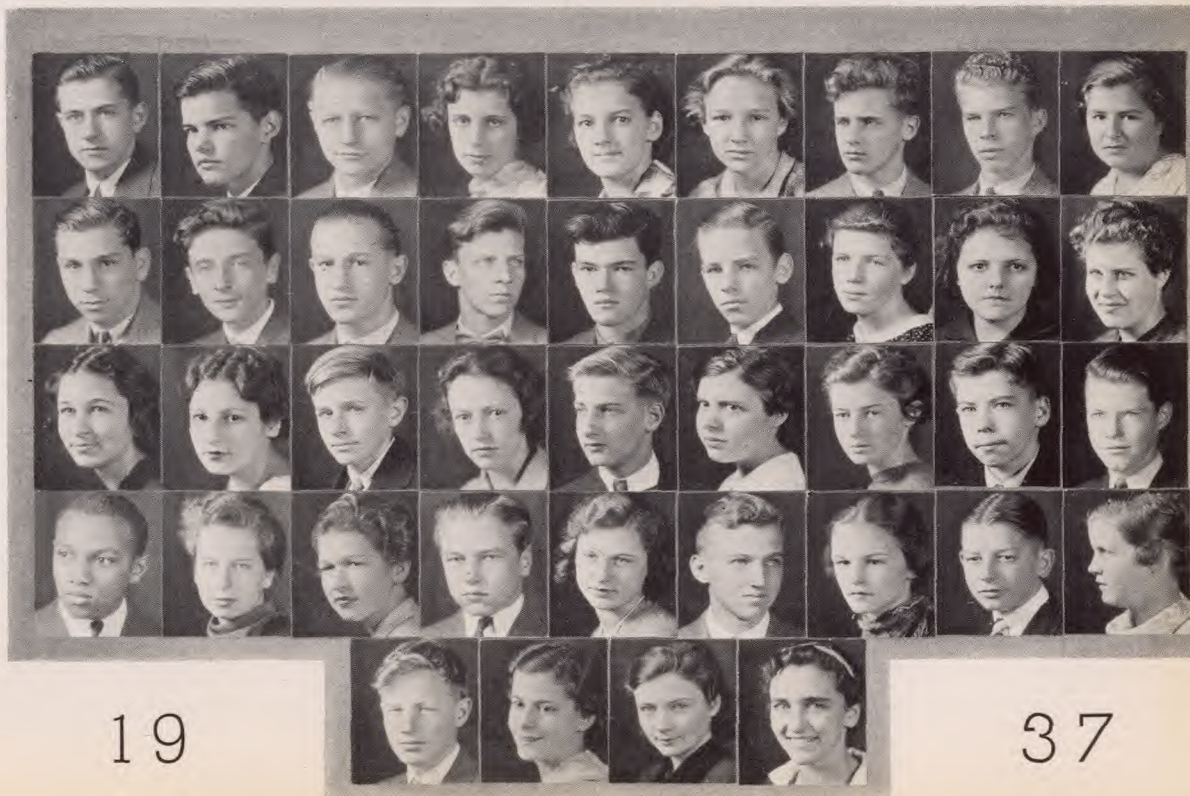
**Row I:** Edgar Abendschoen, John Abernathy, Carl Adam, Dorothy Adams, Evelyn Allen, Mildred Allen, Robert E. Allen, Robert R. Allen, Ruth Ally.

**Row II:** Seymour Alter, Morgan Ames, Andrew Anderson, Thomas Anderson, William Anderson, Edward Annett, Winifred Ash, Maure Astley, Nancy Atz.

**Row III:** Marian Bachman, Ruth Baerncopf, Samuel Bailey, Edith Baird, Beverly Banks, Doris Barbana, Ruth Barkhorn, Swift Barnes, Robert Barrett.

**Row IV:** Edward Baugh, Mildred Becker, Ruth Becker, Jack Bedea, Lillian Beisley, John Bellows, Jean Bendwig, William Bennert, Anne Benson.

**Row V:** Herbert Benson, Margaret Beyen, Muriel Bickel, Mabel Bishop.





1937

---

MIRROR 1935

---

---

# MIRROR 1935

---

Page Seventy-seven

- Row I:** Austin Black, Dorothy Blauvelt, Danny Bochiccio, Harold Bodie, Mae Bond, William Bond, Robert Bork, Adelaide Bourgard, Rita Boyle.
- Row II:** John Brady, Franklin Branin, George Brenn, Lillian Brittle, Harry Brocklehurst, Grace Brown, John Brown, William Brown, Dorothy Brubaker.
- Row III:** John Brundage, Elizabeth Bryan, John Buermann, Shirley Burkhard, Marie Burkhardt, Elizabeth Burman, Muriel Cadmus, Dorothy Caille, Margaret Cain.
- Row IV:** Betty Campbell, William Campbell, Philip Capella, Philip Cartwright, Betty Celler, Douglas Christie, James Clark, William Clark, Ogden Clutsam.
- Row V:** Geraldine Clyde, Marjorie Coe, William Coellner, Mary Colyer, Betty Conklin, Ruth Conkling, Kathleen Conlan, Ruth Cooke, Ted Corage.
- Row VI:** Sidney Cort, Lorraine Coryele, Jane Cowie, Bartholomew Coyne, Mary Alice Coyne, Viola Cracco, Phyllis Crockett, Charles Crompton, Clarence Crompton.
- Row VII:** Marilyn Cross, Larry Crowley, William Cullen, Andrew Cummings, John Cunningham, Dick Currier, Robert Cushing, Alexandria Damiano, Margaret D'Andrea.
- Row VIII:** Helen Daniels, Angelina Dato, Fiore Dato, Dick Davis, Lorraine Davis, Betty Day, Joseph De Cicco, Robert De Groff, Raymond Dehner.
- Row IX:** Congetta De Ieso, Nicholas Deluca, Kenneth Dias, Robert Disque, Rosalind Dobie, Jane Doggett, William Doran, Alice Dorsey, Harry Drypolcher.
- Row X:** Geraldine Dultz, Gilbert Dunklin, Dorothy Dunlap, Jack Dunn, Barbara Dunshee, William Dyke, May Eakins, Seth Eberhardt, Muriel Egan.



1937

---

MIRROR 1935

---

---

# MIRROR 1935

---

Page Seventy-nine

**Row I:** John Ellen, Clifford Engler, Rogert Engstrand, John Ennis, Muriel Epp, Billy Evans, John Fairing, Richard Farrell, Elmer Fecker.

**Row II:** Paul Fellows, Mary Fiore, Evelyn Fitzsimmons, Christian Fleissner, Eileen Flynn, Robert Flynn, Margaret Ford, Sanford Fox, Edward Fraentzel.

**Row III:** Eric Franzen, Florence Freggens, Hazel Fritchie, Ruth Furman, William Garmany, Jeanne Gastmeyer, Andrew Gaudioso, Edmund Gauthier, Elaine Geissele.

**Row IV:** Ethel Gerlack, Ted German, Ralph Gewehr, Ann Giaucipoli, Mary Lou Gibbons, Helen Gillen, Harry Goas, Louis Gorka, Grace Gould.

**Row V:** Herman Graf, Joseph Griffith, Wendell Grimm, John Groel, Edward Gross, Barbara Gumaer, Jean Hafley, Robert Hagen, Marjorie Hahn.

**Row VI:** Douglas Haire, Thelma Hall, Gordon Halm, Barbara Ham, Harold Hansen, Gladys Harbula, Peter Hardy, Doris Harger, Carl Hartdegan.

**Row VII:** Robert Harvey, Ruth Hasty, Robert Haveron, Mary Healy, William Heard, John Heffernon, Hazel Heidrick, Doris Henkel, Thomas Hetzel.

**Row VIII:** Harrison Higham, John Hildebrand, Quentin Hildebrand, Bob Hildebrand, Hilda Hinchman, James Hind, Albert Hindle, Robert Hodge, Elizabeth Holbrook.

**Row IX:** Norma Hoey, Peggy Holsapfel, Betty Hood, Jane Horne, Russell Hosp, Jesse Hughes, Jean Hundley, Charles Hunter, John Hyde.

**Row X:** Ruth Ibbotson, Richard Isenberg, Howard Iserman, Isabelle Iskendarian, Helen Jagel, Arthur Jedryzek, Ella Jensen, Victor Jenson, Janet Johnson.



1937

---

MIRROR 1935

---

---

# MIRROR 1935

---

Page Eighty-one

- Row I:** Ned Johnson, Frances Johnston, Henry Johnston, Herman Kackemester, Charles Kassinger, Henry Kassinger, Jayne Kaufherr, Milda Kaup, Florence Kaveberg.
- Row II:** Betty Kempf, Arthur Kimmerle, Thomas King, Elvira Kirschbaum, William Klein, Arthur Kleindienst, Marjorie Knapp, Miriam Knauer, Evelyn Knispel.
- Row III:** Virginia Knispel, Jeanne Koch, Robert Kohl, Marguerite Kolb, Norma Kraemer, Ervin Krannich, Edward Kraus, Phillip LaBeaume, Barbara Lane.
- Row IV:** Franklin Lane, Janet Lang, Marion Langfinger, Lawrence Langnecker, Edgar Lansing, John Lawrence, Bette Lee, Charles Leidig, Betty Lewis.
- Row V:** Edward Lewis, Leonard Lipman, Betty Jane List, Howard Littell, George Logan, Ogden Ludlow, Margot Lundgren, Malcolm Maccario, Jean Magee.
- Row VI:** John Maguire, Constance Main, Elizabeth Malcolm, Marjorie Malcolmson, Gladys Mambert, Alice Mammaux, Edward Marcusson, Charlotte Marsh, Robert May.
- Row VII:** Mary McAleer, Helen McArthur, Barbara McChesney, Wilkes McClave, Betty Jane McCown, John McDermitt, Betty McDonough, Alice McFarlane, Harriet McGlennon.
- Row VIII:** Mary McGuire, Owen McHarg, Frank McKenna, John McMannis, Jack McMullen, Thomas McMullen, Harvey Meeker, Barbara Melick, Helen Menninger.
- Row IX:** Lorraine Miller, Mildred Miller, Phillip Miller, Arthur Minder, Elmer Mitchell, Marguerite Moore, Alice Morris, Edgar Morris, Edgar Morrison.
- Row X:** Mary Morrison, Carrie Motley, Janet Muelberger, Evelyn Munsick, Mary Murnane, Eileen Murphy, William Nagee, Agnes Neu, Lois Neupert.



1937

---

## MIRROR 1935

---

---

# MIRROR 1935

---

Page Eighty-three

- Row I:** Harry Nickel, Carl Nilsson, Louise Noling, Patsy Nowl, Mary Norton, Betty O'Brien, Darwin O'Brien, Orlee O'Brien, Ingrid Olson.
- Row II:** Katherine Ord, Hugo Oswald, Virginia Outwin, Lois Page, Vincent Parillo, Ross Pascal, Henk Post, Robert Peabody, Granville Peach.
- Row III:** Edgar Peppard, Adrienne Perry, Thomas Phelan, Margaret Philips, Betty Piper, Mary Pisciotta, Donald Platner, John Polnik, Dan Provost.
- Row IV:** Franklin Quinn, Alice Rankin, Charles Rathbun, Lewis Raube, Marjorie Raub, Doris Reed, Robert Reeve, Florence Reichert, Charles Remlinger.
- Row V:** Ruth Rettker, Robert Rhatican, Marie Ricci, Eleanor Richards, Betty Richardson, Arthur Richmond, Harold Rimalover, Mary Jean Ripley, William Ripley.
- Row VI:** Kenneth Robbins, Philip Rock, Arthur Rodgers, Manson Roman, Thomas Romano, Lewis Rose, Shirley Ruestow, James Rummig, Hattie Russell.
- Row VII:** Margery Russell, Robert Russell, William Rutka, Ted Rybka, Robert Saltsman, Margaret Sanford, Grace Saslow, Theodore Scarlett, Edmund Scheive.
- Row VIII:** Jean Schmidt, Regina Schmitt, William Schmitt, John Schnauz, Mary Schnauz, Leonard Schork, Jack Schott, Viola Schroeder, Betty Schuck.
- Row IX:** Richard Schuler, Jack Schultz, Donald Schwarzenbach, Albert Schweickart, Virginia Scott, Frances Seymour, Lewis Sheen, Harry Sheppard, Virginia Shields.
- Row X:** William Shoudy, Marilyn Sidney, Edward Siebert, Dorothy Siemon, Margaret Simondis, Joseph Sisto, Harvey Sitzmann, Harriet Sloane, Caroline Small.



1937

---

---

## MIRROR 1935

---

---

---

# MIRROR 1935

---

Page Eighty-five

- Row I:** Bertha Smith, Dorothy Smith, Eleanor Smith, Frederick Smith, Lorraine Smith, Robert Smith, Robert Snyder, Evelyn Soden, Adelaide Spicer.
- Row II:** Donald Spillman, Corinne Spina, Judith Stanley, Helen Steckman, Alma Steinen, Eleanore Stengel, Joan Stetson, Gladys Stevens, Kenneth Stewert.
- Row III:** Theodore Stewert, Edward Stickel, Dorothy Stivers, Herbert St. John, Margaret Stoecher, Lucille Stoeklein, Barbara Swift, Betty Talbot, Howard Tarleton.
- Row IV:** Roger Tatton, Thomas Tenore, Dorothy Tenfel, Stanley Thompson, June Thomson, Leslie Throssell, Jane Tippet, Franklin Tompkins, Jack Torbert.
- Row V:** Ann Trimble, Audrey Turner, Olga Turner, Lyle Tuttle, Barbara Twitchell, Eleanor Twitchell, Louise Ungnad, William Uptegrove, Evans Valens.
- Row VI:** William Van Arnam, Marjorie Van Morstein, Virginia Van Norde, Robert Vought, Marynelle Vroman, Jack Wadsworth, Harold Walker, Patricia Wallace, Crandall Wallenstein.
- Row VII:** Eunice Walsh, Dan Weaver, Carol Weingarten, Kathlyn Weisenbach, Harry Wheeler, Claire Whittaker, Frank Weiner, Woody Weissel, Barbara Williams.
- Row VIII:** Beatrice Williams, Jane Williams, Walter Williams, Marjorie Williamson, Lucia Willoughby, Florence Wilson, Robert Wilson, Wilbur Winans, Winslow Winans.
- Row IX:** Edwin Wolf, Richard Wolf, Winifred Wood, George Woodford, Ted Woodward, Doris Woolley, Eloise Young, Lovilla Zeiger, Richard Zeller, Miriam Ziegler.



**SOPHOMORE DRAMATIC CLUB**



**"THE TOY SHOP"**

---

---

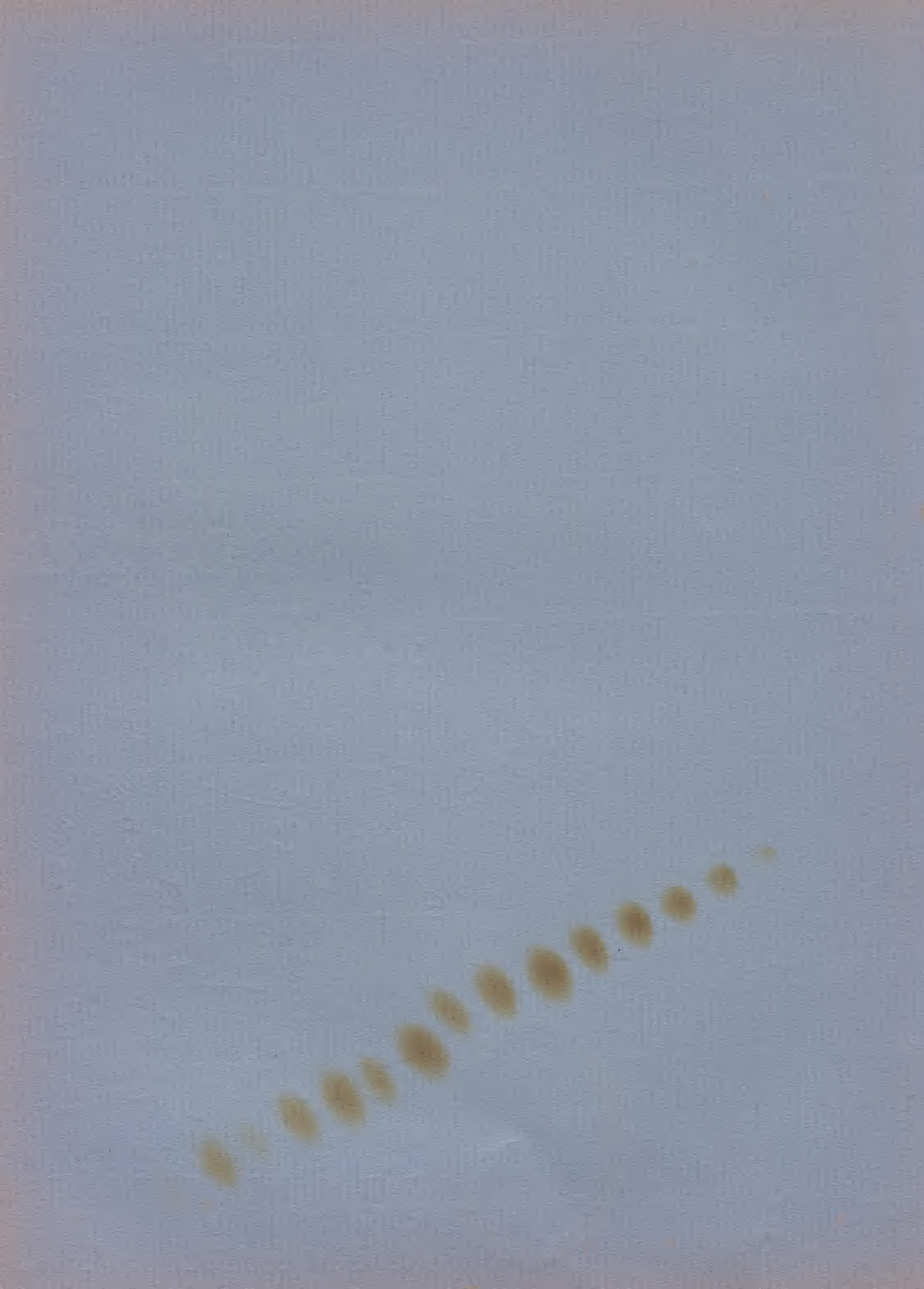
MIRROR 1935

---

---



# O RGANIZATIONS



ORCHESTRA



SERVICE ORCHESTRA



BAND



GLEE CLUBS



# *French Club*



# *German Club*

# *Boys' Art Club*



# *Latin Club*

# *Table Tennis Club*





*Junior Dramatic Club*



*School Council*



*Columbian Staff*



*The Guild*



*Mirror Staff*



SCIENCE  
*Club*



COMMERCIAL  
*Club*



PARNASSIAN  
*Society*



"SEVENTH HEAVEN"  
*Parnassian Play*

BOB SCHULTZ CAMERON MOSELEY MARIAN MOSS LESLIE MACBRIDE JOHN HARVEY RUTH CONKLING GALE SPOWERS HENRY TOMASSEN JACK PRIOR  
MARGUERITE HIRSCHBERGER



GALE SPOWERS

# FEATURES



---

# MIRROR 1935

---

Page Ninety-five

## COMMENTS

WHEN asked what they thought of their three years spent in Columbia, various students replied:

1. K. Lurich: I've learned my lesson.
2. C. Gardner: Oh yeah!
3. H. Convery: The study of the blotter is very absorbing.
4. S. Stearns: I've got to like the teachers quite a bit, especially Miss Vale.
5. G. Schultz: I haven't been here three years, so there. ("So what?" you mean, Mr. Schultz.)
6. J. Perry: Vell, I'm tallin' you.
7. W. Niebling: I suppose so.
8. A fellow named Rimwinkle said: "Oh boy, oh boy, oh boy, oh boy." (We have no idea who this fellow Rimwinkle is or how he got in here.)
9. M. Rothen: These three years have been as good as a trip around the world. (Well, almost.)
10. B. Borrie: (Censored).
11. R. Adams: The same as I thought three years ago. (He wouldn't tell us what he thought three years ago.)
12. P. Clark: (He has just stubbed his toe so the whole remark is censored.)
13. Smith: I'll be glad to get out of here. (We feel safe in printing this since there are so many Smiths.)
14. R. Schultz: A-l-l i-n a-l-l, I've be-e-n v-e-r-y b-u-s-y.
15. C. Farr: Well, fancy meeting you here.
16. L. Sklarz: I've learned two things at Columbia: first, to run; second, to sing. I always could run and I still can't sing.
17. D. Tag: I like school and the swimming pool, and the boys and the teachers, and especially the girls.
18. P. Auerbacher: I have a strange attachment to the place. I think I'll stay here another year or so.
19. L. Stillman: There are quite a number of things that I have found wrong with the place.
20. G. Annin: They've had all the news that was fit to print.
21. J. Stella: Perfect.
22. R. Sullivan: I enjoyed myself immensely when I wasn't studying. Incidentally, I enjoyed myself most of the time.



## A COLUMBIA A-B-C

**A** is for Athletes, healthy and bold;  
**B**'s for Borrie, who sings, we are told;  
**C** is for Crehan, whom none can forget;  
**D**'s for the Discipline most of us get;  
**E**'s for Exams, getting much harder;  
**F** is the Flunk we're given with ardour;  
**G** is for Gnagey, a tip-top romancer;  
**H** is for Hansen, an excellent dancer;  
**I**'s for Ichabod, no one knows why;  
**J** is for Jung, who always says "Hi";  
**K** is for Knowledge, for which we all strive.  
**L** is for License, if you like to drive;  
**M**'s for the Maidens, beauties they are;  
**\*N** is for N--ing, that's done in the car;  
**O** is for Orange, that won six to seven;  
**P** is for Proms that end at eleven;  
**Q** is for Quiet, in study there's none;  
**R** is the Rothen, "The son of a gun";  
**S** is for Smoking, on school grounds forbidden;  
**T**'s for the Teachers who're constantly ridden;  
**U** is for Us, plain "us", that's all;  
**V**'s for Vacations; just look when they fall,  
**W**'s for Wakely, a miler, and how!  
**X** means "Forbidden", we mustn't allow;  
**Y** is the Youth we wish were more free;  
**Z**'s for the Zero we too often see.

\*Nitting—A new spelling for Knitting, the popular sport at present. Fooled you, eh?



---

# MIRROR 1935

---

Page Ninety-seven

## DON'T TELL US YOU HAVEN'T . . .

Felt the chills run up and down your spine during on eof our swell pep assemblies. We know we certainly have. Incidentally, we later discovered the door to the yard was open behind us.

\* \* \* \*

Seen Roger Stewart conversing with one of his innumerable feminine admirers.

\* \* \* \*

Seen Gale Spowers and Bob Schultz on the stage in one of their original and amusing skitches (half skit and half sketch).

\* \* \* \*

Come to class unprepared and prayed that the teacher would not call on you. To the ones (we sincerely trust that there was more than one) who have succeeded in not getting caught, we present the copper-plated leather noodle and our heartiest congratulations.

\* \* \* \*

Said in bye-gone days, "Oh, I didn't know, I'm only a sophomore." (Or were you afraid to admit it.)

\* \* \* \*

Gypped a class.

\* \* \* \*

(Now the real question) Been caught gypping a class. If you are not yet perfect at this art, write for our little book entitled "Caught Short," written by one of our well-known seniors. All you need to get this book, is to tear the top off your desk, or the teacher's, if she's not looking; scribble the name on it (NO! not the teacher's); and send it in.

\* \* \* \*

Seen Hellrigle go down under kicks, and tackle his man before he had a chance to get started.

\* \* \* \*

Had that sinking sensation when the phone rings and you are told to report to the office at the end of the period. You invariably discover that it was Miss Hayner wishing to pass the time of day with you, and yet there is that strange sensation.

\* \* \* \*

Had the insane desire to sneak upon the mighty maestro Batchelder as he takes his shut-eye, and silently shave away that misplaced eyebrow that he deigns to call mustache. (See editor's note below).

\* \* \* \*

Wanted to start a general strike among all the students.

\* \* \* \*

Editor's Note: That is not an insane idea at all. In fact, as this goes to press, someone, perhaps the maestro himself, has shaved it away.



## REMEMBER:

Maglio's 80-yard run against West Orange in 1933?

\* \* \* \*

When the curtain was opened in Junior Nite for an encore of the Puppet scene disclosing the stage crew in the process of dismantling the scenery?

\* \* \* \*

Also in Junior Nite—Alen Herman as Hitler? Miggie Hirshberger and Harvey Convery in their excellent Appache Dance? Marshall Rothen and Kathryn Pohlman in "The Flitch of Baon?"

\* \* \* \*

The night we didn't have our Junior Prom?

\* \* \* \*

John Harvey's excellent portrayal of Shylock in "The Merchant of Venice"?

\* \* \* \*

Major Imlay's humorous and entertaining talk on Securities?

\* \* \* \*

Bob Saber's singing in "Bon Voyage"?

\* \* \* \*

Prohibition?

\* \* \* \*

Your first impression of the school?

\* \* \* \*

Harvey Convery acting bashful in front of the opposite sex? (Neither do we!)

\* \* \* \*

How Joe Stella nearly lost his highly prized "N" during his first few weeks at Columbia?

\* \* \* \*

H. Jones' sparkling, shocking assembly on electricity?

\* \* \* \*

Miss Valé's talk on Spain?

\* \* \* \*

That except for the work of the Central Committee composed of - - - -, we would not have had this Mirror.



---

# MIRROR 1935

---

# MIRROR 1935

Page Ninety-nine

## AS WE WERE



Gordy Annin



"Dick" Drake



"Flirt" Convery



"Snook" Farr "Bobbie" Roberts



"Char" Knapp



"Brat" Brett



"Bob" Stivers "Cacky" Spaeth



"Dolly" Farnier



"Marge" Kohr



"Itchy" De Groff



"Bug" Chapman



"Janie" Perry



"Tommy" Grimm



"Bill" Eberhardt



"Tink" Rothen



"Joe" Stella



"Jay" Goodwin



"Petie" Heflin



"Stew" Stewart



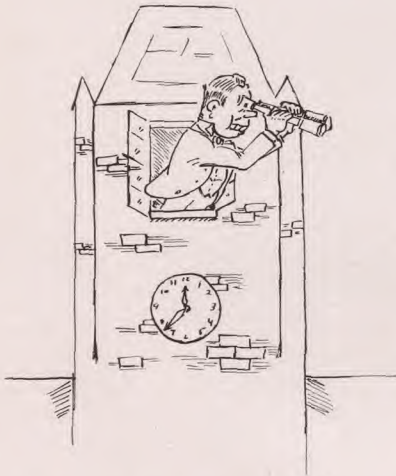
"Nrimo" Herman

## POPULAR SONGS — NEW AND OTHERWISE

Music by  
D. August

Words by  
"Sully"

You're a Builder Upper .....Mr. Mahnken  
Tell Me, Did He Ask for Me? .....Cutting classes  
I believe in Miracles .....Council Opposes Motion  
Stormy Weather .....The basketball team  
Water Boy .....Alan Herman at baseball games  
Anything Goes .....Even the lunch room silver



You're the Top .....Room 404  
I Get a Kick out of You .....The football  
Winter Wonderland .....The hockey team  
I Woke Up Too Soon ..Asleep in class again  
Observatory Hill—Mr. Brown in the tower  
with his field glasses

Ooh! You Miser, You ..Subscriptions hunters  
An Earful of Music ....The Service Orchestra  
O. K. Toots .....Who started that?  
Pardun Ma Suthern Accent,

"Aurchur" Hobson  
La Cucaracha .....(Unprintable)  
How's about Tomorrow Night?

Getting out of staying after  
Old Faithful .....The Latin trot  
Sweet Music—Here's the five dollars I bor-  
rowed in my sophomore year. Remember?

Just Once Too Often .....Fourth time late  
With Every Breath I Take .....The chemistry laboratory  
Flirtation Walk .....Second floor corridor during lunch period  
I Never Slept a Wink Last Night .....Before the finals  
Blame It on My Youth .....Sophomore's excuse  
Don't Let It Bother You .....Failing four solids  
Sweetie Pie .....The lunchroom pies (joke)  
The Man on the Flying Trapeeze .....Our star acrobats  
June in January .....Conclusion of mid-year exams  
Be Still, My Heart .....In Mr. Crehan's office  
Happiness Ahead .....Vacation's coming

---

# MIRROR 1935

---

---

# MIRROR 1935

---

Page One Hundred and One

By **HARVEY CONVERY**

Harvey is a senior artist who specializes in architectural drawing. See his picture of the Columbia tower on the title page.





By **JACK KREISMER**

Jack is a senior artist whose hobby is doing pastel drawings of movie stars. Jack gets many of his portraits autographed by the stars themselves.

---

---

MIRROR 1935

---

---

---

# MIRROR 1935

---

Page One Hundred and Three

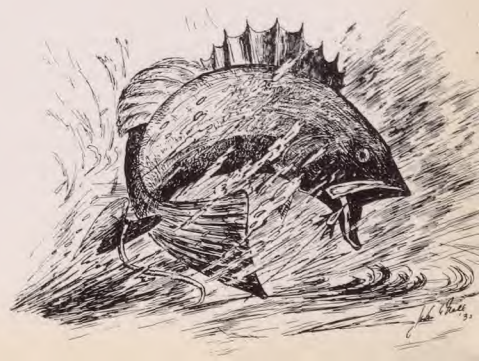
By **SUZANNE LYMAN**

Suzan is a senior artist who does mural paintings. This is a photograph she took herself of one of her recent murals.



By **JOHN NOLL**

John is the senior artist of the out-of-doors. He is fond of camping and fishing, and of sketching outdoor life.







# A THLETICS



# MIRROR 1935

Page One Hundred and Seven

## VARSITY FOOTBALL

### THE SEASON

Columbia.....	32	Scotch Plains .....	0
Columbia.....	7	Summit .....	3
Columbia.....	7	Morristown .....	0
Columbia.....	6	Orange .....	7
Columbia.....	0	Westfield .....	0
Columbia.....	6	Montclair .....	21
Columbia.....	0	New Brunswick .....	6
Columbia.....	0	East Orange .....	0
Columbia.....	7	West Orange .....	13



THE VARSITY SQUAD



## Schedule

COLUMBIA—28	ALUMNI—36
COLUMBIA—22	BELLEVILLE—31
COLUMBIA—22	KEARNY—32
COLUMBIA—21	MONTCLAIR—38
COLUMBIA—16	ORANGE—35
COLUMBIA—20	SOUTH SIDE—46
COLUMBIA—25	BLOOMFIELD—24
COLUMBIA—17	MONTCLAIR—26
COLUMBIA—16	WEST ORANGE—24
COLUMBIA—24	WESTFIELD—25
COLUMBIA—11	ORANGE—40
COLUMBIA—18	EAST ORANGE—22
COLUMBIA—18	WEST ORANGE—29
COLUMBIA—17	SUMMIT—36
COLUMBIA—28	WESTFIELD—47



BASKETBALL SQUAD

---

# MIRROR 1935

---

Page One Hundred and Nine





---

MIRROR 1935

---



ADVERTISEMENTS



**H. B. HALSEY CO.**  
(Incorporated)  
**Masons' Materials, Lumber, Coal**  
THIRD ST., AND D. L. & W. R. R.  
SOUTH ORANGE  
Phone South Orange 2-7820

**THE MAPLEWOOD BANK  
& TRUST CO.**  
MAPLEWOOD CENTER  
and  
SPRINGFIELD AVE. AT PROSPECT ST.

**SAMUEL H. ROSS**  
**The Home of Good Marketing**  
Serving Maplewood for 27 Years  
MAPLEWOOD, N. J.

There are two reasons at least why teachers  
should ask me about auto insurance economy

**ANDREW JACK**  
166 MAPLEWOOD AVE. MAPLEWOOD

**SCHOOL OF DANCING**  
Register Now for Ballroom  
Member of  
Dancing Masters of America  
New York Society for Teachers of Dancing  
Studio: 1-11 SCOTLAND ROAD  
Telephone South Orange 2-0083

Phone South Orange 2-0776

**GEFKEN FLORIST**  
422 RIDGEWOOD ROAD  
MAPLEWOOD

**LOUIS CRACCO**  
**All Styles of Shoes**  
170 MAPLEWOOD AVENUE  
MAPLEWOOD, N. J.

Telephone South Orange 2-9611  
**LORETTE**  
**Salon de Beaute**  
All Branches of Beauty Culture  
124 SOUTH ORANGE AVENUE  
SOUTH ORANGE, N. J.

Phone South Orange 2-9813

**MAPLEWOOD DELICATESSEN**  
LUDWIG PIETZ, Prop.  
**Free Delivery**  
3 HIGHLAND PLACE

**Good Luck**  
**SENIORS!**

**Dependable Service**  
**NELSON'S GARAGE**  
SOUTH ORANGE AVENUE  
SOUTH ORANGE

— **VISIT MINK'S** —  
For Your Wants In  
**Hats — Haberdashery**  
**Sportswear**  
STETSON HATS  
MANHATTAN SHIRTS  
McGREGOR'S SPORTSWEAR

Telephone South Orange 2-9880

**E. O. BOCKMANN**  
**Ford Specialist**  
458 VALLEY STREET SOUTH ORANGE  
Near School

**MINK**  
**Exclusive Haberdasher & Hatter**  
54 SOUTH ORANGE AVENUE  
(Opp. Scotland Road)  
(OPEN EVENINGS)

**HAROLD MOTORS, INC.**  
Dodge and Plymouth Sales and Service  
25 VALLEY STREET SOUTH ORANGE  
S. O. 2-6500 We Call For and Deliver

## **DRAKE'S**

### **SECRETARIAL SCHOOL OF THE ORANGES**

#### **A Business Training School**

With an Inspiring, Dignified  
Atmosphere

**SECRETARIAL, ACCOUNTING AND  
BUSINESS ADMINISTRATION**

Courses for High School and College  
Trained Students

Advanced Stenographic Course For  
Commercial Graduates

308 MAIN STREET, ORANGE

President  
W. C. COPE

Principal  
H. B. LLOYD

## **RICHARD W. HANWELL**

Incorporated

### **Typesetters**

Linotype Composition

For the Trade

Make-up



477 MAIN STREET  
EAST ORANGE, N. J.

"Milk is one of the best foods for  
growth . . . Especially for those  
growing both mentally and phys-  
ically."

Very truly yours,

**BORDEN'S FARM  
PRODUCTS COMPANY,  
INC.**

## **BERKELEY**

### **School of Secretarial Training**



22 PROSPECT STREET  
EAST ORANGE, N. J.  
Tel. ORange 3-1246

Intensive one-year course pre-  
paring young women (high  
school and college graduates  
exclusively) for preferred sec-  
retarial positions. Background  
college courses are given by  
university professors of recog-  
nized standing. Charmingly ap-  
pointed roof garden studios.  
Restricted enrolment. For bul-  
letin address the Director.



ALL OF OUR GRADUATES  
ARE EMPLOYED.

## Y. W. C. A. SCHOOL OF SECRETARIAL TRAINING

offers an intensive complete diploma course to high school and college graduates. Post-graduate course for advanced students. University faculty, individual instruction, day and evening classes, free placement service.

### **A Progressive School at a Moderate Cost.**

Summer term—July 8 to August 16.

Fall term—Sept. 9 to Feb. 1.

Spring term—Feb. 3 to June 25.

53 WASHINGTON STREET

Phone MARKET 2-7941.

NEWARK, N. J.

Ask for a Complete Free Catalog.

## NEW JERSEY PHOTO ENGRAVING CO.

48 EDISON PLACE

NEWARK, N. J.

## HAEBERLE & BARTH

### Home For Funerals

971 CLINTON AVENUE

Juniors and Sophomores: If you  
like this Mirror, subscribe to  
next year's Mirror.

## CLARK SCHOOL—Hanover, New Hampshire

An accredited New England preparatory school which prepares boys for and certifies them to college. Classes average five students. Home-like dormitories. Excellent food. Athletics and winter sports.

Also Junior College Course in Business Administration.

For catalog write

FRANK I. MORGAN, Director.

# JOHN F. SHYERS COMPANY

## YEAR BOOK BINDERS

55 LAFAYETTE STREET

NEWARK, N. J.

For the Better Portrait —

For the Better Year Book —

*Castle*  
**STUDIO**

413 EAST KINGSBRIDGE ROAD

NEW YORK CITY

Official Photographer to the 1935 Mirror

## SCHOOL AND COLLEGE PRINTERS



### THE ART OF PRINTING

The invention of printing from movable types, made in Holland near the middle of the fifteenth century, was the most significant invention of civilized man. The priceless jewel of knowledge, which for centuries could be the possession of only a privileged few, was made available to all by the development of printing. During the last five centuries printing has progressed not only as the spreader and preserver of knowledge and culture, but also as the finest of the graphic arts.

We take pride in turning out artistic printing. Our plant represents the last word in modern equipment, skillful craftsmanship, and dependable service.

You regard your yearbook as the reflection of your school; we regard it as a sample of the art of printing.

Our specialty is distinctive printing that both you and we can be proud of.

The 1935  
MIRROR  
Is a Product  
of Our Plant

●

## COLYER PRINTING COMPANY

SUSSEX AVENUE AND DEY STREET ~ NEWARK, N. J.

. . . LARGEST PRINTERS OF YEAR BOOKS IN THE STATE OF NEW JERSEY . . .







