

OLD MATAWAN NEW JERSEY POSTCARDS



Matawan Historical Society

OLD MATAWAN NEW JERSEY POSTCARDS

The Matawan Historical Society is a non-profit organization organized in 1969 to preserve and restore historical sites in Matawan, New Jersey. A special emphasis of the society is the dissemination of historical information to help arouse interest in the town's past. Along these lines, the society furnishes and operates a museum, the Burrowes Mansion, 94 Main Street, which is maintained by the Matawan Borough Historic Sites Commission. The museum includes items made in Matawan and antique furnishings from various periods. The museum is open to the public on the first and third Sundays of each month, March thru November, from 2 to 4 p.m.

This book of reproductions of antique postcards is being produced in a limited number to commemorate the Tercentenary of the town of Matawan. The cards can be detached and mailed, or the book can be mailed as a postcard collection. The cards in this book were originally printed from 1900 to 1920. The cards are owned by the Matawan Historical Society or its members.

Postcards in the early 20th century had a variety of uses. One use was as a greeting from a vacationer. An additional use was as a gift to a friend who collected them. Postcards, or postals, as they were often referred to, took the place of snapshots which are so popular today. Postals of local businesses, houses, and streets were common.

The most common usage of postcards during this early period was as a telephone message since few people had telephones. The postcard was used instead of a telephone call to issue dinner invitations or to arrange a visit.

The Golden Age or The Postcard Era is generally considered to have ended around World War I.

Main Street, Matawan, N. J.



Main Street, Matawan, N. J.



Old Pitman House, Matawan, N. J.



Lower Main Street, Matawan, N. J.



POSTCARD

THIS SPACE FOR CORRESPONDENCE

THIS SPACE FOR ADDRESS

PLACE
STAMP
HERE

POSTCARD

THIS SPACE FOR CORRESPONDENCE

THIS SPACE FOR ADDRESS

PLACE
STAMP
HERE

POSTCARD

THIS SPACE FOR CORRESPONDENCE

THIS SPACE FOR ADDRESS

PLACE
STAMP
HERE

POSTCARD

THIS SPACE FOR CORRESPONDENCE

THIS SPACE FOR ADDRESS

PLACE
STAMP
HERE



Public School, Matawan, N.J.



Glenwood Institute,

Matawan, N. J.



MATAWAN HOUSE, MATAWAN N. J



C. R. R. of N. J. Station,

Matawan, N. J.

POSTCARD

THIS SPACE FOR CORRESPONDENCE

THIS SPACE FOR ADDRESS

PLACE
STAMP
HERE

POSTCARD

THIS SPACE FOR CORRESPONDENCE

THIS SPACE FOR ADDRESS

PLACE
STAMP
HERE

POSTCARD

THIS SPACE FOR CORRESPONDENCE

THIS SPACE FOR ADDRESS

PLACE
STAMP
HERE

POSTCARD

THIS SPACE FOR CORRESPONDENCE

THIS SPACE FOR ADDRESS

PLACE
STAMP
HERE

POSTCARD

THIS SPACE FOR CORRESPONDENCE

THIS SPACE FOR ADDRESS

PLACE
STAMP
HERE

POSTCARD

THIS SPACE FOR CORRESPONDENCE

THIS SPACE FOR ADDRESS

PLACE
STAMP
HERE

POSTCARD

THIS SPACE FOR CORRESPONDENCE

THIS SPACE FOR ADDRESS

PLACE
STAMP
HERE

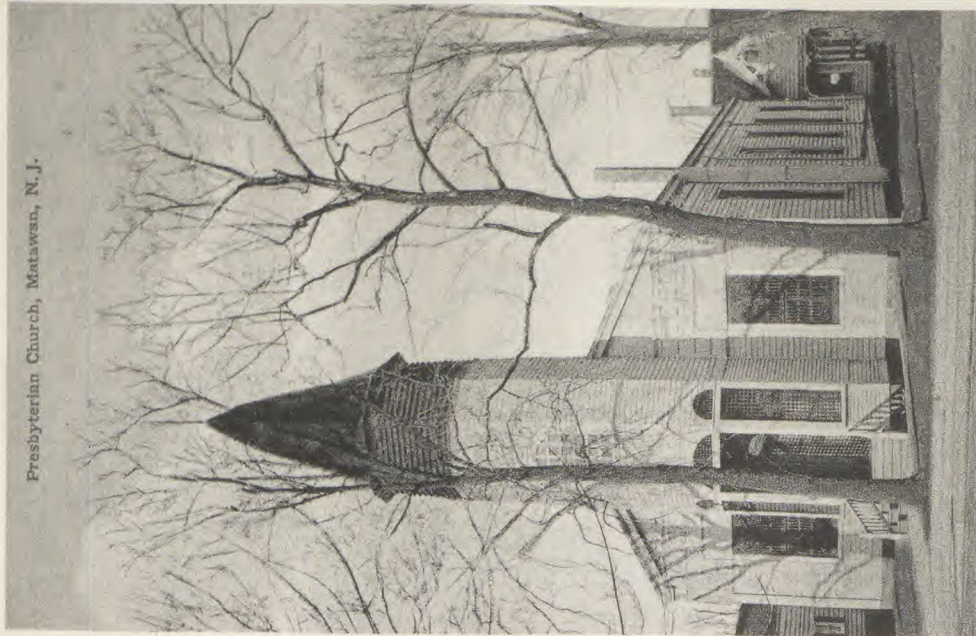
POSTCARD

THIS SPACE FOR CORRESPONDENCE

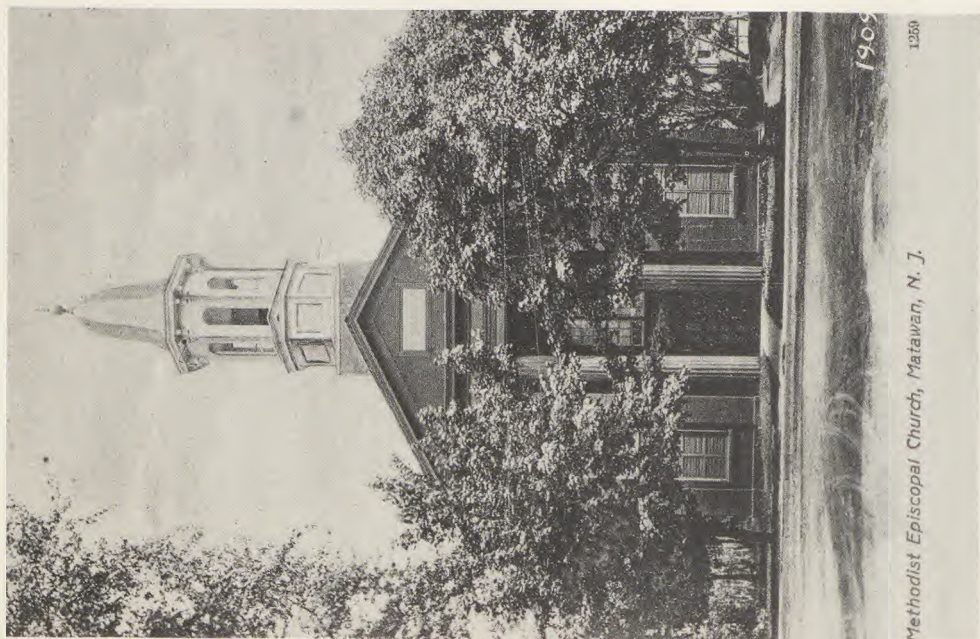
THIS SPACE FOR ADDRESS

PLACE
STAMP
HERE

Presbyterian Church, Matawan, N. J.



Main Street showing
Baptist Church
Matawan, N. J.



Methodist Episcopal Church, Matawan, N. J.



Episcopal Church.

Matawan, N. J.

POSTCARD

THIS SPACE FOR CORRESPONDENCE

THIS SPACE FOR ADDRESS

PLACE
STAMP
HERE

POSTCARD

THIS SPACE FOR CORRESPONDENCE

THIS SPACE FOR ADDRESS

PLACE
STAMP
HERE

POSTCARD

THIS SPACE FOR CORRESPONDENCE

THIS SPACE FOR ADDRESS

PLACE
STAMP
HERE

POSTCARD

THIS SPACE FOR CORRESPONDENCE

THIS SPACE FOR ADDRESS

PLACE
STAMP
HERE



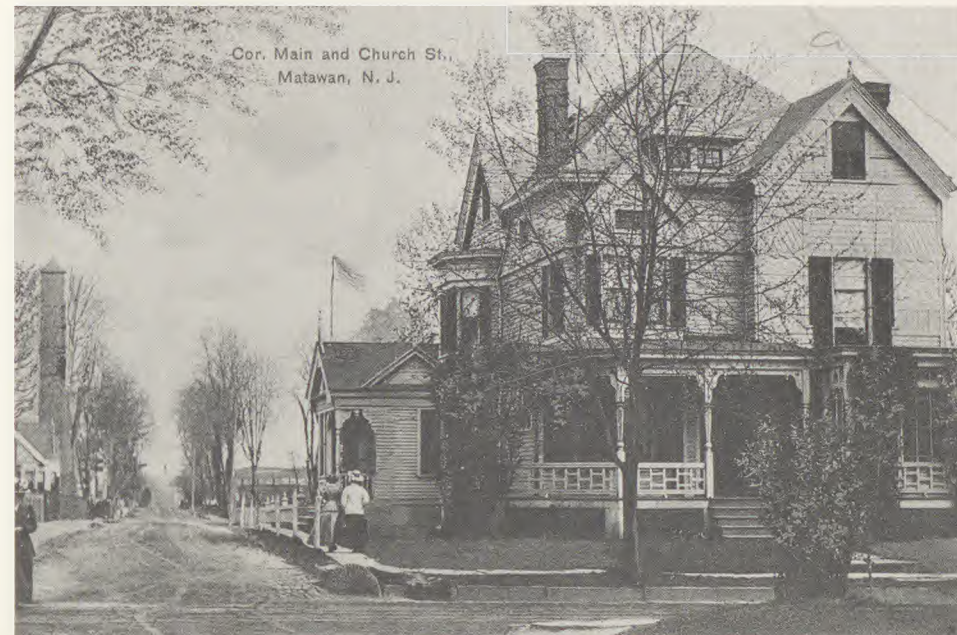
Ravine Drive, Matawan, New Jersey



Main Street & Ravine Drive, Matawan, New Jersey



Main Street Near Presbyterian Church, Matawan, New Jersey



MATAWAN 1686-1986: A Brief History

The beginnings of what was to become Matawan, New Jersey started in September 1686 when Thomas and Stephen Warne received a land grant of 400 acres. Through its 300 years of existence, the area has been known as New Aberdeen, Middletown Point, and Matawan. The borough was formed from Matawan Township in 1885.

Matawan's contributions to the Revolutionary War were Philip Freneau, "The Poet of the Revolution," and Major John Burrowes. The Burrowes Mansion, erected in 1723 at what is now 94 Main Street, still stands today and is used as a museum. Major Burrowes mustered and drilled the first company of militia in Monmouth County. The unit later became part of the First New Jersey Regiment. Philip Freneau wrote poems and articles supporting the revolution and after the war published the first newspaper in Monmouth County.

As the nation and the state developed, so did the town. In the 1830's steamboats came up Matawan Creek. The railroad station opened on December 15, 1875, and gas lights were installed on Main Street in 1870.

The churches displayed on the postcards were built between 1840 and 1854 on Main Street. The Presbyterian Church burnt down in December 1955. The Methodist Church was torn down in 1970. However, the First Baptist Church and the Trinity Episcopal Church still stand.

Several of the educational institutions of the town are represented in the postcard collection. The Matawan Grade School was built in 1895. The High School on Broad Street was built in 1924. The Glenwood Institute began as the Middletown Point Academy. The building at 10 Church Street which housed the institute was built in 1857 and enlarged in 1874. The building is now a co-operative apartment house.

Other Books on Matawan:

Matawan Memories - Word Pictures, by Genevieve Donnell. \$3.00

The Burrowes Mansion of Matawan, New Jersey: and Notations on the History of Monmouth County, by Mary Lou Koegler. \$5.50

Treasury of Recipes Old & New, by Matawan Historical Society. \$4.00

Available for list price plus \$1.00 per order postage and handling from:

Matawan Historical Society
P.O. Box 41
Matawan N.J. 07747

POSTCARD

PLACE
STAMP
HERE

THIS SPACE FOR CORRESPONDENCE

THIS SPACE FOR ADDRESS
