

Golf
Links

on the
G.R. & I.
Ry.



Golf Links

ON THE

Grand Rapids & Indiana Railway.

[1900]

All of the principal resorts on the Grand Rapids & Indiana Railway have either golf links of their own or are within a short distance of a course easily accessible.

Those beautiful places in Northern Michigan along the Grand Rapids & Indiana Railway, which are so attractive because of their natural locations and advantages, are now of greater interest to lovers of the game of golf. This season the golf grounds are in better condition than ever, and much care has been given them to put the courses in prime condition.

This booklet is designed to call the attention of golf players to the links on the Grand Rapids & Indiana Railway, and to give a short description of the best links to be found in any summer resort region in the United States.

One of the many charms is the cool, bracing air which comes from the waters of the upper lakes and through the pine forests. It gives an exhilaration to the players—makes the game more fascinating.

Harbor Point Golf Club.

The Harbor Point Golf Club is on the bluff near Emmet Beach. It was organized during the summer of 1899. Its situation is one of the most picturesque of any course in the West. David Foulis, late of St. Andrews, Scotland, now of Wheaton, pronounced it superb. He took great care in laying out these beautiful links. It is an 18-hole course which measures five thousand yards.

The distance between the holes varies from 140 yards, a nice stroke with an iron, to 500 yards, where you can get a drive and two brassie strokes before you approach on the green. The putting-greens are fifty feet square, have no uneven places nor the growth of bunch grasses in tussocks or detached bunches. Great care has been taken in having the greens first-class in every way. The fair-green is untiring to the foot and pleasing to the eye. From every teeing-ground and every hole, you command a view of Lake Michigan, picturesque and grand.

A new club-house, artistic, commodious and convenient, with lockers for all the players, is to be built.

Two tournaments, one in July and one in August, will be held.



THE HARBOR POINT LINKS

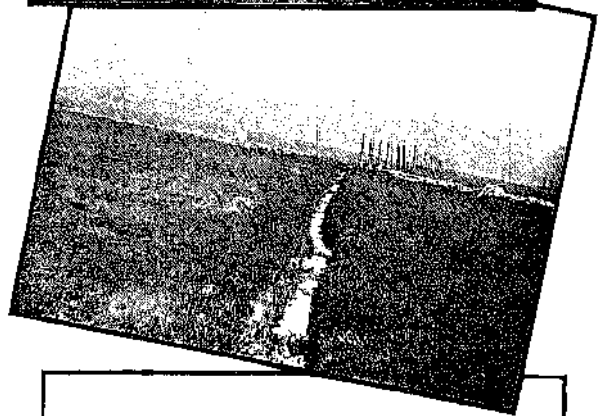
Wequetonsing Golf Club.

The grounds of the Wequetonsing Golf Club are an old Indian farm, charmingly situated on the cool bluff overlooking Lake Michigan, and within six minutes walk from the Wequetonsing railway station. The course of nine holes is very sporty, with its mountain stream, old stone fences and the hedges, besides the artificial bunkers. The grounds have received careful attention for the six years the club has been in existence, it being the first golf club in Northern Michigan. Last summer the putting-greens were relaid and enlarged at considerable expense, and the course promises to be in splendid form this season.

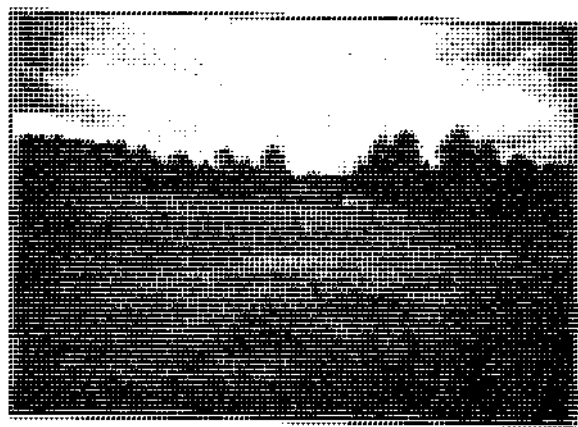
A beautiful and commodious club-house has been erected, with large fire-place, verandas, lockers, and every convenience possible for the members. There the ladies provide entertainment when tournaments and match-plays are in progress.

The links are open from June until October. Season rates are \$5.00, while tickets can also be had for the week or the day.

The officers are: Henry M. Curtis, Cincinnati, Ohio, President; H. P. Cristy, Detroit, Mich., Vice President; Richard M. Bishop, Cincinnati, Ohio, Secretary; George W. Knight, Columbus, Ohio, Treasurer.



WEQUETONSING GOLF LINKS



Roaring Brook Golf Grounds.

The Roaring Brook Golf Grounds occupy a magnificent piece of ground on the bluff west of the Roaring Brook Inn. It commands a view of Little Traverse Bay and the surrounding resorts. The ground is naturally adapted to the game, and has been put in good condition by the management of the Inn.

It is a nine-hole course, and was laid out by one of the professional players of this country. The turf is springy, the greens even, and the course varied and inspiring.

The Inn serves as a club-house, and a most convenient one to guests.

Petoskey.

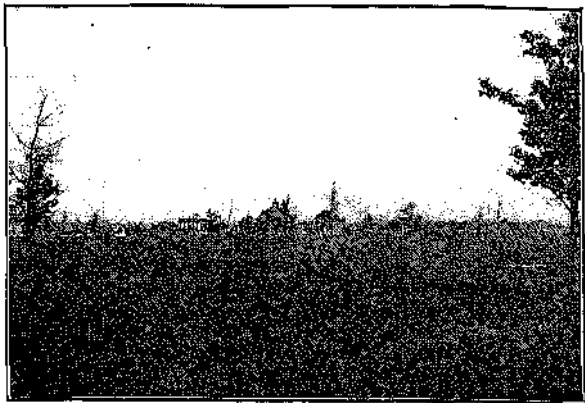
While there are no links at Petoskey, the excellent suburban train service of the Grand Rapids & Indiana Railway to the neighboring resorts puts the links at Wequetonsing, Harbor Point and Roaring Brook as near as links are to the residence portion in the larger cities.

Guests at Petoskey hotels have been frequent visitors to these links, and the courtesy of the clubs is extended to them through members.

Wawashkarno Golf Club.

Mackinac Island.

The grounds of the golf club on Mackinac Island are maintained by the resident cottagers. The club is a purely private affair, and the members are at liberty to extend the courtesies of the club to their friends after proper application.



Traverse City Golf Grounds.

The golf grounds of Traverse City are four blocks south of the Park Place Hotel, making them very convenient to the central part of the city. They are managed by a golf club, but visitors are always welcome to use them. The rates are fifty cents a day, or \$5.00 for the summer. They are kept in good shape, and those who have played on them say they are excellent, on account of their natural beauty, springy turf and even greens. This season they will be improved, many finishing touches put on them.



Neahtawanta Golf Links.

The Neahtawanta golf links are laid out on a large field about half a mile from the hotel. The view is exceptional, taking in Bowers Harbor, Marion Island, and Grand Traverse Bay toward Traverse City.

The field is large and has been made into a golf course of nine holes, that is one of the best in the Traverse region. A fine forest skirts the edge of the field, making it most picturesque. The greens are in admirable condition and the turf excellent for the game.

Omena Golf Grounds.

The golf links at Omena were started this season and are already in shape for use. An expert has laid them out in a beautiful spot near the chapel, lying between that and the village of Omena. The land is gently rolling and overlooks the blue waters of the bay.

No expense has been spared in preparing the grounds, so they will present to the lovers of golf the finest possible condition for enjoyment of the sport.

Northport.

Golf links are to be laid out between Northport and Northport Point this season. There is an admirable place for them, and with a little work can be made into attractive links.

Lake Harbor Golf Links.

Muskegon.

The golf grounds at this resort are directly south of the Lake Harbor Hotel. There are artificial bunkers or natural hazards at each of the nine holes.

The greens are kept in good form and are for the most part piped with water. The course overlooks Mona Lake and is exceedingly pretty.

Charlevoix.

The golf grounds at Charlevoix, which are but a short distance from the Charlevoix Inn, are excellent. The course is eighteen holes, although nine of them are more generally used. From some of the teeing-grounds a view of Pine Lake can be had.

The hazards are good, and more or less difficult. The turf is carefully kept, and the greens watered constantly and trimmed to suit the most exacting player.

Kent Country Club.

Grand Rapids, Michigan.

The golf grounds of the Kent Country Club have been opened this season for the first time, and, from the lay of the land, the rolling hills and the magnificent course, are pronounced to be one of the best links in the United States. Everything that money can do is being done to make them perfect.

A handsome club-house has been built on the summit of the terrace of hills and commands a grand view of the links, the river, and the country and city surrounding it.

The course is laid out over an ample field, artificial bunkers constructed where necessary, and water piped to every green.



KENT COUNTRY CLUB, GRAND RAPIDS, MICH.

The Rules of Golf

AS APPROVED BY THE ROYAL AND ANCIENT GOLF CLUB OF
ST. ANDREWS, IN 1899.

With Rulings and Interpretations by the Executive Committee of
the United States Golf Association in 1900.

The United States Golf Association, in making these Rulings and Interpretations, has made no change in the wording, nor in the import, of the Rules of Golf, as adopted by the Royal and Ancient Golf Club of St. Andrews, but has only added such definitions and explanations as appeared to be called for, or suggested by custom and decisions of competent experts.

1. DEFINITIONS—(a) The Game of Golf is played by sides, each playing its own ball. A side consists either of one or of two players. If one player plays against another, the match is called "a single." If two play against two, it is called "a foursome." A single player may play against two, when the match is called "a threesome," or three players may play against each other, each playing his own ball, when the match is called "a three-ball match."

RULING OF THE U. S. G. A.

"Match Play" is decided by the number of holes won.

"Medal Play" is decided by the aggregate number of strokes.

"Col. Bogey" is an imaginary opponent, against whose arbitrary score each competitor plays by holes; otherwise bogey competitions are governed by the Special Rules for Stroke Competitions, except that a competitor loses the hole:

When the ball is lost;

When his ball is not played where it lies except as otherwise provided for in the Rules.

(b) The game consists in each side playing a ball from a teeing-ground into a hole by successive strokes, and the hole is won by the side which holes its ball in fewer strokes than the opposite side, except as otherwise provided for in the Rules. If the sides hole out in the same number of strokes, the hole is halved.

RULING OF THE U. S. G. A.

In Competitions:

In Match Play, when two competitors have halved their match, they shall continue playing hole by hole till one or the other shall have won a hole, which shall determine the winner of the match.

Should the match-play competition be a handicap, the competitors must decide the tie by playing either one hole, three or five more holes, according to the manner in which the handicap ceded falls upon certain holes so as to make the extra holes a fairly proportionate representation of the round.

In Medal Play, when two or more competitors are tied, the winner shall be determined by another round of the course; except that By-laws 15 and 19 of the United States Golf Association provides that, in case of ties for the sixteenth place in the Amateur Championship medal rounds, or the eighth place in the Women's Championship medal rounds, respectively, the contestants so tied shall continue to play until one or the other shall have gained a lead by strokes, the hole or holes to be played out.

(c) The teeing-ground shall be indicated by two marks placed in a line, as nearly as possible at right angles to the course.

The hole shall be four and one-quarter inches in diameter, and at least four inches deep.

(d) The term "putting-green" shall mean all ground within twenty yards of the hole, except hazards.

(e) A "hazard" shall be any bunker, water (except casual water), sand, path, road, railway, whin, bush, rushes, rabbit scrape, fence, or ditch. Sand blown on to the grass, or sprinkled on the course for its preservation, bare patches, snow, and ice are not hazards. Permanent grass within a hazard shall not be considered part of the hazard.

(f) The term "through the green" shall mean all parts of the course except "hazards" and the putting-green which is being played to.

(g) The term "out of bounds" shall mean any place outside the defined or recognized boundaries of the course.

(h) "Casual water" shall mean any temporary accumulation of water (whether caused by rainfall or otherwise) which is not one of the ordinary and recognized hazards of the course.

(i) A ball shall be "in play" as soon as the player has made a stroke at the teeing-ground in each hole, and shall remain in play until holed out, except when lifted in accordance with the Rules.

(j) A ball shall be considered to have "moved" only if it leave its original position in the least degree, and stop in another; but if it merely oscillate, without finally leaving its original position, it shall not be considered to have moved.

(k) A ball shall be considered "lost" if it be not found within five minutes after the search for it is begun.

(l) A "match" shall consist of one round of the Links, unless it be otherwise agreed.

A match is won by the side which is leading by a number of holes greater than the number of holes remaining to be played. If each side win the same number of holes, the match is halved.

(m) A "stroke" shall be any movement of the ball caused by the player, except as provided for in Rule 4, or any downward movement of the club made with the intention of striking the ball.

(n) A "penalty stroke" is a stroke added to the score of a side under certain rules, and shall not affect the rotation of play.

(o) The privilege of playing first from a teeing-ground is called "the honor."

(p) "Addressing the ball" shall mean that a player has taken up his position and grounded his club, or if in a hazard, that he has taken up his position preparatory to striking the ball.

(q) The reckoning of the strokes is kept by the terms—"the odd," "two more," "three more," etc., and "one off three," "one off two," "the like." The reckoning of holes is kept by the terms—so many "holes up," or "all even," and so many "to play."

2. A match begins by each side playing a ball from the first teeing-ground.

The player who shall play first on each side shall be named by his own side.

The option of taking the honor at the first teeing-ground shall be decided, if necessary, by lot.

A ball played from in front of, or outside of, or more than two club lengths behind the two marks indicating the teeing-ground, or played by a player when his opponent should have had the honor, may be at once recalled by the opposite side, and may be re-tee'd.

The side which wins a hole shall have the honor at the next teeing-ground. If a hole has been halved the side which had the honor at the last teeing-ground shall again have the honor.

On beginning a new match the winner of the long match in the previous round shall have the honor, or if the previous match was halved the side which last won a hole shall have the honor.

RULING OF THE U. S. G. A.

Penalty for playing a ball outside of the limits of teeing-ground:

In Match Play, the ball may be at once recalled by the opponent, no stroke being counted for the misplay.

In Medal play, disqualification.

Penalty for leading off the tee out of turn:

In Match Play, the ball may be at once recalled by the opponent, no stroke being counted for the misplay.

In Medal Play, no penalty—but it is customary in Medal Play to observe the honor.

3. A player shall not play while his ball is moving, under the penalty of the loss of the hole. But if the ball begin to move while the player is making his upward or downward swing, he shall incur no penalty, except as provided for in Rules 10, 18, and 27, and a stroke lost under Rule 27 shall not in these circumstances be counted as a stroke of the player.

RULING OF THE U. S. G. A.

Penalty for playing a moving ball (except at the tee):

In Match Play, loss of the hole.

In Medal Play, two strokes.

But if the ball move while the player is making his upward or downward swing, a penalty is only incurred if the player is deemed to have caused it to move, under Rules 10 and 18, by moving or touching any loose impediment, or under Rule 27, by grounding his club, or in a hazard, by taking his stand to play it, in which cases the penalty shall be:

In Match Play, one stroke.
In Medal Play, one stroke.

4. If the ball fall or be knocked off the tee in addressing it, no penalty shall be incurred, and it may be replaced, and if struck when moving no penalty shall be incurred.

5. If a threesome or foursome the partners shall strike off alternately from the teeing-grounds, and shall strike alternately during the play of the hole.

If a player play when his partner should have done so, his side shall lose the hole.

RULING OF THE U. S. G. A.

Penalty:

In Match Play, loss of the hole.
In Medal Play, two strokes.

6. When the balls are in play, the ball farthest from the hole which the players are approaching shall be played first, except as otherwise provided for in the Rules. If a player play when his opponent should have done so, the opponent may at once recall the stroke. A ball so recalled shall be dropped as near as possible to the place where it lay, without penalty.

RULING OF THE U. S. G. A.

"Otherwise provided for" in Rule 32, and Medal Rule 11.

Penalty for playing out of turn:

In Match Play, ball may be at once recalled by the opponent, no stroke being counted for the misplay.

In Medal Play, no penalty—the ball may not be recalled.

7. The ball must be fairly struck at, not pushed, scraped, nor spooned, under penalty of the loss of the hole.

RULING OF THE U. S. G. A.

Penalty:

In Match Play, loss of the hole.
In Medal Play, two strokes.

8. A ball must be played wherever it lies or the hole be given up, except as otherwise provided for in the Rules.

RULING OF THE U. S. G. A.

"Otherwise provided for" in Rules 9, 11, 14, 15, 17, 22, 23, 28, 31, 32, 34.

Penalty:

In Match Play, loss of the hole.

In Medal Play, two strokes, except otherwise provided for in Medal Rules 6, 8, 9, 10, 11.

9. Unless with the opponent's consent, a ball in play shall not be moved, nor touched before the hole is played out, under penalty of one stroke, except as otherwise provided for in the Rules. But the player may touch his ball with his club in the act of addressing it without penalty.

If the player's ball move the opponent's through the green, the opponent, if he choose, may drop a ball (without penalty) as near as possible to the place where it lay, but this must be done before another stroke is played.

RULING OF THE U. S. G. A.

"Otherwise provided for" in Rules 11, 13, 15, 17, 22, 23, 28, 31, 32, 34, and Medal Rules 6, 8, 9, 10, 11.

Penalty:

In Match Play, for moving or touching, one stroke

In Medal Play, one stroke.

If a competitor's ball be displaced by another competitor's ball it must be replaced, or its owner shall be disqualified.

10. Any loose impediment (not being in or touching a hazard) which is within a club length of the ball may be removed. If the player's ball move after any such loose impediment has been touched by the player, his partner, or either of their caddies, the penalty shall be one stroke. If any loose impediment (not being on the putting-green) which is more than a club length from the ball be removed, the penalty shall be the loss of the hole.

RULING OF THE U. S. G. A.

Penalty for ball moved (not in hazard) after removing loose impediment within club length of the ball:

In Match Play, one stroke.
In Medal Play, one stroke.

Through the green, for removing loose impediment more than a club length from the ball:

In Match Play, loss of the hole.
In Medal Play, two strokes.

11. Any vessel, wheelbarrow, tool, roller, grass cutter, box, or similar obstruction may be removed. If a ball be moved in so doing, it may be replaced without penalty. A ball lying on or touching such obstruction, or on clothes, net, or ground under repair or covered up or opened for the purpose of the upkeep of the Links, may be lifted and dropped without penalty, as near as possible to the place where it lay, but not nearer the hole. A ball lifted in a hazard, under such circumstances, shall be dropped in the hazard.

A ball lying in a golf hole or flag hole, or in a hole made by the greenkeeper, may be lifted and dropped without penalty as near as possible to the place where it lay, but not nearer the hole.

RULING OF THE U. S. G. A.

"As near as possible" shall mean within a club length.

If a ball lie on or within a club length of a drain cover, water pipe, or hydrant, it may be lifted and dropped without penalty as near as possible to the place where it lay, but not nearer the hole.

12. Before striking at a ball in play, the player shall not move, bend, nor break anything fixed or growing near the ball, except in the act of placing his feet on the ground for the purpose of addressing the ball, in so doing his club to address the ball, and in his upward or downward swing, under penalty of the loss of the hole, except as otherwise provided for in the Rules.

RULING OF THE U. S. G. A.

"Otherwise provided for" in Rules 11, 13, 30.

Penalty:

In Match Play, loss of the hole.
In Medal Play, two strokes.

13. When a ball lies in or touches a hazard, nothing shall be done to improve its lie; the club shall not touch the ground, nor shall anything be touched or moved before the player strikes at the ball, subject to the following exceptions: (1) The player may place his feet firmly on the ground for the purpose of addressing the ball; (2) In addressing the ball, or in the upward or downward swing, any grass, bent, whin, or other growing substance, or the side of a bunker, wall, paling, or other immovable obstacle may be touched; (3) Steps or planks placed in a hazard by the Green Committee for access to or egress from such hazard may be removed, and if a ball be moved in so doing, it may be replaced without penalty; (4) Any loose impediments may be removed from the putting-green; (5) The player shall be entitled to find his ball as provided for by Rule 30. The penalty for a breach of this Rule shall be the loss of the hole.

RULING OF THE U. S. G. A.

Penalty:

In Match Play, loss of the hole.
In Medal Play, two strokes.

14. A player or caddie shall not press down nor remove any irregularities of surface near a ball in play. Dung, worm casts, or mole-hills may be removed (but not pressed down) without penalty. The penalty for a breach of this Rule shall be the loss of the hole.

RULING OF THE U. S. G. A.

Penalty:

In Match Play, loss of the hole.
In Medal Play, two strokes.

Pressing down the surface behind the ball by prolonged or forcible grounding of the club shall be deemed a breach of this Rule.

15. If a ball lie or be lost in water, the player may drop a ball, under penalty of one stroke. But if a ball lie or be lost (1) in casual water through the green, a ball may be dropped without penalty; (2) in water in a hazard, or in casual water in a hazard, a ball may be dropped behind the hazard, under penalty of one stroke; (3) in casual water on a putting-green, a ball may be placed by hand behind the water, without penalty.

RULING OF THE U. S. G. A.

Penalty:

In Match Play, one stroke.

In Medal Play, one stroke.

A ball lifted from a recognized water hazard may be dropped under a penalty of one stroke even if the hazard be dry at the time.

If the water in a recognized water hazard overflow its usual boundaries the overflowed portion of the course shall be considered as part of the hazard, and not as casual water.

If a ball lie or be lost in casual water in a hazard, a ball may be dropped without penalty, behind the water, but in the hazard, keeping the spot where it entered the water in line to the hole.

16. When a ball has to be dropped, the player himself shall drop it. He shall face the hole, stand erect behind the hazard or casual water, keep the spot from which the ball was lifted (or in the case of water or casual water, the spot at which it entered) in a line between himself and the hole, and drop the ball behind him from his head, standing as far behind the hazard or casual water as he may please. If it be impossible to drop the ball behind the hazard or casual water, it shall be dropped as near as possible to the place where it lay, but not nearer the hole. If the ball so dropped touch the player dropping it, there shall be no further penalty, and if the ball roll into a hazard, it may be redropped without further penalty.

RULING OF THE U. S. G. A.

Penalty for a ball not dropped in accordance with this Rule:

In Match Play, the opponent may call for the player to drop again; if the request be not complied with the player shall lose the hole.

In Medal Play, the ball must be dropped again or the competitor disqualified.

17. When the balls lie within six inches of each other on a putting-green, or within a club length of each other through the green or in a hazard (the distance to be measured from their nearest points), the ball nearer the hole may, at the option of either the player or the opponent, be lifted until the other is played, and shall then be replaced as near as possible to the place where it lay. If the ball farther from the hole be moved in so doing, or in measuring the distance, it shall be replaced without penalty. If the lie of the lifted ball be altered by the player in playing, the ball may be placed in a lie as nearly as possible similar to that from which it was lifted, but not nearer the hole.

18. Any loose impediments may be removed from the putting-green, irrespective of the position of the player's ball. The opponent's ball may not be moved except as provided for by the immediately preceding Rule. If the player's ball move after any loose impediment lying within six inches of it has been touched by the player, his partner, or either of their caddies, the penalty shall be one stroke.

RULING OF THE U. S. G. A.

Penalty:

In Match Play, one stroke.

In Medal Play, one stroke.

19. When the ball is on the putting-green the player or his caddie may remove (but not press down) sand, earth, dung, worm-casts, mole-hills, snow, or ice lying round the hole or in the line of his putt. This shall be done by brushing lightly with the hand only across the putt and not along it. Dung may be removed by a club, but the club must not be laid with more than its own weight upon the ground. The line of the putt must not be touched, except with the club immediately in front of the ball, in the act of addressing it, or as above authorized. The penalty for a breach of this Rule is the loss of the hole.

RULING OF THE U. S. G. A.

Penalty:

In Match Play, loss of the hole.

In Medal Play, two strokes.

The "line of the putt" does not extend beyond the hole.

The "player or his caddie" shall include his partner or his partner's caddie.

20. When the ball is on the putting-green, no mark shall be placed, nor line drawn as a guide. The line of the putt may be pointed out by the player's caddie, his partner, or his partner's caddie, but the person doing so must not touch the ground.

The player's caddie, his partner, or his partner's caddie, may stand at the hole, but no player nor caddie shall endeavor, by moving or otherwise, to influence the action of the wind upon the ball.

The penalty for a breach of this Rule is the loss of the hole.

RULING OF THE U. S. G. A.

Penalty:

In Match Play, loss of the hole.
In Medal Play, two strokes.

21. When on the putting-green, a player shall not play until the opponent's ball is at rest, under penalty of one stroke.

RULING OF THE U. S. G. A.

Penalty:

In Match Play, one stroke.
In Medal Play, one stroke.

22. Either side is entitled to have the flag-stick removed when approaching the hole. If the ball rest against the flag-stick when in the hole, the player shall be entitled to remove the stick, and if the ball fall in, it shall be deemed as having been holed out at the last stroke. If the player's ball knock in the opponent's ball, the latter shall be deemed as having been holed out at the last stroke. If the player's ball move the opponent's ball, the opponent, if he choose, may replace it, but this must be done before another stroke is played. If the player's ball stop on the spot formerly occupied by the opponent's ball, and the opponent declare his intention to replace, the player shall first play another stroke, after which the opponent shall replace and play his ball. If the opponent's ball lie on the edge of the hole, the player, after holing out, may knock it away, claiming the hole if holing at the like, and the half if holing at the odd, provided, that the player's ball does not strike the opponent's ball and set it in motion. If after the player's ball is in the hole, the player neglect to knock away the opponent's ball, and it fall in also, the opponent shall be deemed to have holed out at his last stroke.

RULING OF THE U. S. G. A.

Penalty—If player's ball knock in the other ball:

In Match Play, the latter shall be counted as holed out in the last stroke.

In Medal Play, the latter must be replaced or its owner disqualified.

—If player's ball displace the other ball:

In Match Play, the other ball may be replaced at its owner's option, but this must be done before another stroke is played.

In Medal Play, the other ball must be replaced or its owner disqualified.

23. If a ball in motion be stopped or deflected by any agency outside the match, or by the forecaddie, the ball must be played from where it lies, and the occurrence submitted to as a "rub of the green." If a ball lodge in anything moving, a ball shall be dropped as near as possible to the place where the object was when the ball lodged in it, without penalty. If a ball at rest be displaced by any agency outside the match, excepting wind, the player shall drop a ball as near as possible to the place where it lay, without penalty. On the putting-green the ball shall be replaced by hand, without penalty.

RULING OF THE U. S. G. A.

Ball at rest displaced:

In Match Play, must be dropped, or if on putting-green replaced, as near as possible to where it lay, or the hole shall be lost.

In Medal Play, must be replaced as near as possible to where it lay, or its owner must be disqualified.

24. If the player's ball strike, or be moved by an opponent or an opponent's caddie or clubs, the opponent shall lose the hole.

RULING OF THE U. S. G. A.

Penalty incurred:

In Match Play, loss of the hole.

In Medal Play, no penalty.

If the player's ball strike the other competitor or his caddie or clubs, it is a "rub of the green" and the ball shall be played from where it lies. If a player's ball at rest be moved by the other competitor or his caddie, the ball must be replaced or the player disqualified.

25. If the player's ball strike, or be stopped by himself or his partner, or either of their caddies or clubs; his side shall lose the hole.

RULING OF THE U. S. G. A.

Penalty:

In Match Play, loss of the hole.

In Medal Play, one stroke.

26. If the player, when making a stroke, strike the ball twice, the penalty shall be one stroke.

RULING OF THE U. S. G. A.

Penalty:

In Match Play, one stroke.
In Medal Play, one stroke.

27. If the player, when not intending to make a stroke, or his partner, or either of their caddies, move his or their ball, or by touching anything cause it to move, when it is in play, the penalty shall be one stroke. If a ball in play move, after the player has grounded his club in the act of addressing it, or, when in a hazard, if he has taken up his stand to play it, he shall be deemed to have caused it to be moved, and shall lose a stroke, which shall be counted as a stroke of the player, except as provided in Rule 3.

RULING OF THE U. S. G. A.

Penalty for moving ball or causing it to be moved as under Rules 10 and 18:

In Match Play, one stroke.
In Medal Play, one stroke.

28. If a player play the opponent's ball, his side shall lose the hole, unless (1) the opponent then play the player's ball, whereby the penalty is cancelled, and the hole must be played out with the balls thus exchanged, or (2) the mistake occur through wrong information given by the opponent or his caddie, in which case there shall be no penalty, but the mistake, if discovered before the opponent has played, must be rectified by placing a ball as near as possible to the place where the opponent's ball lay.

If it be discovered before either side has struck off from the next teeing-ground (or, after playing the last hole in the match, before any of the players have left the green) that one side has played out the hole with the ball of a party not engaged in the match, that side shall lose that hole.

RULING OF THE U. S. G. A.

Penalty for breach of this rule:

1st. Playing the opponent's ball with exceptions (1) and (2) above noted in the Rule:

In Match Play, loss of the hole.
In Medal Play, no penalty. The ball must be replaced.

2d. Playing out with the ball of a party not engaged in the match:
In Match Play, if discovered before the next tee stroke, loss of the hole.

In Medal Play, the player must go back and play his own ball, or, not finding it, return as near as possible to the spot where it was last struck, tee another ball and lose a stroke (Rule 6, Medal Play) or else be disqualified.

29. If a ball be lost, except as otherwise provided for in the Rules, the player's side shall lose the hole; but if both balls be lost, the hole shall be considered halved.

RULING OF THE U. S. G. A.

"Otherwise provided for" in Rules 15, 31.

Penalty for lost ball:

In Match Play, loss of the hole.

In Medal Play, the competitor must return as near as possible to the spot from which the lost ball was struck, tee a ball and lose a stroke.

30. If a ball be lost in fog, bent, whins, long grass, or the like, only so much thereof shall be touched as will enable the player to find his ball. The penalty for a breach of this rule shall be the loss of the hole.

RULING OF THE U. S. G. A.

Penalty:

In Match Play, loss of the hole.
In Medal Play, two strokes.

31. If a ball be driven out of bounds, a ball shall be dropped at the spot from which the stroke was played, under penalty of loss of the distance.

RULING OF THE U. S. G. A.

Penalty:

In Match Play, loss of the distance.
In Medal Play, loss of the distance.

32. In a three-ball match, if a player consider that an opponent's ball on the putting-green might interfere with his stroke, he may require the opponent either to lift or hole out his ball at the opponent's discretion.

If an opponent consider (1) that his own ball, if left, might be of assistance to the player, he is entitled to lift it, or hole out at his discretion; or (2) that the ball of the other opponent might be of such assistance, he may require that it be either lifted or holed out at the other opponent's discretion.

33. A player shall not ask for advice from any one except his own caddie, his partner, or his partner's caddie, nor shall he willingly be otherwise advised in any way whatever, under penalty of the loss of the hole.

RULING OF THE U. S. G. A.

Penalty:

In Match Play, loss of the hole.

In Medal Play, disqualification.

34. If a ball split into separate pieces, another ball may be put down where the largest portion lies, or if two pieces are apparently of equal size, it may be put where either piece lies, at the option of the player. If a ball crack or become unfit for play, the player may change it, on intimating to his opponent his intention to do so. Mud adhering to a ball shall not be considered as making it unfit for play.

35. If a dispute arise on any point, the players have the right of determining the party or parties to whom it shall be referred, but should they not agree, either side may refer it to the Rules of Golf Committee, whose decision shall be final. If the point in dispute be not covered by the Rules of Golf, the arbiters must decide it by equity.

RULING OF THE U. S. G. A.

Such decisions may be finally referred to the Executive Committee of the United States Golf Association.

SPECIAL RULES FOR STROKE COMPETITIONS.

1. In stroke competitions, the competitor who holes the stipulated course in fewest strokes shall be the winner.

2. If the lowest scores be made by two or more competitors, the tie or ties shall be decided by another round to be played on the same day. But if the Green Committee determine that to be inexpedient or impossible, they shall then appoint the following or some subsequent day whereon the tie or ties shall be decided.

RULING OF THE U. S. G. A.

Except that By-Laws 15 and 19 of the United States Golf Association provide that, in case of ties for the sixteenth place in the amateur championship medal rounds, or for the eighth place in the women's championship medal rounds, respectively, the contestants so tied shall continue to play until one or the other shall have gained a lead by strokes, the hole or holes to be played out.

3. New holes shall be made for Stroke Competitions, and thereafter, no competitor, before starting, shall play any stroke on a putting-green, under penalty of disqualification.

RULING OF THE U. S. G. A.

Competitors must always assume that new holes have been made. Practice strokes may be played through the green, and in hazards.

In Match-Play competitions, other than bogey competitions, practice strokes may be played on the putting-greens.

4. The scores shall be kept by a special marker, or by the competitors noting each other's scores. The scores marked shall be checked after each hole. On completion of the round, the score of the competitor shall be signed by the marker, countersigned by the competitor, and handed to the Secretary or his deputy, after which, unless it be found that a card returned shows a score below that actually played (in which case the competitor shall be disqualified), no correction or alteration can be made.

5. If a competitor play from outside the limits of the teeing-ground, the penalty shall be disqualification.

6. If a ball be lost (except as otherwise provided for in the Rules of Golf), the competitor shall return as near as possible to the spot from which the lost ball was struck, tee a ball and lose a stroke. The lost ball shall continue in play, if it be found before the player has struck another ball.

RULING OF THE U. S. G. A.

Penalty for breach of this rule shall be disqualification.

"Otherwise provided for" in Rules 15, 31.

7. If a competitor's ball strike himself, his clubs, or caddie, the penalty shall be one stroke.

8. If a competitor's ball strike another competitor, or his clubs or caddie, it is a "rub of the green," and the ball shall be played from where it lies. If a competitor's ball which is at rest be moved by another competitor, or his caddie, or his club, or his ball, or by any outside agency excepting wind, it shall be replaced as near as possible to the place where it lay, without penalty.

9. A competitor shall hole out with his own ball at every hole, under penalty of disqualification. But if it be discovered, before he has struck off from the next teeing-ground or, if the mistake occur at the last hole, before he has handed his card to the Secretary or his deputy, that he has not holed out with his own ball, he shall be at liberty to return and hole out with his own ball without penalty.

RULING OF THE U. S. G. A.

If he fail to find his own ball he shall return as near as possible to the spot from which he last struck it, tee a ball and lose a stroke. (Medal Rule 6.)

10. A ball may be lifted out of a difficulty of any description, and teed, if possible, behind it, under penalty of two strokes. If it be impossible to tee the ball behind the difficulty, it shall be teed as near as possible to the place where it lay, but not nearer the hole.

11. All the balls shall be holed out, under penalty of disqualification. When a competitor's ball is within 20 yards of the hole, the competitor shall not play until the flag has been removed, under penalty of one stroke. If the ball nearer the hole might either interfere with the competitor's stroke, or in any way assist the competitor, such ball must be holed out or lifted, at the owner's option. Through the green a competitor may have any other competitor's ball lifted, if he find that it interferes with his stroke.

12. A competitor, unless specially authorized by the Green Committee, shall not play with a professional, and he may not willingly receive advice from any one but his caddie, in any way whatever under penalty of disqualification. A forecaddie may be employed.

RULING OF THE U. S. G. A.

Each competitor may have a forecaddie

13. Competitors shall not discontinue play on account of bad weather, under penalty of disqualification.

14. Where, in the "Rules of Golf," the penalty for the breach of any rule is the loss of the hole, in stroke competitions the penalty shall be the loss of two strokes, except where otherwise provided for in these Special Rules.

15. Any dispute regarding the play shall be determined by the Rules of Golf Committee.

RULING OF THE U. S. G. A.

Such decision may be finally referred to the Executive Committee of the United States Golf Association.

16. The Rules of Golf, so far as they are not at variance with these Special Rules, shall apply to Stroke Competitions.

ETIQUETTE OF GOLF.

1. A single player has no standing and must always give way to a properly constituted match.

2. No player, caddie, or onlooker should move or talk during a stroke

3. No player should play from the tee until the party in front have played their second strokes, and are out of range, nor play up to the putting-green till the party in front have holed out and moved away.

4. The player who has the honor should be allowed to play before his opponent tees his ball.

5. Players who have holed out should not try their putts over again when other players are following them.

6. Players looking for a lost ball must allow other matches coming up to pass them.

7. On request being made, a three-ball match must allow a single, threesome or foursome to pass. Any match playing a whole round may claim the right to pass a match playing a shorter round.

8. If a match fail to keep its place on the green, and lose in distance more than one clear hole on those in front, it may be passed, on request being made.

9. Turf cut or displaced by a stroke should be at once replaced.

10. A player should carefully fill up all holes made by himself in a bunker.

11. It is the duty of an umpire or referee to take cognizance of any breach of rule that he may observe, whether he be appealed to on the point or not.

RULING OF THE U. S. G. A.

The "Etiquette of Golf" shall be as binding upon players as the other Rules of the game.



Information to Travelers.

Full information regarding trains, sleeping and parlor car reservations, connections, the Northland Express with its cafe car service, etc., on the Grand Rapids & Indiana Railway, can be obtained of the following:

- C. L. LOCKWOOD, General Passenger and Ticket Agent,
G. R. & I. R'y, Grand Rapids, Mich.
- G. E. ROCKWELL, Assistant General Passenger Agent,
Penna. Lines, 4th and Walnut Sts., Cincinnati, O.
- E. M. BRONSON, S. E. Passenger Agent,
Penna. Lines, Cincinnati, O.
- J. M. CHESBROUGH, Assistant General Passenger Agent,
Vandalia Lines, St. Louis, Mo.
- W. W. RICHARDSON, . . . District Passenger Agent,
Penna. Lines, Indianapolis, Ind.
- C. H. HAGERTY, District Passenger Agent,
Penna. Lines, Louisville, Ky.
- J. M. HARRIS, District Passenger Agent,
Penna. Lines, Columbus, O.
- C. C. HAINES, District Passenger Agent,
Penna. Lines, Dayton, O.
- WARREN KEELER, . . . City Passenger and Ticket Agent,
M. C. R. R., 119 Adams St., Chicago, Ill.
- A. Y. LINDSAY, Traveling Passenger Agent,
G. R. & I. R'y, Cincinnati, O.
- G. C. ALLEN, Traveling Passenger Agent,
G. R. & I. R'y, Grand Rapids, Mich.
- M. F. QUAINANCE, Passenger Agent,
Petoskey, Mich.