

INSIDE THE	
Railway Progress	
Editorials	4
Sports	6
Police Beat	8
Obituaries	8
County news	B1
Entertainment	B3
Shipping Out	B6
Classified	B10
Real estate	B13
Automotive	B14

How to reach us:
Our offices are located at 1291
Stuyvesant Avenue, Union, N.J.
07083. We are open from 9 a.m. to
5 p.m. every weekday. Call us at
one of the telephone numbers
listed below.

Voice Mail:
Our main phone number, 908-686-
7700 is equipped with a voice mail
system to better serve our
customers. During regular business
hours, a receptionist will answer
your call. During the evening or
when the office is closed, your call
will be answered by an automated
receptionist.

To subscribe:
The Progress is mailed to the
homes of subscribers for delivery
every Thursday. One-year
subscriptions in Union County are
available for \$15.00. Two-year
subscriptions for \$28.00. College
and out-of-state subscriptions are
available. You may subscribe by
phone by calling 908-686-7700 and
asking for the circulation
department. Allow at least two
weeks for processing your order.
You may use MasterCard or VISA.

News items:
News releases of general interest
must be in our office by Friday at
noon to be considered for
publication the following week.
Pictures must be black and white
and glossy prints. For further
information or to report a breaking
news story, call 908-686-7700 and
ask for Editorial.

Letters to the editor:
The Progress provides an open
forum for opinions and welcomes
letters to the editor. Letters should
be typed, double spaced, must be
signed, and should be
accompanied by an address and
daytime phone number for
verification. Letters and columns
may be considered for publication
at the discretion of the editor.
Monday to be considered for
publication that week. They are
subject to editing for length and
clarity.

e-mail:
The Progress accepts opinion
pieces by e-mail. Our address is
WONK2@localsource.com.
e-mail must be received by 8 a.m.
Monday to be considered for
publication that week. Advertising
and news releases will not be
accepted by e-mail.

To place a classified ad:
Display advertising for placement
in the general news section of the
Progress must be in our office by
Monday at 5 p.m. for publication
that week. Advertising for
placement in the B section must be
in our office by Monday at noon. An
advertising representative will
gladly assist you in preparing your
message. Call 908-686-7700 for the display
advertising department.

To place a classified ad:
The Progress has a large, well
read classified advertising section.
Advertisements must be in our
office by Tuesday at 3 p.m. for
publication that week. All classified
ads are payable in advance. We
accept VISA and MasterCard. A
classified representative will gladly
assist you in preparing your
message. Please stop by our office
during regular business hours or
call 1-800-564-8911, Monday to
Friday from 9 a.m. to 6 p.m.

Facsimile transmission:
The Progress is equipped to accept
your ads, releases, etc. by Fax.
Our Fax line is open 24 hours a
day. For classified, please dial 908-686-
4189. For other transmissions please dial 908-686-
4189.

Web Site:
Visit our Web Site on the Internet
called LocalSource online at
http://www.localsource.com.
Find all the latest news, classified,
community information, real estate
and hometown chat.

Postmaster: Please note:
THE RAILWAY PROGRESS (USPS 005-857) is published
weekly by World Community
Newspapers, Inc., 1291 Stuyvesant
Avenue, Union, N.J. 07083. Mail
subscriptions \$15.00 per year in
Union County, 25 cents per copy,
non-refundable. Periodicals
postage paid at Union, N.J., and
additional mailing office.
POSTMASTER: Send address
changes to the RAILWAY
PROGRESS, 1291 Stuyvesant
Avenue, Union, N.J. 07083.

Water system revamping may cause rates hike

(Continued from Page 1)
advised that the conditions in Rahway are "a bit different" than they are in North Brunswick. North Brunswick retains control over its water rates and, while some municipal employees were shuffled around, none lost their jobs.
She added that Rahway might experience a "small rate increase" but that this would be accompanied with additional services.
When asked to comment on the offer termination, Janusz, a vocal critic of Kennedy, said, "I think that the people of Rahway proved that you can fight City Hall."
But Kennedy denied that Janusz had anything to do with the termination of the bid offering, saying that Janusz had not seen any of the figures in the feasibility report and that the council had not been brought into the process at that stage.
Kennedy said that the Water Department is already in the middle of a number of changes, some to make it more attractive and others that are just plain necessary.

Teachers to use visitor as display in classroom

By Chris Sykes
Staff Writer
A good, dedicated teacher is always on the lookout for instructional tools to use in class.
Such was the case with Rahway residents Lillian and Bob Eustice, teachers in the Hillside School District. Lillian is a second-grade teacher at A.P. Morris Elementary School and is responsible for raising Holocaust awareness through her annual "Terrible Things" readings. Bob is a fifth-grade teacher at George Washington Elementary School who works to prepare students for participation in Math 24 intramural contests in addition to his regular teaching duties and sponsoring his other pupils in their award-winning artistic and historical endeavors.
The Eustices took a trip to the store last week and when they returned to their home they discovered a rather strange visitor waiting for them. He had a large body and long arms dotted with holes.
As Lillian was the one who found the tool stuck in the backyard of their home, she came across their visitor sitting on the doorknob and he startled her.
"I had never seen anything like him before," she said. "He was huge and kind of big and I didn't want to touch him."
Instead of fleeing, she called Bob

COMMUNITY CALENDAR

The Community Calendar is prepared by the Rahway Progress to inform residents of various community activities and governmental meetings. To give you community events the publicity they deserve, mail your schedule to Rahway Progress, Attention: Chris Sykes, managing editor, P.O. Box 3100, Union, 07083.

Today
• The Mayor's Concert Series continues. There will be concerts on Thursday nights through August from 7 to 9 p.m. at West Main Street and Irving Street in Rahway. Concert goes should bring lawn chairs. In case of inclement weather, the concerts will be moved indoors to Rahway Intermediate School, Rine Place in Rahway. On Aug. 14 the Tim Griffin Band, one of New Jersey's most popular country music dance bands, will perform. This seven piece group features pedal steel, fiddle, guitar, bass, drums, keyboard as well as two highly talented female vocalists. On Aug. 21, the Latin Jazz Connection performed Latin big band classics, its own special Latin/Latin jazz arrangements and mainstream jazz and blues. On Aug. 28, the Degrade will close out this concert series performing "Love" songs of the past, coupled with rock and roll music of the '50s and '60s as well as their personal interpretations of today's music. For more information, call the Division of Parks and Recreation at 827-2045.
• The Rahway Environmental Commission will meet in the second floor conference room of Rahway City Hall at 7 p.m.
Saturday
• The Saturday Marketplace, located in Parking Lot F, adjacent to the train station, at the corner of Irving Street and Broad Street, in downtown Rahway will be open. The Saturday Marketplace is expanding. Interested vendors can call the sponsoring organization, Rahway Center, Partnership, at (732) 596-3545 for information.
Coming events
Aug. 21
• The Concerned Citizens of Union County will meet at the JFC Community Center, 796 East Hazelwood Ave. in Rahway. For time call Bob Cannon at 381-7259 or Kerri Blanchard at 396-7722.
The Concerned Citizens are involved in examining such issues as the hazards of a toxic waste incinerator. The group uses the model of participatory democracy in their organization and state there is no single person who makes all the decisions, the group decides action. The Concerned Citizens invite all to join their meetings on the first and third Thursday of every month.
Aug. 22
• Rahway Hospital will hold its annual summer

HAZMAT team responds to St. Georges Ave. oil leak

Rahway
Firefighters and HAZMAT workers had to respond to an oil leak on the 400 block of St. Georges Avenue on Aug. 5.
According to a fire department spokesman, a light tractor trailer leaked motor oil into a storm drain on St. Georges Avenue at 9:04 a.m. that day. Union County Hazardous Materials workers responded to the leak. It was estimated that a gallon to a couple of gallons of motor oil leaked into the storm drain. The driver and the company that owned the truck were

RAILWAY PROGRESS - CLARK EAGLE

Newly inducted scholars

Students from Arthur L. Johnson High School in Clark are honored at the French National Honor Society induction ceremony. Front row, kneeling is Andrew Tjeng. Back row, from left are Taryn Winkle, Chris Doss, Heather Sapp, Joseph MacAvoy, Laura Breen, Ragine Roussio and Ksenia Adamovich. Other inductees were Melissa Sockell and Gary Stalack.

Freeholders sponsor golf benefit

Challenges have always been part of the course.
A 5-year-old boy without a lower right leg and a 70-year-old stroke victim were among the more than dozen people with disabilities who were part of the third annual First Swing Golf Program held recently at the Ash Brook Golf Course in Scotch Plains.
Sponsored by the Board of Chosen Freeholders, the Division of Parks and Recreation and the Eastern Amputee Golf Association, with funding from the U.S. Golf Association Foundation, First Swing sponsored the sport of golf to people with impediments, and showed how the sport can be a vital part of physical therapy.
"My son loves golf and he's actually pretty good," said Claire Tjeng, mother of Connor, 5, who, despite wearing a prosthesis to compensate for his missing lower right leg, showed proficiency with a nine-iron and became a crowd favorite. "It was important for him to see

Narcotics unit patrols 'shooting' site

By Sean Doherty
Staff Writer
The shooting of an East 18th Street Linden resident on Aug. 13 was only the latest in an ongoing problem on that street.
The shooting, allegedly committed by Christopher Beauty of Rahway, wounded a 27-year-old resident of South 34th Street in the buttocks and followed a fight that began between two females and escalated to include their friends.
According to Linden Police Chief John Milano, such a shooting has not occurred in that area "in recent memory. The last I saw of a street event."
"All I recall is that I saw two cars and I told my kids to come inside because I saw the fight there," said one woman, an East 18th Street resident. Almost all of the residents did not want their names to be printed, some over concerns for their safety.
Many residents were either inside or away when the shooting occurred. When asked if this was a common occurrence on East 18th Street, there were mixed replies.
"It's really not as far as I know," said one male resident of East 18th Street. "Of course, you have the drug problem, but nothing like this."
"Let's put it this way: the back is worse than the bite," he added.
But a number of residents disagreed.
"I would have to say yes," said the owner of one building on East 18th Street, who said the owner of one building on East 18th Street and South Wood Avenue is a hangout for groups of people aged between 18 and the early 30s. There is often "shooting, fighting, throwing bottles" during the late night and early morning hours.
"I have called as much as five times in one night," she said. "I have even called the mayor (Linden Mayor John T. Gregorio)."
She added that there was drug dealing on that corner.
"If I can see it, the detectives can see it," she said.
The woman 18th Street resident agreed, but added that the July 30 shooting was the first that she could recall on that street.
"This used to be a peaceful street," she said. "Then people started coming in." She added that trouble on the street

EVENTS

is "always at that end" of the corner of East 18th Street and South Wood Avenue.
"They're not all stragglers," said a Linden resident. "Some are from Linden, some are from Rahway."
According to Milano, most of the people that hang out on that corner live in the immediate area, many are known by Linden's officers by their first names.
"All I saw was what looked like a mob. I know all these people don't live around here and it's getting very tough around here," said one member of Zion Temple Pentecostal Church on East 18th Street.
According to him, the fact that the people were hanging out there seemed to be in itself a reason for the shooting.
"Where you have a lot of young people gathered, you're going to have a problem," he said. "I don't care if they're not doing anything or having a good time."
Many residents said that having a beat police officer or foot patrolman on the street would help with the "gangs," as some residents called these groups. The Zion Temple member even suggested surveillance cameras along the street.
According to Milano, there are no "formalized gangs" on East 18th Street.
He added that there is "extra attention" paid to the area of East 18th Street and that the Linden Police Department has a patrol program similar to foot patrolmen called "parks and walk." This means that an officer will walk his circuit every few blocks, get out and patrol on foot, then get back in his cruiser.
But many residents said that the police that are there don't do enough.
"Police know what's going on up there, but I don't see them doing it. They're not doing anything about it," said an East 18th Street resident.
According to Milano, the police generally leave small groups that are not disorderly alone. But if the police are called about specific groups that are making noise to throwing rocks, "well then, obviously, we take action."
But several residents said that these groups simply reform once a police officer leaves the area.
As to if there are drugs being sold there, Milano said, "That could be very possible. We have in the past made arrests in that area and the Narcotics Unit continues to monitor the area."

Radio star hosts auction

Radio personality Jeff Caplan, host of the morning program on WCRB newswatch 88 AM, will serve as auctioneer at the Good and Services Auction being co-sponsored by the Jewish Community Center of Middlesex County and two area synagogues: Temple Beth O'Zed Torah in Clark and Temple Ohav Shalom in Colonia on Sept. 6.
The auction, which begins at 8 p.m. at the JCC, 1775 Oak Tree Rd. in Edison, will feature a variety of a massive beach party.
Tickets are \$18 per person, and admission includes refreshments.

BACK TO SCHOOL SAVINGS

THE MATTRESS FACTORY
OPEN TO THE PUBLIC
Visit us at our website: <http://www.mattressfactory.com>
Tired Of Your Mattress??
• Gold Bed Mattresses • 40 Pieces • • • • •
• Gold Box Springs • • • • •
• Electric Beds • • • • •
• • • • •
FUTONS
GASBORN • • • • •
E. HANOVER

NOW IS THE TIME!

SuperPaint®

INTERIOR AND EXTERIOR PAINTS

Our finest paints with a 20-year warranty.

\$5 OFF

Per Gallon

Labor Flat Rate, \$23.49

Sticker savings on other jobs too!

WoodScapes®

HOUSE STAINS

8-year warranty on solid color. 5-year warranty on semi-transparent.

\$4 OFF

Per Gallon

Reg. \$23.49

ON SALE NOW!

Classic® Brushes & Rollers

Reg. \$3.99-\$8.99

Strypeze® Paint Stripper

Reg. \$7.99

SALE PRICES EFFECTIVE THROUGH AUGUST 31, 1997. ALL SAVINGS ARE OFF REGULAR PRICES.

©1997 The Sherwin-Williams Company. Not responsible for typographical or artwork errors. Sherwin-Williams reserves the right to correct errors at point of purchase.

WALLPAPER

Price Rollback!

SAVE \$2-\$4

Per Double Roll Bolt on Select Patterns of In-Stock Wallpaper

Wallpaper packaged in double rolls. In-stock and available in all stores.

LOW PRICE GUARANTEE

Great Selection...

Over 42,000 Patterns and Borders!

Select Custom Order Books

33%-64% OFF

Patterns and Borders for Every Room in Your Home

Cutting papers, lining papers and fabrics found in sample books not included.

Competitive prices must be verifiable. See store for details.

1155 & 2153

St. Georges Avenue

Rahway

732-381-7227

Rahway On-line

FIND IT
Quick & Easy
www.localsource.com/

KITCHENS BY VERSA

You'll LIKE our QUALITY...
But You'll LOVE our LOW PRICES!
VERSAPPLY
30 WILSON AVE., NEWARK, NJ
973-589-3355
FREE BROCHURE SENT ON REQUEST

BusyBee

Kindergarten
Childcare &
Nursery School
Is your 2 1/2 year old ready for preschool but still in diapers? No problem. At Busy Bee we'll accept your child toilet trained or not.
•Ages 2 1/2 - 5
•Special pre-K program for 4+ age group.
•Full and Half Day
•7 a.m. - 6 p.m.
1155 & 2153
St. Georges Avenue
Rahway
732-381-7227

PEOPLE IN THE NEWS

Marchese gets award
Joseph A. Marchese is a 1997 winner of the Joseph G. Frangillo Scholarship awarded by The Center for Italian and Italian-American Culture. A graduate of Arthur L. Johnson Regional High School, he is the son of Joseph and Marilyn Marchese of Clark. He will be attending New York University's Tisch School of the Arts this fall.
"When we see a young person who truly lives his heritage and can express that strong pride in a personal interview, it helps the committee to make a decision," said a member of the awards committee. "Joseph exemplifies the mission of The Center for Italian and Italian-American Culture, a non-profit organization dedicated to the preservation and perpetuation of the rich Italian heritage."
The Center is located in Cedar Grove. For information, call (973) 812-0433.

SMALL APPLIANCES

443
Lake Avenue
Colonia/Clark
982-2088
382-8713

GET READY FOR WINTER

FUEL OIL SAVINGS
•Automatic Delivery
•Service Call
•Budget Plan
•24 Hr. Service
•Tank Protection
•Complete Maintenance
•New Award Low Prices
89¢
CURRENT PRICE
SIMONE BROTHERS FUEL OIL CO.
1405 HARDING AVE. LINDEN
Serving Union & Middlesex Counties For Over 60 Years
(908) 862-2726

ELLEN RADIN ATTORNEY AT LAW

FAMILY LAW
Divorce, Domestic Violence, Alimony, Child Support, Custody, Visitation. Modification of support orders, including contributions towards college expenses and emancipation of children. Interstate matters. Juvenile delinquency.
REAL ESTATE
Purchase, sales, and refinancing of residential and commercial property. Houses, co-ops, condominiums.
Evening and Weekend Appointments Available
O.K. to Bring Children to Office
2358 Carol Place • Scotch Plains, NJ 07076
(908) 889-4842

Ask Dr. Posner

ROBERT POSNER, DDS
HELPING YOUR CHILD FORM GOOD DENTAL HABITS
Q: What can a parent do to help a child form good dental habits?
A: The most important step any parent can take is to evaluate their children's dental habits. Children are the parent can exert a strong influence on their children's approach to teeth and just on that.
"The self-care dental skills that a child learns from an early age will stay with him for the rest of his life and will probably play an important part in saving his teeth well into adulthood," says Dr. Katherine Enright, assistant professor of pediatric dentistry at the Emory University School of Dentistry.
Protecting teeth from decay begins with a trip to the supermarket. You'll probably find the shelves stocked with this sweet snack that are both nutritious and delicious, such as carrots and mixed vegetables. Apples and oranges are a healthy alternative to candies, processed juice drinks, cakes and candy bars.
If such snacking is unavoidable, frequent brushing with a fluoride toothpaste can help rid teeth of decay-causing plaque.
Brought to you as a public service by:
DR. ROBERT POSNER • 53 Westfield Ave., Clark, N.J.
(908) 388-7600

LA DANSE SCHOOL OF PERFORMING ARTS

10 NORTH WOOD AVENUE
SUITE A LINDEN
Announces Fall Registration
CLASSES BEGIN SEPTEMBER
FALL ADVANCED
FOR INFO AND FREE BROCHURE CALL
(908) 862-6887

COMMUNITY FORUM

Examine urgency of improvements

For several months, the City of Rahway had been considering privatizing the entire Rahway Water Utility. But last week, the Kennedy administration announced that will not happen. Instead, the plans are to embark on \$5 million in capital improvements including cleaning and lining mains, remediate the treatment plant, painting tanks and relocating the Bridge Street water main. In addition, entities within the utility may be privatized.

Due to this decision, two major questions exist: Will this restructuring cause layoffs? Will water rates rise significantly?

At this point, the probable answers to both questions is yes.

Business Administrator Peter Pellissier has already addressed the possibility of job cuts and said the city needs to put together an employee layoff plan. "If there will be layoffs," the proposed improvements need to be paid for in some manner. Speculating where that monetary compensation will come from, certain job salaries will get reviewed and possibly addressed.

It is evident the administration is determined to upgrade the water department. Pellissier cited neglect by past City Councils which allowed water rates to remain stable for the past seven years. This reasoning puts blame on council members and claims these governmental bodies failed to recognize the water company's requests for improvement. Also, this perspective gives way to an ultimatum by asserting the city is faced with work that wasn't done and that the current average monthly bill of \$14.25 will need to be increased because of the need for improvements.

Although some of the city's pipes date back to 1908 and earlier, the urgency of every individual improvement proposal needs to be examined and outlined for public review. Does money really need to be spent on painting tanks immediately? An ample outline needs to be given not only because taxpayers citizens of Rahway may be paying more for their water utilities, but because jobs are on the line. Obviously, the city will implement as much of the necessary improvements as possible. The city spent \$150,000 for a study of the existing system and it is apparently accepting those results which indicate the water facility's oversteering and the water rates charges which are comparably less than market rates.

Legislative contacts

President
Bill Clinton, Democrat, Washington D.C. 20500.

Congress
U.S. Sen. Frank R. Lautenberg, Democrat, Gateway 1, Gateway Center, Newark, 07102, (201) 645-3000.
U.S. Sen. Robert Torricelli, 1300 Franklin Plaza, Newark, 07102, (201) 645-3000.
U.S. Rep. Donald M. Payne, 106 Congressional District, Democrat, 333 N. Broad St., Elizabeth, 07208, (908) 629-0222.

Governor
Christie Whitman, Republican, State House, Trenton 08625, (609) 292-6000.

State Legislature
Sen. Raymond Lesniak, 20th District, Democrat, 24-52 Rahway Ave., Elizabeth 07202, (908) 353-7722.
Assemblyman Neil Cohen, 20th District, Democrat, 24-52 Rahway Ave., Elizabeth 07202, (908) 353-7722.
Joseph Saliga, 20th District, Democrat, 24-52 Rahway Ave., Elizabeth 07202, (908) 353-7722.

Union County Board of Chosen Freeholders
Chairman Linda Stender, 154 Herbert Ave., Fairwood, 07023, 322-8246.
Vice Chairman Daniel Sullivan, 976 Edgewood Road, Elizabeth, 07208, (908) 289-4048.
Ed Force, 94 Benjamin St., Cranford, 07016, (908) 276-2224.
Greeneville Henry Kutz, 216 Filbert, Roselle Park, 07204, (908) 241-5033.
Republican.
Frank H. Lehr, 16 Myrtle Ave., Summit, 07901, 273-4714.
Republican.
Carol Cohen, 10 Bennett Place, Westfield, 07091, (908) 232-3850.
Democrat.
Walter McNeil, 638 Sheridan Ave., Plainfield, 07061, (908) 246-2525.
Democrat.

Mayor
Mayor, James Kennedy, Democrat, 422 Elm Avenue, 381-0190.
City Council
Sal Mione, Democrat, 1434 New Church St., 574-1328.
Frank Jannet, Republican, 604 W. Scott Ave., 827-8374.
Donald Anderson, 1146 Kline Place.
David Brown, 353 E. St. Anna St.
Robert Rachlin, 2215 Alta St.
Deanna Tilton, 1135 Jagues Ave.
Jerome Scanaro, 515 Alhambra St.
At-Large, James Jones, Democrat, 193 E. St. Anna St., 396-1348.
At-Large, Nancy Saliga, Democrat, 1103 Milton Blvd., 392-0228.

"If all printers were determined not to print anything till they were sure it would offend nobody, there would be very little printed."
Benjamin Franklin
U.S. Statesman
1751

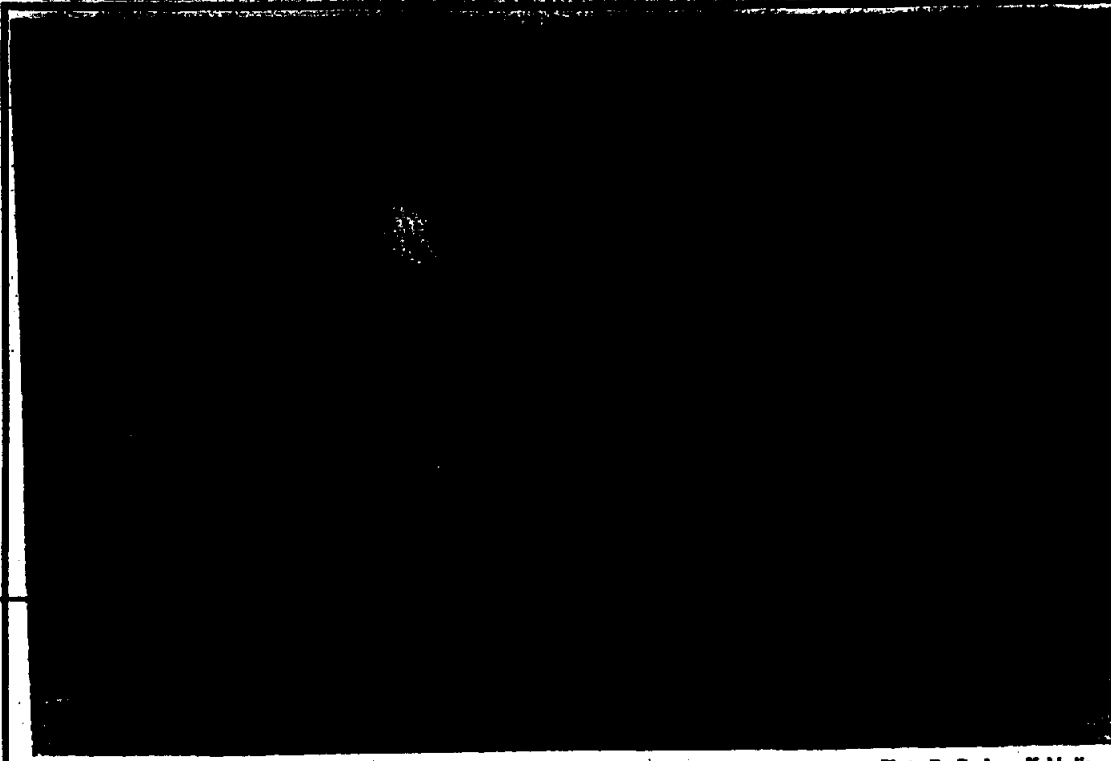
Rahway Progress

Your Best Source For Community Information
Published Weekly Since 1980

Published By
Worral Community Newspapers, Inc.
1291 Shuyemont Avenue
Union, N.J. 07083
(908) 686-7700

Worral Community Newspapers, Inc.
1807 1st Right Reserved
Articles, pictures and advertisements herein are the exclusive property of Worral Community Newspapers, Inc. and any reproduction or broadcast without written permission is prohibited.

David Worral
Publisher
Tom Carvian
Editor in Chief
John Hochberg
Managing Editor
Christopher Stawell
Managing Editor
Mary Strongin
Dir. of Sales and Mktg.
Florence Lanza
Advertising Manager
Nancy Seyboth
Classified Manager



HISTORY COMES ALIVE
During a tour at the Historic Dr. Robinson House and Plantation, area residents observe a re-enactment of an old-fashioned lifestyle. From left are Jean Kovacs, Deanne Kelly, Kallikas and Helen Kallikouris. Information on tours of this house, located on Madison Hill Road in Clark, can be obtained by calling 381-3881.

You can't lose amid weird sights & sounds

From the mainland, the psychedelic Ferris Wheel on the Wildwood boardwalk is clearly visible at night across a dark stretch of bay and marsh, flashing through a series of swirling patterns.

From the top of that Ferris Wheel, gently swinging in a cage, you look down on Mariner's Landing, a pier teeming with amusement rides and a water park. Yet, it will be strangely quiet in worlds at that moment, because Mariner's Landing is at the junction of Boardwalk and Schellenger Avenue, one of this world's magical intersections on any August night.

Here, in the space of a hundred woodenly noisy, pungent, chaotic rides, two piers, three amusement areas, innumerable food stands, stores hawking gold jewelry and 32 earnings, games of chance, racks of tiger T-shirts, and a truly bizarre-looking candy and snack shop called the Nut-house. The elbow-to-elbow crowd flows slowly along the boardwalk. Wildwood's famous boardwalk trans constantly announce the recorded message: "Watch the train cars."

His face and voice are familiar to the thousands who stop to play his game, or just pause as they pass by him, but his name is unknown.

It's a home game. The Greatest Boardwalk Barker sits in an open booth high above the starting gate where he can survey the game itself and "handwrite" the results of each race.

You give his boy behind the counter a buck, you're given a ball, a bell clang, and the "William Tell Overture" plays, and you roll the ball over and over.

over as fast as you can into a small hole in front of you. This sends an electric signal to one of 10 plastic horses that are galloping toward the finish line. The ball doesn't always go in.

The World's Greatest Boardwalk Barker calls the race like a feature at the Belmont Park. It's your money, your pony, and your prize if you win, and if every horse carries a bet, somebody's got to be a winner.

He fills all the seats all night, every race.

His secret is how he makes the prizes grow bigger and grander, although mostly they stay the same. If you "stick around" you'll eventually win a prize, and it's good thing you lost, because you might have won a Mickey Mouse doll but now he's "giving away a three foot high stuffed teddy bear."

Maybe it's only his job, and of course he wants your money, but give him credit for dispensing hope; his heart is in his work.

He is never distracted from his work, even when a young employee who talks in depth of the arcade comes

LETTERS TO THE EDITOR

Kennedy's plan for center is wrong
To the Editor:
I read in the July 25 Star-Ledger that Mayor Kennedy and his political allies, who now control the Rahway Senior Housing Corporation, are taking half a million dollars from the treasury and using the money to build the youth center. That is wrong!

The funds of the Rahway Senior Housing Corporation are supposed to be spent on senior citizens and nothing else. As a concerned citizen, I am outraged that Kennedy is riding senior citizens funds for a totally unnecessary and unrelated facility.

Instead of using senior citizens money, why doesn't he negotiate an agreement with the schools to open up recreational activities? In that way, he also can save the taxpayers millions of dollars, including senior citizens taxpayers. Also, the proposed recreational center, which some say will feature late night basketball, is across the street from the Golden Age Towers. The youthful noise from such a nearby recreational facility is likely to keep senior citizens awake at night. The scenario of this plan seems to be to take \$500,000 from these seniors so they can be deprived of sleep. That's doubly wrong!

Elvira Drzewinski
Rahway

Fishing imparts valuable lessons

To the Editor:
I would like to commend all of those people who help to make Rahway Recreation such a wonderful asset to our community. I believe that everyone who gives his time to our children deserves a heartfelt thank you. I am especially thankful for the coaches and counselors who have spent so much time and effort to provide our children with quality physical activities that will benefit them for years to come.

While the competitive spirit is something we all should enjoy, I propose an alternative to the Annual Fishing Derby that recently took place at Rahway Park.

Being an avid fisherman and having participated in several professionally organized bass tournaments in the past, I know the stress involved in handling and transporting, as well as the weight involved with this type of competition is detrimental to the fish.

The professional conduct at pro tournaments assures the fish are returned to the water alive and healthy. I am saddened to say that at almost all fish measured in our derby were left in several pools for too long. They were dumped back in the pond at the end of the derby, but almost all were dead from lack of oxygen.

It is this result that leads me to look at a different type of derby. I believe that providing the children with no outing that involves fishing as well as the outdoors is an enriching event that can be rewarding and fun in its own right. The destruction of over 100 fish should not be a part of the experience.

There were numerous minnow and catfish that succumbed to the overcrowded pools as well as several larger bass, including a baby striped bass caught in the river next to the pond. These resources need to be protected and nurtured to provide future residents the chance to enjoy a day in the park that includes a fishing not in one hand and a can of worms in the other.

Perhaps an annual fishing day in Rahway Park could be proposed for next year. An opportunity to introduce children with the many aspects of angling,

VIEW POINT

QUESTION OF THE WEEK

Do you favor plans to construct a new recreation center?

Responses will be published next week.
Poll closes Monday at noon.
Calls are free. Touch tone phones only.

CALL (908) 686-0998 and enter #5751 - YES

#5751 - NO

YES — 67%
NO — 33%

LAST WEEK'S RESULTS

Do you plan on attending the Mayor's Concert Series?

YES — 67%
NO — 33%

Catching the 'big one'



An award winner displays her trophy at the Rahway River Park annual Fishing Derby. The Rahway Division of Parks and Recreation commended the Eddie Bauer company for providing prizes and commended Michael Robinson for making the derby happen.

Mitterman volunteers time

Laura Mitterman, 16, of Clark, is a Landmark Volunteer at the Wagon Road Camp. Mitterman is a member of a team that will participate in a three-day counselor in training program to work with economically disadvantaged and physically challenged summer day camp youths. As a Landmark Volunteer, Mitterman will also assist with camp beautification projects.

Mitterman, who will be a junior at Arthur L. Johnson High School in the fall, is an honors student who plans to take a double science in both her junior and senior years. She plays varsity tennis and junior varsity softball. In addition, she is a member of the Science League and a member of the KEY Club, a school-based volunteer program. She studies Latin and piano outside of school and also works weekends in her father's veterinary office. She hopes to pursue veterinary medicine in college.

Landmark Volunteers, based in Sheffield, MA, is a non-profit summer service organization offering high school students the opportunity to work at one of 33 nationally recognized historical, cultural, environmental or social service institutions across the country.

Further information about Landmark Volunteers may be obtained by calling (413) 229-0255.

NEWS CLIPS

Water Watch hike

A hike, sponsored by the Lonsdale Group of the NJ Sierra Club, will be given on Sunday in Medway Park in Carle. This is one in a continuing series of walks throughout the Arthur Kill watershed being given as part of Lonsdale Group's Arthur Kill Water Watch project. It will be led by Bob Harrell, founder and director of the Arthur Kill Watershed Association.

The Arthur Kill watershed starts in Eagle Rock Reservation in West Orange, continues through Union County and terminates at the Kill itself. Lonsdale Group, which covers all of Union and Morris counties, plus portions of Middlesex and the town of Millburn, is fortunate to have this important watershed, with its three major rivers: the Rahway, the Elizabeth and the Woodbridge, in its own backyard.

One leisurely explore the tidewater of the Rahway River with us, and get a close and educational look at the salt marsh vegetation, birds and habitat prime habitat that defines the terminus of the Rahway. Waterproof boots are optional. Bring old sneakers, binoculars, water and lunch if desired.

Meet at 9 a.m. promptly at the end of Post Road, head East on Randolph Ave. by the State prison. Proceed to the junction, left before the Turnpike bridge and make a left onto Post Road. Call Bob at (908) 388-8848 or Sharon Shinas at (908) 232-6187 for further directions and information.

The hike will be cancelled if there is bad weather.

Recycling bins added

Expanding its effort to maintain Union County parks as ecological models and encourage citizens to help keep the area clean, the Division of Parks and Recreation has joined the Bureau of Environmental Affairs to augment its recycling program.

The division has placed specially marked recycling bins in Rahway River Park picnic areas in Rahway to expand the program to other county parks. The effort is in addition to recycling programs at county golf courses, the Trillium Nature Science Center and the Watchung Stables in Monticello.

"We are asking all of the members of the public who use this park to dispose of plastic, glass, aluminum and trash in bins that have been respectfully marked," said Fireholder Dan Sullivan, liaison to the Parks and Recreation Advisory Board.

Individuals who apply for Rahway Park permits receive special packages containing material about the expanded environmental effort, notices for children's bicycle helmet and information about county parks. Information also can be obtained by calling the Division of Parks and Recreation at (908) 327-6000.

Hebrew school opens

Temple Beth O'r Beth Torah in Clark will launch a new Hebrew High School beginning in September. The Mishra of Temple Beth O'r Beth Torah is open to graduates of all Hebrew schools. Classes will be held on Thursdays, beginning Sept. 25, from 7 to 8:15 p.m. at the temple, 111 Valley Road in Clark.

Open house and registration for students and their parents is Sept. 4 at 7:30 p.m. at the Temple.

For further information, call 381-8403.

Recycling program

The City of Rahway Department of Public Works/Office of Recycling is proud to announce the initiation of a pilot program for demanufacturing of

Franks backs strong manufacturing base

The long-term health of New Jersey's economy depends on a strong and dynamic manufacturing sector, said Congressman Bob Franks to the New Jersey Manufacturing Extension Program.

Joined by other government and university officials at the recent event, Franks, R-7, spoke to representatives of 22 Union County manufacturing companies who came to learn about a new program designed to improve manufacturing competitiveness.

The event was co-sponsored by the Union County Economic Development Corp. and the Union County Alliance.

The New Jersey Manufacturing Extension Program, Inc. is focused on increasing profits and enhancing global competitiveness for New Jersey's small- and medium-sized manufacturing firms in the plastics, metalworking/machinery, and electronics/instrumentation industries.

NIMEP, Inc. is a cooperative venture between the New Jersey Institute of Technology, the New Jersey Commission on Science and Technology, and the National Institute of Standards and Technology Manufacturing Extension Partnership.

"The long-term health of New Jersey's economy depends on a strong and dynamic manufacturing sector," he added. "Employment in this vital sector has fallen, but productivity has increased. Today, nearly 20 percent of New Jersey's Gross State Product is generated by our manufacturing companies."

Franks co-chairs the Congressional Taskforce on Manufacturing and Technology. He is a member of the Northeast-Midwest Congressional Coalition.

"I have been an outspoken advocate for those programs that are of significant benefit to small and mid-sized manufacturers. I have found the Manufacturing Extension Partnership to be perhaps the most valuable program that the federal government sponsors for small and mid-sized manufacturers," he also said.

According to Franks, on average, every MEP center project adds or saves five American jobs, increases sales for program participants by \$160,000, and saves nearly \$43,000 in labor and material costs.

"NIMEP's efforts regarding manufacturing and NIMEP, Inc. are a labor of love," said Sp. K. Engeer, president

Courses open

Golfers again can enjoy playing 18 holes at each of the county's three golf courses, with no emergency greens or on-going construction on any of the open holes.

The nine holes reconstructed in phase one of the three-phase plan to restore Gallop Hill Golf Course, located on the Boulevard in Union, are open for play. Gallop Hill now has 18 of its 27 holes open. The new holes that golfers can play are 1, 2, 5, 6, 7 and 8 and on the front nine; with 3 and 4 from the single nine, and 18 from the regular 18-hole course are also open.

Ash Brook Golf Course, in Scotch Plains, now has all greens open. "In mid-August we will begin rebuilding the remainder of the greens on the front nine," said Fireholder Dan Sullivan. As with Gallop Hill, it is anticipated that work at Ash Brook Golf Course will be finished in late 1998, with all greens being open in the spring of 1999.

Pools are open

The county's two outdoor swimming facilities are open to the public.

Both pools, John Russell Wheeler Pool, 500 S. Street and Route 1 in Linden, and the Walter E. Ulrich Memorial Pool, Rahway River Park, St. Georges Avenue in Rahway, feature adult and children's pools. A variety of swimming lessons are offered at the Ulrich Pool.

On Mondays, Wednesdays and Fridays, Wheeler Pool swim times will be 1 to 6 p.m. Tuesday and Thursday will be 1 to 6 p.m. Ulrich Pool's hours will be 1 to 5 p.m. on Mondays and Wednesdays. Hours on Tuesdays, Thursdays and Fridays are 1 to 6 p.m. Weekend and holiday hours, both pools will be open from 11 a.m. to 6 p.m.

Daily admission fees are \$4 for adult county residents; \$8 for out-of-county adults. Discounted rates are available for youths 17 years and younger, and seniors 62 and older. Ten and 30-visit discount cards are also on sale. Identification will be required before admission or the out-of-county rate will be charged. No one under the age of 12 will be admitted without an adult.

JACOBSON'S

SAL MAYTAG

WASHER

DRYER

REFRIGERATOR

SALES TAX

EVERY MAYTAG IS ON SALE

AN ELIZABETH TRADITION

OUR 48TH YEAR

JACOBSON'S

THIS TRIBUTING COMPANY

APPLIANCES • BEDDING • ELECTRONICS • AUDIO & VISUAL

OPEN MON. & THURS. 10AM-7PM, SAT. 10AM-7PM, SUN. 10AM-6PM

OPEN SATURDAY 10AM-7PM, SUNDAY 10AM-6PM

Not responsible for typographical errors. Write us for the 1997-98 RAHWAY-CLARK EAGLE and we will gladly send you our new catalog.

SAVE 3% SALES TAX

ELIZABETH SHOWROOM

725 RAHWAY AVENUE

ELIZABETH • 908-388-8833

COUNTY NEWS

Sheriff's Internship

The Union County Sheriff's Office is offering a college intern program which will be open to all juniors and seniors with a grade point average of 3.0.

Any student with a major in law enforcement or criminal justice can apply by calling (908) 527-4527. All applications must be received by Sept. 3. Secondly, all field placements must be approved by a faculty advisor.

Freeholders on TV

On the August edition of "Freeholder Forum," Union County Freeholders will discuss the impact of the proposed Green Brook Flood Control Project on Union County.

The show, featuring Freeholders Linda Stender and Henry Kutz, and Frank Meeks, a member of the Green Brook Flood Control Commission, and chairman of the committee studying upper basin problems, will address the county's financial, safety and environmental concerns about the project proposed by the state Department of Environmental Protection and the United States Army Corps of Engineers.

The channels, dates and times of the program are:

TV-36: Summit's Channel 36 — 10 p.m. to 11 p.m. on Aug. 19, 21, 26 and 28.

Concast Cablevision: Plainfield's Channel 20, at 1:30 p.m. on Aug. 20 and 27.

Concast Cablevision: Union's Channel 57, at 9:35 p.m. on Aug. 18 and 25.

TRN: Elizabeth's Channel 12, at 7:30 p.m. on Aug. 20 and 27.

Open house at stables

The county's Watchung Stables will hold an open house Aug. 23, from 8 a.m. to noon.

This event is designed to introduce the horseback riding programs and activities offered to the public. Guided tours will be given at 9:30 and 11 a.m. Visitors also will have an opportunity to participate in a question and answer period with the stable manager and riding instructors at 10:15 a.m.

Admission is free although those intending to attend are encouraged to pre-register. For further information, or to obtain lesson registration information, call (908) 789-3665. The Watchung Stables is located in the Watchung Reservation at 1160 Summit Lane, Mountaintop.

Gardener program to open

Rutgers Cooperative Extension of Union County is accepting applications for its 1997-98 Master Gardener Program.

The program gives people with an interest in horticulture an opportunity to become more educated in a variety of horticultural topics and share their expertise with county residents through volunteer programs sponsored by Rutgers Cooperative Extension.

The program is open to all Union County residents.

Master Gardeners complete a course that involves attending weekly horticulture and entomology lectures taught by Extension faculty and staff from Rutgers University. They are also trained to answer telephone inquiries, diagnose plant problems and identify insect pests.

The students complete a landscape project for a Union County resident, an Integrated Pest Management assignment for their home and a Garden Hotline Training Manual.

Lectures will be held on Friday mornings from 10 a.m. to noon at the Rutgers Cooperative Extension of Union County Auditorium, 300 North Ave. East in Westfield. Class will begin on Oct. 17 and run through May of 1998. Applications can be obtained by calling (908) 654-9854.

Forty applicants will be accepted

Upon acceptance to the program's 1997-98 Master Gardener Program, the students will be assigned to 100 hours of volunteer service to Rutgers Cooperative Extension. Master Gardeners provide county residents with information on gardening and maintaining their property through a Speakers' Bureau, Garden Hotline, 654-9852, and Garden Fairs.

The volunteers also provide horticultural therapy programs for disabled adults and youth.

Volunteers needed

The Union County Rape Crisis Center at 300 North Ave. East in Westfield is looking for volunteers to assist sexual assault survivors, their families and significant others.

Classes begin Sept. 30, and time is needed to interview prospective volunteers and schedule training.

Selected volunteers will receive approximately 40 hours of training dealing with the many areas of sexual assault, traumatic reactions of survivors and their family members; legal and medical aspects and related areas.

Volunteer training will be held on Tuesdays and Thursdays from 6:30 to 10 p.m. from Sept. 30 through Nov. 20.

Will train literacy tutors

Literacy Volunteers of America-Union County Affiliate provides free instruction to adults throughout Union County who want to learn to read, improve their reading skills, or increase their ability to understand and speak English. LVA is one of the most comprehensive volunteer literacy programs in the nation.

LVA-UC is providing a workshop for volunteers who wish to be trained as English as a Second Language tutors and provide instruction to adults who need help in English. The workshop will be held at the Elmore Library, 244 N. Grand St., Elizabeth, on Monday mornings Aug. 18, 25 from 9:30 a.m. to 12:30 p.m. There is a small registration fee.

Upon completion of training, volunteers are required to make a commitment to tutor for several hours a week during the day or evening at any public library in Union County. Volunteers age 18 and over are

Health-care workshop

The Union County Chamber of Commerce's Health Care Group is offering four, one-day customer relations workshops for health-care office staff. The programs, provided by Diamond Associates, Multi-Passionate Training and Development of Westfield, will be held Tuesday at the Union County Chamber of Commerce in Elizabeth.

For more information or to register, call (908) 232-2075.

Heart Walk next month

The American Heart Association's Heart Walk will return to Union County and Echo Lake Park in Westfield on Sept. 27.

This year, American Heart Association of New Jersey joins with the American Heart Association to become the title sponsor of 1997 American Heart Association Heart Walk throughout New Jersey.

ARTS & ENTERTAINMENT

Up-and-coming director turns his dreams into reality

By Jacque McCarthy
Associate Editor

As an arts and entertainment editor, I have had the privilege of becoming acquainted with many aspiring artists, both performance and visual. As much as I enjoy my work, repetition can lead to occasional droning of the senses, so that, for fairness' sake, an effort must be made to focus on unique qualities that make each individual a success. In the case of Dan Weiner, I had no trouble focusing on what makes him unique. He's a talented thespian on his way to becoming established in community theater as a director — at the ripe old age of 19.

As a student at Union County High School, Weiner was a member of the drama club. In stating that he was excited about being interviewed, he admitted to fantasizing about being interviewed on television talk shows.

"When I was a kid, I used to do this and I still do it now. Just envision myself on talk shows and giving interviews," Weiner said.

"The first thing I ever did in front of a crowd was a Charlie Chaplin impersonation," said Weiner, reminiscing about the humble beginnings of his artistic career. "I was 5th grade."

"I guess I really liked the attention," the young director continued, making another personal admission. "I know this is wrong, and all my acting teachers would tell me that. What? But I will be quite honest with you, I love getting a laugh. I'm a very few feelings I've ever felt that were greater than just being onstage and getting a laugh, knowing that something that you did had an effect on someone. I think it takes a lot to make people laugh."

A Cranford resident, Weiner said that he was originally interested in stand-up comedy, but changed his creative focus when he was offered an acting role in 8th grade.



Dan Weiner

"I was in 'The Wizard of Oz' at the Cranford Lion, and that was when I really found it was acting that I loved. It was so much fun to go and create a character, even at that point. With everything like 'The Wizard of Oz,' you can do your own interpretation, but when you're 15-years-old there's not much more to do than imitate Mr. Lahr," Weiner said with a knowledgeable air. "But, no one complained," he added, smiling.

Weiner's big break came when he attended Cranford High School.

"When I first came into the high school, I thought, 'Wow, high school productions, that's like a step below Broadway. That's big, that's huge.'"

Weiner auditioned for the fall drama, "Wait Until Dark," but didn't get cast. "You know, I was just a freshman," Weiner explained.

"When the show ran into casting difficulties, Weiner took advantage of the situation and boldly asked for a part."

"It was a little part, five lines at the end of the play," said Weiner.

After that, Weiner played a role in every play and musical throughout his high school experience, but when you're 15-years-old there's not much more to do than imitate Mr. Lahr," Weiner said with a knowledgeable air. "But, no one complained," he added, smiling.

Weiner's big break came when he attended Cranford High School.

romantic lead. At first I wanted to do that, but it just turned out that I was always getting cast as the character role in everything, and I got to enjoy that."

Weiner began taking improv and singing lessons in an effort to improve upon his natural talent. In addition to the high school shows, Weiner worked with Cranford Repertory Theatre and Stagescape Kids Performing Arts Camp during summer vacations. It was at the camp that Weiner got his first directorial opportunity.

Author Harlan Coben 'dunnit' again

By Ben Smith
Staff Writer

One would think that after reading three mystery books by the same author featuring the same major characters and becoming familiar with his style of story-telling, one would automatically be able to recognize the murderer or murderers before the last chapter.

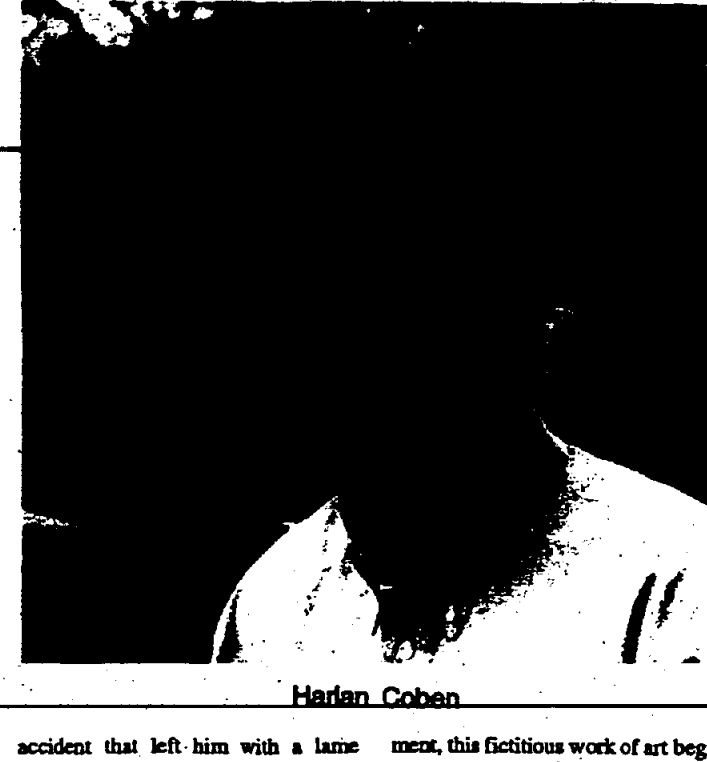
Not with this author — Harlan Coben.

And not with this book — "Backspin."

The author is the ever-talented, wise, humorous, with a touch of sarcasm and a realistic love of sports, Harlan Coben, a former Union resident, whose family once had a travel agency in Union. He also is a Edgar Award winner. The book is "Backspin," a Myron Bolitar Mystery, its theme, golf; its characters, fascinating; its story, a backdrop drive that turns the reader into dizzy putty with such intense interest that one cannot put the book down. At least, this reviewer couldn't. It was dogged up in one weekend.

Coben, whose talent for dialogue is extraordinary, and whose narrative mystery book series, starting Myron Bolitar, a lawyer-turned sports agent, who solves mysteries, began with "Fade Away," with great success. Then came the equally successful "Drop Shot" and "Deal Breaker," and now, "Backspin," which promises to be the most successful. All the books were published in paperback by Dell Publishing, a division of Bantam Doubleday Dell Publishing Group Inc. of New York City.

The author has retained his fascinating, lovable and frightening characters in "Backspin," from Myron Bolitar, a 6-foot 4-inch athlete, who was retired from basketball after an



Harlan Coben

accident that left him with a lame knee, and now owns MB SportsPro on Park Avenue, where he runs space from and has a partnership and friendship with a former college roommate, Windsor Horse Lockwood III, a deceptive, cold, icy handsome blond man, who is an investment and finance broker. Esperanza Diaz, a sexy woman, whose actual partner is questionable, and who serves as a former woman wrestler-Friday for Bolitar. She also is ready to graduate from law school — overnight. Coben also brings back, if only briefly, his Aye Gardner-type girlfriend, Jessica. More of Jessica in the next book, Harlan. Okay?

Set in the Merion Golf Club at the height of the U.S. Open golf tournament, this fictitious work of art begins with the kidnapping of the teenager son, Chad Coben, of star golfer champion Linda Coben and her aging former golf pro, Jack. After a fine hot, artificial quest for help in finding her son, Bolitar, who dislikes golf, is shy and the concentration on all the situations and complications, very few, if any, Bolitar fans, will solve this one.

"Backspin" is a unique piece of literature, and merely adds to Coben's successful literary accomplishment. And it does even more. It causes one to look forward with heart-shaking anticipation to the next Myron Bolitar mystery — only this one will make its hard-cover debut in June of next year called "One Pale Horse Move."

Hurry, Harlan.

Which one is the murderer? How many murderers are there?

With the help of computers, cell-phone, e-mail — how did the world ever get along without them — Bolitar is overwhelmed with information and ultimately solves two murders. But with all the concentration on all the situations and complications, very few, if any, Bolitar fans, will solve this one.

"Backspin" is a unique piece of literature, and merely adds to Coben's successful literary accomplishment. And it does even more. It causes one to look forward with heart-shaking anticipation to the next Myron Bolitar mystery — only this one will make its hard-cover debut in June of next year called "One Pale Horse Move."

Hurry, Harlan.

Kean college student performs in 'Texas'

Ronali Milberger

A member of the 1997 cast and crew of the "Texas" musical drama has ties to the Springfield area. "Texas," staged in Palo Duro Canyon near Amarillo, Texas, opened its 32nd season on June 11 and will run through Aug. 23.

Ronali Milberger returns for her sixth summer with "Texas." She received her B.A. in Music in 1996 from the University of New Jersey. Milberger is a member of MENC and ACDA Music organizations. Her hobbies include singing, horseback riding, volunteering in the public schools and most of all performing. Milberger is the niece of Frances Stern of Springfield.

"Texas," written by Pulitzer-Prize winner Pat Green, uses song, dance, dialogue, colorful costumes and spectacular special effects to tell the story of early settlers in the Lone Star State.

Green wrote "Texas" specifically for the Palo Duro Canyon State Park setting. The professional cast brings life to the story of the Texas high plains, over beneath the 600-foot canyon walls in the Pioneer Amphitheater. The setting adds to the depth and drama of the action as cowboys ride the range, Indians stand proud on the rugged face of the canyon and progress makes its path across the prairie.

"Texas" dazzles audiences with special effects that are improved each year. Lighting and sound professionals recreate nature with a fierce thunderstorm that explodes with a startling crash of lightning. Pyrotechnics professionals have created a finale of fireworks that color the night sky.

The story along with the setting, performance and special effects have garnered the recognition of "Texas" as the best attended outdoor drama in the United States. "Texas" was selected as one of the top 100 attractions in North America by the American Bus Association and was chosen as the program cover for the first-ever White House Conference on Travel and Tourism last year.

Since 1966, the popularity of "Texas" continues to grow. Crowds from every state and nearly 100 countries visit the canyon to be entertained by the 180th anniversary of Texas. The show is a must-see for anyone visiting the area.

0 Tickets for the 32nd season of Texas range in price from \$3.50 to \$16. The show begins nightly except Sundays at 8:30 p.m. An optional barbecue dinner is also available for an additional \$6.50. For information, call "Texas" at (800) 655-2181.

Paper Mill Playhouse celebrates anniversary

By Ben Smith
Staff Writer

The Paper Mill Playhouse, Millburn, will celebrate its 50th anniversary season, 1997-1998, on Sept. 10 with "Big River." It was announced by Angelo Del Rossi, executive producer, and Robert Johnson, artistic director. It will feature four musicals, two plays, including productions of Stephen Sondheim and James Goldman's legendary "Follies" and Stephen Schwartz's "Children of Eden."

"Actually," they said, "the jewel of the theater's Diamond Anniversary season will be a new production of the landmark Stephen Sondheim-James Goldman Broadway musical, 'Follies.' It will be the first major production in the metropolitan area since the show's Broadway debut in 1971."

According to the public relations department, the other five shows of the season will "use classic characters brought to new life: Adam Eve, Noah and God, himself, come out of the Old Testament in the musical 'Children of Eden' by Stephen Schwartz and John Caird, which will run from Nov. 5 through Dec. 14; Mark Twain's 'The Adventures of Huckleberry Finn,' set to music in the Tony Award-winning 'Big River'; Sherlock Holmes faces a new mystery in 'The Mask of Moriaty,' written by Hugh Leonard, Jan. 7 through Feb. 15, 1998; Hal Holbrook playing one of the great roles of the American theater, Willy Loman, in Arthur Miller's Pulitzer Prize-winning 'Death of a Salesman,' Feb. 24 through April 5; and the Tony Award-winning musical, 'The Will Rogers Follies,' June 10 through July 26, based on the life of the great American entertainer."

The season will include "the holiday season return of Paper Mill's and every one else's favorite ballet, 'The Nutcracker,' Dec. 19 through Dec. 28, featuring the New Jersey Ballet's gala New Year's Eve event, and concerts featuring popular entertainers as Harry Belafonte and Engelbert Humperdinck."

"Big River," which will end its run on Oct. 26, has music and lyrics by Roger

Miller, a book by William Hauptmann and will be directed by James Rocco. Twain's immortal characters, Huck and Jim, and their adventures on the Mississippi River will be brought to musical life by the 1983 Tony Award-winning best musical with a country western score by Miller of "King of the Heart."

Johnson will direct "Children of Eden," the Schwartz musical with a book by John Caird. "The creators of 'Godspell,' 'Pippin,' 'Wait Until Tomorrow' and 'Les Miserables' have created the new musical which blends stories from the Old Testament, including Adam and Eve, Cain and Abel and the story of Noah in a musical fable examining the timeless conflict between parents and children."

Nicholas Martin will direct Leonard's "The Mask of Moriaty," the award-winning author of "Die, Damsel of Sin," "The Life of a Fool" and "The Life of a Fool." Miller's Tony and Pulitzer Prize-winning classic, "Death of a Salesman" will be directed by Gerald Freedman, starring Holman as a working man whose family struggles with issues of "success, integrity, truth and the failure of the American Dream."

Sondheim's "Follies" with a book by James Goldman, which also will be directed by Johnson, is "a new production of the legendary set and a reunion of veteran Follies performers."

"The Will Rogers Follies — A Life in Review," will have music by Cy Coleman, lyrics by Betty Comden and Adolph Green and a book by Peter Stone, a 1991 Tony Award-winning best musical. It will review "the life of Will Rogers, the great Ziegfeld Follies entertainer, who never met a man he didn't like." Performances are Wednesday through Sunday at 8 p.m., with matinees on Thursday at 2 p.m., Saturday and Sunday at 3 p.m.

More information can be obtained by calling (201) 379-3636, or the box office at (201) 376-4343.

Miller, a book by William Hauptmann and will be directed by James Rocco. Twain's immortal characters, Huck and Jim, and their adventures on the Mississippi River will be brought to musical life by the 1983 Tony Award-winning best musical with a country western score by Miller of "King of the Heart."

Johnson will direct "Children of Eden," the Schwartz musical with a book by John Caird. "The creators of 'Godspell,' 'Pippin,' 'Wait Until Tomorrow' and 'Les Miserables' have created the new musical which blends stories from the Old Testament, including Adam and Eve, Cain and Abel and the story of Noah in a musical fable examining the timeless conflict between parents and children."

Nicholas Martin will direct Leonard's "The Mask of Moriaty," the award-winning author of "Die, Damsel of Sin," "The Life of a Fool" and "The Life of a Fool." Miller's Tony and Pulitzer Prize-winning classic, "Death of a Salesman" will be directed by Gerald Freedman, starring Holman as a working man whose family struggles with issues of "success, integrity, truth and the failure of the American Dream."

Sondheim's "Follies" with a book by James Goldman, which also will be directed by Johnson, is "a new production of the legendary set and a reunion of veteran Follies performers."

"The Will Rogers Follies — A Life in Review," will have music by Cy Coleman, lyrics by Betty Comden and Adolph Green and a book by Peter Stone, a 1991 Tony Award-winning best musical. It will review "the life of Will Rogers, the great Ziegfeld Follies entertainer, who never met a man he didn't like." Performances are Wednesday through Sunday at 8 p.m., with matinees on Thursday at 2 p.m., Saturday and Sunday at 3 p.m.

More information can be obtained by calling (201) 379-3636, or the box office at (201) 376-4343.

InfoSource

24 HOUR VOICE INFORMATION SERVICE

A Public Service of WORRALL COMMUNITY NEWSPAPERS

CALL 908-686-9898

2 PRESS THE 4 DIGIT CODE (for the info you want to hear) 3 HEAR UNLIMITED SELECTIONS PER CALL

COMMUNITY INFORMATION

NUMBER	LOCATION	EVENTS
1654	Midtown Elizabeth Events	10:00 Downtown Fairway
1655	Midtown Elizabeth Events	4:30 U-Turn On Rt. 22

ENTERTAINMENT

NUMBER	LOCATION	EVENTS
3196	Today's People	11:00 Entertainment News
3197	Today's People	11:00 Entertainment News
3216	Tube Talk (Intro)	11:00 Tube Talk (Intro)
3217	Tube Talk (Update)	11:00 Tube Talk (Update)
3218	Tube Talk (Update)	11:00 Tube Talk (Update)
3221	Thought For The Day	11:00 Thought For The Day

FITNESS

NUMBER	LOCATION	EVENTS
5320	Building Endurance	11:00 Building Endurance
5321	Cardiovascular Endurance	11:00 Cardiovascular Endurance
5322	Body Acceptance	11:00 Body Acceptance
5323	Step Workouts At Home	11:00 Step Workouts At Home
5324	Too Much Dieting?	11:00 Too Much Dieting?
5325	Workouts/How Often?	11:00 Workouts/How Often?
5326	Proper Weight-Lifting	11:00 Proper Weight-Lifting

HOROSCOPES

NUMBER	LOCATION	EVENTS
3219	It's Your Birthday	11:00 It's Your Birthday
3600	Aquarius	11:00 Aquarius
3601	Aries	11:00 Aries
3602	Taurus	11:00 Taurus
3603	Gemini	11:00 Gemini
3604	Cancer	11:00 Cancer
3605	Leo	11:00 Leo
3606	Virgo	11:00 Virgo
3607	Libra	11:00 Libra

THE INTERNET

NUMBER	LOCATION	EVENTS
3237	What's Online Today?	11:00 What's Online Today?
3240	Weekly Web News	11:00 Weekly Web News
3241	On The Net	11:00 On The Net
3291	What Is The Internet?	11:00 What Is The Internet?
3292	Getting Connected	11:00 Getting Connected
3293	Surfing The Net	11:00 Surfing The Net
3294	Downloading	11:00 Downloading
3295	Internet Cautions	11:00 Internet Cautions

LOTTERY

NUMBER	LOCATION	EVENTS
1900	New Jersey	11:00 New Jersey
1901	New York	11:00 New York
1902	Connecticut	11:00 Connecticut
1903	Pennsylvania	11:00 Pennsylvania

MUSICSOURCE

FRESH CUTS FROM THE HOTTEST NEW CD'S

0100 Music Preview

NATIONAL NEWS

1600 Current Events Menu

PEST CONTROL

NUMBER	LOCATION	EVENTS
1531	Ants	11:00 Ants
1532	Carpenter Ants	11:00 Carpenter Ants
1533	Cockroaches	11:00 Cockroaches
1534	Fleas	11:00 Fleas
1535	Termites	11:00 Termites

REAL ESTATE

NUMBER	LOCATION	EVENTS
1700	Before You Buy	11:00 Before You Buy
1703	Buying An Older Home	11:00 Buying An Older Home
1704	Advantage Of Home Ownership	11:00 Advantage Of Home Ownership
1723	The Home Investment	11:00 The Home Investment
1726	Owning Vs. Renting	11:00 Owning Vs. Renting

RECIPES

NUMBER	LOCATION	EVENTS
5300	Ingredients	11:00 Ingredients
5301	Method	11:00 Method
5302	Ingredients	11:00 Ingredients
5303	Method	11:00 Method
5304	Ingredients	11:00 Ingredients
5305	Method	11:00 Method

RELIGION

NUMBER	LOCATION	EVENTS
3220	Bible Verse For The Day	11:00 Bible Verse For The Day

SENIOR CITIZENS

NUMBER	LOCATION	EVENTS
4000	Senior Citizens	11:00 Senior Citizens
4001	Senior Citizens	11:00 Senior Citizens
4002	Senior Citizens	11:00 Senior Citizens
4003	Senior Citizens	11:00 Senior Citizens

SOAP OPERAS

NUMBER	LOCATION	EVENTS
3281	All My Children	11:00 All My Children
3282	Port Charles	11:00 Port Charles
3283	Days Of Our Lives	11:00 Days Of Our Lives
3284	The Young & The Restless	11:00 The Young & The Restless
3285	The Bold & The Beautiful	11:00 The Bold & The Beautiful
3286	As The World Turns	11:00 As The World Turns
3287	One Life To Live	11:00 One Life To Live
3288	General Hospital	11:00 General Hospital
3289	Guiding Light	11:00 Guiding Light
3290	Search Beach	11:00 Search Beach
3291	Weekly Soap Gossip	11:00 Weekly Soap Gossip

SPORTS

NUMBER	LOCATION	EVENTS
3100	NBA	11:00 NBA
3101	NFL	11:00 NFL
3102	NHL	11:00 NHL
3103	NL Baseball	11:00 NL Baseball
3104	NL Baseball	11:00 NL Baseball
3105	NL Baseball	11:00 NL Baseball
3106	NL Baseball	11:00 NL Baseball
3107	NL Baseball	11:00 NL Baseball
3108	NL Baseball	11:00 NL Baseball
3109	NL Baseball	11:00 NL Baseball
3110	NL Baseball	11:00 NL Baseball
3111	NL Baseball	11:00 NL Baseball
3112	NL Baseball	11:00 NL Baseball
3113	NL Baseball	11:00 NL Baseball
3114	NL Baseball	11:00 NL Baseball
3115	NL Baseball	11:00 NL Baseball
3116	NL Baseball	11:00 NL Baseball
3117	NL Baseball	11:00 NL Baseball
3118	NL Baseball	11:00 NL Baseball
3119	NL Baseball	11:00 NL Baseball
3120	NL Baseball	11:00 NL Baseball

TELEVISION

NUMBER	LOCATION	EVENTS
3226	ABC	11:00 ABC
3227	CBS	11:00 CBS
3228	FOX	11:00 FOX
3229	NBC	11:00 NBC
3230	Tonight's Movies	11:00 Tonight's Movies
3231	TV Talk Show Preview	11:00 TV Talk Show Preview
3232	Best Bet For Kids	11:00 Best Bet For Kids
3233	TV Sports Highlights	11:00 TV Sports Highlights
3234	PBS Tonight	11:00 PBS Tonight
3235	Stations A-L	11:00 Stations A-L

WEDDING PLANNING

NUMBER	LOCATION	EVENTS
2000	Theme Weddings	11:00 Theme Weddings
2006	Unique Proposal Ideas	11:00 Unique Proposal Ideas
2010	Wedding Gown Buying Tips	11:00 Wedding Gown Buying Tips
2013	Bridesmaids' Gowns	11:00 Bridesmaids' Gowns
2018	The Bridal Shower	11:00 The Bridal Shower

###

ARTS & ENTERTAINMENT

Duty becomes a pleasure in reviewing 'Jerry Maguire'

Show me the sequel! That's how much I liked this movie. I am actually a Hollywood snob for the most part. I typically stay away from films like "Jerry Maguire," but I saw a video of this film, and I felt it was my duty to review this film. And I really enjoyed it.

Behind every good movie there is a superb script. Cameron Crowe takes the credit for this great script. He is credited with writing such memorable scripts as "Fast Times at Ridgemont High," "Say Anything," and "Singles" — the latter two he also directed. His talent was showcased early in his writing for "Rolling Stone," which he began at the age of 16.

In a cynical, unethical world, Jerry Maguire is a cynical, unethical sports agent, but only for about 10 minutes of this feature-length film. Jerry Maguire has a revelation that leads him to write a "mission statement" for his company, which he just knows they will eat up. His words would change the world. Well, unfortunately, he is successful in changing only a very small part of the world. The rest of the movie, though, is that, fortunately, the small part of the world he does change is his part.

Maguire goes from when his boss reads his mission statement, and leaves his high-paying, high-profile job with nothing more than a goldfish, one client, Cuba Gooding Jr., and one assistant, Renée Zellweger, who believes in his way of doing business. The movie really starts here where the rollercoaster begins its downward plunge. I won't ruin the movie for you by giving you too many details, but I will say that Kelly Preston does a great job of playing the bitchy fiancée and Bonnie Hunt does a great job of playing Zellweger's big sister.

Hunt is the serious, sensitive sister who holds weekly man-bater divorce group meetings in her house and is admittedly "incapable of small-talk."

The Video Detective

By Jim Riffel

Great script writing, combined with Hunt's great talent for delivering lines with just the right combination of sarcasm and humor helps her to steal most scenes that she is part of.

Although I don't know if I completely agree with the Academy Award nomination for Tom Cruise last year — wasn't he simply playing Joel from "Risky Business" — Jerry Maguire is a cynical, unethical sports agent, but only for about 10 minutes of this feature-length film.

So, if you missed it in theaters — the film grossed \$100 million, so most of you probably saw it — check out "Jerry Maguire" on video. In what film did Tom Cruise appear with Brooke Shields?

Answer: "Endless Love." 1981.

A resident of Mountaintop, Jim Riffel is the author of "The Top 100 Films of All Time."

Arts center prepares for new season

After sell-out crowds and standing ovations over the past 10 months, Joseph A. Mancuso, executive director of Union County Arts Center, and Maria C. Watson, artistic director, have announced a season to top last year's. "We have a wonderful opportunity in front of us," Watson said in a recent interview. "After several seasons of preparing the Arts Center to take off as a major force in the New Jersey arts community, we're finally on the runway! We've just finished our first season as an affiliate member of the New Jersey Theater Group, and have really been encouraged by the support that the state's artists have shown us."

The 1997-98 Season kicks off on Oct. 4 with the American premiere of Olga Gorenchik and Alexander Ravitskiy, two award-winning Russian pianists. They will perform a four-hands recital of premiere arrangements of classical favorites and Gershwin standards. This gala evening will coincide with the grand opening of the Arts Center's new box office and patron services office, as well as the completion of the Arts Center's historic restoration.

The Headliner Series will feature classic country superstar Glenn Campbell on Dec. 6, with his band in "Glenn Campbell's Ribstone Christmas." On Valentine's Day, the UCAC will present "The Ladies of the Pack," a follow-up to last season's sold-out presentation of The Countess. The Ladies and The Pack will feature The Shangri-Las, The Drifters and The Frantics. "Ladies" will feature The Shangri-Las. The Pack will feature The Drifters and The Frantics.

The Arts Center will also be the host to The Westfield Symphony Orchestra for "A Russian Fantasy" on Sept. 27 and "The Glory of Great Britain" on March 21. "In The Woods," a 1940s musical revue and a benefit for the Union County Arts Center, will be presented on Oct. 12 and 13. The Union County Arts Center will continue its popular Theater Series in November with the production of the hit 1988 musical "Into The Woods."

The Arts Center Box Office, at 1601 Irving St., Rahway, opens for Arts Center members and subscribers on Aug. 12 and to the public on Aug. 14. Tickets may be purchased over the phone using a Visa or Mastercard by calling (732) 499-8226.

McDonald's to sponsor music education fellowship

As part of McDonald's Gospel Fest, tri-state area McDonald's Restaurants have raised \$20,000 for the 1997 McDonald's Gospel Fest Fellowship Award program. The Fellowship Award program is a scholarship award program to a student with an interest in pursuing a music education.

Applications, along with a letter of recommendation and the essay, must be submitted by Oct. 31. Essays will then be judged by a panel of judges comprised of community leaders — religious, educational, political, social and media — and McDonald's Owner/Operators.

Applicants must be a resident of New York, New Jersey, or Pennsylvania. The award is worth \$1,000 and each award will be given to a student who is currently attending a high school, college or university that is a member of the McDonald's Fellowship Award program. The award is worth \$1,000 and each award will be given to a student who is currently attending a high school, college or university that is a member of the McDonald's Fellowship Award program.

Applications, along with a letter of recommendation and the essay, must be submitted by Oct. 31. Essays will then be judged by a panel of judges comprised of community leaders — religious, educational, political, social and media — and McDonald's Owner/Operators.

CHAN CHINA KING

ALL YOU CAN EAT BUFFET

LUNCH
Monday thru Friday
11:30 AM - 3:30 PM \$4.99
Children Under 10 \$2.99

DINNER
Monday thru Friday
4:00 PM - 9:30 PM \$7.99
Children Under 10 \$3.99
Saturday thru Sunday & Holidays
11:30 AM - 10:30 PM \$7.99
Children Under 10 \$3.99
Dinner Under 2 FREE
Prices subject to change without notice.

Linden Plaza
1601 W. Edgar Rd.
Rt. 1 & 9 • Linden
TEL: 908-474-0338
FAX: 908-474-0460

Madrid Restaurant
Authentic Spanish Cuisine
SPECIALIZING IN SEAFOOD AND STEAK DINNERS
We Feature a Variety Of Daily Specials
Free Off-Street Private Parking
654 N. Point Rd. • Elizabeth
(Corner of Fulton & 7th St.)
One Block South of Elizabeth General Hospital
908-289-4343
All Major Credit Cards Accepted

Alexis
24hr. N.Y. Strip Steak
24 hr. Delmonico Steak
\$11.95
24hr. N.Y. Strip Steak
24 hr. Delmonico Steak
\$11.95

LINDEN CHINA BUFFET
American • Chinese Cuisine
"ALL-U-CAN-EAT"
CHILDREN UNDER 2 FREE
FAST FREE DELIVERY (within 10 mi.)
LUNCH \$5.99 (L.B.) • DINNER \$8.00 (L.B.)
50 ITEMS FOR ONE LOW PRICE
ENTIRE CHECK
10% OFF
We Accept Mastercard, Visa & Discover
667 NORTH STILES STREET, LINDEN
Tel (908) 587-9216 • Fax (908) 587-9218

WORRALL COMMUNITY NEWSPAPERS

Union Leader, Kaniworth Leader, Roselle Park Leader, Summit Observer, Springfield Leader, Mountaintop Echo, Elizabeth Gazette, Roselle Spectator, Rahway Progress, Clark Eagle, Hillside Leader, Linden Leader

DINING REVIEW

AUGUST 14, 1997

City Tavern Restaurant and Bar

A good time and a great meal

By Chris Sykes
Staff Writer
The fictional bar "Cheers" may be the place to go in Boston where everybody knows your name, but for a good time and great meal in Elizabeth the City Tavern Restaurant and Bar will more than suffice. Located on the corner of West Scott Place and Elizabeth Avenue, the tavern is a refuge from the urban grind in the middle of the city's commercial district. It is conveniently located one block from City Hall, two blocks from the county court house, and one-and-a-half blocks from St. Elizabeth's Hospital on Broad Street.

Owners Steve and Conetta Bonjovi have designed their establishment to be equally accessible to businessmen taking lunch and twenty-somethings. They have accomplished this by putting together an international menu loaded with pasta, steak, seafood, soup dishes and combination plates that cater to the diverse tastes of the city's ethnic and cultural groups. Menus are printed in both English and Spanish, and they list a wide array of Colombian, Spanish and Italian dishes and appetizers including stuffed clams, fried calamari, and mussels served in either a green or marinara sauce. The tavern offers a variety of veal, chicken and seafood dishes, but the specialty is Piccata, a Colombian dish made from mixed meats.

Patrons are treated to generous serving portions intended for one that could very well accommodate two. My guest and I ordered the mussels in marinara sauce as an appetizer and dinner entrees of Paella and Arroz con Pollo. The mussels were tasty while not being overwhelmed by the wonderfully delicious marinara sauce, and the entrees themselves were marvelous examples of Colombian delicacies served the way they are supposed to be served.

Paella is a seafood dish made from yellow rice and vegetables with a variety of shrimp, clams, lobster, crab and other delights of the deep mixed in, and the Arroz con Pollo is a chicken and rice dish with the ingredients served together with vegetables mixed in. Each meal was presented creatively; the Arroz con Pollo in particular was served very creatively with sliced tomatoes on a bed of onions, sweet plantain, on the other.

Everything was delicious and I highly recommend the City Tavern to anyone inside or outside the city who is looking for a great meal, great company and excellent service. In fact, Steve Bonjovi, the silent partner in the business run by his wife, said the purpose of the tavern is to provide a quality dining and entertainment experience.

Patrons must be 21-years-of-age or older to be served alcoholic beverages at the bar, which also serves drinks of the non-alcoholic variety as well. Proper attire is required of all patrons at all times. This column is intended to inform our readers about dining opportunities in the area.

City Tavern Restaurant & Bar
Grill & Seafood
Spanish and Colombian Cuisine
Lunch Menu Available
1109 ELIZABETH AVENUE, ELIZABETH
(908) 353-7113 • FAX (908) 353-4308

'Hamlet II' is definitely 'Better Than the Original'

Theater View

By Jacquie McCarthy
Associate Editor

Shakespeare is not dead — yet. The age-old tale of "Hamlet" was given new life by the Summit Theatre company on Aug. 7, 9 and 10 with their production of "Hamlet II — Better Than the Original," staged at Temple Emanuel on East Broad Street in Westfield.

If you've ever questioned the timelessness of the Bard's productions, you would have been proven wrong this past weekend. Summit Theatre presented a slapstick version of the trials and tribulations of the gloomy Hamlet, his spectral visitings and weighty concerns. Instead of refracting the mad Dane to a support group, playwright Sam Bobick pulled fun at Aug. 14: Tickets may be purchased over the phone using a Visa or Mastercard by calling (732) 499-8226.

The cast of characters began with the Marx Brothers a run for their money. And through it all, there was the Great Dane himself, played with alternating solemnity and wacky exuberance by Paul Gonsky. Hamlet's attempts to convince others of his madness could be matched only by Bugs Bunny.

All scenes and performances were this capable director, cast and crew to inject enough humor that even poor Yorick would have laughed. The cast of characters began with the Marx Brothers a run for their money. And through it all, there was the Great Dane himself, played with alternating solemnity and wacky exuberance by Paul Gonsky. Hamlet's attempts to convince others of his madness could be matched only by Bugs Bunny.

The cast of characters began with the Marx Brothers a run for their money. And through it all, there was the Great Dane himself, played with alternating solemnity and wacky exuberance by Paul Gonsky. Hamlet's attempts to convince others of his madness could be matched only by Bugs Bunny.

The cast of characters began with the Marx Brothers a run for their money. And through it all, there was the Great Dane himself, played with alternating solemnity and wacky exuberance by Paul Gonsky. Hamlet's attempts to convince others of his madness could be matched only by Bugs Bunny.

Design studio available

The da Crest School of Art and Design is offering non-profit organizations a full-service design studio at no charge.

The Design Group gives a select group of art students the opportunity to work in an advertising agency environment. New designs are created and camera-ready art work is provided. This service is offered at a minimal cost, to any non-profit organization in the local and surrounding communities.

The da Crest School of Art and Design, founded in 1926, is the oldest private art school in New Jersey. It is approved by the state Department of Education, is accredited by the Council on College Art Association, is a member of the International Council of Design Schools, and is a member of the Private Career Schools of New Jersey. For further information, call (908) 757-7171.

Tour the 'Invention Factory'

Edison's Laboratory, the scientist's "Invention Factory," is open to the public 9:30 a.m. to 3:30 p.m. daily. Admission is \$2; seniors and children are admitted free.

The museum is located on Main Street at Lakeside Avenue in West Orange. For more information, call (201) 736-0050.

The Race For The Heisman Kicks Off In August.
KICKOFF CLASSIC XV Presented by FIRST UNION
Syracuse vs Wisconsin
Sunday, August 24, 2pm Giants Stadium
Tickets \$22 and \$20 available at the Continental Airlines Arena Box Office and all outlets.
To charge by phone call (201) 907-4900 or (201) 907-7171. Seat info call (201) 907-4900. Group Sales (201) 460-4370.
American Express Gold & Platinum Card members call (212) 907-6010 for preferred seating through Gold Card Events.
*The official "Invention Factory" of the museum. The museum is open to the public 9:30 a.m. to 3:30 p.m. daily. Admission is \$2; seniors and children are admitted free.

REUNION

Jonathan Dayton Regional High School Class of 1946 search committee is seeking classmates for its 50th reunion, the date of which has not been determined. To contact the committee, contact Rose Campese Tabor at 530 Fourth Ave., Greewood, NJ 07037 or Anne Griesano at PO Box 251, Springfield, NJ 07081.

South Side High School, Class of 1946, and Bergen Street School Class of 1942 are seeking classmates for a 50th reunion. Contact Sam Sporn, 8 Crested Dr., Parsippany, NJ 07054, or call (201) 335-6611.

East Orange High School Class of 1946 reunion committee is seeking classmates for its 50th reunion, the date of which has not been determined. To contact the committee, call (201) 887-1141.

Jonathan Dayton Regional High School Class of 1942 is seeking a 50th reunion in September. For information, contact Franklyn Yori at (908) 246-1231, John Bunk at (908) 929-1807 or Joseph Pipoli at (908) 354-4613.

Union High School Class of 1937 will hold a 60th reunion luncheon on Sept. 11 at the Waterbury Pavilion, Belmar. All who graduated or attended during the period 1930-1940 and their guests are most welcome. Notices will be mailed in the near future. If notice is not received, contact John Snowdon at (908) 205-3403, Ruth Rabin Rosenbaum at (908) 244-7983 or Marian Lawless Tuffs (908) 449-9554.

Brimley and Jefferson high schools Class of 1967 30th reunion will be held on Oct. 10 at 7 p.m. Scully's Panagiotis Restaurant, Park and Mountain avenues, Scotch Plains. For information, write to Class of 1967, 381 E. 9th Ave., Roselle, NJ 07068.

Alexander Clark High School in Roselle, Class of 1953 will hold a reunion on Oct. 11 at The Westwood in Garwood. For information, call Flo Golday at (908) 968-1399 evenings or (908) 757-3400 day, or Rita Miller at (908) 772-7926.

Linden High School Class of 1940 will hold a reunion on Oct. 25 at the Moose Club, located on Lattin Place in Linden. For information, call Dorothy Houston at (908) 241-3556.

The Class of 1955 of Abraham Clark High School will hold a 42-year reunion on Nov. 8 at the Holiday Inn in Clark.

The reunion committee is seeking class members. For those who have not been notified or know of a class member who has not notified, contact Bennett Miller at (201) 299-3458 or Joanne Hall Keyes at (908) 925-6844.

Jonathan Dayton Regional High School Class of 1977 will hold its 20th reunion on Nov. 29 at 11 A.M. in Mountaintop. Alumni, friends and family who know the whereabouts of former classmates should respond to: The Reunion Committee, 44 Briar Hill Circle, Springfield, NJ 07081.

Scotch Plains-Fanwood 1967, Oct. 18. Columbia Senior 1987, Nov. 28. Union 1967, Nov. 28. Westfield 1967, Nov. 28. Scotch Plains-Fanwood 1977, Nov. 29.

South Plainfield 1972, Nov. 29. South Plainfield 1967, Nov. 29. Union 1967, Nov. 29. Westfield 1967, Nov. 29. Scotch Plains-Fanwood 1967, Oct. 18. Columbia Senior 1987, Nov. 28. Union 1967, Nov. 28. Westfield 1967, Nov. 28. Scotch Plains-Fanwood 1977, Nov. 29.

Reunions Unlimited, Inc., P.O. Box 150, Englishtown, NJ 07726, or call (908) 753-0150 for information.

Student presents play as benefit for charity

Than The Original" is a worthy cause — like the New York Soup Kitchen, which was founded by Dr. Sanford Freeman.

"The Feinman's are friends of our family. My father has been making sandwiches there — he's been doing it at least since I was a sophomore in high school, so that's at least four or five years."

"I feel good about it," Weiner continued. "Everyone needs money, but I'm not doing the show for the money. I wanted to do the show because I wanted to see a show like this done around here, especially because I know there are so many people who are good in it."

As ambitious as young Weiner is, this was a project he couldn't do alone. Luckily he didn't have to, having the support of friends and family. Weiner expressed a great deal of gratitude to everyone who contributed, especially his family.

"The wonderful thing about my parents, they know how tough a profession acting and theater is, and how much of a chance there is for success, but they've never said, 'Don't do it.' They've never said, 'Maybe you should try something else and just use that as a hobby.'"

"Hamlet II — Better Than the Original" is a restoration comedy, a genre that lampoons classical dramatic style. The play is peppered with modern references, some of which — drugs, sexual innuendo, adult humor — are slightly risqué. Quite an opening bid for a new gambler.

"I thought the people around here would like it, if given the chance," said Weiner confidently.

It seems he thought right. The show opened on Aug. 7 to a standing-room-only crowd, and continued to pack audiences for the rest of its short weekend run.

And what has young Weiner learned from this experience? "That I don't want to produce again," he responded pleasantly but emphatically. "I'll never direct again, it's just going to be directing. I'll find a theater company and say, 'I'll direct for you, you get me the space, you get me the money, get me the scripts, get me everything. I'll pick the cast, I'll tell you what I need!'" Weiner laughed heartily.

"I want to act," he said about his future plans, which include continuing to study theater at Rutgers University. "I've always wanted to act, and at least I hope I will direct again, but I want to act, anywhere. I'll go anywhere where I can find a job. I'd love to act on Broadway. I'd love to be in 'film.'"

Well, if this young man makes it to the big time, and his talk show fantasies become reality, I hope he'll remember kindly the someone who jaded arts and entertainment editor who tossed him a little bit in print for his private. One could expect no less of Lemo or Leterman.

'Opposites' attracts attention to Watchung Art Center exhibit

Coming up with a theme for an art exhibit is an art form in itself. The theme should inspire the participants and cause them to stretch their abilities, while at the same time make the viewer want to see the result. It is especially challenging when the target group of artists works in a variety of styles.

The theme for the New Art Group's show this year is simply "Opposites." The exhibit will hang at the Watchung Art Group through Aug. 30. Members of the New Art Group will contribute works that are in some way "opposite." One piece may contain opposites within it, or several companion works may make up a dichotomy. The work may symbolize black-and-white, few and many, or any of the numerous permutations this immensely talented group can imagine.

Typically, art groups exist to help members learn and expand their craft. The New Art Group has an additional, loftier purpose: it does all the work associated with the art exhibits at the Watchung Art Center. This largely thankless job results in two galleries full of artwork each month, exposing emerging and established talents to a wide audience.

The exhibit takes place in the Watchung Arts Center's historic building on the Watchung Plateau. It is easily reached from three surrounding counties: either via Route 22, Plainfield overpass, or Interstate 78, exit 40. Call (908) 753-0150 for information.

I Love My Job

"I was a full time wife and mother who also devoted a great deal of time doing charity work. Finally 15 years ago, I decided to do something which would pay me for my organizational skills, persistence, and motivation."

"That's where Getting to Know You came in. As a Getting to Know You sales representative, I've reaped high financial rewards for my efforts. And I still have time for my family because I make my own hours."

Adrienne Seligman
Sales Representative
Getting to Know You

If you're like Adrienne and want to earn Unlimited Income while working Flexible Day Hours, contact our national advertising company.

MRS. STEWART 1-800-346-1123
STEWART TO KNOW YOU
A Division of GETTO GROUP Inc.

Learn tax preparation from the people who know.

Learn how to minimize your tax liability and keep more of what you earn. Study with the nation's number one tax preparation firm, and you'll discover how to make the tax laws work for you. You'll also learn what you need to know to begin earning money as a qualified tax preparer. Enroll in an H&R Block tax training course.

For more information, call 1-800-TAX-2000 or visit our web site at www.hrblock.com/tax

H&R BLOCK

AA EEO/DFW

Code 100 ©1997 H&R Block Tax Services Inc. *Completion of the course is neither an offer nor a guarantee.

Shipping Out is a weekly calendar designed to guide our readers to the many arts and entertainment events in the Union County area. The calendar is open to all groups and organizations in the Union County area. To place your free listing, send information to Associate Editor Jacqueline McCarthy, *Worral News*, P.O. Box 3109, Union, New Jersey, 07083.

ART SHOWS

DUCHET SCHOOL OF THE ARTS will present selected works of prize winners of the 1987 Just Fine Art Show. The exhibit is open to all groups and organizations in the Union County area. To place your free listing, send information to Associate Editor Jacqueline McCarthy, *Worral News*, P.O. Box 3109, Union, New Jersey, 07083.

BARRON ARTS CENTER will present "Antiquary Art Exhibit" through Sunday.

The arts center is located at 582 Highway Ave., Woodbridge. For information, call (908) 654-0113.

UNION COUNTY ANNUAL JUNE ART AND CRAFT EXHIBITION will take place in the Palmer Gallery at the New Jersey Center for Visual Arts, 68 Elm St., Summit, through Sunday. For information, call (908) 273-9121.

UNION COUNTY TEEN ARTS TOURING EXHIBIT is on display at Berkeley Heights Public Library through Aug. 28.

The exhibit consists of 26 pieces of art selected from the 513 visual art show winners at the 1987 Union County Teen Arts Festival held in March at Union County College.

The library is located at 220 Plainfield Ave., Berkeley Heights. For information, call (908) 558-2550.

OPPOSITE, a diverse media exhibit by New Art Group, hangs at the Wachung Arts Center through Aug. 30.

Gallery hours are 10 a.m. to 4 p.m. weekdays and Saturdays. The arts center is located on the Wachung Circle. For information, call (908) 753-9190.

VOX GALLERY will present "Recent Works of Charlotte Mink and Sy Shames" through August.

Gallery hours are Tuesday through Thursday from 10 a.m. to 6 p.m. and Sunday from noon to 4 p.m. The gallery is located at 444 Springfield Ave., Summit. For information, call (908) 273-9121.

NEWARK PUBLIC LIBRARY has opened a major exhibition celebrating the New Jersey Symphony Orchestra's 75th Anniversary. The history of the orchestra, 1922-1997, will focus on many different facets of the orchestra's rich history.

The exhibit will run through Sept. 6. The library is located at 1500 University Ave., Newark. Library hours are Monday, Tuesday, Thursday and Friday from 9 a.m. to 5:30 p.m., Wednesday from 9 a.m. to 8:30 p.m. and Saturday from 10 a.m. to 1 p.m.

TRAVELS & REFLECTIONS, photographs by Shelia Lange of Union, will be on display at Les Malmat Art Gallery in the Union Library through Sept. 22. A reception will be held on Sept. 6 from 3 to 5 p.m.

The library is located on Morris Avenue at Filiberger Park in Union. For information, call (908) 686-0420 or (908) 686-4536.

NEW JERSEY CENTER FOR VISUAL ARTS will present an exhibit by sculptor and artist Peter Regalado through Sept. 30. The exhibit will take place in the Center's outdoor Art Park.

NJCA is located at 68 Elm St., Summit. For information, call (908) 273-9121.

CHILDREN'S SPECIALIZED HOSPITAL will present the Third Annual Juried Exhibit by the New Jersey Photography Forum during August and Sep-

member. A reception will be held on Sept. 7 from 2 to 4 p.m.

The exhibit will be located in the East Wing. The hospital is located on New Providence Road in Mountainside.

ELIZABETH LIBRARY will display recent children's books and collage by Derek Jay Dent on Aug. 27.

This event is scheduled at the Main Branch located at 11 So. Broad St., Elizabeth.

SUMMIT FRAME & ART is presenting a collection of paintings, etchings, lithographs and woodcuts dating from the 1850s to the 1950s.

Summit Frame and Art is located at 465 Springfield Ave., Summit. Store hours are Monday through Saturday from 9:30 a.m. to 5:30 p.m. and Sunday from 10 a.m. to 4 p.m.

For information, call (908) 273-9121.

GARDENIA, installation by Cindy Tower, runs from Sept. 5 through Nov. 2 in the Palmer Gallery at the New Jersey Center for Visual Arts, 68 Elm St., Summit, through Sunday. For information, call (908) 273-9121.

NEW JERSEY CENTER FOR VISUAL ARTS will present art work by Michelle Post, opening Sept. 5.

The exhibit will hang in The Member Gallery. NJCA is located at 68 Elm St., Summit. For information, call (908) 273-9121.

AUDITIONS

HEAD CHEESE, Rahway's resident comedy troupe, is looking for players for a comedy revue for mid-September. Call (908) 383-9392 for information.

HEAD CHEESE, Rahway's resident comedy troupe, is looking for a few good stand-up comics — and even a few bad ones, for a comedy revue scheduled for mid-September. All creative acts, musical or otherwise, will be considered. Experience is interesting but definitely not necessary. If you can make us laugh, you've got what it takes.

Call (908) 383-9392 for audition appointment.

CARNIVAL PRODUCTIONS will be holding auditions for "All My Sons" by Arthur Miller on Sunday, Wednesday and Aug. 31 at 7:30 p.m. Performances are on Monday, Tuesday, Wednesday and Aug. 31 at 7:30 p.m. Auditions will be held at El Bookshop Restaurant and Theater, 189 West Main St., Rahway. For information, call (732) 389-0647.

INCOCENT will be holding auditions for "Rehearsal for Murder" on Monday and Aug. 25 at 7:30 p.m. at the Presbyterian Church of Teaneck. Needed are an adult cast of 7-9 men and 6 women.

The church is located at Teaneck Road and Church Street. For information, call (201) 641-2180.

SOMERSET PLAYERS will hold auditions for "Cinderella" on Aug. 30 and 31 at noon at their theater. Needed are 21 males, age 45-50; 1 male age 55-plus; 1 female age 25-30; and 1 female age 45-50. Please prepare a dramatic and comic monologue — readings from the script and acceptable — no longer than 3 minutes.

For information, call (908) 369-7469.

STAGECRAFTERS will hold auditions for "Grease" on Sept. 3 and Sept. 4 at 7 p.m. Auditions should prepare a ballad, an up-tempo and come prepared to dance.

For information, call (732) 230-1880.

CRANFORD REPERTORY THEATRE is holding auditions for "Cinderella" on Sept. 3 and Sept. 4 at 7 p.m. Auditions should prepare a ballad, an up-tempo and come prepared to dance.

For information, call (908) 273-9121.

CLUBS

BACK PORCH, a friendly neighborhood Irish pub, features live musical entertainment on weekends. Acoustic guitar and Celtic music will perform on Aug. 22.

The pub is located at 1507 Main St., Rahway. For information, call (908) 381-6455.

CLUB BENE Diner Theater showcases popular entertainers on weekends. Tomorrow — Angela Boffi. Saturday — Bruce Cockburn. Sunday — Elvis Presley tribute.

Dinner-and-show, as well as show-only tickets are available. Club Bene is located on Route 38 in South Amboy. For information, call (908) 722-3200.

CHENILLE'S Steak and Steak House presents jazz entertainment every weekend.

For information, call (732) 230-1880.

CROSSROADS in Garwood presents a weekly lineup of musical rotation: Tuesday — Acoustic Open-Mic Night. Blues guitar stringer and vocal. Thursday — The Blues. The show opens the show, and then comes the stage to any aspiring player who enters. The show opens at 9:30 p.m.

Wednesdays — B.B. of B.B. and the Silencers hosts Open Jam with all musical talents.

Thursdays — Psychedelic Thursdays presents the greatest sounds of classic rock, performed by local bands.

Tomorrow — Moose and The Bullproof Blues Band.

Saturday — Here of Blues.

Weekend performances include blues, rock and folk music. Live music and traditional pub-style brunch is presented every Sunday.

The Crossroads is located at 78 North Ave., Garwood. For information, call (908) 232-6666.

ELLA'S BAR & GRILL presents live musical entertainment on weekends. The tavern is located at 648 Franklin

St., Elizabeth. For information, call (908) 352-9405.

PHYL'S PLACE presents live musical entertainment on weekends.

The tavern is located at 636 Elizabeth Ave., Linden. For information, call (908) 925-8900.

SQUITT presents live musical entertainment on weekends. Hypocrite is scheduled for this evening.

The tavern is located at 119 Washington Ave., Plainfield. For information, call (908) 789-5800.

WAITING ROOM lunch, dinner and rock-and-roll. Open Mike Night every Wednesday and weekend entertainment. The tavern is located at 1431 Irving St., Rahway. For information, call (908) 815-1042.

COMEDY

CASUAL TIMES restaurant features comedians on weekends.

The restaurant is located at 1065 Central Ave., Clark. For information, call (908) 389-6511.

CONCERTS

BILLY ERIC will perform in concert today at 8 p.m. at Mindwashed Park in Westfield.

For information, call (908) 789-4080.

ISRAELI FESTIVAL OF UNION will present a concert of Israeli music.

The festival is located at 1065 Central Ave., Clark. For information, call (908) 389-6511.

NEW JERSEY CENTER FOR VISUAL ARTS will present a concert of Israeli music.

The festival is located at 1065 Central Ave., Clark. For information, call (908) 389-6511.

NEW JERSEY CENTER FOR VISUAL ARTS will present a concert of Israeli music.

The festival is located at 1065 Central Ave., Clark. For information, call (908) 389-6511.

NEW JERSEY CENTER FOR VISUAL ARTS will present a concert of Israeli music.

The festival is located at 1065 Central Ave., Clark. For information, call (908) 389-6511.

NEW JERSEY CENTER FOR VISUAL ARTS will present a concert of Israeli music.

The festival is located at 1065 Central Ave., Clark. For information, call (908) 389-6511.

NEW JERSEY CENTER FOR VISUAL ARTS will present a concert of Israeli music.

The festival is located at 1065 Central Ave., Clark. For information, call (908) 389-6511.

NEW JERSEY CENTER FOR VISUAL ARTS will present a concert of Israeli music.

The festival is located at 1065 Central Ave., Clark. For information, call (908) 389-6511.

NEW JERSEY CENTER FOR VISUAL ARTS will present a concert of Israeli music.

The festival is located at 1065 Central Ave., Clark. For information, call (908) 389-6511.

NEW JERSEY CENTER FOR VISUAL ARTS will present a concert of Israeli music.

The festival is located at 1065 Central Ave., Clark. For information, call (908) 389-6511.

NEW JERSEY CENTER FOR VISUAL ARTS will present a concert of Israeli music.

The festival is located at 1065 Central Ave., Clark. For information, call (908) 389-6511.

NEW JERSEY CENTER FOR VISUAL ARTS will present a concert of Israeli music.

The festival is located at 1065 Central Ave., Clark. For information, call (908) 389-6511.

NEW JERSEY CENTER FOR VISUAL ARTS will present a concert of Israeli music.

The festival is located at 1065 Central Ave., Clark. For information, call (908) 389-6511.

NEW JERSEY CENTER FOR VISUAL ARTS will present a concert of Israeli music.

The festival is located at 1065 Central Ave., Clark. For information, call (908) 389-6511.

NEW JERSEY CENTER FOR VISUAL ARTS will present a concert of Israeli music.

The festival is located at 1065 Central Ave., Clark. For information, call (908) 389-6511.

NEW JERSEY CENTER FOR VISUAL ARTS will present a concert of Israeli music.

The festival is located at 1065 Central Ave., Clark. For information, call (908) 389-6511.

NEW JERSEY CENTER FOR VISUAL ARTS will present a concert of Israeli music.

The festival is located at 1065 Central Ave., Clark. For information, call (908) 389-6511.

NEW JERSEY CENTER FOR VISUAL ARTS will present a concert of Israeli music.

The festival is located at 1065 Central Ave., Clark. For information, call (908) 389-6511.

NEW JERSEY CENTER FOR VISUAL ARTS will present a concert of Israeli music.

The festival is located at 1065 Central Ave., Clark. For information, call (908) 389-6511.

NEW JERSEY CENTER FOR VISUAL ARTS will present a concert of Israeli music.

The festival is located at 1065 Central Ave., Clark. For information, call (908) 389-6511.

NEW JERSEY CENTER FOR VISUAL ARTS will present a concert of Israeli music.

The festival is located at 1065 Central Ave., Clark. For information, call (908) 389-6511.

NEW JERSEY CENTER FOR VISUAL ARTS will present a concert of Israeli music.

The festival is located at 1065 Central Ave., Clark. For information, call (908) 389-6511.

NEW JERSEY CENTER FOR VISUAL ARTS will present a concert of Israeli music.

The festival is located at 1065 Central Ave., Clark. For information, call (908) 389-6511.

NEW JERSEY CENTER FOR VISUAL ARTS will present a concert of Israeli music.

The festival is located at 1065 Central Ave., Clark. For information, call (908) 389-6511.

NEW JERSEY CENTER FOR VISUAL ARTS will present a concert of Israeli music.

The festival is located at 1065 Central Ave., Clark. For information, call (908) 389-6511.

NEW JERSEY CENTER FOR VISUAL ARTS will present a concert of Israeli music.

The festival is located at 1065 Central Ave., Clark. For information, call (908) 389-6511.

NEW JERSEY CENTER FOR VISUAL ARTS will present a concert of Israeli music.

The festival is located at 1065 Central Ave., Clark. For information, call (908) 389-6511.

NEW JERSEY CENTER FOR VISUAL ARTS will present a concert of Israeli music.

The festival is located at 1065 Central Ave., Clark. For information, call (908) 389-6511.

NEW JERSEY CENTER FOR VISUAL ARTS will present a concert of Israeli music.

The festival is located at 1065 Central Ave., Clark. For information, call (908) 389-6511.

NEW JERSEY CENTER FOR VISUAL ARTS will present a concert of Israeli music.

The festival is located at 1065 Central Ave., Clark. For information, call (908) 389-6511.

NEW JERSEY CENTER FOR VISUAL ARTS will present a concert of Israeli music.

The festival is located at 1065 Central Ave., Clark. For information, call (908) 389-6511.

NEW JERSEY CENTER FOR VISUAL ARTS will present a concert of Israeli music.

The festival is located at 1065 Central Ave., Clark. For information, call (908) 389-6511.

NEW JERSEY CENTER FOR VISUAL ARTS will present a concert of Israeli music.

The festival is located at 1065 Central Ave., Clark. For information, call (908) 389-6511.

NEW JERSEY CENTER FOR VISUAL ARTS will present a concert of Israeli music.

The festival is located at 1065 Central Ave., Clark. For information, call (908) 389-6511.

NEW JERSEY CENTER FOR VISUAL ARTS will present a concert of Israeli music.

The festival is located at 1065 Central Ave., Clark. For information, call (908) 389-6511.

NEW JERSEY CENTER FOR VISUAL ARTS will present a concert of Israeli music.

The festival is located at 1065 Central Ave., Clark. For information, call (908) 389-6511.

NEW JERSEY CENTER FOR VISUAL ARTS will present a concert of Israeli music.

The festival is located at 1065 Central Ave., Clark. For information, call (908) 389-6511.

NEW JERSEY CENTER FOR VISUAL ARTS will present a concert of Israeli music.

The festival is located at 1065 Central Ave., Clark. For information, call (908) 389-6511.

NEW JERSEY CENTER FOR VISUAL ARTS will present a concert of Israeli music.

The festival is located at 1065 Central Ave., Clark. For information, call (908) 389-6511.

NEW JERSEY CENTER FOR VISUAL ARTS will present a concert of Israeli music.

The festival is located at 1065 Central Ave., Clark. For information, call (908) 389-6511.

NEW JERSEY CENTER FOR VISUAL ARTS will present a concert of Israeli music.

The festival is located at 1065 Central Ave., Clark. For information, call (908) 389-6511.

NEW JERSEY CENTER FOR VISUAL ARTS will present a concert of Israeli music.

The festival is located at 1065 Central Ave., Clark. For information, call (908) 389-6511.

NEW JERSEY CENTER FOR VISUAL ARTS will present a concert of Israeli music.

The festival is located at 1065 Central Ave., Clark. For information, call (908) 389-6511.

NEW JERSEY CENTER FOR VISUAL ARTS will present a concert of Israeli music.

The festival is located at 1065 Central Ave., Clark. For information, call (908) 389-6511.

NEW JERSEY CENTER FOR VISUAL ARTS will present a concert of Israeli music.

The festival is located at 1065 Central Ave., Clark. For information, call (908) 389-6511.

NEW JERSEY CENTER FOR VISUAL ARTS will present a concert of Israeli music.

The festival is located at 1065 Central Ave., Clark. For information, call (908) 389-6511.

NEW JERSEY CENTER FOR VISUAL ARTS will present a concert of Israeli music.

The festival is located at 1065 Central Ave., Clark. For information, call (908) 389-6511.



Mayor's Concert Series will present country music by Tim Gillis Band today from 7 to 9 p.m. outside Union County Arts Center in Rahway.

deeds of visitors can become more knowledgeable and find beauty in nature.

New Woodland workers are needed for the remainder of summer and into fall to upgrade walking trails, plant native plants, and remove undesirable plants and weeds.

Volunteers who enjoy the outdoors are invited to donate time in three ways: call for same-day participation, come on a regular monthly schedule or join other Woodland workers every Thursday from 9-11 a.m.

For information, contact Education Coordinator Nick Armstrong at (908) 273-9787 or stop at the arboretum, 165 Hobart Ave., near Rt. 24, in Summit.

KIDS

ALL CHILDREN'S THEATRE will be held at Wachung Arts Center from Saturday through Aug. 28. Children will take part in all aspects of producing a musical.

The arts center is located on the Wachung Circle. For information, call (908) 753-9190.

GARDEN STATE POPS Youth Orchestra and Classical Youth Orchestra will perform on Saturday, Aug. 22, at 7:30 p.m. on the village green in Scotch Plains.

In case of rain, all concerts will be moved indoors to the high school auditorium on Westfield Avenue. For information, call (908) 273-9121.

JEWISH RENAISSANCE FAIR will be held on Aug. 31 on the campus of the Rabbinical College of America in Morristown. Children's activities, carnival games, arts-and-crafts village, musical performances, and more.

Admission is \$5. The fair will be held from 9 a.m. to 5 p.m. For information, call (908) 273-9121.

NATIONAL BATTLE OF NEW JERSEY will be holding Nutcracker auditions at the School of the National Ballet of NJ on Sept. 6.

Audition times are 12:30 p.m. for male/female ages 5-10 and 2:30-4 p.m. for female ages 11-18. Auditions are held at the very last. At best, you could find an entirely new calling.

Leo July 23-Aug. 23

What starts out as a dull week should perk up toward the weekend. A prickly person has an insight to share, if you can get past the outermost appearance of dislike. Your closest friend needs some extra attention. A phone call this weekend brings intriguing news.

COUNTY POOLS are open through Labor Day, Sept. 1. John Russell Wheeler Pool, located on Silver Street and Route 1 in Linden, and the Walter E. Ulrich Memorial Pool, located in Rahway River Park on St. Georges Avenue in Rahway, feature adult and children's pools. A variety of swimming lessons are offered at the Ulrich Pool.

On Mondays, Wednesdays and Fridays, Wheeler Pool swim times will be 1 to 6 p.m. Tuesday and Thursday hours are 1 to 8 p.m. on Mondays and Wednesdays. Hours on Tuesdays, Thursdays and Fridays are 1 to 6 p.m. Weekday and holidays, both pools will be open from 11 a.m. to 6 p.m.

ADMISSION is \$4 for adult residents; \$6 for out-of-county adult. Discounted rates are available for youth 17 years and younger, and seniors 62 and older. Ten and 30-day discount cards are also on sale. Identification will be required before admission or the out-of-county rate will be charged. No one under the age of 12 will be admitted without an adult.

For information, call (908) 527-4900. **HORSEBACK RIDING**, including lessons, are available at Watchung Stables.

For girls scouts troops, there is a program designed to allow them to earn a Horse Lover Badge. This one-session is appropriate for Junior Level Scouts and addresses the requirements as set forth in the badge handbook.

Pre-schoolers, youth and scout groups, senior citizen clubs and organizations for people with disabilities will enjoy the stable's one-hour tour of the barn and its facilities.

Lesson programs can be arranged at a date and time convenient for any group. There is a \$20 fee per hour; actual horseback riding is available at an additional cost. Contact Jean Jacobus at (908) 786-3665 for further information. Watchung Stables is a facility of the Union County Division of Parks and Recreation and is located at 1150 Summit Lane, Mountaintown.

LINDEN Lanes features Laser Light Bowling to music at the 700 West Saturday night after 10 p.m.

Games cost \$3 per person. Linden Lanes is located at 741 N. Silver Ave.

PUBLIC NOTICE
NOTICE OF PUBLIC AUCTION
AMERICAN LEGAL & REALTY SERVICE, INC. will hold a public auction of real estate on Thursday, August 14, 1997, at 10:00 a.m. at the premises located at 220 P.M. 1421 Oak Tree Rd., Island, NJ 07035.

NOTICE OF PUBLIC AUCTION
AMERICAN LEGAL & REALTY SERVICE, INC. will hold a public auction of real estate on Thursday, August 14, 1997, at 10:00 a.m. at the premises located at 220 P.M. 1421 Oak Tree Rd., Island, NJ 07035.

NOTICE OF PUBLIC AUCTION
AMERICAN LEGAL & REALTY SERVICE, INC. will hold a public auction of real estate on Thursday, August 14, 1997, at 10:00 a.m. at the premises located at 220 P.M. 1421 Oak Tree Rd., Island, NJ 07035.

NOTICE OF PUBLIC AUCTION
AMERICAN LEGAL & REALTY SERVICE, INC. will hold a public auction of real estate on Thursday, August 14, 1997, at 10:00 a.m. at the premises located at 220 P.M. 1421 Oak Tree Rd., Island, NJ 07035.

NOTICE OF PUBLIC AUCTION
AMERICAN LEGAL & REALTY SERVICE, INC. will hold a public auction of real estate on Thursday, August 14, 1997, at 10:00 a.m. at the premises located at 220 P.M. 1421 Oak Tree Rd., Island, NJ 07035.

NOTICE OF PUBLIC AUCTION
AMERICAN LEGAL & REALTY SERVICE, INC. will hold a public auction of real estate on Thursday, August 14, 1997, at 10:00 a.m. at the premises located at 220 P.M. 1421 Oak Tree Rd., Island, NJ 07035.

NOTICE OF PUBLIC AUCTION
AMERICAN LEGAL & REALTY SERVICE, INC. will hold a public auction of real estate on Thursday, August 14, 1997, at 10:00 a.m. at the premises located at 220 P.M. 1421 Oak Tree Rd., Island, NJ 07035.

NOTICE OF PUBLIC AUCTION
AMERICAN LEGAL & REALTY SERVICE, INC. will hold a public auction of real estate on Thursday, August 14, 1997, at 10:00 a.m. at the premises located at 220 P.M. 1421 Oak Tree Rd., Island, NJ 07035.

NOTICE OF PUBLIC AUCTION
AMERICAN LEGAL & REALTY SERVICE, INC. will hold a public auction of real estate on Thursday, August 14, 1997, at 10:00 a.m. at the premises located at 220 P.M. 1421 Oak Tree Rd., Island, NJ 07035.

NOTICE OF PUBLIC AUCTION
AMERICAN LEGAL & REALTY SERVICE, INC. will hold a public auction of real estate on Thursday, August 14, 1997, at 10:00 a.m. at the premises located at 220 P.M. 1421 Oak Tree Rd., Island, NJ 07035.

NOTICE OF PUBLIC AUCTION
AMERICAN LEGAL & REALTY SERVICE, INC. will hold a public auction of real estate on Thursday, August 14, 1997, at 10:00 a.m. at the premises located at 220 P.M. 1421 Oak Tree Rd., Island, NJ 07035.

NOTICE OF PUBLIC AUCTION
AMERICAN LEGAL & REALTY SERVICE, INC. will hold a public auction of real estate on Thursday, August 14, 1997, at 10:00 a.m. at the premises located at 220 P.M. 1421 Oak Tree Rd., Island, NJ 07035.

THEATRE
BLITHE SPIRIT, Noel Coward's comedy of manners, is presented by the Shakespeare Festival at the Community Theatre of Monticello. Dylan Baker, who directed last season's triumph "Our Town", returns to direct this comedy featuring child ghosts, uncensored scenes and the paranormal in high style.

"Blithe Spirit" runs through Aug. 24. The theatre is located at 100 South St., Monticello. For information, call (201) 408-5600.

FUNCTION TEN will present "Modern's Best Musical" "Tee Vee Be Late" tomorrow at 8 p.m., and Saturday and Sunday at 3 p.m. and 8 p.m.

OPEN MIKE POETRY is featured at Barnes & Noble Cafe on the third Sunday of the month at 7:30 p.m.

Barnes & Noble bookstore is located at 240 Route 22 West in Springfield. For information, call (201) 378-8544.

FAMOUS POETS SOCIETY is sponsoring a free poetry competition open to all persons living in the Union area. Poets may send one poem of 21 lines or less to Free Poetry Contest, 1826 N. Wilcox Ave., Suite 126, Los Angeles, CA 90010. Deadline for entries is Aug. 18, 1997.

AMERICAN FREE POETRY CONTEST is open to everyone and is free. Every poem entered has a chance to be published in a hardbound anthology. In addition, \$25,000 will be awarded by the Famous Poets Society.

The poem should be no more than 20 lines, with the poem name and address on the top of the page. To enter, send one original poem, one subject and one style to Free Poetry Contest, 421 N. Rodeo Dr., Suite 15-44, Beverly Hills, CA 90210. Entries must be postmarked by Aug. 27, 1997.

FAMOUS POETS SOCIETY is offering a \$1,000 grand prize in a free poetry contest, which is open to everyone. Send one poem, 21 lines or less, to: Barnes of Burbank, 2219 W. Olive Ave., Suite 250, Burbank, CA 91506. Deadline for entry is Sept. 17, 1997.

LINDEN Lanes features Laser Light Bowling to music at the 700 West Saturday night after 10 p.m.

Games cost \$3 per person. Linden Lanes is located at 741 N. Silver Ave.

PUBLIC NOTICE
NOTICE OF PUBLIC AUCTION
AMERICAN LEGAL & REALTY SERVICE, INC. will hold a public auction of real estate on Thursday, August 14, 1997, at 10:00 a.m. at the premises located at 220 P.M. 1421 Oak Tree Rd., Island, NJ 07035.

NOTICE OF PUBLIC AUCTION
AMERICAN LEGAL & REALTY SERVICE, INC. will hold a public auction of real estate on Thursday, August 14, 1997, at 10:00 a.m. at the premises located at 220 P.M. 1421 Oak Tree Rd., Island, NJ 07035.

NOTICE OF PUBLIC AUCTION
AMERICAN LEGAL & REALTY SERVICE, INC. will hold a public auction of real estate on Thursday, August 14, 1997, at 10:00 a.m. at the premises located at 220 P.M. 1421 Oak Tree Rd., Island, NJ 07035.

NOTICE OF PUBLIC AUCTION
AMERICAN LEGAL & REALTY SERVICE, INC. will hold a public auction of real estate on Thursday, August 14, 1997, at 10:00 a.m. at the premises located at 220 P.M. 1421 Oak Tree Rd., Island, NJ 07035.

NOTICE OF PUBLIC AUCTION
AMERICAN LEGAL & REALTY SERVICE, INC. will hold a public auction of real estate on Thursday, August 14, 1997, at 10:00 a.m. at the premises located at 220 P.M. 1421 Oak Tree Rd., Island, NJ 07035.

NOTICE OF PUBLIC AUCTION
AMERICAN LEGAL & REALTY SERVICE, INC. will hold a public auction of real estate on Thursday, August 14, 1997, at 10:00 a.m. at the premises located at 220 P.M. 1421 Oak Tree Rd., Island, NJ 07035.

NOTICE OF PUBLIC AUCTION
AMERICAN LEGAL & REALTY SERVICE, INC. will hold a public auction of real estate on Thursday, August 14, 1997, at 10:00 a.m. at the premises located at 220 P.M. 1421 Oak Tree Rd., Island, NJ 07035.

NOTICE OF PUBLIC AUCTION
AMERICAN LEGAL & REALTY SERVICE, INC. will hold a public auction of real estate on Thursday, August 14, 1997, at 10:00 a.m. at the premises located at 220 P.M. 1421 Oak Tree Rd., Island, NJ 07035.

NOTICE OF PUBLIC AUCTION
AMERICAN LEGAL & REALTY SERVICE, INC. will hold a public auction of real estate on Thursday, August 14, 1997, at 10:00 a.m. at the premises located at 220 P.M. 1421 Oak Tree Rd., Island, NJ 07035.

NOTICE OF PUBLIC AUCTION
AMERICAN LEGAL & REALTY SERVICE, INC. will hold a public auction of real estate on Thursday, August 14, 1997, at 10:00 a.m. at the premises located at 220 P.M. 1421 Oak Tree Rd., Island, NJ 07035.

NOTICE OF PUBLIC AUCTION
AMERICAN LEGAL & REALTY SERVICE, INC. will hold a public auction of real estate on Thursday, August 14, 1997, at 10:00 a.m. at the premises located at 220 P.M. 1421 Oak Tree Rd., Island, NJ 07035.

Connections
To place your FREE ad, call 1-800-382-1746. To respond to an ad, call 1-800-786-2400. \$1.99 per minute. You must be 18 or older. Anytime, 24/7 or night.

FREE Personal Ad **FREE Voice Greeting** **FREE Message Retrieval** (1x weekly)
Both numbers work with TouchTone® and Rotary phones.

PERSONAL CALLS ONLY
40 yr old, 5'7", single, white male, looking for a woman to date. Call me at 1-800-382-1746. Box 1000.

ATTN: JOE
Joe, you received my ad on July 21st (1994). I am looking for a woman to date. Call me at 1-800-382-1746. Box 1000.

ATTN: JOE
Joe, you received my ad on July 21st (1994). I am looking for a woman to date. Call me at 1-800-382-1746. Box 1000.

ATTN: JOE
Joe, you received my ad on July 21st (1994). I am looking for a woman to date. Call me at 1-800-382-1746. Box 1000.

ATTN: JOE
Joe, you received my ad on July 21st (1994). I am looking for a woman to date. Call me at 1-800-382-1746. Box 1000.

ATTN: JOE
Joe, you received my ad on July 21st (1994). I am looking for a woman to date. Call me at 1-800-382-1746. Box 1000.

ATTN: JOE
Joe, you received my ad on July 21st (1994). I am looking for a woman to date. Call me at 1-800-382-1746. Box 1000.

ATTN: JOE
Joe, you received my ad on July 21st (1994). I am looking for a woman to date. Call me at 1-800-382-1746. Box 1000.

ATTN: JOE
Joe, you received my ad on July 21st (1994). I am looking for a woman to date. Call me at 1-800-382-1746. Box 1000.

ATTN: JOE
Joe, you received my ad on July 21st (1994). I am looking for a woman to date. Call me at 1-800-382-1746. Box 1000.

ATTN: JOE
Joe, you received my ad on July 21st (1994). I am looking for a woman to date. Call me at 1-800-382-1746. Box 1000.

ATTN: JOE
Joe, you received my ad on July 21st (1994). I am looking for a woman to date. Call me at 1-800-382-1746. Box 1000.

ATTN: JOE
Joe, you received my ad on July 21st (1994). I am looking for a woman to date. Call me at 1-800-382-1746. Box 1000.

ATTN: JOE
Joe, you received my ad on July 21st (1994). I am looking for a woman to date. Call me at 1-800-382-1746. Box 1000.

ATTN: JOE
Joe, you received my ad on July 21st (1994). I am looking for a woman to date. Call me at 1-800-382-1746. Box 1000.

ATTN: JOE
Joe, you received my ad on July 21st (1994). I am looking for a woman to date. Call me at 1-800-382-1746. Box 1000.

ATTN: JOE
Joe, you received my ad on July 21st (1994). I am looking for a woman to date. Call me at 1-800-382-1746. Box 1000.

ATTN: JOE
Joe, you received my ad on July 21st (1994). I am looking for a woman to date. Call me at 1-800-382-1746. Box 1000.

ATTN: JOE
Joe, you received my ad on July 21st (1994). I am looking for a woman to date. Call me at 1-800-382-1746. Box 1000.

ATTN: JOE
Joe, you received my ad on July 21st (1994). I am looking for a woman to date. Call me at 1-800-382-1746. Box 1000.

ATTN: JOE
Joe, you received my ad on July 21st (1994). I am looking for a woman to date. Call me at 1-800-382-1746. Box 1000.

UNION COUNTY CLASSIFIED
The National Kidney Foundation of New York/New Jersey and over a dozen area transplant organizations will hold its Third Annual NY/NJ Walk on Sept. 21 at 9 a.m. with simultaneous 3K walkathons in Manhattan at the 72nd Street Bandshell in Central Park and in Jersey City at Liberty State Park. By joining thousands of area residents and transplant recipients, walkers will help give a second chance to the more than 51,000 Americans, 7,000 individuals in New York and New Jersey, currently awaiting organ transplant.

NY/NJ Walk brings the transplant community closer to the goal of providing an organ or tissue transplant for every American who needs one, said Dr. Jeffrey, president of the National Kidney Foundation of New York/New Jersey.

For more information, and to register, call the National Kidney Foundation of New York/New Jersey at (800) 63-DONATE, or (800) 635-6628, or (212) 629-9770, (201) 342-7894, or (216) 222-1883.

Then use the sponsorship form to collect a minimum of \$25 from friends, family members, co-workers, etc., who will support your efforts and in that first \$25's your registration. You can also write your own personal check for \$25 made payable to the National Kidney Foundation of NY/NJ or you may charge the registration fee on VISA, MasterCard or American Express. For quick and easy registration, call the NY/NJ Walk hotline at (800) 63-DONATE.

The top fund raiser from the combined walks will win a 5-day/4-night dream vacation for two to San Juan, Puerto Rico, restrictions apply. All recipients of National Kidney Foundation of NY/NJ or you may charge the registration fee on VISA, MasterCard or American Express. For quick and easy registration, call the NY/NJ Walk hotline at (800) 63-DONATE.

Pathways invites women who have or have had breast cancer to join one of the organization's support groups. Meetings are free and will be held at one of Pathways' three sponsoring agencies: the Summit YMCA, the Resource Center for Women at Calvary Episcopal Church, or Overlook Hospital.

Call Margaret Media, director of Pathways, at (908) 277-3663 to register for any of these groups or for more information about Pathways.

"Facing Breast Cancer Together," for women who have been recently diagnosed, is an 8-week series that meets on Thursdays from 5:30 to 7 p.m. at the Summit YMCA. Topics will include breast cancer treatments, communication with the health care system, coping strategies, and issues involving families and friends. Vaughn Schwarz, PhD will facilitate.

"Living with Breast Cancer," is a weekly support group for women with nonrecurrent breast cancer that offers a safe, supportive environment in which to share resources and ways of coping. This group discusses living with the ongoing issues of breast cancer. Facilitators are Mary Hill, RN, MSN and Kay English, MSW.

"Adjusting to Recurrent Breast Cancer," meets twice a month just for women with recurrent or metastatic breast cancer. Discussion will include ways of regaining a sense of control in one's life and education about recurrent breast cancer issues. Virginia Burns, LCSW, MSW will facilitate.

Have a great hair day
Hair growth takes place in the roots and follicles, where healthy cells divide and multiply, pushing the hair strands outward.

Unfortunately, some treatments for cancer inhibit the growth of healthy hair cells. Feelings, especially positive feelings, play a vital role in the restoration of health.

The way you think and feel about yourself each day often begins with looking in the mirror. Hair accessories and wigs can become an important aspect of personal appearance.

Horizon Wigs and Beauty Supplies, located at 57 Jersey Ave. in Elizabeth, specializes in wigs and hairpieces for chemotherapy patients.

WEIGHT CONTROL Institute
is pleased to announce opening of their New LIVINGSTON OFFICE for Medical Weight Control.

WEIGHT CONTROL Institute
22 Old Short Hills Road
973-746-1889 / 201-587-7655

WEIGHT CONTROL Institute
22 Old Short Hills Road
973-746-1889 / 201-587-7655

WEIGHT CONTROL Institute
22 Old Short Hills Road
973-746-1889 / 201-587-7655

WEIGHT CONTROL Institute
22 Old Short Hills Road
973-746-1889 / 201-587-7655

WEIGHT CONTROL Institute
22 Old Short Hills Road
973-746-1889 / 201-587-7655

WEIGHT CONTROL Institute
22 Old Short Hills Road
973-746-1889 / 201-587-7655

WEIGHT CONTROL Institute
22 Old Short Hills Road
973-746-1889 / 201-587-7655

WEIGHT CONTROL Institute
22 Old Short Hills Road
973-746-1889 / 201-587-7655

Kidney foundation to sponsor annual walkathons
The National Kidney Foundation of New York/New Jersey is a voluntary, not-for-profit health organization dedicated to the research, treatment and cure of kidney, urologic and hypotensive diseases for more than 40 years. The Foundation receives no government funding and relies solely on the public and corporate sector for the support of its programs.

NY/NJ Walk brings the transplant community closer to the goal of providing an organ or tissue transplant for every American who needs one, said Dr. Jeffrey, president of the National Kidney Foundation of New York/New Jersey.

For more information, and to register, call the National Kidney Foundation of New York/New Jersey at (800) 63-DONATE, or (800) 635-6628, or (212) 629-9770, (201) 342-7894, or (216) 222-1883.

Then use the sponsorship form to collect a minimum of \$25 from friends, family members, co-workers, etc., who will support your efforts and in that first \$25's your registration. You can also write your own personal check for \$25 made payable to the National Kidney Foundation of NY/NJ or you may charge the registration fee on VISA, MasterCard or American Express. For quick and easy registration, call the NY/NJ Walk hotline at (800) 63-DONATE.

The top fund raiser from the combined walks will win a 5-day/4-night dream vacation for two to San Juan, Puerto Rico, restrictions apply. All recipients of National Kidney Foundation of NY/NJ or you may charge the registration fee on VISA, MasterCard or American Express. For quick and easy registration, call the NY/NJ Walk hotline at (800) 63-DONATE.

Pathways invites women who have or have had breast cancer to join one of the organization's support groups. Meetings are free and will be held at one of Pathways' three sponsoring agencies: the Summit YMCA, the Resource Center for Women at Calvary Episcopal Church, or Overlook Hospital.

Call Margaret Media, director of Pathways, at (908) 277-3663 to register for any of these groups or for more information about Pathways.

"Facing Breast Cancer Together," for women who have been recently diagnosed, is an 8-week series that meets on Thursdays from 5:30 to 7 p.m. at the Summit YMCA. Topics will include breast cancer treatments, communication with the health care system, coping strategies, and issues involving families and friends. Vaughn Schwarz, PhD will facilitate.

"Living with Breast Cancer," is a weekly support group for women with nonrecurrent breast cancer that offers a safe, supportive environment in which to share resources and ways of coping. This group discusses living with the ongoing issues of breast cancer. Facilitators are Mary Hill, RN, MSN and Kay English, MSW.

"Adjusting to Recurrent Breast Cancer," meets twice a month just for women with recurrent or metastatic breast cancer. Discussion will include ways of regaining a sense of control in one's life and education about recurrent breast cancer issues. Virginia Burns, LCSW, MSW will facilitate.

Have a great hair day
Hair growth takes place in the roots and follicles, where healthy cells divide and multiply, pushing the hair strands outward.

Unfortunately, some treatments for cancer inhibit the growth of healthy hair cells. Feelings, especially positive feelings, play a vital role in the restoration of health.

The way you think and feel about yourself each day often begins with looking in the mirror. Hair accessories and wigs can become an important aspect of personal appearance.

Horizon Wigs and Beauty Supplies, located at 57 Jersey Ave. in Elizabeth, specializes in wigs and hairpieces for chemotherapy patients.

WEIGHT CONTROL Institute
is pleased to announce opening of their New LIVINGSTON OFFICE for Medical Weight Control.

WEIGHT CONTROL Institute
22 Old Short Hills Road
973-746-1889 / 201-587-7655

WEIGHT CONTROL Institute
22 Old Short Hills Road
973-746-1889 / 201-587-7655

WEIGHT CONTROL Institute
22 Old Short Hills Road
973-746-1889 / 201-587-7655

WEIGHT CONTROL Institute
22 Old Short Hills Road
973-746-1889 / 201-587-7655

WEIGHT CONTROL Institute
22 Old Short Hills Road
973-746-1889 / 201-587-7655

WEIGHT CONTROL Institute
22 Old Short Hills Road
973-746-1889 / 201-587-7655

WEIGHT CONTROL Institute
22 Old Short Hills Road
973-746-1889 / 201-587-7655

WEIGHT CONTROL Institute
22 Old Short Hills Road
973-746-1889 / 201-587-7655

Foster Parents Needed
For abused and neglected children, as well as drug exposed infants who have no family, we need foster parents. Foster parents are needed for children in emergency situations and are in urgent need of foster parents who can provide a safe haven for these children.

For teenagers who have a need for foster parents who can nurture and guide them.

Can you help? Please call 1-800-222-0047 N.J. Department of Human Services

FREE Information!
CALL 800-686-9898 and enter a four digit selection number below!

4000 Senior Citizens Information Line
4001 Senior Events Line
4002 Senior Citizens Travel
4003 Senior Medical Courses and Dental Programs
4004 Senior Citizens Current Issues

CHOOSING A NURSING HOME
4123 Touring A Prospective Nursing Home
4124 Physical Conditions
4129 Nursing Services
4131 Residential Activities
4132 Admission Practices

Inforsource
A Public Service of WORLDWIDE COMMUNITY NEWSPAPERS

Did frequent trips to the bathroom spoil your enjoyment of last night's movie?
They may be warning signs.

Urinary symptoms are often the first sign of a possible prostate problem. Then again, they're just as likely not to be. One thing is certain, however: Your symptoms are not going to clear up without diagnosis and treatment.

And, if they are symptomatic of a prostate problem, you'll want to make certain your physician is a board-certified specialist with the most modern treatment facilities available to him - like the specialists you'll see at The Prostate Center of New Jersey. Have peace of mind that comes with confidence in your future. Call for an appointment today.

Call 800-983-7770
The Prostate Center
OF NEW JERSEY
A SERVICE OF PHYSICIANS IN UROLOGY, PA

Louis C. Gallieri, MD, FACS Matthew L.S. Whang, MD, FACS
Co-Medical Directors
Stanley Bloom, MD, FACS Eugene A. Sautberger, MD, FACS
315 East Northfield Road Suite 1A Livingston, New Jersey

VITAMIN FACTORY
201 Rt. 22, Hillside, NJ 07205 - (201)926-2946

HOME IMPROVEMENTS
PLAZA HOME IMPROVEMENTS
 Kitchen Remodeling, Bathrooms, Additions, Decks, Siding, Windows, Doors, Basements, Fireplaces, Stoves, Dishwashers, Free Estimates. Call 1-800-735-5134.

HOUSE WASHING
 J & P Powerwashing, Housewashing, Wood Deck, Concrete Patios, Water Sealing, Lawn Fertilizer, Air Conditioning, Free Estimates. Call 1-800-735-5134.

LANDSCAPING
 CERTIFIED LANDSCAPING, The Service, General Services, Planting, Lawn Care, Tree Trimming, Mulching, Fertilizing, Free Estimates. Call 1-800-735-5134.

HOLLYWOOD LANDSCAPING
 ARTISTIC LANDSCAPING DESIGN, EXOTIC GARDENS & POND INSTALLATION, TREE REMOVAL, FREE ESTIMATES. 908-686-1838.

We can deliver over four million pairs of these for only \$349
FEAST YOUR EYES ON THIS!
 for only \$349 you can place a classified as that will appear in 112 daily and weekly newspapers in New Jersey. Your ad will come face to face with 4.2 million readers!

WORRALL COMMUNITY NEWSPAPERS 800-564-8911

New Jersey Press Association Statewide Classified Advertising Network (SCAN)
 (609) 406-0600, fax (609) 406-0300, email njnews@worldnet.att.net

LANDSCAPING
 ORCHARD PARK Landscaping Service, Complete landscape design, planting, maintenance, seasonal color, trees, shrubs, flowers, mulch, fertilization, free estimates. Call 1-800-735-5134.

R & C Landscaping
 Shrub, Lawn Care, Tree Trimming, Mulching, Fertilizing, Free Estimates. Call 1-800-735-5134.

MASONRY
 CONCRETE CONSTRUCTION, Driveways, Sidewalks, Patios, Pools, Fireplaces, Retaining Walls, Free Estimates. Call 1-800-735-5134.

MOVING/STORAGE
 DON'S ECONOMY MOVING AND STORAGE, The Recommended Move, Our 50th Year, PC 00191, 751 Lehigh Avenue, Union, NJ. 908-687-0035 908-688-MOVE

PAINTING & PLASTERING
 25 YEARS EXPERIENCE, FREE ESTIMATES, CALL: LEMMY TUFANO 908-273-6025

HOUSE PAINTING
 INTERIOR AND EXTERIOR, Free Estimate, STEVE ROZANSKI 908-686-8455

PAINTING & PLASTERING
 25 YEARS EXPERIENCE, FREE ESTIMATES, CALL: LEMMY TUFANO 908-273-6025

PLUMBING
 PLUMBING & HEATING, 44 Years Experience, Free Estimates, 908-686-7415

MAX SR. & PAUL SCHOENWALDER
 CELEBRATING OUR 50th YEAR, RESTAURATION & SERVICE, 908-686-7415

WE STOP LEAKS!
 CLARK BUILDERS, INC., About Roofing & Siding, 908-686-0740

PRINTING
 Publication printing a specialty, Free Estimates, 908-686-8455

ROOFING
 J.D. ROOFING CONTRACTOR, 44 Years Experience, Free Estimates, 908-686-7415

DO-IT-YOURSELF IDEAS
 A Reader Service Book, New Concepts

3-in-1 Bank Bed Unit
 The most innovative piece of furniture combines a bed, desk and dresser in one unit. Call 1-800-735-5134.

UNION COUNTY CLASSIFIED

THE EXPERTS
 WOOD STACK, The Experts, Just One Call, 1-800-735-5134

COMPUTERIZED TYPING
 Camera Work, Negative, 201-258-1599

WINDOW SHADES
 1216 North Street, Union, NJ, 908-686-8455

UNION COUNTY CLASSIFIED

APARTMENT TO RENT
 1000-1000, 1000-1000, 1000-1000, 1000-1000

APARTMENT TO SHARE
 1000-1000, 1000-1000, 1000-1000, 1000-1000

OFFICE TO LET
 1000-1000, 1000-1000, 1000-1000, 1000-1000

UNION COUNTY CLASSIFIED

COMMERCIAL PROPERTY
 1000-1000, 1000-1000, 1000-1000, 1000-1000

REAL ESTATE FOR SALE
 1000-1000, 1000-1000, 1000-1000, 1000-1000

UNION COUNTY CLASSIFIED

APARTMENT TO RENT
 1000-1000, 1000-1000, 1000-1000, 1000-1000

APARTMENT TO SHARE
 1000-1000, 1000-1000, 1000-1000, 1000-1000

OFFICE TO LET
 1000-1000, 1000-1000, 1000-1000, 1000-1000

UNION COUNTY CLASSIFIED

COMMERCIAL PROPERTY
 1000-1000, 1000-1000, 1000-1000, 1000-1000

REAL ESTATE FOR SALE
 1000-1000, 1000-1000, 1000-1000, 1000-1000

UNION COUNTY CLASSIFIED

COMMERCIAL PROPERTY
 1000-1000, 1000-1000, 1000-1000, 1000-1000

REAL ESTATE FOR SALE
 1000-1000, 1000-1000, 1000-1000, 1000-1000

UNION COUNTY CLASSIFIED

COMMERCIAL PROPERTY
 1000-1000, 1000-1000, 1000-1000, 1000-1000

REAL ESTATE FOR SALE
 1000-1000, 1000-1000, 1000-1000, 1000-1000

UNION COUNTY CLASSIFIED

COMMERCIAL PROPERTY
 1000-1000, 1000-1000, 1000-1000, 1000-1000

REAL ESTATE FOR SALE
 1000-1000, 1000-1000, 1000-1000, 1000-1000

UNION COUNTY CLASSIFIED

COMMERCIAL PROPERTY
 1000-1000, 1000-1000, 1000-1000, 1000-1000

REAL ESTATE FOR SALE
 1000-1000, 1000-1000, 1000-1000, 1000-1000

UNION COUNTY CLASSIFIED

COMMERCIAL PROPERTY
 1000-1000, 1000-1000, 1000-1000, 1000-1000

REAL ESTATE FOR SALE
 1000-1000, 1000-1000, 1000-1000, 1000-1000

UNION COUNTY CLASSIFIED

COMMERCIAL PROPERTY
 1000-1000, 1000-1000, 1000-1000, 1000-1000

REAL ESTATE FOR SALE
 1000-1000, 1000-1000, 1000-1000, 1000-1000

UNION COUNTY CLASSIFIED

COMMERCIAL PROPERTY
 1000-1000, 1000-1000, 1000-1000, 1000-1000

REAL ESTATE FOR SALE
 1000-1000, 1000-1000, 1000-1000, 1000-1000

UNION COUNTY CLASSIFIED

COMMERCIAL PROPERTY
 1000-1000, 1000-1000, 1000-1000, 1000-1000

REAL ESTATE FOR SALE
 1000-1000, 1000-1000, 1000-1000, 1000-1000

UNION COUNTY CLASSIFIED

COMMERCIAL PROPERTY
 1000-1000, 1000-1000, 1000-1000, 1000-1000

REAL ESTATE FOR SALE
 1000-1000, 1000-1000, 1000-1000, 1000-1000

UNION COUNTY CLASSIFIED

COMMERCIAL PROPERTY
 1000-1000, 1000-1000, 1000-1000, 1000-1000

REAL ESTATE FOR SALE
 1000-1000, 1000-1000, 1000-1000, 1000-1000

UNION COUNTY CLASSIFIED

COMMERCIAL PROPERTY
 1000-1000, 1000-1000, 1000-1000, 1000-1000

REAL ESTATE FOR SALE
 1000-1000, 1000-1000, 1000-1000, 1000-1000

UNION COUNTY CLASSIFIED

COMMERCIAL PROPERTY
 1000-1000, 1000-1000, 1000-1000, 1000-1000

REAL ESTATE FOR SALE
 1000-1000, 1000-1000, 1000-1000, 1000-1000

UNION COUNTY CLASSIFIED

COMMERCIAL PROPERTY
 1000-1000, 1000-1000, 1000-1000, 1000-1000

REAL ESTATE FOR SALE
 1000-1000, 1000-1000, 1000-1000, 1000-1000

UNION COUNTY CLASSIFIED

COMMERCIAL PROPERTY
 1000-1000, 1000-1000, 1000-1000, 1000-1000

REAL ESTATE FOR SALE
 1000-1000, 1000-1000, 1000-1000, 1000-1000

Real Estate

UNION COUNTY CLASSIFIED

APARTMENT TO RENT
 1000-1000, 1000-1000, 1000-1000, 1000-1000

APARTMENT TO SHARE
 1000-1000, 1000-1000, 1000-1000, 1000-1000

OFFICE TO LET
 1000-1000, 1000-1000, 1000-1000, 1000-1000

UNION COUNTY CLASSIFIED

COMMERCIAL PROPERTY
 1000-1000, 1000-1000, 1000-1000, 1000-1000

REAL ESTATE FOR SALE
 1000-1000, 1000-1000, 1000-1000, 1000-1000

UNION COUNTY CLASSIFIED

COMMERCIAL PROPERTY
 1000-1000, 1000-1000, 1000-1000, 1000-1000

REAL ESTATE FOR SALE
 1000-1000, 1000-1000, 1000-1000, 1000-1000

UNION COUNTY CLASSIFIED

COMMERCIAL PROPERTY
 1000-1000, 1000-1000, 1000-1000, 1000-1000

REAL ESTATE FOR SALE
 1000-1000, 1000-1000, 1000-1000, 1000-1000

UNION COUNTY CLASSIFIED

COMMERCIAL PROPERTY
 1000-1000, 1000-1000, 1000-1000, 1000-1000

REAL ESTATE FOR SALE
 1000-1000, 1000-1000, 1000-1000, 1000-1000

UNION COUNTY CLASSIFIED

COMMERCIAL PROPERTY
 1000-1000, 1000-1000, 1000-1000, 1000-1000

REAL ESTATE FOR SALE
 1000-1000, 1000-1000, 1000-1000, 1000-1000

UNION COUNTY CLASSIFIED

COMMERCIAL PROPERTY
 1000-1000, 1000-1000, 1000-1000, 1000-1000

REAL ESTATE FOR SALE
 1000-1000, 1000-1000, 1000-1000, 1000-1000

UNION COUNTY CLASSIFIED

COMMERCIAL PROPERTY
 1000-1000, 1000-1000, 1000-1000, 1000-1000

REAL ESTATE FOR SALE
 1000-1000, 1000-1000, 1000-1000, 1000-1000

UNION COUNTY CLASSIFIED

COMMERCIAL PROPERTY
 1000-1000, 1000-1000, 1000-1000, 1000-1000

REAL ESTATE FOR SALE
 1000-1000, 1000-1000, 1000-1000, 1000-1000

UNION COUNTY CLASSIFIED

COMMERCIAL PROPERTY
 1000-1000, 1000-1000, 1000-1000, 1000-1000

REAL ESTATE FOR SALE
 1000-1000, 1000-1000, 1000-1000, 1000-1000

UNION COUNTY CLASSIFIED

COMMERCIAL PROPERTY
 1000-1000, 1000-1000, 1000-1000, 1000-1000

REAL ESTATE FOR SALE
 1000-1000, 1000-1000, 1000-1000, 1000-1000

UNION COUNTY CLASSIFIED

COMMERCIAL PROPERTY
 1000-1000, 1000-1000, 1000-1000, 1000-1000

REAL ESTATE FOR SALE
 1000-1000, 1000-1000, 1000-1000, 1000-1000

UNION COUNTY CLASSIFIED

COMMERCIAL PROPERTY
 1000-1000, 1000-1000, 1000-1000, 1000-1000

REAL ESTATE FOR SALE
 1000-1000, 1000-1000, 1000-1000, 1000-1000

UNION COUNTY CLASSIFIED

COMMERCIAL PROPERTY
 1000-1000, 1000-1000, 1000-1000, 1000-1000

REAL ESTATE FOR SALE
 1000-1000, 1000-1000, 1000-1000, 1000-1000

UNION COUNTY CLASSIFIED

COMMERCIAL PROPERTY
 1000-1000, 1000-1000, 1000-1000, 1000-1000

REAL ESTATE FOR SALE
 1000-1000, 1000-1000, 1000-1000, 1000-1000

UNION COUNTY CLASSIFIED

COMMERCIAL PROPERTY
 1000-1000, 1000-1000, 1000-1000, 1000-1000

REAL ESTATE FOR SALE
 1000-1000, 1000-1000, 1000-1000, 1000-1000

UNION COUNTY CLASSIFIED

COMMERCIAL PROPERTY
 1000-1000, 1000-1000, 1000-1000, 1000-1000

REAL ESTATE FOR SALE
 1000-1000, 1000-1000, 1000-1000, 1000-1000

UNION COUNTY CLASSIFIED

COMMERCIAL PROPERTY
 1000-1000, 1000-1000, 1000-1000, 1000-1000

REAL ESTATE FOR SALE
 1000-1000, 1000-1000, 1000-1000, 1000-1000

UNION COUNTY CLASSIFIED

COMMERCIAL PROPERTY
 1000-1000, 1000-1000, 1000-1000, 1000-1000

REAL ESTATE FOR SALE
 1000-1000, 1000-1000, 1000-1000, 1000-1000

UNION COUNTY CLASSIFIED

COMMERCIAL PROPERTY
 1000-1000, 1000-1000, 1000-1000, 1000-1000

REAL ESTATE FOR SALE
 1000-1000, 1000-1000, 1000-1000, 1000-1000

UNION COUNTY CLASSIFIED

COMMERCIAL PROPERTY
 1000-1000, 1000-1000, 1000-1000, 1000-1000

REAL ESTATE FOR SALE
 1000-1000, 1000-1000, 1000-1000, 1000-1000

UNION COUNTY CLASSIFIED

COMMERCIAL PROPERTY
 1000-1000, 1000-1000, 1000-1000, 1000-1000

REAL ESTATE FOR SALE
 1000-1000, 1000-1000, 1000-1000, 1000-1000

UNION COUNTY CLASSIFIED

COMMERCIAL PROPERTY
 1000-1000, 1000-1000, 1000-1000, 1000-1000

REAL ESTATE FOR SALE
 1000-1000, 1000-1000, 1000-1000, 1000-1000

UNION COUNTY CLASSIFIED

COMMERCIAL PROPERTY
 1000-1000, 1000-1000, 1000-1000, 1000-1000

REAL ESTATE FOR SALE
 1000-1000, 1000-1000, 1000-1000, 1000-1000

Real Estate

TRANSACTIONS

Real estate transactions are recorded in the office of the county clerk. Worrall Community Newspapers publishes an abbreviated version of all transactions recorded in the 12 Union County municipalities the newspapers cover. The information is provided by TRW Property Data, a Fort Lauderdale, Fla. information service, and is published approximately six weeks after it is filed in the county clerk's office.

Clark
 Leo A. and Sherry E. Hudzik sold property at 183 Hall Drive to Julianne Milik for \$230,000 on May 1.

Elizabeth
 Victor E. Dominguez sold property at 1821 Lafayette St. to William S. Torres for \$145,000 on April 25.

Hillsdale
 Agostino and Maria DeOliviera sold property at 1819 Rose Place to Celia Pato for \$160,000 on April 22.

Kentworth
 George J. and Alice F. Reilly Jr. sold property at 2 Red Oak Lane to...

Linden
 Lillian Pastowski sold property at 419 Marlborough Road to Marcus A. Colon for \$159,000 on April 21.

Mountainside
 Mary Mackin sold property at 1376 Outlook Drive to David J. Mackin for \$181,250 on April 25.

Roselle
 Michael and Kerin M. Sidiowski sold property at 486 Grove St. to Joseph Balla for \$134,000 on April 23.

Springfield
 David W. and Christina Johnson sold property at 19 Green Elm Road to Michael Sack for \$358,400 on May 23.

Summit
 Daniel and Barbara K. Draxler Jr. sold property at 7 Laurel Ave. to Julie A. Logothetos for \$395,000 on May 8.

Union
 Agnes Trueta sold property at 911 Ladden Lane to John R. Gamboa for \$168,800 on May 22.

ADVERTISE!

"The Getting To Know You Program Helped Me Turn Recent Home Buyers Into New Customers."

"People move into my community all the time. But as a business owner, I didn't know how to reach them cost effectively. My exclusive sponsorship in the Getting To Know You Welcome Program provides me with a proven way to reach new customers."

It's a great way to grow my business.

For More Information Call 1-800-255-4859

Residence of Union & Springfield
 UNION SPRINGFIELD 908-487-0132

BUSINESS OPPORTUNITIES

HOME SHOPPING - Learn to make \$100,000-\$200,000 profit selling home furnishings. Call 1-800-735-5134.

RENTAL - All real estate information is available in the Union County Clerk's Office. Call 1-800-735-5134.

APARTMENT TO RENT - 1000-1000, 1000-1000, 1000-1000, 1000-1000

APARTMENT TO SHARE - 1000-1000, 1000-1000, 1000-1000, 1000-1000

OFFICE TO LET - 1000-1000, 1000-1000, 1000-1000, 1000-1000

ADVERTISE!

FREE Information!
 CALL 686-9898
 and enter a free but selection number below!

BUYING A HOME
 1700 Before You Buy
 1701 The Real Estate Agent
 1702 The Neighborhood
 1703 Buying An Older Home
 1704 Adv. of Home Ownership

SELLING A HOME
 1300 Attracting A Buyer
 1301 Determining A Selling Price
 1302 The Open House
 1303 Clearing For The Sale
 1304 First Impressions

Call today!
 For More Information Call 1-800-255-4859

NEW JERSEY MORTGAGE RATES

FOR UPDATED RATES CALL INFO SOURCE 908-686-8998 AND DIAL THE LENDER CODE									
LOOK FOR THESE RATES ON THE INTERNET @ WWW.CM-MORTGAGE.COM OR WWW.WORRALL.COM									
PRODUCT	RATE	PTS	APR	PRODUCT	RATE	PTS	APR	PRODUCT	RATE
Amn/Grd/Fld Savings	301 744 500 180	1764							
30 YR FIXED	6.00	0.00	6.00	APP	30 YR FIXED	7.83	0.00	7.75	APP
15 YR FIXED	5.75	0.00	5.75	APP	15 YR FIXED	7.25	0.00	7.25	APP
1 YR ADJ	6.75	0.00	6.75	336	15 YR JUMBO	7.25	0.00	7.38	325
Bank Fld/Grd Savings	301 492 325 180	1753							
30 YR FIXED	7.75	0.00	7.82	APP	30 YR FIXED	7.83	0.00	7.73	APP
15 YR FIXED	7.25	0.00	7.35	FEF	30 YR JUMBO	7.75	0.00	7.69	FEF
1 YR ADJ	6.00	0.00	6.05	350	31 YR ADJ	8.50	0.00	7.97	FEF
Bank/Grd/Fld FSB	301 491 361 180	1763							
30 YR FIXED	7.75	0.00	7.82	APP	30 YR FIXED	6.63	3.00	6.91	APP
15 YR FIXED	7.25	0.00	7.35	FEF	15 YR FIXED	6.13	3.00	6.50	FEF
1 YR ADJ	6.50	0.00	6.10	100	1 YR ADJ	8.38	0.00	6.86	NP
Calif Fld/Grd Savings	301 492 325 180	1753							
30 YR FIXED	7.75	0.00	7.78	APP	30 YR FIXED	7.75	3.00	6.12	APP
15 YR FIXED	7.25	0.00	7.35	FEF	15 YR FIXED	7.25	3.00	6.73	FEF
1 YR ADJ	6.75	0.00	7.08	NP	1 YR ADJ	4.75	2.50	6.95	NP
Calif/Grd/Fld Savings	301 492 325 180	1753							
30 YR FIXED	7.75	0.00	7.78	APP	30 YR FIXED	7.75	3.00	6.12	APP
15 YR FIXED	7.25	0.00	7.35	FEF	15 YR FIXED	7.25	3.00	6.73	FEF
1 YR ADJ	6.75	0.00	7.08	NP	1 YR ADJ	4.75	2.50	6.95	NP
Commercial/Grd Bank	301 493 325 180	1774							
30 YR FIXED	6.99	3.00	6.99	APP	30 YR FIXED	7.75	0.00	7.75	APP
15 YR FIXED	6.38	0.00	7.38	FEF	15 YR FIXED	7.25	0.00	7.25	FEF
1 YR ADJ	6.00	0.00	6.00	NP	1 YR ADJ	6.00	0.00	6.00	350
Calif/Grd/Fld FSB	301 491 361 180	1763							
30 YR FIXED	7.75	0.00	7.82	APP	30 YR FIXED	7.75	3.00	7.38	APP
15 YR FIXED	7.25	0.00	7.35	FEF	15 YR FIXED	6.63	3.00	7.27	FEF
1 YR ADJ	6.75	0.00	7.08	NP	1 YR ADJ	7.50	2.50	7.87	300
Calif/Grd/Fld FSB	301 491 361 180	1763							
30 YR FIXED	7.75	0.00	7.82	APP	30 YR FIXED	6.63	3.00	7.27	FEF
15 YR FIXED	7.25	0.00	7.35	FEF	15 YR FIXED	6.63	3.00	7.27	FEF
1 YR ADJ	6.75	0.00	7.08	NP	1 YR ADJ	7.50	2.50	7.87	300
Calif/Grd/Fld FSB	301 491 361 180	1763							
30 YR FIXED	7.75	0.00	7.82	APP	30 YR FIXED	6.63	3.00	7.27	FEF
15 YR FIXED	7.25	0.00	7.35	FEF	15 YR FIXED	6.63	3.00	7.27	FEF
1 YR ADJ	6.75	0.00	7.08	NP	1 YR ADJ	7.50	2.50	7.87	300
Calif/Grd/Fld FSB	301 491 361 180	1763							
30 YR FIXED	7.75	0.00	7.82	APP	30 YR FIXED	6.63	3.00	7.27	FEF
15 YR FIXED	7.25	0.00	7.35	FEF	15 YR FIXED	6.63	3.00	7.27	FEF
1 YR ADJ	6.75	0.00	7.08	NP	1 YR ADJ	7.50	2.50	7.87	300
Calif/Grd/Fld FSB	301 491 361 180	1763							
30 YR FIXED	7.75	0.00	7.82	APP	30 YR FIXED	6.63	3.00	7.27	FEF
15 YR FIXED	7.25	0.00	7.35	FEF	15 YR FIXED	6.63	3.00	7.27	FEF
1 YR ADJ	6.75	0.00	7.08	NP	1 YR ADJ	7.50	2.50	7.87	300
Calif/Grd/Fld FSB	301 491 361 180	1763							
30 YR FIXED	7.75	0.00	7.82	APP	30 YR FIXED	6.63	3.00	7.27	FEF
15 YR FIXED	7.25	0.00	7.35	FEF	15 YR FIXED	6.63	3.00	7.27	FEF
1 YR ADJ	6.75	0.00	7.08	NP	1 YR ADJ	7.50	2.50	7.87	300
Calif/Grd/Fld FSB	301 491 361 180	1763							
30 YR FIXED	7.75	0.00	7.82	APP	30 YR FIXED	6.63	3.00	7.27	FEF
15 YR FIXED	7.25	0.00	7.35	FEF	15 YR FIXED	6.63	3.00	7.27	FEF
1 YR ADJ	6.75	0.00	7.08	NP	1 YR ADJ	7.50	2.50	7.87	300
Calif/Grd/Fld FSB	301 491 361 180	1763							
30 YR FIXED	7.75	0.00	7.82	APP	30 YR FIXED	6.63	3.00	7.27	FEF
15 YR FIXED	7.25	0.00	7.35	FEF	15 YR FIXED	6.63	3.00	7.27	FEF
1 YR ADJ	6.75	0.00	7.08	NP	1 YR ADJ	7.50	2.50	7.87	300
Calif/Grd/Fld FSB	301 491 361 180	1763							
30 YR FIXED	7.75	0.00	7.82	APP	30 YR FIXED	6.63	3.00	7.27	FEF
15 YR FIXED	7.25	0.00	7.35	FEF	15 YR FIXED	6.63	3.00	7.27	FEF
1 YR ADJ	6.75	0.00	7.08	NP	1 YR ADJ	7.50	2.50	7.87	300
Calif/Grd/Fld FSB	301 491 361 180	1763							
30 YR FIXED	7.75	0.00	7.82	APP	30 YR FIXED	6.63	3.00	7.27	FEF
15 YR FIXED	7.25	0.00	7.35	FEF	15 YR FIXED	6.63	3.00	7.27	FEF
1 YR ADJ	6.75	0.00	7.08	NP	1 YR ADJ	7.50	2.50	7.87	300
Calif/Grd/Fld FSB	301 491 361 180	1763							
30 YR FIXED	7.75	0.00	7.82	APP	30 YR FIXED	6.63	3.00	7.27	FEF
15 YR FIXED	7.25	0.00	7.35	FEF	15 YR FIXED	6.63	3.00	7.27	FEF
1 YR ADJ	6.75	0.00	7.08	NP	1 YR ADJ	7.50	2.50	7.87	300
Calif/Grd/Fld FSB	301 491 361 180	1763							
30 YR FIXED	7.75	0.00	7.82	APP	30 YR FIXED	6.63	3.00	7.27	FEF
15 YR FIXED	7.25	0.00	7.35	FEF	15 YR FIXED	6.63	3.00	7.27	FEF
1 YR ADJ	6.75	0.00	7.08	NP	1 YR ADJ	7.50	2.50	7.87	300
Calif/Grd/Fld FSB	301 491 361 180	1763							
30 YR FIXED	7.75	0.00	7.82	APP	30 YR FIXED	6.63	3.00	7.27	FEF
15 YR FIXED	7.25	0.00	7.35	FEF	15 YR FIXED	6.63	3.00	7.27	FEF
1 YR ADJ	6.75	0.00	7.08	NP	1 YR ADJ	7.50	2.50	7.87	300
Calif/Grd/Fld FSB	301 491 361 180	1763							
30 YR FIXED	7.75	0.00	7.82	APP	30 YR FIXED	6.63	3.00	7.27	FEF
15 YR FIXED	7.25	0.00	7.35	FEF	15 YR FIXED	6.63	3.00	7.27	FEF
1 YR ADJ	6.75	0.00	7.08	NP	1 YR ADJ	7.50	2.50	7.87	300
Calif/Grd/Fld FSB	301 491 361 180	1763							
30 YR FIXED	7.75	0.00	7.82	APP	30 YR FIXED	6.63	3.00	7.27	FEF
15 YR FIXED	7.25	0.00	7.35	FEF	15 YR FIXED	6.63	3.00	7.27	FEF
1 YR ADJ	6.75	0.00	7.08	NP	1 YR ADJ	7.50	2.50	7.87	300
Calif/Grd/Fld FSB	301 491 361 180	1763							
30 YR FIXED	7.75	0.00	7.82	APP	30 YR FIXED	6.63	3.00	7.27	FEF
15 YR FIXED	7.25	0.00	7.35	FEF	15 YR FIXED	6.63	3.00	7.27	FEF
1 YR ADJ	6.75	0.00	7.08	NP	1 YR ADJ	7.50	2.50	7.87	300
Calif/Grd/Fld FSB	301 491 361 180	1763							
30 YR FIXED	7.75	0.00	7.82	APP	30 YR FIXED	6.63	3.00	7.27	FEF
15 YR FIXED	7.25	0.00	7.35	FEF	15 YR FIXED	6.63	3.00	7.27	FEF
1 YR ADJ	6.75	0.00	7.08	NP	1 YR ADJ	7.50	2.50	7.87	300
Calif/Grd/Fld FSB	301 491 361 180	1763							
30 YR FIXED	7.75	0.00	7.82	APP	30 YR FIXED	6.63	3.00	7.27	FEF
15 YR FIXED	7.25	0.00	7.35	FEF	15 YR FIXED	6.63	3.00	7.27	FEF
1 YR ADJ	6.75	0.00	7.08	NP	1 YR ADJ	7.50	2.50	7.87	300
Calif/Grd/Fld FSB	301 491 361 180	1763							
30 YR FIXED	7.75	0.00	7.82	APP	30 YR FIXED	6.63	3.00	7.27	FEF
15 YR FIXED	7.25	0.00	7.35	FEF	15 YR FIXED	6.63	3.00	7.27	FEF
1 YR ADJ	6.75	0.00	7.08	NP	1 YR ADJ	7.50	2.50	7.87	300
Calif/Grd/Fld FSB	301 491 361 180	1763							
30 YR FIXED	7.75	0.00	7.82	APP	30 YR FIXED	6.63	3.00	7.27	FEF
15 YR FIXED	7.25	0.00	7.35	FEF	15 YR FIXED	6.63	3.00	7.27	FEF
1 YR ADJ	6.75	0.00	7.08	NP	1 YR ADJ	7.50	2.50	7.87	300
Calif/Grd/Fld FSB	301 491 361 180	1763							
30 YR FIXED	7.75	0.00	7.82	APP	30 YR FIXED	6.63	3.00	7.27	FEF
15 YR FIXED	7.25	0.00	7.35	FEF	15 YR FIXED	6.63	3.00	7.27	FEF
1 YR ADJ	6.75	0.00	7.08	NP	1 YR ADJ	7.50	2.50	7.87	300
Calif/Grd/Fld FSB	301 491 361 180	1763							
30 YR FIXED	7.75	0.00	7.82	APP	30 YR FIXED	6.63	3.00	7.27	FEF
15 YR FIXED	7.25	0.00	7.35	FEF	15 YR FIXED	6.63	3.00	7.27	FEF
1 YR ADJ	6.75	0.00	7.08	NP	1 YR ADJ	7.50	2.50	7.87	300
Calif/Grd/Fld FSB	301 491 361 180	1763							
30 YR FIXED	7.75	0.00	7.82	APP	30 YR FIXED	6.63	3.00	7.27	FEF
15 YR FIXED	7.25	0.00	7.35	FEF	15 YR FIXED	6.63	3.00	7.27	FEF
1 YR ADJ	6.75	0.00	7.08	NP	1 YR ADJ	7.50	2.50	7.87	300
Calif/Grd/Fld FSB	301 491 361 180	1763							
30 YR FIXED	7.75	0.00	7.82	APP	30 YR FIXED	6.63	3.00	7.27	FEF
15 YR FIXED	7.25	0.00	7.35	FEF	15 YR FIXED	6.63	3.00	7.27	FEF
1 YR ADJ	6.75	0.00	7.08	NP	1 YR ADJ	7.50	2.50	7.87	300
Calif/Grd/Fld FSB	301 491 361 18								

Automotive

Next month, undo the damage of your summer driving

Fall is the perfect time to undo the damage done by summer driving and to get ready for the rigors of winter driving ahead.

But given the complexity of today's vehicles, many motorists, including former do-it-yourselfers, are looking for professional technicians as "tune-ups" have become "engine performance diagnoses" and on-board computer systems, electronic climate control, anti-lock brakes, digital dash boards, and other advanced systems grow popular.

The following tips from the National Institute for Automotive Service Excellence should make finding a

qualified automotive technician easier.

Ask a number of friends or business associates if they can recommend someone; a consensus is usually more reliable than counting solely on one person's judgment.

Be sure to call the local Better Business Bureau or consumer organization and inquire about the reputation of the place of business in question. Look for a relatively neat, well-organized facility with up-to-date equipment and polite service personnel willing to take the time to discuss your repairs. Policies concerning diagnostic fees, labor rates, guaran-

tees, and other policies should be posted.

Check around for an auto technician certified by the non-profit National Institute of Automotive Service Excellence. ASE certifies automotive technicians by means of nationally administered tests. Technicians voluntarily take these certification exams in from one to eight automotive specialties, such as Engine Repair or Brakes. There are also exams for medium/heavy truck and collision repair technicians, engine mechanics, and auto specialties.

Those who pass and fulfill the two-

year work experience requirements are awarded ASE credentials. The certified technicians are then eligible to wear the blue and white ASE shoulder insignia.

Not only are these credentials meaningful to the technician, they are reassuring to his employer, and important to you. They are an extra assurance that your technician knows his or her stuff. And, all ASE-certified technicians must recertify every five years in order to remain current with technology and to stay in the program.

Currently, there are about 375,000 ASE-certified technicians across the

country. Shops that employ these certified technicians often display the blue and white ASE outdoor sign and post their technicians' credentials in the customer service area.

Officials with the National Institute for Automotive Service Excellence remind motorists that their involvement is important, too. Among ASE's recommendations:

Read your owner's manual. Become familiar with the basic components and systems.

Follow the manufacturer's service schedule.

Make note of noises, unusual

odors, changes in performance, and handling.

When describing your vehicle's problem(s), be concrete, but resist the temptation to diagnose.

Have small problems repaired before they become major headaches. Keep good records.

To help technicians get their vehicles ready for winter, ASE has prepared a brochure, "Don't Get Stuck Out in the Cold." For a free copy, send a self-addressed, stamped, business envelope to: ASE Winter Brochure, Dept. CCE-R46, P.O. Box 347, Henderson, VA 22070.

Buick offers high value and luxury in the 1997 LeSabre

Buick's 1997 LeSabre, featuring a freshened design and improvements in safety and comfort, will be the industry's first 1997 model to go on sale in dealer showrooms.

The new models of LeSabre — best-selling full-size sedan in the United States for four straight years — has been on the market since January.

The six-passenger LeSabre, which again features a powerful 205 horsepower V-6 engine rated at 30 miles per gallon on the highway, has a number of exterior styling changes. To elevate LeSabre's quality appearance further, the grille surround has been integrated with the hood; the hood/headlamp assemblies use fixed lenses for a tighter fit with surrounding surfaces, and the taillamps and rear fascia have a diagonal cut line to provide easy access to the trunk. A handy trunk pull-down surface has been incorporated into the license-plate surround.

Improvements were made to the safety and security offered by Buick's full-sized family sedan. LeSabre now surpasses the federal government's dynamic side-impact standard. Safety

belt release buttons have been relocated to the end of the buckle for ease of use.

The front seats fitted to the Custom model have been redesigned to enhance comfort. Woodgrain trim on the instrument panel and doors has a new Cheyenne walnut appearance. Front door trim has been redesigned to better accommodate the speakers used with the optional Concert Sound II entertainment system. New 15-inch aluminum wheels are optional.

LeSabre again is equipped with the 3800 Series II V-6 engine combined with an electronically controlled four-speed automatic transmission. Projected fuel economy ratings are an excellent 19 miles per gallon city and 30 mpg highway, the same as the previous model.

LeSabre continues to provide standard features such as dual air bags, anti-lock brakes, air conditioning, power windows, power door locks, power mirrors, and power windows.

LeSabre is equipped with such long-life features as a new engine coolant with a recommended change interval of five years or 100,000

miles, platinum-tipped spark plugs with first recommended service at 100,000 miles and transmission fluid that requires no change under normal operating conditions.

LeSabre again features an on-board diagnostic system, OBD II, that can reduce exhaust emissions by locating malfunctions before they cause emissions to rise.

For 1997, Personal Choice continues as optional on Custom and Limited. Advantaged by the remote keyless entry fob, Personal Choice allows each of two drivers, using separate fobs, to readily select pre-programmed settings for these features: memory door locks, delayed locking, security feedback and perimeter lighting.

LeSabre again offers Convenience Plus electrical features such as delayed entry and exit lighting, "leisure" lighting, interior lighting, battery run-down protection, lockout protection on power door locks, and warning chimes for leaving on the parking brake, low fuel or low oil pressure, and for leaving keys in the ignition when exiting.

THERE IS ONLY ONE WAY TO...

PUT YOUR FALL AUTOMOTIVE SALES INTO THE FAST LANE WITH...

REAL AUTOMOTIVE GUIDE

Each Thursday since 1968

Worral Community Newspapers have been providing towns in Essex & Union Counties with their local news. Today, 57,000 paid subscriber households rely on Worral Newspapers for the news that is important to them. This is your opportunity to influence their automotive buying decisions for the coming sales season.

DOUBLE YOUR EXPOSURE

Press Releases With Dealership Picture Available To Advertisers Running 16 Inches Or More. DEADLINE SEPT. 1ST

WORRALL COMMUNITY NEWSPAPERS
1201 Shuyesant Ave. Union NJ 07083
Display Advertising: (908) 686-7700
Classified Advertising: (908) 686-7700
FAX: 908-6118 FAX: 783-2557

Benz roadster to set auto standards

Mercedes-Benz displayed its eagerly awaited SLK sports car at the North American International Automobile Show. The fully-equipped new roadster began arriving in the United States at a suggested retail price of \$39,700.

The innovative SLK will set new standards in the two-passenger sports car market segment, and it will take its place among legendary sports cars that bore the three-pointed star. A high-performance engine, responsive transmission and sophisticated independent suspension assure sporty driving in the SLK, including 0-60 mph acceleration in what has already been reported as 6.6 seconds and a top speed of 140 mph. Already named as one of "Car & Driver" magazine's "Ten Best," the new SLK supplements the well-known Mercedes-Benz SL models and returns the German automaker to the enviable position of offering sporty entries in two distinct sports car segments — last seen in the early 1960s with the 300 SL and 190SL.

The SLK has been designed as a sport car for all seasons and reasons, and this is made clear by the car's most unique feature — a fully automatic retractable hardtop. The current Mercedes SL models introduced the industry's first fully automatic operation for the convertible top, and the SLK takes this technology a step further. Pushing one button triggers a sequence of events that transforms the SLK from a closed coupe to a fully open roadster in less than 18 seconds. The roof retracts completely into a rear compartment, leaving a sleek, smooth appearance.

The retractable hardtop creates two cars in one, and also offers the refinement and structural integrity of a coupe. The hardtop provides increased security against theft, and the glass rear window with integrated defroster will not discolor.

ASR traction control, standard for the U.S.-market SLK, is another all-season asset. The system can control rear wheel spin with both the brakes and throttle. As one every U.S.-market Mercedes-Benz, four-wheel disc and lock brakes are standard on the SLK.

The SLK features the first-ever use of the BabySmart system — a new technology which uses off-the-passenger sitting whenever a special child seat is belted in. The BabySmart system uses a small "resonator" built into the child seat, similar to the security pins sometimes attached to merchandise in retail clothing stores.

A low-power radio signal from the passenger seat prompts a return signal from the resonator in a BabySmart-equipped infant or child seat, allowing the system to sense the presence of the seat and automatically turn off the passenger's "Vroom" airbag.

Since the car's signal is essentially "reflected" back by the resonator in the child seat, the seat itself needs no battery or power hookup. The BabySmart system is a special benefit in a two-seater like the SLK, since rear-facing child seats are too close to the airbag and can't be placed in a rear seat. The seat itself is available as an accessory from Mercedes-Benz dealers.

Since the Mercedes-Benz SLK is so comprehensively equipped as standard, there are only three factory options: heated seats for \$395, multi-point seat belt for \$500 and a choice of telephone/CD changer combinations — an integrated mobile phone/CD changer for \$1,495 or an integrated portable phone/CD changer for \$1,995. (A complete list of standard features is attached.)

Selective use of light-weight materials such as magnesium and aluminum contribute to a lean weight-to-power ratio of about 16 pounds-per-horsepower. With a curb weight of 3,036 pounds and 157 inch-length, the SLK is relatively light and short,

emphasizing its sporty nature and contributing to its nimbleness.

All U.S. versions of the Mercedes-Benz SLK are equipped exclusively with a 185-horsepower supercharged, intercooled engine. Badged SLK230, the U.S. model shares the European "Kompressor" badge on the front fender to indicate the presence of a supercharger, or compressor.

The SLK's crash-tested-driven supercharger is an adaptation of the Roots "blower," which was invented by Americans Francis and Philander Roots 130 years ago. Twin three-lobe rotors turn at up to 12,000 rpm within the oval compressor housing, compressing incoming air. An intercooler then cools the compressed air, which creates a denser intake charge to boost power further.

To conserve fuel and enhance component durability, the bell-driven supercharger disengages at idle via magnetic clutch. However, there is a smooth transition, with no of the "lag" or sudden power surge that is performance in some turbocharged cars which use exhaust gas to drive the compressor. On the contrary, with its 200 hp of torque available from 2,500-4,800 rpm, the SLK230 rewards the driver with the smooth, flexible response one would expect of a larger displacement engine.

Trained to the SLK's supercharged transmission is a five-speed automatic transmission that uses electronic controls and a microprocessor to adapt to road conditions and even an individual's driving style. For example, on inclines, the transmission will sense the road grade and delay an upshift to preserve climbing power. Then, on a descent, the transmission will downshift to take advantage of engine braking, just as a driver would do if shifting manually. In normal driving, the transmission shifts quickly and smoothly for optimal fuel efficiency. However, when the transmission computer senses spirited driving, it responds with crisp shifts at higher engine speeds.

The supercharged engine of the SLK includes cues from a rich heritage of Mercedes-Benz racing and sports cars, such as the supercharged 300SL of the 1950s and the 300SL of the 1950s and 1960s. Notable design elements linking the SLK with its proud past include the long hood, short deck proportions and the "power domes" on the hood, a tribute to the original 300SL.

The SLK design is one that looks toward the future, however, not the past. The last wedge profile, short overhangs and wheels that fill the fender wells convey action and performance, even standing still.

Watch for drowsiness when on the road

Most people know how drugs and alcohol affect a driver's slowed reaction time, decreased awareness and impaired judgment. But many drivers are unaware that sleepiness can have the same effects, making driving drowsy as dangerous as driving drunk.

It is difficult to attribute accidents to sleepiness because there are no tests or standardized criteria to clearly determine the extent of the problem. Still, Federal Highway Transportation officials estimate that drowsy drivers are involved in anywhere from 60,000 to 240,000 accidents each year. Drowsiness, they say, contributes to about 10,000 auto deaths a year.

The groups most at risk for drowsy driving are young people, shift workers or those with non-traditional work schedules, commercial drivers, and people with undiagnosed sleep disorders.

John Tene, executive director of the New Jersey Insurance News Service, offers the following advice to help drivers prevent drowsy driving:

1. Recognize the danger signals for drowsy driving. If your eyes close or go out of focus by themselves, if you have trouble keeping your head up, cannot stop yawning, have wandering, disconnected thoughts, cannot remember driving the last few miles, drift between lanes, tailgate, miss traffic signs, or have a difficult time maintaining constant speed, take these as warning signs that you could fall asleep at the wheel.

2. Coffee and other stimulants are substitutes for sleep. They may help you feel more alert, but the effects last only a short time and you may still experience "micro-

sleeps" when driving alone or when on a long, monotonous drive. Waking up early to start a journey, or staying up late the night before a trip to prepare, also puts drivers at a greater risk, he reports.

The New Jersey Insurance News Service offers the following advice to help drivers prevent drowsy driving:

1. Recognize the danger signals for drowsy driving. If your eyes close or go out of focus by themselves, if you have trouble keeping your head up, cannot stop yawning, have wandering, disconnected thoughts, cannot remember driving the last few miles, drift between lanes, tailgate, miss traffic signs, or have a difficult time maintaining constant speed, take these as warning signs that you could fall asleep at the wheel.

2. Coffee and other stimulants are substitutes for sleep. They may help you feel more alert, but the effects last only a short time and you may still experience "micro-

sleeps" when driving alone or when on a long, monotonous drive. Waking up early to start a journey, or staying up late the night before a trip to prepare, also puts drivers at a greater risk, he reports.

The New Jersey Insurance News Service offers the following advice to help drivers prevent drowsy driving:

1. Recognize the danger signals for drowsy driving. If your eyes close or go out of focus by themselves, if you have trouble keeping your head up, cannot stop yawning, have wandering, disconnected thoughts, cannot remember driving the last few miles, drift between lanes, tailgate, miss traffic signs, or have a difficult time maintaining constant speed, take these as warning signs that you could fall asleep at the wheel.

2. Coffee and other stimulants are substitutes for sleep. They may help you feel more alert, but the effects last only a short time and you may still experience "micro-

Finally, An Easy Way To Find Out New Car Information For FREE!

Autosource

24 HOUR AUTO INFORMATION SERVICE
A FREE Public Service Of WORRALL COMMUNITY NEWSPAPERS

YOUR CALL IS FREE
(908) 686-9898

from your touch tone phone...

Press the 4 digit code for the information you want to hear...

Get ready to receive your "FREE" Worral Community Newspapers New or Used Car Vehicle pricing Report, by mail or fax. It includes detailed prices, equipment lists, package descriptions, and more. Call now!

Autosource is a 24 hour auto information service where callers get free new car information from the selections above by calling (908) 686-9898 and entering a 4 digit code for the selection they want to hear (Unlimited selections per call). Calls are FREE if within your local calling area. Out of area calls will be billed as a regular call by your telephone company. **Autosource** is a public service of Worral Community Newspapers, Inc.

For information on advertising & sponsorship opportunities with **Autosource**, call (908) 686-7700 extension 311.

ACURA 4000 Integra 4001 TL 4002 CL Sedan 4003 CL Coupe 4004 NSX 4005 2.0L	ALFA ROMEO 4010 Alfa Romeo and Vignoni 4011 Alfa 4012 Alfa 4013 Alfa 4014 Alfa	BMW 4020 5 Series 4021 7 Series 4022 3 Series 4023 3 Series 4024 3 Series	BUICK 4030 Century 4031 LeSabre 4032 Park Avenue 4033 Roadmaster 4034 Wildcat 4035 Wildcat 4036 Wildcat 4037 Wildcat 4038 Wildcat 4039 Wildcat 4040 Wildcat	CADILLAC 4041 Deville 4042 Deville 4043 Deville 4044 Deville 4045 Deville 4046 Deville 4047 Deville 4048 Deville 4049 Deville 4050 Deville 4051 Deville 4052 Deville 4053 Deville 4054 Deville 4055 Deville 4056 Deville 4057 Deville 4058 Deville 4059 Deville 4060 Deville 4061 Deville 4062 Deville 4063 Deville 4064 Deville 4065 Deville 4066 Deville 4067 Deville 4068 Deville 4069 Deville 4070 Deville 4071 Deville 4072 Deville 4073 Deville 4074 Deville 4075 Deville 4076 Deville 4077 Deville 4078 Deville 4079 Deville 4080 Deville 4081 Deville 4082 Deville 4083 Deville 4084 Deville 4085 Deville 4086 Deville 4087 Deville 4088 Deville 4089 Deville 4090 Deville 4091 Deville 4092 Deville 4093 Deville 4094 Deville 4095 Deville 4096 Deville 4097 Deville 4098 Deville 4099 Deville 4100 Deville	CHEVROLET 4101 Astro 4102 Astro 4103 Astro 4104 Astro 4105 Astro 4106 Astro 4107 Astro 4108 Astro 4109 Astro 4110 Astro 4111 Astro 4112 Astro 4113 Astro 4114 Astro 4115 Astro 4116 Astro 4117 Astro 4118 Astro 4119 Astro 4120 Astro 4121 Astro 4122 Astro 4123 Astro 4124 Astro 4125 Astro 4126 Astro 4127 Astro 4128 Astro 4129 Astro 4130 Astro 4131 Astro 4132 Astro 4133 Astro 4134 Astro 4135 Astro 4136 Astro 4137 Astro 4138 Astro 4139 Astro 4140 Astro 4141 Astro 4142 Astro 4143 Astro 4144 Astro 4145 Astro 4146 Astro 4147 Astro 4148 Astro 4149 Astro 4150 Astro 4151 Astro 4152 Astro 4153 Astro 4154 Astro 4155 Astro 4156 Astro 4157 Astro 4158 Astro 4159 Astro 4160 Astro 4161 Astro 4162 Astro 4163 Astro 4164 Astro 4165 Astro 4166 Astro 4167 Astro 4168 Astro 4169 Astro 4170 Astro 4171 Astro 4172 Astro 4173 Astro 4174 Astro 4175 Astro 4176 Astro 4177 Astro 4178 Astro 4179 Astro 4180 Astro 4181 Astro 4182 Astro 4183 Astro 4184 Astro 4185 Astro 4186 Astro 4187 Astro 4188 Astro 4189 Astro 4190 Astro 4191 Astro 4192 Astro 4193 Astro 4194 Astro 4195 Astro 4196 Astro 4197 Astro 4198 Astro 4199 Astro 4200 Astro	CHEVROLET 4201 Astro 4202 Astro 4203 Astro 4204 Astro 4205 Astro 4206 Astro 4207 Astro 4208 Astro 4209 Astro 4210 Astro 4211 Astro 4212 Astro 4213 Astro 4214 Astro 4215 Astro 4216 Astro 4217 Astro 4218 Astro 4219 Astro 4220 Astro 4221 Astro 4222 Astro 4223 Astro 4224 Astro 4225 Astro 4226 Astro 4227 Astro 4228 Astro 4229 Astro 4230 Astro 4231 Astro 4232 Astro 4233 Astro 4234 Astro 4235 Astro 4236 Astro 4237 Astro 4238 Astro 4239 Astro 4240 Astro 4241 Astro 4242 Astro 4243 Astro 4244 Astro 4245 Astro 4246 Astro 4247 Astro 4248 Astro 4249 Astro 4250 Astro 4251 Astro 4252 Astro 4253 Astro 4254 Astro 4255 Astro 4256 Astro 4257 Astro 4258 Astro 4259 Astro 4260 Astro 4261 Astro 4262 Astro 4263 Astro 4264 Astro 4265 Astro 4266 Astro 4267 Astro 4268 Astro 4269 Astro 4270 Astro 4271 Astro 4272 Astro 4273 Astro 4274 Astro 4275 Astro 4276 Astro 4277 Astro 4278 Astro 4279 Astro 4280 Astro 4281 Astro 4282 Astro 4283 Astro 4284 Astro 4285 Astro 4286 Astro 4287 Astro 4288 Astro 4289 Astro 4290 Astro 4291 Astro 4292 Astro 4293 Astro 4294 Astro 4295 Astro 4296 Astro 4297 Astro 4298 Astro 4299 Astro 4300 Astro	CHEVROLET 4301 Astro 4302 Astro 4303 Astro 4304 Astro 4305 Astro 4306 Astro 4307 Astro 4308 Astro 4309 Astro 4310 Astro 4311 Astro 4312 Astro 4313 Astro 4314 Astro 4315 Astro 4316 Astro 4317 Astro 4318 Astro 4319 Astro 4320 Astro 4321 Astro 4322 Astro 4323 Astro 4324 Astro 4325 Astro 4326 Astro 4327 Astro 4328 Astro 4329 Astro 4330 Astro 4331 Astro 4332 Astro 4333 Astro 4334 Astro 4335 Astro 4336 Astro 4337 Astro 4338 Astro 4339 Astro 4340 Astro 4341 Astro 4342 Astro 4343 Astro 4344 Astro 4345 Astro 4346 Astro 4347 Astro 4348 Astro 4349 Astro 4350 Astro 4351 Astro 4352 Astro 4353 Astro 4354 Astro 4355 Astro 4356 Astro 4357 Astro 4358 Astro 4359 Astro 4360 Astro 4361 Astro 4362 Astro 4363 Astro 4364 Astro 4365 Astro 4366 Astro 4367 Astro 4368 Astro 4369 Astro 4370 Astro 4371 Astro 4372 Astro 4373 Astro 4374 Astro 4375 Astro 4376 Astro 4377 Astro 4378 Astro 4379 Astro 4380 Astro 4381 Astro 4382 Astro 4383 Astro 4384 Astro 4385 Astro 4386 Astro 4387 Astro 4388 Astro 4389 Astro 4390 Astro 4391 Astro 4392 Astro 4393 Astro 4394 Astro 4395 Astro 4396 Astro 4397 Astro 4398 Astro 4399 Astro 4400 Astro	CHEVROLET 4401 Astro 4402 Astro 4403 Astro 4404 Astro 4405 Astro 4406 Astro 4407 Astro 4408 Astro 4409 Astro 4410 Astro 4411 Astro 4412 Astro 4413 Astro 4414 Astro 4415 Astro 4416 Astro 4417 Astro 4418 Astro 4419 Astro 4420 Astro 4421 Astro 4422 Astro 4423 Astro 4424 Astro 4425 Astro 4426 Astro 4427 Astro 4428 Astro 4429 Astro 4430 Astro 4431 Astro 4432 Astro 4433 Astro 4434 Astro 4435 Astro 4436 Astro 4437 Astro 4438 Astro 4439 Astro 4440 Astro 4441 Astro 4442 Astro 4443 Astro 4444 Astro 4445 Astro 4446 Astro 4447 Astro 4448 Astro 4449 Astro 4450 Astro 4451 Astro 4452 Astro 4453 Astro 4454 Astro 4455 Astro 4456 Astro 4457 Astro 4458 Astro 4459 Astro 4460 Astro 4461 Astro 4462 Astro 4463 Astro 4464 Astro 4465 Astro 4466 Astro 4467 Astro 4468 Astro 4469 Astro 4470 Astro 4471 Astro 4472 Astro 4473 Astro 4474 Astro 4475 Astro 4476 Astro 4477 Astro 4478 Astro 4479 Astro 4480 Astro 4481 Astro 4482 Astro 4483 Astro 4484 Astro 4485 Astro 4486 Astro 4487 Astro 4488 Astro 4489 Astro 4490 Astro 4491 Astro 4492 Astro 4493 Astro 4494 Astro 4495 Astro 4496 Astro 4497 Astro 4498 Astro 4499 Astro 4500 Astro	CHEVROLET 4501 Astro 4502 Astro 4503 Astro 4504 Astro 4505 Astro 4506 Astro 4507 Astro 4508 Astro 4509 Astro 4510 Astro 4511 Astro 4512 Astro 4513 Astro 4514 Astro 4515 Astro 4516 Astro 4517 Astro 4518 Astro 4519 Astro 4520 Astro 4521 Astro 4522 Astro 4523 Astro 4524 Astro 4525 Astro 4526 Astro 4527 Astro 4528 Astro 4529 Astro 4530 Astro 4531 Astro 4532 Astro 4533 Astro 4534 Astro 4535 Astro 4536 Astro 4537 Astro 4538 Astro 4539 Astro 4540 Astro 4541 Astro 4542 Astro 4543 Astro 4544 Astro 4545 Astro 4546 Astro 4547 Astro 4548 Astro 4549 Astro 4550 Astro 4551 Astro 4552 Astro 4553 Astro 4554 Astro 4555 Astro 4556 Astro 4557 Astro 4558 Astro 4559 Astro 4560 Astro 4561 Astro 4562 Astro 4563 Astro 4564 Astro 4565 Astro 4566 Astro 4567 Astro 4568 Astro 4569 Astro 4570 Astro 4571 Astro 4572 Astro 4573 Astro 4574 Astro 4575 Astro 4576 Astro 4577 Astro 4578 Astro 4579 Astro 4580 Astro 4581 Astro 4582 Astro 4583 Astro 4584 Astro 4585 Astro 4586 Astro 4587 Astro 4588 Astro 4589 Astro 4590 Astro 4591 Astro 4592 Astro 4593 Astro 4594 Astro 4595 Astro 4596 Astro 4597 Astro 4598 Astro 4599 Astro 4600 Astro	CHEVROLET 4601 Astro 4602 Astro 4603 Astro 4604 Astro 4605 Astro 4606 Astro 4607 Astro 4608 Astro 4609 Astro 4610 Astro 4611 Astro 4612 Astro 4613 Astro 4614 Astro 4615 Astro 4616 Astro 4617 Astro 4618 Astro 4619 Astro 4620 Astro 4621 Astro 4622 Astro 4623 Astro 4624 Astro 4625 Astro 4626 Astro 4627 Astro 4628 Astro 4629 Astro 4630 Astro 4631 Astro 4632 Astro 4633 Astro 4634 Astro 4635 Astro 4636 Astro 4637 Astro 4638 Astro 4639 Astro 4640 Astro 4641 Astro 4642 Astro 4643 Astro 4644 Astro 4645 Astro 4646 Astro 4647 Astro 4648 Astro 4649 Astro 4650 Astro 4651 Astro 4652 Astro 4653 Astro 4654 Astro 4655 Astro 4656 Astro 4657 Astro 4658 Astro 4659 Astro 4660 Astro 4661 Astro 4662 Astro 4663 Astro 4664 Astro 4665 Astro 4666 Astro 4667 Astro 4668 Astro 4669 Astro 4670 Astro 4671 Astro 4672 Astro 4673 Astro 4674 Astro 4675 Astro 4676 Astro 4677 Astro 4678 Astro 4679 Astro 4680 Astro 4681 Astro 4682 Astro 4683 Astro 4684 Astro 4685 Astro 4686 Astro 4687 Astro 4688 Astro 4689 Astro 4690 Astro 4691 Astro 4692 Astro 4693 Astro 4694 Astro 4695 Astro 4696 Astro 4697 Astro 4698 Astro 4699 Astro 4700 Astro	CHEVROLET 4701 Astro 4702 Astro 4703 Astro 4704 Astro 4705 Astro 4706 Astro 4707 Astro 4708 Astro 4709 Astro 4710 Astro 4711 Astro 4712 Astro 4713 Astro 4714 Astro 4715 Astro 4716 Astro 4717 Astro 4718 Astro 4719 Astro 4720 Astro 4721 Astro 4722 Astro 4723 Astro 4724 Astro 4725 Astro 4726 Astro 4727 Astro 4728 Astro 4729 Astro 4730 Astro 4731 Astro 4732 Astro 4733 Astro 4734 Astro 4735 Astro 4736 Astro 4737 Astro 4738 Astro 4739 Astro 4740 Astro 4741 Astro 4742 Astro 4743 Astro 4744 Astro 4745 Astro 4746 Astro 4747 Astro 4748 Astro 4749 Astro 4750 Astro 4751 Astro 4752 Astro 4753 Astro 4754 Astro 4755 Astro 4756 Astro 4757 Astro 4758 Astro 4759 Astro 4760 Astro 4761 Astro 4762 Astro 4763 Astro 4764 Astro 4765 Astro 4766 Astro 4767 Astro 4768 Astro 4769 Astro 4770 Astro 4771 Astro 4772 Astro 4773 Astro 4774 Astro 4775 Astro 4776 Astro 4777 Astro 4778 Astro 4779 Astro 4780 Astro 4781 Astro 4782 Astro 4783 Astro 4784 Astro 4785 Astro 4786 Astro 4787 Astro 4788 Astro 4789 Astro 4790 Astro 4791 Astro 4792 Astro 4793 Astro 4794 Astro 4795 Astro 4796 Astro 4797 Astro 4798 Astro 4799 Astro 4800 Astro	CHEVROLET 4801 Astro 4802 Astro 4803 Astro 4804 Astro 4805 Astro 4806 Astro 4807 Astro 4808 Astro 4809 Astro 4810 Astro 4811 Astro 4812 Astro 4813 Astro 4814 Astro 4815 Astro 4816 Astro 4817 Astro 4818 Astro 4819 Astro 4820 Astro 4821 Astro 4822 Astro 4823 Astro 4824 Astro 4825 Astro 4826 Astro 4827 Astro 4828 Astro 4829 Astro 4830 Astro 4831 Astro 4832 Astro 4833 Astro 4834 Astro 4835 Astro 4836 Astro 4837 Astro 4838 Astro 4839 Astro 4840 Astro 4841 Astro 4842 Astro 4843 Astro 4844 Astro 4845 Astro 4846 Astro 4847 Astro 4848 Astro 4849 Astro 4850 Astro 4851 Astro 4852 Astro 4853 Astro 4854 Astro 4855 Astro 4856 Astro 4857 Astro 4858 Astro 4859 Astro 4860 Astro 4861 Astro 4862 Astro 4863 Astro 4864 Astro 4865 Astro 4866 Astro 4867 Astro 4868 Astro 4869 Astro 4870 Astro 4871 Astro 4872 Astro 4873 Astro 4874 Astro 4875 Astro 4876 Astro 4877 Astro 4878 Astro 4879 Astro 4880 Astro 4881 Astro 4882 Astro 4883 Astro 4884 Astro 4885 Astro 4886 Astro 4887 Astro 4888 Astro 4889 Astro 4890 Astro 4891 Astro 4892 Astro 4893 Astro 4894 Astro 4895 Astro 4896 Astro 4897 Astro 4898 Astro 4899 Astro 4900 Astro	CHEVROLET 4901 Astro 4902 Astro 4903 Astro 4904 Astro 4905 Astro 4906 Astro 4907 Astro 4908 Astro 4909 Astro 4910 Astro 4911 Astro 4912 Astro 4913 Astro 4914 Astro 4915 Astro 4916 Astro 4917 Astro 4918 Astro 4919 Astro 4920 Astro 4921 Astro 4922 Astro 4923 Astro 4924 Astro 4925 Astro 4926 Astro 4927 Astro 4928 Astro 4929 Astro 4930 Astro 4931 Astro 4932 Astro 4933 Astro 4934 Astro 4935 Astro 4936 Astro 4937 Astro 4938 Astro 4939 Astro 4940 Astro 4941 Astro 4942 Astro 4943 Astro 4944 Astro 4945 Astro 4946 Astro 4947 Astro 4948 Astro 4949 Astro 4950 Astro 4951 Astro 4952 Astro 4953 Astro 4954 Astro 4955 Astro 4956 Astro 4957 Astro 4958 Astro 4959 Astro 4960 Astro 4961 Astro 4962 Astro 4963 Astro 4964 Astro 4965 Astro 4966 Astro 49
--	--	---	---	---	--	--	--	--	--	--	--	--	--

