

RESULTS OF THE PRIMARY ELECTION

(Continued From Page 5)

Miscellaneous Votes
The minor offices in the various districts throughout the city in most cases received a few scattering votes. In the first district of the First Ward, Councilman William L. Bodine received five votes as a member of the county committee, while C. W. Bodine received two and A. P. Kirelin for membership on the city committee in the Republican. Joseph Owens received two votes for county committee on the Democratic ticket. Richard Stephens received one vote for constable.

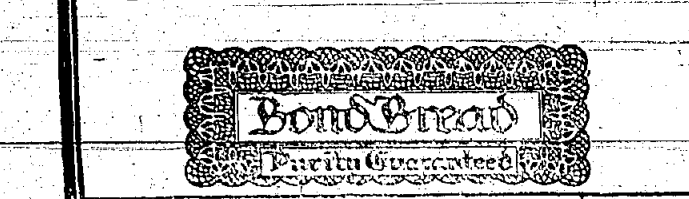


You know what you eat when you eat Bond Bread

On the outside wrapper of every loaf of Bond Bread all ingredients are stated and guaranteed. They are the same pure materials as are used in household bread-making. Bond Bread is fast, Bond Bread is copied after the best household product of 4,775 households of Rayway and vicinity.

No loaf is so nutritious as Bond Bread—no loaf is so tasty. No bread is so light, white or so tender. Bond Bread is fast, Bond Bread is copied after the best household product of 4,775 households of Rayway and vicinity.

Every loaf guaranteed by the bond of the General Baking Company



SECURITY

A strong board of directors, every one a Rayway man.
A sufficient capital and surplus.
Every loan and investment carefully safeguarded.

COURTESY

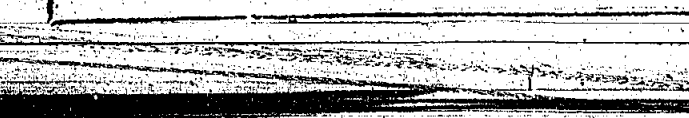
A cordial welcome by courteous employees. Officers always accessible and anxious to be of real assistance to you.

SERVICE

Monthly statements of account.
Careful attention to your every banking need.
Pay rolls made up and delivered.
Unusual ways of meeting unusual demands.

RAYWAY TRUST CO.

Open 8 A. M. to 3 P. M. Daily
Saturday, 8 to 12 Noon
Monday Evenings 5 to 8.30 o'clock



DRUGS
We carry a full line of fresh, pure drugs and reliable proprietary medicines.
Bring your prescriptions to us.
MINTON D. BROSS
39 Cherry St., Rayway, N. J.
PHONE 234

In the second district of the First Ward Samuel H. Morton had a spirited contest for county commissioner with former Councilman John W. Wells. Mr. Morton winning 39 to 11. For city committee A. T. Crane received two and Morton one vote. On the Democratic ticket P. J. McCarthy and S. H. Morton, each received one vote, for county committee. The constable vote was one each for William Miller, John Conner, and William Hedeeman. Philip H. Gehring was named on the Republican ballot in the first district of the Second Ward for county commissioner, receiving 17 votes. Arthur J. Armstrong received one vote. For city committee Thomas Armstrong received three votes and P. H. Gehring and George Armstrong one each. Frank Tyson received one vote for constable. A. J. Clark received one vote for county commissioner on the Democratic ticket and also one for the city committee.

Classified Advertising
REAL ESTATE FOR SALE
FOR SALE—Five room bungalow; lot 100x120. Inquire 191 East 1st Avenue. Phone 121.
FOR SALE—On easy terms, new house, with central heat, two bedrooms and bath; lot 50x120 feet, or site to build. Inquire 191 East 1st Avenue.
FOR SALE—A fine, new, modern house, with central heat, two bedrooms and bath; lot 50x120 feet, or site to build. Inquire 191 East 1st Avenue.

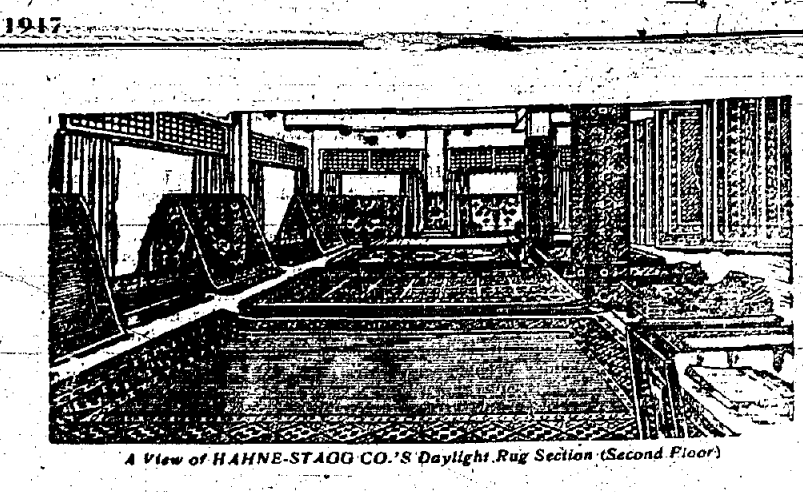
Classified Advertising
REAL ESTATE FOR RENT
TO LET—Furnished room; good location, near station. 115 W. Milton Avenue. Phone 121.
TO LET—Furnished room; good location, near station. 115 W. Milton Avenue. Phone 121.
TO LET—Furnished room; good location, near station. 115 W. Milton Avenue. Phone 121.

Classified Advertising
ROOMS TO LET
TO LET—Furnished room; good location, near station. 115 W. Milton Avenue. Phone 121.
TO LET—Furnished room; good location, near station. 115 W. Milton Avenue. Phone 121.
TO LET—Furnished room; good location, near station. 115 W. Milton Avenue. Phone 121.

Classified Advertising
POPULAR MUSICAL COMEDY
"Love O' Mine" Coming to the Broad Street Theatre.
"Love O' Mine" Coming to the Broad Street Theatre.
"Love O' Mine" Coming to the Broad Street Theatre.

Classified Advertising
FOR SALE
ALL PICTURES TESTED—Various makes, including Kodak, Brownie, and others.
FOR SALE—Various makes, including Kodak, Brownie, and others.
FOR SALE—Various makes, including Kodak, Brownie, and others.

Classified Advertising
Wright-Martin Aircraft Corp.
New Brunswick, N. J.
Will be open Saturday Afternoon and Sunday—until 3 P. M.
All kinds of Machine Operators Wanted



A View of HAHNE-STAGG CO.'S Daylight Rug Section (Second Floor)

Masterpieces in American Rugs

We are showing American Wilton Rugs that are marvelous in their reproduction of the rich softness of Oriental specimens costing ten times the price. Chinese effects in exquisite harmonies of blue, green, gold and rose; copies of Persian and Turkish figures with rich silky sheen.

HIGHEST GRADE WILTONS in all sizes, ranging in price from \$85.00 for 9 ft. x 12 ft., down to \$25.00 for 2 1/2 x 3 1/2 ft.

ROYAL WILTONS, a first-class rug, ranging in price from \$60.00 for 9 ft. x 12 ft., down to \$25.00 for 2 1/2 x 3 1/2 ft.

SEAMLESS AXMINSTERS, in finest Wilton effects. Fine, serviceable rugs in the 9 ft. x 12 ft. size, \$35.00 and \$45.00.

SEAMLESS WILTON VELVET RUGS—A remarkably beautiful and durable rug at a popular price. 9 ft. x 12 ft. size, \$47.50.

SEAMLESS VELVET RUGS in good patterns, 9 ft. x 12 ft. size, \$32.50.

REVERSIBLE WOOL-AND-FIBER RUGS—especially desirable for bedroom use. 9 ft. x 12 ft. size, \$33.50 and \$47.50.

RATTANIA RUGS—desirable for sun parlors. 9 ft. x 12 ft. size, \$14.25.

RAG AND CRETONNE RUGS—a full line in dainty floral effects; charming for bedrooms. 9 ft. x 12 ft. size, \$11.75.

WILTON LINOLEUMS—chiefly in parquet and tile effect; per square yard, \$1.00.

FELT BASE LINOLEUMS—per square yard, \$1.00.

DRAPERIES TO ORDER—OUR SPECIALTY

Our Drapery Section on the main floor Central Avenue is showing beautiful lines of Cretonnes. Entire decorative schemes planned out. Curtains, Portieres, etc., may be selected from stock.

HAHNE-STAGG CO.

GOOD FURNITURE
COR. BROAD ST. & CENTRAL AVE. NEWARK, N. J.
CONVENIENT CHARGE ACCOUNT
Business Hours 10 to 6 P. M. Including Saturdays

Red Cedar SHINGLES

LARGE STOCK
18-inch Eureka
24-inch Imperials 9-16-inch Butts
For Immediate Delivery.

BOYNTON LUMBER CO.

SEWAREN, N. J.
A. J. CLARK, Local Rep.
21 Westfield Ave.
Phone 154-W

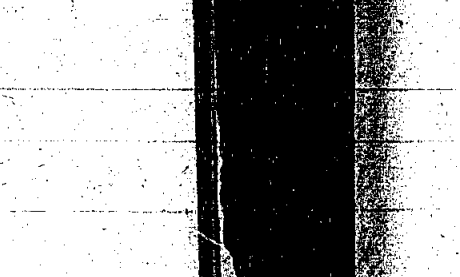
Get the Genuine and Avoid Waste



SAPOLIO

The General All-Around Cleaner

"You Decide This Question—Does Telephone Directory Advertising Pay?"



"THE Telephone Directory is used every day by the real big buyers of your community. It stays in the homes and business places from the time it is delivered until it is replaced by a succeeding issue. It is never thrown away, always handy to the man or woman who buys by telephone and is consulted more times a day than any other publication in your community."

"I began advertising in the Telephone Directory years ago and I'm advertising in it to-day."

One of the best arguments in favor of Telephone Directory advertising is the fact that 85% of the advertisers in this publication, *newspapers*, *etc.*

Why not call, telephone or write and let us give you full particulars?



NEW YORK TELEPHONE COMPANY

A National Shock Absorber

Do you remember any period in which our country has been subjected to so many anxious moments as during the past two years?

Can there be any doubt that confidence in the Federal Reserve Banking System as a national shock absorber has contributed largely to the tranquillity of business and banking during these tense months?

If you appreciate what this new nationwide system has been doing for you, you can appreciate the strength it gives to the strength of our country.

Rayway National Bank

Irving St. and Vail Place
Send for Booklet, "How Does It Benefit Me?"

TAXI CAB STATION

Day and Night Service
also
Limousines and Touring Cars for all occasions!
Prompt and Efficient Service
is guaranteed to all our patrons!

JOSEPH P. RUDDY

112 Irving Street, Rayway, N. J.
Near Elm Avenue
Telephone 116
Cars washed and stored.

FACTS RELATIVE TO THE SCHOOLS

(Continued From Page One)

Since last September one in Washington, two in Columbia, and one in Lincoln schools.

Another fact that must not be lost sight of is brought to our attention by these figures: Last June there were 1250 seats in the grammar schools; in the very first week of school, this year, we have enrolled 1320 pupils. To accommodate the extra surplus, two new rooms have been opened; one in Lincoln and one in Columbia Schools. This affords relief for the present by giving us something over sixty additional seats. But the handwriting is on the wall, nevertheless. We must not delay too long in making preparations for the increase of the city's school population. Nothing can be more detrimental to the schools than to attempt to carry on the work under crowded and adverse conditions. If the city is to expand and take her place among the progressive towns in this commonwealth, we must keep abreast of the times with our public schools.

A review of the statistics of the class of 1917 affords encouragement as well as desire to continue along the progressive lines that our schools have been following in the past.

There were fifty-three in the graduating class last June. Of this number twenty-two had taken the commercial course and, consequently, did not plan to continue their education in higher institutions. Of the remaining thirty-one, fifteen have entered college and twelve normal schools. That is to say, that only four of the academic pupils graduated last June have not planned to continue their education in higher sphere of learning.

It is to be noted that five cities in the State can equal and some surpass that only four of the academic pupils graduated last June have not planned to continue their education in higher sphere of learning.

Health Chats

It is easier to keep well than to get well.
Keep the digestive process in order and disease will find it difficult to get a foothold.

for the Digestion is Indispensable

In Tablet form, at all Drug Stores 50 Cents

to feel Fresh and Fit

—you must keep your stomach well, your liver active, the bowels regular, and your blood pure. Your physical condition depends on the health of these organs.

just take BEECHAM'S PILLS

A few doses of Beecham's Pills and you will find your system, and a great help in maintaining good health. A single box will prove the remedial value of BEECHAM'S PILLS.

Why It Costs Less to Have These Tires On Your Car

Because of their supreme mileage-giving qualities. For United States Tires are the standard of low mileage cost. That is why their sales continue to surge ahead year by year, month by month.

United States Tires Are Good Tires

A Tire for Every Need of Price and Use
Royal Cavalry, "Hobby," "Chad," "Used," "Pilot"

Also tires for motor trucks, motor cycles, mopeds, and mopeds.

A Complete Stock of United States Tires Carried by A. W. Foster & Co.

IT'S FOOLISH TO "UPPER" When So Many Rayway People Are Pointing the Way Outwards

You may be brave enough to stand back and watch the "upper" class. But if in addition you wish to be successful in the "upper" class, you must be brave enough to stand back and watch the "upper" class. But if in addition you wish to be successful in the "upper" class, you must be brave enough to stand back and watch the "upper" class.

THE RAYWAY SAVINGS INSTITUTION

Pays four per cent interest on deposits. The highest rate paid by any savings bank in the State. Open accounts in your home institution. Street.

RAYWAY FIRE-ALARM STATION

Phone 200 for still alarm.
13-Main and Cherry Streets.
14-Main and Lawrence Avenue.
15-Main and Commerce Street.
16-New Brunswick and Lake Avenue.
17-Main and Lawrence Avenue.
18-Main and Lawrence Avenue.
19-Main and Lawrence Avenue.
20-Main and Lawrence Avenue.
21-Main and Lawrence Avenue.
22-Main and Lawrence Avenue.
23-Main and Lawrence Avenue.
24-Main and Lawrence Avenue.
25-Main and Lawrence Avenue.
26-Main and Lawrence Avenue.
27-Main and Lawrence Avenue.
28-Main and Lawrence Avenue.
29-Main and Lawrence Avenue.
30-Main and Lawrence Avenue.

NEWARK, N. J.

New Fall and Winter Coats at 29.50

An excellent selection can be had at this reasonable price. One model is of Vicuña cloth, cut on good lines, with belt shirred at waist, large collar that fastens high at neck, tailored cuffs, fully lined.

Another good model featured in broadcloth, deep belt, large collar, shirred at waist, large collar that fastens high at neck, tailored cuffs, fully lined.

Peek at the new season's new styles—29.50.

A Superior Collection of Women's and Misses' Coats 25.00

There is not a coat in this collection that would not be considered good value at the price. At least all styles in this assortment are medium weights for early Fall and the heavier for later on.

Other winning coats ranging in price from \$15.00 to \$25.00.

HAIRY VANDERHOVEN

164 MAIN STREET
TELEPHONE 127

HIGH & PETTIT

Successors to J. M. Weiss.
FURNERAL DIRECTORS
100 IRVING STREET, NEWARK, N. J.
NO. 10 EAST 10TH STREET, NEWARK, N. J.
NEW YORK OFFICE
100 EAST 10TH STREET, NEWARK, N. J.
BROOKLYN OFFICE
100 EAST 10TH STREET, NEWARK, N. J.
JERSEY CITY OFFICE
100 EAST 10TH STREET, NEWARK, N. J.
AUTO SERVICE IN Newark

Courtesy and Service

The courtesy and service of our employees are a constant reminder to our patrons to tell their friends of our facilities and services. We will serve you personally in a most satisfactory manner.

Lambert & Griener Undertakers

180 Irving Street, Newark, N. J.
Tel. 415
AUTO CORTAGE IF DESIRED

Conkey's Poultry Remedies

JENNINGS & BOLMER
80 Irving St., Rayway, N. J.
Telephone 62-W.

A DEED is better than RENT RECEIPTS

The Industrial Building and Loan Association
will loan you up to 50 per cent of the value of the home you own to buy a home.

WAR CONDITIONS AND THE FRANKLIN CAR

The Franklin Car is "doing its bit" to conserve the national supply of gasoline. Twenty miles to the gallon is the Franklin average.

The car that gives two miles of tire service to every mile the average car gives. 10,203 miles per tire is the Franklin national record, over a five-year period.

The investment value of the Franklin Towing Car secures the Franklin owner against the waste of rapid depreciation. Study the used-car prices for your evidence of this.

Thrill (efficiency) is no new cry for the Franklin. It has been built for efficiency for 15 years. The same fundamental principles today as at the start—tried and true.

Elizabeth Automobile Co., Inc.

289 Morris Ave., Elizabeth, N. J.
Telephone 755-Elizabeth
Union County Distributors for over ten years

The Railway Record

PRICE TWO CENTS

**HELP WIN WAR
CONSERVE FOOD**

Highway To Be Organized To
Do Its Bit For Thrift and
Conservation of Food

MAYOR SIMMONS ACTS ON HOOVER'S APPEAL

[illegible]

ons or restricted supplies. Only her
our own country is each one permitted
judge for himself the duty he owes
his country in food consumption, at

This is a duty of supply. From the point of view of the Government, it is a duty to discharge this duty, not under the austerities of a voluntary abstention, but without any restraint than the guidance of the Government. It is a duty to supply the necessities of the people, and it is this unprecedented adventure here the Government will largely state the issue of the war.

The war is making every household, every hotel, restaurant, and dealer in necessities in the nation to become a part of the Food Administration, and to discharge the duty to follow the Government's lead. It is a duty to supply the necessities of the people, and it is this unprecedented adventure here the Government will largely state the issue of the war.

We wish only that our people should eat wisely, but wisely and with plenty. Wisdom in eating is not wisdom in eating less. It is wisdom in eating less consumption, shipping and war necessities as will allow us to take our duty to export to our allies. It is a duty to supply the necessities of the people, and it is this unprecedented adventure here the Government will largely state the issue of the war.

in this crusade; to all the organizations for defense, local and national; to all the agencies, commercial, social, and civic, that they join the American

HERBERT HOOVER

His policy towards those who have not asked to take refuge to furnish food for all nations and armies require. The small amount which each individual is asked to have contributed has been multiplied when substituted when multiplied by millions becomes an effective total.

It is a matter of the most real of the American people will not less of the foods which, because of the concentrated nutritive value, must be taken abroad and of others food that can be produced and eaten; these, such as pork, dairy products and wheat; these, such as rice, corn, and beans; these, such as poultry, fruit, vegetables, and all the rest.

A. J. ROSENBERG

R. C. CARSON HONORARY

Robert C. Carson, of West Miami Avenue, this City, has been appointed Vice-President of the National Survey of the Company, Inc., of Miami, Florida, this City. Mr. Carson has been connected with the company for eight years as auditor, assistant general manager and

... ..