



# SANIBEL - CAPTIVA ISLANDER

7¢

DEVOTED TO  
THE INTERESTS  
OF  
SANIBEL  
AND  
CAPTIVA ISLANDS

photo by either konold or huston or pickens  
or waghorne or wanderin'

The Finest  
Shelling  
Beaches  
in the  
Western  
Hemisphere

VOLUME 6 NUMBER 49

PUBLISHED EVERY THURSDAY

DECEMBER 8, 1966

## PUBLIC LIBRARY MOVE COMPLETED

All physical evidence of the Sanibel Public Library was removed from its former location in Town Square in a single afternoon. What had been considered a two-day job was completed in four hours on Saturday, November 26. More than twenty friends of the library brought their station wagons and cars to help with the move. Special thanks are due Jerry Martin and his helper for trucking the heavier files and pieces of furniture.

Settling into the new quarters in the Sanibel-Captiva Real Estate building took longer than the dismantling and moving. Stacks had to be assembled and fastened to the walls before books could be taken out of cartons. This work was completed for an opening on Thursday, December 1. As before, regular library hours will be from 10 a.m. to noon on Tuesdays and Saturdays.

Give A Camera  
For Christmas



ALL YOUR  
NEEDS FROM  
FOOD TO FILM

SEE OUR  
SELECTION  
FOR REAL  
DISCOUNT PRICES



**THE STORE WITH THE ISLAND FLAVOR**

## WATER SYSTEM DEDICATION

DECEMBER 15

The Island Water System, with the last of its approximately 475 connections finished December 2, will be formally dedicated this coming Thursday, December 15, at 10 a.m. at the main station on State Road 867 next to the telephone building. Refreshments will be served and the public is not only invited, it is urged to attend.

John Kontinos, president of the Association, said that a number of dignitaries from the Washington and local political scene had been invited, but at press time, acceptances had not yet been completed.

After the dedication, Kontinos and the other Board of Directors members, Ed Konrad, Paul Stahlin, Francis Bailey and Joe Green, with administrator Pat Murphy and assistant administrator Bob Aycock, and any visiting dedicators, will adjourn to South Seas Plantation for lunch.

The Island Water Association first started with a public meeting in September of 1964. At that time, and during subsequent meetings, it was decided to apply for a Farmer's Home Administration guaranteed loan of \$800,000 which was granted. Bids were let and construction started November, 1965, and were completed when the last connection was made December 2, 1966. (The first connection, by the way, was the Kontinos' Coconut Grove Restaurant---on October 6, 1966, "which had absolutely nothing to do with the fact that I'm president" quickly added Mr. Kontinos---and the last was the new Jolly Roger Motel on Sanibel.)

The basic connection fee is \$183, and the monthly water rates are \$9 for the first 7,000 gallons. "There are very few places and/or homes on the Islands which have not subscribed," said Mr. Kontinos.

The \$800,000 loan will be paid back by the proceeds above operating costs. It's a 40 year loan.


## AUDUBON SOCIETY MEETS TONIGHT

The Sanibel-Captiva Audubon Society will hold its second meeting of the season at 8:30 p.m., Thursday (tonight) at the Sanibel Community House.

A film entitled "Song of Thy Works" will be shown. This motion picture is recommended by the National Audubon Society as descriptive in highly informative fashion of nature's wonders.

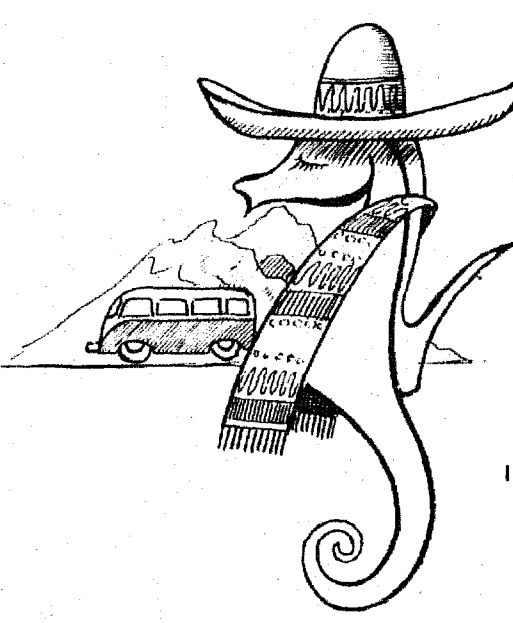
Members and all interested persons are cordially invited to attend.

A PICTURE OF PROGRESS



NEW HOME ON CAPTIVA

photo courtesy of  
**SANIBEL-CAPTIVA REAL ESTATE**  
James S. Pickens & Claire T. Walter, Realtors  
Phone: GRreenleaf 2-4011



THE SEA HORSE  
HAS BEEN  
TRAVELING  
AGAIN . . .  
STOP IN AND SEE  
THE WONDERFUL  
CHRISTMAS GIFT  
IDEAS WE BROUGHT  
BACK FROM  
MEXICO

# SANIBEL CAPTIVA ISLANDER

Established 1961  
Duff Brown, Owner and Publisher

Editors.....Virginia and Duff Brown  
Production.....Carolyn Lowry

ISLANDER OFFICE:  
140 Delmar Road, Fort Myers Beach, or call  
MO 4-6792.

Display ad rates given on request. Minimum  
unclassified charge (25 words), \$1.00. Cash, 75¢

Islander news and ad copy deadline is SATURDAY  
Last minute SHORT news items or unclassifieds  
may be called in Sunday afternoon.

## SUBSCRIPTIONS

On- Island.....\$3.00 yearly  
Off-Island or Split.....\$3.50 yearly  
Second class postage paid at Fort Myers Beach,  
Florida 33931.

*Priscilla  
Murphy*

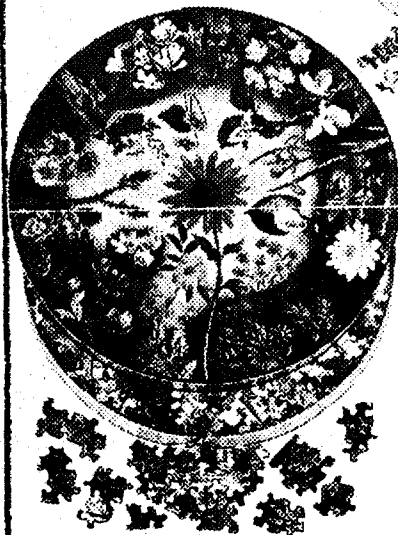
Realtor

SANIBEL ISLAND, FLORIDA

GR 2-4501

## Circular Jig-saw Puzzles

by Springbok Editions



That's right...circular!  
No straight edges to  
line-up, no corners for a  
clue. The most fasci-  
nating jig-saws you've  
ever worked...and the  
most beautiful! Every  
one a handsomely  
reproduced work of art.  
Great to give, great  
to receive.

3.50

Shown:  
THE VIRGIN AND ST.  
JOHN ADORING CHRIST,  
captures the serenity of the  
famed terra cotta by  
Andrea Della Robbia  
WILD FLOWERS, created  
specifically for Springbok  
Editions by Maynard Reese,  
renowned painter of flowers  
and their habitats  
ENGLISH LEGENDS, lively  
illustrations of such favorites  
as Robin Hood, King Arthur,  
St. George and the Dragon  
and others

Not Shown:  
CONVERGENCE  
by Jackson Pollock, a  
challenging reproduction of  
the famed and fiery abstract  
(11 1/2 x 19 1/4")  
And many other designs

MacIntosh Book Shop

SANIBEL ISLAND FLA.

GR 2-3041

## WE INVITE YOU TO ATTEND SERVICES

ST. MICHAEL'S  
AND ALL ANGELS  
EPISCOPAL CHURCH  
the Rev. T.A. Maiden, Vicar  
SUNDAY:

Holy Communion, 7:30 a.m.  
Morning Service and Sunday  
School, 9:30 a.m.  
WEDNESDAY and HOLY DAYS:  
Holy Communion, 9 a.m.

ST. ISABELL'S  
CATHOLIC CHURCH  
Father MIGUEL M. GONI

## HOLY MASS:

Sundays 11:30 a.m.  
Thursdays 7:30 p.m.  
Holy Days 5:30 p.m.  
CONFESSION  
Sundays before Mass

SANIBEL COMMUNITY  
CHURCH  
The Rev. TAD ALLEN, Pastor

Morning Worship, 11:00 a.m.  
Sunday School, 9:30 a.m.

FIRST BAPTIST CHURCH  
The Rev. W.A. McCain, Pastor

SUNDAY  
Sunday School, 10:00 a.m.  
Morning Worship, 11:00 a.m.  
Young People's Hour, 6:30 p.m.  
Evening Worship, 7:30 p.m.  
WEDNESDAY  
Prayer Meeting & Bible Study  
7:30 p.m.

CAPTIVA CHAPEL by the SEA  
Dr. GUTHRIE SPEERS  
Sunday Worship, 11:00 a.m.  
Wed., Bible class, 10:30 a.m.

## MARY K. CUNNINGHAM

Mrs. Mary Katherine Cun-  
ningham of Captiva Island died,  
apparently of a heart attack,  
Thursday, December 1. She was  
68 and had been a resident  
of Captiva for about 11 years.  
She is survived by her sis-  
ter, Mrs. S.T. Mellinger of  
Springfield, Illinois, and sev-  
eral neices and nephews.

Very active in civic affairs,  
Mrs. Cunningham was a mem-  
ber of the Captiva Chapel by  
the Sea, the Community Asso-  
ciation, the Board of Directors  
of the Chamber of Commerce,  
and many shell clubs throughout  
the country.

She gave generously of her  
time, work and money to many  
organizations and individuals.  
Her little red shop on Captiva  
Island was a mecca for many  
visitors, shellers and friends  
(the first two soon becoming  
friends after a visit or so)  
ever since she established it.

Mrs. Cunningham was found  
in her bedroom at her home  
Thursday afternoon by two  
friends who became concerned  
when she did not answer their  
calls when they entered the  
shop. Deputy Sheriff Dave  
Wooster of Sanibel answered  
the emergency call, and Leo  
Englehardt Funeral Home took  
care of further arrangements,  
until Mrs. Cunningham's sister  
arrived late Monday afternoon.

Mrs. Mellinger, who had  
been delayed by an automobile  
accident in Georgia on her way  
to the Islands, (no one was  
hurt) had not completed the  
funeral arrangements Monday.

The funeral arrangements  
were further delayed when the  
key for Mrs. Cunningham's  
safety deposit box in Fort Myers  
could not be located.

## YOUR SAVINGS GROW LARGER

4%

PASSBOOK  
SAVINGS

Effective Oct. 1, 1966

Interest  
Compounded  
Quarterly

5%

ONE YEAR  
CERTIFICATES  
OF DEPOSIT

5% interest payable semi-annu-  
ally is earned on One Year Cer-  
tificates of Deposit of \$1000 or  
more. One Year Certificates pur-  
chased prior to September 20, 1966  
will earn 4% up to September 20  
and 5% thereafter until maturity  
of the Certificate.

SEE YOUR FINANCIAL FRIENDS AT

FIRST NATIONAL  
Bank

IN FORT MYERS

with Experienced Trust Department  
MEMBER FEDERAL RESERVE SYSTEM  
FEDERAL DEPOSIT INSURANCE CORP.

The Leading Bank in Southwest Florida

## Reynold's Craft Shop

Main Road, near Casa Ybel Road

FLORIDA MINIATURES  
RARE SHELLS

SHELL BOXES - FRAMES - TABLES

Shellcraft Supplies and Findings  
Ceramics - Leather & Misc. Items  
The Handmade Gift is the Thoughtful Gift

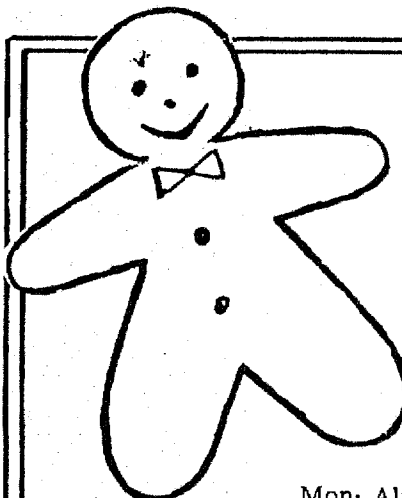
## SANIBEL SERVICE STATION

ATLAS TIRES -- TUBES -- BATTERIES  
ACCESSORIES  
WRECKER -- TOWING -- ROAD SERVICE  
EXPERT SERVICE

STANDARD  
OIL

GR 2-4961

The  
*Reef*  
RESORT MOTEL  
Sanibel



ISLAND  
BAKE  
SHOP


WEEKLY  
SPECIALS

Mon: Almond Macaroons  
Thurs: Lemon Pectens  
Fri: Chocolate Eclairs

GR 2-3121

Hours 8 to 5  
Daily

Closed Sunday



## GOURMET CORNER

**S.S. Pierce**  
**Frozen Chocolate**  
**Layer Cake**

As good as Mother used to make.

THE STORE WITH THE ISLAND FLAVOR

MARY PARKER of Coralville, Iowa, who visited the Hawaiian Islands recently, wrote her parents, Mr. and Mrs. WILLIS COMBS, as follows:

"The beaches are either black or white--the white ones are few and far between as these are formed from coral reefs; the black ones more numerous as these are formed of lava. Most of the black beaches are not good for swimming, at least not for the inexperienced as the bottom is very rough and the currents swirl around the deposits of lava.

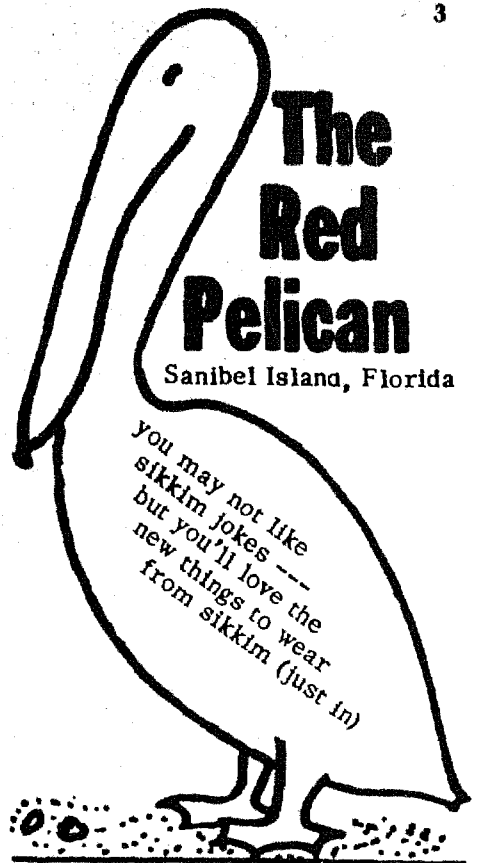
"The black sand beach of course is the exception. Here the lava has been reduced to sand size and the beach is lovely. I brought back a lot of this sand as most of the youngsters I know wanted a little of this sand.

"The shelling is almost nonexistent--at least on the beaches I visited.

"The vegetation is very lush. Anything and everything grows here. Because the Islands are so young geologically most of the plants have been introduced from nearly all over the world. Much of the vegetation reminds me of Sanibel--the palms, mango, papaya, coffee, crotons, pointsettias, hibiscus, Australian pine.

"I like the beach at Sanibel much better than the one at Waikiki."

Mary was representing the Iowa Geological Survey at National meetings of the American Geological Society at San Francisco, followed by a geological field survey of the Hawaiian Islands. She and her teenage daughter, BARBARA, will be on Sanibel for the Christmas holidays.



STEPHEN MUENCH, who graduated with honors as a distinguished student from the Officers' Training School, Lackland Air Force Base, the day after Thanksgiving, and his wife, LYNDA, are spending a two week leave on the Islands with his parents, AL and BETTY MUENCH of Periwinkle Trailer Park.

2/Lt. Muench had been assigned to report to Moody Air Force Base in Valdosta, Georgia, for pilot training after his leave. Steve and Lynda will be spending the Christmas holidays with her parents, Mr. and Mrs. A.V. RUNSEY of Fayetteville, New York.

Mr. and Mrs. RICHARD MORGAN of Washington Depot, Conn., arrived on the Islands a few weeks ago to help Mrs. FRANCES BAILEY at the Red Pelican. They'll be here for the season, and are living in Mrs. Bailey's studio on Gulf Drive.

Dr. GREGORY FLORES of Mid-Island Cottages, Captiva Island, has been commissioned a member of the Captiva Island Fire Control Board by Secretary of State Tom Adams.

The Sanibel Disposal Service, Inc., was granted a charter this week by Tom Adams. Incorporators are Harry C. White, James T. Cowart and Edell White, all of Fort Myers Beach.

#### THRIFT SHOP OPEN

The Thrift Shop will be open Friday evening (tomorrow) from 7-9 p.m. as well as the usual opening time, Thursday (today) from 1 to 4 p.m.

*Hurry!*

## CHRISTMAS PICTURES IN COLOR

12 for \$12.95

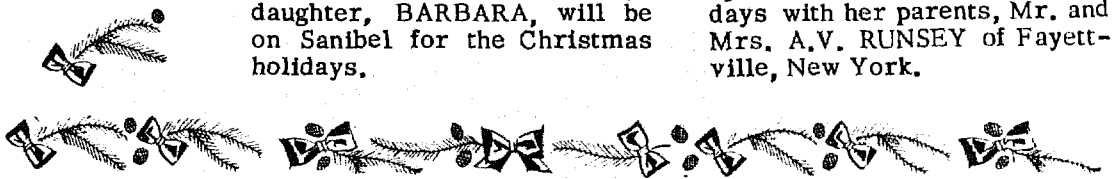
**CALL LARRY C. HUSTON**  
**MO 4-6655**

Fort Myers Beach

## Elsie Malone

### SPECIMEN SHELLS

E. corner of Priscilla Murphy, (Realtor)  
Bldg. Periwinkle Way GR 2-2001



Mr. and Mrs. HERBERT LEWIS fly in from Saint Paul this Sunday to take up winter residence in Moonshell Cottage on Gulf Drive, Sanibel. EMMY LU is busting with ideas gathered on her trip to Japan in October, for the gardens and landscaping around Moonshell.

Dr. and Mrs. ALBERT STEFFEN of Vincennes, Indiana, and Chateaux-sur-Mer, Sanibel, found a beautiful Golden Olive and a Murex Recurverostis (Rybidus) while they were shelling last week. HOWARD and MIM SCHRINER also reported finds: a Golden Olive for Howard and Mim finally landed that Junonia she's wanted.

Captiva, Florida GR 2-3011  
Electronics has been my business since 1921

## CAPTIVA TV SANIBEL

RADIO AND  
RECORD PLAYER REPAIRS

**H. A. VROOMAN**

1 1/2 MILE NORTH OF THE BRIDGE

## WHAT EVERY ISLAND NEEDS IS SERVICE




RELIABLE ISLAND SERVICE  
FOR REPAIRS, YARDWORK, PAINTING,  
REFINISHING, CLEANING  
AND CONCRETE WORK

KEYS MADE (after December 1)

### JIM'S MAINTENANCE


James Hunter, Jr.  
Gr 2-5301 before 8:30 a.m. & after 2:00 p.m.

## YOUR HEALTH IS OUR PRIME CONCERN!

OUR TWO FULL TIME PHARMACISTS FILL YOUR PRESCRIPTION ACCURATELY AND PROMPTLY IN COMPLIANCE WITH ALL FLORIDA AND FEDERAL REGULATIONS IN OUR PRESCRIPTION DEPARTMENT NOW OPEN 7 DAYS A WEEK

Our pharmacists, Bernard Valind and Charles Brown, are with immediate call for emergencies 24 hours a day --- every day through your doctor.

Prescription Dept. Open Daily 9 - 9, Sunday, 10 - 7.



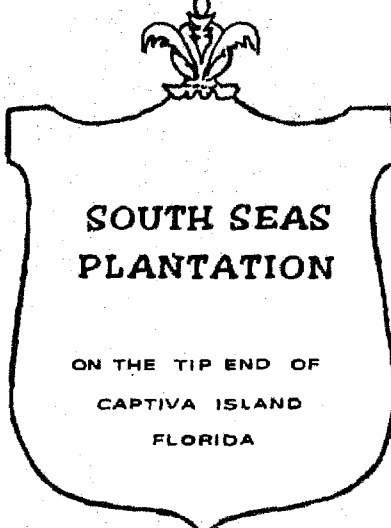
# GARLS

Fort Myers Beach Florida

The Pharmacy Nearest the Islands

San Carlos & Estero Blvd. MO 4-9754

Dining Room



Package Store

## Cocktail Lounge

OPEN



Hi there ...

It's me again... to tell you we have a lovely selection of

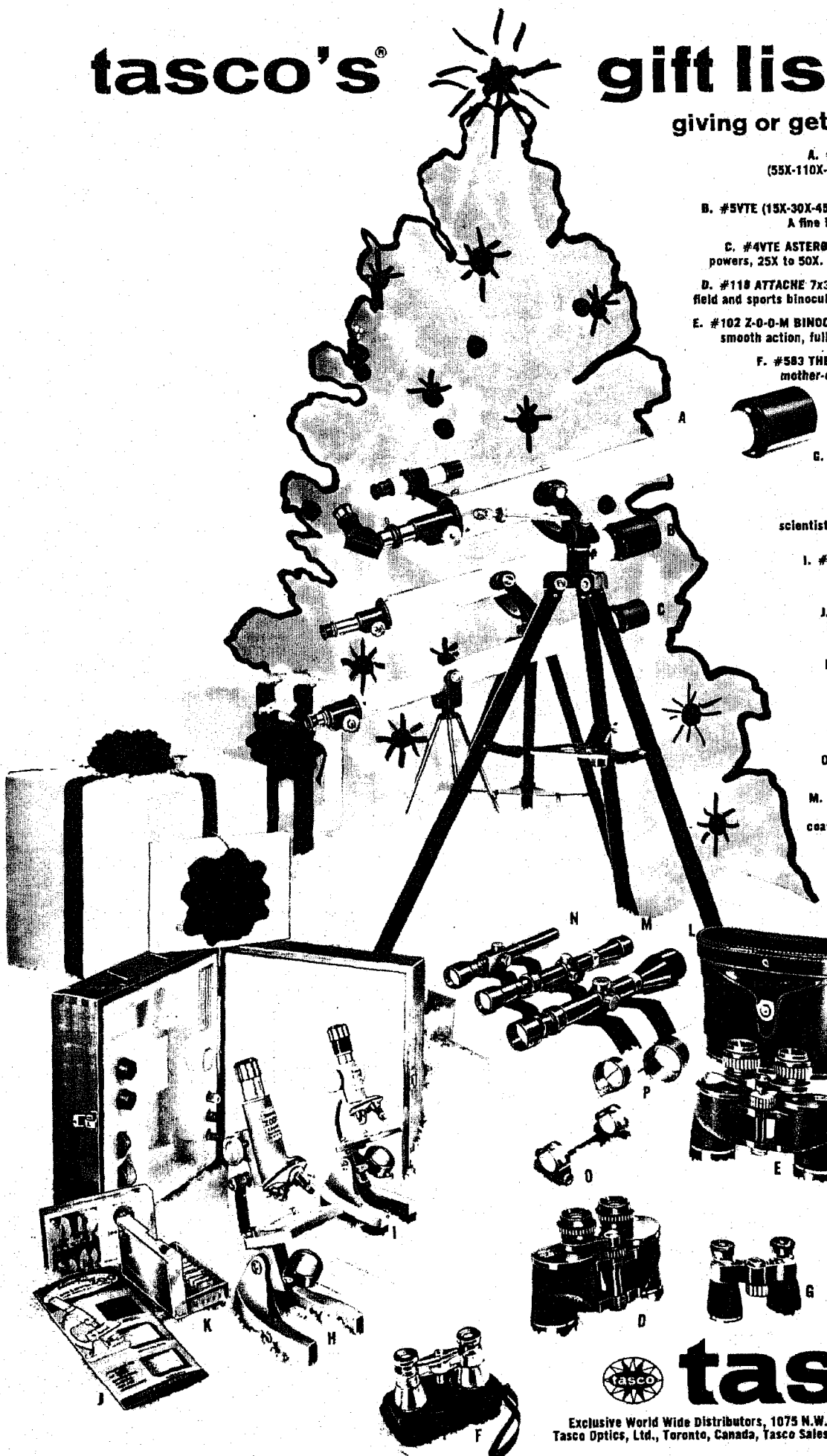
Christmas Cards - Notes - Party Goods - Stationery

Games & Puzzles - Calendars.

Capt. Paul  
Seven Seas Shop

tasco's

gift list for  
giving or getting...



A. #97E ASTRONOMICAL TELESCOPE  
(55X-110X-117X-234X). Excellent resolution.  
With tripod.—\$39.95

B. #5VTE (15X-30X-45X-60X) TERRESTRIAL TELESCOPE.  
A fine instrument, with tripod.—\$29.95

C. #4VTE ASTEROID. Precision lenses, six variable  
powers, 25X to 50X. Gift boxed, with tripod.—\$14.95

D. #118 ATTACHE 7x35mm wide angle (57°). A superb  
field and sports binocular; fully coated. Cased.—\$49.95

E. #102 Z-O-O-M BINOCULAR — 7 in 1! 6X to 12X32mm;  
smooth action, fully coated. Leather case.—\$69.95

F. #583 THEATER GLASSES. High styled, with  
mother-of-pearl and gold finish.—\$24.95

G. #570 NON-PRISM SPORTS GLASS.  
For indoor sports and theater.  
4-power, with case.—\$12.95

H. #951 EXPLORER for the young  
scientist — 50X to 1200X Zoom.—\$29.95

I. #970 zooms from 50 to 750 power.  
Dissecting tools & specimen.  
Styrofoam fitted case.—\$14.95

J. #1800 MicroZOO KIT. View life  
itself! One-celled animals brought  
from hibernation to life.—\$1.25

K. #1580 PREPARED SLIDES. New  
worlds to explore! 10 different  
categories, ready to view.—\$.99

L. #620 SUPER MARKSMAN  
— 3X-9X40mm ZOOM action.  
Fully coated, non-magnifying  
Opti-centered® reticle. Haze filter  
protective caps.—\$39.95

M. #600 3X-7X20mm ZOOM UTILITY.  
Fits grooved receiver 22's. Fully  
coated. Opti-centered® reticle. Haze  
filter protective caps.—\$14.95

N. #750 PISTOLSCOPE;  
1.75X15mm. Target  
and reticle stay  
sharp. Fully coated.  
\$24.95

O. #710 RING MOUNTS  
— 1 inch, rigid,  
quick-detach. Bridge  
mounts fit 37 rifles.  
Rings, pair \$6.95  
Bridge mounts  
\$5.95

P. #730-733 HAZE  
AND GLARE FILTERS  
for 32 and 40mm  
riflescopes: amber  
or blue.  
\$2.50

View these and other  
fine Tasco binoculars,  
riflescopes,  
telescopes and  
microscopes at  
better stores  
everywhere. You can  
spend a lot more...  
but you can't  
buy better!



tasco®

Exclusive World Wide Distributors, 1075 N.W. 71st Street, Miami, Florida 33136  
Tasco Optics, Ltd., Toronto, Canada, Tasco Sales (Aust) Pty, Ltd., Sydney, Australia

MacIntosh Book Shop

SANIBEL ISLAND, FLA.

GR 2-3041

#### CHAMBER DRIVE SUCCESSFUL

Substantial gains in membership were announced last week by the Sanibel-Captiva Islands Chamber of Commerce. Last summer's drive, initiated by Lew Funk, Andy Melody and the late Mary Cunningham, has resulted in the addition of eleven new regular members, 10 new associate members and three new honorary members, plus the reinstatement of two former regular members. Not only did the very successful drive provide a wider support for Chamber activities but the income gave a blood transfusion of almost \$1,400 to the Chamber treasury, according to James Jack, Treasurer.

#### DEMOCRATS MEET TONIGHT

Board members and chairman of the Membership and Voters Education and Registration committees of the Sanibel-Captiva Democratic Club will meet Thursday (tonight) at 8:00 at the office of Priscilla Murphy to discuss future activities. Any member of the Democratic Club is welcome to attend.

#### REAL ESTATE NEWS

SANIBEL CAPTIVA REAL ESTATE reports the sale of a lot in Palm Lake S/D to Mr. and Mrs. WARREN SMITH of Amityville, Long Island, New York.

#### NEW TIDE CHARTS

Priscilla Murphy announces her new tide charts for all of 1967 are now available. Stop in and pick one up, or if you're not on the Island, just write her for the 1967 tides. Priscilla advises there are a few small printer errors about shells, and these will be corrected when it's time for another printing.

#### CHAMBER PRETTIED

Please note that the grounds of the Chamber of Commerce building have been cleaned up, with new plantings added. Thanks to BENNETT BURGON, FRANK PRICE and ROE BRIDGER, all of the Colony, ROY CALDWELL of Periwinkle Trailer Park, NORM CHAMBERS (who was in charge of the job for the Board of Directors of the Chamber) and the MUENCH old faithful tractor.

# 1967 SANIBEL SHELL FAIR

## March 2-3-4

XIX

Sea Life Other Than Shells-marine  
plants and/or animals.

## CATEGORIES

country.

## DIVISION B

## DIVISION A

- I Self collected Sanibel-Captiva Elementary School Students.
- II Self collected Sanibel-Captiva High School Students.
- III Self collected Sanibel-Captiva Adult Beginner-less than 2 yrs
- IV Self collected Sanibel-Captiva Adult Experienced-more than 2 yrs.
- V Self collected Sanibel-Captiva miniature and/or juvenile shells (not to exceed 1 inch in size).
- VI Self collected Sanibel-Captiva beautiful (no labeling).
- VII Beautiful-beautiful shells or beautiful arrangement (any source). (no labeling)
- VIII Miniature and/or juvenile shells (any source) 1 inch or under.
- IX Giant shells (any source) exceptionally large shells, any species.
- X One Area (any source) shells from one locality, state or

- |       |  |
|-------|--|
| XI    | World Wide collection (any source).                            |
| XII   | One Family or Sub Family (any source).                         |
| XIII  | One Genus or Sub Genus (any source).                           |
| XIV   | One Species-to show color, form or growth series (any source). |
| XV    | Educational-primarily to teach (any source).                   |
| XVI   | Marine fossil shells (any source).                             |
| XVII  | Geodes, agatized coral (any source)                            |
| XVIII | Unusual specimens, freaks, albinos (any source).               |

- |     |   |
|-----|---|
| I   | Tables.   |
| II  | Trays and arrangements primarily for use on tables. |
| III | Flowers-singly or in containers.                    |
| IV  | Pictures-open.                                      |
| V   | Pictures-glass enclosed.                            |
| VI  | Gift items and jewelry.                             |

DIVISION C - Commercial -  
Shell Dealers

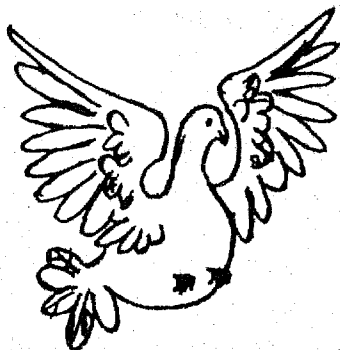
- |    |            |
|----|------------|
| I  | Scientific |
| II | Artistic   |

## AWARDS

- |          |   |   |
|----------|---|---|
| RIBBONS  | - | first, second, third and honorable mention in all categories.   |
| TROPHIES | - | Sanibel Community Association trophies will be awarded each first prize winner in categories I, II, III, IV and V - Division A. |
| ROSETTES | - | Shell of Show awards to one self-collected and one any source shell considered by the judges to be particularly outstanding.    |

## RULES

1. Neither the shell exhibit chairman nor any member of said chairman's family may exhibit competitively in any category.
2. Exhibits must be the property of the exhibitor or exhibitors.
3. Entry blanks must be in the hands of the exhibit chairman not later than Monday noon, February 27th. Later entries will be accepted on a space available basis. No entry may be changed from the category shown on the entry blank.
4. Entries will be accepted on March 1st from 9 A. M. to 2 P. M. Entries may not be removed from display until 5 P. M., March 4th.
5. An exhibitor may enter as many categories as desired, but must have a separate display for each category entered.
6. The name of the exhibitor may not be shown on any case until after the judging.
7. Labeling may prove an asset except in categories VI and VII in Division A.
8. No exhibit, having previously won a Sanibel Community Association trophy will be eligible to win a trophy again in less than 3 years. Any collection having previously won a 1st in Sanibel Shell Fair competition must have 50% new shells to be eligible for entry again.
9. During the judging the Sanibel Community House will be closed except for judges, clerks, exhibit chairman, Shell Fair Chairman and those members of the Board of Directors of the Sanibel Community Association who will serve as observers. The decisions of the judges will be final.



97 SANIBEL SHELL FAIR

APPLICATION FOR ENTRY -

Name: \_\_\_\_\_

Local Address: \_\_\_\_\_

Local Phone: \_\_\_\_\_

Permanent Address:

DIVISION

CATEGORY

NUMBER OF BOXES

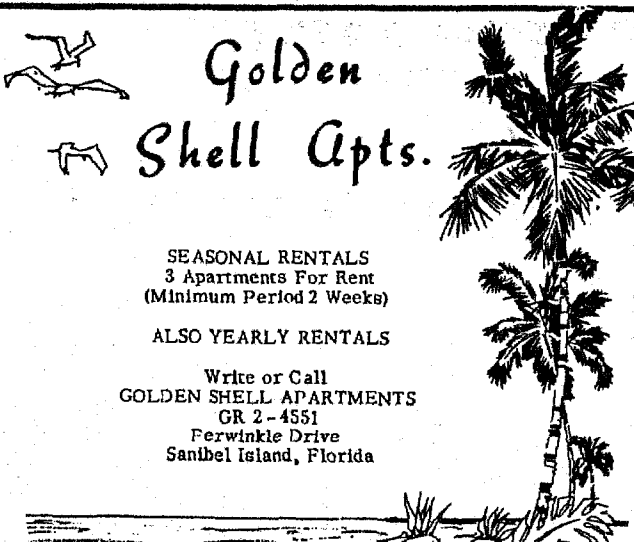
### SIZE OF EXHIBIT

I have examined the rules governing the 1967 Sanibel Shell Fair entries and agree to abide by them.

Date: \_\_\_\_\_

Signature(s) of Exhibitor(s)

(Mail your entry to Mary E. Nix, Exhibit Chairman, Sanibel, Florida - 33957)



**Golden Shell Apts.**

SEASONAL RENTALS  
3 Apartments For Rent  
(Minimum Period 2 Weeks)

ALSO YEARLY RENTALS

Write or Call  
GOLDEN SHELL APARTMENTS  
GR 2-4551  
Perwinkle Drive  
Sanibel Island, Florida

SANIBEL AND CAPTIVA  
**BIRD TOURS**  
NATURE & CANOE TRIPS  
CONDUCTED BY  
**Jeanne Hayes**  
Author of Sanibel-Captiva Bird Guide  
For Reservations Call GR 2-4551



**ISLAND INN**  
American Plan Hotel  
SWIMMING POOL  
**Cottages Available**  
SPECIAL DISCOUNTS OFFERED



**Dining Room**  
OPEN TO THE PUBLIC  
BREAKFAST 7:30-9:00  
LUNCH 12:30-1:30 p.m.  
DINNER 6:30-8:00 p.m.  
RESERVATIONS REQUESTED  
BUT NOT REQUIRED GR 2-3161

**Coconut Grove**  
Restaurant  
GR 2-2751

OPEN: 7:30 a.m. to 9:00 p.m.  
7 DAYS A WEEK  
Corner of Tarpon Bay Rd. & Sanibel Blvd.

FOR CHRISTMAS GIVING  
**Cranes**  
FINE STATIONERY In Gift Boxes  
**MacIntosh Book Shop**  
Sanibel Island, Florida GR 2-3041

### REPEAT VISITORS REMINISCE

The people who "dig" the true charms of Sanibel-Captiva usually are repeat visitors, and as soon as they become old-timers, they like to reminisce.

Mr. and Mrs. Rainer Esslen of New York City, who are back for a ten-day stay at the Woosters' Beach View Cottages, recall how they came here first by the "Rebel" ferry boat in 1960, soon after hurricane Donna.

But what left a more lasting impression on Mr. Esslen than the windstorm damage was the then only telephone on Sanibel, located in a booth close to the ferry slip. Instead of intelligible words it transmitted what sounded like garbled messages from Mars, much to the distress of Mr. Esslen's home office, a large advertising agency, which unsuccessfully tried to get across what it considered to be an important piece of news. To Mr. Esslen this represented truly "getting away from it all."

Walking along the beach before having settled, the Esslens came upon a cottage which they particularly liked. A ten-year old girl showed them round, and when the Esslens wanted to rent it, she quoted terms and closed the deal. It was Linda Wooster, whose parents were out, but who for a long time proudly remembered her first rental of one of the two only cottages the Woosters had built by that time. Dave Wooster was then the first and only TV professional ever to have settled on Sanibel-Captiva, and like an emergency doctor, he had to dedicate much of his time to following summons from all over the Islands to look at TV sets ailing from many years of exposure to humidity and salt air.

Today, Mr. Esslen remarks with a slight touch of nostalgia, things at the Woosters, like everything else on the island, have grown---the number of rental units (now 16), the palm trees, the children and the TV repair business.

The Esslens, like most newcomers, started out as amateur shell collectors, walking along the beach with the typical shelter's stoop. Mrs. Esslen was much encouraged when she found a yellow pecten during the first few days. With some confidential advice from Mary Cunningham, the Esslens became expert conchologists in the course of their third visit to the islands, even digging for live angel wings in the right places.

When Mrs. Francis Bailey at the Red Pelican started renting canoes, their interests widened. Paddling a boat on the sloughs and bayous of the Islands, the Esslens have become bird and alligator watchers. Their prize sight, Mrs. Esslen says, were two frigate birds---their red throat patches in full color---perched among a congregation of pelicans on one of the Wulfert Keys. Mrs. Esslen, who lived in Kenya for two years, says the mangroves and mudbanks remind her of Africa. Mr. Esslen feels transported back to the canals of Thailand, a country where he "had sown some wild oats in his youth," he says.

Canoeing has even made rookie fishermen of the Esslens, who love to eat fresh fish, but who, until this year, were convinced that the cheapest way of getting a good

contd. on p. 7

endorsed by  
Sanibel-Captiva Audubon Society

### BIRD TOURS OF THE ISLANDS

by

**GRIFFING BANCROFT**

RESERVATIONS

MACINTOSH BOOK SHOP

GR 2-3041

WE HAVE THE  
FINEST GIFT INVENTORY  
IN ALL PRICE RANGES  
IN OUR HISTORY

*The Fridays*  
**HOUSE OF TREASURES**  
Sanibel Island, Florida



**dotti** Of Sanibel

"the island boutique"

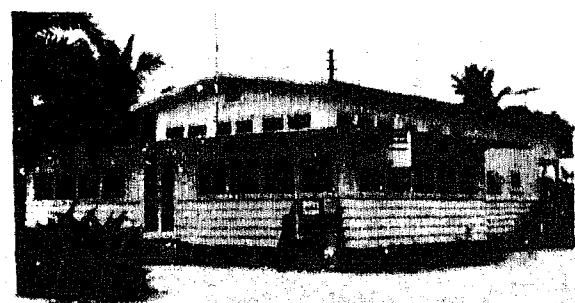
FEATURES NOW

**HAND MADE  
CHRISTMAS  
ORNAMENTS**

ALSO

SPECIAL GROUP  
OF DRESSES JUST REDUCED

DAILY 9:30 to 5:30 CLOSED SUNDAYS



### THE ISLAND STORE

CAPTIVA

groceries

frozen foods

oddments

Airconditioned by Tropigas



OUR DINING ROOM IS OPEN DAILY

DINNER 6:30-8:00

Breakfast 7:30-9:30

Lunch 12:30-2:00

GR 2-3911

Mc Caul's

Captiva Island, Florida

Gifts-Driftwood-Specimen Shells

Located on Main Road, 1/2 mile North of Post Office



Not that we believe in plugs or anything (perish the very thought!) but can you guess who is doing what with what where? And if that isn't enough to confuse you, we give up.

## LIVE SHELLS

Can you recognize the syphon hole of an Angel Wing? The keyhole of the Sunray and Docinia? Do you know how to spot the signs of a Cone or a Lady's Ear? HOW? ON-----

### BOB'S SHELLING TRIPS

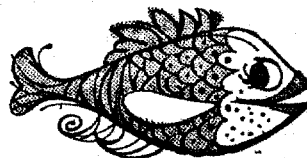
When you return from this shelling trip you will know why Sanibel and Captiva are so well known for the variety of fine specimen shells.

An Education  
In Shelling

For reservations  
Call -GR 2-3053  
Bob Sabatino  
THE SHELLING GUIDE



Philip Hunter, actor-producer of the Pirate Playhouse, Sanibel Island, will be seen on the screen in the role of Judge Jubilation Beale in a new country music musical, "Cotton Picken Chicken Pickers," which will be released by Southeastern Pictures, Hollywood, California, in April.



REMEMBERING from p. 6

red snapper for their cooking pots was to buy it at Dewey's Marina.

What brings the Esslens back to Sanibel year after year? "It's the simplicity of life," says Mrs. Esslen. "You are closer to nature than you can be almost anywhere else in the United States. You step out of your cottage, and nothing separates you from the sea, the sand, the shells---no billboards, no boardwalks, the birds are still more numerous than the people. Many places you can only reach by non-motorized boat still look like the seventh day of the Creation. And, of course, the Woosters. Not just because their cabins are so neat and nicely done that they feel like home; but you can't come back repeatedly without becoming friends with Dave and Marge."

Like all repeat visitors, the Esslens are boosters of the Islands. Last Monday, their friends, Mr. and Mrs. Christopher Ledermann, arrived at the Woosters for their first visit. Mr. Ledermann, the director of the German-American Chamber of Commerce in New York, is an ardent fisherman.



FASHION TAN® helps you attain a rich glowing tan while moisturizing and shielding your skin. Soothes, smooths and beautifies as it helps you tan.

AFTER TAN® enhances and accentuates your fashionable tan, keeps skin looking youthfully lustrous and excitingly alive.

exclusively  
at  
the Black Pearl





## SHOP THE Seven Seas

Sanibel Island, Florida

Hi there ...

May we welcome you to cross the water to the greatest adventure of Gifts and Home Accessories and Casual wear for men and women ... in this area? The First Mate and I have personally selected our unusual merchandise and Sportswear.

Capt. Paul

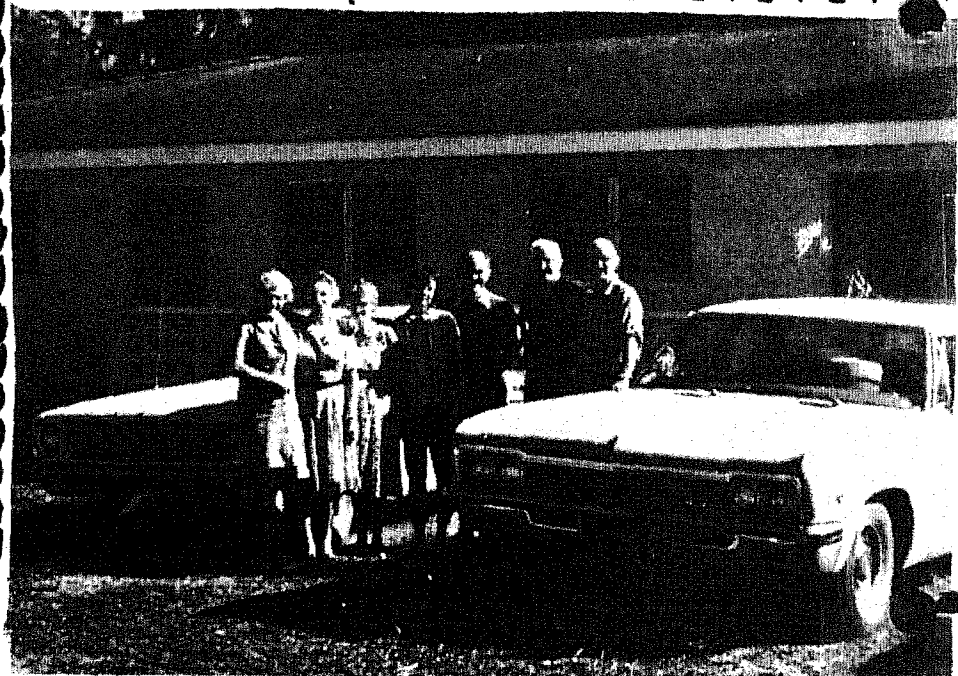
P.S. Be seeing you!

Use our FREE GIFT WRAPPING  
WE MAIL around the World  
GIFT CERTIFICATES ... For your convenience

Open Seven Days a Week & MON., WED. & FRI. Evenings

MEMORIA IN AETERNA  
Mary K. Cunningham  
February 26, 1898 -  
December 1, 1966

An Islander  
and a friend  
always.



A few of the many volunteer workers who helped move the Sanibel Public Library into its new home in the Sanibel-Captiva Real Estate building.

# ORDER YOUR CHRISTMAS TREE



SCOTCH PINE

**NOW**

CANADIAN SPRUCE

**FOR ON YOUR TREE** INDOOR & OUTDOOR LIGHTS, TINSEL, DECORATIONS

**FOR UNDER YOUR TREE** TOYS & GIFTS - EVERYTHING TO MAKE THEM PRETTY

**FOR MAILING** WRAPPING PAPER, TWINE, SCOTCH TAPE



DON'T FORGET TO ORDER YOUR TURKEY, CAPON ETC.

# BAILEY'S GENERAL STORE

SANIBEL PACKING COMPANY

WESTERN UNION

WINE & COLD BEER

BOTTLED WATER

WE ARE OPEN 52 WEEKS A YEAR TO SERVE YOU!