

SANIBEL - CAPTIVA ISLANDER

7¢

DEVOTED TO
THE INTERESTS
OF
SANIBEL
AND
CAPTIVA ISLANDS

photo by either konold or huston or pickens
or waghorne or wanderin'

The Finest
Shelling
Beaches
in the
Western
Hemisphere

VOLUME 6 NUMBER 50

PUBLISHED EVERY THURSDAY

DECEMBER 15, 1966

CHAMBER AUXILIARY FORMED

A ladies auxiliary committee to help with volunteer workers for the Chamber of Commerce was formed at the Chamber's semi-annual meeting, Monday, December 5. Mrs. Al Muench, Mrs. Lew Funk and Mrs. Priscilla Murphy were named by President Al Muench to head up the committee, first proposed by Floyd Snook of the Board of Directors.

Although a quorum of the membership was not present, making it impossible to conduct any official business, reports were made to the members present on finances and the operations of the Chamber's office on the causeway. Bill Newman advised that 17,390 visitors had signed in at the Chamber in the last six months and 17,745 of the Chamber's brochures were mailed out. James Jack, treasurer, reported a current balance in the treasury of \$3,804.43 and estimated that this should yield a surplus in excess of \$500.00 at the end of the fiscal year.

Following the brief business session, members got together over coffee and snacks (thanks to Floyd Snook in charge of refreshments) for the social part of the evening, which all agreed made the meeting worthwhile.

SANCTUARY ROAD REPAIRED

Thanks to the Lee County Board of County Commissioners, and Henry Rhodes and his grader, the dike-access through the Ding Darling Sanctuary has been repaired. Deep holes and ruts at the entrance and exit have been filled, as well as washouts along the dike. There are still a few areas of soft sand, particularly one spot right at the exit, but these can be managed easily in low gear and it is recommended in fact, that drivers go over the entire route in low gear. You'll see more, avoid trouble in the few soft spots, and help keep the surface in better condition. Driving too fast will only create more maintenance problems.

The Jay N. (Ding) Darling Memorial Sanctuary Committee on Sanibel thanks Tom Wood and Charles Le Buff of the U.S. Fish & Wildlife Service, President Al Muench of the Chamber of Commerce Board of Directors and County Engineer Jim De Lozier for their help in getting the County to do the necessary work on the dike-access.

SANIBEL COMMUNITY ASSOCIATION

A capacity crowd attended the buffet dinner and regular business meeting of the Sanibel Community Association last week. Hosts for the dinner were Mr. and Mrs. Arthur Burt.

Association President Gerald Martin welcomed all the new members proposed at the November meeting along with all the former members who have re-instated.

A letter from the Lee Memorial Hospital Blood Bank was read inviting donors to represent the Association. Volunteer donors initiating the program are Marshall Tabacchi and Bob Dormer.

Mr. Martin announced that the Teen Club on the Islands is always welcome to use of the Sanibel Community House as long as responsible sponsors are present.

Mr. Clarence Rutland has been elected by the Board of Directors to fill the unexpired term of Mr. Thomas Mitchell, who recently resigned.

Mrs. Otto Jones accepted appointment as Registration chairman for the 1967 Sanibel Shell Fair.

Mrs. Tom Nix, Exhibit chairman, announced that categories and rules for the '67 shell exhibits are available at shell shops on both Islands and at the Sanibel-Captiva Chamber of Commerce as well as at the Sanibel Community house on Friday evenings.

The shell table will go on exhibit at Sea Gull Studio and a regular schedule of 'places to see it' will be announced later.

Five beautiful little gilded Christmas trees, decorated with shells, which had been made by Mrs. Arthur Burt for use as decoration of the buffet tables, were auctioned at the close of the meeting.



YOUR CENTER FOR...



The finest gourmet foods, vintage wines, cheeses, Christmas gifts, trees, trimmings, wrappings and cards.

Christmas turkeys, geese, and ducks, cooked to order if desired.

THE STORE WITH THE ISLAND FLAVOR

A PICTURE OF PROGRESS



EXPANSION AT SOUTH SEAS PLANTATION

photo courtesy of

SANIBEL-CAPTIVA REAL ESTATE

James S. Pickens & Claire T. Walter, Realtors
Phone: GRenleaf 2-4011



FROM HONG KONG -
HAND KNIT CARDIGANS
SHIRTS, SWEATERS
AND SKIRTS TO MATCH
ALSO COTTON BROCADE
BANKERS COATS
DRESSES
AND PRINTED SHIRTS

FOR CHRISTMAS
OR OTHERWISE

sea horse shop

SANIBEL CAPTIVA ISLANDER

Established 1961
Duff Brown, Owner and Publisher

Editors.....Virginia and Duff Brown
Production.....Carolyn Lowry

ISLANDER OFFICE:
140 Delmar Road, Fort Myers Beach, or call
MO 4-6792.

Display ad rates given on request. Minimum
unclassified charge (25 words), \$1.00. Cash, 75¢

Islander news and ad copy deadline is SATURDAY
Last minute SHORT news items or unclassifieds
may be called in Sunday afternoon.

SUBSCRIPTIONS

On- Island.....\$3.00 yearly
Off-Island or Split.....\$3.50 yearly
Second class postage paid at Fort Myers Beach,
Florida 33931.

*Priscilla
Murphy*

Realtor

SANIBEL ISLAND, FLORIDA
GR 2-4501

FOR CHRISTMAS GIVING

Cranes

FINE STATIONERY In Gift Boxes

MacIntosh Book Shop

Sanibel Island, Florida GR 2-3041

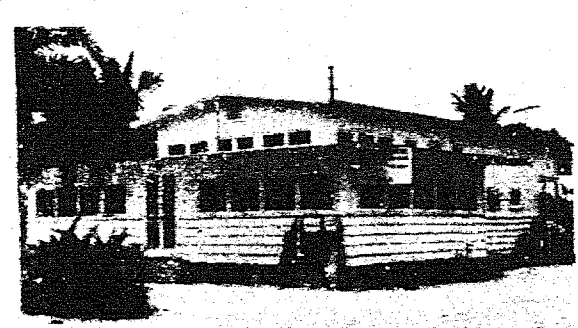
Captiva, Florida GR 2-3011
Electronics has been my business since 1921

CAPTIVA TV SANIBEL

RADIO AND
RECORD PLAYER REPAIRS

H. A. VROOMAN

1 1/2 MILE NORTH OF THE BRIDGE



THE ISLAND STORE

CAPTIVA

groceries
frozen foods
oddments

WE INVITE YOU TO
ATTEND
SERVICES

ST. MICHAEL'S
AND ALL ANGELS
EPISCOPAL CHURCH
the Rev. T.A. Madden, Vicar

SUNDAY:
Holy Communion, 7:30 a.m.
Morning Service and Sunday
School, 9:30 a.m.
WEDNESDAY and HOLY DAYS:
Holy Communion, 9 a.m.

ST. ISABELL'S
CATHOLIC CHURCH
Father MIGUEL M. GONI

HOLY MASS:
Sundays 11:30 a.m.
Thursdays 7:30 p.m.
Holy Days 5:30 p.m.
CONFESSION
Sundays before Mass

SANIBEL COMMUNITY
CHURCH
The Rev. TAD ALLEN, Pastor

Morning Worship, 11:00 a.m.
Sunday School, 9:30 a.m.

FIRST BAPTIST CHURCH
The Rev. E.G. Morgan, Pastor

SUNDAY
Sunday School 9:45 a.m.
Morning Worship 11:00 a.m.
Young People's Hour 6:00 p.m.
Evening Worship 7:30 p.m.
WEDNESDAY
Prayer Meeting & Bible Study
7:30 p.m.

CAPTIVA CHAPEL by the SEA
Dr. GUTHRIE SPEERS
Sunday Worship, 11:00 a.m.
Wed., Bible class, 10:30 a.m.

TEENS IN ACTION
by tim gault

In the meeting of the Teen
Club on Saturday, Dec. 10, we
laid the final plans for the Teen
Club's Christmas Dance. The
dance will be held on Dec. 22
at the Captiva Community House
and will last from 9 until 12 p.m.
Live music will be provided by
The Bees, a popular Fort Myers
group. Refreshments, including
coke and potato chips, will be
sold at the dance. Admission,
payable at the door, will be \$1
per person.

The dance is for young
people 14 and up.


DEMOCRATS GET TO WORK

Informing Island voters
about the new Florida constitu-
tion will be a major project
for the Sanibel-Captiva Demo-
cratic Club.

In an executive session of
the Club's Board with Chairmen
of the Voters Education and
Registration and Membership
committees, it was agreed this
will be the most important po-
litical development of the year.
As soon as copies of the new
Constitution are available, the
Club will get them to interested
voters locally.

Tentative plans to hold a
general meeting for Island
voters to discuss the new Con-
stitution were also made.

As a further educational
service, information regarding
Florida registration require-
ments will be reported in the
"Islander," and an on-island
registration day will be held,
probably in March, so that new
residents who are eligible may
register without having to go to
Fort Myers.



**"DO YOU
HEAR
SLEIGHBELLS?"**

A
SAVINGS
ACCOUNT
PRESENT
FROM
SANTA
IS
UNSURPASSED

See Your Financial Friends

SEE YOUR FINANCIAL FRIENDS AT

**FIRST NATIONAL
Bank**

IN FORT MYERS

with Experienced Trust Department
MEMBER: FEDERAL RESERVE SYSTEM
FEDERAL DEPOSIT INSURANCE CORP.
The Leading Bank in Southwest Florida



Reynold's Craft Shop

Main Road, near Casa Ybel Road

FLORIDA MINIATURES
RARE SHELLS
SHELL BOXES - FRAMES - TABLES


Shellcraft Supplies and Findings
Ceramics - Leather & Misc. Items
The Handmade Gift is the Thoughtful Gift

SANIBEL SERVICE STATION

ATLAS TIRES -- TUBES -- BATTERIES
ACCESSORIES
WRECKER -- TOWING -- ROAD SERVICE
EXPERT SERVICE

STANDARD OIL

GR 2-4961



**R & R
CONSTRUCTION**

GENERAL CONTRACTORS
GR 2-3941 SANIBEL FLORIDA

GENERAL CONTRACTORS
"20 years building experience in South Florida"

RALPH V. CIMATO SANIBEL ISLAND
GREENLEAF 2-4941 FLORIDA



**ISLAND
BAKE
SHOP**

WEEKLY
SPECIALS

Mon: Almond Macaroons
Thurs: Lemon Pectens
Fri: Chocolate Eclairs

GR 2-3121

Hours 8 to 5
Daily

Closed Sunday



GOURMET CORNER

*S.S. Pierce
Plum Pudding
and Hard Sauce*

The perfect complement
to a Christmas feast.

THE STORE WITH THE ISLAND FLAVOR

MISS EMILY PYKE

Mrs. George F. Williamson of Minneapolis, Minnesota, wrote that she had just learned of the death of Miss Emily Pyke, also of Minneapolis, on November 1.

Miss Pyke had been a long-time visitor at Island Inn on Sanibel and had many close friends on the Islands. She had no close survivors.



Hurry!

CHRISTMAS PICTURES IN COLOR

12 for \$12.95

CALL LARRY C. HUSTON
MO 4-6655

Fort Myers Beach

A guest of PRISCILLA MURPHY is Mrs. WILLIAM GARRETT of Wichita, Kansas, who is here to get together with her builder, Cochran Construction, on starting a new home in Sanibel Isles. The Garretts expect to retire within two years, and will make Sanibel their permanent home.

Winter Islanders at Hiers Motel and Cottages by-the-Sea include Mr. and Mrs. ARTHUR CRAWLEY and Mr. and Mrs. RALPH CURRY, both of Flint, Michigan, who are here for the season. Also at Hiers is Mr. W.H. JENNENS of Rochester, New York.

DAN MALONE is visiting with his wife and daughter on Sanibel and has as his guest, Mr. GEORGE E. SCHMIDT of Ost-Friesland, Germany.

BARCLAY READ of McLean, Virginia, now in his home on Gulf Drive, is in the process of building another house there. DAVID HERZOG will be doing the construction.

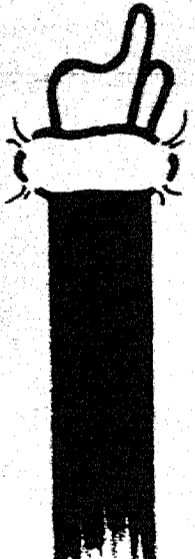
Mr. Schmidt was a guest of honor at a party given by the Malones. Guests included Mr. and Mrs. FLOYD PFOUGH, Mr. and Mrs. J. NELSON, Mr. and Mrs. J.M. VANARDELL, Mrs. THERESA McCLOY, Mrs. WILLIAM GARRETT, Mr. and Mrs. TOM MIX and Miss ELSIE MALONE.

His wife, ELEANOR, and their two sons, TERRY and GEORGE, will be flying in this weekend for the Christmas holidays.

Here for the winter season are Mr. and Mrs. ROBERT W. McEWEN, who have rented through Priscilla Murphy, Realtor, the BOB FORD home on Blind Pass.

RAYMOND G. HOLTZ of Culpeper, Virginia, and Mrs. MARGARET DUNN of Belmar, New Jersey, who are the aunt and uncle of MARTY HOLTZ of Sanibel, have returned to their homes after enjoying a week's visit on the Islands with the Holtzs.

GIFTS



BLACK PEARL

SANIBEL-CAPTIVA REAL ESTATE reports the execution of a lease, from Mr. and Mrs. CHARLES F. ALDEN to GEORGE S. WINTERBOTHAM, for a parcel of land on S867 on Sanibel, including a dwelling and a commercial building.

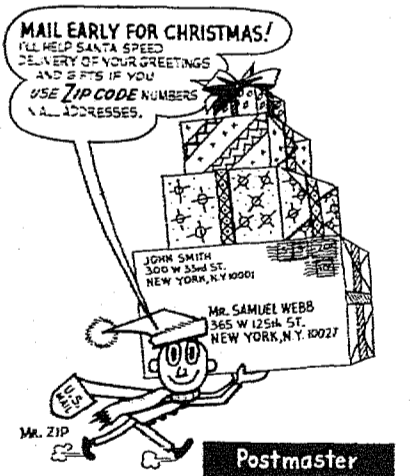
GAME NIGHT FRIDAYS

Belong to the Sanibel Community Association? Don't miss the regular Friday night game nights at the Sanibel Community House for members and your guests. Lots of fun for everyone!

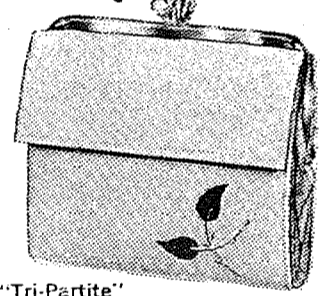
CHRISTMAS SING AT COMMUNITY CHURCH

The traditional Island-wide Christmas Hymn Sing will be held once again at the Sanibel Community Church on Christmas Eve at 7:30 p.m. The Christmas gathering, originally held in the church, had been held in the Community House for the past few years.

The Rev. Tad Allen, pastor of the church, cordially invites all Islanders and visitors to attend the caroling. By the way, the church will be celebrating its 50th anniversary in 1967. The building was constructed in 1907.



PRINCESS GARDNER
"Gay Petals"



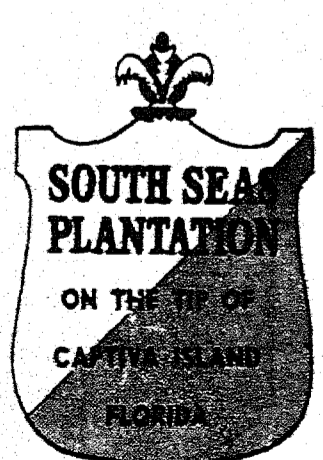
"Tri-Partite"
French Purse \$600

Charming inlay leather Petals adorned with Goldmark Stems on VELVETEEN COWHIDE.

Fashion colors with Pastel Petals

Matching pieces from \$3.00

SEVEN SEAS SHOP



PLAN NOW TO ATTEND

THE TRADITIONAL NEW YEAR'S EVE PARTY AT

SOUTH SEAS PLANTATION

At The Tip Of Captiva Island

CHAMPAGNE AT MIDNIGHT BREAKFAST AT DAWN

PAUL WINSLOW & HIS BAND

BY RESERVATION ONLY---GR 2-4601

Everglades Nursery, Inc.

MC GREGOR BLVD.



BEAUTIFUL...

POINSETTIAS
BOUGAINVILLEA
GERANIUMS

SOUTHWEST FLORIDA'S
OLDEST & LARGEST NURSERY
ESTABLISHED IN 1909

REGISTERED LANDSCAPE ARCHITECT
MISS HELEN JOHNSON

FOR YOU WHO WISH TO GIVE
THE GIFT THAT IS
DISTINCTIVELY DIFFERENT

IT WILL PAY YOU TO COME IN AND CHECK
OUR VAST ASSORTMENT

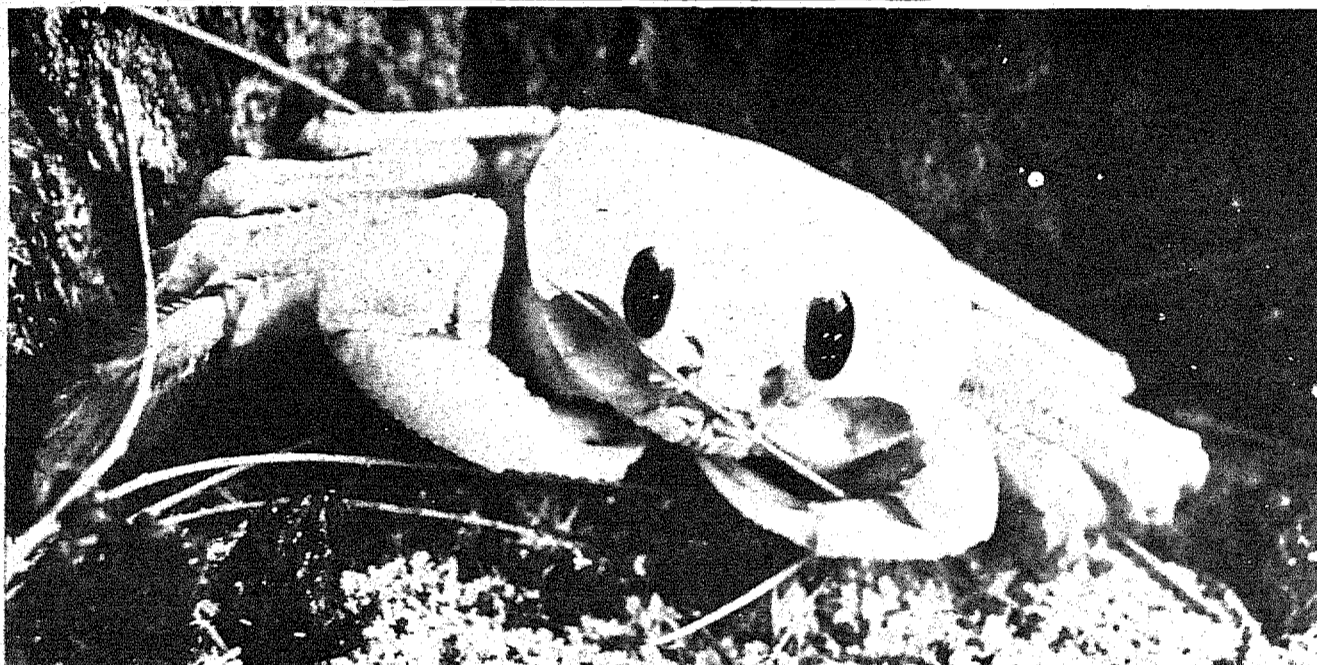
WE INVITE YOU TO COME AND LOOK.

YOU WILL READILY SEE WHY WE SAY

WE TAKE PRIDE IN YOUR GIFT.

The Fridays
HOUSE OF TREASURES

Sanibel Island, Florida



Most Captiva Island residents (as a matter of fact, we don't know of ANY others) are this wary of visitors --- you're looking at a ghost crab, by the way, who scuttled himself into a tight tree corner



OUR
DINING ROOM
IS OPEN

WHY NOT JOIN US FOR---

BREAKFAST

LUNCH

OR

DINNER

GR 2-3911

WHAT EVERY ISLAND
NEEDS
IS SERVICE



RELIABLE ISLAND SERVICE
FOR REPAIRS, YARDWORK, PAINTING,
REFINISHING, CLEANING
AND CONCRETE WORK

KEYS MADE

JIM'S MAINTENANCE

James Hunter, Jr.

Gr 2-5301 before 8:30 a.m. & after 2:00 p.m.

NEW KNEBEL BOOK
ON SALE

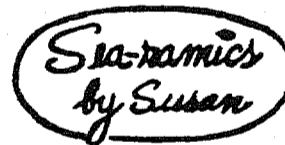
The latest Fletcher Knebel book is now available at Mac-Intosh Book Shop. Mac reports "The Zin Zin Road," a story of the Peace Corps, is now on sale. Knebel formerly had a home on Sanibel and did much of his writing here. He is co-author of the famous best seller, "Seven Days in May."

Mac also is offering as a special Christmas gift item the new "Audubon Birds of America," a two volume portfolio of original water color paintings available until the first of the year at the pre-publication price of \$55.00. Regular price is \$75.00.



sculpture

pottery



studio

Closed Thursday

sanibel side of
blind pass bridge

sea life
replicas

Golden
Shell Apts.

SEASONAL RENTALS
3 Furnished Apartments For Rent
\$50.00 - \$75.00 Per Week
(Minimum Period 2 Weeks)

Write or Call
GOLDEN SHELL APARTMENTS
813-5422032
Periwinkle Drive
Sanibel Island, Florida



LIVE SHELLS

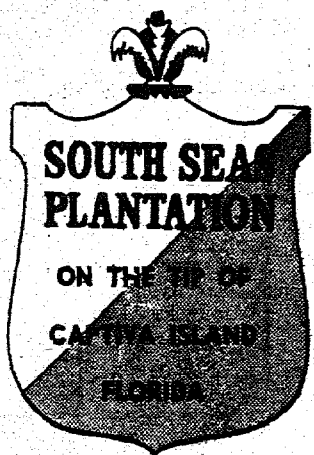
Can you recognize the syphon hole of an Angel Wing? The keyhole of the Sunray and Docinia? Do you know how to spot the signs of a Cone or a Lady's Ear? HOW? ON-----

BOB'S SHELLING TRIPS

When you return from this shelling trip you will know why Sanibel and Captiva are so well known for the variety of fine specimen shells.

An Education
In Shelling

For reservations
Call - GR 2-3053
Bob Sabatino
THE SHELLING GUIDE



A GOLFING WEEKEND
at
SOUTH SEAS PLANTATION

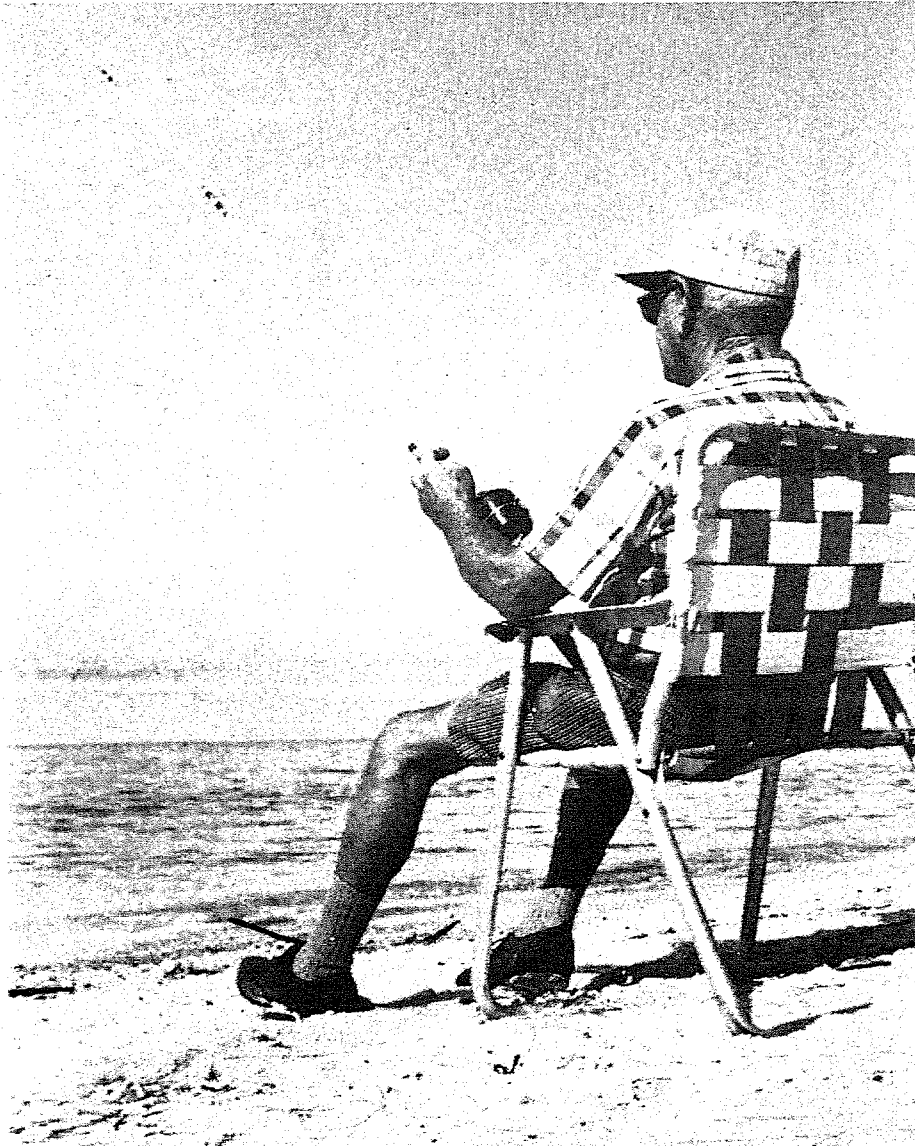
At The Tip Of Captiva Island

\$29.00 per person
Double Occupancy

Two Nights In Our New Plantation House
Unlimited Golf & Of Golf Carts
Starting At 1:00 p.m. Friday, December 16
Until 5:00 p.m. Sunday, December 18

FULL DEPOSIT REQUIRED WITH RESERVATION

PHONE GR 2-4601



IF YOU'RE STILL UP IN THE COLD NAWTH - - -
COME ON DOWN AND RELAX IN TROPICAL COMFORT!



**YOUR HEALTH IS OUR
PRIME CONCERN!**

OUR TWO FULL TIME PHARMACISTS FILL
YOUR PRESCRIPTION ACCURATELY AND PROMPTLY
IN COMPLIANCE WITH ALL FLORIDA AND FEDERAL
REGULATIONS IN OUR PRESCRIPTION DEPARTMENT
NOW OPEN 7 DAYS A WEEK
Our pharmacists, Bernard Valind and Charles Brown, are
with immediate call for emergencies 24 hours a day ---
every day through your doctor.
Prescription Dept. Open Daily 9 - 9, Sunday, 10 - 7.



at
Myers
Beach
Florida

The Pharmacy
Nearest
the
Islands

San Carlos & Estero Blvd.

MO 4-9754

20 Minutes South at Naples

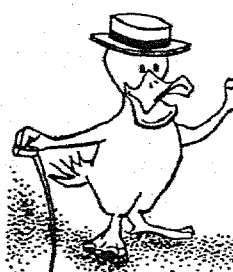
Midway 2-4053

The Naples Showplace

Caribbean Gardens

A thirty-acre tropical paradise where birds roam freely against
the magnificent backdrop of rare plants, trees and orchids.
Largest collection of rare, free-roaming waterfowl in this
country as well as native birds in their natural habitat. Open
8 A.M to 6 P.M. Bring your camera.

FEATURING THE ORIGINAL

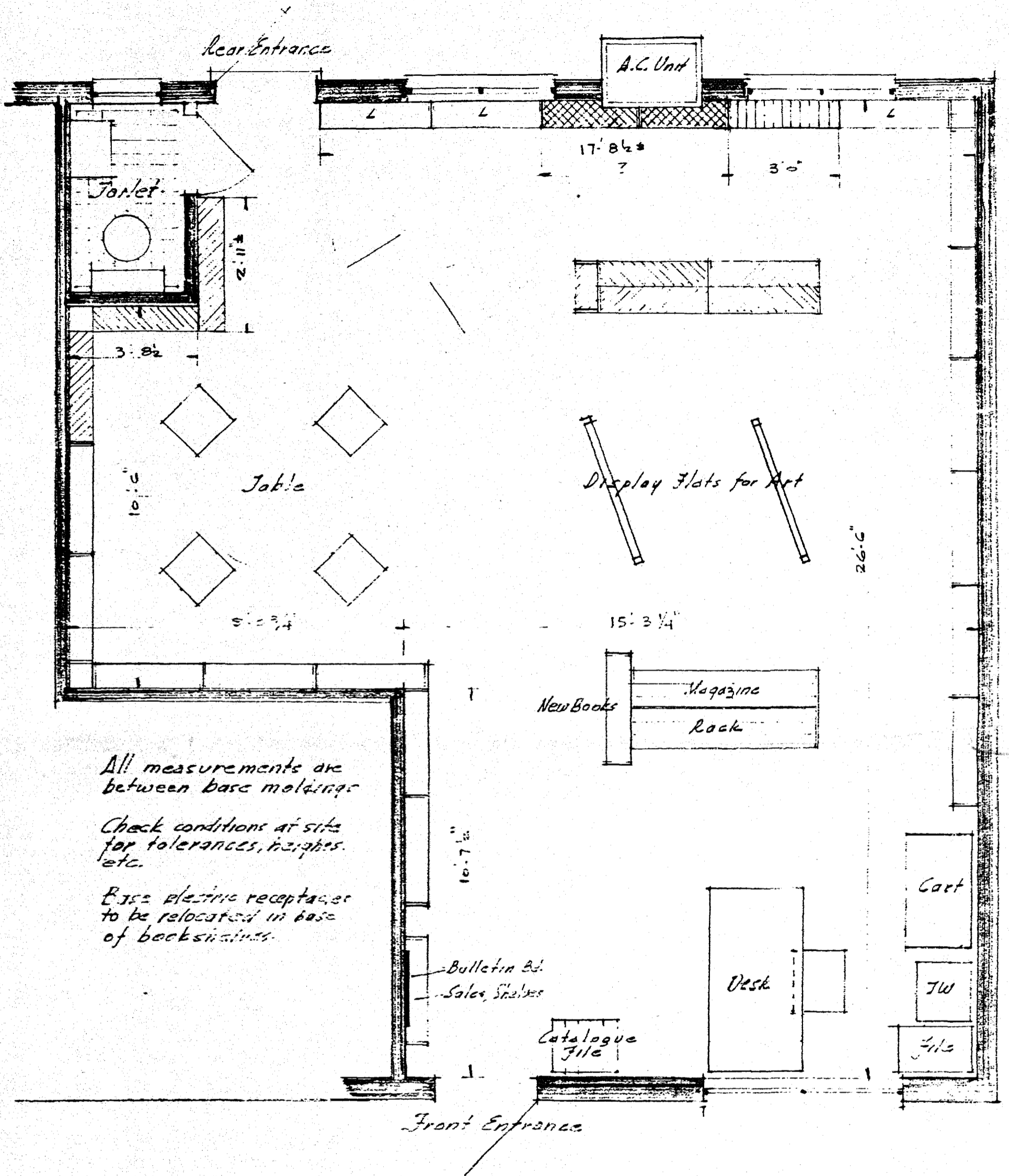


DUCK VAUDEVILLE

200,000 people enjoyed the traveling troupe at the
New York World's Fair. Millions have seen it on TV.
See the original 30-minute show here.

Shows 10 A.M. to 5 P.M.

Come and have lunch at the
Pavilion before or after the show



PLAN of NEW SANIBEL PUBLIC LIBRARY
 SCALE 3/8" = 1'-0"

JUST ARRIVED
 IN TIME FOR CHRISTMAS!

**FULL LINE OF
 ART SUPPLIES**

LEGAL SUPPLY

Sanibel Island GR 2-4051

**FLEX
 BON
 PAINTS**

McCaul's
 Captiva Island, Florida

Gifts - Driftwood - Specimen Shells

Located on Main Road, 1/2 mile North of Post Office

Circular Jig-saw Puzzles

by Springbok Editions



That's right...circular! No straight edges to line-up, no corners for a clue. The most fascinating jig-saws you've ever worked...and the most beautiful! Every one a handsomely reproduced work of art. Great to give, great to receive.

3.50

Shown:
THE VIRGIN AND ST. JOHN ADORING CHRIST, captures the serenity of the famed terra cotta by Andrea Della Robbia
WILD FLOWERS, created specifically for Springbok Editions by Maynard Reese, renowned painter of flowers and their habitats
ENGLISH LEGENDS, lively illustrations of such favorites as Robin Hood, King Arthur, St. George and the Dragon and others

Not Shown:
CONVERGENCE by Jackson Pollock, a challenging reproduction of the famed and fiery abstract (11 1/2 x 19 1/4")
 And many other designs



CIRCULAR WOODEN JIG-SAWS \$15

MacIntosh Book Shop

SANIBEL ISLAND, FLA.

GR 2-3041

CONSIDER EXTENDING PUBLIC LIBRARY HOURS

Discussion at the meeting of the Sanibel Public Library Board centered on the possibility of extending library hours to allow greatest possible use of the library by residents and visitors. Though no decision was reached at the meeting, it is likely that some extension of library hours will be announced in the near future. It is probable that an extension of hours will include at least one evening.

For the present, library hours continue 10 a.m. to noon on Tuesdays and Saturdays at the new quarters in the Sanibel-Captiva Real Estate building next to the Red Pelican in the vicinity of the new shopping center.

PIRATE ALLEY

Pirate Alley, a place for you to greet a friend, enjoy an art exhibit, or have a smoke, has just been completed at the Pirate Playhouse by Ed Legel.

"A Majority of One" opens the season at Sanibel Island's own unique arena theater Saturday. Philip Hunter, who plays Koichi Asano, has directed a fine cast: Elaine Patton, James Maguire, Priscilla Murphy, Robert Dormer, Jane Hines, Gerald Johnson, Susan Holtz, Irene Gale and Ruth Hunter, who plays Mrs. Jacoby who goes to Japan.

Audiences at the playhouse will now be protected from any little flying things, and be comfortable no matter what the weather as the theater is air conditioned and heated.

"A Majority of One" will play Dec. 17, 20, 28, Jan. 7, 14, and 21. Tickets may be ordered in advance. Telephone Box Office, GR 2-3943.

SHELL TABLE FINISHED

The Shell Table for the 1967 Sanibel Shell Fair is finished, on display and tickets for donations available. It is a Chipendale copy---oval, very beautiful and filled with fine specimens of rare and common Florida shells.

The table was made by Mr. Charles LeBuff of Naples, Fla. The legs of the table are Philippine mahogany, the sides Bella Rosa wood, the rim Bola wood and the inserts Australian lace.

Those who so graciously and generously donated shells are; Fred Kinkle, Helen Denny, the late Mary Cunningham, Mary Nix, Clara Stran, Bernice McCaul, Dorothy Jeremiassen, Mim Schriener, Elsie Malone, Ken Havourd, Ethel Reynolds, Bruni Rupert and the Klotz family, who gave some rare shells, filled in the gaps with local shells and arranged the shells in the table.

Thanks to one and all who have donated and helped make this beautiful table.

BOWLING 'EM OVER

Gogo, enthused by having a new sponsor, bowled well over his average for Priscilla Murphy Real Estate---welcome aboard Priscilla.

Ed Legel for Legel Paint and Art Supply had one bad game, and three fair ones; Mel Stutzman, who is temporarily taking Doc Bryant's place for the Sea Horse Shop, had a 202.

The boys want to take this opportunity to thank Doc for all the good help and advice which has improved their bowling. Hope you can join them again, Doc.

Elsie Malone

SPECIMEN SHELLS

E. corner of Priscilla Murphy, (Realtor) Bldg. Periwinkle Way GR 2-2001

dotti

Of Sanibel

"the island boutique"

EXCLUSIVELY OURS...

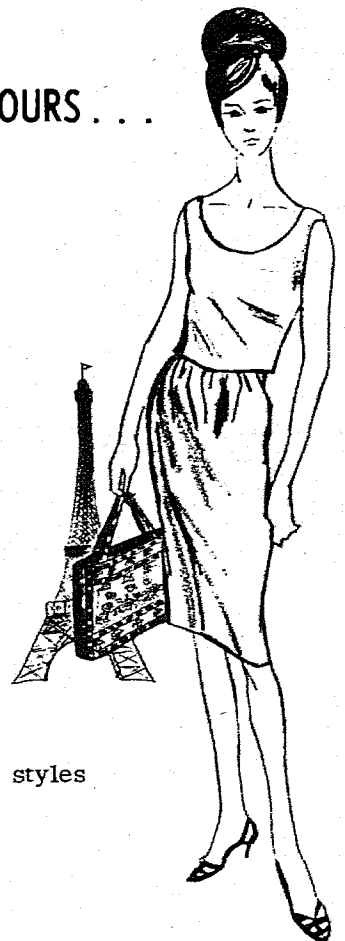
and perfect for Christmas

French Imported Handbags

by Valdrome

pure cotton quilted with intricate designs

in Tote and Zipper styles with go-along eyeglass cases and change purses



DAILY 9:30 to 5:30

CLOSED SUNDAYS

Coconut Grove

GR 2-2751

Restaurant

OPEN: 7:30 a.m. to 9:00 p.m.

7 DAYS A WEEK

Corner of Tarpon Bay Rd. & Sanibel Blvd.

endorsed by

Sanibel-Captiva Audubon Society

BIRD TOURS OF THE ISLANDS

by

GRIFFING BANCROFT

RESERVATIONS
 MACINTOSH BOOK SHOP

GR 2-3041



ISLAND INN

American Plan Hotel

SWIMMING POOL

Cottages Available

SPECIAL DISCOUNTS OFFERED



Dining Room

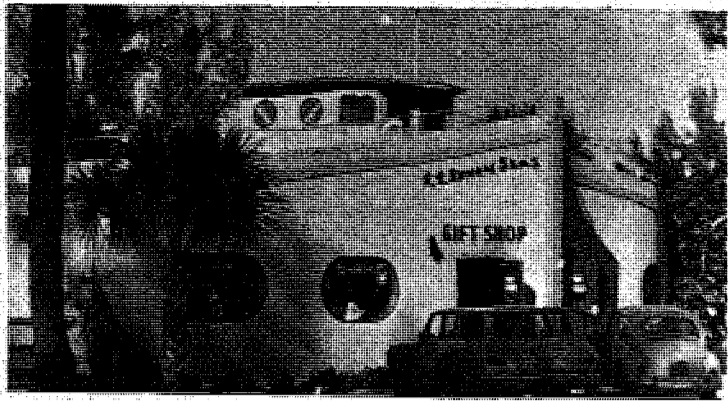
OPEN TO THE PUBLIC

BREAKFAST 7:30-9:00

LUNCH 12:30-1:30 p.m.

DINNER 6:30-8:00 p.m.

RESERVATIONS REQUESTED
 BUT NOT REQUIRED GR 2-3161



SHOP THE *Seven Seas*
Sanibel Island, Florida

Hi there -

Let us be your Christmas angel and help you with your Holiday Shopping.

"Cross the Strait" to the greatest array of Christmas gifts in this area... quality and prices to suit your budget.

Our "thank you" gift to you... our 1967 Social Secretary Date Book and Calendar.

First Mate Irene

P.S.

May we see you?



PERFECT
FOR CHRISTMAS

The Present to Delight Grad or Dad
at Special Pre-Christmas Sale Prices!

binoculars - telescopes - microscopes



tasco[®]

FROM \$14.95 TO \$59.97

MacIntosh Book Shop

SANIBEL ISLAND, FLA. GR 2-3041

CHRISTMAS CAROLS ON
SANIBEL ISLAND

by ethel snyder

One of the oldest and 'way-back customs on the Island is the community singing of Christmas carols in the Community Church on Christmas Eve.

Frank Bailey presided when I first arrived years ago, and he read from the Bible from the book of Luke about the birth of the Christ Child lying in the manger wrapped in swaddling clothes because there was no room for them in the Inn--- And the angels sang "Glory to God in the highest and on earth peace good will towards men." And about the shepherds going to Bethlehem and finding the babe---the Christ child in the manger.

Then everyone sang the Christmas carols.

In the early years there was a Christmas tree beautiful with trimmings and with gifts for every child there.

This was a yearly get-together in an unforgettable way and the singing of the Christmas carols sweetened and uplifted life for all the Islanders and the memory of those songs stayed with us during the year.

This all started long before electricity came to Sanibel but oil lamps and candles gave an inspiring background. After the Community House was built, the carols were sung in the Community House. It did much for each of us and we sang "on earth peace good will to men" and got an uplift ourselves which lasted until the next time of Christmas carols!



TOYS

TOYS

TOYS

TOYS

GAMES

DOLLS

gifts for
grownups too!

Order your Scotch Pine or Spruce tree now
(we also have treated trees)

lights - tree stands - ornaments - snow - angel
hair - icicles - tinsel - tree blankets

gift and mailing wrapping paper
Christmas cards

(and lots of Christmas goodies to eat!)



BAILEY'S GENERAL STORE

SANIBEL PACKING COMPANY

WESTERN UNION

WINE & COLD BEER

BOTTLED WATER

WE ARE OPEN 52 WEEKS A YEAR TO SERVE YOU!