

SANIBEL - CAPTIVA ISLANDER

7¢

DEVOTED TO
THE INTERESTS
OF
SANIBEL
AND
CAPTIVA ISLANDS

photo by either konold or houston or pickens
or waghorne or kautz or wanderin'

The Finest
Shelling
Beaches
In The
Western
Hemisphere

VOLUME 7

NUMBER 35

PUBLISHED EVERY THURSDAY

AUGUST 24, 1967

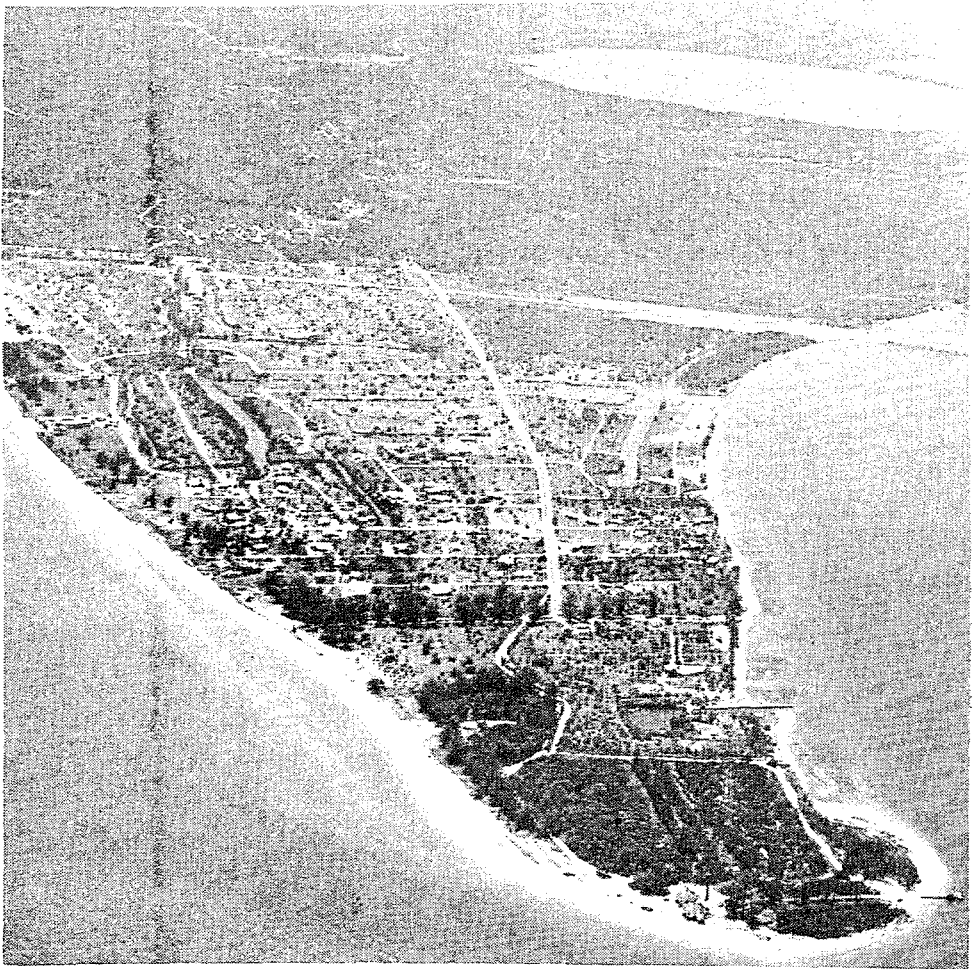
TRAILER PARK MEETING AUGUST 28

All Islanders and friends of the Islands wherever they may live in Lee County are urged to attend the Public Hearing before the Lee County Zoning Board on the proposed trailer park adjoining Sanibel Isles on Sanibel. The meeting will be at 7:30 p.m. in the Lee County Court House, August 28 (Monday).

If you do not have transportation, don't stay home--PHONE JO EDDY at Greenleaf 2-3071, who is in charge of arrangements to see that anyone needing a ride will be provided same.

Latest report from the Interested Citizens Committee shows a total of 62 contributors to the "battle fund" and more than \$600 on hand. Far more than this was collected, but by agreement, pro-rata refunds have been made to most contributors.

The Interested Citizens Committee urges all Island residents and friends to continue to write to the County Commissioners and the Zoning Board. In particular, write all County Commissioners urging that the hearing before them, now scheduled for Wednesday, October



CONSISTENTLY GOOD QUALITY



AT
CONSISTENTLY
FAIR PRICES

ALL YOUR NEEDS FROM FOOD TO FILM

OUR ISLANDS ARE BEAUTIFUL

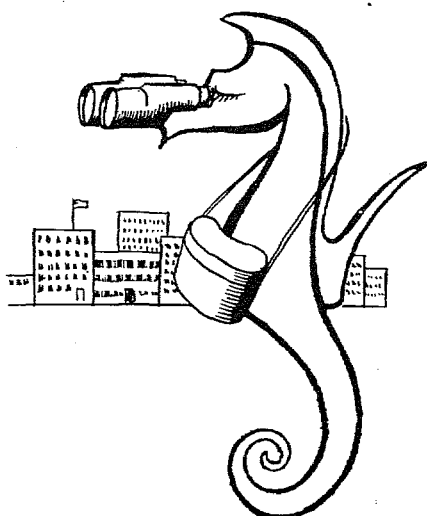
SEA GRAPE TIME



SANIBEL - CAPTIVA REAL ESTATE

(In The Business District)

James S. Pickens & Claire T. Walter, Realtors
Phone: GREENleaf 2-4011



THE
SEA HORSE SHOP
ALWAYS
HAS MORE
OF WHAT
YOU'RE
LOOKING FOR

AT THE LIGHTHOUSE END OF SANIBEL

SANIBEL CAPTIVA ISLANDER

Established 1961
Duff Brown, Owner and Publisher

Editors Virginia and Duff Brown
Production Carolyn Lowry
Second class postage paid at Fort Myers Beach,
Florida 33931.

ISLANDER OFFICE:
140 Delmar Road, Fort Myers Beach, or call
MO 4-6792.

Display ad rates given on request. Minimum
unclassified charge (25 words), \$1.00. Cash, 75¢

Islander news and ad copy deadline is SATURDAY
Last minute SHORT news items or unclassifieds
may be called in Sunday afternoon.

SUBSCRIPTIONS

On-Island \$3.00 yearly
Off-Island or Split \$3.50 yearly

*Priscilla
Murphy*
Realtor

SANIBEL ISLAND, FLORIDA

MAIN OFFICE GR 2-4501
BRANCH OFFICE in Sanibel Shopping Center
GR 2-4521
BRANCH OFFICE CAPTIVA GR 2-2051

You're Invited To Stop By The Office To Read
The Wall Street Journal
Closed At 1 p.m. Saturdays For The Summer

WE take pride in YOUR
Jewelry and Gifts

The Fridays'
HOUSE OF TREASURES
SANIBEL ISLAND, FLORIDA
If You Don't Know Gems And Jewelry
Know Your Jeweler.

ZENITH
TELEVISIONS
BLACK & WHITE OR COLOR

Fedders
AIR CONDITIONERS

WOOSTER TELEVISION
SALES & SERVICE
Gulf Drive, Sanibel GR 2-2101

Captiva, Florida GR 2-3011
Electronics has been my business since 1921
Color and Black & White

CAPTIVA TV SANIBEL

RADIO AND
RECORD PLAYER REPAIRS

H. A. VROOMAN
1 1/2 MILE NORTH OF THE BRIDGE

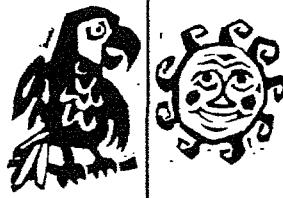
WE INVITE YOU TO
ATTEND
SERVICES

ST. MICHAEL'S
AND ALL ANGELS
EPISCOPAL CHURCH
The Rev. T.A. Madden, Vicar
SUNDAY:
Holy Communion . . . 7:30 a.m.
Morning Service and Sunday
School 9:30 a.m.
WEDNESDAY and HOLY DAYS:
Holy Communion . . . 9:00 a.m.

ST. ISABELL'S
CATHOLIC CHURCH
The Rev. Claude E. Brubaker
Sundays 11:30 a.m.
Thursdays 7:30 a.m.
Holy Days 5:30 p.m.
CONFESSION:
Sundays before Mass.

SANIBEL COMMUNITY
CHURCH
50th Anniversary Year
Morning Worship . . . 11:00 a.m.
Sunday School 9:30 a.m.

FIRST BAPTIST CHURCH
The Rev. Arthur Sims, Pastor
SUNDAY:
Sunday School 10 a.m.
Morning Worship . . . 11 a.m.
Training Union 6:30 p.m.
Evening Worship . . . 7:30 p.m.
WEDNESDAY:
Prayer Meeting & Bible Study
. 7:30 p.m.
FRIDAY:
Youth Ranch 7:30 p.m.



CHAMBER OF COMMERCE

Chamber of Commerce
Board of Directors has postponed its meeting from Monday, August 28, due to the conflict with the Zoning Hearing. The Board will meet the following night, Tuesday, 29, 8:00 p.m., at the Chamber Building.



OUR
DINING ROOM
IS OPEN

WHY NOT JOIN US FOR---
DINNER
BREAKFAST OR LUNCH
AIR CONDITIONED
GR 2-3911

IF YOU NEED A NEW CAR, WE'LL PROVIDE THE
LOW-COST, BUDGET PRICED
AUTO LOAN-FAST!

ANY WAY YOU LOOK AT IT-
YOU SAVE MONEY **BANK**
WITH OUR LOW COST **AUTO**
LOANS

FIRST NATIONAL
Bank
* * * IN FORT MYERS * * *

Largest and Most Experienced Trust Dept. in S. W. Florida
MEMBER: Federal Deposit Insurance Corp.
Federal Reserve System

BIVIE

BIKES TO RENT
by the day
by the week
by the month

JIM'S SHELL SHOP
SANIBEL ISLAND
(Between Post Office & Lighthouse)

FOLLOW SIGNS
A Large Variety Of Local Shells
Local & Foreign Specimen Shells
GR 2-3852

THE HOLTZ'S
SNACK SHACK

BRUNCH - LUNCH
HOT PLATTERS - TAKE-OUTS
GR 2-3321
DAILY 10 a.m. to 7 p.m. EXCEPT TUESDAY
SUNDAY 1 to 7

Coconut Grove Restaurant
GR 2-2751

OPEN: 7:30 a.m. to 9:00 p.m.
7 DAYS A WEEK
Corner of Tarpon Bay Rd. & Sanibel Blvd.



GOURMET CORNER

Continental -
white or dark

WHO'S WHO

AND WHY



Mr. and Mrs. CHARLES SCHLAYER, parents of Mrs. C.M. CARDEZA are visiting Admiral and Mrs. CARDEZA for two weeks at their home, The Moorings, in Sanibel Isles. The Schlayers are from Camp Hill, Pa.

USES FOR SHELLS
by ethel snyder

It probably has never occurred to you that the comfort and security of keeping your shirt on depends upon the humble clam. Pearl buttons are made from the fresh water which live in the Mississippi River. A great industry in Iowa produces most of the buttons. The genuine lovely pearls are found in the Oriental pearl oyster. Natives dive for them and bring them up in baskets tied about their necks. Cameos are carved on several varieties of conch shells and helmet shells. The best work is done in Italy and Paris.

India ink is obtained from a secretion of the squid, sepia paint from a secretion of the cuttle fish and the ancients got their royal purple dye from the murex. There are still great mounds of shells in Greece where this industry had flourished until some Roman Emperor decreed that only royalty could wear the purple and that ended that business. Even in those days there were business problems.

The cuttle bone of the canary cage is the inward shell of the cuttle which Webster describes as a "ten armed marine mollusk." Cowrie shells have been used as money for centuries and are still so used by some primitive tribes in Africa. Our American Indians made their waumpum from clam shells cutting and polishing it. Shells were also used for ornaments bracelets, rings, necklaces being cut from them. A large sharp clam on the end of a stick was used for a hoe.

In China and in the Philippines there is a large roundish shell quite flat, iridescent used as window panes - it will withstand the typhoon winds and

hours 9-5
canoes, sailfish
& bikes for rent,
helps sportswear,
mexican imports,
gifts from 35 countries,
antiques, toys,
penny candy,
salmagundi,
bait

The Red Pelican

SANIBEL ISLAND
FLORIDA

No Need For A Money Tree
When We Have A Sale Tree
(NOW LOADED WITH MIX & MATCH SEPARATES)
Plus A Grab Bag
(AT 50¢ A GRAB)
By The Front Door

the glare of the tropical sun. In Central America there is a giant limpet shell which is round like a basin and is commonly used as a wash basin. Powdered conch shell is a base in the manufacture of porcelain. Countless souvenirs are made from sea shells. Large brown cockles are used as bake dishes, they withstand oven heat. Large Japanese scallop shells make excellent salad plates. And of course mollusks are common on our restaurant menus. Oysters? Clam chowder? et cetera --

ALO-relief

SUNBURNED!

Stop The Pain And Save Your Tan ..

Alo Exclusive With The

BLACK PEARL

IN CASE OF FIRE

At home —
Quickly get everybody out of the house.
Call the fire department immediately.
(Be sure everyone in your family knows how to call the fire department.)

At Public gatherings —
Walk, do not run, to the nearest exit. Call the fire department immediately. Keep calm.
—American Insurance Association

ANNOUNCEMENT

I Will Be Off Sanibel
August 13 to September 18
CURTIS R. HOUSE, M.D.

McCaul's

Captiva Island, Florida

Gifts-Driftwood-Specimen Shells

Located on Main Road, 1/2 mile North of Post Office



THE MAGIC OF CHRISTMAS ABOUNDS
with imprinted or plain BUZZA-CARDOZO CARDS and FASHION COLOR ENVELOPES
GULF DRIVE SANIBEL



THE BEST WEEKEND AWAY FROM HOME IS SPENT AT
SOUTH SEAS PLANTATION
At The Tip Of Captiva Island
LEE COUNTY'S ONLY COMPLETE RESORT HOTEL
GOLF - TENNIS
SURF AND POOL SWIMMING
COCKTAIL LOUNGE - DINING ROOM
FISHING - MARINA
SUNDAY NOON BUFFET
CALL GR 2-4601 FOR INFORMATION



To The Islander

May I add a strong, strong protest in reference to the proposed trailer park on Sanibel. I am a property owner in the Tradewinds Subdivision.

You have doubtless received many letters in opposition covering reasons why, such as: downgrading and devaluation of adjoining areas; strain on government agency; site in swamp area (making sewage disposal virtually impossible); major increase in traffic problems; excessive strain on Lee County Electric.

You have also been aware, I'm sure, of the very pertinent and expert opinion of Dr. Granville W. Larimore, public health official of the New York State Department of Health.

Therefore, I pose to you some other questions. Do you believe that this trailer park scheme is in any way whatsoever concerned about the orderly growth and proper development of Sanibel?

By any stretch of the imagination, does anyone think that there is any interest other than the piling up of that green folding stuff? Do you believe there is real concern as to whether or not there is a piling up of filth and sewage?

Can anyone seriously believe that this abomination in any way whatsoever will do you, me, Sanibel Island one iota of good?

Let's ask ourselves these basic questions -- which, of course, add up to just one: Who is getting the gravy from this proposal?

That is the crux of the matter which should influence your decision against the "park."

I feel sure that you, as responsible officials, know in your secret heart that this zone downgrading is not going to result in a better Sanibel.

May I strongly urge you to act accordingly.

/s/ Cyrus H. Biscardi
56 Wickham Road
Roslyn Hts. L.I., New York

REAL ESTATE NEWS

Priscilla Murphy Realtor reports the sale of a lot in Leisure Acres by Mrs. Rubie S. Reif, Trustee, to Colonel and Mrs. M.J. Montesclaros, Fort Benning, Georgia.

A.A. MEETING

An open meeting of Alcoholics Anonymous will be held at St. Michael's and All Angels' Episcopal Church at 8 p.m. Friday nights. For information call GR 2-3121.

Elsie Malone

SPECIMEN SHELLS

E. corner of Priscilla Murphy, (Realtor)
Bldg. Periwinkle Way GR 2-2001

GOLDEN SANDS

RESTAURANT
COCKTAIL LOUNGE

Periwinkle Drive, Sanibel Island



GR 2-3171

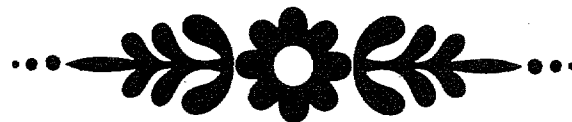
dotti Of Sanibel
"THE ISLAND BOUTIQUE"

TIMELESS CLASSICS

IN THE BEST TASTE

Hours 9-5

Closed Sunday



STOP BY FOR A COOL BREW & A HOT PIZZA

Fresh Cold Cuts - Groceries
Sandwiches - Coffee
Barbecue Spareribs & Chicken
Beer or Wine - On or Off Premises

CALL GR 2-5281 FOR ORDERS TO GO

SEAHORSE DELICATESSEN



WE HAVE BEEN BEAUTIFYING SOUTHWEST FLORIDA SINCE 1909

IF YOU ALSO WANT THE BEST CALL

Everglades Nursery, Inc.

WE 6-1350

MC GREGOR

THE NEW **Casa Ybel** RESORT INVITES YOU TO ENJOY

fabulous cuisine
Breakfast - Lunch - Dinner
bottoms up cocktails
4:00 til 12:00
package goods



POOL - BEACHSIDE COTTAGES

ENJOY HAPPY HOUR
4-6 p.m.
HI BALLS 50¢

SMART TIPS FOR FLORIDA GARDENERS

If you have a new home you'd like to have landscaped, or want to modernize the plantings at the old home site, don't worry about "plants not transplanting in the summer" or the old superstition about "not planting in dog-days". This might have been a good rule of thumb back when plants were all transplanted bare rooted. Now that they are transplanted from containers or balled and burlapped from fields where they have been root pruned, it really is a better time to plant now. First of all, you have more time, with the day-light saving time; second, the plants really put on more new roots in the summer time, so grow off better. Contd. 3rd. col

SAN CARLOS REALTY

Robert L. Dormer
REG. REAL ESTATE BROKER

TOWN SQUARE
SANIBEL ISLAND FLORIDA 33967

PERSONAL ATTENTION GIVEN ALL LISTINGS

OFFICE GR 2-6371 HOME GR 2-3771

SANIBEL  **STANDARD OIL**

SERVICE STATION

ATLAS TIRES -- TUBES -- BATTERIES
ACCESSORIES
WRECKER -- TOWING -- ROAD SERVICE
EXPERT SERVICE

 **GR 2-4961**

Reynold's Craft Shop

Main Road, near Casa Ybel Road

FLORIDA MINIATURES
RARE SHELLS
SHELL BOXES - FRAMES - TABLES

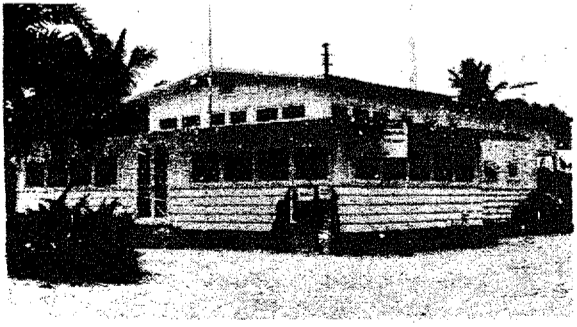
Shellcraft Supplies and Findings
Ceramics - Leather & Misc. Items
The Handmade Gift is the Thoughtful Gift

Cranes

FINE STATIONERY In Gift Boxes

MacIntosh Book Shop

Sanibel Island, Florida GR 2-3041



THE ISLAND STORE

CAPTIVA

groceries
frozen foods
oddrments

GINNI IN WANDERLAND

The name of the game, dear friends, is liars' poker --- an ingenious little competition which utilizes the serial numbers of dollar bills, and, in one recent case, won the lady of the house a press trip to Freeport/Lucaya, Grand Bahama, as a guest of the Bahama Development Company, Limited, and Pris Wood, of Will Hayes' office who as sales manager for Lucaya in this area, extended the invitation.

Freeport/Lucaya is a section of Grand Bahama Islands (as well as a state of mind) which is located about 25 minutes (\$27.50 round trip) by jet from Miami geographically, but many miles away in atmosphere.

To get the statistics over with, Freeport, Lucaya had well over 300,000 visitors last year. Tightly controlled by the Grand Bahama Port Authority, Limited, (for instance, you will find in Freeport, Lucaya, the only non-oranged-roofed Howard Johnson's in the world), there were, in 1966, 714 licensed businesses, 318 miles of roadway, 6,446 apartments and homes, 3,017 motel and hotel units, 11 banks, eight churches, two high schools, two primary schools, a secretarial college, nursery school and music and dance schools, 6,972 cars, 2, 290 telephone subscribers, medical clinics and institutes, medical and educational libraries, 12 shipping lines, three lawyers, four airlines, and approximately 30,500 happy Bahamians, about 13,500 of whom live in the Freeport/Lucaya area.

You would also find one of the most delightful climates around, the clearest ocean water (at a depth of about 15 feet, you can still see every grain of sand on the ocean floor --- we can't attest to more, 'cause that's all the farther out we swam) and, hold your hats, no mosquitoes. As a matter of fact, there seems to be very little insect life (with a consequence of no bird life) --- no screens were in evidence anywhere we went, and we never felt the need for them.

Except for the climate, ocean and lack of flying critters (all of which were admired by Columbus when he set foot on San Salvadore in 1492) Lucaya is in essence, the creation of a gentleman named Wallace Groves, financier and lawyer, who through the Grand Bahama Port Authority signed the Hawksbill Creek Act in

1955 with the Bahamian government. This Act and a 1960 supplement gave the Port Authority control over 200 square miles of Grand Bahama Island, which at that time had a total Island population of 4,095. In return for a complete tax-free income and corporation set-up, the Port Authority promised to develop the area. They did. The lack of income and corporation tax attracts many investors from the U.S. and abroad. The climate, tourist attractions and modern medical and school facilities attract many people who plan to retire or vacation there, and prefer to do so in their own home. The growing economy attracts those who like to buy land for investment purposes, who figure (and most rightly so)

Contd. on P. 6

Modern methods of production makes it possible to transplant at any time of the year, according to President Richard C. Johnson of the Florida Nurseryman and Growers Association. Plants are grown in pots, cans, tubs, baskets, etc. and since their roots are undisturbed by transplanting, they continue to grow and bloom as though nothing had happened. Too, root pruning of field grown stock makes it possible to transplant these balled and burlapped.

Actually, some plants transplant better in the summer. Palms, Lawns, Ground Covers and other grass-related plants become established more rapidly in the summer.

There is another plus factor for summer planting. If we get into the rainy season, the daily rainfall takes care of the watering of the plants for us --- thus saving us a time consuming task.

One thing we must remember during the rainy season, however. That is that the plant nutrients are leached from the soil more rapidly, and hence after a month or two of rainy season, you will begin to note yellow foliage and strange leaf patterns. This is usually due to lack of plant food, with a soil sample, to your local FNCA nurseryman, or to your County Agent. A soil test, made quickly, will determine if you need just a general plant food, or if some deficiency has been set up because of the soil pH.....and will be able to give you definite recommendations to correct it.



CAREFUL

The Florida Park Board is waxing poetic these days in an all-out attempt to discourage the dangerous practice of feeding and handling of wildlife by visitors to state parks, according to State Parks Director Bill Miller.

Signs carrying their message in the form of light verse will be erected in selected areas within the parks to remind visitors of the risks involved if they forget that the wildlife is indeed wild.

"Please don't feed the animals" doesn't seem to carry enough weight anymore, so visitors preparing to make a handout will soon be seeing something like this:

"Please, please, don't feed me.
I'm not tame, but wild, you see.
If on your hand, food odors linger,
I might possibly bite your finger."

All parks have animals, from squirrels, racoons and opossums, to bigger animals like deer. The final couplet of one verse -- "While I do not intend to harm, I might bite off an arm." -- seems designed to warn the tourist that alligators, seemingly placid, should nevertheless be viewed with caution.

Miller pointed out that constant exposure to people -- a natural part of park life -- has made individuals of many normally wild species appear quite tame and the temptation to feed or even pet them is great, especially for children.

The Park Board points out, however, that these animals are not really tame, cannot be depended upon not to bite, and have not been inoculated against diseases like rabies.

State parks are among the safest and best places for study and observation of Florida's vanishing wildlife, and visitors of all ages exercising ordinary caution can enjoy experiences in a variety of natural habitats available in the 59 parks throughout the state.



**ISLAND
BAKE
SHOP**

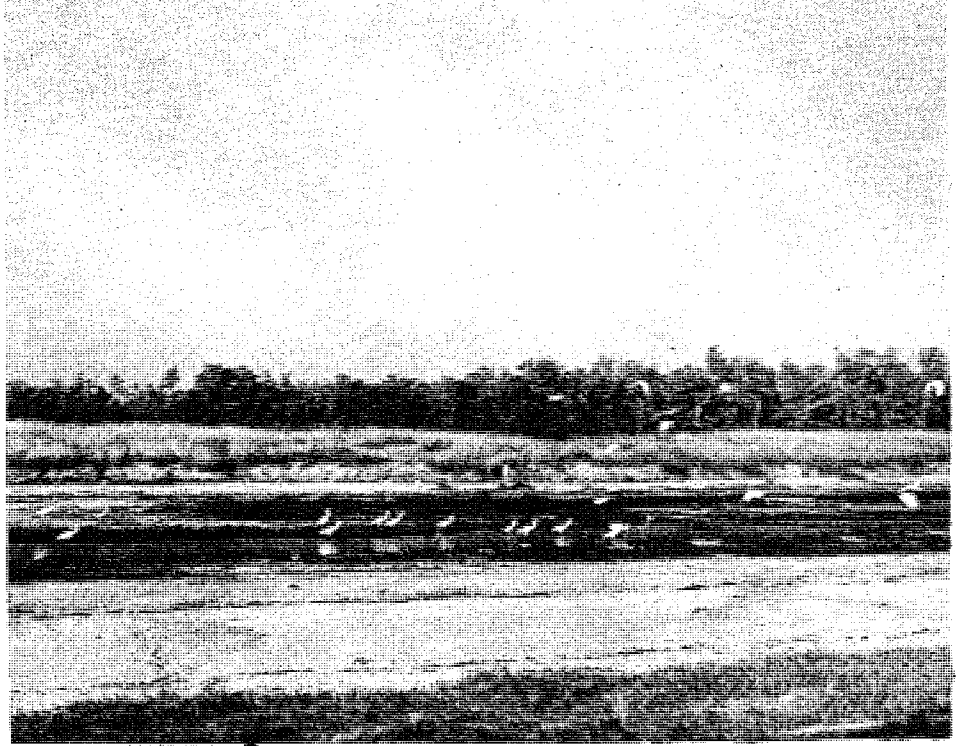
**WEEKLY
SPECIALS**

Mon: Almond Macaroons
Thurs: Lemon Pectens
Fri: Chocolate Eclairs

GR 2-3121

Hours 8 to 5
Daily

Closed Sunday



BIRDS OF THE ISLANDS

TRAILER PARK from P. 1

4, at 10:00 a.m., be postponed at least to late November when most members of the Island community will be in residence here.

An executive committee has been named by Mrs. C.M. Cardeza, Chairman Pro-Tem of the Interested Citizens Committee. It includes Bob Haynie, Vice Chairman; Tom Musson, Secretary-Treasurer; Malcolm Beattie and Charles Siegenthaler.

LUCAYA from P. 5

that an acre of land on Lucaya will be worth much more in ten years than it is now, just as it is worth much more now than it was ten years ago.

Now that we have all the facts out of the way, we'd like to

state most emphatically, that Freeport Lucaya is a place for fun. Some of our younger readers might be interested to learn that consumption of alcoholic beverages is limited only by one's purse and an ability to be tall enough to climb up on a bar stool.

The casino, one of the major tourist attractions (which by the way is off limits to any legal resident of the Island and any person who has business on the Island) offers one the opportunity to learn that beginner's luck doesn't always work at roulette. You may play craps, the slot machines, black jack or just kibitz, of course, or enjoy the stage shows in the casino lounge.

There are calypso bands where you go--pool side, dining room or airport. There are many restaurants, lounges and nightclubs, which stay open (sometimes) until 5 a.m. This accounts for the sleepy-eyed look of many first time visitors.

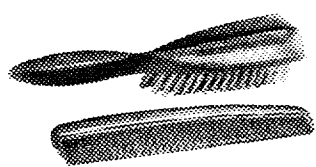
But perhaps the most enjoyable and impressive thing is the joy of the people, who seem truly glad to share their paradise with others. The lack of racial tension is awe-inspiring to any American newspaper reader who has been horrified by accounts of riot-torn cities. The courtesy, which starts at the airport when one goes through Bahamian customs, is a joy and delight. The cab drivers, the shop keepers, the waiters, the people at the next table---all make the visitors feel welcome and at home. And really, what better compliment can one offer than to feel at home in a foreign country?

I did---and I hope, when and if you visit Grand Bahama, you agree with me and Columbus, who wrote his queen that "He never wanted to leave." Leave, of course, one must---but it's nice to know one can always return.

Keep Matches Away from Children

Always put matches or lighters away, out of the reach of children, urges the American Insurance Association.

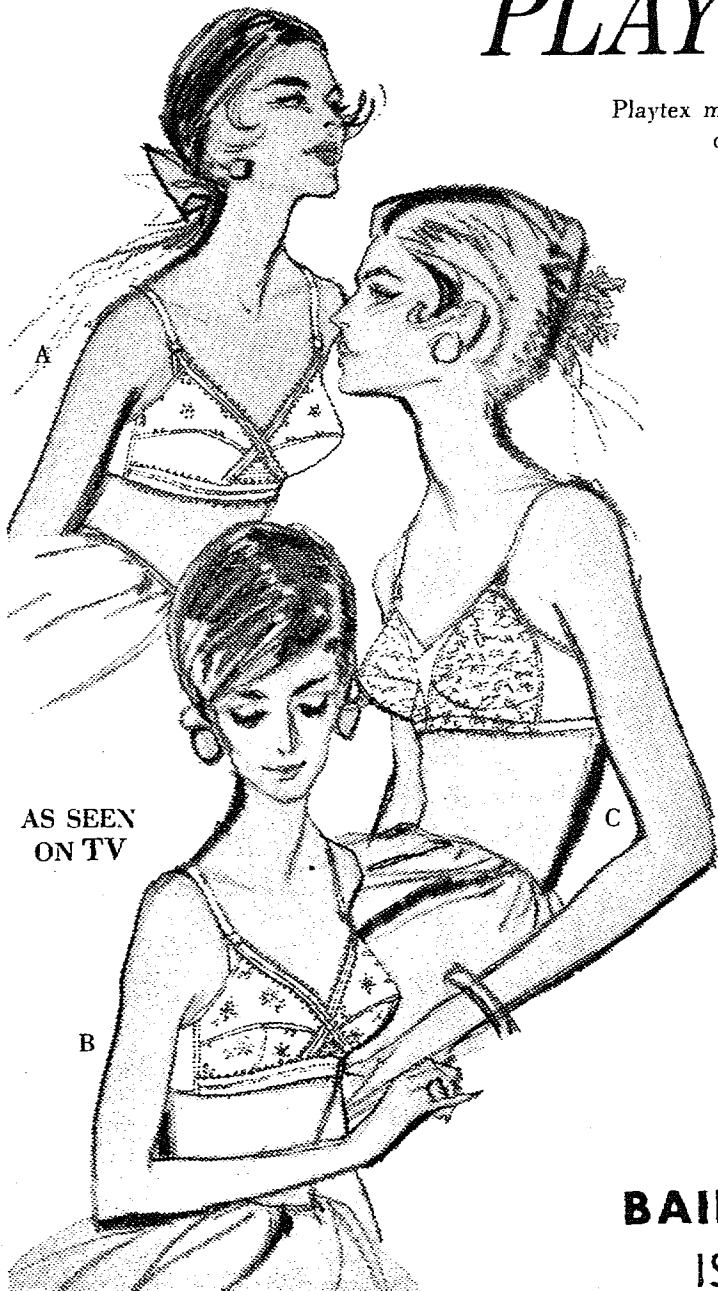
Too many fires are caused by children playing with matches. One-fifth of all fire fatalities are those of children under five years of age.



FREE!

\$1.98 BRUSH AND COMB SET

when you buy any... **PLAYTEX BRA**



AS SEEN
ON TV

Playtex makes this offer because they are certain that once you enjoy the fit and comfort of a Playtex bra you'll never settle for less.

Just think--you get a beautiful \$1.98 Brush and Comb Set when you buy any Playtex bra. And so many beautiful styles to choose from, including...

A. Playtex "Cross-Your-Heart"® Bra with "Cross-Your-Heart"® Stretch between the cups to lift and separate.

White. 32A-42C. Only \$2.50.

"D" sizes \$1.00 more.

With stretch straps, 50¢ more.

B. Playtex "Soft-line" Padded Bra with amazing new fiber-fill padding that stays soft, can't shift, can't bunch up. White. 32A-36B. Only \$3.50.

With stretch straps, 50¢ more.

C. Playtex Living® Sheer Bra with Stretch-ever® sheer elastic back and sides. White.

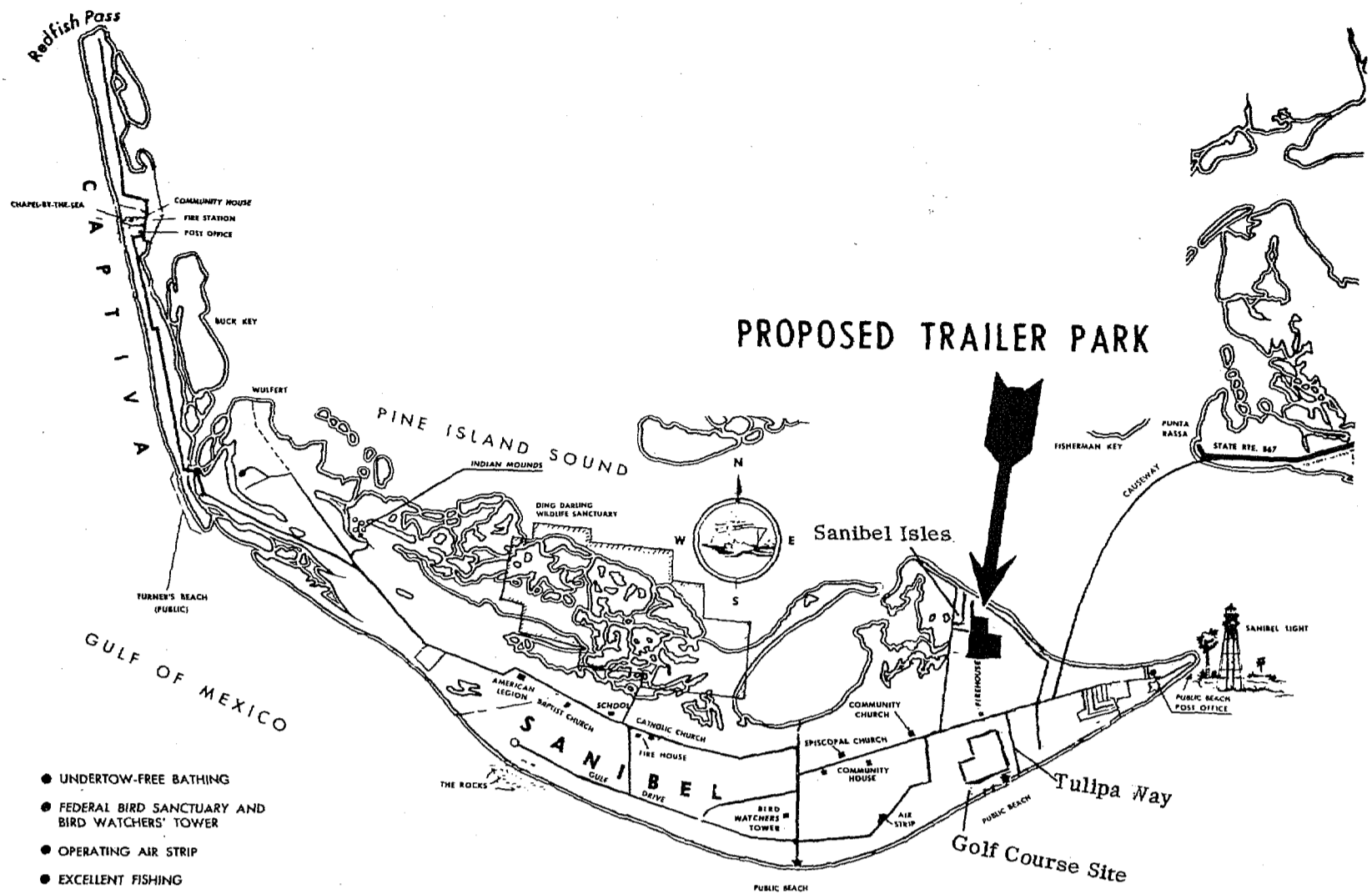
32A-42C. Only \$3.95. "D"

sizes \$1.00 more. With stretch straps, \$1.00 more.

Offer limited, so get your free Brush and Comb Set today and enjoy the heavenly fit and comfort of a Playtex Bra... Padded, Bandeau or Longline. All you do is mail the bra label and the coupon you'll find in every package to Playtex and they'll send you your Brush and Comb Set. * (Include 25 cents for postage and handling.)

BAILEY'S GENERAL STORE
ISLAND SHOPPING CENTER

Cups and band: 100% nylon. Cup linings: 100% cotton.
Stretch-ever® back elastic: nylon, spandex. Stretch-ever strap elastic: rayon, cotton, spandex, nylon. Exclusive of center elastic.



**I'M
AGIN'
IT**

**Be Sure To Be At The Zoning Meeting
August 28, 7:30 p.m.**

At The Lee County Court House

Priscilla Murphy

AND ASSOCIATES



Seven Seas Fashions

SALE

CLOTHING - BEACHWEAR - GIFTS

Seven Seas Shop

Sanibel Island, Florida - We Mail Anywhere

Books On Sale

	Regular	Sale
Wild Flowers of America	15.00	6.95
Holiday in Europe	8.50	3.95
Ballad Book of John Jacob Niles	10.00	3.95
Songs Belafonte Sings	7.95	3.95
Chandoha's Kittens & Cats	8.50	3.95
Golden Deluxe Pinocchio	4.95	2.98
Treasury of the Automobile	12.50	6.95
Currier & Ives America	10.95	6.95

MANY OTHER OUTSTANDING VALUES
COME IN AND BROWSE

MacIntosh Book Shop

Sanibel Island, Florida - We Mail Anywhere - GR 2-3041

YOUR HEALTH IS OUR PRIME CONCERN!

OUR TWO FULL TIME PHARMACISTS FILL
YOUR PRESCRIPTION ACCURATELY AND PROMPTLY
IN COMPLIANCE WITH ALL FLORIDA AND FEDERAL
REGULATIONS IN OUR PRESCRIPTION DEPARTMENT
NOW OPEN 7 DAYS A WEEK

Our pharmacists, Bernard Valind and John Summers, are
within immediate call for emergencies 24 hours a day ---
every day through your doctor.

Prescription Dept. Open Daily 9-9, Sunday, 10-7.

Fort
Myers
Beach
Florida



The Pharmacy
Nearest
the
Islands

San Carlos & Estero Blvd.

MO 4-9754

UNCLASSIFIEDS

ART SUPPLIES:

Paints, brushes, etc. Also Flex-
Bon paints, designed for tropical
weather, at LEGEL
SUPPLY, Sanibel Island, GR
2-4051.

FOR SALE:

Natural Island fill dirt for sale
at prices that can't be beat!
Good for growing things on the
Islands - packs hard, too, for
driveways and bleaches white.
Let us quote you. Our trucks
will not damage your yard.
Dragline and tractor work. Oys-
ter shell delivered and spread.
SANIBEL MARINA, an Island
enterprise for the Islands.

FOR SALE:

Choice homesite lot in Trade-
winds Subdivision - \$2,900...
Terms if desired. Walking ac-
cess to Gulf Beach. Sanibel-
Captiva Real Estate. Phone GR
2-4011

FOR SALE:

1 stamp vending machine
Call GR 2-2591.

CASH WILL BUY NOW!

Sanibel, close in. Two lots,
50 x 115' at end of paved st.
Both for \$1,700. Also, business
zoned lot on main road, 100 x
214, \$7,200. LEW A. FUNK,
Real Estate Broker, GR 2-3361

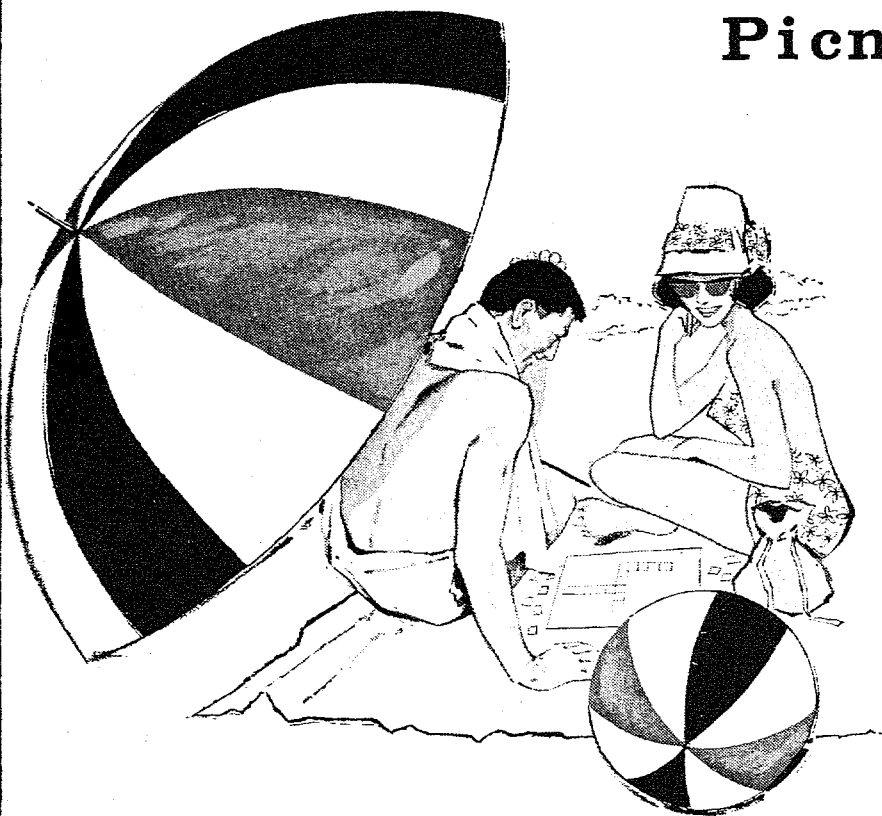
FURNISHED APARTMENT

available by week, month or
year. For particulars phone
GR 2-4971 or GR 2-5371.

SELL OR TRADE:

14 cubic foot refrigerator free-
zer bottom freezer holds 200
lbs. will trade for refrigerator
24 inches across only. Call
GR-2-5621

Bailey's For Your Labor Day Picnic and Beach Supplies



- PAPER PLATES ● CUPS ● ICE BUCKETS ● ICE
- PRE-COOKED CHICKEN & RIBS ● FRESH BAKED PIES
- CHARCOAL ● CHARCOAL LIGHTER
- CHARCOAL GRILL, AND THE STEAK TO GO ON IT!
- HOT DOGS ● HAMBURGER ● SOFT DRINKS ● COLD BEER ● WINE
- MOSQUITO & SUNTAN LOTIONS ● SUN HATS ● SUNGLASSES
- FILM & CAMERAS ● DEVELOPING SERVICE ● FISHING TACKLE
- BATHING SUITS ● SHELLING BASKETS ● AND MORE & MORE

BACK TO SCHOOL SUPPLIES FOR LADS AND LASSES

Keds - Sports & School Clothes - Note Books - Loose Leaf Paper -
Pens - Pencils - Pencil Sharpeners - Lunch Boxes - Etc.

BAILEY'S GENERAL STORE

SERVING SANIBEL & CAPTIVA ISLANDS SINCE 1898

SANIBEL PACKING COMPANY

WESTERN UNION WINE & COLD BEER FILM DEVELOPING SERVICE

WE ARE OPEN 52 WEEKS A YEAR TO SERVE YOU!