

SANIBEL - CAPTIVA ISLANDER

DEVOTED TO
THE INTERESTS
OF
SANIBEL
AND
CAPTIVA ISLANDS

7¢

photo by either houston or pickens or waghorne
or kautz or wanderin'

The Finest
Shelling
Beaches
In The
Western
Hemisphere

VOLUME 8

NUMBER 14

PUBLISHED EVERY THURSDAY

APRIL 4, 1968

SANIBEL - CAPTIVA CONSERVATION FOUNDATION

The Sanibel-Captiva Conservation Foundation has authorized the National Audubon Society to make a comprehensive survey of the feasibility of establishing a nature center on the Islands.

A preliminary survey, recommending that such a survey be established, already has been made. The new survey, to be made by a team of experts from the National Audubon Society will recommend just how the center can best serve the people and interests of the Islands. In general, such a center would be dedicated to education and research in the fields of conservation and wild life protection.

The Foundation has moved into its new quarters on the main highway near the Sanibel Community House. The building has been loaned to the Foundation by the owner, Mr. C. Kirkpatrick.

Four new directors have been added to the Foundation Board; Fred Lesser, president of the South West Florida Audubon Society; Hal H. Harrison, wildlife photographer and lecturer; and Mrs. Edith Lezy and Clarence Conklin of Sanibel.

SANIBEL - CAPTIVA DEMOCRATIC CLUB PICNIC

The Sanibel-Captiva Democratic Club has announced that the Club's Annual Meeting will be combined with an Outdoor Beach Picnic and Hotdog Barbecue, to be held on Sanibel Island on Sunday, April 21, at 4:30 p.m. at the Sanibel Lighthouse.

The occasion, which will recall pleasantly the old-fashioned political gatherings of many years ago, will be attended by State and local government figures. Beside the "Redhot Frankfurters" there will be beer and soft drinks for all.

But there will be no set speeches. Instead everyone will have an opportunity to meet, and to talk to, the men and women who now represent them, or who are candidates for public office in the forthcoming elections.

The Club feels that this method of personal contact will bring about a closer understanding of the views of both voters and politicians, and that these exchanges, which will take place in an informal and relaxed atmosphere, will be conducive of results not possible in any other type of forum.

Previous Annual Meetings of the Democratic Club have been in the form of dinners, which have been well-attended by foremost Florida government figures and by local Club members.

There are many new residents of the Islands who are not presently members of the Democratic Club, and the Board of Directors wishes to extend to these residents, as well as to other Democrats who have not yet joined, a cordial invitation, both to attend the picnic and to become affiliated with the Island group. The dues are \$1.00 per year for each person. Membership does not entail any further financial obligation, but those members who wish to contribute any sum, large or small, to the expenses of the picnic, may do so. Such help will be appreciated.

Elsewhere in this issue of the Islander will be found an advertisement of the picnic, included in which is a "tear-out" form which can be sent to Peggy Maloney, treasurer, Sanibel-Captiva Democratic Club. It is important that the committee on arrangements for the picnic know in advance approximately how many to prepare for, and it requests the cooperation of all members and guests who plan to attend, in checking off the appropriate boxes on the form.



WE MODESTLY
ADMIT - WE
ARE THE BEST
ON THE ISLAND

"ALL YOUR NEEDS FROM FOOD TO FILM"

ISLAND REFLECTIONS



SANIBEL-CAPTIVA REAL ESTATE

Claire T. Walter, Realtor
and Associates.

GR 2-4011

GR 2-3031



IT DOESN'T TAKE
A LOT OF
UNDERCOVER WORK
TO FIND OUT THAT
THE SEA HORSE SHOP
HAS THE FINEST
GIFTS & CLOTHING

we are open until 9 p.m. daily
5:30 on Sunday

SANIBEL CAPTIVA ISLANDER

Established 1961
Duff Brown, Owner and Publisher

Editors Virginia and Duff Brown
Production Carolyn Lowry
Second class postage paid at Fort Myers Beach,
Florida 33931.

ISLANDER OFFICE:
140 Delmar Road, Fort Myers Beach, or call
MO 4-6792.

Display ad rates given on request. Minimum
unclassified charge (25 words), \$1.00. Cash, 75¢

Islander news and ad copy deadline is SATURDAY
Last minute SHORT news items or unclassifieds
may be called in Sunday afternoon.


SUBSCRIPTIONS

On-Island \$3.00 yearly
Off-Island or Split \$3.50 yearly

**Priscilla
Murphy**
Realtor
SANIBEL ISLAND, FLORIDA

MAIN OFFICE GR 2-4501
BRANCH OFFICE in Sanibel Shopping Center
GR 2-4521
BRANCH OFFICE CAPTIVA GR 2-2051

You're Invited To Stop By The Office To Read
The Wall Street Journal
Closed At 1 p.m. Saturdays For The Summer



Endorsed By
Sanibel - Captiva Audubon Society

Bird Tours Of The Islands
by
Griffing Bancroft

Reservations May Be Made At The
MacINTOSH BOOK SHOP
GR 2-3041



Reynold's Craft Shop
Main Road, Near Casa Ybel Road

FLORIDA MINIATURES
RARE SHELLS
SHELL BOXES - FRAMES - TABLES

Shellcraft Supplies and Findings
Ceramics - Leather & Misc. Items
The Handmade Gift is the Thoughtful Gift



ZENITH
TELEVISIONS
BLACK & WHITE OR COLOR

Fedders
AIR CONDITIONERS

WOOSTER TELEVISION
SALES & SERVICE
Gulf Drive, Sanibel GR 2-2101

ST. MICHAEL'S
AND ALL ANGELS
EPISCOPAL CHURCH
The Rev. T.A. Madden, Vicar
SUNDAY:
Holy Communion ... 7:30 a.m.
Morning Service and Sunday
School 9:30 a.m.
WEDNESDAY:
Holy Communion ... 9:00 a.m.
THURSDAY:
Holy Communion ... 7:30 p.m.

ST. ISABEL'S
CATHOLIC CHURCH
The Rev. Claude E. Brubaker
Sundays 11:30 a.m.
Thursdays 7:30 p.m.
Holy Days 5:30 p.m.
CONFESSION:
Sundays before Mass.

SANIBEL COMMUNITY
CHURCH
50th Anniversary Year
Dr. H.E. Sheely
Morning Worship ... 11:00 a.m.
Sunday School 9:30 a.m.

FIRST BAPTIST CHURCH
The Rev. Arthur Sims, Pastor
SUNDAY:
Sunday School 10:00 a.m.
Morning Worship ... 11:00 a.m.
Training Union 6:30 p.m.
Evening Worship ... 7:30 p.m.
WEDNESDAY:
Prayer Meeting & Bible Study
..... 7:30 p.m.
FRIDAY:
Youth Ranch 7:30 p.m.

CHAPEL BY THE SEA
CAPTIVA
The Rev. T. Guthrie Speers
SUNDAY:
Worship 11:00 a.m.
Lenten Classes
each Wednesday .11:00 a.m.

PAPER BACKS
ALL SUBJECTS
FOR ALL AGES

MacIntosh Book Shop
Sanibel Island, Fla. GR 2-3041

ISLAND ACTIVITIES

Sanibel Community Association, Inc., Sanibel Community House -- 1st Tuesday, 6:30 p.m.

Sanibel-Captiva Teen Club, Sanibel Community House -- Saturday, 8 p.m.

Game Night, Sanibel Community House -- Fridays, 8 p.m.

American Legion Post 123, American Legion Home -- 2nd Tuesday, 8 p.m.

American Legion Auxiliary, Members Homes -- 2nd Mondays, 8 p.m.
Bingo Murex, American Legion Home -- Wednesdays, 8:30 p.m. (No Minors)

Ladies' Guild, Sanibel Community Church, Members Homes -- 3rd Thursday, 8 p.m.

Lions Club, dinner meeting at South Seas Plantation, 6:30 p.m., first and third Wednesdays of each month.
The Episcopal Church women of St. Michael's will meet the third Thursday in the church school room at 8:00 p.m.

A.A. open meeting - Fridays 8 p.m. St. Michael's Episcopal Church, GR 2-3121.



GET SOME IN YOUR
SAVINGS

A SURE
PROFIT
(and a good one)
WHEN YOU
PUT YOUR DOLLARS IN A
SAVINGS ACCOUNT

Deposit by the 10th, Earn from the 1st

**FIRST NATIONAL
Bank**
... IN FORT MYERS ...

Largest and Most Experienced Trust Dept. in S. W. Florida
MEMBER: Federal Deposit Insurance Corp.
Federal Reserve System

Elsie Malone
SPECIMEN SHELLS

E. corner of Priscilla Murphy, (Realtor)
Bldg. Periwinkle Way GR 2-2001

GOLDEN SANDS
RESTAURANT
COCKTAIL LOUNGE



Periwinkle Drive, Sanibel Island GR 2-3171

SAN CARLOS REALTY
Robert L. Dormer
REG. REAL ESTATE BROKER
Town Square
Sanibel Island, Florida 33957

Personal Attention Given All Listings

UP TO MINUTE STOCK QUOTES
New York and American Exchanges

Office GR 2-5371 Home GR 2-3771

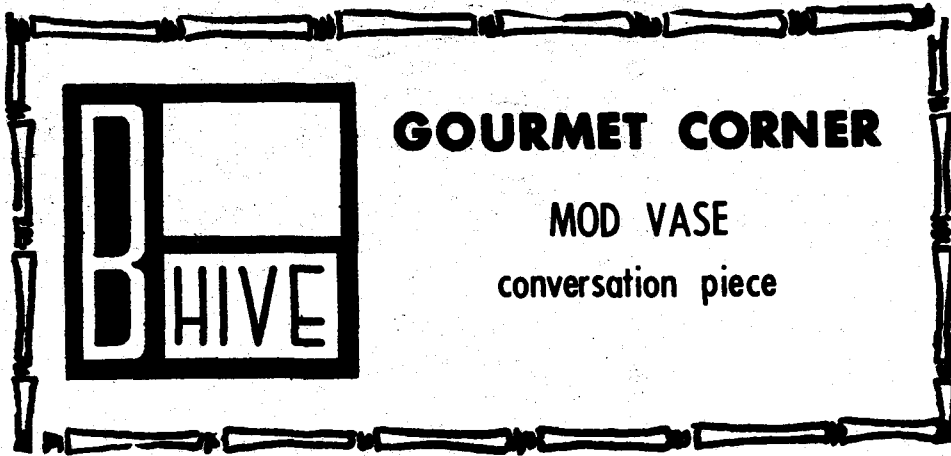


**ISLAND
BAKE
SHOP**

WEEKLY
SPECIALS

Mon: Almond Macaroons
Thurs: Lemon Pectens
Fri: Chocolate Eclairs

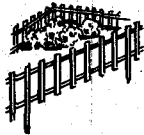
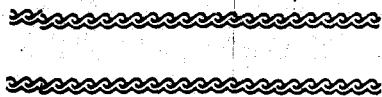
GR 2-3121
Hours 8 to 5
Daily Closed Sunday



WHO'S WHO AND WHY

ISLAND INN GUESTS

Guests now staying at the Island Inn on Sanibel include the following: Mr. and Mrs. Everet Carpenter from Milwaukee, Wis.; Mr. and Mrs. Morton Broffman from N.Y. City; Mrs. P. Hallowell, New York; Mr. and Mrs. Thomas Dent and Mr. John Calhoun of Haverford, Pa.; Mr. and Mrs. J. Woodhead of Chicago, Ill.; Mr. and Mrs. S. Devoe, Indianapolis, Ind.; Mr. and Mrs. C. Brinker; Mr. and Mrs. Charles Otto of Ind.; Mr. and Mrs. T. Armstrong, Princeton, N.J.; and Mr. and Mrs. J.L. Kuplic of Kolher, Wis.



FLORIDA GARDENING

The lush tropical growth in Florida is our state's greatest asset. Visitors to our sunny state are thrilled with the waving palm fronds, the warm sunshine, and the bright blue waters -- and also with the many tropical, brilliantly hued flowers that provide bloom all the year long.

It is the beauty of our state that brings visitors time after time, according to President Richard C. Johnson of the Florida Nurserymen and Growers Association. While many plants are native to Florida, these are also supplemented by introductions from other tropical areas and Florida is a horticulturist's

Contd. page 4

Mr. and Mrs. BRADLEY BUELL of New York City are returning on Friday, March 29, to spend the month of April in their home on Bay Drive, Sanibel. Since mid-February it has been occupied (with much pleasure) by their friends, Mr. and Mrs. GEORGE H. HILL of New York City and Bevans, N.J. Mr. and Mrs. Hill plan to motor North early next week, spending some time en route with cousins in Sarasota.

T.N.T. BENEFIT MEALS FOR MILLIONS

Talent Night for Tourists will be held at the Pirate Playhouse on Friday, April 19, at 8:15 p.m. A fine array of talent has volunteered their services for this worthy cause, Meals for Millions.

The program will introduce the "Nomads" a musical group of youths, Mike Dormer with his trumpet, James and Albert Evans with their guitars (six string and twelve string), and Marty Stokes will play his drums. Marty Schlarb, unusual songstress from Fort Myers Beach, and Coralie Rumold, Sanibel Island's talented dancer have agreed to be on the bill, too. A skit, "Rosalie" by Max Maurin, will have actress Elaine Patton, as well as Ruth and Philip Hunter performing. Scotty Gale will be on hand with some Scotch songs. The popular Sanibel quartet, Robert Dormer, Gene Karr, Ed Legel, and Philip Hunter are rehearsing some new songs for the big night, which promises to be another fun time for all. The ticket price of \$1.50 is a donation to the Meal for Millions Foundation at 1800 Olympic Blvd., Santa Monica, California, which helps the hungry the world over to help themselves. GR 2-3943---T.N.T.---Friday, April 19---Curtain time, 8:15 p.m.

SANIBEL-CAPTIVA SKETCH CLASS

The regular members of the Sanibel-Captiva Sketch Class, as well as those who would like to join the group, please call Jeannette Dieschbourg, GR 2-2425 for information regarding ensuing meetings. The group has been meeting every Thursday.

HOUSE OF TREASURES RING GOES TO NEW YORK MAN

The 14K Gold Ring, awarded last Saturday at the Annual Gem and Jewelry Show, at Fridays' House of Treasures, went to E.J. Hammer, 39 Oak Manor Lane, Pittsford, New York. Mr. Hammer designated the man's ring as his choice and it has been sent to him.

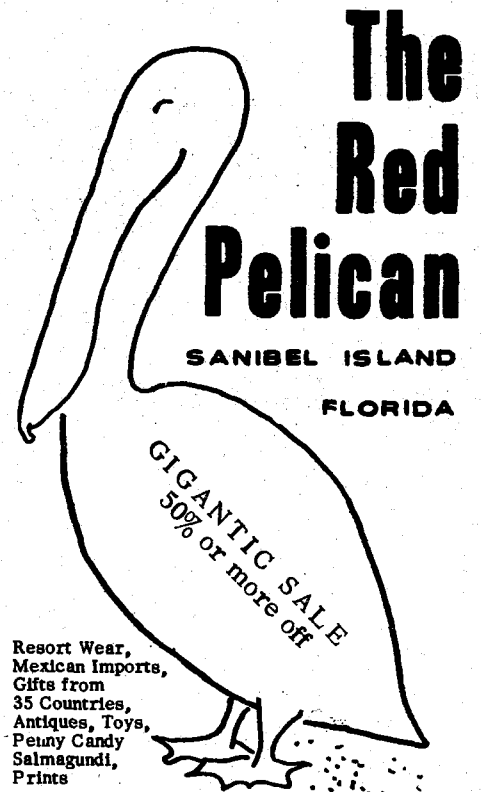
The Fridays were very pleased with the attendance at their annual two-day show. By far the greatest attendance ever enjoyed was by the show this year. Of special interest to all was the chance to see more than 20,000 carats of topaz alone, in one ordinary kitchen pan. This, in addition to the thousands of carats of other semi-precious gem stones on display. The success of the show this year has already started people talking about the next Annual Show in 1969.

AUDUBON CANOE TRIP TODAY

The Audubon Canoe Trip on the Sanibel River, that had to be postponed in February because of bad weather, will take place today, April 4, starting at the Bailey Sanctuary on Tarpon Road. If required by the number of participants, two trips will begin respectively at 1 and 3 p.m. All interested persons should contact Mr. Charles LeBuff at once for reservations, calling 2-4001 or 2-2251.

NEW "PHOTO-VERSE" SHOW ON CAPTIVA

The new program Mario Hutton gave recently on Sanibel met with such success that he was invited to present it at the Captiva Community Center at 8 p.m. on Wednesday, April 10. This will be the third "photo-verse" show offered by Hutton on Captiva during the past two months. It is expected that once again it will attract a record crowd. Among the features to be presented are "Bowman's Beach," "My Lilliputian Cosmos," "Caloosahatchee Canto," "Woodmen of the World," and a few selected episodes from "Recapturing Captiva." The show will be open to the public.



To come see us, take Bailey Road
Opposite the Standard Station

SANIBEL LIBRARY NOTES

Tickets have gone on sale for a drawing on April 20 to determine the new owner of "October Forest," an original oil painting by Leon Levy. Most Island stores have books of tickets. Donations are 50 cents per ticket, three for a dollar, or a book of ten tickets for three dollars. The drawing will be held at the library building during open hours (10 a.m. to noon) on Saturday, April 20. Delivery is guaranteed to those who may not be on the Island at the time of the drawing. Proceeds will be used entirely for the benefit of the Sanibel Public Library.

Thanks have been expressed to those who helped with time and energy to make a success of the book sale at Bailey's General Store on March 23. More than 100 surplus and duplicate books were sold during the day. Library officials have expressed thanks to Mr. Carnahan and Mr. Cory, Mr. and Mrs. Brunner, Mr. and Mrs. Remus and daughter, Vivian, Mrs. Fuller, Mrs. Levy and Mrs. Wolfe for their invaluable help.

Four novels have been donated to the library: The Final Diagnosis, by Arthur Hailey; The Tenth Year of the Ship, by Norman Lewis; California Street, by Niven Busch; and Owls and Answers, by Lillian Pohlman. "Life Around Us," by Fritz-Martin Engel, is an examination of plant and animal life from fifteen feet above the earth to fifteen feet below.



STOP BY FOR A COOL BREW & A HOT PIZZA

Fresh Cold Cuts - Groceries - Coffee - Sandwiches.
Barbecue Chicken
Beer or Wine - On or Off Premises.
o Bicycles For Rent o
CALL GR 2-5281 FOR ORDERS TO GO

SEAHORSE DELICATESSEN

McCaul's

Captiva Island, Florida

Gifts - Driftwood - Specimen Shells

Located on Main Road, 1/2 Mile North of Post Office



Captiva Island, Florida
Overlooking Both Gulf and Bay

DINING ROOM OPEN

EVERY DAY

BREAKFAST - 7:30 A.M. TO 9:30 A.M.

LUNCH - 12:30 P.M. TO 2:00 P.M.

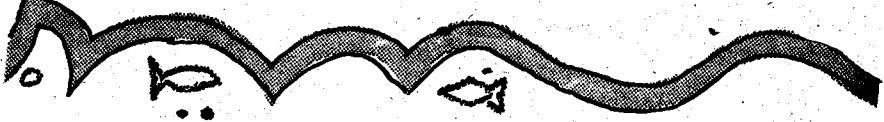
DINNER - 6:30 p.m. to 8:30 p.m.

For Reservations Phone GR 2-3911

Erica Wilson CREWEL EMBROIDERY KITS
SWEATER KITS By Columbia - Minerva

Hours 1 to 5 Mon. - Tues. - Wed. - Thurs. - Sat.
Turn Left At The Colony Road Phone GR 2-4875
PILLOWS, PURSES, EYEGLASS CASES, ETC.

Muriel Way
VILLA VICTORIA



Sea Horse Aquarium & Shell Shop
Local and World Wide Shells For Sale

VISIT THE ONLY SEA AQUARIUM IN SOUTHWEST FLORIDA
See "Al" the Live Alligator
Aquariums and Supplies Shell and Aquarium Books
Live Sea Horses For Sale

For an inexpensive
Sanibel gift, see the items
designed and crafted
by the Bettyes'.

- o Sea Life Wall Plaques
- o Paper Weights
- o Sun Catchers
- o Sliding Door Decor
- o Trivets - Ash Trays
- o Candle Holders
(with Beeswax Candles)
- o Feather Flowers
- o Note Paper Stationery

COMPLETE

ALO

Cosmetic Line
includes - Fashion & After Tan
For That Luscious Tan Look
(Be sure to stock up for
summer, still not available in
some areas.)

Black Pearl
craft - gift - card shop

Gardening Contd. from page 3
dream come true!

Palms are perhaps the most exotic of all plants, and altho there is variation in temperatures from Jacksonville and Tallahassee southward to the Keys, we have some natives to the entire state. Other varieties native include the Serenoa Repens, Sabal Minor, Paurotis, etc.

If you are in the northern part of the state, where frosts occur and below freezing temperatures occasionally creep in, you can use other hardy palms, such as the Trachycarpus excelsa (Windmill Palm), Butia Capitata (Cocos Australis or Australian Fan Palm), Chamaerops humilis (European Fan Palm), Livistona Chinese (Chinese Fan Palm), and Raphis excelsa (Lady Palm).

Of course in Central and Southern Florida you have a much wider range from which to select. A visit to your FNGA Nurseryman in your area will give you a good idea of the wide choice of material available.

Flowering trees, flowering shrubs, flowering vines, ground covers, Bromeliads, Orchids---all these add color to your Florida garden. There are wide choices, ranging from Koelreuteria paniculata in the north to Royal Poinciana in the more tropical regions.

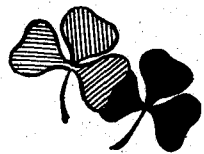
Your garden should be as gay and as beautiful as you wish---and choice of plant materials can keep it colorful all year. That is why, in Florida, we have no "off" season---it is always gay and colorful with flowering trees, shrubs, vines and other plants in bright array!

OPEN HOUSE

APRIL 5, 7 - 10

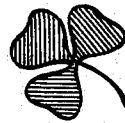
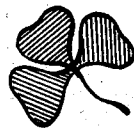
CASHON CLAN IRISH PUNCH & SHAMROCK COOKIES

ERIN'S



BLUE SHAMROCK

FLORIST



CORSAGES - SPECIAL ARRANGMENTS

POTTED PLANTS

E.C. BAILEY

GR 2 - 7071

HOME GR 2 - 5781

PUT YOURSELF IN THE HANDS OF EXPERTS
AND HAVE MORE FUN TONIGHT



Fred Astaire
DANCE STUDIO

ANNOUNCES THE GRAND OPENING AT THEIR
BEAUTIFUL NEW STUDIO
At 3440 Cleveland Ave.

WE 6 - 7244

GRAND OPENING SPECIAL

8 LESSONS FOR \$14.00

OPEN 1 to 10 p.m.

Friday Night Parties 9 - 11, no escort needed - no obligation

the romantic story of
Belleek Parian China

VISUALIZE tiny, china dogs, caught at the precise moment of gentle repose by the artisan's skill and preserved forever in glowing beauty; or the delicately rippled curve of a seashell, faithful to and yet infinitely more perfect than Nature's design.



Our pride in Belleek is immense
It is matched only by the pride of those
who own and cherish its beauty.



Belleek Parian China is prized the world over for its delicate and seemingly fragile appearance, touched with the nacreous, or mother-of-pearl, glow lent it by the extraordinary native skill.

But Belleek is also deservedly well-noted for the many ingenious forms and designs conceived and executed by its master craftsmen.

The Fridays

HOUSE OF TREASURES

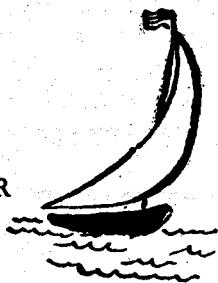
SANIBEL ISLAND, FLORIDA

If you don't know stones and jewelry
Be sure your jeweler does.

Kids-Kids

WATER SKI BOATS
BY THE HOUR
LESSONS AVAILABLE

Sail Fish
Sun Fish
Moths
Cat Boats
Fishing Boats
Canoes
CHARTERS OR
FOR RENT



Shelling Trips
Bait
Fishing Poles For Rent

GR 2-2741

RED PELICAN

Bailey Road
Opposite the Standard Station

accepted for the show, in the classroom off the old library, again from 9 a.m. to 4 p.m. On Sunday, April 7, the show will open with a reception and the awards at 2 p.m. The show will close Saturday, April 13 and all exhibitors are asked to pick up their pictures between 9 a.m. and 5 p.m.

Among the rules are 1. All pictures must be marked N.F.S. or priced; a 15% commission will be charged on all sales which will go to the Art Council to defray expenses. Only original works completed within the last two years and not shown in any juried show in Southwest Florida will be accepted. Pictures must be suitably framed and ready for hanging. No wet picture nor any exceeding 50" x 50", including frame, will be eligible for entry.

Another caution regards possible damage; while handling all entries with utmost care, neither the Art Council nor E. J.C. will be responsible for any loss or damage.

To enter a picture, one must be a member in good standing (that means with your dues paid) of one of the art groups making up the Art Council. Pictures can be in categories including oil, water color or mixed media. Maximum of four entries at a \$1 fee for each is allowed.

There is a terrific list of prizes and honorable mention ribbons, including \$100 for Best of Show Award by the Art Council of S.W. Fla.; \$100 Memorial Award, in memory of Marguerite S. Dorey; \$50 for Judge's Choice; Purchase Award, \$100 oil Still Life given by Priscilla Murphy, Realtor, of Sanibel. Purchase Award, \$25 for best water color of Fla. scene presented by Sea Horse Shop of Sanibel. Oil prizes: \$50, 1st, \$25, 2nd, and

**ISLAND INN
BEACH BUFFET**

Thursday Beach Buffet 12:30 - 1:30 p.m.

WEATHER PERMITTING

RESERVATIONS GR 2-3161

ribbon for 3rd. Water colors: \$50, 1st, \$25, 2nd, and ribbon for 3rd. Mixed Media: \$50, 1st, \$25, 2nd, and ribbon for 3rd. Contestants for purchase prizes must indicate amount, \$25 or \$100, they will accept for their picture.

CONCHOLOGIST SOCIETY

The Southwest Florida Conchologist Society will meet at the Lee County Electric Co-operative on Bayshore Road in North Fort Myers April 9. Helen Denny will show color slides of rare shells.

Shell club members and all interested shellers are welcome.

*Be
Sure
to
Register*

ARTISTS! ATTENTION!

This coming Sunday is the BIG DAY for all artists who wish to enter pictures in the Fifth Annual Exhibit of the Art Council of S.W. Florida which will open April 7 and extend to April 13, at Lobby E. New Learning Resources Building of Edison Junior College of Fort Myers.

Those submitting pictures are asked to bring them to the old library, Bldg. B, E.S.C., from 9 a.m. to 4 p.m. Sunday. The judging will take place the following day and Saturday, April 6, is the day to pick up those pictures which were not

Sanibel-Captiva Democratic Club

OLD-FASHIONED POLITICAL PICNIC

Sunday, April 21st 4:30 p.m.

On The Beach At The Sanibel Lighthouse

Your membership card is your ticket of admission, for you, your family and guests. State and Local Democratic figures in government and candidates of office have been invited.

"RED-HOTS" AND DRINKS FOR ALL

NO SPEECHES, BUT YOU CAN MEET AND TALK WITH YOUR REPRESENTATIVES.

Please clip out the following and send it to PEGGY MALONEY, Treasurer, Sanibel Island, Fla.

I am a paid-up Sanibel-Captiva Dem. Club member -	yes <input type="checkbox"/> no <input type="checkbox"/>
I enclose my 1968 dues (\$1.00 per person)	yes <input type="checkbox"/>
I have added a contribution to help pay for the picnic	\$ <input type="text"/>
I will be on hand for the picnic	yes <input type="checkbox"/> no <input type="checkbox"/>
Name <input style="width: 80%;" type="text"/>	
Address <input style="width: 80%;" type="text"/>	

BRING YOUR OWN CHAIRS OR BLANKET TO SIT ON



BAILEY'S

GENERAL STORE
SANIBEL ISLAND



SUNSHINE SWEETS
SUGAR
5 LB BAG **39¢**

LIMIT 1 PLEASE WITH A \$5.00 ORDER OR MORE

WOW

WHAT SAVINGS!

KRAFT OIL
29¢

LIMIT 1 PLEASE WITH A \$5.00 ORDER OR MORE

Barbagel
by the
Bagful

MRS. FILBERTS
MARGARINE
19¢

LIMIT 2 PLEASE WITH A \$5.00 ORDER OR MORE.

1 LB. PKG.

DAIRY
NEW MASTER
FAT FREE
BUTTERMILK
QT. **15¢**

KRAFT LONG HORN
CHEESE..... 10 OZ PKG. **49¢**

FRESH PR
FRESH GREEN CRISPY
LETTUCE.....

RED RIPE
SALAD TOMATO
U.S. NO. 1 FLA RED BLISS

POTATOES.....
EXTRA FANCY WASHINGTON STATE

WINESAP APP

- FROZEN FOODS
- CHEF CHOICE FRENCH FRIES..... 9 OZ PKG. **10¢**
 - GORTONS FISH CAKES..... 8 OZ PKG. **25¢**
 - TREASURE ISLE BREADED SHRIMP..... 10 OZ PKG. **69¢**
 - ROSEDALE FROZEN CUT CORN..... 10 OZ PKG. EA. **10¢**
 - GREEN PEAS..... 10 OZ PKG. EA. **10¢**
 - LEAF SPINACH..... **10¢**



Sara Lee

GERMAN CHOCOLATE CAKE..... 14 OZ SIZE **5**

SARA LEE
PECAN COFFEE CAKE

SARA LEE
POUND CAKE..... 12 OZ SIZE

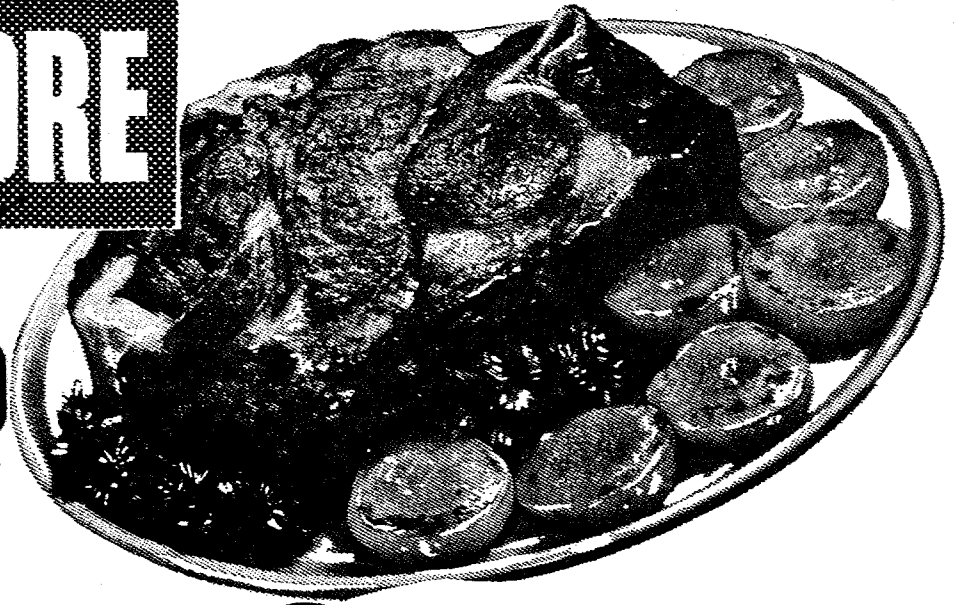
HERE YOU

SAVE MORE

**COUNTRY MANOR
3 LB CANNED**

PICNICS \$1.79 EACH

SLICED ALWAYS GOOD BOLOGNA, 1 LB PKG. 49¢
LEAN MEATY PORK NECK BONES.....LB. 15¢
COPELAND ALL MEAT WIENERS OR DINNER FRANKS..... 1 LB PKG. 49¢



CHUCK ROAST

49¢

U.S.D.A CHOICE BLADE CUT

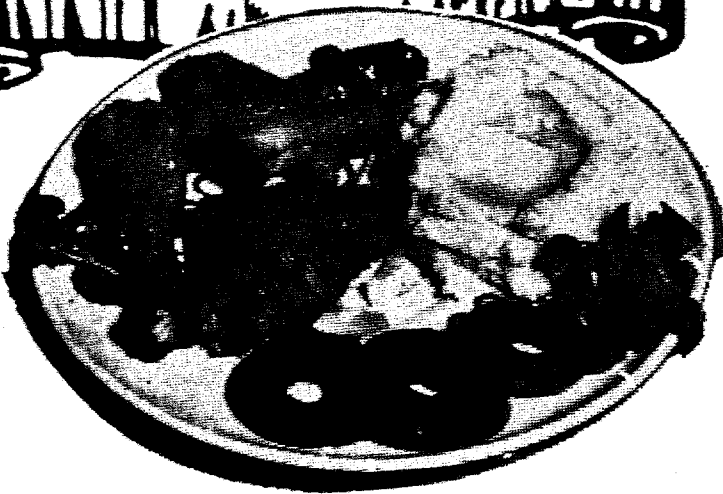
U.S.D.A. CHOICE LB **CHUCK STEAK.....LB 59¢**

GRADE 'A' FRESH WHOLE GA. & FLA. SHPT.

FRYERS

29¢

LB



HEALTH & BEAUTY AIDS

20 GAL SIZE GALVANIZED **GARBAGE CANS.....\$1.99** REG. \$2.89 EA.

MEDIUM & HARD **PRO TOOTHBRUSHES.....25¢** REG. 69¢

VOTE TOOTHPASTE.....59¢

HEAD **15¢**
ES.....LB **19¢**
.....5 LB BAG **39¢**
.....3 LB BAG **59¢**

- 46 OZ CANS ALL FLAVORS **HAWAIIAN PUNCH.....3 FOR \$1.00**
- ALWAYS GOOD SLICED OR HALVES 28 OZ CANS **A.G. PEACHES.....3 FOR \$1.00**
- 28 OZ CANS **OAKHILL TOMATOES...4 FOR \$1.00**
- ALWAYS GOOD WHOLE KERNEL 17 OZ CANS **GOLDEN CORN.....5 FOR \$1.00**
- ALWAYS GOOD 17 OZ CANS **GARDEN SWEET PEAS...6 FOR \$1.00**
- ALWAYS GOOD 17 OZ CANS **CUT GREEN BEANS.....7 FOR \$1.00**
- ALWAYS GOOD 14 OZ BTL. **CATSUP.....5 FOR \$1.00**
- FIRESIDE SANDWICH 24 OZ PKG. **CREME COOKIES.....3 FOR \$1.00**
- AUNT JANES **KOSHER DILLS.....39¢** 32 OZ JAR
- 13 1/2 OZ **PLANTERS MIXED NUTS79¢**
- TNT ANT & **ROACH BOMB.....79¢** 18 OZ CAN
- 22 OZ SIZE **LUX LIQUID.....NET 49¢**
- 200 CT. SCOTTIES WHITE & ASSORTED **FACIAL TISSUE.....4 FOR \$1.00**
- ALWAYS GOOD ASSORTED **BREAKFAST ROLLS.....PKG 29¢**

\$ 1.19



10 OZ JARS

FOLGERS

INSTANT COFFEE

PRICES EFFECTIVE THURSDAY, FRIDAY & SATURDAY APRIL 4, 5, 6

Quantity Rights Reserved

59¢

13 OZ SIZE **69¢**

59¢



HOWARD SCHRINER'S "LITTER DISPLAY" AT SHELL FAIR



WILLIS COMBS AND HIS SHELL FAIR "DISCARD TABLE"

YOU WONDER WHERE THE LITTER WENT

Two men, working entirely unknown to each other, decided to do something about the increasing threat of litter accumulation on Sanibel and Captiva Islands. There were some surprising results.

Mr. W.B. Combs of Sanibel and New York followed after an amateur instant picture en-

thusiast and picked up the following items strewn along the beach: The empty film box which the manufacturer prints on the box itself, "Please put empty pack in wastebasket." The film pack cover lined with foil. Two separate pieces of an empty metal film pack measuring 3 1/2 x 5 inches which also reads, "Please put empty pack in wastebasket." One plastic film pack back of the same size,

three picture tabs, one blotter card and a discarded or lot color picture shot in the same direction on the beach as the trash had been thrown. An enlargement could show the trash itself.

Mr. Combs made a framed display of these items which he exhibited at the recent Sanibel Shell Fair. He called it an Educational Collage and titled it "Shutter Bug or Litter Bug." A sub-title explains; "Monday at 5:30 p.m. all items, including the color print, were discarded on the beach BY ONE PERSON."

Meanwhile Mr. Howard Schriener of Sanibel picked a spot on the beach at random and in 4 1/2 minutes picked up a bushel of discarded beer, soft drink, tobacco and cosmetic spray cans ignoring the other debris. From this bushel a display was made which he titled "Self Collected Sanibel/Captiva Shells" with the plea to "Help eliminate this fast multiplying species new to these Islands which threatens the beaches and wild life sanctuaries." This display was also exhibited at the Fair with a pad on which visitors could write comments.

Most of the comments were serious and helpful. Many tending towards the words "shame" and "revolting." "They" (no one seems to know who "they" are) appeared in several comments: "They ought to do something about it."

Here are some typical comments:

"Good collection but would not like to be the one to pick it up."

"Coon's Brewery in Colorado tried giving 1¢ back on small aluminum beer cans like returning pop bottles. Maybe the East could take a hint."

"You think this is bad---

see the Ohio River beaches at Cincinnati, Ohio."

"Litter shelling must be encouraged."

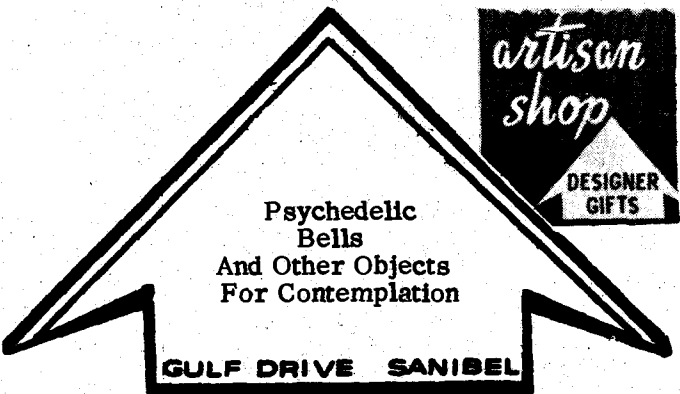
"Don't boat owners know that like the dead seashells, cans and litter thrown overboard wash ashore, too? Even from 5 miles out or better."

"Why not have disposal containers in these parking spots? There are none."

As in previous years, a volunteer clean-up crew reported the morning of the second day of the Fair to tidy up the grounds. Not a piece of paper or can or bottle had to be picked up. The grounds were spotless and remained so for the duration of the 3 day Fair. Refuse cans stationed on the grounds (evidently not seen by one commenter) before the Fair opened were surprisingly not filled to capacity. What happened to the expected debris? The situation seemed unnatural, like waking up one morning and not seeing water in the Gulf.

A few years ago the Sanibel Improvement Committee, under the sponsorship of the Community Association, placed trash cans at strategic points on Sanibel. The original cost, replacement and pick-up is borne by the Community Association. The County has put trash containers in the public park areas and along the Causeway. Unfortunately this combined effort has failed so far to get the hoped for results but for some reason the Fair Grounds remained immaculate for three days.

The Sanibel/Captiva Chamber of Commerce has put both displays made by Mr. Combs and Mr. Schriener in the lobby of the Chamber Building probably hoping that magic of some kind in the displays will rub off on future guests to the Islands.



Psychedellic Bells
And Other Objects
For Contemplation

GULF DRIVE SANIBEL

Cranes
FINE STATIONERY In Gift Boxes
MacIntosh Book Shop
Sanibel Island, Florida GR 2-3041

dotti
of Sanibel
THE ISLAND BOUTIQUE

Phelps Sportswear
Dresses - Blouses - Shorts - Skirts
Pants & Culottes

Tanner of North Carolina
Dresses - Shifts - Shorts - Blouses - Skirts

Lombardi
Shifts - Shorts - Blouses - Culottes

Mr. Pants
Pants & Shorts

Shahoon
Shifts - Skirts - Pants - Blouses
Hand Screened Dresses

Serbin
Dresses - Shifts

Caldonia Knitwear
Cocktail Dresses

Gabar
Beach & Swimwear

Elizabeth Stewart
Patio Dresses & Swimwear

Gerfrude Davenport
"Terry" Robes - Beach Jackets - Shorts -
Tops - Pants - Shifts

Mary Chess Toiletries

Hours 9-5 Closed Sunday


Become a member of,
Friends of the Sanibel Public Library

Memberships \$1 "or more."
YOUR Library needs YOUR support!
Library hours:
Tuesday and Saturdays 10-12
Thursdays 2-4

PAGAN IN THE PARLOR AGAIN

That play everyone's talking about "Pagan In The Parlor" will come to the Pirate Playhouse Sunday, March 31, at 8:15 with the same fine cast, Elaine Patton, Martie Schlarb, Priscilla Murphy, Peggy Parcels, Holly Hollingsworth, Ruth Hunter, Gene Karr, Robert Parcels, Ed Legel and director, Philip Hunter. June and George Brinkworth are stage managers.

The Hunters are indeed proud that this new comedy by author Franklin Lacy has met with so much enthusiasm that audiences are seeing it twice. Orders for tickets have been received a month in advance and visitors to the Islands have been timing their vacations so as to see "Pagan In The Parlor"--- Pirate Playhouse---Curtain 8:15---Box office GR 2-3943.



Island Bird Tours
By
JEANNE

Author of Sanibel-Captiva Bird Guide
FOR RESERVATIONS CALL GR 2-4551

UNCLASSIFIEDS

FOR SALE:
1 exercise bicycle, \$10. Call GR 2-5271 after 5 p.m.
* * * * *

FOR RENT:
From Nov. to April. Efficiency apt. for two. Full bedroom, tile bath, kitchen and living room. Sofa bed. Private pool. Excellent Gulf view. \$390.00 per month. All utilities.
* * * * *

LOST:
Pair colored glasses (prescription). Thick black rims, dark lenses. Return to South Seas Plantation. Lost on bird walk.

Motel owners and business people. You can now get color post cards and brochures. Beautiful full color reproduction, highest quality, low price. Call Larry C. Huston, commercial photographer MO 4-6655.
* * * * *

JOB PRINTING:
Letterheads, envelopes, rate sheets - anything. Fast service - best prices anywhere. B.R. Brown, MO 4-6546.
* * * * *

ART SUPPLIES:
Paints, brushes, etc. Also Flex-Bon paints, designed for tropical weather, at LEGEL SUPPLY, Sanibel Island, GR 2-4051.
* * * * *

TERMS AVAILABLE:
Sanibel, close in. Two lots, 50 x 115 at end of paved St. Both for \$1,700. Zoned lot on main road, 100 x 214, \$7,200. LEW A. FUNK, Real Estate Broker, GR 2-3361.
* * * * *



THE **Pirate Playhouse**

PRESENTS
Pagan In The Parlor
Saturday, April 6

Curtain 8:15 Box Office GR 2-3943

GR 2-2751

Coconut Grove
Restaurant

OPEN: 7:30 a.m. to 9:00 p.m.
7 DAYS A WEEK

Corner of Tarpon Bay Rd. & Sanibel Blvd.

Job Printing

Fine Printing
Fair Prices
Fast Service

LETTERHEADS - ENVELOPES
TICKETS - BILL HEADS
ANYTHING

WE WILL COME TO YOU FOR YOUR COPY AND DELIVER TO YOUR DOOR


Barrett Brown 155 Delmar Road MO 4-6546

SANIBEL **STANDARD OIL**

SERVICE STATION

ATLAS TIRES -- TUBES -- BATTERIES
ACCESSORIES
WRECKER -- TOWING -- ROAD SERVICE
EXPERT SERVICE

AAA **GR 2-4961**



THE ISLAND STORE
CAPTIVA

groceries
frozen foods
oddrrents

BINOCULARS
for rent \$1.00 a day
We have binoculars for sale, also.

MacIntosh Book Shop
Sanibel Island, Fla. GR 2-3041

THE HOLTZ'S
SNACK SHACK

**WOULD YOU LIKE TO PUT YOURSELF IN THIS PICTURE
SEPTEMBER 1968**



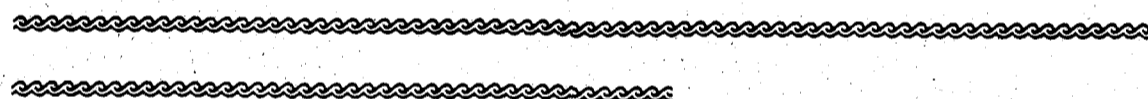
WE ARE OFFERING THREE TOURS FOR CONSIDERATION AND WILL CONCENTRATE ON THE ONE FINDING MORE FAVOR

- #1. New York, Athens, Aegean Islands Cruise, Rome, London, New York, 21 days, Superior Hotels - \$845.00
- #2. New York, Stresa, Venice, Florence, Rome, Siena, Rapallo, Milan, New York, 21 days - \$650.00
- #3 New York, Lisbon, Caceres, Madrid, Granada, Torremolinds, Seville, Lisbon, New York, 21 days, superior hotels - \$595.00

FOR COMPLETE INFORMATION CALL OR WRITE

MacIntosh Bookshop

SANIBEL GR2-4091



Keep Up With the
NEWS FROM HOME
WE MAIL ANYWHERE!

**SANIBEL - CAPTIVA
CAR RENTAL**
Periwinkle Way
BONDED - LICENSED - INSURED
GR 2-3231

HOUSE ON GULF
Lovely residence on Gulf beach in secluded area. 3 bedroom, 2 bath on beautiful lot 400 ft. deep. Many extras for gracious living. All utilities included. This is a MUST SEE.

GULF ACCESS LOTS
Large lot within 2 minute walk of Gulf beach, nice trees. Good privacy. These lots will become even more choice as Sanibel begins its inevitable growth and development.

SAN CARLOS BAY
150 feet on white sand beach. Boat basin at rear, private road, fine trees. This property will retain seclusion in Island flavor when other areas are subdivisoned. Look ahead and get it now.

ACREAGE PARCELS
Invest now before the real growth starts. We have acreage parcels which developers will be fighting for in 5 or 6 years.

NORTH CAPTIVA
North Captiva looks like Sanibel did 20 years ago. Gulf front vacation hideaway lots are \$7,500, Gulf view lots \$2,995, inside lots as low as \$1,695. These are good high lots with nice trees.

LISTINGS WANTED
ROSS MAYER
REGISTERED REAL ESTATE BROKER
Periwinkle Way GR 2-6671

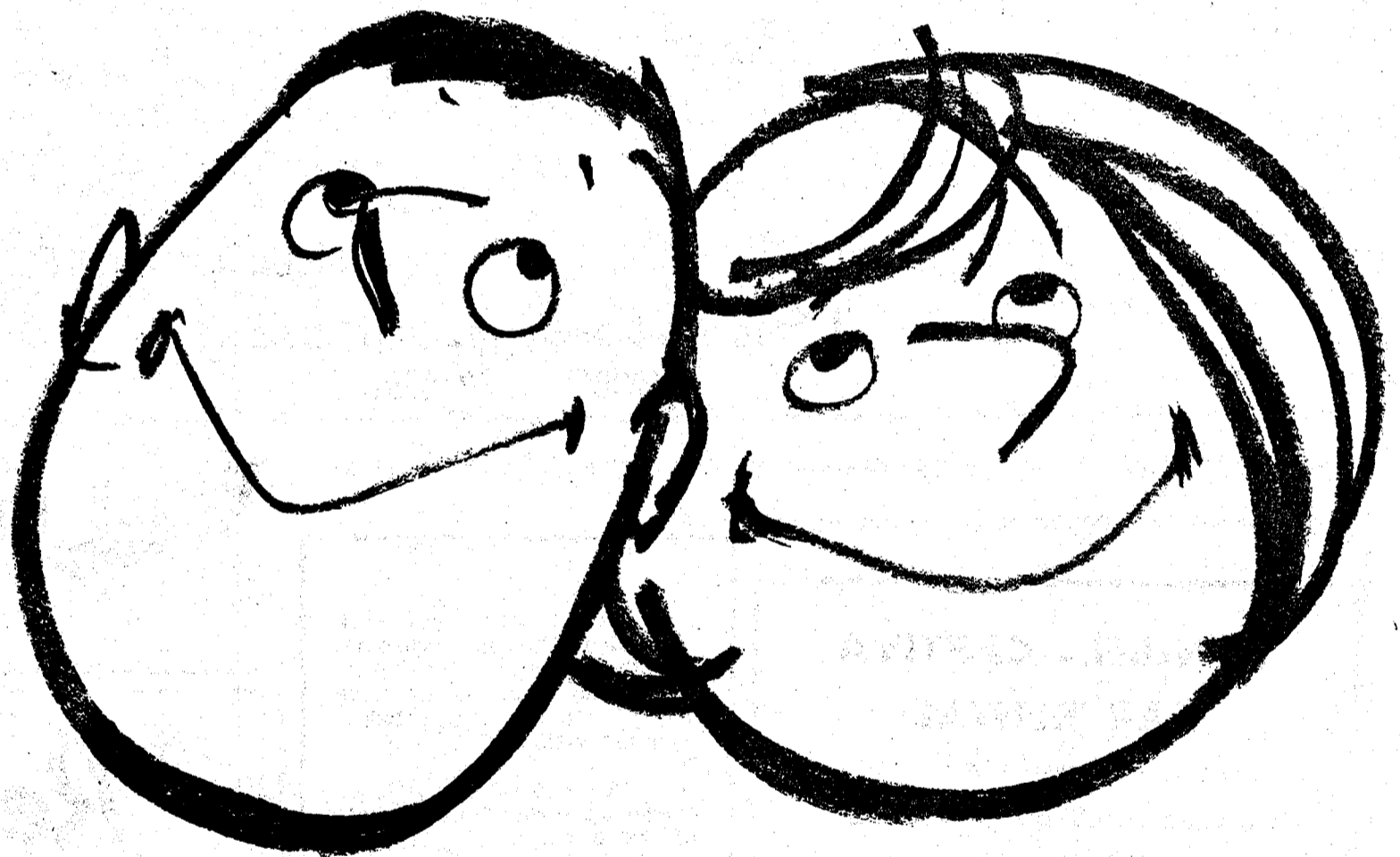
The **Reef**
RESORT MOTEL
Sanibel

SCULPTURE POTTERY
Seramics by Susan
STUDIO
SANIBEL SIDE OF BLIND PASS BRIDGE. SEA LIFE REPLICAS

THE OPEN GATE
BOUTIQUE
● Hawaiian dresses and pant toppers
● Pamper your feet in a pair of our soft slippers
● Waterbabies for boating, shelling, and sailing
Next Door to the Bookshop
WE ONLY LOOK EXPENSIVE GR 2-6051

H. A. VROOMAN
TV
Phone Number Changed To
GR2 - 6611
CAPTIVA ISLAND, FLORIDA

**SUPPORT YOUR
LOCAL MERCHANTS!
&
THE CHAMBER OF COMMERCE**



**BUY ON
THE ISLANDS!**



Seven Seas

With Exclusive Lines
in the Latest Styles & Colors.

HAWAIIAN SWIMWEAR MUU'S & DRESSES

DRESSES in all styles including HAND-SCREENED SHIRTS

. BLOUSES CULOTTES 2-way NYLON

STRETCH SLACKS & SHORTS TERRY JACKETS

& SHIRTS.

FOR THE LARGEST SELECTION IN SPORTSWEAR SHOP

THE MAN'S SHOP at

SEVEN SEAS

Come In And Browse

'ACROSS THE MOAT TO FASHION'

Seven Seas Shop

Try Our Islands Colognes & Perfumes

BEST SELLERS AVAILABLE

NEW YORK TIMES, MARCH 31, 1968

General

- ✓ The Naked Ape. *Morris*
- ✓ Between Parent and Child. *Ginott*
- ✓ "Our Crowd": The Great Jewish Families of New York. *Birmingham*
- 4 Nicholas and Alexandra. *Massie*
- ✓ Rickenbacker. *Rickenbacker*
- ✓ Gipsy Moth Circles The World. *Chichester*
- 7 The Way Things Work: An Illustrated Encyclopedia of Technology
- ✓ Tolstoy. *Troyat*
- 9 Kennedy and Johnson. *Lincoln*
- ✓ The English. *Frost & Jay*

Fiction

- 1 Vanished. *Knobel*
- ✓ The Confessions of Nat Turner. *Styron*
- ✓ Myra Breckinridge. *Vidal*
- 4 Topaz. *Uris*
- ✓ The Tower of Babel. *West*
- ✓ Christy. *Marshall*
- ✓ Airport. *Hailey*
- 8 The Exhibitionist. *Sutton*
- ✓ The President's Plane Is Missing. *Serling*
- ✓ Rosemary's Baby. *Levin*

MacIntosh Book Shop

Sanibel Island, Florida - We Mail Anywhere - GR 2-3041

Your Health

Is Our Prime Concern!

YOUR PRESCRIPTION IS ALWAYS FILLED

WITH THE UTMOST CONCERN FOR YOU AND YOUR FAMILY

Prescription Dept. Open Daily 9-9, Sunday 9-7



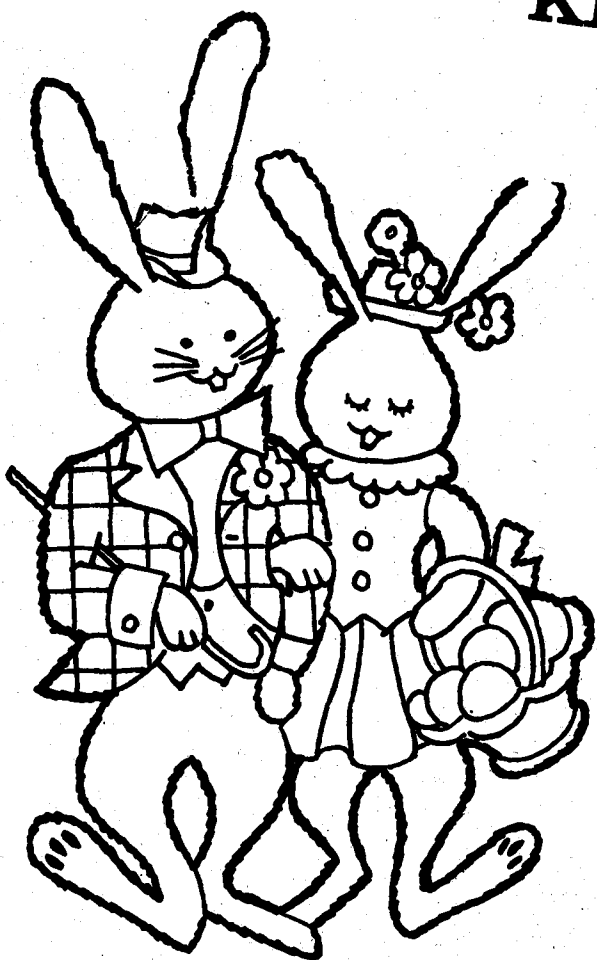
Fort
Myers
Beach
Florida

GARLS

The Pharmacy
Nearest
the
Islands

San Carlos & Estero Blva.

MO 4-9754



KEDS FOR THE EASTER PARADE

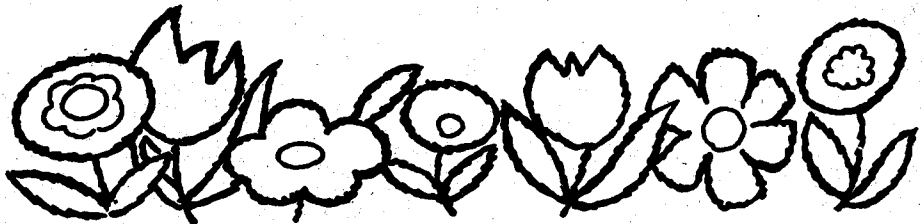
EGG DYE

CANDY NOVELTIES

BASKETS

CANDY RABBITS, DUCKS, ETC.

CARDS



BAILEY'S GENERAL STORE

SERVING SANIBEL & CAPTIVA ISLANDS SINCE 1899

SANIBEL PACKING COMPANY

WESTERN UNION WINE & COLD BEER FILM DEVELOPING SERVICE

WE ARE OPEN 52 WEEKS A YEAR TO SERVE YOU!