

SANIBEL-CAPTIVA ISLANDER

DEVOTED TO
THE INTERESTS
OF
SANIBEL
AND
CAPTIVA ISLANDS

7¢

photos by Larry C. Huston

The Finest
Shelling
Beaches
In The
Western
Hemisphere

VOLUME 9

NUMBER 16

PUBLISHED EVERY THURSDAY

APRIL 17, 1969

DEATH AT SEA

The first fatality in the local population of loggerhead sea turtles directly caused by shrimping operations in water adjacent to the Island since 1967 happened recently when a dead mature female loggerhead turtle washed ashore on Sanibel Island.

With the closing of the Tortugas shrimping grounds there has been accelerated shrimping activity five to ten miles off Sanibel and Captiva in the past few weeks. The large loggerhead becomes entangled in the nets of the shrimp boats and drowns. It is most likely that other dead turtles will be found along the Island beaches as the Spring progresses.

On Friday Charles LeBuff received a message that a sea turtle was foundering 200 yards off shore from the Trade Winds Motel. LeBuff and Phil Hollembeak of Buffalo, N.Y., who reported the turtle, put to sea in a small skiff and managed to grab a float attached to the turtle by a connecting line, and brought it to the beach. With the turtle came the float, the line and a stone crab trap. The line encircled the turtle's neck, twisted and the poor creature was held fast anchored by the crab trap. The line was removed and the turtle loaded (with the help of several onlookers, including Sid Collacott of Sanibel) and taken to the Sanibel Lighthouse where on Saturday it was measured, tagged and released. Many photographers were present and photographs were taken in quantities. The most amazing thing about the entire incident was that the turtle was a male. It's weight was estimated at 300 lbs. and aged approximately 15 years. Without a doubt this was the first time since this turtle hatched

years before that it had touched ground, for the male never leaves the sea; only the female come to the beaches for egg laying.

Anyone observing the sea turtles, dead or alive, is asked to contact LeBuff and the Ding Darling Refuge headquarters, GR 2-2251, or Chuck Holloway, GR 2-6411.

Mr. LeBuff, executive director of Caretta Research, announced this week the resignation of Cliff Grimard of Sanibel from the Board of Directors of Caretta. Mr. Grimard served on the Propagation Division since the creation of the project to restore the sea turtle colony of Sanibel and Captiva Islands and contributed valuable time and effort in the establishment of many of objectives of this group. His cooperation will certainly be missed. For the outstanding contribution he made the restoration of the loggerhead turtle on island beaches, Mr. Grimard received a life-sponsor membership in Caretta Research.

To fill the vacancy Chuck Holloway was appointed to serve. Chuck is an outdoor man, conservationist and assistant scout master of Boy Scout Troop 88 of Sanibel and Captiva and very interested in fulfilling the objectives of Caretta Research.

AUDUBON ELECTION


At the closing meeting of the 1968-69 season, held on April 10, the members of the Sanibel-Captiva Audubon Society elected unanimously the following officers for 1969: Mario F. Hutton, president; Griffing Bancroft, vice president; Louise Goodwin, secretary-treasurer. Also elected director for a three year term was Marion Cannon. The Board will also include the following directors, serving the second or third year of their terms: Margaret Buschman, Edmund Carnahan, Clarence R. Conklin, Hervey Roberts, Elmer L. Severinghaus, George S. Winterbotham, and Roy Bazire, chairman of the Sanibel-Captiva Conservation Foundation.

In submitting his annual report, President Mario Hutton stated that 1968 was a year of achievement and continued progress for the local Audubon. Among the most outstanding accomplishments he listed the holding on Sanibel of the Fall Conference of the Florida Audubon Society from November 14 to 18, and of the annual meeting of the Wilderness Society from November 19 to 22; a program given by Mr. Hutton in New York before members of the Board and Department Chiefs of the National Audubon, focusing their attention on the unique ecological importance of our islands; interventions before the County Commission and Zoning Board; escorting 9 Florida Audubon Chapters and numerous other groups visiting the Ding Darling Sanctuary; the increase in quality of programs, including 11 evening shows and 6 outdoor events; further improvement in the Society's financial situation; increase in the membership from 225 to 304; and very close cooperation with local organizations operating in allied fields. As proof of this cooperation, Mr. Hutton was able to hand to the chairman of the Sanibel-Captiva Conservation a check in the amount of \$600, received from the Caloosa Bird Club of Fort Myers, constituting the major portion of their annual surplus, offered in appreciation for the Foundation's activities in the field of conservation on the Islands.



**Quality That
Never Varies**


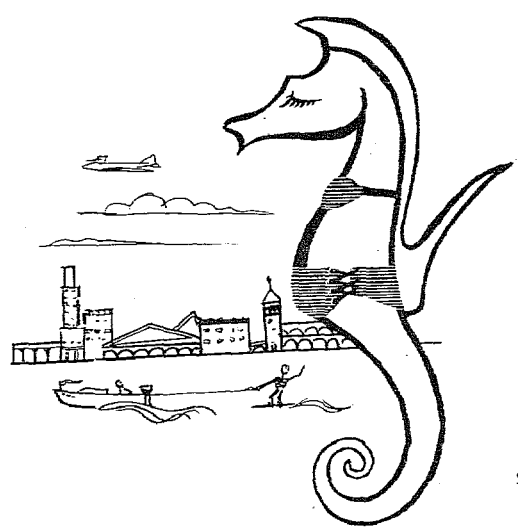
"ALL YOUR NEEDS FROM FOOD TO FILM"



SANIBEL-CAPTIVA REAL ESTATE

Claire T. Walter, Realtor
and Associates

GR 2-4011 GR 2-3031

IT'S TIME FOR
SWIM WEAR
AGAIN
AND THE
SEAHORSE SHOP
HAS THE
BEST
SELECTION EVER

At The Lighthouse End Of Sanibel

SANIBEL CAPTIVA ISLANDER

Established 1961
Duff Brown, Owner and Publisher

Editors.....Virginia and Duff Brown
Production...Louise Ostling, Patti Ann Gillfillan
Susan Kosinski, Carolyn Lowry,
Karen Huston
Reporter.....Susan Holtz (Phone GR 2-5052)
Unclassified rates: \$1.00 minimum for 15 words
or less; 5¢ a word thereafter.
Second class postage paid at Fort Myers Beach,
Florida 33931.

ISLANDER OFFICE:
2330 Estero Blvd., Fort Myers Beach, Write P.O.
Box 2827, FMB, Phone MO 4-6792 (not a toll call
from the Islands)

Deadlines: Ad and news copy are picked up Sat-
urday afternoon; SHORT news items and ads may
be phoned in (MO 4-6792) no later than Monday
noon.

SUBSCRIPTIONS

On-Island \$3.00 yearly
Off-Island or Split \$3.50 yearly

*Priscilla
Murphy*

Realtor

SANIBEL ISLAND, FLORIDA

MAIN OFFICE GR 2-4501
BRANCH OFFICE in Sanibel Shopping Center
GR 2-4521 and GR 2-4531

You're Invited To Stop By The Office To Read
The Wall Street Journal
OFFICES OPEN ALL DAY SATURDAY

**H. A. VROOMAN
TV**

Phone Number Changed To

GR2 - 6611

CAPTIVA ISLAND, FLORIDA

**SANIBEL
SERVICE STATION**



Atlas Tires -- Batteries -- Accessories
Wrecker -- Road Service -- Inspection
HAVE IT CHECKED BEFORE YOU GO!
Auto Painting & Body Work
Tune Up -- Muffler Service



GR 2-4961

ZENITH

TELEVISIONS

BLACK & WHITE OR COLOR

**Fedders
AIR CONDITIONERS**

WOOSTER TELEVISION

SALES & SERVICE

Gulf Drive, Sanibel

GR 2-2101

CAPTIVA LIBRARY MOVES

The Captiva Library has mov-
ed its books into the new library
building adjoining the Captiva
Community Center, and will
function from there hereafter, but
because many of the winter resi-
dents have already left for the
north the new building will not be
formally dedicated until next sea-
son. It had been hoped that the
library could be dedicated while
the winter residents were still
on the Island, but unavoidable de-
lays made this impossible.

The books were moved last
Friday by Ballinger's Captiva
Services, under the supervision
of Librarian Hazel Roberts and
Associate Librarian Pintard
Mills. Thanks to a careful flow
plan worked out in advance by
Mrs. Roberts and Mrs. Mills, and
an excellent job by Ted Walden
and George Mahone of Captiva
Services, the physical part of the
move was accomplished in one
afternoon. About 3,000 hardback
books were moved, plus paper-
backs, magazines, and files, as
well as the book stacks and other
furniture. Not one book was mis-
placed --- something of a record.

Hours for the library will be
the same in the new building as
in the old; from 9 to 12:30 on
Tuesday and Friday mornings.

An important reason for hold-
ing the formal dedication of the
new library until the winter
people return is the fact that in
every way the building is the Is-
landers. It was built entirely by
Island contributions, and is prob-
ably one of the few libraries in
the country in recent years to be
constructed without any money
from Federal, State, or County
governments. It is therefore
planned to hold a celebration
ceremony to which all Islanders
will be invited. Invitations will
also be sent to the County Com-
missioners, the County Library
Board, the Lee County Library,
and the local libraries in the
county.

The building will be known
as the Captiva Memorial Library
in honor of former residents who
have passed on. A plaque to this
effect will be installed at the
dedication. The plaque will also
contain individual names of for-
mer Captivaites who were spec-
ified by donors, with room left
for the addition of other names
that may be specified by donors
in the future.

In addition to its own books
and books obtained through the
Lee County Library system, Cap-
tiva recently subscribed to the
American Lending Library Ser-
vice. This service makes it pos-
sible to obtain new books, mostly
new fiction, almost as soon as
these are published. The books
are retained as long as there is
a demand for them, and are then
returned.

To make it even more of an
Island building, the library was
constructed by Karl Wightman,
one of the few native-born Cap-
tivaites.

BAKE SALE

On behalf of the members of
the Sanibel-Captiva P.T.A. Bake
Sale Committee, the chairman,
Mrs. Ralph Woodring, wishes to
thank all those who gave so gen-
erously of their time and talent
to make the sale an outstanding
success.

Special thanks go to those
contributors who are non mem-
bers of the P.T.A.

SANIBEL PUBLIC LIBRARY

A new experiment in open
hours will be tried by the Sanibel
Public Library during the months
of May and June. The Library will
be open Wednesday evenings be-
tween the hours of 7:30 and 9:00
p.m. If these new hours are
popular further extension of
them will be considered. See you
Wednesday nights, 7:30 to 9 at
the Sanibel Library.

**First National's Golden
Savings lets everyone
earn 5% interest...
and it's compounded
continuously!**

As little as \$25 opens your account and you start
earning 5% interest continuously from the very first
day. Add to your savings as often as you like, in
any amount.
Interest is credited to your account four times a
year. You can withdraw any money which was on
deposit a full calendar quarter during a convenient
ten-day withdrawal period, at the beginning of the
next quarter.
Another great service from the "helpful one"

**FIRST
NATIONAL BANK**
IN FORT MYERS, FLORIDA
FIRST AND LEE STREETS



Member Federal Deposit Insurance Corporation

Reynold's Craft Shop

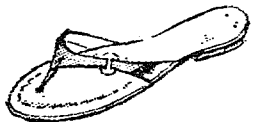
Main Road, Near Casa Ybel Road

FLORIDA MINIATURES
RARE SHELLS

SHELL BOXES - FRAMES - TABLES

Shellcraft Supplies and Findings
Ceramics - Leather & Misc. Items
The Handmade Gift is the Thoughtful Gift

SHOES STYLED
FOR ISLAND LIVING



THE OPEN GATE

BOUTIQUE

Periwinkle Way

GR 2-6051

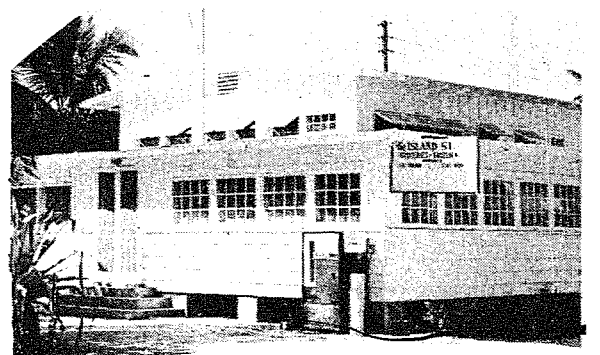
For Meals
The Whole
Family Enjoys
**Coconut
Grove** Restaurant

GR 2-2751

OPEN: 7:30 a.m. to 9:00 p.m.

7 DAYS A WEEK

Corner of Tarpon Bay Rd. & Sanibel Blvd.




THE ISLAND STORE

CAPTIVA

groceries

frozen foods

oddments



GOURMET CORNER

Something Different
s. s. pierce's creamed
salmon and peas

To Sanibel & Captiva residents, property owners and visitors: From the Sanibel Planning and Zoning Study Committee.

Lee County is engaged in the preparation of a new zoning ordinance, and in a county-wide planning survey.

The Sanibel Planning and Zoning Study Committee was formed last fall by these Civic organizations: The Sanibel-Captiva Conservation Foundation, Inc., The Sanibel Community Association, The Sanibel-Captiva Chamber of Commerce, The Audubon Society, The Interested Citizens Committee, The Captiva Civic Association, The Rocks Association and The Palm Lake Association.

The Committee was authorized to work with the County's Planning Consultants, to the end that a revised and improved Island zoning plan be submitted to the Consultants, and after their review, to the County Commissioners.

First by individual residents, and later by this Committee, certain desirable restrictions have been submitted to the Consultants. These restrictions include setback lines, building height limitations, lot sizes, a new sign ordinance, and other items.

At an early December meeting, County zoning officials and the consultants gave us encouragement in our requests, subject, of course, to the public hearings that will be held this year.

The Committee has so far successfully opposed one appli-

cation for Industrial Zoning and two other down-grading applications. It is currently directing its effort into a limitation of building heights to two stories. It is too early to say whether we shall be successful.

We are also working on a new zoning map, with the general intent of up-grading zoned areas wherever desirable and practical.

It is expected that the Committee will be needed for an indefinite period, and that it will continue to promote improvements in Island zoning, roads, and other matters. It will also serve as watchdog for undesirable projects.

The Committee has incurred some considerable expense in these pursuits, principally for attorney fees, surveys, etc. The Committee members are volunteers.

We invite your contributions to this effort. When the trailer court project was opposed and defeated in 1967, contributions of \$10 were solicited by the Interested Citizens Committee. The work of that committee has been taken over by this one, which will operate generally by the By-Laws of the former.

Contributions may be sent to the Chairman, Mr. M. B. Beattie, Palm Lake Drive, Sanibel, Fla. 33957.

We hope that we will be able to give you your money's worth.
/s/ M. B. Beattie, Chairman

ANSWER TO SUZI'S Q'S

What is the speed limit on S-867 between Tarpon Bay Road and West Sanibel?

Answer: 60 mph by day and 55 mph by night; however, slow down to a "creep" at the "S" turns and at Trade Winds.

Vintage of school bus?

Answer: There were no buses when Francis Bailey went to school. He rode a trained alligator.

Information on golf course: Opening of bids on the Sanibel-Captiva Gold & Country Club's golf course is expected by April 15. The project went out for bids late in March and several firms in the golf course construction business are known to be planning to enter bids.

It has been a long time since we wrote to you regarding your Sanibel-Captiva Golf & Country Club, but we did not want to give any "iffy" information in view of the lengthy delay in finalizing plans. These have now been accepted by the Farmers Home Administration, enabling the Board to invite bids. Golf course plans and specifications are available for inspection by any member of the Chamber of Commerce building.

Closing on the FHA guaranteed loan of \$174,500 is anticipated soon. It is also anticipated that FGA will ask that we have the full initiation fee for all members on deposit as part of the requirements for closing. For that reason, we are asking you to please send check for balance due, made out to Sanibel-Captiva Golf and Country Club, to us promptly. With but a few exceptions, this will be \$50.00 for each membership, almost all members having paid \$50.00 (or one-half initiation fee of \$100.00) on signing the agreement. If you cannot find your receipt, and think you paid \$100.00, please contact any member of the Board of Directors for verification.

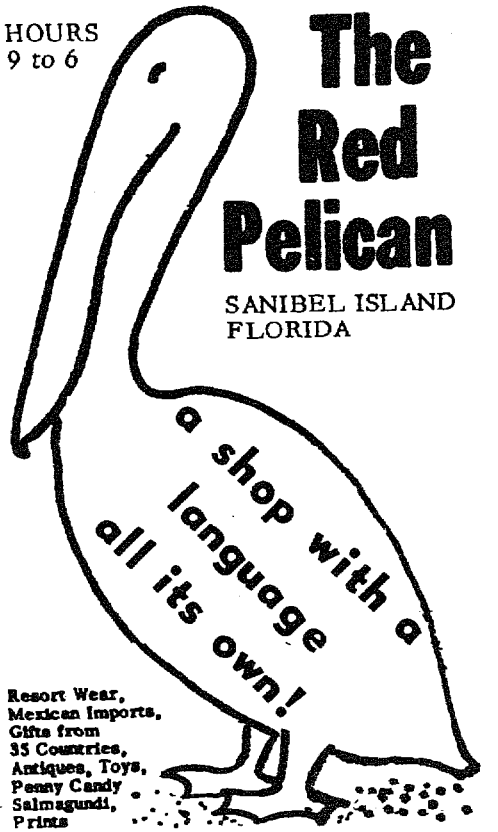
Since the golf course architect's fee does not include bringing in the course, the Board expects to hire Mr. Bob Ford, Jr., for that job. Funds will also be needed to employ him, probably as soon as clearing is completed. Bob and his wife are native Floridians, and he has had 24 years experience in the golf professional field. His experiences include building the Lawrenceburg County Club course at Lawrenceburg, Tenn., pro-greens superintendent at clubs in Jeffersonville, Ind.; Cairo, Ga.; Glasgow, Ky.; and Park Mammoth Resort, Park City, Ky. He and his family presently live in Ft. Myers.

To refresh your memory, our golf course architect is Mr. Ernest E. Smith, who did the South Seas course; consulting engineers are Bennett & Bishop; coordinating architects, William R. Frizzell Partnership.

/s/ Sanibel-Captiva Golf & Country Club, Inc.

Board of Directors
John Kontinos, President
Norman Chambers, V-P
Ray E. Bazire, Secy-Tr.
John Wakefield
Roly Frenette

HOURS
9 to 6



The Red Pelican

SANIBEL ISLAND
FLORIDA

a shop with a
language
all its own!

Resort Wear,
Mexican Imports,
Gifts from
35 Countries,
Antiques, Toys,
Penny Candy
Salsmagundi,
Prints

Turn Right At The Shopping Plaza
Follow the Signs GR 2-2741

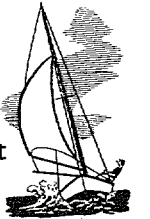
SPECIAL NEW SCENIC BOAT TOURS OF THE ISLANDS

Fish, Bay and Gulf

Live Shelling


Boats, motors for rent

Sailboats for rent



Guided Tours from
Tarpon Bay Marina

next to the Red Pelican
COMPLETE INFORMATION
CALL GR 2-2741



SERVING

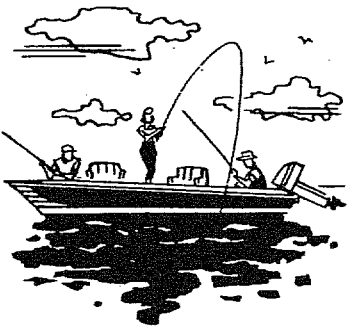
BREAKFAST - LUNCH - DINNER
AT THE COUNTER... OR ON THE PATIO
AND IN THE DINING ROOM

THE SNACK SHACK

OPEN 8 a.m. until 8 p.m.
SIX DAYS A WEEK - CLOSED TUESDAY GR 2-3321

Dewey's Marina

Tarpon Bay, Sanibel Island, Florida




boats - bait - tackle

MARINE SUPPLIES - ANTIQUE BOTTLE SHOP

Fresh Seafood Market

Gas - Oil
GR 2-2231
Dockage



Navigation Charts Now On Sale

MacIntosh Bookshop

Sanibel Island, Florida
GR 2-3041



Captiva Island, Florida

Our Dining Room Is Open

WHY NOT JOIN US FOR ---
BREAKFAST
LUNCH
DINNER

GR 2-3911



PRICES EFFECTIVE THURSDAY, FRIDAY, & SATURDAY
APRIL 17, 18 & 19

BAILEY'S GENERAL STORE

SANIBEL ISLAND

THE ORIGINAL
Old German
BRAND
PREMIUM LAGER



THE WORLD
KNOWS
NO FINER

BEER

12 OZ POP TOP CANS

PACK **689¢**



USDA CHOICE FULL CUT
**ROUND
STEAK**

\$ 1.09
LB



JACKSON'S
SMO
SHOW
PIC
3
WHOLE
LB
SLICED

USDA CHOICE
SIRLOIN STEAK LB **\$1.19**

USDA CHOICE
PORTERHOUSE STEAK LB **\$1.29**

USDA CHOICE
T-BONE STEAK LB **\$1.29**

USDA CHOICE
SIRLOIN TIP STEAK LB **\$1.29**

USDA CHOICE
RUMP ROAST LB **\$1.29**

FRESH WESTERN CENTER CUT
RIB PORK CHOPS LB **79¢**

FRESH WESTERN COUNTRY STYLE
SPARE RIBS LB **59¢**

JACKSONS FINEST
WIENERS 12 OZ PKG **39¢**

RATH FRESH
SAUSAGE LINKS 8 OZ PKG **35¢**

CENTER CUT
SMOKED PORK CHOPS... LB **98¢**

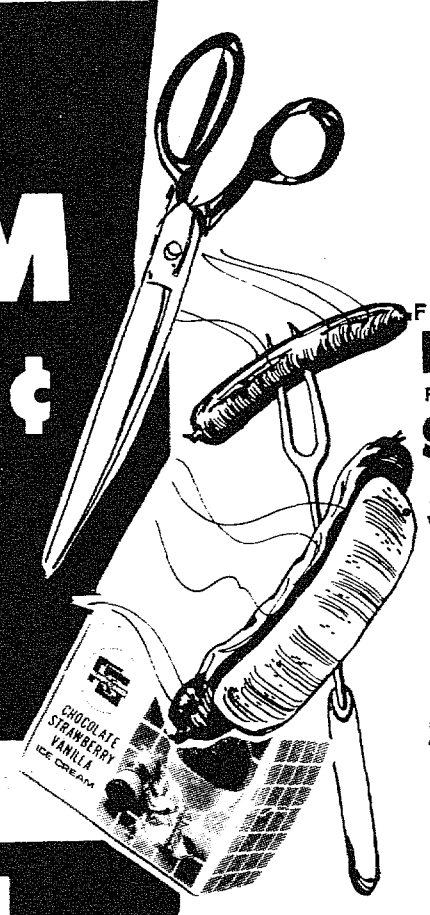
RATH Summer Sausage, Cooked Salami, Luncheon Meat
SLICED LUNCH MEATS 6 Oz PKG **35¢ EA**

COPELAND STICK (By the Piece)
BRAUNSCHWEIGER LB **49¢**

RATH BLACK HAWK
SLICED BACON LB PKG **69¢**

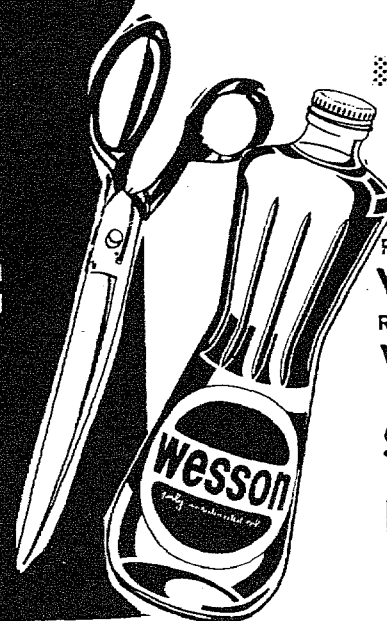
ALWAYS GOOD
**ICE
CREAM**
39¢
1/2 GAL

LIMIT 1 WITH \$5.00 ORDER OR MORE
EXCLUDING CIGARETTES



**WESSON
OIL**
24oz BTL
39¢

LIMIT 1 WITH \$5.00 ORDER OR MORE
EXCLUDING CIGARETTES



★ A.G. NON-FOOD BUYS ★

REG. 39¢, 4 OZ SIZE
VASELINE PETROLEUM JELLY **29¢**

REG. 69¢, 1 1/2 OZ SIZE
VASELINE HAIR TONIC **49¢**

REG. 89¢, 9 1/2 OZ SIZE
SPEAKEASY BREATHE FRESHNER **69¢**

REG. 89¢, 7 CT. PKG
PERSONNA INJECTOR BLADES **79¢**

REG. \$1.49, PKG of 100
EXCEDRIN **\$1.19**

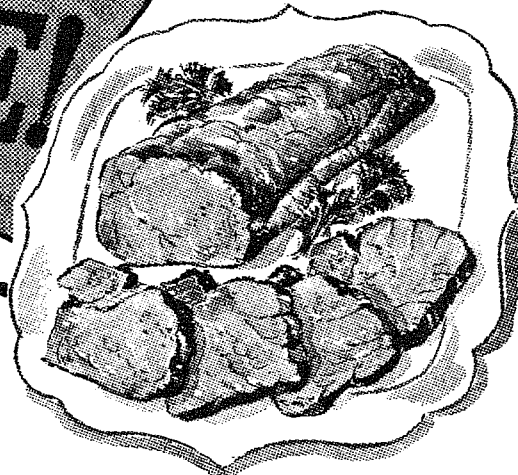


32 OZ B
LIC
32 OZ J
MA
150 CT.
HU
20 OZ K
KI

QUANTITY RIGHTS RESERVED

**SAVE
HERE!**

SAVE MORE!



**FINEST
SMOKED
HARDER.
NIC
5¢
...LB 43¢**

FRESH WESTERN SLICED
QUARTER

**PORK
LOIN
69¢
LB**



Frozen Foods & DAIRY VALUES

- Banquet "COOKING BAG" MEAT ENTREES**
5 OZ PKG Chicken A La King, Beef, Turkey, BBQ Beef **19¢ EA.**
Sloppy Joe, Crm. Chip. Beef & Salisbury Steak
- McKENZIE VEGETABLES**
24 OZ PKG Peas, Cut Corn, Mixed Vegetables **39¢ EA.**
20 OZ PKG Cut Green Beans
- 10 OZ SIZE 4 Individual CHEF BOY ARDEE
- CHEESE PIZZA..... PKG 49¢**
10 OZ SIZE, 4 Individual CHEF BOY ARDEE
- SAUSAGE PIZZA... PKG 59¢**
QUART, ALWAYS GOOD
- ORANGE JUICE..... 29¢**
12 OZ PKG KRAFT SPECIAL
- AMERICAN CHEESE.... 59¢**
12 OZ CUP LARGE or SMALL CURD MASTER
- COTTAGE CHEESE..... 27¢**

- TL ALWAYS GOOD PINK **Q. DETERGENT..... 29¢**
- AR ALWAYS GOOD **AYONNAISE..... 49¢**
- GIANT ROLL 2 PLY ASSORTED or DECORATED
- JDSON TOWELS 25¢** NET
- ING SIZE LOAVES ALWAYS GOOD **NG SIZE BREAD 2/39¢**



**MAXWELL
HOUSE**

**COFFEE
39¢
LB
CAN**

LIMIT 1 WITH \$5.00 ORDER OR MORE
EXCLUDING CIGARETTES



- 20 OZ CAN VAN CAMP **PORK & BEANS..... 19¢**
- 29 OZ CAN PRIDE OF GEORGIA **FREESTONE PEACHES..... 29¢**
- 46 OZ CANS **LIBBY'S TOMATO JUICE 3/\$1**
- 12 OZ CAN **LYKES LUNCHEON MEAT 49¢**
- 5 OZ GLASS TOWIE
- STUFFED MANZ. OLIVES 45¢**
- 8 OZ BTL WISHBONE CLASSIC
- FRENCH DRESSING 29¢**
1/4 LB PKG
- LIPTON TEA 43¢**
9 OZ TWIN PACK ALWAYS GOOD, REG or DIP
- POTATO CHIPS..... 39¢**
- 15 1/2 OZ CANS BURGER ROUNDS, STEW or CHICKEN PARTS
- KAL KAN DOG FOODS 2/39¢**
- 6 1/2 OZ CANS NINE LIVES
- TUNA CAT FOOD..... 4/49¢**
13 OZ CAN
- HOT SHOT BUG BOMB... 79¢**



FRUITS & VEGETABLES

- FLORIDA **GRAPEFRUIT..... 5 LB BAG 39¢**
The Diet Fruit
- SWEET JUICY **VALENCIA ORANGES 5 LB BAG 49¢**
- FRESH CRUNCHY **CARROTS..... 10¢**
LB Cello PKG

**FRESH TENDER
POLE
BEANS
19¢
LB**

RED BLISS **POTATOES 5 LB BAG 39¢**

we specialize in

PIZZA, SPAGHETTI & MEAT BALLS
and **SHRIMP IN THE ROUGH**

we serve it every night

The Lighthouse
Lounge
and
Restaurant




COLD BUD ON TAP
GR 2-5281

11 a.m. to 10 p.m. Mon. thru Sat. - Sunday noon to 5:30
Periwinkle Way • Adjacent to the Sea Horse Gift Shop

Your Health
Is Our Prime Concern!

YOUR PRESCRIPTION IS ALWAYS FILLED
WITH THE UTMOST CONCERN FOR YOU AND YOUR FAMILY



Fort Myers Beach Florida
San Carlos & Estero Blvd.

The Pharmacy
Nearest
the
Islands
MO 4-6128

RUTH HUNTER enters Lee Memorial Hospital for eye surgery this week.

BILL FRIDAY, son of Mr. & Mrs. LEE ROY FRIDAY, owners of the House of Treasures on Sanibel, returned to his home at New Haven, Conn., Friday morning. Bill had flown down two weeks ago to be with his mother while Mr. Friday underwent major surgery.

Bill, with his wife Sandy, serve as directors for one of the International Houses on the Yale University campus. Bill is on the ministerial staff at Yale and Sandy also teaches in one of the New Haven High Schools.

THE COLONY GUESTS

Guests enjoying a vacation at The Colony are: Mr. & Mrs. John L. Rowe and family of Downers Grove, Ill.; Mr. & Mrs. C. G. Caldwell, Peoria, Ill.; Mr. and Mrs. D. J. Trawicki and family, Milwaukee, Wisc.; Mr. & Mrs. K. L. Johnson and family, Brookfield, Wisc.; Mr. & Mrs. Roger Patch and family, Long Lake, Minn.; Mr. & Mrs. John L. Sullivan, Elmhurst, Ill.; Mr. & Mrs. Frank Rau, Amityville, L. I., N.Y.; Dr. & Mrs. Richard Kelly and family, Maumee, Ohio; Dr. & Mrs. R. S. Cron, Milwaukee, Wisc.; Mr. & Mrs. Art Appl, La Grange, Ill., and Mr. & Mrs. Wm. Breitzke, Elmwood Park, Ill.

CARD OF THANKS

It is with deepest gratitude that we wish to extend our sincere thanks to all those who remembered us in their thoughts and prayers before, during and since Lee Roy's recent surgery and hospitalization. We are, of course, particularly grateful to those who so quickly and willingly donated the blood that was so urgently needed. We are also very appreciative of the many gorgeous flowers, the books and cheery cards and greetings received.

Our thanks would not be complete without making specific mention of the wonderful care given by Dr. Roger Scott and Dr. Robert Cushman and the entire

staff of the Lee Memorial Hospital. Every person went far beyond the "actual call of duty" in their efforts to be of service. We shall never cease being thankful that we have such a wonderful medical staff and such adequate facilities as a part of our community.

/s/ Helen and Lee Roy Friday

Cranes

Fine Stationery in Gift Boxes

MacIntosh Book Shop

Sanibel Island, Fla. GR 2-3041




Fish 'N Chip DINNERS

Every Night
5 to 9 p.m.

Scotty's Pub

Open Daily 12 noon to 2 a.m.
GR 2-4322



Shannon's Real Estate

ON PALM AVENUE, CAPTIVA

SALES COTTAGES RENTALS

William C. Shannon, Broker Zella Mae Shannon, Associate
813 GR 2-2051 or 813 GR 2-2052 Captiva, Florida 33924

McCaul's

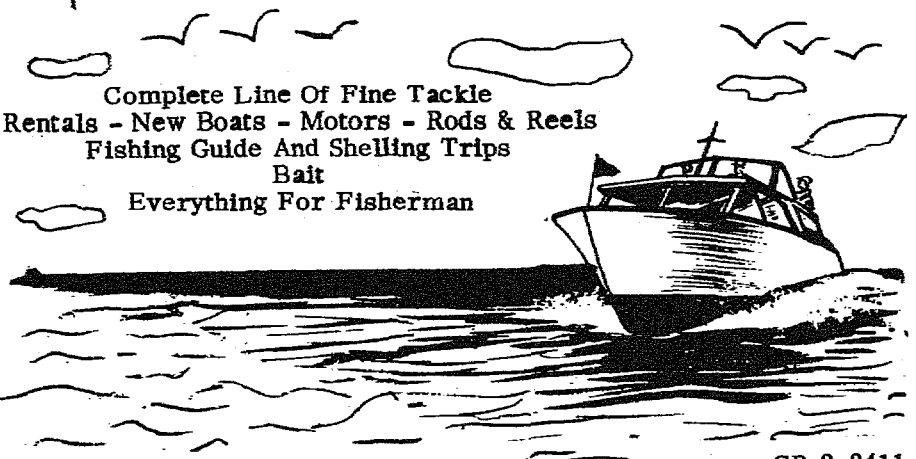
Captiva Island, Florida

Gifts - Driftwood - Specimen Shells

Located on Main Road, 3 Miles North of Captiva Bridge

SUPPORT CONSERVATION

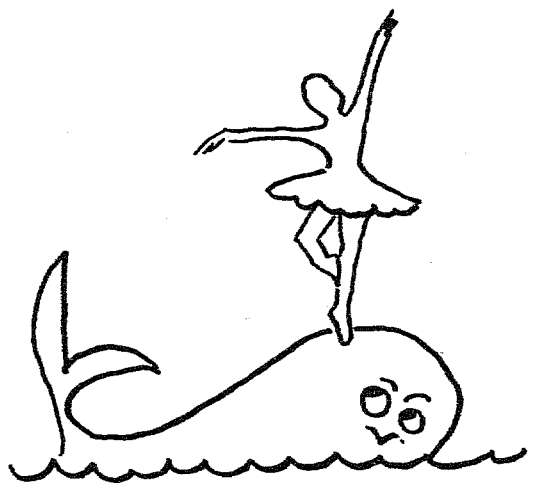
CASTAWAYS MARINA



Complete Line Of Fine Tackle
Rentals - New Boats - Motors - Rods & Reels
Fishing Guide And Shelling Trips
Bait
Everything For Fisherman

SANIBEL ISLAND GR.2-2411

ISLAND SCHOOL OF DANCE



PRESENTS
Evening at the Ballet

To Be Held April 26, At The Sanibel Community Center-8:00 p.m.
TICKETS NOW ON SALE AT THE KONA KAI MOTEL

GR 2-5711 Coralle Rumbold

artisan shop
DESIGNER GIFTS

GLASS
WEED POTS
\$2.00

GULF DRIVE SANIBEL




ISLAND BAKE SHOP

WEEKLY SPECIALS

Mon: Almond Macaroons
Thurs: Lemon Pectens
Fri: Chocolate Eclairs

GR 2-3121

Hours 8 to 5 Daily
Closed Sunday And Wednesday



Endorsed By
Sanibel - Captiva Audubon Society

Bird Tours Of The Islands
by
Griffing Bancroft

Reservations May Be Made At The
MacINTOSH BOOK SHOP
GR 2-3041

ATTENTION Motel Owners

ARE YOUR GUESTS BOTHERED WITH SANDFLY BITES OR SUNBURN?

Did you know, that Alo Ointment is an effective treatment to aid healing of all types of minor burns (including sunburn) cuts, abrasions, poison ivy, and non poisonous insect bites (such as sandflies)?

\$2.00 & \$3.00 SIZES - GUARANTEED
Sold Exclusively at the

Black Pearl

SCULPTURE POTTERY


Seaamics by Susan

STUDIO

SANIBEL SIDE OF BLIND PASS BRIDGE SEA LIFE REPLICAS

GOLDEN SANDS

RESTAURANT
COCKTAIL LOUNGE
OPEN 11:30 A.M.



Periwinkle Drive, Sanibel Island GR2-3171

Unclassifieds

WANTED TO RENT:
3 bedroom house on Captiva or Sanibel. Prefer year round but will accept for summer season. Call GR 2-4601.
* * * * *

SALE:
Sea Dog sailing dinghy, 10 ft. All fiberglass with dacron sail. \$250.00. Call Island Inn, Sanibel.
* * * * *

FOR RENT:
2 bedroom home from May 1st. \$110.00 monthly. Near Light-house, couple preferred, no pets. Call Westmore 6-1724.
* * * * *

WANTED:
Licensed Captain to handle twin diesel cruiser on occasional charters, out of Captiva. Gr 2-2312.
* * * * *

Electric Stove Repair
Washers - Dryers
Refrigeration
Air Conditioning
Heating
RITE - TEMP SERVICE
MO 4-9556
6051 Estero Blvd.

* * * * *

ART SUPPLIES:
Paints, brushes, etc. Also Flex-Bon paints, designed for tropical weather at LEGEL SUPPLY. Sanibel Island, GR 2-4051.
* * * * *

Get your lawn mowers in shape now. Call Chucks Repair Shop, GR 2-6411 or Bring them in, next to the Snack Shack.

FOR SALE:
General Electric dishwasher. Roll around type, brand new. \$100.00. Call Island Inn on Sanibel.
* * * * *

WANTED FOR SUMMER MONTHS:
Studio bedroom or 1 bedroom cottage on Captiva and preferably on or near the Gulf. For single occupancy. Call GR 2-2871 after 4:30 p.m.
* * * * *

We carry Sarlo lawn mowers and McCulloch chain saws
Welding and Repairs

SANIBEL MARINA
Yachtsman Drive, Sanibel
GR 2-6251 - Open daily 7 to 5

* * * * *

Motel owners and business people. You can now get color post cards and brochures. Beautiful full color reproduction, highest quality, low price. Call Larry C. Huston, commercial photographer. MO 4-6655.
* * * * *

FOR RENT:
Furnished upstairs apartment. Can be used as one or two bedrooms. Three miles from beach. MO 4-9526 or MO 4-6862. San Carlos Blvd.
* * * * *

BINOCULARS

for rent \$1.00 a day

We have binoculars for sale, also.

MacIntosh Book Shop
Sanibel Island, Fla. GR 2 - 3041

dotti Or Sanibel THE ISLAND BOUTIQUE

A new exclusive has been added -
the Vera line

Mary Chess Exclusive
Gabar
Hadley Cashmere
Leon Levin
Lombardi
Phelps Sportswear
Serbin
Alfred Shaheen
Elisabeth Stewart
Tanner of North Carolina

Hours 9 - 5 Closed Sunday

ISLAND WATER ASSOCIATION
The annual meeting of the Island Water Association, Inc. was held on April 8 and the following were elected to the Board of Directors to serve a two year term: Francis P. Bailey, Jr., Joseph Green and Marty Holtz.
At an organizational meeting of the directors held April 10, the following officers were appointed: President Paul Stahlin, Vice President Francis P. Bailey, Jr., Secretary-Treasurer Joseph Green, Ass't. Secretary-Treasurer Marty Holtz, and Director at Large, John Kontinos.

Elsie Malone
SPECIMEN SHELLS
FLORIDA AND WORLD WIDE!!
Periwinkle Way - One Block West Of The Causeway - GR 2-2001

WE take pride in YOUR Jewelry and Gifts

The Fridays
HOUSE OF TREASURES
SANIBEL ISLAND, FLORIDA
If you don't know stones and jewelry Be sure your jeweler does.

SAN CARLOS REALTY

Robert L. Dormer
REG. REAL ESTATE BROKER

Town Square
Sanibel Island, Florida 33957

FOR SALE OR RENT

IDEAL FOR COUPLE - Modern, furnished, air-conditioned home on two large lots in prime restricted residential neighborhood.

Office GR 2-5371 Home GR 2-3771

THE NICEST PEOPLE DESERVE THE
FINEST AND BEST SELECTION OF
CLOTHING AND GIFTS AT THE
SEVEN SEAS SHOP



WITH EXCLUSIVE LINES
IN THE LATEST STYLES & COLORS

Dresses ... Shifts ... Hand-Screened Dresses ... Skirts

Knit Shells ... Blouses ... Culottes ... Sweaters

2-Way Stretch Shorts & Slacks ... Double Knit Dresses

Terry Cover-Ups & Jackets ... Coats

SEE OUR COMPLETE MEN'S SHOP
IN SPORTSWEAR -

Sport Coats - Turtle Necks - Jackets - Walking Shorts

Sweaters - Hawaiian Shirts & Swimwear

• WE MAIL ANYWHERE •

Seven Seas Shop

TRY OUR ISLAND'S COLOGNES AND PERFUMES

Turn Right From Causeway
Open Sunday Thru Saturday

BEST SELLERS

COMPILED FROM REPORTS FROM 39 BOOKSTORES
IN 33 COMMUNITIES IN THE UNITED STATES

FICTION

1. THE SALZBURG CONNECTION. Helen MacInness. | Harcourt, \$5.95
2. A SMALL TOWN IN GERMANY. John Le Carré. | Coward McCann, \$6.95
3. PORTNOY'S COMPLAINT. Philip Roth. | Random, \$5.95
4. AIRPORT. Arthur Hailey. | Doubleday, \$5.95
5. FORCE 10 FROM NAVARONE. Alistair MacLean. | Doubleday, \$4.95
6. THE HURRICANE YEARS. Cameron Hawley. | Little, Brown, \$7.50
7. A WORLD OF PROFIT. Louis Auchincloss. | Houghton, \$5.95
8. PRESERVE AND PROTECT. Allen Drury. | Doubleday, \$6.95
9. THE FIRST CIRCLE. Aleksandr Solzhenitsyn. | Harper, \$10
10. TESTIMONY OF TWO MEN. Taylor Caldwell. | Doubleday, \$6.95

NONFICTION

1. THE MONEY GAME. Adam Smith. | Random, \$6.95
2. THE ARMS OF KRUPP. William Manchester. | Little, Brown, \$12.50
3. THE 900 DAYS. Harrison Salisbury. | Harper, \$10
4. THIRTEEN DAYS. Robert F. Kennedy. | Norton, \$5.50
5. MEMOIRS: SIXTY YEARS ON THE FIRING LINE. Arthur Krock. | Funk & Wagnalls, \$10
6. THE DAY KENNEDY WAS SHOT. Jim Bishop. | Funk & Wagnalls, \$7.95
7. MISS CRAIG'S 21-DAY SHAPE-UP PROGRAM FOR MEN AND WOMEN. Marjorie Craig. | Random, \$6.95
8. INSTANT REPLAY. Jerry Kramer. | World (NAL), \$5.95
9. THE JOYS OF YIDDISH. Leo Rosten. | McGraw-Hill, \$10
10. THE BITTER WOODS. John S. D. Eisenhower. | Putnam, \$10

FICTION RUNNERS-UP

- ✓ BY THE PRICKING OF MY THUMBS. Agatha Christie. | Dodd, Mead, \$4.95
- THE BEASTLY BEATITUDES OF BALTHAZAR B. J. P. Donleavy. | Delacorte Press (Seymour Lawrence), \$6.95
- ✓ WHIPPLE'S CASTLE. Thomas Williams. | Random, \$6.95
- THE SLEEP OF REASON. C. P. Snow. | Scribners, \$6.95

NONFICTION RUNNERS-UP

- ✓ ON REFLECTION. Helen Hayes with Sandford Dody. | M. Evans, \$5.95
- THE VALACHI PAPERS. Peter Maas. | Putnam, \$6.95
- ✓ THE TRAGEDY OF LYNDON B. JOHNSON. Eric F. Goldman. | Knopf, \$8.95
- ✓ THE RICH AND THE SUPER-RICH. Ferdinand Lundberg. | Lyle Stuart, \$12.50

MacIntosh Bookshop

SANIBEL ISLAND - WE MAIL ANYWHERE - GR 2-3041



Need Something Beachy
To Perk Up Your Day!?!

- Bathing Suits for Men, Women & Children
- Noskote by Coppertone • Beach Towels • Air Floats
- Foster Grant & Other Sunglasses for Men, Women & Children
- Suntan Lotions, Oils & Cocoa Butter Cream & Oil
- Masks • Snorkels • Styrofoam Rafts • Beach Toys
- Sandpalls • & More & More & More & More & More

WE NOW MAKE DUPLICATE KEYS!!!

BAILEY'S GENERAL STORE

SERVING SANIBEL & CAPTIVA ISLANDS SINCE 1888

SANIBEL PACKING COMPANY

• WESTERN UNION • WINE & COLD BEER • FILM DEVELOPING SERVICE

WE ARE OPEN 52 WEEKS A YEAR TO SERVE YOU!