

SANIBEL-CAPTIVA ISLANDER

7¢

DEVOTED TO
THE INTERESTS
OF
SANIBEL
AND
CAPTIVA ISLANDS

The Finest
Shelling
Beaches
In The
Western
Hemisphere

photos by larry c. huston

VOLUME 9

NUMBER 39

PUBLISHED EVERY THURSDAY

SEPTEMBER 18, 1969

MORE ABOUT TURTLE CONSERVATION

Sanibel Island's homely loggerhead turtles are becoming important citizens.

"Caretta Research Inc.," the project to conserve the turtles, will provide Lee County science students with practical projects in marine biology, set up the first projects in what will become a marine science center and give high school students the opportunity to do original research of international interest.

At the same time, the project's primary object of preserving the turtle will be pushed.

Each summer the female of the species has been lumbering onto Sanibel and other Gulf Coast beaches in fewer numbers, as men's destruction exceeded reproduction.

During the past summer some 30 clutches of eggs were taken by Caretta Research. Caretta's the scientific name for the turtles. During the past week the last of the eggs hatched. More than 2,900 turtles ranging up to about six weeks in age are growing in captivity.

The plan is to raise the females until they are a year of age and large enough to defend themselves against most sea enemies, then release them in the same area from which the egg clutches were taken. The highest mortality period for the turtles is when the tiny, ungainly creatures fumble their way from nest to sea while under attack by birds, raccoons and whatever else can get to them.

Caretta Research, a project of the Sanibel-Captiva Conservation

Foundation and individual conservationists, hatched the clutches in a wire enclosure at the Sanibel Lighthouse, where Charles LeBuff one of the J.N. (Ding) Darling National Wildlife refuge officers, could keep an eye on them. The clutches were buried to the usual 25 to 30 inch depth at which the hardshell mammas lay them, and a small circle of hardware cloth or small mesh screen, was placed around the surface area of each clutch. All the batches of eggs are numbered to keep records.

LeBuff is the executive operator of the project. That means he does the work. But that's because he piloted it into being, patrolled the beaches night after night to get the eggs when the loggerheads laid them and watched them through hatching.

LeBuff several years ago estimated that the loggerhead turtles averaged 110 eggs per clutch. The project's 30 clutches totaled exactly 3,300 eggs.

Hatches ran 90 to 95 percent of the eggs, with very few mortalities. About 70 per cent hatch and survival beyond the first week is considered average.

The turtle tank salt water is pumped in at high tide about twice a day to refresh the supply taken from Tarpon Bay. The tanks, fence, and other installations were made with the assistance of David and Paul Zajicek of Sanibel and members of Troop 88, Boy Scouts of America, in which they are leaders.

Caretta was licensed to take 50 clutches. But LeBuff would not move a clutch unless it was known to be brand new. Mortality loss is believed to increase with the time eggs are left in the original nest before transfer.

The first eggs were taken May 21, and hatched July 17. The first females will be released June 17, 1970.

Spectators could observe the hatching pens and now can observe the turtles. There is nothing secret about Caretta Research. As the turtles hatched they were moved to salt water vats on a site provided by the Red Pelican and Tarpon Bay Marina, on Tarpon Bay Road.

James F. McGuir, who owns the Red Pelican, also provides the electricity for the site as a donation to Caretta.


The turtles eat fish and lettuce. The bulk of the fish now are provided by the Organized Fishermen of Florida, Pine Island Chapter. But there is a transportation problem, so the Caretta members on the Islands and just plain fishermen using the nearby marinas donate the fish.

"We even have people bring down snook filets they can't eat," said LeBuff. "We have a small freezer here at the site, but we've got volunteer freezer place all over the Islands."

Floyd Barnes of Bokeelia said the commercial fishermen all have responded willingly when asked for trash fish. Jessie Padilla keeps the fish frozen at Pine Island Seafood Co., without charge. But there is no easy delivery of the fish to Sanibel. Currently LeBuff goes to Matlacha to get them.

Barnes said he originally planned to boat them over regularly from

(contd. on back page)




IT'S NOT SO MUCH

WHAT WE SELL —

IT'S WHAT WE ARE!


"ALL YOUR NEEDS FROM FOOD TO FILM"

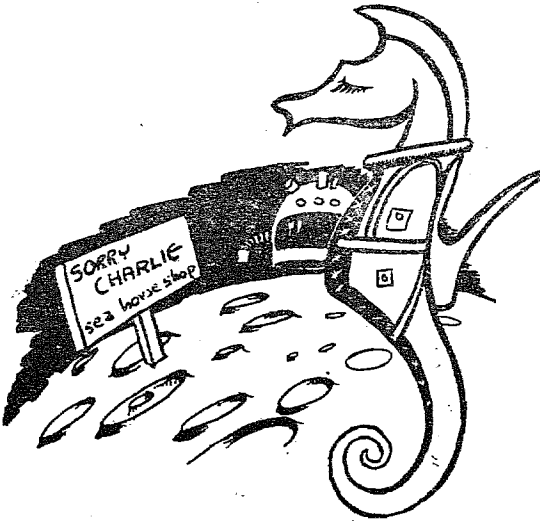


SANIBEL-CAPTIVA REAL ESTATE

Claire T. Walter, Realtor
and Associates

GR 2-4011 GR 2-3031





SEA HORSE
SHOP

ALWAYS GOES
TO EXTREMES
TO FIND THE
NEWEST
AND
THE BEST

At the lighthouse end of Sanibel

SANIBEL CAPTIVA ISLANDER

Established 1961
Duff Brown, Owner and Publisher

Editors.....Virginia and Duff Brown

Production...Louise Ostling, Carolyn Lowry,
Carolyn Stewart, Carlene Kelly, Anita Brown

Unclassified rates: \$1.00 minimum for 15 words
or less; 5¢ a word thereafter.
Second class postage paid at Fort Myers Beach,
Florida 33931.

ISLANDER OFFICE:
2330 Estero Blvd., Fort Myers Beach, Write P.O.
Box 2827, FMB, Phone MO 4-6792 (not a toll call
from the Islands)

Deadlines: Ad and news copy are picked up Sat-
urday afternoon; SHORT news items and ads may
be phoned in (MO 4-6792) no later than Monday
noon.

SUBSCRIPTIONS

On-Island\$3.00 yearly
Off-Island or Split\$3.50 yearly

*Priscilla
Murphy*
Realtor
SANIBEL ISLAND, FLORIDA

MAIN OFFICE GR 2-4510
BRANCH OFFICE in Sanibel Shopping Center
GR 2-4521 and GR 2-4531

You're Invited To Stop By The Office To Read
The Wall Street Journal
OFFICES OPEN ALL DAY SATURDAY

CAPTIVA ISLAND
H. A. Vrooman
TV
SERVICE
GR 2-6611

coconut Restaurant
Grove
Open: 7:30 a.m. - 9:00 p.m.
7 days a week GR 2-2751
Corner of Tarpon Bay Road
and Sanibel Blvd.
For Meals The Whole Family Enjoys

ZENITH
TELEVISIONS
BLACK & WHITE OR COLOR

Fedders
AIR CONDITIONERS

WOOSTER TELEVISION
SALES & SERVICE

Gulf Drive, Sanibel

GR 2-2101

ISLANDER

A REMINDER

On October 1, 1969 Commuter
Tickets for passenger cars and
pickup trucks will be available at
the toll booth in books of 10 for
\$20.00. Valid for 2 months from
date of purchase.

YOUNG DRIVERS CHALLENGED
TO SHOW MATURITY

The Florida Highway Patrol
today challenged youthful drivers
to help curb the rising number
of accidents involving drivers of
their age group by exercising
mature judgement behind the
wheel.

Highway Patrol Director Col-
onel Reid Clifton said, "Maturity
is a prerequisite of safe driving.
The responsibilities of driving
demand that an operator possess
the capability to resist childish
temptations.

Clifton said immature actions
of small children are found in the
attitudes of immature drivers.
"The selfishness, temper tan-
trums, 'show-off' actions and
lack of patience of youth are
deadly when a driver takes the
wheel. As a person matures
these attitudes will be left be-
hind," said Clifton.

Clifton said figures com-
piled by his department show
that accidents involving the 15
to 19 year old group have in-
creased by 10 percent over the
previous year.

ACTIVITIES CALENDAR

Sanibel Community Association,
Inc., Sanibel Community House,
1st Tuesday, 6:30 p.m.

Sanibel-Captiva Teen Club, San-
ibel Community House, Saturday,
8 p.m.

Game Night, Sanibel Community
House, Fridays, 7:30.

American Legion Post #123,
American Legion Home, 2nd
Tuesday 8 p.m.

American Legion Auxiliary, Unit
123, 1st Mondays, 8 p.m. Legion
Hall.

Bingo Murex, American Legion
Home, Wednesdays, 8 p.m. (No
minors)

A.A. open meeting, Fridays,
8 p.m. at St. Michael's Episcopal
Church GR 2-3121

Lions Club, Dinner meeting at
South Seas Plantation, 6:30 p.m.,
first and third Wednesdays of
each month.

Sanibel Public Library - hours:
Tuesday, 10 to noon; Thursday,
2 to 4 p.m.; Saturday 10 to noon;
Wednesday night, 7:30 to 9

Public Health Nurse - Third
Tuesday of every month, from
1:00 to 4:00 p.m. at the Com-
munity House.

Any civic or social organization
wishing to be included in the
Activities Calendar may call or
or drop the Islander a card
notifying us of your club's meet-
ing time and place.



Randy, a pet doe at Florida's
Weeki Wachee, set a multiple-
birth record recently when she
bore twin fawns for the third
consecutive year. This is a rar-
ity in nature -- especially for
white tail deer.

**First National's Golden
Savings lets everyone
earn 5% interest...
and it's compounded
continuously!**

As little as \$25 opens your account and you start
earning 5% interest continuously from the very first
day. Add to your savings as often as you like, in
any amount.
Interest is credited to your account four times a
year. You can withdraw any money which was on
deposit a full calendar quarter during a convenient
ten-day withdrawal period, at the beginning of the
next quarter.
Another great service from the "helpful one"

**FIRST
NATIONAL BANK**
IN FORT MYERS, FLORIDA
FIRST AND LEE STREETS



Member Federal Deposit Insurance Corporation

THE BARBER SHOP

AT THE SHOPPING CENTER

WILL BE OPEN

FRIDAY & SATURDAY

SAN CARLOS REALTY

Robert L. Dormer

REG. REAL ESTATE BROKER

FOR SALE
Contemporary Gulf Front Home
In secluded, restricted area

Town Square
Sanibel Island, Florida 33957

Office GR 2-5371

Home GR 2-3771



**Reynold's
Craft Shop**

Main Road,
Near Casa Ybel Road
FLORIDA MINIATURES
RARE SHELLS

Shell Boxes, Frames, Tables, Shellcraft Supplies
Ceramics, Leather & Misc. Items

SANIBEL SERVICE
STATION

• Atlas Tires • Batteries • Accessories
• Wrecker • Road Service • Inspection
• Tune Up • Muffler Service
HAVE IT CHECKED BEFORE YOU GO!
Rent - A - Car... Daily - Weekly - Monthly

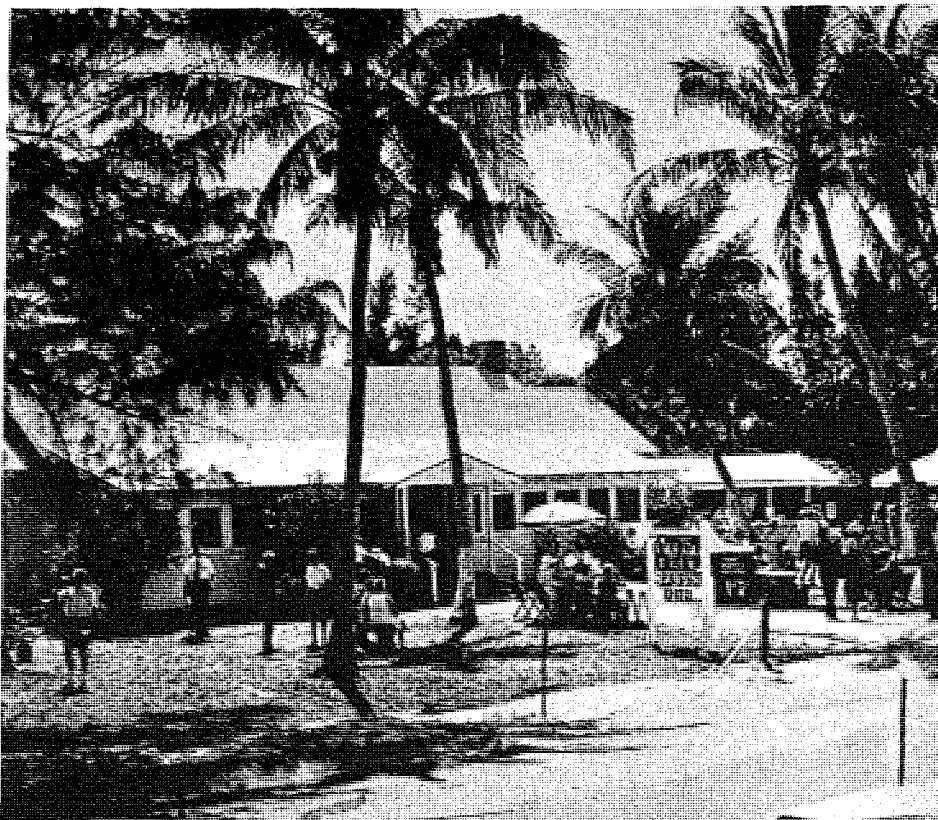
STANDARD
OIL

472-6351



GOURMET CORNER

S.S. PIERCE
PICKLED OR MARINATED
AS LONG
AS IT'S MUSHROOM'S



GIRLS-START NOW!!!

"September may sound early to think about the 1970 Shell Fair Driftwood Shop, but we have started working on several projects and desperately need GOOD SANIBEL SHELLS. Any shells or novelties that you would care to donate will be greatly ap-

preciated. Also, as it is canning and jelly making time, how about an extra batch for the Driftwood Shop. The Driftwood Shop is everybody's work shop. Let Fae Muller or Holly Moore know when you have items ready. Lets go, gals!"



Lighthouse Lounge and Restaurant

Lighthouse End of the Island GR 2-5281
Open 12 a.m. until 9 p.m. Six Days A Week
12 to 5:00 on Sundays

SERVING

- Spaghetti and Meat Balls • Shrimp in the Rough • Pizzas
- Assorted Cold Cut Platters • Sandwiches and Salad

MAKE YOUR EATING WITH US A FAMILY AFFAIR

Captain WILLIAM R. NEWMAN, son of Mr. and Mrs. WILLIAM F. NEWMAN, Sanibel Island, has received a regular commission in the U.S. Air Force at Fort Ritchie, Maryland.

Captain Newman, who previously held a USAF reserve commission as an Officer Training School graduate, was named for regular status on the basis of his duty performance, educational background and potential as an Air Force Officer.

He is serving as a weather forecaster in a unit of the Air Weather Service at Fort Ritchie.

The Colony has the following guests enjoying a vacation: Dr. and Mrs. A.E. GRAY of Miami Springs, Fla.; Mr. and Mrs. RAYMOND DODSON and family of Hialeah, Fla.; Mr. and Mrs. WALTER ROSENBAUM and family of Gainesville, Fla.; The TEWKSBURY family of Fort Lauderdale, Fla.; Mr. and Mrs. J. BABKIRK of El Jobean, Fla.; Mr. and Mrs. DUNBAR of Palm Beach, Fla.; Mr. and Mrs. GILBERT BROWN of North Fort Myers, Fla.; and Mr. and Mrs. RAYMOND LYNCH and daughter MICHELE of Pompano Beach, Fla.

Mr. Frank George who has owned and operated a barber shop on Fort Myers Beach for many years has purchased the Island Barber Shop from Doc Bryant. Mr. George hopes in the future to make the Island his home.



SPECIAL RELEASE

The Florida Highway Patrol today reminded emergency vehicle owners and operators that a recent law change limits the use of flashing red lights to police, fire, and ambulance vehicles.

Under a previous statute several types of vehicles were authorized to use flashing red lights. The revised statute now limits this to fire, ambulance, and police vehicles and authorizes the use of flashing amber lights for others. Those concerned should be aware they are in violation of the State law if they do not change.

The vehicles spelled out in the law that must change to amber lights are wreckers, mosquito control spray vehicles, and emergency vehicles of public service corporations or governmental departments. The law allows them to display the amber lights only at the scene of the hazard or operation and they may not display them while going to and from the scene of operation or hazard unless specifically authorized by a law enforcement officer or agency.

Escort vehicles must also change to amber lights and they may be used only when in actual process of escorting over-dimensioned equipment, material or buildings.

HOURS
9 to 6

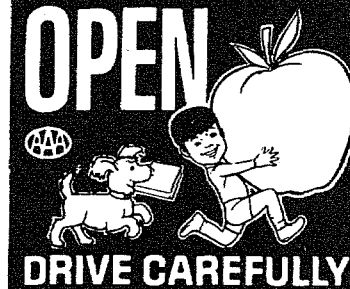
The Red Pelican

SANIBEL ISLAND
FLORIDA



Turn Right At The Shopping Plaza
Follow The Signs GR 2-2741

SCHOOL'S OPEN



Exceptional small business opportunity just waiting to be snapped up by an energetic husband and wife team. Will pay for itself in less than a year and will make a good living every year thereafter.

Gulf front parcel in more secluded area. Approximately 200 ft. wide x 350 ft. deep. Excellent for gulf front apartment building.

Gulf front parcel with a total of 8 beautiful acres. Excellent location. This is ideal for luxury condominium complex.

Excellent investment opportunity. This will return approximately 25% on cash invested with substantial yearly increase in value. This is a fine tax shelter and capital gain opportunity.

Interested in resort motels? We have them.

LISTINGS WANTED

ROSS MAYER

Registered Real Estate Broker
Periwinkle Way GR 2-6671



Shannon's Real Estate

ON PALM AVENUE, CAPTIVA

SALES COTTAGES RENTALS

William C. Shannon, Broker
813 GR 2-2051 or 813 GR 2-2052

Zella Mae Shannon, Associate
Captiva, Florida 33924



QUANTITY RIGHTS RESERVED
PRICES EFFECTIVE
THURSDAY, FRIDAY & SATURDAY
SEPTEMBER 18, 19 & 20

SHOP
A.G.

for **VALUES**
BEST
BIGGER VARIETY
BETTER QUALITY!

ALWAYS
GOOD

HOT DOGS.....

WESTERN
QUARTER PORK LOIN SLI
WESTERN
CENTER CUT RIB PORK CH
WESTERN
RIB END PORK LOIN ROA
WESTERN
SMALL LEAN & MEATY SP
QUICK FROZEN
YOUNG SPRING WHOLE LI
QUICK FROZEN YOUNG SPRING
LAMB SHOULDER ROAST..
QUICK FROZEN YOUNG SPRING
LAMB SHOULDER BLADE C
RATH CORNED BEEF BRISK
HYGRADE
ALL BEEF SALAMI CHUBS..
OSCAR MAYER
ALL MEAT FRANKS.....

BAILEY'S GENERAL STORE

BALLANTINE BEER

12oz BTLS

6 89

PAK
PLUS DEP

ALL PURPOSE
WHITE
POTATOES
10 LB BAG

59

¢

YELLOW COOKING
ONIONS.....
TANGY REFRESHING
FLORIDA LIMES...6
CRISP, JUICY RED
DELICIOUS
APPLES..... CELLO 3

FROZEN & DAIRY

MINUTE MAID ORANGE JUICE
LIBBY'S DRINKS..... ORANGE LEMON, BLACK
CHEF'S CHOICE FRENCH FRIES
McKENZIE BLACK EYE PEAS &
BANQUET POT PIES..... 8 OZ SIZE CHICKEN & B
MORTON POUND CAKE.....
BIRDS EYE COOL WHIP.....
FLEISCHMANN'S SOFT MARGA
ALWAYS GOOD ORANGE JU
MASTER FAT-FREE BUTTERMIL
KRAFT SAMAMI or PIMENIO

QT. SUNSWEET NET
PRUNE JUICE.....45¢

20 OZ BTL
HEINZ KETCHUP.....29¢

12 OZ CAN
RITZ DRINKS.....7¢

29 OZ CAN LIBBY'S SLICED OR HALVES
PEACHES.....29¢

15 OZ CAN ZIPPY
DOG FOOD.....7¢

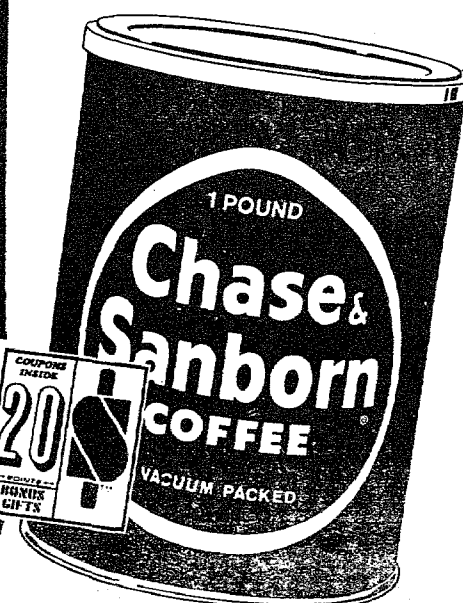


CHASE & SANBORN
COFFEE

39

1 LB CAN

LIMIT 1 PLEASE WITH A \$5.00
GROCERY ORDER OR MORE.
EXCLUDING CIGARETTES.



PEPSO
TOC
3/4 OZ S
TOC
FRENCH
DO
300 CT
FILL
6.4 OZ
DEQ
21'S P
VITA
6/4 OZ S
POV
13 OZ C
HA

12 OZ PKG **49¢**
 CED LB **79¢**
 OPS LB **99¢**
 ST LB **69¢**
 ARE RIBS LB **79¢**
 G-O-LAMB LB **89¢**
 LB **59¢**
 UT CHOPS LB **69¢**
 ET LB **99¢**
 12 OZ PKG **79¢**
 12 OZ PKG **69¢**



FLA or GA
 GRADE A SHIPPED D&D
 WHOLE
FRYERS
 LB **33¢**

FRESH WESTERN
PORK SHOULDER
PICNIC
 ROAST WHOLE
 LB **43¢**
 SLICED...LB **49¢**

Fresh

LB BAG **35¢**

6 FOR **19¢**

LB BAG **49¢**

BUYS

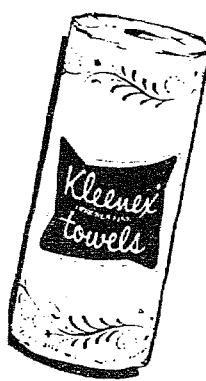
..... 2 6 OZ CANS **47¢**
 CHERRY & ORANGE 6 OZ CAN **10¢**
 2 LB PKG **37¢**
 PEAS WITH SNAPS EACH 24 OZ PKG **49¢**
 EEF EA. **17¢**
 12 OZ PKG **47¢**
 9 OZ CTN **53¢**
 MARINE 1 LB PKG **43¢**
 CE HALF GAL **59¢**
 K QT. **15¢**
 SINGLES 12 OZ PKG EA. **59¢**

NON-FOOD NEEDS

MENT ADULT REG. 69¢ **55¢**
 THBRUSH REG. 60¢
 THPASTE NET **45¢**
 SHOO FLEA REG. \$1.98
 COLLAR **\$1.19**
 REG. 69¢
 R PAPER **47¢**
 ZE MUM CREAM REG. 45¢
 DORANT NET **33¢**
 AL'S REG. \$1.00
 AMINS **69¢**
 ZE AMMEN'S REG. 83¢
 WDER **69¢**
 CAN AQUA NET, REG. & HTH
 R SPRAY REG. 99¢ **69¢**



GIANT
 49oz BOX
TIDE
49¢
 NET
 LIMIT 1 PLEASE WITH A \$5.00
 GROCERY ORDER OR MORE,
 EXCLUDING CIGARETTES.



KLEENEX
 130 SHEET ROLL
TOWELS
 ASSORTED
25¢
 LIMIT 2 ROLLS PLEASE, WITH A \$5.00
 GROCERY ORDER OR MORE,
 EXCLUDING CIGARETTES.

GROCERY SPECIALS

STOKELY CUT GREEN BEANS 4 17 OZ CANS **89¢**
 VAN CAMP LIGHT CHUNK TUNA 6 1/2 OZ CAN **29¢**
 LIPTON TEA BAGS 48 CT BOX **59¢**
 BETTY CROCKER PUDDINGS CHOCOLATE, CHOCOLATE FUDGE, VANILLA 18 OZ CAN **29¢**
 ALWAYS GOOD POTATO CHIPS 9 OZ PKG. **39¢**
 KLEENEX FACIAL TISSUE 2 FOR **39¢**
 REAL KILL BUG KILLER BOMB 11 OZ CAN **69¢**

**Give 'em a subscription
to the Islander
so they won't forget you!
The PRESENT with a FUTURE!**

\$3.00

ON ISLANDS

\$3.50

OFF ISLANDS or SPLIT SUBSCRIPTION
per year

ANTIQUE BOTTLES
A COLLECTOR'S FINEST
WISTER, PORTER & CASPER
16th & 17th CENTURY BOTTLES

**Dewey's
Marina**

Sanibel Island, Florida 33957

**boats-bait-tackle
Fresh Seafood Market**

Gas

GR 2-2231

Dockage



Electric Stove Repair
Washers - Dryers
Refrigeration
Air Conditioning
Heating
RITE - TEMP SERVICE
MO 4-9556
6051 Estero Blvd.

ART SUPPLIES:
Paints, brushes, etc. Also Flex-
Bon paints, designed for tropical
weather at LEGAL SUPPLY, San-
ibel Island, GR 2-4051.

AIR CONDITIONING

Service repair on residential
and commercial units, Sanibel-
Captiva area only. Call OX 4-
3831.

RESIDENTIAL LOT ON GULF
BEACH:
120 feet on beach, deep lot, palms,
seagrape, etc. high ground.
Terms: Cash. Write W. Wright,
Rout 1, Box 829, Sanibel for
appointment.

Unclassifieds

FOR SALE:
200 ft., motel zoned, Sanibel
Island gulf frontage approxi-
mately 500 ft. deep, good high
land. Beautiful location for gar-
den apartments or condomin-
iums. \$116,000 cash. See or
write Jim Pickens Broker-
salesman for Michigan Sales
and Development Corporation,
Shell Harbor Models R.R. #1,
Box 243, Sanibel, Fla., 33957.
No information given by tele-
phone.

FOR SALE:
Beautiful blonde mahogany dining
table, 42 x 60, two leaves, custom
made pad. \$125. Blue wool sculp-
tured rug 12 x 10, \$25. One four
drawer chest, \$20.00 GR 2-4333.

FOR RENT:
Large bayfront furnished apt.
\$150 per month with utilities.
Red Pelican. Call GR 2-2741

FOR RENT:
Evans house on Sanibel Gulf,
available Sept. 15 through Dec.
15. Write 5543 Sun Rise Drive,
Ft. Myers, Fla. 33901. Call
813-936-4830.

SARLO POWERLAWN
MOWERS and McCULLOCH
CHAIN SAWS
Sales, Service, and Repair
Satisfaction guaranteed
Franchised Dealer for
Sanibel and Captiva

SANIBEL MARINA
Lighthouse End GR 2-2651

FOR SALE:
Used Boats, \$100.00 and up, Tar-
pon Bay Marina. GR 2-2741.



TAKE ALL THE DEAD
SHELLS YOU CAN
CARRY BUT LEAVE
SOME LIVE ONES SO
THEY CAN MARRY.

Property
Management
Service

Phone: GR 2-8742

(MICHAEL FRENETTE)

Route 1 Box 149
Sanibel Island, Florida

Repairs
Mowing
New Lawns Laid
Painting
Free Estimates

LOST:
Lost August 16, Jade butterfly
pin, pearl body, ruby eyes, in-
laid in gold. Generous reward.
Call GR 2-4151.

Motel owners and business
people. You can now get color
post cards and brochures.
Beautiful full color reproduction,
highest quality, low price. Call
Larry C. Huston, commercial
photographer, MO 4-6655.



Become a member of
**Friends of the
Sanibel Public Library**

Memberships \$1 or more!
YOUR library needs
YOUR SUPPORT!
Library Hours:
Tuesdays & Saturdays 10-12
Thursdays 2-4

GOLDEN SANDS

UNDER THE MANAGEMENT OF

ROY & GERTRUDE WEBB

WITH THE LOU GENTILE TRIO IN THE TIERRA LOUNGE

ON WED. NIGHT COUNTRY MUSIC
9 till 2:00 A.M.

Dottie - Jean
Marilyn - Hal
Mary - Sally



**PRESCRIPTIONS FILLED BY OUR
REGISTERED PHARMACISTS ARE YOUR
ASSURANCE OF ACCURACY AND SATISFACTION**

NEW HOURS
Sunday 9 to 6 -- Tuesday and Friday 9 to 9
Monday, Wednesday, Thursday, Saturday 9 to 6
PHARMACY CLOSED ALL DAY SUNDAY

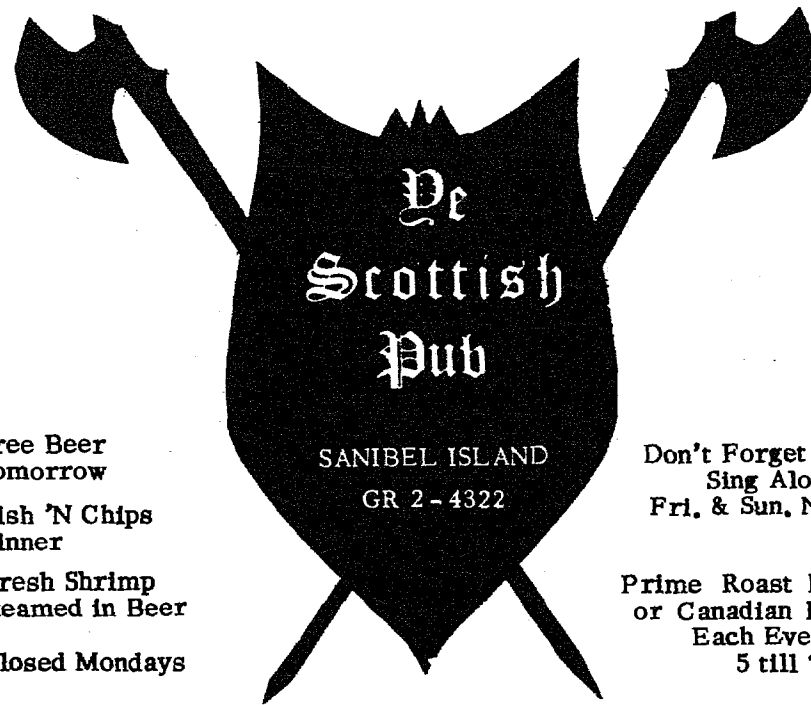
Fort
Myers
Beach
Florida



San Carlos & Estero Blvd.

The Pharmacy
Nearest
the
Islands

MO 4-6128



Free Beer
Tomorrow

Fish 'N Chips
Dinner

Fresh Shrimp
Steamed in Beer

Closed Mondays

SANIBEL ISLAND
GR 2-4322

Don't Forget Our
Sing Along's
Fri. & Sun. Night

Prime Roast Beef
or Canadian Ham
Each Evening
5 till 7???

WHAT COMMUNITY SHOPPING MEANS TO YOU

(1) A Better Community! It takes money to build a community... money that circulates within the community and money that goes into taxes that support our schools and civic improvements. Help yourself... spend at home!

(2) Easier Shopping! When you shop at home, you can "come as you are"... enjoy plenty of free parking within easy walking distance of the stores you need... shop in leisure with none of the hustle and bustle of big city shopping... and fine everything you want easily.

(3) Good Local Credit! And, when you establish credit with your merchants here at home... when you want to buy a home or need a credit rating for any

other purpose... your record is handy and it means more, too!

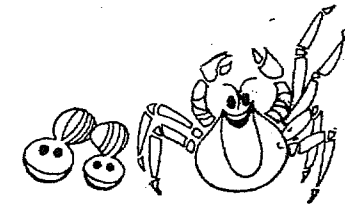
(4) Take Advantage of Sales! Yes, when a sale is announced here at home, you are right there ready to take advantage of the many values and low prices. And, when you are a regular at-home shopper, you often know of sales before they are advertised to the public.

(5) Save Time and Money! Going out of town to shop is a costly way to shop. Save your valuable time and your money by shopping within minutes of your own home. Prices are just as low here in your community, too!

(6) You Can Trust Your Local Merchants!... they are your friends and neighbors and they depend on their good reputation as

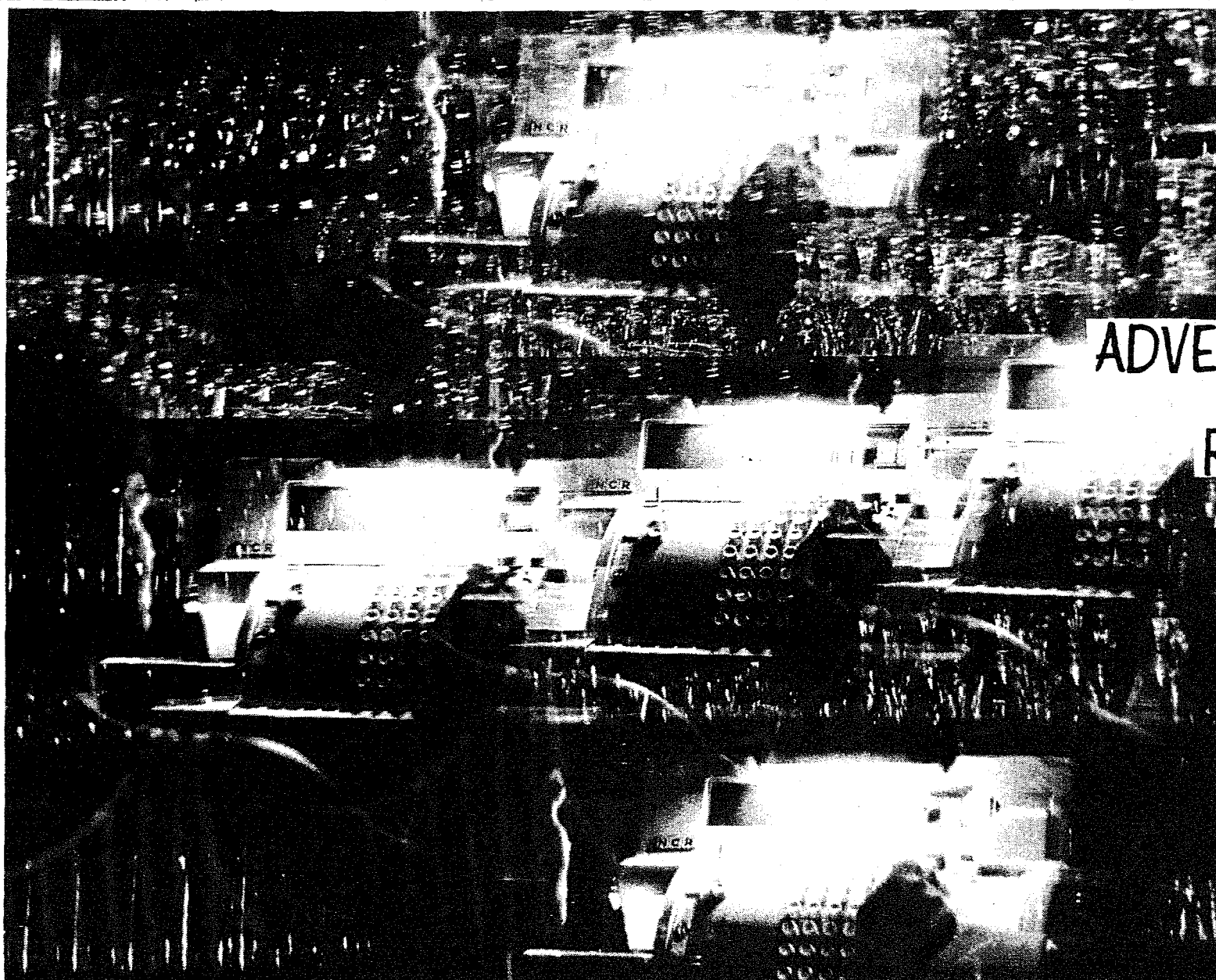
much as their quality merchandise and low prices to sell you. Their integrity is high!

The advantages of shopping in your local community will far outweigh any disadvantages you may think there are. Shop at home and see!



**GENE BROADBENT
GENERAL CONTRACTOR**
licensed, bonded & insured.

Phone 472-6141



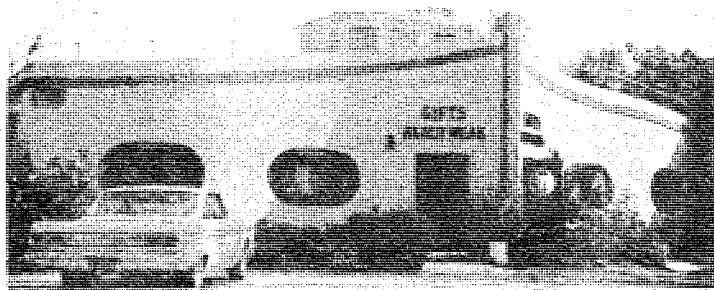
**GOOD
ADVERTISING
RINGS UP
MORE
SALES**

HUSTON PHOTOS

CREATIVE • ILLUSTRATIVE • COMMERCIAL
2330 Estero Blvd. Fort Myers Beach, Florida 33931

TELEPHONE MOHAWK 4-6655

**CROSS THE MOAT
TO SEVEN SEAS SHOP**



**TO OUR EXCLUSIVE LINES
in Ladies & Men's
FASHIONS & SPORTSWEAR**

**ALSO LARGE SELECTION OF
CHILDREN'S CLOTHING**

GIFTS FROM

Seven Seas Shop

"ALWAYS FIRST WITH QUALITY"

Exclusive Living on SANIBEL

SUNSET SOUTH GARDEN APARTMENT CONDOMINIUM



The Sunset South Condominium concept is one frankly aimed at providing exclusive luxury living for a compatible few, in deliberate contrast to the current trend of city-type, cliff-dwelling, highrise structures. These are spacious two bedroom, 2 bathroom apartments with just 4 units to a building. Our master plan of only 14 buildings will limit occupancy to a select few, 7 are already under construction. Sound clubby? It is! With private fresh water pool, cabanas, putting green, club house, etc. --- the works. You'll have the new Country Club and Golf Course on one side and the wide, sparkling white sandy beach of the Gulf of Mexico on the other.

There is still time to qualify. Price range --- \$35,500 to \$49,500.

Write for full descriptive brochure today.

SUNSET SOUTH BOX 131 SANIBEL, FLORIDA 33957

TURTLES from p. 1

the slip at St. James City when fishing out of that area but that Padilla's Slip there had been filled with silt due to some onshore pipe installations.

The turtles are up to 75 pounds a fish a week and weigh only a few ounces themselves. As they grow the consumption will increase considerably.

Science students will have as their first job determining a method of telling a female turtle from a male. In adults this is easy enough, but in the newborn there is no known outward indication.

Bill Hammond, Lee County's science coordinator and marine biology specialists, said a group of students at Cypress Lake High School are learning biological statistics methods to kick off this project.

There have been about 24 mortalities among the turtles as natural infant deaths. These have been preserved. The students dissect them, compare the reproductive organs to determine which are males and which are female then look for an outward indication of a difference in the newborn.

The immediate advantage is that all males can be released. There is no advantage in having large numbers of male turtles, so there is no reason in providing food for turtles able to feed themselves.

The student studies won't end there. One student Paula Strube of Cape Coral has been working in behavioral studies in a summer session at the University of Florida and will be a leader in behavioral studies this school year, said Hammond.

"What I'm hoping to do is use the turtles as an example of other problems," said Hammond. "There may be as many as 40 research projects going on with the turtles, each one with significance.

The students may relate the turtle projects to field studies they can do themselves in other areas, said Hammond.

All the Lee County science teachers have been through the turtle set up on tour. A slide projector program is being readied for presentation in the school narration.

There are two plans afoot for laboratories on Sanibel. One is that the Lee County schools will use a Sanibel Foundation site in the Island's fresh water center, the Sanibel Slough. The other plan is being worked out by Florida Atlantic University of Boca Raton. The Foundation and the college already have an arrangement for research and instruction on the Island. Dr. Manley L. Boss, chairman of the college's department of biological science, said two graduate students and a number of scientists associated with the college are using the dormitory, rough laboratory and boat on the Island in biological and ecological surveys of the Sanibel Slough region and the Tarpon Bay area.

This winter a representative of a "consortium of 12 liberal arts colleges in the Midwest" will be in Florida to discuss development of a marine biology complex on Sanibel in association with Florida Atlantic.

The line that ties all the projects together is the Sanibel-Captiva Conservation Foundation, headed by Roy A. Bazire.

Donations to Caretta Research can be made tax deductible by making them at the foundation, earmarked for Caretta Research.

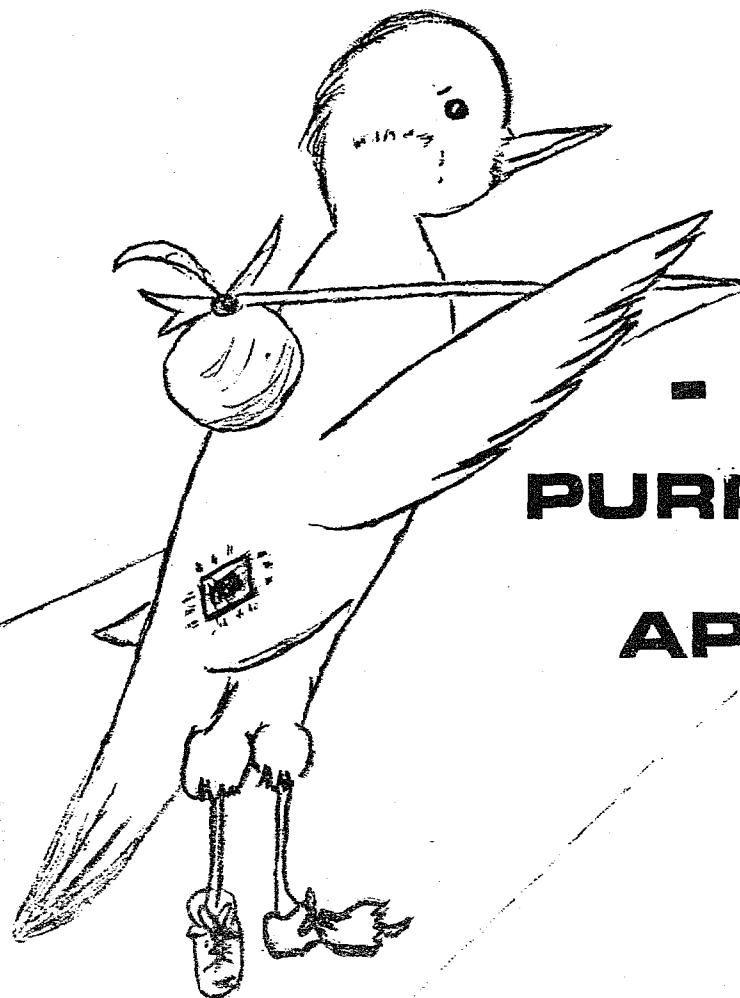
Some time in October the Caretta Research will acquire some outsiders, turtles from Costa Rica. They are green sea turtles from the original turtle-preserving project, Caribbean Conservation Cooperative.

Half will be released immediately from Sanibel. The other half will be raised to an older age in the vats.

Currently no green sea turtles lumber ashore at Sanibel. The project eventually will determine if the creatures can be transplanted to start new nesting grounds.

DO YOU KNOW A MARTIN THAT NEEDS A HOME?

CHEER UP - YOUR PROBLEM IS SOLVED.



**- NEW SHIPMENT -
PURPLE MARTIN MANSIONS
1 - 2 - 3 - 4
APARTMENTS OR MORE**

AS MANY AS YOU NEED ----

Made of Space Age Plastic - Lightweight, Rugged, Durable

A Snap To Assemble - By Rocc'd - No Tools - Build in 10 Minutes

Give a martin a Home!

YOUR FRIENDLY GROCER
COME IN AND BROWSE ---- YOU'RE ALWAYS WELCOME AT BAILEY'S

BAILEY'S GENERAL STORE

SANIBEL PACKING COMPANY

OPEN 7 DAYS A WEEK, 52 WEEKS A YEAR TO SERVE YOU
• WESTERN UNION • SINCE 1899 • WINE & COLD BEER
OPEN UNTIL 8:00P.M. FRIDAY AND SATURDAY NIGHTS