

SANIBEL — CAPTIVA

ISLANDER

Serving the Islands since 1961

Vol. 15

No. 41

Tuesday, September 30, 1975

1 Section, 10 cents

Council hears alternatives Friday a.m. from Roberts

WMRT's Bill Roberts' week-long ordeal of public meetings, discussions, and data gathering culminated Friday morning with a joint meeting of the city council and planning commission in Sanibel City Hall. Most of the discussion at Friday's meeting involved WMRT's phase three report, which was first released to the public at Thursday night's planning commission and public information presentation.

After adopting Emergency Ordinance 75-56, an extension of the city's existing vegetation ordinance; the council agreed that they wished to observe the provisions of Florida statute 75-257 in developing the city's comprehensive land use plan, as requested by Roberts.

WMRT consulting attorneys Fred

October 16 presentation of the finished plan to the planning commission will be delayed at least five to ten days, thus postponing the council's review of the plan from November 12 to sometime later in the month.

And so another interim land use plan and building moratorium will of necessity go into effect on November 7. The inordinate degree of complexity involved in planning for Sanibel and the mandatory provisions of statute 75-257 will entail a far greater amount of work for WMRT than had been anticipated, said Roberts, and so a corresponding increase in planning costs for the city, although he did not disclose the amount of the estimated increase at Friday's meeting due to a request by councilman Vernon MacKenzie that he submit an itemized bill to the city in writing.

"Some might think \$60,000 a hell of a lot to pay for a land use plan," stated Roberts. "but I assure you we are not making a killing."

Those who attended the meeting were presented with a set of four alternative growth thresholds prepared by WMRT for the city's consideration, providing a basis for much of the morning's discussion. Roberts stated that from WMRT's standpoint the most advisable alternative would be no growth whatsoever were it not for the existing building permits which could conceivably provide for 4,000 new units being constructed on the Island. Said attorney Bosselman, growth limitation was considered mainly in light of the environment at the outset of the WMRT study, but that performance standards would be the crucial point in the plan's implementation. He also stressed hurricane evacuation as another key factor for consideration in the matter of growth limitation.

Toward the end of the morning's session, developer Bob Taylor expressed an opinion that the planning procedure employed on Sanibel thus far was at odds with the stated goals of public input, saying that virtually no important information has been released to the public as of yet and that the whole of the public input has been a "charade to satisfy the terms of the law."

He further protested the use of certain

(Continued on Page 4)



Fred Bosselman

Bosselman and Charles Siemon explained that the law requires mandatory provisions for traffic control, sewage, water, open recreational space, moderate-income housing, vegetation maps, dune preservation measures, wildlife conservation measures, inter-governmental coordination elements, and ten year sight utility, with optional provisions for pedestrian travel (bike paths), historic and scenic preservation, public safety elements, and public participation in the planning process.

Roberts told council that WMRT's compliance with the above provisions will entail two unpleasant and unavoidable difficulties: a possible two week delay in the completion of the plan and increased costs to the city, necessitating further contractual arrangements. The initially scheduled

LATE BULLETIN

Judge rules for Sundial against City of Sanibel Monday.

Details next week.



"Heavy report" (?) pulls map from wall Thursday night

Sanibel's Mayor 7:30 p.m. Thursday



Sanibel's Mayor, 10 p.m. Thursday



Phase III alternatives first presented Thursday

Inside this week's ISLANDER, you will find direct quotes, (or summaries thereof), graphs and maps taken directly from the Wallace, McHarg, Roberts and Todd Phase III report for the Land Use Plan of Sanibel. In almost every instance in the report, WMRT recommends alternative 1, which limits construction to 6,000 units. (According to WMRT's figures, 4,000 units are already built; if the courts ruled in favor of Sundial yesterday, Sundial gets to build the remaining 2,000 units.)

The four alternative plans were first presented to the public (at a special planning commission meeting) Thursday night. An overflow crowd of over 200 gathered in the Community House; almost one third left halfway or less through the three hour presentation, for reasons ranging from "I was having a nicotine fit" to "What were they saying, anyway? I couldn't understand."

It was, indeed hard to follow, even when one had a graph or and the Red Book in front of one. The major reason for the difficulty (by ye ed, at any rate) was that the basic figures and reasons for a low (6,000 unit) population cap were based on hurricane

evacuation.

This remained a puzzler, until Ian MacHarg addressed the audience and explained (for those of us who could understand his rapid-fire intriguing Scottish brogue) that one could not win court cases on environmental factions: one had to prove that the population cap was set for the benefit of the "health, safety and welfare" of the community's population.

"We planned (a town) in New Jersey, but we did so well, that the schlock builders all warned one another to stay away from that town. . . You, however, are in the green belt, and when the court cases (which may go to the U.S. Supreme Court) come, you will be forever remembered - - if you win."

"In 1963, when the causeway was dedicated, the ruling county commission "forgot" to invite anyone from Sanibel to the bridge opening ceremonies until the night before the "big day" on Sanibel. They even forgot the local Legion and asked the Fort Myers Legion Post to act as Honor and Color guard during the day. That week, we wrote that this made us feel that perhaps Sanibel "was a golden egg, laid by some far off goose in the County Commissioners' office." This week, we wonder if Sanibel is an experimental, test goose, with or without gold.)

All Thursday evening, and during Friday morning's PC presentation to the city council, the phrase "health, welfare and safety" was used and re-used. While WMRT's Bill Roberts had consistently recommended Alternate I, he hastened to state Friday morning that just because the 6,000 unit figure was in WMRT's opinion the best, that did not mean that a "responsible" city could not be formed "even if the PC picked Alternative 4," (24,000 units) and that certainly the PC had not yet made up its mind. PC chairman Duane White forcefully backed Roberts' statement up, saying that's why they (the pc) asked for the week of public hearings "to get public input - - to find out what the public wants."

The public hearings will be held tomorrow (Wednesday) and Friday from 9 a.m. to 5:30 p.m. in the city hall.

Real eel tips . . .

Baked red snapper

by Skip Purdy

Fishing is a very popular and enjoyable sport which can present the beginnings of a delightful meal. Of course, there are many ways to prepare your fish. My wife and I are always looking for a new recipe to try. Here's one we'd like to share with you.

Baked Red Snapper with sour cream stuffing

3 or 4 lbs. dressed red snapper or other dressed fish

1 1/2 tsp. salt
2 tbsp. melted fat or oil
Clean, wash, and dry fish. Sprinkle with salt inside and out. Stuff fish loosely with sour cream stuffing. Close opening with small skewers or tooth picks. Place fish in a well-greased pan. Brush with fat. Bake in a moderate oven, 350 degrees for 40 to 60 minutes or until fish flakes

easily when tested with a fork. Baste occasionally with fat, remove skewers. Serves 6.

Sour Cream Stuffing
3/4 c. chopped celery
1/2 c. chopped onion
1/4 c. melted fat or oil
1 qt. dry bread cubes
1/2 c. sour cream
1/4 c. diced peeled lime or lemon

2 tbsp. grated lime or lemon rind

1 tsp. paprika
1 tsp. salt

Cook celery and onion in fat until tender. Combine all ingredients and mix thoroughly. Makes approximately 1 qt. stuffing.

My tip of the week is about fishing hooks. Your all-around fishing hook has a medium or regular size shank, 1-0 or 2-0 is good. The long shanks are good to use when fishing for snook because their gill flaps can cut the leader. The long

shanks are also good for catching the fish that tend to swallow their bait, such as, the catfish. Most of the shanks are straight.

Try to keep the hook as inconspicuous as possible by using the lightest one you can get away with. Of course, if you're after the big game then you must use a heavier hook.

Hooks with a wide gap between the point and the shank are good for using large bait and catching large fish. It gives a lot of clearance for those big mouths.

For those smaller fish that often swallow the bait I suggest using hooks with a sharp angled bend.

A good hook to use for sheepshead is the "wide bend" which allows the fish to come in without bumping the shank. Happy fishing to you all!

Astrological Hints

by madam dorinda 481-3051

Aries: Do not come to any quick decisions regarding a family matter; take time to think. Make use of something that has not been touched for a long time. Problems with a teacher or co-worker could come up.

Taurus: There will be more of an emphasis on social life, local travel, also a tendency to bend the truth. Someone you need will come through. Some loss or a poor purchase is likely.

Gemini: Don't be petty about money matters, but avoid a show of affluence. Opportunities await you in connection with travel agencies, make the most of them. Watch driving at intersections.

Cancer: Take heed if someone counsels caution or suggests a delay. Forces that have consistently opposed you in recent years diminish now as Saturn moves from the sign of Cancer into Leo.

Leo: Rumors may be floating about; avoid individuals who do too much complaining or backbiting. Investment in new products may be practical; don't be tied down to what was profitable in the past.

Virgo: Boost a community project. Your goals could be deflected off course. Don't make a problem out of nothing and use finances for worthy purposes only.

Libra: Don't play around; concern yourself with the practical. Talking out of turn can get you into some trouble. Take a temporary job, it will enhance your reputation if it does nothing else.

Scorpio: Persons and places far-off may be in your thoughts; economic and career pressures will tend to build up now. Don't overextend yourself, especially financially.

Sagittarius: Take extra time to avoid slipups or going against wishes of partners. Surprising news is likely. Confrontation with authority possible, don't be too pugnacious or independent.

Capricorn: Proposals and plans could be overblown or overoptimistic. The aspects favor travel, but some obstacles could arise where communications about the travel is concerned.

Aquarius: You will find an alliance or contract burdensome or boring, but weigh the probable disadvantages of making a change. You should stop doing anything you have been told is harmful.

Pisces: There may be upsets where health and employment are concerned. Go easy with self-indulgence. Listen to a mate's problems and gripes.

proclamation

CITY OF SANIBEL
FLORIDA

WHEREAS, September 17, 1975, marks the one hundred eighty-eighth anniversary of the adoption of the Constitution of the United States of America by the Constitutional Convention, and

WHEREAS, the Constitution of the United States of America established our Constitutional Republic, which has grown in strength over nearly two centuries and guarantees a free and independent life for every citizen, and

WHEREAS, the people of the United States of America should be deeply grateful to their founding fathers for the wisdom and foresight they displayed in writing the Constitution,

NOW, THEREFORE, I, PORTER J. GOSS, by virtue of the authority vested in me as Mayor of the City of Sanibel, Florida, do hereby proclaim the week of 17 September through 23 September, 1975, as

CONSTITUTION WEEK

It is therefore appropriate that, in the period set apart, we shall think afresh of the founding of our Government under the Constitution, how it has served us in the past and how in the days to come its principles will guide the Nation ever forward.

In witness whereof I have hereunto set my hand and caused the Seal of the City of Sanibel, Florida to be affixed this tenth day of September in the year of our Lord one thousand nine hundred and seventy-five.

Porter J. Goss
Mayor

LEGAL NOTICE

NOTICE OF INTENTION TO REGISTER FICTITIOUS NAME
The undersigned does hereby certify that it is conducting a retail sales of men's apparel, toiletries & general gift items business at Sanibel Island, Florida, under the fictitious name of CAPT'NS CASUAL CABIN and that said firm is composed of the following persons whose names and places of residences are as follows: TRANS-OCEANIC RESORTS, INC., a Florida corporation, 1515 Cape Coral Parkway, Cape Coral, Florida 33904. Ownership of CAPT'NS CASUAL CABIN is as follows: TRANS-OCEANIC RESORTS, INC., a Florida Corporation - 100%.

It is its intention to apply

to the Clerk of the Circuit Court in and for Lee County, Florida to register the said name of CAPT'NS CASUAL CABIN under the provisions of Section 865.09, Florida Statutes, 1963.

Witness my hand, this 10th day of September, 1975. TRANS-OCEANIC RESORTS, INC. BY Jeannette Daniel, President

Sworn to and subscribed to be JEANNETTE DANIEL, President of TRANS-OCEANIC RESORTS, INC. before me this 10th day of September, A.D. 1975.

William J. Hudson, Jr.,
Notary Public
William J. Hudson, Jr.
Notary Public
Sept. 16, 23, 30, Oct. 7

A Fisherman's Paradise



Where you can shell beside the Gulf and fish in your backyard. west end of Sanibel at Captiva bridge 7:30-5:30 daily (813) 472-1020

"Let's Go Skiing!"



Water Ski Along Sanibel's Bay Front. RATES BY THE HOUR ALL EQUIPMENT FURNISHED. CALL CAPT. HERB PURDY: 472-1849 after 6

ON VACATION!

At The REAL EEL

LIVE EDUCATED SHRIMP 75 cents A DOZ.

See me for fishing tackle & tennis rentals!

SKIP PURDY 472-2674

LIVE PIN FISH

GAMES SPORTING GOODS TENNIS & GOLF EQUIPMENT

RAFTS-BEACH TOWELS-BAIT CASTING NETS-SPEAR-GUNS-TIPS & BANDS MEN'S SWIM TRUNKS-FILM-SUNTAN LOTION-MASKS. FINS. SNORKLES RODS. REELS & FISHING TACKLE-ISLAND'S ONLY SCUBA AIR STATION-SCUBA RENTALS-TENNIS-WATER SKIES

Sanibel Center Bldg., Periwinkle & Casa Ybel Road

MYERLEE COUNTRY CLUB

FT. MYERS, FLORIDA 481-1440

MEMBERSHIP OFFER

Here is an opportunity to play one of the finest Private Executive Golf Courses as a guest of Myerlee Country Club. If you decide to join, all guest fee charges will be credited toward your initiation fee. If you decide not to, we are happy you had an opportunity to play Myerlee. This offer expires Oct. 1, 1975.

For added information see Mike Calbot, Golf Professional,

Myerlee Country Club. Directions: Winkler Road South to Myerlee Country Blvd.

RATES: Guest Fee \$5.00 Per 18 Holes Electric Cart \$6.00



Around town

by georgie mankin

It's been an interesting week around the islands—we have without a doubt had some higher than usual tides from Hurricane Eloise, winds, and extra rain. Most Islanders are discussing the possibility that this is in fact the year for the "big one" to hit. We all hope not but nevertheless, we should be in a state of preparedness.

Sanibel Elementary School has a talented new second grade teacher, Paul Kallajainen. Mr. K., as the children call him, is an accomplished guitar player. It's a real delight to watch the children singing as he plays—all this in the outdoor chikee.

Mr. and Mrs. Paul Seifert of South Bend, Indiana, are enjoying the islands. They'll be staying for about three weeks.

Bob Care of Island Floor Coverings hasn't been able to put up signs as yet—his mother, who's visiting him, has been in the hospital and Bob has been quite busy. We hope his mother will be well and home very soon.

Kay Casparis' mother, Mrs. Glenn McConnell Sr. is now at home at 211 West

Franklin St. in Troy, Ohio. She'd enjoy hearing from her friends here on the Island. We're mighty pleased that she's recovering so beautifully from her recent stroke.

Fred McConnell, co-owner of Blind Pass Cottages, has just returned from Boca Raton, where he attended the motel owners association convention.

Guests at Blind Pass Cottages this week include: Mr. and Mrs. Michael Zoschenko of Miami, Florida; Mr. and Mrs. Homer Rhode of Rockledge, Florida; Mr. and Mrs. Wm. Becker of Ft. Lauderdale, Florida; and Mr. and Mrs. Michael Miller of Belle Glade, Florida.

THE COLONY's Florida guests this week include Mr. and Mrs. Jerry Patterson of Jacksonville; Mr. and Mrs. Bobby E. Jones of Tallahassee; Mr. and Mrs. Baxter and family of Hollywood; Mr. and Mrs. Leonard Lubin of St. Petersburg, Miss Doris Lynch of Miami.

Mrs. Mary Jo Burgoon of Ligonier Penn. will also be arriving this week.

To the ISLANDER:

Went to the big meeting at the Community House Thursday nite but didn't grasp all that wonderful rhetoric so took the little paper that was handed me and departed for the quiet of my little house to study same.

I was never any great shakes at math but, given 72,000 people to move over a causeway that will safely carry 5,400 vehicles an hour, seems to me that, figuring one person per vehicle, it would take less than 14 hours. More'n likely, in an actual occurrence, there'd be an average of 3 people per car, which would cut the time to less than 5 hours.

Even if a family of two has two cars I'm sure they'd leave one on the island to get about in on their return until traffic access was restored to the mainland and since hurricanes have a way of occurring during the warm months, when there is usually 12 to 14 hours of daylight, evacuation should present no great problem for even 72,000 people.

Of course, at present, only a few over 1,500 registered voters, and most residents do seem to register—even those that just winter here, it shouldn't take more than an hour, at the outside, for everybody to make tracks for the mainland. It shouldn't take 95 hours—that's just one hour short of four days—notice to get even the pokiest going, as this WMRT report appears to assume.

But, as I noted before, I'm no whiz at math so maybe they're using what we hear referred to as "new math" for their calculations. Maybe some of the other folks who were there can figure out the deep meanings involved and will write in and enlighten us all. -s-Mary Nix

To the ISLANDER:

The presentation of Sanibel's Comprehensive Land Use Plan alternatives last Thursday night was a most exhaustive, as well as exhausting, treatment of this key phase of the Plan. With a flair worthy of maestro Stowkowsky, however, Bill Roberts supported by his two colleagues deftly orchestrated the interplay of the virtues and foibles of our unique island. A few sour notes were heard from the overflow audience in the Community House during the performance. Generally, the enraptured listeners hung on each syllable.

A brief and perplexing plaint was sounded, however, by a self-proclaimed spokeswoman for the enigmatic and amorphous Sanibel Taxpayers' Association. She decried in wavering voice the failure of the City to spend a substantial sum of scarce tax funds to mail out the libretto for the three-hour performance so that the "absentee property owners" might have the opportunity to fly-speck the Plan. This costly (but not lawfully justified) demand like several similar tax-consuming proposals and legal actions attributed to this Association raise a doubt in my mind as to just what are the purposes of this nebulous group.

Do they seek to return the discredited Lee County Commissioners to power over Sanibel's destiny? Are they striving for higher taxes for themselves as well as their neighbors? Are they bucking for the City's bankruptcy? Are they trying to wear down our volunteer City Councilmen? Those ends seem to be dubious goals for a normal taxpayers' association.

If this group desires to gain the recognition and respect of loyal Sanibelites, they should present a convincing statement of their constructive objectives that will not strain the credulity of their Sanibel neighbors. If their ultimate purpose, however, is to set neighbor against neighbor in a mini-Civil War against constituted authority, I can assure them that they will not recruit many worthwhile followers on Sanibel. -s-Paul A. Howe

LETTERS TO THE EDITOR

To the Islander:

I want to know the legality of the occupational license. I feel that questions concerning my privacy are unconstitutional. What does the occupational license have to do with my social security and internal revenue numbers or whether I have been convicted of a felony?

I begin to think we don't belong to the United States anymore. I also think we don't need all the auxillary police force. We are not New York City. Are the council members worried about their safety?

I come from Germany and what's happening on Sanibel reminds me of how it was in Germany during the rise of Hitler.

It also seems to me that the city of Sanibel is not out to plan the island but out to control the people.

-s- Helga A. Hiers
Citizen of the United States.

Letter to the Editor:

Dear Sir: The ISLANDER sure is fun. I'm enjoying that "white paper" more than the Sunday Detroit Free Press. The comic section (police reports) is beautiful and should help the SPD more than it entertains by demonstrating that the SPD does its job and is earning its extra budgeted funds and in fact does patrol your corner of heaven.

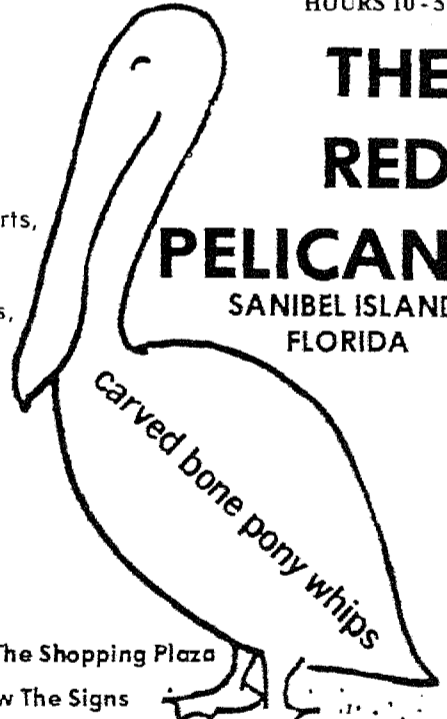
The only fear that an outsider might have is that the "Southern County Sheriff" attitude could pop up its ugly head by harassment of visitors or that the local people may have that they live in a Police State and as a result lose respect. But as it reads now—you've got a good group and they should be complimented. -s- Ted Buehler, Flint, Mich.

HOURS 10 - 5

THE RED PELICAN

SANIBEL ISLAND FLORIDA

Resort Wear,
Mexican Imports,
Gifts from
35 Countries,
Antiques, Toys,
Penny Candy,
Salmagundi,
Prints



Carved bone pony whips

Turn Right At The Shopping Plaza
Follow The Signs
472-4449

LOOKING FOR A UNIQUE SHELL?

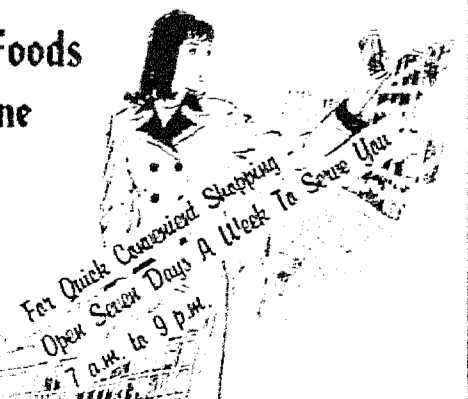
Visit our Model in the Dunes
Open 10 to 4; Sun. 2 to 6

For information:
P.O. Box 271
Sanibel, FL
813-472-2881



SANTIVA MINI MART

- Grocery - Dairy - Frozen Foods
- Meats - Cold Beer & Wine
- Fishing Tackle
- Post Cards - Magazines
- Hats
- Health & Beauty Aids



NORTH END OF SANIBEL
AT BLIND PASS BRIDGE

Proclamation of Youth Week

WHEREAS, Youth are a treasured asset of any happy, well-balanced community, and

WHEREAS, from year to year an ever-increasing number of young people reside, work and play on Sanibel, and

WHEREAS, these same youngsters will some day soon be responsible for guiding the destiny of the community we today seek to build, and

WHEREAS, the young and growing government of Sanibel wishes to focus attention on and to serve as possible the needs and aspirations of all its citizens of every age, and

WHEREAS, it is evident that every individual and community organization should be mindful of the need for suitable recreational, educational and athletic programs and opportunities to foster sound development of young

people, and

WHEREAS, the youth of Sanibel have willingly contributed their energies and talents to many civic efforts such as the Shell Fair, area-wide baseball competition, Beach and Roadway clean-up campaigns, Scouting programs and the like,

NOW, THEREFORE, I, PORTER J. GOSS, by virtue of the authority vested in me as Mayor of the City of Sanibel, Florida, do hereby proclaim the week of September 28 through October 4, 1975, as

YOUTH RECOGNITION WEEK

It is therefore appropriate that, in the period set apart, we should pause to consider and appreciate the immeasurable beneficial effects to our community of having young people

growing up on Sanibel and participating in the joys and responsibilities of our island community, and it is further deemed appropriate that we all do our best to devote time to and to guide wisely our young people, mindful that they are indeed our future.

In witness whereof I have hereunto set my hand and caused the Seal of the City of Sanibel, Florida to be affixed this 23rd day of September in the year of our Lord one thousand nine hundred and seventy-five.

Porter J. Goss

Mayor

Council from page

super-charged words at public meetings, specifically objecting to expressions of wanting to "squash developers for some higher public good."

Mayor Goss regretfully concurred with the accusation of insufficient information being made available to the public, while Duane White opined that city officials were already being overworked in this respect and doing the best job they could within the framework of the city's limited time schedule for completion of the land use plan.

In response to Taylor's charges that WMRT and city planners had already chosen their alternative, Roberts retorted, "As a planner I feel that there are urban areas on this Island that are ugly, cheaply built, and unsafe by my standards and by yours as well, in all honesty."

Roberts went on to say, "We strongly feel that you should take one of the first two options," but stressed that it was by no means intended to be a close-out.

The job of choosing which alternative will be recommended to WMRT is now in the hands of the planning commission and the residents of Sanibel.

The planning commission will meet on Wednesday and Friday of this week from nine a.m. to five p.m. at City Hall to review the phase three report and decide upon the alternative to be submitted to WMRT.

Public input is not merely urged but is a requisite in this process. The phase three report, which was at the outset going to cost residents twenty-five dollars a copy, is available at City Hall for the price of five dollars, a figure somewhat below what it costs the city to Xerox and collate it. This savings was made possible by a motion



Officer Trefny

Officer Wm. Trefny of the Sanibel Police Department will be promoted to sergeant Monday, Oct. 6. Trefny spent 25 years with the Greenwich, Conn. PD, retiring as a lieutenant. Congratulations, Bill! By the way, the SPD is the smallest PD we know of with the most amount of police experience — four members, 51 years!

PC discusses procedure

An almost total complement of planning commission members met yesterday to consider alternatives for the comprehensive land use plan.

LeeRoy Friday will not be present at this week's meetings because of family commitments. Ann Winterbotham and Anina Hills were back from holiday.

There were 21 members of the public present.

The commission considered procedures to follow for Wednesday's and Friday's public meetings.

Number 1: persons wanting to speak will be asked to sign in and will be called on in turn.

Number 2: each person will be confined to talk about the subject under discussion.

Number 3: There will be a three minute time limit on each subject.

Number 4: Legal

arguments must be presented in writing.

Number 5: There will be no discussion allowed for personal property problems.

Number 6: Written questions will be answered during the day as time permits.

Number 7: There will be one hour of discussion from the public on Friday before the vote is taken.

Fred Bosselman and Bill Roberts will be at the Friday meeting to hear the public discussion.

In discussing the procedures to follow, Clark Newcombe reminded the commissioners that there is a "silent majority," adding that if those people have to sign in, "You'll probably never hear from them."

Discussing the alternatives, Duane White read the definition of "threshold" and read parts of the first

few pages in WMRT's Phase III book, explaining vertical evacuation and discussed briefly horizontal evacuation with John Shepherd. They both agreed with WMRT that the city has no jurisdiction over traffic flow on the mainland or control over the bridge.

The rest of the morning was spent deciding on two relief cases.

The petitions of D.E. Cooperrider and Mr. and Mrs. W. Paul Brundage to construct single family residences were both denied.

Mrs. Brundage felt that the land use plan would not be affected by her building a home in Sanibel River Estates. She said, "I feel this is a personal violation of my rights," after it was obvious that the planning commission would deny her request.

Best attended task force meeting

Perhaps the best attended task force meeting this past week was the Real Estate and Development task force, which met late Tuesday afternoon.

In the three hour discussion between task force members, Robert Dorner, Thomas Brown, John Kontinos, and chairman Robert Taylor, WMRT's Bill Roberts, and a fair turnout of Island realtors and developers, one point was made perfectly clear: Island property-holders want the forthcoming land use plan to protect their right to build.

Chairman Taylor recommended that property owners not be denied the use of their property as set out in the current Lee County zoning, to which Roberts replied that WMRT will largely ignore the existing zoning in drawing up a plan which will insure the unique quality of life on Sanibel.

When the emergency transition ordinances expire later this year, the building moratorium will also come to an end and the city council will adopt a new land use and zoning plan on an interim basis until the plan can be processed by the appropriate review and recommendation agencies as outlined in Florida House Bill 782, at which

time the plan will become law.

When asked about possible legal suits arising from this rezoning, Roberts answered that his lawyers feel that landowners have no valid legal claim for compensation, although they can be solaced by the fact that their property taxes will be commensurate with the possible uses for their land as set forth in the new zoning.

Taylor then asked that the new zoning be implemented gradually so that the change in the open market value of land be minimal.

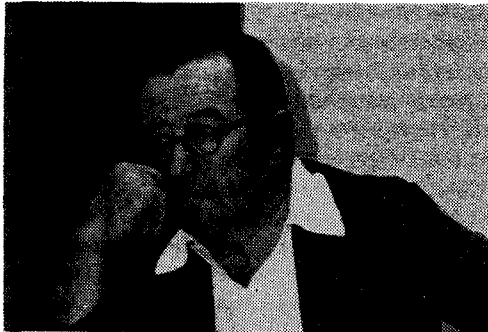
Roberts answered that the normal course of events is for the plan for further review of those cases where a landowner is put in dire financial straits by the zoning change and would be willing to cooperate with city planners to work out a compromise.

In reply, Roberts stressed the point that performance is what matters and that zoning can be somewhat flexible within the guidelines, and went on to say that he could not foresee any existing subdivisions being torn up to meet future zoning changes, although the city may recommend improvements be made to correct any initial mistakes.

Taylor revealed that the meetings of his task force had met with nominal community support, yet those who did attend expressed desires to see the road system expanded, to see bike paths constructed, to see land set aside for low-cost housing, to see more medical facilities on the Island, to see the thirty-five foot height limit on buildings maintained, and to see more recreational boating areas and more beach access points.

Taylor's personal recommendations included a desire to see the highest densities provided for in areas where people want to be (i.e. on the water) and where the highest concentration of facilities and roads already exist. He defended multi-family dwellings as being the best use of land in many cases in that they allow for a greater concentration of people with the least possible denuding of the vegetation.

Virtually everyone present at the meeting agreed that limited density, on the other hand, makes the Island a more attractive place and so improves land values. Thus, the developers acknowledged their situation to be somewhat of a conundrum.



Councilman Mackenzie

initiated by councilman Vernon MacKenzie.

All those interested in the future of our Island are strongly advised to obtain and digest the phase three report and to attend the two planning commission meetings this week to make their opinions and suggestions known to the city governors. Only in this way can the plan be supported to reflect the needs of the entire community.

What's Happening At Council Today

1:30 p.m. 1. Invocation and pledge of Allegiance (MacKenzie)

2. Correspondence

3. Consider request by Paul and Gertrude Kuhn to construct a Florida room addition to an existing single-family structure on a parcel of land in Government Lot 4, Section 19, Twp. 46 S., Rg. 23 E., Sanibel, Lee County, Florida.

1:45 p.m. 4. Consider request by H.M. Stafford to construct a single family detached residence on Lot 173 of Sanibel Bayous II, lying in Section 13, Twp. 46 S., Rg. 21 E., Sanibel, Lee County, Florida.

2:00 p.m. 5. Consider request by Paul F. and Monica Stahlia to construct a single-family detached residence on Lot 8, Belle Meade Subdivision, lying in part of Government

Lot 6, Section 20, Twp. 46 S., Rg. 22 E., Sanibel, Lee County, Florida.

2:15 p.m. 6. Consider request by Rufus M. Dodrill, Jr., for approval of a plat of a subdivision of a tract or parcel of land referred to as Sea Gull Estates Unit No. 1, lying in part of the NW 1/4 of Section 35, Twp. 46 S., Rg. 22 E., Sanibel, Lee County, Florida (property fronting on the N. Side of Gulf Dr. west of Tarpon Bay Road).

2:15 p.m. 7. Consider request by Keith W. Trowbridge representing Casuarina Corporation to complete construction of the south portion of Building No. 2 of Casuarina Condominium Village, being four units lying on a tract or parcel of land lying in Government Lot 1, Section 30, Twp. 46 S., Rg. 23 E., Sanibel, Lee County, Florida (Nerita Street).

3:15 p.m. 8. Consider request by Thomas Brymer representing Texas Nominee Corporation to construct swimming pool on property located in Section 30, Twp. 46 S., Rg. 23 E., Sanibel, Lee County, Florida, a part of which is described as Lots 8, 9, 14, 18, 19 and 20, Blk. 9, Unit No. 1, Sanibel Shores Subdivision (Ramada Inn between Tulipa Way and fulgur Street).

3:30 p.m. 9. Consider proposed amendment to Sign Ordinance 75-53.

3:40 p.m. 10. Discussion of Double Taxation situation.

3:45 p.m. 11. City Manager's Report.

4:00 p.m. 11. City Attorney's Report.

4:15 p.m. 13. Mayor and Councilman Reports.

4:30 p.m. 14. Public Comments and Inquiries.

Adjournment.

Sanibel Stinger



"Where in the hell have you been?" Bets jumped on me as soon as I walked in her front door. "Just cause I agreed you ought to go to school, you get in your car and disappear for a month! And you don't call, write or kiss my foot!"

"Now, Bets. . . I ain't really been gone a month? Come on, give me a hug. Ain't you as glad to see me as I am to be here?" I caught her up in my arms an threw the little bundle of nothin half up in the air. She let out a squeal, threw her arms around my neck jest to hang on at first an then tried to wriggle away. Then she thought better an give me a respectable hug an a big kiss. Before I could catch another one, she pushed me away. She looked like she didn't know whuther to still be mad or glad an I guess she was a little of both.

"I've been damned worried about you, you know! what happened?"

"Ain't you gonna ask me to set? Or do I have ta stand here?" Somehow we don't have the same relationship in her house as we do in mine. I ain't figured that one out yet.

"Sure, come on. I just fixed a pitcher of limeade. Let's go out on the porch."

We got settled in her swing. "O.K. tell me. Start from when you went into town to see about school."

"You know I had all the intentions in the world about goin to school? Well, I gets over to Fort Myers an I'm goin around the block lookin at the school and goin around the block somemore. An I reckon what happened was I jest reacted. I never did like school much. Left the first time when I was 15, so I found any excuse not to go, jest like a teenager that don't want to go to school.

I parked the car downtown away from havin to look at the school an figured I hadn't called my ma fer a while, so I gets on a phone an calls. She tells me my old man's

been sick an the roof leaks an a whole bunch of woes and worries.

I tells her I'll send her some money so she can git the roof fixed an that made her feel better. After I hung up I was sittin out on them new benches downtown an all of a sudden I asks myself, how's come the only responsibility I got to my folks is sendin money?

I didn't have no ready answer to that, so there was my excuse not to go to school. see? I got in the car an started drivin. . . ma needed me more than any money. I knowed when I got across the Caloosahatchee I was on my way. It felt good to jest drive along an keep drivin. Only once somewhere in the middle of Georgia I asked myself what I was doin but it was too late then.

The second night, jest as the sun was goin down I pulled into the front yard of the farm. Bets, someday you got to come with me. There's nowhere purtier than them North Carolina hills. Ma's house, it's on a little knoll overlookin a river an on behind is hills and forest. . . Well I ain't good at describin how beautiful it is.

I had jest got out of the car an was takin a feel of the cool mountain air an ma comes out of the house.

"Thet you, son?" she hollers, jest like she was expectin me.

I run up on the porch, grabbed her an give her a big hug. "Yeah ma, it's me."

"I knowed you was comin. I fixed extra fer supper."

Pa come out, shook my hand an said, "Howdy, son. Glad yer here."

Well, we set up an talked as long as they was able. They tole me what was going on at the farm an in the town an who was gone an who was home an who got married an who got buried. I tole them all about Sanibel an when I got to tellin about bein a new city an all, Pa got out a jug. He always said a little

nip helped him stay awake longer an he didn't want to miss nothin.

I recon I don't remember all of what I told them cause Pa an me, we kept on hittin the jug long after ma had gone to bed, but I know I rattled on fer a long time, tellin all about the crazy laws an the plannin an all what had been botherin me fer a long time.

Well, the next day, ma asked me whuther I'd see about gittin the roof fixed, so I said, "Sure, Ma," jest like I'd never been away. Mebby you don't know how that is, but mebby you do. You get involved with everythin that's got to git done. A couple of days later after I got all the materials, I got to puttin on the new roof an ma comes out of the kitchen an hollers up to me, "Son, they can't do thet."

"What?"

"They can't do thet," she hollers louder.

"Do what? Who?"

"Git down here. I don't like to holler."

I got down off the roof. "Ma, what you talkin about?"

"Listen," she says. "I heard you tell pa about the city wantin to flood up some of Sanibel. They can't do thet. What would happen if the county around here flooded up the river an our farm was drowned? How would we make a livin? Where would we go? Thet kinda thing ain't legal. . . floodin a person's land. . ." She looked very worried. Her nose wrinkled up.

"Now, ma, what you worryin about thet fer? It don't concern you or me neither. My house ain't near where they want to flood up the river."

"What you mean, don't concern me? Everythin concerns me, you oughtta know better. Now, what you say if the county comes by here an says they're gonna flood up thet little river down there. . . an our farm gits flooded. What you say about thet?"

"Mebby it is an mebby it ain't but I'll bet ya everybody in this here county would have a tizzy iffen they didn't have no more potatas and tomatas an onions offen this farm."

"Well, ma, I expect the county would pay you fer the farm what it's worth before they done anything like thet."

"What you mean, pay? This county don't

have no money to pay fer things like thet."

"Then what's worryin ya? Fer pete's sake, ma I gotta get the roof done. Besides, Sanibel don't grow tomatos or onions

"Thet ain't the point. The point is whuther the city is gonna pay fer the land that them people own. . . thet's the point."

"Well, I reckon I don't know the answer to that one."

Pa come around the house from the barn. "You two are scrappin about somethin neither one of ya know anythin about. It says in the Bill of Rights thet private property can't be taken without just compensation, so git back on the roof, son. Ma, what's fer lunch?"

Pa always had a way of settlin things firmly and quietly.

After I got the roof done, there was some leakin plumbin to fix an then pa needed some help mendin some fences an the time jest slipped by so fast I didn't notice.

No more got said about Sanibel or the bill or rights except one night we was late to supper an I was tired so I didn't have much energy to talk about anythin so I jest sat quiet while ma was gittin the food cleared away.

Pa says to me, "What's the matter, son, so quiet?"

"Nothin, pa, jest tired."

"Well, I got to thinkin," he says. "You never did take kindly to schoolin as I recollect. That's how's come you don't know about the bill of rights an them things. Mebby you ought to go to night school an do some serious readin before you gets too old."

Bet's, let me tell you I didn't quit laughin fer an hour. I guess my folks thought I was ready fer the men in the white coats. I tried, but somehow I jest couldn't explain to them why they got their roof fixed, so I jest kept on feelin fine an I think I hee-hawed all the way back here.

Next morning I kissed them both an told em that it was time fer me to be mosyin back to the island.

Ma kinda sniffed a bit an asked did I have to leave and pa, he said, "Well, so long, boy. Yer a good son even if you ain't got a lot of booklearnin."

JOHN AND PAT ZAMBUTO

PRESENT

THE

GRAND OPENING

OF

the CEDAR CHEST
of sanibel



SATURDAY, OCTOBER 1

FEATURING:

FINE GIFTS FOR EVERYONE

- MANY EXCLUSIVE & UNUSUAL ITEMS
- A COMPLETE LINE OF "TODAY'S" JEWELRY
- FINE GIFTS AND HANDCRAFTED SPECIALITIES
- UNIQUE SHELL NOVELITIES
- LIMITED EDITION PRINTS

TAHITIAN GARDENS 1987 PERIWINKLE WAY
SANIBEL ISLAND, FLA. 33957 (813) 472-2876

MIKI'S HOUSE ON SANIBEL

1989 PERIWINKLE WAY
SANIBEL, FLA. 33957

SCHEDULE OF CLASSES - BEGINNING WORK

Monday 9:00 am to 11:30 am - Tiny Shell Work - \$5.00 plus materials.

Tuesday 9:00 am to 11:30 am - Velvet Petal Work - \$5.00 plus materials.

Wednesday and Thursday (2 sessions) - 9:00 am to 11:30 am - Limoge Eggery - \$8.00 plus materials.

Friday 9:00 am to 11:30 am - Basic Trapuntos - \$5.00 plus materials.

The above tuitions must be paid in advance, and turned in with this sheet in order to be enrolled. Minimum of 6 persons needed to start any class.

Afternoon use of work tables where help to pupils taking work is given is \$1.00 per hour or portion thereof. Many warm and lasting friendships are made at these sessions. Work tables available from 1:30 pm to 4:30 pm. No one may use the work tables or equipment unless previously registered.

CLASSES STARTING THIS WEEK.

I wish to take _____

course on _____

Name _____

Address _____

Phone _____

City and State _____

If other than Sanibel and you wish news of new items, please give both addresses.

Other Address _____

ALL CLASSES EXCEPT LIMOGGE EGGERY ARE ONE SESSION COMPLETE AND WILL ENABLE YOU TO MAKE MANY OF THE FINE SHOP ITEMS YOU SEE DISPLAYED.

Also Evening & Children's Classes on Request

Class Materials average \$2.00 to \$5.00.

Young man requested assistance to find a camping space for himself and his wife; said he had been refused because of his appearance and was annoyed to have paid the \$3 toll and not be allowed to stay. He didn't want to rent a motel room, but had friends on Captiva and was advised by the SPD to check

out the possibility of staying there.

Man said his power mowing machine was missing. SPD noticed lawn had been just mowed, asked who did mowing. Investigation showed young man who did mowing mowed another piece of property, got hot, stopped



mowing and left machine at his house while he went to store. No further action needed.

Back hoe was left in up position at end of work day Friday, citizen called and said he was worried someone might get hurt if the bucket fell, since he had noticed some young people around machine. Water company man, when called, said if anyone got hurt they deserved it. Lock was cut by SPD but bucket couldn't be lowered anyway. Gave key to new lock to citizen to give to workmen Monday morning.

Police Report

While on regular patrol, officer noticed open door at a residence. Woke up resident who said he went to bed and just forgot about door. Resident also said he saw another open door on another residence and that he had closed it. SPD will keep close attention to residence until owners return.

Intoxicated man complained that private club was serving without a licensed bartender, and that if complainant had to obey the law, why didn't the club? Investigation showed 23 people at club, 10 of

whom were members, with licensed bartender on premises, and no violations. When this was reported back to original complainant, he still said they were breaking the law and he would swear out an affidavit as to what he had observed. Action pending.

A 10 foot fiberglass boat was reported stolen, complete with motor, anchor and gas tank. Further action to be taken.

House was broken into—stolen, one Kodak camera, a fishing rod and the contents of two 7-ups and one beer (containers left on premises.) Also left on premises were a small flashlight and a pair of dirty underwear. Entrance accomplished by cutting screen and prying open awning window.

\$50 was stolen from man's bureau who shares home with other gentlemen. Suspected roommate, was reputed to have purchased three cases of beer after money was missing, in spite of the fact he hadn't worked in two months. Suspect left Island. Advised complainant to swear out a misdemeanor warrant with Lee County Sheriff's Department.

Complaint of car being driven on beach. Car gone by time officer arrived.

Man came to SPD and said that a lady told him she had found a fishing tackle box (his) and given it to a "policeman". Check showed that "policeman" was not a member of the SPD or the LCSD. Man left his office island address in case "policeman" and-or tackle box shows up.

Small, approximately 10 week old calico kitten found on beach by resident. Resident said he was taking care of kitten till owner was found.

Man complained that a black and white kitten, complete with collar, had been "hanging around." Said he would check out some "suspected owners."

Lady said her dog, a reddish brown miniature collie, had disappeared.

Grownup called in and said a juvenile was playing
(Continued on Page 15)

THE Sextant RESTAURANT

"A Delicious Experience"

OTHER FRESH ENTREES PREPARED DAILY



ONE OF OUR SPECIALTIES
Tender, juicy and delicious
Broasted Chicken
'cause it's broasted not fried.
ALSO BROASTED POTATOES

SELECT GULF SHRIMP (BOILED OR FRIED)
CHESAPEAKE BAY OYSTERS
BLACK GROUPER (BROILED OR FRIED)
CHOICE RIB-EYE STEAKS (WE CUT OUR OWN)
BAKED HAM

OUR OWN RECIPES
CORN MUFFINS
HUSH PUPPIES
BEAN SALAD
CARROT CAKE

**Hours: 5 p.m. to 9 p.m.
7 Days a Week**

463-6839
751 San Carlos Blvd. Ft. Myers Beach
Between the old wooden bridge and the swing bridge.

The Gulf Shore Inn Restaurant

ON BEAUTIFUL FT. MYERS BEACH
"With Traditional Island Atmosphere"
Watch The Sun Set Over The Gulf

Beef	Open Hearth	Seafood
Beer	Open Evenings 5 to 10: Dining On The Gulf	Wine
1270 Estero Blvd.		463-9551


TINER'S SEAFOOD

NOW OPEN DAILY 9-6
FRESH SEAFOOD DAILY

OKEECHOBEE CATFISH
SMOKED MULLET \$1.00 EACH

NO ORDER TOO LARGE
OR TOO SMALL

GLADIOLUS DRIVE
481-2270



THE Breakfast Place

Lighthouse Restaurant

CLOSED FOR VACATION
from Sept. 29th
'til Columbus Day Oct. 13th

362 Periwinkle Way, Sanibel Island, Fla.
472-9976

BE FIRE ALERT


HAPPINESS IS EATING AT CHARLEY BROWN'S



ESTERO BLVD. FT. MYERS BEACH 463-6660

463-6225

Ye Olde Holmes House



House Specialty
SPECIAL
• Live Maine Lobster
"Choose From Our Own Tank"

\$6.95

MON. THRU THURS.

463-5519

2500 ESTERO BLVD. FORT MYERS BEACH, FLORIDA

Dining &
Cocktails
7 Days-5 'til?
Entrees
starting at \$3.95

For
Your
Dining



and Entertainment
Pleasure

Coconut
Grove

Restaurant
& Lounge

Cocktails
Specializing in Seafood

11 a.m. to 10 p.m.
Open Seven Days a Week

Corner of Tarpon Bay Road
and Sanibel Blvd., Sanibel 472-1366

GED Tests

The next local testing for Florida General Education Development (GED) high school diplomas will be October 6, 7, and 8, 1975. Adults who are at least 18 years old, have a high school credit in American history, and are Florida residents are eligible for testing. Successful applicants are awarded a high school diploma by the Florida Department of Education. Interested persons should contact the adult education office at 2266 Second Street, Fort Myers, or call 334-7172 before September 26, 1975.



The
Monarch "Royal Family Plan"
The King-Size Cruise Bargain
for families or friends.

50% Discount on all cruises
July 21 thru Dec. 19, 1975
for the 2nd person in a double
stateroom. (plus port tax/service)
BONUS!
3rd or 4th person in room pay
only 50% of minimum
fare!

The Royal Route to Adventure

3 NIGHTS to
NASSAU from **MIAMI**
\$140 to \$250* off
season
\$155 to \$290* on
season
Every Friday Year 'Round

4 NIGHTS to
FREEPORT & NASSAU
from **MIAMI**
\$170 to \$295* off
season
\$190 to \$345* on
season
Every Monday Year 'Round
plus port tax-service
Group rates available on request

THE DELUXE CRUISE SHIP TO THE BAHAMAS FROM MIAMI

Now, at last, Elegance and Luxury in
the Grand Manner.

You never have had the opportunity to sail on
3 night and 4 night cruises to the Bahamas in
such splendid style! And, it is likely that you
have seldom seen such a beautiful ship,
specifically designed for world cruising. For
spaciousness, for luxury, for service, for
attention, for magnificent facilities and
accommodations... It's the Monarch Sun!

Super-spacious staterooms, each with private
facilities, phone, music console, individually
controlled air conditioning (and, 92% of rooms
are outside doubles). A magnificent dining
room with superlative continental cuisine and
service. Theater, Lounge, Night Clubs, 5 Bars,
3 Elevators, Swimming Pool, Duty-Free Shops,
Gymnasium... and, Casino Facilities!
Entertainment, Shows, Revues and world-
renowned Cruise Director and Staff.

RESERVE NOW! HERE COMES "THE SUN"!

SS Monarch Sun registration from
Netherlands Antilles to Panama pending.

MONARCH CRUISE LINES, INC.
1428 BRICKELL AVENUE
MIAMI, FLORIDA 33131

Gentlemen:
Please send me full information and brochure on Monarch Sun.

Name _____
Address _____
City _____ State _____ Zip _____
My Travel Agent is _____

SEE YOUR TRAVEL AGENT or call

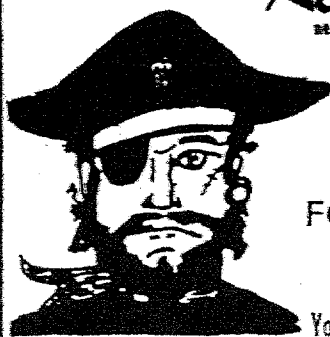
MONARCH CRUISE LINES

Incorporated
1428 Brickell Avenue, Miami, Florida 33131

Phone: (305) 374-6611 • Open Sundays 10AM-4PM

Gasparilla
Restaurant

next to Sanibel Community House



CLOSED
FOR VACATION

Try our Daily Specials
You'll be glad you did! 472-2113

Open daily 5 p.m. - 9 p.m., Closed Tuesdays



Reservations Not Required

Harbor House RESTAURANT

FRESH SEAFOOD

"The Closest You Can Get To
Fresh Seafood Without Getting Wet!"

Chicken, Steaks, Fresh Fla. Lobster
DINNER 5:00 - 9:00

WILL BE OPEN UNTIL DEC. 1, 1975
Closed Sunday 1244 Periwinkle Way

NOW OPEN FOR BUSINESS
Come & have as good a time as you did
at the grand opening!



LOCATED ON
TARPON BAY ROAD
THE FASTEST SERVICE ON THE ISLAND

Castaways Resort & Restaurant

BEAUTIFUL SUNSETS AT BLIND PASS-GULFSIDE DINING

Lunches: Noon - 3 p.m.

Dinner: 5:30 p.m. - 9:00 p.m.

Fish lunches and dinners to satisfy a pelican,
(even those whose beaks hold more than their bellies can!)
YES, WE HAVE LOBSTER TAILS - AND STONE CRAB CLAWS
AND SAUTEED FROGS' LEGS - AND SHRIMP SCAMPI
AND RED SNAPPER
and other outstanding SEAFOOD, STEAKS & CHICKEN.

Carry out available on all items

WINE & BEER
RESERVATIONS SUGGESTED

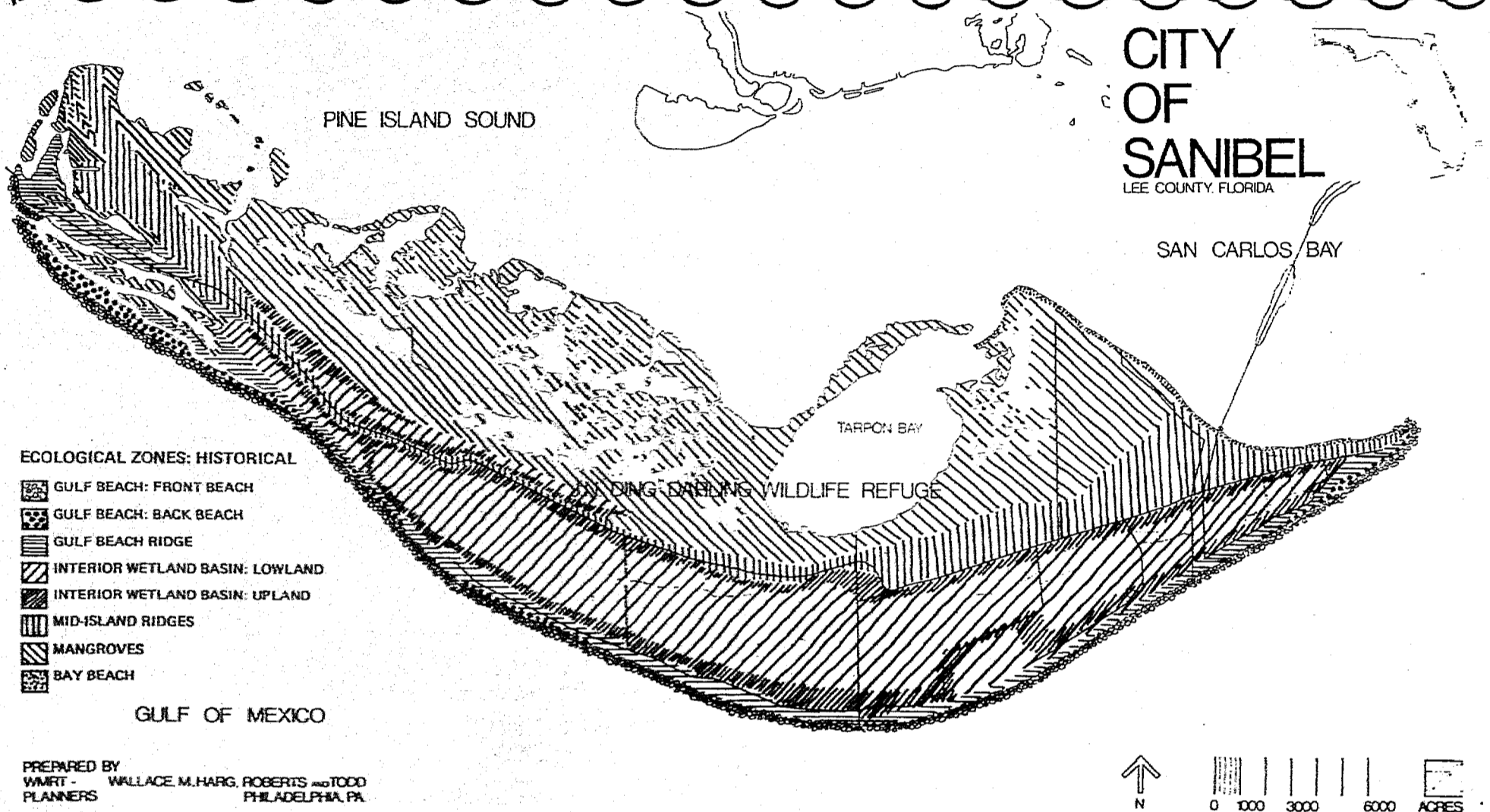
472-1212

CLOSED SUNDAYS



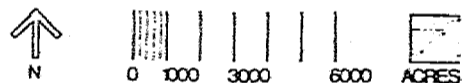
"WMRT" as referred to on these pages and throughout the ISLANDER, refer to Wallace, MacHarg, Roberts and Todd, the planners hired by the City of Sanibel to form a land use plan for the Island.

All maps, graphs and information (with some sections in summary form) are taken directly, without comment, from WMRT's Phase III report. Those wishing an entire report may buy one at City Hall for \$5. Public hearings on the four alternatives presented are scheduled to be held from 9 to 5:30 this Wednesday and Friday. The public is urged to attend.



- ECOLOGICAL ZONES: HISTORICAL**
- GULF BEACH: FRONT BEACH
 - GULF BEACH: BACK BEACH
 - GULF BEACH RIDGE
 - INTERIOR WETLAND BASIN: LOWLAND
 - INTERIOR WETLAND BASIN: UPLAND
 - MID-ISLAND RIDGES
 - MANGROVES
 - BAY BEACH

PREPARED BY
WMRT - WALLACE, M. HARG, ROBERTS AND TODD
PLANNERS PHILADELPHIA, PA.



WMRT's Sewage Facts

... As with the other major threshold factors, emergency evacuation, water supply and traffic, it is necessary to review present Island conditions with respect to sewage treatment before examining the costs associated with future increments of growth. . .

... As with traffic, this alternative (1) threshold is really the only one that might permit no major change in the status quo.

Conclusion

... Each threshold of growth indicates increased costs and increased care and system monitoring that is needed to maintain the quality of the surface and ground water systems. As population increases more open land will be required to assimilate the treated effluent. If population increases in a concentrated pattern, there will be more open land for this assimilation to take place and there will be less cost in building an extensive sewer system to every part of the Island. The relative holding capacity appropriate to levels of development density for the Island based on the assimilation of nutrients is discussed by Albert Veri Associates in their report to the Conservation Foundation entitled Interior Wetlands Water Quality Management (August, 1975).

Finally, if waste water disposal is viewed as an integral part of water supply, the community may be able to develop the most cost effective water system in the future ensuring health, safety and welfare. . .

WMRT's Economic Report

... The following comparison between Sanibel, Ft. Myers Beach, and Ft. Lauderdale with respect to average rate per room during the peak season and the off season as well as accompanying percentage of occupancy clearly indicates Sanibel's strong competitive position in the Florida tourist business.

Hotel-Motel Rentals and Occupancy for Sanibel:
During the Season
Average rate per room per day: \$40.
Occupancy: 85-90 per cent

Off Season

Average rate per room per day: \$22.

Occupancy: 70-75 per cent.

Note: Lowest occupancy period begins right after labor day and extends to mid November. During this period occupancy rate is 50-60 per cent.

Hotel-Motel Rentals and Occupancy for Ft. Myers Beach:

During the Season

Average rate per room per day: \$12-13-\$50-57.

Occupancy: 80 per cent.

Off Season

Average rate per room per day: \$7-9-\$14-21.

Occupancy: 25 per cent. . .

Hotel-Motel Rentals and Occupancy for Ft. Lauderdale:

During the Season

Average rate per room per day \$30-\$50

Occupancy: 80 per cent

Off Season

Average rate per room per day: \$15-\$22

Occupancy: 30 per cent

A quick check of the figures will show that Sanibel is able to charge the highest average rents while still maintaining the highest occupancy rate. The ability to hold occupancy in the off season is particularly impressive.

As anyone familiar with Sanibel can attest, this market strength is not supported by exciting night life, exclusive restaurants, or numerous championship golf courses. Sanibel is assured of its place in the Florida vacation economy simply because of its beaches, its shells, its wildlife refuge and its birds. . .

WMRT's Environmental Value Findings And Energy Report

This one we have to summarize, since to quote the report directly, but not in full, is misleading.

Residential (Sanibel) energy is abundant - sun, rain, wind, wave and currents. Purchased energy are electricity, oil, gas, goods and materials. This brings a balance of

payments which is "Natural resident energy plus purchased energy equals exported energy."

When one compares purchased energy to resident energy, one comes up with "investment ratio" which is now 1.65 to 1. It is not explained how this figure is obtained, or what it means, but further growth increases the investment ratio, making "more vulnerable. . . the economy of Sanibel to increases in world energy prices" but "the limit of growth is related to that level of development Sanibel can accommodate which maintaining an investment ratio that keeps it in a competitively favorable position."

WMRT's Education Costs

... Skipping Municipal services and health care, as well as fire and police protection, we come to education, where, we are told Under alternative I, we will have 1,020 elementary middle school students and 504 high school students. Alternative II, 1,530 students, kindergarten to 8th grade, 758 high school, Alternative III, 2,040 k. thru 8th grade, 1,008 high school; Alternative IV, 4,080 k. thru 8th grade, 2,016 high school students.

(Editor's note: As of Friday, Sept. 26, there were 135 students at Sanibel Elementary; as of Monday, Sept. 29, there are 139, since four students transferred early because of Northern school closings. This is the highest enrollment ever on Sanibel to date.)

WMRT's Police Protection Figures

... Alternative I, 27 man police force; Alternative II, 40 man; Alternative III, 54 man and Alternative IV, 108 man police force. . .

WMRT's Storm Protection Policies

... Three policy options regarding the protection of life and property from storms and floods are described below. Each description is followed by a brief summary of the impacts of the option.

Option 1: Protect life and property from storms and flooding by maintaining the natural system to the highest degree possible. This option implies that marshes, wetlands and low lying areas shall be absolutely protected so that their natural function of accommodating storm water is

(Continued on Page 9)

ALTERNATIVE GROWTH THRESHOLDS AND THEIR ASSOCIATED REQUIREMENTS AND COST

Alternatives	Major Governing Factors						Other Municipal Costs (Based on other small Florida communities)
	Emergency Evacuation Constraints	Water Supply Costs	Traffic Movement Costs	Sewage Treatment Costs	Economic Values	Environmental Values	
Alternative 1 (6,000 living units) 12,000 permanent popula. 6,000 seasonal popula. 18,000 total population	For complete evacuation order to evacuate should be made 42 hrs. from land fall or vertical evacuation should be provided for 6,500 people.	\$4,700,000 Cumulative Total	\$2,470,660	Option A: \$1,900,000 minimal improvement of system. Option B: \$7,850,000 high level of improvements	Sanibel could maintain its image as haven for shell & bird lovers & its strong competitive position in the Florida vacation market	Energy Investment Ratio = 2.6:1 Purchased Energy to natural resident energy favorable with other competitive Florida communities.	Approximately 190* per capita *figure does not include state or federal funds
Alternative 2 (9,000 living units) 18,000 permanent popula. 9,000 seasonal popula. 27,000 total population	For complete evacuation order to evacuate should be made 51 hrs. from land fall or vertical evacuation should be provided for 16,500 people.	\$5,900,000 Cumulative Total	\$6,088,285	\$12,200,000	Sanibel's image & market position could be compromised by increased density and loss of natural areas	Energy Investment Ratio = 3.9:1 Purchased Energy needed to sustain development increases to approximately same level as Ft. Myers Beach	Approximately 175* per capita *figure does not include state or federal funds
Alternative 3 (12,000 living units) 24,000 permanent popula. 12,000 seasonal popula. 36,000 total population	For complete evacuation order to evacuate should be made 60 hrs. from land fall or vertical evacuation should be provided for 21,500 people.	Substantial hook-up charges could off-set development, operation and maintenance costs	\$7,194,945	\$15,450,000	Sanibel's gross density threshold similar to Ft. Myers Beach & may command same room rates & occupancy.	Energy Investment Ratio = 7.4:1 Increasingly non-competitive; and vulnerable to price fluctuations. Equivalent to Dade City, Fla.	Approximately 220 per capita
Alternative 4 (24,000 living units) 48,000 permanent popula. 24,000 seasonal popula. 72,000 total population	For complete evacuation order to evacuate should be made 95 hrs. from land fall or vertical evacuation should be provided for 66,500 people	Substantial hook-up charges could off-set development, operation and maintenance costs	\$8,292,798	\$21,450,000	Sanibel reaches the gross density of Ft. Lauderdale; major amenities necessary to attract exclusive resort market	Energy Investment Ratio = 13.2:1 Energy costs may exceed island ability to pay. Equivalent to Jacksonville, Fla.	Approximately 350 per capita
	Note: 5,400 vehicles per hour can safely be moved over Causeway in 12 hrs. daylight.	Note: These are cumulative in 1974 dollars.	Note: These are cumulative in 1975 dollars.	Note: These are cumulative totals in 1975 dollars.	Note: Conclusions drawn from average room rents & occupancy rates in Sanibel compared to Ft. Myers Beach & Ft. Lauderdale	Note: Findings for this evaluation from "An Energetic Analysis of Sanibel Island, Fla.," by Mark Brown	Note: Source is 1972 Florida Census of Local Government Finances, Commission of Local Government, 1973.

(Continued from Page 8)

maintained and that any future development is conditional on such maintainance.

Option 2: Protect life and property from storms and floods to a particular degree by land use policy. Strictly regulate human activities in those critical ecological zones which buffer high winds and storm tides. Permit urban development in the Island's wetland interior which would raise flood levels in the Island's interior. Establish standards for siting and construction of buildings to protect lives and property in case of storm or flood.

This option is less effective than the first in protecting the health, safety, and welfare of Sanibel residents. The incidence and extent of severe flooding would be increased by permitting future development in certain areas that would raise future flood levels.

Option 3: Storm and flood protection should not be regulated by the City in terms of permitted land uses and performance standards.

The health, safety and welfare of Island residents would be threatened if this option were chosen.

WMRT on Public Services

Sanibel residents are affected daily by the level of municipal services provided by the City. The City can choose to enhance the living environment by providing adequate recreational, educational, and medical facilities as well as adequate fire and police protection. Conversely, the City may choose to maintain its present level of services and reduce the safety as well as the attractiveness of the Island as a place to live.

WMRT's Statement of Conflicts

CONFLICTS BETWEEN POLICY OPTIONS

In some cases, the choice of a less restrictive policy in one area of concern and a more restrictive policy in another may conflict. For example, it is impossible to maintain the existing diversity and abundance of wildlife if the fresh water system is degraded. The following options are in conflict and should be resolved:

I. Protection of Life and Property from Storms and Floods:

Options 2 and 3 conflict with Option 1 of Police II - Protection of Life and Property from accelerated shoreline erosion.

II. Protection of Life and Property from Accelerated Shoreline erosion:

Options 2 and 3 conflict with option 1 of Policy I - Protection of Life and Property from Storms and floods.

III. Protection of Health and Welfare by Maintaining Water Quality:

Option 2 conflicts with Options 1 and 2 of Policy VI - Protection of Public Welfare by Maintaining Marine Life and Terrestrial Wildlife and Option 1 of Policy VII - Enhancement of Public Welfare by Preserving Vegetation of High Value.

IV. Protection of Life and Property from Wild Fire:

Option 2 conflicts with Options 1 and 2 of Policy VI - Protection of Public Welfare by Maintaining Marine Life and Terrestrial Wildlife and Option 1 of Policy VII - Enhancement of Public Welfare by Preserving Vegetation of High Value.

V. Protection of Public Welfare by Maintaining the Fresh Water System:

Option 1 conflicts with Options 1 and 2 of Policy VI - Protection of Public Welfare by Maintaining Marine Life and Terrestrial Wildlife and Option 1 of Policy VII - Protection of Public Welfare by Preserving Vegetation of High Value.

Portion of WMRT's Phase III Studies Introduction

The major policy choices and decisions the City Planning Commission is presented with by this report are organized at three different scales of concern.

1) Alternative Growth Thresholds are indicated for Sanibel-Captiva based on their regional context and the costs inherent in providing adequate public services in terms of health, safety and welfare for each increment of growth. The levels of achievement of adequate public services have been recommended by the consultant and their costs calculated. The costs of each alternative are related to the major governing factors that influence the City's survival—hurricane evacuation, water supply, traffic movement, sewage treatment, economic values, and environmental values. Most of these critical factors are not entirely within the jurisdiction or control of the City.

2) Options for Island-Wide Policies with respect to health, safety and welfare also presented. However, they must be evaluated within the overall context of each Growth Threshold. Once a decision on Growth Threshold has determined survival of the City and the costs necessary to maintain this level, Island-Wide Policy Options are offered with respect to priority of achievement of different degrees of health, safety and welfare on an Island-wide basis. The

City in large measure controls achievement of Island-wide policies. The policy options recommended by the consultant have been noted.

3) Performance Standards for development or management within each Ecological Zone (physiographic unit) of the island is given as the third scale of decision making. These performance standards suggest the techniques that can be employed by zone to ensure the balance of the natural systems on the island can be maintained.

All studies undertaken to date by both WMRT and the Conservation Foundation indicate that Sanibel Island is a dynamic and fragile natural environment. Furthermore, it is evident that this environment has been greatly modified and degraded by urbanization, and that continued urban growth poses serious threats to public health, safety and welfare as well as to the ecology of this unique environment. Previous studies also show that public facilities serving existing urbanization in terms of emergency evacuation, sewage treatment, and traffic movement are inadequate. Continued urban growth at a pace consistent with that of the last three years would greatly exacerbate existing problems of health, safety and welfare. For these reasons it is proposed that the most important policies to be adopted by the Planning Commission are those that apply to the population and resources of the region and to the entire island and to Captiva in terms of protecting life, health and property.

- Alternative 1 - 6,000 living units
- Alternative 2 - 9,000 living units
- Alternative 3 - 12,000 living units
- Alternative 4 - 24,000 living units.

The rationale for selecting these particular thresholds is discussed in the next section of this report.

If the City adopts policies that are protective of all health, safety and welfare factors considered, then the first threshold alternative (6,000 living units) represents the least cost alternative.

Currently it is estimated that there are approximately 4,000 living units and that the permanent and seasonal total population ranges from 7,299 to 9,277 and 10,360 to 13,522 respectively for Sanibel. Captiva population is estimated at 400.

In summary then the selection of a Plan for Sanibel is structured on the following three levels: 1) Alternative Growth Thresholds (Sanibel-Captiva), 2) Island-Wide Policies, and 3) Performance Standards by Ecological Zone.

(Continued on Page 10)

(Continued from Page 9)

Associated Economic Costs

To illustrate the economic costs inherent in providing adequate services to the citizens of Sanibel, four alternative growth levels are selected for analysis.

They are as follows:
Alternative 1 - 6,000 living units

Permanent population	12,000 people
Seasonal population	6,000 people
Total population at height of season	18,000 people

Alternative 2 - 9,000 living units

Permanent population	18,000
Seasonal population	9,000
Total population at height of season	27,000

Alternative 3 - 12,000 living units

Permanent population	24,000
Seasonal population	12,000
Total population at height of season	36,000

Alternative 4 - 24,000 living units

Permanent population	48,000
Seasonal population	24,000
Total population at height of season	72,000

Each of these alternative thresholds are examined in terms of their impact on emergency evacuation, water supply, traffic movement, sewage treatment, economic and environmental values to determine the costs necessary to establish and maintain adequate standards of health, safety and welfare. The city must first decide what it will accept as an adequate provision for health, safety and welfare as well as what it is willing to commit to various capital programs to insure these standards are met.

WMRT's Hurricane Figures

Between 1901 and 1970, 84 storms with hurricane force winds (at least 75 miles per hour) were recorded in the Gulf off the west coast of Florida. Discussions with the Office of Emergency Preparedness and the Techniques Development Laboratory of the National Weather Service indicate the critical evacuation problems confronting the city in case of a major hurricane.

The Office of Emergency Preparedness bases its strategic planning and Emergency Evacuation Maps on very severe storm episodes (a Camille type storm or the 100 year storm).

...It has been assumed that the 6,000 living unit alternative represents a permanent population of 12,000 and a seasonal population of 6,000 for a possible total of 18,000.

Therefore, if a complete evacuation were to be called under Alternative 1 and the residents of each dwelling unit evacuated in one automobile (the ratio of cars per dwelling unit is closer to 2:1 on the island for permanent residents), 6,000 vehicles would be involved. In terms of seasonal population, 3 persons per vehicle will be assumed for a total of 2,000 vehicles. Thus the total evacuation vehicles for permanent population and seasonal population would be 8,000.

This total suggests that a complete evacuation could not take place in a 12 hour daylight period even if there is adequate advance warning of tides rising in San Carlos Pass and the causeway is not sealed off.

Alternative 2 represents a permanent population of 18,000 and a seasonal population of 9,000 for a total peak population of 27,000. Assuming one car per unit for the permanent population, and 3 persons per car for the seasonal population, the total vehicles to be evacuated in a 12 hour daylight period would be 12,000. This total is more than twice the safe figure (5,400 vehicles in a 12 hour daylight period) for complete evacuation.

12,000 living units for permanent residents would mean 12,000 vehicles to be evacuated. The peak seasonal population under this alternative was assumed to be 12,000 people. Which at 3 persons per evacuation vehicle gives you 4,000 vehicles. Under this alternative then, 16,000 vehicles would need to be evacuated in a 12 hour daylight period. This total is 10,600 in excess of the safe evacuation route capacity of 5,400 vehicles per 12 hour daylight period.

A total of 24,000 permanent living units would mean 24,000 escaping vehicles. The seasonal population in this alternative as mentioned previously is 24,000 people which at 3 persons per vehicle would be 8,000 additional vehicles under existing conditions on the island, on the causeway, and on the mainland. This total of 24,000 plus 8,000, or 32,000 vehicles, would exceed the safe capacity (5,400 vehicles per 12 hour daylight period) by 26,600 vehicles. Under this alternative, emergency evacuation would have to be pushed up 144 hours to achieve complete evacuation. Sanibel would be forced to evacuate almost on the minute a hurricane appeared in the Gulf or Caribbean, staying within the 12 hour daylight period.

Water Supply Alternatives

When analyzing the implications of Alternative Growth Threshold with respect to water supply, two major factors should be kept in mind. These are the cost of pumping and treatment, and treatment, and the costs of storage and distribution.

	Net	Cumulative Cost
Alternative 1 (in 1975 dollars)	\$4,700,000	0
Alternative 2 (9,000 living units)		

In a June 26, 1975 memorandum to the Island Water Association entitled "Plant Capacity and Proposed Capital Improvements 1975-1986", William F. Bishop of Rennett and Bishop Engineers discusses the cost implications and timing involved in the supplementation of the Long Range Water

Plan.

The capital costs necessary to provide for Phase II would be as follows: (see appendix for cost breakdown)

	Net Increase	Cumulative Cost
Alternative 2 (in 1975 dollars)	\$1,200,000	\$5,900,000

Alternative 3 The costs of Phase III which are necessary to accommodate this growth increment have not been calculated by Bennett and Bishop. Data from their Long Range Plan suggests that the cost of hook-ups (depending on level) could finance development, operating and maintenance cost. Hook-up costs have now escalated to \$900 per unit, and they are still rising.

Alternative 4

As in Alternative 3, figures from the Bennett and Bishop's Long Range Water Plan suggest that hook-ups at this level of growth might finance development, operating and maintenance costs.

WMRT's Traffic Report

Although the road system is already over-taxed during the peak season, Alternative 1 is the only one which offers the option of no road improvements if the community were willing to accept lower levels of service (i.e. more congestion, greater hazards, etc.) than they now experience.

If the City were to adequately provide for hurricane evacuation and for a higher level of daily service, an elevated By-Pass road filled to between 6 and 8 feet (depending on location) would be required north of Periwinkle Way. The height of fill is to protect against flooding. It would run from the Lindgren Boulevard to intersect the Sanibel-Captiva road at Tarpon Bay Road.

	Net Increase	Cumulative Total
	\$2,470,660	0

Above and beyond the improvements suggested in Alternative 1, the increase of 3,000 living units in Alternative 2 requires an additional east-west lane in the East Central Sector.

This link would be a scenic drive as opposed to the By-pass (22 feet pavement width, curving alignment and more frequent intersection).

	Net Increase	Cumulative Cost
	\$3,617,625	\$6,088,285

The traffic volumes generated by the addition of another 3,000 living units over Alternative 2 suggest the widening of the By-Pass to four lanes.

	Net Increase	Cumulative Cost
	\$1,106,666	\$7,194,945

The traffic volumes generated by Alternative 4 require a widening of Periwinkle Way to four lanes with increased signalization or providing paralleling service roads behind the commercial strip. The following figures suggest the order of magnitude of additional costs over Alternative 3.

	Net Increase	Cumulative Cost
	\$1,097,851	\$8,292,796

FACTS FOR THOUGHT (compiled by the ISLANDER)

Present Sanibel permanent population, 7,299 - 9,277. (Source: WMRT's Phase III report).

Sanibel Elementary School enrollment, as of Sept. 29, 1975. 139 (record high). (Source, Sanibel Elementary School).

Hurricanes of sufficient severity to be termed "disaster" since 1893. 13. (Note: not all hit S.W. Florida.) Of the 13 hurricanes, one occurred in June (Texas and Alabama), three in August, all the rest in September and October. (Source - N.Y. Times Family Almanac).

Registered Sanibel voters as of Sept. 22, 1975 - 1,550. (Source: Office of Supervisor of Elections, Lee County).

Postal customers, season high, 1708, off season, 1,150. (Source: Sanibel Post Office).

Active residential electric connections on Sanibel, Aug. 30, 1975, 2,546. (Source: Lee County Electrical Co-op).

Task Force Reports

Residential & Subdivision

Duane White opened the two days of task force sessions at 8:30 a.m. last Tuesday by telling the residential and subdivision task force, Don Bissell, John Sherman and Milton Scheiter, that the main objective of the meetings was to bring the final reports of the task forces to the attention of Wallace, McHarg, Roberts and Todd (WMRT).

Bill Roberts, senior WMRT partner, said the planners were having a problem determining the exact population of Sanibel, which the task force members said was a problem, since the population fluctuated according to the season.

After discussion, Roberts said WMRT was using a "safely conservative" figure of two persons per dwelling unit off season, and three persons during the peak season. The task force thought this was low, to which Roberts replied that even the conservative figures means "some pretty

strong steps" had to be taken, and if higher figures were used, "We'll start having to move people off who are already here."

Population checks such as water usage, voting records, knocking on doors, and so forth were discussed and discarded, and for the first time a phrase, which would become of supreme importance by the end of the week, was used.

Roberts, mentioning hurricane evacuation, said "We tell the city that they have a responsibility to protect the health, safety and welfare" of the city's population.

The existing limited road facilities for hurricane evacuation were mentioned as a major factor in the plan.

Roberts wished to take the planning commission's recommendations back to Philadelphia with him Monday, Sept. 29. White objected, saying that at least a week or ten days of public input and study were needed.

It was finally decided to hold public meetings this week from 9 a.m. to 5:30 (the first was held, depending on the p.c.'s morning schedule, yesterday afternoon) on Wednesday and Friday, necessitating putting off the final presentation of the plan for about two weeks and increasing the planning firm's cost an undetermined amount as we go to press.

Paul Howe questioned the city council's agreement with the planning commissions recommendations, as the city council is the "sole legal agency responsible for legislative implementation of the plan."

Roberts said he thought council would accept. Marshall said there was a "tremendous amount" of cooperation. Arthur Hunter said he wasn't concerned and White didn't agree that the council would necessarily agree completely with the planning commission.

Civic & Social

The civic and social task force meeting, with members Mary Johnson, Betty Robinson, Mike Dormer and Mosella Jordan, started off with a question.

"What is the purpose of this meeting?" Johnson asked after Duane White gave his introductory speech.

What did WMRT need of the task force from now on? she inquired. The task force was vitally concerned with a questionnaire they felt to be very important, which had been scuttled in Philadelphia by the planners. "I don't feel that it (the land use plan) is a people's program yet," she said.

After Roberts explaining that the planners needed the task force to solicit opinions of various interest groups,



Robinson said that she felt there was unanimous agreement of the young adults group wanting recreational facilities, but there wasn't much agreement by other groups on anything else.

Roberts said that there would not be unanimity "even on the city council. . . . As you limit growth on the Island, there will be a negative impact.

Johnson repeated the task force was a little stymied as to the purpose of the meeting and brought up the questionnaire again.

White said that the

lawyers found that the questionnaire included value judgements, which would have to be analyzed by professionals at a cost of \$10,000 to \$15,000. Hal Harrison asked if the lawyers felt that asking every "Tom, Dick and Harry" who were property owners negated the desire of the voters?

Roberts said the lawyers had taken a conservative defense posture, that WMRT had a "damn good plan" without a loaded questionnaire, so why take the risk?

Parks & Recreation

The Parks and Recreation Task Force, John Cook, Elinor Dormer and Mariel Goss, dealt with beach access, deeded, dedicated and otherwise.

WMRT's Bill Roberts said that, by state law, land use plans have to provide for public recreation. Mrs. Goss asked "What is the public? All the tourists, all Lee County, all the residents?"

Roberts said, "All of them."

Mrs. Dormer asked if it

was legal to make a city beach for city residents only. Roberts replied that the public cannot be preventing from using beach areas between high and low tides, but other cities have restricted beach use by restricting parking areas.

Cook reported there were 12 beach accesses, between 8 and 20 feet wide between Tarpon Bay Road and Tahiti Shores. More discussion of parking prevailed, consensus being

it should be kept minimal.

Mrs. Goss suggested young Islanders might benefit from a non-water oriented park. Duane White agreed there should be a middle island park.

LeeRoy Friday asked if anyone had researched recreational financing. No one had an answer.

Roberts asked the task force to go back to the people to find out what they really want, and that the task force should not be reticent about being "amateur planners."

Conservation foundation

In mid-afternoon Wednesday the Sanibel-Captiva Conservation Foundation made a presentation to Bill Roberts about their interests in the forthcoming comprehensive land use plan. The Foundation was represented by chairman Charles Wilson, vice-chairman Malcolm Beatty, and administrative director Dick Workman. Excepting the U.S. government's holdings (J.N. "Ding" Darling Wildlife Sanctuary), the Conservation Foundation is one of the largest non-profit landholders on the Islands, having some 520 acres.

For the benefit of WMRT, the Foundation gave a detailed catalogue of their holdings and the use for which each is intended. Their lands include a number of undevelopable parcels which are being held for environmental reasons, particularly two-hundred or so lots in the Sanibel Gardens area which border and protect the Sanibel River and the Bailey Tract of the Darling Preserve. Twenty-two acres of land off of

Wulfert Road are intended for a marine research lab eventually.

Administrative offices and an administrative library will someday be built somewhere on two-hundred and seven acres of land in four parcels along the Sanibel River, some of which is currently in use as a public nature trail. A strip of low-lying buttonwood marshes along Gulf Drive will remain undeveloped because of its value as a habitat for certain species of wildlife. The Conservation Foundation also holds a pair of residential lots which were donated to them with the stipulation that they be resold for the purpose of acquiring more wetlands in the interior.

Roberts thanked the Conservation Foundation for their interest and information and assured them that their intentions for their land would be taken into account in drawing up the final land use plan.

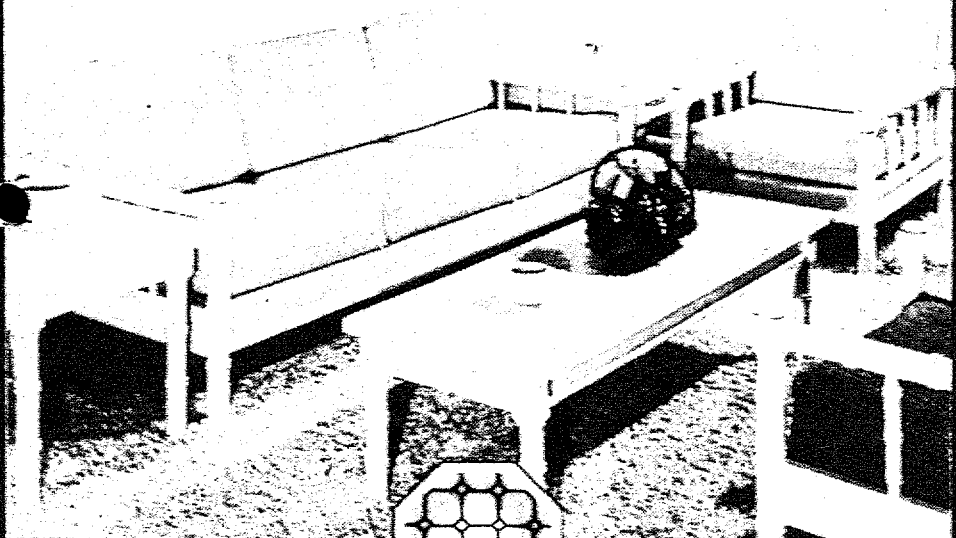
Bill Roberts



OUR SPECIAL PURCHASE — YOUR SAVINGS

Family Room Groupings

Sofas, Love Seats, Chairs
Tables, Etageres.
White, Antique & Yellow

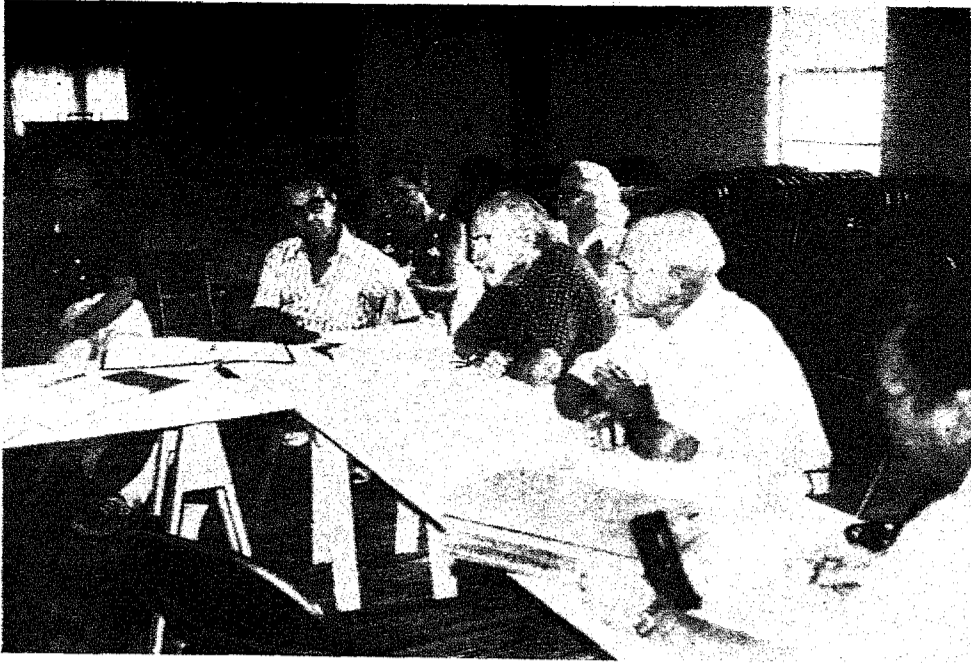


the living room of today

1610 S.E. 47th Street
across from the Cape Coral Cinema

Giselle Dietrich - Owner-Designer
542-8010





Commercial and economic

Tuesday afternoon proved to be a long one for WMRT's Bill Roberts as he met first with members of the Commercial and Economics task force.

After Duane White's prefatory address to the group, task force chairman Ed Underhill disclosed their findings, which, he said, were compiled with the fullest cooperation of the Island business community.

The task force's research unearthed approximately 228 Island-based commercial units on Sanibel, roughly 70 of which are tourist accommodations, employing an estimated 343 full-time and 51 part-time employees. (exclusive of one-family businesses).

Another 280 or so Islanders are employed on the mainland, Underhill reported. The group was not able to get the employment figures for off-Island firms working on Sanibel, but Underhill pointed out that Island commerce is more in the form of small local businesses than large off-Island ventures anyway.

Roberts thanked the members of the task force for their contribution to WMRT's increasing store of data about Sanibel, saying that he expects the completed land use plan to be attacked by the best lawyers in the country and that he won't be surprised if some cases finally end up in the U.S. Supreme Court. The information gathered by the various task forces is needed not only in formulating the comprehensive land use plan but in making it legally defensible as well, he said.

Public information

The public information task force. Ed Underhill, Mario Hutton and Hal Harrison, met with WMRT's Bill Roberts Wednesday morning. Harrison reported they had established a 40 person phone committee to notify Islanders of WMRT meetings; that they had spent time on the discarded questionnaire; that Al TenBroek obtained TV and radio coverage for the last meeting; that they had not written news releases since they did not feel it their duty to tell newspapers how to go about their business.

There was considerable discussion of a 2 to 4 page paid supplement in both Island papers; it was finally decided to see what they printed before paying for a supplement in either paper.

Maxine Michl asked if efforts were being made to reach off island land owners. The response was "None."

There was more discussion, as in other task force meetings, as to when the option could be chosen, Roberts pushing for an early date, White asking for a later day "to get public input."

Roberts asked the Commercial and Economics task force to ascertain what aspects of life on Sanibel make it possible for Island businessmen to charge ten or fifteen per cent more for tourist services than other resort areas of Lee County, and more specifically, what commercial services are needed on the Island.

Ex-officio task force member LeeRoy Friday observed that the rising trend of commercialization must level off or the Island economic community will become disastrously competitive.

Task force vice-chairman Andrew Melody pointed out that only a handful of Island stores (Bailey's and convenience stores) are not geared to a tourist economy, so that Island residents do much of their shopping on the mainland.

Arthur Hunter asked the task force about the possibility of low-cost housing, for which space must be provided in the final land use plan to meet the legal requirements of zoning. Roberts answered that there are a number of alternatives open to Sanibel in this respect, for instance, requiring new developments to set aside a percentage of their land for moderate-cost rental homes. Church groups can also sponsor moderate-income housing areas with aid from federal agencies.

A last suggestion by chairman Underhill before adjournment was that the business community might erect public restroom facilities for customers somewhere along Periwinkle Way.

Roberts stressed that he was distressed that the public had not heard his pleas for public input. Harrison said it wasn't WMRT's fault if the public was "apathetic." White said he didn't agree with the word "apathetic;" that he himself was "stunned, bewildered and dismayed" in that sequence after his three readings of the Phase II report.

The questionnaire was again discussed, Roberts finally saying if one were to be sent around it would have to be "much later."

More task force reports

Street and traffic

Wednesday afternoon found Bill Roberts meeting with Arthur Hunter, temporary chairman Everett Kilmer, and ex-officio member Joseph McMurtry of the Streets and Roads (Emergency Evacuation) task force.

The group presented Roberts with traffic statistics compiled early last summer at stations on Periwinkle Way, Tarpon Bay Road, and Blind Pass, among others, as well as toll figures from the Causeway bridge.

The statistics indicate that the peak loading of Island roads occurs between eleven a.m. and four p.m. each day, with every household making an average of six trips per day up and down Periwinkle, a comparatively low figure because of the retirement nature of Sanibel.

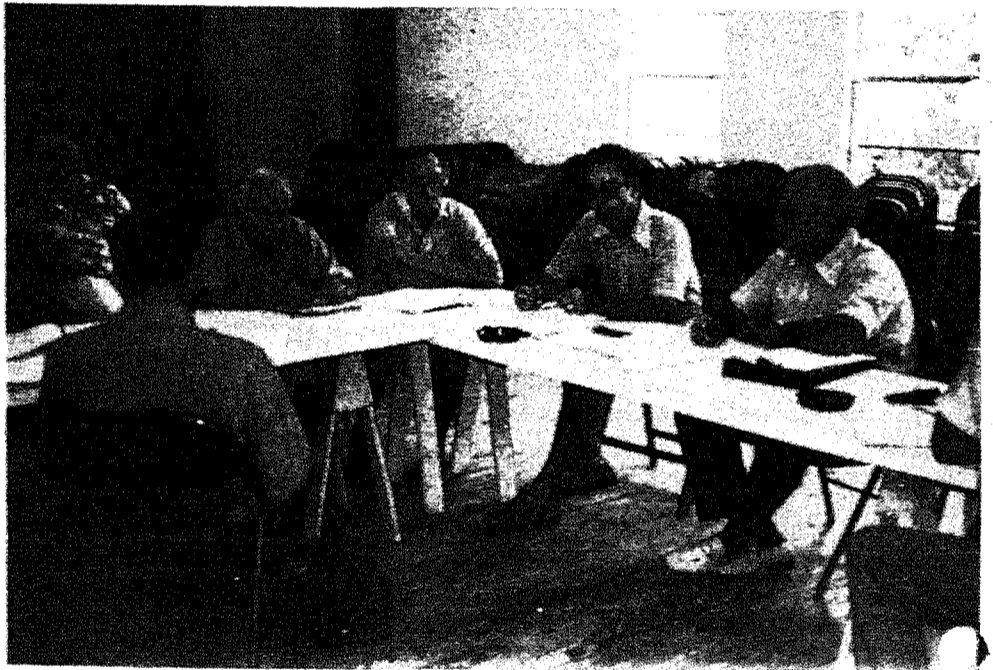
The task force was unable to compile any information on the impact of hurricanes on Island traffic or of possible traffic danger points during an evacuation.

On the basis of their findings, the group made the following suggestions to WMRT: (1) Bicycle paths should be constructed along Periwinkle Way; (2) The cluster concept should be used with respect to businesses and shops to minimize busy intersections; (3) Businesses should not be allowed to line Causeway Road for aesthetic reasons; (4) The city should attempt to educate tourists and residents in traffic

courtesy; (5) Expand beach access parking facilities at Blind Pass, Bowman's Beach, and East Gulf Drive, to name a few, and prohibit parking along the road at access points along Gulf Drive; (6) Allow fewer large parking areas to minimize traffic jams.

The task force also presented Roberts with a list of existing traffic hazards and some possible solutions, including: (1) The overloading and many friction points along Periwinkle might be remedied by installing traffic lights at the intersections of Causeway Road, Donax, Casa Ybel, and Tarpon Bay roads; (2) Widening the shoulders along Sanibel-Captiva Road near the Wegryn Clinic; (4) Large capital expenditures should be avoided in building Periwinkle by-pass, but if necessary, perhaps another road parallel to Periwinkle making them both one-way would be in order. The task force also suggested placing a heavy tax on new land developments to defray the increasing cost of public services.

Roberts questioned the feasibility of an Island bus system, at which some members of the audience lodged complaints against the last such venture that was attempted. The task force promised to investigate the idea before adjourning the meeting.



Water problems

The last of Bill Roberts' scheduled task force meetings was with the Water and Associated Problems task force late Wednesday afternoon.

They had been unable to prepare a verbal report because of the absence of chairman Fred Fox, said acting chairman Clark Newcombe, but a comprehensive written report on the Island Water Association, beach erosion, and sewage had already been presented to WMRT. Roberts asked the group to be continually checking, correcting, and supplementing the figures they had already submitted, and then the discussion turned mainly about the problem of sewage disposal on the Island.

Task force member Peter Evans explained under questioning that the Jamestown-Beechview Sewage Treatment Plant has a peak capacity of 1,250,000 gallons per day, a capacity far above the current level of treatment, making it possible for them to expand and hook in many of the small package systems.

"The disposal of effluent is the barrier to expansion," said Evans, "not the capacity of treatment." He went on to say that without major construction Jamestown-Beechview is nearing a problem with effluent disposal.

Their next means of disposal will be spray irrigation of the Dunes golf course at night. The ideal arrangement environmentally, said Evans, would be to dispose of the effluent in the wetlands, but the cost of tertiary treatment would be roughly double what it is now. He also asserted that the Jamestown-Beechview plant is not polluting

the Sanibel River appreciably in the vicinity of its holding ponds.

The task force acknowledged some problems in areas where septic tanks have been improperly installed, but gave the issue low priority. Evans also expressed a belief that most of the small package treatment plants on Sanibel are working well, and revealed that Mariner Enterprises is currently negotiating to purchase the Jamestown-Beechview plant.

In the area of water problems, the group discussed the possibility of using the Sanibel River freshwater system for drinking water, if development along its banks could be brought to a halt and the quality of the water upgraded and somehow protected from saline intrusions and inundation. With respect to this, Evans mentioned that the state department of pollution control was enthusiastic about the possibility of dumping highly treated effluent into the interior wetlands, their conclusion being that tertiary treated effluent could very likely upgrade the Sanibel freshwater system. At the present time, the amount of water used per unit on Sanibel is three-hundred gallons per day maximum, varying with the season, of course.

Task force member Walter Emmons concluded the meeting with the suggestion that anywhere the coastal dunes had been disturbed for roads or any other reason the sand should be restored to minimize beach erosion.

Roberts stated that part of the land use plan will necessarily include provisions for water and sewage systems to meet the Island's increasing needs.



Real eel tips . . .

Time for Kingfish

by Skip Purdy

The fall season is now upon us and we can soon expect the King Mackerel to start their migration southward.

In the winter months large numbers of King Mackerel can be found in the straits of Florida before their migration northward in the spring. They usually follow the Spanish Mackerel up both coasts of Florida and return in the fall.

The King shows a green and silver iridescence, tarnished silver sides and has no spots as the Spanish Mackerel does. It's also a much larger fish than the Spanish variety.

Being a deep-water fish, the King can be caught near the stream, over outer reefs, and in off shore Gulf waters.

Trolling is considered the best fishing method for King Mackerel, using natural baits or lures on light tackle.

The King has a strong and fast strike and keeps moving with great speed and force.

A five foot wire leader should be used to

prevent the King from cutting the line. Their favorite foods are balao and small mullet. A metal-headed feather lure with a small strip of mullet for a streamer is good to use. Many King fishermen prefer using spoons for fast hooking and unhooking.

To fish a big school of running King Mackerel, make a forward progressive circle about a mile and a half in diameter with your boat. Bisect the circle on each go-round which will keep you in the fast moving school.

The angler should strike hard and quickly. Once the King is hooked he will often take to the air and make swift surface runs. Don't allow any slack, this will usually free your fish.

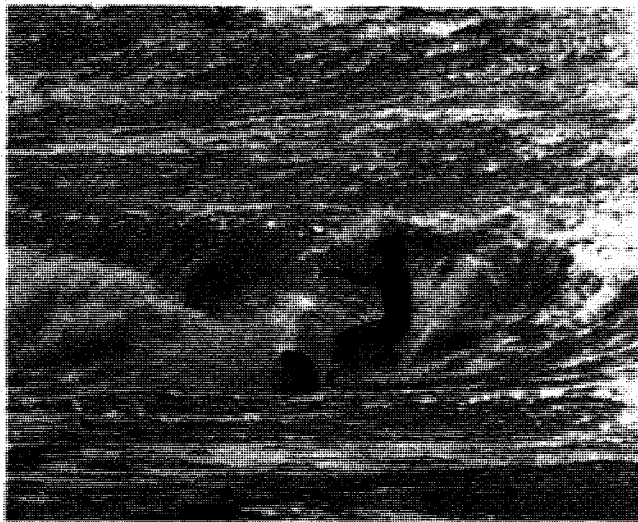
The edibility of the King Mackerel is excellent, the flesh being firm and tasty. After gutting simply slice like a loaf of bread, broil or pan fry your scaleless fish.

The Real Eel is now opened again with a good supply of "educated shrimp". Stop in and see our new look and tell me your fish tale of the week. Good fishing!



Mr. Donald G. Cox, owner of the Reef Resort Motel, caught this beautiful 141 lb. tarpon on a recent fishing trip with Robby Wilson, popular young golf pro of the Dunes.

Wind
blown
surf



LIVE EDUCATED SHRIMP
75 cents a dozen

**At The
REAL EEL**

See me
for fishing tackle
& tennis rentals!

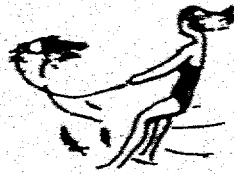
SKIP PURDY
472-2674
**LIVE
PIN FISH**

**GAMES
SPORTING GOODS
TENNIS & GOLF EQUIPMENT**

RAFTS-BEACH TOWELS-BAIT
CASTING NETS-SPEAR-GUNS-TIPS & BANDS
MEN'S SWIM TRUNKS-FILM-SUNTAN LOTION-MASKS, FINS, SNORKLES
RODS, REELS & FISHING TACKLE-ISLAND'S ONLY SCUBA AIR STATION
SCUBA RENTALS-TENNIS-WATER SKIES

Sanibel Center Bldg., Periwinkle & Casa Ybel Road

**"Let's Go
Skiing!"**



Water Ski Along Sanibel's Bay Front.
RATES BY THE HOUR
ALL EQUIPMENT FURNISHED.
CALL CAPT. HERB PURDY: 472-1849 after 6

THE Fridays'
on vacation
CREATIVE JEWELRY
in the heart of the island

Hours: 10-5 on Sanibel Tues. thru Sat.
Helen & Lee Roy Friday 472-1454

Open Mon. thru Sat.

**Elsie
Malone**

**Specimen Shells
Florida & WORLD Wide**

1017 Periwinkle Way
One block west of Causeway
472-1121

Foxworthy's
Furniture • Interiors

Your furniture and interior designer specialists for over 50 years announces the opening of their Sanibel shop in Periwinkle Place Oct. 3rd.

There will be one salesperson and one interior designer in the store at all times.

Jackson At Main - Downtown Fort Myers
3 blocks so. of river phone 334-1348

Periwinkle Shopping Place



Casa Ybel Road



Periwinkle Way

The Real Estate Corner

CALL COLLECT FOR INFORMATION

Laughrey & Holtz Island Real Estate, Inc.

"IN THE HEART OF SANIBEL'S FINANCIAL DISTRICT"
REG. REAL ESTATE BROKER

Located in Sanibel Center Building, 1711 Periwinkle Way

Sanibel Island (813)-472-1123
Florida 33957 (813)-472-1441

AFTER HOURS 472-1846

Astrological Hints

by madam derinda 481-3051

Aries: Aspects will emphasize matters concerning popularity or prestige. Be a little skeptical of proposals, policies. Some people may play loose with laws or company regulations.

Taurus: A trip or journey to some out of the way place is possible. Travel with companions can be especially enjoyable, stimulating. There will be a tendency to talk too much or form premature conclusions.

Gemini: Secrets should be carefully guarded. Be careful in pricing, evaluating, making estimates. Overconfidence could throw you way off. Be patient in negotiations involving distant places.

Cancer: There will be a tendency to think or work at cross purposes with others, so lay your cards on the table, talk things over. Economic stresses may develop.

Leo: Avoid letting co-workers waste your time. If seeking employment avoid fly-by-night agencies. The Quarter Moon may make you pick on others, or bring out latent hypochondria in yourself.

Virgo: Don't believe all you hear now: things tend to be exaggerated. If seeking an apartment or trying to fix up tenancy problems you are favored. Be trusting in these matters.

Libra: Watch your speed in driving, watch that headstrong tendency. Invite others to comment, express their opinions, especially in regard to divic affairs, property, and environmental improvements.

Scorpio: You will likely be planning a short trip, take some pictures. Responsibilities connected with home, family, and property have priority. Think small for a change.

Sagittarius: Avoid unnecessary expenditures now. Be skeptical concerning sales pitches or maneuvers. Don't agree too quickly. Be sure to listen before making up your mind.

Capricorn: Some financial restrictions may have to be coped with. Emergency measures, however, should not be too extreme. You will have a tendency to overstate a case or lack sensitivity as to how you affect people.

Aquarius: A friend may try to get you to make a dangerous journey. It could be worth the risk. Rumors, gossip may be distortions of fact. If you don't discipline yourself, fate may do it for you.

Pisces: You will meet someone who can be helpful in a business deal or humanitarian project. Avoid efforts that are extravagant or misguided. Juniors, don't try to fool Mom or Pop.



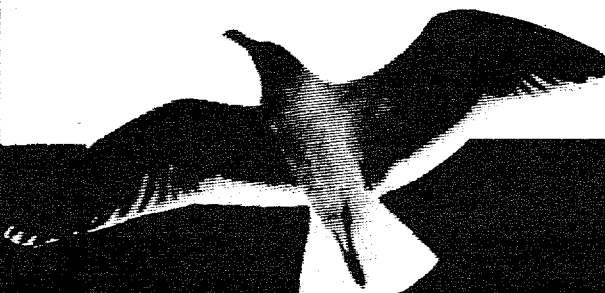
Lalienda

An Import Boutique

white cotton pants
with flower embroidery

Punta Ybel Plaza
(around the corner on Buttonwood Lane)
at the Lighthouse end of the Island

Tues.-Sat. 10-5 472-4561



MODEL OPEN EVERY DAY 9-5

Bay Beach

New waterfront resort condominium community

7401 Estero Blvd. Ft Myers Beach Fla 3395 813-463-5708

Get the picture?

Why not share your islands with your friends back home? We're here to help you do just that. We can supply your photographic needs with top quality professional processing, fresh prints, and accessories. While you're here, why not let us arrange for your film to be processed by Kodak to arrive at home before you do? It's a nice touch!





photo sanibel

NEW LOCATION:
1571 Periwinkle Way... Phone: 472-1086

- Kodak
- Honeywell
- Polaroid
- Olympus
- Agfa
- Novotex
- Fuji





My neighbors on Sanibel
are the Birds...

& the trees, & the flowers,
& the beach, & the shells, & the gulf,
& the fish, & the tennis, & above all - "tranquility."
My only regret is that it took me this long
to know what life is all about.

Don't you make the same mistake -
- come see Blind Pass
on Sanibel today.

Blind Pass

2 & 3 BR Condominiums from \$44,900
Sea Bell Rd. Sanibel Island, Florida 33957
(813) 472-1585

Central American Holiday!

Guatemala, Costa Rica,
El Salvador




INCLUDES JET AIRFARE,
FIRST CLASS HOTELS, ALL
TRANSFERS, SERVICE & TAXES & ESCORT.

ONLY \$330. PER PERSON
CALL US FOR DETAILS.....

beach travel agency

2 locations to serve you:
7205 Estero Blvd., Fort Myers Beach, Fla. 33931 - 463-5744
6074 McGregor Blvd., Fort Myers, Fla. 33901 - 481-5610

Police report

(Continued from Page 6) around the new water tower. Found juvenile hiding in bushes and advised him that this was a restricted area.

Routine patrol disclosed water, debris and rocks washing over road (probably because of Eliose backlash) and notified Department of Transportation. DOT truck dispatched to scene shortly after 2 p.m.

SPD notified by LCSD to deliver message to lady on island whose son was worried about her mental health. Message delivered.

Five foot vase stolen from outside someone's house. (Is nothing sacred?)

Key found by resident behind his home and turned into SPD.

Barricades and a rain tent erected by man working on telephone line was hit by car. Car came into SPD parking lot and the driver reported that after windshield wipers were turned on, he couldn't see very well, but he was afraid he had run over the base of a barricade or barricades. He was unaware he had run over barricade completely and almost hit man. Everybody sorry. No one hurt, no complaints filed.

Lady complained she was being ripped off by a moving company because they had given her used packing and moving boxes and she had been advised this was against the law. SPD informed her this was a civil matter, but that SPD would act as a witness when boxes were delivered, which officer did. Seven of the 19 boxes appeared to be used, plus four wardrobe boxes. Took pictures and discriptions of alledged used and old boxes, and

advised complainant that SPD could testify only to appearance of boxes should she take civil action. Lady said she would file complaint with proper officials.

Man complained to officer on duty that men were taking lumber from construction site. Investigation found two men who said they had permission of contractor to take scrap lumber from site.

Both men were residents and there seemed to be no reason to disbelieve them, since they had what appeared to be scrap lumber in their possession. Later, was told by another contractor that men had not taken proper lumber, but lumber which could be reused. Tried to find 2nd contractor unsuccessfully. Talked to person in his office, said "matter had been taken care of". SPD will be informed if any charges are to be filed.

Man came into police station to complain about someone else and was informed he himself was under investigation for several B&S's. When confronted with the circumstantial evidence, he stated that he'd done it. He was advised of his rights and then made voluntary statement to Police Chief and Officer. After he signed a consent to search form for investigation of his residence, residence was searched.

After search, man admitted to other burglaries, clearing up four in all. He was advised of his rights before each and every voluntary statement.

He was allowed use of the phone, called two people, and was then arrested and transported to Lee County Sheriff's Department and booked into jail, where he is now under \$5,000 bail.

(Note: among other things in his home, the

ISLANDER's police report was found—man evidently kept running account as to accuracy of report in effort to find out if SPD was trying to put him off the track.)

Female reported a case of indecent exposure at Bowman's Beach.

At 10:55 a.m. Friday, SPD responded to a call from Sundial that an elderly man was ill. Officer Rhodes accompanied EMT with subject to hospital in Ft. Myers. The man was dead on arrival.

Citizen complained to SPD that shrubbery had grown over side road to such an extent that only one car could drive at a time.

Investigation showed shrubbery had grown to such an extent that only one vehicle could use the road at one time in three places. Report will be forwarded to proper authorities.

San-Cap Conservation Foundation reported a Mosquito control dam had been opened on Beach Road without authority. They

notified Lee Co. Mosquito Control, who closed the dam. They requested that SPD occasionally check the trap as it had been tampered with on previous occasions.

An accident reported Thursday afternoon on San-Cap Road when a dump truck travelling eastbound veered to miss stopped

traffic, did a 160 degree turn about and rolled over on its side on the opposite side of the road. SPD investigated the accident. No injuries resulted.

At 3:00 a.m. Friday SPD was called to serve a warrant for narcotics arrest. The suspect could not be located and the investigation is continuing.

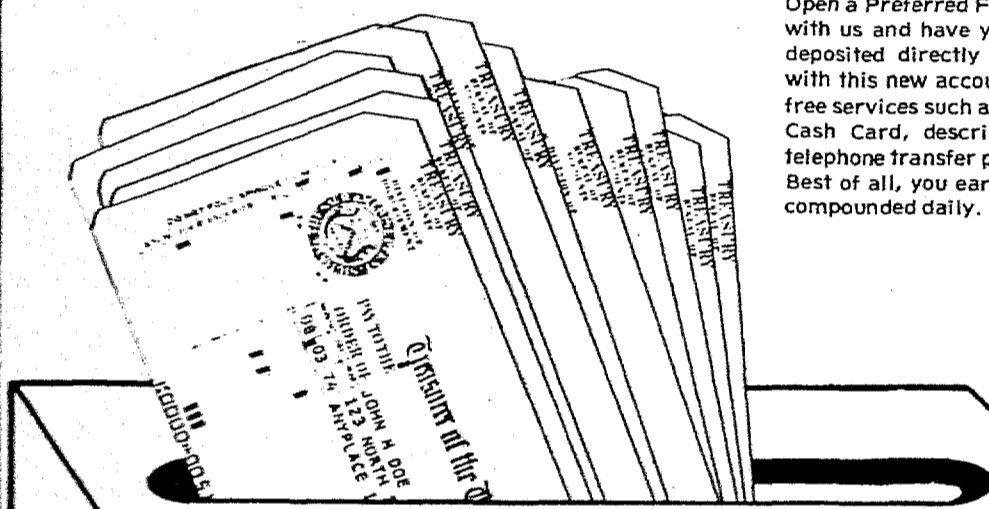
Pottinger Landscaping

WANTED - COCONUT PALMS
We Move, Fill Hole & Pay For Them

Monday to Friday

Call 481-4734

DIRECT DEPOSIT of your SOCIAL SECURITY CHECK means more convenience, greater safety, added earnings and many new free services



Open a Preferred Financial Services Account with us and have your social security check deposited directly to it each month. Along with this new account you will receive many free services such as the Prestige Emergency Cash Card, descriptive savings statement, telephone transfer privileges and much more. Best of all, you earn annual interest at 5 1/4% compounded daily.



Palmetto Federal Savings and Loan Association

8800 South Tamiami Trail - Fort Myers - Telephone 939-0221

Other Offices in Palmetto, Bradenton, Cortez Plaza East, Ellenton, Anna Maria Island

LOOK FOR US SOON!
Island Floor Covering

also Walkcovering - Draperies

SAVE CROW

...

send

in

your

tax

deductable

check

NOW



THE FORT MYERS EXHIBITION HALL

ANNOUNCES THE

1975-76 CELEBRITY SERIES



FIVE Fantastic "Bicentennial" Season MINI-SERIES Show Packages:

MINI-SERIES NO. 1.

★ THREE MARVELOUS MUSICALS ★

MON., NOV. 17, 1975

THE

"MUSIC MAN"

WEB., JAN. 7, 1976

"IRENE"

WEB., FEB. 18, 1976

"Dames at Sea"

1 CHOICE SEAT FOR ALL THREE SHOWS. \$24⁷⁵

MINI-SERIES NO. 2.

★ THE MASTERPIECE SERIES ★

WEB., FEB. 4, 1976

Fred Waring

AND ALL THE PENNSYLVANIANS

WEB., MARCH 24, 1976

"THE KING FAMILY"

1 CHOICE SEAT FOR BOTH SHOWS. \$15³⁰

MINI-SERIES NO. 3.

★ THE AMERICAN SAMPLER ★

MON., JAN. 19, 1976

"1776"

A Broadway Musical about America

WEB., JAN. 28, 1976

"THE NEW CHRISTY MINSTRELS"

1 CHOICE SEAT FOR BOTH SHOWS. \$14⁸⁵

MINI-SERIES NO. 4.

★ INTERNATIONAL FAVORITES ★

MON., NOV. 3, 1975

"THE ROLAND FINK SINGERS"

from Switzerland

FRI., JAN. 30, 1976

"Royal Tahitian Dancers"

1 CHOICE SEAT FOR BOTH SHOWS. \$13⁰⁵

MINI-SERIES NO. 5.

★ GREAT AMERICAN MUSIC ★

FRI., JAN. 23, 1976

"FERRANTE & TEICHER"

- IN PERSON -

MON., FEB. 2, 1976

- From NEW ORLEANS -

"PRESERVATION" HALL

"JAZZ BAND"

1 CHOICE SEAT FOR BOTH SHOWS. \$13⁵⁰

ORDER TICKETS by MAIL to "TICKETS", P. O. Box CC, Fort Myers, Fla. 33902

Or purchase at FT. MYERS TOURIST CENTER - Box Office, Monday thru Friday - 12 Noon to 5 P.M.

DETAILED BROCHURE LISTING STARS - SINGLE SHOW PRICES - AND FULL CELEBRITY SERIES DETAILS

AT TOURIST CENTER BOX OFFICE NOW - ALL PROFESSIONAL STAGE SHOWS - ALL SEATS RESERVED -

***** BOX OFFICE PHONE 334-4958 *****

C.R.O.W. collapsing from financial burden

by Chris Patton

The endangered brown pelican is about to lose another battle—C.R.O.W. is on the verge of folding its wings.

Due to a lack of financial aid, C.R.O.W. Wildlife Rescue and Rehabilitation will no longer be answering

calls of distress, will no longer be wandering out into rainy nights in search of injured wild animals, will no longer be returning the animals back to nature.

The Coral Veterinary Clinic on Cypress Lake Drive donates time and labor in healing the animals, but the cost of

medicine, rescue vehicle and especially food is rapidly pulling C.R.O.W. under.

Shouldering the burden is Shirley Walter, leader of the organization. Along with her helper, Liz Stone, Ms. Walter has worked for the past eight years in an attempt to bolster the brown pelican population in Florida.

"The brown pelican is more abundant in this area of the United States than any other and is therefore taken for granted as being abundant generally," Ms. Walter said. "Our populations from the Tampa Bay area to the Ten Thousand Islands have only remained stable for the last several years at about 35,000 individuals. Louisiana was once the

Pelican State and still carries the Brown Pelican on its state seal. From the time it was first noticed that there was a decline in the population it took only seven years for them to completely disappear from the waters of that state, and that was a much larger number than we have ever had."

Are we to follow Louisiana's example?

C.R.O.W. has claimed over half of its pelican

Shirley Walter
checks
pelican's
crippled
foot

patient list from this beach.

"We have rescued approximately 300 brown pelicans this year since January 1, and receive more calls on this species than any other single species. This fact alone accounts for much of the increased cost of operation since it requires from 600 to 1000 pounds of fish per week to feed these birds depending on the number in residence. Coupled with the remaining 300 other animals we have treated, the cost runs from \$300 to \$400 per week for food alone," Ms. Walter said.

While some can be released almost immediately, others require extensive care and rehabilitation and still others become permanent residents.

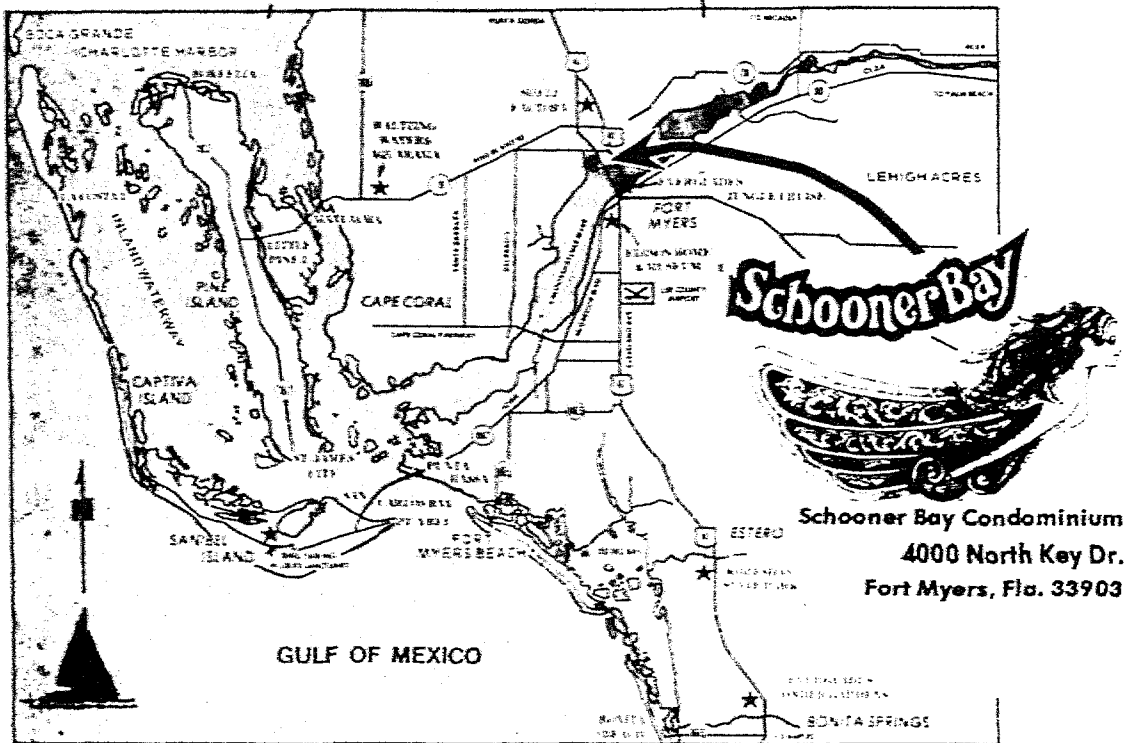


Pelican pleads for assistance

At present, approximately 50 permanent pelican residents reside at C.R.O.W.'s headquarters on Sanibel. Most were rendered immobile due to crippling injuries caused by fish hooks or lines which have been cut off too long and allow the birds to become entangled in the

lines causing the loss of wings, eyes and legs. Release back to the wild occurs about 75 per cent of the time. However, the ones becoming permanent residents still have an opportunity to live out their lives in the open compound provided by C.R.O.W.

RIVERFRONT LIVING AT ITS FINEST For The Discriminate



Ideally located on peninsula 5 minutes to downtown Ft. Myers direct deep water access to the Gulf, 2600 feet of seawall and boardwalk. No land or recreation leases, lovely waterview from every apartment. Optional dockage and tennis facilities.....

1-2-3 Bedroom UNITS,
prices starting at
\$39,450

Please Send Brochure

NAME _____
ADDRESS _____
PHONE _____
Interested in: 1 bedroom 2 bedroom
3 bedroom

Send to: Schooner Bay Condominiums
4000 North Key Drive
Ft. Myers, Florida 33903

Information Center
Open
9 AM-5 PM Weekdays
Saturday & Sunday
12-6 PM
(813) 997-1110

Phone:
472-2176

complete
selection
american
hand made crafts



CLOSED UNTIL OCTOBER 1
2807 Gulf Drive, Sanibel Island



Art Gallery
Custom Framing
Art Supplies

The Knot Shop
Macrame
Decoupage
Craft Supplies

HEISHE, TURQUOISE
SIGN UP FOR MACRAME CLASSES
STARTING TUESDAY, OCTOBER 7
10-12 am

472-2893

Open 10-5 Tues. - Sat. Closed Mondays

print shop
of the Islands

letterheads envelopes invoices
brochures flyers N.C.R. Forms
and many more

A Complete Printing Service
With Quality in Mind
Located on the Island...to
serve the Island

472-4592

2398 Palm Ridge Rd. (across from the library)

We, the people of the United States, in order to form a more perfect Union, establish justice, insure domestic tranquility, provide for the common defense, promote the general welfare, and secure the blessings of liberty to ourselves and our posterity, do ordain and establish this Constitution for the United States of America.

Section 6—Compensation, privileges, disqualifications in certain cases.

1. The Senators and Representatives shall receive a compensation for their services, to be ascertained by law, and paid out of the Treasury of the United States. They shall in all cases, except treason, felony and breach of the peace, be privileged from arrest during their attendance at the session of their respective Houses, and in going to and returning from the same; and for any speech or debate in either House, they shall not be questioned in any other place.

2. No Senator or Representative shall, during the time for which he was elected, be appointed to any civil office under the authority of the United States, which shall have been created, or the emoluments whereof shall have been increased during such time; and no person holding any office under the United States, shall be a member of either House during his continuance in office.

Section 7—House to originate all revenue bills. Veto. Bill may be passed by two-thirds of each House, notwithstanding, etc. Bill, not returned in ten days, to become a law. Provisions as to orders, concurrent resolutions, etc.

1. All bills for raising revenue shall originate in the House of Representatives; but the Senate may propose or concur with amendments as on other bills.

2. Every bill which shall have passed the House of Representatives and the Senate, shall, before it become a law, be presented to the President of the United States; if he approve he shall sign it, but if not he shall return it, with his objections to that House in which it shall have originated, who shall enter the objections at large on their journal, and proceed to reconsider it. If after such reconsideration two-thirds of that House shall agree to pass the bill, it shall be sent, together with the objections, to the other House, by which it shall likewise be reconsidered, and if approved by two-thirds of that House, it shall become a law. But in all such cases the votes of both Houses shall be determined by yeas and nays, and the names of the persons voting for and against the bill shall be entered on the journal of each House respectively. If any bill shall not be returned by the President within ten days (Sundays excepted) after it shall have been presented to him, the same shall be a law, in like manner as if he had signed it, unless the Congress by their adjournment prevent its return, in which case it shall not be a law.

3. Every order, resolution, or vote to which the concurrence of the Senate and House of Representatives may be necessary (except on a question of adjournment) shall be presented to the President of the United States; and before the same shall take effect, shall be approved by him, or being disapproved by him, shall be repassed by two-thirds of the Senate and House of Representatives, according to the rules and limitations prescribed in the case of a bill.

Section 8—Powers of Congress.

The Congress shall have power

1. To lay and collect taxes, duties, imposts and excises, to pay the debts and provide for the common defense and general welfare of the United States; but all duties, imposts and excises shall be uniform throughout the United States;

2. To borrow money on the credit of the United States;

3. To regulate commerce with foreign nations, and among the several States, and with the Indian tribes;

4. To establish a uniform rule of naturalization, and uniform laws on the

subject of bankruptcies throughout the United States;

5. To coin money, regulate the value thereof, and of foreign coin, and fix the standard of weights and measures;

6. To provide for the punishment of counterfeiting the securities and current coin of the United States;

7. To establish post-offices and post-roads;

8. To promote the progress of science and useful arts, by securing for limited times to authors and inventors the exclusive right to their respective writings and discoveries;

9. To constitute tribunals inferior to the Supreme Court;

10. To define and punish piracies and felonies committed on the high seas, and offenses against the law of nations;

11. To declare war, grant letters of marque and reprisal, and make rules concerning captures on land and water;

12. To raise and support armies, but no appropriation of money to that use shall be for a longer term than two years;

13. To provide and maintain a navy;

14. To make rules for the government and regulation of the land and naval forces;

15. To provide for calling forth the militia to execute the laws of the Union, suppress insurrections and repel invasions;

16. To provide for organizing, arming, and disciplining the militia, and for governing such part of them as may be employed in the service of the United States, reserving to the States respectively, the appointment of the officers, and the authority of training the militia according to the discipline prescribed by Congress;

17. To exercise exclusive legislation in all cases whatsoever, over such district (not exceeding ten miles square) as may, by cession of particular States, and the acceptance of Congress, become the seat of the Government of the United States, and to

exercise like authority over all places purchased by the consent of the Legislature of the State in which the same shall be, for the erection of forts, magazines, arsenals, dockyards, and other needful buildings:— And

18. To make all laws which shall be necessary and proper for carrying into execution the foregoing powers, and all other powers vested by this Constitution in the Government of the United States, or in any department or officer thereof.

Section 9—Provision as to migration or importation of certain persons. Habeas corpus, bills of attainder, etc. Taxes, how apportioned. No export duty. No commercial preference. Money, how drawn from Treasury, etc. No titular nobility. Officers not to receive presents, etc.

1. The migration or importation of such persons as any of the States now existing shall think proper to admit, shall not be prohibited by the Congress prior to the year one thousand eight hundred and eight, but a tax or duty may be imposed on such importation, not exceeding ten dollars for each person.

2. The privilege of the writ of habeas corpus shall not be suspended, unless when in cases of rebellion or invasion the public safety may require it.

3. No bill of attainder or ex post facto law shall be passed.

4. No capitation, or other direct tax shall be laid, unless in proportion to the census or enumeration herein before directed to be taken (Modified by Amendment XVI)

Amendment XVI

INCOME TAXES AUTHORIZED

(Proposed by Congress July 12, 1909; ratification completed Feb. 3, 1913)

The Congress shall have the power to lay and collect taxes on incomes, from whatever sources derived, without apportionment among the several States, and without regard to any census or enumeration.

5. No tax or duty shall be laid on articles exported from any state.

6. No preference shall be given by any regulation of commerce or revenue to the ports of one State over those of another; nor shall vessels bound to, or from one State, be obliged to enter, clear, or pay duties in another.

7. No money shall be drawn from the treasury, but in consequence of appropriations made by law; and a regular statement and account of the receipts and expenditures of all public money shall be published from time to time.

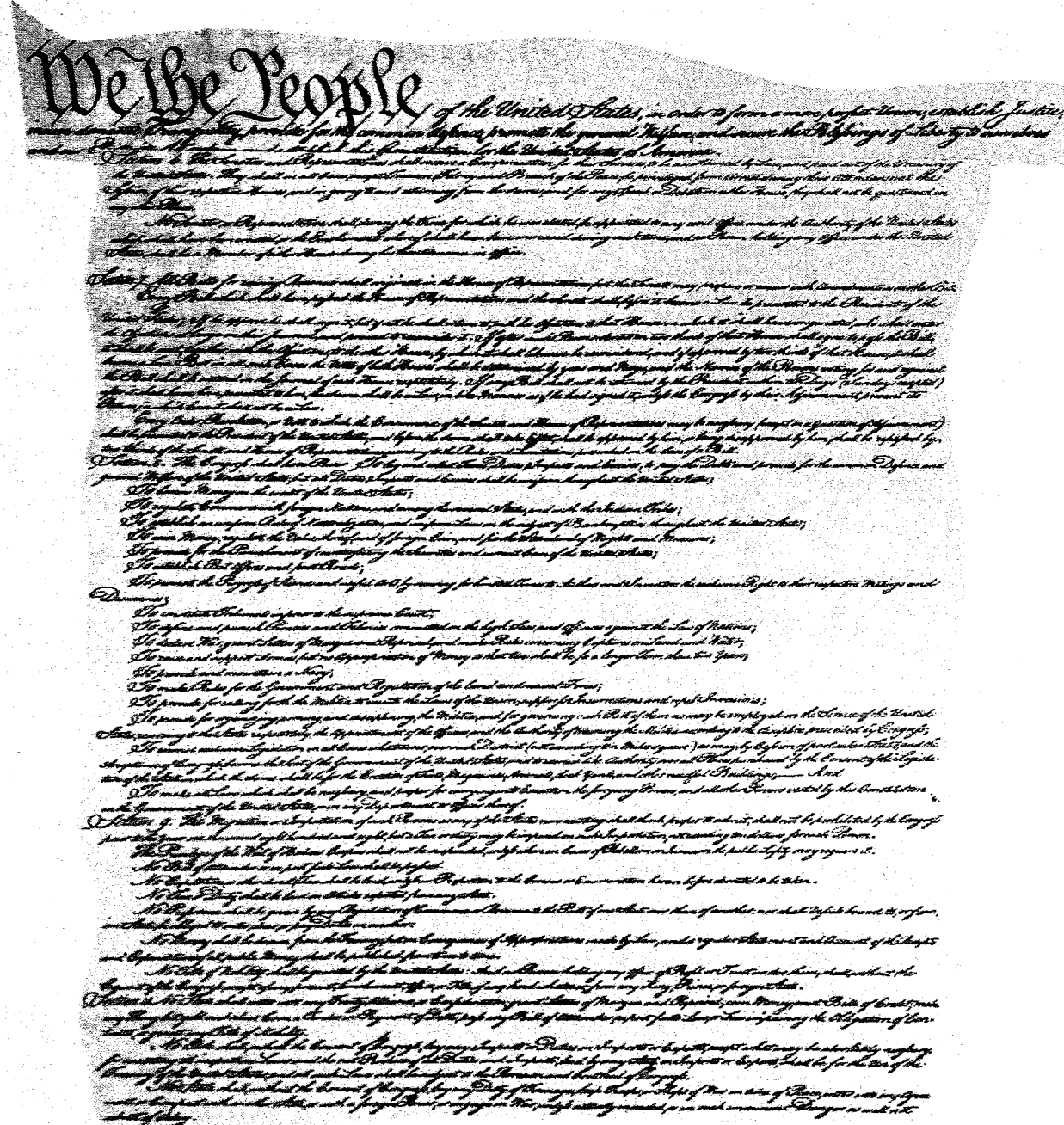
8. No title of nobility shall be granted by the United States; and no person holding any office of profit or trust under them, shall, without the consent of the Congress, accept of any present, emolument, office, or title, of any kind whatever, from any king, prince or foreign state.

Section 10—States prohibited from the exercise of certain powers.

1. No State shall enter into any treaty, alliance, or confederation; grant letters of marque and reprisal; coin money; emit bills of credit; make anything but gold and silver coin a tender in payment of debts; pass any bill of attainder, ex post facto law, or law impairing the obligation of contracts, or grant any title of nobility.

2. No State shall, without the consent of the Congress, lay any imposts or duties on imports or exports, except what may be absolutely necessary for executing its inspection laws; and the net produce of all duties and imposts, laid by any State on imports or exports, shall be for the use of the Treasury of the United States; and all such laws shall be subject to the revision and control of the Congress.

3. No State shall, without the consent of Congress, lay any duty of tonnage, keep troops, or ships of war in time of peace, enter into any agreement or compact with another State, or with a foreign power, or engage in war, unless actually invaded, or in such imminent danger as will not admit of delay.



***** this Bicentennial Page brought to you through the courtesy of *****

Advertisement for local businesses: BAILEY'S GENERAL STORE, FRIDAYS' Creative Jewelry, PHOTO-SANIBEL INC., SURF REALTY, INC. (James O. Evans, Realtor), Pauline, Bob & Wendy TUTTLE, Bob & Pat THE CEDAR CHEST, Betty Gardiner & June Henry CASTAWAY'S RESORT & RESTAURANT, MID-ISLAND REAL ESTATE, INC. (Roy Bazire, Broker), COCONUT GROVE, SANIBEL-CAPTIVA REAL ESTATE (Claire Walter, Broker), SANIBEL CAPTIVA American Legion Post No. 123



New signs to be installed at beach accesses.

**MCCAUL'S
TREE HOUSE
GIFT SHOP**

Specimen shells - Agatized coral

BankAmericard - Island made gifts - Mastercharge

7 days a week 9:30-5:30 3/4 mile N. of Captiva P.O.

LEGAL NOTICES

NOTICE OF INTENTION TO REGISTER FICTITIOUS NAME

The undersigned does hereby certify that it is conducting a retail sales of wearing apparel and works of art business at Sanibel, Florida, under the fictitious name of JEANETTE DANIEL TROPICAL FASHIONS and that said firm is composed of the following persons whose names and places of residences are as follows: TRANS-OCEANIC RESORTS, INC., a Florida corporation, 1515 Cape Coral Parkway, Cape Coral, Florida 33904. Ownership of JEANETTE DANIEL TROPICAL FASHIONS is as follows: TRANS-OCEANIC RESORTS, INC., a Florida Corporation - 100%.

It is its intention to apply to the Clerk of the Circuit Court in and for Lee County, Florida to register the said name of JEANETTE DANIEL TROPICAL FASHIONS under the provisions of Section 865.09, Florida Statutes, 1963.

Witness my hand, this 6th day of August, 1975.

TRANS-OCEANIC RESORTS, INC. BY Jeanette Daniel, President.

Sworn to and subscribed to by JEANETTE DANIEL, President of TRANS-OCEANIC RESORTS, INC. before me this 11th day of August, A.D. 1975.

William J. Hudson, Jr.
Notary Public

NOTICE OF INTENTION TO REGISTER FICTITIOUS NAME

The undersigned does hereby certify that it is conducting a retail sales of men's apparel, toiletries & general gift items business at Sanibel Island, Florida, under the fictitious name of CAPT'NS CASUAL CABIN and that said firm is composed of the following persons whose names and places of residences are as follows: TRANS-OCEANIC RESORTS, INC., a Florida corporation, 1515 Cape Coral

Parkway, Cape Coral, Florida 33904. Ownership of CAPT'NS CASUAL CABIN is as follows: TRANS-OCEANIC RESORTS, INC., a Florida Corporation - 100%.

It is its intention to apply to the Clerk of the Circuit Court in and for Lee County, Florida to register the said name of CAPT'NS CASUAL CABIN under the provisions of Section 865.09, Florida Statutes, 1963.

Witness my hand, this 10th day of September, 1975.

Sworn to and subscribed to be JEANETTE DANIEL, President of TRANS-OCEANIC RESORTS, INC. before me this 10th day of September, A.D. 1975.

William J. Hudson, Jr.
Notary Public
Sept. 16, 23, 30, Oct. 7

DUGGERS OF SANIBEL

Unusual Ceramic & China Painted Gifts

2902 Gulf Drive 472-1181 Tuesday thru Saturday 10-3

Check our prices... you can add to your collection today! browsers welcome at

Jim's Shell Shop

Open daily 10 - 5 West of Causeway on Periwinkle Way

MEN-

WE HAVE A NEW SELECTION OF JEAN SLACKS IN PLAIDS AND CHECKS WE ALSO HAVE A NEW SELECTION OF SHIRTS HATS AND BATHING SUITS WITH MATCHING SHIRT TOPS

Bailey's Sportswear Center
next to Grog Shop

Island Living On The Gulf Of Mexico

Spectrum is pleased to announce:

OUR DEVELOPMENTS: 40 units at COQUINA BEACH, completed in April 1975 are 80% sold out. 20 units at VILLA SANIBEL, completed in March 1975 are 70% sold out.

With the features and the construction that we put into them, that really can't be described.

Superb examples of creative planning by experts who know how to relax in tropical Florida and who are architecturally responsible to the environment. Here is proof there are still developers who care about the ultimate excellence of their product.

2 Bedroom, 2 Bath Condominiums with fully equipped kitchens, landscaped grounds, tennis court and swimming pools designed for delightful island living.

Please send me additional information about:

Coquina Beach Villa Sanibel

The Spectrum Corporation
P.O. Box 1000, Sanibel, Florida 33957
Phone 813/472-2068

NAME _____
ADDRESS _____
CITY _____
STATE _____ ZIP _____

On our way to the city of gold

by Ruth Hunter

"First the explorers, then the Eskimos, next the Russians, and now, YOU! Welcome to Alaska!"

A big sign on the top deck of the M.V. Taku which we boarded at 8 a.m. on a cold morning in June, tells you this. The customs official was very nice.

"Alaska is the only state we haven't been in of all the fifty" I told him, "and we decided to visit it because we're on our 50th Anniversary honeymoon". He shook my hand, "Congratulations, you kids" and he didn't take one peek into our luggage.

The M.V. Taku is a sturdy ship—but the stateroom! My Sainted Aunt! You've heard of places not big enough to swing a cat. That was our room 23-A on promenade deck.

There wasn't room enough to even change your mind. But of course it didn't matter for sailing to Alaska, you spend 99 per cent of your time gazing at the beautiful scenery,—the snow, the mountains, the glaciers and the falls. And of course, your fellow passengers. On our left was a sculptress and on the right a young government employee who suggested we try and spot the bald eagle. The minute any passenger did see something, he shouted, "killer whale" or "porpoise starboard" and then there'd be a

rush to the picture windows with cameras.

Ketchikan was our first port. All the dogs in the campers and cars were now let out—large dogs, small dogs, in between size dogs. Poodles were the most popular.

Ketchikan had a bus tour and our Ketchikan driver was so delighted to live in Alaska, he vowed he'd never go back to Oshkosh—or was it Twiddlin Switch? His lecture was full of jokes, like telling us "Ketchikan is thinking of annexing Seattle because Juneau, Alaska's capitol, has just annexed an island."

Our tour brought us to a garden of Totem poles all beautifully decorated with birds and flowers and strange animals. The tallest one had no decorations at all but sitting all by himself on the top was a figure of Captain Seward, the instigator of our buying Alaska from the Russians. At the time the deal was negotiated, it was called "Seward's Folly." Ketchikan gets a great deal of rain. Fourteen inches have been known to fall.

Ketchikan is "the place where the ocean breaks its back." One whole street is on stilts, for I guess at times the waves are wicked. As we got off the bus to walk down the dock to the M.V. Taku our bus driver called out "Goodbye you all - back to your blue canoe!" (M.V. Taku was painted a beautiful blue from stem to stern.)

It was heartwarming to see so many young people coming to Alaska. On the M.V. Taku seventy-five or more men, women, boys and girls and children slept in reclining chairs all night, willing to put up with hardships to reach the City of Gold, Alaska.

Most of us ate in the cafeteria, though there was a big dining room with fuss and feathers and red coated waiters if you wanted it. We found the food exceptionally good. The clam chowder made you wish you could take it home. The crew was jovial and willing, the reason being that when you work on the Alaskan ferries, you have a week off every other week. That is, you work one week and off the next, etc., and the pay is good.

Juneau was very cold. "Now there's a face I've been longing to see" said a girl greeting a fellow on shore. This guy had a long beard, long hair, bouncing around the front of his face, a droopy mustache and eyebrows which met. Where did she see a face? All I saw was eyes.

Juneau is very picturesque, past the Red Dog Saloon we roamed up the street to visit quaint shops. Every minute my ears got colder so I stopped and bought a red patent leather rain hat with ties around the chin. It

must get very cold in Juneau for way inside were red chinchilla ear muffs. Juneau has a big salmon derby every year. Everyone goes fishing. Alaska is the last frontier of fresh water fishing, Cutthroat, Rainbow trout, are plentiful but how come they named a fish "Dolly Varden"?

No wonder they all fish in Alaska - food prices are very high. In a little store I saw a sign—seventy five cents for one cucumber, one dollar and fifteen cents for a stalk of celery. I paid \$1.57 for a box of crackers.

Skagway, is one of the most interesting spots on the Alaskan coast. A young student of the ministry, son of our hosts, met our ship in a small station wagon. "We're expecting you" he said and drove us past wooden sidewalks to The White House, a lovely mansion built by a gambler for his bride, the daughter of a Presbyterian preacher who never knew how her husband made his money. A great organ stood in the middle of the huge foyer, paneled in white oak with a winding carved staircase.

"Here is your room" said the young man's mother, "we will have tea soon". Then she pushed open a sliding door. Before us was the most spacious, gracious room of the White House, the gambler's former ball room!

(to be continued)

Islander classified advertising

REAL ESTATE FOR RENT

FOR RENT - Furnished 1 bedroom duplex, close to beach. Shady yard. Winter season or monthly. Reasonable. Write P.O. Box 347, Branchport, NY, 11418.

HOME FOR RENT - St. James City on Monroe Canal. New, 3 bedroom, 2 bath, screened porch, 30 foot dock, roofed boat well, air conditioned & heat, dishwasher, washer and dryer, garage, completely furnished. 2 miles from Tarpon Bay. Long Season. Write J.A. Novak, 1716 N.E. 16 Ter., Ft. Lauderdale, Fla., 33305.

HOUSE FOR RENT - Quiet, wooded lot, near bird sanctuary. Tastefully decorated. 3 bedroom, 2 bath, all modern appliances. 3/4 mile walk or drive to Bowmans Beach. \$700 per month, Nov. 15th to April 15th. \$400 per month rest of year. Two week minimum. Write, N.E. Scott, 23 Hamill Court, Baltimore, Md. 21210 or Phone 301-433-4373.

BY OWNER FT MYERS BEACH Gulf Front, 2 bedrooms, 2 baths, Leonardo Arms, Unit 2, all kitchen appliances, rugs, draperies. \$45,500. Call Collect (513) 771-7070 or (513) 521-2973.

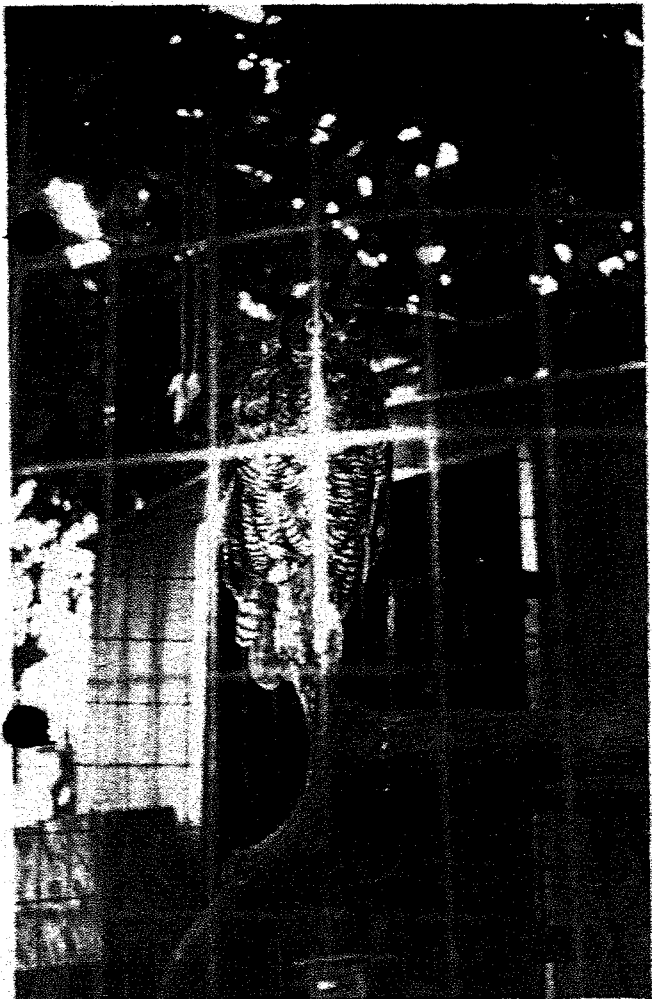
SERVICES

RITE-TEMP SERVICE, INC. SALES AND SERVICE
• Air Conditioning and Heating
• Refrigeration
• Electric Ranges
• 24 Hour Answering Service
Fort Myers Beach 463-9556

REMO (RIP) GABACCIA
PLUMBING CONTRACTOR
Licensed - Insured - Bonded
Captiva 472-2518

MISCELLANEOUS FOR SALE

FOR SALE - 8, 19" Zenith B&W TV's little over 1 year old, perfect working condition. \$75 per unit. Call 472-1333, Segunda Apts. after 6 p.m.



Owl waits for recovery at C.R.O.W.

"Call for Call"
Mr. Condominium has FOR RENT - SANIBEL ISLAND GULF FRONT & GULF VIEW 2 bedroom, 2 bath condominiums, completely and comfortably furnished. Choose an apartment in a family complex or an adult complex. Will rent by season, monthly or two weeks.
RALPH A. CALL, REALTOR 472-4127
P.O. Box 232 Sanibel, 33957

REAL ESTATE FOR SALE

"CALL FOR CALL"
Let's exchange Your unwanted property for something you like!
Ralph A. Call, Realtor
Exchanger and counselor
1471 Periwinkle, Sanibel Island
P.O. Box 232 Sanibel, 33957
472-4127
472-4309

FOR SALE
Two Lots on private road on Sanibel. Only 700 ft. from Gulf with access to beach via permanent easement. Lot 1: 90 x 120 ft. Lot 2: 111 x 110 ft. Buy one or both. \$18,000 per lot. Call 472-2621.

ANNOUNCEMENTS

ALCOHOLICS ANONYMOUS, open meeting, St. Michael's & All Angels Church, Periwinkle Way, Friday nights, 8 p.m. For information call 332-1300.

AL ANON - Every Friday 8 p.m. at St. Michael's and All Angels Church. For information call 472-2491.

BOATS FOR SALE

FOR SALE - Jon boat 14 ft. asking \$165. 542-4696.

FOR SALE - Mercury out board 20 h.p., 1974. 3525. 542-4696.

GULF FRONT LOT AT BLIND PASS
Zoned RU-3, 290 ft. on Gulf
Price \$82,500
Wyman E. Atkins, Jr., Realtor
Reg. Real Estate Broker
1473 Periwinkle Way 813-472-2194 or evenings 472-2901

New CBS Home ready for Occupancy

1870 sq. ft. under roof. 2 Bedroom, 2 Full Baths. Car Port, Tool Room 10 x 28 Screened Lanai. Fully Carpeted. Refrigerator, Electric Stove with Eye Level Oven. Dishwasher, Automatic Washer, Electric Clothes Dryer, Garbage Disposal Unit. Fully Scedded Lot.

\$39,950

Call J.P. Carter Co. for inspection 472-2472 - 472-1788 or call your local realtor.

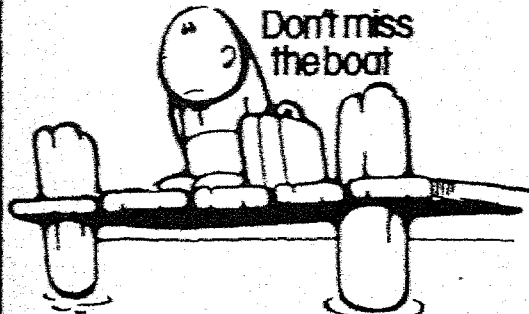
New CBS Home ready for Occupancy

ditto!

\$39,950

Call J.P. Carter Co. for inspection 472-2472 - 472-1788 or call your local realtor.

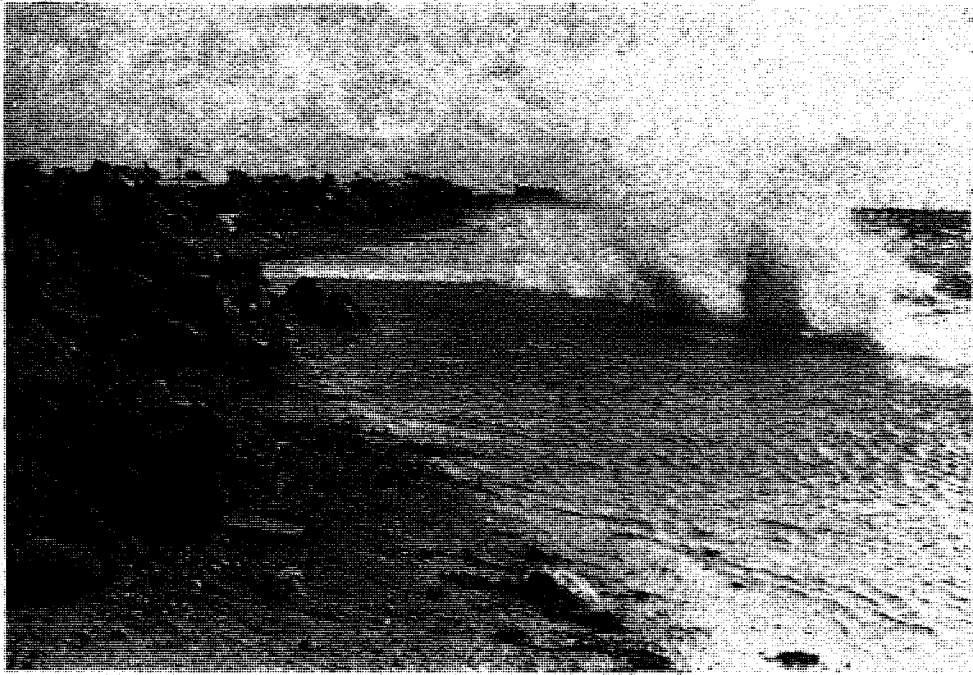
Subscribe now to the Sanibel-Captiva Islander - the original little paper that gets around!



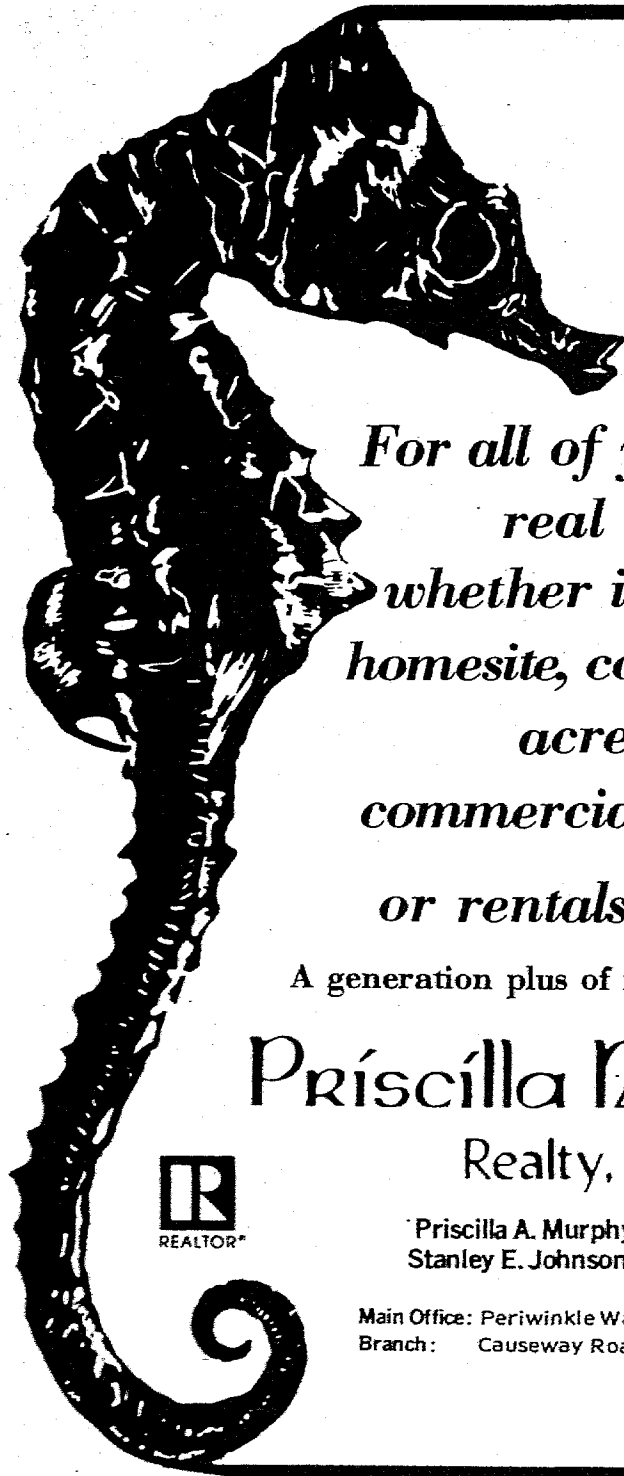
- \$5.00 Check enclosed for year's subscription
- Bill Me

NAME
ADDRESS
CITY & STATE..... ZIP

Mail this coupon to the ISLANDER, P.O. Box 3, Sanibel, FL. 33957



Eloise on the "rocks"



*For all of your
real estate needs
whether it be a home
homesite, condominium
acreage
commercial property
or rentals contact:*

A generation plus of islands experience.

Priscilla Murphy
Realty, Inc.

Priscilla A. Murphy, Chairman
Stanley E. Johnson, Jr., Realtor

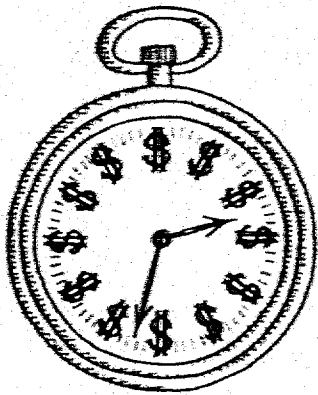
Main Office: Periwinkle Way 472-1511
Branch: Causeway Road 472-4121



The Sea Horse Shop
is having a sale
1/3 to 1/2 off on
Housewares

Sea Horse Shop

at the Lighthouse End of Sanibel
Daily 9 to 5:30 - Sunday 12 to 5:30



TRANSISTOR RADIOS
(PRACTICAL & NOVELTY)
AND BATTERIES

STOP BY OUR SERVICE DESK
AND LET US HELP YOU
WITH YOUR SELECTION —

KODAK
INSTAMATIC CAMERAS
AND FILM



TIMEX WATCHES FOR
THE LADIES AND MEN

BAILEY'S GENERAL STORE

in Island Shopping Center, corner of Periwinkle & Tarpon Bay Roads

Serving Sanibel & Captiva Islands since 1899

SANIBEL PACKING COMPANY

WESTERN UNION — WINE & COLD BEER — FILM DEVELOPING SERVICE

We Are Open 52 Weeks A Year To Serve You

Monday - Thursday 8 a.m. to 6 p.m. Friday & Saturday 8 a.m. to 8 p.m. Sunday 9 a.m. to 6 p.m.