

since 1961

Sanibel - Captiva

# Islander

Vol. 19, No. 49

Tuesday, December 4, 1979

one section 15 cents



Bazaar Chairwoman Fae Muller turned her arms into a walking lei, rack as she traveled the aisles hawking shell necklaces.

see story and photos on page 2

## Road repair priorities set

by gwen stevenson

The Planning Commission and City Council met in a workshop session Friday morning to settle on the City's priorities in road improvements. The meeting was the first in what will probably be a series of sessions to implement a road repair program that Public Works Director Gary Price says is already three months behind schedule.

On October 26, the Planning Commission submitted a list of priorities for repairs to the City Council -- a list, which underwent some reworking Friday.

Commissioner Betty Robinson explained to the Council that the Commission had used, as their main criteria, the idea of safety first, and for that reason had ranked improvements to Sanibel-Captiva Road as their number one priority.

Councilman Zee Butler said that she thought it was "not a good idea to spend money on Sanibel-Captiva Road because the County will be taking it over within a couple of years," though, she added, "I recognize the need."

Councilman Goss pointed out that the Road improvements might become part of the negotiations the City is beginning with the County to buy the Causeway.

The decision on the road was officially moved into the number 2 spot on the list pending the information from an engineer about the feasibility and cost of different solutions.

The discussion on Sanibel-Captiva Road shoulder situation (and Tarpon Bay Road which has the same problem) prompted Sanibel Mayor Duane White to declare that it was a "top city priority that the City employ a top-notch in house engineer".

White stated, "I am concerned about hazard mitigation and the safety of people who have to use these roads every day and we can't do a good job without an engineer."

"Isn't that the prerogative of the City Manager?" Councilman Francis Bailey asked, adding that he felt an in-house engineer would be subject to more internal pressures than an outside consultant. The City has been utilizing Howard, Needles,

continued on page 23

## vandalism plagues condos

by gwen stevenson

A rash of acts of vandalism at Gulf-front condominiums and motels has Sanibel police officials puzzled.

The latest incident took place last Saturday night when someone put sugar in the gas tank of a car parked at Loggerhead Cay. That condominium has been the site of the majority of acts ranging from flattened tires to roof scratches.

Over the Thanksgiving weekend, visitors at Ocean's Reach Condominium woke up to find a sunflower and sun coast dinghy floating in their pool. The boats, which had been stored illegally on the beach in front of the adjacent Steamboat property, were removed to the City garage. Managers also reported that some pool furniture had been placed atop a car in the parking lot as well.

The same weekend, Loggerhead Cay reported four cars with tires flattened by the removal of a valve core and a battery was stolen from an automobile at Sanibel Siesta.

Last week brought another flat tire at Loggerhead Cay and a car roof was found to have slash marks on it.

The same night, two bikes were stolen from King's Crown and the following night a hammock was taken from Hurricane House.

Last Thursday night, a moped was stolen from Sandpebble Condominium but was later discovered down the road from the condominium missing its rear wheel and license plate. Wheels from other bikes in the bike rack at Sandpebble were also

found to be missing.

Sanibel police haven't decided whether the acts are all connected and whether the perpetrators are visitors or local residents.

"But," said Sanibel Police Chief John Butler, "we have increased our patrols in this area".

Butler added that people should be careful to lock their cars and store valuables in the trunk. "Also," Butler added, "report anything at all suspicious or unusual to the police". Butler also advises that cars should be parked in an area where there is high visibility if possible. The Chief said the arrival of a pair of night glasses, expected soon, should help the effectiveness of night patrols.

## garbage rate hike requested

Sanibel Disposal has requested a rate hike of 27.73 percent to obtain "the profit I (Joseph Hamstra, Sanibel Disposal president) consider necessary in order to continue offering and expanding the collection needs of your city."

Hamstra, in a letter to the Mayor, stated several reasons the raise was needed including the fact that he hadn't received any compensation from the company; the 1979 inflation rate was close to 15 percent; the type of equipment we (Sanibel Disposal) needs has increased at a rate greater than the inflation rate; the cost of doing business on Sanibel is double that of the mainland due to tolls and double franchise fees; and, while the residential sector pays for the entire year, the commercial sector is highly seasonal.

What that means to the Sanibel resident is:

- someone with an annual curb service will have a two-can bill increased from \$60 to \$75;
- annual house service (for two cans) will increase from \$78 to \$98;
- container service is going from \$3 to \$3.75;
- construction containers will go from \$4 to \$5;
- commercial can pick-up will increase from \$4 to \$5 at the curb and \$5 to \$6.25 at the house.

According to Hamstra's statement, this increase will net \$80,000 income to his company.

Sanibel Mayor Duane White said that the proposed rate increases would likely be heard by the City Council at their regular December 18 meeting.



The Gulf Drive connector has been given third priority status.

# community church bazaar draws crowds



Some of the best bargains of the day were found at the jewelry counter. Annis Huggins carefully examined all the necklaces before buying, and Alice Jone was delighted to find a pair of earrings to her liking for only a quarter.

Cars of frugal Christmas shoppers lined both sides of Periwinkle Way last Saturday as the rush was on for bazaar bargains at the Sanibel Community Church.

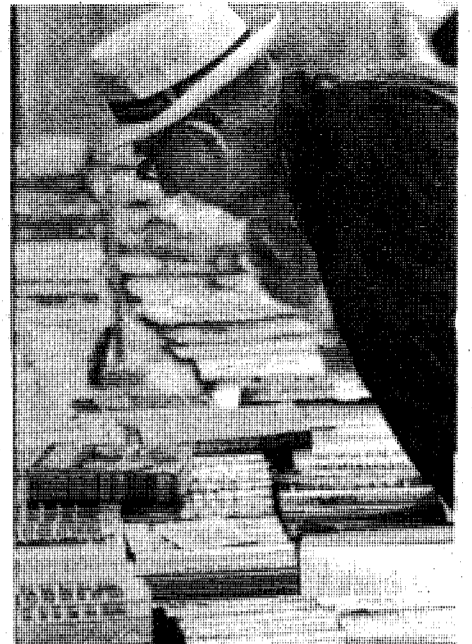
The Annual Ladies Guild Christmas Bazaar, now over 20 years old, was held at the church for the first time this year. Many gifts for sale were displayed in Friendship Hall, a new wing of the church built with funds raised during previous bazaars.

Scheduled to begin at 10 a.m., the bazaar

got underway at 9 o'clock when early-birds began to fill the chuntyard. "By 11 there wasn't a vacant spot," according to Chairwoman Fae Muller.

Many of the handcrafted items for sale were made by the 35 women who had been meeting for weeks on Wednesday afternoons at the church. Other church members contributed by making food and donating used items to be sold.

photos by mark harmel



A large selection of books were available for customers' browsing and buying pleasure.



Pairs of green sunglasses were a steal at ten cents a piece.

Sometimes a bargain isn't a bargain until some repairs are made. Mell Goodwin bought a space heater to warm her studio but a wire on the heater came loose, requiring the fix-it ability of Jim Kraemer.



## URGENT ---- RESIDENTS AND FRIENDS OF SANIBEL ---- URGENT --- A UNIQUE OPPORTUNITY TO EXPRESS YOURSELF

An attempt is being made to develop a large metropolitan-style shopping center on Sanibel. The enormity of this project is such that it supercedes the population growth as established by the Rate of Growth ordinance. It is super-saturation of the most bizarre nature. Its proposed location at the overburdened intersection of Casa Ybel Road and Periwinkle Way has already stimulated the inevitable suggestion for traffic signals and the four-laning of these two roads at that point.

The eventual establishment of this abnormality on Sanibel represents one of two unavoidable possibilities. First, it may mark the finality of Sanibel as we know and love it, or secondly, it most certainly heralds the beginning of the end of a unique lifestyle for residents and visitors alike.

If you strongly oppose this degradation, this destruction of our island, please sign on the appropriate line below as befits your legal status on Sanibel. One line for registered voters represents a legal petition, the second line represents an opinion poll for visitors, or non-registered voters living on Sanibel.

### PETITION

I strongly oppose the establishment of the proposed shopping center on the property east of the Sanibel Community Church. Said property lying at the intersection of Periwinkle Way and Casa Ybel Road. I request or instruct the Sanibel City Council to oppose vigorously by all available legal means the granting of the necessary development permits.

#79-998-DF	
PETITIONER	OPINION POLL
NAME _____	NAME _____
REGISTERED VOTER	NON-REGISTERED VOTER
ADDRESS _____	ADDRESS _____

Please bring this into any business displaying the petition, or mail to P.O. Dr. U, Sanibel, Florida 33957. For further information concerning its disposition call 472-1519 or 472-1235.

ADVERTISEMENT PAID FOR BY ALICE KYLLO AND LEN KESSLER



### FLORIDA'S FINEST CITRUS FRUIT

## GIFT FRUIT BOXES and BASKETS

Order Florida's Finest Citrus Fruit for CHRISTMAS GIFT SENDING

**Now Shipping**

Naval Oranges and Seedless Grapefruit

Specify oranges, grapefruit or mixed

Unconditionally Guaranteed

Licensed & Bonded Fruit Shipper

Out of State Call Toll Free 1 (800) 874-9063

## She Sells Sea Shells

"An Ocean Boutique"

2 CONVENIENT LOCATIONS

Tahitian Garden 1983 Periwinkle Way Sanibel 472-3991	Store Hours 10-5 Daily Closed Sunday	Apothecary Center 2460 Palm Ridge Rd. Sanibel 472-1991
---	--	---

## - 1980 -

# Kiwanis Photo Calendar

AVAILABLE NOW!

ORDER BLANK:

13 SCENIC PHOTOS OF THE ISLANDS

SUITABLE FOR FRAMING -

BEGINS WITH JAN-80

LARGE DATE SQUARES

SIZE: 11"x17" (OVERALL)

PRICE: \$2.50 & .50 FOR POSTAGE & HANDLING

### Great Christmas Gift!

SANIBEL-CAPTIVA KIWANIS CLUB: PO BOX 1, SANIBEL, FLA 33957

---

NAME: \_\_\_\_\_

ADDRESS: \_\_\_\_\_

QUANTITY ORDERED: \_\_\_\_\_ at \$3.00 each: \_\_\_\_\_ ENCLOSED

# council to elect mayor, vice-mayor and two planners today

by gwen stevenson

The Sanibel City Council will decide today, Tuesday, December 4, who will be the Council's leader for the next 12 months.

According to the Sanibel City Charter, a mayor and vice-mayor are elected the first council meeting in December. The Charter also stipulates that the position should rotate amongst council members.



Vice-mayor Francis Bailey

The logical successor to the position is Councilman Francis Bailey, who has been vice-mayor for two years in a row. He turned down the mayoralty last year, citing business pressures. When questioned last week, Bailey would not comment upon whether he would accept the position this year. A new addition to his store signals an increase in business responsibilities, but Bailey would not commit himself either way.

Councilman Charles LeBuff is the other Council member who has not held the post. LeBuff's attendance record at Council meetings has been poor and outgoing Mayor Duane White said that, although he believed either LeBuff or Bailey could handle the responsibilities, before he could support LeBuff, he (White) would require a commitment that LeBuff could attend more Council meetings.

In terms of the rotation system, Councilman Porter Goss would be next in line, but he has said he would assume the position he held for two consecutive terms only if "the rest of the Council dropped dead". Goss has made no secret that he "wants out" of the City Council and that chances of his even finishing his current term, which expires in November, are slim. Goss will, in all likelihood, resign prior to the summer, which he spends away from Sanibel.

The next in line for the job would be Council member Zee Butler. She echoed other Council members' statements that the Mayor's job is "primarily ceremonial" and the main function is to chair the Council meetings. She stated that "the Mayor has no more power than any other council member and, agreed with a statement made also by Goss that, "you can be more effective on certain issues as a council member".

Goss said, in discussing upcoming appointments this Tuesday, that he felt the question of who will replace retiring Planning Commissioners Twink Underhill and Betty Robinson to be "the more important question".

Underhill is resigning to pay attention to a business she feels has been neglected



councilman Charles LeBuff

and Robinson has said that, while she does not want to be reappointed this term, she is willing to work with the City in the future, as is Underhill.

Although many names had been considered, primarily those who have been considered for the position of City Manager from the community (Fred valtín, Gordon Kiddoo, Ralph Zeiss and Steve Maxwell), and those who ran for City government, including Mike Klein, Gerry Weirman and Joe Gault, Council members could make no definitive statements about possible nominees last Friday.

The selection of Council officers and Planning Commission appointments are both on today's City Council agenda.

## CORRECTION

Ooops! The headline on the story describing the approval of a Development Permit for the Children's Center in last week's issue should have read:

"Children's Center development permit o.k.'d: renovation to start soon," instead of "Children's Center permit delayed: renovation to start soon." The headline was dictated over the phone and was a case of what one person said was not what the other party heard. We regret any confusion that might have arisen as a result of our error.



**ZAMBOANGA**

**SHELL LAMP**

\$39<sup>95</sup>  
Complete

Just Add Shells

We Ship Anywhere



at Tahitian Garden  
Periwinkle Way  
10-5 Mon.-Sat.  
472-4035

HOME FURNISHINGS



**ISLAND STORE**

CAPTIVA ISLAND

NOW OPEN MON.-SAT. 9 AM-9 PM  
EXCEPT SUN. 10 AM-2 PM 472-2374  
Captiva Road & Andy Rosse Lane

**PULSAR**

From the new Pulsar® Quartz Collection  
Unbeatable quality at unbeatable prices.



XY002 Golden tone \$125

XW002 Golden tone. Leather strap \$89.50

XZ011 Stainless steel. Blue dial \$95

LC Digital Alarm JK001 \$85

This sleek English/Spanish bilingual day/date calendar watch has true quality features. A luminous dial. A center second hand. It runs for years on an ordinary battery and is even water-resistant to 30 meters (100 feet). Like every Pulsar quality quartz watch pictured, it's priced at \$100 or less. Come see our complete selection priced to \$135.

Ultra-slim dress watches, sport models, contemporary digitals and day/date calendars. For men and women. All with true quality quartz accuracy and dependability. That's why this Christmas you can count on finding the special Pulsar Quartz style that's meant for someone very special. Pulsar Quartz. Always a beat beyond. In technology. In value.

**The Cedar Chest**  
fine jewelry & better gifts

Tahitian Gardens Hours 10:00-5:00

Open Friday evening until 9:00 for your Christmas Shopping Convenience

John & Pat Zambuto (813) 472-2876



# letters to the editor

## Attendance at shopping center hearing urged

To the Editor:

Why did Sanibel become a City? Lest we forget after five years it was because the Lee County Commissioners were giving out building permits to build condos, shopping centers and everything else.

Now we have a Planning Commission who are supposed to control growth on the Island. The only growth they are controlling is that of single family homes and

not businesses.

If they allow this new shopping center to be built over the protests of the permanent residents, they are surely not for the people who live on Sanibel.

I urge all residents to sign Alice Kilo's petition to stop it and to pack the meeting on December 10.

Let us show our strength!  
Bill Von Eiff

To the Editor:

On December 10, 1979, the Planning Commission of the City of Sanibel will meet. On their agenda will be the consideration of the largest commercial request ever to hit the City of Sanibel at any time in history. There is strong reason to believe that the members of the Commission can find no good cause to legally

deny the development permit for this monstrous structure. If, in fact, this request for a development permit meets all legal criteria, we the people must give the Planning Commission a reason beyond mere legal boundaries, by which they can, with reason, deny this request. By sheer force of numbers, we must show them that the citizens, visitors and all friends of Sanibel, the island and the city, abhor the very idea of this aberration. Public opinion as expressed verbally and by signature on petition show strong public indignation at the possibility of the granting of this development permit.

If we the People cannot require the Planning Commission to deny the permitting of this project, then we must insist loudly, and with great vigor, that the Planning Commission realize that it is too large for them to consider in light of public opinion. We must insist that it be passed on to the elected officials of the city government, the Sanibel City Council, for final authority.

I beseech you to come, bring your neighbors, crowd the meeting room and the parking lot outside. Show by your very numbers that you are against the defilement of Sanibel as we know it and love it. Let us demonstrate once and for all that we intend to preserve what tranquility and serenity is left to us.

Leonard G. Kessler

### Gulf connector important priority

## commentary

Since "hazard mitigation" has become the in phrase in the wake of the devastation encountered by Dauphin Island at the hands of Hurricane Frederick, the City's attention has again turned to an alternate route off the Island. We think this is long overdue.

Many Islanders fear that a second route would open up heretofore untouched parts of sanibel to development and are opposed to the connector. We think this is, in the very least, short sighted. Land carries a certain density based, as we all know, on its ecological status. If, as Porter Goss said, the City has done a proper job with its land use plan and with its rate of growth ordinance, then some development may occur under those rules. Not putting in an alternate main route might postpone that development a few months, but is the risk worth it? We believe not.

We agree with Mayor Duane White that a connector must be in before the next hurricane season. We know how shallow a root system the casuarinas on Periwinkle Way have and we know that high winds are going to bring some of them down. A second route would not only ensure safe evacuation but also help immeasurably in returning home after amajor storm.

Goss came back from Dauphin Island with one major theme song: EVERYBODY MUST GET OFF THIS ISLAND IN THE EVENT OF AN APPROACHING HURRICANE.

We should heed him and bend our efforts toward making certain that everyone CAN get off. Let's work with the Council in helping them establish a second route and put our own, somewhat selfish, considerations behind us for the good of every Islander.

**The Sweat Shop**  
18 Periwinkle Place - Sanibel Island - Florida 33957  
**The Original T-Shirt Shop**  
1000  
**Unique designs & decals**

**Island Financial Services**  
(Financial Planning & Management)  
provides  
-bookkeeping and accounting for shops, motels, condo associations, partnerships, and corporations including  
-budget preparation, financial statements and financial analyses as well as an  
-executive tax service a division of  
**H & B BLOCK**  
Sanibel Center Building, 1711 Periwinkle Way,  
P.O. Box 194, Sanibel, Florida 33957  
(813) 472-1439 Elliot Gelberg

HAND CRAFTED GIFTS CRAFT SUPPLIES  
**Black Pearl**  
HOURS: 10 TO 5 CLOSED SUNDAY  
PERIWINKLE WAY, SANIBEL ISLAND

The promise of CHRISTMAS...  
**POINSETTIA**  
a clear and colorful expression of your Christmas wishes for those you love.  
Available now in decorator self-watering, ceramic pots.  
While they last \$15.  
**'TUESDAY'S CHILD'**  
2240 Periwinkle Way • 472-4555  
Shadehouse and Shop hours 9-5

USA LAKE PLACID 1980 WINTER OLYMPICS  
**Deluxe Winter Olympic Tour**  
ALL INCLUSIVE PLANS FOR 4 DAY, 5 DAY AND LONGER STAYS  
Packages include admission tickets to Olympic events, luxurious accommodations at the hotel of your choice in either Montreal or the Lake George, New York area.  
Prices from \$305 plus air fare.  
**Maureen's Travel, Inc.** 472-3117  
2418 Palm Ridge Road  
Eve. - Sun 472-1856

**SANIBEL-CAPTIVA Islander**  
Established 1961  
Editor: Gwendolyn J. Stevenson  
Advertising and Business Manager: Peter Cloud  
Production Manager: Bonnie Evenson  
- ADVERTISING -  
Classifieds: All classifieds appear in the Sanibel-Captiva Islander and Fort Myers Beach Bulletin \$1.00 for first 10 words, 5¢ each additional word. Boxed ads in classifieds section \$1.00 extra. Mailing address: P.O. Box 2867, Fort Myers Beach, Florida 33931.  
- WHERE TO CALL -  
news items 472-5185  
classifieds 463-4421; 472-5185  
subscriptions 549-0123; 472-5185  
- DEADLINES -  
classifieds: Mon., 12 noon  
news items: Friday, 5 p.m.  
display advertising: Thursday, 5 p.m.  
- ADDRESSES -  
Mailing address: P.O. Box 3, Sanibel, FL. 33957  
Office Location: 2353 Periwinkle Way Suite 102, Sanibel  
SANIBEL-CAPTIVA ISLANDER (USPS 481-400)  
Price at newsstands: 15¢ subscription: Lee County, \$7 per year; USA, \$10 per year; Canada, \$12 per year.  
Second class postage permit paid for at Sanibel, Florida 33957.  
Post Master: Send form 3579 and changes of address to P.O. Box 3, Sanibel, Florida 33957.

## Letters...

Beach renourishment merits serious scrutiny

The following letter was given to the ISLANDER for publication:

Commissioner Harry Rodda  
Lee County Courthouse  
Fort Myers, Fla. 33901

Dear Commissioner Rodda:

As more and more evidence comes to light that our barrier islands and coastal wetlands are fragile and dynamic systems, it becomes increasingly apparent that the development of these areas should occur with the utmost care and responsible stewardship.

It has come to our attention that a beach renourishment project has been proposed to the Lee County Commission and that a committee of which you are a member has been formed to study the validity of such a project. Therefore, the Sanibel-Captiva Audubon Society Board of Directors feel that you should know that our position is that:

Wherever there lies the slightest possibility or probability of the occurrence of any ecological damage, either on shore or off shore, during any beach renourishment program, we have an obligation to stand in opposition to any and all such beach renourishment programs.

We hope you will accept this letter and seriously scrutinize all of the issues in making a responsible decision. Thank you.

Sincerely,

Mark A. Westall,  
President  
Sanibel-Captiva Audubon Society

## Three major I-75 segments to be completed this month

Three major segments of Interstate 75 in Lee County, which will open the road from Colonial Boulevard to Corkscrew Road, are expected to be completed this month, said Rep. Frank Mann, (D-Fort Myers.)

Mann said the newly-completed segments of the four-lane interstate totaling almost 11 additional miles of road, will give Lee County residents a clear traffic route from North Fort Myers south to Daniels Road and beyond before the end of this year and could provide a fast traffic corridor for some local traffic to bypass metropolitan Fort Myers.

"There have been some delays in meeting anticipated completion dates on these highway segments in the past," Mann said, "but the best information we have available from the State Department of Transportation today is that these segments will be completed this month."

"We are hopeful that completion schedules will be met in time to ease some of the winter traffic crunch that we experience each tourist season here in Southwest Florida," Mann said.

The remaining 7.7 miles of I-75 in Lee County south of Corkscrew Road is currently slated for completion in March of 1981, Mann said. Charlotte County segments of the interstate and the remaining northern section of I-75 in Lee County are due for completion by January of 1981 and will be connected by Sarasota County segments two months later.

Most Sarasota County segments will be completed early

next year, with the exception of the Myakka River to Charlotte County line segment, scheduled for completion immediately after the Charlotte portions in March of 1981.

Manatee County segments will be completed in September 1981, according to Mann, and will provide a completed traffic route from Fort Myers to the Sunshine Skyway within two years.

"The completion of I-75 was simply an often-delayed dream several years ago," said Mann, who served as vice chairman of the House Transportation Committee during those crucial years in which the I-75 funds were won from the legislature, "and now it really looks close enough to touch."

Mann, who is in Tallahassee today for the special legislative session, said the most important priority in road funding now is to assure enough money for the completion by 1982. "With that segment finished, you will be able to drive from Fort Myers on I-75 straight through to other states," Mann said.

Mann continues to serve on the House Appropriations Committee where he is a subcommittee chairman and a member of the House Leadership Circle, which will play the most important legislative roll in assuring that all of the I-75 portions, including the Tampa Bypass, are funded and completed.

### SANIBEL Grog Shop

DISCOUNT LIQUORS  
Liquors • Beer • Wine • Mixes

SALE GOOD

December 4, 5, 6, 7

MATTINGLY & MOORE BOURBON	Qt.	\$4.99
CANADIAN L.T.D.	Qt.	\$5.49
GUCKENHEIMER BLEND	Qt.	\$5.19
J & B SCOTCH	Qt.	\$9.99
USHERS SCOTCH	Qt.	\$6.69
OLD MR. BOSTON GIN	Qt.	\$4.79
BRUGA ANEJO RUM	5th	\$4.99
SCHENLEY VODKA	Qt.	\$4.79



### WINE SPECIALS

PAUL MASSON 1.5 Litre \$4.29  
Burgundy - Rose - Chablis - Fr. Colambard

### BEER SPECIALS

BLATZ 6 Pk. N.R.B. \$1.49  
OLD MILWAUKEE 12 Pk Cans \$3.89

LIMITED QUANTITIES NO RAIN CHECKS AT THESE PRICES

PLUS MANY UNADVERTISED SPECIALS!!

OPEN EVERY DAY

10% 472-1682

DISCOUNT ON CASE ORDERS  
(Excluding Specials)

OPEN  
Mon.-Sat. 9-9  
Sun. 12 noon - 6:00 p.m.

ISLAND SHOPPING CENTER (Next to Bailey's)

## TRU-TEST E-Z KARE THE SCRUBBABLE LATEX PAINT

Fresh beauty  
that stays fresh with  
soap and water.

E-Z Kare is the flat latex finish that washes and wears like enamel. Its hard surface won't let soil penetrate, protects against detergent scrubbing, too. So most stains wipe away, and greasy smudges, fingerprints, even tough food stains scrub off repeatedly leaving no trace of damage.

Tough enough for walls and trim, E-Z Kare gives you lasting color in one easy latex application, fresh beauty everywhere you paint.



True Value  
HARDWARE STORES®

BAILEY'S  
GENERAL STORE

8 - 8 Mon. - Sat. 9 - 6 Sun.

Island Shopping Center - Periwinkle and Tarpon Bay Roads

Groceries - Meat Market - Produce - Hardware - Fishing Tackle  
Dry Goods - Sportswear

# Bailey's parking lot gets face lift

Bailey's General Store parking lot received a face lift last week when parking spots were striped and directional arrows were painted in the various lanes.

Residents and visitors alike will be grateful for the additions.



photo by mark harmel

## Canal dredging permit sought

by gwen stevenson

The City of Sanibel has requested a permit for maintenance dredging for almost five miles of canals on Sanibel's east end from the Army Corps of Engineers and the Department of Environmental Regulation. The dredging would be carried out over a ten-year period.

Sanibel Mayor Duane White, who has met with the Shell Harbor Property Owners' Association, said that the dredging procedure was "quite a complicated legal affair".

According to City Attorney Neal Bowen,

the ownership of some of the canals is complex. "It is fairly clear that the canals in the Shell Harbor subdivision have been deeded to the City," he said, "but some of the canals are privately owned and there is one canal where, as far as we can determine, the City owns half of it and the rest is in private ownership.

The question of who pays for the dredging is the big one. According to White, the City would be willing to contribute to the program where they have property that abuts the canal system, but

"that isn't very much", he said, adding that the City might be willing to purchase the fill from the dredging.

Urban Palmer, president of the Shell Harbor Owners Association, has written the City to inform them that a motion was passed by his Association requesting that the City of Sanibel "undertake the dredging and maintenance of the Shell Harbor canal system". White said Friday that he had also received a request from the property owners to work out an assessment program. White pointed out that if the City puts out the "up-front

money" for the project, they can only charge the Association and owners involved 8 percent interest whereas, White claimed, some of the City's money is drawing 12 percent interest.

The next step, according to White, is to bring the matter before the City Council to get an engineering study done. "That might come up today (December 4)," he stated.

The public has until December 17 to register their comments with the Corps of Engineers of the Department of Environmental Regulation.

# IMPORTANT ANNOUNCEMENT!

## AN OPEN LETTER TO SANIBEL CABLEVISION SUBSCRIBERS

On Sunday morning, December 9th, most of the channels on your cable connected television set will be moved to new channel numbers. We are sorry about the temporary confusion this is going to create, but it is being done so as to create more uniformity in the channel numbers throughout the Fort Myers-Southwest Florida area.

As you may have read, the three area television stations and the five cable companies doing business in the area agreed to realign the three local stations so that they would be carried on the same cable channel number by all area cable companies. In exchange, the television stations have agreed to support the cable companies request for a waiver of an FCC rule and allow the cable companies to add an additional independent TV station.

The FCC has recently approved the agreement and all parties are now implementing the agreement. The first step is the realignment of the three local network stations on December 9th as follows:

Channel 2 - WBBH - NBC  
Channel 5 - WINK-TV - CBS  
Channel 7 - WEVU - ABC

Palmer Cablevision of Sanibel is now beginning the process to secure necessary Government approval for the purchase and installation of a satellite earth receive station for the Island. This will take a number of months to complete, but once accomplished, subscribers to the cable system here will have access to a variety of television signals not previously available, including the addition of the new independent station.

PALMER

**CABLEVISION** of SANIBEL

DIVISION OF PALMER BROADCASTING COMPANY

1571 Periwinkle Way

472-4787

Your New  
CABLEVISION OF SANIBEL  
Dial Directory  
Effective December 9, 1979

WELCOME TO OUR ISLAND

### CHANNELS

- 2 WBBH, Fort Myers - NBC.
- 3 WEDU, Tampa - PBS.
- 4 REUTERS Business Service.
- 5 WINK, Fort Myers - CBS.
- 6 WTOG, St. Petersburg - IND.
- 7 WEVU, Naples - ABC.
- 8 WFLA, Tampa - NBC.
- 9 WUSF, Tampa - PBS.
- 10 WXLN, Sarasota - ABC.
- 11 REUTERS Business News.
- 12 Weather.
- 13 WTVT, Tampa - CBS.

# business and real estate

## VIP has new office

VIP ADVERTISING, a division of Vacation and Investment Properties, Inc., (VIP) has opened a new office in Sanibel Plaza on Sanibel.

Managed by VIP Marketing Director, Bill Burdette, the office directs the real estate advertising for VIP, Mariner Properties, South Seas Plantation, Sun State Advertising and the Carter-Keathley Company.

## Condominium Associations meeting scheduled

Representatives of a number of condominium associations on Sanibel have held two preliminary meetings to consider the feasibility of forming an organization of Sanibel condominium associations to focus on common operating problems, legislative developments and other subjects of general interest.

Similar organizations have been effective in several areas on both the east and west coasts. The next meeting will be held on Tuesday, December 11 at 1 p.m. in the Recreation Building at Loggerhead Cay on Beach Road. Any condominium association interested is invited to send a representative to the meeting.

## Sanibel Realty buys shopping center

Sanibel Realty, Inc., has announced the purchase of Sanibel Plaza Shopping Center from Velna Ridge and Gordon Tracy for \$316,750. The center is located at 1630 Periwinkle Way across from the Bank of the Islands. It is composed of 7,418 square feet and is divided into eight business offices and one restaurant.

According to Bert Jenks, President of Sanibel Realty, Inc., the firm purchased the property to broaden its base on Sanibel. Jenks said he plans no major changes in the complex in the immediate future. Jenks added that Sanibel Realty Rental Division will be managing the center.

Sanibel Realty, which performs services in sales, rentals, appraisals and property management, has offices at 1207 Periwinkle Way in the Huxter Plaza, and at 1633 Periwinkle Way, just east of the Bank of the Islands.

## Century 21 appointment announced

Alan Wortzel, a two year resident of Sanibel, has recently joined the staff of Century 21, Ray Hoxie Realty of the Islands. He will serve as a sales associate.

Wortzel's previous experience in the realty field includes developing a residential subdivision, and managing commercial property in Clearmont, Ohio.



The General Store, located next to Chadwick's Restaurant on Captiva, is now open for business. Specialty features include imported wines, fresh ground coffee, and frozen take-out dishes straight from Chadwick's kitchen.





**COME SEE**  
our new and exciting  
**GOODIES**  
for Christmas!  
You won't  
be disappointed.

Periwinkle Place  
Shopping Center  
472-1171  
Closed Sunday

*She Sells Sea Shells*  
"An Ocean Boutique"

Shells From Sanibel & World Wide  
Coral, Gifts, Jewelry & Exotic Sea Life  
**SHELL CRAFT SUPPLIES & MIRRORS**

**LARGE SNAIL HAT WIND CHIME**

Over 100 richly colored brown land snails strung together in a most unusual manner suspended from a woven straw hat comprise this marvelous chime. Approximately 28 inches long.

REGULAR PRICE \$6.00  
**SPECIAL PRICE \$4.00**

Mail orders add \$3.00 - Fla. residents 4% sales tax

**2 CONVENIENT LOCATIONS**

Tahitian Garden 1983 Periwinkle Way Sanibel 472-3991	Store Hours 10-5 Daily Closed Sunday	Apothecary Center 2460 Palm Ridge Rd. Sanibel 472-1991
---	--	---






**PRE-CHRISTMAS SALE!**

**VILLAGER**  
Wrap Skirts, Matching Blouses **50% OFF**

**KEDS**  
Women's, Children's, Closeout Styles **50% OFF**

**BATHING SUITS**  
Women's, Children's, Assorted Styles **20% OFF**

**BAILEY'S**  
CLOTHING CENTER

# MUNICIPAL RECORDS

by gwen stevenson

## Council officially hires new City Manager

In a housekeeping matter last Friday, the Sanibel City Council passed a resolution officially hiring Bernard J. Murphy, Jr. as the City Manager for an indefinite period of time at an annual salary of \$38,000. The Council also authorized fringe benefits for Murphy, including a six percent annual contribution to his retirement, medical benefits and \$100 per month travel allowance. Council member Zee Butler pointed out that the sum of all the benefits plus salary totalled slightly over \$44,000 per year, not including any out-of-county travel.

Although the Resolution, which also calls for 90 days notice in the event of termination by either party, passed unanimously, neither Council member Francis Bailey, nor Council member Zee Butler would second it. The motion, initiated by Councilman Porter Goss, was finally seconded by Mayor Duane White. Both Bailey and Butler had voted against Murphy's appointment but have since acknowledged that they will be able to work with the new City Manager.

Murphy's first official day of work for the City of Sanibel was yesterday, December 3.

## Lloyd appointed to 208 Advisory Committee

Upon Councilman Zee Butler's recommendation, Sanibel resident Allen Lloyd was appointed to the 208 Advisory Committee for the Southwest Florida Regional Planning Council. Lloyd's appointment was applauded by Mayor Duane White, who pointed out that Lloyd's position on the City sewer committee would stand him in good stead for the 208 (Water Quality) appointment.

He replaces Bette Parke, who resigned some time ago.

## Shopping Center hearing slated for next Monday

A hearing for a proposed shopping center will be held next Monday by the Sanibel Planning Commission. The 56,000 square foot complex, with a large grocery store, drugstore and 15 smaller shops, is planned for a 6.7 parcel of land adjacent to the Community Church.

Since the developer is not requesting a Specific Amendment, (which would have to go to the City Council) a Development Permit could be issued at this hearing.

## Goss, Rodda hold preliminary talk on Causeway purchase

Sanibel councilman Porter Goss, recently appointed chairman of Sanibel's negotiating team for the Causeway purchase, held a preliminary meeting with Lee County Commissioner Harry Rodda last week on the possibility of Sanibel buying the Causeway.

Goss said that the discussion centered around some of the very "complex" legal issues involved with the proposal. "It began with, 'Can you sell the bridge to Sanibel, Mr. Rodda?' and 'Can you buy the bridge if we can, Mr. Goss?' according to Goss.

Goss said that he felt that the legal issues would take a long time to sort out and said that both he and Rodda were referring many topics to the City and County attorneys respectively for answers.

## Support of American hostages urged

In what he called a "a non-partisan show of support for the president", Sanibel councilman Porter Goss last Friday urged the Mayor to "take appropriate action of his choice to urge community support of the President's patient position". Goss said that the noontime bell ringing and horn honking was one idea, while flying the American flag was another.

Plans for Sanibel's official show of support had not been finalized at press time.

Come to the

# GRAND OPENING

of our second store

in the RAFTERS Dec. 6, 7 and 8!

## FREE ORCHIDS

**SPECIAL -- a selection of Alfred Shaheen long and short skirts, pants. Buy the bottom, get the top for half price.**

**30% off soft blue coordinated group of Alfred Shaheen during the Grand Opening Days**

**Rafters store open 10-9 til Christmas, after Grand Opening (Reg. hours 10-6)**



**LEANI'S  
POLYNESIAN  
SHOP**

**The Rafters  
Corner College Parkway & Winkler, Fort Myers**

**Villa Santini Plaza  
Fort Myers Beach  
Hours: 9:30 - 5:30 Mon. - Sat.**



472-1571

Your partner in Security

**bia**

FRANK D. JOYCE

DENSON INSURANCE AGENCY INC.  
1619 PERIWINKLE WAY / SANIBEL IS., FL 33957

## Schoolhouse Gallery

*Schedule of Featured Showings 1979-80 Season*

**DECEMBER 1979**

**OUTSTANDING AMERICAN WATERCOLORISTS GROUP SHOWING**

Gael · Gray · Hale · McAuliffe · Larsen  
May · Moore · Nordstrand · Palmer

**· 1980 ·**

**JAN. 3 - FEB. 9**

**GROUP GRAPHICS SHOW · Contemporary**  
Crump · Ehrenworth · Hamill  
Rodman · Sherman · White

**FEB. 10 - 23**

**MARILYN DAVIS · Paintings**  
**GERALD HARDY · Paintings & Sculpture**  
**OPENING Sunday Eve. Feb. 10, 5 - 8 pm**  
Artists in Attendance

**FEB. 25 - MAR. 15**

**ORIGINAL PAINTINGS**  
Oil · Acrylic · Casein · Mixed Media  
Gael · Moore · Naoko · Nelson · Squires

**MAR. 16 - 29**

**IKKI MATSUMOTO · Paintings & Prints**  
**POLLY MATSUMOTO · Hand-woven Tapestries**  
**OPENING Sunday Eve. Mar. 16, 5 - 8 pm**  
Artists in Attendance

**APRIL 1 - 30**

**GROUP GRAPHICS SHOW · Contemporary**  
Cohen · Meader · Miller · Shahn  
Schwartz · Targan · Youkeles

Tarpon Bay Road · Sanibel, Florida 33957  
OPEN DAILY except Sunday, 10 am - 5 pm



## Lee County joins Cape Coral in Federal flood regulations challenge

Proposed federal flood regulations for the City of Cape Coral have elicited howls of protest from that municipality and have brought county and city officials together in a fight to challenge what they feel are "extremely unrealistic" flood elevations.

The original federal study, completed by the consulting firm of Tetra Tech, has called for all new construction in Cape Coral to be based at 10 to 11 feet.

"Past history tells us that water levels in Cape Coral have never been as high as what federal officials are recommending," County Commissioner Doug Taylor said last week. "Not even in the worst storms has water risen that high."

"We realize that there should be a certain elevation," Commission Chairman Dick Steele said, "But what they (Tetra Tech) came up with is ridiculously overboard for the inland areas. We accept the elevations for the barrier islands, but we're going to challenge the inland elevations."

Flood elevations on Sanibel, for example, dictate that the first floor of building in an inland area will range from 10 to 12 feet above mean sea level and the first floor of a building located within 500 feet of a main body of water will be 13.5 feet above mean sea level.

In response to the city and county efforts to have the elevations lowered, federal officials have agreed to an administrative hearing at which a judge will decide whether to uphold Tetra Tech's findings. No date for the hearing has been set.

The county has hired Dr. B.A. Christiansen, a flood elevations expert and scientist with the University of Florida, to study Tetra Tech's report and determine whether or not he thinks the figures are justifiable.

"We're going to go with what he (Christiansen) decides," Lee County Flood Insurance Coordinator Ed Rich said today. "He'll be our main witness at the hearing." Steele said if Cape Coral and the

county win their case in the administrative hearing, federal flood insurance officials will probably face demands for elevation revisions all over the state.

"Collier County is in the same spot right now," Steele said. "They're just waiting to see how things turn out for us, then they'll make a move. It could make a lot of work for the federal officials."

Christiansen devised his own method for determining flood elevations in Lee County. In an effort to appease local officials, federal staffers agreed to utilize the methods suggested by Christiansen and run their own study. The results of that study were sent to local officials last week.

In a letter to Cape Coral Mayor Lyman Moore accompanying the study results, Federal Flood Insurance Administrator Gloria Jimenez states, "Dr. Christiansen's study...does not produce significantly different results than those obtained from the original Tetra Tech analysis."

Local officials, however, are still not

satisfied that the Tetra Tech figures are accurate.

"We don't know exactly how they carried out their application of Christiansen's theory," Rich said. "The report we received makes no mention of the elevations at which the study was run."

"We recommended that the study be run at one-foot and two-foot intervals," Rich added. "But for all we know, they could have run one study at five or 10 feet."

Rich said county officials won't be satisfied with the federal figures until Jimenez provides documentation as to how those figures were determined.

A report on Tetra Tech's methodology is being sought through the office of U.S. Congressman L.A. "Skip" Bifalis.

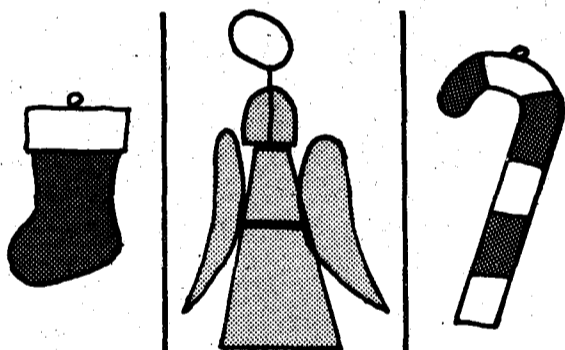
Once that information is available, Rich said, "We'll know just where we stand. As for now, all we know is the federal recommendations which seem unrealistically high for this area, and we won't adopt them without further study."



Raellyn Angel  
Shown actual size  
**Pin on a  
GUARDIAN ANGEL**  
Endearing "little angel" to watch over you or someone you care for. An angel will clasp your scarf or hug a lapel, beautifully. Or win compliments as it rests protectively on your shoulder. 24 K gold plated. Crafted in the Bavarian Alps.  
**SHAKEYS NOISY OYSTER**  
NO. 3 PERIWINKLE PLACE SANIBEL ISLAND



### Capiz Shell Christmas Ornaments



Absolutely charming Christmas tree ornaments handcrafted of translucent capiz shell from the Philippines. Delightful Christmas gifts for everyone on your list. 20 styles available. 50¢ to \$3.95. We ship anywhere.

**Zamboanga**  
A Shopping Adventure on Sanibel Island

Mon - Sat. 10-5  
P.O. Box 216 • 2009 Periwinkle Way  
at Tahitian Garden Plaza  
Sanibel Island, Florida 33957  
(813) 472-4035

## flexible, luxurious, and economical --interval ownership makes sense.

Yes. Our vacations are special — we like to travel, stay at top resorts, dine at fine restaurants, and enjoy a variety of activities.

We've been visiting the islands for several years and have thought seriously about buying a vacation home here. We looked around, and discovered the interval ownership program at South Seas Plantation offers our kind of vacations — very economically and allows us to vacation more frequently.

In fact, it made sense for us to purchase four vacation weeks — two for our vacations at South Seas Plantation, one for our children to come and visit, and another week to use with the exchange program. The exchange week we'll use to go to Hilton Head, Europe, Hawaii or wherever.



Let's face facts. Renting accommodations at first class resorts is expensive. The vacation villas at Plantation Beach Club are luxurious, the one-time purchase price is very reasonable, and we always have something to show for the money we've spent.

Membership at South Seas Plantation and our beachfront vacation villa — that's the kind of vacation we value.

## PLANTATION BEACH CLUB

Visit our furnished model at South Seas Plantation, on Captiva Island — just drop by the Information Center next to Chadwick's Restaurant for your Special Guest Pass.

Our brochure has all the facts — get yours today by phoning (813) 472-4435, or writing Plantation Beach Club, P.O. Box 217, Captiva Island, Florida 33924.

See our model villa, furnished by Robb & Stucky

### SANIBEL CONGREGATIONAL UNITED CHURCH OF CHRIST

Dr. James W. Lenhart, Minister

Cordially invites you to share in the worship, work and witness of the new church in our community

REV. WEBB HOWARD  
Preaching

SPECIAL MUSIC BY JUDITH KENNEDY

THE DUNES GOLF AND COUNTRY CLUB— CLUB ROOM 10:30 A.M.

Do Worship with us and Grow with us!



# on the water

by capt. mike fuery

Finding new, productive fishing spots is one of the most difficult aspects of successful angling. Every fisherman always has an ear out for a new area or "secret hole" where the big ones are biting.

I always have to laugh at that commercial on television about E. F. Hutton. The fella starts to tell another about what his stock broker at E. F. Hutton says and the group around the two drop everything to listen in for a market tip. That's the same way it goes in a tackle shop when one fella asks another, "Hey, where'd you get those fish?"

You can be the best caster in the world or be able to afford the finest equipment, but if you don't have an arsenal of good fishing spots, then you aren't going to do much to bring home fresh fish for dinner. Let's take a look at some ways to add a few hot spots to your fishing.

Outside of watching where other fishermen go, or visiting some spots you've heard about, you're soon going to thin out your fishing grounds and need new places.

One of the best ways to locate more fishing grounds is to get out with the boat at low tide. When the tide has dropped, the fish naturally have to pull back and find deeper waters until the tide again rises and they can forage on the flats again.

Going out at low tide, especially when a north wind is blowing, may not be as comfortable as a hot, sunny day, but you'll see lots of exposed "real estate". And around that high and sometimes dry land, you're probably going to locate some new areas.

We're moving into the winter cycle of fishing, where you have to seek fish in the deeper spots when the weather gets

cool enough to drive fish off the shallow flats. That's why you want to look for deeper parts of the bay when you're out there at low tide.

As I mentioned in a previous column, a depth finder on the boat is very important and, along with an up-to-date chart, you should be able to locate several good fishing spots in a few hours.

No one says going out on a cold morning on a low tide is the most fun you'll ever have, but by investigating some of the depressions around the shallow areas, and carefully marking them on your chart, you can easily add new fishing grounds to your hobby.

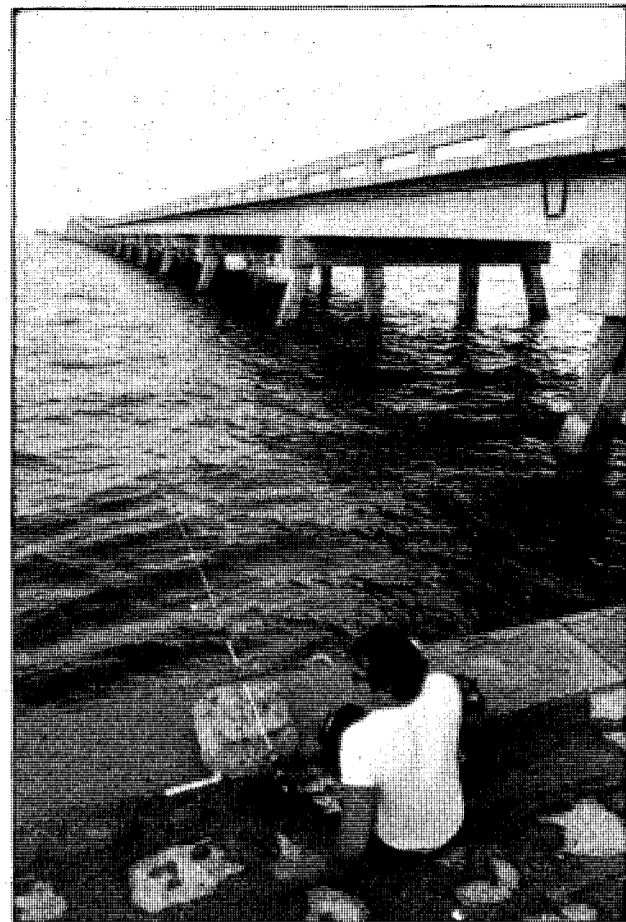


photo by mark harmel

## islander angling

by mark harmel

It's hard to tell who is seeking shelter more this week - the fish or the fisherman! Most fishing activity has ground to a halt thanks to rough seas and cold weather, but for the hardy angler who doesn't mind cold weather, there are fish to be caught.

Fish around the Islands are seeking warmer spots to swim. The warmer waters of the canals leading into Shell Harbor, Sanibel Marina, and Mariner Point are attracting snook and sheepshead from the Bay. Anglers fishing the bottoms of these canals have been having luck. The advice from the Ball Box and Sanibel Marina is to fish the bottom of the canals early in the

morning or at night, using a 1-2 ounce white bucktail, or white feather jig. Live shrimp are also being used.

The bottom of the canals are best because with a few days of cold weather the water in the canals forms a thermal inversion - where the top of the water is cold and the bottom is warm. Seeking out the warmth, the fish I

In spite of the weather, trout are still hitting around the Causeway and in Tarpon Bay. Also at the bridge are a few flounder and in Tarpon Bay some small grouper can be found in the flats. Mullet are reportedly congregating near the docks.

### CHARTERS

- \*SPORTS FISHING
- \*SHELLING TRIPS
- \*DRAG SHELL TRIPS
- \*SIGHTSEEING
- \*COMBINATION TRIPS

FULL OR HALF DAY.

CALL — 549-5530

## BRIDGES CHARTERS

23' MAKO-BIMINI TOP-S/S RADIO-TACKLE SUPPLIED

## CAPTIVA EROSION

DISTRICT WILL HOLD THEIR MEETINGS ON THE FIRST MONDAY OF EACH MONTH, STARTING AT 3:30 P.M. AT CAPTIVA COMMUNITY CENTER.

DAN BURNER  
CHAIRMAN

## Elsie Malone

**"A SHELL COLLECTOR'S PARADISE"**

Specimen Shells — Florida & Worldwide

P.O. BOX 54  
SANIBEL ISLAND, FLA. 33957

2422 PERIWINKLE WAY  
PHONE (813) 472-1121

## BLIND PASS Cottages & Marina

On the west tip of Sanibel at Captiva Bridge  
A Boat with every Cottage—No Charge.  
Full Kitchen, Tackle Shop, Live Bait, Soft Drinks

COTTAGES 472-1020
MARINA 472-1334

## SANTIVA MINI MART

Grocery - Dairy - Frozen Foods  
Meats - Cold Beer & Wine  
Post Cards - Magazines  
Hats  
Health & Beauty Aids

NORTH END OF SANIBEL  
AT BLIND PASS BRIDGE

for  
sanibel  
and captiva  
islands

## DECEMBER

Day	Date	8:15 AML	3:17 PMH	6:19 PML	7:05 PML
Th	6	12:13 AML	*8:53 AML	3:53 PMH	8:05 PML
F	7	12:55 AMH	9:33 AML	4:27 PMH	9:15 PML
Sa	8	1:40 AMH	10:15 AML	5:03 PMH	10:43 PML
Su	9	2:36 AMH	10:59 AML	5:39 PMH	11:39 PML
M	10	3:39 AMH	11:45 AML	6:14 PMH	12:35 PML
Tu	11	12:13 AML	4:58 AMH	12:29 PML	6:52 PMH Last Q

\* Denotes strong tides  
\*\* Denotes very strong tides

Conversion table: The above tides are for the lighthouse point of Sanibel only. To convert for Redfish Pass (north tip of Captiva), add 55 minutes to the time shown for every hi tide subtract two minutes for every low tide (NO we don't know why, but it works. Instructions following are even less sensical but as we stated they do work!)  
For Captiva Island Gulf side, subtract 30 minutes from each high tide, and subtract hour and 16 minutes for each low tide.  
For Captiva Island, Pine Island Sound (Bay) side, add 1 hour and four minutes for each high tide and add 52 minutes for each low tide.  
In between these point gulf or bay - guesstimate and have good fishing and or shelling.

# Islander Sports

by mark harmel

## GOLF

The Women's Golf Association at the Dunes held their first meeting of the year Friday when they played a blind hole and a low putt tournament. Helen Uhrich was first in the blind hole and Betty Uhr finished second. Dot Ohlmann and Ginny McKee tied for low putts. The Dunes Women welcome golfers wishing to join them Fridays at 8:30 a.m.

Mary Jane Preston and Herta Howland tied last Monday in the Beachview Women's Golf Association odd hole competition with a 24. Zee Butler won low putts with a 14. The Beachview Women play at 8:30 a.m. on Mondays.

The Beachview Men played their last Tuesday outing until next spring last week. Topping the 30 players was the team of Ed Reed, Charles Meltretter, and Bob Robertson with a score of plus five. An even score hit by the team of Curt Washburn, Hugh Crider, Charlie Uhr, and Bud Ristow took second. Bob Robertson won high individual score with a plus six.

On Saturday George Siri, Bill Alquist, George Fletcher, and Bob Neth led the polar bear contingent with a plus five. Finishing second were Roy Hull, Ray Howland, Hugh Crider and Rudy Mikulic at plus one. High individual went to George Siri at plus four.

The Beachview Men will not meet next week due to Saturday's tournament sponsored by Scotty's Pub.



Sanibel resident Larry Snell paired with touring pro Mark McCumber in the South Seas Traditional on Saturday. Playing with a pro proved to be a good lesson for Snell. He said that playing with McCumber, "provides a fine inspiration to play with such a fine player."

## Pro-Am Tournament held at South Seas

Former University of Florida All-American, Wally Armstrong, won the inaugural South Seas Traditional pro-am golf tournament with a four under 140. Armstrong defeated eleven other touring pros, in the cold air on Captiva, including the charging Bobby Nichols who finished one stroke back.

The pro-am team of Chuck Ames, Ron Garl and John Schnieder paired with pros Wayne Levi on Saturday and Mark McCumber on Sunday to win the team title. Sanibel's Chuck Andrews was on the second place team with Don Mayeron and John Ver-Colen. Pros Eddie Pearce and Mike Sullivan teamed with the runner-ups.

Proceeds from the tournament were donated to Big Brothers and Big Sisters of Lee County.

## Scotty's sponsors Saturday tournament

Golf balls will be flying all over the Beachview golf course Saturday as an unexpectedly large number of golfers compete in a tournament sponsored by Scotty's Pub. As of Sunday, 96 golfers had signed up for the tournament.

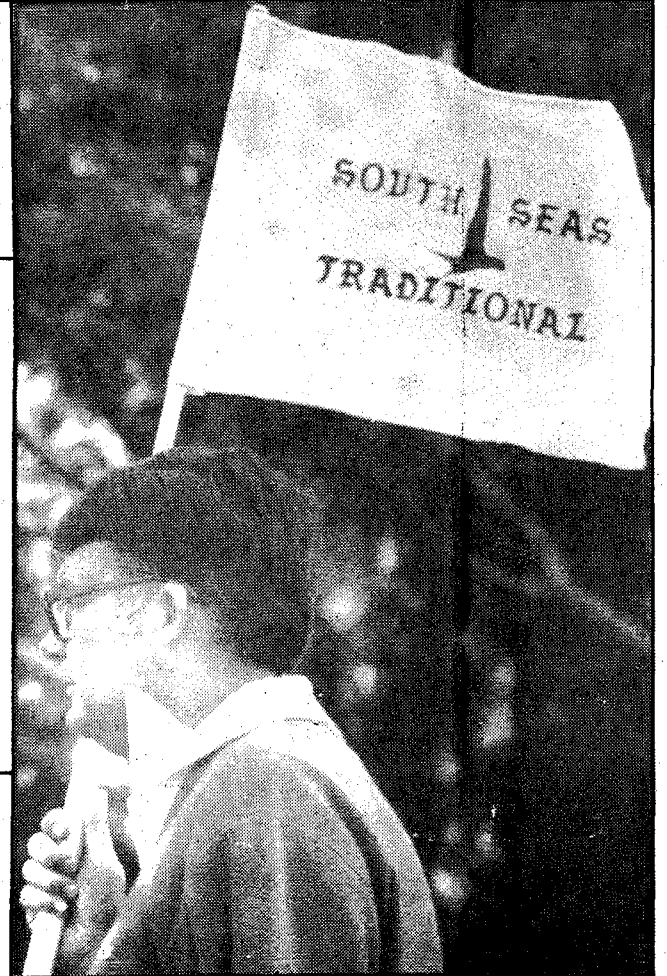
Beachview golf pro Robby Wilson said he had not expected such a large turn out. "We were going to limit the number of players to 64, but now we are looking for about one hundred," he explained.

Players will be grouped in two shotgun starts, one beginning at 8:00 a.m., and

another at noon. Starting times will be posted at the Beachview pro shop on Thursday. Deadline for entry is Wednesday at 5:00p.m.

A mystery still surrounds the special prize to be awarded by Al Duncan, owner of Scotty's. Duncan is offering a car to the player that hits the ball closest to the cup on the fourth hole. The type of car and the condition is still an unknown.

The long awaited opening of the Beachview Club House will also occur on Saturday.



### Children's Ladder

1. Mahlon Thompson
2. Ross Bjerke
3. Joey Hammett
4. Billy Zeiss
5. Kit Toomey
6. Peter Epranian
7. Lolli Bartdal
8. Jim Toomey

### Women's Ladder

1. Lou Anne Parker
2. Pam Thompson
3. Pam Pfahler
4. Marge Peck
5. June Muench
6. Dorothy Andrews
7. Wendy Bissel
8. Mary Ann Boleman
9. Linda McCarthy
10. Kathy Clapp

### Men's Ladder

1. Ben Bjerke
2. Brian Newberry
3. Bob Thompson
4. Tom Fisher
5. Jerry Muench
6. John Conway
7. Jim Fisher
8. Lem Clements
9. Jim Pfahler
10. Bill Hatcher
11. Steve Corbin
12. Bill Pickering
13. Joe Searing
14. Vinny Hayes

### Challenges

Ben Bjerke hold on to the top seed on the Men's Ladder after defeating Vinny Hayes in a close match this week. Bjerke won in three sets 6-4, 5-7, 7-5.

Hayes threw caution to the wind in deciding to challenge top seeded Bjerke on his open challenge. Rather than taking the more cautious route of challenging near to top to establish his position, and then working for the top, Hayes gambled on winning the number one position on his open challenge. The gamble almost paid off, but now Hayes must go to the bottom of the ladder and attempt working his way up two positions at a time.

Player interested in challenging the Ladder are allowed one open challenge, challenging any player on the Ladder. After the initial challenge, players can challenge two rungs up. If you are interested in making a challenge, contact the Casa Ybel tennis pro at 472-3145.

## tennis

### Ladder Standings

### THIS WEEK'S WINNERS

#### Division A Standings

FM Racquet	27	5
Landings	26	6
Casa Ybel	19	13
Rangoon	15	17
Burnt Store	13	19
Cape Coral	15	17
Port Charlotte	11	21
Lehigh	4	28

#### Division B Standings

Landings	27	5
YMCA 1	21	11
Cypress Lake	20	12
FM Racquet Blue	19	13
Cape Coral	16	16
FM Racquet Red	19	13
Dunes	15	17
YMCA 2	11	21
Rangoon	8	24
Park Meadow	4	28

#### Division B Results

##### Dunes 3, Cape Coral 1

Tetreault - Ireland	6-2, 7-6
Grinnell - Fisher	6-0, 3-6, 7-6
Bissell - Waterhouse	6-0, 6-4
Vernon - Rhodes	1-6, 2-6

#### Division A Results

##### Casa Ybel 3, Port Charlotte 1

Costanzo - Zeiss	5-7, 7-5, 4-6
Muench - Thompson	6-1, 6-0
Meyers - Peck	2-6, 6-4, 6-3
Greenberg - Mather	5-7, 6-3, 6-4

# BOWLING

## The Odd Couples

	W	L
1. Alley Cats	37	15
2. Mole Holers	34	18
3. Turkeys	32	20
4. C.B.'s	27	25
5. Odd Balls	26	26
6. High Hopes	26	26
7. Alley Oops	25	27
8. The Aces	24	28
9. Dee's 104	22	30
10. The Nurds	22	30
11. Guy's and Dolls	19	33
12. FUBAR	18	34

# Mail your letters to Santa at Toys Ahoy!

Toys Ahoy toy and game shop in Periwinkle Place has a mailbox where youngsters can deposit their letters to Santa Claus. If the sender includes his or her return address in the letter, a personal reply is promised.



# A Gift of Luggage



and away you go...at **NO COST** or at low, low prices just for saving with us

HERE'S HOW TO QUALIFY FOR FINE QUALITY LUGGAGE ITEMS:

With your first deposit to new or existing account, one Free Gift or one Trade-up Discount purchase as follows:

With each additional deposit of \$100 to the same account (excluding certificates) you pay only:

Deposit Amount	\$100	\$1,000	\$5,000	*
A. Toilet Kit, brown	FREE	FREE	FREE	\$ 3.95
B. Ladies Travel Kit, blue	FREE	FREE	FREE	3.95
C. Ladies Tote, 2 handles, zipper pocket on one side, outside open pocket on other side. Brown or Blue.	FREE	FREE	FREE	4.95
D. Ladies Tote, Brown	\$ 4.95	FREE	FREE	6.95
E. Folding Zipper Tote, Tan	4.95	FREE	FREE	6.95
F. Expanded shoulder Tote, Pecan, blue or melon	7.95	4.95	FREE	9.95
G. Jumbo vinyl tote with handle & adjustable shoulder strap. Pecan or melon	8.95	5.95	FREE	10.95
H. Get-Away bag, Tan	9.95	6.95	1.95	11.95
I. Garment Carrier, Pecan	16.95	14.95	11.95	21.95
J. Ladies Garment Carrier, Blue	22.95	19.95	14.95	24.95
K. 3-Pc. Luggage Set with interior pocket, interior cross straps and padlock. Pecan, Blue	52.95	49.95	44.95	54.95

Prices plus 4% Fla. St. Tax. One free gift per family, please. No mail orders. MONEY MARKET CERTIFICATES QUALIFY UNDER COL. 4\* ONLY.



## Palmetto Federal Savings and Loan Association



• HOME OFFICE •  
600 Eighth Avenue  
PALMETTO, FLORIDA  
722-4511

• ELLENTON OFFICE •  
3815 Highway 301  
ELLENTON, FLORIDA  
722-6671

• ISLAND OFFICE •  
603 Manatee Ave., West  
HOLMES BEACH, FLORIDA  
778-0795

• SOUTHSIDE OFFICE •  
617 - 44th Ave., West  
Cortez Plaza East  
BRADENTON, FLORIDA  
756-8711

• FORT MYERS OFFICE •  
8800 South Tamiami Trail  
FORT MYERS, FLORIDA  
939-0221

• WESTGATE OFFICE •  
3813 Manatee Ave., West  
BRADENTON, FLORIDA  
746-2191

## JIMMY THE GREEK DELI SANDWICH SHOP & CATERING

### GYROS • SOUVLAKIA

GREEK SALADS-PITA BREAD  
GREEK PASTERIES

ALL GREEK FOODS



WE ALSO CARRY

JEWISH - AMERICAN - ITALIAN & GERMAN FOOD



IMPORTED

GREEK-ITALIAN-GERMAN-JEWISH-AMERICAN WINES

-SPECIALTIES-



FETA-KASSERI-KEFALOTIRI  
FILLO-TRARAH-KOUKOUN ADIA  
GRAPE LEAVES  
GREEK OLIVE OIL-OLIVES  
SPANAKOPITA-TIROPITA-DIPLES  
GREEK COFFEE

-CANDIES-

L  
O  
U  
K  
U  
M  
I  
A  
H  
A  
L  
V  
A  
H

CATERING  
FOR ALL OCCASIONS  
PARTY TRAYS  
HOT & COLD FOODS

542-5400 4716 Del Prado Blvd., Cape Coral, Fla. 542-5400

COULD YOU USE A **FREE** CORDLESS TELEPHONE?

TELL US HOW IN OUR COUPON BELOW.

The Bike Route will give away a cordless telephone to a Sanibel/Captiva resident chosen from entrants who complete this coupon and get it to us by December 15, 1979.

Remember, your holiday supply of Raleigh and Fuji bikes and Trailmate trikes is here. Shop early for the best selection of size and color.

Opening Soon on Sanibel



NAME \_\_\_\_\_ PHONE \_\_\_\_\_

CITY \_\_\_\_\_ STATE \_\_\_\_\_ ZIP \_\_\_\_\_

I WOULD USE A CORDLESS PHONE IN MY  HOME  BUSINESS

FOR \_\_\_\_\_

# BIKE ROUTE

SOUTH TAMIA MI TRAIL, FORT MYERS, FLORIDA (813) 481-3376

# shelling tips

The other day, I found myself drawn into the oldest argument there is when it comes to shelling: is the best shelling time when there's a storm...or when the tide's low and there's no wind?

What would you say? Well, as it happened, the family out with me got to answer their own question because that week, with a full moon, there was also a cool front with north winds of about 10 to 15 knots. Hardly storm weather, but the shelling was excellent. No violent waves mounding up shells or any of the other circumstances some shellers wait for, expecting better shells to be found.

Any time, I'd take the low tides and calm wind conditions over rough seas and the next time there's a full moon, you can generally expect to have excellent shelling, whether it be on the beaches or the mud flats.

This business of watching moon phases is not something most shellers worry about. When they have a few minutes, they head for the beach. You will, however, want to keep an eye out for both full and new moon phases. The reason is that these times of the moon's month have unusually high and low tides.

You can get a tide chart from most of the bait and tackle shops on the islands, as well as at many specialty stores. We also publish one weekly in The ISLANDER.

Of course, it helps to have a cold front hit at the same time as the full moon. In this area of the state, when a strong north or northeast wind comes down, it has a tendency to hold the water out in the Gulf, resulting in lower than nor-

by capt.  
mike fuery



mal tides around the islands. Sometimes, when a high tide is scheduled, the winds will be so strong that there's hardly any rise at all. Now, THAT'S good shelling!

If you're here on the islands long enough to mark your calendar with the full moon phases of the month, I would expect you'll find very good shelling, no matter where you go on the islands.

Incidentally, during the last full moon, on a bright, clear morning, 11-year old Tamara Sialer of Miami picked up a large lion's paw, a perfect Scotch bonnet and a large jewel

box. Don't feel badly, Tamara's been shelling for many years and knows what's valuable.

(Capt. Mike Fuery offers daily shelling and fishing trips from Tween Waters Marina, on Captiva Island. Call Mike at 472-5161 for details.)

## Bradley & Tenhagen, Inc. Custom Jewelers



Handmade Rings,  
pendants, earrings.  
Loose genuine stones.  
Jewelry repair.

## GRAND OPENING

December 6, 7, 8

Come See Us. You'll be  
delightfully surprised.

Open 10 'til 9 'til Christmas

119 Ratters Mall  
3858 College Parkway  
Fort Myers, Florida 33907  
(813) 482-7550

## 78 DIFFERENT COLD BEERS B HIVE

! \* ? 2407 Periwinkle • 472-1277  
You know where!  
Groceries, Shells, Sundries and  
more with only one stop.

**SANIBEL CENTER BUILDING**  
Ideal for office or retail,  
880 sq. feet across from  
Bank of the Islands in  
established Plaza.  
Available immediately.  
Rent \$511.37 monthly.  
**Lou Joseph Realty,**

Realtor **939-2411**

## Miki's House The ORIGINAL SHELL LAMP PLACE

Now! We ship anywhere in the U.S. Beautiful bowl-shaped glass shell lamps to fill with your own shells.

Large bowl lamp  
19" high with  
harp, brass  
finial and white  
fabric shade

**\$15.95**

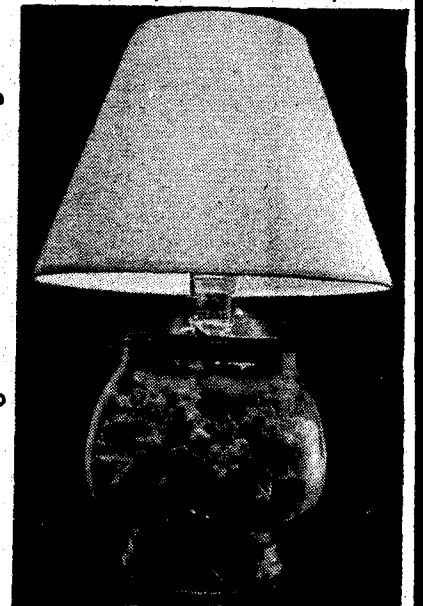
Small bowl lamp  
14" high - fabric  
clip-on shade.

**\$13.95**

Plus postage, handling, insurance \$6.00  
Beautiful shell finials for the large lamp or  
any large lamp, \$2.50. Postage 75¢ (We pay  
postage if ordered with \$15.95 lamp). Check,  
money order, Visa or Master Charge.

Miki's House  
on Sanibel

1989 Periwinkle Way  
Sanibel, Fl. 33957  
(813) 472-1800



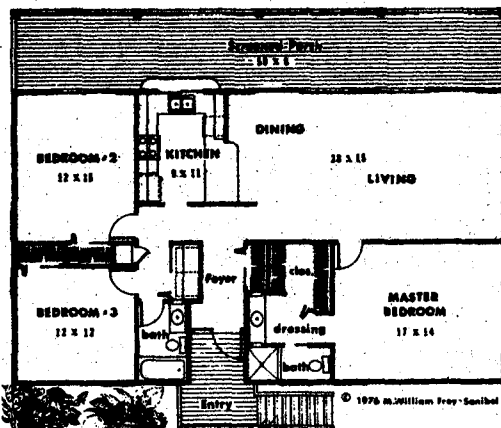
Resort Wear  
Mexican Imports,  
Gifts from  
35 Countries,  
Antiques, Toys,  
Penny Candy,  
Salmagundi,  
Prints



HOURS 10-5

**THE  
RED  
PELICAN**  
SANIBEL ISLAND,  
FLORIDA

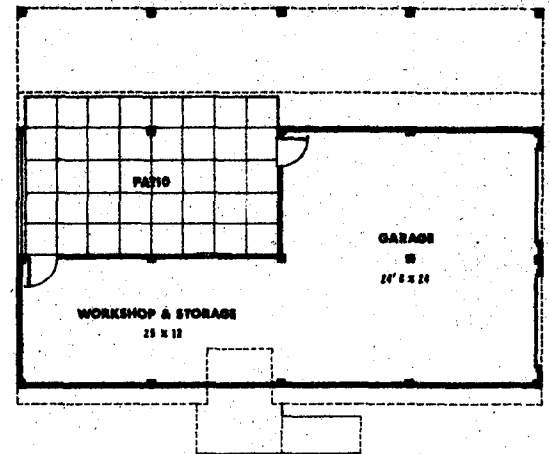
Next to Tarpon  
Bay Marina  
472-4449



FIRST FLOOR PLAN

Ocean View

This elevated home optimizes the cool breezes and your view. A further bonus is the lower level area which serves as garage, storage and hobby space. Call us for information concerning the Ocean View and several other designs under construction on golf course lots in the Dunes. Visit or call 9 to 4 weekdays or 1 to 4 on Sunday.

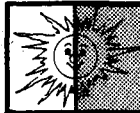


GROUND FLOOR PLAN

**Sanibel  
homes**

1015 SAND CASTLE ROAD  
SANIBEL, FLORIDA, 33957

PHONE 813: 472-2881


**RAYFLECT**

 873 S.E. 47th St  
 Cape Coral, Florida **549-5822**

 RAYFLECT SOLAR INSULATION FILM ON YOUR  
 WINDOWS WILL SAVE YOU \$\$\$\$!

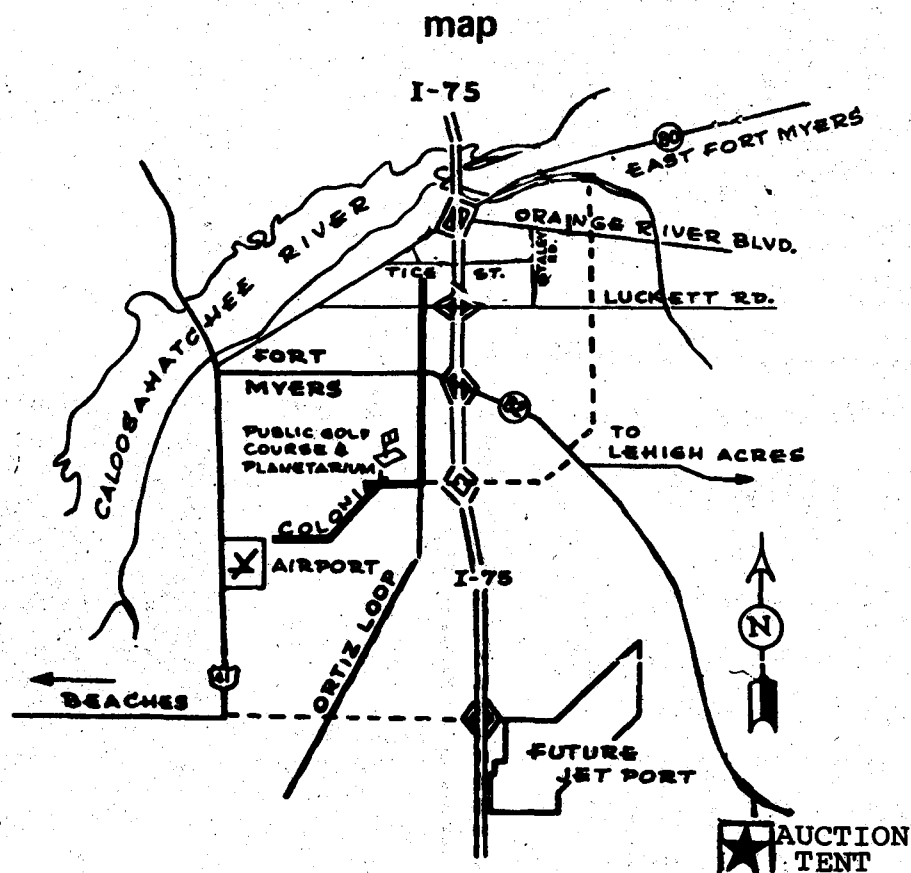
**CALL US NOW FOR 30%  
 PRE-CHRISTMAS DISCOUNT  
 BUY NOW - PAY LATER**

### Childers files drinking age and tax change bills

A bill that would raise the legal drinking age for alcoholic beverages from 18 to 21 in Florida has been filed by State Sen. Donnell Childers. Another bill, ending a provision for prepayment of ad valorem tax bills by the installment plan has also been filed by Childers. The latter bill, however, would allow taxpayers who have elected to prepay, and have made the June, 1980, prepayment, to continue prepayment for 1980 only.

Both bills, of course, are subject to approval by both the Florida House and Senate and well as Governor Graham.

# PUBLIC REAL ESTATE AUCTION

**ABSOLUTE HIGHEST BIDDER ACCEPTED**
**FT. MYERS, FLORIDA**
**SATURDAY, DECEMBER 8, 1 PM SHARP**
**STATE ROAD 82 & ALABAMA ROAD**


### LOOK AT THIS LOCATION

- 15 miles to the City of Ft. Myers
- 13 miles to the regional Edison Mall
- 5 miles to the newly approved airport
- 2 miles to the City of Lehigh Acres, a fully developed residential community consisting of parks, golf courses, schools, hospitals, banks, shopping centers. One of the fastest growing cities on the west coast.

### HOW TO GET THERE

... it's easy:

I-75 exit at State Road 82, go east 6 miles to our auction tent.

From Ft. Myers Colonial to Ortiz Ave. north to State Road 82 then east on State Road 82 8 miles to the auction tent.

From the east coast either Alligator Alley (State Road 84) or State Road 441 to State Road 29. Go north through Immokalee to State Road 82. Go west 15 miles to the auction tent.

**265 Choice Acres**

## TERMS AND CONDITIONS

**TERMS:** As low as 5% Down - balance over 10 years at 9 7/8% interest. 10% Discount for all cash. We will accept checks with proper I.D.

# OSCAR E. DOOLY

ASSOCIATES, INC.

REALTORS

Amerifirst / Miami, Florida 33131 - (305) 358-7000

# refuge report . . . By Del Pierce

Due to the construction of water control facilities, only a portion of the wildlife drive will be open for public use for the next several months. Beginning immediately, visitors may enter the wildlife drive from the Wulfert Point exit Road and travel to the observation tower area. To exit the Refuge, they must turn around and return the same way they entered.

The drive will be congested at times and extreme caution will have to be exercised by everyone to avoid accidents. The speed limit of nine miles an hour will be enforced. Drivers should keep to the extreme right at all times.

Visitors may walk on the south dike either from the observation tower area or by parking near the ball fields at the elementary school, walking in on the entrance road and walking on the dike on the left after reaching the water area.

I apologize for the extremely short notice concerning the closing of the drive and the inconvenience it has caused. Due to various circumstances, however, I did not know until very recently what construction procedures would be involved and whether or not we would be required to completely close construction areas.

Although this construction could have been scheduled for a time of year when there are fewer visitors, it would have been prohibitively expensive - if it could

have been done at all. From May to October, the regularly occurring downpours would make construction activities difficult and contractors would be reluctant to locate several pieces of expensive, heavy equipment on the wildlife drive during this period of the year because of the possibility of hurricanes. Jovan Zepceviski, the contractor during this project, said he would not have bothered submitting a bid if he would have had to do this work during the rainy hurricane season. He said that others might submit bids for this project during the May-October period, but would have to bid very high to compensate for the extra problems and hazards.

The J.N. "Ding" Darling National Wildlife Refuge has grown considerably in the last few weeks. It now includes about 210 acres on Buck Key and all of Runyan Key, a 6.85 acre island. The Buck Key portion is officially designated as the Benedict Unit of the Refuge.

The Benedict Unit was acquired with the assistance of the Nature Conservancy, who received it as a gift from Elena Duke Benedict. Two plaques acknowledging

continued on page 22

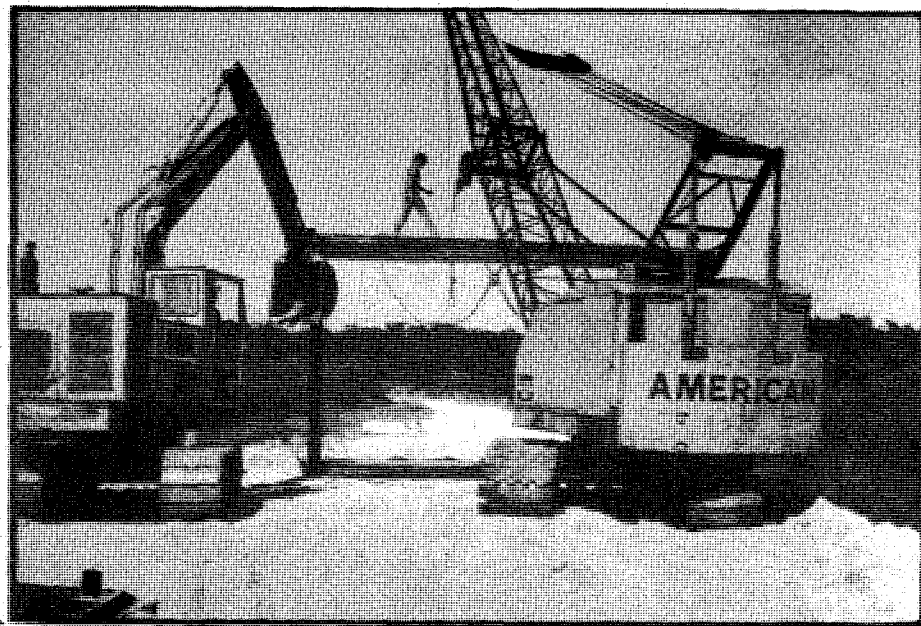


photo by mark harmel

The J.N. "Ding" Darling National Wildlife Refuge, a favorite drive-through, sight seeing adventure for thousands of yearly visitors, locked its gates last Wednesday morning as construction of seven water control devices began. According to Refuge officials, the five mile drive was originally expected to be closed for 14 weeks due to openings cut in the road for installation of

culverts designed to aid in controlling water levels. But public outcry over the closing of the favored tourist attraction, along with a clause providing for passable roads in the construction contract have convinced Refuge officials that areas of the drive should remain open during the four month construction period.

## NEPTUNE POOL SERVICE, INC.



BIG SALE ON CENTURY SOLAR CELL SUNBLAKENTS — SAVE MONEY ON THIS WINTER'S WATER AND CHEMICALS BILL REDUCING

EVAPORATION BY 90% OR MORE - 2 Year Warranty

12'x24' - WAS \$150.00 NOW \$125.00; 16'x32' WAS \$230.00 NOW \$205.00

14'x28' - WAS \$180.00 NOW \$155.00; 18'x36' - WAS \$275.00 NOW \$250.00

15'x30' - WAS \$200.00 NOW \$175.00; 20'x40' - WAS \$340.00 NOW \$310.00

COMMERCIAL CHEMICAL DELIVERY AVAILABLE TO MEET YOUR SPECIFIC POOL NEEDS

6289 Bridge Plaza  
(McGregor Blvd. & College Parkway)

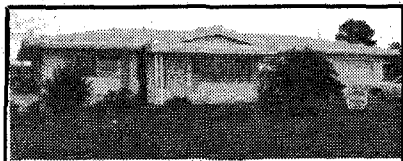
482-6417

VISA

**DORMAN REALTY INC.**  
**RAYMOND E. DORMAN**  
REALTOR

LEONARD BLVD., P.O. BOX 785  
LEHIGH ACRES, FLORIDA 33936

369-6155/After Hours 369-2242

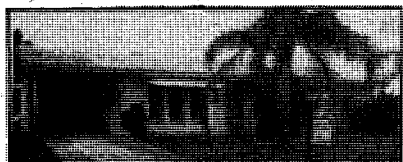


**CARISSA**

Three bedroom, two bath  
1523 Hunt Dale St  
\$61,500



**SOLAR HEAT, FIREPLACE**  
Three bedroom, two bath  
1309 Ellendale Circle  
\$54,900



**IMMEDIATE OCCUPANCY**

Two bedroom, two bath  
1515 Lindale Circle  
\$48,500



**ASSUME LOAN**

Two bedroom, one bath  
1322 Ellendale Circle  
\$46,900

Buying? Selling?

Call us today for a Professional Appraisal. All listings are entered in MLS. There are 37 Homes to select from and over 100 high and dry lots from \$1500.

**OPEN HOUSE:**

Sat. Dec. 8  
Sun. Dec. 9 - 9 to 5 P.M.

**ASSOCIATES AFTER HOURS**  
JOAN BOSWELL 369-4935  
NELLIE LOONEY 369-4563  
TOM MACLEARY 369-6053



## EARLY BROWSERS

get the best gifts at the best prices

## LOTS OF NEW ITEMS

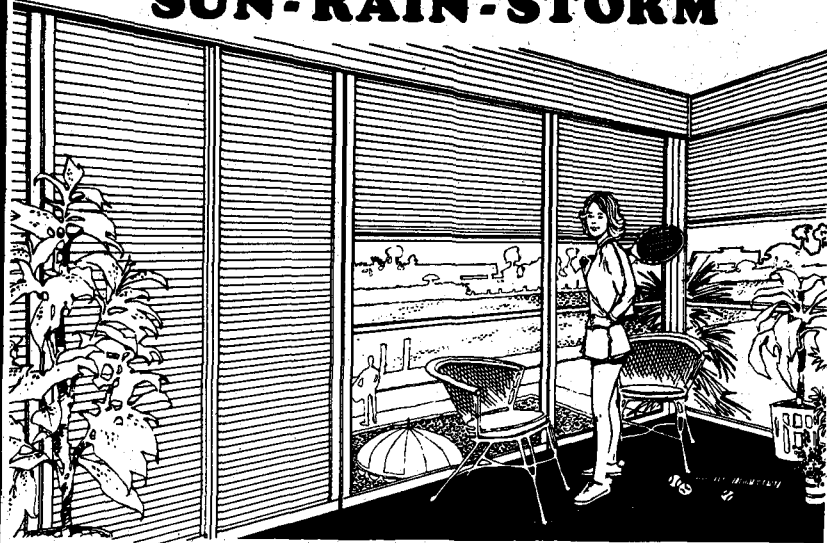
Seeing is  
Believing

Wicked  
Wicker  
Woman

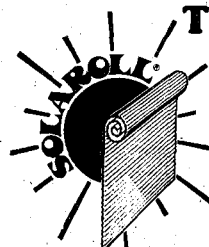
We love  
browsers.

3319 Cleveland Ave., Fort Myers 936-8916

## PROTECTION: SUN - RAIN - STORM



### The Solaroll® Shade System



A Shade Better  
Than The Rest

- converts your open terrace or balcony to a weather-free extra room.
- adds the touch you want for the patio, and inside rooms as well.
- complements your decor. (Decorator colors available)
- gives you privacy you couldn't enjoy before.
- makes opening and closing the room a fingertip operation.
- Shade slides up quietly, rolls up neatly, out of the way.
- equipped with unique storm reinforcing system.
- (PVC roll shutters also available for windows, doors and terraces.)
- Interior control available for windows.

**Hurricane  
Shutter Co.**

Rt. 3, Chitwood Drive, S.W. at San Carlos & Kelly  
Fort Myers, Florida 33908 Phone (813) 481-4180



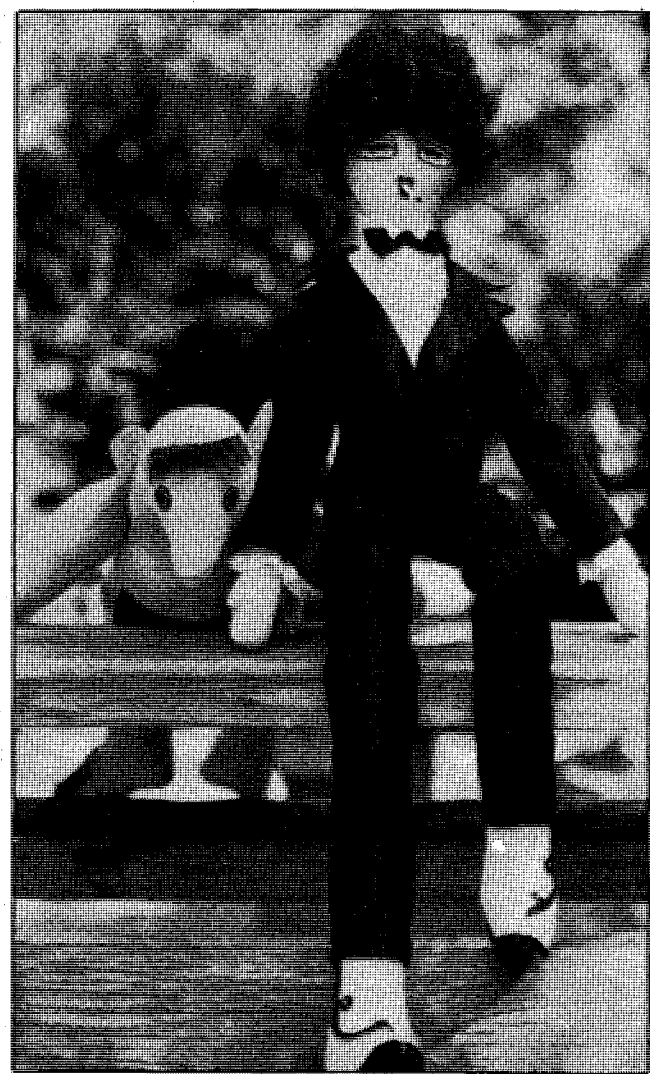
### Telling tattlers!

"Hairstyles chic, both long and short; stylish coiffures are her forte. Make-up tips she dishes out... Sieve-like skin? She smoothes it out. But some cases are so tragic... She runs out of beauty magic."

**T**hus is the tattle-tale accompanying "The World's Greatest Beautician," a handmade, wooden wall plaque nearly a foot tall, sure to tickle the fancy of any chignon-sharpie!

With an entire bevy of philosophical professionals to choose from it's easy to find the perfect prototype for that hard-to-buy-for-person-who-has-everything. Characters range from Farah Phischer and Wally Walleye (fisher-people) to plaques in praise of The World's Greatest Carpenter, Teacher, Secretary, Mechanic, Plumber, Nurse, Doctor, and Bartender.

Available at the Artisan Shop and Gallery, 2807 Gulf Drive. (\$20)



### You've got a friend...

**F**or someone in need of a friend — Tazor the Troll and his cigarette smoking buddy offer perfect silent sympathy and companionship - not to mention serving as a great conversation starter!

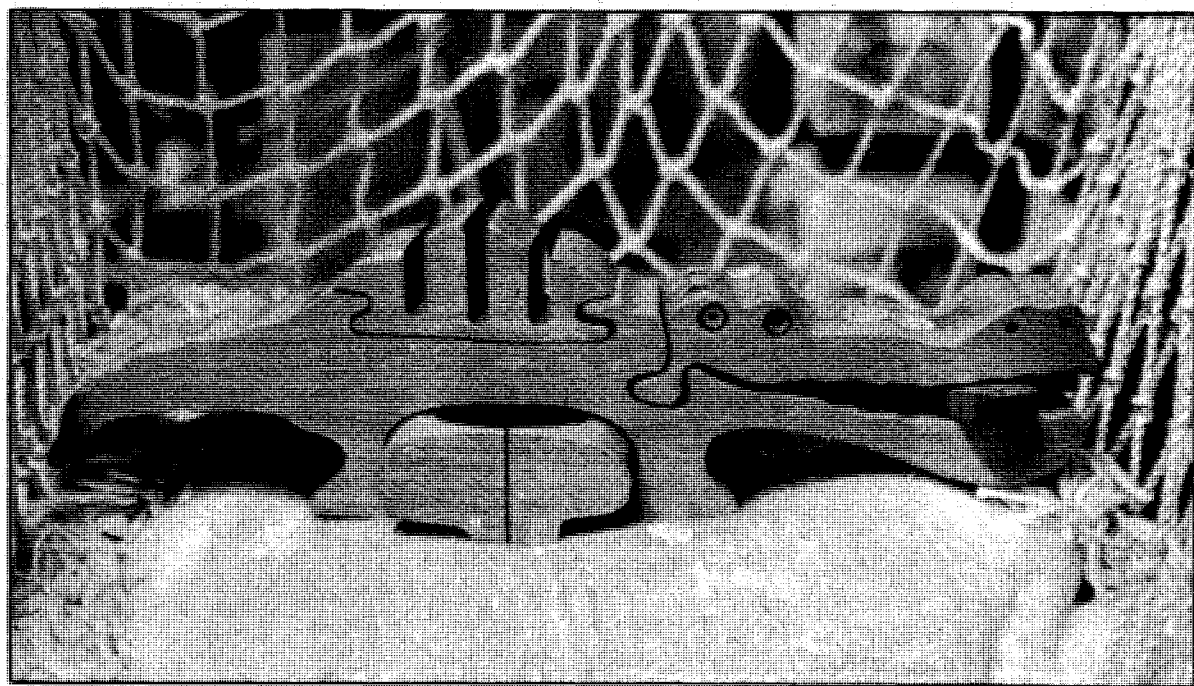
Both characters available at Toys Ahoy! in the Periwinkle Place shopping center. Tazor (\$13.95) and friend (\$40).



### A midwinter's night mask —

**T**hey may not appeal to all of the people all of the time but handcrafted clay or porcelain wall masks from The Wheel Pottery Gallery are guaranteed to please some of the people all of the time. Ranging in size, material and price (from \$25-200) these original masks are handcrafted on Sanibel by the Island's potter-in-residence, Mark Heimann. Pots, vases, cups, and clay chimes stamped with Egyptian or Chinese symbols also available at very reasonable prices.

Located on Periwinkle Way and open from 10 a.m. till 5:00 p.m. Tuesday through Saturday.

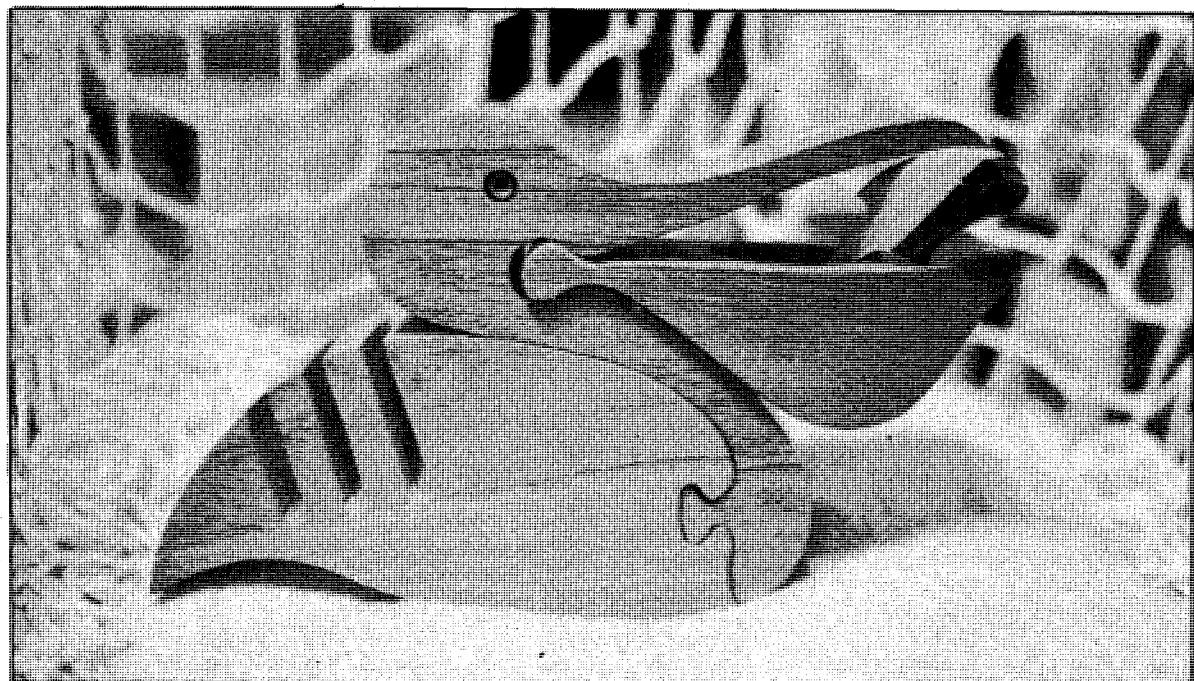


### Crockerfile loose on Sanibel!

**F**or the person who never quite seems to get their desk in order help is on the way! The wooden crockerfile and pelican desk organizer, with holes for pencils, slots for mail or memos, and even a paperclip drawer, make pull-

ing-it-altogether a fun thing to do.

Creature boxes also available in whale, turtle and monkey form. Prices range from \$9.50 to \$26.50. Available from Zamboanga in the Tahitian Garden Plaza on Periwinkle Way.



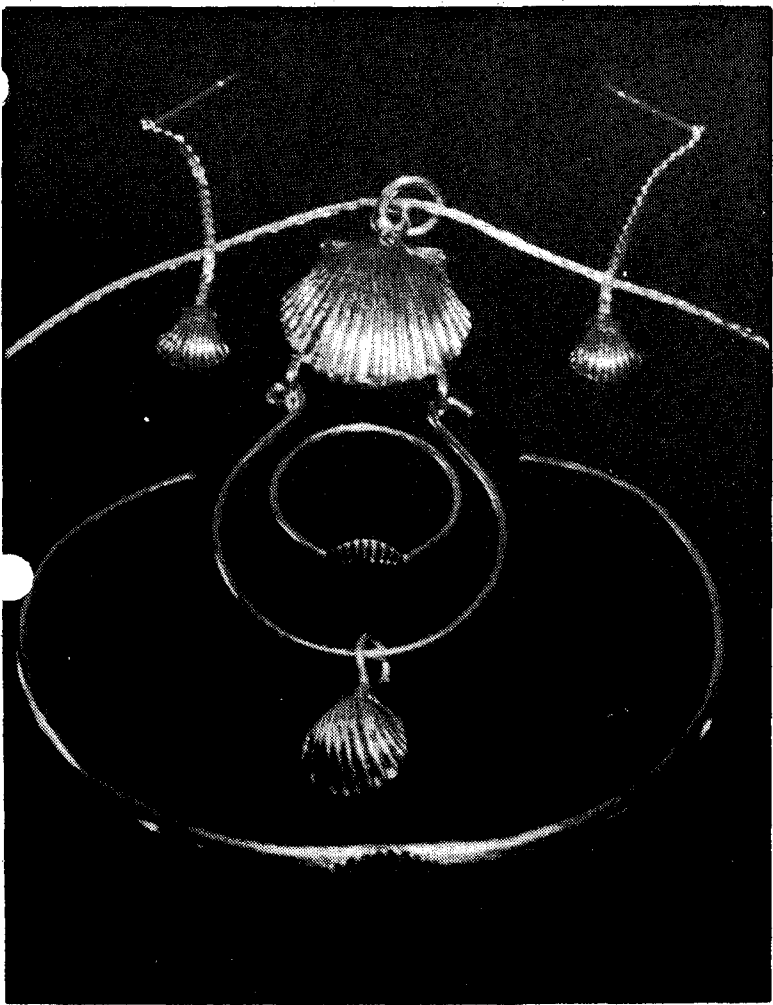


## WISE GUIDE

Islander Best Bets  
for Christmas

Ready or not it's that Santa Claus-is-coming-to-town time of year again. In an effort to spark your stocking stuffing creativity the Islander took a shopping browse of the Islands and came up with the items we'd most like to find under our Christmas tree. Remember - Only 21 days till Christmas!

By Pat and Mark Harmel



## Betwitching sparkling silver —

Sparkling silver pecten shell jewelry to delight the heart of everyone's favorite lady! Starfish, and seahorses also available, along with a large selection of Silver work handcrafted on Sanibel.

Bracelet, \$11.50; charm holder to wear on a chain displaying your favorite charms, \$8.50; pecten charm, \$2.50; earrings, \$6; and ring, \$3.50.

Available at The Silver Witch on Periwinkle Way. Open Monday through Saturday from 10 - 5.

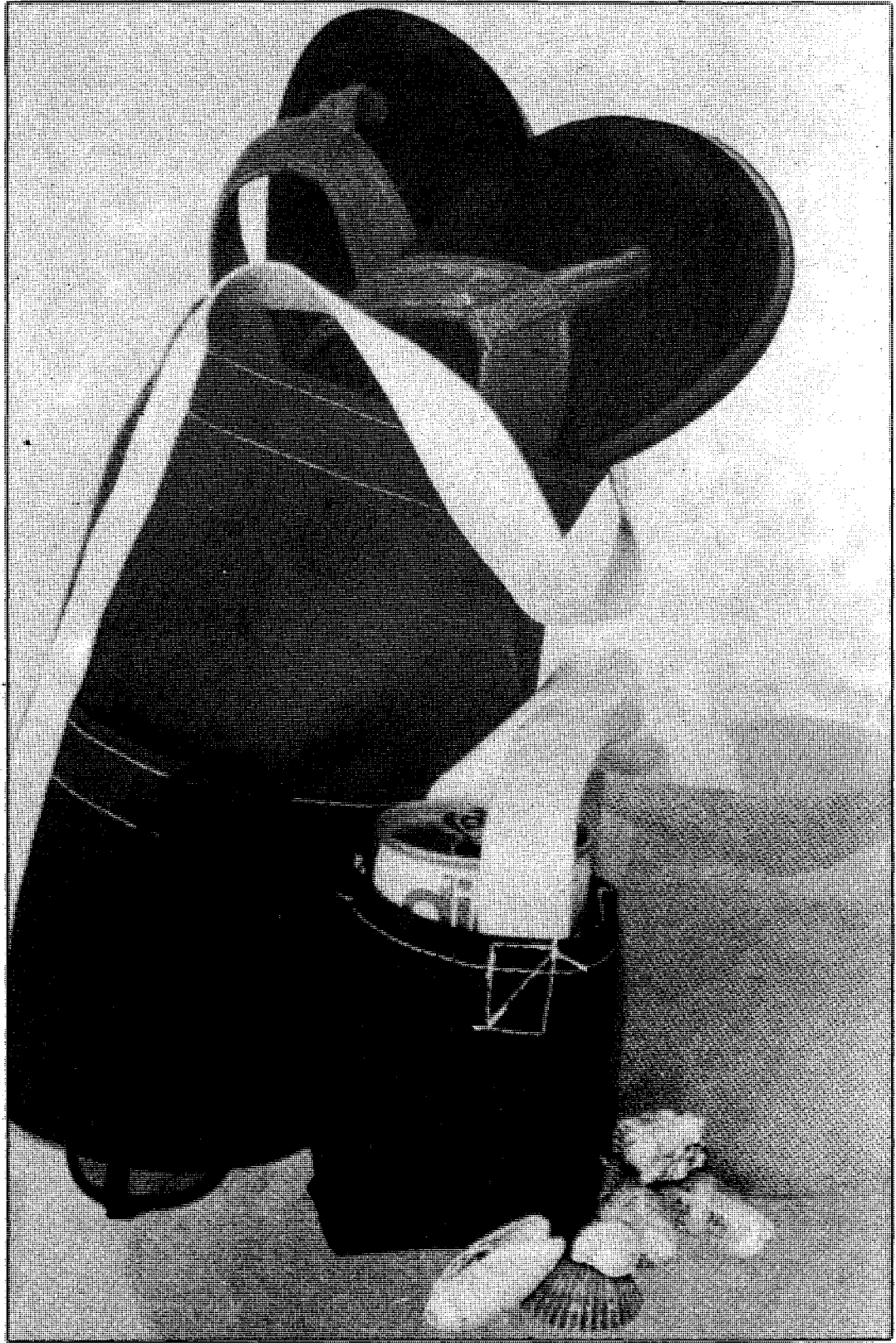
## He sells canvas sea shell bags!

For the serious sheller in your family what better Holiday gift than a mesh-web bottomed canvas shelling bag, complete with finger coddling dacron handles and guaranteed not to mildew?

Eleven inches high with a seven inch wide round base, including a deep pocket for toting beach miscelany, this sheller's booty bag beats the traditional baggy and plastic pail ten ways to Sunday!

For the picky sailor who cringes at the thought of aluminum cans ever setting bottom on his gunwale, we have the perfect stocking stuffer solution. Miniature can-sized canvas drink caddys with long straps— just right for swinging from a rail or shoulder.

Both gifts handmade on Sanibel and available from Caloosa Canvas Company at 2244-C Periwinkle Way. Shell bags in green, yellow, blue or red - \$6.50. Drink caddys available in a variety of colors - \$3.50.



## Fuzzy-Wuzzy was a bear —

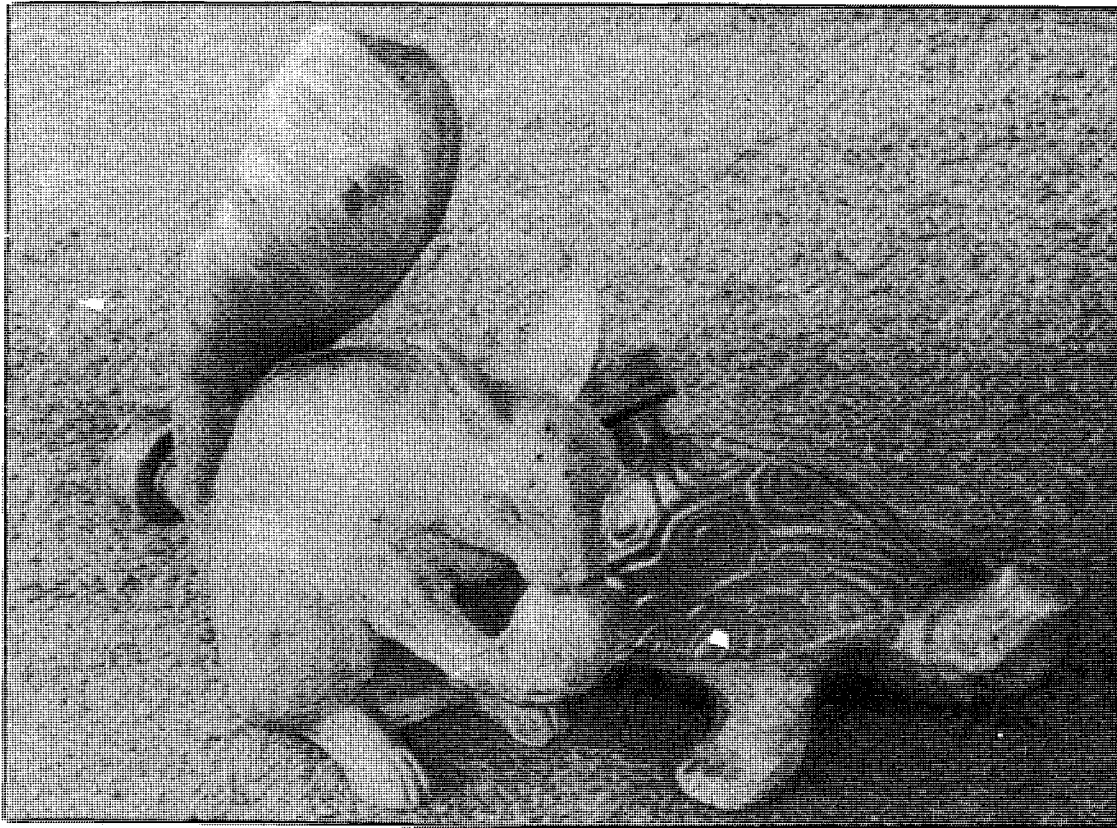
Toys Ahoy! in the Periwinkle Place shopping center carries a multitude of fuzzy-wuzzies anxiously awaiting Christmas morning kisses and squeezes from the special huggy-bear in your life.

From left to right: Petsy from Austria is just like the oldtime teddies with moveable arms, legs and head (\$16); Misha, the official mascot of the 1980 Moscow Olympics, sports an official Olympic belt and big brown eyes guaranteed to melt the most grown-up heart (\$6); two loveable polar bears dressed in either bluejeans (he-bear) or pink checkered undies (she-bear) promise to keep little ones warm on even the most Arctic of nights, from Russ Luv Pets \$10.50 each); B.B. Bear ("Basic Brown Bear") ready for bed in a flannel nightshirt promises to bring sweet dreams to a lucky owner, (hand washable \$22.95); and Wonder Bear traveling faster than a speeding bullet right into your heart, (\$17.95).

### Garden surprises

**M**ary, Mary quite contrary, how does your garden grow?" With brass squirrel tails and turtle shell sprinklers watering your flower rows!

A definite conversation piece for the garden! Brass squirrel sprinkler - \$31.95. Brass turtle - \$22.95. Hook up to any garden hose. From The Mole Hole Shop, 1711 Periwinkle Way.



**F**or the athletically inclined with a penchant for sweets, solid milk chocolate golf balls or a solid chocolate tennis racquet may be just what the coach ordered! And those with an urge to return to the old days will be tickled pink with the "strictly Sanibel" candy jars and candy filled glass cadillacs available at the Sweet Sea Horse shop.

Located on Periwinkle Way near the Lighthouse. Golf balls, (7 oz.) \$7.50; Christmas car, \$2.10; jelly bean jar with shell decorated lid, \$4.75; solid milk chocolate tennis racquet, (3 oz.) \$5.50; bubble gum jar, (50 balls) \$4.20.

### Say Si Bon ...

**T**he three mousse-keteers at Si Bon, Sanibel's gourmet take-out shop, offer a unique answer to the Christmas gift giving quandary. For \$12 - \$18 you can slip a gift certificate good for a gourmet dinner for two into a favorite someone's stocking - and let Betty Johnson, Bill Boyd, and Ginger Carter do the slaving over a hot stove for you.

\$18 to \$26 will purchase a certificate for an extravagant meal including appetizer, vegetable, main course and desert. Wine is also available at an extra charge.

Located in Sanibel Square behind Dunham's on Periwinkle Way. Open seven days a week from 11:30 a.m. till 7:30 p.m.



### Say cheeeeeese!

**F**or your favorite photographer or patron of the Arts the perfect gift - a membership to The Photographer's Gallery. Student membership - \$25, Individual membership - \$45.

Also available, the best in books on photographers and the art of photography.

The Photographer's Gallery is located at 1554 Periwinkle Way. Hours, Tuesday through Saturday 10 a.m. till 5 p.m. and Tuesday, Wednesday, Thursday evenings from 7 - 9 p.m.

### The U.S. Post Office comes through again!

**F**or the dedicated collector the U.S. Mail has come up with just the right answer to gift-giving woes.

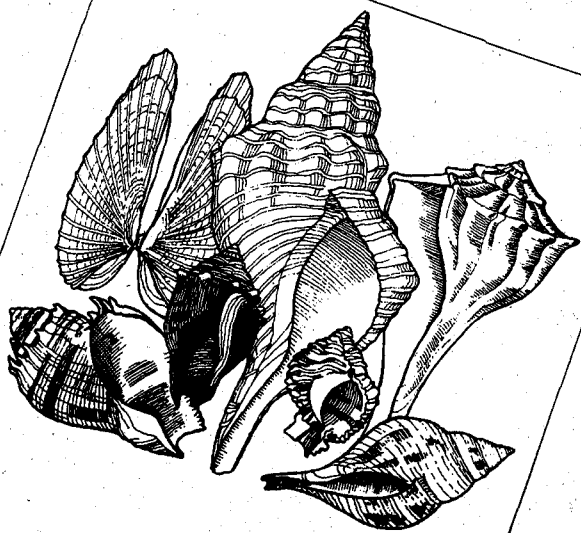
For \$2.25 you can purchase 16 sets of mint commemorative stamps in their own explanatory folder, including a see-through plastic page for showcase mounting. Memorable stamps honoring Dr. Martin Luther King, John Steinbeck, Albert Einstein and even old Santa Claus himself, are among those included in this perfect gift for both the beginning and experienced stamp collector.

"U.S. Stamps and Stories," another must-have for the collector, is a 240 page look at the history behind America's postage stamps. A steal at only \$4.50

And who among you has memorized all the zip codes of all the friends and all the relatives and all the business associates demanding your correspondence throughout the year? The gift that truly "goes on giving" will be used over and over again - the National Zip Code and Post Office Directory. (\$7.50)

All items available at your local Post Office.





## Shell brochure now available

**Shelling on Sanibel Island**  
 Important information to make your shelling better now and in years to come.

Sanibel's Live Shelling Committee is looking for volunteers to help distribute new information pamphlets and posters warning visitors against taking live shells from Island beaches.

Shelling restrictions, Gulf and Bay shelling, the "Sanibel Shuffle," and descriptions of live shells and egg cases are all included in the informative pamphlet. The new posters, available in three sizes, remind beach goers that live shelling is restricted to two live shells of each species per person on Sanibel's beaches.

Posters and pamphlets are now available at City Hall and volunteers and Committee members will be distributing the materials to businesses and resorts on December 10, 11, and 12.

Persons interested in volunteering their time to aid in the distribution effort may contact Pat Kair, Live Shelling Committee Chairman, at 472-1152.

## No new clues in double murder

by pat harmel

Police officials say they still have no clues in the bizarre double murder of two young Iona-McGregor residents last October 28.

The bodies of 19 year old Terry Tarvin and his 20 year old girlfriend Wanda Griffin were discovered in the morning hours of October 29, by Tarvin's father in an unused bedroom of the elder Tarvin's home. Both victims had been shot in the head.

Despite speculation that the execution style slayings had been drug related, Criminal Investigation Department spokesmen deny having any suspects or reason to believe that drugs were involved.

The elder Tarvin is out on bond from an August arrest in Michigan and has been charged with intent to sell marijuana, carrying a concealed weapon and carrying a radar detection device.

According to Captain Don Schmitt of the Lee County Sheriff's Dept., the only evidence investigators have is "two badly mangled 22 slugs."

The bodies were found in a large, walk-in closet containing a safe, but according to Schmitt, robbery is not being considered a motive for the murders at this time. Both victims had cash on their persons at the time they were discovered.

### DR. ROBERT G. LeSAGE

announces the re-location of his office to

**2800 SAN CARLOS BOULEVARD**  
**GULF POINTS SQUARE Suite 11**  
 adjacent to Beach-South Fort Myers Optical

**FAMILY PRACTICE OF OPTOMETRY**  
 SPECIALIZING IN CONTACT LENSES

Appointments accepted Monday through Friday  
 9 a.m. to 5 p.m. - 482-0355

Our Sanibel Office remains at  
 2402 Palm Ridge Road - 472-4204

ARENA PRODUCTIONS & ENTAM PRESENT FOR WCAI

LIVE  IN CONCERT

### Waylon Jennings & The Waylors

SPECIAL GUEST  
**BUDDY HOLLY'S ORIGINAL CRICKETS**

**SATURDAY, DECEMBER 8, 8 P.M.**

TICKETS: \$8.50, 7.50 ALL SEATS RESERVED

ON SALE: FORT MYERS - MALL MUSIC, HAPPY NOTE WEST, ARENA BOX OFFICE, MARCO ISLAND & EAST NAPLES - TALES N TUNES, NAPLES - LOONEY TUNES, PORT CHARLOTTE - STEREO SUPERMARKET - CAPE CORAL - RAINBOW RECORDS, SANIBEL - TUTTLE'S BONITA - HICKORY ISLAND VINYARD.

MAIL ORDERS: WAYLON C/O LEE COUNTY ARENA, ROUTE 2 BOX 235, NO. FORT MYERS, FL. 33903. CERTIFIED CHECKS OR MONEY ORDERS ONLY. FOR INFORMATION CALL 997-1718.

**LEE COUNTY ARENA**



## RAYFLECT

873 S.E. 47th St  
 Cape Coral, Florida **549-5822**

RAYFLECT SOLAR INSULATION FILM ON YOUR WINDOWS WILL SAVE YOU \$\$\$\$!

**CALL US NOW FOR 30% PRE-CHRISTMAS DISCOUNT BUY NOW - PAY LATER**

## PAINT NO MORE!



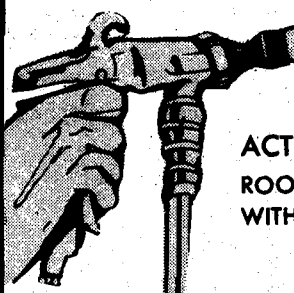
GREEN STAMPS  
 1000 WITH FREE ESTIMATE

## TEXTURIZE YOUR HOME

- 20 YEAR GUARANTEE • NO MIDDLEMAN LABOR & MATERIALS RIPOFF!
- 16 DECORATOR COLORS

APPLIES OVER ANY SURFACE

- WOOD, CONCRETE, ASBESTOS, STUCCO.
- INSULATES
- WATERPROOFS
- REDUCES NOISE
- FIRE RETARDANT
- WILL NOT CHIP, PEEL, FLAKE
- BEAUTIFIES - PROTECTS
- INCREASES PROPERTY VALUE
- FIGHTS BUGS - FUNGUS



ACT NOW!  
 ROOF PAINTED FREE WITH PURCHASE  
 (White acrylic paints)

**25% OFF LIMITED TIME ONLY**

Yes, we even do MOBILE HOMES

**BEWARE OF IMITATORS!**

LEE **995-0204**  
 OR **629-3243**  
 CHARLOTTE

a complete Painting Service  
**ECONO**  
 705 G. PONDELLA RD.

PAINTING & TEXTURE COATING INC.  
 N. FORT MYERS

STATE: Licensed, Bonded, Insured  
**CALL COLLECT**  
 OUTSIDE LOCAL AREA  
 We Serve All 5 Counties

### Island Gifts

Shells  
 T-Shirts  
 Gifts

9 - 5:30 Mon. - Sat.  
 Sometimes on Sunday

### Island Garage

American & Foreign  
 Car Repair

**24 HOUR WRECKER SERVICE**  
 8 - 5 Mon. - Sat.

1609 Periwinkle Way  
 Sanibel  
 (813) 472-4318

# community calendar

## Lions tree sale starts Saturday

The arrival of a truck loaded with Christmas trees on December 8 will herald the beginning of the traditional Lions Club Tree Sale.

The sale will be held in the lot at the west end of Periwinkle Way across from the Island Shopping Center. More than 100 Lions will participate in selling the trees.

The slogan for the sale is "Help Others to See...Buy Your Tree from Me".

## Over 55 driver's class offered

Sanibel resident Hilda Rush has announced the arrival of a unique driver education program called "55 Alive; Mature Driving" designed for older motorists.

The program is sponsored by the American Association of Retired Persons and the National Retired Teachers Association and will be held at the Sanibel Community Center January 15 and 18 from 1 to 4 p.m.

Volunteer instructors will teach the sessions, which will include a talk by an eye specialist, a slide show and group discussions. Course material will cover the effects of aging and of medication on driving, license renewal, local traffic hazards, adverse road conditions and accident prevention.

Enrollment is limited to 25 persons, so early registration is suggested. The charge is \$3 and checks should be made payable to "Driver Improvement Program" and mailed to Hilda Rush, 40 Periwinkle Park, Sanibel. Further information can be obtained by calling 472-4354.

## Community Association Christmas dance this weekend

The Sanibel Community Association (SCA) will hold a Christmas dinner dance Saturday, December 8 at the Association's building on Periwinkle Way.

The festivities will begin at 6:30 p.m. and each couple is asked to bring their favorite dish. The music will be furnished by Sal and the Vibratones.

Tickets are priced at \$2.50 each for members and \$3 for guests and are available at the Community Center or from any of the members of the SCA Board of Directors.

## SCCF sponsors consumer workshops

The Sanibel-Captiva Conservation Center is sponsoring a series of workshops to provide consumer information on subjects of special interest to people trying to adopt a more energy-efficient lifestyle. The "how to" information provided will equip participants with the knowledge necessary in order to design their own projects or to better deal with professional contractors whom they hire to design and build such projects.

All sessions will be held on Wednesday evenings at the Conservation Center on Sanibel-Captiva Road from 7 p.m. to 9 p.m. Call the Center for further information at 472-2329.

Subjects to be covered are: restoring beachfront vegetation, December 12; native landscaping for filled lots, December 26; energy conservation landscaping, January 9; landscaping Sanibel interior wetlands, February 6.

## Chamber celebrates 25 years this Saturday

The Sanibel-Captiva Chamber of Commerce will celebrate 25 years of service next Saturday, December 8. The Chamber has scheduled a special party in honor of the occasion and will award silver commemorative medallions to the Chamber's past presidents.

The Chamber has also proposed that Island restaurants create a special dish dedicated to the chamber's birthday. Chamber president Fred Valtin told the restaurateurs that he hopes they will design "dishes and names delicious with nostalgia. A delight to both the palate and the funny bone."

Dishes from participating restaurants will be promoted in local newspapers.

## Christian Women hold luncheon

The Sanibel-Captiva Christian Women's Club will hold its monthly luncheon on December 6 at Chadwick's Restaurant on Captiva.

Mrs. Doyle Gardner of Winter Haven will be the guest speaker, and a fashion show featuring holiday gift ideas will be presented by the Sea Horse Shoppe.

The public is cordially invited to attend the luncheon, which will be held from 11 a.m. to 1 p.m. Tickets are \$5.25 and reservations may be made by contacting Diane Goode at 472-4673, or Ruth Rau at 472-1213.

A nursery is available at no charge. Call Becky Cowan at 472-4241 to make arrangements.

Mid-Island  
Real Estate



Phone (813) 472-1559  
Corner of Wulfert & Sanibel Captiva Roads  
5301 Sanibel - Captiva Road

**CANAL LOT**, secluded, few buildable lots in area, beautiful water view, water line to lot

**\$50,000.**

**SANIBEL BAYOUS lots**, large, all utilities, including sewage, close to Gulf, and access,

from **\$16,000.**

**CHATEAUX-SUR-MER** lots, half acre plus, with water hookup

**\$41,500.**  
and **\$45,000.**

**TERRELL RIDGE**, approx. 1/2 acre, high near beach and easement, as hurricane proof as you can be near the Gulf

**\$45,500.**

**ROY E. BAZIRE**

REGISTERED REAL ESTATE BROKER  
ASSOCIATES: E. G. Konrad, Eva Pearl Cook,  
Dana E. Brantley

*Foxworthy's*  
OVER 50 YEARS  
Residential and Commercial  
Designing and Furnishings  
OPEN 10 TO 5 MONDAY THRU SATURDAY

No. 1 Periwinkle Pl.  
SANIBEL  
ISLAND  
472-1327

1601 Jackson St.  
DOWNTOWN  
FORT MYERS  
334-1348

## Holiday Smiles for Everyone!

with KODAK  
Photo-Greeting  
Cards

- Choice of Slim-Line or Trim-Line styles
  - Available in Christmas, Chanukah or Navidad designs
  - Regular orders accepted through December 5, 1979
- Stop in today for complete details.

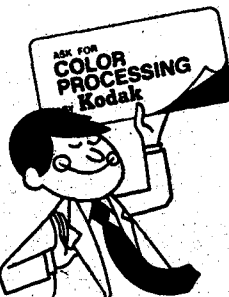


photo  
Sanibel  
Kodak

571 Periwinkle Way at intersection  
with Dixie Beach Boulevard  
Phone 472-1086

# PORTRAIT

by pot harmel

## Eben Joy

**Age:** 65

**Height:** 5'11½"

**Roots:** "Born in New York City but lived most of my life in Connecticut."

**Last book read:** "Robert Kennedy and His Times" by Arthur Schlesinger, Jr.

**Pleasures:** "Everything that Sanibel has to offer is what I love to do."

**Wish:** "That there was some way to hold a cap on building on Sanibel - not to hurt those who own land here but to make sure that those who are going to buy land understand that they can't overbuild."

**Mentor:** "Both Charles Lawton and Sir Wilfred Grenfell."

**Words of Wisdom:** "I don't think there are really any bad people - any given person has a good side if you look hard enough. I don't believe there's anybody who can't be helped."



photos by mark harmel

Duncan the IV, the boxer dog belonging to Eben and Eileen Joy, hardly leads the unsung, ignoble "dog's life" one hears so much about.

The reason being, that Duncan's master is a man of epicurean ways and gourmet means - and what's good for the man in the Joy household is also considered good for man's best friend.

On this particular day Duncan dines with guests on exquisite turkey soup and homemade-raisin-cookies-like-100m-never-made, and his greatest concern is the licking of wounds incurred while defending the honor of his best girl from the likes of Councilman Porter Goss' Labrador retriever.

The reason both guests and dog alike are dining on such mouthwatering delights is because Eben Joy is entertaining - and entertaining guests is what Eben Joy does best.

For 32 years Eben was the owner-overseer of the famous Dog Team Tavern in Middlebury, Vermont; a venture begun in 1946 when he purchased the inn that had been part of the Grenfell Mission. The inn, closed for six years before Eben bought it, was considered by many to be a pig-in-the-poke business venture - a theory soon disproved by the dedicated new innkeeper.

The Grenfell Mission was nearest and dearest to Eben's heart in more ways than one. As a young man he had signed on with Sir Wilfred Grenfell as a W.O.P. worker (With Out Pay), selling Mission handcrafts all over the United States to raise funds for the great doctor-explorer's orphanages, schools, and hospitals. It was the beginning of a life-long friendship and one that would strongly influence the young Eben's values and philosophies.

Leaving Sir Grenfell's missionary work behind him, Eben joined the war effort by entering the ski troopers - an act,

unbeknownst to him, that would establish the culinary career that would become his life.

Serving as a line soldier in Italy, Eben one day chanced to meet a Colonel who had "stopped by to have dinner with the troops." When asked by the Colonel if the food was good, Eben's instant and unabashed reply was that it was awful and he couldn't understand why - it was obvious that good food was coming into the camp but something was apparently going wrong in the kitchen. And that was the beginning.

In less than 24 hours Eben was approached by the First Sergeant who had learned through the Colonel of Eben's distaste for military food. Against his better judgement he found himself on his way to four months in cook's school, and upon his return was made "mess cook" for the troops. It was a twist of fate that probably saved his life - there was a 100 percent casualty rate of the soldiers he had been fighting with.

After the war Eben returned to Vermont with thoughts of buying a ski lodge but settled instead for buying the inn. He managed to get through his first year of ownership by working 15 hour days and learning the business inside-out. The second year he also ran a neighboring ski slope that received much business from the Middlebury College students and by the third year felt confident in saying "I'm in the restaurant business." The fourth year he expanded and by the seventh year was serving 400 people a day. By the time Eben was ready to sell the restaurant 900 meals a day were passing through the kitchen doors.

Where do ski troopers go to retire? Why, the tropics of course! Eben had been visiting Sanibel since 1950 and in 1971 bought a home here. Every year he would spend a little more time on the Island - sandwiched between running the inn and taking "food safaris" around the world. Having

sold the restaurant last summer, 1979 will be the first year Eben has been able to spend 10 months on Sanibel.

"I miss it," he says of the restaurant business, "but I wouldn't want to be involved again for so many hours a day." He would, however, "welcome a chance to help out," and sees himself as having the potential to be a restaurant trouble shooter.

"I'm super critical," he admits, "but I'd like to go into an establishment during their four busiest hours and just watch things run and then tell them what's going wrong."

Eben's wife Eileen, also a career restaurateur, has other plans however. She would like to see the two of them open an Island tea room or a small school where local restaurants could send their employees for two weeks to learn the proper way of doing things. Eben's years of perfecting the art of entertaining should not be for naught, she believes.

The Joy Art of Entertaining at The Dog Team Tavern included Eben's presence every day - to greet and talk with the guests, printing the Tavern menu on a Chippendale tray from which guests would order and then be shepherd to the lounge - from which they would later be called by name to their table where their first course was already waiting.

If a restaurant intends to serve two meals a day the manager or owner should plan to spend 15 out of 24 hours there, according to Eben. "People expect to see you there," he says, adding, "how many restaurants do you go to where you know who's running the place?"

A firm believer in the owner knowing how to do every job in the business Eben offers a final word of advice to other restaurateurs - "If you don't know the back of the House, stay out of the front!" It's a lesson he knows from experience - once having prepared 350 dinners in an evening after a temperamental chef walked out - a feat he continued to perform for a week!

## Committee chairmen for ABC Sale named

Committee Chairmen for Captiva's annual Attic, Basement and Closet (ABC) Sale have been announced by Bob and Lois Kessler, general chairmen of the fundraiser that is scheduled for February 23 at the Captiva Community Center.

Proceeds from the sale, which opens at 8:30 a.m., and continues until 2 p.m., will go to the Civic Association and the Captiva

Memorial Library.

Items for sale, which will include new and used furniture, bric-a-brac, crafts, baked goods, plants and clothing donated by Captiva residents will be displayed in expanded areas including a huge tent on the lawn behind the Center.

Committee Chairmen are: Baked Goods -- Kay Schultz; Food -- Bud and Georgia

Hemphill; Captiva Merchants Raffle -- Bud and Ginny Loomis (solicitations) and Priscilla Charlie Fenton (ticket sales and raffle); Sanibel Merchants -- Mike Friedman; Books -- Mary Kelsey; Clothing -- Bea Koepnick; Furniture -- Leo and Peg Hofschneider; Jewelry -- Alice Rice; Junque -- Jane Basinger; Plants -- Fred Schlup; Miscellaneous -- Jeannie

Holloway; Electrical -- Derek and Rusty Webb; Shells -- Phyllis Mount; Parking -- Bun Day; Silent Auction -- Helen Thomas; Linen -- Terry Abbey McDonnell; Publicity -- Jane Bancroft; Auction -- Dewitt Jones; Posters -- Sam and Cy Conant (Distribution); Leo Hofschneider, Art Rice and Bob Kessler (posters); Set-Up and Clean-Up -- Bob Kessler.

## Sanibel Public Library offers gift-giving program

The Sanibel Public Library's annual Christmas gift-giving program was announced this week. The program was instituted several years ago as a means of purchasing books the library would otherwise not acquire, and also to supplement the meager book budget provided by the Lee County library system.

The library has compiled a list of books it would like added to its selection. The gift-giver may choose the book he wishes to donate from the list, which is kept at the library's check-out counter. All that is required is that he write his name after the title of the book he selects and make out a check to the Sanibel Public Library. All

gifts are tax deductible.

Titles include a large number of adult non-fiction books, several large type fiction volumes and more than a dozen juvenile books. Non fiction titles include several biographical and non-biographical works which, next to mysteries, are the most popular books on the library's shelves. "The Windsor Story", the Kissinger memoirs and a new biography of John Steinbeck are among the desired titles.

The juvenile list includes Peter Rabbit, the Bobbsey Twins and Dr. Seuss books which are frequently requested by children.

## refuge report...

from page 15

this gift will be maintained on the island.

The plaque will be inscribed:

BENEDICT WILDLIFE SANCTUARY  
BUCK KEY  
A GIFT TO THE AMERICAN PEOPLE

IN HONOR OF HER FAMILY

Runyan Key was purchased from Paul and Christine Tuohy of North Palm Beach, Florida for \$45,000.

Immediate management of these two land areas will consist of boundary posting and general habitat surveys. Short term

goals will be to control Brazilian pepper and Australian pine, accomplish an archeological survey and determine the needs for recreational development such as walking trails.

The Pine Island Refuge which is administered from the J.N. "Ding" Darling headquarters has also expanded. Cove Key, Black Key, Mangrove Key and a small lot on Pine Island was purchased from Mary Eldredge of Tampa, Florida for \$54,000. These islands consist almost entirely of mangroves and no management other than posting and patrolling is planned for the near future.


**BRAND NEW!**  
STARTING TODAY



**BIG BAND SOUNDS  
and  
MIDDLE of the ROAD  
GREATS**

Every Night 6 to 9:30  
**Lost Horizon Lounge  
Sun Dial**

**RICK KEELER**  
Guitar / Vocals




Entertains Nightly  
Tuesday thru Sunday  
8 to Midnight  
Easy listening and Dancing

**scotty's pub**

The J. N. "Ding" Darling National Wildlife Refuge is located on the Sanibel portion of the Sanibel-Captiva Road and is open daily, dawn 'til dusk.

**PIZZA!**




**Island Pizza**

Our dough is made fresh daily

ITALIAN SUBS  
PIZZA  
SPAGHETTI  
BEER & WINE TO GO

EAT IN OR TAKE OUT  
**472-1581 or 472-1582**  
7 Days 11 A.M. - 11 P.M. 1630 A. Periwinkle Way

**"NO FISH TODAY"**





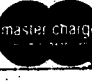
AT THE TIMBERS, BECAUSE WE USE ONLY FRESH FISH, OCCASIONALLY OUR SUPPLY RUNS OUT. RATHER THAN SUBSTITUTE FROZEN FISH, WE HAVE TO SAY "SORRY NO FISH TODAY". WHAT THIS MEANS IS THAT WHEN YOU ORDER FISH AT THE TIMBERS, YOU KNOW IT IS FRESH, NEVER FROZEN.

RED SNAPPER - GROUPER - SWORDFISH - SOLE AND MORE  
WE SERVE IT FRESH... OR WE DON'T SERVE IT AT ALL!

FULL LIQUOR LICENSE

**the TIMBERS**

975 RABBIT RD. 472-3128 OPEN 7 DAYS 5-10

**Pete's** RESTAURANT  
ON SANIBEL  
1523 Periwinkle Way  
next to 7/11

Serving full Dinner Menu  
Mon. thru Sat. 5:30 - 10:30 PM  
RAW BAR 4 PM till???

for your entertainment pleasure  
**TRAUCHT, RAINWATER & CO.**  
in the lounge Thur., Fri., Sat.  
**MON NITE FOOTBALL - HAPPY  
HOUR PRICES**

**FREE HOT DOGS & PEANUTS**  
New Pates Menu, New Management!  
We want and appreciate your business  
Please give us a try --  
You'll be glad you did.  
Bill Bates Manager

# Road priorities

from page one

Tammen and Bergendoff in Cape Coral.

Goss also urged the Council and Commission members to complete the bike path system. "This is the last time we will have the flexibility we have to use that money (Causeway surplus funds)" he said, and bike paths are good for this Island. Although White disagreed with spending all the money on bike paths at this time, he went along with putting the bike path system into the same category with the repair of Sanibel-Captiva Road.

Item four on the Planning Commission's list, the intersection between the Causeway Road and Periwinkle Way was bumped into the number one position. "There has been no agreement on the design of that intersection," said Butler, "and we need to get it done soon".

The controversial Gulf Drive connector was given the third priority pending a separate workshop on just that one subject. "If we're serious about the safety of people on this Island, knowing the conditions and hazards or Periwinkle Way, then the connector should be one of our biggest concerns," Butler said.

Planning Commission Chairman Ann Winterbotham said that the Commission "agreed wholeheartedly, but the problem bogged down because of the design for the east end of the road". White said he favored Sanibel resident Arthur Hunter's route which is a more northerly route than the one originally planned. Butler said she didn't agree at all with that route.

"Whatever we do, it has just got to be done," White said. "We can't go through another hurricane season without it."

Goss pointed out that there was a "very strong feeling on the Island that we don't really want it (the Gulf Drive connector) because it will break down the identity of the island. More roads, more people. But," he added, "other people feel that if we do the rest of our job right, we can keep other controls in force." Goss reiterated that the need for the connector -- and additional roads -- was spelled out in Sanibel's comprehensive land use plan.

The City decided that the Casa Ybel Road, Periwinkle Way intersection was fourth on the priority list, but only to handle existing needs. (The Planning Commission is slated to hear a Development Permit request for a shopping center at that location next Monday which, if approved, would drastically alter that intersection's use and design.)

The City Council agreed with the Planning Commission that any resurfacing of Middle Gulf Drive, to be paid for from the Weight Permit fees, should be postponed until the end of heavy construction in that area.

They also decided that a study into a "Tourist Traffic Advisory Program" should wait until the new City Manager can study it and a left turn lane down Periwinkle Way was eliminated.

A vegetation management study is being conducted by Dr. Bill Webb and Mike Klein and the Council was told that a report will be forthcoming soon.

"We're over the hill and going for broke," White said as he ended what he termed to be a "very productive" meeting.

# Anxiety Gastritis!



Never let it be said that Island businessmen lack a sense of humor! This sign at Huxter's spells trouble for would-be shoplifters. photo by mark harmel

## Best Restaurant on Sanibel?

Ask a friendly native!

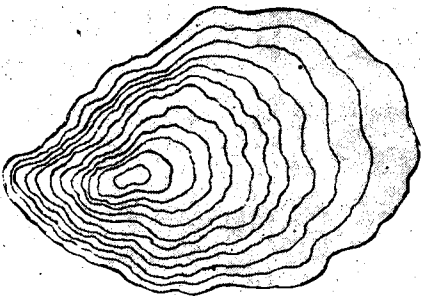
- Fresh Grouper Daily
- Gulf Shrimp ... right off the shrimp boat
- U.S.D.A. Choice Iowa Grain Fed Beef
- Warm, Friendly People and Atmosphere



5:00 to 9:30 Daily — Children's Menu  
1223 Periwinkle  
Sanibel



## F&B OYSTER CO.



## A FISH HOUSE

2163 Periwinkle Way, Sanibel

THE FINEST FISH HOUSE  
IN SOUTHWEST FLORIDA

TRY OUR FAMOUS SHORE DINNER

BEERS AND WINES SERVED  
DAILY 5:00 TO 9:30

Phone 472-5276

RAW OYSTER BAR

People come  
thousands of  
miles to dine here.

Virginia Wade, Wimbledon Champion  
Touring Tennis Pro for South Seas Plantation Resort.

Chadwick's, on the tip of Captiva  
Island at the entrance of South  
Seas Plantation Resort. (813)  
472-5111.

Selected as one of Florida's Top  
100 restaurants by Florida  
Trend magazine. Open to one  
and all.

Lunch 11:30 to 2:00 Monday  
through Saturday, Dinner 5:30  
to 10:00 daily.  
Entertainment nightly  
except Monday.



So do I.

**Chadwick's**  
Award Winning Dining and Entertainment.

## Causeway traffic up 10 percent

Officials at the toll booths of the Sanibel Causeway estimated Friday that their November figures would have increased about 10 percent over November of 1978.

The figures for the month of November last year totalled 99,901 cars while officials were estimating a total of 109,074 cars for the month of November, 1979.

## Erosion District discusses money; Chairman considers resignation

The Captiva Erosion Prevention District yesterday planned to discuss the selection of the engineering firm to handle a massive private beach reourishment program on Captiva Island.

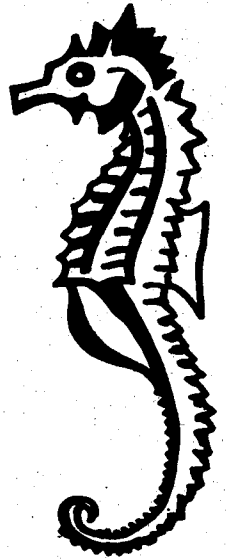
According to District Chairman Dan Burner, the District is now prepared to enter negotiations on price with the Jacksonville-based firm of Tetra Tech, Inc. for the proposed project.

The meeting, slated to begin at 4:30 p.m. was past the ISLANDER's press time.

Burner added last week that he had advised the Captiva Civic Association that he was prepared to resign his post, even though his term still has a year to run.

"I've put the District in the right place," Burner said, "and I have a lot of architectural work to do for my own business. Now that the Captiva Civic Association is behind the (beach reourishment) project, I feel that I can step down."

Burner added that he did not expect to resign in the very near future.



## New handicap parking rules go into effect Jan. 1

Regulations that will go into effect Jan. 1, 1980 will require a special handicapped parking sticker in the lower left corner of the license tag for persons who wish to park in handicapped-only designated parking spaces. In addition, an identification permit card will be issued along with the sticker and will be required to be carried by the person who was issued and is using the sticker.

In order to be eligible for a handicap parking sticker and identification card, the applicant must have a statement from a

licensed Florida physician, the Social Security Administration or the Veterans Administration attesting that the applicant is severely physically disabled with permanent mobility problems which substantially impair his or her ability to ambulate, or the applicant should be certified as legally blind. Once certified as legally handicapped, the applicant should contact the Lee County Tax Collector and complete the application which includes a 50 cent service charge.


**SANIBEL REALTY**  
INC. REALTOR

**SOON TO BE A MEMORY TODAY A REALITY**

Enjoy your own beach house situated on 100 feet of beautiful beach (Gulf front). Two bedrooms - one bath. Enjoy the Sanibel of yesteryear this year - \$6,250 for the season. To place your reservation call Sanibel Realty, Inc.

**REALTOR**  
1207 PERIWINKLE WAY SANIBEL ISLAND,  
(813) 472-1566 FLORIDA 33957 11/23

**Enjoy Thursdays Sundial Style...**



**with Fine Food & Fashion**

Lunch in our Gulf-front dining room is special every day, but Thursdays are very special. Join us in the Bahama Room from 12 n to 2 pm on Thursday for lunch and a showing of the latest Island fashions, from swim suits to business attire to evening wear. Jeanette Daniel furnishes the exquisite fashions... Sundial furnishes the setting. That's Thursdays... Sundial Style!

**Sundial**  
1246 Middle Gulf Drive  
Sanibel Island, Florida  
472-4151

A French Menu has arrived

*jean-paul's* restaurant francais

**The French Corner**

(by the new post office)  
on Tarpon Bay Road  
(West end of Periwinkle, turn right)

RESERVATIONS CLOSED TUES. 472-1493

Dinner 6 to 10

Your own special holiday greeting. A festive arrangement of fresh flowers and holiday greens in an exclusive FTD Wooden "Nutcracker" bowl. And featuring a Christmas candle. It's so beautiful, you'll want to send one and take one home. Just call or visit us now. We have other special holiday ideas for you too.

Send our FTD Season's Greeter Bouquet now.



**Kandy the Florist**  
of Sanibel

Located behind Landlubber Restaurant  
We Deliver 1619 Periwinkle Way 472-3125

**Kingston Square**

**RESTAURANT & LOUNGE**

Specializing in Prime Rib, Charbroiled Steaks & Fresh Seafood

2 MILES PAST MINER'S PLAZA  
ON THE ROAD TO SANIBEL

**SPECIAL BROILED SEAFOOD PLATTER**

**\$6.95**

**NOW PLAYING**  
for your listening pleasure  
**RON and BOB INKENBRANDT**

Appearing Every Sunday  
**THE MUSIC MAKERS**

DINNER SERVED 5 to 11 p.m. daily — 5-10 pm Sunday  
**482-1881**  
Reservations Suggested.


**800 Different COLD WINES**

**BHIVE**

! \* ? 2407 Periwinkle • 472-1277

You know where!  
Groceries, Shells, Sundries and more with only one stop.

*Gulf Shore*  
Restaurant



1270 ESTERO BOULEVARD  
FORT MYERS BEACH, FLORIDA  
RESERVATIONS CALL 463-9551

BREAKFAST 7 A.M. — 11 A.M.  
LUNCH 11 A.M. — 3:30 P.M.  
DINNER 5 P.M. — 10:00 P.M.

COCKTAILS  
LUNCH — DINNER — SPECIALS

FRESH LOCAL FISH • STEAKS  
VEAL • DUCKLING • BBQ RIBS  
GOURMET SOUP



# PROPERTY SPEAKING

BY BERT JENKS

SANIBEL REALTY PRESIDENT

Many island visitors go house and condominium hunting in an extremely casual way, and sometimes wind up making costly mistakes.

One of the biggest mistakes a home hunter can make is buying the frills instead of the residence. All too often, a couple will fall in love with an eye-catching feature and buy the residence because of that special feature. This may not be all bad, but it usually costs the purchasers real money. I might add that this mistake occurs frequently - and in all price ranges.

Buyers many times skip over careful consideration of the major features because some one feature really grabbed them. This might be a charming fireplace,

a glamorous lighting fixture, a garage door opener or even a unique tropical tree or shrub that happens to be in bloom

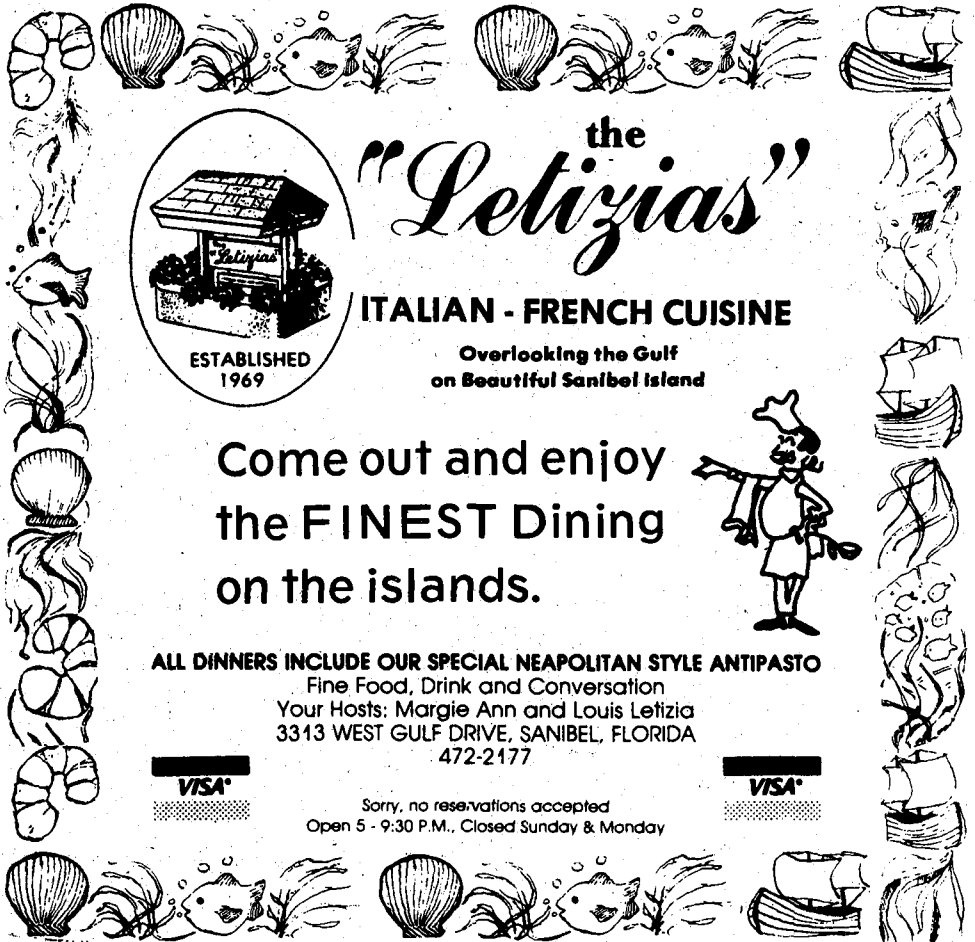
I know of a couple who recently purchased a home on Sanibel specifically because of a luxurious bathroom, while another couple paid a premium for a condominium that was furnished, in order to avoid having to furnish it themselves.

Yielding to superficial attractions like these can result in your family having to live in a home that really does not suit its real needs. Bear in mind that most of these alluring features can usually be added to a house at a relatively small cost when one considers the total amount of the overall purchase price.

## San-Cap Rotary Club forms

Bob Merklas and John Murray have announced the formation of the new Sanibel-Captiva Rotary Club, which will meet weekly on Fridays for lunch at Sundial, from 12 noon to 1:15, Dutch Treat.

Applications for membership may be obtained by phoning 472-1307 or 472-5159. Remember, only one membership is permitted for one type of business category so applications should be made early.



the  
*"Letizias"*

ITALIAN - FRENCH CUISINE

ESTABLISHED 1969

Overlooking the Gulf  
on Beautiful Sanibel Island

Come out and enjoy  
the **FINEST** Dining  
on the islands.

ALL DINNERS INCLUDE OUR SPECIAL NEAPOLITAN STYLE ANTIPASTO  
Fine Food, Drink and Conversation  
Your Hosts: Margie Ann and Louis Letizia  
3313 WEST GULF DRIVE, SANIBEL, FLORIDA  
472-2177

Sorry, no reservations accepted  
Open 5 - 9:30 P.M., Closed Sunday & Monday

VISA



the **Unusual Deli**

home of **Julie's Kitchen**  
where the good food starts

**HAVING A PARTY?**

We can offer:

- \* COMPLETE MENU PLANNING (including international specialties such as Hawaiian, Hungarian, Greek).
- \* PARTY RENTAL CENTER all items that make a party special and easy from silver to disposables, from linens to fountains.
- \* COOPERATION with sources for liquor, flowers, entertainment and photography as well as printing and any other needs.
- \* LOCATIONS as an off premises caterer we are equipped to work anywhere (and we have, from beaches to yachts to breakfast in bed).
- \* INSTANT PARTIES from our always in stock selection of hors d'oeuvres, main courses and deserts.

**MORE!** Just call for an appointment to discuss your needs. We have 24 hour phone service and will return your call as soon as possible.

**WE'LL CATER 936-6003 YOUR PARTY!**  
5605 S. Tamiami Trail - Dragon Plaza

**Coconut Grove** Restaurant & Cocktail Lounge



★ ★ ★ 22 years of fine food & fine service

Local & International Dishes  
Luncheon & Dinner Specials - Salad Bar

**SEAFOOD SPECIALISTS**

**WEEKEND SPECIAL**  
**A SUMPTUOUS BROILED SEAFOOD PLATTER**

**SUNDAY SMORGASBORD**  
**12 NOON to 3 PM**

*Full menu and cocktails available  
also childrens menu*

**HAPPY HOUR 4 to 6**  
**HOT & COLD HOR d'OEUVRES**

Located in front of Bailey's store  
**472-1366**  
open every day 11 am - 10 pm



Selected as one of:

**BEST Restaurants FLORIDA**

**Harbor House**

SANIBEL ISLAND'S  
*First and Finest*

**SEAFOOD Restaurant**

**Dinner Hours**  
**5:00-9:00**

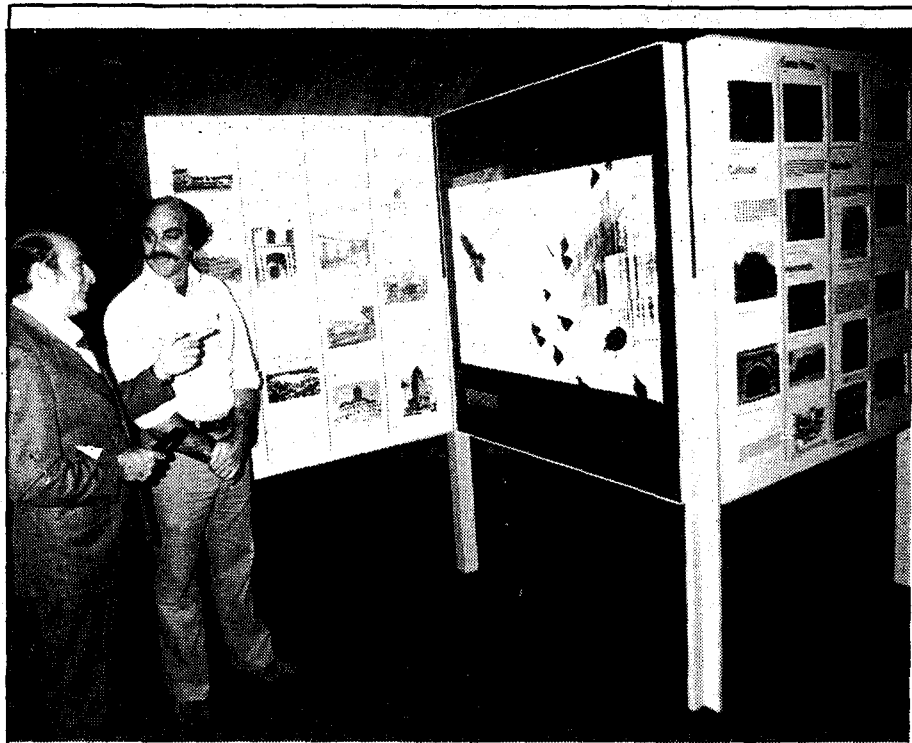
Lauded in:

NEW YORK TIMES — CHICAGO TRIBUNE  
WASHINGTONIAN MAGAZINE — MIAMI HERALD  
CHICAGO SUN TIMES — NATIONAL OBSERVER  
JACKSONVILLE TIMES — UNION and JOURNAL  
CINCINNATI MAGAZINE — ATLANTA JOURNAL

1244 Periwinkle Way 472-1242 CLOSED SUNDAY

*Sincerely* Bob & Judi Horstmeyer





## Courthouse exhibit opens

Time isn't the only thing that flies by Florida's county courthouses, says Secretary of State George Firestone (left) to Jim Macbeth, Director of the Museum of Florida History. A new traveling exhibit entitled "Down at the Courthouse: Photographs and Stories of Florida's County Courthouses," offers an intimate look at life in each of the state's 67 counties. Produced by the Department of State (Division of Archives, History & Records Management), the exhibit opens December 6 at the Fort Myers-Lee County Public Library.



## Gifts of Gab.

Nobody has nicer gifts for special people than the telephone company. They're the Tele-fashion™ phones called "The Gifts of Gab," and we have all kinds for all manners of speaking. Make it fancy, fun or just plain functional. But make it a Gift of Gab—a very special telephone from the telephone company. You know you can always call on us.

3858 College Parkway  
The Rafter's Shopping Mall  
Winkler Road and College Parkway

2213 Coralwood Drive  
Coralwood Mall

1520 Lee Street  
Downtown Fort Myers

1846 North Tamiami Trail  
Weavers Corner Plaza

**the  
phone  
shop**

**United Telephone**

CONSULTING-APPRAISALS  
SALES  
PERSONAL PROPERTY  
COMMERCIAL-LIQUIDATION  
WILLIAM JAMES ALQUIST  
SANIBEL 472-2357

**APPRAISALS**  
RESIDENTIAL, COMMERCIAL  
and INVESTMENT  
Real estate appraisal.  
Prompt reasonable  
service.  
**SANIBEL REALTY,  
INC. Realtors**  
1633 Periwinkle  
(Just E. of Bank of  
The Islands) Sanibel  
**472-1549**

### FOR LEASE

Office Suite available  
in Sanibel's only  
Professional Plaza  
550' Carpeted, draped,  
A.C. panelled, ready to  
move in across from  
New First Federal  
Bldg on Palm Ridge  
Rd.

For info.,  
Call 472-2946

### PLUMBING

• ALTERATIONS

• REPAIRS

• REMODELING

• CALL

**936-4385**

**ALTE & SON**

**CONTRACTORS**

LICENSED • BONDED

INSURED

SERVING

ALL OF

LEE COUNTY

# Today at city council

**9:00 A.M.** Invocation and Pledge of Allegiance (White)  
 Council Election of Mayor and Vice Mayor as required by Section 3.04 of Article III of the City Charter.  
 Approval of Minutes of Meeting held November 20, 1979.  
 Planning Commission Report  
 City Attorney's Report  
 City Manager's Report; Status Report - Turner Beach, Resource Recovery Task Force Appointment, LEAA Subgrant Resolution, Night Surveillance Equipment, Multi-Channel Logging Recorder, Typographical Errors in Comprehensive Land Use Plan, Report on Privately Owned Parcel Causeway Properties.  
 Mayor and Councilmen's Reports  
**10:30 A.M.** Public Hearing and Second Reading of an Ordinance Providing a Procedure for Disabled Persons to Obtain Permission to Operate a Wheelchair on Public Bicycle Paths; Providing Standards for the Operation of Wheelchairs; Providing for Appeals.  
**10:45 A.M.** Public Hearing and Second Reading of an Ordinance Prohibiting the False Personation of a Sanibel Municipal Officer; Providing that Aiding and Abetting is also a Violation; Providing for Penalties.  
**11:00 A.M.** Public Hearing and Second Reading of an Ordinance Amending the Sanibel Building Code as Adopted by Ordinance 75-25, as Amended, to Require Satisfaction of all Conditions to Development Permits Prior to the Issuance of Certificates of Occupancy.  
 Continuation of Public Hearing and Second Reading of an Ordinance Providing that all Surveys and Maps Purporting to Establish the Local Tidal Datums shall Comply with Florida Statutes Chapter 177, Part II.

**12:30 P.M.** Recess for Lunch  
**1:30 P.M.** Appointments (2) to Sanibel Planning Commission. Appointments (2) to Sanibel Causeway Negotiating Team. Appointment to Southwest Florida Regional Planning Council's 208 Advisory Committee.  
 Consider Approval of an Amended Inter-Local Agreement between the City of Sanibel and the Florida Division of Transportation and a Resolution Authorizing the Mayor to Sign said Amended Agreement. Continuation of Annual Review of Rate of Growth Ordinance No. 79-02 and Consideration of Planning Commission's Recommendations for Amending said Ordinance.  
 Council Review of Unallocated Units and Review of Call-up Period as Required by Ordinance No. 79-02.  
 Public Hearing and First Reading of an Ordinance Amending Ordinance 77-30, Section 15, Code 6531 Tax Schedule, to Delete Reference to Real Estate Managers from the Code Classification Providing an Occupational License Tax for Real Estate Agents and Brokers.  
 Public Hearing and First Reading of an Ordinance Providing for a Fee for the Issuance of Letters of Verification of the Habitable Floor(s) of Structures.  
 Public Hearing and First Reading of an Ordinance Amending Ordinance 77-46, Section 1 to Add a New Subsection (e) which Provides for a Fee for Applications under the Comprehensive Land Use Plan which Involve Accessory Uses of a Certain Size or Valuation.  
 Public Inquiries and Comments

## American Legion Post 123 sponsors children's Christmas party

American Legion Post 123 will be sponsoring a Christmas party for all the children of the Islands on December 14 in the Post meeting room.  
 St. Nick is expected to make an appearance and all children will receive a Christmas stocking full of goodies and a gift. A drawing will be held for two walkie-talkies and two bicycles to be given away to two lucky boys and girls.  
 The party will begin at 6 p.m. sharp at the Legion Post on San-Cap Rd. Refreshments for the children will be served.



YOUR FRIENDLY

# TIM FISHER HARDWARE

HOME CENTER



We're always Here when You need us



## Holiday Savings



We meet all ARMA Adv. Prices



STANLEY helps you do things right

**8<sup>99</sup>**  
12.05 VALUE

PL320 20 FT. POWERLOCK TAPE RULE

20" x 3/4" wide blade protected for long wear. Power return. PL320.



Crescent

**5<sup>99</sup>**  
8.35 VALUE

8 IN. ADJUSTABLE WRENCH

World famous CRESCENT adjustable wrenches are the wrenches all the others try to copy. Heavy chrome plated. AC18.



ARROW

**14<sup>99</sup>**  
19.50 VALUE

HANDY ARROW STAPLER

One squeeze shoots a staple whenever a nail can be driven. Uses heavy .050 wire staples in 8 sizes and callouts. Designed specially for ceiling tile. T50.

GENERAL ELECTRIC

**15<sup>99</sup>**  
20.99 VALUE

5-SPEED PORTABLE MIXER

5 speed fingertip control - fold, stir, beat, whip. Handy beater ejector. Wood grain styling accents. Almond color. M22CA.

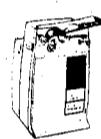


GENERAL ELECTRIC

**14<sup>99</sup>**  
19.99 VALUE

CAN OPENER W/KNIFE SHARPENER

Deluxe can opener/knife sharpener combination. "Hands Free" operation. "Easy Clean" removable cutting assembly. Cord storage keeps excess cord off counter. Almond color. EC33CA.



STANLEY

**1<sup>99</sup>**  
2.99 VALUE

99 STANLEY UTILITY KNIFE

Retractable blade locks in 3 cutting positions. Two extra blades in handle. 99.



STANLEY

**4<sup>99</sup>**  
5.79 VALUE

15-350 STANLEY HANDSAW

Cross-filed saw with contoured, textured grips. 90 degrees and 45 degree feature built into handle. 15-350.



Lufkin

**6<sup>88</sup>**  
8.29 VALUE

X46 LUFKIN RULE

Made tough to withstand hard daily use. Graduated brass slide extends full 6". X46.

GENERAL ELECTRIC

**31<sup>99</sup>**  
40.99 VALUE

ALMOND ELECTRIC SKILLET

12" skillet for frying, stewing, roasting, baking, etc. Improved Teflon II non-stick coating on cooking surface. "Tip-Tow" skillet with tilt leg for draining cooking oil, grease and for basting. SK27CA1.



GENERAL ELECTRIC

**27<sup>88</sup>**  
34.99 VALUE

10 CUP DRIP COFFEE MAKER

Makes 2 - 10 cups coffee, brewed with the speed of instant. One-step off brew/warm switch. Automatic, keeps warm. DCM10.



STANLEY

**5<sup>99</sup>**  
8.99 VALUE

206 STANLEY SURFORM

Non-clogging steel blade planes wood, aluminum, plastics, tile. 206.



STANLEY

**8<sup>99</sup>**  
12.99 VALUE

16-OZ. STANLEY HAMMER

16 oz. professional quality tubular steel handle with vinyl grip. "Rim-tempered" face minimizes chipping. ST1-1/2.



**11<sup>88</sup>**  
19.99 VALUE

HOMEOWNER'S BENCH VICES

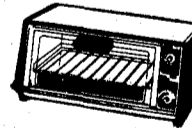
Made of unbreakable ductile steel with replaceable hardened faces. Permanent pipe jaws, large anvil and horn, swivel base. 1773.

GENERAL ELECTRIC

**39<sup>99</sup>**  
47.99 VALUE

T-104 TOASTER OVEN

Toasts 4 slices of bread. Oven capacity for large 3 course frozen dinner. Separate oven temperature dial. Top browning setting browns, crisps or melts tops of foods. T-104.

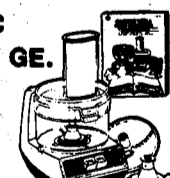


GENERAL ELECTRIC  
\$7.00 REBATE FROM GE.

**49<sup>99</sup>**  
71.99 VALUE

FP-1 FOOD PROCESSOR

Food Processor slices, chops, shreds, grates, etc. Two-in-one reversible disc has slicing side and shredding side. Stainless steel knife blade for grinding and chopping.



### CHRISTMAS STORE HOURS:

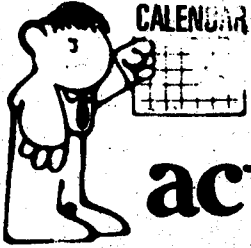
Sundays 12 to 5 P.M. - Monday, Thurs., & Fri. Open 'til 8 P.M. - Tues., Wed., & Sat. 8 to 6

# TIM FISHER HARDWARE

(next to Publix)

Gulf Points Square - Home of Duff's

482-4011



# activities

**BINGO MUREX** — American Legion Home, Thursday, 8:00 p.m. No minors. Sanibel-Captiva Road, 472-9979.

**BIRD TOURS** — Griffing Bancroft, 472-1447; George Weymouth, 472-1516; Dick Frieman, 472-1315.

**FISHING GUIDES FOR CHARTER** — Capt. Ted Cole, 472-2723; Capt. Doug Fischer, 472-1551; Capt. Baughn Halloway, 472-2802; Capt. Belton Johnson, 472-1122; Capt. Duke Sells, 472-1784; Capt. John Johnson, 472-1020; Capt. Bob Sabatino, 472-1784; Esperanza Woodring, 472-1126; Capt. Chic Kennedy, 472-4087; Capt. Herb Purdy, 472-1849; Capt. Jerry Way, 472-1784 or 472-1007; Capt. Butch Cottrill 472-2917; Capt. Alex Payne, 472-2913. Tarpon Bay Marina. Fishing, shelling, sightseeing, trips to Cabbage Key.

**FISHING GUIDE** — Bridges Charters - 549-5530, Sports Fishing, Shelling Trips, Drag Shell Trips, Sightseeing Trips, and Combination Trips.

**ELLIE MY'S MUSEUM** — By appointment, Call 472-2121.

**NATIONAL HISTORY FIELD TRIPS** — to Sanibel's wildlife habitats — for reservations, information, times and fees, call 472-2180, with naturalist, George Cambell.

**SAILING** — (lessons and - or charter) — Southwind, 472-2531; Paul Taylor, 472-1551; Chic Kennedy, 472-4087; Mike Fuery, 'Tween Waters, 472-5161; Ft. Myers Yacht Charters, Roger Nodruff, 463-2320, Twin Palms Marina; Papa Nui, 332-1200; Off-Shore Sailing School, S.S.P., 472-1551, ext. 4141. Capt. Hugh Alexander, Island Boat Rentals, 472-2228.

**SIGHTSEEING TOURS** — Herb Purdy, 472-1849; Tarpon Bay Marina (canoes) 472-1323; Capt. Chic Kennedy, 472-4087; Capt. Herby Purdy, 472-1849; Mike Fuery 472-1784; Jerry Way, 472-1784; Capt. Hugh Alexander, Island Boat Rentals, 472-2228.

**TENNIS & TACKLE EQUIPMENT (RENTAL)** — The Reel Eel, 472-2674.

**OFF ISLAND DAY TIME ATTRACTIONS** — Edison Home in Fort Myers, 334-1280; Shell Factory, U.S. 41 North Fort Myers; Jungle Cruises, 334-7474, Fort Myers Yacht Basin; Waltzing Waters, 283-0636, Pine Island Road.

Macrame, Weaving, Crewel, Needlepoint, Knitting, or Crocheting lessons **IDLE HOURS**, 31 Periwinkle Place. By appointment only, 472-1039.

**DUNES TENNIS RACQUET CLUB**. Full racquet facilities. 472-3522.

**THE SANIBEL-CAPTIVA CONSERVATION CENTER** is now open from 9-5 daily except Sunday. Exhibits and nature trails. Members free. Nominal charge to visitors.

**SANIBEL-CAPTIVA GYMNASICS PROGRAM** - Beginning Gym. Monday 3:45-4:45, Intermediate Gym Monday 4:45-5:45,

Ballet II Monday 3:45-4:45, Ballet I Monday 4:45-5:45, Advanced Gym (Boys & Girls) Wednesday 4:30-6:00, Team Ballet Wednesday 6:00-7:00, Team Gym. Friday 4:15-7:15. For further information, please call, Mrs. Gault 472-2053 or Lisa Murphy 472-5683.

**BOATS (FISHING) TO RENT** — Blind Pass Marina, 472-1020; 'Tween Waters Marina, 472-5161; Tarpon Bay (canoes) 472-1323.

**BOATS (SAIL) TO RENT** — Southwind, Inc. 472-2531, Island Boat Rentals, 472-2228, Capt. Hugh Alexander.

**MOTORCYCLE RENTALS** — Sanibel Motorcycle Rentals, 1203 Periwinkle - 472-2001

**POWER BOAT RENTALS** — 15' to 18' 50 to 85 h.p. Capt. Win and Capt. Fred Comlosy Southwinds, Inc. 472-2531.

**SAILING** — (lessons and - or charter) — Southwind, 472-2531, Capt. Win and Capt. Fred Comlosy; Chic Kennedy, 472-4087; Mike Fuery, 'Tween Waters, 472-5161; Ft. Myers Yacht Charters, Roger Nodruff, 463-2320, Twin Palms Marina; Papa Nui, 332-1200; Off-Shore Sailing School, S.S.P., 472-1551, ext. 4141.

# church

**ST. MICHAEL AND ALL ANGELS EPISCOPAL CHURCH**  
The Rev. James D.B. Hubbs, Rector  
Larry Brunke, Organist-Choirmaster

**SUNDAY:**  
Holy Eucharist, Rite I ..... 7:30 a.m.  
Holy Eucharist, or morning prayer and church school ..... 9:30 a.m.  
**WEDNESDAY:**  
Holy Eucharist ..... 9:00 a.m.

**ST. ISABEL'S CATHOLIC CHURCH**  
Father Gerald Beauregard, Pastor  
Father Louis Reczek, Assistant Pastor

Sunday Mass ..... 8:30 and 10:00 a.m.  
Saturday Evening Mass ..... 5:30 p.m.  
Daily Mass ..... 8:30 a.m. and 5:30 p.m.  
Vigil Mass preceding Holy Day ..... 5:30 p.m.  
Holy Day Mass ..... 10:00 a.m. and 5:30 p.m.  
Confessions . . . . Before each Mass and at 3:30 p.m. Saturday

**COMMUNITY CHURCH**  
The Rev. Bruce E. Milligan, Pastor

Worship Services ..... 9 and 11:15 A.M.  
Church School Classes ..... 10:15 A.M.  
Youth Club, Grades 4-7 ..... Wed. at 3:15 P.M.

**FIRST BAPTIST CHURCH**  
Pastor, Jamie Stilson

**SUNDAY SERVICE:**  
Sunday School ..... 10:00 a.m.  
Worship ..... 11:00 a.m.  
Evening Services ..... 7:00 p.m.

**WEDNESDAY EVENING:**  
Prayer Meeting ..... 7:00 p.m.

# clubs & civic groups

**SANIBEL-CAPTIVA LIONS CLUB** meets on the first and third Wednesdays at the Sanibel Community Center at 6:30 p.m.

**SANIBEL-CAPTIVA BOY SCOUTS** — meet at Sanibel Elementary School every Tuesday at 7 p.m. Visiting Scouts are welcome.

**SANIBEL-CAPTIVA AMERICAN LEGION POST 123**  
Meetings second Tuesday of the month ..... 8 p.m.  
Open 7 days a week ..... 11 a.m. to 10 p.m.  
(and sometimes later, much later, depending upon the attendance.)

Bingo every Thursday, cash prizes ..... 8 p.m.

**SANIBEL COMMUNITY ASSOCIATION, INC.** — Sanibel Community House, 1st Tuesdays, 6:30 p.m.

**SANIBEL-CAPTIVA KIWANIS** — Scotty's Pub, Breakfast Meeting each Wednesday, 7:30 a.m. Visitors Welcome.

**AMERICAN BUSINESS WOMEN'S ASSOCIATION**. Regular meeting the second Thursday of every month at 6:30 p.m. Call Bette Parke 472-2946 for location.

**THE SANIBEL-CAPTIVA POWER SQUADRON** meets on the second Wednesday of each month (excepting July and August) at the Community Association building at 7:30 p.m. Visitors to the islands from other squadrons are always welcome.

**SANIBEL-CAPTIVA ROTARY CLUB** — Meets for luncheon we. on Fridays at Sundial, from 12 noon to 1:15 p.m. Dutch Treat.

**CHRISTIAN SCIENCE SERVICES** Phone 472-4449  
Sundays ..... 11:00 a.m.  
Wednesdays ..... 8:00 p.m.  
Corner Gulf Drive and Palm Lake Drive

**SANIBEL CONGREGATIONAL UNITED CHURCH OF CHRIST**  
Rev. Webb Howard, Minister  
Sunday Worship at The Dunes Golf & Country Club Clubroom ..... 10:30 a.m.

**JEWISH COMMUNITY CENTER of Lee County**  
915 SE 47th Terrace, Cape Coral, Fla.  
Rabbi: Samuel Silver, D.D.  
549-1967

Friday evening ..... 8:00 p.m.  
Saturday Service ..... 10:00 a.m.

**GREEK ORTHODOX CHURCH**  
The Rev. Fr. Arthur Kontinos  
Cypress Lake Drive - 482-2099

Orthos ..... 9:30 a.m.  
Divine Liturgy ..... 10:00 a.m.

**SEVENTH-DAY ADVENTIST CHURCH**  
Fort Myers - 2663 Second Street  
Fort Myers Shores - Highway 80, East of Fort Myers  
Pastor: Philip A. Parker  
936-0775

Saturday Worship ..... 11:00 a.m.  
Sabbath School ..... 9:30 a.m.  
Evening Vespers ..... One hour before Sunset - Saturday  
Prayer Meeting ..... Wednesday, 7:30 p.m.

**CHAPEL-BY-THE-SEA CAPTIVA**  
Rev. Dr. James W. Kennedy  
Services ..... 11:00

**RETREADED TIRES**  
GUARANTEED-ALL SIZES

A78-13	16.00	G78-14	22.00	<b>TRUCK TIRES</b>	
B78-13	17.00	H78-14	23.00	5.60-15	20.00
C78-14	18.00	G78-15	22.00	7.00-15	25.00
D78-14	19.00	H78-15	23.00	8.00-16.5	35.00
E78-14	20.00	L78-15	24.00	8.75-16.5	40.00
F78-14	21.00				

Prices incl. Mounting, F.E.T. TAX  
Also 1000 used tires - all sizes \$5.00 up

**JOHNNY MYERS USED TIRES**  
4210 Fowler St. CALL TODAY 939-4014

**GARAGE DOORS**  
by ROY NORTH

Wood - Fiberglass - Steel  
Rough Sawn Woodgrain

**SALES • INSTALLATION • REPAIRS**

**MOORE MATIC** PHONE 936-2500  
GARAGE DOOR OPENERS  
2016 BEACON MANOR DRIVE, SO. FORT MYERS

Why Buy Plastic when you can buy heavy-duty Aluminum for less!

## 3-IN-ONE HURRICANE AWNING and BURGLARY PROTECTION SHUTTERS

• Factory Sold-Factory installed -  
Factory Serviced and Factory  
5 yr. Warranty

• Rolls up or down from inside or out.

• Custom made for Homes, condominiums or mobile homes.

• Free estimates with No Obligation

**SECURITY SHUTTER® CORP** CALL DAY OR NIGHT Collect 484-1700  
109 James Street - Venice Fl. 33595

**BRAND NEW!**  
STARTING TODAY

**BIG BAND SOUNDS and MIDDLE of the ROAD GREATS**

Every Night 6 to 9:30  
**Lost Horizon Lounge**  
Sun Dial

# INTEREST RATES%

KEEP GOING UP...  
BUT NOT AT

## RAYNER & ASSOCIATES

APPLICATION BY PHONE 334-8081  
LICENSED MORTGAGE BROKERS

1810 JACKSON STREET  
FT. MYERS, FLA.

**GOING SOUTH THIS WINTER?**

WE ARE NOT NO. 1 OR NO. 2 OR EVEN NO. 22, BUT:

We have new cars  
We have clean cars  
And rates 15% to 25% lower than the big four  
Lowest in area  
Unlimited free mileage  
We pick you up on arrival and return you on departure

**ALL CARS START WITH FULL TANK OF GAS.**

Free maps, travel advice, and any other services you may wish.

**TRY US**

Write or call anytime

SPECIAL RATES FOR INS. VEHICLE

**CAPE CORAL RENT-A-CAR, INC.**

P.O. BOX 291  
CAPE CORAL, FLORIDA 33904

**542-2025**

**sizes 10-54**

Regular, Half and Tall  
Full line of  
Women's Apparel  
including Shoes to Size 13

**WHITES**

3633 PALM BEACH BLVD.  
MON. - SAT. 9:30 - 5:30  
694-8012

**USED TIRES**

ALL SIZES

**\$5.00**  
and up

OVER 1000 USED TIRES TO CHOOSE FROM  
NEW CAR TAKE-OFFS, BLENDS & SECONDS USUALLY AVAILABLE  
HOURS: WEEKDAYS 8:30-5:30, SAT. 8:30-2:00

**JOHNNY MYERS USED TIRES, Inc.**

4210 FOWLER ST.  
939-4014 FT. MYERS 939-4014

JUST PUBLISHED



Beachcombing  
on Sanibel  
by John Harold Wilson  
Brenda Wilson Jerman

**2.95**

**MacIntosh Bookshop**

1021 Periwinkle Way 472-1447 Sanibel

**Royal Flair FURNITURE**  
of Sanibel and Cape Coral

Complete home and condo decorating service by our professional Interior Designer

Just Give Us A Call

Major lines of -  
✓ fine furniture  
✓ accessories  
✓ floral pieces  
✓ pictures and paintings  
✓ lamps  
✓ carpet and drapery samples available for custom work, including the "Sanibel Pattern".

**FASTER SERVICE**

Draperies made to order in our own work shop.  
Carpeting and draperies installed by professionals.

Sanibel Store  
1619 Periwinkle Way  
101 Landlubber  
rear of Landlubber Restaurant  
Phone 472-2101

Cape Coral Store  
1013 Cape Coral Pkwy.  
Across from Publix  
Phone 542-3333

**SUBSCRIBE TO THE ISLANDS'**

*oldest newspaper*

**THE SANIBEL-CAPTIVA Islander**

SINCE 1961

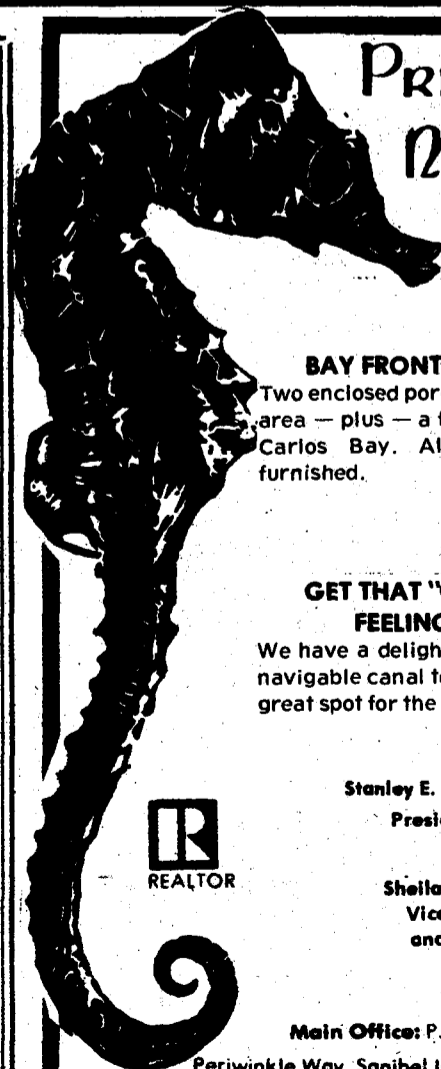
NAME \_\_\_\_\_

ADDRESS \_\_\_\_\_

CHECK ENCLOSED \_\_\_\_\_

LOCAL \$7.00/YR. U.S.A. \$10.00/YR. CANADA \$12.00/YR.

MAIL TO:  
SANIBEL-CAPTIVA ISLANDER, P.O. BOX 3, SANIBEL, FL. 33957



**Priscilla Murphy Realty, Inc**

**BAY FRONT TOWNHOUSE**

Two enclosed porches for added living area — plus — a fantastic view of Sa Carlos Bay. All for \$118,500 or furnished.

**GET THAT "OLD SANIBEL" FEELING BACK —**

We have a delightful lot with 80' on navigable canal to Dinkins Bayou — great spot for the sailer. \$28,000.

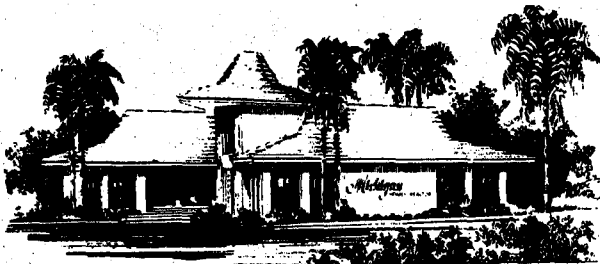
Stanley E. Johnson, Jr., G.R.I.  
President & Owner

Sheila B. Snell, G.R.I.  
Vice President  
and associates



Main Office: P.O. Box 57  
Periwinkle Way, Sanibel Island, Florida 472-15  
Branch Office: Causeway Road 472-4121  
Captiva Office: Andy Rosse Ln. 472-5154  
Island Accommodations: Causeway Road 472-41

**SANIBEL HEADQUARTERS  
FOR ALL YOUR  
REAL ESTATE NEEDS**



*Michigan*  
...full-service  
general real estate  
and specialists in the  
resale of Michigan Homes  
and new home construction

**HOMES  
REALTORS**

Periwinkle Way at Lindgren Blvd.

**HOMES**

**Beachview Country Club  
from \$121,840**

**Shell Harbor Canal Homes**

- Three bedroom, 2 bath, family room, pool, many extras. Unfurnished \$165,000.
- Customized "Saville" model with fireplace and entertainment center, 3 bedroom, 2 bath, family room, decorator designed. \$168,500.
- New Michigan "Deauville". 3 bedroom, 2 bath, family room. About 600' from beach. Unfurnished \$150,000.
- Three bedroom, 2 bath and pool with A-frame screen enclosure. \$159,500.
- Michigan Amesbury. Large pool with A-frame screening. Cathedral ceiling in Family Room. Close to Beach Road. \$185,000. Terms.

**Gumbo Limbo**

Three bedrooms, family room, carpet, drapes, "OAKWOOD". \$125,000.

**Tahiti Shores**

Private beach, 2 bedroom, 2 bath, wooded lot. \$115,000.

**The Rocks**

Michigan "Manchester Mark I", 3 bedrooms, 2 baths, solar heated pool, oversized lot, fully landscaped. \$145,000.

**Seagrape Lane Duplex**

Seagrape Cottages. Duplex with 1 bedroom on each side of attached carport. \$92,500. Terms available.

**RESTRICTED  
COMMERCIAL**

Two 1 bedroom cottages and a 2 bedroom, 2 bath unit with family room and fireplace. Carports, workshop and laundry with washer/dryer. Large lot 150' x 200'. \$280,000. Terms available.

**RENTAL DIVISION**

Christmas rentals now available. Contact Judy Hopkins.

**RESIDENTIAL PROPERTY**

- Gumbo Limbo on lake. From \$23,000
- Beachview Country Club Estates from \$38,500
- Shell Harbor. Two contiguous lots on canal. \$110,000.
- Gumbo Limbo. 1-3/4 acres. Terms. \$37,000
- Shell Harbor. Long view down canal. On sewer. \$65,000
- Shell Harbor. Seawall, boat dock, on sewer. \$63,500.

**CONDOMINIUMS**

- Kings Crown, 2 bedrooms, 2 baths, view of Gulf over courtyard. \$128,000
- Sanibel Moorings. 2 bedrooms, 2 baths, good rental record. \$87,900.

*Michigan*  
**HOMES**

**OPEN 7 DAYS A WEEK**

Mon., Tues., Wed. evenings til 7  
950 Periwinkle Way  
at Lindgren Boulevard

**472-1506**

**Century 21**



Ray Hoxsey Realty of the Islands Inc.  
Registered Real Estate Broker 472-1546  
2353 Periwinkle Way

**CONDOMINIUMS**

**BLIND PASS**

Best 2 bedroom, 2 bath available in complex. Close to best shelling beach on Sanibel. Fully furnished, ready to move in. \$79,500 Owner will take terms.

**SPANISH CAY**

Lovely one bedroom, one bath unit at quiet and delightful Spanish Cay. Never rented and very expensively furnished. Price: \$53,900, unfurnished. Furniture negotiable.

**VILLA SANIBEL**

2/2 with loft for den or 3rd bedroom. Tastefully furnished. Gulf-view. \$145,000 Furnished. Assumable mortgage.

**BURNT STORE MARINA**

Reservations are being taken for condominiums. Preconstruction prices. Amenities will include the largest marina on the west coast. Tennis, golf, and pools. Directly opposite Boca Grande Pass, the most famous tarpon fishing area in the world.

**HOMES**

Looking for a home on a wide canal with a large dock where you can tie up a 32-foot motor or sailboat? Let us show you this lovely 3/2 home in Sanibel Isles. There are no bridges and just three minutes from the bay. There is room for a pool. Priced at \$120,000. Partially furnished. Owners needs to sell.

A very complete home at "The Dunes". Ground level includes, two car parking, large room and bath for a Cabana or 4th bedroom. Large screened pool and patio. First floor-living area, has fully equipped kitchen. Lovely living and dining area opening into a screened deck, overlooking the 7th fairway and the lake. Nicely landscaped with built in sprinklers. This home was completed early in 1979. Beautifully furnished from Robb and Stuckey. \$170,000, furnished.

1992 Roseate Ln. - Beautiful large three bedroom, two bath home. Split plan, barrel tile roof, 2 car garage with automatic door opener. Cathedral ceiling in living room dining area. Extra large lot on quiet Cul de Sac. Room for pool. Fenced back yard. Assumable mortgage. \$83,900.

**BUSINESS & INVESTMENTS**

We have investment properties of all types on Sanibel and in the Southwest Florida area. Want to buy a restaurant, shopping center, land on water? Give us a call.

**LOTS**

**SANIBEL PINES**

An exceptionally beautiful lot, totally covered with native vegetation. One block from Periwinkle -- with complete privacy in area of expensive homes. Over 1/2 acre. Only \$21,500 FIRM.

**BETTS SUBDIVISION**

Two lovely lots on a wide canal. Just two minutes to Blind Pass. Prices: one, \$40,000, and one \$44,000. 29% down, for 10 years or cash.

**SHELL HARBOR**

One of the few lots left to be brought in the original Shell Harbor. On wide canal with seawall. The appreciation value makes this area one of the most desirable on Sanibel. Away from traffic.

**SEA GATE SUBDIVISION**

Nine extra large lots at the end of West Gulf Drive in a lovely vegetated area. Just 100 yards from a beach that few people find! Prices from \$52,300 to \$72,000.

**BELLE MEADE**

Affordable lot, water service included. \$14,000

**SANIBEL BAYOUS**

Owner will finance nicely vegetated lot. \$20,000.

**CLAM BAYOU**

1 acre water frontage lot. Native vegetation \$50,000.

**CAPE CORAL**

If on Sanibel, this lot would cost \$60,000. Direct access canal lots: \$17,500.

AFTER HOURS: 472-3897

**Century 21**

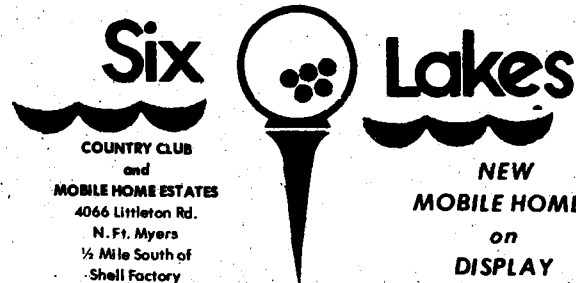


Ray Hoxsey Realty of the Islands Inc.  
Registered Real Estate Broker 472-1546  
After Hours: 472-3897  
2353 Periwinkle Way

**EXECUTIVE GOLF COURSE**

\$6.00 Green Fee \$6.00 Cart Fee  
Package Deal \$16.00  
(2 Players & Elect. Cart)  
After 2 PM - Green Fee \$3.00

995-5434



**THERE ARE STILL  
SOME ISLANDS...**

— real islands unconnected by causeways, untrampled by tourists and nearly untouched by the outside world.

VIP's North Captiva Outpost is your jumping off place for true island living. We deal exclusively in out-island properties, including North Captiva, Cayo Costa and beyond.

Boat over this weekend or call for an excursion appointment.



**VACATION AND INVESTMENT  
PROPERTIES, INC.**

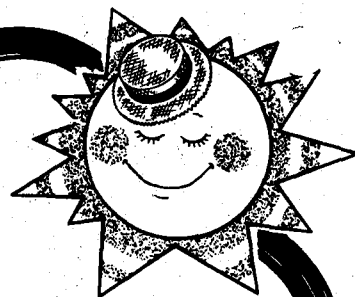
REALTOR

**NORTH CAPTIVA OUTPOST**

at the north end of North Captiva Island  
Open Weekends. Weekdays by appointment

**472-2523**

P.O. Box 168, Sanibel, Fl. 33957



**ALOHA REALTY**

**MLS  
REALTOR**

**OF FORT MYERS**

2209 S. Fowler - Fort Myers, Fla.

**332-4493 (EXT. 32)**

**COUNTRY COMFORT**

2 Bedrooms south, carport, den, screened porch. 29,900. FINANCING AVAILABLE



**8 UNIT APARTMENT COMPLEX**

Good location, near river.  
Terms available. ONLY 175K

**DUPLEX LOTS \$4500 EACH**

**HANDYMAN SPECIAL**

Hardly anything in town under \$20,000?  
Here's one worth the money! Close to shopping, schools and church. Call today for appointment. OWNER SAYS SELL! 19,900.





Pete Carmichael

A group of color nature and wildlife photography by Sarasota photographers Pete Carmichael and Margarette Mead opens the month of December at The Photographer's Gallery. Carmichael's work has been extensively published in National Geographic, Audubon, and Natural History. He currently has a calendar featuring seashells on the market.

Margarette Mead has been a student of Carmichael's for the past four years. Her work consists mainly of close-ups of flowers and wildlife shots.

photos by mark harmel



Margarette Mead

# The Finest Interval Ownership Resort on Sanibel Island Welcomes Your Inspection

CAPTIVA

SANIBEL

Causeway Road

FURNISHED MODELS  
OPEN 9 AM - 6 PM EVERY DAY

Tarpon Bay Road

Periwinkle Way  
Casa Ybel Road

Casa Ybel Beach &amp; Racquet Club

**Casa Ybel**  
BEACH @ RACQUET CLUB

CASA YBEL ROAD AT WEST GULF DRIVE  
(813) 472-1531

P.O. BOX 353, SANIBEL ISLAND, FLORIDA 33957