




Osprey foundation
Page 9

Everything you need to know
Page 26



Meet Peter Woodard



JPS 437-700
Cap. The Public Library
Capt. J. L. Woodard

The **Sanibel Captiva Islander** since 1961

Building the beaches
City registers concern over Captiva renourishment

By John Yoder
In a letter to the U.S. Army Corps of Engineers the city of Sanibel has expressed concern over a new permit application filed by the Captiva Erosion Prevention District for beach renourishment on Captiva.

The letter signed by City Planning Director Bruce Rogers reflects the city's fears that beach renourishment on Captiva would adversely affect Sanibel.

The City and its residents have a constitutional right and it is the duty of the state to protect and conserve Sanibel's natural resources the letter reads. "The protection of Sanibel's environmental systems and natural resources is a legitimate exercise of the City's municipal power. The protection of the City's tourist

related economy is likewise a legitimate exercise of the municipal power.

Laws enacted in the letter giving a legal basis for the city's concern.

Sanibel officials have indicated they think the renourishment project is no substitute for land use planning and growth management.

Originated by a motion made by City Councilman Forley Goss at the Sept. 8 council session, the letter was unanimously supported by council members.

At the time of the motion Councilman Mike Klein said, "We do not want to appear uncooperative." In making the motion however Goss said no approval should be

continued page 6

All that jazz on the green!



South Seas ahead of schedule

By John Yoder
The South Seas Beach Renourishment Project came in like a lion but is going out like a lamb. After months of pumping top soil by sand from the Gulf of Mexico to the nearby shore the project is almost completed.

The \$16 million project was originally scheduled to be done by the end of October but Project Manager Dick Stevens says renourishment will be terminated about two weeks ahead of schedule.

Monitoring of the project will go on

through the use of aerial photography. Photographs of the shore will be taken six, 12 and 18 months after completion meaning the next photo will be taken some time early next spring. Those photos will then be compared to some taken prior to the commencement of the project and will probably reveal any changes or possible side effects of the project.

According to a stipulation agreed to by South Seas Plantation with the city of

continued page 6



\$200,000 grant will help complete bike path network

By Barbara Brundage
Sanibel's network of bicycle paths as outlined in the *Comprehensive Land Use Plan* will be complete some-time after the first of the year. Assistant City Manager Gary Price estimated last week.

Work will begin soon on the last two links a path along Tarpon Bay Road from Periwinkle Way to the gulf beach and on Casa Ybel Road from Tarpon Bay Road and West Gulf Drive through the Algiers property along the new West Gulf connector road to the Periwinkle Way intersection.

A \$200,000 matching grant from the state Department of Natural Resources will help fund the \$422,000 project. Price said the remaining \$222,000 will come from

Causeway Surplus funds.

Price said the city was notified last week that the grant had been awarded by Gov. Bob Graham and the state Cabinet.

That was really good news, Price said. "There's a lot of competition for that money and the funds available have been cut."

Bike paths along east Periwinkle Way between the Lighthouse and Causeway Road and on a 10-foot easement west of Rabbit Road between San-Cap Road and West Gulf Drive are nearing completion, Price said.

"I'm really proud of our bicycle network," he said. "It will provide a safe route for residents to travel from their homes to business areas, churches, schools, the beaches and other recreational areas."



MUNICIPAL RECORDS

By Barbara Brundage

Outer Island, Inc. suit goes to court this week

Outer Island, Inc. filed a \$1 million lawsuit with the city of Sanibel on Monday. Planning Commissioners charging a violation of civil rights went to federal court Monday afternoon in Fort Myers.

The suit was filed in 1979 in Tampa U.S. District Court after the Planning Commission denied the Fort Myers firm a development permit for an eight-unit condominium project on Buttonwood Lane.

The commission by a 7 to 1 vote rejected the project at a hearing in October 1978 because the three-story buildings were not compatible with the single family homes in the neighborhood.

Defendants in the suit with the city are current Planning Commission Chairman Ann Winterbotham and Commissioner Don Mantheiser and former Planning Commissioners Betty Robinson, Judy Workman, Emily Linderhill and Joe McMurry.

Former Commissioner Ray Benton who cast the lone vote in favor of the project is not named in the suit.

The commission issued its denial on the premise that the project violated the community design element of the city's Comprehensive Land Use Plan.

Benton who is working on the defense with the city's Chicago based consulting law firm of Ross, Hardes, O'Keefe, Babcock and Parsons said he has filed a summary judgment in the case.

This means that the city and the six commissioners are entitled to a judgment as a matter of law and there are no genuine issues of material fact, Bowen said.

The city denies that Outer Island's civil rights were violated by the commission's action.

The commissioners felt the condominiums would have a negative influence on the character of the neighborhood and used rational planning criteria to make their decisions, Bowen said.

A Cape Coral attorney representing Outer Island Development has said the suit seeks \$200,000 to \$300,000 in compensatory damage or actual financial losses suffered by the developer. In addition the court will be asked to assess the city \$750,000 in punitive damages for its actions.

Tampa U.S. District Court Judge William Terrell Hodges will preside at the trial which Bowen expects to last between two and three days.

Shell Harbor voters register for absentee ballots

Registered voters who live in the Shell Harbor Canal Maintenance District can vote by absentee ballot if they will be able to cast their votes in the special election Tuesday Oct. 6.

A spokesman in the Lee County Elections Office said absentee ballots will be mailed upon request to voters who will be out of town or otherwise unable to get to the polls Oct. 6.

The deadline for absentee voting is 5 p.m. Monday Oct. 5.

The special election is for voters in the canal maintenance district to approve or disapprove a proposed millage of not more than 7.5 mills to fund canal maintenance for the 1981-82 fiscal year.

For more information about absentee voting, contact the Elections Office 325-2313.

The Board of Governors of the Shell Harbor Canal Maintenance District will meet at 9 a.m. this Friday Sept. 18 in Mackenzie Hall.

Trolley workshop scheduled

A public workshop to gauge resident reaction to the Sanibel-Captiva Chamber of Commerce proposal to operate a trolley tram transit system on Sanibel during the winter season is scheduled for 9 a.m. next Tuesday Sept. 22.

The City Council and chamber officials will receive public input on the plan at the session in Mackenzie Hall.

Water to be shut off

The water will be shut off from midnight until 3 a.m. Thursday Sept. 17. The interruption will affect those on West Gulf Drive between Tarpon Bay Road and the east entrance to Palm Lake subdivision.

The Island Water Association Inc. regrets any inconvenience and hopes this notice allows Islanders to prepare accordingly.

SCCF group suggests Citizens Advisory Committee

The hue and cry raised by some Island conservationists in recent months over the method used to eradicate Brazilian Peppers in the J.N. Ding Darling Wild Life Refuge Conservation Foundation, committee that investigated the controversy has concluded.

The type of buildings now under construction in the refuge and their usefulness has also been questioned and criticism leveled at its refuge management for its failure to comply with environmental rules and regulations of the city of Sanibel.

It is the consensus of the SCCF group that includes four past SCCF chairman members of its Environmental Affairs Committee current Chairman George Tenney

and Executive Director B.G. Olson that similar discussion can be eliminated in the future by the formation of a Citizens Advisory Committee.

The committee's function would be to consult with refuge officials regarding implementation of wild life goals objectives and programs.

In a letter to Mayor Duane White Olson asked the city to join the SCCF in sponsoring the establishment of a Ding Darling Wildlife Refuge Advisory Council, as proposed in a resolution passed by the SCCF board.

The local refuge management is in agreement with the proposal but has no official power to activate such a council.

Olson said council members would represent the city of Sanibel including the other community interests including the Audubon Society, The Fund for Animals Inc., The Ding Darling Foundation, the Southwest Florida Regional Planning Council, the U.S. Fish and Wildlife Service (Atlanta and regional offices), Sanibel school authorities, the Sanibel Community Association, the Committee of Neighborhood Associations and the Committee of the Islands.

The SCCF also recommends making the manager of the wildlife refuge an ex officio member of its Board of Directors.

The SCCF believes that such a council

would provide a communications bridge between the Fish and Wildlife Service, Sanibel and Captiva residents and the public concerned with the preservation of the environment and a mutually coordinated operating and development program for the refuge.

Though it is the consensus of the SCCF group that there is a basis for controversy among conservationists with differing viewpoints, it is their considered opinion that future public contention can be avoided by the formation of an advisory council, Olson said.

Estuary mortgages petition Supreme Court

Three mortgages of bankrupt Estuary Properties Inc. are petitioning the United States Supreme Court to review a Florida Supreme Court ruling that affirmed the right of state and local governments to block development of environmentally sensitive land.

City Attorney Neal Bowen said this week he received notification of the action from a Washington D.C. attorney representing Claude Taylor, Tillman Bruet and John Nash.

The three men have foreclosed on their mortgage on the Windsor tract part of Estuary Properties' 6,500 acres of swampland on Estero Bay formerly held by Atlanta millionaire Robert Troutman.

Troutman, originally planned to build 25,000 housing units on 1,000 acres of black mangrove swamp land leaving 2,500 acres of red mangrove undisturbed.

When Lee County refused to issue a development permit for the environmentally sensitive land, Estuary appealed the decision to the First District Court of Appeal.

That court granted the developer relief and ruled that the denial of a development permit constituted a taking of private property for public use without compensation and was a violation of the U.S. and Florida Constitutions.

The city of Sanibel joined petitioners seeking a review of the district court decision by the State Supreme Court.

Last April the high court overturned the district court with a landmark decision that delighted environmentalists who hailed it as a victory for the government planning and zoning process.

The high court ruled that protection of environmentally sensitive areas and

pollution prevention are legitimate concerns within the police power of the state.

The Justices found that preventing destruction of the mangrove forest was necessary to avoid unreasonable pollution of bay waters causing attendant harm to the public.

Developers viewed the decision as a radical departure from the traditional rights of property owners to build on their land.

But the ruling still permits the developer to clear about half the original number of units on 700 acres leaving several thousand acres of mangrove undisturbed.

Bowen who argued the city's position in the case called the high court decision the most significant development ever for the use of land in Florida.

Sanibel city fathers regard the decision as a vindication of Sanibel's early land use policies.

See today's City Council agenda, page 8

Correction

A story in last week's Islander reported the Sanibel-Captiva Conservation Foundation had offered a site to the city for use as a vegetation and trash recycling center. The site was offered for use as a recycling center for vegetation trimmings and would not involve any trash. The Islander regrets the error.

Mid-Island Real Estate Inc. CLOSED FOR VACATION

IF YOU HAVE BEING OMBING FIGURE

Ray B. Bazire Real Estate Broker

CAPTIVA EROSION DISTRICT

WILL HOLD THEIR MEETINGS ON THE FIRST MONDAY OF EACH MONTH STARTING AT 10:00 A.M. AT CAPTIVA COMMUNITY CENTER

HAND CRAFTED G.F.T.S. CRAFT SUPPLY CO.

Black Pearl

HAUL TO US. CLOSED SUNDAY. 245 PER MILE WAY SANIBEL ISLAND. MEMBER A 699 A.

"WE KEEP COMING BACK To A Different Place Every Year"

The first year we wanted to be on the beach. The next year we wanted a boat dock with our accommodations. Now that the kids are older it's easier.

Yes we keep coming back to Sanibel to a different rental each year. We've been booking through Executive Services Inc. ever since we discovered Sanibel Island.

We actually make our reservations for the next season while we're here. With the selection I can have on Sanibel and Gasparilla Island we'll never run out of different places to stay.

Call toll free nationwide except Florida 1-800-237-6002.

EXECUTIVE SERVICES INC. 455 Peninsula Way Sanibel Island, Florida 33957 (813) 472-4199

SO YOU WERE CAUGHT NAPPING!

O.K. But we can still get you where you want to go for the holidays For a little while longer, anyway.

Maureen's Travel, Inc.

2418 Palm Ridge Road 472-3117 Mon - Fri 9-5 Evenings - Weekends 472-1856

Sanibel Captiva Islander

EDITOR: CAROL LEE
BUSINESS MANAGER: Peter Cloud
PHOTOGRAPHER: David Chellie
REPORTERS: Walter Brantage, Bill Kelly, Mike Lutz, Mike Gieseler
ADVERTISING SALES: Bobbie Gier
EDITORIAL: WE CAN DO WITHOUT YOU! (But talk with Ed Hesse, Executive Editor, 472-4199)

ADVERTISING: All classified ads \$1 for first 25 words or less. \$2 for 26 to 50 words and \$3 for each column inch over 50 words. Add 1 cent \$1 added for billings except for color inches over 20 words. No charge for Employment or Lost and Found ads. All ads to P.O. Box 34, Sanibel Island, Florida 33957 or deliver to 2232 Periwinkle Way, Suite 102, Outside Plaza. Classified deadline noon Friday.

DEADLINES: Friday 5 p.m. Friday noon Thursday 5 p.m.

MAILING ADDRESS: Sanibel Captive Islander, P.O. Box 34, Sanibel Island, Florida 33957

LOCATION: 2332 Periwinkle Way, Suite 102, Outside Plaza, Sanibel Island

Sanibel Captive Islander (USPS 481-409) 15 cents
Newsstand Price \$7 per year
USA Subscription \$10 per year
Foreign \$12 per year

Second class postage permit paid for at Sanibel Island, Fla. 33957. Postmaster: please send form 3526 and changes of address to P.O. Box 34, Sanibel Island, Fla. 33957

Sanibel & Captiva Islands Naturally

Gumbo Limbo Subdivision

Enjoy privacy with a lake view in a mid island quiet residential area. This cedar frame biling home offers this and much more of ferred at \$125,000 with owner financing available After hours 472-3269

VIP Realty Group, Inc., Realtor

Sanibel Island (813) 472-5187
1509 Peninsula Way Sanibel Island, FL 33957

Captive Island (813) 472-2523
South Seas Plantation Captiva Island FL 33924

OPEN 7 DAYS FOR YOUR CONVENIENCE

HAVE YOU JOINED SIMFA?

SIMFA has the largest membership on the Islands. It is composed of non dues paying "members" who are interested in fine art. They regularly visit and enjoy the ever-changing exhibits at one of Florida's most exciting galleries. For them it is Sanibel Island's Museum of Fine Art. (SIMFA).

Its generic name is:

Schoolhouse Gallery

Tarpon Bay Rd., Sanibel Island Daily, except Sunday, 10-5: 472-1193



SANIBEL ISLAND

NORTH YACHTSMAN PORTE

Very special homes for a very special few offering only five homes. The development includes spacious lots, tennis court and fabulous 3 bedrooms 2 bath homes with many luxurious extras.

\$149,900 Realtor Associate After Hours: 472 2831

THE DUNES ON SECLUDED LAKE

This delightful ground level home with master and guest bedroom suites features an excellent floor plan, beautiful way to maintain landscaping and immaculate condition throughout. Situated by a secluded natural lake and surrounded with abundant wild life.

OWNER WILL CARRY MORTGAGE AT 13.5% INTEREST RATE

\$148,900 Realtor Associate After Hours: 472 2811

GULFSIDE PLACE

Sanibel's most prestigious fisherman of Florida signed March to the South Seas Company engineer will analyze the photographs and prepare evaluations of any changes in the Sanibel shoreline.

\$350,900
\$484,900

SUNDAIL RESORT

The most spectacular view of the Gulf. The wrap-around porch brings the view in. The most spectacular view of the Gulf. The wrap-around porch brings the view in. The most spectacular view of the Gulf. The wrap-around porch brings the view in.

\$219,900 Realtor Associate After Hours: 472 2811

GRACIOUS BAYFRONT ESTATE

Gracious bayfront residence. Convenient private location offers magnificent unobstructed view with 150' of seawall and boat dock. Including two separate boat lifts with direct bay access. Classically designed with lush mature landscaping. The home has 3,000 sq ft of living space with five bedrooms and four baths. Huge master suite with adjacent guest bedroom. Family room with fireplace overlooking screened heated pool. Many more luxurious extras. Shown by appointment only.

\$425,000 Realtor Associate After Hours: 472 9300

SHELL HARBOR

Direct to boat access and walk to private Gulf access with three bedroom three bath pool home in the best residential area on Sanibel in immaculate condition.

\$375,000 Realtor Associate After Hours: 472 2811

GULFSIDE PLACE

The ultimate in affordable luxury. Two spacious suites available one beautifully furnished one unfurnished. 160,000 down on each suite and owner will finance balance at a very attractive 14% interest rate over 30 years. Entry luxury at its finest while accumulating maximum tax benefits.

\$179,000 Broker Salesman After Hours: 649 1238

CLOSE TO SANIBEL ISLAND

McGregor Woods is one of the most beautiful single family home developments in Lee County. The Glendale Model Home is now listed. 3 bedrooms 2 baths and den. Fully equipped kitchen. In place hot tub. screened porch. vaulted ceilings. sunken conversation pit and many more luxurious extras are featured in this home. Description furnished by Robb & Jucy. Assumable mortgage.

\$177,000 Realtor Associate After Hours: 472 5901

CAPTIVA ISLAND

SOUTH SEAS PLANTATION

One half acre two bath BAYSIDE VILLA. Overlooks Pine Island Sound. Boat basin and jettied heated pool. Entertainment area. Spa. Tennis. golf. gourmet restaurant and shop. Excellent rental history with two separate rental units with this one villa. Two separate villas from which to choose. Offered furnished at \$120,000.

SUNSET CAPTIVA

Sunset Captiva a beautiful private community directly on the Gulf of Mexico. The community is situated on a 13-acre secluded site and includes a huge heated pool, cabana and barbecue area plus tennis courts, boyside bar, dog park and private tree shaded roadway.

A delightful 3 bedroom 2 bath luxury home enclosed Sunset Captiva. It a home features a lush cathedral ceiling, a fireplace, sun deck screened porch and a sun deck. Many custom extras. Furnished.

\$245,000 Realtor Associate After Hours: 472 2811

GASPARILLA ISLAND

SILVER KING

Close to port in miles away from your home at Silver King Point. Built on a 1/2 acre lot plus many more luxurious extras. Offered furnished at \$230,000.

Real Estate
GULFSIDE
(813) 472-3165



City registers concern from page 1

given to the CEFD project unless four concerns are assured with workable safeguards. Those areas include growth impact, the environment erosion and water quality.

The erosion district is expecting a battle on Captiva alone and the Sanibel letter promises to add fuel to the fire. According to the city's letter Sanibel officials feel the district can offer no assurances that the proposed renourishment which would pick up where the current South Seas renourishment project will stop will not adversely affect Sanibel.

Growth on Captiva which could be a result of the new beach places a burden on Sanibel's service systems e.g. roads, police, beaches etc. as well as Sanibel's ability to assure its residents a continuing opportunity for safe evacuation in the event of a hurricane. The letter states:

The city also recommends that four basic actions be taken prior to any decision on the renourishment.

According to the letter there should be a reduction in densities on Captiva a special adherence to the State Department of Natural Resources Coastal Construction Setback Line for all of Captiva (rather than the existing Lee County setback line).

South Seas ahead of schedule

from page 1

Sanibel and the Organized Fisherman of Florida signed March to the South Seas Company engineer will analyze the photographs and prepare evaluations of any changes in the Sanibel shoreline.

Also in the agreement is the stipulation that no matter how successful the renourishment project is South Seas cannot use that success as justification for additional development or density increases.

examination of the feasibility of relocating the main road further away from the Gulf and adoption of a hazard mitigation program for Captiva that recognizes that island's extreme vulnerability to hurricanes and the fact that Captiva is at the far end of the evacuation route.

Although the CEFD is funding for the project will be decided by Captiva voters in a November referendum. Sanibel is taking action to ensure protection for its resources.

Monitoring the effects of the South Seas Plantation Beach Renourishment Project will take over a year with preliminary aerial photographs will be taken when that stipulation was set in March and agreed to by South Seas.

The last meeting of the CEFD was cancelled due to vacation schedules and the Labor Day holiday. The next meeting is Oct. 5. Results of South Seas turbidity studies and other monitoring programs will likely be discussed then.

Persons interested in serving as CEFD commissioners must file for candidacy by noon today Sept. 15 to be considered in the upcoming election. Voter registration deadline for the same election is Oct. 2.

Islanders to the (turtle) rescue!



When more than 100 loggerhead turtles hatched on the beach near Blind Pass in the middle of the night earlier this month the turtles dashed away from the ocean and into a pond drawn by bright security lights.

Through the efforts of Eastway resort managers Ed and Faith Williams their

Planning Commission cut short because of Outer Island suit

By John Under
In an unexpectedly short Planning Commission meeting Monday officials considered a motion to permit construction of paved roads for Waqull Estates subdivision and a request to permit an increase in the development intensity of Callose Shores subdivisions were heard by 11 a.m.

Due to court proceedings involving the Outer Island Development Inc. Planning Commission members had to delay several items until Sept. 22 at 2 p.m. Commissioners were required to be at the court proceedings with commission members unanimously approving a request from the city Planning Department to officially rename Gulf Drive segments to East Middle and West Gulf Drives.

Fulgur street from Middle Gulf Drive to Tulpa in new Middle Gulf Drive and Dulse from North to the new road is renamed East Gulf Drive. Fulpa is in the Middle Gulf Drive. As a result all three Gulf frontage roads carry the name Gulf Drive. The action was taken after all affected persons were contacted about the renaming.

In other action Rufus Dodrill received permission for a revision to the development permit for Segull Estates subdivision to allow construction of paved roads rather than the shell roads.

After some discussion among commission members the request was approved because members felt shell roads were too difficult to maintain in that area and asphalt would probably be better for residents there.

continued page 18

Obituary

William Charles C. Boyle

William Charles C. Boyle age 77 of 1576 Jamaica Drive Sanibel passed away suddenly on September 1, 1981 while vacationing in Sunapee, NH. Boyle had been a technical engineer with Armco International Corporation in Middletown OH for many years and spent five years in London England as a consulting engineer with Armco Ltd. While in Middletown he was active in the First Presbyterian Church and as a volunteer at Middletown Hospital.

He was educated at Highland College in Kansas and the University of Missouri. He had resided in Sanibel for seven years where he was active in the Sanibel Community Church and as a volunteer at the Public Library. He leaves his wife Kathryn Miller Boyle of Sanibel a son Joseph Michael Boyle of Richmond VA, two daughters, Marjorie Baggott of Baker VA and Anne Justice of Lexington MA and seven grandchildren. Memorial services will be held at the Sanibel Community Church on Tuesday September 15 at 11 a.m. Memorial contributions may be sent to Habitat for Humanity of Fort Myers or the Sanibel Public Library.

FANTASIZE!

...your Sanibel dream home starts with a homesite...we invite you to choose from this selection of island lots.

- Belle Meade - large corner with seller financing \$15,000
- Dixie Beach Blvd. - Develop your own wildlife sanctuary. 38 acre tract for \$195,000
- Old Rocks (West) - Copana Drive 15,600 sq ft with great vegetation survey and per test \$42,500
- Dinkins Bayou - 2 lots on Dinkins Lake Road. 56 acres \$21,000 for the two!
- GUMBO LIMBO
- Arum Court, exempt from Rule of Growth, on 20000 water frontage \$40,600
- Callio Court 180 on waterway exempt from Rule of Growth. 249 x 260 \$58,500
- Sanibel Highlands
- Peneltree Rd. \$17,500
- Piedmont \$19,500
- Corner Atlanta & Ponca de Leon \$20,500
- Corner Lot On Security Lane Exempt on water \$19,500
- Beverly Lane 150 x 168 1/2 acre frontage \$31,500
- Corner Lot, 20,000 sq ft only \$28,000



472-5021
Out of State (800)237-5146

sanibel & captiva islands Naturally

SHELL HARBOR POOL HOME
Sited on a deep water canal lot with no bridges to San Carlos Bay and the Gulf of Mexico. Perfect soil boat location.
ASSURABLE MORTGAGE AT 9 1/2% INTEREST RATE OWNER WILL HOLD SECOND MORTGAGE FOR QUALIFIED BUYER \$245,000 After hours: 472 5464

VIP Realty Group, Inc., Realtor
Sanibel Island (813) 472 5116
1509 Pensacola Way Sanibel Island, FL 33957
Captiva Island (813) 472 2529
South Seas Plantation Captiva Island, FL 33924

VIP REALTOR
OPEN 7 DAYS FOR YOUR CONVENIENCE

SANIBEL REALTY

General Office: 472-5021
Sanibel Office: 472-5021
Captiva Office: 472-5021

OCEAN'S REACH

ON THE ISLAND OF SANIBEL!

This outstanding complex is located at the southern tip of the most beautiful part of Sanibel's Gulf Beach. The owner of this one bedroom one bath first floor unit has signed an exclusive listing with us to market this most unusual unit. The unit wraps around a 12 x 18 living room, dining area, a complete kitchen (including all appliances plus washer and dryer). The screened porch lends a special touch to complete this condo. Recreational facilities include a private tennis court, shuffleboard and a large heated pool. Maintenance fee for the mentioned amenities is only \$80.00 per month. County taxes are approximately \$700.00. There is an assumable mortgage on this lovely unit on asset for any investment. Call any one of our three offices on the island for any additional details concerning this captivating condo. Priced at \$128,000.00 furnished.

P.S. WE LOVE TO PUT THE GULF OF MEXICO IN THE PALM OF YOUR HAND!



On the water

By Captain Mike Fuery

Have you ever noticed that some people are simply fascinated by knives? I had this fellow out on the boat for a day who collects Lone Star Army knives. The ones with all those fancy gadgets? He not only had one, he had two, one a larger version of the other.

I got to thinking about it and realized I carry two myself. One small knife on a key chain and the other, my working knife, on a belt sheath or fishing and boat duties.

I like even you women are collectors with knives in the kitchen of course, but also in the garage and perhaps one old knife with the gardening junk and maybe one in the sewing box too.

But did you ever wonder where you could go with money no object to buy the finest knife made?

Fortunately, I have a friend who researches such things. He's a fishing guide, Randy White, who works out of Tarpon Bay Marina on Sanibel. That is when he's not sitting in front of his typewriter.

Besides being an accomplished fishing guide, Randy is also a novelist. He writes under the pen name of Randy Carter, and his series of adventure novels revolves around the life of Dusky MacMorgan. Signet publishes the books

and so far, Randy has four out on the bookstore racks with more to come.

When researching background material for Dusky MacMorgan, Randy wanted to add authenticity to the words. And with the name of Dusky, one had to pick out the "finest" personal protection knife made in the world.

After some looking, Randy finally came upon a knife manufacturer who makes the finest knife in the world. Guess where it is made? Germany? Switzerland? How about Orlando, Florida? That's right, Orlando, by a father and son team of W.D. and Gary Randall.

To be honest with you, I had never heard of a Randall knife until Randy started mentioning Model 18, the Attack Survival model. But those who know their knives were way ahead of me. For instance, Project Mercury Astronauts carried Randall knives with them into space. Many Randall models are on display in the Smithsonian Institution.

The knives have been carried by professional soldiers since WW II. The firm has hundreds of testimonial letters telling how the knives have saved their owners from one problem or another over the years.

Randall does't make just survival knives, they have 24

models that cover about any task you can think of, even fishing. Incidentally, if none of the 24 suit your task, Randall can custom make you a knife. When you order a Randall, you can also choose several features like handles in bone, maraca wood or leather.

You can also order your name engraved in the blade. And you have the choice of having finger grips carved into the handle. If you want a fancy collar or butt cap, just ask and it's yours. You can get a leather fob to go into the cap too.

No problem. They will build in a compass if you want. Of course you might want to do some ripping and sawing so they will put saw teeth on the top of the blade. "King of the Hill" of Iraq shot the works on, no knives and custom ordered them to go with everything.

Each Randall is handmade, and you are going to pay for it. What do you expect to pay for the finest knife around? Dusky MacMorgan pays \$145 for the "plain model." If I ordered the Model 10 fishing knife, it would start at \$55. The Randall folks put a note on my return letter. They say if I hurry up and order right now, my knife will be ready in April 1984.

The Sweat Shop
T SHIRTS SWEAT SHIRTS FASHION TOPS
18 Fernwick Place
Sanibel Island, Florida 33957
(813) 472-2292

RAMADA INN
ON THE GULF AT 1231 TULIPA WAY
SANIBEL ISLAND, FLA. 33957 (813) 472-4123

VIDEO MOVIE CENTER
VIDEO SALES, RENTALS & SERVICE
ON RECORDERS, CAMERAS, MOVIES & ACCESSORIES
Gulf Point Square
P.O. Box 1000
Mesa, Florida 33908 JIM FELTON (813) 489-0750

Special in Fort Myers area

Caribe BEACH RESORT

Gulf Front

on beautiful Sanibel Island

See Us before you become an interested buyer

Our PRIVATE VACATION CLUB MEMBERSHIP offers the same advantages as ownership with the additional major advantages of LOWER COST, TOTAL FLEXIBILITY!

As little as \$3,000.00 Full Week Charter Memberships

Appointments requested but not required. Phone 472-6220

BLIND PASS Cottages & Marina

On the west tip of Sanibel at Captiva Bridge
A Boat with every Cottage — No Charge
Full Kitchen, Tackle Shop, Live Bait, Soft Drinks
COTTAGES 472-1020 MARINA 472-1334

for Sanibel and Captiva islands

| DAY-DATE | SEPTEMBER | | | |
|----------|-----------|------------|-----------|------------|
| Tu 15 | 1:38 AM H | 8:09 AM I | 1:55 PM H | 8:48 PM L |
| W 16 | 2:05 AM H | 9:00 AM L | 2:48 PM H | 9:13 PM L |
| Th 17 | 2:31 AM H | 9:53 AM L | 3:48 PM H | 9:41 PM L |
| F 18 | 3:04 AM H | 10:56 AM L | 4:58 PM H | 10:03 PM L |
| Sa 19 | 3:43 AM H | 12:05 PM L | 6:40 PM H | 10:19 PM L |
| Su 20 | 4:32 AM H | — | — | 1:31 PM L |
| M 21 | 5:39 AM H | — | — | 3:04 PM L |
| Tu 22 | 7:10 AM H | — | 4:26 PM L | 11:55 PM H |

Conversion table: The above tides are for the lighthouse point of Sanibel only. To convert for Redfish Pass, North tip of Captiva, add 35 minutes to the time shown for every high tide. Subtract 30 minutes for every low tide. For Captiva Island Gulf side, subtract 30 minutes for each high tide and add 30 minutes for each low tide. For Captiva Island Pine Island Sound (Bay) side, add 1 hour and four minutes for each high tide and add 52 minutes for each low tide. In between these points, gulf or bay, guessimate and have good fishing or shelling.

Shelling Tips

By Captain Mike Fuery

As you walk our Sanibel and Captiva Island beaches, shells are just some of the interesting items you will find left at the tide line by the waves. Many shellers have an eye out for driftwood too.

This week, let's talk not only about driftwood collecting, but about other items you might use around the house for decorating.

We don't find much hard wood washing up on our beaches so you have to look more closely to find decent pieces of wood to display your shells with.

Up north, cold water lakes are surrounded with trees like maple, oak, walnut, and ash. These woods can be easily carved, drilled and painted and if you have ever seen what carved driftwood looks like with driftwood—you can see those new England craftsmen at their ingenuity.

Here in Southwest Florida, we don't have the hard woods, but rather cabbage palms and several other varieties of soft trunk palms, along with buttonwood and of course mangrove.

Of the choices, dead and well worn mangrove roots and branches make the best pieces for display work because the tree is hard and raised along saltwater. It's hearty.

But what I like best about old mangrove roots and limbs

found as driftwood is that there are rarely two pieces alike and all the pieces are bent in unusual shapes.

We took a U-shaped mangrove root, bleached it out and then superdried large sand dollars from it as a mobile in our living room.

Where to go for mangrove driftwood is not always easy to say. I would look on the bay or the Pine Island sound side of Sanibel and Captiva Islands for branches or dead roots.

Whatever you do don't cut down mangrove trees that are alive. There are all sorts of laws against it, and on these islands protecting the mangrove population of live trees is considered very important. Don't touch the live ones.

You will recognize the mangrove branches because they are generally skinny, smooth barked and of course are found in or near the water.

While you are out there looking for display items, don't pass up the occasional crab trap floats that you can use in with your shells.

Those foam floats are round about the size of a small watermelon and some might have numbers carved into the top. These are used by area crabbers to mark where they have put down a trap, usually for stone or blue crabs. They get tossed about during storms and often the traps are lost

but the float washes up on the shore.

These lost floats cost the trappers a lot of money over a year's time, but if you find one on the beach, you might as well take it because it is a long way from where the trap was and the owner won't likely look for the float at that point, anyway.

Some collectors use the trap floats for decorations around their porches or mixed with shells and other water front collectibles.

During some of the more violent winter storms, crab trappers often loose many of their wooden traps which come tumbling up on the beaches while you shell.

Again, if you see a trapper running his boat close to shore, he is obviously looking for the wood trap, which cost a lot of money.

If you find a half buried trap later on, you might try and get it home for use as a decorative item on your porch or around the house. I know one couple who uses a wood trap as their Christmas tree holder.

Capt. Mike Fuery offers daily shelling trips to North Captiva and Cayo Costa Islands. Call 472-3458 for information.

J & B COINS & STAMPS
We Buy Old Gold and Silver.
Buy and Sell Coins and Stamps
Gulf Points Square
481-1556
ALSO
KNAPP SHOES

ISLAND GIFTS
SHELLS • GIFTS • T-SHIRTS
1609 Fernwick Way
Sanibel Island, Fla. 33957
(813) 472-4318
9-5:30 Monday-Saturday
Sometimes on Sunday

Give the Gift of Plush
THE STUFFED ANIMAL SHOP
YOUR GIFT HEADQUARTERS -
WIDEST SELECTION OF DAKIN'S STUFFED ANIMALS IN THE AREA
Conventional Unusual Souvenir
472 4010 UPS Delivery 2440 Palm Ridge Rd
Pelican Place Shops (Next to Apothecary Center)

Sanibel & Captiva islands
Naturally

When Opportunity Knocks... Answer!
You can now become the proud owner of a distinctive condominium on beautiful Sanibel Island. This unique two bedroom two bath unit at Blind Pass offers white sand beaches, swimming, fishing and shelling in an atmosphere befitting a true Islander. Exclusively listed at \$135,900 with owner financing available. After hours 482-7986.

VIP Realty Group, Inc., Realtor
Sanibel Island (813) 472-5187
1509 Fernwick Way Sanibel Island, FL 33957

Captiva Island (813) 472-2523
South Seas Plantation Captiva Island, FL 33924

OPEN 7 DAYS FOR YOUR CONVENIENCE

Bayside Villa Apartments in South Seas Plantation

Two attractive three bedroom three bath apartments with all the privileges of the prestigious South Seas Plantation resort. Beige carpeting throughout, both units. One apartment has striking view down the channel to the bay. Furnished \$190,000. Terms available. Second apartment has direct bayfront view. Furnished \$201,125.

Priscilla Marpley REALTY, INCORPORATED

Sanibel Island (813) 472-5187
Captiva Island (813) 472-2523
1509 Fernwick Way Sanibel Island, FL 33957
South Seas Plantation Captiva Island, FL 33924

Police Beat



A M.T. restaurant employee reported all four tires on a car were slashed early Monday morning Sept. 14. The car was in the M.T.'s parking lot when the incident occurred.

A Sanibel resident was on vacation to the island of June reported Monday morning Sept. 14 that he was having trouble with items in his home.

Ralph Zeiss, Harbour Lane, told police 160 pieces of sterling silver and several pieces of expensive jewelry were missing from his home. The value of the missing items was unknown.

A Miami man suffered a broken leg Monday afternoon Sept. 7 when he fell from the bridge at Turners Beach.

John Mangemann of Miami was fishing from the bridge when the wooden railing he was leaning against gave away.

All information in the following reports was taken directly from Sanibel Police Department records.

Three motorcyclists were charged with reckless driving Friday afternoon Sept. 4 after a Sanibel Police officer followed them from the elementary school to Bowman's Beach at speeds reaching 75 mph.

Philip Francis Shwin, Douglas James Winfield and Colin Paul King all of Cape Coral were charged with reckless driving.

A Sylvania TV recorder was reported missing from a unit at the Surfside Beach Club Friday afternoon Sept. 4. The recorder which was still in a cardboard box was taken sometime between 9 p.m. Sept. 3 and 1 p.m. Sept. 4. The beach club unit was locked and police found no sign of forced entry.

Two bicycles were reported missing from the Sanibel Arms parking lot Monday evening Sept. 7. Carol Young told police the two Western Flyer bicycles worth approximately \$300 were taken sometime between 3 p.m. Sept. 6 and 5 p.m. Sept. 7. Both bicycles have white wall balloon tires.

Two color televisions and assorted liquor valued at \$1,000 were reported missing from a Donna Street house Tuesday night Sept. 8. The missing items were reported by a neighbor who is watching the house for Frieda Lindner of Union, N.J.

A West Germany resident reported \$650 in jewelry was taken from a unit at the Shell Harbour Inn Tuesday evening Sept. 8. The guest told police he left the room for an hour Tuesday morning. The jewelry was in a plastic bag in a suitcase.

A trailer at the Christian Science Church at 294 West Col. Dr. was reported struck by a car Wednesday morning Sept. 9 because it was in the way. Police said the trailer was damaged.

Approximately \$4,000 in tools and equipment belonging to the federal government was stolen from a construction trailer at the J.B. Ding Darling tourist center. Police are still investigating the burglary which was reported Thursday morning Sept. 10.

Police Recreation Club gets use of original Bailey's store

by Cindy Chalmers

After five years of carrying out his business as the Police Department squad room, the Sanibel Police Recreation Club finally has a home of its own.

Last Friday club President and Police Officer Jack Primm received notice from Franca Bailey and Mike Guinac that club members and their families could use the original Bailey's Grocery Store and former Children's Center off Bailey Road.

It's great news for us, Primm said. We've been looking for a permanent home for some time now.

The building will need considerable fixing up before the club can use the facility as a meeting place and gathering spot for off-duty officers, Primm said.

The officers will begin working on the building within the next few weeks, he said, adding that any donations of furniture, television sets, etc. will be greatly appreciated. Contact Primm at 472-3111.

The Police Recreation Club spearheaded the drive for the new completed community swimming pool.

The club is also responsible for the Sanibel-Capiva telephone directory. Other projects include donations of encyclopedias and projector equipment to the Sanibel Elementary School and sponsorship of a magic show on the island.

Refuge Report

By Charles LeBuff Jr., Biological Technician
J. A. Ding Darling Wildlife Refuge

A few weeks ago I wrote about loggerhead sea turtle egg development. During that discussion I briefly touched upon local predation factors that influence the success of turtle eggs. I identified the raccoon as a major culprit responsible for loss of considerable numbers of eggs and hatchlings.

Other less conspicuous predators and environmental events reduce annual production of hatchlings and directly contribute to the disappearance of marine turtles.

In many areas raccoons make seasonal trips to nesting beaches. At Cape Sable in Everglades National Park live trapping and marking of coons showed that the animals move up to 25 miles from inland areas to the nesting beach from root regrowth that entwines through the egg clutches. The roots often completely encapsulate individual eggs and prohibit the young from hatching. Approximately 2 percent of our turtle nests meet this fate.

Lethal bacteria can also invade egg clutches and totally negate viability. Early summer rainfall of a few days in late summer rainfall which drops as torrential cloud bursts floods nest cavities. If young turtles have hatched and are digging toward the surface they can easily be drowned should the cavity fill with rainwater.

At least 10 percent of unmanipulated egg clutches on Sanibel were wiped out by heavy rains in late July and August. There is no preferred solution to this problem, however close monitoring of the due date and timely excavation are helpful.

Another nearly invisible killer of hatchling loggerheads is the tiny biting ant known locally as the fire ant. This is not to be confused with the exotic fire ant that has become established in the Southeastern United States.

If scouting ants discover freshly hatched young prior to their emergence from the sand the ant colony attacks the turtles in force and can easily kill the entire clutch in a matter of minutes.

Rats have probably been the chief menace to loggerhead eggs this summer. In the Sanibel hatchery and with some

Menacing racoons responsible for loss of turtle eggs, hatchlings

nest left undisturbed and pups have been useful. Fifteen percent of nonhatchery hatchlings were killed this summer while still in the sand.

On occasion ghost crabs locate egg clutches by tunneling into a nest. One some beach sectors on the islands it is not uncommon to find half a dozen crab burrows penetrating turtle nests. Each burrow may have dried eggshells near its entrance as the crabs methodically consume developing eggs or intercept full-term hatchlings on their way to the beach surface. Five percent of nonhatchery nests are lost to these animals.

A somewhat lesser problem is caused by the beautiful sea otter that grace our shoreline. Turtle eggs that are deposited close to or within dense strands of this grass often suffer from root regrowth that entwines through the egg clutches. The roots often completely encapsulate individual eggs and prohibit the young from hatching. Approximately 2 percent of our turtle nests meet this fate.

Lethal bacteria can also invade egg clutches and totally negate viability. Early summer rainfall of a few days in late summer rainfall which drops as torrential cloud bursts floods nest cavities. If young turtles have hatched and are digging toward the surface they can easily be drowned should the cavity fill with rainwater.

At least 10 percent of unmanipulated egg clutches on Sanibel were wiped out by heavy rains in late July and August. There is no preferred solution to this problem, however close monitoring of the due date and timely excavation are helpful.

Another nearly invisible killer of hatchling loggerheads is the tiny biting ant known locally as the fire ant. This is not to be confused with the exotic fire ant that has become established in the Southeastern United States.

If scouting ants discover freshly hatched young prior to their emergence from the sand the ant colony attacks the turtles in force and can easily kill the entire clutch in a matter of minutes.

Rats have probably been the chief menace to loggerhead eggs this summer. In the Sanibel hatchery and with some



Historically turtle eggs have been a food source for raccoons. Modern Sanibel has too many raccoons and they impart far too much negative pressure on our dwindling loggerhead turtle population.

In this drawing by island wildlife artist George Weymouth a pair of coons has opened a loggerhead nest and will completely ingest or destroy every egg.

NOTICE

Inland boat storage is available now at Southwest Florida's top marina location.

- In and out (up to 26') \$3.00 per foot per month
- In and out (up to 26') \$2.50 per foot per month

Free lift service included—7 days a week!

Pier 50 Marina at Punta Rassa offers boaters complete marine service—sales, parts and repairs, plus boat and tackle.

Dealer for Mercury and merCruiser

PIER 50 MARINA
At the end of Punta Rassa Road, just before the Sanibel Causeway
481-3055

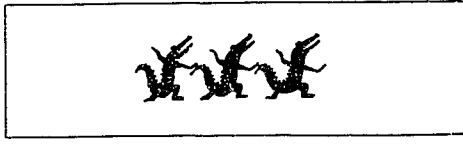
SPRAYED URETHANE
THE ENERGY SAVING ROOF

ROOFING WITH SUPER INSULATION SAVINGS

DEVIN SAYS "DON'T GET STRAPPED WITH ROOF PROBLEMS, CALL"

STATE CERTIFIED CC CO1619

ADVANCED INC. SE 939-4412



THE LAW FIRM OF
PATTERSON, TURK, HUDSON & SNOW P.A.

TAKES GREAT PLEASURE IN ANNOUNCING THAT

MICHAEL R. DOUGLAS
ATTORNEY AT LAW
HAS JOINED THE FIRM

NEAL C. PATTERSON, JR.
LAWRENCE C. TURK
WILLIAM J. HUDSON, JR.

JOHN R. SNOW
THOMAS E. SHIPP, JR.
MICHAEL R. DOUGLAS

4222 DEL PRADO BOULEVARD
CAPE CORAL, FLORIDA 33904
(813) 542-1131

1981
4 DOOR CULTRASS LUXURY SEDANS

- ★ POWER STEERING
- ★ AM/FM STEREO
- ★ WHITE WALLS
- ★ POWER BRAKES
- ★ POWER WINDOWS
- ★ TILT STEERING WHEEL

FROM **\$7,286**

4 Year/50,000 Mile SERVICE POLICY AVAILABLE

KING MOTOR CENTER
3614 SO. CLEVELAND FT. MYERS, FL 33901
936-0131

MON-FRI 9:00am-8pm
SAT-SUN 10:00am-5pm
DAILY 10:00am-5pm

LIVE BETWEEN THE WATERS AT SUNSET CAPTIVA

Live in the perfect home in a perfect island setting of blue waters, lush tropical greenery and luxurious amenities at Sunset Captiva. Our new 1 1/2 story is a colorful 3 bedroom, 2 bath luxury home of natural woods. The home features a loft, cathedral ceiling, a fireplace, spacious screened porches and sundeck. Call and ask about the many custom extras and furnishings.

\$285,000

Real or Assoc. After Hours 472-2188

P.O. Box G
100 Periwinkle Way
Sanibel, Florida 33957
(813) 472-3165
Real or

Offered Exclusively by
Gulfside Realty Inc.

Sanibel Water Attack Team meet results

Sixteen members of the Sanibel Water Attack Team competed in the USG Gulf Times Championship swim meet in Naples the weekend of Sept. 4.

To qualify for the meet swimmers must have competed in three USG meets and met qualifying times in one or more events.

The Sanibel swimmers finished as follows:

Under 10 Under
Tara Friedlund second place Medley
Iteya second place Free Relay
Hilaker Maenech second place Medley
place Backstroke second place Butterfly
third place Freestyle Duro place
Breaststroke Duro place
Freestyle fourth place 200 yard Freestyle
Medley fourth place 50 yard Freestyle
harry Maenech second place Medley
Relay fourth place Free Relay fourth place
place Breaststroke sixth place
place Butterfly and Backstroke
Haldrup Plahler second place Free Relay
fifth place Freestyle eighth place But-
terfly eighth place 50 yard Freestyle
ninth place Backstroke ninth place 100
yard Individual Medley ninth place 200
yard Freestyle thirteenth place Breast-
stroke
Joni Kramer eighth place Freestyle
thirteenth place Backstroke
Andy Maenech second place Medley Relay
Jason Vaniteem first place Free Relay
fifth place Backstroke ninth place
Freestyle

10-1 Under
Lauri Preston sixteenth place Butterfly
Lisa Preston second place Medley Relay
twelfth place Breaststroke sixteenth place
Freestyle
Kathy Magg participated
Kia Magnuson second place Medley
Relay third place Butterfly twelfth place
Freestyle fifteenth place Backstroke and
100 yard Freestyle
Joni Maenech first place Medley Relay
first place Free Relay second place
Freestyle fourth place Breaststroke
eighth place 100 yard Freestyle 100 yard
Individual Medley Butterfly and
Backstroke tenth place 500 yard Freestyle
John Keene participated
David Maenech fourth place Medley Relay
ninth place Free Relay

11-12
Gerry Bowie third place Free Relay tenth
place Freestyle
Seach Peloso tenth place Breaststroke

Island Golf

Only 13 players took part in the Beaches Men's Golf Association tournament play last Tuesday and Saturday. At plus eight the winners on Sept. 8 were John Forster, Curt Washburn, Ray Martorelli and Hank Groh. Curt Washburn garnered high individual honors with a plus four.

On Saturday Sept. 12 Larry Simon, Curt Washburn and George Siri were winners at plus one. Washburn again came away with high individual honors this time tied with Ctein Donnell at plus three.



Senility Sisters prove age before youth on courts

By Maggie Greenberg
During the last two weekends in August the day beach Racquet Club of Fort Myers Beach held an all-doubles tournament. I was Lanny Falgout and Tony DeHulis did a superb job of organizing men's women's and mixed doubles events.

All competitors received a club T-shirt and were served coffee and a variety of high calorie doughnuts each morning. Around noon grilled hotdogs and condiments appeared to restore energy, courage and flagging spirits.

Marge Peck and I were the only participants from Sanibel among the 16 competitors in the women's doubles tournament. We arrived quite unheralded, virtually unknown.

Now there are certain advantages to being obscure and inscrutable. However, finding your names at the very bottom of the draw sheet bracketed with those of a top-seeded team is most certainly not one of them.

As we approached the court, Marge asked, "Shall we tell them how old we are, dear?" I replied, "Let's save that for when we get into trouble."

Our first-round match against the top-seeded players went on and on and on. Well ahead in the first set our opponents suddenly poured on the steam and we barely managed to win 6-4.

Encouraged by their recent momentum our adversaries slaughtered us in the second set 6-1. After a 10-minute break from the relentless sun and heat we all returned to the court for the third and decisive set.

Still flushed from their second-set victory our opponents must have been high on confidence at that point. As often happens they became extremely cordial and chatty.

It was then that Marge socked it to them. "By the way, girls, did you know that our combined ages are well over 100?"

Actually this airtight revelation may have made our adversaries even more confident and a bit less cautious. Before they realized that Sanibel's Senility Sisters had any fight left in them we had bagged them 16-0 and won the first round in the tournament.

Having defeated one of the two top-seeded teams we quickly changed all our clothes which were clinging to our aging frames. Within 15 minutes we were back on the courts to play the second round.

I doubt that either of us remembers much about that match. While it was far easier than the first, fatigue became a factor. The final scores made the pro raise an eyebrow: 6-1, 7-6. We appeared to be gluttons for three set punishments.

After our and a half hours of nearly continuous play we returned to Sanibel and applied balm to aching muscles and joints. It took nearly a week to recuperate. For exactly we had a week before the finals.

On the last Saturday in August we appeared once more at the Bay Beach Racquet Club knowing that we had a fair chance to win.

The Willow Wallpapers were tall young girls (one was nearly six feet) and their combined ages did not even equal 100. They had breezed through the tournament right up to the finals with out losing a set and probably without working up much of a sweat.

I don't think either of us expected to win. All we hoped to do was to give our opponents a tough match and preferably force them to play three sets.

The idea of arriving on the court in white had occurred to us, but we decided to save that for future tournaments when our combined ages are 150.

The warm-up period convinced us and surely our adversaries that mere survival

would be a most respectable accomplishment. Their thunderous topspin groundstrokes impaled us against the back fence.

When the match began however the Willow Wallpapers made a grave mistake: they zeroed in on Marge, the senior Senility Sister.

Marge was never intimidated. She just kept returning their smashing blows by blocking them with her jumbo racket in a most ladylike manner. Her skillful parries often arced gracefully over their heads to land on the baseline.

Frustration often forces errors and this is exactly what happened to the Willow Wallpapers. They lost the first set in a tiebreaker 7-6.

By the second set their mounting frustration had turned to anger. Racquets were dropped in anguish and inconsistency reigned on their side of the court.

Nothing is more annoying to fine young players than a match against two old biddies who just keep returning that optic yellow ball over the net. But that is often just what it takes to win the trophy.



With more than 100 years of experience Sanibel's Senility Sisters Maggie Greenberg left and Marge Peck right show off their all-doubles trophy photo by David Meadon. T-shirts courtesy of Island Financial Services.

FRESH AIR



CHUCK THOMAS
Cools Down Hot Florida Evenings
With Fresh, Breezy Jazz

Jazz fans of Florida take heart! And tune in to Chuck Thomas on WRCC for the finest selections in mainstream jazz six nights a week. Cool down to the sounds of Ellington, Mangione, Parker, Davis, Spyro Gyra and Coltrane. Move to the music of America weekdays from 9 PM and Saturday from 6 PM.

ALL THAT JAZZ
9 PM TO 1 AM MONDAY THROUGH FRIDAY
6 PM TO MIDNIGHT SATURDAY



FM 104

The Bronx Bag
Men's Casual Wear

SWIM WEAR

by OP Offshore
Laguna and Catalina
A nice way to beat the heat!

Pariwinkle Place Shopping Center
473-1171
Closed Sunday

MRS SHERATON

PALM READINGS
ASTROLOGICAL READINGS
CARD READINGS

She'll Read Your Entire Life
She Gives Never Failing Advice On All Affairs Of Life
Tells Past Present and Future

Call today for an appointment 334-8612
Located at 2812 Cleveland Ave Ft. Myers across from Lee Memorial Hospital



GOING SOUTH EARLY BIRD SPECIAL

Our Already Low Rates Sliced 15%

TRY US
FREE Pick Up And Delivery
Write or call anytime
813-542-2025

CAPE CORAL RENT-A-CAR, INC.
P O BOX 291
CAPE CORAL, FLORIDA 33904
542-2025

New lake front Sanibel home

Beautiful new three bedroom two bath Gumbo Limbo home has marvelous lake view from living room bedroom and kitchen. Home is wired for phone and TV outlets and is equipped with lightning rods. Features extra heavy insulation, high efficiency air conditioning, and attic fan. 175 feet of lake front on lot 118 feet deep. To settle estate \$130,000.

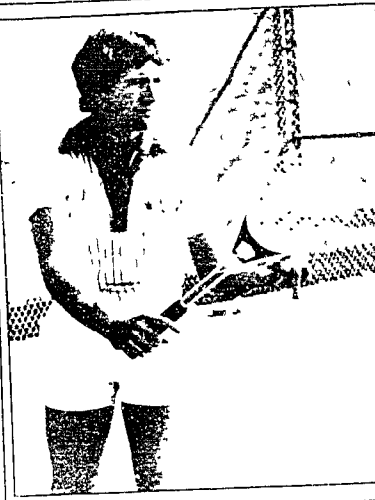
Priscilla Murphy
REALTY INCORPORATED

MAIN OFFICE - 27 S.W. 11th Ave. Ft. Lauderdale, FL 33301
BRANCH OFFICE - 1000 N. W. 11th St. Ft. Lauderdale, FL 33304
CAPE CORAL OFFICE - 400 N. W. 1st St. Cape Coral, FL 33904
DENTAL OFFICE - 1000 N. W. 11th St. Ft. Lauderdale, FL 33304

Gracious Bayfront Estate

OFFERED EXCLUSIVELY AT \$475,000

Gulfside Realty Inc.



Kridle named Casa Ybel tennis pro

By David Meardon
 Jim Kridle has been named Casa Ybel Resort's new tennis professional. The announcement was made last week by Greg Parker, tennis director for the Mariner Group.
 A Fort Myers native, Kridle has 11 years of tennis experience and has taught professionally for the last four years. His most recent position was head pro at The Forest, a development south of Fort Myers.
 Kridle spent the last four summers teaching at the National Tennis School in St. Paul, Minnesota, and worked for Arden Hills Tennis Club also in St. Paul in 1980.
 Kridle replaces Jim Watterfield who resigned as the Casa Ybel tennis pro to take a sales position with a Virginia plumbing firm.
 Casa Ybel resort is owned by the Mariner Group and managed by Marjorie Hotels and Resorts, an affiliate of Mariner.



SO YOU WERE CAUGHT NAPPING!

O.K. But we can still get you where you want to go for the holidays. For a little while longer, anyway.

Maureen's Travel, Inc.

2418 Palm Ridge Road
 472-3117 Mon. - Fri. 9-5
 Evenings - Weekends 472-1856

Weekly Health Tip



From Len Kessler

WHEN GIVING MEDICINE:

Read the label and instructions beforehand. Never give medicine from an unlabeled bottle. Before measuring liquid medicine, shake the bottle thoroughly each time. Don't give medicine in the dark; you may have picked up the wrong bottle.

Island Apothecary

A FULL SERVICE PHARMACY
 2460 PALM RIDGE RD.
 BUS. 472-4721 1519
 EMERGENCY 472-2768

Why Buy Plastic when you can buy heavy-duty Aluminum for less!

3-FOR-ONE HURRICANE AWNING and BURGLARY PROTECTION SHUTTERS

SAVE 20%

- Factory Sold-Factory Installed - Factory Serviced and Factory 5 yr Warranty
- Rolls up or down from inside or out.
- Custom made for Homes, condominiums or mobile homes
- Free estimates with No Obligation

(PEACE OF MIND WHEN AWAY)
CALL COLLECT A: NIGHT 1-484-1700 DAYTIME 1-484-8484

SECURITY SHUTTER CORP.
 109 James Street - Venice, FL 33595

REALTORS CONTRACTORS SELF BUILDERS

PERC TESTS AND ENERGY CODE CALCULATIONS

542-8831
 1020 DEL PRADO CAPE CORAL
 48 HOURS FAST SERVICE 24 HOURS



NOTICE

NEW TELEPHONE SERVICE & SALES AVAILABLE TO YOU

WE CAN SOLVE YOUR TELEPHONE PROBLEMS FAST — BECAUSE OUR EFFORTS ARE DIRECTED TO YOUR INDIVIDUAL NEEDS. CALL US OR COME AND SEE OUR WIDE VARIETY OF TELEPHONES AND SERVICES OFFERED! WE CAN SAVE YOU MONEY!

SALES & INSTALLATION OF ALL PHONES & ACCESSORIES IN SHOP REPAIR OF YOUR PHONE

- PRE WIRING • JACKS AND CORDS
- MOVES AND CHANGES • DIALERS
- DECORATOR PHONES • RECODERS

FAST, DEPENDABLE SERVICE AND REPAIR

• CALL OR COME IN •

TELEPHONE SERVICE AND SALES

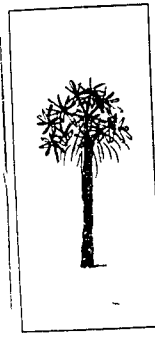
KINGSTON SQUARE
 1 1/2 MILES SOUTH OF MARINER PLAZA ON THE ROAD TO SANBLEE

PHONE 489-1135 OR 489-1136
 INSURED AND OVER 30 YEARS EXPERIENCE

This Sunday enjoy the ambience and luxury of a New Orleans style brunch in a magnificent Victorian mansion.

Start with an "Ovo omelette" from a gulf flax or fresh fruit in strawberries. Then just relax and appreciate the view of the sun sparkling in the Gulf of Mexico.
 Follow in a variety of fish entrees from elaborated. Enjoy a 1 egg Benedict to delicious Eggs Benedict.
 Dishes in generous helpings of Shrimp, Roast Beef, or Crabmeat. It's accompanied by a favorite wine.
 Complete your leisurely brunch with the finest fresh fruit, Dishes and Orleans. If you can't get it done. Coffee Express on a branch at Thistle Lodge. Sundaes from 9 am till 2 pm.

The Thistle Lodge Restaurant. A Legend In Its Own Time.
 Serving lunch, dinner and Sunday brunch. Nightly entertainment. Closed Monday.
 Reservations suggested.
Casa Ybel Resort
 880A N. Pine Island Drive • Sanibel Island • 478-0980



You can own a place and time in paradise forever!

The Mariner Group is creating a paradise on Sanibel Island's beautiful Gulf Beach. It's Tortuga Beach Club — an interval ownership resort that offers everything you'd expect in paradise — luxury accommodations, lush seashell beaches, tennis courts, spas and swimming pool. And it's golf at the nearby Dunes Country Club.

It can all be yours forever for just the weeks you want at surprisingly affordable prices.

Visit our sales center at the Gulf end of Lindgren Blvd. (Causeway Rd.) and let us show you our version of paradise.

MAX — the automated teller — is like having a stream of bankers at your fingertips. And MAX is open all day — all night — all weeks.

Call now to get your MAX account. No charge. No credit check. No waiting.

Call now to get your MAX account. No charge. No credit check. No waiting.

Lee County Bank
 1801 W. US HWY 90
 SANIBEL ISLAND, FL 33957

Mariner's Tortuga Beach Club
 An Interval Ownership Resort

959 Lindgren Blvd. • Sanibel Island, Florida 33957
 (813) 472-5044

Developed by **THE MARINER GROUP** of affiliated companies

Want information by mail? Send us this coupon.

NAME _____
 ADDRESS _____
 CITY _____ STATE _____ ZIP _____

Watch for marked wood storks

By Brian V. Ivers, refuge manager
 J.N. Ding Darling Refuge
 Ivers is a good pass biller that you will observe in a usually colored woods in the area this year.
 Pacific Lark and Freshwater Fish Commission personnel under the direction of Jim Rogers color marked dot neckings at various locations in the state this year for the purpose of obtaining information pertaining to dispersal.
 If you observe pink green blue or yellow marked wood storks please notify the refuge and we will relay the information to Jim Rogers.
 Because of molting and sun fading color marked birds may be only partially colored by the time they start showing up on Santee. The feathers on the under side of the wings

Commission from page 7

The approval was made with the stipulation that developers make every effort to lighten the color of the pavement.
 Karl Wightman appeared before the commission requesting a permit to increase development intensity of Caloosa Shores Subdivision from one dwelling unit per acre to 22 units per acre. Much discussion evolved when Wightman said he is trying to make some money. I've been here since 1935.
 Commissioner Louise Johnson said about Wightman a request. So much care has gone into the original permit that I believe we start increasing the density we are saying we did not have good reason to have it set the way it is.
 Wightman claimed it is too late for that kind of thinking and that everybody got a break and I just want my break too. Wightman went on to say he has had whole lot invested in this development and I just want to get a return on that investment.
 Commissioner Arthur Wycoff said he agreed with the planning staff recommendation not to permit the increase in density because I cannot see any per season to charge the density here. It would cause an inconsistency. It would distort the entire subdivision.
 Wycoff recommended by motion that Wightman be denied the request but without prejudice thus giving the builder with a better plan. Mrs. Louise Johnson seconded the motion with Commissioners Wightman, Wainwright and Don Manchester voting against the denial and the rest voting for the denial.

We know how islanders like to bank:



not fancy...just friendly.

After all we've been dealing with islanders since we started so we're used to what they like. First they like to get their banking done quickly so they get back to enjoying their island. Then they like to know they're getting their money's worth. And most important they like things friendly and relaxed with no big city stuffiness.

That's the way we hope you'll stop by relax with us for a few minutes and get acquainted. Then maybe we can do some business.

Close to you in lots of ways



Bank of the Islands

MAIN OFFICE: 1699 Periwinkle Way • 472-4141
 Open Mon-Fri. 9-2 and Fri. 4-6
 Drive in open Mon-Thurs. 8:30-4 and Fri. 8:30-6

BRANCH OFFICE: Island Shopping Center • 472-5173
 Open Mon-Fri. 9-4

Member FDIC • Member Federal Reserve System
 Equal Housing Lender


THE OPEN GATE

RESORT FASHIONS

1035 Periwinkle Way
 Sanibel Island, Fla. 33957
 (813) 472-2108

brochures

NOW! A COMPLETE ART SERVICE



call Joyce 472-6869

newspaper ads • cards • signs • announcements • questions • interviews

The Beach Bag

Men's Casual Wear

SWIM WEAR

by OP Off shore
 Laguna and Catalina
 A nice way to beat the heat!

Periwinkle Place Shopping Center
 472-1171
 Closed Sunday



NOW WE HAVE A DELTA

ISLAND STORE

CAPTIVA ISLAND

NOW OPEN MON-SAT 9 AM - 9 PM
 EXCEPT SUN. 10 AM - 6 PM 472-2374
 Captiva Road & Andy Rosse Lane

Portrait

Peter Woodard

- Age: 40
- Height: "Knee-high to a jam pot"
- Roots: "Uprooted from Belfast. That's the only place I really consider home. Originally from Reigate, England"
- Pleasures: "Making people laugh and good music"
- Last Book Read: Corky Park by Martin Cruz Smith
- Mentor: "Leonard Moseley, who convinced me there was more to life than serving soup"
- Wish: "That people could understand the other person's point of view."
- Words of Wisdom: "Love makes the world go 'round'"



By John Yoder
 Photos by David Meardon

After seeing the destructive elements of human nature for many years, Island life seems like a just reward to Peter Woodard.

I got into a way of life in Belfast that was destroying me, says the curly-haired action-packed man with the English and Irish mixed accent. The complacency of people whose lives are eaten up by hatred like in Ireland can be very discouraging. Peter speaks from experience. Woodard first found Santee for a 1978 holiday when he came here to visit his parents for one week. Like so many other guests to the Islands, he returned in 1980 and decided to stay.

He can now most often be found dashing about the Islands either photographing or getting ready to photograph as his demand for his work increases.

I found something on the Islands I have been looking for for years, he relates. Good friends and love. The last time I returned out to be Island resident and Photographer's Gallery Manager Hence, Twombly.

Woodard went to Belfast in 1960 on a three-month trial with one of Britain's leading newspapers, The Daily

Express as a photographer. Back then Ireland was a very nice part of the world, what with trout streams, nice beaches, everything you would wish, he remembers.

The three-month trial stretched into two years. But in 1968 the paper decided it did not need two photographers anymore so Woodard decided to freelance. And that is when all hell broke loose, he says.

There were dangerous moments for Woodard in Ireland with a plain English accent. I was constantly asked whether I was an Army photographer, sometimes at the point of a gun, says. He tells with raised eyebrows of one particularly incident at a roadblock when he faced a dual barreled shotgun. He hopes to forget those days.

Woodard has received much encouragement on the Islands to continue with his work. An exhibit of his photographs will open the Photographers' Gallery this season Oct. 4.

Most of the newspapers I worked for have retained the negatives, he explains. But I still have some of my own negatives that had been in a damp cardboard box in Northern Ireland. It took us weeks of rummaging the tub

undivided negatives but we found enough to have a show, Woodard is complimentary of the Photographers' Gallery when he says. The Gallery is the first place I visited on the Islands. The enthusiasm of the people there is contagious and they rekindled my interest in photography. They encouraged me to put this show together.

About his upcoming exhibit, Woodard says he has tried to reveal some humor rather than the horror of Belfast. Nobody wants to get depressed by the subject matter, he says. So I have tried to make those 4 years in Belfast reveal some humor and other aspects rather than the blood and guts horror.

The show will feature the children of Ulster, he says. Of course, there is a saturation about the sadness of living with the whole thing, heads. That part is in their faces and inescapable.

22 Tuesday, September 15, 1981 The ISLANDER

ARTS and ARTISTS

Exquisite new hand woven tapestries by Poley Mastromatteo will be on exhibit through Sept. 19 at Sanibel's Schoolhouse Gallery. Poley's latest weavings are her most sophisticated and artistic to date. Of breathtaking beauty is a weaving titled "Tideflow" in subtly blended colorations of blue and flowing into deepening shades of blue and with a woven overlay of bubbling surf sky with a woven overlay of bubbling surf sky with a woven overlay of bubbling surf sky with a woven overlay of bubbling surf sky.

to communicate via her craft. Gallery hours are 10 a.m. to 5 p.m. daily except Sunday. The gallery is on Tarpon Bay Road across from the Island Cinema.

The Cape Coral Arts Studios' September exhibition "Artistic Delights" will display the work of a talented group of local artists. The following artists will be represented: drawings by Betty Hantzen and Carl Hirsch; 19th Century American paintings by Lynn Smith; photographs by Bob Kay and Lynn Smith; jewelry by Carolyn Gore and Bill Rogers; macramé by Mildred Chiaramonte; masks

by Philip Hanes; stained glass by George Migliarese and wall hangings and stone art creations by the six Beet. The gallery is a non-profit facility of the Cape Coral Parks and Recreation Department located at 4533 Coronado Parkway (open hours are 9 a.m. to 5 p.m. Monday through Thursday and 2 a.m. to 5 p.m. Friday. Telephone 582-7714 for more information).

La Belle Gallery 1475A Periwinkle Way will be closed from Sept. 8 through Oct. 5 for vacation. The gallery will reopen Oct. 6.

LUNCH AT BEACHVIEW



The PUTTING PELICAN Restaurant and Lounge is serving up your luncheon favorites.

Potted salads, jumbo burgers, homemade soups and daily specials.

Also featuring Birdbath Margaritas, "Best Bloody Marys on the Islands", along with your other favorite cocktails.

Continental Breakfast 9-11, Lunch 11-3
Cocktails 'til 6

1160 Periwinkle Drive Beachview Golf Club

472-4394



DEEP SEA FISHING
Party Boat
"LADY ESTERO"
Charter Boats
"INDEPENDENCE" & "ANGIE-DON"
From
Gulf Star Marina
Fort Myers Beach
Eves 481-6561
463-2224

FRESH FISH HOTLINE 472-3128

- Red Snapper
- Shark
- Grouper
- Flounder
- Soft Shell Crabs
- Swordfish
- Yellowtail
- Pompano
- Dolphin
- Maine Lobster

Give us a call on our FRESH FISH HOTLINE to find out which fresh fish is available tonight at



WE SERVE IT FRESH-OR WE DON'T SERVE IT AT ALL!

FRESH FISH—CHOICE STEAKS—COCKTAILS
FULL LIQUOR LICENSE 9'S RABBIT RD
472-3128 OPEN 7 DAYS 5 TO 9 P.M.

CLOSED TUESDAY & WEDNESDAY—SEPT. 8 THROUGH SEPT. 30

Coconut Grove

Restaurant & Lounge
Serving fine food since 1957
Serving 11-10
Mon Sat



FRESH SEAFOOD & FISH STEAKS

U.S. Choice or U.S. Prime Heavy Western Steer

Friday Evening

Gourmet Greek Cuisine

Saturday Evening

Roast Sirloin Special

TRY OUR NEW IMPORTED WINES



COMPLIMENTARY SHELL SOUVENIR
Please present this ad with lunch or dinner
1 gift per couple

Cocktail Lounge
Hors d'Oeuvres 4-6
472-1356

Full Menu
Fine Children's Menu
Reservations accepted

*** Highly Recommended by 1981 Mobil Travel Guide



will be closed for renovation September 8th through September 17th. We appreciate your patronage throughout the year and look forward to serving you on September 18th with our Fabulous Friday Evening Seafood Buffet.

Located at the entrance of SOUTH SEAS PLANTATION

Managed by Margaux Hobbs and Partners

Island bike-a-thon will benefit cystic fibrosis victims

A bike-a-thon to benefit victims of cystic fibrosis is planned for Sanibel on Saturday Sept. 26.

Providing Sanibel officials approve the route cyclists will ride between the Police Department on Palm Ridge Road and the Sanibel Elementary School via the bike path a spokesman for the Cystic Fibrosis Foundation in Fort Myers said.

Cyclists will be encouraged to ride as many miles as possible. If five bike path

gets too crowded between the school and the Police Department, we might think about sending some riders down the Periwinkle Way bike path, the spokesman said.

Riders are encouraged to obtain pledges from sponsors for every mile they ride in the bike-a-thon. All proceeds from the bike-a-thon will go to the Cystic Fibrosis Foundation. Prizes will be awarded to the riders who collect the most money for cystic fibrosis. In addition, CP T-shirts will be given

to every rider who turns in at least 25 Cystic Fibrosis in an easily readable respiratory and digestive disease that attacks children. One of every 25 persons in the United States is a cystic fibrosis carrier. Medical treatment has helped some CP patients live into their teens.

Sponsor shirts for the upcoming bike-a-thon are available at the Drapery Forum in the Rafter's Mall Fort Myers at Saint Michael's Lutheran Church in Fort Myers or by calling bike-a-thon Chairwoman Jim. Stray 482-9148 or 483-2182.

LOUIS P. GARZETTA, Ph. D.

Clinical Psychologist

Announces office hours beginning October 1st

SANIBEL-CAPTIVA COUNSELING CENTER

1633 H Periwinkle Way, Sanibel FL.
472-9696

Children and adult services, marriage counseling
post-holocaust testing
Call Fort Myers for all appointments 838-4333.

She Sells Sea Shells

"An Ocean Boutique"

Shells From Sanibel & World Wide
Coral, Gifts, Jewelry & Exotic Sea Life
Shell Craft Supplies & Mirrors
3 Locations



Tahitian Garden 1983 Periwinkle Way 472-3991
10:5 - 5:15 Mon Sat
Apothecary Center 2860 Palm Ridge Rd 472-1911
10:5 - 5:15 Seven Days
10:5 Mon Sat

ISLAND PIZZA

Our dough is made fresh daily
ITALIAN SUBS
PIZZA
SPAGHETTI
SALADS
BEER & WINE TO GO



EAT IN OR TAKE OUT
472-1581 or 472-1582

7 Days 11 A.M. - 11 P.M. 1650 Periwinkle Way

SANIBEL REALTY
PROPERTY APPRAISALS
Residential
Investment
Prompt Reasonable Service
(Just East of Bank of the Islands)
1028 A Periwinkle Way
Sanibel Island, Florida 472-1549

F&B OYSTER CO.



A FISH HOUSE

2163 Periwinkle Way Sanibel
THE FINEST FISH HOUSE
IN SOUTHWEST FLORIDA

TRY OUR FAMOUS SHORE DINNER

BEERS AND WINES SERVED
DAILY 5:30 TO 9:30
Phone 472-5276

RAW OYSTER BAR

Elegant Gulf Front Dining in The Bahama Room at Sundial

featuring
Breakfast, Lunch & Dinner
served daily

TWILIGHT SPECIALS
(Served 5 pm to 7 pm)
\$7.50
Soup du Jour
Choice of
Prime Rib of Beef
Chicken Pie
Sole Francaise
Veal Parmigiana with
Spaghetti
Entrées served with House
Salad Potato or
Vegetable du Jour
Coffee or Tea
Dessert

THE CATS ARE BACK!!!
Return Engagement
Entertainment Nightly
For Reservations
Please Call
472-4151

1246 Middle Gulf Drive Sanibel

on Sanibel

8 & Diner House 5143 Parkside Way (472 3761) ... serving dinner only from 5 to 9:30 p.m. ...

Jean Paul's French Corner Next to the Post Office on Tarpon Bay Road (472 1492) ...

Summit 1234 Middle Gulf Drive (472 4111) ... MC, VISA, AE ...

Seafood buffet on Fridays from 4 to 9:45 a.m. to 2:30 p.m. ...

Scotty's Pub 1222 Parkside Way (472 1771) ... MC, VISA, AE ...

Jackie's Island Messa Restaurant 1000 Tarpon Bay Road (472 3733) ...

Quartermaster of Sanibel Restaurant 1415 Parkside Way (472 1023) ...

The Lettices 212 West Gulf Drive (472 777) ... MC, VISA, AE ...

Lighthouse Restaurant 32 Parkside Way (472 974) ...

Light House Restaurant 32 Parkside Way (472 974) ...

The Thistle Lodge at the Casa Vieja Beach and Racquet Club 250 Gulf Drive (472 2145) ...

Light House Restaurant 32 Parkside Way (472 974) ...

Light House Restaurant 32 Parkside Way (472 974) ...

Light House Restaurant 32 Parkside Way (472 974) ...

Light House Restaurant 32 Parkside Way (472 974) ...

Light House Restaurant 32 Parkside Way (472 974) ...

Light House Restaurant 32 Parkside Way (472 974) ...

Light House Restaurant 32 Parkside Way (472 974) ...

Light House Restaurant 32 Parkside Way (472 974) ...

Light House Restaurant 32 Parkside Way (472 974) ...

Dining on the Islands



The Timbers Intersection of Rabbit Road and Sanibel Captiva Road (472 3128) ...

Harbor House 1244 Parkside Way (472 1502) ...

The Hermes House 2741 West Gulf Drive (472 1141) ...

Captain's Table 1222 Parkside Way (472 1771) ...

Puttling Pelican At the Beach View Golf Course (472 4944) ...

Puttling Pelican At the Beach View Golf Course (472 4944) ...

Puttling Pelican At the Beach View Golf Course (472 4944) ...

Puttling Pelican At the Beach View Golf Course (472 4944) ...

Puttling Pelican At the Beach View Golf Course (472 4944) ...

Puttling Pelican At the Beach View Golf Course (472 4944) ...

Puttling Pelican At the Beach View Golf Course (472 4944) ...

Puttling Pelican At the Beach View Golf Course (472 4944) ...

Puttling Pelican At the Beach View Golf Course (472 4944) ...

Puttling Pelican At the Beach View Golf Course (472 4944) ...

Puttling Pelican At the Beach View Golf Course (472 4944) ...

Puttling Pelican At the Beach View Golf Course (472 4944) ...

Puttling Pelican At the Beach View Golf Course (472 4944) ...

Puttling Pelican At the Beach View Golf Course (472 4944) ...

Puttling Pelican At the Beach View Golf Course (472 4944) ...

Puttling Pelican At the Beach View Golf Course (472 4944) ...

on Captiva

Chedwick's The Top of Captiva Island at the entrance to South Seas Plantation (472 3111) ...

The Muddy Duck Andy Steele Lane turn left off Sanibel Captiva Road (472 3544) ...

Timothy's Messa Sanibel Captiva Road (472 3544) ...

Boys by the Bubble Room Sanibel Captiva Road (472 3544) ...

The Bubble Room Sanibel Captiva Road (472 3544) ...

Texas Waters Inn 2425 Parkside Way (472 1541) ...

Sanibel Village Square Sanibel Captiva Road (472 3033) ...

Chedwick's General Store South Seas Plantation (472 3111) ...

Chedwick's South Seas Plantation (472 3111) ...

Chedwick's South Seas Plantation (472 3111) ...

Chedwick's South Seas Plantation (472 3111) ...

Chedwick's South Seas Plantation (472 3111) ...

Chedwick's South Seas Plantation (472 3111) ...

Chedwick's South Seas Plantation (472 3111) ...

Chedwick's South Seas Plantation (472 3111) ...

Chedwick's South Seas Plantation (472 3111) ...

Chedwick's South Seas Plantation (472 3111) ...

Chedwick's South Seas Plantation (472 3111) ...

Chedwick's South Seas Plantation (472 3111) ...

Chedwick's South Seas Plantation (472 3111) ...

Chedwick's South Seas Plantation (472 3111) ...

Chedwick's South Seas Plantation (472 3111) ...

Take-out Only

The Sals Shop Across from the Fire Station on Palm Ridge Road (472 3245) ...

Health and Happiness Inc. Next to Bailey's General Store (472 3111) ...

Health and Happiness Inc. Next to Bailey's General Store (472 3111) ...

Health and Happiness Inc. Next to Bailey's General Store (472 3111) ...

Health and Happiness Inc. Next to Bailey's General Store (472 3111) ...

Health and Happiness Inc. Next to Bailey's General Store (472 3111) ...

Health and Happiness Inc. Next to Bailey's General Store (472 3111) ...

Health and Happiness Inc. Next to Bailey's General Store (472 3111) ...

Health and Happiness Inc. Next to Bailey's General Store (472 3111) ...

Health and Happiness Inc. Next to Bailey's General Store (472 3111) ...

Health and Happiness Inc. Next to Bailey's General Store (472 3111) ...

Health and Happiness Inc. Next to Bailey's General Store (472 3111) ...

Health and Happiness Inc. Next to Bailey's General Store (472 3111) ...

Health and Happiness Inc. Next to Bailey's General Store (472 3111) ...

Clubs and Organizations



Commonwealth Association of Sanibel Meetings held on the second and fourth Thursday of each month ...

Commonwealth Association of Sanibel Meetings held on the second and fourth Thursday of each month ...

Commonwealth Association of Sanibel Meetings held on the second and fourth Thursday of each month ...

Commonwealth Association of Sanibel Meetings held on the second and fourth Thursday of each month ...

Commonwealth Association of Sanibel Meetings held on the second and fourth Thursday of each month ...

Commonwealth Association of Sanibel Meetings held on the second and fourth Thursday of each month ...

Commonwealth Association of Sanibel Meetings held on the second and fourth Thursday of each month ...

Commonwealth Association of Sanibel Meetings held on the second and fourth Thursday of each month ...

Commonwealth Association of Sanibel Meetings held on the second and fourth Thursday of each month ...

Commonwealth Association of Sanibel Meetings held on the second and fourth Thursday of each month ...

Commonwealth Association of Sanibel Meetings held on the second and fourth Thursday of each month ...

Commonwealth Association of Sanibel Meetings held on the second and fourth Thursday of each month ...

Commonwealth Association of Sanibel Meetings held on the second and fourth Thursday of each month ...

Commonwealth Association of Sanibel Meetings held on the second and fourth Thursday of each month ...

Commonwealth Association of Sanibel Meetings held on the second and fourth Thursday of each month ...

Commonwealth Association of Sanibel Meetings held on the second and fourth Thursday of each month ...

Commonwealth Association of Sanibel Meetings held on the second and fourth Thursday of each month ...

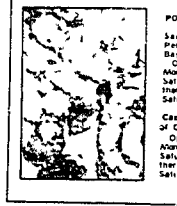
Commonwealth Association of Sanibel Meetings held on the second and fourth Thursday of each month ...

Commonwealth Association of Sanibel Meetings held on the second and fourth Thursday of each month ...

Commonwealth Association of Sanibel Meetings held on the second and fourth Thursday of each month ...

Commonwealth Association of Sanibel Meetings held on the second and fourth Thursday of each month ...

Post Offices



POST OFFICES SANIBEL: Sanibel Post Office 5143 Parkside Way (472 3761) ...

Government

Sanibel City Council Meetings held on the first and third Tuesday of every month ...

Sanibel City Council Meetings held on the first and third Tuesday of every month ...

Sanibel City Council Meetings held on the first and third Tuesday of every month ...

Sanibel City Council Meetings held on the first and third Tuesday of every month ...

Sanibel City Council Meetings held on the first and third Tuesday of every month ...

Sanibel City Council Meetings held on the first and third Tuesday of every month ...

Sanibel City Council Meetings held on the first and third Tuesday of every month ...

Sanibel City Council Meetings held on the first and third Tuesday of every month ...

Sanibel City Council Meetings held on the first and third Tuesday of every month ...

Sanibel City Council Meetings held on the first and third Tuesday of every month ...

Sanibel City Council Meetings held on the first and third Tuesday of every month ...

Sanibel City Council Meetings held on the first and third Tuesday of every month ...

Sanibel City Council Meetings held on the first and third Tuesday of every month ...

Sanibel City Council Meetings held on the first and third Tuesday of every month ...

Sanibel City Council Meetings held on the first and third Tuesday of every month ...

Sanibel City Council Meetings held on the first and third Tuesday of every month ...

Sanibel City Council Meetings held on the first and third Tuesday of every month ...

Sanibel City Council Meetings held on the first and third Tuesday of every month ...

Sanibel City Council Meetings held on the first and third Tuesday of every month ...

Sanibel City Council Meetings held on the first and third Tuesday of every month ...

WESTERN UNION Bay View General Store 3400 Bay View Road (472 3111) ...

Sanibel City Planning Commission Meetings held on the second and fourth Monday of every month ...

Sanibel City Planning Commission Meetings held on the second and fourth Monday of every month ...

Sanibel City Planning Commission Meetings held on the second and fourth Monday of every month ...

Sanibel City Planning Commission Meetings held on the second and fourth Monday of every month ...

Sanibel City Planning Commission Meetings held on the second and fourth Monday of every month ...

Sanibel City Planning Commission Meetings held on the second and fourth Monday of every month ...

Sanibel City Planning Commission Meetings held on the second and fourth Monday of every month ...

Sanibel City Planning Commission Meetings held on the second and fourth Monday of every month ...

Sanibel City Planning Commission Meetings held on the second and fourth Monday of every month ...

Sanibel City Planning Commission Meetings held on the second and fourth Monday of every month ...

Sanibel City Planning Commission Meetings held on the second and fourth Monday of every month ...

Sanibel City Planning Commission Meetings held on the second and fourth Monday of every month ...

Sanibel City Planning Commission Meetings held on the second and fourth Monday of every month ...

Sanibel City Planning Commission Meetings held on the second and fourth Monday of every month ...

Sanibel City Planning Commission Meetings held on the second and fourth Monday of every month ...

Sanibel City Planning Commission Meetings held on the second and fourth Monday of every month ...

Sanibel City Planning Commission Meetings held on the second and fourth Monday of every month ...

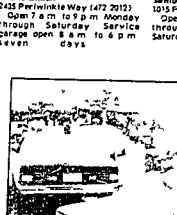
Sanibel City Planning Commission Meetings held on the second and fourth Monday of every month ...

Sanibel City Planning Commission Meetings held on the second and fourth Monday of every month ...

Sanibel City Planning Commission Meetings held on the second and fourth Monday of every month ...

Sanibel City Planning Commission Meetings held on the second and fourth Monday of every month ...

Service with a smile



Island Exxon 2425 Parkside Way (472 2033) ...

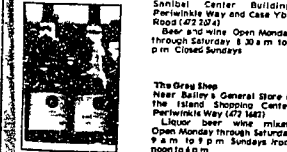
Island Garage 1609 Parkside Way (472 418) ...

Sanibel Standard 1055 Parkside Way (472 7133) ...

Sanibel Taxi and Service 1015 Parkside Way (472 1874) ...

Sanibel Taxi and Service 1015 Parkside Way (472 1874) ...

Spirits

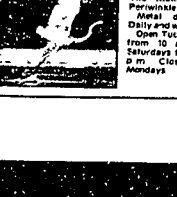


The Reef Bar Sanibel Center Building Parkside Way and Casa Vieja Road (472 3043) ...

The Reef Bar Sanibel Center Building Parkside Way and Casa Vieja Road (472 3043) ...

The Reef Bar Sanibel Center Building Parkside Way and Casa Vieja Road (472 3043) ...

Miscellaneous



The Monkey Tree 1711 Parkside Way (472 1511) ...

Island Apothecary 1015 Parkside Way (472 1874) ...

Island Apothecary 1015 Parkside Way (472 1874) ...

Good things to know

HELP!

Emergency Numbers
 Fire 472 1414
 Police 472 1414
 Sheriff 232 2414
 Ambulance 736-3086
 Paramedics 472 1717
 Island Psychiatry 472 1414
 Emergency Service 472-2748
 CROW Care and Rehabilitation
 of Wildlife 472 3444, emergency
 care for injured island wildlife

Non-Emergency Numbers
 Fire 472 5323
 Police 472 2111

DISASTER ALERT

Radio Station WRCC, 162.9 FM
 broadcasts details of any
 emergency such as hurricanes
 alert or any other disastrous
 occurrence that might affect
 Sanibel or Captiva



CAMPING BEACH FIRES

Camping on the beach is
 prohibited as are open beach
 fires.
 An exemption to the beach fire
 ordinance is a fire in an approved
 cooking container that does not
 exceed 424 X17 and used with
 an extinguisher for non-combustible
 food preparation. This type of container will be
 allowed on the beach without a
 permit.

After you have had your beach
 party, it is recommended that
 you assume the responsibility for
 cleaning up any debris or
 litter in your area.

SMELLING

The City's revolution limiting
 the tasting of live shells no longer
 will allow a person to purchase
 shellfish. As a matter of fact, in
 order to preserve Sanibel's
 beautiful shellfish harvest, shellfish
 collectors refuse to take any live
 shellfish home.



DOGGY DO'S AND DON'TS

If you are visiting Sanibel with
 the family dog, in law all the
 better. All family members can
 enjoy Southwest Florida sun and
 surf.
 The Chamber of Commerce
 can tell you what accommodations are available for
 family as well as pets.
 Remember, whenever you
 are clean up after your pet.
 Leave nothing on the beach but
 footprints applies to dogs too.
 There is no leash law on
 Sanibel but of course an ex-
 ception or liability on mail is
 better off when controlled with a
 leash.

BICYCLING

If you aren't used to a lot of
 bicycling, watch out on
 Sanibel. The extensive network
 of bike paths on the island is
 clearly marked along the edge
 of the road.

Caution on when driving
 near the bike path. A state law
 and city ordinance combine to
 prohibit parking or driving on
 the bike path. Speeds are not
 permitted on the bike path.
 Planning on spending some
 time on a bike to enjoy the
 island sun and sights? Make
 sure your vehicle is equipped
 with a 15 lb fire horn, good
 brakes and a light for night
 riding.

Under Florida law, bicycle
 riders have the same rights and
 responsibilities as motor vehicle
 drivers.
 Drive safely!

LIBRARIES

Sanibel Public Library
 at the intersection of Palm
 Ridge Road and Florence Drive
 472 3423
 On vacation until Oct. 1

Captiva Memorial Library
 Chasin and Wilm. Capiva 472
 2121
 Open Tuesdays, Thursdays
 and Fridays from 9 a.m. to 5
 p.m. Wednesday evenings from
 7 to 9 p.m. Saturdays from 9
 a.m. to noon.

BANKING

Bank of the Islands
 499 Parlinville Way 472 4141
 Hours:
 Monday through Thursday 9
 a.m. to 3 p.m. Drive-in window
 8:30 a.m. to 9 p.m.
 Fridays inside 9 a.m. to 2
 p.m. and 4 to 6 p.m. Drive-in
 window 8:30 a.m. to 9 p.m.
 Closed weekends

Bank of the Islands Branch
 Office
 Island Shopping Center, 546
 Parlinville Way 472 3773
 Hours:
 Monday through Thursday -- 9
 a.m. to 4 p.m.
 Fridays 9 a.m. to 3 p.m.
 Closed weekends

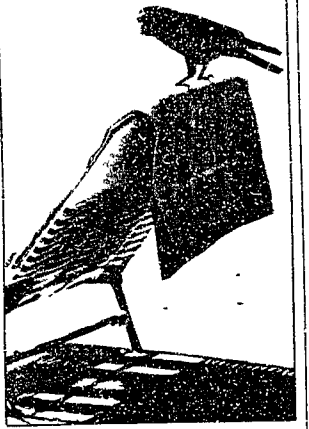
First Federal Savings and Loan
 Corner of Palm Ridge Road and
 Florence 472 1371
 Hours:
 Monday through Thursday 9
 a.m. to 4 p.m.
 Fridays 9 a.m. to 3 p.m.
 Closed weekends

SPEED LIMITS

There is a very good reason for
 the varying speed limits (30-50
 mph) along the Causeway. The
 slower speeds, preserve the
 bridge supports from strain and
 stress.
 This speed limit is strictly
 enforced in fact on a 24-hour
 basis by both the Sanibel Police
 Department and the Lee County
 Sheriff's Department.

CHAMBER OF COMMERCE VISITOR'S INFORMATION SERVICE

Sanibel Captive Chamber of
 Commerce
 Just off the Causeway on
 Causeway Road 472 1360
 Open Monday through
 Saturdays from 10 a.m. to 5 p.m.
 Sundays from 10 a.m. to 3 p.m.



OATERS

Feeding alligators anywhere
 within the Sanibel city limits is
 not only illegal (visitors are
 subject to a fine of up to \$500 or
 up to 60 days in jail or both) but
 can be extremely dangerous.
 Alligators can run up to 45

mph so if you are close enough
 to feed an alligator, he is close
 enough to feed on you.
 An alligator fed for fun loses
 his natural fear of humans and
 becomes a potential threat to
 children and pets.



Island Garage
 American & Foreign Car Repair
 24 HOUR WRECKER SERVICE
 (813) 472-4318
 GOODYEAR DEALER
 1609 Periwinkle Way
 Sanibel Island, Florida 33957
 Hours:
 8:30 Mon. thru Sat.

**ISLAND FINANCIAL
SERVICES, INC.**
 Provides on a year round basis:
 • ACCOUNTING
 • TAXES
 Pelican Place
 2440 Palm Ridge Road
 Sanibel, Florida 33957
 (813) 472-1439

Resort Wear
 Mexican Imports
 Gifts from
 26 Countries
 Antiques Toys
 Penny Candy
 Salmagund
 Prints
 HOURS 10-5
**THE
RED
PELICAN**
 SANIBEL ISLAND
 FLORIDA
 Next to Tarpon
 Bay Marina
 472-4449

Award winning in-depth reporting
 since 1961
The Sanibel Captiva Islander
 Name: _____
 Address: _____
 Local \$7 per year U.S.A. \$10 per year Foreign \$12 per year
 Mail to: The Sanibel Captiva Islander, P.O. Box 56, Sanibel Island, Fla. 33957

**CHONG
ON THREE TRIPS!**
 Sanibel River
 Wildlife Refuge • Buck Key
 Binoculars provided
 call 472 2818 for
 Reservations information

**Canoe
Adventures**
 with Bird Westall

Spend a week in solitary with someone you love... every year, forever.



A grand idea — sensibly priced. For
\$6,000* you and your loved one may
 own a luxurious beachfront
 condominium for your special week.
 And it's yours to enjoy every year...
 forever.

Interval ownership at Casa Ybel
 Resort, on Sanibel Island, allows you
 to match ownership of a fully
 furnished 2-bedroom, 2-bath
 vacation home to the specific week
 or weeks you desire.



You are invited to learn more
 about interval ownership at
 Casa Ybel...to visit our
 furnished models, and perhaps
 meet some of the owners. Our
 sales center is open every day...
 see us soon.

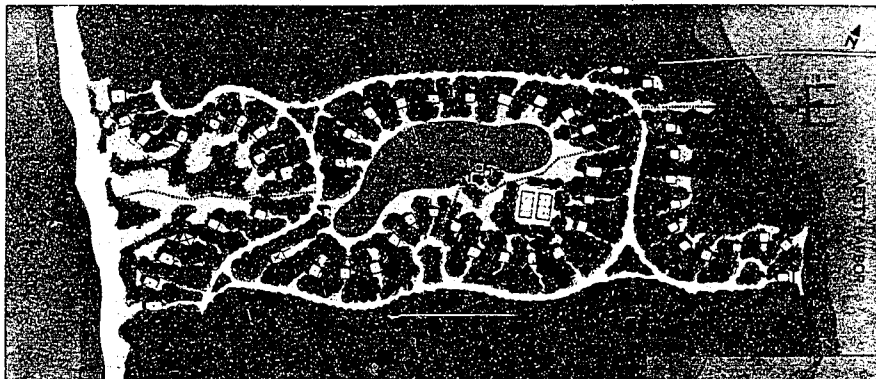
*Prices subject to change without notice



For the colorful details and hard facts about Interval Ownership at Casa Ybel Resort,
 write: Casa Ybel Resort & Club • P.O. Box 353
 Sanibel Island • Florida • 33957 or phone (813) 472-1531

Let's face it...

ISLANDS AREN'T FOR EVERYBODY.



It all depends on you. If you like your fun packaged and your idea of a great night out is a fancy restaurant or opening night at the theatre, then an island like North Captiva isn't for you.

But, if there's adventure in your soul, you relish your privacy and have a fervent desire to leave the hustle and hassle behind, then Safety Harbor Club on the out island of North Captiva could spell paradise for you.

Here's some information to help you make up your mind.

Can I get around by automobile?
Not exactly. Traffic within Safety Harbor Club will be limited. Most transportation will be by electric cart or bicycle.

Is there water on the island?
Yes. There are eight wells on the site itself and lines will be run throughout the area for owners' hook-ups.

Can I dock my boat?
Yes. A dock will be installed to provide tie-ups for boats of owners and guests. Fishing and fish-cleaning facilities will also be available.

How do I get there?
Access to North Captiva is strictly by boat or private aircraft. Embarkation points are either Pine Island or Captiva Island, each about five miles away.

How much will this cost me?
Prices on these unique homesites begin at \$54,900 with 30% financing available at an annual interest rate of 14 3/4%.

More questions? Call us for details.
We will be pleased to take you to Safety Harbor Club by boat any day of the week.



SAFETY HARBOR CLUB



EXCLUSIVE MARKETING BY
VIP REALTY GROUP, INC., REALTOR
(813) 472-5187
1509 PERIWINKLE WAY, SANIBEL, FL 33958
OPEN SEVEN DAYS A WEEK