



We're 20 years old!
Page 19

Island naturalists

Captiva

USPS 401-400
Captiva Public Library
Captiva, FL 33924
COMB



Page
= 14

The
**Sanibel
Captiva**

since 1961
Islander

Vol. 21 No. 45

Tuesday, November 10, 1981

One section 45 cents

**One week after bond defeat,
CEPD reaffirms renourishment**

By David Meardon

In the wake of last week's defeat of a \$9 million beach renourishment bond issue the Captiva Erosion Prevention District yesterday passed a resolution reaffirming beach renourishment as the most viable solution to erosion by the sea on Captiva's gulf coast.

The seven five-member board voted 3-1 in an emergency meeting to continue to seek the necessary licenses for a renourishment project and consider other alternatives. But it was clear that renourishment will be the number one concern with the board.

CEPD Chairman Richard Gutzen and newly elected board members Dwight Wilson and Lloyd Wright voted in favor of the resolution. Edward Olling voted against it. The fifth board member, John Oster, was not present.

Under Florida state law a bond issue can be put before the voters no more than twice a year. Last Tuesday the proposed renourishment project was narrowly defeated by four votes with 102 voting against the issue and 98 casting their ballots in favor.

"The vote does not alter the function or necessity of the board," Butze said, adding that "it still appears that beach courtment is the best solution we have. If we don't have renourishment, then we have nothing between us and the sea."

In the board election last week, Wilson captured 112 votes and Wright, with 105 votes, edged John Mound by two votes.

Of the 1,900 eligible voters on Captiva only 708 are registered and 200 voted in the bond issue.

"Those of us in favor did not do a suitable selling job and did not get enough people registered," Wright said. "Any future renourishment bond issue should clarify the actual cost to taxpayers," he added.

"I think we're getting carried away here and are trying to oust the people something they don't want," Olling said. Olling has been a vocal opponent of beach renourishment without additional measures such as jettes to ensure that a new beach would not erode with the next big storm.

"You can put sand on a beach and it can stay there for 10 or 20 years. But if you don't have something to hold it, it could be gone in a weekend," he said.

Olling suggested placing jettes from 500 to 1,000 feet offshore at half-mile intervals to induce sandbars to wash ashore.

But Dick Stevens, manager of the recently-completed South Seas renourishment project, said the sandbars offshore are not large enough for such a plan to work. About 23 Captiva residents attended the emergency meeting at the old fire station and were concerned with both the threat of the eroding sea and the looming costs it will take to protect their property.

"It is a quandary. The beaches here are being eroded and whether as humans we should try to step in and change mother

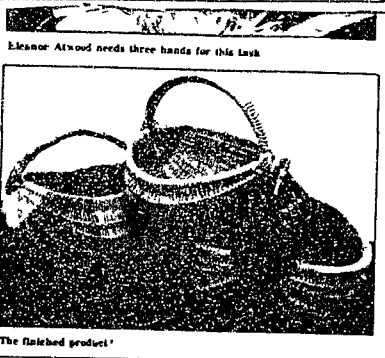
continued page 9



ed it in
andle
rocess
er the
form
in our
who

though
esler
quite a
start
were
askets
bring
esler

and at
he last
ours-
wa t
sicher



Eleanor Atwood needs three hands for this task

The finished product

**Schoolhouse
Gallery**

Carl G. Nelson

**Commission assigns
29 ROGO allocations**

By Barbara Brundage

Twenty-nine of the 60 dwelling units available in the final period of amended a 1981 Rate of Growth year were assigned by the Planning Commission in the first round of the allocation process Monday morning.

Five units went to multi-family projects that were judged to have no beneficial use. Shorewood (formerly Buttonwood), Porto Grassier and Ray's on a Ferry Landing projects each received one unit and James Evans Rabbit Road duplex development received two units in the no beneficial use category.

Twenty-three multi-family units were allotted to projects that qualified under the phased development priority by limiting the number of units to four or less for this ROGO year.

The three units remaining in the 1981 multi-family reserve of 31 will be allocated later by the application of ROGO a point system Commission Chairman Ann Wintertobham said.

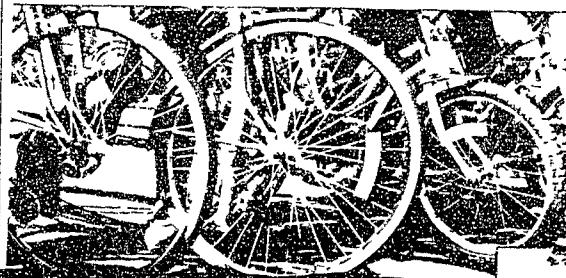
One single family unit stipulated to be added to the Below Market Rate Housing Program when it is finalized was allocated to the former Caspars-Stewart project that was recently taken over by Jack Salmer.

Applications for 140 multi-family units were received for November allocations. Planning Director Bruce Rogers who outlined the ground rules for the proceedings said 120 dwelling units already had been allocated in the March and July periods.

continued page 9

Around and About...

Stories and photos
by David Meardon



Top right: riders patiently await the start of the bikeathon. Above: a young cyclist happily pedals to the bike route.

Islanders support blood drive

Islanders donated 39 pints of blood during the Sanibel-Captiva Lion's Club blood drive last Thursday. I think the results are quite good. John Lusk, chairman of the club's blood drive, said.

It's a snap, said regular donor Gordon Kiddoo after enduring the short, painless procedure in the Edison Regional Blood Center's bloodmobile at Bailey's shopping center.

Fifty-five Islanders turned out to give blood but 15 were turned away after a careful screening by blood center officials. Donors were checked for their medical history, present state of health and recent travel history before they were cleared to give blood. The careful checking guards against possible infection of blood and also protects the donor. ERBC spokeswoman

Paula Sklodowski said.

For instance, a person who is suffering from a cold would be turned away because his blood would not be pure. Ms. Sklodowski explained. Also, a person who intended to climb ladders after donating blood would be refused because of possible temporary dizziness that follows the procedure she added.

As the season brings more visitors to Southwest Florida, the EPBL's need for blood grows. With three centers in Fort Myers, one in Port Charlotte and one bloodmobile, the blood center supplies five hospitals and two kidney dialysis centers in the region.

The center expects to process more than 17,000 pints of blood by the end of the year. Ms. Sklodowski said.



Nurse Mary Ann Schneider draws both blood and a smile from Gordon Kiddoo.

Bridge is back!

The tenth season of duplicate bridge play opened last Thursday at the Sanibel Community Association Center. Eleven players turned out to start a one-team, short-handed for the first session.

Duplicate bridge is much more serious and complicated than regular bridge. Helen Winterrowd, who along with her husband Joe starts the Island bridge games 10 years ago, said.

All those interested in playing duplicate bridge are welcome at the community association hall on Periwinkle Way every Thursday at 1:30 p.m. and Friday at 7:30 p.m.

If you don't have a partner, call Joe Winterrowd and he will arrange one for you. Cost of each session this season, which runs until May, is \$150.

Scores in this season's first Duplicate Bridge games on the Island last week are as follows:

Thursday Nov. 5	Three Tables	Friday Nov. 6	Nine Tables
1 Victoria Smith Helen Winterrowd	30+	1 North South	126+
2 Jean Scott Joe Winterrowd	27+	1 Esther and Harry Duncan	126
3 Louise Bach Fred Weymouth	25+	2 Marsha Kluow Fred Weymouth	125
		3 Harriet and Don MacKinnon	125
		4 East West	
		1 Betty Wakefield-Charlotte Helmann	116
		2 Donna and Robert Peters	125
		3 Ruth and Clarence Frank	119

A tisket, a tasket, an Appalachian basket



Jean Wilson unrolls reed, the first step in the basket weaving process.

Story and photos
by David Meardon

Then harca were sore and tired after five full hours of nimble work. But by the end of the day more than 40 Islanders had that many melon baskets soon to hold the fruits of their labor well on the way to completion last Friday.

The group made up the first of three basket weaving sessions that are part of this year's Community Courses program. Two more sessions are planned for this and next Friday. Last week a weaver fashioned an Appalachian-style melon basket under the careful instruction of Polly Matsumoto and Charlie E. and

Using reed imported from China via California, neophyte weavers first straightened the coiled reed, some wrapping it around themselves, and then soaked it in water to render it pliable.

After shaping a ribbed frame and handling the weavers began the long, arduous process of snaking the reed over and under the frame and the baskets slowly took form.

We probably won't be able to open our hands tomorrow, said Elsie Becker, who despite sore joints said, "This is fun."

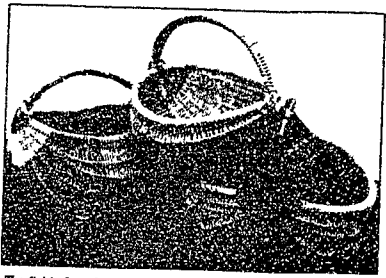
It's kind of hard on the fingers, though not as hard as rock shrimp, Lou Kessler said. While most of the group had quite a bit of homework on their hands (they start on a new basket next week) all were determined to finish their melon baskets before the next session. I'm going to bring my lunch in next week, Mrs. Kessler promised.

Next week's weavers will try their hand at a potato basket. A hen basket will be the last project.

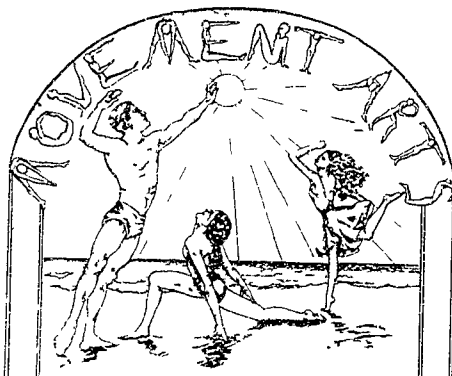
Response to the basket weaving course has been so great (15 people had to be wait-listed) that Evans hopes to offer another course in January or February.



Eleanor Alwood needs three hands for this task.



The finished product!



AEROBICS

Starts Tues 7:00 - 7:30 p.m.
Evenings Wed 7:30 - 8:00 p.m.
Sanibel Community Center
No. 1001 - 1002 - 1003 - 1004

YOGA

Starts Tues 10:30 a.m. - 11:00 a.m.
Sanibel Community Center
Evenings Wed 6:30 - 7:00 p.m.
Child Care Center of the 1st St.
November 21 - December 30 \$10.00

MODERN DANCE

Starts 10:00 - 11:30 a.m.
Sanibel Community Center
November 21 - December 28 \$10.00

MUSICAL WAVES

472-2811

Schoolhouse Gallery

Carl G. Nelson

"The Early Years"
1930-1965

An exhibit of paintings and drawings representative of various periods of the artist's productive earlier career, including a few superb examples from the private collection of Clarence and Fred Fox.

Exhibit continues through
November 30th

Carpon Bay Rd. Sanibel

Daily except Sunday 10-5
172-1193

Quote

Howe responds to government appraisal of property taxes

A copy of the following letter was given to The Islander for publication:

Gregory L. Miller
Governmental Analyst
Office of the Governor
Tallahassee, Fla.

Congratulations on your thought provoking letter of Oct. 20 that was published in our two local weeklies in response to Mrs. Shelton's inquiry to the Governor concerning the ad valorem real property tax levied by Florida's local governments.

Your appraisal of that anachronistic and much overworked tax as a rather complicated matter is indeed a massive understatement.

The prestigious Senate Ways and Means Committee for several years in its Florida Tax Handbook condemned the tax by asserting no brief statement of property tax procedure can list all possible variations in procedure. By a combination of Attorney General's Opinions, Departmental Regulation, court decisions and statutory law, property tax procedures have become so complex as to make widespread public understanding of the system almost impossible.

Despite the derogatory characterization of the main revenue source dished out by our Legislature to local governments, they have done little to provide a substitute type of

property tax or a broader range of income to fund essential local government services. To the contrary, they have shuffed off onto those bodies financial responsibility for such facilities as road maintenance and patrolling operation of the courts, regional water management planning, etc.

Our attention is invited to the recent book Financing Florida State Government by Howard P. Tuckman of Florida State University. Its chapters four and 21 are particularly worth reading. The former reports that the issues surrounding the taxation of property are essentially no different today than they were 50 years ago. Among the litany of such issues is the uniformity and objectivity in assessment practices that your letter mentioned.

Chapter 21 of that book offers two alternatives to the property tax. They are utilize other types of levies or limit local services. It points out the pros and cons of those choices. They are eye-openers.

It does not, however, suggest that to enhance the wealth and equitability of the existing tax the proliferation of exemptions from paying it should be pared.

Four years ago a whopping 42 percent of the value of Florida's property already was tax-free. Only God knows what that percentage will climb to when the full \$2,000 Homestead exemption and other special tax subsidies are enacted.

At the Oct. 8 Southwest Florida Legislative Delegation meetings I

suggested two alternatives to the ad valorem property tax. One was to authorize a broader array of revenue sources much like Mr. Tuckman's plan. The other was to remove the lack of uniformity and objectivity in the current unstable ad valorem base of the property tax. That can be achieved by shifting that base to a physical unit one that is utilized by more than half the state's revenue sources. It is also successfully used by Lee County's Iona McGrigor Fire Protection and Rescue Service District under authority of Chapter 75-421 of the Laws of Florida. The physical unit base considers the constant nature of lands and buildings rather than their relative dollar values.

A major but conceivable objection to the current administration of ANY form of property tax however is the failure of the state Legislature to provide specific and unequivocal guidelines to prevent the odious dual (or double) taxation practice.

That issue is the most divisive one that has counties and cities at each other's throats and pits taxpayers in the incorporated sections of the counties against their neighbors in the unincorporated areas.

Many desecrated and ineffective measures have been enacted over the past decade to resolve the problem. A possibly workable one is HB 809 that was introduced by Rep. Jim Watt in the 1981 session but died on the House Calendar. It prescribed that 15 selected county services commonly ren-

dered in unincorporated areas should be presumed to be provided especially for the benefit of the property residents of those areas and shall therefore be funded by those so benefited—except as may otherwise be arranged by an interlocal agreement between the affected county and city.

Your letter mentioned that your office is researching innovative reforms of Florida's tax structure. I shall look forward to reading them.

Contrary to your letter's allusion on Florida's Constitution and statutes have preempted the solution to the property tax dilemma to the Legislature.

The much vaunted Home Rule powers granted local governments by Florida's 1968 Constitutional amendments and implementing laws have proven largely illusory since those local governing bodies are still largely slavishly treated as helpless and witless wards of the State.

It is my fond hope however that after the 1982 Legislative Session has tucked away the mandated Reapportionment effort it will address with finally this festering local taxation problem. Otherwise I fear the threats of a Florida Proposition Number 13.

Kindly convey the above thoughts to the Governor and the leaders of our State Legislature.

Paul A. Howe
Sanibel

continued on next page

Festival promises bigger, better

Nearly double the number of 1980 exhibitors have entered this year's Second Annual Arts and Crafts Festival promising to make the affair bigger and better than ever.

Cosponsored by the Sanibel Island Group for the Arts and the Board of the Islands festival comes to the Sanibel Community Center on Saturday, Nov. 28 from 10 a.m. to 6 p.m.

BIG Arts celebrates the return to Sanibel of Polly Macumoto, the group's first program chairman by announcing that she has consented to serve as this year's festival chairman.

Working with Polly are Dorey Liber and Barbara Hill assisted by BIG Arts Hospitality Chairman Deane Kreager and press relations writers Jim Levy and Charlotte Heurman.

Last year's festival favorites brought back by popular demand are the Littlebits bluegrass band and the food tent with gourmet treats plus wine, beer, soda and coffee.

Kate Aume is coordinating a raffle of special arts and crafts items that have been donated by local artists. Paving for the

festival will be directed by Sam Hill and Kevin Kraspin.

Approximately 40 exhibits of arts and crafts including wood carving, sculpture (clay, fabric, paper, metal), textiles (strapart, original, crewel), jewelry, graphics, photography, stained glass, booklets, painting, pottery and books will be exhibited both in the big tent and under the palm trees on the east side of the Community Center. Items will range in size from tiny porcelain figurines to tremendous modern oils.

The exhibiting artisans are Island residents or special guests invited by the Festival Committee for their unusual work.

Early Christmas shoppers will find a rich selection of one-of-a-kind gifts all made by hand and displayed by the artists and craftsmen in person.

BIG Arts and the Bank of the Islands are doing all they can to make the Second Annual Arts and Crafts Festival a show of high quality and a community event of which the Islands can be proud.

Admission is \$1 for the daylong show which includes the concert by the Littlebits bluegrass band.

continued

Thanks, Island Moped!

A copy of the following letter was given to The Islander for publication:

Island Moped
Sanibel Florida
Dear Mrs. Woods:

Thank you for sending Mark and Brad to help us learn about our bicycles. We appreciate their help, time and patience.

Thanks again
The Sanibel Community Church Youth Club

Good luck, Godspeed to LPN

Letter to the Editor
A Good Luck Farewell

We learned today that Cecilia Kelly is leaving Sanibel. Mrs. Kelly is well known here to all who have needed her services as an LPN. She was much more than a nurse and we do so hope comfort and an easier time of illness. She is a remarkable woman and we do not know her shall miss her activity. It is not just a loss to her friends but to Sanibel also.

Good luck and Godspeed Cecilia!
John & Marty Vreeman and Family
Sanibel

'Hurrah,' Skiffington

To the Editor
The Islander

The Islander more than made up for its lack of coverage of the Captiva beach reappointment referendum by giving space in its Letters to the Editor column to Captiva's own Last Hurrah's man. Take a bow, J. Wesley Skiffington III!
Gloria Berry
Captiva



Unquote

TUTTLES SEAHORSE SHELL SHOP
wonder full IS
342 Periwinkle Sanibel Island Fla
The Lighthouse End Of The Island
VISA

A COMPLETE ART SERVICE
THE SKETCH PAD
call days 472-6865

ISLAND GIFTS
SHELLS • GIFTS • T-SHIRTS
1605 Periwinkle Way
Sanibel Island Fla 33957
(813) 472-4318
9:30 Monday-Saturday
Sometimes on Sunday

Quimby's
Touch a Friend!
Halima Christmas cards—a nice way to stay in touch with old friends. Tell them how you miss them. You still care. And Christmas cards can build new friendships too. They can say "I'm glad I met you. Here's a beautiful Christmas!"
Old friends, new friends too. They're worth remembering especially at Christmas. Hallmark Christmas cards. When you care enough to send the very best.
1626 Periwinkle Way
in the Heart of the Island
472-2955

ONLY \$124 TO NEW YORK OR WASHINGTON?
THAT'S RIGHT! GUARANTEED THROUGH JANUARY 31, 1982 ON TICKETS PURCHASED BY DECEMBER 8, 1981!
TEMPUS FUGIT, RALPH, BETTER CALL MAUREEN
Maureen's Travel, Inc.
2413 Palm Ridge Road
472-2117 Mon. - Fri 9-5
Evenings - Weekends 472-1856

Sanibel Captiva Islander
EDITOR: Cindy Chalmers
BUSINESS MANAGER: Peter Cloud
PHOTOGRAPHY EDITOR: David Meardon
REPORTERS: Barbara Brundage, Mike Furey, Maggie Greenberg
ADVERTISING SALES: Thomas F. Humann Jr.
PEOPLE WE CAN'T DO WITHOUT: Paula Acosta, Paul Howe, Bette Linggow
ADVERTISING: All class rates are \$1 for first 25 words or less. 1¢ for 26 to 50 words and 2¢ for each column inch over 50 words. Add 10¢ for 51 added for billing except for column inches over 50 words. No charges for Employment or Lost and Found ads. Mail ads to P.O. Box 56, Sanibel Island, Florida 33957 or deliver to 2353 Periwinkle Way, Suite 101, Gulf of Mexico Plaza. Class tied deadline: noon Friday.
DEADLINES: Friday 5 p.m., Friday noon, Thursday 5 p.m.
MAILING ADDRESS: Sanibel Captiva Islander, P.O. Box 56, Sanibel Island, Florida 33957.
LOCATION: 2353 Periwinkle Way, Suite 101, Gulf of Mexico Plaza, Sanibel Island.
Sanibel Captiva Islander (USPS 481-400)
Newstand Price: 15 cents
1st Class Subscription: \$7 per year
USA Subscriptions: \$10 per year
Foreign: \$12 per year
Second class postage permit paid for at Sanibel Island, Fla. 33957. Postmaster: please send Form 3579 and change of address to P.O. Box 56, Sanibel Island, Fla. 33957.

Island life at its best
Lovely Gulf view residence on top floor of Sanibel Mesta Condominium has two bedrooms and two baths. Features attractive furniture, enclosed garage and ample storage at ground level. Tennis court and pool of course. Offered completely furnished at \$190,000.
Priscilla Marpley REALTY, INC.
MAIN OFFICE - P.O. Box 47 • Periwinkle Way • Sanibel Island, FL 33957 • 472-1111
BRANCH OFFICE - Casuarina Road • Sanibel Island, FL • 472-2111
CAPTIVA OFFICE - Andy Rowe Lane • Captiva, FL • 472-5111
DETAILS OFFICE - Casuarina Road • Sanibel Island, FL • 472-4115

ASK FOR QUALITY COLOR PROCESSING BY KODAK
Bring us your KODAK Slide, Movie, and Print Film for prompt, quality processing by Kodak.
We also offer Kodak Color Reprint, Prints-from-Slides, Copyprint, and Enlargement services.
photo sanibel
1771 Periwinkle Way in the heart of a Beach Community of 1 phone 472-1086

Buntrock, Jenks agree to vegetation buffer specifications

John Buntrock and Bert Jenks who in partnership with Banks Properties own Sanibel Plaza shopping center have agreed to begin in one month the installation of a vegetation buffer along property lines of the shopping center that will meet city requirements for the same.

The request for a buffer planted last summer was not acceptable as a screen for several lots stored in the shopping center parking lot, vegetation on Committee Member George Christensen reported to the City Council Inspector Dick Baker.

Last May the City Council made the installation of a suitable buffer a condition of the issuance of an occupational license for Buntrock and Jenks to conduct their real estate business.

Sanibel Plaza is the former W. E. T. building in the shopping center.

At that time the council also put the two on notice that before the license would be renewed at the end of September the council would review the vegetation specifications.

Baker told the council last Tuesday that the occupational license of Joan M. Good and John Knuff real estate brokers who own Sanibel Plaza, really a Sanibel Plaza office as well as Jenks license, had not yet been issued. The license will be issued pending Buntrock and Jenks approval of an acceptable plan for the vegetation buffer, Baker said.

Proper punitive action would have been for the city to pull the license of the shopping center, Buntrock said.

City Attorney Neal Bowen agreed after he established that the partnership of Buntrock, Banks and Jenks and not Sanibel Plaza was the owner of record of Sanibel Plaza.

MUNICIPAL RECORDS

By Barbara Brundage

Final decisions scheduled Dec. 15 for specific amendment requests

The city Council will make a final decision Dec. 15 on three specific amendment requests heard or first reading last Tuesday.

Raymond and Edwina Vreath want to add an existing duplex they own with another couple down the middle to simplify its use in the future.

By using the zero lot line concept two 8,000-square-foot lots could be created within one of the duplexes on each.

The fact that the lots are smaller than the minimum 10,000 square feet CLUP requires presented problems to Mayor Duane White.

Zero lot line was originally intended only for use in project developments where common open space would make up the difference between the allowed 7,500-foot lots and the minimum footage. White said.

Assistant Planner Ken Pfister said a 3,000-foot road easement in front of the property probably would never be utilized.

Additional land is also available adjacent to the Vreath's property, he added.

A second reading and final action is scheduled at the Dec. 15 council meeting.

The council agreed to let bygones be bygones after a half-hour discussion of the history of Robert Sagers' six-year struggle to convert his single family home to a duplex.

At the Oct. 26 meeting the Planning Commission denied Sagers' request for a specific amendment to permit two additional units to the house on East Gulf Drive in The Colony Resort.

The line that separates resort housing from residential district in The Colony passes through the middle of Sagers' property.

If density for resort housing were used as the criteria the property would be allowed two building units. On that basis the commissioners offered to recommend per-

Increase planned for McGregor elevation

The elevation of McGregor Boulevard between the Causeway toll booth and County Road 800 will gradually be increased from 64 feet at the toll booth to eight feet at the intersection, according to Project Engineer Frank Trice of Gee and Jenks.

"Sanibel Assistant City Manager Gary Price reported to the council last week that less than 100 feet from the toll booth overhanging the road elevation will be increased 1.68 inches to 6.62 feet.

The City Council has recommended to Lee County that McGregor Boulevard be elevated to eight feet at the Causeway entrance to counteract traditional flooding.

Price directed by the council to research the elevations on the Sanibel Causeway said.

Howard Needles Tammen & Bergendoff found during a bridge inspection last year that elevations of the Causeway islands are a uniform 6.38 feet at mean sea level. The height of the road is 6.48 feet at the toll booth and six feet 200 feet inland.

Manchester, Searing to step down from commission

Don Manchester who has served four years on Sanibel's Planning Commission has resigned effective Dec. 31 when his term expires.

John Searing who will complete his first term on the commission at the end of this year has chosen not to seek reappointment.

Searing said last week he has found the subjectivity of the ROGQ allocation process distressing.

In a letter to the City Council Manchester said his planned absence from the island during the summer would not permit him to serve effectively on the commission. The council accepted his resignation with regret.

Mayor Duane White said appointments will be made in December to afford the new members an opportunity to learn the ropes before officially assuming their posts Jan. 1, 1982.

Councilmen were asked to be prepared to present resumes of candidates' credentials in advance.

Sanibel residents who volunteer their services will also be considered, White said.

Moratorium continuance approved

An ordinance providing for the temporary continuance of the moratorium on commercial development on Sanibel Island, Feb. 1, 1981 or until city adopts revisions to the municipal code of its Comprehensive Land Use Plan was approved by the City Council on a second reading last Tuesday.

The ordinance is an amended version of one first adopted in October 1980.

The principal difference is the addition of a more liberal method for applicants to seek relief from the hanging ban.

City Attorney Neal Bowen said the District Court of Appeals ruling in the Buntrock case is long overdue.

\$39,965 contract awarded for chamber restrooms

Lomer & Moore Sanibel building contractors have been awarded the contract to build public restrooms at the rear of the Chamber of Commerce Information Center on Causeway Road.

The firm bid of \$39,965 was the lowest of four received and gained City Council approval last week.

Work on the restrooms will begin as soon as the contracts are signed, City Manager Bernie Murphy told the council Feb. 1 is the expected completion date.

Construction will not interfere with the use of the public restrooms in the chamber building that will be replaced by the new structure, Murphy said.

The city is mandated to provide the restrooms for public use under terms of the Farmers Home Administration loan used to purchase the 28.2 acres of land on both sides of Causeway Road destined for development for low intensity recreational use.

Levy named to Vegetation Committee

James Levy, a retired businessman who is publicity chairman for the Barrier Islands Group for the Arts has been appointed to the city's Vegetation Committee by the City Council.

Vegetation Committee Chairman Dr. Bill Walsh recommended Levy's appointment and said with his background Levy would be able to make a substantial contribution to the committee's educational campaign to promote the control of melaleucas on the island.

The council accepted with regret John H. Holmes' resignation from the Code Enforcement Board.

Mrs. Holmes cited pressure of business as the reason for retiring from the board at the end of her one-year term.

She assured the council she would be willing to serve until a suitable replacement is found.

continued on next page

MUNICIPAL RECORDS continued

Request for home forward of CCSL sent back to Planning Commission

On Oct. 26 the Planning Commission split on a 2-2 tie vote and failed to come up with a recommendation for Albert and Jean Chakmak's request for a specific amendment to build a single-family home forward of the Coastal Construction Setback Line near Blind Pass.

Last Tuesday the City Council refused to act on the request without guidance from the Planning Commission.

Councilman Francis Bailey's motion to remand the request back to the commission for a recommendation was passed by a 5-0 vote of the council.

Attorney Beverly Myers representing the Chakmaks acknowledged she had waived her right to wait for a hearing before a full commission before appealing to the council.

We are doing everything we can to work things out with the city, Myers said. Otherwise the Chakmaks' only alternative is to go to court.

In 1980 before her marriage Mrs. Chakmak sought relief from the city for a request to build a home there seaward of the CCSL, she denied Myers said.

At the time Mrs. Chakmak did not own the property but since then has acquired it, Myers said.

I would call that a self-imposed hardship, Councilman Fred Vallin said.

The ISLANDER Tuesday, November 10, 1981

Council decides against renewal of option for Armstrong property

The city of Sanibel will not renew its option to purchase the Armstrong property on Casaibel Road that expires Nov. 15.

Instead the City Council instructed City Manager Bernice Murphy to request the right of first refusal from the owner, Reisa Arms, Inc.

The 8.5-acre tract one time the prime site for the new City Hall has been under consideration as a possible location for below market rate housing.

But the city has not yet finalized a program to provide moderate cost housing for island residents, Councilman Fred Vallin chairman of the city's below market rate housing committee reminded the council last week.

We're so far out of synch at this point from being ready to acquire property that I think we should let it slide, Vallin said.

Hopeful the Armstrong property may still be available later on.

City Manager Bernice Murphy said he was not sure whether Mrs. Armstrong would extend the option and in any event would want more money to find the deal.

It was council consensus at that time that refusal would serve the same purpose.

An estimate outlining guidelines for a city financed housing foundation to fund a BMRH program is ready for council and Planning Commission secretary V. A. said.

The council has scheduled a joint workshop with the Planning Commission for 3 p.m. Wednesday, Dec. 16 at MacKenzie Hall to discuss the BMRH committee proposal.

ARTISAN SHOP
NUTMEG VILLAGE
2807 West Gulf Drive
Sanibel Florida 33957

Exclusively American made Designer Gifts and Paintings Featuring Florida Artists and Craftsmen

Open 10 A.M. to 5 P.M., Mon-Sat

The Tree House Gift Shop

Captiva Island

The Most Beautiful Shops on the Islands

Open 10-3
7 days a week

Items from South Seas, Thailand

The Bronx Bag

KENNINGTON SHIRTS
in soft velours,
KENNINGTON SWEATERS
in fall colors!

Periwinkle Place Shopping Center
472-1171
Closed Sunday



Gulfside Place
The Ultimate Sanibel Address

Gulfside Place is the ultimate in luxurious island living. The splendid 2 and 3 bedroom suites all enjoy a spectacular view of the Gulf of Mexico and miles of pure white beaches.

Inside the gracious residences you will find lush acreage on each location, a terrace from the wide screened porch with a louver ceiling fans, marble bathrooms (master bathroom with hot tub whirlpool) to the eastward many kitchens with handsome wood cabinets, terraces, a bar/breakfast nook, a clean, bright and modern pool with much more.

Amenities include a lighted tennis courts, two large heated swimming pools, 2000 sq. ft. beach access, sauna, shuffleboard and a very luxurious appointed clubhouse.

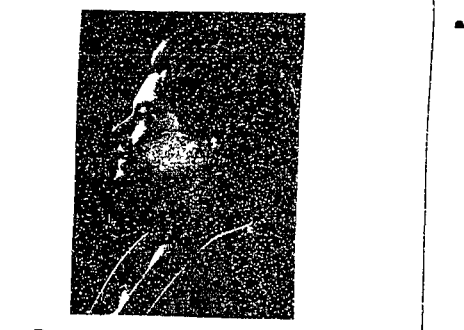
Gulfside Place — the ultimate condominium on Sanibel Island, exclusively listed by our company.

Two-bedroom Garden Suite	\$345,000
Two-bedroom Penthouse Suite	\$450,000
Three-bedroom Penthouse Suite	\$465,000

P.O. Box C • 10-3 Periwinkle Way • Sanibel Florida 33957 • (813) 422-3165

Restor

Gulfside Realty Inc.



Barrier Island Group for the Arts
Presents

Judith Kennedy
Soprano

William Blum at the piano

Sunday, November 15 at 8 p.m.
Sanibel Community Center

Admission \$5.00

Tickets available at Schoolhouse Gallery, MacIntosh Books, B Hive Photographers' Gallery, Art Fac, and Tree House Gifts on Captiva

Commercial development ordinance pinpoints problems

By Barbara Brandauer
 Nine critical problem areas in the proposed new plan for future commercial development on Sanibel were pinpointed by Associate City Planner Bob Duane last Wednesday at the first public airing of the document that will implement the plan.
 Duane who authored the 37-page general amendment ordinance told the City Council and four members of the Planning Commission present at a joint workshop that the new plan represents the largest single revision since the Comprehensive Land Use Plan was adopted and said it will have a tremendous impact on the future of the city.

The proposed general amendment is the culmination of more than a year of study by the city planning staff, the Planning Commission the City Council and private citizens who participated in surveys conducted by Barton Aschman Associates the city's outside consultants.
 Commercial market and land use analyses revealed that commercially zoned land on Sanibel now is far in excess of the

perceived need for commercial development in the future Duane said.
 One of the basic issues to be decided is what kind of community Sanibel residents want Duane stressed.
 In the four-hour session last week the council conceptually accepted nine proposed provisions contained in the ordinance that will be discussed in detail in further meetings.
 Main tenets of the plan approved in principle by the council that will be subjects of future debate call for:
 1 Alternative uses other than retail for commercially zoned land by allowing higher intensity for residential and office use.
 2 Changes in site planning regulations including the requirement of a 20-foot vegetation buffer along Periwinkle Way.
 3 A "Floating Zone" that would allow subject to Planning Commission review non-retail non-office uses in areas where not specifically permitted.
 4 A mix of residential and commercial in a commercial district by reducing the amount of commercial or office use on the

sites by 500 square feet for each residential unit after the first and for as many as four per acre.
 5 Preferential treatment or waiving of ROGO as incentive for alternative residential units.
 6 Recognition of the adverse impact of the created increase in density estimated to be as much as 300 residential units and how to recover these units in other categories.
 7 Consideration of the outlook for non-conforming (lawfully existing) commercial property for expansion and replacement if damaged more than 50 percent.
 8 Introduction of a new development intensity map that establishes three commercial districts island wide and:
 9 A requirement that shopping centers of more than 12,000 square feet submit a market analysis to demonstrate demand and show that the project will not have an adverse impact on the community.
 Duane asserted that the new commercial development plan provides a variety of alternatives to retail development and a more specific set of performance standards tailored to community needs.
 It outlines land uses by right and in addition defines a variety of "conditional uses that will be reviewed by the Planning Commission.
 Duane listed possible defects in the proposal including its failure to reduce the amount of commercial use and to simplify the development code which will still require staff assistance in interpretation.
 But the proposed changes to the commercial element of CLUP encompasses provisions that will best promote the planning objectives for Sanibel and are reasonable in their application to real property Duane maintained.
 The council is seeking public input on the proposal at its next workshop Councilmen expressed disappointment that only one resident was present at last week's session, but City Manager Bertie Murphy assured them the special workshop had been properly advertised and noticed.

CEPD ...from page 1

nature's work, I don't know," said one Captiva resident who asked not to be named.
 "One of the oldest residents on the Island told me that if this (land lease) passed, and his taxes went up he would have to leave after over 60 years on the Island. That was the straw that tilted me against this particular proposal," the resident added. "I don't think a small population like this can support a 20 million bond issue."
 "It has been said that only a fool builds on the beach," said Helen Hardy a Captiva resident for 23 years who said she opposed picking up the cost of reencourishment of her neighbor's property.
 But she maintained, however, that reencourishment would benefit all Captivas by protecting the shoreline road and upping property values.
 "It is a hard fact of life that it may come to be that a lot of people who are living on the island now should get off," Butte said. "If they cannot afford it (the cost of protecting their property), then they're going to have to sell."

ROGO allocations assigned ...from page 1

"Of these more than 100 are single-family units, which exhausts that reserve for this year," Rogers said. "Fourteen multi-family units have been allocated which leaves 31 that must be assigned to make up the 45 guaranteed for the year."
 The City Council last Tuesday voted not to carry over to 1982 the 20 units in the Besow Market Rate Housing reserve and authorized the commission to use them at its discretion.
 "This means you can add them, to either multi-family or single-family as you see fit," Rogers told the commissioners Monday.
 Under the rules you have no obligation to allocate any single-family units. He added that it was commission consensus early in Monday's initial session that the 19 BMRH units remaining should be assigned to single-family applications with no beneficial use.
 "I think that is the only equitable way to do it," Commissioner Bill Hagerup said.
 Chairman Winterbotham ruled that the 41 applicants for single-family units com-

peting for 28 allocations remaining would be scored under the point system before the commission addresses the problem of allocating the three multi-family units remaining in that reserve.
 Nine projects all with beneficial use will be in the competition.
 Winterbotham said the commissioners would work no later than 4 p.m. Monday and if necessary reconvene at 9 a.m. this morning to complete the job.

ACTION TV RENTALS ACTION TV

RENT TO OWN
 NEW COLOR TV'S MICRO WAVES WASHERS & DRYERS. STRICTLY WEEKLY RATES. Service included. Rent as low as \$10.00/week. Delivered in factory. We now have clean used units for sale. No credit check. Low down payment.

694-8633
NO CREDIT NEEDED
 Factory Trained Professional Service
ACTION TV RENTALS
 3835 Palm Beach Blvd.
 Fort Myers, FL 33904

ACTION TV RENTALS ACTION TV

THE SANIBEL REALTY

PROPERTY APPRAISALS
 Residential Commercial Investment
 Prompt Reasonable Service
 (Just East of Bank of the Islands)
 1633 A Periwinkle Way
 Sanibel Island Florida 33957

YOUR DEALER FOR ALL SEASONS' GALEANA
 CHEVROLET-PLYMOUTH INC.

SATURDAY OPENING SPECIAL
 FREE OIL CHANGE - 9 A.M. to 3 P.M.
 Saturdays Only With Coupon
 Offer Expires November 14, 1981

WE SERVICE ALL CHRYSLER PRODUCTS
 • CERTIFIED MECHANICS
 • State Facility Service Mgr.
 Service Hours 9:30 AM - 5:00 PM
 Mon - Fri

YOUR DEALER FOR ALL SEASONS' GALEANA
 CHEVROLET-PLYMOUTH INC.
 334-1324

DEEP SEA FISHING
 Party Boat
"LADY ESTERO"
 Charter Boats
"INDEPENDENCE" - "ANGIE-DON"
 From
 Gulf Star Marina
 Fort Myers Beach
 463-2224 Evos. 481-6581

The Sweat Shop
 T-SHIRTS SWEAT SHIRTS FASHION TOPS
 18 Periwinkle Place Sanibel Island Florida 33957
 (813) 472-2392

Island Garage
 American & Foreign Car Repair
 24 HOUR WRECKER SERVICE
 (813) 472-4318
GOODYEAR
 DEALER
 1609 Periwinkle Way
 Sanibel Island Fla. 33957 8:5 Mon 11:15 Sat

Available in Sanibel, Captiva, and other islands.

Caribe BEACH RESORT
Gulf Front
 on beautiful Sanibel Island
 See Us before you become an interval owner!

OUR PRIVATE VACATION CLUB MEMBERSHIP
 offers the same advantages as interval ownership with the additional major advantages of **LOWER COST, TOTAL FLEXIBILITY!**

Available for a limited time only!
Full Week Charter Memberships
 as low as \$3,000.00

Appointments requested but not required. Phone 472-6220
 2609 West Coast Drive
 Sanibel, Florida

Announced with the world's largest vacation exchange program, Over 500 resorts worldwide are available to our members.

For This Season. For This Year Or For A Lifetime We Offer Only The Best...

Take advantage of professional management and care of your investment in real estate. Let us help you with the purchase, sale, lease, financing, and management of your property. We will assist you in finding the perfect investment and help you with the financing. We will also assist you in the sale of your property. We will also assist you in the financing of your property. We will also assist you in the management of your property.

Gulfside Realty Inc.
 P.O. Box 2
 1042 Periwinkle Way
 Sanibel Island Florida 33957
 (813) 472-1155
 REALTOR

HORN OF PLENTY
 Add a lovely touch to your Florida home with these traditional symbols of Thanksgiving

The Wicked Wicker Woman has a nice selection of sizes. Some are filled with festive silk and dried arrangements... others are waiting for you to fill them yourself.

3319 Cleveland Avenue Fort Myers 936-8916

NOW OPEN

A Touch of Class

Custom Dry Cleaners
 Shirt Laundry
 Next Day Service (most items)
 Drapery Specialists with Take down and Rehang Services
 Alterations on premises by Florene Higgins
 Shoe Repair by Rodino's

Sanibel Center Building
 1711 Periwinkle Way
 Sanibel
 472-5500

Mid-Island Real Estate Inc.

Phone (813) 472-1559
 Corner of Wulfert & Sanibel Captiva Roads
 5301 Sanibel - Captiva Road

REGULAR HOURS RESUMED
 9 a.m. to 4 p.m., Monday through Friday

GULF FRONT HOUSE
 Chateaux-sur-Mer, 3 bedrooms, 2 baths \$415,000 terms

GULF FRONT LOT
 Chateaux-sur-Mer, 100 x 424 \$275,000 terms

CANAL FRONT HOME
 Sanibel Isles, 2 bedrooms 2 baths, double lot unique location & view \$250,000

ROY E. BAZIRE
 LICENSED REAL ESTATE BROKER

ASSOCIATES: Edmond G. Konrad, Eva Pearl Cook, Edmund O. "Ed" List, Claire T. Wolter, Elizabeth B. Yancey



On the water

By Captain Mike Fuery

The past several warty days have made it difficult for any of us to successfully chase those delicious Spanish mackerel but in the place I have come to - more resilient blue fish. This week let's look at how and where to go after blue fish.

Not long ago some folks came down to the boat asking if they could get a charter to go after some blue fish. Seems they were from New Jersey and the previous week they had been out on a boat where they said the fish were running from 10 to 15 pounds. That a handful of fish because the blues are famous for being hard strikers that put on a tough battle both down deep and on the surface too.

Unfortunately our average blues are not nearly the size we have a fall and high spring migration of these school fish but on the average ours run in the two to four-pound class. That seems like a big let-down after listening to those stories of what was in northern waters. But just the same those that you will find around our shorelines for the next few weeks will fat even the best rods and probably overtax some unsuspecting fishermen.

One thing you have to learn about blue fishing is that you don't always get the full-size diving birds to pinpoint where the fish are schooling. And you don't always have to rent or bring your own boat to get in on the action. Blues work closely to the shore many times but again you can't count on the birds telling you where to fish as they do with the mackerel. Little tunny and other migratory fish we see at this time of the year.

Blue fish incidentally they are more gray than blue, move around under the surface, slashing at schools of small

baifish. When the mackerel drive the bait to the surface and the birds move in the blues sometimes break surface. So for that reason you are going to have to do some looking unless you have a hot tip on where the fish might be hitting. Before we get into where to fish, you might check your tackle to see if you have what is most likely to bring the fish into the boat.

First, use wire leader material. I've got a knuckle on my left hand that exists to the fact that they have a mouthful of efficient teeth.

Don't be afraid of the fish. The point is they can't cut through common mono leader and when you trail a lure that is worth upwards of two dollars and the cost starts to climb when the blues continually cut you off.

Tight rods - on overkill but I like 1 1/2 to 20-pound line. If you use 12-pound line you are going to get some higher than red nazy cut-offs.

A four-pound blue going 20 mph in the opposite direction of your boat can snap a line with very little effort. You can be a sportsman and all that stuff and work 5-pound line but if you want to come home with some fish and not a 26-dollar lure bill, lean toward the 20 size. Just about any type of fishing rig will work as long as it will hold about 30 yards of the heavier line. Casting rigs are great for this job.

Where to find the blues? They tend to school and often hang the same general area for a month or two. One good place where they show each year is to the east of the Sanibel Causeway.

Rebound anglers will latch onto a few but the trolling

boaters will do the best. Watch for birds and you might grab a mackerel or two in the process. Give an area a good half hour of serious work before giving up and moving on. Try around the public fishing pier too.

The Boca Grande Bar some 20 miles north is a good run but also productive. Work the north side of the pass where the water goes from about four feet to 40.

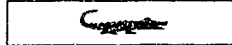
You also want to work around the outside bars of Redfish and Cayuga passes. Huge schools of blues will sometimes be on the inside of the Sanibel Causeway too.

As for lures, I would suggest working a combination of two and then switch to all the rods to the one that works best. On one trolling rod use a yellow jig of about half an ounce. Buy a while one of the same size and try that too. On the other rod use a silver spoon. Select one in the 1-6 to 30 range. All the tackle shops on the Islands are good about helping and can help you make the choice based on what is being taken.

There are several good recipes around for the blues. The meal is darker until it starts to cook then turns light and is of course very good.

I've told you the how and the where and the what to use now the rest is up to you. See you out there.

For charter information call Capt. Fuery at 472-3459



Shelling Tips

By Captain Mike Fuery

Do shells bite? No. But shelling guides might after they hear that question a million times. Will we see any sharks if we go out shelling? Not unless you check out the pool bar about 4:30 on a Saturday afternoon.

Shelling questers never seem to stop cooing and I am often amazed that what I thought was rather basic is not at all to many new shellers and in fact turns out to be a most worrisome thing for some people.

Some new shellers think looking for shells is something like guling on a rattlesnake hunt. As for our local shells there's not much to worry about - unless you are like one of my group this past summer who picked up a little stingray she thought was a sand dollar.

Overall, don't worry. I know that some women wouldn't touch anything that looks like it might be of danger. I don't blame them. But the guys get a little jittery too.

A couple of years ago I had a rather famous actor out on my boat for a morning of shelling. I remember it was New Years Day morning and cold as hell. On top of that, it was very low tides which make for great shelling but rotten boating.

This fellow who you would recognize with little problem since he has done several well known TV commercials stood about 6'3". He was well built and handsome.

The only trouble was he was afraid to get out of the boat. It's true. His wife and I did all the shelling that morning because he was afraid something in the water was going to get him.

To a lesser extent many first time shellers are a bit afraid to walk in the water in front of their motels or condos or walk the beach along the Causeway.

With the cooler weather the two biggest hazards jellyfish and stingrays will be moving on out. Not to worry if you do worry, you won't find any shells. How about those sharks? They got anyone yet? Like I said, more young folks have been hurt while sitting or a bar stool overlooking the pool than have been hurt in our waters.

I recall a single shark attack reported some 50 years ago but research done by a friend of mine never confirmed it was a shark. The person incidentally wasn't killed. Not to worry again.

If your number is up you have a better chance of being run over and killed in Baitley's General Store by a tourist hell bent for the beer cooler.

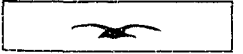
What will I do about getting sunburned? Well, there are a couple of things to remember about the sun. The first is always (and I mean always) have a sun

block on your skin. I can't recall the number of people I've seen who were burned to a glowing red condition. That frankly is embarrassing because it points directly to stupidity.

Can you imagine clipping your dog and making him lie in the sun for three hours? Or how about taking a freckle skinned 3-year-old and letting her sleep in the sun for a couple of hours? Can you imagine what it would do to the skin? Well, I've seen them both. The first was a poodle, I don't even want to tell you what the little girl went through. Island danger. By far, it is the sun even when it's cloudy. Watch out for what it can do.

The object is to have a good time. Take in the sunsets the wide bright blue skies and maybe even a few finza shells. But the most important thing is to enjoy the beaches for what they are. Good shelling this week.

Capt. Mike Fuery offers daily shelling and fishing trips. Call 472-3459 for information.



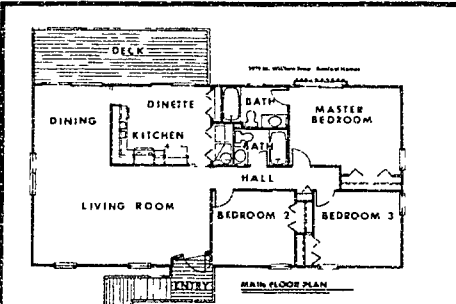
BLACK BEAN
 205 PERMANENT WAY SANibel Island
 MEMBER A.S.I.A.



JAMES A. MOSELEY, M.D.
FAMILY PRACTICE
 PELICAN PLACE
 2440 Palm Ridge Road

Hospital admitting privileges at Cape Coral Hospital and Lee County Memorial Hospital

Accepting New Patients
 HOURS BY APPOINTMENT
 24 Hour Emergency Care 472-6249



THE SEABREEZE

Presently, we are constructing a Seabreeze on a customer's lot. If you'd like to consider this lot, 3 bedrooms, 2 bath, elevated home for your island needs, call or stop at our office for further details.

The basic Seabreeze including lower level slab and enclosure is priced at \$65,000 on your lot. If you want a house a builder for your Sanibel home, check the many quality features which are standard in our designs.

1020 W. 4th St. Bldg. 1
 The Dunes
 Model Home Exhibits
 1010 N. 1st St.
 (813) 472-2281

Sanibel home

for Sanibel and Captiva Islands

NOVEMBER

DAY-DATE	5:38 AM L	11:34 AM H	5:09 PM L	10:29 PM H
Fr 10	5:38 AM L	11:34 AM H	5:09 PM L	10:29 PM H
W 11	6:23 AM L	12:38 PM H	5:34 PM L	*10:58 PM H Full
Th 12	7:12 AM L	1:37 PM H	5:59 PM L	*11:32 PM H
F 13	7:57 AM L	2:44 PM H	6:15 PM L	—
Sa 14	12:09 AM H	—	—	8:11 PM L
Su 15	12:50 AM H	—	—	9:45 PM L
M 16	1:37 AM L	—	—	10:44 PM L
Tu 17	2:35 AM L	—	—	11:48 AM L

* Denotes strong tides
 Denotes very strong tides

Converts on table. The above tides are for the high/low point of Sanibel only to convert for Redfish Pass (North tip of Captiva) add 55 minutes to the time shown for every high tide. Subtract two minutes for every low tide.

For Captiva Island Gull's Cove subtract 30 minutes for each high tide and subtract four minutes for each low tide.

For Captiva Island Pink, in the Sound (Bay) side add 1 hour and four minutes for each high tide and add 55 minutes for each low tide.

If between these points, call or buy questionnaire and have good fishing or hell no.

Jet South
 JET HELICOPTER CHARTER SERVICE
 6 PMS - 6 AM
 CONSTRUCTION - AIR CONDITIONED
 PASSENGER SEATING - 8 PASSENGER SERVICE
 PASSENGER CHAIRS - AIR CURE UNIT

PROFESSIONAL SERVICE ESTABLISHED

Jet South, Inc.
 Based - Dandley Drive Page Field
 24 HDUR Phone - Call Collect 936 7480

COLLECTOR QUALITY HANDCRAFTED SAILBOAT HALF HULL

- Solid Mahogany Backboard
- Solid Mahogany Deck
- Solid Brass Name Plate
- Hand Padded Lacquer Finish

Home Decoration Offices Commercial

Price \$295

Please Call 629 0035

Showroom Hours By Appointment Only

Precision Nautical Inc.
 140 Ocean Blvd NW D-6 Port Charlotte FL 33922

Sanibel & Captiva Islands Naturally

OWNER FINANCING

Owner willing to assist in financing plus a 5% assumable mortgage makes this canal home with pool possible for you. Direct access water way to San Carlos Bay and the Gulf of Mexico.

\$245,000 Unfurnished

Betty Derowtsch Associate
 After hours 472 5464

VIP Realty Group, Inc., Realtor

Sanibel Island (813) 472-5387
 15109 Periwinkle Way Sanibel Island FL 33957

Captiva Island (813) 472-2523
 South Seas Plantation Captiva Island FL 33924

VIP REALTOR

OPEN 7 DAYS FOR YOUR CONVENIENCE

Sanibel Realty

FOR RENT
 ISLAND OFFICE SPACE AVAILABLE

Sanibel Plaza
 Professional/Administrative
 496 sq ft at \$300** per mo
 550 sq ft at \$350** per mo
 1,072 sq ft at \$641** per mo
 (plus water at \$20** mo)
 1st. Last and \$200** Security Landubber

1st Floor Unit 24.6 wide x 26.8 deep (inside measurements) \$27.5** per mo
 2nd Floor Unit (some sq feet as above) \$30** per mo (all units carpeted)
 1st. Last and \$200** Security (plus water at \$20** mo)

SANIBEL REALTY, Inc.
 472-6565

LOUIS P. GARZETTA, Ph.D.
CLINICAL PSYCHOLOGIST

Now has office hours locally at the

SANIBEL CAPTIVA COUNSELING CENTER
 1633-H Periwinkle Way, Sanibel

Children & adult services marriage counseling, psychological testing, Call Fort Myers for all appointments
936-4333



Lions greet Swiss visitor

R. D. E. Cooperider
 The Sanibel Captiva Lions Club held a regular meeting on Nov. 4 at the Sanibel Community Building. Also at the meeting were 70 guests and Jim LaBurg, a friend from Basel, Switzerland who was vacationing on the island.

Numerous compliments were reported and Leon Bert Jones reported that the plants were in place in front of the building and ready for the sale which started on Nov. 4 and closed on Nov. 7.

Leon Huggers noted the coming of the Bloodmobile from the Edison Blood Bank also in front of the building on Nov. 5. Leon Buhl Burgomeister asked members to join the coming Turkey Shoot on Nov. 19 and 21 on the north side of the bridge Store District. Guest or Ven Shiel introduced

has a staff members Deputy District Governor Bruce Metcovey of Naples and Zone 3 Chairman Sam Moore of Fort Myers Beach. Governor Shiel noted that the Sanibel Captiva club is the largest in the district and reported a other club a chairman.

Governor Shiel spoke on the program and there of International President Kazuo Sugitani of Japan. People at Peace. He also spoke in favor of the club having a representative at next year's Luncheon Forum at Louisville. He closed with a request for active participation in the Club not meeting to be held at the Lions Camp for the visually handicapped at Lake Wales on Nov. 15.

The next meeting will be at the Sanibel Community Building on Nov. 18 at 8:30 p.m.

Robert E. Watkins DDS
Welmakes
Rosemary Merilly DDS

Dr. Robert E. Watkins and Dr. Rosemary Merilly are a general practice dental office located at 2214 Cleveland Ave. Fort Myers, Florida.

Services include: dental exams, cleanings, X-rays, fillings, crowns, bridges, dentures, orthodontics, periodontics, oral surgery, and emergency dental care.

Hours: Monday through Saturday, 9:00 am to 5:00 pm. Sunday, 10:00 am to 4:00 pm.

Call 332-7789 for an appointment.

Let Avis show you how to

Florida

Drive Better Bargain in Florida

What better way is there to see Florida than with an Avis Rent A Car? We have great bargains with GM cars that you can rent for as long as you need. We have more locations to serve you from Venice to Marco Island and everywhere in between. And remember with Avis you can rent our way too. So the next time you need a car for yourself or a vacationing friend let us show you how to drive a better bargain in Florida.

Fort Myers
 1st Floor, 1st Floor 936-2121
 Fort Myers Beach
 Beach Texaco 8985 C.R. 463-5011
 Erie 666-3118 U.S. 1 463-6843
 Sanibel Island
 3500 Sanibel-Captiva Pk. 936-4333
 472-4040

AVIS

We try harder.

Avis features GM cars and trucks.

NOVEMBER RENTAL CLEARANCE

Sale

SALE PRICES FROM \$6999.00
 24 Month — 24,000 Mile Warranty
 48 Month Financing 10% Down Payment

A.P.R. 15.38%
 This Sale to Qualified Buyers Will End November 30, 1981

KING

ARTS and ARTISTS

Photography

A 60-print series entitled "The Naked Ladies of Pittsburgh" remains on exhibit at "The Photo Gallery" through November 16. The exhibit by Franco Carra captures the changing lives of his women over a one-year period.

Ms. Carra is a freelance photojournalist who also teaches photography at the Art Institute of Pittsburgh.

The gallery on Periwinkle Way is open from 11 a.m. to 4 p.m. Tuesday through Saturday.

Sanibel-Captiva Art League juried show

The Sanibel-Captiva Art League juried show sponsored by the Captiva Civic Association will be presented Sunday Nov. 22 through Sunday Nov. 30.

Local artists who are 1980-81 members of a league in the Art Council of Southwest Florida are eligible to submit their entries of original dry suitably framed ready to hang paintings. Paintings that have won cash awards in area juried shows or were not executed within the last two years are not eligible.

Paintings will be received at the Captiva Community Center on Wednesday Nov. 18 from 1 to 4 p.m.

Traditional paintings

Two exhibits of traditional paintings will be on view from the Ringling Museum of Art in Sarasota at the Leitch Community College Gallery of Fine Art Landscape in Art and 18th Century Paintings will be on view through Dec. 17.

These magnificent exhibits are sponsored by Dr. and Mrs. Bernhardt Gottlieb of Fort Myers.

Landscape in Art traces the development of landscape painting from the 12th century to the present.

Landscape is a fairly recent development in western art and until the 17th century's views of nature were not considered important subjects. By the early 18th century in the western world landscape became a common theme for art particularly among the poets and painters who celebrated the pastoral life in England and America. The 20th century has brought about rapid communications and travel which has caused an intermingling of art and cultures with landscapes of the east and west each showing traces of the other.

These exhibits are possible at the college through the affiliate program of the Ringling Museum of Art.

The Gallery is open Tuesday through Friday from 10 a.m. to 4 p.m. Thursday from 5 to 9 p.m. and Sunday from 2 to 5 p.m.

Wildlife wood sculptures

A special introduction to the wood sculptures of Mike Malone is on exhibit this month at the LaBelle Gallery in the French Quarter on Periwinkle Way.

Malone a Florida Cracker and outdoorsman has recently come home to Sanibel after 30 years as a professional soldier. He lives on the beach on the bay side of Sanibel and spends much of his time developing his unique style of wildlife wood sculpture.

Basically, an oriental art form Malone's work is a study of the dynamics of woodgrain and should be considered wood sculpture rather than wood carving.

Through studying the grain charac-

teristics of redwood and white cedar Malone says he has learned over time what these grains do when the wood is cut or shaped in various ways. These dynamics are applied to the main lines or 'signatures' of various forms of wildlife to produce each basic piece.

What I do comes from about nine years of trial and error a lot of sketching and thinking and about 1/2 mile of redwood," Malone says. I know damned little of the world of the artist but I do know the splendor of nature.

The gallery is open Tuesday through Sunday from 11:30 a.m. to 3:30 p.m. and from 5:30 to 10 p.m.

Gallery talent search

Lebelle Gallery manager Donna Wampler is receiving portfolios of original oil paintings watercolors metal and wood sculptures in search of new talent through November.

The gallery which is on the second floor of the French Quarter building on Periwinkle Way is open from 11:30 a.m. to 3:30 p.m. and from 5:30 to 10 p.m. Tuesday through Sunday. For more information call 472-4481.

FT. MYERS VIDEO MOVIE CENTER

Gulf Point Square 489-0550

"America's Video Specialist"

Complete Sales and Rentals on Video Equipment, T.V.s and the latest Releases in movies.

WAYNE'S TREE SERVICE

Complete Tree & Shrub Removal

TRIMMING & SHARING
 TREE ESTIMATES

463-7402 EVES 936-5474

SENIOR CITIZEN \$39.00

1000 5 Rooms, Double Or more Bath
 4 DAYS 3 NIGHTS
 Any other Special

FALL SAVER

Complimentary Cocktails on arrival
 Complimentary Bottle of House Wine while under the Christmas Tree on Christmas Eve
 Complimentary Breakfast on Sunday night with Folk Singing
 Complimentary Dinner on Sunday Morning
 Complimentary transfer to and from airport
 Complimentary parking

Call for more information
 On 2nd floor of the building
 On 2nd floor of the building
 If you are in St. Petersburg or Tampa call 813-266-0000
 If you are in Ft. Myers call 463-5500

Yes! Please make the following reservation
 Name _____
 Address _____
 City _____
 State _____
 Zip _____

Causeway Inn
 "The Best in Tampa Bay"
 (813) 884-7561
 COURTESY CAUSEWAY INN 33607



WHEELPRICE PARADISE

This perfect vacation will last only as long as you remember it. Come discover how you can own a beautiful vacation home by the week at South Seas Plantation for about \$7000. And rediscover the tropical island, the sandy beaches and the championship golf and tennis every year for

over. Visit our Interval Ownership Model and Inform at Center at South Seas Plantation. Or call 813/472-4435. Or write to P.O. Box 217 Captiva Island Florida 33924

SOUTH SEAS PLANTATION

Natural histories

New Zealand trip yields lessons about fascinating Kiwis, exotic opossums

By George Campbell

CHRISTCHURCH, New Zealand - New Zealanders are called Kiwis. They are even more closely identified with that famous flightless bird that are we Floridians with Gators.

Kiwis are truly fascinating birds. Their generic name, Apteryx, suggests their wingless (and, consequently, flightless) life style. There are three species on both North and South Islands, and they exist nowhere else in the world.

These mainly nocturnal creatures are rather large (over four pounds), active, vigorous and muscular, with soft brown and white, terminally hair-like plumage. They have no breast bones and pectinally reduced wings. These vestiges from their ancestors are absolutely useless, for over the cone Kiwis (along with the related ostriches, ex-

tinct moas and emus) have evolved a life style that no longer requires flight. In this respect they are not unlike the Galapagos Flightless Cormorant.

At night, the Kiwis can be heard more often than seen, for as they probe the earth with their long bills, seeking worms, insects, mollusks and the like, we can hear the expulsion of air from the terminal nostrils.

Yes, the nostrils are located at the side of the tip of the long bill, the better to sniff out prey. Whiskers around the base of the bill complete the equipment which enables these prey creatures to survive in a world of rapidly-reducing natural habitat. Eyesight is of little use and is thought to be of poor quality.

The feet are large and strong and are used to aid in scratching and loosening the earth so that deep bill-probing

can be accomplished.

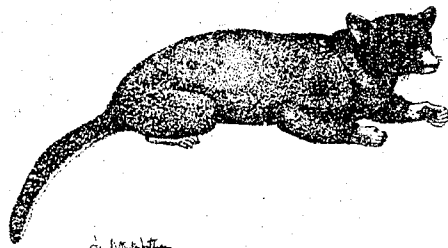
A dedicated and kindly young man, Tony Thomas, proudly showed us the Kiwis under his care at Orana Park, Christchurch.

Much can be, and has been, learned about Kiwis from accidentally-trapped specimens or from specimens injured by automobiles. Tony has two paraplegics. Each has lost a leg to a steel trap. The one-legged bird pictured is a Great Spotted Kiwi, Apteryx haastii, accidentally caught in a trap intended for the exotic Brush-tailed Opossum, *Trichosurus vulpecula*.

In common with many other mammals, this Opossum was introduced in the mid-19th Century and is now a devastating pest all over the place, harmful to forest and cropland alike. These Opossums, indigenous to Australia, are completely unlike our own Sanibel opossums. About all they have in common is the pouch, a universal characteristic of the marsupial.

The Brush-tail has a lovely brown, yellow and grey fur that is much sought after, and as the government seeks the species' reduction, its fur is widely marketed.

In the United States, a presidential order prevents the use of Compound 1080, a dreadfully dangerous fluoride poison employed in animal control. Not so here: Compound 1080 is used in baited carrots to kill Opossums. Cyanide, another horror, is also used. Also, even though their use is illegal, steel traps are widely employed as possum-getters. And here lies the problem: a lot of other things are caught, too.



Contributed

REPRODUCED BY PERMIT

continued on next page . . .

Kiwis, opossums

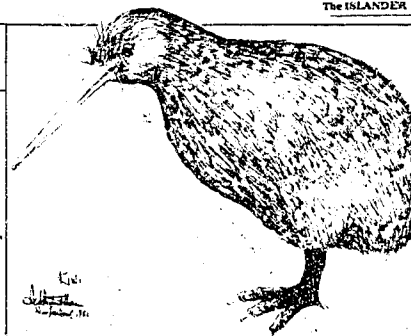
continued

including Kiwis - hence our one-legged friend pictured here.

Steel traps are illegal in Florida, too, but most rural farm stores continue to offer them. The authorities told me, when queried, that it is not illegal to set steel traps in Florida; it is only illegal to use them. Typical bureaucratic distortion!

The Kiwi-Opossum story aptly illustrates the dilemma often presented when an out-of-control exotic confronts a rare endangered endemic form. Each such case differs in detail, threat, problems and solutions, but all point up the folly of exotic introduction of animals or plants without prior careful study.

George Campbell is the author of *The Nature of Things on Sanibel*.



Kiwi
George Campbell
Nov. 1981, 15

Total Island visitor's guide!

Page 34



To Save Time And Money, Look Before You Dial After November 8th

The message found in this fortune cookie is not an ancient Chinese proverb...but important information from the people at United Telephone of Florida.

On November 8, United Telephone's new digital switching office was placed into service for a portion of our customers in Cape Coral and North Fort Myers. With our advanced equipment now in place, a new exchange was established which means that some numbers in Cape Coral and North Fort Myers changed.

The current directory has both the old and new numbers listed.

Yes, even with modern communications, some important messages can still be found in fortune cookies.

Remember, to save time and money, look before you dial Cape Coral and North Fort Myers.

United Telephone of Florida
UNITED TELEPHONE SYSTEM

Why Buy Plastic when you can buy heavy-duty Aluminum for less!

3-FOR-ONE HURRICANE AWNING and BURGLARY PROTECTION SHUTTERS

SAVE 20%

- Factory Sidelighting Windows
- Factory Serviced and Factory 1 yr. Warranty
- Built-up or doors from inside or out.
- Custom made for Homes, Condo's, Hotels or mobile Homes.
- A fine alternative with No Obligations!

(PLEASE OF MIND WHEN AWAY)

SECURITY SHUTTER & CORP.
109 James Street - Venice, FL 33595

CALL COLLECT AT NIGHT 1-484-1700
DAYTIME 1-484-6284

"Give the Gift of Plush"

THE STUFFED ANIMAL SHOP

- YOUR GIFT HEADQUARTERS -

WIDEST SELECTION OF "DAKIN" STUFFED ANIMALS IN THE AREA

Conventional - Unusual - Souvenir

472-4010 UPS Delivery 2440 Palm Ridge Rd.
Pelican Place Shops (Next to Apothecary Center)



CRUISE WITH US

JANUARY 2 7 DAY MAYA MAGIC AND COZUMEL CRUISE ABOARD THE S/S VERACRUZ (REG. PANAMA) TO PUERTO MORELOS AND COZUMEL.

JANUARY 3 6 DAY CRUISE ABOARD THE S/S NORWAY (REG. NORWAY) CALLING ON ST. THOMAS AND A BAHAMAS OUT ISLAND.

FEBRUARY 12 3 NIGHT VALENTINE CRUISE ON THE S/S EMERALD SEAS (REG. PANAMA) VISITING NASSAU AND FREEPORT.

FEBRUARY 22 3 NIGHT CRUISE S/S EMERALD SEAS (REG. PANAMA) VISITING NASSAU & FREEPORT.

FEBRUARY 26 3 NIGHT NASSAU AND FREEPORT ON THE S/S EMERALD SEAS (REG. PANAMA).

FEBRUARY 28 7 NIGHTS ABOARD THE TSS CARNIVALE (REG. PANAMA) CALLING ON SAMANA, SAN JUAN, AND ST. THOMAS.

APRIL 18 WEEK MEXICAN FIESTA ABOARD THE S/S SKYWARD (REG. NORWAY) CALLING ON PLAYA DEL CARMEN, COZUMEL, AND AN OUT ISLAND.

CALL FOR DETAILS

WILLS WORLD OF TRAVEL
WRIGHT INVESTMENT GROUP, INC.

MOVING SOON TO RAFTERS MALL

FORT MYERS 335-1303
5025 S. Dewey DRAGON PLAZA 1/2 MILE SOUTH OF AIRPORT

TRAVEL SERVICE
YOUR AMERICAN EXPRESS REPRESENTATIVE

PATTERSON, TURK, HUDSON & SNOW, P.A.

Attorneys at Law

COMPLETE CONDOMINIUM SERVICES

Preparation of condominium filing package including PROSPECTUS and DECLARATION.

Closing of unit sales and purchases including all CLOSING DOCUMENTS and TITLE INSURANCE.

4223 DEL PRADO BLVD. CAPE CORAL 542-1131

LEE COUNTY APPLIANCE CENTERS ARE HAVING WEEKLY MICROWAVE COOKING DEMONSTRATIONS - TO SHOW YOU THE FUN AND EASE OF MICROWAVE COOKING. OUR PROFESSIONAL HOME ECONOMIST WILL SHOW YOU HOW TO SAVE TIME AND MONEY!



PLUS ALL MICROWAVES & CONVECTION - MICROWAVES AT SPECIAL REDUCED PRICES DURING THE COOKING DEMONSTRATIONS

MAKE YOUR RESERVATIONS NOW FOR OUR COOKING SCHOOL AT THE STORE NEAREST YOU - SCHEDULE

FT. MYERS BEACH Between the Bridges on San Carlos Blvd.

Thursday, November 12, 7-9 p.m.
For Reservations phone 463-6168

FT. MYERS-CAPE CORAL Grand Union Plaza McGregor at College Pkwy

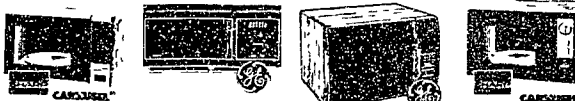
Thursday, November 19, 7-9 p.m.
For reservations phone 482-2511

SAN CARLOS PARK On Highway 41 South San Carlos Shopping Plaza

Thursday, December 3, 7-9 p.m.
For reservations phone 482-5900

PLEASE CALL EARLY FOR RESERVATIONS! BRING YOUR HUSBAND, NEIGHBORS, FRIENDS!!

WE'RE YOUR MICROWAVE SPECIALISTS - FEATURING THE FINEST: GENERAL ELECTRIC & SHARP



I JUST LOVE LEE COUNTY APPLIANCE! SO WILL YOU!

Lee County Appliance & TV Centers
• QUALITY • SAVINGS • SERVICE

FT. MYERS - CAPE CORAL
MCGREGOR AT COLLEGE PKWY.
IN GRAND UNION PLAZA
482-2511

FT. MYERS BEACH
ON U.S. 91 SOUTH
BETWEEN THE BRIDGES
463-6168

SAN CARLOS PARK
ON U.S. 41 SOUTH
30 SAN CARLOS PLAZA
482-5900

Conservation foundation announces Tuesdays at the Center schedule

The Sanibel Captiva Conservation Foundation has announced its winter Tuesdays at the Center agenda. Programs at the weekly affairs will be based on subjects covered in the foundation's new Barrier Island Nature Publication series 1981-82 Tuesdays at the Center programs begin at 7 p.m. Tuesday, Nov. 17 with a special presentation on alligators by officers of the Game and Freshwater Fish Commission. The subjects of the seasons remaining 17 programs are as follows:

November	24	Archaeology
December	1	Barrier Islands
December	8	Birds nesting
December	15	Birns - Roseates and Wading
January	5	Brazilian pepper
January	12	Butterflies
January	19	Calusa Indians
January	26	Fish and Fishing
February	2	Caretta
February	9	CROW
February	16	Gopher tortoises
February	23	Opreys
March	2	Otters and other Mammals
March	9	Plants
March	16	Poisonous Plants and Animals
March	23	Reptiles and Amphibians
March	30	Water

Because of fire regulations seating is limited to 65 persons for the programs. Admission is free to foundation members and \$1 for all others.

Caretta plans beach strolls

Caretta Research Inc. the Sanibel-based sea turtle conservation group, announced last week plans to sponsor a unique beach walk series on the island this winter season. Caretta Project Manager and long-time Sanibel resident Charles LeBluff will lead the walks which will serve as an introduction to Sanibel and its history. On the walks LeBluff will discuss beach dynamics, identification of local marine life including sea turtle biology and shell and convey interesting aspects about Sanibel that visitors might otherwise miss. The walks will begin Saturday, Nov. 21, and will continue each Saturday and Sunday beginning at 9 a.m. through mid-April. For more information and reservations call 472-3177.



Charles LeBluff, leader of the new Caretta Research beach walks, will share his knowledge and Sanibel experiences with island visitors and residents on weekend beach strolls beginning Saturday, Nov. 21.

Police Beat



were blocking the evacuation route between Landgren Boulevard and Nerita Street on Saturday night Oct. 31.

A Sanibel resident reported vandalism to his MG18 sports car that was parked at the Sundial early Sunday morning, Nov. 1. Three holes were ripped in the convertible top and the plastic window punched out of the car. Damage was estimated at \$250.

A Sanibel resident reported vandalism to his boat that was in his garage Monday morning, Nov. 2. The Shell Basket Lane resident had been out of town for several weeks. Neighbors reportedly chased away two young white males from the garage area on Oct. 18. Damage to the boat motor was estimated at \$1,250.

Three Sanibel youths agreed to stack lumber at a construction site after they were caught turning over piles of the plank Monday evening, Nov. 2. The boys were caught at the construction site at the corner of Durion Court and East Rocks.

A 20-foot white Mako boat with a 175-hp Johnson outboard motor and fishing gear was reported missing from Tarpon Bay Marina on Wednesday morning, Nov. 4. A marina employee told police he last saw the boat at 7:30 Wednesday morning. Value of the boat, motor and fishing gear was estimated at \$9,000. The registration number on the boat was FL 0568 BM. The Florida Marine Patrol and U.S. Coast Guard authorities were notified of the theft.

An AM FM stereo cassette player was reported missing from a trooper's unit at the Surfside Motel Saturday evening, Oct. 31. The unit, directly behind the main office is left open to the public and is manned by Surfside's employees in potential buyers. No value was available for the stereo player. Police removed three large oil drums that

A Calumet, Ill. woman who was riding a moped struck a stopped truck at the intersection of Nerita Street and Diloe Lane on Tuesday afternoon, Oct. 27.

Sharon Chipules, 22, was not injured when she turned right from Nerita Street onto Diloe Lane and hit a Hires Construction truck driven by Wayne Newmar of Doyles town Ohio.

Police estimated \$20 damage to the moped which was owned by Island Moped. No charges were made in the accident.

Wind blew a load of unsecured lumber from the back of a pickup truck on Tarpon Bay Road on Saturday afternoon, Oct. 31. A car traveling in the opposite direction of the truck hit a large piece of the lumber and sustained \$400 damage.

Francis Salinger, 25, Gulf Drive was driving the 1980 Datsun that struck the lumber. Donald Gregory Weglar, 6308 Panther Lane Fort Myers was driving the truck.

Police charged Weglar with driving with an expired license and carrying an un-covered load.

A Fort Myers man was charged with driving while intoxicated Friday night, Oct. 30, after his car became stuck on the concrete divider strip at the intersection of Tarpon Bay and San-Cap roads.

Douglas Gary Dhall of Fort Myers apparently ran over the concrete divider and

knocked down the stop sign at the intersection before his 1978 Honda sedan became stuck on the divider. Police estimated \$250 damage to Dhall's car.

A bicyclist struck a car Wednesday afternoon, Nov. 5, near the intersection of Periwinkle Way and Casa Vieja Road. Nancy Reynolds, 665 Main Street was riding her bicycle on Periwinkle Way when she struck a car driven by Barbara Anderson Hill, 960 Sandcastle Road. Ms. Hill was leaving the parking lot at 1831 Periwinkle Way when the mishap occurred. Ms. Reynolds told police she couldn't stop to avoid hitting the car because of wet pavement. Ms. Hill told police she was not able to see the cyclist approaching because of mailboxes and other obstructions around the driveway.

There were no injuries and no charges were filed.

A Cape Coral woman escaped serious injury Thursday morning, Nov. 5, when her Honda sedan left Periwinkle Way and struck a tree near Donax Street.



A Cape Coral woman escaped serious injury Thursday morning, Nov. 5, when her Honda sedan struck a tree on Periwinkle Way.

SANIBEL REALTY

Center Office: 472-2424
 Main Office: 472-6162
 Rental Office: 472-6162
 Ft. Myers Office: 482-1917

ISLAND LIVING... SANIBEL STYLE

Lush landscaping enhances the exterior and the interior is a blend of beauty and efficiency. The panoramic view from the screened porch only hints at the spaciousness of this three bedroom two bath home in OCEANFRONT. Situated in a serene setting, this CBS home features three beautiful sunrooms, a complete kitchen and a charming dining area where you may impress both family and friends with a single course luncheon. The relaxing effect of the Poollet sliding glass doors that lead from the spacious living room to the larger screened porch, has been beautifully with the warmth of the entire home. The two car garage, an in-liner sprinkler system, complete this already complete home. Immediate occupancy makes this home an attractive investor will accept 25% down.

Pool and Billiard at \$112,500 completely furnished.

GULF FRONT APARTMENTS

in White Sands

Lovely complex has only 14 units to share beach pool and tennis court. This attractive apartment has a spectacular direct Gulf view. Two bedrooms with den that can be used as third bedroom. Offered fully furnished at \$255,000, or unfurnished at \$245,000.

Priscilla Marpley REALTY, INC.

MAIN OFFICE - 710 N. 23rd St. - Ft. Myers, FL 33905 - 482-2511
 BRANCH OFFICE - Cape Coral, FL 33914 - 482-2511
 CAPITOLA OFFICE - 4555 N. Palm Ave. - Cape Coral, FL 33914
 RENTAL OFFICE - Cape Coral Road - Sanibel, FL 33958 - 472-3177

Shell Net robbery suspects remain at large

Three black suspects remained at large Monday in the robbery of The Shell Net shop in the Island Shopping Center on Tuesday morning, Nov. 3.

Two black females allegedly diverted the attention while their com-panion a black male went behind the counter and took a bank bag. Inside the bag was \$295 in cash and assorted personal and travelers checks.

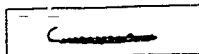
Police recovered the empty bank bag in the men's restroom at Island Exxon but did

not locate the suspects. The suspects were not armed.

Sanibel police ordered the Causeway bridge closed as soon as they were notified of the robbery. The bridge remained closed until an officer checked all traffic leaving the Island. An officer remained near the Causeway exit all day watching for the suspects. A car which was a dark blue or dark green four-door Chevrolet.

The suspects were all believed to be in their 20s. The man was approximately six

feet tall and of thin build. He was wearing a blue shirt and faded blue jeans. One of the females was light complexioned and wore red pants and a white and blue striped shirt. The other female wore an orange top with blue polka dots and had pink curlers in her hair. Both women wore heavy set



Total
Visitor's
Guide



Page 34

LIMITED OFFER!
13.9% FIXED RATE*
80% FINANCING



GREAT RESALE VALUES

(Terms of above offer do not apply)

Offered	Description	Location
84,900	1 1/2 Charming Suite (F)	Courtyard view
93,500	1 1/4 Club Suite (F)	Courtyard view
98,500	1 1/2 Charm Suite (F)	Courtyard/Gulf View
150,000	2 1/2 Superior Suite (F)	Beautiful Gulf view
175,000	2 1/2 Superior Suite (F)	Gulf & courtyard view
225,000	2 1/2 w/den Deluxe Suite (F)	Beautiful Gulf view
225,000	2 1/2 w/den Deluxe Suite (F)	Beach front
225,000	2 1/2 w/den Deluxe Suite (F)	Gulf front
SOLD	2 1/2 w/den NEW	Beautiful Gulf view
245,000	2 1/2 w/den & cabana NEW (F)	Beautiful Gulf view
250,000	2 1/2 w/den & cabana (F)	Courtyard/Gulf view
		Beautiful Gulf view

Some owner financing available. Some with good assumption of mortgage.

THIS IS A ONE-TIME LIMITED OFFER ON REMAINING NEW UNITS IN SUNDIAL'S FINAL PHASE.

THESE ARE ALL NEW TWO BEDROOMS, TWO BATH UNITS WITH DEN, ALL APPLIANCES INCLUDED.

Prices subject to change without notice.

*25 year amortization, three year balloon.

Toll-free outside Fla. — 800-237-4184
Toll-free outside Fla. — 800-282-3405
Local — 813-472-4151

Exclusive On Site Sales Agent

Sundial SALES ASSOCIATES, INC.

Licensed Real Estate Broker

(813) 472-4151 Ext. 3808

MAX
TRUCK

MAX — our automated offer — is like having a team of bankers at your fingertips. And MAX is open all day, all night — all week.

At any time, you can call MAX to get the latest information on the latest rates, terms, conditions, and restrictions. You can also call MAX to get the latest information on the latest rates, terms, conditions, and restrictions.

Lee County Bank
Member FDIC

RIGHT NOW! FREE GIFTS FOR OFFICE & HOME



FREE COUPONS WITH YOUR PRINTING!

RIGHT NOW! You get free gift coupons with your printing order. Save on your purchases for lovely, useful, practical gifts.

Yours With 20% Printing Purchase

20% OFF ALL PRINTING PURCHASES

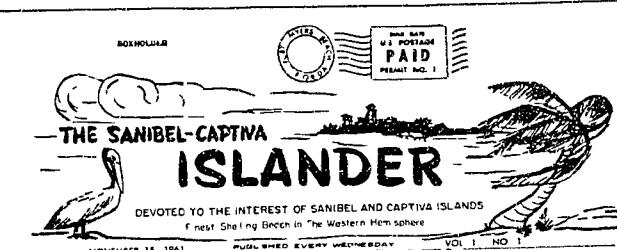
20% OFF ALL PRINTING PURCHASES

20% OFF ALL PRINTING PURCHASES

20% OFF ALL PRINTING PURCHASES

20% OFF ALL PRINTING PURCHASES

The Islander celebrates 20 years of serving the Islands



THIS IS YOUR ISLANDER

THIS PUBLICATION, THE AN ISLANDER, IS DEVOTED TO PROMOTE THE INTERESTS OF THE ISLANDS.

IT IS DEVOTED TO THE INTERESTS OF THE ISLANDS AND IS DEVOTED TO THE INTERESTS OF THE ISLANDS.

IT IS DEVOTED TO THE INTERESTS OF THE ISLANDS AND IS DEVOTED TO THE INTERESTS OF THE ISLANDS.

IT IS DEVOTED TO THE INTERESTS OF THE ISLANDS AND IS DEVOTED TO THE INTERESTS OF THE ISLANDS.

FOR REAL ESTATE on Sanibel & Captiva Islands

SEE, WRITE OR PHONE

SANIBEL - CAPTIVA REAL ESTATE

OUR OFFICE IS LOCATED NEXT TO THE COMMUNITY CHURCH ON SANIBEL

Marge Simonds Paul Simonds

Salesmen: Andy Melody, James O'Connell, Claire Waller, Ken Waller, Helen Sorenson, Einar Sorenson

There's excitement in the air. Come in and see the new things as we unpack them.

clothes clothes - clothes

sea horse shop

This week marks the 20th year The Islander has served Sanibel and Captiva. Above is page one of the first issue, which made its debut on Wednesday, Nov. 15, 1961. Pages 2, 3, 4, 5 and 6 follow in today's Islander.

Looking back with pride, ahead with excitement

This week marks the 20th anniversary of The Sanibel-Captiva Islander, a milestone we celebrate with pride in our past and excitement about our future. Since its first issue on Nov. 15, 1961, The Islander's task as a community newspaper has been to provide Sanibel and Captiva residents and visitors alike with the facts about both islands - facts upon which reasonable decisions and opinions can be formed.

Milestones and memories from Islander news stories

- 1961 Dec 13 Paul Stahlin and local investors purchase South Seas Plantation on Captiva for \$225,000 from the American Hotel Company of Connecticut.
1962 Feb 28 - Public Library is established in the Community House and will be open on Wednesdays and Saturdays.
May 26 - Sanibel Causeway and bridge opens, and 130 Islanders make a last trip on the ferries "Rebel" and "Bea".
Dec 3 Blind Pass is opened by high tides and waves from a non-tropical storm. Turner's Beach is deluged.
Apr 2 - Erosion is the topic at Captiva Civic Association.
Oct 29 - Chamber of Commerce, Captiva Civic Association and Sanibel Community Association have formed a committee to study the proposed water system for the two islands. Farmers Home Administration will loan up to \$1 million for such a project.
Dec 17 - Island Water Association is accepting membership with dues set at \$108. Goal is 600 members.
1963 Jan 21 - Lee County begins paving Gulf Drive from Rabbit Run to the Combs property.
March 4 - Island Water Association opens an office in the Community House.
May 6 - New Chamber of Commerce building on Causeway Road is dedicated.
July 15 - Islanders object to the colors (purple and pink) of the new Chamber of Commerce building.
Sept 9 - Hurricane Betsy misses Sanibel but high tides wash out roads on Captiva.
Sept 23 - Bailey's new \$80,000 shopping center is under construction at the corner of Pierwinkle Way and Tarpon Road. It will have two to three times the space of the old Sanibel Packing Co. store on the bay at Bailey Road, which opened its doors in 1899.
Dec 2 - Sanibel Library moves from the Community House to its new home in Town Square.
1964 June 8 - Hurricane Alma blows off roofs.
Sept 23 - Casa Ybel Hotel, which has been in operation since turn of century, burns. Damage estimated at \$175,000.
Nov 26 - Growing Sanibel Library moves to new home in Sanibel-Captiva Real Estate building.
Dec 31 - 1963 is a record year for real estate transactions with \$25 million of property changing hands on Sanibel and Captiva.
Oct 1 - Special Causeway toll ticket books, 10 trips for \$20, go on sale. Cost of single trips will remain \$1. Lee County Commission decides.
Oct 2 - Dr. Mordecai Haber of Fort Lauderdale opens a general medical practice on the Island.
1970 Feb 5 - New Captiva Library, adjacent to the Community Center, is dedicated.
March 20 - The one millionth car to cross the Causeway since it opened in 1963 was driven by a Croton-on-Hudson couple who received a refund of the \$1 toll.
Oct 8 - Three barges and two tugs crash into the west fender system of the Causeway damaging 41 pilings. Cost of repairs is estimated at \$25,000 to \$30,000.
Nov 25 - County Commission approves an ordinance limiting the building heights to 35 feet in scenic areas on Sanibel and Captiva Islands.

continued next page...

THE ISLANDER
PERSONALS
MARRIAGE
THE ISLANDER
PERSONALS
MARRIAGE
THE ISLANDER
PERSONALS
MARRIAGE


CLUB CALENDAR
SANIBEL ISLAND TACKLE SHOP
AUCTION MEETING
CONGRATULATIONS
HOW TO ENJOY FULL SCALE BANKING SERVICE

THE ISLANDER
PERSONALS
MARRIAGE
THE ISLANDER
PERSONALS
MARRIAGE
THE ISLANDER
PERSONALS
MARRIAGE

THE ISLANDER
PERSONALS
MARRIAGE
THE ISLANDER
PERSONALS
MARRIAGE
THE ISLANDER
PERSONALS
MARRIAGE

THE ISLANDER
PERSONALS
MARRIAGE
THE ISLANDER
PERSONALS
MARRIAGE
THE ISLANDER
PERSONALS
MARRIAGE

THE ISLANDER
PERSONALS
MARRIAGE
THE ISLANDER
PERSONALS
MARRIAGE
THE ISLANDER
PERSONALS
MARRIAGE

<p>Island golf</p>	<p>Dunes ladies open</p> <p>Twenty-eight women turned out for a scramble even that opened the Dunes Ladies Golf Association's 1981-82 season. The team of Irene Caspar's, Hertha Howland, Jean Hartman and Edith Riddle captured first place. Emily Schofield, Betty Huff, Lorraine Hauser and Billie Tyler finished as runners up. A bus near meeting and sat dinner followed the event.</p>	<p>Dunes men elect officers</p> <p>The Dunes Men's Golf Association inaugurated the new season last Wednesday with a breakfast followed by a scramble golf match. Henry M. Ker was elected president of the association. George Gehrmann vice president and Dick Light treasurer.</p>
<p>Beachview men play</p> <p>Fifty-two players turned out last Saturday for the Beachview Golf Club Men's Assoc. at 10 a.m. The winning team was comprised of Ira Hartman, George W. Dave Harrison and Bob North. Dave Wootter, Ted Hartshorn, Bob Marie and Dave Dean finished second at plus seven. Charlie Uhr and Bob Marie finished in a tie for high individual with plus five. Last Tuesday Nov. 3 two teams finished in a tie for top honors. The team of Bob Robertson, Dick Light, Don Purcell and Bob Schneider was deadlocked with Lee Gibson, Bud Walters and Eben Joy at plus one. Bill Katep was the high individual at plus five.</p>	<p>Howland wins with Beachview women</p> <p>Helen Howland finished in the winner's circle at the Beachview Women's Golf Association tourney play last Wednesday. The 4 Pully Chaver was second. Enid Bever the high individual at plus five finished third. A luncheon and meeting at the Putting Pal can followed play.</p>	

We know how islanders like to bank:



not fancy...just friendly.

After all, we've been dealing with islanders since we started so we're used to what they like. First, they like to get their banking done quickly so they get back to enjoying their island. They like to know they're getting their money's worth. And most important, they like things friendly and relaxed with no big city stuffiness.

That's the way we like things, too. So, if you haven't gotten to know us yet, we hope you'll stop by relax with us for a few minutes and get acquainted. Then maybe we can do some business.

Closer to you in lots of ways



Bank of the Islands

MAIN OFFICE: 1609 Periwinkle Way • 477-4141
 Open Mon-Fri. 9-2 and Fri. 4-6
 Drive-in open Mon., Thurs. 8:30-4 and Fri. 8:30-6

BRANCH OFFICE: Island Shopping Center • 472-5173
 Open Mon-Fri. 9-4
 Deposits insured up to \$100,000 by FDIC


Equal Housing Lender

BOAT RENTALS

ON SANIBEL SINCE 1975

SAIL — 17-21 sloops with engines
 Sunfish 34 charter with captain
POWER — 15-9 55 115 HP
 USCG equipped. Bimini tops

472-2531


 AT SANIBEL MARINA
 A DIVISION OF SOUTHWIND, INC.

ISLAND STORE

CAPTIVA ISLAND

NOW OPEN MON-SAT 8AM-10PM
 EXCEPT SUN 9AM-9PM 472-2372
 Captiva Road & Andy Rosse Lane

Canoe Adventures

with Bird Westall

CHOICE OF THREE TRIPS:
 Sanibel River
 Wild Is. Refuge Bunk Key
 Biscayne Sp. provided
 call 472-2318 for
 Reservations info. msn.

Portrait

Donna Wampler

Age: 24

Height: 5'9"

Roots: Naples, Florida -- I'm a true Florida Cracker!

Pleasures: Antique hunting and junking with husband Wayne, animals, beaches and music.

Last Book Read: Firestarter by Stephen King

Mentor: None right now. When I was younger it was Keith Richards of the Rolling Stones. Thank goodness! I outgrew that!

Wish: It's very simple. I wish to always be happy and to not have to worry.



By Cindy Chalmers
Photos by David Meardon

Donna Wampler had a busy summer packed with two major changes — marriage and a new career. Both are to be stunning ex-models a liking.

Her new career, however, doesn't leave much time these days for husband Wayne. As the new director of LaBelle Gallery in the French Quarter on Periwinkle Way, Donna works long hours that stretch into every evening of the week except Monday.

"We both realize that it's just going to have to be this way for a while," she says. "Thank goodness for crock pots!"

The gallery is open now on its winter schedule from 11:30 a.m. to 3:30 p.m. and from 5:30 to 10 p.m. Tuesday through Sunday. As director, Donna is solely responsible for selecting the artists whose work hangs on the crisp white gallery walls and for arranging and hanging the work itself.

"I had never done anything like this in my life before. I started in August," she says, adding that her only qualification was a natural love for art. "That's really all you need," she says.

If Donna were an artist herself, she says, she wouldn't have time to manage exhibits for others.

Learning the gallery director job has been interesting and fun for the former model. Liquor store manager and pharmacist's assistant. "I've done a bit of everything," she says. "I've really just had a ball." But this job is more than just a job, she says. "It's been very good."

The main emphasis on the art now hanging at the gallery is toward beach scenes and wildlife paintings, but Donna wants to start a section of more modern, surrealistic work.

"I want to offer something to the younger people," she says. "Not many people in their 30s seem to want seascapes."

The work now showing at LaBelle Gallery represents artists from Port Charlotte to Naples and all points between.

"We want to keep it fair and local," she says, adding that many island artists are also featured at the gallery. The gallery also welcomes the work of newcomers to the local

art circles, Donna says. "I like to give the unknowns a chance, she says. "Why not?" They have to start somewhere.

Donna says she has had good relationships with all of the artists regarding their exhibits. "Of course they are concerned about how I am going to present their work," she says. "But that hasn't caused any problems. It's their work and I understand why they are temperamental about it. I would be, too." She also helps the artists select the brochures and invitations necessary for each new show.

While Donna and Wayne live just off Sanibel on the mainland, she prefers the island's beaches to those along Estero Island or even the beaches in her hometown of Naples. At least there are places here where cormorants haven't ruined the beach, she says.

Life on the mainland, she says, offers Donna and Wayne more choices as they establish their life together. "The only way we'd live on an island is if we owned the whole thing ourselves," she says.

Walls on Wheels

Island businesswoman takes office to the streets

By Cindy Chalmers

After five years in island offices Cynthia Varian was forced earlier this month to take her business to the streets.

The landlord from whom she rented her flat now Paint and Wallpaper office behind the 1st and 2nd Quarter on Periwinkle Way decided he needed the office space for his own business and Mrs. Varian had to find her own new quarters.

Discouraged by high rents and offices that were larger than what she needed for her one person operation Mrs. Varian bought a second-hand panel van wallpapered the interior and changed the name of her business to Walls on Wheels.

Now she drives to and from her clients homes with 300-400 books of wallpaper and fabric samples in tow. The samples can be taken inside the home of the decorator and client can work from the van with its doors open.

This really is more convenient for the client Mrs. Varian says. Everything is

right here. It helps that I get to see the house too.

Walls on Wheels is geared toward home and condominium owners who don't want to get into high decorating fees according to its proprietor. They usually have a good idea of what they want and don't need a decorator to tell them how to do it, she says. I just provide the materials and sometimes give a little decorating advice.

Mrs. Varian orders all the paper and fabric and allows her clients to choose who will do the actual paper-hanging and other labor involved in decorating or redecorating.

While most of the Walls on Wheels business is done on the islands the van has given Mrs. Varian the ability to make house calls in Punta Rassa Fort Myers Beach and even beyond.

Going on the road has been his Islander a way of beating the high cost of doing business on the Islands and making lemonade when life deals me lemons.



Cynthia Varian above stands beside her mobile office. The van allows Cynthia's customers to select wallpaper and fabric from sample books right at home or on the road. Photos by David Mcardon



Bank of the Islands announces merger plans

By Cindy Chalmers

Sanibel Bank of the Islands announced last week to merge with the Winter Park National Bank Winter Park Fla. BOLI President Jim Hermes said the merger of the two independent banks which already share the same Chairman of the Board (Winter Park banker-economist John W. Beck) will insure the independence BOLI has enjoyed since its formation on the island six years ago.

Pending approval from the Federal Reserve the merged banks will retain their independence but will be run by the Sanibel based holding company Independent

Community Bank Inc.

Three directors from each bank will comprise the board of the holding company. The merger will allow the two banks to improve loan limits and better compete with bigger banks but won't mean anything different in daily business for BOLI customers Hermes said.

The Bank of the Islands with assets of \$49 million is headquartered on Periwinkle Way and has one branch office in the island Shopping Center and once branch on Pine Island.

Hermes said he expected the merger to be completed by May 1982.

Kappy King Cole commissioned for timeshare interiors

Kappy King Cole A.S.I.D. recently announced that her Sanibel based firm Kappy King Cole & Associates has been commissioned to design the interiors for two new timeshare endeavors in Florida and one in Barbados the West Indies.

Mrs. Cole also said new owners will begin occupying their Kappy King Cole & Associates designed vacation homes at Long Beach Resort "Christ Church Barbados Coral Island Club in Florida Bermuda and Labaina and Windward Passage resorts in Fort Myers Beach in early December.

The firm's design plan highlights a tropical island boating oriented theme for the 20 one-and-a-half-bedrooms vacation homes of Marco Island's Sunrise Bay Resort

& Club The vacation condominiums of the Isles Resort in Hollywood Fla. will enjoy a European flavor featuring bold colors and the utilization of natural woods. The Sand Acres Beach Club in Christ Church Barbados West Indies is an 18 one bedroom 19 studio conversion under the direction of Gordon Seale. The interiors are nautically flavored with a subtle color blending of elegant navy and beige tones.

All of the resorts are beneficiaries of the exclusive Kappy King Cole touch of distinction that identifies timeshare interiors designed by the firm. Each interior is designed with practicality, usability and durability for maintenance ease in mind. Kappy King, Cole & Associates is located in Suite 104 at 1618 Periwinkle Way.



THE EXTRAORDINARY SUNDAY BRUNCH
9 am to 2 pm

Go ahead for six days a week eat ordinary meals. But on Sundays that extra special day treat yourself to the extraordinary brunch at Ludwick's. Hean your plate with Eggs Benedict, Baked ham carved to order and crisp bacon, Chicken Liver Muffins, Country sausage and cheese blintzes, Fresh fish. And help yourself to fresh ribs, fruit and international cheeses. Fresh Garden vegetables, Toasted bagels and danish, Cold cuts, Scrumptious Chocolate Rum Cake and a-sorted French pastries. And more. Much more. Unlimited servings.

\$10.95 per person \$6.00 (Children under 12)

South Seas Plantation
For information call 472-5111

South Seas Plantation
Managed by Virginia Hotels and Resorts

LETIZIAS

DINNER FROM 6 PM - 10 PM

CREOLE & AMERICAN CUISINE
Best selection of imported and domestic wines and beers

FINE DINING IN A RELAXED ATMOSPHERE
PIANO MUSIC ON FRIDAY, SATURDAY AND SUNDAY

FOR RESERVATIONS CALL 472-5700
1472 PERIWINKLE WAY SANIBEL
CLOSED MONDAY

LUNCH AT BEACHVIEW

The PUTTING PELICAN Restaurant and Lounge is serving up your luncheon favorites.

Potted salads, jumbo burgers, homemade soups and daily specials.

Also featuring Bird bath Margaritas, "Best Bloody Marys on the Islands", along with your other favorite cocktails.

Continental Breakfast 9-11, Lunch 11-3
Cocktails 'til 6

1100 Parview Drive Beachview Golf Club

472-4394

Boy.. what a catch!

- RED SNAPPER EN PAPILOTE
- ALASKA KING CRAB LEGS
- LOBSTER TAILS ALLA NEAPOLITAN
- SCAMPI ALLA NEAPOLITAN
- SCALLOPS ALLA LETIZIA
- BAKED RED SNAPPER ALLA NEAPOLITAN

All Dinners Include Our Famous Neapolitan Style Salad, a Side Order of Spaghettini with Your Choice of Meat Sauce or Aglio E Olio, French Bread and Butter

"LETIZIAS"
CONTINENTAL CUISINE

FULL LIQUOR LICENSE - POURING ONLY THE BEST

472-2177

SORRY NO RESERVATIONS - CASUAL DRESS - 5:30 - 9:30 P.M. CLOSED SUNDAYS

AMERICAN EXPRESS VISA





Evening Enchantment at the Thistle Lodge

The Thistle Lodge has a special evening of music and entertainment. The program will feature a variety of contemporary works this Sunday, Nov. 15, at the Sanibel Community Association. Her performance will begin at 8 p.m.

LITE AND LIVELY WILL BE APPEARING EVERY NIGHT EXCEPT MONDAY FROM 9 P.M.

Thistle Lodge Raw Bar
Every Friday and Saturday Night From 10 P.M. to Midnight

The Thistle Lodge Raw Bar is the perfect way to end a night of entertainment. Enjoy the freshest oysters from the sea with appetizing special drinks while enjoying our entertainment.

Thistle Lodge A Legend In Its Own Time
CASA YBEL RESORT

255 West Gulf Drive • Sanibel Island • 472-9200

Coming Attractions

Soprano Judith Kennedy in concert

Soprano Judith Kennedy will present a concert of songs and arias by Arne, Purcell, Brahms, Faure, Verdi and light contemporary works this Sunday, Nov. 15, at the Sanibel Community Association. Her performance will begin at 8 p.m.

Ms. Kennedy has appeared as soloist in concert and revival, opera, radio and television throughout the Great Lakes area as well as in Switzerland. She performed as soloist in approximately 60 choruses, she held the position of soprano soloist at Cleveland's famed Old Stone Church as well as the Epworth United Methodist Church and Plymouth Church of Shaker Heights, Ohio.

She vacationed on Sanibel as a child and returned as a resident in 1975. She gradually established herself as a performer in Southwest Florida and became well known as a lecture-recitalist. She has been teaching voice, piano and music theory in her Sanibel studio and in Fort Myers.

Currently she is vice president and program chairman of the Fort Myers Music Teachers Association, secretary of district 10 of the Florida Music Teachers Association and a performing member of the Lee County Chorus Musicians. Ms. Kennedy was recently appointed to the Arts Task Force of the Florida Conference of the United Church of Christ and will perform at Rollins College at the Biennial Conference in September 1982.

Her other activities include musical directing in the Island Youth Theatre 1981 summer production. She is the mother of Anne and Heather Kennedy of Sanibel and Jennifer Kennedy, recently graduated from Kent State School of Music.

Pianist William Bilen will accompany Ms. Kennedy in the Sunday evening, Nov. 15 concert at the Sanibel Community Association. The concert is presented by the Barrier Island Group for the Arts.

Abortion documentary

Assignment Life, a documentary on both sides of abortion, will be shown at the Purate Playhouse Nov. 20 at 8 p.m. The presentation is brought to the island courtesy of Mary Russo, member of St. Isabel's Women's Guild. Admission is free. For information call 472-2850.

Chapel-By-The-Sea

On Sunday, Nov. 15, Capella Chapel-By-The-Sea will resume its regular morning services at 11 a.m. The Rev. James W. Kennedy will officiate at the inter-denominational services. All are welcome.

★ ★ ★ 1/2 Ft. Myers News Press
Gourmet French Food Served with Flair. A Class Act. Join us for our Restaurant. One of America's best restaurants. A bit of Paris in southern Florida. We really compete better. French food. Get the news a Quarterly Magazine. **JEAN PAUL'S FRENCH CORNER** By the Post Office. Tarpon Bay Rd. West End Of Periwinkle. Closed Sunday. Dinner 6 to 10. Luncheon after Dec. 15. From 12 to 2 pm. Reservations 472-1493.

RAMADA INN
ON THE GULF AT 1231 TULIPA WAY
SANIBEL ISLAND, FLA. 33957 (813) 472-4123

CAPTIVA EROSION DISTRICT
WILL HOLD THEIR MEETINGS ON THE FIRST MONDAY OF EACH MONTH, STARTING AT 10:00 A.M. AT CAPTIVA COMMUNITY CENTER.

Coconut Grove
Restaurant & Lounge
Serving fine food since 1957
Serving 11-10 Mon Sat.
FRESH SEAFOOD & FISH STEAKS
U.S. Choice or U.S. Prime Heavy Western Steer
Friday Evening **Gourmet Greek Cuisine**
Saturday Evening **Roast Sirloin Special**
TRY OUR NEW IMPORTED WINES
Full Menu
Fine Children's Menu
Reservations accepted
Cocktail Lounge
Hors d'Oeuvres 4-6
472-1366
Highly Recommended by 1981 Mobil Travel Guide

WOMEN'S LADIES' NITE
All Cocktails 1/2 Price Every Wednesday 9 p.m. 'til close
TWIGS LOUNGE & RAW BAR
HAPPY HOURS 4:30 to 6:30 ALL DRINKS TWO FOR ONE MON. THRU FRI. Plus Nightly Specials
Every Friday And Saturday Night During November CATHY MADIGAN-EAGLE on the GUITAR
SERVING BURGERS, OYSTERS & MORE 10 P.M. TIL MIDNIGHT CLOSED SUNDAY
LOCATED NEXT TO THE TIMBERS
ENTERTAINMENT SOMETIMES GOOD TIMES ALL THE TIME! 975 RABBIT RD. 472-3128

Coming Attractions

South Seas wine tasting

South Seas Plantation Resort and Yacht Harbour and the Mirasou Vineyards will present A Wine Tasting on Saturday, Nov. 14 at 8 p.m. in Chadwick's Lindbergh Hall at South Seas Plantation.

Steve Mirasou, a fifth generation winemaker and member of the oldest winemaking family in the United States, will be on hand for the evening.

The event will be open to the public for \$5 per person admission. Reservations and tickets can be obtained by calling the Information Center at South Seas, 472-6111, extension 3312.

Six selected wines will be tasted, with fresh cheeses, fruit and french bread available to guests. There is limited seating, so you are encouraged to make your reservations early.

BIG Arts annual meeting

The Barrier Island Group for the Arts will hold its Annual Meeting on Thursday evening, Nov. 16. New officers will be elected for the coming year, and members will deliver various reports about upcoming events and business.

The dinner meeting will be \$3 plus a dessert or appetizer for you. Bring your own bottle. For more information and reservations call Donna Krueger, 472-5518.

Episcopal Church Women Oriental Bazaar

The Episcopal Church Women of St. Michael and All Angels will hold an Oriental Bazaar in the parish hall on Thursday, Nov. 12, from 10 a.m. to 5 p.m. Crafts through the Thai International Display will be on sale, providing opportunity for residents and island visitors alike to shop for unusual Christmas gifts.

The Thai International Display is a private mission enterprise created to help hundreds of family units in developing countries by supporting Asian handicrafts and providing channels for their sale.

It is an educational project to deepen Americans' appreciation of the aesthetic beauty of crafts of other countries. It is an economic enterprise as well, committed to finding markets for the craft products.

To name only a few, the crafts include wood carvings, metal objects, embroidered apparel, jewelry, baskets and numerous items such as trunk boxes of satin and brocade. There will be no admission charge, but sandwiches and beverages will be sold for those who want refreshments as they browse and buy.



Tonight spend an unforgettable evening dining in an enchanting Victorian Mansion

Enjoy the endless splendor of the sun setting on the Gulf, and drift back to the turn of the century when the Island Legend of Thistle Lodge began. Feast on the finest New Orleans cuisine. Plus island favorites. Luscious rich, scrumptious desserts and super specialty drinks.

The Thistle Lodge Restaurant A Legend in Its Own Time
Serving Lunch, Dinner and Sunday Brunch. Nobly Entertaining.

Closed Monday
Reservations suggested
CASA YBEL RESORT
255 West Gulf Drive • Sanibel Island • 472-9200

Pinocchio's
HOME MADE ITALIAN ICE CREAM & SWEET SHOP
HEAD FOR THE LIGHTHOUSE AND THE SEAHORSE SHOPS 3627 Periwinkle Way
BUONA SERA
We are now open until 9:00 p.m. except Mondays
472-6566

F&B OYSTER CO.
A FISH HOUSE
2163 Periwinkle Way Sanibel
THE FINEST FISH HOUSE IN SOUTHWEST FLORIDA
TRY OUR FAMOUS SHORE DINNER
BEERS AND WINES SERVED DAILY 5:00 TO 9:20
Phone 472-5275
RAW OYSTER BAR

Elegant Gulf Front Dining in The Bahama Room at **Sundial** Markon Hotel
Red Snapper a la Sundial
A Sundial Specialty with Florida's Favorite Fish. Your Choice Broiled or Sauteed. Basted with Lemon Butter.
Broiled Scallops
To die for Sweet Potatoes brushed with Butter. White Broiling. Served with Cocktail Sauce. Tantalizing and Luscious.
Shrimp Scampi
Fresh Gulf Shrimp sauteed in Garlic, Fresh Parsley, Lemon Juice and White Wine. Then Basted with Sauce and finished under the Broiler.
Baked Stuffed Shrimp
Fresh Gulf Shrimp Stuffed with a Dressing of Shrimp, Crabmeat, Mushroom, Green Onions and Garlic Butter. Topped with a Crispy Topping, then Baked to a Golden Brown.
Shrimp a la Sundial
Large Gulf Shrimp Dipped in Oil, Battered and Fried to a Light Golden Brown. Served on a Bed of Rice.
Lobster Thermidor
One Half Florida Lobster Filled with Lobster Meat and Mushroom. Glazed with Hollandaise Sauce.
Alaskan King Crab Legs
We've Spiced the Wholesome King Crab Legs to Expose the Sweet Tender Meat. Baked in Butter.
Catch of the Day
Sundial is Pleased to Feature the Freshest Fish Available at This Time of Year. Your Waiter Can Tell You What the Fishing Fleet's Have Provided Us With Today.
Marliner's Platter
The Sea Offers a Delectable Combination of Shrimp, Scallops, Fresh Fish and Alaskan King Crab Legs. Served with Cocktail Sauce, Tartar Sauce and Lemon Wedge.
Sundial Specialties
Roast Long Island Duck
Crisp and Brown Roasted Duck. Served with a Potatoes and Plum Sauce. Over a Bed of Wild Rice Pilaf.
Breast of Chicken Veronique
Boneless Breast of Chicken Sautéed and Served with a Wine, Sauce and Grapes.
Broiled Lamb Chops
Tender Lamb Chops. Served with Mint Jelly.
Veal Oscar
An Old Fashioned Medallion Sautéed with White Wine and Topped with Crabmeat, Asparagus Tips and Beurre Blanc.
Veal Scaloppini
Sautéed Milk Fed Medallions in Chablis Wine.
From the Bread
Broiled New York Strip
New York Style Cut Sirloin Steak. Broiled to Perfection.
Steak Au Poivre
The Continental Way of Preparing this Steak with Peppercorns. Crisped and Mushroom Sauce.
Filet Mignon
Chateaubriand Bouquetiere
Roast Prime Rib of Beef
Served with House Salad, Vegetable and Potatoes. Potato, Fresh Baked Bread and Butter.
Breakfast, Lunch & Dinner served daily
Live Entertainment Nightly in the Lost Horizon Lounge
Now Appearing "CATS"
9 P.M. to 1 A.M. except Sunday
Visit Our **Poolside Chickee Bar** 11 A.M. to 6 P.M.
THANKSGIVING RESERVATIONS NOW BEING ACCEPTED
CALL NOW AND PLAN YOUR CHRISTMAS PARTY
1246 Middle Gulf Drive, Sanibel Island
472-4151

PANCAKE AND OMELETTE RESTAURANT
in Tahitian Garden

25 Different Varieties
Pancakes, Omelettes and Waffles

Sandwiches Salad Plates

Slim Liners for Waist Watchers

Tues-Sat. 7 a.m. - 2 p.m. 472-4453
Sun 7 a.m. - 1 p.m. Closed Monday

Coming Attractions

ECC student production	Veteran's Day plans
Edison Community College students production of Tennessee Williams' <i>A Streetcar Named Desire</i> opens Nov. 13 at the college auditorium. Tickets are now on sale for \$3 each. Community members are encouraged to purchase tickets early to be assured of seating for the limited performances. Tickets can be purchased at the business office in Building E on the Fort Myers campus. Performances are scheduled for Nov. 13, 14, 15, 20 and 21 at 8 p.m. and Sunday, Nov. 15 at 4 p.m. The business office is opened Monday through Thursday from 9 a.m. to 5 p.m. and Friday from 9 a.m. to 4 p.m. For further information call 481-2131 extension 313.	A county wide Veterans Day observance is planned for 11 a.m. Wednesday, Nov. 11 at the two Jims Statue in Fort Myers Memorial Gardens Cemetery. The observance is sponsored jointly by the Lee County Veterans Council and other patriotic organizations including the Children of the American Revolution, Sons of the American Revolution and three local chapters of the Daughters of the American Revolution. Everyone who can attend will be welcome and their presence will be appreciated by those senior and junior Americans who sponsor the commemoration of this important day in the lives of all of us who enjoy the blessings of liberty.
Elementary school book fair	San-Cap Shell Club
The Sanibel Elementary School will hold a book fair this week Nov. 8-13 in the school multi-purpose room. The fair, which offers a wide variety of children's books will be open from 7:30 a.m. to 2 p.m. The school is located at 3840 San-Cap Road. The public is welcome.	The first meeting of the Sanibel-Captiva Shell Club for this year will be held on Nov. 16 at 8 p.m. in the Sanibel Community House. Members and guests are welcome. Ed Hanley, dealer and guide specimens shells will present a talk and also show slides on his shelling trip to Antigua.

RICK KEELER IS BACK!

scotty's pub

Restaurant and Backyard Saloon

SERVING:
LUNCHEON 11:30 a.m. - 3:00 p.m. Monday - Friday
DINNER 5:00 p.m. - 9:30 p.m. Daily
ENTERTAINMENT 8:30 p.m. on Tuesday - Saturday

1233 Periwinkle Way
Sanibel Island, FL
(813) 472-1771

PATTERSON, TURK, HUDSON & SNOW, P.A.

Attorneys at Law

REPRESENTATION OF LANDOWNERS
BUSINESSES AND OTHER AFFECTED PARTIES IN

EMINENT DOMAIN (CONDEMNATION)
LAWSUITS AND INVERSE
CONDEMNATION MATTERS

4223 DEL PRADO BLVD. CAPE CORAL 542-1131

Si Bon Reopening Saturday November 14!

Sanibel's Gourmet Take Out

Open 7 days 9:30 a.m. - 7:30 p.m.

Sanibel Square
2244 Periwinkle Way
472-3888

LET US ENTERTAIN YOU with LE QUARTET

For your listening and dancing pleasure, we feature nightly entertainment in the Atrium Lounge. Sip a delicious drink and enjoy the musical expertise of LE QUARTET from 9 p.m. to 1 a.m. except Mondays.

On Sundays tap your feet to the Dixie Land Quartet while enjoying our Sunday Champagne Brunch 11 a.m. to 2 p.m.

Call 472-5111 for information

South Seas Plantation
Managed by Arques Hotels & Resorts

Book report from the Sanibel Library

By Harriet Howe
King of the Confessors by Thomas Hoving an utterly fascinating account of the quest for the most intricate and exciting work of art ever created.
In 1955 a carved ivory cross was discovered in the possession of an enigmatic and elusive collector and at once there began a campaign for its acquisition by all the great art museums.
The author then a young assistant curator of medieval art at the Metropolitan Museum was assigned the task of loving the cross for the Clusters that housed the museum's medieval collection. His account of his adventures reads like a detective story. The suspense is gripping and to tell more here would spoil the excitement of reading the book.
The Hours of Light by Janet Tanner the story of the riots a young family in Western England James the calm and slow-temper father and Charlotte the maternal ambitious for her children special y Jack whose father is her secret father three elder boys and their father are slaves to the mine but when war breaks out in 1914 one by one the boys enlist through the horrors of war the dreadful flu epidemic and the struggle of those at home to endure the lives of family now loved ones remain strong.
Frost and Center by John Houseman continues his autobiography which began with Run Through Religion with his wartime work this book goes on to his career in Hollywood in the forties and into the sixties.
The Return to Camelot by Mark Vonnard a beautiful and lavishly illustrated book produced in Eng. and by Yale University Press. It chronicles the revival of the medieval code of chivalry beginning toward the end of the 16th Century and surviving through the 19th and up to World War I in the 20th.

Full Service Florist
Flowers 472-3123

PALM RIDGE FLORISTS

CUT FLOWERS DREID & SILK ARRANGEMENTS
CUSTOM DESIGNING
236 PALM RIDGE ROAD
SANIBEL FLORIDA 33907
472-3123

MY FRIENDS TELL ME THAT "LETIZIAS" CONTINENTAL CUISINE

IS A MUST WHEN ON SANIBEL AND WHY NOT? LOOK WHAT THEY OFFER IN ITALIAN/FRENCH AND SEAFOOD SPECIALTIES

- Lasagna
- Ravioli
- Mousseline
- Beaufort
- Continental
- Spaghetti with White Cream Sauce
- Sweet Italian Sausage
- Marinated Meatballs
- Mushrooms
- Meat Sauce
- Aglio & Olio
- Veal Milanese
- Veal Parmigiana
- Veal Scalloped
- Aubergine
- Chicken Breast
- Veal Alla Esca
- Labrador Tails
- Alaskan King Crab Legs
- Baked Red Snapper
- Red Snapper in Papillote
- Shrimp Scampi
- Scallops Alla Letizia

Also offering Combination Dinners for Two cooked to order just for you so you can have a taste of more than one

FULL LIQUOR LICENSE POURING ONLY THE BEST

472-2177
SORRY NO RESERVATIONS CASUAL DRESS
5:30 P.M. - 9:30 P.M. CLOSED SUNDAYS
2313 West Gulf Drive - Beautiful Sanibel Island - On the Gulf

VISA MasterCard

ISLAND PIZZA

Our dough is made fresh daily

ITALIAN SUBS
PIZZA
SPAGHETTI SALADS
BEER & WINE TO GO

EAT IN OR TAKE OUT
472-1581 or 472-1582

7 Days 11 A.M. - 11 P.M. 1630 Periwinkle Way

GET LUCKY THIS FRIDAY THE 13TH!

This Friday and Every Friday We'll Be Featuring Our Famous **NO BUFFET SEAFOOD BUFFET**

FEATURING FRESH FISH COOKED TO ORDER
Swordfish • Snapper • Grouper • Shark • Trout AND MORE

COMPLIMENTARY APPETIZERS
Salad • Fresh Vegetables • Potatoes
Homebaked Bread and Butter

AND THIS FRIDAY ONLY
COMPLIMENTARY AFTER DINNER LIQUEUR

CALL 472-3128 FOR DETAILS

the LIMBERS

FULL LIQUOR LICENSE 975 RABBIT RD
SORRY NO RESERVATIONS
472-3176 OPEN 7 DAYS 5 TO 10 P.M.

VISA MasterCard

McT's Shrimp House and Tavern
1523 Periwinkle Way
472-3161

"FAMOUS FOR ALL THE SHRIMP YOU CARE TO EAT"
Mary & Bud are Proud to Present the New Dinner Menu. In appreciation of your patronage and to introduce the New Dinner Menu they would like to invite you to McT's and receive

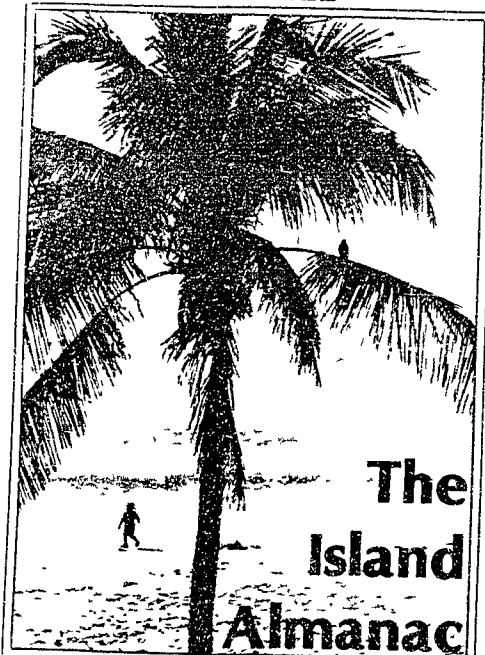
COUPON
\$2.00 OFF
WITH THIS COUPON
On every entree served from 5 p.m.
For each member of your party
Please present when ordering
OFFER EXPIRES 11/17/87

EARLY BIRD SPECIALS
Between 5:00 and 6:00 p.m. every day to the first 100 people

Prime Rib Dinner \$5.95
Shrimp Dinner
Bar-B-Q Ribs
Stan's Nightly Special

By Popular Demand The Burrito is Back!
In The Bar After 10:00 p.m.

Children - Dinner \$1.50
DINNER SERVED FROM 5:00 - 10:00 p.m. Every Evening
FULL LIQUOR LICENSE
MAJOR CREDIT CARDS ACCEPTED



The Island Almanac

Marinas

Twin Palm Marina Harbor Center Road Captiva (42-2807)
 Open to the public 8 a.m. to 6 p.m. seven days a week.
 Captiva Marina (42-2531)
 Open 8 a.m. to 5 p.m. seven days a week.
 Power 15 hp (42-115) hp USCG equipped in millage. Sail Smith 17 21 days sailer slips with engines to a 24 charter stood with Capt. Fred Cominsky.

Sanibel Marina N Yachtman Drive Sanibel (42-2723)
 Open seven days a week 7 a.m. to 6 p.m.
 Capt. Ted Cole and Bill Doane for fishing, shelling and sightseeing guides. Boat tackle gear. Tackle for rent. Boat rentals 15 hp skills and 15 25hp skiffs.

Blind Pass Marina Sanibel Captiva Road (42-2723)
 Open 7 a.m. to 6 p.m. seven days a week.
 Capt. Master Larry Cill Capt. M. as Ferry Duke Sells Jerry Way. Call for fishing, shelling and sightseeing guides. Boat tackle gear. Tackle for rent. Boat rentals 15 hp skills and 15 25hp skiffs.

South Seas Plantation Marina Captiva (42-2111)
 Open to the public 8 a.m. to 6 p.m. seven days a week.
 Harbor Master Don Starr Capt. Doug F. Scharf. Boat rentals. Charter. Sightseeing. Call for appointment. Boat rentals. Power. Boat rentals. Boat rentals. Boat rentals.

Tarpon Bay Marina at the north end of Tarpon Bay Road (42-1922)
 Open seven days a week 7 a.m. to 6 p.m.
 Capt. Randy White and Capt. Don Prinsack available. Call for appointment. Boat rentals. Power. Boat rentals. Boat rentals.

Marinas

Twin Palm Marina Harbor Center Road Captiva (42-2807)
 Open to the public 8 a.m. to 6 p.m. seven days a week.
 Captiva Marina (42-2531)
 Open 8 a.m. to 5 p.m. seven days a week.
 Power 15 hp (42-115) hp USCG equipped in millage. Sail Smith 17 21 days sailer slips with engines to a 24 charter stood with Capt. Fred Cominsky.

Bait, Tackle, Gear

Bailey's General Store Island Shopping Center Periwinkle Way (42-1516)
 The Ball Box 100 Periwinkle Way (42-1618). Also tackle rentals.

The Reef Eel Sanibel Center Building Periwinkle Way and Cape Way Road (42-2848)
 Also snorkeling wetsuits and beachwear. Fresh, sea food available. Beer and wine.

Things to do and see

LIGHTHOUSE
 Located at the Eastern tip of Sanibel, the lighthouse is in close proximity to the pier which offers a fine view of the lighthouse and the surrounding area. Open to the public 10 a.m. to 5 p.m. on Wednesdays and Saturdays. Call for reservations and information.

J.N. DING DORLING NATIONAL WILDLIFE REFUGE
 Located on the western tip of Sanibel, the refuge is a beautiful area with many bird and animal species. Open to the public 10 a.m. to 5 p.m. on Wednesdays and Saturdays. Call for reservations and information.

Sanibel Captiva Conservation Foundation
 Located on the eastern tip of Sanibel, the foundation is dedicated to the preservation of the natural resources of the island. Open to the public 10 a.m. to 5 p.m. on Wednesdays and Saturdays. Call for reservations and information.



Galleries

LaBelle Gallery 1474 A Periwinkle Way (42-4467)
 Original oil paintings, watercolors, mixed media and wood sculptures. A unique gallery featuring local artists. Open to the public 10 a.m. to 5 p.m. on Wednesdays and Saturdays. Call for reservations and information.

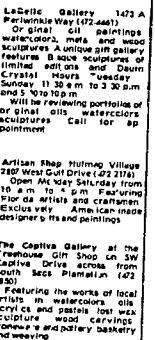
Artisan Shop Harbor Village 240 West Gulf Drive (42-2714)
 Open to the public 10 a.m. to 5 p.m. on Wednesdays and Saturdays. Call for reservations and information.

The Photographers Gallery 1534 Periwinkle Way (42-2723)
 Open to the public 10 a.m. to 5 p.m. on Wednesdays and Saturdays. Call for reservations and information.

Schneeweis Gallery Tarpon Bay Road (42-1191)
 Open to the public 10 a.m. to 5 p.m. on Wednesdays and Saturdays. Call for reservations and information.

The Reefside Gallery Periwinkle Way (42-2723)
 Open to the public 10 a.m. to 5 p.m. on Wednesdays and Saturdays. Call for reservations and information.

ArtFac Gallery 1028 Periwinkle Way (42-2723)
 Open to the public 10 a.m. to 5 p.m. on Wednesdays and Saturdays. Call for reservations and information.



Beach access

Island residents with residential parking stickers can park on West Gulf Drive at the Sanibel Lighthouse and Fishing Pier at the eastern tip of the island. Call for reservations and information.

Unrestricted parking with no restrictions is permitted for everyone at Bower's Beach on Sanibel Captiva Road at the Sanibel Lighthouse and Fishing Pier at the eastern tip of the island. Call for reservations and information.

Nature Guides

Griffing Research (42-1647)
 Offering bird tours of the island commencing at dawn. The tours start at the Sanctuary Call for reservations and information.

Mark Bird (42-2141)
 Offering a choice of canoe trips on the Sanibel River through the mangrove wetlands. Call for reservations and information.

George Lewis (42-1647)
 Offering bird tours of the island commencing at dawn. The tours start at the Sanctuary Call for reservations and information.

Shopping

Sanibel Shell Shop
 Located on the eastern tip of Sanibel, the shop offers a wide variety of shells and jewelry. Open to the public 10 a.m. to 5 p.m. on Wednesdays and Saturdays. Call for reservations and information.

Sanibel Jewelry
 Located on the eastern tip of Sanibel, the jewelry store offers a wide variety of jewelry. Open to the public 10 a.m. to 5 p.m. on Wednesdays and Saturdays. Call for reservations and information.

Courts and Courses

The Dunes Country Club
 Located on the eastern tip of Sanibel, the club offers a wide variety of golf courses. Open to the public 10 a.m. to 5 p.m. on Wednesdays and Saturdays. Call for reservations and information.

Sanibel Elementary School
 Located on the eastern tip of Sanibel, the school offers a wide variety of educational programs. Open to the public 10 a.m. to 5 p.m. on Wednesdays and Saturdays. Call for reservations and information.

Fishing, shelling, sightseeing, sailing, and charter trips

Sanibel Fishing
 Located on the eastern tip of Sanibel, the fishing guides offer a wide variety of fishing trips. Open to the public 10 a.m. to 5 p.m. on Wednesdays and Saturdays. Call for reservations and information.

Sanibel Shelling
 Located on the eastern tip of Sanibel, the shelling guides offer a wide variety of shelling trips. Open to the public 10 a.m. to 5 p.m. on Wednesdays and Saturdays. Call for reservations and information.



Rentals of all kinds

Autovans
 Located on the eastern tip of Sanibel, the autovans offer a wide variety of rental services. Open to the public 10 a.m. to 5 p.m. on Wednesdays and Saturdays. Call for reservations and information.

Bicycles/Mopeds
 Located on the eastern tip of Sanibel, the bicycles and mopeds offer a wide variety of rental services. Open to the public 10 a.m. to 5 p.m. on Wednesdays and Saturdays. Call for reservations and information.

To your Health

John Colucci D.D.
 Located on the eastern tip of Sanibel, the doctor offers a wide variety of medical services. Open to the public 10 a.m. to 5 p.m. on Wednesdays and Saturdays. Call for reservations and information.

Robert G. L. Sage D.D.
 Located on the eastern tip of Sanibel, the doctor offers a wide variety of medical services. Open to the public 10 a.m. to 5 p.m. on Wednesdays and Saturdays. Call for reservations and information.

Churches

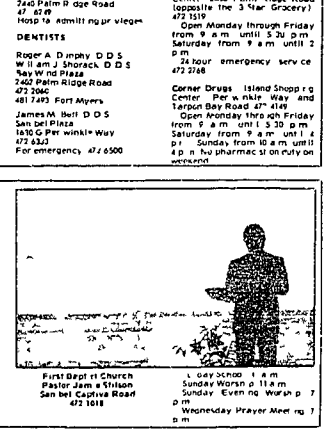
Sanibel Community Church
 Located on the eastern tip of Sanibel, the church offers a wide variety of religious services. Open to the public 10 a.m. to 5 p.m. on Wednesdays and Saturdays. Call for reservations and information.

St. Michael and St. Ann's Episcopal Church
 Located on the eastern tip of Sanibel, the church offers a wide variety of religious services. Open to the public 10 a.m. to 5 p.m. on Wednesdays and Saturdays. Call for reservations and information.

Medicine and Surgery

John Colucci D.D.
 Located on the eastern tip of Sanibel, the doctor offers a wide variety of medical services. Open to the public 10 a.m. to 5 p.m. on Wednesdays and Saturdays. Call for reservations and information.

Robert G. L. Sage D.D.
 Located on the eastern tip of Sanibel, the doctor offers a wide variety of medical services. Open to the public 10 a.m. to 5 p.m. on Wednesdays and Saturdays. Call for reservations and information.



on Sanibel

B & B Oyster House
2143 Perdido Way (472 2774)
MC, VISA
Serving classic oyster from 11 to 10 p.m. seven days a week. Fresh seafood and oysters and all other seafood specialties. Also a seafood house with 20 different types of oysters and fresh fish.
Cassual dress

John Paul's French Corner
401 W. Pine St. 2nd fl. on Harbor Bay Road (472 1922)
MC, VISA
Specializing in French cuisine. Dinner from 8 to 10 p.m. on Bayview on December 15, but reservations will be served from 11:30 a.m. to 2 p.m. Closed Sundays.
Cassual dress

Island Golf Drive (472 4131)
+ MC, VISA, AE
Serves golfers from dining at the Bahama Room. Lunch 11 to 2 p.m. Dinner 5 to 10 p.m. Closed Sundays.
Reservations on Fridays from 6 to 9:45 p.m. Sunday brunch from 11:30 a.m. to 2 p.m.
Open seven days. Enter tournament at the Lost Seaman lounge from 11 p.m. to 2 a.m.

Scoti's Pub
1222 Perdido Way (472 1711)
MC, VISA
Fresh is the key word at Scoti's. Serves a variety of fresh seafood including oysters, scallops, and fish. Superb specialties daily.
Lunch 11:30 a.m. to 3:30 p.m. Dinner 5 to 10 p.m. daily. Open every Tuesday through Saturday.

Island House Restaurant
Serves lunch at the Gulf at Tulip Way (472 2735)
+ MC, VISA, AE
Dinner from 5 to 9:30 p.m. Offer to enjoy with your own fresh seafood. Open 7 days a week. Hot omelets and cold appetizers. Hot omelets and cold appetizers. Hot omelets and cold appetizers.
Cassual dress

Quarterdeck of Seabe Restaurant
675 W. Perdido Way (472 3713)
+ MC, VISA, AE
Seafood and a steak. A specialty lunch and dinner. Open 7 days a week. Hot omelets and cold appetizers.
Lunch 11 a.m. to 2 p.m. Dinner 5 to 10 p.m. Closed Sundays.
Cassual dress

The Turtles
212 West Hill Drive (472 2177)
+ MC, VISA
French elegant seafood cuisine. Fresh country stuffed steak, pasta and cheese dishes. All dinners include Hoppington entree. Also cocktail-lounge combinations for two.
Open 7 days from 5:30 to 9:30 p.m. Closed Sundays.
Cassual dress

Lighthouse Restaurant
1248 Perdido Way (472 1974)
Dine credit cards.
Lunch from 11 a.m. to 2 p.m. Dinner 5 to 10 p.m. Specialties include oysters, scallops, and fish. Also a variety of seafood specialties. Open 7 days from 5:30 to 9:30 p.m. Closed Sundays.
Cassual dress

The Thistle Lodge at the Casa Vieja Beach and Racquet Club
755 Gulf Drive (472 3143)
+ MC, VISA, D.C. AE
Enjoy Gulf front dining in this authentic reproduction of a late Victorian Sanibel mansion on the beach.
Croquet Club. New Orleans specialties. Lunch served from 11:30 a.m. to 2 p.m. Dinner 5 to 10 p.m. Entertainment nightly in the lounge from 8:30 p.m. to 2 a.m. Collared shirts required.

Dining on the Islands



Illustration of a plate of food with a fork and knife.

RBV: AE American Express
D.C. Dinners Club
MC, VISA, AE
+ Full Liquor License
+ Wine & Beer License
Cashed dress, casual shirts & shoes

Breakfast

Light House Restaurant
1248 Perdido Way (472 1974)
7 a.m. to 2 p.m. every day except Monday.
Pancakes, omelets, eggs, French toast.
Moderate prices. Menu posted.
Cashed dress.
No credit cards accepted.

Cherry's General Store
South Seas Plantation (472 3111)
7 to 11 a.m. Continental breakfast every day.
All major credit cards accepted.

Chadwick's
South Seas Plantation (472 3111)
9 to 11 a.m. Champagne Brunch on Sunday.
Cashed dress.
Reservations are suggested.
All major credit cards accepted.

Island Ice Cream
2222 Perdido Way (472 3344)
7 to 10 a.m. to 12 noon everyday except Sunday 8 a.m. to 10 p.m. Closed on Wednesdays.
Eggs Benedict and soft ice cream.
Cashed dress.
MC, VISA, AE

Thistle Lodge
Casa Vieja Beach & Racquet Club (472 3143)
7 a.m. to 10 p.m. Sunday only.
New Orleans style breakfast, crepe, quiche and socially priced dishes.
Reservations suggested.
Cashed dress.
MC, VISA, AE and DC

Eat in or take-out

Somebody's Special
Capitola Village Square Sanibel (472 3500)
8 to 11 a.m. everyday.
Homemade bread and pastries. Fresh egg waffles. No formal dress code. Tables on porch.
No credit cards accepted.

Island House Restaurant
On the Gulf at Tulip (472 2735)
7:30 a.m. to 12 noon.
Cashed dress.
MC, VISA, AE

Somebody's Special
Capitola Village Square Sanibel (472 3500)
8 to 11 a.m. everyday.
Homemade bread and pastries. Fresh egg waffles. No formal dress code. Tables on porch.
No credit cards accepted.

Island House Restaurant
On the Gulf at Tulip (472 2735)
7:30 a.m. to 12 noon.
Cashed dress.
MC, VISA, AE

on Captiva

Chadwick's
The tip of Captiva Island at the entrance to South Seas Plantation (472 3111)
Fresh seafood including dining and entertainment.
Lunch served from 11:30 a.m. to 2 p.m. on Saturdays from noon to 2 p.m. on other days.
Dinner from 5 to 10 p.m. on Saturdays from 5 to 10 p.m. on other days.
Entertainment nightly except Monday. Friday through Saturday. Dinner served from 5 to 10 p.m. on Saturdays from 5 to 10 p.m. on other days.
A South Seas Plantation brunch from 11 a.m. to 2 p.m. on a new bar and night lounge. Friday from 6 to 10 p.m. in the A.I. Lounge.

Beep's by the Bubble Room
Sanibel Captiva Road (472 3344)
MC, VISA
Serving lunch from 11:30 a.m. to 2 p.m. on Saturdays from noon to 2 p.m. on other days.
Dinner from 5 to 10 p.m. on Saturdays from 5 to 10 p.m. on other days.
Entertainment nightly except Monday. Friday through Saturday. Dinner served from 5 to 10 p.m. on Saturdays from 5 to 10 p.m. on other days.

The Bubble Room
Sanibel Captiva Road (472 3344)
MC, VISA
A 100% island atmosphere with a nostalgic feel from the beach. Featuring premium fresh seafood, home made soups, casseroles, lunch and dinner of the day.
Open Tuesday through Sunday 11:30 a.m. to 10 p.m. Closed Mondays. Cashed dress.

Sanibel Waters Inn
Sanibel Captiva Road (472 3111)
+ MC, VISA
Open Tuesday through Sunday 11:30 a.m. to 10 p.m. Closed Mondays. Cashed dress.

Clubs and Organizations



Illustration of a group of people at a social gathering.

Sanibel Captiva Chess Club
Meets every Sunday at 10 a.m. at the Chess Club. Open to all ages. 11:30 a.m. to 2 p.m. on Saturdays from noon to 2 p.m. on other days.
Sanibel Captiva Art League
Holding outdoor painting workshops from 8 a.m. to 10 a.m. on Thursdays. Call 472 4394 for more info.

Sanibel Captiva American Legion
Meets every Monday at 8 p.m. at the American Legion. Open to all ages. 11:30 a.m. to 2 p.m. on Saturdays from noon to 2 p.m. on other days.

Sanibel Captiva Chamber of Commerce
Meets every Tuesday at 10 a.m. at the Chamber of Commerce. Open to all ages. 11:30 a.m. to 2 p.m. on Saturdays from noon to 2 p.m. on other days.

Sanibel Captiva Golf Club
Meets every Wednesday at 8 p.m. at the Sanibel Captiva Golf Club. Open to all ages. 11:30 a.m. to 2 p.m. on Saturdays from noon to 2 p.m. on other days.

Post Offices

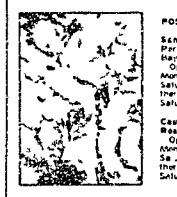


Illustration of a person at a post office counter.

Post Offices
Sanibel Post Office
Open 8:30 a.m. to 5 p.m. Monday through Friday. Closed Saturdays and Sundays. A through letter mail delivery on Saturdays.

Sanibel Post Office
Open 8:30 a.m. to 5 p.m. Monday through Friday. Closed Saturdays and Sundays. A through letter mail delivery on Saturdays.

WESTERN UNION

Western Union
Sanibel General Store
Open 8:30 a.m. to 5 p.m. Monday through Friday. Closed Saturdays and Sundays. A through letter mail delivery on Saturdays.

Government

Sanibel City Council
Meets every Tuesday at 8 p.m. at the City Council. Open to all ages. 11:30 a.m. to 2 p.m. on Saturdays from noon to 2 p.m. on other days.

Sanibel City Planning Commission
Meets every Tuesday at 8 p.m. at the City Council. Open to all ages. 11:30 a.m. to 2 p.m. on Saturdays from noon to 2 p.m. on other days.

Take-out Only

The Sub Shop
Across from the Fire Station on Perdido Way (472 3344)
Large menu of take-out food. Open 11:30 a.m. to 10 p.m. on Saturdays from noon to 2 p.m. on other days.

Island Ice Cream
2222 Perdido Way (472 3344)
7 to 10 a.m. to 12 noon everyday except Sunday 8 a.m. to 10 p.m. Closed on Wednesdays.
Eggs Benedict and soft ice cream.
Cashed dress.
MC, VISA, AE

Thistle Lodge
Casa Vieja Beach & Racquet Club (472 3143)
7 a.m. to 10 p.m. Sunday only.
New Orleans style breakfast, crepe, quiche and socially priced dishes.
Reservations suggested.
Cashed dress.
MC, VISA, AE and DC

Spirits

R & B Liquors
Next to Hostler's 1205 Perdido Way (472 3333)
Liquor bar with wine, cigars, and more. Open Monday through Saturday from 9 a.m. to 10 p.m. on Sundays from noon to 7 p.m.

The Grog Shop
Near Dal's General Store in the Island Shopping Center. Periwinkle Way (472 1647)
Liquor bar with wine, cigars, and more. Open Monday through Saturday from 9 a.m. to 10 p.m. on Sundays from noon to 7 p.m.

Service with a smile

Island Elixon
2455 Perdido Way (472 2033)
Open 7 a.m. to 10 p.m. Monday through Saturday. Closed Sundays and holidays.

Sanibel Standard
1015 Perdido Way (472 4141)
Open 8 a.m. to 10 p.m. Monday through Saturday. Closed Sundays and holidays.

TAXICABS

Taxicabs
Sanibel Taxicab Company
Local service available from 6 a.m. to 11 p.m. 8 1/2 light 8 a.m. at the airport. Special arrangements or rates for group and from the airport at other hours can be made.

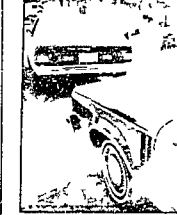


Illustration of a person in a uniform, possibly a taxi driver.

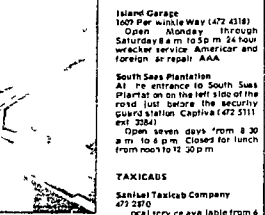


Illustration of a person in a uniform, possibly a taxi driver.

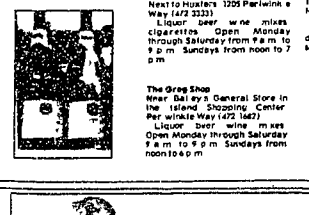


Illustration of a person in a uniform, possibly a taxi driver.

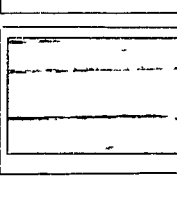


Illustration of a person in a uniform, possibly a taxi driver.

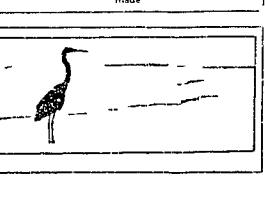


Illustration of a person in a uniform, possibly a taxi driver.

Good things to know

HELPH

Emergency Numbers
 Fire 472-1414
 Police 472-1414
 Sheriff 322-3434
 Ambulance 326-3434
 Paramedics 472-1717
 Island Ambulance 472-1414
 Emergency Service 472-1444
 CRW Care and Rehabilitation of Wildlife 472-3444

DISASTER ALERT

Read a Stat on WCCC 10:57 PM broadcast sets in at any emergency such as hurricane alert or any other distress occurrence that might affect Sanibel or Captiva



FISHING

While no license is required for saltwater fishing in freshwater parks on the Sanibel River requires a Florida Fishing License
 Licenses are available at Bailey's General Store on Park Avenue. The fee is \$5.00 for the date and \$10.00 for non-residents
Mullet Legal Lengths:
 Blue Fish 12 inches
 Flounder 11 inches
 Croaker 12 inches
 Mackerel 12 inches
 Mullet 12 inches
 Pompano 12 inches
 Red Fish 18 inches
 Snook 12 inches
 Trout 12 inches

SMELLING

The city's resolution to prohibit the use of dogs on the beach is a matter of public health. As a matter of fact, the city's resolution is not a new one. It has been in effect for many years. The city's resolution is not a new one. It has been in effect for many years. The city's resolution is not a new one. It has been in effect for many years.



DOG DO'S AND DON'TS

You are visiting Sanibel in the winter. It is recommended that you clean up after your dog. The city's resolution is not a new one. It has been in effect for many years. The city's resolution is not a new one. It has been in effect for many years.

BIKING

If you aren't used to a lot of bicycle traffic, watch out on Sanibel. The extensive network of bike paths on the island is clearly marked along the edge of the road. Observe caution when driving near the bike path. A state law prohibits parking or driving on the bike path. Always use proper riding technique. Florida law bicyclists have the same rights and responsibilities as motor vehicle drivers. Drive Safely!

PUBLIC REST ROOMS

Sanibel Fishing Pier At the Lighthouse and on the Island
 Turner Beach At the end of the bridge between Sanibel and Captiva
 Lighthouse between the two bridges
 Drive Safely!

LIBRARIES

Sanibel Public Library 472-1414
 Captiva Memorial Library 472-1414
 Open Monday through Thursday 9 a.m. to 4 p.m. Friday 9 a.m. to 4 p.m. Saturday 9 a.m. to 4 p.m. Sunday closed

BANKING

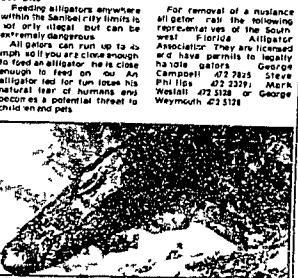
Bank of the Islands 1499 Parkside Way 472-4141
 Monday through Thursday 9 a.m. to 4 p.m. Friday 9 a.m. to 4 p.m. Saturday 9 a.m. to 4 p.m. Sunday closed

GAZARDS

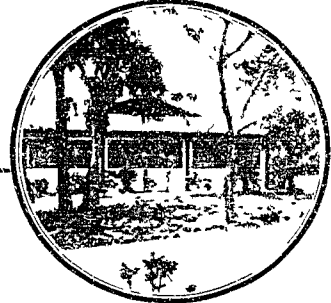
Feeding alligators anywhere within the Sanibel city limits is not only illegal but can be extremely dangerous. Alligators can run up to 40 mph. If you are close enough to feed an alligator, he is close enough to feed on you. An alligator fed for fun loses his natural fear of humans and becomes a potential threat to children and pets.

SPEED LIMITS

There is very good reason for the varying speed limits (25-30 mph) along the Causeway. The slower speeds preserve the bridge supports from strain and flex. This speed limit is strictly enforced with radar on a 24-hour basis by both the Sanibel Police Department and the Lee County Sheriff's Department.



Save a bundle!
 Buy, sell and trade
 the
 Island Classified
 way
 25 words
 for just one buck
 472-5185



SANIBEL ISLAND
GULFSIDE PLACE
 Sanibel's most prestigious address. Nearly 2,000 sq. ft. of pure luxury in the two bedroom, two bath, plus den suite. Almost 7,000 sq. ft. of view across the three bed room, three bath, plus den suite. Spectacular Gulf views, pool, lighted tennis court, in-suite and much more. Call for details.
 Two bedroom Garden Suite \$145,900
 Two bedroom Penthouse Suite \$240,900
 Three bedroom Vista Suite \$449,900

SELLER FINANCING
 Gulfside Place. The ultimate in affordable luxury. A spacious unfurnished suite is available. With property appreciation and tax shelter, this unit makes an ideal investment opportunity. One year lease. Assumed mortgage of attractive rate. Owner will finance with reasonable down payment.
 After Hours: 549-1228

SUNDIAL RESORT
 The most spectacular view of the Gulf. The wrap-around porch brings the view in doors. Step onto the white sand from your private ground level beachfront entrance for tanning, swimming and strolling. Two bedroom, two bath, plus den, fully furnished and available immediately.
 \$219,900
 Realtor-Associate
 After Hours: 472-2811

SHELL HARBOR
 An immaculate home in the best section of Sanibel Island. Must be seen to be appreciated. 3 spacious bedrooms and three baths, screened porch, large pool and many up-gated extras add to the luxury of the home. Direct boat access and a short walk to the best of sandy beaches.
 Realtor-Associate
 After Hours: 472-2811

TAX SHELTER INVESTMENT
 Five immaculate duplexes in a good Fort Myers neighborhood. 11 tenant residences, a 100% leased and are all on one property. Owner financing available at a variety of attractive rates. Please call for detailed information.
 \$279,900
 Realtor-Associate
 After Hours: 549-1228

THE DUNES ON SECLUDED LAKE
 The delightful ground level home with master and guest bedroom suites features an excellent floor plan, beautiful easy to maintain landscaping and immaculate condition throughout. Situated by a secluded natural lake and surrounded with abundant wildlife. A attractive financing option will carry mortgage.
 \$188,500
 Realtor-Associate
 After Hours: 472-2811

CLOSE TO SANIBEL ISLAND
 Mc Gregor Woods is one of the most beautiful single family home developments in Lee County. The Glendole Model Home is now listed. 3 bedrooms, 2 baths plus den. Fully equipped kitchen. Fireplace, hot tub, screened porch, vaulted ceiling, sunken conversation pit and many more luxury extras are featured in this home. Decorator furnished by Robb & Sucky. Assumable mortgage.
 \$197,000
 Realtor-Associate
 After Hours: 472-5901

NORTH YACHTSMAN PORTE
 Very special homes for a very special offer. Only five homes. The development includes spacious lots, tennis court and fabulous 3 bedroom, 2 bath homes with many luxury extras.
 \$139,500
 Realtor-Associate
 After Hours: 472-2651

HARBOR COTTAGES
 Just listed! A fabulous home in prestigious Harbor Cottages. 3 bedroom, 3 bath home with many luxurious extras. Amenities include tennis courts, large pool and boat dockage for serious boaters. Very attractive financing available. Offered at \$215,000.
 Realtor-Associate
 After Hours: 472-9300

GRACIOUS BAYFRONT ESTATES
 Grace bayfront residence. Convenient private location offers magnificent unobstructed view with 150 of uncollected shoreline. Including two separate boat slips with direct bay access. Classically designed with lush mature landscaping. The home has 5,000 sq. ft. of living space with five bedrooms and four full bathrooms. Family room with fireplace overlooking screened heated pool. Many many luxurious extras. Shown by appointment only.
 \$475,000
 Realtor-Associate
 After Hours: 472-9300

CAPTIVA ISLAND
SOUTH SEAS PLANTATION
 One bedroom two bath BAYSIDE VILLA. Overlooks Pine Island Sound. Boat basin on deck. Heated pool, entire main area and spa. Tennis, golf, computer, restaurant and shops. Excellent rental history with two separate rental units within the same villa. Two separate villas from which to choose. See offered furnished at \$128,000.
SUNSET CAPTIVA
 A delightful 2 bed room, 2 bath luxury home in secluded 5 mi. Captiva. The home features a full cathedral ceiling, a fireplace, spacious screened pool deck and a sun deck. Many custom extras. Furnished.
 \$285,000
 Realtor-Associate
 After Hours: 472-2811

Gulfside Realty Inc.
 (813) 472-3165

ISLAND FINANCIAL SERVICES, INC.
 Provides on a year round basis:
 • ACCOUNTING
 • TAXES
 Pelican Place
 2440 Palm Ridge Road
 Sanibel Florida 33957 (813) 472-1439

WATERFRONT CONDOMINIUM SOUTH SEAS PLANTATION AND YACHT HARBOR
FOR SALE BY OWNER
 Spectacular furnished 3 bedroom/2 bath Beach Villa (cathedral ceiling) with large screened balcony overlooking the Gulf of Mexico. Excellent investment opportunity. Rental history available. \$150,000. Price includes only NO REALTOR'S Call 955 (813) 922-5727

Shell Lamp
 OPEN SUNDAY 10-2
 JUST ADD 5 TELLS
 4 OTHER STYLES AVAILABLE
 We Ship Anywhere in USA (Add \$14.95 shipping, FL residents 4% tax)
 Zangoang's
 "The Shell Lamp Store"
 Mon-Sat. 9:30-5:30
 Sun 10:00-5:00
 P.O. Box 305, 2001 Parkside Way at Garden Gate Plaza
 Sanibel Island, Florida 33957 (813) 472-4035
 Complete \$55.00

Award winning in-depth reporting
 The Sanibel Captiva Islander
 Name: _____
 Address: _____
 Local \$7 per year U.S.A. \$10 per year Foreign \$12 per year
 Mail to The Sanibel Captiva Islander, P.O. Box 56, Sanibel Island, Fla 33957

Looking for rentals?
SEASONAL SHELL HARBOR 2/2
GRANADA VILLAS 2/2 Townhouse
SEA OATS
 New 3/3, 500 Feet to Beach
 Call Betty Thompson
Michigan HOMES REALTY
 Call 472-1506. 7 days a week
 950 Parkside Way in Lindgreen Parkland



You can own a place and time in paradise forever!

The Mariner Group is creating a paradise on Sanibel Island's beautiful Gulf Beach. It's Tortuga Beach Club — an interval ownership resort that offers everything you'd expect in paradise — luxurious vacation villas, secluded shelling beaches, tennis courts, spas and swimming pool. And there is golf at the nearby Dunes Country Club.

It can all be yours forever for just the weeks you want at surprisingly affordable prices.

Visit our sales center at the Gulf end of Lindgren Blvd. Causeway Rd.) and let us show you our version of paradise.



95 East Gulf Drive Sanibel Island, Florida 33957
(813) 472 5044



Developed by
THE MARINER GROUP
of Affiliated Companies

Want information by mail?
Send us this coupon

NAME _____
ADDRESS _____
CITY _____
STATE _____ ZIP _____

WE NOW REPAIR SHOES

ALSO LEATHER and PLASTIC ITEMS INCLUDING LUGGAGE

BAILEY'S GENERAL STORE
2477 Fernside Way
Phone 472 1516

Weekly **Health Tip**

From Ian Passio

Before you endure hours of discomfort, look for the best way you should know for the best kind of glasses. In fact, a few glasses can expose the sun's rays to the lens, which in turn damages the eye. The most common cause of eye damage is the sun's rays, which can lead to cataracts and other eye problems. Wearing sunglasses can help reduce the sun's rays and can also reduce the risk of cataracts. A quality pair of sunglasses can reduce the sun's rays and can also reduce the risk of cataracts. A quality pair of sunglasses can reduce the sun's rays and can also reduce the risk of cataracts.

Island Apothecary
A FULL SERVICE PHARMACY

2480 PALM RIDGE RD.
815 (813) 472 1419
EMERGENCY 472 2768

MAX is the automated teller machine that's like having a team of bankers at your fingertips. And MAX is open all day — all night — all week.

Call ahead to get the best service. Call ahead to get the best service. Call ahead to get the best service.

Lee County Bank
Member FDIC
FIRST FEDERAL BANK OF LEESBURG, FLORIDA