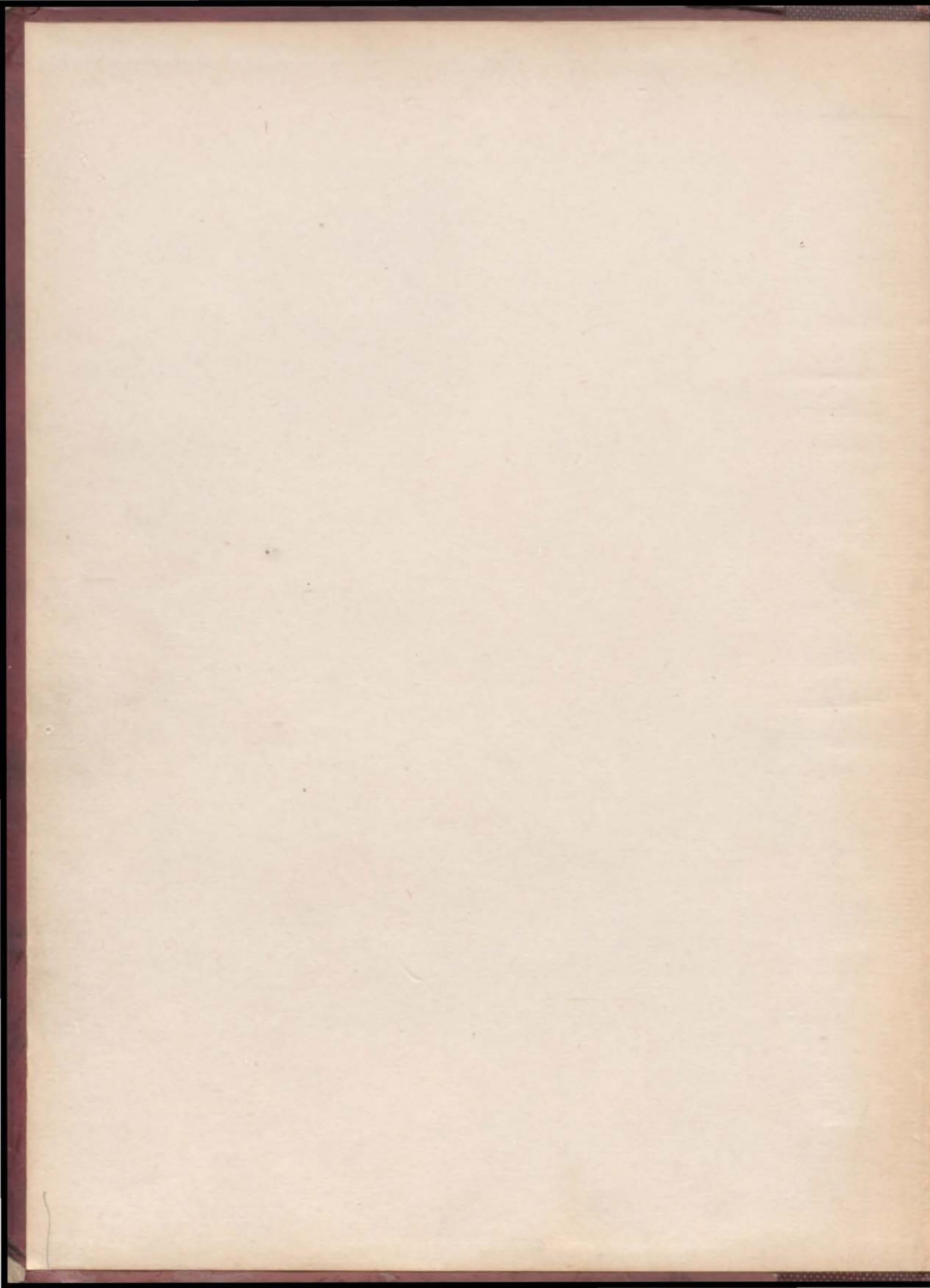
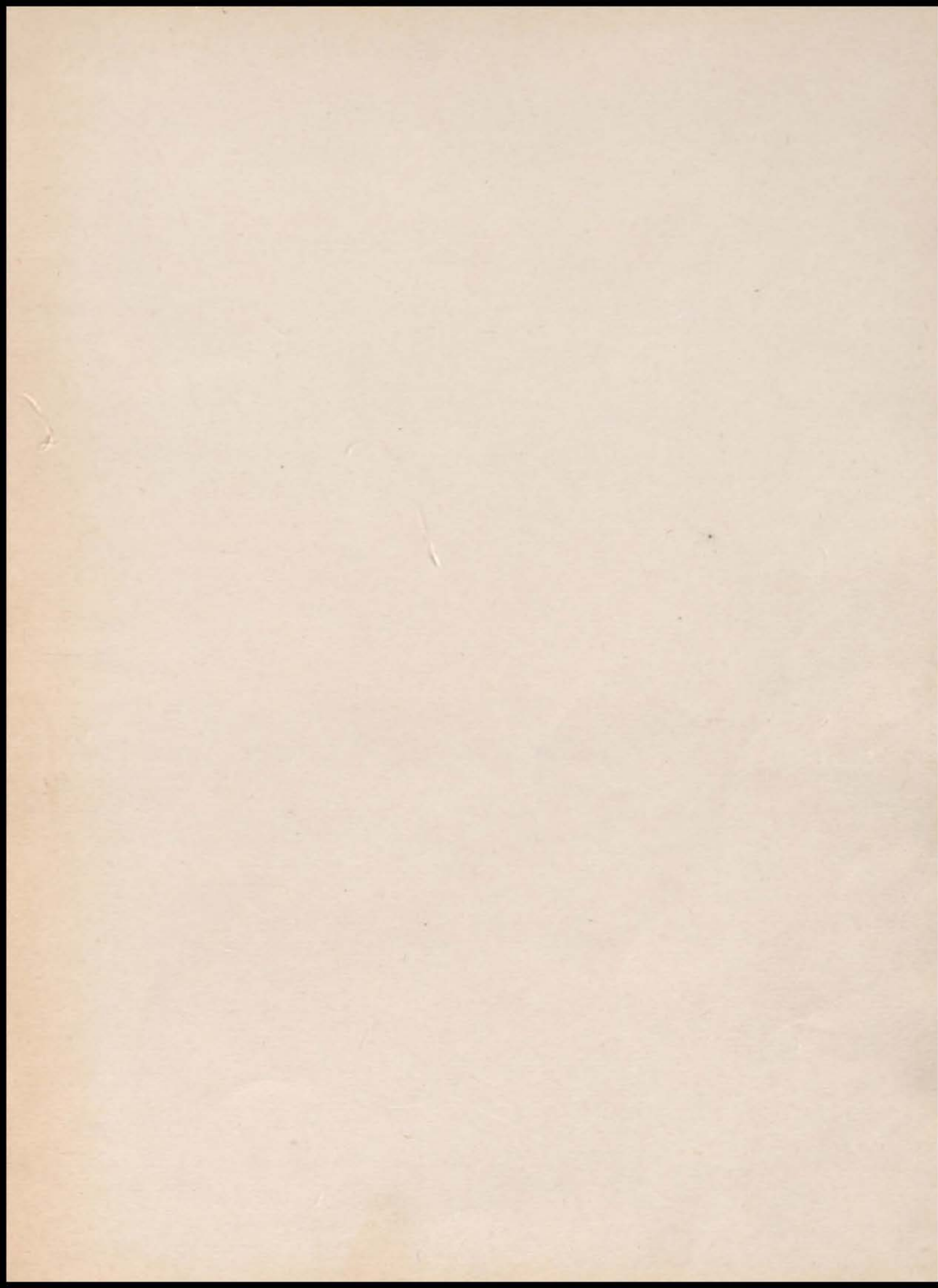
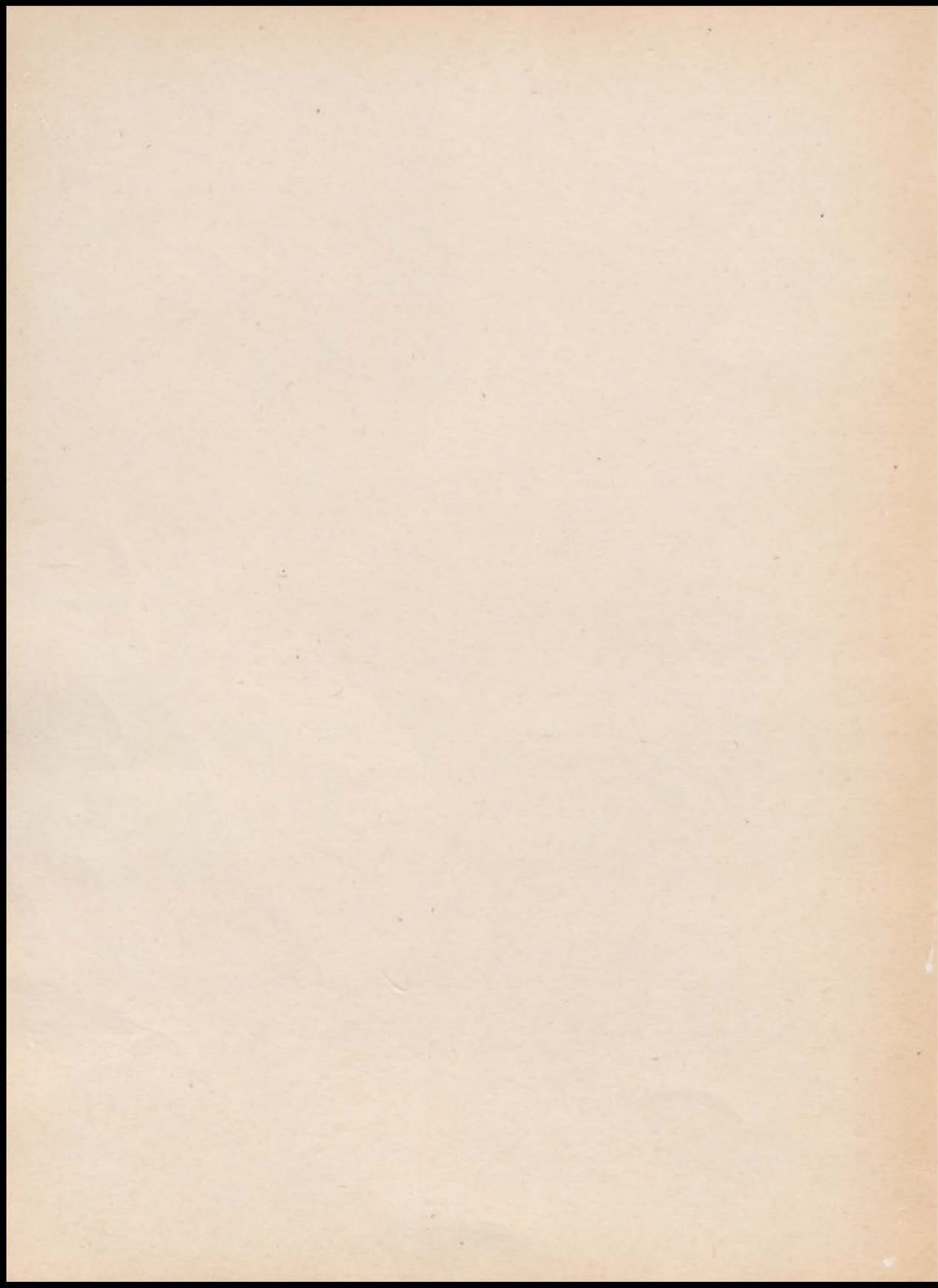
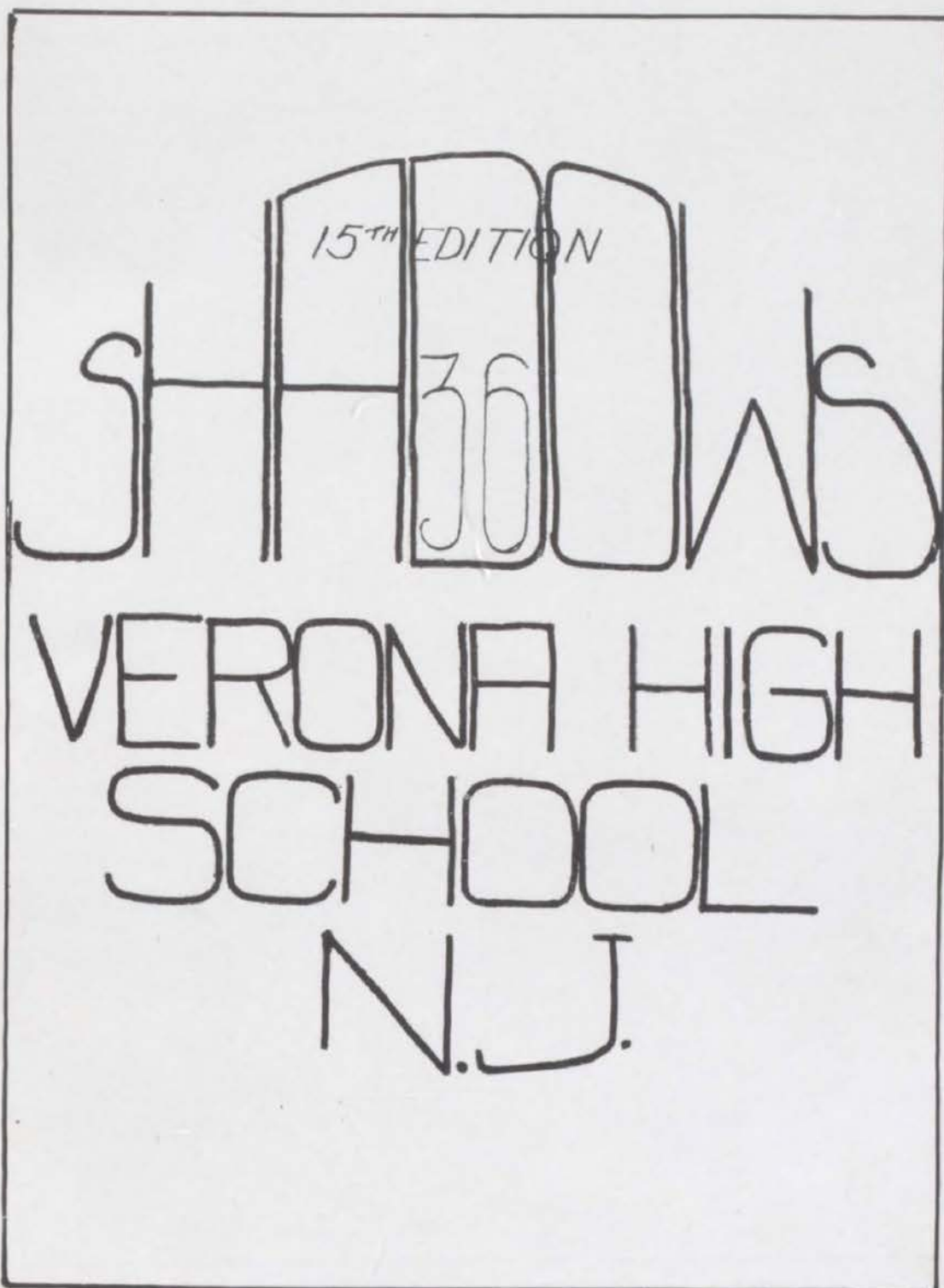


SHADOWS 1936 HVS





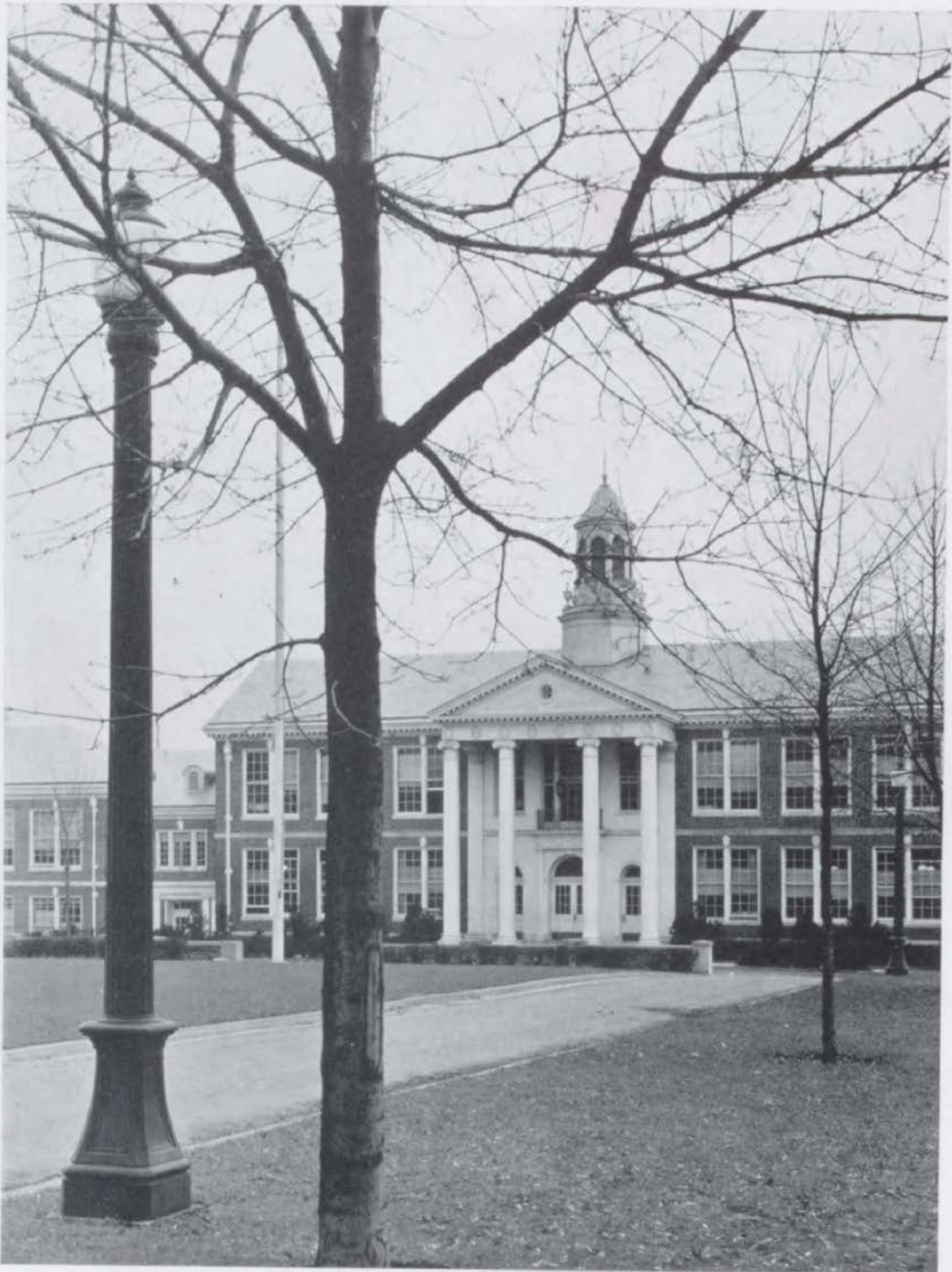




15TH EDITION

36

VERONA HIGH
SCHOOL
N.J.



ALMA MATER

O, fairest Alma Mater
Our praise we sing to thee,
And join in song together
Our hearts so loyally.
Sons of Verona ever—
Exalt our one delight,
And with our best endeavor
Hail to Maroon and White.
And with our best endeavor
Hail to Maroon and White.

A GRADUATE'S LAMENT

My school days now are over,
I'll miss them much I know;
I've had both work and pleasure,
And now it grieves me so
To think that in my school days,
The little things of Fate
Have helped me towards this moment,
And I must graduate.

I've gone on from grade to grade
With marks both low and high;
Now I'm in my last school year—
And I must say good-bye.
So—sadly to Verona,
To all my teachers, too,
To all my friends and classmates
I say "Good-bye! Goodbye to you!"

(M. F. '36)



To

MR. AXEL L. JOHNSON

our friend, teacher, and class dean, who has so willingly assisted us in our work during the past year, we, the senior class, dedicate this, the fifteenth edition of Shadows.



HIGH SCHOOL FACULTY

SUPERVISING PRINCIPAL, Frederic N. Brown

HIGH SCHOOL PRINCIPAL, Harold A. Crane

E. Herman Anderson
Helen Batchelder
Edith M. Burton
Alice H. Cheney
M. Imogene Cook
Stanton C. Craigie
Sarah B. Decker
Paul E. Dimmers
Maurice K. Dwyer
Paul W. Goeltz
Axel L. Johnson

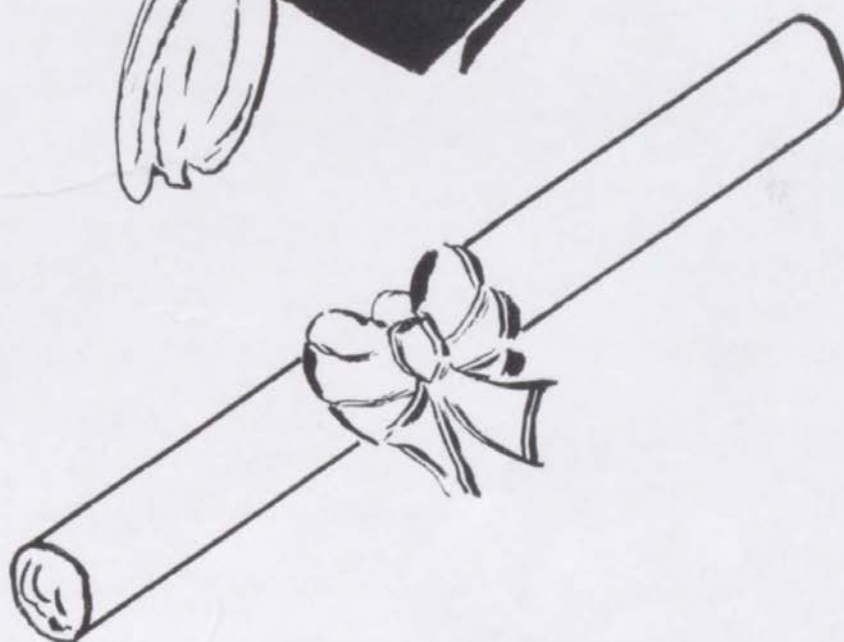
Muriel W. Lewis
Vera A. Michel
William A. Monprode
Harriet S. Overton
Harriette E. Prince
Vivian S. Roegner
Edmund Schill
C. Smith
Elizabeth Stewart
Aline B. VanHouten
Clifford D. Wilkin

Margaret H. Wood

BOARD OF EDUCATION

Miss Maude Conway, Vice-President
Mr. John Culp
Gordon Mills
Dwight Sterrett, President
Stanton Ralston

CLASSES



SHADOWS

GEORGE ASHLEY

"A great man's smile is a blest infection."

Baseball 3, 4.



JULE ANN BARBER

"To doubt her fairness were to want an eye."

Glee Club 1, 3, 4; Girls' A. C. 1, 2; Social Committee 2; Shadows Staff 4; Girls' Craft Club 3; Girls' A. A. 1, 2, 3.



OLIVE BEDFORD

"Each mind has its own method."

Girls' Glee Club 1; Girls' Chorus 3; Girls' Athletic Club 2, 3; Shadows Staff 3; Shadows Typist 4; White Hornet 3, 4.



JUNE BENTON

"—And looks on life with quiet eyes."

Student Council 1; A. A. 1; Chorus 3; Home Economics Club 3, 4; Girls' Craft Club 4.



DOROTHY BERRY

"The heavens laugh with you in your jubilee."

Glee Club 1, 2, 3, 4; Dramatic Club 3; French Club 3; Operetta 2, 3; Concert 1, 4; Traffic Committee 2; Chorus 3; Play Committee 2, 4; Amateur Hour Committee 4.



ELEANOR BOURIE

"But Oh, she dances such a way."

Girls' A. C. 2, 3, 4; A. A. 2, 3, 4; Economics Club 3, 4; Finance Committee 3, 4; White Hornet 4.



EDWARD BROMBACH

"Laugh with a vast and inextinguishable laughter."

Orchestra 1, 2, 3, 4; Band 1; Hi-Y 1, 2; Creative Writing Club 3; Harmony 2; All-State High School Orchestra 2, 3, 4.



MARY ANNE BROWN

"Her faultless form and graceful air."

Class Secretary 4; Shadows Staff 2; Cooking Club 4; Thanksgiving Play 4; A. A. 1, 2, 3, 4.



THELMA CARLSON

"So flaxen are her ringlets"

Glee Club 1, 3, 4; A. A. 1, 2, 3; Girls' A. C. 3; Orchestra 4; Chorus 3; French Club 3; Traffic Committee 3, 4; Vice-President Biology Club 4; Secretary-Treasurer Chemistry Club 4; Operetta 3; Lunchroom Committee 3; Creative Writing Club 3; Assistant Editor Shadows 2; Lit. Department 3; Editor-in-Chief 4.



VINCENT CITRANO

"But still his tongue ran on."

Came to V. H. S. Sophomore year. Glee Club 4; Art Club 2, 3, 4; School Play 4; French Club 2; White Hornet 3; Shadows 3, 4; Social Committee 4; Concert 4; Chemistry Club 4; Publicity Committee 3.

LILLIE MAE CLARK

"Thou of an independent mind."

Glee Club 1, 4.



CONSTANTINE CARPOU

"And gentle dullness ever loves a joke."

All State Orchestra 2, 3, 4; Orchestra 1, 2, 3, 4; A. A. 1, 2, 3, 4; Concert 1, 2, 3, 4; Band 1, 2; President Sophomore Class; Hi-Y 2; Basketball 4; School Play 4; Vice President Chemistry Club; President Biology Club 4; Essex County Orchestra 3; Traffic Committee 3.



GLORIA COOK

"—you flavor everything; you are the vanilla of society."

Glee Club 1, 2, 3; Social Committee 4; Concert 2.



CATHERINE COSLICK

"Blythe and merry is she."

Girls' A. C. 1, 2; Craft Club 4; Secretary Home Economics Club 4.



CARL COSLICK

"Every artist was first an amateur."

Glee Club 2; Art Club 3; A. A. 2; Printing Club 1.



MARY LU CULP

"—and still my delight is in proper young men."

Glee Club 1, 4; White Hornet 3, 4; French Club 3, 4; Dramatic Club 3, 4; Student Council 2; Girls' A. C. 2; Social Committee 4; Traffic Committee 4; Lunchroom Committee 2, 3; School Play 4; Shadows Staff 3; Creative Writing Club 3; A. A.

DANNY DEMAREST

"Oh, had the malt thy strength of mind or hops the flavor of thy wit."

Student Council 1, 2, 3, 4; Glee Club 1, 2, 3, 4; Orchestra 1, 2; Tennis 1, 2; Soccer 1, 2; Basketball 1, 2; Track 2; Hi-Y 2.

RUSSELL DOUGHERTY

"Humanity is constitutionally idle."

Orchestra 1, 2; Sports Club 3; Checker Club 4.

WILLIAM DRYDEN

"Not lazy, but born naturally tired."

Baseball 1, 4; Radio Club 3; Chess and Checker Club 4.

ROBERT DYE

"Still water runs deep."

Radio Club 3; Stamp and Checker Club 3; Glee Club 4; Chemistry Club 4.



BETTY EIBLE

"To a young heart everything is fun."

Entered Verona High School as a sophomore.

Dramatic Club 3; Traffic Committee 3;
Girls' A. C. 3, 4; Creative Writing Club 3;
Home Economics Club 4; White Hornet 4.



RUTH EIBLE

"To be gentle is the test of a lady."

Entered Verona High School as a sophomore.

Home Economics Club 3, 4; Girls' A. C.
2, 4; A. A. 4; Chorus 3; Creative Writing
Club 3.



MARGARET FALLER

"Sincere, plain hearted, hospitable, kind."



MARIE FICHTER

"A daughter of the Gods, divinely tall and
most divinely fair."

Girls' A. C. 1; Knitting Club 4; Art Club
1, 3.



ROSALIE FIDUCCIA

"What! can't thou say all this and not
blush."

Came from Lincoln H. S., N. Y.

Craft Club 3.



LILLIAS FRANCES

"I'd rather be master of my own time than wear a diadem."

Glee Club 1.



NATALIE FREY

"Laugh and be merry"

Student Council 2; Chorus 3; Home Economics Club 3, 4; Glee Club 4; Concert 4.



VINCENT GERARD

"The blossom of our gentry."

A. A. 1, 2, 3, 4.



HELEN GIESENDORFER

"I should be loath to think you hinted at ironic satire."

Art Club 1; A. A. 1, 2, 3, 4; Shadows 1, 2, 3, 4; Girls' A. C. 3, 4; White Hornet 3, 4; Finance Committee 3, 4; Traffic Committee 4; School Play 3.



DOROTHY GRAUER

"A maiden never bold."

Came from Philadelphia in senior year.

SHADOWS

CLIFFORD GEIB

"In everything the middle course is best."

A. A. 1, 2, 3, 4; Art Club 1, 3, 4; Sports Club 1, 3, 4; Activity Committee 4; Publicity Committee 4; Basketball 3, 4; Baseball 4; Shadows Art Editor 4; Chemistry Club 4.



JOHN HAAS

"The just medium—."

A. A. 1, 2, 3, 4; Cooking Club 2, 3; Sports Club 3; Science Club 2.



OTTO HAAS

"A good heart is better than all the heads in the world."

Baseball 1, 2, 3, 4; Soccer 2, 3, 4; Basketball 1, 2, 3, 4; Sports Club 3; A. A. 2, 3; Science Club 2.



GLADYS HALLETT

"Every man is a volume if you know how to read him."

Girls' A. C. 2, 3, 4; (Treasurer 4) A. A. 1, 2, 3, 4; Orchestra 1, 2, 3, 4; Concert 1; Chorus 3; Home Economics Club.



DOROTHY HANSEN

"As idle as a painted ship upon a painted ocean."

Glee Club 1; Publicity Committee 4; White Hornet 4; Operetta 3.



MARGARET HARBECKE

"A soul as white as heaven."

Girls' A. C. 1, 2, 3, 4; Basketball Manager 2; Glee Club 1, 4; Shadows 4, News Editor; A. A. 1, 2, 3, 4; Concert 4; French Club 3, 4; Knitting Club 3, 4; Library 1.

DOROTHY HODGE

"Neat not gaudy."

Orchestra 1, 2, 3, 4; Girls' Glee Club 3, 4; Girls' A. C. 2; Dramatic Club 3; French Club 3, 4; A Cappella Choir 4; Concert 4; Student Council 3.

JOHN HODGSON

JOHN HOAGLAND

"Of stature short but genius bright."

White Hornet Editor-in-Chief 4, Assistant Editor-in-Chief 2, 3; Shadows, Assistant Editor 2, 3; Soccer Manager 3; Traffic Committee 2; Assembly Committee 3; Stamp and Checker Club Secretary-Treasurer 3; Library 1.

PELL HOLLINGSHEAD

"The secret of success is constancy of purpose."

Glee Club 1, 2, 3, 4; Operetta 2, 3; Concert 1, 4; Chemistry Club 4; Dramatic Club 3; Traffic Committee 3; School Council 2; Hi-Y 2; Library Assistant 1.



WILLIAM HOWARD

"Nature designed us to be of good cheer."

Art Club 1, 2, 4; Traffic Committee 3;
A. A. 3, 4; Activities Committee 4.



MARY LOU HUNT

"Nothing endures but personal qualities."

Came to Verona High School in Senior year.

White Hornet 4; A. A. 4; Girls' A. C. 4.



EDITH JACKSON

"In her tongue is the law of kindness."

Glee Club 1, 2, 3, 4; Costume Committee 2, 3; Operetta 3; Chorus 2, 3; Dramatic Club 2; White Hornet 4; Home Economics Club 1, 2.



BETTY JACOBS

"Dance, laugh and be merry."

Glee Club 1, 2, 3, 4; Operetta 3; Concert 2, 4; French Club 3.



ALFRED JAQUETH

"All musical people seem to be happy."

Orchestra 1, 2, 3, 4; Glee Club 3; Accompanist 4; Music Appreciation 3; Harmony 3; Concert 1, 4; A. A. 1, 2, 3, 4; Assem. Committee 4; Election Committee 4; French Club 3, 4.



ALLAN JOHNSON

"To be strong is to be happy."

Council 2, 3; Glee Club 2, 3, 4; Orchestra 1, 2, 3; Band 1, 2, 3; Operetta 2, 3; Concert 1, 4; Social Committee 4; Civic Committee 3, 4; Radio Club 3; Chemistry Club 4; V. W. L. A. C. 3, 4.



DOROTHY JOHNSON

"Oh, I am stabbed with laughter."

Girls' A. C. 1, 2, 3, 4, Secretary 2; Craft Club 3.



EDWARD JOHNSON

"If we lead a life of pleasure 'tis no matter how or where."

Art Club 1, 2; Marionette Club 2; Soccer Manager 4, Assistant 2; Assistant Basketball Manager 4; White Hornet 2, 3, 4; Shadows 3 (Art Ed.); School Play 3, 4; Radio Club 3; Stamp and Checker Club, President 3; Secretary Biology Club 4; Council Alternate 4.



FRANCES KAHRS

"She is bonnie, blooming, straight and tall."

Council 1, 2, 3, 4, Secretary 2, 3; Lunchroom Committee 2; Election Committee 4; Dramatic Club 3; French Club 3; Marionette Club 2; Shadows 3; School Play, Properties 3.



JEAN KING

"A mind full of knowledge is a mind that never fails."

Girls' A. C. 2; Traffic Committee 2; White Hornet 3, 4; Shadows Literary Editor 3.

SHADOWS

MARY KONDLY

"Her mirth the world requires."

Girls' A. C. 1, 2, 3; Home Economics Girls' Craft Club 4; Knitting Club Art Club 1, 2.



CARIL KREUDER

"Let this world slide."

Dramatic Club 4; Glee Club 1, 2, 3, 4; Art Club 3; Opera Study Club 3.



WILBUR LENZ

"Dandys when first rate are generally very agreeable men."

Glee Club 1, 2; Art Club 1; A. A. 1, 2, 3, 4; Industrial Arts Club 2, 3; White Hornet 3, 4, Vice-President 4; Social Committee 4.



HENRY LINS

"Thinking is but an idle waste of thought."

Glee Club 1, 4; A. A. 1, 2, 3, 4.



KATHERINE MAC DONALD

"It is the tranquil people who accomplish much."

Girls' A. C. 1, 2, 3, 4; Craft Club 3; School Council 2, 4; White Hornet 4; Shadows Literary Editor 4; Chemistry Club 4; Lunch-room Committee 3; Library 1; A. A. 1, 2, 3, 4; Knitting Club 3.



HELEN McCRYSTAL

"Wee, modest, crimson-tipped flower."

Glee Club 1; Movie Club 4.

WOODROW McDONALD

"Great men are not always wise."

Student Council 1, 2, 3, 4; Baseball Team 1, 2, 3, 4; Soccer Squad 1, 2, 3, 4; Boys' Service Club 2; Art Club 3; Sports Club 3; Basketball Assistant Manager 4; President of Senior Class.

HOWARD MARION

"The modest man has everything to gain."

White Hornet 4; French Club 4; Fencing Club 4; Chess and Checker Club 4; Marionette Club 3.

DONALD McNAMARA

"Whose little body lodged a mighty wind."

Came to V. H. S. senior year; Cheer Leader 4.

GERALD MILLER

"—And steep my senses in forgetfulness."

Art Club 1, 2, 3, 4; Chess Club 2, 3, 4; Stamp Club 1, 2, 3; Checker Club 1, 2; Boys' Art Club 1, 2, 3; Cooking Club 1, 2; Glee Club 1, 2; Sports Club 2, 3.



SHADOWS

LUCILLE MURPHY

"The smile that wins."

Glee Club 1; Girls' A. C. 1, 2, 3; Civic Committee 2; Science Club 3; Girls' Craft Club 3.



EDNA NESBITT

"Nothing is so hard but search will find it out."

Girls' A. C. 2, 3, 4; A. A. 1, 2, 3, 4; French Club 3; Girls' Glee Club 1, 2, 3, 4; Concert 4; Music Appreciation 3; Chorus 3; Home Ec. 4; Senior Dance Committee 4; Concert 4.



DORIS PARSONS

"Here's to the day when it is May and care as light as a feather."

Foxboro High School 1, 3; Girls' A. C. 2, 3; Home Ec. Club 2; Glee Club 1, 3; Science Club 3; Knitting Club 1; White Hornet 4; Properties Committee; School Play 4.



ALLEINE PFEIFER

"Boots, saddle, to horse and away."

Glee Club 1, 3, 4; Girls' A. C. 1, 2, 3; Shadows 3; White Hornet 4; Social Committee 4; Science Club 3; Biology Club 4; Chemistry Club 4; Concert 4; Dramatic Club 3; A. A. 1, 2, 3, 4.



GEORGE PFEIFFER

"And frame your mind to mirth—."

Glee Club 4; Orchestra 1, 2, 3, 4; Art Club 1, 2, 3.



CLAIRE PILGER

"Sentiment is the poetry of imagination."

A. A. 1; Home Economics Club 2; Craft Club 3; Glee Club 4.



PHILIP REKOON

"A man of fashion, too—."

Glee Club 1, 2, 3, 4; Concert 1, 4; Operetta 2, 3; Baseball 3; Soccer 4; Sports Club 3.



WALTER REYNOLDS

"Nonsense and noise will oft prevail."

Art Club 1, 3; A. A. 1, 2, 3, 4.



MURIEL RIDSDALE

"Hasten, slowly."

Girls' A. C. 1, 2, 3, 4, President 3; Knitting Club 3, 4; Craft Club 3; Art Club 1.



PAUL RILEY

"Mankind is a science—defies definition."

Biology Club 4; Student Council 4; Weight Lifting and Tumbling Club 4.

SHADOWS

EILEEN ROBERTS

"A merry heart maketh a cheerful countenance."

Glee Club 1, 3, 4; Operetta 2, 3; Home Economics Club 1, 2; Concert 4; Cheer Leader 4; Girls' A. C. 1.



WENDELL ROLLASON

"His ready speech flowed fair and free."

School Council 2, 3, 4; White Hornet 3, 4, News Editor 4; Shadows 3; Chairman Civic Committee 3; Chairman Traffic Committee 4; Chairman Constitution Committee 2; Biology Club 4.



MILDRED SCHER

"In quiet she reposes."

Art Club 1, 2, 3, 4; Booklovers 3; Chemistry 4; French Club 4.



GEORGE SELLMER

"What's bred in the bone will never come out of the flesh."

Came from Wauwatosa High School. Science Club 3; Chemistry Club, President 4; Traffic Committee 3, 4; Shadows Staff 4, Business Manager; Glee Club 4; V. W. L. C. 3, 4.



WILLIAM SILER

"—and still the wonder grew that one small head could carry all he knew."

Orchestra 2, 3, 4; White Hornet, Business Manager 2; French Club 3, 4, Sec. 4; Shadows 2; Radio Club 3; Science Club 3; Chemistry Club 4; Biology Club 4; School Play 4; Stamp and Checker Club 3; Fencing Club 4; Creative Writing Club 3.



JAMES SIEWIERSKI

"Eat not thy heart with care."

JOHN STOCKS

"Wondrous is the strength of cheerfulness."

Finance Committee 2, 3, 4; Basketball Manager 2, 4; Soccer Squad 3, Assistant 2, 4; Shadows Staff 3; Baseball Manager 4; Student Council Alternate 4; A. A. 2, 3, 4; Budget Committee.

DONALD STRAIT

"Great works are performed not by strength but by perseverance."

A. A. 1, 2, 3, 4; Baseball Squad 2, 3, 4; Sports Club 3; Basketball 3, 4; Student Council 4; Science Club 2.

MARIE TAYLOR

"I am sure care is an enemy to life."

Glee Club 1, 2, 3, 4.

CHARLES TEARE



SHADOWS

FRED TURNBULL

"Though this be madness, yet there is a
method in it."

Glee Club 1, 2, 3; A. A. 1, 2; School Con-
cert 1; Operetta 2, 3; All-State Chorus 3;
County Chorus 2, 3.



ORMOND VALENTINE

"Up, up, my friend and quit your books."



GEORGE WATERS

"Strange to the world he wore a bashful
look."



MADGE WILDER

"First say to yourself what would be and
then do what you have to do."

Glee Club 1; Shadows Staff 2; White Hor-
net 4.



ROBERT WREDE

"—Prithee why so mute?"

Art Club 1, 2, 4; A. A. 1, 2, 4; Sports
Club 3.



JOHN YOUNG

"Even though vanquished he could argue
still."

White Hornet 2, 3, 4; Glee Club 3, 4;
French Club 3, 4; Shadows 2, 3; Dramatic
Club 3, 4, Sec. 4; Fencing Club 4; School
Play 2, 4; Traffic Committee 3; Operetta
2, 3; Concert 4.



JEAN ZINGG

"Our character is our will, for what we will
we are."

Glee Club 1, 2, 3, 4; Girls' A. C. 1; Shad-
ows 2; Operetta 2, 3; Knitting Club 3; Con-
cert 4; Home Economics Club 4; Social Com-
mittee, Chairman 4; School Council 4.

VIOLET COX

"Those blue violets, her eyes."

Art Craft Club 3; Girls' A. C. 4.

BETTY GLOVER

"Fine manners are like unto personal
beauty."

AURORA

Darkness,
Then a streak of light shows in the sky,
Brighter,
And the birds begin to chirp and fly.
Glory,
In that brilliant splash of flame and gold.
Wonder,
With exquisite ecstasy behold!
Paling,
Vanished splendor leaves a barren sky
Awakened,
See the busy people hurry by.

Mildred Scher

CLASS HISTORY

The timbers of V. H. S. shook, and voices resounded through its portals as the class of '36 besieged it one morning in early September 1932. Tamed by the haughty glances of upper classmen, this class, the largest ever to enter Whitehorne High School, settled down enough to elect the following as its officers: President, Paul Busse; Vice-President, William Venner; Secretary-Treasurer, Evelyn LaRicca. In the early spring these freshmen vigorously planned a party and put it over successfully.

In the fall of 1933 the class entered school again, this time as proud sophomores. Their choice of officers in their first meeting was: President, Connie Carpou; Vice-President, Clifton Lewis; Secretary-Treasurer, Dorothy Hodge. The class took an active part in school affairs by assisting with "Shadows" and by being well represented in the operetta. It gave a class party in February.

Then 1934 rolled around and the class, now in its junior year, was headed once more by Paul Busse as President. Other officers were: Vice-President, Homer Clinch, and Secretary-Treasurer, Gloria Cook. Again the class had an active part in the publication of "Shadows". Many of its members were in the school play and operetta. In June the usual Prom was given by the class to the seniors. In place of giving slams at this affair, a special assembly was held in which they were presented.

Finally 1936 arrived. The class, as seniors, was determined to help the school and make the last year the most successful one of all. Woodrow McDonald was elected president, while Wilbur Lenz and Mary Ann Brown acted as vice-president and secretary-treasurer, respectively. Assisted by their dean, Mr. Axel L. Johnson, they gave a Hallowe'en party, which was enjoyed by the entire school. The clubs and committees of the school were well represented by seniors, and many of the main characters of the play, "The Goose Hangs High", were members of this class. Finally, to top their achievements they published "Shadows" with some assistance from the junior class.

G I R L

Betty Jacobs
 Jule Anne Barber
 Lucille Murphy
 Lucille Murphy
 Kay MacDonald }
 Lucille Murphy }
 Dorothy Johnson
 Eileen Roberts
 Jule Anne Barber
 Jean Zingg
 Jule Anne Barber
 Helen Giesendorfer
 Helen McCrystal
 Lucille Murphy
 Mary Ann Brown
 Dorothy Hansen
 Dorothy Hodge
 Natalie Frey
 Kay MacDonald
 Jean King
 Dorothy Hansen

Best Dancer
 Best Looking
 Sunniest Disposition
 Wittiest
 Best All Around
 Best Athlete
 Best Dresser
 Most Admired
 Most Typical V. H. S.
 Most Popular
 Biggest Pull
 Most Bashful
 Most Talkative
 Cutest
 Biggest Bluffer
 Most Courteous
 Laziest
 Best Sport
 Most Studious
 Most Sarcastic

B O Y

Daniel Demarest
 Allan Johnson
 Edward Brombach
 Connie Carpou
 Woodrow McDonald
 Otto Haas
 Daniel Demarest
 Woodrow McDonald
 Woodrow McDonald
 Woodrow McDonald
 Wendell Rollason
 Robert Wrede
 Donald McNamara
 William Howard
 Fred Turnbull
 William Siler
 Daniel Demarest
 Woodrow McDonald
 Jack Young
 John Hoagland



JUNIORS

Lester Mills—President

Thomas Lyons—Vice-President William Cartmill—Secretary-Treasurer

Ethel Abrams
Nelson Abrams
Elizabeth Ahrendsten
Kathryn Andreas
Martha Andreas
Estelle Bookhalter
Genevieve Brown
Peter Carpou
Joan Clifford
Ruth Coerper
Janet Conklin
Laura Darling
Peter Delpone
Alice Dougherty
Georgiana Durning
Anna Erickson
Bessie Erickson
Donald Farson
Jeanne Feltham
Howard Ferguson
Ruth W. Franklin
Russell C. Graham
Joseph Hathaway
David Hecht
George Heider
Jerry Hirsch
Kenneth Howat
James Hughes
Elizabeth Hunt
Rose Hurwitz
Doris Jacobs
Dell Jacobsen
Mildred Jacobus
Mildred Johnson
Judy Kocon
Maurice Kripple
Wallace Lent

Clifton Lewis
Jean McCance
Grace McGhee
Marguerite Maack
Anne Mau
Juliette Meyer
Helen Mills
Mary Molinari
Robert Morris
Robert Neill
Connie Neumann
John Newitt
Theodore Oates
Harold Owen
Henry Palladino
Maisy Pierson
Stanley Ridsdale
Janet Roy
Betty Russell
George Schwend
Roger Shotwell
Mary Ann Siewerski
Frances Sims
William Sury
Watson Taylor
Charlotte Van Orden
William Walters
Catherine Ward
Thomas Ward
Gertrude Waterman
Mildred Watt
Arthur White
John White
Kenneth Williams
Laurie Young
Ruth Zink



SOPHOMORES

William Dox—President

Ruth Allard—Vice-President

Dorothy Collins—Secretary-Treasurer

Dwen Abramson
Mildred Abramson
Lois Ackerman
Jean Allard
Ruth Allard
Hyman Amsterdam
Doris Apgar
Bessie Arminio
Paul Baker
Gladys Barraclough
Eleanor Bauerle
Mae Baumgarten
Doris Bealer
Louise Berry
Beth Bollenback
Winifred Bonnet
Walter Bunton
Dorothy Bush
Patricia Campbell
Nan Carroll
Winifred Coad
Dorothy Collins
Daniel Conklin
Oliver Cordz
Eileen Cronin
Patrick DeCarlo
William Dox
Robert Eller
Herbert Englert
Jean Farley
Lorraine Fischer
Lewis Fredericks
William Gilbert
Sophie Goldberg
Joseph Gulla
Marie Hansberry
Robert Hansen
Elwood Hermey
Allan Hinrichs
Donald Hoagland
Gladys Hortsch

Robert Hough
Dorothy Hurwitz
Marion Johnson
Paul Johnson
Roberta Kautzmann
Janice Lance
Eugene Leone
Rosina Leone
Arthur Littlefield
Jean McCusker
Betty MacDonald
Gordon Meacham
John Molinari
Gladys Mueller
Robert Nesbitt
Charlotte Oglivie
Marie O'Mara
Eugene Peters
Adolph Pischl
Christopher Puopolo
Loretta Rekoon
Beverly Rieser
Margaret Rollason
Opal St. George
Lewis Sandler
Frances Scher
Bernard Shaw
Rita Sinsheimer
Frederick Tourelle
Walter Trapp
Charles Wachtel
Marvin Waimon
Jane Walker
Robert Weir
Lloyd White
Lloyd Wicks
Evelyn Weiner
Elaine Wilder
Ruth Jane Wilson
Howard Wirthlin
Jill Young



FRESHMEN

Clarence Anderson—President

Henrik Kathenes—Vice-President

Robert Dunn—Secretary-Treasurer

Nicholas Alderio	Ralph Hallett	Ethel Siewierski
Roy Anderson	Dorothy Hendershott	Jean Sigler
Stanley Anderson	James Hendershott	Ruth Ann Sigler
Osborne Baker	Leroy Hutchins	Mary Simans
Keith Bently	Livingston Hutchins	June Siris
Alfred Bonney	Ruth Jackson	Virginia Sorge
Ruth Briener	Frances Jacobus	Betty Stenstrom
George Brookwell	Betty Kahrs	Eleanor Sterett
Janet Brown	Frank Kondly	Susan St. George
Gladys Burns	Sophie Kreuder	Lillian Stonaker
Claire Cable	Arthur Krohn	Audrey Strait
Norman Camb	William Kurtz	William Saylor
James Carreck	Gaetanna Loibissio	Adel Teare
Charles Coad	John Luzzi	Gordon Thompson
Evelyn Cory	William McCrystal	Eric Thyren
Raymond Coslick	Betty McManamon	Florence Toomey
Mae Craig	Frank McNamara	William Tourelle
Jean Crocker	Lillian Mahon	Jean Trippett
James Curran	Mary Matthews	Barbara Van Brunt
Betsy Davis	James Meehan	Edmond Van Wagoner
Jean Davis	Charles Morrison	Audrey Varley
Rachel DeSantis	Robert Orr	Allan Vitale
Grace DeVeaux	Charles Peterson	Dorothy Wachtel
Fred Davenport	Blanche Pfeiffer	Myrtle Ward
William Elphick	Anita Pilger	Katherine Werlick
Edward Erickson	Jack Pruden	Robert Wharten
Robert Erickson	Bryant Reed	Evelyn Whitcomb
Florence Finkel	Charlotte Rowe	George Widmark
Ralph Flook	Louise Russo	Jack Wiener
Muriel Freedman	Irene Scharago	Robert Williams
Mickey Frey	Charles Schweizer	Ruth Winans
Doris Galloway	James Scott	Marion Wirthlin
Hugh Gerard	Edward Sellmer	Janice Young
Miriam Greene	Virginia Shaw	Betty Zimmerman
Louis Grodowsky		

ARE THEY FAMILIAR?

Mr. Monprode: Are you chewing gum?

Mr. Craigie: Well!

Miss Michel: The mind and the jaws can't work together.

Mr. Schill: This lesson is worth \$50 to you.

Mr. Johnson: Let those windows alone. I'll take care of the ventilation of this room.

Miss Cheney: Have you done this before?

Mr. Anderson: Did you hear the bell?

Miss Roegner: That's a good point.

Miss Cook: Don't drum on your desk, please.

Miss Decker: I want to lock up, now.

Miss Batchelder: I can't do it, we haven't enough materials.

Miss Overton: All right—now—

Mrs. Prince: All right—no talking.

Miss Stewart: I don't want four or five talking at the same time.

Mrs. Van Houten: Pardon me! ! (as sarcasm)

Mrs. Wood: Come girls! Get busy!

Mr. Dimmers:, please be quiet.

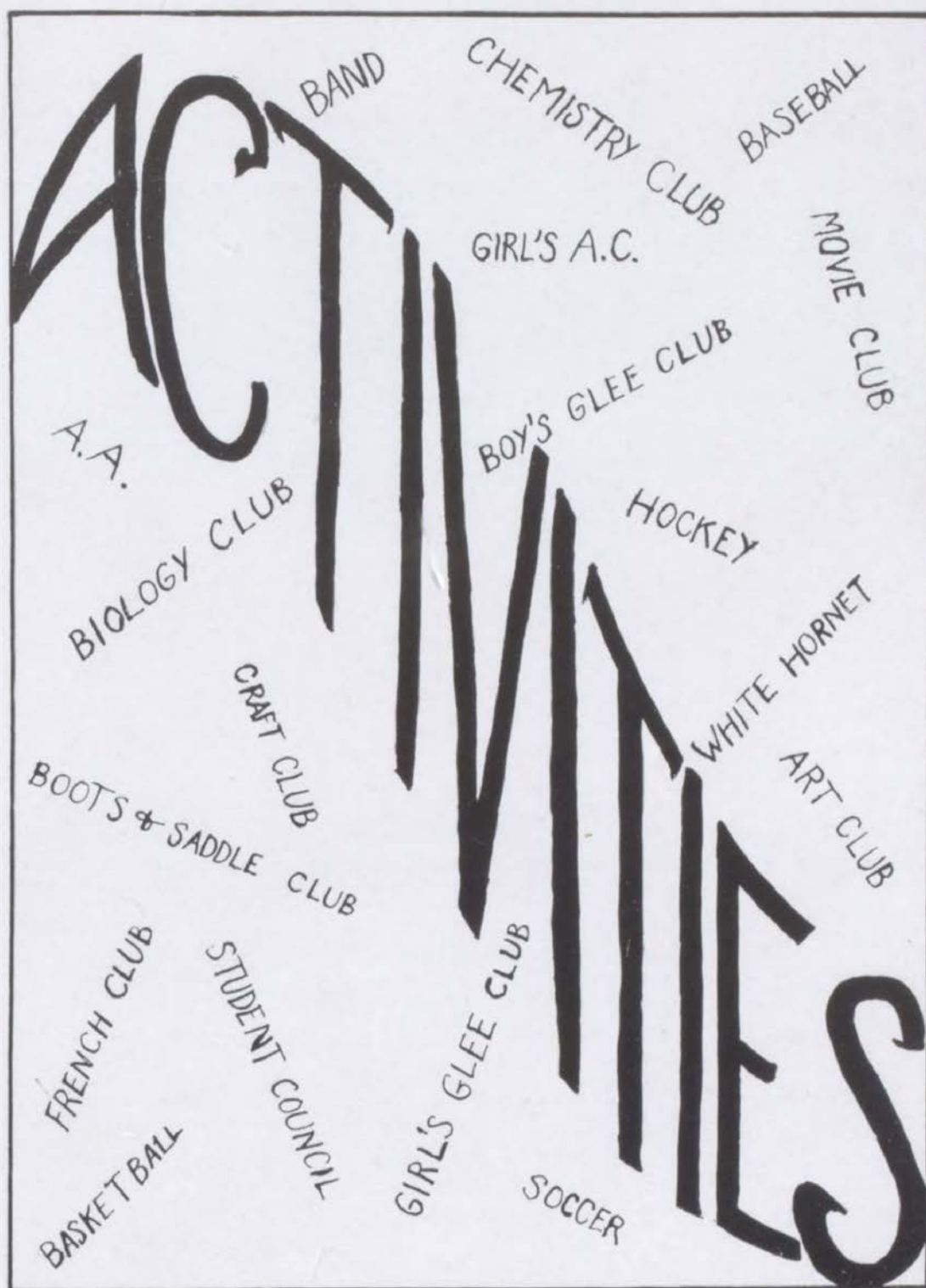
Mr. Dwyer: Come now! Come now!

Mr. Goeltz: Down at Camp Dix

Mr. Smith: You can get it at Sears and Roebuck.

Mr. Wilkin: It's astounding how the sophomore mind works.

Mrs. Burton: I want absolutely no communication in this study hall.



SHADOWS



SCHOOL COUNCIL

This year's School Council sent five representatives to the annual conference of N. J. High School Councils at Princeton and obtained many practical ideas. The Council had the pleasure of entertaining three Caldwell representatives at the meeting on November 26.

A student-faculty committee was appointed to investigate the homework situation and this resulted in avoiding conflicts of heavy assignments.

The officers for the year were: President, Paul Busse; Vice-President, William Cartmill; Secretary-Treasurer, Janice Lance.

SHADOWS STAFF

Thelma Carlson—Editor-in-Chief
Lester Mills—Assistant

Katherine MacDonald	Literary Editor
Donald Farson	Assistant
Margaret Harbecke	News Editor
Howard Ferguson	Assistant
George Sellmer	Business Manager
Helen Giesendorfer	Assistant
Clifford Geib	Art Editor
Connie Neumann	Assistant
Vincent Citrano	Advertising Manager
Pell Hollingshead	Assistant
Russell Graham	Circulation Manager
Genevieve Brown	Assistant
W. A. Monprode, H. A. Crane	Faculty Advisers
Olive Bedford, Dorothy Hansen, Gladys Hallett, Helen McCrystal, and Daniel Demarest	Typists

WHITE HORNET

The White Hornet reached unusually high standards this year by achieving the All-American award in the National Scholastic Press Association contest and the First Class Award in the Columbia Scholastic Press Association.

John Hoagland was editor-in-chief for the first term. Upon his resignation, an editorial board was formed. The members of this board were Wendell Rollason, News Editor; Mary Lu Culp, Feature Editor; Jean King, Column Editor; Edward Johnson, Production Manager; Helen Giesendorfer, Typing Editor; Kenneth Williams, Business Manager; and Donald Hoagland, Make-up Editor. Paul E. Dimmers was the faculty adviser for the third consecutive year.

There were twenty-two staff aids during this past year.

SHADOWS



FRENCH CLUB

The French Club this year consisted of fourteen members and was under the supervision of Miss Cheney. The officers elected at the first meeting were: Mary Lu Culp, President, and William Siler, Secretary. Bi-weekly meetings were held after school in the cafeteria.

A Quignol Puppet show, presented by the club at a meeting of the P. T. A. was so well received that another performance was given in a freshman assembly.

The members of the club were: Marguerite Maack, Mary Lu Culp, Lester Mills, Margaret Harbecke, Dorothy Hodge, Mildred Scher, Elizabeth Russell, William Siler, Maisie Pierson, Alfred Jaqueth, Mildred Watt, Howard Marion, Janet Roy, and John Young.

DRAMATIC CLUB

The membership of this club was, as in former years, selective. Candidates were placed in groups, which presented one-act plays and dialogues before the older members of the club, who voted on the admittance of the candidates according to the ability shown in their performances.

The club sponsored the school play "The Goose Hangs High," the proceeds of which went to "Shadows," the Scholarship Fund, and the club.

The officers, who were chosen in the early part of the school year, were: President, Ruth Allard; Vice-President, Lester Mills; Secretary, Jack Young; Faculty Adviser, Miss Vivian S. Roegner.

MOVIE CLUB

The Movie Club was organized the beginning of this year with Mrs. Edith M. Burton as sponsor. Its aim is to foster a keener appreciation of the better motion pictures and dramatic plays. Pictures are rated by the club and its members are guided by this list.

Officers of the club are: President, Mary DeStefano; Secretary, Rose Gulla; and Treasurer, Estelle Bookhalter. Other members are: Mae Baumgarten, Jean McCusker, Ruth Breiner, Betty Stenstrom, Helen McCrystal, Bessie Arminio, Ruth Coerper, Loretta Rekoon, Martha Andreas, Lois Ackerman, Marian Johnson, Doris Jacobs, Gaetanna Loibissio, Charlotte Ogilvie, and Marie O'Mara.

SHADOWS



ART CLUB

Several interesting phases of art were carried out in the Art Club this year by different members who were striving to perfect skill in some definite field. These were pencil drawings, crayon drawings, lettering, oil painting, linoleum cuts and clay works.

The members of the club were: Woodrow McDonald, Bob Wrede, Clifford Geib, Opal St. George, Frances Scher, Mildred Scher, Beverly Rieser, Peggy Rollason, Janice Young, Stanley Anderson, Gerald Miller, Betty Ahrendtsen, Elwood Hermey, Connie Neumann, Jean Feltham, Virginia Shaw, Betty Stenstrom, Jean Trippett, Vincent Citrano, Anna Erickson and William Howard.

Miss Batchelder was faculty adviser for the past year.

CHEMISTRY AND BIOLOGY CLUBS

In order to concentrate on the various phases of science, two organizations have been formed this year in place of the former Science Club. These are the Chemistry Club and the Biology Club.

The Chemistry Club, open to any Chemistry student, had twelve members. Mr. Axel L. Johnson was faculty adviser. The officers were: President, George Sellmer; Vice-President, Connie Carpou; Secretary, Thelma Carlson.

The Biology Club was for students interested in Biology. The officers of the club for the past year were: President, Connie Carpou; Vice-President, Thelma Carlson; Secretary, Edward Johnson. Mr. E. Herman Anderson was the faculty adviser.

HOME ECONOMICS CLUB

The Home Economics Club was started, along with purely sociable ideas, with the aim of doing service to the school. Since then they have endeavored to carry out their aim.

During the regular club meetings, held on alternate Mondays, many varied and entertaining programs were planned under the direction of the program chairman.

These included several speakers, slides, a fashion show, a food demonstration, and in the early fall, a picnic.

The twenty-five members who participate in the activities of the club elected as their officers: President, Mildred Watt; Secretary, Catherine Coslick; Program Chairman, Edna Nesbitt; Faculty Adviser, Mrs. Margaret H. Wood.

SHADOWS



BASEBALL

Although the baseball season is hardly started as this write-up goes to press, the baseball season of '36 looks very hopeful. The team has been entered in the Greater Newark Tournament again this year.

Coach Goeltz has Don Strait and Cliff Geib as pitchers; "Tex" Heider, co-captain, catcher; George Ashley, first base; "Red" Hughes, second base; Ted Oates, short stop; Vinnie Gerard, third base; Woody McDonald, co-captain, left field; Otto Haas, center field; "Greaser" Neill, right field; Bob Nesbitt, utility fielder and Pete Graham, utility out-fielder. John Stocks acted as manager with Gerald Miller as his assistant.

BASKETBALL

This year's basketball team under the coaching of "Doc" Goeltz and Clifford D. Wilkin played a schedule of thirteen games. Of these, it won six and lost seven. The team posted victories over Weequahic, the Alumni, Montclair Academy, two Kingsley teams, and Caldwell. The boys were defeated in games with Montclair High, Glen Ridge, Chatham, Bloomfield, and East Orange.

Bill Cartmill, captain of the team, headed the varsity scoring with 95 points. Paul Busse and Bob Neill were second and third with sixty-seven and forty-four points respectively. Otto Haas and "Tex" Heider were guards and "Red" Hughes, forward. John Stocks was manager.

SOCCER

Our Soccer team showed great comeback ability in several of its games. During the season we played many teams of higher rating and held them to low scores. One which proved this was the Montclair team. The score was 3-1 at Montclair and 0-0 at Verona.

Goals scored during the season were by the following: Pete Graham 3, "Red" Hughes 3, Woody McDonald 2, Bill Dox 2, Otto Haas 1, and George Brookwell 1. The other members of the team were: Joe Gulla, Bob Nesbitt, Watson Taylor, Bill Cartmill, John White, Ormonde Valentine. Managers were Edward Johnson and John Stocks.



GIRLS' ATHLETIC CLUB

With the opening of the hockey season in the fall, the Girls' A. C. was launched on its eighth year of existence. To be a member of the club a girl had to follow definite regulations.

During the three seasons, hockey, basketball, and baseball, intramural tournaments were staged.

Officers for the year were: President, Connie Neumann; Vice-President, Laura Darling; Secretary, Beth Bollenback; Treasurer, Gladys Hallett; School Council Representative, Ann Mau; Hockey Manager, Audrey Heider; Basketball Manager, Kay MacDonald; Baseball Manager, Betty Stenstrom.

The club was made up of forty members. Mrs. Van Houten was the faculty adviser.

VERONA WEIGHT LIFTING CLUB

In June 1934 the Verona Weight Lifting Club was formed by three boys. Since then the club has more than doubled itself in size and has grown considerably in prestige.

The prime purpose of the club is to develop its members in health, strength, and physical endurance.

The officers are: President, Paul Riley; Vice-President, Allan Johnson; Secretary, Vincent Citrano; Treasurer, Robert Dye; Scribe, George Sellmer. John Riso and Phil Rekoon are the other club members.

GIRL'S CRAFT CLUB

The Girls' Craft Club which has met only once a week, accomplished a considerable amount of work for the limited time allowed.

The first part of the year was taken up in the making of pewter plates. After that the girls made rings and bracelets. The year was finished by the making of small tables. Mr. Dwyer acted as the faculty adviser of this club.

MARIONETTE CLUB

The Marionette Club was formed this year by the members of last year's club. Having no faculty adviser, the club elected Adolph Pischl as president to take charge of the meetings. The members were: Doris Bealer, Anna Erickson, Roberta Dautzman, Howard Marion, Gordon Thompson and Adolph Pischl.

The club members have been making Marionettes and planning a show during the meetings.

HIGH SCHOOL CONVENTION

On Thursday, November 21, a delegation of five members attended the tenth Annual Conference of New Jersey Association of High School Councils at Princeton University.

The students who attended the conference were: Wendell Rollason, School Publications Group; Helen Giesendorfer, Finance Group; Frances Kahrs, Safety Education Group; Russell Graham and William Cartmill, Powers of Student Councils Group. This was the second of these conferences at which Verona High School was represented.



COMBINED MUSICAL DEPARTMENTS

ALL-STATE ORCHESTRA

Four members of the High School Orchestra were chosen as representatives for the New Jersey All-State Orchestra, held in Atlantic City. They were: Edward Brombach, Cellist; Connie Carpou and Dorothy Hodge, first violins; and Betty Russell, second violin.

Edward Brombach again secured first chair in the Cello division.

The above representatives also played at the Metropolitan Opera House with the All-State Orchestra for the National Music Convention.

FINANCE COMMITTEE

In its third year of existence as a part of the School Council, the Finance Committee handled the finances of the various school activities and organizations.

The sale of tickets for the play and concert, the handling of the door admissions at dances and basketball games, and the reports to the organizations were the principal duties during the year.

The members of the committee were: Helen Giesendorfer, chairman; Ruth Allard, Eleanor Bourie, Herbert Englert, Helen Mills, Lester Mills, Adolph Pischl, John Stocks, and Gertrude Waterman.

Mrs. Harriette E. Prince was the faculty adviser.

SOCIAL COMMITTEE

The Social Committee, with Jean Zingg as chairman, aided in all the social affairs of the school. During the year, the committee sponsored a series of afternoon dances. The price of admission to these dances was ten cents. The music was furnished by students of the school. The Athletic Association received the proceeds. The five members on the committee besides the chairman were Vincent Citrano, Allan Johnson, Mary Lu Culp, Alleine Pfeifer, and Frances Sims. Mr. W. Monprode was faculty adviser.

TRAFFIC COMMITTEE

This year the Civic and Lunch Room Committees were combined with the Traffic Committee by the School Council. By this combination the Traffic Committee became the largest and most active of all the council committees.

Wendell Rollason was elected chairman and Mr. E. Herman Anderson was chosen as faculty adviser.

The other members of the committee were: Thelma Carlson, Frances Kahrs, Mary Lu Culp, George Sellmer, Allan Johnson, Helen Giesendorfer, Herbert Englert, Maurice Bergman, Katherine Andreas, and Hugh Gerard.

THEME SONGS

Thanks A Million—Madge Wilder
The Beautiful Lady In Blue—Jule Ann Barber
Goody Goody—Helen Giesendorfer
Alone—George Ashley
Yours Truly Is Truly Yours—Paul Riley
Maybe We'd Still Be Sweethearts—Jean Zingg
Sing An Old Fashioned Song—Helen McCrystal
You'd Better Play Ball With Me—Otto Haas
Let Yourself Go—Bill Siler
I'd Rather Lead a Band—Edward Brombach
You're Toots To Me—Natalie Frey
Let's Face the Music and Dance—Phil Rekoon
Wahoo—Don McNamara
Cling To Me—Mary Anne Brown
I'm Goin' to Sit Right Down and Write Myself a Letter—J. Hodgson
Boots and Saddle—Alleine Pfeifer
The Glory of Love—Don Strait
I'm On a Wild Goose Chase—Olive Bedford
My Melancholy Baby—Woody McDonald
It's Been So Long—Mary Lu Culp
Tormented—Lucille Murphy
I Don't Want To Make History—Ruth Eible
Sugar Blues—Violet Cox
The Girl With the Dreamy Eyes—Thelma Carlson
The Music Goes 'Round and 'Round—Danny Demarest
I'se a Muggin'—Henry Lins
Truckin'—Fred Turnbull
Lovely Lady—Margaret Harbecke
Haunting Me—Caril Kreuder
If I Could Be With You One Hour Tonight—Gloria Cook
Lost—Gladys Hallett
Sing Before Breakfast—Dot Berry
The Touch of Your Lips—Wilbur Lenz
Love Is Like a Cigarette—Dot Hansen
Moon Over Miami—Frances Kahrs
Footloose and Fancy Free—Connie Carpou
Gotta Get Up and Go To Work Again—Vincent Citrano
Here Am I But Where Are You—Bill Dryden
No Other One—Marie Fichter
Popeye the Sailor Man—Betty Jacobs
Why—Eddie Johnson
Man On the Flying Trapeze—Allan Johnson
Anything Goes—Mary Kondly
Small Town Girl—Enda Nesbitt
It's Great To Be In Love Again—Eileen Roberts

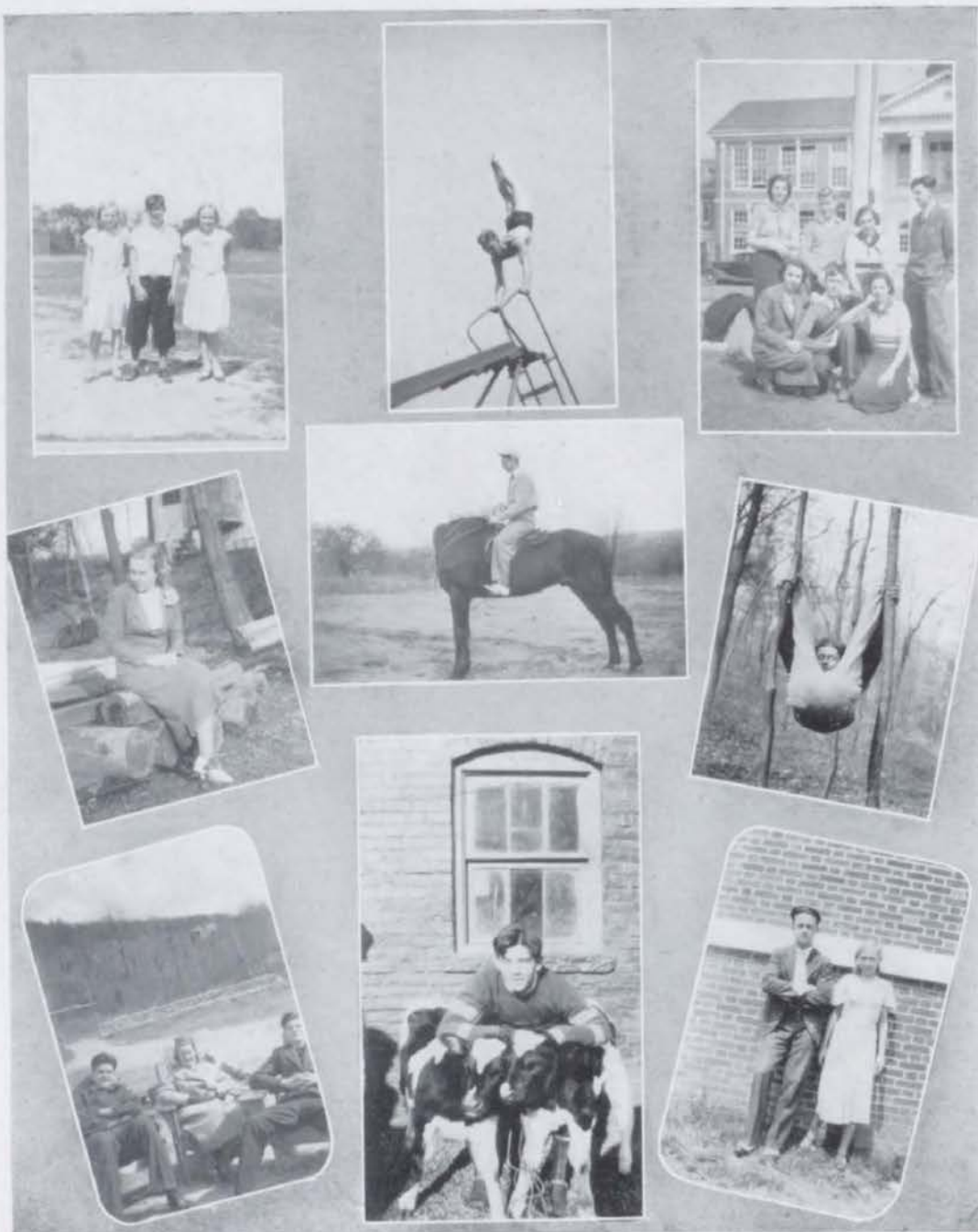
MISS 1936 HAS

Betty Jacob's personality
Doris Parson's nose
Muriel Ridsdale's eyelashes
Natalie Frey's complexion
Lucille Murphy's smile
Edith Jackson's petiteness
Jule Ann's dreamy eyes
Frances Kahr's pull
Eileen Robert's clothes
Margaret Harbecke's demureness
Dot Hansen's curly hair
Thelma Carlson's nimble fingers
Mary Ann Brown's figure.

MISTER 1936 HAS

Allan Johnson's complexion
Vincent Citrano's eyes
Bill Siler's politeness
John Hoagland's brains
Wendell Rollason's gift of speech
Phil Rekoon's dancing feet
George Ashley's smile
Fred Turnbull's voice
Russ Dougherty's curls
Danny Demarest's clothes
Woody MacDonald's personality
George Sellmer's hair
Connie Carpou's sense of humor
Eddie Brombach's engaging smile.

SHADOWS



APEDA STUDIO, INC.



212 West 48th Street

New York City

Tel.: Chickering 4-3960

DIEGES & CLUST

Established 1898

Goldsmiths

Silversmiths

Bronzesmiths

15 John Street, New York

Class Rings and Pins — Sorority, Fraternity Jewelry

VERONA TRUST COMPANY

Checking and Savings Accounts

Safe Deposit Boxes and Storage

Trust Department

Travel Service



Federal Housing Loans

Consult us about your financial problems

All Branches of Beauty Culture

EVELYNE
Hairdresser

EUGENE
Permanent Waving

Phone VErona 8-9844
506 Bloomfield Ave., Verona, N. J.

STRAND STORES

Suits and Dresses
Beautifully Cleaned

638 Bloomfield Avenue
Verona, N. J.

JACOBSEN'S
SPORT SHOP

Everything in the line of
Sports
Athletic Wear

Ammunition - Fishing
Tackle
Tennis Rackets Restrung

24 HOUR SERVICE
Films Developed

Ice Skates - Skis
596 Bloomfield Avenue
Montclair, N. J.
Telephone Mtc. 2-8600-8601

"The Shop that's Different"

Nann's
Flowers

For Every Occasion

Phone Montclair 2-5465
Night Phone Verona 8-4865

623 Bloomfield Avenue
MONTCLAIR, N. J.
Greenhouses: Verona, N. J.

Dolly Madison's Ice
Cream and Fine Candies
- - at - -

Verona Candy
Kitchen

554 Bloomfield Ave., Verona

LOU SEBIRI'S

Lakeside Delicatessen

FINE FOODS

Verona, N. J.
Verona 8-6431 We Deliver

Golden Lad Farms

Grade "A" Milk

Verona, New Jersey
Tel. Verona 8-3855

COMPLIMENTS

OF

Verona Boot Shop

We Major in the Classics
Beach Wear, Skirts,
Sweaters, Blouses,
Underwear and
Hosiery

THE BABS SHOP

458 Bloomfield Avenue
MONTCLAIR, N. J.

at the Center
Open Thurs. and Sat. Evenings

6 - Oldsmobile - 8

ROBERT B. KING,
Inc.

Still a Year Ahead

Tel. VE. 8-5299, Verona, N. J.

CALLED FOR and DELIVERED
Phone VE. 8 9203

HURWITZ

French Cleaning and Dyeing
Ladies' and Gentlemen's
Tailoring

479 Bloomfield Ave., Verona, N. J.

Verona 8-0520

MYRTLE BEAUTY SHOPPE

Complete Beauty Service

380 Bloomfield Ave., Verona, N. J.
Opposite the Dahlia Gardens
Myrtle Hennion

Berkeley School

22 Prospect St., East Orange, N. J.

Telephone ORange 3-1246

COLLEGE training in the
practical arts

An intensive one-year course,
preparing high school grad-
uates and college women ex-
clusively for preferred secre-
tarial positions.

Background courses are given
by university professors of rec-
ognized standing. Technical
subjects are taught by expe-
rienced college graduates.

Charmingly appointed roof
garden studios. Restricted en-
rollment. For bulletin address
the Director.

Telephone Market 3-9605

THE H. A. GREENE CO.

SPORTING GOODS

CAMP OUTFITTERS

Baseball - Tennis - Golf
Supplies

Special discounts to Verona
High School Students

88 Halsey St., Newark, N. J.

Home Made Ice Creams and Candies Schroeter Grotheer Inc.

Quality and Service

374 Main Street
East Orange, N. J.

605 Blomfield Avenue
Verona VE. 8-1923



Dependable Service

Our Home, in which services
may be conducted in a homelike
atmosphere, is centrally located.
There is no extra charge for the
use of Our Home.

Prout Funeral Service

595 Bloomfield Avenue

Phone Verona 8-9786

Opposite Verona Civic Center

"A Complete Service
at Moderate Cost"

CHRYSLER - PLYMOUTH

SALES AND SERVICE

Latest Models on Display

We maintain efficient service on
all Chrysler made cars

VERONA GARAGE

449 Bloomfield Ave., Verona, N. J.

Tel. VERona 8-5491

Established 1916

C. T. Brunner

K. S. Robbins

COMPLIMENTS

OF

Hillcrest Barbers

The Primrose Shop

Showing smart dresses
and gowns for the
Miss and Juniors

461 Bloomfield Ave.

Montclair, N. J.

**HEALTH AND PHYSICAL
EDUCATION**

The SAVAGE SCHOOL conducts an accredited course in the theory and practice of health and physical education; prepares men and women High School graduates to fill positions as supervisors, directors, teachers, and leaders in colleges, schools, playgrounds, recreation and community centers, camps, clubs, and industrial organizations.

Catalog Upon Request
Employment Bureau for Graduates
Register now for class entering on
September 25, 1936

Graduates of this three year course may complete the Bachelor of Science Degree requirements in one additional year at certain recognized colleges.

SAVAGE SCHOOL

308 West 59 St., New York, N. Y.

**Freytag & Anderson
Inc.**

FLORISTS

6 So. Park St., Montclair, N. J.

Phone Montclair 2-2921 - 2922

COMPLIMENTS

OF

**United States Shoe
Repairing Company**

580 Blfd. Ave.

Mo. 2-0540

PACE INSTITUTE

A School of Business Technology

Courses of intensive character, preparing for various occupations in business, are given at Pace Institute in daytime and in evening classes. These courses include among others the following:

Accountancy and Business
Administration

Summary (C.P.A.) Accountancy
Secretarial Practice
Shorthand Reporting
Shorthand Speed Classes
Advertising and Marketing
Selling and Marketing
Credit Science

Bulletins, interesting vocational booklets, and class dates are available upon request. Inquire of the Registrar by personal call, by letter, or by telephone, Barclay 7-8200. Visitors are welcome.

PACE INSTITUTE 225 BROADWAY
NEW YORK, N.Y.

CIVIC CENTER MARKET

Phone VErona 8-8224 - 8225

644 Bloomfield Avenue

Verona

Charles Taylor, Meat
Department

Otto Arients, Vegetable
Dept. and Groceries

White SHOES

for graduation

All White Buckskin \$7.50



A full assortment of vacation
footwear from \$4.00 up

Harrison Brothers

East Orange	551 Main St.
Montclair	540 Bloomfield Ave.
Morristown	31 Park Place

Congratulations to the
Faculty and
Good Luck and God speed
to the
Class of 1936

Herbert Stalp

Fine Flowers

Massmann

Flowers

416 Bloomfield Ave.
Montclair, N. J.

201 Bellevue Ave.
Upper Montclair, N. J.

COMPLIMENTS

OF

Mayor Slayback



THE EDWARD • MADISON • COMPANY

BOOKS • STATIONERY • ART-WARES • CAMERAS
• ARTISTIC • FRAMING • PRINTING •

427-429 • BLOOMFIELD • AV • MONTCLAIR • N • J



Electrol Automatic Oil Burner and
Heating Equipment

A complete Fuel Service with Reputation and
Superior Quality



VERONA, N. J.

Telephone
Verona 8-5460

Office and Plant
110 Fairview Ave.

Largest Fuel Storage in West Essex

Best Wishes to All
Graduates

COMPLIMENTS OF
Willard S. Purdy
JEWELER

638 Bloomfield Avenue
Verona, N. J.

●
COMPLIMENTS
OF

Casa Regis Orchestra
●

BEST WISHES FROM

JOSTEN'S

Treasurecraft Jewelers and Stationers

Class Rings and Jewelry

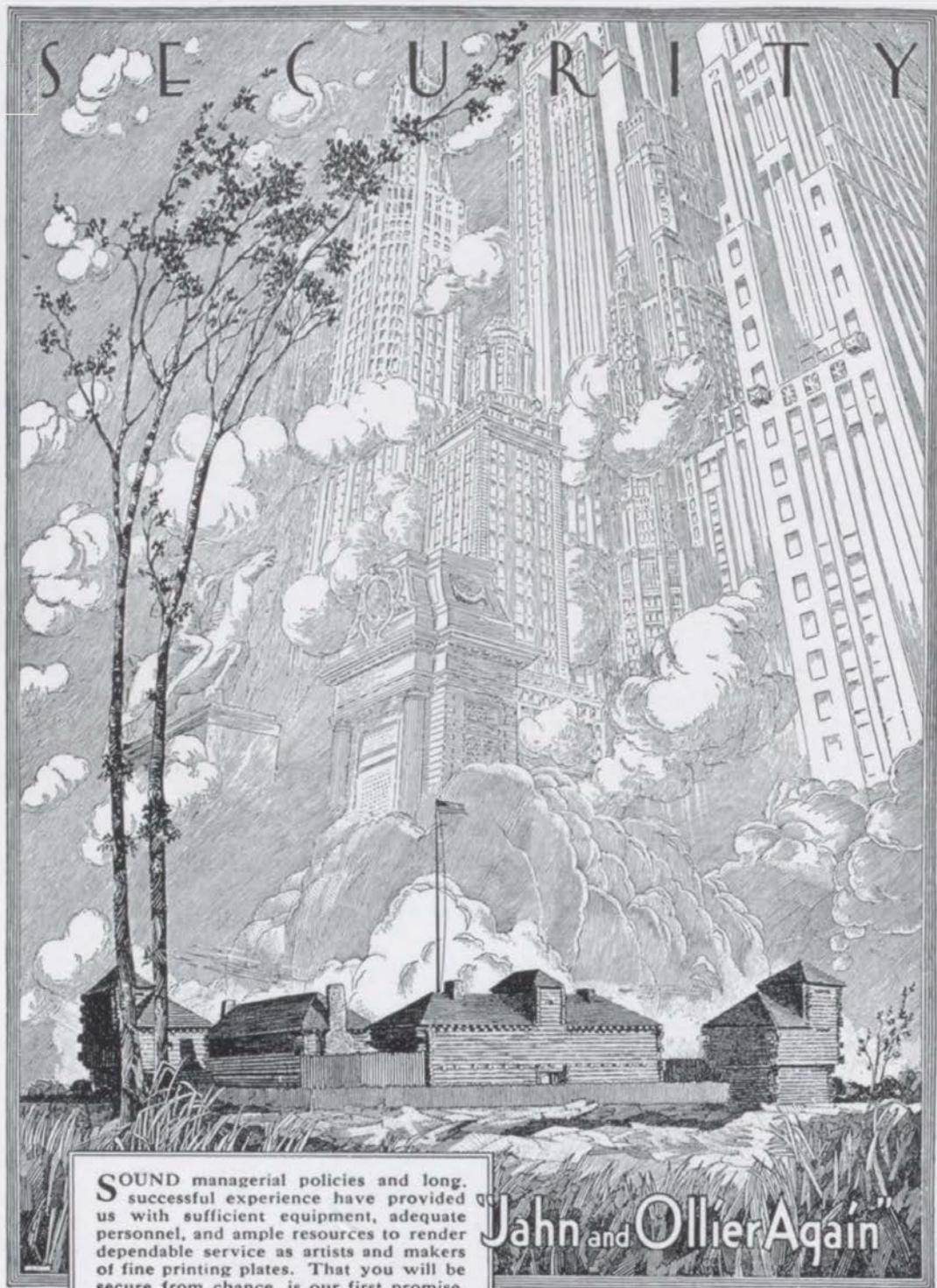
General Offices and Main Plant

Owatonna, Minnesota

Verona Agency

W. S. PURDY

638 Bloomfield Avenue

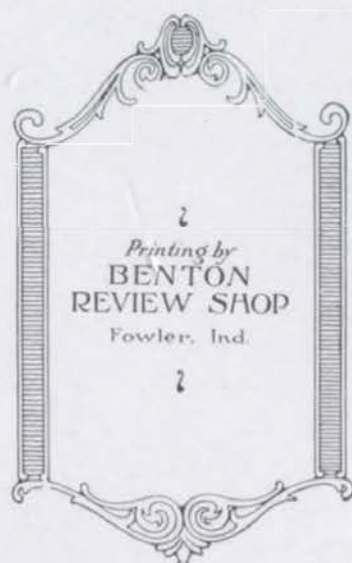


SOUND managerial policies and long, successful experience have provided us with sufficient equipment, adequate personnel, and ample resources to render dependable service as artists and makers of fine printing plates. That you will be secure from chance, is our first promise.

JAHN & OLLIER ENGRAVING CO.
817 West Washington Blvd., - Chicago, Illinois

"Jahn and Ollier Again"

In the foreground - Ft. Dearborn re-erected
in Grant Park on Chicago's lake front.
Illustration by Jahn & Ollier Art Studios.



 SHADOWS 

AUTOGRAPHS

