



Arrow Group earns award from Sears

— page 4

Business	4	Community	6
Calendar	11	Police blotter	2
Classified	14	Sports	9

To facilitate delivery of this newspaper, write to Linda Temple, 10 Park Place, Butler, N.J. 07401.



Scelba captures golf championship

— page 9

Wayne TODAY

An independently edited member of North Jersey Newspapers

Police: Investigators probe Jeep crash pg.2

Community: Wayne budget waits for vote pg.3

Inside: Free classified ads! ... See classified, pg.1

Vol. 35 No. 41 USPS 670-640 25 Cents Sunday, May 22, 1994

First aiders set for celebration

Construction will begin

BY ROB ERRERA
TODAY Staff Writer

WAYNE — The Wayne Memorial First Aid Squad will hold a ground-breaking ceremony this Saturday to celebrate the start of construction on its new downtown headquarters.

The squad received preliminary site plan approval during the Planning Board's May 9 meeting. The squad will hold a ribbon-cutting/ground-breaking ceremony 10:30 a.m., Saturday, at the Taylor Drive site to celebrate the approval.

The Wayne Memorial First Aid Squad's response facility and headquarters on Taylor Drive were destroyed by an Aug. 26, 1992 electrical fire. The blaze caused the township to lose two ambulances, and suffer damage to a third vehicle and a stored boat. Officials estimated the damage to cost well over \$1 million.

The squad received a variance for lot width, and front- and side-yard setback from the Planning Board. An artist's rendering of the proposed facility is included with the squad's fund-raising letters.

According to Ruth Leine, commissioner of the Wayne Memorial First Aid Squad, the remaining shell and foundation of the Taylor Drive building are the only parts of the original structure still intact. The refurbished building will include all of the facilities of the old first aid headquarters "and more," Leine said.

The old building included holding bays for the emergency vehicles as well as a small office area. The new building may include separate training quarters as well.

Insurance will cover most of the cost of refurbishing the downtown building, Leine said, though the squad is still holding fund raisers to cover additional expenses.

Dandelion delight



TODAY Photo by Demitris Baleski
Chelsea Marie Messier, 3, of Wayne gathers dandelions from her backyard for a bouquet she is making.

'Friends' will operate town's animal shelter

Council, volunteer group sign one-year pact

BY ROB ERRERA
TODAY Staff Writer

WAYNE — The Township Council unanimously agreed Wednesday night to allow a volunteer group to assume control of the Wayne Animal Shelter and care for the township's stray animals.

Members of the Friends of Wayne Animals applauded after the vote was taken. According to

the terms the contract, FOWA will assume control of the shelter beginning July 1. The one-year contract will be reviewed annually by the council.

Reluctant to play devil's advocate, Councilman Joseph DiDonato tentatively asked if there was any escape clause in the lease allowing the township to back out if the agreement wasn't working.

"As with any lease, if they

breach the terms of this resolution, we can terminate the agreement," said Township Attorney John Fiorello.

The resolution approved Wednesday allows FOWA to take over control and care of the animals kept at the Dey Road shelter. The ordinance permits the group to lease the Dey Road shelter from the town for \$1 per

(Continued On Page 6)

Pipeline repair is tricky work

BY CHERYL MARINO
TODAY Staff Writer

WEST PATERSON — The borough is willing to pay for the replacement of a deteriorating, 30-year-old pipeline running through several properties along Merline Avenue.

The danger of the pipeline collapsing is the main concern of the mayor and Borough Council.

"The problem with the repair is that in order to replace the approximately 200-foot pipeline, fill it in and level it, residents from the center, to 10 feet in either direction, will be disrupted and inconvenienced," said Mayor Matthew Capano. "In that general area are pools, patio's and landscape, all of

which will have to be completely restored."

The borough is now looking for a temporary easement for work crews, but ultimately would like to make arrangements for some form of permanent ownership. This is in case any resident down the line decides to do any type of excavation, such as put in an built-in swimming pool, which may again cause problems in that area.

Five residents will be directly affected, but others in the general area will also be disrupted.

"We have to get the permission of all five residents before anything can be done," Capano said. "I'm sure we won't have a problem, they all seemed agreeable."

If approval of all five residents is granted, the job will be completed by the end of June.

Pickers object to non-union mausoleum construction crews

BY HARRY RAINBOW
TODAY Staff Writer

TOTOWA — Passaic County Labor Local #239 want the dead to rest in peace, but they would prefer to see them resting in a union-built mausoleum.

Local # 239 and supporting locals are currently picketing the Laurel Grove Memorial Park because the company handling the mausoleum construction project has subcontracted the installation of the mausoleum's foundation to non-union labor.

"It isn't right to use non-union workers when union members are willing and available for work," said Norman Smith, business manager for Local 239.

Smith said his union generally handles commercial construc-

tion jobs, while the nonunion men generally do residential jobs. "They are taking our work away from us and we have families to support," Smith said.

Paul Desbiem, vice president of operations for Laurel Grove Memorial Park, said that Granite Bronze, the company handling the mausoleum's construction, has its own crews to handle different aspects of construction and that it is in control of hiring, not the memorial park.

"Laurel Grove is a privately-owned family concern, unlike some of the larger cemeteries, such as those owned by the Newark Diocese, we are not obligated to use union labor," said Desbiem.

At a customer's request in May of 1993, the Laurel Grove Memorial Park of Totowa was com-

missioned to build a mausoleum.

"This is the first time we have ever had to build a mausoleum and we wanted to make sure that it would be built properly to withstand time and weather," said Desbiem.

After investigating the building procedure, the administrators of Laurel Grove accepted open bids from mausoleum companies for the contract.

"We found that Granite Bronze of Minnesota not only specialized in the building of mausoleums, but they also did the actual construction themselves from start to finish, and they had the most reasonable price," Desbiem said.

As the park erects more mausoleums in the future, Desbiem said he may be able to use more local workers.



TODAY photo by Demitris Baleski

PROTESTING — Members of Passaic County Labor Local #239 picket Laurel Grove Memorial Park in Totowa for using out-of-state, non-union labor to construct a mausoleum

Board cuts adult school, summer term

By NANCY LOUGHLIN
TODAY Correspondent

POMPTON LAKES — The school budget ax has fallen.

On Tuesday night, the Board of Education announced that it has accepted the council's recommendation for \$210,000 in cuts.

Two of the largest and what School Board Administrator Theresa McHale termed as "the saddest cuts" was the termination of the adult school and the summer school programs.

According to McHale, summer school had been affected by budget cuts in the past. Summer school for Pompton Lakes students had become strictly remedial, providing a second chance for students who need to repeat a course. Now, students will have to repeat courses in another school district.

Other cuts include reductions in the telephone, legal and architectural budgets; custodial supplies; team uniform replacement; and salaries for several club advisor positions.

Additionally, the district had hoped to renovate all the fire alarm systems but that budget was also trimmed.

Superintendent McKenzie recommended that the gymnastics program be eliminated but after pleas from students, the board voted to retain the program. The board also declined to eliminate an assistant football coach and a percussion instructor as recommended by the superintendent.

When a school budget is voted down by residents, the Board of Education prepares a Budget Defeat Package for the council, which includes the entire budget and the school board's priorities for the district. Council then recommends line by line reductions and submits a report to the Board of Education.

(Continued On Page 6)

Kinnelon adjusts faculty, honors student feats

BY LURA MOUNTFORD
TODAY Correspondent

KINNELON — Before a large crowd of concerned citizens and school faculty the Board of Education met Monday evening at Pearl Miller School. The meeting was used to confirm several major personnel changes for the upcoming school year and to honor the accomplishments of the academic decathlon and the boys' basketball teams.

Voting 6-0, Laurence Boudria not present, the board hired Judith Nappi and Ethel Minichello to fill newly created administrative assistant positions. The two \$65,000-a-year staff positions, one for Pearl Miller School and one for Kinnelon High School, have been developed to handle curriculum coordination duties

once assigned to academic department chairmen and to oversee discipline and other affairs once handled by the high school vice-principal.

Nappi, who holds a BA and MA degree from Montclair State College and is currently a grade-level administrator at Ridge-wood High School, will begin as administrative assistant at Kinnelon High on July 1. Ninchello, who holds a BA from Trenton State and an MA from Jersey City and is currently coordinator of federal and state grants for the Bayonne school district, will join Nappi July 1 to begin work as the Pearl Miller School administrative assistant.

The board accepted with appreciation for many years of service the resignation/retirement of high school professional

staff members Helen Heehey, English Department chairman, James Heehey, History Department chairman, June Bennett, English, Perrylin McKelvie, Resource Room; from K-8 professional staff members Frank Phillips, science, Kathryn Veszi, art, E. Jean Vitacco, first grade, Clara Decker, nurse, and Genevieve Hazelton, nurse. Also resigning was Virginia Myer.

The board voted unanimously to grant tenure to Eileen Broden, Student Assistance coordinator, and to Dr. Susan Grossbard, school psychologist. Not recommended for renewal of contract were the following staff members:

Deborah Cicchino, music, Angela Cosentino, Psychologist, and Joanne Mulqueen, Spanish. Elizabeth Ferrara was not recom-

ended for renewal of her contract until such time as adequate Flow-Through-Funds are granted to the district.

Other professional staff changes approved involved the music department's change in status of Lisa Wishman from 4 to 1.0 and Margaret Bane's move from 1.0 to 2.5.

Other staffing changes approved by the board included the transfer of John DeBellis, French and Spanish, from PRM to PRM, KHS; Barbara Fair-snider, math, and Barbara Parthasarathy, basic skills, from Stonybrook to PRM and Kiel; and Natalie Palladino, math, PRM to basic skills, PRM and KHS Administrative/secretarial moves approved included Charlene McKenny from KHS to KHS /Kiel; Joan Kelly, Stonybrook to

PRM, and Karen Sienicki from Central Office to Stonybrook.

For the upcoming school year Catherine Bailey was appointed as Occupational Therapist for 12 hours per week and Reliable Health Care for physical therapy services for six hours per week. Barbara Link was appointed a full-time special education aide at Stonybrook and Jacqueline Smedley at PRM. Kim Murray was approved as KHS Attendance Aide.

Lauren Warner, Samuel Mann, and Jamie Manco were approved as substitute teachers K-12 for the remaining 1993-94 school year.

In the opening program to honor distinguished performance in academics and

(Continued On Page 6)

LSD, marijuana charges levied

• BUTLER — Police Chief Gerald Napoleone reported that on May 17 at approximately 4:20 p.m., as Lt. Dennis Passenti was checking the downtown business district, he observed three individuals standing together in the borough park making what appeared to be a transaction of a controlled dangerous substance.

Passenti called for backup and officers Colleen Kober and Jay Dean responded immediately. As Passenti pulled next to the curb on Main Street, along the railroad tracks, he called the three individuals over to the police car. As they approached the car, Passenti ordered them to place their hands upon the car and they complied. Kober and Dean then assisted in a search of the suspects.

Police report that Eric Dunn, 21, of Kiel Avenue, was arrested for having several tablets of what appeared to be LSD. On the person of Kevin McGrath, 18, of the Hamburg Turnpike, in Bloomingdale, police say they found three bags of marijuana and a number of LSD hits.

The two males, along with a 16-year-old Bloomingdale female, were transported to police headquarters where they were processed. The juvenile was released to the custody of her father.

The adults were remanded to the Morris County Jail in lieu of \$15,000 and \$10,000 bail respectively.

Students try to rebound from tragedy

Investigation will seek to find why Jeep overturned

BY ROB ERRERA
TODAY Staff Writer

WAYNE — Township students mourned the loss of two peers this week as the investigation into a crash that claimed the lives of two Wayne Valley High School students continued.

Friends and family said goodbye to Jaclyn Coriale, 14, and Paula Antonucci, 16, on Tuesday and Wednesday, respectively. The two girls were killed when the Jeep they were riding in overturned last Saturday on Lake Drive East in Packanack Lake. This week, adults and students attempted to cope with the devastating loss of the two exuberant and well-liked girls.

"For the most part things are returning to normal," said Superintendent of Schools Robert Winter. "We told the kids that we understand they are upset, but that our focus has to return to academics."

Winter said counselors saw several students in Wayne Valley High School on Monday and Tuesday. Students at

Schuyler Colfax, George Washington Junior High School and Lafayette School also met with counselors, Winter said.

"I think things will be different now," Winter said. "There will be some positive benefit to come out of all this. A greater sense of unity between the students. A greater sense of closeness."

While adults and students searched this week for a spiritual cause behind the accident, police and traffic specialists searched for a physical one. Officers visited the site several times this week to collect evidence, said Lt. Donald Buwalda, head of the Wayne Traffic Bureau. The investigation is still in its early stages, Buwalda said, but it appears an uneven distribution of weight in the vehicle as it rounded a bend caused the 1988 Jeep Cherokee to flip. The victims were hanging out of the windows, clutching an overhead luggage rack when the accident occurred.

"There was a definite weight shift in the vehicle that we feel



TODAY photo by Shawn Keegan
Classmates of 14-year-old Jaclyn Coriale mourn at her funeral, held at Our Lady of the Valley church on Tuesday. Other pictures Page 11.

may have been a contributing factor," Buwalda said. "If specialists are needed in any area of the investigation, we'll call them in."

The entire investigation, which involves collecting evidence, examining the accident scene, searching for vehicle defects and recreating the scene of the accident, could take several weeks to complete, Buwalda said.

A third girl in the vehicle, 14-year-old Toni Ann D'Ambrosio,

suffered a broken shoulder as well as lung injuries during Saturday's accident. She was listed in fair condition at St. Joseph's Hospital and Medical Center in Paterson late last week. Tina D'Ambrosio, Toni's 17-year-old sister who was driving the Jeep, was treated and released from Chilton Memorial Hospital the day of the crash.

Twenty minutes before Saturday's accident, police issued summonses to another group of students driving along Valley

Road who were honking the car horn and hanging out of the windows. The beeping ritual was an impromptu pep rally to raise spirits for a high school competition which was scheduled for Saturday night. The event was cancelled. Instead, guidance counselors and community therapists moved into the school last Saturday and Sunday to speak with students distraught over the accident. The outside counselors remained in the school for the rest of the week.

HURRY IN FOR TRIPLE BONUS SAVINGS! STORES OPEN TODAY 11-6, DAILY 10-9 SPECIAL HOLIDAY HOURS: SAT. 5/28, 9-9; SUN. 5/29, 10-7; MON. 5/30, 9-9

MEMORIAL DAY
TRIPLE BONUS COUPON
SALE

THE SAME QUALITY AS DEPARTMENT STORES... BUT LOWER PRICES, GUARANTEED!

Beautyrest, Sealy, King of the Hill, Serta

0% INTEREST FOR 6 MONTHS
NO MONEY DOWN

Subject to credit approval. Minimum purchase of \$150. Minimum monthly payment required. If not paid in full within 6 months, finance charges will be assessed from date of purchase.

PHONE ORDERS WELCOMED ON "SLEEP ON THE BEST" ITEMS
CALL 1-800-BED-TIME
OR YOUR LOCAL STORE

SUPER VALUES

\$23 FIRM
Twin each piece \$23
Full each piece \$57
Queen 2 pc. set \$148
King 3 pc. set \$179

A FANTASTIC VALUE!

\$57 SEALY EXTRA FIRM
Twin each piece \$57
Full each piece \$127
Queen 2 pc. set \$299
King 3 pc. set \$449

A FANTASTIC VALUE!

\$87 BEAUTYREST EXTRA FIRM
Twin each piece \$87
Full each piece \$159
Queen 2 pc. set \$359
King 3 pc. set \$499

THE LOWEST PRICED BEAUTYREST ON THE MARKET • 15 YEAR WARRANTY



SLEEP ON THE BEST

KING KOIL SPINAL GUARD MYSTIQUE

Twin each piece	VALUE \$159	SALE PRICE \$129
Full each piece	VALUE \$179	SALE PRICE \$169
Queen 2 pc. set	VALUE \$449	SALE PRICE \$399
King 3 pc. set	VALUE \$649	SALE PRICE \$599

10 YEAR FULL REPLACEMENT WARRANTY!

SEALY POSTUREPEDIC HANOVER EXTRA FIRM

Twin each piece	VALUE \$169	SALE PRICE \$169
Full each piece	VALUE \$269	SALE PRICE \$229
Queen 2 pc. set	VALUE \$599	SALE PRICE \$499
King 3 pc. set	VALUE \$799	SALE PRICE \$699

15 YEAR FULL REPLACEMENT WARRANTY!

SEALY POSTUREPEDIC NEWBERRY PLUSH

Twin each piece	VALUE \$199	SALE PRICE \$199
Full each piece	VALUE \$299	SALE PRICE \$279
Queen 2 pc. set	VALUE \$699	SALE PRICE \$599
King 3 pc. set	VALUE \$899	SALE PRICE \$799

15 YEAR FULL REPLACEMENT WARRANTY!

Beautyrest SILHOUETTE

Twin 2 piece set	VALUE \$599	SALE PRICE \$499
Full 2 piece set	VALUE \$799	SALE PRICE \$639
Queen 2 pc. set	VALUE \$899	SALE PRICE \$799
King 3 pc. set	VALUE \$1199	SALE PRICE \$1099

15 YEAR FULL REPLACEMENT WARRANTY!

FREE HARVARD BEDFRAME

Receive a free heavy duty steel HARVARD bedframe with the purchase of any full, queen, or king size mattress set.

HARVARD bedframe is exclusively available at Mattress Discounters!

UP TO A \$50 VALUE!

ADDITIONAL BONUS SAVINGS COUPON

WE AN ADDITIONAL \$100

Present this coupon and save an additional \$100 on the purchase of any queen or king size Beautyrest, Posturepedic, King Coil Posture Bond or Seams & Foster mattress set.

FREE DELIVERY

Present this coupon and receive free delivery with the purchase of any full, queen or king size Beautyrest, Posturepedic, King Coil Posture Bond or Seams & Foster mattress set.

PLUS... SET UP OF YOUR NEW BED AND DISPOSAL OF YOUR OLD MATTRESS & BOXSPRING WITH DELIVERY

WATERFALL DAYBED

GREAT FOR GUESTS! \$65

OUR LOWEST PRICE EVER!

• 46" UNIQUE WHITE CAMELBACK DAYBED • AN OUTSTANDING VALUE • COMPLETE BACK, SIDES & HEAD SPRING

JAMESTOWN DAYBED

ONE OF THE MOST POPULAR DAYBEDS ON THE MARKET!

\$199

OUR LOWEST PRICE EVER!

• HEAVY DUTY ALL WOOD CONSTRUCTION • COMPLETE BACK, SIDES & HEAD SPRING

SARATOGA CHERRY & IRON BED

AVAILABLE FOR IMMEDIATE DELIVERY! \$599

• FULL QUEEN OR KING SIZE BED PRICE UP TO \$1049 • ELEGANTLY STYLISH CHERRY AND IRON BED • BED INCLUDES HEADBOARD, FOOTBOARD & SIDE RAILS

Have a good night's sleep on us!

MATTRESS DISCOUNTERS

THE NATION'S LARGEST MATTRESS RETAILER COAST TO COAST WITH OVER 100 LOCATIONS AND GROWING!

• TOTOWA/LITTLE FALLS/WAYNE SUPERSTORE 360 Highway 46 East, across from Toys 'R' Us, next to Pearle Express (201) 256-4433 •

- EAST BRUNSWICK SUPERSTORE (908) 651-1965
- 393 Route 18 South, 1/2 mile south of Midstate Mall, at the W. Fenton St. Intersection
- EAST HANOVER/LIVINGSTON SUPERSTORE (201) 887-9002
- 418 Route 10 West, 1/10 mile east of Tops, next to the Outdoor Furniture Store
- EATONTOWN/MONMOUTH MALL SUPERSTORE (908) 542-4696
- 255 Route 35 North, at Rt. 35 Monmouth Mall Entrance, next to White Castle and Goodyear Tire
- ELIZABETH/LINDEN CLEARANCE CENTER (908) 527-9300
- Route 1, 771 Edgely Road, 2 blocks south of Boy Way Circle
- LEDGEWOOD/SUCCASUNNA SUPERSTORE (201) 584-6448
- 275 Route 10 East, in Roxbury Mall, facing Rt. 10, next to Mandee's
- MANALAPAN/FREEHOLD SUPERSTORE (908) 972-6801
- 520 Route 9, in the Home Fashion Center, next to Nevada Bobs
- PARAMUS SUPERSTORE (ma slow CLOSED SUNDAYS) (201) 447-5959
- 557 Route 17, next to Levitz, in front of Staples
- PARAMUS SUPERSTORE (ma slow CLOSED SUNDAYS) (201) 487-4242
- 261 Route 4 West, next to THE MALL AT IV
- SOMERVILLE SUPERSTORE (908) 253-8588
- 936 Route 22 East, across from Bridgewater Commons Mall, next to NBC
- SPRINGFIELD/JUNIOR SUPERSTORE (201) 379-2234
- 275 Route 22 East, between Olive Garden and Sam Goody
- TOMS RIVER/BRICK SUPERSTORE (908) 505-2100
- 1338 Hooper Ave., in T2 MAXX Center, approx. 1/2 mile north of Green County Mall
- WOODBIDGE/MENLO PARK SUPERSTORE (908) 321-0200
- Route 1 South and Ford Ave., Woodbridge, N.J. between Woodbridge Center and Menlo Park Mall

MEMORIAL DAY SALE

ANDERSEN WINDOWS & PATIO DOORS CLOSE-OUT SPECIALS

Left-Over Stock & Unclaimed Merchandise
ALL AT DEEP DISCOUNTS



• PRICES LIMITED TO STOCK ON HAND

All Prices Good Thru 5/28/94

ANDERSEN NARROWLINE DOUBLE-HUNG HIGH-PERFORMANCE



#2032	\$126.00 + Tax
#2056	\$175.00 + Tax
#2062	\$178.00 + Tax
#3042	\$178.00 + Tax
#3046	\$184.00 + Tax
#3432	\$158.00 + Tax

ANDERSEN CASEMENT WINDOWS



#CR135-3	\$445.00
#CW23	\$272.00
#C24	\$298.00
#CW15	\$204.00
#CW155	\$220.00
#CW25 Sandstone	\$395.00
#C16	\$206.00

ANDERSEN PATIO SLIDERS & FRENCHWOOD GLIDERS

#PS8	\$795.00
#PS12	\$1175.00
#FWG6068 (w/screen & brass hardware)	\$985.00



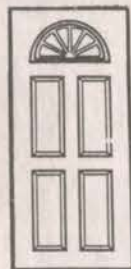
ANDERSEN BASEMENT WINDOWS

#2813	\$65.00
#2817 w/screen	\$68.95
#2820	\$74.50



PROVIDENCE STEEL ENTRANCE DOOR UNITS PRE-HUNG 4 5/8" PRIMED JAMB

3/0 4 Panel/Fan Lite \$148.50



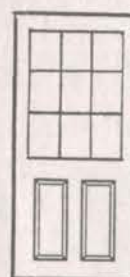
2/8 6-Panel \$115.00

3/0 \$119.95



2/6 9 Lite/2-Panel \$139.95

2/8 \$139.95



We Also Have Other styles & Sizes Available

EXCELSIOR LUMBER

Company, Inc.



140 Hamburg Tpke.
Butler, New Jersey

Hrs: Mon.-Fri. 7AM-5PM • Sat. 7:30AM-3:00PM

Tel: (201) 838-1513

Fax: (201) 838-6543



BARCELONA '92

—Tapas Bar & Restaurant—

AUTHENTIC CUISINE FROM SPAIN

Hefty portions of top notch Spanish fare at prices that keep happy patrons coming back for more

(***DAILY NEWS 2/93)



Your Hosts, Jose Fernandez
& Claudio Rea



Our beautiful dining room
Banquet Facilities Available
For All Occasions
Best Paella & Sangria
in Bergen Country

Daily Lobster Special

1-1 1/4 lb. Lobster \$10.95

Daily Double Lobster

2-1 1/4 lb. Lobster \$17.95

3 lb. Shell Steak \$16.95

Lunch Specials

from \$5.95

Includes Italian Specialties

Complete Dinner Specials

"Taste of Spain"

Mon.-Thurs. \$14.95

Includes: Choice of

Appetizers

Soup or Salad

Choice of Entree

Dessert

Sunday Brunch

Our Extensive Menu

Includes

Fresh Sea Food, Steaks,
Chops, Veal & Poultry

OPEN 7 DAYS

for Lunch & Dinner

Major Credit Cards Accepted

Herald & News Friday, May 13, 1994



Dining Guide

Barcelona 92

If Spain did as well in competition during the 1992 Olympics in Barcelona as Barcelona 92, the Spanish restaurant in Oakland, does in competition for customers who appreciate authentic Spanish cuisine, Spain would have garnered a long list of medals.

Claudio Rea and Jose Fernandez are co-owners of Barcelona 92, located at 20-A Elm St., across from Sears. Born in Spain, where he received his early education, Claudio earned his bachelor's degree right here in New Jersey, at Rutgers. His initial restaurant experience came from Spanish restaurants including Barcelona 92's sister restaurant, El Quixote on 23rd St. in Manhattan and Porto Spain in Hoboken.

No test of Spanish cuisine is complete without sampling the green sauce and the garlic sauce, both of which may be ordered here over mussels, clams or shrimp as appetizers or in combination dinners with veal and shrimp or with Barcelona's famous Mariscada, which, by the way, is also available Catalana style, with the mixed seafood in a hot tomato sauce. Clams Barcelona are another great seafood entree. Here the chef's special sauce is one you'll spoon up after the clams are consumed. And don't overlook Chorizo, Spanish sausage sliced and broiled. It is nicely prepared at Barcelona 92.

Moving on, Barcelona 92 has four typical Spanish soups. It's hard to decide which is best but the black bean just may take the edge. Gazpacho, garlic soup and caldo Gallego, with white beans, meat and collard greens are all tasty and recommended.

An order of pork chops Riojana is almost overwhelming. You are served two thick chops covered with generous slices of sauteed peppers, onions and potatoes. Fortunately there are take-home containers here.

Filet Mignon Barcelona arrives as two very thick steaks, garnished with melted cheese and bacon with a mushroom sauce. It takes a hearty appetite to finish it, especially when the thin, potato chip-like fries and a side order medley of lemony, garlicked fresh vegetables are put before you.

Lobster is one of the most popular items on Barcelona's menu. An entree of two one and a quarter-pound lobsters is \$17.95 as a special and the meal is clearly well received.

Barcelona 92 serves so many lobsters that it shares a lobster fishing boat from Maine with El Quixote. Lobsters are trucked down from Maine daily.

Everything's big at Barcelona 92, even the pitchers of sangria. The small pitcher holds at least five glasses.

If you can handle it, there's an attractive dessert cart laden with cheesecake, flan, a poached pear over ice cream, drizzled with a raspberry sauce and several other cakes and pies.

Lunch, as well as dinner, is served seven days a week at reasonable prices. Sandwiches, salads and vegetarian dishes, with numerous other entrees, complete the luncheon menu. Banquet facilities are available.

Call 337-0092 or 337-7038.

20 Elm St., Oakland, NJ
(Off Rt. 202 & 208 & 287)

337-0092

WANTED

TOP CASH PAID

1 MILLION DOLLARS

BUYING

1 MILLION DOLLARS

SILVER COINS

BEFORE 1964

SILVER DOLLARS

STAMPS & COVERS

SMALL ANTIQUES

DIAMONDS

FOREIGN COINS

• HUMMELS • COLLECTABLES
• FRANKLIN MINT •



\$10,000⁰⁰

THIS PHILADELPHIA MINT SILVER DOLLAR
IN PROOF IS WORTH \$10,000.00

• ESTATES •

• APPRAISALS •
NOTARY PUBLIC SERVICE

GOLD COINS

RARE COINS
INDIAN CENTS

OLD PAPER MONEY

WATCHES & RINGS

OLD JEWELRY

SILVERWARE

GOLD 10K, 14K 18K

FOR THE COLLECTOR 1993 STAMP SUPPLEMENTS, SCOTT, HARRIS, MINKUS, WHITE
ACE * STAMP MOUNTS • STAMP ALBUMS • COIN ALBUMS • CATALOGS 1994 SILVER DOLLARS
• PROOF SETS • GOLD & SILVER COINS • SCOTT CATALOGS • RED & BLUE BOOKS, ETC.

AMERICAN

1273 MAIN AVE., CLIFTON

COIN & STAMP CO., INC.

Tues thru Sat. 10 to 5 PM
Fri. 10 to 6 PM

772-8100

Established 1955
Closed Sunday & Monday

• New Jersey's Oldest and Largest Rare Coin, Gold, and Silver Exchange •

Today SPORTS

SPORTS INDEX

The Pequannock Department of Parks and Recreation will be sponsoring a biathlon scheduled for Saturday, June 18 at Greenview Park. Call 835-5700 for more information.

PETER CENTINEO
TODAY Sports Editor

Scelba scorches back nine to win county golf title

BY PETER CENTINEO

WAYNE — After hitting a 41 on the front nine at the Passaic County Golf tournament Thursday, DePaul's Anthony Scelba was not at all happy.

After a score of 71 had won it last year, and the fact that Wayne Hills standout Scott Samanchik (last year's county champ) and teammate Willie Spicer (second last year) were both competing, Scelba figured he was well back.

But, to his surprise, he was just one stroke off the pace. Spicer had shot a 40, and Scelba finished with a 41. After that, the back nine belonged to Scelba, as he scorched it for a 34 on his way to a 75 and the county title, beating teammate Willie Spicer by three

strokes (78).

The Spartans also won the team title, scoring 325 to beat Passaic Valley by 11 strokes (336). Wayne Valley placed third with a 347, followed by Wayne Hills with a 350.

DePaul's Jeff Heaney carded a 85, and Sean Thomas scored an 89 to aid the Spartans' team championship, their third consecutive county team title. Spicer placed second in the county tournament for the fourth consecutive year.

Scelba birdied the third and sixth holes on the back nine, both par fives. On the third he hit a driver and then a 1-iron to the green, and then two-putted for birdie. On the sixth, he hit a driver and then a three wood, and then pitched on to get within

three feet of the hole.

"It was a real tough putt because it was going downhill and breaking right to left. It trickled in. After I birdied the first par five I knew I was getting hot. Then I made a lot of pars. On the front I bogeyed a lot of holes, but I had a real good back.

"My putting was my strong point on the back. I one-putted six or seven times. My driver was good too. I hit the fairways most of the time and stayed out of trouble," Scelba said.

DePaul coach Richard Bayley wasn't surprised Scelba won, but he was surprised at how well he played in the rain and wind.

"I was talking to Gino (Ancora, Wayne Hills head coach) and he and I both thought Anthony could

win it. He's been playing great all year. What was most impressive was how he played given the circumstances. The weather was bad, but it didn't affect him," Bayley said. "He kept hitting greens, and his putting was amazing."

"The weather really didn't bother me. As long you keep your clubs dry you're okay. The front was playing long because they pushed the tees all the way back," Scelba said.

The tournament's first nine holes were played on the Red Course at Passaic County. The front consisted of the first-fourth holes, and then finished with the 14th-18th. The back nine was played on the front of the Blue Course.

"The 17th hole on the front was a 240-yard par three. A lot of guys came up short on that. The front was playing long, but I thought the course was in real good shape. The greens were excellent. They were a little fast, but I liked it.

"There was a lot of pressure on us this year. Everybody was talking about Passaic Valley, but I knew if Willie and I shot well we could win it," Scelba said in regard to the team championship.

As a team, DePaul started out badly this year, posting a 3-4 mark after the first seven matches. But the Spartans won their last 15 to finish with an 18-4 record. That streak included a win over Passaic Valley, which

was their first loss of the year after winning 18 straight.

Bryan Florio of Wayne Valley finished third individually with a 79, followed by PV's Ryan Melone, who scored 80. Mike O'Connell of Lakeland hit an 81, while Hills' Samanchik shot 82.

DePaul will go for a state team championship tomorrow, and Spicer and Scelba will compete for individual state championships along with Samanchik after doing well in the Region 2 tournament. Samanchik won Region 2, Spicer finished second and Scelba fourth.

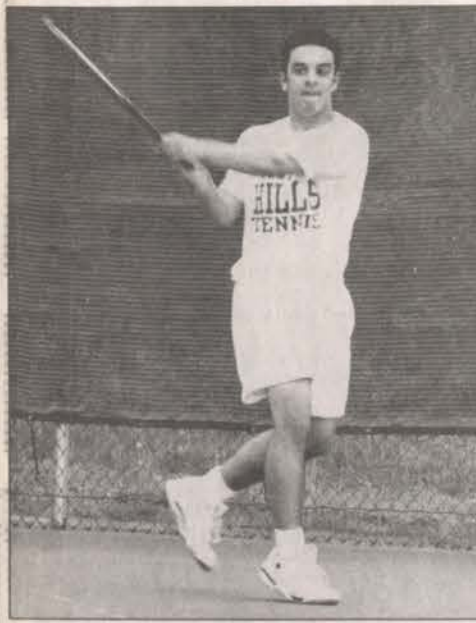
Instead of going to Burlington where the state championships were scheduled to be held, the state championships will be held at Little Mill Country Club in Marlton.

Wayne battle



Photos by Susan Zelinhofer

Marti Martin of Wayne Valley, top, and Jason Scala of Wayne Hills, bottom, battled for a win at first singles Tuesday during the North 1 Group 3 state tennis tournament. Scala won the match (6-1, 6-1), but Valley prevailed, 3-2, to advance in the states.



Learn to swim program

PEQUANNOCK — Registration is being taken from May 2 to June 3 for the "Learn to Swim Campaign."

This campaign is sponsored by the Morris/Sussex chapter of the American Red Cross in cooperation with the Pequannock Township Dept. of Parks and Recreation. Classes are held twice a week, on Tuesdays and Thursdays,

from June 28 to July 28 from 9 to 10 a.m. at PV Park.

This program is for children finishing kindergarten in 1994 and who have not completed this Red Cross beginner course. The cost is \$5 and PV Park membership is not required.

For further information, contact the Parks and Recreation Department at 835-5700.

WV girls take county track title

BY PETER CENTINEO

WAYNE — After losing out on a Passaic County track championship last year to Passaic by six points, the girls from Wayne Valley returned the favor, scoring 120 points to Passaic's 116 to win the county title.

The culmination of Tuesday and Wednesday's competition at Clifton High School came after the tragic deaths of two Wayne Valley students last weekend. Paula Antonucci and Jaclyn Coriale both died in a car accident, leaving the Wayne Valley track teams questioning whether they should compete or not.

The girls were fresh off another Northern Hills Skyline Conference track title they had won that Saturday when the tragedy occurred. Coach Jim Coyne said he talked to the team the day before the county tournament to find out if the girls felt up to competing.

"The girls took it very, very hard. It was a horrible thing to have happened," Coyne said. "I asked the girls if they wanted to go to the county tournament, and they said they did. I told them if they did go they'd have to be able to give it 100 percent, and they said they could."

The girls wore ribbons in memory of their classmates, and then went on to win the county title through some very inspired efforts.

Jen Prigaro, who only competed in the triple jump twice all year, needed to finish in the top five Saturday if Valley was to stand a chance at winning the overall title. Prigaro's jump of 30-feet, 10-inches placed her fifth in the event, and helped propel Wayne to the county title.

"The toughest part of the triple jump is that first step. If you step over the first board it's a penalty, and if you start too far before it you waste distance. Jen hit it dead center," Coyne said.

Valley has become a dominant team in the running events, but their ability to keep up in field events has been a big plus. A team has to have good balance, or they'll lack the points at the end needed to win.

With Prigaro doing a good job in the triple jump, Katie Holmgren and Jen Roy also did well in the field events. Holmgren placed second in the high jump (4-feet, 10-inches), fifth in the shot put (39-feet, 4-inches) and third in the discus (109-feet, 4-inches). Roy took first in the long jump with a leap of 16-feet-2 inches, and Nancy Schemele placed fourth with a leap of 15-feet, 5 1/4 inches.

Roy also excelled in several running events, finishing first in the 400 hurdles with a time of 64.4 seconds, and following that performance with a second-place finish in the 400 (58.8) and third in the 200 (26.6).

"Jen really did a great job. She ran the 400

hurdles and 10 minutes later she had to run the finals of the 400. Then she did the 200. It was amazing that she could do all three in such a short amount of time and do so well. She was real tired by the time she was done," said assistant coach Conan Ward.

Valley got off to an excellent start Tuesday, earning 68 points to Passaic's 59. Leading the way was Amy Mizzone who placed first in the 800 (2:27.6), and placing second in that event was Valley's Sara Park with a time of 2:27.8. Monica Chlupsa was fourth at 2:31.2. Mizzone also finished first in the 1600 (5:16.2) with Beth Crenshaw placing second at 5:20.6, and Monica Chlupsa placed fourth (5:35.7).

Crenshaw won the 3200 with a time of 11:14.3, beating her best time of the year by 12 seconds. Mizzone finished third at 11:51.5.

With the NHC Skyline and Passaic County track titles in hand, the Wayne Valley girls head into the state sectionals May 28 at Wayne Hills with a lot of momentum. Returning sectional champs include Roy in the 200 and 400, and Mizzone in the 3200. Prigaro placed second in the 400 last year.

"It's going to be really tight competition. We're real good in distance events, but so is Ramsey," said Coyne, as Valley won the sectional last year. "We have to do as good as we always do in those events, and also perform well in the field events. We can't afford to get blown out in the field events if we want to win."

Wayne A's should be competitive

BY PETER CENTINEO

WAYNE — Several players who helped make the Wayne Lincoln Mercury A's a surprise semi-finalist in the Metropolitan Baseball League playoffs last year are gone, but coach Russ Purdue sees no reason why this year's team shouldn't have a very competitive season.

After last year's 20-18 campaign, the coach feels some young players are ready to step up and impress, while the vets provide steady play and show what it takes to win. The team is 1-1 thus far, as the A's recorded their first win of the year Wednesday, a 3-1 victory over Parsippany.

"It was a nice win because everybody contributed. I don't see why we shouldn't be .500 or better this year. I think we have more pop in the lineup offensively, and our defense in the infield is strong," Purdue said. "We also have one of the strongest pitching staffs in the league. At least, I believe we do."

Some key losses for the A's were Mark Wright, Dan Bartolomeo and Dennis Daly. Wright, an outfielder, and Bartolomeo, a second baseman, were Met League All-Stars last year. Wright retired, and Bartolomeo now lives in Cherry Hill. Daly, a strong catcher last year, may return to the team later in the season.

"Losing Mark and Dan will be tough. They were great players for us. Dennis can come back anytime he likes, but he'll have to earn a spot if and when he returns. I'm comfortable with the guys we have now," Purdue said.

The pitching staff is solid with Pat Cantalupo being the number one pitcher, followed in the rotation by John Goll, Adam Liccardo and newcomer Mike Jannucci. Liccardo is still pitching college ball, so for the time being the A's are going with a three-man rota-

tion. Lou Torres, a legitimate league MVP candidate over the past several years, will be the A's ace in relief, as well as a key player at second or right field. Veteran Ralph Doerfler will provide relief and see time in the outfield, and Jim Bouton is also in the pen. Pat Hoarle of Raritan Valley College, will come on in relief when necessary, as well as being the starting third baseman.

Billy Jannucci, a Morris County College product, will be behind the plate where he has a very good throwing arm and fine defensive skills overall. He'll provide the A's with a solid bat as well.

Purdue's infield shapes up with Hoarle at third, and returning starter Roy Kirchner at short. Kirchner played his first year for the A's last year, and was a pleasant surprise offensively and defensively for Wayne.

Torres is starting at second,

but that may just be temporary. Bryan Schroeder, a former Wayne Valley standout, will be returning from Clemson University soon and may be put at second with Torres moving to right.

"It depends on who plays second better. It's a wait and see thing. If Lou is better at second, Schroeder will go to right. If Bryan shows he can do it at second, we'll move Lou to right. Either way we're sound," Purdue said.

Tom Kwiatkowski will be at first base where he provides solid defensive skills. Jerry Maglione will see time at first as well, but most of the time he'll be the team's starting designated hitter and bat fourth.

Brian Kelly is solid in center, with Torres or Schroeder in right. Doerfler may also get playing time in right field, and Wayne Valley standout Jayson Friedman Friedman may see time in

right as well. Friedman will play many positions this year, except for short, second and center. A speedy Ray Valente, who hit .300 in his first year for the A's last season, will be in left. Prakash Patel is an infielder/outfielder with great speed.

Mike Pasquino, who played with Valente at Wayne Hills High School, is another player to look for, as he's versatile and swings a good bat.

Mike Amatulli and Craig Siepe are back coaching the A's this year. Wayne will also be sporting new uniforms. Peter Spina, owner of Wayne Lincoln Mercury and sponsor for the team, put up the money for the new uniforms as he continues to support semipro ball.

"Without Pete Spina there would be no A's. He's always come through for us," Purdue said.

The A's will play Secaucus at Wayne Valley High School today at 1:30.



Photo by Shawa Kegera

Pompton Lakes ace pitcher Allison Moyle, center, is 18-0 thus far with six perfect games for her softball team, and next year will play for Div. IA Monmouth College on a full athletic scholarship. She is pictured above signing a letter of intent, with dad Robert, left, and mom Carolyn, right, in attendance. Standing is Athletic Director David Moyle and softball coach Eileen Allan.

GOLD'S GYM

Aerobic and Fitness Center of Riverdale

A CLUB FOR MEN AND WOMEN

92 RT. 23
RIVERDALE - 839-8606

ON TOP OF ALL THE REST

**EVERYONE'S
TALKING ABOUT
GOLD'S
COME SEE WHY!**

FREE!
**1 WEEK
TRIAL
MEMBERSHIP**
W/COUPON



GYM®



Volunteers

Volunteers wanted

• CONTACT of Pequannock, is looking for volunteers to work on their Hotline eight to 12 hours a month. Call 831-6800 for information.

• The Mental Health Association is seeking volunteer actors to join the Mental Health Players Troupe in Passaic County. No experience is necessary, full training provided. Call 778-0077 for more information.

Literacy volunteers

• Trained tutors or those interested in helping individuals learn to read and write should contact the Literacy Volunteers of America, Passaic County Affiliate at 628-8829.

Buddy system

• The Mental Health Association of Passaic County is looking for volunteers to provide one-on-one counselling services to troubled adolescents & adults. The Mental Health Association will provide training and supervision. For more information call Steve or Christine at 778-0077.

Visitors needed

• The North Jersey Developmental Center needs community groups and volunteers to provide visitors and entertainment for its developmentally disabled residents. For more information call Dolores Cattiny at 256-1700, ext. 3004.

Animal care

• Save the Animals Rescue Team (START) needs volunteers to care for abandoned animals. People who can drive, or provide a home for cats and kittens are needed. For more information call 785-1245.

Volunteers wanted

• The Voluntary Action Center of Morris County is looking for volunteers. The center uses computers to find charities and volunteer work that will fit the schedule, desires and talents of interested volunteers. For more information call 538-7200.

• North Jersey Developmental Center in Totowa is looking for volunteers to work in the "People Who Need People" program. For additional information call Dolores Cattiny at 256-1700, ext. 3004.

Elder help

• The Nursing Home Advocacy Center of Senior Services & the State Ombudsman's Office are offering free training to become a volunteer advocate for nursing home residents in Essex and Morris counties. Call 673-0640 for details.

Hospital aid

• Prekness Hospital seeks volunteers in the clerical, recreation, dietary and nursing departments. Call Kathy at 904-6096 for more information.

Adopt-A-Floor

• Prekness Hospital is seeking groups or organizations to adopt a floor at the long term care facility. Volunteers would provide holiday decorations, birthday cards to residents and help with special events. For additional information call Kathy at 904-6069.

Volunteer action

• Projects For People is an organization that provides volunteers an opportunity to work on short-term projects. PFP holds regular meetings on the third Tuesday of each month at the Clifton Library at 7 p.m. PFP can also be contacted at the Volunteer Action Center for Passaic County at 279-8900.

Seniors

Platzl Brauhaus trip

• The Fellowship and Holy Spirit Seniors are off to Platzl Brauhaus on June 15. The bus leaves Alex Hearel Village in Pequannock at 9:30 a.m. Coffee and danish will be available on arrival and noon lunch will be an outdoor picnic of hamburgers, franks, sausage and peppers, salad bar, corn on the cob, watermelon beer and soda.

Platzl Brauhaus features walking grounds, a pool, putting green and horse shoe courts in addition to other activities. A sit-down dinner will be served at 4 p.m. and the bus will return home by 6 p.m. Price is \$39. If interested, call Terry at 839-2138 after 7 p.m.

Wildwood trip

• The Fellowship and Holy Spirit Seniors will make a five day trip to Wildwood Crest, June 6 to 10. The trip includes five days at a beachfront hotel, transportation, breakfast, lunch and dinner and all entertainment. A day at Atlantic City is planned in addition to a day at Cape May. Price for two in a room is \$230 per person. Cost for a single in a room is \$290. For more information call Terry at 839-2138 after 7 p.m.

Bloomington trips

• Bloomington Seniors has openings for two trips. For information about either trip call Nicky at 492-0304, after 6 p.m.
Branson, Missouri, June 26 through July 4.
Montreal and Old Quebec, July 25 through July 29.
Both trips include all transportation, baggage, tax and gratuities.

Alzheimer's support

• Chilton Memorial Hospital holds a support meeting for caregivers of Alzheimer's disease patients. The group meets on the second Tuesday of each month from 1 to 2:30 p.m. Admission is free and open to the public. For more information call 831-5167 or 831-5175.

Seniors wanted

• The North Jersey Developmental Center is looking for Foster Grandparents for its developmentally disabled residents. Participating seniors will receive a stipend, travel expenses, medical help, and free lunch. For more information call 256-1700 ext. 3003.

Caregivers support

• Caregivers for the Elderly Support Group meets every first Thursday of the month at the Wayne General Hospital at 7:30 p.m. For more information call Diane Marinaro at 956-3345.

Dial-A-Ride

• Transportation needed? Call Dial-A-Ride at 835-8885 from 9 a.m. to noon for an appointment. The program is open only to the non-driving residents of Butler, Kinnelon, Lincoln Park, Pequannock, and Riverdale who are 55 years or older.

Project L.I.N.C.

• The Prekness Branch Library can help find information on community agencies and groups for seniors and caregivers. For more information call 696-1026.

Medicare help

• Wayne General Hospital offers a free Medicare assistance program to all residents, aged 55 and older. Individuals who need help applying for Medicare or supplemental insurance should make an appointment by calling 956-3345.

• The Retired Senior Volunteer Program of Morris County offers free Medicare counseling. The program is conducted by certified volunteers from the N.J. Division on Aging and the N.J. Department of Insurance. For more information contact Kay Anderson at 538-7947.

Municipal

Summer registration

• The Wayne Boys and Girls Club will hold a summer day camp with weekly sessions from July 5 through August 26, for children ages five to 12. Call 956-0033 for an application.

• Registration for the Bloomington Recreation Department's Tot's Summer Fun Program will be held on Wednesday, June 8, from 7:30 to 9 p.m., in room 235 of the Walter Bergen school. The cost of the program is \$20. For additional information call Pat Taggart at 492-5486.

• The Borough of Lincoln Park will hold registration for their Summer Day Camp on June 1 and 2 between 6 and 8 p.m. at Borough Hall, 34 Chapel Hill Road, Lincoln Park. The cost is \$50 for the first child and \$20 for each ad-

ditional child. For information call 694-1146.

Community Lake

• The Borough of Lincoln Park will hold an admission free weekend for residents at Community Lake on June 18 and 19. Proof of residency will be required for entry. For seasonal badge prices call the Recreation Department at 694-1146.

Flood information

• The Main Branch of the Wayne Public Library has maps, manuals and insurance rate information about federal flood insurance in their reference department at 475 Valley Road, Wayne, or call the reference number 694-8813.

Public meetings

• The Recreation Commission of Pompton Lakes will meet the third Tuesday of every month, (unless otherwise noted), at 8 p.m. in the municipal building, 23 Lenox Ave. The next meet will be Tuesday, June 21.

• The Little Falls Recreation Commission will meet on the fourth Monday of each month at 7 p.m. in the Community Center, 160 Paterson Ave. The next meeting will be held on Monday, June 27. For further information call Karen Mazowiecki at 256-3884.

• The regular meeting of the Totowa Municipal Council will be held the second and fourth Tuesday of every month at 8 p.m. in the Council Chamber of the municipal building, Totowa Road at Churba Place. The next scheduled meeting will be Tuesday, May 24.

• The Pompton Lakes Planning Board will meet the third Tuesday of every month at 8 p.m. in the municipal building, 25 Lenox Ave. The next scheduled meeting will be Tuesday, June 21.

• The next scheduled meeting of the Totowa Board of Health will be held May 25, at 8 p.m. in the municipal building, 537 Totowa Road.

• The next scheduled Regular Meeting of the Municipal Council of West Paterson will be held on May 25, at 8 p.m. in the municipal building on McBride Avenue.

• The next scheduled Conference Meeting of the West Paterson Municipal Council will be held on June 1, at 8 p.m. in the municipal building on McBride Avenue.

• The Borough of Butler will hold their next Council Workshop on June 6. The next scheduled regular council meeting will be held on June 14. Both meetings begin at 8 p.m. at are held in the municipal building.

Summer jobs

• The Pequannock Township Parks and Recreation Department is accepting applications for 1994 summer jobs. Applications may be picked up at the Parks and Recreation Office at 530 Turnpike, Pompton Plains or by calling 835-5700 ext. 45 and 58.

• The Bloomington Recreation Commission is now accepting applications for counselors in their Summer Recreation Program. Interested parties, age 14 or over should apply at the borough clerk's office, 101 Hamburg Turnpike, Bloomington. For information call 838-2893.

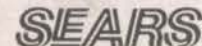


NOTICE

In our "Memorial Day Sale" color circular, the 5 drawer chest in the youth bedroom on page 2 does not have handles as pictured, but matches the coordinating pieces shown. We apologize for any inconvenience this may cause.

CORRECTION NOTICE

Throughout the months of May and June, we are advertising the #70644 Craftsman Electric Edger at a sale price of \$74.99. Due to production problems, this item will not be available at that time. We will be offering rainchecks or a substitute #74144 Black and Decker Edger of equal value. We regret any inconvenience this may have caused our customers.



Waiting on a friend



TODAY photo by Demitrius Balevski

Students wait outside the church following the funeral of 16-year-old Paula Antonucci on Wednesday morning.

Eternal peace



TODAY photo by Demitrius Balevski

The casket of 16-year-old Paula Antonucci is brought into Our Lady of the Valley church on Wednesday morning.

Final rest



TODAY photo by Shawn Keegan

The casket of 14-year-old Jaclyn Coriale is placed in a hearse following her funeral services Tuesday morning.

Get the Best Bagging & Mulching You've Ever Seen in the Same Machine

- Featuring the Ninja mulching blade
- Easily convertible between mulching and bagging
- Available in 4 to 5.5 horsepower
- Ask about our Interest Free Financing -No Money Down! No payment til Oct. 94!
- New machine includes...
 - FREE Delivery (10 mi radius)
 - FREE Assembly
 - FREE Demonstration



Hi Vac Walk Mower

SNAPPER
Anything Less Just Won't Cut It.



Sold & Serviced By



245 Union Boulevard
Totowa
1-800-640-2027
Open 7 Days

1190 Rt. 23
Cedar Grove
1-800-894-3987
Open 6 Days

WE SELL THE BEST & SERVICE THE REST
Parts & Service On Many Major Brands



Today Newspapers Classified

To Place Your Ad Call 1-201-492-9595

10 Park Place, Butler, NJ 07405



Guaranteed Rates
3 LINES \$15.00 1 WEEK
(Only one item per ad please.)
Sell it in the first week or we'll run it another week FREE!
(merchandise up to \$2500, private party only)

Deadlines
To start your ad on Wednesday, call Monday by 4pm
To start your ad for the weekend call us on Friday by 4pm.

Fax Your Ad
For maximum convenience just fax us your ad anytime, 24 hours a day at (201) 492-8785. (We'll call you back to confirm your order.)

Classified Hours
For your convenience, our Classified Telephone Lines are open:
Monday-Friday: 7am to 7pm
Saturday: 8am to 1pm

Free Ads
GENERAL MERCHANDISE
Valued up to *100
FREE for one week
LOST & FOUND FREE
ad for one week
private party only

Charge Your Ad With...
VISA M/C DISCOVER

Cancellations
To Cancel An Ad?
For Fast
Cancellation Service
please call
1-800-922-8122

Tips for making your ad more effective

- Start your ad with the item for sale, service offering or job title of the person you are looking to hire
- Be descriptive. The more information you provide to the reader, the better the responses will be to your ad.
- Always include the price of the item for sale.
- Run your ad for an ample length of time. Remember, as soon as you get results you can cancel at any time.

BARGAIN SHOPPING Items Under \$100

8 TRACK TAPE-radio, record player, Lloyds, w/2 speakers, \$35, 227-2812.

ABDOMINAL BOARD-Mary Pro, like new, adj. \$65, 296-5077 msg.

AIR COMPRESSOR-Seair Craftsman, 1HP, gd cond, \$90, at 4pm 639-0960

AIR COND-5000 BTU, \$89, 340-4734

AIR COND-GE, 3000 BTU, window unit, vry gd cond, \$99, 739-5919

AIR COND-10000 BTU, window unit, \$85, 340-4734

AIR CONDITIONER-Emerson Quiet Cool, 27,000 btu, \$99, 305-4863 no calls aft 8:30pm.

AIR CONDITIONER-18000 BTU, 10 yrs old, Carrier 220 line, \$99, 478-3404.

AIRLESS SPRAYER-Sears Craftsman, watch, case, new, \$29, 628-0370.

AIRLINE TICKET-Atlanta to Newark, 1 way, \$99, obo, 295-9325

ALUMINUM SCAF-FOLD-24x30, \$99, 773-3692.

ALUMINUM WALKER-holds up w/heels, new cond, \$45, Callon 478-2669

ANSWERING MACHINE-Panasonic intergr phone system w/ans, \$99, 56, 742-5864.

ANTIQUE-1 Pr. Candelabrum lamps, All cond, \$99 pr, 614-0731

ANTIQUE BATHUB-claw foot, \$25, 930-4471.

ANTIQUE-Feed chest, 61Wx24D, \$59, 492-9732.

ANTIQUE NEWSPAPER-The London Gazette, year 1772, \$75, 478-4212

ANTIQUE-Stoneware crock, 5 gal, wild & handles, mint, \$65, 696-8328.

ANTIQUE-Trunk, gd cond, \$65, 835-2828.

ARTIST DRAWING TABLE-30x42, wide comp, top, \$99, 391, 334-4867.

ATARI GAME-Hook to TV, 6 games incl, \$85, 831-7782.

AUTO PART-2 bucket seat, for 82 Dodge (Mustang), \$30 vs, 808-7174.

AUTO PART-4 Rims, 6x14 for 214, \$90, 259-0191.

AUTO PART-3 Grill for Wagoneer, \$60, 546-4819 after 4pm.

AUTO PART-Camaro seats, gray, exc cond, '82 and up, \$75, 751-8761.

AUTO PART-hard off, center for Toyota, 4x4 w/5 71 gears, \$99, 478-4069.

AUTO PART-grill, '86, old Catalina, \$20 both sides, 340-4622 Callon.

AUTO PART-Hood for Ford p, \$20, bumper, \$20, 2-alam, 14 wheels, \$20, 728-0456.

AUTO PART-Rear window for 1993 Ford, F150, new, \$40 w/o, 478-9229.

AUTO PART-Spotter w/hood brake lift, \$25, 4 wheels Chevy 14, \$65, 338-6738.

AUTO PART-Stock hood for 1981 Corvette, black, still in box, \$95, 208-9649.

BABY BOUNCER-w/attached toys, never used, \$25, dms, 773-6213.

BABY SWING-wind-up, almost new, \$10, 478-6167.

BASEBALL CARD-Tops 1961 Roger Maris, exc cond, \$59, 839-3825.

BASEBALL CARD-Tops '72 Nolan Ryan, exc cond, \$90, 833-2833.

BATHROOM CABINET-21x29, sliding mirrors, fluorescent light, \$30, 839-3825.

BATHROOM LIGHT FIXTURE-40w, medicine cab, 54 crystals, \$25, 478-4919.

BATH SET-Gd for heavy person, gd \$150, sell for \$50, 779-4265.

BED-Early American, drk pine, w/bedding, \$99, 777-7851.

BED FRAME-all size, exc cond, \$20, 633-5073.

BED-Full, mattress/frame, 1 yr old, moving, \$80, at 4pm 337-0884.

BED-Hospital, gd cond, \$30, 546-3396 during the day.

BEDROOM FURN-Pine dresser, mirror, chest, night std, good cond, \$85, 812-0764.

BEDROOM SET-White wood, twin bed, dresser, mirror, \$99, 99, 239-2650.

BENCH-Set 6x2, black vinyl, chrome base, must sell, moving, \$50, 697-9061.

BIKE-21 girls silver and red, \$65, 696-3755.

BIKE-Hospital, w/ribs, w/ribs, \$30, 83, 836-4134.

BIKE-Boy's 21, racing, exc cond, \$40, 633-7566.

BIKE-Boy's 40, girls 20, \$182-1181.

BIKE-Duke, Spans, exc cond, manual incl, \$50, 694-3096.

BIKE-Girl's & man's, 1 spd, coaster brakes, ask \$40 ea, 790-4188.

BIKE-Lady's girl's, 26, Mohawk Sunco, 10 spd, exc cond, \$75, 696-7640.

BIKE-men's 26, Sparten 10 spd, \$1 new, \$45, 696-3126.

BIKE-Schwin, 28, exc cond, 10 spd, \$40, 696-3178.

BIKES-2 girls, 1 20 w/ribs, wheels, 1 26 Schwin, w/ cond, \$25 ea, 742-5594.

BIKE-Schwin World men's 10 sp, 23 frame, exc shape, \$95, 835-3001.

BOAT PART-Reconditioned prop, Johnson Evinrude outboard, 13x19, \$50, 684-2425.

BOAT TRAILER-small, \$80, 833-9244.

BOOK-Memorial to Washington, The Mason, vry old, antique, \$50, 853-4277.

BOOK-The Art of Coats, pd, \$38, still \$5, 696-4032.

BOWL-crystal, round, lead cut, 7x7, exc cond, \$75, 864-7817.

BOWLING BALL-Wibag & shoes, man's sz 10, \$20, 994-1205.

BOWL SET-For salad, 5 pc, Nolan Ryan, exc cond, \$90, 699-628-7317.

BOWLING-China, light w/ribs, \$30, 839-3825.

BSPRING/FRAME-Pius headboard, gd cond, \$50, swap like, \$45, 226-3648.

CABINET-China, light w/ribs, gd cond, \$99, 697-5303.

CABINET-form/woodedge almost new, 75x15x20, w/ribs, \$1 new, \$75, 633-8308.

CHAFFER-for baby, 4 drawers & door from 1950's, \$25, 492-9408.

CHRISTENING OUTFIT-Boy's, wholus, never been worn, ask \$40, 305-1511.

CLARINET-new, never used, Armstrong, student model, \$99, 492-10416.

CLOSET-70x47, custom made, bargain at \$40, 696-5471.

CLOSET-EX-DO, new in box, \$35, 334-2299.

FREE HAIR COLORING-50% off Top & Waves. Free regisr-new clients only Hair Studio 835-7856

MASSAGE THERAPY-Relaxing, prof, legit Athletes w/ribs, student discount avail Jerry, helper 291-9504

PSYCHIC-Reader & Advisor, 1 reading will complete your help in all matters, 423-3190

PSYCHIC READINGS-by JAMET Advice on all matters One Question Fee \$48-1129

THERAPEUTIC MASSAGE-201-470-9678

THERAPEUTIC MASSAGE-201-470-9678

Ride Sharing 169

RISE NEEDED, from Passaic Pk to Elmwood Pk, Mon-Fri 7:30-8:30 or 1/2 mi/g

rockier-CHILDS, MAPLE, \$35, 833-9391

ROCKING HORSE-Makes sounds, flexible flyer, \$15, 616-0084

ROLLER SKATES-1 Pr, white, girls, sz 13, gd cond, \$6, 837-0469.

Announcements 110

CLASSIFIED EXTENDED HOURS!
For your convenience our Classified telephone lines are open from 7am-7pm, Mon-Fri. Start your ad by 6am-1pm. Please call to place your advertising at:

201-492-9595

Serial Needs 115

2 NEW CRYPTS, \$3900. Present value \$4400. Loc Garden of Memories Paramus 839-3629.

TWO graves, George Washington Memorial Park, Paramus, \$700, 939-8107 at 5pm.

Lost and Found 135

LOST-Cat, gray & white, 2 yrs old, vicinity of Wayne on Borden Ave. Call 958-1014

LOST DOG-Small black & white, Lincoln Park area. Family heartbroken. 628-0172

Persons 140

CENTER OLD ESCORTS 212-399-3599

ATTENTION LOVERS! Call Now, 1-920-845-4040 Ext.8040. Caller will be billed \$2.99 per min. must be 18 yrs. Procall Co. 602-945-7420

ELITE CONNECTIONS You probably will not meet the partner you are seeking at a bar or dance. I do it all there. This is a modest fee upon your approval for each match. Call Free 908-493-2022 Pat Fri

FREE HAIR COLORING 50% off Top & Waves. Free regisr-new clients only Hair Studio 835-7856

MASSAGE THERAPY Relaxing, prof, legit Athletes w/ribs, student discount avail Jerry, helper 291-9504

PSYCHIC Reader & Advisor, 1 reading will complete your help in all matters, 423-3190

PSYCHIC READINGS by JAMET Advice on all matters One Question Fee \$48-1129

THERAPEUTIC MASSAGE 201-470-9678

THERAPEUTIC MASSAGE 201-470-9678

Ride Sharing 169

RISE NEEDED, from Passaic Pk to Elmwood Pk, Mon-Fri 7:30-8:30 or 1/2 mi/g

rockier-CHILDS, MAPLE, \$35, 833-9391

ROCKING HORSE-Makes sounds, flexible flyer, \$15, 616-0084

ROLLER SKATES-1 Pr, white, girls, sz 13, gd cond, \$6, 837-0469.

Employment Agencies 205

ADMIN ASST Prest Wayne are corp has IMMEDIATE open for sharp indiv to handle diversified respon in fast paced dept. Should possess 2+ yrs exp. Word-Perfect/Lotus, solid org & comm skills. Excel work environ & brts. Sal \$25K. Call for details! 694-0303

aps ADVANCED PERSONNEL SERVICES

1341 Hamburg Tpk, Wayne, NJ 07470

TEMPORARY

SECRETARIAL WORD PROCESSING DATA ENTRY ACCOUNTING CLERICAL WAREHOUSE

If you are in the market for employment, whether it be long or short term, NORMANN is the place to call. We are currently recruiting for many openings locally. We offer free software training on the most current releases, vacation pay and regular benefits. Call now to arrange an interview with us.

NORMANN TEMPORARY SERVICES

785-4064
185 WILMINGTON BLVD
299-1950
307 N. L. ST. WASHINGTON

Employment Help 220

ASSEMBLY at HOME. To Sewing, Crafts, Jewelry, Woodworking, Toys, 447-2577.

Earn \$50-\$100/Hr Exciting new product. Able to detect funny money. 1-800-260-2272

GOVERNMENT JOBS \$16,540-\$50,230/yr. Now HR's \$11,600-\$20,000/yr. Call (1) 605-962-9000 Ext. HR-9317 for current federal list.

HOME TYPISTS-PC users needed \$35,000 potential. Dpt. 805-962-8000 ext-89317

POSTAL JOBS - \$18,392-\$97,125/yr. Now Hiring. Call (1) 805-962-8000 Ext P-9317

The job you've been looking for could be listed in today's HELP WANTED.

Child Care 225

CHILD CARE in my Wayne home. 3 small employees. PT days 3-6pm. Ideal for student. 305-8185

EXP'D loving mom will excelent rel will watch child in Pompton Plains. W/ry pay. 839-1651

NANNY needed part time, exp'd, 3 days/week. Rets & drivers license a must. 329-8674

General Help 240

ATT. JOB APPLICANTS - This newspaper does not knowingly accept Help Wanted ads from employers covered by the Fair Labor Standards Act if they offer less than the legal minimum wage or fail to pay at least time and one-half for overtime hours. For employees covered prior to 1967 the minimum wage is \$5.05 per hour with overtime pay required after 40 hours a week. This newspaper does not knowingly accept Help Wanted ads that indicate a preference based on age from employers covered by the Age Discrimination in Employment Act. Further info may be obtained from US Department of Labor, 200 Sheffield St, Room 102, Mountaineer, NJ 07082

A AAA OPPORTUNITY **AVON'S SALES** Toll Free 1-800-682-2392

ADMINISTRATIVE ASST Part-time 3 months. Must be computer literate. Exp in office management, bookkeeping. Send resume: PO Box 41, Riverdale, NJ 07457

A FUN Home Based Business. Rep. Discovery Toys, Genie, Flea P/T. Sr Mgr 628-6151

For immediate consideration stop by one of our branches for an application or call: 201-670-2106

CITIZENS FIRST National Bank of N.J. EOE M/F/D

Help Wanted

APPOINTMENT SETTERS-Earn \$8-\$12 hr PT work from home. Paul, bet 5-7pm, 835-0533

APPOINTMENT SETTERS-Earn \$8-\$12 hr PT work from home. Paul, bet 5-7pm, 835-0533

AIR CLERK PT For busy management co in Wayne. Data entry & Lotus exp req. Send resume to: Mary Gae, First Call Management Inc., 1084 Hamburg Tpk, Wayne, NJ 07470

ASSEMBLY/SERVICE temporary positions for mechanically inclined M/F. Assembly and repair of small electro-mechanical products. Will train, non-smoking company. Apply in person between 1-3:30pm. Richard Highmaster of America, Inc., Industrial Row, Riverdale, 835-5002 ext. 360

ASST MANAGER Must have min 3 yrs exp, excellent organizational skills, gd pay. Call 812-7373

ASST OFFICE MANAGER/SECRETARY For engineering firm in Paterson. Please call 201-345-2400 (even 10am-noon) for an appointment.

AUTO MECHANIC exp'd. Call 773-9714 or apply in person 505 Broadway, Passaic

Auto Body Person Like collision or prep. Some exp & tools req. 777-7730

AUTO CAR POLISHER WASHER Must have experience. High pay. Plenty of work. All com party benefits. Apply in person to MAROON, PONTIAC BODY SHOP, 317 Wanarua Ave., Pompton Lakes, NJ

AUTO MECHANICS WANTED Experienced Top Pay Benefits 696-4005

TECHNICIANS WANTED You Could Earn \$800 PER WEEK Full Time & Part Time Positions Available Busy dealer looking for qualified help. Flat rate shop. * Bonus for Productivity * PROFIT SHARING * Full Medical Benefits

Call 201-595-7666 ASK FOR GLENN B.

BOROUGH JEEP/EAGLE Chrysler/Plymouth 168 Hamburg Tpk, Wayne, NJ

Banking

TELLER POSITIONS AVAILABLE

The Bank of New York, NA National Community Division has some Part Time and Full Time Teller positions available

If you have prior banking or cashier experience stop by your nearest branch for an application. There are also Head Teller openings in Pompton Lakes and Parsippany. Previous Head Teller experience necessary.

THE BANK OF NEW YORK NATIONAL COMMUNITY DIVISION All Equal Opportunity Employer

BANKING

Now Hiring! (Part-Time) Tellers/Cashiers

Citizens First National Bank of NJ is currently interviewing for Teller openings in northern NJ. We provide paid training, conveniently located branches, and a pleasant professional working environment. Previous teller, cashier or bookkeeping experience a plus.

For immediate consideration stop by one of our branches for an application or call: 201-670-2106

CITIZENS FIRST National Bank of N.J. EOE M/F/D

Help Wanted

Bakery Manager Needed for high volume scratch bakery in a super market. Person must be experienced in all phases of operation including packaging, inventory taking and sanitation control. A very good pay and benefit package. Please call 908-965-5193.

BARBER/HAIRSTYLIST For busy Wayne Shop, FT/PT. Call (201) 702-1879

BARBER-wanted, FT or PT. Busy shop, good earnings, 652-6595

BARTENDING COURSE \$99 Hands-on diploma, job ast, 914-226-6226, 18/older. Mister Card/Visa

BEAT RECEPTION-EARN Extra \$\$\$-Hustlers. Consignment-sell high fashion ladies clothes. 438-2299

BEST PT JOB Nat'l co. v. new vision. Seeks fashionable women PT eves &/wk-end. Rapid advance to FT. \$39-9278-9p

BOOKKEEPER FT permanent position. Start immediate. 478-3695, 995-7425.

BUSINESS DIRECTOR EARN 6 FIGURE INCOME! Business Analysis Co. expanding nationwide. Sales/mktg. In/finance bkgnd helpful. Train in Dallas. 214-680-8414

STARTUP DRIVERS **BUSV NOW!** \$ Earn While You Learn \$ Great Pay \$ Monthly Bonus Medical ins. Qualified. Free training to available.

CDL A + Lincoln Pk 698-1441 Elmwood Pk 703-1100 Paramus 845-5550

BUYER-ELECTRONICS Electronics Company Seeking self motivated person w/5 yrs exp. Buying Electronic Components. Good telephone skills & organization A-Must. State Salary Requirement. No Jersey. Applicants: Box A1628, 10 Park Pl, Butler, NJ 07405

CABINET MAKER with all round experience. Call 340-3328.

CARPENTER 5 years minimum exp. in framing, roofing, & int. Call Mike 942-9444 or mag

CARPENTERS - exp. Must have tools & transp. 472-9737

CARPENTERS HELPER-Experienced own transportation. Call 492-8505

CARPENTERS & LABORERS 838-1925, after 6pm

CARPET Installer Helper. Min 1 yr exp. Call bet 7 & 10pm, 696-7826.

CARRIERS NEWSPAPER Needed for Pequannock, Pompton Plain, Wayne, West Paterson, & Little Falls. No Collect. 492-0046

COLLECTORS!! Nationwide Co. Looking for aggressive, no-nonsense exp'd. person who can get results. Must be knowledgeable in both 1st & 3rd party collections. Skip tracing a must. Growth potential. Full Benefits. Call Mr. Natoli 201-628-0434

Help Wanted

CLERICAL

EQUIPMENT OPERATORS Hours: 3PM-11PM

Paed Prescriptions, Inc. a leader in managing medical prescription programs, is seeking conscientious, detail-oriented individuals to perform clerical duties in our card production area.

To qualify, you must be a High School Graduate with some experience in a production environment, have the ability to lift 50 lbs and have good mechanical ability to cross-train on our mail sorting equipment. Some working knowledge of PC's is preferred.

Please apply in person or send resume to Human Resources Department, Paed Prescriptions, Inc., 1900 Point Drive, Fair Lawn, NJ 07410. An Equal Opportunity Employer M/F/D/V.

MEDCO Paed Prescriptions, Inc. For Those With Higher Expectations!

COLLEGE STUDENTS PERMANENT PT Night owl hours \$60 hour to start. Call Dawn 492-6268 after 9pm

College students Large national co. hiring ambitious college students for summer employment. Earning opportunity up to \$3500 per week plus college bonus award. Serious inquiries only. Call Mr. DiStasio, 835-0533 EOE

COLLEGE STUDENTS FT/PT Market research co. in Wayne, interviewing shoppers. Will train. Call Marco 785-4449

CUSTODIAN Immediate opening. Seeking dependable, responsible worker to perform janitorial duties in public bldg including restroom, basic maintenance, trash removal; minor repairs; refresh supplies. Min 8 months general exp. Must be able to lift 100 lbs. Hrs 10 am to 6 pm. Mon to Fri. \$6.67/hr. plus generous benefits. Passaic County residents receive hiring preference. Respond to Human Resources Manager, Village University Council of Passaic County, Inc., 388 Lakeview Avenue, Clifton, NJ 07011. An EOE/AA Employer M/F/D

DANCE/VOICE/DRAMA INSTRUCTORS for leading performing art center. All levels of ballet, RAD, profs, tap, jazz. 100 ballroom, 791-6673

DELIVERY \$100-\$200/day deliver legal papers all areas. FT/PT 1-403-433-2080

DENTAL ASST Exp. X-Ray certification. Hours M-9.5, T-9.9, Sat 9:30-11. Call 696-2425

Help Wanted

COUNTER PERSON For Plumbing Supply Co. Knowledge of plumbing & computers helpful. Call 835-2924.

Customer Service/Data Entry

Osten Staffing Services, through our on-site partnership program, has been selected to provide all temporary staffing for a major prescription service company in Bergen County.

- *Alpha/Numerics Data Entry
- *Customer Service Reps with CRT Data Entry Experience
- *Telemarketers
- *Mailroom Clerks
- *Word Processors

WordPerfect 5.1 Lotus 1-2-3

We offer:

- * Training/Cross training
- * Benefits/High Pay
- * Same Week Pay For Same Week You Work

Call us at: **201-628-0121**

Osten Staffing Services™

The Working Solution

600 Valley Road, Wayne, NJ 07470

CUSTOMER SERVICE Full-time up to 6 weeks person within entry, excellent phone & office procedure skills. Gd advancement & benefits. \$484-3910

CUSTOMER SERVICE Busy flower door manufacturer expanding their territory. Needs aggressive, motivated individual for customer service dept. Heavy phone, must be detail oriented. Good with figures. Work well under pressure. Fully paid benefits, holidays & vacation.

Good starting salary. Call 785-4290

DANCE/VOICE/DRAMA INSTRUCTORS for leading performing art center. All levels of ballet, RAD, profs, tap, jazz. 100 ballroom, 791-6673

DELIVERY \$100-\$200/day deliver legal papers all areas. FT/PT 1-403-433-2080

DENTAL ASST Exp. X-Ray certification. Hours M-9.5, T-9.9, Sat 9:30-11. Call 696-2425

FREE CLASSIFIED ADS

If you have an item to sell for less than \$100, we'll run your 3 line classified ad for FREE. All we ask is that you include the price of the item in your ad and that it be under \$100. Please limit each ad to one item; 3 lines.

ONLY ONE ITEM per family per week.

- Must include a price under \$100.
- Used Clothing must include number of pieces, and total for all (not to exceed \$100)
- No autos, pets or business ads please.
- We will publish as soon as space is available.

Just fill out the coupon below (no phone orders, please) and mail to:

Wayne Today
Classified Dept., 10 Park Place, Butler, NJ 07405

Please run my FREE classified ad as follows

NAME _____

ADDRESS _____

CITY, STATE _____ ZIP _____

TELEPHONE _____

This offer available only to private party advertisers selling merchandise under \$100

Wayne Today

DO YOU SUFFER FROM ANY OF THE FOLLOWING?

- *Lyme Disease
- *Chronic Fatigue
- *Immune Deficiency Syndrome
- *Metabolic Acidosis
- *Chronic Headaches
- *Chronic Inflammation
- *Chronic Pain
- *Chronic Tiredness
- *Chronic Anxiety
- *Chronic Depression
- *Chronic Irritability
- *Chronic Nervousness
- *Chronic Sleep Problems
- *Chronic Stomach Problems
- *Chronic Throat Problems
- *Chronic Urinary Problems
- *Chronic Vaginal Problems
- *Chronic Weight Problems
- *Chronic Wound Healing Problems

Would you like a new approach to your problem? We can help you. Through a variety of Alternative Therapies, we can improve the quality of your life and your health.

PLEASE CALL 1-800-356-2273

SEARCHING FOR MEDICAL HISTORY, BORN DEC. 23, 1947 in Passaic, NJ. BIRTH NAME: CAROLE LIND LITTLE. Please notify: P.O. Box 367, Vienna, NJ 07880

aps ADVANCED PERSONNEL SERVICES

Anthony Wayne Bldg 1341 Hamburg Tpk Wayne, NJ 07470

ENHANCE YOUR SKILLS!

In today's competitive job market, up-to-date skills are essential. If you have the desire to learn and possess general secretarial skills, we will train you on the ACTUAL Software Program, not just a "tutorial".

Advanced Temporary's FREE Software Training Center

WordPerfect Lotus/Always OfficeWriter

MultiMate DisplayWrite 3.4.5 Word For Windows WordPerfect For Windows

These skills are in DEMAND! The sooner you register, the sooner you'll be working!

694-3434 Permanent/Temporary Personnel Specialists SINCE 1945

aps ADVANCED PERSONNEL SERVICES

Anthony Wayne Bldg 1341 Hamburg Tpk Wayne, NJ 07470

EARLY HOLIDAY DEADLINES

For the issue of Sunday, May 29
The deadline is:
Wednesday, May 25 at 5:00 PM

HAVE A SAFE & HAPPY MEMORIAL DAY!

People Recycled!

You are in a sales position now or possibly you have sales ability but have not been given a chance to reach your potential. Get recycled!

North Jersey Newspapers Company, a division of Media/News Group (one of America's fastest growing communication chains), has a dynamic training program that can help you meet your career aims. If you can handle challenging goals with confidence, creativity and drive, advertising sales is for you. And we'll pay you while you learn.

Future earnings are based on a weekly draw versus monthly commission in established territories with proven earning potential. Benefits include 401K, health, dental, prescription coverage and vacations.

Send your resume to:
Tony Roselli
Director of Training
Box 13
North Jersey Newspapers Company
20 Eisenhower Drive
Paramus, New Jersey 07652

North Jersey Newspapers Company
The Newspaper Network

COLLEGE STUDENTS PERMANENT PT

Night Owl Hours
\$6 Per Hour to Start
Call Down after 9PM
492-9268

Real Estate

ADVERTISING SECTION

Kwiatkowski earns N.J. million dollar honors

Joe Palermo, regional vice president for Murphy Realty/Better Homes & Gardens, recently announced that Joyce Kwiatkowski has earned entry into the New Jersey Association of Realtors Million Dollar Club for 1993.

Kwiatkowski received this honor for the outstanding production she did as Sales Executive in the Wayne Regional Marketing Sales Center.

A real estate professional for five years, Kwiatkowski has been very active since joining the Murphy team in 1990. She has attended seminars, workshops and classes which are provided at no cost to the firm's sales and management staff. The education and training investments reflect a commitment by Joseph Murphy Jr., founder/chairman of Murphy Realty, to ensure that members of his staff are the most knowledgeable and skilled in the industry.

Kwiatkowski has received honors as the Salesperson of the month numerous times and also the Better Homes & Gardens Multi Million Dollar Club.

Originally from Little Falls, Kwiatkowski has been a resident of Wayne for the past 12 years with her husband Tom



JOYCE KWIATKOWSKI

and children, Brian, David and Allison. She is actively involved in her community as a member of the Theunis Dey PTA, Our Lady of Consolation Church and as an organizer of many fund drives to help the needy in the Wayne area.

Prior to entering real estate, Kwiatkowski worked as a registered nurse at Mountainside Hospital.

For all your real estate needs, call Joyce Kwiatkowski at the Murphy Realty Regional Marketing and Sales Center in Wayne. The phone number is 628-0223.

Regional sales award goes to Weichert pro

POMPTON PLAINS — Michele Zalfa, a sales associate with Weichert Realtors Pompton Plains office, has received a regional award for the greatest number of listings of resale properties. The announcement was made by James Weichert, president of the realtors.

Zalfa has been a licensed real estate professional for eight years. She is a member of the Morris and Passaic County Boards of Realtors, Weichert's Condominium Network, and the company's International Division.

A consistent top producer, Zalfa has received numerous office and regional awards for her sales and listing achievements. She is a member of Weichert's Ambassador's Club and has been a mem-

ber of the company's Million Dollar Sales and Marketed Club since 1986. She has qualified for the New Jersey State Million Dollar Club for the past seven years, including at the silver level.

Zalfa, a longtime resident of Pompton Plains, is married and has two children. Prior to entering real estate, she owned and operated the Pompton Family Salon in Pompton Plains.

Zalfa can be reached at Weichert's Pompton Plains office at 839-4646. The office is located at 937 Route 23 South.

According to a national report, Weichert Realtors is the largest independent real estate company in the country, with 7,500 sales associates in 215 offices from Connecticut through Virginia.



James Weichert congratulates sales associate Michelle Zalfa for earning a regional award.

Firm expands to Jersey

First West Mortgage Bankers Ltd

We make home owning dreams come true!



First West Mortgage Company is celebrating its 10th year of experience in mortgage banking. The bank, located at 577 Chestnut Ridge Road in Woodcliff Lake, recently expanded its horizons into the Garden State. Pictured are Nadine Karp, operations manager, Steve Liebowitz, senior vice president, and Richard Tschernia, executive vice president.

Matthews joins with Coldwell Schlott

BUTLER — D.H. Matthews Inc., a single-office real estate agency in Butler, has joined Coldwell Banker Schlott Realtors.

Don Matthews, owner of the agency and the D.H. Matthews sales team, will relocate to the Coldwell Banker Schlott office at 1450 Route 23 North in Butler.

"We are very proud to have D.H. Matthews become part of Coldwell Banker Schlott," said Robert Becker, president. "They have a well deserved reputation for excellence that fits in nicely with our high standards for service and professionalism. I can't imagine a more impressive sales team than that of the D.H. Matthews sales staff combined with the Coldwell Banker Schlott sales staff."

Jo Ann Galus, manager of Coldwell Banker Schlott's Kinnelon/Butler area offices, said Don Matthews has been a pillar of the local real estate community for 39 years.

"It is our good fortune that he has decided to step away from his management responsibilities in order to provide full time service to his customers," she said. "His experience and stature within the community will be a wonderful asset to our office."

Coldwell Banker Schlott's Kinnelon/Butler area office and a sister office, located in Smoke Rise, are members of both Morris and Passaic County Boards of Realtors. The two offices are among 100 Coldwell Banker Schlott offices in the greater New York metropolitan area. Coldwell Banker has over 2100 residential real estate offices and over 52,000 sales associates in North America.

Century 21 welcomes new sales associate

Century 21 Crestmere has welcomed Colleen McMahon as a new associate.

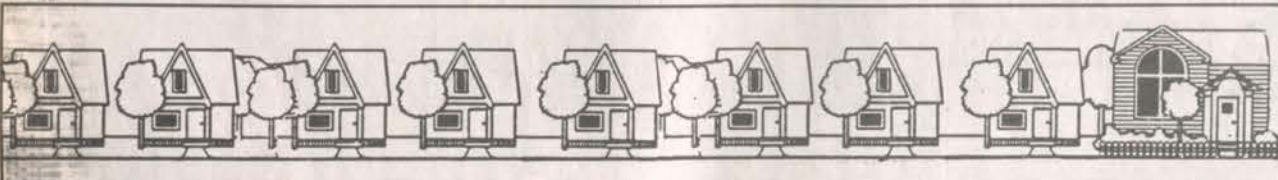
McMahon, born and raised in the township of Pequannock, is a graduate of Pequannock HS, has graduated from the Capri Institute of Hair Design and has had a career in hair designing for the past 14 years.

She and her husband, Jerry, and their two children, currently reside in Pompton Plains.

McMahon said she is looking forward to serving and helping people with their real estate needs, in either buying a new home or selling their present home.



COLLEEN McMAHON



ATTENTION: REALTORS REACH MORE REAL ESTATE BUYERS IN PASSAIC COUNTY

IN THESE 5 PUBLICATIONS
THE HERALD & NEWS
TODAY NEWSPAPERS • DATELINE JOURNAL
SUBURBAN TRENDS • SUBURBAN LIFE

WITH A CIRCULATION OF
201,000

WITH A HOUSEHOLD PENETRATION OF
80%

FOR ADDITIONAL INFORMATION AND RATES CALL:
BOB WAGNER (201) 492-3594



KJ Lovmanian Companies

\$10,000 price increase Monday, May 23!

A home worthy of your consideration... from a builder you know and trust.

Live on top of the world. Horizon Heights magnificent four and five-bedroom estate homes are set on 3/4 to 1-1/4 acre mountaintop homesites with spectacular views for miles around. Luxury appointments include copper clad dormers, double-door front entrances, grand foyers, libraries, two and three car garages, and stately exteriors of crafted brick, stone and stucco. Availability limited. Open 9 to 6 daily, 10 to 6 Sunday, and by appointment. Call Richard at (201) 616-1700.

Majestic Mountaintop Manors in Wayne. From the low \$400s.



The first name in lasting value.

Directions: Take Route 3 or 46 west to Riverview Drive (east of Willowbrook Mall), right on Riverview to Valley Road (1st right past the Passaic County Golf Course). Continue on Valley Road to end and turn right on Berdan Avenue. Take Berdan Avenue to the end and turn left at signal onto Long Hill Road. Proceed approximately 2 miles to Horizon Heights on the left. Open 9 to 6 daily, 10 to 6 Sunday.

All prices are base prices and subject to availability. Prices by location. Prices subject to change. We are pledged to the letter and spirit of U.S. policy for the achievement of equal housing opportunity throughout the Nation. We encourage and support an affirmative advertising and marketing program in which there are no barriers to obtaining housing because of race, color, religion, sex, handicap, familial status or national origin.

WAYNE, NEW JERSEY

Real Estate	Real Estate	Real Estate	Real Estate	Real Estate
Acres & Lots 305 W. Paterson Pkwy 1/2 acre flat resident. US\$ 81.5K. Owner. 812-7923. Lv. name, number & best time to call.	Condos & Townhouses 320 LINCOLN PARK \$189,900 IT'S UNBELIEVABLE! 3 YR OLD LUXURY TOWNHOUSE JUST REDUCED FOR QUICK SALE. Best location, best model, minutes to rty bus & train. LR, DR, MEK, 2BRs, 2 1/2 baths, 2 decks, gar. Pool. Mountain views surround. MAKE OFFER. MORAN R.E. Realtor 694-4500	LINCOLN PK. Soc. Hills, 2 BR, LR, DR, EIK, 2 BA, 1st flr End Unit. New appl. No Realtors \$124,900. 872-0312 POMPTON PLAINS-Gems. For sale view. 2 BR, 2 baths, 1st flr, call Mr. Moran \$148K. 616-2823 WANAUQUE-Brookside Rd. Impressive young prime end Townhouse with mod EIK, FDR, LR w/tp, 3 decks, gar, CAC, pool + more. Near NYC transp. low \$150's. 473-2876	WAYNE EXCELLENT VALUE CONDO-Near everything in town & NY road. DR, EIK, 2BRs, 1 1/2 bath, MICRO-wash-dryer. All you could hope for \$ in move in cond. Motivated seller MAKE OFFER. MORAN R.E. Realtor 694-4500 Have an APARTMENT TO RENT? Place an ad in our RENTAL column for fast response	Homes For Sale 330 AAA CASH ON THE BARREL All types of property. No real estate. 3 day closing possible. Call Bob or Lois. 599-0092 ALL CASH PAID FOR YOUR MORTGAGE 201-772-2837 ATTENTION: SELLERS WE BUY HOMES "CASH AS IS" Call 340-1902. Ask for Nick NICHOLAS Real Estate

MASTERS, REALTORS

1490 ROUTE 23, WAYNE (Packanack/Wayne Shopping Center)
Each office independently owned & operated

<p>Wayne PIN # 52054 \$239,900 OPEN HOUSE TODAY 1-4 One of the Finest Offerings! 3BR, 2 1/2 Bath Quality Custom Home w/brick, hardwood flrs, 2 yd old lot, sec next to car DR. Also to 65 Mountainridge Dr.</p>	<p>Wayne \$330,000 GRACIOUS TALL OAKS RANCH! Details will charm you in this private 4BR, 2 1/2 bath home! Parquet flrs, custom built-in, fam rm, lg pool w/whirlpool adjoining forest preserve.</p>	<p>Wayne \$239,900 OPEN HOUSE TODAY 1-4 Cul-de-sac! 4BR, 2 1/2 Bath Private Family Br-Level LR, DR, EIK, 2 car gar & lg pool. VBR-tn 231 New York Rd on Bergen Ln on Newark to 26.5th</p>
<p>Wayne PIN # 52034 \$169,900 WATERFRONT! Delightful 2BR vinyl-sided Ranch! LR/stone fireplace, EIK, hwd flrs, garage & spectacular view of the lake! Sunny & Bright! Very Expansive!</p>	<p>Wayne PIN # 52094 \$309,000 RADIANT CENTER HALL COLONIAL! Most beautiful home in exclusive area! Features 4BRs, 2.5Baths, LR w/brk, 1st flr, MEK, Fam Rm, bar, 2-zone c/h, 3-zone heat & garage!</p>	<p>Wayne PIN # 52094 \$254,900 BRAND NEW ON OUR DOORSTEP! Be first to tour this Spacious 3BR Br-Level tucked away on beautifully landscaped grounds. TRV, LR, DR, MEK, 3Baths, Sun Rm & 2 car garage.</p>
<p>Wayne \$227,900 PACKANACK LAKE CHARMER! 3BR, 1.5Bth Ranch w/hardw floor pans, vly, vinyl siding, brick flk, level lot 9 many extras!</p>	<p>Riverdale \$755,000 BRING YOUR WORK HOME! Great for professional! Beautifully renovated home, new 100x100 lot, parking! Call for details</p>	<p>Wayne PIN # 52004 \$225,000 WE INVITE YOU TO IMAGINE THIS... Cath ceiling, balcony, floor to ceiling windows w/ wooded views, singled fireplace, hardwood flrs, lots of sun! This 3BR Townhouse has it all!</p>
<p>Wayne PIN # 52004 \$105,000 YOUNG COUPLE OR SINGLES DELIGHT! Cute starter Ranch w/stone lot, DR, and roomy living area of home & more! Estate Sold! Call!</p>	<p>JUST LISTED</p>	

201/915-0404
Hours: Monday - Saturday 9:00am - 6:00pm
House-hunting made easier. Call ERA Real Estate On-Line and enter the individual property identification number (PIN) for complete description.

696-8686

CALL COLDWELL BANKER SCHLOTT REALTORS®

<p>HALEDON \$134,900 Great buy for 1st time buyer. Well maintained 3 BR, 2 bath home w/1-car garage. Attractive stone front Cape located on quiet street. WYN-9327 694-8000</p>	<p>HALEDON \$179,900 This 2 Family home shows pride of ownership. Five rooms with 2 BRs on first flr and 4 rooms with 2 DRs on second flr. Full brk w/LR, BR & full bath. WYN-9073 694-8000</p>	<p>LINCOLN PARK COZY CAPE \$139,900 Lovely 4 BR Cape sits high on extra lg corner lot. 2-car garage, full brk, great family neighborhood. Walking distance to shopping, NYC bus & train. Rt. 23, 46 & 80. PPL 2516 839-8900</p>	<p>LINCOLN PARK \$490,900 Quality older Colonial located on 2.88 acres in an excellent area! This home would make an ideal professional home/office or mini estate. Possible 6-7 lot subdivision. Many options. WYN 8050 694-8000</p>	<p>PEGANNOCK \$97,000 1 BR Condo in great location has lg rooms and priced to sell! Walk to shopping. WYN-8032 694-8000</p>	<p>POMPTON LAKES GARDEN SECTION \$172,900 Family neighborhood offers you a 4 BR, 2-bath Cape Cod. Well maintained, 1-car garage and more. PPL 2512 839-8900</p>
<p>POMPTON LAKES QUIET CUL-DE-SAC LOCATION \$159,900 Wonderful Ranch w/hardwood flrs + 36x16 tastefully fin brnt. Newer spacious kitchen and baths. Great yard. PPL 2523 839-8900</p>	<p>POMPTON LAKES 622 HAMBURG TURNPIKE \$172,900 Move-in condition, 2-story home features a lg LR, FDR, newer updated EIK w/breakfast nook & bath, 3 BR, full fin brnt, 1-car garage and much more! DIR, Hamburg Turnpike. PPL 2532 839-8900</p>	<p>POMPTON PLAINS HIDDEN ASSETS \$204,900 In this comfortably appointed 4 BR home w/possible 2nd flr in-law apt. Move-in condition. Great north and location. Spacious yard for backyard picnics. 1-car garage. PPL 2516 839-8900</p>	<p>POMPTON PLAINS FIX IT UP \$159,900 Exceptional opportunity for the fixer-upper buyer. Great potential, large plot. Get your imagination in gear! PPL 2519 839-8900</p>	<p>RINGWOOD AND HORSES TOO... \$239,000 Horses will love it here and so will you. Br-Level on 2 private acres, 2 barns. Backs up to Reserve property. LR + Fam Rm w/tp. PPL 2496 839-8900</p>	<p>WANAUQUE 2 FAMILY \$189,900 Both apartments offer huge rooms. Updated throughout. 13-y-old addition. Must see! Great income tool. Public water & sewers. Call for details. PPL 2517 839-8900</p>
<p>WANAUQUE LOOKS LIKE NEW \$184,900 4 BRs, remodeled within 5 yrs. 1-year warranty. Oversized 1-car detached garage. Magnificent kitchen & master BR. 2 lg baths. Fully fenced rear yard. Move-in condition. City utilities. PPL 2456 839-8900</p>	<p>WAYNE HOME FOR THE EXTENDED FAMILY \$299,900 Meticulously maintained 11 rm Colonial. 5 BRs, 2.5 baths, lg 2-car garage. Overlooks golf course. CA, burglar alarm. Move right in! PPL 2497 839-8900</p>	<p>WAYNE GREAT LOCATION - OWNER FINANCING \$240,900 3 BR Ranch w/tp and potential studio apt for in-laws. Over an acre of property with low taxes. Must hurry! PPL 2469 839-8900</p>	<p>WAYNE 111 TALL GRASS \$389,900 New construction at Preakness Estates! Features include 4 BRs, 2.5 baths, mod kitch w/center island & dining area. Great Rm/tp, master bath w/jac, deck & outside-slab location! DIR, Ratzer Rd to Beatrice to Tall Grass. WYN-9143 894-8000</p>	<p>WAYNE \$244,000 Toms Lake area! Great in-law potential w/tp! Entertainment size LR, lg kitchen, 3 BRs & bath. Second story features 2 BRs, LR/DR, kitchen, bath, fin brntpr & 1/2 bath. Walk to lake & NYC bus. WYN-9189 694-8000</p>	<p>WAYNE \$279,900 Spectacular 4 BR home features 2.5 baths, modern kitchen, LR/DR, Fam Rm, bank, 2-car garage, magnificent level property with great view of the valley. Many extras! WYN-9201 694-8000</p>
<p>WAYNE \$199,900 This 3 BR Ranch is a lovely place to start! Features include eat-in kitchen, 1.5 baths, full brnt, lg level pty. Walk to schools, shopping & transportation! WYN-9321 694-8000</p>	<p>WAYNE \$89,900 This renovated 2 BR home has lg rooms and located close to Rt. 23, 46 & 80. Great community. Low taxes. Call today! WYN-9328 694-8000</p>	<p>WAYNE \$234,900 Live in, good taste in this updated 3 BR home with sprawling yard! Updated kitchen & bath, newer carpet, roof & cent air. Second kitchen on lower level for in-law potential! WYN-9323 694-8000</p>	<p>WAYNE \$188,750 Everlasting charm! Lovely older Colonial with brick flr in LR, updated features in kitchen, 2-car garage and extra lg driveway. Delightful front porch. Motivated seller! WYN-9332 694-8000</p>	<p>WEST MILFORD RUSTIC EXTERIOR - COMFORTABLE INTERIOR - SUPER VALUE \$148,900 Quiet & modern, light & airy, the warm look of wood panel walls, exposed beams & natural stone flr all add to your enjoyment in this rustic 3 BR, 1.5 bath retreat. PPL 2509 839-8900</p>	<p>WEST PATERSON \$124,900 Great price on this move-in condition 2 BR home with eat-in kitchen, garage and fenced-in yard. Home warranty provided! Don't miss it! WYN-9216 694-8000</p>

POMPTON PLAINS
839-8900

WAYNE
694-8000

COLDWELL BANKER
SCHLOTT REALTORS®

Your dream home is just a phone call away!

MURPHY REALTY HOME BUYERS' HOTLINE

TOLL-FREE

1-800-944-SALE

For specific information and photographs about selected properties advertised, call with your touchtone phone and use the "PIN" (Property Identification Number) in the ad. You can also hear and receive faxed information on hundreds of other properties in all price ranges by calling 1-800-944-SALE. In cooperation with Property Network One™ Joe Murphy, Chairman

PREAKNESS SHOPPING CENTER, WAYNE 628-0223
2 KIEL AVENUE, KINNELON 492-0500
1198 CLIFTON AVENUE, CLIFTON 773-4141



WAYNE OFFICE TOP SALESPERSON APRIL - UNITS



MITZI SCHROEDER SENIOR MARKETING DIRECTOR LAKE PROPERTIES

A 39 year Wayne Resident she resides in the Pine Lakes area with her husband George & has been awarded every honor that the company has to offer, Top Salesperson of the Year, N.J. Million Dollar Club, Top Salesperson of the Month, Better Homes & Gardens Multi-Million Dollar Medallion Club. The perennial Pines Lake expert, past president of the Pine Lakes Association, the Pine Lakes Garden Club & the Pine Lake Women's Club.



CLIFTON OPEN HOUSE SUN 12-4 \$409,900
46 WITHERSPOON
 "Montclair Heights" w/leisure to read's in-law or college age child apt. 5 BRs, 3 full + 2 half baths, heated IG pool, Grove-Woodway-Witherspoon.
WYN-1519 628-0223



CLIFTON OPEN HOUSE SUN 12-4 \$249,900
17 PINE HILL DRIVE
 Perfect location! Great family home, 2-story, Maple Park sect. 9 rms, 5 BRs + 3 baths, 2.5 gar, CA, hot tub! Valley-Van Houten-Maple Hill-Pine Hill.
WYN-1814 628-0223



WAYNE OPEN HOUSE SUN 12-4 \$395,000
865 PINES LAKE DR W
 Perfect 10! Pines Lake Colonial, LR, FDR, Fam Rm, 3 baths, 2 fpls, fin LL, w/kt, 1.5 blocks to beach, landscaped to perfection! Indian-Pkwy.
WYN-2070 628-0223



CLIFTON OPEN HOUSE SUN 12-4 \$128,500
106 LINDEN AVENUE
 So much for so little! Dollhouse Colonial renovated front to back. New kit, bath, w/c carpet & much more! Main-Delawanna-Linden.
WYN-2006 628-0223



PASSAIC PARK OPEN HOUSE SUN 12-4 \$157,000
302 HIGH STREET
 Beautifully updated! 2 family w/fin attic + bsmt. Must be seen! Great for lg family who wants income too! Shad in yard, Van Houten-High.
WYN-1895 773-4141



CLIFTON OPEN HOUSE SUN 12-4 \$289,900
26 KNOX PLACE
 Custom brick Ranch Private setting, one of a kind! Master BR suite, 3 BRs, 2 baths, DR, 15x24 Fam Rm, AC, 1st flr laundry, dark tm, Off Broad St.
WYN-2071 773-4141



CLIFTON OPEN HOUSE SUN 12-4 \$339,000
12 GLEESON DRIVE
 Exec Colonial. Quiet cul-de-sac. C/T entry & kit. 4 BRs, MBR suite w/wedder closet, stone wall, FR w/pt. Grove-Jones-Gleeson.
WYN-2036 773-4141



CLIFTON OPEN HOUSE SUN 12-4 \$167,500
145 ALLWOOD ROAD
 Move right in! Plush LR, formal DR, new w/kt, 14x15 master BR + 2 BRs, white ceramic bath, Carpet, fin bsmt, AG pool, 18 ft deck!
WYN-2072 773-4141



RIVERDALE OPEN HOUSE 12-4 \$184,900
1 WILLIAMS STREET
 Immac. Bi-Level. Immac updated move-in cond. 1-yr-old kit w/wook cabinets, corian countertops, FR w/SGD to patio, lg backyard. Rt 23-Riverdale.
WYN-2046 628-0223



WAYNE CUL-DE-SAC LOCATION \$429,500
 Fabulous Colonial! 5 BRs, 3+ baths, maid's quarters, state-of-the-art kitchen, huge deck! Call for more details!
WYN-1671 628-0223



WEST MILFORD OPEN HOUSE SUN 12-4 \$228,900
14 KRATTIGER COURT
 Move right in! Immac custom 3 BR, 2 bath Ranch. MEK, fpl, formal DR, full fin walk-out bsmt to park-like ppty, Macopin-Maple-Krattiger.
WYN-2057 628-0223



PASSAIC BEAUTIFUL 2 FAMILY! \$172,000
 Completely renovated top to bottom. Attic is finished with full bath & kitchen. Possible annual income \$25,800.
WYN-2018 773-4141



WAYNE SPOTLESS CONDO \$115,000
 Valley Terrace 2 BRs, 1.5 baths, LR, DR, EIK, garage. Walk to bus & shopping.
WYN-2032 628-0223



WAYNE 117 OLD HOMESTEAD RD \$274,900
 Mother/Daughter 11 rm Contemp, 4 BR main house + 1 BR apt for separate family needs! Jackson-Warner-Old Homestead Rd.
WYN-1906 628-0223



WAYNE OUTSTANDING LUXURY \$339,900
 Condo - "Breckenridge" the ultimate in living. 2 BRs, 2.5 baths, beautiful w/water! Pool, tennis, exc m avail.
WYN-2066 628-0223



MONTCLAIR SPECTACULAR ESTATE \$1,200,000
 3 acres of Montclair land adjoining Eagle Rock res. w/ast. ring NYC view. This is estate living in a prime area w/other gorgeous homes.
WYN-1296 258-6363



WAYNE 1 COURTER AVENUE \$159,900
 Lg family home w/many recent improvements: wiring, plumbing, etc. Exc loc. Lg 2-car gar. Close to bus & schools. Plenty of parking. Make offer!
WYN-2077 628-0223



WAYNE 24 LYLE AVENUE \$289,900
 Oversized Bi-Level. Huge 4 BR, 3.5 baths, LR, FR w/pt, 2 screened sun rms, CA, 2-car garage. Great ppty. Preakness-Lauwe-Village-Lyle.
WYN-1964 628-0223



WAYNE LOVELY 3 BR RANCH \$199,900
 New kitchen, new tile bath, 12x14 deck overlooking private field acre yard. Move in - enjoy!
WYN-1863 628-0223



WAYNE GRACIOUS & SPACIOUS \$349,900
 Fab 4 BR, 2.5 bath CH Colonial. 2 fpls, GR Rm, MEK, FR w/built-ins, IG pool, GR deck and property. Black Oak-Sheffield-Divan.
WYN-2042 628-0223



WAYNE 29 PACKANACK LK RD \$219,900
 Charming Col Cape w/2 newer full baths, 3/4 BRs, huge FR/DR w/kylights, newer windows, roof, carpet.
WYN-1953 628-0223



WAYNE HOME SWEET HOME \$185,000
 Pines Lake Log near beach & tennis. 3 BRs, bath ceilings in LR w/pt. Large flat lot, deck & garage.
WYN-1802 628-0223



WAYNE LARGE SPLIT \$300,000
 5 BRs, 3.5 baths on 3/4 acre wooded lot. Poss MID screened porch, 2 driveways, wet bar & 2nd kit in bsmt. Walking distance to shop & NY bus.
WYN-2065 628-0223



WAYNE 39 TOMS LAKE ROAD \$359,900
 Young Cedar Contemp w/impressive vaulted cell nestled on .5 acres picturesque ppty. Quality abounds. Theresa Dey/Toms Lk, Jackson-Toms Lk Rd.
WYN-1991 628-0223



WAYNE OPPORTUNITY KNOCKS \$209,000
 Pines Lake Cape, LR w/pt, 3 BRs, 1.5 baths, garage, babbling brook. Needs some TLC, but priced right.
WYN-2049 628-0223



CLIFTON OPEN HOUSE SUN 12-4 \$168,500
22 EDWARD COURT
 1st time offered! Mod 3 BR Cape, MEK, full fin bsmt w/kt, carpet, heat + lg yard w/pool, newer windows, dead-end street, Hazel-Florence-Edward.
WYN-2051 773-4141



WAYNE 4 FOX HILL DRIVE \$355,800
 Approx. 2800 sq ft 4 BR, 2.5 baths, Center Hill Colonial, CA, HW flrs, amenities galore!
WYN-1701 PIN#241202 628-0223



WAYNE 4 SLOPING HILL TERR \$389,500
 Sprawling Ranch w/ptl ofcial: 5 BRs, immaculate cond in Packanack Lakes most desired loc. 2 fpls, summer kit, DR, Brookwood-Sloping Hill.
WYN-1486 628-0223



WAYNE LAKEFRONT PINES LAKE \$449,900
 4 BRs, 3 baths, LR/pt, NL, DR, fin LL. Level 1/2 acre near beach and school.
WYN-1982 628-0223



CLIFTON CLIFTON COLONIAL \$189,900
 Fabulous home/office. Newer roof, aluminum siding, heat, kit, Family Rm w/pt & skylights. Fin bsmt w/Woodburn stove. Move in!
WYN-1992 628-0223



WAYNE 1/2 ACRE-POSS PROF \$299,900
 Location, 4 BRs, 2.5 baths Split Level. Possible in-law apt. Stone fireplace, in-ground pool.
WYN-1931 628-0223

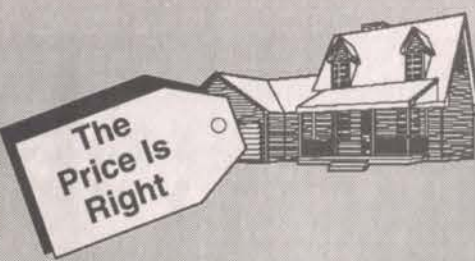


NORTH HALEDON OPEN HOUSE SUN 12-4 \$174,900
70 HILL SIDE DRIVE
 5 rm, 1.5 bath Ranch, MEK, excellent condition, bsmt, 2 garages, gas heat, Belmont-Olen-Hillside.
WYN-1965 628-0223



WAYNE 7 OMAHA ROAD \$279,900
 Pines Lake Ranch on 3/4 acre. LR, DR, lg EIK, 3 BRs, 2 baths, Fam Rm, 2-car garage, 2 fpls. Excellent cond. Worth last! Indian Rd-Omaha Rd.
WYN-1868 628-0223

FIRST TIME HOMEBUYERS



The Price Is Right

AFFORDABILITY IN KINNELON!
Three Bedroom Ranch with full basement, Liv Room with fpic, 2-car carport. **\$145,000**

Two Bedrooms plus Cape with 1st floor bedroom, Liv Room, Dining Room, screened porch. **\$142,000**

Handyman Special 3 bedrooms, Liv Rm with cath ceiling, fireplace, Family Room, all one floor with full basement and workshop. Asking **\$129,000**. Seller wants all offers presented. Just Call Tom Shields

RE/MAX 625-0737 Office 625-0450 Leading Edge 838-4182 Eve

PATERSON \$225,000
6 Family & 2 stores! With sep utilities. Lot size: 43x113 and a 3-car gar. Owner will hold mortgage! Reduced for fast sale to **\$180,000!**

PATERSON/EASTSIDE SECTION
3 Family, 5 over 5 and 3 rooms in the attic. Clean house located near transportation & shopping. Owner ill, needs fast sale!

PATERSON \$490,000
Great investment property! 33 units. Excellent return. Owner will hold mortgage!

PATERSON \$129,000
4 Fam. Live rent free! Owner will install new heat system. 3% down to qualified buyer!

Great Falls Real Estate Agency, Inc
#1 Office in Paterson 1992-1993 684-0909

HAWTHORNE-Brick Ranch with lg fpic'd LR, FDR, mod kit, 2 BRs, 1.5 baths, partially fin bsmt, 1-car garage. **\$156,900**

PAT/TOTOWA SEC-A roomy Colonial in move-in condition. EIK, fpic'd LR, FDR, 1 full, 2 half baths, fin bsmt, 2-car garage. **\$144,900**. Submit offer!

PAT. STONEY RD.-TWO FAMILY- Alum sided 6 rms on 1st; 7 rms on 2nd. Partially fin bsmt. Walk-up attic. Sep newer furnaces & utls. **\$174,900**

PAT/RIVERSIDE-3 BR Colonial. EIK, DR, updated electric and newer windows. Motivated seller. Only **\$78,000**

Century 21 595-1500 GOLD PROPERTIES REALTY Independently Owned & Operated

LITTLE FALLS \$139,900
JUST LISTED
Home incl 5 rms, 3 BRs, non-floor area. Updated furnace, nice property 50x117 including 2-car detach garage. Buy for only \$8,550 down to qual buyer. Call for details.

LITTLE FALLS \$159,900
Cute Col loc in the center of town area. Home incl 6 rms, 3 BRs. Walk to NYC bus and trains! Great fam neighborhood! Buy for only \$7,995 down. Low taxes of only \$2,600.

GARFIELD \$149,900
JUST LISTED
Large Colonial incl 7 rooms, 3 BRs, ba and a half. Nice woodwork, new windows & updated kit + 1-car gar.

CLIFTON \$144,900 & \$149,900
2 NEW LISTINGS
First has 5 rooms, 3 BRs, LR w/fireplace. 2nd has 5 rooms, 2 BRs, updated kit & immaculate condition. Both homes are great starters and ready for your furniture.

RAYMOND REALTY 256-0303
DAMIANO REALTOR

FOR INFORMATION ON ADVERTISING IN "FIRST TIME HOMEBUYERS," PLEASE CALL

Bob Wagner 492-3594

Real Estate

CLIFTON By owner, red from \$199,900 to \$190,000. 3BR, 2 1/2 bath, Fam Rm w/kitchen, 772-6986 for appt.

CLIFTON Col charmer, incl 3 BRs, mod EIK, fam dm, liv rm, lg deck, priv yd, Gar w/kshop. All woodwork \$169,500. Owner 472-3924

CLIFTON Cozy Col. LR, DR, Large EIK, 3 BR, 1 1/2 BA, 2 Car Garage. Only \$152,000. Call Owner 772-2159

GOVT HOMES from \$1 (w/ up pt). Doing like gov't. Repose. Your area 805-962-8000 ext G4-9217 for current rep list.

LINCOLN PARK 3 BR Cape Cod, 1 ba, fin bsmt, oversize att gar. Ask \$188,000 or near offer. Call 628-9159

MODULAR HOME PACKAGE SPECIAL
TRIPLE 17 CONTRACTORS 2500 sq ft Colonial, 4 BR, 2 1/2 bath & 2 car garage. Complete excavation. Full basement. All plumbing & electrical. Hot water heat. Septic (on your lot). \$129,500. Call for details or brochures 201-839-2948

MOULTRAIL BY OWNER
Near West Orange line, quiet street, 3 bdrm, Colonial, aluminum sided. Very good condition, near NY 294. \$131,900. 338-9009

Moving out of State? Call Coldwell Banker Schlotz Realtors 201-839-8900 for help & information.

NORTH HALEDON builder ready to construct colonial w/ LR, DR, kit, laundry rm, 3 BR, bath, basement, future lam rm or home of your choice on 75x150 lot. Ready to go price to sell at \$239,000. Offers on lot considered. Call 427-8257

OAKLAND NEEDED - LARGE FAMILY
For this expanded home w/4 BRs, huge country kit, 22 DR & updated baths. Also great for in-laws. In Chubbuck location. Don't wait!
WYCW 1327 5294-900
COLDWELL BANKER SCHLOTT REALTORS
REALTORS 201-891-6606 WYCKOFF WEST OFFICE

PASSAIC 2 fam, 47 lg rms, imm occup, parking, reduced \$149,900 owner 445-9298

PASSAIC Colonial 75 rooms 2 car garage on corner property. Call 789-5305

PATERSON-Lakeview sept. 1 fam, 8 rms. By owner. Price reduced \$139,000, 345-1429.

PEQUANNOC \$223,000
OPEN HOUSE-SUNDAY 12-4
3 Third Street, 028-1037
Spacious 4 BR ranch, 2 FB, LR, DR, lg EIK, den, fin bsmt on 0.3 acre. Principals only

Pompton Lakes Open House 5:22-10:59 Orchard St. 3br Cnt. Kit, Col/Lake/Orchard 145K. No Pets \$31,8094

PROSPECT Pk-2 fam vinyl sided LR, DR, 2 BR, bath w/ fr, 2 BR & toilet 3rd fl. 1 gar. Great cond \$179,000, 427-0424

RAMSEY-CHanning over Colonial, move-in condition. Completely updated 3 bedrooms, full basement, hardwood floors, main floor entrance, huge backyard & lot. Taxes \$246,500, 327-0578

RINGWOOD 3BR/2BTH
Lake: \$159,900/owner Lease option Avail 5/1 839-1406

ROCKAWAY TWSP-Green Pond
Enjoy Green Pond lifestyle from great bungalow - 1 BR & sleeping porch, master's tpic, WBS, newer vinyl siding. Walking dist to lake!
KIN 1956 \$118,900

Spacious CH Colonial offering privacy & beautiful woodwork. Estate like setting & approach in desirable light (sub) suburb of Green Pond. KIN 1989 \$317,900

COLDWELL BANKER SCHLOTT REALTORS
838-9300 838-8400 KINNELON/BUTLER OFFICE

TOTOWA BORO \$299,000
4BR, 20th - MD apt w/bk, Joseph J. Pavola Bar 294-4954

TOTOWA REALTOR
OPEN HOUSE
SUN, 5:22-1:4PM
16 COLUMBUS AVE.
(Totowa) (Green/Chubbuck) EXECUTIVE COLONIAL
Spanish style white brick 6 rm beachy feel. LR w/fpic, DR, mod kit, BR, bath, fam rm w/fpic, + 4 BR & 2 bath. Call, 100-277
Amenities & extras galore!
Must see. Offered at \$110,000

DIAMOND AGENCY 473-5800

VERNON 3 or 4 level 2 ba fam rm w/dvd stove 2 car gar fenced yard w/dock around pool \$139K 764-1361

Wayne Area Open House
SUN 5:22-12:59PM
3 ELM ROAD
SCENIC LAKES, HAMBURG
3 BR, 1-1/2 bath raised ranch 1200x1200 dblt corner lot, new tile, 20X16 LR w/fr to cell w/d, 1st fl. gar, \$127,000. Owner relocates 309-7712

WANUAKE
8 ROOM COLONIAL
Perfect cond home w/center tile kit, new dtb, FDR, lg FR overlooking private fenced yard! Hurry!
PPL 2634 \$129,900

Coldwell Banker Schlotz
REALTORS 201-839-8900 POMPON PLAINS OFFICE

WAYNE-2BRs, LR, EIK, 20th
laundry rms, (Floor area) \$79,500. Call 831-1980

WAYNE 3 BR colonial in one of 100s of homes in Bergen County featured in our Real Estate Buyers Guide. Call for your free copy.
Coldwell Banker Schlotz Realtors 201-694-8000

WAYNE 4BR apt, 2 1/2 bath, LR w/fpic, DR, mod EIK, FR, cat gar, CA, very quiet st. \$252,000, 872-1885

WAYNE in liv., 4BR, 2 1/2 BA, EIK, gar, move in cond, owner must! \$279,500, 639-5950

WAYNE Exc loc, sale st. 4br, 2 1/2 bath, center hall, vinyl tile, lg deck, w/d, a/c, \$339,000. By Owner 201-942-2125 Priv. only

WAYNE
OPEN SUN 1-5PM
3 STURBRIDGE CT.
EXTRAORDINARY 3 BR Colonial
Contemporary Colonial. Most desirable area in Wayne! MBP w/cathedral ceiling, beautiful kitchen & family room w/bk, 051-3633, 878-960, DR, Bertson Ave., R. Valley Rd. Ext. L. WaterView Estates. WAYNE OFFICE 636-6660

Weichert Realtors

WAYNE Spacious 10 rm 5pm Level, corner lot, many many extras \$284,500, 790-3447

WY MILFORD BY OWNER
5 BR Cape w/docking, EIK, LR, DR, 2 full baths, 1000 sq ft, \$155,000, 728-9137

W/PATERSON 6yr old brick hse, call 488-2166, 3 1/2 DR, LR, FR, AC, Must see! Many extras! \$324,000, 258-5342

ADVERTISEMENT



Home Mortgage Rates

LENDER Phone	30yr Fixed Rate-Pts/APR	15yr Fixed Rate-Pts/APR	Variations
Advance Mortgage Corp. 201-696-0900	9+0	8.625+0	*No Income, No Asset Loans Avail. Adjustable rate mortgages. High income rates and credit problems understood. 3% down payments avail. Buy-downs with 10% down payment. Rates change daily. PURCHASE SPECIALISTS! Call for pre-approved now. Rate locks. Jumbo loans
Arbor National Mortgage 201-575-3400	8.99+0 or 8.375+2.875-8.7	8.5+0 or 7.75+3-8.25	*AG 1yr 4.99+3, APR 8.6, 125+0, APR 7.91
Carroll Financial 201-488-0100	8.875+0-8.894 or 8.375+2.5-8.67	8.5+0-8.53 or 7.75+2.5-8.198	*1 yr 5.25+2.5, APR 7.633, Second Mortgages-Poor Credit-No Doc loans avail.
Charter Federal Savings Bank 201-366-3300	9.25+0 or 8.825+3-8.96	7.75+0 or 7.5+1-7.66	*\$200 application fee refunded at closing. 10yr ARM 7.375+0, APR 7.57. 7yr ARM 7+1, APR 7.57. Jumbo loans avail. Call now for investor programs.
Chelsea Financial 201-342-6594	8.875+0 or 8.25+2.5-8.52	8.5+0 or 7.75+2.5-8.16	*1yr ARM 4.25+2.5, APR 7.88. 30yr Jumbo 8.375+2.5, APR 8.65. 15yr Jumbo 8+2.5, APR 8.42. SPECIAL REFI PROGRAMS.
Disability Mortgage Services 908-544-6100	9+0 or 8.25+3-8.578	8.5+0 or 7.75+3-8.253	*1yr ARM 6.375+0, APR 6.034, 2% & 6% caps, 2.45% margin, to \$600K. Application fee \$350.00.
Dreyfus Security Savings Bank 201-587-1500	8.875+0 or 8.5+3-8.842	8.5+0 or 7.75+3-8.267	*Jumbo 30yr 9.25+0, APR 9.25. Jumbo 15yr 9+0, APR 9. Ask us about our Investment Property Rates & our new 2-step program.
Dynamic Financial 800-643-3992	9.125+2.75-8.42	7.875+2.75-8.34	*30 yr Jumbo 8.375+2.75; 15 yr 8.125+2.75. No Income/Asset Check & No-Point Quotes avail. Over 30 programs avail to suit your needs. Bad Credit-Special Programs. 1yr ARM 4.875+2.75. Bi-weekly 15yr 7.875+2.75; 30yr 8.125+2.75
Empire Financial Corp 201-357-0034	8.125+3-8.45	7.62+3-8.14	*Avail rate re-lock if rates go down. No application or income verif avail. Rates are for new applicants only.
First Savings Bank of Little Falls 201-785-8300	9.25+0 or 8.75+2-8.974	8.75+0 or 8.25+2-8.589	*1yr ARM 5.5+0, APR 7.307
First Security Mortgage Assoc. 201-935-1107	8.875+0-8.91	8.5+0-8.55	*No income check available, credit problems available. 30yr Jumbo 9.125+0. 15yr Jumbo 8.875+0. Commitment within 15 business days. No attorney review fee. No lock-in fee. Call us 1st for bad credit.
First West Mortgage Co. 201-307-0300	9+0	8.625+0	*Joint down rate options avail., No app fee. No income check avail for self-employed & non-self-employed. Rate locks to 180 days, 15, 20, & 30yr fixed, 1 & 3yr ARMS, Jumbo loans, FHA approved, 100% ref. Open 7 days a week. Rates are for new applicants only. Call today for free pre-qual.
Fleet Mortgage 800-882-5558	8.5+5-8.721 or 8.25+3.75-8.61	8.125+1-8.292 or 7.875+2.25-8.25	*Call for rates.
Gentry Mortgage Inc. 201-543-5006	8+3-8.32 or 8.75+0	7.375+3-7.87 or 8.25+0	*30yr FRM Jumbo 8.25+2, 15yr FRM Jumbo 7.5+2-8.75. Clients with credit delinquencies including late pays, judgements through foreclosure are welcome with no consultation fee. All calls confidential 305-0707.
Hudson City Savings Bank 201-987-1900	NG	8+0-8.019 or 7.25+3-7.767	*1yr ARM 3.875+3, 5.375+0. 5yr ARM 7+0. 10yr ARM 7.75+0. Many other ARM and rate options avail including Jumbos.
Independent Bank of New Jersey 201-625-1000	9.125+0	8.75+0	*30yr Jumbo 9.5+0, APR 9.5. 15yr 9+1, APR 9.172. 3yr ARM 6.5+0, APR 6.12. 1yr ARM 5.125+0, APR 7.369. Rates may be locked in between 2pm & 5pm (Mon-Fri) for a 1 point fee. Rates subject to change at any time.
King Mortgage 201-777-5988	9+0-9.04 or 8.5+2-125-8.73	8.825+0-8.89 or 8.25+1.125-8.44	*1yr ARM 4.75+3, 5.25yr 7.62+2; 7.25yr 7.5+3. 30yr Jumbo 8.625+3.
Lenders Mortgage Co. 201-836-6200	8.5+1-8.628	8.5+0 or 8.25+2-9.33	*VA 0 down payment to 180K. 12 other programs-1,3,5,7,10,20,30yr avail. Appointments your place or ours.
Manor Mortgage Corp. 201-884-0040	8.875+0 or 8.25+2.875	8.5+0 or 7.75+2.75	*New Client Protection Program Lock-Re-Lock Option. Free 90 day locks. 30yr Jumbo 9.125+0. 15yr Jumbo 8.75+0. Call us first for Credit Problems. 1st time Homebuyers Program 3% down. Up to 50:50 ratios. No income 20% down. New program 5/1 ARM Conforming & Jumbo 7.5+0. Ask for Todd or John. After 5:30 weekdays & weekends call 481-6732 or 861-8224.
Midland Bank 201-225-2424	9.125+0-9.18 or 8.825+2.5-8.96	8.5+0-8.56 or 8+2.5-8.604	*Call for more information on other programs.
Mortgage Unlimited Corp. 201-974-1111	9.25+0 or 8+3-8.83	8.875+0 or 8+3-8.51	*1yr ARM 5.625+0, APR 5.625, 4.75+2.5, APR 6.61. Welcome 1st time homebuyers. New applicants refundable. Commercial loans avail.
RLR Mortgage Company 201-794-6733	9.125+0 or 8.375+3	8.625+0 or 7.875+3	*Jumbo 30yr fixed 9.375+0 or 8.875+2.75. 15yr fixed 8.125+0 or 8.25+2.75. 1yr Jumbo ARM 6+0 or 5.375+2.5. No cost loans available.
Sterling Nat'l Mortgage Company 1-800-LOAN-5ALE	7.875+3 or 8.125+1.75	7.375+3 or 7.625+1.75	*30yr Conforming 8.625+0. 15yr Conforming 8.25+0. Jumbo 30yr 9.125+0. Jumbo 15yr 8.5+0
Sullivan Financial Serv. 1-800-722-7008	9+0 or 8.375+3-8.71	8.5+0 or 7.875+3-8.38	*Approved FHA lender. 1yr ARM, starting at 4.25%. No income/asset verification loans on 1 family homes. 15yr fixed rate with bi-weekly payments. NO FNMA/FHLM approval on condo loans. Refi with no points or closing costs. Investor refi on 1-4 family properties. 1st time Homebuyers & Community Homebuyers programs. Rates quoted for new apps with minimum loan amounts of \$100K.
TMC and Company 201-575-5090	8.25+3-8.53 or 8.875+0-8.99	7.75+3-8.25 or 8.5+0-8.67	*30yr Jumbo 8.75+1.5, 8.5+3, 15yr 8.25+1.75, 7.875+3. 1yr ARM NG. Programs with qualifying ratio 60/60 starting rate avail. \$100K to \$650K. Limited time offer. Free 60 day lock. Poor credit understood purchase or refi. 100% refi program. TMC's lenders will give 2% for down payment. Call today for free qualification.
United Jersey 201-296-3851	9.25+0 or 8.5+3-8.834	8.75+0 or 7.875+3-8.381	*Call for details on other programs.
Valley National Bank 201-305-8300	Call for quotes	8.25+0-8.295	*Call Residential Mortgage Dept. for any inquiries 800-CALL VLY

For information on specific mortgage programs call the lender. To participate in this column, call (800) 779-9662. Information is current as of May 18. Rate, points and programs cannot be guaranteed. POINTS ARE TOTAL POINTS AND INCLUDE BOTH ORIGINATOR AND SERVICING FEES. Rates quoted are for loans \$60,000 and up. 60-day locks. Minimum \$60,000 amount for a conforming loan is \$203,150. Jumbo is a loan amount in excess of \$203,150. Programs are for owner-occupied, unless specified.

CALL COLDWELL BANKER SCHLOTT REALTORS
NEW LISTINGS

BLOOMINGDALE-Dazzling lakefront! Absolutely unbelievable view! Beautifully decorated home. One of Glenwood Lake's finest! **KIN-1985 \$549,900**

KINNELON-Stately brick front pillared Colonial is privately sited well back from the road in the sought-after Stonybrook Highlands section of town. **KIN-1983 \$319,000**

WEST MILFORD-High Crest Lake 3 BR, 1.5 bath Ranch. Walk-out basement & 2-car garage. With membership enjoy summers of swimming, sailing, etc. **KIN-1976 \$329,000**

WEST MILFORD-High Crest Lake 5 BR, 3.5 bath Colonial w/view. LR w/fpic, MBR suite w/bath, 2 car gar. Lot 100x277. MEIK, deck overlooks fenced-in yard. **KIN-1982 \$329,000**

ROCKAWAY TWSP-Lakefront on beautiful Green Pond. The perfect vacation retreat for the buyer who wants to get away from it all! **KIN-1984 \$150,000**

ROCKAWAY TWSP-A wonderful opportunity to purchase yr-round home in desirable Green Pond an area of higher priced homes. Located on spacious lot (owned land) w/wonderful view of lake. **KIN-1981 \$119,900**

KINNELON/BUTLER AREA OFFICE
838-9300 838-8400

CALL COLDWELL BANKER SCHLOTT REALTORS

WEST MILFORD \$283,000
Elegant w/ 5 fam, rm, fpic, double deck around 16x32 inground pool. DIR, Macopin to Arundel, Mt Braden, Rt 108, 1000 ft Ridge to Vreeland, etc. WMD-4508 728-3600

WEST MILFORD \$189,900
Like two houses in one! Mother/daughter or professional office. Easy commute. Large rooms both eaters! Spacious Move Right in! WMD-4427 728-3600

WEST MILFORD \$108,000
Great potential for the right buyer! Liv w/brick tile, cat w/dormer stove & sliders to deck & above grnd pool. Avail for rent @ \$1000/mo. WMD-4428 728-3600

WEST MILFORD \$114,995
2 bedroom remodeled ranch, 1 block to lake. Country style kitchen, living rm w/fpic., EZ commute. Lower West Method. WMD-4437 728-3600

WEST MILFORD \$345,500
Horse lovers - 12 acre w/farm assessment. Miles of scenic trails. Charming stone home recently renovated. Convenient to town center. Call West Method. WMD-4444 728-3600

WEST MILFORD \$117,954
A townhouse with really nice floor plan, not all those stairs. Easy to decorate & live in. WMD-4457 728-3600

WEST MILFORD \$155,000
Country big on Greenwood Lakes situated in quiet cov. Large enclosed porch for summer dining & relaxation. Fpic & ceiling in LR. WMD-4458 728-3600

WEST MILFORD \$184,900
Beautiful 3 bedroom end unit, full basement, window treatments, oak railings & cozy logs \$600 sq. ft. of living space. Privacy & woods. WMD-4499 728-3600

WEST MILFORD OFFICE 201-728-3600

MEET YOUR NEIGHBORHOOD REALTORS



ELLEN COHEN JOINS COLDWELL BANKER SCHLOTT WAYNE OFFICE

Ellen Cohen, a resident of Wayne, has joined Coldwell Banker Schlott Realtors as a sales associate with the firm's Wayne office.

A member of the Passaic Board of Realtors, Cohen has successfully completed Coldwell Banker Schlott's extensive sales training program, which includes nearly 60 hours of instruction in real estate law, ethics, sales and contracts, as well as negotiating, finance, and marketing. In addition, she has attended a series of advanced real estate workshops.

Cohen holds a degree from Temple University and an MA from William Paterson College. Originally from New York, Cohen has resided in Wayne for 27 years. Before entering the real estate field, she was employed on the adjunct staff of William Paterson College Art Dept.

Cohen and her husband, Irwin, have 3 children. For information regarding homebuying and selling services in the area, contact Ellen Cohen at Coldwell Banker Schlott Realtors' Wayne office, 189 Berdan Ave., telephone 694-8000.



WAYNE OFFICE
189 Berdan Avenue
694-8000



BYRAM HONORED AT AWARDS CEREMONY

Jackie Byram, sales associate in the Pompton Plains office of Coldwell Banker Schlott Realtors, was awarded the firm's elite Ambassadors' President's Club designation at an Awards Breakfast held recently at The Wayne Manor. The award places Jackie among the top 15 percent of the firm's 3600 sales associates in 1993 sales volume.

A member of the Passaic & Morris County Board of Realtors, she also qualified for the Bronze Level for the 1993 NJ Association of Realtors' Million Dollar Club. A real estate professional for 12 years, Byram has completed Level I of Coldwell Banker University, a core of studies for advanced Real Estate Professionals.

Jackie holds a Bachelor of Science degree from St. Bonaventure University. Originally from Butler, New Jersey, Byram has resided in Pompton Plains for 14 years and has previously resided in Michigan.

Before entering the real estate field, she was employed as an elementary school teacher for five years.



POMPTON PLAINS OFFICE
580 RT. 23 N
839-8900



FRANCINE ELMO IS TOPS IN COLDWELL BANKER SCHLOTT'S WAYNE OFFICE

Francine Elmo, a sales associate with Coldwell Banker Schlott Realtors' Wayne Office has been named the top sales associate of the month in her sales office. Elmos produced a greater sales and listings volume during the month of April than any of her colleagues in the Wayne office.

A 11 year real estate professional, Elmo is an active member of the Passaic Board of Realtors.

Consistently a high achiever since she entered real estate, Elmo has frequently been cited as a top real estate producer. She is a member of the NJAR Million Dollar Club and has frequently been awarded Associate of the Month. In addition she holds the prestigious GRI designation of advanced real estate education and a broker's license.

Elmo attended Monclair State College. Originally from Clifton, Elmo has resided in Wayne for 19 years.

For information regarding homebuying and selling services in the area, contact Francine Elmo at Coldwell Banker Schlott's Wayne Office, 189 Berdan Ave., telephone 694-8000.



WAYNE OFFICE
189 Berdan Avenue
694-8000

Weichert

Buy For \$1,146 Mo.

COME HOME TO: BLOOMINGDALE - Easy living in this large Bi-Level 4BR, 2 car garage, 2 decorator baths, large lot in quiet neighborhood. 051-3524, \$192,900.

Wayne Office 696-6660

Buy For \$1,063 Mo.

TOO NEW FOR PHOTO

BLOOMINGDALE - Well maintained 3Bdr, 2BA ranch in family neighborhood, park-like setting w/wooded backyard. New kit cabinets, new floor, new roof, bath w/skyline, finished basement, storage shed in back w/iron roof. 019-7037, \$179,000

Kinnelon Office 838-6200

Buy For \$588 Mo.

ATTENTION INVESTORS

BUTLER - 1564 SF Bldg in prime location in Butler business district. Income producing property. Leased till the year 2001. Tenant pays all utilities. Priced for a quick sale. 019-6918, \$99,000.

Kinnelon Office 838-6200

Buy For \$1,307 Mo.

LARGE SPLIT LEVEL

CLIFTON - Located in a nice area, four bdr, 2 full baths, extra big lot, family room, thermo windows. 172-3181, \$220,000.

Clifton Office 779-1900

Buy For \$763 Mo.

VILLAGE CHARMER

GREENWOOD LAKE, NY

Walk to bus. Great views, 3rd, large rooms, wrap-around porch, enclosed pavilion. \$126,500, 115-2923.

West Milford Office 728-7775

Buy For \$2,043 Mo.

OPEN SUN. 1-5

KINNELON - Colonial with new apt. Spacious rooms abound including 21' glassed & skylit porch. Level landscaped grounds. Separate main level entry for in-law w/br, sitting fire, full BA & 3 closets. 3BRs, 2.5BA, 019-6702, \$338,000. DIR: 228-Armonia Rd. L. Richel. Straight on Kill L. Forestville to Etc #10.

Kinnelon Office 838-6200

Buy For \$1,078 Mo.

OPEN SUN. 1-5

POMPTON LAKES - You will find charm & character in this 3 story home. LR w/pt, newer kit, to Dining Area, 4.5 BR, gar, quiet street. Owner's motivated. 085-2839. DIR: Hamburg Tpk. to Garden Rd #27, \$181,500

Pompton Plains Office 839-4646

Buy For \$950 Mo.

SPACIOUS CAPE

POMPTON LAKES - 3Bdr's, family room, 2 car garage detached, 50x175 lot. All big rooms and priced to sell! Convenient location. 019-6974, \$169,000.

Kinnelon Office 838-6200

Buy For \$921 Mo.

RINGWOOD - Lakefront home w/beautiful sunsets. 3Bdr's, 1.5BA's. Very well cared for when carpeting in family room, & new updates throughout the house. 019-6985, \$155,000.

Kinnelon Office 838-6200

Buy For \$1,891 Mo.

OPEN SUN. 1-5

TOWACO - Wonderful cul-de-sac location. Custom built home. All brick, flr, o/a, c/r, full basement. 285-2624, \$314,500. DIR: Pinebrook R Douglas L Cliff #6.

Pompton Plains Office 839-4646

Buy For \$1,262 Mo.

OPEN SUN. 1-5

WAYNE - Spacious 5 BR colonial w/country kitchen, neutral decor, central air. Too many perks to mention. Come & see, you won't be disappointed. 051-3620, \$212,500. DIR: Colfax, Tamarack, Allwood, Locust #6

Wayne Office 696-6660

Buy For \$1,923 Mo.

OPEN SUN. 1-5

WAYNE - Gorgeous home on 1+ acre in Wayne. All the lifestyle you could want. Too many goodies to list. 051-3359, \$320,000. DIR: Black Oak to Hurel Terrace, Marling, Elliott #39.

Wayne Office 696-6660

Buy For \$1,484 Mo.

OPEN SUN. 1-5

WAYNE - Great home, great buy! 3 BRs, 2 1/2 baths, 2 car garage. Walk to golf course, NYC bus, 2 mi. to train! 051-3222, \$245,900. DIR: French Hill, Panah, Dartmouth #60

Wayne Office 696-6660

Buy For \$1,802 Mo.

OPEN SUN. 1-5

WAYNE - Renovated from top to bottom this 3 BR contemp. has it all. Vaulted ceilings, customized kitchen & baths, skylites, IG. pool, 051-3582, \$299,900. DIR: Colfax, Tulip, Linden, Ridge, Redwood, #149

Wayne Office 696-6660

IF YOU THINK THE LOW MONTHLY PAYMENTS IN OUR ADS LOOK GOOD, Wait 'til you see the great homes they buy!

VISIT OUR OPEN HOUSES THIS WEEKEND!

For purchase prices up to \$250,000, monthly mortgage payments generally - interest quoted in our ads are to qualified buyers based upon a 30% down payment and a 30 year fixed rate loan at 8.125% with 3 points. **A.P.R. 8.490%**

As an example, a \$100,000 loan would mean 500 monthly payments of \$1,431.00. For purchase prices from \$200,000 to \$250,000, the monthly payments are to qualified buyers based upon a 30% down payment and calculated at 8.250% with 3 points. **A.P.R. 8.618%**. An average of a \$100,000 loan would mean 560 monthly payments of \$1,790.00. Figures herein are approximate and do not include property taxes, hazard insurance, or homeowners' association dues for a condominium purchase. Interest rates quoted are as of April 19, 1994, and are subject to change. Not responsible for typographical errors, while information is believed accurate, we warrant that the payments be valid, go with mortgage provider prior to purchase. Plan, Case 0195

OPEN HOUSE THIS SUNDAY 1-5 P.M.

Weichert Realtors

Buy For \$1,677 Mo.

NEW LISTING

OPEN SUN. 1-5

WAYNE - Lovingly updated and maintained four BR, 2 1/2 baths colonial split in picturesque setting. 051-3584, \$279,000. DIR: Black Oak, Hubbarton L, Webster, R Wellington, or Ratzer, Webster, Wellington, #28

Wayne Office 696-6660

Buy For \$889 Mo.

NEW LISTING

OPEN SUN. 1-5

WAYNE - You gotta see it to believe it! Newer siding, roof, windows, walk to walk, Enclave, short block to NYC bus. No Flood. 051-3639, \$149,700. DIR: Colfax, Tamarack, Linden #6

Wayne Office 696-6660

Buy For \$1,241 Mo.

IMMACULATE CAPE

WAYNE - Immaculate cape w/2 new full baths, 3 BRs, family room w/pt, private level yard w/deck & 26x12 screened porch! 051-3534, \$209,000.

Wayne Office 696-6660

Buy For \$1,622 Mo.

YOU'RE SURROUNDED...

WAYNE - By a beautifully landscaped and private yard! Home has everything including local area 4 BRs and more. 051-3615, \$269,900.

Wayne Office 696-6660

Buy For \$1,396 Mo.

MORE, MORE, MORE

WAYNE - Lots of living space in this 4 BR ranch. Fireplace in LR, flr. basement with kitchen, full bath, rec. room & more. 051-3508, \$235,000.

Wayne Office 696-6660

Buy For \$1,360 Mo.

SPACIOUS RANCH

WAYNE - Call to see this 3 BR ranch. Large country kitchen on wooded lot. 051-3436, \$229,000.

Wayne Office 696-6660

Buy For \$1,742 Mo.

NEW LISTING

OPEN SUN. 1-5

WAYNE - Ideal professional home office. This 10 room house is waiting for you. Hurry don't delay! 051-3630, \$289,900. DIR: Valley Rd #96

Wayne Office 696-6660

Buy For \$1,378 Mo.

SPACIOUS TOWNHOME

WAYNE - Treat yourself to this spectacular townhome located on a cul-de-sac, 3 BR, skylights and convenient commuting. 085-2882, \$232,000.

Pompton Plains Office 839-4646

Buy For \$1,485 Mo.

OPEN SUN. 1-5

WAYNE - Lovely ranch, 3 BR, Valley Section, Aluminum siding, 100x160 parking grounds, very convenient location. 085-2890, \$249,900. DIR: Valley Rd. to Birchwood Terr to #30.

Pompton Plains Office 839-4646

Buy For \$1,682 Mo.

GRANDMA COULD LIVE HERE TOO!

WAYNE - Perfect set up for m/d. Appealing split 3 BRs, 2 full BA, EIK, LR w/pt, GR on main level. FR & 1 BR w/separate entrance on lower level. 085-2848, \$279,900.

Pompton Plains Office 839-4646

Buy For \$758 Mo.

OPEN SUN. 1-5

WAYNE - Nice large kitchen, level yard with patio, great for picnics, 1 car garage. Spring is here buy now. 085-2862, \$127,800. DIR: Black Oak Ridge Rd to South Rd. #31.

Pompton Plains Office 839-4646

Buy For \$1,158 Mo.

SUPER CAPE

WAYNE - 4BR, Fireplace, large EIK, 75x125 level full w/pt w/pt basement, all new windows & siding. 085-2928, \$194,900.

Pompton Plains Office 839-4646

Buy For \$1,099 Mo.

WEST MILFORD - 5 Bdr, 2 full BA, 2 story, 3 zone gas heat, oak cabinets in large Country Kit, W/W carpet over h/d/wood floors, Andersen Windows. Private rear yard. 019-7040, \$185,000.

Kinnelon Office 838-6200

Buy For \$802 Mo.

RANCHO GRANDE

WEST MILFORD - This spacious 4 bdrn home is conveniently located to stores, buses and peace & quiet! \$135,000 115-2884.

West Milford Office 728-7775

Buy For \$802 Mo.

WONDERFUL LAKE VIEW

WEST MILFORD - Dock directly across the street! Beautifully landscaped, 3 bdrn, 1 1/2 bath, open flr plan for entertaining! \$134,999 115-2689.

West Milford Office 728-7775

Buy For \$688 Mo.

COUNTRY CHARMER!

WEST MILFORD - Vacation year round in great lake community! Close to everything. Lovely well kept ranch. A must see! \$115,899 115-2834.

West Milford Office 728-7775

Buy For \$1,009 Mo.

GREAT LAKEFRONT HOME

WEST MILFORD - Loaded with charm - move-in condition! 2-3 bdrn home offers stone flr, cati ceiling, gorgeous lake view. \$169,900, 115-2885.

West Milford Office 728-7775

Buy For \$646 Mo.

HATE HARD WORK??

WEST MILFORD - This charmer is perfect! 3 bdrn, all new carpet & flooring, new septic. Walk to lake. Buy it now! \$108,750 115-2814.

West Milford Office 728-7775



MORTGAGE SHOPPERS GUIDE

An advertising service of HSH Associates, the Nations Largest Publisher of Mortgage Information

Rates as of 05/20/94

Lender / Phone / Contact	Type	Term	Rate	Points	APR
CHELSEA FINANCIAL SERVICES 201-342-6594 Mortgage Department	CON	30	8	2	8.210
	CON	15	7.5	2	7.830
	CON JUM	30	8.25	2	8.470
CHOICE MORTGAGE SERVICES, INC 800-244-2821 Al Tobia	CON	30	8.5	0	8.500
	ARM	1/30	5.375	0	6.120
COASTAL FEDERAL MORTGAGE CO 800-772-6278	CON	30	8	3	8.275
	ARM	1/30	4.625	3	5.000
COUNTRYWIDE MORTGAGE CORP 808-789-9455 Ann Cooper	CON	30	7.75	2.875	8.165
	ARM	1/30	5.375	1.625	6.258
DREYFUS SECURITY SAVINGS BK 201-587-1500 Don Koby	CON	30	8.625	0	8.625
	ARM	1/30	5.25	0	7.504
DYNAMIC FINANCIAL CONSULTANT 201-595-7800	CON	30	8.375	2.75	8.190
	ARM	1/30	4.875	1	5.770
FIRST DE WITT S&L 201-575-5800 Tony Campanella	CON	30	8.875	0	8.877
	ARM JUM	1/30	4.5	1.75	7.215

Get complete information for over 250 loans from 50 lenders, plus "How to Shop For a Mortgage" - 44 pages of information to show how to negotiate the best mortgage for you. Send \$14.95 + .90 N.J. sales tax to HSH, Dept. TK, Butler, NJ 07405 0622.

Lender / Phone / Contact	Type	Term	Rate	Points	APR
INDEPENDENCE BANK OF NJ 201-825-1000 William Schwertler	CON	15	8.25	0	8.250
	ARM JUM	1/30	5.125	0	7.638
LUMBERMENS MORTGAGE CORP 800-672-1154 Robert J Ciullo	CON	30	8.25	3	8.455
	ARM	1/30	5.625	1	7.904
MWHC / C M BROWN DIVISION 800-223-0793 Rate Desk	CON	30	8.625	0	8.625
	CON JUM	30	8.75	0	8.750
STERLING NATIONAL MTG CORP 800-LOANSALE	CON	30	7.625	2.75	7.910
	CON	15	7.875	0	8.500
UNITED JERSEY BANK/MTG DIV 800-932-0811 Peter Llaguno	CON	15	7.625	3	8.127
	ARM	10/30	7.25	3	7.916
VALLEY NATIONAL BANK 800-225-5859	CON	30	9	1	9.143
	ARM	1/30	5	0	8.295
WAYNE SAVINGS BANK, SLA 201-305-5500 David VerHage	CON	15	7.75	0	7.750
	BAL JUM	1/30	4.9	0	7.398

CON = Fixed Rate ARM = Adj. Rate JUM = Jumbo APR = Annual Percentage Rate
Terms are current as of 05/20/94, and are subject to change. HSH cannot be responsible for errors or omissions, or for changes made after our survey.
Copyright 1994 HSH Associates, Butler NJ 07405 / 201-638-3330

Real Estate

Apartment Unfurnished 405

CLIFTON 2 bdr, 2nd fl. 1st fl. \$750 per mo. avl 7/1. nice area 908-241-2669

CLIFTON 2 1/2 bdr, 2nd fl. 2br 1/2 bdr, 1st fl. New w/w washer/dryer, 1st fl. pet's \$800/mo. avl Call 927-1033

CLIFTON 2nd fl. 2 bdr, 7 rms, 3 bdrms, \$850/mo - util, avl 7/1. Call 772-4697 aft 6pm

CLIFTON 3br town apt, \$500/mo all util's incl, conv to trans, perfect for seniors, 472-0763

CLIFTON - 4 BR 2.5 bdr, sunrm, \$1375 - util's or option to buy. Call 646-2053

CLIFTON, Large AC modern 2BR Apt w/ sun porch, Off st pet's \$750 - util's, 1 1/2 mo sec, Avail 6/01. Call 778-0003, 773-9579, 471-9095

CLIFTON Studio, priv cottage house, fenced yard. Excel loc \$550/mo - util's 975-9116

E Rutherford studio util's pd \$500 Lyndhurst 3 rms 1st fl \$600 Bergen Rty Bkr Fee 796-1111

Far Lawnd 2BR w/ pet's \$475 Bergen Rty Bkr Fee 796-1111

FRANKLIN Modern 1 BR/1 apt LR with tile, WW carpet, no pet's. \$550, 279-9229, 595-5284

Garfield 3 rms 1st fl pd \$550 Lodi 1 BR fl pd \$625 Bergen Rty Bkr Fee 796-1111

GARFIELD 2nd fl. 5 bedrooms, LR, kitchen, avl. \$1,195 util's included. Call 529-8166

GARFIELD-5 rms, 2 BR mod 2 bath \$875 + util's Avail 6/15. Call 785-4053 or 266-3185.

Haledon 2 fam util's pd \$450 Wayne condo apt fl pd \$775 Bergen Rty Bkr Fee 796-1111

LITTLE FALLS 2nd fl 3BRs, LR, kitchen, utility rm, gar., \$900/mo + util's. 335-1492

PASSAIC residential area, 1BR & 3BR apt's applications req'd. avl 5/15. Call 614-9247

PASSAIC PARK 3rd fl 1 BR apt, LR, 1/2 bath, ideal for single or cpl. \$600 w/hrs. Days 212-246-5383; evns 777-2066

PASSAIC PK 1BR, pet's ok, incl util, won't last \$500. Open House Rly Inc Bkr 616-0735

PASSAIC PK - 2 BRs, HT/HW supplied, \$750. Call 473-3256, 10/6PM Mon to Sat

PASSAIC PK: Beautiful lg rm w/looking AC, phone, table, tv all in trap. 614-0738 anytime

CLIFTON 10 Knapp Ave. apt 2 2BR, \$625 + util's, no pet's, to view aft 5pm 340-3890

CLIFTON 1 Bdr, 2 family, \$700. Includes all util's. Avail 6/1. 772-5229 aft 3pm

Real Estate

CLIFTON 2 bdr, 2nd fl. 1st fl. \$750 per mo. avl 7/1. nice area 908-241-2669

PATERSON - 5 rm apt, \$550, util's not incl, close to transit, please call 278-9032

PATERSON - Liberty St, 4 rooms, 1st fl, \$600/mo + util's, call 942-0668

PATERSON 2 fam home Getty Ave. 1st fl. 5 rm apt, \$800. Avail 6/7. 2nd fl. 3 rm apt. Avail 6/1. \$275. 1 mo sec req'd. Serious inquiries only. Call after 5pm, 702-1132

PATERSON-3 Beautiful rooms, h/w supplied, call aft 3p.m. please, 904-1017.

PATERSON 42-50 Alderm St 3 lge rooms, \$400 includ heat, 4 rms \$460, vouchers OK. Se Habla Espanol. Apply to 339 Broadway, bmt apt, bet 9-5.

PATERSON 42-50 Alderm St 3 lge rooms, \$400 includ heat, 4 rms \$460, vouchers OK. Se Habla Espanol. Apply to 339 Broadway, bmt apt, bet 9-5.

PATERSON - 4 rms, 2br, no pet's. Call after 5pm, 293-1118

PATERSON - Clean, modern 3m apt, central ht. Very reasonable. Call 278-0900

PATERSON INCLUDES GARAGE! Call 942-0043 after 4pm

PEQUANNOCK 2BR, w/o h/w, w/w, \$250 - util's, sec. Open House Sat/Sun, 2-4, 10 Martin

POMPTON LAKES-1 bdr/2br, 2 LR w/ tile, w/c, all util's incl. \$825/mo avail 7/1 616-0336

POMPTON LKS- 2 1/2 rms w/H HW, D/C, parking, \$550/mo. Call 839-6585 aft 7:30pm

PROSPECT PARK: 3 BR apt. Avail 6/1. 2nd fl on-site parking \$575/mo + util's 423-4450

SD PATERSON - 2 fam house, 1st fl. 2 BR, DR, LR, LG, EIK w/pantry, Avail 6/1. \$750 + util's. Call 546-3547

SOUTH PATERSON 2 BR apt, \$700/month includes heat, avail 6/1. 684-1962

TOTOWA 2BR, kids ok, yrd, gar, great place \$700. Open House Rly Inc Bkr 916-0735

TOTOWA/PATERSON 4 rms, 1st fl. 2 fam, 1 bath, CAC, h/w, range, yard & garage, no pet's. \$700/mo + util's 790-0044

WALLINGTON \$1100. Lovely new home, 3 BR, 2 BR, LR, DR, EIK, 471-3959/ 777-0845

WANACUE- 2 BR, \$855+ util's, no pet's, 1 1/2 mo sec. Avail immed 839-1929

WAYNE 1BR, 3 rooms, \$650 incl util, call aft 4 pm w/dy, daytime weekends, 305-0626

WAYNE 2bdr 2nd fl attic str laundry fac. n/pets \$750+util w/hwd 1 mo sec off req. Avail 7/1 Call 305-8260

Real Estate

WAYNE Sunny 1st fl 1 BR apt avl now for fam. Share gar. \$600/mo util's incl. Cable Hookup. 639-7292 aft 6pm

W Pat studio ht pd \$500 Little Falls 3 BR pool yrd \$900 Bergen Rty Bkr Fee 796-1111

W/Bedd 2 rms typ util's pd \$500 Bloomfield 2BR w/ pet's pd \$775 Bergen Rty Bkr Fee 796-1111

WEST PATERSON Studio apt, \$600/mo all util's includ, please call 684-2400/v msg

WEST PATERSON - 5 rms, 2 BR, \$775/mo. + util's. Call 278-1043 aft 6pm

WEST PATERSON 3rms 2nd fl \$550/mo - util's Avail 7/1. Call 278-9536

Real Estate

WAYNE: Garage for rent, Valley Rd. area \$50/mo. 942-9323 1p-3p or iv. msg

House Unfurnished 430

AAA+ Houses Clifton 11 rms kids/pets \$1450 Garfield 7 rms kids apt \$1350 Ringwood 3 Br kids gar \$1200 Bergen Rty Bkr Fee 796-1111

FAIRFIELD new home, 5 rooms, \$950 + util's, call bet 9am-6pm 808-9105, 684-9675

PATERSON near 8th Ave & 23rd St. Space for Rent - 2 car garage - 4 car garage & 1500 sq ft. for storage or live assembly. Call Nick 344-1107. Avail immed.

Housing To Share 435

RINGWOOD 5 BR, 3 BA house to share, incl util's, \$350/mo. Please call 839-8420

WAYNE prof fl to share 5 room house, priv BR, must love dogs, \$550 per month. 616-0649

Butler Modern Stone Front, c/a, get h/w/1000, Main St. next to buy Florist. Call 836-0196 days/evn/1247 evns

Butler - modern 1st fl 1 BR apt \$575/mo, plus util's & gas heat. Call 838-0196. days, 827-1247 evns

Clifton-Crooks Ave store/pt of c/c. Cent H/c \$850+ heat/mo w/ util's 2nd fl. 2000, base \$19-2513.

Garfield 2BR w/ storage, 3500 SF. Good, for retail \$1100-1150. 1 1/2 mo sec. 473-0378

PASSAIC-2500 sq ft presently used as auto repair shop. In-dust 1 bldg \$1250/mo + util's. 773-3037, 9-5pm, Mt. Valle

PASSAIC Main Ave. Prof. suite, 1100-1600 sq ft. Call 343-0020 9a-5p

PASSAIC MAIN AVE - 3000 sq ft or 6000 sq ft. 1st fl. 2nd fl. 9000 sq ft. Can divide 201-778-1222

PASSAIC PK-2800 sq ft, 2nd fl. apt for rent. Off street pkg. avl. immed. \$1,000. 473-2700

PATERSON 2,111 sq ft office space with private bath. Counter for retail sales, light manufacturing, printing, etc. Avail. immed. 423-3274.

REVERDEAR-Near Rt 287 & 23 6300 sq ft office & warehouse. Loading dock & parking. \$3,000/mo. Call after 6pm, 838-9647 or 838-9037

TOTOWA-1st & 2nd fl. Store, office. Min to major hwy. Avail 1000-1800 sq ft. 790-9399.

TOTOWA-1st & 2nd fl. Store, office. Min to major hwy. Avail 1000-1800 sq ft. 790-9399.

Real Estate

LINCOLN PK. All-in-one incl. Shared W/bedroom. In Pvt. res. \$120/wk. 342-2893

POMPTON LAKES - conveniently located weekly maid service, all services \$90 per week. Call 955-5623

Townhomes & Condo

For Rent 475

CLIFTON - luxury condo 1-BR LR DR C/w W/W/DW balcony, \$900 + util. Call 578-9569 days 339-0404 evns/weekends

FRANKLIN 3 BR, 6bdr, AC, w/d, deck, pool, tennis, \$850. Call 825-7572

WAYNE BEST IN TOWN! 2br, 4 m Condo in conv location, new kit, extra closets, heat, incl w/d, 3 pool incl w/d, call today!

WYN 405 R \$850/mo Coldwell Banker Schlotz Realtors 201-694-9000

Vacation Property For Rent 480

NEW HAMPSHIRE - Lakeside Cottage 2 BR, 1 1/2 Bath, \$250/wk 694-4138

SEAGRIST BEACH - Lighthouse 2BR apt, no pet's \$225-275, \$550/wk, call 201-386-6034

SEASIDE HGTS - North 2 BR apt, ocean bk, 900 sq ft, cable TV, parking, free beach, clean, quiet, families - only. \$495/wk. 201-791-1681

VT. Pico Resort 3 BR 2 bdr condo. Try something new! Leave kids to do or do nothing! \$495/wk. 201-825-1884

WILDWOOD CREST - Oceanview 2br town apt, all amenities, prime wk w/d, all the price for June & Sept rental 201-251-9462

WILDWOOD -Luxury condo across from beach/boat ramp. Sleeps 6, pool, parking, all amenities. \$600-750/wk. 471-4245 or 694-4300

Wanted To Rent 485

Single professional woman with two cats looking for 2br apartment. Little Falls w/hw. 2 Day 227-7710 Even 785-2472

Warehouse Space For Rent 490

GARFIELD - 128,000 sq ft, light commercial bldg for rent. Approx. 1100 sq ft. EPT for small business. For info call 546-5969 or 790-8999. To see only bet at 130 Valley St.

Have an APARTMENT TO RENT? Place an ad in our RENTAL column for fast response

Equal Housing Opportunity. All real estate advertising in this newspaper is subject to the Federal Fair Housing Act of 1968 as amended which makes it illegal to advertise "any preference limitation or discrimination based on race, color, religion, sex, affectional or sexual orientation, marital status, handicap, familial status, ancestry or national origin, or an intention to discriminate, based on such preference, limitation or discrimination." This newspaper will not knowingly accept any advertisement for real estate which is in violation of the law. Our readers are hereby informed that all dwellings advertised in this newspaper are available on an equal opportunity basis. To complain of discrimination, call HUD Toll-Free at 1-800-669-9777.

Open House DIRECTORY

TOWN	ADDRESS	TIME	PRICE	REALTOR	PHONE
CLIFTON	22 EDWARD COURT	12-4 PM	\$168,500	MURPHY REALTY	773-4141
CLIFTON	145 ALLWOOD ROAD	12-4PM	\$167,500	MURPHY REALTY	773-4141
CLIFTON	12 GLEESON DRIVE	12-4 PM	\$339,000	MURPHY REALTY	773-4141
CLIFTON	26 KNOX PLACE	12-4 PM	\$289,900	MURPHY REALTY	773-4141
CLIFTON	106 LINDEN AVE	12-4 PM	\$128,500	MURPHY REALTY	773-4141
CLIFTON	17 PINE HILL DRIVE	12-4 PM	\$249,900	MURPHY REALTY	628-0223
CLIFTON	46 WITHERSPOON	12-4 PM	\$409,900	MURPHY REALTY	628-0223
CLIFTON	155 LOCKWOOD DRIVE	1-4 PM	\$155,000	CENTURY 21 A CV REAL ESTATE	365-2122
CLIFTON	10 STANDISH DRIVE	1-4 PM	\$249,900	CENTURY 21 A CV REAL ESTATE	365-2122
HARDYSTON	2 LAUREL COURT	1-4 PM	\$260,000	CENTURY 21 YANKEE REAL ESTATE	697-4900
KINNELON	10 ERIC	1-5 PM	\$339,900	WEICHERT REALTORS	838-6200
LINCOLN PARK	27 NORTHWEST ST	1-5 PM	\$359,900	CENTURY 21 JOE PISARCIK & ASSOC	628-7800
LITTLE FALLS	181 LONG HILL RD UNIT D-2	1-4 PM	\$139,900	CENTURY 21 VAN DER WENDE ASSOC	785-8420
LITTLE FALLS	11-1D TULIP CRESCENT	1-4 PM	\$179,900	CENTURY 21 VAN DER WENDE ASSOC	785-8420
NORTH HALEDON	70 HILLSIDE DRIVE	12-4 PM	\$174,900	MURPHY REALTY	628-0223
PASSAIC PARK	302 HIGH STREET	12-4 PM	\$157,000	MURPHY REALTY	773-4141
POMPTON LAKES	27 GARDEN ROAD	1-5 PM	\$181,500	WEICHERT REALTORS	839-4646
POMPTON LAKES	622 HAMBURG TPKE	1-4 PM	\$172,900	COLDWELL BANKER SCHLOTT	839-8900
RIVERDALE	1 WILLIAMS ST.	12-4 PM	\$184,900	MURPHY REALTY	628-0223
TOTOWA	16 COLUMBUS AVE	1-4 PM	\$510,000	DIAMOND AGENCY	473-5800
TOWACO	5 CLIFF RD	1-5 PM	\$314,500	WEICHERT REALTORS	839-4646
WAYNE	35 EDITH CT.	1-4 PM	\$239,900	ERA MASTERS REALTORS	696-8686
WAYNE	89 MT RIDGE DRIVE	1-4 PM	\$239,900	ERA MASTERS REALTORS	696-8686
WAYNE	52 WINDING WAY	1-4 PM	\$272,700	CENTURY 21 CRESTMERE	835-4400
WAYNE	865 PINES LAKE DR W	12-4 PM	\$395,000	MURPHY REALTY	628-0223
WAYNE	31 SOUTH ROAD	1-5 PM	\$127,600	WEICHERT REALTORS	839-4646
WAYNE	30 BIRCHWOOD TERR	1-5 PM	\$249,900	WEICHERT REALTORS	839-4646
WAYNE	906 VALLEY RD	1-5 PM	\$289,900	WEICHERT REALTORS	696-6660
WAYNE	6 LINDEN RD	1-5 PM	\$149,700	WEICHERT REALTORS	696-6660
WAYNE	28 WELLINGTON DR	1-5 PM	\$279,000	WEICHERT REALTORS	696-6660
WAYNE	149 REDWOOD AVE	1-5 PM	\$299,900	WEICHERT REALTORS	696-6660
WAYNE	60 DARTMOUTH RD	1-5 PM	\$249,900	WEICHERT REALTORS	696-6660
WAYNE	3 STURBRIDGE CT	1-5 PM	\$379,900	WEICHERT REALTORS	696-6660
WAYNE	39 ELLICOTT	1-5 PM	\$320,000	WEICHERT REALTORS	696-6660
WAYNE	6 LOCUST PL	1-5 PM	\$212,500	WEICHERT REALTORS	696-6660
WAYNE	111 TALL GRASS	1-4 PM	\$389,900	COLDWELL BANKER SCHLOTT	694-8000
WEST MILFORD	68 VRELAND ROAD	1-4 PM	\$283,000	COLDWELL BANKER SCHLOTT	728-3600
WEST MILFORD	14 KRATTIGER COURT	12-4 PM	\$228,900	MURPHY REALTY	628-0223

Once Again CENTURY 21® Sets The Standard.

BUTLER \$137,700
OPPORTUNITY KNOCKS!
 Large colonial in desirable neighborhood w/4 possibly 5 BRs or office, updated kitchen, 3 bh, first floor laundry area, partially finished basement. Just waiting for you!
 CENTURY 21 Crestmere 835-4400
 Pompton Plains Office

CLIFTON \$159,900
BEAUTIFUL BI-LEVEL IN ATHENA SECTION..
 With 5 rooms, 3 bedrooms, 1 1/2 baths, large eat in kitchen, large living room with hardwood floors, finished basement, garage. Call today! This house won't last!
 CENTURY 21 Best Choice Realty 778-3500
 Clifton Office

OPEN HOUSES SUNDAY 1-4PM
CLIFTON-155 Lockwood Dr. Albion Cape
 Great starter at an affordable price in nice residential neighborhood with park nearby. Newly painted interior offers 3 BRs, fin. Base plus gar. Very motivated seller - \$155,000.
CLIFTON - 10 Standish Dr. Location - Location
 Richfield split. Broad St area, offers 3 BRs, 2 1/2 Bas, family rm + fin. Base too. New roof, oak HW fls, throughout and a fantastic neighborhood. Easy access to NY transp. Asking \$248,900.
 CENTURY 21 A CV Real Estate 365-2122
 Clifton Office

CLIFTON VALLEY SEC. CHARMING COLONIAL
 Vinyl sided well kept 3 BR colonial in a walk to school location. EIK, DR, sunrm, newer roof & thermo windows, new kit, appliances. See & present offer!
 CENTURY 21 Gold Properties Rty. 595-1500
 Totowa Office

GARFIELD \$245,000
END YOUR SEARCH....
 Two family custom built bi level with 10 rooms, 4 bedrooms, 3 baths, family room 18x33 with fireplace, w/w carpeting, Italian tile in kitchen, foyer & bathroom, new roofing, garage. Truly a must see home!
 CENTURY 21 Best Choice Realty 778-3500
 Clifton Office

HALEDON \$169,900
 First time or investment. Buyers. Affordable two family located near N. Haledon border. 1st floor, 3 Br, 1 Bm & 2nd floor, 2 Br, 1 Bth. Separate utilities, everything been redone.
 CENTURY 21 Gemini Realty Inc. 896-1111
 Wayne Office

HIGHLAND LAKES \$119,000
GREAT BEGINNINGS
 Start w/the best in this 4BR home w/parklike grounds, Cath ceilings, skylights, wood stove, 16x16 deck. Start packing!
 CENTURY 21 Preferred Realty, Inc. 838-1001
 Kinnelon/Butler Office

LINCOLN PARK \$359,900
CUSTOM BUILT CONTEMP OPEN HOUSE SUNDAY, MAY 22, 1-5PM
 This 2 yr. old home has 5BRs, 4 bth, 2 lg decks, GA, calm cntry, Indspcd, cell fans, burg alarm, recessed lighting & more. Directions: Route 202 to 27 Northwest Street, Lincoln Park.
 CENTURY 21 Joe Pissarik & Assoc. 626-7800
 Lincoln Park Office

LITTLE FALLS \$139,900
INWOOD AT GREAT NOTCH 181 Long Hill Rd. Unit D-2 Sun. 5/22, 1-4 P.M.
 Two bedroom, 2 1/2 bh twtwn in lovely suburban empx w/pool, tennis. Spacious inter w/whip, MBR w/bth, fam rm. Directions: RR. 46 to Notch Rd., left on Long Hill Rd.
 CENTURY 21 Van Der Wende Assoc. 785-8420
 Little Falls Office

LITTLE FALLS \$179,900
TULIP GARDENS 11-10 TULIP CRESCENT Sun. 5/22 1-4PM
 Perfect 2 bdrm, 2 bh first flr condo. Cherry cabinets & chic tile flr in kitch. MBR suite w/walk-in clst. Gar, w/electric oprn. Walls to stones, NYC transport. Directions: E. Main St. to Tulip Crescent.
 CENTURY 21 Van Der Wende Assoc. 785-8420
 Little Falls Office

WAYNE \$179,900
BEAUTIFUL
 Maintained & decorated cap cod set in a family neighborhood, LR w/ptc, hardwood floors, kitchen w/greenhouse window, formal Dining Rm plus 3 Bdrm & finished basement.
 CENTURY 21 Gemini Realty Inc. 696-1111
 Wayne Office

WAYNE \$269,500
IMMACULATE SUN. 5/22/94 - 1-4PM
 Meticulously mntd, 3BR, Rnch, private lot, 2 1/2 baths, LR w/FP, FDR, EIK, MBR w/sliders to sunroom, GA, 2car gar. Dir: Black Oak Ridge/Sheffield/Ridgeview
 CENTURY 21 Preferred Realty, Inc. 838-1001
 Kinnelon/Butler Office



In a nationwide study by The Wirthlin Group, a leading research organization, the CENTURY 21® system was awarded top honors again and again. In 12 separate categories ranging from "Best at finding people the right home" to "Best at selling a home", CENTURY 21 system came in first, every time, by wide margins. Trust your home to a member of the real estate sales organization more homeowners trust, the CENTURY 21 system.



TOO NEW FOR PHOTO
PASSAIC PARK \$139,800
BACK ON MARKET...
 and seller is packed and ready to move! If you missed it first time around, don't miss this 4BR, 2 bath Colonial with separate apartment.
 CENTURY 21 Gold Key Realty 835-5000
 Riverdale Office

TOO NEW FOR PHOTO
POMPTON LKS \$169,900
MOVE IN CONDITION
 This lovely home has 6 Bdrms, EIK, Fam Rm w/altrium style door to a deck overlooking a park, must see, won't last!
 CENTURY 21 Gold Key Realty 835-5000
 Riverdale Office, NJ

RINGWD AREA \$298,900
3200 SQ.FT. COUNTRY COLONIAL
 Like total privacy? This 6 BR, 3.5 bh magnificent home is secluded! So near and yet so far! Features huge country kitchen w/valued ceiling, deck, appliances inc. A MUST SEE!
 CENTURY 21 Crestmere 835-4400
 Pompton Plains Office

WEST MILFORD \$495,000
HORSE FARM
 9 acre retreat w/Chalet home, 10 stall barn, jump pen, lunging pen, sep. feed rm, Ht tack rm., backs up to water shed. Saddle up & enjoy.
 CENTURY 21 Preferred Realty, Inc. 838-1001
 Kinnelon/Butler Office

WEST MILFORD \$429,000
COUNTRY RESTAURANT
 Charming country restaurant includes building, land & liquor license. Newly decorated, fully equipped, located on busy road, newly paved parking lot. In operation for over 30 years.
 CENTURY 21 Neil McCann Rty, Inc. 728-8151
 West Milford Office

TOO NEW FOR PHOTO
WEST MILFORD \$208,000
LAKEFRONT BI-LEVEL
 3 BRs, 2.5 baths, finished FR w/FP, sliders off DR & master BR out to deck, patio, central air, private deck, huge backyard and more...
 CENTURY 21 Neil McCann Realty, Inc. 728-8151
 West Milford Office

WEST MILFORD \$118,500
LAKEVIEW RANCH
 Recently renovated, private deck, FP in LR, 14'x26' deck overlooking lake, skylights, full basement, huge 2nd building 18' x 26' w/electric & plumbing.
 CENTURY 21 Neil McCann Rty, Inc. 728-8151
 West Milford Office

W. PATERSON \$214,900
VERY SPECIAL TWO
 Large, lovely & modern home features 5 rm apart plus ground floor studio apartment w/wood burning stove. This value packed beauty offers all new windows & newer heating sys too! Excellent for income or extended family.
 CENTURY 21 A CV Real Estate 365-2122
 Clifton Office

W. PATERSON \$194,900
TWO FAMILY
 Main free 4 over 4, large MBR on 1st flr, Fin.basmt, w/kit, family rm & bath, Sept. util. Large driveway. Walk to transp.
 CENTURY 21 Gold Properties Rty. 895-1500
 Totowa Office

CLIFTON \$169,900
2 FAMILY + STORE
 Income potential with this storefront plus rear 3 room apart, and lg. 5 rm apart on 2nd fl. Ideal for user, very visible main thoroughfare, 325 sq. ft. store or expand into apartment. Call for details - Asking \$169,900
 CENTURY 21 A CV Real Estate 365-2122
 Clifton Office

CLIFTON \$179,800
MAPLE VALLEY
 Looking for space? Then this is just for you! Expanded Cape offers 5 BRs, 2 Bas, den w/FPic + fam. rm too. Plenty of room to grow plus Central Air & Maint-free exterior. Nicely priced at \$179,800.
 CENTURY 21 A CV Real Estate 365-2122
 Clifton Office

ELMWOOD PARK \$196,000
CHECK THIS ONE OUT!
 Expanded 3 BR cape w/widening rm, fam. room addition and large full bath. Full finished rec. rm w/half bath, sliders off DR to large deck. 2-zone heating, all appliances incl. Come see and be pleasantly surprised!
 CENTURY 21 Crestmere 835-4400
 Pompton Plains Office

FRANKLIN \$79,900
PRICED TO SELL
 Your "get started" home! 2BR Cape, detached garage. Some improvements have been made. Convenient access to Rt.23. Great opportunity for a handy person. Priced to sell quickly!
 CENTURY 21 Preferred Realty, Inc. 838-1001
 Kinnelon/Butler Office

HARDYSTON \$249,900
OPEN HOUSE SUN. 5/22/94 1-4 PM
 Spectacular executive contemporary ranch on large private lot convenient to Routes 23 and 287. Many custom features make this a must see. Directions: Route 23 to Silver Grove Rd. to home set back on right.
 CENTURY 21 Yankee Real Estate 697-4500
 Newfoundland Office

HAWTHORNE \$168,000
JUST LISTED! THIS COULD BE YOURS!
 Affordable 2 stry, 4BR home w/widened rms, huge eat in kitch w/pantry, DR w/ built in Hutch, LR w/stained glass window, newer bth, storage plus TLC given in this home. 2 car gar. Come see!
 CENTURY 21 Crestmere 838-4400
 Pompton Plains Office

LINCOLN PARK \$129,900
THIS CHARMING HOME....
 features a gorgeous EIK, hardwood flrs, 4 Bdrms, 1 bh, above grd pool, located in a family neighborhood.
 CENTURY 21 Gold Key Realty 201-835-5000
 Riverdale Office, NJ

LITTLE FALLS \$79,000-\$210,000
"THE MILL"
 Variety of 1 & 2 bdrm units at this delightful complex w/pool, tennis & jog trails. Units available in different buildings to suite your tastes. Many offer a panoramic view of "The Falls". Walk to NYC bus & train.
 CENTURY 21 Van Der Wende Assoc. 785-8420
 Little Falls Office

VERNON \$269,900
FULFILL FAMILY DREAMS!
 Beautiful 5 BR, 2.5 bh brick tuator col. in prestigious neighborhood, LR, DR, Euro kitchen, deck, patio, family room w/ fireplace, and scenic countryside lake and mountain view! Priced Right!
 CENTURY 21 Crestmere 835-4400
 Pompton Plains Office

WAYNE \$272,700
OFFERING TOP VALUE! OPEN HOUSE MAY 22 1-4PM
 Cntr hall col split level, 4BR, 2 flr 2 bh bth in exec. ngrbrhd. EIK, FDR entry, trimm, rm w/wet bar, jacuzzi, Deck, enc, porch, 2 car gar, central air. See now!
 Directions: Rt. 23 North to Laguna to Winding Way #52
 CENTURY 21 Crestmere 835-4400
 Pompton Plains Office

THINKING OF SELLING?



DISCOVER THE Power Of Number 1.™

CALL FOR A FREE MARKET ANALYSIS!

Source: 1992 Nationwide Survey of Homeowners. This survey included 1,500 telephone interviews with a random sample of homeowners from throughout the USA and was conducted during October 1992 by The Wirthlin Group, a leading survey research organization. The results from the survey have a 95% confidence interval of +/- 2.5%. Homeowners were asked, "Now, thinking about real estate sales organizations, which one would you say... has the most professional and knowledgeable agents? Partial results: The CENTURY 21 system, 18%; Coldwell Banker, 3%;... is the best at helping people sell their home? Partial results: The CENTURY 21 system, 19%; Coldwell Banker, 3%;... has the most trustworthy agents? Partial results: The CENTURY 21 system, 15%; Coldwell Banker, 3%;... gives its customers the best service? Partial results: The CENTURY 21 system, 16%; Coldwell Banker, 3%;... is the best at finding people the right home? Partial results: The CENTURY 21 system, 18%; Coldwell Banker, 3%;... has the most trustworthy agents? Partial results: The CENTURY 21 system, 15%; Coldwell Banker, 3%;...". © 1992 Century 21 Real Estate Corporation as trustee of the NAE. ® and ™. Trademarks of Century 21 Real Estate Corporation. EACH OFFICE IS INDEPENDENTLY OWNED AND OPERATED. Equal Housing Opportunity.

A-584

LEGAL NOTICE
SHERIFF'S SALE
SUPERIOR COURT OF NEW JERSEY
CHANCERY DIVISION
PASSAIC COUNTY

Wherein FIRST FIDELITY BANK N.A., NORTH JERSEY ETC. IS PLAINTIFF AND FRANK G. ZIELLA, ET ALS. ARE DEFENDANTS.
Execution for Sale of Mortgaged Premises.

Wherein the above stated writ to me directed and delivered, I shall expose for sale by public vendue and sell to the highest bidder on Tuesday, 6-14-94, at Two O'Clock in the afternoon, prevailing time, at the Sheriff's Office, situated in the Passaic County Court House, Hamilton Street, Paterson, that is to say:

The property to be sold is located in the Borough of Pompton Lakes County of Passaic and State of New Jersey. Commonly known as: 111 Montclair Avenue Tax Lot #4 in Block #1000.

Dimensions: Approximately 30 feet wide by 150 feet long. Nearest cross street: Situate on the Eastern side of Montclair Avenue, 236 feet from the Northern side of Willard Bridge Street.

This concise description does not constitute a legal description of the real estate. A full legal description can be found at the Sheriff's Office.

Approximate amount due Plaintiff on this execution: (\$46,000.)

Forty six thousand dollars.

Lien and encumbrances will be made known at time of Sale. 10% of amount bid will be required as a deposit at time of Sale, in Cash, Certified Check, Cashiers Check or Treasurers Check. Balance to be paid within 30 days of Sale.

The Sheriff hereby reserves the right to adjourn this Sale without further notice by publication.

Edwin Englehardt SHERIFF

Wayne Today 41 May 22, 29, June 5, 12, 1994

LEGAL NOTICE

LEGAL NOTICE
TOWNSHIP OF WAYNE
PUBLIC NOTICE
In accordance with Section 9.8 of the New Jersey Statute Code (N.J.A.C. Title 17, Chapter 30), NOTICE IS HEREBY GIVEN that Wayne Township, 475 Valley Road, Wayne New Jersey, will be applying insecticides for the control of adult mosquito populations on an area-wide basis, as needed, throughout the municipality during the period from May 2, 1994 through September 30, 1994.

The insecticide to be used in the abovementioned program will be Cythion (Methidathion) applied by ground equipment. All persons interested in obtaining additional information regarding the Wayne Township mosquito extermination program are requested to contact Mr. T. Robert Vercoppe, Pesticide Control Officer (C.P.O. #2680) at 301-974-4700; NJ Poison Information 1-800-123-3333; or NJ Dept. of Health 1-609-423-2800.

David Waks Mayor

ATTEST: John R. O'Brien Township Clerk

Wayne Today 41 May 22, 29, June 5, 12, 1994

BARGAIN SHOPPING Items Under \$100

- CLOTHES-blouses, slacks, in new, sz. small-med, large bag \$50.
GRILL-Charmglow, w/cover, used once, exc. cond., \$99, 227-0236.
GRILL-s, steel, large for bbq, used once, \$45, 790-8869.
CLOTHES-Ladies, 200, tops sz 4-8, exc cond \$70 or \$35 ea, 995-2270.

- COMPUTER DISC PLAYER Sony, k, new, hardly used, \$98, 229-4036, w/ vmc.
COMPLETE HIFI SYSTEM incl CD sound-system, dual cassette, etc, \$99, 772-1280.
COMPUTER-Apple 2C-128K, manual, print, affairs, comp, \$225, 229-6016.
COMPUTER-Desk-Wood, \$40, 00, Call 851-7808, after 4 w/days, after 9 w/days.

- COMPUTER SOFTWARE-Macintosh Adobe Photoshop Version 1.0.7, \$99, 862-0898.
COMPUTER VIDEO GAME CARTRIDGES-two for \$99, 628-8932.
COMPUTER VIDEO GAME-20 games & acc, \$75, 00, exc, 628-0189.
CONTACT LENSES-Fire-Fit-one, machine, pd \$300, asking \$99, 85, new, 283-1812.

- GRILL-Charmglow, gas, \$35, 955-0552.
GRILL-s, steel, large for bbq, used once, \$45, 790-8869.
GUITAR-Gibson, new strings, plus music stand, exc cond, \$50, 226, 831-8730.
HEATER electric, new, 6, \$15, 476-0422.
HEDGE-CLIPPERS-New, B&J, 15, 778-7878.

FREE KIDS CLASSIFIEDS
For all Children ages 5 to 15
Suggestions & Instructions
PLEASE READ ALL INSTRUCTIONS CAREFULLY AND THEN FOLLOW THEM EXACTLY.
ADVERTISED WILL BE PRINTED ONLY IF THEY ADHERE TO THESE INSTRUCTIONS.

LEGAL NOTICE

LEGAL NOTICE
NORTH JERSEY
DISTRICT WATER
"UP or about June 7, 1994, NJDWC will open a public hearing on the proposed sale of the Passaic County Water Utility to the City of Paterson.

The application will be made only if favorable conditions exist. The application will be made by Douglas W. Olorin (Reg. No. 45504) using a Gilmore Garden hose server, fed by a 200 gallon truck mounted water tank.

TELEPHONE-Andy, deco style, newer, ready to plug in, \$55, 272-8732.

TENT-10x16 double canopy tent, used for flea market, \$90, 00, 771-1855.

TIRE-1-8F Goodrich, 33 1/2x15, all terrain, like Chevy/Toyota, \$45, 225-9068.

TIRE-1) Loner 85 Nissan Passenger P155-70R13, new on wheel, \$34, 933-9112.

TIRE-2) 185/60R13, \$22 ea, 00, Frank 835-8251 even.

TIRE-2) 185/60R13, \$22 ea, 00, Frank, Jr. 835-8251 even.

TIRE-Michelin, MXV3, 205/60/15 used 2 mos, like Accu, \$60, 694-3063.

TIRE-new, FRTB15, mounted, balanced on new 5 lug GM wheel, \$40, 887-4247.

TIRE-New Uniroyal on rim 31x10.5 R. 6 lug, \$70, 473-5198.

TIRE-Radial GT P215 70R15, asking \$15, 546-5263.

TIRE-New donut tires and rims \$10 ea, 2 tires 155 x 12, \$10 ea Call 790-7425.

TIRE-1 G.Y. 1 Goodrich on rims, P225/75R15, \$30, 00, 473-9082 ext. 6.

TIRE-3) P235 60R14, Firestone, k, new, \$55, 00, 261-3875.

TIRE-4) P205/75R14, whitewall, all for \$99, 697-6729.

TIRE-6) R15, R14, W/ tread, \$5, 898-2270.

TIRE-Complete writings, corrected, new in carton, \$50, 828-2712.

TOY-Lite Tykes kitchen w/ accessories, exc cond, \$25, 628-7958.

TOY-NEW Uniroyal on rim 31x10.5 R. 6 lug, \$70, 473-5198.

TOY-NEW donut tires and rims \$10 ea, 2 tires 155 x 12, \$10 ea Call 790-7425.

TOY-1 G.Y. 1 Goodrich on rims, P225/75R15, \$30, 00, 473-9082 ext. 6.

TOY-Lite Tykes kitchen w/ accessories, exc cond, \$25, 628-7958.

TOY-NEW Uniroyal on rim 31x10.5 R. 6 lug, \$70, 473-5198.

TOY-NEW donut tires and rims \$10 ea, 2 tires 155 x 12, \$10 ea Call 790-7425.

TOY-1 G.Y. 1 Goodrich on rims, P225/75R15, \$30, 00, 473-9082 ext. 6.

TOY-Lite Tykes kitchen w/ accessories, exc cond, \$25, 628-7958.

TOY-NEW Uniroyal on rim 31x10.5 R. 6 lug, \$70, 473-5198.

TOY-NEW donut tires and rims \$10 ea, 2 tires 155 x 12, \$10 ea Call 790-7425.

TOY-1 G.Y. 1 Goodrich on rims, P225/75R15, \$30, 00, 473-9082 ext. 6.

TOY-Lite Tykes kitchen w/ accessories, exc cond, \$25, 628-7958.

TOY-NEW Uniroyal on rim 31x10.5 R. 6 lug, \$70, 473-5198.

TOY-NEW donut tires and rims \$10 ea, 2 tires 155 x 12, \$10 ea Call 790-7425.

TOY-1 G.Y. 1 Goodrich on rims, P225/75R15, \$30, 00, 473-9082 ext. 6.

TOY-Lite Tykes kitchen w/ accessories, exc cond, \$25, 628-7958.

TOY-NEW Uniroyal on rim 31x10.5 R. 6 lug, \$70, 473-5198.

TOY-NEW donut tires and rims \$10 ea, 2 tires 155 x 12, \$10 ea Call 790-7425.

TOY-1 G.Y. 1 Goodrich on rims, P225/75R15, \$30, 00, 473-9082 ext. 6.

TOY-Lite Tykes kitchen w/ accessories, exc cond, \$25, 628-7958.

TOY-NEW Uniroyal on rim 31x10.5 R. 6 lug, \$70, 473-5198.

TOY-NEW donut tires and rims \$10 ea, 2 tires 155 x 12, \$10 ea Call 790-7425.

TOY-1 G.Y. 1 Goodrich on rims, P225/75R15, \$30, 00, 473-9082 ext. 6.

TOY-Lite Tykes kitchen w/ accessories, exc cond, \$25, 628-7958.

TOY-NEW Uniroyal on rim 31x10.5 R. 6 lug, \$70, 473-5198.

TOY-NEW donut tires and rims \$10 ea, 2 tires 155 x 12, \$10 ea Call 790-7425.

TOY-1 G.Y. 1 Goodrich on rims, P225/75R15, \$30, 00, 473-9082 ext. 6.

TOY-Lite Tykes kitchen w/ accessories, exc cond, \$25, 628-7958.

TOY-NEW Uniroyal on rim 31x10.5 R. 6 lug, \$70, 473-5198.

TOY-NEW donut tires and rims \$10 ea, 2 tires 155 x 12, \$10 ea Call 790-7425.

TOY-1 G.Y. 1 Goodrich on rims, P225/75R15, \$30, 00, 473-9082 ext. 6.

TOY-Lite Tykes kitchen w/ accessories, exc cond, \$25, 628-7958.

TOY-NEW Uniroyal on rim 31x10.5 R. 6 lug, \$70, 473-5198.

TOY-NEW donut tires and rims \$10 ea, 2 tires 155 x 12, \$10 ea Call 790-7425.

TOY-1 G.Y. 1 Goodrich on rims, P225/75R15, \$30, 00, 473-9082 ext. 6.

TOY-Lite Tykes kitchen w/ accessories, exc cond, \$25, 628-7958.

TOY-NEW Uniroyal on rim 31x10.5 R. 6 lug, \$70, 473-5198.

TOY-NEW donut tires and rims \$10 ea, 2 tires 155 x 12, \$10 ea Call 790-7425.

TOY-1 G.Y. 1 Goodrich on rims, P225/75R15, \$30, 00, 473-9082 ext. 6.

REAL ESTATE DIRECTORY

A Convenient Guide to Finding the Home of Your Choice in the Community of Your Choice



Butler Century 21 Preferred Realty Inc. 1370 Route 23 North, Butler, N.J. 07405 838-1001

Coldwell Banker Schlott Realtors Smoke Rise Office 838-9300 838-8400 Also Serving Butler & Bloomingdale

Clifton Weichert, Realtors 795 Clifton Ave, Clifton, NJ 07013 779-1900

De Mattia-O'Brien Real Estate Inc. Established 1922 500 Clifton Ave, Clifton N.J. 546-3366

Century 21 Best Choice Realty 1187 Main Ave, Clifton, NJ (201) 778-3500 DISCOVER THE POWER OF CENTURY 21

Century 21 A CV Real Estate 931 Clifton Ave, Clifton, NJ 07013 365-2122

Coldwell Banker Schlott Realtors 1355 Broad St, Clifton, NJ 07013 778-4500

Murphy Realty 1198 Clifton Ave, Clifton, NJ 773-4141 "Nobody Markets Like Murphy"

Cupo Realty 50 Mt. Pleasant Avenue Clifton, NJ 07013 471-6100

Kinnelon Murphy Realty 2 1/2 rd Ave, Kinnelon, NJ 492-0500 "Nobody Markets Like Murphy"

Weichert, Realtors 174 Bonton Ave, Kinnelon, NJ 838-6200

Empire Real Estate Services, Inc. COMMERCIAL, INDUSTRIAL, RESIDENTIAL Kinnelon, N.J. 07405 (201) 838-2828

Remax Leading Edge Tom Shields Serving Passaic, Morris & Sussex Counties. 625-0450 Office 838-4182 Eves

Pateron Leopizzi Real Estate Agency 282 Trenton Avenue Pateron, N.J. 07650 (201) 684-7171

George Tahan Agency Residential & Commercial Sales & Rentals 1071 Main Street, Pateron, NJ 07650 345-2224

Pompton Plains Coldwell Banker Schlott Realtors 580 Rt. 23 North, Pompton Plains, NJ 839-8900

Weichert, Realtors 937 Rt. 23 South Pompton Plains, NJ 839-4646

Ringwood Coldwell Banker Schlott Realtors 52 Skyline Dr, Ringwood 962-7007

West Milford Era Masters Realtors 1490 Rt. 23 Wayne Packanack/Wayne Shopping Center 696-8686

Lewis & Haring Realtors 1594-B Union Valley Rd. West Milford, NJ 728-0300 "All Your Real Estate Needs Under One Roof"

West Milford Coldwell Banker Schlott Realtors 1489 Union Valley Rd West Milford, NJ 728-3600

Weichert, Realtors 1433 Union Valley Rd. West Milford 728-7775

Butler Century 21 Preferred Realty Inc. 1370 Route 23 North, Butler, N.J. 07405 838-1001

Coldwell Banker Schlott Realtors Smoke Rise Office 838-9300 838-8400 Also Serving Butler & Bloomingdale

Clifton Weichert, Realtors 795 Clifton Ave, Clifton, NJ 07013 779-1900

De Mattia-O'Brien Real Estate Inc. Established 1922 500 Clifton Ave, Clifton N.J. 546-3366

Century 21 Best Choice Realty 1187 Main Ave, Clifton, NJ (201) 778-3500 DISCOVER THE POWER OF CENTURY 21

Century 21 A CV Real Estate 931 Clifton Ave, Clifton, NJ 07013 365-2122

Coldwell Banker Schlott Realtors 1355 Broad St, Clifton, NJ 07013 778-4500

Murphy Realty 1198 Clifton Ave, Clifton, NJ 773-4141 "Nobody Markets Like Murphy"

Cupo Realty 50 Mt. Pleasant Avenue Clifton, NJ 07013 471-6100

Kinnelon Murphy Realty 2 1/2 rd Ave, Kinnelon, NJ 492-0500 "Nobody Markets Like Murphy"

Weichert, Realtors 174 Bonton Ave, Kinnelon, NJ 838-6200

Empire Real Estate Services, Inc. COMMERCIAL, INDUSTRIAL, RESIDENTIAL Kinnelon, N.J. 07405 (201) 838-2828

Remax Leading Edge Tom Shields Serving Passaic, Morris & Sussex Counties. 625-0450 Office 838-4182 Eves

Pateron Leopizzi Real Estate Agency 282 Trenton Avenue Pateron, N.J. 07650 (201) 684-7171

George Tahan Agency Residential & Commercial Sales & Rentals 1071 Main Street, Pateron, NJ 07650 345-2224

Pompton Plains Coldwell Banker Schlott Realtors 580 Rt. 23 North, Pompton Plains, NJ 839-8900

Weichert, Realtors 937 Rt. 23 South Pompton Plains, NJ 839-4646

Ringwood Coldwell Banker Schlott Realtors 52 Skyline Dr, Ringwood 962-7007

West Milford Era Masters Realtors 1490 Rt. 23 Wayne Packanack/Wayne Shopping Center 696-8686

Lewis & Haring Realtors 1594-B Union Valley Rd. West Milford, NJ 728-0300 "All Your Real Estate Needs Under One Roof"

West Milford Coldwell Banker Schlott Realtors 1489 Union Valley Rd West Milford, NJ 728-3600

Weichert, Realtors 1433 Union Valley Rd. West Milford 728-7775

Butler Century 21 Preferred Realty Inc. 1370 Route 23 North, Butler, N.J. 07405 838-1001

Coldwell Banker Schlott Realtors Smoke Rise Office 838-9300 838-8400 Also Serving Butler & Bloomingdale

Clifton Weichert, Realtors 795 Clifton Ave, Clifton, NJ 07013 779-1900

De Mattia-O'Brien Real Estate Inc. Established 1922 500 Clifton Ave, Clifton N.J. 546-3366

Merchandise Merchandise Merchandise Garage & Yard Sales 585 Garage & Yard Sales 585 Merchandise Business Opportunities 659 Autos Autos Autos

DR SET - Brown, Walnut table w/ chairs, high & 3 seats \$600.00. Call 785-2449.
ORSET Mini French Provincial chair set - matching table & chairs (No chairs) \$200 Call 733-6263.
From 1000 unwarranted items we feature cash with a fast acting. CLASSIFIED Ad!!!

DO-IT-YOURSELF IDEAS
A READER SERVICE OF THIS NEWSPAPER
DOLL HOUSE AND FURNITURE
Sinking deep the doors of this charming country-style dollhouse and peek into the past. The house is a scale version (1 1/2" to 1") of a pioneer farm house built mostly from plywood. It's easy to make with our full-size pattern and step-by-step instructions. Also available is a selection of country-style doll furniture. Plans include a 4-poster bed, chest, cradle, dressing table, chairs, etc.

Send check to:
NUN Pattern Dept.
P.O. Box 2983
Van Nuys, CA 91409
#567 Dollhouse \$6.50
#568 Furniture \$6.50
1-Page catalog \$3.95
(Picturing 700 projects)

NAME _____
ADDRESS _____
CITY _____ STATE _____ ZIP _____
This offer available to private party advertisers.
Send ad & check made payable to:
NUNC Classifieds
10 Park Pl.
Butler, NJ 07405
or call 1-800-472-0151 & use your credit card.

DR SET - Brown, Walnut table w/ chairs, high & 3 seats \$600.00. Call 785-2449.
ORSET Mini French Provincial chair set - matching table & chairs (No chairs) \$200 Call 733-6263.
From 1000 unwarranted items we feature cash with a fast acting. CLASSIFIED Ad!!!

PATIO SET - 4 chairs w/ cushions; round table, umbrella. base. \$200 616-9611
Garage & Yard Sales 585
* BLOOMINGDALE *
YARD SALE - Sat-Sun 5/21-22, 10am-4pm. Many baby items, HH appliances, weight bench, dishwasher like new. 1 Oakwood Dr. Terr. Hammburg to Glenwild to Oakwood

* BUTLER *
3 FAMILIES - 14 Cedar St. Sat-Sun May 28-29, 9am-5pm. Clothing, jewelry, laptop, ice skates, clubs & misc items.
* CLIFTON *
110 BROOKWOOD RD. Sat, May 21 9-3. Stereo, games, cd, dh's, misc.
14 BREEN CT. Sat May 21, 9-4. hand, turn, tools, clothes, toys, mink, Singer sew, food processor, bike, TV, Barbie, etc.

* GARFIELD *
19 DEWEY ST May 21/22, 9-6pm. DR 64665. A lot of items. Something for all.
* W. PATERSON *
31 HOWARD AVE. Sat/Sun 5/21-22, 9-5. Kids, misc. & assorted LR items. Odds & Ends. (Anything something for everyone)

* PATERSON *
Hilcrest ave. 300 Elberton Ave. Sat 5/22, 10-4pm. 1 Day only. Something for everyone.
* PEQUANNOCK *
OUR LADY OF FATIMA Factory. 1st & W Franklin. Sat May 28, 9am-4pm. Something for everyone.
* POMPTON LAKES *
38 WHITE WAY Saturday 9-4pm. Desk, Sew Mach, Mower, Comgr, etc.

* GLEN ROCK *
7 WOODVALE RD May 28, 29-30 Time: 9am-5pm. For sale to suit MARVEL, DC etc. Over 10,000 comics to be sold by private collector.
* HALEDON *
4 FAMILIES 105 Church St. High Min Rd to Church. Crafts, toys, sneakers, flower pots, art supplies, kids set, on track, child's metal frame bunk, 1/2 sofa, lamp, linen, dh's, games & more. Dealers welcome. Sat 5/21, RD Sun 5/22, 9-4pm

* KINNELON *
Smoke Room Moving Sale 5/27 & 28, 10-4. Antiques, furniture, toys, bicycle, water skis, sewing machine & other good stuff. Route 23 Gate, left on North Rd to 224 Gavel Hill. Smoke Room Moving Sale May 20 & 21, 9am-4pm. Almost the entire contents of 1/2 home. Beds, 2 Mercedes Benz, 1984 380 SL, & 1986 4.0 M180E. Use Free 23s only.
* LINCOLN PARK *
CONTENTS OF APARTMENT 209 Conny Rd. Apt. F. 4, 5/22 9-5. Fun, Everything Must Go! Call 305-8092

* PASSAIC *
381 Howe Ave. Sat 5/21 thru 5/14, 9-4. Moving Sale. Contents of apt. 778-9163 Patrick.
* PATERSON *
Hilcrest ave. 300 Elberton Ave. Sat 5/22, 10-4pm. 1 Day only. Something for everyone.
* PEQUANNOCK *
OUR LADY OF FATIMA Factory. 1st & W Franklin. Sat May 28, 9am-4pm. Something for everyone.
* POMPTON LAKES *
38 WHITE WAY Saturday 9-4pm. Desk, Sew Mach, Mower, Comgr, etc.

* WEST MILFORD *
10 CLUB HOME Rd (Shady Lane), Multi Family, Sat 5/21, 9-4. Fun, misc, clothes & more.
* W. PATERSON *
GIANT YARD SALE: One of the oldest families in W Paterson, having 1st ever Yard Sale, 2.66 Days, Sat 5/21, 9-4. Fun, misc, clothes & more.
* W. PATERSON *
Shine, 10 Randazzo Lane, W. Paterson, NJ.

* POMPTON LAKES *
MOVING SOUTH-Farm, 639, Boka, Tools, Records, 639 Lincoln Ave, 5/28-29, 3pm.
* POMPTON PLAINS *
28 FRANKLIN ST. Multi Family Sat 5/21, 9-4pm. 9806 Call 454-9114 or 278-0388

* RINGWOOD *
HOUSE SALE - Art, antiques, baby, turn, country decor, electronics, 5/21-22, 10-4pm. 264 Stonetown Rd. Rainforest 5/22.
* RIVERDALE *
RIVERVIEW TERR. Multi Family Sat 5/21, 9-4pm. 9806 Call 454-9114 or 278-0388

* WANAQUE *
134 Waldmans Blvd Sat 5/28, Sun 5/29, 9-4pm. HH items, tires, motorcycle, etc.
15 Funt, Toys (Hamburg) T/K Sat & Sun 5/21-22, 9-5pm. Workout, auto parts & more.
39 GRAND STREET (Off Oak Pump Tpk) Sat & Sun, May 21 & 22, 9-4pm. Multi-Family

* W. PATERSON *
GIANT YARD SALE: One of the oldest families in W Paterson, having 1st ever Yard Sale, 2.66 Days, Sat 5/21, 9-4. Fun, misc, clothes & more.
* W. PATERSON *
Shine, 10 Randazzo Lane, W. Paterson, NJ.

* RINGWOOD *
HOUSE SALE - Art, antiques, baby, turn, country decor, electronics, 5/21-22, 10-4pm. 264 Stonetown Rd. Rainforest 5/22.
* RIVERDALE *
RIVERVIEW TERR. Multi Family Sat 5/21, 9-4pm. 9806 Call 454-9114 or 278-0388

* WANAQUE *
134 Waldmans Blvd Sat 5/28, Sun 5/29, 9-4pm. HH items, tires, motorcycle, etc.
15 Funt, Toys (Hamburg) T/K Sat & Sun 5/21-22, 9-5pm. Workout, auto parts & more.
39 GRAND STREET (Off Oak Pump Tpk) Sat & Sun, May 21 & 22, 9-4pm. Multi-Family

* W. PATERSON *
GIANT YARD SALE: One of the oldest families in W Paterson, having 1st ever Yard Sale, 2.66 Days, Sat 5/21, 9-4. Fun, misc, clothes & more.
* W. PATERSON *
Shine, 10 Randazzo Lane, W. Paterson, NJ.

* W. PATERSON *
GIANT YARD SALE: One of the oldest families in W Paterson, having 1st ever Yard Sale, 2.66 Days, Sat 5/21, 9-4. Fun, misc, clothes & more.
* W. PATERSON *
Shine, 10 Randazzo Lane, W. Paterson, NJ.

General Merchandise 588
30 in. Gas Stove \$99. Sears Roebuck & Co. 278-0388
AMWAY PRODUCTS - MEAN QUALITY And Personal Service Try us & see. 343-1623

BAHAMA CRUISE 5 days/4 nights. Underbooked! Must sell! \$27/1couple. Limited tickets. 407-787-0208 ext. 871. Mon-Sat, 9am-10pm.
BAHAMA Cruise 5 days/4 nights. Underbooked! Must sell! \$27/1couple. Limited tickets. 407-787-0208 ext. 871. Mon-Sat, 9am-10pm.
BEAUTY SALON FUR SALE - 4 work stations, 200 accs guaranteed. Free Franchise. \$100,000. \$1,800-700-5477

BEAUTY SALON FUR SALE - 4 work stations, 200 accs guaranteed. Free Franchise. \$100,000. \$1,800-700-5477
COMPUTER DECIDE - butcher block kit set, glass bedroom set w/bed & 4 poster bed, living rm, bedroom, full, all in exc cond. \$295-0666 all pm
DOORS - Sliding patio, aluminum, 8' wide x 6' high. \$450-638-4222 ext. 200.

FREE washer w/purchase of 1 yr gas front loader. Exc cond. \$275, 523-8231.
GREAT DEALS ON CARPET. CALL 800-890-9084
KITCHEN CABINETS - oak finish, 10 in. alt, reduced to \$475. exc cond, 839-6949 ext 100.
KITCHEN CABINETS - Wood, 119 in complete, w/panel 6000. Reg. \$1000. Offer \$837.
MILL DRILL gear head. Enco Pump Tpk Sat & Sun, May 21 & 22, 9-4pm. Multi-Family

300 e Phone Business \$59
Free Kit 215-831-2909 x359
AUTO PARTS WHOLESALE
Net Profit 100K+
Min invest \$5K Liquid financing Available. Buy-Back Protection National Company. 800-451-6742

BEAUTY SALON FUR SALE - 4 work stations, 200 accs guaranteed. Free Franchise. \$100,000. \$1,800-700-5477
COMPUTER DECIDE - butcher block kit set, glass bedroom set w/bed & 4 poster bed, living rm, bedroom, full, all in exc cond. \$295-0666 all pm
DOORS - Sliding patio, aluminum, 8' wide x 6' high. \$450-638-4222 ext. 200.

FREE washer w/purchase of 1 yr gas front loader. Exc cond. \$275, 523-8231.
GREAT DEALS ON CARPET. CALL 800-890-9084
KITCHEN CABINETS - oak finish, 10 in. alt, reduced to \$475. exc cond, 839-6949 ext 100.
KITCHEN CABINETS - Wood, 119 in complete, w/panel 6000. Reg. \$1000. Offer \$837.

MILL DRILL gear head. Enco Pump Tpk Sat & Sun, May 21 & 22, 9-4pm. Multi-Family
POOL TABLES PL. Your Recreation Source! Free Brochure 800-732-7666
REFRIGERATOR 19 Cu. Ft. 4-Door, new, Almond color. Asking \$1400. Call 208-0720

THIGH REDUCING CREAM - Surprise your thighs! Thigh reducing cream with Aminophylline. Call 628-8297
WASHER & DRYER GE - Exc Cond. Money Back Guarantee. \$165 each. 694-2235.
WASHER/DRYER - Kenmore heavy duty call. Like new \$800/800 722-6340

BEAUTY SALON FUR SALE - 4 work stations, 200 accs guaranteed. Free Franchise. \$100,000. \$1,800-700-5477
COMPUTER DECIDE - butcher block kit set, glass bedroom set w/bed & 4 poster bed, living rm, bedroom, full, all in exc cond. \$295-0666 all pm
DOORS - Sliding patio, aluminum, 8' wide x 6' high. \$450-638-4222 ext. 200.

FREE washer w/purchase of 1 yr gas front loader. Exc cond. \$275, 523-8231.
GREAT DEALS ON CARPET. CALL 800-890-9084
KITCHEN CABINETS - oak finish, 10 in. alt, reduced to \$475. exc cond, 839-6949 ext 100.
KITCHEN CABINETS - Wood, 119 in complete, w/panel 6000. Reg. \$1000. Offer \$837.

MILL DRILL gear head. Enco Pump Tpk Sat & Sun, May 21 & 22, 9-4pm. Multi-Family
POOL TABLES PL. Your Recreation Source! Free Brochure 800-732-7666
REFRIGERATOR 19 Cu. Ft. 4-Door, new, Almond color. Asking \$1400. Call 208-0720

THIGH REDUCING CREAM - Surprise your thighs! Thigh reducing cream with Aminophylline. Call 628-8297
WASHER & DRYER GE - Exc Cond. Money Back Guarantee. \$165 each. 694-2235.
WASHER/DRYER - Kenmore heavy duty call. Like new \$800/800 722-6340

THIGH REDUCING CREAM - Surprise your thighs! Thigh reducing cream with Aminophylline. Call 628-8297
WASHER & DRYER GE - Exc Cond. Money Back Guarantee. \$165 each. 694-2235.
WASHER/DRYER - Kenmore heavy duty call. Like new \$800/800 722-6340

BEAUTY SALON FUR SALE - 4 work stations, 200 accs guaranteed. Free Franchise. \$100,000. \$1,800-700-5477
COMPUTER DECIDE - butcher block kit set, glass bedroom set w/bed & 4 poster bed, living rm, bedroom, full, all in exc cond. \$295-0666 all pm
DOORS - Sliding patio, aluminum, 8' wide x 6' high. \$450-638-4222 ext. 200.

FREE washer w/purchase of 1 yr gas front loader. Exc cond. \$275, 523-8231.
GREAT DEALS ON CARPET. CALL 800-890-9084
KITCHEN CABINETS - oak finish, 10 in. alt, reduced to \$475. exc cond, 839-6949 ext 100.
KITCHEN CABINETS - Wood, 119 in complete, w/panel 6000. Reg. \$1000. Offer \$837.

MILL DRILL gear head. Enco Pump Tpk Sat & Sun, May 21 & 22, 9-4pm. Multi-Family
POOL TABLES PL. Your Recreation Source! Free Brochure 800-732-7666
REFRIGERATOR 19 Cu. Ft. 4-Door, new, Almond color. Asking \$1400. Call 208-0720

THIGH REDUCING CREAM - Surprise your thighs! Thigh reducing cream with Aminophylline. Call 628-8297
WASHER & DRYER GE - Exc Cond. Money Back Guarantee. \$165 each. 694-2235.
WASHER/DRYER - Kenmore heavy duty call. Like new \$800/800 722-6340

THIGH REDUCING CREAM - Surprise your thighs! Thigh reducing cream with Aminophylline. Call 628-8297
WASHER & DRYER GE - Exc Cond. Money Back Guarantee. \$165 each. 694-2235.
WASHER/DRYER - Kenmore heavy duty call. Like new \$800/800 722-6340

BEAUTY SALON FUR SALE - 4 work stations, 200 accs guaranteed. Free Franchise. \$100,000. \$1,800-700-5477
COMPUTER DECIDE - butcher block kit set, glass bedroom set w/bed & 4 poster bed, living rm, bedroom, full, all in exc cond. \$295-0666 all pm
DOORS - Sliding patio, aluminum, 8' wide x 6' high. \$450-638-4222 ext. 200.

FREE washer w/purchase of 1 yr gas front loader. Exc cond. \$275, 523-8231.
GREAT DEALS ON CARPET. CALL 800-890-9084
KITCHEN CABINETS - oak finish, 10 in. alt, reduced to \$475. exc cond, 839-6949 ext 100.
KITCHEN CABINETS - Wood, 119 in complete, w/panel 6000. Reg. \$1000. Offer \$837.

MILL DRILL gear head. Enco Pump Tpk Sat & Sun, May 21 & 22, 9-4pm. Multi-Family
POOL TABLES PL. Your Recreation Source! Free Brochure 800-732-7666
REFRIGERATOR 19 Cu. Ft. 4-Door, new, Almond color. Asking \$1400. Call 208-0720

THIGH REDUCING CREAM - Surprise your thighs! Thigh reducing cream with Aminophylline. Call 628-8297
WASHER & DRYER GE - Exc Cond. Money Back Guarantee. \$165 each. 694-2235.
WASHER/DRYER - Kenmore heavy duty call. Like new \$800/800 722-6340

THIGH REDUCING CREAM - Surprise your thighs! Thigh reducing cream with Aminophylline. Call 628-8297
WASHER & DRYER GE - Exc Cond. Money Back Guarantee. \$165 each. 694-2235.
WASHER/DRYER - Kenmore heavy duty call. Like new \$800/800 722-6340

The Wheel Deal Guarantee
\$2995
ADVERTISE YOUR USED CAR, TRUCK OR VAN TILL IT SELLS
PLACE YOUR 3 LINE WHEEL DEAL AD
IN ANY ONE NEWSPAPER FOR \$2995 • IN ALL FIVE PAPERS FOR \$4295

WRITE YOUR Run It Till It Sells WHEEL DEAL AD HERE
CHECK ONE
Herald & News
Suburban Trends
Today Newspapers
Dateline Journal
Suburban Life
Give me all five newspapers for \$4295
Name _____ Address _____ City/State _____ Zip _____
Print clearly. Use one character or punctuation mark per block. Use one block between words. Additional lines \$5.50.
Send this ad and check made payable to: NORTH JERSEY NEWSPAPERS / WHEEL DEAL 10 Park Place, Butler, N.J. 07405
ORDER TOLL FREE! WHEEL DEAL Use Your Credit Card

Wanted to Buy 625
\$1000-\$10,000 Paid For Antique Oriental Rug James Proctor 201-278-0280 Or 800-359-7947
A Better Price, Civil War & Old Military Items. Swords, Rifles, etc. Mail, call. 301-891-3044.
All Civil War military goods, weapons, bayonets, medals, etc. All others sold W/WH 777-2125
ALL GUAS DR WAR RELICS GERMAN, JAPANESE, AMER Swords, Helmets, Medals Top Cash Pd. 839-0174

ALL LIONEL, Lion, Flyer & other trains. Top prices paid. 800-464-4671/201-825-3747
ANTIQUES, art, home collections, toys, trains, Brns. 546-3533
AUTOGRAHS Bought & Sold. All kinds, Civil War & more. Free shipping. 1500-1000. Buy 1 pc or collect. 444-9653

OLDER Furniture & oak wash, mahog, DR & BR sets, antiques, china, rugs, lamp, etc. For cash 1-800-789-0202.
TOOLS WANTED Any type, any quantity. Call Gene 696-4908. Betw. 4 & 7 PM. WEEKENDS ext. 6:30 PM
TOYS, TOYS, TOYS Wanted All Types 1900-1980. Call 534-8724 from 5 to 9pm

ACURA LEGEND L, 1989 1600 cc, 4 door, 111,800 (BO: 838-623)
ACURA Integra GS, 1990, 4 dr, auto, loaded, exc warranty, exc cond. 48K mi. 311,000. 839-0005.
AUDI - 1986 5000s, fully loaded, exc cond. 98K mi. 33500. 790-5377

ACURA LEGEND L, 1989 1600 cc, 4 door, 111,800 (BO: 838-623)
ACURA Integra GS, 1990, 4 dr, auto, loaded, exc warranty, exc cond. 48K mi. 311,000. 839-0005.
AUDI - 1986 5000s, fully loaded, exc cond. 98K mi. 33500. 790-5377

Private Party Advertisers Only
ONE Auto for sale per customer.
Please be sure to ask your Customer Service Representative the last day the ad is to run, and be sure to call back each month to renew ad if automobile is not sold.

Send this ad and check made payable to: NORTH JERSEY NEWSPAPERS / WHEEL DEAL 10 Park Place, Butler, N.J. 07405
ORDER TOLL FREE! WHEEL DEAL Use Your Credit Card

Pet Supplies & Services 645
Good Shepherd Pet Sitting Pet Care in Your Home. Insured, Bonded, Mem NJSPS. 790-SHEP (7437)

ACURA LEGEND L, 1989 1600 cc, 4 door, 111,800 (BO: 838-623)
ACURA Integra GS, 1990, 4 dr, auto, loaded, exc warranty, exc cond. 48K mi. 311,000. 839-0005.
AUDI - 1986 5000s, fully loaded, exc cond. 98K mi. 33500. 790-5377

ACURA LEGEND L, 1989 1600 cc, 4 door, 111,800 (BO: 838-623)
ACURA Integra GS, 1990, 4 dr, auto, loaded, exc warranty, exc cond. 48K mi. 311,000. 839-0005.
AUDI - 1986 5000s, fully loaded, exc cond. 98K mi. 33500. 790-5377

ACURA LEGEND L, 1989 1600 cc, 4 door, 111,800 (BO: 838-623)
ACURA Integra GS, 1990, 4 dr, auto, loaded, exc warranty, exc cond. 48K mi. 311,000. 839-0005.
AUDI - 1986 5000s, fully loaded, exc cond. 98K mi. 33500. 790-5377

ACURA LEGEND L, 1989 1600 cc, 4 door, 111,800 (BO: 838-623)
ACURA Integra GS, 1990, 4 dr, auto, loaded, exc warranty, exc cond. 48K mi. 311,000. 839-0005.
AUDI - 1986 5000s, fully loaded, exc cond. 98K mi. 33500. 790-5377

WARRANTY

ADVERTISE YOUR OWN CAR, TRUCK OR VAN TILL IT SELLS • 492 • 9595

LEXUS SC400 92-28K mi. black saddle in Exc cond. \$31,000 848-1350

MAZDA 323 Exc cond. \$2995 423-5971

MAZDA 90 Miata Red Convertible Exc cond, orig owner, 48K, 5 spd, htdrop, A/C, alarm system, p/b, \$9,700, 410-4999

MAZDA 90 Miata Red Convertible Exc cond, orig owner, 48K, 5 spd, htdrop, A/C, alarm system, p/b, \$9,700, 410-4999

MERCEDES 1976 Benz 450 SEL sunroofs, p/b, well maintained \$2800/BO. Fred days 345-1802

MERCEDES 450SEL 76 Everything works, strong motor \$2295/obo 646-6708

MERCEDES 3000 1977 Very Reliable, all pwr, A/C, Auto, \$2400, 201-684-2752, 914-445-2198

MERCEDES 2400 1983 Auto, 3000 cc, 200, exc cond, \$580/obo, 653-9682

MERCEDES Benz 450 SEL 1979, 4 dr, full power, clean in lot, 85K mi, \$2500, 340-4729

MERCEDES 1988 420 SEL 26K, like new, 1 owner, black \$3700, 633-1182

MERCEDES 3000 4000, auto, all power, snf, exc running cond, \$5500, 845-5385

MERCEDES 1992 300 92-Immaculate, low mileage, \$23,000, 952-0523

MERCEDES 1982 300 92 Turbo, leather, sunroof, good cond \$7900, 628-7219

MERCEDES 300E 97 51K mi \$15000 628-9234 ext 609

MERCEDES Benz 34-300 300 Turbo, white/blue int. Must sell. We are taking reasonable offers, car needs some work. Call with cash, you can make a deal & if you want, \$7500 2902, Serious only, 684-1841

MERCEDES SEL 1989 Bmw, 4 dr, 3700, low miles, 1 owner, \$2500, Call 872-1835

MERCEDES COUGER 1980 2 dr, small V8, 88K, wht, dr, clean \$4950, 340-2428

MERCEDES COUGER 92, teal, blk, landau r, fully loaded, very in to, \$11,500 638-1090

MERCEDES Cougar 92, teal, blk, landau r, fully loaded, very in to, \$11,500 638-1090

MERCEDES 88 Stable, exc, auto, am/fm, cas, runs great, \$2995, 628-7437

MERCEDES 88 Stable, exc, auto, am/fm, cas, runs great, \$2995, 628-7437

MERCEDES 3800 Fiat, Call 927-1802

MERcury 87 Sable Wagon, exc cond, needs trans, work. 100K, \$2000/obo, 956-8110

MERcury 87 Sable GS Wagon Complete tune-up, alignment, Exc cond, 85K mi, \$3200, 638-9436

MERcury 91 Tracer, 34K mi, A/C, fold down rear seat, \$6500, Call 790-7638

MERcury Capri Conv. 91 Gray, A/C, Air bag, alarm, radio/cass, nice car, 26K mi, ask \$9,500, 201-228-6347

MERcury Cougar 1984 A/C, P/B, P/S, White w/blue int. Exc call cond \$1800, 473-7971

MERcury Grand Marquis LS, 1988, 4 dr, Exc cond, 100K mi, pwr, thr, alloy wheels, \$8800, 256-4650

MERcury Lynx 87, 90K \$1500, M-F 212-415-7071, w/ds, 201-599-0168

MERcury Marquis 87 Exc cond, 85K careful mi, gar kept, 1 owner, blue/blue push int, power everything, A/C, Dolby radio, w/cass, V6, luxury ride, cruise control, come see! \$4900, 996-8176

MERcury Marquis LS Station Wag, 1987, Loaded, exc cond, 102K, \$3600, 768-2577

MERcury Sable 89, 88K, pwr, n/c, A/C, am/fm, cas, Runs exc. Only \$4900, 612-8594

MITSUBISHI 3000 GT 91 Blue/green exc, grey int, fully loaded, nice cond, 20K, \$15,995, 781-8842

MITSUBISHI 1992 Diamond LS, Under warranty, over 40K, beige, 4 dr sedan, leather, cd, all p/b, \$10,900, 492-2903

MITSUBISHI Eclipse 1992 Red w/blk, low mi, auto, p/b, exc cond, Perfect cond Orig owner. Must sell \$9900/BO, 696-2117 or 626-4418

MITSUBISHI Pajero 4 dr, auto, p/b, cas, 43,000 mi, like new, \$3275 651-6892

MITSUBISHI 1989 Conquest, 4dr, 100K, 2dr, \$6000, 470-9228

MITSUBISHI 87 54K, 2dr, 5SPD, \$1800/obo, Beeper 238-3960 or 503-6507/nt 4

MUSTANG 1984, 4 cyl, auto, P/S, P/B, A/C, 63K mi, \$1,775, 772-5745

MUSTANG LX 1985, red, loaded, 53K mi, runs good, \$1,500, 492-2359

MUSTANG 1985, 3000 cc, 2000, auto, am/fm, 75,000 mi, A/C, auto, Call 952-1757

NISSAN 1986 Maxima S/wgn, V6, auto, ac, loaded, 100K mi, brown dr, exc \$4950 340-2428

NISSAN 85 300ZX 2+2, 5 spd, 100K, exc cond, 96K, Ask \$2995, 696-1856

NISSAN 86 300ZX, black, fully loaded, 71,000, 72K mi, \$3800/BO, 706-7638

MAXIMA SE 87, 5 spd, p, sunroof, ac, p/b, blk, CD, \$4500, 305-1939 or 613,000

NISSAN Sentra 1988 5SPD, exc, AM/FM, runs & looks new, must sell \$300/obo, 956-0252

NISSAN F150 XE 85, sport, red, 2 dr, auto, p/b, cass, sunr, 70K, like new, \$3075 831-8882

NISSAN 300ZX 1985 loaded 135K, well kept. Looks & runs great \$2800, Call 473-3210

NISSAN 1988 300ZX shown cond, Kamiani kit, metallic black, \$8500, 956-1390

NISSAN 1988 300ZX shown cond, Kamiani kit, metallic black, \$8000, 956-1390

NISSAN 1988 Sentra 2 dr, 5 spd, ac, p/b, 79K, wht, dr, clean \$2950, 340-2428

NISSAN 200 SX SE 1991, white, 5 spd, air sunr, am/fm, cas, 26K mi, A-1 cond, \$11,800 839-4695

NISSAN 300 ZX Twin Turbo 91, Silver exc, grey int, CD, Bose elec, T, roofs, Mint cond, 20K, \$24,995, Call 761-8842

NISSAN 1988 300ZX shown cond, Kamiani kit, metallic black, \$8000, 956-1390

NISSAN 1988 Sentra 2 dr, 5 spd, ac, p/b, 79K, wht, dr, clean \$2950, 340-2428

NISSAN 200 SX SE 1991, white, 5 spd, air sunr, am/fm, cas, 26K mi, A-1 cond, \$11,800 839-4695

NISSAN 300 ZX Twin Turbo 91, Silver exc, grey int, CD, Bose elec, T, roofs, Mint cond, 20K, \$24,995, Call 761-8842

NISSAN 1988 300ZX shown cond, Kamiani kit, metallic black, \$8000, 956-1390

NISSAN 1988 Sentra 2 dr, 5 spd, ac, p/b, 79K, wht, dr, clean \$2950, 340-2428

NISSAN 200 SX SE 1991, white, 5 spd, air sunr, am/fm, cas, 26K mi, A-1 cond, \$11,800 839-4695

NISSAN 300 ZX Twin Turbo 91, Silver exc, grey int, CD, Bose elec, T, roofs, Mint cond, 20K, \$24,995, Call 761-8842

NISSAN 1988 300ZX shown cond, Kamiani kit, metallic black, \$8000, 956-1390

NISSAN 1988 Sentra 2 dr, 5 spd, ac, p/b, 79K, wht, dr, clean \$2950, 340-2428

NISSAN 200 SX SE 1991, white, 5 spd, air sunr, am/fm, cas, 26K mi, A-1 cond, \$11,800 839-4695

NISSAN 300 ZX Twin Turbo 91, Silver exc, grey int, CD, Bose elec, T, roofs, Mint cond, 20K, \$24,995, Call 761-8842

NISSAN 1988 300ZX shown cond, Kamiani kit, metallic black, \$8000, 956-1390

NISSAN 1988 Sentra 2 dr, 5 spd, ac, p/b, 79K, wht, dr, clean \$2950, 340-2428

NISSAN 200 SX SE 1991, white, 5 spd, air sunr, am/fm, cas, 26K mi, A-1 cond, \$11,800 839-4695

NISSAN 300 ZX Twin Turbo 91, Silver exc, grey int, CD, Bose elec, T, roofs, Mint cond, 20K, \$24,995, Call 761-8842

NISSAN 1988 300ZX shown cond, Kamiani kit, metallic black, \$8000, 956-1390

NISSAN 1988 Sentra 2 dr, 5 spd, ac, p/b, 79K, wht, dr, clean \$2950, 340-2428

NISSAN 200 SX SE 1991, white, 5 spd, air sunr, am/fm, cas, 26K mi, A-1 cond, \$11,800 839-4695

NISSAN 300 ZX Twin Turbo 91, Silver exc, grey int, CD, Bose elec, T, roofs, Mint cond, 20K, \$24,995, Call 761-8842

NISSAN 1988 300ZX shown cond, Kamiani kit, metallic black, \$8000, 956-1390

NISSAN 1988 Sentra 2 dr, 5 spd, ac, p/b, 79K, wht, dr, clean \$2950, 340-2428

NISSAN 200 SX SE 1991, white, 5 spd, air sunr, am/fm, cas, 26K mi, A-1 cond, \$11,800 839-4695

NISSAN 300 ZX Twin Turbo 91, Silver exc, grey int, CD, Bose elec, T, roofs, Mint cond, 20K, \$24,995, Call 761-8842

NISSAN 1988 300ZX shown cond, Kamiani kit, metallic black, \$8000, 956-1390

NISSAN 1988 Sentra 2 dr, 5 spd, ac, p/b, 79K, wht, dr, clean \$2950, 340-2428

NISSAN 200 SX SE 1991, white, 5 spd, air sunr, am/fm, cas, 26K mi, A-1 cond, \$11,800 839-4695

NISSAN 300 ZX Twin Turbo 91, Silver exc, grey int, CD, Bose elec, T, roofs, Mint cond, 20K, \$24,995, Call 761-8842

NISSAN 1988 300ZX shown cond, Kamiani kit, metallic black, \$8000, 956-1390

NISSAN 1988 Sentra 2 dr, 5 spd, ac, p/b, 79K, wht, dr, clean \$2950, 340-2428

NISSAN 200 SX SE 1991, white, 5 spd, air sunr, am/fm, cas, 26K mi, A-1 cond, \$11,800 839-4695

NISSAN 300 ZX Twin Turbo 91, Silver exc, grey int, CD, Bose elec, T, roofs, Mint cond, 20K, \$24,995, Call 761-8842

NISSAN 1988 300ZX shown cond, Kamiani kit, metallic black, \$8000, 956-1390

NISSAN 1988 Sentra 2 dr, 5 spd, ac, p/b, 79K, wht, dr, clean \$2950, 340-2428

NISSAN 200 SX SE 1991, white, 5 spd, air sunr, am/fm, cas, 26K mi, A-1 cond, \$11,800 839-4695

NISSAN 300 ZX Twin Turbo 91, Silver exc, grey int, CD, Bose elec, T, roofs, Mint cond, 20K, \$24,995, Call 761-8842

NISSAN 1988 300ZX shown cond, Kamiani kit, metallic black, \$8000, 956-1390

NISSAN 1988 Sentra 2 dr, 5 spd, ac, p/b, 79K, wht, dr, clean \$2950, 340-2428

NISSAN 200 SX SE 1991, white, 5 spd, air sunr, am/fm, cas, 26K mi, A-1 cond, \$11,800 839-4695

NISSAN 300 ZX Twin Turbo 91, Silver exc, grey int, CD, Bose elec, T, roofs, Mint cond, 20K, \$24,995, Call 761-8842

NISSAN 1988 300ZX shown cond, Kamiani kit, metallic black, \$8000, 956-1390

NISSAN 1988 Sentra 2 dr, 5 spd, ac, p/b, 79K, wht, dr, clean \$2950, 340-2428

NISSAN 200 SX SE 1991, white, 5 spd, air sunr, am/fm, cas, 26K mi, A-1 cond, \$11,800 839-4695

NISSAN 300 ZX Twin Turbo 91, Silver exc, grey int, CD, Bose elec, T, roofs, Mint cond, 20K, \$24,995, Call 761-8842

NISSAN 1988 300ZX shown cond, Kamiani kit, metallic black, \$8000, 956-1390

NISSAN 1988 Sentra 2 dr, 5 spd, ac, p/b, 79K, wht, dr, clean \$2950, 340-2428

NISSAN 200 SX SE 1991, white, 5 spd, air sunr, am/fm, cas, 26K mi, A-1 cond, \$11,800 839-4695

NISSAN 300 ZX Twin Turbo 91, Silver exc, grey int, CD, Bose elec, T, roofs, Mint cond, 20K, \$24,995, Call 761-8842

NISSAN 1988 300ZX shown cond, Kamiani kit, metallic black, \$8000, 956-1390

NISSAN 1988 Sentra 2 dr, 5 spd, ac, p/b, 79K, wht, dr, clean \$2950, 340-2428

NISSAN 200 SX SE 1991, white, 5 spd, air sunr, am/fm, cas, 26K mi, A-1 cond, \$11,800 839-4695

NISSAN 300 ZX Twin Turbo 91, Silver exc, grey int, CD, Bose elec, T, roofs, Mint cond, 20K, \$24,995, Call 761-8842

NISSAN 1988 300ZX shown cond, Kamiani kit, metallic black, \$8000, 956-1390

NISSAN 1988 Sentra 2 dr, 5 spd, ac, p/b, 79K, wht, dr, clean \$2950, 340-2428

NISSAN 200 SX SE 1991, white, 5 spd, air sunr, am/fm, cas, 26K mi, A-1 cond, \$11,800 839-4695

NISSAN 300 ZX Twin Turbo 91, Silver exc, grey int, CD, Bose elec, T, roofs, Mint cond, 20K, \$24,995, Call 761-8842

NISSAN 1988 300ZX shown cond, Kamiani kit, metallic black, \$8000, 956-1390

NISSAN 1988 Sentra 2 dr, 5 spd, ac, p/b, 79K, wht, dr, clean \$2950, 340-2428

NISSAN 200 SX SE 1991, white, 5 spd, air sunr, am/fm, cas, 26K mi, A-1 cond, \$11,800 839-4695

NISSAN 300 ZX Twin Turbo 91, Silver exc, grey int, CD, Bose elec, T, roofs, Mint cond, 20K, \$24,995, Call 761-8842

NISSAN 1988 300ZX shown cond, Kamiani kit, metallic black, \$8000, 956-1390

NISSAN 1988 Sentra 2 dr, 5 spd, ac, p/b, 79K, wht, dr, clean \$2950, 340-2428

NISSAN 200 SX SE 1991, white, 5 spd, air sunr, am/fm, cas, 26K mi, A-1 cond, \$11,800 839-4695

NISSAN 300 ZX Twin Turbo 91, Silver exc, grey int, CD, Bose elec, T, roofs, Mint cond, 20K, \$24,995, Call 761-8842

NISSAN 1988 300ZX shown cond, Kamiani kit, metallic black, \$8000, 956-1390

NISSAN 1988 Sentra 2 dr, 5 spd, ac, p/b, 79K, wht, dr, clean \$2950, 340-2428

NISSAN 200 SX SE 1991, white, 5 spd, air sunr, am/fm, cas, 26K mi, A-1 cond, \$11,800 839-4695

NISSAN 300 ZX Twin Turbo 91, Silver exc, grey int, CD, Bose elec, T, roofs, Mint cond, 20K, \$24,995, Call 761-8842

NISSAN 1988 300ZX shown cond, Kamiani kit, metallic black, \$8000, 956-1390

NISSAN 1988 Sentra 2 dr, 5 spd, ac, p/b, 79K, wht, dr, clean \$2950, 340-2428

NISSAN 200 SX SE 1991, white, 5 spd, air sunr, am/fm, cas, 26K mi, A-1 cond, \$11,800 839-4695

NISSAN 300 ZX Twin Turbo 91, Silver exc, grey int, CD, Bose elec, T, roofs, Mint cond, 20K, \$24,995, Call 761-8842

NISSAN 1988 300ZX shown cond, Kamiani kit, metallic black, \$8000, 956-1390

NISSAN 1988 Sentra 2 dr, 5 spd, ac, p/b, 79K, wht, dr, clean \$2950, 340-2428

NISSAN 200 SX SE 1991, white, 5 spd, air sunr, am/fm, cas, 26K mi, A-1 cond, \$11,800 839-4695

NISSAN 300 ZX Twin Turbo 91, Silver exc, grey int, CD, Bose elec, T, roofs, Mint cond, 20K, \$24,995, Call 761-8842

NISSAN 1988 300ZX shown cond, Kamiani kit, metallic black, \$8000, 956-1390

NISSAN 1988 Sentra 2 dr, 5 spd, ac, p/b, 79K, wht, dr, clean \$2950, 340-2428

NISSAN 200 SX SE 1991, white, 5 spd, air sunr, am/fm, cas, 26K mi, A-1 cond, \$11,800 839-4695

NISSAN 300 ZX Twin Turbo 91, Silver exc, grey int, CD, Bose elec, T, roofs, Mint cond, 20K, \$24,995, Call 761-8842

NISSAN 1988 300ZX shown cond, Kamiani kit, metallic black, \$8000, 956-1390

NISSAN 1988 Sentra 2 dr, 5 spd, ac, p/b, 79K, wht, dr, clean \$2950, 340-2428

NISSAN 200 SX SE 1991, white, 5 spd, air sunr, am/fm, cas, 26K mi, A-1 cond, \$11,800 839-4695

NISSAN 300 ZX Twin Turbo 91, Silver exc, grey int, CD, Bose elec, T, roofs, Mint cond, 20K, \$24,995, Call 761-8842

NISSAN 1988 300ZX shown cond, Kamiani kit, metallic black, \$8000, 956-1390

NISSAN 1988 Sentra 2 dr, 5 spd, ac, p/b, 79K, wht, dr, clean \$2950, 340-2428

NISSAN 200 SX SE 1991, white, 5 spd, air sunr, am/fm, cas, 26K mi, A-1 cond, \$11,800 839-4695

NISSAN 300 ZX Twin Turbo 91, Silver exc, grey int, CD, Bose elec, T, roofs, Mint cond, 20K, \$24,995, Call 761-8842

NISSAN 1988 300ZX shown cond, Kamiani kit, metallic black, \$8000, 956-1390

NISSAN 1988 Sentra 2 dr, 5 spd, ac, p/b, 79K, wht, dr, clean \$2950, 340-2428

NISSAN 200 SX SE 1991, white, 5 spd, air sunr, am/fm, cas, 26K mi, A-1 cond, \$11,800 839-4695

NISSAN 300 ZX Twin Turbo 91, Silver exc, grey int, CD, Bose elec, T, roofs, Mint cond, 20K, \$24,995, Call 761-8842

NISSAN 1988 300ZX shown cond, Kamiani kit, metallic black, \$8000, 956-1390

NISSAN 1988 Sentra 2 dr, 5 spd, ac, p/b, 79K, wht, dr, clean \$2950, 340-2428

NISSAN 200 SX SE 1991, white, 5 spd, air sunr, am/fm, cas, 26K mi, A-1 cond, \$11,800 839-4695

NISSAN 300 ZX Twin Turbo 91, Silver exc, grey int, CD, Bose elec, T, roofs, Mint cond, 20K, \$24,995, Call 761-8842

NISSAN 1988 300ZX shown cond, Kamiani kit, metallic black, \$8000, 956-1390

NISSAN 1988 Sentra 2 dr, 5 spd, ac, p/b, 79K, wht, dr, clean \$2950, 340-2428

NISSAN 200 SX SE 1991, white, 5 spd, air sunr, am/fm, cas, 26K mi, A-1 cond, \$11,800 839-4695

NISSAN 300 ZX Twin Turbo 91, Silver exc, grey int, CD, Bose elec, T, roofs, Mint cond, 20K, \$24,995, Call 761-8842

NISSAN 1988 300ZX shown cond, Kamiani kit, metallic black, \$8000, 956-1390

NISSAN 1988 Sentra 2 dr, 5 spd, ac, p/b, 79K, wht, dr, clean \$2950, 340-2428

NISSAN 200 SX SE 1991, white, 5 spd, air sunr, am/fm, cas, 26K mi, A-1 cond, \$11,800 839-4695

NISSAN 300 ZX Twin Turbo 91, Silver exc, grey int, CD, Bose elec, T, roofs, Mint cond, 20K, \$24,995, Call 761-8842

NISSAN 1988 300ZX shown cond, Kamiani kit, metallic black, \$8000, 956-1390

NISSAN 1988 Sentra 2 dr, 5 spd, ac, p/b, 79K, wht, dr, clean \$2950, 340-2428

NISSAN 200 SX SE 1991, white, 5 spd, air sunr, am/fm, cas, 26K mi, A-1 cond, \$11,800 839-4695

NISSAN 300 ZX Twin Turbo 91, Silver exc, grey int, CD, Bose elec, T, roofs, Mint cond, 20K, \$24,995, Call 761-8842

NISSAN 1988 300ZX shown cond, Kamiani kit, metallic black, \$8000, 956-1390

NISSAN 1988 Sentra 2 dr, 5 spd, ac, p/b, 79K, wht, dr, clean \$2950, 340-2428

NISSAN 200 SX SE 1991, white, 5 spd, air sunr, am/fm, cas, 26K mi, A-1 cond, \$11,800 839-4695

NISSAN 300 ZX Twin Turbo 91, Silver exc, grey int, CD, Bose elec, T, roofs, Mint cond, 20K, \$24,995, Call 761-8842

NISSAN 1988 300ZX shown cond, Kamiani kit, metallic black, \$8000, 956-1390

NISSAN 1988 Sentra 2 dr, 5 spd, ac, p/b, 79K, wht, dr, clean \$2950, 340-2428

NISSAN 200 SX SE 1991, white, 5 spd, air sunr, am/fm, cas, 26K mi, A-1 cond, \$11,800 839-4695

NISSAN 300 ZX Twin Turbo 91, Silver exc, grey int, CD, Bose elec, T, roofs, Mint cond, 20K, \$24,995, Call 761-8842

NISSAN 1988 300ZX shown cond, Kamiani kit, metallic black, \$8000, 956-1390

NISSAN 1988 Sentra 2 dr, 5 spd, ac, p/b, 79K, wht, dr, clean \$2950, 340-2428

NISSAN 200 SX SE 1991, white, 5 spd, air sunr, am/fm, cas, 26K mi, A-1 cond, \$11,800 839-4695

NISSAN 300 ZX Twin Turbo 91, Silver exc, grey int, CD, Bose elec, T, roofs, Mint cond, 20K, \$24,995, Call 761-8842

NISSAN 1988 300ZX shown cond, Kamiani kit, metallic black, \$8000, 956-1390

NISSAN 1988 Sentra 2 dr, 5 spd, ac, p/b, 79K, wht, dr, clean \$2950, 340-2428

NISSAN 200 SX SE 1991, white, 5 spd, air sunr, am/fm, cas, 26K mi, A-1 cond, \$11,800 839-4695

NISSAN 300 ZX Twin Turbo 91, Silver exc, grey int, CD, Bose elec, T, roofs, Mint cond, 20K, \$24,995, Call 761-8842

NISSAN 1988 300ZX shown cond, Kamiani kit, metallic black, \$8000, 956-1390

NISSAN 1988 Sentra 2 dr, 5 spd, ac, p/b, 79K, wht, dr, clean \$2950, 340-2428

NISSAN 200 SX SE 1991, white, 5 spd, air sunr, am/fm, cas, 26K mi, A-1 cond, \$11,800 839-4695

NISSAN 300 ZX Twin Turbo 91, Silver exc, grey int, CD, Bose elec, T, roofs, Mint cond, 20K, \$24,995, Call 761-8842

NISSAN 1988 300ZX shown cond, Kamiani kit, metallic black, \$8000, 956-1390

NISSAN 1988 Sentra 2 dr, 5 spd, ac, p/b, 79K, wht, dr, clean \$2950, 340-2428

NISSAN 200 SX SE 1991, white, 5 spd, air sunr, am/fm, cas, 26K mi, A-1 cond, \$11,800 839-4695

NISSAN 300 ZX Twin Turbo 91, Silver exc, grey int, CD, Bose elec, T, roofs, Mint cond, 20K, \$24,995, Call 761-8842

NISSAN 1988 300ZX shown cond, Kamiani kit, metallic black, \$8000, 956-1390

NISSAN 1988 Sentra 2 dr, 5 spd, ac, p/b, 79K, wht, dr, clean \$2950, 340-2428

NISSAN 200 SX SE 1991, white, 5 spd, air sunr, am/fm, cas, 26K mi, A-1 cond, \$11,800 839-4695

NISSAN 300 ZX Twin Turbo 91, Silver exc, grey int, CD, Bose elec, T, roofs, Mint cond, 20K, \$24,995, Call 761-8842

NISSAN 1988 300ZX shown cond, Kamiani kit, metallic black, \$8000, 956-1390

NISSAN 1988 Sentra 2 dr, 5 spd, ac, p/b, 79K, wht, dr, clean \$2950, 340-2428

NISSAN 200 SX SE 1991, white, 5 spd, air sunr, am/fm, cas, 26K mi, A-1 cond, \$11,800 839-4695

NISSAN 300 ZX Twin Turbo 91, Silver exc, grey int, CD, Bose elec, T, roofs, Mint cond, 20K, \$24,995, Call 761-8842

NISSAN 1988 300ZX shown cond, Kamiani kit, metallic black, \$8000, 956-1390

NISSAN 1988 Sentra 2 dr, 5 spd, ac, p/b, 79K, wht, dr, clean \$2950, 340-2428

NISSAN 200 SX SE 1991, white, 5 spd, air sunr, am/fm, cas, 26K mi, A-1 cond, \$11,800 839-4695

NISSAN 300 ZX Twin Turbo 91, Silver exc, grey int, CD, Bose elec, T, roofs, Mint cond, 20K, \$24,995, Call 761-8842

NISSAN 1988 300ZX shown cond, Kamiani kit, metallic black, \$8000, 956-1390

NISSAN 1988 Sentra 2 dr, 5 spd, ac, p/b, 79K, wht, dr, clean \$2950, 340-2428

NISSAN 200 SX SE 1991, white, 5 spd, air sunr, am/fm, cas, 26K mi, A-1 cond, \$11,800 839-4695

NISSAN 300 ZX Twin Turbo 91, Silver exc, grey int, CD, Bose elec, T, roofs, Mint cond, 20K, \$24,995, Call 761-8842

NISSAN 1988 300ZX shown cond, Kamiani kit, metallic black, \$8000, 956-1390

NISSAN 1988 Sentra 2 dr, 5 spd, ac, p/b, 79K, wht, dr, clean \$2950, 340-2428

NISSAN 200 SX SE 1991, white, 5 spd, air sunr, am/fm, cas, 26K mi, A-1 cond, \$11,800 839-4695

NISSAN 300 ZX Twin Turbo 91, Silver exc, grey int, CD, Bose elec, T, roofs, Mint cond, 20K, \$24,995, Call 761-8842

NISSAN 1988 300ZX shown cond, Kamiani kit, metallic black, \$8000, 956-1390

NISSAN 1988 Sentra